



**DEPARTMENT OF NATURAL RESOURCES
STATE OF MICHIGAN
TIMBER SALE PROSPECTUS #7239**

SCHEDULED SALE DATE AND TIME: 10:00 a.m. (local time) on July 25, 2023.

LOCATION: GLADWIN MGMT UNIT, 801 NORTH SILVERLEAF, GLADWIN, MI 48624.

PROSPECTUS NOTE: The bidder is advised to inspect the sale area and review the location, estimated volumes, operating costs and contract terms of proposed sales. Please be aware that some landowners may request 60 days or more notice for access across their land.

Notice is hereby given that bids will be received by the Unit Manager, GLADWIN MANAGEMENT UNIT, for certain timber on the following described lands:

C134 Brigg Knights (73-001-22) / T19N, R05E, SEC. 4 , S1/2NW,SWNE.

T19N, R05E, SEC. 5 , NESE.

T19N, R05E, SEC. 6 , N1/2NW.

T20N, R04E, SEC. 36, S1/2SW.

T20N, R05E, SEC. 31, NENW,SW.

Arenac County, Advertised Price \$94,228.90, 153.1 Acres, Aspen, Hardwood.

SALE NOTE: Some of the units have low wet ground. These units need to be harvested during dry or frozen conditions. Some of the units have received wind damage and have trees with broken tops and wind thrown trees. The trails into some of the units are wet and will limit the time they can be accessed and they may also need some work to make them useable by logging trucks. This may include using fill, culverts and/or equalization tubes.

C134 Main Walker (73-002-22) / T20N, R05E, SEC. 15, NW,SESW,SWSE.

T20N, R05E, SEC. 22, NENW,NWNE.

T20N, R05E, SEC. 29, S1/2NW,SESW,W1/2SE.

T20N, R05E, SEC. 30, NESW,NWSE.

Arenac County, Advertised Price \$154,499.55, 132.3 Acres, Aspen, White Pine.

SALE NOTE: Units 1 and 2 have Walker Road going through them. This road is a seasonal county road. If wood products are to be decked along the road, then permission from the Arenac County Road Commission will be needed. The existing roads and two-track will need to be kept in a passable condition while logging and hauling operation are going on.

BID INSTRUCTIONS (VER. 10/10/2022):

1. Scheduled Bid Location, Date, and Time (2/11)

Bids must be received by the Unit Manager, GLADWIN OFFICE, 801 NORTH SILVERLEAF, GLADWIN, MI 48624, no later than 10:00 a.m. (local time) on July 25, 2023. For further information concerning this sale, contact Blair Tweedale at 989-426-9205 extension 7640.

2. Bidder's Qualifications (10/22)

If all or part of a timber sale was prepared by a private contractor, the contractor and that contractor's company are not permitted to bid on the timber sale. A person must be 18 years of age or older to purchase timber. Permanent employees of the Department of Natural Resources or members of their immediate household may not bid. Former employees, in the permanent or seasonal class, may not bid until 3 months after the last day of active duty. Bids will not be accepted from individuals or companies appearing on the DNR/FRD No-Bid List. This list contains the names of purchasers who previously failed to execute a contract within 21-days or who have a history of poor performance.

3. Preparation of Sealed Bids (5/16)

Bid Forms may be completed online thru Michigan DNR Timber Sale Online Bidding (OLB) at www.michigan.gov/timberbidding or by completing the hardcopy Bid Form found in the Timber Sale Prospectus. Hardcopy Bid Forms shall be manually signed in ink. Registration in OLB is considered your 'signature' for all bids submitted thru that system. Bid prices must be entered for each species and product in the Bid Price column for all material subject to bidding and all fill-in blanks must be completed. If erasures or other changes appear on the hardcopy Bid Form, each erasure or change must be initialed by the person signing the bid.

4. Submission of Sealed Bids (5/16)

Bid forms may be obtained from the Unit Manager or thru OLB. Bids may be submitted hardcopy or thru OLB. All hardcopy bids must be submitted on the bid form and in an envelope clearly identified as described in this section. NOTE: Only one bid form per bid envelope. Sealed bids must be submitted to the Unit office designated in the prospectus and must be submitted at or prior to the time established in the prospectus. The envelope should show on the outside (a) the sale name or number and (b) the date and time of bid opening, as shown in the prospectus. Bids received after the time specified in the sale prospectus are late bids and will be rejected.

It is possible for a bidder to submit multiple bids on a single sale. For example, a bid may be submitted hardcopy and a bid may be submitted thru OLB. Or, two bidders from the same company could both submit bids on the same sale. If this were to happen, the State would accept all bids received and award the contract accordingly. All bidding and contractual requirements would apply to all bids received.

5. Public Opening of Sealed Bids (7/16)

If conditions permit, the sealed bids will be publicly opened and posted at the time and place set in the prospectus.

If a bidder, present at a bid opening, has submitted bids on more than one sale, that bidder may withdraw their unopened bid envelopes or announce the withdrawal of their online bid after being declared the successful bidder on one sale.

6. Award of Contract (1/11)

Award of the contract will be made to the Bidder whose bid, conforming to the prospectus, is most advantageous to the State of Michigan on the basis of total value at rates bid for the estimated quantities. The State reserves the right to reject any bid or waive any minor irregularity in bids received. A written award mailed (or otherwise furnished) to the successful Bidder shall be deemed to result in a binding contract without further action by either party.

7. Down Payment (1/11)

The Bidder to whom award is made must make a down payment within 21 days of the sale award. The amount of the down payment will be calculated as shown in the Bond and Payment Schedule of this prospectus. Only cash may be used to meet this requirement.

8. Performance Security (1/11)

As guarantee of faithful performance, a cash bond, certificate of deposit, surety bond or irrevocable letter of credit (LOC) is required within 21 days of the sale award. The amount of the performance security is shown in the Bond and

Payment Schedule of this prospectus. If an LOC or surety is used, the coverage must extend for at least 6 months beyond the contract expiration.

9. Worker's Compensation (10/22)

Purchaser shall obtain worker's compensation insurance to cover claims under Michigan's Worker's Disability Compensation Act of 1969 or similar employee benefit act of any other state applicable to an employee. Verification of Worker's Disability Compensation Act Compliance must be completed and submitted within 21 days of contract award and prior to the issuance of the timber sale contract. In addition, if applicable, Notice of Exclusion or Certificate of Insurance must also be submitted.

10. Timber Sale Contract (10/22)

Additional conditions and requirements common to all timber sales are listed on the timber sale contract (R4031) and are available on line at www.michigan.gov/timber. Contact the Unit Manager for additional information or a sample contract. Within 21 days of the date of the award letter, the bidder must sign the contract and provide the required down payment, performance security, and verification of worker's disability compensation. The down payment and performance security shall be in accordance with the provisions of the timber sale contract, in the sums stated in this prospectus. If these actions are not taken, then the Bidder, the Bidder's corporation, and the corporation's principals may not be permitted to bid on State timber sales for a period of 3 months after the first offense, 6 months after the second offense, and 1 year after the third offense. An offense will only be counted against the Bidder for 5 years. In addition, the Bidder certifies that if awarded this contract, the Bidder will complete the timber sale contract in accordance with its terms and any modifications thereof including requirements to purchase, cut, and remove the included timber by the expiration date.

Payment Unit values in the State Forest Timber Sale Contract are calculated based on the advertised value of the Payment Unit as a percentage of the total advertised value of the contract. The advertised value of each Payment Unit is given in the Description of Timber by Payment Unit table on the Timber Sale Information page. For example, if the value of Payment Unit 1 is advertised as \$1,500 and the total Timber Sale value is advertised as \$10,000, the contract price for Payment Unit 1 will be 15% of the total bid price ($\$1,500/\$10,000 * 100$).

11. Disclaimer of Estimates and Bidder's Warranty of Inspection (10/22)

Before submitting this bid, the Bidder is advised and cautioned to inspect the sale area, review the requirements of the sale contract, and take other steps as may be reasonably necessary to ascertain the location, estimated volumes, construction estimates, and operating costs of the proposed sale. Failure to do so will not relieve the Bidder from responsibility for completing the contract.

The Bidder warrants that this bid is submitted solely on the basis of the Bidder's examination and inspection of the quality and quantity of the timber offered for sale and the Bidder's opinion of the value thereof and the costs of recovery. No reliance should be placed on the State of Michigan's estimates of timber quality, quantity or costs of recovery. Bidder further acknowledges that the State of Michigan: (i) expressly disclaims any warranty of fitness of timber for any purpose; (ii) offers this timber as is without any warranty of quality (merchantability) or quantity and (iii) expressly disclaims any warranty as to the quantity or quality of timber sold.

12. Certification and Chain-of-Custody (10/22)

Unless otherwise indicated in the contract under section 7 – Other Conditions of the Sale Specific Conditions & Requirements, the area encompassed by this timber sale is certified to the standards of the Forest Stewardship Council (FSC) - Certificate #SCS-FM/COC-00090N and the Sustainable Forestry Initiative (SFI) - Certificate #NSF-SFIS-5Y031-SF5. Forest products from this sale may be delivered to the mill as "FSC 100% and / or SFI certified" as long as the contractor hauling the forest products is chain-of-custody (COC) certified or covered under a COC certificate from the destination mill. The purchaser is responsible for maintaining COC after leaving the sale area.

13. Good Neighbor Authority (GNA) Requirements (10/22)

If the name of this timber sales contains the acronym GNA, it is authorized by the Good Neighbor Authority (GNA) and covered by various agreements between the U.S. Forest Service and the State. The timber sale occurs on federal land and the following conditions apply:

GNA contracts on US Forest Service land will not be awarded to purchasers on the Federal list of excluded parties. The System for Award Management (SAM) will be checked for active excluded parties prior to award of contract. In

addition, the Bidder to whom award is made must complete an Assurance Regarding Felony Conviction or Tax Delinquent Status for Corporate Applicants (AD-3031).

14. Good Neighbor Authority (GNA) Requirements, con't (10/22)

Bidder certifies, by signing this bid form, that to the best of Bidder's knowledge that the following representations are accurate and complete.

- a. That the Bidder and its principals are not presently debarred, suspended, proposed for debarment, declared ineligible, or voluntary excluded from timber sales (covered transactions) by any Federal department or agency.
- b. That the Bidder and its principals have not within a 3-year period preceding this bid been convicted of or had a civil judgment rendered against them for commission of fraud or a criminal offense in connection with obtaining, attempting to obtain, or performing a public (Federal, State, or local) transaction or contract under a public transaction; violation of Federal or State antitrust statutes or commission of embezzlement, theft, forgery, bribery, falsification or destruction of records, making false statements, or receiving stolen property.
- c. That the Bidder and its principals are not presently indicted for or otherwise criminally or civilly charged by a governmental entity (Federal, State, or local) with commission of any of the offenses enumerated in paragraph b of this certification.
- d. That the Bidder and its principals have not within a 3-year period preceding this bid had one or more public transactions (Federal, State, or local) terminated for breach or default of a timber or forest product contract.

Bidders that cannot certify this requirement, in whole or in part, shall submit an explanation with their bid.

SHANNON LOTT, Acting
Director

TIMBER SALE INFORMATION

C134 Brigg Knights (73-001-22)

T19N, R05E, SEC. 4; T19N, R05E, SEC. 5; T19N, R05E, SEC. 6; T20N, R04E, SEC. 36; T20N, R05E, SEC. 31.
Arenac County (Advertised Price \$94,228.90)

SALE NOTE: Some of the units have low wet ground. These units need to be harvested during dry or frozen conditions. Some of the units have received wind damage and have trees with broken tops and wind thrown trees. The trails into some of the units are wet and will limit the time they can be accessed and they may also need some work to make them useable by logging trucks. This may include using fill, culverts and/or equalization tubes.

A timber sale contract for this lump sum, sealed bid timber sale will be awarded to the responsible bidder offering the highest sealed bid price. All units of volume listed below were estimated using the Inventory Manager computer program and the new Michigan taper model. Bids must be at or above the following advertised price for each product and species:

<u>PRODUCTS & SPECIES</u>	<u>ESTIMATED UNITS*</u>	<u>ADVERTISED PRICE</u>
Sawtimber		
Black Cherry	3.4 MBF	\$ 213.00 / MBF
Black/Red (Hybrid) Oak	159.4 MBF	\$ 109.00 / MBF
Mixed Aspen	190.5 MBF	\$ 78.00 / MBF
Red Maple	21.6 MBF	\$ 76.00 / MBF
Red Pine	5.5 MBF	\$ 121.00 / MBF
White Oak	36.8 MBF	\$ 96.00 / MBF
White Pine	91.7 MBF	\$ 68.00 / MBF
Pulpwood		
Balsam Fir	4 Cords	\$ 42.65 / Cord
Cottonwood	4 Cords	\$ 30.35 / Cord
Jack Pine	15 Cords	\$ 25.55 / Cord
Mixed Aspen	984 Cords	\$ 30.35 / Cord
Mixed Hardwood	93 Cords	\$ 21.00 / Cord
Mixed Oak	418 Cords	\$ 15.75 / Cord
Red Maple	323 Cords	\$ 21.00 / Cord
Red Pine	3 Cords	\$ 51.15 / Cord
Scotch Pine	12 Cords	\$ 14.00 / Cord
White Pine	100 Cords	\$ 30.15 / Cord

* The total volume is statistically estimated within plus (+) or minus (-) 5.78 percent. There are an estimated 3,004 cords on this timber sale, plus or minus 174 cords at the 95% confidence level. The estimated units are final and not subject to adjustment. Prospective bidders are urged to examine this timber and to make their own estimates of quantity and quality.

BOND AND PAYMENT SCHEDULE:

1. A bond in the amount of \$4,711.00 to insure faithful performance of the conditions of the contract will be deposited by the successful bidder within 21 days of the sale award.
2. Cutting in any sale or unit without the required advance payment would be considered a trespass.
3. Total payment must be paid in advance or according to the following schedule :
 - (a) Ten percent (10%) of the sale value must be paid within 21 days of the sale award.
 - (b) The 10% down payment will be credited towards the first unit cut.
 - (c) Payment for each of the following units must be made before cutting begins in that unit:

PAYMENT UNIT NUMBER	PERCENT OF TOTAL SALE VALUE
01	8.1%
02	13.9%
03	18.4%
04	22.2%
05	5.7%
06	31.7%

4. If no cutting takes place, the 10% down payment will not be refunded.
5. Operations on the contract issued will terminate on 09/30/2025.

SALE STATISTICS

Volumes were calculated in cubic feet using the Michigan taper model. Cubic foot volume includes all wood inside bark for the product indicated. For display purposes, cubic feet were converted to cords and MBF using a simple conversion factor, e.g. 79 cubic feet per cord and 185 cubic feet per MBF. The cubic foot volumes are precise; the cords and MBF volumes are not. Cubic foot volume cannot be directly converted to cords or boards with precision.

SALE VOLUMES

The total estimated sale volume may not equal the sum of the species/products due to the nature of statistical calculations associated with double sampling methodology.

VOLUME			STATISTICAL RANGE IN CORDS	
TOTAL CUBIC FEET	TOTAL CORDS	PERCENT ERROR	MINIMUM	MAXIMUM
237,287	3,004	5.78%	2,830	3,177

VDU VOLUMES

A VDU is a Volume Determination Unit. Volumes and their associated statistics are calculated at the VDU level and summarized to the sale level. There is often a one to one relationship between a VDU and a Payment Unit, but not always, depending on the cruise design. Refer to the VDU TO PAYMENT UNIT table.

VDU	VOLUME		PERCENT ERROR	RANGE IN CORDS	
	TOTAL CUBIC FEET	TOTAL CORDS		MINIMUM	MAXIMUM
87	77,064	975	10.02%	878	1,073
106	28,670	363	6.84%	338	388
114	44,699	566	11.38%	501	630
135	9,719	123	18.38%	100	146
138	10,280	130	19.36%	105	155
192	53,368	676	17.71%	556	795
196	13,487	171	11.45%	151	190
TOTAL:	237,287	3,004		2,630	3,378

VDU TO PAYMENT UNIT

When a VDU is associated with more than one Payment Unit (PU), the VDU volumes are assigned to the PU based on acres of the VDU within the PU.

VDU	VDU ACRES	PU	PU ACRES
87	19.9	6	19.9
106	41.0	2	41.0
114	22.6	3	22.6
135	10.7	1	10.7
138	5.0	1	5.0
192	47.6	4	47.6
196	6.3	5	6.3
TOTAL:	153.1		153.1

DESCRIPTION OF TIMBER BY PAYMENT UNIT (PU)

PU	MARKET GROUP	PRODUCT	QUANTITY	UNIT	ACRES	ADVERTISE PRICE
1	Black/Red (Hybrid)	Sawtimber	8.8	MBF	15.7	\$7,660.95
	Mixed Aspen		21.9	MBF		
	<i>B. T. Aspen</i>		11.2	<i>MBF</i>		
	<i>Quaking Aspen</i>		10.7	<i>MBF</i>		
	Red Maple		15.8	MBF		
	White Oak		5.6	MBF		
	Balsam Fir	Pulpwood	4	Cords		
	Cottonwood		4	Cords		
	<i>Cottonwood</i>	<i>Sawtimber</i>	1.5	<i>MBF</i>		
	<i>Cottonwood</i>	<i>Pulpwood</i>	1	<i>Cords</i>		
	Mixed Aspen		22	Cords		
	<i>B. T. Aspen</i>		12	<i>Cords</i>		
	<i>Quaking Aspen</i>		10	<i>Cords</i>		
	Mixed Hardwood		28	Cords		
	<i>Basswood</i>	<i>Sawtimber</i>	0.8	<i>MBF</i>		
	<i>Paper Birch</i>		0.9	<i>MBF</i>		
	<i>Basswood</i>	<i>Pulpwood</i>	1	<i>Cords</i>		
	<i>Paper Birch</i>		23	<i>Cords</i>		
	Mixed Oak		12	Cords		
	<i>/Red (Hybrid) Oak</i>		9	<i>Cords</i>		
	<i>White Oak</i>		3	<i>Cords</i>		
	Red Maple		68	Cords		
	White Pine		3	Cords		
2	Black/Red (Hybrid)	Sawtimber	68.4	MBF	41.0	\$13,074.05
	Red Pine		2.1	MBF		
	White Oak		26.5	MBF		
	White Pine		10.4	MBF		
	Mixed Aspen	Pulpwood	2	Cords		
	<i>B. T. Aspen</i>		2	<i>Cords</i>		
	Mixed Oak		111	Cords		
	<i>/Red (Hybrid) Oak</i>		56	<i>Cords</i>		
	<i>White Oak</i>		55	<i>Cords</i>		
	Red Maple		2	Cords		
	Red Pine		1	Cords		
	White Pine		7	Cords		
3	Black/Red (Hybrid)	Sawtimber	18.5	MBF	22.6	\$17,321.20
	Mixed Aspen		10.3	MBF		
	<i>Quaking Aspen</i>		10.3	<i>MBF</i>		
	Red Maple		1.4	MBF		
	White Oak		4.7	MBF		
	White Pine		4.3	MBF		
	Mixed Aspen	Pulpwood	338	Cords		
	<i>Quaking Aspen</i>		338	<i>Cords</i>		
	Mixed Hardwood		19	Cords		
	<i>Black Cherry</i>		13	<i>Cords</i>		
	<i>Paper Birch</i>		4	<i>Cords</i>		
	<i>Pin Cherry</i>		2	<i>Cords</i>		
	Mixed Oak		42	Cords		
	<i>/Red (Hybrid) Oak</i>		37	<i>Cords</i>		
	<i>White Oak</i>		5	<i>Cords</i>		
	Red Maple		68	Cords		
	White Pine		30	Cords		
4	Black Cherry	Sawtimber	1.9	MBF	47.6	\$20,900.45
	Black/Red (Hybrid)		31.9	MBF		
	Mixed Aspen		23.3	MBF		
	<i>B. T. Aspen</i>		16.0	<i>MBF</i>		

DESCRIPTION OF TIMBER BY PAYMENT UNIT (PU), CON'T

PU	MARKET GROUP	PRODUCT	QUANTITY	UNIT	ACRES	ADVERTISE PRICE
4 con't	<i>Quaking Aspen</i>	<i>Sawtimber</i>	7.3	<i>MBF</i>		
	Red Maple		4.4	MBF		
	White Pine		2.3	MBF		
	Jack Pine	Pulpwood	11	Cords		
	<i>Jack Pine</i>	<i>Sawtimber</i>	2.9	<i>MBF</i>		
	<i>Jack Pine</i>	<i>Pulpwood</i>	5	<i>Cords</i>		
	Mixed Aspen		363	Cords		
	<i>B. T. Aspen</i>		349	<i>Cords</i>		
	<i>Quaking Aspen</i>		14	<i>Cords</i>		
	Mixed Hardwood		14	Cords		
	<i>Black Cherry</i>		14	<i>Cords</i>		
	Mixed Oak		121	Cords		
	<i>/Red (Hybrid) Oak</i>		121	<i>Cords</i>		
	Red Maple		52	Cords		
	White Pine		4	Cords		
	5	Black Cherry	Sawtimber	1.5	MBF	6.3
Black/Red (Hybrid			16.6	MBF		
Mixed Aspen			2.8	MBF		
<i>B. T. Aspen</i>			2.8	<i>MBF</i>		
White Pine			18.5	MBF		
Jack Pine		Pulpwood	4	Cords		
<i>Jack Pine</i>			4	<i>Cords</i>		
Mixed Aspen			20	Cords		
<i>B. T. Aspen</i>			20	<i>Cords</i>		
Mixed Hardwood			2	Cords		
<i>Black Cherry</i>			2	<i>Cords</i>		
Mixed Oak			50	Cords		
<i>/Red (Hybrid) Oak</i>			50	<i>Cords</i>		
White Pine			6	Cords		
6	Black/Red (Hybrid	Sawtimber	15.2	MBF	19.9	\$29,947.35
	Mixed Aspen		132.2	MBF		
	<i>B. T. Aspen</i>		132.2	<i>MBF</i>		
	Red Pine		3.4	MBF		
	White Pine		56.2	MBF		
	Mixed Aspen	Pulpwood	239	Cords		
	<i>B. T. Aspen</i>		203	<i>Cords</i>		
	<i>Quaking Aspen</i>		36	<i>Cords</i>		
	Mixed Hardwood		30	Cords		
	<i>Black Cherry</i>		11	<i>Cords</i>		
	<i>Paper Birch</i>		19	<i>Cords</i>		
	Mixed Oak		82	Cords		
	<i>/Red (Hybrid) Oak</i>		82	<i>Cords</i>		
	Red Maple		133	Cords		
	Red Pine		2	Cords		
	Scotch Pine		12	Cords		
	<i>Scotch Pine</i>	<i>Sawtimber</i>	0.9	<i>MBF</i>		
	<i>Scotch Pine</i>	<i>Pulpwood</i>	10	<i>Cords</i>		
White Pine		50	Cords			
TOTAL:			508.9	MBF		
TOTAL:			1,956	Cords		

Sale Specific Conditions & Requirements

Sale Name: C134 Brigg Knights

Sale Number: 73-001-22 Seq#: 1

1 - Sale Area

1.2 - Boundaries

1.2.1 - Painted boundaries (9/19)

The sale boundary and Payment Unit boundaries are marked and identified by blue, red and yellow paint. Exterior sale boundary lines against private property are marked with blue paint. Exterior sale boundary lines against state are marked with red paint. Interior boundaries are marked with yellow paint. Retention patches are marked with red paint; no harvesting activities may occur within these areas. The painted boundary line trees are not Included Timber and are to be protected unless marked with orange paint.

2 - Timber Specifications

2.1 - Included Timber

2.1.1 - Clearcut unit(s) with unmerchantable trees (6/14)

Within Payment Unit(s) 1, 3, 5 and 6, cut all trees that are two (2) inches or more at DBH except trees marked with green paint above and below stump height. In addition, within units 1, 3 and 6 do not cut hemlock or cedar.

2.1.4 - Designated timber unit(s) (6/17)

Within Payment Unit(s) 4, all aspen, maple and jack pine trees two (2) inches or more at DBH are designated for cutting regardless of merchantability. In addition, trees marked with orange paint above and below stump height are designated for cutting regardless of merchantability.

2.1.5 - Overstory removal unit(s) (8/11)

Within Payment Unit(s) 2, all trees with DBH equal to or greater than six (6) inches which meet minimum piece specifications in 2.2 Utilization, are designated for cutting except trees marked with green paint above and below stump height..

2.1.16 - Timber along county or forest roads (6/14)

Cut and remove all standing trees two (2) inches or more at DBH between the yellow line and Tyler Plains Road in payment unit 4 regardless of merchantability.

3 - Payments

3.3 - Pre-measured Sales

3.3.4 - Dividing payment units (7/14)

Payment Unit(s) 4 and 6 may be divided at the request of the Purchaser and upon approval of the Unit Manager. Dividing Payment Units is a contract modification which requires a Timber Sale Contract Amendment. There will be only one division per Payment Unit.

3.4 - Damaged Timber

3.4.1 - Damaged timber (7/16)

General Condition and Requirement 3.4 Damaged Timber, defines liquidated damages for undesignated live merchantable trees which are cut or injured. In addition, extreme care should be taken to avoid damage to tree seedlings and saplings.

Within payment unit 2 and 4, if more than 25% of the tree seedlings or saplings (1/4" to 4.5" DBH) within a specified portion of the sale area are damaged, liquidated damages will be assessed at \$300 per acre for all acreage within that specified portion of the sale area that was damaged.

No damage is acceptable to undesignated live merchantable trees. Within the sale area, if more than 5% of trees (> 4.5" DBH) within a specified area of the sale are damaged, liquidated damages will be assessed for all trees damaged. Rates will be in accordance with General Condition and Requirement 3.4 Damaged Timber.

4 - Transportation

4.1 - Construction

4.1.7 - Road closure (10/11)

All new roads built into the sale must be blocked to vehicle traffic upon completion of the sale. Overgrown roads that are reopened shall be considered new roads. All stumps from road building and landing construction must be reserved to block any newly constructed roads upon completion of the sale. These stumps must be scattered along the road system to prohibit vehicular movement.

4.2 - Maintenance

4.2.5 - Two wheel drive condition (2/04)

All existing trail roads on and adjacent to the sale area must be passable by two-wheel drive traffic for the duration of the sale.

5 - Operations

5.2 - Conduct of Operations

5.2.2 - Hazard Trees/Snags

5.2.2.1 - Den trees (10/16)

Obvious hollow and/or den trees shall be protected and left standing unless they are a safety hazard.

5.2.3 - Operating Restrictions

5.2.3.4 - Oak wilt restriction, no exceptions (1/18)

Within Payment Unit(s) 2 and 4, cutting, skidding, hauling within the sale and brushing of access roads to the sale are not permitted during the period of April 15 to July 15. No exceptions will be granted. This is necessary to reduce the spread of oak wilt.

5.2.4 - Dead and Down Creation

5.2.4.4 - Dead and down creation, grouse (6/18)

To encourage grouse and other wildlife, in Payment Unit(s) 4, 5 and 6 leave one 12" or larger diameter whole tree on the ground for every 3 acres. Trees should be scattered throughout the sale and at least two chains from any roads, two-tracks, or trails open to vehicles, or positioned per the sale administrators instructions. Stumps must be at least 3 feet tall.

5.2.17 - Timber Mats and Interlocking Composite Mats (10/20)

Some roads or skid trails may require extra protection such as that afforded by timber mats, interlocking composite mats, or another approved system. Approximately 24 feet of road or trail will need extra protection at locations shown on the Timber Sale Map. If available, mats may be borrowed from the DNR. A Timber Sale Contract Supplement will be used to document the Purchaser's use of the DNR's mats. Contact the sale administrator regarding availability and pick-up. Timber mats are available from various field offices. Composite mats are only available from the Grayling field office and the Marquette ICC. The Purchaser is responsible for picking up and hauling the mats to and from the site. The composite mats will require DNR staff onsite for installation and removal. Contact the sale administrator to schedule at least 30 days before desired install/removal date. All mats must be cleaned prior to drop off. This may include, but is not limited to, power washing and brushing to remove mud and debris. A charge of \$700.00 per timber mat and \$2,000.00 per composite mat will be assessed for all damaged or non-returned mats. Damage for the crane/timber mats is defined as three or more broken cants. Damage for the composite mats is defined as cracked or broken mats.

5.2.22 - Operating Caution

5.2.22.1 - Operating caution (6/11)

It is recommended, but not required, that within Payment Unit(s) 1 and 3, cutting, skidding, and hauling occur during dry summer or frozen winter conditions. The reason for the recommendation is because soils are seasonally wet and prone to rutting.

5.4 - Soil Protection

5.4.1 - Rutting restriction, general (7/16)

Operations are to cease immediately if equipment and weather conditions result in rutting of roads and/or skid trails which is 12 inches or greater in depth and 50 feet in length. The Unit Manager or his/her representative may restrict hauling and/or skidding if ruts exceed the specified depth. With the Unit Manager or his/her representative's approval, the Purchaser may return to the area when the risk of rutting has decreased.

7 - Other Conditions

7.5 - Loss

7.5.1 - Deteriorating timber (7/09)

The sale area has received damage from windthrow in unit 1. The Purchaser should harvest the wood as soon as possible. The Department of Natural Resources is held free of responsibility of any further damage or deterioration due to delay in harvesting.



Sale Number	Year
73 - 001	22

TIMBER SALE MAP

This information provided by authority of Part 525, 1994 PA 451, as amended.

Forest Management Unit	County	Mapped By	Date	Page	of
Gladwin Management Unit	Arenac	Steven Nyhoff	05/03/2022	1	2
Township	Range	Section(s) and Subdivision(s)	Scale		
19 & 20N	04 & 05E	Various	1:15,840		

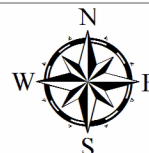
Cover Type				Density	
A = Aspen	H = Hemlock	N = Marsh	U = Upland Brush	0 = Non Stocked	5 = Pole Timber Medium
B = Paper Birch	J = Jack Pine	O = Oak	UM = Upland Mixed	1 = Seedling Sapling Poor	6 = Pole Timber Well
C = Cedar	L = Lowland Brush	P = Lowland Poplar	V = Bog or Marsh	2 = Seedling Sapling Medium	7 = Saw Timber Poor
D = Treed Bog	LM = Lowland Mixed	Q = Mixed Swamp Conifer	W = White Pine	3 = Seedling Sapling Well	8 = Saw Timber Medium
E = Swamp Hdwoods	M = Mpl, Bch, Brch	R = Red Pine	X = Non Stocked	4 = Pole Timber Poor	9 = Saw Timber Well
F = Spruce Fir	MC = Mixed Conifer	S = Black Spruce	Z = Water		
G = Grass	MD = Mixed Deciduous	T = Tamarack			

PU	Acres	PU	Acres
1	15.7	5	6.3
2	41.0	6	19.9
3	22.6		
4	47.6		

C134 Brigg Knight

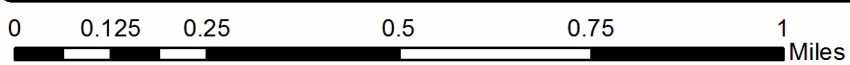
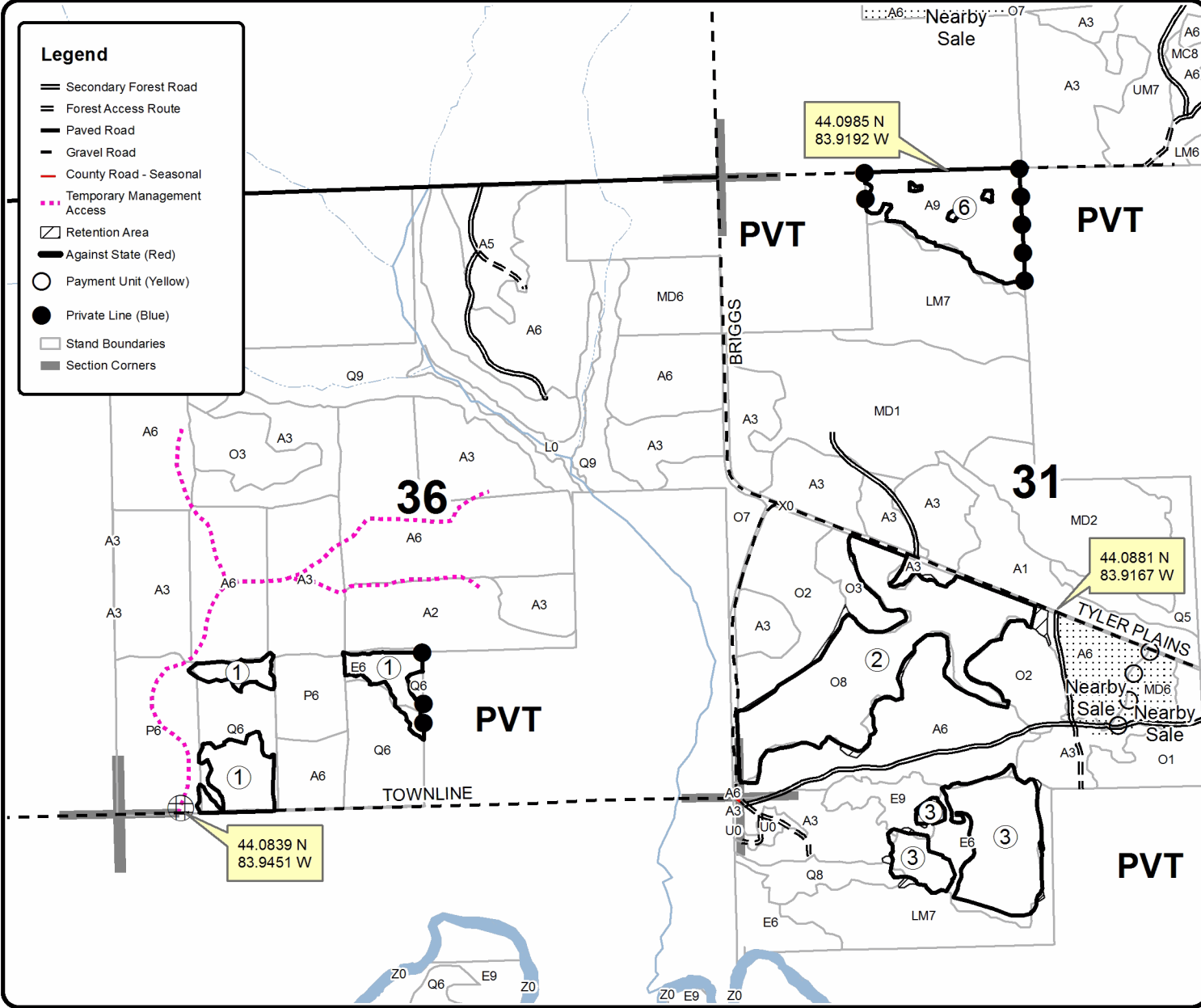
Compartment 134

153.1 Acres



Legend

- Secondary Forest Road
- Forest Access Route
- Paved Road
- Gravel Road
- County Road - Seasonal
- Temporary Management Access
- Retention Area
- Against State (Red)
- Payment Unit (Yellow)
- Private Line (Blue)
- Stand Boundaries
- Section Corners





Sale Number	Year
73 - 001	22

TIMBER SALE MAP

This information provided by authority of Part 525, 1994 PA 451, as amended.

Forest Management Unit	County	Mapped By	Date	Page	of
Gladwin Management Unit	Arenac	Steven Nyhoff	05/03/2022	2	2
Township	Range	Section(s) and Subdivision(s)	Scale		
19 & 20N	04 & 05E	Various	1:15,840		

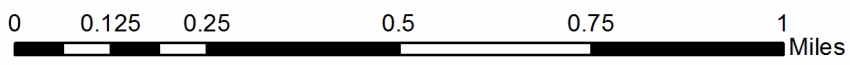
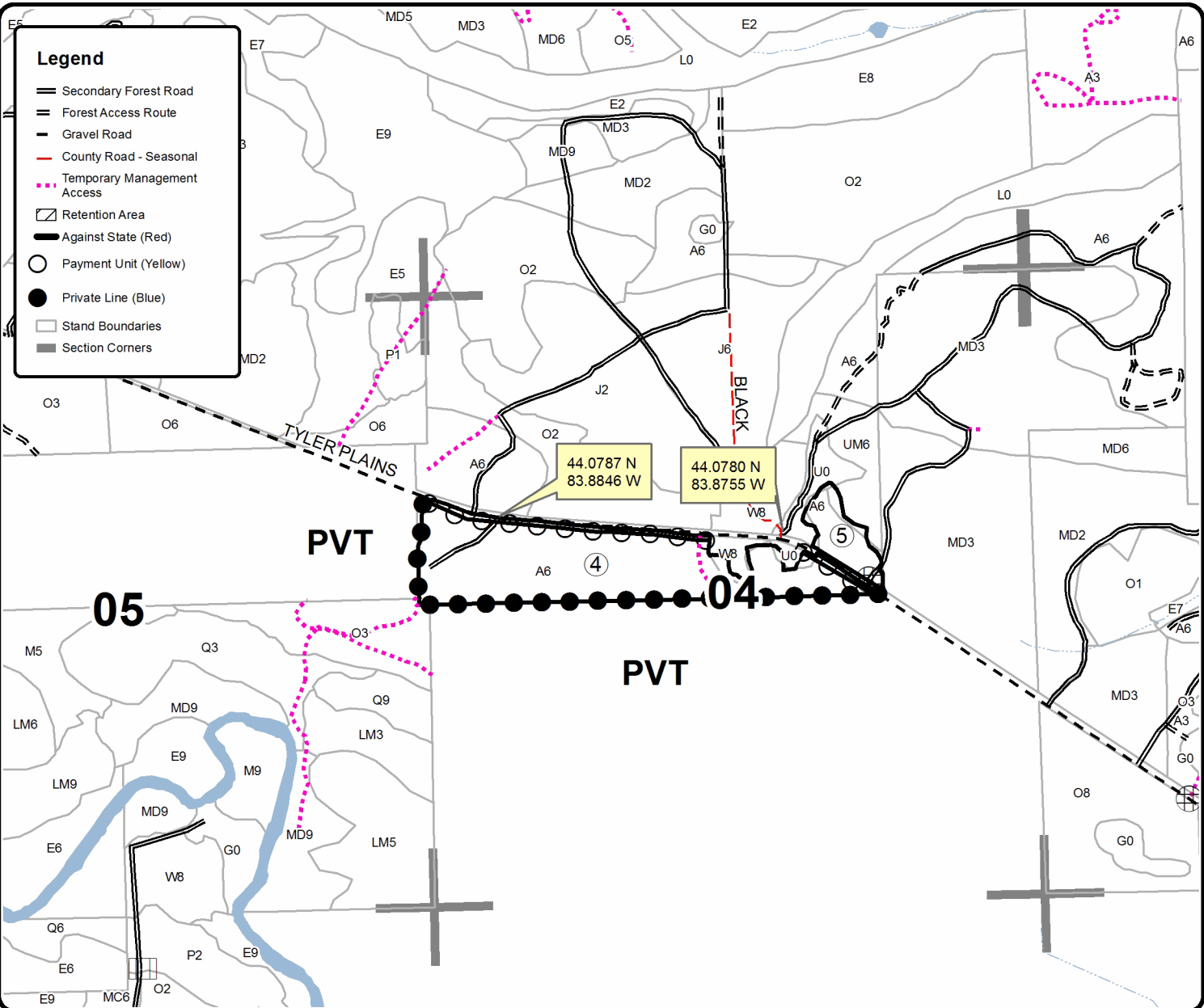
Cover Type				Density	
A = Aspen	H = Hemlock	N = Marsh	U = Upland Brush	0 = Non Stocked	5 = Pole Timber Medium
B = Paper Birch	J = Jack Pine	O = Oak	UM = Upland Mixed	1 = Seedling Sapling Poor	6 = Pole Timber Well
C = Cedar	L = Lowland Brush	P = Lowland Poplar	V = Bog or Marsh	2 = Seedling Sapling Medium	7 = Saw Timber Poor
D = Treed Bog	LM = Lowland Mixed	Q = Mixed Swamp Conifer	W = White Pine	3 = Seedling Sapling Well	8 = Saw Timber Medium
E = Swamp Hdwoods	M = Mpl. Bch. Brch	R = Red Pine	X = Non Stocked	4 = Pole Timber Poor	9 = Saw Timber Well
F = Spruce Fir	MC = Mixed Conifer	S = Black Spruce	Z = Water		
G = Grass	MD = Mixed Deciduous	T = Tamarack			

PU	Acres	PU	Acres
1	15.7	5	6.3
2	41.0	6	19.9
3	22.6		
4	47.6		

C134 Brigg Knight

Compartment 134

153.1 Acres



TIMBER SALE INFORMATION

C134 Main Walker (73-002-22)

T20N, R05E, SEC. 15; T20N, R05E, SEC. 22; T20N, R05E, SEC. 29; T20N, R05E, SEC. 30.
Arenac County (Advertised Price \$154,499.55)

SALE NOTE: Units 1 and 2 have Walker Road going through them. This road is a seasonal county road. If wood products are to be decked along the road, then permission from the Arenac County Road Commission will be needed. The existing roads and two-track will need to be kept in a passable condition while logging and hauling operation are going on.

A timber sale contract for this lump sum, sealed bid timber sale will be awarded to the responsible bidder offering the highest sealed bid price. All units of volume listed below were estimated using the Inventory Manager computer program and the new Michigan taper model. Bids must be at or above the following advertised price for each product and species:

<u>PRODUCTS & SPECIES</u>	<u>ESTIMATED UNITS*</u>		<u>ADVERTISED PRICE</u>
Sawtimber			
Black/Red (Hybrid) Oak	49.8	MBF	\$ 109.00 / MBF
Mixed Aspen	157.1	MBF	\$ 78.00 / MBF
Red Maple	23.2	MBF	\$ 76.00 / MBF
Red Pine	268.2	MBF	\$ 121.00 / MBF
White Oak	9.7	MBF	\$ 96.00 / MBF
White Pine	288.1	MBF	\$ 68.00 / MBF
Pulpwood			
Mixed Aspen	1,524	Cords	\$ 30.35 / Cord
Mixed Oak	230	Cords	\$ 15.75 / Cord
Red Maple	286	Cords	\$ 21.00 / Cord
Red Pine	221	Cords	\$ 51.15 / Cord
White Pine	494	Cords	\$ 30.15 / Cord

* The total volume is statistically estimated within plus (+) or minus (-) 12.75 percent. There are an estimated 4,511 cords on this timber sale, plus or minus 575 cords at the 95% confidence level. The estimated units are final and not subject to adjustment. Prospective bidders are urged to examine this timber and to make their own estimates of quantity and quality.

BOND AND PAYMENT SCHEDULE:

1. A bond in the amount of \$7,725.00 to insure faithful performance of the conditions of the contract will be deposited by the successful bidder within 21 days of the sale award.
2. Cutting in any sale or unit without the required advance payment would be considered a trespass.
3. Total payment must be paid in advance or according to the following schedule:
 - (a) Ten percent (10%) of the sale value must be paid within 21 days of the sale award.
 - (b) The 10% down payment will be credited towards the first unit cut.
 - (c) Payment for each of the following units must be made before cutting begins in that unit:

PAYMENT UNIT NUMBER	PERCENT OF TOTAL SALE VALUE
01	42.4%
02	8.3%
03	10.6%
04	28.8%
05	9.9%

4. If no cutting takes place, the 10% down payment will not be refunded.
5. Operations on the contract issued will terminate on 03/31/2025.

SALE STATISTICS

Volumes were calculated in cubic feet using the Michigan taper model. Cubic foot volume includes all wood inside bark for the product indicated. For display purposes, cubic feet were converted to cords and MBF using a simple conversion factor, e.g. 79 cubic feet per cord and 185 cubic feet per MBF. The cubic foot volumes are precise; the cords and MBF volumes are not. Cubic foot volume cannot be directly converted to cords or boards with precision.

SALE VOLUMES

The total estimated sale volume may not equal the sum of the species/products due to the nature of statistical calculations associated with double sampling methodology.

VOLUME			STATISTICAL RANGE IN CORDS	
TOTAL CUBIC FEET	TOTAL CORDS	PERCENT ERROR	MINIMUM	MAXIMUM
356,334	4,511	12.75%	3,935	5,086

VDU VOLUMES

A VDU is a Volume Determination Unit. Volumes and their associated statistics are calculated at the VDU level and summarized to the sale level. There is often a one to one relationship between a VDU and a Payment Unit, but not always, depending on the cruise design. Refer to the VDU TO PAYMENT UNIT table.

	VOLUME			RANGE IN CORDS	
VDU	TOTAL CUBIC FEET	TOTAL CORDS	PERCENT ERROR	MINIMUM	MAXIMUM
5	113,543	1,437	21.05%	1,135	1,740
20	46,453	588	21.35%	462	714
79	38,986	493	40.99%	291	696
220	133,369	1,688	14.79%	1,438	1,938
235	23,983	304	41.52%	178	430
TOTAL:	356,334	4,511		3,504	5,517

VDU TO PAYMENT UNIT

When a VDU is associated with more than one Payment Unit (PU), the VDU volumes are assigned to the PU based on acres of the VDU within the PU.

VDU	VDU ACRES	PU	PU ACRES
5	34.5	4	34.5
20	18.5	3	18.5
79	11.9	5	11.9
220	38.2	1	38.2
235	29.2	2	29.2
TOTAL:	132.3		132.3

DESCRIPTION OF TIMBER BY PAYMENT UNIT (PU)

PU	MARKET GROUP	PRODUCT	QUANTITY	UNIT	ACRES	ADVERTISE PRICE
1	Black/Red (Hybrid)	Sawtimber	3.2	MBF	38.2	\$65,465.40
		Red Pine	225.1	MBF		
		White Pine	216.1	MBF		
		Mixed Aspen	59	Cords		
		<i>B. T. Aspen</i>	59	<i>Cords</i>		
		Mixed Oak	20	Cords		
		<i>/Red (Hybrid) Oak</i>	20	<i>Cords</i>		
		Red Maple	6	Cords		
		Red Pine	155	Cords		
		White Pine	432	Cords		
2	Black/Red (Hybrid)	Sawtimber	4.6	MBF	29.2	\$12,851.30
		Red Maple	8.0	MBF		
		Red Pine	40.2	MBF		
		White Pine	5.8	MBF		
		Mixed Aspen	66	Cords		
		<i>B. T. Aspen</i>	66	<i>Cords</i>		
		Mixed Oak	4	Cords		
		<i>/Red (Hybrid) Oak</i>	4	<i>Cords</i>		
		Red Maple	21	Cords		
		Red Pine	63	Cords		
White Pine	25	Cords				
3	Black/Red (Hybrid)	Sawtimber	9.2	MBF	18.5	\$16,426.50
		Mixed Aspen	15.0	MBF		
		<i>B. T. Aspen</i>	15.0	<i>MBF</i>		
		Red Maple	3.1	MBF		
		Red Pine	2.9	MBF		
		White Oak	1.6	MBF		
		White Pine	34.9	MBF		
		Mixed Aspen	259	Cords		
		<i>B. T. Aspen</i>	94	<i>Cords</i>		
		<i>Quaking Aspen</i>	165	<i>Cords</i>		
		Mixed Oak	44	Cords		
		<i>/Red (Hybrid) Oak</i>	41	<i>Cords</i>		
		<i>White Oak</i>	3	<i>Cords</i>		
		Red Maple	113	Cords		
Red Pine	3	Cords				
White Pine	2	Cords				
4	Black/Red (Hybrid)	Sawtimber	30.5	MBF	34.5	\$44,487.85
		Mixed Aspen	110.3	MBF		
		<i>B. T. Aspen</i>	110.3	<i>MBF</i>		
		Red Maple	12.1	MBF		
		White Oak	8.1	MBF		
		White Pine	27.7	MBF		
		Mixed Aspen	778	Cords		
		<i>B. T. Aspen</i>	754	<i>Cords</i>		
		<i>Quaking Aspen</i>	24	<i>Cords</i>		
		Mixed Oak	89	Cords		
		<i>/Red (Hybrid) Oak</i>	44	<i>Cords</i>		
		<i>White Oak</i>	45	<i>Cords</i>		
		Red Maple	140	Cords		
White Pine	34	Cords				
5	Black/Red (Hybrid)	Sawtimber	2.3	MBF	11.9	\$15,268.50
		Mixed Aspen	31.8	MBF		
		<i>B. T. Aspen</i>	12.1	<i>MBF</i>		
		<i>Quaking Aspen</i>	19.7	<i>MBF</i>		
		White Pine	3.6	MBF		

DESCRIPTION OF TIMBER BY PAYMENT UNIT (PU), CON'T

PU	MARKET GROUP	PRODUCT	QUANTITY	UNIT	ACRES	ADVERTISE PRICE
5 con't	Mixed Aspen	Pulpwood	362	Cords		
	<i>B. T. Aspen</i>		189	<i>Cords</i>		
	<i>Quaking Aspen</i>		173	<i>Cords</i>		
	Mixed Oak		73	Cords		
	<i>/Red (Hybrid) Oak</i>		43	<i>Cords</i>		
	<i>White Oak</i>		30	<i>Cords</i>		
	Red Maple		6	Cords		
	White Pine		1	Cords		
TOTAL:			796.1	MBF		
TOTAL:			2,755	Cords		

Sale Specific Conditions & Requirements

Sale Name: C134 Main Walker

Sale Number: 73-002-22 Seq#: 1

1 - Sale Area

1.2 - Boundaries

1.2.1 - Painted boundaries (9/19)

The sale boundary and Payment Unit boundaries are marked and identified by blue and red. Exterior sale boundary lines against private property are marked with blue paint. Exterior sale boundary lines against state are marked with red paint. Retention patches are marked with red paint; no harvesting activities may occur within these areas.

2 - Timber Specifications

2.1 - Included Timber

2.1.1 - Clearcut unit(s) with unmerchantable trees (6/14)

Within Payment Unit(s) 3, 4, and 5, cut all trees that are two (2) inches or more at DBH except do not cut any pines or oaks that have a DBH greater than 28 inches.

2.1.4 - Designated timber unit(s) (6/17)

Within Payment Unit(s) 2, all aspen and maple trees that are two (2) inches or more at DBH are designated for cutting regardless of merchantability. In addition, cut all trees that are marked with orange paint above and below stump height.

2.1.5 - Overstory removal unit(s) (8/11)

Within Payment Unit(s) 1, all trees with DBH equal to or greater than 4 inches which meet minimum piece specifications in 2.2 Utilization, are designated for cutting except do not cut any trees marked with green paint above and below stump height.

3 - Payments

3.3 - Pre-measured Sales

3.3.4 - Dividing payment units (7/14)

Payment Unit(s) 1 and 4 may be divided at the request of the Purchaser and upon approval of the Unit Manager. Dividing Payment Units is a contract modification which requires a Timber Sale Contract Amendment.

3.4 - Damaged Timber

3.4.1 - Damaged timber (7/16)

General Condition and Requirement 3.4 Damaged Timber, defines liquidated damages for undesignated live merchantable trees which are cut or injured. In addition, extreme care should be taken to avoid damage to tree seedlings and saplings.

Within units 1 and 2 of the sale area, if more than 25% of the tree seedlings or saplings (1/4" to 4.5" DBH) within a specified portion of the sale area are damaged, liquidated damages will be assessed at \$300 per acre for all acreage within that specified portion of the sale area that was damaged.

No damage is acceptable to undesignated live merchantable trees. Within the sale area, if more than 5% of trees (> 4.5" DBH) within a specified area of the sale are damaged, liquidated damages will be assessed for all trees damaged. The rates will be in accordance with General Condition and Requirement 3.4 Damaged Timber.

4 - Transportation

4.1 - Construction

4.1.12 - No new roads (1/12)

No new roads will be permitted in any Payment Unit. All operations are limited to existing roads. Skid trails only will be allowed.

4.2 - Maintenance

4.2.5 - Two wheel drive condition (2/04)

All existing trail roads on and adjacent to the sale area must be passable by two-wheel drive traffic for the duration of the sale.

5 - Operations

5.2 - Conduct of Operations

5.2.2 - Hazard Trees/Snags

5.2.2.1 - Den trees (10/16)

Obvious hollow and/or den trees shall be protected and left standing unless they are a safety hazard.

5.2.3 - Operating Restrictions

5.2.3.3 - Bark slippage restriction (3/09)

Within Payment Unit(s) 1 and 2, unless changed by written agreement, cutting and skidding are not permitted during the period of April 15 to July 15. This restriction is because of bark slippage.

5.2.3.4 - Oak wilt restriction, no exceptions (1/18)

Within Payment Unit(s) 1 and 2 cutting, skidding, hauling within the sale and brushing of access roads to the sale are not permitted during the period of April 15 to July 15. No exceptions will be granted. This is necessary to reduce the spread of oak wilt.

5.2.3.6 - Bark beetle restriction (12/08)

In the event drought creates a high risk of pine bark beetle infestation, pine is not to be cut during the period March 1 through July 1, unless all portions of trees greater than two inches in diameter are removed from the sale area, reduced to chips, or treated to the satisfaction of the Unit Manager or his/her representative, within fifteen days of being severed from the stump. Pine log decks, pulpwood piles and treetops that are piled for chipping in the fall or winter within a 1/4 mile of susceptible sites must be removed before March 15. Residual slash must not be placed in piles or rows and must be spread over the site for quick drying. The Department of Natural Resources will exercise this specification if the risk of damage warrants.

5.2.4 - Dead and Down Creation

5.2.4.4 - Dead and down creation, grouse (6/18)

To encourage grouse and other wildlife, in Payment Unit(s) 3, 4, and 5 leave one 12" or larger diameter whole tree on the ground for every 3 acres. Trees should be scattered throughout the sale and at least two chains from any roads, two-tracks, or trails open to vehicles, or positioned per the sale administrators instructions. Stumps must be at least 3 feet tall.

5.2.22 - Operating Caution

5.2.22.1 - Operating caution (6/11)

It is recommended, but not required, that within Payment Unit(s) 3, cutting, skidding, and hauling occur during dry summer or frozen winter conditions. The reason for the recommendation is because the soils are seasonal wet.

5.4 - Soil Protection

5.4.1 - Rutting restriction, general (7/16)

Operations are to cease immediately if equipment and weather conditions result in rutting of roads and/or skid trails which is 12 inches or greater in depth and 50 feet in length. The Unit Manager or his/her representative may restrict hauling and/or skidding if ruts exceed the specified depth. With the Unit Manager or his/her representative's approval, the Purchaser may return to the area when the risk of rutting has decreased.



TIMBER SALE MAP

This information provided by authority of Part 525, 1994 PA 451, as amended.

Sale Number	Year
73 - 002	22

Forest Management Unit	County	Mapped By	Date	Page	of
Gladwin Management Unit	Arenac	Steven Nyhoff	07/01/2022	1	2
		Cruised By			
		Steven Nyhoff			

Township	Range	Section(s) and Subdivision(s)	Scale
20N	05E	Sections 15, 22, 29, 30	1:15,840

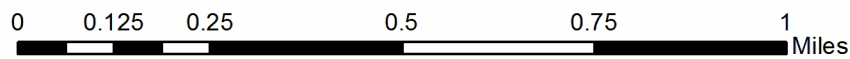
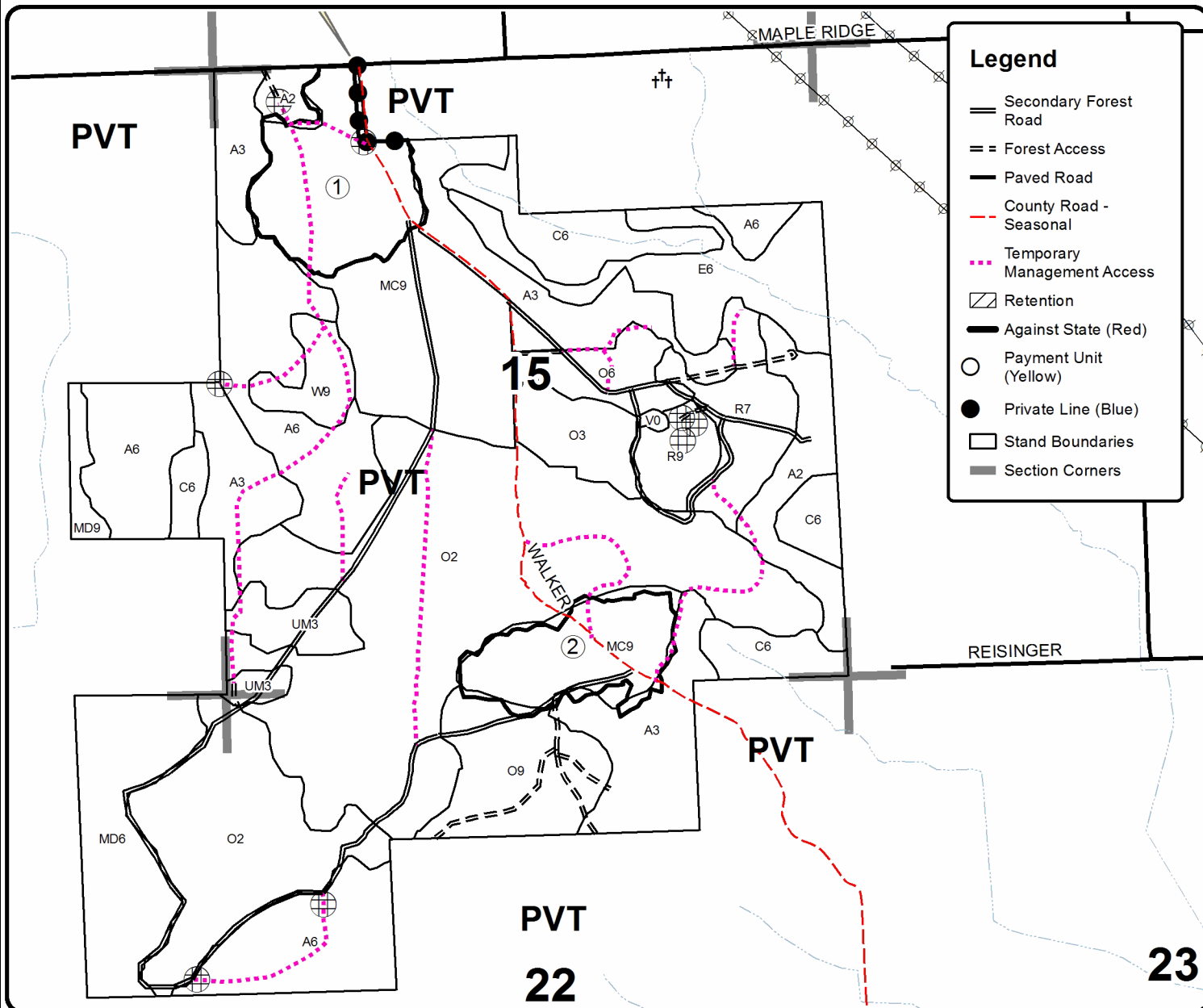
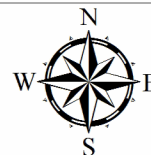
Cover Type				Density	
A = Aspen	H = Hemlock	N = Marsh	U = Upland Brush	0 = Non Stocked	5 = Pole Timber Medium
B = Paper Birch	J = Jack Pine	O = Oak	UM = Upland Mixed	1 = Seedling Sapling Poor	6 = Pole Timber Well
C = Cedar	L = Lowland Brush	P = Lowland Poplar	V = Bog or Marsh	2 = Seedling Sapling Medium	7 = Saw Timber Poor
D = Treed Bog	LM = Lowland Mixed	Q = Mixed Swamp Conifer	W = White Pine	3 = Seedling Sapling Well	8 = Saw Timber Medium
E = Swamp Hdwoods	M = Mpl, Bch, Brch	R = Red Pine	X = Non Stocked	4 = Pole Timber Poor	9 = Saw Timber Well
F = Spruce Fir	MC = Mixed Conifer	S = Black Spruce	Z = Water		
G = Grass	MD = Mixed Deciduous	T = Tamarack			

PU	Acres	PU	Acres
1	38.2	4	34.5
2	29.2	5	11.9
3	18.5		

C134 Main Walker

Compartment 134

132.2 Acres





TIMBER SALE MAP

This information provided by authority of Part 525, 1994 PA 451, as amended.

Sale Number	Year
73 - 002	22

Forest Management Unit	County	Mapped By	Date	Page	of
Gladwin Management Unit	Arenac	Steven Nyhoff	07/01/2022	2	2
Township	Range	Section(s) and Subdivision(s)	Scale		
20N	05E	Sections 15, 22, 29, 30	1:15,840		

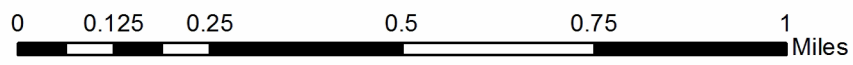
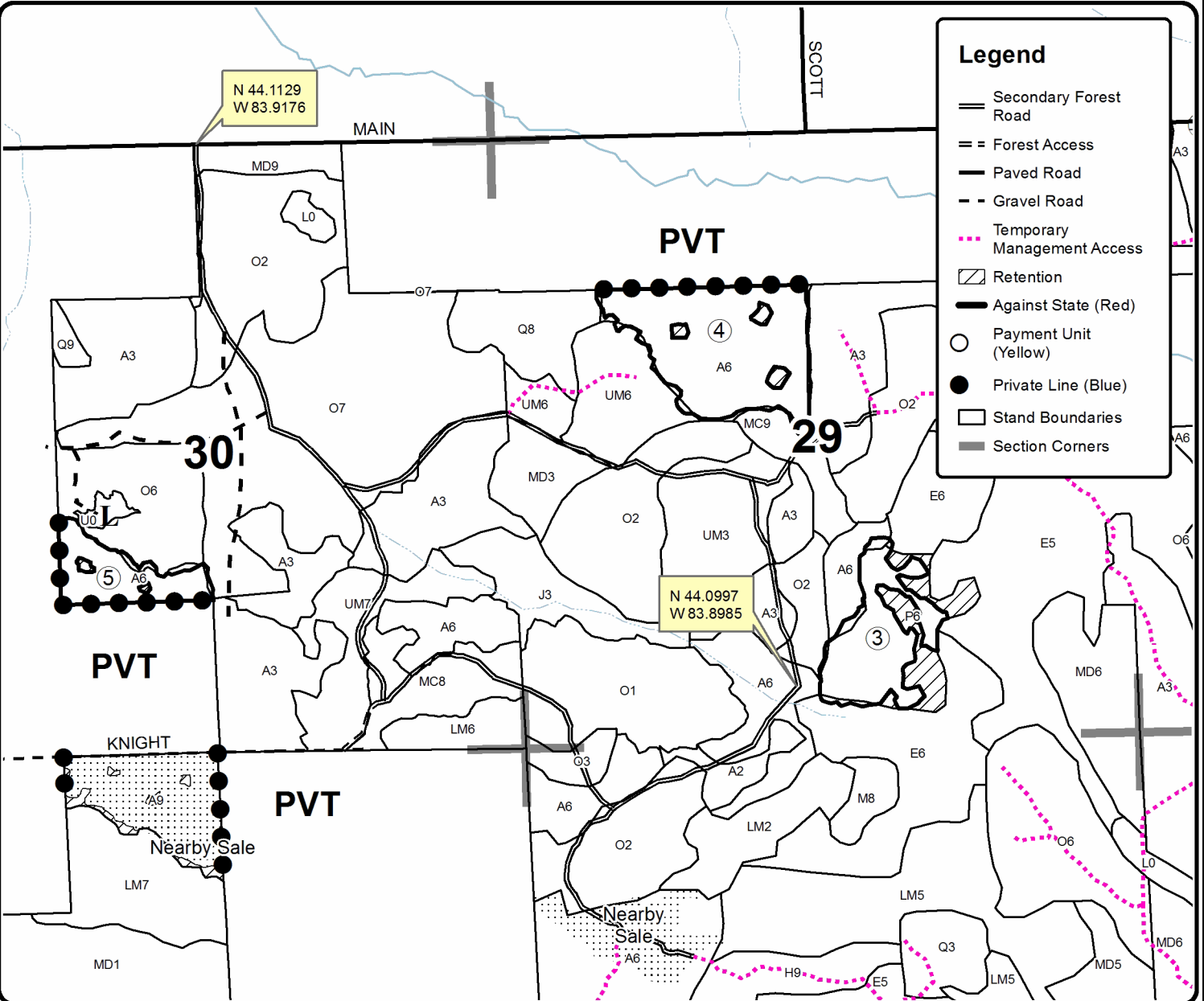
Cover Type				Density	
A = Aspen	H = Hemlock	N = Marsh	U = Upland Brush	0 = Non Stocked	5 = Pole Timber Medium
B = Paper Birch	J = Jack Pine	O = Oak	UM = Upland Mixed	1 = Seedling Sapling Poor	6 = Pole Timber Well
C = Cedar	L = Lowland Brush	P = Lowland Poplar	V = Bog or Marsh	2 = Seedling Sapling Medium	7 = Saw Timber Poor
D = Treed Bog	LM = Lowland Mixed	Q = Mixed Swamp Conifer	W = White Pine	3 = Seedling Sapling Well	8 = Saw Timber Medium
E = Swamp Hdwoods	M = Mpl, Bch, Brch	R = Red Pine	X = Non Stocked	4 = Pole Timber Poor	9 = Saw Timber Well
F = Spruce Fir	MC = Mixed Conifer	S = Black Spruce	Z = Water		
G = Grass	MD = Mixed Deciduous	T = Tamarack			

PU	Acres	PU	Acres
1	38.2	4	34.5
2	29.2	5	11.9
3	18.5		

C134 Main Walker

Compartment 134

132.2 Acres



C134 Brigg Knights (73-001-22)

T19N, R05E, SEC. 4; T19N, R05E, SEC. 5; T19N, R05E, SEC. 6; T20N, R04E,

In response to the notice of sale to be held 10:00 a.m. (local time) on July 25, 2023, I am hereby submitting my sealed bid (firm offer) for the following forest products to be cut. Bids for individual species must be at or above the advertised price. All non-responsive bid forms may be rejected.

<u>PRODUCTS & SPECIES</u>	<u>ESTIMATED VOLUME*</u>	<u>ADVERTISED PRICE</u>	<u>BID PRICE/UNIT</u>
Sawtimber			
Black Cherry	3.4 MBF	\$ 213.00/MBF	\$ _____
Black/Red (Hybrid) Oak	159.4 MBF	\$ 109.00/MBF	\$ _____
Mixed Aspen	190.5 MBF	\$ 78.00/MBF	\$ _____
Red Maple	21.6 MBF	\$ 76.00/MBF	\$ _____
Red Pine	5.5 MBF	\$ 121.00/MBF	\$ _____
White Oak	36.8 MBF	\$ 96.00/MBF	\$ _____
White Pine	91.7 MBF	\$ 68.00/MBF	\$ _____
Pulpwood			
Balsam Fir	4 Cords	\$ 42.65/Cord	\$ _____
Cottonwood	4 Cords	\$ 30.35/Cord	\$ _____
Jack Pine	15 Cords	\$ 25.55/Cord	\$ _____
Mixed Aspen	984 Cords	\$ 30.35/Cord	\$ _____
Mixed Hardwood	93 Cords	\$ 21.00/Cord	\$ _____
Mixed Oak	418 Cords	\$ 15.75/Cord	\$ _____
Red Maple	323 Cords	\$ 21.00/Cord	\$ _____
Red Pine	3 Cords	\$ 51.15/Cord	\$ _____
Scotch Pine	12 Cords	\$ 14.00/Cord	\$ _____
White Pine	100 Cords	\$ 30.15/Cord	\$ _____

*The volumes are statistically estimated within plus (+) or minus (-) 5.78 percent at 95% confidence level. These estimated volumes are final and not subject to adjustment. Prospective bidders are urged to examine this timber and to make their own estimates of quantity and quality.

I understand that any or all bids may be rejected. All bids must be signed and all bid items must be bid or the bid form may be rejected. I also understand that consideration and awarding a contract will be based upon my past performance and ability to complete the contract based upon equipment and staffing subject to my control.

FEDERAL ID: _____ or SOCIAL SECURITY NUMBER: _____

Company or individual bidding: _____

Company representative's name: _____

Address: _____

City: _____ State: _____ Zip: _____

IF AVAILABLE, PLEASE PLACE THE PERSONALIZED LABEL FROM YOUR PROSPECTUS IN THE ABOVE BOX.

Individual or company representative's signature: _____ Date: _____

Phone number : _____ Email (optional): _____

THE WINNING BIDDER MUST COMPLETE THE VERIFICATION OF WORKER'S DISABILITY COMPENSATION ACT COMPLIANCE (ON REVERSE SIDE IF DOUBLE SIDED) WITHIN 21 DAYS OF SALE AWARD DATE



FOR DEPARTMENT USE ONLY
Sale Number (XX - XXX - XX - XX)
Forest Management Unit:

TIMBER SALE VERIFICATION OF WORKER'S DISABILITY COMPENSATION ACT COMPLIANCE

*As required by Act 317, P.A. 1969 (Worker's Compensation) and
Part 5 of Act 451 of 1994, as amended.*

VERIFICATION OF WORKER'S DISABILITY COMPENSATION ACT COMPLIANCE

- This verification must be completed and submitted within 21 days of contract award and prior to the issuance of the timber sale contract.
- In addition, if boxes 2B or 2C are checked, then Notice of Exclusion or Certificate of Insurance must be submitted within twenty-one (21) days of the contract award and prior to the issuance of the timber sale contract.
- All information must be typed or printed except for written signatures.

Please Check Appropriate Categories:

1. My business is organized as (you **must** check one of the boxes below):
 - A. Sole Proprietorship (individual)
 - B. Partnership
 - C. Corporation
2. You **must** check one of the boxes below:
 - A. I certify my business is a sole proprietorship and it has no employees but the sole proprietor. I am not subject to the Worker's Compensation Laws.
 - B. I certify my business has satisfied its obligation to the Worker's Compensation Act through the use of an approved Notice of Exclusion (BWC-337, Rev. 5/96). I will provide a copy of the Notice of Exclusion within 21 days of the contract award. (For questions or a copy of the BWC-337, please call the Worker's Compensation Bureau at 517-322-1195).
 - C. I certify my business has a Worker's Compensation Policy. I will provide an original Certificate of Insurance within twenty-one (21) days of the contract award.
3. If you have checked item 2(A) or 2(B), you **must** indicate the number of **both** full-time and part-time employees, other than yourself, including family members and active partners (if none, you must enter "0").

_____ Full-time Employees _____ Part-time Employees

Name of Business		Federal ID (or) Social Security No.	
Address		Telephone ()	
City	State	ZIP	

I hereby certify that the above information is true and correct. I agree to notify the Michigan DNR of any changes that occur in factors affecting my coverage during any of my present and future operations.

Signature of Owner or Authorized Representative

Title

Date

Please complete the "SEALED BID" information on the next page

C134 Main Walker (73-002-22)

T20N, R05E, SEC. 15; T20N, R05E, SEC. 22; T20N, R05E, SEC. 29; T20N, R05E,

In response to the notice of sale to be held 10:00 a.m. (local time) on July 25, 2023, I am hereby submitting my sealed bid (firm offer) for the following forest products to be cut. Bids for individual species must be at or above the advertised price. All non-responsive bid forms may be rejected.

<u>PRODUCTS & SPECIES</u>	<u>ESTIMATED VOLUME*</u>	<u>ADVERTISED PRICE</u>	<u>BID PRICE/UNIT</u>
Sawtimber			
Black/Red (Hybrid) Oak	49.8 MBF	\$ 109.00/MBF	\$ _____
Mixed Aspen	157.1 MBF	\$ 78.00/MBF	\$ _____
Red Maple	23.2 MBF	\$ 76.00/MBF	\$ _____
Red Pine	268.2 MBF	\$ 121.00/MBF	\$ _____
White Oak	9.7 MBF	\$ 96.00/MBF	\$ _____
White Pine	288.1 MBF	\$ 68.00/MBF	\$ _____
Pulpwood			
Mixed Aspen	1,524 Cords	\$ 30.35/Cord	\$ _____
Mixed Oak	230 Cords	\$ 15.75/Cord	\$ _____
Red Maple	286 Cords	\$ 21.00/Cord	\$ _____
Red Pine	221 Cords	\$ 51.15/Cord	\$ _____
White Pine	494 Cords	\$ 30.15/Cord	\$ _____

*The volumes are statistically estimated within plus (+) or minus (-) 12.75 percent at 95% confidence level. These estimated volumes are final and not subject to adjustment. Prospective bidders are urged to examine this timber and to make their own estimates of quantity and quality.

I understand that any or all bids may be rejected. All bids must be signed and all bid items must be bid or the bid form may be rejected. I also understand that consideration and awarding a contract will be based upon my past performance and ability to complete the contract based upon equipment and staffing subject to my control .

FEDERAL ID: _____ or SOCIAL SECURITY NUMBER: _____

Company or individual bidding: _____

Company representative's name: _____

Address: _____

City: _____ State: _____ Zip: _____

IF AVAILABLE, PLEASE PLACE THE PERSONALIZED LABEL FROM YOUR PROSPECTUS IN THE ABOVE BOX.

Individual or company representative's signature: _____ Date: _____

Phone number : _____ Email (optional): _____

THE WINNING BIDDER MUST COMPLETE THE VERIFICATION OF WORKER'S DISABILITY COMPENSATION ACT COMPLIANCE (ON REVERSE SIDE IF DOUBLE SIDED) WITHIN 21 DAYS OF SALE AWARD DATE



FOR DEPARTMENT USE ONLY
Sale Number (XX – XXX – XX – XX)
Forest Management Unit:

TIMBER SALE VERIFICATION OF WORKER'S DISABILITY COMPENSATION ACT COMPLIANCE

*As required by Act 317, P.A. 1969 (Worker's Compensation) and
Part 5 of Act 451 of 1994, as amended.*

VERIFICATION OF WORKER'S DISABILITY COMPENSATION ACT COMPLIANCE

- This verification must be completed and submitted within 21 days of contract award and prior to the issuance of the timber sale contract.
- In addition, if boxes 2B or 2C are checked, then Notice of Exclusion or Certificate of Insurance must be submitted within twenty-one (21) days of the contract award and prior to the issuance of the timber sale contract.
- All information must be typed or printed except for written signatures.

Please Check Appropriate Categories:

1. My business is organized as (you **must** check one of the boxes below):
 - A. Sole Proprietorship (individual)
 - B. Partnership
 - C. Corporation

2. You **must** check one of the boxes below:
 - A. I certify my business is a sole proprietorship and it has no employees but the sole proprietor. I am not subject to the Worker's Compensation Laws.
 - B. I certify my business has satisfied its obligation to the Worker's Compensation Act through the use of an approved Notice of Exclusion (BWC-337, Rev. 5/96). I will provide a copy of the Notice of Exclusion within 21 days of the contract award. (For questions or a copy of the BWC-337, please call the Worker's Compensation Bureau at 517-322-1195).
 - C. I certify my business has a Worker's Compensation Policy. I will provide an original Certificate of Insurance within twenty-one (21) days of the contract award.

3. If you have checked item 2(A) or 2(B), you **must** indicate the number of **both** full-time and part-time employees, other than yourself, including family members and active partners (if none, you must enter "0").

_____ Full-time Employees

_____ Part-time Employees

Name of Business		Federal ID (or) Social Security No.	
Address		Telephone ()	
City	State	ZIP	

I hereby certify that the above information is true and correct. I agree to notify the Michigan DNR of any changes that occur in factors affecting my coverage during any of my present and future operations.

Signature of Owner or Authorized Representative

Title

Date

Please complete the "SEALED BID" information on the next page