



**DEPARTMENT OF NATURAL RESOURCES
STATE OF MICHIGAN
TIMBER SALE PROSPECTUS #7241**

SCHEDULED SALE DATE AND TIME: 10:00 a.m. (local time) on September 21, 2023.

LOCATION: GLADWIN MGMT UNIT, 801 NORTH SILVERLEAF, GLADWIN, MI 48624.

PROSPECTUS NOTE: The bidder is advised to inspect the sale area and review the location, estimated volumes, operating costs and contract terms of proposed sales. Please be aware that some landowners may request 60 days or more notice for access across their land.

Notice is hereby given that bids will be received by the Unit Manager, GLADWIN MANAGEMENT UNIT, for certain timber on the following described lands:

No Mas Aspen (73-011-22) / T14N, R02W, SEC. 28, W1/2SW.

T14N, R02W, SEC. 32, SENW,S1/2NE,NESW.

T14N, R02W, SEC. 33, W1/2NW.

T14N, R02W, SEC. 35, N1/2NW,SEW,NESW.

Midland County, Advertised Price \$150,775.90, 150.2 Acres, Aspen, Hardwood.

SALE NOTE: Access to this sale is provided through state forest land. This access is above average in difficulty, requiring long skids and numerous drainage way crossings. Easier access is possible through private property from the south. It is the Purchaser's responsibility to secure this access.

Chippewa Prairie (73-012-22) / T14N, R02W, SEC. 14, W1/2SW.

T14N, R02W, SEC. 22, S1/2NE,N1/2SW,SEW,N1/2SE,SWSE.

T14N, R02W, SEC. 24, NW.

Midland County, Advertised Price \$180,209.25, 216.7 Acres, Aspen, Hardwood.

SALE NOTE: Payment Units 6 & 7 have significant oak decline. Marked dead oak was priced to reflect its value. Marked living oak was priced as normal. Living oak in the stand is expected to continue to decline. Difficult access to Payment Units 2-4 requiring road work, culvert installs, and crane mat/composite mat installs. An on-site pre-sale meeting with the timber sale administrator is required prior to beginning the sale.

BID INSTRUCTIONS (VER. 10/10/2022):

1. Scheduled Bid Location, Date, and Time (2/11)

Bids must be received by the Unit Manager, GLADWIN OFFICE, 801 NORTH SILVERLEAF, GLADWIN, MI 48624, no later than 10:00 a.m. (local time) on September 21, 2023. For further information concerning this sale, contact Blair Tweedale at 989-426-9205 extension 7640.

2. Bidder's Qualifications (10/22)

If all or part of a timber sale was prepared by a private contractor, the contractor and that contractor's company are not permitted to bid on the timber sale. A person must be 18 years of age or older to purchase timber. Permanent employees of the Department of Natural Resources or members of their immediate household may not bid. Former employees, in the permanent or seasonal class, may not bid until 3 months after the last day of active duty. Bids will not be accepted from individuals or companies appearing on the DNR/FRD No-Bid List. This list contains the names of purchasers who previously failed to execute a contract within 21-days or who have a history of poor performance.

3. Preparation of Sealed Bids (5/16)

Bid Forms may be completed online thru Michigan DNR Timber Sale Online Bidding (OLB) at www.michigan.gov/timberbidding or by completing the hardcopy Bid Form found in the Timber Sale Prospectus. Hardcopy Bid Forms shall be manually signed in ink. Registration in OLB is considered your 'signature' for all bids submitted thru that system. Bid prices must be entered for each species and product in the Bid Price column for all material subject to bidding and all fill-in blanks must be completed. If erasures or other changes appear on the hardcopy Bid Form, each erasure or change must be initialed by the person signing the bid.

4. Submission of Sealed Bids (5/16)

Bid forms may be obtained from the Unit Manager or thru OLB. Bids may be submitted hardcopy or thru OLB. All hardcopy bids must be submitted on the bid form and in an envelope clearly identified as described in this section. NOTE: Only one bid form per bid envelope. Sealed bids must be submitted to the Unit office designated in the prospectus and must be submitted at or prior to the time established in the prospectus. The envelope should show on the outside (a) the sale name or number and (b) the date and time of bid opening, as shown in the prospectus. Bids received after the time specified in the sale prospectus are late bids and will be rejected.

It is possible for a bidder to submit multiple bids on a single sale. For example, a bid may be submitted hardcopy and a bid may be submitted thru OLB. Or, two bidders from the same company could both submit bids on the same sale. If this were to happen, the State would accept all bids received and award the contract accordingly. All bidding and contractual requirements would apply to all bids received.

5. Public Opening of Sealed Bids (7/16)

If conditions permit, the sealed bids will be publicly opened and posted at the time and place set in the prospectus.

If a bidder, present at a bid opening, has submitted bids on more than one sale, that bidder may withdraw their unopened bid envelopes or announce the withdrawal of their online bid after being declared the successful bidder on one sale.

6. Award of Contract (1/11)

Award of the contract will be made to the Bidder whose bid, conforming to the prospectus, is most advantageous to the State of Michigan on the basis of total value at rates bid for the estimated quantities. The State reserves the right to reject any bid or waive any minor irregularity in bids received. A written award mailed (or otherwise furnished) to the successful Bidder shall be deemed to result in a binding contract without further action by either party.

7. Down Payment (1/11)

The Bidder to whom award is made must make a down payment within 21 days of the sale award. The amount of the down payment will be calculated as shown in the Bond and Payment Schedule of this prospectus. Only cash may be used to meet this requirement.

8. Performance Security (1/11)

As guarantee of faithful performance, a cash bond, certificate of deposit, surety bond or irrevocable letter of credit (LOC) is required within 21 days of the sale award. The amount of the performance security is shown in the Bond and

Payment Schedule of this prospectus. If an LOC or surety is used, the coverage must extend for at least 6 months beyond the contract expiration.

9. Worker's Compensation (10/22)

Purchaser shall obtain worker's compensation insurance to cover claims under Michigan's Worker's Disability Compensation Act of 1969 or similar employee benefit act of any other state applicable to an employee. Verification of Worker's Disability Compensation Act Compliance must be completed and submitted within 21 days of contract award and prior to the issuance of the timber sale contract. In addition, if applicable, Notice of Exclusion or Certificate of Insurance must also be submitted.

10. Timber Sale Contract (10/22)

Additional conditions and requirements common to all timber sales are listed on the timber sale contract (R4031) and are available on line at www.michigan.gov/timber. Contact the Unit Manager for additional information or a sample contract. Within 21 days of the date of the award letter, the bidder must sign the contract and provide the required down payment, performance security, and verification of worker's disability compensation. The down payment and performance security shall be in accordance with the provisions of the timber sale contract, in the sums stated in this prospectus. If these actions are not taken, then the Bidder, the Bidder's corporation, and the corporation's principals may not be permitted to bid on State timber sales for a period of 3 months after the first offense, 6 months after the second offense, and 1 year after the third offense. An offense will only be counted against the Bidder for 5 years. In addition, the Bidder certifies that if awarded this contract, the Bidder will complete the timber sale contract in accordance with its terms and any modifications thereof including requirements to purchase, cut, and remove the included timber by the expiration date.

Payment Unit values in the State Forest Timber Sale Contract are calculated based on the advertised value of the Payment Unit as a percentage of the total advertised value of the contract. The advertised value of each Payment Unit is given in the Description of Timber by Payment Unit table on the Timber Sale Information page. For example, if the value of Payment Unit 1 is advertised as \$1,500 and the total Timber Sale value is advertised as \$10,000, the contract price for Payment Unit 1 will be 15% of the total bid price ($\$1,500/\$10,000 * 100$).

11. Disclaimer of Estimates and Bidder's Warranty of Inspection (10/22)

Before submitting this bid, the Bidder is advised and cautioned to inspect the sale area, review the requirements of the sale contract, and take other steps as may be reasonably necessary to ascertain the location, estimated volumes, construction estimates, and operating costs of the proposed sale. Failure to do so will not relieve the Bidder from responsibility for completing the contract.

The Bidder warrants that this bid is submitted solely on the basis of the Bidder's examination and inspection of the quality and quantity of the timber offered for sale and the Bidder's opinion of the value thereof and the costs of recovery. No reliance should be placed on the State of Michigan's estimates of timber quality, quantity or costs of recovery. Bidder further acknowledges that the State of Michigan: (i) expressly disclaims any warranty of fitness of timber for any purpose; (ii) offers this timber as is without any warranty of quality (merchantability) or quantity and (iii) expressly disclaims any warranty as to the quantity or quality of timber sold.

12. Certification and Chain-of-Custody (10/22)

Unless otherwise indicated in the contract under section 7 – Other Conditions of the Sale Specific Conditions & Requirements, the area encompassed by this timber sale is certified to the standards of the Forest Stewardship Council (FSC) - Certificate #SCS-FM/COC-00090N and the Sustainable Forestry Initiative (SFI) - Certificate #NSF-SFIS-5Y031-SF5. Forest products from this sale may be delivered to the mill as "FSC 100% and / or SFI certified" as long as the contractor hauling the forest products is chain-of-custody (COC) certified or covered under a COC certificate from the destination mill. The purchaser is responsible for maintaining COC after leaving the sale area.

13. Good Neighbor Authority (GNA) Requirements (10/22)

If the name of this timber sales contains the acronym GNA, it is authorized by the Good Neighbor Authority (GNA) and covered by various agreements between the U.S. Forest Service and the State. The timber sale occurs on federal land and the following conditions apply:

GNA contracts on US Forest Service land will not be awarded to purchasers on the Federal list of excluded parties. The System for Award Management (SAM) will be checked for active excluded parties prior to award of contract. In

addition, the Bidder to whom award is made must complete an Assurance Regarding Felony Conviction or Tax Delinquent Status for Corporate Applicants (AD-3031).

14. Good Neighbor Authority (GNA) Requirements, con't (10/22)

Bidder certifies, by signing this bid form, that to the best of Bidder's knowledge that the following representations are accurate and complete.

- a. That the Bidder and its principals are not presently debarred, suspended, proposed for debarment, declared ineligible, or voluntary excluded from timber sales (covered transactions) by any Federal department or agency.
- b. That the Bidder and its principals have not within a 3-year period preceding this bid been convicted of or had a civil judgment rendered against them for commission of fraud or a criminal offense in connection with obtaining , attempting to obtain, or performing a public (Federal, State, or local) transaction or contract under a public transaction; violation of Federal or State antitrust statutes or commission of embezzlement, theft, forgery, bribery, falsification or destruction of records, making false statements, or receiving stolen property.
- c. That the Bidder and its principals are not presently indicted for or otherwise criminally or civilly charged by a governmental entity (Federal, State, or local) with commission of any of the offenses enumerated in paragraph b of this certification.
- d. That the Bidder and its principals have not within a 3-year period preceding this bid had one or more public transactions (Federal, State, or local) terminated for breach or default of a timber or forest product contract.

Bidders that cannot certify this requirement, in whole or in part, shall submit an explanation with their bid.

Scott Bowen
Director

TIMBER SALE INFORMATION

No Mas Aspen (73-011-22)

T14N, R02W, SEC. 28; T14N, R02W, SEC. 32; T14N, R02W, SEC. 33; T14N, R02W, SEC. 35.
Midland County (Advertised Price \$150,775.90)

SALE NOTE: Access to this sale is provided through state forest land. This access is above average in difficulty, requiring long skids and numerous drainage way crossings. Easier access is possible through private property from the south. It is the Purchaser's responsibility to secure this access.

A timber sale contract for this lump sum, sealed bid timber sale will be awarded to the responsible bidder offering the highest sealed bid price. All units of volume listed below were estimated using the Inventory Manager computer program and the new Michigan taper model. Bids must be at or above the following advertised price for each product and species:

<u>PRODUCTS & SPECIES</u>	<u>ESTIMATED UNITS*</u>		<u>ADVERTISED PRICE</u>
Sawtimber			
Black/Red (Hybrid) Oak	215.1	MBF	\$ 111.00 / MBF
Mixed Aspen	495.3	MBF	\$ 69.00 / MBF
Red Maple	57.8	MBF	\$ 65.00 / MBF
Pulpwood			
Black/Red (Hybrid) Oak	217	Cords	\$ 15.90 / Cord
Mixed Aspen	2,739	Cords	\$ 29.40 / Cord
Mixed Hardwood	32	Cords	\$ 20.05 / Cord
Red Maple	208	Cords	\$ 20.05 / Cord
Swamp White Oak	11	Cords	\$ 16.20 / Cord

* The total volume is statistically estimated within plus (+) or minus (-) 13.29 percent. There are an estimated 6,425 cords on this timber sale, plus or minus 854 cords at the 95% confidence level. The estimated units are final and not subject to adjustment. Prospective bidders are urged to examine this timber and to make their own estimates of quantity and quality.

BOND AND PAYMENT SCHEDULE:

1. A bond in the amount of \$7,539.00 to insure faithful performance of the conditions of the contract will be deposited by the successful bidder within 21 days of the sale award.
2. Cutting in any sale or unit without the required advance payment would be considered a trespass.
3. Total payment must be paid in advance or according to the following schedule :
 - (a) Ten percent (10%) of the sale value must be paid within 21 days of the sale award.
 - (b) The 10% down payment will be credited towards the first unit cut.
 - (c) Payment for each of the following units must be made before cutting begins in that unit:

PAYMENT UNIT NUMBER	PERCENT OF TOTAL SALE VALUE
01	17.1%
02	3.9%
03	4.2%
04	0.8%
05	6.9%
06	18.5%
07	25.3%
08	15.3%
09	8.0%
4. If no cutting takes place, the 10% down payment will not be refunded.
5. Operations on the contract issued will terminate on 09/30/2026.

SALE STATISTICS

Volumes were calculated in cubic feet using the Michigan taper model. Cubic foot volume includes all wood inside bark for the product indicated. For display purposes, cubic feet were converted to cords and MBF using a simple conversion factor, e.g. 79 cubic feet per cord and 185 cubic feet per MBF. The cubic foot volumes are precise; the cords and MBF volumes are not. Cubic foot volume cannot be directly converted to cords or boards with precision.

SALE VOLUMES

The total estimated sale volume may not equal the sum of the species/products due to the nature of statistical calculations associated with double sampling methodology.

VOLUME			STATISTICAL RANGE IN CORDS	
TOTAL CUBIC FEET	TOTAL CORDS	PERCENT ERROR	MINIMUM	MAXIMUM
507,575	6,425	13.29%	5,571	7,279

VDU VOLUMES

A VDU is a Volume Determination Unit. Volumes and their associated statistics are calculated at the VDU level and summarized to the sale level. There is often a one to one relationship between a VDU and a Payment Unit, but not always, depending on the cruise design. Refer to the VDU TO PAYMENT UNIT table.

	VOLUME			RANGE IN CORDS	
VDU	TOTAL CUBIC FEET	TOTAL CORDS	PERCENT ERROR	MINIMUM	MAXIMUM
1	438,691	5,553	12.78%	4,843	6,263
26	21,315	270	79.90%	54	485
45	12,260	155	102.89%	0	315
160	3,628	46	170.02%	0	124
167	31,681	401	30.59%	278	524
TOTAL:	507,575	6,425		5,176	7,711

VDU TO PAYMENT UNIT

When a VDU is associated with more than one Payment Unit (PU), the VDU volumes are assigned to the PU based on acres of the VDU within the PU.

VDU	VDU ACRES	PU	PU ACRES
1	119.3	1	24.3
		2	5.6
		3	5.9
		5	9.8
		6	26.3
		7	25.7
		8	21.7
		9	9.0
26	9.0	9	9.0
45	3.9	9	3.9
160	7.3	4	7.3
167	10.7	7	10.7
TOTAL:	150.2		150.2

DESCRIPTION OF TIMBER BY PAYMENT UNIT (PU)

PU	MARKET GROUP	PRODUCT	QUANTITY	UNIT	ACRES	ADVERTISE PRICE
1	Black/Red (Hybrid)	Sawtimber	39.0	MBF	24.3	\$25,789.55
	Mixed Aspen		93.0	MBF		
	<i>B. T. Aspen</i>		77.1	<i>MBF</i>		
	<i>Quaking Aspen</i>		15.9	<i>MBF</i>		
	Black/Red (Hybrid)	Pulpwood	41	Cords		
	Mixed Aspen		485	Cords		
	<i>B. T. Aspen</i>		448	<i>Cords</i>		
	<i>Quaking Aspen</i>		37	<i>Cords</i>		
	Mixed Hardwood		5	Cords		
	<i>Paper Birch</i>		5	<i>Cords</i>		
	Swamp White Oak		2	Cords		
	2	Black/Red (Hybrid)	Sawtimber	9.0		
Mixed Aspen			21.5	MBF		
<i>B. T. Aspen</i>			17.8	<i>MBF</i>		
<i>Quaking Aspen</i>			3.7	<i>MBF</i>		
Black/Red (Hybrid)		Pulpwood	9	Cords		
Mixed Aspen			112	Cords		
<i>B. T. Aspen</i>			103	<i>Cords</i>		
<i>Quaking Aspen</i>			9	<i>Cords</i>		
Mixed Hardwood			1	Cords		
<i>Paper Birch</i>			1	<i>Cords</i>		
Swamp White Oak			1	Cords		
3		Black/Red (Hybrid)	Sawtimber	9.5	MBF	5.9
	Mixed Aspen		22.6	MBF		
	<i>B. T. Aspen</i>		18.7	<i>MBF</i>		
	<i>Quaking Aspen</i>		3.9	<i>MBF</i>		
	Black/Red (Hybrid)	Pulpwood	10	Cords		
	Mixed Aspen		118	Cords		
	<i>B. T. Aspen</i>		109	<i>Cords</i>		
	<i>Quaking Aspen</i>		9	<i>Cords</i>		
	Mixed Hardwood		1	Cords		
	<i>Paper Birch</i>		1	<i>Cords</i>		
	Swamp White Oak		1	Cords		
	4	Mixed Aspen	Sawtimber	9.2	MBF	
<i>Quaking Aspen</i>			9.2	<i>MBF</i>		
Red Maple			5.8	MBF		
Mixed Aspen		Pulpwood	4	Cords		
<i>Quaking Aspen</i>			4	<i>Cords</i>		
Red Maple			7	Cords		
5	Black/Red (Hybrid)	Sawtimber	15.7	MBF	9.8	\$10,389.80
	Mixed Aspen		37.5	MBF		
	<i>B. T. Aspen</i>		31.1	<i>MBF</i>		
	<i>Quaking Aspen</i>		6.4	<i>MBF</i>		
	Black/Red (Hybrid)	Pulpwood	17	Cords		
	Mixed Aspen		195	Cords		
	<i>B. T. Aspen</i>		180	<i>Cords</i>		
	<i>Quaking Aspen</i>		15	<i>Cords</i>		
	Mixed Hardwood		2	Cords		
	<i>Paper Birch</i>		2	<i>Cords</i>		
	Swamp White Oak		1	Cords		
	6	Black/Red (Hybrid)	Sawtimber	42.3		
Mixed Aspen			100.4	MBF		
<i>B. T. Aspen</i>			83.4	<i>MBF</i>		
<i>Quaking Aspen</i>			17.0	<i>MBF</i>		
Black/Red (Hybrid)		Pulpwood	44	Cords		
Mixed Aspen			525	Cords		

DESCRIPTION OF TIMBER BY PAYMENT UNIT (PU), CON'T

PU	MARKET GROUP	PRODUCT	QUANTITY	UNIT	ACRES	ADVERTISE PRICE
6 con't	<i>B. T. Aspen</i>	<i>Pulpwood</i>	484	<i>Cords</i>		
	<i>Quaking Aspen</i>		41	<i>Cords</i>		
	Mixed Hardwood		5	<i>Cords</i>		
	<i>Paper Birch</i>		5	<i>Cords</i>		
	Swamp White Oak		2	<i>Cords</i>		
7	Black/Red (Hybrid)	Sawtimber	41.3	MBF	36.4	\$38,043.65
	Mixed Aspen		98.3	MBF		
	<i>B. T. Aspen</i>		81.5	<i>MBF</i>		
	<i>Quaking Aspen</i>		16.8	<i>MBF</i>		
	Red Maple	47.8	MBF			
	Black/Red (Hybrid)	Pulpwood	43	<i>Cords</i>		
	Mixed Aspen		718	<i>Cords</i>		
	<i>B. T. Aspen</i>		633	<i>Cords</i>		
	<i>Quaking Aspen</i>		85	<i>Cords</i>		
	Mixed Hardwood		5	<i>Cords</i>		
	<i>Paper Birch</i>		5	<i>Cords</i>		
	Red Maple		82	<i>Cords</i>		
	Swamp White Oak		2	<i>Cords</i>		
8	Black/Red (Hybrid)	Sawtimber	34.9	MBF	21.7	\$23,032.00
	Mixed Aspen		83.0	MBF		
	<i>B. T. Aspen</i>		68.8	<i>MBF</i>		
	<i>Quaking Aspen</i>		14.2	<i>MBF</i>		
	Black/Red (Hybrid)	Pulpwood	37	<i>Cords</i>		
	Mixed Aspen		433	<i>Cords</i>		
	<i>B. T. Aspen</i>		400	<i>Cords</i>		
	<i>Quaking Aspen</i>		33	<i>Cords</i>		
	Mixed Hardwood		4	<i>Cords</i>		
	<i>Paper Birch</i>		4	<i>Cords</i>		
	Swamp White Oak		2	<i>Cords</i>		
9	Black/Red (Hybrid)	Sawtimber	23.4	MBF	12.9	\$12,128.00
	Mixed Aspen		29.8	MBF		
	<i>B. T. Aspen</i>		29.8	<i>MBF</i>		
	Red Maple		4.2	MBF		
	Black/Red (Hybrid)	Pulpwood	16	<i>Cords</i>		
	Mixed Aspen		149	<i>Cords</i>		
	<i>B. T. Aspen</i>		149	<i>Cords</i>		
	Mixed Hardwood		9	<i>Cords</i>		
	<i>Black Cherry</i>		9	<i>Cords</i>		
	Red Maple		119	<i>Cords</i>		
TOTAL:			768.2	MBF		
TOTAL:			3,207	Cords		

Sale Specific Conditions & Requirements

Sale Name: No Mas Aspen

Sale Number: 73-011-22 Seq#: 1

1 - Sale Area

1.2 - Boundaries

1.2.1 - Painted boundaries (9/19)

The sale boundary and Payment Unit boundaries are marked and identified by blue, red and yellow paint. Exterior sale boundary lines against private property are marked with blue paint. Exterior sale boundary lines against state are marked with red paint. Interior Payment Unit boundaries are marked with yellow paint. The painted boundary line trees are not Included Timber and are to be protected unless marked with orange paint. Yellow painted trees designating an interior Payment Unit boundary are only to be cut when all surrounding Payment Units have been paid.

2 - Timber Specifications

2.1 - Included Timber

2.1.1 - Clearcut unit(s) with unmerchantable trees (6/14)

Within Payment Unit(s) 1-3 & 5-9, cut all trees that are two (2) inches or more at DBH, except do not cut white pine or trees marked with green paint above and below stump height.

2.1.3 - Cut tree marked unit(s) (12/08)

Within Payment Unit(s) 4, all trees are designated for cutting when marked with orange paint above and below stump height, regardless of merchantability.

2.1.11 - Description of timber note (2/04)

Note that Mixed Aspen saw and pulp consists of bigtooth and quaking aspen. Mixed Hardwood pulp consists of black cherry and paper birch.

2.2 - Utilization

2.2.10 - No chipping tops and limbs (8/16)

Within Payment Unit(s) 1-9, chipping of limbs or tops is not permitted. Limbs and the remaining top must be left on site and scattered.

4 - Transportation

4.1 - Construction

4.1.3 - Slash and earthen piles (8/04)

Piles or windrows of earth along roads and landings that have been widened or constructed shall be leveled. Slash from road maintenance or construction, including stumps, shall be dispersed throughout the sale.

4.1.6 - Road construction (1/09)

Construction of new roads or improvements of existing roads shall be done in such a way as to minimize the environmental and visual impacts. Merchantable trees shall be cut and utilized unless otherwise directed. Non-merchantable trees shall be severed and laid flat on the ground. Slash shall be scattered, and not left in windrows and kept a minimum of 10 feet back from the road edge. Stumps shall be set upright, not left on edge, and be moved at least 10 feet away from the road edge. Disturbed soil shall be feathered into the woods and not left in berms or windrows.

4.1.7 - Road closure (10/11)

All new roads built into the sale must be blocked to vehicle traffic upon completion of the sale. Overgrown roads that are reopened shall be considered new roads. In general, this will require constructing a four (4') foot high berm of stumps and logs covered with earth. Stumps and brush must be placed along the remainder of the trail. These roads must be rendered impassable to cars and trucks. All stumps from road building and landing construction must be reserved to block any newly constructed roads upon completion of the sale. These stumps must be scattered along the road system to prohibit vehicular movement. Contact the sale administrator for specific details of design and placement.

5 - Operations

5.2 - Conduct of Operations

5.2.1 - Slash

5.2.1.11 - Slash for reforestation (3/21)

To facilitate reforestation, the Sale Area shall be left with slash evenly distributed. Bunched tops within the cutting area shall be broken up and scattered. Stumps shall be cut low to the ground. Processing sites shall not be left with a compacted layer of slash; tops from these sites shall be hauled back into the cut area and scattered.

5.2.3 - Operating Restrictions

5.2.3.1 - Operating restrictions (9/11)

Within Payment Unit(s) 1-9, unless changed by written agreement, cutting, skidding, and hauling are not permitted during the periods of November 1 to December 31 and from April 1 to June 1. This restriction is because of seasonally wet soils.

5.2.3.3 - Bark slippage restriction (3/09)

Within Payment Unit(s) 4, unless changed by written agreement, cutting and skidding are not permitted during the period of April 15 to July 15. This restriction is because of bark slippage.

5.2.3.4 - Oak wilt restriction, no exceptions (1/18)

Within Payment Unit(s) 1 & 9, cutting, skidding, hauling within the sale and brushing of access roads to the sale are not permitted during the period of April 15 to July 15. No exceptions will be granted. This is necessary to reduce the spread of oak wilt.

5.2.4 - Dead and Down Creation

5.2.4.4 - Dead and down creation, grouse (6/18)

To encourage grouse and other wildlife, in Payment Unit(s) 1-9, leave one, 12" or larger diameter whole tree on the ground for every 3 acres. Trees should be scattered throughout the sale and at least two chains from any roads, two-tracks, or trails open to vehicles, or positioned per the sale administrator's instructions. Stumps must be at least 3 feet tall.

5.2.17 - Timber Mats and Interlocking Composite Mats (10/20)

Some roads or skid trails may require extra protection such as that afforded by timber mats, interlocking composite mats, or another approved system. If available, mats may be borrowed from the DNR. A Timber Sale Contract Supplement will be used to document the Purchaser's use of the DNR's mats. Contact the sale administrator regarding availability and pick-up. Timber mats are available from various field offices. Composite mats are only available from the Grayling field office and the Marquette ICC. The Purchaser is responsible for picking up and hauling the mats to and from the site. The composite mats will require DNR staff onsite for installation and removal. Contact the sale administrator to schedule at least 30 days before desired install/removal date. All mats must be cleaned prior to drop off. This may include, but is not limited to, power washing and brushing to remove mud and debris. A charge of \$700.00 per timber mat and \$2,000.00 per composite mat will be assessed for all damaged or non-returned mats. Damage for the crane/timber mats is defined as three or more broken cants. Damage for the composite mats is defined as cracked or broken mats.

5.2.31 - Landing locations (9/13)

Recommended landing areas are marked on the timber sale map with the letter "L". These locations are recommendations only. All landing locations must be approved by the sale administrator.

5.2.32 - Decking/landing restoration (9/13)

All decking and landing areas must have the surface area restored to a condition equal to or better than before. This is to ensure the proper regeneration of the stand. Wood debris, chips and "cookies" from trimmings must be removed or scattered away from landing and loading areas and may not be windrowed on the edge.

5.4 - Soil Protection

5.4.1 - Rutting restriction, general (7/16)

Operations are to cease immediately if equipment and weather conditions result in rutting of roads and/or skid trails which is 12 inches or greater in depth and 50 feet in length. The Unit Manager or his/her representative may restrict hauling and/or skidding if ruts exceed the specified depth. With the Unit Manager or his/her representative's approval, the Purchaser may return to the area when the risk of rutting has decreased.



TIMBER SALE MAP

This information provided by authority of Part 525, 1994 PA 451, as amended.

Sale Number	Year
73 - 011	22

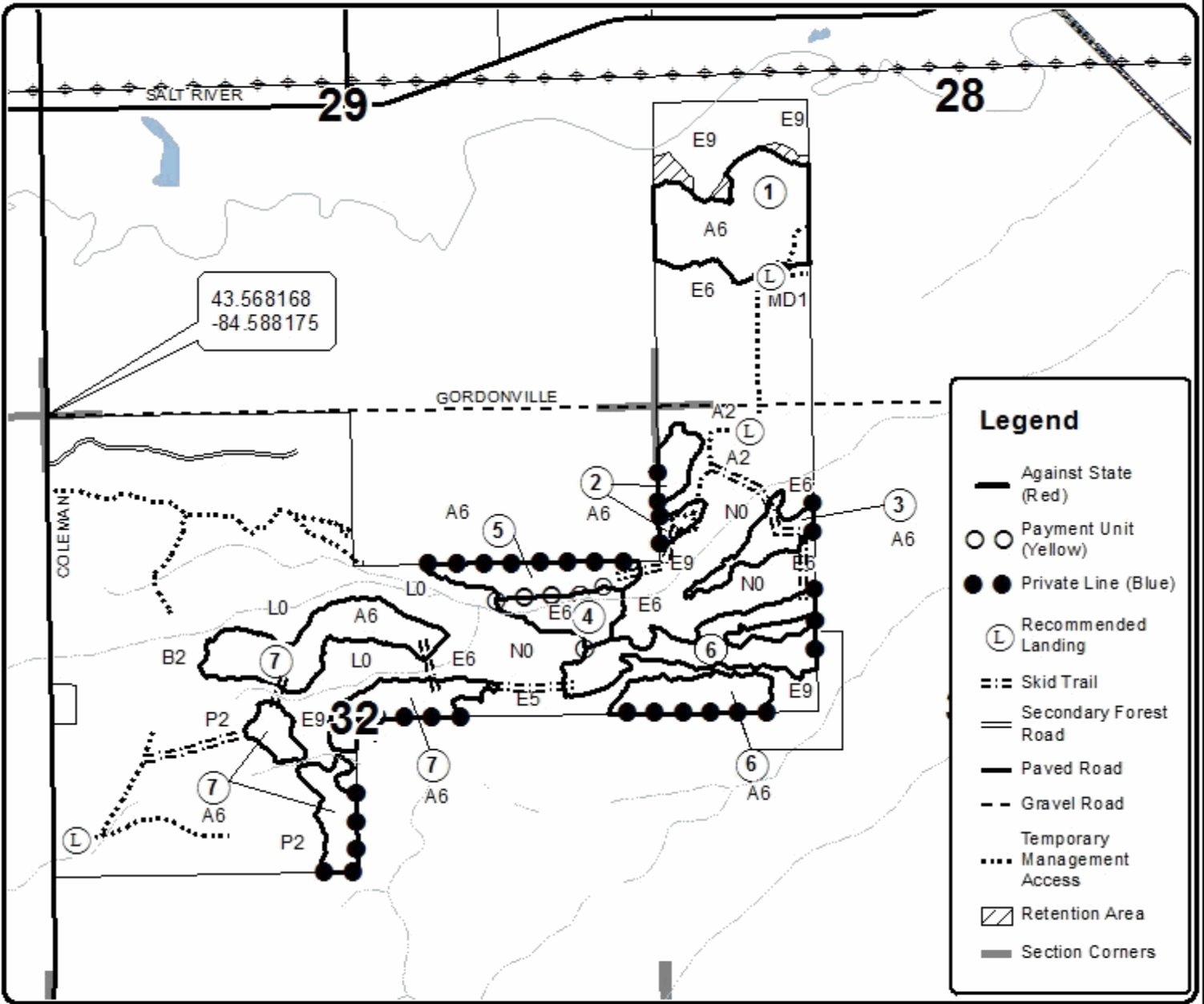
Forest Management Unit	County	Mapped By	Date	Page	of
Gladwin	Midland	Shooltz	09/26/2022	1	2
		Cruised By			
		Shooltz			

Township	Range	Section(s) and Subdivision(s)	Scale
14N	02W	Sections: 28, 32, 33, 35	1:15,840

Cover Type				Density	
A = Aspen	H = Hemlock	N = Marsh	U = Upland Brush	0 = Non Stocked	5 = Pole Timber Medium
B = Paper Birch	J = Jack Pine	O = Oak	UM = Upland Mixed	1 = Seeding Sapling Poor	6 = Pole Timber Well
C = Cedar	L = Lowland Brush	P = Lowland Poplar	V = Bog or Marsh	2 = Seeding Sapling Medium	7 = Saw Timber Poor
D = Tread Bog	LM = Lowland Mixed	Q = Mixed Swamp Conifer	W = White Pine	3 = Seeding Sapling Well	8 = Saw Timber Medium
E = Swamp Hdwoods	M = Mpl, Bch, Bach	R = Red Pine	X = Non Stocked	4 = Pole Timber Poor	9 = Saw Timber Well
F = Spruce Fir	MC = Mixed Conifer	S = Black Spruce	Z = Water		
G = Grass	MD = Mixed Deciduous	T = Tamarack			

PU	Acres	PU	Acres	PU	Acres
1	24.3	4	7.3	7	36.4
2	5.6	5	9.8	8	21.7
3	5.9	6	26.3	9	12.9

No Mas Aspen
 Compartment 115
 150.2 Acres





TIMBER SALE MAP

This information provided by authority of Part 525, 1994 PA 451, as amended.

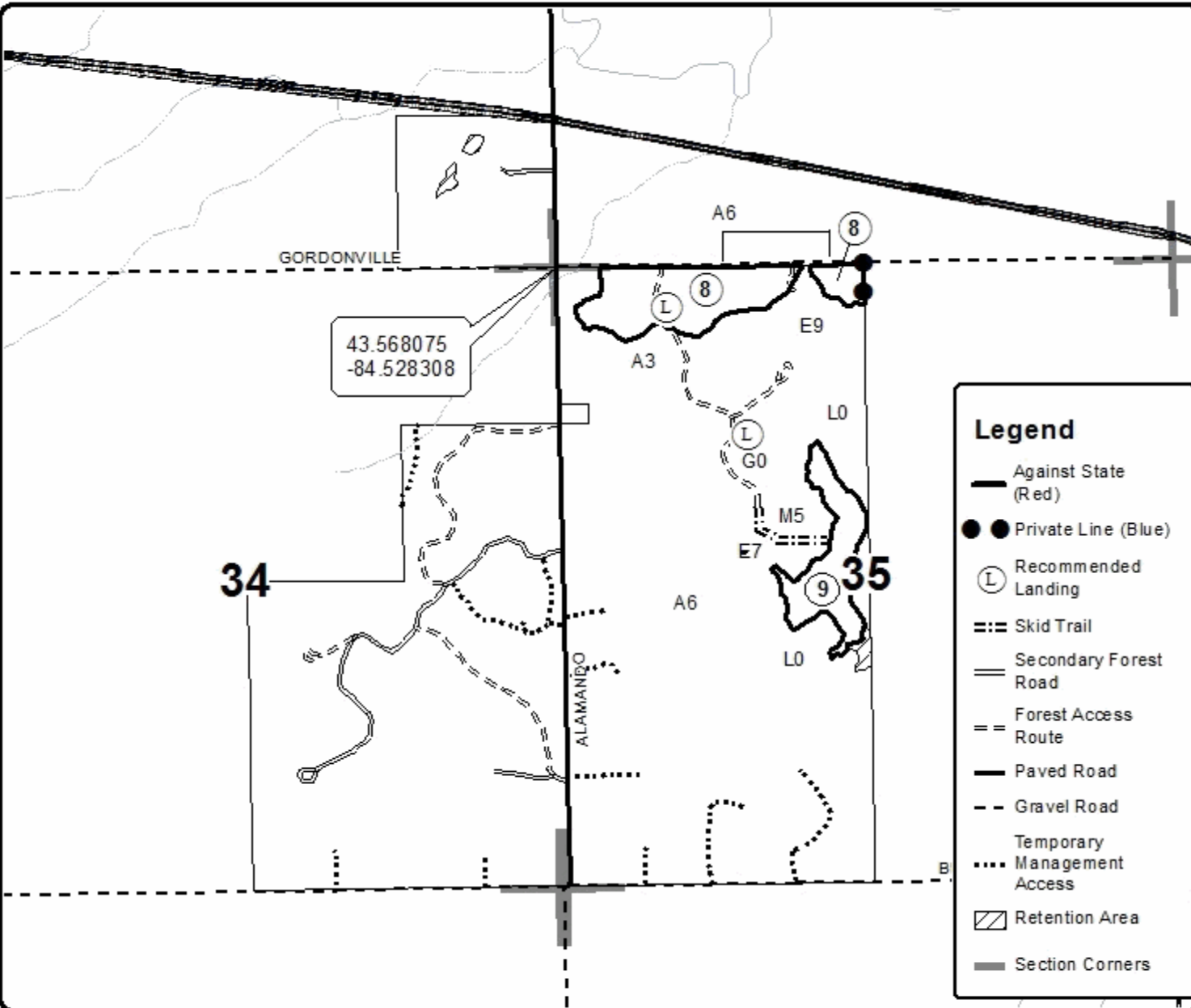
Sale Number	Year
73 - 011	22

Forest Management Unit		County	Mapped By	Date	Page	of
Gladwin		Midland	Shooltz	09/26/2022	2	2
Township	Range	Section(s) and Subdivision(s)			Scale	
14N	02W	Sections: 28, 32, 33, 35			1:15,840	

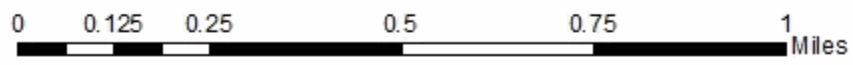
Cover Type				Density	
A = Aspen	H = Hemlock	N = Marsh	U = Upland Brush	0 = Non Stocked	5 = Pole Timber Medium
B = Paper Birch	J = Jack Pine	O = Oak	UM = Upland Mixed	1 = Seedling Sapling Poor	6 = Pole Timber Well
C = Cedar	L = Lowland Brush	P = Lowland Poplar	V = Bog or Marsh	2 = Seedling Sapling Medium	7 = Saw Timber Poor
D = Tread Bog	LM = Lowland Mixed	Q = Mixed Swamp Conifer	W = White Pine	3 = Seedling Sapling Well	8 = Saw Timber Medium
E = Swamp Hdwoods	M = Mpl, Bch, Bach	R = Red Pine	X = Non Stocked	4 = Pole Timber Poor	9 = Saw Timber Well
F = Spruce Fir	MC = Mixed Conifer	S = Black Spruce	Z = Water		
G = Grass	MD = Mixed Deciduous	T = Tamarack			

PU	Acres	PU	Acres	PU	Acres
1	24.3	4	7.3	7	36.4
2	5.6	5	9.8	8	21.7
3	5.9	6	26.3	9	12.9

No Mas Aspen
 Compartment 115
 150.2 Acres



Legend	
	Against State (Red)
	Private Line (Blue)
	Recommended Landing
	Skid Trail
	Secondary Forest Road
	Forest Access Route
	Paved Road
	Gravel Road
	Temporary Management Access
	Retention Area
	Section Corners



TIMBER SALE INFORMATION

Chippewa Prairie (73-012-22)

T14N, R02W, SEC. 14; T14N, R02W, SEC. 22; T14N, R02W, SEC. 24.
Midland County (Advertised Price \$180,209.25)

SALE NOTE: Payment Units 6 & 7 have significant oak decline. Marked dead oak was priced to reflect its value. Marked living oak was priced as normal. Living oak in the stand is expected to continue to decline. Difficult access to Payment Units 2-4 requiring road work, culvert installs, and crane mat/composite mat installs. An on-site pre-sale meeting with the timber sale administrator is required prior to beginning the sale.

A timber sale contract for this lump sum, sealed bid timber sale will be awarded to the responsible bidder offering the highest sealed bid price. All units of volume listed below were estimated using the Inventory Manager computer program and the new Michigan taper model. Bids must be at or above the following advertised price for each product and species:

<u>PRODUCTS & SPECIES</u>	<u>ESTIMATED UNITS*</u>		<u>ADVERTISED PRICE</u>
Sawtimber			
Black/Red (Hybrid) Oak	261.3	MBF	\$ 111.00 / MBF
Mixed Aspen	325.0	MBF	\$ 69.00 / MBF
Red Maple	157.1	MBF	\$ 65.00 / MBF
Swamp White Oak	16.2	MBF	\$ 79.00 / MBF
Pulpwood			
Black/Red (Hybrid) Oak	400	Cords	\$ 15.90 / Cord
Misc. Species 1	362	Cords	\$ 7.00 / Cord
Mixed Aspen	2,537	Cords	\$ 29.40 / Cord
Mixed Hardwood	300	Cords	\$ 20.05 / Cord
Red Maple	1,353	Cords	\$ 20.05 / Cord
Swamp White Oak	41	Cords	\$ 16.20 / Cord

* The total volume is statistically estimated within plus (+) or minus (-) 14.28 percent. There are an estimated 6,803 cords on this timber sale, plus or minus 972 cords at the 95% confidence level. The estimated units are final and not subject to adjustment. Prospective bidders are urged to examine this timber and to make their own estimates of quantity and quality.

BOND AND PAYMENT SCHEDULE:

1. A bond in the amount of \$9,010.00 to insure faithful performance of the conditions of the contract will be deposited by the successful bidder within 21 days of the sale award.
2. Cutting in any sale or unit without the required advance payment would be considered a trespass.
3. Total payment must be paid in advance or according to the following schedule :
 - (a) Ten percent (10%) of the sale value must be paid within 21 days of the sale award.
 - (b) The 10% down payment will be credited towards the first unit cut.
 - (c) Payment for each of the following units must be made before cutting begins in that unit:

PAYMENT UNIT NUMBER	PERCENT OF TOTAL SALE VALUE
01	6.1%
02	16.1%
03	23.5%
04	17.1%
05	21.1%
06	10.5%
07	5.6%
4. If no cutting takes place, the 10% down payment will not be refunded.
5. Operations on the contract issued will terminate on 09/30/2026.

SALE STATISTICS

Volumes were calculated in cubic feet using the Michigan taper model. Cubic foot volume includes all wood inside bark for the product indicated. For display purposes, cubic feet were converted to cords and MBF using a simple conversion factor, e.g. 79 cubic feet per cord and 185 cubic feet per MBF. The cubic foot volumes are precise; the cords and MBF volumes are not. Cubic foot volume cannot be directly converted to cords or boards with precision.

SALE VOLUMES

The total estimated sale volume may not equal the sum of the species/products due to the nature of statistical calculations associated with double sampling methodology.

VOLUME			STATISTICAL RANGE IN CORDS	
TOTAL CUBIC FEET	TOTAL CORDS	PERCENT ERROR	MINIMUM	MAXIMUM
537,407	6,803	14.28%	5,831	7,774

VDU VOLUMES

A VDU is a Volume Determination Unit. Volumes and their associated statistics are calculated at the VDU level and summarized to the sale level. There is often a one to one relationship between a VDU and a Payment Unit, but not always, depending on the cruise design. Refer to the VDU TO PAYMENT UNIT table.

	VOLUME			RANGE IN CORDS	
VDU	TOTAL CUBIC FEET	TOTAL CORDS	PERCENT ERROR	MINIMUM	MAXIMUM
2	361,940	4,582	20.21%	3,656	5,507
93	47,812	605	23.97%	460	750
99	48,493	614	28.37%	440	788
102	48,855	618	22.05%	482	755
117	30,306	384	33.02%	257	510
TOTAL:	537,407	6,803		5,295	8,311

VDU TO PAYMENT UNIT

When a VDU is associated with more than one Payment Unit (PU), the VDU volumes are assigned to the PU based on acres of the VDU within the PU.

VDU	VDU ACRES	PU	PU ACRES
2	111.3	2	26.4
		3	38.3
		4	28.0
		5	18.6
93	12.3	5	12.3
99	37.2	6	37.2
102	39.6	7	39.6
117	16.3	1	16.3
TOTAL:	216.7		216.7

DESCRIPTION OF TIMBER BY PAYMENT UNIT (PU)

PU	MARKET GROUP	PRODUCT	QUANTITY	UNIT	ACRES	ADVERTISE PRICE
1	Black/Red (Hybrid)	Sawtimber	23.9	MBF	16.3	\$10,964.35
	Mixed Aspen		32.7	MBF		
	<i>Quaking Aspen</i>		32.7	<i>MBF</i>		
	Red Maple		23.3	MBF		
	Swamp White Oak		2.3	MBF		
	Black/Red (Hybrid)	Pulpwood	39	Cords		
	Mixed Aspen		43	Cords		
	<i>Quaking Aspen</i>		43	<i>Cords</i>		
	Mixed Hardwood		12	Cords		
	<i>American Elm</i>		4.0	<i>MBF</i>		
	<i>American Elm</i>		4	<i>Cords</i>		
	Red Maple		109	Cords		
	Swamp White Oak		3	Cords		
2	Black/Red (Hybrid)	Sawtimber	6.0	MBF	26.4	\$29,078.60
	Mixed Aspen		68.7	MBF		
	<i>B. T. Aspen</i>		66.6	<i>MBF</i>		
	<i>Cottonwood</i>		2.1	<i>MBF</i>		
	Red Maple		21.1	MBF		
	Black/Red (Hybrid)	Pulpwood	32	Cords		
	Mixed Aspen		553	Cords		
	<i>B. T. Aspen</i>		362	<i>Cords</i>		
	<i>Cottonwood</i>		1	<i>Cords</i>		
	<i>Quaking Aspen</i>		190	<i>Cords</i>		
	Mixed Hardwood		67	Cords		
	<i>American Elm</i>		4	<i>Cords</i>		
	<i>Black Cherry</i>		18	<i>Cords</i>		
	<i>Paper Birch</i>		45	<i>Cords</i>		
	Red Maple		209	Cords		
3	Black/Red (Hybrid)	Sawtimber	8.7	MBF	38.3	\$42,193.50
	Mixed Aspen		99.8	MBF		
	<i>B. T. Aspen</i>		96.7	<i>MBF</i>		
	<i>Cottonwood</i>		3.1	<i>MBF</i>		
	Red Maple		30.7	MBF		
	Black/Red (Hybrid)	Pulpwood	47	Cords		
	Mixed Aspen		802	Cords		
	<i>B. T. Aspen</i>		526	<i>Cords</i>		
	<i>Cottonwood</i>		1	<i>Cords</i>		
	<i>Quaking Aspen</i>		275	<i>Cords</i>		
	Mixed Hardwood		97	Cords		
	<i>American Elm</i>		5	<i>Cords</i>		
	<i>Black Cherry</i>		26	<i>Cords</i>		
	<i>Paper Birch</i>		66	<i>Cords</i>		
	Red Maple		303	Cords		
4	Black/Red (Hybrid)	Sawtimber	6.4	MBF	28.0	\$30,849.50
	Mixed Aspen		72.9	MBF		
	<i>B. T. Aspen</i>		70.7	<i>MBF</i>		
	<i>Cottonwood</i>		2.2	<i>MBF</i>		
	Red Maple		22.4	MBF		
	Black/Red (Hybrid)	Pulpwood	34	Cords		
	Mixed Aspen		587	Cords		
	<i>B. T. Aspen</i>		384	<i>Cords</i>		
	<i>Cottonwood</i>		1	<i>Cords</i>		
	<i>Quaking Aspen</i>		202	<i>Cords</i>		
	Mixed Hardwood		71	Cords		
	<i>American Elm</i>		4	<i>Cords</i>		
	<i>Black Cherry</i>		19	<i>Cords</i>		

DESCRIPTION OF TIMBER BY PAYMENT UNIT (PU), CON'T

PU	MARKET GROUP	PRODUCT	QUANTITY	UNIT	ACRES	ADVERTISE PRICE
4 con't	<i>Paper Birch</i>	<i>Pulpwood</i>	48	<i>Cords</i>		
	Red Maple		221	Cords		
5	Black/Red (Hybrid)	Sawtimber	68.8	MBF	30.9	\$38,013.95
	Mixed Aspen		48.4	MBF		
	<i>B. T. Aspen</i>		46.9	<i>MBF</i>		
	<i>Cottonwood</i>		1.5	<i>MBF</i>		
	Red Maple		37.1	MBF		
	Black/Red (Hybrid)	Pulpwood	122	Cords		
	Mixed Aspen		550	Cords		
	<i>B. T. Aspen</i>		415	<i>Cords</i>		
	<i>Cottonwood</i>		1	<i>Cords</i>		
	<i>Quaking Aspen</i>		134	<i>Cords</i>		
	Mixed Hardwood		48	Cords		
	<i>American Elm</i>		3	<i>Cords</i>		
	<i>Black Cherry</i>		13	<i>Cords</i>		
	<i>Paper Birch</i>		32	<i>Cords</i>		
	Red Maple		277	Cords		
6	Black/Red (Hybrid)	Sawtimber	111.7	MBF	37.2	\$18,939.40
	Mixed Aspen		2.5	MBF		
	<i>B. T. Aspen</i>		2.5	<i>MBF</i>		
	Red Maple		12.0	MBF		
	Swamp White Oak		13.9	MBF		
	Black/Red (Hybrid)	Pulpwood	79	Cords		
	Misc. Species 1		57	Cords		
	<i>Misc. Species 1</i>	<i>Sawtimber</i>	7.6	<i>MBF</i>		
	<i>Misc. Species 1</i>	<i>Pulpwood</i>	42	<i>Cords</i>		
	Mixed Aspen		2	Cords		
	<i>B. T. Aspen</i>		2	<i>Cords</i>		
	Red Maple		132	Cords		
Swamp White Oak		8	Cords			
7	Black/Red (Hybrid)	Sawtimber	35.8	MBF	39.6	\$10,169.95
	Red Maple		10.5	MBF		
	Black/Red (Hybrid)	Pulpwood	47	Cords		
	Misc. Species 1		305	Cords		
	<i>Misc. Species 1</i>	<i>Sawtimber</i>	116.0	<i>MBF</i>		
	<i>Misc. Species 1</i>	<i>Pulpwood</i>	73	<i>Cords</i>		
	Mixed Hardwood		5	Cords		
	<i>Basswood</i>		5	<i>Cords</i>		
	Red Maple		102	Cords		
Swamp White Oak		30	Cords			
TOTAL:			759.6	MBF		
TOTAL:			4,993	Cords		

Sale Specific Conditions & Requirements

Sale Name: Chippewa Prairie

Sale Number: 73-012-22 Seq#: 1

1 - Sale Area

1.2 - Boundaries

1.2.1 - Painted boundaries (9/19)

The sale boundary and Payment Unit boundaries are marked and identified by blue and red paint. Exterior sale boundary lines against private property are marked with blue paint. Exterior sale boundary lines against state are marked with red paint. The painted boundary line trees are not Included Timber and are to be protected unless marked with orange paint.

2 - Timber Specifications

2.1 - Included Timber

2.1.1 - Clearcut unit(s) with unmerchantable trees (6/14)

Within Payment Unit(s) 1-5, cut all trees that are two (2) inches or more at DBH, except trees marked with green paint above and below stump height. In addition, within Payment Unit 1, do not cut pine. Also, within Payment Units 2-4, do not cut oak.

2.1.3 - Cut tree marked unit(s) (12/08)

Within Payment Unit(s) 6 & 7, all trees are designated for cutting when marked with orange paint above and below stump height, regardless of merchantability. Standing dead trees may be harvested when marked with orange paint.

2.1.11 - Description of timber note (2/04)

Note that Misc. Species 1 indicates dead oak. Mixed Aspen includes quaking, big tooth, and cottonwood. Mixed Hardwood includes elm, paper birch, basswood and black cherry.

2.2 - Utilization

2.2.10 - No chipping tops and limbs (8/16)

Within Payment Unit(s) 1-7, chipping of limbs or tops is not permitted. Limbs and the remaining top must be left on site and scattered.

3 - Payments

3.4 - Damaged Timber

3.4.1 - Damaged timber (7/16)

General Condition and Requirement 3.4 Damaged Timber, defines liquidated damages for undesignated live merchantable trees which are cut or injured. In addition, extreme care should be taken to avoid damage to tree seedlings and saplings within Payment Units 6 & 7.

Within Payment Units 6 & 7, if more than 25% of the tree seedlings or saplings (1/4" to 4.5" DBH) within a specified portion of the sale area are damaged, liquidated damages will be assessed at \$300 per acre for all acreage within that specified portion of the sale area that was damaged.

No damage is acceptable to undesignated live merchantable trees. Within the sale area, if more than 25% of trees (> 4.5" DBH) within a specified area of the sale are damaged, liquidated damages will be assessed for all trees damaged. Rates will be in accordance with General Condition and Requirement 3.4 Damaged Timber.

4 - Transportation

4.1 - Construction

4.1.5 - Culverts (5/14)

Roads will require the installation of culverts for cross drainage or at natural drainage-ways. Culvert location will be specified by the sale administrator and they shall be installed prior to hauling. The culverts shall be new, corrugated metal or plastic gauge. Culverts will be a minimum of 12 inches in diameter and 24 feet in length. If culverts are removed, fill shall be removed from wetland soils as specified. Soils shall be maintained and left in a non-erodible condition, with water bars, seed,

fertilizer, mulch, and slash installed as directed by the sale administrator and as specified in the BMP manual. Stream crossing permits, if needed, will be obtained by the DNR.

4.1.6 - Road construction (1/09)

Construction of new roads or improvements of existing roads shall be done in such a way as to minimize the environmental and visual impacts. Merchantable trees shall be cut and utilized unless otherwise directed. Non-merchantable trees shall be severed and laid flat on the ground. Slash shall be scattered, and not left in windrows and kept a minimum of 10 feet back from the road edge. Stumps shall be set upright, not left on edge, and be moved at least 10 feet away from the road edge. Disturbed soil shall be feathered into the woods and not left in berms or windrows.

4.1.7 - Road closure (10/11)

All new roads built into the sale must be blocked to vehicle traffic upon completion of the sale. Overgrown roads that are reopened shall be considered new roads. In general, this will require constructing a four (4') foot high berm of stumps and logs covered with earth. Stumps and brush must be placed along the remainder of the trail. These roads must be rendered impassable to cars and trucks. All stumps from road building and landing construction must be reserved to block any newly constructed roads upon completion of the sale. These stumps must be scattered along the road system to prohibit vehicular movement. Contact the sale administrator for specific details of design and placement.

4.1.8 - Road work (1) (8/07)

The following road work is required: Installation of four culverts in drainage ways and 50 feet of composite mats between Payment Units 1 & 3. On-site fill may be used to cap culverts. All culverts and fill will be removed from drainage ways upon completion of the sale. All roads utilized must be smoothed and top soil replaced (if removed) prior to closing the sale.

4.2 - Maintenance

4.2.2 - Fill material (4/07)

To maintain roads, fill material may be needed in areas where "holes" exist or may be expected to develop. This fill material should be placed before trucking begins. Contact the sale administrator regarding the availability of onsite sand or gravel from adjacent State-owned lands.

5 - Operations

5.1 - Notification

5.1.1 - Pre-sale conference (10/16)

A pre-sale conference on site between the Purchaser and sale administrator is required prior to beginning any operations to determine landing, road locations, culvert placement, and crane mat installation locations. The Unit Manager or his/her representative must be contacted at least 5 days in advance to schedule the conference.

5.1.4 - Post-sale conference (10/16)

A post-sale conference on site between the Purchaser and sale administrator is required 5 days prior to the completion of active logging operations to determine clean-up and repair of landings, road edges, and the fulfillment of other contract specifications.

5.2 - Conduct of Operations

5.2.1 - Slash

5.2.1.11 - Slash for reforestation (3/21)

To facilitate reforestation, the Sale Area shall be left with slash evenly distributed. Bunched tops within the cutting area shall be broken up and scattered. Stumps shall be cut low to the ground. Processing sites shall not be left with a compacted layer of slash; tops from these sites shall be hauled back into the cut area and scattered.

5.2.3 - Operating Restrictions

5.2.3.1 - Operating restrictions (9/11)

Within Payment Unit(s) 1-7, cutting, skidding, and hauling are not permitted during the period of April 15 to July 15 and from November 1 to December 31. This restriction is because of seasonally saturated soils.

5.2.3.3 - Bark slippage restriction (3/09)

Within Payment Unit(s) 6 & 7, unless changed by written agreement, cutting and skidding are not permitted during the

period of April 15 to July 15. This restriction is because of bark slippage.

5.2.3.4 - Oak wilt restriction, no exceptions (1/18)

Within Payment Unit(s) 2-7, cutting, skidding, hauling within the sale and brushing of access roads to the sale are not permitted during the period of April 15 to July 15. No exceptions will be granted. This is necessary to reduce the spread of oak wilt.

5.2.4 - Dead and Down Creation

5.2.4.4 - Dead and down creation, grouse (6/18)

To encourage grouse and other wildlife, in Payment Unit(s) 1-5, leave one 12" or larger diameter whole tree on the ground for every 3 acres. Trees should be scattered throughout the sale and at least two chains from any roads, two-tracks, or trails open to vehicles, or positioned per the sale administrator's instructions. Stumps must be at least 3 feet tall.

5.2.17 - Timber Mats and Interlocking Composite Mats (10/20)

Some roads or skid trails will require extra protection such as that afforded by timber mats, interlocking composite mats, or another approved system. If available, mats may be borrowed from the DNR. A Timber Sale Contract Supplement will be used to document the Purchaser's use of the DNR's mats. Contact the sale administrator regarding availability and pick-up. Timber mats are available from various field offices. Composite mats are only available from the Grayling field office and the Marquette ICC. The Purchaser is responsible for picking up and hauling the mats to and from the site. The composite mats will require DNR staff onsite for installation and removal. Contact the sale administrator to schedule at least 30 days before desired install/removal date. All mats must be cleaned prior to drop off. This may include, but is not limited to, power washing and brushing to remove mud and debris. A charge of \$700.00 per timber mat and \$2,000.00 per composite mat will be assessed for all damaged or non-returned mats. Damage for the crane/timber mats is defined as three or more broken cants. Damage for the composite mats is defined as cracked or broken mats.

5.2.31 - Landing locations (9/13)

Recommended landing areas are marked on the timber sale map with the letter "L". These locations are recommendations only. All landing locations must be authorized by the Unit Manager or his/her representative. Establishing landings east of the composite mat installation site is not recommended.

5.2.32 - Decking/landing restoration (9/13)

All decking and landing areas must have the surface area restored to a condition equal to or better than before. This is to ensure the proper regeneration of the stand.

5.2.37 - No decking areas (12/08)

No decking is allowed within the northern area of Payment Unit 3 or within Payment Unit 4 without permission of the Unit Manager or his/her representative.

5.4 - Soil Protection

5.4.1 - Rutting restriction, general (7/16)

Operations are to cease immediately if equipment and weather conditions result in rutting of roads and/or skid trails which is 12 inches or greater in depth and 50 feet in length. The Unit Manager or his/her representative may restrict hauling and/or skidding if ruts exceed the specified depth. With the Unit Manager or his/her representative's approval, the Purchaser may return to the area when the risk of rutting has decreased.

7 - Other Conditions

7.5 - Loss

7.5.1 - Deteriorating timber (7/09)

The sale area has received damage from oak decline. The Purchaser should harvest the wood as soon as possible. The Department of Natural Resources is held free of responsibility of any further damage or deterioration due to delay in harvesting. This condition applies to Payment Unit 6 & 7.



TIMBER SALE MAP

This information provided by authority of Part 525, 1994 PA 451, as amended.

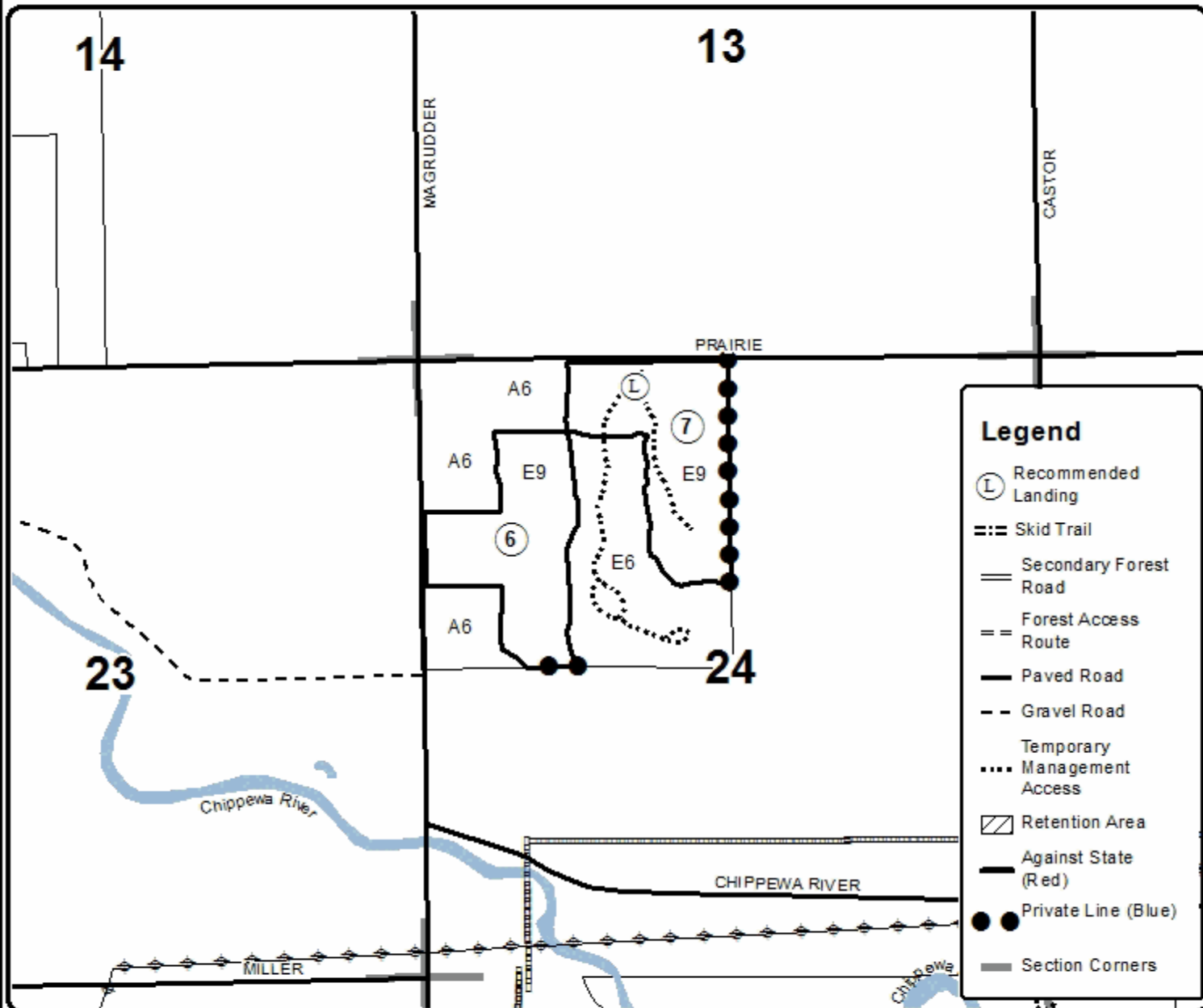
Sale Number	Year
73 - 012	22

Forest Management Unit	County	Mapped By	Date	Page	of
Gladwin	Midland	Shooltz	09/26/2022	2	2
Township	Range	Section(s) and Subdivision(s)	Scale		
14N	02W	Sections: 14, 22, 24	1:15,840		

Cover Type				Density	
A = Aspen	H = Hemlock	N = Marsh	U = Upland Brush	0 = Non Stocked	5 = Pole Timber Medium
B = Paper Birch	J = Jack Pine	O = Oak	UM = Upland Mixed	1 = Seeding Sapling Poor	6 = Pole Timber Well
C = Cedar	L = Lowland Brush	P = Lowland Poplar	V = Bog or Marsh	2 = Seeding Sapling Medium	7 = Saw Timber Poor
D = Tread Bog	LM = Lowland Mixed	Q = Mixed Swamp Conifer	W = White Pine	3 = Seeding Sapling Well	8 = Saw Timber Medium
E = Swamp Hdwoods	M = Mpl, Bch, Bach	R = Red Pine	X = Non Stocked	4 = Pole Timber Poor	9 = Saw Timber Well
F = Spruce Fir	MC = Mixed Conifer	S = Black Spruce	Z = Water		
G = Grass	MD = Mixed Deciduous	T = Tamarack			

PU	Acres	PU	Acres	PU	Acres
1	16.3	4	28.0	7	39.6
2	26.4	5	30.9		
3	38.3	6	37.2		

Chippewa Prairie
 Compartment 115
 216.7 Acres





TIMBER SALE MAP

This information provided by authority of Part 525, 1994 PA 451, as amended.

Sale Number	Year
73 - 012	22

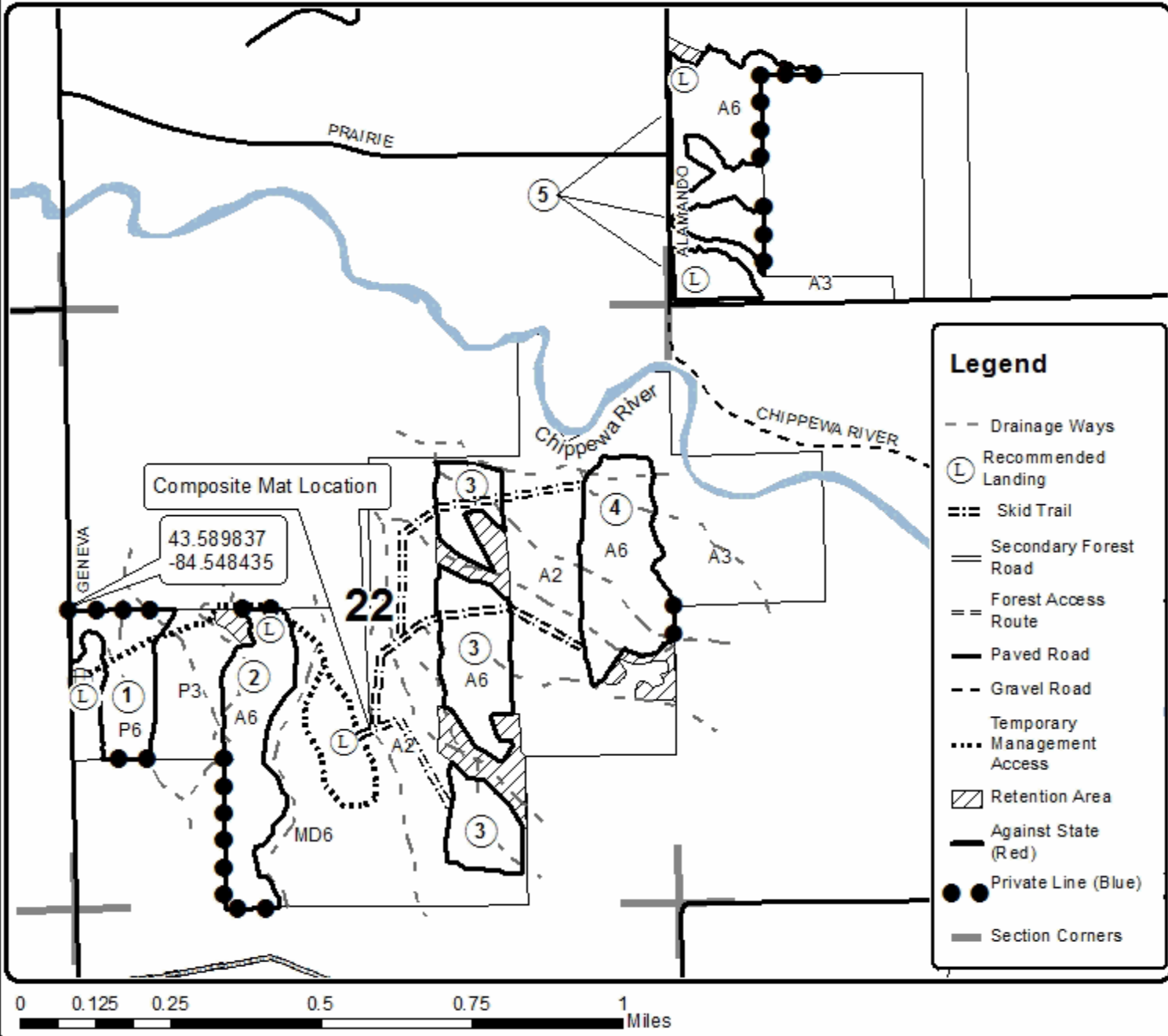
Forest Management Unit Gladwin	County Midland	Mapped By Shooltz	Date 09/26/2022	Page 1	of 2
Township 14N	Range 02W	Section(s) and Subdivision(s) Sections: 14, 22, 24	Scale 1:15,840		

Cover Type				Density	
A = Aspen	H = Hemlock	N = Marsh	U = Upland Brush	0 = Non Stocked	5 = Pole Timber Medium
B = Paper Birch	J = Jack Pine	O = Oak	UM = Upland Mixed	1 = Seeding Sapling Poor	6 = Pole Timber Well
C = Cedar	L = Lowland Brush	P = Lowland Poplar	V = Bog or Marsh	2 = Seeding Sapling Medium	7 = Saw Timber Poor
D = Tread Bog	LM = Lowland Mixed	Q = Mixed Swamp Conifer	W = White Pine	3 = Seeding Sapling Well	8 = Saw Timber Medium
E = Swamp Hdwoods	M = Mpl, Bch, Bch	R = Red Pine	X = Non Stocked	4 = Pole Timber Poor	9 = Saw Timber Well
F = Spruce Fir	MC = Mixed Conifer	S = Black Spruce	Z = Water		
G = Grass	MD = Mixed Deciduous	T = Tamarack			

PU	Acres	PU	Acres	PU	Acres
1	16.3	4	28.0	7	39.6
2	26.4	5	30.9		
3	38.3	6	37.2		

Chippewa Prairie

Compartment 115
216.7 Acres



No Mas Aspen (73-011-22)

T14N, R02W, SEC. 28; T14N, R02W, SEC. 32; T14N, R02W, SEC. 33; T14N,

In response to the notice of sale to be held 10:00 a.m. (local time) on September 21, 2023, I am hereby submitting my sealed bid (firm offer) for the following forest products to be cut. Bids for individual species must be at or above the advertised price. All non-responsive bid forms may be rejected.

<u>PRODUCTS & SPECIES</u>	<u>ESTIMATED VOLUME*</u>	<u>ADVERTISED PRICE</u>	<u>BID PRICE/UNIT</u>
Sawtimber			
Black/Red (Hybrid) Oak	215.1 MBF	\$ 111.00/MBF	\$ _____
Mixed Aspen	495.3 MBF	\$ 69.00/MBF	\$ _____
Red Maple	57.8 MBF	\$ 65.00/MBF	\$ _____
Pulpwood			
Black/Red (Hybrid) Oak	217 Cords	\$ 15.90/Cord	\$ _____
Mixed Aspen	2,739 Cords	\$ 29.40/Cord	\$ _____
Mixed Hardwood	32 Cords	\$ 20.05/Cord	\$ _____
Red Maple	208 Cords	\$ 20.05/Cord	\$ _____
Swamp White Oak	11 Cords	\$ 16.20/Cord	\$ _____

*The volumes are statistically estimated within plus (+) or minus (-) 13.29 percent at 95% confidence level. These estimated volumes are final and not subject to adjustment. Prospective bidders are urged to examine this timber and to make their own estimates of quantity and quality.

I understand that any or all bids may be rejected. All bids must be signed and all bid items must be bid or the bid form may be rejected. I also understand that consideration and awarding a contract will be based upon my past performance and ability to complete the contract based upon equipment and staffing subject to my control.

FEDERAL ID: _____ - _____ or SOCIAL SECURITY NUMBER: _____ - _____ - _____

Company or individual bidding: _____

Company representative's name: _____

Address: _____

City: _____ State: _____ Zip: _____

IF AVAILABLE, PLEASE PLACE THE PERSONALIZED LABEL FROM YOUR PROSPECTUS IN THE ABOVE BOX.

Individual or company representative's signature: _____ Date: _____

Phone number : _____ Email (optional): _____

THE WINNING BIDDER MUST COMPLETE THE VERIFICATION OF WORKER'S DISABILITY COMPENSATION ACT COMPLIANCE (ON REVERSE SIDE IF DOUBLE SIDED) WITHIN 21 DAYS OF SALE AWARD DATE



FOR DEPARTMENT USE ONLY	
Sale Number (XX - XXX - XX - XX)	
Forest Management Unit:	

TIMBER SALE VERIFICATION OF WORKER'S DISABILITY COMPENSATION ACT COMPLIANCE

As required by Act 317, P.A. 1969 (Worker's Compensation) and
Part 5 of Act 451 of 1994, as amended.

VERIFICATION OF WORKER'S DISABILITY COMPENSATION ACT COMPLIANCE

- This verification must be completed and submitted within 21 days of contract award and prior to the issuance of the timber sale contract.
- In addition, if boxes 2B or 2C are checked, then Notice of Exclusion or Certificate of Insurance must be submitted within twenty-one (21) days of the contract award and prior to the issuance of the timber sale contract.
- All information must be typed or printed except for written signatures.

Please Check Appropriate Categories:

1. My business is organized as (you **must** check one of the boxes below):
 - A. Sole Proprietorship (individual)
 - B. Partnership
 - C. Corporation
2. You **must** check one of the boxes below:
 - A. I certify my business is a sole proprietorship and it has no employees but the sole proprietor. I am not subject to the Worker's Compensation Laws.
 - B. I certify my business has satisfied its obligation to the Worker's Compensation Act through the use of an approved Notice of Exclusion (BWC-337, Rev. 5/96). I will provide a copy of the Notice of Exclusion within 21 days of the contract award. (For questions or a copy of the BWC-337, please call the Worker's Compensation Bureau at 517-322-1195).
 - C. I certify my business has a Worker's Compensation Policy. I will provide an original Certificate of Insurance within twenty-one (21) days of the contract award.
3. If you have checked item 2(A) or 2(B), you **must** indicate the number of **both** full-time and part-time employees, other than yourself, including family members and active partners (if none, you must enter "0").

_____ Full-time Employees

_____ Part-time Employees

Name of Business		Federal ID (or) Social Security No.	
Address		Telephone ()	
City	State	ZIP	

I hereby certify that the above information is true and correct. I agree to notify the Michigan DNR of any changes that occur in factors affecting my coverage during any of my present and future operations.

Signature of Owner or Authorized Representative

Title

Date

Please complete the "SEALED BID" information on the next page

Chippewa Prairie (73-012-22)

T14N, R02W, SEC. 14; T14N, R02W, SEC. 22; T14N, R02W, SEC. 24; Midland

In response to the notice of sale to be held 10:00 a.m. (local time) on September 21, 2023, I am hereby submitting my sealed bid (firm offer) for the following forest products to be cut. Bids for individual species must be at or above the advertised price. All non-responsive bid forms may be rejected.

<u>PRODUCTS & SPECIES</u>	<u>ESTIMATED VOLUME*</u>	<u>ADVERTISED PRICE</u>	<u>BID PRICE/UNIT</u>
Sawtimber			
Black/Red (Hybrid) Oak	261.3 MBF	\$ 111.00/MBF	\$ _____
Mixed Aspen	325.0 MBF	\$ 69.00/MBF	\$ _____
Red Maple	157.1 MBF	\$ 65.00/MBF	\$ _____
Swamp White Oak	16.2 MBF	\$ 79.00/MBF	\$ _____
Pulpwood			
Black/Red (Hybrid) Oak	400 Cords	\$ 15.90/Cord	\$ _____
Misc. Species 1	362 Cords	\$ 7.00/Cord	\$ _____
Mixed Aspen	2,537 Cords	\$ 29.40/Cord	\$ _____
Mixed Hardwood	300 Cords	\$ 20.05/Cord	\$ _____
Red Maple	1,353 Cords	\$ 20.05/Cord	\$ _____
Swamp White Oak	41 Cords	\$ 16.20/Cord	\$ _____

*The volumes are statistically estimated within plus (+) or minus (-) 14.28 percent at 95% confidence level. These estimated volumes are final and not subject to adjustment. Prospective bidders are urged to examine this timber and to make their own estimates of quantity and quality.

I understand that any or all bids may be rejected. All bids must be signed and all bid items must be bid or the bid form may be rejected. I also understand that consideration and awarding a contract will be based upon my past performance and ability to complete the contract based upon equipment and staffing subject to my control.

FEDERAL ID: _____ - _____ or SOCIAL SECURITY NUMBER: _____ - _____ - _____

Company or individual bidding: _____

Company representative's name: _____

Address: _____

City: _____ State: _____ Zip: _____

IF AVAILABLE, PLEASE PLACE THE PERSONALIZED LABEL FROM YOUR PROSPECTUS IN THE ABOVE BOX.

Individual or company representative's signature: _____ Date: _____

Phone number : _____ Email (optional): _____

THE WINNING BIDDER MUST COMPLETE THE VERIFICATION OF WORKER'S DISABILITY COMPENSATION ACT COMPLIANCE (ON REVERSE SIDE IF DOUBLE SIDED) WITHIN 21 DAYS OF SALE AWARD DATE



FOR DEPARTMENT USE ONLY	
Sale Number (XX - XXX - XX - XX)	
Forest Management Unit:	

TIMBER SALE VERIFICATION OF WORKER'S DISABILITY COMPENSATION ACT COMPLIANCE

As required by Act 317, P.A. 1969 (Worker's Compensation) and
Part 5 of Act 451 of 1994, as amended.

VERIFICATION OF WORKER'S DISABILITY COMPENSATION ACT COMPLIANCE

- This verification must be completed and submitted within 21 days of contract award and prior to the issuance of the timber sale contract.
- In addition, if boxes 2B or 2C are checked, then Notice of Exclusion or Certificate of Insurance must be submitted within twenty-one (21) days of the contract award and prior to the issuance of the timber sale contract.
- All information must be typed or printed except for written signatures.

Please Check Appropriate Categories:

1. My business is organized as (you **must** check one of the boxes below):
 - A. Sole Proprietorship (individual)
 - B. Partnership
 - C. Corporation
2. You **must** check one of the boxes below:
 - A. I certify my business is a sole proprietorship and it has no employees but the sole proprietor. I am not subject to the Worker's Compensation Laws.
 - B. I certify my business has satisfied its obligation to the Worker's Compensation Act through the use of an approved Notice of Exclusion (BWC-337, Rev. 5/96). I will provide a copy of the Notice of Exclusion within 21 days of the contract award. (For questions or a copy of the BWC-337, please call the Worker's Compensation Bureau at 517-322-1195).
 - C. I certify my business has a Worker's Compensation Policy. I will provide an original Certificate of Insurance within twenty-one (21) days of the contract award.
3. If you have checked item 2(A) or 2(B), you **must** indicate the number of **both** full-time and part-time employees, other than yourself, including family members and active partners (if none, you must enter "0").

_____ Full-time Employees

_____ Part-time Employees

Name of Business		Federal ID (or) Social Security No.	
Address		Telephone ()	
City	State	ZIP	

I hereby certify that the above information is true and correct. I agree to notify the Michigan DNR of any changes that occur in factors affecting my coverage during any of my present and future operations.

Signature of Owner or Authorized Representative

Title

Date

Please complete the "SEALED BID" information on the next page