



**DEPARTMENT OF NATURAL RESOURCES
STATE OF MICHIGAN
TIMBER SALE PROSPECTUS #7126**

SCHEDULED SALE DATE AND TIME: 3:00 p.m. (local time) on October 20, 2022.

LOCATION: ESCANABA MGMT UNIT, 6833 HWY'S 2, 41 & M-35, GLADSTONE, MI 49837.

PROSPECTUS NOTE: The bidder is advised to inspect the sale area and review the location, estimated volumes, operating costs and contract terms of proposed sales. Please be aware that some landowners may request 60 days or more notice for access across their land.

Notice is hereby given that bids will be received by the Unit Manager, ESCANABA MANAGEMENT UNIT, for certain timber on the following described lands:

Westman Summer (33-003-22) / T35N, R25W, SEC. 5 , NENW,N1/2NE.

T36N, R25W, SEC. 20, S1/2SE.

T36N, R25W, SEC. 29, N1/2NE,SENE,SESW,N1/2SE,SWSE.

T36N, R25W, SEC. 31, NWNE,S1/2NE,N1/2SE,SESE.

T36N, R25W, SEC. 32, NENW,SWNW,NWNE,SENE,NWSW.

T36N, R25W, SEC. 32, S1/2SW,SE.

T36N, R25W, SEC. 33, W1/2SW.

Menominee County, Advertised Price \$89,349.25, 255.4 Acres, Hardwood, White Pine.

SALE NOTE: The ash, softwood species, aspen species have been cruised as pulpwood regardless of diameter at breast height (dbh) size class.

A recreation site such as a trail, pathway, or campground is within the sale area or the vicinity. Certain restrictions/specifications may be applicable including time restrictions.

Lost Brass Cap (33-004-22) / T36N, R25W, SEC. 20, SWSW.

T36N, R25W, SEC. 29, NWNW.

T36N, R25W, SEC. 30, NENE,SWNE.

T36N, R25W, SEC. 31, NESW,S1/2SW.

Menominee County, Advertised Price \$10,698.35, 58.1 Acres, Spruce/Fir/Tamarack, Hardwood.

SALE NOTE: The ash, aspen, and softwood species were cruised as pulpwood.

Alternate access through private property is the responsibility of the Purchaser. All access can be obtained through state forest land.

THE GEM (33-030-22) / T35N, R25W, SEC. 18, N1/2NW.

T35N, R25W, SEC. 5 , SESW.

T35N, R25W, SEC. 6 , S1/2NW,N1/2SW.

T35N, R25W, SEC. 7 , N1/2NE,SENE,S1/2SW.

T35N, R25W, SEC. 8 , NW,W1/2NE.

Menominee County, Advertised Price \$41,845.50, 111.6 Acres, Aspen, Hardwood.

SALE NOTE: A recreation site such as a trail, pathway, or campground is within the sale area or the vicinity. Certain restrictions/specifications may be applicable including time restrictions.

Pringle Hardwoods (33-031-22) / T33N, R26W, SEC. 8 , SESE.

T33N, R26W, SEC. 9 , NENW,S1/2NW,W1/2SW.

Menominee County, Advertised Price \$10,118.20, 54.5 Acres, Hardwood, Spruce/Fir/Tamarack.

SALE NOTE: Access may be through other public land.

BID INSTRUCTIONS (VER. 07/02/2018):

1. Scheduled Bid Location, Date, and Time (2/11)

Bids must be received by the Unit Manager, ESCANABA OFFICE, 6833 Hwy's 2, 41 & M-35, Gladstone, MI 49837, no later than 3:00 p.m. (local time) on October 20, 2022. For further information concerning this sale, contact Eric Thompson at 906-789-8231.

2. Bidder's Qualifications (5/16)

Purchaser shall obtain workers compensation insurance to cover claims under Michigan's Worker's Disability Compensation Act of 1969 or similar employee benefit act of any other state applicable to an employee. If all or part of a timber sale was prepared by a private contractor, the contractor and that contractor's company are not permitted to bid on the timber sale contract. Bids will not be accepted from individuals or companies appearing on the DNR/FRD No-Bid List. This list contains the names of purchasers who previously failed to execute a contract within 21-days or who have a history of poor performance.

3. Preparation of Sealed Bids (5/16)

Bid Forms may be completed online thru Michigan DNR Timber Sale Online Bidding (OLB) at www.michigan.gov/timberbidding or by completing the hardcopy Bid Form found in the Timber Sale Prospectus. Hardcopy Bid Forms shall be manually signed in ink. Registration in OLB is considered your 'signature' for all bids submitted thru that system. Bid prices must be entered for each species and product in the Bid Price column for all material subject to bidding and all fill-in blanks must be completed. If erasures or other changes appear on the hardcopy Bid Form, each erasure or change must be initialed by the person signing the bid.

4. Submission of Sealed Bids (5/16)

Bid forms may be obtained from the Unit Manager or thru OLB. Bids may be submitted hardcopy or thru OLB. All hardcopy bids must be submitted on the bid form and in an envelope clearly identified as described in this section. NOTE: Only one bid form per bid envelope. Sealed bids must be submitted to the Unit office designated in the prospectus and must be submitted at or prior to the time established in the prospectus. The envelope should show on the outside (a) the sale name or number and (b) the date and time of bid opening, as shown in the prospectus. Bids received after the time specified in the sale prospectus are late bids and will be rejected.

It is possible for a bidder to submit multiple bids on a single sale. For example, a bid may be submitted hardcopy and a bid may be submitted thru OLB. Or, two bidders from the same company could both submit bids on the same sale. If this were to happen, the State would accept all bids received and award the contract accordingly. All bidding and contractual requirements would apply to all bids received.

5. Public Opening of Sealed Bids (7/16)

If conditions permit, the sealed bids will be publicly opened and posted at the time and place set in the prospectus.

If a bidder, present at a bid opening, has submitted bids on more than one sale, that bidder may withdraw their unopened bid envelopes or announce the withdrawal of their online bid after being declared the successful bidder on one sale.

6. Award of Contract (1/11)

Award of the contract will be made to the Bidder whose bid, conforming to the prospectus, is most advantageous to the State of Michigan on the basis of total value at rates bid for the estimated quantities. The State reserves the right to reject any bid or waive any minor irregularity in bids received. A written award mailed (or otherwise furnished) to the successful Bidder shall be deemed to result in a binding contract without further action by either party.

7. Down Payment (1/11)

The Bidder to whom award is made must make a down payment within 21 days of the sale award. The amount of the down payment will be calculated as shown in the Bond and Payment Schedule of this prospectus. Only cash may be used to meet this requirement.

8. Performance Security (1/11)

As guarantee of faithful performance, a cash bond, certificate of deposit, surety bond or irrevocable letter of credit (LOC) is required within 21 days of the sale award. The amount of the performance security is shown in the Bond and

Payment Schedule of this prospectus. If an LOC or surety is used, the coverage must extend for at least 6 months beyond the contract expiration.

9. Timber Sale Contract (7/18)

Additional conditions and requirements common to all timber sales are listed on the timber sale contract (R4031) and are available on line at www.michigan.gov/timber. Contact the Unit Manager for additional information or a sample contract. Within 21 days of the date of the award letter, the bidder must sign the contract and provide the required down payment, performance security, and verification of worker's disability compensation. The down payment and performance security shall be in accordance with the provisions of the timber sale contract, in the sums stated in this prospectus. If these actions are not taken, then the Bidder, the Bidder's corporation, and the corporation's principals may not be permitted to bid on State timber sales for a period of 3 months after the first offense, 6 months after the second offense, and 1 year after the third offense. An offense will only be counted against the Bidder for 5 years. In addition, the Bidder certifies that if awarded this contract, the Bidder will complete the timber sale contract in accordance with its terms and any modifications thereof including requirements to purchase, cut, and remove the included timber by the expiration date.

Payment Unit values in the State Forest Timber Sale Contract are calculated based on the advertised value of the Payment Unit as a percentage of the total advertised value of the contract. The advertised value of each Payment Unit is given in the Description of Timber by Payment Unit table on the Timber Sale Information page. For example, if the value of Payment Unit 1 is advertised as \$1,500 and the total Timber Sale value is advertised as \$10,000, the contract price for Payment Unit 1 will be 15% of the total bid price ($\$1,500/\$10,000 * 100$).

10. Disclaimer of Estimates and Bidder's Warranty of Inspection (7/16)

Before submitting this bid, the Bidder is advised and cautioned to inspect the sale area, review the requirements of the sale contract, and take other steps as may be reasonably necessary to ascertain the location, estimated volumes, construction estimates, and operating costs of the proposed sale. Failure to do so will not relieve the Bidder from responsibility for completing the contract.

The Bidder warrants that this bid is submitted solely on the basis of the Bidder's examination and inspection of the quality and quantity of the timber offered for sale and the Bidder's opinion of the value thereof and the costs of recovery. No reliance should be placed on the State of Michigan's estimates of timber quality, quantity or costs of recovery. Bidder further acknowledges that the State of Michigan: (i) expressly disclaims any warranty of fitness of timber for any purpose; (ii) offers this timber as is without any warranty of quality (merchantability) or quantity and (iii) expressly disclaims any warranty as to the quantity or quality of timber sold.

11. Certification and Chain-of-Custody (10/14)

Unless otherwise indicated in the contract under section 7 – Other Conditions of the Sale Specific Conditions & Requirements, the area encompassed by this timber sale is certified to the standards of the Forest Stewardship Council (FSC) - Certificate #SCS-FM/COC-00090N and the Sustainable Forestry Initiative (SFI) - Certificate #NSF-SFIS-5Y031-SF5. Forest products from this sale may be delivered to the mill as "FSC 100% and / or SFI certified" as long as the contractor hauling the forest products is chain-of-custody (COC) certified or covered under a COC certificate from the destination mill. The purchaser is responsible for maintaining COC after leaving the sale area.

12. Good Neighbor Authority (GNA) Requirements (7/16)

If the name of this timber sales contains the acronym GNA, it is authorized by the Good Neighbor Authority (GNA) and covered by various agreements between the U.S. Forest Service and the State. The timber sale occurs on federal land and the following conditions apply:

GNA contracts on US Forest Service land will not be awarded to purchasers on the Federal list of excluded parties. The System for Award Management (SAM) will be checked for active excluded parties prior to award of contract. In addition, the Bidder to whom award is made must complete an Assurance Regarding Felony Conviction or Tax Delinquent Status for Corporate Applicants (AD-3031).

13. Good Neighbor Authority (GNA) Requirements, con't (9/16)

Bidder certifies, by signing this bid form, that to the best of Bidder's knowledge that the following representations are accurate and complete.

- a. That the Bidder and its principals are not presently debarred, suspended, proposed for debarment, declared ineligible, or voluntary excluded from timber sales (covered transactions) by any Federal department or agency.
- b. That the Bidder and its principals have not within a 3-year period preceding this bid been convicted of or had a civil judgment rendered against them for commission of fraud or a criminal offense in connection with obtaining , attempting to obtain, or performing a public (Federal, State, or local) transaction or contract under a public transaction; violation of Federal or State antitrust statutes or commission of embezzlement, theft, forgery, bribery, falsification or destruction of records, making false statements, or receiving stolen property.
- c. That the Bidder and its principals are not presently indicted for or otherwise criminally or civilly charged by a governmental entity (Federal, State, or local) with commission of any of the offenses enumerated in paragraph b of this certification.
- d. That the Bidder and its principals have not within a 3-year period preceding this bid had one or more public transactions (Federal, State, or local) terminated for breach or default of a timber or forest product contract.

Bidders that cannot certify this requirement, in whole or in part, shall submit an explanation with their bid.

DAN EICHINGER
Director

TIMBER SALE INFORMATION

Westman Summer (33-003-22)

T35N, R25W, SEC. 5; T36N, R25W, SEC. 20; T36N, R25W, SEC. 29; T36N, R25W, SEC. 31; T36N, R25W, SEC. 32; T36N, R25W, SEC. 33.

SALE NOTE: The ash, softwood species, aspen species have been cruised as pulpwood regardless of diameter at breast height (dbh) size class.

A recreation site such as a trail, pathway, or campground is within the sale area or the vicinity. Certain restrictions/specifications may be applicable including time restrictions.

A timber sale contract for this lump sum, sealed bid timber sale will be awarded to the responsible bidder offering the highest sealed bid price. All units of volume listed below were estimated using the Inventory Manager computer program and the new Michigan taper model. Bids must be at or above the following advertised price for each product and species:

<u>PRODUCTS & SPECIES</u>	<u>ESTIMATED UNITS*</u>	<u>ADVERTISED PRICE</u>
Sawtimber		
Basswood	40.0 MBF	\$ 27.00 / MBF
Paper Birch	14.6 MBF	\$ 48.00 / MBF
Red Maple	116.1 MBF	\$ 123.00 / MBF
Sugar Maple	17.7 MBF	\$ 130.00 / MBF
Yellow Birch	1.1 MBF	\$ 25.00 / MBF
Pulpwood		
Balsam Fir	426 Cords	\$ 9.80 / Cord
Black Ash	59 Cords	\$ 13.35 / Cord
Green Ash	341 Cords	\$ 13.35 / Cord
Mixed Aspen	543 Cords	\$ 16.10 / Cord
Mixed Hardwood	1,843 Cords	\$ 13.35 / Cord
Mixed Spruce	248 Cords	\$ 10.40 / Cord
Red Pine	79 Cords	\$ 37.90 / Cord
White Ash	142 Cords	\$ 13.35 / Cord
White Pine	809 Cords	\$ 25.50 / Cord

* The total volume is statistically estimated within plus (+) or minus (-) 11.85 percent. There are an estimated 4,991 cords on this timber sale, plus or minus 592 cords at the 95% confidence level. The estimated units are final and not subject to adjustment. Prospective bidders are urged to examine this timber and to make their own estimates of quantity and quality.

BOND AND PAYMENT SCHEDULE:

1. A bond in the amount of \$4,467.00 to insure faithful performance of the conditions of the contract will be deposited by the successful bidder within 21 days of the sale award.
2. Cutting in any sale or unit without the required advance payment would be considered a trespass.
3. Total payment must be paid in advance or according to the following schedule :
 - (a) Ten percent (10%) of the sale value must be paid within 21 days of the sale award.
 - (b) The 10% down payment will be credited towards the first unit cut.
 - (c) Payment for each of the following units must be made before cutting begins in that unit:

PAYMENT UNIT NUMBER	PERCENT OF TOTAL SALE VALUE
01	4.2%
02	1.3%
03	0.3%
04	5.4%
05	4.9%
06	3.0%
07	4.1%
08	2.6%
09	8.6%
10	12.1%
11	19.3%
12	19.3%
13	14.9%

4. If no cutting takes place, the 10% down payment will not be refunded.
5. Operations on the contract issued will terminate on 09/30/2025.

SALE STATISTICS

Volumes were calculated in cubic feet using the Michigan taper model. Cubic foot volume includes all wood inside bark for the product indicated. For display purposes, cubic feet were converted to cords and MBF using a simple conversion factor, e.g. 79 cubic feet per cord and 185 cubic feet per MBF. The cubic foot volumes are precise; the cords and MBF volumes are not. Cubic foot volume cannot be directly converted to cords or boards with precision.

SALE VOLUMES

The total estimated sale volume may not equal the sum of the species/products due to the nature of statistical calculations associated with double sampling methodology.

VOLUME			STATISTICAL RANGE IN CORDS	
TOTAL CUBIC FEET	TOTAL CORDS	PERCENT ERROR	MINIMUM	MAXIMUM
394,313	4,991	11.85%	4,400	5,583

VDU VOLUMES

A VDU is a Volume Determination Unit. Volumes and their associated statistics are calculated at the VDU level and summarized to the sale level. There is often a one to one relationship between a VDU and a Payment Unit, but not always, depending on the cruise design. Refer to the VDU TO PAYMENT UNIT table.

VDU	VOLUME			RANGE IN CORDS	
	TOTAL CUBIC FEET	TOTAL CORDS	PERCENT ERROR	MINIMUM	MAXIMUM
8	41,460	525	25.04%	393	656
12	23,694	300	28.52%	214	385
33	11,750	149	56.41%	65	233
35	4,629	59	177.93%	46	163
36	1,454	18	156.81%	10	47
40	23,504	298	34.89%	194	401
552	287,821	3,643	9.51%	3,297	3,990
TOTAL:	394,313	4,991		4,107	5,876

VDU TO PAYMENT UNIT

When a VDU is associated with more than one Payment Unit (PU), the VDU volumes are assigned to the PU based on acres of the VDU within the PU.

VDU	VDU ACRES	PU	PU ACRES
8	62.6	6	19.3
		7	26.5
		8	16.8
12	10.3	5	10.3
33	26.2	1	26.2
35	6.3	2	6.3
36	3.0	3	3.0
40	24.9	4	24.9
552	122.1	9	14.1
		10	19.9
		11	31.9
		12	31.8
		13	24.4
TOTAL:	255.4		255.4

DESCRIPTION OF TIMBER BY PAYMENT UNIT (PU)

PU	MARKET GROUP	PRODUCT	QUANTITY	UNIT	ACRES	ADVERTISE PRICE
1	Paper Birch	Sawtimber	1.2	MBF	26.2	\$3,749.35
	Balsam Fir	Pulpwood	8	Cords		
	Mixed Aspen		50	Cords		
	<i>B. T. Aspen</i>		50	<i>Cords</i>		
	Mixed Hardwood		17	Cords		
	<i>Paper Birch</i>		8	<i>Cords</i>		
	<i>Red Maple</i>		9	<i>Cords</i>		
	Red Pine		56	Cords		
	White Pine		18	Cords		
2	Balsam Fir	Pulpwood	6	Cords	6.3	\$1,194.50
	Mixed Aspen		47	Cords		
	<i>B. T. Aspen</i>		44	<i>Cords</i>		
	<i>Quaking Aspen</i>		3	<i>Cords</i>		
	Red Pine		10	Cords		
3	Basswood	Sawtimber	1.1	MBF	3.0	\$291.75
	Sugar Maple		0.4	MBF		
	Balsam Fir	Pulpwood	1	Cords		
	Mixed Hardwood		10	Cords		
	<i>Basswood</i>		1	<i>Cords</i>		
	<i>Sugar Maple</i>		9	<i>Cords</i>		
	White Ash		5	Cords		
4	Basswood	Sawtimber	8.7	MBF	24.9	\$4,823.45
	Red Maple		1.5	MBF		
	Sugar Maple		3.6	MBF		
	Balsam Fir	Pulpwood	26	Cords		
	Black Ash		3	Cords		
	Green Ash		46	Cords		
	Mixed Aspen		125	Cords		
	<i>B. T. Aspen</i>		106	<i>Cords</i>		
	<i>Quaking Aspen</i>		19	<i>Cords</i>		
	Mixed Hardwood		46	Cords		
	<i>Basswood</i>		6	<i>Cords</i>		
	<i>Ironwood</i>		7	<i>Cords</i>		
	<i>Red Maple</i>		2	<i>Cords</i>		
	<i>Sugar Maple</i>		31	<i>Cords</i>		
	White Ash		30	Cords		
5	Paper Birch	Sawtimber	4.5	MBF	10.3	\$4,374.20
	Balsam Fir	Pulpwood	41	Cords		
	Green Ash		9	Cords		
	Mixed Aspen		156	Cords		
	<i>Quaking Aspen</i>		156	<i>Cords</i>		
	Mixed Hardwood		63	Cords		
	<i>Balsam Poplar</i>		11	<i>Cords</i>		
	<i>Paper Birch</i>		28	<i>Cords</i>		
	<i>Red Maple</i>		24	<i>Cords</i>		
	Mixed Spruce		17	Cords		
	<i>White Spruce</i>		17	<i>Cords</i>		
	White Ash		8	Cords		
6	Basswood	Sawtimber	9.3	MBF	19.3	\$2,661.40
	Paper Birch		2.7	MBF		
	Red Maple		1.9	MBF		
	Sugar Maple		4.2	MBF		
	Yellow Birch		0.3	MBF		
	Balsam Fir	Pulpwood	8	Cords		
	Black Ash		6	Cords		
	Mixed Hardwood		69	Cords		

DESCRIPTION OF TIMBER BY PAYMENT UNIT (PU), CON'T

PU	MARKET GROUP	PRODUCT	QUANTITY	UNIT	ACRES	ADVERTISE PRICE				
6 con't	<i>Basswood</i>	<i>Pulpwood</i>	8	<i>Cords</i>						
	<i>Paper Birch</i>		11	<i>Cords</i>						
	<i>Red Maple</i>		13	<i>Cords</i>						
	<i>Sugar Maple</i>		33	<i>Cords</i>						
	<i>Yellow Birch</i>		4	<i>Cords</i>						
	White Ash		31	Cords						
7	Basswood	Sawtimber	12.8	MBF	26.5	\$3,632.20				
	Paper Birch		3.8	MBF						
	Red Maple		2.5	MBF						
	Sugar Maple		5.8	MBF						
	Yellow Birch		0.5	MBF						
	Balsam Fir		Pulpwood	11			Cords			
	Black Ash	9		Cords						
	Mixed Hardwood	94		Cords						
	<i>Basswood</i>	10		<i>Cords</i>						
	<i>Paper Birch</i>	15		<i>Cords</i>						
	<i>Red Maple</i>	18		<i>Cords</i>						
	<i>Sugar Maple</i>	46		<i>Cords</i>						
	<i>Yellow Birch</i>	5		<i>Cords</i>						
	White Ash	41		Cords						
	8	Basswood		Sawtimber			8.1	MBF	16.8	\$2,329.35
		Paper Birch	2.4				MBF			
Red Maple		1.6	MBF							
Sugar Maple		3.7	MBF							
Yellow Birch		0.3	MBF							
Balsam Fir		Pulpwood	7		Cords					
Black Ash			6	Cords						
Mixed Hardwood			60	Cords						
<i>Basswood</i>			7	<i>Cords</i>						
<i>Paper Birch</i>			10	<i>Cords</i>						
<i>Red Maple</i>			11	<i>Cords</i>						
<i>Sugar Maple</i>			29	<i>Cords</i>						
<i>Yellow Birch</i>			3	<i>Cords</i>						
White Ash			27	Cords						
9			Red Maple	Sawtimber	12.5	MBF	14.1	\$7,662.85		
		Balsam Fir	Pulpwood	37	Cords					
	Black Ash	4		Cords						
	Green Ash	33		Cords						
	Mixed Aspen	19		Cords						
	<i>Quaking Aspen</i>	19		<i>Cords</i>						
	Mixed Hardwood	172		Cords						
	<i>Paper Birch</i>	7		<i>Cords</i>						
	<i>Red Maple</i>	165		<i>Cords</i>						
	Mixed Spruce	26		Cords						
	<i>Black Spruce</i>	3		<i>Cords</i>						
	<i>White Spruce</i>	23		<i>Cords</i>						
	Red Pine	2		Cords						
	White Pine	91		Cords						
	10	Red Maple		Sawtimber	17.7	MBF			19.9	\$10,820.15
		Balsam Fir		Pulpwood	52	Cords				
Black Ash		6	Cords							
Green Ash		47	Cords							
Mixed Aspen		27	Cords							
<i>Quaking Aspen</i>		27	<i>Cords</i>							
Mixed Hardwood		242	Cords							
<i>Paper Birch</i>		10	<i>Cords</i>							

DESCRIPTION OF TIMBER BY PAYMENT UNIT (PU), CON'T

PU	MARKET GROUP	PRODUCT	QUANTITY	UNIT	ACRES	ADVERTISE PRICE
10 con't	<i>Red Maple</i>	<i>Pulpwood</i>	232	<i>Cords</i>		
	Mixed Spruce		38	Cords		
	<i>Black Spruce</i>		5	<i>Cords</i>		
	<i>White Spruce</i>		33	<i>Cords</i>		
	Red Pine		2	Cords		
	White Pine		129	Cords		
11	Red Maple	Sawtimber	28.4	MBF	31.9	\$17,293.15
	Balsam Fir	Pulpwood	82	Cords		
	Black Ash		9	Cords		
	Green Ash		75	Cords		
	Mixed Aspen		43	Cords		
	<i>Quaking Aspen</i>		43	<i>Cords</i>		
	Mixed Hardwood		387	Cords		
	<i>Paper Birch</i>		15	<i>Cords</i>		
	<i>Red Maple</i>		372	<i>Cords</i>		
	Mixed Spruce		60	Cords		
	<i>Black Spruce</i>		7	<i>Cords</i>		
	<i>White Spruce</i>		53	<i>Cords</i>		
	Red Pine		3	Cords		
	White Pine		207	Cords		
12	Red Maple	Sawtimber	28.3	MBF	31.8	\$17,238.45
	Balsam Fir	Pulpwood	83	Cords		
	Black Ash		9	Cords		
	Green Ash		74	Cords		
	Mixed Aspen		43	Cords		
	<i>Quaking Aspen</i>		43	<i>Cords</i>		
	Mixed Hardwood		386	Cords		
	<i>Paper Birch</i>		15	<i>Cords</i>		
	<i>Red Maple</i>		371	<i>Cords</i>		
	Mixed Spruce		60	Cords		
	<i>Black Spruce</i>		7	<i>Cords</i>		
	<i>White Spruce</i>		53	<i>Cords</i>		
	Red Pine		3	Cords		
	White Pine		206	Cords		
13	Red Maple	Sawtimber	21.7	MBF	24.4	\$13,278.45
	Balsam Fir	Pulpwood	64	Cords		
	Black Ash		7	Cords		
	Green Ash		57	Cords		
	Mixed Aspen		33	Cords		
	<i>Quaking Aspen</i>		33	<i>Cords</i>		
	Mixed Hardwood		297	Cords		
	<i>Paper Birch</i>		12	<i>Cords</i>		
	<i>Red Maple</i>		285	<i>Cords</i>		
	Mixed Spruce		47	Cords		
	<i>Black Spruce</i>		6	<i>Cords</i>		
	<i>White Spruce</i>		41	<i>Cords</i>		
	Red Pine		3	Cords		
	White Pine		158	Cords		
TOTAL:			189.5	MBF		
TOTAL:			4,490	Cords		

Sale Specific Conditions & Requirements

Sale Name: Westman Summer

Sale Number: 33-003-22 Seq#: 1

1 - Sale Area

1.2 - Boundaries

1.2.1 - Painted boundaries (9/19)

The sale boundary and Payment Unit boundaries are marked and identified by red and yellow paint. Exterior sale boundary lines against state are marked with red paint. Interior Payment Unit boundaries are marked with yellow paint. The painted boundary line trees are not Included Timber and are to be protected unless marked with orange paint. Yellow painted trees designating an interior Payment Unit boundary are only to be cut when all surrounding Payment Units have been paid.

2 - Timber Specifications

2.1 - Included Timber

2.1.1 - Clearcut unit(s) with unmerchantable trees (6/14)

Within Payment Unit(s) 5, 9, 10, 11, 12 and 13, cut all trees that are three (3) inches or more at DBH except do not cut any cedar, hemlock and trees marked with green paint. Also, within payment units 11, 12, and 13 do not cut any yellow birch.

2.1.3 - Cut tree marked unit(s) (12/08)

Within Payment Unit(s) 1, 2, 3, 4, 6, 7, and 8, all trees are designated for cutting when marked with orange paint above and below stump height, regardless of merchantability. In addition the following species are designated for harvested as listed below:

Unit 1- Cut all aspen, balsam fir, birch, red maple and spruce.

Unit 2- Cut all merchantable species except do not cut hemlock and un-marked pine.

Unit 3 and 4- Cut all aspen, balsam fir, spruce, ironwood and ash.

Units 6, 7 and 8- Cut all aspen, balm, balsam fir, spruce, tamarack, ironwood and ash.

2.1.9 - Harvest exception (12/08)

Do not cut any cedar trees within payment unit 5 other than those that are necessary to remove in order to operate within the sale area. Every effort must be made to preserve the existing cedar and to leave an intact stand upon sale completion. All cut cedar shall be piled separately by products and scaled in the woods unless other scaling arrangements are agreed to by the Unit Manager or his/her representative. Stumpage price for cedar shall be \$50.00 per cord for posts and pulpwood, and \$100.00 per cord for bolts and sawlogs.

2.1.11 - Description of timber note (2/04)

Note that All softwood species, aspen, balm, and ash is cruised as pulpwood volumes regardless of tree diameter at breast height (dbh) size class.

3 - Payments

3.3 - Pre-measured Sales

3.3.4 - Dividing payment units (7/14)

Payment Unit(s) with a contract bid value of \$18,000 dollars or greater may be divided at the request of the Purchaser and upon approval of the Unit Manager. Dividing Payment Units is a contract modification which requires a Timber Sale Contract Amendment. There will be only one division per Payment Unit.

4 - Transportation

4.1 - Construction

4.1.6 - Road construction (1/09)

Construction of new roads or improvements of existing roads shall be done in such a way as to minimize the environmental and visual impacts. Merchantable trees shall be cut and utilized unless otherwise directed. Non-merchantable trees shall be severed and laid flat on the ground. Slash shall be scattered, and not left in windrows and kept a minimum of 10 feet back from the road edge. Stumps shall be set upright, not left on edge, and be moved at least 10 feet away from the road edge. Disturbed soil shall be feathered into the woods and not left in berms or windrows.

4.1.7 - Road closure (10/11)

All new roads built into the sale must be blocked to vehicle traffic upon completion of the sale. In general, this will require constructing a four (4') foot high berm of stumps and logs covered with earth. These roads must be rendered impassable to cars and trucks. Contact the sale administrator for specific details of design and placement.

4.2 - Maintenance

4.2.2 - Fill material (4/07)

To maintain roads, fill material may be needed in areas where "holes" exist or may be expected to develop. This fill material should be placed before trucking begins. Contact the sale administrator regarding the availability of onsite sand or gravel from adjacent State-owned lands.

4.2.4 - Grading (10/16)

For completion of the sale, state forest roads must be graded. In general, this will require a road grader or bull dozer to shape up the roads after forest products have been hauled off site. This includes cleaning of drainage areas, grading, crowning and filling with gravel, if necessary. The grading equipment to be used must be approved by the Unit Manager or his/her representative.

5 - Operations

5.2 - Conduct of Operations

5.2.2 - Hazard Trees/Snags

5.2.2.1 - Den trees (10/16)

Obvious hollow and/or den trees shall be protected and left standing unless they are a safety hazard.

5.2.3 - Operating Restrictions

5.2.3.1 - Operating restrictions (9/11)

Within Payment Unit(s) 5 cutting and skidding are limited to the period of December 1 to March 31, unless there is an extended dry or frozen period, and the sale administrator allows harvesting during that period of time. This restriction is because of some low wet ground access to this payment unit.

5.2.3.3 - Bark slippage restriction (3/09)

Within Payment Unit(s) 1, 2, 3, 4, 6, 7 and 8, unless changed by written agreement, cutting and skidding are not permitted during the period of April 15 to July 15. This restriction is because of bark slippage.

5.2.3.6 - Bark beetle restriction (12/08)

In the event drought creates a high risk of pine bark beetle infestation, pine is not to be cut during the period March 1 through July 1, unless all portions of trees greater than two inches in diameter are removed from the sale area, reduced to chips, or treated to the satisfaction of the Unit Manager or his/her representative, within fifteen days of being severed from the stump. Pine log decks, pulpwood piles and treetops that are piled for chipping in the fall or winter within a 1/4 mile of susceptible sites must be removed before March 15. Residual slash must not be placed in piles or rows and must be spread over the site for quick drying. The Department of Natural Resources will exercise this specification if the risk of damage warrants.

5.2.39 - ORV trail/route protection (4/18)

The forest island is an ORV trail or route and is shown on the Timber Sale Map. Do not cut trees or damage posts with yellow ORV markers. Maintain a 20 foot wide slash, debris, and rut free zone daily using the ORV trail or route as the centerline.

5.4 - Soil Protection

5.4.1 - Rutting restriction, general (7/16)

Operations are to cease immediately if equipment and weather conditions result in rutting of roads and/or skid trails which is 12 inches or greater in depth and 50 feet in length. The Unit Manager or his/her representative may restrict hauling and/or skidding if ruts exceed the specified depth. With the Unit Manager or his/her representative's approval, the Purchaser may return to the area when the risk of rutting has decreased.

6 - Safety and Fire Prevention

6.2 - Signing

6.2.1 - Road posting (10/20)

The Purchaser is responsible for posting and maintaining caution signs on the Westman Dam Road prior to beginning operations. The road must be posted at appropriate distances from the sale area to warn of logging activity and truck traffic. Signs must be removed when harvest operations are suspended or completed. The Purchaser will provide these signs.

6.2.3 - Recreational trail posting (10/20)

The Purchaser is responsible for posting and maintaining caution signs on the Forest Islands ORV trail prior to beginning operations. The trail must be posted at appropriate distances from the sale area to warn of logging activity and truck traffic at both ends of the trail. Signs must be removed when harvest operations are suspended or completed. The Purchaser will provide these signs.



Sale Number	Year
33-003	22

TIMBER SALE MAP

This information provided by authority of Part 525, 1994 PA 451, as amended.

Forest Management Unit		County	Mapped By	Racine	Date	Page of	
Escanaba		Menominee	Cruised By	Racine	08/24/2022	1	1
Township	Range	Section(s) and Subdivision(s)			Scale		
35 36 N	25W	SEE PROPOSAL			1:24,000		

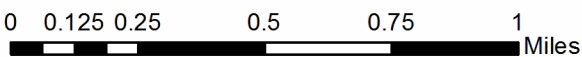
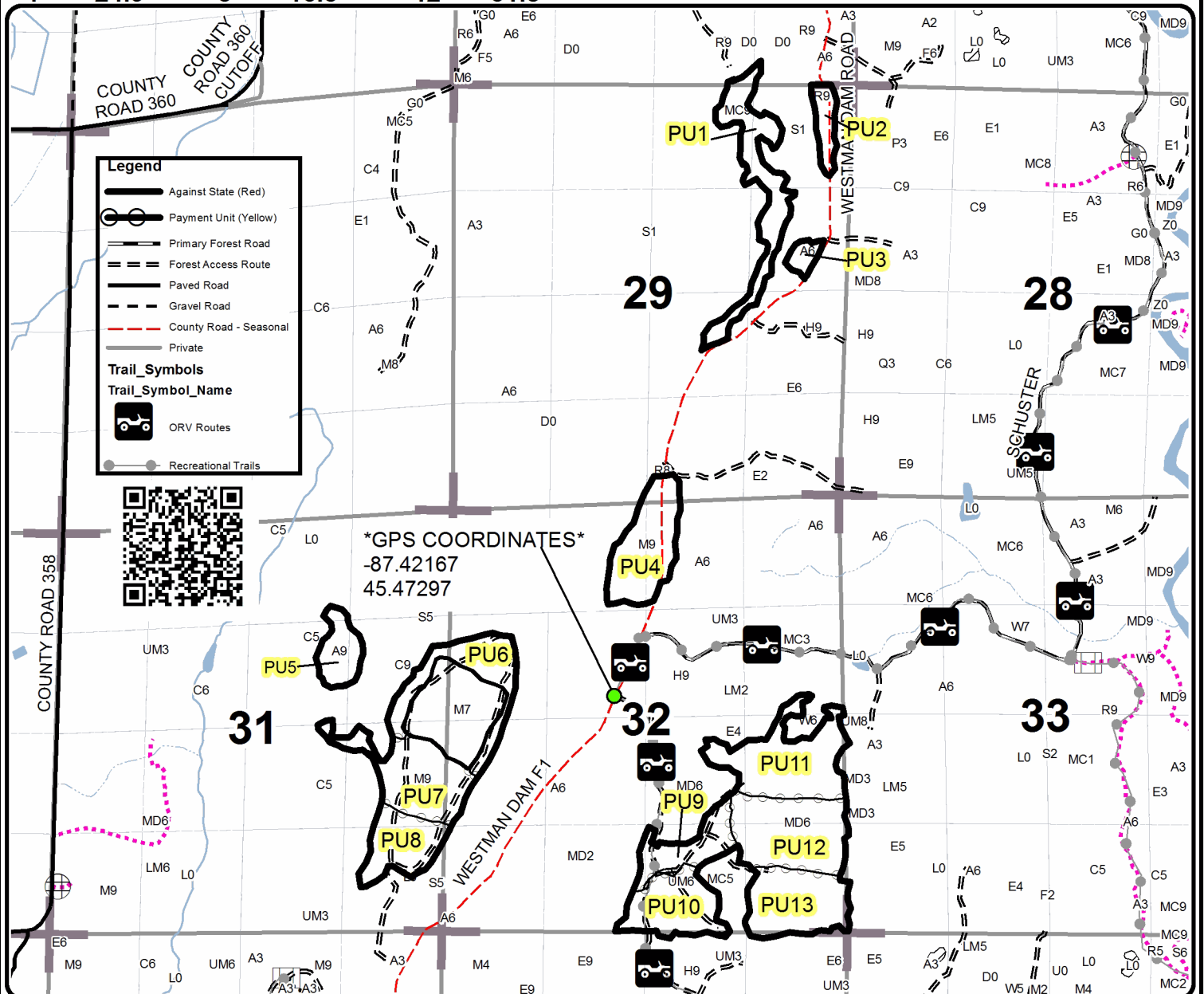
Cover Type				Density				
A = Aspen	H = Hemlock	N = Marsh	U = Upland Brush	0 = Non Stocked	5 = Pole Timber Medium			
B = Paper Birch	J = Jack Pine	O = Oak	UM = Upland Mixed	1 = Seedling Sapling Poor	6 = Pole Timber Well			
C = Cedar	L = Lowland Brush	P = Lowland Poplar	V = Bog or Marsh	2 = Seedling Sapling Medium	7 = Saw Timber Poor			
D = Treed Bog	LM = Lowland Mixed	Q = Mixed Swamp Conifer	W = White Pine	3 = Seedling Sapling Well	8 = Saw Timber Medium			
E = Swamp Hdwoods	M = Mpl, Bch, Brch	R = Red Pine	X = Non Stocked	4 = Pole Timber Poor	9 = Saw Timber Well			
F = Spruce Fir	MC = Mixed Conifer	S = Black Spruce	Z = Water					
G = Grass	MD = Mixed Deciduous	T = Tamarack						

PU	Acres	PU	Acres	PU	Acres	PU	Acres
1	26.2	5	10.3	9	14.1	13	24.4
2	6.3	6	19.3	10	19.9		
3	3	7	26.5	11	31.9		
4	24.9	8	16.8	12	31.8		

Westman Summer

Compartment 48

255.4 Acres



TIMBER SALE INFORMATION

Lost Brass Cap (33-004-22)

T36N, R25W, SEC. 20; T36N, R25W, SEC. 29; T36N, R25W, SEC. 30; T36N, R25W, SEC. 31.
Menominee County (Advertised Price \$10,698.35)

SALE NOTE: The ash, aspen, and softwood species were cruised as pulpwood.

Alternate access through private property is the responsibility of the Purchaser. All access can be obtained through state forest land.

A timber sale contract for this lump sum, sealed bid timber sale will be awarded to the responsible bidder offering the highest sealed bid price. All units of volume listed below were estimated using the Inventory Manager computer program and the new Michigan taper model. Bids must be at or above the following advertised price for each product and species:

<u>PRODUCTS & SPECIES</u>	<u>ESTIMATED UNITS*</u>	<u>ADVERTISED PRICE</u>
Sawtimber		
Basswood	2.0 MBF	\$ 27.00 / MBF
Red Maple	2.8 MBF	\$ 123.00 / MBF
Sugar Maple	7.0 MBF	\$ 130.00 / MBF
Pulpwood		
Balsam Fir	276 Cords	\$ 9.80 / Cord
Black Ash	15 Cords	\$ 13.35 / Cord
Green Ash	16 Cords	\$ 13.35 / Cord
Mixed Aspen	140 Cords	\$ 16.10 / Cord
Mixed Hardwood	133 Cords	\$ 13.35 / Cord
N. White Cedar	86 Cords	\$ 5.85 / Cord
White Ash	109 Cords	\$ 13.35 / Cord
White Pine	5 Cords	\$ 25.50 / Cord
White Spruce	15 Cords	\$ 10.40 / Cord

* The total volume is statistically estimated within plus (+) or minus (-) 26.26 percent. There are an estimated 809 cords on this timber sale, plus or minus 212 cords at the 95% confidence level. The estimated units are final and not subject to adjustment. Prospective bidders are urged to examine this timber and to make their own estimates of quantity and quality.

BOND AND PAYMENT SCHEDULE:

1. A bond in the amount of \$535.00 to insure faithful performance of the conditions of the contract will be deposited by the successful bidder within 21 days of the sale award.
2. Cutting in any sale or unit without the required advance payment would be considered a trespass.
3. Total payment must be paid in advance or according to the following schedule :
 - (a) Ten percent (10%) of the sale value must be paid within 21 days of the sale award.
 - (b) The 10% down payment will be credited towards the first unit cut.
 - (c) Payment for each of the following units must be made before cutting begins in that unit:

PAYMENT UNIT NUMBER	PERCENT OF TOTAL SALE VALUE
01	25.0%
02	17.2%
03	24.2%
04	33.6%
4. If no cutting takes place, the 10% down payment will not be refunded.
5. Operations on the contract issued will terminate on 09/30/2025.

SALE STATISTICS

Volumes were calculated in cubic feet using the Michigan taper model. Cubic foot volume includes all wood inside bark for the product indicated. For display purposes, cubic feet were converted to cords and MBF using a simple conversion factor, e.g. 79 cubic feet per cord and 185 cubic feet per MBF. The cubic foot volumes are precise; the cords and MBF volumes are not. Cubic foot volume cannot be directly converted to cords or boards with precision.

SALE VOLUMES

The total estimated sale volume may not equal the sum of the species/products due to the nature of statistical calculations associated with double sampling methodology.

VOLUME			STATISTICAL RANGE IN CORDS	
TOTAL CUBIC FEET	TOTAL CORDS	PERCENT ERROR	MINIMUM	MAXIMUM
63,910	809	26.26%	597	1,021

VDU VOLUMES

A VDU is a Volume Determination Unit. Volumes and their associated statistics are calculated at the VDU level and summarized to the sale level. There is often a one to one relationship between a VDU and a Payment Unit, but not always, depending on the cruise design. Refer to the VDU TO PAYMENT UNIT table.

	VOLUME			RANGE IN CORDS	
VDU	TOTAL CUBIC FEET	TOTAL CORDS	PERCENT ERROR	MINIMUM	MAXIMUM
1	17,001	215	22.24%	167	263
2	19,148	242	62.85%	90	395
22	10,549	134	72.81%	36	231
29	17,212	218	32.76%	147	289
TOTAL:	63,910	809		440	1,178

VDU TO PAYMENT UNIT

When a VDU is associated with more than one Payment Unit (PU), the VDU volumes are assigned to the PU based on acres of the VDU within the PU.

VDU	VDU ACRES	PU	PU ACRES
1	18.9	4	18.9
2	6.9	3	6.9
22	9.8	2	9.8
29	22.5	1	22.5
TOTAL:	58.1		58.1

DESCRIPTION OF TIMBER BY PAYMENT UNIT (PU)

PU	MARKET GROUP	PRODUCT	QUANTITY	UNIT	ACRES	ADVERTISE PRICE
1	Red Maple	Sawtimber	1.9	MBF	22.5	\$2,674.70
	Balsam Fir	Pulpwood	101	Cords		
	Green Ash		16	Cords		
	Mixed Aspen		14	Cords		
	<i>B. T. Aspen</i>		14	<i>Cords</i>		
	Mixed Hardwood		54	Cords		
	<i>Balsam Poplar</i>		17	<i>Cords</i>		
	<i>Black Cherry</i>		8	<i>Cords</i>		
	<i>Paper Birch</i>		9	<i>Cords</i>		
	<i>Red Maple</i>		17	<i>Cords</i>		
	<i>Yellow Birch</i>		3	<i>Cords</i>		
	N. White Cedar		28	Cords		
	White Pine		5	Cords		
2	Balsam Fir	Pulpwood	23	Cords	9.8	\$1,839.30
	Black Ash		15	Cords		
	Mixed Aspen		82	Cords		
	<i>B. T. Aspen</i>		26	<i>Cords</i>		
	<i>Quaking Aspen</i>		56	<i>Cords</i>		
	Mixed Hardwood		7	Cords		
	<i>Red Maple</i>		7	<i>Cords</i>		
3	Balsam Fir	Pulpwood	134	Cords	6.9	\$2,585.05
	Mixed Aspen		44	Cords		
	<i>B. T. Aspen</i>		44	<i>Cords</i>		
	N. White Cedar		58	Cords		
	White Ash		9	Cords		
	White Spruce		10	Cords		
4	Basswood	Sawtimber	2.0	MBF	18.9	\$3,599.30
	Red Maple		0.9	MBF		
	Sugar Maple		7.0	MBF		
	Balsam Fir	Pulpwood	18	Cords		
	Mixed Hardwood		72	Cords		
	<i>Basswood</i>		1	<i>Cords</i>		
	<i>Ironwood</i>		1	<i>Cords</i>		
	<i>Red Maple</i>		2	<i>Cords</i>		
	<i>Sugar Maple</i>		68	<i>Cords</i>		
	White Ash		100	Cords		
	White Spruce		5	Cords		
TOTAL:			11.8	MBF		
TOTAL:			795	Cords		

Sale Specific Conditions & Requirements

Sale Name: Lost Brass Cap

Sale Number: 33-004-22 Seq#: 1

1 - Sale Area

1.2 - Boundaries

1.2.1 - Painted boundaries (9/19)

The sale boundary and Payment Unit boundaries are marked and identified by blue, red and yellow paint. Exterior sale boundary lines against private property are marked with blue paint. Exterior sale boundary lines against state are marked with red paint. Interior Payment Unit boundaries are marked with yellow paint. The painted boundary line trees are not Included Timber and are to be protected unless marked with orange paint. Yellow painted trees designating an interior Payment Unit boundary are only to be cut when all surrounding Payment Units have been paid.

2 - Timber Specifications

2.1 - Included Timber

2.1.1 - Clearcut unit(s) with unmerchantable trees (6/14)

Within Payment Unit(s) 1, 2 and 3, cut all trees that are three (3) inches or more at DBH, with the following exceptions:

- Within Payment Unit 1, do not cut hemlock or any trees marked with green paint.
- Within Payment Unit 2, do not cut cedar and hemlock.

2.1.3 - Cut tree marked unit(s) (12/08)

Within Payment Unit(s) 4, all trees are designated for cutting when marked with orange paint above and below stump height, regardless of merchantability. In addition, cut all balsam fir, spruce, ironwood and ash.

2.1.9 - Harvest exception (12/08)

Do not cut within payment unit 2 any cedar trees other than those that are necessary to remove in order to operate within the sale area. Every effort must be made to preserve the existing cedar and to leave an intact stand upon sale completion. All cut cedar shall be piled separately by products and scaled in the woods unless other scaling arrangements are agreed to by the Unit Manager or his/her representative. Stumpage price for cedar shall be \$50.00 per cord for posts and pulpwood, and \$100.00 per cord for bolts and sawlogs. The harvest exception spec applies to unit 2 only.

2.1.11 - Description of timber note (2/04)

Note that all ash, softwood and aspen species are calculated as pulpwood volumes regardless of diameter at breast height (dbh) size class.

3 - Payments

3.3 - Pre-measured Sales

3.3.4 - Dividing payment units (7/14)

Payment Unit(s) with a contract bid value of \$18,000 dollars or greater may be divided at the request of the Purchaser and upon approval of the Unit Manager. Dividing Payment Units is a contract modification which requires a Timber Sale Contract Amendment. There will be only one division per Payment Unit.

4 - Transportation

4.1 - Construction

4.1.6 - Road construction (1/09)

Construction of new roads or improvements of existing roads shall be done in such a way as to minimize the environmental and visual impacts. Merchantable trees shall be cut and utilized unless otherwise directed. Non-merchantable trees shall be severed and laid flat on the ground. Slash shall be scattered, and not left in windrows and kept a minimum of 10 feet back from the road edge. Stumps shall be set upright, not left on edge, and be moved at least 10 feet away from the road edge. Disturbed soil shall be feathered into the woods and not left in berms or windrows.

4.1.7 - Road closure (10/11)

All new roads built into the sale must be blocked to vehicle traffic upon completion of the sale. All new roads built into the

sale must be blocked to vehicle traffic within 30 days of completion of hauling. Overgrown roads that are reopened shall be considered new roads. In general, this will require constructing a four (4') foot high berm of stumps and logs covered with earth. These roads must be rendered impassable to cars and trucks. Contact the sale administrator for specific details of design and placement.

4.2 - Maintenance

4.2.2 - Fill material (4/07)

To maintain roads, fill material may be needed in areas where "holes" exist or may be expected to develop. This fill material should be placed before trucking begins. Contact the sale administrator regarding the availability of onsite sand or gravel from adjacent State-owned lands.

4.2.4 - Grading (10/16)

For completion of the sale, state forest roads must be graded. In general, this will require a road grader or bull dozer to shape up the roads after forest products have been hauled off site. This includes cleaning of drainage areas, grading, crowning and filling with gravel, if necessary. The grading equipment to be used must be approved by the Unit Manager or his/her representative.

4.4 - Access

4.4.2 - Alternate route on private property (2/04)

It is the Purchaser's responsibility to obtain access across private land for any routes other than the route shown on the Timber Sale Map.

5 - Operations

5.2 - Conduct of Operations

5.2.3 - Operating Restrictions

5.2.3.1 - Operating restrictions (9/11)

Within Payment Unit(s) 2, cutting, skidding, and hauling are limited to the period of December 1st to March 31st, unless there is an extended dry or frozen period, and the sale administrator allows harvesting during that time period. This restriction is because of the low wet ground access through state forest land. Specification 4.4.2 allows the mitigation of this contract specification.

5.2.3.3 - Bark slippage restriction (3/09)

Within Payment Unit(s) 4, unless changed by written agreement, cutting and skidding are not permitted during the period of April 15 to July 15. This restriction is because of bark slippage.

5.4 - Soil Protection

5.4.1 - Rutting restriction, general (7/16)

Operations are to cease immediately if equipment and weather conditions result in rutting of roads and/or skid trails which is 12 inches or greater in depth and 50 feet in length. The Unit Manager or his/her representative may restrict hauling and/or skidding if ruts exceed the specified depth. With the Unit Manager or his/her representative's approval, the Purchaser may return to the area when the risk of rutting has decreased.

5.8 - Protection of Endangered Species

5.8.5 - Protection of raptor nests (3/13)

All trees with raptor nests will be protected if found during harvesting operations. Notification will be made to the Unit Manager or his/her representative who will notify the Wildlife Biologist so an on-site evaluation and recommendation can be made, if necessary.

6 - Safety and Fire Prevention

6.2 - Signing

6.2.1 - Road posting (10/20)

The Purchaser is responsible for posting and maintaining caution signs on the Westman Dam and County Road 358 prior to beginning operations. The road must be posted at appropriate distances from the sale area to warn of logging activity and

truck traffic. Signs must be removed when harvest operations are suspended or completed. The Purchaser will provide these signs.



TIMBER SALE MAP

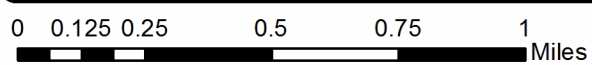
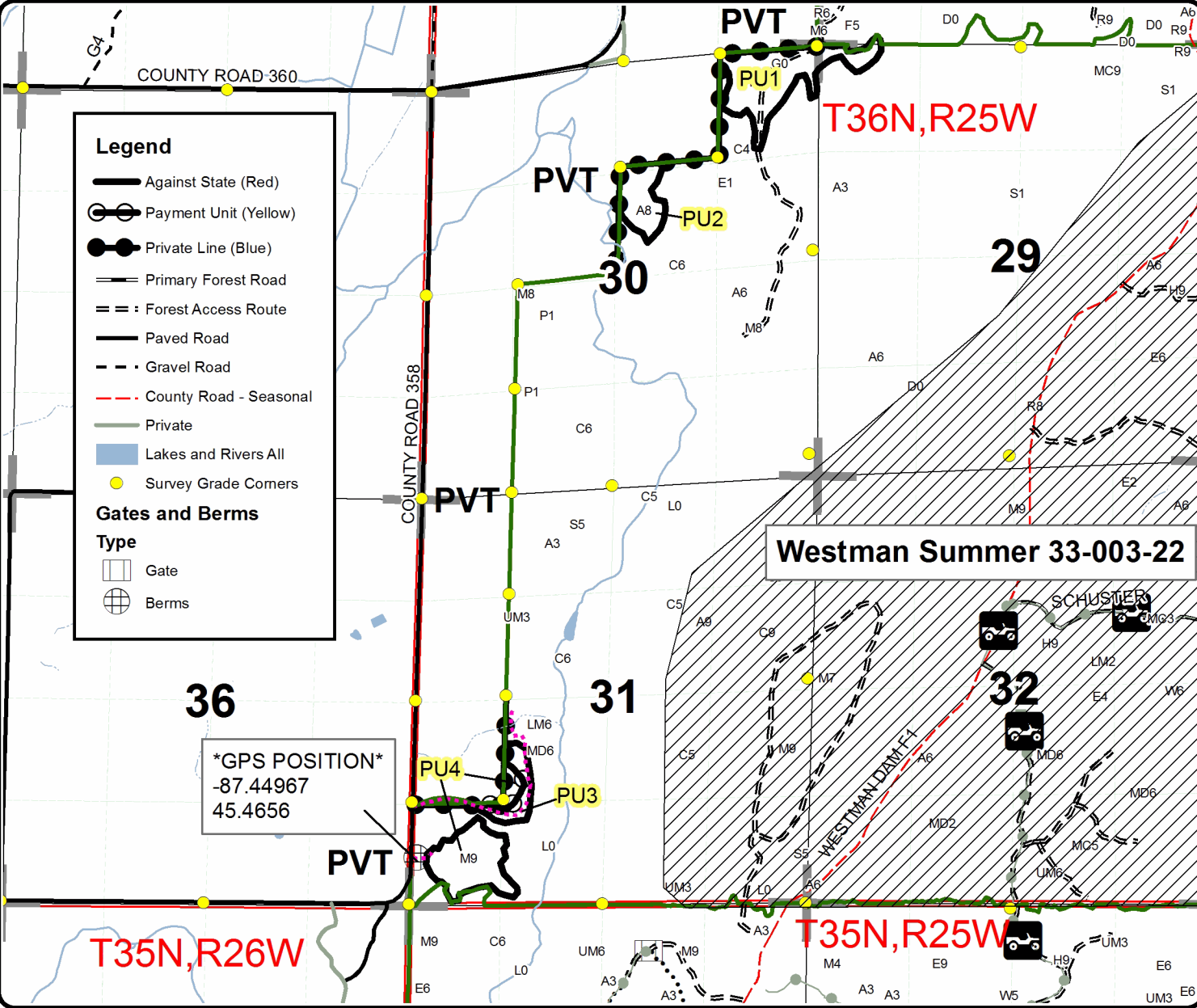
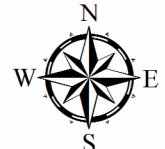
This information provided by authority of Part 525, 1994 PA 451, as amended.

Forest Management Unit Escanaba	County Menominee	Mapped By Racine	Date 08/25/2022	Page 1	of 1
Township 36N	Range 25W	Section(s) and Subdivision(s) 20) SWSW, 29) NWNW, 30 NENE, SWNE, 31) NESW, S1/2SW	Scale 1:24,000		

Cover Type				Density	
A = Aspen	H = Hemlock	N = Marsh	U = Upland Brush	0 = Non Stocked	5 = Pole Timber Medium
B = Paper Birch	J = Jack Pine	O = Oak	UM = Upland Mixed	1 = Seedling Sapling Poor	6 = Pole Timber Well
C = Cedar	L = Lowland Brush	P = Lowland Poplar	V = Bog or Marsh	2 = Seedling Sapling Medium	7 = Saw Timber Poor
D = Treed Bog	LM = Lowland Mixed	Q = Mixed Swamp Conifer	W = White Pine	3 = Seedling Sapling Well	8 = Saw Timber Medium
E = Swamp Hdwoods	M = Mpl, Bch, Brch	R = Red Pine	X = Non Stocked	4 = Pole Timber Poor	9 = Saw Timber Well
F = Spruce Fir	MC = Mixed Conifer	S = Black Spruce	Z = Water		
G = Grass	MD = Mixed Deciduous	T = Tamarack			

PU	Acres	PU	Acres
1	22.5	4	18.9
2	9.8		
3	6.9		

Lost Brass Cap Compartment 48 58.1 Acres



TIMBER SALE INFORMATION

THE GEM (33-030-22)

T35N, R25W, SEC. 18; T35N, R25W, SEC. 5; T35N, R25W, SEC. 6; T35N, R25W, SEC. 7; T35N, R25W, SEC. 8.
Menominee County (Advertised Price \$41,845.50)

SALE NOTE: A recreation site such as a trail, pathway, or campground is within the sale area or the vicinity. Certain restrictions/specifications may be applicable including time restrictions.

A timber sale contract for this lump sum, sealed bid timber sale will be awarded to the responsible bidder offering the highest sealed bid price. All units of volume listed below were estimated using the Inventory Manager computer program and the new Michigan taper model. Bids must be at or above the following advertised price for each product and species:

<u>PRODUCTS & SPECIES</u>	<u>ESTIMATED UNITS*</u>	<u>ADVERTISED PRICE</u>
Sawtimber		
Paper Birch	2.3 MBF	\$ 61.00 / MBF
Red Maple	3.6 MBF	\$ 156.00 / MBF
Pulpwood		
Balsam Fir	185 Cords	\$ 12.45 / Cord
Mixed Aspen	1,391 Cords	\$ 20.50 / Cord
Mixed Hardwood	393 Cords	\$ 16.95 / Cord
Mixed Spruce	42 Cords	\$ 13.25 / Cord
Red Pine	26 Cords	\$ 48.25 / Cord
White Pine	57 Cords	\$ 32.50 / Cord

* The total volume is statistically estimated within plus (+) or minus (-) 8.93 percent. There are an estimated 1,978 cords on this timber sale, plus or minus 177 cords at the 95% confidence level. The estimated units are final and not subject to adjustment. Prospective bidders are urged to examine this timber and to make their own estimates of quantity and quality.

BOND AND PAYMENT SCHEDULE:

- A bond in the amount of \$2,092.00 to insure faithful performance of the conditions of the contract will be deposited by the successful bidder within 21 days of the sale award.
- Cutting in any sale or unit without the required advance payment would be considered a trespass.
- Total payment must be paid in advance or according to the following schedule :
 - Ten percent (10%) of the sale value must be paid within 21 days of the sale award.
 - The 10% down payment will be credited towards the first unit cut.
 - Payment for each of the following units must be made before cutting begins in that unit:

<u>PAYMENT UNIT NUMBER</u>	<u>PERCENT OF TOTAL SALE VALUE</u>
01	10.4%
02	17.2%
03	13.7%
04	15.8%
05	23.5%
06	16.2%
07	3.2%
- If no cutting takes place, the 10% down payment will not be refunded.
- Operations on the contract issued will terminate on 09/30/2024.

SALE STATISTICS

Volumes were calculated in cubic feet using the Michigan taper model. Cubic foot volume includes all wood inside bark for the product indicated. For display purposes, cubic feet were converted to cords and MBF using a simple conversion factor, e.g. 79 cubic feet per cord and 185 cubic feet per MBF. The cubic foot volumes are precise; the cords and MBF volumes are not. Cubic foot volume cannot be directly converted to cords or boards with precision.

SALE VOLUMES

The total estimated sale volume may not equal the sum of the species/products due to the nature of statistical calculations associated with double sampling methodology.

<u>VOLUME</u>		<u>PERCENT ERROR</u>	<u>STATISTICAL RANGE IN CORDS</u>	
<u>TOTAL CUBIC FEET</u>	<u>TOTAL CORDS</u>		<u>MINIMUM</u>	<u>MAXIMUM</u>
156,274	1,978	8.93%	1,801	2,155

VDU VOLUMES

A VDU is a Volume Determination Unit. Volumes and their associated statistics are calculated at the VDU level and summarized to the sale level. There is often a one to one relationship between a VDU and a Payment Unit, but not always, depending on the cruise design. Refer to the VDU TO PAYMENT UNIT table.

VDU	VOLUME		PERCENT ERROR	RANGE IN CORDS	
	TOTAL CUBIC FEET	TOTAL CORDS		MINIMUM	MAXIMUM
7	2,695	34	25.28%	25	43
9	16,537	209	32.23%	142	277
27	26,895	340	26.78%	249	432
70	47,665	603	17.15%	500	707
75	38,744	490	13.01%	427	554
104	23,737	300	25.03%	225	376
TOTAL:	156,274	1,978		1,568	2,388

VDU TO PAYMENT UNIT

When a VDU is associated with more than one Payment Unit (PU), the VDU volumes are assigned to the PU based on acres of the VDU within the PU.

VDU	VDU ACRES	PU	PU ACRES
7	3.8	7	3.8
9	12.1	1	12.1
27	17.4	2	17.4
70	37.7	3	17.5
		4	20.2
75	23.7	5	23.7
104	16.9	6	16.9
TOTAL:	111.6		111.6

DESCRIPTION OF TIMBER BY PAYMENT UNIT (PU)

PU	MARKET GROUP	PRODUCT	QUANTITY	UNIT	ACRES	ADVERTISE PRICE
1	Balsam Fir	Pulpwood	29	Cords	12.1	\$4,344.25
	Mixed Aspen		152	Cords		
	<i>Quaking Aspen</i>		152	Cords		
	Mixed Hardwood		41	Cords		
	<i>Balsam Poplar</i>		4	Cords		
	<i>Black Ash</i>		1	Cords		
	<i>Green Ash</i>		31	Cords		
	<i>Red Maple</i>		5	Cords		
	Mixed Spruce		13	Cords		
	<i>White Spruce</i>		13	Cords		
2	Balsam Fir	Pulpwood	17	Cords	17.4	\$7,214.85
	Mixed Aspen		244	Cords		
	<i>B. T. Aspen</i>		3	Cords		
	<i>Quaking Aspen</i>		241	Cords		
	Mixed Hardwood		91	Cords		
	<i>Black Ash</i>		4	Cords		
	<i>Green Ash</i>		3	Cords		
	<i>Red Maple</i>		84	Cords		
	Mixed Spruce		15	Cords		
	<i>Black Spruce</i>		7	Cords		
	<i>White Spruce</i>		8	Cords		
	White Pine		8	Cords		
3	Balsam Fir	Pulpwood	59	Cords	17.5	\$5,726.70
	Mixed Aspen		155	Cords		
	<i>B. T. Aspen</i>		19	Cords		
	<i>Quaking Aspen</i>		136	Cords		
	Mixed Hardwood		67	Cords		
	<i>Balsam Poplar</i>		12	Cords		
	<i>Black Ash</i>		4	Cords		
	<i>Green Ash</i>		25	Cords		
	<i>Ironwood</i>		3	Cords		
	<i>Paper Birch</i>		3	Cords		
	<i>Red Maple</i>		20	Cords		
	Mixed Spruce		1	Cords		
	<i>White Spruce</i>		1	Cords		
	Red Pine		1	Cords		
White Pine	19	Cords				
4	Balsam Fir	Pulpwood	68	Cords	20.2	\$6,625.50
	Mixed Aspen		178	Cords		
	<i>B. T. Aspen</i>		22	Cords		
	<i>Quaking Aspen</i>		156	Cords		
	Mixed Hardwood		77	Cords		
	<i>Balsam Poplar</i>		14	Cords		
	<i>Black Ash</i>		4	Cords		
	<i>Green Ash</i>		29	Cords		
	<i>Ironwood</i>		3	Cords		
	<i>Paper Birch</i>		4	Cords		
	<i>Red Maple</i>		23	Cords		
	Mixed Spruce		1	Cords		
	<i>White Spruce</i>		1	Cords		
	Red Pine		2	Cords		
White Pine	22	Cords				
5	Paper Birch	Sawtimber	2.3	MBF	23.7	\$9,819.00
	Red Maple		3.6	MBF		
	Balsam Fir	Pulpwood	7	Cords		
	Mixed Aspen		341	Cords		

DESCRIPTION OF TIMBER BY PAYMENT UNIT (PU), CON'T

PU	MARKET GROUP	PRODUCT	QUANTITY	UNIT	ACRES	ADVERTISE PRICE
5 con't	<i>B. T. Aspen</i>	<i>Pulpwood</i>	135	<i>Cords</i>		
	<i>Quaking Aspen</i>		206	<i>Cords</i>		
	Mixed Hardwood		101	<i>Cords</i>		
	<i>Black Cherry</i>		3	<i>Cords</i>		
	<i>Green Ash</i>		3	<i>Cords</i>		
	<i>Paper Birch</i>		15	<i>Cords</i>		
	<i>Red Maple</i>		80	<i>Cords</i>		
	Mixed Spruce		10	<i>Cords</i>		
	<i>Black Spruce</i>		7	<i>Cords</i>		
	<i>White Spruce</i>		3	<i>Cords</i>		
	White Pine		6	<i>Cords</i>		
6	Balsam Fir	Pulpwood	2	Cords	16.9	\$6,774.10
	Mixed Aspen		316	Cords		
	<i>B. T. Aspen</i>		26	<i>Cords</i>		
	<i>Quaking Aspen</i>		290	<i>Cords</i>		
	Mixed Hardwood		16	Cords		
	<i>Red Maple</i>		10	<i>Cords</i>		
	<i>White Ash</i>		6	<i>Cords</i>		
7	Balsam Fir	Pulpwood	3	Cords	3.8	\$1,341.10
	Mixed Aspen		5	Cords		
	<i>B. T. Aspen</i>		4	<i>Cords</i>		
	<i>Quaking Aspen</i>		1	<i>Cords</i>		
	Mixed Spruce		2	Cords		
	<i>Black Spruce</i>		2	<i>Cords</i>		
	Red Pine		23	Cords		
	White Pine		2	Cords		
TOTAL:			5.9	MBF		
TOTAL:			2,094	Cords		

Sale Specific Conditions & Requirements

Sale Name: THE GEM

Sale Number: 33-030-22 Seq#: 1

1 - Sale Area

1.2 - Boundaries

1.2.1 - Painted boundaries (9/19)

The sale boundary and Payment Unit boundaries are marked and identified by red and yellow paint. Exterior sale boundary lines against state are marked with red paint. Interior Payment Unit boundaries are marked with yellow paint. Retention patches are marked with red paint; no harvesting activities may occur within these areas. The painted boundary line trees are not Included Timber and are to be protected. Yellow painted trees designating an interior Payment Unit boundary are only to be cut when all surrounding Payment Units have been paid for.

2 - Timber Specifications

2.1 - Included Timber

2.1.1 - Clearcut unit(s) with unmerchantable trees (6/14)

Within Payment Unit(s) 1 - 6, cut all trees that are three (3) inches or more at DBH.

2.1.3 - Cut tree marked unit(s) (12/08)

Within Payment Unit(s) 7, all red pine are designated for cutting when marked with orange paint above and below stump height, regardless of merchantability. In addition, cut all other species that are greater than three (3) inches at DBH.

3 - Payments

3.3 - Pre-measured Sales

3.3.4 - Dividing payment units (7/14)

Payment Unit(s) \$18,000 in value or greater may be divided at the request of the Purchaser and upon approval of the Unit Manager. Dividing Payment Units is a contract modification which requires a Timber Sale Contract Amendment. There will be only one division per Payment Unit.

4 - Transportation

4.2 - Maintenance

4.2.1 - Hauling restriction (12/08)

Hauling may be restricted on forest roads by the Unit Manager or his/her representative. The restriction may occur during spring breakup or during other wet weather conditions.

4.2.4 - Grading (10/16)

For completion of the sale, state forest roads must be graded. In general, this will require a road grader or bull dozer to shape up the roads after forest products have been hauled off site. This includes cleaning of drainage areas, grading, crowning and filling with gravel, if necessary. The grading equipment to be used must be approved by the Unit Manager or his/her representative.

4.4 - Access

4.4.3 - Access gate (12/08)

The access gates into Payment Units 1, 2, and if used for Payment Unit 4, must be locked at the completion of each day unless otherwise approved by the Unit Manager or his/her representative.

If a potential bidder would like to drive through one of the gates prior to the Bid Open, they may call Dustin @ 906-399-1828 or Dan @ 906-399-0879 at the Stephenson Field Office to have the gates unlocked.

5 - Operations

5.2 - Conduct of Operations

5.2.39 - ORV trail/route protection (4/18)

The Forest Island ORV route is shown on the Timber Sale Map. Do not cut trees or damage posts with yellow ORV markers. Trees with yellow ORV markers shall be cut off above the markers and at least 5 feet above ground. All stumps within 5 feet of the trail must be cut flush with the ground. Maintain a 20 foot wide slash, debris, and rut free zone daily using the ORV trail or route as the centerline.

6 - Safety and Fire Prevention

6.2 - Signing

6.2.1 - Road posting (10/20)

The Purchaser is responsible for posting and maintaining caution signs on the Westman Dam and Camp "O" Roads prior to beginning operations. The road must be posted at appropriate distances from the sale area to warn of logging activity and truck traffic. Signs must be removed when harvest operations are suspended or completed. The Purchaser will provide these signs.

7 - Other Conditions

7.2 - Extensions

7.2.1 - One year extension (2/04)

Given justification, only one, 1 year extension may be granted if the contract has been paid for in full.



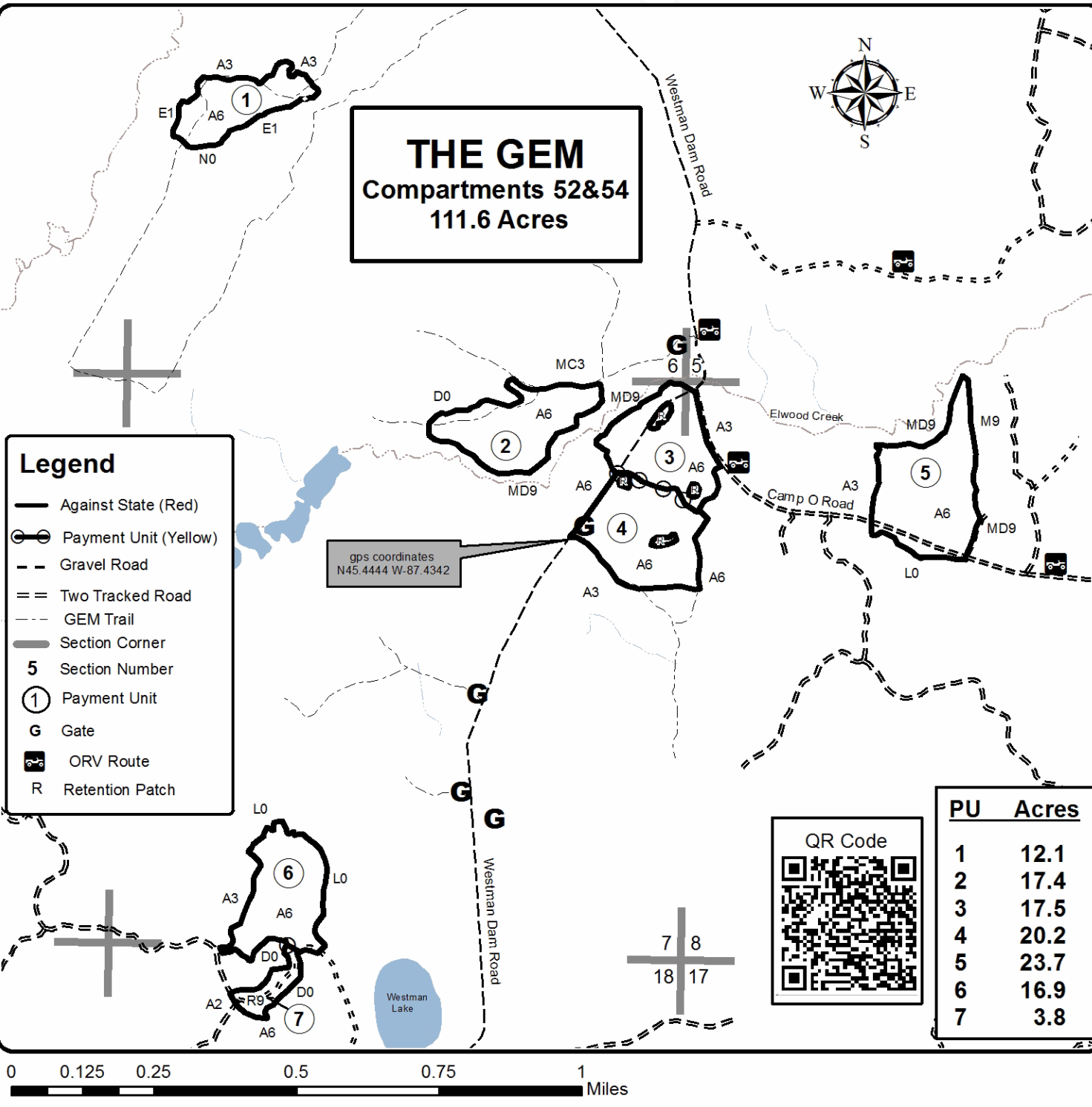
TIMBER SALE MAP

This information provided by authority of Part 525, 1994 PA 451, as amended.

Sale Number	Year
33-030	22

Forest Management Unit Escanaba Management Unit	County Menominee County	Mapped By Beaudo	Date 8/3/2022	Page 1	of 1
Township 35N	Range 25W	Section(s) and Subdivision(s) Sec 5 - SESW; Sec 6 - S1/2NW, N1/2SW; Sec 7 - N1/2NE, SENE, S1/2SW; Sec 8 - NW, W1/2NE; Sec 18 - N1/2NW.	Scale 1:15,840		

Cover Type				Density	
A = Aspen	H = Hemlock	N = Marsh	U = Upland Brush	0 = Non Stocked	5 = Pole Timber Medium
B = Paper Birch	J = Jack Pine	O = Oak	UM = Upland Mixed	1 = Seedling Sapling Poor	6 = Pole Timber Well
C = Cedar	L = Lowland Brush	P = Lowland Poplar	V = Bog or Marsh	2 = Seedling Sapling Medium	7 = Saw Timber Poor
D = Treed Bog	LM = Lowland Mixed	Q = Mixed Swamp Conifer	W = White Pine	3 = Seedling Sapling Well	8 = Saw Timber Medium
E = Swamp Hdwoods	M = Mpl, Bch, Brch	R = Red Pine	X = Non Stocked	4 = Pole Timber Poor	9 = Saw Timber Well
F = Spruce Fir	MC = Mixed Conifer	S = Black Spruce	Z = Water		
G = Grass	MD = Mixed Deciduous	T = Tamarack			



TIMBER SALE INFORMATION

Pringle Hardwoods (33-031-22)
T33N, R26W, SEC. 8; T33N, R26W, SEC. 9.
Menominee County (Advertised Price \$10,118.20)

SALE NOTE: Access may be through other public land.

A timber sale contract for this lump sum, sealed bid timber sale will be awarded to the responsible bidder offering the highest sealed bid price. All units of volume listed below were estimated using the Inventory Manager computer program and the new Michigan taper model. Bids must be at or above the following advertised price for each product and species:

<u>PRODUCTS & SPECIES</u>	<u>ESTIMATED UNITS*</u>	<u>ADVERTISED PRICE</u>
Sawtimber		
Basswood	15.6 MBF	\$ 27.00 / MBF
Beech	1.8 MBF	\$ 26.00 / MBF
Paper Birch	5.7 MBF	\$ 48.00 / MBF
Red Maple	9.3 MBF	\$ 123.00 / MBF
Sugar Maple	26.2 MBF	\$ 130.00 / MBF
Pulpwood		
Balsam Fir	64 Cords	\$ 9.80 / Cord
Black Spruce	2 Cords	\$ 10.40 / Cord
Mixed Hardwood	298 Cords	\$ 13.35 / Cord
N. White Cedar	26 Cords	\$ 5.85 / Cord
Quaking Aspen	3 Cords	\$ 16.10 / Cord

* The total volume is statistically estimated within plus (+) or minus (-) 14.57 percent. There are an estimated 545 cords on this timber sale, plus or minus 79 cords at the 95% confidence level. The estimated units are final and not subject to adjustment. Prospective bidders are urged to examine this timber and to make their own estimates of quantity and quality.

BOND AND PAYMENT SCHEDULE:

1. A bond in the amount of \$506.00 to insure faithful performance of the conditions of the contract will be deposited by the successful bidder within 21 days of the sale award.
2. Cutting in any sale or unit without the required advance payment would be considered a trespass.
3. Total payment must be paid in advance or according to the following schedule :
 - (a) Ten percent (10%) of the sale value must be paid within 21 days of the sale award.
 - (b) The 10% down payment will be credited towards the first unit cut.
 - (c) Payment for each of the following units must be made before cutting begins in that unit:

PAYMENT UNIT NUMBER	PERCENT OF TOTAL SALE VALUE
01	52.1%
02	42.4%
03	5.5%
4. If no cutting takes place, the 10% down payment will not be refunded.
5. Operations on the contract issued will terminate on 09/30/2025.

SALE STATISTICS

Volumes were calculated in cubic feet using the Michigan taper model. Cubic foot volume includes all wood inside bark for the product indicated. For display purposes, cubic feet were converted to cords and MBF using a simple conversion factor, e.g. 79 cubic feet per cord and 185 cubic feet per MBF. The cubic foot volumes are precise; the cords and MBF volumes are not. Cubic foot volume cannot be directly converted to cords or boards with precision.

SALE VOLUMES

The total estimated sale volume may not equal the sum of the species/products due to the nature of statistical calculations associated with double sampling methodology.

VOLUME		STATISTICAL RANGE IN CORDS		
TOTAL CUBIC FEET	TOTAL CORDS	PERCENT ERROR	MINIMUM	MAXIMUM
43,027	545	14.57%	465	624

VDU VOLUMES

A VDU is a Volume Determination Unit. Volumes and their associated statistics are calculated at the VDU level and summarized to the sale level. There is often a one to one relationship between a VDU and a Payment Unit, but not always, depending on the cruise design. Refer to the VDU TO PAYMENT UNIT table.

VDU	VOLUME		PERCENT ERROR	RANGE IN CORDS	
	TOTAL CUBIC FEET	TOTAL CORDS		MINIMUM	MAXIMUM
7	40,216	509	16.28%	426	592
11	2,812	36	38.19%	22	49
TOTAL:	43,027	545		448	641

VDU TO PAYMENT UNIT

When a VDU is associated with more than one Payment Unit (PU), the VDU volumes are assigned to the PU based on acres of the VDU within the PU.

VDU	VDU ACRES	PU	PU ACRES
7	51.5	1	28.4
		2	23.1
11	3.0	3	3.0
TOTAL:	54.5		54.5

DESCRIPTION OF TIMBER BY PAYMENT UNIT (PU)

PU	MARKET GROUP	PRODUCT	QUANTITY	UNIT	ACRES	ADVERTISE PRICE			
1	Basswood	Sawtimber	8.3	MBF	28.4	\$5,275.80			
	Beech		1.0	MBF					
	Paper Birch		3.1	MBF					
	Red Maple		4.7	MBF					
	Sugar Maple		14.0	MBF					
	Balsam Fir	Pulpwood	25	Cords					
	Black Spruce		1	Cords					
	Mixed Hardwood		158	Cords					
	<i>Balsam Poplar</i>		2	<i>Cords</i>					
	<i>Basswood</i>		22	<i>Cords</i>					
	<i>Beech</i>		4	<i>Cords</i>					
	<i>Black Cherry</i>		2	<i>Cords</i>					
	<i>Green Ash</i>		8	<i>Cords</i>					
	<i>Ironwood</i>		1	<i>Cords</i>					
	<i>Paper Birch</i>		9	<i>Cords</i>					
	<i>Red Maple</i>		17	<i>Cords</i>					
	<i>Sugar Maple</i>		45	<i>Cords</i>					
	<i>White Ash</i>		48	<i>Cords</i>					
	N. White Cedar		14	Cords					
	Quaking Aspen	2	Cords						
	2	Basswood	Sawtimber	6.7			MBF	23.1	\$4,286.50
Beech		0.8		MBF					
Paper Birch		2.6		MBF					
Red Maple		3.9		MBF					
Sugar Maple		11.3		MBF					
Balsam Fir		Pulpwood	21	Cords					
Black Spruce			1	Cords					
Mixed Hardwood			128	Cords					
<i>Balsam Poplar</i>			2	<i>Cords</i>					
<i>Basswood</i>			18	<i>Cords</i>					
<i>Beech</i>			3	<i>Cords</i>					
<i>Black Cherry</i>			2	<i>Cords</i>					
<i>Green Ash</i>			6	<i>Cords</i>					
<i>Paper Birch</i>			7	<i>Cords</i>					
<i>Red Maple</i>			14	<i>Cords</i>					
<i>Sugar Maple</i>			37	<i>Cords</i>					
<i>White Ash</i>			39	<i>Cords</i>					
N. White Cedar			12	Cords					
Quaking Aspen			1	Cords					
3		Basswood	Sawtimber	0.6	MBF	3.0	\$555.90		
		Red Maple		0.7	MBF				
	Sugar Maple	0.9		MBF					
	Balsam Fir	Pulpwood	18	Cords					
	Mixed Hardwood		12	Cords					
	<i>Basswood</i>		1	<i>Cords</i>					
	<i>Ironwood</i>		2	<i>Cords</i>					
	<i>Red Maple</i>		6	<i>Cords</i>					
	<i>Sugar Maple</i>		3	<i>Cords</i>					
	TOTAL:			58.6	MBF				
TOTAL:			393	Cords					

Sale Specific Conditions & Requirements

Sale Name: Pringle Hardwoods

Sale Number: 33-031-22 Seq#: 1

1 - Sale Area

1.2 - Boundaries

1.2.1 - Painted boundaries (9/19)

The sale boundary and Payment Unit boundaries are marked and identified by blue, red and yellow paint. Exterior sale boundary lines against private property are marked with blue paint. Exterior sale boundary lines against state are marked with red paint. Interior Payment Unit boundaries are marked with yellow paint. The painted boundary line trees are not Included Timber and are to be protected unless marked with orange paint. Yellow painted trees designating an interior Payment Unit boundary are only to be cut when all surrounding Payment Units have been paid for.

2 - Timber Specifications

2.1 - Included Timber

2.1.3 - Cut tree marked unit(s) (12/08)

Within Payment Unit(s) 1 - 3, all trees are designated for cutting when marked with orange paint above and below stump height, regardless of merchantability.

In addition, within Payment Units 1 and 2, cut all balsam fir and ironwood greater than three (3) inches at DBH.

In addition, within Payment Unit 3, cut all balsam fir greater than three (3) inches at DBH.

2.1.9 - Harvest exception (12/08)

Do not cut any cedar trees that are not marked with orange paint, other than those that are necessary to remove in order to operate within the sale area. Every effort must be made to preserve the existing cedar and to leave an intact stand upon sale completion. All cut cedar without orange paint shall be piled separately by products and scaled in the woods unless other scaling arrangements are agreed to by the Unit Manager or his/her representative. Stumpage price for unmarked cedar shall be \$45.00 per cord.

2.2 - Utilization

2.2.4 - Skidding length (2/14)

Skidding of unlimbed tops or lengths over 17 feet is not permissible..

3 - Payments

3.3 - Pre-measured Sales

3.3.4 - Dividing payment units (7/14)

Payment Unit(s) \$18,000 in value or greater may be divided at the request of the Purchaser and upon approval of the Unit Manager. Dividing Payment Units is a contract modification which requires a Timber Sale Contract Amendment. There will be only one division per Payment Unit.

4 - Transportation

4.1 - Construction

4.1.8 - Road work (1) (8/07)

The following road work is required: a minimum of 24 cubic yards of gravel must be hauled and spread by the Purchaser. The gravel will be placed on the approaches to the culvert on Bailey Creek. All roadwork must be completed prior to any hauling taking place. The gravel is available from a state pit about 14 miles away.

4.2 - Maintenance

4.2.1 - Hauling restriction (12/08)

Hauling may be restricted on forest roads by the Unit Manager or his/her representative. The restriction may occur during spring breakup or during other wet weather conditions.

4.2.4 - Grading (10/16)

For completion of the sale, state forest roads must be graded. In general, this will require a road grader or bull dozer to shape up the roads after forest products have been hauled off site. This includes cleaning of drainage areas, grading, crowning and filling with gravel, if necessary. The grading equipment to be used must be approved by the Unit Manager or his/her representative.

5 - Operations

5.2 - Conduct of Operations

5.2.3 - Operating Restrictions

5.2.3.3 - Bark slippage restriction (3/09)

Within Payment Unit(s) 1 - 3, unless changed by written agreement, cutting and skidding are not permitted during the period of April 15 to July 15. This restriction is because of bark slippage.

6 - Safety and Fire Prevention

6.2 - Signing

6.2.1 - Road posting (10/20)

The Purchaser is responsible for posting and maintaining caution signs on Newlin Lane prior to beginning operations. The road must be posted at appropriate distances from the sale area to warn of logging activity and truck traffic. Signs must be removed when harvest operations are suspended or completed. The Purchaser will provide these signs. Newlin Lane is a county road, that extends from the Million Dollar Road north to state land.

7 - Other Conditions

7.5 - Loss

7.5.1 - Deteriorating timber (7/09)

The sale area has received damage from the emerald ash borer. The Purchaser should harvest the wood as soon as possible. The Department of Natural Resources is held free of responsibility of any further damage or deterioration due to delay in harvesting.

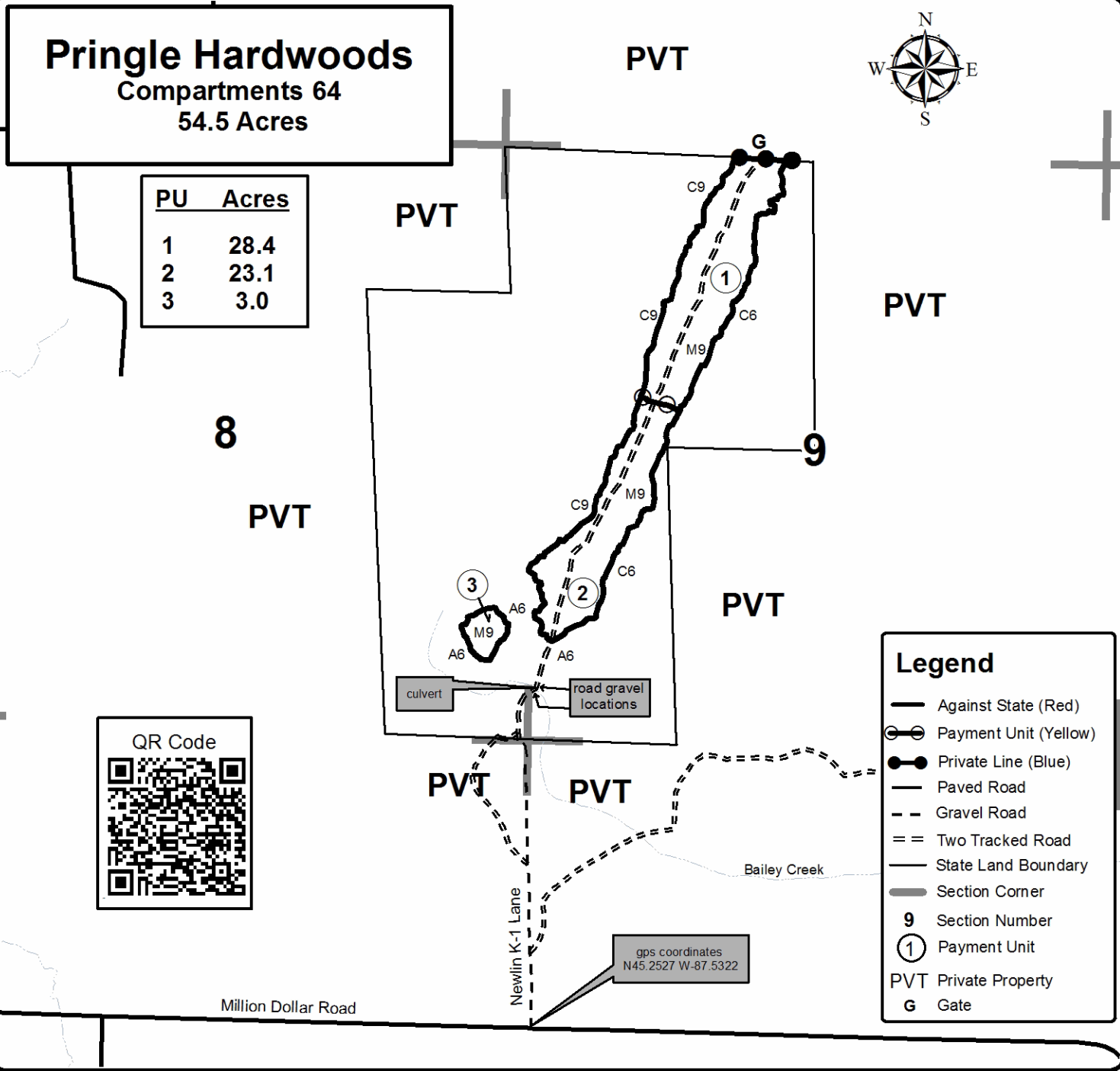


TIMBER SALE MAP

This information provided by authority of Part 525, 1994 PA 451, as amended.

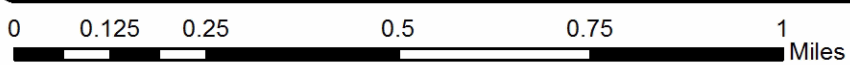
Forest Management Unit Escanaba Management Unit	County Menominee County	Mapped By Beudo	Date 8/17/2022	Page 1	of 1
Township 33N	Range 26W	Section(s) and Subdivision(s) Sec 8 - SESE; Sec 9 - NENW, S1/2NW, W1/2SW.	Scale 1:15,840		

Cover Type				Density	
A = Aspen	H = Hemlock	N = Marsh	U = Upland Brush	0 = Non Stocked	5 = Pole Timber Medium
B = Paper Birch	J = Jack Pine	O = Oak	UM = Upland Mixed	1 = Seedling Sapling Poor	6 = Pole Timber Well
C = Cedar	L = Lowland Brush	P = Lowland Poplar	V = Bog or Marsh	2 = Seedling Sapling Medium	7 = Saw Timber Poor
D = Treed Bog	LM = Lowland Mixed	Q = Mixed Swamp Conifer	W = White Pine	3 = Seedling Sapling Well	8 = Saw Timber Medium
E = Swamp Hdwoods	M = Mpl, Bch, Brch	R = Red Pine	X = Non Stocked	4 = Pole Timber Poor	9 = Saw Timber Well
F = Spruce Fir	MC = Mixed Conifer	S = Black Spruce	Z = Water		
G = Grass	MD = Mixed Deciduous	T = Tamarack			



Legend

- Against State (Red)
- Payment Unit (Yellow)
- Private Line (Blue)
- Paved Road
- - Gravel Road
- = = Two Tracked Road
- State Land Boundary
- Section Corner
- 9 Section Number
- ① Payment Unit
- PVT Private Property
- G Gate



THE GEM (33-030-22)

T35N, R25W, SEC. 18; T35N, R25W, SEC. 5; T35N, R25W, SEC. 6; T35N, R25W,

In response to the notice of sale to be held 3:00 p.m. (local time) on October 20, 2022, I am hereby submitting my sealed bid (firm offer) for the following forest products to be cut. Bids for individual species must be at or above the advertised price. All non-responsive bid forms may be rejected.

<u>PRODUCTS & SPECIES</u>	<u>ESTIMATED VOLUME*</u>	<u>ADVERTISED PRICE</u>	<u>BID PRICE/UNIT</u>
Sawtimber			
Paper Birch	2.3 MBF	\$ 61.00/MBF	\$ _____
Red Maple	3.6 MBF	\$ 156.00/MBF	\$ _____
Pulpwood			
Balsam Fir	185 Cords	\$ 12.45/Cord	\$ _____
Mixed Aspen	1,391 Cords	\$ 20.50/Cord	\$ _____
Mixed Hardwood	393 Cords	\$ 16.95/Cord	\$ _____
Mixed Spruce	42 Cords	\$ 13.25/Cord	\$ _____
Red Pine	26 Cords	\$ 48.25/Cord	\$ _____
White Pine	57 Cords	\$ 32.50/Cord	\$ _____

*The volumes are statistically estimated within plus (+) or minus (-) 8.93 percent at 95% confidence level. These estimated volumes are final and not subject to adjustment. Prospective bidders are urged to examine this timber and to make their own estimates of quantity and quality.

I understand that any or all bids may be rejected. All bids must be signed and all bid items must be bid or the bid form may be rejected. I also understand that consideration and awarding a contract will be based upon my past performance and ability to complete the contract based upon equipment and staffing subject to my control.

FEDERAL ID: ____ - ____ - ____ or SOCIAL SECURITY NUMBER: ____ - ____ - ____

Company or individual bidding: _____

Company representative's name: _____

Address: _____

City: _____ State: _____ Zip: _____

IF AVAILABLE, PLEASE PLACE THE PERSONALIZED LABEL FROM YOUR PROSPECTUS IN THE ABOVE BOX.

Individual or company representative's signature: _____ Date: _____

Phone number : _____ Email (optional): _____

THE WINNING BIDDER MUST COMPLETE THE VERIFICATION OF WORKER'S DISABILITY COMPENSATION ACT COMPLIANCE (ON REVERSE SIDE IF DOUBLE SIDED) WITHIN 21 DAYS OF SALE AWARD DATE



FOR DEPARTMENT USE ONLY	
Sale Number (XX - XXX - XX - XX)	
Forest Management Unit:	

TIMBER SALE VERIFICATION OF WORKER'S DISABILITY COMPENSATION ACT COMPLIANCE

As required by Act 317, P.A. 1969 (Worker's Compensation) and
Part 5 of Act 451 of 1994, as amended.

VERIFICATION OF WORKER'S DISABILITY COMPENSATION ACT COMPLIANCE

- This verification must be completed and submitted within 21 days of contract award and prior to the issuance of the timber sale contract.
- In addition, if boxes 2B or 2C are checked, then Notice of Exclusion or Certificate of Insurance must be submitted within twenty-one (21) days of the contract award and prior to the issuance of the timber sale contract.
- All information must be typed or printed except for written signatures.

Please Check Appropriate Categories:

1. My business is organized as (you **must** check one of the boxes below):
 - A. Sole Proprietorship (individual)
 - B. Partnership
 - C. Corporation
2. You **must** check one of the boxes below:
 - A. I certify my business is a sole proprietorship and it has no employees but the sole proprietor. I am not subject to the Worker's Compensation Laws.
 - B. I certify my business has satisfied its obligation to the Worker's Compensation Act through the use of an approved Notice of Exclusion (BWC-337, Rev. 5/96). I will provide a copy of the Notice of Exclusion within 21 days of the contract award. (For questions or a copy of the BWC-337, please call the Worker's Compensation Bureau at 517-322-1195).
 - C. I certify my business has a Worker's Compensation Policy. I will provide an original Certificate of Insurance within twenty-one (21) days of the contract award.
3. If you have checked item 2(A) or 2(B), you **must** indicate the number of **both** full-time and part-time employees, other than yourself, including family members and active partners (if none, you must enter "0").

_____ Full-time Employees

_____ Part-time Employees

Name of Business		Federal ID (or) Social Security No.	
Address		Telephone ()	
City	State	ZIP	

I hereby certify that the above information is true and correct. I agree to notify the Michigan DNR of any changes that occur in factors affecting my coverage during any of my present and future operations.

Signature of Owner or Authorized Representative

Title

Date

Please complete the "SEALED BID" information on the next page

Westman Summer (33-003-22)

T35N, R25W, SEC. 5; T36N, R25W, SEC. 20; T36N, R25W, SEC. 29; T36N, R25W,

In response to the notice of sale to be held 3:00 p.m. (local time) on October 20, 2022, I am hereby submitting my sealed bid (firm offer) for the following forest products to be cut. Bids for individual species must be at or above the advertised price. All non-responsive bid forms may be rejected.

<u>PRODUCTS & SPECIES</u>	<u>ESTIMATED VOLUME*</u>	<u>ADVERTISED PRICE</u>	<u>BID PRICE/UNIT</u>
Sawtimber			
Basswood	40.0 MBF	\$ 27.00/MBF	\$ _____
Paper Birch	14.6 MBF	\$ 48.00/MBF	\$ _____
Red Maple	116.1 MBF	\$ 123.00/MBF	\$ _____
Sugar Maple	17.7 MBF	\$ 130.00/MBF	\$ _____
Yellow Birch	1.1 MBF	\$ 25.00/MBF	\$ _____
Pulpwood			
Balsam Fir	426 Cords	\$ 9.80/Cord	\$ _____
Black Ash	59 Cords	\$ 13.35/Cord	\$ _____
Green Ash	341 Cords	\$ 13.35/Cord	\$ _____
Mixed Aspen	543 Cords	\$ 16.10/Cord	\$ _____
Mixed Hardwood	1,843 Cords	\$ 13.35/Cord	\$ _____
Mixed Spruce	248 Cords	\$ 10.40/Cord	\$ _____
Red Pine	79 Cords	\$ 37.90/Cord	\$ _____
White Ash	142 Cords	\$ 13.35/Cord	\$ _____
White Pine	809 Cords	\$ 25.50/Cord	\$ _____

*The volumes are statistically estimated within plus (+) or minus (-) 11.85 percent at 95% confidence level. These estimated volumes are final and not subject to adjustment. Prospective bidders are urged to examine this timber and to make their own estimates of quantity and quality.

I understand that any or all bids may be rejected. All bids must be signed and all bid items must be bid or the bid form may be rejected. I also understand that consideration and awarding a contract will be based upon my past performance and ability to complete the contract based upon equipment and staffing subject to my control.

FEDERAL ID: _____ - _____ or SOCIAL SECURITY NUMBER: _____ - _____ - _____

Company or individual bidding: _____

Company representative's name: _____

Address: _____

City: _____ State: _____ Zip: _____

IF AVAILABLE, PLEASE PLACE THE PERSONALIZED LABEL FROM YOUR PROSPECTUS IN THE ABOVE BOX.

Individual or company representative's signature: _____ Date: _____

Phone number : _____ Email (optional): _____

THE WINNING BIDDER MUST COMPLETE THE VERIFICATION OF WORKER'S DISABILITY COMPENSATION ACT COMPLIANCE (ON REVERSE SIDE IF DOUBLE SIDED) WITHIN 21 DAYS OF SALE AWARD DATE



TIMBER SALE VERIFICATION OF WORKER'S DISABILITY COMPENSATION ACT COMPLIANCE

As required by Act 317, P.A. 1969 (Worker's Compensation) and
Part 5 of Act 451 of 1994, as amended.

FOR DEPARTMENT USE ONLY	
Sale Number (XX - XXX - XX - XX)	
Forest Management Unit:	

VERIFICATION OF WORKER'S DISABILITY COMPENSATION ACT COMPLIANCE

- This verification must be completed and submitted within 21 days of contract award and prior to the issuance of the timber sale contract.
- In addition, if boxes 2B or 2C are checked, then Notice of Exclusion or Certificate of Insurance must be submitted within twenty-one (21) days of the contract award and prior to the issuance of the timber sale contract.
- All information must be typed or printed except for written signatures.

Please Check Appropriate Categories:

1. My business is organized as (you **must** check one of the boxes below):
 - A. Sole Proprietorship (individual)
 - B. Partnership
 - C. Corporation
2. You **must** check one of the boxes below:
 - A. I certify my business is a sole proprietorship and it has no employees but the sole proprietor. I am not subject to the Worker's Compensation Laws.
 - B. I certify my business has satisfied its obligation to the Worker's Compensation Act through the use of an approved Notice of Exclusion (BWC-337, Rev. 5/96). I will provide a copy of the Notice of Exclusion within 21 days of the contract award. (For questions or a copy of the BWC-337, please call the Worker's Compensation Bureau at 517-322-1195).
 - C. I certify my business has a Worker's Compensation Policy. I will provide an original Certificate of Insurance within twenty-one (21) days of the contract award.
3. If you have checked item 2(A) or 2(B), you **must** indicate the number of **both** full-time and part-time employees, other than yourself, including family members and active partners (if none, you must enter "0").

_____ Full-time Employees

_____ Part-time Employees

Name of Business		Federal ID (or) Social Security No.	
Address		Telephone ()	
City	State	ZIP	

I hereby certify that the above information is true and correct. I agree to notify the Michigan DNR of any changes that occur in factors affecting my coverage during any of my present and future operations.

Signature of Owner or Authorized Representative

Title

Date

Please complete the "SEALED BID" information on the next page

Pringle Hardwoods (33-031-22)
T33N, R26W, SEC. 8; T33N, R26W, SEC. 9; Menominee COUNTY

In response to the notice of sale to be held 3:00 p.m. (local time) on October 20, 2022, I am hereby submitting my sealed bid (firm offer) for the following forest products to be cut. Bids for individual species must be at or above the advertised price. All non-responsive bid forms may be rejected.

<u>PRODUCTS & SPECIES</u>	<u>ESTIMATED VOLUME*</u>	<u>ADVERTISED PRICE</u>	<u>BID PRICE/UNIT</u>
Sawtimber			
Basswood	15.6 MBF	\$ 27.00/MBF	\$ _____
Beech	1.8 MBF	\$ 26.00/MBF	\$ _____
Paper Birch	5.7 MBF	\$ 48.00/MBF	\$ _____
Red Maple	9.3 MBF	\$ 123.00/MBF	\$ _____
Sugar Maple	26.2 MBF	\$ 130.00/MBF	\$ _____
Pulpwood			
Balsam Fir	64 Cords	\$ 9.80/Cord	\$ _____
Black Spruce	2 Cords	\$ 10.40/Cord	\$ _____
Mixed Hardwood	298 Cords	\$ 13.35/Cord	\$ _____
N. White Cedar	26 Cords	\$ 5.85/Cord	\$ _____
Quaking Aspen	3 Cords	\$ 16.10/Cord	\$ _____

*The volumes are statistically estimated within plus (+) or minus (-) 14.57 percent at 95% confidence level. These estimated volumes are final and not subject to adjustment. Prospective bidders are urged to examine this timber and to make their own estimates of quantity and quality.

I understand that any or all bids may be rejected. All bids must be signed and all bid items must be bid or the bid form may be rejected. I also understand that consideration and awarding a contract will be based upon my past performance and ability to complete the contract based upon equipment and staffing subject to my control.

FEDERAL ID: _____ or SOCIAL SECURITY NUMBER: _____

Company or individual bidding: _____

Company representative's name: _____

Address: _____

City: _____ State: _____ Zip: _____

IF AVAILABLE, PLEASE PLACE THE PERSONALIZED LABEL FROM YOUR PROSPECTUS IN THE ABOVE BOX.

Individual or company representative's signature: _____ Date: _____

Phone number : _____ Email (optional): _____

THE WINNING BIDDER MUST COMPLETE THE VERIFICATION OF WORKER'S DISABILITY COMPENSATION ACT COMPLIANCE (ON REVERSE SIDE IF DOUBLE SIDED) WITHIN 21 DAYS OF SALE AWARD DATE



FOR DEPARTMENT USE ONLY	
Sale Number (XX - XXX - XX - XX)	
Forest Management Unit:	

TIMBER SALE VERIFICATION OF WORKER'S DISABILITY COMPENSATION ACT COMPLIANCE

As required by Act 317, P.A. 1969 (Worker's Compensation) and
Part 5 of Act 451 of 1994, as amended.

VERIFICATION OF WORKER'S DISABILITY COMPENSATION ACT COMPLIANCE

- This verification must be completed and submitted within 21 days of contract award and prior to the issuance of the timber sale contract.
- In addition, if boxes 2B or 2C are checked, then Notice of Exclusion or Certificate of Insurance must be submitted within twenty-one (21) days of the contract award and prior to the issuance of the timber sale contract.
- All information must be typed or printed except for written signatures.

Please Check Appropriate Categories:

1. My business is organized as (you **must** check one of the boxes below):
 - A. Sole Proprietorship (individual)
 - B. Partnership
 - C. Corporation
2. You **must** check one of the boxes below:
 - A. I certify my business is a sole proprietorship and it has no employees but the sole proprietor. I am not subject to the Worker's Compensation Laws.
 - B. I certify my business has satisfied its obligation to the Worker's Compensation Act through the use of an approved Notice of Exclusion (BWC-337, Rev. 5/96). I will provide a copy of the Notice of Exclusion within 21 days of the contract award. (For questions or a copy of the BWC-337, please call the Worker's Compensation Bureau at 517-322-1195).
 - C. I certify my business has a Worker's Compensation Policy. I will provide an original Certificate of Insurance within twenty-one (21) days of the contract award.
3. If you have checked item 2(A) or 2(B), you **must** indicate the number of **both** full-time and part-time employees, other than yourself, including family members and active partners (if none, you must enter "0").

_____ Full-time Employees

_____ Part-time Employees

Name of Business		Federal ID (or) Social Security No.	
Address		Telephone ()	
City	State	ZIP	

I hereby certify that the above information is true and correct. I agree to notify the Michigan DNR of any changes that occur in factors affecting my coverage during any of my present and future operations.

Signature of Owner or Authorized Representative

Title

Date

Please complete the "SEALED BID" information on the next page

Lost Brass Cap (33-004-22)

T36N, R25W, SEC. 20; T36N, R25W, SEC. 29; T36N, R25W, SEC. 30; T36N,

In response to the notice of sale to be held 3:00 p.m. (local time) on October 20, 2022, I am hereby submitting my sealed bid (firm offer) for the following forest products to be cut. Bids for individual species must be at or above the advertised price. All non-responsive bid forms may be rejected.

<u>PRODUCTS & SPECIES</u>	<u>ESTIMATED VOLUME*</u>	<u>ADVERTISED PRICE</u>	<u>BID PRICE/UNIT</u>
Sawtimber			
Basswood	2.0 MBF	\$ 27.00/MBF	\$ _____
Red Maple	2.8 MBF	\$ 123.00/MBF	\$ _____
Sugar Maple	7.0 MBF	\$ 130.00/MBF	\$ _____
Pulpwood			
Balsam Fir	276 Cords	\$ 9.80/Cord	\$ _____
Black Ash	15 Cords	\$ 13.35/Cord	\$ _____
Green Ash	16 Cords	\$ 13.35/Cord	\$ _____
Mixed Aspen	140 Cords	\$ 16.10/Cord	\$ _____
Mixed Hardwood	133 Cords	\$ 13.35/Cord	\$ _____
N. White Cedar	86 Cords	\$ 5.85/Cord	\$ _____
White Ash	109 Cords	\$ 13.35/Cord	\$ _____
White Pine	5 Cords	\$ 25.50/Cord	\$ _____
White Spruce	15 Cords	\$ 10.40/Cord	\$ _____

*The volumes are statistically estimated within plus (+) or minus (-) 26.26 percent at 95% confidence level. These estimated volumes are final and not subject to adjustment. Prospective bidders are urged to examine this timber and to make their own estimates of quantity and quality.

I understand that any or all bids may be rejected. All bids must be signed and all bid items must be bid or the bid form may be rejected. I also understand that consideration and awarding a contract will be based upon my past performance and ability to complete the contract based upon equipment and staffing subject to my control.

FEDERAL ID: ____ - ____ - ____ or SOCIAL SECURITY NUMBER: ____ - ____ - ____

Company or individual bidding: _____

Company representative's name: _____

Address: _____

City: _____ State: _____ Zip: _____

IF AVAILABLE, PLEASE PLACE THE PERSONALIZED LABEL FROM YOUR PROSPECTUS IN THE ABOVE BOX.

Individual or company representative's signature: _____ Date: _____

Phone number : _____ Email (optional): _____

THE WINNING BIDDER MUST COMPLETE THE VERIFICATION OF WORKER'S DISABILITY COMPENSATION ACT COMPLIANCE (ON REVERSE SIDE IF DOUBLE SIDED) WITHIN 21 DAYS OF SALE AWARD DATE



FOR DEPARTMENT USE ONLY
Sale Number (XX - XXX - XX - XX)
Forest Management Unit:

TIMBER SALE VERIFICATION OF WORKER'S DISABILITY COMPENSATION ACT COMPLIANCE

*As required by Act 317, P.A. 1969 (Worker's Compensation) and
Part 5 of Act 451 of 1994, as amended.*

VERIFICATION OF WORKER'S DISABILITY COMPENSATION ACT COMPLIANCE

- This verification must be completed and submitted within 21 days of contract award and prior to the issuance of the timber sale contract.
- In addition, if boxes 2B or 2C are checked, then Notice of Exclusion or Certificate of Insurance must be submitted within twenty-one (21) days of the contract award and prior to the issuance of the timber sale contract.
- All information must be typed or printed except for written signatures.

Please Check Appropriate Categories:

1. My business is organized as (you **must** check one of the boxes below):
 - A. Sole Proprietorship (individual)
 - B. Partnership
 - C. Corporation
2. You **must** check one of the boxes below:
 - A. I certify my business is a sole proprietorship and it has no employees but the sole proprietor. I am not subject to the Worker's Compensation Laws.
 - B. I certify my business has satisfied its obligation to the Worker's Compensation Act through the use of an approved Notice of Exclusion (BWC-337, Rev. 5/96). I will provide a copy of the Notice of Exclusion within 21 days of the contract award. (For questions or a copy of the BWC-337, please call the Worker's Compensation Bureau at 517-322-1195).
 - C. I certify my business has a Worker's Compensation Policy. I will provide an original Certificate of Insurance within twenty-one (21) days of the contract award.
3. If you have checked item 2(A) or 2(B), you **must** indicate the number of **both** full-time and part-time employees, other than yourself, including family members and active partners (if none, you must enter "0").

_____ Full-time Employees

_____ Part-time Employees

Name of Business		Federal ID (or) Social Security No.	
Address		Telephone ()	
City	State	ZIP	

I hereby certify that the above information is true and correct. I agree to notify the Michigan DNR of any changes that occur in factors affecting my coverage during any of my present and future operations.

Signature of Owner or Authorized Representative

Title

Date

Please complete the "SEALED BID" information on the next page