



**DEPARTMENT OF NATURAL RESOURCES
STATE OF MICHIGAN
TIMBER SALE PROSPECTUS #7169**

SCHEDULED SALE DATE AND TIME: 2:00 p.m. (local time) on February 6, 2023.

LOCATION: GWINN MGMT UNIT, 410 WEST M 35, GWINN, MI 49841.

PROSPECTUS NOTE: The bidder is advised to inspect the sale area and review the location, estimated volumes, operating costs and contract terms of proposed sales. Please be aware that some landowners may request 60 days or more notice for access across their land.

Notice is hereby given that bids will be received by the Unit Manager, GWINN MANAGEMENT UNIT, for certain timber on the following described lands:

Corner River (32-004-22) / T43N, R25W, SEC. 10, NW.

T43N, R25W, SEC. 3, SWNW, SW.

T43N, R25W, SEC. 4, SENE, E1/2SE.

T43N, R25W, SEC. 9, NE, NWSE.

Marquette County, Advertised Price \$104,774.00, 203.7 Acres, Aspen, Hardwood.

SALE NOTE: Some Payment Units have received damage from spruce budworm. Little West Road is a County Road for approximately 3 miles off of County Road 557 and spans across the entire sale area. Little West Road is an ORV/snowmobile trail and must be properly signed and protected.

A recreation site such as a trail, pathway, or campground is within the sale area or the vicinity. Certain restrictions/specifications may be applicable including time restrictions.

Bit of Hardwood (32-018-22) / T46N, R24W, SEC. 23, S1/2SE.

Marquette County, Advertised Price \$18,832.30, 36.1 Acres, Hardwood, Sugar Maple.

SALE NOTE: Access across private may shorten skidding length, see spec 4.4.1. Fill material may be required to fill holes, see spec 4.2.2.

Lovely Ladoga (32-033-22) / T45N, R22W, SEC. 1, W1/2NW, W1/2SW.

T45N, R22W, SEC. 11, NW, NE, SW, SE.

T45N, R22W, SEC. 12, SWSW.

T45N, R22W, SEC. 2, W1/2NW, E1/2NE, E1/2SW, SE.

Alger County, Advertised Price \$367,420.90, 526.5 Acres, Hardwood, Aspen.

SALE NOTE: Access may be through private or other public land.

BID INSTRUCTIONS (VER. 10/10/2022):

1. Scheduled Bid Location, Date, and Time (2/11)

Bids must be received by the Unit Manager, GWINN OFFICE, 410 WEST M 35, GWINN, MI 49841, no later than 2:00 p.m. (local time) on February 6, 2023. For further information concerning this sale, contact Kristen Matson at 906-346-9201 extension 103.

2. Bidder's Qualifications (10/22)

If all or part of a timber sale was prepared by a private contractor, the contractor and that contractor's company are not permitted to bid on the timber sale. A person must be 18 years of age or older to purchase timber. Permanent employees of the Department of Natural Resources or members of their immediate household may not bid. Former employees, in the permanent or seasonal class, may not bid until 3 months after the last day of active duty. Bids will not be accepted from individuals or companies appearing on the DNR/FRD No-Bid List. This list contains the names of purchasers who previously failed to execute a contract within 21-days or who have a history of poor performance.

3. Preparation of Sealed Bids (5/16)

Bid Forms may be completed online thru Michigan DNR Timber Sale Online Bidding (OLB) at www.michigan.gov/timberbidding or by completing the hardcopy Bid Form found in the Timber Sale Prospectus. Hardcopy Bid Forms shall be manually signed in ink. Registration in OLB is considered your 'signature' for all bids submitted thru that system. Bid prices must be entered for each species and product in the Bid Price column for all material subject to bidding and all fill-in blanks must be completed. If erasures or other changes appear on the hardcopy Bid Form, each erasure or change must be initialed by the person signing the bid.

4. Submission of Sealed Bids (5/16)

Bid forms may be obtained from the Unit Manager or thru OLB. Bids may be submitted hardcopy or thru OLB. All hardcopy bids must be submitted on the bid form and in an envelope clearly identified as described in this section. NOTE: Only one bid form per bid envelope. Sealed bids must be submitted to the Unit office designated in the prospectus and must be submitted at or prior to the time established in the prospectus. The envelope should show on the outside (a) the sale name or number and (b) the date and time of bid opening, as shown in the prospectus. Bids received after the time specified in the sale prospectus are late bids and will be rejected.

It is possible for a bidder to submit multiple bids on a single sale. For example, a bid may be submitted hardcopy and a bid may be submitted thru OLB. Or, two bidders from the same company could both submit bids on the same sale. If this were to happen, the State would accept all bids received and award the contract accordingly. All bidding and contractual requirements would apply to all bids received.

5. Public Opening of Sealed Bids (7/16)

If conditions permit, the sealed bids will be publicly opened and posted at the time and place set in the prospectus.

If a bidder, present at a bid opening, has submitted bids on more than one sale, that bidder may withdraw their unopened bid envelopes or announce the withdrawal of their online bid after being declared the successful bidder on one sale.

6. Award of Contract (1/11)

Award of the contract will be made to the Bidder whose bid, conforming to the prospectus, is most advantageous to the State of Michigan on the basis of total value at rates bid for the estimated quantities. The State reserves the right to reject any bid or waive any minor irregularity in bids received. A written award mailed (or otherwise furnished) to the successful Bidder shall be deemed to result in a binding contract without further action by either party.

7. Down Payment (1/11)

The Bidder to whom award is made must make a down payment within 21 days of the sale award. The amount of the down payment will be calculated as shown in the Bond and Payment Schedule of this prospectus. Only cash may be used to meet this requirement.

8. Performance Security (1/11)

As guarantee of faithful performance, a cash bond, certificate of deposit, surety bond or irrevocable letter of credit (LOC) is required within 21 days of the sale award. The amount of the performance security is shown in the Bond and

Payment Schedule of this prospectus. If an LOC or surety is used, the coverage must extend for at least 6 months beyond the contract expiration.

9. Worker's Compensation (10/22)

Purchaser shall obtain worker's compensation insurance to cover claims under Michigan's Worker's Disability Compensation Act of 1969 or similar employee benefit act of any other state applicable to an employee. Verification of Worker's Disability Compensation Act Compliance must be completed and submitted within 21 days of contract award and prior to the issuance of the timber sale contract. In addition, if applicable, Notice of Exclusion or Certificate of Insurance must also be submitted.

10. Timber Sale Contract (10/22)

Additional conditions and requirements common to all timber sales are listed on the timber sale contract (R4031) and are available on line at www.michigan.gov/timber. Contact the Unit Manager for additional information or a sample contract. Within 21 days of the date of the award letter, the bidder must sign the contract and provide the required down payment, performance security, and verification of worker's disability compensation. The down payment and performance security shall be in accordance with the provisions of the timber sale contract, in the sums stated in this prospectus. If these actions are not taken, then the Bidder, the Bidder's corporation, and the corporation's principals may not be permitted to bid on State timber sales for a period of 3 months after the first offense, 6 months after the second offense, and 1 year after the third offense. An offense will only be counted against the Bidder for 5 years. In addition, the Bidder certifies that if awarded this contract, the Bidder will complete the timber sale contract in accordance with its terms and any modifications thereof including requirements to purchase, cut, and remove the included timber by the expiration date.

Payment Unit values in the State Forest Timber Sale Contract are calculated based on the advertised value of the Payment Unit as a percentage of the total advertised value of the contract. The advertised value of each Payment Unit is given in the Description of Timber by Payment Unit table on the Timber Sale Information page. For example, if the value of Payment Unit 1 is advertised as \$1,500 and the total Timber Sale value is advertised as \$10,000, the contract price for Payment Unit 1 will be 15% of the total bid price ($\$1,500/\$10,000 * 100$).

11. Disclaimer of Estimates and Bidder's Warranty of Inspection (10/22)

Before submitting this bid, the Bidder is advised and cautioned to inspect the sale area, review the requirements of the sale contract, and take other steps as may be reasonably necessary to ascertain the location, estimated volumes, construction estimates, and operating costs of the proposed sale. Failure to do so will not relieve the Bidder from responsibility for completing the contract.

The Bidder warrants that this bid is submitted solely on the basis of the Bidder's examination and inspection of the quality and quantity of the timber offered for sale and the Bidder's opinion of the value thereof and the costs of recovery. No reliance should be placed on the State of Michigan's estimates of timber quality, quantity or costs of recovery. Bidder further acknowledges that the State of Michigan: (i) expressly disclaims any warranty of fitness of timber for any purpose; (ii) offers this timber as is without any warranty of quality (merchantability) or quantity and (iii) expressly disclaims any warranty as to the quantity or quality of timber sold.

12. Certification and Chain-of-Custody (10/22)

Unless otherwise indicated in the contract under section 7 – Other Conditions of the Sale Specific Conditions & Requirements, the area encompassed by this timber sale is certified to the standards of the Forest Stewardship Council (FSC) - Certificate #SCS-FM/COC-00090N and the Sustainable Forestry Initiative (SFI) - Certificate #NSF-SFIS-5Y031-SF5. Forest products from this sale may be delivered to the mill as "FSC 100% and / or SFI certified" as long as the contractor hauling the forest products is chain-of-custody (COC) certified or covered under a COC certificate from the destination mill. The purchaser is responsible for maintaining COC after leaving the sale area.

13. Good Neighbor Authority (GNA) Requirements (10/22)

If the name of this timber sales contains the acronym GNA, it is authorized by the Good Neighbor Authority (GNA) and covered by various agreements between the U.S. Forest Service and the State. The timber sale occurs on federal land and the following conditions apply:

GNA contracts on US Forest Service land will not be awarded to purchasers on the Federal list of excluded parties. The System for Award Management (SAM) will be checked for active excluded parties prior to award of contract. In

addition, the Bidder to whom award is made must complete an Assurance Regarding Felony Conviction or Tax Delinquent Status for Corporate Applicants (AD-3031).

14. Good Neighbor Authority (GNA) Requirements, con't (10/22)

Bidder certifies, by signing this bid form, that to the best of Bidder's knowledge that the following representations are accurate and complete.

- a. That the Bidder and its principals are not presently debarred, suspended, proposed for debarment, declared ineligible, or voluntary excluded from timber sales (covered transactions) by any Federal department or agency.
- b. That the Bidder and its principals have not within a 3-year period preceding this bid been convicted of or had a civil judgment rendered against them for commission of fraud or a criminal offense in connection with obtaining , attempting to obtain, or performing a public (Federal, State, or local) transaction or contract under a public transaction; violation of Federal or State antitrust statutes or commission of embezzlement, theft, forgery, bribery, falsification or destruction of records, making false statements, or receiving stolen property.
- c. That the Bidder and its principals are not presently indicted for or otherwise criminally or civilly charged by a governmental entity (Federal, State, or local) with commission of any of the offenses enumerated in paragraph b of this certification.
- d. That the Bidder and its principals have not within a 3-year period preceding this bid had one or more public transactions (Federal, State, or local) terminated for breach or default of a timber or forest product contract.

Bidders that cannot certify this requirement, in whole or in part, shall submit an explanation with their bid.

SHANNON LOTT, Acting
Director

TIMBER SALE INFORMATION

Corner River (32-004-22)

T43N, R25W, SEC. 10; T43N, R25W, SEC. 3; T43N, R25W, SEC. 4; T43N, R25W, SEC. 9.
Marquette County (Advertised Price \$104,774.00)

SALE NOTE: Some Payment Units have received damage from spruce budworm. Little West Road is a County Road for approximately 3 miles off of County Road 557 and spans across the entire sale area. Little West Road is an ORV/snowmobile trail and must be properly signed and protected.

A recreation site such as a trail, pathway, or campground is within the sale area or the vicinity. Certain restrictions/specifications may be applicable including time restrictions.

A timber sale contract for this lump sum, sealed bid timber sale will be awarded to the responsible bidder offering the highest sealed bid price. All units of volume listed below were estimated using the Inventory Manager computer program and the new Michigan taper model. Bids must be at or above the following advertised price for each product and species:

<u>PRODUCTS & SPECIES</u>	<u>ESTIMATED UNITS*</u>	<u>ADVERTISED PRICE</u>
Sawtimber		
Basswood	8.2 MBF	\$ 33.00 / MBF
Black Cherry	1.4 MBF	\$ 94.00 / MBF
Paper Birch	2.1 MBF	\$ 55.00 / MBF
Red Maple	18.2 MBF	\$ 127.00 / MBF
Red Pine	1.3 MBF	\$ 126.00 / MBF
Sugar Maple	141.4 MBF	\$ 190.00 / MBF
Pulpwood		
Balsam Fir	377 Cords	\$ 10.85 / Cord
Mixed Aspen	1,893 Cords	\$ 23.05 / Cord
Mixed Hardwood	1,594 Cords	\$ 13.40 / Cord
Red Pine	38 Cords	\$ 50.85 / Cord
White Spruce	317 Cords	\$ 12.30 / Cord

* The total volume is statistically estimated within plus (+) or minus (-) 12.75 percent. There are an estimated 4,526 cords on this timber sale, plus or minus 577 cords at the 95% confidence level. The estimated units are final and not subject to adjustment. Prospective bidders are urged to examine this timber and to make their own estimates of quantity and quality.

BOND AND PAYMENT SCHEDULE:

1. A bond in the amount of \$5,239.00 to insure faithful performance of the conditions of the contract will be deposited by the successful bidder within 21 days of the sale award.
2. Cutting in any sale or unit without the required advance payment would be considered a trespass.
3. Total payment must be paid in advance or according to the following schedule :
 - (a) Ten percent (10%) of the sale value must be paid within 21 days of the sale award.
 - (b) The 10% down payment will be credited towards the first unit cut.
 - (c) Payment for each of the following units must be made before cutting begins in that unit:

PAYMENT UNIT NUMBER	PERCENT OF TOTAL SALE VALUE
01	9.5%
02	2.0%
03	3.8%
04	4.0%
05	6.9%
06	7.3%
07	9.1%
08	7.8%
09	0.7%
10	9.3%
11	1.1%
12	6.8%
13	17.7%
14	14.0%

4. If no cutting takes place, the 10% down payment will not be refunded.
5. Operations on the contract issued will terminate on 08/30/2026.

SALE STATISTICS

Volumes were calculated in cubic feet using the Michigan taper model. Cubic foot volume includes all wood inside bark for the product indicated. For display purposes, cubic feet were converted to cords and MBF using a simple conversion factor, e.g. 79 cubic feet per cord and 185 cubic feet per MBF. The cubic foot volumes are precise; the cords and MBF volumes are not. Cubic foot volume cannot be directly converted to cords or boards with precision.

SALE VOLUMES

The total estimated sale volume may not equal the sum of the species/products due to the nature of statistical calculations associated with double sampling methodology.

VOLUME		PERCENT ERROR	STATISTICAL RANGE IN CORDS	
TOTAL CUBIC FEET	TOTAL CORDS		MINIMUM	MAXIMUM
357,574	4,526	12.75%	3,949	5,104

VDU VOLUMES

A VDU is a Volume Determination Unit. Volumes and their associated statistics are calculated at the VDU level and summarized to the sale level. There is often a one to one relationship between a VDU and a Payment Unit, but not always, depending on the cruise design. Refer to the VDU TO PAYMENT UNIT table.

VDU	VOLUME		PERCENT ERROR	RANGE IN CORDS	
	TOTAL CUBIC FEET	TOTAL CORDS		MINIMUM	MAXIMUM
1	44,083	558	18.83%	453	663
2	45,378	574	20.97%	454	695
3	33,112	419	34.52%	274	564
4	110,368	1,397	16.79%	1,163	1,632
5	49,624	628	32.76%	422	834
6	2,571	33	49.23%	17	49
7	42,629	540	34.97%	351	728
8	21,261	269	38.63%	165	373
9	8,548	108	41.78%	63	153
TOTAL:	357,574	4,526		3,362	5,691

VDU TO PAYMENT UNIT

When a VDU is associated with more than one Payment Unit (PU), the VDU volumes are assigned to the PU based on acres of the VDU within the PU.

VDU	VDU ACRES	PU	PU ACRES
1	58.5	4	12.8
		5	22.2
		6	23.5
2	35.9	7	19.4
		8	16.5
3	14.0	12	14.0
		13	20.0
4	35.8	14	15.8
		10	16.4
5	18.3	11	1.9
		9	3.6
6	3.6	1	12.3
		3	13.2
7	12.3	2	12.1
8	13.2		
9	12.1		
TOTAL:	203.7		203.7

DESCRIPTION OF TIMBER BY PAYMENT UNIT (PU)

PU	MARKET GROUP	PRODUCT	QUANTITY	UNIT	ACRES	ADVERTISE PRICE
1	Sugar Maple	Sawtimber	3.9	MBF	12.3	\$9,925.40
	Balsam Fir	Pulpwood	101	Cords		
	Mixed Aspen		253	Cords		
	<i>B. T. Aspen</i>		47	<i>Cords</i>		
	<i>Quaking Aspen</i>		206	<i>Cords</i>		
	Mixed Hardwood		39	Cords		
	<i>Sugar Maple</i>		39	<i>Cords</i>		
	White Spruce		141	Cords		
2	Sugar Maple	Sawtimber	3.7	MBF	12.1	\$2,055.15
	Balsam Fir	Pulpwood	11	Cords		
	Mixed Hardwood		92	Cords		
	<i>Basswood</i>		3	<i>Cords</i>		
	<i>Ironwood</i>		2	<i>Cords</i>		
	<i>Red Maple</i>		20	<i>Cords</i>		
	<i>Sugar Maple</i>		67	<i>Cords</i>		
3	Sugar Maple	Sawtimber	2.1	MBF	13.2	\$3,994.10
	Balsam Fir	Pulpwood	85	Cords		
	Mixed Aspen		39	Cords		
	<i>Quaking Aspen</i>		39	<i>Cords</i>		
	Mixed Hardwood		36	Cords		
	<i>Balsam Poplar</i>		6	<i>Cords</i>		
	<i>Basswood</i>		7	<i>Cords</i>		
	<i>Sugar Maple</i>		23	<i>Cords</i>		
	White Spruce		105	Cords		
	4	Basswood	Sawtimber	1.2		
Red Maple			3.3	MBF		
Sugar Maple			14.2	MBF		
Balsam Fir		Pulpwood	3	Cords		
Mixed Hardwood			72	Cords		
<i>Basswood</i>			1	<i>Cords</i>		
<i>Red Maple</i>			12	<i>Cords</i>		
<i>Sugar Maple</i>			59	<i>Cords</i>		
White Spruce			2	Cords		
5		Basswood	Sawtimber	2.1	MBF	22.2
	Red Maple		5.8	MBF		
	Sugar Maple		24.6	MBF		
	Balsam Fir	Pulpwood	5	Cords		
	Mixed Hardwood		123	Cords		
	<i>Basswood</i>		1	<i>Cords</i>		
	<i>Red Maple</i>		20	<i>Cords</i>		
	<i>Sugar Maple</i>		102	<i>Cords</i>		
	White Spruce		3	Cords		
6	Basswood	Sawtimber	2.2	MBF	23.5	\$7,633.15
	Red Maple		6.2	MBF		
	Sugar Maple		26.0	MBF		
	Balsam Fir	Pulpwood	5	Cords		
	Mixed Hardwood		130	Cords		
	<i>Basswood</i>		1	<i>Cords</i>		
	<i>Red Maple</i>		21	<i>Cords</i>		
	<i>Sugar Maple</i>		108	<i>Cords</i>		
	White Spruce		3	Cords		
7	Basswood	Sawtimber	1.5	MBF	19.4	\$9,525.75
	Red Maple		0.6	MBF		
	Sugar Maple		32.9	MBF		
	Mixed Aspen	Pulpwood	25	Cords		

DESCRIPTION OF TIMBER BY PAYMENT UNIT (PU), CON'T

PU	MARKET GROUP	PRODUCT	QUANTITY	UNIT	ACRES	ADVERTISE PRICE
7 con't	<i>Quaking Aspen</i> Mixed Hardwood <i>Basswood</i> <i>Red Maple</i> <i>Sugar Maple</i>	<i>Pulpwood</i>	25 192 4 2 186	<i>Cords</i> Cords <i>Cords</i> <i>Cords</i> <i>Cords</i>		
8	Basswood Red Maple Sugar Maple Mixed Aspen <i>Quaking Aspen</i> Mixed Hardwood <i>Basswood</i> <i>Red Maple</i> <i>Sugar Maple</i>	Sawtimber Pulpwood	1.2 0.5 28.1 22 22 165 4 2 159	MBF MBF MBF Cords <i>Cords</i> Cords <i>Cords</i> <i>Cords</i> <i>Cords</i>	16.5	\$8,160.20
9	Sugar Maple Mixed Hardwood <i>Red Maple</i> <i>Sugar Maple</i>	Sawtimber Pulpwood	1.9 27 4 23	MBF Cords <i>Cords</i> <i>Cords</i>	3.6	\$722.80
10	Paper Birch Red Maple Sugar Maple Balsam Fir Mixed Aspen <i>Quaking Aspen</i> Mixed Hardwood <i>Basswood</i> <i>Black Cherry</i> <i>Paper Birch</i> <i>Red Maple</i> <i>Sugar Maple</i> White Spruce	Sawtimber Pulpwood	1.9 1.6 1.2 64 229 229 225 11 10 4 129 71 21	MBF MBF MBF Cords Cords <i>Cords</i> Cords <i>Cords</i> <i>Cords</i> <i>Cords</i> <i>Cords</i> <i>Cords</i> Cords	16.4	\$9,781.85
11	Paper Birch Red Maple Sugar Maple Balsam Fir Mixed Aspen <i>Quaking Aspen</i> Mixed Hardwood <i>Basswood</i> <i>Black Cherry</i> <i>Red Maple</i> <i>Sugar Maple</i> White Spruce	Sawtimber Pulpwood	0.2 0.2 0.1 7 27 27 25 1 1 15 8 2	MBF MBF MBF Cords Cords <i>Cords</i> Cords <i>Cords</i> <i>Cords</i> <i>Cords</i> <i>Cords</i> Cords	1.9	\$1,113.30
12	Red Pine Balsam Fir Mixed Aspen <i>Quaking Aspen</i> Mixed Hardwood <i>Balsam Poplar</i> <i>Black Ash</i> <i>Black Cherry</i> <i>Ironwood</i> <i>Red Maple</i> <i>Sugar Maple</i> Red Pine White Spruce	Sawtimber Pulpwood	1.3 13 27 27 297 5 15 10 6 114 147 38 25	MBF Cords Cords <i>Cords</i> Cords <i>Cords</i> <i>Cords</i> <i>Cords</i> <i>Cords</i> <i>Cords</i> <i>Cords</i> Cords Cords	14.0	\$7,146.80

DESCRIPTION OF TIMBER BY PAYMENT UNIT (PU), CON'T

PU	MARKET GROUP	PRODUCT	QUANTITY	UNIT	ACRES	ADVERTISE PRICE
13	Black Cherry	Sawtimber	0.8	MBF	20.0	\$18,609.60
	Sugar Maple		1.5	MBF		
	Balsam Fir	Pulpwood	46	Cords		
	Mixed Aspen		710	Cords		
	<i>B. T. Aspen</i>		66	<i>Cords</i>		
	<i>Quaking Aspen</i>		644	<i>Cords</i>		
	Mixed Hardwood		96	Cords		
	<i>Black Ash</i>		3	<i>Cords</i>		
	<i>Black Cherry</i>		25	<i>Cords</i>		
	<i>Sugar Maple</i>		68	<i>Cords</i>		
	White Spruce		8	Cords		
14	Black Cherry	Sawtimber	0.6	MBF	15.8	\$14,708.00
	Sugar Maple		1.2	MBF		
	Balsam Fir	Pulpwood	37	Cords		
	Mixed Aspen		561	Cords		
	<i>B. T. Aspen</i>		53	<i>Cords</i>		
	<i>Quaking Aspen</i>		508	<i>Cords</i>		
	Mixed Hardwood		75	Cords		
	<i>Black Ash</i>		2	<i>Cords</i>		
	<i>Black Cherry</i>		19	<i>Cords</i>		
	<i>Sugar Maple</i>		54	<i>Cords</i>		
	White Spruce		7	Cords		
TOTAL:			172.6	MBF		
TOTAL:			4,219	Cords		

Sale Specific Conditions & Requirements

Sale Name: Corner River

Sale Number: 32-004-22 Seq#: 1

1 - Sale Area

1.2 - Boundaries

1.2.1 - Painted boundaries (9/19)

The sale boundary and Payment Unit boundaries are marked and identified by blue, red, and yellow paint. Exterior sale boundary lines against private are marked with blue paint. Exterior sale boundary lines against state are marked with red paint. Interior Payment Unit boundaries are marked with yellow paint. The painted boundary line trees are not Included Timber and are to be protected unless marked with orange paint. Yellow painted trees designating an interior Payment Unit boundary are only to be cut when all surrounding Payment Units have been paid.

2 - Timber Specifications

2.1 - Included Timber

2.1.1 - Clearcut unit(s) with unmerchantable trees (6/14)

Within Payment Unit(s) 1, 3, 10, 12, 13, and 14, cut all trees that are two (2) inches or more at DBH except cedar, hemlock, and pine unless marked with orange paint above and below stump height.

In addition, within Payment Units:

Payment Units 1 and 3 - Leave black cherry, elm, paper birch, and yellow birch.

Payment Unit 12 - Leave elm and yellow birch.

Payment Unit 10 - Leave oak and yellow birch.

2.1.3 - Cut tree marked unit(s) (12/08)

Within Payment Unit(s) 2, 4, 5, 6, 7, 8, 9, and 11, all trees are designated for cutting when marked with orange paint above and below stump height, regardless of merchantability.

In addition: Within Payment Units 2, 4, 5, 6, 9, and 11, all merchantable spruce/fir is designated for cutting.

2.2 - Utilization

2.2.4 - Skidding length (2/14)

Within Payment Units 2, 4, 5, 6, 7, 8, 9, and 11, skidding of unlimbed tops or lengths over 17 feet is not permissible unless approved by the Unit Manager or his/her representative.

3 - Payments

3.4 - Damaged Timber

3.4.1 - Damaged timber (7/16)

General Condition and Requirement 3.4 Damaged Timber, defines liquidated damages for undesignated live merchantable trees which are cut or injured. In addition, extreme care should be taken to avoid damage to tree seedlings and saplings.

No damage is acceptable to undesignated live merchantable trees. Within the sale area, if more than 5% of trees (> 4.5" DBH) within a specified area of the sale are damaged, liquidated damages will be assessed for all trees damaged. Rates will be in accordance with General Condition and Requirement 3.4 Damaged Timber.

4 - Transportation

4.1 - Construction

4.1.3 - Slash and earthen piles (8/04)

Piles or windrows of earth along roads and landings that have been widened or constructed shall be leveled. Slash from road maintenance or construction, including stumps, shall be dispersed throughout the sale.

4.1.4 - Timber removed for construction (12/09)

Trees cut or damaged in the process of pre-approved road, landing or skid trail construction will be decked in an area separate from other Designated Timber and not removed until measured by the sale administrator. Payment will be made at the specified Purchase Unit Price.

4.1.6 - Road construction (1/09)

Construction of new roads or improvements of existing roads shall be done in such a way as to minimize the environmental and visual impacts. Merchantable trees shall be cut and utilized unless otherwise directed. Non-merchantable trees shall be severed and laid flat on the ground. Slash shall be scattered, and not left in windrows and kept a minimum of 10 feet back from the road edge. Stumps shall be set upright, not left on edge, and be moved at least 10 feet away from the road edge. Disturbed soil shall be feathered into the woods and not left in berms or windrows.

4.1.7 - Road closure (10/11)

All new roads built into the sale must be blocked to vehicle traffic upon completion of the sale. Overgrown roads that are reopened shall be considered new roads. In general, this will require constructing a four (4') foot high berm of stumps and logs covered with earth. Contact the sale administrator for specific details of design and placement.

4.2 - Maintenance

4.2.2 - Fill material (4/07)

To maintain roads, fill material may be needed in areas where "holes" exist or may be expected to develop. This fill material should be placed before trucking begins. Contact the sale administrator regarding the availability of onsite sand or gravel from adjacent State-owned lands.

4.2.4 - Grading (10/16)

For completion of the sale, state forest roads must be graded. In general, this will require a road grader or bull dozer to shape up the roads after forest products have been hauled off site. This includes cleaning of drainage areas, grading, crowning and filling with gravel, if necessary. The grading equipment to be used must be approved by the Unit Manager or his/her representative.

5 - Operations

5.1 - Notification

5.1.1 - Pre-sale conference (10/16)

A pre-sale conference between the Purchaser and sale administrator is required prior to beginning any operations. The Unit Manager or his/her representative must be contacted at least 3 business days in advance to schedule the conference.

5.2 - Conduct of Operations

5.2.1 - Slash

5.2.1.11 - Slash for reforestation (3/21)

To facilitate reforestation, Payment Units 1, 3, 10, 12, 13, and 14 shall be left with slash evenly distributed. Bunched tops within the cutting area shall be broken up and scattered. Stumps shall be cut low to the ground. Processing sites shall not be left with a compacted layer of slash; tops from these sites shall be hauled back into the cut area and scattered.

5.2.2 - Hazard Trees/Snags

5.2.2.1 - Den trees (10/16)

Obvious hollow and/or den trees shall be protected and left standing unless they are a safety hazard.

5.2.3 - Operating Restrictions

5.2.3.3 - Bark slippage restriction (3/09)

Within Payment Unit(s) 2, 4, 5, 6, 7, 8, 9, and 11, unless changed by written agreement, cutting and skidding are not permitted during the period of April 15 to July 15. This restriction is because of bark slippage.

5.2.32 - Decking/landing restoration (9/13)

All decking and landing areas must have the surface area restored to a condition equal to or better than before. This is to ensure the proper regeneration of the stand. Wood debris, chips and "cookies" from trimmings must be removed or scattered away from landing and loading areas and may not be windrowed on the edge.

5.2.37 - No decking areas (12/08)

No decking is allowed within 50 feet of County roads without permission of the County and Unit Manager or his/her representative. This applies to Little West Road and Payment Units 4, 5, 6, 12, 13, and 14.

5.2.38 - No decking against live trees (2/04)

Cut products may not be decked against unmarked or designated leave trees.

5.2.39 - ORV trail/route protection (4/18)

The Little West Road is an ORV trail or route and is shown on the Timber Sale Map. Do not cut trees or damage posts with ORV markers. All stumps within 20 feet of the trail must be cut flush with the ground. Maintain a 20 foot wide slash, debris, and rut free zone daily using the ORV trail or route as the centerline.

5.2.41 - Snowmobile trail protection (9/11)

The Little West Road is a snowmobile trail and is shown on the Timber Sale Map. Do not cut or damage posts with orange trail markers or traffic control signs. If the trail road is to be used for hauling during the snowmobile season, then a snow covered base must be left on the trail. The snowmobile trail may only be crossed at right angles. Maintain a 20 foot wide slash, debris, and rut free zone daily using the snowmobile trail as the centerline. All stumps within 20 feet of the snowmobile trail must be cut at ground level.

5.4 - Soil Protection

5.4.1 - Rutting restriction, general (7/16)

Operations are to cease immediately if equipment and weather conditions result in rutting of roads and/or skid trails which is 12 inches or greater in depth and 50 feet in length. The Unit Manager or his/her representative may restrict hauling and/or skidding if ruts exceed the specified depth. With the Unit Manager or his/her representative's approval, the Purchaser may return to the area when the risk of rutting has decreased.

5.4.2 - Skid trails (2/04)

Skid trails up and down slopes should be avoided. If however this is unavoidable, these trails will be left in a non-erodible condition using water bars, logs, and slash. Placing of slash on these skid trails while logging is ongoing may alleviate need for any further action. At the direction of the sale administrator, seed, fertilizer, and mulch may also be required.

5.8 - Protection of Endangered Species

5.8.5 - Protection of raptor nests (3/13)

All trees with raptor nests will be protected if found during harvesting operations. Notification will be made to the Unit Manager or his/her representative who will notify the Wildlife Biologist so an on-site evaluation and recommendation can be made, if necessary.

6 - Safety and Fire Prevention

6.2 - Signing

6.2.1 - Road posting (10/20)

The Purchaser is responsible for posting and maintaining caution signs on Little West Road and County Road 557 from both directions prior to beginning operations. The road must be posted at appropriate distances from the sale area to warn of logging activity and truck traffic. Signs must be removed when harvest operations are suspended or completed. The Purchaser will provide these signs.

7 - Other Conditions

7.5 - Loss

7.5.1 - Deteriorating timber (7/09)

The sale area has received damage from spruce budworm. The Purchaser should harvest the wood as soon as possible. The Department of Natural Resources is held free of responsibility of any further damage or deterioration due to delay in harvesting.



TIMBER SALE MAP

This information provided by authority of Part 525, 1994 PA 451, as amended.

Forest Management Unit	County	Mapped By	Date	Page	of
Gwinn Management Unit	Marquette	Brolin	08/23/2033	1	1
Township	Range	Section(s) and Subdivision(s)	Scale		
43N	25W	Sections 3, 4, 9 and 10	1:15,840		

Cover Type				Density	
A = Aspen	H = Hemlock	N = Marsh	U = Upland Brush	0 = Non Stocked	5 = Pole Timber Medium
B = Paper Birch	J = Jack Pine	O = Oak	UM = Upland Mixed	1 = Seedling Sapling Poor	6 = Pole Timber Well
C = Cedar	L = Lowland Brush	P = Lowland Poplar	V = Bog or Marsh	2 = Seedling Sapling Medium	7 = Saw Timber Poor
D = Treed Bog	LM = Lowland Mixed	Q = Mixed Swamp Conifer	W = White Pine	3 = Seedling Sapling Well	8 = Saw Timber Medium
E = Swamp Hdwoods	M = Mpl, Bch, Brch	R = Red Pine	X = Non Stocked	4 = Pole Timber Poor	9 = Saw Timber Well
F = Spruce Fir	MC = Mixed Conifer	S = Black Spruce	Z = Water		
G = Grass	MD = Mixed Deciduous	T = Tamarack			

PU Acres	PU Acres	PU Acres
1 12.3	6 23.5	11 1.9
2 12.1	7 19.4	12 14.0
3 13.2	8 16.5	13 20.0
4 12.8	9 3.6	14 15.8
5 22.2	10 16.4	

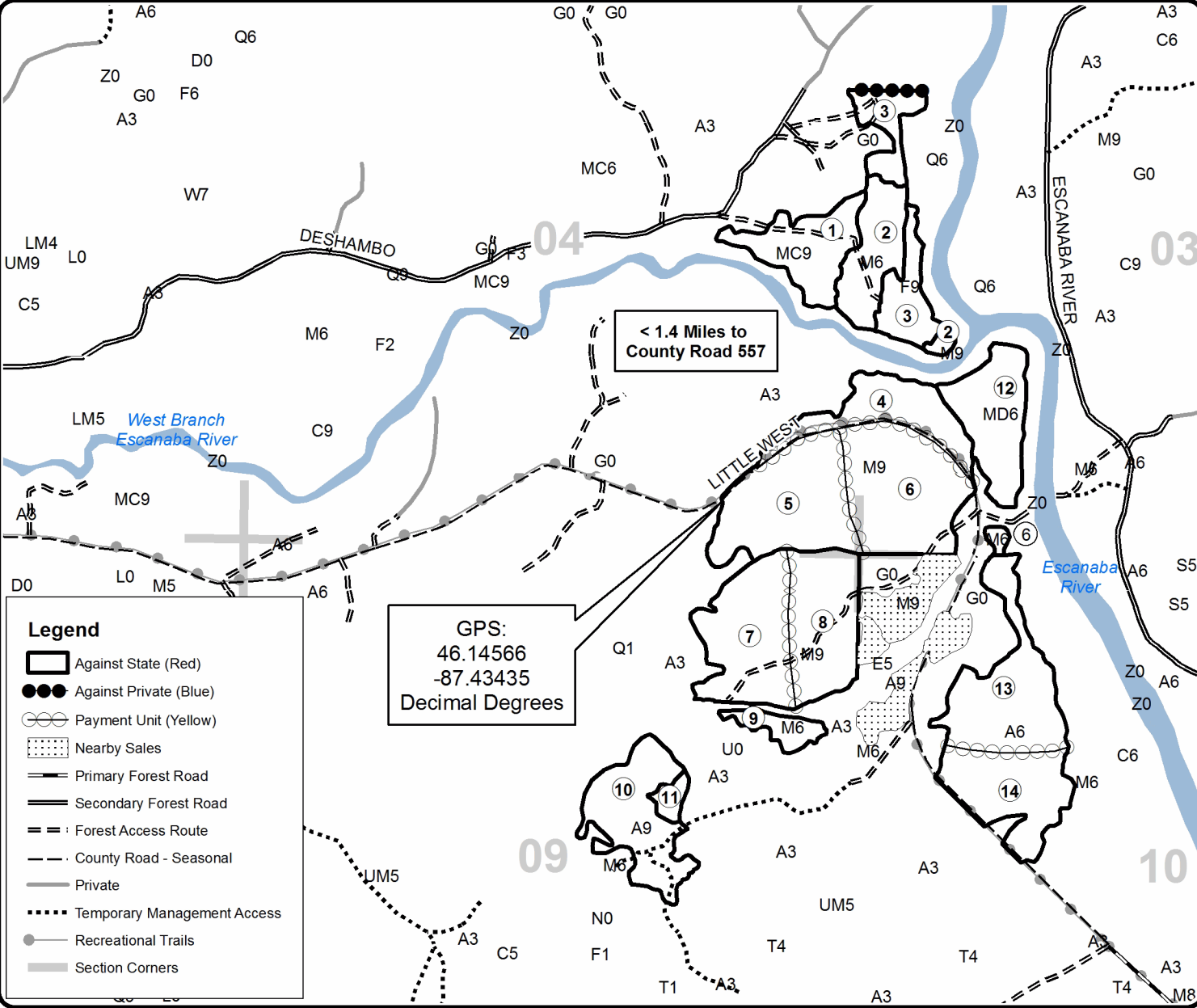
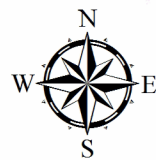
Corner River

Compartments, 65, 66, and 74

203.7 Acres



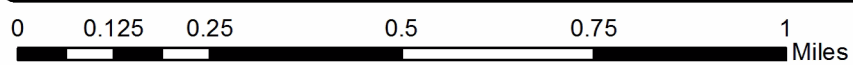
QR code for PDF Maps app



Legend

- Against State (Red)
- Against Private (Blue)
- Payment Unit (Yellow)
- Nearby Sales
- Primary Forest Road
- Secondary Forest Road
- Forest Access Route
- County Road - Seasonal
- Private
- Temporary Management Access
- Recreational Trails
- Section Corners

GPS:
46.14566
-87.43435
Decimal Degrees



TIMBER SALE INFORMATION

Bit of Hardwood (32-018-22)

T46N, R24W, SEC. 23.

Marquette County (Advertised Price \$18,832.30)

SALE NOTE: Access across private may shorten skidding length, see spec 4.4.1. Fill material may be required to fill holes, see spec 4.2.2.

A timber sale contract for this lump sum, sealed bid timber sale will be awarded to the responsible bidder offering the highest sealed bid price. All units of volume listed below were estimated using the Inventory Manager computer program and the new Michigan taper model. Bids must be at or above the following advertised price for each product and species:

<u>PRODUCTS & SPECIES</u>	<u>ESTIMATED UNITS*</u>	<u>ADVERTISED PRICE</u>
Sawtimber		
Black Cherry	26.2 MBF	\$ 94.00 / MBF
Red Maple	2.1 MBF	\$ 127.00 / MBF
Sugar Maple	49.7 MBF	\$ 190.00 / MBF
Pulpwood		
Mixed Hardwood	497 Cords	\$ 13.40 / Cord

* The total volume is statistically estimated within plus (+) or minus (-) 16.13 percent. There are an estimated 683 cords on this timber sale, plus or minus 110 cords at the 95% confidence level. The estimated units are final and not subject to adjustment. Prospective bidders are urged to examine this timber and to make their own estimates of quantity and quality.

BOND AND PAYMENT SCHEDULE:

1. A bond in the amount of \$942.00 to insure faithful performance of the conditions of the contract will be deposited by the successful bidder within 21 days of the sale award.
2. Cutting in any sale or unit without the required advance payment would be considered a trespass.
3. Total payment must be paid in advance or according to the following schedule :
 - (a) Ten percent (10%) of the sale value must be paid within 21 days of the sale award.
 - (b) The 10% down payment will be credited towards the first unit cut.

(c) Payment for each of the following units must be made before cutting begins in that unit:

PAYMENT UNIT NUMBER	PERCENT OF TOTAL SALE VALUE
01	26.7%
02	28.8%
03	44.5%

4. If no cutting takes place, the 10% down payment will not be refunded.
5. Operations on the contract issued will terminate on 08/31/2026.

SALE STATISTICS

Volumes were calculated in cubic feet using the Michigan taper model. Cubic foot volume includes all wood inside bark for the product indicated. For display purposes, cubic feet were converted to cords and MBF using a simple conversion factor, e.g. 79 cubic feet per cord and 185 cubic feet per MBF. The cubic foot volumes are precise; the cords and MBF volumes are not. Cubic foot volume cannot be directly converted to cords or boards with precision.

SALE VOLUMES

The total estimated sale volume may not equal the sum of the species/products due to the nature of statistical calculations associated with double sampling methodology.

VOLUME		STATISTICAL RANGE IN CORDS		
TOTAL CUBIC FEET	TOTAL CORDS	PERCENT ERROR	MINIMUM	MAXIMUM
53,947	683	16.13%	573	793

VDU VOLUMES

A VDU is a Volume Determination Unit. Volumes and their associated statistics are calculated at the VDU level and summarized to the sale level. There is often a one to one relationship between a VDU and a Payment Unit, but not always, depending on the cruise design. Refer to the VDU TO PAYMENT UNIT table.

VDU	VOLUME		PERCENT ERROR	RANGE IN CORDS	
	TOTAL CUBIC FEET	TOTAL CORDS		MINIMUM	MAXIMUM
1	53,947	683	16.14%	573	793
TOTAL:	53,947	683		573	793

VDU TO PAYMENT UNIT

When a VDU is associated with more than one Payment Unit (PU), the VDU volumes are assigned to the PU based on acres of the VDU within the PU.

VDU	VDU ACRES	PU	PU ACRES
1	36.1	1	9.6
		2	10.4
		3	16.1
TOTAL:	36.1		36.1

DESCRIPTION OF TIMBER BY PAYMENT UNIT (PU)

PU	MARKET GROUP	PRODUCT	QUANTITY	UNIT	ACRES	ADVERTISE PRICE
1	Black Cherry	Sawtimber	7.0	MBF	9.6	\$5,024.40
	Red Maple		0.6	MBF		
	Sugar Maple		13.2	MBF		
	Mixed Hardwood	Pulpwood	133	Cords		
	<i>Black Cherry</i>		33	<i>Cords</i>		
	<i>Northern Pin Oak</i>		1	<i>Cords</i>		
	<i>Red Maple</i>		13	<i>Cords</i>		
	<i>Sugar Maple</i>		86	<i>Cords</i>		
2	Black Cherry	Sawtimber	7.5	MBF	10.4	\$5,414.40
	Red Maple		0.6	MBF		
	Sugar Maple		14.3	MBF		
	Mixed Hardwood	Pulpwood	143	Cords		
	<i>Black Cherry</i>		35	<i>Cords</i>		
	<i>Northern Pin Oak</i>		1	<i>Cords</i>		
	<i>Red Maple</i>		14	<i>Cords</i>		
	<i>Sugar Maple</i>		93	<i>Cords</i>		
3	Black Cherry	Sawtimber	11.7	MBF	16.1	\$8,393.50
	Red Maple		0.9	MBF		
	Sugar Maple		22.2	MBF		
	Mixed Hardwood	Pulpwood	221	Cords		
	<i>Black Cherry</i>		55	<i>Cords</i>		
	<i>Northern Pin Oak</i>		1	<i>Cords</i>		
	<i>Red Maple</i>		22	<i>Cords</i>		
	<i>Sugar Maple</i>		143	<i>Cords</i>		
TOTAL:			78.0	MBF		
TOTAL:			497	Cords		

Sale Specific Conditions & Requirements

Sale Name: Bit of Hardwood

Sale Number: 32-018-22 Seq#: 1

1 - Sale Area

1.2 - Boundaries

1.2.1 - Painted boundaries (9/19)

The sale boundary and Payment Unit boundaries are marked and identified by blue, red, and yellow paint. Exterior sale boundary lines against private are marked with blue paint. Exterior sale boundary lines against state are marked with red paint. Interior Payment Unit boundaries are marked with yellow paint. The painted boundary line trees are not Included Timber and are to be protected unless marked with orange paint. Yellow painted trees designating an interior Payment Unit boundary, that are also marked with orange paint, are only to be cut when all surrounding Payment Units have been paid.

2 - Timber Specifications

2.1 - Included Timber

2.1.3 - Cut tree marked unit(s) (12/08)

Within Payment Unit(s) 1, 2, and 3, all trees are designated for cutting when marked with orange paint above and below stump height, regardless of merchantability. In addition, all merchantable balsam fir is designated for cutting.

2.2 - Utilization

2.2.4 - Skidding length (2/14)

Skidding of unlimbed tops or lengths over 17 feet is not permissible unless approved by the Unit Manager or his/her representative.

3 - Payments

3.4 - Damaged Timber

3.4.1 - Damaged timber (7/16)

General Condition and Requirement 3.4 Damaged Timber, defines liquidated damages for undesignated live merchantable trees which are cut or injured. In addition, extreme care should be taken to avoid damage to tree seedlings and saplings.

No damage is acceptable to undesignated live merchantable trees. Within the sale area, if more than 5% of trees (> 4.5" DBH) within a specified area of the sale are damaged, liquidated damages will be assessed for all trees damaged. Rates will be in accordance with General Condition and Requirement 3.4 Damaged Timber.

4 - Transportation

4.1 - Construction

4.1.3 - Slash and earthen piles (8/04)

Piles or windrows of earth along roads and landings that have been widened or constructed shall be leveled. Slash from road maintenance or construction, including stumps, shall be dispersed throughout the sale.

4.1.4 - Timber removed for construction (12/09)

Trees cut or damaged in the process of pre-approved road, landing or skid trail construction will be decked in an area separate from other Designated Timber and not removed until measured by the sale administrator. Payment will be made at the specified Purchase Unit Price.

4.1.12 - No new roads (1/12)

No new roads will be permitted in any Payment Unit. All operations are limited to existing roads. Skid trails only will be allowed.

4.2 - Maintenance

4.2.2 - Fill material (4/07)

To maintain roads, fill material may be needed in areas where "holes" exist or may be expected to develop. This fill material

should be placed before trucking begins. Depending on the time of year, multiple areas may require fill material for access across the sale area. Contact the sale administrator regarding the availability of onsite sand or gravel from adjacent State-owned lands.

4.2.4 - Grading (10/16)

For completion of the sale, state forest roads must be graded. In general, this will require a road grader or bull dozer to shape up the roads after forest products have been hauled off site. This includes cleaning of drainage areas, grading, crowning and filling with gravel, if necessary. The grading equipment to be used must be approved by the Unit Manager or his/her representative.

4.4 - Access

4.4.1 - Private property access (3/11)

Permission for access across private land is the responsibility of the Purchaser. Access across state land is possible but will lengthen the skid distance.

5 - Operations

5.1 - Notification

5.1.1 - Pre-sale conference (10/16)

A pre-sale conference between the Purchaser and sale administrator is required prior to beginning any operations. The Unit Manager or his/her representative must be contacted at least 3 business days in advance to schedule the conference.

5.2 - Conduct of Operations

5.2.2 - Hazard Trees/Snags

5.2.2.1 - Den trees (10/16)

Obvious hollow and/or den trees shall be protected and left standing unless they are a safety hazard.

5.2.3 - Operating Restrictions

5.2.3.3 - Bark slippage restriction (3/09)

Within Payment Unit(s) 1, 2, and 3, unless changed by written agreement, cutting and skidding are not permitted during the period of April 15 to July 15. This restriction is because of bark slippage.

5.2.32 - Decking/landing restoration (9/13)

All decking and landing areas must have the surface area restored to a condition equal to or better than before. This is to ensure the proper regeneration of the stand. Wood debris, chips and "cookies" from trimmings must be removed or scattered away from landing and loading areas and may not be windrowed on the edge.

5.2.38 - No decking against live trees (2/04)

Cut products may not be decked against unmarked or designated leave trees.

5.4 - Soil Protection

5.4.1 - Rutting restriction, general (7/16)

Operations are to cease immediately if equipment and weather conditions result in rutting of roads and/or skid trails which is 12 inches or greater in depth and 50 feet in length. The Unit Manager or his/her representative may restrict hauling and/or skidding if ruts exceed the specified depth. With the Unit Manager or his/her representative's approval, the Purchaser may return to the area when the risk of rutting has decreased.

5.4.2 - Skid trails (2/04)

Skid trails up and down slopes should be avoided. If however this is unavoidable, these trails will be left in a non-erodible condition using water bars, logs, and slash. Placing of slash on these skid trails while logging is ongoing may alleviate need for any further action. At the direction of the sale administrator, seed, fertilizer, and mulch may also be required.

5.8 - Protection of Endangered Species

5.8.5 - Protection of raptor nests (3/13)

All trees with raptor nests will be protected if found during harvesting operations. Notification will be made to the Unit

Manager or his/her representative who will notify the Wildlife Biologist so an on-site evaluation and recommendation can be made, if necessary.

6 - Safety and Fire Prevention

6.2 - Signing

6.2.1 - Road posting (10/20)

The Purchaser is responsible for posting and maintaining caution signs on Highway 94 from both directions and the forest access road prior to beginning operations. The road must be posted at appropriate distances from the sale area to warn of logging activity and truck traffic. Signs must be removed when harvest operations are suspended or completed. The Purchaser will provide these signs.



Sale Number	Year
32-018	22

TIMBER SALE MAP

This information provided by authority of Part 525, 1994 PA 451, as amended.

Forest Management Unit	County	Mapped By	Brolin	Date	Page	of
Gwinn Management Unit	Marquette	Cruised By	Brolin	09/12/2022	1	1
Township	Range	Section(s) and Subdivision(s)	Scale			
46N	24W	Section 23	1:15,840			

Cover Type				Density	
A = Aspen	H = Hemlock	N = Marsh	U = Upland Brush	0 = Non Stocked	5 = Pole Timber Medium
B = Paper Birch	J = Jack Pine	O = Oak	UM = Upland Mixed	1 = Seedling Sapling Poor	6 = Pole Timber Well
C = Cedar	L = Lowland Brush	P = Lowland Poplar	V = Bog or Marsh	2 = Seedling Sapling Medium	7 = Saw Timber Poor
D = Treed Bog	LM = Lowland Mixed	Q = Mixed Swamp Conifer	W = White Pine	3 = Seedling Sapling Well	8 = Saw Timber Medium
E = Swamp Hdwoods	M = Mpl, Bch, Brch	R = Red Pine	X = Non Stocked	4 = Pole Timber Poor	9 = Saw Timber Well
F = Spruce Fir	MC = Mixed Conifer	S = Black Spruce	Z = Water		
G = Grass	MD = Mixed Deciduous	T = Tamarack			

PU Acres

- 1 9.6
- 2 10.4
- 3 16.1

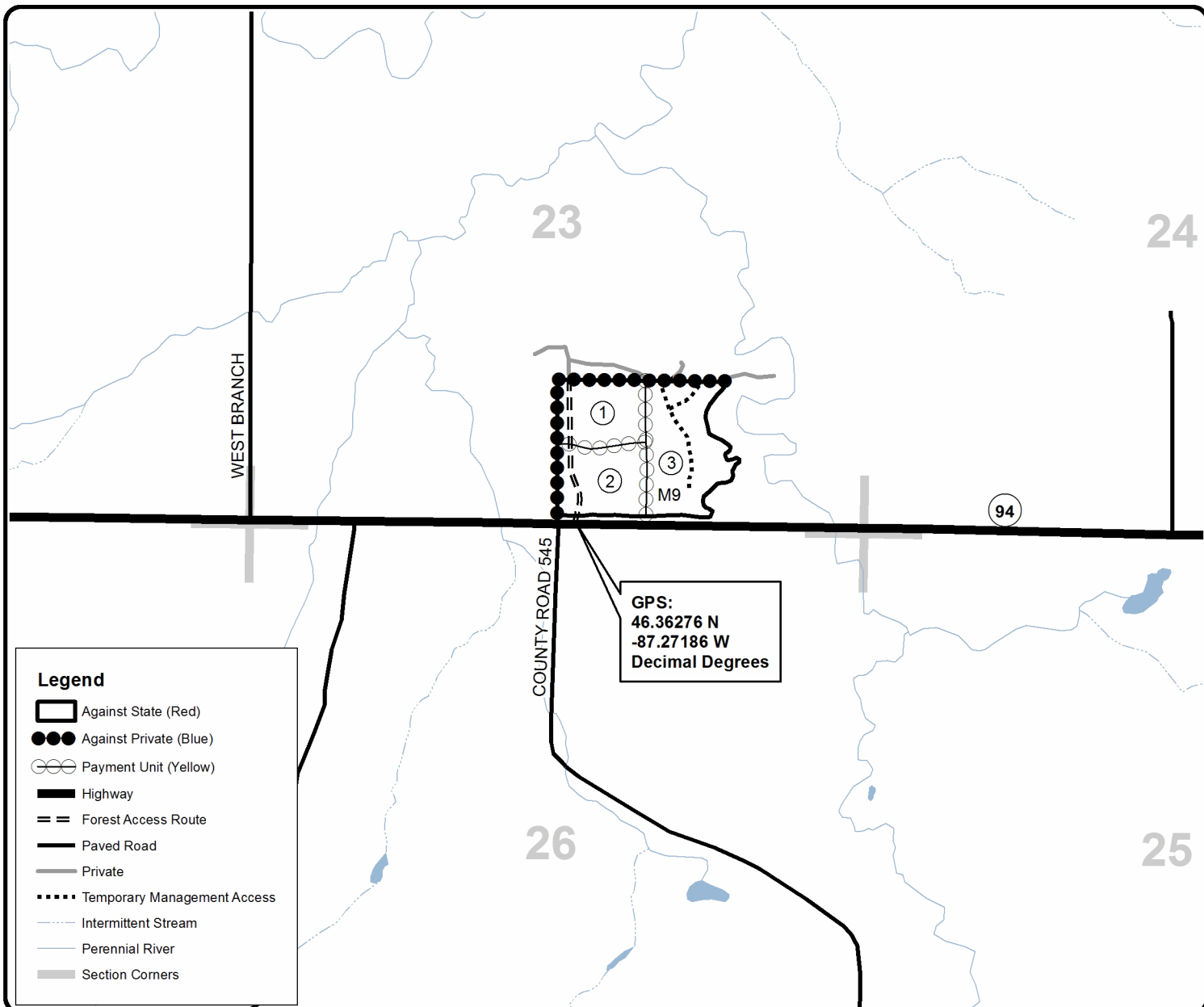
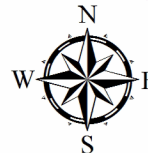
Bit of Hardwood

Compartment 281

36.1 Acres

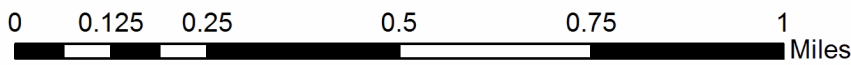


QR code for PDF Maps app



Legend

- Against State (Red)
- Against Private (Blue)
- Payment Unit (Yellow)
- Highway
- Forest Access Route
- Paved Road
- Private
- Temporary Management Access
- Intermittent Stream
- Perennial River
- Section Corners



TIMBER SALE INFORMATION

Lovely Ladoga (32-033-22)

T45N, R22W, SEC. 1; T45N, R22W, SEC. 11; T45N, R22W, SEC. 12; T45N, R22W, SEC. 2.
Alger County (Advertised Price \$367,420.90)

SALE NOTE: Access may be through private or other public land.

A timber sale contract for this lump sum, sealed bid timber sale will be awarded to the responsible bidder offering the highest sealed bid price. All units of volume listed below were estimated using the Inventory Manager computer program and the new Michigan taper model. Bids must be at or above the following advertised price for each product and species:

<u>PRODUCTS & SPECIES</u>	<u>ESTIMATED UNITS*</u>	<u>ADVERTISED PRICE</u>
Sawtimber		
Basswood	12.0 MBF	\$ 33.00 / MBF
Beech	13.4 MBF	\$ 32.00 / MBF
Paper Birch	3.3 MBF	\$ 55.00 / MBF
Red Maple	122.4 MBF	\$ 127.00 / MBF
Sugar Maple	1,270.6 MBF	\$ 190.00 / MBF
Pulpwood		
Balsam Fir	140 Cords	\$ 10.85 / Cord
Balsam Poplar	61 Cords	\$ 23.05 / Cord
Black Spruce	28 Cords	\$ 12.30 / Cord
Mixed Hardwood	3,219 Cords	\$ 13.40 / Cord
Quaking Aspen	2,673 Cords	\$ 23.05 / Cord
White Spruce	117 Cords	\$ 12.30 / Cord

* The total volume is statistically estimated within plus (+) or minus (-) 7.36 percent. There are an estimated 9,615 cords on this timber sale, plus or minus 708 cords at the 95% confidence level. The estimated units are final and not subject to adjustment. Prospective bidders are urged to examine this timber and to make their own estimates of quantity and quality.

BOND AND PAYMENT SCHEDULE:

1. A bond in the amount of \$18,371.00 to insure faithful performance of the conditions of the contract will be deposited by the successful bidder within 21 days of the sale award.
2. Cutting in any sale or unit without the required advance payment would be considered a trespass.
3. Total payment must be paid in advance or according to the following schedule :
 - (a) Ten percent (10%) of the sale value must be paid within 21 days of the sale award.
 - (b) The 10% down payment will be credited towards the first unit cut.
 - (c) Payment for each of the following units must be made before cutting begins in that unit:

PAYMENT UNIT NUMBER	PERCENT OF TOTAL SALE VALUE
01	8.4%
02	5.0%
03	3.4%
04	3.1%
05	4.6%
06	5.4%
07	5.7%
08	5.0%
09	6.2%
10	7.1%
11	5.3%
12	6.5%
13	8.6%
14	6.2%
15	6.9%
16	8.3%
17	4.3%

4. If no cutting takes place, the 10% down payment will not be refunded.
5. Operations on the contract issued will terminate on 08/31/2027.

SALE STATISTICS

Volumes were calculated in cubic feet using the Michigan taper model. Cubic foot volume includes all wood inside bark for the product indicated. For display purposes, cubic feet were converted to cords and MBF using a simple conversion factor, e.g. 79 cubic feet per cord and 185 cubic feet per MBF. The cubic foot volumes are precise; the cords and MBF volumes are not. Cubic foot volume cannot be directly converted to cords or boards with precision.

SALE VOLUMES

The total estimated sale volume may not equal the sum of the species/products due to the nature of statistical calculations associated with double sampling methodology.

VOLUME			STATISTICAL RANGE IN CORDS	
TOTAL CUBIC FEET	TOTAL CORDS	PERCENT ERROR	MINIMUM	MAXIMUM
759,591	9,615	7.36%	8,907	10,323

VDU VOLUMES

A VDU is a Volume Determination Unit. Volumes and their associated statistics are calculated at the VDU level and summarized to the sale level. There is often a one to one relationship between a VDU and a Payment Unit, but not always, depending on the cruise design. Refer to the VDU TO PAYMENT UNIT table.

VDU	VOLUME			RANGE IN CORDS	
	TOTAL CUBIC FEET	TOTAL CORDS	PERCENT ERROR	MINIMUM	MAXIMUM
1	92,290	1,168	13.80%	1,007	1,329
2	119,113	1,508	13.00%	1,312	1,704
3	232,242	2,940	12.51%	2,572	3,308
6	251,100	3,178	12.15%	2,792	3,565
8	64,846	821	28.08%	590	1,051
TOTAL:	759,591	9,615		8,273	10,957

VDU TO PAYMENT UNIT

When a VDU is associated with more than one Payment Unit (PU), the VDU volumes are assigned to the PU based on acres of the VDU within the PU.

VDU	VDU ACRES	PU	PU ACRES
1	87.6	1	43.8
		2	25.9
		3	17.9
2	90.8	4	15.0
		5	22.2
		6	26.0
		7	27.6
		8	25.8
3	198.3	9	31.9
		10	36.3
		11	27.3
		12	33.3
		13	43.7
6	111.8	14	32.2
		15	36.1
		16	43.5
8	38.0	17	38.0
TOTAL:	526.5		526.5

DESCRIPTION OF TIMBER BY PAYMENT UNIT (PU)

PU	MARKET GROUP	PRODUCT	QUANTITY	UNIT	ACRES	ADVERTISE PRICE	
1	Basswood	Sawtimber	1.1	MBF	43.8	\$30,871.50	
	Beech		0.9	MBF			
	Red Maple		6.5	MBF			
	Sugar Maple		142.6	MBF			
	Mixed Hardwood		Pulpwood	212			Cords
	<i>Basswood</i>			1			<i>Cords</i>
	<i>Beech</i>			1			<i>Cords</i>
	<i>Red Maple</i>			16			<i>Cords</i>
	<i>Sugar Maple</i>			194			<i>Cords</i>
	Quaking Aspen			2			Cords
2	Basswood	Sawtimber	0.7	MBF	25.9	\$18,223.35	
	Beech		0.5	MBF			
	Red Maple		3.8	MBF			
	Sugar Maple		84.3	MBF			
	Mixed Hardwood		Pulpwood	124			Cords
	<i>Red Maple</i>			9			<i>Cords</i>
	<i>Sugar Maple</i>			115			<i>Cords</i>
	Quaking Aspen			1			Cords
3	Basswood	Sawtimber	0.5	MBF	17.9	\$12,595.35	
	Beech		0.3	MBF			
	Red Maple		2.6	MBF			
	Sugar Maple		58.3	MBF			
	Mixed Hardwood		Pulpwood	85			Cords
	<i>Red Maple</i>			6			<i>Cords</i>
	<i>Sugar Maple</i>			79			<i>Cords</i>
	Quaking Aspen			1			Cords
4	Red Maple	Sawtimber	0.8	MBF	15.0	\$11,400.70	
	Sugar Maple		50.2	MBF			
	Balsam Fir		Pulpwood	3			Cords
	Mixed Hardwood			97			Cords
	<i>Red Maple</i>			4			<i>Cords</i>
	<i>Sugar Maple</i>			93			<i>Cords</i>
	Quaking Aspen			17			Cords
	White Spruce			3			Cords
5	Red Maple	Sawtimber	1.2	MBF	22.2	\$16,884.30	
	Sugar Maple		74.4	MBF			
	Balsam Fir		Pulpwood	5			Cords
	Mixed Hardwood			143			Cords
	<i>Red Maple</i>			6			<i>Cords</i>
	<i>Sugar Maple</i>			137			<i>Cords</i>
	Quaking Aspen			25			Cords
	White Spruce			4			Cords
6	Red Maple	Sawtimber	1.4	MBF	26.0	\$19,762.20	
	Sugar Maple		87.1	MBF			
	Balsam Fir		Pulpwood	5			Cords
	Mixed Hardwood			168			Cords
	<i>Red Maple</i>			7			<i>Cords</i>
	<i>Sugar Maple</i>			161			<i>Cords</i>
	Quaking Aspen			29			Cords
	White Spruce			5			Cords
7	Red Maple	Sawtimber	1.5	MBF	27.6	\$20,972.85	
	Sugar Maple		92.4	MBF			
	Balsam Fir		Pulpwood	6			Cords
	Mixed Hardwood			178			Cords
	<i>Red Maple</i>			7			<i>Cords</i>

DESCRIPTION OF TIMBER BY PAYMENT UNIT (PU), CON'T

PU	MARKET GROUP	PRODUCT	QUANTITY	UNIT	ACRES	ADVERTISE PRICE
7 con't	<i>Sugar Maple</i>	<i>Pulpwood</i>	171	<i>Cords</i>		
	Quaking Aspen		31	Cords		
	White Spruce		5	Cords		
8	Basswood	Sawtimber	0.6	MBF	25.8	\$18,520.65
	Beech		1.5	MBF		
	Red Maple		10.3	MBF		
	Sugar Maple		78.9	MBF		
	Balsam Fir	Pulpwood	1	Cords		
	Mixed Hardwood		159	Cords		
	<i>Beech</i>		4	<i>Cords</i>		
	<i>Red Maple</i>		27	<i>Cords</i>		
	<i>Sugar Maple</i>		128	<i>Cords</i>		
	White Spruce		1	Cords		
9	Basswood	Sawtimber	0.7	MBF	31.9	\$22,902.65
	Beech		1.9	MBF		
	Red Maple		12.7	MBF		
	Sugar Maple		97.6	MBF		
	Balsam Fir	Pulpwood	1	Cords		
	Mixed Hardwood		196	Cords		
	<i>Beech</i>		5	<i>Cords</i>		
	<i>Red Maple</i>		33	<i>Cords</i>		
	<i>Sugar Maple</i>		158	<i>Cords</i>		
	White Spruce		2	Cords		
10	Basswood	Sawtimber	0.8	MBF	36.3	\$26,062.15
	Beech		2.1	MBF		
	Red Maple		14.5	MBF		
	Sugar Maple		111.0	MBF		
	Balsam Fir	Pulpwood	1	Cords		
	Mixed Hardwood		224	Cords		
	<i>Basswood</i>		1	<i>Cords</i>		
	<i>Beech</i>		5	<i>Cords</i>		
	<i>Red Maple</i>		38	<i>Cords</i>		
	<i>Sugar Maple</i>		180	<i>Cords</i>		
	White Spruce		2	Cords		
11	Basswood	Sawtimber	0.6	MBF	27.3	\$19,581.25
	Beech		1.6	MBF		
	Red Maple		10.9	MBF		
	Sugar Maple		83.5	MBF		
	Balsam Fir	Pulpwood	1	Cords		
	Mixed Hardwood		167	Cords		
	<i>Beech</i>		4	<i>Cords</i>		
	<i>Red Maple</i>		28	<i>Cords</i>		
	<i>Sugar Maple</i>		135	<i>Cords</i>		
	White Spruce		1	Cords		
12	Basswood	Sawtimber	0.8	MBF	33.3	\$23,936.35
	Beech		2.0	MBF		
	Red Maple		13.3	MBF		
	Sugar Maple		101.9	MBF		
	Balsam Fir	Pulpwood	1	Cords		
	Mixed Hardwood		206	Cords		
	<i>Basswood</i>		1	<i>Cords</i>		
	<i>Beech</i>		5	<i>Cords</i>		
	<i>Red Maple</i>		35	<i>Cords</i>		
	<i>Sugar Maple</i>		165	<i>Cords</i>		
	White Spruce		2	Cords		

DESCRIPTION OF TIMBER BY PAYMENT UNIT (PU), CON'T

PU	MARKET GROUP	PRODUCT	QUANTITY	UNIT	ACRES	ADVERTISE PRICE	
13	Basswood	Sawtimber	1.0	MBF	43.7	\$31,369.05	
	Beech		2.6	MBF			
	Red Maple		17.4	MBF			
	Sugar Maple		133.7	MBF			
	Balsam Fir		Pulpwood	1			Cords
	Mixed Hardwood			269			Cords
	<i>Basswood</i>			1			<i>Cords</i>
	<i>Beech</i>			7			<i>Cords</i>
	<i>Red Maple</i>			45			<i>Cords</i>
	<i>Sugar Maple</i>			216			<i>Cords</i>
	White Spruce			2			Cords
14	Basswood	Sawtimber	0.7	MBF	32.2	\$22,607.35	
	Paper Birch		1.0	MBF			
	Red Maple		5.3	MBF			
	Sugar Maple		19.2	MBF			
	Balsam Fir		Pulpwood	18			Cords
	Black Spruce			8			Cords
	Mixed Hardwood			193			Cords
	<i>Basswood</i>			19			<i>Cords</i>
	<i>Ironwood</i>			3			<i>Cords</i>
	<i>Paper Birch</i>			5			<i>Cords</i>
	<i>Red Maple</i>			49			<i>Cords</i>
	<i>Sugar Maple</i>			117			<i>Cords</i>
	Quaking Aspen			665			Cords
	15			Basswood			Sawtimber
Paper Birch		1.1	MBF				
Red Maple		5.9	MBF				
Sugar Maple		21.6	MBF				
Balsam Fir		Pulpwood	21	Cords			
Black Spruce			9	Cords			
Mixed Hardwood			216	Cords			
<i>Basswood</i>			21	<i>Cords</i>			
<i>Ironwood</i>			3	<i>Cords</i>			
<i>Paper Birch</i>			6	<i>Cords</i>			
<i>Red Maple</i>			55	<i>Cords</i>			
<i>Sugar Maple</i>			131	<i>Cords</i>			
Quaking Aspen			745	Cords			
16			Basswood	Sawtimber	0.9	MBF	
	Paper Birch	1.2	MBF				
	Red Maple	7.2	MBF				
	Sugar Maple	26.0	MBF				
	Balsam Fir	Pulpwood	25		Cords		
	Black Spruce		11		Cords		
	Mixed Hardwood		259		Cords		
	<i>Basswood</i>		25		<i>Cords</i>		
	<i>Ironwood</i>		3		<i>Cords</i>		
	<i>Paper Birch</i>		7		<i>Cords</i>		
	<i>Red Maple</i>		66		<i>Cords</i>		
	<i>Sugar Maple</i>		158		<i>Cords</i>		
	Quaking Aspen		899		Cords		
	17		Basswood		Sawtimber	2.8	MBF
Red Maple		7.1	MBF				
Sugar Maple		7.9	MBF				
Balsam Fir		Pulpwood	51	Cords			
Balsam Poplar			61	Cords			
Mixed Hardwood			323	Cords			

DESCRIPTION OF TIMBER BY PAYMENT UNIT (PU), CON'T

PU	MARKET GROUP	PRODUCT	QUANTITY	UNIT	ACRES	ADVERTISE PRICE
17 con't	<i>Basswood</i>	<i>Pulpwood</i>	30	<i>Cords</i>		
	<i>Red Maple</i>		128	<i>Cords</i>		
	<i>Sugar Maple</i>		165	<i>Cords</i>		
	Quaking Aspen		258	Cords		
	White Spruce		90	Cords		
TOTAL:			1,421.7	MBF		
TOTAL:			6,238	Cords		

Sale Specific Conditions & Requirements

Sale Name: Lovely Ladoga

Sale Number: 32-033-22 Seq#: 1

1 - Sale Area

1.2 - Boundaries

1.2.1 - Painted boundaries (9/19)

The sale boundary and Payment Unit boundaries are marked and identified by blue, red and yellow paint. Exterior sale boundary lines against private property are marked with blue paint. Exterior sale boundary lines against state are marked with red paint. Interior Payment Unit boundaries are marked with yellow paint. The painted boundary line trees are not Included Timber and are to be protected unless marked with orange paint.

2 - Timber Specifications

2.1 - Included Timber

2.1.1 - Clearcut unit(s) with unmerchantable trees (6/14)

Within Payment Unit(s) 14-17, cut all species trees that are two (2) inches or more at DBH except

Within Payment Unit(s) 14-16, leave hemlock, cedar, elm, black cherry, yellow birch, and any tree marked with green paint.

Within Payment Unit 17, leave hemlock, cedar, yellow birch and black cherry.

2.1.3 - Cut tree marked unit(s) (12/08)

Within Payment Unit(s) 1-13, all trees are designated for cutting when marked with orange paint above and below stump height, regardless of merchantability.

2.2 - Utilization

2.2.4 - Skidding length (2/14)

Skidding of unlimbed tops or lengths over 17 feet is not permissible in Payment Units 1-13. Changes may be approved by the Unit Manager or his/her representative.

3 - Payments

3.4 - Damaged Timber

3.4.1 - Damaged timber (7/16)

General Condition and Requirement 3.4 Damaged Timber, defines liquidated damages for undesignated live merchantable trees which are cut or injured. In addition, extreme care should be taken to avoid damage to tree seedlings and saplings.

Within the sale area, if more than 10% of the tree seedlings or saplings (1/4" to 4.5" DBH) within a specified portion of the sale area are damaged, liquidated damages will be assessed at \$200 per acre for all acreage within that specified portion of the sale area that was damaged.

No damage is acceptable to undesignated live merchantable trees. Within the sale area, if more than 5 % of trees (> 4.5" DBH) within a specified area of the sale are damaged, liquidated damages will be assessed for all trees damaged. Rates will be in accordance with General Condition and Requirement 3.4 Damaged Timber.

4 - Transportation

4.1 - Construction

4.1.3 - Slash and earthen piles (8/04)

Piles or windrows of earth along roads and landings that have been widened or constructed shall be leveled. Slash from road maintenance or construction, including stumps, shall be scattered, and not left in windrows, and kept a minimum of 10 feet back from the road edge.

4.1.4 - Timber removed for construction (12/09)

Trees cut or damaged in the process of pre-approved road, landing or skid trail construction will be decked in an area separate from other Designated Timber and not removed until measured by the sale administrator. Payment will be made at the

specified Purchase Unit Price.

4.1.6 - Road construction (1/09)

Construction of new roads or improvements of existing roads shall be done in such a way as to minimize the environmental and visual impacts. Merchantable trees shall be cut and utilized unless otherwise directed. Non-merchantable trees shall be severed and laid flat on the ground. Slash shall be scattered, and not left in windrows and kept a minimum of 10 feet back from the road edge. Stumps shall be set upright, not left on edge, and be moved at least 10 feet away from the road edge. Disturbed soil shall be feathered into the woods and not left in berms or windrows.

4.1.7 - Road closure (10/11)

All new roads built into the sale must be blocked to vehicle traffic upon completion of the sale. Overgrown roads that are reopened shall be considered new roads. In general, this will require constructing a four (4') foot high berm of stumps and logs covered with earth. Contact the sale administrator for specific details of design and placement.

4.1.8 - Road work (1) (8/07)

The following road work is required: 200 yards of gravel will be spread in holes on state forest land. Contact the sale administrator for the specifics on where to put the gravel.

4.2 - Maintenance

4.2.2 - Fill material (4/07)

To maintain roads, fill material may be needed in areas where "holes" exist or may be expected to develop. This fill material should be placed before trucking begins. Contact the sale administrator regarding the availability of onsite sand or gravel from adjacent State-owned lands.

4.2.4 - Grading (10/16)

For completion of the sale, state forest roads must be graded. In general, this will require a road grader or bull dozer to shape up the roads after forest products have been hauled off site. This includes cleaning of drainage areas, grading, crowning and filling with gravel, if necessary. The grading equipment to be used must be approved by the Unit Manager or his/her representative.

5 - Operations

5.1 - Notification

5.1.1 - Pre-sale conference (10/16)

A pre-sale conference between the Purchaser and sale administrator is required prior to beginning any operations. The Unit Manager or his/her representative must be contacted at least 10 days in advance to schedule the conference.

5.2 - Conduct of Operations

5.2.1 - Slash

5.2.1.11 - Slash for reforestation (3/21)

To facilitate reforestation, the Sale Area shall be left with slash evenly distributed. Bunched tops within the cutting area shall be broken up and scattered. Stumps shall be cut low to the ground. Processing sites shall not be left with a compacted layer of slash; tops from these sites shall be hauled back into the cut area and scattered.

5.2.2 - Hazard Trees/Snags

5.2.2.1 - Den trees (10/16)

Obvious hollow and/or den trees shall be protected and left standing unless they are a safety hazard.

5.2.3 - Operating Restrictions

5.2.3.3 - Bark slippage restriction (3/09)

Within Payment Unit(s) 1-13, unless changed by written agreement, cutting and skidding are not permitted during the period of April 15 to July 15. This restriction is because of bark slippage.

5.2.22 - Operating Caution

5.2.22.1 - Operating caution (6/11)

It is recommended, but not required, that within Payment Unit(s) 4 and 8-13, cutting, skidding, and hauling occur during dry summer or frozen winter conditions. The reason for the recommendation is because of wet roads.

5.2.32 - Decking/landing restoration (9/13)

All decking and landing areas must have the surface area restored to a condition equal to or better than before. This is to ensure the proper regeneration of the stand. Wood debris, chips and "cookies" from trimmings must be removed or scattered away from landing and loading areas and may not be windrowed on the edge.

5.2.38 - No decking against live trees (2/04)

Cut products may not be decked against unmarked or designated leave trees.

5.4 - Soil Protection

5.4.1 - Rutting restriction, general (7/16)

Operations are to cease immediately if equipment and weather conditions result in rutting of roads and/or skid trails which is 12 inches or greater in depth and 50 feet in length. The Unit Manager or his/her representative may restrict hauling and/or skidding if ruts exceed the specified depth. With the Unit Manager or his/her representative's approval, the Purchaser may return to the area when the risk of rutting has decreased.

5.4.2 - Skid trails (2/04)

Skid trails up and down slopes should be avoided. If however this is unavoidable, these trails will be left in a non-erodible condition using water bars, logs, and slash. Placing of slash on these skid trails while logging is ongoing may alleviate need for any further action. At the direction of the sale administrator, seed, fertilizer, and mulch may also be required.

5.8 - Protection of Endangered Species

5.8.5 - Protection of raptor nests (3/13)

All trees with raptor nests will be protected if found during harvesting operations. Notification will be made to the Unit Manager or his/her representative who will notify the Wildlife Biologist so an on-site evaluation and recommendation can be made, if necessary.

6 - Safety and Fire Prevention

6.2 - Signing

6.2.1 - Road posting (10/20)

The Purchaser is responsible for posting and maintaining caution signs on Kuivinen and Ladoga Road prior to beginning operations. The road must be posted at appropriate distances from the sale area to warn of logging activity and truck traffic. Signs must be removed when harvest operations are suspended or completed. The Purchaser will provide these signs.

7 - Other Conditions

7.5 - Loss

7.5.1 - Deteriorating timber (7/09)

The sale area has received damage from Spruce Budworm. The Purchaser should harvest the wood as soon as possible. The Department of Natural Resources is held free of responsibility of any further damage or deterioration due to delay in harvesting.



TIMBER SALE MAP

This information provided by authority of Part 525, 1994 PA 451, as amended.

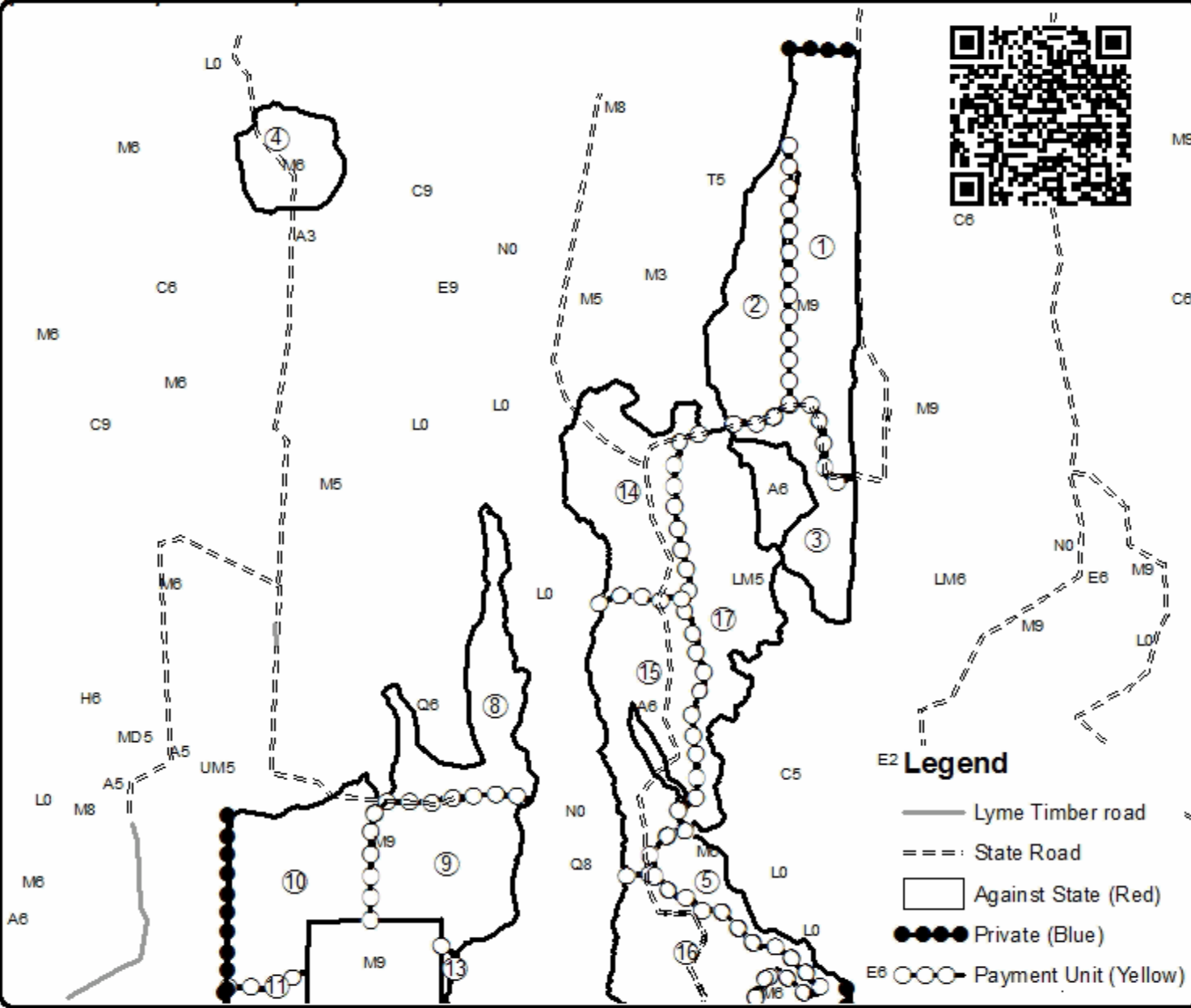
Sale Number	Year
32-033	22

Forest Management Unit	County	Mapped By	Date	Page	of
Gwinn Management Unit	Alger County	Pete Holodnick	08/26/22	1	2
Township	Range	Section(s) and Subdivision(s)	Scale		
45N	22W	Sections: 1,2,11 and 12	1:15,840		

Cover Type				Density			
A = Aspen	H = Hemlock	N = Marsh	U = Upland Brush	0 = Non Stocked	5 = Pole Timber Medium		
B = Paper Birch	J = Jack Pine	O = Oak	UM = Upland Mixed	1 = Seeding Sapling Poor	6 = Pole Timber Well		
C = Cedar	L = Lowland Brush	P = Lowland Poplar	V = Bog or Marsh	2 = Seeding Sapling Medium	7 = Saw Timber Poor		
D = Tread Bog	LM = Lowland Mixed	Q = Mixed Swamp Conifer	W = White Pine	3 = Seeding Sapling Well	8 = Saw Timber Medium		
E = Swamp Hdwoods	M = Mpl, Bch, Bach	R = Red Pine	X = Non Stocked	4 = Pole Timber Poor	9 = Saw Timber Well		
F = Spruce Fir	MC = Mixed Conifer	S = Black Spruce	Z = Water				
G = Grass	MD = Mixed Deciduous	T = Tamarack					

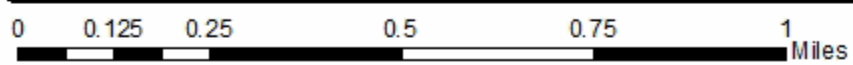
PU	Acres	PU	Acres	PU	Acres	PU	Acres
1)	43.8	5)	22.2	9)	31.9	13)	43.7
2)	25.9	6)	26	10)	36.3	14)	32.2
3)	17.9	7)	27.6	11)	27.3	15)	36.1
4)	15	8)	25.8	12)	33.3	16)	43.5

Lovely Ladoga
 Compartment 100
 526.5 Acres



E2 Legend

- Lyme Timber road
- State Road
- Against State (Red)
- Private (Blue)
- Payment Unit (Yellow)





TIMBER SALE MAP

This information provided by authority of Part 525, 1994 PA 451, as amended.

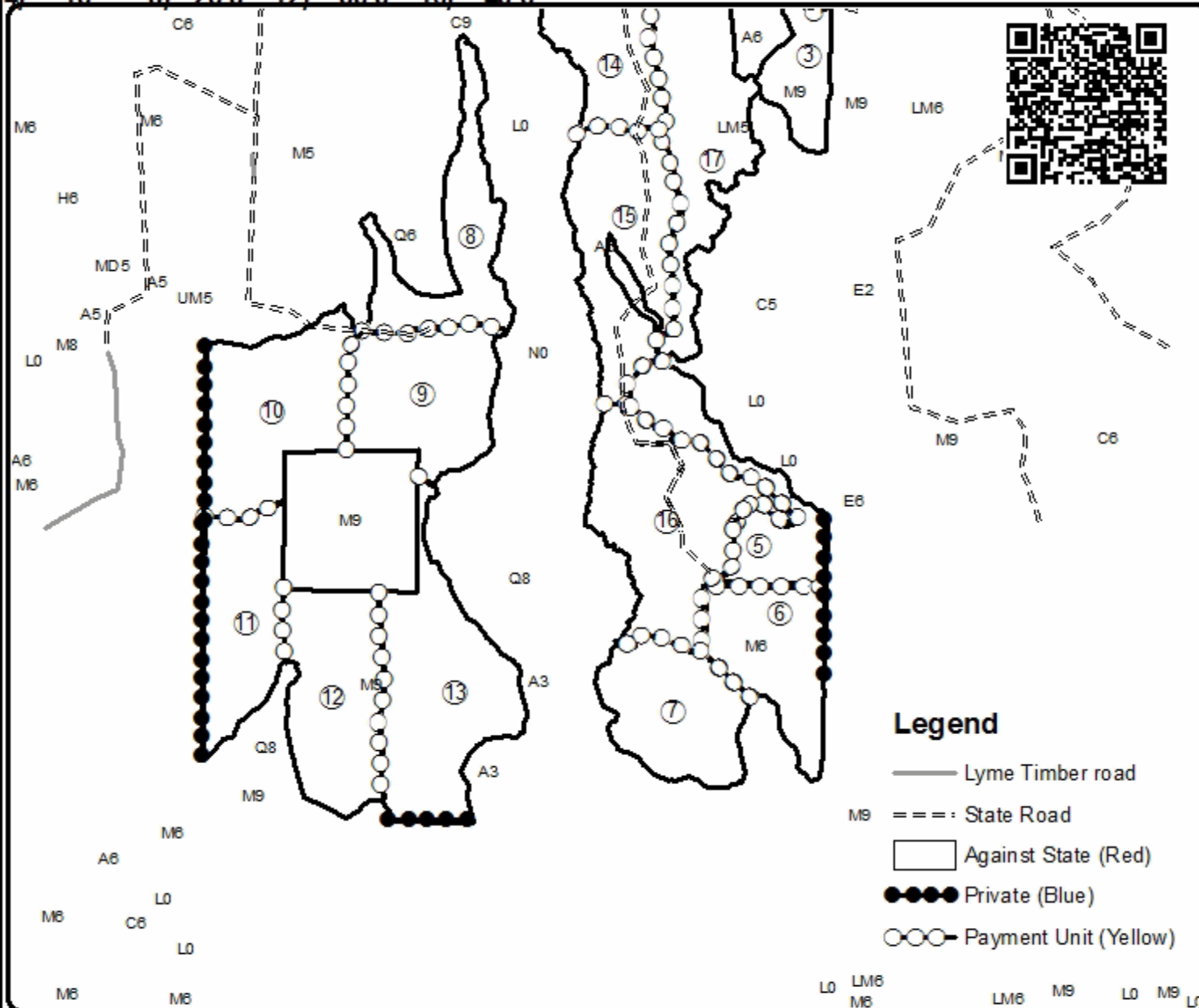
Sale Number	Year
32-033	22

Forest Management Unit		County	Mapped By	Date	Page	of
Gwinn Management Unit		Alger County	Pete Holodnick	08/26/22	2	2
Township	Range	Section(s) and Subdivision(s)			Scale	
45N	22W	Sections: 1, 2, 11 and 12			1:15,840	

Cover Type				Density			
A = Aspen	H = Hemlock	N = Marsh	U = Upland Brush	0 = Non Stocked	5 = Pole Timber Medium		
B = Paper Birch	J = Jack Pine	O = Oak	UM = Upland Mixed	1 = Seeding Sapling Poor	6 = Pole Timber Well		
C = Cedar	L = Lowland Brush	P = Lowland Poplar	V = Bog or Marsh	2 = Seeding Sapling Medium	7 = Saw Timber Poor		
D = Tread Bog	LM = Lowland Mixed	Q = Mixed Swamp Conifer	W = White Pine	3 = Seeding Sapling Well	8 = Saw Timber Medium		
E = Swamp Hdwoods	M = Mpl, Bch, Bch	R = Red Pine	X = Non Stocked	4 = Pole Timber Poor	9 = Saw Timber Well		
F = Spruce Fir	MC = Mixed Conifer	S = Black Spruce	Z = Water				
G = Grass	MD = Mixed Deciduous	T = Tamarack					

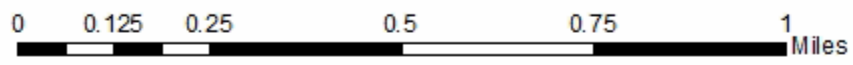
PU	Acres	PU	Acres	PU	Acres	PU	Acres
1)	43.8	5)	22.2	9)	31.9	13)	43.7
2)	25.9	6)	26	10)	36.3	14)	32.2
3)	17.9	7)	27.6	11)	27.3	15)	36.1
4)	15	8)	25.8	12)	33.3	16)	43.5
17)	38						

Lovely Ladoga
Compartment 100
526.5 Acres



Legend

- Lyme Timber road
- M9 - - - - State Road
- Against State (Red)
- Private (Blue)
- ○ ○ ○ Payment Unit (Yellow)



Bit of Hardwood (32-018-22)
T46N, R24W, SEC. 23; Marquette COUNTY

In response to the notice of sale to be held 2:00 p.m. (local time) on February 6, 2023, I am hereby submitting my sealed bid (firm offer) for the following forest products to be cut. Bids for individual species must be at or above the advertised price. All non-responsive bid forms may be rejected.

<u>PRODUCTS & SPECIES</u>	<u>ESTIMATED VOLUME*</u>	<u>ADVERTISED PRICE</u>	<u>BID PRICE/UNIT</u>
Sawtimber			
Black Cherry	26.2 MBF	\$ 94.00/MBF	\$ _____
Red Maple	2.1 MBF	\$ 127.00/MBF	\$ _____
Sugar Maple	49.7 MBF	\$ 190.00/MBF	\$ _____
Pulpwood			
Mixed Hardwood	497 Cords	\$ 13.40/Cord	\$ _____

*The volumes are statistically estimated within plus (+) or minus (-) 16.13 percent at 95% confidence level. These estimated volumes are final and not subject to adjustment. Prospective bidders are urged to examine this timber and to make their own estimates of quantity and quality.

I understand that any or all bids may be rejected. All bids must be signed and all bid items must be bid or the bid form may be rejected. I also understand that consideration and awarding a contract will be based upon my past performance and ability to complete the contract based upon equipment and staffing subject to my control.

FEDERAL ID: _____ - _____ or SOCIAL SECURITY NUMBER: _____ - _____ - _____

Company or individual bidding: _____

Company representative's name: _____

Address: _____

City: _____ State: _____ Zip: _____

IF AVAILABLE, PLEASE PLACE THE PERSONALIZED LABEL FROM YOUR PROSPECTUS IN THE ABOVE BOX.

Individual or company representative's signature: _____ Date: _____

Phone number : _____ Email (optional): _____

THE WINNING BIDDER MUST COMPLETE THE VERIFICATION OF WORKER'S DISABILITY COMPENSATION ACT COMPLIANCE (ON REVERSE SIDE IF DOUBLE SIDED) WITHIN 21 DAYS OF SALE AWARD DATE



FOR DEPARTMENT USE ONLY
Sale Number (XX - XXX - XX - XX)
Forest Management Unit:

TIMBER SALE VERIFICATION OF WORKER'S DISABILITY COMPENSATION ACT COMPLIANCE

*As required by Act 317, P.A. 1969 (Worker's Compensation) and
Part 5 of Act 451 of 1994, as amended.*

VERIFICATION OF WORKER'S DISABILITY COMPENSATION ACT COMPLIANCE

- This verification must be completed and submitted within 21 days of contract award and prior to the issuance of the timber sale contract.
- In addition, if boxes 2B or 2C are checked, then Notice of Exclusion or Certificate of Insurance must be submitted within twenty-one (21) days of the contract award and prior to the issuance of the timber sale contract.
- All information must be typed or printed except for written signatures.

Please Check Appropriate Categories:

1. My business is organized as (you **must** check one of the boxes below):
 - A. Sole Proprietorship (individual)
 - B. Partnership
 - C. Corporation
2. You **must** check one of the boxes below:
 - A. I certify my business is a sole proprietorship and it has no employees but the sole proprietor. I am not subject to the Worker's Compensation Laws.
 - B. I certify my business has satisfied its obligation to the Worker's Compensation Act through the use of an approved Notice of Exclusion (BWC-337, Rev. 5/96). I will provide a copy of the Notice of Exclusion within 21 days of the contract award. (For questions or a copy of the BWC-337, please call the Worker's Compensation Bureau at 517-322-1195).
 - C. I certify my business has a Worker's Compensation Policy. I will provide an original Certificate of Insurance within twenty-one (21) days of the contract award.
3. If you have checked item 2(A) or 2(B), you **must** indicate the number of **both** full-time and part-time employees, other than yourself, including family members and active partners (if none, you must enter "0").

_____ Full-time Employees

_____ Part-time Employees

Name of Business		Federal ID (or) Social Security No.	
Address		Telephone ()	
City	State	ZIP	

I hereby certify that the above information is true and correct. I agree to notify the Michigan DNR of any changes that occur in factors affecting my coverage during any of my present and future operations.

Signature of Owner or Authorized Representative

Title

Date

Please complete the "SEALED BID" information on the next page

Corner River (32-004-22)

T43N, R25W, SEC. 10; T43N, R25W, SEC. 3; T43N, R25W, SEC. 4; T43N, R25W,

In response to the notice of sale to be held 2:00 p.m. (local time) on February 6, 2023, I am hereby submitting my sealed bid (firm offer) for the following forest products to be cut. Bids for individual species must be at or above the advertised price. All non-responsive bid forms may be rejected.

<u>PRODUCTS & SPECIES</u>	<u>ESTIMATED VOLUME*</u>	<u>ADVERTISED PRICE</u>	<u>BID PRICE/UNIT</u>
Sawtimber			
Basswood	8.2 MBF	\$ 33.00/MBF	\$ _____
Black Cherry	1.4 MBF	\$ 94.00/MBF	\$ _____
Paper Birch	2.1 MBF	\$ 55.00/MBF	\$ _____
Red Maple	18.2 MBF	\$ 127.00/MBF	\$ _____
Red Pine	1.3 MBF	\$ 126.00/MBF	\$ _____
Sugar Maple	141.4 MBF	\$ 190.00/MBF	\$ _____
Pulpwood			
Balsam Fir	377 Cords	\$ 10.85/Cord	\$ _____
Mixed Aspen	1,893 Cords	\$ 23.05/Cord	\$ _____
Mixed Hardwood	1,594 Cords	\$ 13.40/Cord	\$ _____
Red Pine	38 Cords	\$ 50.85/Cord	\$ _____
White Spruce	317 Cords	\$ 12.30/Cord	\$ _____

*The volumes are statistically estimated within plus (+) or minus (-) 12.75 percent at 95% confidence level. These estimated volumes are final and not subject to adjustment. Prospective bidders are urged to examine this timber and to make their own estimates of quantity and quality.

I understand that any or all bids may be rejected. All bids must be signed and all bid items must be bid or the bid form may be rejected. I also understand that consideration and awarding a contract will be based upon my past performance and ability to complete the contract based upon equipment and staffing subject to my control.

FEDERAL ID: _____ or SOCIAL SECURITY NUMBER: _____

Company or individual bidding: _____

Company representative's name: _____

Address: _____

City: _____ State: _____ Zip: _____

IF AVAILABLE, PLEASE PLACE THE PERSONALIZED LABEL FROM YOUR PROSPECTUS IN THE ABOVE BOX.

Individual or company representative's signature: _____ Date: _____

Phone number : _____ Email (optional): _____

THE WINNING BIDDER MUST COMPLETE THE VERIFICATION OF WORKER'S DISABILITY COMPENSATION ACT COMPLIANCE (ON REVERSE SIDE IF DOUBLE SIDED) WITHIN 21 DAYS OF SALE AWARD DATE



FOR DEPARTMENT USE ONLY
Sale Number (XX - XXX - XX - XX)
Forest Management Unit:

TIMBER SALE VERIFICATION OF WORKER'S DISABILITY COMPENSATION ACT COMPLIANCE

*As required by Act 317, P.A. 1969 (Worker's Compensation) and
Part 5 of Act 451 of 1994, as amended.*

VERIFICATION OF WORKER'S DISABILITY COMPENSATION ACT COMPLIANCE

- This verification must be completed and submitted within 21 days of contract award and prior to the issuance of the timber sale contract.
- In addition, if boxes 2B or 2C are checked, then Notice of Exclusion or Certificate of Insurance must be submitted within twenty-one (21) days of the contract award and prior to the issuance of the timber sale contract.
- All information must be typed or printed except for written signatures.

Please Check Appropriate Categories:

1. My business is organized as (you **must** check one of the boxes below):
 - A. Sole Proprietorship (individual)
 - B. Partnership
 - C. Corporation
2. You **must** check one of the boxes below:
 - A. I certify my business is a sole proprietorship and it has no employees but the sole proprietor. I am not subject to the Worker's Compensation Laws.
 - B. I certify my business has satisfied its obligation to the Worker's Compensation Act through the use of an approved Notice of Exclusion (BWC-337, Rev. 5/96). I will provide a copy of the Notice of Exclusion within 21 days of the contract award. (For questions or a copy of the BWC-337, please call the Worker's Compensation Bureau at 517-322-1195).
 - C. I certify my business has a Worker's Compensation Policy. I will provide an original Certificate of Insurance within twenty-one (21) days of the contract award.
3. If you have checked item 2(A) or 2(B), you **must** indicate the number of **both** full-time and part-time employees, other than yourself, including family members and active partners (if none, you must enter "0").

_____ Full-time Employees

_____ Part-time Employees

Name of Business		Federal ID (or) Social Security No.	
Address		Telephone ()	
City	State	ZIP	

I hereby certify that the above information is true and correct. I agree to notify the Michigan DNR of any changes that occur in factors affecting my coverage during any of my present and future operations.

Signature of Owner or Authorized Representative

Title

Date

Please complete the "SEALED BID" information on the next page

Lovely Ladoga (32-033-22)

T45N, R22W, SEC. 1; T45N, R22W, SEC. 11; T45N, R22W, SEC. 12; T45N, R22W,

In response to the notice of sale to be held 2:00 p.m. (local time) on February 6, 2023, I am hereby submitting my sealed bid (firm offer) for the following forest products to be cut. Bids for individual species must be at or above the advertised price. All non-responsive bid forms may be rejected.

<u>PRODUCTS & SPECIES</u>	<u>ESTIMATED VOLUME*</u>	<u>ADVERTISED PRICE</u>	<u>BID PRICE/UNIT</u>
Sawtimber			
Basswood	12.0 MBF	\$ 33.00/MBF	\$ _____
Beech	13.4 MBF	\$ 32.00/MBF	\$ _____
Paper Birch	3.3 MBF	\$ 55.00/MBF	\$ _____
Red Maple	122.4 MBF	\$ 127.00/MBF	\$ _____
Sugar Maple	1,270.6 MBF	\$ 190.00/MBF	\$ _____
Pulpwood			
Balsam Fir	140 Cords	\$ 10.85/Cord	\$ _____
Balsam Poplar	61 Cords	\$ 23.05/Cord	\$ _____
Black Spruce	28 Cords	\$ 12.30/Cord	\$ _____
Mixed Hardwood	3,219 Cords	\$ 13.40/Cord	\$ _____
Quaking Aspen	2,673 Cords	\$ 23.05/Cord	\$ _____
White Spruce	117 Cords	\$ 12.30/Cord	\$ _____

*The volumes are statistically estimated within plus (+) or minus (-) 7.36 percent at 95% confidence level. These estimated volumes are final and not subject to adjustment. Prospective bidders are urged to examine this timber and to make their own estimates of quantity and quality.

I understand that any or all bids may be rejected. All bids must be signed and all bid items must be bid or the bid form may be rejected. I also understand that consideration and awarding a contract will be based upon my past performance and ability to complete the contract based upon equipment and staffing subject to my control.

FEDERAL ID: _____ or SOCIAL SECURITY NUMBER: _____

Company or individual bidding: _____

Company representative's name: _____

Address: _____

City: _____ State: _____ Zip: _____

IF AVAILABLE, PLEASE PLACE THE PERSONALIZED LABEL FROM YOUR PROSPECTUS IN THE ABOVE BOX.

Individual or company representative's signature: _____ Date: _____

Phone number : _____ Email (optional): _____

THE WINNING BIDDER MUST COMPLETE THE VERIFICATION OF WORKER'S DISABILITY COMPENSATION ACT COMPLIANCE (ON REVERSE SIDE IF DOUBLE SIDED) WITHIN 21 DAYS OF SALE AWARD DATE



FOR DEPARTMENT USE ONLY
Sale Number (XX - XXX - XX - XX)
Forest Management Unit:

TIMBER SALE VERIFICATION OF WORKER'S DISABILITY COMPENSATION ACT COMPLIANCE

*As required by Act 317, P.A. 1969 (Worker's Compensation) and
Part 5 of Act 451 of 1994, as amended.*

VERIFICATION OF WORKER'S DISABILITY COMPENSATION ACT COMPLIANCE

- This verification must be completed and submitted within 21 days of contract award and prior to the issuance of the timber sale contract.
- In addition, if boxes 2B or 2C are checked, then Notice of Exclusion or Certificate of Insurance must be submitted within twenty-one (21) days of the contract award and prior to the issuance of the timber sale contract.
- All information must be typed or printed except for written signatures.

Please Check Appropriate Categories:

1. My business is organized as (you **must** check one of the boxes below):
 - A. Sole Proprietorship (individual)
 - B. Partnership
 - C. Corporation
2. You **must** check one of the boxes below:
 - A. I certify my business is a sole proprietorship and it has no employees but the sole proprietor. I am not subject to the Worker's Compensation Laws.
 - B. I certify my business has satisfied its obligation to the Worker's Compensation Act through the use of an approved Notice of Exclusion (BWC-337, Rev. 5/96). I will provide a copy of the Notice of Exclusion within 21 days of the contract award. (For questions or a copy of the BWC-337, please call the Worker's Compensation Bureau at 517-322-1195).
 - C. I certify my business has a Worker's Compensation Policy. I will provide an original Certificate of Insurance within twenty-one (21) days of the contract award.
3. If you have checked item 2(A) or 2(B), you **must** indicate the number of **both** full-time and part-time employees, other than yourself, including family members and active partners (if none, you must enter "0").

_____ Full-time Employees

_____ Part-time Employees

Name of Business		Federal ID (or) Social Security No.	
Address		Telephone ()	
City	State	ZIP	

I hereby certify that the above information is true and correct. I agree to notify the Michigan DNR of any changes that occur in factors affecting my coverage during any of my present and future operations.

Signature of Owner or Authorized Representative

Title

Date

Please complete the "SEALED BID" information on the next page