



**DEPARTMENT OF NATURAL RESOURCES
STATE OF MICHIGAN
TIMBER SALE PROSPECTUS #7258**

SCHEDULED SALE DATE AND TIME: **9:00 a.m. (local time) on July 13, 2023.**

LOCATION: **PIGEON RIVER COUNTRY MGMT UNIT, PO BOX 456, 9966 TWIN LAKES ROAD, VANDERBILT, MI 49795.**

PROSPECTUS NOTE: The bidder is advised to inspect the sale area and review the location, estimated volumes, operating costs and contract terms of proposed sales. Please be aware that some landowners may request 60 days or more notice for access across their land.

Notice is hereby given that bids will be received by the Unit Manager, PIGEON RIVER COUNTRY MANAGEMENT UNIT, for certain timber on the following described lands:

Scenic Hardwoods 2 (53-001-23) / T32N, R02W, SEC. 14, NENE,S1/2NE,SE.

Otsego County, Advertised Price \$14,827.15, 93.6 Acres, Hardwood, Red Oak.

SALE NOTE: This sale contains beech that has been impacted by beech bark disease. See specs 7.2.6 and 7.5.1 for additional details.

Grouse Walk Aspen (53-023-22) / T34N, R01W, SEC. 29, S1/2SE.

T34N, R01W, SEC. 32, NE,SW,NESE,SWSE.

Cheboygan County, Advertised Price \$90,923.85, 101.9 Acres, Aspen, Spruce/Fir/Tamarack.

SALE NOTE: Note seasonal operating restrictions in spec 5.2.3.1 as well as the potential need for Timber Mats in spec 5.2.17.

End of the Line Aspine (53-027-22) / T34N, R01W, SEC. 28, W1/2SW.

T34N, R01W, SEC. 29, N1/2SE,SESE.

Cheboygan County, Advertised Price \$28,586.10, 53.8 Acres, Aspen, Red Pine.

SALE NOTE: Please note the potential need for fill material and/or timber mats, as discussed in specs 4.2.2 and 5.2.17, respectively. Also, note seasonal operating restrictions in spec 5.2.3.1.

No Way Out Aspen (53-030-22) / T34N, R01W, SEC. 20, NENW,S1/2NW,SWNE,NWSE.

Cheboygan County, Advertised Price \$20,743.90, 37.1 Acres, Aspen, Spruce/Fir/Tamarack.

SALE NOTE: The only access to this timber sale is through private property. Per spec 4.4.1, it is the responsibility of the Purchaser to obtain permission from the private landowner. Please also note seasonal operating restrictions in spec 5.2.3.1 and the potential need for fill and/or timber mats in specs 4.2.2 and 5.2.17, respectively.

Access may be through private land.

A Rick Special (53-015-21) / T33N, R01E, SEC. 11, E1/2NE.

Cheboygan County, Advertised Price \$6,719.45, 13.9 Acres, Spruce/Fir/Tamarack, Aspen.

BID INSTRUCTIONS (VER. 10/10/2022):

1. Scheduled Bid Location, Date, and Time (2/11)

Bids must be received by the Unit Manager, PIGEON RIVER COUNTRY OFFICE, PO Box 456 9966 Twin Lakes Road, Vanderbilt, MI 49795, no later than 9:00 a.m. (local time) on July 13, 2023. For further information concerning this sale, contact Mark Monroe at 989-983-4101 extension .

2. Bidder's Qualifications (10/22)

If all or part of a timber sale was prepared by a private contractor, the contractor and that contractor's company are not permitted to bid on the timber sale. A person must be 18 years of age or older to purchase timber. Permanent employees of the Department of Natural Resources or members of their immediate household may not bid. Former employees, in the permanent or seasonal class, may not bid until 3 months after the last day of active duty. Bids will not be accepted from individuals or companies appearing on the DNR/FRD No-Bid List. This list contains the names of purchasers who previously failed to execute a contract within 21-days or who have a history of poor performance.

3. Preparation of Sealed Bids (5/16)

Bid Forms may be completed online thru Michigan DNR Timber Sale Online Bidding (OLB) at www.michigan.gov/timberbidding or by completing the hardcopy Bid Form found in the Timber Sale Prospectus . Hardcopy Bid Forms shall be manually signed in ink. Registration in OLB is considered your 'signature' for all bids submitted thru that system. Bid prices must be entered for each species and product in the Bid Price column for all material subject to bidding and all fill-in blanks must be completed. If erasures or other changes appear on the hardcopy Bid Form, each erasure or change must be initialed by the person signing the bid.

4. Submission of Sealed Bids (5/16)

Bid forms may be obtained from the Unit Manager or thru OLB. Bids may be submitted hardcopy or thru OLB. All hardcopy bids must be submitted on the bid form and in an envelope clearly identified as described in this section. NOTE: Only one bid form per bid envelope. Sealed bids must be submitted to the Unit office designated in the prospectus and must be submitted at or prior to the time established in the prospectus. The envelope should show on the outside (a) the sale name or number and (b) the date and time of bid opening, as shown in the prospectus. Bids received after the time specified in the sale prospectus are late bids and will be rejected.

It is possible for a bidder to submit multiple bids on a single sale. For example, a bid may be submitted hardcopy and a bid may be submitted thru OLB. Or, two bidders from the same company could both submit bids on the same sale. If this were to happen, the State would accept all bids received and award the contract accordingly. All bidding and contractual requirements would apply to all bids received.

5. Public Opening of Sealed Bids (7/16)

If conditions permit, the sealed bids will be publicly opened and posted at the time and place set in the prospectus.

If a bidder, present at a bid opening, has submitted bids on more than one sale, that bidder may withdraw their unopened bid envelopes or announce the withdrawal of their online bid after being declared the successful bidder on one sale.

6. Award of Contract (1/11)

Award of the contract will be made to the Bidder whose bid, conforming to the prospectus, is most advantageous to the State of Michigan on the basis of total value at rates bid for the estimated quantities. The State reserves the right to reject any bid or waive any minor irregularity in bids received. A written award mailed (or otherwise furnished) to the successful Bidder shall be deemed to result in a binding contract without further action by either party.

7. Down Payment (1/11)

The Bidder to whom award is made must make a down payment within 21 days of the sale award. The amount of the down payment will be calculated as shown in the Bond and Payment Schedule of this prospectus. Only cash may be used to meet this requirement.

8. Performance Security (1/11)

As guarantee of faithful performance, a cash bond, certificate of deposit, surety bond or irrevocable letter of credit (LOC) is required within 21 days of the sale award. The amount of the performance security is shown in the Bond and

Payment Schedule of this prospectus. If an LOC or surety is used, the coverage must extend for at least 6 months beyond the contract expiration.

9. Worker's Compensation (10/22)

Purchaser shall obtain worker's compensation insurance to cover claims under Michigan's Worker's Disability Compensation Act of 1969 or similar employee benefit act of any other state applicable to an employee. Verification of Worker's Disability Compensation Act Compliance must be completed and submitted within 21 days of contract award and prior to the issuance of the timber sale contract. In addition, if applicable, Notice of Exclusion or Certificate of Insurance must also be submitted.

10. Timber Sale Contract (10/22)

Additional conditions and requirements common to all timber sales are listed on the timber sale contract (R4031) and are available on line at www.michigan.gov/timber. Contact the Unit Manager for additional information or a sample contract. Within 21 days of the date of the award letter, the bidder must sign the contract and provide the required down payment, performance security, and verification of worker's disability compensation. The down payment and performance security shall be in accordance with the provisions of the timber sale contract, in the sums stated in this prospectus. If these actions are not taken, then the Bidder, the Bidder's corporation, and the corporation's principals may not be permitted to bid on State timber sales for a period of 3 months after the first offense, 6 months after the second offense, and 1 year after the third offense. An offense will only be counted against the Bidder for 5 years. In addition, the Bidder certifies that if awarded this contract, the Bidder will complete the timber sale contract in accordance with its terms and any modifications thereof including requirements to purchase, cut, and remove the included timber by the expiration date.

Payment Unit values in the State Forest Timber Sale Contract are calculated based on the advertised value of the Payment Unit as a percentage of the total advertised value of the contract. The advertised value of each Payment Unit is given in the Description of Timber by Payment Unit table on the Timber Sale Information page. For example, if the value of Payment Unit 1 is advertised as \$1,500 and the total Timber Sale value is advertised as \$10,000, the contract price for Payment Unit 1 will be 15% of the total bid price ($\$1,500/\$10,000 * 100$).

11. Disclaimer of Estimates and Bidder's Warranty of Inspection (10/22)

Before submitting this bid, the Bidder is advised and cautioned to inspect the sale area, review the requirements of the sale contract, and take other steps as may be reasonably necessary to ascertain the location, estimated volumes, construction estimates, and operating costs of the proposed sale. Failure to do so will not relieve the Bidder from responsibility for completing the contract.

The Bidder warrants that this bid is submitted solely on the basis of the Bidder's examination and inspection of the quality and quantity of the timber offered for sale and the Bidder's opinion of the value thereof and the costs of recovery. No reliance should be placed on the State of Michigan's estimates of timber quality, quantity or costs of recovery. Bidder further acknowledges that the State of Michigan: (i) expressly disclaims any warranty of fitness of timber for any purpose; (ii) offers this timber as is without any warranty of quality (merchantability) or quantity and (iii) expressly disclaims any warranty as to the quantity or quality of timber sold.

12. Certification and Chain-of-Custody (10/22)

Unless otherwise indicated in the contract under section 7 – Other Conditions of the Sale Specific Conditions & Requirements, the area encompassed by this timber sale is certified to the standards of the Forest Stewardship Council (FSC) - Certificate #SCS-FM/COC-00090N and the Sustainable Forestry Initiative (SFI) - Certificate # NSF-SFIS-5Y031-SF5. Forest products from this sale may be delivered to the mill as "FSC 100% and / or SFI certified" as long as the contractor hauling the forest products is chain-of-custody (COC) certified or covered under a COC certificate from the destination mill. The purchaser is responsible for maintaining COC after leaving the sale area.

13. Good Neighbor Authority (GNA) Requirements (10/22)

If the name of this timber sales contains the acronym GNA, it is authorized by the Good Neighbor Authority (GNA) and covered by various agreements between the U.S. Forest Service and the State. The timber sale occurs on federal land and the following conditions apply:

GNA contracts on US Forest Service land will not be awarded to purchasers on the Federal list of excluded parties. The System for Award Management (SAM) will be checked for active excluded parties prior to award of contract. In

addition, the Bidder to whom award is made must complete an Assurance Regarding Felony Conviction or Tax Delinquent Status for Corporate Applicants (AD-3031).

14. Good Neighbor Authority (GNA) Requirements, con't (10/22)

Bidder certifies, by signing this bid form, that to the best of Bidder's knowledge that the following representations are accurate and complete.

- a. That the Bidder and its principals are not presently debarred, suspended, proposed for debarment, declared ineligible, or voluntary excluded from timber sales (covered transactions) by any Federal department or agency.
- b. That the Bidder and its principals have not within a 3-year period preceding this bid been convicted of or had a civil judgment rendered against them for commission of fraud or a criminal offense in connection with obtaining, attempting to obtain, or performing a public (Federal, State, or local) transaction or contract under a public transaction; violation of Federal or State antitrust statutes or commission of embezzlement, theft, forgery, bribery, falsification or destruction of records, making false statements, or receiving stolen property.
- c. That the Bidder and its principals are not presently indicted for or otherwise criminally or civilly charged by a governmental entity (Federal, State, or local) with commission of any of the offenses enumerated in paragraph b of this certification.
- d. That the Bidder and its principals have not within a 3-year period preceding this bid had one or more public transactions (Federal, State, or local) terminated for breach or default of a timber or forest product contract.

Bidders that cannot certify this requirement, in whole or in part, shall submit an explanation with their bid.

SHANNON LOTT, Acting
Director

TIMBER SALE INFORMATION

Scenic Hardwoods 2 (53-001-23)
T32N, R02W, SEC. 14.
Otsego County (Advertised Price \$14,827.15)

SALE NOTE: This sale contains beech that has been impacted by beech bark disease. See specs 7.2.6 and 7.5.1 for additional details.

A timber sale contract for this lump sum, sealed bid timber sale will be awarded to the responsible bidder offering the highest sealed bid price. All units of volume listed below were estimated using the Inventory Manager computer program and the new Michigan taper model. Bids must be at or above the following advertised price for each product and species:

<u>PRODUCTS & SPECIES</u>	<u>ESTIMATED UNITS*</u>	<u>ADVERTISED PRICE</u>
Sawtimber		
Beech	14.2 MBF	\$ 39.00 / MBF
Red Oak	13.6 MBF	\$ 110.00 / MBF
Sugar Maple	6.9 MBF	\$ 198.00 / MBF
Pulpwood		
B. T. Aspen	43 Cords	\$ 17.10 / Cord
Basswood	29 Cords	\$ 9.35 / Cord
Mixed Hardwood	871 Cords	\$ 11.50 / Cord
Red Oak	36 Cords	\$ 9.00 / Cord
White Pine	4 Cords	\$ 16.05 / Cord

* The total volume is statistically estimated within plus (+) or minus (-) 19.64 percent. There are an estimated 1,070 cords on this timber sale, plus or minus 210 cords at the 95% confidence level. The estimated units are final and not subject to adjustment. Prospective bidders are urged to examine this timber and to make their own estimates of quantity and quality.

BOND AND PAYMENT SCHEDULE:

1. A bond in the amount of \$1,483.00 to insure faithful performance of the conditions of the contract will be deposited by the successful bidder within 21 days of the sale award.
2. Cutting in any sale or unit without the required advance payment would be considered a trespass.
3. Total payment must be paid in advance or according to the following schedule :
 - (a) Ten percent (10%) of the sale value must be paid within 21 days of the sale award.
 - (b) The 10% down payment will be credited towards the first unit cut.
 - (c) Payment for each of the following units must be made before cutting begins in that unit:

PAYMENT UNIT NUMBER	PERCENT OF TOTAL SALE VALUE
01	32.3%
02	37.6%
03	30.1%
4. If no cutting takes place, the 10% down payment will not be refunded.
5. Operations on the contract issued will terminate on 12/31/2025.

SALE STATISTICS

Volumes were calculated in cubic feet using the Michigan taper model. Cubic foot volume includes all wood inside bark for the product indicated. For display purposes, cubic feet were converted to cords and MBF using a simple conversion factor, e.g. 79 cubic feet per cord and 185 cubic feet per MBF. The cubic foot volumes are precise; the cords and MBF volumes are not. Cubic foot volume cannot be directly converted to cords or boards with precision.

SALE VOLUMES

The total estimated sale volume may not equal the sum of the species/products due to the nature of statistical calculations associated with double sampling methodology.

VOLUME		STATISTICAL RANGE IN CORDS		
TOTAL CUBIC FEET	TOTAL CORDS	PERCENT ERROR	MINIMUM	MAXIMUM
84,553	1,070	19.64%	860	1,281

VDU VOLUMES

A VDU is a Volume Determination Unit. Volumes and their associated statistics are calculated at the VDU level and summarized to the sale level. There is often a one to one relationship between a VDU and a Payment Unit, but not always, depending on the cruise design. Refer to the VDU TO PAYMENT UNIT table.

VDU	VOLUME		PERCENT ERROR	RANGE IN CORDS	
	TOTAL CUBIC FEET	TOTAL CORDS		MINIMUM	MAXIMUM
82	84,553	1,070	19.64%	860	1,281
TOTAL:	84,553	1,070		860	1,281

VDU TO PAYMENT UNIT

When a VDU is associated with more than one Payment Unit (PU), the VDU volumes are assigned to the PU based on acres of the VDU within the PU.

VDU	VDU ACRES	PU	PU ACRES
82	93.6	1	30.3
		2	35.1
		3	28.2
TOTAL:	93.6		93.6

DESCRIPTION OF TIMBER BY PAYMENT UNIT (PU)

PU	MARKET GROUP	PRODUCT	QUANTITY	UNIT	ACRES	ADVERTISE PRICE
1	Beech	Sawtimber	4.6	MBF	30.3	\$4,789.60
	Red Oak		4.4	MBF		
	Sugar Maple		2.2	MBF		
	B. T. Aspen	Pulpwood	14	Cords		
	Basswood		9	Cords		
	<i>Basswood</i>	<i>Sawtimber</i>	0.7	<i>MBF</i>		
	<i>Basswood</i>	<i>Pulpwood</i>	8	<i>Cords</i>		
	Mixed Hardwood		282	Cords		
	<i>Red Maple</i>	<i>Sawtimber</i>	0.7	<i>MBF</i>		
	<i>Beech</i>	<i>Pulpwood</i>	136	<i>Cords</i>		
	<i>Red Maple</i>		39	<i>Cords</i>		
	<i>Sugar Maple</i>		106	<i>Cords</i>		
	Red Oak		12	Cords		
	White Pine		1	Cords		
2	Beech	Sawtimber	5.3	MBF	35.1	\$5,557.05
	Red Oak		5.1	MBF		
	Sugar Maple		2.6	MBF		
	B. T. Aspen	Pulpwood	16	Cords		
	Basswood		11	Cords		
	<i>Basswood</i>	<i>Sawtimber</i>	0.8	<i>MBF</i>		
	<i>Basswood</i>	<i>Pulpwood</i>	9	<i>Cords</i>		
	Mixed Hardwood		326	Cords		
	<i>Red Maple</i>	<i>Sawtimber</i>	0.9	<i>MBF</i>		
	<i>Beech</i>	<i>Pulpwood</i>	157	<i>Cords</i>		
	<i>Red Maple</i>		45	<i>Cords</i>		
	<i>Sugar Maple</i>		122	<i>Cords</i>		
	Red Oak		13	Cords		
	White Pine		2	Cords		
3	Beech	Sawtimber	4.3	MBF	28.2	\$4,469.00
	Red Oak		4.1	MBF		
	Sugar Maple		2.1	MBF		
	B. T. Aspen	Pulpwood	13	Cords		
	Basswood		9	Cords		
	<i>Basswood</i>	<i>Sawtimber</i>	0.6	<i>MBF</i>		
	<i>Basswood</i>	<i>Pulpwood</i>	8	<i>Cords</i>		
	Mixed Hardwood		262	Cords		
	<i>Red Maple</i>	<i>Sawtimber</i>	0.7	<i>MBF</i>		
	<i>Beech</i>	<i>Pulpwood</i>	127	<i>Cords</i>		
	<i>Red Maple</i>		36	<i>Cords</i>		
	<i>Sugar Maple</i>		98	<i>Cords</i>		
	Red Oak		11	Cords		
	White Pine		1	Cords		
TOTAL:			34.7	MBF		
TOTAL:			982	Cords		

Sale Specific Conditions & Requirements

Sale Name: Scenic Hardwoods 2

Sale Number: 53-001-23 Seq#: 2

1 - Sale Area

1.2 - Boundaries

1.2.1 - Painted boundaries (9/19)

The sale boundary and Payment Unit boundaries are marked and identified by blue and red paint. Exterior sale boundary lines against private property are marked with blue paint. Exterior sale boundary lines against state are marked with red paint. Interior retention areas are marked with a red X. Pickerel Lake Road forms the unpainted Payment Unit boundary between Payment Unit #'s 1 & 2, and Payment Unit #'s 2 & 3. Red and blue painted boundary line trees are not Included Timber and are to be protected, unless marked with orange paint.

2 - Timber Specifications

2.1 - Included Timber

2.1.3 - Cut tree marked unit(s) (12/08)

Within Payment Unit(s) #'s 1-3, all trees are designated for cutting when marked with orange paint above and below stump height, regardless of merchantability. In addition, cut all beech trees except for those marked with green paint.

2.2 - Utilization

2.2.6 - Roundwood operation required (3/21)

The skidding of whole trees or tree segments with limbs attached is prohibited within Payment Unit(s) #'s 1-3. All products must be produced as roundwood and forwarded to existing roads or landing areas in final product length.

2.2.7 - Uncut designated trees (2/04)

Liquidated damages of \$5.00 per tree will be assessed for every marked tree not cut. In addition, all saplings (trees less than 4 inches DBH) must be cut down in the small patch clearcuts which are scattered throughout the Sale Area. Most of these saplings have been marked with orange paint.

3 - Payments

3.4 - Damaged Timber

3.4.1 - Damaged timber (7/16)

General Condition and Requirement 3.4 Damaged Timber, defines liquidated damages for undesignated live merchantable trees which are cut or injured. No damage is acceptable to undesignated live merchantable trees. Within the sale area, if more than 10% of trees (> 4.5" DBH) within a specified area of the sale are damaged, liquidated damages will be assessed for all trees damaged. Rates will be in accordance with General Condition and Requirement 3.4 Damaged Timber.

Also, protect red oak saplings and poletimber from damage as much as possible. Some of these have been marked with green paint to aid in identification.

4 - Transportation

4.1 - Construction

4.1.3 - Slash and earthen piles (8/04)

Piles or windrows of earth along roads and landings that have been widened or constructed shall be leveled. Slash from road maintenance or construction, including stumps, shall be dispersed throughout the sale.

4.1.4 - Timber removed for construction (12/09)

Trees cut or damaged in the process of pre-approved road, landing or skid trail construction will be decked in an area separate from other Designated Timber and not removed until measured by the sale administrator. Payment will be made at the specified Purchase Unit Price.

4.1.6 - Road construction (1/09)

Construction of new roads or improvements of existing roads shall be done in such a way as to minimize the environmental

and visual impacts. Merchantable trees shall be cut and utilized unless otherwise directed. Non-merchantable trees shall be severed and laid flat on the ground. Slash shall be scattered, and not left in windrows and kept a minimum of 10 feet back from the road edge. Stumps shall be set upright, not left on edge, and be moved at least 10 feet away from the road edge. Disturbed soil shall be feathered into the woods and not left in berms or windrows.

4.1.7 - Road closure (10/11)

All new roads built into the sale must be blocked to vehicle traffic upon completion of the sale. Overgrown roads that are reopened shall be considered new roads. In general, this will require constructing a four (4') foot high berm of stumps and logs covered with earth. These roads must be rendered impassable to cars and trucks. All stumps from road building and landing construction must be reserved to block any newly constructed roads upon completion of the sale. These stumps must be scattered along the road system to prohibit vehicular movement. Contact the sale administrator for specific details of design and placement.

4.2 - Maintenance

4.2.5 - Two wheel drive condition (2/04)

All existing trail roads on and adjacent to the sale area must be passable by two-wheel drive traffic for the duration of the sale.

5 - Operations

5.2 - Conduct of Operations

5.2.1 - Slash

5.2.1.11 - Slash for reforestation (3/21)

To facilitate reforestation, the Sale Area shall be left with slash evenly distributed. Bunched tops within the cutting area shall be broken up and scattered. Stumps shall be cut low to the ground. Processing sites shall not be left with a compacted layer of slash; tops from these sites shall be hauled back into the cut area and scattered.

5.2.2 - Hazard Trees/Snags

5.2.2.1 - Den trees (10/16)

Obvious hollow and/or den trees shall be protected and left standing unless they are a safety hazard.

5.2.3 - Operating Restrictions

5.2.3.1 - Operating restrictions (9/11)

Within Payment Unit(s) #2 cutting, skidding, and hauling are not permitted during the period of March 15 to July 15. This restriction is because of an active red-shouldered hawk nest within the area.

5.2.3.4 - Oak wilt restriction, no exceptions (1/18)

Within Payment Unit(s) #'s 1-3, cutting, skidding, hauling within the sale and brushing of access roads to the sale are not permitted during the period of April 15 to July 15. No exceptions will be granted. This is necessary to reduce the spread of oak wilt.

5.2.4 - Dead and Down Creation

5.2.4.3 - Dead and down creation, dead trees (6/07)

Except as provided for in General Condition and Requirement 5.2.2, no dead trees, standing or down, are to be cut, skidded, or processed. This does not include dead beech trees. However, any beech trees where the main stem has snapped off must not be cut.

5.2.38 - No decking against live trees (2/04)

Cut products may not be decked against unmarked or designated leave trees.

5.4 - Soil Protection

5.4.1 - Rutting restriction, general (7/16)

Operations are to cease immediately if equipment and weather conditions result in rutting of roads and/or skid trails which is 12 inches or greater in depth and 25 feet in length. The Unit Manager or his/her representative may restrict hauling and/or skidding if ruts exceed the specified depth. With the Unit Manager or his/her representative's approval, the Purchaser may

return to the area when the risk of rutting has decreased.

5.4.2 - Skid trails (2/04)

Skid trails up and down slopes should be avoided. If however this is unavoidable, these trails will be left in a non-erodible condition using water bars, logs, and slash. Placing of slash on these skid trails while logging is ongoing may alleviate need for any further action. At the direction of the sale administrator, seed, fertilizer, and mulch may also be required.

5.8 - Protection of Endangered Species

5.8.5 - Protection of raptor nests (3/13)

All trees with raptor nests will be protected if found during harvesting operations. Notification will be made to the Unit Manager or his/her representative who will notify the Wildlife Biologist so an on-site evaluation and recommendation can be made, if necessary.

6 - Safety and Fire Prevention

6.2 - Signing

6.2.1 - Road posting (10/20)

The Purchaser is responsible for posting and maintaining caution signs on Pickerel Lake Road prior to beginning operations. The road must be posted at appropriate distances from the sale area to warn of logging activity and truck traffic. Signs must be removed when harvest operations are suspended or completed. The Purchaser will provide these signs.

7 - Other Conditions

7.2 - Extensions

7.2.6 - Forest health extension (6/13)

This sale contains trees infected with beech bark disease. It is considered at high risk for mortality and/or loss of timber value. The sale must be harvested promptly. One (1), twelve (12) month extension can be applied to one (1) other State Forest Timber Sale Contract owned by the purchaser or owned by one (1) designated sub-contractor of the Purchaser that works this contract. To qualify, the contract expiration date of the contract to be extended must be within twelve (12) months from the issue date of this contract. If this is the first extension on the other State Forest Timber Sale Contract, then the 5% extension fee will be waived. If this is an additional extension, the 10% fee will be reduced to 5%. The forest health extension must be used before this contract is closed-out. This specification does not alleviate the purchaser from any contractual obligations of the extended State Forest Timber Sale Contract. Per General Condition & Requirement 7.2, extensions are at the sole discretion of the DNR.

7.5 - Loss

7.5.1 - Deteriorating timber (7/09)

The sale area has received damage from beech bark disease. The Purchaser should harvest the wood as soon as possible. The Department of Natural Resources is held free of responsibility of any further damage or deterioration due to delay in harvesting.



TIMBER SALE MAP

This information provided by authority of Part 525, 1994 PA 451, as amended.

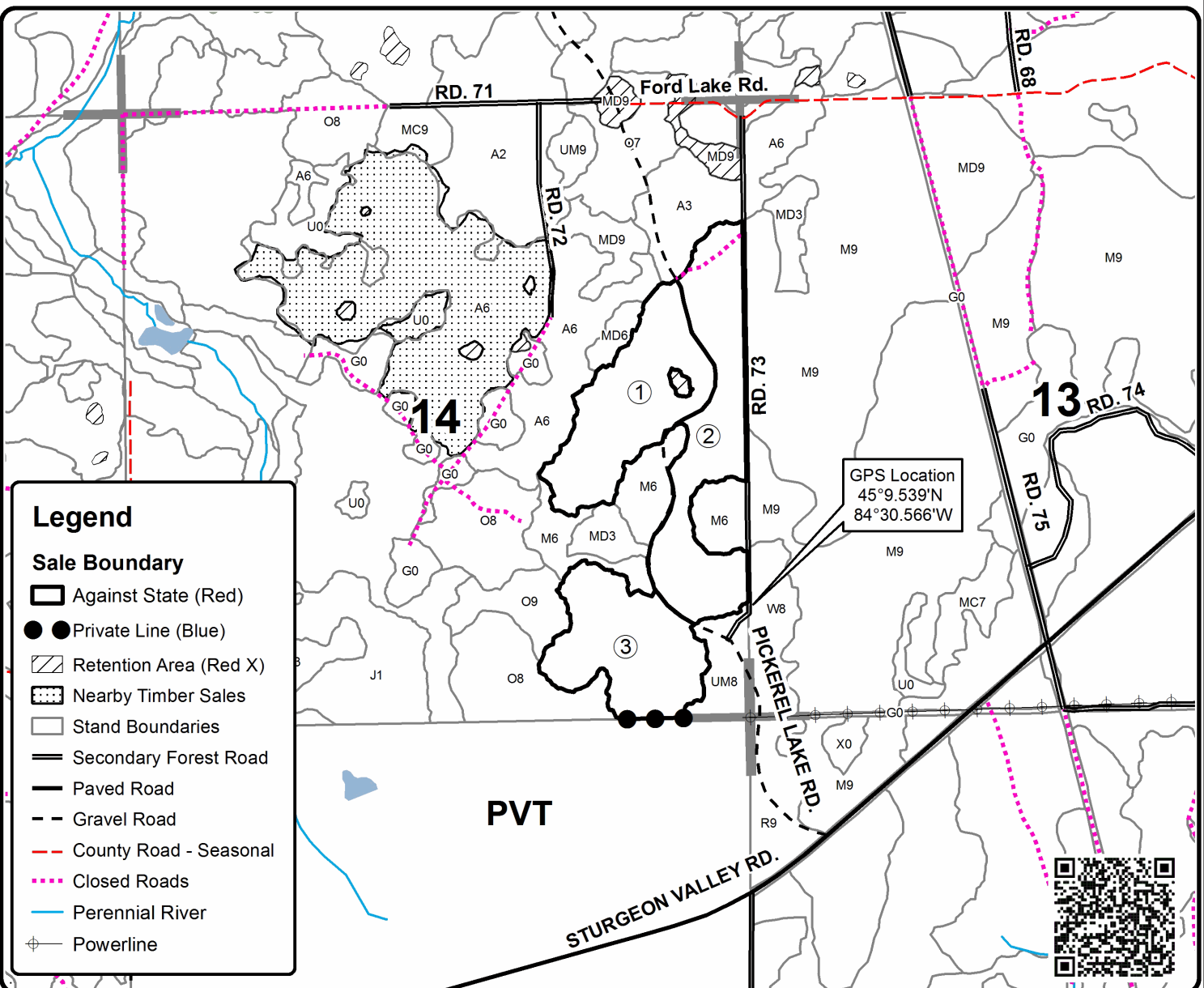
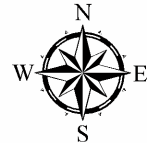
Forest Management Unit Pigeon River Country		County Otsego	Mapped By Rekowski	Date 10/12/2022	Page 1	of 1
Township 32N	Range 02W	Section(s) and Subdivision(s) 14: NENE, S1/2NE, SE1/4		Scale 1:15,840		

Cover Type				Density	
A = Aspen	H = Hemlock	N = Marsh	U = Upland Brush	0 = Non Stocked	5 = Pole Timber Medium
B = Paper Birch	J = Jack Pine	O = Oak	UM = Upland Mixed	1 = Seedling Sapling Poor	6 = Pole Timber Well
C = Cedar	L = Lowland Brush	P = Lowland Poplar	V = Bog or Marsh	2 = Seedling Sapling Medium	7 = Saw Timber Poor
D = Treed Bog	LM = Lowland Mixed	Q = Mixed Swamp Conifer	W = White Pine	3 = Seedling Sapling Well	8 = Saw Timber Medium
E = Swamp Hdwoods	M = Mpl, Bch, Brch	R = Red Pine	X = Non Stocked	4 = Pole Timber Poor	9 = Saw Timber Well
F = Spruce Fir	MC = Mixed Conifer	S = Black Spruce	Z = Water		
G = Grass	MD = Mixed Deciduous	T = Tamarack			

PU	Acres
1	30.3
2	35.1
3	28.2

Scenic Hardwoods 2

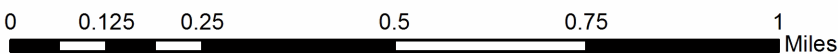
Compartment 030
93.6 Acres



Legend

Sale Boundary

- Against State (Red)
- Private Line (Blue)
- Retention Area (Red X)
- Nearby Timber Sales
- Stand Boundaries
- Secondary Forest Road
- Paved Road
- Gravel Road
- County Road - Seasonal
- Closed Roads
- Perennial River
- Powerline



TIMBER SALE INFORMATION

Grouse Walk Aspen (53-023-22)
T34N, R01W, SEC. 29; T34N, R01W, SEC. 32.
Cheboygan County (Advertised Price \$90,923.85)

SALE NOTE: Note seasonal operating restrictions in spec 5.2.3.1 as well as the potential need for Timber Mats in spec 5.2.17.

A timber sale contract for this lump sum, sealed bid timber sale will be awarded to the responsible bidder offering the highest sealed bid price. All units of volume listed below were estimated using the Inventory Manager computer program and the new Michigan taper model. Bids must be at or above the following advertised price for each product and species:

<u>PRODUCTS & SPECIES</u>	<u>ESTIMATED UNITS*</u>	<u>ADVERTISED PRICE</u>
Sawtimber		
Mixed Aspen	143.4 MBF	\$ 53.00 / MBF
Red Maple	19.1 MBF	\$ 59.00 / MBF
White Spruce	52.7 MBF	\$ 31.00 / MBF
Pulpwood		
Balsam Fir	1,173 Cords	\$ 26.95 / Cord
Mixed Aspen	1,414 Cords	\$ 28.50 / Cord
Mixed Hardwood	248 Cords	\$ 19.15 / Cord
Red Pine	8 Cords	\$ 65.45 / Cord
White Pine	7 Cords	\$ 26.70 / Cord
White Spruce	160 Cords	\$ 19.95 / Cord

* The total volume is statistically estimated within plus (+) or minus (-) 12.06 percent. There are an estimated 3,634 cords on this timber sale, plus or minus 438 cords at the 95% confidence level. The estimated units are final and not subject to adjustment. Prospective bidders are urged to examine this timber and to make their own estimates of quantity and quality.

BOND AND PAYMENT SCHEDULE:

1. A bond in the amount of \$9,092.00 to insure faithful performance of the conditions of the contract will be deposited by the successful bidder within 21 days of the sale award.
2. Cutting in any sale or unit without the required advance payment would be considered a trespass.
3. Total payment must be paid in advance or according to the following schedule :
 - (a) Ten percent (10%) of the sale value must be paid within 21 days of the sale award.
 - (b) The 10% down payment will be credited towards the first unit cut.

(c) Payment for each of the following units must be made before cutting begins in that unit:

PAYMENT UNIT NUMBER	PERCENT OF TOTAL SALE VALUE
01	20.6%
02	8.4%
03	10.2%
04	9.5%
05	4.9%
06	18.7%
07	14.1%
08	13.6%

4. If no cutting takes place, the 10% down payment will not be refunded.
5. Operations on the contract issued will terminate on 06/30/2026.

SALE STATISTICS

Volumes were calculated in cubic feet using the Michigan taper model. Cubic foot volume includes all wood inside bark for the product indicated. For display purposes, cubic feet were converted to cords and MBF using a simple conversion factor, e.g. 79 cubic feet per cord and 185 cubic feet per MBF. The cubic foot volumes are precise; the cords and MBF volumes are not. Cubic foot volume cannot be directly converted to cords or boards with precision.

SALE VOLUMES

The total estimated sale volume may not equal the sum of the species/products due to the nature of statistical calculations associated with double sampling methodology.

VOLUME			STATISTICAL RANGE IN CORDS	
TOTAL CUBIC FEET	TOTAL CORDS	PERCENT ERROR	MINIMUM	MAXIMUM
287,076	3,634	12.06%	3,196	4,072

VDU VOLUMES

A VDU is a Volume Determination Unit. Volumes and their associated statistics are calculated at the VDU level and summarized to the sale level. There is often a one to one relationship between a VDU and a Payment Unit, but not always, depending on the cruise design. Refer to the VDU TO PAYMENT UNIT table.

	VOLUME			RANGE IN CORDS	
VDU	TOTAL CUBIC FEET	TOTAL CORDS	PERCENT ERROR	MINIMUM	MAXIMUM
57	146,358	1,853	17.00%	1,538	2,168
78	140,718	1,781	17.47%	1,470	2,092
TOTAL:	287,076	3,634		3,008	4,260

VDU TO PAYMENT UNIT

When a VDU is associated with more than one Payment Unit (PU), the VDU volumes are assigned to the PU based on acres of the VDU within the PU.

VDU	VDU ACRES	PU	PU ACRES
57	56.6	5	5.4
		6	20.8
		7	15.5
		8	14.9
78	45.3	1	19.2
		2	7.8
		3	9.5
		4	8.8
TOTAL:	101.9		101.9

DESCRIPTION OF TIMBER BY PAYMENT UNIT (PU)

PU	MARKET GROUP	PRODUCT	QUANTITY	UNIT	ACRES	ADVERTISE PRICE	
1	Mixed Aspen	Sawtimber	23.8	MBF	19.2	\$18,805.10	
	<i>B. T. Aspen</i>		6.2	<i>MBF</i>			
	<i>Quaking Aspen</i>		17.6	<i>MBF</i>			
	Red Maple		5.4	MBF			
	White Spruce		8.6	MBF			
	Balsam Fir		Pulpwood	256			Cords
	Mixed Aspen			316			Cords
	<i>B. T. Aspen</i>			35			<i>Cords</i>
	<i>Balsam Poplar</i>			7			<i>Cords</i>
	<i>Quaking Aspen</i>			274			<i>Cords</i>
	Mixed Hardwood			30			Cords
	<i>Red Maple</i>			30			<i>Cords</i>
	White Spruce			24			Cords
	2		Mixed Aspen	Sawtimber			9.6
<i>B. T. Aspen</i>		2.5	<i>MBF</i>				
<i>Quaking Aspen</i>		7.1	<i>MBF</i>				
Red Maple		2.2	MBF				
White Spruce		3.5	MBF				
Balsam Fir		Pulpwood	104		Cords		
Mixed Aspen			128		Cords		
<i>B. T. Aspen</i>			14		<i>Cords</i>		
<i>Balsam Poplar</i>			3		<i>Cords</i>		
<i>Quaking Aspen</i>			111		<i>Cords</i>		
Mixed Hardwood			12		Cords		
<i>Red Maple</i>			12		<i>Cords</i>		
White Spruce			10		Cords		
3		Mixed Aspen	Sawtimber		11.7	MBF	9.5
	<i>B. T. Aspen</i>	3.0		<i>MBF</i>			
	<i>Quaking Aspen</i>	8.7		<i>MBF</i>			
	Red Maple	2.7		MBF			
	White Spruce	4.2		MBF			
	Balsam Fir	Pulpwood		126	Cords		
	Mixed Aspen			157	Cords		
	<i>B. T. Aspen</i>			17	<i>Cords</i>		
	<i>Balsam Poplar</i>			4	<i>Cords</i>		
	<i>Quaking Aspen</i>			136	<i>Cords</i>		
	Mixed Hardwood			15	Cords		
	<i>Red Maple</i>			15	<i>Cords</i>		
	White Spruce			12	Cords		
	4	Mixed Aspen		Sawtimber	10.9	MBF	
<i>B. T. Aspen</i>		2.8	<i>MBF</i>				
<i>Quaking Aspen</i>		8.1	<i>MBF</i>				
Red Maple		2.5	MBF				
White Spruce		3.9	MBF				
Balsam Fir		Pulpwood	117		Cords		
Mixed Aspen			145		Cords		
<i>B. T. Aspen</i>			16		<i>Cords</i>		
<i>Balsam Poplar</i>			3		<i>Cords</i>		
<i>Quaking Aspen</i>			126		<i>Cords</i>		
Mixed Hardwood			14		Cords		
<i>Red Maple</i>			14		<i>Cords</i>		
White Spruce			11		Cords		
5		Mixed Aspen	Sawtimber		8.3	MBF	5.4
	<i>Quaking Aspen</i>	8.3		<i>MBF</i>			
	Red Maple	0.6		MBF			
	White Spruce	3.1		MBF			

DESCRIPTION OF TIMBER BY PAYMENT UNIT (PU), CON'T

PU	MARKET GROUP	PRODUCT	QUANTITY	UNIT	ACRES	ADVERTISE PRICE	
5 con't	Balsam Fir	Pulpwood	54	Cords			
	Mixed Aspen		64	Cords			
	<i>Balsam Poplar</i>		1	<i>Cords</i>			
	<i>Quaking Aspen</i>		63	<i>Cords</i>			
	Mixed Hardwood		17	Cords			
	<i>Paper Birch</i>		7	<i>Cords</i>			
	<i>Red Maple</i>		10	<i>Cords</i>			
	Red Pine		1	Cords			
	<i>Red Pine</i>		0.3	<i>MBF</i>			
	White Pine		1	Cords			
White Spruce	10	Cords					
6	Mixed Aspen	Sawtimber	32.2	MBF	20.8	\$17,040.35	
	<i>Quaking Aspen</i>		32.2	<i>MBF</i>			
	Red Maple		2.3	MBF			
	White Spruce		11.9	MBF			
	Balsam Fir		Pulpwood	210			Cords
	Mixed Aspen			245			Cords
	<i>Balsam Poplar</i>			2			<i>Cords</i>
	<i>Quaking Aspen</i>			243			<i>Cords</i>
	Mixed Hardwood			65			Cords
	<i>Paper Birch</i>			29			<i>Cords</i>
	<i>Red Maple</i>			36			<i>Cords</i>
	Red Pine			2			Cords
	<i>Red Pine</i>			1.0			<i>MBF</i>
	White Pine			2			Cords
White Spruce	38	Cords					
7	Mixed Aspen	Sawtimber		23.9	MBF	15.5	\$12,790.15
	<i>Quaking Aspen</i>			23.9	<i>MBF</i>		
	Red Maple			1.7	MBF		
	White Spruce		8.9	MBF			
	Balsam Fir		Pulpwood	156	Cords		
	Mixed Aspen			183	Cords		
	<i>Balsam Poplar</i>			2	<i>Cords</i>		
	<i>Quaking Aspen</i>			181	<i>Cords</i>		
	Mixed Hardwood			48	Cords		
	<i>Paper Birch</i>			21	<i>Cords</i>		
	<i>Red Maple</i>			27	<i>Cords</i>		
	Red Pine			3	Cords		
	<i>Red Pine</i>			0.8	<i>MBF</i>		
	<i>Red Pine</i>			1	<i>Cords</i>		
White Pine	2	Cords					
White Spruce	28	Cords					
8	Mixed Aspen	Sawtimber		23.0	MBF	14.9	\$12,332.85
	<i>Quaking Aspen</i>			23.0	<i>MBF</i>		
	Red Maple		1.7	MBF			
	White Spruce		8.6	MBF			
	Balsam Fir		Pulpwood	150	Cords		
	Mixed Aspen			176	Cords		
	<i>Balsam Poplar</i>			2	<i>Cords</i>		
	<i>Quaking Aspen</i>			174	<i>Cords</i>		
	Mixed Hardwood			47	Cords		
	<i>Paper Birch</i>			21	<i>Cords</i>		
	<i>Red Maple</i>			26	<i>Cords</i>		
	Red Pine			3	Cords		
	<i>Red Pine</i>			0.8	<i>MBF</i>		
	<i>Red Pine</i>			1	<i>Cords</i>		

DESCRIPTION OF TIMBER BY PAYMENT UNIT (PU), CON'T

PU	MARKET GROUP	PRODUCT	QUANTITY	UNIT	ACRES	ADVERTISE PRICE
8 con't	White Pine	Pulpwood	2	Cords		
	White Spruce		27	Cords		
TOTAL:			215.2	MBF		
TOTAL:			3,011	Cords		

Sale Specific Conditions & Requirements

Sale Name: Grouse Walk Aspen

Sale Number: 53-023-22 Seq#: 2

1 - Sale Area

1.2 - Boundaries

1.2.1 - Painted boundaries (9/19)

The sale boundary and Payment Unit boundaries are marked and identified by red and yellow paint. Exterior sale boundary lines against state are marked with red paint. Interior Payment Unit boundaries are marked with yellow paint. Retention patches are marked with red paint; no harvesting activities may occur within these areas. Red painted boundary line trees are not Included Timber and are to be protected. Yellow painted trees designating an interior Payment Unit boundary are only to be cut when all surrounding Payment Units have been paid.

2 - Timber Specifications

2.1 - Included Timber

2.1.1 - Clearcut unit(s) with unmerchantable trees (6/14)

Within Payment Unit(s) #'s 1-8, cut all trees that are two (2) inches or more at DBH except do not cut cedar, hemlock, elm, or green marked trees. In addition, do not cut any red pine or white pine greater than twenty (20) inches at DBH. Also, do not cut any black cherry over five (5) inches at DBH.

2.2 - Utilization

2.2.6 - Roundwood operation required (3/21)

The skidding of whole trees or tree segments with limbs attached is prohibited. All products must be produced as roundwood and forwarded to existing roads or landing areas in final product length. This requirement is in place in order to utilize slash to protect areas of wet ground.

2.2.10 - No chipping tops and limbs (8/16)

Within Payment Unit(s) #'s 1-8, chipping of limbs or tops is not permitted. Limbs and the remaining top must be left on site and scattered.

4 - Transportation

4.1 - Construction

4.1.3 - Slash and earthen piles (8/04)

Piles or windrows of earth along roads and landings that have been widened or constructed shall be leveled. Slash from road maintenance or construction, including stumps, shall be dispersed throughout the sale.

4.1.6 - Road construction (1/09)

Improvements of existing roads shall be done in such a way as to minimize the environmental and visual impacts. Merchantable trees shall be cut and utilized unless otherwise directed. Non-merchantable trees shall be severed and laid flat on the ground. Slash shall be scattered, and not left in windrows and kept a minimum of 10 feet back from the road edge. Stumps shall be set upright, not left on edge, and be moved at least 10 feet away from the road edge. Disturbed soil shall be feathered into the woods and not left in berms or windrows.

4.1.12 - No new roads (1/12)

No new roads will be permitted in any Payment Unit. All operations are limited to existing roads.

4.2 - Maintenance

4.2.2 - Fill material (4/07)

To maintain roads, fill material may be needed in areas where "holes" exist or may be expected to develop. This fill material should be placed before trucking begins. 3B crushed limestone must be used as fill material. Sand or gravel may not be sourced from adjacent State-owned lands.

4.2.4 - Grading (10/16)

If deemed necessary by the timber sale administrator, state forest roads, including closed roads behind gates, must be graded

for completion of the timber sale. In general, this will require a road grader or bull dozer to shape up the roads after forest products have been hauled off site. This includes cleaning of drainage areas, grading, crowning and filling with gravel, if necessary. The grading equipment to be used must be approved by the Unit Manager or his/her representative.

4.4 - Access

4.4.3 - Access gate (12/08)

The access gate must be locked at the completion of each day.

5 - Operations

5.2 - Conduct of Operations

5.2.1 - Slash

5.2.1.10 - No slash in openings (5/10)

No brush or logging debris is to be left in the wildlife openings which are indicated by G0 on the Timber Sale Map. Any damage to the opening shall be repaired according to specifications of the Unit Manager or his/her representative.

5.2.1.11 - Slash for reforestation (3/21)

To facilitate reforestation, the Sale Area shall be left with slash evenly distributed. Bunched tops within the cutting area shall be broken up and scattered. Stumps shall be cut low to the ground. Processing sites shall not be left with a compacted layer of slash; tops from these sites shall be hauled back into the cut area and scattered.

5.2.2 - Hazard Trees/Snags

5.2.2.1 - Den trees (10/16)

Obvious hollow and/or den trees shall be protected and left standing unless they are a safety hazard.

5.2.3 - Operating Restrictions

5.2.3.1 - Operating restrictions (9/11)

Within Payment Unit(s) #'s 1-8 cutting, skidding, and hauling are limited to the period of December 1 to March 15. This restriction is in place to reduce damage to wet soils throughout the timber sale area and to protect the hunter walking trails from damage.

5.2.4 - Dead and Down Creation

5.2.4.3 - Dead and down creation, dead trees (6/07)

Except as provided for in General Condition and Requirement 5.2.2, no dead trees, standing or down, are to be cut, skidded, or processed. In addition, logging equipment must go around large areas of blowdown (areas greater than 50X50 feet) in order to maintain this valuable wildlife habitat.

5.2.4.7 - Dead and down creation: hare, grouse, deer and other species (5/15)

To improve horizontal cover habitat for snowshoe hare, grouse, deer, and other species, the Purchaser is to push over all trees marked with an orange "X". These trees should be tipped over with the root ball still attached so the base of the tree is suspended off the ground. The crown of the fallen tree should be at or near ground level after it is pushed over.

5.2.17 - Timber Mats and Interlocking Composite Mats (10/20)

The overgrown road leading to Payment Unit #8 may require extra protection such as that afforded by timber mats, interlocking composite mats, or another approved system. At least 75 feet of road will need extra protection at the location shown on page 3 of the Timber Sale Map. If available, mats may be borrowed from the DNR. A Timber Sale Contract Supplement will be used to document the Purchaser's use of the DNR's mats. Contact the sale administrator regarding availability and pick-up. Timber mats are available from various field offices. Composite mats are only available from the Grayling field office and the Marquette ICC. The Purchaser is responsible for picking up and hauling the mats to and from the site. The composite mats will require DNR staff onsite for installation and removal. Contact the sale administrator to schedule at least 30 days before desired install/removal date. All mats must be cleaned prior to drop off. This may include, but is not limited to, power washing and brushing to remove mud and debris. A charge of \$700.00 per timber mat and \$2,000.00 per composite mat will be assessed for all damaged or non-returned mats. Damage for the crane/timber mats is

defined as three or more broken cants. Damage for the composite mats is defined as cracked or broken mats.

5.2.29 - Shrub protection (1/20)

Do not cut or damage hawthorn or juneberry. Also, do not cut any black cherry over 5 (five) inches at DBH. These woody-shrub plants are highly beneficial to various wildlife species.

5.2.31 - Landing locations (9/13)

Landing areas are recommended in the wildlife openings marked G0 on the timber sale map. However, all equipment and wood decking operations must take place along the outside edge of the opening in order to limit damage. Landings must be confined to these designated sites unless otherwise authorized by the Unit Manager or his/her representative.

5.2.38 - No decking against live trees (2/04)

Cut products may not be decked against unmarked or designated leave trees.

5.4 - Soil Protection

5.4.1 - Rutting restriction, general (7/16)

Operations are to cease immediately if equipment and weather conditions result in rutting of roads and/or skid trails which is 12 inches or greater in depth and 25 feet in length. The Unit Manager or his/her representative may restrict hauling and/or skidding if ruts exceed the specified depth. With the Unit Manager or his/her representative's approval, the Purchaser may return to the area when the risk of rutting has decreased.

5.4.5 - Soil caution (11/04)

Care must be taken to minimize soil damage due to the wet soils. Be aware that there are multiple areas of wet ground throughout the timber sale, particularly along the edges of PU #'s 3-8, and throughout the entirety of PU #'s 1-2.

5.8 - Protection of Endangered Species

5.8.3 - Red shoulder hawk or goshawk (2/16)

In the event that an active red shoulder hawk or goshawk nest is found, the contract may be amended to protect the nest site until the nest is determined to be inactive. The value of the trees in this excluded area will be refunded or credited to the Purchaser. The nest will be buffered with a five-chain radius (eight acre) protection area, centered on the nest tree, in which there will be no cutting or new roads constructed. Avoid human disturbance, including loading and skidding, in the protection area.

An additional zone of five chains (ten chains centered on the active nest tree) will be established in which there is no management activity from March 15 to July 15 (NLP). Limit biomass harvesting and chipping operations within this ten-chain zone, retain the maximum one-third of residues per the Woody Biomass Harvesting Guidelines (Michigan DNR 2010). Nests determined to be inactive will be protected with a one-chain no-harvest buffer.

6 - Safety and Fire Prevention

6.2 - Signing

6.2.1 - Road posting (10/20)

The Purchaser is responsible for posting and maintaining caution signs on Webber Road prior to beginning operations. The road must be posted at appropriate distances from the sale area to warn of logging activity and truck traffic. Signs must be removed when harvest operations are suspended or completed. The Purchaser will provide these signs.

99 - Unique

SKIP

99.1 - Unique Sale Condition (5/19)

Due to the complexity of the timber sale boundary, it is recommended that logging equipment operators download the digital copy of the timber sale map onto the Avenza app using the provided QR code.

99.2 - Unique Sale Condition (5/19)

All logging equipment must stay within the timber sale boundary, and may not go outside the boundary to cross narrow areas that have been excluded from the harvest. These narrow areas are seasonal water drainages.



TIMBER SALE MAP

This information provided by authority of Part 525, 1994 PA 451, as amended.

Forest Management Unit Pigeon River Country	County Cheboygan	Mapped By Rekowski	Date 09/04/2022	Page 1	of 3
Cruised By Rekowski					

Township 34N	Range 01W	Section(s) and Subdivision(s) 29: S1/2SE 32: NE1/4, NESE, SWSE, SW1/4	Scale 1:15,840
-----------------	--------------	--	-------------------

Cover Type				Density			
A = Aspen	H = Hemlock	N = Marsh	U = Upland Brush	0 = Non Stocked	5 = Pole Timber Medium		
B = Paper Birch	J = Jack Pine	O = Oak	UM = Upland Mixed	1 = Seedling Sapling Poor	6 = Pole Timber Well		
C = Cedar	L = Lowland Brush	P = Lowland Poplar	V = Bog or Marsh	2 = Seedling Sapling Medium	7 = Saw Timber Poor		
D = Treed Bog	LM = Lowland Mixed	Q = Mixed Swamp Conifer	W = White Pine	3 = Seedling Sapling Well	8 = Saw Timber Medium		
E = Swamp Hdwoods	M = Mpl, Bch, Brch	R = Red Pine	X = Non Stocked	4 = Pole Timber Poor	9 = Saw Timber Well		
F = Spruce Fir	MC = Mixed Conifer	S = Black Spruce	Z = Water				
G = Grass	MD = Mixed Deciduous	T = Tamarack					

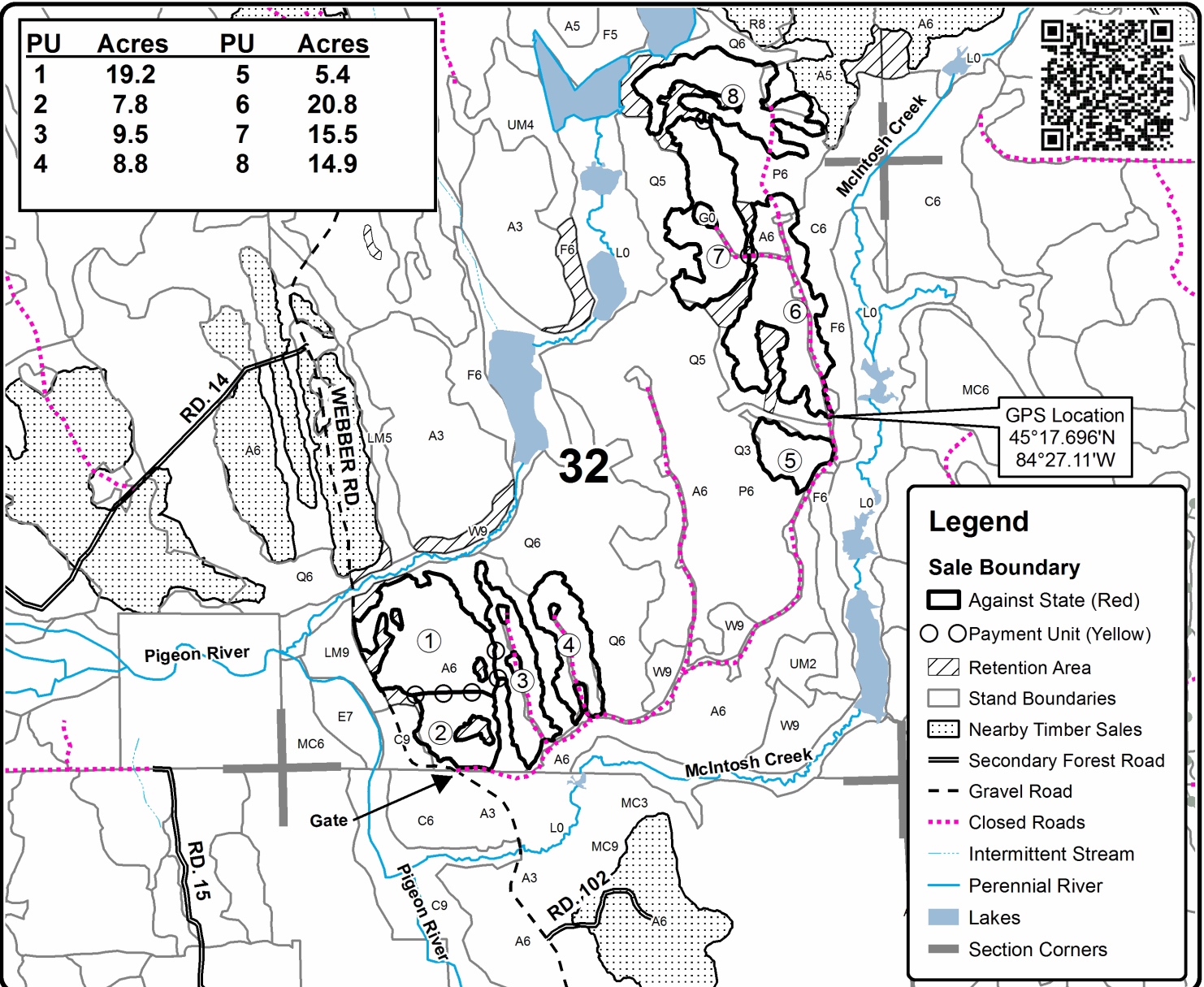
Grouse Walk Aspen

Compartment 002

101.9 Acres



PU	Acres	PU	Acres
1	19.2	5	5.4
2	7.8	6	20.8
3	9.5	7	15.5
4	8.8	8	14.9

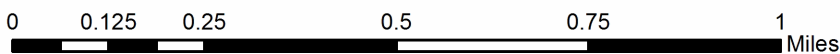


GPS Location
45°17.696'N
84°27.11'W

Legend

Sale Boundary

- Against State (Red)
- Payment Unit (Yellow)
- Retention Area
- Stand Boundaries
- Nearby Timber Sales
- Secondary Forest Road
- Gravel Road
- Closed Roads
- Intermittent Stream
- Perennial River
- Lakes
- Section Corners





TIMBER SALE MAP

This information provided by authority of Part 525, 1994 PA 451, as amended.

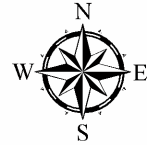
Forest Management Unit Pigeon River Country	County Cheboygan	Mapped By Rekowski	Date 09/04/2022	Page 2	of 3
Township 34N	Range 01W	Section(s) and Subdivision(s) 29: S1/2SE 32: NE1/4, NESE, SWSE, SW1/4	Scale 1:7,920		

Cover Type				Density	
A = Aspen	H = Hemlock	N = Marsh	U = Upland Brush	0 = Non Stocked	5 = Pole Timber Medium
B = Paper Birch	J = Jack Pine	O = Oak	UM = Upland Mixed	1 = Seedling Sapling Poor	6 = Pole Timber Well
C = Cedar	L = Lowland Brush	P = Lowland Poplar	V = Bog or Marsh	2 = Seedling Sapling Medium	7 = Saw Timber Poor
D = Tread Bog	LM = Lowland Mixed	Q = Mixed Swamp Conifer	W = White Pine	3 = Seedling Sapling Well	8 = Saw Timber Medium
E = Swamp Hdwoods	M = Mpl, Bch, Brch	R = Red Pine	X = Non Stocked	4 = Pole Timber Poor	9 = Saw Timber Well
F = Spruce Fir	MC = Mixed Conifer	S = Black Spruce	Z = Water		
G = Grass	MD = Mixed Deciduous	T = Tamarack			

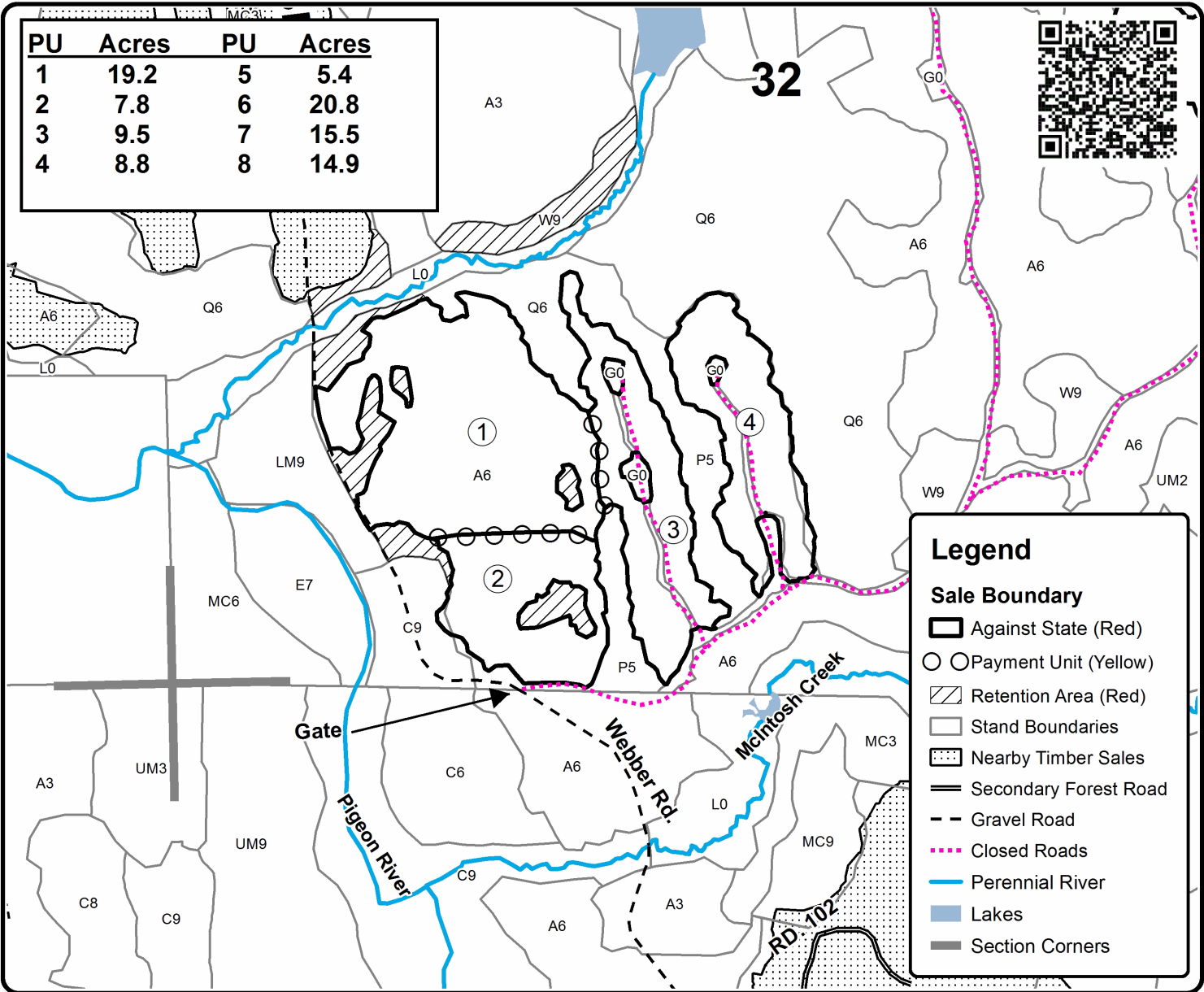
Grouse Walk Aspen

Compartment 002

101.9 Acres



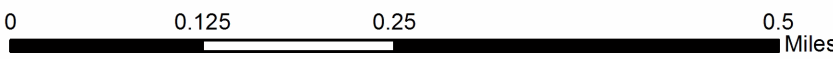
PU	Acres	PU	Acres
1	19.2	5	5.4
2	7.8	6	20.8
3	9.5	7	15.5
4	8.8	8	14.9



Legend

Sale Boundary

- Against State (Red)
- Payment Unit (Yellow)
- Retention Area (Red)
- Stand Boundaries
- Nearby Timber Sales
- Secondary Forest Road
- Gravel Road
- Closed Roads
- Perennial River
- Lakes
- Section Corners





TIMBER SALE MAP

This information provided by authority of Part 525, 1994 PA 451, as amended.

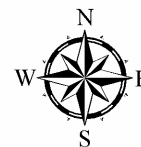
Forest Management Unit Pigeon River Country	County Cheboygan	Mapped By Rekowski	Date 09/04/2022	Page 3	of 3
Township 34N	Range 01W	Section(s) and Subdivision(s) 29: S1/2SE 32: NE1/4, NESE, SWSE, SW1/4	Scale 1:7,920		

Cover Type				Density	
A = Aspen	H = Hemlock	N = Marsh	U = Upland Brush	0 = Non Stocked	5 = Pole Timber Medium
B = Paper Birch	J = Jack Pine	O = Oak	UM = Upland Mixed	1 = Seedling Sapling Poor	6 = Pole Timber Well
C = Cedar	L = Lowland Brush	P = Lowland Poplar	V = Bog or Marsh	2 = Seedling Sapling Medium	7 = Saw Timber Poor
D = Tread Bog	LM = Lowland Mixed	Q = Mixed Swamp Conifer	W = White Pine	3 = Seedling Sapling Well	8 = Saw Timber Medium
E = Swamp Hdwoods	M = Mpl, Bch, Brch	R = Red Pine	X = Non Stocked	4 = Pole Timber Poor	9 = Saw Timber Well
F = Spruce Fir	MC = Mixed Conifer	S = Black Spruce	Z = Water		
G = Grass	MD = Mixed Deciduous	T = Tamarack			

Grouse Walk Aspen

Compartment 002

101.9 Acres



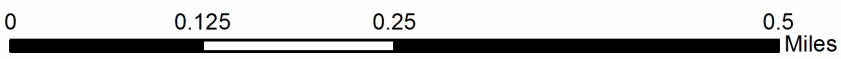
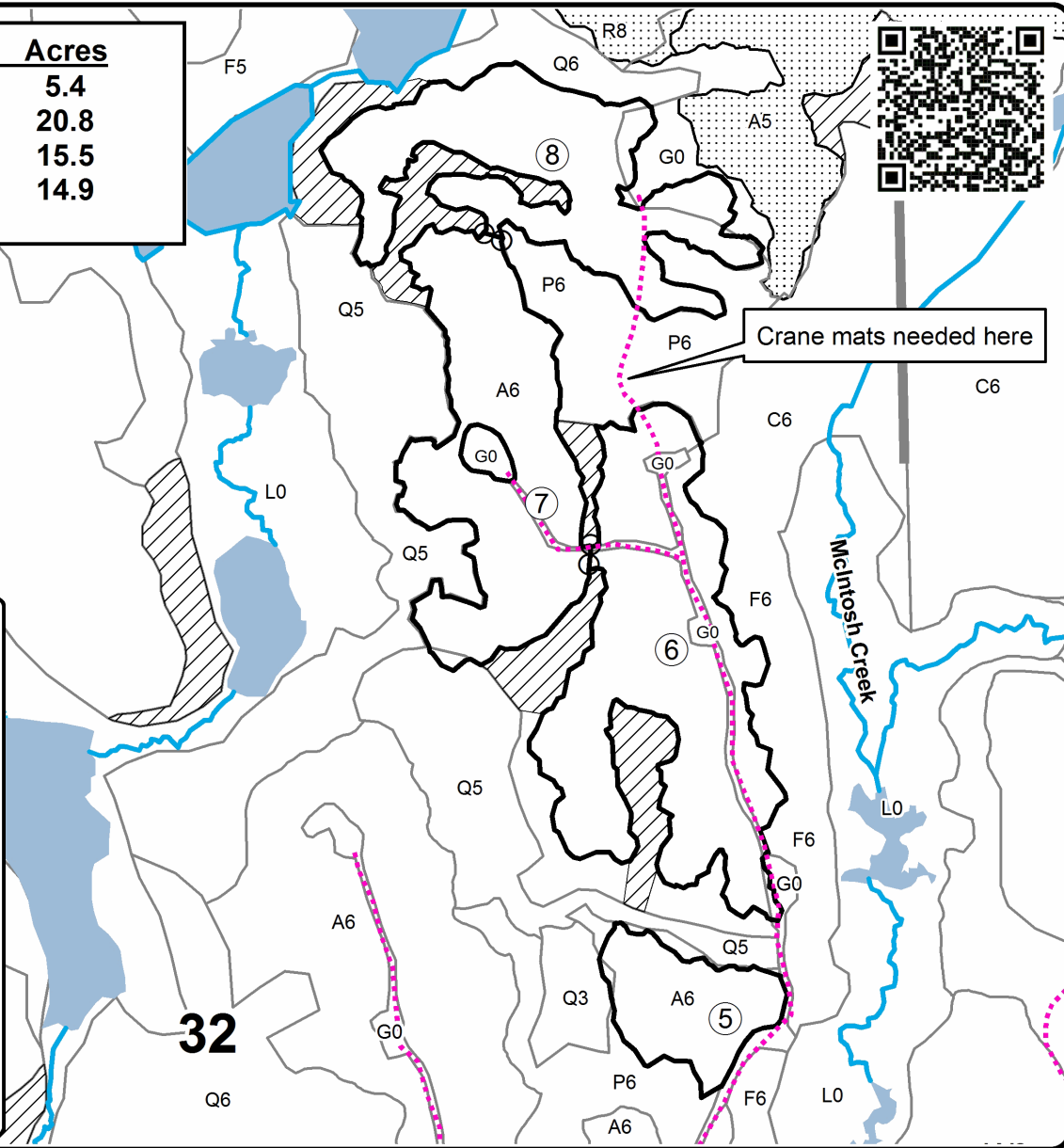
PU	Acres	PU	Acres
1	19.2	5	5.4
2	7.8	6	20.8
3	9.5	7	15.5
4	8.8	8	14.9



Crane mats needed here

Legend

- Sale Boundary**
 - Against State (Red)
 - Payment Unit (Yellow)
 - Retention Area (Red)
 - Stand Boundaries
 - Nearby Timber Sales
 - Gravel Road
 - Closed Roads
 - Intermittent Stream
 - Perennial River
 - Lakes
 - Section Corners



TIMBER SALE INFORMATION

End of the Line Aspine (53-027-22)
 T34N, R01W, SEC. 28; T34N, R01W, SEC. 29.
 Cheboygan County (Advertised Price \$28,586.10)

SALE NOTE: Please note the potential need for fill material and/or timber mats, as discussed in specs 4.2.2 and 5.2.17, respectively. Also, note seasonal operating restrictions in spec 5.2.3.1.

A timber sale contract for this lump sum, sealed bid timber sale will be awarded to the responsible bidder offering the highest sealed bid price. All units of volume listed below were estimated using the Inventory Manager computer program and the new Michigan taper model. Bids must be at or above the following advertised price for each product and species:

<u>PRODUCTS & SPECIES</u>	<u>ESTIMATED UNITS*</u>	<u>ADVERTISED PRICE</u>
Sawtimber		
Red Pine	85.5 MBF	\$ 102.00 / MBF
Pulpwood		
Balsam Fir	93 Cords	\$ 17.95 / Cord
Jack Pine	45 Cords	\$ 10.95 / Cord
Mixed Aspen	568 Cords	\$ 19.00 / Cord
Red Maple	31 Cords	\$ 12.75 / Cord
Red Pine	135 Cords	\$ 43.65 / Cord
White Pine	35 Cords	\$ 17.80 / Cord

* The total volume is statistically estimated within plus (+) or minus (-) 19.05 percent. There are an estimated 1,087 cords on this timber sale, plus or minus 207 cords at the 95% confidence level. The estimated units are final and not subject to adjustment. Prospective bidders are urged to examine this timber and to make their own estimates of quantity and quality.

BOND AND PAYMENT SCHEDULE:

1. A bond in the amount of \$2,859.00 to insure faithful performance of the conditions of the contract will be deposited by the successful bidder within 21 days of the sale award.
2. Cutting in any sale or unit without the required advance payment would be considered a trespass.
3. Total payment must be paid in advance or according to the following schedule :
 - (a) Ten percent (10%) of the sale value must be paid within 21 days of the sale award.
 - (b) The 10% down payment will be credited towards the first unit cut.
 - (c) Payment for each of the following units must be made before cutting begins in that unit:

PAYMENT UNIT NUMBER	PERCENT OF TOTAL SALE VALUE
01	31.5%
02	39.1%
03	29.4%
4. If no cutting takes place, the 10% down payment will not be refunded.
5. Operations on the contract issued will terminate on 06/30/2026.

SALE STATISTICS

Volumes were calculated in cubic feet using the Michigan taper model. Cubic foot volume includes all wood inside bark for the product indicated. For display purposes, cubic feet were converted to cords and MBF using a simple conversion factor, e.g. 79 cubic feet per cord and 185 cubic feet per MBF. The cubic foot volumes are precise; the cords and MBF volumes are not. Cubic foot volume cannot be directly converted to cords or boards with precision.

SALE VOLUMES

The total estimated sale volume may not equal the sum of the species/products due to the nature of statistical calculations associated with double sampling methodology.

VOLUME		STATISTICAL RANGE IN CORDS		
TOTAL CUBIC FEET	TOTAL CORDS	PERCENT ERROR	MINIMUM	MAXIMUM
85,883	1,087	19.05%	880	1,294

VDU VOLUMES

A VDU is a Volume Determination Unit. Volumes and their associated statistics are calculated at the VDU level and summarized to the sale level. There is often a one to one relationship between a VDU and a Payment Unit, but not always, depending on the cruise design. Refer to the VDU TO PAYMENT UNIT table.

VDU	VOLUME		PERCENT ERROR	RANGE IN CORDS	
	TOTAL CUBIC FEET	TOTAL CORDS		MINIMUM	MAXIMUM
53	18,446	233	39.17%	142	325
54	36,001	456	35.60%	293	618
113	31,436	398	29.10%	282	514
TOTAL:	85,883	1,087		718	1,457

VDU TO PAYMENT UNIT

When a VDU is associated with more than one Payment Unit (PU), the VDU volumes are assigned to the PU based on acres of the VDU within the PU.

VDU	VDU ACRES	PU	PU ACRES
53	13.3	1	13.3
54	22.5	2	22.5
113	18.0	3	18.0
TOTAL:	53.8		53.8

DESCRIPTION OF TIMBER BY PAYMENT UNIT (PU)

PU	MARKET GROUP	PRODUCT	QUANTITY	UNIT	ACRES	ADVERTISE PRICE
1	Red Pine	Sawtimber	48.2	MBF	13.3	\$8,991.90
	Balsam Fir	Pulpwood	5	Cords		
	Mixed Aspen		29	Cords		
	<i>B. T. Aspen</i>		14	<i>Cords</i>		
	<i>Quaking Aspen</i>		15	<i>Cords</i>		
	Red Maple		22	Cords		
	Red Pine		69	Cords		
	White Pine		8	Cords		
	<i>White Pine</i>	<i>Sawtimber</i>	1.8	<i>MBF</i>		
	<i>White Pine</i>	<i>Pulpwood</i>	4	<i>Cords</i>		
2	Red Pine	Sawtimber	22.8	MBF	22.5	\$11,175.90
	Balsam Fir	Pulpwood	27	Cords		
	Jack Pine		15	Cords		
	<i>Jack Pine</i>		15	<i>Cords</i>		
	Mixed Aspen		308	Cords		
	<i>B. T. Aspen</i>	<i>Sawtimber</i>	13.6	<i>MBF</i>		
	<i>B. T. Aspen</i>	<i>Pulpwood</i>	248	<i>Cords</i>		
	<i>Quaking Aspen</i>		33	<i>Cords</i>		
	Red Maple		9	Cords		
	Red Pine		41	Cords		
	White Pine		25	Cords		
	<i>White Pine</i>	<i>Sawtimber</i>	1.6	<i>MBF</i>		
	<i>White Pine</i>	<i>Pulpwood</i>	22	<i>Cords</i>		
3	Red Pine	Sawtimber	14.5	MBF	18.0	\$8,418.30
	Balsam Fir	Pulpwood	61	Cords		
	Jack Pine		30	Cords		
	<i>Jack Pine</i>	<i>Sawtimber</i>	2.1	<i>MBF</i>		
	<i>Jack Pine</i>	<i>Pulpwood</i>	26	<i>Cords</i>		
	Mixed Aspen		231	Cords		
	<i>B. T. Aspen</i>	<i>Sawtimber</i>	6.8	<i>MBF</i>		
	<i>B. T. Aspen</i>	<i>Pulpwood</i>	55	<i>Cords</i>		
	<i>Quaking Aspen</i>		162	<i>Cords</i>		
	Red Pine		25	Cords		
	White Pine		2	Cords		
	<i>White Pine</i>	<i>Sawtimber</i>	0.5	<i>MBF</i>		
	<i>White Pine</i>	<i>Pulpwood</i>	1	<i>Cords</i>		
TOTAL:			85.5	MBF		
TOTAL:			907	Cords		

Sale Specific Conditions & Requirements

Sale Name: End of the Line Aspine

Sale Number: 53-027-22 Seq#: 2

1 - Sale Area

1.2 - Boundaries

1.2.1 - Painted boundaries (9/19)

The sale boundary and Payment Unit boundaries are marked and identified by red and yellow paint. Exterior sale boundary lines against state are marked with red paint. Interior Payment Unit boundaries are marked with yellow paint. Retention patches are marked with a red X; no harvesting activities may occur within these areas. Red and yellow painted boundary line trees are not Included Timber and are to be protected.

2 - Timber Specifications

2.1 - Included Timber

2.1.1 - Clearcut unit(s) with unmerchantable trees (6/14)

Within Payment Unit(s) #'s 2-3, cut all trees that are two (2) inches or more at DBH except do not cut any green marked trees, and do not cut any red or white pine trees less than five (5) inches DBH. In addition, do not cut any black cherry trees greater than five (5) inches DBH.

2.1.7 - Leave tree marked unit(s) (6/14)

Within Payment Unit(s) #1, cut all trees that are two (2) inches or more at DBH except do not cut paper birch and trees marked with green paint above and below stump height. In addition, do not cut any red or white pine trees less than five (5) inches DBH.

3 - Payments

3.4 - Damaged Timber

3.4.1 - Damaged timber (7/16)

General Condition and Requirement 3.4 Damaged Timber, defines liquidated damages for undesignated live merchantable trees which are cut or injured. No damage is acceptable to undesignated live merchantable trees. Within the sale area, if more than 10% of trees (> 4.5" DBH) within a specified area of the sale are damaged, liquidated damages will be assessed for all trees damaged. Rates will be in accordance with General Condition and Requirement 3.4 Damaged Timber.

In addition, extreme care should be taken to avoid damage to red pine and white pine seedlings and saplings that are less than five (5) inches DBH. Within the sale area, if more than 25% of the tree seedlings or saplings (1/4" to 4.5" DBH) within a specified portion of the sale area are damaged, liquidated damages will be assessed at \$500 per acre for all acreage within that specified portion of the sale area that was damaged.

4 - Transportation

4.1 - Construction

4.1.3 - Slash and earthen piles (8/04)

Piles or windrows of earth along roads and landings that have been widened or constructed shall be leveled. Slash from road maintenance or construction, including stumps, shall be dispersed throughout the sale.

4.1.4 - Timber removed for construction (12/09)

Trees cut or damaged in the process of pre-approved road, landing or skid trail construction will be decked in an area separate from other Designated Timber and not removed until measured by the sale administrator. Payment will be made at the specified Purchase Unit Price.

4.1.6 - Road construction (1/09)

Improvements of existing roads shall be done in such a way as to minimize the environmental and visual impacts. Merchantable trees shall be cut and utilized unless otherwise directed. Non-merchantable trees shall be severed and laid flat on the ground. Slash shall be scattered, and not left in windrows and kept a minimum of 10 feet back from the road edge. Stumps shall be set upright, not left on edge, and be moved at least 10 feet away from the road edge. Disturbed soil shall be

feathered into the woods and not left in berms or windrows.

4.1.12 - No new roads (1/12)

No new roads will be permitted in any Payment Unit. All operations are limited to existing roads.

4.2 - Maintenance

4.2.2 - Fill material (4/07)

To maintain roads, fill material may be needed in areas where "holes" exist or may be expected to develop. This fill material should be placed before trucking begins. The specific area where fill may be needed is the unimproved road section that is noted on page 2 of the timber sale map. 3B crushed limestone must be used as fill material. Sand or gravel may not be sourced from adjacent State-owned lands.

4.2.4 - Grading (10/16)

For completion of the sale, and if deemed necessary by the timber sale administrator, closed state forest roads behind the locked gate must be graded. In general, this will require a road grader or bull dozer to shape up the roads after forest products have been hauled off site. This includes cleaning of drainage areas, grading, crowning and filling with gravel, if necessary. The grading equipment to be used must be approved by the Unit Manager or his/her representative.

4.4 - Access

4.4.3 - Access gate (12/08)

The access gate must be locked at all times. This is to prevent someone other than the Purchaser from going through the gate and being locked in.

5 - Operations

5.2 - Conduct of Operations

5.2.1 - Slash

5.2.1.11 - Slash for reforestation (3/21)

To facilitate reforestation, the Sale Area shall be left with slash evenly distributed. Bunched tops within the cutting area shall be broken up and scattered. Stumps shall be cut low to the ground. Processing sites shall not be left with a compacted layer of slash; tops from these sites shall be hauled back into the cut area and scattered.

5.2.2 - Hazard Trees/Snags

5.2.2.1 - Den trees (10/16)

Obvious hollow and/or den trees shall be protected and left standing unless they are a safety hazard.

5.2.3 - Operating Restrictions

5.2.3.1 - Operating restrictions (9/11)

Within Payment Unit(s) #'s 1-3 cutting, skidding, and hauling are limited to the period of December 1 to March 15. This restriction is in place to limit damage to the food plots and hunter walking trails which fall on the access roads to this sale.

5.2.4 - Dead and Down Creation

5.2.4.3 - Dead and down creation, dead trees (6/07)

Except as provided for in General Condition and Requirement 5.2.2, no dead trees, standing or down, are to be cut, skidded, or processed.

5.2.4.7 - Dead and down creation: hare, grouse, deer and other species (5/15)

To improve horizontal cover habitat for snowshoe hare, grouse, deer, and other species, the Purchaser is to push over all trees marked with an orange "X" or a pink "D". These trees should be tipped over with the root ball still attached so the base of the tree is suspended off the ground. The crown of the fallen tree should be at or near ground level after it is pushed over.

5.2.17 - Timber Mats and Interlocking Composite Mats (10/20)

The access road to this timber sale may require extra protection such as that afforded by timber mats, interlocking composite mats, or another approved system. Specifically, at least 75 feet of road may need timber mats, as shown on the 2nd page of

the Timber Sale Map. If available, mats may be borrowed from the DNR. A Timber Sale Contract Supplement will be used to document the Purchaser's use of the DNR's mats. Contact the sale administrator regarding availability and pick-up. Timber mats are available from various field offices. Composite mats are only available from the Grayling field office and the Marquette ICC. The Purchaser is responsible for picking up and hauling the mats to and from the site. The composite mats will require DNR staff onsite for installation and removal. Contact the sale administrator to schedule at least 30 days before desired install/removal date. All mats must be cleaned prior to drop off. This may include, but is not limited to, power washing and brushing to remove mud and debris. A charge of \$700.00 per timber mat and \$2,000.00 per composite mat will be assessed for all damaged or non-returned mats. Damage for the crane/timber mats is defined as three or more broken cants. Damage for the composite mats is defined as cracked or broken mats.

5.2.21 - Chains (6/11)

To help promote scarification and natural pine regeneration, it is required that rubber wheeled harvesters and forwarders run with chains if the sale is cut by a round-wood crew. If the sale is whole tree harvested with grapple skidders the chains will not be needed.

If the producer shows that they can adequately scarify the site without chains this specification can be waived by the sale administrator. Contact the sale administrator for further details.

5.2.29 - Shrub protection (1/20)

Do not cut or damage hawthorn or juneberry (serviceberry). These woody-shrub plants are highly beneficial to various wildlife species. Some of these clumps have been marked with green paint. In addition, do not cut any black cherry greater than five (5) inches DBH in any of the Payment Units.

5.2.32 - Decking/landing restoration (9/13)

All decking and landing areas must have the surface area restored to a condition equal to or better than before. This is to ensure the proper regeneration of the stand. Wood debris, chips and "cookies" from trimmings must be removed or scattered away from landing and loading areas and may not be windrowed on the edge.

5.4 - Soil Protection

5.4.1 - Rutting restriction, general (7/16)

Operations are to cease immediately if equipment and weather conditions result in rutting of roads and/or skid trails which is 12 inches or greater in depth and 25 feet in length. The Unit Manager or his/her representative may restrict hauling and/or skidding if ruts exceed the specified depth. With the Unit Manager or his/her representative's approval, the Purchaser may return to the area when the risk of rutting has decreased.

5.8 - Protection of Endangered Species

5.8.3 - Red shoulder hawk or goshawk (2/16)

In the event that an active red shoulder hawk or goshawk nest is found, the contract may be amended to protect the nest site until the nest is determined to be inactive. The value of the trees in this excluded area will be refunded or credited to the Purchaser. The nest will be buffered with a five-chain radius (eight acre) protection area, centered on the nest tree, in which there will be no cutting or new roads constructed. Avoid human disturbance, including loading and skidding, in the protection area.

An additional zone of five chains (ten chains centered on the active nest tree) will be established in which there is no management activity from March 15 to July 15 (NLP). Limit biomass harvesting and chipping operations within this ten-chain zone, retain the maximum one-third of residues per the Woody Biomass Harvesting Guidelines (Michigan DNR 2010). Nests determined to be inactive will be protected with a one-chain no-harvest buffer.



TIMBER SALE MAP

This information provided by authority of Part 525, 1994 PA 451, as amended.

Forest Management Unit Pigeon River Country	County Cheboygan	Mapped By Rekowski	Date 09/26/2022	Page 1	of 2
Township 34N	Range 01W	Section(s) and Subdivision(s) 28: W1/2SW 29: N1/2SE, SESE	Scale 1:15,840		
Cruised By Rekowski/Halabut					

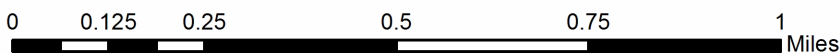
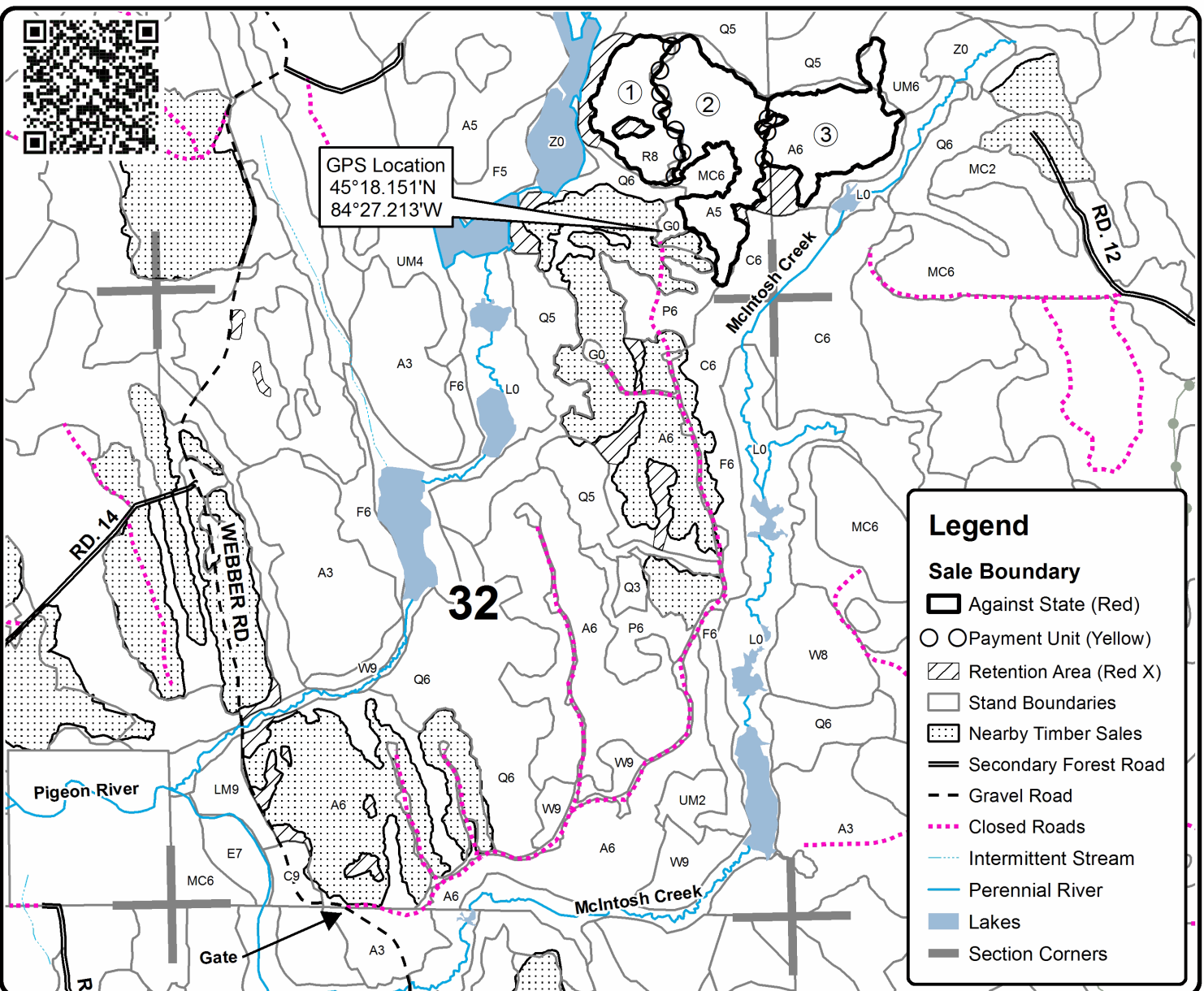
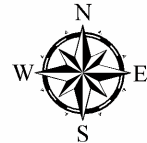
Cover Type				Density	
A = Aspen	H = Hemlock	N = Marsh	U = Upland Brush	0 = Non Stocked	5 = Pole Timber Medium
B = Paper Birch	J = Jack Pine	O = Oak	UM = Upland Mixed	1 = Seedling Sapling Poor	6 = Pole Timber Well
C = Cedar	L = Lowland Brush	P = Lowland Poplar	V = Bog or Marsh	2 = Seedling Sapling Medium	7 = Saw Timber Poor
D = Treed Bog	LM = Lowland Mixed	Q = Mixed Swamp Conifer	W = White Pine	3 = Seedling Sapling Well	8 = Saw Timber Medium
E = Swamp Hdwoods	M = Mpl, Bch, Brch	R = Red Pine	X = Non Stocked	4 = Pole Timber Poor	9 = Saw Timber Well
F = Spruce Fir	MC = Mixed Conifer	S = Black Spruce	Z = Water		
G = Grass	MD = Mixed Deciduous	T = Tamarack			

PU	Acres
1	13.3
2	22.5
3	18

End of the Line Aspine

Compartments 002 & 003

53.8 Acres





TIMBER SALE MAP

This information provided by authority of Part 525, 1994 PA 451, as amended.

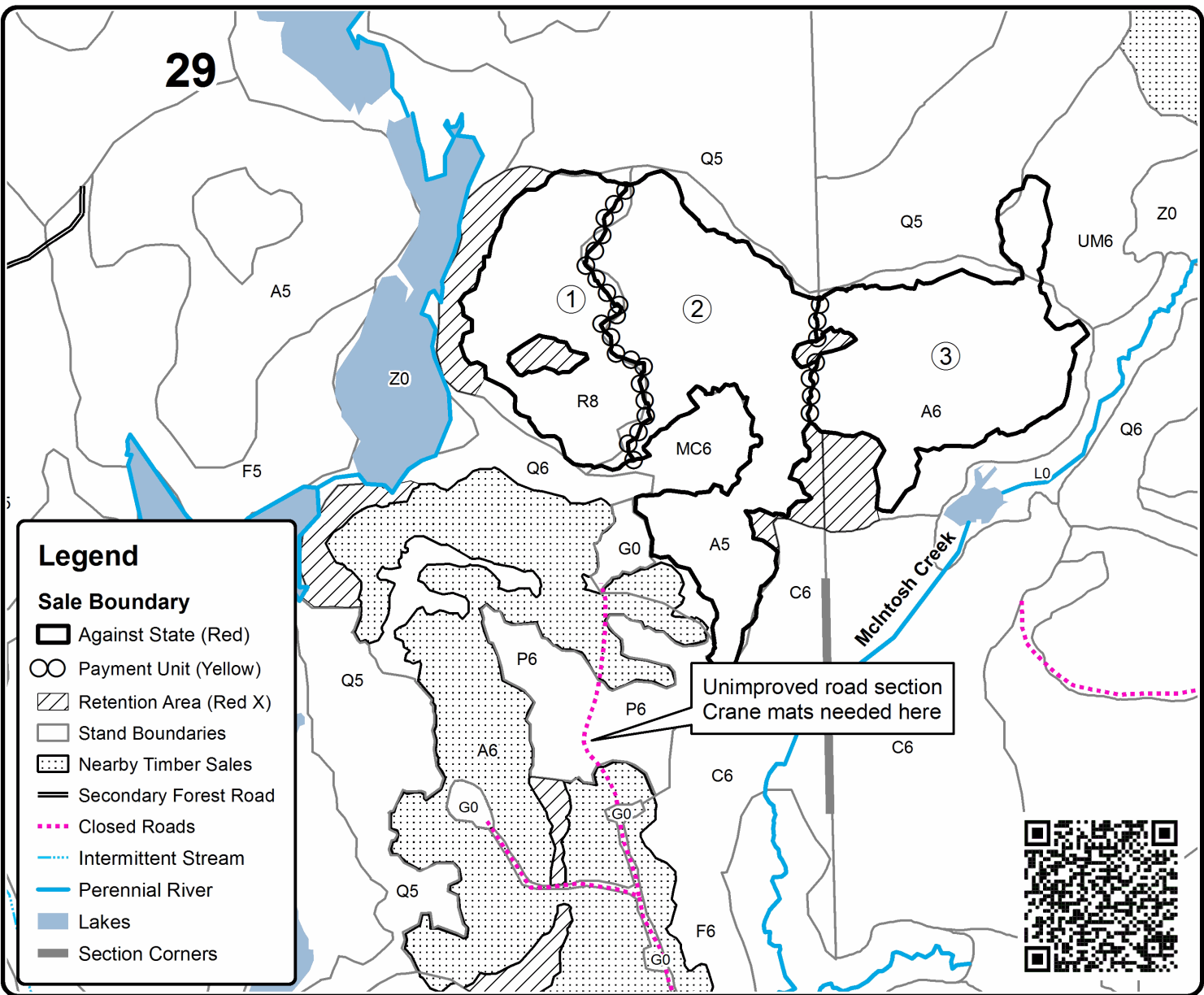
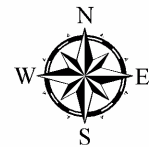
Forest Management Unit Pigeon River Country	County Cheboygan	Mapped By Rekowski	Date 09/26/2022	Page 2	of 2
Township 34N	Range 01W	Section(s) and Subdivision(s) 28: W1/2SW 29: N1/2SE, SESE	Scale 1:7,920		

Cover Type				Density	
A = Aspen	H = Hemlock	N = Marsh	U = Upland Brush	0 = Non Stocked	5 = Pole Timber Medium
B = Paper Birch	J = Jack Pine	O = Oak	UM = Upland Mixed	1 = Seedling Sapling Poor	6 = Pole Timber Well
C = Cedar	L = Lowland Brush	P = Lowland Poplar	V = Bog or Marsh	2 = Seedling Sapling Medium	7 = Saw Timber Poor
D = Treed Bog	LM = Lowland Mixed	Q = Mixed Swamp Conifer	W = White Pine	3 = Seedling Sapling Well	8 = Saw Timber Medium
E = Swamp Hdwoods	M = Mpl, Bch, Brch	R = Red Pine	X = Non Stocked	4 = Pole Timber Poor	9 = Saw Timber Well
F = Spruce Fir	MC = Mixed Conifer	S = Black Spruce	Z = Water		
G = Grass	MD = Mixed Deciduous	T = Tamarack			

PU	Acres
1	13.3
2	22.5
3	18

End of the Line Aspine

Compartments 002 & 003
53.8 Acres



TIMBER SALE INFORMATION

No Way Out Aspen (53-030-22)
T34N, R01W, SEC. 20.
Cheboygan County (Advertised Price \$20,743.90)

SALE NOTE: The only access to this timber sale is through private property. Per spec 4.4.1, it is the responsibility of the Purchaser to obtain permission from the private landowner. Please also note seasonal operating restrictions in spec 5.2.3.1 and the potential need for fill and/or timber mats in specs 4.2.2 and 5.2.17, respectively.

Access may be through private land.

A timber sale contract for this lump sum, sealed bid timber sale will be awarded to the responsible bidder offering the highest sealed bid price. All units of volume listed below were estimated using the Inventory Manager computer program and the new Michigan taper model. Bids must be at or above the following advertised price for each product and species:

<u>PRODUCTS & SPECIES</u>	<u>ESTIMATED UNITS*</u>	<u>ADVERTISED PRICE</u>
Pulpwood		
Balsam Fir	354 Cords	\$ 17.95 / Cord
Mixed Aspen	665 Cords	\$ 19.00 / Cord
Mixed Hardwood	26 Cords	\$ 12.75 / Cord
Mixed Spruce	107 Cords	\$ 13.30 / Cord

* The total volume is statistically estimated within plus (+) or minus (-) 17.38 percent. There are an estimated 1,137 cords on this timber sale, plus or minus 198 cords at the 95% confidence level. The estimated units are final and not subject to adjustment. Prospective bidders are urged to examine this timber and to make their own estimates of quantity and quality.

BOND AND PAYMENT SCHEDULE:

1. A bond in the amount of \$2,074.00 to insure faithful performance of the conditions of the contract will be deposited by the successful bidder within 21 days of the sale award.
2. Cutting in any sale or unit without the required advance payment would be considered a trespass.
3. Total payment must be paid in advance or according to the following schedule :
 - (a) Ten percent (10%) of the sale value must be paid within 21 days of the sale award.
 - (b) The 10% down payment will be credited towards the first unit cut.
 - (c) Payment for each of the following units must be made before cutting begins in that unit:

PAYMENT UNIT NUMBER	PERCENT OF TOTAL SALE VALUE
01	53.9%
02	46.1%
4. If no cutting takes place, the 10% down payment will not be refunded.
5. Operations on the contract issued will terminate on 06/30/2026.

SALE STATISTICS

Volumes were calculated in cubic feet using the Michigan taper model. Cubic foot volume includes all wood inside bark for the product indicated. For display purposes, cubic feet were converted to cords and MBF using a simple conversion factor, e.g. 79 cubic feet per cord and 185 cubic feet per MBF. The cubic foot volumes are precise; the cords and MBF volumes are not. Cubic foot volume cannot be directly converted to cords or boards with precision.

SALE VOLUMES

The total estimated sale volume may not equal the sum of the species/products due to the nature of statistical calculations associated with double sampling methodology.

VOLUME		STATISTICAL RANGE IN CORDS		
TOTAL CUBIC FEET	TOTAL CORDS	PERCENT ERROR	MINIMUM	MAXIMUM
89,802	1,137	17.38%	939	1,334

VDU VOLUMES

A VDU is a Volume Determination Unit. Volumes and their associated statistics are calculated at the VDU level and summarized to the sale level. There is often a one to one relationship between a VDU and a Payment Unit, but not always, depending on the cruise design. Refer to the VDU TO PAYMENT UNIT table.

VDU	VOLUME		PERCENT ERROR	RANGE IN CORDS	
	TOTAL CUBIC FEET	TOTAL CORDS		MINIMUM	MAXIMUM
11	47,244	598	26.34%	441	756
20	42,558	539	23.58%	412	666
TOTAL:	89,802	1,137		852	1,421

VDU TO PAYMENT UNIT

When a VDU is associated with more than one Payment Unit (PU), the VDU volumes are assigned to the PU based on acres of the VDU within the PU.

VDU	VDU ACRES	PU	PU ACRES
11	20.9	1	20.9
20	16.2	2	16.2
TOTAL:	37.1		37.1

DESCRIPTION OF TIMBER BY PAYMENT UNIT (PU)

PU	MARKET GROUP	PRODUCT	QUANTITY	UNIT	ACRES	ADVERTISE PRICE
1	Balsam Fir	Pulpwood	138	Cords	20.9	\$11,181.00
	Mixed Aspen		428	Cords		
	<i>B. T. Aspen</i>	<i>Sawtimber</i>	2.9	<i>MBF</i>		
	<i>Quaking Aspen</i>		11.4	<i>MBF</i>		
	<i>B. T. Aspen</i>	<i>Pulpwood</i>	7	<i>Cords</i>		
	<i>Quaking Aspen</i>		392	<i>Cords</i>		
	Mixed Spruce		43	Cords		
	<i>White Spruce</i>		43	<i>Cords</i>		
2	Balsam Fir	Pulpwood	216	Cords	16.2	\$9,562.90
	Mixed Aspen		237	Cords		
	<i>B. T. Aspen</i>	<i>Sawtimber</i>	1.2	<i>MBF</i>		
	<i>B. T. Aspen</i>	<i>Pulpwood</i>	35	<i>Cords</i>		
	<i>Quaking Aspen</i>		200	<i>Cords</i>		
	Mixed Hardwood		26	Cords		
	<i>Red Maple</i>	<i>Sawtimber</i>	1.4	<i>MBF</i>		
	<i>Paper Birch</i>	<i>Pulpwood</i>	7	<i>Cords</i>		
	<i>Red Maple</i>		16	<i>Cords</i>		
	Mixed Spruce		64	Cords		
	<i>Black Spruce</i>		11	<i>Cords</i>		
	<i>White Spruce</i>		53	<i>Cords</i>		
TOTAL:			1,152	Cords		

Sale Specific Conditions & Requirements

Sale Name: No Way Out Aspen

Sale Number: 53-030-22 Seq#: 2

1 - Sale Area

1.2 - Boundaries

1.2.1 - Painted boundaries (9/19)

The sale boundary and Payment Unit boundaries are marked and identified by blue, red and green paint. Exterior sale boundary lines against private property are marked with blue paint. Exterior sale boundary lines against state are marked with red paint. Interior Payment Unit boundaries are marked with green paint. Retention patches are marked with red paint; no harvesting activities may occur within these areas. Red, blue, and green painted boundary line trees are not Included Timber and are to be protected.

2 - Timber Specifications

2.1 - Included Timber

2.1.1 - Clearcut unit(s) with unmerchantable trees (6/14)

Within Payment Unit(s) #'s 1-2, cut all trees that are two (2) inches or more at DBH except for cedar, red and white oak, elm, and yellow marked trees. In addition, do not cut any black cherry or juneberry (serviceberry) greater than 5 inches DBH.

2.2 - Utilization

2.2.6 - Roundwood operation required (3/21)

The skidding of whole trees or tree segments with limbs attached is prohibited. All products must be produced as roundwood and forwarded to existing roads or landing areas in final product length.

2.2.9 - No chipping permitted (12/08)

Within Payment Unit(s) #'s 1-2, all wood must be removed by roundwood. No chipping is permitted.

4 - Transportation

4.1 - Construction

4.1.3 - Slash and earthen piles (8/04)

Piles or windrows of earth along roads and landings that have been widened or constructed shall be leveled. Slash from road maintenance or construction, including stumps, shall be dispersed throughout the sale.

4.1.4 - Timber removed for construction (12/09)

Trees cut or damaged in the process of pre-approved road, landing or skid trail construction will be decked in an area separate from other Designated Timber and not removed until measured by the sale administrator. Payment will be made at the specified Purchase Unit Price.

4.1.6 - Road construction (1/09)

Improvements of existing roads shall be done in such a way as to minimize the environmental and visual impacts. Merchantable trees shall be cut and utilized unless otherwise directed. Non-merchantable trees shall be severed and laid flat on the ground. Slash shall be scattered, and not left in windrows and kept a minimum of 10 feet back from the road edge. Stumps shall be set upright, not left on edge, and be moved at least 10 feet away from the road edge. Disturbed soil shall be feathered into the woods and not left in berms or windrows.

4.1.7 - Road closure (10/11)

Overgrown roads that are reopened must be blocked to vehicle traffic upon completion of the sale. In general, this will require constructing a four (4') foot high berm of stumps and logs covered with earth. Stumps and brush must be placed along the remainder of the trail. These roads must be rendered impassable to cars and trucks. Contact the sale administrator for specific details of design and placement.

4.2 - Maintenance

4.2.2 - Fill material (4/07)

To maintain roads, fill material may be needed in areas where "holes" exist or may be expected to develop. This fill material

should be placed before trucking begins. Fill material must be 3B crushed limestone. Sand or gravel may not be sourced from adjacent State-owned lands.

4.4 - Access

4.4.1 - Private property access (3/11)

Permission for access across private land is the responsibility of the Purchaser. A copy of the written permission from the private landowner must be given to the Unit Manager within 30 days of the bid opening and prior to the beginning of operations.

5 - Operations

5.2 - Conduct of Operations

5.2.1 - Slash

5.2.1.11 - Slash for reforestation (3/21)

To facilitate reforestation, the Sale Area shall be left with slash evenly distributed. Bunched tops within the cutting area shall be broken up and scattered. Stumps shall be cut low to the ground. Processing sites shall not be left with a compacted layer of slash; tops from these sites shall be hauled back into the cut area and scattered.

5.2.2 - Hazard Trees/Snags

5.2.2.1 - Den trees (10/16)

Obvious hollow and/or den trees shall be protected and left standing unless they are a safety hazard.

5.2.3 - Operating Restrictions

5.2.3.1 - Operating restrictions (9/11)

Within Payment Unit(s) #'s 1-2 cutting, skidding, and hauling are limited to the winter months of December 1 to March 1. This restriction is because of wet ground throughout the timber sale area. No exceptions will be granted.

5.2.4 - Dead and Down Creation

5.2.4.3 - Dead and down creation, dead trees (6/07)

Except as provided for in General Condition and Requirement 5.2.2, no dead trees, standing or down, are to be cut, skidded, or processed. In addition, all areas of blowdown must be left intact and equipment may only operate around the perimeter of these areas.

5.2.4.7 - Dead and down creation: hare, grouse, deer and other species (5/15)

To improve horizontal cover habitat for snowshoe hare, grouse, deer, and other species, the Purchaser is to push over all trees marked with an orange "X". These trees should be tipped over with the root ball still attached so the base of the tree is suspended off the ground. The crown of the fallen tree should be at or near ground level after it is pushed over.

5.2.17 - Timber Mats and Interlocking Composite Mats (10/20)

Some roads or skid trails may require extra protection such as that afforded by timber mats, interlocking composite mats, or another approved system. At least 100 feet of road may need extra protection at the location shown on the Timber Sale Map. If available, mats may be borrowed from the DNR. A Timber Sale Contract Supplement will be used to document the Purchaser's use of the DNR's mats. Contact the sale administrator regarding availability and pick-up. Timber mats are available from various field offices. Composite mats are only available from the Grayling field office and the Marquette ICC. The Purchaser is responsible for picking up and hauling the mats to and from the site. The composite mats will require DNR staff onsite for installation and removal. Contact the sale administrator to schedule at least 30 days before desired install/removal date. All mats must be cleaned prior to drop off. This may include, but is not limited to, power washing and brushing to remove mud and debris. A charge of \$700.00 per timber mat and \$2,000.00 per composite mat will be assessed for all damaged or non-returned mats. Damage for the crane/timber mats is defined as three or more broken cants. Damage for the composite mats is defined as cracked or broken mats.

5.2.18 - Equipment requirements (1/09)

All rubber wheeled logging equipment operating within the timber sale area must be equipped with tracks to protect the wet ground from rutting damage.

5.2.29 - Shrub protection (1/20)

Do not cut or damage hawthorn or juneberry (serviceberry). Many, but not all, of the juneberry clumps have been marked with yellow paint. In addition, do not cut any black cherry trees over five (5) inches DBH. These woody-shrub plants are highly beneficial to various wildlife species.

5.4 - Soil Protection

5.4.1 - Rutting restriction, general (7/16)

Operations are to cease immediately if equipment and weather conditions result in rutting of roads and/or skid trails which is 12 inches or greater in depth and 25 feet in length. The Unit Manager or his/her representative may restrict hauling and/or skidding if ruts exceed the specified depth. With the Unit Manager or his/her representative's approval, the Purchaser may return to the area when the risk of rutting has decreased.

5.4.5 - Soil caution (11/04)

Care must be taken to minimize soil damage due to the wet soil conditions that are present throughout most of PU #1 and portions of PU #2.

5.8 - Protection of Endangered Species

5.8.5 - Protection of raptor nests (3/13)

All trees with raptor nests will be protected if found during harvesting operations. Notification will be made to the Unit Manager or his/her representative who will notify the Wildlife Biologist so an on-site evaluation and recommendation can be made, if necessary.

7 - Other Conditions

7.2 - Extensions

7.2.5 - Weather related extension (1/13)

If weather conditions during the operating period of this contract prevent harvesting, this sale may qualify for a weather related extension. If approved, the normal extension fee would be waived. To qualify, there must be a documented attempt each year to harvest in the difficult portion of the sale.



TIMBER SALE MAP

This information provided by authority of Part 525, 1994 PA 451, as amended.

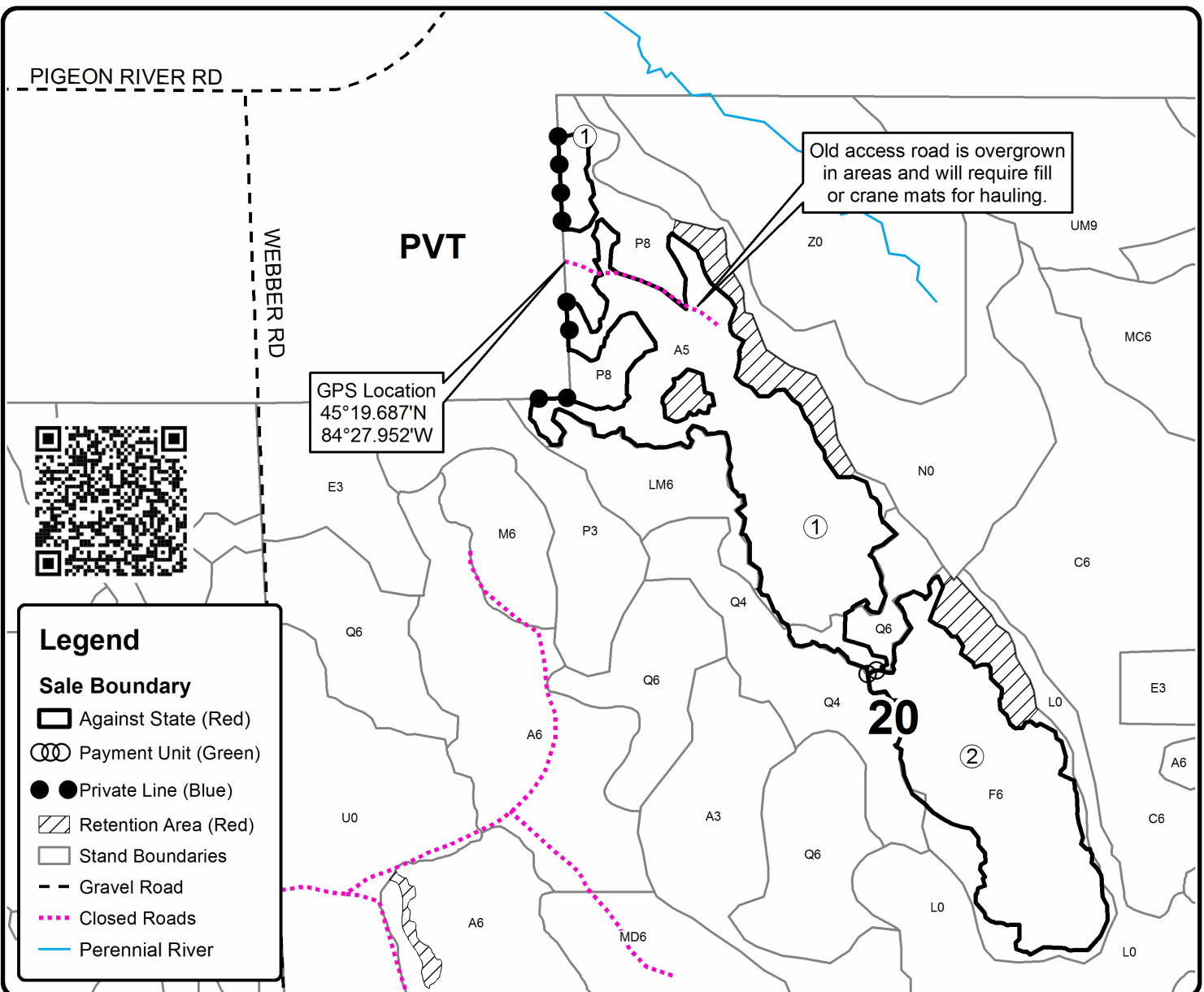
Forest Management Unit Pigeon River Country		County Cheboygan	Mapped By Rekowski	Date 09/30/2022	Page 1	of 1
Township 34N	Range 01W	Section(s) and Subdivision(s) 20: NENW, S1/2NW, SWNE, NWSE		Scale 1:7,920		

Cover Type				Density			
A = Aspen	H = Hemlock	N = Marsh	U = Upland Brush	0 = Non Stocked	5 = Pole Timber Medium		
B = Paper Birch	J = Jack Pine	O = Oak	UM = Upland Mixed	1 = Seedling Sapling Poor	6 = Pole Timber Well		
C = Cedar	L = Lowland Brush	P = Lowland Poplar	V = Bog or Marsh	2 = Seedling Sapling Medium	7 = Saw Timber Poor		
D = Treed Bog	LM = Lowland Mixed	Q = Mixed Swamp Conifer	W = White Pine	3 = Seedling Sapling Well	8 = Saw Timber Medium		
E = Swamp Hdwoods	M = Mpl, Bch, Brch	R = Red Pine	X = Non Stocked	4 = Pole Timber Poor	9 = Saw Timber Well		
F = Spruce Fir	MC = Mixed Conifer	S = Black Spruce	Z = Water				
G = Grass	MD = Mixed Deciduous	T = Tamarack					

PU	Acres
1	20.9
2	16.2

No Way Out Aspen

Compartment 002
37.1 Acres



Legend

Sale Boundary

- Against State (Red)
- Payment Unit (Green)
- Private Line (Blue)
- Retention Area (Red)
- Stand Boundaries
- Gravel Road
- Closed Roads
- Perennial River



TIMBER SALE INFORMATION

A Rick Special (53-015-21)

T33N, R01E, SEC. 11.

Cheboygan County (Advertised Price \$6,719.45)

A timber sale contract for this lump sum, sealed bid timber sale will be awarded to the responsible bidder offering the highest sealed bid price. All units of volume listed below were estimated using the Inventory Manager computer program and the new Michigan taper model. Bids must be at or above the following advertised price for each product and species:

<u>PRODUCTS & SPECIES</u>	<u>ESTIMATED UNITS*</u>	<u>ADVERTISED PRICE</u>
Sawtimber		
Quaking Aspen	17.0 MBF	\$ 32.00 / MBF
Pulpwood		
Balsam Fir	197 Cords	\$ 16.15 / Cord
Mixed Aspen	86 Cords	\$ 17.10 / Cord
Mixed Hardwood	90 Cords	\$ 11.50 / Cord
White Pine	20 Cords	\$ 16.05 / Cord
White Spruce	14 Cords	\$ 11.95 / Cord

* The total volume is statistically estimated within plus (+) or minus (-) 11.80 percent. There are an estimated 435 cords on this timber sale, plus or minus 51 cords at the 95% confidence level. The estimated units are final and not subject to adjustment. Prospective bidders are urged to examine this timber and to make their own estimates of quantity and quality.

BOND AND PAYMENT SCHEDULE:

1. A bond in the amount of \$672.00 to insure faithful performance of the conditions of the contract will be deposited by the successful bidder within 21 days of the sale award.
2. Cutting in any sale or unit without the required advance payment would be considered a trespass.
3. Total payment must be paid in advance or according to the following schedule :
 - (a) Ten percent (10%) of the sale value must be paid within 21 days of the sale award.
 - (b) The remainder is due before cutting begins.
 - (c) Payment for each of the following units must be made before cutting begins in that unit:

PAYMENT UNIT NUMBER	PERCENT OF TOTAL SALE VALUE
01	100.0%
4. If no cutting takes place, the 10% down payment will not be refunded.
5. Operations on the contract issued will terminate on 06/30/2026.

SALE STATISTICS

Volumes were calculated in cubic feet using the Michigan taper model. Cubic foot volume includes all wood inside bark for the product indicated. For display purposes, cubic feet were converted to cords and MBF using a simple conversion factor, e.g. 79 cubic feet per cord and 185 cubic feet per MBF. The cubic foot volumes are precise; the cords and MBF volumes are not. Cubic foot volume cannot be directly converted to cords or boards with precision.

SALE VOLUMES

The total estimated sale volume may not equal the sum of the species/products due to the nature of statistical calculations associated with double sampling methodology.

VOLUME		STATISTICAL RANGE IN CORDS		
TOTAL CUBIC FEET	TOTAL CORDS	PERCENT ERROR	MINIMUM	MAXIMUM
34,377	435	11.80%	384	487

VDU VOLUMES

A VDU is a Volume Determination Unit. Volumes and their associated statistics are calculated at the VDU level and summarized to the sale level. There is often a one to one relationship between a VDU and a Payment Unit, but not always, depending on the cruise design. Refer to the VDU TO PAYMENT UNIT table.

VDU	VOLUME		PERCENT ERROR	RANGE IN CORDS	
	TOTAL CUBIC FEET	TOTAL CORDS		MINIMUM	MAXIMUM
28	34,377	435	11.81%	384	487
TOTAL:	34,377	435		384	487

VDU TO PAYMENT UNIT

When a VDU is associated with more than one Payment Unit (PU), the VDU volumes are assigned to the PU based on acres of the VDU within the PU.

VDU	VDU ACRES	PU	PU ACRES
28	13.9	1	13.9
TOTAL:	13.9		13.9

DESCRIPTION OF TIMBER BY PAYMENT UNIT (PU)

PU	MARKET GROUP	PRODUCT	QUANTITY	UNIT	ACRES	ADVERTISE PRICE
1	Quaking Aspen	Sawtimber	17.0	MBF	13.9	\$6,719.45
	Balsam Fir	Pulpwood	197	Cords		
	Mixed Aspen		86	Cords		
	<i>B. T. Aspen</i>		4	<i>Cords</i>		
	<i>Balsam Poplar</i>		3	<i>Cords</i>		
	<i>Quaking Aspen</i>		79	<i>Cords</i>		
	Mixed Hardwood		90	Cords		
	<i>Sugar Maple</i>	<i>Sawtimber</i>	3.1	<i>MBF</i>		
	<i>Paper Birch</i>	<i>Pulpwood</i>	37	<i>Cords</i>		
	<i>Red Maple</i>		14	<i>Cords</i>		
	<i>Sugar Maple</i>		33	<i>Cords</i>		
	White Pine		20	Cords		
	<i>White Pine</i>	<i>Sawtimber</i>	2.3	<i>MBF</i>		
	<i>White Pine</i>	<i>Pulpwood</i>	15	<i>Cords</i>		
	White Spruce		14	Cords		
	TOTAL:			17.0		
TOTAL:			407	Cords		

Sale Specific Conditions & Requirements

Sale Name: A Rick Special

Sale Number: 53-015-21 Seq#: 2

1 - Sale Area

1.2 - Boundaries

1.2.1 - Painted boundaries (9/19)

The sale boundary is marked and identified by red paint. Retention patches are marked with red paint; no harvesting activities may occur within these areas. Red painted boundary line trees are not Included Timber and are to be protected unless marked with orange paint.

2 - Timber Specifications

2.1 - Included Timber

2.1.1 - Clearcut unit(s) with unmerchantable trees (6/14)

Within Payment Unit(s) #1, cut all trees that are two (2) inches or more at DBH except do not cut cedar, hemlock, red oak, elm, yellow birch, or trees marked with green paint.

2.2 - Utilization

2.2.6 - Roundwood operation required (3/21)

The skidding of whole trees or tree segments with limbs attached is prohibited. All products must be produced as roundwood and forwarded to existing roads or landing areas in final product length.

3 - Payments

3.4 - Damaged Timber

3.4.1 - Damaged timber (7/16)

General Condition and Requirement 3.4 Damaged Timber, defines liquidated damages for undesigned live merchantable trees which are cut or injured. No damage is acceptable to undesigned live merchantable trees. Within the sale area, if more than 10% of cedar trees (> 4.5" DBH) within a specified area of the sale are damaged, liquidated damages will be assessed for all trees damaged. Rates will be in accordance with General Condition and Requirement 3.4 Damaged Timber.

4 - Transportation

4.1 - Construction

4.1.2 - Stream crossings, specific (3/11)

As shown on the Timber Sale Map, there is an intermittent water drainage which crosses the utility line and splits Payment Unit #1 into two parts. This drainage should only be crossed via the utility line right-of-way and only during frozen winter conditions. It is recommended that all decking and hauling operations take place north of this drainage, closer to Black River Road.

4.1.3 - Slash and earthen piles (8/04)

Piles or windrows of earth along roads and landings that have been widened or constructed shall be leveled. Slash from road maintenance or construction, including stumps, shall be dispersed throughout the sale.

4.1.7 - Road closure (10/11)

Overgrown roads that are reopened must be blocked to vehicle traffic upon completion of the sale. In general, this will require constructing a four (4') foot high berm of stumps and logs covered with earth. Stumps and brush must be placed along the remainder of the trail. These roads must be rendered impassable to cars and trucks. Contact the sale administrator for specific details of design and placement.

4.1.12 - No new roads (1/12)

No new roads will be permitted. All operations are limited to existing roads.

5 - Operations

5.2 - Conduct of Operations

5.2.1 - Slash

5.2.1.11 - Slash for reforestation (3/21)

To facilitate reforestation, the Sale Area shall be left with slash evenly distributed. Bunched tops within the cutting area shall be broken up and scattered. Stumps shall be cut low to the ground. Processing sites shall not be left with a compacted layer of slash; tops from these sites shall be hauled back into the cut area and scattered.

5.2.2 - Hazard Trees/Snags

5.2.2.1 - Den trees (10/16)

Obvious hollow and/or den trees shall be protected and left standing unless they are a safety hazard.

5.2.3 - Operating Restrictions

5.2.3.1 - Operating restrictions (9/11)

Within Payment Unit(s) #1, cutting, skidding, and hauling are limited to the period of December 1 to March 1. This restriction is because of wet soils within the Sale Area. No exceptions will be granted.

5.2.4 - Dead and Down Creation

5.2.4.3 - Dead and down creation, dead trees (6/07)

Except as provided for in General Condition and Requirement 5.2.2, no dead trees, standing or down, are to be cut, skidded, or processed.

5.4 - Soil Protection

5.4.1 - Rutting restriction, general (7/16)

Operations are to cease immediately if equipment and weather conditions result in rutting of roads and/or skid trails which is 12 inches or greater in depth and 25 feet in length. The Unit Manager or his/her representative may restrict hauling and/or skidding if ruts exceed the specified depth. With the Unit Manager or his/her representative's approval, the Purchaser may return to the area when the risk of rutting has decreased.

6 - Safety and Fire Prevention

6.2 - Signing

6.2.1 - Road posting (10/20)

The Purchaser is responsible for posting and maintaining caution signs on Black River Road prior to beginning operations. The road must be posted at appropriate distances from the sale area to warn of logging activity and truck traffic. Signs must be removed when harvest operations are suspended or completed. The Purchaser will provide these signs.



TIMBER SALE MAP

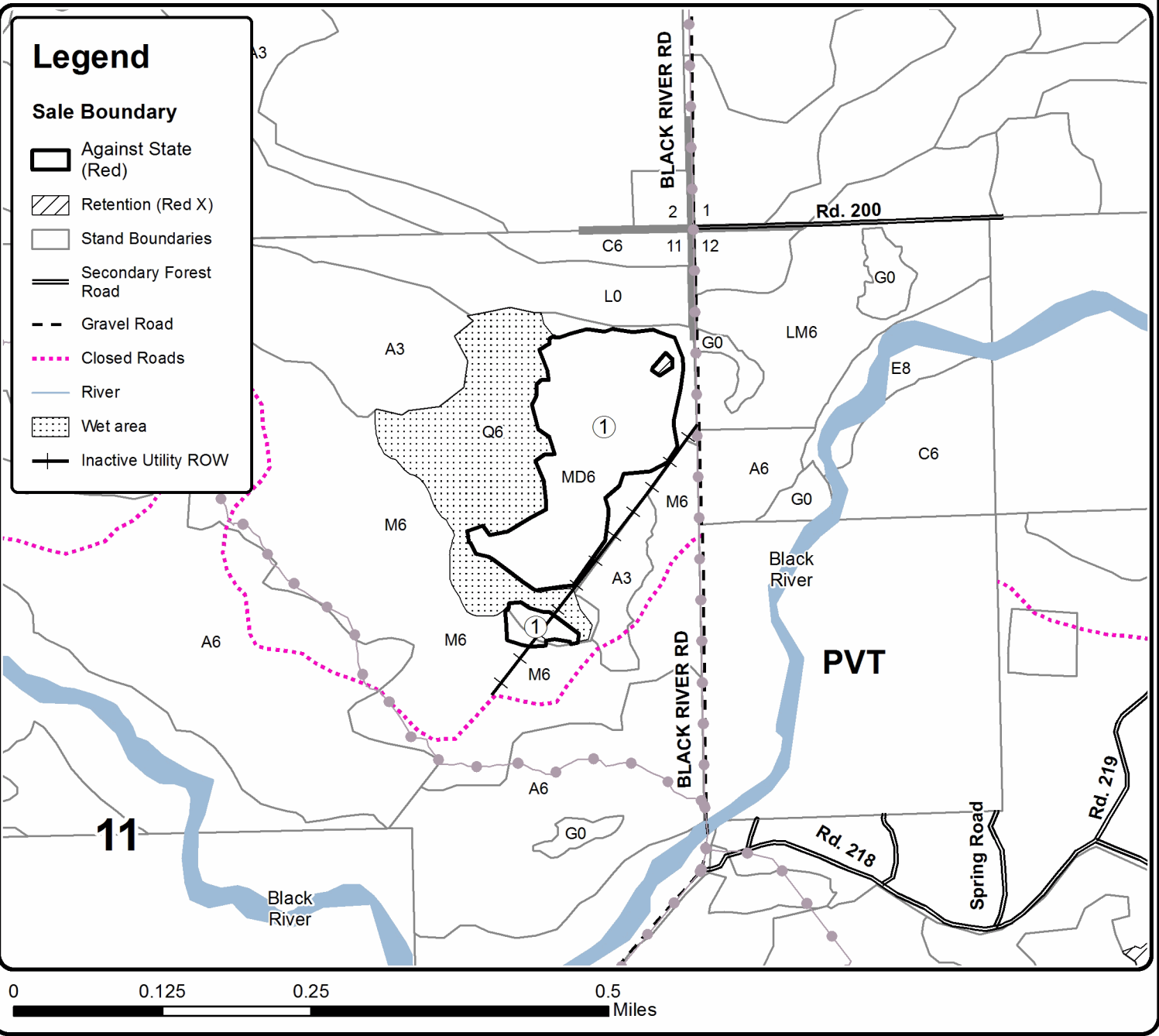
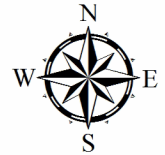
This information provided by authority of Part 525, 1994 PA 451, as amended.

Forest Management Unit Pigeon River Country	County Cheboygan	Mapped By Rekowski	Date 08/27/2021	Page 1	of 1
Township 33N	Range 01E	Section(s) and Subdivision(s) 11: E1/2NE	Scale 1:7,920		

Cover Type				Density	
A = Aspen	H = Hemlock	N = Marsh	U = Upland Brush	0 = Non Stocked	5 = Pole Timber Medium
B = Paper Birch	J = Jack Pine	O = Oak	UM = Upland Mixed	1 = Seedling Sapling Poor	6 = Pole Timber Well
C = Cedar	L = Lowland Brush	P = Lowland Poplar	V = Bog or Marsh	2 = Seedling Sapling Medium	7 = Saw Timber Poor
D = Treed Bog	LM = Lowland Mixed	Q = Mixed Swamp Conifer	W = White Pine	3 = Seedling Sapling Well	8 = Saw Timber Medium
E = Swamp Hdwoods	M = Mpl, Bch, Brch	R = Red Pine	X = Non Stocked	4 = Pole Timber Poor	9 = Saw Timber Well
F = Spruce Fir	MC = Mixed Conifer	S = Black Spruce	Z = Water		
G = Grass	MD = Mixed Deciduous	T = Tamarack			

PU Acres
1 13.9

A Rick Special Compartment 024 13.9 Acres



Grouse Walk Aspen (53-023-22)
T34N, R01W, SEC. 29; T34N, R01W, SEC. 32; Cheboygan COUNTY

In response to the notice of sale to be held 9:00 a.m. (local time) on July 13, 2023, I am hereby submitting my sealed bid (firm offer) for the following forest products to be cut. Bids for individual species must be at or above the advertised price. All non-responsive bid forms may be rejected.

<u>PRODUCTS & SPECIES</u>	<u>ESTIMATED VOLUME*</u>	<u>ADVERTISED PRICE</u>	<u>BID PRICE/UNIT</u>
Sawtimber			
Mixed Aspen	143.4 MBF	\$ 53.00/MBF	\$ _____
Red Maple	19.1 MBF	\$ 59.00/MBF	\$ _____
White Spruce	52.7 MBF	\$ 31.00/MBF	\$ _____
Pulpwood			
Balsam Fir	1,173 Cords	\$ 26.95/Cord	\$ _____
Mixed Aspen	1,414 Cords	\$ 28.50/Cord	\$ _____
Mixed Hardwood	248 Cords	\$ 19.15/Cord	\$ _____
Red Pine	8 Cords	\$ 65.45/Cord	\$ _____
White Pine	7 Cords	\$ 26.70/Cord	\$ _____
White Spruce	160 Cords	\$ 19.95/Cord	\$ _____

*The volumes are statistically estimated within plus (+) or minus (-) 12.06 percent at 95% confidence level. These estimated volumes are final and not subject to adjustment. Prospective bidders are urged to examine this timber and to make their own estimates of quantity and quality.

I understand that any or all bids may be rejected. All bids must be signed and all bid items must be bid or the bid form may be rejected. I also understand that consideration and awarding a contract will be based upon my past performance and ability to complete the contract based upon equipment and staffing subject to my control.

FEDERAL ID: ____ - ____ - ____ or SOCIAL SECURITY NUMBER: ____ - ____ - ____

Company or individual bidding: _____

Company representative's name: _____

Address: _____

City: _____ State: _____ Zip: _____

IF AVAILABLE, PLEASE PLACE THE PERSONALIZED LABEL FROM YOUR PROSPECTUS IN THE ABOVE BOX.

Individual or company representative's signature: _____ Date: _____

Phone number : _____ Email (optional): _____

THE WINNING BIDDER MUST COMPLETE THE VERIFICATION OF WORKER'S DISABILITY COMPENSATION ACT COMPLIANCE (ON REVERSE SIDE IF DOUBLE SIDED) WITHIN 21 DAYS OF SALE AWARD DATE



FOR DEPARTMENT USE ONLY	
Sale Number (XX - XXX - XX - XX)	
Forest Management Unit:	

TIMBER SALE VERIFICATION OF WORKER'S DISABILITY COMPENSATION ACT COMPLIANCE

As required by Act 317, P.A. 1969 (Worker's Compensation) and
Part 5 of Act 451 of 1994, as amended.

VERIFICATION OF WORKER'S DISABILITY COMPENSATION ACT COMPLIANCE

- This verification must be completed and submitted within 21 days of contract award and prior to the issuance of the timber sale contract.
- In addition, if boxes 2B or 2C are checked, then Notice of Exclusion or Certificate of Insurance must be submitted within twenty-one (21) days of the contract award and prior to the issuance of the timber sale contract.
- All information must be typed or printed except for written signatures.

Please Check Appropriate Categories:

1. My business is organized as (you **must** check one of the boxes below):
 - A. Sole Proprietorship (individual)
 - B. Partnership
 - C. Corporation
2. You **must** check one of the boxes below:
 - A. I certify my business is a sole proprietorship and it has no employees but the sole proprietor. I am not subject to the Worker's Compensation Laws.
 - B. I certify my business has satisfied its obligation to the Worker's Compensation Act through the use of an approved Notice of Exclusion (BWC-337, Rev. 5/96). I will provide a copy of the Notice of Exclusion within 21 days of the contract award. (For questions or a copy of the BWC-337, please call the Worker's Compensation Bureau at 517-322-1195).
 - C. I certify my business has a Worker's Compensation Policy. I will provide an original Certificate of Insurance within twenty-one (21) days of the contract award.
3. If you have checked item 2(A) or 2(B), you **must** indicate the number of **both** full-time and part-time employees, other than yourself, including family members and active partners (if none, you must enter "0").

_____ Full-time Employees

_____ Part-time Employees

Name of Business		Federal ID (or) Social Security No.	
Address		Telephone ()	
City	State	ZIP	

I hereby certify that the above information is true and correct. I agree to notify the Michigan DNR of any changes that occur in factors affecting my coverage during any of my present and future operations.

Signature of Owner or Authorized Representative

Title

Date

Please complete the "SEALED BID" information on the next page

End of the Line Aspine (53-027-22)
T34N, R01W, SEC. 28; T34N, R01W, SEC. 29; Cheboygan COUNTY

In response to the notice of sale to be held 9:00 a.m. (local time) on July 13, 2023, I am hereby submitting my sealed bid (firm offer) for the following forest products to be cut. Bids for individual species must be at or above the advertised price. All non-responsive bid forms may be rejected.

<u>PRODUCTS & SPECIES</u>	<u>ESTIMATED VOLUME*</u>	<u>ADVERTISED PRICE</u>	<u>BID PRICE/UNIT</u>
Sawtimber			
Red Pine	85.5 MBF	\$ 102.00/MBF	\$ _____
Pulpwood			
Balsam Fir	93 Cords	\$ 17.95/Cord	\$ _____
Jack Pine	45 Cords	\$ 10.95/Cord	\$ _____
Mixed Aspen	568 Cords	\$ 19.00/Cord	\$ _____
Red Maple	31 Cords	\$ 12.75/Cord	\$ _____
Red Pine	135 Cords	\$ 43.65/Cord	\$ _____
White Pine	35 Cords	\$ 17.80/Cord	\$ _____

*The volumes are statistically estimated within plus (+) or minus (-) 19.05 percent at 95% confidence level. These estimated volumes are final and not subject to adjustment. Prospective bidders are urged to examine this timber and to make their own estimates of quantity and quality.

I understand that any or all bids may be rejected. All bids must be signed and all bid items must be bid or the bid form may be rejected. I also understand that consideration and awarding a contract will be based upon my past performance and ability to complete the contract based upon equipment and staffing subject to my control.

FEDERAL ID: _____ or SOCIAL SECURITY NUMBER: _____

Company or individual bidding: _____

Company representative's name: _____

Address: _____

City: _____ State: _____ Zip: _____

IF AVAILABLE, PLEASE PLACE THE PERSONALIZED LABEL FROM YOUR PROSPECTUS IN THE ABOVE BOX.

Individual or company representative's signature: _____ Date: _____
Phone number : _____ Email (optional): _____

THE WINNING BIDDER MUST COMPLETE THE VERIFICATION OF WORKER'S DISABILITY COMPENSATION ACT COMPLIANCE (ON REVERSE SIDE IF DOUBLE SIDED) WITHIN 21 DAYS OF SALE AWARD DATE



FOR DEPARTMENT USE ONLY
Sale Number (XX - XXX - XX - XX)
Forest Management Unit:

TIMBER SALE VERIFICATION OF WORKER'S DISABILITY COMPENSATION ACT COMPLIANCE

*As required by Act 317, P.A. 1969 (Worker's Compensation) and
Part 5 of Act 451 of 1994, as amended.*

VERIFICATION OF WORKER'S DISABILITY COMPENSATION ACT COMPLIANCE

- This verification must be completed and submitted within 21 days of contract award and prior to the issuance of the timber sale contract.
- In addition, if boxes 2B or 2C are checked, then Notice of Exclusion or Certificate of Insurance must be submitted within twenty-one (21) days of the contract award and prior to the issuance of the timber sale contract.
- All information must be typed or printed except for written signatures.

Please Check Appropriate Categories:

1. My business is organized as (you **must** check one of the boxes below):
 - A. Sole Proprietorship (individual)
 - B. Partnership
 - C. Corporation
2. You **must** check one of the boxes below:
 - A. I certify my business is a sole proprietorship and it has no employees but the sole proprietor. I am not subject to the Worker's Compensation Laws.
 - B. I certify my business has satisfied its obligation to the Worker's Compensation Act through the use of an approved Notice of Exclusion (BWC-337, Rev. 5/96). I will provide a copy of the Notice of Exclusion within 21 days of the contract award. (For questions or a copy of the BWC-337, please call the Worker's Compensation Bureau at 517-322-1195).
 - C. I certify my business has a Worker's Compensation Policy. I will provide an original Certificate of Insurance within twenty-one (21) days of the contract award.
3. If you have checked item 2(A) or 2(B), you **must** indicate the number of **both** full-time and part-time employees, other than yourself, including family members and active partners (if none, you must enter "0").

_____ Full-time Employees

_____ Part-time Employees

Name of Business		Federal ID (or) Social Security No.	
Address		Telephone ()	
City	State	ZIP	

I hereby certify that the above information is true and correct. I agree to notify the Michigan DNR of any changes that occur in factors affecting my coverage during any of my present and future operations.

Signature of Owner or Authorized Representative

Title

Date

Please complete the "SEALED BID" information on the next page

No Way Out Aspen (53-030-22)
T34N, R01W, SEC. 20; Cheboygan COUNTY

In response to the notice of sale to be held 9:00 a.m. (local time) on July 13, 2023, I am hereby submitting my sealed bid (firm offer) for the following forest products to be cut. Bids for individual species must be at or above the advertised price. All non-responsive bid forms may be rejected.

<u>PRODUCTS & SPECIES</u>	<u>ESTIMATED VOLUME*</u>	<u>ADVERTISED PRICE</u>	<u>BID PRICE/UNIT</u>
Pulpwood			
Balsam Fir	354 Cords	\$ 17.95/Cord	\$ _____
Mixed Aspen	665 Cords	\$ 19.00/Cord	\$ _____
Mixed Hardwood	26 Cords	\$ 12.75/Cord	\$ _____
Mixed Spruce	107 Cords	\$ 13.30/Cord	\$ _____

*The volumes are statistically estimated within plus (+) or minus (-) 17.38 percent at 95% confidence level. These estimated volumes are final and not subject to adjustment. Prospective bidders are urged to examine this timber and to make their own estimates of quantity and quality.

I understand that any or all bids may be rejected. All bids must be signed and all bid items must be bid or the bid form may be rejected. I also understand that consideration and awarding a contract will be based upon my past performance and ability to complete the contract based upon equipment and staffing subject to my control.

FEDERAL ID: ___ - ___ - ___ or SOCIAL SECURITY NUMBER: ___ - ___ - ___

Company or individual bidding: _____

Company representative's name: _____

Address: _____

City: _____ State: _____ Zip: _____

IF AVAILABLE, PLEASE PLACE THE PERSONALIZED LABEL FROM YOUR PROSPECTUS IN THE ABOVE BOX.

Individual or company representative's signature: _____ Date: _____

Phone number : _____ Email (optional): _____

THE WINNING BIDDER MUST COMPLETE THE VERIFICATION OF WORKER'S DISABILITY COMPENSATION ACT COMPLIANCE (ON REVERSE SIDE IF DOUBLE SIDED) WITHIN 21 DAYS OF SALE AWARD DATE



FOR DEPARTMENT USE ONLY
Sale Number (XX - XXX - XX - XX)
Forest Management Unit:

TIMBER SALE VERIFICATION OF WORKER'S DISABILITY COMPENSATION ACT COMPLIANCE

*As required by Act 317, P.A. 1969 (Worker's Compensation) and
Part 5 of Act 451 of 1994, as amended.*

VERIFICATION OF WORKER'S DISABILITY COMPENSATION ACT COMPLIANCE

- This verification must be completed and submitted within 21 days of contract award and prior to the issuance of the timber sale contract.
- In addition, if boxes 2B or 2C are checked, then Notice of Exclusion or Certificate of Insurance must be submitted within twenty-one (21) days of the contract award and prior to the issuance of the timber sale contract.
- All information must be typed or printed except for written signatures.

Please Check Appropriate Categories:

1. My business is organized as (you **must** check one of the boxes below):
 - A. Sole Proprietorship (individual)
 - B. Partnership
 - C. Corporation
2. You **must** check one of the boxes below:
 - A. I certify my business is a sole proprietorship and it has no employees but the sole proprietor. I am not subject to the Worker's Compensation Laws.
 - B. I certify my business has satisfied its obligation to the Worker's Compensation Act through the use of an approved Notice of Exclusion (BWC-337, Rev. 5/96). I will provide a copy of the Notice of Exclusion within 21 days of the contract award. (For questions or a copy of the BWC-337, please call the Worker's Compensation Bureau at 517-322-1195).
 - C. I certify my business has a Worker's Compensation Policy. I will provide an original Certificate of Insurance within twenty-one (21) days of the contract award.
3. If you have checked item 2(A) or 2(B), you **must** indicate the number of **both** full-time and part-time employees, other than yourself, including family members and active partners (if none, you must enter "0").

_____ Full-time Employees

_____ Part-time Employees

Name of Business		Federal ID (or) Social Security No.	
Address		Telephone ()	
City	State	ZIP	

I hereby certify that the above information is true and correct. I agree to notify the Michigan DNR of any changes that occur in factors affecting my coverage during any of my present and future operations.

Signature of Owner or Authorized Representative

Title

Date

Please complete the "SEALED BID" information on the next page

A Rick Special (53-015-21)
T33N, R01E, SEC. 11; Cheboygan COUNTY

In response to the notice of sale to be held 9:00 a.m. (local time) on July 13, 2023, I am hereby submitting my sealed bid (firm offer) for the following forest products to be cut. Bids for individual species must be at or above the advertised price. All non-responsive bid forms may be rejected.

<u>PRODUCTS & SPECIES</u>	<u>ESTIMATED VOLUME*</u>	<u>ADVERTISED PRICE</u>	<u>BID PRICE/UNIT</u>
Sawtimber			
Quaking Aspen	17.0 MBF	\$ 32.00/MBF	\$ _____
Pulpwood			
Balsam Fir	197 Cords	\$ 16.15/Cord	\$ _____
Mixed Aspen	86 Cords	\$ 17.10/Cord	\$ _____
Mixed Hardwood	90 Cords	\$ 11.50/Cord	\$ _____
White Pine	20 Cords	\$ 16.05/Cord	\$ _____
White Spruce	14 Cords	\$ 11.95/Cord	\$ _____

*The volumes are statistically estimated within plus (+) or minus (-) 11.80 percent at 95% confidence level. These estimated volumes are final and not subject to adjustment. Prospective bidders are urged to examine this timber and to make their own estimates of quantity and quality.

I understand that any or all bids may be rejected. All bids must be signed and all bid items must be bid or the bid form may be rejected. I also understand that consideration and awarding a contract will be based upon my past performance and ability to complete the contract based upon equipment and staffing subject to my control.

FEDERAL ID: _____ - _____ or SOCIAL SECURITY NUMBER: _____ - _____ - _____

Company or individual bidding: _____

Company representative's name: _____

Address: _____

City: _____ State: _____ Zip: _____

IF AVAILABLE, PLEASE PLACE THE PERSONALIZED LABEL FROM YOUR PROSPECTUS IN THE ABOVE BOX.

Individual or company representative's signature: _____ Date: _____

Phone number : _____ Email (optional): _____

THE WINNING BIDDER MUST COMPLETE THE VERIFICATION OF WORKER'S DISABILITY COMPENSATION ACT COMPLIANCE (ON REVERSE SIDE IF DOUBLE SIDED) WITHIN 21 DAYS OF SALE AWARD DATE



FOR DEPARTMENT USE ONLY
Sale Number (XX – XXX – XX – XX)
Forest Management Unit:

TIMBER SALE VERIFICATION OF WORKER'S DISABILITY COMPENSATION ACT COMPLIANCE

*As required by Act 317, P.A. 1969 (Worker's Compensation) and
Part 5 of Act 451 of 1994, as amended.*

VERIFICATION OF WORKER'S DISABILITY COMPENSATION ACT COMPLIANCE

- This verification must be completed and submitted within 21 days of contract award and prior to the issuance of the timber sale contract.
- In addition, if boxes 2B or 2C are checked, then Notice of Exclusion or Certificate of Insurance must be submitted within twenty-one (21) days of the contract award and prior to the issuance of the timber sale contract.
- All information must be typed or printed except for written signatures.

Please Check Appropriate Categories:

1. My business is organized as (you **must** check one of the boxes below):
 - A. Sole Proprietorship (individual)
 - B. Partnership
 - C. Corporation
2. You **must** check one of the boxes below:
 - A. I certify my business is a sole proprietorship and it has no employees but the sole proprietor. I am not subject to the Worker's Compensation Laws.
 - B. I certify my business has satisfied its obligation to the Worker's Compensation Act through the use of an approved Notice of Exclusion (BWC-337, Rev. 5/96). I will provide a copy of the Notice of Exclusion within 21 days of the contract award. (For questions or a copy of the BWC-337, please call the Worker's Compensation Bureau at 517-322-1195).
 - C. I certify my business has a Worker's Compensation Policy. I will provide an original Certificate of Insurance within twenty-one (21) days of the contract award.
3. If you have checked item 2(A) or 2(B), you **must** indicate the number of **both** full-time and part-time employees, other than yourself, including family members and active partners (if none, you must enter "0").

_____ Full-time Employees

_____ Part-time Employees

Name of Business		Federal ID (or) Social Security No.	
Address		Telephone ()	
City	State	ZIP	

I hereby certify that the above information is true and correct. I agree to notify the Michigan DNR of any changes that occur in factors affecting my coverage during any of my present and future operations.

Signature of Owner or Authorized Representative

Title

Date

Please complete the "SEALED BID" information on the next page

Scenic Hardwoods 2 (53-001-23)
T32N, R02W, SEC. 14; Otsego COUNTY

In response to the notice of sale to be held 9:00 a.m. (local time) on July 13, 2023, I am hereby submitting my sealed bid (firm offer) for the following forest products to be cut. Bids for individual species must be at or above the advertised price. All non-responsive bid forms may be rejected.

<u>PRODUCTS & SPECIES</u>	<u>ESTIMATED VOLUME*</u>	<u>ADVERTISED PRICE</u>	<u>BID PRICE/UNIT</u>
Sawtimber			
Beech	14.2 MBF	\$ 39.00/MBF	\$ _____
Red Oak	13.6 MBF	\$ 110.00/MBF	\$ _____
Sugar Maple	6.9 MBF	\$ 198.00/MBF	\$ _____
Pulpwood			
B. T. Aspen	43 Cords	\$ 17.10/Cord	\$ _____
Basswood	29 Cords	\$ 9.35/Cord	\$ _____
Mixed Hardwood	871 Cords	\$ 11.50/Cord	\$ _____
Red Oak	36 Cords	\$ 9.00/Cord	\$ _____
White Pine	4 Cords	\$ 16.05/Cord	\$ _____

*The volumes are statistically estimated within plus (+) or minus (-) 19.64 percent at 95% confidence level. These estimated volumes are final and not subject to adjustment. Prospective bidders are urged to examine this timber and to make their own estimates of quantity and quality.

I understand that any or all bids may be rejected. All bids must be signed and all bid items must be bid or the bid form may be rejected. I also understand that consideration and awarding a contract will be based upon my past performance and ability to complete the contract based upon equipment and staffing subject to my control .

FEDERAL ID: ____ - ____ - ____ or SOCIAL SECURITY NUMBER: ____ - ____ - ____

Company or individual bidding: _____

Company representative's name: _____

Address: _____

City: _____ State: _____ Zip: _____

IF AVAILABLE, PLEASE PLACE THE PERSONALIZED LABEL FROM YOUR PROSPECTUS IN THE ABOVE BOX.

Individual or company representative's signature: _____ Date: _____

Phone number : _____ Email (optional): _____

THE WINNING BIDDER MUST COMPLETE THE VERIFICATION OF WORKER'S DISABILITY COMPENSATION ACT COMPLIANCE (ON REVERSE SIDE IF DOUBLE SIDED) WITHIN 21 DAYS OF SALE AWARD DATE



FOR DEPARTMENT USE ONLY
Sale Number (XX - XXX - XX - XX)
Forest Management Unit:

TIMBER SALE VERIFICATION OF WORKER'S DISABILITY COMPENSATION ACT COMPLIANCE

*As required by Act 317, P.A. 1969 (Worker's Compensation) and
Part 5 of Act 451 of 1994, as amended.*

VERIFICATION OF WORKER'S DISABILITY COMPENSATION ACT COMPLIANCE

- This verification must be completed and submitted within 21 days of contract award and prior to the issuance of the timber sale contract.
- In addition, if boxes 2B or 2C are checked, then Notice of Exclusion or Certificate of Insurance must be submitted within twenty-one (21) days of the contract award and prior to the issuance of the timber sale contract.
- All information must be typed or printed except for written signatures.

Please Check Appropriate Categories:

1. My business is organized as (you **must** check one of the boxes below):
 - A. Sole Proprietorship (individual)
 - B. Partnership
 - C. Corporation
2. You **must** check one of the boxes below:
 - A. I certify my business is a sole proprietorship and it has no employees but the sole proprietor. I am not subject to the Worker's Compensation Laws.
 - B. I certify my business has satisfied its obligation to the Worker's Compensation Act through the use of an approved Notice of Exclusion (BWC-337, Rev. 5/96). I will provide a copy of the Notice of Exclusion within 21 days of the contract award. (For questions or a copy of the BWC-337, please call the Worker's Compensation Bureau at 517-322-1195).
 - C. I certify my business has a Worker's Compensation Policy. I will provide an original Certificate of Insurance within twenty-one (21) days of the contract award.
3. If you have checked item 2(A) or 2(B), you **must** indicate the number of **both** full-time and part-time employees, other than yourself, including family members and active partners (if none, you must enter "0").

_____ Full-time Employees

_____ Part-time Employees

Name of Business		Federal ID (or) Social Security No.	
Address		Telephone ()	
City	State	ZIP	

I hereby certify that the above information is true and correct. I agree to notify the Michigan DNR of any changes that occur in factors affecting my coverage during any of my present and future operations.

Signature of Owner or Authorized Representative

Title

Date

Please complete the "SEALED BID" information on the next page