



**DEPARTMENT OF NATURAL RESOURCES
STATE OF MICHIGAN
TIMBER SALE PROSPECTUS #7261**

SCHEDULED SALE DATE AND TIME: 3:00 p.m. (local time) on July 24, 2023.

LOCATION: ESCANABA MGMT UNIT, 6833 HWY'S 2, 41 & M-35, GLADSTONE, MI 49837.

PROSPECTUS NOTE: These are Dickinson Co. sales. Please note the Location for bids is Escanaba Field Office. Dickinson Co is now part of the Escanaba Management Unit.

The bidder is advised to inspect the sale area and review the location, estimated volumes, operating costs and contract terms of proposed sales. Please be aware that some landowners may request 60 days or more notice for access across their land.

Notice is hereby given that bids will be received by the Unit Manager, CRYSTAL FALLS MANAGEMENT UNIT, for certain timber on the following described lands:

Three Section Mix (12-002-23) / T40N, R29W, SEC. 14, SWNW.

T40N, R29W, SEC. 15, SWNW,NWSW.

T40N, R29W, SEC. 16, SENE.

T40N, R29W, SEC. 17, S1/2NE,N1/2SE.

Dickinson County, Advertised Price \$28,992.25, 53.5 Acres, Aspen, Hardwood.

SALE NOTE: Access to the sale is through private land. In addition, within Payment Unit 2, cutting is only allowed during frozen conditions.

A recreation site such as a trail, pathway, or campground is within the sale area or the vicinity. Certain restrictions/specifications may be applicable including time restrictions. Access may be through private land.

Beekeeper (12-004-23) / T44N, R27W, SEC. 18, W1/2SW.

T44N, R28W, SEC. 11, N1/2NW,SENW,N1/2NE,N1/2SW.

T44N, R28W, SEC. 11, SESW,W1/2SE.

T44N, R28W, SEC. 12, SENW,S1/2NE,E1/2SW,N1/2SE,SWSE.

T44N, R28W, SEC. 13, E1/2NW,NE,SE.

T44N, R28W, SEC. 14, NWNE.

T44N, R28W, SEC. 2, SWSW.

Dickinson County, Advertised Price \$138,497.10, 287.0 Acres, Aspen, Hardwood.

SALE NOTE: Road construction, including stream crossing permits, will be required to access Payment Units 2 & 3. The Purchaser will be required to obtain permits. Payment Unit 4 is a scaled unit; it is a lowland black spruce/tamarack unit, and it is recommended that harvest occurs during winter or very dry summer.

A recreation site such as a trail, pathway, or campground is within the sale area or the vicinity. Certain restrictions/specifications may be applicable including time restrictions.

Hatchetman Highway (12-006-23) / T43N, R27W, SEC. 28, N1/2SW.

T43N, R27W, SEC. 29, E1/2NE,S1/2SW,S1/2SE.

T43N, R27W, SEC. 30, E1/2SE.

T43N, R27W, SEC. 32, NWNE.

Dickinson County, Advertised Price \$82,653.05, 118.7 Acres, Aspen, Hardwood.

SALE NOTE: The roads to the sale are class A access. In addition, Payment Unit 1 will be a scaled Payment Unit. Furthermore, the pipeline company must be contacted prior to harvesting operations.

BID INSTRUCTIONS (VER. 10/10/2022):

1. Scheduled Bid Location, Date, and Time (2/11)

Bids must be received by the Unit Manager, ESCANABA OFFICE, 6833 Hwy's 2, 41 & M-35, Gladstone, MI 49837, no later than 3:00 p.m. (local time) on July 24, 2023. For further information concerning this sale, contact Eric Thompson at 906-789-8231.

2. Bidder's Qualifications (10/22)

If all or part of a timber sale was prepared by a private contractor, the contractor and that contractor's company are not permitted to bid on the timber sale. A person must be 18 years of age or older to purchase timber. Permanent employees of the Department of Natural Resources or members of their immediate household may not bid. Former employees, in the permanent or seasonal class, may not bid until 3 months after the last day of active duty. Bids will not be accepted from individuals or companies appearing on the DNR/FRD No-Bid List. This list contains the names of purchasers who previously failed to execute a contract within 21-days or who have a history of poor performance.

3. Preparation of Sealed Bids (5/16)

Bid Forms may be completed online thru Michigan DNR Timber Sale Online Bidding (OLB) at www.michigan.gov/timberbidding or by completing the hardcopy Bid Form found in the Timber Sale Prospectus. Hardcopy Bid Forms shall be manually signed in ink. Registration in OLB is considered your 'signature' for all bids submitted thru that system. Bid prices must be entered for each species and product in the Bid Price column for all material subject to bidding and all fill-in blanks must be completed. If erasures or other changes appear on the hardcopy Bid Form, each erasure or change must be initialed by the person signing the bid.

4. Submission of Sealed Bids (5/16)

Bid forms may be obtained from the Unit Manager or thru OLB. Bids may be submitted hardcopy or thru OLB. All hardcopy bids must be submitted on the bid form and in an envelope clearly identified as described in this section. NOTE: Only one bid form per bid envelope. Sealed bids must be submitted to the Unit office designated in the prospectus and must be submitted at or prior to the time established in the prospectus. The envelope should show on the outside (a) the sale name or number and (b) the date and time of bid opening, as shown in the prospectus. Bids received after the time specified in the sale prospectus are late bids and will be rejected.

It is possible for a bidder to submit multiple bids on a single sale. For example, a bid may be submitted hardcopy and a bid may be submitted thru OLB. Or, two bidders from the same company could both submit bids on the same sale. If this were to happen, the State would accept all bids received and award the contract accordingly. All bidding and contractual requirements would apply to all bids received.

5. Public Opening of Sealed Bids (7/16)

If conditions permit, the sealed bids will be publicly opened and posted at the time and place set in the prospectus.

If a bidder, present at a bid opening, has submitted bids on more than one sale, that bidder may withdraw their unopened bid envelopes or announce the withdrawal of their online bid after being declared the successful bidder on one sale.

6. Award of Contract (1/11)

Award of the contract will be made to the Bidder whose bid, conforming to the prospectus, is most advantageous to the State of Michigan on the basis of total value at rates bid for the estimated quantities. The State reserves the right to reject any bid or waive any minor irregularity in bids received. A written award mailed (or otherwise furnished) to the successful Bidder shall be deemed to result in a binding contract without further action by either party.

7. Down Payment (1/11)

The Bidder to whom award is made must make a down payment within 21 days of the sale award. The amount of the down payment will be calculated as shown in the Bond and Payment Schedule of this prospectus. Only cash may be used to meet this requirement.

8. Performance Security (1/11)

As guarantee of faithful performance, a cash bond, certificate of deposit, surety bond or irrevocable letter of credit (LOC) is required within 21 days of the sale award. The amount of the performance security is shown in the Bond and

Payment Schedule of this prospectus. If an LOC or surety is used, the coverage must extend for at least 6 months beyond the contract expiration.

9. Worker's Compensation (10/22)

Purchaser shall obtain worker's compensation insurance to cover claims under Michigan's Worker's Disability Compensation Act of 1969 or similar employee benefit act of any other state applicable to an employee. Verification of Worker's Disability Compensation Act Compliance must be completed and submitted within 21 days of contract award and prior to the issuance of the timber sale contract. In addition, if applicable, Notice of Exclusion or Certificate of Insurance must also be submitted.

10. Timber Sale Contract (10/22)

Additional conditions and requirements common to all timber sales are listed on the timber sale contract (R4031) and are available on line at www.michigan.gov/timber. Contact the Unit Manager for additional information or a sample contract. Within 21 days of the date of the award letter, the bidder must sign the contract and provide the required down payment, performance security, and verification of worker's disability compensation. The down payment and performance security shall be in accordance with the provisions of the timber sale contract, in the sums stated in this prospectus. If these actions are not taken, then the Bidder, the Bidder's corporation, and the corporation's principals may not be permitted to bid on State timber sales for a period of 3 months after the first offense, 6 months after the second offense, and 1 year after the third offense. An offense will only be counted against the Bidder for 5 years. In addition, the Bidder certifies that if awarded this contract, the Bidder will complete the timber sale contract in accordance with its terms and any modifications thereof including requirements to purchase, cut, and remove the included timber by the expiration date.

Payment Unit values in the State Forest Timber Sale Contract are calculated based on the advertised value of the Payment Unit as a percentage of the total advertised value of the contract. The advertised value of each Payment Unit is given in the Description of Timber by Payment Unit table on the Timber Sale Information page. For example, if the value of Payment Unit 1 is advertised as \$1,500 and the total Timber Sale value is advertised as \$10,000, the contract price for Payment Unit 1 will be 15% of the total bid price ($\$1,500/\$10,000 * 100$).

11. Disclaimer of Estimates and Bidder's Warranty of Inspection (10/22)

Before submitting this bid, the Bidder is advised and cautioned to inspect the sale area, review the requirements of the sale contract, and take other steps as may be reasonably necessary to ascertain the location, estimated volumes, construction estimates, and operating costs of the proposed sale. Failure to do so will not relieve the Bidder from responsibility for completing the contract.

The Bidder warrants that this bid is submitted solely on the basis of the Bidder's examination and inspection of the quality and quantity of the timber offered for sale and the Bidder's opinion of the value thereof and the costs of recovery. No reliance should be placed on the State of Michigan's estimates of timber quality, quantity or costs of recovery. Bidder further acknowledges that the State of Michigan: (i) expressly disclaims any warranty of fitness of timber for any purpose; (ii) offers this timber as is without any warranty of quality (merchantability) or quantity and (iii) expressly disclaims any warranty as to the quantity or quality of timber sold.

12. Certification and Chain-of-Custody (10/22)

Unless otherwise indicated in the contract under section 7 – Other Conditions of the Sale Specific Conditions & Requirements, the area encompassed by this timber sale is certified to the standards of the Forest Stewardship Council (FSC) - Certificate #SCS-FM/COC-00090N and the Sustainable Forestry Initiative (SFI) - Certificate #NSF-SFIS-5Y031-SF5. Forest products from this sale may be delivered to the mill as "FSC 100% and / or SFI certified" as long as the contractor hauling the forest products is chain-of-custody (COC) certified or covered under a COC certificate from the destination mill. The purchaser is responsible for maintaining COC after leaving the sale area.

13. Good Neighbor Authority (GNA) Requirements (10/22)

If the name of this timber sales contains the acronym GNA, it is authorized by the Good Neighbor Authority (GNA) and covered by various agreements between the U.S. Forest Service and the State. The timber sale occurs on federal land and the following conditions apply:

GNA contracts on US Forest Service land will not be awarded to purchasers on the Federal list of excluded parties. The System for Award Management (SAM) will be checked for active excluded parties prior to award of contract. In

addition, the Bidder to whom award is made must complete an Assurance Regarding Felony Conviction or Tax Delinquent Status for Corporate Applicants (AD-3031).

14. Good Neighbor Authority (GNA) Requirements, con't (10/22)

Bidder certifies, by signing this bid form, that to the best of Bidder's knowledge that the following representations are accurate and complete.

- a. That the Bidder and its principals are not presently debarred, suspended, proposed for debarment, declared ineligible, or voluntary excluded from timber sales (covered transactions) by any Federal department or agency.
- b. That the Bidder and its principals have not within a 3-year period preceding this bid been convicted of or had a civil judgment rendered against them for commission of fraud or a criminal offense in connection with obtaining , attempting to obtain, or performing a public (Federal, State, or local) transaction or contract under a public transaction; violation of Federal or State antitrust statutes or commission of embezzlement, theft, forgery, bribery, falsification or destruction of records, making false statements, or receiving stolen property.
- c. That the Bidder and its principals are not presently indicted for or otherwise criminally or civilly charged by a governmental entity (Federal, State, or local) with commission of any of the offenses enumerated in paragraph b of this certification.
- d. That the Bidder and its principals have not within a 3-year period preceding this bid had one or more public transactions (Federal, State, or local) terminated for breach or default of a timber or forest product contract.

Bidders that cannot certify this requirement, in whole or in part, shall submit an explanation with their bid.

SHANNON LOTT, Acting
Director

TIMBER SALE INFORMATION

Three Section Mix (12-002-23)

T40N, R29W, SEC. 14; T40N, R29W, SEC. 15; T40N, R29W, SEC. 16; T40N, R29W, SEC. 17.
Dickinson County (Advertised Price \$28,992.25)

SALE NOTE: Access to the sale is through private land. In addition, within Payment Unit 2, cutting is only allowed during frozen conditions.

A recreation site such as a trail, pathway, or campground is within the sale area or the vicinity. Certain restrictions/specifications may be applicable including time restrictions. Access may be through private land.

A timber sale contract for this lump sum, sealed bid timber sale will be awarded to the responsible bidder offering the highest sealed bid price. All units of volume listed below were estimated using the Inventory Manager computer program and the new Michigan taper model. Bids must be at or above the following advertised price for each product and species:

<u>PRODUCTS & SPECIES</u>	<u>ESTIMATED UNITS*</u>	<u>ADVERTISED PRICE</u>
Pulpwood		
Balsam Fir	44 Cords	\$ 11.30 / Cord
Basswood	18 Cords	\$ 9.15 / Cord
Mixed Aspen	647 Cords	\$ 34.25 / Cord
Mixed Hardwood	259 Cords	\$ 17.55 / Cord
Mixed Spruce	38 Cords	\$ 16.75 / Cord
Paper Birch	21 Cords	\$ 5.65 / Cord
Tamarack	120 Cords	\$ 7.25 / Cord

* The total volume is statistically estimated within plus (+) or minus (-) 18.60 percent. There are an estimated 1,157 cords on this timber sale, plus or minus 215 cords at the 95% confidence level. The estimated units are final and not subject to adjustment. Prospective bidders are urged to examine this timber and to make their own estimates of quantity and quality.

BOND AND PAYMENT SCHEDULE:

1. A bond in the amount of \$2,899.00 to insure faithful performance of the conditions of the contract will be deposited by the successful bidder within 21 days of the sale award.
2. Cutting in any sale or unit without the required advance payment would be considered a trespass.
3. Total payment must be paid in advance or according to the following schedule :
 - (a) Ten percent (10%) of the sale value must be paid within 21 days of the sale award.
 - (b) The 10% down payment will be credited towards the first unit cut.
 - (c) Payment for each of the following units must be made before cutting begins in that unit:

PAYMENT UNIT NUMBER	PERCENT OF TOTAL SALE VALUE
01	48.2%
02	3.6%
03	48.2%
4. If no cutting takes place, the 10% down payment will not be refunded.
5. Operations on the contract issued will terminate on 06/30/2027.

SALE STATISTICS

Volumes were calculated in cubic feet using the Michigan taper model. Cubic foot volume includes all wood inside bark for the product indicated. For display purposes, cubic feet were converted to cords and MBF using a simple conversion factor, e.g. 79 cubic feet per cord and 185 cubic feet per MBF. The cubic foot volumes are precise; the cords and MBF volumes are not. Cubic foot volume cannot be directly converted to cords or boards with precision.

SALE VOLUMES

The total estimated sale volume may not equal the sum of the species/products due to the nature of statistical calculations associated with double sampling methodology.

VOLUME		STATISTICAL RANGE IN CORDS		
TOTAL CUBIC FEET	TOTAL CORDS	PERCENT ERROR	MINIMUM	MAXIMUM
91,398	1,157	18.60%	942	1,372

VDU VOLUMES

A VDU is a Volume Determination Unit. Volumes and their associated statistics are calculated at the VDU level and summarized to the sale level. There is often a one to one relationship between a VDU and a Payment Unit, but not always, depending on the cruise design. Refer to the VDU TO PAYMENT UNIT table.

VDU	VOLUME		PERCENT ERROR	RANGE IN CORDS	
	TOTAL CUBIC FEET	TOTAL CORDS		MINIMUM	MAXIMUM
9	38,591	488	19.68%	392	585
24	10,345	131	49.73%	66	196
32	42,462	537	30.06%	376	699
TOTAL:	91,398	1,157		834	1,480

VDU TO PAYMENT UNIT

When a VDU is associated with more than one Payment Unit (PU), the VDU volumes are assigned to the PU based on acres of the VDU within the PU.

VDU	VDU ACRES	PU	PU ACRES
9	19.0	3	19.0
24	14.2	2	14.2
32	20.3	1	20.3
TOTAL:	53.5		53.5

DESCRIPTION OF TIMBER BY PAYMENT UNIT (PU)

PU	MARKET GROUP	PRODUCT	QUANTITY	UNIT	ACRES	ADVERTISE PRICE
1	Balsam Fir	Pulpwood	20	Cords	20.3	\$13,966.55
	Basswood		10	Cords		
	<i>Basswood</i>	<i>Sawtimber</i>	1.3	<i>MBF</i>		
	<i>Basswood</i>	<i>Pulpwood</i>	7	<i>Cords</i>		
	Mixed Aspen		317	Cords		
	<i>Balsam Poplar</i>		27	<i>Cords</i>		
	<i>Quaking Aspen</i>		290	<i>Cords</i>		
	Mixed Hardwood		138	Cords		
	<i>Red Maple</i>	<i>Sawtimber</i>	1.0	<i>MBF</i>		
	<i>Sugar Maple</i>		1.1	<i>MBF</i>		
	<i>Red Maple</i>	<i>Pulpwood</i>	56	<i>Cords</i>		
	<i>Sugar Maple</i>		78	<i>Cords</i>		
	Mixed Spruce		15	Cords		
	<i>White Spruce</i>		15	<i>Cords</i>		
	Paper Birch		21	Cords		
	<i>Paper Birch</i>	<i>Sawtimber</i>	1.9	<i>MBF</i>		
	<i>Paper Birch</i>	<i>Pulpwood</i>	17	<i>Cords</i>		
2	Mixed Spruce	Pulpwood	10	Cords	14.2	\$1,037.50
	<i>Black Spruce</i>		10	<i>Cords</i>		
	Tamarack		120	Cords		
3	Balsam Fir	Pulpwood	24	Cords	19.0	\$13,988.20
	Basswood		8	Cords		
	<i>Basswood</i>	<i>Sawtimber</i>	3.5	<i>MBF</i>		
	<i>Basswood</i>	<i>Pulpwood</i>	1	<i>Cords</i>		
	Mixed Aspen		330	Cords		
	<i>B. T. Aspen</i>		57	<i>Cords</i>		
	<i>Balsam Poplar</i>		14	<i>Cords</i>		
	<i>Quaking Aspen</i>		259	<i>Cords</i>		
	Mixed Hardwood		121	Cords		
	<i>Sugar Maple</i>	<i>Sawtimber</i>	2.5	<i>MBF</i>		
	<i>Red Maple</i>	<i>Pulpwood</i>	12	<i>Cords</i>		
	<i>Sugar Maple</i>		104	<i>Cords</i>		
	Mixed Spruce		13	Cords		
	<i>Black Spruce</i>		3	<i>Cords</i>		
<i>White Spruce</i>		10	<i>Cords</i>			
TOTAL:			1,147	Cords		

Sale Specific Conditions & Requirements

Sale Name: Three Section Mix

Sale Number: 12-002-23 Seq#: 1

1 - Sale Area

1.2 - Boundaries

1.2.1 - Painted boundaries (9/19)

The sale boundary and Payment Unit boundaries are marked and identified by red paint. Exterior sale boundary lines against state are marked with red paint. The painted boundary line trees are not Included Timber and are to be protected unless marked with orange paint.

2 - Timber Specifications

2.1 - Included Timber

2.1.1 - Clearcut unit(s) with unmerchantable trees (6/14)

Within Payment Unit(s) 1-3, cut all trees that are two (2) inches or more at DBH, except do not cut cedar. In addition, the following exceptions apply:

- Within Payment Unit 1, do not cut any hemlock, oak, or pine.
- Within Payment Unit 3, do not cut spruce/fir that are six (6) inches or less at DBH. Also, do not cut any hemlock, oak, pine, birch, and black ash.

4 - Transportation

4.2 - Maintenance

4.2.4 - Grading (10/16)

For completion of the sale, state forest roads must be graded. In general, this will require a road grader or bull dozer to shape up the roads after forest products have been hauled off site. This includes cleaning of drainage areas, grading, crowning and filling with gravel, if necessary. The grading equipment to be used must be approved by the Unit Manager or his/her representative.

4.4 - Access

4.4.1 - Private property access (3/11)

Permission for access across private land is the responsibility of the Purchaser. Should the Purchaser desire to cross private land, a copy of the written permission from the private land-owner may be required by the DNR.

5 - Operations

5.2 - Conduct of Operations

5.2.1 - Slash

5.2.1.13 - Dispose of slash as directed (12/05)

Slash is to be disposed of as directed by the Sale Administrator.

5.2.3 - Operating Restrictions

5.2.3.1 - Operating restrictions (9/11)

Within Payment Unit(s) 2, unless changed by written agreement, cutting, skidding, and hauling are limited to frozen ground only. This restriction is because of wet soils.

5.2.32 - Decking/landing restoration (9/13)

All decking and landing areas must have the surface area restored to a condition equal to or better than before. This is to ensure the proper regeneration of the stand. Wood debris, chips and "cookies" from trimmings must be removed or scattered away from landing and loading areas and may not be windrowed on the edge.

5.2.39 - ORV trail/route protection (4/18)

There is an ORV trail or route and is shown on the Timber Sale Map. Do not cut trees or damage posts with yellow ORV

markers. All stumps within 5 feet of the trail must be cut flush with the ground. Maintain a 20-foot-wide slash, debris, and rut free zone daily using the ORV trail or route as the centerline. Do not run equipment down the ORV trail or route. Skidding across the trail or route may only occur in locations approved by the Sale Administrator.

5.2.41 - Snowmobile trail protection (9/11)

Trail 115 is a snowmobile trail and is shown on the Timber Sale Map. Do not cut or damage posts with orange trail markers or traffic control signs. If the trail is used, it must be maintained and restored to a condition equal to or better than before the sale. The road maintenance/restoration must be done prior to December 1. If the trail is used for hauling, it must be graded to the satisfaction of the Unit Manager or his/her representative prior to December 1. If the trail road is to be used for hauling during the snowmobile season, then a snow covered base must be left on the trail. Maintain a 20-foot-wide slash, debris, and rut free zone daily using the snowmobile trail as the centerline. All stumps within 20 feet of the snowmobile trail must be cut at ground level. In addition, any trees cut within 5 feet of the trail must have the stumps removed and be disposed of according to the direction of the Unit Manager or his/her representative.

5.4 - Soil Protection

5.4.1 - Rutting restriction, general (7/16)

Operations are to cease immediately if equipment and weather conditions result in rutting of roads and/or skid trails which are 12 inches or greater in depth and 50 feet in length. The Unit Manager or his/her representative may restrict hauling and/or skidding if ruts exceed the specified depth. With the Unit Manager or his/her representative's approval, the Purchaser may return to the area when the risk of rutting has decreased.

6 - Safety and Fire Prevention

6.2 - Signing

6.2.1 - Road posting (10/20)

The Purchaser is responsible for posting and maintaining caution signs on Benton Lake Road, and the Norway Truck Trail prior to beginning operations. The road must be posted at appropriate distances from the Sale Area to warn of logging activity and truck traffic. Signs must be removed when harvest operations are suspended or completed. The Purchaser will provide these signs.

6.2.2 - Snowmobile trail posting (10/20)

The Purchaser is responsible for posting and maintaining caution signs on snowmobile Trail 115 prior to beginning operations during the snowmobile season (approximately December 1 to March 31). The trail must be posted at appropriate distances from the Sale Area to warn of logging activity and truck traffic. Signs must be removed when harvest operations are suspended or completed. The Purchaser will provide these signs.

6.2.3 - Recreational trail posting (10/20)

The Purchaser is responsible for posting and maintaining caution signs on the ORV trail prior to beginning operations. The trail must be posted at appropriate distances from the Sale Area to warn of logging activity and truck traffic at both ends of the trail. Signs must be removed when harvest operations are suspended or completed. The Purchaser will provide these signs.

7 - Other Conditions

7.5 - Loss

7.5.1 - Deteriorating timber (7/09)

The sale area has received damage from Eastern Larch Borer. The Purchaser should harvest the wood as soon as possible. The Department of Natural Resources is held free of responsibility of any further damage or deterioration due to delay in harvesting.



TIMBER SALE MAP

This information provided by authority of Part 525, 1994 PA 451, as amended.

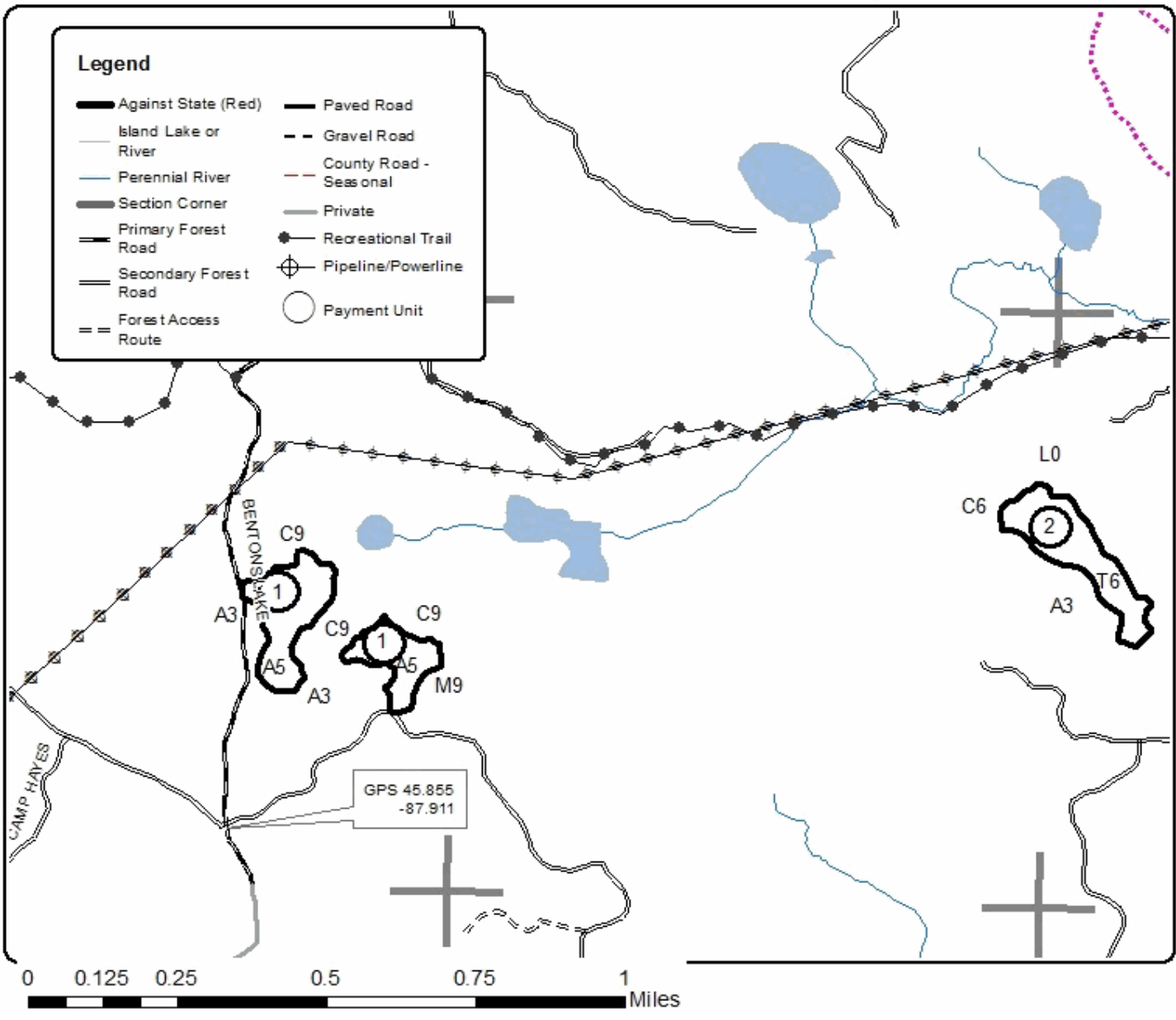
Sale Number	Year
12-002-23	2023

Forest Management Unit Crystal Falls Management Unit	County Dickinson Co.	Mapped By Dickie Goupell	Date 4-27-2023	Page 1	of 2
Township 40 N	Range 29 W	Section(s) and Subdivision(s) SEC 14 SWNW SEC 15 SWNW, NWSW SEC 16 SENE, SEC 17 S1/2NE, N1/2 SE	Scale 1:15,840		

Cover Type				Density	
A = Aspen	H = Hemlock	N = Marsh	U = Upland Brush	0 = Non Stocked	5 = Pole Timber Medium
B = Paper Birch	J = Jack Pine	O = Oak	UM = Upland Mixed	1 = Seedling Sapling Poor	6 = Pole Timber Well
C = Cedar	L = Lowland Brush	P = Lowland Poplar	V = Bog or Marsh	2 = Seedling Sapling Medium	7 = Saw Timber Poor
D = Tread Bog	LM = Lowland Mixed	Q = Mixed Swamp Conifer	W = White Pine	3 = Seedling Sapling Well	8 = Saw Timber Medium
E = Swamp Hdwoods	M = Mpl, Bch, Brch	R = Red Pine	X = Non Stocked	4 = Pole Timber Poor	9 = Saw Timber Well
F = Spruce Fir	MC = Mixed Conifer	S = Black Spruce	Z = Water		
G = Grass	MD = Mixed Deciduous	T = Tamarack			

PU	Acres
1	20.3
2	14.2
3	19.0

Three Section Mix Compartment 96 Acres 53.5





TIMBER SALE MAP

Sale Number	Year
12-002-23	2023

This information provided by authority of Part 525, 1994 PA 451, as amended.

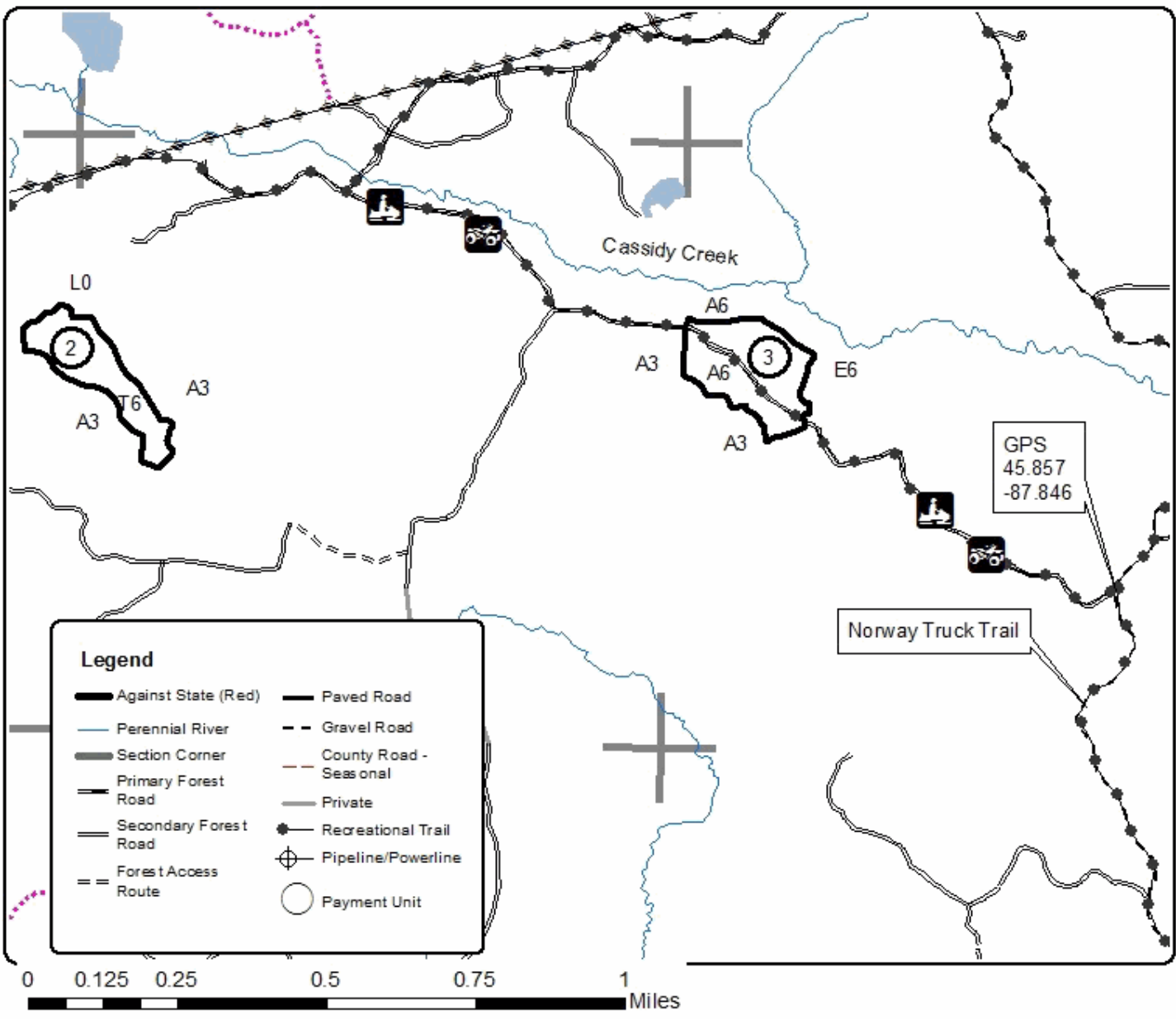
Forest Management Unit	County	Mapped By	Date	Page	of
Crystal Falls Management Unit	Dickinson Co.	Dickie Goupell	4-27-2023	2	2
		Cruised By			
		Dickie Goupell			

Township	Range	Section(s) and Subdivision(s)	Scale
40 N	29 W	SEC 14 SWNW, SEC 15 SWNW, NWSW SEC 16 SENE, SEC 17 S1/2NE, N1/2 SE	1:15,840

Cover Type				Density	
A = Aspen	H = Hemlock	N = Marsh	U = Upland Brush	0 = Non Stocked	5 = Pole Timber Medium
B = Paper Birch	J = Jack Pine	O = Oak	UM = Upland Mixed	1 = Seedling Sapling Poor	6 = Pole Timber Well
C = Cedar	L = Lowland Brush	P = Lowland Poplar	V = Bog or Marsh	2 = Seedling Sapling Medium	7 = Saw Timber Poor
D = Treed Bog	LM = Lowland Mixed	Q = Mixed Swamp Conifer	W = White Pine	3 = Seedling Sapling Well	8 = Saw Timber Medium
E = Swamp Hardwoods	M = Mpl, Bch, Birch	R = Red Pine	X = Non Stocked	4 = Pole Timber Poor	9 = Saw Timber Well
F = Spruce Fir	MC = Mixed Conifer	S = Black Spruce	Z = Water		
G = Grass	MD = Mixed Deciduous	T = Tamarack			

PU	Acres
1	20.3
2	14.2
3	19.0

Three Section Mix Compartment 96 Acres 53.5



TIMBER SALE INFORMATION

Beekeeper (12-004-23)

T44N, R27W, SEC. 18; T44N, R28W, SEC. 11; T44N, R28W, SEC. 12; T44N, R28W, SEC. 13; T44N, R28W, SEC. 14; T44N, R28W, SEC. 2.

SALE NOTE: Road construction, including stream crossing permits, will be required to access Payment Units 2 & 3. The Purchaser will be required to obtain permits. Payment Unit 4 is a scaled unit; it is a lowland black spruce/tamarack unit, and it is recommended that harvest occurs during winter or very dry summer.

A recreation site such as a trail, pathway, or campground is within the sale area or the vicinity. Certain restrictions/specifications may be applicable including time restrictions.

A timber sale contract for this mixed, sealed bid timber sale will be awarded to the responsible bidder offering the highest sealed bid price. All units of volume listed below were estimated using the Inventory Manager computer program and the new Michigan taper model. Bids must be at or above the following advertised price for each product and species:

<u>PRODUCTS & SPECIES</u>	<u>ESTIMATED UNITS*</u>		<u>ADVERTISED PRICE</u>
Sawtimber			
Paper Birch	72.4	MBF	\$ 99.00 / MBF
Red Maple	28.2	MBF	\$ 97.00 / MBF
Sugar Maple	47.6	MBF	\$ 195.00 / MBF
Pulpwood			
Balsam Fir	323	Cords	\$ 9.05 / Cord
Mixed Hardwood	1,191	Cords	\$ 14.05 / Cord
Mixed Spruce	136	Cords	\$ 13.40 / Cord
Paper Birch	584	Cords	\$ 4.55 / Cord
Quaking Aspen	3,456	Cords	\$ 27.40 / Cord
Tamarack	83	Cords	\$ 5.80 / Cord

* The total volume is statistically estimated within plus (+) or minus (-) 12.87 percent. There are an estimated 5,892 cords on this timber sale, plus or minus 759 cords at the 95% confidence level. The estimated units are final and not subject to adjustment. Prospective bidders are urged to examine this timber and to make their own estimates of quantity and quality.

BOND AND PAYMENT SCHEDULE:

1. A bond in the amount of \$11,080.00 to insure faithful performance of the conditions of the contract will be deposited by the successful bidder within 21 days of the sale award.
2. Cutting in any sale or unit without the required advance payment would be considered a trespass.
3. Total payment must be paid in advance or according to the following schedule :
 - (a) Ten percent (10%) of the sale value must be paid within 21 days of the sale award.
 - (b) The 10% down payment will be credited towards the first unit cut.
 - (c) Payment for each of the following units must be made before cutting begins in that unit:

PAYMENT UNIT NUMBER	PERCENT OF TOTAL SALE VALUE
01	16.1%
02	14.6%
03	20.2%
04	3.8%
05	12.6%
06	9.8%
07	3.9%
08	4.8%
09	3.5%
10	10.7%

4. If no cutting takes place, the 10% down payment will not be refunded.
5. Operations on the contract issued will terminate on 06/30/2027.

SALE STATISTICS

Volumes were calculated in cubic feet using the Michigan taper model. Cubic foot volume includes all wood inside bark for the product indicated. For display purposes, cubic feet were converted to cords and MBF using a simple conversion factor, e.g. 79 cubic feet per cord and 185 cubic feet per MBF. The cubic foot volumes are precise; the cords and MBF volumes are not. Cubic foot volume cannot be directly converted to cords or boards with precision.

SALE VOLUMES

The total estimated sale volume may not equal the sum of the species/products due to the nature of statistical calculations associated with double sampling methodology.

VOLUME			STATISTICAL RANGE IN CORDS	
TOTAL CUBIC FEET	TOTAL CORDS	PERCENT ERROR	MINIMUM	MAXIMUM
465,431	5,892	12.87%	5,133	6,650

VDU VOLUMES

A VDU is a Volume Determination Unit. Volumes and their associated statistics are calculated at the VDU level and summarized to the sale level. There is often a one to one relationship between a VDU and a Payment Unit, but not always, depending on the cruise design. Refer to the VDU TO PAYMENT UNIT table.

	VOLUME			RANGE IN CORDS	
VDU	TOTAL CUBIC FEET	TOTAL CORDS	PERCENT ERROR	MINIMUM	MAXIMUM
1	91,476	1,158	35.63%	745	1,570
9	87,435	1,107	28.01%	797	1,417
10	46,035	583	43.68%	328	837
13	22,769	288	598.99%	1,438	2,015
16	119,048	1,507	20.70%	1,195	1,819
33	39,790	504	28.54%	360	647
999	58,877	745	14.90%	634	856
TOTAL:	465,431	5,892		2,621	9,162

VDU TO PAYMENT UNIT

When a VDU is associated with more than one Payment Unit (PU), the VDU volumes are assigned to the PU based on acres of the VDU within the PU.

VDU	VDU ACRES	PU	PU ACRES
1	37.6	1	37.6
9	44.1	2	27.9
		3	16.2
10	18.5	3	18.5
13	35.3	4	35.3
16	64.8	5	36.5
		6	28.3
33	10.5	10	10.5
999	76.2	7	24.5
		8	30.2
		9	21.5
TOTAL:	287.0		287.0

DESCRIPTION OF TIMBER BY PAYMENT UNIT (PU)

PU	MARKET GROUP	PRODUCT	QUANTITY	UNIT	ACRES	ADVERTISE PRICE
1	Paper Birch	Sawtimber	11.4	MBF	37.6	\$22,314.35
	Balsam Fir	Pulpwood	237	Cords		
	Mixed Hardwood		255	Cords		
	<i>Red Maple</i>		228	Cords		
	<i>Sugar Maple</i>		27	Cords		
	Mixed Spruce		11	Cords		
	<i>White Spruce</i>		11	Cords		
	Paper Birch		77	Cords		
	Quaking Aspen		546	Cords		
2	Balsam Fir	Pulpwood	4	Cords	27.9	\$20,172.50
	Mixed Spruce		23	Cords		
	<i>Black Spruce</i>		14	Cords		
	<i>White Spruce</i>		9	Cords		
	Paper Birch		22	Cords		
	Quaking Aspen		720	Cords		
	3	Balsam Fir	Pulpwood	3		
Mixed Spruce			14	Cords		
<i>Black Spruce</i>			8	Cords		
<i>White Spruce</i>			6	Cords		
Paper Birch			24	Cords		
Quaking Aspen			1,003	Cords		
4		Mixed Spruce	Pulpwood	82	Cords	35.3
	<i>Black Spruce</i>		82	Cords		
	Quaking Aspen		136	Cords		
	Tamarack		83	Cords		
5	Paper Birch	Sawtimber	29.2	MBF	36.5	\$17,494.00
	Red Maple		6.1	MBF		
	Balsam Fir	Pulpwood	12	Cords		
	Mixed Hardwood		174	Cords		
	<i>Red Maple</i>		149	Cords		
	<i>Sugar Maple</i>		25	Cords		
	Paper Birch		248	Cords		
	Quaking Aspen		377	Cords		
6	Paper Birch	Sawtimber	22.7	MBF	28.3	\$13,579.55
	Red Maple		4.8	MBF		
	Balsam Fir	Pulpwood	9	Cords		
	Mixed Hardwood		136	Cords		
	<i>Red Maple</i>		116	Cords		
	<i>Sugar Maple</i>		20	Cords		
	Paper Birch		192	Cords		
	Quaking Aspen		292	Cords		
7	Paper Birch	Sawtimber	2.9	MBF	24.5	\$5,470.35
	Red Maple		5.6	MBF		
	Sugar Maple		7.0	MBF		
	Balsam Fir	Pulpwood	14	Cords		
	Mixed Hardwood		138	Cords		
	<i>Red Maple</i>		41	Cords		
	<i>Sugar Maple</i>		97	Cords		
	Mixed Spruce		2	Cords		
	<i>White Spruce</i>		2	Cords		
	Paper Birch		7	Cords		
	Quaking Aspen		42	Cords		
	8	Paper Birch	Sawtimber	3.6		
Red Maple			6.8	MBF		
Sugar Maple			8.6	MBF		

DESCRIPTION OF TIMBER BY PAYMENT UNIT (PU), CON'T

PU	MARKET GROUP	PRODUCT	QUANTITY	UNIT	ACRES	ADVERTISE PRICE	
8 con't	Balsam Fir	Pulpwood	17	Cords			
	Mixed Hardwood		169	Cords			
	<i>Red Maple</i>		50	<i>Cords</i>			
	<i>Sugar Maple</i>		119	<i>Cords</i>			
	Mixed Spruce		2	Cords			
	<i>White Spruce</i>		2	<i>Cords</i>			
	Paper Birch		8	Cords			
	Quaking Aspen		52	Cords			
9	Paper Birch	Sawtimber	2.6	MBF	21.5	\$4,818.25	
	Red Maple	Pulpwood	4.9	MBF			
	Sugar Maple		6.2	MBF			
	Balsam Fir		12	Cords			
	Mixed Hardwood		121	Cords			
	<i>Red Maple</i>		36	<i>Cords</i>			
	<i>Sugar Maple</i>		85	<i>Cords</i>			
	Mixed Spruce		2	Cords			
	<i>White Spruce</i>		2	<i>Cords</i>			
	Paper Birch		6	Cords			
	Quaking Aspen		37	Cords			
	10		Sugar Maple	Sawtimber			25.8
Balsam Fir			Pulpwood	15	Cords		
Mixed Hardwood		198		Cords			
<i>Red Maple</i>		33		<i>Cords</i>			
<i>Sugar Maple</i>		165		<i>Cords</i>			
Quaking Aspen		251		Cords			
TOTAL:				148.2	MBF		
TOTAL:				5,773	Cords		

Sale Specific Conditions & Requirements

Sale Name: Beekeeper

Sale Number: 12-004-23 Seq#: 1

1 - Sale Area

1.2 - Boundaries

1.2.1 - Painted boundaries (9/19)

The sale boundary and Payment Unit boundaries are marked and identified by red and yellow paint. Exterior sale boundary lines against state are marked with red paint. Interior Payment Unit boundaries are marked with yellow paint. The painted boundary line trees are not Included Timber and are to be protected. Yellow painted trees designating an interior Payment Unit boundary are only to be cut when all surrounding Payment Units have been paid.

2 - Timber Specifications

2.1 - Included Timber

2.1.2 - Clearcut unit(s) w/o unmerchantable trees (8/11)

Within Payment Unit(s) 1-6 & 10, cut all trees which meet minimum piece specifications in 2.2 Utilization, except cedar, white pine, red pine, and oak. In addition, do not cut any green painted birch trees or submerchantable cherry.

2.1.3 - Cut tree marked unit(s) (12/08)

Within Payment Unit(s) 7-9, all trees are designated for cutting when marked with orange paint above and below stump height, regardless of merchantability.

3 - Payments

3.2 - Scaled Sales

3.2.1 - Scale location (2/04)

Forest products will be placed for measurement before being hauled. This pertains to all cut products in Payment Unit 4. Landing area must be approved by Sale Administrator prior to decking products.

3.3 - Pre-measured Sales

3.3.4 - Dividing payment units (7/14)

Payment Unit(s) 1, may be divided at the request of the Purchaser and upon approval of the Unit Manager. Dividing Payment Units is a contract modification which requires a Timber Sale Contract Amendment. There will be only one division per Payment Unit.

3.4 - Damaged Timber

3.4.1 - Damaged timber (7/16)

General Condition and Requirement 3.4 Damaged Timber, defines liquidated damages for undesignated live merchantable trees which are cut or injured.

No damage is acceptable to undesignated live merchantable trees. Within the Sale Area, if more than 10% of trees (> 4.5" DBH) within a specified area of the sale are damaged, liquidated damages will be assessed for all trees damaged. Rates will be in accordance with General Condition and Requirement 3.4 Damaged Timber, or at a rate of \$20 per sawtimber tree and \$5 per pole sized tree, whichever is greater.

4 - Transportation

4.1 - Construction

4.1.1 - Stream crossings, general (3/11)

All stream crossing structures will be temporary and therefore, shall be provided by the Purchaser, and must be removed upon completion of the sale. All permits for stream crossings will be provided by the Purchaser.

4.1.4 - Timber removed for construction (3/23)

Trees cut or damaged in the process of pre-approved road, landing or skid trail construction will be decked in an area separate from other Designated Timber and not removed until measured by the sale administrator. Payment will be made at contract

prices or average prices, if not on the contract.

4.1.6 - Road construction (1/09)

Construction of new roads or improvements of existing roads shall be done in such a way as to minimize the environmental and visual impacts. Merchantable trees shall be cut and utilized unless otherwise directed. Non-merchantable trees shall be severed and laid flat on the ground. Slash shall be scattered, and not left in windrows and kept a minimum of 10 feet back from the road edge. Stumps shall be set upright, not left on edge, and be moved at least 5 feet away from the road edge. Disturbed soil shall be feathered into the woods and not left in berms or windrows.

4.1.7 - Road closure (10/11)

New roads built into the sale must be blocked to vehicle traffic upon completion of the sale. Overgrown roads that are reopened will be considered new roads. In general, this will require constructing a four (4') foot high berm of stumps and logs covered with earth. Contact the Sale Administrator for specific details of design and placement.

4.2 - Maintenance

4.2.1 - Hauling restriction (12/08)

Hauling may be restricted on forest roads by the Unit Manager or his/her representative. The restriction may occur during spring breakup or prolonged wet weather conditions.

4.2.4 - Grading (10/16)

For completion of the sale, state forest roads must be graded. In general, this will require a road grader or bull dozer to shape up the roads after forest products have been hauled off site. This includes cleaning of drainage areas, grading, crowning and filling with gravel, if necessary. The grading equipment to be used must be approved by the Unit Manager or his/her representative.

4.4 - Access

4.4.2 - Alternate route on private property (2/04)

It is the Purchaser's responsibility to obtain access across private land for any routes other than the route shown on the Timber Sale Map.

5 - Operations

5.2 - Conduct of Operations

5.2.3 - Operating Restrictions

5.2.3.3 - Bark slippage restriction (3/09)

Within Payment Unit(s) 8 & 9, unless changed by written agreement, cutting and skidding are not permitted during the period of April 15 to July 15. This restriction is because of bark slippage.

5.2.22 - Operating Caution

5.2.22.1 - Operating caution (6/11)

It is recommended, but not required, that within Payment Unit(s) 4, cutting and skidding occur during dry summer or frozen winter conditions. The reason for the recommendation is because of the lowland soils.

5.2.32 - Decking/landing restoration (9/13)

All decking and landing areas must have the surface area restored to a condition equal to or better than before. This is to ensure the proper regeneration of the stand. Wood debris, chips and "cookies" from trimmings must be removed or scattered away from landing and loading areas and may not be windrowed on the edge.

5.2.38 - No decking against live trees (2/04)

Cut products may not be decked against unmarked or designated leave trees.

5.2.41 - Snowmobile trail protection (9/11)

The Simpson Road is also partially a snowmobile trail and is shown on the Timber Sale Map. Do not cut or damage posts with orange trail markers or traffic control signs. If the trail is used, it must be maintained and restored to a condition equal to or better than before the sale. The road maintenance/restoration must be done prior to December 1. If the trail road is to be used for hauling during the snowmobile season, then a snow covered base must be left on the trail. Maintain a 20-foot-wide slash, debris, and rut free zone daily using the snowmobile trail as the centerline. All stumps within 10 feet of the snowmobile

trail must be cut at ground level.

5.4 - Soil Protection

5.4.1 - Rutting restriction, general (7/16)

Operations are to cease immediately if equipment and weather conditions result in rutting of roads and/or skid trails which are 12 inches or greater in depth and 50 feet in length. The Unit Manager or his/her representative may restrict hauling and/or skidding if ruts exceed the specified depth. With the Unit Manager or his/her representative's approval, the Purchaser may return to the area when the risk of rutting has decreased.

6 - Safety and Fire Prevention

6.2 - Signing

6.2.2 - Snowmobile trail posting (10/20)

The Purchaser is responsible for posting and maintaining caution signs on Simpson Road prior to beginning operations during the snowmobile season (approximately December 1 to March 31). The trail must be posted at appropriate distances from the Sale Area to warn of logging activity and truck traffic. Signs must be removed when harvest operations are suspended or completed. The Purchaser will provide these signs.



TIMBER SALE MAP

This information provided by authority of Part 525, 1994 PA 451, as amended.

Sale Number	Year
004	2023

Forest Management Unit Crystal Falls Management Unit	County Dickinson Co.	Mapped By Debbie Goupell	Date 4/11/23	Page 1	of 2
Township 44N	Range 28,27W	Section(s) and Subdivision(s) R27 S18: W1/2SW R28 S.2: SWSW S11:N1/2N1/2,SENW,SW1/4,W1/2SE S12: S1/2NE,SENW,N1/2SE,SWSE,E1/2SW S13:E1/2,E1/2NW S14:NWNE	Scale 1:15,840		

Cover Type			
A = Aspen	H = Hemlock	N = Marsh	U = Upland Brush
B = Paper Birch	J = Jack Pine	O = Oak	UM = Upland Mixed
C = Cedar	L = Lowland Brush	P = Lowland Poplar	V = Bog or Marsh
D = Tread Bog	LM = Lowland Mixed	Q = Mixed Swamp Conifer	W = White Pine
E = Swamp Hdwoods	M = Mpl, Bch, Brch	R = Red Pine	X = Non Stocked
F = Spruce Fir	MC = Mixed Conifer	S = Black Spruce	Z = Water
G = Grass	MD = Mixed Deciduous	T = Tamarack	

Density	
0 = Non Stocked	5 = Pole Timber Medium
1 = Seedling Sapling Poor	6 = Pole Timber Well
2 = Seedling Sapling Medium	7 = Saw Timber Poor
3 = Seedling Sapling Well	8 = Saw Timber Medium
4 = Pole Timber Poor	9 = Saw Timber Well



Unit	Acres	Unit	Acres
1	37.6	6	28.3
2	27.9	7	24.5
3	34.7	8	30.2
4	35.3	9	21.5
5	36.5	10	10.5

Beekeeper Compartment 18 287 Acres



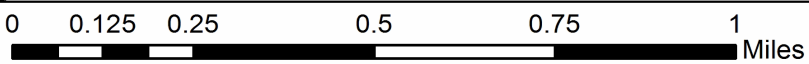
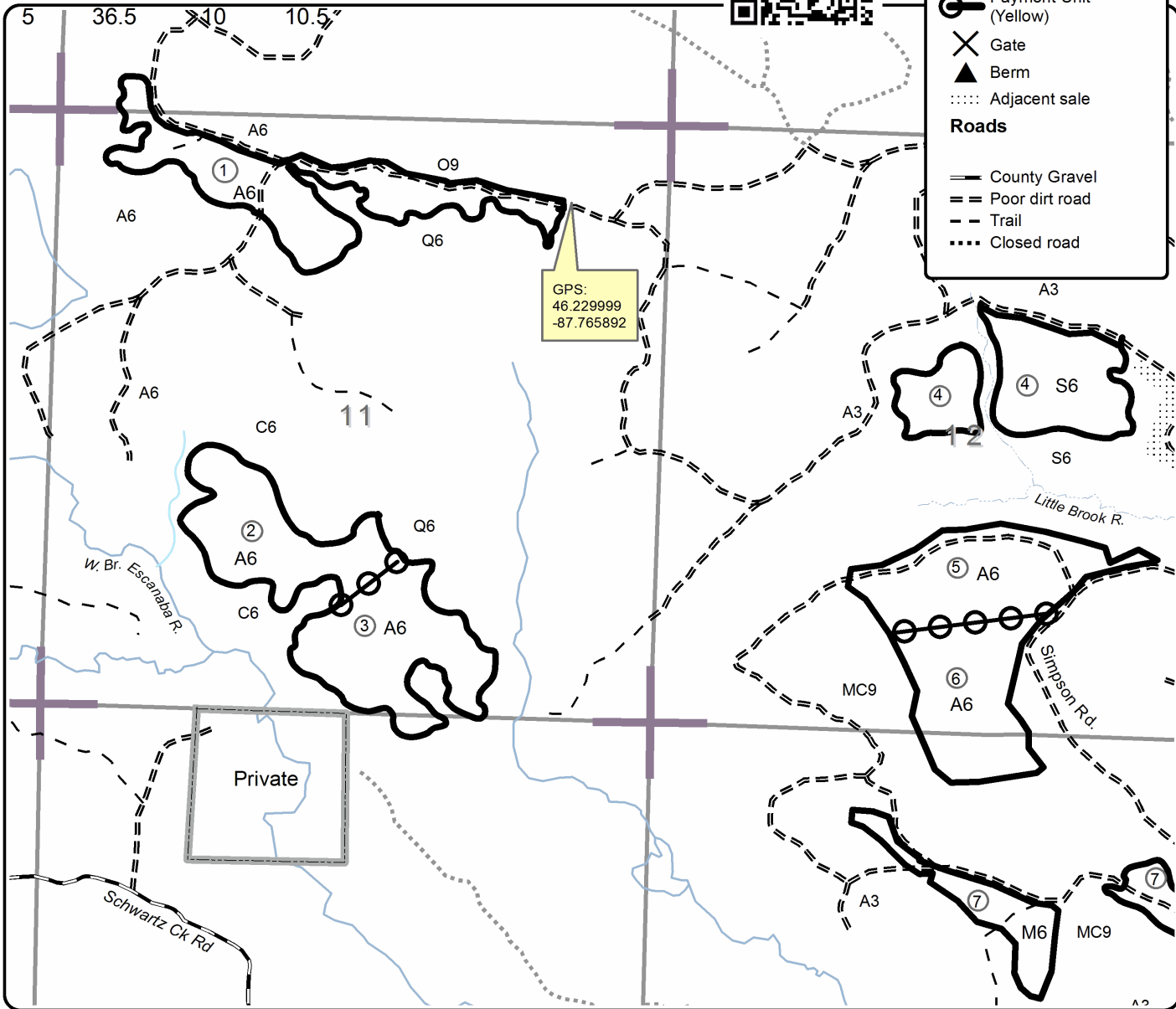
Legend

- Against State (Red)
- Payment Unit (Yellow)
- ✕ Gate
- ▲ Berm
- ⋯ Adjacent sale

Roads

- County Gravel
- == Poor dirt road
- - Trail
- ⋯ Closed road

GPS:
46.229999
-87.765892





TIMBER SALE MAP

This information provided by authority of Part 525, 1994 PA 451, as amended.

Forest Management Unit	County	Mapped By	Date	Page	of
Crystal Falls Management Unit	Dickinson Co.	Debbie Goupell	4/11/23	2	2
Township	Range	Section(s) and Subdivision(s)	Scale		
44N	28,27W	R27 S18: W1/2SW R28 S.2: SWSW S11:N1/2N1/2,SENW,SW1/4,W1/2SE S12: S1/2NE,SENW,N1/2SE,SWSE,E1/2SW S13:E1/2,E1/2NW S14:WNW	1:15,840		

Cover Type			
A = Aspen	H = Hemlock	N = Marsh	U = Upland Brush
B = Paper Birch	J = Jack Pine	O = Oak	UM = Upland Mixed
C = Cedar	L = Lowland Brush	P = Lowland Poplar	V = Bog or Marsh
D = Treed Bog	LM = Lowland Mixed	Q = Mixed Swamp Conifer	W = White Pine
E = Swamp Hdwoods	M = Mpl, Bch, Brch	R = Red Pine	X = Non Stocked
F = Spruce Fir	MC = Mixed Conifer	S = Black Spruce	Z = Water
G = Grass	MD = Mixed Deciduous	T = Tamarack	

Density	
0 = Non Stocked	5 = Pole Timber Medium
1 = Seedling Sapling Poor	6 = Pole Timber Well
2 = Seedling Sapling Medium	7 = Saw Timber Poor
3 = Seedling Sapling Well	8 = Saw Timber Medium
4 = Pole Timber Poor	9 = Saw Timber Well

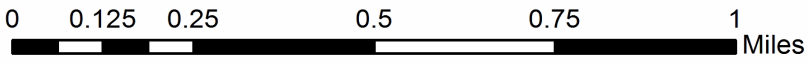
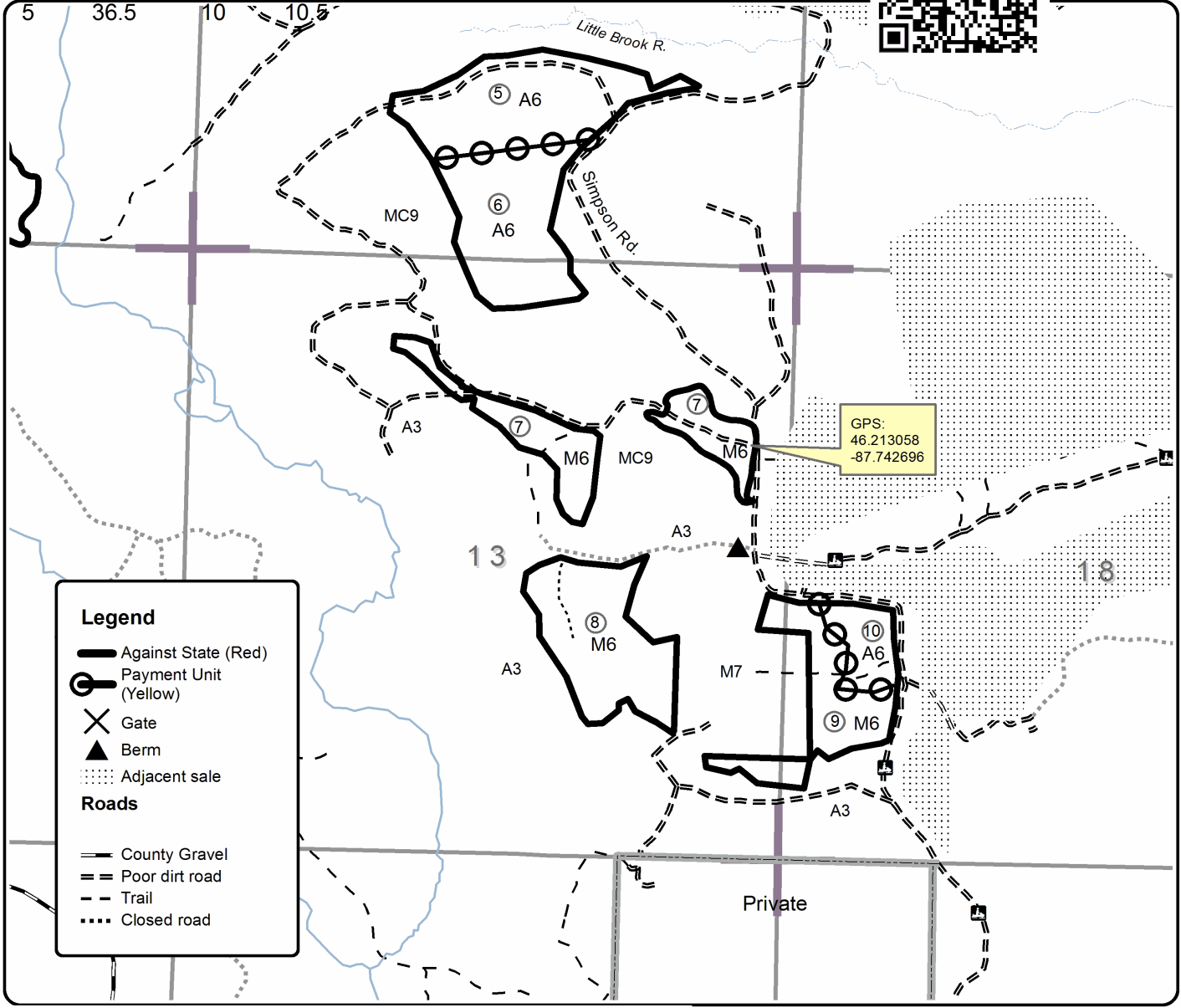


Unit	Acres	Unit	Acres
1	37.6	6	28.3
2	27.9	7	24.5
3	34.7	8	30.2
4	35.3	9	21.5
5	36.5	10	10.5

Beekeeper

Compartment 18

287 Acres



TIMBER SALE INFORMATION

Hatchetman Highway (12-006-23)

T43N, R27W, SEC. 28; T43N, R27W, SEC. 29; T43N, R27W, SEC. 30; T43N, R27W, SEC. 32.
Dickinson County (Advertised Price \$82,653.05)

SALE NOTE: The roads to the sale are class A access. In addition, Payment Unit 1 will be a scaled Payment Unit. Furthermore, the pipeline company must be contacted prior to harvesting operations.

A timber sale contract for this mixed, sealed bid timber sale will be awarded to the responsible bidder offering the highest sealed bid price. All units of volume listed below were estimated using the Inventory Manager computer program and the new Michigan taper model. Bids must be at or above the following advertised price for each product and species:

<u>PRODUCTS & SPECIES</u>	<u>ESTIMATED UNITS*</u>	<u>ADVERTISED PRICE</u>
Sawtimber		
Paper Birch	12.8 MBF	\$ 123.00 / MBF
Red Maple	39.8 MBF	\$ 121.00 / MBF
Sugar Maple	29.2 MBF	\$ 243.00 / MBF
White Ash	28.6 MBF	\$ 99.00 / MBF
Yellow Birch	5.9 MBF	\$ 122.00 / MBF
Pulpwood		
Balsam Fir	111 Cords	\$ 11.30 / Cord
Basswood	38 Cords	\$ 9.15 / Cord
Mixed Aspen	1,334 Cords	\$ 34.25 / Cord
Mixed Hardwood	879 Cords	\$ 17.55 / Cord
Mixed Spruce	122 Cords	\$ 16.75 / Cord
Paper Birch	64 Cords	\$ 5.65 / Cord
Tamarack	68 Cords	\$ 7.25 / Cord

* The total volume is statistically estimated within plus (+) or minus (-) 15.41 percent. There are an estimated 2,914 cords on this timber sale, plus or minus 449 cords at the 95% confidence level. The estimated units are final and not subject to adjustment. Prospective bidders are urged to examine this timber and to make their own estimates of quantity and quality.

BOND AND PAYMENT SCHEDULE:

1. A bond in the amount of \$4,133.00 to insure faithful performance of the conditions of the contract will be deposited by the successful bidder within 21 days of the sale award.
2. Cutting in any sale or unit without the required advance payment would be considered a trespass.
3. Total payment must be paid in advance or according to the following schedule :
 - (a) Ten percent (10%) of the sale value must be paid within 21 days of the sale award.
 - (b) The 10% down payment will be credited towards the first unit cut.
 - (c) Payment for each of the following units must be made before cutting begins in that unit:

PAYMENT UNIT NUMBER	PERCENT OF TOTAL SALE VALUE
01	1.9%
02	72.6%
03	10.5%
04	11.1%
05	3.9%

4. If no cutting takes place, the 10% down payment will not be refunded.
5. Operations on the contract issued will terminate on 06/30/2026.

SALE STATISTICS

Volumes were calculated in cubic feet using the Michigan taper model. Cubic foot volume includes all wood inside bark for the product indicated. For display purposes, cubic feet were converted to cords and MBF using a simple conversion factor, e.g. 79 cubic feet per cord and 185 cubic feet per MBF. The cubic foot volumes are precise; the cords and MBF volumes are not. Cubic foot volume cannot be directly converted to cords or boards with precision.

SALE VOLUMES

The total estimated sale volume may not equal the sum of the species/products due to the nature of statistical calculations associated with double sampling methodology.

VOLUME			STATISTICAL RANGE IN CORDS	
TOTAL CUBIC FEET	TOTAL CORDS	PERCENT ERROR	MINIMUM	MAXIMUM
230,219	2,914	15.41%	2,465	3,364

VDU VOLUMES

A VDU is a Volume Determination Unit. Volumes and their associated statistics are calculated at the VDU level and summarized to the sale level. There is often a one to one relationship between a VDU and a Payment Unit, but not always, depending on the cruise design. Refer to the VDU TO PAYMENT UNIT table.

	VOLUME			RANGE IN CORDS	
VDU	TOTAL CUBIC FEET	TOTAL CORDS	PERCENT ERROR	MINIMUM	MAXIMUM
14	10,382	131	0.00%	131	131
20	157,251	1,991	18.91%	1,614	2,367
32	30,633	388	31.15%	267	509
33	21,657	274	36.92%	173	375
36	10,294	130	28.05%	94	167
TOTAL:	230,219	2,914		2,279	3,549

VDU TO PAYMENT UNIT

When a VDU is associated with more than one Payment Unit (PU), the VDU volumes are assigned to the PU based on acres of the VDU within the PU.

VDU	VDU ACRES	PU	PU ACRES
14	11.8	1	11.8
20	61.4	2	61.4
32	17.9	4	17.9
33	16.1	3	16.1
36	11.5	5	11.5
TOTAL:	118.7		118.7

DESCRIPTION OF TIMBER BY PAYMENT UNIT (PU)

PU	MARKET GROUP	PRODUCT	QUANTITY	UNIT	ACRES	ADVERTISE PRICE	
1	Mixed Spruce	Pulpwood	64	Cords	11.8	\$1,565.00	
	<i>Black Spruce</i>		64	<i>Cords</i>			
	Tamarack		68	Cords			
2	Paper Birch	Sawtimber	3.2	MBF	61.4	\$59,992.20	
	Red Maple	Pulpwood	8.5	MBF			
	Sugar Maple		19.5	MBF			
	Balsam Fir		111	Cords			
	Mixed Aspen		1,275	Cords			
	<i>Balsam Poplar</i>		85	<i>Cords</i>			
	<i>Quaking Aspen</i>		1,190	<i>Cords</i>			
	Mixed Hardwood		450	Cords			
	<i>Black Ash</i>		113	<i>Cords</i>			
	<i>Black Cherry</i>		13	<i>Cords</i>			
	<i>Red Maple</i>		287	<i>Cords</i>			
	<i>Sugar Maple</i>		37	<i>Cords</i>			
	Mixed Spruce		58	Cords			
	<i>Black Spruce</i>		8	<i>Cords</i>			
	<i>White Spruce</i>		50	<i>Cords</i>			
	Paper Birch		7	Cords			
	3		Red Maple	Sawtimber			11.8
Sugar Maple		Pulpwood	8.5	MBF			
White Ash			23.9	MBF			
Yellow Birch			1.4	MBF			
Basswood			38	Cords			
<i>Basswood</i>			<i>Sawtimber</i>	10.0	<i>MBF</i>		
<i>Basswood</i>			<i>Pulpwood</i>	18	<i>Cords</i>		
Mixed Aspen			10	Cords			
<i>Balsam Poplar</i>			10	<i>Cords</i>			
Mixed Hardwood			112	Cords			
<i>Red Maple</i>			48	<i>Cords</i>			
<i>Sugar Maple</i>			51	<i>Cords</i>			
<i>White Ash</i>			11	<i>Cords</i>			
<i>Yellow Birch</i>			2	<i>Cords</i>			
4	Paper Birch	Sawtimber	6.7	MBF	17.9	\$9,155.90	
	Red Maple	Pulpwood	15.0	MBF			
	Yellow Birch		4.5	MBF			
	Mixed Aspen		49	Cords			
	<i>Quaking Aspen</i>		49	<i>Cords</i>			
	Mixed Hardwood		228	Cords			
	<i>Black Ash</i>		20	<i>Cords</i>			
	<i>Red Maple</i>		180	<i>Cords</i>			
	<i>Sugar Maple</i>		14	<i>Cords</i>			
	<i>Yellow Birch</i>		14	<i>Cords</i>			
	Paper Birch		51	Cords			
5	Paper Birch	Sawtimber	2.9	MBF	11.5	\$3,253.95	
	Red Maple	Pulpwood	4.5	MBF			
	Sugar Maple		1.2	MBF			
	White Ash		4.7	MBF			
	Mixed Hardwood		89	Cords			
	<i>Red Maple</i>		35	<i>Cords</i>			
	<i>Sugar Maple</i>		42	<i>Cords</i>			
	<i>White Ash</i>		12	<i>Cords</i>			
	Paper Birch		6	Cords			
	TOTAL:			116.3			MBF

TOTAL:	2,616 Cords
--------	-------------

Sale Specific Conditions & Requirements

Sale Name: Hatchetman Highway

Sale Number: 12-006-23 Seq#: 1

1 - Sale Area

1.2 - Boundaries

1.2.1 - Painted boundaries (9/19)

The sale boundary and Payment Unit boundaries are marked and identified by blue, red and yellow paint. Exterior sale boundary lines against private property are marked with blue paint. Exterior sale boundary lines against state are marked with red paint. Interior Payment Unit boundaries are marked with yellow paint. The painted boundary line trees are not Included Timber and are to be protected unless marked with orange paint. Yellow painted trees designating an interior Payment Unit boundary are only to be cut when all surrounding Payment Units have been paid.

2 - Timber Specifications

2.1 - Included Timber

2.1.2 - Clearcut unit(s) w/o unmerchantable trees (8/11)

Within Payment Unit(s) 1, 2, & 4, cut all trees which meet minimum piece specifications in 2.2 Utilization, except cedar, pine, or hemlock.

2.1.3 - Cut tree marked unit(s) (12/08)

Within Payment Unit(s) 3 & 5, all trees are designated for cutting when marked with orange paint above and below stump height, regardless of merchantability.

2.1.11 - Description of timber note (2/04)

Note that Payment Unit 1 volume will be scaled and sold at contract prices.

3 - Payments

3.2 - Scaled Sales

3.2.1 - Scale location (2/04)

Forest products will be placed for measurement roadside in Payment Unit 1.

3.3 - Pre-measured Sales

3.3.4 - Dividing payment units (7/14)

Payment Unit(s) 2, may be divided at the request of the Purchaser and upon approval of the Unit Manager. Dividing Payment Units is a contract modification which requires a Timber Sale Contract Amendment. There will be only one division per Payment Unit.

3.4 - Damaged Timber

3.4.1 - Damaged timber (7/16)

General Condition and Requirement 3.4 Damaged Timber, defines liquidated damages for undesignated live merchantable trees which are cut or injured.

No damage is acceptable to undesignated live merchantable trees. Within the Sale Area, if more than 10% of trees (> 4.5" DBH) within a specified area of the sale are damaged, liquidated damages will be assessed for all trees damaged. Rates will be in accordance with General Condition and Requirement 3.4 Damaged Timber.

4 - Transportation

4.1 - Construction

4.1.6 - Road construction (1/09)

Construction of new roads or improvements of existing roads shall be done in such a way as to minimize the environmental and visual impacts. Merchantable trees shall be cut and utilized unless otherwise directed. Non-merchantable trees shall be severed and laid flat on the ground. Slash shall be scattered, and not left in windrows and kept a minimum of 10 feet back from the road edge. Stumps shall be set upright, not left on edge, and be moved at least 10 feet away from the road edge.

Disturbed soil shall be feathered into the woods and not left in berms or windrows.

4.1.7 - Road closure (10/11)

All new roads built into the sale must be blocked to vehicle traffic upon completion of the sale. Overgrown roads that are reopened shall be considered new roads. In general, this will require constructing a four (4') foot high berm of stumps and logs covered with earth. These roads must be rendered impassable to cars and trucks. Contact the Sale Administrator for specific details of design and placement.

4.3 - Public Right-of-Way

4.3.2 - County R-O-W (12/06)

The county must be contacted prior to crossing or harvesting in the county road R-O-W. This applies to Payment Units 1 & 2 and County Road 426.

5 - Operations

5.1 - Notification

5.1.6 - Utility R.O.W. (4/19)

It is the responsibility of the Purchaser to obtain permission from the utility company to utilize the Enbridge pipeline R.O.W. for operations.

5.2 - Conduct of Operations

5.2.2 - Hazard Trees/Snags

5.2.2.1 - Den trees (10/16)

Obvious hollow and/or den trees shall be protected and left standing unless they are a safety hazard.

5.2.3 - Operating Restrictions

5.2.3.3 - Bark slippage restriction (3/09)

Within Payment Unit(s) 3 & 5, unless changed by written agreement, cutting and skidding are not permitted during the period of April 15 to July 15. This restriction is because of bark slippage.

5.4 - Soil Protection

5.4.1 - Rutting restriction, general (7/16)

Operations are to cease immediately if equipment and weather conditions result in rutting of roads and/or skid trails which are 12 inches or greater in depth and 50 feet in length. The Unit Manager or his/her representative may restrict hauling and/or skidding if ruts exceed the specified depth. With the Unit Manager or his/her representative's approval, the Purchaser may return to the area when the risk of rutting has decreased.

6 - Safety and Fire Prevention

6.2 - Signing

6.2.1 - Road posting (10/20)

The Purchaser is responsible for posting and maintaining caution signs on County Road 426 prior to beginning operations. The road must be posted at appropriate distances from the Sale Area to warn of logging activity and truck traffic. Signs must be removed when harvest operations are suspended or completed. The Purchaser will provide these signs.



TIMBER SALE MAP

This information provided by authority of Part 525, 1994 PA 451, as amended.

Sale Number	Year
12 - 006	23

Forest Management Unit	County	Mapped By	Date	Page	of
Crystal Falls FMU	Dickinson	Andy Church	05/28/2023	1	1
		Cruised By			
		Church, Deb Goupell			

Township	Range	Section(s) and Subdivision(s)	Scale
43N	27W	Sec 28 N1/2SW, Sec 30 E1/2SE, Sec 29 E1/2NE, S1/2SW, S1/2SE, Sec 32 NWNE	1:15,840

Cover Type				Density	
A = Aspen	H = Hemlock	N = Marsh	U = Upland Brush	0 = Non Stocked	5 = Pole Timber Medium
B = Paper Birch	J = Jack Pine	O = Oak	UM = Upland Mixed	1 = Seedling Sapling Poor	6 = Pole Timber Well
C = Cedar	L = Lowland Brush	P = Lowland Poplar	V = Bog or Marsh	2 = Seedling Sapling Medium	7 = Saw Timber Poor
D = Treed Bog	LM = Lowland Mixed	Q = Mixed Swamp Conifer	W = White Pine	3 = Seedling Sapling Well	8 = Saw Timber Medium
E = Swamp Hdwoods	M = Mpl, Bch, Brch	R = Red Pine	X = Non Stocked	4 = Pole Timber Poor	9 = Saw Timber Well
F = Spruce Fir	MC = Mixed Conifer	S = Black Spruce	Z = Water		
G = Grass	MD = Mixed Deciduous	T = Tamarack			

PU	Acres	PU	Acres
1	11.8	4	17.9
2	61.4	5	11.5
3	16.1		

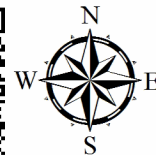
Hatchetman Highway

Compartment 28

118.7 Acres

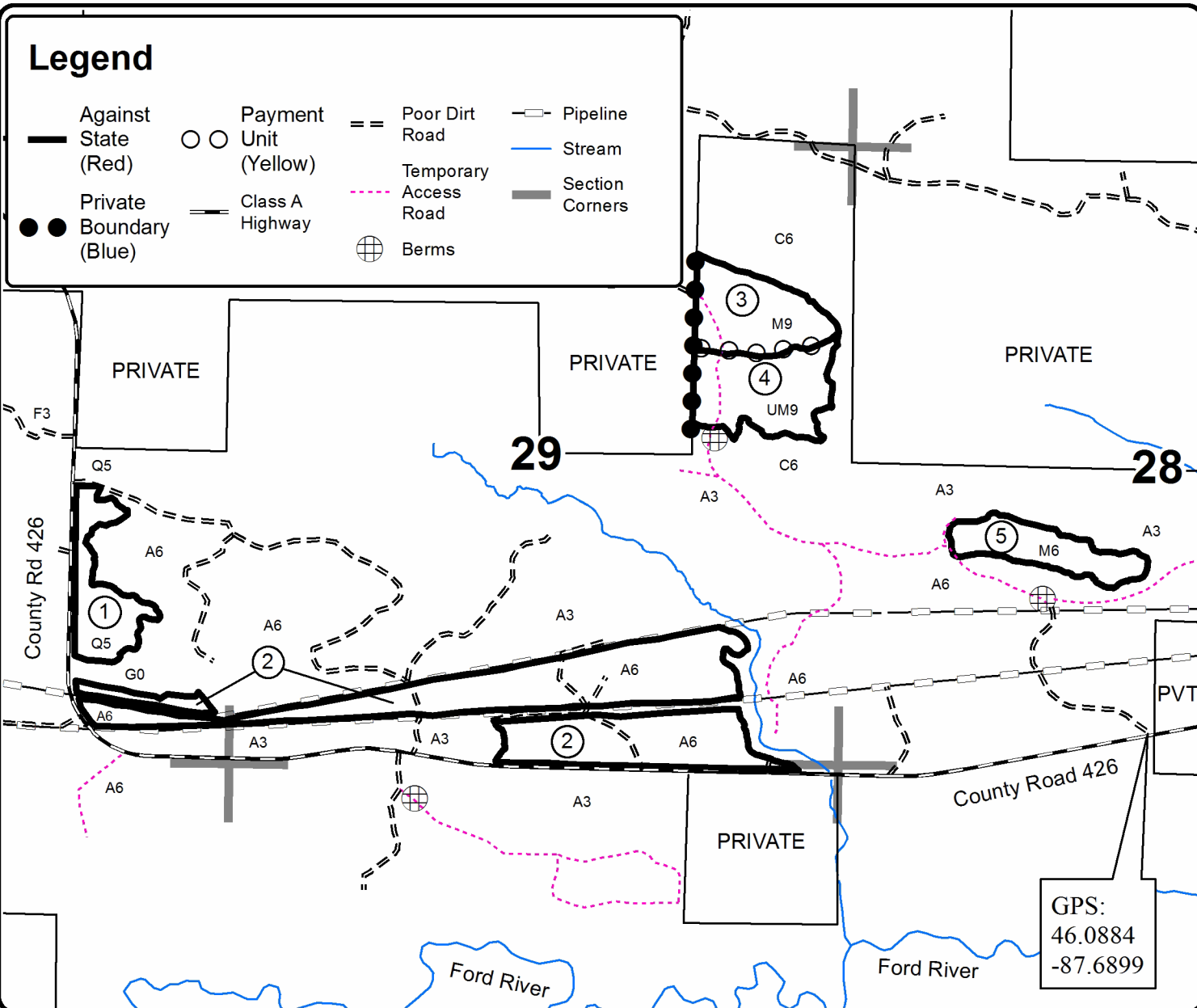


QR code for GeoRef PDF

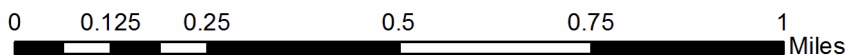


Legend

- Against State (Red)
- Private Boundary (Blue)
- ○ Payment Unit (Yellow)
- Class A Highway
- == Poor Dirt Road
- Temporary Access Road
- ⊕ Berms
- Pipeline
- Stream
- Section Corners



GPS:
46.0884
-87.6899



Beekeeper (12-004-23)

T44N, R27W, SEC. 18; T44N, R28W, SEC. 11; T44N, R28W, SEC. 12; T44N,

In response to the notice of sale to be held 3:00 p.m. (local time) on July 24, 2023, I am hereby submitting my sealed bid (firm offer) for the following forest products to be cut. Bids for individual species must be at or above the advertised price. All non-responsive bid forms may be rejected.

<u>PRODUCTS & SPECIES</u>	<u>ESTIMATED VOLUME*</u>	<u>ADVERTISED PRICE</u>	<u>BID PRICE/UNIT</u>
Sawtimber			
Paper Birch	72.4 MBF	\$ 99.00/MBF	\$ _____
Red Maple	28.2 MBF	\$ 97.00/MBF	\$ _____
Sugar Maple	47.6 MBF	\$ 195.00/MBF	\$ _____
Pulpwood			
Balsam Fir	323 Cords	\$ 9.05/Cord	\$ _____
Mixed Hardwood	1,191 Cords	\$ 14.05/Cord	\$ _____
Mixed Spruce	136 Cords	\$ 13.40/Cord	\$ _____
Paper Birch	584 Cords	\$ 4.55/Cord	\$ _____
Quaking Aspen	3,456 Cords	\$ 27.40/Cord	\$ _____
Tamarack	83 Cords	\$ 5.80/Cord	\$ _____

*The volumes are statistically estimated within plus (+) or minus (-) 12.87 percent at 95% confidence level. These estimated volumes are final and not subject to adjustment. Prospective bidders are urged to examine this timber and to make their own estimates of quantity and quality.

I understand that any or all bids may be rejected. All bids must be signed and all bid items must be bid or the bid form may be rejected. I also understand that consideration and awarding a contract will be based upon my past performance and ability to complete the contract based upon equipment and staffing subject to my control.

FEDERAL ID: ____ - ____ - ____ or SOCIAL SECURITY NUMBER: ____ - ____ - ____

Company or individual bidding: _____

Company representative's name: _____

Address: _____

City: _____ State: _____ Zip: _____

IF AVAILABLE, PLEASE PLACE THE PERSONALIZED LABEL FROM YOUR PROSPECTUS IN THE ABOVE BOX.

Individual or company representative's signature: _____ Date: _____

Phone number : _____ Email (optional): _____

THE WINNING BIDDER MUST COMPLETE THE VERIFICATION OF WORKER'S DISABILITY COMPENSATION ACT COMPLIANCE (ON REVERSE SIDE IF DOUBLE SIDED) WITHIN 21 DAYS OF SALE AWARD DATE



FOR DEPARTMENT USE ONLY	
Sale Number (XX - XXX - XX - XX)	
Forest Management Unit:	

TIMBER SALE VERIFICATION OF WORKER'S DISABILITY COMPENSATION ACT COMPLIANCE

As required by Act 317, P.A. 1969 (Worker's Compensation) and
Part 5 of Act 451 of 1994, as amended.

VERIFICATION OF WORKER'S DISABILITY COMPENSATION ACT COMPLIANCE

- This verification must be completed and submitted within 21 days of contract award and prior to the issuance of the timber sale contract.
- In addition, if boxes 2B or 2C are checked, then Notice of Exclusion or Certificate of Insurance must be submitted within twenty-one (21) days of the contract award and prior to the issuance of the timber sale contract.
- All information must be typed or printed except for written signatures.

Please Check Appropriate Categories:

1. My business is organized as (you **must** check one of the boxes below):
 - A. Sole Proprietorship (individual)
 - B. Partnership
 - C. Corporation
2. You **must** check one of the boxes below:
 - A. I certify my business is a sole proprietorship and it has no employees but the sole proprietor. I am not subject to the Worker's Compensation Laws.
 - B. I certify my business has satisfied its obligation to the Worker's Compensation Act through the use of an approved Notice of Exclusion (BWC-337, Rev. 5/96). I will provide a copy of the Notice of Exclusion within 21 days of the contract award. (For questions or a copy of the BWC-337, please call the Worker's Compensation Bureau at 517-322-1195).
 - C. I certify my business has a Worker's Compensation Policy. I will provide an original Certificate of Insurance within twenty-one (21) days of the contract award.
3. If you have checked item 2(A) or 2(B), you **must** indicate the number of **both** full-time and part-time employees, other than yourself, including family members and active partners (if none, you must enter "0").

_____ Full-time Employees

_____ Part-time Employees

Name of Business		Federal ID (or) Social Security No.	
Address		Telephone ()	
City	State	ZIP	

I hereby certify that the above information is true and correct. I agree to notify the Michigan DNR of any changes that occur in factors affecting my coverage during any of my present and future operations.

Signature of Owner or Authorized Representative

Title

Date

Please complete the "SEALED BID" information on the next page

Three Section Mix (12-002-23)

T40N, R29W, SEC. 14; T40N, R29W, SEC. 15; T40N, R29W, SEC. 16; T40N,

In response to the notice of sale to be held 3:00 p.m. (local time) on July 24, 2023, I am hereby submitting my sealed bid (firm offer) for the following forest products to be cut. Bids for individual species must be at or above the advertised price. All non-responsive bid forms may be rejected.

<u>PRODUCTS & SPECIES</u>	<u>ESTIMATED VOLUME*</u>	<u>ADVERTISED PRICE</u>	<u>BID PRICE/UNIT</u>
Pulpwood			
Balsam Fir	44 Cords	\$ 11.30/Cord	\$ _____
Basswood	18 Cords	\$ 9.15/Cord	\$ _____
Mixed Aspen	647 Cords	\$ 34.25/Cord	\$ _____
Mixed Hardwood	259 Cords	\$ 17.55/Cord	\$ _____
Mixed Spruce	38 Cords	\$ 16.75/Cord	\$ _____
Paper Birch	21 Cords	\$ 5.65/Cord	\$ _____
Tamarack	120 Cords	\$ 7.25/Cord	\$ _____

*The volumes are statistically estimated within plus (+) or minus (-) 18.60 percent at 95% confidence level. These estimated volumes are final and not subject to adjustment. Prospective bidders are urged to examine this timber and to make their own estimates of quantity and quality.

I understand that any or all bids may be rejected. All bids must be signed and all bid items must be bid or the bid form may be rejected. I also understand that consideration and awarding a contract will be based upon my past performance and ability to complete the contract based upon equipment and staffing subject to my control.

FEDERAL ID: ___ - ___ - _____ or SOCIAL SECURITY NUMBER: ___ - ___ - _____

Company or individual bidding: _____

Company representative's name: _____

Address: _____

City: _____ State: _____ Zip: _____

IF AVAILABLE, PLEASE PLACE THE PERSONALIZED LABEL FROM YOUR PROSPECTUS IN THE ABOVE BOX.

Individual or company representative's signature: _____ Date: _____

Phone number : _____ Email (optional): _____

THE WINNING BIDDER MUST COMPLETE THE VERIFICATION OF WORKER'S DISABILITY COMPENSATION ACT COMPLIANCE (ON REVERSE SIDE IF DOUBLE SIDED) WITHIN 21 DAYS OF SALE AWARD DATE



TIMBER SALE VERIFICATION OF WORKER'S DISABILITY COMPENSATION ACT COMPLIANCE

As required by Act 317, P.A. 1969 (Worker's Compensation) and
Part 5 of Act 451 of 1994, as amended.

FOR DEPARTMENT USE ONLY	
Sale Number (XX - XXX - XX - XX)	
Forest Management Unit:	

VERIFICATION OF WORKER'S DISABILITY COMPENSATION ACT COMPLIANCE

- This verification must be completed and submitted within 21 days of contract award and prior to the issuance of the timber sale contract.
- In addition, if boxes 2B or 2C are checked, then Notice of Exclusion or Certificate of Insurance must be submitted within twenty-one (21) days of the contract award and prior to the issuance of the timber sale contract.
- All information must be typed or printed except for written signatures.

Please Check Appropriate Categories:

1. My business is organized as (you **must** check one of the boxes below):
 - A. Sole Proprietorship (individual)
 - B. Partnership
 - C. Corporation
2. You **must** check one of the boxes below:
 - A. I certify my business is a sole proprietorship and it has no employees but the sole proprietor. I am not subject to the Worker's Compensation Laws.
 - B. I certify my business has satisfied its obligation to the Worker's Compensation Act through the use of an approved Notice of Exclusion (BWC-337, Rev. 5/96). I will provide a copy of the Notice of Exclusion within 21 days of the contract award. (For questions or a copy of the BWC-337, please call the Worker's Compensation Bureau at 517-322-1195).
 - C. I certify my business has a Worker's Compensation Policy. I will provide an original Certificate of Insurance within twenty-one (21) days of the contract award.
3. If you have checked item 2(A) or 2(B), you **must** indicate the number of **both** full-time and part-time employees, other than yourself, including family members and active partners (if none, you must enter "0").

_____ Full-time Employees

_____ Part-time Employees

Name of Business		Federal ID (or) Social Security No.	
Address		Telephone ()	
City	State	ZIP	

I hereby certify that the above information is true and correct. I agree to notify the Michigan DNR of any changes that occur in factors affecting my coverage during any of my present and future operations.

Signature of Owner or Authorized Representative

Title

Date

Please complete the "SEALED BID" information on the next page

Hatchetman Highway (12-006-23)
T43N, R27W, SEC. 28; T43N, R27W, SEC. 29; T43N, R27W, SEC. 30; T43N,

In response to the notice of sale to be held 3:00 p.m. (local time) on July 24, 2023, I am hereby submitting my sealed bid (firm offer) for the following forest products to be cut. Bids for individual species must be at or above the advertised price. All non-responsive bid forms may be rejected.

<u>PRODUCTS & SPECIES</u>	<u>ESTIMATED VOLUME*</u>	<u>ADVERTISED PRICE</u>	<u>BID PRICE/UNIT</u>
Sawtimber			
Paper Birch	12.8 MBF	\$ 123.00/MBF	\$ _____
Red Maple	39.8 MBF	\$ 121.00/MBF	\$ _____
Sugar Maple	29.2 MBF	\$ 243.00/MBF	\$ _____
White Ash	28.6 MBF	\$ 99.00/MBF	\$ _____
Yellow Birch	5.9 MBF	\$ 122.00/MBF	\$ _____
Pulpwood			
Balsam Fir	111 Cords	\$ 11.30/Cord	\$ _____
Basswood	38 Cords	\$ 9.15/Cord	\$ _____
Mixed Aspen	1,334 Cords	\$ 34.25/Cord	\$ _____
Mixed Hardwood	879 Cords	\$ 17.55/Cord	\$ _____
Mixed Spruce	122 Cords	\$ 16.75/Cord	\$ _____
Paper Birch	64 Cords	\$ 5.65/Cord	\$ _____
Tamarack	68 Cords	\$ 7.25/Cord	\$ _____

*The volumes are statistically estimated within plus (+) or minus (-) 15.41 percent at 95% confidence level. These estimated volumes are final and not subject to adjustment. Prospective bidders are urged to examine this timber and to make their own estimates of quantity and quality.

I understand that any or all bids may be rejected. All bids must be signed and all bid items must be bid or the bid form may be rejected. I also understand that consideration and awarding a contract will be based upon my past performance and ability to complete the contract based upon equipment and staffing subject to my control.

FEDERAL ID: ____ - ____ - ____ or SOCIAL SECURITY NUMBER: ____ - ____ - ____

Company or individual bidding: _____

Company representative's name: _____

Address: _____

City: _____ State: _____ Zip: _____

IF AVAILABLE, PLEASE PLACE THE PERSONALIZED LABEL FROM YOUR PROSPECTUS IN THE ABOVE BOX.

Individual or company representative's signature: _____ Date: _____

Phone number : _____ Email (optional): _____

THE WINNING BIDDER MUST COMPLETE THE VERIFICATION OF WORKER'S DISABILITY COMPENSATION ACT COMPLIANCE (ON REVERSE SIDE IF DOUBLE SIDED) WITHIN 21 DAYS OF SALE AWARD DATE



FOR DEPARTMENT USE ONLY	
Sale Number (XX - XXX - XX - XX)	
Forest Management Unit:	

TIMBER SALE VERIFICATION OF WORKER'S DISABILITY COMPENSATION ACT COMPLIANCE

As required by Act 317, P.A. 1969 (Worker's Compensation) and
Part 5 of Act 451 of 1994, as amended.

VERIFICATION OF WORKER'S DISABILITY COMPENSATION ACT COMPLIANCE

- This verification must be completed and submitted within 21 days of contract award and prior to the issuance of the timber sale contract.
- In addition, if boxes 2B or 2C are checked, then Notice of Exclusion or Certificate of Insurance must be submitted within twenty-one (21) days of the contract award and prior to the issuance of the timber sale contract.
- All information must be typed or printed except for written signatures.

Please Check Appropriate Categories:

1. My business is organized as (you **must** check one of the boxes below):
 - A. Sole Proprietorship (individual)
 - B. Partnership
 - C. Corporation
2. You **must** check one of the boxes below:
 - A. I certify my business is a sole proprietorship and it has no employees but the sole proprietor. I am not subject to the Worker's Compensation Laws.
 - B. I certify my business has satisfied its obligation to the Worker's Compensation Act through the use of an approved Notice of Exclusion (BWC-337, Rev. 5/96). I will provide a copy of the Notice of Exclusion within 21 days of the contract award. (For questions or a copy of the BWC-337, please call the Worker's Compensation Bureau at 517-322-1195).
 - C. I certify my business has a Worker's Compensation Policy. I will provide an original Certificate of Insurance within twenty-one (21) days of the contract award.
3. If you have checked item 2(A) or 2(B), you **must** indicate the number of **both** full-time and part-time employees, other than yourself, including family members and active partners (if none, you must enter "0").

_____ Full-time Employees

_____ Part-time Employees

Name of Business		Federal ID (or) Social Security No.	
Address		Telephone ()	
City	State	ZIP	

I hereby certify that the above information is true and correct. I agree to notify the Michigan DNR of any changes that occur in factors affecting my coverage during any of my present and future operations.

Signature of Owner or Authorized Representative

Title

Date

Please complete the "SEALED BID" information on the next page