



**DEPARTMENT OF NATURAL RESOURCES
STATE OF MICHIGAN
TIMBER SALE PROSPECTUS #7240**

SCHEDULED SALE DATE AND TIME: 10:00 a.m. (local time) on August 24, 2023.

LOCATION: GLADWIN MGMT UNIT, 801 NORTH SILVERLEAF, GLADWIN, MI 48624.

PROSPECTUS NOTE: The bidder is advised to inspect the sale area and review the location, estimated volumes, operating costs and contract terms of proposed sales. Please be aware that some landowners may request 60 days or more notice for access across their land.

Notice is hereby given that bids will be received by the Unit Manager, GLADWIN MANAGEMENT UNIT, for certain timber on the following described lands:

Leota Fuelbreak RP (73-998-23) / T20N, R05W, SEC. 17, NENE.

T20N, R05W, SEC. 3, N1/2SW, SESW.

T20N, R05W, SEC. 8, S1/2SE.

T20N, R05W, SEC. 9, SWSW.

Clare County, Advertised Price \$89,942.20, 88.2 Acres, Red Pine, Hardwood.

SALE NOTE: This sale has a 2-month contract for quick turnaround. In addition, these stands have been identified as shaded fuel breaks near Leota.

A recreation site such as a trail, pathway, or campground is within the sale area or the vicinity. Certain restrictions/specifications may be applicable including time restrictions.

Loopy Grim Aspen (73-007-22) / T18N, R02E, SEC. 19, NESW, S1/2SW, SE.

T18N, R02E, SEC. 29, N1/2NW, SWNW, W1/2NE.

T18N, R02E, SEC. 30, W1/2NW, NE.

Gladwin County, Advertised Price \$101,985.40, 146.5 Acres, Aspen, Hardwood.

SALE NOTE: The sale area of Loopy Grim Aspen can be found off of Grim and Fournier road. Culvert(s) may need to be installed along Grim and Fournier road to access payment units. Most of the sale contains low, wet ground and operating caution specs have been added.

A recreation site such as a trail, pathway, or campground is within the sale area or the vicinity. Certain restrictions/specifications may be applicable including time restrictions.

Eastman Dustbowl (73-008-22) / T17N, R02E, SEC. 5, NE, NESE.

T18N, R02E, SEC. 29, S1/2NE, SW, SE.

T18N, R02E, SEC. 30, SESE.

T18N, R02E, SEC. 32, SESW, S1/2SE.

Gladwin County, Advertised Price \$124,668.20, 183.2 Acres, Hardwood, Aspen.

SALE NOTE: The sale area for Eastman Dustbowl can be accessed from Eastman road. There is low / wet ground throughout the sale and operating caution specs have been added. Payment unit 1 is a leave tree unit with 13 BA/acre marked to leave. Oak wilt with no exceptions has been added to payment unit 1.

A recreation site such as a trail, pathway, or campground is within the sale area or the vicinity. Certain restrictions/specifications may be applicable including time restrictions.

Guernsey Grimy Mix (73-009-22) / T17N, R01E, SEC. 1 , SENW,SWNE,NESW.

T17N, R01E, SEC. 12, NENW.

T17N, R02E, SEC. 5 , SWNW,W1/2SW,SE.

T17N, R02E, SEC. 6 , NW,SENE,E1/2SE.

T17N, R02E, SEC. 8 , NENE.

Gladwin County, Advertised Price \$131,231.45, 163.3 Acres, Aspen, Hardwood.

SALE NOTE: The sale area can be accessed from Eastman, Guernsey creek and Jones road. Payment units 1, 3 & 4 are final harvest. Payment unit 2 is a marked red pine thinning, payment unit 5 is a designated cut unit with all aspen and paper birch to be cut and payment unit 6 is a leave tree marked unit. The sale area contains low / wet ground.

A recreation site such as a trail, pathway, or campground is within the sale area or the vicinity. Certain restrictions/specifications may be applicable including time restrictions.

BID INSTRUCTIONS (VER. 10/10/2022):

1. Scheduled Bid Location, Date, and Time (2/11)

Bids must be received by the Unit Manager, GLADWIN OFFICE, 801 NORTH SILVERLEAF, GLADWIN, MI 48624, no later than 10:00 a.m. (local time) on August 24, 2023. For further information concerning this sale, contact Blair Tweedale at 989-426-9205 extension 7640.

2. Bidder's Qualifications (10/22)

If all or part of a timber sale was prepared by a private contractor, the contractor and that contractor's company are not permitted to bid on the timber sale. A person must be 18 years of age or older to purchase timber. Permanent employees of the Department of Natural Resources or members of their immediate household may not bid. Former employees, in the permanent or seasonal class, may not bid until 3 months after the last day of active duty. Bids will not be accepted from individuals or companies appearing on the DNR/FRD No-Bid List. This list contains the names of purchasers who previously failed to execute a contract within 21-days or who have a history of poor performance.

3. Preparation of Sealed Bids (5/16)

Bid Forms may be completed online thru Michigan DNR Timber Sale Online Bidding (OLB) at www.michigan.gov/timberbidding or by completing the hardcopy Bid Form found in the Timber Sale Prospectus. Hardcopy Bid Forms shall be manually signed in ink. Registration in OLB is considered your 'signature' for all bids submitted thru that system. Bid prices must be entered for each species and product in the Bid Price column for all material subject to bidding and all fill-in blanks must be completed. If erasures or other changes appear on the hardcopy Bid Form, each erasure or change must be initialed by the person signing the bid.

4. Submission of Sealed Bids (5/16)

Bid forms may be obtained from the Unit Manager or thru OLB. Bids may be submitted hardcopy or thru OLB. All hardcopy bids must be submitted on the bid form and in an envelope clearly identified as described in this section. NOTE: Only one bid form per bid envelope. Sealed bids must be submitted to the Unit office designated in the prospectus and must be submitted at or prior to the time established in the prospectus. The envelope should show on the outside (a) the sale name or number and (b) the date and time of bid opening, as shown in the prospectus. Bids received after the time specified in the sale prospectus are late bids and will be rejected.

It is possible for a bidder to submit multiple bids on a single sale. For example, a bid may be submitted hardcopy and a bid may be submitted thru OLB. Or, two bidders from the same company could both submit bids on the same sale. If this were to happen, the State would accept all bids received and award the contract accordingly. All bidding and contractual requirements would apply to all bids received.

5. Public Opening of Sealed Bids (7/16)

If conditions permit, the sealed bids will be publicly opened and posted at the time and place set in the prospectus.

If a bidder, present at a bid opening, has submitted bids on more than one sale, that bidder may withdraw their unopened bid envelopes or announce the withdrawal of their online bid after being declared the successful bidder on one sale.

6. Award of Contract (1/11)

Award of the contract will be made to the Bidder whose bid, conforming to the prospectus, is most advantageous to the State of Michigan on the basis of total value at rates bid for the estimated quantities. The State reserves the right to reject any bid or waive any minor irregularity in bids received. A written award mailed (or otherwise furnished) to the successful Bidder shall be deemed to result in a binding contract without further action by either party.

7. Down Payment (1/11)

The Bidder to whom award is made must make a down payment within 21 days of the sale award. The amount of the down payment will be calculated as shown in the Bond and Payment Schedule of this prospectus. Only cash may be used to meet this requirement.

8. Performance Security (1/11)

As guarantee of faithful performance, a cash bond, certificate of deposit, surety bond or irrevocable letter of credit (LOC) is required within 21 days of the sale award. The amount of the performance security is shown in the Bond and

Payment Schedule of this prospectus. If an LOC or surety is used, the coverage must extend for at least 6 months beyond the contract expiration.

9. Worker's Compensation (10/22)

Purchaser shall obtain worker's compensation insurance to cover claims under Michigan's Worker's Disability Compensation Act of 1969 or similar employee benefit act of any other state applicable to an employee. Verification of Worker's Disability Compensation Act Compliance must be completed and submitted within 21 days of contract award and prior to the issuance of the timber sale contract. In addition, if applicable, Notice of Exclusion or Certificate of Insurance must also be submitted.

10. Timber Sale Contract (10/22)

Additional conditions and requirements common to all timber sales are listed on the timber sale contract (R4031) and are available on line at www.michigan.gov/timber. Contact the Unit Manager for additional information or a sample contract. Within 21 days of the date of the award letter, the bidder must sign the contract and provide the required down payment, performance security, and verification of worker's disability compensation. The down payment and performance security shall be in accordance with the provisions of the timber sale contract, in the sums stated in this prospectus. If these actions are not taken, then the Bidder, the Bidder's corporation, and the corporation's principals may not be permitted to bid on State timber sales for a period of 3 months after the first offense, 6 months after the second offense, and 1 year after the third offense. An offense will only be counted against the Bidder for 5 years. In addition, the Bidder certifies that if awarded this contract, the Bidder will complete the timber sale contract in accordance with its terms and any modifications thereof including requirements to purchase, cut, and remove the included timber by the expiration date.

Payment Unit values in the State Forest Timber Sale Contract are calculated based on the advertised value of the Payment Unit as a percentage of the total advertised value of the contract. The advertised value of each Payment Unit is given in the Description of Timber by Payment Unit table on the Timber Sale Information page. For example, if the value of Payment Unit 1 is advertised as \$1,500 and the total Timber Sale value is advertised as \$10,000, the contract price for Payment Unit 1 will be 15% of the total bid price ($\$1,500/\$10,000 * 100$).

11. Disclaimer of Estimates and Bidder's Warranty of Inspection (10/22)

Before submitting this bid, the Bidder is advised and cautioned to inspect the sale area, review the requirements of the sale contract, and take other steps as may be reasonably necessary to ascertain the location, estimated volumes, construction estimates, and operating costs of the proposed sale. Failure to do so will not relieve the Bidder from responsibility for completing the contract.

The Bidder warrants that this bid is submitted solely on the basis of the Bidder's examination and inspection of the quality and quantity of the timber offered for sale and the Bidder's opinion of the value thereof and the costs of recovery. No reliance should be placed on the State of Michigan's estimates of timber quality, quantity or costs of recovery. Bidder further acknowledges that the State of Michigan: (i) expressly disclaims any warranty of fitness of timber for any purpose; (ii) offers this timber as is without any warranty of quality (merchantability) or quantity and (iii) expressly disclaims any warranty as to the quantity or quality of timber sold.

12. Certification and Chain-of-Custody (10/22)

Unless otherwise indicated in the contract under section 7 – Other Conditions of the Sale Specific Conditions & Requirements, the area encompassed by this timber sale is certified to the standards of the Forest Stewardship Council (FSC) - Certificate #SCS-FM/COC-00090N and the Sustainable Forestry Initiative (SFI) - Certificate #NSF-SFIS-5Y031-SF5. Forest products from this sale may be delivered to the mill as "FSC 100% and / or SFI certified" as long as the contractor hauling the forest products is chain-of-custody (COC) certified or covered under a COC certificate from the destination mill. The purchaser is responsible for maintaining COC after leaving the sale area.

13. Good Neighbor Authority (GNA) Requirements (10/22)

If the name of this timber sales contains the acronym GNA, it is authorized by the Good Neighbor Authority (GNA) and covered by various agreements between the U.S. Forest Service and the State. The timber sale occurs on federal land and the following conditions apply:

GNA contracts on US Forest Service land will not be awarded to purchasers on the Federal list of excluded parties. The System for Award Management (SAM) will be checked for active excluded parties prior to award of contract. In

addition, the Bidder to whom award is made must complete an Assurance Regarding Felony Conviction or Tax Delinquent Status for Corporate Applicants (AD-3031).

14. Good Neighbor Authority (GNA) Requirements, con't (10/22)

Bidder certifies, by signing this bid form, that to the best of Bidder's knowledge that the following representations are accurate and complete.

- a. That the Bidder and its principals are not presently debarred, suspended, proposed for debarment, declared ineligible, or voluntary excluded from timber sales (covered transactions) by any Federal department or agency.
- b. That the Bidder and its principals have not within a 3-year period preceding this bid been convicted of or had a civil judgment rendered against them for commission of fraud or a criminal offense in connection with obtaining , attempting to obtain, or performing a public (Federal, State, or local) transaction or contract under a public transaction; violation of Federal or State antitrust statutes or commission of embezzlement, theft, forgery, bribery, falsification or destruction of records, making false statements, or receiving stolen property.
- c. That the Bidder and its principals are not presently indicted for or otherwise criminally or civilly charged by a governmental entity (Federal, State, or local) with commission of any of the offenses enumerated in paragraph b of this certification.
- d. That the Bidder and its principals have not within a 3-year period preceding this bid had one or more public transactions (Federal, State, or local) terminated for breach or default of a timber or forest product contract.

Bidders that cannot certify this requirement, in whole or in part, shall submit an explanation with their bid.

SHANNON LOTT, Acting
Director

TIMBER SALE INFORMATION

Leota Fuelbreak RP (73-998-23)

T20N, R05W, SEC. 17; T20N, R05W, SEC. 3; T20N, R05W, SEC. 8; T20N, R05W, SEC. 9.

Clare County (Advertised Price \$89,942.20)

SALE NOTE: This sale has a 2-month contract for quick turnaround. In addition, these stands have been identified as shaded fuel breaks near Leota.

A recreation site such as a trail, pathway, or campground is within the sale area or the vicinity. Certain restrictions/specifications may be applicable including time restrictions.

A timber sale contract for this lump sum, sealed bid timber sale will be awarded to the responsible bidder offering the highest sealed bid price. All units of volume listed below were estimated using the Inventory Manager computer program and the new Michigan taper model. Bids must be at or above the following advertised price for each product and species:

<u>PRODUCTS & SPECIES</u>	<u>ESTIMATED UNITS*</u>	<u>ADVERTISED PRICE</u>
Sawtimber		
Red Pine	523.0 MBF	\$ 121.00 / MBF
Pulpwood		
B. T. Aspen	12 Cords	\$ 31.45 / Cord
Mixed Oak	48 Cords	\$ 16.90 / Cord
Red Pine	478 Cords	\$ 52.50 / Cord
White Pine	12 Cords	\$ 31.30 / Cord

* The total volume is statistically estimated within plus (+) or minus (-) 17.00 percent. There are an estimated 854 cords on this timber sale, plus or minus 145 cords at the 95% confidence level. The estimated units are final and not subject to adjustment. Prospective bidders are urged to examine this timber and to make their own estimates of quantity and quality.

BOND AND PAYMENT SCHEDULE:

1. A bond in the amount of \$4,497.00 to insure faithful performance of the conditions of the contract will be deposited by the successful bidder within 21 days of the sale award.
2. Cutting in any sale or unit without the required advance payment would be considered a trespass.
3. Total payment must be paid in advance or according to the following schedule :
 - (a) Ten percent (10%) of the sale value must be paid within 21 days of the sale award.
 - (b) The 10% down payment will be credited towards the first unit cut.
 - (c) Payment for each of the following units must be made before cutting begins in that unit:

PAYMENT UNIT NUMBER	PERCENT OF TOTAL SALE VALUE
01	15.7%
02	84.3%

4. If no cutting takes place, the 10% down payment will not be refunded.
5. Operations on the contract issued will terminate on 03/31/2024.

SALE STATISTICS

Volumes were calculated in cubic feet using the Michigan taper model. Cubic foot volume includes all wood inside bark for the product indicated. For display purposes, cubic feet were converted to cords and MBF using a simple conversion factor, e.g. 79 cubic feet per cord and 185 cubic feet per MBF. The cubic foot volumes are precise; the cords and MBF volumes are not. Cubic foot volume cannot be directly converted to cords or boards with precision.

SALE VOLUMES

The total estimated sale volume may not equal the sum of the species/products due to the nature of statistical calculations associated with double sampling methodology.

VOLUME			STATISTICAL RANGE IN CORDS	
TOTAL CUBIC FEET	TOTAL CORDS	PERCENT ERROR	MINIMUM	MAXIMUM
67,476	854	17.00%	709	999

VDU VOLUMES

A VDU is a Volume Determination Unit. Volumes and their associated statistics are calculated at the VDU level and summarized to the sale level. There is often a one to one relationship between a VDU and a Payment Unit, but not always, depending on the cruise design. Refer to the VDU TO PAYMENT UNIT table.

VDU	VOLUME		PERCENT ERROR	RANGE IN CORDS	
	TOTAL CUBIC FEET	TOTAL CORDS		MINIMUM	MAXIMUM
121	56,746	718	17.72%	591	846
170	10,730	136	42.77%	78	194
TOTAL:	67,476	854		669	1,040

VDU TO PAYMENT UNIT

When a VDU is associated with more than one Payment Unit (PU), the VDU volumes are assigned to the PU based on acres of the VDU within the PU.

VDU	VDU ACRES	PU	PU ACRES
121	67.2	2	67.2
170	21.0	1	21.0
TOTAL:	88.2		88.2

DESCRIPTION OF TIMBER BY PAYMENT UNIT (PU)

PU	MARKET GROUP	PRODUCT	QUANTITY	UNIT	ACRES	ADVERTISE PRICE
1	Red Pine	Sawtimber	79.4	MBF	21.0	\$14,122.40
	Red Pine	Pulpwood	86	Cords		
2	Red Pine	Sawtimber	443.6	MBF	67.2	\$75,788.35
	B. T. Aspen	Pulpwood	11	Cords		
	<i>B. T. Aspen</i>	<i>Sawtimber</i>	3.6	<i>MBF</i>		
	<i>B. T. Aspen</i>	<i>Pulpwood</i>	4	<i>Cords</i>		
	Mixed Oak		48	Cords		
	<i>/Red (Hybrid) Oak</i>	<i>Sawtimber</i>	9.2	<i>MBF</i>		
	<i>/Red (Hybrid) Oak</i>	<i>Pulpwood</i>	20	<i>Cords</i>		
	<i>Northern Pin Oak</i>		10	<i>Cords</i>		
	Red Pine		392	Cords		
	White Pine		12	Cords		
	<i>White Pine</i>	<i>Sawtimber</i>	2.8	<i>MBF</i>		
<i>White Pine</i>	<i>Pulpwood</i>	6	<i>Cords</i>			
TOTAL:			523.0	MBF		
TOTAL:			549	Cords		

Sale Specific Conditions & Requirements

Sale Name: Leota Fuelbreak RP

Sale Number: 73-998-23 Seq#: 1

1 - Sale Area

1.2 - Boundaries

1.2.1 - Painted boundaries (9/19)

The sale boundaries are marked and identified by blue and red paint. Exterior sale boundary lines against private property are marked with blue paint. Exterior sale boundary lines against state are marked with red paint. The painted boundary line trees are not Included Timber and are to be protected unless marked with orange paint.

2 - Timber Specifications

2.1 - Included Timber

2.1.3 - Cut tree marked unit(s) (12/08)

Within Payment Unit(s) 1 & 2, all trees are designated for cutting when marked with orange paint above and below stump height, regardless of merchantability.

2.1.15 - Hazard trees near roads (11/20)

Cut and remove all standing dead trees within 100 feet of the cleared portion of designated county roads. These trees may be utilized or must be scattered back into the Sale Area.

2.2 - Utilization

2.2.2 - Chipping required (2/18)

This area must be chip harvested to facilitate future silvicultural activities. The Purchaser has the option to produce sawlogs or pulpwood bolts, but the remaining portion of the trees must be chipped and hauled.

2.2.3 - Stump heights (4/07)

Stump heights within the Sale Area shall not exceed 6 inches for all trees. This is in order to facilitate future silvicultural activities.

3 - Payments

3.4 - Damaged Timber

3.4.1 - Damaged timber (7/16)

General Condition and Requirement 3.4 Damaged Timber, defines liquidated damages for undesignated live merchantable trees which are cut or injured. No damage is acceptable to undesignated live merchantable trees. Within the Sale Area, if more than 5% of trees (> 4.5" DBH) within a specified area of the sale are damaged, liquidated damages will be assessed for all trees damaged. Rates will be in accordance with General Condition and Requirement 3.4 Damaged Timber.

4 - Transportation

4.1 - Construction

4.1.12 - No new roads (1/12)

No new roads will be permitted in any Payment Unit. All operations are limited to existing roads. Skid trails will only be allowed.

5 - Operations

5.1 - Notification

5.1.1 - Pre-sale conference (10/16)

A pre-sale conference on site between the Purchaser and sale administrator is required prior to beginning any operations, to determine landing locations. The Unit Manager or his/her representative must be contacted at least 3 business days in advance to schedule the conference.

5.2 - Conduct of Operations

5.2.1 - Slash

5.2.1.8 - Slash height (12/08)

No slash or tree tops may exceed 24 inches in height.

5.2.1.12 - Slash for prescribed burning (1/05)

To facilitate prescribed burning, slash shall be moved at least 10 feet inside the sale boundary. Slash cannot be piled or placed near residual trees.

5.2.32 - Decking/landing restoration (9/13)

All decking and landing areas must have the surface area restored to a condition equal to or better than before. This is to ensure the proper regeneration of the stand. Wood debris, chips and "cookies" from trimmings must be removed or scattered away from landing and loading areas and may not be windrowed on the edge.

5.2.38 - No decking against live trees (2/04)

Cut products may not be decked against unmarked or designated leave trees.

5.2.39 - ORV trail/route protection (4/18)

Leota Trail #2 is an ORV trail and is shown on the Timber Sale Map. Do not cut trees or damage posts with yellow ORV markers. All stumps within 5 feet of the trail must be cut flush with the ground. Maintain a 20-foot-wide slash, debris, and rut free zone daily using the ORV trail or route as the centerline. Do not run equipment down the ORV trail or route. Skidding across the trail or route may only occur in locations approved by the Sale Administrator.

6 - Safety and Fire Prevention

6.2 - Signing

6.2.1 - Road posting (10/20)

The Purchaser is responsible for posting and maintaining caution signs on Harding and Jackson Avenue prior to beginning operations. The road must be posted at appropriate distances from the Sale Area to warn of logging activity and truck traffic. Signs must be removed when harvest operations are suspended or completed. The Purchaser will provide these signs.

6.2.3 - Recreational trail posting (10/20)

The Purchaser is responsible for posting and maintaining caution signs on Leota Trail #2 prior to beginning operations. The trail must be posted at appropriate distances from the Sale Area to warn of logging activity and truck traffic at both ends of the trail. Signs must be removed when harvest operations are suspended or completed. The Purchaser will provide these signs.

7 - Other Conditions

7.2 - Extensions

7.2.2 - No extensions (3/09)

There will be no extensions granted on this contract. This sale is already scheduled for prescribed burning to maintain as a shaded fuel break.



TIMBER SALE MAP

This information provided by authority of Part 525, 1994 PA 451, as amended.

Sale Number	Year
73 - 998	23

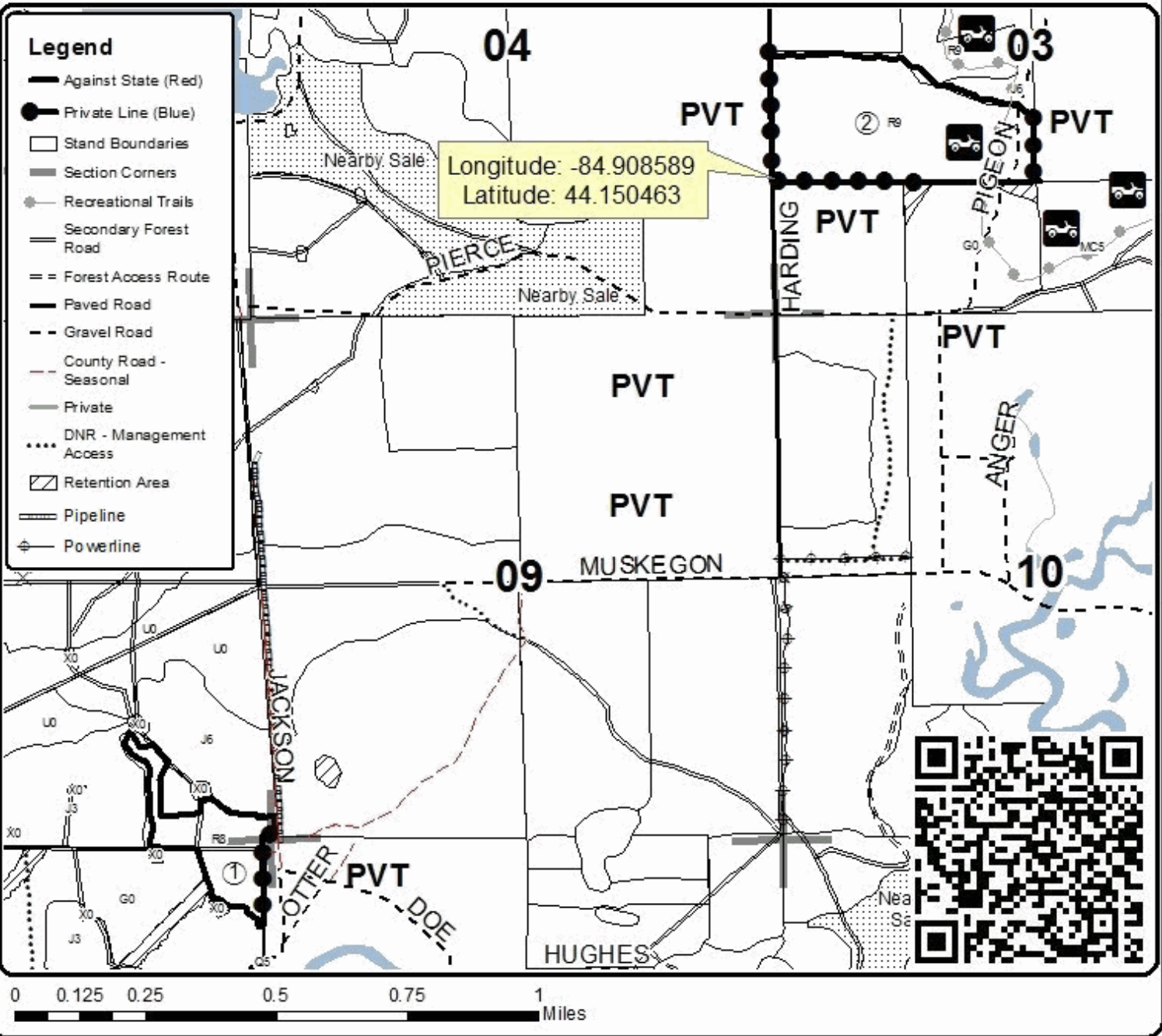
Forest Management Unit	County	Mapped By	Date	Page	of
Gladwin Management Unit	Clare County	Behrmann	06/26/2023	1	1
Township	Range	Section(s) and Subdivision(s)	Scale		
20N	05W	Sec 3 N1/2SW, Sec 8 SESE, Sec 17 NENE	1:15,840		

Cover Type				Density	
A = Aspen	H = Hemlock	N = Marsh	U = Upland Brush	0 = Non Stocked	5 = Pole Timber Medium
B = Paper Birch	J = Jack Pine	O = Oak	UM = Upland Mixed	1 = Seedling Sapling Poor	6 = Pole Timber Well
C = Cedar	L = Lowland Brush	P = Lowland Poplar	V = Bog or Marsh	2 = Seedling Sapling Medium	7 = Saw Timber Poor
D = Tired Bog	LM = Lowland Mixed	Q = Mxd Swamp Conifer	W = White Pine	3 = Seedling Sapling Well	8 = Saw Timber Medium
E = Swamp Hdwoods	M = Mpl, Boh, Brch	R = Red Pine	X = Non Stocked	4 = Pole Timber Poor	9 = Saw Timber Well
F = Spruce Fir	MC = Mixed Conifer	S = Black Spruce	Z = Water		
G = Grass	MD = Mxd Deciduous	T = Tamarack			

PU	Acres
1	21
2	67.2

Leota Fuelbreak RP

Compartment 9
88.2 Acres



TIMBER SALE INFORMATION

Loopy Grim Aspen (73-007-22)

T18N, R02E, SEC. 19; T18N, R02E, SEC. 29; T18N, R02E, SEC. 30.
Gladwin County (Advertised Price \$101,985.40)

SALE NOTE: The sale area of Loopy Grim Aspen can be found off of Grim and Fournier road . Culvert(s) may need to be installed along Grim and Fournier road to access payment units. Most of the sale contains low, wet ground and operating caution specs have been added.

A recreation site such as a trail, pathway, or campground is within the sale area or the vicinity. Certain restrictions/specifications may be applicable including time restrictions.

A timber sale contract for this lump sum, sealed bid timber sale will be awarded to the responsible bidder offering the highest sealed bid price. All units of volume listed below were estimated using the Inventory Manager computer program and the new Michigan taper model. Bids must be at or above the following advertised price for each product and species:

<u>PRODUCTS & SPECIES</u>	<u>ESTIMATED UNITS*</u>	<u>ADVERTISED PRICE</u>
Sawtimber		
B. T. Aspen	85.5 MBF	\$ 76.00 / MBF
Northern Pin Oak	85.6 MBF	\$ 112.00 / MBF
Quaking Aspen	74.3 MBF	\$ 76.00 / MBF
Red Maple	91.0 MBF	\$ 72.00 / MBF
Red Pine	25.6 MBF	\$ 121.00 / MBF
Pulpwood		
B. T. Aspen	449 Cords	\$ 31.45 / Cord
Black Cherry	65 Cords	\$ 20.60 / Cord
Mixed Oak	280 Cords	\$ 16.90 / Cord
Paper Birch	90 Cords	\$ 21.45 / Cord
Quaking Aspen	1,107 Cords	\$ 31.45 / Cord
Red Maple	599 Cords	\$ 20.60 / Cord
Red Pine	5 Cords	\$ 52.50 / Cord
White Pine	34 Cords	\$ 31.30 / Cord

* The total volume is statistically estimated within plus (+) or minus (-) 10.38 percent. There are an estimated 3,427 cords on this timber sale, plus or minus 356 cords at the 95% confidence level. The estimated units are final and not subject to adjustment. Prospective bidders are urged to examine this timber and to make their own estimates of quantity and quality.

BOND AND PAYMENT SCHEDULE:

1. A bond in the amount of \$5,099.00 to insure faithful performance of the conditions of the contract will be deposited by the successful bidder within 21 days of the sale award.
2. Cutting in any sale or unit without the required advance payment would be considered a trespass.
3. Total payment must be paid in advance or according to the following schedule :
 - (a) Ten percent (10%) of the sale value must be paid within 21 days of the sale award.
 - (b) The 10% down payment will be credited towards the first unit cut.
 - (c) Payment for each of the following units must be made before cutting begins in that unit:

PAYMENT UNIT NUMBER	PERCENT OF TOTAL SALE VALUE
01	8.3%
02	12.2%
03	8.2%
04	6.1%
05	24.2%
06	3.7%
07	10.3%
08	5.0%
09	4.6%
10	17.4%

4. If no cutting takes place, the 10% down payment will not be refunded.
5. Operations on the contract issued will terminate on 09/30/2025.

SALE STATISTICS

Volumes were calculated in cubic feet using the Michigan taper model. Cubic foot volume includes all wood inside bark for the product indicated. For display purposes, cubic feet were converted to cords and MBF using a simple conversion factor, e.g. 79 cubic feet per cord and 185 cubic feet per MBF. The cubic foot volumes are precise; the cords and MBF volumes are not. Cubic foot volume cannot be directly converted to cords or boards with precision.

SALE VOLUMES

The total estimated sale volume may not equal the sum of the species/products due to the nature of statistical calculations associated with double sampling methodology.

VOLUME			STATISTICAL RANGE IN CORDS	
TOTAL CUBIC FEET	TOTAL CORDS	PERCENT ERROR	MINIMUM	MAXIMUM
270,706	3,427	10.38%	3,071	3,782

VDU VOLUMES

A VDU is a Volume Determination Unit. Volumes and their associated statistics are calculated at the VDU level and summarized to the sale level. There is often a one to one relationship between a VDU and a Payment Unit, but not always, depending on the cruise design. Refer to the VDU TO PAYMENT UNIT table.

VDU	VOLUME			RANGE IN CORDS	
	TOTAL CUBIC FEET	TOTAL CORDS	PERCENT ERROR	MINIMUM	MAXIMUM
105	12,552	159	46.34%	85	233
164	20,158	255	26.82%	187	324
188	62,528	791	14.82%	674	909
189	26,507	336	22.67%	259	412
192	15,820	200	44.59%	111	290
196	51,516	652	24.43%	493	811
210	10,703	135	30.92%	94	177
244	30,633	388	40.39%	231	544
247	17,004	215	28.96%	153	278
248	23,286	295	46.22%	159	431
TOTAL:	270,706	3,427		2,446	4,408

VDU TO PAYMENT UNIT

When a VDU is associated with more than one Payment Unit (PU), the VDU volumes are assigned to the PU based on acres of the VDU within the PU.

VDU	VDU ACRES	PU	PU ACRES
105	5.7	9	5.7
164	11.5	3	11.5
188	24.0	5	24.0
189	18.9	7	18.9
192	17.4	8	17.4
196	22.6	10	22.6
210	8.3	6	8.3
244	12.1	2	12.1
247	14.7	4	14.7
248	11.3	1	11.3
TOTAL:	146.5		146.5

DESCRIPTION OF TIMBER BY PAYMENT UNIT (PU)

PU	MARKET GROUP	PRODUCT	QUANTITY	UNIT	ACRES	ADVERTISE PRICE
1	B. T. Aspen	Sawtimber	16.0	MBF	11.3	\$8,495.55
	Northern Pin Oak		3.1	MBF		
	Red Maple		22.6	MBF		
	B. T. Aspen	Pulpwood	39	Cords		
	Black Cherry		2	Cords		
	<i>Black Cherry</i>		2	<i>Cords</i>		
	Mixed Oak		2	Cords		
	<i>Northern Pin Oak</i>		2	<i>Cords</i>		
	Paper Birch		3	Cords		
	<i>Paper Birch</i>		3	<i>Cords</i>		
	Quaking Aspen		53	Cords		
	Red Maple		86	Cords		
	White Pine		16	Cords		
	<i>White Pine</i>	<i>Sawtimber</i>	7.6	<i>MBF</i>		
<i>White Pine</i>	<i>Pulpwood</i>	1	<i>Cords</i>			
2	B. T. Aspen	Sawtimber	13.0	MBF	12.1	\$12,457.70
	Northern Pin Oak		0.9	MBF		
	Quaking Aspen		9.5	MBF		
	Red Pine		21.5	MBF		
	B. T. Aspen	Pulpwood	51	Cords		
	Black Cherry		3	Cords		
	<i>Black Cherry</i>		3	<i>Cords</i>		
	Mixed Oak		1	Cords		
	<i>Northern Pin Oak</i>		1	<i>Cords</i>		
	Paper Birch		5	Cords		
	<i>Paper Birch</i>		5	<i>Cords</i>		
	Quaking Aspen		130	Cords		
	Red Maple		95	Cords		
	Red Pine		4	Cords		
3	B. T. Aspen	Sawtimber	5.6	MBF	11.5	\$8,385.65
	Northern Pin Oak		7.7	MBF		
	Quaking Aspen		2.7	MBF		
	Red Maple		1.8	MBF		
	B. T. Aspen	Pulpwood	11	Cords		
	Black Cherry		3	Cords		
	<i>Black Cherry</i>		3	<i>Cords</i>		
	Mixed Oak		10	Cords		
	<i>Northern Pin Oak</i>		10	<i>Cords</i>		
	Paper Birch		3	Cords		
	<i>Paper Birch</i>		3	<i>Cords</i>		
	Quaking Aspen		175	Cords		
	Red Maple		30	Cords		
	4	Quaking Aspen	Sawtimber	23.0		
Black Cherry		Pulpwood	16	Cords		
<i>Black Cherry</i>			16	<i>Cords</i>		
Mixed Oak			15	Cords		
<i>Northern Pin Oak</i>			13	<i>Cords</i>		
<i>White Oak</i>			2	<i>Cords</i>		
Paper Birch			13	Cords		
<i>Paper Birch</i>			13	<i>Cords</i>		
Quaking Aspen			94	Cords		
Red Maple			28	Cords		
White Pine			2	Cords		
<i>White Pine</i>			2	<i>Cords</i>		
5	Northern Pin Oak	Sawtimber	17.3	MBF	24.0	\$24,618.20
	Quaking Aspen		33.4	MBF		

DESCRIPTION OF TIMBER BY PAYMENT UNIT (PU), CON'T

PU	MARKET GROUP	PRODUCT	QUANTITY	UNIT	ACRES	ADVERTISE PRICE
5 con't	Red Maple	Sawtimber	15.6	MBF		
	Black Cherry	Pulpwood	5	Cords		
	<i>Black Cherry</i>		5	<i>Cords</i>		
	Mixed Oak		26	Cords		
	<i>Northern Pin Oak</i>		26	<i>Cords</i>		
	Paper Birch		10	Cords		
	<i>Paper Birch</i>		10	<i>Cords</i>		
	Quaking Aspen		506	Cords		
	Red Maple		114	Cords		
6	Northern Pin Oak	Sawtimber	9.9	MBF	8.3	\$3,815.60
	Quaking Aspen		5.7	MBF		
	Red Maple		4.6	MBF		
	Mixed Oak	Pulpwood	22	Cords		
	<i>Northern Pin Oak</i>		20	<i>Cords</i>		
	<i>White Oak</i>		2	<i>Cords</i>		
	Paper Birch		7	Cords		
	<i>Paper Birch</i>		7	<i>Cords</i>		
	Quaking Aspen		17	Cords		
Red Maple		43	Cords			
7	B. T. Aspen	Sawtimber	20.0	MBF	18.9	\$10,486.80
	Northern Pin Oak		14.2	MBF		
	Red Maple		2.1	MBF		
	B. T. Aspen	Pulpwood	129	Cords		
	Black Cherry		7	Cords		
	<i>Black Cherry</i>		7	<i>Cords</i>		
	Mixed Oak		38	Cords		
	<i>Northern Pin Oak</i>		38	<i>Cords</i>		
	Paper Birch		3	Cords		
	<i>Paper Birch</i>		3	<i>Cords</i>		
Quaking Aspen		56	Cords			
Red Maple		27	Cords			
8	B. T. Aspen	Sawtimber	11.1	MBF	17.4	\$5,119.65
	Red Maple		5.2	MBF		
	B. T. Aspen	Pulpwood	60	Cords		
	Black Cherry		5	Cords		
	<i>Black Cherry</i>	<i>Sawtimber</i>	0.7	<i>MBF</i>		
	<i>Black Cherry</i>	<i>Pulpwood</i>	4	<i>Cords</i>		
	Paper Birch		9	Cords		
	<i>Paper Birch</i>		9	<i>Cords</i>		
	Quaking Aspen		16	Cords		
Red Maple		59	Cords			
9	Northern Pin Oak	Sawtimber	12.6	MBF	5.7	\$4,690.15
	Red Maple		24.1	MBF		
	Black Cherry	Pulpwood	9	Cords		
	<i>Black Cherry</i>		9	<i>Cords</i>		
	Mixed Oak		32	Cords		
	<i>Northern Pin Oak</i>		32	<i>Cords</i>		
	Quaking Aspen		7	Cords		
	Red Maple		29	Cords		
10	B. T. Aspen	Sawtimber	19.8	MBF	22.6	\$17,710.45
	Northern Pin Oak		19.9	MBF		
	Red Maple		15.0	MBF		
	Red Pine		4.1	MBF		
	B. T. Aspen	Pulpwood	159	Cords		
	Black Cherry		15	Cords		
	<i>Black Cherry</i>		15	<i>Cords</i>		

DESCRIPTION OF TIMBER BY PAYMENT UNIT (PU), CON'T

PU	MARKET GROUP	PRODUCT	QUANTITY	UNIT	ACRES	ADVERTISE PRICE
10 con't	Mixed Oak	Pulpwood	134	Cords		
	<i>Northern Pin Oak</i>		134	<i>Cords</i>		
	Paper Birch		37	Cords		
	<i>Paper Birch</i>	<i>Sawtimber</i>	4.9	<i>MBF</i>		
	<i>Paper Birch</i>	<i>Pulpwood</i>	27	<i>Cords</i>		
	Quaking Aspen		53	Cords		
	Red Maple		88	Cords		
	Red Pine		1	Cords		
	White Pine		16	Cords		
	<i>White Pine</i>		16	<i>Cords</i>		
TOTAL:			362.0	MBF		
TOTAL:			2,629	Cords		

Sale Specific Conditions & Requirements

Sale Name: Loopy Grim Aspen

Sale Number: 73-007-22 Seq#: 1

1 - Sale Area

1.2 - Boundaries

1.2.1 - Painted boundaries (9/19)

The sale boundary and Payment Unit boundaries are marked and identified by blue, red and yellow paint. Exterior sale boundary lines against private property are marked with blue paint. Exterior sale boundary lines against state are marked with red paint. There are designated unmarked private and state sale boundaries along Eastman and Fournier road. See timber sale map for more details. Interior Payment Unit boundaries are marked with yellow paint. Retention patches are marked with red paint; no harvesting activities may occur within these areas. The painted boundary line trees are not Included Timber and are to be protected unless marked with orange paint. Yellow painted trees designating an interior Payment Unit boundary are only to be cut when all surrounding Payment Units have been paid.

2 - Timber Specifications

2.1 - Included Timber

2.1.1 - Clearcut unit(s) with unmerchantable trees (6/14)

Within Payment Unit(s) 1-10 (ALL UNITS), cut all trees that are two (2) inches or more at DBH except for oak marked with green paint above and below stump height in payment units 1,2,3,4,5,6, 7, 9 & 10. In addition, retain all oak within payment unit 8.

2.1.15 - Hazard trees near roads (11/20)

Cut and remove all standing dead trees within 100 feet of the cleared portion of designated county roads. These trees may be utilized or must be scattered back into the sale area.

3 - Payments

3.3 - Pre-measured Sales

3.3.4 - Dividing payment units (7/14)

Payment Unit(s) may be divided at the request of the Purchaser and upon approval of the Unit Manager. Dividing Payment Units is a contract modification which requires a Timber Sale Contract Amendment. There will be only one division per Payment Unit.

4 - Transportation

4.1 - Construction

4.1.2 - Stream crossings, specific (3/11)

Any creek/river crossing will require the installation of a culvert which may be borrowed from the DNR. This installation will be performed in accordance with the specifications on the appropriate permits which shall be provided by the DNR.

4.1.5 - Culverts (5/14)

Roads may require the installation of culverts for cross drainage or at natural drainage-ways. If culverts are needed in these locations, their placement will be specified by the sale administrator and they shall be installed prior to hauling. The culverts shall be new, corrugated metal or plastic gauge. If culverts are removed, fill shall be removed from wetland soils as specified. Soils shall be maintained and left in a non-erodible condition, with water bars, seed, fertilizer, mulch, and slash installed as directed by the sale administrator and as specified in the BMP manual. Stream crossing permits, if needed, will be obtained by the DNR.

4.1.6 - Road construction (1/09)

Construction of new roads or improvements of existing roads shall be done in such a way as to minimize the environmental and visual impacts. Merchantable trees shall be cut and utilized unless otherwise directed. Non-merchantable trees shall be severed and laid flat on the ground. Slash shall be scattered, and not left in windrows and kept a minimum of 10 feet back from the road edge. Stumps shall be set upright, not left on edge, and be moved at least 10 feet away from the road edge. Disturbed soil shall be feathered into the woods and not left in berms or windrows.

4.1.7 - Road closure (10/11)

All new roads built into the sale must be blocked to vehicle traffic upon completion of the sale. Overgrown roads that are reopened shall be considered new roads. In general, this will require constructing a four (4') foot high berm of stumps and logs covered with earth. Stumps and brush must be placed along the remainder of the trail. These roads must be rendered impassable to cars and trucks. Contact the sale administrator for specific details of design and placement.

5 - Operations

5.1 - Notification

5.1.1 - Pre-sale conference (10/16)

A pre-sale conference on site between the Purchaser and sale administrator is required prior to beginning any operations to determine landing and road locations. The Unit Manager or his/her representative must be contacted at least 2 business days in advance to schedule the conference.

5.2 - Conduct of Operations

5.2.2 - Hazard Trees/Snags

5.2.2.1 - Den trees (10/16)

Obvious hollow and/or den trees shall be protected and left standing unless they are a safety hazard.

5.2.3 - Operating Restrictions

5.2.3.4 - Oak wilt restriction, no exceptions (1/18)

Within Payment Unit(s) 7, 8 & 10 cutting, skidding and hauling within the sale and brushing of access roads to the sale are not permitted during the period of April 15 to July 15. No exceptions will be granted. This is necessary to reduce the spread of oak wilt.

5.2.3.5 - Oak wilt restriction (1/18)

Within Payment Unit(s) 6, unless changed by written agreement, cutting, skidding, hauling within the sale and brushing of access roads to the sale are not permitted during the period of April 15 to July 15. Operations may be allowed if specific steps are taken to prevent damaging uncut oak during the high risk period. Those steps may include completing all road brushing before April 15th and clearing a tree-length buffer along uncut oak cover before April 15th. This is necessary to reduce the spread of oak wilt. For more information, contact the Unit Manager or his/her representative.

5.2.4 - Dead and Down Creation

5.2.4.4 - Dead and down creation, grouse (6/18)

To encourage grouse and other wildlife, in Payment Unit(s) 1, 2, 4, 5, 6, 8 & 10 leave one 12" or larger diameter whole tree on the ground for every 3 acres. Trees should be scattered throughout the sale and at least two chains from any roads, two-tracks, or trails open to vehicles, or positioned per the sale administrators instructions. Stumps must be at least 3 feet tall.

5.2.17 - Timber Mats and Interlocking Composite Mats (10/20)

Some roads or skid trails may require extra protection such as that afforded by timber mats, interlocking composite mats, or another approved system. If available, mats may be borrowed from the DNR. A Timber Sale Contract Supplement will be used to document the Purchaser's use of the DNR's mats. Contact the sale administrator regarding availability and pick-up. Timber mats are available from various field offices. Composite mats are only available from the Grayling field office and the Marquette ICC. The Purchaser is responsible for picking up and hauling the mats to and from the site. The composite mats will require DNR staff onsite for installation and removal. Contact the sale administrator to schedule at least 30 days before desired install/removal date. All mats must be cleaned prior to drop off. This may include, but is not limited to, power washing and brushing to remove mud and debris. A charge of \$700.00 per timber mat and \$2,000.00 per composite mat will be assessed for all damaged or non-returned mats. Damage for the crane/timber mats is defined as three or more broken cants. Damage for the composite mats is defined as cracked or broken mats.

5.2.22 - Operating Caution

5.2.22.1 - Operating caution (6/11)

It is recommended, but not required, that within Payment Unit(s) 1, 2, 3, 4, 5, 6 & 9, cutting, skidding, and hauling occur

during dry summer or frozen winter conditions. The reason for the recommendation is because of saturated soils.

5.2.32 - Decking/landing restoration (9/13)

All decking and landing areas must have the surface area restored to a condition equal to or better than before. This is to ensure the proper regeneration of the stand. Wood debris, chips and "cookies" from trimmings must be removed or scattered away from landing and loading areas and may not be windrowed on the edge.

6 - Safety and Fire Prevention

6.2 - Signing

6.2.1 - Road posting (10/20)

The Purchaser is responsible for posting and maintaining caution signs on Grim road prior to beginning operations. The road must be posted at appropriate distances from the sale area to warn of logging activity and truck traffic. Signs must be removed when harvest operations are suspended or completed. The Purchaser will provide these signs.

6.2.3 - Recreational trail posting (10/20)

The Purchaser is responsible for posting and maintaining caution signs on the Midland to Mackinac boy scout trail prior to beginning operations. The trail must be posted at appropriate distances from the sale area to warn of logging activity and truck traffic at both ends of the trail. Signs must be removed when harvest operations are suspended or completed. The Purchaser will provide these signs.



TIMBER SALE MAP

This information provided by authority of Part 525, 1994 PA 451, as amended.

Sale Number	Year
73 - 007	22

Forest Management Unit	County	Mapped By	Date	Page	of
Gladwin	Gladwin	Behrmann	09/12/2022	1	1
Township	Range	Section(s) and Subdivision(s)	Scale		
18N	02E	Sec 19 S1/2, Sec 30 W1/2NE, NE, Sec 29 N1/2NW, SWNW, W1/2NE	1:15,840		

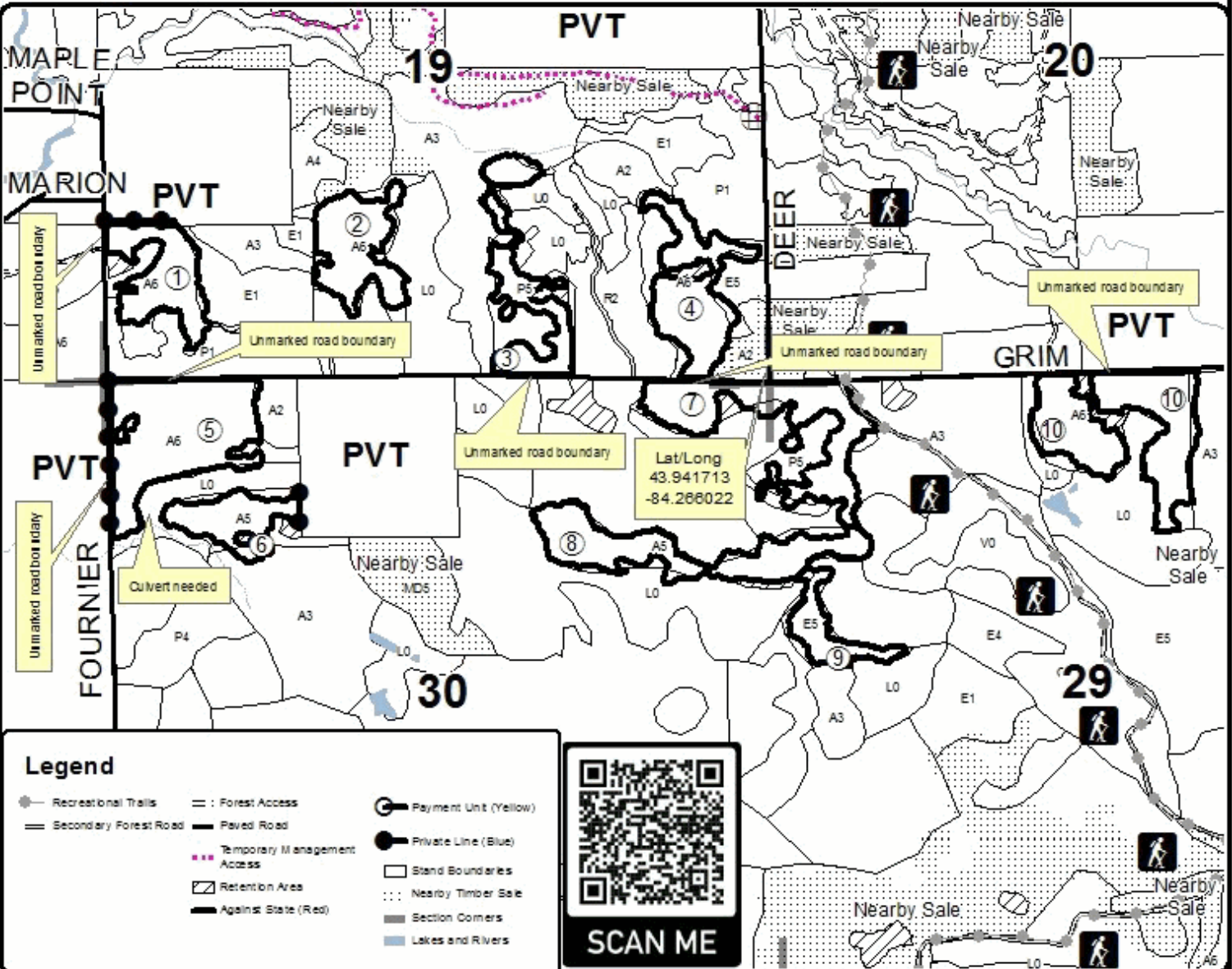
Cover Type				Density	
A = Aspen	H = Hemlock	N = Marsh	U = Upland Brush	0 = Non Stocked	5 = Pole Timber Medium
B = Paper Birch	J = Jack Pine	O = Oak	UM = Upland Mixed	1 = Seedling Sapling Poor	6 = Pole Timber Well
C = Cedar	L = Lowland Brush	P = Lowland Poplar	V = Bog or Marsh	2 = Seedling Sapling Medium	7 = Saw Timber Poor
D = Tired Bog	LM = Lowland Mixed	Q = Mxd Swamp Conifer	W = White Pine	3 = Seedling Sapling Well	8 = Saw Timber Medium
E = Swamp Hardwoods	M = Mpl, Boh, Brch	R = Red Pine	X = Non Stocked	4 = Pole Timber Poor	9 = Saw Timber Well
F = Spruce Fir	MC = Mixed Conifer	S = Black Spruce	Z = Water		
G = Grass	MD = Mixed Deciduous	T = Tamarack			

PU	Acres	PU	Acres
1	11.3	6	8.3
2	12.1	7	18.9
3	11.5	8	17.4
4	14.7	9	5.7
5	24.0	10	22.6

Loopy Grim Aspen

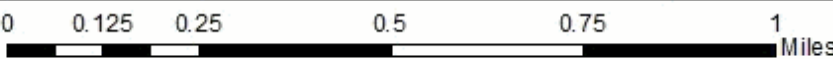
Compartment 79

146.5 Acres



Legend

- Recreational Trails
- Secondary Forest Road
- Forest Access
- Paved Road
- Temporary Management Access
- Retention Area
- Against State (Red)
- Payment Unit (Yellow)
- Private Line (Blue)
- Stand Boundaries
- Nearby Timber Sale
- Section Corners
- Lakes and Rivers



TIMBER SALE INFORMATION

Eastman Dustbowl (73-008-22)

T17N, R02E, SEC. 5; T18N, R02E, SEC. 29; T18N, R02E, SEC. 30; T18N, R02E, SEC. 32.
Gladwin County (Advertised Price \$124,668.20)

SALE NOTE: The sale area for Eastman Dustbowl can be accessed from Eastman road. There is low / wet ground throughout the sale and operating caution specs have been added. Payment unit 1 is a leave tree unit with 13 BA/acre marked to leave. Oak wilt with no exceptions has been added to payment unit 1.

A recreation site such as a trail, pathway, or campground is within the sale area or the vicinity. Certain restrictions/specifications may be applicable including time restrictions.

A timber sale contract for this lump sum, sealed bid timber sale will be awarded to the responsible bidder offering the highest sealed bid price. All units of volume listed below were estimated using the Inventory Manager computer program and the new Michigan taper model. Bids must be at or above the following advertised price for each product and species:

<u>PRODUCTS & SPECIES</u>	<u>ESTIMATED UNITS*</u>	<u>ADVERTISED PRICE</u>
Sawtimber		
Mixed Aspen	57.1 MBF	\$ 76.00 / MBF
Mixed Oak	211.9 MBF	\$ 112.00 / MBF
Red Maple	140.3 MBF	\$ 72.00 / MBF
Red Pine	69.4 MBF	\$ 121.00 / MBF
Pulpwood		
Black Cherry	54 Cords	\$ 20.60 / Cord
Mixed Aspen	897 Cords	\$ 31.45 / Cord
Mixed Oak	728 Cords	\$ 16.90 / Cord
Paper Birch	71 Cords	\$ 21.45 / Cord
Red Maple	1,146 Cords	\$ 20.60 / Cord
Red Pine	216 Cords	\$ 52.50 / Cord

* The total volume is statistically estimated within plus (+) or minus (-) 10.12 percent. There are an estimated 4,210 cords on this timber sale, plus or minus 426 cords at the 95% confidence level. The estimated units are final and not subject to adjustment. Prospective bidders are urged to examine this timber and to make their own estimates of quantity and quality.

BOND AND PAYMENT SCHEDULE:

1. A bond in the amount of \$6,233.00 to insure faithful performance of the conditions of the contract will be deposited by the successful bidder within 21 days of the sale award.
2. Cutting in any sale or unit without the required advance payment would be considered a trespass.
3. Total payment must be paid in advance or according to the following schedule :
 - (a) Ten percent (10%) of the sale value must be paid within 21 days of the sale award.
 - (b) The 10% down payment will be credited towards the first unit cut.
 - (c) Payment for each of the following units must be made before cutting begins in that unit:

PAYMENT UNIT NUMBER	PERCENT OF TOTAL SALE VALUE
01	13.2%
02	48.3%
03	23.6%
04	14.9%

4. If no cutting takes place, the 10% down payment will not be refunded.
5. Operations on the contract issued will terminate on 09/30/2025.

SALE STATISTICS

Volumes were calculated in cubic feet using the Michigan taper model. Cubic foot volume includes all wood inside bark for the product indicated. For display purposes, cubic feet were converted to cords and MBF using a simple conversion factor, e.g. 79 cubic feet per cord and 185 cubic feet per MBF. The cubic foot volumes are precise; the cords and MBF volumes are not. Cubic foot volume cannot be directly converted to cords or boards with precision.

SALE VOLUMES

The total estimated sale volume may not equal the sum of the species/products due to the nature of statistical calculations associated with double sampling methodology.

VOLUME			STATISTICAL RANGE IN CORDS	
TOTAL CUBIC FEET	TOTAL CORDS	PERCENT ERROR	MINIMUM	MAXIMUM
332,577	4,210	10.12%	3,784	4,636

VDU VOLUMES

A VDU is a Volume Determination Unit. Volumes and their associated statistics are calculated at the VDU level and summarized to the sale level. There is often a one to one relationship between a VDU and a Payment Unit, but not always, depending on the cruise design. Refer to the VDU TO PAYMENT UNIT table.

	VOLUME			RANGE IN CORDS	
VDU	TOTAL CUBIC FEET	TOTAL CORDS	PERCENT ERROR	MINIMUM	MAXIMUM
49	54,078	685	25.12%	513	856
50	11,217	142	23.81%	108	176
92	70,707	895	14.12%	769	1,021
110	39,219	496	26.15%	367	626
237	108,056	1,368	14.47%	1,170	1,566
238	49,301	624	24.89%	469	779
TOTAL:	332,577	4,210		3,395	5,025

VDU TO PAYMENT UNIT

When a VDU is associated with more than one Payment Unit (PU), the VDU volumes are assigned to the PU based on acres of the VDU within the PU.

VDU	VDU ACRES	PU	PU ACRES
49	22.7	4	22.7
50	6.2	3	6.2
92	37.9	3	37.9
110	10.4	2	10.4
237	77.6	2	77.6
238	28.4	1	28.4
TOTAL:	183.2		183.2

DESCRIPTION OF TIMBER BY PAYMENT UNIT (PU)

PU	MARKET GROUP	PRODUCT	QUANTITY	UNIT	ACRES	ADVERTISE PRICE			
1	Mixed Oak	Sawtimber	23.7	MBF	28.4	\$16,411.80			
	<i>Northern Pin Oak</i>		22.1	<i>MBF</i>					
	<i>White Oak</i>		1.6	<i>MBF</i>					
	Red Maple		44.2	MBF					
	Black Cherry		Pulpwood	3			Cords		
	<i>Black Cherry</i>			3			<i>Cords</i>		
	Mixed Aspen			99			Cords		
	<i>B. T. Aspen</i>			14			<i>Cords</i>		
	<i>Quaking Aspen</i>			85			<i>Cords</i>		
	Mixed Oak			90			Cords		
	<i>Northern Pin Oak</i>			89			<i>Cords</i>		
	<i>White Oak</i>			1			<i>Cords</i>		
	Paper Birch			9			Cords		
	Red Maple			276			Cords		
2	Mixed Aspen	Sawtimber		13.3	MBF	88.0	\$60,238.65		
	<i>Quaking Aspen</i>			13.3	<i>MBF</i>				
	Mixed Oak			98.9	MBF				
	<i>Northern Pin Oak</i>			97.8	<i>MBF</i>				
	<i>White Oak</i>		1.1	<i>MBF</i>					
	Red Maple		19.3	MBF					
	Red Pine		69.4	MBF					
	Black Cherry		Pulpwood	25	Cords				
	<i>Black Cherry</i>			25	<i>Cords</i>				
	Mixed Aspen			361	Cords				
	<i>B. T. Aspen</i>			193	<i>Cords</i>				
	<i>Quaking Aspen</i>			168	<i>Cords</i>				
	Mixed Oak			330	Cords				
	<i>Northern Pin Oak</i>			276	<i>Cords</i>				
	<i>White Oak</i>			54	<i>Cords</i>				
	Paper Birch			48	Cords				
Red Maple	415	Cords							
Red Pine	216	Cords							
3	Mixed Aspen	Sawtimber		22.0	MBF	44.1	\$29,387.95		
	<i>B. T. Aspen</i>			13.7	<i>MBF</i>				
	<i>Quaking Aspen</i>			8.3	<i>MBF</i>				
	Mixed Oak			86.8	MBF				
	<i>Northern Pin Oak</i>			85.3	<i>MBF</i>				
	<i>White Oak</i>		1.5	<i>MBF</i>					
	Red Maple		76.8	MBF					
	Black Cherry		Pulpwood	26	Cords				
	<i>Black Cherry</i>			Sawtimber	6.6			<i>MBF</i>	
	<i>Black Cherry</i>				Pulpwood			13	<i>Cords</i>
	Mixed Aspen			71				Cords	
	<i>B. T. Aspen</i>			42				<i>Cords</i>	
	<i>Quaking Aspen</i>			29				<i>Cords</i>	
	Mixed Oak			230				Cords	
	<i>Northern Pin Oak</i>			228				<i>Cords</i>	
	<i>White Oak</i>			2				<i>Cords</i>	
Red Maple	282	Cords							
4	Mixed Aspen	Sawtimber		21.8		MBF	22.7	\$18,629.80	
	<i>B. T. Aspen</i>			21.8		<i>MBF</i>			
	Mixed Oak			2.5		MBF			
	<i>White Oak</i>			2.5		<i>MBF</i>			
	Mixed Aspen			Pulpwood		366			Cords
	<i>B. T. Aspen</i>					366			<i>Cords</i>
Mixed Oak	78	Cords							

DESCRIPTION OF TIMBER BY PAYMENT UNIT (PU), CON'T

PU	MARKET GROUP	PRODUCT	QUANTITY	UNIT	ACRES	ADVERTISE PRICE
4 con't	Northern Pin Oak	Pulpwood	76	Cords		
	White Oak		2	Cords		
	Paper Birch		14	Cords		
	Red Maple		173	Cords		
TOTAL:			478.7	MBF		
TOTAL:			3,112	Cords		

Sale Specific Conditions & Requirements

Sale Name: Eastman Dustbowl

Sale Number: 73-008-22 Seq#: 1

1 - Sale Area

1.2 - Boundaries

1.2.1 - Painted boundaries (9/19)

The sale boundary and Payment Unit boundaries are marked and identified by blue, red and yellow paint. Exterior sale boundary lines against private property are marked with blue paint. Exterior sale boundary lines against state are marked with red paint. The eastern sale boundary on payment unit #'s 1, 3 & 4 are unmarked and designated by Eastman road. Interior Payment Unit boundaries are marked with yellow paint. Retention patches are marked with red paint; no harvesting activities may occur within these areas. The painted boundary line trees are not Included Timber and are to be protected unless marked with orange paint. Yellow painted trees designating an interior Payment Unit boundary are only to be cut when all surrounding Payment Units have been paid.

2 - Timber Specifications

2.1 - Included Timber

2.1.1 - Clearcut unit(s) with unmerchantable trees (6/14)

Within Payment Unit(s) 2, 3 and 4, cut all trees that are two (2) inches or more at DBH except for oak marked with green paint above and below stump height.

2.1.7 - Leave tree marked unit(s) (6/14)

Within Payment Unit(s) 1, cut all trees that are two (2) inches or more at DBH except trees marked with green paint above and below stump height.

2.1.15 - Hazard trees near roads (11/20)

Cut and remove all standing dead trees within 100 feet of the cleared portion of Eastman road. These trees may be utilized or must be scattered back into the sale area.

2.2 - Utilization

2.2.6 - Roundwood operation required (3/21)

The skidding of whole trees or tree segments with limbs attached is prohibited within Payment Unit 1. All products must be produced as roundwood and forwarded to existing roads or landing areas in final product length.

3 - Payments

3.3 - Pre-measured Sales

3.3.4 - Dividing payment units (7/14)

Payment Unit(s) may be divided at the request of the Purchaser and upon approval of the Unit Manager. Dividing Payment Units is a contract modification which requires a Timber Sale Contract Amendment. There will be only one division per Payment Unit.

3.4 - Damaged Timber

3.4.1 - Damaged timber (7/16)

General Condition and Requirement 3.4 Damaged Timber, defines liquidated damages for undesignated live merchantable trees which are cut or injured. No damage is acceptable to undesignated live merchantable trees. Within the sale area, if more than 10% of trees (> 4.5" DBH) within a specified area of the sale are damaged, liquidated damages will be assessed for all trees damaged. Rates will be in accordance with General Condition and Requirement 3.4 Damaged Timber.

4 - Transportation

4.1 - Construction

4.1.6 - Road construction (1/09)

Construction of new roads or improvements of existing roads shall be done in such a way as to minimize the environmental

and visual impacts. Merchantable trees shall be cut and utilized unless otherwise directed. Non-merchantable trees shall be severed and laid flat on the ground. Slash shall be scattered, and not left in windrows and kept a minimum of 10 feet back from the road edge. Stumps shall be set upright, not left on edge, and be moved at least 10 feet away from the road edge. Disturbed soil shall be feathered into the woods and not left in berms or windrows.

4.1.7 - Road closure (10/11)

All new roads built into the sale must be blocked to vehicle traffic upon completion of the sale. Overgrown roads that are reopened shall be considered new roads. In general, this will require constructing a four (4') foot high berm of stumps and logs covered with earth. Stumps and brush must be placed along the remainder of the trail. These roads must be rendered impassable to cars and trucks. Contact the sale administrator for specific details of design and placement.

5 - Operations

5.1 - Notification

5.1.1 - Pre-sale conference (10/16)

A pre-sale conference on site between the Purchaser and sale administrator is required prior to beginning any operations to determine landing and road locations. The Unit Manager or his/her representative must be contacted at least 2 business days in advance to schedule the conference.

5.2 - Conduct of Operations

5.2.2 - Hazard Trees/Snags

5.2.2.1 - Den trees (10/16)

Obvious hollow and/or den trees shall be protected and left standing unless they are a safety hazard.

5.2.3 - Operating Restrictions

5.2.3.4 - Oak wilt restriction, no exceptions (1/18)

Within Payment Unit 1, cutting, skidding, hauling within the sale and brushing of access roads to the sale are not permitted during the period of April 15 to July 15. No exceptions will be granted. This is necessary to reduce the spread of oak wilt.

5.2.3.5 - Oak wilt restriction (1/18)

Within Payment Unit 3, unless changed by written agreement, cutting, skidding, hauling within the sale and brushing of access roads to the sale are not permitted during the period of April 15 to July 15. Operations may be allowed if specific steps are taken to prevent damaging uncut oak during the high risk period. Those steps may include completing all road brushing before April 15th and clearing a tree-length buffer along uncut oak cover before April 15th. This is necessary to reduce the spread of oak wilt. For more information, contact the Unit Manager or his/her representative.

5.2.4 - Dead and Down Creation

5.2.4.4 - Dead and down creation, grouse (6/18)

To encourage grouse and other wildlife, in Payment Unit(s) 2 & 4, leave one 12" or larger diameter whole tree on the ground for every 3 acres. Trees should be scattered throughout the sale and at least two chains from any roads, two-tracks, or trails open to vehicles, or positioned per the sale administrator's instructions. Stumps must be at least 3 feet tall.

5.2.22 - Operating Caution

5.2.22.1 - Operating caution (6/11)

It is recommended, but not required, that within Payment Unit(s) 1-4, cutting, skidding, and hauling occur during dry summer or frozen winter conditions. The reason for the recommendation is because of saturated soils.

5.2.32 - Decking/landing restoration (9/13)

All decking and landing areas must have the surface area restored to a condition equal to or better than before. This is to ensure the proper regeneration of the stand. Wood debris, chips and "cookies" from trimmings must be removed or scattered away from landing and loading areas and may not be windrowed on the edge.

5.2.39 - ORV trail/route protection (4/18)

The Midland to Mackinaw is an ORV trail route and is shown on the Timber Sale Map. Do not cut or damage trees with blue paint. Maintain a 20 foot wide slash, debris, and rut free zone daily using the ORV trail or route as the centerline.

6 - Safety and Fire Prevention

6.2 - Signing

6.2.1 - Road posting (10/20)

The Purchaser is responsible for posting and maintaining caution signs on Eastman road prior to beginning operations. The road must be posted at appropriate distances from the sale area to warn of logging activity and truck traffic. Signs must be removed when harvest operations are suspended or completed. The Purchaser will provide these signs.

6.2.3 - Recreational trail posting (10/20)

The Purchaser is responsible for posting and maintaining caution signs on the Midland to Mackinac boy scout trail prior to beginning operations. The trail must be posted at appropriate distances from the sale area to warn of logging activity and truck traffic at both ends of the trail. Signs must be removed when harvest operations are suspended or completed. The Purchaser will provide these signs.



TIMBER SALE MAP

This information provided by authority of Part 525, 1994 PA 451, as amended.

Sale Number	Year
73 - 008	22

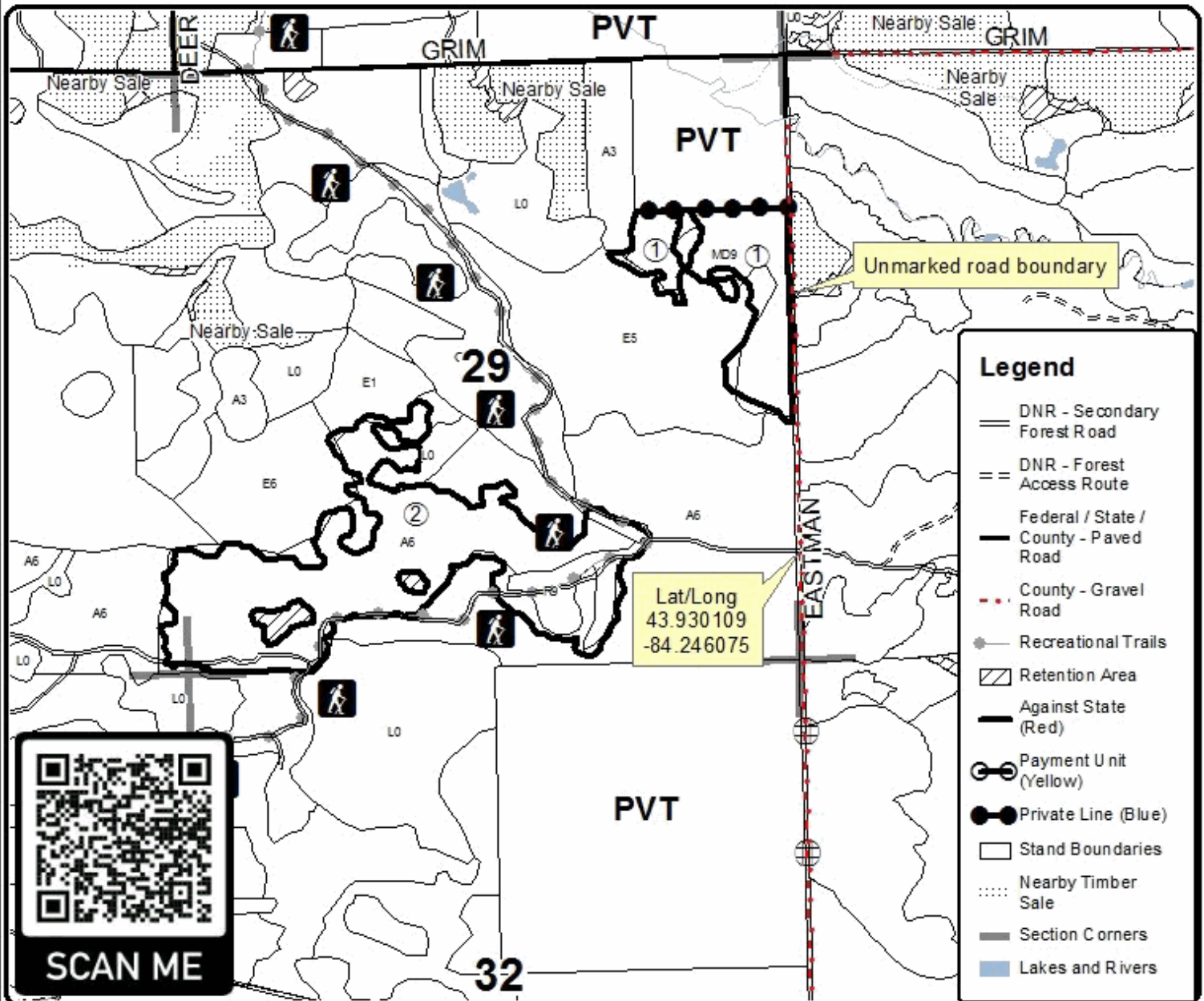
Forest Management Unit Gladwin	County Gladwin	Mapped By Behrmann	Date 09/26/2022	Page 1	of 2
Township 17 & 18N	Range 02E	Section(s) and Subdivision(s) 18N 02E Sec 29 S1/2, S1/2NE Sec 30 S1/2SE, 17N 02E Sec 5 NE	Scale 1:15,840		

Cover Type				Density	
A = Aspen	H = Hemlock	N = Marsh	U = Upland Brush	0 = Non Stocked	5 = Pole Timber Medium
B = Paper Birch	J = Jack Pine	O = Oak	UM = Upland Mixed	1 = Seedling Sapling Poor	6 = Pole Timber Well
C = Cedar	L = Lowland Brush	P = Lowland Poplar	V = Bog or Marsh	2 = Seedling Sapling Medium	7 = Saw Timber Poor
D = Tired Bog	LM = Lowland Mixed	Q = Mxd Swamp Conifer	W = White Pine	3 = Seedling Sapling Well	8 = Saw Timber Medium
E = Swamp Hdwoods	M = Mpl, Boh, Brch	R = Red Pine	X = Non Stocked	4 = Pole Timber Poor	9 = Saw Timber Well
F = Spruce Fir	MC = Mixed Conifer	S = Black Spruce	Z = Water		
G = Grass	MD = Mixed Deciduous	T = Tamarack			

PU	Acres	PU	Acres
1	28.4	3	44.1
2	88	4	22.7

Eastman Dustbowl

Compartment 79
183.2 Acres





TIMBER SALE MAP

This information provided by authority of Part 525, 1994 PA 451, as amended.

Sale Number	Year
73 - 008	22

Forest Management Unit	County	Mapped By	Date	Page	of
Gladwin	Gladwin	Behrmann	09/26/2022	2	2
Cruised By					
Behrmann					

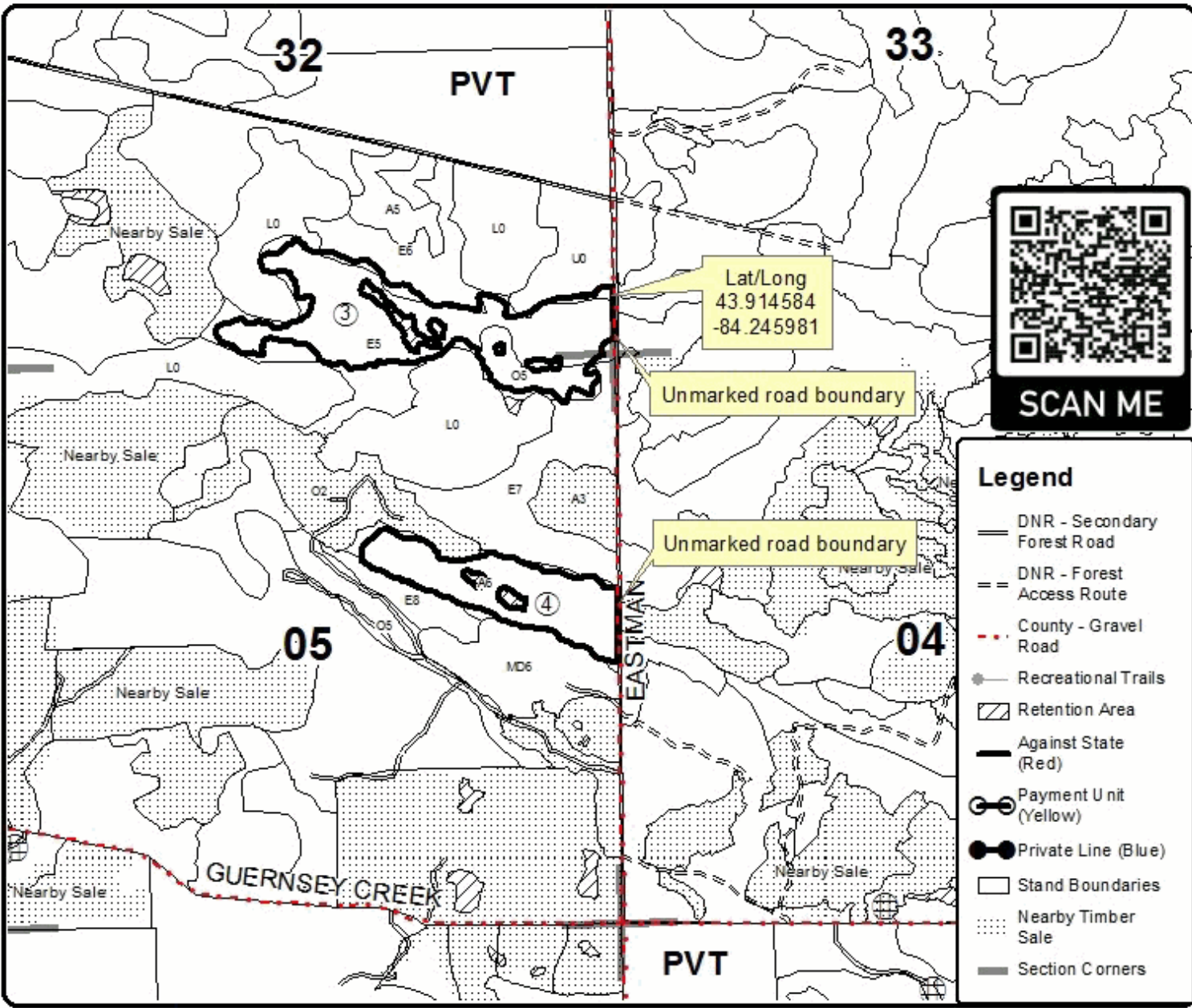
Township	Range	Section(s) and Subdivision(s)	Scale
17 & 18N	02E	18N 02E Sec 29 S1/2, S1/2NE Sec 30 S1/2SE, 17N 02E Sec 5 NE	1:15,840

Cover Type				Density	
A = Aspen	H = Hemlock	N = Marsh	U = Upland Brush	0 = Non Stocked	5 = Pole Timber Medium
B = Paper Birch	J = Jack Pine	O = Oak	UM = Upland Mixed	1 = Seedling Sapling Poor	6 = Pole Timber Well
C = Cedar	L = Lowland Brush	P = Lowland Poplar	V = Bog or Marsh	2 = Seedling Sapling Medium	7 = Saw Timber Poor
D = Tread Bog	LM = Lowland Mixed	Q = Mixed Swamp Conifer	W = White Pine	3 = Seedling Sapling Well	8 = Saw Timber Medium
E = Swamp Hardwoods	M = Mpl, Boh, Brch	R = Red Pine	X = Non Stocked	4 = Pole Timber Poor	9 = Saw Timber Well
F = Spruce Fir	MC = Mixed Conifer	S = Black Spruce	Z = Water		
G = Grass	MD = Mixed Deciduous	T = Tamarack			

PU	Acres	PU	Acres
1	28.4	3	44.1
2	88	4	22.7

Eastman Dustbowl

Compartment 79
183.2 Acres



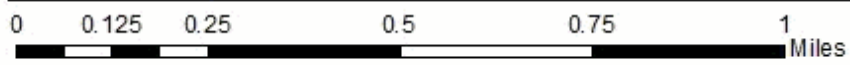
Lat/Long
43.914584
-84.245981

Unmarked road boundary

Unmarked road boundary

Legend

- DNR - Secondary Forest Road
- DNR - Forest Access Route
- County - Gravel Road
- Recreational Trails
- Retention Area
- Against State (Red)
- Payment Unit (Yellow)
- Private Line (Blue)
- Stand Boundaries
- Nearby Timber Sale
- Section Corners



TIMBER SALE INFORMATION

Guernsey Grimy Mix (73-009-22)

T17N, R01E, SEC. 1; T17N, R01E, SEC. 12; T17N, R02E, SEC. 5; T17N, R02E, SEC. 6; T17N, R02E, SEC. 8.
Gladwin County (Advertised Price \$131,231.45)

SALE NOTE: The sale area can be accessed from Eastman, Guernsey creek and Jones road. Payment units 1, 3 & 4 are final harvest. Payment unit 2 is a marked red pine thinning, payment unit 5 is a designated cut unit with all aspen and paper birch to be cut and payment unit 6 is a leave tree marked unit. The sale area contains low / wet ground.

A recreation site such as a trail, pathway, or campground is within the sale area or the vicinity. Certain restrictions/specifications may be applicable including time restrictions.

A timber sale contract for this lump sum, sealed bid timber sale will be awarded to the responsible bidder offering the highest sealed bid price. All units of volume listed below were estimated using the Inventory Manager computer program and the new Michigan taper model. Bids must be at or above the following advertised price for each product and species:

<u>PRODUCTS & SPECIES</u>	<u>ESTIMATED UNITS*</u>	<u>ADVERTISED PRICE</u>
Sawtimber		
Mixed Aspen	129.9 MBF	\$ 76.00 / MBF
Northern Pin Oak	108.1 MBF	\$ 112.00 / MBF
Red Maple	38.7 MBF	\$ 72.00 / MBF
Red Pine	92.5 MBF	\$ 121.00 / MBF
White Oak	59.9 MBF	\$ 96.00 / MBF
White Pine	30.3 MBF	\$ 68.00 / MBF
Pulpwood		
Black Cherry	5 Cords	\$ 20.60 / Cord
Mixed Aspen	1,502 Cords	\$ 31.45 / Cord
Northern Pin Oak	277 Cords	\$ 16.90 / Cord
Paper Birch	48 Cords	\$ 21.45 / Cord
Red Maple	778 Cords	\$ 20.60 / Cord
Red Pine	313 Cords	\$ 52.50 / Cord
Tamarack	9 Cords	\$ 16.55 / Cord
White Oak	77 Cords	\$ 16.90 / Cord
White Pine	16 Cords	\$ 31.30 / Cord

* The total volume is statistically estimated within plus (+) or minus (-) 11.28 percent. There are an estimated 4,321 cords on this timber sale, plus or minus 488 cords at the 95% confidence level. The estimated units are final and not subject to adjustment. Prospective bidders are urged to examine this timber and to make their own estimates of quantity and quality.

BOND AND PAYMENT SCHEDULE:

1. A bond in the amount of \$6,562.00 to insure faithful performance of the conditions of the contract will be deposited by the successful bidder within 21 days of the sale award.
2. Cutting in any sale or unit without the required advance payment would be considered a trespass.
3. Total payment must be paid in advance or according to the following schedule :
 - (a) Ten percent (10%) of the sale value must be paid within 21 days of the sale award.
 - (b) The 10% down payment will be credited towards the first unit cut.
 - (c) Payment for each of the following units must be made before cutting begins in that unit:

PAYMENT UNIT NUMBER	PERCENT OF TOTAL SALE VALUE
01	50.3%
02	10.0%
03	12.1%
04	9.6%
05	5.3%
06	12.7%

4. If no cutting takes place, the 10% down payment will not be refunded.
5. Operations on the contract issued will terminate on 09/30/2025.

SALE STATISTICS

Volumes were calculated in cubic feet using the Michigan taper model. Cubic foot volume includes all wood inside bark for the product indicated. For display purposes, cubic feet were converted to cords and MBF using a simple conversion factor, e.g. 79 cubic feet per cord and 185 cubic feet per MBF. The cubic foot volumes are precise; the cords and MBF volumes are not. Cubic foot volume cannot be directly converted to cords or boards with precision.

SALE VOLUMES

The total estimated sale volume may not equal the sum of the species/products due to the nature of statistical calculations associated with double sampling methodology.

VOLUME			STATISTICAL RANGE IN CORDS	
TOTAL CUBIC FEET	TOTAL CORDS	PERCENT ERROR	MINIMUM	MAXIMUM
341,338	4,321	11.28%	3,833	4,808

VDU VOLUMES

A VDU is a Volume Determination Unit. Volumes and their associated statistics are calculated at the VDU level and summarized to the sale level. There is often a one to one relationship between a VDU and a Payment Unit, but not always, depending on the cruise design. Refer to the VDU TO PAYMENT UNIT table.

VDU	VOLUME			RANGE IN CORDS	
	TOTAL CUBIC FEET	TOTAL CORDS	PERCENT ERROR	MINIMUM	MAXIMUM
3	35,389	448	35.67%	288	608
33	66,663	844	22.61%	653	1,035
53	154,494	1,956	19.05%	1,583	2,328
55	19,801	251	61.42%	97	405
56	9,538	121	60.08%	48	193
124	16,690	211	72.19%	59	364
204	38,763	491	22.94%	378	603
TOTAL:	341,338	4,321		3,106	5,535

VDU TO PAYMENT UNIT

When a VDU is associated with more than one Payment Unit (PU), the VDU volumes are assigned to the PU based on acres of the VDU within the PU.

VDU	VDU ACRES	PU	PU ACRES
3	17.0	4	17.0
33	36.4	3	36.4
53	64.5	1	64.5
55	9.1	2	9.1
56	4.8	1	4.8
124	9.3	5	9.3
204	22.2	6	22.2
TOTAL:	163.3		163.3

DESCRIPTION OF TIMBER BY PAYMENT UNIT (PU)

PU	MARKET GROUP	PRODUCT	QUANTITY	UNIT	ACRES	ADVERTISE PRICE	
1	Mixed Aspen	Sawtimber	29.1	MBF	69.3	\$65,979.30	
	<i>B. T. Aspen</i>		29.1	<i>MBF</i>			
	Northern Pin Oak		82.6	MBF			
	Red Pine		23.1	MBF			
	White Oak		36.9	MBF			
	White Pine		5.5	MBF			
	Mixed Aspen		Pulpwood	1,030			Cords
	<i>B. T. Aspen</i>			1,030			<i>Cords</i>
	Northern Pin Oak			134			Cords
	Paper Birch			22			Cords
	Red Maple			325			Cords
	Red Pine			106			Cords
	White Oak			19			Cords
	White Pine			3			Cords
2	Red Pine	Sawtimber	24.2	MBF	9.1	\$13,113.20	
	Red Pine	Pulpwood	194	Cords			
3	Mixed Aspen	Sawtimber	49.1	MBF	36.4	\$15,914.30	
	<i>B. T. Aspen</i>		19.9	<i>MBF</i>			
	<i>Quaking Aspen</i>		29.2	<i>MBF</i>			
	Northern Pin Oak		7.5	MBF			
	Mixed Aspen		Pulpwood	133			Cords
	<i>B. T. Aspen</i>			133			<i>Cords</i>
	Northern Pin Oak			88			Cords
	Paper Birch			9			Cords
Red Maple	266	Cords					
4	Mixed Aspen	Sawtimber	21.0	MBF	17.0	\$12,656.30	
	<i>B. T. Aspen</i>		18.0	<i>MBF</i>			
	<i>Quaking Aspen</i>		3.0	<i>MBF</i>			
	Northern Pin Oak		6.2	MBF			
	Red Maple		23.8	MBF			
	White Pine		1.7	MBF			
	Black Cherry		Pulpwood	5			Cords
	Mixed Aspen			171			Cords
	<i>B. T. Aspen</i>			54			<i>Cords</i>
	<i>Quaking Aspen</i>			117			<i>Cords</i>
	Northern Pin Oak			16			Cords
	Paper Birch			9			Cords
	Red Maple			118			Cords
	White Oak			4			Cords
	White Pine		3	Cords			
	5		Mixed Aspen	Sawtimber			29.5
<i>B. T. Aspen</i>		29.5	<i>MBF</i>				
Mixed Aspen		Pulpwood	147		Cords		
<i>B. T. Aspen</i>			147		<i>Cords</i>		
Paper Birch	3	Cords					
6	Mixed Aspen	Sawtimber	1.2	MBF	22.2	\$16,638.85	
	<i>B. T. Aspen</i>		1.2	<i>MBF</i>			
	Northern Pin Oak		11.8	MBF			
	Red Maple		14.9	MBF			
	Red Pine		45.2	MBF			
	White Oak		23.0	MBF			
	White Pine		23.1	MBF			
	Mixed Aspen		Pulpwood	21			Cords
	<i>B. T. Aspen</i>			21			<i>Cords</i>
	Northern Pin Oak			39			Cords
Paper Birch	5	Cords					

DESCRIPTION OF TIMBER BY PAYMENT UNIT (PU), CON'T

PU	MARKET GROUP	PRODUCT	QUANTITY	UNIT	ACRES	ADVERTISE PRICE
6 con't	Red Maple	Pulpwood	69	Cords		
	Red Pine		13	Cords		
	Tamarack		9	Cords		
	White Oak		54	Cords		
	White Pine		10	Cords		
TOTAL:			459.4	MBF		
TOTAL:			3,025	Cords		

Sale Specific Conditions & Requirements

Sale Name: Guernsey Grimy Mix

Sale Number: 73-009-22 Seq#: 1

1 - Sale Area

1.2 - Boundaries

1.2.1 - Painted boundaries (9/19)

The sale boundary and Payment Unit boundaries are marked and identified by blue, red and yellow paint. Exterior sale boundary lines against private property are marked with blue paint. Exterior sale boundary lines against state are marked with red paint. Eastman and Guernsey Creek road are unmarked designated boundaries for payment units 1-3. Jones road is an unmarked designated boundary for payment unit 5. Interior Payment Unit boundaries are marked with yellow paint. Retention patches are marked with red paint; no harvesting activities may occur within these areas. The painted boundary line trees are not Included Timber and are to be protected unless marked with orange paint. Yellow painted trees designating an interior Payment Unit boundary are only to be cut when all surrounding Payment Units have been paid.

2 - Timber Specifications

2.1 - Included Timber

2.1.1 - Clearcut unit(s) with unmerchantable trees (6/14)

Within Payment Unit(s) 1, 3 & 4, cut all trees that are two (2) inches or more at DBH except oak marked with green paint above and below stump height.

2.1.3 - Cut tree marked unit(s) (12/08)

Within Payment Unit(s) 2, all trees are designated for cutting when marked with orange paint above and below stump height, regardless of merchantability.

2.1.4 - Designated timber unit(s) (6/17)

Within Payment Unit(s) 5, all aspen and paper birch are designated for cutting which meet minimum piece specifications in 2.2 - Utilization.

2.1.7 - Leave tree marked unit(s) (6/14)

Within Payment Unit(s) 6, cut all trees that are two (2) inches or more at DBH except trees marked with green paint above and below stump height.

2.1.15 - Hazard trees near roads (11/20)

Cut and remove all standing dead trees within 100 feet of the cleared portion of designated county roads. These trees may be utilized or must be scattered back into the sale area.

2.2 - Utilization

2.2.6 - Roundwood operation required (3/21)

The skidding of whole trees or tree segments with limbs attached is prohibited within Payment Units 2, 5 & 6. All products must be produced as roundwood and forwarded to existing roads or landing areas in final product length.

3 - Payments

3.3 - Pre-measured Sales

3.3.4 - Dividing payment units (7/14)

Payment Unit(s) may be divided at the request of the Purchaser and upon approval of the Unit Manager. Dividing Payment Units is a contract modification which requires a Timber Sale Contract Amendment. There will be only one division per Payment Unit.

3.4 - Damaged Timber

3.4.1 - Damaged timber (7/16)

General Condition and Requirement 3.4 Damaged Timber, defines liquidated damages for undesignated live merchantable trees which are cut or injured. No damage is acceptable to undesignated live merchantable trees. Within the sale area, if more than 10% of trees (> 4.5" DBH) within a specified area of the sale are damaged, liquidated damages will be assessed

for all trees damaged. Rates will be in accordance with General Condition and Requirement 3.4 Damaged Timber.

4 - Transportation

4.1 - Construction

4.1.6 - Road construction (1/09)

Construction of new roads or improvements of existing roads shall be done in such a way as to minimize the environmental and visual impacts. Merchantable trees shall be cut and utilized unless otherwise directed. Non-merchantable trees shall be severed and laid flat on the ground. Slash shall be scattered, and not left in windrows and kept a minimum of 10 feet back from the road edge. Stumps shall be set upright, not left on edge, and be moved at least 10 feet away from the road edge. Disturbed soil shall be feathered into the woods and not left in berms or windrows.

4.1.7 - Road closure (10/11)

All new roads built into the sale must be blocked to vehicle traffic upon completion of the sale. Overgrown roads that are reopened shall be considered new roads. In general, this will require constructing a four (4') foot high berm of stumps and logs covered with earth. Stumps and brush must be placed along the remainder of the trail. These roads must be rendered impassable to cars and trucks. Contact the sale administrator for specific details of design and placement.

5 - Operations

5.1 - Notification

5.1.1 - Pre-sale conference (10/16)

A pre-sale conference on site between the Purchaser and sale administrator is required prior to beginning any operations to determine landing and road locations. The Unit Manager or his/her representative must be contacted at least 2 business days in advance to schedule the conference.

5.2 - Conduct of Operations

5.2.2 - Hazard Trees/Snags

5.2.2.1 - Den trees (10/16)

Obvious hollow and/or den trees shall be protected and left standing unless they are a safety hazard.

5.2.3 - Operating Restrictions

5.2.3.3 - Bark slippage restriction (3/09)

Within Payment Unit(s) 2 & 5, unless changed by written agreement, cutting and skidding are not permitted during the period of April 15 to July 15. This restriction is because of bark slippage.

5.2.3.4 - Oak wilt restriction, no exceptions (1/18)

Within Payment Units 5 & 6 cutting, skidding, hauling within the sale and brushing of access roads to the sale are not permitted during the period of April 15 to July 15. No exceptions will be granted. This is necessary to reduce the spread of oak wilt.

5.2.3.5 - Oak wilt restriction (1/18)

Within Payment Unit 3, unless changed by written agreement, cutting, skidding, hauling within the sale and brushing of access roads to the sale are not permitted during the period of April 15 to July 15. Operations may be allowed if specific steps are taken to prevent damaging uncut oak during the high risk period. Those steps may include completing all road brushing before April 15th and clearing a tree-length buffer along uncut oak cover before April 15th. This is necessary to reduce the spread of oak wilt. For more information, contact the Unit Manager or his/her representative.

5.2.3.6 - Bark beetle restriction (12/08)

In the event drought creates a high risk of pine bark beetle infestation, pine is not to be cut during the period March 1 through July 1, unless all portions of trees greater than two inches in diameter are removed from the sale area, reduced to chips, or treated to the satisfaction of the Unit Manager or his/her representative, within fifteen days of being severed from the stump. Pine log decks, pulpwood piles and treetops that are piled for chipping in the fall or winter within a 1/4 mile of susceptible sites must be removed before March 15. Residual slash must not be placed in piles or rows and must be spread over the site for quick drying. The Department of Natural Resources will exercise this specification if the risk of damage warrants.

5.2.4 - Dead and Down Creation

5.2.4.4 - Dead and down creation, grouse (6/18)

To encourage grouse and other wildlife, in Payment Unit(s) 3 & 4, leave one 12" or larger diameter whole tree on the ground for every 3 acres. Trees should be scattered throughout the sale and at least two chains from any roads, two-tracks, or trails open to vehicles, or positioned per the sale administrators instructions.

5.2.22 - Operating Caution

5.2.22.1 - Operating caution (6/11)

It is recommended, but not required, that within Payment Unit(s) 1, 3, 4 & 5, cutting, skidding, and hauling occur during dry summer or frozen winter conditions. The reason for the recommendation is because of saturated soils.

5.2.32 - Decking/landing restoration (9/13)

All decking and landing areas must have the surface area restored to a condition equal to or better than before. This is to ensure the proper regeneration of the stand. Wood debris, chips and "cookies" from trimmings must be removed or scattered away from landing and loading areas and may not be windrowed on the edge.

6 - Safety and Fire Prevention

6.2 - Signing

6.2.1 - Road posting (10/20)

The Purchaser is responsible for posting and maintaining caution signs on Eastman, Guernsey Creek & Jones road prior to beginning operations. The road must be posted at appropriate distances from the sale area to warn of logging activity and truck traffic. Signs must be removed when harvest operations are suspended or completed. The Purchaser will provide these signs.

6.2.3 - Recreational trail posting (10/20)

The Purchaser is responsible for posting and maintaining caution signs on the Midland to Mackinac boy scout trail prior to beginning operations. The trail must be posted at appropriate distances from the sale area to warn of logging activity and truck traffic at both ends of the trail. Signs must be removed when harvest operations are suspended or completed. The Purchaser will provide these signs.



TIMBER SALE MAP

This information provided by authority of Part 525, 1994 PA 451, as amended.

Sale Number	Year
73 - 009	22

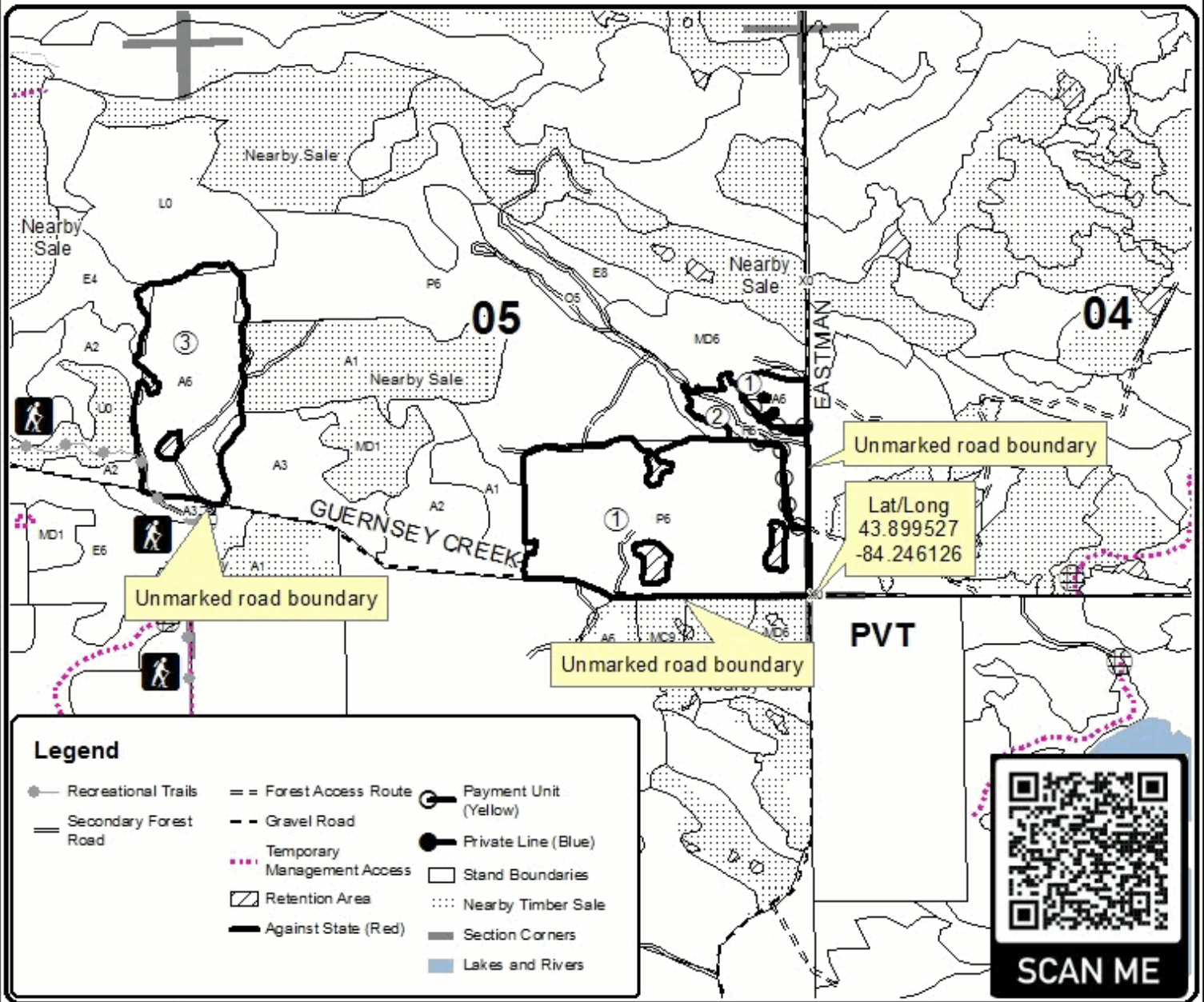
Forest Management Unit	County	Mapped By	Date	Page	of
Gladwin	Gladwin	Behrmann	09/26/2022	1	2
Township	Range	Section(s) and Subdivision(s)	Scale		
17N	01 & 02E	17N 01E Sec. 5 SW, W1/2NW SW, Sec. 6 E1/2NE SE, NW, 17N 01E Sec. 1 SE NW, Sec. 12 NE NW	1:15,840		

Cover Type				Density	
A = Aspen	H = Hemlock	N = Marsh	U = Upland Brush	0 = Non Stocked	5 = Pole Timber Medium
B = Paper Birch	J = Jack Pine	O = Oak	UM = Upland Mixed	1 = Seedling Sapling Poor	6 = Pole Timber Well
C = Cedar	L = Lowland Brush	P = Lowland Poplar	V = Bog or Marsh	2 = Seedling Sapling Medium	7 = Saw Timber Poor
D = Treed Bog	LM = Lowland Mixed	Q = Mxed Swamp Conifer	W = White Pine	3 = Seedling Sapling Well	8 = Saw Timber Medium
E = Swamp Hardwoods	M = Mpl, Boh, Brch	R = Red Pine	X = Non Stocked	4 = Pole Timber Poor	9 = Saw Timber Well
F = Spruce Fir	MC = Mixed Conifer	S = Black Spruce	Z = Water		
G = Grass	MD = Mixed Deciduous	T = Tamarack			

PU	Acres	PU	Acres
1	69.3	4	17
2	9.1	5	9.3
3	36.4	6	22.2

Guernsey Grimy Mix

Compartment 79
163.3 Acres





TIMBER SALE MAP

This information provided by authority of Part 525, 1994 PA 451, as amended.

Sale Number	Year
73 - 009	22

Forest Management Unit	County	Mapped By	Date	Page	of
Gladwin	Gladwin	Behrmann	09/26/2022	2	2
Township	Range	Section(s) and Subdivision(s)	Scale		
17N	01 & 02E	17N 01E Sec. 5 SW, W1/2NW SW, Sec. 6 E1/2NESE, NW, 17N 01E Sec. 1 SENW, Sec. 12 NENW	1:15,840		

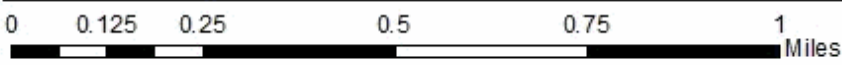
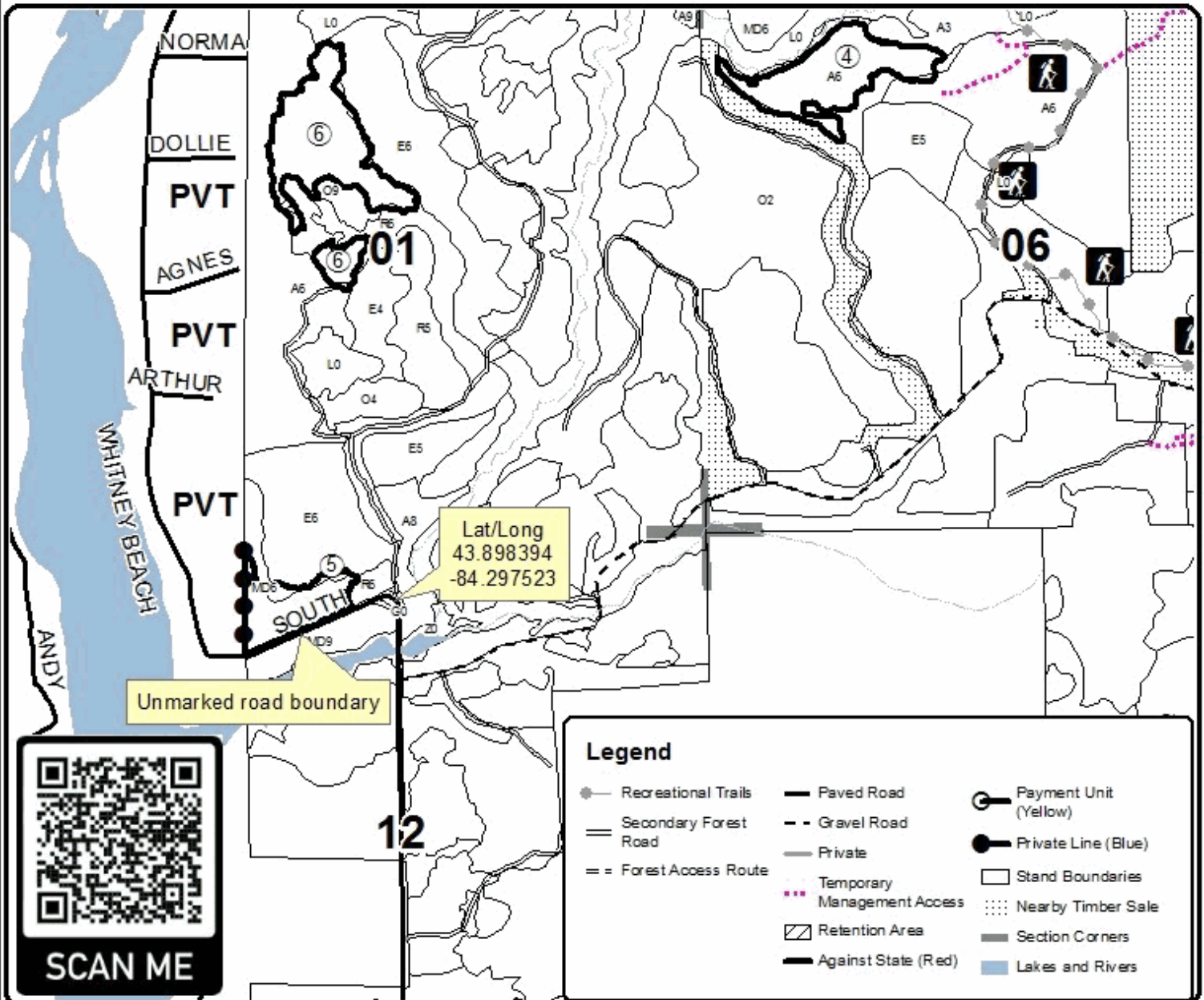
Cover Type				Density	
A = Aspen	H = Hemlock	N = Marsh	U = Upland Brush	0 = Non Stocked	5 = Pole Timber Medium
B = Paper Birch	J = Jack Pine	O = Oak	UM = Upland Mixed	1 = Seedling Sapling Poor	6 = Pole Timber Well
C = Cedar	L = Lowland Brush	P = Lowland Poplar	V = Bog or Marsh	2 = Seedling Sapling Medium	7 = Saw Timber Poor
D = Tread Bog	LM = Lowland Mixed	Q = Mixed Swamp Conifer	W = White Pine	3 = Seedling Sapling Well	8 = Saw Timber Medium
E = Swamp Hardwoods	M = Mpl, Boh, Brch	R = Red Pine	X = Non Stocked	4 = Pole Timber Poor	9 = Saw Timber Well
F = Spruce Fir	MC = Mixed Conifer	S = Black Spruce	Z = Water		
G = Grass	MD = Mixed Deciduous	T = Tamarack			

PU	Acres	PU	Acres
1	69.3	4	17
2	9.1	5	9.3
3	36.4	6	22.2

Guernsey Grimy Mix

Compartment 79

163.3 Acres



Loopy Grim Aspen (73-007-22)

T18N, R02E, SEC. 19; T18N, R02E, SEC. 29; T18N, R02E, SEC. 30; Gladwin

In response to the notice of sale to be held 10:00 a.m. (local time) on August 24, 2023, I am hereby submitting my sealed bid (firm offer) for the following forest products to be cut. Bids for individual species must be at or above the advertised price. All non-responsive bid forms may be rejected.

<u>PRODUCTS & SPECIES</u>	<u>ESTIMATED VOLUME*</u>	<u>ADVERTISED PRICE</u>	<u>BID PRICE/UNIT</u>
Sawtimber			
B. T. Aspen	85.5 MBF	\$ 76.00/MBF	\$ _____
Northern Pin Oak	85.6 MBF	\$ 112.00/MBF	\$ _____
Quaking Aspen	74.3 MBF	\$ 76.00/MBF	\$ _____
Red Maple	91.0 MBF	\$ 72.00/MBF	\$ _____
Red Pine	25.6 MBF	\$ 121.00/MBF	\$ _____
Pulpwood			
B. T. Aspen	449 Cords	\$ 31.45/Cord	\$ _____
Black Cherry	65 Cords	\$ 20.60/Cord	\$ _____
Mixed Oak	280 Cords	\$ 16.90/Cord	\$ _____
Paper Birch	90 Cords	\$ 21.45/Cord	\$ _____
Quaking Aspen	1,107 Cords	\$ 31.45/Cord	\$ _____
Red Maple	599 Cords	\$ 20.60/Cord	\$ _____
Red Pine	5 Cords	\$ 52.50/Cord	\$ _____
White Pine	34 Cords	\$ 31.30/Cord	\$ _____

*The volumes are statistically estimated within plus (+) or minus (-) 10.38 percent at 95% confidence level. These estimated volumes are final and not subject to adjustment. Prospective bidders are urged to examine this timber and to make their own estimates of quantity and quality.

I understand that any or all bids may be rejected. All bids must be signed and all bid items must be bid or the bid form may be rejected. I also understand that consideration and awarding a contract will be based upon my past performance and ability to complete the contract based upon equipment and staffing subject to my control.

FEDERAL ID: _____ or SOCIAL SECURITY NUMBER: _____

Company or individual bidding: _____

Company representative's name: _____

Address: _____

City: _____ State: _____ Zip: _____

IF AVAILABLE, PLEASE PLACE THE PERSONALIZED LABEL FROM YOUR PROSPECTUS IN THE ABOVE BOX.

Individual or company representative's signature: _____ Date: _____

Phone number : _____ Email (optional): _____

THE WINNING BIDDER MUST COMPLETE THE VERIFICATION OF WORKER'S DISABILITY COMPENSATION ACT COMPLIANCE (ON REVERSE SIDE IF DOUBLE SIDED) WITHIN 21 DAYS OF SALE AWARD DATE



FOR DEPARTMENT USE ONLY	
Sale Number (XX - XXX - XX - XX)	
Forest Management Unit:	

TIMBER SALE VERIFICATION OF WORKER'S DISABILITY COMPENSATION ACT COMPLIANCE

As required by Act 317, P.A. 1969 (Worker's Compensation) and
Part 5 of Act 451 of 1994, as amended.

VERIFICATION OF WORKER'S DISABILITY COMPENSATION ACT COMPLIANCE

- This verification must be completed and submitted within 21 days of contract award and prior to the issuance of the timber sale contract.
- In addition, if boxes 2B or 2C are checked, then Notice of Exclusion or Certificate of Insurance must be submitted within twenty-one (21) days of the contract award and prior to the issuance of the timber sale contract.
- All information must be typed or printed except for written signatures.

Please Check Appropriate Categories:

1. My business is organized as (you **must** check one of the boxes below):
 - A. Sole Proprietorship (individual)
 - B. Partnership
 - C. Corporation
2. You **must** check one of the boxes below:
 - A. I certify my business is a sole proprietorship and it has no employees but the sole proprietor. I am not subject to the Worker's Compensation Laws.
 - B. I certify my business has satisfied its obligation to the Worker's Compensation Act through the use of an approved Notice of Exclusion (BWC-337, Rev. 5/96). I will provide a copy of the Notice of Exclusion within 21 days of the contract award. (For questions or a copy of the BWC-337, please call the Worker's Compensation Bureau at 517-322-1195).
 - C. I certify my business has a Worker's Compensation Policy. I will provide an original Certificate of Insurance within twenty-one (21) days of the contract award.
3. If you have checked item 2(A) or 2(B), you **must** indicate the number of **both** full-time and part-time employees, other than yourself, including family members and active partners (if none, you must enter "0").

_____ Full-time Employees

_____ Part-time Employees

Name of Business		Federal ID (or) Social Security No.	
Address		Telephone ()	
City	State	ZIP	

I hereby certify that the above information is true and correct. I agree to notify the Michigan DNR of any changes that occur in factors affecting my coverage during any of my present and future operations.

Signature of Owner or Authorized Representative

Title

Date

Please complete the "SEALED BID" information on the next page

Eastman Dustbowl (73-008-22)

T17N, R02E, SEC. 5; T18N, R02E, SEC. 29; T18N, R02E, SEC. 30; T18N, R02E,

In response to the notice of sale to be held 10:00 a.m. (local time) on August 24, 2023, I am hereby submitting my sealed bid (firm offer) for the following forest products to be cut. Bids for individual species must be at or above the advertised price. All non-responsive bid forms may be rejected.

<u>PRODUCTS & SPECIES</u>	<u>ESTIMATED VOLUME*</u>	<u>ADVERTISED PRICE</u>	<u>BID PRICE/UNIT</u>
Sawtimber			
Mixed Aspen	57.1 MBF	\$ 76.00/MBF	\$ _____
Mixed Oak	211.9 MBF	\$ 112.00/MBF	\$ _____
Red Maple	140.3 MBF	\$ 72.00/MBF	\$ _____
Red Pine	69.4 MBF	\$ 121.00/MBF	\$ _____
Pulpwood			
Black Cherry	54 Cords	\$ 20.60/Cord	\$ _____
Mixed Aspen	897 Cords	\$ 31.45/Cord	\$ _____
Mixed Oak	728 Cords	\$ 16.90/Cord	\$ _____
Paper Birch	71 Cords	\$ 21.45/Cord	\$ _____
Red Maple	1,146 Cords	\$ 20.60/Cord	\$ _____
Red Pine	216 Cords	\$ 52.50/Cord	\$ _____

*The volumes are statistically estimated within plus (+) or minus (-) 10.12 percent at 95% confidence level. These estimated volumes are final and not subject to adjustment. Prospective bidders are urged to examine this timber and to make their own estimates of quantity and quality.

I understand that any or all bids may be rejected. All bids must be signed and all bid items must be bid or the bid form may be rejected. I also understand that consideration and awarding a contract will be based upon my past performance and ability to complete the contract based upon equipment and staffing subject to my control.

FEDERAL ID: _____ or SOCIAL SECURITY NUMBER: _____

Company or individual bidding: _____

Company representative's name: _____

Address: _____

City: _____ State: _____ Zip: _____

IF AVAILABLE, PLEASE PLACE THE PERSONALIZED LABEL FROM YOUR PROSPECTUS IN THE ABOVE BOX.

Individual or company representative's signature: _____ Date: _____

Phone number : _____ Email (optional): _____

THE WINNING BIDDER MUST COMPLETE THE VERIFICATION OF WORKER'S DISABILITY COMPENSATION ACT COMPLIANCE (ON REVERSE SIDE IF DOUBLE SIDED) WITHIN 21 DAYS OF SALE AWARD DATE



FOR DEPARTMENT USE ONLY	
Sale Number (XX - XXX - XX - XX)	
Forest Management Unit:	

TIMBER SALE VERIFICATION OF WORKER'S DISABILITY COMPENSATION ACT COMPLIANCE

As required by Act 317, P.A. 1969 (Worker's Compensation) and
Part 5 of Act 451 of 1994, as amended.

VERIFICATION OF WORKER'S DISABILITY COMPENSATION ACT COMPLIANCE

- This verification must be completed and submitted within 21 days of contract award and prior to the issuance of the timber sale contract.
- In addition, if boxes 2B or 2C are checked, then Notice of Exclusion or Certificate of Insurance must be submitted within twenty-one (21) days of the contract award and prior to the issuance of the timber sale contract.
- All information must be typed or printed except for written signatures.

Please Check Appropriate Categories:

1. My business is organized as (you **must** check one of the boxes below):
 - A. Sole Proprietorship (individual)
 - B. Partnership
 - C. Corporation
2. You **must** check one of the boxes below:
 - A. I certify my business is a sole proprietorship and it has no employees but the sole proprietor. I am not subject to the Worker's Compensation Laws.
 - B. I certify my business has satisfied its obligation to the Worker's Compensation Act through the use of an approved Notice of Exclusion (BWC-337, Rev. 5/96). I will provide a copy of the Notice of Exclusion within 21 days of the contract award. (For questions or a copy of the BWC-337, please call the Worker's Compensation Bureau at 517-322-1195).
 - C. I certify my business has a Worker's Compensation Policy. I will provide an original Certificate of Insurance within twenty-one (21) days of the contract award.
3. If you have checked item 2(A) or 2(B), you **must** indicate the number of **both** full-time and part-time employees, other than yourself, including family members and active partners (if none, you must enter "0").

_____ Full-time Employees

_____ Part-time Employees

Name of Business		Federal ID (or) Social Security No.	
Address		Telephone ()	
City	State	ZIP	

I hereby certify that the above information is true and correct. I agree to notify the Michigan DNR of any changes that occur in factors affecting my coverage during any of my present and future operations.

Signature of Owner or Authorized Representative

Title

Date

Please complete the "SEALED BID" information on the next page

Guernsey Grimy Mix (73-009-22)

T17N, R01E, SEC. 1; T17N, R01E, SEC. 12; T17N, R02E, SEC. 5; T17N, R02E,

In response to the notice of sale to be held 10:00 a.m. (local time) on August 24, 2023, I am hereby submitting my sealed bid (firm offer) for the following forest products to be cut. Bids for individual species must be at or above the advertised price. All non-responsive bid forms may be rejected.

<u>PRODUCTS & SPECIES</u>	<u>ESTIMATED VOLUME*</u>	<u>ADVERTISED PRICE</u>	<u>BID PRICE/UNIT</u>
Sawtimber			
Mixed Aspen	129.9 MBF	\$ 76.00/MBF	\$ _____
Northern Pin Oak	108.1 MBF	\$ 112.00/MBF	\$ _____
Red Maple	38.7 MBF	\$ 72.00/MBF	\$ _____
Red Pine	92.5 MBF	\$ 121.00/MBF	\$ _____
White Oak	59.9 MBF	\$ 96.00/MBF	\$ _____
White Pine	30.3 MBF	\$ 68.00/MBF	\$ _____
Pulpwood			
Black Cherry	5 Cords	\$ 20.60/Cord	\$ _____
Mixed Aspen	1,502 Cords	\$ 31.45/Cord	\$ _____
Northern Pin Oak	277 Cords	\$ 16.90/Cord	\$ _____
Paper Birch	48 Cords	\$ 21.45/Cord	\$ _____
Red Maple	778 Cords	\$ 20.60/Cord	\$ _____
Red Pine	313 Cords	\$ 52.50/Cord	\$ _____
Tamarack	9 Cords	\$ 16.55/Cord	\$ _____
White Oak	77 Cords	\$ 16.90/Cord	\$ _____
White Pine	16 Cords	\$ 31.30/Cord	\$ _____

*The volumes are statistically estimated within plus (+) or minus (-) 11.28 percent at 95% confidence level. These estimated volumes are final and not subject to adjustment. Prospective bidders are urged to examine this timber and to make their own estimates of quantity and quality.

I understand that any or all bids may be rejected. All bids must be signed and all bid items must be bid or the bid form may be rejected. I also understand that consideration and awarding a contract will be based upon my past performance and ability to complete the contract based upon equipment and staffing subject to my control.

FEDERAL ID: ____ - ____ - ____ or SOCIAL SECURITY NUMBER: ____ - ____ - ____

Company or individual bidding: _____

Company representative's name: _____

Address: _____

City: _____ State: _____ Zip: _____

IF AVAILABLE, PLEASE PLACE THE PERSONALIZED LABEL FROM YOUR PROSPECTUS IN THE ABOVE BOX.

Individual or company representative's signature: _____ Date: _____

Phone number : _____ Email (optional): _____

THE WINNING BIDDER MUST COMPLETE THE VERIFICATION OF WORKER'S DISABILITY COMPENSATION ACT COMPLIANCE (ON REVERSE SIDE IF DOUBLE SIDED) WITHIN 21 DAYS OF SALE AWARD DATE



FOR DEPARTMENT USE ONLY
Sale Number (XX - XXX - XX - XX)
Forest Management Unit:

TIMBER SALE VERIFICATION OF WORKER'S DISABILITY COMPENSATION ACT COMPLIANCE

*As required by Act 317, P.A. 1969 (Worker's Compensation) and
Part 5 of Act 451 of 1994, as amended.*

VERIFICATION OF WORKER'S DISABILITY COMPENSATION ACT COMPLIANCE

- This verification must be completed and submitted within 21 days of contract award and prior to the issuance of the timber sale contract.
- In addition, if boxes 2B or 2C are checked, then Notice of Exclusion or Certificate of Insurance must be submitted within twenty-one (21) days of the contract award and prior to the issuance of the timber sale contract.
- All information must be typed or printed except for written signatures.

Please Check Appropriate Categories:

1. My business is organized as (you **must** check one of the boxes below):
 - A. Sole Proprietorship (individual)
 - B. Partnership
 - C. Corporation
2. You **must** check one of the boxes below:
 - A. I certify my business is a sole proprietorship and it has no employees but the sole proprietor. I am not subject to the Worker's Compensation Laws.
 - B. I certify my business has satisfied its obligation to the Worker's Compensation Act through the use of an approved Notice of Exclusion (BWC-337, Rev. 5/96). I will provide a copy of the Notice of Exclusion within 21 days of the contract award. (For questions or a copy of the BWC-337, please call the Worker's Compensation Bureau at 517-322-1195).
 - C. I certify my business has a Worker's Compensation Policy. I will provide an original Certificate of Insurance within twenty-one (21) days of the contract award.
3. If you have checked item 2(A) or 2(B), you **must** indicate the number of **both** full-time and part-time employees, other than yourself, including family members and active partners (if none, you must enter "0").

_____ Full-time Employees

_____ Part-time Employees

Name of Business		Federal ID (or) Social Security No.	
Address		Telephone ()	
City	State	ZIP	

I hereby certify that the above information is true and correct. I agree to notify the Michigan DNR of any changes that occur in factors affecting my coverage during any of my present and future operations.

Signature of Owner or Authorized Representative

Title

Date

Please complete the "SEALED BID" information on the next page

Leota Fuelbreak RP (73-998-23)

T20N, R05W, SEC. 17; T20N, R05W, SEC. 3; T20N, R05W, SEC. 8; T20N, R05W,

In response to the notice of sale to be held 10:00 a.m. (local time) on August 24, 2023, I am hereby submitting my sealed bid (firm offer) for the following forest products to be cut. Bids for individual species must be at or above the advertised price. All non-responsive bid forms may be rejected.

<u>PRODUCTS & SPECIES</u>	<u>ESTIMATED VOLUME*</u>	<u>ADVERTISED PRICE</u>	<u>BID PRICE/UNIT</u>
Sawtimber			
Red Pine	523.0 MBF	\$ 121.00/MBF	\$ _____
Pulpwood			
B. T. Aspen	12 Cords	\$ 31.45/Cord	\$ _____
Mixed Oak	48 Cords	\$ 16.90/Cord	\$ _____
Red Pine	478 Cords	\$ 52.50/Cord	\$ _____
White Pine	12 Cords	\$ 31.30/Cord	\$ _____

*The volumes are statistically estimated within plus (+) or minus (-) 17.00 percent at 95% confidence level. These estimated volumes are final and not subject to adjustment. Prospective bidders are urged to examine this timber and to make their own estimates of quantity and quality.

I understand that any or all bids may be rejected. All bids must be signed and all bid items must be bid or the bid form may be rejected. I also understand that consideration and awarding a contract will be based upon my past performance and ability to complete the contract based upon equipment and staffing subject to my control.

FEDERAL ID: _____ - _____ or SOCIAL SECURITY NUMBER: _____ - _____ - _____

Company or individual bidding: _____

Company representative's name: _____

Address: _____

City: _____ State: _____ Zip: _____

IF AVAILABLE, PLEASE PLACE THE PERSONALIZED LABEL FROM YOUR PROSPECTUS IN THE ABOVE BOX.

Individual or company representative's signature: _____ Date: _____

Phone number : _____ Email (optional): _____

THE WINNING BIDDER MUST COMPLETE THE VERIFICATION OF WORKER'S DISABILITY COMPENSATION ACT COMPLIANCE (ON REVERSE SIDE IF DOUBLE SIDED) WITHIN 21 DAYS OF SALE AWARD DATE



FOR DEPARTMENT USE ONLY	
Sale Number (XX - XXX - XX - XX)	
Forest Management Unit:	

TIMBER SALE VERIFICATION OF WORKER'S DISABILITY COMPENSATION ACT COMPLIANCE

As required by Act 317, P.A. 1969 (Worker's Compensation) and
Part 5 of Act 451 of 1994, as amended.

VERIFICATION OF WORKER'S DISABILITY COMPENSATION ACT COMPLIANCE

- This verification must be completed and submitted within 21 days of contract award and prior to the issuance of the timber sale contract.
- In addition, if boxes 2B or 2C are checked, then Notice of Exclusion or Certificate of Insurance must be submitted within twenty-one (21) days of the contract award and prior to the issuance of the timber sale contract.
- All information must be typed or printed except for written signatures.

Please Check Appropriate Categories:

1. My business is organized as (you **must** check one of the boxes below):
 - A. Sole Proprietorship (individual)
 - B. Partnership
 - C. Corporation
2. You **must** check one of the boxes below:
 - A. I certify my business is a sole proprietorship and it has no employees but the sole proprietor. I am not subject to the Worker's Compensation Laws.
 - B. I certify my business has satisfied its obligation to the Worker's Compensation Act through the use of an approved Notice of Exclusion (BWC-337, Rev. 5/96). I will provide a copy of the Notice of Exclusion within 21 days of the contract award. (For questions or a copy of the BWC-337, please call the Worker's Compensation Bureau at 517-322-1195).
 - C. I certify my business has a Worker's Compensation Policy. I will provide an original Certificate of Insurance within twenty-one (21) days of the contract award.
3. If you have checked item 2(A) or 2(B), you **must** indicate the number of **both** full-time and part-time employees, other than yourself, including family members and active partners (if none, you must enter "0").

_____ Full-time Employees

_____ Part-time Employees

Name of Business		Federal ID (or) Social Security No.	
Address		Telephone ()	
City	State	ZIP	

I hereby certify that the above information is true and correct. I agree to notify the Michigan DNR of any changes that occur in factors affecting my coverage during any of my present and future operations.

Signature of Owner or Authorized Representative

Title

Date

Please complete the "SEALED BID" information on the next page