



**DEPARTMENT OF NATURAL RESOURCES
STATE OF MICHIGAN
TIMBER SALE PROSPECTUS #7406**

SCHEDULED SALE DATE AND TIME: 10:00 a.m. (local time) on April 16, 2024.

LOCATION: ATLANTA MGMT UNIT, 13501 M 33, ATLANTA, MI 49709.

PROSPECTUS NOTE: The bidder is advised to inspect the sale area and review the location, estimated volumes, operating costs and contract terms of proposed sales. Please be aware that some landowners may request 60 days or more notice for access across their land.

Notice is hereby given that bids will be received by the Unit Manager, ATLANTA MANAGEMENT UNIT, for certain timber on the following described lands:

Spring Lk and Elk Rd Aspen Oak (54-002-23) / T33N, R02E, SEC. 23, SESE.

T33N, R02E, SEC. 25, SWNW,SW,SWSE.

T33N, R02E, SEC. 26, N1/2NE,SENE,SE.

T33N, R02E, SEC. 35, NWNE.

T33N, R03E, SEC. 30, E1/2SE.

Presque Isle County, Advertised Price \$167,758.95, 168.0 Acres, Red Oak, Hardwood.

SALE NOTE: 5.2.3.1 - Operating restrictions: Within Payment Units 1-10, cutting, skidding, and hauling are limited to the period of August 16 to April 15. This restriction is to limit oak wilt spread (all Payment Units) and protecting adjacent essential and occupied Kirtland's Warbler habitat (Payment Units 1, 2, 3, & 6).

A recreation site such as a trail, pathway, or campground is within the sale area or the vicinity. Certain restrictions/specifications may be applicable including time restrictions.

Hubert Rd South Mix (54-003-23) / T32N, R04E, SEC. 18, NW,W1/2NE,N1/2SW.

T32N, R04E, SEC. 7, W1/2NE,SWSW,N1/2SE,SESE.

Montmorency County, Advertised Price \$209,913.20, 197.9 Acres, Aspen, Hardwood.

SALE NOTE: 5.2.3.5 - Oak wilt restriction - Within Payment Units 1-4, unless changed by written agreement, cutting, skidding, hauling within the sale and brushing of access roads to the sale are not permitted during the period of April 15 to July 15. Operations may be allowed if specific steps are taken to prevent damaging uncut oak during the high-risk period. Those steps may include completing all road brushing before April 15 and clearing a tree-length buffer along uncut oak cover before April 15. This is necessary to reduce the spread of oak wilt. For more information, contact the Unit Manager or his/her representative.

Forsaken Pine (54-013-23) / T33N, R02E, SEC. 27, N1/2NE,SENE,S1/2SE.

Presque Isle County, Advertised Price \$30,267.70, 50.8 Acres, Red Pine, Jack Pine.

SALE NOTE: 5.2.3.3 - Bark slippage restriction (3/09)

Within Payment Units 1 & 2, cutting and skidding are not permitted during the period of April 15 to July 15. This restriction is because of bark slippage.

5.2.3.6 - Bark beetle restriction (12/08)

In the event drought creates a high risk of pine bark beetle infestation, pine is not to be cut during the period March 1 through July 1.

A recreation site such as a trail, pathway, or campground is within the sale area or the vicinity. Certain restrictions/specifications may be applicable including time restrictions.

Swiss Cheese Aspen (54-025-23) / T29N, R03E, SEC. 33, SE.

Montmorency County, Advertised Price \$80,147.95, 38.8 Acres, Aspen, Hardwood.

SALE NOTE: Good quality timber with variable stocking. Soft Oak Wilt restrictions on Unit 3 due to proximity of young Oak in adjacent stand. No rec trails. Soft ground and steep slopes in areas. Access into sale is fair, but will need some fill and/or grading.

BID INSTRUCTIONS (VER. 10/10/2022):

1. Scheduled Bid Location, Date, and Time (2/11)

Bids must be received by the Unit Manager, ATLANTA OFFICE, 13501 M 33, ATLANTA, MI 49709, no later than 10:00 a.m. (local time) on April 16, 2024. For further information concerning this sale, contact Matt Foster at 989-619-5921 extension .

2. Bidder's Qualifications (10/22)

If all or part of a timber sale was prepared by a private contractor, the contractor and that contractor's company are not permitted to bid on the timber sale. A person must be 18 years of age or older to purchase timber. Permanent employees of the Department of Natural Resources or members of their immediate household may not bid. Former employees, in the permanent or seasonal class, may not bid until 3 months after the last day of active duty. Bids will not be accepted from individuals or companies appearing on the DNR/FRD No-Bid List. This list contains the names of purchasers who previously failed to execute a contract within 21-days or who have a history of poor performance.

3. Preparation of Sealed Bids (5/16)

Bid Forms may be completed online thru Michigan DNR Timber Sale Online Bidding (OLB) at www.michigan.gov/timberbidding or by completing the hardcopy Bid Form found in the Timber Sale Prospectus . Hardcopy Bid Forms shall be manually signed in ink. Registration in OLB is considered your 'signature' for all bids submitted thru that system. Bid prices must be entered for each species and product in the Bid Price column for all material subject to bidding and all fill-in blanks must be completed. If erasures or other changes appear on the hardcopy Bid Form, each erasure or change must be initialed by the person signing the bid.

4. Submission of Sealed Bids (5/16)

Bid forms may be obtained from the Unit Manager or thru OLB. Bids may be submitted hardcopy or thru OLB. All hardcopy bids must be submitted on the bid form and in an envelope clearly identified as described in this section. NOTE: Only one bid form per bid envelope. Sealed bids must be submitted to the Unit office designated in the prospectus and must be submitted at or prior to the time established in the prospectus. The envelope should show on the outside (a) the sale name or number and (b) the date and time of bid opening, as shown in the prospectus. Bids received after the time specified in the sale prospectus are late bids and will be rejected.

It is possible for a bidder to submit multiple bids on a single sale. For example, a bid may be submitted hardcopy and a bid may be submitted thru OLB. Or, two bidders from the same company could both submit bids on the same sale. If this were to happen, the State would accept all bids received and award the contract accordingly. All bidding and contractual requirements would apply to all bids received.

5. Public Opening of Sealed Bids (7/16)

If conditions permit, the sealed bids will be publicly opened and posted at the time and place set in the prospectus.

If a bidder, present at a bid opening, has submitted bids on more than one sale, that bidder may withdraw their unopened bid envelopes or announce the withdrawal of their online bid after being declared the successful bidder on one sale.

6. Award of Contract (1/11)

Award of the contract will be made to the Bidder whose bid, conforming to the prospectus, is most advantageous to the State of Michigan on the basis of total value at rates bid for the estimated quantities. The State reserves the right to reject any bid or waive any minor irregularity in bids received. A written award mailed (or otherwise furnished) to the successful Bidder shall be deemed to result in a binding contract without further action by either party.

7. Down Payment (1/11)

The Bidder to whom award is made must make a down payment within 21 days of the sale award. The amount of the down payment will be calculated as shown in the Bond and Payment Schedule of this prospectus. Only cash may be used to meet this requirement.

8. Performance Security (1/11)

As guarantee of faithful performance, a cash bond, certificate of deposit, surety bond or irrevocable letter of credit (LOC) is required within 21 days of the sale award. The amount of the performance security is shown in the Bond and

Payment Schedule of this prospectus. If an LOC or surety is used, the coverage must extend for at least 6 months beyond the contract expiration.

9. Worker's Compensation (10/22)

Purchaser shall obtain worker's compensation insurance to cover claims under Michigan's Worker's Disability Compensation Act of 1969 or similar employee benefit act of any other state applicable to an employee. Verification of Worker's Disability Compensation Act Compliance must be completed and submitted within 21 days of contract award and prior to the issuance of the timber sale contract. In addition, if applicable, Notice of Exclusion or Certificate of Insurance must also be submitted.

10. Timber Sale Contract (10/22)

Additional conditions and requirements common to all timber sales are listed on the timber sale contract (R4031) and are available on line at www.michigan.gov/timber. Contact the Unit Manager for additional information or a sample contract. Within 21 days of the date of the award letter, the bidder must sign the contract and provide the required down payment, performance security, and verification of worker's disability compensation. The down payment and performance security shall be in accordance with the provisions of the timber sale contract, in the sums stated in this prospectus. If these actions are not taken, then the Bidder, the Bidder's corporation, and the corporation's principals may not be permitted to bid on State timber sales for a period of 3 months after the first offense, 6 months after the second offense, and 1 year after the third offense. An offense will only be counted against the Bidder for 5 years. In addition, the Bidder certifies that if awarded this contract, the Bidder will complete the timber sale contract in accordance with its terms and any modifications thereof including requirements to purchase, cut, and remove the included timber by the expiration date.

Payment Unit values in the State Forest Timber Sale Contract are calculated based on the advertised value of the Payment Unit as a percentage of the total advertised value of the contract. The advertised value of each Payment Unit is given in the Description of Timber by Payment Unit table on the Timber Sale Information page. For example, if the value of Payment Unit 1 is advertised as \$1,500 and the total Timber Sale value is advertised as \$10,000, the contract price for Payment Unit 1 will be 15% of the total bid price ($\$1,500/\$10,000 * 100$).

11. Disclaimer of Estimates and Bidder's Warranty of Inspection (10/22)

Before submitting this bid, the Bidder is advised and cautioned to inspect the sale area, review the requirements of the sale contract, and take other steps as may be reasonably necessary to ascertain the location, estimated volumes, construction estimates, and operating costs of the proposed sale. Failure to do so will not relieve the Bidder from responsibility for completing the contract.

The Bidder warrants that this bid is submitted solely on the basis of the Bidder's examination and inspection of the quality and quantity of the timber offered for sale and the Bidder's opinion of the value thereof and the costs of recovery. No reliance should be placed on the State of Michigan's estimates of timber quality, quantity or costs of recovery. Bidder further acknowledges that the State of Michigan: (i) expressly disclaims any warranty of fitness of timber for any purpose; (ii) offers this timber as is without any warranty of quality (merchantability) or quantity and (iii) expressly disclaims any warranty as to the quantity or quality of timber sold.

12. Certification and Chain-of-Custody (10/22)

Unless otherwise indicated in the contract under section 7 – Other Conditions of the Sale Specific Conditions & Requirements, the area encompassed by this timber sale is certified to the standards of the Forest Stewardship Council (FSC) - Certificate #SCS-FM/COC-00090N and the Sustainable Forestry Initiative (SFI) - Certificate #NSF-SFIS-5Y031-SF5. Forest products from this sale may be delivered to the mill as "FSC 100% and / or SFI certified" as long as the contractor hauling the forest products is chain-of-custody (COC) certified or covered under a COC certificate from the destination mill. The purchaser is responsible for maintaining COC after leaving the sale area.

13. Good Neighbor Authority (GNA) Requirements (10/22)

If the name of this timber sales contains the acronym GNA, it is authorized by the Good Neighbor Authority (GNA) and covered by various agreements between the U.S. Forest Service and the State. The timber sale occurs on federal land and the following conditions apply:

GNA contracts on US Forest Service land will not be awarded to purchasers on the Federal list of excluded parties. The System for Award Management (SAM) will be checked for active excluded parties prior to award of contract. In

addition, the Bidder to whom award is made must complete an Assurance Regarding Felony Conviction or Tax Delinquent Status for Corporate Applicants (AD-3031).

14. Good Neighbor Authority (GNA) Requirements, con't (10/22)

Bidder certifies, by signing this bid form, that to the best of Bidder's knowledge that the following representations are accurate and complete.

- a. That the Bidder and its principals are not presently debarred, suspended, proposed for debarment, declared ineligible, or voluntary excluded from timber sales (covered transactions) by any Federal department or agency.
- b. That the Bidder and its principals have not within a 3-year period preceding this bid been convicted of or had a civil judgment rendered against them for commission of fraud or a criminal offense in connection with obtaining , attempting to obtain, or performing a public (Federal, State, or local) transaction or contract under a public transaction; violation of Federal or State antitrust statutes or commission of embezzlement, theft, forgery, bribery, falsification or destruction of records, making false statements, or receiving stolen property.
- c. That the Bidder and its principals are not presently indicted for or otherwise criminally or civilly charged by a governmental entity (Federal, State, or local) with commission of any of the offenses enumerated in paragraph b of this certification.
- d. That the Bidder and its principals have not within a 3-year period preceding this bid had one or more public transactions (Federal, State, or local) terminated for breach or default of a timber or forest product contract.

Bidders that cannot certify this requirement, in whole or in part, shall submit an explanation with their bid.

Scott Bowen
Director

TIMBER SALE INFORMATION

Spring Lk and Elk Rd Aspen Oak (54-002-23)

T33N, R02E, SEC. 23; T33N, R02E, SEC. 25; T33N, R02E, SEC. 26; T33N, R02E, SEC. 35; T33N, R03E, SEC. 30.

Presque Isle County (Advertised Price \$167,758.95)

SALE NOTE: 5.2.3.1 - Operating restrictions: Within Payment Units 1-10, cutting, skidding, and hauling are limited to the period of August 16 to April 15. This restriction is to limit oak wilt spread (all Payment Units) and protecting adjacent essential and occupied Kirtland's Warbler habitat (Payment Units 1, 2, 3, & 6).

A recreation site such as a trail, pathway, or campground is within the sale area or the vicinity. Certain restrictions/specifications may be applicable including time restrictions.

A timber sale contract for this lump sum, sealed bid timber sale will be awarded to the responsible bidder offering the highest sealed bid price. All units of volume listed below were estimated using the Inventory Manager computer program and the new Michigan taper model. Bids must be at or above the following advertised price for each product and species:

<u>PRODUCTS & SPECIES</u>	<u>ESTIMATED UNITS*</u>	<u>ADVERTISED PRICE</u>
Sawtimber		
Black/Red (Hybrid) Oak	56.7 MBF	\$ 125.00 / MBF
Jack Pine	16.6 MBF	\$ 32.00 / MBF
Mixed Aspen	31.8 MBF	\$ 113.00 / MBF
Red Oak	490.0 MBF	\$ 190.00 / MBF
White Oak	61.4 MBF	\$ 60.00 / MBF
Pulpwood		
Balsam Fir	3 Cords	\$ 20.55 / Cord
Jack Pine	49 Cords	\$ 11.80 / Cord
Mixed Aspen	468 Cords	\$ 25.60 / Cord
Mixed Oak	767 Cords	\$ 30.90 / Cord
Red Maple	48 Cords	\$ 24.85 / Cord
Red Oak	689 Cords	\$ 30.90 / Cord
Red Pine	14 Cords	\$ 40.45 / Cord
White Pine	14 Cords	\$ 28.05 / Cord

* The total volume is statistically estimated within plus (+) or minus (-) 10.29 percent. There are an estimated 3,594 cords on this timber sale, plus or minus 370 cords at the 95% confidence level. The estimated units are final and not subject to adjustment. Prospective bidders are urged to examine this timber and to make their own estimates of quantity and quality.

BOND AND PAYMENT SCHEDULE:

1. A bond in the amount of \$8,388.00 to insure faithful performance of the conditions of the contract will be deposited by the successful bidder within 21 days of the sale award.
2. Cutting in any sale or unit without the required advance payment would be considered a trespass.
3. Total payment must be paid in advance or according to the following schedule :
 - (a) Ten percent (10%) of the sale value must be paid within 21 days of the sale award.
 - (b) The 10% down payment will be credited towards the first unit cut.
 - (c) Payment for each of the following units must be made before cutting begins in that unit:

PAYMENT UNIT NUMBER	PERCENT OF TOTAL SALE VALUE
01	19.0%
02	21.9%
03	10.6%
04	10.6%
05	13.4%
06	3.2%
07	10.5%
08	2.0%
09	2.2%
10	6.6%

4. If no cutting takes place, the 10% down payment will not be refunded.
5. Operations on the contract issued will terminate on 06/30/2027.

SALE STATISTICS

Volumes were calculated in cubic feet using the Michigan taper model. Cubic foot volume includes all wood inside bark for the product indicated. For display purposes, cubic feet were converted to cords and MBF using a simple conversion factor, e.g. 79 cubic feet per cord and 185 cubic feet per MBF. The cubic foot volumes are precise; the cords and MBF volumes are not. Cubic foot volume cannot be directly converted to cords or boards with precision.

SALE VOLUMES

The total estimated sale volume may not equal the sum of the species/products due to the nature of statistical calculations associated with double sampling methodology.

VOLUME			STATISTICAL RANGE IN CORDS	
TOTAL CUBIC FEET	TOTAL CORDS	PERCENT ERROR	MINIMUM	MAXIMUM
283,955	3,594	10.29%	3,224	3,964

VDU VOLUMES

A VDU is a Volume Determination Unit. Volumes and their associated statistics are calculated at the VDU level and summarized to the sale level. There is often a one to one relationship between a VDU and a Payment Unit, but not always, depending on the cruise design. Refer to the VDU TO PAYMENT UNIT table.

VDU	VOLUME		PERCENT ERROR	RANGE IN CORDS	
	TOTAL CUBIC FEET	TOTAL CORDS		MINIMUM	MAXIMUM
12	33,414	423	23.33%	324	522
20	4,694	59	61.98%	23	96
28	24,973	316	36.83%	200	433
31	14,396	182	54.31%	83	281
32	19,796	251	33.34%	167	334
40	96,325	1,219	18.55%	993	1,445
56	90,357	1,144	16.97%	950	1,338
TOTAL:	283,955	3,594		2,740	4,449

VDU TO PAYMENT UNIT

When a VDU is associated with more than one Payment Unit (PU), the VDU volumes are assigned to the PU based on acres of the VDU within the PU.

VDU	VDU ACRES	PU	PU ACRES
12	26.4	9	7.1
		10	19.3
20	8.3	10	8.3
		7	11.6
31	9.7	6	9.7
		7	8.4
32	12.9	8	4.5
		3	18.8
		4	18.7
40	61.2	5	23.7
		1	17.6
		2	20.3
TOTAL:	168.0		168.0

DESCRIPTION OF TIMBER BY PAYMENT UNIT (PU)

PU	MARKET GROUP	PRODUCT	QUANTITY	UNIT	ACRES	ADVERTISE PRICE
1	Red Oak	Sawtimber	130.7	MBF	17.6	\$31,884.95
	Balsam Fir	Pulpwood	1	Cords		
	Mixed Aspen		51	Cords		
	<i>B. T. Aspen</i>		28	<i>Cords</i>		
	<i>Balsam Poplar</i>		23	<i>Cords</i>		
	Red Oak		172	Cords		
	Red Pine		6	Cords		
	<i>Red Pine</i>	<i>Sawtimber</i>	2.5	<i>MBF</i>		
	<i>Red Pine</i>	<i>Pulpwood</i>	1	<i>Cords</i>		
	White Pine		6	Cords		
	<i>White Pine</i>	<i>Sawtimber</i>	2.6	<i>MBF</i>		
	<i>White Pine</i>	<i>Pulpwood</i>	1	<i>Cords</i>		
	2	Red Oak	Sawtimber	150.8		
Balsam Fir		Pulpwood	2	Cords		
Mixed Aspen			59	Cords		
<i>B. T. Aspen</i>			32	<i>Cords</i>		
<i>Balsam Poplar</i>			27	<i>Cords</i>		
Red Oak			200	Cords		
Red Pine			7	Cords		
<i>Red Pine</i>		<i>Sawtimber</i>	2.8	<i>MBF</i>		
<i>Red Pine</i>		<i>Pulpwood</i>	1	<i>Cords</i>		
White Pine			8	Cords		
<i>White Pine</i>		<i>Sawtimber</i>	3.1	<i>MBF</i>		
<i>White Pine</i>		<i>Pulpwood</i>	2	<i>Cords</i>		
3		Black/Red (Hybrid)	Sawtimber	3.9	MBF	18.8
	Jack Pine		0.3	MBF		
	Red Oak		56.7	MBF		
	White Oak		10.4	MBF		
	Jack Pine	Pulpwood	1	Cords		
	Mixed Aspen		21	Cords		
	<i>B. T. Aspen</i>		21	<i>Cords</i>		
	Mixed Oak		85	Cords		
	<i>/Red (Hybrid) Oak</i>		42	<i>Cords</i>		
	<i>White Oak</i>		43	<i>Cords</i>		
	Red Maple		8	Cords		
	<i>Red Maple</i>	<i>Sawtimber</i>	0.8	<i>MBF</i>		
	<i>Red Maple</i>	<i>Pulpwood</i>	6	<i>Cords</i>		
	Red Oak		84	Cords		
4	Black/Red (Hybrid)	Sawtimber	3.9	MBF	18.7	\$17,776.50
	Jack Pine		0.3	MBF		
	Red Oak		56.4	MBF		
	White Oak		10.4	MBF		
	Jack Pine	Pulpwood	1	Cords		
	Mixed Aspen		21	Cords		
	<i>B. T. Aspen</i>		21	<i>Cords</i>		
	Mixed Oak		84	Cords		
	<i>/Red (Hybrid) Oak</i>		42	<i>Cords</i>		
	<i>White Oak</i>		42	<i>Cords</i>		
	Red Maple		8	Cords		
	<i>Red Maple</i>	<i>Sawtimber</i>	0.8	<i>MBF</i>		
	<i>Red Maple</i>	<i>Pulpwood</i>	6	<i>Cords</i>		
	Red Oak		84	Cords		
5	Black/Red (Hybrid)	Sawtimber	4.9	MBF	23.7	\$22,516.45
	Jack Pine		0.4	MBF		
	Red Oak		71.5	MBF		
	White Oak		13.1	MBF		

DESCRIPTION OF TIMBER BY PAYMENT UNIT (PU), CON'T

PU	MARKET GROUP	PRODUCT	QUANTITY	UNIT	ACRES	ADVERTISE PRICE					
5 con't	Jack Pine	Pulpwood	2	Cords							
	Mixed Aspen		27	Cords							
	<i>B. T. Aspen</i>		27	<i>Cords</i>							
	Mixed Oak		107	Cords							
	<i>/Red (Hybrid) Oak</i>		53	<i>Cords</i>							
	<i>White Oak</i>		54	<i>Cords</i>							
	Red Maple		9	Cords							
	<i>Red Maple</i>		1.0	<i>MBF</i>							
	<i>Red Maple</i>		7	<i>Cords</i>							
	Red Oak		106	Cords							
6	Black/Red (Hybrid)	Sawtimber	1.1	MBF	9.7	\$5,331.15					
	Mixed Aspen		7.0	MBF							
	<i>B. T. Aspen</i>		3.3	<i>MBF</i>							
	<i>Quaking Aspen</i>		3.7	<i>MBF</i>							
	Red Oak		1.5	MBF							
	White Oak		1.4	MBF							
	Jack Pine		Pulpwood	10			Cords				
	Mixed Aspen			129			Cords				
	<i>B. T. Aspen</i>			65			<i>Cords</i>				
	<i>Quaking Aspen</i>			64			<i>Cords</i>				
	Mixed Oak			5			Cords				
	<i>/Red (Hybrid) Oak</i>			1			<i>Cords</i>				
	<i>White Oak</i>			4			<i>Cords</i>				
	Red Maple			11			Cords				
	<i>Red Maple</i>			1.2			<i>MBF</i>				
	<i>Red Maple</i>			9			<i>Cords</i>				
	Red Oak			6			Cords				
	7			Black/Red (Hybrid)			Sawtimber	7.3	MBF	20.0	\$17,537.15
				Mixed Aspen				16.6	MBF		
<i>B. T. Aspen</i>		16.6		<i>MBF</i>							
Red Oak		18.7		MBF							
White Oak		21.8		MBF							
Jack Pine		Pulpwood		3	Cords						
Mixed Aspen				92	Cords						
<i>B. T. Aspen</i>				77	<i>Cords</i>						
<i>Quaking Aspen</i>			15	<i>Cords</i>							
Mixed Oak			203	Cords							
<i>/Red (Hybrid) Oak</i>			68	<i>Cords</i>							
<i>White Oak</i>			135	<i>Cords</i>							
Red Maple			7	Cords							
<i>Red Maple</i>			7	<i>Cords</i>							
Red Oak			34	Cords							
8			Black/Red (Hybrid)	Sawtimber	2.9	MBF		4.5	\$3,275.95		
	Mixed Aspen		7.0		MBF						
	<i>B. T. Aspen</i>		7.0		<i>MBF</i>						
	Red Oak		2.0		MBF						
	White Oak		1.5		MBF						
	Jack Pine		Pulpwood		1	Cords					
	Mixed Aspen	31			Cords						
	<i>B. T. Aspen</i>	23			<i>Cords</i>						
	<i>Quaking Aspen</i>	8			<i>Cords</i>						
	Mixed Oak	23			Cords						
	<i>/Red (Hybrid) Oak</i>	18			<i>Cords</i>						
	<i>White Oak</i>	5			<i>Cords</i>						
	Red Maple	3			Cords						
	<i>Red Maple</i>	3			<i>Cords</i>						

DESCRIPTION OF TIMBER BY PAYMENT UNIT (PU), CON'T

PU	MARKET GROUP	PRODUCT	QUANTITY	UNIT	ACRES	ADVERTISE PRICE
8 con't	Red Oak	Pulpwood	2	Cords		
9	Black/Red (Hybrid)	Sawtimber	8.8	MBF	7.1	\$3,634.65
	Jack Pine		1.4	MBF		
	Mixed Aspen		0.3	MBF		
	<i>Quaking Aspen</i>		0.3	<i>MBF</i>		
	Red Oak		0.5	MBF		
	White Oak		0.8	MBF		
	Jack Pine	Pulpwood	2	Cords		
	Mixed Aspen		10	Cords		
	<i>B. T. Aspen</i>		10	<i>Cords</i>		
	Mixed Oak		65	Cords		
	<i>/Red (Hybrid) Oak</i>		63	<i>Cords</i>		
	<i>White Oak</i>		2	<i>Cords</i>		
	Red Maple		1	Cords		
	<i>Red Maple</i>		1	<i>Cords</i>		
10	Black/Red (Hybrid)	Sawtimber	23.9	MBF		
	Jack Pine		14.2	MBF		
	Mixed Aspen		0.9	MBF		
	<i>Quaking Aspen</i>		0.9	<i>MBF</i>		
	Red Oak		1.2	MBF		
	White Oak		2.0	MBF		
	Jack Pine	Pulpwood	29	Cords		
	Mixed Aspen		27	Cords		
	<i>B. T. Aspen</i>		26	<i>Cords</i>		
	<i>Quaking Aspen</i>		1	<i>Cords</i>		
	Mixed Oak		195	Cords		
	<i>/Red (Hybrid) Oak</i>		189	<i>Cords</i>		
	<i>White Oak</i>		6	<i>Cords</i>		
	Red Maple		2	Cords		
	<i>Red Maple</i>		2	<i>Cords</i>		
	Red Oak		1	Cords		
	Red Pine		1	Cords		
	<i>Red Pine</i>		1	<i>Cords</i>		
TOTAL:			656.5	MBF		
TOTAL:			2,053	Cords		

Sale Specific Conditions & Requirements

Sale Name: Spring Lk and Elk Rd Aspen Oak

Sale Number: 54-002-23 Seq#: 2

1 - Sale Area

1.2 - Boundaries

1.2.1 - Painted boundaries (9/19)

The sale boundary and Payment Unit boundaries are marked and identified by blue, red and yellow paint. Exterior sale boundary lines against state are marked with red paint. Exterior sale boundary lines against private are marked with blue paint. The painted boundary line trees are not Included Timber and are to be protected. Yellow painted trees designating an interior Payment Unit boundary are only to be cut when all surrounding Payment Units have been paid.

2 - Timber Specifications

2.1 - Included Timber

2.1.1 - Clearcut unit(s) with unmerchantable trees (6/14)

Within Payment Unit(s) 1-10, cut all trees that are two (2) inches or more at DBH, with the following exceptions:

- Within Payment Units 1 & 2, do not cut any trees marked with purple paint.
- Within Payment Units 3-5, do not cut any white pine or red pine.

Note: See spec 5.2.4.7 - 'Dead and down creation' for instructions on orange marked trees.

2.2 - Utilization

2.2.2 - Chipping required (2/18)

Payment Units 1 & 2 must be chip harvested to facilitate subsequent planting operations. The Purchaser has the option to produce sawlogs or pulpwood bolts, but the remaining portion of the trees must be chipped and hauled. Products may be produced as roundwood and forwarded to decking areas in final product length, but the tops must be left intact and skidded to the landing for chipping in order to minimize the amount of residual slash. If market conditions limit the practicality of chipping the following is required:

- Tops must be cut into lengths 4 feet or less and trees greater than 4 inches at DBH must be cut to a 2-inch top or smaller.
- Sub-merchantable trees, and hardwood limbs 4 inches or greater where they attach to the stem, are to be cut/reduced to 4-foot lengths.
- Tops and slash must also be spread evenly across the sale. This is to speed the breakdown of tops/slash and not impede planting operations.
- Retain approximately 1/6 to 1/3 of treetops and limbs less than four inches in diameter is still applicable (G. C. & R. 2.2).

To not delay follow-up cultivation work, this work must be completed within 60 days of severing stems. No additional Payment Units can be entered until these Payment Units are considered complete and in compliance with specification 2.2.2.

2.2.3 - Stump heights (4/07)

Stump heights within Payment Units 1 & 2 shall not exceed 6 inches for all trees. This is in order to facilitate planting operations.

3 - Payments

3.3 - Pre-measured Sales

3.3.4 - Dividing payment units (7/14)

Payment Unit(s) may be divided at the request of the Purchaser and upon approval of the Unit Manager. Dividing Payment Units is a contract modification which requires a Timber Sale Contract Amendment. Payment Units valued over \$25,000 may be divided. There will be only one division per Payment Unit.

3.4 - Damaged Timber

3.4.1 - Damaged timber (7/16)

General Condition and Requirement 3.4 Damaged Timber, defines liquidated damages for undesignated live merchantable trees which are cut or injured. In addition, extreme care should be taken to avoid damage to tree seedlings and saplings. Within Payment Units 3-5, 7, 9, & 10, operations must avoid damaging tree seedlings or saplings (1/4" to 2" DBH) as much as operationally possible.

No damage is acceptable to undesignated live merchantable trees. Within the Sale Area, if more than 5% of trees (> 4.5" DBH) within a specified area of the sale are damaged, liquidated damages will be assessed for all trees damaged. Rates will be in accordance with General Condition and Requirement 3.4 Damaged Timber.

4 - Transportation

4.1 - Construction

4.1.3 - Slash and earthen piles (8/04)

Piles or windrows of earth along roads and landings that have been widened or constructed shall be leveled. Slash from road maintenance or construction, including stumps, shall be chipped, utilized or otherwise removed from the sale.

4.1.6 - Road construction (1/09)

Construction or improvements of existing roads shall be done in such a way as to minimize the environmental and visual impacts. Merchantable trees shall be cut and utilized unless otherwise directed. Non-merchantable trees shall be severed and laid flat on the ground. Slash shall be scattered, and not left in windrows and kept a minimum of 10 feet back from the road edge. Stumps shall be set upright, not left on edge, and be moved at least 10 feet away from the road edge. Disturbed soil shall be feathered into the woods and not left in berms or windrows.

Narrow access into some Payment Units will require widening and blading on lengths of state forest roads. Additional access timber must be piled separately for scaling by the Sale Administrator. The improved roads and constructed roads must not be unreasonably widened beyond 15 feet.

4.1.7 - Road closure (10/11)

All new roads built into the sale must be blocked to vehicle traffic upon completion of the sale. Overgrown roads that are reopened shall be considered new roads. In general, this will require constructing a four (4') foot high berm of stumps and logs covered with earth. These roads must be rendered impassable to cars and trucks. Contact the Sale Administrator for specific details of design and placement.

4.2 - Maintenance

4.2.5 - Two wheel drive condition (2/04)

All existing trail roads on and adjacent to the sale area must be passable by two-wheel drive traffic for the duration of the sale.

5 - Operations

5.1 - Notification

5.1.1 - Pre-sale conference (10/16)

A pre-sale conference between the Purchaser and sale administrator is required prior to beginning any operations to determine landing and road locations. The Unit Manager or his/her representative must be contacted at least 5 days in advance to schedule the conference.

5.1.4 - Post-sale conference (10/16)

A post-sale conference on site between the Purchaser and sale administrator is required 5 days prior to the completion of active logging operations to determine clean-up and repair of landings, road edges, and the fulfillment of other contract specifications.

5.2 - Conduct of Operations

5.2.2 - Hazard Trees/Snags

5.2.2.1 - Den trees (10/16)

Obvious hollow and/or den trees shall be protected and left standing unless they are a safety hazard.

5.2.3 - Operating Restrictions

5.2.3.1 - Operating restrictions (9/11)

Within Payment Unit(s) 1-10, cutting, skidding, and hauling are limited to the period of August 16 to April 15. This restriction is to reduce the spread of oak wilt (all Payment Units) and to protect adjacent essential and occupied Kirtland's Warbler habitat (Payment Units 1-3 & 6).

5.2.3.6 - Bark beetle restriction (12/08)

In the event drought creates a high risk of pine bark beetle infestation, pine is not to be cut during the period March 1 through July 1, unless all portions of trees greater than two inches in diameter are removed from the sale area, reduced to chips, or treated to the satisfaction of the Unit Manager or his/her representative, within fifteen days of being severed from the stump. Pine log decks, pulpwood piles and treetops that are piled for chipping in the fall or winter within a 1/4 mile of susceptible sites must be removed before March 15. Residual slash must not be placed in piles or rows and must be spread over the site for quick drying. The Department of Natural Resources will exercise this specification if the risk of damage warrants.

5.2.3.11 - Coppice regeneration protection (4/10)

Timber harvesting in Payment Units 3-10 must be completed within 60 days of severing/cutting stem(s) to minimize damage to deciduous regeneration. Any post harvest operations, such as chipping, must be completed before sprouting of regeneration occurs. If it is anticipated that chipping will be delayed, then tops shall be carried to one central location or left unchipped. The Unit Manager or his/her representative may cease such operations if sprouting occurs before the operation is complete.

5.2.4 - Dead and Down Creation

5.2.4.7 - Dead and down creation: hare, grouse, deer and other species (5/15)

To improve horizontal cover habitat for snowshoe hare, grouse, deer, and other species, the Purchaser is to push over all orange painted trees in Payment Units 6-8. These trees should be tipped over with the root ball still attached so the base of the tree is suspended off the ground. The crown of the fallen tree should be at or near ground level after it is pushed over. If it is impractical to push the trees over, they may be cut or partially cut and pushed over.

5.2.31 - Landing locations (9/13)

Landing locations are shown on the Timber Sale Map. Landings must be confined to these designated sites unless otherwise authorized by the Unit Manager or his/her representative.

5.2.32 - Decking/landing restoration (9/13)

All decking and landing areas must have the surface area restored to a condition equal to or better than before. This is to ensure the proper regeneration of the stand. Wood debris, chips and "cookies" from trimmings must be removed or scattered away from landing and loading areas and may not be windrowed on the edge.

5.2.38 - No decking against live trees (2/04)

Cut products may not be decked against unmarked or designated leave trees.

5.2.39 - ORV trail/route protection (4/18)

The Atlanta ORV and Motorcycle Trails are shown on the Timber Sale Map. Do not cut trees or damage posts with yellow, brown, or orange trail markers. All stumps within 5 feet of the trail must be cut flush with the ground. Maintain a 20-foot-wide slash, debris, and rut free zone daily using the trails or routes as the centerline. Do not run equipment down the ORV trail or route. Skidding across the trails or routes may only occur in locations approved by the Sale Administrator.

5.2.41 - Snowmobile trail protection (9/11)

The LP9 snowmobile trail is shown on the Timber Sale Map. Do not cut or damage posts with orange trail markers or traffic control signs. If the trail is used, it must be maintained and restored to a condition equal to or better than before the sale. If the trail is used for hauling, it must be graded to the satisfaction of the Unit Manager or his/her representative prior to December 1. If the trail road is to be used for hauling during the snowmobile season, then a snow-covered base must be left on the trail. Maintain a 20-foot-wide slash, debris, and rut free zone daily using the snowmobile trail as the centerline. All stumps within 10 feet of the snowmobile trail must be cut at ground level.

5.4 - Soil Protection

5.4.1 - Rutting restriction, general (7/16)

Operations are to cease immediately if equipment and weather conditions result in rutting of roads and/or skid trails which is 12 inches or greater in depth and 50 feet in length. The Unit Manager or his/her representative may restrict hauling and/or skidding if ruts exceed the specified depth. With the Unit Manager or his/her representative's approval, the Purchaser may return to the area when the risk of rutting has decreased.

5.8 - Protection of Endangered Species

5.8.5 - Protection of raptor nests (3/13)

All trees with raptor nests will be protected if found during harvesting operations. Notification will be made to the Unit Manager or his/her representative who will notify the Wildlife Biologist so an on-site evaluation and recommendation can be made, if necessary.

6 - Safety and Fire Prevention

6.2 - Signing

6.2.2 - Snowmobile trail posting (10/20)

The Purchaser is responsible for posting and maintaining caution signs on the LP9 Snowmobile Trail prior to beginning operations during the snowmobile season (approximately December 1 to March 31). The trail must be posted to warn of logging activity and truck traffic. Signs must be removed when harvest operations are suspended or completed.

6.2.3 - Recreational trail posting (10/20)

The Purchaser is responsible for posting and maintaining caution signs on the Atlanta ATV, Motorcycle (Red Bridge to Atlanta MCCCT South) and LP9 Snowmobile trails prior to beginning operations. The trail must be posted at appropriate distances from the Sale Area to warn of logging activity and truck traffic at both ends of the trail. Signs must be removed when harvest operations are suspended or completed. The Purchaser will provide these signs.



TIMBER SALE MAP

This information provided by authority of Part 525, 1994 PA 451, as amended.

Forest Management Unit
Atlanta Management Unit

County
Presque Isle

Mapped By
Coy
Cruised By
Coy

Date
04/07/2023

Page
1 of
2

Township
33N

Range
02E & 03E

Section(s) and Subdivision(s)
23- SESE 25- SWNW,SW,SWSE 26- N1/2NE,SENE,SE 35- NWNE 30- E1/2SE

1:15,840

Cover Type

A = Aspen	J = Jack Pine	O = Oak	U = Upland Brush
B = Paper Birch	K = Rock	P = Lowland Poplar	UM = Upland Mix Forest
C = Cedar	L = Lowland Brush	Q = Mixed Swamp Conifer	V = Bog or Marsh
D = Treed Bog	LM = Lowland Mix Forest	R = Red Pine	W = White Pine
E = Swamp Hardwoods	M = Maple, Beech, Birch	S = Black Spruce	X = Non Stocked
F = Spruce/Fir	MC = Mixed Conifer	T = Tamarack	Y = Sand
G = Grass	MD = Mixed Deciduous	Z = Water	
H = Hemlock	N = Marsh		

Density

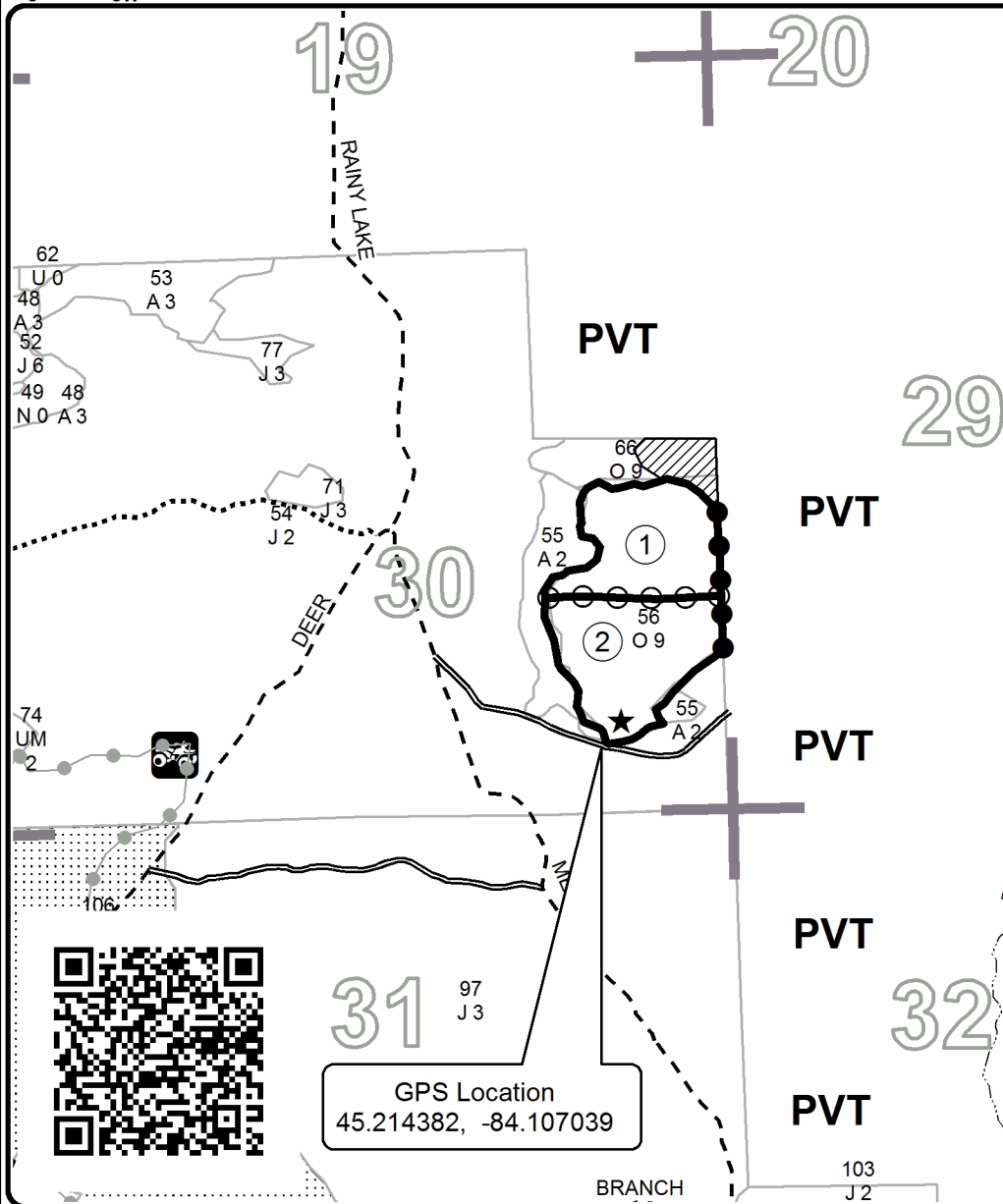
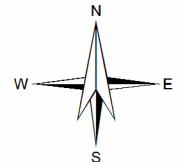
0 = Non Stocked	5 = Pole Timber Medium
1 = Seedling Sapling Poor	6 = Pole Timber Well
2 = Seedling Sapling Medium	7 = Saw Timber Poor
3 = Seedling Sapling Well	8 = Saw Timber Medium
4 = Pole Timber Poor	9 = Saw Timber Well

PU	Acres	PU	Acres
1	17.6	7	20.0
2	20.3	8	4.5
3	18.8	9	7.1
4	18.7	10	27.6
5	23.7		
6	9.7		

Spring Lk and Elk Rd Aspen Oak

Compartment 124

168.0 Acres

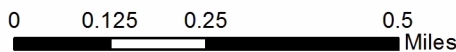
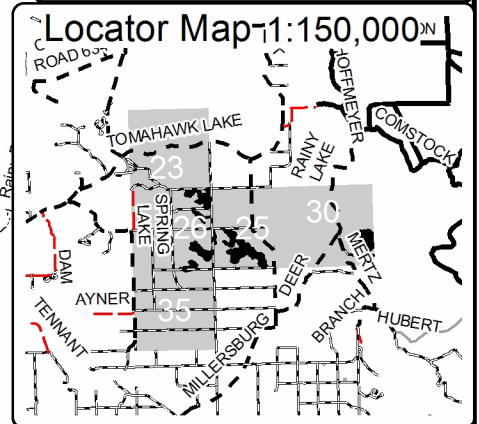


Legend

- Against State (Red)
- Private Line (Blue)
- Payment Unit Line (Yellow)
- Retention Area (Outside of Sale)
- Nearby Timber Sales
- Stand Boundaries
- Lakes
- Landing
- Payment Unit
- Recreational Trail
- Secondary Road
- Gravel Road
- Temporary Access
- Perennial River
- Section Corner



GPS Location
45.214382, -84.107039





TIMBER SALE MAP

54 - 002

2023

This information provided by authority of Part 525, 1994 PA 451, as amended.

Forest Management Unit Atlanta Management Unit	County Presque Isle	Mapped By Coy	Date 04/07/2023	Page 2	of 2
Township 33N	Range 02E & 03E	Section(s) and Subdivision(s) 23- SESE 25- SWNW,SW,SWSE 26- N1/2NE,SENE,SE 35- NWNE 30- E1/2SE			1:15,840

Cover Type

A = Aspen	J = Jack Pine	O = Oak	U = Upland Brush
B = Paper Birch	K = Rock	P = Lowland Poplar	UM = Upland Mix Forest
C = Cedar	L = Lowland Brush	Q = Mixed Swamp Conifer	V = Bog or Marsh
D = Tread Bog	LM = Lowland Mix Forest	R = Red Pine	W = White Pine
E = Swamp Hardwoods	M = Maple, Beech, Birch	S = Black Spruce	X = Non Stocked
F = Spruce/Fir	MC = Mixed Conifer	T = Tamarack	Y = Sand
G = Grass	MD = Mixed Deciduous		Z = Water
H = Hemlock	N = Marsh		

Density

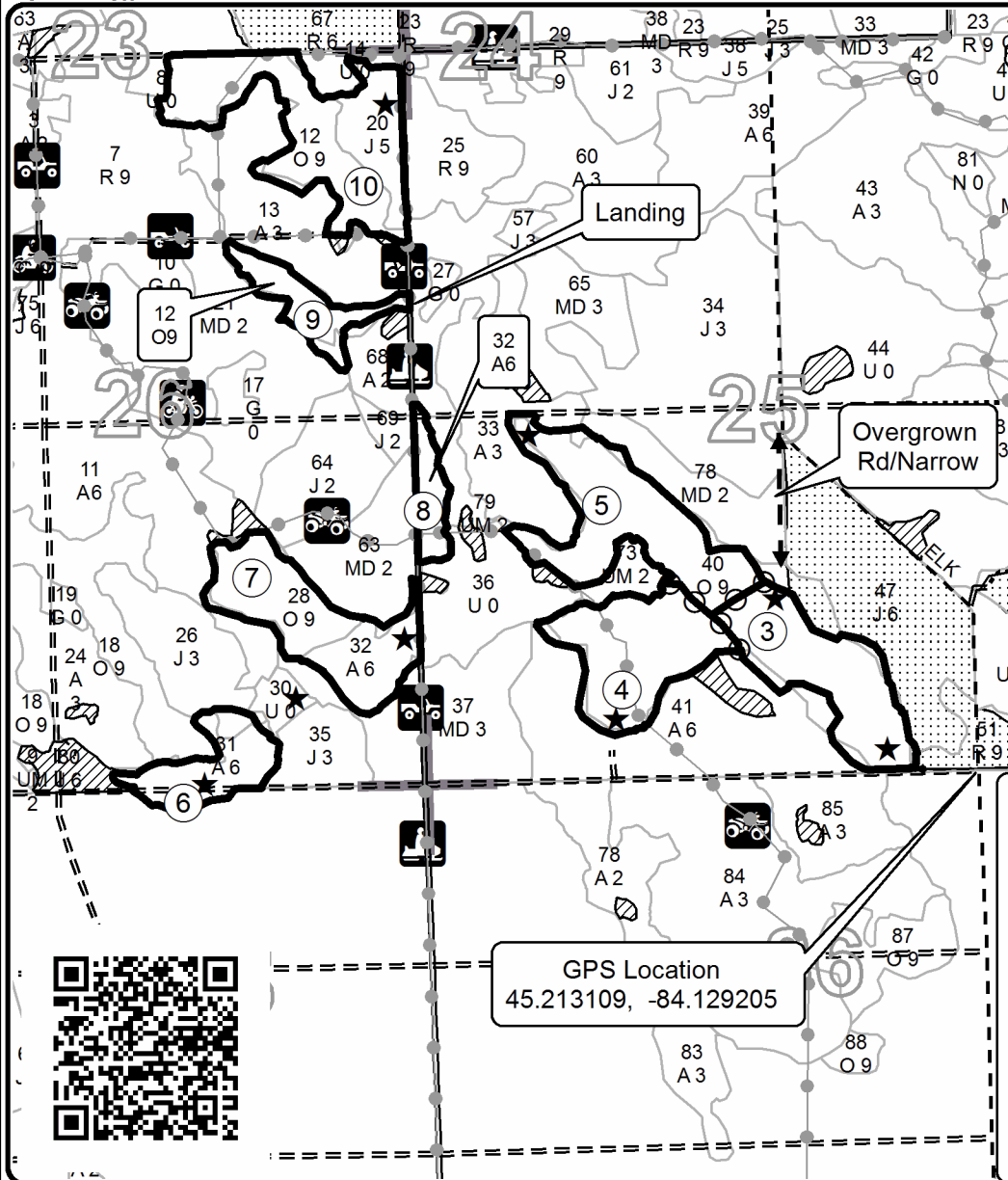
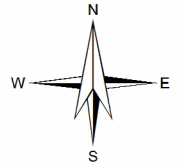
0 = Non Stocked	5 = Pole Timber Medium
1 = Seedling Sapling Poor	6 = Pole Timber Well
2 = Seedling Sapling Medium	7 = Saw Timber Poor
3 = Seedling Sapling Well	8 = Saw Timber Medium
4 = Pole Timber Poor	9 = Saw Timber Well

PU	Acres	PU	Acres
1	17.6	7	20.0
2	20.3	8	4.5
3	18.8	9	7.1
4	18.7	10	27.6
5	23.7		
6	9.7		

Spring Lk and Elk Rd Aspen Oak

Compartment 124

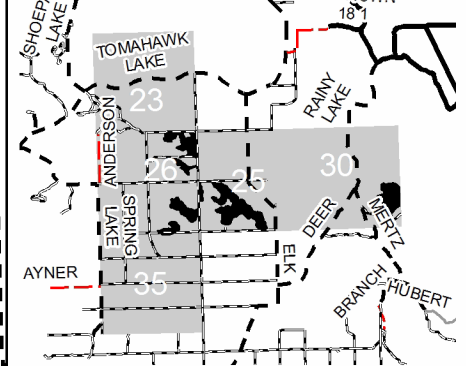
168.0 Acres



Legend

- Against State (Red)
- Payment Unit Line (Yellow)
- Retention Area (Outside of Sale)
- Nearby Timber Sales
- Stand Boundaries
- Lakes
- Landing
- Payment Unit
- Recreational Trail
- Secondary Road
- Forest Access Route
- Gravel Road
- Temporary Access
- Drain
- Section Corner

Locator Map 1:120,000



TIMBER SALE INFORMATION

Hubert Rd South Mix (54-003-23)

T32N, R04E, SEC. 18; T32N, R04E, SEC. 7.

Montmorency County (Advertised Price \$209,913.20)

SALE NOTE: 5.2.3.5 - Oak wilt restriction - Within Payment Units 1-4, unless changed by written agreement, cutting, skidding, hauling within the sale and brushing of access roads to the sale are not permitted during the period of April 15 to July 15. Operations may be allowed if specific steps are taken to prevent damaging uncut oak during the high-risk period. Those steps may include completing all road brushing before April 15 and clearing a tree-length buffer along uncut oak cover before April 15. This is necessary to reduce the spread of oak wilt. For more information, contact the Unit Manager or his/her representative.

A timber sale contract for this lump sum, sealed bid timber sale will be awarded to the responsible bidder offering the highest sealed bid price. All units of volume listed below were estimated using the Inventory Manager computer program and the new Michigan taper model. Bids must be at or above the following advertised price for each product and species:

<u>PRODUCTS & SPECIES</u>	<u>ESTIMATED UNITS*</u>		<u>ADVERTISED PRICE</u>
Sawtimber			
Basswood	14.8	MBF	\$ 67.00 / MBF
Black/Red (Hybrid) Oak	12.8	MBF	\$ 125.00 / MBF
Mixed Aspen	257.8	MBF	\$ 113.00 / MBF
N. White Cedar	12.7	MBF	\$ 40.00 / MBF
Paper Birch	15.2	MBF	\$ 42.00 / MBF
Red Maple	57.5	MBF	\$ 79.00 / MBF
Red Oak	193.2	MBF	\$ 190.00 / MBF
Red Pine	20.1	MBF	\$ 140.00 / MBF
Sugar Maple	37.8	MBF	\$ 520.00 / MBF
White Pine	16.9	MBF	\$ 128.00 / MBF
Pulpwood			
Balsam Fir	161	Cords	\$ 20.55 / Cord
Basswood	88	Cords	\$ 16.90 / Cord
Jack Pine	33	Cords	\$ 11.80 / Cord
Mixed Aspen	1,984	Cords	\$ 25.60 / Cord
Mixed Hardwood	1,276	Cords	\$ 24.85 / Cord
Mixed Oak	79	Cords	\$ 30.90 / Cord
Mixed Spruce	17	Cords	\$ 9.80 / Cord
N. White Cedar	115	Cords	\$ 9.75 / Cord
Paper Birch	88	Cords	\$ 16.45 / Cord
Red Oak	516	Cords	\$ 30.90 / Cord
Red Pine	18	Cords	\$ 40.45 / Cord
White Pine	58	Cords	\$ 28.05 / Cord

* The total volume is statistically estimated within plus (+) or minus (-) 8.03 percent. There are an estimated 5,904 cords on this timber sale, plus or minus 474 cords at the 95% confidence level. The estimated units are final and not subject to adjustment. Prospective bidders are urged to examine this timber and to make their own estimates of quantity and quality.

BOND AND PAYMENT SCHEDULE:

1. A bond in the amount of \$10,496.00 to insure faithful performance of the conditions of the contract will be deposited by the successful bidder within 21 days of the sale award.
2. Cutting in any sale or unit without the required advance payment would be considered a trespass.
3. Total payment must be paid in advance or according to the following schedule :
 - (a) Ten percent (10%) of the sale value must be paid within 21 days of the sale award.
 - (b) The 10% down payment will be credited towards the first unit cut.

(c) Payment for each of the following units must be made before cutting begins in that unit:

PAYMENT UNIT NUMBER	PERCENT OF TOTAL SALE VALUE
01	10.0%
02	11.1%
03	14.1%
04	11.0%
05	8.3%
06	6.8%
07	8.1%
08	15.3%
09	14.0%
10	1.3%

4. If no cutting takes place, the 10% down payment will not be refunded.

5. Operations on the contract issued will terminate on 06/30/2027.

SALE STATISTICS

Volumes were calculated in cubic feet using the Michigan taper model. Cubic foot volume includes all wood inside bark for the product indicated. For display purposes, cubic feet were converted to cords and MBF using a simple conversion factor, e.g. 79 cubic feet per cord and 185 cubic feet per MBF. The cubic foot volumes are precise; the cords and MBF volumes are not. Cubic foot volume cannot be directly converted to cords or boards with precision.

SALE VOLUMES

The total estimated sale volume may not equal the sum of the species/products due to the nature of statistical calculations associated with double sampling methodology.

VOLUME		PERCENT ERROR	STATISTICAL RANGE IN CORDS	
TOTAL CUBIC FEET	TOTAL CORDS		MINIMUM	MAXIMUM
466,443	5,904	8.03%	5,430	6,379

VDU VOLUMES

A VDU is a Volume Determination Unit. Volumes and their associated statistics are calculated at the VDU level and summarized to the sale level. There is often a one to one relationship between a VDU and a Payment Unit, but not always, depending on the cruise design. Refer to the VDU TO PAYMENT UNIT table.

VDU	VOLUME		PERCENT ERROR	RANGE IN CORDS	
	TOTAL CUBIC FEET	TOTAL CORDS		MINIMUM	MAXIMUM
40	190,259	2,408	13.31%	2,088	2,729
45	39,871	505	28.89%	359	650
47	33,014	418	26.27%	308	528
82	46,302	586	23.15%	450	722
88	123,999	1,570	20.67%	1,245	1,894
157	26,437	335	16.29%	280	389
163	6,562	83	152.09%	0	209
TOTAL:	466,443	5,904		4,730	7,122

VDU TO PAYMENT UNIT

When a VDU is associated with more than one Payment Unit (PU), the VDU volumes are assigned to the PU based on acres of the VDU within the PU.

VDU	VDU ACRES	PU	PU ACRES
40	86.1	1	22.4
		2	22.9
		3	15.6
		4	24.6
		10	0.6
45	14.9	6	14.2
		7	0.7
47	11.5	7	11.5
82	18.5	5	18.5
88	51.7	8	26.9
		9	24.8
157	12.4	2	1.4
		3	11.0
163	2.8	10	2.8
TOTAL:	197.9		197.9

DESCRIPTION OF TIMBER BY PAYMENT UNIT (PU)

PU	MARKET GROUP	PRODUCT	QUANTITY	UNIT	ACRES	ADVERTISE PRICE		
1	Black/Red (Hybrid)	Sawtimber	3.3	MBF	22.4	\$21,039.80		
	Mixed Aspen		22.5	MBF				
	<i>B. T. Aspen</i>		22.5	<i>MBF</i>				
	Red Maple		0.9	MBF				
	Red Oak		23.8	MBF				
	Red Pine		2.3	MBF				
	Balsam Fir		Pulpwood	1			Cords	
	Mixed Aspen			266			Cords	
	<i>B. T. Aspen</i>			261			<i>Cords</i>	
	<i>Quaking Aspen</i>			5			<i>Cords</i>	
	Mixed Hardwood			108			Cords	
	<i>Red Maple</i>			108			<i>Cords</i>	
	Mixed Oak			21			Cords	
	<i>White Oak</i>			Sawtimber			1.8	<i>MBF</i>
	<i>/Red (Hybrid) Oak</i>						Pulpwood	16
	<i>White Oak</i>	1						<i>Cords</i>
	Red Oak	96						Cords
Red Pine	1	Cords						
2	Black/Red (Hybrid)	Sawtimber	3.4	MBF	24.3	\$23,385.75		
	Mixed Aspen		23.4	MBF				
	<i>B. T. Aspen</i>		23.4	<i>MBF</i>				
	Red Maple		1.0	MBF				
	Red Oak		31.3	MBF				
	Red Pine		2.4	MBF				
	Balsam Fir		Pulpwood	1			Cords	
	Mixed Aspen			279			Cords	
	<i>B. T. Aspen</i>			272			<i>Cords</i>	
	<i>Quaking Aspen</i>			7			<i>Cords</i>	
	Mixed Hardwood			115			Cords	
	<i>Red Maple</i>			115			<i>Cords</i>	
	Mixed Oak			21			Cords	
	<i>White Oak</i>			Sawtimber			1.9	<i>MBF</i>
	<i>/Red (Hybrid) Oak</i>						Pulpwood	16
	<i>White Oak</i>	1						<i>Cords</i>
	Red Oak	105						Cords
Red Pine	1	Cords						
3	Black/Red (Hybrid)	Sawtimber	2.3	MBF	26.6	\$29,659.00		
	Mixed Aspen		19.4	MBF				
	<i>B. T. Aspen</i>		19.4	<i>MBF</i>				
	Red Maple		1.2	MBF				
	Red Oak		71.3	MBF				
	Red Pine		2.0	MBF				
	Balsam Fir		Pulpwood	2			Cords	
	Mixed Aspen			236			Cords	
	<i>B. T. Aspen</i>			223			<i>Cords</i>	
	<i>Quaking Aspen</i>			13			<i>Cords</i>	
	Mixed Hardwood			111			Cords	
	<i>Red Maple</i>			111			<i>Cords</i>	
	Mixed Oak			15			Cords	
	<i>White Oak</i>			Sawtimber			1.3	<i>MBF</i>
	<i>/Red (Hybrid) Oak</i>						Pulpwood	11
	<i>White Oak</i>	1						<i>Cords</i>
	Red Oak	124						Cords
Red Pine	3	Cords						
4	Black/Red (Hybrid)	Sawtimber	3.7	MBF	24.6	\$23,107.85		
	Mixed Aspen		24.7	MBF				

DESCRIPTION OF TIMBER BY PAYMENT UNIT (PU), CON'T

PU	MARKET GROUP	PRODUCT	QUANTITY	UNIT	ACRES	ADVERTISE PRICE
4 con't	<i>B. T. Aspen</i>	<i>Sawtimber</i>	24.7	<i>MBF</i>		
	Red Maple		0.9	MBF		
	Red Oak		26.1	MBF		
	Red Pine		2.5	MBF		
	Balsam Fir	Pulpwood	1	Cords		
	Mixed Aspen		293	Cords		
	<i>B. T. Aspen</i>		287	<i>Cords</i>		
	<i>Quaking Aspen</i>		6	<i>Cords</i>		
	Mixed Hardwood		119	Cords		
	<i>Red Maple</i>		119	<i>Cords</i>		
	Mixed Oak		23	Cords		
	<i>White Oak</i>	<i>Sawtimber</i>	2.1	<i>MBF</i>		
	<i>Red (Hybrid) Oak</i>	<i>Pulpwood</i>	17	<i>Cords</i>		
	<i>White Oak</i>		2	<i>Cords</i>		
	Red Oak		105	Cords		
	Red Pine		1	Cords		
5	Mixed Aspen	Sawtimber	33.0	MBF	18.5	\$17,449.10
	<i>B. T. Aspen</i>		4.7	<i>MBF</i>		
	<i>Quaking Aspen</i>		28.3	<i>MBF</i>		
	N. White Cedar		1.3	MBF		
	Paper Birch		1.3	MBF		
	Red Maple		7.3	MBF		
	Red Oak		11.9	MBF		
	White Pine		1.8	MBF		
	Balsam Fir	Pulpwood	59	Cords		
	Mixed Aspen		163	Cords		
	<i>B. T. Aspen</i>		73	<i>Cords</i>		
	<i>Quaking Aspen</i>		90	<i>Cords</i>		
	Mixed Hardwood		115	Cords		
	<i>Red Maple</i>		115	<i>Cords</i>		
	N. White Cedar		52	Cords		
	Paper Birch		11	Cords		
	Red Oak		35	Cords		
	White Pine		19	Cords		
6	Mixed Aspen	Sawtimber	15.7	MBF	14.2	\$14,361.90
	<i>B. T. Aspen</i>		6.7	<i>MBF</i>		
	<i>Quaking Aspen</i>		9.0	<i>MBF</i>		
	N. White Cedar		1.4	MBF		
	Paper Birch		1.4	MBF		
	Red Maple		17.7	MBF		
	Red Oak		5.5	MBF		
	Red Pine		5.3	MBF		
	White Pine		8.3	MBF		
	Balsam Fir	Pulpwood	30	Cords		
	Mixed Aspen		94	Cords		
	<i>B. T. Aspen</i>		30	<i>Cords</i>		
	<i>Quaking Aspen</i>		64	<i>Cords</i>		
	Mixed Hardwood		133	Cords		
	<i>Red Maple</i>		133	<i>Cords</i>		
	Mixed Spruce		2	Cords		
	<i>White Spruce</i>		2	<i>Cords</i>		
	N. White Cedar		19	Cords		
	Paper Birch		51	Cords		
	Red Oak		12	Cords		
Red Pine		5	Cords			
White Pine		10	Cords			

DESCRIPTION OF TIMBER BY PAYMENT UNIT (PU), CON'T

PU	MARKET GROUP	PRODUCT	QUANTITY	UNIT	ACRES	ADVERTISE PRICE		
7	Mixed Aspen	Sawtimber	66.1	MBF	12.2	\$17,028.00		
	<i>B. T. Aspen</i>		63.5	<i>MBF</i>				
	<i>Quaking Aspen</i>		2.6	<i>MBF</i>				
	N. White Cedar		0.1	MBF				
	Paper Birch		3.6	MBF				
	Red Maple		2.3	MBF				
	Red Oak		11.5	MBF				
	Red Pine		2.8	MBF				
	White Pine		0.4	MBF				
	Balsam Fir		Pulpwood	6			Cords	
	Mixed Aspen	163		Cords				
	<i>B. T. Aspen</i>	159		<i>Cords</i>				
	<i>Quaking Aspen</i>	4		<i>Cords</i>				
	Mixed Hardwood	43		Cords				
	<i>Red Maple</i>	43		<i>Cords</i>				
	Mixed Spruce	5		Cords				
	<i>White Spruce</i>	Sawtimber		1.9			<i>MBF</i>	
	<i>White Spruce</i>			Pulpwood			1	<i>Cords</i>
	N. White Cedar						1	Cords
	Paper Birch	4	Cords					
	Red Oak	19	Cords					
	Red Pine	1	Cords					
	White Pine	17	Cords					
8	Basswood	Sawtimber	7.7	MBF	26.9	\$31,808.70		
	Mixed Aspen		27.2	MBF				
	<i>B. T. Aspen</i>		16.0	<i>MBF</i>				
	<i>Quaking Aspen</i>		11.2	<i>MBF</i>				
	N. White Cedar		5.2	MBF				
	Paper Birch		4.6	MBF				
	Red Maple		13.6	MBF				
	Red Oak		5.8	MBF				
	Sugar Maple		19.7	MBF				
	Balsam Fir		Pulpwood	32			Cords	
	Basswood	46		Cords				
	Mixed Aspen	249		Cords				
	<i>B. T. Aspen</i>	99		<i>Cords</i>				
	<i>Balsam Poplar</i>	4		<i>Cords</i>				
	<i>Quaking Aspen</i>	146		<i>Cords</i>				
	Mixed Hardwood	275		Cords				
	<i>American Elm</i>	2		<i>Cords</i>				
	<i>Beech</i>	5		<i>Cords</i>				
	<i>Red Maple</i>	121		<i>Cords</i>				
	<i>Sugar Maple</i>	147	<i>Cords</i>					
	N. White Cedar	22	Cords					
	Paper Birch	11	Cords					
	Red Oak	9	Cords					
Red Pine	2	Cords						
9	Basswood	Sawtimber	7.1	MBF	24.8	\$29,304.30		
	Mixed Aspen		25.2	MBF				
	<i>B. T. Aspen</i>		14.8	<i>MBF</i>				
	<i>Quaking Aspen</i>		10.4	<i>MBF</i>				
	N. White Cedar		4.7	MBF				
	Paper Birch		4.3	MBF				
	Red Maple		12.6	MBF				
	Red Oak		5.4	MBF				
	Sugar Maple		18.1	MBF				

DESCRIPTION OF TIMBER BY PAYMENT UNIT (PU), CON'T

PU	MARKET GROUP	PRODUCT	QUANTITY	UNIT	ACRES	ADVERTISE PRICE
9 con't	Balsam Fir	Pulpwood	29	Cords		
	Basswood		42	Cords		
	Mixed Aspen		230	Cords		
	<i>B. T. Aspen</i>		92	<i>Cords</i>		
	<i>Balsam Poplar</i>		3	<i>Cords</i>		
	<i>Quaking Aspen</i>		135	<i>Cords</i>		
	Mixed Hardwood		254	Cords		
	<i>American Elm</i>		2	<i>Cords</i>		
	<i>Beech</i>		5	<i>Cords</i>		
	<i>Red Maple</i>		112	<i>Cords</i>		
	<i>Sugar Maple</i>		135	<i>Cords</i>		
	N. White Cedar		21	Cords		
	Paper Birch		11	Cords		
	Red Oak		8	Cords		
	Red Pine		1	Cords		
10	Black/Red (Hybrid)	Sawtimber	0.1	MBF	3.4	\$2,799.70
	Mixed Aspen		0.6	MBF		
	<i>B. T. Aspen</i>		0.6	<i>MBF</i>		
	Red Oak		0.6	MBF		
	Red Pine		2.8	MBF		
	White Pine		6.4	MBF		
	Jack Pine	Pulpwood	33	Cords		
	Mixed Aspen		11	Cords		
	<i>B. T. Aspen</i>		11	<i>Cords</i>		
	Mixed Hardwood		3	Cords		
	<i>Red Maple</i>		3	<i>Cords</i>		
	Mixed Spruce		10	Cords		
	<i>Black Spruce</i>		10	<i>Cords</i>		
	Red Oak		3	Cords		
	Red Pine		3	Cords		
	White Pine		12	Cords		
	TOTAL:			638.8	MBF	
TOTAL:			4,434	Cords		

Sale Specific Conditions & Requirements

Sale Name: Hubert Rd South Mix

Sale Number: 54-003-23 Seq#: 1

1 - Sale Area

1.2 - Boundaries

1.2.1 - Painted boundaries (9/19)

The sale boundary and Payment Unit boundaries are marked and identified by red, blue, and yellow paint, along with state forest roads and cover type changes. Exterior sale boundary lines against state are marked with red paint, with the exception of the boundaries in Payment Units 3, 4, & 5 adjacent to the non-forested openings (G0), which are unpainted and identified by the cover type change. No harvesting may occur within G0 non-forested stands. Exterior sale boundary lines against private are marked with blue paint. Interior Payment Unit boundaries are marked with yellow paint, with the exception of the boundaries along Ribble Lake Road and another state road along the northern boundary of Payment Unit 10, which are unpainted and identified by the road (see Timber Sale Map). The painted boundary line trees are not Included Timber and are to be protected. Yellow painted trees are only to be cut when all surrounding Payment Units have been paid. The Ribble Lake Road and the state forest road segments designating an interior Payment Unit boundary are only to be crossed when all surrounding Payment Units have been paid.

2 - Timber Specifications

2.1 - Included Timber

2.1.1 - Clearcut unit(s) with unmerchantable trees (6/14)

Within Payment Unit(s) 1-10, cut all trees that are two (2) inches or more at DBH, with the following exceptions:

- Within Payment Units 1-4, do not cut white pine.
- Within Payment Units 8 & 9, do not cut white pine or hemlock.
- Within Payment Units 5-7, do not cut any white pine marked with purple paint or hemlock.

Note: See spec 5.2.4.7 - 'Dead and down creation' for instructions on orange marked trees.

3 - Payments

3.3 - Pre-measured Sales

3.3.4 - Dividing payment units (7/14)

Payment Unit(s) may be divided at the request of the Purchaser and upon approval of the Unit Manager. Dividing Payment Units is a contract modification which requires a Timber Sale Contract Amendment. Payment Units valued over \$25,000 may be divided. There will be only one division per Payment Unit.

3.4 - Damaged Timber

3.4.1 - Damaged timber (7/16)

General Condition and Requirement 3.4 Damaged Timber, defines liquidated damages for undesignated live merchantable trees which are cut or injured. No damage is acceptable to undesignated live merchantable trees. Within the Sale Area, if more than 5% of trees (> 4.5" DBH) within a specified area of the sale are damaged, liquidated damages will be assessed for all trees damaged. Rates will be in accordance with General Condition and Requirement 3.4 Damaged Timber.

4 - Transportation

4.1 - Construction

4.1.3 - Slash and earthen piles (8/04)

Piles or windrows of earth along roads and landings that have been widened or constructed shall be leveled. Slash from road maintenance or construction, including stumps, shall be chipped, utilized or otherwise removed from the sale.

4.1.6 - Road construction (1/09)

Construction or improvements of existing roads shall be done in such a way as to minimize the environmental and visual impacts. Merchantable trees shall be cut and utilized unless otherwise directed. Non-merchantable trees shall be severed and

laid flat on the ground. Slash shall be scattered, and not left in windrows and kept a minimum of 10 feet back from the road edge. Stumps shall be set upright, not left on edge, and be moved at least 10 feet away from the road edge. Disturbed soil shall be feathered into the woods and not left in berms or windrows.

A new road through a narrow lowland conifer stand in Payment Unit 5 will need to be created and protected according to specification 5.2.17, if access through private is not possible. The improved roads and constructed roads must not be unreasonably widened beyond 15 feet. Narrow access into some Payment Units will require widening and blading on lengths of state forest roads. Additional access timber must be piled separately for scaling by the Sale Administrator.

4.1.7 - Road closure (10/11)

All new roads built into the sale must be blocked to vehicle traffic upon completion of the sale. Overgrown roads that are reopened shall be considered new roads. In general, this will require constructing a four (4') foot high berm of stumps and logs covered with earth. Stumps and brush must be placed along the remainder of the trail. These roads must be rendered impassable to cars and trucks. Contact the Sale Administrator for specific details of design and placement.

4.2 - Maintenance

4.2.5 - Two wheel drive condition (2/04)

All existing trail roads on and adjacent to the sale area must be passable by two-wheel drive traffic for the duration of the sale.

4.4 - Access

4.4.1 - Private property access (3/11)

Permission for access across private land is the responsibility of the Purchaser. This applies to Payment Units 5-7 where skidding and trucking access will be difficult through lowland conifer stands. Should the Purchaser desire to cross private land, a copy of the written permission from the private landowner may be required by the DNR. A copy of the written permission from the private landowner must be given to the Unit Manager within 30 days of the bid opening and prior to the beginning of operations.

5 - Operations

5.1 - Notification

5.1.1 - Pre-sale conference (10/16)

A pre-sale conference between the Purchaser and sale administrator is required prior to beginning any operations to determine landing and road locations. The Unit Manager or his/her representative must be contacted at least 5 days in advance to schedule the conference.

5.1.4 - Post-sale conference (10/16)

A post-sale conference on site between the Purchaser and sale administrator is required 5 days prior to the completion of active logging operations to determine clean-up and repair of landings, road edges, and the fulfillment of other contract specifications.

5.2 - Conduct of Operations

5.2.1 - Slash

5.2.1.10 - No slash in openings (5/10)

No brush or logging debris is to be left in maintained wildlife openings which are indicated by "G0" on the Timber Sale Map. Any damage to the opening shall be repaired according to specifications of the Unit Manager or his/her representative.

5.2.2 - Hazard Trees/Snags

5.2.2.1 - Den trees (10/16)

Obvious hollow and/or den trees shall be protected and left standing unless they are a safety hazard.

5.2.3 - Operating Restrictions

5.2.3.1 - Operating restrictions (9/11)

Within Payment Unit(s) 10, it is recommended, but not required that cutting and skidding be conducted during July 15 to December 1 with snow-off and unfrozen ground conditions. This restriction is to increase scarification and conifer regeneration.

5.2.3.5 - Oak wilt restriction (1/18)

Within Payment Units 1-4, unless changed by written agreement, cutting, skidding, hauling within the sale and brushing of access roads to the sale are not permitted during the period of April 15 to July 15. Operations may be allowed if specific steps are taken to prevent damaging uncut oak during the high risk period. Those steps may include completing all road brushing before April 15th and clearing a tree-length buffer along uncut oak cover before April 15th. This is necessary to reduce the spread of oak wilt. For more information, contact the Unit Manager or his/her representative.

5.2.3.11 - Coppice regeneration protection (4/10)

Timber harvesting in Payment Units must be completed within 30 days of severing/cutting stem(s) to minimize damage to deciduous regeneration. Any post harvest operations, such as chipping, must be completed before sprouting of regeneration occurs. If it is anticipated that chipping will be delayed, then tops shall be carried to one central location or left unchipped. The Unit Manager or his/her representative may cease such operations if sprouting occurs before the operation is complete.

5.2.4 - Dead and Down Creation

5.2.4.7 - Dead and down creation: hare, grouse, deer and other species (5/15)

To improve horizontal cover habitat for snowshoe hare, grouse, deer, and other species, the Purchaser is to push over all orange painted trees in Payment Units 1-4 & 7. These trees should be tipped over with the root ball still attached so the base of the tree is suspended off the ground. The crown of the fallen tree should be at or near ground level after it is pushed over. If it is impractical to push the trees over, they may be cut or partially cut and pushed over.

5.2.17 - Timber Mats and Interlocking Composite Mats (5/23)

Some skid trails will require extra protection through lowland conifer crossings such as that afforded by timber mats, interlocking composite mats, corduroy, or another approved system. Approximately 200-300 feet of skid trails (total length for 3 locations) will need extra protection at locations shown on the Timber Sale Map. Timber cut within the Sale Administrator approved new skid trail (15 feet access width) locations may be used as corduroy at no cost to the Purchaser. If available, mats may be borrowed from the DNR. A Timber Sale Contract Amendment will be used to document the Purchaser's use of the DNR's mats. Contact the Sale Administrator regarding availability and pick-up. Timber mats are available from various field offices. Composite mats are only available from the Grayling field office and the Marquette ICC. The Purchaser is responsible for picking up and hauling the mats to and from the site. The composite mats will require DNR staff onsite for installation and removal. Contact the Sale Administrator to schedule at least 30 days before desired install/removal date. All mats must be cleaned prior to drop off. This may include, but is not limited to, power washing and brushing to remove mud and debris. A charge of \$700.00 per timber mat and \$2,000.00 per composite mat will be assessed for all damaged or non-returned mats. Damage for the crane/timber mats is defined as three or more broken cants. Damage for the composite mats is defined as cracked or broken mats.

5.2.31 - Landing locations (9/13)

Landing locations are shown on the Timber Sale Map. Landings must be confined to these designated sites unless otherwise authorized by the Unit Manager or his/her representative.

5.2.32 - Decking/landing restoration (9/13)

All decking and landing areas must have the surface area restored to a condition equal to or better than before. This is to ensure the proper regeneration of the stand. Wood debris, chips and "cookies" from trimmings must be removed or scattered away from landing and loading areas and may not be windrowed on the edge.

5.2.38 - No decking against live trees (2/04)

Cut products may not be decked against unmarked or designated leave trees.

5.4 - Soil Protection

5.4.1 - Rutting restriction, general (7/16)

Operations are to cease immediately if equipment and weather conditions result in rutting of roads and/or skid trails which is 12 inches or greater in depth and 50 feet in length. The Unit Manager or his/her representative may restrict hauling and/or skidding if ruts exceed the specified depth. With the Unit Manager or his/her representative's approval, the Purchaser may

return to the area when the risk of rutting has decreased.

5.8 - Protection of Endangered Species

5.8.5 - Protection of raptor nests (3/13)

All trees with raptor nests will be protected if found during harvesting operations. Notification will be made to the Unit Manager or his/her representative who will notify the Wildlife Biologist so an on-site evaluation and recommendation can be made, if necessary.



TIMBER SALE MAP

This information provided by authority of Part 525, 1994 PA 451, as amended.

Forest Management Unit
Atlanta Management Unit

County
Montmorency

Mapped By
Coy
Cruised By
Coy

Date
04/14/2023

Page
1 of
2

Township
32N

Range
04E

Section(s) and Subdivision(s)
7- W1/2NE,SWSW,N1/2SE,SESE 18- NW,W1/2NE,N1/2SW

1:15,840

Cover Type

A = Aspen	J = Jack Pine	O = Oak	U = Upland Brush
B = Paper Birch	K = Rock	P = Lowland Poplar	UM = Upland Mix Forest
C = Cedar	L = Lowland Brush	Q = Mixed Swamp Conifer	V = Bog or Marsh
D = Treed Bog	LM = Lowland Mix Forest	R = Red Pine	W = White Pine
E = Swamp Hardwoods	M = Maple, Beech, Birch	S = Black Spruce	X = Non Stocked
F = Spruce/Fir	MC = Mixed Conifer	T = Tamarack	Y = Sand
G = Grass	MD = Mixed Deciduous	Z = Water	
H = Hemlock	N = Marsh		

Density

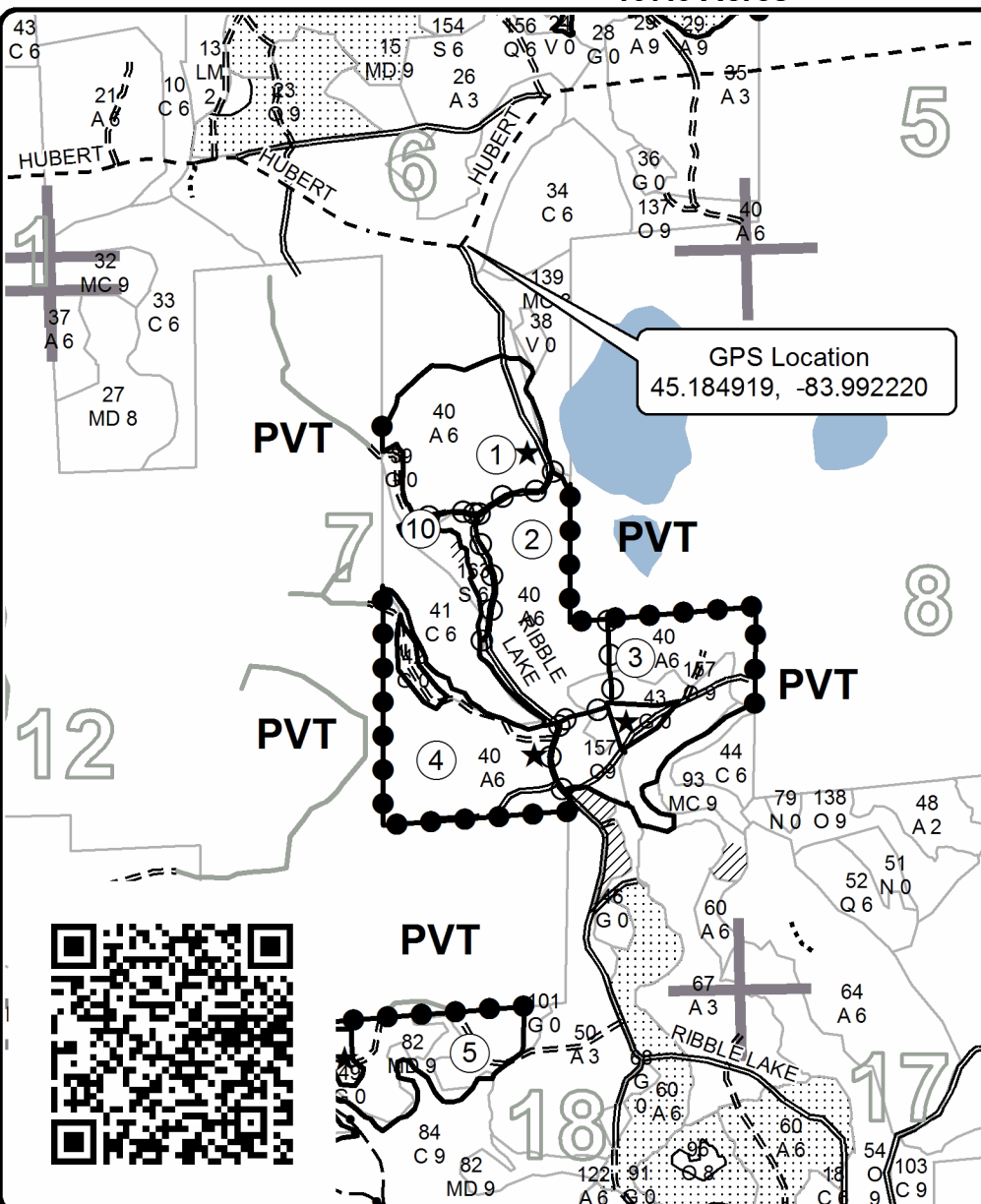
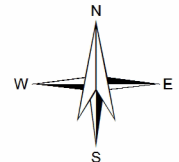
0 = Non Stocked	5 = Pole Timber Medium
1 = Seedling Sapling Poor	6 = Pole Timber Well
2 = Seedling Sapling Medium	7 = Saw Timber Poor
3 = Seedling Sapling Well	8 = Saw Timber Medium
4 = Pole Timber Poor	9 = Saw Timber Well

PU	Acres	PU	Acres
1	22.4	6	14.2
2	24.3	7	12.2
3	26.6	8	26.9
4	24.6	9	24.8
5	18.5	10	3.4

Hubert Rd South Mix

Compartment 76

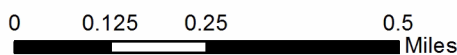
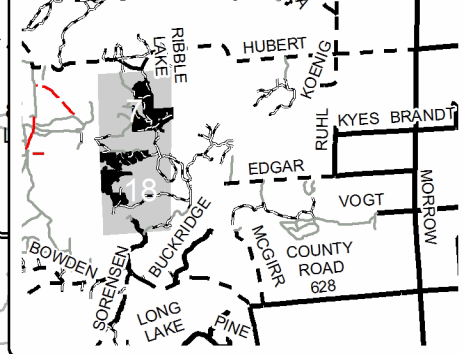
197.9 Acres



Legend

- Against State (Red)
- Private Line (Blue)
- ⊙ Payment Unit Line (Yellow or Road)
- ▨ Retention Area (Outside of Sale)
- ▤ Nearby Timber Sales
- Stand Boundaries
- Lakes
- Payment Unit
- ★ Landing
- Secondary Road
- == Forest Access Route
- - Gravel Road
- Private Road
- ⋯ Temporary Access
- Drain
- Section Corner

Locator Map 1:150,000





TIMBER SALE MAP

54 - 003

2023

This information provided by authority of Part 525, 1994 PA 451, as amended.

Forest Management Unit Atlanta Management Unit	County Montmorency	Mapped By Coy	Date 04/14/2023	Page 2	of 2
---	-----------------------	------------------	--------------------	-----------	---------

Township 32N	Range 04E	Section(s) and Subdivision(s) 7- W1/2NE,SWSW,N1/2SE,SESE 18- NW,W1/2NE,N1/2SW	1:15,840
-----------------	--------------	--	----------

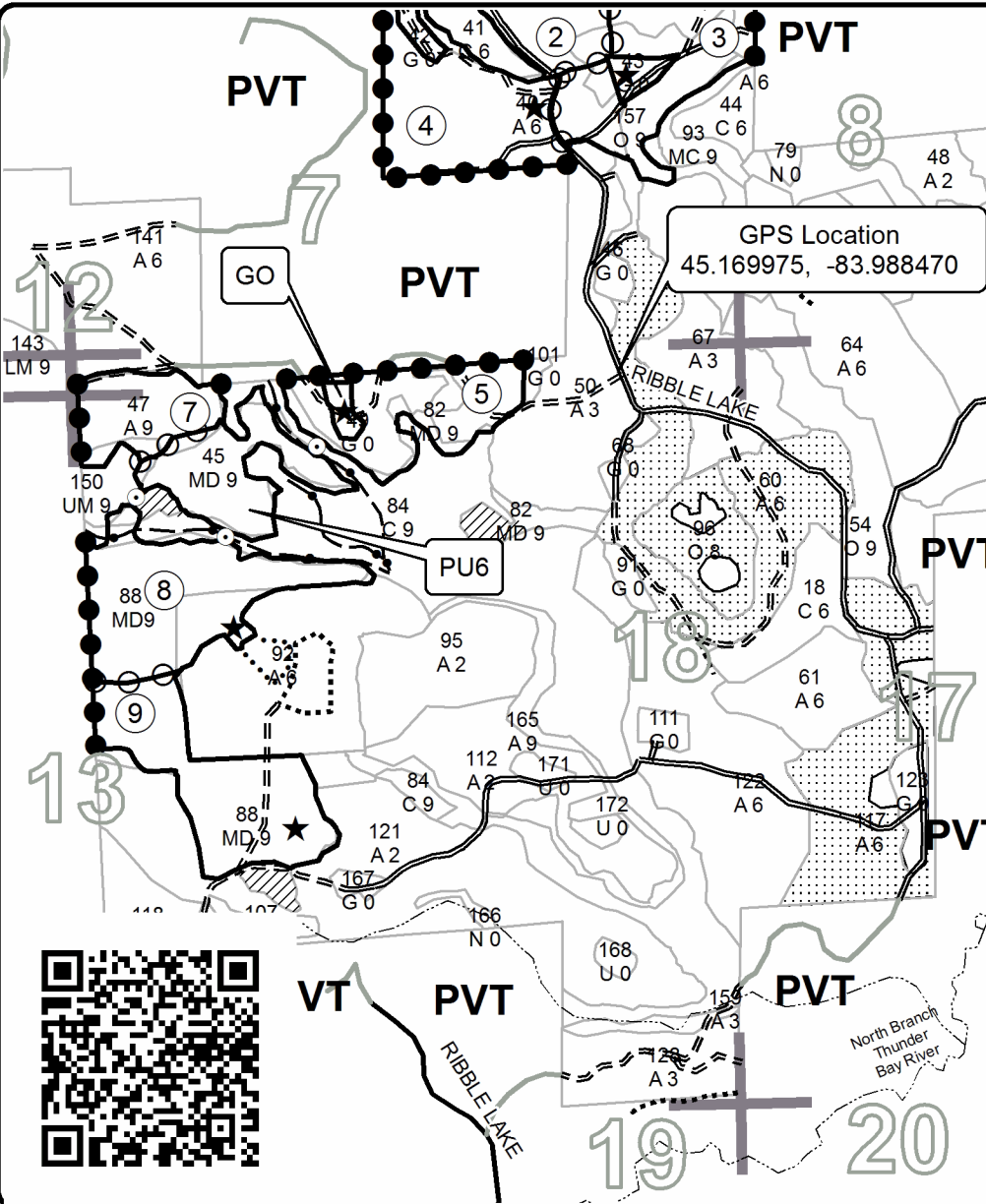
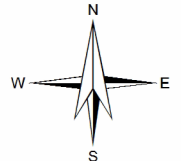
Cover Type				Density			
A = Aspen	J = Jack Pine	O = Oak	U = Upland Brush	0 = Non Stocked	5 = Pole Timber Medium		
B = Paper Birch	K = Rock	P = Lowland Poplar	UM = Upland Mix Forest	1 = Seedling Sapling Poor	6 = Pole Timber Well		
C = Cedar	L = Lowland Brush	Q = Mixed Swamp Conifer	V = Bog or Marsh	2 = Seedling Sapling Medium	7 = Saw Timber Poor		
D = Tread Bog	LM = Lowland Mix Forest	R = Red Pine	W = White Pine	3 = Seedling Sapling Well	8 = Saw Timber Medium		
E = Swamp Hardwoods	M = Maple, Beech, Birch	S = Black Spruce	X = Non Stocked	4 = Pole Timber Poor	9 = Saw Timber Well		
F = Spruce/Fir	MC = Mixed Conifer	T = Tamarack	Y = Sand				
G = Grass	MD = Mixed Deciduous						
H = Hemlock	N = Marsh						

PU	Acres	PU	Acres
1	22.4	6	14.2
2	24.3	7	12.2
3	26.6	8	26.9
4	24.6	9	24.8
5	18.5	10	3.4

Hubert Rd South Mix

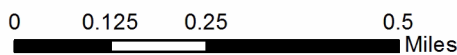
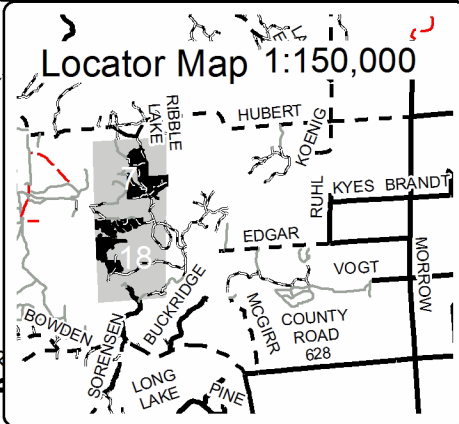
Compartment 76

197.9 Acres



Legend

- Against State (Red)
- Private Line (Blue)
- Payment Unit Line (Yellow or Road)
- ▨ Retention Area (Outside of Sale)
- ▤ Nearby Timber Sales
- Stand Boundaries
- Payment Unit
- Protected Forwarder Crossing Only
- ★ Landing
- Secondary Road
- == Forest Access Route
- Paved Road
- Private Road
- ⋯ Temporary Access
- Drain
- ⋯ Intermittent Stream
- ⋯ Perennial River
- Section Corner



TIMBER SALE INFORMATION

Forsaken Pine (54-013-23)

T33N, R02E, SEC. 27.

Presque Isle County (Advertised Price \$30,267.70)

SALE NOTE: 5.2.3.3 - Bark slippage restriction (3/09)

Within Payment Units 1 & 2, cutting and skidding are not permitted during the period of April 15 to July 15. This restriction is because of bark slippage.

5.2.3.6 - Bark beetle restriction (12/08)

In the event drought creates a high risk of pine bark beetle infestation, pine is not to be cut during the period March 1 through July 1.

A recreation site such as a trail, pathway, or campground is within the sale area or the vicinity. Certain restrictions/specifications may be applicable including time restrictions.

A timber sale contract for this lump sum, sealed bid timber sale will be awarded to the responsible bidder offering the highest sealed bid price. All units of volume listed below were estimated using the Inventory Manager computer program and the new Michigan taper model. Bids must be at or above the following advertised price for each product and species:

<u>PRODUCTS & SPECIES</u>	<u>ESTIMATED UNITS*</u>	<u>ADVERTISED PRICE</u>
Sawtimber		
Red Pine	40.3 MBF	\$ 140.00 / MBF
Pulpwood		
Jack Pine	28 Cords	\$ 11.80 / Cord
Northern Pin Oak	27 Cords	\$ 30.90 / Cord
Red Pine	580 Cords	\$ 40.45 / Cord

* The total volume is statistically estimated within plus (+) or minus (-) 16.60 percent. There are an estimated 729 cords on this timber sale, plus or minus 121 cords at the 95% confidence level. The estimated units are final and not subject to adjustment. Prospective bidders are urged to examine this timber and to make their own estimates of quantity and quality.

BOND AND PAYMENT SCHEDULE:

1. A bond in the amount of \$1,513.00 to insure faithful performance of the conditions of the contract will be deposited by the successful bidder within 21 days of the sale award.
2. Cutting in any sale or unit without the required advance payment would be considered a trespass.
3. Total payment must be paid in advance or according to the following schedule :
 - (a) Ten percent (10%) of the sale value must be paid within 21 days of the sale award.
 - (b) The 10% down payment will be credited towards the first unit cut.

(c) Payment for each of the following units must be made before cutting begins in that unit:

PAYMENT UNIT NUMBER	PERCENT OF TOTAL SALE VALUE
01	58.7%
02	41.3%

4. If no cutting takes place, the 10% down payment will not be refunded.
5. Operations on the contract issued will terminate on 06/30/2026.

SALE STATISTICS

Volumes were calculated in cubic feet using the Michigan taper model. Cubic foot volume includes all wood inside bark for the product indicated. For display purposes, cubic feet were converted to cords and MBF using a simple conversion factor, e.g. 79 cubic feet per cord and 185 cubic feet per MBF. The cubic foot volumes are precise; the cords and MBF volumes are not. Cubic foot volume cannot be directly converted to cords or boards with precision.

SALE VOLUMES

The total estimated sale volume may not equal the sum of the species/products due to the nature of statistical calculations associated with double sampling methodology.

VOLUME		STATISTICAL RANGE IN CORDS		
TOTAL CUBIC FEET	TOTAL CORDS	PERCENT ERROR	MINIMUM	MAXIMUM
57,600	729	16.60%	608	850

VDU VOLUMES

A VDU is a Volume Determination Unit. Volumes and their associated statistics are calculated at the VDU level and summarized to the sale level. There is often a one to one relationship between a VDU and a Payment Unit, but not always, depending on the cruise design. Refer to the VDU TO PAYMENT UNIT table.

VDU	VOLUME		PERCENT ERROR	RANGE IN CORDS	
	TOTAL CUBIC FEET	TOTAL CORDS		MINIMUM	MAXIMUM
53	34,167	432	27.35%	314	551
56	23,432	297	18.87%	241	353
TOTAL:	57,600	729		555	903

VDU TO PAYMENT UNIT

When a VDU is associated with more than one Payment Unit (PU), the VDU volumes are assigned to the PU based on acres of the VDU within the PU.

VDU	VDU ACRES	PU	PU ACRES
53	35.0	1	35.0
56	15.8	2	15.8
TOTAL:	50.8		50.8

DESCRIPTION OF TIMBER BY PAYMENT UNIT (PU)

PU	MARKET GROUP	PRODUCT	QUANTITY	UNIT	ACRES	ADVERTISE PRICE
1	Red Pine	Sawtimber	21.1	MBF	35.0	\$17,766.05
	Jack Pine	Pulpwood	17	Cords		
	<i>Jack Pine</i>		17	<i>Cords</i>		
	Northern Pin Oak		16	Cords		
	<i>Northern Pin Oak</i>	<i>Sawtimber</i>	0.7	<i>MBF</i>		
	<i>Northern Pin Oak</i>	<i>Pulpwood</i>	15	<i>Cords</i>		
	Red Pine		349	Cords		
2	Red Pine	Sawtimber	19.2	MBF	15.8	\$12,501.65
	Jack Pine	Pulpwood	11	Cords		
	<i>Jack Pine</i>	<i>Sawtimber</i>	0.4	<i>MBF</i>		
	<i>Jack Pine</i>	<i>Pulpwood</i>	10	<i>Cords</i>		
	Northern Pin Oak		11	Cords		
	<i>Northern Pin Oak</i>	<i>Sawtimber</i>	0.3	<i>MBF</i>		
	<i>Northern Pin Oak</i>	<i>Pulpwood</i>	10	<i>Cords</i>		
	Red Pine		231	Cords		
	TOTAL:			40.3		
TOTAL:			635	Cords		

Sale Specific Conditions & Requirements

Sale Name: Forsaken Pine

Sale Number: 54-013-23 Seq#: 1

1 - Sale Area

1.2 - Boundaries

1.2.1 - Painted boundaries (9/19)

The sale boundary and Payment Unit boundaries are marked and identified by blue and red paint. Exterior sale boundary lines against private property are marked with blue paint. Exterior sale boundary lines against state are marked with red paint. The painted boundary line trees are not Included Timber and are to be protected.

2 - Timber Specifications

2.1 - Included Timber

2.1.8 - Designated plantation row unit(s) (12/08)

Within Payment Unit(s) 1 & 2, all trees which meet minimum piece specifications in 2.2 Utilization, within designated plantation rows are designated for cutting. Designated plantation rows follow a leave three, take two pattern. Begin with the fourth and fifth rows in from the outside of the plantation, then continue the leave three, take two pattern. Because of the variability of row direction, it shall be the responsibility of the producer to maintain the cut row sequence.

2.2 - Utilization

2.2.6 - Roundwood operation required (3/21)

The skidding of whole trees or tree segments with limbs attached is prohibited. All products must be produced as roundwood and forwarded to existing roads or landing areas in final product length.

3 - Payments

3.4 - Damaged Timber

3.4.1 - Damaged timber (7/16)

General Condition and Requirement 3.4 Damaged Timber, defines liquidated damages for undesignated live merchantable trees which are cut or injured. No damage is acceptable to undesignated live merchantable trees. Within the Sale Area, if more than 5% of trees (> 4.5" DBH) within a specified area of the sale are damaged, liquidated damages will be assessed for all trees damaged. Rates will be in accordance with General Condition and Requirement 3.4 Damaged Timber.

4 - Transportation

4.1 - Construction

4.1.3 - Slash and earthen piles (8/04)

Piles or windrows of earth along roads and landings that have been widened or constructed shall be leveled. Slash from road maintenance or construction, including stumps, shall be dispersed throughout the sale.

4.1.6 - Road construction (1/09)

Improvements of existing roads shall be done in such a way as to minimize the environmental and visual impacts. Merchantable trees shall be cut and utilized unless otherwise directed. Non-merchantable trees shall be severed and laid flat on the ground. Slash shall be scattered, and not left in windrows and kept a minimum of 10 feet back from the road edge. Stumps shall be set upright, not left on edge, and be moved at least 10 feet away from the road edge. Disturbed soil shall be feathered into the woods and not left in berms or windrows.

4.1.7 - Road closure (10/11)

All new roads built into the sale must be blocked to vehicle traffic upon completion of the sale. Overgrown roads that are reopened shall be considered new roads. In general, this will require constructing a four (4') foot high berm of stumps and logs covered with earth. These roads must be rendered impassable to cars and trucks. Contact the Sale Administrator for specific details of design and placement.

4.2 - Maintenance

4.2.2 - Fill material (4/07)

To maintain roads, fill material may be needed in areas where "holes" exist or may be expected to develop. This fill material should be placed before trucking begins. Fill material shall not contain organic matter or clay.

4.2.5 - Two wheel drive condition (2/04)

All existing trail roads on and adjacent to the sale area must be passable by two-wheel drive traffic for the duration of the sale.

5 - Operations

5.1 - Notification

5.1.1 - Pre-sale conference (10/16)

A pre-sale conference between the Purchaser and sale administrator is required prior to beginning any operations to determine landing and road locations. The Unit Manager or his/her representative must be contacted in advance to schedule the conference.

5.1.4 - Post-sale conference (10/16)

A post-sale conference on site between the Purchaser and sale administrator is required prior to the completion of active logging operations to determine clean-up and repair of landings, road edges, and the fulfillment of other contract specifications.

5.2 - Conduct of Operations

5.2.3 - Operating Restrictions

5.2.3.3 - Bark slippage restriction (3/09)

Within Payment Unit(s) 1 & 2, cutting and skidding are not permitted during the period of April 15 to July 15. This restriction is because of bark slippage.

5.2.3.6 - Bark beetle restriction (12/08)

In the event drought creates a high risk of pine bark beetle infestation, pine is not to be cut during the period March 1 through July 1, unless all portions of trees greater than two inches in diameter are removed from the sale area, reduced to chips, or treated to the satisfaction of the Unit Manager or his/her representative, within fifteen days of being severed from the stump. Pine log decks, pulpwood piles and treetops that are piled for chipping in the fall or winter within a 1/4 mile of susceptible sites must be removed before March 15. Residual slash must not be placed in piles or rows and must be spread over the site for quick drying. The Department of Natural Resources will exercise this specification if the risk of damage warrants.

5.2.31 - Landing locations (9/13)

Landing areas for Payment Unit 2 are marked on the Timber Sale Map with the letter "L". Landings must be confined to these designated sites unless otherwise authorized by the Unit Manager or his/her representative.

5.2.32 - Decking/landing restoration (9/13)

All decking and landing areas must have the surface area restored to a condition equal to or better than before. This is to ensure the proper regeneration of the stand. Wood debris and "cookies" from trimmings must be removed or scattered away from landing and loading areas and may not be windrowed on the edge.

5.2.37 - No decking areas (12/08)

No decking is allowed within 50 feet of Tomahawk Flooding without permission of the Unit Manager or his/her representative.

5.2.38 - No decking against live trees (2/04)

Cut products may not be decked against unmarked or designated leave trees.

5.2.40 - Pathway protection (10/10)

The High Country Pathway is a hiking trail and is shown on the Timber Sale Map. Do not cut trees or damage posts with blue pathway markers. Maintain a 20-foot wide slash, debris, and rut free zone daily, using the pathway as the centerline. Do not run equipment down the pathway. Skidding across the trail may only occur in locations approved by the Sale Administrator.

5.4 - Soil Protection

5.4.1 - Rutting restriction, general (7/16)

Operations are to cease immediately if equipment and weather conditions result in rutting of roads and/or skid trails which is

12 inches or greater in depth and 50 feet in length. The Unit Manager or his/her representative may restrict hauling and/or skidding if ruts exceed the specified depth. With the Unit Manager or his/her representative's approval, the Purchaser may return to the area when the risk of rutting has decreased.

5.8 - Protection of Endangered Species

5.8.5 - Protection of raptor nests (3/13)

All trees with raptor nests will be protected if found during harvesting operations. Notification will be made to the Unit Manager or his/her representative who will notify the Wildlife Biologist so an on-site evaluation and recommendation can be made, if necessary.

6 - Safety and Fire Prevention

6.2 - Signing

6.2.3 - Recreational trail posting (10/20)

The Purchaser is responsible for posting and maintaining caution signs on the High Country Pathway prior to beginning operations. The trail must be posted at appropriate distances from the Sale Area to warn of logging activity and truck traffic at both ends of the trail. Signs must be removed when harvest operations are suspended or completed. The Purchaser will provide these signs.

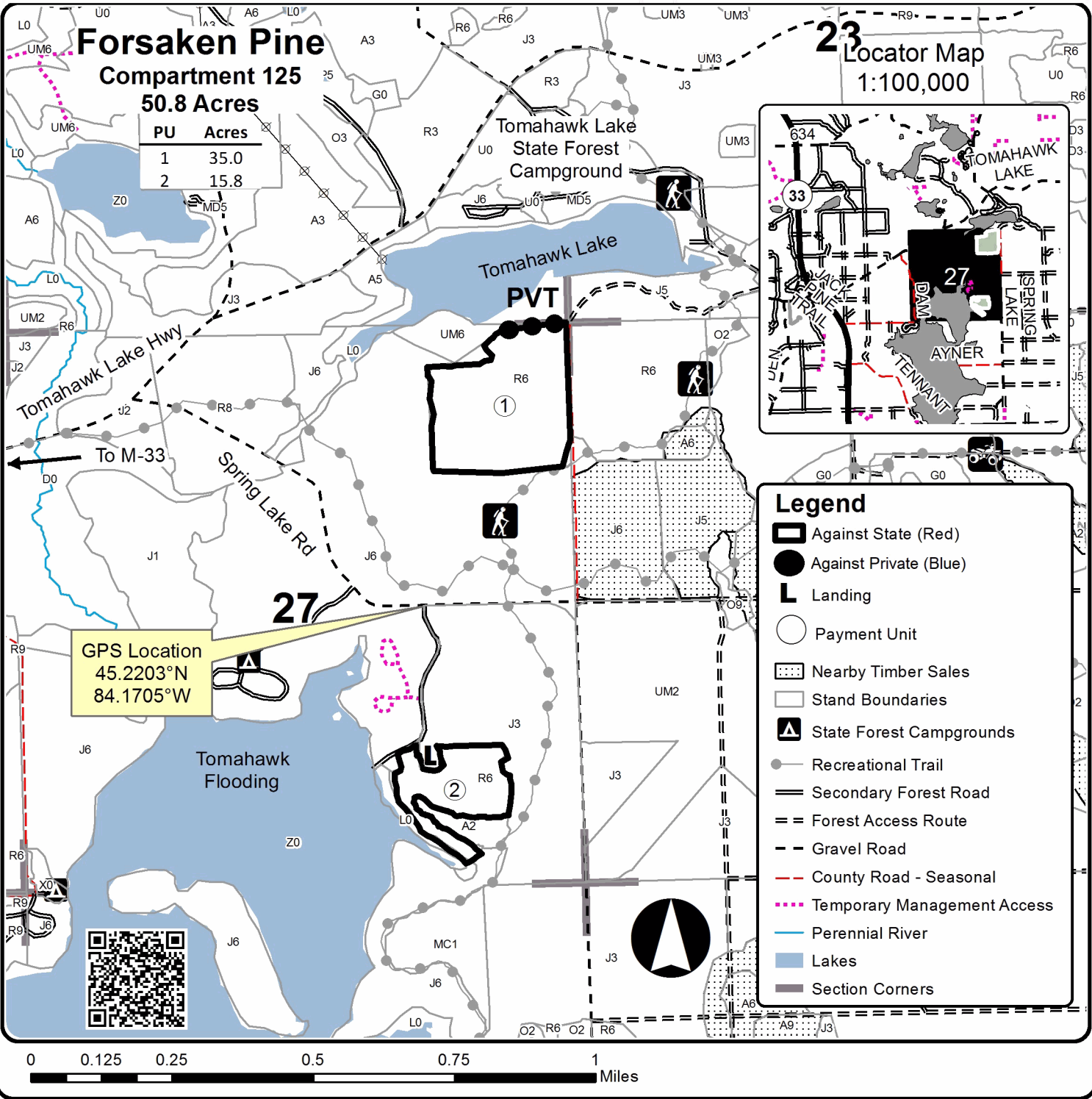


TIMBER SALE MAP

This information provided by authority of Part 525, 1994 PA 451, as amended.

Forest Management Unit Atlanta	County Presque Isle	Mapped By Natzke	Date 11/29/2022	Page 1	of 1
Township 33N	Range 02E	Section(s) and Subdivision(s) Sec. 27 N2NE, SENE, S2SE	Cruised By Natzke		
Scale 1:15,840					

Cover Type				Density			
A = Aspen	H = Hemlock	N = Marsh	U = Upland Brush	0 = Non Stocked	5 = Pole Timber Medium		
B = Paper Birch	J = Jack Pine	O = Oak	UM = Upland Mixed	1 = Seedling Sapling Poor	6 = Pole Timber Well		
C = Cedar	L = Lowland Brush	P = Lowland Poplar	V = Bog or Marsh	2 = Seedling Sapling Medium	7 = Saw Timber Poor		
D = Treed Bog	LM = Lowland Mixed	Q = Mixed Swamp Conifer	W = White Pine	3 = Seedling Sapling Well	8 = Saw Timber Medium		
E = Swamp Hdwoods	M = Mpl, Bch, Brch	R = Red Pine	X = Non Stocked	4 = Pole Timber Poor	9 = Saw Timber Well		
F = Spruce Fir	MC = Mixed Conifer	S = Black Spruce	Z = Water				
G = Grass	MD = Mixed Deciduous	T = Tamarack					



TIMBER SALE INFORMATION

Swiss Cheese Aspen (54-025-23)

T29N, R03E, SEC. 33.

Montmorency County (Advertised Price \$80,147.95)

SALE NOTE: Good quality timber with variable stocking. Soft Oak Wilt restrictions on Unit 3 due to proximity of young Oak in adjacent stand. No rec trails. Soft ground and steep slopes in areas. Access into sale is fair, but will need some fill and/or grading.

A timber sale contract for this lump sum, sealed bid timber sale will be awarded to the responsible bidder offering the highest sealed bid price. All units of volume listed below were estimated using the Inventory Manager computer program and the new Michigan taper model. Bids must be at or above the following advertised price for each product and species:

<u>PRODUCTS & SPECIES</u>	<u>ESTIMATED UNITS*</u>	<u>ADVERTISED PRICE</u>
Sawtimber		
Basswood	9.1 MBF	\$ 63.00 / MBF
Sugar Maple	71.7 MBF	\$ 485.00 / MBF
Pulpwood		
Basswood	50 Cords	\$ 15.80 / Cord
Mixed Aspen	1,463 Cords	\$ 23.85 / Cord
Mixed Hardwood	393 Cords	\$ 23.20 / Cord

* The total volume is statistically estimated within plus (+) or minus (-) 18.00 percent. There are an estimated 2,055 cords on this timber sale, plus or minus 370 cords at the 95% confidence level. The estimated units are final and not subject to adjustment. Prospective bidders are urged to examine this timber and to make their own estimates of quantity and quality.

BOND AND PAYMENT SCHEDULE:

1. A bond in the amount of \$4,007.00 to insure faithful performance of the conditions of the contract will be deposited by the successful bidder within 21 days of the sale award.
2. Cutting in any sale or unit without the required advance payment would be considered a trespass.
3. Total payment must be paid in advance or according to the following schedule :
 - (a) Ten percent (10%) of the sale value must be paid within 21 days of the sale award.
 - (b) The 10% down payment will be credited towards the first unit cut.
 - (c) Payment for each of the following units must be made before cutting begins in that unit:

PAYMENT UNIT NUMBER	PERCENT OF TOTAL SALE VALUE
01	31.3%
02	37.2%
03	31.5%

4. If no cutting takes place, the 10% down payment will not be refunded.
5. Operations on the contract issued will terminate on 06/30/2026.

SALE STATISTICS

Volumes were calculated in cubic feet using the Michigan taper model. Cubic foot volume includes all wood inside bark for the product indicated. For display purposes, cubic feet were converted to cords and MBF using a simple conversion factor, e.g. 79 cubic feet per cord and 185 cubic feet per MBF. The cubic foot volumes are precise; the cords and MBF volumes are not. Cubic foot volume cannot be directly converted to cords or boards with precision.

SALE VOLUMES

The total estimated sale volume may not equal the sum of the species/products due to the nature of statistical calculations associated with double sampling methodology.

VOLUME		STATISTICAL RANGE IN CORDS		
TOTAL CUBIC FEET	TOTAL CORDS	PERCENT ERROR	MINIMUM	MAXIMUM
162,330	2,055	18.00%	1,685	2,425

VDU VOLUMES

A VDU is a Volume Determination Unit. Volumes and their associated statistics are calculated at the VDU level and summarized to the sale level. There is often a one to one relationship between a VDU and a Payment Unit, but not always, depending on the cruise design. Refer to the VDU TO PAYMENT UNIT table.

VDU	VOLUME		PERCENT ERROR	RANGE IN CORDS	
	TOTAL CUBIC FEET	TOTAL CORDS		MINIMUM	MAXIMUM
56	162,330	2,055	18.00%	1,685	2,425
TOTAL:	162,330	2,055		1,685	2,425

VDU TO PAYMENT UNIT

When a VDU is associated with more than one Payment Unit (PU), the VDU volumes are assigned to the PU based on acres of the VDU within the PU.

VDU	VDU ACRES	PU	PU ACRES
56	38.8	1	12.1
		2	14.5
		3	12.2
TOTAL:	38.8		38.8

DESCRIPTION OF TIMBER BY PAYMENT UNIT (PU)

PU	MARKET GROUP	PRODUCT	QUANTITY	UNIT	ACRES	ADVERTISE PRICE
1	Basswood	Sawtimber	2.8	MBF	12.1	\$25,046.25
	Sugar Maple		22.4	MBF		
	Basswood	Pulpwood	16	Cords		
	Mixed Aspen		457	Cords		
	<i>B. T. Aspen</i>		278	<i>Cords</i>		
	<i>Quaking Aspen</i>		179	<i>Cords</i>		
	Mixed Hardwood		123	Cords		
	<i>Beech</i>	<i>Sawtimber</i>	0.8	<i>MBF</i>		
	<i>Paper Birch</i>		1.0	<i>MBF</i>		
	<i>Beech</i>	<i>Pulpwood</i>	13	<i>Cords</i>		
	<i>Ironwood</i>		7	<i>Cords</i>		
	<i>Paper Birch</i>		1	<i>Cords</i>		
	<i>Sugar Maple</i>		98	<i>Cords</i>		
	2	Basswood	Sawtimber	3.4		
Sugar Maple			26.8	MBF		
Basswood		Pulpwood	18	Cords		
Mixed Aspen			546	Cords		
<i>B. T. Aspen</i>			332	<i>Cords</i>		
<i>Quaking Aspen</i>			214	<i>Cords</i>		
Mixed Hardwood			146	Cords		
<i>Beech</i>		<i>Sawtimber</i>	0.9	<i>MBF</i>		
<i>Paper Birch</i>			1.2	<i>MBF</i>		
<i>Beech</i>		<i>Pulpwood</i>	16	<i>Cords</i>		
<i>Ironwood</i>			7	<i>Cords</i>		
<i>Paper Birch</i>			2	<i>Cords</i>		
<i>Sugar Maple</i>			117	<i>Cords</i>		
3		Basswood	Sawtimber	2.9	MBF	12.2
	Sugar Maple		22.5	MBF		
	Basswood	Pulpwood	16	Cords		
	Mixed Aspen		460	Cords		
	<i>B. T. Aspen</i>		280	<i>Cords</i>		
	<i>Quaking Aspen</i>		180	<i>Cords</i>		
	Mixed Hardwood		125	Cords		
	<i>Beech</i>	<i>Sawtimber</i>	0.8	<i>MBF</i>		
	<i>Paper Birch</i>		1.0	<i>MBF</i>		
	<i>Beech</i>	<i>Pulpwood</i>	14	<i>Cords</i>		
	<i>Ironwood</i>		7	<i>Cords</i>		
	<i>Paper Birch</i>		1	<i>Cords</i>		
	<i>Sugar Maple</i>		99	<i>Cords</i>		
	TOTAL:			80.8	MBF	
TOTAL:			1,907	Cords		

Sale Specific Conditions & Requirements

Sale Name: Swiss Cheese Aspen

Sale Number: 54-025-23 Seq#: 1

1 - Sale Area

1.2 - Boundaries

1.2.1 - Painted boundaries (9/19)

The sale boundary and Payment Unit boundaries are marked and identified by blue, red and yellow paint. Exterior sale boundary lines against private property are marked with blue paint. Exterior sale boundary lines against state are marked with red paint. Interior Payment Unit boundaries are marked with yellow paint. Retention patches are marked with Red X's; no harvesting activities may occur within these areas. The painted boundary line trees are not Included Timber and are to be protected. Yellow painted trees designating an interior Payment Unit boundary are only to be cut when all surrounding Payment Units have been paid. Johnsons Pond Rd is unpainted and designated as the payment unit line separating Payment Unit 2 from Payment Units 1 & 3

2 - Timber Specifications

2.1 - Included Timber

2.1.1 - Clearcut unit(s) with unmerchantable trees (6/14)

Within Payment Unit(s) 1, 2, & 3, cut all trees that are two (2) inches or more at DBH.

3 - Payments

3.3 - Pre-measured Sales

3.3.4 - Dividing payment units (7/14)

Payment Unit(s) may be divided at the request of the Purchaser and upon approval of the Unit Manager. Dividing Payment Units is a contract modification which requires a Timber Sale Contract Amendment. There will be only one division per Payment Unit.

4 - Transportation

4.1 - Construction

4.1.3 - Slash and earthen piles (8/04)

Piles or windrows of earth along roads and landings that have been widened or constructed shall be leveled. Slash from road maintenance or construction, including stumps, shall be dispersed throughout the sale, chipped, utilized or otherwise removed from the sale.

4.1.6 - Road construction (1/09)

Construction of new roads or improvements of existing roads shall be done in such a way as to minimize the environmental and visual impacts. Merchantable trees shall be cut and utilized unless otherwise directed. Non-merchantable trees shall be severed and laid flat on the ground. Slash shall be scattered, and not left in windrows and kept a minimum of 10 feet back from the road edge OR be chipped, utilized or otherwise removed from the sale. Stumps shall be set upright, not left on edge, and be moved at least 10 feet away from the road edge. Disturbed soil shall be feathered into the woods and not left in berms or windrows.

4.1.7 - Road closure (10/11)

All new roads built into the sale must be blocked to vehicle traffic upon completion of the sale. Overgrown roads that are reopened shall be considered new roads. In general, this will require constructing a four (4') foot high berm of stumps and logs covered with earth. Stumps and brush must be placed along the remainder of the trail. These roads must be rendered impassable to cars and trucks. All stumps from road building and landing construction must be reserved to block any newly constructed roads upon completion of the sale. These stumps must be scattered along the road system to prohibit vehicular movement. Temporary berms may be required if no sale activity occurs for 30 or more consecutive days. Contact the sale administrator for specific details of design and placement.

4.1.11 - Permits (2/12)

The Purchaser will secure any necessary permits that may be required.

5 - Operations

5.1 - Notification

5.1.1 - Pre-sale conference (10/16)

A pre-sale conference on site between the Purchaser and sale administrator is required prior to beginning any operations to determine landing and road locations. The Unit Manager or his/her representative must be contacted at least 5 days in advance to schedule the conference.

5.1.3 - Well heads and natural gas pipelines (11/15)

The Purchaser is responsible for contacting the gas or pipeline company 14 days prior to operating equipment in the vicinity of well heads or natural gas pipelines.

5.1.4 - Post-sale conference (10/16)

A post-sale conference on site between the Purchaser and sale administrator is required 5 days prior to the completion of active logging operations to determine clean-up and repair of landings, road edges, and the fulfillment of other contract specifications.

5.2 - Conduct of Operations

5.2.1 - Slash

5.2.1.8 - Slash height (12/08)

No slash or tree tops may exceed 36 inches in height. Slash must be scattered and not windrowed.

5.2.2 - Hazard Trees/Snags

5.2.2.1 - Den trees (10/16)

Obvious hollow and/or den trees shall be protected and left standing unless they are a safety hazard.

5.2.3 - Operating Restrictions

5.2.3.5 - Oak wilt restriction (1/18)

Within Payment Unit 3, unless changed by written agreement, cutting, skidding, hauling within the sale and brushing of access roads to the sale are not permitted during the period of April 15 to July 15. Operations may be allowed if specific steps are taken to prevent damaging uncut oak during the high risk period. Those steps may include completing all road brushing before April 15th and clearing a tree-length buffer along uncut oak cover before April 15th. This is necessary to reduce the spread of oak wilt. For more information, contact the Unit Manager or his/her representative.

5.2.4 - Dead and Down Creation

5.2.4.2 - Dead and down creation, hare and grouse (1/14)

To improve habitat for snowshoe hare, grouse, and other species, the Purchaser is to leave two 14 inch diameter or larger log size pieces on the ground for every two acres. They should be scattered throughout the sale or positioned per the sale administrators instructions. If possible, the logs or trees should be felled so they overlap and with the root ball still attached. Note these pieces should have a minimum length of twenty feet. They can be of any tree species and can be an un-merchantable piece of wood or a full tree.

5.2.32 - Decking/landing restoration (9/13)

All decking and landing areas must have the surface area restored to a condition equal to or better than before. This is to ensure the proper regeneration of the stand. Wood debris, chips and "cookies" from trimmings must be removed or scattered away from landing and loading areas and may not be windrowed on the edge.

5.2.38 - No decking against live trees (2/04)

Cut products may not be decked against unmarked or designated leave trees.

5.4 - Soil Protection

5.4.4 - Slope protection (9/19)

Skid trails and roads on slopes shall be water barred with slash and stumps as soon as use is complete to prevent erosion.

5.4.5 - Soil caution (11/04)

Soft ground present within portions of Payment Unit 1 and 3. Utilize caution when operating in these areas. General Rutting spec applies.

5.8 - Protection of Endangered Species

5.8.5 - Protection of raptor nests (3/13)

All trees with raptor nests will be protected if found during harvesting operations. Notification will be made to the Unit Manager or his/her representative who will notify the Wildlife Biologist so an on-site evaluation and recommendation can be made, if necessary.

6 - Safety and Fire Prevention

6.2 - Signing

6.2.1 - Road posting (10/20)

The Purchaser is responsible for posting and maintaining caution signs on Johnsons Pond Rd prior to beginning operations. The road must be posted at appropriate distances from the sale area to warn of logging activity and truck traffic. Signs must be removed when harvest operations are suspended or completed. The Purchaser will provide these signs.



TIMBER SALE MAP

This information provided by authority of Part 525, 1994 PA 451, as amended.

Forest Management Unit Atlanta Management Unit		County Montmorency	Mapped By T. Kubitskey		Date 7/26/2023	Page 1 of 1	
		Cruised By T. Kubitskey, J. Smolinski		Scale 1:7,920			
Township 29N	Range 03E	Section(s) and Subdivision(s) Sec 33 SE1/4					

Cover Type				Density			
A = Aspen	H = Hemlock	N = Marsh	U = Upland Brush	0 = Non Stocked	5 = Pole Timber Medium		
B = Paper Birch	J = Jack Pine	O = Oak	UM = Upland Mixed	1 = Seedling Sapling Poor	6 = Pole Timber Well		
C = Cedar	L = Lowland Brush	P = Lowland Poplar	V = Bog or Marsh	2 = Seedling Sapling Medium	7 = Saw Timber Poor		
D = Treed Bog	LM = Lowland Mixed	Q = Mixed Swamp Conifer	W = White Pine	3 = Seedling Sapling Well	8 = Saw Timber Medium		
E = Swamp Hdwoods	M = Mpl, Bch, Brch	R = Red Pine	X = Non Stocked	4 = Pole Timber Poor	9 = Saw Timber Well		
F = Spruce Fir	MC = Mixed Conifer	S = Black Spruce	Z = Water				
G = Grass	MD = Mixed Deciduous	T = Tamarack					

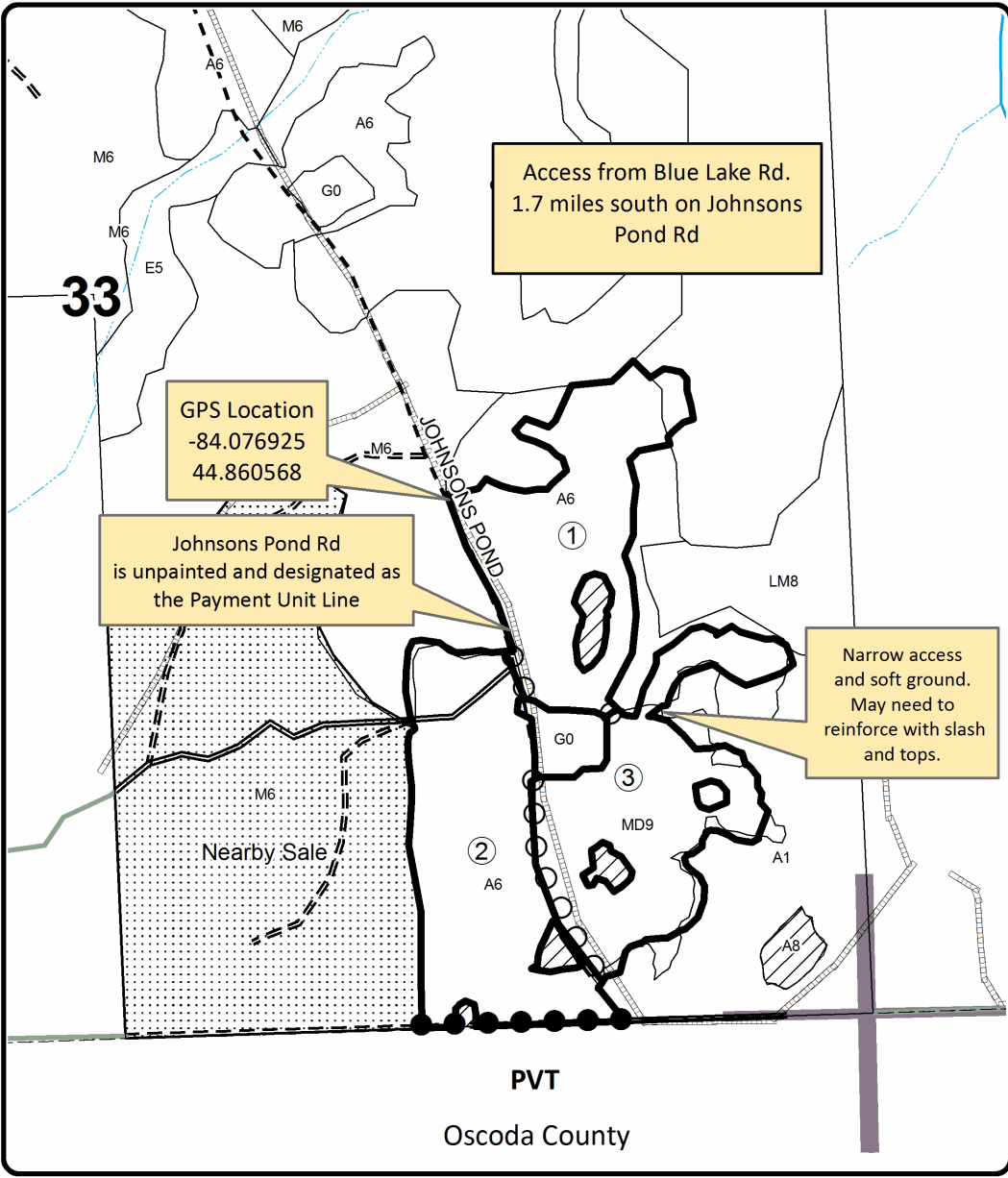
PU	Acres
1	12.1
2	14.5
3	12.2



Swiss Cheese Aspen

Compartment 18

38.8 Acres

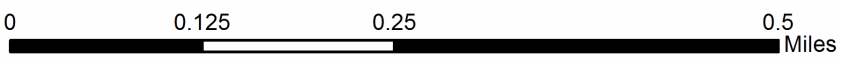
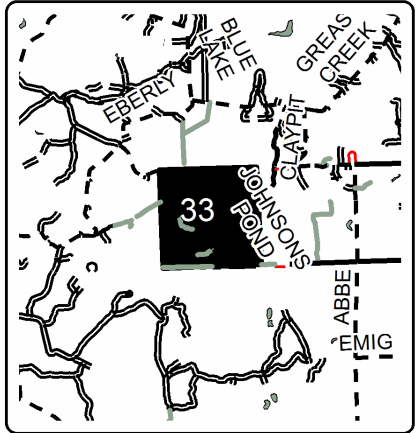


Legend

- Against State (Red)
- Payment Unit (Yellow)
- Private Line (Blue)
- Retention Area (Red X's)
- Nearby Timber Sales
- Stand Boundaries
- Secondary Forest Road
- Forest Access Route
- Gravel Road
- Private
- Intermittent Stream
- Perennial River
- Payment Unit
- PVT Private Property
- Section Corners

Locator Map

1:125,000



Forsaken Pine (54-013-23)
T33N, R02E, SEC. 27; Presque Isle COUNTY

In response to the notice of sale to be held 10:00 a.m. (local time) on April 16, 2024, I am hereby submitting my sealed bid (firm offer) for the following forest products to be cut. Bids for individual species must be at or above the advertised price. All non-responsive bid forms may be rejected.

<u>PRODUCTS & SPECIES</u>	<u>ESTIMATED VOLUME*</u>	<u>ADVERTISED PRICE</u>	<u>BID PRICE/UNIT</u>
Sawtimber			
Red Pine	40.3 MBF	\$ 140.00/MBF	\$ _____
Pulpwood			
Jack Pine	28 Cords	\$ 11.80/Cord	\$ _____
Northern Pin Oak	27 Cords	\$ 30.90/Cord	\$ _____
Red Pine	580 Cords	\$ 40.45/Cord	\$ _____

*The volumes are statistically estimated within plus (+) or minus (-) 16.60 percent at 95% confidence level. These estimated volumes are final and not subject to adjustment. Prospective bidders are urged to examine this timber and to make their own estimates of quantity and quality.

I understand that any or all bids may be rejected. All bids must be signed and all bid items must be bid or the bid form may be rejected. I also understand that consideration and awarding a contract will be based upon my past performance and ability to complete the contract based upon equipment and staffing subject to my control.

FEDERAL ID: _____ - _____ or SOCIAL SECURITY NUMBER: _____ - _____ - _____

Company or individual bidding: _____

Company representative's name: _____

Address: _____

City: _____ State: _____ Zip: _____

IF AVAILABLE, PLEASE PLACE THE PERSONALIZED LABEL FROM YOUR PROSPECTUS IN THE ABOVE BOX.

Individual or company representative's signature: _____ Date: _____

Phone number : _____ Email (optional): _____

THE WINNING BIDDER MUST COMPLETE THE VERIFICATION OF WORKER'S DISABILITY COMPENSATION ACT COMPLIANCE (ON REVERSE SIDE IF DOUBLE SIDED) WITHIN 21 DAYS OF SALE AWARD DATE



FOR DEPARTMENT USE ONLY	
Sale Number (XX - XXX - XX - XX)	
Forest Management Unit:	

TIMBER SALE VERIFICATION OF WORKER'S DISABILITY COMPENSATION ACT COMPLIANCE

As required by Act 317, P.A. 1969 (Worker's Compensation) and
Part 5 of Act 451 of 1994, as amended.

VERIFICATION OF WORKER'S DISABILITY COMPENSATION ACT COMPLIANCE

- This verification must be completed and submitted within 21 days of contract award and prior to the issuance of the timber sale contract.
- In addition, if boxes 2B or 2C are checked, then Notice of Exclusion or Certificate of Insurance must be submitted within twenty-one (21) days of the contract award and prior to the issuance of the timber sale contract.
- All information must be typed or printed except for written signatures.

Please Check Appropriate Categories:

1. My business is organized as (you **must** check one of the boxes below):
 - A. Sole Proprietorship (individual)
 - B. Partnership
 - C. Corporation
2. You **must** check one of the boxes below:
 - A. I certify my business is a sole proprietorship and it has no employees but the sole proprietor. I am not subject to the Worker's Compensation Laws.
 - B. I certify my business has satisfied its obligation to the Worker's Compensation Act through the use of an approved Notice of Exclusion (BWC-337, Rev. 5/96). I will provide a copy of the Notice of Exclusion within 21 days of the contract award. (For questions or a copy of the BWC-337, please call the Worker's Compensation Bureau at 517-322-1195).
 - C. I certify my business has a Worker's Compensation Policy. I will provide an original Certificate of Insurance within twenty-one (21) days of the contract award.
3. If you have checked item 2(A) or 2(B), you **must** indicate the number of **both** full-time and part-time employees, other than yourself, including family members and active partners (if none, you must enter "0").

_____ Full-time Employees

_____ Part-time Employees

Name of Business		Federal ID (or) Social Security No.	
Address		Telephone ()	
City	State	ZIP	

I hereby certify that the above information is true and correct. I agree to notify the Michigan DNR of any changes that occur in factors affecting my coverage during any of my present and future operations.

Signature of Owner or Authorized Representative

Title

Date

Please complete the "SEALED BID" information on the next page

Hubert Rd South Mix (54-003-23)
T32N, R04E, SEC. 18; T32N, R04E, SEC. 7; Montmorency COUNTY

In response to the notice of sale to be held 10:00 a.m. (local time) on April 16, 2024, I am hereby submitting my sealed bid (firm offer) for the following forest products to be cut. Bids for individual species must be at or above the advertised price. All non-responsive bid forms may be rejected.

<u>PRODUCTS & SPECIES</u>	<u>ESTIMATED VOLUME*</u>	<u>ADVERTISED PRICE</u>	<u>BID PRICE/UNIT</u>
Sawtimber			
Basswood	14.8 MBF	\$ 67.00/MBF	\$ _____
Black/Red (Hybrid) Oak	12.8 MBF	\$ 125.00/MBF	\$ _____
Mixed Aspen	257.8 MBF	\$ 113.00/MBF	\$ _____
N. White Cedar	12.7 MBF	\$ 40.00/MBF	\$ _____
Paper Birch	15.2 MBF	\$ 42.00/MBF	\$ _____
Red Maple	57.5 MBF	\$ 79.00/MBF	\$ _____
Red Oak	193.2 MBF	\$ 190.00/MBF	\$ _____
Red Pine	20.1 MBF	\$ 140.00/MBF	\$ _____
Sugar Maple	37.8 MBF	\$ 520.00/MBF	\$ _____
White Pine	16.9 MBF	\$ 128.00/MBF	\$ _____
Pulpwood			
Balsam Fir	161 Cords	\$ 20.55/Cord	\$ _____
Basswood	88 Cords	\$ 16.90/Cord	\$ _____
Jack Pine	33 Cords	\$ 11.80/Cord	\$ _____
Mixed Aspen	1,984 Cords	\$ 25.60/Cord	\$ _____
Mixed Hardwood	1,276 Cords	\$ 24.85/Cord	\$ _____
Mixed Oak	79 Cords	\$ 30.90/Cord	\$ _____
Mixed Spruce	17 Cords	\$ 9.80/Cord	\$ _____
N. White Cedar	115 Cords	\$ 9.75/Cord	\$ _____
Paper Birch	88 Cords	\$ 16.45/Cord	\$ _____
Red Oak	516 Cords	\$ 30.90/Cord	\$ _____
Red Pine	18 Cords	\$ 40.45/Cord	\$ _____
White Pine	58 Cords	\$ 28.05/Cord	\$ _____

*The volumes are statistically estimated within plus (+) or minus (-) 8.03 percent at 95% confidence level. These estimated volumes are final and not subject to adjustment. Prospective bidders are urged to examine this timber and to make their own estimates of quantity and quality.

I understand that any or all bids may be rejected. All bids must be signed and all bid items must be bid or the bid form may be rejected. I also understand that consideration and awarding a contract will be based upon my past performance and ability to complete the contract based upon equipment and staffing subject to my control.

FEDERAL ID: ____ - ____ - ____ or SOCIAL SECURITY NUMBER: ____ - ____ - ____

Company or individual bidding: _____

Company representative's name: _____

Address: _____

City: _____ State: _____ Zip: _____

IF AVAILABLE, PLEASE PLACE THE PERSONALIZED LABEL FROM YOUR PROSPECTUS IN THE ABOVE BOX.

Individual or company representative's signature: _____ Date: _____

Phone number : _____ Email (optional): _____

THE WINNING BIDDER MUST COMPLETE THE VERIFICATION OF WORKER'S DISABILITY COMPENSATION ACT COMPLIANCE (ON REVERSE SIDE IF DOUBLE SIDED) WITHIN 21 DAYS OF SALE AWARD DATE



FOR DEPARTMENT USE ONLY	
Sale Number (XX - XXX - XX - XX)	
Forest Management Unit:	

TIMBER SALE VERIFICATION OF WORKER'S DISABILITY COMPENSATION ACT COMPLIANCE

As required by Act 317, P.A. 1969 (Worker's Compensation) and
Part 5 of Act 451 of 1994, as amended.

VERIFICATION OF WORKER'S DISABILITY COMPENSATION ACT COMPLIANCE

- This verification must be completed and submitted within 21 days of contract award and prior to the issuance of the timber sale contract.
- In addition, if boxes 2B or 2C are checked, then Notice of Exclusion or Certificate of Insurance must be submitted within twenty-one (21) days of the contract award and prior to the issuance of the timber sale contract.
- All information must be typed or printed except for written signatures.

Please Check Appropriate Categories:

1. My business is organized as (you **must** check one of the boxes below):
 - A. Sole Proprietorship (individual)
 - B. Partnership
 - C. Corporation
2. You **must** check one of the boxes below:
 - A. I certify my business is a sole proprietorship and it has no employees but the sole proprietor. I am not subject to the Worker's Compensation Laws.
 - B. I certify my business has satisfied its obligation to the Worker's Compensation Act through the use of an approved Notice of Exclusion (BWC-337, Rev. 5/96). I will provide a copy of the Notice of Exclusion within 21 days of the contract award. (For questions or a copy of the BWC-337, please call the Worker's Compensation Bureau at 517-322-1195).
 - C. I certify my business has a Worker's Compensation Policy. I will provide an original Certificate of Insurance within twenty-one (21) days of the contract award.
3. If you have checked item 2(A) or 2(B), you **must** indicate the number of **both** full-time and part-time employees, other than yourself, including family members and active partners (if none, you must enter "0").

_____ Full-time Employees

_____ Part-time Employees

Name of Business		Federal ID (or) Social Security No.	
Address		Telephone ()	
City	State	ZIP	

I hereby certify that the above information is true and correct. I agree to notify the Michigan DNR of any changes that occur in factors affecting my coverage during any of my present and future operations.

Signature of Owner or Authorized Representative

Title

Date

Please complete the "SEALED BID" information on the next page

Swiss Cheese Aspen (54-025-23)
T29N, R03E, SEC. 33; Montmorency COUNTY

In response to the notice of sale to be held 10:00 a.m. (local time) on April 16, 2024, I am hereby submitting my sealed bid (firm offer) for the following forest products to be cut. Bids for individual species must be at or above the advertised price. All non-responsive bid forms may be rejected.

<u>PRODUCTS & SPECIES</u>	<u>ESTIMATED VOLUME*</u>	<u>ADVERTISED PRICE</u>	<u>BID PRICE/UNIT</u>
Sawtimber			
Basswood	9.1 MBF	\$ 63.00/MBF	\$ _____
Sugar Maple	71.7 MBF	\$ 485.00/MBF	\$ _____
Pulpwood			
Basswood	50 Cords	\$ 15.80/Cord	\$ _____
Mixed Aspen	1,463 Cords	\$ 23.85/Cord	\$ _____
Mixed Hardwood	393 Cords	\$ 23.20/Cord	\$ _____

*The volumes are statistically estimated within plus (+) or minus (-) 18.00 percent at 95% confidence level. These estimated volumes are final and not subject to adjustment. Prospective bidders are urged to examine this timber and to make their own estimates of quantity and quality.

I understand that any or all bids may be rejected. All bids must be signed and all bid items must be bid or the bid form may be rejected. I also understand that consideration and awarding a contract will be based upon my past performance and ability to complete the contract based upon equipment and staffing subject to my control.

FEDERAL ID: _____ - _____ or SOCIAL SECURITY NUMBER: _____ - _____ - _____

Company or individual bidding: _____

Company representative's name: _____

Address: _____

City: _____ State: _____ Zip: _____

IF AVAILABLE, PLEASE PLACE THE PERSONALIZED LABEL FROM YOUR PROSPECTUS IN THE ABOVE BOX.

Individual or company representative's signature: _____ Date: _____

Phone number : _____ Email (optional): _____

THE WINNING BIDDER MUST COMPLETE THE VERIFICATION OF WORKER'S DISABILITY COMPENSATION ACT COMPLIANCE (ON REVERSE SIDE IF DOUBLE SIDED) WITHIN 21 DAYS OF SALE AWARD DATE



FOR DEPARTMENT USE ONLY	
Sale Number (XX - XXX - XX - XX)	
Forest Management Unit:	

TIMBER SALE VERIFICATION OF WORKER'S DISABILITY COMPENSATION ACT COMPLIANCE

As required by Act 317, P.A. 1969 (Worker's Compensation) and
Part 5 of Act 451 of 1994, as amended.

VERIFICATION OF WORKER'S DISABILITY COMPENSATION ACT COMPLIANCE

- This verification must be completed and submitted within 21 days of contract award and prior to the issuance of the timber sale contract.
- In addition, if boxes 2B or 2C are checked, then Notice of Exclusion or Certificate of Insurance must be submitted within twenty-one (21) days of the contract award and prior to the issuance of the timber sale contract.
- All information must be typed or printed except for written signatures.

Please Check Appropriate Categories:

1. My business is organized as (you **must** check one of the boxes below):
 - A. Sole Proprietorship (individual)
 - B. Partnership
 - C. Corporation
2. You **must** check one of the boxes below:
 - A. I certify my business is a sole proprietorship and it has no employees but the sole proprietor. I am not subject to the Worker's Compensation Laws.
 - B. I certify my business has satisfied its obligation to the Worker's Compensation Act through the use of an approved Notice of Exclusion (BWC-337, Rev. 5/96). I will provide a copy of the Notice of Exclusion within 21 days of the contract award. (For questions or a copy of the BWC-337, please call the Worker's Compensation Bureau at 517-322-1195).
 - C. I certify my business has a Worker's Compensation Policy. I will provide an original Certificate of Insurance within twenty-one (21) days of the contract award.
3. If you have checked item 2(A) or 2(B), you **must** indicate the number of **both** full-time and part-time employees, other than yourself, including family members and active partners (if none, you must enter "0").

_____ Full-time Employees

_____ Part-time Employees

Name of Business		Federal ID (or) Social Security No.	
Address		Telephone ()	
City	State	ZIP	

I hereby certify that the above information is true and correct. I agree to notify the Michigan DNR of any changes that occur in factors affecting my coverage during any of my present and future operations.

Signature of Owner or Authorized Representative

Title

Date

Please complete the "SEALED BID" information on the next page

Spring Lk and Elk Rd Aspen Oak (54-002-23)
T33N, R02E, SEC. 23; T33N, R02E, SEC. 25; T33N, R02E, SEC. 26; T33N, R02E,

In response to the notice of sale to be held 10:00 a.m. (local time) on April 16, 2024, I am hereby submitting my sealed bid (firm offer) for the following forest products to be cut. Bids for individual species must be at or above the advertised price. All non-responsive bid forms may be rejected.

<u>PRODUCTS & SPECIES</u>	<u>ESTIMATED VOLUME*</u>	<u>ADVERTISED PRICE</u>	<u>BID PRICE/UNIT</u>
Sawtimber			
Black/Red (Hybrid) Oak	56.7 MBF	\$ 125.00/MBF	\$ _____
Jack Pine	16.6 MBF	\$ 32.00/MBF	\$ _____
Mixed Aspen	31.8 MBF	\$ 113.00/MBF	\$ _____
Red Oak	490.0 MBF	\$ 190.00/MBF	\$ _____
White Oak	61.4 MBF	\$ 60.00/MBF	\$ _____
Pulpwood			
Balsam Fir	3 Cords	\$ 20.55/Cord	\$ _____
Jack Pine	49 Cords	\$ 11.80/Cord	\$ _____
Mixed Aspen	468 Cords	\$ 25.60/Cord	\$ _____
Mixed Oak	767 Cords	\$ 30.90/Cord	\$ _____
Red Maple	48 Cords	\$ 24.85/Cord	\$ _____
Red Oak	689 Cords	\$ 30.90/Cord	\$ _____
Red Pine	14 Cords	\$ 40.45/Cord	\$ _____
White Pine	14 Cords	\$ 28.05/Cord	\$ _____

*The volumes are statistically estimated within plus (+) or minus (-) 10.29 percent at 95% confidence level. These estimated volumes are final and not subject to adjustment. Prospective bidders are urged to examine this timber and to make their own estimates of quantity and quality.

I understand that any or all bids may be rejected. All bids must be signed and all bid items must be bid or the bid form may be rejected. I also understand that consideration and awarding a contract will be based upon my past performance and ability to complete the contract based upon equipment and staffing subject to my control.

FEDERAL ID: _____ or SOCIAL SECURITY NUMBER: _____

Company or individual bidding: _____

Company representative's name: _____

Address: _____

City: _____ State: _____ Zip: _____

IF AVAILABLE, PLEASE PLACE THE PERSONALIZED LABEL FROM YOUR PROSPECTUS IN THE ABOVE BOX.

Individual or company representative's signature: _____ Date: _____

Phone number : _____ Email (optional): _____

THE WINNING BIDDER MUST COMPLETE THE VERIFICATION OF WORKER'S DISABILITY COMPENSATION ACT COMPLIANCE (ON REVERSE SIDE IF DOUBLE SIDED) WITHIN 21 DAYS OF SALE AWARD DATE



FOR DEPARTMENT USE ONLY	
Sale Number (XX - XXX - XX - XX)	
Forest Management Unit:	

TIMBER SALE VERIFICATION OF WORKER'S DISABILITY COMPENSATION ACT COMPLIANCE

As required by Act 317, P.A. 1969 (Worker's Compensation) and
Part 5 of Act 451 of 1994, as amended.

VERIFICATION OF WORKER'S DISABILITY COMPENSATION ACT COMPLIANCE

- This verification must be completed and submitted within 21 days of contract award and prior to the issuance of the timber sale contract.
- In addition, if boxes 2B or 2C are checked, then Notice of Exclusion or Certificate of Insurance must be submitted within twenty-one (21) days of the contract award and prior to the issuance of the timber sale contract.
- All information must be typed or printed except for written signatures.

Please Check Appropriate Categories:

1. My business is organized as (you **must** check one of the boxes below):
 - A. Sole Proprietorship (individual)
 - B. Partnership
 - C. Corporation
2. You **must** check one of the boxes below:
 - A. I certify my business is a sole proprietorship and it has no employees but the sole proprietor. I am not subject to the Worker's Compensation Laws.
 - B. I certify my business has satisfied its obligation to the Worker's Compensation Act through the use of an approved Notice of Exclusion (BWC-337, Rev. 5/96). I will provide a copy of the Notice of Exclusion within 21 days of the contract award. (For questions or a copy of the BWC-337, please call the Worker's Compensation Bureau at 517-322-1195).
 - C. I certify my business has a Worker's Compensation Policy. I will provide an original Certificate of Insurance within twenty-one (21) days of the contract award.
3. If you have checked item 2(A) or 2(B), you **must** indicate the number of **both** full-time and part-time employees, other than yourself, including family members and active partners (if none, you must enter "0").

_____ Full-time Employees

_____ Part-time Employees

Name of Business		Federal ID (or) Social Security No.	
Address		Telephone ()	
City	State	ZIP	

I hereby certify that the above information is true and correct. I agree to notify the Michigan DNR of any changes that occur in factors affecting my coverage during any of my present and future operations.

Signature of Owner or Authorized Representative

Title

Date

Please complete the "SEALED BID" information on the next page