



**DEPARTMENT OF NATURAL RESOURCES  
STATE OF MICHIGAN  
TIMBER SALE PROSPECTUS #7475**

SCHEDULED SALE DATE AND TIME: **3:00 p.m. (local time) on September 18, 2024.**

LOCATION: **BALDWIN OFFICE, 2468 W 24TH STREET, BALDWIN, MI 49304.**

PROSPECTUS NOTE: The bidder is advised to inspect the sale area and review the location, estimated volumes, operating costs and contract terms of proposed sales. Please be aware that some landowners may request 60 days or more notice for access across their land.

Notice is hereby given that bids will be received by the Unit Manager, CADILLAC MANAGEMENT UNIT, for certain timber on the following described lands:

Down Range Aspen (63-003-24) / T18N, R12W, SEC. 10, SENW,NENE,S1/2NE,NESW.

T18N, R12W, SEC. 11, SWNW.

T18N, R12W, SEC. 3 , NWNE,S1/2NE,N1/2SE.

Lake County, Advertised Price \$170,780.50, 91.3 Acres, Aspen, Red Oak.

SALE NOTE: A recreation site such as a trail, pathway, or campground is within the sale area or the vicinity. Certain restrictions/specifications may be applicable including time restrictions.

GNA2 Scorpio Mix (63-811-24) / T16N, R15W, SEC. 30, SWNW.

T16N, R16W, SEC. 26, SENW,S1/2NE,E1/2SW,W1/2SE.

Oceana County, Advertised Price \$147,984.45, 88.9 Acres, Aspen, Hardwood, Red Pine.

SALE NOTE: All units of volume listed for this sale were estimated using the Inventory Manager computer program and the new Michigan taper model. This is a Good Neighbor Authority (GNA) timber sale on national forest land. This timber sale was set-up and is being advertised by the Michigan DNR for the US Forest Service. The contract will be awarded and administered by the Michigan DNR. Note the additional Sale Specific Conditions & Requirements containing the acronym 'GNA'.

Access may be through other public land.

GNA2 Cobra Mix (63-814-24) / T16N, R16W, SEC. 23, E1/2NE,E1/2SE.

T16N, R16W, SEC. 24, NW,SWNE,N1/2SW,SWSW,W1/2SE.

T16N, R16W, SEC. 25, NWNW.

Oceana County, Advertised Price \$270,971.90, 207.8 Acres, Red Pine, Aspen.

SALE NOTE: All units of volume listed for this sale were estimated using the Inventory Manager computer program and the new Michigan taper model. This is a Good Neighbor Authority (GNA) timber sale on national forest land. This timber sale was set-up and is being advertised by the Michigan DNR for the US Forest Service. The contract will be awarded and administered by the Michigan DNR. Note the additional Sale Specific Conditions & Requirements containing the acronym 'GNA'.

Access may be through other public land.

GNA2 156th Oak (63-815-24) / T16N, R15W, SEC. 7 , S1/2NW,N1/2SW.

T16N, R16W, SEC. 12, NENE,S1/2NE,SE.

T16N, R16W, SEC. 13, NWNE,S1/2NE.

Oceana County, Advertised Price \$125,332.10, 154.5 Acres, Hardwood, Red Oak.

SALE NOTE: All units of volume listed for this sale were estimated using the Inventory Manager computer program and the new Michigan taper model. This is a Good Neighbor Authority (GNA) timber sale on national forest land. This timber sale was set-up and is being advertised by the Michigan DNR for the US Forest Service. The contract will be awarded and administered by the Michigan DNR. Note the additional Sale Specific Conditions & Requirements containing the acronym 'GNA'.

Access may be through other public land.

## BID INSTRUCTIONS (VER. 10/10/2022):

### 1. Scheduled Bid Location, Date, and Time (2/11)

Bids must be received by the Unit Manager, BALDWIN OFFICE, 2468 W 24th Street, Baldwin, MI 49304, no later than 3:00 p.m. (local time) on September 18, 2024. For further information concerning this sale, contact David Flsher at 231-745-4651 extension 9064.

### 2. Bidder's Qualifications (10/22)

If all or part of a timber sale was prepared by a private contractor, the contractor and that contractor's company are not permitted to bid on the timber sale. A person must be 18 years of age or older to purchase timber. Permanent employees of the Department of Natural Resources or members of their immediate household may not bid. Former employees, in the permanent or seasonal class, may not bid until 3 months after the last day of active duty. Bids will not be accepted from individuals or companies appearing on the DNR/FRD No-Bid List. This list contains the names of purchasers who previously failed to execute a contract within 21-days or who have a history of poor performance.

### 3. Preparation of Sealed Bids (5/16)

Bid Forms may be completed online thru Michigan DNR Timber Sale Online Bidding (OLB) at [www.michigan.gov/timberbidding](http://www.michigan.gov/timberbidding) or by completing the hardcopy Bid Form found in the Timber Sale Prospectus. Hardcopy Bid Forms shall be manually signed in ink. Registration in OLB is considered your 'signature' for all bids submitted thru that system. Bid prices must be entered for each species and product in the Bid Price column for all material subject to bidding and all fill-in blanks must be completed. If erasures or other changes appear on the hardcopy Bid Form, each erasure or change must be initialed by the person signing the bid.

### 4. Submission of Sealed Bids (5/16)

Bid forms may be obtained from the Unit Manager or thru OLB. Bids may be submitted hardcopy or thru OLB. All hardcopy bids must be submitted on the bid form and in an envelope clearly identified as described in this section. NOTE: Only one bid form per bid envelope. Sealed bids must be submitted to the Unit office designated in the prospectus and must be submitted at or prior to the time established in the prospectus. The envelope should show on the outside (a) the sale name or number and (b) the date and time of bid opening, as shown in the prospectus. Bids received after the time specified in the sale prospectus are late bids and will be rejected.

It is possible for a bidder to submit multiple bids on a single sale. For example, a bid may be submitted hardcopy and a bid may be submitted thru OLB. Or, two bidders from the same company could both submit bids on the same sale. If this were to happen, the State would accept all bids received and award the contract accordingly. All bidding and contractual requirements would apply to all bids received.

### 5. Public Opening of Sealed Bids (7/16)

If conditions permit, the sealed bids will be publicly opened and posted at the time and place set in the prospectus.

If a bidder, present at a bid opening, has submitted bids on more than one sale, that bidder may withdraw their unopened bid envelopes or announce the withdrawal of their online bid after being declared the successful bidder on one sale.

### 6. Award of Contract (1/11)

Award of the contract will be made to the Bidder whose bid, conforming to the prospectus, is most advantageous to the State of Michigan on the basis of total value at rates bid for the estimated quantities. The State reserves the right to reject any bid or waive any minor irregularity in bids received. A written award mailed (or otherwise furnished) to the successful Bidder shall be deemed to result in a binding contract without further action by either party.

### 7. Down Payment (1/11)

The Bidder to whom award is made must make a down payment within 21 days of the sale award. The amount of the down payment will be calculated as shown in the Bond and Payment Schedule of this prospectus. Only cash may be used to meet this requirement.

### 8. Performance Security (1/11)

As guarantee of faithful performance, a cash bond, certificate of deposit, surety bond or irrevocable letter of credit (LOC) is required within 21 days of the sale award. The amount of the performance security is shown in the Bond and

Payment Schedule of this prospectus. If an LOC or surety is used, the coverage must extend for at least 6 months beyond the contract expiration.

#### 9. Worker's Compensation (10/22)

Purchaser shall obtain worker's compensation insurance to cover claims under Michigan's Worker's Disability Compensation Act of 1969 or similar employee benefit act of any other state applicable to an employee. Verification of Worker's Disability Compensation Act Compliance must be completed and submitted within 21 days of contract award and prior to the issuance of the timber sale contract. In addition, if applicable, Notice of Exclusion or Certificate of Insurance must also be submitted.

#### 10. Timber Sale Contract (10/22)

Additional conditions and requirements common to all timber sales are listed on the timber sale contract (R4031) and are available on line at [www.michigan.gov/timber](http://www.michigan.gov/timber). Contact the Unit Manager for additional information or a sample contract. Within 21 days of the date of the award letter, the bidder must sign the contract and provide the required down payment, performance security, and verification of worker's disability compensation. The down payment and performance security shall be in accordance with the provisions of the timber sale contract, in the sums stated in this prospectus. If these actions are not taken, then the Bidder, the Bidder's corporation, and the corporation's principals may not be permitted to bid on State timber sales for a period of 3 months after the first offense, 6 months after the second offense, and 1 year after the third offense. An offense will only be counted against the Bidder for 5 years. In addition, the Bidder certifies that if awarded this contract, the Bidder will complete the timber sale contract in accordance with its terms and any modifications thereof including requirements to purchase, cut, and remove the included timber by the expiration date.

Payment Unit values in the State Forest Timber Sale Contract are calculated based on the advertised value of the Payment Unit as a percentage of the total advertised value of the contract. The advertised value of each Payment Unit is given in the Description of Timber by Payment Unit table on the Timber Sale Information page. For example, if the value of Payment Unit 1 is advertised as \$1,500 and the total Timber Sale value is advertised as \$10,000, the contract price for Payment Unit 1 will be 15% of the total bid price ( $\$1,500/\$10,000 * 100$ ).

#### 11. Disclaimer of Estimates and Bidder's Warranty of Inspection (10/22)

Before submitting this bid, the Bidder is advised and cautioned to inspect the sale area, review the requirements of the sale contract, and take other steps as may be reasonably necessary to ascertain the location, estimated volumes, construction estimates, and operating costs of the proposed sale. Failure to do so will not relieve the Bidder from responsibility for completing the contract.

The Bidder warrants that this bid is submitted solely on the basis of the Bidder's examination and inspection of the quality and quantity of the timber offered for sale and the Bidder's opinion of the value thereof and the costs of recovery. No reliance should be placed on the State of Michigan's estimates of timber quality, quantity or costs of recovery. Bidder further acknowledges that the State of Michigan: (i) expressly disclaims any warranty of fitness of timber for any purpose; (ii) offers this timber as is without any warranty of quality (merchantability) or quantity and (iii) expressly disclaims any warranty as to the quantity or quality of timber sold.

#### 12. Certification and Chain-of-Custody (10/22)

Unless otherwise indicated in the contract under section 7 – Other Conditions of the Sale Specific Conditions & Requirements, the area encompassed by this timber sale is certified to the standards of the Forest Stewardship Council (FSC) - Certificate #SCS-FM/COC-00090N and the Sustainable Forestry Initiative (SFI) - Certificate # NSF-SFIS-5Y031-SF5. Forest products from this sale may be delivered to the mill as "FSC 100% and / or SFI certified" as long as the contractor hauling the forest products is chain-of-custody (COC) certified or covered under a COC certificate from the destination mill. The purchaser is responsible for maintaining COC after leaving the sale area.

#### 13. Good Neighbor Authority (GNA) Requirements (10/22)

If the name of this timber sales contains the acronym GNA, it is authorized by the Good Neighbor Authority (GNA) and covered by various agreements between the U.S. Forest Service and the State. The timber sale occurs on federal land and the following conditions apply:

GNA contracts on US Forest Service land will not be awarded to purchasers on the Federal list of excluded parties. The System for Award Management (SAM) will be checked for active excluded parties prior to award of contract. In

addition, the Bidder to whom award is made must complete an Assurance Regarding Felony Conviction or Tax Delinquent Status for Corporate Applicants (AD-3031).

14. Good Neighbor Authority (GNA) Requirements, con't (10/22)

Bidder certifies, by signing this bid form, that to the best of Bidder's knowledge that the following representations are accurate and complete.

- a. That the Bidder and its principals are not presently debarred, suspended, proposed for debarment, declared ineligible, or voluntary excluded from timber sales (covered transactions) by any Federal department or agency.
- b. That the Bidder and its principals have not within a 3-year period preceding this bid been convicted of or had a civil judgment rendered against them for commission of fraud or a criminal offense in connection with obtaining , attempting to obtain, or performing a public (Federal, State, or local) transaction or contract under a public transaction; violation of Federal or State antitrust statutes or commission of embezzlement, theft, forgery, bribery, falsification or destruction of records, making false statements, or receiving stolen property.
- c. That the Bidder and its principals are not presently indicted for or otherwise criminally or civilly charged by a governmental entity (Federal, State, or local) with commission of any of the offenses enumerated in paragraph b of this certification.
- d. That the Bidder and its principals have not within a 3-year period preceding this bid had one or more public transactions (Federal, State, or local) terminated for breach or default of a timber or forest product contract.

Bidders that cannot certify this requirement, in whole or in part, shall submit an explanation with their bid.

Scott Bowen  
Director



# TIMBER SALE INFORMATION

## Down Range Aspen (63-003-24)

T18N, R12W, SEC. 10; T18N, R12W, SEC. 11; T18N, R12W, SEC. 3.  
Lake County (Advertised Price \$170,780.50)

SALE NOTE: A recreation site such as a trail, pathway, or campground is within the sale area or the vicinity. Certain restrictions/specifications may be applicable including time restrictions.

A timber sale contract for this lump sum, sealed bid timber sale will be awarded to the responsible bidder offering the highest sealed bid price. All units of volume listed below were estimated using the Inventory Manager computer program and the new Michigan taper model. Bids must be at or above the following advertised price for each product and species:

<u>PRODUCTS &amp; SPECIES</u>	<u>ESTIMATED UNITS*</u>	<u>ADVERTISED PRICE</u>
<b>Sawtimber</b>		
B. T. Aspen	526.6 MBF	\$ 85.00 / MBF
Red Maple	33.3 MBF	\$ 84.00 / MBF
Red Oak	100.6 MBF	\$ 173.00 / MBF
Red Pine	1.9 MBF	\$ 99.00 / MBF
White Pine	3.0 MBF	\$ 71.00 / MBF
<b>Pulpwood</b>		
B. T. Aspen	3,119 Cords	\$ 24.40 / Cord
Black Cherry	45 Cords	\$ 20.10 / Cord
Red Maple	416 Cords	\$ 20.10 / Cord
Red Oak	553 Cords	\$ 33.45 / Cord
Red Pine	7 Cords	\$ 46.20 / Cord
White Oak	33 Cords	\$ 33.45 / Cord
White Pine	4 Cords	\$ 30.65 / Cord

\* The total volume is statistically estimated within plus (+) or minus (-) 13.39 percent. There are an estimated 5,736 cords on this timber sale, plus or minus 768 cords at the 95% confidence level. The estimated units are final and not subject to adjustment. Prospective bidders are urged to examine this timber and to make their own estimates of quantity and quality.

### **BOND AND PAYMENT SCHEDULE:**

1. A bond in the amount of \$8,539.00 to insure faithful performance of the conditions of the contract will be deposited by the successful bidder within 21 days of the sale award.
2. Cutting in any sale or unit without the required advance payment would be considered a trespass.
3. Total payment must be paid in advance or according to the following schedule :
  - (a) Ten percent (10%) of the sale value must be paid within 21 days of the sale award.
  - (b) The 10% down payment will be credited towards the first unit cut.
  - (c) Payment for each of the following units must be made before cutting begins in that unit:
 

PAYMENT UNIT NUMBER	PERCENT OF TOTAL SALE VALUE
01	52.4%
02	31.4%
03	16.2%
4. If no cutting takes place, the 10% down payment will not be refunded.
5. Operations on the contract issued will terminate on 09/30/2026.

### **SALE STATISTICS**

Volumes were calculated in cubic feet using the Michigan taper model. Cubic foot volume includes all wood inside bark for the product indicated. For display purposes, cubic feet were converted to cords and MBF using a simple conversion factor, e.g. 79 cubic feet per cord and 185 cubic feet per MBF. The cubic foot volumes are precise; the cords and MBF volumes are not. Cubic foot volume cannot be directly converted to cords or boards with precision.

### **SALE VOLUMES**

The total estimated sale volume may not equal the sum of the species/products due to the nature of statistical calculations associated with double sampling methodology.

VOLUME		STATISTICAL RANGE IN CORDS		
TOTAL CUBIC FEET	TOTAL CORDS	PERCENT ERROR	MINIMUM	MAXIMUM
453,150	5,736	13.39%	4,968	6,504

**VDU VOLUMES**

A VDU is a Volume Determination Unit. Volumes and their associated statistics are calculated at the VDU level and summarized to the sale level. There is often a one to one relationship between a VDU and a Payment Unit, but not always, depending on the cruise design. Refer to the VDU TO PAYMENT UNIT table.

VDU	VOLUME		PERCENT ERROR	RANGE IN CORDS	
	TOTAL CUBIC FEET	TOTAL CORDS		MINIMUM	MAXIMUM
185	230,255	2,915	18.27%	2,382	3,447
204	77,050	975	33.23%	651	1,299
243	145,845	1,846	25.47%	1,376	2,316
<b>TOTAL:</b>	<b>453,150</b>	<b>5,736</b>		<b>4,409</b>	<b>7,063</b>

**VDU TO PAYMENT UNIT**

When a VDU is associated with more than one Payment Unit (PU), the VDU volumes are assigned to the PU based on acres of the VDU within the PU.

VDU	VDU ACRES	PU	PU ACRES
185	44.7	1	44.7
204	13.4	3	13.4
243	33.2	2	33.2
<b>TOTAL:</b>	<b>91.3</b>		<b>91.3</b>



**DESCRIPTION OF TIMBER BY PAYMENT UNIT (PU)**

PU	MARKET GROUP	PRODUCT	QUANTITY	UNIT	ACRES	ADVERTISE PRICE
1	B. T. Aspen	Sawtimber	334.7	MBF	44.7	\$89,513.50
	Red Maple		20.2	MBF		
	Red Oak		66.1	MBF		
	<i>Red Oak</i>		66.1	<i>MBF</i>		
	B. T. Aspen	Pulpwood	1,284	Cords		
	Black Cherry		21	Cords		
	<i>Black Cherry</i>		2.4	<i>MBF</i>		
	<i>Black Cherry</i>		16	<i>Cords</i>		
	Red Maple		349	Cords		
	Red Oak		274	Cords		
	<i>Red Oak</i>		274	<i>Cords</i>		
	2	B. T. Aspen	Sawtimber	82.5		
Red Maple		13.1		MBF		
Red Oak		31.5		MBF		
<i>Red Oak</i>			31.5	<i>MBF</i>		
Red Pine		1.9	MBF			
White Pine		3.0	MBF			
B. T. Aspen		Pulpwood	1,193	Cords		
Black Cherry			24	Cords		
<i>Black Cherry</i>			2.3	<i>MBF</i>		
<i>Black Cherry</i>			19	<i>Cords</i>		
Red Maple			52	Cords		
Red Oak			225	Cords		
<i>Red Oak</i>			225	<i>Cords</i>		
Red Pine			7	Cords		
White Oak			33	Cords		
White Pine	4	Cords				
3	B. T. Aspen	Sawtimber	109.4	MBF	13.4	\$27,590.60
	Red Oak		3.0	MBF		
	<i>/Red (Hybrid) Oak</i>		3.0	<i>MBF</i>		
	B. T. Aspen	Pulpwood	642	Cords		
	Red Maple		15	Cords		
	Red Oak		54	Cords		
	<i>/Red (Hybrid) Oak</i>		1	<i>Cords</i>		
<i>Red Oak</i>	53	<i>Cords</i>				
TOTAL:			665.4	MBF		
TOTAL:			4,177	Cords		

# Sale Specific Conditions & Requirements

**Sale Name: Down Range Aspen**

**Sale Number: 63-003-24 Seq#: 1**

## 1 - Sale Area

### 1.2 - Boundaries

#### 1.2.1 - Painted boundaries (9/19)

The sale boundary and Payment Unit boundaries are marked and identified by blue and red paint. Exterior sale boundary lines against private property are marked with blue paint. Exterior sale boundary lines against state are marked with red paint. Retention patches are marked with red paint; no harvesting activities may occur within these areas. The painted boundary line trees are not Included Timber and are to be protected.

## 2 - Timber Specifications

### 2.1 - Included Timber

#### 2.1.1 - Clearcut unit(s) with unmerchantable trees (6/14)

Within Payment Unit(s) 1, 2, and 3, cut all trees that are two (2) inches or more at DBH, except do not cut trees marked with green paint. In addition:

Within Payment Units 2 and 3, do not cut white pine greater than 18 inches at DBH.

Within Payment Unit 3, do not cut white oak.

## 3 - Payments

### 3.3 - Pre-measured Sales

#### 3.3.4 - Dividing payment units (7/14)

Payment Unit(s) may be divided at the request of the Purchaser and upon approval of the Unit Manager. Dividing Payment Units is a contract modification which requires a Timber Sale Contract Amendment. There will be only one division per Payment Unit.

## 4 - Transportation

### 4.1 - Construction

#### 4.1.3 - Slash and earthen piles (8/04)

Piles or windrows of earth along roads and landings that have been widened or constructed shall be leveled. Slash from road maintenance or construction, including stumps, shall be dispersed throughout the sale.

#### 4.1.12 - No new roads (1/12)

No new roads will be permitted in any Payment Unit. All operations are limited to existing roads. Skid trails only will be allowed.

### 4.2 - Maintenance

#### 4.2.1 - Hauling restriction (12/08)

Hauling may be restricted on forest roads by the Unit Manager or his/her representative. The restriction may occur during spring breakup or may occur during wet weather conditions.

#### 4.2.4 - Grading (10/16)

For completion of the sale, state forest roads must be graded. In general, this will require a road grader or bulldozer to shape up the roads after forest products have been hauled off site. This includes cleaning of drainage areas, grading, crowning and filling with gravel, if necessary. The grading equipment to be used must be approved by the Unit Manager or his/her representative.

#### 4.2.5 - Two wheel drive condition (2/04)

All existing trail roads on and adjacent to the sale area must be passable by two-wheel drive traffic for the duration of the sale.

## 5 - Operations

### 5.1 - Notification

#### 5.1.1 - Pre-sale conference (10/16)

A pre-sale conference on site between the Purchaser and sale administrator is required prior to beginning any Payment Unit to determine landing locations. The Unit Manager or his/her representative must be contacted at least 5 days in advance to schedule the conference.

#### 5.1.4 - Post-sale conference (10/16)

A post-sale conference on site between the Purchaser and sale administrator is required 5 days prior to the completion of active logging operations to determine clean-up and repair of landings, road edges, and the fulfillment of other contract specifications.

### 5.2 - Conduct of Operations

#### 5.2.1 - Slash

##### 5.2.1.8 - Slash height (12/08)

No slash or tree tops may exceed 24 inches in height.

#### 5.2.2 - Hazard Trees/Snags

##### 5.2.2.1 - Den trees (10/16)

Obvious hollow and/or den trees shall be protected and left standing unless they are a safety hazard.

#### 5.2.3 - Operating Restrictions

##### 5.2.3.5 - Oak wilt restriction (1/18)

Within Payment Unit(s) 1, 2, and 3, unless changed by written agreement, cutting, skidding, hauling within the sale and brushing of access roads to the sale are not permitted during the period of April 15 to July 15. Operations may be allowed if specific steps are taken to prevent damaging uncut oak during the high risk period. Those steps may include completing all road brushing before April 15th and clearing a tree-length buffer along uncut oak cover before April 15th. This is necessary to reduce the spread of oak wilt. For more information, contact the Unit Manager or his/her representative.

#### 5.2.4 - Dead and Down Creation

##### 5.2.4.2 - Dead and down creation, hare and grouse (1/14)

To improve habitat for snowshoe hare, grouse, and other species, the Purchaser is to leave two trees, nine (9) inches or larger in diameter on the ground for every two acres. They should be scattered throughout the sale or positioned per the Sale Administrator's instructions. If possible, the logs or trees should be felled so they overlap. Note these pieces should have a minimum length of five (5) feet. They can be of any tree species and can be an un-merchantable piece of wood or a full tree.

#### 5.2.29 - Shrub protection (1/20)

Do not cut or damage hawthorn, witch-hazel, dogwood or junberry. These woody-shrub plants are highly beneficial to various wildlife species.

#### 5.2.32 - Decking/landing restoration (9/13)

All decking and landing areas must have the surface area restored to a condition equal to or better than before. This is to ensure the proper regeneration of the stand. Wood debris, chips and "cookies" from trimmings must be removed or scattered away from landing and loading areas and may not be windrowed on the edge. In addition, landing must be seeded to native grass upon completion of sale to the satisfaction of the Unit Manager or their representative.

#### 5.2.38 - No decking against live trees (2/04)

Cut products may not be decked against unmarked or designated leave trees.

#### 5.2.39 - ORV trail/route protection (4/18)

The Tin Cup Spring Trail is an ORV trail or route and is shown on the Timber Sale Map. Do not cut trees or damage posts with ORV markers. All stumps within 5 feet of the trail must be cut flush with the ground. Maintain a 20-foot-wide slash, debris, and rut free zone daily using the ORV trail or route as the centerline. Do not run equipment down the ORV trail or

route. Skidding across the trail or route may only occur in locations approved by the Sale Administrator.

#### 5.4 - Soil Protection

##### 5.4.1 - Rutting restriction, general (7/16)

Operations are to cease immediately if equipment and weather conditions result in rutting of roads and/or skid trails which is 12 inches or greater in depth and 50 feet in length. The Unit Manager or his/her representative may restrict hauling and/or skidding if ruts exceed the specified depth. With the Unit Manager or his/her representative's approval, the Purchaser may return to the area when the risk of rutting has decreased.

### 6 - Safety and Fire Prevention

#### 6.2 - Signing

##### 6.2.1 - Road posting (10/20)

The Purchaser is responsible for posting and maintaining caution signs on Kings Highway prior to beginning operations. The road must be posted at appropriate distances from the Sale Area to warn of logging activity and truck traffic. Signs must be removed when harvest operations are suspended or completed. The Purchaser will provide these signs.

##### 6.2.3 - Recreational trail posting (10/20)

The Purchaser is responsible for posting and maintaining caution signs on Tin Cup Spring Trail prior to beginning operations. The trail must be posted at appropriate distances from the Sale Area to warn of logging activity and truck traffic at both ends of the trail. Signs must be removed when harvest operations are suspended or completed. The Purchaser will provide these signs.

**TIMBER SALE MAP**

This information provided by authority of Part 525, 1994 PA 451, as amended.

Sale Number  
**63-003-24**

Date  
**07/31/2024**

Forest Management Unit	County	Mapped By: T. Lewis
Cadillac Mgt Unit	Lake	Cruised By: Adamczyk

Scale	Page	Of
1:20,000	1	1

Township	Range	Section(s) and Subdivision(s)
18N	12W	Sec. 10 SENW,NENE,S1/2NE,NESW; Sec. 11 SWNW; Sec. 3 NWNE,S1/2NE,N1/2SE;

Cover Type			
A = Aspen	J = Jack Pine	O = Oak	U = Upland Brush
B = Paper Birch	K = Rock	P = Lowland Poplar	UM = Upland Mix Forest
C = Cedar	L = Lowland Brush	Q = Mixed Swamp Conifer	V = Bog or Marsh
D = Treed Bog	LM = Lowland Mix Forest	R = Red Pine	W = White Pine
E = Swamp Hardwoods	M = Maple, Beech, Birch	S = Black Spruce	X = Non Stocked
F = Spruce/Fir	MC = Mixed Conifer	T = Tamarack	Y = Sand
G = Grass	MD = Mixed Deciduous	Z = Water	
H = Hemlock	N = Marsh		

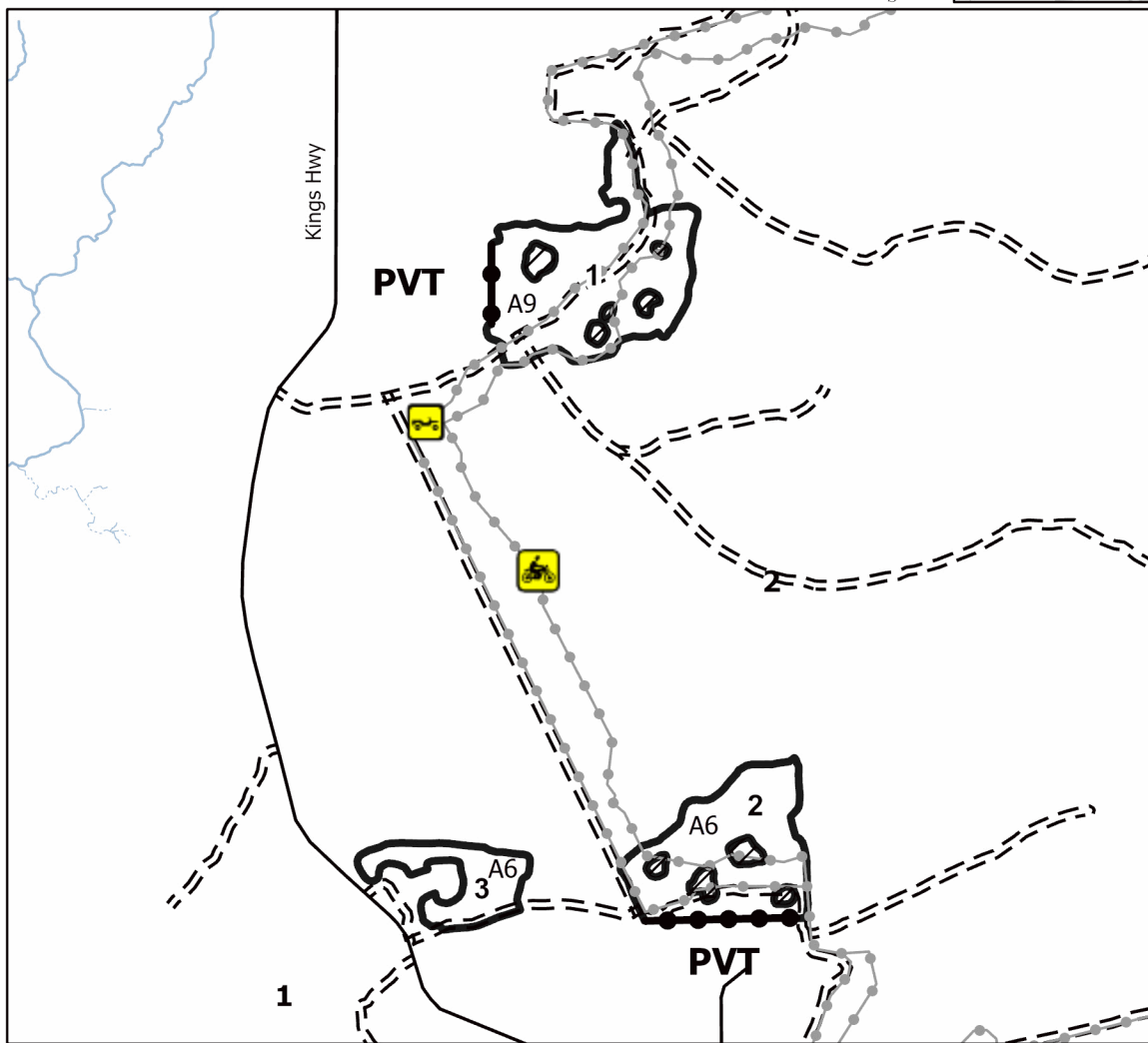
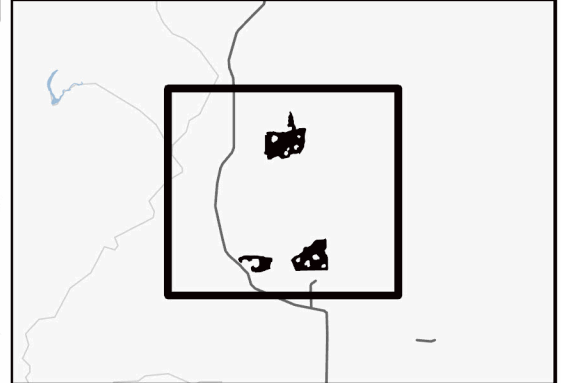
Density	
0 = Non Stocked	5 = Pole Timber Medium
1 = Seedling Sapling Poor	6 = Pole Timber Well
2 = Seedling Sapling Medium	7 = Saw Timber Poor
3 = Seedling Sapling Well	8 = Saw Timber Medium
4 = Pole Timber Poor	9 = Saw Timber Well

PU #	Acres
1	44.7
2	33.2
3	13.4

**Down Range Aspen**

**91.3 Acres**

**Locator Map (1:100,000)**



**Legend**

- Against State (Red)
- Retention Areas
- Private Line (Blue)
- Recreational Trail
- Primary Forest Road
- Forest Access Route
- Administrative Access Only
- Paved Road
- Government Gravel/Dirt
- Private Gravel/Dirt

Use QR Code to open Map in App





## TIMBER SALE INFORMATION

### GNA2 Scorpio Mix (63-811-24)

T16N, R15W, SEC. 30; T16N, R16W, SEC. 26.  
Oceana County (Advertised Price \$147,984.45)

SALE NOTE: All units of volume listed for this sale were estimated using the Inventory Manager computer program and the new Michigan taper model. This is a Good Neighbor Authority (GNA) timber sale on national forest land. This timber sale was set-up and is being advertised by the Michigan DNR for the US Forest Service. The contract will be awarded and administered by the Michigan DNR. Note the additional Sale Specific Conditions & Requirements containing the acronym 'GNA'.

Access may be through other public land.

A timber sale contract for this lump sum, sealed bid timber sale will be awarded to the responsible bidder offering the highest sealed bid price. All units of volume listed below were estimated using the Inventory Manager computer program and the new Michigan taper model. Bids must be at or above the following advertised price for each product and species:

<u>PRODUCTS &amp; SPECIES</u>	<u>ESTIMATED UNITS*</u>		<u>ADVERTISED PRICE</u>
<b>Sawtimber</b>			
Mixed Aspen	685.8	MBF	\$ 85.00 / MBF
Red Maple	105.1	MBF	\$ 84.00 / MBF
Red Oak	83.8	MBF	\$ 173.00 / MBF
Red Pine	54.7	MBF	\$ 99.00 / MBF
White Pine	4.0	MBF	\$ 71.00 / MBF
<b>Pulpwood</b>			
Mixed Aspen	851	Cords	\$ 24.40 / Cord
Mixed Hardwood	584	Cords	\$ 20.10 / Cord
Red Oak	139	Cords	\$ 33.45 / Cord
Red Pine	501	Cords	\$ 46.20 / Cord
White Pine	12	Cords	\$ 30.65 / Cord

\* The total volume is statistically estimated within plus (+) or minus (-) 12.36 percent. There are an estimated 5,010 cords on this timber sale, plus or minus 619 cords at the 95% confidence level. The estimated units are final and not subject to adjustment. Prospective bidders are urged to examine this timber and to make their own estimates of quantity and quality.

### **BOND AND PAYMENT SCHEDULE:**

1. A bond in the amount of \$14,798.00 to insure faithful performance of the conditions of the contract will be deposited by the successful bidder within 21 days of the sale award.
2. Cutting in any sale or unit without the required advance payment would be considered a trespass.
3. Total payment must be paid in advance or according to the following schedule :
  - (a) Ten percent (10%) of the sale value must be paid within 21 days of the sale award.
  - (b) The 10% down payment will be credited towards the first unit cut.
  - (c) Payment for each of the following units must be made before cutting begins in that unit:

PAYMENT UNIT NUMBER	PERCENT OF TOTAL SALE VALUE
01	6.5%
02	14.2%
03	18.1%
04	16.1%
05	11.9%
06	33.2%

4. If no cutting takes place, the 10% down payment will not be refunded.
5. Operations on the contract issued will terminate on 09/30/2026.

### **SALE STATISTICS**

Volumes were calculated in cubic feet using the Michigan taper model. Cubic foot volume includes all wood inside bark for the product indicated. For display purposes, cubic feet were converted to cords and MBF using a simple conversion factor, e.g. 79 cubic feet per cord and 185 cubic feet per MBF. The cubic foot volumes are precise; the cords and MBF volumes are not. Cubic foot volume cannot be directly converted to cords or boards with precision.

## SALE VOLUMES

The total estimated sale volume may not equal the sum of the species/products due to the nature of statistical calculations associated with double sampling methodology.

VOLUME			STATISTICAL RANGE IN CORDS	
TOTAL CUBIC FEET	TOTAL CORDS	PERCENT ERROR	MINIMUM	MAXIMUM
395,806	5,010	12.36%	4,391	5,629

## VDU VOLUMES

A VDU is a Volume Determination Unit. Volumes and their associated statistics are calculated at the VDU level and summarized to the sale level. There is often a one to one relationship between a VDU and a Payment Unit, but not always, depending on the cruise design. Refer to the VDU TO PAYMENT UNIT table.

	VOLUME			RANGE IN CORDS	
VDU	TOTAL CUBIC FEET	TOTAL CORDS	PERCENT ERROR	MINIMUM	MAXIMUM
24	16,626	210	30.24%	147	274
25	89,490	1,133	18.34%	925	1,341
33	48,561	615	37.40%	385	845
43	60,295	763	36.98%	481	1,045
44	61,097	773	45.60%	421	1,126
75	119,736	1,516	21.01%	1,197	1,834
<b>TOTAL:</b>	<b>395,806</b>	<b>5,010</b>		<b>3,555</b>	<b>6,465</b>

## VDU TO PAYMENT UNIT

When a VDU is associated with more than one Payment Unit (PU), the VDU volumes are assigned to the PU based on acres of the VDU within the PU.

VDU	VDU ACRES	PU	PU ACRES
24	5.7	1	5.7
25	18.3	5	18.3
33	9.0	2	9.0
43	16.3	3	16.3
44	10.2	4	10.2
75	29.4	6	29.4
<b>TOTAL:</b>	<b>88.9</b>		<b>88.9</b>



**DESCRIPTION OF TIMBER BY PAYMENT UNIT (PU)**

PU	MARKET GROUP	PRODUCT	QUANTITY	UNIT	ACRES	ADVERTISE PRICE	
1	Red Pine	Sawtimber	7.9	MBF	5.7	\$9,652.50	
	Red Pine	Pulpwood	192	Cords			
2	Mixed Aspen	Sawtimber	116.5	MBF	9.0	\$21,051.90	
	<i>B. T. Aspen</i>		116.5	<i>MBF</i>			
	Red Maple		2.9	MBF			
	Red Oak		19.2	MBF			
	White Pine		4.0	MBF			
	Mixed Aspen		Pulpwood	174			Cords
	<i>B. T. Aspen</i>			174			<i>Cords</i>
	Mixed Hardwood			40			Cords
	<i>Red Maple</i>			40			<i>Cords</i>
	Red Oak			48			Cords
	Red Pine	6		Cords			
White Pine	12	Cords					
3	Mixed Aspen	Sawtimber	142.7	MBF	16.3	\$26,742.30	
	<i>B. T. Aspen</i>		142.7	<i>MBF</i>			
	Red Maple		16.2	MBF			
	Red Oak		35.3	MBF			
	Mixed Aspen		Pulpwood	135			Cords
	<i>B. T. Aspen</i>			135			<i>Cords</i>
	Mixed Hardwood			145			Cords
	<i>Beech</i>			67			<i>Cords</i>
	<i>Red Maple</i>			78			<i>Cords</i>
Red Oak	28	Cords					
4	Mixed Aspen	Sawtimber	153.8	MBF	10.2	\$23,835.20	
	<i>B. T. Aspen</i>		140.1	<i>MBF</i>			
	<i>Quaking Aspen</i>		13.7	<i>MBF</i>			
	Red Maple		20.6	MBF			
	Red Pine		5.3	MBF			
	Mixed Aspen		Pulpwood	213			Cords
	<i>B. T. Aspen</i>			139			<i>Cords</i>
	<i>Quaking Aspen</i>			74			<i>Cords</i>
	Mixed Hardwood			121			Cords
	<i>Beech</i>			52			<i>Cords</i>
	<i>Red Maple</i>			69			<i>Cords</i>
Red Pine	19	Cords					
5	Mixed Aspen	Sawtimber	1.7	MBF	18.3	\$17,629.50	
	<i>Quaking Aspen</i>		1.7	<i>MBF</i>			
	Red Maple		0.6	MBF			
	Red Pine		41.5	MBF			
	Mixed Aspen		Pulpwood	1			Cords
	<i>Quaking Aspen</i>			1			<i>Cords</i>
	Mixed Hardwood			9			Cords
<i>Red Maple</i>	9	<i>Cords</i>					
Red Pine	284	Cords					
6	Mixed Aspen	Sawtimber	271.1	MBF	29.4	\$49,073.05	
	<i>B. T. Aspen</i>		271.1	<i>MBF</i>			
	Red Maple		64.8	MBF			
	Red Oak		29.3	MBF			
	Mixed Aspen		Pulpwood	328			Cords
	<i>B. T. Aspen</i>			328			<i>Cords</i>
	Mixed Hardwood			269			Cords
	<i>Beech</i>			119			<i>Cords</i>
	<i>Red Maple</i>			150			<i>Cords</i>
Red Oak	63	Cords					

TOTAL:	933.4	MBF
--------	-------	-----

TOTAL:	2,087	Cords
--------	-------	-------

# Sale Specific Conditions & Requirements

**Sale Name: GNA2 Scorpio Mix**

**Sale Number: 63-811-24 Seq#: 1**

## 1 - Sale Area

### 1.2 - Boundaries

#### 1.2.1 - Painted boundaries (9/19)

The sale boundary and Payment Unit boundaries are marked and identified by orange paint and a road. Exterior sale boundary lines against private property are marked with orange paint. Exterior sale boundary lines against forest service are marked with orange paint, with the exception of the northern boundary of Payment Unit 1 which is unpainted and identified by Winter Road. Interior Payment Unit boundaries are marked with orange paint. Retention patches are marked with orange paint; no harvesting activities may occur within these areas. The painted boundary line trees are not Included Timber and are to be protected.

## 2 - Timber Specifications

### 2.1 - Included Timber

#### 2.1.3 - Cut tree marked unit(s) (12/08)

Within Payment Unit(s) 1, all red pine are designated for cutting when marked with blue and green paint above and below stump height, regardless of merchantability. Designated plantation rows are identified by green paint and follow row direction. In addition, do not cut any oak.

#### 2.1.7 - Leave tree marked unit(s) (6/14)

Within Payment Unit(s) 2, 3, 4 & 6, all trees which meet minimum piece specifications in 2.2 Utilization are designated for cutting, except do not cut basswood, black cherry, and trees marked with orange paint above and below stump height. In addition, within Payment Units 2 & 6, do not cut any white oak.

#### 2.1.8 - Designated plantation row unit(s) (12/08)

Within Payment Unit(s) 5, all red pine trees which meet minimum piece specifications in 2.2 Utilization, within designated plantation rows are designated for cutting. Designated plantation rows begin with the third row in from the outside of the plantation, then continue every third row. Rows may follow a cut 1 leave 2 pattern, or a cut 2 leave 4 pattern based on spacing. Because of the variability of row direction, it shall be the responsibility of the Purchaser to maintain the third-row sequence. In addition, do not cut any oak.

### 2.2 - Utilization

#### 2.2.12 - GNA, cut and remove Included Timber (3/18)

Unless provided otherwise herein, the DNR agrees to sell and permit Purchaser to cut and remove Included Timber and Purchaser agrees to purchase, cut, and remove Included Timber.

## 3 - Payments

### 3.3 - Pre-measured Sales

#### 3.3.4 - Dividing payment units (7/14)

Payment Unit(s) 1-6 may be divided at the request of the Purchaser and upon approval of the Unit Manager. Dividing Payment Units is a contract modification which requires a Timber Sale Contract Amendment. There will be only one division per Payment Unit.

## 4 - Transportation

### 4.1 - Construction

#### 4.1.3 - Slash and earthen piles (8/04)

Piles or windrows of earth along roads and landings that have been widened or constructed shall be leveled. Slash from road maintenance or construction, including stumps, shall be dispersed throughout the sale.

#### 4.1.6 - Road construction (4/24)

Construction of new roads or improvements of existing roads shall be done in such a way as to minimize the environmental

and visual impacts. Merchantable trees shall be cut and utilized unless otherwise directed. Non-merchantable trees shall be severed and laid flat on the ground. Slash shall be scattered, and not left in windrows and kept a minimum of 10 feet back from the road edge. Stumps shall be set upright, not left on edge, and be moved at least 10 feet away from the road edge. Disturbed soil shall be feathered into the woods and not left in berms or windrows.

#### 4.1.7 - Road closure (10/11)

All new roads built into the sale must be blocked to vehicle traffic within 30 days of completion of hauling. Overgrown roads that are reopened shall be considered new roads. In general, this will require constructing a four (4') foot high berm of stumps and logs covered with earth. These roads must be rendered impassable to cars and trucks. All stumps from road building and landing construction must be reserved to block any newly constructed roads upon completion of the sale. These stumps must be scattered along the road system to prohibit vehicular movement. Temporary berms may be required if no sale activity occurs for 30 or more consecutive days. Contact the Sale Administrator for specific details of design and placement.

#### 4.1.11 - Permits (2/12)

The Purchaser will secure any necessary permits that may be required.

### 4.2 - Maintenance

#### 4.2.1 - Hauling restriction (12/08)

Hauling may be restricted on forest roads by the Unit Manager or his/her representative. The restriction may occur during spring breakup or may occur during wet weather conditions.

#### 4.2.4 - Grading (10/16)

For completion of the sale, forest roads must be graded. In general, this will require a road grader or bulldozer to shape up the roads after forest products have been hauled off site. This includes cleaning of drainage areas, grading, crowning and filling with gravel, if necessary. The grading equipment to be used must be approved by the Unit Manager or his/her representative.

#### 4.2.5 - Two wheel drive condition (2/04)

All existing trail roads on and adjacent to the sale area must be passable by two-wheel drive traffic for the duration of the sale.

### 4.4 - Access

#### 4.4.5 - Federal property access (3/11)

Permission for access across federal land has been obtained by the DNR.

## 5 - Operations

### 5.1 - Notification

#### 5.1.1 - Pre-sale conference (10/16)

A pre-sale conference on site between the Purchaser and sale administrator is required prior to beginning any operations. The Unit Manager or his/her representative must be contacted at least 10 days in advance to schedule the conference.

#### 5.1.4 - Post-sale conference (10/16)

A post-sale conference on site between the Purchaser and sale administrator is required 5 days prior to the completion of active logging operations to determine clean-up and repair of landings, road edges, and the fulfillment of other contract specifications.

### 5.2 - Conduct of Operations

#### 5.2.1 - Slash

##### 5.2.1.8 - Slash height (12/08)

No slash may exceed 24 inches in height.

#### 5.2.2 - Hazard Trees/Snags

##### 5.2.2.1 - Den trees (10/16)

Obvious hollow and/or den trees shall be protected and left standing unless they are a safety hazard.

#### 5.2.3 - Operating Restrictions

#### 5.2.3.1 - Operating restrictions (9/11)

Within Payment Unit(s) 2, 3, 4 and 6, unless changed by written agreement, cutting, skidding, and hauling are limited to the period of October 1 to March 31. This restriction is for aspen regeneration per USFS.

#### 5.2.3.4 - Oak wilt restriction, no exceptions (1/18)

Within Payment Units 1-6 cutting, skidding, hauling within the sale and brushing of access roads to the sale are not permitted during the period of April 15 to July 15. No exceptions will be granted. This is necessary to reduce the spread of oak wilt.

#### 5.2.3.14 - Heterobasidion root disease (HRD) (3/21)

This plantation is at risk of infection by the root rot fungus, *Heterobasidion irregulare*. To prevent the spread of this disease, cutting operations within Payment Unit(s) 1 and 5 are restricted to the period of January 1st through February 28th. Cutting may only occur outside this period with written permission of the Unit Manager or with the application of a preventative pesticide. Consultation with a forest health specialist will determine if cutting can occur prior to January 1 without pesticide application, dependent upon current and forecasted snow cover. Cellu-Treat and RotStop C are currently the only EPA registered products available in the United States for the control of *Heterobasidion*. Both products are a water-soluble powder that must be applied to the stump, in accordance with the product label. Dye must be added to these products to provide visible evidence of adequate coverage. Application of these pesticides requires licensing by the Michigan Department of Agriculture and Rural Development. All applicators are required to: provide to the Sale Administrator notification of application per requirements in 40 CFR 170.120; and document and provide to the Sale Administrator annually, by December 31 and prior to closure of sale, the volume of product used and acres treated.

#### 5.2.29 - Shrub protection (1/20)

Do not cut or damage hawthorn, witch-hazel, dogwood or junberry. These woody-shrub plants are highly beneficial to various wildlife species.

#### 5.2.32 - Decking/landing restoration (9/13)

All decking and landing areas must have the surface area restored to a condition equal to or better than before. This is to ensure the proper regeneration of the stand. Wood debris, chips and "cookies" from trimmings must be removed or scattered away from landing and loading areas and may not be windrowed on the edge.

#### 5.2.38 - No decking against live trees (2/04)

Cut products may not be decked against unmarked or designated leave trees.

### 5.4 - Soil Protection

#### 5.4.1 - Rutting restriction, general (7/16)

Operations are to cease immediately if equipment and weather conditions result in rutting of roads and/or skid trails which is 12 inches or greater in depth and 50 feet in length. The Unit Manager or his/her representative may restrict hauling and/or skidding if ruts exceed the specified depth. With the Unit Manager or his/her representative's approval, the Purchaser may return to the area when the risk of rutting has decreased.

#### 5.4.2 - Skid trails (2/04)

Skid trails up and down slopes should be avoided. If however this is unavoidable, these trails will be left in a non-erodible condition using water bars, logs, and slash. Placing of slash on these skid trails while logging is ongoing may alleviate need for any further action. At the direction of the sale administrator, seed, fertilizer, and mulch may also be required.

### 5.6 - Debris and Waste Material

#### 5.6.2 - GNA, equipment cleaning (4/24)

(a) Areas, known by the DNR prior to timber sale advertisement, that are infested with invasive species of concern are shown on the Timber Sale Map. A current list of invasive species of concern and a map showing the extent of known infestations is available from the DNR. For purposes of this provision, "Off-Road Equipment" includes all logging and construction machinery, except for log trucks, chip vans, service vehicles, water trucks, pickup trucks, cars, and similar vehicles.

(b) Purchaser shall adhere to the following requirements with regard to cleaning "Off-Road Equipment":

(i) Prior to moving Off-Road Equipment onto the Sale Area, Purchaser shall identify the location of the equipment's most

recent operation. Purchaser shall not move any Off-Road Equipment that last operated in an area infested with one or more invasive species of concern onto Sale Area without having cleaned such equipment of seeds, soil, vegetative matter, and other debris that could contain or hold seeds, and having notified the DNR, as provided in (iii). If the location of prior operation cannot be identified, then Purchaser shall assume that the location is infested with invasive species of concern.

(ii) Prior to moving Off-Road Equipment from a cutting unit that is shown on the Timber Sale Map to be infested with invasive species of concern to, or through any other area that is shown as being free of invasive species of concern, or infested with a different invasive species, Purchaser shall clean such equipment of seeds, soil, vegetative matter, and other debris that could contain or hold seeds, and shall notify the DNR, as provided in (iii).

(iii) Prior to moving any Off-Road Equipment subject to the cleaning requirements set forth above, Purchaser shall advise DNR of its cleaning measures and make the equipment available for inspection. DNR shall have 2 days, excluding weekends and State holidays, to inspect equipment after it has been made available. After satisfactory inspection or after such 2 day period, Purchaser may move the equipment as planned. Equipment shall be considered clean when a visual inspection does not disclose seeds, soil, vegetative matter, and other debris that could contain or hold seeds. Purchaser shall not be required to disassemble equipment unless so directed by the DNR after inspection.

(iv) If Purchaser desires to clean Off-Road Equipment on National Forest land, such as at the end of a project or prior to moving to, or through an area that is free of invasive species of concern, Purchaser shall obtain prior approval from the Unit Manager or his/her representative as to the location for such cleaning and measures, if any, for controlling impacts.

(v) Unit Manager or his/her representative may order delay, interruption, or modification of this Contract pursuant to Condition & Requirement 7.3 or 7.3.4.

(c) Nothing contained in this Condition & Requirement shall be interpreted as creating any warranty on the part of the DNR that all locations of invasive species of concern have been described herein, elsewhere in this Contract, or designated on the ground. Following sale advertisement, additional locations may be described or designated, and other species may be added to the list of invasive species of concern. In such event, the Unit Manager or his/her representative may order delay, interruption, or modification of this Contract pursuant to Condition & Requirement 7.3 or 7.3.4.

(d) The parties shall promptly communicate with one another with respect to description or designation of additional locations; discovery of locations of new species or new infestation; and, addition of species to the list of invasive species of concern.

## **7 - Other Conditions**

### **SKIP**

#### **7.1.1 - GNA, title (7/16)**

General Condition & Requirement 7.1 is inapplicable. The following applies to this contract.

All right, title, and interest in and to any Included Timber shall remain in USDA Forest Service with the State of Michigan acting on behalf of the USDA Forest Service under this GNA contract, until it has been Measured, removed from Sale Area or other authorized cutting area, and paid for, at which time title shall vest in Purchaser. Title to any Included Timber that has been Measured and paid for, but not removed from Sale Area or other authorized cutting area by Purchaser on or prior to Termination Date, shall remain in USDA Forest Service.

### **7.3 - Contract Modifications**

#### **7.3.4 - GNA, contract suspension and modification (5/16)**

(a) The Unit Manager may, by written order, delay or interrupt authorized operations under this contract or, notwithstanding Condition & Requirement 7.3, modify this contract, in whole or in part:

(i) To prevent environmental degradation or resource damage, including, but not limited to, harm to habitat, plants, animals, cultural resources, or cave resources;

(ii) To ensure consistency with land and resource management plans or other documents prepared pursuant to the National Environmental Policy Act of 1969, 42 USC 4321-4347;

(iii) To conduct environmental analysis, including, but not limited to, engaging in consultation pursuant to the Endangered Species Act of 1973, 16 USC 1531, et seq.; or

(iv) Upon agreement of the Forest Service, due to administrative appeal or litigation, regardless of whether the Unit Manager's order is required by a court order or this contract is named in such a proceeding.

(b) In the event of an order delaying or interrupting Purchaser's Operations under this Condition & Requirement, Purchaser's remedy shall be:

(i) a no cost contract extension,

(ii) reimbursement for Out-of-Pocket Expenses,

however, the foregoing remedies shall be available only to the extent that the Unit Manager's order was the sole and exclusive cause of the delay or interruption of Purchaser's operations.

(c) Remedies awarded to the Purchaser shall not be duplicative, and the Unit Manager shall have the right to structure remedies provided herein to avoid duplicative compensation.

(d) Purchaser agrees that this Condition & Requirement, and the remedies provided herein shall apply regardless of any finding by any court that the DNR failed to comply with any statute, regulation and/or policy in connection with awarding, advertising, or authorizing this sale, or a similar sale.

## 7.5 - Loss

### 7.5.2 - GNA, liability for loss (7/16)

If Included Timber is destroyed or damaged by an unexpected event that changes the nature of Included Timber, such as wind, flood, insects, disease, or similar cause, the Purchaser shall bear the timber value loss resulting from such destruction or damage.

Deterioration or loss of timber value due to delay or interruption under 7.3.4 - GNA, contract suspension and modification, shall be borne by the party holding title. In this event, Included Timber to which USDA Forest Service holds title, Purchaser of the State GNA contract will not be obligated to remove and pay for such timber. This Subsection shall not be construed to relieve either party of liability for negligence.

## 7.10 - Certified Timber

### 7.10.1 - Non-certified timber (2/16)

The area encompassed by this timber sale is not certified to the standards of the Forest Stewardship Council (FSC) or the Sustainable Forestry Initiative (SFI). Forest products from this sale may not be delivered to the mill as "FSC and / or SFI certified". The lands within this sale belong to the National Forest system and are being managed by the State as part of a Good Neighbor Authority (GNA) agreement.

**TIMBER SALE MAP**

This information provided by authority of Part 525, 1994 PA 451, as amended.

Sale Number  
**63-811-24**

Date  
**07/10/2024**

Forest Management Unit	County	Mapped By: T. Lewis
Cadillac Mgt Unit	Oceana	Cruised By: T. Lewis

Scale	Page	Of
1:10,000	1	1

Township	Range	Section(s) and Subdivision(s)
16N	15W /	Sec. 26 SENW,S1/2NE,E1/2SW,W1/2SE; Sec. 30 SWNW;

**Cover Type**

A = Aspen	J = Jack Pine	O = Oak	U = Upland Brush
B = Paper Birch	K = Rock	P = Lowland Poplar	UM = Upland Mix Forest
C = Cedar	L = Lowland Brush	Q = Mixed Swamp Conifer	V = Bog or Marsh
D = Treed Bog	LM = Lowland Mix Forest	R = Red Pine	W = White Pine
E = Swamp Hardwoods	M = Maple, Beech, Birch	S = Black Spruce	X = Non Stocked
F = Spruce/Fir	MC = Mixed Conifer	T = Tamarack	Y = Sand
G = Grass	MD = Mixed Deciduous	Z = Water	
H = Hemlock	N = Marsh		

**Density**

0 = Non Stocked	5 = Pole Timber Medium
1 = Seedling Sapling Poor	6 = Pole Timber Well
2 = Seedling Sapling Medium	7 = Saw Timber Poor
3 = Seedling Sapling Well	8 = Saw Timber Medium
4 = Pole Timber Poor	9 = Saw Timber Well

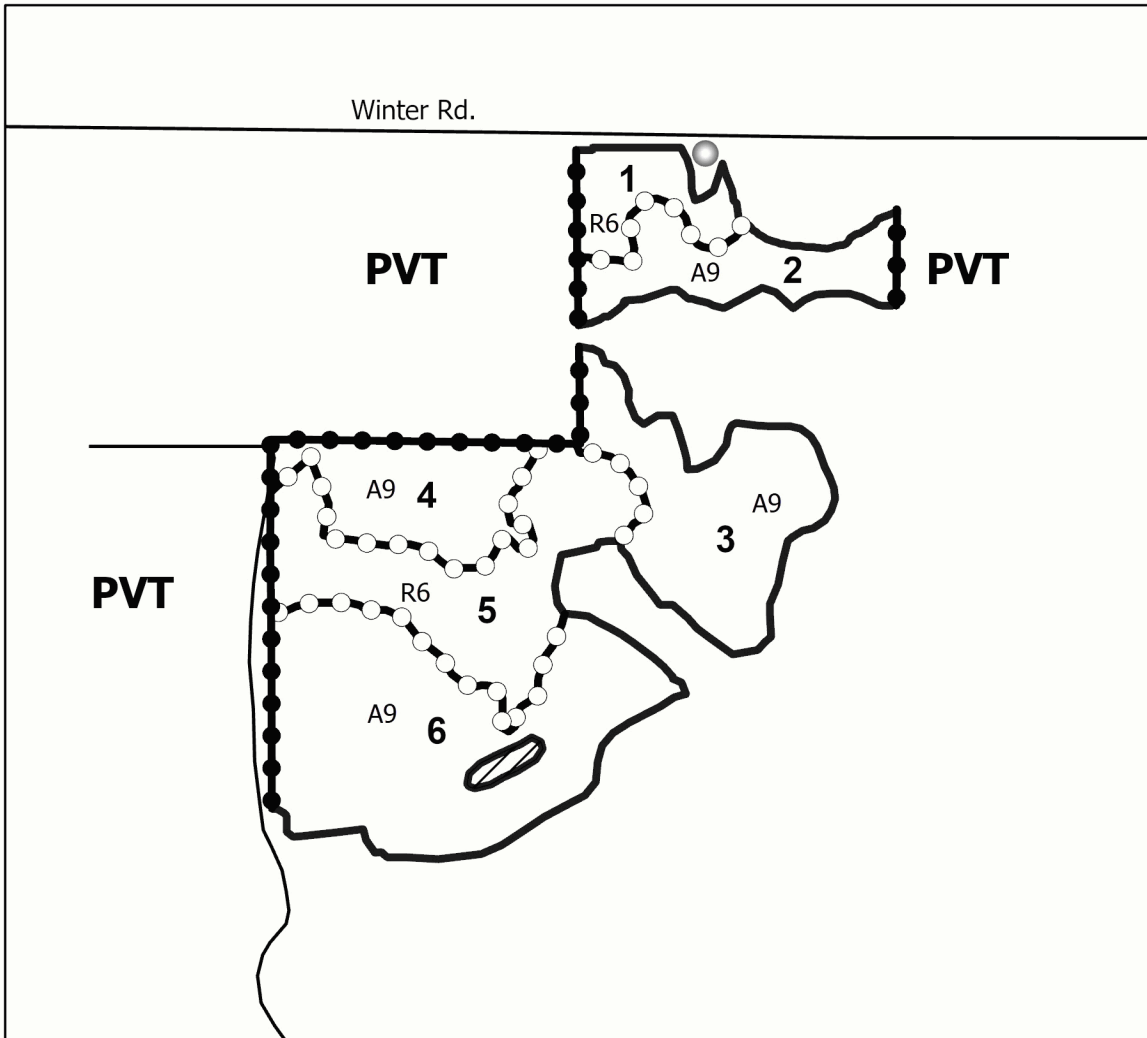
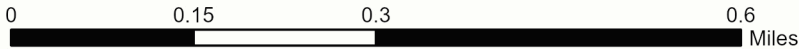
**Locator Map (1:100,000)**



PU #	Acres	PU #	Acres
1	5.7	4	10.2
2	9	5	18.3
3	16.3	6	29.4

**GNA2 Scorpio Mix**

**88.9 Acres**



**Legend**

- Against Federal (Orange)
- Retention Areas
- Payment Unit (Orange)
- Private Line (Orange)
- Optional Landing
- Primary Forest Road
- Forest Access Route
- Administrative Access Only
- Paved Road
- Government Gravel/Dirt
- Private Gravel/Dirt

Use QR Code to open Map in App





## TIMBER SALE INFORMATION

### GNA2 Cobra Mix (63-814-24)

T16N, R16W, SEC. 23; T16N, R16W, SEC. 24; T16N, R16W, SEC. 25.  
Oceana County (Advertised Price \$270,971.90)

SALE NOTE: All units of volume listed for this sale were estimated using the Inventory Manager computer program and the new Michigan taper model. This is a Good Neighbor Authority (GNA) timber sale on national forest land. This timber sale was set-up and is being advertised by the Michigan DNR for the US Forest Service. The contract will be awarded and administered by the Michigan DNR. Note the additional Sale Specific Conditions & Requirements containing the acronym 'GNA'.

Access may be through other public land.

A timber sale contract for this lump sum, sealed bid timber sale will be awarded to the responsible bidder offering the highest sealed bid price. All units of volume listed below were estimated using the Inventory Manager computer program and the new Michigan taper model. Bids must be at or above the following advertised price for each product and species:

<u>PRODUCTS &amp; SPECIES</u>	<u>ESTIMATED UNITS*</u>	<u>ADVERTISED PRICE</u>
Sawtimber		
Black/Red (Hybrid) Oak	4.1 MBF	\$ 105.00 / MBF
Mixed Aspen	800.0 MBF	\$ 85.00 / MBF
Red Maple	130.2 MBF	\$ 84.00 / MBF
Red Oak	107.8 MBF	\$ 173.00 / MBF
Red Pine	117.5 MBF	\$ 99.00 / MBF
White Oak	17.2 MBF	\$ 106.00 / MBF
Pulpwood		
Mixed Aspen	969 Cords	\$ 24.40 / Cord
Mixed Hardwood	838 Cords	\$ 20.10 / Cord
Mixed Oak	134 Cords	\$ 33.45 / Cord
Red Pine	2,479 Cords	\$ 46.20 / Cord

\* The total volume is statistically estimated within plus (+) or minus (-) 10.87 percent. There are an estimated 7,174 cords on this timber sale, plus or minus 780 cords at the 95% confidence level. The estimated units are final and not subject to adjustment. Prospective bidders are urged to examine this timber and to make their own estimates of quantity and quality.

### **BOND AND PAYMENT SCHEDULE:**

1. A bond in the amount of \$27,097.00 to insure faithful performance of the conditions of the contract will be deposited by the successful bidder within 21 days of the sale award.
2. Cutting in any sale or unit without the required advance payment would be considered a trespass.
3. Total payment must be paid in advance or according to the following schedule :
  - (a) Ten percent (10%) of the sale value must be paid within 21 days of the sale award.
  - (b) The 10% down payment will be credited towards the first unit cut.
  - (c) Payment for each of the following units must be made before cutting begins in that unit:

PAYMENT UNIT NUMBER	PERCENT OF TOTAL SALE VALUE
01	16.6%
02	30.1%
03	1.5%
04	2.0%
05	2.6%
06	0.1%
07	2.6%
08	7.2%
09	9.6%
10	27.7%

4. If no cutting takes place, the 10% down payment will not be refunded.
5. Operations on the contract issued will terminate on 09/30/2026.

### **SALE STATISTICS**

Volumes were calculated in cubic feet using the Michigan taper model. Cubic foot volume includes all wood inside bark for the product indicated. For display purposes, cubic feet were converted to cords and MBF using a simple conversion factor, e.g. 79 cubic feet per cord and 185 cubic feet per MBF. The cubic foot volumes are precise; the cords and MBF volumes are not. Cubic foot volume cannot be directly converted to cords or boards with precision.

### SALE VOLUMES

The total estimated sale volume may not equal the sum of the species/products due to the nature of statistical calculations associated with double sampling methodology.

VOLUME			STATISTICAL RANGE IN CORDS	
TOTAL CUBIC FEET	TOTAL CORDS	PERCENT ERROR	MINIMUM	MAXIMUM
566,762	7,174	10.87%	6,394	7,955

### VDU VOLUMES

A VDU is a Volume Determination Unit. Volumes and their associated statistics are calculated at the VDU level and summarized to the sale level. There is often a one to one relationship between a VDU and a Payment Unit, but not always, depending on the cruise design. Refer to the VDU TO PAYMENT UNIT table.

VDU	VOLUME			RANGE IN CORDS	
	TOTAL CUBIC FEET	TOTAL CORDS	PERCENT ERROR	MINIMUM	MAXIMUM
2	10,375	131	46.15%	71	192
3	13,949	177	68.63%	55	298
23	67,618	856	31.85%	583	1,129
27	43,424	550	38.03%	341	759
28	78,691	996	25.85%	739	1,254
33	176,054	2,229	22.66%	1,724	2,733
48	14,335	181	57.47%	77	286
62	17,012	215	78.51%	46	384
64	496	6	88.87%	1	12
255	144,809	1,833	20.26%	1,462	2,204
<b>TOTAL:</b>	<b>566,762</b>	<b>7,174</b>		<b>5,098</b>	<b>9,250</b>

### VDU TO PAYMENT UNIT

When a VDU is associated with more than one Payment Unit (PU), the VDU volumes are assigned to the PU based on acres of the VDU within the PU.

VDU	VDU ACRES	PU	PU ACRES
2	2.6	3	2.6
3	3.7	4	3.7
23	21.0	9	21.0
27	11.8	8	11.8
28	26.6	1	26.6
33	41.3	10	41.3
48	8.1	7	8.1
62	8.0	5	8.0
64	0.4	6	0.4
255	84.3	2	84.3
<b>TOTAL:</b>	<b>207.8</b>		<b>207.8</b>

**DESCRIPTION OF TIMBER BY PAYMENT UNIT (PU)**

PU	MARKET GROUP	PRODUCT	QUANTITY	UNIT	ACRES	ADVERTISE PRICE
1	Mixed Aspen	Sawtimber	22.2	MBF	26.6	\$44,860.60
	<i>B. T. Aspen</i>		22.2	<i>MBF</i>		
	Red Pine		34.4	MBF		
	Mixed Aspen	Pulpwood	16	Cords		
	<i>B. T. Aspen</i>		16	<i>Cords</i>		
	Red Pine		848	Cords		
2	Mixed Aspen	Sawtimber	12.4	MBF	84.3	\$81,399.00
	<i>B. T. Aspen</i>		12.4	<i>MBF</i>		
	Red Pine		76.6	MBF		
	Mixed Aspen	Pulpwood	104	Cords		
	<i>B. T. Aspen</i>		104	<i>Cords</i>		
	Red Pine		1,520	Cords		
3	Mixed Aspen	Sawtimber	23.9	MBF	2.6	\$4,119.40
	<i>B. T. Aspen</i>		23.9	<i>MBF</i>		
	Red Maple		3.3	MBF		
	Red Pine	0.4	MBF			
	Mixed Aspen	Pulpwood	38	Cords		
	<i>B. T. Aspen</i>		38	<i>Cords</i>		
	Mixed Hardwood		19	Cords		
	<i>Red Maple</i>		19	<i>Cords</i>		
	Red Pine		10	Cords		
4	Mixed Aspen	Sawtimber	39.4	MBF	3.7	\$5,404.30
	<i>B. T. Aspen</i>		39.4	<i>MBF</i>		
	Red Maple		3.9	MBF		
	Mixed Aspen	Pulpwood	33	Cords		
	<i>B. T. Aspen</i>		33	<i>Cords</i>		
	Mixed Hardwood		39	Cords		
	<i>Red Maple</i>		39	<i>Cords</i>		
	Red Pine		3	Cords		
5	Mixed Aspen	Sawtimber	58.2	MBF	8.0	\$7,087.30
	<i>B. T. Aspen</i>		58.2	<i>MBF</i>		
	Red Maple		7.2	MBF		
	Mixed Aspen	Pulpwood	43	Cords		
	<i>B. T. Aspen</i>		43	<i>Cords</i>		
	Mixed Hardwood		15	Cords		
	<i>Red Maple</i>		15	<i>Cords</i>		
Red Pine	4	Cords				
6	Mixed Aspen	Sawtimber	0.3	MBF	0.4	\$280.90
	<i>B. T. Aspen</i>		0.3	<i>MBF</i>		
	Mixed Aspen	Pulpwood	1	Cords		
	<i>B. T. Aspen</i>		1	<i>Cords</i>		
Red Pine	5	Cords				
7	Mixed Aspen	Sawtimber	11.2	MBF	8.1	\$7,116.80
	<i>B. T. Aspen</i>		11.2	<i>MBF</i>		
	Red Maple		9.8	MBF		
	Red Pine	6.1	MBF			
	Mixed Aspen	Pulpwood	10	Cords		
	<i>B. T. Aspen</i>		10	<i>Cords</i>		
	Mixed Hardwood		19	Cords		
	<i>Red Maple</i>		19	<i>Cords</i>		
	Red Pine		89	Cords		
8	Mixed Aspen	Sawtimber	48.8	MBF	11.8	\$19,540.80
	<i>B. T. Aspen</i>		48.8	<i>MBF</i>		
	Red Maple		21.8	MBF		
	Red Oak		31.5	MBF		

**DESCRIPTION OF TIMBER BY PAYMENT UNIT (PU), CON'T**

PU	MARKET GROUP	PRODUCT	QUANTITY	UNIT	ACRES	ADVERTISE PRICE
8 con't	White Oak	Sawtimber	17.2	MBF		
	Mixed Aspen	Pulpwood	84	Cords		
	<i>B. T. Aspen</i>		77	<i>Cords</i>		
	<i>Quaking Aspen</i>		7	<i>Cords</i>		
	Mixed Hardwood		151	Cords		
	<i>Beech</i>		30	<i>Cords</i>		
	<i>Red Maple</i>		121	<i>Cords</i>		
	Mixed Oak		36	Cords		
	<i>Red Oak</i>		23	<i>Cords</i>		
	<i>White Oak</i>		13	<i>Cords</i>		
9	Black/Red (Hybrid)	Sawtimber	4.1	MBF	21.0	\$26,094.50
	Mixed Aspen	Pulpwood	98.8	MBF		
	<i>B. T. Aspen</i>		86.2	<i>MBF</i>		
	<i>Quaking Aspen</i>		12.6	<i>MBF</i>		
	Red Maple		28.9	MBF		
	Red Oak		19.4	MBF		
	Mixed Aspen		243	Cords		
	<i>B. T. Aspen</i>		227	<i>Cords</i>		
	<i>Quaking Aspen</i>		16	<i>Cords</i>		
	Mixed Hardwood		233	Cords		
	<i>Beech</i>		83	<i>Cords</i>		
	<i>Red Maple</i>		150	<i>Cords</i>		
	Mixed Oak		26	Cords		
	<i>/Red (Hybrid) Oak</i>		3	<i>Cords</i>		
	<i>Red Oak</i>		23	<i>Cords</i>		
10	Mixed Aspen	Sawtimber	484.8	MBF	41.3	\$75,068.30
	<i>B. T. Aspen</i>	Pulpwood	484.8	<i>MBF</i>		
	Red Maple		55.3	MBF		
	Red Oak		56.9	MBF		
	Mixed Aspen		397	Cords		
	<i>B. T. Aspen</i>		397	<i>Cords</i>		
	Mixed Hardwood		362	Cords		
	<i>Beech</i>		19	<i>Cords</i>		
	<i>Red Maple</i>		343	<i>Cords</i>		
	Mixed Oak		72	Cords		
<i>Red Oak</i>	72	<i>Cords</i>				
TOTAL:			1,176.8	MBF		
TOTAL:			4,420	Cords		

## Sale Specific Conditions & Requirements

Sale Name: GNA2 Cobra Mix

Sale Number: 63-814-24 Seq#: 1

### 1 - Sale Area

#### 1.2 - Boundaries

##### 1.2.1 - Painted boundaries (9/19)

The sale boundary and Payment Unit boundaries are marked and identified by orange paint. Exterior sale boundary lines against private property are marked with orange paint. Exterior sale boundary lines against federal are marked with orange paint. Interior Payment Unit boundaries are marked with orange paint. The painted boundary line trees are not Included Timber and are to be protected unless marked with blue paint.

### 2 - Timber Specifications

#### 2.1 - Included Timber

##### 2.1.1 - Clearcut unit(s) with unmerchantable trees (6/14)

Within Payment Unit(s) 3 and 4, cut all trees that are two (2) inches or more at DBH, except within Payment Unit 3, do not cut any red pine trees that are five (5) inches or less at DBH.

Within Payment Unit 5 cut all aspen, red maple, and trees marked with blue paint above and below stump height, regardless of merchantability.

##### 2.1.3 - Cut tree marked unit(s) (12/08)

Within Payment Unit(s) 1, 2 and 6, all red pine are designated for cutting when marked with blue and green paint above and below stump height, regardless of merchantability. Designated plantation rows are identified by green paint and follow row direction. In addition, within Payment Units 1, 2, and 6, cut all aspen, regardless of merchantability. Furthermore, within Payment Units 1, 2, and 6, do not cut any oak.

##### 2.1.7 - Leave tree marked unit(s) (6/14)

Within Payment Unit(s) 8, 9 and 10, cut all trees that are two (2) inches or more at DBH, except do not cut any conifer trees or trees marked with orange paint above and below stump height. In addition, within Payment Units 9 and 10, do not cut any white oak.

##### 2.1.8 - Designated plantation row unit(s) (12/08)

Within Payment Unit(s) 7, all red pine trees which meet minimum piece specifications in 2.2 Utilization, within designated plantation rows are designated for cutting. Designated plantation rows begin with the third row in from the outside of the plantation, then continue every third row. Rows may follow a cut 1 leave 2 pattern, or a cut 2 leave 4 pattern based on spacing. Because of the variability of row direction, it shall be the responsibility of the Purchaser to maintain the third-row sequence. In addition, within Payment Unit 7 cut all aspen and maple, regardless of merchantability. Furthermore, within Payment Unit 7, do not cut any oak.

#### 2.2 - Utilization

##### 2.2.12 - GNA, cut and remove Included Timber (3/18)

Unless provided otherwise herein, the DNR agrees to sell and permit Purchaser to cut and remove Included Timber and Purchaser agrees to purchase, cut, and remove Included Timber.

### 3 - Payments

#### 3.3 - Pre-measured Sales

##### 3.3.4 - Dividing payment units (7/14)

Payment Unit(s) 1-10 may be divided at the request of the Purchaser and upon approval of the Unit Manager. Dividing Payment Units is a contract modification which requires a Timber Sale Contract Amendment. There will be only one division per Payment Unit.

### 4 - Transportation

#### 4.1 - Construction

#### 4.1.3 - Slash and earthen piles (8/04)

Piles or windrows of earth along roads and landings that have been widened or constructed shall be leveled. Slash from road maintenance or construction, including stumps, shall be dispersed throughout the sale or used to block roads.

#### 4.1.6 - Road construction (4/24)

Construction of new roads or improvements of existing roads shall be done in such a way as to minimize the environmental and visual impacts. Merchantable trees shall be cut and utilized unless otherwise directed. Non-merchantable trees shall be severed and laid flat on the ground. Slash shall be scattered, and not left in windrows and kept a minimum of 10 feet back from the road edge. Stumps shall be set upright, not left on edge, and be moved at least 10 feet away from the road edge. Disturbed soil shall be feathered into the woods and not left in berms or windrows.

#### 4.1.7 - Road closure (10/11)

All new roads built into the sale must be blocked to vehicle traffic within 30 days of completion of hauling. Overgrown roads that are reopened shall be considered new roads. Some existing roads may also need to be closed, the Sale Administrator will determine these roads. In general, this will require constructing a four (4') foot high berm of stumps and logs covered with earth. These roads must be rendered impassable to cars and trucks. All stumps from road building and landing construction must be reserved to block any newly constructed roads upon completion of the sale. These stumps must be scattered along the road system to prohibit vehicular movement. Temporary berms may be required if no sale activity occurs for 30 or more consecutive days. Contact the Sale Administrator for specific details of design and placement.

### 4.2 - Maintenance

#### 4.2.1 - Hauling restriction (12/08)

Hauling may be restricted on forest roads by the Unit Manager or his/her representative. The restriction may occur during spring breakup or during wet weather conditions.

#### 4.2.4 - Grading (10/16)

For completion of the sale, forest roads must be graded. In general, this will require a road grader or bulldozer to shape up the roads after forest products have been hauled off site. This includes cleaning of drainage areas, grading, crowning and filling with gravel, if necessary. The grading equipment to be used must be approved by the Unit Manager or his/her representative.

#### 4.2.5 - Two wheel drive condition (2/04)

All existing trail roads on and adjacent to the sale area must be passable by two-wheel drive traffic for the duration of the sale.

### 4.4 - Access

#### 4.4.1 - Private property access (3/11)

Permission for access across private land is the responsibility of the Purchaser. Should the Purchaser desire to cross private land, a copy of the written permission from the private land-owner may be required by the DNR.

#### 4.4.5 - Federal property access (3/11)

Permission for access across federal land has been obtained by the DNR.

## 5 - Operations

### 5.1 - Notification

#### 5.1.1 - Pre-sale conference (10/16)

A pre-sale conference on site between the Purchaser and sale administrator is required prior to beginning any operations to determine landing and road locations. The Unit Manager or his/her representative must be contacted at least 10 days in advance to schedule the conference.

#### 5.1.4 - Post-sale conference (10/16)

A post-sale conference on site between the Purchaser and sale administrator is required 5 days prior to the completion of active logging operations to determine clean-up and repair of landings, road edges, and the fulfillment of other contract specifications.

### 5.2 - Conduct of Operations

#### 5.2.1 - Slash

#### 5.2.1.8 - Slash height (12/08)

No slash may exceed 24 inches in height.

### 5.2.2 - Hazard Trees/Snags

#### 5.2.2.1 - Den trees (10/16)

Obvious hollow and/or den trees shall be protected and left standing unless they are a safety hazard.

### 5.2.3 - Operating Restrictions

#### 5.2.3.1 - Operating restrictions (9/11)

Within Payment Unit(s) 1-10, unless changed by written agreement, cutting, skidding, and hauling are limited to the period of October 1 to March 31. This restriction is for aspen regeneration per USFS.

#### 5.2.3.4 - Oak wilt restriction, no exceptions (1/18)

Within Payment Unit(s) 1-10 cutting, skidding, hauling within the sale and brushing of access roads to the sale are not permitted during the period of April 15 to July 15. No exceptions will be granted. This is necessary to reduce the spread of oak wilt.

#### 5.2.3.14 - Heterobasidion root disease (HRD) (3/21)

This plantation is at risk of infection by the root rot fungus, Heterobasidion irregulare. To prevent the spread of this disease, cutting operations within Payment Unit(s) 1, 2 and 7 are restricted to the period of January 1st through February 28th. Cutting may only occur outside this period with written permission of the Unit Manager or with the application of a preventative pesticide. Consultation with a forest health specialist will determine if cutting can occur prior to January 1 without pesticide application, dependent upon current and forecasted snow cover. Cellu-Treat and RotStop C are currently the only EPA registered products available in the United States for the control of Heterobasidion. Both products are a water-soluble powder that must be applied to the stump, in accordance with the product label. Dye must be added to these products to provide visible evidence of adequate coverage. Application of these pesticides requires licensing by the Michigan Department of Agriculture and Rural Development. All applicators are required to: provide to the Sale Administrator notification of application per requirements in 40 CFR 170.120; and document and provide to the Sale Administrator annually, by December 31 and prior to closure of sale, the volume of product used and acres treated.

#### 5.2.29 - Shrub protection (1/20)

Do not cut or damage hawthorn, witch-hazel, dogwood or juneberry. These woody-shrub plants are highly beneficial to various wildlife species.

#### 5.2.32 - Decking/landing restoration (9/13)

All decking and landing areas must have the surface area restored to a condition equal to or better than before. This is to ensure the proper regeneration of the stand. Wood debris, chips and "cookies" from trimmings must be removed or scattered away from landing and loading areas and may not be windrowed on the edge.

#### 5.2.37 - No decking areas (12/08)

No decking is allowed in Payment Unit 3 and 4 to stimulate aspen regeneration.

#### 5.2.38 - No decking against live trees (2/04)

Cut products may not be decked against unmarked or designated leave trees.

### 5.4 - Soil Protection

#### 5.4.1 - Rutting restriction, general (7/16)

Operations are to cease immediately if equipment and weather conditions result in rutting of roads and/or skid trails which is 12 inches or greater in depth and 50 feet in length. The Unit Manager or his/her representative may restrict hauling and/or skidding if ruts exceed the specified depth. With the Unit Manager or his/her representative's approval, the Purchaser may return to the area when the risk of rutting has decreased.

#### 5.4.2 - Skid trails (2/04)

Skid trails up and down slopes should be avoided. If however this is unavoidable, these trails will be left in a non-erodible condition using water bars, logs, and slash. Placing of slash on these skid trails while logging is ongoing may alleviate need for any further action. At the direction of the sale administrator, seed, fertilizer, and mulch may also be required.

### 5.6 - Debris and Waste Material

#### 5.6.2 - GNA, equipment cleaning (4/24)

(a) Areas, known by the DNR prior to timber sale advertisement, that are infested with invasive species of concern are shown on the Timber Sale Map. A current list of invasive species of concern and a map showing the extent of known infestations is available from the DNR. For purposes of this provision, "Off-Road Equipment" includes all logging and construction machinery, except for log trucks, chip vans, service vehicles, water trucks, pickup trucks, cars, and similar vehicles.

(b) Purchaser shall adhere to the following requirements with regard to cleaning "Off-Road Equipment":

(i) Prior to moving Off-Road Equipment onto the Sale Area, Purchaser shall identify the location of the equipment's most recent operation. Purchaser shall not move any Off-Road Equipment that last operated in an area infested with one or more invasive species of concern onto Sale Area without having cleaned such equipment of seeds, soil, vegetative matter, and other debris that could contain or hold seeds, and having notified the DNR, as provided in (iii). If the location of prior operation cannot be identified, then Purchaser shall assume that the location is infested with invasive species of concern.

(ii) Prior to moving Off-Road Equipment from a cutting unit that is shown on the Timber Sale Map to be infested with invasive species of concern to, or through any other area that is shown as being free of invasive species of concern, or infested with a different invasive species, Purchaser shall clean such equipment of seeds, soil, vegetative matter, and other debris that could contain or hold seeds, and shall notify the DNR, as provided in (iii).

(iii) Prior to moving any Off-Road Equipment subject to the cleaning requirements set forth above, Purchaser shall advise DNR of its cleaning measures and make the equipment available for inspection. DNR shall have 2 days, excluding weekends and State holidays, to inspect equipment after it has been made available. After satisfactory inspection or after such 2 day period, Purchaser may move the equipment as planned. Equipment shall be considered clean when a visual inspection does not disclose seeds, soil, vegetative matter, and other debris that could contain or hold seeds. Purchaser shall not be required to disassemble equipment unless so directed by the DNR after inspection.

(iv) If Purchaser desires to clean Off-Road Equipment on National Forest land, such as at the end of a project or prior to moving to, or through an area that is free of invasive species of concern, Purchaser shall obtain prior approval from the Unit Manager or his/her representative as to the location for such cleaning and measures, if any, for controlling impacts.

(v) Unit Manager or his/her representative may order delay, interruption, or modification of this Contract pursuant to Condition & Requirement 7.3 or 7.3.4.

(c) Nothing contained in this Condition & Requirement shall be interpreted as creating any warranty on the part of the DNR that all locations of invasive species of concern have been described herein, elsewhere in this Contract, or designated on the ground. Following sale advertisement, additional locations may be described or designated, and other species may be added to the list of invasive species of concern. In such event, the Unit Manager or his/her representative may order delay, interruption, or modification of this Contract pursuant to Condition & Requirement 7.3 or 7.3.4.

(d) The parties shall promptly communicate with one another with respect to description or designation of additional locations; discovery of locations of new species or new infestation; and, addition of species to the list of invasive species of concern.

## 7 - Other Conditions

### SKIP

#### 7.1.1 - GNA, title (7/16)

General Condition & Requirement 7.1 is inapplicable. The following applies to this contract.

All right, title, and interest in and to any Included Timber shall remain in USDA Forest Service with the State of Michigan acting on behalf of the USDA Forest Service under this GNA contract, until it has been Measured, removed from Sale Area or other authorized cutting area, and paid for, at which time title shall vest in Purchaser. Title to any Included Timber that has been Measured and paid for, but not removed from Sale Area or other authorized cutting area by Purchaser on or prior to Termination Date, shall remain in USDA Forest Service.

### 7.3 - Contract Modifications



#### 7.3.4 - GNA, contract suspension and modification (5/16)

(a) The Unit Manager may, by written order, delay or interrupt authorized operations under this contract or, notwithstanding Condition & Requirement 7.3, modify this contract, in whole or in part:

(i) To prevent environmental degradation or resource damage, including, but not limited to, harm to habitat, plants, animals, cultural resources, or cave resources;

(ii) To ensure consistency with land and resource management plans or other documents prepared pursuant to the National Environmental Policy Act of 1969, 42 USC 4321-4347;

(iii) To conduct environmental analysis, including, but not limited to, engaging in consultation pursuant to the Endangered Species Act of 1973, 16 USC 1531, et seq.; or

(iv) Upon agreement of the Forest Service, due to administrative appeal or litigation, regardless of whether the Unit Manager's order is required by a court order or this contract is named in such a proceeding.

(b) In the event of an order delaying or interrupting Purchaser's Operations under this Condition & Requirement, Purchaser's remedy shall be:

(i) a no cost contract extension,

(ii) reimbursement for Out-of-Pocket Expenses,

however, the foregoing remedies shall be available only to the extent that the Unit Manager's order was the sole and exclusive cause of the delay or interruption of Purchaser's operations.

(c) Remedies awarded to the Purchaser shall not be duplicative, and the Unit Manager shall have the right to structure remedies provided herein to avoid duplicative compensation.

(d) Purchaser agrees that this Condition & Requirement, and the remedies provided herein shall apply regardless of any finding by any court that the DNR failed to comply with any statute, regulation and/or policy in connection with awarding, advertising, or authorizing this sale, or a similar sale.

#### 7.5 - Loss

##### 7.5.2 - GNA, liability for loss (7/16)

If Included Timber is destroyed or damaged by an unexpected event that changes the nature of Included Timber, such as wind, flood, insects, disease, or similar cause, the Purchaser shall bear the timber value loss resulting from such destruction or damage.

Deterioration or loss of timber value due to delay or interruption under 7.3.4 - GNA, contract suspension and modification, shall be borne by the party holding title. In this event, Included Timber to which USDA Forest Service holds title, Purchaser of the State GNA contract will not be obligated to remove and pay for such timber. This Subsection shall not be construed to relieve either party of liability for negligence.

#### 7.10 - Certified Timber

##### 7.10.1 - Non-certified timber (2/16)

The area encompassed by this timber sale is not certified to the standards of the Forest Stewardship Council (FSC) or the Sustainable Forestry Initiative (SFI). Forest products from this sale may not be delivered to the mill as "FSC and / or SFI certified". The lands within this sale belong to the National Forest system and are being managed by the State as part of a Good Neighbor Authority (GNA) agreement.

**TIMBER SALE MAP**

This information provided by authority of Part 525, 1994 PA 451, as amended.

Sale Number  
**63-814-24**

Date  
**07/18/2024**

Forest Management Unit	County	Mapped By: T. Lewis
Cadillac Mgt Unit	Oceana	Cruised By: Lewis, Adamczyk, Park

Scale	Page	Of
1:15,840	1	1

Township	Range	Section(s) and Subdivision(s)
16N	16W	Sec. 23 E1/2NE,E1/2SE; Sec. 24 NW,SWNE,N1/2SW,SWSW,W1/2SE; Sec. 25 NWNW;

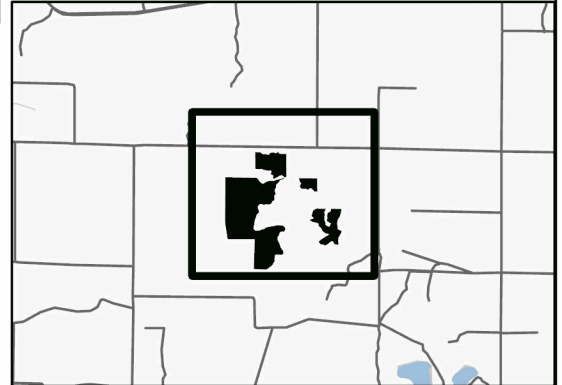
**Cover Type**

A = Aspen	J = Jack Pine	O = Oak	U = Upland Brush
B = Paper Birch	K = Rock	P = Lowland Poplar	UM = Upland Mix Forest
C = Cedar	L = Lowland Brush	Q = Mixed Swamp Conifer	V = Bog or Marsh
D = Treed Bog	LM = Lowland Mix Forest	R = Red Pine	W = White Pine
E = Swamp Hardwoods	M = Maple, Beech, Birch	S = Black Spruce	X = Non Stocked
F = Spruce/Fir	MC = Mixed Conifer	T = Tamarack	Y = Sand
G = Grass	MD = Mixed Deciduous	Z = Water	
H = Hemlock	N = Marsh		

**Density**

0 = Non Stocked	5 = Pole Timber Medium
1 = Seedling Sapling Poor	6 = Pole Timber Well
2 = Seedling Sapling Medium	7 = Saw Timber Poor
3 = Seedling Sapling Well	8 = Saw Timber Medium
4 = Pole Timber Poor	9 = Saw Timber Well

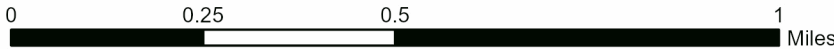
**Locator Map (1:100,000)**



**GNA2 Cobra Mix**

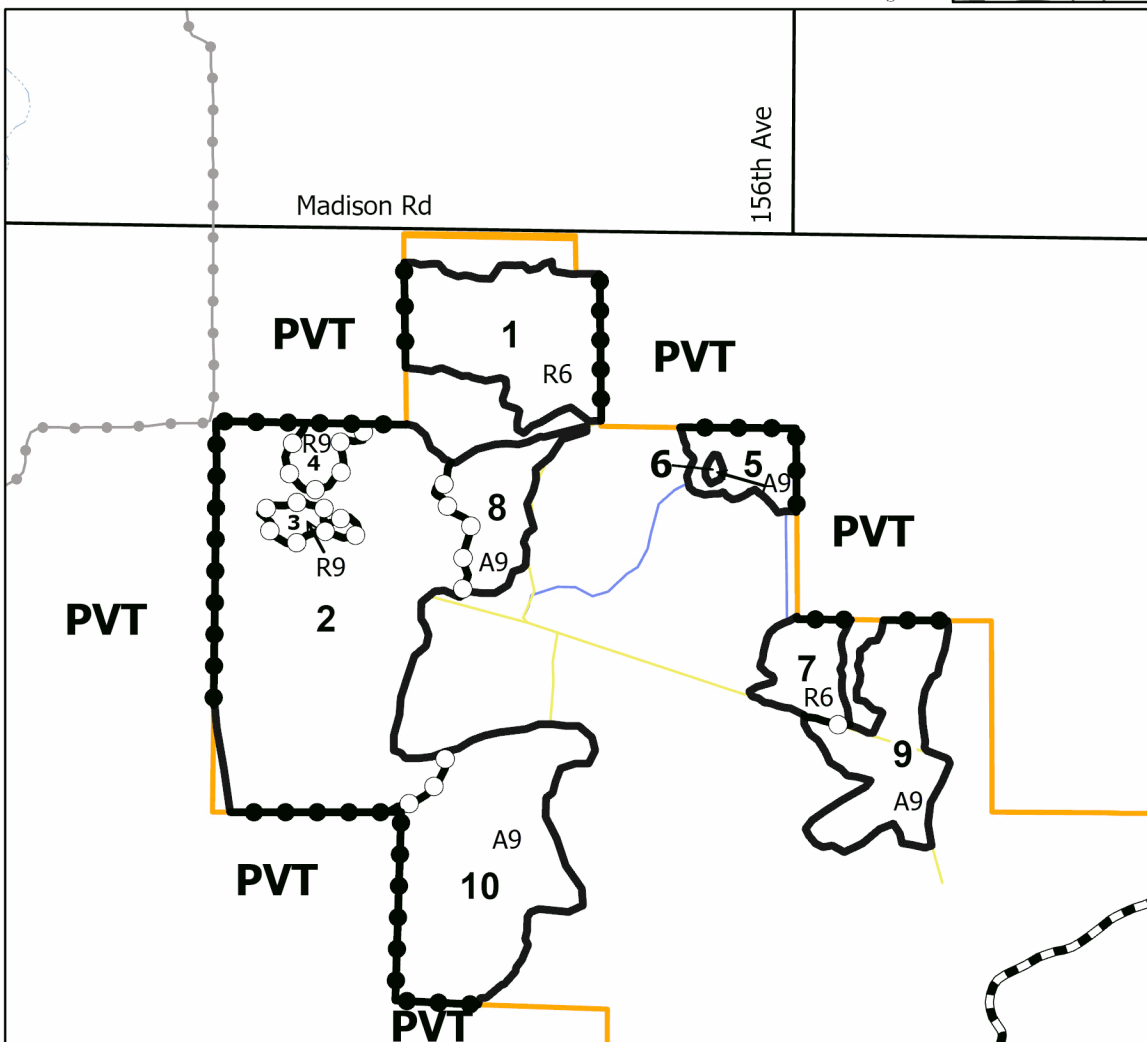
**207.8 Acres**

PU #	Acres	PU #	Acres
1	26.6	6	0.4
2	84.3	7	8.1
3	2.6	8	11.8
4	3.7	9	21
5	8	10	41.3



**Legend**

- Against Federal (Orange)
- Good Neighbor Authority (USFS)
- Payment Unit (Orange)
- Private Line (Orange)
- Recreational Trail
- Optional Skid Route
- Trails
- Primary Forest Road
- Forest Access Route
- Administrative Access Only
- Paved Road
- Government Gravel/Dirt
- Private Gravel/Dirt



Use QR Code to open Map in App



## TIMBER SALE INFORMATION

### GNA2 156th Oak (63-815-24)

T16N, R15W, SEC. 7; T16N, R16W, SEC. 12; T16N, R16W, SEC. 13.  
Oceana County (Advertised Price \$125,332.10)

SALE NOTE: All units of volume listed for this sale were estimated using the Inventory Manager computer program and the new Michigan taper model. This is a Good Neighbor Authority (GNA) timber sale on national forest land. This timber sale was set-up and is being advertised by the Michigan DNR for the US Forest Service. The contract will be awarded and administered by the Michigan DNR. Note the additional Sale Specific Conditions & Requirements containing the acronym 'GNA'.

Access may be through other public land.

A timber sale contract for this lump sum, sealed bid timber sale will be awarded to the responsible bidder offering the highest sealed bid price. All units of volume listed below were estimated using the Inventory Manager computer program and the new Michigan taper model. Bids must be at or above the following advertised price for each product and species:

<u>PRODUCTS &amp; SPECIES</u>	<u>ESTIMATED UNITS*</u>	<u>ADVERTISED PRICE</u>
<b>Sawtimber</b>		
B. T. Aspen	58.5 MBF	\$ 85.00 / MBF
Beech	1.8 MBF	\$ 132.00 / MBF
Black/Red (Hybrid) Oak	73.0 MBF	\$ 105.00 / MBF
Red Maple	74.5 MBF	\$ 84.00 / MBF
Red Oak	219.6 MBF	\$ 173.00 / MBF
Red Pine	27.0 MBF	\$ 99.00 / MBF
Sugar Maple	9.1 MBF	\$ 206.00 / MBF
White Oak	116.1 MBF	\$ 106.00 / MBF
<b>Pulpwood</b>		
B. T. Aspen	198 Cords	\$ 24.40 / Cord
Mixed Hardwood	329 Cords	\$ 20.10 / Cord
Mixed Oak	718 Cords	\$ 33.45 / Cord
Red Pine	344 Cords	\$ 46.20 / Cord

\* The total volume is statistically estimated within plus (+) or minus (-) 16.60 percent. There are an estimated 2,944 cords on this timber sale, plus or minus 489 cords at the 95% confidence level. The estimated units are final and not subject to adjustment. Prospective bidders are urged to examine this timber and to make their own estimates of quantity and quality.

### **BOND AND PAYMENT SCHEDULE:**

1. A bond in the amount of \$12,533.00 to insure faithful performance of the conditions of the contract will be deposited by the successful bidder within 21 days of the sale award.
2. Cutting in any sale or unit without the required advance payment would be considered a trespass.
3. Total payment must be paid in advance or according to the following schedule :
  - (a) Ten percent (10%) of the sale value must be paid within 21 days of the sale award.
  - (b) The 10% down payment will be credited towards the first unit cut.
  - (c) Payment for each of the following units must be made before cutting begins in that unit:
 

PAYMENT UNIT NUMBER	PERCENT OF TOTAL SALE VALUE
01	18.3%
02	28.0%
03	14.7%
04	19.9%
05	9.1%
06	10.0%
4. If no cutting takes place, the 10% down payment will not be refunded.
5. Operations on the contract issued will terminate on 04/15/2027.

### **SALE STATISTICS**

Volumes were calculated in cubic feet using the Michigan taper model. Cubic foot volume includes all wood inside bark for the product indicated. For display purposes, cubic feet were converted to cords and MBF using a simple conversion factor, e.g. 79 cubic feet per cord and 185 cubic feet per MBF. The cubic foot volumes are precise; the cords and MBF volumes are not. Cubic foot volume cannot be directly converted to cords or boards with precision.

## SALE VOLUMES

The total estimated sale volume may not equal the sum of the species/products due to the nature of statistical calculations associated with double sampling methodology.

VOLUME			STATISTICAL RANGE IN CORDS	
TOTAL CUBIC FEET	TOTAL CORDS	PERCENT ERROR	MINIMUM	MAXIMUM
232,598	2,944	16.60%	2,455	3,433

## VDU VOLUMES

A VDU is a Volume Determination Unit. Volumes and their associated statistics are calculated at the VDU level and summarized to the sale level. There is often a one to one relationship between a VDU and a Payment Unit, but not always, depending on the cruise design. Refer to the VDU TO PAYMENT UNIT table.

	VOLUME			RANGE IN CORDS	
VDU	TOTAL CUBIC FEET	TOTAL CORDS	PERCENT ERROR	MINIMUM	MAXIMUM
12	23,114	293	68.50%	92	493
14	44,000	557	33.95%	368	746
16	69,183	876	29.09%	621	1,131
17	33,909	429	47.03%	227	631
21	43,355	549	43.25%	311	786
27	19,036	241	56.30%	105	377
<b>TOTAL:</b>	<b>232,598</b>	<b>2,944</b>		<b>1,725</b>	<b>4,163</b>

## VDU TO PAYMENT UNIT

When a VDU is associated with more than one Payment Unit (PU), the VDU volumes are assigned to the PU based on acres of the VDU within the PU.

VDU	VDU ACRES	PU	PU ACRES
12	8.7	6	8.7
14	37.4	4	37.4
16	51.3	2	51.3
17	26.2	3	26.2
21	21.7	1	21.7
27	9.2	5	9.2
<b>TOTAL:</b>	<b>154.5</b>		<b>154.5</b>

**DESCRIPTION OF TIMBER BY PAYMENT UNIT (PU)**

PU	MARKET GROUP	PRODUCT	QUANTITY	UNIT	ACRES	ADVERTISE PRICE
1	B. T. Aspen	Sawtimber	6.8	MBF	21.7	\$22,983.25
	Beech		1.8	MBF		
	Black/Red (Hybrid		11.6	MBF		
	Red Maple		5.3	MBF		
	Red Oak		6.0	MBF		
	Red Pine		20.5	MBF		
	White Oak		40.2	MBF		
	B. T. Aspen		Pulpwood	8		
	Mixed Hardwood	20		Cords		
	<i>Beech</i>	2		<i>Cords</i>		
	<i>Black Cherry</i>	5		<i>Cords</i>		
	<i>Red Maple</i>	13		<i>Cords</i>		
	Mixed Oak	115		Cords		
	<i>/Red (Hybrid) Oak</i>	49		<i>Cords</i>		
	<i>Red Oak</i>	12		<i>Cords</i>		
	<i>White Oak</i>	54	<i>Cords</i>			
Red Pine	189	Cords				
2	B. T. Aspen	Sawtimber	16.9	MBF	51.3	\$35,097.75
	Black/Red (Hybrid		26.0	MBF		
	Red Maple		16.2	MBF		
	Red Oak		59.0	MBF		
	White Oak		55.1	MBF		
	B. T. Aspen	Pulpwood	32	Cords		
	Mixed Hardwood		143	Cords		
	<i>Beech</i>		3	<i>Cords</i>		
	<i>Red Maple</i>		140	<i>Cords</i>		
	Mixed Oak		295	Cords		
	<i>/Red (Hybrid) Oak</i>		48	<i>Cords</i>		
	<i>Red Oak</i>		74	<i>Cords</i>		
	<i>White Oak</i>		173	<i>Cords</i>		
3	B. T. Aspen	Sawtimber	11.3	MBF	26.2	\$18,389.80
	Black/Red (Hybrid		30.6	MBF		
	Red Oak		42.4	MBF		
	B. T. Aspen	Pulpwood	33	Cords		
	Mixed Hardwood		46	Cords		
	<i>Beech</i>		8	<i>Cords</i>		
	<i>Red Maple</i>		38	<i>Cords</i>		
	Mixed Oak		154	Cords		
	<i>/Red (Hybrid) Oak</i>		22	<i>Cords</i>		
	<i>Red Oak</i>		100	<i>Cords</i>		
	<i>White Oak</i>		32	<i>Cords</i>		
4	B. T. Aspen	Sawtimber	17.7	MBF	37.4	\$24,903.15
	Red Maple		35.6	MBF		
	Red Oak		76.7	MBF		
	White Oak		7.5	MBF		
	B. T. Aspen	Pulpwood	113	Cords		
	Mixed Hardwood		37	Cords		
	<i>Red Maple</i>		26	<i>Cords</i>		
	<i>Sugar Maple</i>		11	<i>Cords</i>		
	Mixed Oak		85	Cords		
	<i>Red Oak</i>		71	<i>Cords</i>		
<i>White Oak</i>	14	<i>Cords</i>				
5	B. T. Aspen	Sawtimber	2.5	MBF	9.2	\$11,429.15
	Red Maple		15.8	MBF		
	Red Oak		31.9	MBF		
	Sugar Maple		9.1	MBF		

**DESCRIPTION OF TIMBER BY PAYMENT UNIT (PU), CON'T**

PU	MARKET GROUP	PRODUCT	QUANTITY	UNIT	ACRES	ADVERTISE PRICE
5 con't	B. T. Aspen	Pulpwood	9	Cords		
	Mixed Hardwood		65	Cords		
	<i>Beech</i>		8	<i>Cords</i>		
	<i>Red Maple</i>		27	<i>Cords</i>		
	<i>Sugar Maple</i>		30	<i>Cords</i>		
	Mixed Oak		29	Cords		
	<i>Red Oak</i>		29	<i>Cords</i>		
6	B. T. Aspen	Sawtimber	3.3	MBF	8.7	\$12,529.00
	Black/Red (Hybrid)		4.8	MBF		
	Red Maple		1.6	MBF		
	Red Oak		3.6	MBF		
	Red Pine		6.5	MBF		
	White Oak		13.3	MBF		
	B. T. Aspen		Pulpwood	3		
	Mixed Hardwood	18		Cords		
	<i>Beech</i>	2		<i>Cords</i>		
	<i>Red Maple</i>	16		<i>Cords</i>		
	Mixed Oak	40		Cords		
	<i>/Red (Hybrid) Oak</i>	7		<i>Cords</i>		
	<i>Red Oak</i>	3		<i>Cords</i>		
	<i>White Oak</i>	30		<i>Cords</i>		
	Red Pine	155		Cords		
	TOTAL:			579.6	MBF	
TOTAL:			1,589	Cords		

## Sale Specific Conditions & Requirements

Sale Name: GNA2 156th Oak

Sale Number: 63-815-24 Seq#: 1

### 1 - Sale Area

#### 1.2 - Boundaries

##### 1.2.1 - Painted boundaries (9/19)

The sale boundary and Payment Unit boundaries are marked and identified by orange paint. Exterior sale boundary lines against private property are marked with orange paint. Exterior sale boundary lines against forest service are marked with orange paint. Interior Payment Unit boundaries are marked with orange paint. The painted boundary line trees are not Included Timber and are to be protected unless marked with orange paint.

### 2 - Timber Specifications

#### 2.1 - Included Timber

##### 2.1.3 - Cut tree marked unit(s) (12/08)

Within Payment Unit(s) 2-5, all trees are designated for cutting when marked with blue paint above and below stump height, regardless of merchantability.

##### 2.1.7 - Leave tree marked unit(s) (6/14)

Within Payment Unit(s) 1 and 6, all trees, which meet minimum piece specifications in 2.2 Utilization, are designated for cutting, except do not cut trees marked with orange paint above and below stump height.

Special protection trees identified in accordance with condition 3.4.2, within clearcutting unit boundaries, are not Included Timber and are to be protected.

#### 2.2 - Utilization

##### 2.2.12 - GNA, cut and remove Included Timber (3/18)

Unless provided otherwise herein, the DNR agrees to sell and permit Purchaser to cut and remove Included Timber and Purchaser agrees to purchase, cut, and remove Included Timber.

### 3 - Payments

#### 3.3 - Pre-measured Sales

##### 3.3.4 - Dividing payment units (7/14)

Payment Unit(s) may be divided at the request of the Purchaser and upon approval of the Unit Manager. Dividing Payment Units is a contract modification which requires a Timber Sale Contract Amendment. There will be only one division per Payment Unit.

#### 3.4 - Damaged Timber

##### 3.4.2 - Special Protection Trees (4/14)

The Purchaser shall not cut live or dead special protection trees within cutting units or clearings. Special protection trees are marked with orange paint. If the Purchaser's operations have cut or damaged special protection trees through carelessness, the Purchaser shall pay twice the bid value as fixed, agreed and liquidated damages for each special protection tree cut or damaged. Such payment does not constitute ownership of the undesignated timber.

### 4 - Transportation

#### 4.1 - Construction

##### 4.1.6 - Road construction (4/24)

Construction of new roads or improvements of existing roads shall be done in such a way as to minimize the environmental and visual impacts. Merchantable trees shall be cut and utilized unless otherwise directed. Non-merchantable trees shall be severed and laid flat on the ground. Slash shall be scattered, and not left in windrows and kept a minimum of 10 feet back from the road edge. Stumps shall be set upright, not left on edge, and be moved at least 10 feet away from the road edge. Disturbed soil shall be feathered into the woods and not left in berms or windrows.

#### 4.1.7 - Road closure (10/11)

All new roads built into the sale must be blocked to vehicle traffic within 30 days of completion of hauling. Overgrown roads that are reopened shall be considered new roads. In general, this will require constructing a four (4') foot high berm of stumps and logs covered with earth. Stumps and brush must be placed along the remainder of the trail. These roads must be rendered impassable to cars and trucks. All stumps from road building and landing construction must be reserved to block any newly constructed roads upon completion of the sale. Temporary berms may be required if no sale activity occurs for 30 or more consecutive days. Contact the Sale Administrator for specific details of design and placement.

#### 4.2 - Maintenance

##### 4.2.4 - Grading (10/16)

For completion of the sale, forest roads must be graded. In general, this will require a road grader or bulldozer to shape up the roads after forest products have been hauled off site. This includes cleaning of drainage areas, grading, crowning and filling with gravel, if necessary. The grading equipment to be used must be approved by the Unit Manager or his/her representative.

##### 4.2.5 - Two wheel drive condition (2/04)

All existing trail roads on and adjacent to the sale area must be passable by two-wheel drive traffic for the duration of the sale.

#### 4.4 - Access

##### 4.4.5 - Federal property access (3/11)

Permission for access across federal land has been obtained by the DNR.

### 5 - Operations

#### 5.1 - Notification

##### 5.1.1 - Pre-sale conference (10/16)

A pre-sale conference between the Purchaser and sale administrator is required prior to beginning any operations to determine landing and road locations. The Unit Manager or his/her representative must be contacted at least 10 days in advance to schedule the conference.

##### 5.1.4 - Post-sale conference (10/16)

A post-sale conference on site between the Purchaser and sale administrator is required 5 days prior to the completion of active logging operations to determine clean-up and repair of landings, road edges, and the fulfillment of other contract specifications.

#### 5.2 - Conduct of Operations

##### 5.2.1 - Slash

###### 5.2.1.8 - Slash height (12/08)

No slash may exceed 24 inches in height.

##### 5.2.2 - Hazard Trees/Snags

###### 5.2.2.1 - Den trees (10/16)

Obvious hollow and/or den trees shall be protected and left standing unless they are a safety hazard.

##### 5.2.3 - Operating Restrictions

###### 5.2.3.1 - Operating restrictions (9/11)

Within Payment Unit(s) 1-6, cutting, skidding, and hauling are not permitted during the period of May 1 to September 15. This restriction is important to protect Indiana bat and turtle habitat.

###### 5.2.3.4 - Oak wilt restriction, no exceptions (1/18)

Within Payment Unit(s) 1-6, cutting, skidding, hauling within the sale and brushing of access roads to the sale are not permitted during the period of April 15 to July 15. No exceptions will be granted. This is necessary to reduce the spread of oak wilt.

###### 5.2.3.14 - Heterobasidion root disease (HRD) (3/21)



This plantation is at risk of infection by the root rot fungus, *Heterobasidion irregulare*. To prevent the spread of this disease, cutting operations within Payment Unit(s) 1 and 6 are restricted to the period of January 1st through February 28th. Cutting may only occur outside this period with written permission of the Unit Manager or with the application of a preventative pesticide. Cellu-Treat and RotStop C are currently the only EPA registered products available in the United States for the control of *Heterobasidion*. Both products are a water-soluble powder that must be applied to the stump, in accordance with the product label. Dye must be added to these products to provide visible evidence of adequate coverage. Application of these pesticides requires licensing by the Michigan Department of Agriculture and Rural Development. All applicators are required to: provide to the Sale Administrator notification of application per requirements in 40 CFR 170.120; and document and provide to the Sale Administrator annually, by December 31 and prior to closure of sale, the volume of product used and acres treated.

#### 5.2.32 - Decking/landing restoration (9/13)

All decking and landing areas must have the surface area restored to a condition equal to or better than before. This is to ensure the proper regeneration of the stand. Wood debris, chips and "cookies" from trimmings must be removed or scattered away from landing and loading areas and may not be windrowed on the edge.

#### 5.2.38 - No decking against live trees (2/04)

Cut products may not be decked against unmarked or designated leave trees.

### 5.4 - Soil Protection

#### 5.4.1 - Rutting restriction, general (7/16)

Operations are to cease immediately if equipment and weather conditions result in rutting of roads and/or skid trails which is 12 inches or greater in depth and 50 feet in length. The Unit Manager or his/her representative may restrict hauling and/or skidding if ruts exceed the specified depth. With the Unit Manager or his/her representative's approval, the Purchaser may return to the area when the risk of rutting has decreased.

### 5.6 - Debris and Waste Material

#### 5.6.2 - GNA, equipment cleaning (4/24)

(a) Areas, known by the DNR prior to timber sale advertisement, that are infested with invasive species of concern are shown on the Timber Sale Map. A current list of invasive species of concern and a map showing the extent of known infestations is available from the DNR. For purposes of this provision, "Off-Road Equipment" includes all logging and construction machinery, except for log trucks, chip vans, service vehicles, water trucks, pickup trucks, cars, and similar vehicles.

(b) Purchaser shall adhere to the following requirements with regard to cleaning "Off-Road Equipment":

(i) Prior to moving Off-Road Equipment onto the Sale Area, Purchaser shall identify the location of the equipment's most recent operation. Purchaser shall not move any Off-Road Equipment that last operated in an area infested with one or more invasive species of concern onto Sale Area without having cleaned such equipment of seeds, soil, vegetative matter, and other debris that could contain or hold seeds, and having notified the DNR, as provided in (iii). If the location of prior operation cannot be identified, then Purchaser shall assume that the location is infested with invasive species of concern.

(ii) Prior to moving Off-Road Equipment from a cutting unit that is shown on the Timber Sale Map to be infested with invasive species of concern to, or through any other area that is shown as being free of invasive species of concern, or infested with a different invasive species, Purchaser shall clean such equipment of seeds, soil, vegetative matter, and other debris that could contain or hold seeds, and shall notify the DNR, as provided in (iii).

(iii) Prior to moving any Off-Road Equipment subject to the cleaning requirements set forth above, Purchaser shall advise DNR of its cleaning measures and make the equipment available for inspection. DNR shall have 2 days, excluding weekends and State holidays, to inspect equipment after it has been made available. After satisfactory inspection or after such 2 day period, Purchaser may move the equipment as planned. Equipment shall be considered clean when a visual inspection does not disclose seeds, soil, vegetative matter, and other debris that could contain or hold seeds. Purchaser shall not be required to disassemble equipment unless so directed by the DNR after inspection.

(iv) If Purchaser desires to clean Off-Road Equipment on National Forest land, such as at the end of a project or prior to moving to, or through an area that is free of invasive species of concern, Purchaser shall obtain prior approval from the Unit

Manager or his/her representative as to the location for such cleaning and measures, if any, for controlling impacts.

(v) Unit Manager or his/her representative may order delay, interruption, or modification of this Contract pursuant to Condition & Requirement 7.3 or 7.3.4.

(c) Nothing contained in this Condition & Requirement shall be interpreted as creating any warranty on the part of the DNR that all locations of invasive species of concern have been described herein, elsewhere in this Contract, or designated on the ground. Following sale advertisement, additional locations may be described or designated, and other species may be added to the list of invasive species of concern. In such event, the Unit Manager or his/her representative may order delay, interruption, or modification of this Contract pursuant to Condition & Requirement 7.3 or 7.3.4.

(d) The parties shall promptly communicate with one another with respect to description or designation of additional locations; discovery of locations of new species or new infestation; and, addition of species to the list of invasive species of concern.

## 5.7 - Protection of Historical Sites

### 5.7.1 - Historical sites (7/12)

The Purchaser shall not cut live or dead trees or operate equipment within historical sites. Historical sites are marked with an orange boundary line. The Purchaser shall protect historical sites from damage by the Purchaser's operations. If Purchaser's operations have cut or damaged historical sites through carelessness, the Purchaser shall pay \$5,000 as fixed, agreed and liquidated damages for each acre or part thereof cut or damaged.

## 5.8 - Protection of Endangered Species

### 5.8.5 - Protection of raptor nests (3/13)

All trees with raptor nests will be protected if found during harvesting operations. Notification will be made to the Unit Manager or his/her representative who will notify the Wildlife Biologist so an on-site evaluation and recommendation can be made, if necessary.

## 6 - Safety and Fire Prevention

### 6.2 - Signing

#### 6.2.1 - Road posting (10/20)

The Purchaser is responsible for posting and maintaining caution signs on 156th Avenue prior to beginning operations. The road must be posted at appropriate distances from the Sale Area to warn of logging activity and truck traffic. Signs must be removed when harvest operations are suspended or completed. The Purchaser will provide these signs.

## 7 - Other Conditions

### SKIP

#### 7.1.1 - GNA, title (7/16)

General Condition & Requirement 7.1 is inapplicable. The following applies to this contract.

All right, title, and interest in and to any Included Timber shall remain in USDA Forest Service with the State of Michigan acting on behalf of the USDA Forest Service under this GNA contract, until it has been Measured, removed from Sale Area or other authorized cutting area, and paid for, at which time title shall vest in Purchaser. Title to any Included Timber that has been Measured and paid for, but not removed from Sale Area or other authorized cutting area by Purchaser on or prior to Termination Date, shall remain in USDA Forest Service.

### 7.3 - Contract Modifications

#### 7.3.4 - GNA, contract suspension and modification (5/16)

(a) The Unit Manager may, by written order, delay or interrupt authorized operations under this contract or, notwithstanding Condition & Requirement 7.3, modify this contract, in whole or in part:

(i) To prevent environmental degradation or resource damage, including, but not limited to, harm to habitat, plants, animals, cultural resources, or cave resources;

(ii) To ensure consistency with land and resource management plans or other documents prepared pursuant to the National Environmental Policy Act of 1969, 42 USC 4321-4347;

(iii) To conduct environmental analysis, including, but not limited to, engaging in consultation pursuant to the Endangered Species Act of 1973, 16 USC 1531, et seq.; or

(iv) Upon agreement of the Forest Service, due to administrative appeal or litigation, regardless of whether the Unit Manager's order is required by a court order or this contract is named in such a proceeding.

(b) In the event of an order delaying or interrupting Purchaser's Operations under this Condition & Requirement, Purchaser's remedy shall be:

(i) a no cost contract extension,

(ii) reimbursement for Out-of-Pocket Expenses,

however, the foregoing remedies shall be available only to the extent that the Unit Manager's order was the sole and exclusive cause of the delay or interruption of Purchaser's operations.

(c) Remedies awarded to the Purchaser shall not be duplicative, and the Unit Manager shall have the right to structure remedies provided herein to avoid duplicative compensation.

(d) Purchaser agrees that this Condition & Requirement, and the remedies provided herein shall apply regardless of any finding by any court that the DNR failed to comply with any statute, regulation and/or policy in connection with awarding, advertising, or authorizing this sale, or a similar sale.

## 7.5 - Loss

### 7.5.2 - GNA, liability for loss (7/16)

If Included Timber is destroyed or damaged by an unexpected event that changes the nature of Included Timber, such as wind, flood, insects, disease, or similar cause, the Purchaser shall bear the timber value loss resulting from such destruction or damage.

Deterioration or loss of timber value due to delay or interruption under 7.3.4 - GNA, contract suspension and modification, shall be borne by the party holding title. In this event, Included Timber to which USDA Forest Service holds title, Purchaser of the State GNA contract will not be obligated to remove and pay for such timber. This Subsection shall not be construed to relieve either party of liability for negligence.

## 7.10 - Certified Timber

### 7.10.1 - Non-certified timber (2/16)

The area encompassed by this timber sale is not certified to the standards of the Forest Stewardship Council (FSC) or the Sustainable Forestry Initiative (SFI). Forest products from this sale may not be delivered to the mill as "FSC and / or SFI certified". The lands within this sale belong to the National Forest system and are being managed by the State as part of a Good Neighbor Authority (GNA) agreement.

**TIMBER SALE MAP**

This information provided by authority of Part 525, 1994 PA 451, as amended.

Sale Number  
**63-815-24**

Date  
**07/10/2024**

Forest Management Unit	County	Mapped By: T. Lewis
Cadillac Mgt Unit	Oceana	Cruised By: DNRTCWRITER

Scale	Page	Of
1:15,840	1	1

Township	Range	Section(s) and Subdivision(s)
16N	15W /	Sec. 12 NENE,S1/2NE,SE; Sec. 13 NWNE,S1/2NE; Sec. 7 S1/2NW,N1/2SW;

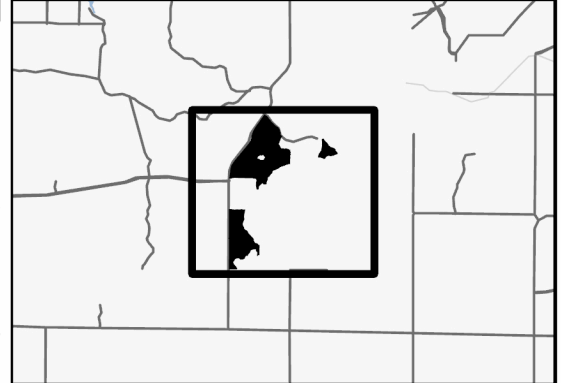
**Cover Type**

A = Aspen	J = Jack Pine	O = Oak	U = Upland Brush
B = Paper Birch	K = Rock	P = Lowland Poplar	UM = Upland Mix Forest
C = Cedar	L = Lowland Brush	Q = Mixed Swamp Conifer	V = Bog or Marsh
D = Treed Bog	LM = Lowland Mix Forest	R = Red Pine	W = White Pine
E = Swamp Hardwoods	M = Maple, Beech, Birch	S = Black Spruce	X = Non Stocked
F = Spruce/Fir	MC = Mixed Conifer	T = Tamarack	Y = Sand
G = Grass	MD = Mixed Deciduous	Z = Water	
H = Hemlock	N = Marsh		

**Density**

0 = Non Stocked	5 = Pole Timber Medium
1 = Seedling Sapling Poor	6 = Pole Timber Well
2 = Seedling Sapling Medium	7 = Saw Timber Poor
3 = Seedling Sapling Well	8 = Saw Timber Medium
4 = Pole Timber Poor	9 = Saw Timber Well

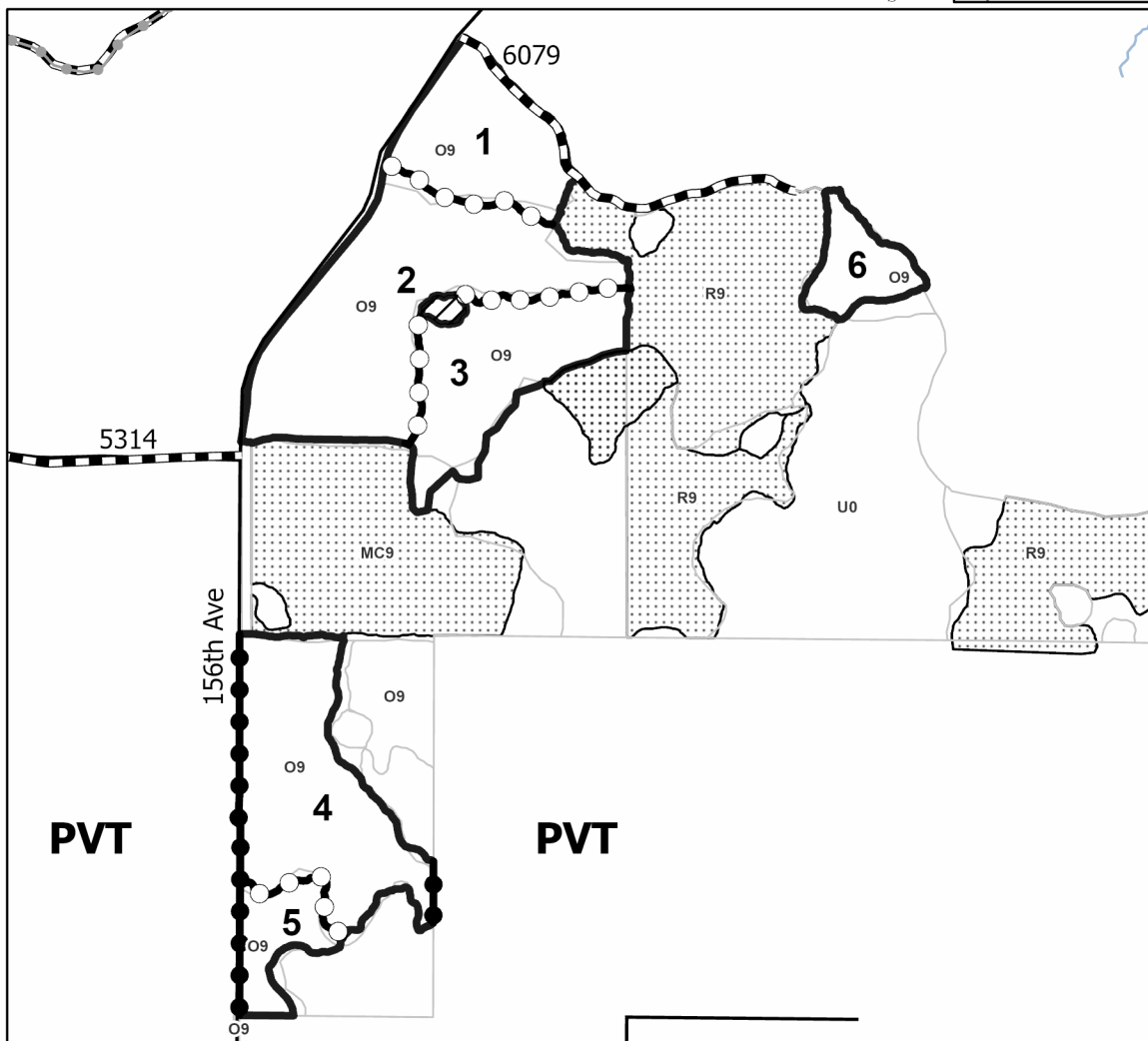
**Locator Map (1:100,000)**



**GNA2 156th Oak**

**154.5 Acres**

PU #	Acres	PU #	Acres
1	21.7	4	37.4
2	51.3	5	9.2
3	26.2	6	8.7



**Legend**

- Against Federal (Orange)
- Stand
- Nearby Timber Sale
- Retention Areas
- Payment Unit (Orange)
- Private Line (Orange)
- Recreational Trail
- Primary Forest Road
- Forest Access Route
- Administrative Access Only
- Paved Road
- Government Gravel/Dirt
- Private Gravel/Dirt

Use QR Code to open Map in App



Down Range Aspen (63-003-24)  
T18N, R12W, SEC. 10; T18N, R12W, SEC. 11; T18N, R12W, SEC. 3; Lake

In response to the notice of sale to be held 3:00 p.m. (local time) on September 18, 2024, I am hereby submitting my sealed bid (firm offer) for the following forest products to be cut. Bids for individual species must be at or above the advertised price. All non-responsive bid forms may be rejected.

<u>PRODUCTS &amp; SPECIES</u>	<u>ESTIMATED VOLUME*</u>	<u>ADVERTISED PRICE</u>	<u>BID PRICE/UNIT</u>
<b>Sawtimber</b>			
B. T. Aspen	526.6 MBF	\$ 85.00/MBF	\$ _____
Red Maple	33.3 MBF	\$ 84.00/MBF	\$ _____
Red Oak	100.6 MBF	\$ 173.00/MBF	\$ _____
Red Pine	1.9 MBF	\$ 99.00/MBF	\$ _____
White Pine	3.0 MBF	\$ 71.00/MBF	\$ _____
<b>Pulpwood</b>			
B. T. Aspen	3,119 Cords	\$ 24.40/Cord	\$ _____
Black Cherry	45 Cords	\$ 20.10/Cord	\$ _____
Red Maple	416 Cords	\$ 20.10/Cord	\$ _____
Red Oak	553 Cords	\$ 33.45/Cord	\$ _____
Red Pine	7 Cords	\$ 46.20/Cord	\$ _____
White Oak	33 Cords	\$ 33.45/Cord	\$ _____
White Pine	4 Cords	\$ 30.65/Cord	\$ _____

\*The volumes are statistically estimated within plus (+) or minus (-) 13.39 percent at 95% confidence level. These estimated volumes are final and not subject to adjustment. Prospective bidders are urged to examine this timber and to make their own estimates of quantity and quality.

I understand that any or all bids may be rejected. All bids must be signed and all bid items must be bid or the bid form may be rejected. I also understand that consideration and awarding a contract will be based upon my past performance and ability to complete the contract based upon equipment and staffing subject to my control.

FEDERAL ID: \_\_\_\_ - \_\_\_\_ - \_\_\_\_ or SOCIAL SECURITY NUMBER: \_\_\_\_ - \_\_\_\_ - \_\_\_\_

Company or individual bidding: \_\_\_\_\_

Company representative's name: \_\_\_\_\_

Address: \_\_\_\_\_

City: \_\_\_\_\_ State: \_\_\_\_\_ Zip: \_\_\_\_\_

IF AVAILABLE, PLEASE PLACE THE PERSONALIZED LABEL FROM YOUR PROSPECTUS IN THE ABOVE BOX.

Individual or company representative's signature: \_\_\_\_\_ Date: \_\_\_\_\_

Phone number : \_\_\_\_\_ Email (optional): \_\_\_\_\_

**THE WINNING BIDDER MUST COMPLETE THE VERIFICATION OF WORKER'S DISABILITY COMPENSATION ACT COMPLIANCE (ON REVERSE SIDE IF DOUBLE SIDED) WITHIN 21 DAYS OF SALE AWARD DATE**



## TIMBER SALE VERIFICATION OF WORKER'S DISABILITY COMPENSATION ACT COMPLIANCE

*As required by Act 317, P.A. 1969 (Worker's Compensation) and  
Part 5 of Act 451 of 1994, as amended.*

FOR DEPARTMENT USE ONLY
Sale Number (XX - XXX - XX - XX)
Forest Management Unit:

### VERIFICATION OF WORKER'S DISABILITY COMPENSATION ACT COMPLIANCE

- This verification must be completed and submitted within 21 days of contract award and prior to the issuance of the timber sale contract.
- In addition, if boxes 2B or 2C are checked, then Notice of Exclusion or Certificate of Insurance must be submitted within twenty-one (21) days of the contract award and prior to the issuance of the timber sale contract.
- All information must be typed or printed except for written signatures.

Please Check Appropriate Categories:

1. My business is organized as (you **must** check one of the boxes below):
  - A.  Sole Proprietorship (individual)
  - B.  Partnership
  - C.  Corporation
  
2. You **must** check one of the boxes below:
  - A.  I certify my business is a sole proprietorship and it has no employees but the sole proprietor. I am not subject to the Worker's Compensation Laws.
  - B.  I certify my business has satisfied its obligation to the Worker's Compensation Act through the use of an approved Notice of Exclusion (BWC-337, Rev. 5/96). I will provide a copy of the Notice of Exclusion within 21 days of the contract award. (For questions or a copy of the BWC-337, please call the Worker's Compensation Bureau at 517-322-1195).
  - C.  I certify my business has a Worker's Compensation Policy. I will provide an original Certificate of Insurance within twenty-one (21) days of the contract award.
  
3. If you have checked item 2(A) or 2(B), you **must** indicate the number of **both** full-time and part-time employees, other than yourself, including family members and active partners (if none, you must enter "0").

\_\_\_\_\_ Full-time Employees

\_\_\_\_\_ Part-time Employees

Name of Business		Federal ID (or) Social Security No.	
Address		Telephone (      )	
City	State	ZIP	

*I hereby certify that the above information is true and correct. I agree to notify the Michigan DNR of any changes that occur in factors affecting my coverage during any of my present and future operations.*

\_\_\_\_\_  
Signature of Owner or Authorized Representative

\_\_\_\_\_  
Title

\_\_\_\_\_  
Date

**Please complete the "SEALED BID" information on the next page**

GNA2 Scorpio Mix (63-811-24)  
T16N, R15W, SEC. 30; T16N, R16W, SEC. 26; Oceana COUNTY

In response to the notice of sale to be held 3:00 p.m. (local time) on September 18, 2024, I am hereby submitting my sealed bid (firm offer) for the following forest products to be cut. Bids for individual species must be at or above the advertised price. All non-responsive bid forms may be rejected.

<u>PRODUCTS &amp; SPECIES</u>	<u>ESTIMATED VOLUME*</u>	<u>ADVERTISED PRICE</u>	<u>BID PRICE/UNIT</u>
<b>Sawtimber</b>			
Mixed Aspen	685.8 MBF	\$ 85.00/MBF	\$ _____
Red Maple	105.1 MBF	\$ 84.00/MBF	\$ _____
Red Oak	83.8 MBF	\$ 173.00/MBF	\$ _____
Red Pine	54.7 MBF	\$ 99.00/MBF	\$ _____
White Pine	4.0 MBF	\$ 71.00/MBF	\$ _____
<b>Pulpwood</b>			
Mixed Aspen	851 Cords	\$ 24.40/Cord	\$ _____
Mixed Hardwood	584 Cords	\$ 20.10/Cord	\$ _____
Red Oak	139 Cords	\$ 33.45/Cord	\$ _____
Red Pine	501 Cords	\$ 46.20/Cord	\$ _____
White Pine	12 Cords	\$ 30.65/Cord	\$ _____

\*The volumes are statistically estimated within plus (+) or minus (-) 12.36 percent at 95% confidence level. These estimated volumes are final and not subject to adjustment. Prospective bidders are urged to examine this timber and to make their own estimates of quantity and quality.

I understand that any or all bids may be rejected. All bids must be signed and all bid items must be bid or the bid form may be rejected. I also understand that consideration and awarding a contract will be based upon my past performance and ability to complete the contract based upon equipment and staffing subject to my control.

FEDERAL ID: \_\_\_\_\_ or SOCIAL SECURITY NUMBER: \_\_\_\_\_

Company or individual bidding: \_\_\_\_\_

Company representative's name: \_\_\_\_\_

Address: \_\_\_\_\_

City: \_\_\_\_\_ State: \_\_\_\_\_ Zip: \_\_\_\_\_

IF AVAILABLE, PLEASE PLACE THE PERSONALIZED LABEL FROM YOUR PROSPECTUS IN THE ABOVE BOX.

Individual or company representative's signature: \_\_\_\_\_ Date: \_\_\_\_\_

Phone number : \_\_\_\_\_ Email (optional): \_\_\_\_\_

**THE WINNING BIDDER MUST COMPLETE THE VERIFICATION OF WORKER'S DISABILITY COMPENSATION ACT COMPLIANCE (ON REVERSE SIDE IF DOUBLE SIDED) WITHIN 21 DAYS OF SALE AWARD DATE**



FOR DEPARTMENT USE ONLY	
Sale Number (XX - XXX - XX - XX)	
Forest Management Unit:	

# TIMBER SALE VERIFICATION OF WORKER'S DISABILITY COMPENSATION ACT COMPLIANCE

As required by Act 317, P.A. 1969 (Worker's Compensation) and  
Part 5 of Act 451 of 1994, as amended.

## VERIFICATION OF WORKER'S DISABILITY COMPENSATION ACT COMPLIANCE

- This verification must be completed and submitted within 21 days of contract award and prior to the issuance of the timber sale contract.
- In addition, if boxes 2B or 2C are checked, then Notice of Exclusion or Certificate of Insurance must be submitted within twenty-one (21) days of the contract award and prior to the issuance of the timber sale contract.
- All information must be typed or printed except for written signatures.

Please Check Appropriate Categories:

1. My business is organized as (you **must** check one of the boxes below):
  - A.  Sole Proprietorship (individual)
  - B.  Partnership
  - C.  Corporation
2. You **must** check one of the boxes below:
  - A.  I certify my business is a sole proprietorship and it has no employees but the sole proprietor. I am not subject to the Worker's Compensation Laws.
  - B.  I certify my business has satisfied its obligation to the Worker's Compensation Act through the use of an approved Notice of Exclusion (BWC-337, Rev. 5/96). I will provide a copy of the Notice of Exclusion within 21 days of the contract award. (For questions or a copy of the BWC-337, please call the Worker's Compensation Bureau at 517-322-1195).
  - C.  I certify my business has a Worker's Compensation Policy. I will provide an original Certificate of Insurance within twenty-one (21) days of the contract award.
3. If you have checked item 2(A) or 2(B), you **must** indicate the number of **both** full-time and part-time employees, other than yourself, including family members and active partners (if none, you must enter "0").

\_\_\_\_\_ Full-time Employees

\_\_\_\_\_ Part-time Employees

Name of Business		Federal ID (or) Social Security No.	
Address		Telephone (      )	
City	State	ZIP	

*I hereby certify that the above information is true and correct. I agree to notify the Michigan DNR of any changes that occur in factors affecting my coverage during any of my present and future operations.*

\_\_\_\_\_  
Signature of Owner or Authorized Representative

\_\_\_\_\_  
Title

\_\_\_\_\_  
Date

Please complete the "SEALED BID" information on the next page



GNA2 Cobra Mix (63-814-24)

T16N, R16W, SEC. 23; T16N, R16W, SEC. 24; T16N, R16W, SEC. 25; Oceana

In response to the notice of sale to be held 3:00 p.m. (local time) on September 18, 2024, I am hereby submitting my sealed bid (firm offer) for the following forest products to be cut. Bids for individual species must be at or above the advertised price. All non-responsive bid forms may be rejected.

<u>PRODUCTS &amp; SPECIES</u>	<u>ESTIMATED VOLUME*</u>	<u>ADVERTISED PRICE</u>	<u>BID PRICE/UNIT</u>
<b>Sawtimber</b>			
Black/Red (Hybrid) Oak	4.1 MBF	\$ 105.00/MBF	\$ _____
Mixed Aspen	800.0 MBF	\$ 85.00/MBF	\$ _____
Red Maple	130.2 MBF	\$ 84.00/MBF	\$ _____
Red Oak	107.8 MBF	\$ 173.00/MBF	\$ _____
Red Pine	117.5 MBF	\$ 99.00/MBF	\$ _____
White Oak	17.2 MBF	\$ 106.00/MBF	\$ _____
<b>Pulpwood</b>			
Mixed Aspen	969 Cords	\$ 24.40/Cord	\$ _____
Mixed Hardwood	838 Cords	\$ 20.10/Cord	\$ _____
Mixed Oak	134 Cords	\$ 33.45/Cord	\$ _____
Red Pine	2,479 Cords	\$ 46.20/Cord	\$ _____

\*The volumes are statistically estimated within plus (+) or minus (-) 10.87 percent at 95% confidence level. These estimated volumes are final and not subject to adjustment. Prospective bidders are urged to examine this timber and to make their own estimates of quantity and quality.

I understand that any or all bids may be rejected. All bids must be signed and all bid items must be bid or the bid form may be rejected. I also understand that consideration and awarding a contract will be based upon my past performance and ability to complete the contract based upon equipment and staffing subject to my control.

FEDERAL ID: \_\_\_\_\_ or SOCIAL SECURITY NUMBER: \_\_\_\_\_

Company or individual bidding: \_\_\_\_\_

Company representative's name: \_\_\_\_\_

Address: \_\_\_\_\_

City: \_\_\_\_\_ State: \_\_\_\_\_ Zip: \_\_\_\_\_

IF AVAILABLE, PLEASE PLACE THE PERSONALIZED LABEL FROM YOUR PROSPECTUS IN THE ABOVE BOX.

Individual or company representative's signature: \_\_\_\_\_ Date: \_\_\_\_\_

Phone number : \_\_\_\_\_ Email (optional): \_\_\_\_\_

**THE WINNING BIDDER MUST COMPLETE THE VERIFICATION OF WORKER'S DISABILITY COMPENSATION ACT COMPLIANCE (ON REVERSE SIDE IF DOUBLE SIDED) WITHIN 21 DAYS OF SALE AWARD DATE**



<b>FOR DEPARTMENT USE ONLY</b>
Sale Number (XX – XXX – XX – XX)
Forest Management Unit:

## TIMBER SALE VERIFICATION OF WORKER'S DISABILITY COMPENSATION ACT COMPLIANCE

*As required by Act 317, P.A. 1969 (Worker's Compensation) and  
Part 5 of Act 451 of 1994, as amended.*

### VERIFICATION OF WORKER'S DISABILITY COMPENSATION ACT COMPLIANCE

- This verification must be completed and submitted within 21 days of contract award and prior to the issuance of the timber sale contract.
- In addition, if boxes 2B or 2C are checked, then Notice of Exclusion or Certificate of Insurance must be submitted within twenty-one (21) days of the contract award and prior to the issuance of the timber sale contract.
- All information must be typed or printed except for written signatures.

Please Check Appropriate Categories:

1. My business is organized as (you **must** check one of the boxes below):
  - A.  Sole Proprietorship (individual)
  - B.  Partnership
  - C.  Corporation
  
2. You **must** check one of the boxes below:
  - A.  I certify my business is a sole proprietorship and it has no employees but the sole proprietor. I am not subject to the Worker's Compensation Laws.
  - B.  I certify my business has satisfied its obligation to the Worker's Compensation Act through the use of an approved Notice of Exclusion (BWC-337, Rev. 5/96). I will provide a copy of the Notice of Exclusion within 21 days of the contract award. (For questions or a copy of the BWC-337, please call the Worker's Compensation Bureau at 517-322-1195).
  - C.  I certify my business has a Worker's Compensation Policy. I will provide an original Certificate of Insurance within twenty-one (21) days of the contract award.
  
3. If you have checked item 2(A) or 2(B), you **must** indicate the number of **both** full-time and part-time employees, other than yourself, including family members and active partners (if none, you must enter "0").

\_\_\_\_\_ Full-time Employees

\_\_\_\_\_ Part-time Employees

Name of Business		Federal ID (or) Social Security No.	
Address		Telephone (       )	
City	State	ZIP	

*I hereby certify that the above information is true and correct. I agree to notify the Michigan DNR of any changes that occur in factors affecting my coverage during any of my present and future operations.*

\_\_\_\_\_  
Signature of Owner or Authorized Representative

\_\_\_\_\_  
Title

\_\_\_\_\_  
Date

**Please complete the "SEALED BID" information on the next page**

GNA2 156th Oak (63-815-24)  
T16N, R15W, SEC. 7; T16N, R16W, SEC. 12; T16N, R16W, SEC. 13; Oceana

In response to the notice of sale to be held 3:00 p.m. (local time) on September 18, 2024, I am hereby submitting my sealed bid (firm offer) for the following forest products to be cut. Bids for individual species must be at or above the advertised price. All non-responsive bid forms may be rejected.

<u>PRODUCTS &amp; SPECIES</u>	<u>ESTIMATED VOLUME*</u>	<u>ADVERTISED PRICE</u>	<u>BID PRICE/UNIT</u>
<b>Sawtimber</b>			
B. T. Aspen	58.5 MBF	\$ 85.00/MBF	\$ _____
Beech	1.8 MBF	\$ 132.00/MBF	\$ _____
Black/Red (Hybrid) Oak	73.0 MBF	\$ 105.00/MBF	\$ _____
Red Maple	74.5 MBF	\$ 84.00/MBF	\$ _____
Red Oak	219.6 MBF	\$ 173.00/MBF	\$ _____
Red Pine	27.0 MBF	\$ 99.00/MBF	\$ _____
Sugar Maple	9.1 MBF	\$ 206.00/MBF	\$ _____
White Oak	116.1 MBF	\$ 106.00/MBF	\$ _____
<b>Pulpwood</b>			
B. T. Aspen	198 Cords	\$ 24.40/Cord	\$ _____
Mixed Hardwood	329 Cords	\$ 20.10/Cord	\$ _____
Mixed Oak	718 Cords	\$ 33.45/Cord	\$ _____
Red Pine	344 Cords	\$ 46.20/Cord	\$ _____

\*The volumes are statistically estimated within plus (+) or minus (-) 16.60 percent at 95% confidence level. These estimated volumes are final and not subject to adjustment. Prospective bidders are urged to examine this timber and to make their own estimates of quantity and quality.

I understand that any or all bids may be rejected. All bids must be signed and all bid items must be bid or the bid form may be rejected. I also understand that consideration and awarding a contract will be based upon my past performance and ability to complete the contract based upon equipment and staffing subject to my control.

FEDERAL ID: \_\_\_\_ - \_\_\_\_ - \_\_\_\_ or SOCIAL SECURITY NUMBER: \_\_\_\_ - \_\_\_\_ - \_\_\_\_

Company or individual bidding: \_\_\_\_\_

Company representative's name: \_\_\_\_\_

Address: \_\_\_\_\_

City: \_\_\_\_\_ State: \_\_\_\_\_ Zip: \_\_\_\_\_

IF AVAILABLE, PLEASE PLACE THE PERSONALIZED LABEL FROM YOUR PROSPECTUS IN THE ABOVE BOX.

Individual or company representative's signature: \_\_\_\_\_ Date: \_\_\_\_\_

Phone number : \_\_\_\_\_ Email (optional): \_\_\_\_\_

**THE WINNING BIDDER MUST COMPLETE THE VERIFICATION OF WORKER'S DISABILITY COMPENSATION ACT COMPLIANCE (ON REVERSE SIDE IF DOUBLE SIDED) WITHIN 21 DAYS OF SALE AWARD DATE**



<b>FOR DEPARTMENT USE ONLY</b>	
Sale Number (XX - XXX - XX - XX)	
Forest Management Unit:	

# TIMBER SALE VERIFICATION OF WORKER'S DISABILITY COMPENSATION ACT COMPLIANCE

As required by Act 317, P.A. 1969 (Worker's Compensation) and  
Part 5 of Act 451 of 1994, as amended.

## VERIFICATION OF WORKER'S DISABILITY COMPENSATION ACT COMPLIANCE

- This verification must be completed and submitted within 21 days of contract award and prior to the issuance of the timber sale contract.
- In addition, if boxes 2B or 2C are checked, then Notice of Exclusion or Certificate of Insurance must be submitted within twenty-one (21) days of the contract award and prior to the issuance of the timber sale contract.
- All information must be typed or printed except for written signatures.

Please Check Appropriate Categories:

1. My business is organized as (you **must** check one of the boxes below):
  - A.  Sole Proprietorship (individual)
  - B.  Partnership
  - C.  Corporation
2. You **must** check one of the boxes below:
  - A.  I certify my business is a sole proprietorship and it has no employees but the sole proprietor. I am not subject to the Worker's Compensation Laws.
  - B.  I certify my business has satisfied its obligation to the Worker's Compensation Act through the use of an approved Notice of Exclusion (BWC-337, Rev. 5/96). I will provide a copy of the Notice of Exclusion within 21 days of the contract award. (For questions or a copy of the BWC-337, please call the Worker's Compensation Bureau at 517-322-1195).
  - C.  I certify my business has a Worker's Compensation Policy. I will provide an original Certificate of Insurance within twenty-one (21) days of the contract award.
3. If you have checked item 2(A) or 2(B), you **must** indicate the number of **both** full-time and part-time employees, other than yourself, including family members and active partners (if none, you must enter "0").

\_\_\_\_\_ Full-time Employees

\_\_\_\_\_ Part-time Employees

Name of Business		Federal ID (or) Social Security No.	
Address		Telephone (       )	
City	State	ZIP	

*I hereby certify that the above information is true and correct. I agree to notify the Michigan DNR of any changes that occur in factors affecting my coverage during any of my present and future operations.*

\_\_\_\_\_  
Signature of Owner or Authorized Representative

\_\_\_\_\_  
Title

\_\_\_\_\_  
Date

Please complete the "SEALED BID" information on the next page