



**DEPARTMENT OF NATURAL RESOURCES  
STATE OF MICHIGAN  
TIMBER SALE PROSPECTUS #7466**

SCHEDULED SALE DATE AND TIME: 9:00 a.m. (local time) on September 26, 2024.

LOCATION: **BARAGA MGMT UNIT, 427 US 41 NORTH, BARAGA, MI 49908.**

PROSPECTUS NOTE: The bidder is advised to inspect the sale area and review the location, estimated volumes, operating costs and contract terms of proposed sales. Please be aware that some landowners may request 60 days or more notice for access across their land.

Notice is hereby given that bids will be received by the Unit Manager, BARAGA MANAGEMENT UNIT, for certain timber on the following described lands:

Fungal Foot (11-001-24) / T48N, R34W, SEC. 5 , NENW,NWNE.

T49N, R34W, SEC. 21, S1/2SE.

T49N, R34W, SEC. 22, SWSW.

T49N, R34W, SEC. 27, NWNW.

T49N, R34W, SEC. 28, N1/2NE,SWNE.

T49N, R34W, SEC. 32, SENW,NESW,S1/2SW.

Baraga County, Advertised Price \$54,357.40, 138.6 Acres, Jack Pine, Spruce/Fir/Tamarack.

SALE NOTE: A recreation site such as a trail, pathway, or campground is within the sale area or the vicinity. Certain restrictions/specifications may be applicable including time restrictions.

Usitalo Road Aspen (11-012-24) / T51N, R36W, SEC. 25, SWNE,NWSE.

Houghton County, Advertised Price \$5,536.35, 16.8 Acres, Aspen, Hardwood.

SALE NOTE: Access may be through private land.

GNA2 White Rabbit (11-809-24) / T47N, R40W, SEC. 10, W1/2NW,W1/2SW.

T47N, R40W, SEC. 16, NWNW,S1/2NW,NE,SW,N1/2SE,SWSE.

T47N, R40W, SEC. 17, E1/2NW,NE,NESW,E1/2SE.

T47N, R40W, SEC. 4 , SWSW.

T47N, R40W, SEC. 5 , SESE.

T47N, R40W, SEC. 8 , E1/2NE,E1/2SW,SE.

T47N, R40W, SEC. 9 , W1/2NW,E1/2NE,W1/2SW,SE.

Ontonagon County, Advertised Price \$235,653.25, 630.9 Acres, Aspen, Hardwood.

SALE NOTE: Access may be through private or other public land.

GNA2 Northwestern (12-800-24) / T44N, R37W, SEC. 2 , NWNW.

T44N, R37W, SEC. 3 , NENE.

T45N, R36W, SEC. 31, SWNW.

T45N, R37W, SEC. 25, S1/2SW,S1/2SE.

T45N, R37W, SEC. 26, SESW,S1/2SE.

T45N, R37W, SEC. 34, SENE,SE.

T45N, R37W, SEC. 35, NW,NE,SW,NWSE.

T45N, R37W, SEC. 36, N1/2NW,SWNW,N1/2NE,SENE,NESE.

Iron County, Advertised Price \$269,532.25, 623.7 Acres, Hardwood, Sugar Maple.

SALE NOTE: Access may be through other public land.

## BID INSTRUCTIONS (VER. 10/10/2022):

### 1. Scheduled Bid Location, Date, and Time (2/11)

Bids must be received by the Unit Manager, BARAGA OFFICE, 427 US 41 North, Baraga, MI 49908, no later than 9:00 a.m. (local time) on September 26, 2024. For further information concerning this sale, contact Brad Carlson at 906-353-6651.

### 2. Bidder's Qualifications (10/22)

If all or part of a timber sale was prepared by a private contractor, the contractor and that contractor's company are not permitted to bid on the timber sale. A person must be 18 years of age or older to purchase timber. Permanent employees of the Department of Natural Resources or members of their immediate household may not bid. Former employees, in the permanent or seasonal class, may not bid until 3 months after the last day of active duty. Bids will not be accepted from individuals or companies appearing on the DNR/FRD No-Bid List. This list contains the names of purchasers who previously failed to execute a contract within 21-days or who have a history of poor performance.

### 3. Preparation of Sealed Bids (5/16)

Bid Forms may be completed online thru Michigan DNR Timber Sale Online Bidding (OLB) at [www.michigan.gov/timberbidding](http://www.michigan.gov/timberbidding) or by completing the hardcopy Bid Form found in the Timber Sale Prospectus. Hardcopy Bid Forms shall be manually signed in ink. Registration in OLB is considered your 'signature' for all bids submitted thru that system. Bid prices must be entered for each species and product in the Bid Price column for all material subject to bidding and all fill-in blanks must be completed. If erasures or other changes appear on the hardcopy Bid Form, each erasure or change must be initialed by the person signing the bid.

### 4. Submission of Sealed Bids (5/16)

Bid forms may be obtained from the Unit Manager or thru OLB. Bids may be submitted hardcopy or thru OLB. All hardcopy bids must be submitted on the bid form and in an envelope clearly identified as described in this section. NOTE: Only one bid form per bid envelope. Sealed bids must be submitted to the Unit office designated in the prospectus and must be submitted at or prior to the time established in the prospectus. The envelope should show on the outside (a) the sale name or number and (b) the date and time of bid opening, as shown in the prospectus. Bids received after the time specified in the sale prospectus are late bids and will be rejected.

It is possible for a bidder to submit multiple bids on a single sale. For example, a bid may be submitted hardcopy and a bid may be submitted thru OLB. Or, two bidders from the same company could both submit bids on the same sale. If this were to happen, the State would accept all bids received and award the contract accordingly. All bidding and contractual requirements would apply to all bids received.

### 5. Public Opening of Sealed Bids (7/16)

If conditions permit, the sealed bids will be publicly opened and posted at the time and place set in the prospectus.

If a bidder, present at a bid opening, has submitted bids on more than one sale, that bidder may withdraw their unopened bid envelopes or announce the withdrawal of their online bid after being declared the successful bidder on one sale.

### 6. Award of Contract (1/11)

Award of the contract will be made to the Bidder whose bid, conforming to the prospectus, is most advantageous to the State of Michigan on the basis of total value at rates bid for the estimated quantities. The State reserves the right to reject any bid or waive any minor irregularity in bids received. A written award mailed (or otherwise furnished) to the successful Bidder shall be deemed to result in a binding contract without further action by either party.

### 7. Down Payment (1/11)

The Bidder to whom award is made must make a down payment within 21 days of the sale award. The amount of the down payment will be calculated as shown in the Bond and Payment Schedule of this prospectus. Only cash may be used to meet this requirement.

### 8. Performance Security (1/11)

As guarantee of faithful performance, a cash bond, certificate of deposit, surety bond or irrevocable letter of credit (LOC) is required within 21 days of the sale award. The amount of the performance security is shown in the Bond and

Payment Schedule of this prospectus. If an LOC or surety is used, the coverage must extend for at least 6 months beyond the contract expiration.

#### 9. Worker's Compensation (10/22)

Purchaser shall obtain worker's compensation insurance to cover claims under Michigan's Worker's Disability Compensation Act of 1969 or similar employee benefit act of any other state applicable to an employee. Verification of Worker's Disability Compensation Act Compliance must be completed and submitted within 21 days of contract award and prior to the issuance of the timber sale contract. In addition, if applicable, Notice of Exclusion or Certificate of Insurance must also be submitted.

#### 10. Timber Sale Contract (10/22)

Additional conditions and requirements common to all timber sales are listed on the timber sale contract (R4031) and are available on line at [www.michigan.gov/timber](http://www.michigan.gov/timber). Contact the Unit Manager for additional information or a sample contract. Within 21 days of the date of the award letter, the bidder must sign the contract and provide the required down payment, performance security, and verification of worker's disability compensation. The down payment and performance security shall be in accordance with the provisions of the timber sale contract, in the sums stated in this prospectus. If these actions are not taken, then the Bidder, the Bidder's corporation, and the corporation's principals may not be permitted to bid on State timber sales for a period of 3 months after the first offense, 6 months after the second offense, and 1 year after the third offense. An offense will only be counted against the Bidder for 5 years. In addition, the Bidder certifies that if awarded this contract, the Bidder will complete the timber sale contract in accordance with its terms and any modifications thereof including requirements to purchase, cut, and remove the included timber by the expiration date.

Payment Unit values in the State Forest Timber Sale Contract are calculated based on the advertised value of the Payment Unit as a percentage of the total advertised value of the contract. The advertised value of each Payment Unit is given in the Description of Timber by Payment Unit table on the Timber Sale Information page. For example, if the value of Payment Unit 1 is advertised as \$1,500 and the total Timber Sale value is advertised as \$10,000, the contract price for Payment Unit 1 will be 15% of the total bid price ( $\$1,500/\$10,000 * 100$ ).

#### 11. Disclaimer of Estimates and Bidder's Warranty of Inspection (10/22)

Before submitting this bid, the Bidder is advised and cautioned to inspect the sale area, review the requirements of the sale contract, and take other steps as may be reasonably necessary to ascertain the location, estimated volumes, construction estimates, and operating costs of the proposed sale. Failure to do so will not relieve the Bidder from responsibility for completing the contract.

The Bidder warrants that this bid is submitted solely on the basis of the Bidder's examination and inspection of the quality and quantity of the timber offered for sale and the Bidder's opinion of the value thereof and the costs of recovery. No reliance should be placed on the State of Michigan's estimates of timber quality, quantity or costs of recovery. Bidder further acknowledges that the State of Michigan: (i) expressly disclaims any warranty of fitness of timber for any purpose; (ii) offers this timber as is without any warranty of quality (merchantability) or quantity and (iii) expressly disclaims any warranty as to the quantity or quality of timber sold.

#### 12. Certification and Chain-of-Custody (10/22)

Unless otherwise indicated in the contract under section 7 – Other Conditions of the Sale Specific Conditions & Requirements, the area encompassed by this timber sale is certified to the standards of the Forest Stewardship Council (FSC) - Certificate #SCS-FM/COC-00090N and the Sustainable Forestry Initiative (SFI) - Certificate #NSF-SFIS-5Y031-SF5. Forest products from this sale may be delivered to the mill as "FSC 100% and / or SFI certified" as long as the contractor hauling the forest products is chain-of-custody (COC) certified or covered under a COC certificate from the destination mill. The purchaser is responsible for maintaining COC after leaving the sale area.

#### 13. Good Neighbor Authority (GNA) Requirements (10/22)

If the name of this timber sales contains the acronym GNA, it is authorized by the Good Neighbor Authority (GNA) and covered by various agreements between the U.S. Forest Service and the State. The timber sale occurs on federal land and the following conditions apply:

GNA contracts on US Forest Service land will not be awarded to purchasers on the Federal list of excluded parties. The System for Award Management (SAM) will be checked for active excluded parties prior to award of contract. In

addition, the Bidder to whom award is made must complete an Assurance Regarding Felony Conviction or Tax Delinquent Status for Corporate Applicants (AD-3031).

14. Good Neighbor Authority (GNA) Requirements, con't (10/22)

Bidder certifies, by signing this bid form, that to the best of Bidder's knowledge that the following representations are accurate and complete.

- a. That the Bidder and its principals are not presently debarred, suspended, proposed for debarment, declared ineligible, or voluntary excluded from timber sales (covered transactions) by any Federal department or agency.
- b. That the Bidder and its principals have not within a 3-year period preceding this bid been convicted of or had a civil judgment rendered against them for commission of fraud or a criminal offense in connection with obtaining , attempting to obtain, or performing a public (Federal, State, or local) transaction or contract under a public transaction; violation of Federal or State antitrust statutes or commission of embezzlement, theft, forgery, bribery, falsification or destruction of records, making false statements, or receiving stolen property.
- c. That the Bidder and its principals are not presently indicted for or otherwise criminally or civilly charged by a governmental entity (Federal, State, or local) with commission of any of the offenses enumerated in paragraph b of this certification.
- d. That the Bidder and its principals have not within a 3-year period preceding this bid had one or more public transactions (Federal, State, or local) terminated for breach or default of a timber or forest product contract.

Bidders that cannot certify this requirement, in whole or in part, shall submit an explanation with their bid.

Scott Bowen  
Director

## TIMBER SALE INFORMATION

### Fungal Foot (11-001-24)

T48N, R34W, SEC. 5; T49N, R34W, SEC. 21; T49N, R34W, SEC. 22; T49N, R34W, SEC. 27; T49N, R34W, SEC. 28; T49N, R34W, SEC. 32.

SALE NOTE: A recreation site such as a trail, pathway, or campground is within the sale area or the vicinity. Certain restrictions/specifications may be applicable including time restrictions.

A timber sale contract for this lump sum, sealed bid timber sale will be awarded to the responsible bidder offering the highest sealed bid price. All units of volume listed below were estimated using the Inventory Manager computer program and the new Michigan taper model. Bids must be at or above the following advertised price for each product and species:

<u>PRODUCTS &amp; SPECIES</u>	<u>ESTIMATED UNITS*</u>	<u>ADVERTISED PRICE</u>
Pulpwood		
Balsam Fir	6 Cords	\$ 4.85 / Cord
Black Spruce	467 Cords	\$ 11.40 / Cord
Jack Pine	1,580 Cords	\$ 30.90 / Cord
Paper Birch	26 Cords	\$ 2.35 / Cord
Red Maple	5 Cords	\$ 12.40 / Cord
Tamarack	12 Cords	\$ 4.95 / Cord

\* The total volume is statistically estimated within plus (+) or minus (-) 17.40 percent. There are an estimated 2,100 cords on this timber sale, plus or minus 365 cords at the 95% confidence level. The estimated units are final and not subject to adjustment. Prospective bidders are urged to examine this timber and to make their own estimates of quantity and quality.

### **BOND AND PAYMENT SCHEDULE:**

1. A bond in the amount of \$5,000.00 to insure faithful performance of the conditions of the contract will be deposited by the successful bidder within 21 days of the sale award.
2. Cutting in any sale or unit without the required advance payment would be considered a trespass.
3. Total payment must be paid in advance or according to the following schedule :
  - (a) Ten percent (10%) of the sale value must be paid within 21 days of the sale award.
  - (b) The 10% down payment will be credited towards the first unit cut.
  - (c) Payment for each of the following units must be made before cutting begins in that unit:
 

PAYMENT UNIT NUMBER	PERCENT OF TOTAL SALE VALUE
01	52.6%
02	47.4%
4. If no cutting takes place, the 10% down payment will not be refunded.
5. Operations on the contract issued will terminate on 06/30/2028.

### **SALE STATISTICS**

Volumes were calculated in cubic feet using the Michigan taper model. Cubic foot volume includes all wood inside bark for the product indicated. For display purposes, cubic feet were converted to cords and MBF using a simple conversion factor, e.g. 79 cubic feet per cord and 185 cubic feet per MBF. The cubic foot volumes are precise; the cords and MBF volumes are not. Cubic foot volume cannot be directly converted to cords or boards with precision.

### **SALE VOLUMES**

The total estimated sale volume may not equal the sum of the species/products due to the nature of statistical calculations associated with double sampling methodology.

VOLUME		STATISTICAL RANGE IN CORDS		
TOTAL CUBIC FEET	TOTAL CORDS	PERCENT ERROR	MINIMUM	MAXIMUM
165,861	2,100	17.40%	1,734	2,465

**VDU VOLUMES**

A VDU is a Volume Determination Unit. Volumes and their associated statistics are calculated at the VDU level and summarized to the sale level. There is often a one to one relationship between a VDU and a Payment Unit, but not always, depending on the cruise design. Refer to the VDU TO PAYMENT UNIT table.

VDU	VOLUME		PERCENT ERROR	RANGE IN CORDS	
	TOTAL CUBIC FEET	TOTAL CORDS		MINIMUM	MAXIMUM
69	89,273	1,130	24.44%	854	1,406
114	21,338	270	39.12%	164	376
121	34,652	439	41.72%	256	622
221	20,598	261	49.42%	132	390
<b>TOTAL:</b>	<b>165,861</b>	<b>2,100</b>		<b>1,406</b>	<b>2,793</b>

**VDU TO PAYMENT UNIT**

When a VDU is associated with more than one Payment Unit (PU), the VDU volumes are assigned to the PU based on acres of the VDU within the PU.

VDU	VDU ACRES	PU	PU ACRES
69	52.2	1	52.2
114	22.6	2	22.6
121	38.0	2	38.0
221	25.8	2	25.8
<b>TOTAL:</b>	<b>138.6</b>		<b>138.6</b>

**DESCRIPTION OF TIMBER BY PAYMENT UNIT (PU)**

PU	MARKET GROUP	PRODUCT	QUANTITY	UNIT	ACRES	ADVERTISE PRICE
1	Balsam Fir	Pulpwood	6	Cords	52.2	\$28,608.80
	Black Spruce		312	Cords		
	Jack Pine		809	Cords		
	Red Maple		2	Cords		
2	Black Spruce	Pulpwood	155	Cords	86.4	\$25,748.60
	Jack Pine		771	Cords		
	Paper Birch		26	Cords		
	Red Maple		3	Cords		
	Tamarack		12	Cords		
<b>TOTAL:</b>			2,096	Cords		

## Sale Specific Conditions & Requirements

**Sale Name: Fungal Foot**

**Sale Number: 11-001-24 Seq#: 1**

### 1 - Sale Area

#### 1.2 - Boundaries

##### 1.2.1 - Painted boundaries (9/19)

The sale boundary and Payment Unit boundaries are marked and identified by blue and red paint. Exterior sale boundary lines against private property are marked with blue paint. Exterior sale boundary lines against state are marked with red paint.

### 2 - Timber Specifications

#### 2.1 - Included Timber

##### 2.1.1 - Clearcut unit(s) with unmerchantable trees (6/14)

Within Payment Unit(s) 1 and 2, cut all trees that are two (2) inches or more at DBH, except do not cut white pine, red pine, red oak and cedar. In addition, within Payment Unit 1, do not cut any white birch.

#### 2.2 - Utilization

##### 2.2.3 - Stump heights (4/07)

Stump heights within the Sale Area shall not exceed 6 inches for all trees. This is in order to facilitate scarification operations. A written waiver of this requirement may be obtained if wet summer weather makes winter logging necessary.

##### 2.2.8 - Utilization and removal (5/14)

All products meeting standards set forth in General Condition and Requirement 2.2 Utilization must be removed from the Sale Area. This is because excessive woody debris inhibits regeneration.

##### 2.2.11 - Chipping restriction (9/14)

If chipping occurs on this sale, then no woody debris present on the ground at the start of the sale may be chipped. In addition, brush or chips may not be stored or stockpiled on-site for more than 30 days.

### 4 - Transportation

#### 4.1 - Construction

##### 4.1.1 - Stream crossings, general (3/11)

All stream crossing structures will be temporary and therefore, shall be provided by the Purchaser, and must be removed upon completion of the sale. All permits for stream crossings will be provided by the DNR for crossings on state owned land.

##### 4.1.6 - Road construction (4/24)

Construction of new roads or improvements of existing roads shall be done in such a way as to minimize the environmental and visual impacts. Merchantable trees shall be cut and utilized unless otherwise directed. Non-merchantable trees shall be severed and laid flat on the ground. Slash shall be scattered, and not left in windrows and kept a minimum of 10 feet back from the road edge, or be chipped, utilized or otherwise removed from the sale. Stumps shall be set upright, not left on edge, and be moved at least 10 feet away from the road edge. Disturbed soil shall be feathered into the woods and not left in berms or windrows.

##### 4.1.7 - Road closure (10/11)

All new roads built into the sale must be blocked to vehicle traffic upon completion of the sale. Overgrown roads that are reopened shall be considered new roads. In general, this will require constructing a four (4') foot high berm of stumps and logs covered with earth. Contact the Sale Administrator for specific details of design and placement.

#### 4.4 - Access

##### 4.4.1 - Private property access (3/11)

Permission for access across private land is the responsibility of the Purchaser. Should the Purchaser desire to cross private land, a copy of the written permission from the private land-owner may be required by the DNR.

### 5 - Operations

## 5.2 - Conduct of Operations

### 5.2.1 - Slash

#### 5.2.1.11 - Slash for reforestation (3/21)

To facilitate reforestation, Payment Unit(s) 1 and 2 shall be left with slash evenly distributed. Bunched tops within the cutting area shall be broken up and scattered. Stumps shall be cut low to the ground. Processing sites shall not be left with a compacted layer of slash; tops from these sites shall be hauled back into the cut area and scattered.

### 5.2.2 - Hazard Trees/Snags

#### 5.2.2.1 - Den trees (10/16)

Obvious hollow and/or den trees shall be protected and left standing unless they are a safety hazard.

### 5.2.3 - Operating Restrictions

#### 5.2.3.1 - Operating restrictions (9/11)

Within Payment Unit(s) 1, unless changed by written agreement, cutting, skidding, and hauling are not permitted during goose hunting season (September 1 to December 16). This restriction is because Payment Unit 1 is adjacent to a managed goose field.

#### 5.2.3.2 - Operating restrictions (9/11)

Within Payment Unit(s) 1 and 2, unless changed by written agreement, all clean-up activities must be completed by June 15 for all areas that were harvested during the previous harvest season. This restriction is to allow the clean-up areas to revegetate before the dry season.

### 5.2.22 - Operating Caution

#### 5.2.22.1 - Operating caution (6/11)

It is recommended, but not required, that within Payment Unit(s) 1 and 2, cutting, skidding, and hauling occur during dry summer or frozen winter conditions. The reason for the recommendation is due to the intermittent wet areas throughout the Sale Area.

### 5.2.32 - Decking/landing restoration (9/13)

All decking and landing areas must have the surface area restored to a condition equal to or better than before. This is to ensure the proper regeneration of the stand. Wood debris, chips and "cookies" from trimmings must be removed or scattered away from landing and loading areas and may not be windrowed on the edge.

### 5.2.38 - No decking against live trees (2/04)

Cut products may not be decked against unmarked or designated leave trees.

### 5.2.40 - Pathway protection (10/10)

The North Country Trail is a hiking trail and is shown on the Timber Sale Map. Do not cut trees or damage posts with blue pathway markers. In addition, within Payment Unit 2, the trail has some boardwalks through some low areas that will need to be avoided during operations. Maintain a 20-foot-wide slash, debris, and rut free zone daily, using the pathway as the centerline. Do not run equipment down the pathway. Skidding across the trail may only occur in locations approved by the Sale Administrator.

## 5.4 - Soil Protection

### 5.4.1 - Rutting restriction, general (7/16)

Operations are to cease immediately if equipment and weather conditions result in rutting of roads and/or skid trails which is 12 inches or greater in depth and 50 feet in length. The Unit Manager or his/her representative may restrict hauling and/or skidding if ruts exceed the specified depth. With the Unit Manager or his/her representative's approval, the Purchaser may return to the area when the risk of rutting has decreased.

### 5.4.5 - Soil caution (11/04)

Care must be taken to minimize soil damage due to the sandy soils, as well as the area of saturated soil that are in the Sale Area.

## 5.8 - Protection of Endangered Species



#### 5.8.8 - Protected species, other (2/12)

Within Payment Unit(s) 1, the harvesting time period may be altered if wood turtles are found within or adjacent to the Sale Area. This restriction may make winter harvesting necessary.

### **6 - Safety and Fire Prevention**

#### 6.2 - Signing

##### 6.2.1 - Road posting (10/20)

The Purchaser is responsible for posting and maintaining caution signs on Baraga Plains Rd prior to beginning operations. The road must be posted at appropriate distances from the Sale Area to warn of logging activity and truck traffic. Signs must be removed when harvest operations are suspended or completed. The Purchaser will provide these signs.

##### 6.2.3 - Recreational trail posting (10/20)

The Purchaser is responsible for posting and maintaining caution signs on the North Country Trail prior to beginning operations. The trail must be posted at appropriate distances from the Sale Area to warn of logging activity and truck traffic at both ends of the trail. Signs must be removed when harvest operations are suspended or completed. The Purchaser will provide these signs.

### **7 - Other Conditions**

#### 7.2 - Extensions

##### 7.2.5 - Weather related extension (1/13)

If weather conditions during the operating period of this contract prevent harvesting, this sale may qualify for a weather related extension. If approved, the normal extension fee would be waived. To qualify, there must be a documented attempt each year to harvest in the difficult portion of the sale.



**TIMBER SALE MAP**

This information provided by authority of Part 525, 1994 PA 451, as amended.

Sale Number	Date	
<b>11-001-24</b>	06/12/2024	
Scale	Page	Of
1:24,000	1	1

Forest Management Unit	County	Mapped By: Carlson
Baraga Mgt Unit	Baraga	Cruised By: Baraga Staff

Township	Range	Section(s) and	SENW,NESW,S1/2SW; Sec. 5	NENW,NWNE;
48N / 49N	34W	Subdivision(s)	Sec. 21 S1/2SE; Sec. 22 SWSW; Sec. 27 NWNW;	Sec. 28 N1/2NE,SWNE; Sec. 32

Cover Type			
A = Aspen	J = Jack Pine	O = Oak	U = Upland Brush
B = Paper Birch	K = Rock	P = Lowland Poplar	UM = Upland Mix Forest
C = Cedar	L = Lowland Brush	Q = Mixed Swamp Conifer	V = Bog or Marsh
D = Treed Bog	LM = Lowland Mix Forest	R = Red Pine	W = White Pine
E = Swamp Hardwoods	M = Maple, Beech, Birch	S = Black Spruce	X = Non Stocked
F = Spruce/Fir	MC = Mixed Conifer	T = Tamarack	Y = Sand
G = Grass	MD = Mixed Deciduous	Z = Water	
H = Hemlock	N = Marsh		

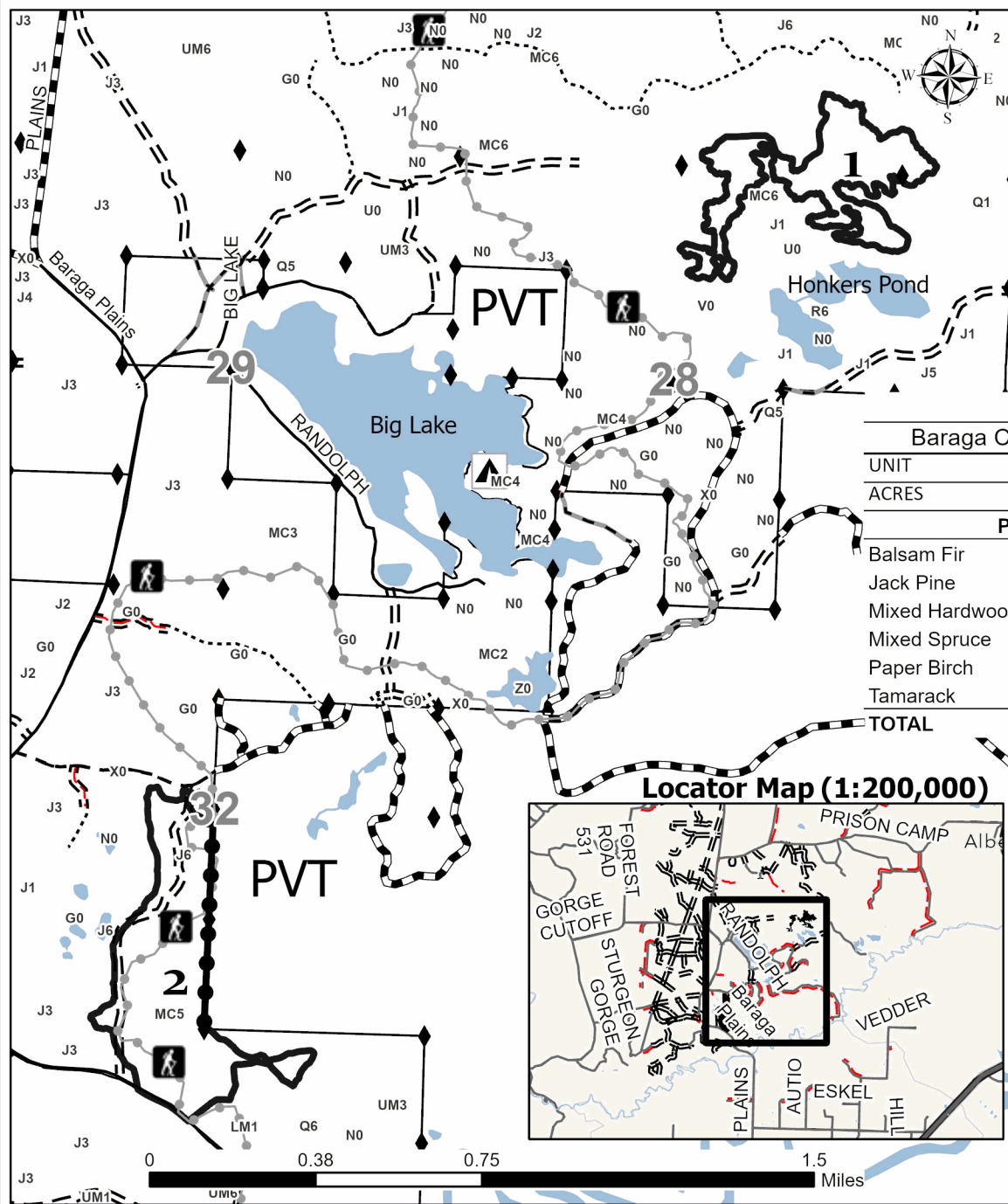
Density	
0 = Non Stocked	5 = Pole Timber Medium
1 = Seedling Sapling Poor	6 = Pole Timber Well
2 = Seedling Sapling Medium	7 = Saw Timber Poor
3 = Seedling Sapling Well	8 = Saw Timber Medium
4 = Pole Timber Poor	9 = Saw Timber Well

**Legend**

Against State (Red) Stand

**Compartments**

- State Forests
- Private Line (Blue)
- Recreational Trail
- Paved Road
- Gravel Road
- County Road - Seasonal
- Private Road
- Primary Forest Road
- Forest Access Route
- Administrative Access Only
- Paved Road
- Government Gravel/Dirt
- Private Gravel/Dirt
- Survey Grade Corner

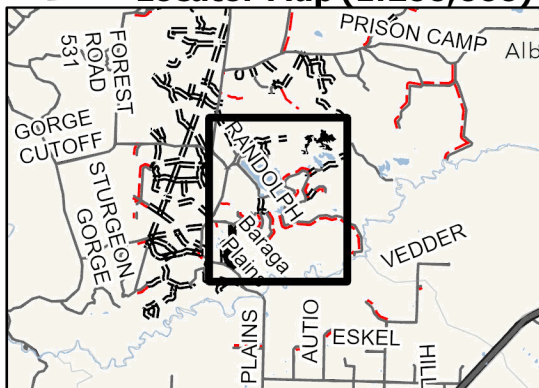


**Fungal Foot**

Baraga County, Compartment 11

UNIT	1	2	TOTALS
ACRES	52.2	86.4	138.6
<b>Pulpwood CORDS</b>			
Balsam Fir	6	0	6
Jack Pine	809	771	1580
Mixed Hardwood	2	3	5
Mixed Spruce	312	155	467
Paper Birch	0	26	26
Tamarack	0	12	12
<b>TOTAL</b>	<b>1129</b>	<b>967</b>	<b>2096</b>

**Locator Map (1:200,000)**



Use QR Code to open Map in App



## TIMBER SALE INFORMATION

Usitalo Road Aspen (11-012-24)  
 T51N, R36W, SEC. 25.  
 Houghton County (Advertised Price \$5,536.35)

SALE NOTE: Access may be through private land.

A timber sale contract for this lump sum, sealed bid timber sale will be awarded to the responsible bidder offering the highest sealed bid price. All units of volume listed below were estimated using the Inventory Manager computer program and the new Michigan taper model. Bids must be at or above the following advertised price for each product and species:

<u>PRODUCTS &amp; SPECIES</u>	<u>ESTIMATED UNITS*</u>	<u>ADVERTISED PRICE</u>
Sawtimber		
Sugar Maple	0.7 MBF	\$ 154.00 / MBF
Pulpwood		
Balsam Fir	19 Cords	\$ 3.25 / Cord
Mixed Hardwood	49 Cords	\$ 8.30 / Cord
Quaking Aspen	386 Cords	\$ 12.85 / Cord

\* The total volume is statistically estimated within plus (+) or minus (-) 24.73 percent. There are an estimated 455 cords on this timber sale, plus or minus 113 cords at the 95% confidence level. The estimated units are final and not subject to adjustment. Prospective bidders are urged to examine this timber and to make their own estimates of quantity and quality.

### **BOND AND PAYMENT SCHEDULE:**

1. A bond in the amount of \$500.00 to insure faithful performance of the conditions of the contract will be deposited by the successful bidder within 21 days of the sale award.
2. Cutting in any sale or unit without the required advance payment would be considered a trespass.
3. Total payment must be paid in advance or according to the following schedule :
  - (a) Ten percent (10%) of the sale value must be paid within 21 days of the sale award.
  - (b) The remainder is due before cutting begins.
  - (c) Payment for each of the following units must be made before cutting begins in that unit:
 

PAYMENT UNIT NUMBER	PERCENT OF TOTAL SALE VALUE
01	100.0%
4. If no cutting takes place, the 10% down payment will not be refunded.
5. Operations on the contract issued will terminate on 06/30/2028.

### **SALE STATISTICS**

Volumes were calculated in cubic feet using the Michigan taper model. Cubic foot volume includes all wood inside bark for the product indicated. For display purposes, cubic feet were converted to cords and MBF using a simple conversion factor, e.g. 79 cubic feet per cord and 185 cubic feet per MBF. The cubic foot volumes are precise; the cords and MBF volumes are not. Cubic foot volume cannot be directly converted to cords or boards with precision.

### **SALE VOLUMES**

The total estimated sale volume may not equal the sum of the species/products due to the nature of statistical calculations associated with double sampling methodology.

VOLUME		STATISTICAL RANGE IN CORDS		
TOTAL CUBIC FEET	TOTAL CORDS	PERCENT ERROR	MINIMUM	MAXIMUM
35,945	455	24.73%	342	568

**VDU VOLUMES**

A VDU is a Volume Determination Unit. Volumes and their associated statistics are calculated at the VDU level and summarized to the sale level. There is often a one to one relationship between a VDU and a Payment Unit, but not always, depending on the cruise design. Refer to the VDU TO PAYMENT UNIT table.

VDU	VOLUME		PERCENT ERROR	RANGE IN CORDS	
	TOTAL CUBIC FEET	TOTAL CORDS		MINIMUM	MAXIMUM
19	35,945	455	24.74%	342	568
<b>TOTAL:</b>	<b>35,945</b>	<b>455</b>		<b>342</b>	<b>568</b>

**VDU TO PAYMENT UNIT**

When a VDU is associated with more than one Payment Unit (PU), the VDU volumes are assigned to the PU based on acres of the VDU within the PU.

VDU	VDU ACRES	PU	PU ACRES
19	16.8	1	16.8
<b>TOTAL:</b>	<b>16.8</b>		<b>16.8</b>

**DESCRIPTION OF TIMBER BY PAYMENT UNIT (PU)**

PU	MARKET GROUP	PRODUCT	QUANTITY	UNIT	ACRES	ADVERTISE PRICE
1	Sugar Maple	Sawtimber	0.7	MBF	16.8	\$5,536.35
	Balsam Fir	Pulpwood	19	Cords		
	Mixed Hardwood		49	Cords		
	<i>Black Cherry</i>		4	<i>Cords</i>		
	<i>Paper Birch</i>		6	<i>Cords</i>		
	<i>Red Maple</i>		36	<i>Cords</i>		
	<i>Sugar Maple</i>		1	<i>Cords</i>		
	<i>Yellow Birch</i>		2	<i>Cords</i>		
	Quaking Aspen		386	Cords		
	TOTAL:			0.7		
TOTAL:			454	Cords		

## Sale Specific Conditions & Requirements

**Sale Name: Usitalo Road Aspen**

**Sale Number: 11-012-24 Seq#: 2**

### 1 - Sale Area

#### 1.2 - Boundaries

##### 1.2.1 - Painted boundaries (9/19)

The sale boundary and Payment Unit boundaries are marked and identified by blue and red paint. Exterior sale boundary lines against private property are marked with blue paint. Exterior sale boundary lines against state are marked with red paint.

### 2 - Timber Specifications

#### 2.1 - Included Timber

##### 2.1.2 - Clearcut unit(s) w/o unmerchantable trees (8/11)

Within Payment Unit(s) 1, cut all trees which meet minimum piece specifications in 2.2 Utilization, except do not cut hemlock, cedar, white pine, or red oak.

#### 2.2 - Utilization

##### 2.2.3 - Stump heights (4/07)

Stump heights within the Sale Area shall not exceed 12 inches for trees greater than 10 inches DBH and 4 inches for trees smaller than 10 inches DBH. A written waiver of this requirement may be obtained if wet summer weather makes winter logging necessary.

##### 2.2.4 - Skidding length (2/14)

Skidding of unlimbed tops or lengths over 17 feet is not permissible, unless approved by the Unit Manager or his/her representative. Skidding of lengths over 17 feet is permissible as long as the Timber Sale Administrator approves the method and machinery used. If at any point damage exceeds specification 3.4.1, all of the remaining wood must be skid in lengths less than 17 feet.

##### 2.2.8 - Utilization and removal (5/14)

All products meeting standards set forth in General Condition and Requirement 2.2 - Utilization must be removed from the Sale Area. This is because excessive woody debris inhibits regeneration.

### 3 - Payments

#### 3.4 - Damaged Timber

##### 3.4.1 - Damaged timber (7/16)

General Condition and Requirement 3.4 Damaged Timber, defines liquidated damages for undesignated live merchantable trees which are cut or injured. In addition, extreme care should be taken to avoid damage to tree seedlings and saplings.

### 4 - Transportation

#### 4.1 - Construction

##### 4.1.1 - Stream crossings, general (3/11)

All stream crossing structures will be temporary and therefore, shall be provided by the Purchaser, and must be removed upon completion of the sale. All permits for stream crossings will be provided by the DNR for crossings located on state land.

##### 4.1.3 - Slash and earthen piles (8/04)

Piles or windrows of earth along roads and landings that have been widened or constructed shall be leveled. Slash from road maintenance or construction, including stumps, shall be dispersed throughout the sale, chipped, utilized or otherwise removed from the sale.

##### 4.1.4 - Timber removed for construction (3/23)

Trees cut or damaged in the process of pre-approved road, landing or skid trail construction will be decked in an area separate from other Designated Timber and not removed until measured by the sale administrator. Payment will be made at contract prices or average prices, if not on the contract.

#### 4.1.5 - Culverts (5/14)

Roads may require the installation of culverts for cross drainage or at natural drainage-ways. If culverts are needed in these locations, their placement will be specified by the Sale Administrator and they shall be installed prior to hauling. The culverts shall be new, corrugated metal or plastic gauge. Culverts will be a minimum of 12 inches in diameter and 24 feet in length. If culverts are removed, fill shall be removed from wetland soils as specified. Soils shall be maintained and left in a non-erodible condition, with water bars, seed, fertilizer, mulch, and slash installed as directed by the Sale Administrator and as specified in the BMP manual. Stream crossing permits, if needed, will be obtained by the DNR for crossings located on state land.

#### 4.1.6 - Road construction (1/09)

Construction of new roads or improvements of existing roads shall be done in such a way as to minimize the environmental and visual impacts. Merchantable trees shall be cut and utilized unless otherwise directed. Non-merchantable trees shall be severed and laid flat on the ground. Slash shall be scattered, and not left in windrows and kept a minimum of 10 feet back from the road edge, or be chipped, utilized or otherwise removed from the sale. Stumps shall be set upright, not left on edge, and be moved at least 10 feet away from the road edge. Disturbed soil shall be feathered into the woods and not left in berms or windrows.

#### 4.1.7 - Road closure (10/11)

All new roads built into the sale must be blocked to vehicle traffic upon completion of the sale. Overgrown roads that are reopened shall be considered new roads. In general, this will require constructing a four (4') foot high berm of stumps and logs covered with earth. These roads must be rendered impassable to cars and trucks. Temporary berms may be required if no sale activity occurs for 30 or more consecutive days. Contact the Sale Administrator for specific details of design and placement.

### 4.2 - Maintenance

#### 4.2.2 - Fill material (4/07)

To maintain roads, fill material may be needed in areas where "holes" exist or may be expected to develop. This fill material should be placed before trucking begins. Contact the Sale Administrator regarding the availability of onsite sand or gravel from adjacent State-owned lands.

#### 4.2.4 - Grading (10/16)

For completion of the sale, state forest roads must be graded. In general, this will require a road grader or bulldozer to shape up the roads after forest products have been hauled off site. This includes cleaning of drainage areas, grading, crowning and filling with gravel, if necessary. The grading equipment to be used must be approved by the Unit Manager or his/her representative.

#### 4.2.5 - Two wheel drive condition (2/04)

All existing trail roads on and adjacent to the sale area must be passable by two-wheel drive traffic for the duration of the sale.

### 4.4 - Access

#### 4.4.1 - Private property access (3/11)

Permission for access across private land is the responsibility of the Purchaser. A copy of the written permission from the private landowner must be given to the Unit Manager within 30 days of the bid opening and prior to the beginning of operations.

## 5 - Operations

### 5.1 - Notification

#### 5.1.1 - Pre-sale conference (10/16)

A pre-sale conference between the Purchaser and sale administrator is required prior to beginning any operations to determine landing and road locations. The Unit Manager or his/her representative must be contacted at least 10 days in advance to schedule the conference.

#### 5.1.4 - Post-sale conference (10/16)

A post-sale conference on site between the Purchaser and sale administrator is required 5 days prior to the completion of active logging operations to determine clean-up and repair of landings, road edges, and the fulfillment of other contract specifications.

## 5.2 - Conduct of Operations

### 5.2.2 - Hazard Trees/Snags

#### 5.2.2.1 - Den trees (10/16)

Obvious hollow and/or den trees shall be protected and left standing unless they are a safety hazard.

### 5.2.3 - Operating Restrictions

#### 5.2.3.2 - Operating restrictions (9/11)

Within Payment Unit(s) 1, unless changed by written agreement, all clean up activities must be completed by June 30 for all areas that were harvested during the previous harvest season. This restriction is to allow the clean up areas time to revegetate before the dry season.

### 5.2.30 - Landing/road top soil protection (2/15)

Top soil on landings and new roads must be removed, stockpiled and saved. Upon completion of the timber sale, soil must be evenly distributed back over the area for revegetation. In addition, the area must be seeded and mulched per instructions of the Sale Administrator.

### 5.2.32 - Decking/landing restoration (9/13)

All decking and landing areas must have the surface area restored to a condition equal to or better than before. This is to ensure the proper regeneration of the stand. Wood debris, chips and "cookies" from trimmings must be removed or scattered away from landing and loading areas and may not be windrowed on the edge.

### 5.2.38 - No decking against live trees (2/04)

Cut products may not be decked against unmarked or designated leave trees.

## 5.4 - Soil Protection

### 5.4.1 - Rutting restriction, general (7/16)

Operations are to cease immediately if equipment and weather conditions result in rutting of roads and/or skid trails which is 12 inches or greater in depth and 50 feet in length. The Unit Manager or his/her representative may restrict hauling and/or skidding if ruts exceed the specified depth. With the Unit Manager or his/her representative's approval, the Purchaser may return to the area when the risk of rutting has decreased.

## 5.8 - Protection of Endangered Species

### 5.8.3 - Red shoulder hawk or goshawk (1) (2/16)

In the event that an active red shoulder hawk or goshawk nest is found, the contract may be amended to protect the nest site until the nest is determined to be inactive. The value of the trees in this excluded area will be refunded or credited to the Purchaser. The nest will be buffered with a five-chain radius (eight acre) protection area, centered on the nest tree, in which there will be no cutting or new roads constructed. Avoid human disturbance, including loading and skidding, in the protection area.

An additional zone of five chains (ten chains centered on the active nest tree) will be established in which there is no management activity from April 1 to July 30. Limit biomass harvesting and chipping operations within this ten-chain zone, retain the maximum one-third of residues per the Woody Biomass Harvesting Guidelines (Michigan DNR 2010). Nests determined to be inactive will be protected with a one-chain no-harvest buffer.

### 5.8.5 - Protection of raptor nests (3/13)

All trees with raptor nests will be protected if found during harvesting operations. Notification will be made to the Unit Manager or his/her representative who will notify the Wildlife Biologist so an on-site evaluation and recommendation can be made, if necessary.



### TIMBER SALE MAP

This information provided by authority of Part 525, 1994 PA 451, as amended.

Sale Number <b>11-012-24</b>	Date 04/22/2024
Scale 1:15,840	Page 1
	Of 1

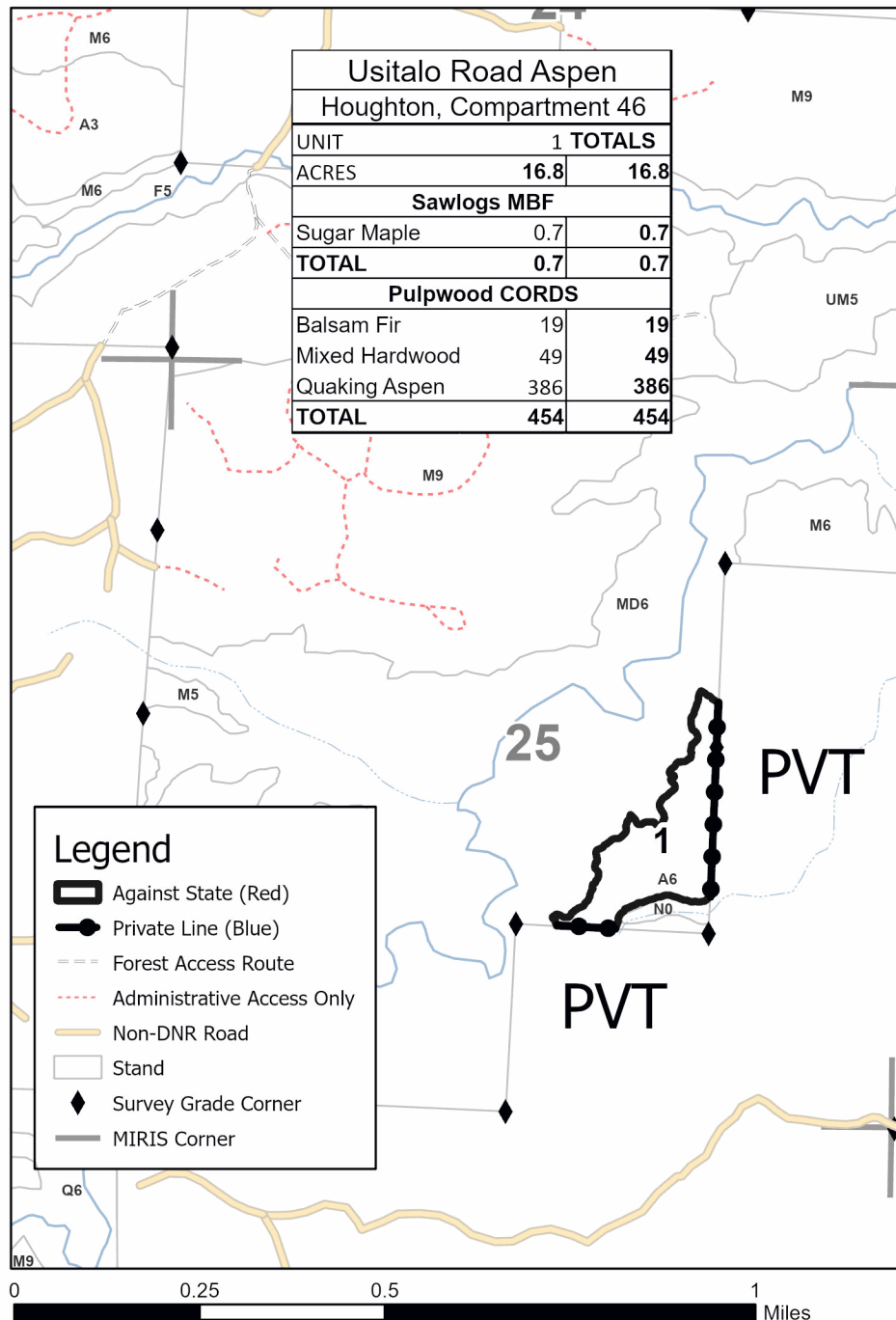
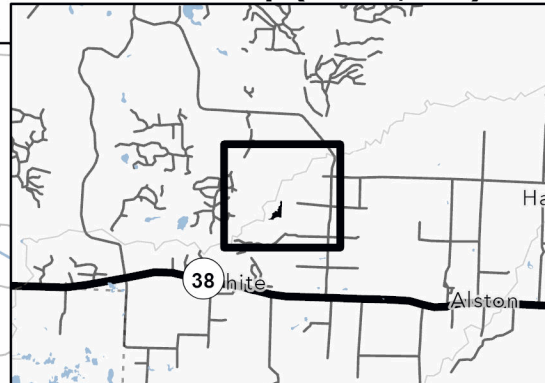
Forest Management Unit Baraga Mgt Unit	County Houghton	Mapped By: Ryan Mattila
		Cruised By: Ryan Mattila

Township 51N	Range 36W	Section(s) and Subdivision(s) Sec. 25 SWNE,NWSE;
-----------------	--------------	--

Cover Type			
A = Aspen	J = Jack Pine	O = Oak	U = Upland Brush
B = Paper Birch	K = Rock	P = Lowland Poplar	UM = Upland Mix Forest
C = Cedar	L = Lowland Brush	Q = Mixed Swamp Conifer	V = Bog or Marsh
D = Treed Bog	LM = Lowland Mix Forest	R = Red Pine	W = White Pine
E = Swamp Hardwoods	M = Maple, Beech, Birch	S = Black Spruce	X = Non Stocked
F = Spruce/Fir	MC = Mixed Conifer	T = Tamarack	Y = Sand
G = Grass	MD = Mixed Deciduous	Z = Water	
H = Hemlock	N = Marsh		

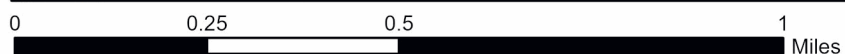
Density	
0 = Non Stocked	5 = Pole Timber Medium
1 = Seedling Sapling Poor	6 = Pole Timber Well
2 = Seedling Sapling Medium	7 = Saw Timber Poor
3 = Seedling Sapling Well	8 = Saw Timber Medium
4 = Pole Timber Poor	9 = Saw Timber Well

### Locator Map (1:200,000)



Legend	
	Against State (Red)
	Private Line (Blue)
	Forest Access Route
	Administrative Access Only
	Non-DNR Road
	Stand
	Survey Grade Corner
	MIRIS Corner

Use QR Code to open Map in App





## TIMBER SALE INFORMATION

### GNA2 White Rabbit (11-809-24)

T47N, R40W, SEC. 10; T47N, R40W, SEC. 16; T47N, R40W, SEC. 17; T47N, R40W, SEC. 4; T47N, R40W, SEC. 5; T47N, R40W, SEC. 8; T47N, R40W, SEC. 9.

SALE NOTE: Access may be through private or other public land.

A timber sale contract for this lump sum, sealed bid timber sale will be awarded to the responsible bidder offering the highest sealed bid price. All units of volume listed below were estimated using the Inventory Manager computer program and the new Michigan taper model. Bids must be at or above the following advertised price for each product and species:

<u>PRODUCTS &amp; SPECIES</u>	<u>ESTIMATED UNITS*</u>	<u>ADVERTISED PRICE</u>
Pulpwood		
Balsam Fir	215 Cords	\$ 4.55 / Cord
Mixed Aspen	11,372 Cords	\$ 18.15 / Cord
Mixed Hardwood	1,879 Cords	\$ 11.70 / Cord
Mixed Spruce	515 Cords	\$ 10.70 / Cord
Paper Birch	320 Cords	\$ 2.20 / Cord
Tamarack	16 Cords	\$ 4.65 / Cord

\* The total volume is statistically estimated within plus (+) or minus (-) 6.19 percent. There are an estimated 14,318 cords on this timber sale, plus or minus 887 cords at the 95% confidence level. The estimated units are final and not subject to adjustment. Prospective bidders are urged to examine this timber and to make their own estimates of quantity and quality.

### **BOND AND PAYMENT SCHEDULE:**

1. A bond in the amount of \$20,000.00 to insure faithful performance of the conditions of the contract will be deposited by the successful bidder within 21 days of the sale award.
2. Cutting in any sale or unit without the required advance payment would be considered a trespass.
3. Total payment must be paid in advance or according to the following schedule :
  - (a) Ten percent (10%) of the sale value must be paid within 21 days of the sale award.
  - (b) The 10% down payment will be credited towards the first unit cut.

(c) Payment for each of the following units must be made before cutting begins in that unit:

PAYMENT UNIT NUMBER	PERCENT OF TOTAL SALE VALUE
01	8.6%
02	9.0%
03	6.6%
04	7.2%
05	7.4%
06	9.2%
07	16.8%
08	8.9%
09	8.8%
10	6.2%
11	7.1%
12	4.2%

4. If no cutting takes place, the 10% down payment will not be refunded.
5. Operations on the contract issued will terminate on 06/30/2028.

### **SALE STATISTICS**

Volumes were calculated in cubic feet using the Michigan taper model. Cubic foot volume includes all wood inside bark for the product indicated. For display purposes, cubic feet were converted to cords and MBF using a simple conversion factor, e.g. 79 cubic feet per cord and 185 cubic feet per MBF. The cubic foot volumes are precise; the cords and MBF volumes are not. Cubic foot volume cannot be directly converted to cords or boards with precision.

### **SALE VOLUMES**

The total estimated sale volume may not equal the sum of the species/products due to the nature of statistical calculations associated with double sampling methodology.

VOLUME		STATISTICAL RANGE IN CORDS		
TOTAL CUBIC FEET	TOTAL CORDS	PERCENT ERROR	MINIMUM	MAXIMUM
1,131,140	14,318	6.19%	13,431	15,205

## VDU VOLUMES

A VDU is a Volume Determination Unit. Volumes and their associated statistics are calculated at the VDU level and summarized to the sale level. There is often a one to one relationship between a VDU and a Payment Unit, but not always, depending on the cruise design. Refer to the VDU TO PAYMENT UNIT table.

VDU	VOLUME		PERCENT ERROR	RANGE IN CORDS	
	TOTAL CUBIC FEET	TOTAL CORDS		MINIMUM	MAXIMUM
2	47,074	596	21.25%	469	722
4	89,233	1,130	20.65%	896	1,363
5	287,035	3,633	12.93%	3,164	4,103
8	341,414	4,322	11.31%	3,833	4,810
13	176,682	2,236	16.51%	1,867	2,606
14	189,702	2,401	15.03%	2,040	2,762
<b>TOTAL:</b>	<b>1,131,140</b>	<b>14,318</b>		<b>12,270</b>	<b>16,367</b>

## VDU TO PAYMENT UNIT

When a VDU is associated with more than one Payment Unit (PU), the VDU volumes are assigned to the PU based on acres of the VDU within the PU.

VDU	VDU ACRES	PU	PU ACRES
2	27.3	12	27.3
4	55.8	11	55.8
5	174.4	8	65.1
		9	64.0
		10	45.3
8	193.6	1	55.0
		2	57.7
		3	42.0
		4	38.9
13	84.2	7	84.2
14	95.6	4	6.1
		5	39.8
		6	49.7
<b>TOTAL:</b>	<b>630.9</b>		<b>630.9</b>

**DESCRIPTION OF TIMBER BY PAYMENT UNIT (PU)**

PU	MARKET GROUP	PRODUCT	QUANTITY	UNIT	ACRES	ADVERTISE PRICE
1	Balsam Fir	Pulpwood	14	Cords	55.0	\$20,307.55
	Mixed Aspen		966	Cords		
	<i>B. T. Aspen</i>		4	<i>Cords</i>		
	<i>Quaking Aspen</i>		962	<i>Cords</i>		
	Mixed Hardwood		169	Cords		
	<i>Red Maple</i>		160	<i>Cords</i>		
	<i>White Ash</i>		9	<i>Cords</i>		
	Mixed Spruce		65	Cords		
	<i>Black Spruce</i>		16	<i>Cords</i>		
	<i>White Spruce</i>		49	<i>Cords</i>		
	Paper Birch		11	Cords		
	Tamarack		3	Cords		
	2		Balsam Fir	Pulpwood		
Mixed Aspen		1,013	Cords			
<i>B. T. Aspen</i>		4	<i>Cords</i>			
<i>Quaking Aspen</i>		1,009	<i>Cords</i>			
Mixed Hardwood		178	Cords			
<i>Red Maple</i>		168	<i>Cords</i>			
<i>White Ash</i>		10	<i>Cords</i>			
Mixed Spruce		69	Cords			
<i>Black Spruce</i>		18	<i>Cords</i>			
<i>White Spruce</i>		51	<i>Cords</i>			
Paper Birch		11	Cords			
Tamarack		3	Cords			
3		Balsam Fir	Pulpwood		11	Cords
	Mixed Aspen	737		Cords		
	<i>B. T. Aspen</i>	3		<i>Cords</i>		
	<i>Quaking Aspen</i>	734		<i>Cords</i>		
	Mixed Hardwood	129		Cords		
	<i>Red Maple</i>	122		<i>Cords</i>		
	<i>White Ash</i>	7		<i>Cords</i>		
	Mixed Spruce	49		Cords		
	<i>Black Spruce</i>	12		<i>Cords</i>		
	<i>White Spruce</i>	37		<i>Cords</i>		
	Paper Birch	8		Cords		
	Tamarack	2		Cords		
	4	Balsam Fir		Pulpwood	15	Cords
Mixed Aspen		825	Cords			
<i>B. T. Aspen</i>		3	<i>Cords</i>			
<i>Quaking Aspen</i>		822	<i>Cords</i>			
Mixed Hardwood		122	Cords			
<i>Red Maple</i>		116	<i>Cords</i>			
<i>White Ash</i>		6	<i>Cords</i>			
Mixed Spruce		49	Cords			
<i>Black Spruce</i>		11	<i>Cords</i>			
<i>White Spruce</i>		38	<i>Cords</i>			
Paper Birch		7	Cords			
Tamarack		2	Cords			
5		Balsam Fir	Pulpwood		29	Cords
	Mixed Aspen	926		Cords		
	<i>Quaking Aspen</i>	926		<i>Cords</i>		
	Mixed Hardwood	22		Cords		
	<i>Red Maple</i>	22		<i>Cords</i>		
	Mixed Spruce	24		Cords		
	<i>White Spruce</i>	24		<i>Cords</i>		
6	Balsam Fir	Pulpwood	36	Cords	49.7	\$21,782.10

**DESCRIPTION OF TIMBER BY PAYMENT UNIT (PU), CON'T**

PU	MARKET GROUP	PRODUCT	QUANTITY	UNIT	ACRES	ADVERTISE PRICE
6 con't	Mixed Aspen	Pulpwood	1,156	Cords		
	<i>Quaking Aspen</i>		1,156	<i>Cords</i>		
	Mixed Hardwood		27	Cords		
	<i>Red Maple</i>		27	<i>Cords</i>		
	Mixed Spruce		30	Cords		
	<i>White Spruce</i>		30	<i>Cords</i>		
7	Balsam Fir	Pulpwood	15	Cords	84.2	\$39,547.80
	Mixed Aspen		2,113	Cords		
	<i>Quaking Aspen</i>		2,113	<i>Cords</i>		
	Mixed Hardwood		75	Cords		
	<i>Red Maple</i>		60	<i>Cords</i>		
	<i>Sugar Maple</i>		15	<i>Cords</i>		
	Mixed Spruce		21	Cords		
	<i>White Spruce</i>		21	<i>Cords</i>		
	Paper Birch		12	Cords		
8	Balsam Fir	Pulpwood	22	Cords	65.1	\$20,981.75
	Mixed Aspen		939	Cords		
	<i>B. T. Aspen</i>		8	<i>Cords</i>		
	<i>Quaking Aspen</i>		931	<i>Cords</i>		
	Mixed Hardwood		269	Cords		
	<i>Black Ash</i>		6	<i>Cords</i>		
	<i>Ironwood</i>		2	<i>Cords</i>		
	<i>Red Maple</i>		206	<i>Cords</i>		
	<i>Sugar Maple</i>		19	<i>Cords</i>		
	<i>White Ash</i>		36	<i>Cords</i>		
	Mixed Spruce		49	Cords		
	<i>White Spruce</i>		49	<i>Cords</i>		
	Paper Birch		76	Cords		
9	Balsam Fir	Pulpwood	22	Cords	64.0	\$20,633.85
	Mixed Aspen		923	Cords		
	<i>B. T. Aspen</i>		7	<i>Cords</i>		
	<i>Quaking Aspen</i>		916	<i>Cords</i>		
	Mixed Hardwood		265	Cords		
	<i>Black Ash</i>		6	<i>Cords</i>		
	<i>Ironwood</i>		2	<i>Cords</i>		
	<i>Red Maple</i>		202	<i>Cords</i>		
	<i>Sugar Maple</i>		19	<i>Cords</i>		
	<i>White Ash</i>		36	<i>Cords</i>		
	Mixed Spruce		48	Cords		
	<i>White Spruce</i>		48	<i>Cords</i>		
	Paper Birch		76	Cords		
10	Balsam Fir	Pulpwood	15	Cords	45.3	\$14,590.70
	Mixed Aspen		653	Cords		
	<i>B. T. Aspen</i>		5	<i>Cords</i>		
	<i>Quaking Aspen</i>		648	<i>Cords</i>		
	Mixed Hardwood		187	Cords		
	<i>Black Ash</i>		4	<i>Cords</i>		
	<i>Ironwood</i>		2	<i>Cords</i>		
	<i>Red Maple</i>		143	<i>Cords</i>		
	<i>Sugar Maple</i>		13	<i>Cords</i>		
	<i>White Ash</i>		25	<i>Cords</i>		
	Mixed Spruce		34	Cords		
	<i>White Spruce</i>		34	<i>Cords</i>		
	Paper Birch		54	Cords		
11	Balsam Fir	Pulpwood	21	Cords	55.8	\$16,672.90
	Mixed Aspen		665	Cords		

**DESCRIPTION OF TIMBER BY PAYMENT UNIT (PU), CON'T**

PU	MARKET GROUP	PRODUCT	QUANTITY	UNIT	ACRES	ADVERTISE PRICE
11 con't	<i>Quaking Aspen</i>	<i>Pulpwood</i>	665	<i>Cords</i>		
	Mixed Hardwood		320	Cords		
	<i>Red Maple</i>		294	<i>Cords</i>		
	<i>Sugar Maple</i>		7	<i>Cords</i>		
	<i>White Ash</i>		19	<i>Cords</i>		
	Mixed Spruce		58	Cords		
	<i>White Spruce</i>		58	<i>Cords</i>		
	Paper Birch		65	Cords		
	12		Mixed Aspen	Pulpwood		
<i>Quaking Aspen</i>		456	<i>Cords</i>			
Mixed Hardwood		116	Cords			
<i>Black Ash</i>		16	<i>Cords</i>			
<i>Red Maple</i>		94	<i>Cords</i>			
<i>Sugar Maple</i>		6	<i>Cords</i>			
Mixed Spruce		19	Cords			
<i>White Spruce</i>		19	<i>Cords</i>			
Tamarack		6	Cords			
TOTAL:			14,317		Cords	

## Sale Specific Conditions & Requirements

**Sale Name: GNA2 White Rabbit**

**Sale Number: 11-809-24 Seq#: 1**

### 1 - Sale Area

#### 1.2 - Boundaries

##### 1.2.1 - Painted boundaries (9/19)

The sale boundary and Payment Unit boundaries are marked and identified by orange paint. Exterior sale boundary lines against private property are marked with orange paint and red blaze. Exterior sale boundary lines against USFS are marked with orange paint. The painted Payment Unit boundary line trees are Included Timber and can only be cut when the adjacent Payment Units are paid for.

### 2 - Timber Specifications

#### 2.1 - Included Timber

##### 2.1.1 - Clearcut unit(s) with unmerchantable trees (6/14)

Within Payment Unit(s) 1-12, cut all trees that are 4.6 inches or more at DBH, except do not cut elm, oak, cherry, red pine, white pine, hemlock and cedar.

#### 2.2 - Utilization

##### 2.2.4 - Skidding length (2/14)

Skidding of unlimbed tops or lengths over 17 feet is not permissible, unless approved by the Unit Manager or his/her representative.

##### 2.2.8 - Utilization and removal (5/14)

All products meeting standards set forth in General Condition and Requirement 2.2 - Utilization must be removed from the Sale Area. Retain on site more than 1/3 of the slash from harvested trees (tree tops and limbs less than four inches in diameter). This is because scattered tops and limbs help to maintain soil nutrients and provide for wildlife habitat and biodiversity.

##### 2.2.9 - No chipping permitted (12/08)

Within Payment Unit(s) 1-12, all wood must be removed by whole tree, tree segment, or roundwood. No chipping is permitted. Tops may not be chipped.

##### 2.2.12 - GNA, cut and remove Included Timber (3/18)

Unless provided otherwise herein, the DNR agrees to sell and permit Purchaser to cut and remove Included Timber and Purchaser agrees to purchase, cut, and remove Included Timber.

### 3 - Payments

#### 3.4 - Damaged Timber

##### 3.4.1 - Damaged timber (7/16)

General Condition and Requirement 3.4 Damaged Timber, defines liquidated damages for undesignated live merchantable trees which are cut or injured. In addition, extreme care should be taken to avoid damage to tree seedlings and saplings.

Within the Sale Area, if more than 30% of the tree seedlings or saplings (1/4" to 4.5" DBH) within a specified portion of the Sale Area are damaged, liquidated damages will be assessed at \$100 per acre for all acreage within that specified portion of the Sale Area that was damaged.

##### 3.4.3 - Special Protection Areas (8/11)

The Purchaser shall protect special protection areas from damage by the Purchaser's operations. Special protection areas are marked with a triple orange paint slash boundary line and letters "PA" (See attached map for reference). The Purchaser shall not enter protected areas for any reason. No trees are to be felled across protected area boundary and all slash is to be kept 10 feet away from protected area boundary. If the Purchaser's operations damage special protection areas through carelessness, the Purchaser shall be fined in accordance with USFS policy.

## 4 - Transportation

### 4.1 - Construction

#### 4.1.3 - Slash and earthen piles (8/04)

Piles or windrows of earth along roads and landings that have been widened or constructed shall be leveled. Slash from road maintenance or construction, including stumps, shall be dispersed throughout the sale.

#### 4.1.5 - Culverts (5/14)

Roads may require the installation of culverts for cross drainage or at natural drainage-ways. If culverts are needed in these locations, their placement will be specified by the Sale Administrator, and they shall be installed prior to hauling. The culverts shall be new, corrugated metal or plastic gauge. Culverts will be a minimum of 18 inches in diameter and 24 feet in length. If culverts are removed, fill shall be removed from wetland soils as specified. Soils shall be maintained and left in a non-erodible condition, with water bars, seed, fertilizer, mulch, and slash installed as directed by the Sale Administrator and as specified in the BMP manual. Stream crossing permits, will be obtained by the DNR for crossings on USFS land (see Sale Map for locations). Also, refer to 4.1.8 for estimated permissible crossing dimensions.

#### 4.1.6 - Road construction (4/24)

Construction of new roads or improvements of existing roads shall be done in such a way as to minimize the environmental and visual impacts. Merchantable trees shall be cut and utilized unless otherwise directed. Non-merchantable trees shall be severed and laid flat on the ground. Slash shall be scattered, and not left in windrows and kept a minimum of 10 feet back from the road edge. Stumps shall be set upright, not left on edge, and be moved at least 10 feet away from the road edge. Disturbed soil shall be feathered into the woods and not left in berms or windrows.

#### 4.1.7 - Road closure (10/11)

All new roads built into the sale must be blocked to vehicle traffic upon completion of the sale. Overgrown roads that are reopened shall be considered new roads. Some existing roads may also need to be closed. In general, this will require constructing a four (4') foot high berm of stumps and logs covered with earth. All stumps and brush from road building and landing construction must be reserved to block any newly constructed roads upon completion of the sale. The stumps and brush must be scattered along the road system to prohibit vehicular movement. Temporary berms may be required if no sale activity occurs for 30 or more consecutive days. Contact the Sale Administrator for specific details of design and placement.

#### 4.1.8 - Road work (1) (8/07)

The following road work is required: The Purchaser will gravel the transition onto South Fair Oaks Road. This work needs to be completed prior to hauling. Gravel must be from a weed free source. In general, this will require between five (5) and ten (10) yards of gravel and must be completed to the satisfaction of the Sale Administrator. Also, Forest Road 560 will be moved to the west for 3/8 of a mile from the end of South Fair Oaks Road to the Forest Service gate so that its entirety is on Forest Service property (see Timber Sale Map for location). Permittable stream crossing locations are indicated on the Timber Sale Map. Measurements at each have been taken and are estimated to be the following: crossing "A" and "B" require a crane mat structure, "C" will require a sixteen (16) foot minimum length bridge, and "D", "E", "F", and "G" will require culverts of thirty-six (36) inch diameter by twenty-four (24) foot length. Any other equalization crossings (non permittable) will require culverts of eighteen (18) inch diameter and 24 foot length.

### 4.2 - Maintenance

#### 4.2.1 - Hauling restriction (12/08)

Hauling may be restricted on forest roads by the Unit Manager or his/her representative. The restriction may occur during spring breakup or during wet weather conditions.

#### 4.2.2 - Fill material (4/07)

To maintain roads, fill material may be needed in areas where "holes" exist or may be expected to develop. This fill material should be placed before trucking begins. Contact the Sale Administrator regarding the availability of onsite sand or gravel from adjacent USFS lands.

#### 4.2.4 - Grading (10/16)

For completion of the sale, USFS roads must be graded. In general, this will require a road grader or bulldozer to shape up the roads after forest products have been hauled off site. This includes cleaning of drainage areas, grading, crowning and filling with gravel, if necessary. The grading equipment to be used must be approved by the Unit Manager or his/her representative.

#### 4.4 - Access

##### 4.4.2 - Alternate route on private property (2/04)

It is the Purchaser's responsibility to obtain access across private land for any routes other than the route shown on the Timber Sale Map.

### 5 - Operations

#### 5.1 - Notification

##### 5.1.1 - Pre-sale conference (10/16)

A pre-sale conference on site between the Purchaser and sale administrator is required prior to beginning any operations, to determine landing and road locations. The Unit Manager or his/her representative must be contacted at least 10 days in advance to schedule the conference.

#### 5.2 - Conduct of Operations

##### 5.2.2 - Hazard Trees/Snags

###### 5.2.2.1 - Den trees (10/16)

Obvious hollow and/or den trees shall be protected and left standing unless they are a safety hazard.

##### 5.2.3 - Operating Restrictions

###### 5.2.3.1 - Operating restrictions (9/11)

Within Payment Unit(s) 1-12, unless changed by written agreement, cutting, skidding, and hauling are limited to December 1 to March 15, or winter frozen ground. This restriction is due to USFS seasonal operating restrictions.

###### 5.2.32 - Decking/landing restoration (9/13)

All decking and landing areas must have the surface area restored to a condition equal to or better than before. This is to ensure the proper regeneration of the stand. Wood debris, chips and "cookies" from trimmings must be removed or scattered away from landing and loading areas and may not be windrowed on the edge.

###### 5.2.38 - No decking against live trees (2/04)

Cut products may not be decked against unmarked or designated leave trees.

#### 5.4 - Soil Protection

##### 5.4.1 - Rutting restriction, general (7/16)

Operations are to cease immediately if equipment and weather conditions result in rutting of roads and/or skid trails which are 6 inches or greater in depth and 25 feet in length. The Unit Manager or his/her representative may restrict hauling and/or skidding if ruts exceed the specified depth. With the Unit Manager or his/her representative's approval, the Purchaser may return to the area when the risk of rutting has decreased.

##### 5.4.3 - Erosion control (12/08)

Skid trails or haul roads may require erosion control structures or berms per direction of the Unit Manager or his/her representative.

#### 5.6 - Debris and Waste Material

##### 5.6.2 - GNA, equipment cleaning (4/24)

(a) Areas, known by the DNR prior to timber sale advertisement, that are infested with invasive species of concern are shown on the Timber Sale Map. A current list of invasive species of concern and a map showing the extent of known infestations is available from the DNR. For purposes of this provision, "Off-Road Equipment" includes all logging and construction machinery, except for log trucks, chip vans, service vehicles, water trucks, pickup trucks, cars, and similar vehicles.

(b) Purchaser shall adhere to the following requirements with regard to cleaning "Off-Road Equipment":

(i) Prior to moving Off-Road Equipment onto the Sale Area, Purchaser shall identify the location of the equipment's most recent operation. Purchaser shall not move any Off-Road Equipment that last operated in an area infested with one or more



invasive species of concern onto Sale Area without having cleaned such equipment of seeds, soil, vegetative matter, and other debris that could contain or hold seeds, and having notified the DNR, as provided in (iii). If the location of prior operation cannot be identified, then Purchaser shall assume that the location is infested with invasive species of concern.

(ii) Prior to moving Off-Road Equipment from a cutting unit that is shown on the Timber Sale Map to be infested with invasive species of concern to, or through any other area that is shown as being free of invasive species of concern, or infested with a different invasive species, Purchaser shall clean such equipment of seeds, soil, vegetative matter, and other debris that could contain or hold seeds, and shall notify the DNR, as provided in (iii).

(iii) Prior to moving any Off-Road Equipment subject to the cleaning requirements set forth above, Purchaser shall advise DNR of its cleaning measures and make the equipment available for inspection. DNR shall have 2 days, excluding weekends and State holidays, to inspect equipment after it has been made available. After satisfactory inspection or after such 2 day period, Purchaser may move the equipment as planned. Equipment shall be considered clean when a visual inspection does not disclose seeds, soil, vegetative matter, and other debris that could contain or hold seeds. Purchaser shall not be required to disassemble equipment unless so directed by the DNR after inspection.

(iv) If Purchaser desires to clean Off-Road Equipment on National Forest land, such as at the end of a project or prior to moving to, or through an area that is free of invasive species of concern, Purchaser shall obtain prior approval from the Unit Manager or his/her representative as to the location for such cleaning and measures, if any, for controlling impacts.

(v) Unit Manager or his/her representative may order delay, interruption, or modification of this Contract pursuant to Condition & Requirement 7.3 or 7.3.4.

(c) Nothing contained in this Condition & Requirement shall be interpreted as creating any warranty on the part of the DNR that all locations of invasive species of concern have been described herein, elsewhere in this Contract, or designated on the ground. Following sale advertisement, additional locations may be described or designated, and other species may be added to the list of invasive species of concern. In such event, the Unit Manager or his/her representative may order delay, interruption, or modification of this Contract pursuant to Condition & Requirement 7.3 or 7.3.4.

(d) The parties shall promptly communicate with one another with respect to description or designation of additional locations; discovery of locations of new species or new infestation; and, addition of species to the list of invasive species of concern.

## 5.8 - Protection of Endangered Species

### 5.8.5 - Protection of raptor nests (3/13)

All trees with raptor nests will be protected if found during harvesting operations. Notification will be made to the Unit Manager or his/her representative who will notify the Wildlife Biologist so an on-site evaluation and recommendation can be made, if necessary.

## 6 - Safety and Fire Prevention

### 6.2 - Signing

#### 6.2.1 - Road posting (10/20)

The Purchaser is responsible for posting and maintaining caution signs on South Fair Oaks Road prior to beginning operations. The road must be posted at appropriate distances from the Sale Area to warn of logging activity and truck traffic. Signs must be removed when harvest operations are suspended or completed. The Purchaser will provide these signs.

## 7 - Other Conditions

### SKIP

#### 7.1.1 - GNA, title (7/16)

General Condition & Requirement 7.1 is inapplicable. The following applies to this contract.

All right, title, and interest in and to any Included Timber shall remain in USDA Forest Service with the State of Michigan acting on behalf of the USDA Forest Service under this GNA contract, until it has been Measured, removed from Sale Area or other authorized cutting area, and paid for, at which time title shall vest in Purchaser. Title to any Included Timber that has

been Measured and paid for, but not removed from Sale Area or other authorized cutting area by Purchaser on or prior to Termination Date, shall remain in USDA Forest Service.

### 7.3 - Contract Modifications

#### 7.3.4 - GNA, contract suspension and modification (5/16)

(a) The Unit Manager may, by written order, delay or interrupt authorized operations under this contract or, notwithstanding Condition & Requirement 7.3, modify this contract, in whole or in part:

(i) To prevent environmental degradation or resource damage, including, but not limited to, harm to habitat, plants, animals, cultural resources, or cave resources;

(ii) To ensure consistency with land and resource management plans or other documents prepared pursuant to the National Environmental Policy Act of 1969, 42 USC 4321-4347;

(iii) To conduct environmental analysis, including, but not limited to, engaging in consultation pursuant to the Endangered Species Act of 1973, 16 USC 1531, et seq.; or

(iv) Upon agreement of the Forest Service, due to administrative appeal or litigation, regardless of whether the Unit Manager's order is required by a court order or this contract is named in such a proceeding.

(b) In the event of an order delaying or interrupting Purchaser's Operations under this Condition & Requirement, Purchaser's remedy shall be:

(i) a no cost contract extension,

(ii) reimbursement for Out-of-Pocket Expenses,

however, the foregoing remedies shall be available only to the extent that the Unit Manager's order was the sole and exclusive cause of the delay or interruption of Purchaser's operations.

(c) Remedies awarded to the Purchaser shall not be duplicative, and the Unit Manager shall have the right to structure remedies provided herein to avoid duplicative compensation.

(d) Purchaser agrees that this Condition & Requirement, and the remedies provided herein shall apply regardless of any finding by any court that the DNR failed to comply with any statute, regulation and/or policy in connection with awarding, advertising, or authorizing this sale, or a similar sale.

### 7.5 - Loss

#### 7.5.1 - Deteriorating timber (7/09)

The sale area has received damage from spruce budworm. The Purchaser should harvest the wood as soon as possible. The Department of Natural Resources is held free of responsibility of any further damage or deterioration due to delay in harvesting.

#### 7.5.2 - GNA, liability for loss (7/16)

If Included Timber is destroyed or damaged by an unexpected event that changes the nature of Included Timber, such as wind, flood, insects, disease, or similar cause, the Purchaser shall bear the timber value loss resulting from such destruction or damage.

Deterioration or loss of timber value due to delay or interruption under 7.3.4 - GNA, contract suspension and modification, shall be borne by the party holding title. In this event, Included Timber to which USDA Forest Service holds title, Purchaser of the State GNA contract will not be obligated to remove and pay for such timber. This Subsection shall not be construed to relieve either party of liability for negligence.

### 7.10 - Certified Timber

#### 7.10.1 - Non-certified timber (2/16)

The area encompassed by this timber sale is not certified to the standards of the Forest Stewardship Council (FSC) or the Sustainable Forestry Initiative (SFI). Forest products from this sale may not be delivered to the mill as "FSC and / or SFI certified". The lands within this sale belong to the National Forest system and are being managed by the State as part of a Good Neighbor Authority (GNA) agreement.



### TIMBER SALE MAP

This information provided by authority of Part 525, 1994 PA 451, as amended.

Sale Number

**11-809-24**

Date

08/22/2024

Forest Management Unit

County

Mapped By: Houle

Baraga Mgt Unit

Ontonagon

Cruised By: Baraga Staff

Scale

1:24,000

Page

1

Of

1

Township  
47N

Range  
40W

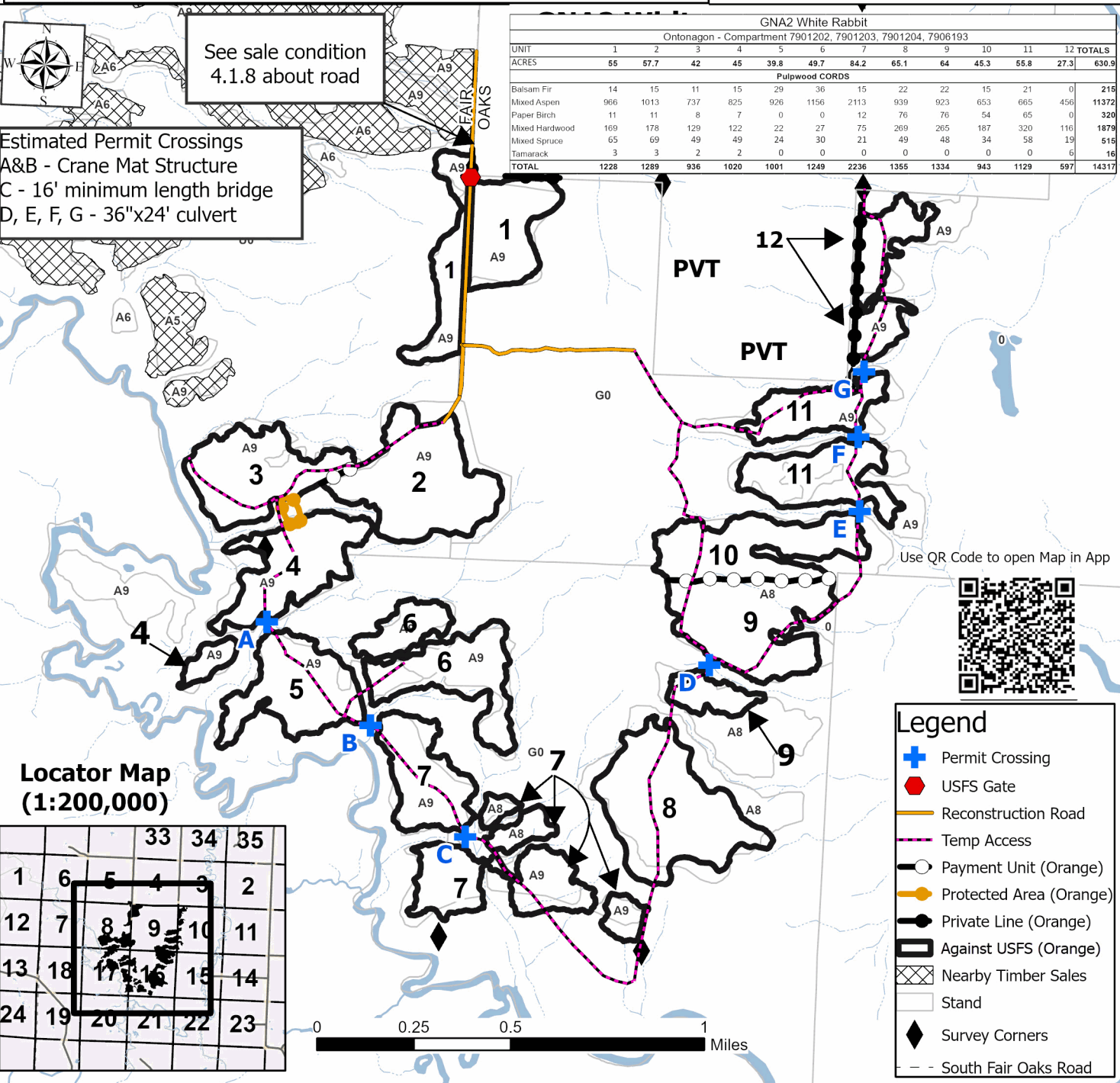
Section(s) and  
Subdivision(s) E1/2NW,NE,NESW,E1/2SE; Sec. 4 SWSW; Sec. 5 SESE; Sec. 8 E1/2NE,E1/2SW,SE; Sec. 9  
Sec. 10 W1/2NW,W1/2SW; Sec. 16 NWNW,S1/2NW,NE,SW,N1/2SE,SWSE; Sec. 17

#### Cover Type

- A = Aspen
- B = Paper Birch
- C = Cedar
- D = Treed Bog
- E = Swamp Hardwoods
- F = Spruce/Fir
- G = Grass
- H = Hemlock
- J = Jack Pine
- K = Rock
- L = Lowland Brush
- LM = Lowland Mix Forest
- M = Maple, Beech, Birch
- MC = Mixed Conifer
- MD = Mixed Deciduous
- N = Marsh
- O = Oak
- P = Lowland Poplar
- Q = Mixed Swamp Conifer
- R = Red Pine
- S = Black Spruce
- T = Tamarack
- U = Upland Brush
- UM = Upland Mix Forest
- V = Bog or Marsh
- W = White Pine
- X = Non Stocked
- Y = Sand
- Z = Water

#### Density

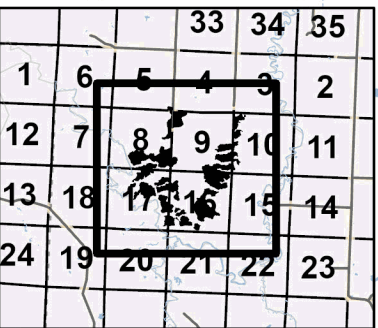
- 0 = Non Stocked
- 1 = Seedling Sapling Poor
- 2 = Seedling Sapling Medium
- 3 = Seedling Sapling Well
- 4 = Pole Timber Poor
- 5 = Pole Timber Medium
- 6 = Pole Timber Well
- 7 = Saw Timber Poor
- 8 = Saw Timber Medium
- 9 = Saw Timber Well



**Estimated Permit Crossings**  
 A&B - Crane Mat Structure  
 C - 16' minimum length bridge  
 D, E, F, G - 36"x24' culvert

GNA2 White Rabbit													
Ontonagon - Compartment 7901202, 7901203, 7901204, 7906193													
UNIT	1	2	3	4	5	6	7	8	9	10	11	12 TOTALS	
ACRES	55	57.7	42	45	39.8	49.7	84.2	65.1	64	45.3	55.8	27.3	630.9
Pulpwood CORDS													
Balsam Fir	14	15	11	15	29	36	15	22	22	15	21	0	215
Mixed Aspen	966	1013	737	825	926	1156	2113	939	923	653	665	456	11372
Paper Birch	11	11	8	7	0	0	12	76	76	54	85	0	320
Mixed Hardwood	169	178	129	122	22	27	75	269	265	187	320	116	1879
Mixed Spruce	65	69	49	49	24	30	21	49	48	34	58	19	515
Tamarack	3	3	2	2	0	0	0	0	0	0	0	6	16
<b>TOTAL</b>	<b>1228</b>	<b>1289</b>	<b>936</b>	<b>1020</b>	<b>1001</b>	<b>1249</b>	<b>2236</b>	<b>1355</b>	<b>1334</b>	<b>943</b>	<b>1129</b>	<b>597</b>	<b>14317</b>

#### Locator Map (1:200,000)



#### Legend

- + Permit Crossing
- USFS Gate
- Reconstruction Road
- Temp Access
- Payment Unit (Orange)
- Protected Area (Orange)
- Private Line (Orange)
- Against USFS (Orange)
- Nearby Timber Sales
- Stand
- ◆ Survey Corners
- South Fair Oaks Road

## BID INSTRUCTIONS (VER. 10/10/2022):

### 1. Scheduled Bid Location, Date, and Time (2/11)

Bids must be received by the Unit Manager, BARAGA OFFICE, 427 US 41 North, Baraga, MI 49908, no later than 9:00 a.m. (local time) on September 26, 2024. For further information concerning this sale, contact Brad Carlson at 906-353-6651.

### 2. Bidder's Qualifications (10/22)

If all or part of a timber sale was prepared by a private contractor, the contractor and that contractor's company are not permitted to bid on the timber sale. A person must be 18 years of age or older to purchase timber. Permanent employees of the Department of Natural Resources or members of their immediate household may not bid. Former employees, in the permanent or seasonal class, may not bid until 3 months after the last day of active duty. Bids will not be accepted from individuals or companies appearing on the DNR/FRD No-Bid List. This list contains the names of purchasers who previously failed to execute a contract within 21-days or who have a history of poor performance.

### 3. Preparation of Sealed Bids (5/16)

Bid Forms may be completed online thru Michigan DNR Timber Sale Online Bidding (OLB) at [www.michigan.gov/timberbidding](http://www.michigan.gov/timberbidding) or by completing the hardcopy Bid Form found in the Timber Sale Prospectus. Hardcopy Bid Forms shall be manually signed in ink. Registration in OLB is considered your 'signature' for all bids submitted thru that system. Bid prices must be entered for each species and product in the Bid Price column for all material subject to bidding and all fill-in blanks must be completed. If erasures or other changes appear on the hardcopy Bid Form, each erasure or change must be initialed by the person signing the bid.

### 4. Submission of Sealed Bids (5/16)

Bid forms may be obtained from the Unit Manager or thru OLB. Bids may be submitted hardcopy or thru OLB. All hardcopy bids must be submitted on the bid form and in an envelope clearly identified as described in this section. NOTE: Only one bid form per bid envelope. Sealed bids must be submitted to the Unit office designated in the prospectus and must be submitted at or prior to the time established in the prospectus. The envelope should show on the outside (a) the sale name or number and (b) the date and time of bid opening, as shown in the prospectus. Bids received after the time specified in the sale prospectus are late bids and will be rejected.

It is possible for a bidder to submit multiple bids on a single sale. For example, a bid may be submitted hardcopy and a bid may be submitted thru OLB. Or, two bidders from the same company could both submit bids on the same sale. If this were to happen, the State would accept all bids received and award the contract accordingly. All bidding and contractual requirements would apply to all bids received.

### 5. Public Opening of Sealed Bids (7/16)

If conditions permit, the sealed bids will be publicly opened and posted at the time and place set in the prospectus.

If a bidder, present at a bid opening, has submitted bids on more than one sale, that bidder may withdraw their unopened bid envelopes or announce the withdrawal of their online bid after being declared the successful bidder on one sale.

### 6. Award of Contract (1/11)

Award of the contract will be made to the Bidder whose bid, conforming to the prospectus, is most advantageous to the State of Michigan on the basis of total value at rates bid for the estimated quantities. The State reserves the right to reject any bid or waive any minor irregularity in bids received. A written award mailed (or otherwise furnished) to the successful Bidder shall be deemed to result in a binding contract without further action by either party.

### 7. Down Payment (1/11)

The Bidder to whom award is made must make a down payment within 21 days of the sale award. The amount of the down payment will be calculated as shown in the Bond and Payment Schedule of this prospectus. Only cash may be used to meet this requirement.

### 8. Performance Security (1/11)

As guarantee of faithful performance, a cash bond, certificate of deposit, surety bond or irrevocable letter of credit (LOC) is required within 21 days of the sale award. The amount of the performance security is shown in the Bond and

Payment Schedule of this prospectus. If an LOC or surety is used, the coverage must extend for at least 6 months beyond the contract expiration.

#### 9. Worker's Compensation (10/22)

Purchaser shall obtain worker's compensation insurance to cover claims under Michigan's Worker's Disability Compensation Act of 1969 or similar employee benefit act of any other state applicable to an employee. Verification of Worker's Disability Compensation Act Compliance must be completed and submitted within 21 days of contract award and prior to the issuance of the timber sale contract. In addition, if applicable, Notice of Exclusion or Certificate of Insurance must also be submitted.

#### 10. Timber Sale Contract (10/22)

Additional conditions and requirements common to all timber sales are listed on the timber sale contract (R4031) and are available on line at [www.michigan.gov/timber](http://www.michigan.gov/timber). Contact the Unit Manager for additional information or a sample contract. Within 21 days of the date of the award letter, the bidder must sign the contract and provide the required down payment, performance security, and verification of worker's disability compensation. The down payment and performance security shall be in accordance with the provisions of the timber sale contract, in the sums stated in this prospectus. If these actions are not taken, then the Bidder, the Bidder's corporation, and the corporation's principals may not be permitted to bid on State timber sales for a period of 3 months after the first offense, 6 months after the second offense, and 1 year after the third offense. An offense will only be counted against the Bidder for 5 years. In addition, the Bidder certifies that if awarded this contract, the Bidder will complete the timber sale contract in accordance with its terms and any modifications thereof including requirements to purchase, cut, and remove the included timber by the expiration date.

Payment Unit values in the State Forest Timber Sale Contract are calculated based on the advertised value of the Payment Unit as a percentage of the total advertised value of the contract. The advertised value of each Payment Unit is given in the Description of Timber by Payment Unit table on the Timber Sale Information page. For example, if the value of Payment Unit 1 is advertised as \$1,500 and the total Timber Sale value is advertised as \$10,000, the contract price for Payment Unit 1 will be 15% of the total bid price ( $\$1,500/\$10,000 * 100$ ).

#### 11. Disclaimer of Estimates and Bidder's Warranty of Inspection (10/22)

Before submitting this bid, the Bidder is advised and cautioned to inspect the sale area, review the requirements of the sale contract, and take other steps as may be reasonably necessary to ascertain the location, estimated volumes, construction estimates, and operating costs of the proposed sale. Failure to do so will not relieve the Bidder from responsibility for completing the contract.

The Bidder warrants that this bid is submitted solely on the basis of the Bidder's examination and inspection of the quality and quantity of the timber offered for sale and the Bidder's opinion of the value thereof and the costs of recovery. No reliance should be placed on the State of Michigan's estimates of timber quality, quantity or costs of recovery. Bidder further acknowledges that the State of Michigan: (i) expressly disclaims any warranty of fitness of timber for any purpose; (ii) offers this timber as is without any warranty of quality (merchantability) or quantity and (iii) expressly disclaims any warranty as to the quantity or quality of timber sold.

#### 12. Certification and Chain-of-Custody (10/22)

Unless otherwise indicated in the contract under section 7 – Other Conditions of the Sale Specific Conditions & Requirements, the area encompassed by this timber sale is certified to the standards of the Forest Stewardship Council (FSC) - Certificate #SCS-FM/COC-00090N and the Sustainable Forestry Initiative (SFI) - Certificate #NSF-SFIS-5Y031-SF5. Forest products from this sale may be delivered to the mill as "FSC 100% and / or SFI certified" as long as the contractor hauling the forest products is chain-of-custody (COC) certified or covered under a COC certificate from the destination mill. The purchaser is responsible for maintaining COC after leaving the sale area.

#### 13. Good Neighbor Authority (GNA) Requirements (10/22)

If the name of this timber sales contains the acronym GNA, it is authorized by the Good Neighbor Authority (GNA) and covered by various agreements between the U.S. Forest Service and the State. The timber sale occurs on federal land and the following conditions apply:

GNA contracts on US Forest Service land will not be awarded to purchasers on the Federal list of excluded parties. The System for Award Management (SAM) will be checked for active excluded parties prior to award of contract. In

addition, the Bidder to whom award is made must complete an Assurance Regarding Felony Conviction or Tax Delinquent Status for Corporate Applicants (AD-3031).

14. Good Neighbor Authority (GNA) Requirements, con't (10/22)

Bidder certifies, by signing this bid form, that to the best of Bidder's knowledge that the following representations are accurate and complete.

- a. That the Bidder and its principals are not presently debarred, suspended, proposed for debarment, declared ineligible, or voluntary excluded from timber sales (covered transactions) by any Federal department or agency.
- b. That the Bidder and its principals have not within a 3-year period preceding this bid been convicted of or had a civil judgment rendered against them for commission of fraud or a criminal offense in connection with obtaining , attempting to obtain, or performing a public (Federal, State, or local) transaction or contract under a public transaction; violation of Federal or State antitrust statutes or commission of embezzlement, theft, forgery, bribery, falsification or destruction of records, making false statements, or receiving stolen property.
- c. That the Bidder and its principals are not presently indicted for or otherwise criminally or civilly charged by a governmental entity (Federal, State, or local) with commission of any of the offenses enumerated in paragraph b of this certification.
- d. That the Bidder and its principals have not within a 3-year period preceding this bid had one or more public transactions (Federal, State, or local) terminated for breach or default of a timber or forest product contract.

Bidders that cannot certify this requirement, in whole or in part, shall submit an explanation with their bid.

Scott Bowen  
Director





# TIMBER SALE INFORMATION

## GNA2 Northwestern (12-800-24)

T44N, R37W, SEC. 2; T44N, R37W, SEC. 3; T45N, R36W, SEC. 31; T45N, R37W, SEC. 25; T45N, R37W, SEC. 26; T45N, R37W, SEC. 34; T45N, R37W, SEC. 35; T45N, R37W, SEC. 36.

SALE NOTE: Access may be through other public land.

A timber sale contract for this lump sum, sealed bid timber sale will be awarded to the responsible bidder offering the highest sealed bid price. All units of volume listed below were estimated using the Inventory Manager computer program and the new Michigan taper model. Bids must be at or above the following advertised price for each product and species:

<u>PRODUCTS &amp; SPECIES</u>	<u>ESTIMATED UNITS*</u>	<u>ADVERTISED PRICE</u>
<b>Sawtimber</b>		
Basswood	29.9 MBF	\$ 83.00 / MBF
Red Maple	133.1 MBF	\$ 116.00 / MBF
Sugar Maple	783.4 MBF	\$ 231.00 / MBF
White Spruce	11.0 MBF	\$ 38.00 / MBF
Yellow Birch	24.7 MBF	\$ 117.00 / MBF
<b>Pulpwood</b>		
Balsam Fir	5 Cords	\$ 4.85 / Cord
Basswood	30 Cords	\$ 6.40 / Cord
Mixed Aspen	28 Cords	\$ 19.30 / Cord
Mixed Hardwood	5,363 Cords	\$ 12.40 / Cord
Mixed Spruce	7 Cords	\$ 11.40 / Cord

\* The total volume is statistically estimated within plus (+) or minus (-) 8.91 percent. There are an estimated 7,734 cords on this timber sale, plus or minus 689 cords at the 95% confidence level. The estimated units are final and not subject to adjustment. Prospective bidders are urged to examine this timber and to make their own estimates of quantity and quality.

### BOND AND PAYMENT SCHEDULE:

1. A bond in the amount of \$13,477.00 to insure faithful performance of the conditions of the contract will be deposited by the successful bidder within 21 days of the sale award.
2. Cutting in any sale or unit without the required advance payment would be considered a trespass.
3. Total payment must be paid in advance or according to the following schedule :
  - (a) Ten percent (10%) of the sale value must be paid within 21 days of the sale award.
  - (b) The 10% down payment will be credited towards the first unit cut.
  - (c) Payment for each of the following units must be made before cutting begins in that unit:

PAYMENT UNIT NUMBER	PERCENT OF TOTAL SALE VALUE
01	9.5%
02	17.5%
03	18.6%
04	9.0%
05	6.7%
06	15.0%
07	4.2%
08	6.7%
09	12.8%

4. If no cutting takes place, the 10% down payment will not be refunded.
5. Operations on the contract issued will terminate on 06/30/2028.

### SALE STATISTICS

Volumes were calculated in cubic feet using the Michigan taper model. Cubic foot volume includes all wood inside bark for the product indicated. For display purposes, cubic feet were converted to cords and MBF using a simple conversion factor, e.g. 79 cubic feet per cord and 185 cubic feet per MBF. The cubic foot volumes are precise; the cords and MBF volumes are not. Cubic foot volume cannot be directly converted to cords or boards with precision.

## SALE VOLUMES

The total estimated sale volume may not equal the sum of the species/products due to the nature of statistical calculations associated with double sampling methodology.

VOLUME			STATISTICAL RANGE IN CORDS	
TOTAL CUBIC FEET	TOTAL CORDS	PERCENT ERROR	MINIMUM	MAXIMUM
610,961	7,734	8.91%	7,044	8,423

## VDU VOLUMES

A VDU is a Volume Determination Unit. Volumes and their associated statistics are calculated at the VDU level and summarized to the sale level. There is often a one to one relationship between a VDU and a Payment Unit, but not always, depending on the cruise design. Refer to the VDU TO PAYMENT UNIT table.

	VOLUME			RANGE IN CORDS	
VDU	TOTAL CUBIC FEET	TOTAL CORDS	PERCENT ERROR	MINIMUM	MAXIMUM
1	610,961	7,734	8.91%	7,044	8,423
<b>TOTAL:</b>	<b>610,961</b>	<b>7,734</b>		<b>7,044</b>	<b>8,423</b>

## VDU TO PAYMENT UNIT

When a VDU is associated with more than one Payment Unit (PU), the VDU volumes are assigned to the PU based on acres of the VDU within the PU.

VDU	VDU ACRES	PU	PU ACRES
1	623.7	1	59.4
		2	109.4
		3	114.4
		4	56.2
		5	41.8
		6	93.9
		7	26.4
		8	42.1
		9	80.1
<b>TOTAL:</b>	<b>623.7</b>		<b>623.7</b>

**DESCRIPTION OF TIMBER BY PAYMENT UNIT (PU)**

PU	MARKET GROUP	PRODUCT	QUANTITY	UNIT	ACRES	ADVERTISE PRICE	
1	Basswood	Sawtimber	2.8	MBF	59.4	\$25,681.90	
	Red Maple		12.7	MBF			
	Sugar Maple		74.6	MBF			
	White Spruce		1.0	MBF			
	Yellow Birch		2.4	MBF			
	Basswood	Pulpwood	3	Cords			
	Mixed Aspen		3	Cords			
	<i>Quaking Aspen</i>		3	<i>Cords</i>			
	Mixed Hardwood		511	Cords			
	<i>Red Maple</i>		56	<i>Cords</i>			
	<i>Sugar Maple</i>		448	<i>Cords</i>			
	<i>Yellow Birch</i>		7	<i>Cords</i>			
	Mixed Spruce		1	Cords			
	<i>White Spruce</i>		1	<i>Cords</i>			
2	Basswood	Sawtimber	5.2	MBF	109.4	\$47,262.25	
	Red Maple		23.3	MBF			
	Sugar Maple		137.4	MBF			
	White Spruce		1.9	MBF			
	Yellow Birch		4.3	MBF			
	Balsam Fir		Pulpwood	1			Cords
	Basswood			5			Cords
	Mixed Aspen			5			Cords
	<i>Quaking Aspen</i>			5			<i>Cords</i>
	Mixed Hardwood			941			Cords
	<i>Black Cherry</i>			1			<i>Cords</i>
	<i>Red Maple</i>			103			<i>Cords</i>
	<i>Sugar Maple</i>			824			<i>Cords</i>
	<i>Yellow Birch</i>			13			<i>Cords</i>
Mixed Spruce	1	Cords					
<i>White Spruce</i>	1	<i>Cords</i>					
3	Basswood	Sawtimber	5.6	MBF	114.4	\$49,451.10	
	Red Maple		24.5	MBF			
	Sugar Maple		143.7	MBF			
	White Spruce		2.1	MBF			
	Yellow Birch		4.5	MBF			
	Balsam Fir		Pulpwood	2			Cords
	Basswood			5			Cords
	Mixed Aspen			4			Cords
	<i>Quaking Aspen</i>			4			<i>Cords</i>
	Mixed Hardwood			984			Cords
	<i>Black Cherry</i>			2			<i>Cords</i>
	<i>Red Maple</i>			107			<i>Cords</i>
	<i>Sugar Maple</i>			861			<i>Cords</i>
	<i>Yellow Birch</i>			14			<i>Cords</i>
Mixed Spruce	2	Cords					
<i>White Spruce</i>	2	<i>Cords</i>					
4	Basswood	Sawtimber	2.7	MBF	56.2	\$24,310.20	
	Red Maple		12.0	MBF			
	Sugar Maple		70.6	MBF			
	White Spruce		1.0	MBF			
	Yellow Birch		2.2	MBF			
	Basswood		Pulpwood	3			Cords
	Mixed Aspen			3			Cords
	<i>Quaking Aspen</i>			3			<i>Cords</i>
	Mixed Hardwood			484			Cords
	<i>Red Maple</i>			53			<i>Cords</i>

## DESCRIPTION OF TIMBER BY PAYMENT UNIT (PU), CON'T

PU	MARKET GROUP	PRODUCT	QUANTITY	UNIT	ACRES	ADVERTISE PRICE
4 con't	<i>Sugar Maple</i> <i>Yellow Birch</i> Mixed Spruce <i>White Spruce</i>	<i>Pulpwood</i>	424 7 1 1	<i>Cords</i> <i>Cords</i> Cords <i>Cords</i>		
5	Basswood Red Maple Sugar Maple White Spruce Yellow Birch Basswood Mixed Aspen <i>Quaking Aspen</i> Mixed Hardwood <i>Red Maple</i> <i>Sugar Maple</i> <i>Yellow Birch</i>	Sawtimber     Pulpwood	2.0 8.9 52.5 0.7 1.7 2 2 2 359 39 315 5	MBF MBF MBF MBF MBF Cords Cords <i>Cords</i> Cords <i>Cords</i> <i>Cords</i> <i>Cords</i>	41.8	\$18,054.40
6	Basswood Red Maple Sugar Maple White Spruce Yellow Birch Balsam Fir Basswood Mixed Aspen <i>Quaking Aspen</i> Mixed Hardwood <i>Red Maple</i> <i>Sugar Maple</i> <i>Yellow Birch</i> Mixed Spruce <i>White Spruce</i>	Sawtimber     Pulpwood	4.5 20.0 117.9 1.7 3.7 1 5 4 4 807 88 708 11 1 1	MBF MBF MBF MBF MBF Cords Cords Cords <i>Cords</i> Cords <i>Cords</i> <i>Cords</i> <i>Cords</i> Cords <i>Cords</i>	93.9	\$40,558.15
7	Basswood Red Maple Sugar Maple White Spruce Yellow Birch Basswood Mixed Aspen <i>Quaking Aspen</i> Mixed Hardwood <i>Red Maple</i> <i>Sugar Maple</i> <i>Yellow Birch</i>	Sawtimber     Pulpwood	1.3 5.6 33.2 0.5 1.0 1 1 1 227 25 199 3	MBF MBF MBF MBF MBF Cords Cords <i>Cords</i> Cords <i>Cords</i> <i>Cords</i> <i>Cords</i>	26.4	\$11,403.20
8	Basswood Red Maple Sugar Maple White Spruce Yellow Birch Basswood Mixed Aspen <i>Quaking Aspen</i> Mixed Hardwood <i>Red Maple</i> <i>Sugar Maple</i> <i>Yellow Birch</i>	Sawtimber     Pulpwood	2.0 9.0 52.9 0.7 1.7 2 2 2 361 39 317 5	MBF MBF MBF MBF MBF Cords Cords <i>Cords</i> Cords <i>Cords</i> <i>Cords</i> <i>Cords</i>	42.1	\$18,183.20
9	Basswood	Sawtimber	3.8	MBF	80.1	\$34,627.85

**DESCRIPTION OF TIMBER BY PAYMENT UNIT (PU), CON'T**

PU	MARKET GROUP	PRODUCT	QUANTITY	UNIT	ACRES	ADVERTISE PRICE
9 con't	Red Maple	Sawtimber	17.1	MBF		
	Sugar Maple		100.6	MBF		
	White Spruce		1.4	MBF		
	Yellow Birch		3.2	MBF		
	Balsam Fir	Pulpwood	1	Cords		
	Basswood		4	Cords		
	Mixed Aspen		4	Cords		
	<i>Quaking Aspen</i>		4	<i>Cords</i>		
	Mixed Hardwood		689	Cords		
	<i>Red Maple</i>		75	<i>Cords</i>		
	<i>Sugar Maple</i>		604	<i>Cords</i>		
	<i>Yellow Birch</i>		10	<i>Cords</i>		
	Mixed Spruce		1	Cords		
	<i>White Spruce</i>		1	<i>Cords</i>		
TOTAL:			982.1	MBF		
TOTAL:			5,433	Cords		

## Sale Specific Conditions & Requirements

**Sale Name: GNA2 Northwestern**

**Sale Number: 12-800-24 Seq#: 1**

### 1 - Sale Area

#### 1.2 - Boundaries

##### 1.2.1 - Painted boundaries (9/19)

The sale boundary and Payment Unit boundaries are marked and identified by orange paint. Exterior sale boundary lines against USFS are marked with orange triple slashes. Interior Payment Unit boundaries are marked with orange double slashes. The painted boundary line trees are not Included Timber and are to be protected unless marked with blue paint.

### 2 - Timber Specifications

#### 2.1 - Included Timber

##### 2.1.3 - Cut tree marked unit(s) (12/08)

Within Payment Unit(s) 1-9, all trees are designated for cutting when marked with blue paint above and below stump height, regardless of merchantability.

#### 2.2 - Utilization

##### 2.2.12 - GNA, cut and remove Included Timber (3/18)

Unless provided otherwise herein, the DNR agrees to sell and permit Purchaser to cut and remove Included Timber and Purchaser agrees to purchase, cut, and remove Included Timber.

### 3 - Payments

#### 3.4 - Damaged Timber

##### 3.4.1 - Damaged timber (7/16)

General Condition and Requirement 3.4 Damaged Timber, defines liquidated damages for undesignated live merchantable trees which are cut or injured. In addition, extreme care should be taken to avoid damage to tree seedlings and saplings.

No damage is acceptable to undesignated live merchantable trees. Within the Sale Area, if more than 10% of trees (> 4.5" DBH) within a specified area of the sale are damaged, liquidated damages will be assessed for all trees damaged. Rates will be in accordance with General Condition and Requirement 3.4 Damaged Timber.

### 4 - Transportation

#### 4.1 - Construction

##### 4.1.3 - Slash and earthen piles (8/04)

Piles or windrows of earth along roads and landings that have been widened or constructed shall be leveled. Slash from road maintenance or construction, including stumps, shall be dispersed throughout the sale.

##### 4.1.5 - Culverts (5/14)

Roads may require the installation of culverts for cross drainage or at natural drainage-ways. If culverts are needed in these locations, their placement will be specified by the Sale Administrator, and they shall be installed prior to hauling. The culverts shall be new, corrugated metal or plastic gauge. Culverts will be a minimum of 18 inches in diameter and 30 feet in length. If culverts are removed, fill shall be removed from wetland soils as specified. Soils shall be maintained and left in a non-erodible condition, with water bars, seed, fertilizer, mulch, and slash installed as directed by the Sale Administrator and as specified in the BMP manual. Stream crossing permits, if needed, will be obtained by the DNR on USFS land.

##### 4.1.7 - Road closure (10/11)

Existing roads may need to be closed or bermed to USFS specific road designations. In general, this will require constructing a four (4') foot high berm of stumps and logs covered with earth. Temporary berms may be required if no sale activity occurs for 30 or more consecutive days. Contact the Sale Administrator for specific details of design and placement.

##### 4.1.8 - Road work (1) (8/07)

The following road work is required: The Purchaser will gravel all transitions onto USFS 3320 & HWY 16 used during the

timber sale. This work will be done prior to any hauling activity. The gravel used must be from a weed free source. In general, this will require between 5 to 10 yards of gravel per transition and must be done to the satisfaction of the Sale Administrator.

#### 4.1.11 - Permits (2/12)

The DNR will secure any necessary permits that may be required. This is for USFS land only.

#### 4.1.12 - No new roads (1/12)

No new roads will be permitted in any Payment Unit. All operations are limited to existing roads. Skid trails will only be allowed.

### 4.2 - Maintenance

#### 4.2.2 - Fill material (4/07)

To maintain roads, fill material may be needed in areas where "holes" exist or may be expected to develop. This fill material should be placed before trucking begins. Contact the Sale Administrator regarding the availability of onsite sand or gravel from adjacent USFS lands.

#### 4.2.4 - Grading (10/16)

For completion of the sale, USFS roads must be graded. In general, this will require a road grader or bulldozer to shape up the roads after forest products have been hauled off site. This includes cleaning of drainage areas, grading, crowning and filling with gravel, if necessary. The grading equipment to be used must be approved by the Unit Manager or his/her representative.

### 4.4 - Access

#### 4.4.5 - Federal property access (3/11)

Permission for access across federal land has been obtained by the DNR.

## 5 - Operations

### 5.2 - Conduct of Operations

#### 5.2.2 - Hazard Trees/Snags

##### 5.2.2.1 - Den trees (10/16)

Obvious hollow and/or den trees shall be protected and left standing unless they are a safety hazard.

#### 5.2.3 - Operating Restrictions

##### 5.2.3.1 - Operating restrictions (9/11)

Within Payment Unit(s) 1-3 & 5-9 unless changed by written agreement, cutting, skidding, and hauling are limited to the period of August 1 to September 30, or during frozen winter conditions.

Withing Payment Unit 4 unless changed by written agreement, cutting, skidding, and hauling are limited to the period of August 1 to August 31, or during frozen winter conditions. This restriction is because of USFS soil and operating restrictions.

#### 5.2.17 - Timber Mats and Interlocking Composite Mats (5/23)

Some roads or skid trails may require extra protection such as that afforded by timber mats, interlocking composite mats, or another approved system. If available, mats may be borrowed from the DNR. A Timber Sale Contract Amendment will be used to document the Purchaser's use of the DNR's mats. Contact the Sale Administrator regarding availability and pick-up. Timber mats are available from various field offices. Composite mats are only available from the Grayling field office and the Marquette ICC. The Purchaser is responsible for picking up and hauling the mats to and from the site. The composite mats will require DNR staff onsite for installation and removal. Contact the Sale Administrator to schedule at least 30 days before desired install/removal date. All mats must be cleaned prior to drop off. This may include, but is not limited to, power washing and brushing to remove mud and debris. A charge of \$700.00 per timber mat and \$2,000.00 per composite mat will be assessed for all damaged or non-returned mats. Damage for the crane/timber mats is defined as three or more broken cants. Damage for the composite mats is defined as cracked or broken mats.

#### 5.2.32 - Decking/landing restoration (9/13)

All decking and landing areas must have the surface area restored to a condition equal to or better than before. This is to

ensure the proper regeneration of the stand. Wood debris, chips and "cookies" from trimmings must be removed or scattered away from landing and loading areas and may not be windrowed on the edge.

#### 5.4 - Soil Protection

##### 5.4.1 - Rutting restriction, general (7/16)

Operations are to cease immediately if equipment and weather conditions result in rutting of roads and/or skid trails which are 6 inches or greater in depth and 25 feet in length. The Unit Manager or his/her representative may restrict hauling and/or skidding if ruts exceed the specified depth. With the Unit Manager or his/her representative's approval, the Purchaser may return to the area when the risk of rutting has decreased.

##### 5.4.6 - Wet area protection (5/10)

No harvesting operations, including skidding and felling, are to take place within the vernal pond areas or drainages. When harvesting occurs, there should be no disturbance to the vernal pond depression. All equipment, trees and tops should be kept out of this area. Within 50 feet of the pond, no equipment is allowed. Care must be taken by the Purchaser to identify and avoid operating in these areas of the timber sale.

#### 5.6 - Debris and Waste Material

##### 5.6.2 - GNA, equipment cleaning (4/24)

(a) Areas, known by the DNR prior to timber sale advertisement, that are infested with invasive species of concern are shown on the Timber Sale Map. A current list of invasive species of concern and a map showing the extent of known infestations is available from the DNR. For purposes of this provision, "Off-Road Equipment" includes all logging and construction machinery, except for log trucks, chip vans, service vehicles, water trucks, pickup trucks, cars, and similar vehicles.

(b) Purchaser shall adhere to the following requirements with regard to cleaning "Off-Road Equipment":

(i) Prior to moving Off-Road Equipment onto the Sale Area, Purchaser shall identify the location of the equipment's most recent operation. Purchaser shall not move any Off-Road Equipment that last operated in an area infested with one or more invasive species of concern onto Sale Area without having cleaned such equipment of seeds, soil, vegetative matter, and other debris that could contain or hold seeds, and having notified the DNR, as provided in (iii). If the location of prior operation cannot be identified, then Purchaser shall assume that the location is infested with invasive species of concern.

(ii) Prior to moving Off-Road Equipment from a cutting unit that is shown on the Timber Sale Map to be infested with invasive species of concern to, or through any other area that is shown as being free of invasive species of concern, or infested with a different invasive species, Purchaser shall clean such equipment of seeds, soil, vegetative matter, and other debris that could contain or hold seeds, and shall notify the DNR, as provided in (iii).

(iii) Prior to moving any Off-Road Equipment subject to the cleaning requirements set forth above, Purchaser shall advise DNR of its cleaning measures and make the equipment available for inspection. DNR shall have 2 days, excluding weekends and State holidays, to inspect equipment after it has been made available. After satisfactory inspection or after such 2 day period, Purchaser may move the equipment as planned. Equipment shall be considered clean when a visual inspection does not disclose seeds, soil, vegetative matter, and other debris that could contain or hold seeds. Purchaser shall not be required to disassemble equipment unless so directed by the DNR after inspection.

(iv) If Purchaser desires to clean Off-Road Equipment on National Forest land, such as at the end of a project or prior to moving to, or through an area that is free of invasive species of concern, Purchaser shall obtain prior approval from the Unit Manager or his/her representative as to the location for such cleaning and measures, if any, for controlling impacts.

(v) Unit Manager or his/her representative may order delay, interruption, or modification of this Contract pursuant to Condition & Requirement 7.3 or 7.3.4.

(c) Nothing contained in this Condition & Requirement shall be interpreted as creating any warranty on the part of the DNR that all locations of invasive species of concern have been described herein, elsewhere in this Contract, or designated on the ground. Following sale advertisement, additional locations may be described or designated, and other species may be added to the list of invasive species of concern. In such event, the Unit Manager or his/her representative may order delay,



interruption, or modification of this Contract pursuant to Condition & Requirement 7.3 or 7.3.4.

(d) The parties shall promptly communicate with one another with respect to description or designation of additional locations; discovery of locations of new species or new infestation; and, addition of species to the list of invasive species of concern.

## 5.8 - Protection of Endangered Species

### 5.8.5 - Protection of raptor nests (3/13)

All trees with raptor nests will be protected if found during harvesting operations. Notification will be made to the Unit Manager or his/her representative who will notify the Wildlife Biologist so an on-site evaluation and recommendation can be made, if necessary.

## 6 - Safety and Fire Prevention

### 6.2 - Signing

#### 6.2.1 - Road posting (10/20)

The Purchaser is responsible for posting and maintaining caution signs on HWY 16 and USFS 3320 prior to beginning operations. The road must be posted approximately 350 feet from the Sale Area to warn of logging activity and truck traffic. Signs must be removed when harvest operations are suspended or completed. The Purchaser will provide these signs.

## 7 - Other Conditions

### SKIP

#### 7.1.1 - GNA, title (7/16)

General Condition & Requirement 7.1 is inapplicable. The following applies to this contract.

All right, title, and interest in and to any Included Timber shall remain in USDA Forest Service with the State of Michigan acting on behalf of the USDA Forest Service under this GNA contract, until it has been Measured, removed from Sale Area or other authorized cutting area, and paid for, at which time title shall vest in Purchaser. Title to any Included Timber that has been Measured and paid for, but not removed from Sale Area or other authorized cutting area by Purchaser on or prior to Termination Date, shall remain in USDA Forest Service.

### 7.3 - Contract Modifications

#### 7.3.4 - GNA, contract suspension and modification (5/16)

(a) The Unit Manager may, by written order, delay or interrupt authorized operations under this contract or, notwithstanding Condition & Requirement 7.3, modify this contract, in whole or in part:

(i) To prevent environmental degradation or resource damage, including, but not limited to, harm to habitat, plants, animals, cultural resources, or cave resources;

(ii) To ensure consistency with land and resource management plans or other documents prepared pursuant to the National Environmental Policy Act of 1969, 42 USC 4321-4347;

(iii) To conduct environmental analysis, including, but not limited to, engaging in consultation pursuant to the Endangered Species Act of 1973, 16 USC 1531, et seq.; or

(iv) Upon agreement of the Forest Service, due to administrative appeal or litigation, regardless of whether the Unit Manager's order is required by a court order or this contract is named in such a proceeding.

(b) In the event of an order delaying or interrupting Purchaser's Operations under this Condition & Requirement, Purchaser's remedy shall be:

(i) a no cost contract extension,

(ii) reimbursement for Out-of-Pocket Expenses,

however, the foregoing remedies shall be available only to the extent that the Unit Manager's order was the sole and exclusive cause of the delay or interruption of Purchaser's operations.

(c) Remedies awarded to the Purchaser shall not be duplicative, and the Unit Manager shall have the right to structure remedies provided herein to avoid duplicative compensation.

(d) Purchaser agrees that this Condition & Requirement, and the remedies provided herein shall apply regardless of any finding by any court that the DNR failed to comply with any statute, regulation and/or policy in connection with awarding, advertising, or authorizing this sale, or a similar sale.

## 7.5 - Loss

### 7.5.2 - GNA, liability for loss (7/16)

If Included Timber is destroyed or damaged by an unexpected event that changes the nature of Included Timber, such as wind, flood, insects, disease, or similar cause, the Purchaser shall bear the timber value loss resulting from such destruction or damage.

Deterioration or loss of timber value due to delay or interruption under 7.3.4 - GNA, contract suspension and modification, shall be borne by the party holding title. In this event, Included Timber to which USDA Forest Service holds title, Purchaser of the State GNA contract will not be obligated to remove and pay for such timber. This Subsection shall not be construed to relieve either party of liability for negligence.

## 7.10 - Certified Timber

### 7.10.1 - Non-certified timber (2/16)

The area encompassed by this timber sale is not certified to the standards of the Forest Stewardship Council (FSC) or the Sustainable Forestry Initiative (SFI). Forest products from this sale may not be delivered to the mill as "FSC and / or SFI certified". The lands within this sale belong to the National Forest system and are being managed by the State as part of a Good Neighbor Authority (GNA) agreement.



### TIMBER SALE MAP

This information provided by authority of Part 525, 1994 PA 451, as amended.

Sale Number

**12-800-24**

Date

08/12/2024

Forest Management Unit		County	Mapped By: Tyler Ritchie		
Crystal Falls Mgt Unit		Iron	Cruised By: Tyler Ritchie		
Township	Range	Section(s) and	Subdivision(s)		
44N / 45N	36W /	34 SENE,SE; Sec. 35 NW,NE,SW,NWSE; Sec. 36 N1/2NW,SWNW,N1/2NE,SENE,NESE;	Sec. 2 NWNW; Sec. 25 S1/2SW,S1/2SE; Sec. 26 SESW,S1/2SE; Sec. 3 NENE; Sec. 31 SWNW; Sec.		

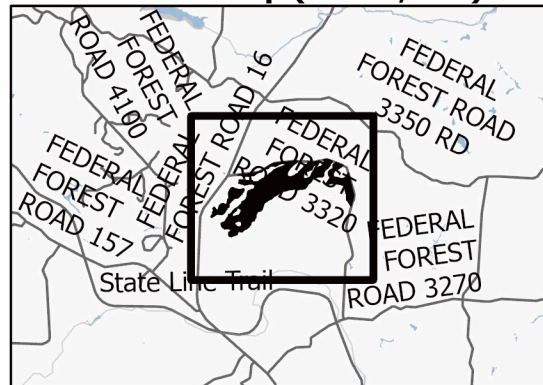
### Cover Type

A = Aspen	J = Jack Pine	O = Oak	U = Upland Brush
B = Paper Birch	K = Rock	P = Lowland Poplar	UM = Upland Mix Forest
C = Cedar	L = Lowland Brush	Q = Mixed Swamp Conifer	V = Bog or Marsh
D = Treed Bog	LM = Lowland Mix Forest	R = Red Pine	W = White Pine
E = Swamp Hardwoods	M = Maple, Beech, Birch	S = Black Spruce	X = Non Stocked
F = Spruce/Fir	MC = Mixed Conifer	T = Tamarack	Y = Sand
G = Grass	MD = Mixed Deciduous	Z = Water	
H = Hemlock	N = Marsh		

### Density

0 = Non Stocked	5 = Pole Timber Medium
1 = Seedling Sapling Poor	6 = Pole Timber Well
2 = Seedling Sapling Medium	7 = Saw Timber Poor
3 = Seedling Sapling Well	8 = Saw Timber Medium
4 = Pole Timber Poor	9 = Saw Timber Well

### Locator Map (1:200,000)

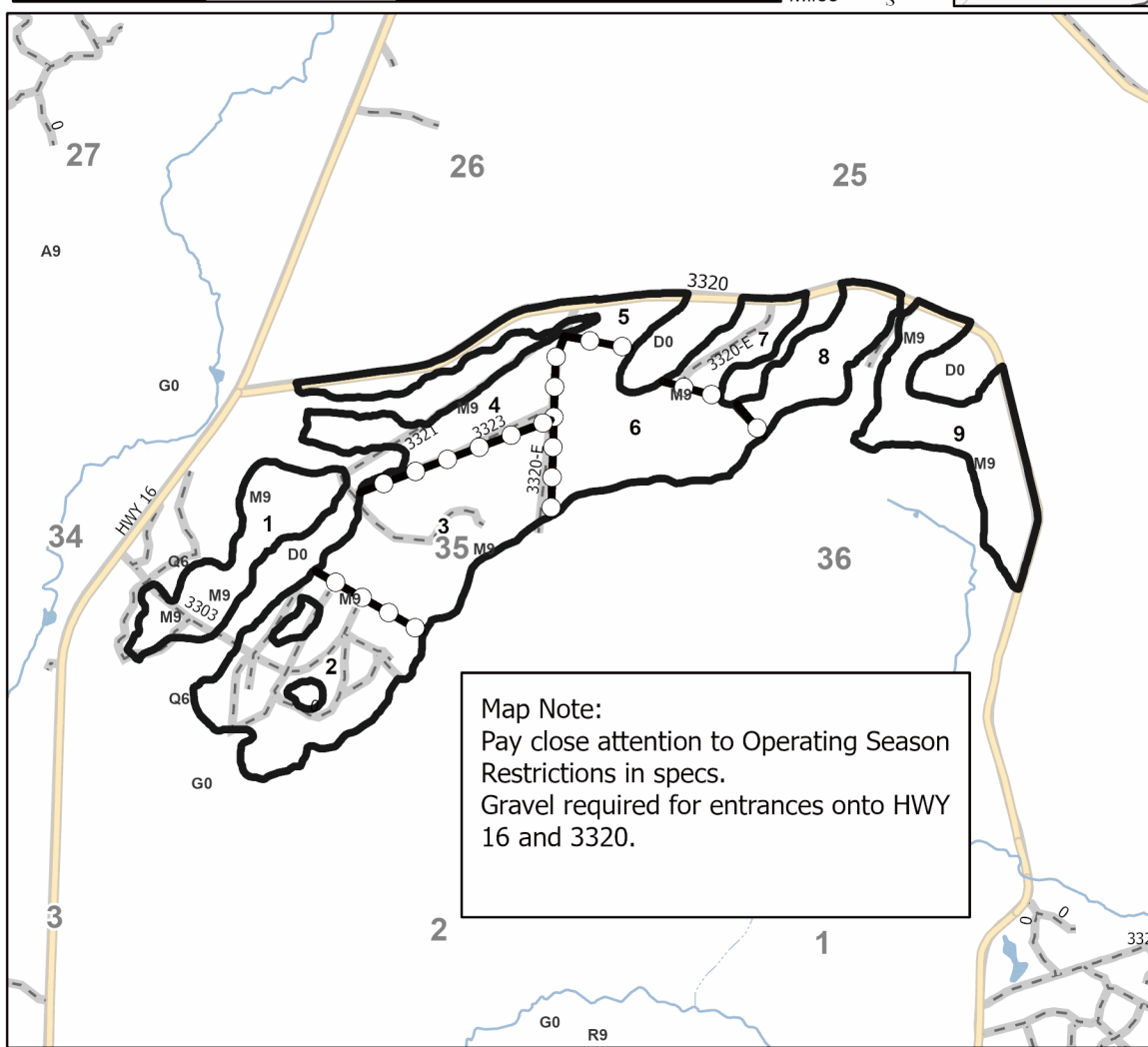


## GNA2 Northwestern

623.7 Acres



GNA2 Northwestern										
Iron, Compartment 7903058 7903059										
UNIT	1	2	3	4	5	6	7	8	9	TOTALS
ACRES	59.4	109.4	114.4	56.2	41.8	93.9	26.4	42.1	80.1	623.7
Sawlogs MBF										
Basswood	2.8	5.2	5.6	2.7	2.0	4.5	1.3	2.0	3.8	29.9
Red Maple	12.7	23.3	24.5	12.0	8.9	20.0	5.6	9.0	17.1	133.1
Sugar Maple	74.6	137.4	143.7	70.6	52.5	117.9	33.2	52.9	100.6	783.4
White Spruce	1.0	1.9	2.1	1.0	0.7	1.7	0.5	0.7	1.4	11.0
Yellow Birch	2.4	4.3	4.5	2.2	1.7	3.7	1.0	1.7	3.2	24.7
<b>TOTAL</b>	<b>93.5</b>	<b>172.1</b>	<b>180.4</b>	<b>88.5</b>	<b>65.8</b>	<b>147.8</b>	<b>41.6</b>	<b>66.3</b>	<b>126.1</b>	<b>982.1</b>
Pulpwood CORDS										
Balsam fir	0	1	2	0	0	1	0	0	1	5
Basswood	3	5	5	3	2	5	1	2	4	30
Mixed Aspen	3	5	4	3	2	4	1	2	4	28
Mixed Hardwood	511	941	984	484	359	807	227	361	689	5363
Mixed Spruce	1	1	2	1	0	1	0	0	1	7
<b>TOTAL</b>	<b>518</b>	<b>953</b>	<b>997</b>	<b>491</b>	<b>363</b>	<b>818</b>	<b>229</b>	<b>365</b>	<b>699</b>	<b>5433</b>



Map Note:  
 Pay close attention to Operating Season Restrictions in specs.  
 Gravel required for entrances onto HWY 16 and 3320.

### Legend

- Against USFS (Triple Orange)
- Payment Unit (Double Orange)
- Intermittent Stream
- Perennial River
- USFS Roads

Use QR Code to open Map in App





GNA2 White Rabbit (11-809-24)

T47N, R40W, SEC. 10; T47N, R40W, SEC. 16; T47N, R40W, SEC. 17; T47N,

In response to the notice of sale to be held 9:00 a.m. (local time) on September 26, 2024, I am hereby submitting my sealed bid (firm offer) for the following forest products to be cut. Bids for individual species must be at or above the advertised price. All non-responsive bid forms may be rejected.

<u>PRODUCTS &amp; SPECIES</u>	<u>ESTIMATED VOLUME*</u>	<u>ADVERTISED PRICE</u>	<u>BID PRICE/UNIT</u>
Pulpwood			
Balsam Fir	215 Cords	\$ 4.55/Cord	\$ _____
Mixed Aspen	11,372 Cords	\$ 18.15/Cord	\$ _____
Mixed Hardwood	1,879 Cords	\$ 11.70/Cord	\$ _____
Mixed Spruce	515 Cords	\$ 10.70/Cord	\$ _____
Paper Birch	320 Cords	\$ 2.20/Cord	\$ _____
Tamarack	16 Cords	\$ 4.65/Cord	\$ _____

\*The volumes are statistically estimated within plus (+) or minus (-) 6.19 percent at 95% confidence level. These estimated volumes are final and not subject to adjustment. Prospective bidders are urged to examine this timber and to make their own estimates of quantity and quality.

I understand that any or all bids may be rejected. All bids must be signed and all bid items must be bid or the bid form may be rejected. I also understand that consideration and awarding a contract will be based upon my past performance and ability to complete the contract based upon equipment and staffing subject to my control.

FEDERAL ID: \_\_\_\_ - \_\_\_\_ - \_\_\_\_ or SOCIAL SECURITY NUMBER: \_\_\_\_ - \_\_\_\_ - \_\_\_\_

Company or individual bidding: \_\_\_\_\_

Company representative's name: \_\_\_\_\_

Address: \_\_\_\_\_

City: \_\_\_\_\_ State: \_\_\_\_\_ Zip: \_\_\_\_\_

IF AVAILABLE, PLEASE PLACE THE PERSONALIZED LABEL FROM YOUR PROSPECTUS IN THE ABOVE BOX.

Individual or company representative's signature: \_\_\_\_\_ Date: \_\_\_\_\_

Phone number : \_\_\_\_\_ Email (optional): \_\_\_\_\_

**THE WINNING BIDDER MUST COMPLETE THE VERIFICATION OF WORKER'S DISABILITY COMPENSATION ACT COMPLIANCE (ON REVERSE SIDE IF DOUBLE SIDED) WITHIN 21 DAYS OF SALE AWARD DATE**



# TIMBER SALE VERIFICATION OF WORKER'S DISABILITY COMPENSATION ACT COMPLIANCE

As required by Act 317, P.A. 1969 (Worker's Compensation) and  
Part 5 of Act 451 of 1994, as amended.

FOR DEPARTMENT USE ONLY	
Sale Number (XX - XXX - XX - XX)	
Forest Management Unit:	

## VERIFICATION OF WORKER'S DISABILITY COMPENSATION ACT COMPLIANCE

- This verification must be completed and submitted within 21 days of contract award and prior to the issuance of the timber sale contract.
- In addition, if boxes 2B or 2C are checked, then Notice of Exclusion or Certificate of Insurance must be submitted within twenty-one (21) days of the contract award and prior to the issuance of the timber sale contract.
- All information must be typed or printed except for written signatures.

Please Check Appropriate Categories:

1. My business is organized as (you **must** check one of the boxes below):
  - A.  Sole Proprietorship (individual)
  - B.  Partnership
  - C.  Corporation
2. You **must** check one of the boxes below:
  - A.  I certify my business is a sole proprietorship and it has no employees but the sole proprietor. I am not subject to the Worker's Compensation Laws.
  - B.  I certify my business has satisfied its obligation to the Worker's Compensation Act through the use of an approved Notice of Exclusion (BWC-337, Rev. 5/96). I will provide a copy of the Notice of Exclusion within 21 days of the contract award. (For questions or a copy of the BWC-337, please call the Worker's Compensation Bureau at 517-322-1195).
  - C.  I certify my business has a Worker's Compensation Policy. I will provide an original Certificate of Insurance within twenty-one (21) days of the contract award.
3. If you have checked item 2(A) or 2(B), you **must** indicate the number of **both** full-time and part-time employees, other than yourself, including family members and active partners (if none, you must enter "0").

\_\_\_\_\_ Full-time Employees

\_\_\_\_\_ Part-time Employees

Name of Business		Federal ID (or) Social Security No.	
Address		Telephone (       )	
City	State	ZIP	

*I hereby certify that the above information is true and correct. I agree to notify the Michigan DNR of any changes that occur in factors affecting my coverage during any of my present and future operations.*

\_\_\_\_\_  
Signature of Owner or Authorized Representative

\_\_\_\_\_  
Title

\_\_\_\_\_  
Date

Please complete the "SEALED BID" information on the next page

GNA2 Northwestern (12-800-24)

T44N, R37W, SEC. 2; T44N, R37W, SEC. 3; T45N, R36W, SEC. 31; T45N, R37W,

In response to the notice of sale to be held 9:00 a.m. (local time) on September 26, 2024, I am hereby submitting my sealed bid (firm offer) for the following forest products to be cut. Bids for individual species must be at or above the advertised price. All non-responsive bid forms may be rejected.

<u>PRODUCTS &amp; SPECIES</u>	<u>ESTIMATED VOLUME*</u>	<u>ADVERTISED PRICE</u>	<u>BID PRICE/UNIT</u>
<b>Sawtimber</b>			
Basswood	29.9 MBF	\$ 83.00/MBF	\$ _____
Red Maple	133.1 MBF	\$ 116.00/MBF	\$ _____
Sugar Maple	783.4 MBF	\$ 231.00/MBF	\$ _____
White Spruce	11.0 MBF	\$ 38.00/MBF	\$ _____
Yellow Birch	24.7 MBF	\$ 117.00/MBF	\$ _____
<b>Pulpwood</b>			
Balsam Fir	5 Cords	\$ 4.85/Cord	\$ _____
Basswood	30 Cords	\$ 6.40/Cord	\$ _____
Mixed Aspen	28 Cords	\$ 19.30/Cord	\$ _____
Mixed Hardwood	5,363 Cords	\$ 12.40/Cord	\$ _____
Mixed Spruce	7 Cords	\$ 11.40/Cord	\$ _____

\*The volumes are statistically estimated within plus (+) or minus (-) 8.91 percent at 95% confidence level. These estimated volumes are final and not subject to adjustment. Prospective bidders are urged to examine this timber and to make their own estimates of quantity and quality.

I understand that any or all bids may be rejected. All bids must be signed and all bid items must be bid or the bid form may be rejected. I also understand that consideration and awarding a contract will be based upon my past performance and ability to complete the contract based upon equipment and staffing subject to my control.

FEDERAL ID: \_\_\_\_\_ - \_\_\_\_\_ or SOCIAL SECURITY NUMBER: \_\_\_\_\_ - \_\_\_\_\_ - \_\_\_\_\_

Company or individual bidding: \_\_\_\_\_

Company representative's name: \_\_\_\_\_

Address: \_\_\_\_\_

City: \_\_\_\_\_ State: \_\_\_\_\_ Zip: \_\_\_\_\_

IF AVAILABLE, PLEASE PLACE THE PERSONALIZED LABEL FROM YOUR PROSPECTUS IN THE ABOVE BOX.

Individual or company representative's signature: \_\_\_\_\_ Date: \_\_\_\_\_

Phone number : \_\_\_\_\_ Email (optional): \_\_\_\_\_

**THE WINNING BIDDER MUST COMPLETE THE VERIFICATION OF WORKER'S DISABILITY COMPENSATION ACT COMPLIANCE (ON REVERSE SIDE IF DOUBLE SIDED) WITHIN 21 DAYS OF SALE AWARD DATE**



FOR DEPARTMENT USE ONLY	
Sale Number (XX - XXX - XX - XX)	
Forest Management Unit:	

# TIMBER SALE VERIFICATION OF WORKER'S DISABILITY COMPENSATION ACT COMPLIANCE

As required by Act 317, P.A. 1969 (Worker's Compensation) and  
Part 5 of Act 451 of 1994, as amended.

## VERIFICATION OF WORKER'S DISABILITY COMPENSATION ACT COMPLIANCE

- This verification must be completed and submitted within 21 days of contract award and prior to the issuance of the timber sale contract.
- In addition, if boxes 2B or 2C are checked, then Notice of Exclusion or Certificate of Insurance must be submitted within twenty-one (21) days of the contract award and prior to the issuance of the timber sale contract.
- All information must be typed or printed except for written signatures.

Please Check Appropriate Categories:

1. My business is organized as (you **must** check one of the boxes below):
  - A.  Sole Proprietorship (individual)
  - B.  Partnership
  - C.  Corporation
2. You **must** check one of the boxes below:
  - A.  I certify my business is a sole proprietorship and it has no employees but the sole proprietor. I am not subject to the Worker's Compensation Laws.
  - B.  I certify my business has satisfied its obligation to the Worker's Compensation Act through the use of an approved Notice of Exclusion (BWC-337, Rev. 5/96). I will provide a copy of the Notice of Exclusion within 21 days of the contract award. (For questions or a copy of the BWC-337, please call the Worker's Compensation Bureau at 517-322-1195).
  - C.  I certify my business has a Worker's Compensation Policy. I will provide an original Certificate of Insurance within twenty-one (21) days of the contract award.
3. If you have checked item 2(A) or 2(B), you **must** indicate the number of **both** full-time and part-time employees, other than yourself, including family members and active partners (if none, you must enter "0").

\_\_\_\_\_ Full-time Employees

\_\_\_\_\_ Part-time Employees

Name of Business		Federal ID (or) Social Security No.	
Address		Telephone (       )	
City	State	ZIP	

*I hereby certify that the above information is true and correct. I agree to notify the Michigan DNR of any changes that occur in factors affecting my coverage during any of my present and future operations.*

\_\_\_\_\_  
Signature of Owner or Authorized Representative

\_\_\_\_\_  
Title

\_\_\_\_\_  
Date

Please complete the "SEALED BID" information on the next page



Fungal Foot (11-001-24)

T48N, R34W, SEC. 5; T49N, R34W, SEC. 21; T49N, R34W, SEC. 22; T49N, R34W,

In response to the notice of sale to be held 9:00 a.m. (local time) on September 26, 2024, I am hereby submitting my sealed bid (firm offer) for the following forest products to be cut. Bids for individual species must be at or above the advertised price. All non-responsive bid forms may be rejected.

<u>PRODUCTS &amp; SPECIES</u>	<u>ESTIMATED VOLUME*</u>	<u>ADVERTISED PRICE</u>	<u>BID PRICE/UNIT</u>
Pulpwood			
Balsam Fir	6 Cords	\$ 4.85/Cord	\$ _____
Black Spruce	467 Cords	\$ 11.40/Cord	\$ _____
Jack Pine	1,580 Cords	\$ 30.90/Cord	\$ _____
Paper Birch	26 Cords	\$ 2.35/Cord	\$ _____
Red Maple	5 Cords	\$ 12.40/Cord	\$ _____
Tamarack	12 Cords	\$ 4.95/Cord	\$ _____

\*The volumes are statistically estimated within plus (+) or minus (-) 17.40 percent at 95% confidence level. These estimated volumes are final and not subject to adjustment. Prospective bidders are urged to examine this timber and to make their own estimates of quantity and quality.

I understand that any or all bids may be rejected. All bids must be signed and all bid items must be bid or the bid form may be rejected. I also understand that consideration and awarding a contract will be based upon my past performance and ability to complete the contract based upon equipment and staffing subject to my control.

FEDERAL ID: \_\_\_\_ - \_\_\_\_ - \_\_\_\_ or SOCIAL SECURITY NUMBER: \_\_\_\_ - \_\_\_\_ - \_\_\_\_

Company or individual bidding: \_\_\_\_\_

Company representative's name: \_\_\_\_\_

Address: \_\_\_\_\_

City: \_\_\_\_\_ State: \_\_\_\_\_ Zip: \_\_\_\_\_

IF AVAILABLE, PLEASE PLACE THE PERSONALIZED LABEL FROM YOUR PROSPECTUS IN THE ABOVE BOX.

Individual or company representative's signature: \_\_\_\_\_ Date: \_\_\_\_\_

Phone number : \_\_\_\_\_ Email (optional): \_\_\_\_\_

**THE WINNING BIDDER MUST COMPLETE THE VERIFICATION OF WORKER'S DISABILITY COMPENSATION ACT COMPLIANCE (ON REVERSE SIDE IF DOUBLE SIDED) WITHIN 21 DAYS OF SALE AWARD DATE**



<b>FOR DEPARTMENT USE ONLY</b>	
Sale Number (XX - XXX - XX - XX)	
Forest Management Unit:	

# TIMBER SALE VERIFICATION OF WORKER'S DISABILITY COMPENSATION ACT COMPLIANCE

As required by Act 317, P.A. 1969 (Worker's Compensation) and  
Part 5 of Act 451 of 1994, as amended.

## VERIFICATION OF WORKER'S DISABILITY COMPENSATION ACT COMPLIANCE

- This verification must be completed and submitted within 21 days of contract award and prior to the issuance of the timber sale contract.
- In addition, if boxes 2B or 2C are checked, then Notice of Exclusion or Certificate of Insurance must be submitted within twenty-one (21) days of the contract award and prior to the issuance of the timber sale contract.
- All information must be typed or printed except for written signatures.

Please Check Appropriate Categories:

1. My business is organized as (you **must** check one of the boxes below):
  - A.  Sole Proprietorship (individual)
  - B.  Partnership
  - C.  Corporation
2. You **must** check one of the boxes below:
  - A.  I certify my business is a sole proprietorship and it has no employees but the sole proprietor. I am not subject to the Worker's Compensation Laws.
  - B.  I certify my business has satisfied its obligation to the Worker's Compensation Act through the use of an approved Notice of Exclusion (BWC-337, Rev. 5/96). I will provide a copy of the Notice of Exclusion within 21 days of the contract award. (For questions or a copy of the BWC-337, please call the Worker's Compensation Bureau at 517-322-1195).
  - C.  I certify my business has a Worker's Compensation Policy. I will provide an original Certificate of Insurance within twenty-one (21) days of the contract award.
3. If you have checked item 2(A) or 2(B), you **must** indicate the number of **both** full-time and part-time employees, other than yourself, including family members and active partners (if none, you must enter "0").

\_\_\_\_\_ Full-time Employees

\_\_\_\_\_ Part-time Employees

Name of Business		Federal ID (or) Social Security No.	
Address		Telephone (       )	
City	State	ZIP	

*I hereby certify that the above information is true and correct. I agree to notify the Michigan DNR of any changes that occur in factors affecting my coverage during any of my present and future operations.*

\_\_\_\_\_  
Signature of Owner or Authorized Representative

\_\_\_\_\_  
Title

\_\_\_\_\_  
Date

Please complete the "SEALED BID" information on the next page

Usitalo Road Aspen (11-012-24)  
T51N, R36W, SEC. 25; Houghton COUNTY

In response to the notice of sale to be held 9:00 a.m. (local time) on September 26, 2024, I am hereby submitting my sealed bid (firm offer) for the following forest products to be cut. Bids for individual species must be at or above the advertised price. All non-responsive bid forms may be rejected.

<u>PRODUCTS &amp; SPECIES</u>	<u>ESTIMATED VOLUME*</u>	<u>ADVERTISED PRICE</u>	<u>BID PRICE/UNIT</u>
Sawtimber			
Sugar Maple	0.7 MBF	\$ 154.00/MBF	\$ _____
Pulpwood			
Balsam Fir	19 Cords	\$ 3.25/Cord	\$ _____
Mixed Hardwood	49 Cords	\$ 8.30/Cord	\$ _____
Quaking Aspen	386 Cords	\$ 12.85/Cord	\$ _____

\*The volumes are statistically estimated within plus (+) or minus (-) 24.73 percent at 95% confidence level. These estimated volumes are final and not subject to adjustment. Prospective bidders are urged to examine this timber and to make their own estimates of quantity and quality.

I understand that any or all bids may be rejected. All bids must be signed and all bid items must be bid or the bid form may be rejected. I also understand that consideration and awarding a contract will be based upon my past performance and ability to complete the contract based upon equipment and staffing subject to my control.

FEDERAL ID: \_\_\_\_\_ - \_\_\_\_\_ or SOCIAL SECURITY NUMBER: \_\_\_\_\_ - \_\_\_\_\_ - \_\_\_\_\_

Company or individual bidding: \_\_\_\_\_

Company representative's name: \_\_\_\_\_

Address: \_\_\_\_\_

City: \_\_\_\_\_ State: \_\_\_\_\_ Zip: \_\_\_\_\_

IF AVAILABLE, PLEASE PLACE THE PERSONALIZED LABEL FROM YOUR PROSPECTUS IN THE ABOVE BOX.

Individual or company representative's signature: \_\_\_\_\_ Date: \_\_\_\_\_

Phone number : \_\_\_\_\_ Email (optional): \_\_\_\_\_

**THE WINNING BIDDER MUST COMPLETE THE VERIFICATION OF WORKER'S DISABILITY COMPENSATION ACT COMPLIANCE (ON REVERSE SIDE IF DOUBLE SIDED) WITHIN 21 DAYS OF SALE AWARD DATE**



FOR DEPARTMENT USE ONLY	
Sale Number (XX - XXX - XX - XX)	
Forest Management Unit:	

# TIMBER SALE VERIFICATION OF WORKER'S DISABILITY COMPENSATION ACT COMPLIANCE

As required by Act 317, P.A. 1969 (Worker's Compensation) and  
Part 5 of Act 451 of 1994, as amended.

## VERIFICATION OF WORKER'S DISABILITY COMPENSATION ACT COMPLIANCE

- This verification must be completed and submitted within 21 days of contract award and prior to the issuance of the timber sale contract.
- In addition, if boxes 2B or 2C are checked, then Notice of Exclusion or Certificate of Insurance must be submitted within twenty-one (21) days of the contract award and prior to the issuance of the timber sale contract.
- All information must be typed or printed except for written signatures.

Please Check Appropriate Categories:

1. My business is organized as (you **must** check one of the boxes below):
  - A.  Sole Proprietorship (individual)
  - B.  Partnership
  - C.  Corporation
2. You **must** check one of the boxes below:
  - A.  I certify my business is a sole proprietorship and it has no employees but the sole proprietor. I am not subject to the Worker's Compensation Laws.
  - B.  I certify my business has satisfied its obligation to the Worker's Compensation Act through the use of an approved Notice of Exclusion (BWC-337, Rev. 5/96). I will provide a copy of the Notice of Exclusion within 21 days of the contract award. (For questions or a copy of the BWC-337, please call the Worker's Compensation Bureau at 517-322-1195).
  - C.  I certify my business has a Worker's Compensation Policy. I will provide an original Certificate of Insurance within twenty-one (21) days of the contract award.
3. If you have checked item 2(A) or 2(B), you **must** indicate the number of **both** full-time and part-time employees, other than yourself, including family members and active partners (if none, you must enter "0").

\_\_\_\_\_ Full-time Employees

\_\_\_\_\_ Part-time Employees

Name of Business		Federal ID (or) Social Security No.	
Address		Telephone (       )	
City	State	ZIP	

*I hereby certify that the above information is true and correct. I agree to notify the Michigan DNR of any changes that occur in factors affecting my coverage during any of my present and future operations.*

\_\_\_\_\_  
Signature of Owner or Authorized Representative

\_\_\_\_\_  
Title

\_\_\_\_\_  
Date

Please complete the "SEALED BID" information on the next page