



**DEPARTMENT OF NATURAL RESOURCES  
STATE OF MICHIGAN  
TIMBER SALE PROSPECTUS #7371**

SCHEDULED SALE DATE AND TIME: 10:00 a.m. (local time) on February 5, 2024.

LOCATION: SE REGION-WILD, 3580 STATE PARK DRIVE, BAY CITY, MI 48706.

PROSPECTUS NOTE: The bidder is advised to inspect the sale area and review the location, estimated volumes, operating costs and contract terms of proposed sales. Please be aware that some landowners may request 60 days or more notice for access across their land.

Notice is hereby given that bids will be received by the Game Area Manager, CASS CITY FIELD OFFICE, for certain timber on the following described lands:

Tangled Up Buck Mix (55-143-23) / T12N, R10E, SEC. 3, NWNW,S1/2NW,N1/2SW,SWSW.

T13N, R10E, SEC. 31, SENE,NESE,S1/2SE.

T13N, R10E, SEC. 32, SWNW,SW,NWSE,S1/2SE.

Tuscola County, Advertised Price \$50,022.40, 118.9 Acres, Aspen, Hardwood.

SALE NOTE: Access may be through other public land.

Woodpecker Aspen (55-144-23) / T12N, R10E, SEC. 3, SESE.

Tuscola County, Advertised Price \$3,149.90, 9.7 Acres, Aspen, Hardwood.

SALE NOTE: Access may be through other public land.

Falling Down Aspen (55-145-23) / T12N, R09E, SEC. 27, SWNW,SW,NWSE,S1/2SE.

T12N, R09E, SEC. 28, E1/2SW,SE.

Tuscola County, Advertised Price \$34,758.10, 88.8 Acres, Hardwood, Aspen.

SALE NOTE: To promote aspen regeneration, harvesting is limited to October 15 - March 15.

Access may be through other public land.

Many Fingers Aspen (55-146-23) / T12N, R09E, SEC. 25, SESW,S1/2SE.

T12N, R09E, SEC. 36, NENW,N1/2NE.

Tuscola County, Advertised Price \$18,106.50, 43.3 Acres, Aspen, Hardwood.

SALE NOTE: Access may be through other public land.

## BID INSTRUCTIONS (VER. 10/10/2022):

### 1. Scheduled Bid Location, Date, and Time (2/11)

Bids must be received by the Unit Manager, BAY CITY OFFICE, 3580 State Park Drive, Bay City, MI 48706, no later than 10:00 a.m. (local time) on February 5, 2024. For further information concerning this sale, contact Don Bonnette at 989-385-5616.

### 2. Bidder's Qualifications (10/22)

If all or part of a timber sale was prepared by a private contractor, the contractor and that contractor's company are not permitted to bid on the timber sale. A person must be 18 years of age or older to purchase timber. Permanent employees of the Department of Natural Resources or members of their immediate household may not bid. Former employees, in the permanent or seasonal class, may not bid until 3 months after the last day of active duty. Bids will not be accepted from individuals or companies appearing on the DNR/FRD No-Bid List. This list contains the names of purchasers who previously failed to execute a contract within 21-days or who have a history of poor performance.

### 3. Preparation of Sealed Bids (5/16)

Bid Forms may be completed online thru Michigan DNR Timber Sale Online Bidding (OLB) at [www.michigan.gov/timberbidding](http://www.michigan.gov/timberbidding) or by completing the hardcopy Bid Form found in the Timber Sale Prospectus. Hardcopy Bid Forms shall be manually signed in ink. Registration in OLB is considered your 'signature' for all bids submitted thru that system. Bid prices must be entered for each species and product in the Bid Price column for all material subject to bidding and all fill-in blanks must be completed. If erasures or other changes appear on the hardcopy Bid Form, each erasure or change must be initialed by the person signing the bid.

### 4. Submission of Sealed Bids (5/16)

Bid forms may be obtained from the Unit Manager or thru OLB. Bids may be submitted hardcopy or thru OLB. All hardcopy bids must be submitted on the bid form and in an envelope clearly identified as described in this section. NOTE: Only one bid form per bid envelope. Sealed bids must be submitted to the Unit office designated in the prospectus and must be submitted at or prior to the time established in the prospectus. The envelope should show on the outside (a) the sale name or number and (b) the date and time of bid opening, as shown in the prospectus. Bids received after the time specified in the sale prospectus are late bids and will be rejected.

It is possible for a bidder to submit multiple bids on a single sale. For example, a bid may be submitted hardcopy and a bid may be submitted thru OLB. Or, two bidders from the same company could both submit bids on the same sale. If this were to happen, the State would accept all bids received and award the contract accordingly. All bidding and contractual requirements would apply to all bids received.

### 5. Public Opening of Sealed Bids (7/16)

If conditions permit, the sealed bids will be publicly opened and posted at the time and place set in the prospectus.

If a bidder, present at a bid opening, has submitted bids on more than one sale, that bidder may withdraw their unopened bid envelopes or announce the withdrawal of their online bid after being declared the successful bidder on one sale.

### 6. Award of Contract (1/11)

Award of the contract will be made to the Bidder whose bid, conforming to the prospectus, is most advantageous to the State of Michigan on the basis of total value at rates bid for the estimated quantities. The State reserves the right to reject any bid or waive any minor irregularity in bids received. A written award mailed (or otherwise furnished) to the successful Bidder shall be deemed to result in a binding contract without further action by either party.

### 7. Down Payment (1/11)

The Bidder to whom award is made must make a down payment within 21 days of the sale award. The amount of the down payment will be calculated as shown in the Bond and Payment Schedule of this prospectus. Only cash may be used to meet this requirement.

### 8. Performance Security (1/11)

As guarantee of faithful performance, a cash bond, certificate of deposit, surety bond or irrevocable letter of credit (LOC) is required within 21 days of the sale award. The amount of the performance security is shown in the Bond and

Payment Schedule of this prospectus. If an LOC or surety is used, the coverage must extend for at least 6 months beyond the contract expiration.

#### 9. Worker's Compensation (10/22)

Purchaser shall obtain worker's compensation insurance to cover claims under Michigan's Worker's Disability Compensation Act of 1969 or similar employee benefit act of any other state applicable to an employee. Verification of Worker's Disability Compensation Act Compliance must be completed and submitted within 21 days of contract award and prior to the issuance of the timber sale contract. In addition, if applicable, Notice of Exclusion or Certificate of Insurance must also be submitted.

#### 10. Timber Sale Contract (10/22)

Additional conditions and requirements common to all timber sales are listed on the timber sale contract (R4031) and are available on line at [www.michigan.gov/timber](http://www.michigan.gov/timber). Contact the Unit Manager for additional information or a sample contract. Within 21 days of the date of the award letter, the bidder must sign the contract and provide the required down payment, performance security, and verification of worker's disability compensation. The down payment and performance security shall be in accordance with the provisions of the timber sale contract, in the sums stated in this prospectus. If these actions are not taken, then the Bidder, the Bidder's corporation, and the corporation's principals may not be permitted to bid on State timber sales for a period of 3 months after the first offense, 6 months after the second offense, and 1 year after the third offense. An offense will only be counted against the Bidder for 5 years. In addition, the Bidder certifies that if awarded this contract, the Bidder will complete the timber sale contract in accordance with its terms and any modifications thereof including requirements to purchase, cut, and remove the included timber by the expiration date.

Payment Unit values in the State Forest Timber Sale Contract are calculated based on the advertised value of the Payment Unit as a percentage of the total advertised value of the contract. The advertised value of each Payment Unit is given in the Description of Timber by Payment Unit table on the Timber Sale Information page. For example, if the value of Payment Unit 1 is advertised as \$1,500 and the total Timber Sale value is advertised as \$10,000, the contract price for Payment Unit 1 will be 15% of the total bid price ( $\$1,500/\$10,000 * 100$ ).

#### 11. Disclaimer of Estimates and Bidder's Warranty of Inspection (10/22)

Before submitting this bid, the Bidder is advised and cautioned to inspect the sale area, review the requirements of the sale contract, and take other steps as may be reasonably necessary to ascertain the location, estimated volumes, construction estimates, and operating costs of the proposed sale. Failure to do so will not relieve the Bidder from responsibility for completing the contract.

The Bidder warrants that this bid is submitted solely on the basis of the Bidder's examination and inspection of the quality and quantity of the timber offered for sale and the Bidder's opinion of the value thereof and the costs of recovery. No reliance should be placed on the State of Michigan's estimates of timber quality, quantity or costs of recovery. Bidder further acknowledges that the State of Michigan: (i) expressly disclaims any warranty of fitness of timber for any purpose; (ii) offers this timber as is without any warranty of quality (merchantability) or quantity and (iii) expressly disclaims any warranty as to the quantity or quality of timber sold.

#### 12. Certification and Chain-of-Custody (10/22)

Unless otherwise indicated in the contract under section 7 – Other Conditions of the Sale Specific Conditions & Requirements, the area encompassed by this timber sale is certified to the standards of the Forest Stewardship Council (FSC) - Certificate #SCS-FM/COC-00090N and the Sustainable Forestry Initiative (SFI) - Certificate #NSF-SFIS-5Y031-SF5. Forest products from this sale may be delivered to the mill as "FSC 100% and / or SFI certified" as long as the contractor hauling the forest products is chain-of-custody (COC) certified or covered under a COC certificate from the destination mill. The purchaser is responsible for maintaining COC after leaving the sale area.

#### 13. Good Neighbor Authority (GNA) Requirements (10/22)

If the name of this timber sales contains the acronym GNA, it is authorized by the Good Neighbor Authority (GNA) and covered by various agreements between the U.S. Forest Service and the State. The timber sale occurs on federal land and the following conditions apply:

GNA contracts on US Forest Service land will not be awarded to purchasers on the Federal list of excluded parties. The System for Award Management (SAM) will be checked for active excluded parties prior to award of contract. In

addition, the Bidder to whom award is made must complete an Assurance Regarding Felony Conviction or Tax Delinquent Status for Corporate Applicants (AD-3031).

14. Good Neighbor Authority (GNA) Requirements, con't (10/22)

Bidder certifies, by signing this bid form, that to the best of Bidder's knowledge that the following representations are accurate and complete.

- a. That the Bidder and its principals are not presently debarred, suspended, proposed for debarment, declared ineligible, or voluntary excluded from timber sales (covered transactions) by any Federal department or agency.
- b. That the Bidder and its principals have not within a 3-year period preceding this bid been convicted of or had a civil judgment rendered against them for commission of fraud or a criminal offense in connection with obtaining , attempting to obtain, or performing a public (Federal, State, or local) transaction or contract under a public transaction; violation of Federal or State antitrust statutes or commission of embezzlement, theft, forgery, bribery, falsification or destruction of records, making false statements, or receiving stolen property.
- c. That the Bidder and its principals are not presently indicted for or otherwise criminally or civilly charged by a governmental entity (Federal, State, or local) with commission of any of the offenses enumerated in paragraph b of this certification.
- d. That the Bidder and its principals have not within a 3-year period preceding this bid had one or more public transactions (Federal, State, or local) terminated for breach or default of a timber or forest product contract.

Bidders that cannot certify this requirement, in whole or in part, shall submit an explanation with their bid.

Scott Bowen  
Director

## TIMBER SALE INFORMATION

### Tangled Up Buck Mix (55-143-23)

T12N, R10E, SEC. 3; T13N, R10E, SEC. 31; T13N, R10E, SEC. 32.  
Tuscola County (Advertised Price \$50,022.40)

SALE NOTE: Access may be through other public land.

A timber sale contract for this lump sum, sealed bid timber sale will be awarded to the responsible bidder offering the highest sealed bid price. All units of volume listed below were estimated using the Inventory Manager computer program and the new Michigan taper model. Bids must be at or above the following advertised price for each product and species:

<u>PRODUCTS &amp; SPECIES</u>	<u>ESTIMATED UNITS*</u>	<u>ADVERTISED PRICE</u>
Sawtimber		
Black Cherry	28.6 MBF	\$ 60.00 / MBF
Jack Pine	50.1 MBF	\$ 23.00 / MBF
Mixed Aspen	483.6 MBF	\$ 28.00 / MBF
Red Maple	110.5 MBF	\$ 33.00 / MBF
Red Pine	135.2 MBF	\$ 45.00 / MBF
White Pine	1.4 MBF	\$ 23.00 / MBF
Pulpwood		
Jack Pine	225 Cords	\$ 7.50 / Cord
Mixed Aspen	959 Cords	\$ 10.50 / Cord
Mixed Hardwood	759 Cords	\$ 10.90 / Cord
Red Pine	231 Cords	\$ 16.50 / Cord
White Pine	1 Cords	\$ 9.00 / Cord

\* The total volume is statistically estimated within plus (+) or minus (-) 9.78 percent. There are an estimated 4,029 cords on this timber sale, plus or minus 394 cords at the 95% confidence level. The estimated units are final and not subject to adjustment. Prospective bidders are urged to examine this timber and to make their own estimates of quantity and quality.

### **BOND AND PAYMENT SCHEDULE:**

1. A bond in the amount of \$2,501.00 to insure faithful performance of the conditions of the contract will be deposited by the successful bidder within 21 days of the sale award.
2. Cutting in any sale or unit without the required advance payment would be considered a trespass.
3. Total payment must be paid in advance or according to the following schedule :
  - (a) Ten percent (10%) of the sale value must be paid within 21 days of the sale award.
  - (b) The 10% down payment will be credited towards the first unit cut.
  - (c) Payment for each of the following units must be made before cutting begins in that unit:
 

PAYMENT UNIT NUMBER	PERCENT OF TOTAL SALE VALUE
01	12.2%
02	14.5%
03	17.3%
04	19.8%
05	20.4%
06	15.8%
4. If no cutting takes place, the 10% down payment will not be refunded.
5. Operations on the contract issued will terminate on 03/01/2026.

### **SALE STATISTICS**

Volumes were calculated in cubic feet using the Michigan taper model. Cubic foot volume includes all wood inside bark for the product indicated. For display purposes, cubic feet were converted to cords and MBF using a simple conversion factor, e.g. 79 cubic feet per cord and 185 cubic feet per MBF. The cubic foot volumes are precise; the cords and MBF volumes are not. Cubic foot volume cannot be directly converted to cords or boards with precision.

## SALE VOLUMES

The total estimated sale volume may not equal the sum of the species/products due to the nature of statistical calculations associated with double sampling methodology.

VOLUME			STATISTICAL RANGE IN CORDS	
TOTAL CUBIC FEET	TOTAL CORDS	PERCENT ERROR	MINIMUM	MAXIMUM
318,280	4,029	9.78%	3,635	4,423

## VDU VOLUMES

A VDU is a Volume Determination Unit. Volumes and their associated statistics are calculated at the VDU level and summarized to the sale level. There is often a one to one relationship between a VDU and a Payment Unit, but not always, depending on the cruise design. Refer to the VDU TO PAYMENT UNIT table.

	VOLUME			RANGE IN CORDS	
VDU	TOTAL CUBIC FEET	TOTAL CORDS	PERCENT ERROR	MINIMUM	MAXIMUM
2	44,803	567	26.67%	416	718
6	72,605	919	19.72%	738	1,100
17	38,682	490	23.00%	377	602
73	53,904	682	35.77%	438	926
90	47,309	599	29.45%	422	775
124	60,976	772	23.11%	594	950
<b>TOTAL:</b>	<b>318,280</b>	<b>4,029</b>		<b>2,985</b>	<b>5,073</b>

## VDU TO PAYMENT UNIT

When a VDU is associated with more than one Payment Unit (PU), the VDU volumes are assigned to the PU based on acres of the VDU within the PU.

VDU	VDU ACRES	PU	PU ACRES
2	15.0	1	15.0
6	28.5	5	6.6
		6	21.9
17	17.3	5	17.3
73	20.1	3	20.1
90	16.8	2	16.8
124	21.2	4	21.2
<b>TOTAL:</b>	<b>118.9</b>		<b>118.9</b>

**DESCRIPTION OF TIMBER BY PAYMENT UNIT (PU)**

PU	MARKET GROUP	PRODUCT	QUANTITY	UNIT	ACRES	ADVERTISE PRICE	
1	Black Cherry	Sawtimber	1.7	MBF	15.0	\$6,125.10	
	Mixed Aspen		69.7	MBF			
	<i>B. T. Aspen</i>		69.7	<i>MBF</i>			
	Red Maple		4.9	MBF			
	Mixed Aspen		Pulpwood	199			Cords
	<i>B. T. Aspen</i>			199			<i>Cords</i>
	Mixed Hardwood			167			Cords
	<i>Black Cherry</i>			13			<i>Cords</i>
	<i>Paper Birch</i>			6			<i>Cords</i>
	<i>Red Maple</i>			148			<i>Cords</i>
2	Black Cherry	Sawtimber	1.7	MBF	16.8	\$7,249.50	
	Mixed Aspen		83.6	MBF			
	<i>B. T. Aspen</i>		83.6	<i>MBF</i>			
	Red Maple		60.7	MBF			
	Mixed Aspen		Pulpwood	76			Cords
	<i>B. T. Aspen</i>			76			<i>Cords</i>
	Mixed Hardwood			184			Cords
	<i>Black Cherry</i>			3			<i>Cords</i>
	<i>Paper Birch</i>			8			<i>Cords</i>
	<i>Red Maple</i>			173			<i>Cords</i>
3	Mixed Aspen	Sawtimber	163.6	MBF	20.1	\$8,674.80	
	<i>B. T. Aspen</i>		163.6	<i>MBF</i>			
	Red Maple		23.6	MBF			
	Mixed Aspen		Pulpwood	214			Cords
	<i>B. T. Aspen</i>			214			<i>Cords</i>
	Mixed Hardwood			98			Cords
	<i>Black Cherry</i>			3			<i>Cords</i>
	<i>Green Ash</i>		4	<i>Cords</i>			
<i>Red Maple</i>	91	<i>Cords</i>					
4	Black Cherry	Sawtimber	25.2	MBF	21.2	\$9,893.70	
	Jack Pine		50.1	MBF			
	Mixed Aspen		11.3	MBF			
	<i>B. T. Aspen</i>		11.3	<i>MBF</i>			
	Red Pine		51.7	MBF			
	Jack Pine		Pulpwood	225			Cords
	Mixed Aspen			20			Cords
	<i>B. T. Aspen</i>			20			<i>Cords</i>
	Mixed Hardwood			115			Cords
	<i>Black Cherry</i>			86			<i>Cords</i>
	<i>Paper Birch</i>			6			<i>Cords</i>
	<i>Red Maple</i>			23			<i>Cords</i>
	Red Pine		87	Cords			
5	Mixed Aspen	Sawtimber	42.7	MBF	23.9	\$10,163.60	
	<i>B. T. Aspen</i>		34.0	<i>MBF</i>			
	<i>Cottonwood</i>		3.6	<i>MBF</i>			
	<i>Quaking Aspen</i>		5.1	<i>MBF</i>			
	Red Maple		13.2	MBF			
	Red Pine		83.5	MBF			
	White Pine		1.4	MBF			
	Mixed Aspen		Pulpwood	128			Cords
	<i>B. T. Aspen</i>			97			<i>Cords</i>
	<i>Cottonwood</i>			5			<i>Cords</i>
	<i>Quaking Aspen</i>			26			<i>Cords</i>
	Mixed Hardwood			93			Cords
	<i>American Elm</i>			2			<i>Cords</i>
	<i>Paper Birch</i>			4			<i>Cords</i>

**DESCRIPTION OF TIMBER BY PAYMENT UNIT (PU), CON'T**

PU	MARKET GROUP	PRODUCT	QUANTITY	UNIT	ACRES	ADVERTISE PRICE
5 con't	<i>Red Maple</i>	<i>Pulpwood</i>	87	<i>Cords</i>		
	Red Pine		144	Cords		
	White Pine		1	Cords		
6	Mixed Aspen	Sawtimber	112.7	MBF	21.9	\$7,915.70
	<i>B. T. Aspen</i>		112.7	<i>MBF</i>		
	Red Maple	8.1	MBF			
	Mixed Aspen	Pulpwood	322	Cords		
	<i>B. T. Aspen</i>		322	<i>Cords</i>		
	Mixed Hardwood		102	Cords		
	<i>Paper Birch</i>		6	<i>Cords</i>		
	<i>Red Maple</i>	96	<i>Cords</i>			
TOTAL:			809.4	MBF		
TOTAL:			2,175	Cords		



# Sale Specific Conditions & Requirements

**Sale Name: Tangled Up Buck Mix**

**Sale Number: 55-143-23 Seq#: 1**

## 1 - Sale Area

### 1.2 - Boundaries

#### 1.2.1 - Painted boundaries (9/19)

The sale boundary and Payment Unit boundaries are marked and identified by red, blue and yellow paint. Exterior sale boundary lines against private property are marked with blue paint. Exterior sale boundary lines against state are marked with red paint and in some cases, orange paint intermixed with the red. Interior Payment Unit boundaries are marked with yellow paint. The painted boundary line trees are not Included Timber and are to be protected. Yellow painted trees designating an interior Payment Unit boundary are only to be cut when all surrounding Payment Units have been paid.

## 2 - Timber Specifications

### 2.1 - Included Timber

#### 2.1.1 - Clearcut unit(s) with unmerchantable trees (6/14)

Within Payment Unit(s) 1-6, cut all trees that are two (2) inches or more at DBH, except do not cut white pine that are ten (10) inches or more at DBH, oak that are five (5) inches or more at DBH, walnut, hickory, hemlock, cedar, beech, or any trees marked with green paint. Additionally, in Payment Unit 5, cut all red pine marked with orange paint. Special protection trees identified in accordance with condition 3.4.2, within clearcutting unit boundaries, are not Included Timber and are to be protected.

### 2.2 - Utilization

#### 2.2.3 - Stump heights (4/07)

Stump heights within the Sale Area shall not exceed 6 inches for all trees.

#### 2.2.4 - Skidding length (2/14)

Skidding of unlimbed tops is not permissible.

## 3 - Payments

### 3.4 - Damaged Timber

#### 3.4.2 - Special Protection Trees (4/14)

The Purchaser shall not cut live or dead special protection trees within cutting units or clearings. Special protection trees are unmarked red pine within Payment Unit 5, white pine that are ten (10) inches or more at DBH, oak that are five (5) inches or more at DBH, hemlock, walnut, hickory, cedar, beech, and any trees marked with green paint. If the Purchaser's operations have cut or damaged special protection trees through carelessness, the Purchaser shall pay \$200 as fixed, agreed and liquidated damages for each special protection tree cut or damaged. Such payment does not constitute ownership of the undesignated timber.

### 3.6 - Payment Unit Cutting Schedule

#### 3.6.2 - One active unit (12/08)

Each Payment Unit must be completed to the satisfaction of the Unit Manager or his/her representative before the next unit may be opened. The Purchaser must give a one week notice before finishing a Payment Unit to allow for inspection.

## 4 - Transportation

### 4.1 - Construction

#### 4.1.3 - Slash and earthen piles (8/04)

Piles or windrows of earth along roads and landings that have been widened or constructed shall be leveled. Slash from road maintenance or construction, including stumps, shall be dispersed throughout the sale.

#### 4.1.7 - Road closure (10/11)

All roads built into the sale must be blocked to vehicle traffic upon completion of the sale. See the Sale Administrator for

specifics on placement and design. Any existing vehicle barriers in place prior to the start of operations shall be replaced in its original location and condition. Any damage to existing vehicle barriers must be repaired or replaced at the purchaser's expense. Temporary berms may be required if no sale activity occurs for 30 or more consecutive days.

#### 4.1.12 - No new roads (1/12)

No new roads will be permitted in any Payment Unit. All operations are limited to existing roads and/or skid trails. Skid trails only will be allowed. All skid trails and/or existing roads must be closed to the Sale Administrator's satisfaction upon completion of the sale and/or individual Payment Units.

### 4.2 - Maintenance

#### 4.2.4 - Grading (10/16)

For completion of the sale, existing roads and new or existing skid trails must be graded. In general, this will require a road grader or bulldozer to shape up the roads/skid trails after forest products have been hauled off site. This includes cleaning of drainage areas, filling ruts, grading, crowning and filling with gravel, if necessary. The grading equipment to be used must be approved by the Unit Manager or his/her representative.

#### 4.2.5 - Two wheel drive condition (2/04)

All existing trail roads on and adjacent to the sale area must be passable by two-wheel drive traffic for the duration of the sale.

### 4.4 - Access

#### 4.4.3 - Access gate (12/08)

Any gate used to access the sale or payment unit gate must be locked at the completion of each day unless otherwise approved by the Unit Manager or his/her representative. Any vehicle barriers (wood posts, earthen berms, boulders, gates etc.) removed or damaged to allow access must be replaced in their original location. The costs of replacement posts, gates, berms, boulders is the purchaser's responsibility.

## 5 - Operations

### 5.1 - Notification

#### 5.1.1 - Pre-sale conference (10/16)

A pre-sale conference between the Purchaser and sale administrator is required prior to beginning any operations to determine landing and road locations. The Sale Administrator or his/her representative must be contacted at least 10 days in advance to schedule the conference.

#### 5.1.4 - Post-sale conference (10/16)

A post-sale conference on site between the Purchaser and sale administrator is required 10 days prior to the completion of active logging operations to determine clean-up and repair of landings, road edges, and the fulfillment of other contract specifications.

#### 5.1.6 - Utility R.O.W. (4/19)

It is the responsibility of the Purchaser to obtain permission from the utility company to utilize the power line R.O.W. for operations.

### 5.2 - Conduct of Operations

#### 5.2.1 - Slash

##### 5.2.1.8 - Slash height (12/08)

No slash or tree tops may exceed 24 inches in height.

##### 5.2.1.10 - No slash in openings (5/10)

No brush or logging debris is to be left in any opening which is indicated by "G0" or "U0" on the Timber Sale Map. Any damage to the opening shall be repaired according to specifications of the Unit Manager or his/her representative.

##### 5.2.1.11 - Slash for reforestation (3/21)

To facilitate reforestation, the Sale Area shall be left with slash evenly distributed. Bunched tops within the cutting area shall be broken up and scattered. Stumps shall be cut low to the ground. Processing sites shall not be left with windrows or a compacted layer of slash; tops from these sites shall be evenly distributed and scattered throughout the Sale Area.

## 5.2.2 - Hazard Trees/Snags

### 5.2.2.1 - Den trees (10/16)

Obvious hollow and/or den trees shall be protected and left standing unless they are a safety hazard. This includes standing dead trees (snags).

## 5.2.3 - Operating Restrictions

### 5.2.3.1 - Operating restrictions (9/11)

Within Payment Unit(s) 1-6, cutting, skidding, and hauling are not permitted during the period of March 15 to August 1. This restriction is necessary to minimize the spread of oak wilt, to protect seasonally wet soils and to minimize the impact to nesting and breeding wildlife.

### 5.2.3.2 - Operating restrictions (9/11)

Within Payment Unit(s) 1-6, the operation of feller bunchers before 7 AM or after 9 PM is not permitted. This restriction is due to the close proximity of residences to the Sale Area.

### 5.2.3.12 - Hunting operating restriction (1/18)

No Payment Unit may be started during the period of September 29 through October 10 or November 1 through November 30 without permission of the Unit Manager or his/her representative.

### 5.2.31 - Landing locations (9/13)

Recommended landing locations will be determined in the pre-sale conference. Landings must be confined to these mutually agreed upon sites unless otherwise authorized by the Unit Manager or his/her representative. In general, landings are limited to a "T" turnaround which will accommodate a truck with a 50 foot trailer. The purchaser must minimize any bull dozer work needed to accommodate a landing. All bulldozer work must be approved by the Sale Administrator prior to beginning work.

### 5.2.32 - Decking/landing restoration (9/13)

All decking and landing areas must have the surface area restored to a condition equal to or better than before. This is to ensure the proper regeneration of the stand. Wood debris, chips and "cookies" from trimmings must be removed or scattered away from landing and loading areas and may not be windrowed on the edge.

### 5.2.37 - No decking areas (12/08)

No decking is allowed in any designated parking area. No equipment storage is allowed in these designated parking areas.

## 5.4 - Soil Protection

### 5.4.1 - Rutting restriction, general (7/16)

Operations are to cease immediately if equipment and weather conditions result in rutting within the sale area, roads and/or skid trails which is 12 inches or greater in depth and 50 feet in length. The Unit Manager or his/her representative may restrict hauling and/or skidding if ruts exceed the specified depth. With the Unit Manager or his/her representative's approval, the Purchaser may return to the area when the risk of rutting has decreased.

### 5.4.6 - Wet area protection (5/10)

No harvesting operations, including skidding and felling, are to take place within the vernal pond areas or drainages. When harvesting occurs, there should be no disturbance to the vernal pond depression. All equipment, trees and tops should be kept out of this area. Within 100 feet of the pond, equipment should only be used when the soil is in a dry or frozen condition. Care must be taken by the Purchaser to identify and avoid operating in these areas of the timber sale.

## 5.6 - Debris and Waste Material

### 5.6.3 - Equipment cleaning (12/17)

For purposes of this provision, "Off-Road Equipment" includes all logging and construction machinery, except for log trucks, chip vans, service vehicles, water trucks, pickup trucks, cars, and similar vehicles. Off-Road Equipment brought on site must be clean and free from plant material and soil prior to arrival on any Payment Unit. Off-Road Equipment shall be cleaned of plant material and dirt prior to being moved to a new stand within the sale. Plant material includes leaves, stems, roots and seeds. Equipment shall be considered clean when a visual inspection does not disclose seeds, soil, vegetative matter, and other debris that could contain or hold seeds. This is to prevent the spread of invasive plant species.

## 5.8 - Protection of Endangered Species

#### 5.8.5 - Protection of raptor nests (3/13)

All trees with raptor nests will be protected if found during harvesting operations. Notification will be made to the Unit Manager or his/her representative who will notify the Wildlife Biologist so an on-site evaluation and recommendation can be made, if necessary.

### **7 - Other Conditions**

#### 7.10 - Certified Timber

##### 7.10.1 - Non-certified timber (2/16)

The area encompassed by this timber sale is not certified to the standards of the Forest Stewardship Council (FSC) or the Sustainable Forestry Initiative (SFI). Forest products from this sale may not be delivered to the mill as "FSC and / or SFI certified". The lands within this sale are managed as a State Game Area.



# TIMBER SALE MAP

This information provided by authority of Part 525, 1994 PA 451, as amended.

Sale Number	Year
55-143	23

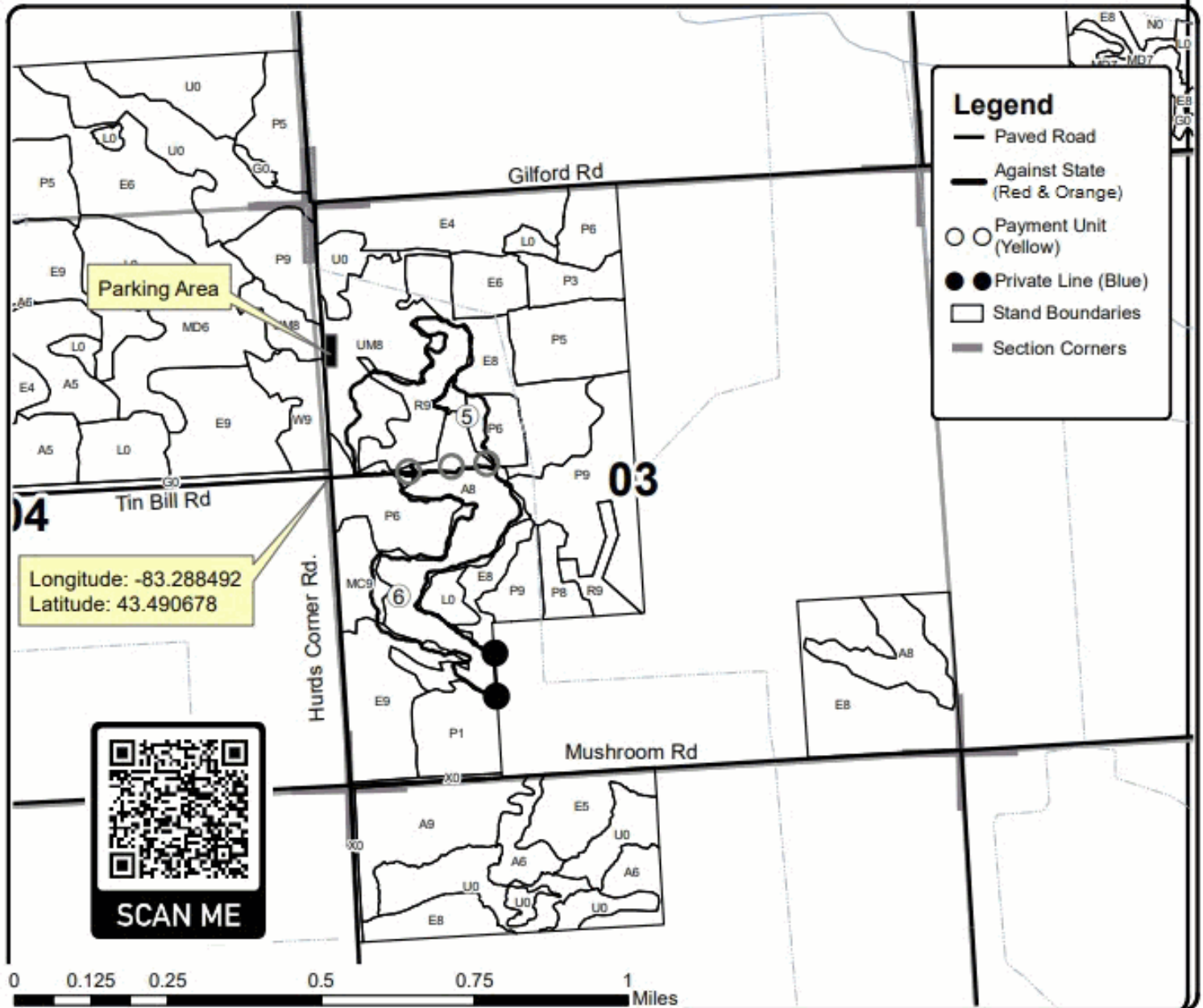
Forest Management Unit Deford State Game Area		County Tuscola	Mapped By Bonnette	Date 07/05/2023	Page 2	of 2
Township 12N	Range 10E	Section(s) and Subdivision(s) Section 3		Scale 1:15,840		

Cover Type				Density			
A = Aspen	H = Hemlock	N = Marsh	U = Upland Brush	0 = Non Stocked	5 = Pole Timber Medium		
B = Paper Birch	J = Jack Pine	O = Oak	UM = Upland Mixed	1 = Seedling Sapling Poor	6 = Pole Timber Well		
C = Cedar	L = Lowland Brush	P = Lowland Poplar	V = Bog or Marsh	2 = Seedling Sapling Medium	7 = Saw Timber Poor		
D = Tread Bog	LM = Lowland Mixed	Q = Mixed Swamp Conifer	W = White Pine	3 = Seedling Sapling Well	8 = Saw Timber Medium		
E = Swamp Hdwoods	M = Mpl, Bch, Brch	R = Red Pine	X = Non Stocked	4 = Pole Timber Poor	9 = Saw Timber Well		
F = Spruce Fir	MC = Mixed Conifer	S = Black Spruce	Z = Water				
G = Grass	MD = Mixed Deciduous	T = Tamarack					

PU	Acres	PU	Acres
1	15.0	4	21.2
2	16.8	5	23.9
3	20.1	6	21.9

## Tangled Up Buck Mix

118.9 Acres





Sale Number	Year
55-143	23

# TIMBER SALE MAP

This information provided by authority of Part 525, 1994 PA 451, as amended.

Forest Management Unit	County	Mapped By	Date	Page	of
Deford State Game Area	Tuscola	Bonnette	07/05/2023	1	2
		Cruised By			
		Bonnette			

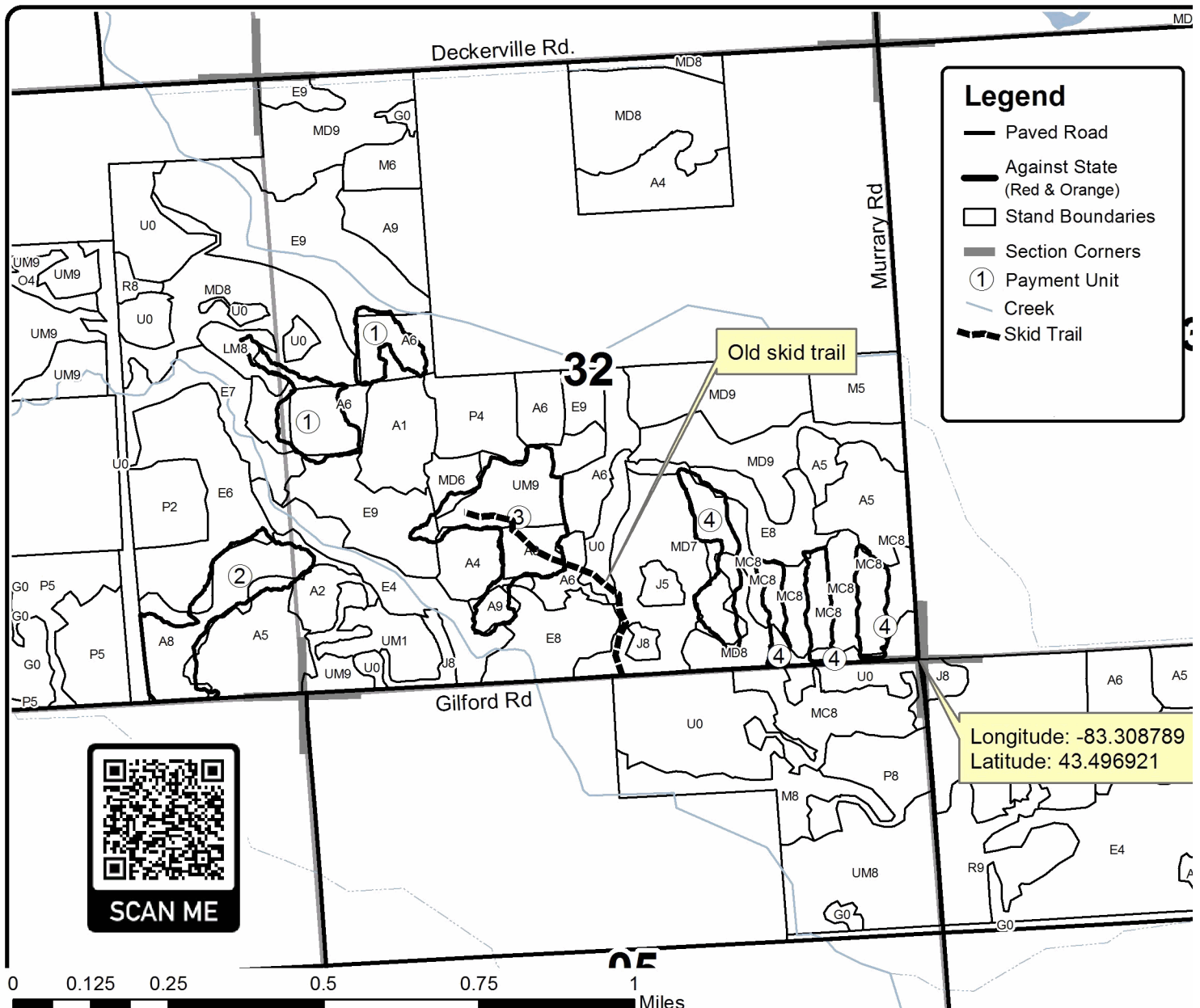
Township	Range	Section(s) and Subdivision(s)	Scale
13N	10E	Section 31 & 32	1:15,840

Cover Type				Density	
A = Aspen	H = Hemlock	N = Marsh	U = Upland Brush	0 = Non Stocked	5 = Pole Timber Medium
B = Paper Birch	J = Jack Pine	O = Oak	UM = Upland Mixed	1 = Seedling Sapling Poor	6 = Pole Timber Well
C = Cedar	L = Lowland Brush	P = Lowland Poplar	V = Bog or Marsh	2 = Seedling Sapling Medium	7 = Saw Timber Poor
D = Tread Bog	LM = Lowland Mixed	Q = Mixed Swamp Conifer	W = White Pine	3 = Seedling Sapling Well	8 = Saw Timber Medium
E = Swamp Hdwoods	M = Mpl, Bch, Brch	R = Red Pine	X = Non Stocked	4 = Pole Timber Poor	9 = Saw Timber Well
F = Spruce Fir	MC = Mixed Conifer	S = Black Spruce	Z = Water		
G = Grass	MD = Mixed Deciduous	T = Tamarack			

PU	Acres	PU	Acres
1	15.0	4	21.2
2	16.8	5	23.9
3	20.1	6	21.9

## Tangled Up Buck Mix

118.9 Acres



## TIMBER SALE INFORMATION

Woodpecker Aspen (55-144-23)  
T12N, R10E, SEC. 3.  
Tuscola County (Advertised Price \$3,149.90)

SALE NOTE: Access may be through other public land.

A timber sale contract for this lump sum, sealed bid timber sale will be awarded to the responsible bidder offering the highest sealed bid price. All units of volume listed below were estimated using the Inventory Manager computer program and the new Michigan taper model. Bids must be at or above the following advertised price for each product and species:

<u>PRODUCTS &amp; SPECIES</u>	<u>ESTIMATED UNITS*</u>	<u>ADVERTISED PRICE</u>
Sawtimber		
B. T. Aspen	51.8 MBF	\$ 28.00 / MBF
Pulpwood		
B. T. Aspen	157 Cords	\$ 9.75 / Cord
Mixed Hardwood	15 Cords	\$ 11.25 / Cord

\* The total volume is statistically estimated within plus (+) or minus (-) 37.83 percent. There are an estimated 275 cords on this timber sale, plus or minus 104 cords at the 95% confidence level. The estimated units are final and not subject to adjustment. Prospective bidders are urged to examine this timber and to make their own estimates of quantity and quality.

### **BOND AND PAYMENT SCHEDULE:**

1. A bond in the amount of \$157.00 to insure faithful performance of the conditions of the contract will be deposited by the successful bidder within 21 days of the sale award.
2. Cutting in any sale or unit without the required advance payment would be considered a trespass.
3. Total payment must be paid in advance or according to the following schedule :
  - (a) Ten percent (10%) of the sale value must be paid within 21 days of the sale award.
  - (b) The remainder is due before cutting begins.
  - (c) Payment for each of the following units must be made before cutting begins in that unit:
 

PAYMENT UNIT NUMBER	PERCENT OF TOTAL SALE VALUE
01	100.0%
4. If no cutting takes place, the 10% down payment will not be refunded.
5. Operations on the contract issued will terminate on 03/01/2026.

### **SALE STATISTICS**

Volumes were calculated in cubic feet using the Michigan taper model. Cubic foot volume includes all wood inside bark for the product indicated. For display purposes, cubic feet were converted to cords and MBF using a simple conversion factor, e.g. 79 cubic feet per cord and 185 cubic feet per MBF. The cubic foot volumes are precise; the cords and MBF volumes are not. Cubic foot volume cannot be directly converted to cords or boards with precision.

### **SALE VOLUMES**

The total estimated sale volume may not equal the sum of the species/products due to the nature of statistical calculations associated with double sampling methodology.

VOLUME		STATISTICAL RANGE IN CORDS		
TOTAL CUBIC FEET	TOTAL CORDS	PERCENT ERROR	MINIMUM	MAXIMUM
21,740	275	37.83%	171	379

**VDU VOLUMES**

A VDU is a Volume Determination Unit. Volumes and their associated statistics are calculated at the VDU level and summarized to the sale level. There is often a one to one relationship between a VDU and a Payment Unit, but not always, depending on the cruise design. Refer to the VDU TO PAYMENT UNIT table.

VDU	VOLUME		PERCENT ERROR	RANGE IN CORDS	
	TOTAL CUBIC FEET	TOTAL CORDS		MINIMUM	MAXIMUM
3	21,740	275	37.84%	171	379
<b>TOTAL:</b>	<b>21,740</b>	<b>275</b>		<b>171</b>	<b>379</b>

**VDU TO PAYMENT UNIT**

When a VDU is associated with more than one Payment Unit (PU), the VDU volumes are assigned to the PU based on acres of the VDU within the PU.

VDU	VDU ACRES	PU	PU ACRES
3	9.7	1	9.7
<b>TOTAL:</b>	<b>9.7</b>		<b>9.7</b>

**DESCRIPTION OF TIMBER BY PAYMENT UNIT (PU)**

PU	MARKET GROUP	PRODUCT	QUANTITY	UNIT	ACRES	ADVERTISE PRICE
1	B. T. Aspen	Sawtimber	51.8	MBF	9.7	\$3,149.90
	B. T. Aspen	Pulpwood	157	Cords		
	Mixed Hardwood		15	Cords		
	<i>Black Cherry</i>		2	<i>Cords</i>		
	<i>Red Maple</i>		13	<i>Cords</i>		
TOTAL:			51.8	MBF		
TOTAL:			172	Cords		



# Sale Specific Conditions & Requirements

**Sale Name: Woodpecker Aspen**

**Sale Number: 55-144-23 Seq#: 1**

## 1 - Sale Area

### 1.2 - Boundaries

#### 1.2.1 - Painted boundaries (9/19)

The sale boundary and Payment Unit boundaries are marked and identified by blue and red paint. Exterior sale boundary lines against private property are marked with blue paint. Exterior sale boundary lines against state are marked with red paint.

## 2 - Timber Specifications

### 2.1 - Included Timber

#### 2.1.1 - Clearcut unit(s) with unmerchantable trees (6/14)

Within Payment Unit(s) 1, cut all trees that are two (2) inches or more at DBH, except oak, white pine, hickory, cedar, hemlock, apple and any trees marked with green paint. Special protection trees identified in accordance with condition 3.4.2, within clearcutting unit boundaries, are not Included Timber and are to be protected.

### 2.2 - Utilization

#### 2.2.3 - Stump heights (4/07)

Stump heights within the Sale Area shall not exceed 6 inches for all trees.

#### 2.2.4 - Skidding length (2/14)

Skidding of unlimbed tops is not permissible.

## 3 - Payments

### 3.4 - Damaged Timber

#### 3.4.2 - Special Protection Trees (4/14)

The Purchaser shall not cut live or dead special protection trees within cutting units or clearings. Special protection trees are oak, apple, hemlock, and trees marked with green paint. If the Purchaser's operations have cut or damaged special protection trees through carelessness, the Purchaser shall pay \$250 as fixed, agreed and liquidated damages for each special protection tree cut or damaged. Such payment does not constitute ownership of the undesignated timber.

## 4 - Transportation

### 4.1 - Construction

#### 4.1.3 - Slash and earthen piles (8/04)

Piles or windrows of earth along roads and landings that have been widened or constructed shall be leveled. Slash from road maintenance or construction, including stumps, shall be dispersed throughout the sale.

#### 4.1.7 - Road closure (10/11)

All new skid trails into the sale must be blocked to vehicle traffic upon completion of the sale. In general, this will require constructing a four (4') foot high berm of stumps and logs covered with earth. Temporary berms may be required if no sale activity occurs for 30 or more consecutive days. Contact the Sale Administrator for specific details of design and placement.

#### 4.1.11 - Permits (2/12)

The Purchaser will secure any necessary temporary driveway permits that may be required.

#### 4.1.12 - No new roads (1/12)

No new roads will be permitted. Skid trails only will be allowed.

### 4.2 - Maintenance

#### 4.2.4 - Grading (10/16)

For completion of the sale, skid trails and landings must be graded. In general, this will require a road grader or bulldozer to shape up skid trails and landings after forest products have been hauled off site. This includes cleaning of drainage areas,

grading, crowning and filling with gravel, if necessary. The grading equipment to be used must be approved by the Unit Manager or his/her representative.

## 5 - Operations

### 5.1 - Notification

#### 5.1.1 - Pre-sale conference (10/16)

A pre-sale conference between the Purchaser and sale administrator is required prior to beginning any operations to determine landing and skid trail locations.

#### 5.1.4 - Post-sale conference (10/16)

A post-sale conference on site between the Purchaser and sale administrator is required prior to the completion of active logging operations to determine clean-up and repair of landings, road edges, and the fulfillment of other contract specifications.

#### 5.1.6 - Utility R.O.W. (4/19)

It is the responsibility of the Purchaser to obtain permission from the utility company to utilize the power line R.O.W. for operations.

### 5.2 - Conduct of Operations

#### 5.2.1 - Slash

##### 5.2.1.8 - Slash height (12/08)

No slash or tree tops may exceed 24 inches in height.

##### 5.2.1.10 - No slash in openings (5/10)

No brush or logging debris is to be left in the maintained wildlife opening which is indicated by "G0" on the Timber Sale Map. Any damage to the opening shall be repaired according to specifications of the Unit Manager or his/her representative.

##### 5.2.1.11 - Slash for reforestation (3/21)

To facilitate reforestation, the Sale Area shall be left with slash evenly distributed. Bunched tops within the cutting area shall be broken up and scattered. Stumps shall be cut low to the ground. Processing sites shall not be left with windrows or a compacted layer of slash; tops from these sites shall be hauled back into the cut area and scattered.

#### 5.2.2 - Hazard Trees/Snags

##### 5.2.2.1 - Den trees (10/16)

Obvious hollow and/or den trees shall be protected and left standing unless they are a safety hazard. Standing dead trees shall be protected unless they are a safety hazard.

#### 5.2.3 - Operating Restrictions

##### 5.2.3.1 - Operating restrictions (9/11)

Within Payment Unit(s) 1, cutting, skidding, and hauling are not permitted during from March 10 to August 1. This restriction is necessary to protect seasonally wet soils, minimize disturbance to breeding and nesting wildlife and reduce the risk of oak wilt.

##### 5.2.3.2 - Operating restrictions (9/11)

Within Payment Unit(s) 1, the operation of feller bunchers before 7 AM and after 9 PM is not permitted. This restriction is due to the close proximity of residences to the Sale Area.

##### 5.2.3.12 - Hunting operating restriction (1/18)

No Payment Unit may be started during the period of September 25 through November 30 without permission of the Unit Manager or his/her representative. Additionally, the unit manager may opt to restrict harvesting to specific days between October 1 and November 30.

#### 5.2.31 - Landing locations (9/13)

Landing areas are marked on the Timber Sale Map with the letter "L". Landings must be confined to these designated sites unless otherwise authorized by the Unit Manager or his/her representative. In general, landings are limited to a "T" turnaround which will accommodate a truck with a 50 foot trailer.

#### 5.2.32 - Decking/landing restoration (9/13)

All decking and landing areas must have the surface area restored to a condition equal to or better than before. This is to ensure the proper regeneration of the stand. Wood debris, chips and "cookies" from trimmings must be removed or scattered away from landing and loading areas and may not be windrowed on the edge.

#### 5.2.37 - No decking areas (12/08)

No decking is allowed in the designated parking area on Mushroom Road. No vehicle or equipment storage is allowed in the parking area.

### 5.4 - Soil Protection

#### 5.4.1 - Rutting restriction, general (7/16)

Operations are to cease immediately if equipment and weather conditions result in rutting of the sale area and/or skid trails which is 12 inches or greater in depth and 50 feet in length. The Unit Manager or his/her representative may restrict hauling and/or skidding if ruts exceed the specified depth. With the Unit Manager or his/her representative's approval, the Purchaser may return to the area when the risk of rutting has decreased.

## 7 - Other Conditions

### 7.2 - Extensions

#### 7.2.4 - Limited extensions (4/17)

Given justification, only one, 1 year extension may be granted if the contract has been paid in full.

### 7.10 - Certified Timber

#### 7.10.1 - Non-certified timber (2/16)

The area encompassed by this timber sale is not certified to the standards of the Forest Stewardship Council (FSC) or the Sustainable Forestry Initiative (SFI). Forest products from this sale may not be delivered to the mill as "FSC and / or SFI certified". The lands within this sale are managed as a State Game Area.



# TIMBER SALE MAP

This information provided by authority of Part 525, 1994 PA 451, as amended.

Sale Number	Year
55-144	23

Forest Management Unit	County	Mapped By	Date	Page	of
Deford State Game Area	Tuscola	Bonnette	07/06/2023	1	1
		Cruised By			
		Bonnette			

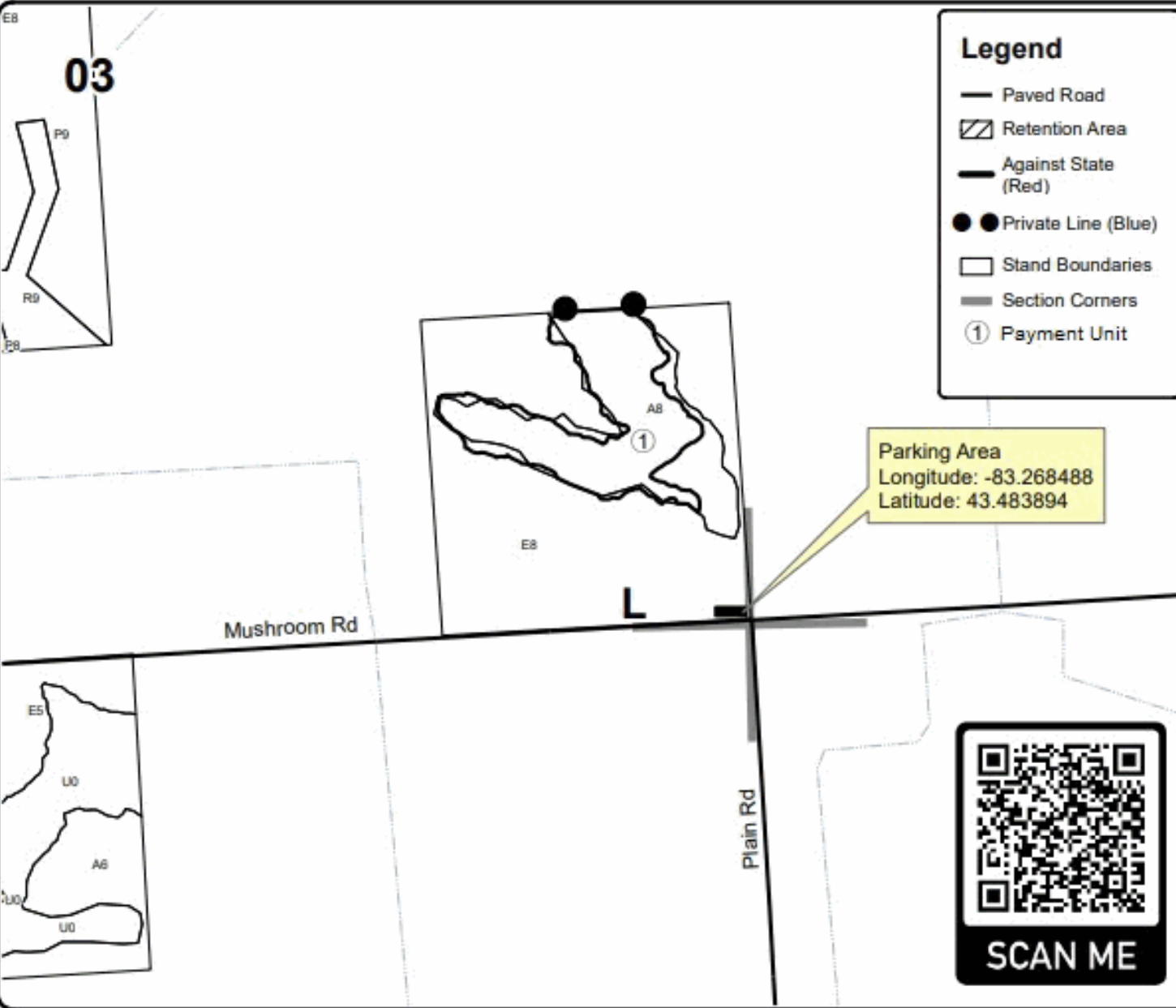
Township	Range	Section(s) and Subdivision(s)	Scale
12N	10E	Section 3	1:7,920

Cover Type				Density			
A = Aspen	H = Hemlock	N = Marsh	U = Upland Brush	0 = Non Stocked	5 = Pole Timber Medium		
B = Paper Birch	J = Jack Pine	O = Oak	UM = Upland Mixed	1 = Seeding Sapling Poor	6 = Pole Timber Well		
C = Cedar	L = Lowland Brush	P = Lowland Poplar	V = Bog or Marsh	2 = Seeding Sapling Medium	7 = Saw Timber Poor		
D = Treed Bog	LM = Lowland Mixed	Q = Mixed Swamp Conifer	W = White Pine	3 = Seeding Sapling Well	8 = Saw Timber Medium		
E = Swamp Hdwoods	M = Mpl, Boh, Birch	R = Red Pine	X = Non Stocked	4 = Pole Timber Poor	9 = Saw Timber Well		
F = Spruce Fir	MC = Mixed Conifer	S = Black Spruce	Z = Water				
G = Grass	MD = Mixed Deciduous	T = Tamarack					

**PU Acres**    **PU Acres**  
**1**    **9.7**

## Woodpecker Aspen

9.7 Acres



**Legend**

- Paved Road
- Retention Area
- Against State (Red)
- Private Line (Blue)
- Stand Boundaries
- Section Corners
- Payment Unit



## TIMBER SALE INFORMATION

Falling Down Aspen (55-145-23)  
 T12N, R09E, SEC. 27; T12N, R09E, SEC. 28.  
 Tuscola County (Advertised Price \$34,758.10)

SALE NOTE: To promote aspen regeneration, harvesting is limited to October 15 - March 15.

Access may be through other public land.

A timber sale contract for this lump sum, sealed bid timber sale will be awarded to the responsible bidder offering the highest sealed bid price. All units of volume listed below were estimated using the Inventory Manager computer program and the new Michigan taper model. Bids must be at or above the following advertised price for each product and species:

<u>PRODUCTS &amp; SPECIES</u>	<u>ESTIMATED UNITS*</u>	<u>ADVERTISED PRICE</u>
Sawtimber		
Black Cherry	35.4 MBF	\$ 60.00 / MBF
Mixed Aspen	253.0 MBF	\$ 28.00 / MBF
Paper Birch	6.5 MBF	\$ 28.00 / MBF
Red Maple	143.6 MBF	\$ 33.00 / MBF
Pulpwood		
Mixed Aspen	883 Cords	\$ 10.50 / Cord
Mixed Hardwood	1,042 Cords	\$ 10.90 / Cord

\* The total volume is statistically estimated within plus (+) or minus (-) 10.82 percent. There are an estimated 2,957 cords on this timber sale, plus or minus 320 cords at the 95% confidence level. The estimated units are final and not subject to adjustment. Prospective bidders are urged to examine this timber and to make their own estimates of quantity and quality.

### **BOND AND PAYMENT SCHEDULE:**

1. A bond in the amount of \$1,738.00 to insure faithful performance of the conditions of the contract will be deposited by the successful bidder within 21 days of the sale award.
2. Cutting in any sale or unit without the required advance payment would be considered a trespass.
3. Total payment must be paid in advance or according to the following schedule :
  - (a) Ten percent (10%) of the sale value must be paid within 21 days of the sale award.
  - (b) The 10% down payment will be credited towards the first unit cut.
  - (c) Payment for each of the following units must be made before cutting begins in that unit:
 

PAYMENT UNIT NUMBER	PERCENT OF TOTAL SALE VALUE
01	11.2%
02	23.7%
03	18.8%
04	31.1%
05	15.2%
4. If no cutting takes place, the 10% down payment will not be refunded.
5. Operations on the contract issued will terminate on 03/01/2026.

### **SALE STATISTICS**

Volumes were calculated in cubic feet using the Michigan taper model. Cubic foot volume includes all wood inside bark for the product indicated. For display purposes, cubic feet were converted to cords and MBF using a simple conversion factor, e.g. 79 cubic feet per cord and 185 cubic feet per MBF. The cubic foot volumes are precise; the cords and MBF volumes are not. Cubic foot volume cannot be directly converted to cords or boards with precision.

### **SALE VOLUMES**

The total estimated sale volume may not equal the sum of the species/products due to the nature of statistical calculations associated with double sampling methodology.

VOLUME		STATISTICAL RANGE IN CORDS		
TOTAL CUBIC FEET	TOTAL CORDS	PERCENT ERROR	MINIMUM	MAXIMUM
233,634	2,957	10.82%	2,637	3,278

**VDU VOLUMES**

A VDU is a Volume Determination Unit. Volumes and their associated statistics are calculated at the VDU level and summarized to the sale level. There is often a one to one relationship between a VDU and a Payment Unit, but not always, depending on the cruise design. Refer to the VDU TO PAYMENT UNIT table.

VDU	VOLUME		PERCENT ERROR	RANGE IN CORDS	
	TOTAL CUBIC FEET	TOTAL CORDS		MINIMUM	MAXIMUM
102	26,968	341	44.66%	189	494
120	56,627	717	18.52%	584	850
130	42,299	535	28.80%	381	690
206	74,722	946	21.43%	743	1,149
212	33,019	418	30.51%	290	545
<b>TOTAL:</b>	<b>233,634</b>	<b>2,957</b>		<b>2,188</b>	<b>3,727</b>

**VDU TO PAYMENT UNIT**

When a VDU is associated with more than one Payment Unit (PU), the VDU volumes are assigned to the PU based on acres of the VDU within the PU.

VDU	VDU ACRES	PU	PU ACRES
102	13.4	1	13.4
120	20.8	2	20.8
130	17.1	3	17.1
206	26.9	4	26.9
212	10.6	5	10.6
<b>TOTAL:</b>	<b>88.8</b>		<b>88.8</b>

**DESCRIPTION OF TIMBER BY PAYMENT UNIT (PU)**

PU	MARKET GROUP	PRODUCT	QUANTITY	UNIT	ACRES	ADVERTISE PRICE	
1	Mixed Aspen	Sawtimber	34.2	MBF	13.4	\$3,875.70	
	<i>B. T. Aspen</i>		34.2	<i>MBF</i>			
	Paper Birch		1.7	MBF			
	Red Maple		4.0	MBF			
	Mixed Aspen		Pulpwood	157			Cords
	<i>B. T. Aspen</i>			157			<i>Cords</i>
	Mixed Hardwood			100			Cords
	<i>Paper Birch</i>			3			<i>Cords</i>
	<i>Red Maple</i>			97			<i>Cords</i>
2	Black Cherry	Sawtimber	9.5	MBF	20.8	\$8,221.60	
	Mixed Aspen		56.1	MBF			
	<i>B. T. Aspen</i>		24.4	<i>MBF</i>			
	<i>Quaking Aspen</i>		31.7	<i>MBF</i>			
	Red Maple		38.7	MBF			
	Mixed Aspen		Pulpwood	226			Cords
	<i>B. T. Aspen</i>			37			<i>Cords</i>
	<i>Quaking Aspen</i>			189			<i>Cords</i>
	Mixed Hardwood			223			Cords
	<i>American Elm</i>			9			<i>Cords</i>
	<i>Black Cherry</i>			62			<i>Cords</i>
	<i>Red Maple</i>			152			<i>Cords</i>
	3		Black Cherry	Sawtimber			3.0
Mixed Aspen		52.3	MBF				
<i>B. T. Aspen</i>		46.1	<i>MBF</i>				
<i>Quaking Aspen</i>		6.2	<i>MBF</i>				
Red Maple		25.2	MBF				
Mixed Aspen		Pulpwood	162		Cords		
<i>B. T. Aspen</i>			148		<i>Cords</i>		
<i>Quaking Aspen</i>			14		<i>Cords</i>		
Mixed Hardwood			215		Cords		
<i>American Elm</i>			2		<i>Cords</i>		
<i>Black Cherry</i>			25		<i>Cords</i>		
<i>Red Maple</i>			186		<i>Cords</i>		
<i>Cherry (Juneberry)</i>		2	<i>Cords</i>				
4	Black Cherry	Sawtimber	11.1	MBF	26.9	\$10,840.50	
	Mixed Aspen		57.5	MBF			
	<i>B. T. Aspen</i>		56.0	<i>MBF</i>			
	<i>Quaking Aspen</i>		1.5	<i>MBF</i>			
	Paper Birch		3.6	MBF			
	Red Maple		55.5	MBF			
	Mixed Aspen		Pulpwood	260			Cords
	<i>B. T. Aspen</i>			256			<i>Cords</i>
	<i>Quaking Aspen</i>			4			<i>Cords</i>
	Mixed Hardwood			358			Cords
	<i>American Elm</i>			5			<i>Cords</i>
	<i>Black Cherry</i>			18			<i>Cords</i>
	<i>Paper Birch</i>			16			<i>Cords</i>
	<i>Red Maple</i>			319			<i>Cords</i>
	5			Black Cherry			Sawtimber
Mixed Aspen		52.9	MBF				
<i>B. T. Aspen</i>		52.9	<i>MBF</i>				
Paper Birch		1.2	MBF				
Red Maple		20.2	MBF				
Mixed Aspen		Pulpwood	78	Cords			
<i>B. T. Aspen</i>			78	<i>Cords</i>			
Mixed Hardwood			146	Cords			

**DESCRIPTION OF TIMBER BY PAYMENT UNIT (PU), CON'T**

PU	MARKET GROUP	PRODUCT	QUANTITY	UNIT	ACRES	ADVERTISE PRICE
5 con't	<i>Black Cherry</i>	<i>Pulpwood</i>	10	<i>Cords</i>		
	<i>Paper Birch</i>		10	<i>Cords</i>		
	<i>Red Maple</i>		126	<i>Cords</i>		
TOTAL:			438.5	MBF		
TOTAL:			1,925	Cords		



# Sale Specific Conditions & Requirements

**Sale Name: Falling Down Aspen**

**Sale Number: 55-145-23 Seq#: 1**

## 1 - Sale Area

### 1.2 - Boundaries

#### 1.2.1 - Painted boundaries (9/19)

The sale boundary is marked and identified by red, orange, and blue paint. Exterior sale boundary lines against private property are marked with blue paint. Exterior sale boundary lines against state are marked with red paint and in some cases, orange paint intermixed with the red. The painted boundary line trees are not Included Timber and are to be protected.

## 2 - Timber Specifications

### 2.1 - Included Timber

#### 2.1.1 - Clearcut unit(s) with unmerchantable trees (6/14)

Within Payment Unit(s) 1-5, cut all trees that are two (2) inches or more at DBH, except do not cut any oak that are five (5) inches or more at DBH, white pine, hemlock, cedar, beech, walnut, hickory, apple, or trees marked with green paint. Special protection trees identified in accordance with condition 3.4.2, within clearcutting unit boundaries, are not Included Timber and are to be protected.

### 2.2 - Utilization

#### 2.2.3 - Stump heights (4/07)

Stump heights within the Sale Area shall not exceed 6 inches for all trees.

#### 2.2.4 - Skidding length (2/14)

Skidding of unlimbed tops is not permissible.

## 3 - Payments

### 3.4 - Damaged Timber

#### 3.4.2 - Special Protection Trees (4/14)

The Purchaser shall not cut live or dead special protection trees within cutting units or clearings. Special protection trees are oak that are five (5) inches or more at DBH, white pine, walnut, hickory, and apple. If the Purchaser's operations have cut or damaged special protection trees through carelessness, the Purchaser shall pay \$250 as fixed, agreed and liquidated damages for each special protection tree cut or damaged. Such payment does not constitute ownership of the undesignated timber.

### 3.6 - Payment Unit Cutting Schedule

#### 3.6.2 - One active unit (12/08)

Each Payment Unit must be completed to the satisfaction of the Unit Manager or his/her representative before the next unit may be opened.

## 4 - Transportation

### 4.1 - Construction

#### 4.1.3 - Slash and earthen piles (8/04)

Piles or windrows of earth along roads and landings that have been widened or constructed shall be leveled. Slash from road maintenance or construction, including stumps, shall be dispersed throughout the sale.

#### 4.1.7 - Road closure (10/11)

All access built into the sale must be blocked to vehicle traffic upon completion of the sale. In general, this will require constructing a four (4') foot high berm of stumps and logs covered with earth. Temporary berms may be required if no sale activity occurs for 30 or more consecutive days. Contact the Sale Administrator for specific details of design and placement.

#### 4.1.11 - Permits (2/12)

The Purchaser will secure any necessary temporary driveway or powerline right-of-way use permits that may be required.

#### 4.1.12 - No new roads (1/12)

No new roads will be permitted in any Payment Unit. All operations are limited to existing skid trails or temporary skid trails.

### 4.2 - Maintenance

#### 4.2.4 - Grading (10/16)

For completion of the sale, skid trails and log landings must be graded. In general, this will require a bulldozer to shape up the roads after forest products have been hauled off site. This includes cleaning of drainage areas, grading, crowning and filling with gravel, if necessary. The grading equipment to be used must be approved by the Unit Manager or his/her representative.

### 4.4 - Access

#### 4.4.3 - Access gate (12/08)

The access gate leading to Payment Units 2 & 3 north of the intersection of Bliss and Wireline Roads must be locked at the completion of each day, unless otherwise approved by the Unit Manager or his/her representative. If the gate is temporarily removed to facilitate access, the gate must be replaced in the same location and condition prior to harvest. Any damage to the gate is the responsibility of the producer. If the producer chooses to bypass the gate, the resulting access must be blocked in a manner approved by the Sale Administrator. Any other vehicle barriers (gates, guard rail, posts, boulders, etc.) removed to access any Payment Unit must be replaced in its original location and its original condition. Damage to any vehicle barrier is the responsibility of the producer.

## 5 - Operations

### 5.1 - Notification

#### 5.1.1 - Pre-sale conference (10/16)

A pre-sale conference between the Purchaser and sale administrator is required prior to beginning any operations to determine access and landing locations. The Unit Manager or his/her representative must be contacted at least 10 days in advance to schedule the conference.

#### 5.1.4 - Post-sale conference (10/16)

A post-sale conference on site between the Purchaser and sale administrator is required 10 days prior to the completion of active logging operations to determine clean-up and repair of landings, road edges, and the fulfillment of other contract specifications.

#### 5.1.6 - Utility R.O.W. (4/19)

It is the responsibility of the Purchaser to obtain permission from the utility company to utilize the power line R.O.W. for operations.

### 5.2 - Conduct of Operations

#### 5.2.1 - Slash

##### 5.2.1.8 - Slash height (12/08)

No slash or tree tops may exceed 24 inches in height.

##### 5.2.1.10 - No slash in openings (5/10)

No brush or logging debris is to be left within the powerline right-of-way which is indicated by "G0" and labeled on the Timber Sale Map. Any damage to the opening shall be repaired according to specifications of the Unit Manager or his/her representative.

##### 5.2.1.11 - Slash for reforestation (3/21)

To facilitate reforestation, the Sale Area shall be left with slash evenly distributed. Bunched tops within the cutting area shall be broken up and scattered. Stumps shall be cut low to the ground. Processing sites shall not be left with windrows or a compacted layer of slash; tops from these sites shall be hauled back into the cut area and scattered.

#### 5.2.2 - Hazard Trees/Snags

##### 5.2.2.1 - Den trees (10/16)

Obvious hollow and/or den trees shall be protected and left standing unless they are a safety hazard.

### 5.2.3 - Operating Restrictions

#### 5.2.3.1 - Operating restrictions (9/11)

Within Payment Unit(s) 1-5, operations are restricted to dry or frozen ground conditions only. This restriction is necessary to protect poorly drained and seasonally wet soils throughout the Sale Area.

#### 5.2.3.2 - Operating restrictions (9/11)

Within Payment Unit(s) 1-5, the operation of feller bunchers before 7 AM or after 9 PM is not permitted. This restriction is due to the close proximity of residences to the Sale Area.

#### 5.2.3.11 - Coppice regeneration protection (4/10)

To promote aspen regeneration, harvesting is limited to October 15 - March 15. Timber harvesting in any Payment Unit must be completed before significant aspen sprouting occurs in that Payment Unit so as to minimize damage to the new regeneration. Any post harvest operations, such as chipping, must be completed before sprouting of regeneration occurs. If it is anticipated that chipping will be delayed, then tops shall be carried to one central location or left unchipped. The Unit Manager or his/her representative may cease such operations if sprouting occurs before the operation is complete.

#### 5.2.3.12 - Hunting operating restriction (1/18)

No Payment Unit may be started during the period of September 25 - November 30 without permission of the Unit Manager or his/her representative. Alternatively, the Unit Manager may opt to restrict harvesting to specific days between October 1 - November 30.

#### 5.2.32 - Decking/landing restoration (9/13)

All decking and landing areas must have the surface area restored to a condition equal to or better than before. This is to ensure the proper regeneration of the stand. Wood debris, chips and "cookies" from trimmings must be removed or scattered away from landing and loading areas and may not be windrowed on the edge.

#### 5.2.37 - No decking areas (12/08)

No decking is allowed within any parking area or within a powerline ROW, without permission of the pipeline company. No equipment storage is allowed in any parking area.

### 5.4 - Soil Protection

#### 5.4.1 - Rutting restriction, general (7/16)

Operations are to cease immediately if equipment and weather conditions result in rutting of the Sale Area or skid trails which is 12 inches or greater in depth and 50 feet in length. The Unit Manager or his/her representative may restrict hauling and/or skidding if ruts exceed the specified depth. With the Unit Manager or his/her representative's approval, the Purchaser may return to the area when the risk of rutting has decreased.

#### 5.4.2 - Skid trails (2/04)

Skid trails up and down slopes should be avoided. If however this is unavoidable, these trails will be left in a non-erodible condition using water bars, logs, and slash. Placing of slash on these skid trails while logging is ongoing may alleviate need for any further action. At the direction of the sale administrator, seed, fertilizer, and mulch may also be required.

### 5.8 - Protection of Endangered Species

#### 5.8.5 - Protection of raptor nests (3/13)

All trees with raptor nests will be protected if found during harvesting operations. Notification will be made to the Unit Manager or his/her representative who will notify the Wildlife Biologist so an on-site evaluation and recommendation can be made, if necessary.

## 7 - Other Conditions

### 7.2 - Extensions

#### 7.2.5 - Weather related extension (1/13)

If weather conditions during the operating period of this contract prevent harvesting, this sale may qualify for a weather related extension. If approved, the normal extension fee would be waived. To qualify, there must be a documented attempt each year to harvest in the difficult portion of the sale.

### 7.10 - Certified Timber

7.10.1 - Non-certified timber (2/16)

The area encompassed by this timber sale is not certified to the standards of the Forest Stewardship Council (FSC) or the Sustainable Forestry Initiative (SFI). Forest products from this sale may not be delivered to the mill as "FSC and / or SFI certified". The lands within this sale are managed as a State Game Area.



# TIMBER SALE MAP

This information provided by authority of Part 525, 1994 PA 451, as amended.

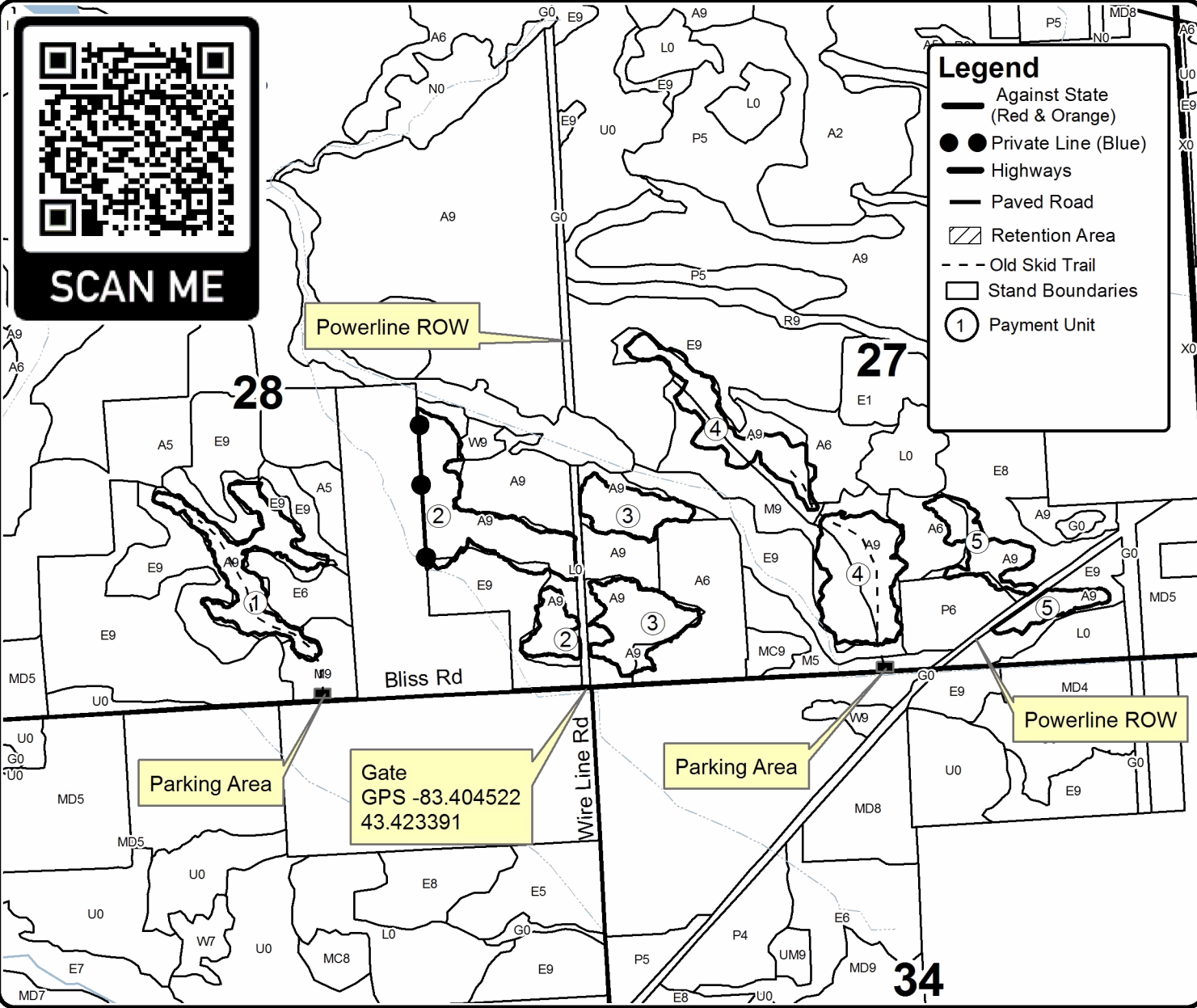
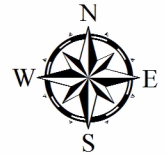
Forest Management Unit Tuscola State Game Area	County Tuscola	Mapped By Bonnette	Date 09/14/23	Page 1	of 1
Township 12N	Range 09E	Section(s) and Subdivision(s) Section 27 & 28	Scale 1:15,840		

Cover Type				Density	
A = Aspen	H = Hemlock	N = Marsh	U = Upland Brush	0 = Non Stocked	5 = Pole Timber Medium
B = Paper Birch	J = Jack Pine	O = Oak	UM = Upland Mixed	1 = Seedling Sapling Poor	6 = Pole Timber Well
C = Cedar	L = Lowland Brush	P = Lowland Poplar	V = Bog or Marsh	2 = Seedling Sapling Medium	7 = Saw Timber Poor
D = Treed Bog	LM = Lowland Mixed	Q = Mixed Swamp Conifer	W = White Pine	3 = Seedling Sapling Well	8 = Saw Timber Medium
E = Swamp Hdwoods	M = Mpl, Bch, Brch	R = Red Pine	X = Non Stocked	4 = Pole Timber Poor	9 = Saw Timber Well
F = Spruce Fir	MC = Mixed Conifer	S = Black Spruce	Z = Water		
G = Grass	MD = Mixed Deciduous	T = Tamarack			

PU	Acres	PU	Acres
1	13.4	4	26.9
2	20.8	5	10.6
3	17.1		

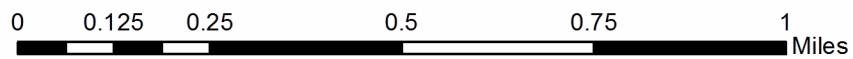
## Falling Down Aspen

88.9 Acres



**Legend**

- Against State (Red & Orange)
- Private Line (Blue)
- Highways
- Paved Road
- ▨ Retention Area
- - - Old Skid Trail
- Stand Boundaries
- ① Payment Unit





## TIMBER SALE INFORMATION

Many Fingers Aspen (55-146-23)  
 T12N, R09E, SEC. 25; T12N, R09E, SEC. 36.  
 Tuscola County (Advertised Price \$18,106.50)

SALE NOTE: Access may be through other public land.

A timber sale contract for this lump sum, sealed bid timber sale will be awarded to the responsible bidder offering the highest sealed bid price. All units of volume listed below were estimated using the Inventory Manager computer program and the new Michigan taper model. Bids must be at or above the following advertised price for each product and species:

<u>PRODUCTS &amp; SPECIES</u>	<u>ESTIMATED UNITS*</u>	<u>ADVERTISED PRICE</u>
Sawtimber		
Black Cherry	7.4 MBF	\$ 60.00 / MBF
Green Ash	2.8 MBF	\$ 23.00 / MBF
Mixed Aspen	211.7 MBF	\$ 28.00 / MBF
Red Maple	36.8 MBF	\$ 33.00 / MBF
Red Pine	36.1 MBF	\$ 45.00 / MBF
Pulpwood		
Mixed Aspen	570 Cords	\$ 10.50 / Cord
Mixed Hardwood	134 Cords	\$ 10.90 / Cord
Red Pine	84 Cords	\$ 16.50 / Cord

\* The total volume is statistically estimated within plus (+) or minus (-) 20.94 percent. There are an estimated 1,509 cords on this timber sale, plus or minus 316 cords at the 95% confidence level. The estimated units are final and not subject to adjustment. Prospective bidders are urged to examine this timber and to make their own estimates of quantity and quality.

### **BOND AND PAYMENT SCHEDULE:**

1. A bond in the amount of \$905.00 to insure faithful performance of the conditions of the contract will be deposited by the successful bidder within 21 days of the sale award.
2. Cutting in any sale or unit without the required advance payment would be considered a trespass.
3. Total payment must be paid in advance or according to the following schedule :
  - (a) Ten percent (10%) of the sale value must be paid within 21 days of the sale award.
  - (b) The 10% down payment will be credited towards the first unit cut.
  - (c) Payment for each of the following units must be made before cutting begins in that unit:
 

PAYMENT UNIT NUMBER	PERCENT OF TOTAL SALE VALUE
01	36.1%
02	13.9%
03	25.9%
04	24.1%
4. If no cutting takes place, the 10% down payment will not be refunded.
5. Operations on the contract issued will terminate on 03/01/2026.

### **SALE STATISTICS**

Volumes were calculated in cubic feet using the Michigan taper model. Cubic foot volume includes all wood inside bark for the product indicated. For display purposes, cubic feet were converted to cords and MBF using a simple conversion factor, e.g. 79 cubic feet per cord and 185 cubic feet per MBF. The cubic foot volumes are precise; the cords and MBF volumes are not. Cubic foot volume cannot be directly converted to cords or boards with precision.

### **SALE VOLUMES**

The total estimated sale volume may not equal the sum of the species/products due to the nature of statistical calculations associated with double sampling methodology.

VOLUME		STATISTICAL RANGE IN CORDS		
TOTAL CUBIC FEET	TOTAL CORDS	PERCENT ERROR	MINIMUM	MAXIMUM
119,216	1,509	20.94%	1,193	1,825

**VDU VOLUMES**

A VDU is a Volume Determination Unit. Volumes and their associated statistics are calculated at the VDU level and summarized to the sale level. There is often a one to one relationship between a VDU and a Payment Unit, but not always, depending on the cruise design. Refer to the VDU TO PAYMENT UNIT table.

VDU	VOLUME		PERCENT ERROR	RANGE IN CORDS	
	TOTAL CUBIC FEET	TOTAL CORDS		MINIMUM	MAXIMUM
54	8,205	104	173.91%	0	284
102	55,952	708	27.35%	515	902
125	28,079	355	55.60%	158	553
126	26,980	342	46.73%	182	501
<b>TOTAL:</b>	<b>119,216</b>	<b>1,509</b>		<b>854</b>	<b>2,241</b>

**VDU TO PAYMENT UNIT**

When a VDU is associated with more than one Payment Unit (PU), the VDU volumes are assigned to the PU based on acres of the VDU within the PU.

VDU	VDU ACRES	PU	PU ACRES
54	5.3	2	5.3
102	20.2	1	16.3
		2	3.9
125	7.9	3	7.9
126	9.9	4	9.9
<b>TOTAL:</b>	<b>43.3</b>		<b>43.3</b>



**DESCRIPTION OF TIMBER BY PAYMENT UNIT (PU)**

PU	MARKET GROUP	PRODUCT	QUANTITY	UNIT	ACRES	ADVERTISE PRICE	
1	Green Ash	Sawtimber	2.3	MBF	16.3	\$6,537.90	
	Mixed Aspen		78.8	MBF			
	<i>B. T. Aspen</i>		78.8	<i>MBF</i>			
	Red Maple		22.2	MBF			
	Red Pine		8.7	MBF			
	Mixed Aspen	Pulpwood	249	Cords			
	<i>B. T. Aspen</i>		249	<i>Cords</i>			
	Mixed Hardwood		45	Cords			
	<i>Green Ash</i>		2	<i>Cords</i>			
	<i>Paper Birch</i>		7	<i>Cords</i>			
	<i>Red Maple</i>		36	<i>Cords</i>			
Red Pine	3	Cords					
2	Black Cherry	Sawtimber	2.1	MBF	9.2	\$2,512.10	
	Green Ash		0.5	MBF			
	Mixed Aspen		29.2	MBF			
	<i>B. T. Aspen</i>		24.8	<i>MBF</i>			
	<i>Cottonwood</i>		4.4	<i>MBF</i>			
	Red Maple		5.3	MBF			
	Red Pine		2.1	MBF			
	Mixed Aspen		Pulpwood	65			Cords
	<i>B. T. Aspen</i>			64			<i>Cords</i>
	<i>Cottonwood</i>			1			<i>Cords</i>
	Mixed Hardwood			54			Cords
	<i>Black Cherry</i>			14			<i>Cords</i>
	<i>Paper Birch</i>			2			<i>Cords</i>
	<i>Red Maple</i>			38			<i>Cords</i>
Red Pine	1	Cords					
3	Black Cherry	Sawtimber	5.3	MBF	7.9	\$4,686.60	
	Mixed Aspen		62.2	MBF			
	<i>B. T. Aspen</i>		61.1	<i>MBF</i>			
	<i>Quaking Aspen</i>		1.1	<i>MBF</i>			
	Red Maple		2.3	MBF			
	Red Pine		20.9	MBF			
	Mixed Aspen		Pulpwood	131			Cords
	<i>B. T. Aspen</i>			125			<i>Cords</i>
	<i>Quaking Aspen</i>			6			<i>Cords</i>
	Mixed Hardwood			14			Cords
	<i>Black Cherry</i>			5			<i>Cords</i>
<i>Red Maple</i>	9	<i>Cords</i>					
Red Pine	5	Cords					
4	Mixed Aspen	Sawtimber	41.5	MBF	9.9	\$4,369.90	
	<i>B. T. Aspen</i>		41.5	<i>MBF</i>			
	Red Maple		7.0	MBF			
	Red Pine		4.4	MBF			
	Mixed Aspen		Pulpwood	125			Cords
	<i>B. T. Aspen</i>			125			<i>Cords</i>
	Mixed Hardwood			21			Cords
	<i>Red Maple</i>			21			<i>Cords</i>
Red Pine	75	Cords					
TOTAL:			294.8	MBF			
TOTAL:			788	Cords			

# Sale Specific Conditions & Requirements

**Sale Name: Many Fingers Aspen**

**Sale Number: 55-146-23 Seq#: 1**

## 1 - Sale Area

### 1.2 - Boundaries

#### 1.2.1 - Painted boundaries (9/19)

The sale boundary and Payment Unit boundaries are marked and identified by blue, red and yellow paint. Exterior sale boundary lines against private property are marked with blue paint. Exterior sale boundary lines against state are marked with red paint. Interior Payment Unit boundaries are marked with yellow paint. Yellow painted trees designating an interior Payment Unit boundary are only to be cut when all surrounding Payment Units have been paid.

## 2 - Timber Specifications

### 2.1 - Included Timber

#### 2.1.1 - Clearcut unit(s) with unmerchantable trees (6/14)

Within Payment Unit(s) 1-4, cut all trees that are two (2) inches or more at DBH, except white pine, oak, cedar, hemlock, walnut, hickory, apple, and trees marked with green paint. Special protection trees identified in accordance with condition 3.4.2, within clearcutting unit boundaries, are not Included Timber and are to be protected.

### 2.2 - Utilization

#### 2.2.3 - Stump heights (4/07)

Stump heights within the Sale Area shall not exceed 6 inches for all trees.

#### 2.2.4 - Skidding length (2/14)

Skidding of unlimbed tops is not permissible.

## 3 - Payments

### 3.4 - Damaged Timber

#### 3.4.2 - Special Protection Trees (4/14)

The Purchaser shall not cut live or dead special protection trees within cutting units or clearings. Special protection trees are white pine, oak, walnut, hickory, apple, and any trees marked with green paint. If the Purchaser's operations have cut or damaged special protection trees through carelessness, the Purchaser shall pay \$250 as fixed, agreed and liquidated damages for each special protection tree cut or damaged. Such payment does not constitute ownership of the undesignated timber.

### 3.6 - Payment Unit Cutting Schedule

#### 3.6.2 - One active unit (12/08)

Each Payment Unit must be completed to the satisfaction of the Unit Manager or his/her representative before the next unit may be opened. The Purchaser must give a one week notice before finishing a Payment Unit to allow for inspection.

## 4 - Transportation

### 4.1 - Construction

#### 4.1.3 - Slash and earthen piles (8/04)

Piles or windrows of earth along roads and landings that have been widened or constructed shall be leveled. Slash from road maintenance or construction, including stumps, shall be leveled or dispersed throughout the sale.

#### 4.1.7 - Road closure (10/11)

All access built into the sale must be blocked to vehicle traffic upon completion of the sale. In general, this will require constructing a four (4') foot high berm of stumps and logs covered with earth. All stumps from landing construction must be reserved to block any newly constructed access upon completion of the sale. Temporary berms may be required if no sale activity occurs for 30 or more consecutive days. Contact the Sale Administrator for specific details of design and placement.

#### 4.1.12 - No new roads (1/12)

No new roads will be permitted in any Payment Unit. All operations are limited to existing skid trails, temporary skid trails and access points.

#### 4.2 - Maintenance

##### 4.2.4 - Grading (10/16)

For completion of the sale, skid trails and log landings must be graded. In general, this will require a road grader or bulldozer to shape up skid trails after forest products have been hauled off site. This includes cleaning of drainage areas, grading, crowning and filling with gravel, if necessary. The grading equipment to be used must be approved by the Unit Manager or his/her representative.

#### 4.4 - Access

##### 4.4.3 - Access gate (12/08)

If the producer chooses to use the access gate north of Rossman Road, it must be locked at the completion of each day. If the gate is temporarily removed to facilitate access, the gate must be replaced in the same location and condition prior to harvest. Any damage to the gate is the responsibility of the producer. If the producer chooses to bypass the gate, the resulting access must be blocked in a manner approved by the Sale Administrator. Any other vehicle barriers (gates, guard rail, posts, boulders etc.) removed to access any payment unit must be replaced in its original location and its original condition. Damage to any vehicle barrier (posts, boulders, berms, gates etc.) is the responsibility of the producer.

### 5 - Operations

#### 5.1 - Notification

##### 5.1.1 - Pre-sale conference (10/16)

A pre-sale conference between the Purchaser and sale administrator is required prior to beginning any operations to determine landing locations and access. The Unit Manager or his/her representative must be contacted at least 10 days in advance to schedule the conference.

##### 5.1.4 - Post-sale conference (10/16)

A post-sale conference on site between the Purchaser and sale administrator is required prior to the completion of active logging operations to determine clean-up and repair of landings, road edges, and the fulfillment of other contract specifications.

#### 5.2 - Conduct of Operations

##### 5.2.1 - Slash

###### 5.2.1.8 - Slash height (12/08)

No slash or tree tops may exceed 24 inches in height.

###### 5.2.1.11 - Slash for reforestation (3/21)

To facilitate reforestation, the Sale Area shall be left with slash evenly distributed. Bunched tops within the cutting area shall be broken up and scattered. Stumps shall be cut low to the ground. Processing sites shall not be left with windrows or a compacted layer of slash; tops from these sites shall be hauled back into the cut area and scattered.

##### 5.2.2 - Hazard Trees/Snags

###### 5.2.2.1 - Den trees (10/16)

Obvious hollow and/or den trees shall be protected and left standing unless they are a safety hazard. Standing dead trees shall be protected and left standing unless they are a safety hazard.

##### 5.2.3 - Operating Restrictions

###### 5.2.3.1 - Operating restrictions (9/11)

Within Payment Unit(s) 1-4, cutting, skidding, and hauling are not permitted during the period from March 10 to August 1. This restriction is due to seasonally wet soils, potential oak wilt, and nesting wildlife within the Sale Area.

###### 5.2.3.2 - Operating restrictions (9/11)

Within Payment Unit(s) 1-4, the operation of feller bunchers before 7 AM or after 9 PM is not permitted. This restriction is due to the close proximity of residences to the Sale Area.

#### 5.2.3.12 - Hunting operating restriction (1/18)

No Payment Unit may be started during the period of September 25 - November 30 without permission of the Unit Manager or his/her representative. Additionally, the unit manager may opt to restrict harvesting to specific days between October 1 and November 30.

#### 5.2.31 - Landing locations (9/13)

Landing areas must be no bigger than absolutely necessary to accommodate logs and equipment. Any dozer work shall be minimized and must be approved by the Sale Administrator. In general, landings are limited to a "T" turnaround, which will accommodate a truck with a 50-foot trailer.

#### 5.2.32 - Decking/landing restoration (9/13)

All decking and landing areas must have the surface area restored to a condition equal to or better than before. This is to ensure the proper regeneration of the stand. Wood debris, stumps, chips and "cookies" from trimmings must be removed or scattered away from landing and loading areas and may not be windrowed on the edge. Holes and ruts must be levelled and/or filled.

#### 5.2.37 - No decking areas (12/08)

No decking is allowed in any designated parking area.

### 5.4 - Soil Protection

#### 5.4.1 - Rutting restriction, general (7/16)

Operations are to cease immediately if equipment and weather conditions result in rutting of the sale area and/or skid trails which is 12 inches or greater in depth and 50 feet in length. The Unit Manager or his/her representative may restrict hauling and/or skidding if ruts exceed the specified depth. With the Unit Manager or his/her representative's approval, the Purchaser may return to the area when the risk of rutting has decreased.

#### 5.4.2 - Skid trails (2/04)

Skid trails up and down slopes should be avoided. If however this is unavoidable, these trails will be left in a non-erodible condition using water bars, logs, and slash. Placing of slash on these skid trails while logging is ongoing may alleviate need for any further action. At the direction of the sale administrator, seed, fertilizer, and mulch may also be required.

## 7 - Other Conditions

### 7.2 - Extensions

#### 7.2.4 - Limited extensions (4/17)

Given justification, only one, 1 year extension may be granted if the contract has been paid in full.

### 7.10 - Certified Timber

#### 7.10.1 - Non-certified timber (2/16)

The area encompassed by this timber sale is not certified to the standards of the Forest Stewardship Council (FSC) or the Sustainable Forestry Initiative (SFI). Forest products from this sale may not be delivered to the mill as "FSC and / or SFI certified". The lands within this sale are managed as a State Game Area.



# TIMBER SALE MAP

This information provided by authority of Part 525, 1994 PA 451, as amended.

Sale Number	Year
55-146	2023

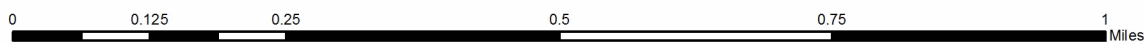
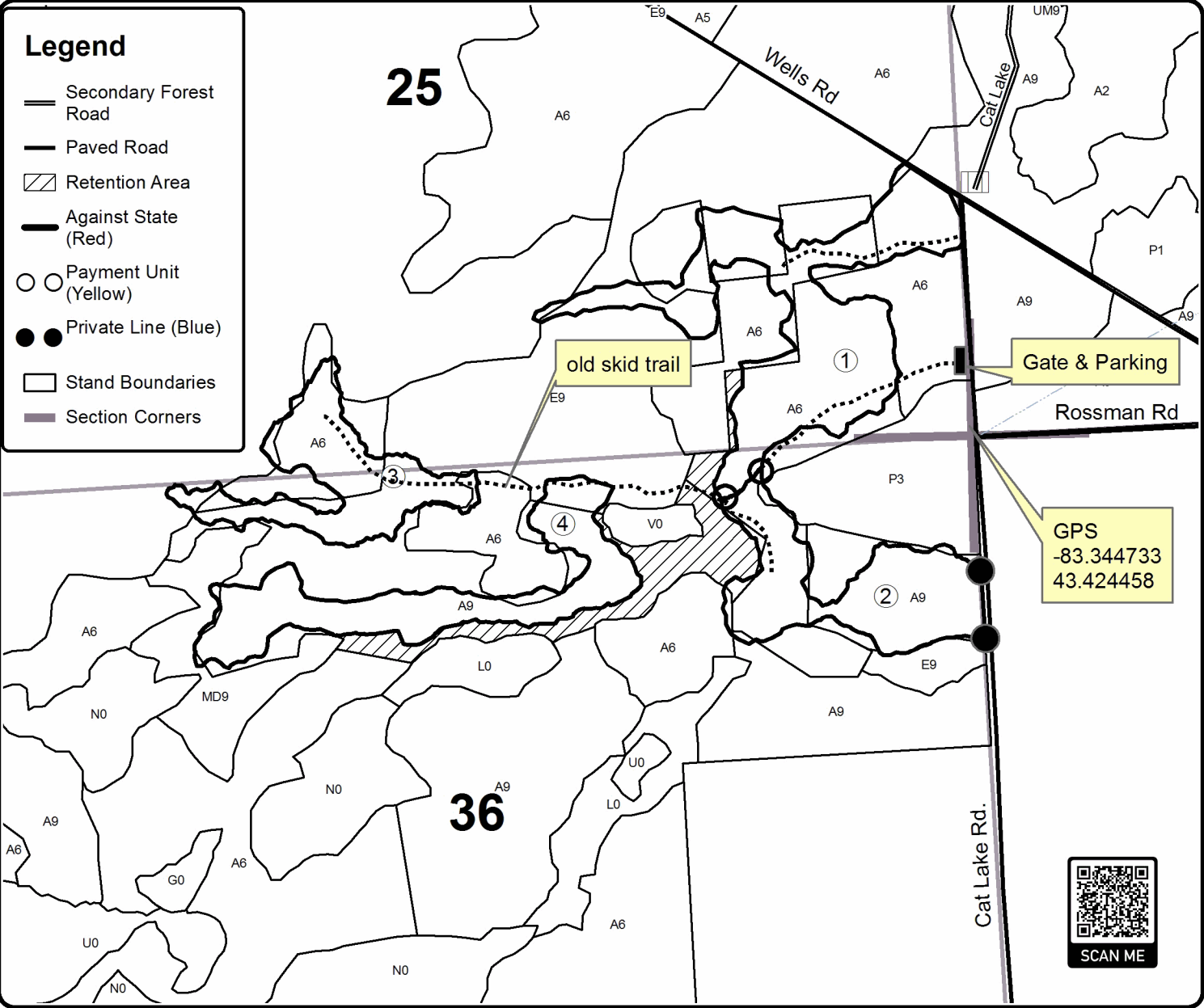
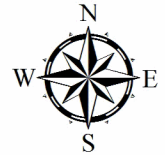
Forest Management Unit	County	Mapped By	Date	Page	of
Tuscola State Game Area	Tuscola	Bonnette	10/16/23	1	1
Township	Range	Section(s) and Subdivision(s)	Scale		
12N	09E	Sec. 28 SESW,S1/2SE & 36 NENW,N1/2NE	1:7,920		
Cruised By					
Bonnette					

Cover Type				Density	
A = Aspen	H = Hemlock	N = Marsh	U = Upland Brush	0 = Non Stocked	5 = Pole Timber Medium
B = Paper Birch	J = Jack Pine	O = Oak	UM = Upland Mixed	1 = Seedling Sapling Poor	6 = Pole Timber Well
C = Cedar	L = Lowland Brush	P = Lowland Poplar	V = Bog or Marsh	2 = Seedling Sapling Medium	7 = Saw Timber Poor
D = Treed Bog	LM = Lowland Mixed	Q = Mixed Swamp Conifer	W = White Pine	3 = Seedling Sapling Well	8 = Saw Timber Medium
E = Swamp Hdwoods	M = Mpl, Bch, Brch	R = Red Pine	X = Non Stocked	4 = Pole Timber Poor	9 = Saw Timber Well
F = Spruce Fir	MC = Mixed Conifer	S = Black Spruce	Z = Water		
G = Grass	MD = Mixed Deciduous	T = Tamarack			

PU	Acres	PU	Acres
1	16.3	4	9.9
2	9.2		
3	7.9		

## Many Fingers Aspen

43.3 Acres





Tangled Up Buck Mix (55-143-23)  
T12N, R10E, SEC. 3; T13N, R10E, SEC. 31; T13N, R10E, SEC. 32; Tuscola

In response to the notice of sale to be held 10:00 a.m. (local time) on February 5, 2024, I am hereby submitting my sealed bid (firm offer) for the following forest products to be cut. Bids for individual species must be at or above the advertised price. All non-responsive bid forms may be rejected.

<u>PRODUCTS &amp; SPECIES</u>	<u>ESTIMATED VOLUME*</u>	<u>ADVERTISED PRICE</u>	<u>BID PRICE/UNIT</u>
<b>Sawtimber</b>			
Black Cherry	28.6 MBF	\$ 60.00/MBF	\$ _____
Jack Pine	50.1 MBF	\$ 23.00/MBF	\$ _____
Mixed Aspen	483.6 MBF	\$ 28.00/MBF	\$ _____
Red Maple	110.5 MBF	\$ 33.00/MBF	\$ _____
Red Pine	135.2 MBF	\$ 45.00/MBF	\$ _____
White Pine	1.4 MBF	\$ 23.00/MBF	\$ _____
<b>Pulpwood</b>			
Jack Pine	225 Cords	\$ 7.50/Cord	\$ _____
Mixed Aspen	959 Cords	\$ 10.50/Cord	\$ _____
Mixed Hardwood	759 Cords	\$ 10.90/Cord	\$ _____
Red Pine	231 Cords	\$ 16.50/Cord	\$ _____
White Pine	1 Cords	\$ 9.00/Cord	\$ _____

\*The volumes are statistically estimated within plus (+) or minus (-) 9.78 percent at 95% confidence level. These estimated volumes are final and not subject to adjustment. Prospective bidders are urged to examine this timber and to make their own estimates of quantity and quality.

I understand that any or all bids may be rejected. All bids must be signed and all bid items must be bid or the bid form may be rejected. I also understand that consideration and awarding a contract will be based upon my past performance and ability to complete the contract based upon equipment and staffing subject to my control.

FEDERAL ID: \_\_\_\_\_ or SOCIAL SECURITY NUMBER: \_\_\_\_\_

Company or individual bidding: \_\_\_\_\_

Company representative's name: \_\_\_\_\_

Address: \_\_\_\_\_

City: \_\_\_\_\_ State: \_\_\_\_\_ Zip: \_\_\_\_\_

IF AVAILABLE, PLEASE PLACE THE PERSONALIZED LABEL FROM YOUR PROSPECTUS IN THE ABOVE BOX.

Individual or company representative's signature: \_\_\_\_\_ Date: \_\_\_\_\_

Phone number : \_\_\_\_\_ Email (optional): \_\_\_\_\_

**THE WINNING BIDDER MUST COMPLETE THE VERIFICATION OF WORKER'S DISABILITY COMPENSATION ACT COMPLIANCE (ON REVERSE SIDE IF DOUBLE SIDED) WITHIN 21 DAYS OF SALE AWARD DATE**



FOR DEPARTMENT USE ONLY	
Sale Number (XX - XXX - XX - XX)	
Forest Management Unit:	

# TIMBER SALE VERIFICATION OF WORKER'S DISABILITY COMPENSATION ACT COMPLIANCE

As required by Act 317, P.A. 1969 (Worker's Compensation) and  
Part 5 of Act 451 of 1994, as amended.

## VERIFICATION OF WORKER'S DISABILITY COMPENSATION ACT COMPLIANCE

- This verification must be completed and submitted within 21 days of contract award and prior to the issuance of the timber sale contract.
- In addition, if boxes 2B or 2C are checked, then Notice of Exclusion or Certificate of Insurance must be submitted within twenty-one (21) days of the contract award and prior to the issuance of the timber sale contract.
- All information must be typed or printed except for written signatures.

Please Check Appropriate Categories:

1. My business is organized as (you **must** check one of the boxes below):
  - A.  Sole Proprietorship (individual)
  - B.  Partnership
  - C.  Corporation
2. You **must** check one of the boxes below:
  - A.  I certify my business is a sole proprietorship and it has no employees but the sole proprietor. I am not subject to the Worker's Compensation Laws.
  - B.  I certify my business has satisfied its obligation to the Worker's Compensation Act through the use of an approved Notice of Exclusion (BWC-337, Rev. 5/96). I will provide a copy of the Notice of Exclusion within 21 days of the contract award. (For questions or a copy of the BWC-337, please call the Worker's Compensation Bureau at 517-322-1195).
  - C.  I certify my business has a Worker's Compensation Policy. I will provide an original Certificate of Insurance within twenty-one (21) days of the contract award.
3. If you have checked item 2(A) or 2(B), you **must** indicate the number of **both** full-time and part-time employees, other than yourself, including family members and active partners (if none, you must enter "0").

\_\_\_\_\_ Full-time Employees

\_\_\_\_\_ Part-time Employees

Name of Business		Federal ID (or) Social Security No.	
Address		Telephone (       )	
City	State	ZIP	

*I hereby certify that the above information is true and correct. I agree to notify the Michigan DNR of any changes that occur in factors affecting my coverage during any of my present and future operations.*

\_\_\_\_\_  
Signature of Owner or Authorized Representative

\_\_\_\_\_  
Title

\_\_\_\_\_  
Date

Please complete the "SEALED BID" information on the next page



Woodpecker Aspen (55-144-23)  
T12N, R10E, SEC. 3; Tuscola COUNTY

In response to the notice of sale to be held 10:00 a.m. (local time) on February 5, 2024, I am hereby submitting my sealed bid (firm offer) for the following forest products to be cut. Bids for individual species must be at or above the advertised price. All non-responsive bid forms may be rejected.

<u>PRODUCTS &amp; SPECIES</u>	<u>ESTIMATED VOLUME*</u>	<u>ADVERTISED PRICE</u>	<u>BID PRICE/UNIT</u>
Sawtimber			
B. T. Aspen	51.8 MBF	\$ 28.00/MBF	\$ _____
Pulpwood			
B. T. Aspen	157 Cords	\$ 9.75/Cord	\$ _____
Mixed Hardwood	15 Cords	\$ 11.25/Cord	\$ _____

\*The volumes are statistically estimated within plus (+) or minus (-) 37.83 percent at 95% confidence level. These estimated volumes are final and not subject to adjustment. Prospective bidders are urged to examine this timber and to make their own estimates of quantity and quality.

I understand that any or all bids may be rejected. All bids must be signed and all bid items must be bid or the bid form may be rejected. I also understand that consideration and awarding a contract will be based upon my past performance and ability to complete the contract based upon equipment and staffing subject to my control.

FEDERAL ID: \_\_\_\_\_ - \_\_\_\_\_ or SOCIAL SECURITY NUMBER: \_\_\_\_\_ - \_\_\_\_\_ - \_\_\_\_\_

Company or individual bidding: \_\_\_\_\_

Company representative's name: \_\_\_\_\_

Address: \_\_\_\_\_

City: \_\_\_\_\_ State: \_\_\_\_\_ Zip: \_\_\_\_\_

IF AVAILABLE, PLEASE PLACE THE PERSONALIZED LABEL FROM YOUR PROSPECTUS IN THE ABOVE BOX.

Individual or company representative's signature: \_\_\_\_\_ Date: \_\_\_\_\_

Phone number : \_\_\_\_\_ Email (optional): \_\_\_\_\_

**THE WINNING BIDDER MUST COMPLETE THE VERIFICATION OF WORKER'S DISABILITY COMPENSATION ACT COMPLIANCE (ON REVERSE SIDE IF DOUBLE SIDED) WITHIN 21 DAYS OF SALE AWARD DATE**



FOR DEPARTMENT USE ONLY	
Sale Number (XX - XXX - XX - XX)	
Forest Management Unit:	

# TIMBER SALE VERIFICATION OF WORKER'S DISABILITY COMPENSATION ACT COMPLIANCE

As required by Act 317, P.A. 1969 (Worker's Compensation) and  
Part 5 of Act 451 of 1994, as amended.

## VERIFICATION OF WORKER'S DISABILITY COMPENSATION ACT COMPLIANCE

- This verification must be completed and submitted within 21 days of contract award and prior to the issuance of the timber sale contract.
- In addition, if boxes 2B or 2C are checked, then Notice of Exclusion or Certificate of Insurance must be submitted within twenty-one (21) days of the contract award and prior to the issuance of the timber sale contract.
- All information must be typed or printed except for written signatures.

Please Check Appropriate Categories:

1. My business is organized as (you **must** check one of the boxes below):
  - A.  Sole Proprietorship (individual)
  - B.  Partnership
  - C.  Corporation
2. You **must** check one of the boxes below:
  - A.  I certify my business is a sole proprietorship and it has no employees but the sole proprietor. I am not subject to the Worker's Compensation Laws.
  - B.  I certify my business has satisfied its obligation to the Worker's Compensation Act through the use of an approved Notice of Exclusion (BWC-337, Rev. 5/96). I will provide a copy of the Notice of Exclusion within 21 days of the contract award. (For questions or a copy of the BWC-337, please call the Worker's Compensation Bureau at 517-322-1195).
  - C.  I certify my business has a Worker's Compensation Policy. I will provide an original Certificate of Insurance within twenty-one (21) days of the contract award.
3. If you have checked item 2(A) or 2(B), you **must** indicate the number of **both** full-time and part-time employees, other than yourself, including family members and active partners (if none, you must enter "0").

\_\_\_\_\_ Full-time Employees

\_\_\_\_\_ Part-time Employees

Name of Business		Federal ID (or) Social Security No.	
Address		Telephone (       )	
City	State	ZIP	

*I hereby certify that the above information is true and correct. I agree to notify the Michigan DNR of any changes that occur in factors affecting my coverage during any of my present and future operations.*

\_\_\_\_\_  
Signature of Owner or Authorized Representative

\_\_\_\_\_  
Title

\_\_\_\_\_  
Date

Please complete the "SEALED BID" information on the next page

Falling Down Aspen (55-145-23)  
T12N, R09E, SEC. 27; T12N, R09E, SEC. 28; Tuscola COUNTY

In response to the notice of sale to be held 10:00 a.m. (local time) on February 5, 2024, I am hereby submitting my sealed bid (firm offer) for the following forest products to be cut. Bids for individual species must be at or above the advertised price. All non-responsive bid forms may be rejected.

<u>PRODUCTS &amp; SPECIES</u>	<u>ESTIMATED VOLUME*</u>	<u>ADVERTISED PRICE</u>	<u>BID PRICE/UNIT</u>
<b>Sawtimber</b>			
Black Cherry	35.4 MBF	\$ 60.00/MBF	\$ _____
Mixed Aspen	253.0 MBF	\$ 28.00/MBF	\$ _____
Paper Birch	6.5 MBF	\$ 28.00/MBF	\$ _____
Red Maple	143.6 MBF	\$ 33.00/MBF	\$ _____
<b>Pulpwood</b>			
Mixed Aspen	883 Cords	\$ 10.50/Cord	\$ _____
Mixed Hardwood	1,042 Cords	\$ 10.90/Cord	\$ _____

\*The volumes are statistically estimated within plus (+) or minus (-) 10.82 percent at 95% confidence level. These estimated volumes are final and not subject to adjustment. Prospective bidders are urged to examine this timber and to make their own estimates of quantity and quality.

I understand that any or all bids may be rejected. All bids must be signed and all bid items must be bid or the bid form may be rejected. I also understand that consideration and awarding a contract will be based upon my past performance and ability to complete the contract based upon equipment and staffing subject to my control.

FEDERAL ID: \_\_\_\_\_ - \_\_\_\_\_ or SOCIAL SECURITY NUMBER: \_\_\_\_\_ - \_\_\_\_\_ - \_\_\_\_\_

Company or individual bidding: \_\_\_\_\_

Company representative's name: \_\_\_\_\_

Address: \_\_\_\_\_

City: \_\_\_\_\_ State: \_\_\_\_\_ Zip: \_\_\_\_\_

IF AVAILABLE, PLEASE PLACE THE PERSONALIZED LABEL FROM YOUR PROSPECTUS IN THE ABOVE BOX.

Individual or company representative's signature: \_\_\_\_\_ Date: \_\_\_\_\_

Phone number : \_\_\_\_\_ Email (optional): \_\_\_\_\_

**THE WINNING BIDDER MUST COMPLETE THE VERIFICATION OF WORKER'S DISABILITY COMPENSATION ACT COMPLIANCE (ON REVERSE SIDE IF DOUBLE SIDED) WITHIN 21 DAYS OF SALE AWARD DATE**



FOR DEPARTMENT USE ONLY	
Sale Number (XX - XXX - XX - XX)	
Forest Management Unit:	

## TIMBER SALE VERIFICATION OF WORKER'S DISABILITY COMPENSATION ACT COMPLIANCE

As required by Act 317, P.A. 1969 (Worker's Compensation) and  
Part 5 of Act 451 of 1994, as amended.

### VERIFICATION OF WORKER'S DISABILITY COMPENSATION ACT COMPLIANCE

- This verification must be completed and submitted within 21 days of contract award and prior to the issuance of the timber sale contract.
- In addition, if boxes 2B or 2C are checked, then Notice of Exclusion or Certificate of Insurance must be submitted within twenty-one (21) days of the contract award and prior to the issuance of the timber sale contract.
- All information must be typed or printed except for written signatures.

Please Check Appropriate Categories:

1. My business is organized as (you **must** check one of the boxes below):
  - A.  Sole Proprietorship (individual)
  - B.  Partnership
  - C.  Corporation
2. You **must** check one of the boxes below:
  - A.  I certify my business is a sole proprietorship and it has no employees but the sole proprietor. I am not subject to the Worker's Compensation Laws.
  - B.  I certify my business has satisfied its obligation to the Worker's Compensation Act through the use of an approved Notice of Exclusion (BWC-337, Rev. 5/96). I will provide a copy of the Notice of Exclusion within 21 days of the contract award. (For questions or a copy of the BWC-337, please call the Worker's Compensation Bureau at 517-322-1195).
  - C.  I certify my business has a Worker's Compensation Policy. I will provide an original Certificate of Insurance within twenty-one (21) days of the contract award.
3. If you have checked item 2(A) or 2(B), you **must** indicate the number of **both** full-time and part-time employees, other than yourself, including family members and active partners (if none, you must enter "0").

\_\_\_\_\_ Full-time Employees

\_\_\_\_\_ Part-time Employees

Name of Business		Federal ID (or) Social Security No.	
Address		Telephone (       )	
City	State	ZIP	

*I hereby certify that the above information is true and correct. I agree to notify the Michigan DNR of any changes that occur in factors affecting my coverage during any of my present and future operations.*

\_\_\_\_\_  
Signature of Owner or Authorized Representative

\_\_\_\_\_  
Title

\_\_\_\_\_  
Date

Please complete the "SEALED BID" information on the next page

Many Fingers Aspen (55-146-23)  
T12N, R09E, SEC. 25; T12N, R09E, SEC. 36; Tuscola COUNTY

In response to the notice of sale to be held 10:00 a.m. (local time) on February 5, 2024, I am hereby submitting my sealed bid (firm offer) for the following forest products to be cut. Bids for individual species must be at or above the advertised price. All non-responsive bid forms may be rejected.

<u>PRODUCTS &amp; SPECIES</u>	<u>ESTIMATED VOLUME*</u>	<u>ADVERTISED PRICE</u>	<u>BID PRICE/UNIT</u>
<b>Sawtimber</b>			
Black Cherry	7.4 MBF	\$ 60.00/MBF	\$ _____
Green Ash	2.8 MBF	\$ 23.00/MBF	\$ _____
Mixed Aspen	211.7 MBF	\$ 28.00/MBF	\$ _____
Red Maple	36.8 MBF	\$ 33.00/MBF	\$ _____
Red Pine	36.1 MBF	\$ 45.00/MBF	\$ _____
<b>Pulpwood</b>			
Mixed Aspen	570 Cords	\$ 10.50/Cord	\$ _____
Mixed Hardwood	134 Cords	\$ 10.90/Cord	\$ _____
Red Pine	84 Cords	\$ 16.50/Cord	\$ _____

\*The volumes are statistically estimated within plus (+) or minus (-) 20.94 percent at 95% confidence level. These estimated volumes are final and not subject to adjustment. Prospective bidders are urged to examine this timber and to make their own estimates of quantity and quality.

I understand that any or all bids may be rejected. All bids must be signed and all bid items must be bid or the bid form may be rejected. I also understand that consideration and awarding a contract will be based upon my past performance and ability to complete the contract based upon equipment and staffing subject to my control.

FEDERAL ID: \_\_\_\_ - \_\_\_\_ - \_\_\_\_ or SOCIAL SECURITY NUMBER: \_\_\_\_ - \_\_\_\_ - \_\_\_\_

Company or individual bidding: \_\_\_\_\_

Company representative's name: \_\_\_\_\_

Address: \_\_\_\_\_

City: \_\_\_\_\_ State: \_\_\_\_\_ Zip: \_\_\_\_\_

IF AVAILABLE, PLEASE PLACE THE PERSONALIZED LABEL FROM YOUR PROSPECTUS IN THE ABOVE BOX.

Individual or company representative's signature: \_\_\_\_\_ Date: \_\_\_\_\_

Phone number : \_\_\_\_\_ Email (optional): \_\_\_\_\_

**THE WINNING BIDDER MUST COMPLETE THE VERIFICATION OF WORKER'S DISABILITY COMPENSATION ACT COMPLIANCE (ON REVERSE SIDE IF DOUBLE SIDED) WITHIN 21 DAYS OF SALE AWARD DATE**



<b>FOR DEPARTMENT USE ONLY</b>
Sale Number (XX - XXX - XX - XX)
Forest Management Unit:

## TIMBER SALE VERIFICATION OF WORKER'S DISABILITY COMPENSATION ACT COMPLIANCE

*As required by Act 317, P.A. 1969 (Worker's Compensation) and  
Part 5 of Act 451 of 1994, as amended.*

### VERIFICATION OF WORKER'S DISABILITY COMPENSATION ACT COMPLIANCE

- This verification must be completed and submitted within 21 days of contract award and prior to the issuance of the timber sale contract.
- In addition, if boxes 2B or 2C are checked, then Notice of Exclusion or Certificate of Insurance must be submitted within twenty-one (21) days of the contract award and prior to the issuance of the timber sale contract.
- All information must be typed or printed except for written signatures.

Please Check Appropriate Categories:

1. My business is organized as (you **must** check one of the boxes below):
  - A.  Sole Proprietorship (individual)
  - B.  Partnership
  - C.  Corporation
  
2. You **must** check one of the boxes below:
  - A.  I certify my business is a sole proprietorship and it has no employees but the sole proprietor. I am not subject to the Worker's Compensation Laws.
  - B.  I certify my business has satisfied its obligation to the Worker's Compensation Act through the use of an approved Notice of Exclusion (BWC-337, Rev. 5/96). I will provide a copy of the Notice of Exclusion within 21 days of the contract award. (For questions or a copy of the BWC-337, please call the Worker's Compensation Bureau at 517-322-1195).
  - C.  I certify my business has a Worker's Compensation Policy. I will provide an original Certificate of Insurance within twenty-one (21) days of the contract award.
  
3. If you have checked item 2(A) or 2(B), you **must** indicate the number of **both** full-time and part-time employees, other than yourself, including family members and active partners (if none, you must enter "0").

\_\_\_\_\_ Full-time Employees

\_\_\_\_\_ Part-time Employees

Name of Business		Federal ID (or) Social Security No.	
Address		Telephone (       )	
City	State	ZIP	

*I hereby certify that the above information is true and correct. I agree to notify the Michigan DNR of any changes that occur in factors affecting my coverage during any of my present and future operations.*

\_\_\_\_\_  
Signature of Owner or Authorized Representative

\_\_\_\_\_  
Title

\_\_\_\_\_  
Date

**Please complete the "SEALED BID" information on the next page**