



**DEPARTMENT OF NATURAL RESOURCES
STATE OF MICHIGAN
TIMBER SALE PROSPECTUS #7284**

SCHEDULED SALE DATE AND TIME: 3:00 p.m. (local time) on October 19, 2023.

LOCATION: **ESCANABA MGMT UNIT, 6833 HWY'S 2, 41 & M-35, GLADSTONE, MI 49837.**

PROSPECTUS NOTE: The bidder is advised to inspect the sale area and review the location, estimated volumes, operating costs and contract terms of proposed sales. Please be aware that some landowners may request 60 days or more notice for access across their land.

Notice is hereby given that bids will be received by the Unit Manager, ESCANABA MANAGEMENT UNIT, for certain timber on the following described lands:

Cherry Ridge Islands (33-002-23) / T35N, R25W, SEC. 28, SWNW,N1/2SW,SWSW.
T35N, R25W, SEC. 29, NENW,E1/2SE.
T35N, R25W, SEC. 30, SWNE,NWSE.
T35N, R25W, SEC. 33, NWNW.

Menominee County, Advertised Price \$15,362.35, 100.1 Acres, Aspen, Hardwood.

SALE NOTE: The best access is through private land from the north from same landowner that allowed access for Fourth Quarter sale. There is access through state from the Cherry Ridge Road, but there is a stream crossing that would need a bridge.

Hazy Wutkevcz (33-005-23) / T35N, R25W, SEC. 19, SESE.
T35N, R25W, SEC. 20, SWNW,NWSW.

Menominee County, Advertised Price \$6,553.70, 40.9 Acres, Hardwood, Spruce/Fir/Tamarack.

SALE NOTE: Access may be through private land.

River Road Hardwood (33-026-23) / T35N, R29W, SEC. 12, S1/2NW,NENE,S1/2NE,NWSW,SESW.

Menominee County, Advertised Price \$38,879.90, 91.7 Acres, Aspen, Hardwood.

Red Washer (33-027-23) / T37N, R27W, SEC. 4 , SESW,NWSE,S1/2SE.
T37N, R27W, SEC. 9 , N1/2NE.

Menominee County, Advertised Price \$21,469.55, 70.1 Acres, Hardwood, Spruce/Fir/Tamarack.

BID INSTRUCTIONS (VER. 10/10/2022):

1. Scheduled Bid Location, Date, and Time (2/11)

Bids must be received by the Unit Manager, ESCANABA OFFICE, 6833 Hwy's 2, 41 & M-35, Gladstone, MI 49837, no later than 3:00 p.m. (local time) on October 19, 2023. For further information concerning this sale, contact Eric Thompson at 906-789-8231.

2. Bidder's Qualifications (10/22)

If all or part of a timber sale was prepared by a private contractor, the contractor and that contractor's company are not permitted to bid on the timber sale. A person must be 18 years of age or older to purchase timber. Permanent employees of the Department of Natural Resources or members of their immediate household may not bid. Former employees, in the permanent or seasonal class, may not bid until 3 months after the last day of active duty. Bids will not be accepted from individuals or companies appearing on the DNR/FRD No-Bid List. This list contains the names of purchasers who previously failed to execute a contract within 21-days or who have a history of poor performance.

3. Preparation of Sealed Bids (5/16)

Bid Forms may be completed online thru Michigan DNR Timber Sale Online Bidding (OLB) at www.michigan.gov/timberbidding or by completing the hardcopy Bid Form found in the Timber Sale Prospectus. Hardcopy Bid Forms shall be manually signed in ink. Registration in OLB is considered your 'signature' for all bids submitted thru that system. Bid prices must be entered for each species and product in the Bid Price column for all material subject to bidding and all fill-in blanks must be completed. If erasures or other changes appear on the hardcopy Bid Form, each erasure or change must be initialed by the person signing the bid.

4. Submission of Sealed Bids (5/16)

Bid forms may be obtained from the Unit Manager or thru OLB. Bids may be submitted hardcopy or thru OLB. All hardcopy bids must be submitted on the bid form and in an envelope clearly identified as described in this section. NOTE: Only one bid form per bid envelope. Sealed bids must be submitted to the Unit office designated in the prospectus and must be submitted at or prior to the time established in the prospectus. The envelope should show on the outside (a) the sale name or number and (b) the date and time of bid opening, as shown in the prospectus. Bids received after the time specified in the sale prospectus are late bids and will be rejected.

It is possible for a bidder to submit multiple bids on a single sale. For example, a bid may be submitted hardcopy and a bid may be submitted thru OLB. Or, two bidders from the same company could both submit bids on the same sale. If this were to happen, the State would accept all bids received and award the contract accordingly. All bidding and contractual requirements would apply to all bids received.

5. Public Opening of Sealed Bids (7/16)

If conditions permit, the sealed bids will be publicly opened and posted at the time and place set in the prospectus.

If a bidder, present at a bid opening, has submitted bids on more than one sale, that bidder may withdraw their unopened bid envelopes or announce the withdrawal of their online bid after being declared the successful bidder on one sale.

6. Award of Contract (1/11)

Award of the contract will be made to the Bidder whose bid, conforming to the prospectus, is most advantageous to the State of Michigan on the basis of total value at rates bid for the estimated quantities. The State reserves the right to reject any bid or waive any minor irregularity in bids received. A written award mailed (or otherwise furnished) to the successful Bidder shall be deemed to result in a binding contract without further action by either party.

7. Down Payment (1/11)

The Bidder to whom award is made must make a down payment within 21 days of the sale award. The amount of the down payment will be calculated as shown in the Bond and Payment Schedule of this prospectus. Only cash may be used to meet this requirement.

8. Performance Security (1/11)

As guarantee of faithful performance, a cash bond, certificate of deposit, surety bond or irrevocable letter of credit (LOC) is required within 21 days of the sale award. The amount of the performance security is shown in the Bond and

Payment Schedule of this prospectus. If an LOC or surety is used, the coverage must extend for at least 6 months beyond the contract expiration.

9. Worker's Compensation (10/22)

Purchaser shall obtain worker's compensation insurance to cover claims under Michigan's Worker's Disability Compensation Act of 1969 or similar employee benefit act of any other state applicable to an employee. Verification of Worker's Disability Compensation Act Compliance must be completed and submitted within 21 days of contract award and prior to the issuance of the timber sale contract. In addition, if applicable, Notice of Exclusion or Certificate of Insurance must also be submitted.

10. Timber Sale Contract (10/22)

Additional conditions and requirements common to all timber sales are listed on the timber sale contract (R4031) and are available on line at www.michigan.gov/timber. Contact the Unit Manager for additional information or a sample contract. Within 21 days of the date of the award letter, the bidder must sign the contract and provide the required down payment, performance security, and verification of worker's disability compensation. The down payment and performance security shall be in accordance with the provisions of the timber sale contract, in the sums stated in this prospectus. If these actions are not taken, then the Bidder, the Bidder's corporation, and the corporation's principals may not be permitted to bid on State timber sales for a period of 3 months after the first offense, 6 months after the second offense, and 1 year after the third offense. An offense will only be counted against the Bidder for 5 years. In addition, the Bidder certifies that if awarded this contract, the Bidder will complete the timber sale contract in accordance with its terms and any modifications thereof including requirements to purchase, cut, and remove the included timber by the expiration date.

Payment Unit values in the State Forest Timber Sale Contract are calculated based on the advertised value of the Payment Unit as a percentage of the total advertised value of the contract. The advertised value of each Payment Unit is given in the Description of Timber by Payment Unit table on the Timber Sale Information page. For example, if the value of Payment Unit 1 is advertised as \$1,500 and the total Timber Sale value is advertised as \$10,000, the contract price for Payment Unit 1 will be 15% of the total bid price ($\$1,500/\$10,000 * 100$).

11. Disclaimer of Estimates and Bidder's Warranty of Inspection (10/22)

Before submitting this bid, the Bidder is advised and cautioned to inspect the sale area, review the requirements of the sale contract, and take other steps as may be reasonably necessary to ascertain the location, estimated volumes, construction estimates, and operating costs of the proposed sale. Failure to do so will not relieve the Bidder from responsibility for completing the contract.

The Bidder warrants that this bid is submitted solely on the basis of the Bidder's examination and inspection of the quality and quantity of the timber offered for sale and the Bidder's opinion of the value thereof and the costs of recovery. No reliance should be placed on the State of Michigan's estimates of timber quality, quantity or costs of recovery. Bidder further acknowledges that the State of Michigan: (i) expressly disclaims any warranty of fitness of timber for any purpose; (ii) offers this timber as is without any warranty of quality (merchantability) or quantity and (iii) expressly disclaims any warranty as to the quantity or quality of timber sold.

12. Certification and Chain-of-Custody (10/22)

Unless otherwise indicated in the contract under section 7 – Other Conditions of the Sale Specific Conditions & Requirements, the area encompassed by this timber sale is certified to the standards of the Forest Stewardship Council (FSC) - Certificate #SCS-FM/COC-00090N and the Sustainable Forestry Initiative (SFI) - Certificate #NSF-SFIS-5Y031-SF5. Forest products from this sale may be delivered to the mill as "FSC 100% and / or SFI certified" as long as the contractor hauling the forest products is chain-of-custody (COC) certified or covered under a COC certificate from the destination mill. The purchaser is responsible for maintaining COC after leaving the sale area.

13. Good Neighbor Authority (GNA) Requirements (10/22)

If the name of this timber sales contains the acronym GNA, it is authorized by the Good Neighbor Authority (GNA) and covered by various agreements between the U.S. Forest Service and the State. The timber sale occurs on federal land and the following conditions apply:

GNA contracts on US Forest Service land will not be awarded to purchasers on the Federal list of excluded parties. The System for Award Management (SAM) will be checked for active excluded parties prior to award of contract. In

addition, the Bidder to whom award is made must complete an Assurance Regarding Felony Conviction or Tax Delinquent Status for Corporate Applicants (AD-3031).

14. Good Neighbor Authority (GNA) Requirements, con't (10/22)

Bidder certifies, by signing this bid form, that to the best of Bidder's knowledge that the following representations are accurate and complete.

- a. That the Bidder and its principals are not presently debarred, suspended, proposed for debarment, declared ineligible, or voluntary excluded from timber sales (covered transactions) by any Federal department or agency.
- b. That the Bidder and its principals have not within a 3-year period preceding this bid been convicted of or had a civil judgment rendered against them for commission of fraud or a criminal offense in connection with obtaining , attempting to obtain, or performing a public (Federal, State, or local) transaction or contract under a public transaction; violation of Federal or State antitrust statutes or commission of embezzlement, theft, forgery, bribery, falsification or destruction of records, making false statements, or receiving stolen property.
- c. That the Bidder and its principals are not presently indicted for or otherwise criminally or civilly charged by a governmental entity (Federal, State, or local) with commission of any of the offenses enumerated in paragraph b of this certification.
- d. That the Bidder and its principals have not within a 3-year period preceding this bid had one or more public transactions (Federal, State, or local) terminated for breach or default of a timber or forest product contract.

Bidders that cannot certify this requirement, in whole or in part, shall submit an explanation with their bid.

Scott Bowen
Director

TIMBER SALE INFORMATION

Cherry Ridge Islands (33-002-23)

T35N, R25W, SEC. 28; T35N, R25W, SEC. 29; T35N, R25W, SEC. 30; T35N, R25W, SEC. 33.
Menominee County (Advertised Price \$15,362.35)

SALE NOTE: The best access is through private land from the north from same landowner that allowed access for Fourth Quarter sale. There is access through state from the Cherry Ridge Road, but there is a stream crossing that would need a bridge.

A timber sale contract for this lump sum, sealed bid timber sale will be awarded to the responsible bidder offering the highest sealed bid price. All units of volume listed below were estimated using the Inventory Manager computer program and the new Michigan taper model. Bids must be at or above the following advertised price for each product and species:

<u>PRODUCTS & SPECIES</u>	<u>ESTIMATED UNITS*</u>	<u>ADVERTISED PRICE</u>
Sawtimber		
Red Maple	24.5 MBF	\$ 72.00 / MBF
Pulpwood		
Balsam Fir	130 Cords	\$ 6.00 / Cord
Mixed Aspen	534 Cords	\$ 13.15 / Cord
Mixed Hardwood	419 Cords	\$ 9.85 / Cord
Paper Birch	21 Cords	\$ 5.15 / Cord
Tamarack	17 Cords	\$ 8.50 / Cord
White Pine	73 Cords	\$ 16.65 / Cord
White Spruce	30 Cords	\$ 6.70 / Cord

* The total volume is statistically estimated within plus (+) or minus (-) 14.13 percent. There are an estimated 1,289 cords on this timber sale, plus or minus 182 cords at the 95% confidence level. The estimated units are final and not subject to adjustment. Prospective bidders are urged to examine this timber and to make their own estimates of quantity and quality.

BOND AND PAYMENT SCHEDULE:

1. A bond in the amount of \$768.00 to insure faithful performance of the conditions of the contract will be deposited by the successful bidder within 21 days of the sale award.
2. Cutting in any sale or unit without the required advance payment would be considered a trespass.
3. Total payment must be paid in advance or according to the following schedule :
 - (a) Ten percent (10%) of the sale value must be paid within 21 days of the sale award.
 - (b) The 10% down payment will be credited towards the first unit cut.
 - (c) Payment for each of the following units must be made before cutting begins in that unit:

PAYMENT UNIT NUMBER	PERCENT OF TOTAL SALE VALUE
01	10.4%
02	24.9%
03	29.1%
04	12.4%
05	7.3%
06	15.9%
4. If no cutting takes place, the 10% down payment will not be refunded.
5. Operations on the contract issued will terminate on 06/30/2026.

SALE STATISTICS

Volumes were calculated in cubic feet using the Michigan taper model. Cubic foot volume includes all wood inside bark for the product indicated. For display purposes, cubic feet were converted to cords and MBF using a simple conversion factor, e.g. 79 cubic feet per cord and 185 cubic feet per MBF. The cubic foot volumes are precise; the cords and MBF volumes are not. Cubic foot volume cannot be directly converted to cords or boards with precision.

SALE VOLUMES

The total estimated sale volume may not equal the sum of the species/products due to the nature of statistical calculations associated with double sampling methodology.

VOLUME		STATISTICAL RANGE IN CORDS		
TOTAL CUBIC FEET	TOTAL CORDS	PERCENT ERROR	MINIMUM	MAXIMUM
101,819	1,289	14.13%	1,107	1,471

VDU VOLUMES

A VDU is a Volume Determination Unit. Volumes and their associated statistics are calculated at the VDU level and summarized to the sale level. There is often a one to one relationship between a VDU and a Payment Unit, but not always, depending on the cruise design. Refer to the VDU TO PAYMENT UNIT table.

VDU	VOLUME		PERCENT ERROR	RANGE IN CORDS	
	TOTAL CUBIC FEET	TOTAL CORDS		MINIMUM	MAXIMUM
57	8,243	104	69.63%	32	177
59	15,538	197	46.09%	106	287
94	60,069	760	18.62%	619	902
96	17,968	227	35.71%	146	309
TOTAL:	101,819	1,289		903	1,675

VDU TO PAYMENT UNIT

When a VDU is associated with more than one Payment Unit (PU), the VDU volumes are assigned to the PU based on acres of the VDU within the PU.

VDU	VDU ACRES	PU	PU ACRES
57	9.6	5	9.6
59	19.2	4	19.2
94	55.0	1	8.9
		2	21.2
		3	24.9
96	16.3	6	16.3
TOTAL:	100.1		100.1

DESCRIPTION OF TIMBER BY PAYMENT UNIT (PU)

PU	MARKET GROUP	PRODUCT	QUANTITY	UNIT	ACRES	ADVERTISE PRICE
	Red Maple	Sawtimber	2.6	MBF		
	Balsam Fir	Pulpwood	7	Cords		
	Mixed Hardwood		30	Cords		
	Paper Birch		1	Cords		
	Tamarack		3	Cords		
	White Pine		3	Cords		
	White Spruce		1	Cords		
	Red Maple	Sawtimber	6.1	MBF		
	Balsam Fir	Pulpwood	17	Cords		
	Mixed Hardwood		72	Cords		
	Paper Birch		2	Cords		
	Tamarack		7	Cords		
	White Pine		8	Cords		
	White Spruce		2	Cords		
	Red Maple	Sawtimber	7.2	MBF		
	Balsam Fir	Pulpwood	20	Cords		
	Mixed Hardwood		84	Cords		
	Paper Birch		2	Cords		
	Tamarack		7	Cords		
	White Pine		10	Cords		
	White Spruce		2	Cords		
	Red Maple	Sawtimber	1.7	MBF		
	Balsam Fir	Pulpwood	29	Cords		
	Mixed Hardwood		84	Cords		
	Paper Birch		13	Cords		
	White Pine		23	Cords		
	White Spruce		16	Cords		
	Balsam Fir		6	Cords		
	Mixed Hardwood		59	Cords		
	White Pine		29	Cords		
	Red Maple	Sawtimber	6.9	MBF		
	Balsam Fir	Pulpwood	51	Cords		
	Mixed Hardwood		90	Cords		
	Paper Birch		3	Cords		
	White Spruce		9	Cords		
	Mixed Aspen	Pulpwood	75	Cords	8.9	
	<i>B. T. Aspen</i>		30	<i>Cords</i>		
	<i>Quaking Aspen</i>		45	<i>Cords</i>		
2	Mixed Aspen	Pulpwood	179	Cords	21.2	\$3,820.65
	<i>B. T. Aspen</i>		72	<i>Cords</i>		
	<i>Quaking Aspen</i>		107	<i>Cords</i>		
3	Mixed Aspen	Pulpwood	210	Cords	24.9	\$4,477.00
	<i>B. T. Aspen</i>		84	<i>Cords</i>		
	<i>Quaking Aspen</i>		126	<i>Cords</i>		
4	Mixed Aspen	Pulpwood	17	Cords	19.2	\$1,904.45
	<i>Quaking Aspen</i>		17	<i>Cords</i>		
5	Mixed Aspen	Pulpwood	2	Cords	9.6	\$1,126.30
	<i>B. T. Aspen</i>		2	<i>Cords</i>		
6	Mixed Aspen	Pulpwood	51	Cords	16.3	\$2,435.70
	<i>B. T. Aspen</i>		13	<i>Cords</i>		
	<i>Quaking Aspen</i>		38	<i>Cords</i>		
TOTAL:			24.5	MBF		
TOTAL:			1,224	Cords		

Sale Specific Conditions & Requirements

Sale Name: Cherry Ridge Islands

Sale Number: 33-002-23 Seq#: 2

1 - Sale Area

1.2 - Boundaries

1.2.1 - Painted boundaries (9/19)

The sale boundary and Payment Unit boundaries are marked and identified by blue, red and yellow paint. Exterior sale boundary lines against private property are marked with blue paint. Exterior sale boundary lines against state are marked with red paint. Exterior sale boundary lines against roadways are marked with red paint and/or is the physical edge of the roadway. Interior Payment Unit boundaries are marked with yellow paint. Retention areas are marked with red paint; no harvesting activities may occur within these areas. The painted boundary line trees are not Included Timber and are to be protected. Yellow painted trees designating an interior Payment Unit boundary are only to be cut when all surrounding Payment Units have been paid.

2 - Timber Specifications

2.1 - Included Timber

2.1.1 - Clearcut unit(s) with unmerchantable trees (6/14)

Within Payment Unit(s) 1, 2, 3, 5, 6, cut all trees that are three (3) inches or more at DBH, except trees marked with green paint at stump and breast height.

2.1.2 - Clearcut unit(s) w/o unmerchantable trees (8/11)

Within Payment Unit(s) 4, cut all trees which meet minimum piece specifications in 2.2 Utilization, except trees marked with green paint at stump and breast height.

2.1.11 - Description of timber note (2/04)

Note that all ash, softwood and aspen species are calculated as pulpwood volumes regardless of diameter at breast height (dbh) size class.

3 - Payments

3.3 - Pre-measured Sales

3.3.4 - Dividing payment units (7/14)

Payment Unit(s) with a contract value of \$18,000 or more may be divided at the request of the Purchaser and upon approval of the Unit Manager. Dividing Payment Units is a contract modification which requires a Timber Sale Contract Amendment. There will be only one division per Payment Unit.

4 - Transportation

4.1 - Construction

4.1.1 - Stream crossings, general (3/11)

All stream crossing structures will be temporary and therefore, shall be provided by the Purchaser, and must be removed upon completion of the sale. All permits for stream crossings will be provided by the DNR.

4.1.6 - Road construction (1/09)

Improvements of existing roads shall be done in such a way as to minimize the environmental and visual impacts. Merchantable trees shall be cut and utilized unless otherwise directed. Non-merchantable trees shall be severed and laid flat on the ground. Slash shall be scattered, and not left in windrows and kept a minimum of 10 feet back from the road edge, be chipped, utilized or otherwise removed from the sale. Stumps shall be set upright, not left on edge, and be moved at least 10 feet away from the road edge. Disturbed soil shall be feathered into the woods and not left in berms or windrows.

4.1.12 - No new roads (1/12)

No new roads will be permitted in any Payment Unit. All operations are limited to existing roads. Skid trails only will be allowed.

4.2 - Maintenance

4.2.2 - Fill material (4/07)

To maintain roads, fill material may be needed in areas where "holes" exist or may be expected to develop. This fill material should be placed before trucking begins. Contact the sale administrator regarding the availability of onsite sand or gravel from adjacent State-owned lands.

4.2.3 - Road maintenance (8/13)

The following road maintenance is required: Within 60 days of completion of hauling, or if no hauling occurs for 60 days, the road must be maintained and graded. This includes cleaning of drainage areas, grading, crowning and filling with gravel, if necessary. Damages will be assessed if grading/repair does not occur.

4.2.4 - Grading (10/16)

For completion of the sale, state forest roads must be graded. In general, this will require a road grader or bull dozer to shape up the roads after forest products have been hauled off site. This includes cleaning of drainage areas, grading, crowning and filling with gravel, if necessary. The grading equipment to be used must be approved by the Unit Manager or his/her representative.

4.2.5 - Two wheel drive condition (2/04)

All existing trail roads on and adjacent to the sale area must be passable by two-wheel drive traffic for the duration of the sale.

4.3 - Public Right-of-Way

4.3.2 - County R-O-W (12/06)

The county must be contacted prior to crossing or harvesting in the county road R-O-W. This applies to Payment Unit(s) 4 & 5 and County Road 352 (G12) and Jimtown Road (F3) respectively.

4.4 - Access

4.4.1 - Private property access (3/11)

Permission for access across private land is the responsibility of the Purchaser. Contact the Escanaba Field Office for private landowner contact information.

4.4.2 - Alternate route on private property (2/04)

It is the Purchaser's responsibility to obtain access across private land for any routes other than the route shown on the Timber Sale Map.

5 - Operations

5.1 - Notification

5.1.1 - Pre-sale conference (10/16)

A pre-sale conference between the Purchaser and sale administrator is required prior to beginning any operations. The Unit Manager or his/her representative must be contacted at least 10 days in advance to schedule the conference.

5.1.4 - Post-sale conference (10/16)

A post-sale conference on site between the Purchaser and sale administrator is required 5 days prior to the completion of active logging operations to determine clean-up and repair of landings, road edges, and the fulfillment of other contract specifications.

5.2 - Conduct of Operations

5.2.2 - Hazard Trees/Snags

5.2.2.1 - Den trees (10/16)

Obvious hollow and/or den trees shall be protected and left standing unless they are a safety hazard.

5.2.22 - Operating Caution

5.2.22.1 - Operating caution (6/11)

It is recommended, but not required, that within Payment Unit(s) 1-6, cutting, skidding, and hauling occur during dry summer or frozen winter conditions. The reason for the recommendation is because the access to and within these units is low and wet in areas.

5.4 - Soil Protection

5.4.1 - Rutting restriction, general (7/16)

Operations are to cease immediately if equipment and weather conditions result in rutting of roads and/or skid trails which is 12 inches or greater in depth and 50 feet in length. The Unit Manager or his/her representative may restrict hauling and/or skidding if ruts exceed the specified depth. With the Unit Manager or his/her representative's approval, the Purchaser may return to the area when the risk of rutting has decreased.

6 - Safety and Fire Prevention

6.2 - Signing

6.2.1 - Road posting (10/20)

The Purchaser is responsible for posting and maintaining caution signs on County Road 352, Jimtown Road, and Cherry Ridge Road (if used to access the sale) prior to beginning operations. The road must be posted at appropriate distances from the sale area to warn of logging activity and truck traffic. Signs must be removed when harvest operations are suspended or completed. The Purchaser will provide these signs.



Sale Number	Year
33-002	23

TIMBER SALE MAP

This information provided by authority of Part 525, 1994 PA 451, as amended.

Forest Management Unit Escanaba	County Menominee	Mapped By Reger	Date 04/21/2023	Page 1	of 1
Township 35N	Range 25W	Section(s) and Subdivision(s) 28; SWNW,N1/2SW 29; NENW,NESE 30; SWNE,NWSE 33; NWNW	Scale 1:15,840		

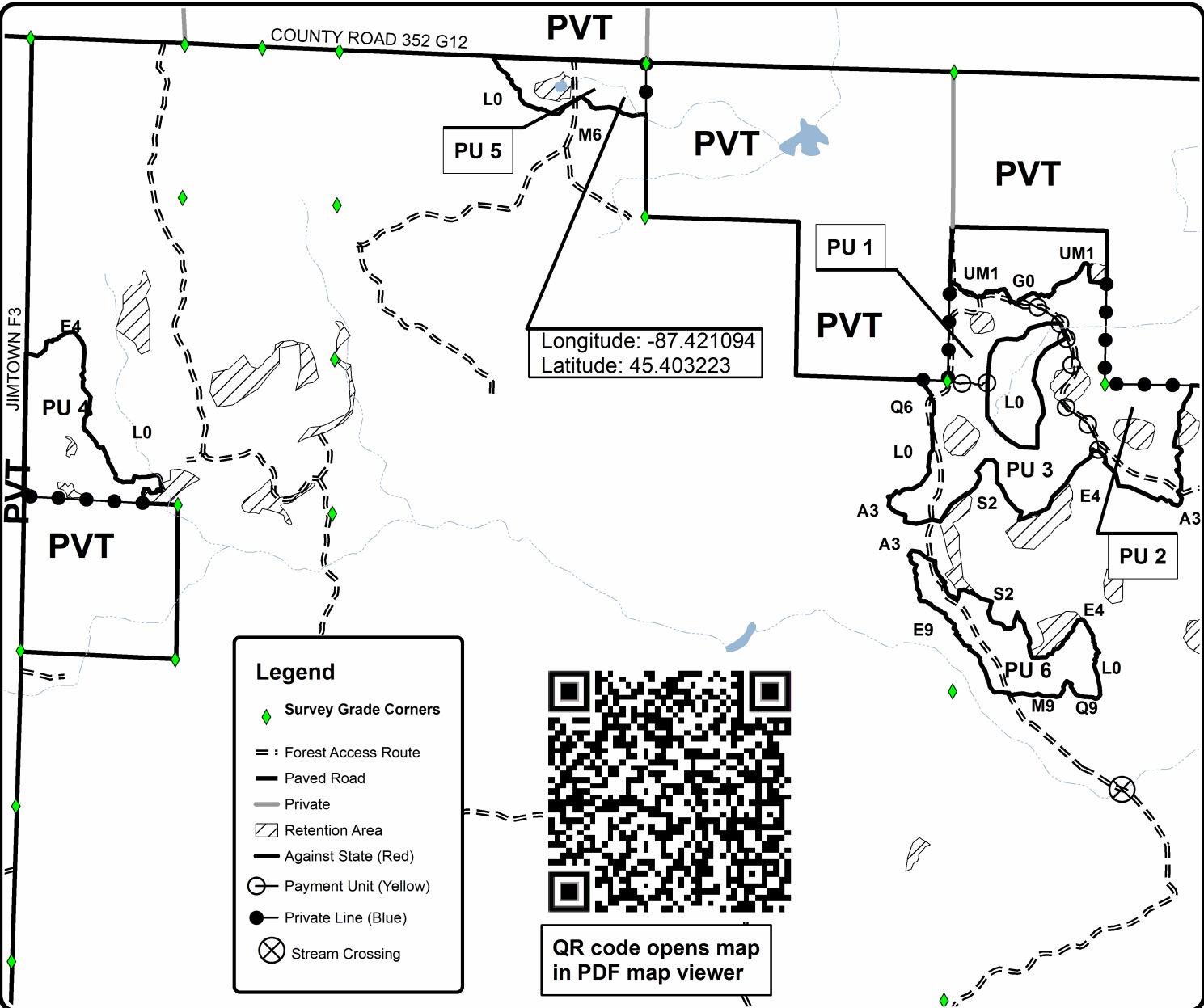
Cover Type				Density	
A = Aspen	H = Hemlock	N = Marsh	U = Upland Brush	0 = Non Stocked	5 = Pole Timber Medium
B = Paper Birch	J = Jack Pine	O = Oak	UM = Upland Mixed	1 = Seedling Sapling Poor	6 = Pole Timber Well
C = Cedar	L = Lowland Brush	P = Lowland Poplar	V = Bog or Marsh	2 = Seedling Sapling Medium	7 = Saw Timber Poor
D = Treed Bog	LM = Lowland Mixed	Q = Mixed Swamp Conifer	W = White Pine	3 = Seedling Sapling Well	8 = Saw Timber Medium
E = Swamp Hdwoods	M = Mpl, Bch, Brch	R = Red Pine	X = Non Stocked	4 = Pole Timber Poor	9 = Saw Timber Well
F = Spruce Fir	MC = Mixed Conifer	S = Black Spruce	Z = Water		
G = Grass	MD = Mixed Deciduous	T = Tamarack			

PU	Acres	PU	Acres
1	8.9	4	19.2
2	21.2	5	9.6
3	24.9	6	16.3

Cherry Ridge Islands

Compartment 56

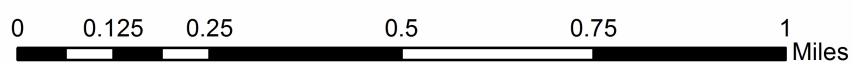
100.1 Acres



Legend	
	Survey Grade Corners
	Forest Access Route
	Paved Road
	Private
	Retention Area
	Against State (Red)
	Payment Unit (Yellow)
	Private Line (Blue)
	Stream Crossing



QR code opens map in PDF map viewer



TIMBER SALE INFORMATION

Hazy Wutkevcz (33-005-23)

T35N, R25W, SEC. 19; T35N, R25W, SEC. 20.
Menominee County (Advertised Price \$6,553.70)

SALE NOTE: Access may be through private land.

A timber sale contract for this lump sum, sealed bid timber sale will be awarded to the responsible bidder offering the highest sealed bid price. All units of volume listed below were estimated using the Inventory Manager computer program and the new Michigan taper model. Bids must be at or above the following advertised price for each product and species:

<u>PRODUCTS & SPECIES</u>	<u>ESTIMATED UNITS*</u>	<u>ADVERTISED PRICE</u>
Sawtimber		
American Elm	4.3 MBF	\$ 22.00 / MBF
Red Maple	26.2 MBF	\$ 103.00 / MBF
Pulpwood		
Balsam Fir	44 Cords	\$ 8.55 / Cord
Green Ash	30 Cords	\$ 14.05 / Cord
Misc. Species 1	113 Cords	\$ 1.00 / Cord
Mixed Hardwood	195 Cords	\$ 14.05 / Cord
N. White Cedar	6 Cords	\$ 7.20 / Cord
White Spruce	7 Cords	\$ 9.55 / Cord

* The total volume is statistically estimated within plus (+) or minus (-) 17.57 percent. There are an estimated 493 cords on this timber sale, plus or minus 87 cords at the 95% confidence level. The estimated units are final and not subject to adjustment. Prospective bidders are urged to examine this timber and to make their own estimates of quantity and quality.

BOND AND PAYMENT SCHEDULE:

1. A bond in the amount of \$328.00 to insure faithful performance of the conditions of the contract will be deposited by the successful bidder within 21 days of the sale award.
2. Cutting in any sale or unit without the required advance payment would be considered a trespass.
3. Total payment must be paid in advance or according to the following schedule :
 - (a) Ten percent (10%) of the sale value must be paid within 21 days of the sale award.
 - (b) The 10% down payment will be credited towards the first unit cut.
 - (c) Payment for each of the following units must be made before cutting begins in that unit:

PAYMENT UNIT NUMBER	PERCENT OF TOTAL SALE VALUE
01	68.3%
02	31.7%
4. If no cutting takes place, the 10% down payment will not be refunded.
5. Operations on the contract issued will terminate on 09/30/2026.

SALE STATISTICS

Volumes were calculated in cubic feet using the Michigan taper model. Cubic foot volume includes all wood inside bark for the product indicated. For display purposes, cubic feet were converted to cords and MBF using a simple conversion factor, e.g. 79 cubic feet per cord and 185 cubic feet per MBF. The cubic foot volumes are precise; the cords and MBF volumes are not. Cubic foot volume cannot be directly converted to cords or boards with precision.

SALE VOLUMES

The total estimated sale volume may not equal the sum of the species/products due to the nature of statistical calculations associated with double sampling methodology.

VOLUME		STATISTICAL RANGE IN CORDS		
TOTAL CUBIC FEET	TOTAL CORDS	PERCENT ERROR	MINIMUM	MAXIMUM
38,964	493	17.57%	407	580

VDU VOLUMES

A VDU is a Volume Determination Unit. Volumes and their associated statistics are calculated at the VDU level and summarized to the sale level. There is often a one to one relationship between a VDU and a Payment Unit, but not always, depending on the cruise design. Refer to the VDU TO PAYMENT UNIT table.

VDU	VOLUME		PERCENT ERROR	RANGE IN CORDS	
	TOTAL CUBIC FEET	TOTAL CORDS		MINIMUM	MAXIMUM
30	13,050	165	25.25%	123	207
33	25,913	328	17.63%	270	386
TOTAL:	38,964	493		394	593

VDU TO PAYMENT UNIT

When a VDU is associated with more than one Payment Unit (PU), the VDU volumes are assigned to the PU based on acres of the VDU within the PU.

VDU	VDU ACRES	PU	PU ACRES
30	7.9	2	7.9
33	33.0	1	33.0
TOTAL:	40.9		40.9

DESCRIPTION OF TIMBER BY PAYMENT UNIT (PU)

PU	MARKET GROUP	PRODUCT	QUANTITY	UNIT	ACRES	ADVERTISE PRICE
	American Elm	Sawtimber	4.3	MBF		
	Red Maple		18.1	MBF		
	Balsam Fir	Pulpwood	44	Cords		
	Green Ash		19	Cords		
	Misc. Species 1		63	Cords		
	White Spruce		4	Cords		
	Red Maple	Sawtimber	8.1	MBF		
	Green Ash	Pulpwood	11	Cords		
	Misc. Species 1		50	Cords		
	N. White Cedar		6	Cords		
	White Spruce		3	Cords		
	Mixed Hardwood	Pulpwood	126	Cords	33.0	
	<i>American Elm</i>		11	<i>Cords</i>		
	<i>Red Maple</i>		115	<i>Cords</i>		
2	Mixed Hardwood	Pulpwood	69	Cords	7.9	\$2,080.15
	<i>Paper Birch</i>		5	<i>Cords</i>		
	<i>Red Maple</i>		64	<i>Cords</i>		
TOTAL:			30.5	MBF		
TOTAL:			395	Cords		

Sale Specific Conditions & Requirements

Sale Name: Hazy Wutkevcz

Sale Number: 33-005-23 Seq#: 1

1 - Sale Area

1.2 - Boundaries

1.2.1 - Painted boundaries (9/19)

The sale boundary and Payment Unit boundaries are marked and identified by blue, red and yellow paint. Exterior sale boundary lines against private property are marked with blue paint. Exterior sale boundary lines against state are marked with red paint. Interior Payment Unit boundaries are marked with yellow paint. Retention patches are marked with red paint; no harvesting activities may occur within these areas. The painted boundary line trees are not Included Timber and are to be protected unless marked with orange paint. Yellow painted trees designating an interior Payment Unit boundary are only to be cut when all surrounding Payment Units have been paid.

2 - Timber Specifications

2.1 - Included Timber

2.1.1 - Clearcut unit(s) with unmerchantable trees (6/14)

Within Payment Unit(s) 2, cut all trees that are two (2) inches or more at DBH.

2.1.7 - Leave tree marked unit(s) (6/14)

Within Payment Unit(s) 1, cut all trees that are two (2) inches or more at DBH except northern white cedar and trees marked with green paint above and below stump height. Heavily faded green paint from a previous treatment may still be present in Payment Unit 1. This obviously faded green paint is to be ignored.

2.1.11 - Description of timber note (2/04)

Note that all ash, aspen and softwood species are calculated as pulpwood volumes regardless of diameter at DBH. Dead trees are to be harvested. Misc species 1 is green ash that is either dead or has heavy die back. Gray/brown painted trees are to be treated as unpainted trees.

3 - Payments

3.3 - Pre-measured Sales

3.3.4 - Dividing payment units (7/14)

Payment Unit(s) with a contract value of \$18,000 or more may be divided at the request of the Purchaser and upon approval of the Unit Manager. Dividing Payment Units is a contract modification which requires a Timber Sale Contract Amendment.

4 - Transportation

4.4 - Access

4.4.1 - Private property access (3/11)

Permission for access across private land is the responsibility of the Purchaser.

4.4.4 - Restricted access (10/05)

Access is restricted, because the only access is through private land.

5 - Operations

5.1 - Notification

5.1.1 - Pre-sale conference (10/16)

A pre-sale conference between the Purchaser and sale administrator is required prior to beginning any operations. The Unit Manager or his/her representative must be contacted at least 10 days in advance to schedule the conference.

5.1.4 - Post-sale conference (10/16)

A post-sale conference on site between the Purchaser and sale administrator is required 5 days prior to the completion of active logging operations to determine clean-up and repair of landings, road edges, and the fulfillment of other contract

specifications.

5.2 - Conduct of Operations

5.2.2 - Hazard Trees/Snags

5.2.2.1 - Den trees (10/16)

Obvious hollow and/or den trees shall be protected and left standing unless they are a safety hazard.

5.2.38 - No decking against live trees (2/04)

Cut products may not be decked against unmarked or designated leave trees.

5.4 - Soil Protection

5.4.1 - Rutting restriction, general (7/16)

Operations are to cease immediately if equipment and weather conditions result in rutting of roads and/or skid trails which is 12 inches or greater in depth and 50 feet in length. The Unit Manager or his/her representative may restrict hauling and/or skidding if ruts exceed the specified depth. With the Unit Manager or his/her representative's approval, the Purchaser may return to the area when the risk of rutting has decreased.

6 - Safety and Fire Prevention

6.2 - Signing

6.2.1 - Road posting (10/20)

The Purchaser is responsible for posting and maintaining caution signs on Wutkevicz Lane E 3 prior to beginning operations. The road must be posted at appropriate distances from the Sale Area to warn of logging activity and truck traffic. Signs must be removed when harvest operations are suspended or completed. The Purchaser will provide these signs.

7 - Other Conditions

7.5 - Loss

7.5.1 - Deteriorating timber (7/09)

The sale area has received damage from emerald ash borer. The Purchaser should harvest the wood as soon as possible. The Department of Natural Resources is held free of responsibility of any further damage or deterioration due to delay in harvesting.



Sale Number	Year
33-005	23

TIMBER SALE MAP

This information provided by authority of Part 525, 1994 PA 451, as amended.

Forest Management Unit Escanaba	County Menominee	Mapped By Reger	Date 06/22/2023	Page 1	of 1
Township 35N	Range 25W	Section(s) and Subdivision(s) 19; SESE, 20;SWNW,NWSW	Scale 1:15,840		

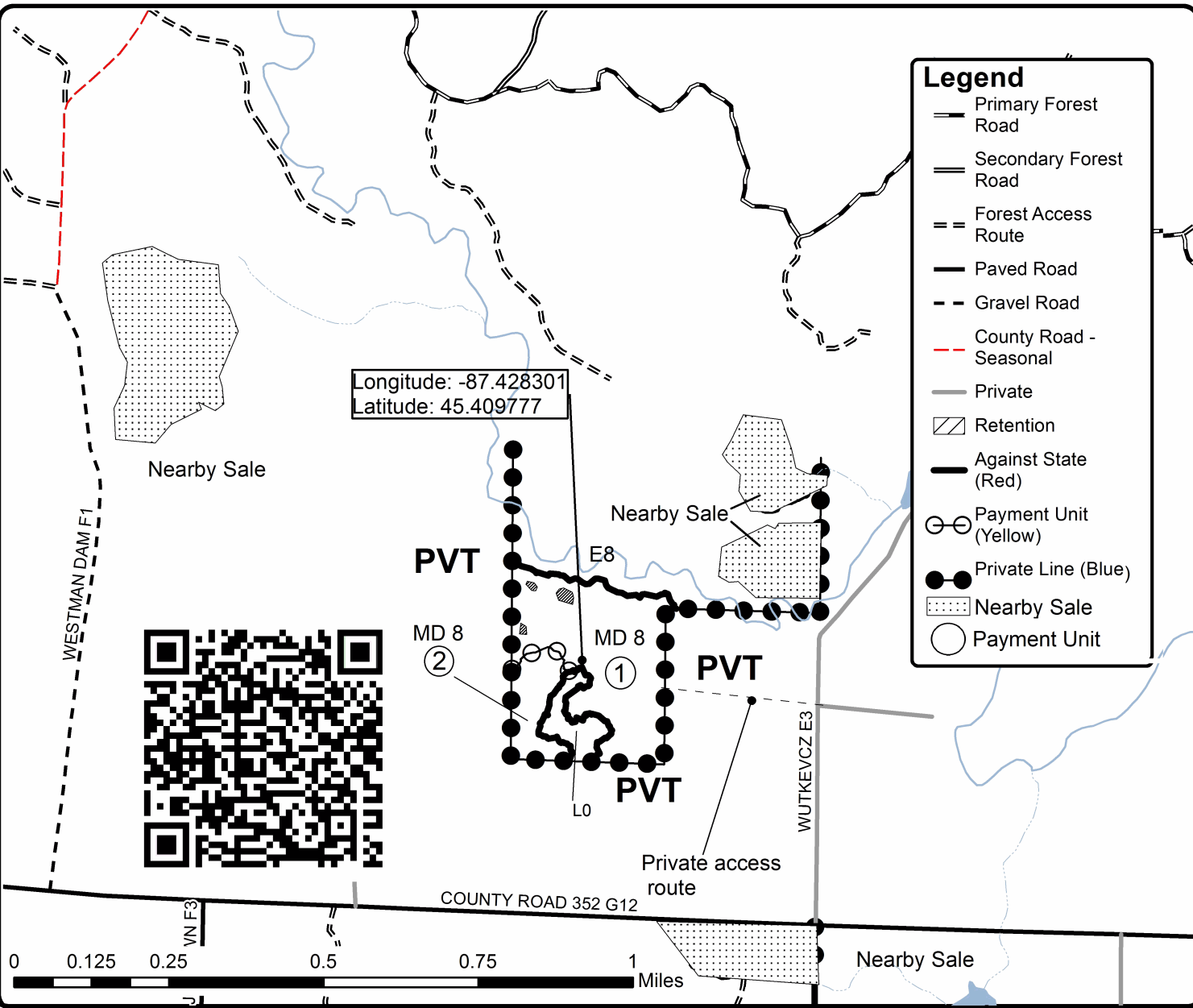
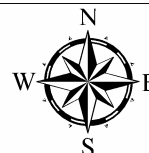
Cover Type				Density	
A = Aspen	H = Hemlock	N = Marsh	U = Upland Brush	0 = Non Stocked	5 = Pole Timber Medium
B = Paper Birch	J = Jack Pine	O = Oak	UM = Upland Mixed	1 = Seedling Sapling Poor	6 = Pole Timber Well
C = Cedar	L = Lowland Brush	P = Lowland Poplar	V = Bog or Marsh	2 = Seedling Sapling Medium	7 = Saw Timber Poor
D = Treed Bog	LM = Lowland Mixed	Q = Mixed Swamp Conifer	W = White Pine	3 = Seedling Sapling Well	8 = Saw Timber Medium
E = Swamp Hdwoods	M = Mpl, Bch, Brch	R = Red Pine	X = Non Stocked	4 = Pole Timber Poor	9 = Saw Timber Well
F = Spruce Fir	MC = Mixed Conifer	S = Black Spruce	Z = Water		
G = Grass	MD = Mixed Deciduous	T = Tamarack			

PU	Acres	PU	Acres
1	33	2	7.9

Hazy Wutkevcz

Compartment 56

40.9 Acres



TIMBER SALE INFORMATION

River Road Hardwood (33-026-23)

T35N, R29W, SEC. 12.

Menominee County (Advertised Price \$38,879.90)

A timber sale contract for this lump sum, sealed bid timber sale will be awarded to the responsible bidder offering the highest sealed bid price. All units of volume listed below were estimated using the Inventory Manager computer program and the new Michigan taper model. Bids must be at or above the following advertised price for each product and species:

<u>PRODUCTS & SPECIES</u>	<u>ESTIMATED UNITS*</u>	<u>ADVERTISED PRICE</u>
Sawtimber		
Basswood	5.9 MBF	\$ 41.00 / MBF
Northern Pin Oak	20.3 MBF	\$ 115.00 / MBF
Paper Birch	0.9 MBF	\$ 86.00 / MBF
Red Maple	11.7 MBF	\$ 134.00 / MBF
Red Oak	49.2 MBF	\$ 116.00 / MBF
Sugar Maple	2.7 MBF	\$ 249.00 / MBF
White Oak	9.5 MBF	\$ 71.00 / MBF
Pulpwood		
Balsam Fir	48 Cords	\$ 11.10 / Cord
Basswood	12 Cords	\$ 8.15 / Cord
Jack Pine	3 Cords	\$ 38.45 / Cord
Mixed Aspen	654 Cords	\$ 24.40 / Cord
Mixed Hardwood	141 Cords	\$ 18.30 / Cord
Mixed Oak	194 Cords	\$ 27.05 / Cord
Mixed Spruce	33 Cords	\$ 12.45 / Cord
Paper Birch	21 Cords	\$ 9.60 / Cord
Red Pine	15 Cords	\$ 45.25 / Cord
Tamarack	7 Cords	\$ 15.75 / Cord
White Pine	54 Cords	\$ 30.95 / Cord

* The total volume is statistically estimated within plus (+) or minus (-) 14.27 percent. There are an estimated 1,435 cords on this timber sale, plus or minus 205 cords at the 95% confidence level. The estimated units are final and not subject to adjustment. Prospective bidders are urged to examine this timber and to make their own estimates of quantity and quality.

BOND AND PAYMENT SCHEDULE:

1. A bond in the amount of \$1,944.00 to insure faithful performance of the conditions of the contract will be deposited by the successful bidder within 21 days of the sale award.
2. Cutting in any sale or unit without the required advance payment would be considered a trespass.
3. Total payment must be paid in advance or according to the following schedule :
 - (a) Ten percent (10%) of the sale value must be paid within 21 days of the sale award.
 - (b) The 10% down payment will be credited towards the first unit cut.
 - (c) Payment for each of the following units must be made before cutting begins in that unit:

PAYMENT UNIT NUMBER	PERCENT OF TOTAL SALE VALUE
01	11.5%
02	15.8%
03	15.8%
04	12.0%
05	17.2%
06	14.6%
07	13.1%
4. If no cutting takes place, the 10% down payment will not be refunded.
5. Operations on the contract issued will terminate on 09/30/2026.

SALE STATISTICS

Volumes were calculated in cubic feet using the Michigan taper model. Cubic foot volume includes all wood inside bark for the product indicated. For display purposes, cubic feet were converted to cords and MBF using a simple conversion factor, e.g. 79 cubic feet per cord and 185 cubic feet per MBF. The cubic foot volumes are precise; the cords and MBF volumes are not. Cubic foot volume cannot be directly converted to cords or boards with precision.

SALE VOLUMES

The total estimated sale volume may not equal the sum of the species/products due to the nature of statistical calculations associated with double sampling methodology.

VOLUME			STATISTICAL RANGE IN CORDS	
TOTAL CUBIC FEET	TOTAL CORDS	PERCENT ERROR	MINIMUM	MAXIMUM
113,370	1,435	14.27%	1,230	1,640

VDU VOLUMES

A VDU is a Volume Determination Unit. Volumes and their associated statistics are calculated at the VDU level and summarized to the sale level. There is often a one to one relationship between a VDU and a Payment Unit, but not always, depending on the cruise design. Refer to the VDU TO PAYMENT UNIT table.

	VOLUME			RANGE IN CORDS	
VDU	TOTAL CUBIC FEET	TOTAL CORDS	PERCENT ERROR	MINIMUM	MAXIMUM
5	55,404	701	21.33%	552	851
9	13,714	174	22.62%	134	213
15	25,396	321	25.00%	241	402
17	18,856	239	39.52%	144	333
TOTAL:	113,370	1,435		1,072	1,799

VDU TO PAYMENT UNIT

When a VDU is associated with more than one Payment Unit (PU), the VDU volumes are assigned to the PU based on acres of the VDU within the PU.

VDU	VDU ACRES	PU	PU ACRES
5	33.3	5	12.7
		6	10.8
		7	9.8
9	16.4	3	16.4
15	29.3	1	12.4
		2	16.9
17	12.7	4	12.7
TOTAL:	91.7		91.7

DESCRIPTION OF TIMBER BY PAYMENT UNIT (PU)

PU	MARKET GROUP	PRODUCT	QUANTITY	UNIT	ACRES	ADVERTISE PRICE
	Basswood	Sawtimber	1.6	MBF		
	Northern Pin Oak		0.4	MBF		
	Paper Birch		0.4	MBF		
	Red Maple		3.0	MBF		
	Red Oak		18.2	MBF		
	Sugar Maple		1.1	MBF		
	White Oak		1.5	MBF		
	Balsam Fir	Pulpwood	8	Cords		
	Basswood		1	Cords		
	Jack Pine		1	Cords		
	Mixed Hardwood		22	Cords		
	Mixed Oak		25	Cords		
	Paper Birch		6	Cords		
	Red Pine		3	Cords		
	White Pine		1	Cords		
	Basswood	Sawtimber	2.2	MBF		
	Northern Pin Oak		0.6	MBF		
	Paper Birch		0.5	MBF		
	Red Maple		4.1	MBF		
	Red Oak		24.7	MBF		
	Sugar Maple		1.6	MBF		
	White Oak		2.0	MBF		
	Balsam Fir	Pulpwood	11	Cords		
	Basswood		1	Cords		
	Jack Pine		2	Cords		
	Mixed Hardwood		30	Cords		
	Mixed Oak		33	Cords		
	Paper Birch		9	Cords		
	Red Pine		4	Cords		
	White Pine		2	Cords		
	Northern Pin Oak	Sawtimber	17.4	MBF		
	Red Oak		6.3	MBF		
	White Oak		5.1	MBF		
	Balsam Fir	Pulpwood	2	Cords		
	Mixed Aspen		2	Cords		
	Mixed Hardwood		24	Cords		
	Red Pine		8	Cords		
	White Pine		35	Cords		
	Basswood	Sawtimber	2.1	MBF		
	Northern Pin Oak		1.9	MBF		
	Red Maple		2.6	MBF		
	White Oak		0.9	MBF		
	Balsam Fir	Pulpwood	27	Cords		
	Basswood		10	Cords		
	Mixed Aspen		66	Cords		
	Mixed Hardwood		53	Cords		
	Mixed Oak		4	Cords		
	Paper Birch		6	Cords		
	Tamarack		7	Cords		
	White Pine		11	Cords		
	Red Maple	Sawtimber	0.8	MBF		
	Mixed Aspen	Pulpwood	224	Cords		
	Mixed Hardwood		4	Cords		
	White Pine		2	Cords		
	Red Maple	Sawtimber	0.6	MBF		
	Mixed Aspen	Pulpwood	190	Cords		

DESCRIPTION OF TIMBER BY PAYMENT UNIT (PU), CON'T

PU	MARKET GROUP	PRODUCT	QUANTITY	UNIT	ACRES	ADVERTISE PRICE
	Mixed Hardwood White Pine Red Maple Mixed Aspen Mixed Hardwood White Pine	Pulpwood Sawtimber Pulpwood	4 2 0.6 172 4 1	Cords Cords MBF Cords Cords Cords		
	Mixed Spruce <i>White Spruce</i>	Pulpwood	1 1	Cords <i>Cords</i>	12.4	
2	Mixed Spruce <i>White Spruce</i>	Pulpwood	1 1	Cords <i>Cords</i>	16.9	\$6,147.75
3	Mixed Oak <i>Northern Pin Oak</i> <i>Red Oak</i> <i>White Oak</i>	Pulpwood	40 18 5 17	Cords <i>Cords</i> <i>Cords</i> <i>Cords</i>	16.4	\$6,131.35
4	Mixed Spruce <i>Black Spruce</i> <i>White Spruce</i>	Pulpwood	31 19 12	Cords <i>Cords</i> <i>Cords</i>	12.7	\$4,680.85
5	Mixed Oak <i>Northern Pin Oak</i>	Pulpwood	35 35	Cords <i>Cords</i>	12.7	\$6,654.65
6	Mixed Oak <i>Northern Pin Oak</i>	Pulpwood	30 30	Cords <i>Cords</i>	10.8	\$5,663.00
7	Mixed Oak <i>Northern Pin Oak</i>	Pulpwood	27 27	Cords <i>Cords</i>	9.8	\$5,111.70
TOTAL:			100.2	MBF		
TOTAL:			1,182	Cords		

Sale Specific Conditions & Requirements

Sale Name: River Road Hardwood

Sale Number: 33-026-23 Seq#: 1

1 - Sale Area

1.2 - Boundaries

1.2.1 - Painted boundaries (9/19)

The sale boundary and Payment Unit boundaries are marked and identified by blue, red and yellow paint. Exterior sale boundary lines against private property are marked with blue paint. Exterior sale boundary lines against state are marked with red paint. Interior Payment Unit boundaries are marked with yellow paint. Yellow painted trees designating an interior Payment Unit boundary are only to be cut when all surrounding Payment Units have been paid.

2 - Timber Specifications

2.1 - Included Timber

2.1.1 - Clearcut unit(s) with unmerchantable trees (6/14)

Within Payment Unit(s) 1 & 2 and 4-7, cut all trees that are three inches or more at DBH, with the following exceptions:

- Within Payment Units 1 & 2, do not cut trees marked with green paint.
- Within Payment Unit 4, do not cut northern white cedar, hemlock, or any trees marked with green paint.
- Within Payment Units 5, 6, & 7, do not cut white oak or red pine.

2.1.7 - Leave tree marked unit(s) (6/14)

Within Payment Unit(s) 3, cut all trees that are greater than five (5) inches at DBH, except do not cut trees marked with green paint above and below stump height.

2.2 - Utilization

2.2.4 - Skidding length (2/14)

Skidding of unlimbed tops or lengths over 17 feet is not permissible within the Sale Area.

3 - Payments

3.3 - Pre-measured Sales

3.3.4 - Dividing payment units (7/14)

Payment Unit(s) \$18,000 in value or greater may be divided at the request of the Purchaser and upon approval of the Unit Manager. Dividing Payment Units is a contract modification which requires a Timber Sale Contract Amendment. There will be only one division per Payment Unit.

4 - Transportation

4.1 - Construction

4.1.8 - Road work (1) (8/07)

The following road work is required: the Purchaser must haul and spread 120 cubic yards of gravel on the access road running through Payment Units 1-3. The exact locations will be identified during the pre-sale meeting. The gravel must be hauled and spread before any hauling takes place in Payment Units 1-4. Gravel is available from a state pit located about 8 miles from the sale.

4.1.12 - No new roads (1/12)

No new roads will be permitted within Payment Units 5-7. All operations are limited to existing roads. Skid trails only will be allowed.

4.2 - Maintenance

4.2.1 - Hauling restriction (12/08)

Hauling may be restricted on forest roads by the Unit Manager or his/her representative. The restriction may occur during spring breakup or wet weather conditions.

4.2.4 - Grading (10/16)

For completion of the sale, state forest roads must be graded. In general, this will require a road grader or bulldozer to shape up the roads after forest products have been hauled off site. This includes cleaning of drainage areas, grading, crowning and filling with gravel, if necessary. The grading equipment to be used must be approved by the Unit Manager or his/her representative.

5 - Operations

5.2 - Conduct of Operations

5.2.3 - Operating Restrictions

5.2.3.1 - Operating restrictions (9/11)

Within Payment Unit(s) 5-7, unless changed by written agreement, cutting and skidding are limited to the period of 12/1 to 3/31, unless there is snow cover or an extended frozen period. In addition, the Sale Administrator must allow harvesting activities during this period of time. This restriction is to minimize soil disturbance.

5.2.3.4 - Oak wilt restriction, no exceptions (1/18)

Within Payment Unit(s) 1-4, cutting & skidding within the sale and brushing of access roads to the sale are not permitted during the period of April 15 to July 15. No exceptions will be granted. This is necessary to reduce the spread of oak wilt.

5.2.22 - Operating Caution

5.2.22.1 - Operating caution (6/11)

It is recommended, but not required, that within Payment Unit(s) 4, cutting and skidding occur during dry summer or frozen winter conditions. The reason for the recommendation is because of lower wet ground within the central and southern portions of the Payment Unit.

5.2.38 - No decking against live trees (2/04)

Cut products may not be decked against unmarked or designated leave trees.

7 - Other Conditions

7.3 - Contract Modifications

7.3.2 - Modification for oak wilt (2/05)

Within the sale area, there may be patches of oak wilt. If oak wilt is identified within the sale area, this contract may be modified. The following modifications could occur: time of cutting, species to cut, volume to harvest, or various others dealing with the treatment of oak wilt. If a species is not specified in this contract, it shall be paid for at the average price received for that species and product.



TIMBER SALE MAP

This information provided by authority of Part 525, 1994 PA 451, as amended.

Sale Number	Year
33-026	23

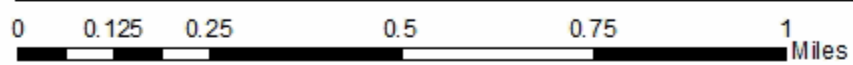
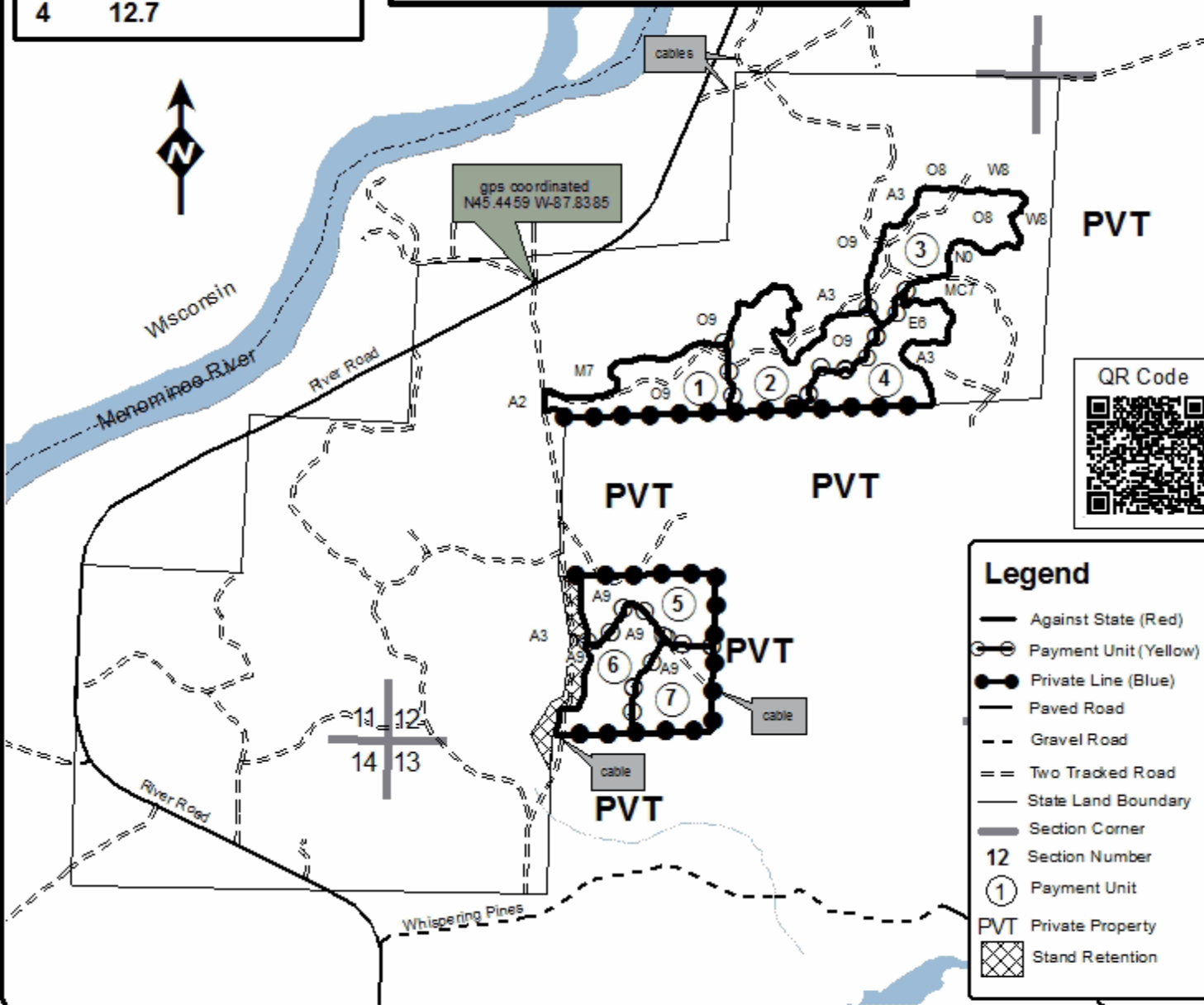
Forest Management Unit	County	Mapped By	Date	Page	of
Escanaba Management Unit	Menominee County	Beaudo	6/26/2023	1	1

Township	Range	Section(s) and Subdivision(s)	Scale
35N	29W	Sec 12 - S1/2NW, NENE, S1/2NE, NWSW, SESW.	1:15,840

Cover Type				Density	
A = Aspen	H = Hemlock	N = Marsh	U = Upland Brush	0 = Non Stocked	5 = Pole Timber Medium
B = Paper Birch	J = Jack Pine	O = Oak	UM = Upland Mixed	1 = Seeding Sapling Poor	6 = Pole Timber Well
C = Cedar	L = Lowland Brush	P = Lowland Poplar	V = Bog or Marsh	2 = Seeding Sapling Medium	7 = Saw Timber Poor
D = Tread Bog	LM = Lowland Mixed	Q = Mixed Swamp Conifer	W = White Pine	3 = Seeding Sapling Well	8 = Saw Timber Medium
E = Swamp Hdwoods	M = Mpl, Bch, Bach	R = Red Pine	X = Non Stocked	4 = Pole Timber Poor	9 = Saw Timber Well
F = Spruce Fir	MC = Mixed Conifer	S = Black Spruce	Z = Water		
G = Grass	MD = Mixed Deciduous	T = Tamarack			

PU	Acres	PU	Acres
1	12.4	5	12.7
2	16.9	6	10.8
3	16.4	7	9.8
4	12.7		

River Road Hardwood
 Compartments 23 & 109
 91.7 Acres



TIMBER SALE INFORMATION

Red Washer (33-027-23)

T37N, R27W, SEC. 4; T37N, R27W, SEC. 9.
Menominee County (Advertised Price \$21,469.55)

A timber sale contract for this lump sum, sealed bid timber sale will be awarded to the responsible bidder offering the highest sealed bid price. All units of volume listed below were estimated using the Inventory Manager computer program and the new Michigan taper model. Bids must be at or above the following advertised price for each product and species:

<u>PRODUCTS & SPECIES</u>	<u>ESTIMATED UNITS*</u>	<u>ADVERTISED PRICE</u>
Sawtimber		
Basswood	15.3 MBF	\$ 47.00 / MBF
Paper Birch	1.7 MBF	\$ 99.00 / MBF
Red Maple	11.2 MBF	\$ 155.00 / MBF
Sugar Maple	20.4 MBF	\$ 288.00 / MBF
White Ash	9.8 MBF	\$ 87.00 / MBF
Pulpwood		
Balsam Fir	45 Cords	\$ 12.80 / Cord
Basswood	68 Cords	\$ 9.40 / Cord
Mixed Aspen	51 Cords	\$ 28.15 / Cord
Mixed Hardwood	382 Cords	\$ 21.10 / Cord
Mixed Spruce	78 Cords	\$ 14.35 / Cord
N. White Cedar	2 Cords	\$ 10.80 / Cord
Paper Birch	24 Cords	\$ 11.10 / Cord

* The total volume is statistically estimated within plus (+) or minus (-) 13.48 percent. There are an estimated 822 cords on this timber sale, plus or minus 111 cords at the 95% confidence level. The estimated units are final and not subject to adjustment. Prospective bidders are urged to examine this timber and to make their own estimates of quantity and quality.

BOND AND PAYMENT SCHEDULE:

1. A bond in the amount of \$1,073.00 to insure faithful performance of the conditions of the contract will be deposited by the successful bidder within 21 days of the sale award.
2. Cutting in any sale or unit without the required advance payment would be considered a trespass.
3. Total payment must be paid in advance or according to the following schedule :
 - (a) Ten percent (10%) of the sale value must be paid within 21 days of the sale award.
 - (b) The 10% down payment will be credited towards the first unit cut.

(c) Payment for each of the following units must be made before cutting begins in that unit:

PAYMENT UNIT NUMBER	PERCENT OF TOTAL SALE VALUE
01	21.7%
02	11.8%
03	23.6%
04	28.3%
05	11.4%
06	3.2%

4. If no cutting takes place, the 10% down payment will not be refunded.
5. Operations on the contract issued will terminate on 09/30/2026.

SALE STATISTICS

Volumes were calculated in cubic feet using the Michigan taper model. Cubic foot volume includes all wood inside bark for the product indicated. For display purposes, cubic feet were converted to cords and MBF using a simple conversion factor, e.g. 79 cubic feet per cord and 185 cubic feet per MBF. The cubic foot volumes are precise; the cords and MBF volumes are not. Cubic foot volume cannot be directly converted to cords or boards with precision.

SALE VOLUMES

The total estimated sale volume may not equal the sum of the species/products due to the nature of statistical calculations associated with double sampling methodology.

VOLUME			STATISTICAL RANGE IN CORDS	
TOTAL CUBIC FEET	TOTAL CORDS	PERCENT ERROR	MINIMUM	MAXIMUM
64,936	822	13.48%	711	933

VDU VOLUMES

A VDU is a Volume Determination Unit. Volumes and their associated statistics are calculated at the VDU level and summarized to the sale level. There is often a one to one relationship between a VDU and a Payment Unit, but not always, depending on the cruise design. Refer to the VDU TO PAYMENT UNIT table.

	VOLUME			RANGE IN CORDS	
VDU	TOTAL CUBIC FEET	TOTAL CORDS	PERCENT ERROR	MINIMUM	MAXIMUM
59	25,778	326	28.00%	235	418
60	26,918	341	17.01%	283	399
61	9,138	116	30.82%	80	151
62	3,102	39	118.39%	0	86
TOTAL:	64,936	822		598	1,053

VDU TO PAYMENT UNIT

When a VDU is associated with more than one Payment Unit (PU), the VDU volumes are assigned to the PU based on acres of the VDU within the PU.

VDU	VDU ACRES	PU	PU ACRES
59	27.8	1	18.0
		2	9.8
60	30.6	3	14.0
		4	16.6
61	9.3	5	9.3
62	2.4	6	2.4
TOTAL:	70.1		70.1

DESCRIPTION OF TIMBER BY PAYMENT UNIT (PU)

PU	MARKET GROUP	PRODUCT	QUANTITY	UNIT	ACRES	ADVERTISE PRICE
	Basswood	Sawtimber	0.9	MBF		
	Paper Birch		1.1	MBF		
	Red Maple		4.5	MBF		
	Sugar Maple		1.6	MBF		
	Balsam Fir	Pulpwood	10	Cords		
	Basswood		10	Cords		
	Mixed Aspen		13	Cords		
	Mixed Hardwood		93	Cords		
	Paper Birch		16	Cords		
	Basswood	Sawtimber	0.5	MBF		
	Paper Birch		0.6	MBF		
	Red Maple		2.4	MBF		
	Sugar Maple		0.8	MBF		
	Balsam Fir	Pulpwood	6	Cords		
	Basswood		6	Cords		
	Mixed Aspen		7	Cords		
	Mixed Hardwood		51	Cords		
	Paper Birch		8	Cords		
	Basswood	Sawtimber	4.2	MBF		
	Red Maple		2.0	MBF		
	Sugar Maple		8.0	MBF		
	White Ash		4.3	MBF		
	Balsam Fir	Pulpwood	4	Cords		
	Basswood		19	Cords		
	Mixed Aspen		1	Cords		
	Mixed Hardwood		76	Cords		
	Basswood	Sawtimber	5.0	MBF		
	Red Maple		2.3	MBF		
	Sugar Maple		9.5	MBF		
	White Ash		5.0	MBF		
	Balsam Fir	Pulpwood	5	Cords		
	Basswood		22	Cords		
	Mixed Aspen		2	Cords		
	Mixed Hardwood		92	Cords		
	Sugar Maple	Sawtimber	0.5	MBF		
	Balsam Fir	Pulpwood	7	Cords		
	Basswood		4	Cords		
	Mixed Aspen		26	Cords		
	Mixed Hardwood		64	Cords		
	N. White Cedar		2	Cords		
	Basswood	Sawtimber	4.7	MBF		
	White Ash		0.5	MBF		
	Balsam Fir	Pulpwood	13	Cords		
	Basswood		7	Cords		
	Mixed Hardwood		6	Cords		
	Mixed Spruce	Pulpwood	44	Cords	18.0	
	<i>Black Spruce</i>		37	<i>Cords</i>		
	<i>White Spruce</i>		7	<i>Cords</i>		
2	Mixed Spruce	Pulpwood	24	Cords	9.8	\$2,524.85
	<i>Black Spruce</i>		20	<i>Cords</i>		
	<i>White Spruce</i>		4	<i>Cords</i>		
3	Mixed Spruce	Pulpwood	2	Cords	14.0	\$5,075.75
	<i>White Spruce</i>		2	<i>Cords</i>		
4	Mixed Spruce	Pulpwood	3	Cords	16.6	\$6,073.85
	<i>White Spruce</i>		3	<i>Cords</i>		
5	Mixed Spruce	Pulpwood	5	Cords	9.3	\$2,446.85

DESCRIPTION OF TIMBER BY PAYMENT UNIT (PU), CON'T

PU	MARKET GROUP	PRODUCT	QUANTITY	UNIT	ACRES	ADVERTISE PRICE
5 con't	<i>White Spruce</i>	<i>Pulpwood</i>	5	<i>Cords</i>		
6	Mixed Aspen	Pulpwood	2	Cords	2.4	\$679.50
	<i>Quaking Aspen</i>		2	<i>Cords</i>		
TOTAL:			58.4	MBF		
TOTAL:			650	Cords		

Sale Specific Conditions & Requirements

Sale Name: Red Washer

Sale Number: 33-027-23 Seq#: 1

1 - Sale Area

1.2 - Boundaries

1.2.1 - Painted boundaries (9/19)

The sale boundary and Payment Unit boundaries are marked and identified by blue, red and yellow paint. Exterior sale boundary lines against private property are marked with blue paint. Exterior sale boundary lines against state are marked with red paint. Interior Payment Unit boundaries are marked with yellow paint. The painted boundary line trees are not Included Timber and are to be protected unless marked with orange paint. Yellow painted trees designating an interior Payment Unit boundary are only to be cut when all surrounding Payment Units have been paid for.

2 - Timber Specifications

2.1 - Included Timber

2.1.1 - Clearcut unit(s) with unmerchantable trees (6/14)

Within Payment Unit(s) 1, 2, 5, & 6, cut all trees that are three (3) inches or more at DBH, except within Payment Units 1 & 2, do not cut cedar.

2.1.3 - Cut tree marked unit(s) (12/08)

Within Payment Unit(s) 3 & 4, all trees are designated for cutting when marked with orange paint above and below stump height, regardless of merchantability. In addition, cut all ironwood, spruce, fir, aspen, and balsam poplar greater than three (3) inches at DBH.

2.1.9 - Harvest exception (12/08)

Do not cut any cedar trees within Payment Units 1 and 2, other than those that are necessary to remove in order to operate within the sale area. Every effort must be made to preserve the existing cedar and to leave an intact stand upon sale completion. All cut cedar shall be piled separately by products and scaled in the woods unless other scaling arrangements are agreed to by the Unit Manager or his/her representative. Stumpage price for cedar shall be \$40.00 per cord.

2.2 - Utilization

2.2.4 - Skidding length (2/14)

Skidding of unlimbed tops or lengths over 17 feet is not permissible within Payment Units 3 and 4, unless approved by the Unit Manager or his/her representative.

3 - Payments

3.3 - Pre-measured Sales

3.3.4 - Dividing payment units (7/14)

Payment Unit(s) \$18,000 in value or greater, may be divided at the request of the Purchaser and upon approval of the Unit Manager. Dividing Payment Units is a contract modification which requires a Timber Sale Contract Amendment. There will be only one division per Payment Unit.

4 - Transportation

4.1 - Construction

4.1.2 - Stream crossings, specific (3/11)

There is an intermittent stream between Payments Units 1 and 2 as shown on the Timber Sale Map. Crossing this stream will be permitted for skidding in up to two locations. The crossing must be approved by the Sale Administrator. The use of mats would be very beneficial. Each Payment Unit can be harvested without crossing the stream.

4.2 - Maintenance

4.2.1 - Hauling restriction (12/08)

Hauling may be restricted on forest roads by the Unit Manager or his/her representative. The restriction may occur during

spring breakup or during other wet weather conditions.

4.2.4 - Grading (10/16)

For completion of the sale, state forest roads must be graded. In general, this will require a road grader or bulldozer to shape up the roads after forest products have been hauled off site. This includes cleaning of drainage areas, grading, crowning and filling with gravel, if necessary. The grading equipment to be used must be approved by the Unit Manager or his/her representative.

4.4 - Access

4.4.1 - Private property access (3/11)

Permission for access across private land is the responsibility of the Purchaser. The best access into the sale is from the east off of 36 Lane and through private property. The landowners are willing to work with the Purchaser to permit access. Each potential Purchaser must contact the landowner to gain access to review the sale and to obtain permission for harvesting activities. There is also access from the west through state land or private land off of the East Branch of the DeTemple road. To obtain the landowners contact information, contact Dustin at (906) 399-1828 or Dan at (906) 399-0879.

5 - Operations

5.2 - Conduct of Operations

5.2.3 - Operating Restrictions

5.2.3.1 - Operating restrictions (9/11)

Within Payment Unit(s) 1 & 2, cutting and skidding are limited to the period of December 1 to March 31, unless there is an extended dry or frozen period, and the Sale Administrator allows harvesting during that period of time. This restriction is because of some low, wet, ground within each Payment Unit. In addition, the majority of Payment Unit 2 can be harvested during a dry summer.

5.2.3.3 - Bark slippage restriction (3/09)

Within Payment Unit(s) 3 & 4, unless changed by written agreement, cutting and skidding are not permitted during the period of April 15 to July 15. This restriction is because of bark slippage.

5.2.22 - Operating Caution

5.2.22.1 - Operating caution (6/11)

It is recommended, but not required, that within Payment Unit(s) 5, cutting and skidding occur during dry summer or frozen winter conditions. The reason for the recommendation is because of some lower, wet, ground in the center of the stand.

7 - Other Conditions

7.5 - Loss

7.5.1 - Deteriorating timber (7/09)

The sale area has received damage from the emerald ash borer, beech bark disease, and the eastern larch beetle. The Purchaser should harvest the wood as soon as possible. The Department of Natural Resources is held free of responsibility of any further damage or deterioration due to delay in harvesting.



TIMBER SALE MAP

This information provided by authority of Part 525, 1994 PA 451, as amended.

Forest Management Unit	Escanaba Management Unit	County	Menominee County	Mapped By	Beaudou	Date	7/24/2023	Page	1	of	1	Sale Number	33-027	Year	23
Township	37N	Range	27W	Section(s) and Subdivisions(s)	Sec 4 - SESW, NWSE, S1/2SE, Sec 9 - N1/2NE.	Created By	Salter, Beaudou	Scale	1:15,840						

Cover Type

- A = Aspen
- B = Paper Birch
- C = Cedar
- D = Tread Bog
- E = Swamp Hardwoods
- F = Spruce Fir
- G = Grass
- H = Hemlock
- J = Jack Pine
- L = Lowland Brush
- LM = Lowland Mixed
- M = Mpl. Bot. Birch
- MC = Mixed Conifer
- MD = Mixed Deciduous
- N = Marsh
- O = Oak
- P = Lowland Poplar
- Q = Mixed Swamp Conifer
- R = Red Pine
- S = Black Spruce
- T = Tamarack
- U = Upland Brush
- UM = Upland Mixed
- V = Bog or Marsh
- W = White Pine
- X = Non Stocked
- Z = Water

Density

- 0 = Non Stocked
- 1 = Seeding Sapling Poor
- 2 = Seeding Sapling Medium
- 3 = Seeding Sapling Well
- 4 = Pole Timber Poor
- 5 = Pole Timber Medium
- 6 = Pole Timber Well
- 7 = Saw Timber Poor
- 8 = Saw Timber Medium
- 9 = Saw Timber Well

Red Washer

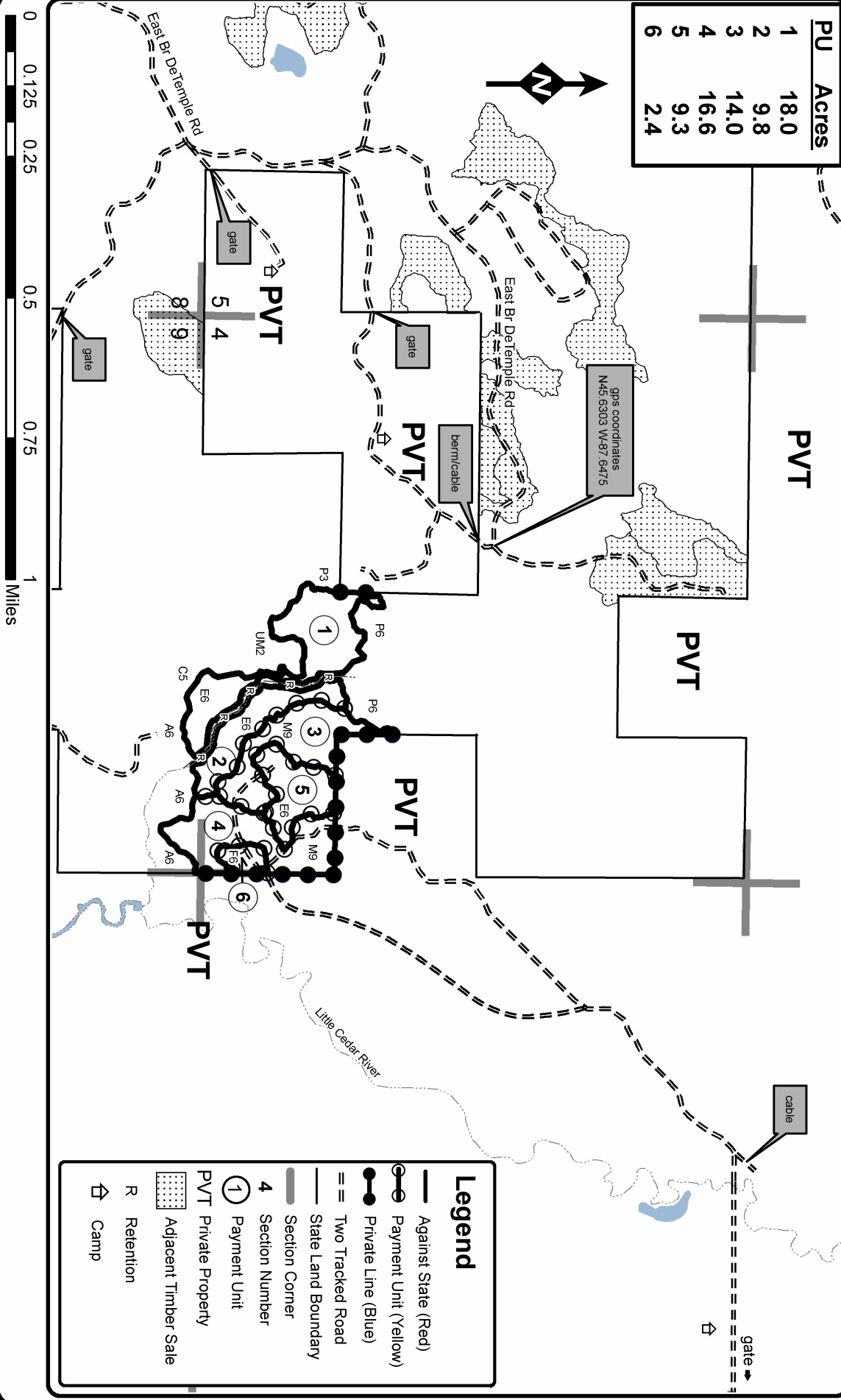
Compartment 1

70.1 Acres



PU	Acres
1	18.0
2	9.8
3	14.0
4	16.6
5	9.3
6	2.4

gps coordinates
N45.6303 W-87.6475



Legend

- Against State (Red)
- Payment Unit (Yellow)
- Private Line (Blue)
- Two Tracked Road
- State Land Boundary
- 4 Section Corner
- 1 Payment Unit
- PVT Private Property
- R Retention
- Camp Camp
- Adj Adjacent Timber Sale

Hazy Wutkevcz (33-005-23)
T35N, R25W, SEC. 19; T35N, R25W, SEC. 20; Menominee COUNTY

In response to the notice of sale to be held 3:00 p.m. (local time) on October 19, 2023, I am hereby submitting my sealed bid (firm offer) for the following forest products to be cut. Bids for individual species must be at or above the advertised price. All non-responsive bid forms may be rejected.

<u>PRODUCTS & SPECIES</u>	<u>ESTIMATED VOLUME*</u>	<u>ADVERTISED PRICE</u>	<u>BID PRICE/UNIT</u>
Sawtimber			
American Elm	4.3 MBF	\$ 22.00/MBF	\$ _____
Red Maple	26.2 MBF	\$ 103.00/MBF	\$ _____
Pulpwood			
Balsam Fir	44 Cords	\$ 8.55/Cord	\$ _____
Green Ash	30 Cords	\$ 14.05/Cord	\$ _____
Misc. Species 1	113 Cords	\$ 1.00/Cord	\$ _____
Mixed Hardwood	195 Cords	\$ 14.05/Cord	\$ _____
N. White Cedar	6 Cords	\$ 7.20/Cord	\$ _____
White Spruce	7 Cords	\$ 9.55/Cord	\$ _____

*The volumes are statistically estimated within plus (+) or minus (-) 17.57 percent at 95% confidence level. These estimated volumes are final and not subject to adjustment. Prospective bidders are urged to examine this timber and to make their own estimates of quantity and quality.

I understand that any or all bids may be rejected. All bids must be signed and all bid items must be bid or the bid form may be rejected. I also understand that consideration and awarding a contract will be based upon my past performance and ability to complete the contract based upon equipment and staffing subject to my control.

FEDERAL ID: ____ - ____ - ____ or SOCIAL SECURITY NUMBER: ____ - ____ - ____

Company or individual bidding: _____

Company representative's name: _____

Address: _____

City: _____ State: _____ Zip: _____

IF AVAILABLE, PLEASE PLACE THE PERSONALIZED LABEL FROM YOUR PROSPECTUS IN THE ABOVE BOX.

Individual or company representative's signature: _____ Date: _____

Phone number : _____ Email (optional): _____

THE WINNING BIDDER MUST COMPLETE THE VERIFICATION OF WORKER'S DISABILITY COMPENSATION ACT COMPLIANCE (ON REVERSE SIDE IF DOUBLE SIDED) WITHIN 21 DAYS OF SALE AWARD DATE



FOR DEPARTMENT USE ONLY
Sale Number (XX - XXX - XX - XX)
Forest Management Unit:

TIMBER SALE VERIFICATION OF WORKER'S DISABILITY COMPENSATION ACT COMPLIANCE

*As required by Act 317, P.A. 1969 (Worker's Compensation) and
Part 5 of Act 451 of 1994, as amended.*

VERIFICATION OF WORKER'S DISABILITY COMPENSATION ACT COMPLIANCE

- This verification must be completed and submitted within 21 days of contract award and prior to the issuance of the timber sale contract.
- In addition, if boxes 2B or 2C are checked, then Notice of Exclusion or Certificate of Insurance must be submitted within twenty-one (21) days of the contract award and prior to the issuance of the timber sale contract.
- All information must be typed or printed except for written signatures.

Please Check Appropriate Categories:

1. My business is organized as (you **must** check one of the boxes below):
 - A. Sole Proprietorship (individual)
 - B. Partnership
 - C. Corporation

2. You **must** check one of the boxes below:
 - A. I certify my business is a sole proprietorship and it has no employees but the sole proprietor. I am not subject to the Worker's Compensation Laws.
 - B. I certify my business has satisfied its obligation to the Worker's Compensation Act through the use of an approved Notice of Exclusion (BWC-337, Rev. 5/96). I will provide a copy of the Notice of Exclusion within 21 days of the contract award. (For questions or a copy of the BWC-337, please call the Worker's Compensation Bureau at 517-322-1195).
 - C. I certify my business has a Worker's Compensation Policy. I will provide an original Certificate of Insurance within twenty-one (21) days of the contract award.

3. If you have checked item 2(A) or 2(B), you **must** indicate the number of **both** full-time and part-time employees, other than yourself, including family members and active partners (if none, you must enter "0").

_____ Full-time Employees

_____ Part-time Employees

Name of Business		Federal ID (or) Social Security No.	
Address		Telephone ()	
City	State	ZIP	

I hereby certify that the above information is true and correct. I agree to notify the Michigan DNR of any changes that occur in factors affecting my coverage during any of my present and future operations.

Signature of Owner or Authorized Representative

Title

Date

Please complete the "SEALED BID" information on the next page

River Road Hardwood (33-026-23)
T35N, R29W, SEC. 12; Menominee COUNTY

In response to the notice of sale to be held 3:00 p.m. (local time) on October 19, 2023, I am hereby submitting my sealed bid (firm offer) for the following forest products to be cut. Bids for individual species must be at or above the advertised price. All non-responsive bid forms may be rejected.

<u>PRODUCTS & SPECIES</u>	<u>ESTIMATED VOLUME*</u>	<u>ADVERTISED PRICE</u>	<u>BID PRICE/UNIT</u>
Sawtimber			
Basswood	5.9 MBF	\$ 41.00/MBF	\$ _____
Northern Pin Oak	20.3 MBF	\$ 115.00/MBF	\$ _____
Paper Birch	0.9 MBF	\$ 86.00/MBF	\$ _____
Red Maple	11.7 MBF	\$ 134.00/MBF	\$ _____
Red Oak	49.2 MBF	\$ 116.00/MBF	\$ _____
Sugar Maple	2.7 MBF	\$ 249.00/MBF	\$ _____
White Oak	9.5 MBF	\$ 71.00/MBF	\$ _____
Pulpwood			
Balsam Fir	48 Cords	\$ 11.10/Cord	\$ _____
Basswood	12 Cords	\$ 8.15/Cord	\$ _____
Jack Pine	3 Cords	\$ 38.45/Cord	\$ _____
Mixed Aspen	654 Cords	\$ 24.40/Cord	\$ _____
Mixed Hardwood	141 Cords	\$ 18.30/Cord	\$ _____
Mixed Oak	194 Cords	\$ 27.05/Cord	\$ _____
Mixed Spruce	33 Cords	\$ 12.45/Cord	\$ _____
Paper Birch	21 Cords	\$ 9.60/Cord	\$ _____
Red Pine	15 Cords	\$ 45.25/Cord	\$ _____
Tamarack	7 Cords	\$ 15.75/Cord	\$ _____
White Pine	54 Cords	\$ 30.95/Cord	\$ _____

*The volumes are statistically estimated within plus (+) or minus (-) 14.27 percent at 95% confidence level. These estimated volumes are final and not subject to adjustment. Prospective bidders are urged to examine this timber and to make their own estimates of quantity and quality.

I understand that any or all bids may be rejected. All bids must be signed and all bid items must be bid or the bid form may be rejected. I also understand that consideration and awarding a contract will be based upon my past performance and ability to complete the contract based upon equipment and staffing subject to my control.

FEDERAL ID: ____ - ____ - ____ or SOCIAL SECURITY NUMBER: ____ - ____ - ____

Company or individual bidding: _____

Company representative's name: _____

Address: _____

City: _____ State: _____ Zip: _____

IF AVAILABLE, PLEASE PLACE THE PERSONALIZED LABEL FROM YOUR PROSPECTUS IN THE ABOVE BOX.

Individual or company representative's signature: _____ Date: _____

Phone number : _____ Email (optional): _____

THE WINNING BIDDER MUST COMPLETE THE VERIFICATION OF WORKER'S DISABILITY COMPENSATION ACT COMPLIANCE (ON REVERSE SIDE IF DOUBLE SIDED) WITHIN 21 DAYS OF SALE AWARD DATE



FOR DEPARTMENT USE ONLY	
Sale Number (XX - XXX - XX - XX)	
Forest Management Unit:	

TIMBER SALE VERIFICATION OF WORKER'S DISABILITY COMPENSATION ACT COMPLIANCE

As required by Act 317, P.A. 1969 (Worker's Compensation) and
Part 5 of Act 451 of 1994, as amended.

VERIFICATION OF WORKER'S DISABILITY COMPENSATION ACT COMPLIANCE

- This verification must be completed and submitted within 21 days of contract award and prior to the issuance of the timber sale contract.
- In addition, if boxes 2B or 2C are checked, then Notice of Exclusion or Certificate of Insurance must be submitted within twenty-one (21) days of the contract award and prior to the issuance of the timber sale contract.
- All information must be typed or printed except for written signatures.

Please Check Appropriate Categories:

1. My business is organized as (you **must** check one of the boxes below):
 - A. Sole Proprietorship (individual)
 - B. Partnership
 - C. Corporation
2. You **must** check one of the boxes below:
 - A. I certify my business is a sole proprietorship and it has no employees but the sole proprietor. I am not subject to the Worker's Compensation Laws.
 - B. I certify my business has satisfied its obligation to the Worker's Compensation Act through the use of an approved Notice of Exclusion (BWC-337, Rev. 5/96). I will provide a copy of the Notice of Exclusion within 21 days of the contract award. (For questions or a copy of the BWC-337, please call the Worker's Compensation Bureau at 517-322-1195).
 - C. I certify my business has a Worker's Compensation Policy. I will provide an original Certificate of Insurance within twenty-one (21) days of the contract award.
3. If you have checked item 2(A) or 2(B), you **must** indicate the number of **both** full-time and part-time employees, other than yourself, including family members and active partners (if none, you must enter "0").

_____ Full-time Employees

_____ Part-time Employees

Name of Business		Federal ID (or) Social Security No.	
Address		Telephone ()	
City	State	ZIP	

I hereby certify that the above information is true and correct. I agree to notify the Michigan DNR of any changes that occur in factors affecting my coverage during any of my present and future operations.

Signature of Owner or Authorized Representative

Title

Date

Please complete the "SEALED BID" information on the next page

Red Washer (33-027-23)

T37N, R27W, SEC. 4; T37N, R27W, SEC. 9; Menominee COUNTY

In response to the notice of sale to be held 3:00 p.m. (local time) on October 19, 2023, I am hereby submitting my sealed bid (firm offer) for the following forest products to be cut. Bids for individual species must be at or above the advertised price. All non-responsive bid forms may be rejected.

<u>PRODUCTS & SPECIES</u>	<u>ESTIMATED VOLUME*</u>	<u>ADVERTISED PRICE</u>	<u>BID PRICE/UNIT</u>
Sawtimber			
Basswood	15.3 MBF	\$ 47.00/MBF	\$ _____
Paper Birch	1.7 MBF	\$ 99.00/MBF	\$ _____
Red Maple	11.2 MBF	\$ 155.00/MBF	\$ _____
Sugar Maple	20.4 MBF	\$ 288.00/MBF	\$ _____
White Ash	9.8 MBF	\$ 87.00/MBF	\$ _____
Pulpwood			
Balsam Fir	45 Cords	\$ 12.80/Cord	\$ _____
Basswood	68 Cords	\$ 9.40/Cord	\$ _____
Mixed Aspen	51 Cords	\$ 28.15/Cord	\$ _____
Mixed Hardwood	382 Cords	\$ 21.10/Cord	\$ _____
Mixed Spruce	78 Cords	\$ 14.35/Cord	\$ _____
N. White Cedar	2 Cords	\$ 10.80/Cord	\$ _____
Paper Birch	24 Cords	\$ 11.10/Cord	\$ _____

*The volumes are statistically estimated within plus (+) or minus (-) 13.48 percent at 95% confidence level. These estimated volumes are final and not subject to adjustment. Prospective bidders are urged to examine this timber and to make their own estimates of quantity and quality.

I understand that any or all bids may be rejected. All bids must be signed and all bid items must be bid or the bid form may be rejected. I also understand that consideration and awarding a contract will be based upon my past performance and ability to complete the contract based upon equipment and staffing subject to my control.

FEDERAL ID: ____ - ____ - ____ or SOCIAL SECURITY NUMBER: ____ - ____ - ____

Company or individual bidding: _____

Company representative's name: _____

Address: _____

City: _____ State: _____ Zip: _____

IF AVAILABLE, PLEASE PLACE THE PERSONALIZED LABEL FROM YOUR PROSPECTUS IN THE ABOVE BOX.

Individual or company representative's signature: _____ Date: _____

Phone number : _____ Email (optional): _____

THE WINNING BIDDER MUST COMPLETE THE VERIFICATION OF WORKER'S DISABILITY COMPENSATION ACT COMPLIANCE (ON REVERSE SIDE IF DOUBLE SIDED) WITHIN 21 DAYS OF SALE AWARD DATE



FOR DEPARTMENT USE ONLY
Sale Number (XX - XXX - XX - XX)
Forest Management Unit:

TIMBER SALE VERIFICATION OF WORKER'S DISABILITY COMPENSATION ACT COMPLIANCE

*As required by Act 317, P.A. 1969 (Worker's Compensation) and
Part 5 of Act 451 of 1994, as amended.*

VERIFICATION OF WORKER'S DISABILITY COMPENSATION ACT COMPLIANCE

- This verification must be completed and submitted within 21 days of contract award and prior to the issuance of the timber sale contract.
- In addition, if boxes 2B or 2C are checked, then Notice of Exclusion or Certificate of Insurance must be submitted within twenty-one (21) days of the contract award and prior to the issuance of the timber sale contract.
- All information must be typed or printed except for written signatures.

Please Check Appropriate Categories:

1. My business is organized as (you **must** check one of the boxes below):
 - A. Sole Proprietorship (individual)
 - B. Partnership
 - C. Corporation
2. You **must** check one of the boxes below:
 - A. I certify my business is a sole proprietorship and it has no employees but the sole proprietor. I am not subject to the Worker's Compensation Laws.
 - B. I certify my business has satisfied its obligation to the Worker's Compensation Act through the use of an approved Notice of Exclusion (BWC-337, Rev. 5/96). I will provide a copy of the Notice of Exclusion within 21 days of the contract award. (For questions or a copy of the BWC-337, please call the Worker's Compensation Bureau at 517-322-1195).
 - C. I certify my business has a Worker's Compensation Policy. I will provide an original Certificate of Insurance within twenty-one (21) days of the contract award.
3. If you have checked item 2(A) or 2(B), you **must** indicate the number of **both** full-time and part-time employees, other than yourself, including family members and active partners (if none, you must enter "0").

_____ Full-time Employees

_____ Part-time Employees

Name of Business		Federal ID (or) Social Security No.	
Address		Telephone ()	
City	State	ZIP	

I hereby certify that the above information is true and correct. I agree to notify the Michigan DNR of any changes that occur in factors affecting my coverage during any of my present and future operations.

Signature of Owner or Authorized Representative

Title

Date

Please complete the "SEALED BID" information on the next page

Cherry Ridge Islands (33-002-23)
T35N, R25W, SEC. 28; T35N, R25W, SEC. 29; T35N, R25W, SEC. 30; T35N,

In response to the notice of sale to be held 3:00 p.m. (local time) on October 19, 2023, I am hereby submitting my sealed bid (firm offer) for the following forest products to be cut. Bids for individual species must be at or above the advertised price. All non-responsive bid forms may be rejected.

<u>PRODUCTS & SPECIES</u>	<u>ESTIMATED VOLUME*</u>	<u>ADVERTISED PRICE</u>	<u>BID PRICE/UNIT</u>
Sawtimber			
Red Maple	24.5 MBF	\$ 72.00/MBF	\$ _____
Pulpwood			
Balsam Fir	130 Cords	\$ 6.00/Cord	\$ _____
Mixed Aspen	534 Cords	\$ 13.15/Cord	\$ _____
Mixed Hardwood	419 Cords	\$ 9.85/Cord	\$ _____
Paper Birch	21 Cords	\$ 5.15/Cord	\$ _____
Tamarack	17 Cords	\$ 8.50/Cord	\$ _____
White Pine	73 Cords	\$ 16.65/Cord	\$ _____
White Spruce	30 Cords	\$ 6.70/Cord	\$ _____

*The volumes are statistically estimated within plus (+) or minus (-) 14.13 percent at 95% confidence level. These estimated volumes are final and not subject to adjustment. Prospective bidders are urged to examine this timber and to make their own estimates of quantity and quality.

I understand that any or all bids may be rejected. All bids must be signed and all bid items must be bid or the bid form may be rejected. I also understand that consideration and awarding a contract will be based upon my past performance and ability to complete the contract based upon equipment and staffing subject to my control.

FEDERAL ID: ____ - ____ - ____ or SOCIAL SECURITY NUMBER: ____ - ____ - ____

Company or individual bidding: _____

Company representative's name: _____

Address: _____

City: _____ State: _____ Zip: _____

IF AVAILABLE, PLEASE PLACE THE PERSONALIZED LABEL FROM YOUR PROSPECTUS IN THE ABOVE BOX.

Individual or company representative's signature: _____ Date: _____

Phone number : _____ Email (optional): _____

THE WINNING BIDDER MUST COMPLETE THE VERIFICATION OF WORKER'S DISABILITY COMPENSATION ACT COMPLIANCE (ON REVERSE SIDE IF DOUBLE SIDED) WITHIN 21 DAYS OF SALE AWARD DATE



FOR DEPARTMENT USE ONLY	
Sale Number (XX - XXX - XX - XX)	
Forest Management Unit:	

TIMBER SALE VERIFICATION OF WORKER'S DISABILITY COMPENSATION ACT COMPLIANCE

As required by Act 317, P.A. 1969 (Worker's Compensation) and
Part 5 of Act 451 of 1994, as amended.

VERIFICATION OF WORKER'S DISABILITY COMPENSATION ACT COMPLIANCE

- This verification must be completed and submitted within 21 days of contract award and prior to the issuance of the timber sale contract.
- In addition, if boxes 2B or 2C are checked, then Notice of Exclusion or Certificate of Insurance must be submitted within twenty-one (21) days of the contract award and prior to the issuance of the timber sale contract.
- All information must be typed or printed except for written signatures.

Please Check Appropriate Categories:

1. My business is organized as (you **must** check one of the boxes below):
 - A. Sole Proprietorship (individual)
 - B. Partnership
 - C. Corporation
2. You **must** check one of the boxes below:
 - A. I certify my business is a sole proprietorship and it has no employees but the sole proprietor. I am not subject to the Worker's Compensation Laws.
 - B. I certify my business has satisfied its obligation to the Worker's Compensation Act through the use of an approved Notice of Exclusion (BWC-337, Rev. 5/96). I will provide a copy of the Notice of Exclusion within 21 days of the contract award. (For questions or a copy of the BWC-337, please call the Worker's Compensation Bureau at 517-322-1195).
 - C. I certify my business has a Worker's Compensation Policy. I will provide an original Certificate of Insurance within twenty-one (21) days of the contract award.
3. If you have checked item 2(A) or 2(B), you **must** indicate the number of **both** full-time and part-time employees, other than yourself, including family members and active partners (if none, you must enter "0").

_____ Full-time Employees

_____ Part-time Employees

Name of Business		Federal ID (or) Social Security No.	
Address		Telephone ()	
City	State	ZIP	

I hereby certify that the above information is true and correct. I agree to notify the Michigan DNR of any changes that occur in factors affecting my coverage during any of my present and future operations.

Signature of Owner or Authorized Representative

Title

Date

Please complete the "SEALED BID" information on the next page