



**DEPARTMENT OF NATURAL RESOURCES  
STATE OF MICHIGAN  
TIMBER SALE PROSPECTUS #7297**

SCHEDULED SALE DATE AND TIME: 3:00 p.m. (local time) on November 2, 2023.

LOCATION: ESCANABA MGMT UNIT, 6833 HWY'S 2, 41 & M-35, GLADSTONE, MI 49837.

PROSPECTUS NOTE: The bidder is advised to inspect the sale area and review the location, estimated volumes, operating costs and contract terms of proposed sales. Please be aware that some landowners may request 60 days or more notice for access across their land.

Notice is hereby given that bids will be received by the Unit Manager, CRYSTAL FALLS MANAGEMENT UNIT, for certain timber on the following described lands:

Three Section Mix (12-002-23) / T40N, R29W, SEC. 14, SWNW.

T40N, R29W, SEC. 15, SWNW,NWSW.

T40N, R29W, SEC. 16, SENE.

T40N, R29W, SEC. 17, S1/2NE,N1/2SE.

Dickinson County, Advertised Price \$12,597.10, 53.5 Acres, Aspen, Hardwood.

SALE NOTE: Access to the sale is through private land. In addition, within Payment Unit 2, cutting is only allowed during frozen conditions.

A recreation site such as a trail, pathway, or campground is within the sale area or the vicinity. Certain restrictions/specifications may be applicable including time restrictions. Access may be through private land.

Turner & Hooch (12-008-23) / T43N, R28W, SEC. 6 , SWNW,NWSW.

T43N, R29W, SEC. 1 , N1/2NW,SWNW,NWNE,S1/2NE,SW,SE.

T43N, R29W, SEC. 11, SESE.

T43N, R29W, SEC. 12, S1/2SW,SWSE.

T43N, R29W, SEC. 13, NENW,N1/2NE.

T43N, R29W, SEC. 14, NENE.

T43N, R29W, SEC. 2 , S1/2NW,SWNE,SW,SE.

T44N, R29W, SEC. 36, SW,SWSE.

Dickinson County, Advertised Price \$455,958.90, 442.4 Acres, Aspen, Red Pine.

SALE NOTE: Payment Unit 1 is a scaled lowland unit and products need to be scaled prior to hauling. It is recommended, but not required to be cut in winter or dry summer conditions.

Payment Units 2, 13 & 14 have bark slip cutting restrictions.

Six Mile Jungle (12-009-23) / T42N, R29W, SEC. 13, SESW,SWSE.

T42N, R29W, SEC. 14, SWSE.

T42N, R29W, SEC. 23, N1/2NE.

T42N, R29W, SEC. 24, N1/2NW.

Dickinson County, Advertised Price \$66,573.10, 74.2 Acres, Aspen, Spruce/Fir/Tamarack.

Comp 40 Mix (12-012-23) / T43N, R28W, SEC. 19, SWNW.

T43N, R29W, SEC. 14, W1/2NW,NE,N1/2SW,S1/2SE.

T43N, R29W, SEC. 15, E1/2NE.

T43N, R29W, SEC. 23, N1/2NE,SW.

T43N, R29W, SEC. 24, N1/2NW,SE,NE,N1/2SE.

T43N, R29W, SEC. 26, NENW.

Dickinson County, Advertised Price \$101,206.40, 327.0 Acres, Hardwood, Aspen.

## BID INSTRUCTIONS (VER. 10/10/2022):

### 1. Scheduled Bid Location, Date, and Time (2/11)

Bids must be received by the Unit Manager, ESCANABA OFFICE, 6833 Hwy's 2, 41 & M-35, Gladstone, MI 49837, no later than 3:00 p.m. (local time) on November 2, 2023. For further information concerning this sale, contact Eric Thompson at 906-789-8231.

### 2. Bidder's Qualifications (10/22)

If all or part of a timber sale was prepared by a private contractor, the contractor and that contractor's company are not permitted to bid on the timber sale. A person must be 18 years of age or older to purchase timber. Permanent employees of the Department of Natural Resources or members of their immediate household may not bid. Former employees, in the permanent or seasonal class, may not bid until 3 months after the last day of active duty. Bids will not be accepted from individuals or companies appearing on the DNR/FRD No-Bid List. This list contains the names of purchasers who previously failed to execute a contract within 21-days or who have a history of poor performance.

### 3. Preparation of Sealed Bids (5/16)

Bid Forms may be completed online thru Michigan DNR Timber Sale Online Bidding (OLB) at [www.michigan.gov/timberbidding](http://www.michigan.gov/timberbidding) or by completing the hardcopy Bid Form found in the Timber Sale Prospectus. Hardcopy Bid Forms shall be manually signed in ink. Registration in OLB is considered your 'signature' for all bids submitted thru that system. Bid prices must be entered for each species and product in the Bid Price column for all material subject to bidding and all fill-in blanks must be completed. If erasures or other changes appear on the hardcopy Bid Form, each erasure or change must be initialed by the person signing the bid.

### 4. Submission of Sealed Bids (5/16)

Bid forms may be obtained from the Unit Manager or thru OLB. Bids may be submitted hardcopy or thru OLB. All hardcopy bids must be submitted on the bid form and in an envelope clearly identified as described in this section. NOTE: Only one bid form per bid envelope. Sealed bids must be submitted to the Unit office designated in the prospectus and must be submitted at or prior to the time established in the prospectus. The envelope should show on the outside (a) the sale name or number and (b) the date and time of bid opening, as shown in the prospectus. Bids received after the time specified in the sale prospectus are late bids and will be rejected.

It is possible for a bidder to submit multiple bids on a single sale. For example, a bid may be submitted hardcopy and a bid may be submitted thru OLB. Or, two bidders from the same company could both submit bids on the same sale. If this were to happen, the State would accept all bids received and award the contract accordingly. All bidding and contractual requirements would apply to all bids received.

### 5. Public Opening of Sealed Bids (7/16)

If conditions permit, the sealed bids will be publicly opened and posted at the time and place set in the prospectus.

If a bidder, present at a bid opening, has submitted bids on more than one sale, that bidder may withdraw their unopened bid envelopes or announce the withdrawal of their online bid after being declared the successful bidder on one sale.

### 6. Award of Contract (1/11)

Award of the contract will be made to the Bidder whose bid, conforming to the prospectus, is most advantageous to the State of Michigan on the basis of total value at rates bid for the estimated quantities. The State reserves the right to reject any bid or waive any minor irregularity in bids received. A written award mailed (or otherwise furnished) to the successful Bidder shall be deemed to result in a binding contract without further action by either party.

### 7. Down Payment (1/11)

The Bidder to whom award is made must make a down payment within 21 days of the sale award. The amount of the down payment will be calculated as shown in the Bond and Payment Schedule of this prospectus. Only cash may be used to meet this requirement.

### 8. Performance Security (1/11)

As guarantee of faithful performance, a cash bond, certificate of deposit, surety bond or irrevocable letter of credit (LOC) is required within 21 days of the sale award. The amount of the performance security is shown in the Bond and

Payment Schedule of this prospectus. If an LOC or surety is used, the coverage must extend for at least 6 months beyond the contract expiration.

#### 9. Worker's Compensation (10/22)

Purchaser shall obtain worker's compensation insurance to cover claims under Michigan's Worker's Disability Compensation Act of 1969 or similar employee benefit act of any other state applicable to an employee. Verification of Worker's Disability Compensation Act Compliance must be completed and submitted within 21 days of contract award and prior to the issuance of the timber sale contract. In addition, if applicable, Notice of Exclusion or Certificate of Insurance must also be submitted.

#### 10. Timber Sale Contract (10/22)

Additional conditions and requirements common to all timber sales are listed on the timber sale contract (R4031) and are available on line at [www.michigan.gov/timber](http://www.michigan.gov/timber). Contact the Unit Manager for additional information or a sample contract. Within 21 days of the date of the award letter, the bidder must sign the contract and provide the required down payment, performance security, and verification of worker's disability compensation. The down payment and performance security shall be in accordance with the provisions of the timber sale contract, in the sums stated in this prospectus. If these actions are not taken, then the Bidder, the Bidder's corporation, and the corporation's principals may not be permitted to bid on State timber sales for a period of 3 months after the first offense, 6 months after the second offense, and 1 year after the third offense. An offense will only be counted against the Bidder for 5 years. In addition, the Bidder certifies that if awarded this contract, the Bidder will complete the timber sale contract in accordance with its terms and any modifications thereof including requirements to purchase, cut, and remove the included timber by the expiration date.

Payment Unit values in the State Forest Timber Sale Contract are calculated based on the advertised value of the Payment Unit as a percentage of the total advertised value of the contract. The advertised value of each Payment Unit is given in the Description of Timber by Payment Unit table on the Timber Sale Information page. For example, if the value of Payment Unit 1 is advertised as \$1,500 and the total Timber Sale value is advertised as \$10,000, the contract price for Payment Unit 1 will be 15% of the total bid price ( $\$1,500/\$10,000 * 100$ ).

#### 11. Disclaimer of Estimates and Bidder's Warranty of Inspection (10/22)

Before submitting this bid, the Bidder is advised and cautioned to inspect the sale area, review the requirements of the sale contract, and take other steps as may be reasonably necessary to ascertain the location, estimated volumes, construction estimates, and operating costs of the proposed sale. Failure to do so will not relieve the Bidder from responsibility for completing the contract.

The Bidder warrants that this bid is submitted solely on the basis of the Bidder's examination and inspection of the quality and quantity of the timber offered for sale and the Bidder's opinion of the value thereof and the costs of recovery. No reliance should be placed on the State of Michigan's estimates of timber quality, quantity or costs of recovery. Bidder further acknowledges that the State of Michigan: (i) expressly disclaims any warranty of fitness of timber for any purpose; (ii) offers this timber as is without any warranty of quality (merchantability) or quantity and (iii) expressly disclaims any warranty as to the quantity or quality of timber sold.

#### 12. Certification and Chain-of-Custody (10/22)

Unless otherwise indicated in the contract under section 7 – Other Conditions of the Sale Specific Conditions & Requirements, the area encompassed by this timber sale is certified to the standards of the Forest Stewardship Council (FSC) - Certificate #SCS-FM/COC-00090N and the Sustainable Forestry Initiative (SFI) - Certificate #NSF-SFIS-5Y031-SF5. Forest products from this sale may be delivered to the mill as "FSC 100% and / or SFI certified" as long as the contractor hauling the forest products is chain-of-custody (COC) certified or covered under a COC certificate from the destination mill. The purchaser is responsible for maintaining COC after leaving the sale area.

#### 13. Good Neighbor Authority (GNA) Requirements (10/22)

If the name of this timber sales contains the acronym GNA, it is authorized by the Good Neighbor Authority (GNA) and covered by various agreements between the U.S. Forest Service and the State. The timber sale occurs on federal land and the following conditions apply:

GNA contracts on US Forest Service land will not be awarded to purchasers on the Federal list of excluded parties. The System for Award Management (SAM) will be checked for active excluded parties prior to award of contract. In

addition, the Bidder to whom award is made must complete an Assurance Regarding Felony Conviction or Tax Delinquent Status for Corporate Applicants (AD-3031).

14. Good Neighbor Authority (GNA) Requirements, con't (10/22)

Bidder certifies, by signing this bid form, that to the best of Bidder's knowledge that the following representations are accurate and complete.

- a. That the Bidder and its principals are not presently debarred, suspended, proposed for debarment, declared ineligible, or voluntary excluded from timber sales (covered transactions) by any Federal department or agency.
- b. That the Bidder and its principals have not within a 3-year period preceding this bid been convicted of or had a civil judgment rendered against them for commission of fraud or a criminal offense in connection with obtaining , attempting to obtain, or performing a public (Federal, State, or local) transaction or contract under a public transaction; violation of Federal or State antitrust statutes or commission of embezzlement, theft, forgery, bribery, falsification or destruction of records, making false statements, or receiving stolen property.
- c. That the Bidder and its principals are not presently indicted for or otherwise criminally or civilly charged by a governmental entity (Federal, State, or local) with commission of any of the offenses enumerated in paragraph b of this certification.
- d. That the Bidder and its principals have not within a 3-year period preceding this bid had one or more public transactions (Federal, State, or local) terminated for breach or default of a timber or forest product contract.

Bidders that cannot certify this requirement, in whole or in part, shall submit an explanation with their bid.

Scott Bowen  
Director



# TIMBER SALE INFORMATION

## Three Section Mix (12-002-23)

T40N, R29W, SEC. 14; T40N, R29W, SEC. 15; T40N, R29W, SEC. 16; T40N, R29W, SEC. 17.

Dickinson County (Advertised Price \$12,597.10)

SALE NOTE: Access to the sale is through private land. In addition, within Payment Unit 2, cutting is only allowed during frozen conditions.

A recreation site such as a trail, pathway, or campground is within the sale area or the vicinity. Certain restrictions/specifications may be applicable including time restrictions. Access may be through private land.

A timber sale contract for this lump sum, sealed bid timber sale will be awarded to the responsible bidder offering the highest sealed bid price. All units of volume listed below were estimated using the Inventory Manager computer program and the new Michigan taper model. Bids must be at or above the following advertised price for each product and species:

<u>PRODUCTS &amp; SPECIES</u>	<u>ESTIMATED UNITS*</u>	<u>ADVERTISED PRICE</u>
Pulpwood		
Balsam Fir	44 Cords	\$ 5.40 / Cord
Basswood	18 Cords	\$ 4.15 / Cord
Mixed Aspen	647 Cords	\$ 14.70 / Cord
Mixed Hardwood	259 Cords	\$ 7.50 / Cord
Mixed Spruce	38 Cords	\$ 7.55 / Cord
Paper Birch	21 Cords	\$ 2.50 / Cord
Tamarack	120 Cords	\$ 4.10 / Cord

\* The total volume is statistically estimated within plus (+) or minus (-) 18.60 percent. There are an estimated 1,157 cords on this timber sale, plus or minus 215 cords at the 95% confidence level. The estimated units are final and not subject to adjustment. Prospective bidders are urged to examine this timber and to make their own estimates of quantity and quality.

### BOND AND PAYMENT SCHEDULE:

1. A bond in the amount of \$1,260.00 to insure faithful performance of the conditions of the contract will be deposited by the successful bidder within 21 days of the sale award.
2. Cutting in any sale or unit without the required advance payment would be considered a trespass.
3. Total payment must be paid in advance or according to the following schedule :
  - (a) Ten percent (10%) of the sale value must be paid within 21 days of the sale award.
  - (b) The 10% down payment will be credited towards the first unit cut.
  - (c) Payment for each of the following units must be made before cutting begins in that unit:
 

PAYMENT UNIT NUMBER	PERCENT OF TOTAL SALE VALUE
01	47.7%
02	4.5%
03	47.8%
4. If no cutting takes place, the 10% down payment will not be refunded.
5. Operations on the contract issued will terminate on 06/30/2027.

### SALE STATISTICS

Volumes were calculated in cubic feet using the Michigan taper model. Cubic foot volume includes all wood inside bark for the product indicated. For display purposes, cubic feet were converted to cords and MBF using a simple conversion factor, e.g. 79 cubic feet per cord and 185 cubic feet per MBF. The cubic foot volumes are precise; the cords and MBF volumes are not. Cubic foot volume cannot be directly converted to cords or boards with precision.

### SALE VOLUMES

The total estimated sale volume may not equal the sum of the species/products due to the nature of statistical calculations associated with double sampling methodology.

VOLUME		STATISTICAL RANGE IN CORDS		
TOTAL CUBIC FEET	TOTAL CORDS	PERCENT ERROR	MINIMUM	MAXIMUM
91,398	1,157	18.60%	942	1,372

**VDU VOLUMES**

A VDU is a Volume Determination Unit. Volumes and their associated statistics are calculated at the VDU level and summarized to the sale level. There is often a one to one relationship between a VDU and a Payment Unit, but not always, depending on the cruise design. Refer to the VDU TO PAYMENT UNIT table.

VDU	VOLUME		PERCENT ERROR	RANGE IN CORDS	
	TOTAL CUBIC FEET	TOTAL CORDS		MINIMUM	MAXIMUM
9	38,591	488	19.68%	392	585
24	10,345	131	49.73%	66	196
32	42,462	537	30.06%	376	699
<b>TOTAL:</b>	<b>91,398</b>	<b>1,157</b>		<b>834</b>	<b>1,480</b>

**VDU TO PAYMENT UNIT**

When a VDU is associated with more than one Payment Unit (PU), the VDU volumes are assigned to the PU based on acres of the VDU within the PU.

VDU	VDU ACRES	PU	PU ACRES
9	19.0	3	19.0
24	14.2	2	14.2
32	20.3	1	20.3
<b>TOTAL:</b>	<b>53.5</b>		<b>53.5</b>



**DESCRIPTION OF TIMBER BY PAYMENT UNIT (PU)**

PU	MARKET GROUP	PRODUCT	QUANTITY	UNIT	ACRES	ADVERTISE PRICE
1	Balsam Fir	Pulpwood	20	Cords	20.3	\$6,010.15
	Basswood		10	Cords		
	<i>Basswood</i>	<i>Sawtimber</i>	1.3	<i>MBF</i>		
	<i>Basswood</i>	<i>Pulpwood</i>	7	<i>Cords</i>		
	Mixed Aspen		317	Cords		
	<i>Balsam Poplar</i>		27	<i>Cords</i>		
	<i>Quaking Aspen</i>		290	<i>Cords</i>		
	Mixed Hardwood		138	Cords		
	<i>Red Maple</i>	<i>Sawtimber</i>	1.0	<i>MBF</i>		
	<i>Sugar Maple</i>		1.1	<i>MBF</i>		
	<i>Red Maple</i>	<i>Pulpwood</i>	56	<i>Cords</i>		
	<i>Sugar Maple</i>		78	<i>Cords</i>		
	Mixed Spruce		15	Cords		
	<i>White Spruce</i>		15	<i>Cords</i>		
	Paper Birch		21	Cords		
	<i>Paper Birch</i>	<i>Sawtimber</i>	1.9	<i>MBF</i>		
	<i>Paper Birch</i>	<i>Pulpwood</i>	17	<i>Cords</i>		
2	Mixed Spruce	Pulpwood	10	Cords	14.2	\$567.50
	<i>Black Spruce</i>		10	<i>Cords</i>		
	Tamarack		120	Cords		
3	Balsam Fir	Pulpwood	24	Cords	19.0	\$6,019.45
	Basswood		8	Cords		
	<i>Basswood</i>	<i>Sawtimber</i>	3.5	<i>MBF</i>		
	<i>Basswood</i>	<i>Pulpwood</i>	1	<i>Cords</i>		
	Mixed Aspen		330	Cords		
	<i>B. T. Aspen</i>		57	<i>Cords</i>		
	<i>Balsam Poplar</i>		14	<i>Cords</i>		
	<i>Quaking Aspen</i>		259	<i>Cords</i>		
	Mixed Hardwood		121	Cords		
	<i>Sugar Maple</i>	<i>Sawtimber</i>	2.5	<i>MBF</i>		
	<i>Red Maple</i>	<i>Pulpwood</i>	12	<i>Cords</i>		
	<i>Sugar Maple</i>		104	<i>Cords</i>		
	Mixed Spruce		13	Cords		
	<i>Black Spruce</i>		3	<i>Cords</i>		
<i>White Spruce</i>		10	<i>Cords</i>			
TOTAL:			1,147	Cords		

## Sale Specific Conditions & Requirements

**Sale Name: Three Section Mix**

**Sale Number: 12-002-23 Seq#: 2**

### 1 - Sale Area

#### 1.2 - Boundaries

##### 1.2.1 - Painted boundaries (9/19)

The sale boundary and Payment Unit boundaries are marked and identified by red paint. Exterior sale boundary lines against state are marked with red paint. The painted boundary line trees are not Included Timber and are to be protected unless marked with orange paint.

### 2 - Timber Specifications

#### 2.1 - Included Timber

##### 2.1.1 - Clearcut unit(s) with unmerchantable trees (6/14)

Within Payment Unit(s) 1-3, cut all trees that are two (2) inches or more at DBH, except do not cut cedar. In addition, the following exceptions apply:

- Within Payment Unit 1, do not cut any hemlock, oak, or pine.
- Within Payment Unit 3, do not cut spruce/fir that are six (6) inches or less at DBH. Also, do not cut any hemlock, oak, pine, birch, and black ash.

### 4 - Transportation

#### 4.2 - Maintenance

##### 4.2.4 - Grading (10/16)

For completion of the sale, state forest roads must be graded. In general, this will require a road grader or bull dozer to shape up the roads after forest products have been hauled off site. This includes cleaning of drainage areas, grading, crowning and filling with gravel, if necessary. The grading equipment to be used must be approved by the Unit Manager or his/her representative.

#### 4.4 - Access

##### 4.4.1 - Private property access (3/11)

Permission for access across private land is the responsibility of the Purchaser. Should the Purchaser desire to cross private land, a copy of the written permission from the private land-owner may be required by the DNR.

### 5 - Operations

#### 5.2 - Conduct of Operations

##### 5.2.1 - Slash

###### 5.2.1.13 - Dispose of slash as directed (12/05)

Slash is to be disposed of as directed by the Sale Administrator.

##### 5.2.3 - Operating Restrictions

###### 5.2.3.1 - Operating restrictions (9/11)

Within Payment Unit(s) 2, unless changed by written agreement, cutting, skidding, and hauling are limited to frozen ground only. This restriction is because of wet soils.

###### 5.2.32 - Decking/landing restoration (9/13)

All decking and landing areas must have the surface area restored to a condition equal to or better than before. This is to ensure the proper regeneration of the stand. Wood debris, chips and "cookies" from trimmings must be removed or scattered away from landing and loading areas and may not be windrowed on the edge.

###### 5.2.39 - ORV trail/route protection (4/18)

There is an ORV trail or route and is shown on the Timber Sale Map. Do not cut trees or damage posts with yellow ORV

markers. All stumps within 5 feet of the trail must be cut flush with the ground. Maintain a 20-foot-wide slash, debris, and rut free zone daily using the ORV trail or route as the centerline. Do not run equipment down the ORV trail or route. Skidding across the trail or route may only occur in locations approved by the Sale Administrator.

#### 5.2.41 - Snowmobile trail protection (9/11)

Trail 115 is a snowmobile trail and is shown on the Timber Sale Map. Do not cut or damage posts with orange trail markers or traffic control signs. If the trail is used, it must be maintained and restored to a condition equal to or better than before the sale. The road maintenance/restoration must be done prior to December 1. If the trail is used for hauling, it must be graded to the satisfaction of the Unit Manager or his/her representative prior to December 1. If the trail road is to be used for hauling during the snowmobile season, then a snow covered base must be left on the trail. Maintain a 20-foot-wide slash, debris, and rut free zone daily using the snowmobile trail as the centerline. All stumps within 20 feet of the snowmobile trail must be cut at ground level. In addition, any trees cut within 5 feet of the trail must have the stumps removed and be disposed of according to the direction of the Unit Manager or his/her representative.

### 5.4 - Soil Protection

#### 5.4.1 - Rutting restriction, general (7/16)

Operations are to cease immediately if equipment and weather conditions result in rutting of roads and/or skid trails which are 12 inches or greater in depth and 50 feet in length. The Unit Manager or his/her representative may restrict hauling and/or skidding if ruts exceed the specified depth. With the Unit Manager or his/her representative's approval, the Purchaser may return to the area when the risk of rutting has decreased.

## 6 - Safety and Fire Prevention

### 6.2 - Signing

#### 6.2.1 - Road posting (10/20)

The Purchaser is responsible for posting and maintaining caution signs on Benton Lake Road, and the Norway Truck Trail prior to beginning operations. The road must be posted at appropriate distances from the Sale Area to warn of logging activity and truck traffic. Signs must be removed when harvest operations are suspended or completed. The Purchaser will provide these signs.

#### 6.2.2 - Snowmobile trail posting (10/20)

The Purchaser is responsible for posting and maintaining caution signs on snowmobile Trail 115 prior to beginning operations during the snowmobile season (approximately December 1 to March 31). The trail must be posted at appropriate distances from the Sale Area to warn of logging activity and truck traffic. Signs must be removed when harvest operations are suspended or completed. The Purchaser will provide these signs.

#### 6.2.3 - Recreational trail posting (10/20)

The Purchaser is responsible for posting and maintaining caution signs on the ORV trail prior to beginning operations. The trail must be posted at appropriate distances from the Sale Area to warn of logging activity and truck traffic at both ends of the trail. Signs must be removed when harvest operations are suspended or completed. The Purchaser will provide these signs.

## 7 - Other Conditions

### 7.5 - Loss

#### 7.5.1 - Deteriorating timber (7/09)

The sale area has received damage from Eastern Larch Borer. The Purchaser should harvest the wood as soon as possible. The Department of Natural Resources is held free of responsibility of any further damage or deterioration due to delay in harvesting.



# TIMBER SALE MAP

This information provided by authority of Part 525, 1994 PA 451, as amended.

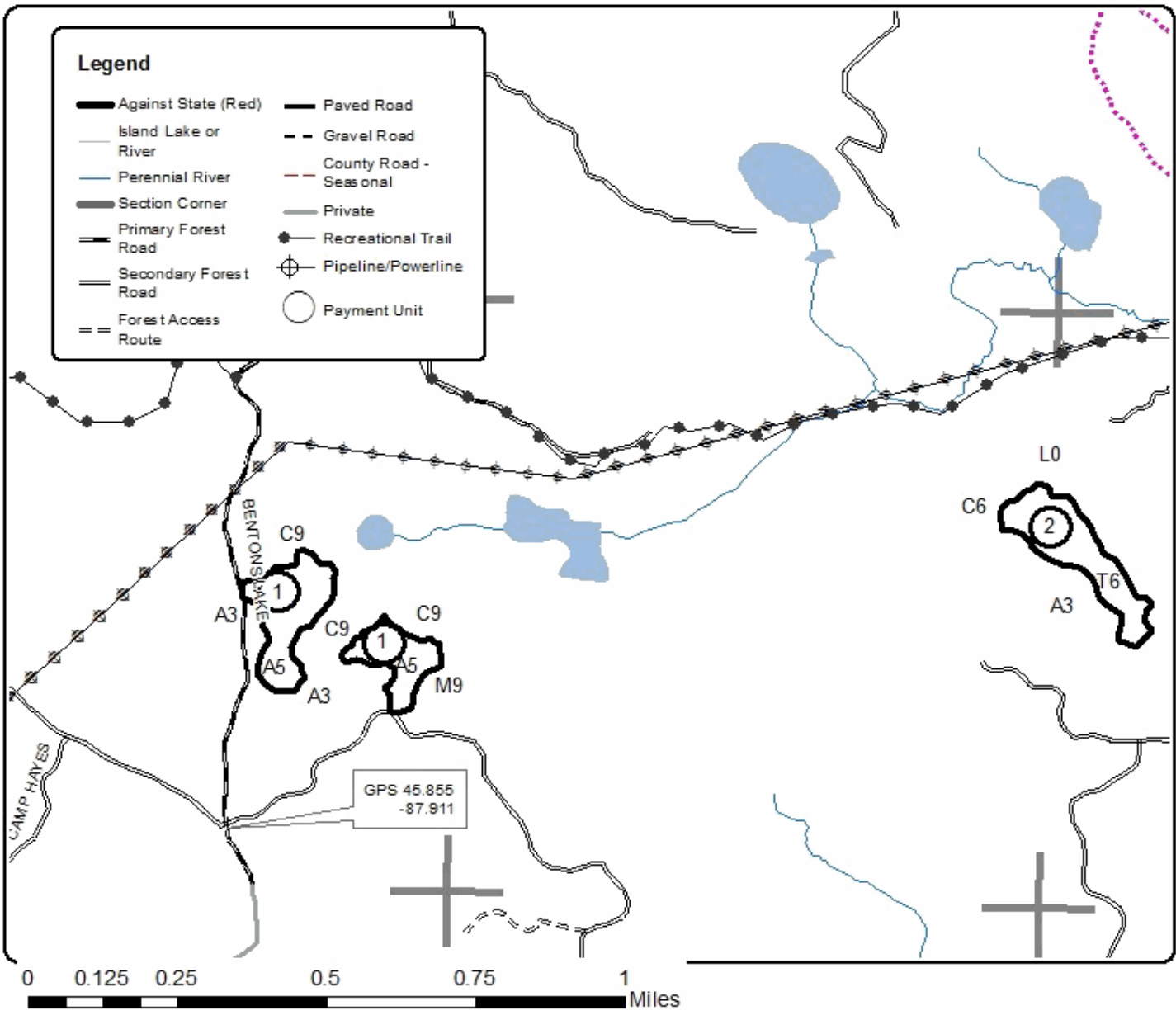
Sale Number	Year
12-002-23	2023

Forest Management Unit Crystal Falls Management Unit	County Dickinson Co.	Mapped By Dickie Goupell	Date 4-27-2023	Page 1	of 2
Township 40 N	Range 29 W	Section(s) and Subdivision(s) SEC 14 SWNW SEC 15 SWNW, NWSW SEC 16 SENE, SEC 17 S1/2NE, N1/2 SE	Scale 1:15,840		

Cover Type				Density	
A = Aspen	H = Hemlock	N = Marsh	U = Upland Brush	0 = Non Stocked	5 = Pole Timber Medium
B = Paper Birch	J = Jack Pine	O = Oak	UM = Upland Mixed	1 = Seedling Sapling Poor	6 = Pole Timber Well
C = Cedar	L = Lowland Brush	P = Lowland Poplar	V = Bog or Marsh	2 = Seedling Sapling Medium	7 = Saw Timber Poor
D = Tread Bog	LM = Lowland Mixed	Q = Mixed Swamp Conifer	W = White Pine	3 = Seedling Sapling Well	8 = Saw Timber Medium
E = Swamp Hdwoods	M = Mpl, Bch, Brch	R = Red Pine	X = Non Stocked	4 = Pole Timber Poor	9 = Saw Timber Well
F = Spruce Fir	MC = Mixed Conifer	S = Black Spruce	Z = Water		
G = Grass	MD = Mixed Deciduous	T = Tamarack			

PU	Acres
1	20.3
2	14.2
3	19.0

## Three Section Mix Compartment 96 Acres 53.5





# TIMBER SALE MAP

Sale Number	Year
12-002-23	2023

This information provided by authority of Part 525, 1994 PA 451, as amended.

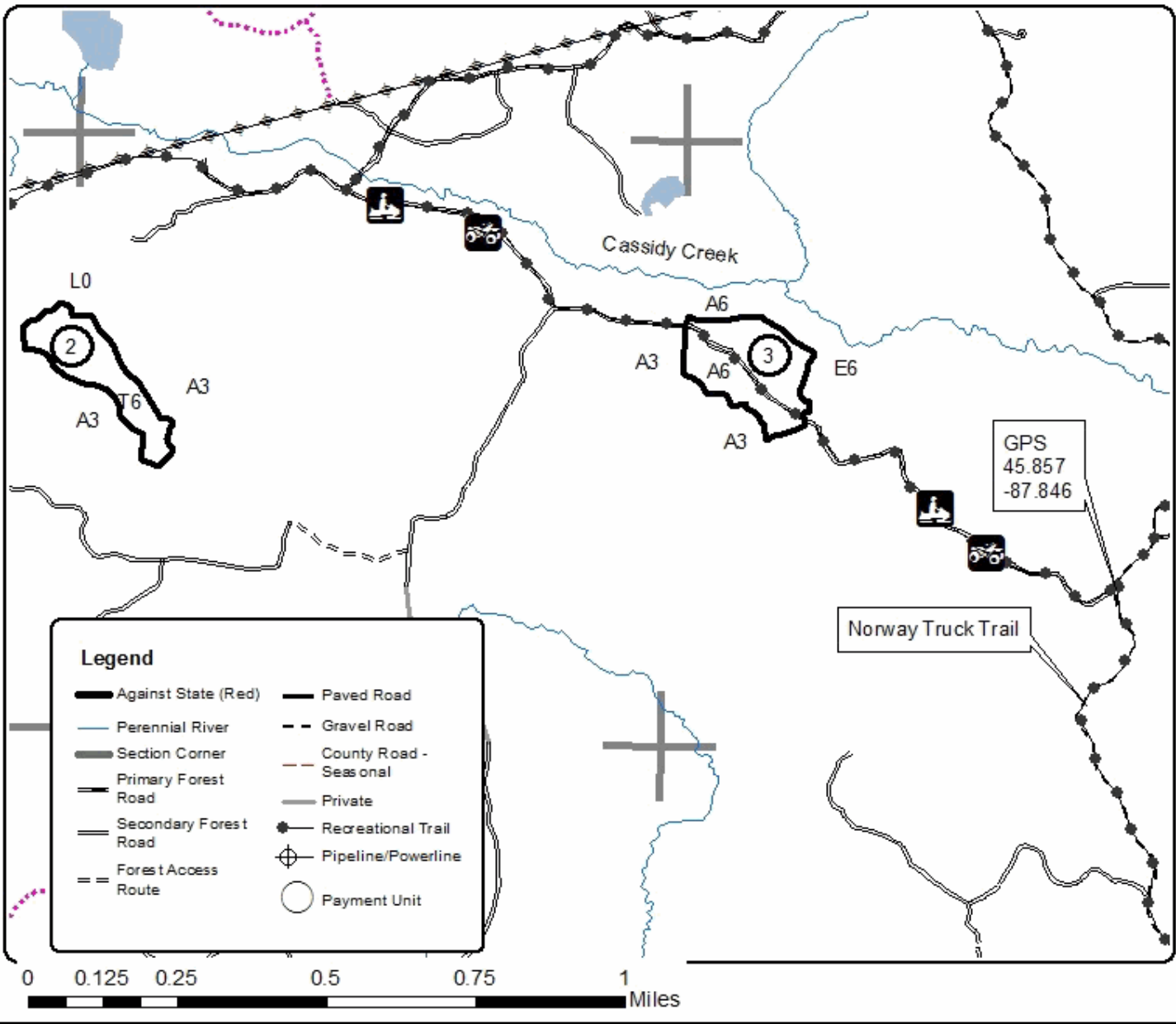
Forest Management Unit Crystal Falls Management Unit	County Dickinson Co.	Mapped By Dickie Goupell	Date 4-27-2023	Page 2	of 2
Township 40 N	Range 29 W	Section(s) and Subdivision(s) SEC 14 SWNW, SEC 15 SWNW, NWSW SEC 16 SENE, SEC 17 S1/2NE, N1/2 SE	Scale 1:15,840		

Cover Type			
A = Aspen	H = Hemlock	N = Marsh	U = Upland Brush
B = Paper Birch	J = Jack Pine	O = Oak	UM = Upland Mixed
C = Cedar	L = Lowland Brush	P = Lowland Poplar	V = Bog or Marsh
D = Treed Bog	LM = Lowland Mixed	Q = Mixed Swamp Conifer	W = White Pine
E = Swamp Hardwoods	M = Mpl, Bch, Birch	R = Red Pine	X = Non Stocked
F = Spruce Fir	MC = Mixed Conifer	S = Black Spruce	Z = Water
G = Grass	MD = Mixed Deciduous	T = Tamarack	

Density	
0 = Non Stocked	5 = Pole Timber Medium
1 = Seedling Sapling Poor	6 = Pole Timber Well
2 = Seedling Sapling Medium	7 = Saw Timber Poor
3 = Seedling Sapling Well	8 = Saw Timber Medium
4 = Pole Timber Poor	9 = Saw Timber Well

PU	Acres
1	20.3
2	14.2
3	19.0

## Three Section Mix Compartment 96 Acres 53.5





## TIMBER SALE INFORMATION

### Turner & Hooch (12-008-23)

T43N, R28W, SEC. 6; T43N, R29W, SEC. 1; T43N, R29W, SEC. 11; T43N, R29W, SEC. 12; T43N, R29W, SEC. 13; T43N, R29W, SEC. 14; T43N, R29W, SEC. 2; T44N, R29W, SEC. 36.

SALE NOTE: Payment Unit 1 is a scaled lowland unit and products need to be scaled prior to hauling. It is recommended, but not required to be cut in winter or dry summer conditions.

Payment Units 2, 13 & 14 have bark slip cutting restrictions.

A timber sale contract for this mixed, sealed bid timber sale will be awarded to the responsible bidder offering the highest sealed bid price. All units of volume listed below were estimated using the Inventory Manager computer program and the new Michigan taper model. Bids must be at or above the following advertised price for each product and species:

<u>PRODUCTS &amp; SPECIES</u>	<u>ESTIMATED UNITS*</u>	<u>ADVERTISED PRICE</u>
<b>Sawtimber</b>		
Basswood	60.3 MBF	\$ 151.00 / MBF
Red Pine	666.2 MBF	\$ 105.00 / MBF
Sugar Maple	149.6 MBF	\$ 236.00 / MBF
<b>Pulpwood</b>		
Balsam Fir	482 Cords	\$ 11.55 / Cord
Basswood	160 Cords	\$ 8.90 / Cord
Mixed Aspen	7,501 Cords	\$ 31.50 / Cord
Mixed Hardwood	1,307 Cords	\$ 16.10 / Cord
Mixed Spruce	82 Cords	\$ 16.15 / Cord
Paper Birch	6 Cords	\$ 5.30 / Cord
Red Pine	1,682 Cords	\$ 44.80 / Cord
Tamarack	65 Cords	\$ 8.80 / Cord

\* The total volume is statistically estimated within plus (+) or minus (-) 7.70 percent. There are an estimated 13,029 cords on this timber sale, plus or minus 1,003 cords at the 95% confidence level. The estimated units are final and not subject to adjustment. Prospective bidders are urged to examine this timber and to make their own estimates of quantity and quality.

### **BOND AND PAYMENT SCHEDULE:**

1. A bond in the amount of \$36,477.00 to insure faithful performance of the conditions of the contract will be deposited by the successful bidder within 21 days of the sale award.
2. Cutting in any sale or unit without the required advance payment would be considered a trespass.
3. Total payment must be paid in advance or according to the following schedule :
  - (a) Ten percent (10%) of the sale value must be paid within 21 days of the sale award.
  - (b) The 10% down payment will be credited towards the first unit cut.
  - (c) Payment for each of the following units must be made before cutting begins in that unit:

PAYMENT UNIT NUMBER	PERCENT OF TOTAL SALE VALUE
01	0.2%
02	2.7%
03	5.7%
04	10.3%
05	5.9%
06	4.6%
07	8.0%
08	6.3%
09	6.9%
10	7.4%
11	10.0%
12	7.6%
13	2.7%
14	3.0%
15	6.0%
16	6.2%
17	6.5%

4. If no cutting takes place, the 10% down payment will not be refunded.
5. Operations on the contract issued will terminate on 06/30/2028.

**SALE STATISTICS**

Volumes were calculated in cubic feet using the Michigan taper model. Cubic foot volume includes all wood inside bark for the product indicated. For display purposes, cubic feet were converted to cords and MBF using a simple conversion factor, e.g. 79 cubic feet per cord and 185 cubic feet per MBF. The cubic foot volumes are precise; the cords and MBF volumes are not. Cubic foot volume cannot be directly converted to cords or boards with precision.

**SALE VOLUMES**

The total estimated sale volume may not equal the sum of the species/products due to the nature of statistical calculations associated with double sampling methodology.

VOLUME			STATISTICAL RANGE IN CORDS	
TOTAL CUBIC FEET	TOTAL CORDS	PERCENT ERROR	MINIMUM	MAXIMUM
1,029,328	13,029	7.70%	12,026	14,033

**VDU VOLUMES**

A VDU is a Volume Determination Unit. Volumes and their associated statistics are calculated at the VDU level and summarized to the sale level. There is often a one to one relationship between a VDU and a Payment Unit, but not always, depending on the cruise design. Refer to the VDU TO PAYMENT UNIT table.

VDU	VOLUME		PERCENT ERROR	RANGE IN CORDS	
	TOTAL CUBIC FEET	TOTAL CORDS		MINIMUM	MAXIMUM
13	213,728	2,705	11.98%	2,381	3,029
18	50,673	641	20.58%	509	773
20	434,433	5,499	10.03%	4,947	6,051
31	256,941	3,252	15.53%	2,747	3,758
33	45,754	579	30.21%	404	754
50	20,693	262	22.37%	203	321
55	7,107	90	0.00%	90	90
<b>TOTAL:</b>	<b>1,029,328</b>	<b>13,029</b>		<b>11,283</b>	<b>14,776</b>



**VDU TO PAYMENT UNIT**

When a VDU is associated with more than one Payment Unit (PU), the VDU volumes are assigned to the PU based on acres of the VDU within the PU.

VDU	VDU ACRES	PU	PU ACRES
13	77.7	15	25.0
		16	25.6
		17	27.1
18	70.3	13	33.5
		14	36.8
20	161.3	6	19.6
		7	34.3
		10	32.0
		11	42.8
		12	32.6
31	87.3	3	16.2
		4	22.3
		5	11.6
		8	17.8
		9	19.4
		4	10.2
33	17.7	5	7.5
		2	17.3
50	17.3	2	17.3
55	10.8	1	10.8
<b>TOTAL:</b>	<b>442.4</b>		<b>442.4</b>

**DESCRIPTION OF TIMBER BY PAYMENT UNIT (PU)**

PU	MARKET GROUP	PRODUCT	QUANTITY	UNIT	ACRES	ADVERTISE PRICE
1	Mixed Spruce	Pulpwood	26	Cords	10.8	\$991.90
	<i>Black Spruce</i>		26	Cords		
	Tamarack		65	Cords		
2	Red Pine	Sawtimber	56.1	MBF	17.3	\$12,185.60
	Balsam Fir	Pulpwood	2	Cords		
	Red Pine		140	Cords		
3	Red Pine	Sawtimber	113.2	MBF	16.2	\$26,120.15
	Balsam Fir	Pulpwood	7	Cords		
	Mixed Aspen		40	Cords		
	<i>Quaking Aspen</i>		40	Cords		
	Mixed Hardwood		5	Cords		
	<i>Red Maple</i>		5	Cords		
	Red Pine		286	Cords		
4	Red Pine	Sawtimber	155.8	MBF	32.5	\$47,086.35
	Balsam Fir	Pulpwood	20	Cords		
	Mixed Aspen		395	Cords		
	<i>Balsam Poplar</i>		4	Cords		
	<i>Quaking Aspen</i>		391	Cords		
	Mixed Hardwood		22	Cords		
	<i>Red Maple</i>		22	Cords		
	Mixed Spruce		3	Cords		
	<i>White Spruce</i>		3	Cords		
	Red Pine		394	Cords		
	5	Red Pine	Sawtimber	81.1		
Balsam Fir		Pulpwood	12	Cords		
Mixed Aspen			278	Cords		
<i>Balsam Poplar</i>			3	Cords		
<i>Quaking Aspen</i>			275	Cords		
Mixed Hardwood			14	Cords		
<i>Red Maple</i>			14	Cords		
Mixed Spruce			3	Cords		
<i>White Spruce</i>			3	Cords		
Red Pine			205	Cords		
6	Basswood	Sawtimber	1.3	MBF	19.6	\$20,791.20
	Sugar Maple		8.6	MBF		
	Balsam Fir	Pulpwood	44	Cords		
	Basswood		8	Cords		
	Mixed Aspen		526	Cords		
	<i>Balsam Poplar</i>		4	Cords		
	<i>Quaking Aspen</i>		522	Cords		
	Mixed Hardwood		86	Cords		
	<i>Black Ash</i>		1	Cords		
	<i>Black Cherry</i>		3	Cords		
	<i>Red Maple</i>		16	Cords		
	<i>Sugar Maple</i>		66	Cords		
	Mixed Spruce		2	Cords		
	<i>Black Spruce</i>		1	Cords		
<i>White Spruce</i>		1	Cords			
7	Basswood	Sawtimber	2.3	MBF	34.3	\$36,391.65
	Sugar Maple		15.1	MBF		
	Balsam Fir	Pulpwood	77	Cords		
	Basswood		13	Cords		
	Mixed Aspen		920	Cords		
	<i>Balsam Poplar</i>		6	Cords		
<i>Quaking Aspen</i>		914	Cords			

**DESCRIPTION OF TIMBER BY PAYMENT UNIT (PU), CON'T**

PU	MARKET GROUP	PRODUCT	QUANTITY	UNIT	ACRES	ADVERTISE PRICE
7 con't	Mixed Hardwood	Pulpwood	151	Cords		
	<i>Black Ash</i>		2	<i>Cords</i>		
	<i>Black Cherry</i>		6	<i>Cords</i>		
	<i>Red Maple</i>		28	<i>Cords</i>		
	<i>Sugar Maple</i>		115	<i>Cords</i>		
	Mixed Spruce		4	Cords		
	<i>Black Spruce</i>		2	<i>Cords</i>		
	<i>White Spruce</i>		2	<i>Cords</i>		
8	Red Pine	Sawtimber	124.4	MBF	17.8	\$28,704.20
	Balsam Fir	Pulpwood	8	Cords		
	Mixed Aspen		44	Cords		
	<i>Quaking Aspen</i>		44	<i>Cords</i>		
	Mixed Hardwood		6	Cords		
	<i>Red Maple</i>		6	<i>Cords</i>		
	Red Pine		314	Cords		
9	Red Pine	Sawtimber	135.6	MBF	19.4	\$31,305.40
	Balsam Fir	Pulpwood	8	Cords		
	Mixed Aspen		48	Cords		
	<i>Quaking Aspen</i>		48	<i>Cords</i>		
	Mixed Hardwood		6	Cords		
	<i>Red Maple</i>		6	<i>Cords</i>		
	Red Pine		343	Cords		
10	Basswood	Sawtimber	2.1	MBF	32.0	\$33,960.90
	Sugar Maple		14.1	MBF		
	Balsam Fir	Pulpwood	72	Cords		
	Basswood		12	Cords		
	Mixed Aspen		858	Cords		
	<i>Balsam Poplar</i>		6	<i>Cords</i>		
	<i>Quaking Aspen</i>		852	<i>Cords</i>		
	Mixed Hardwood		142	Cords		
	<i>Black Ash</i>		2	<i>Cords</i>		
	<i>Black Cherry</i>		5	<i>Cords</i>		
	<i>Red Maple</i>		27	<i>Cords</i>		
	<i>Sugar Maple</i>		108	<i>Cords</i>		
	Mixed Spruce		4	Cords		
	<i>Black Spruce</i>		2	<i>Cords</i>		
	<i>White Spruce</i>		2	<i>Cords</i>		
11	Basswood	Sawtimber	2.8	MBF	42.8	\$45,519.30
	Sugar Maple		18.8	MBF		
	Balsam Fir	Pulpwood	97	Cords		
	Basswood		16	Cords		
	Mixed Aspen		1,150	Cords		
	<i>Balsam Poplar</i>		8	<i>Cords</i>		
	<i>Quaking Aspen</i>		1,142	<i>Cords</i>		
	Mixed Hardwood		192	Cords		
	<i>Black Ash</i>		4	<i>Cords</i>		
	<i>Black Cherry</i>		8	<i>Cords</i>		
	<i>Red Maple</i>		36	<i>Cords</i>		
	<i>Sugar Maple</i>		144	<i>Cords</i>		
	Mixed Spruce		5	Cords		
	<i>Black Spruce</i>		3	<i>Cords</i>		
	<i>White Spruce</i>		2	<i>Cords</i>		
12	Basswood	Sawtimber	2.2	MBF	32.6	\$34,579.85
	Sugar Maple		14.3	MBF		
	Balsam Fir	Pulpwood	73	Cords		
	Basswood		13	Cords		

**DESCRIPTION OF TIMBER BY PAYMENT UNIT (PU), CON'T**

PU	MARKET GROUP	PRODUCT	QUANTITY	UNIT	ACRES	ADVERTISE PRICE				
12 con't	Mixed Aspen	Pulpwood	874	Cords						
	<i>Balsam Poplar</i>		6	<i>Cords</i>						
	<i>Quaking Aspen</i>		868	<i>Cords</i>						
	Mixed Hardwood		144	Cords						
	<i>Black Ash</i>		2	<i>Cords</i>						
	<i>Black Cherry</i>		5	<i>Cords</i>						
	<i>Red Maple</i>		27	<i>Cords</i>						
	<i>Sugar Maple</i>		110	<i>Cords</i>						
	Mixed Spruce		4	Cords						
	<i>Black Spruce</i>		2	<i>Cords</i>						
	<i>White Spruce</i>		2	<i>Cords</i>						
13	Basswood	Sawtimber	20.1	MBF	33.5	\$12,361.70				
	Sugar Maple		27.5	MBF						
	Basswood	Pulpwood	10	Cords						
	Mixed Hardwood		170	Cords						
	<i>Ironwood</i>		1	<i>Cords</i>						
	<i>Red Maple</i>		10	<i>Cords</i>						
	<i>Sugar Maple</i>		159	<i>Cords</i>						
	Paper Birch		2	Cords						
	<i>Paper Birch</i>		0.7	<i>MBF</i>						
	<i>Paper Birch</i>		1	<i>Cords</i>						
14	Basswood		Sawtimber	22.0	MBF	36.8	\$13,604.00			
	Sugar Maple		30.2	MBF						
	Basswood	Pulpwood	12	Cords						
	Mixed Hardwood		188	Cords						
	<i>Ironwood</i>		2	<i>Cords</i>						
	<i>Red Maple</i>		12	<i>Cords</i>						
	<i>Sugar Maple</i>		174	<i>Cords</i>						
	Paper Birch		4	Cords						
	<i>Paper Birch</i>		0.8	<i>MBF</i>						
	<i>Paper Birch</i>		2	<i>Cords</i>						
15	Basswood		Sawtimber	2.4	MBF	25.0	\$27,510.10			
	Sugar Maple		6.8	MBF						
	Balsam Fir	Pulpwood	20	Cords						
	Basswood		24	Cords						
	Mixed Aspen		762	Cords						
	<i>Balsam Poplar</i>		57	<i>Cords</i>						
	<i>Quaking Aspen</i>		705	<i>Cords</i>						
	Mixed Hardwood		58	Cords						
	<i>Red Maple</i>		5	<i>Cords</i>						
	<i>Sugar Maple</i>		53	<i>Cords</i>						
	Mixed Spruce		10	Cords						
	<i>White Spruce</i>		10	<i>Cords</i>						
	16		Basswood	Sawtimber	2.5			MBF	25.6	\$28,156.90
Sugar Maple				6.9	MBF					
Balsam Fir		Pulpwood	20	Cords						
Basswood			25	Cords						
Mixed Aspen			780	Cords						
<i>Balsam Poplar</i>			58	<i>Cords</i>						
<i>Quaking Aspen</i>			722	<i>Cords</i>						
Mixed Hardwood			60	Cords						
<i>Red Maple</i>			5	<i>Cords</i>						
<i>Sugar Maple</i>			55	<i>Cords</i>						
Mixed Spruce			10	Cords						
<i>White Spruce</i>			10	<i>Cords</i>						
17			Basswood	Sawtimber	2.6	MBF	27.1	\$29,820.75		

**DESCRIPTION OF TIMBER BY PAYMENT UNIT (PU), CON'T**

PU	MARKET GROUP	PRODUCT	QUANTITY	UNIT	ACRES	ADVERTISE PRICE
17 con't	Sugar Maple	Sawtimber	7.3	MBF		
	Balsam Fir	Pulpwood	22	Cords		
	Basswood		27	Cords		
	Mixed Aspen		826	Cords		
	<i>Balsam Poplar</i>		61	<i>Cords</i>		
	<i>Quaking Aspen</i>		765	<i>Cords</i>		
	Mixed Hardwood		63	Cords		
	<i>Red Maple</i>		5	<i>Cords</i>		
	<i>Sugar Maple</i>		58	<i>Cords</i>		
	Mixed Spruce		11	Cords		
	<i>White Spruce</i>		11	<i>Cords</i>		
	TOTAL:			876.1	MBF	
TOTAL:			11,285	Cords		

# Sale Specific Conditions & Requirements

**Sale Name: Turner & Hooch**

**Sale Number: 12-008-23 Seq#: 1**

## 1 - Sale Area

### 1.2 - Boundaries

#### 1.2.1 - Painted boundaries (9/19)

The sale boundary and Payment Unit boundaries are marked and identified by red and yellow paint. Exterior sale boundary lines against state are marked with red paint. Interior Payment Unit boundaries are marked with yellow paint. Retention patches are marked with red paint; no harvesting activities may occur within these areas. The painted boundary line trees are not Included Timber and are to be protected unless marked with orange paint. Yellow painted trees designating an interior Payment Unit boundary are only to be cut when all surrounding Payment Units have been paid.

## 2 - Timber Specifications

### 2.1 - Included Timber

#### 2.1.1 - Clearcut unit(s) with unmerchantable trees (6/14)

Within Payment Unit(s) 1, 6, 7, 10, 11, 12, 15, 16, & 17, cut all trees that are two (2) inches or more at DBH, except do not cut red pine, white pine, oak, cedar, and hemlock. In addition, leave small clumps (5-10 stems) of live sub-merchantable conifers and black ash, where present.

Within Payment Unit(s) 3, 4, 5, 8 & 9, cut all trees that are two (2) inches or more at DBH.

#### 2.1.3 - Cut tree marked unit(s) (12/08)

Within Payment Unit(s) 2, 13, and 14, all trees are designated for cutting when marked with orange paint above and below stump height, regardless of merchantability.

## 3 - Payments

### 3.2 - Scaled Sales

#### 3.2.1 - Scale location (2/04)

Forest products will be placed for measurement in Payment Unit 1 or in another pre-agreed upon location. Payment Unit 1 is a scaled unit and products may not be hauled prior to being scaled by Timber Sale Administrator.

## 4 - Transportation

### 4.1 - Construction

#### 4.1.4 - Timber removed for construction (3/23)

Trees cut or damaged in the process of pre-approved road, landing or skid trail construction will be decked in an area separate from other Designated Timber and not removed until measured by the sale administrator. Payment will be made at contract prices or average prices, if not on the contract.

#### 4.1.6 - Road construction (1/09)

Construction of new roads or improvements of existing roads shall be done in such a way as to minimize the environmental and visual impacts. Merchantable trees shall be cut and utilized unless otherwise directed. Non-merchantable trees shall be severed and laid flat on the ground. Slash shall be scattered, and not left in windrows and kept a minimum of 10 feet back from the road edge, chipped, utilized or otherwise removed from the sale. Stumps shall be set upright, not left on edge, and be moved at least 5 feet away from the road edge. Disturbed soil shall be feathered into the woods and not left in berms or windrows.

#### 4.1.7 - Road closure (10/11)

All new roads built into the sale must be blocked to vehicle traffic upon completion of the sale. Overgrown roads that are reopened shall be considered new roads. In general, this will require constructing a four (4') foot high berm of stumps and logs covered with earth. Contact the Sale Administrator for specific details of design and placement.

### 4.2 - Maintenance

#### 4.2.1 - Hauling restriction (12/08)

Hauling may be restricted on forest roads by the Unit Manager or his/her representative. The restriction may occur during spring breakup or prolonged wet weather conditions.

#### 4.2.4 - Grading (10/16)

For completion of the sale, state forest roads must be graded. In general, this will require a road grader or bulldozer to shape up the roads after forest products have been hauled off site. This includes cleaning of drainage areas, grading, crowning and filling with gravel, if necessary. The grading equipment to be used must be approved by the Unit Manager or his/her representative.

#### 4.2.5 - Two wheel drive condition (2/04)

All existing trail roads on and adjacent to the sale area must be passable by two-wheel drive traffic for the duration of the sale.

### 4.3 - Public Right-of-Way

#### 4.3.2 - County R-O-W (12/06)

The county must be contacted prior to using or decking along the county road R-O-W. This applies to Payment Units 1 & 2 and Turner Road.

## 5 - Operations

### 5.2 - Conduct of Operations

#### 5.2.3 - Operating Restrictions

##### 5.2.3.3 - Bark slippage restriction (3/09)

Within Payment Unit(s) 2, 13 & 14, unless changed by written agreement, cutting and skidding are not permitted during the period of April 15 to July 15. This restriction is because of bark slippage.

#### 5.2.22 - Operating Caution

##### 5.2.22.1 - Operating caution (6/11)

It is recommended, but not required, that within Payment Unit(s) 1, cutting, skidding, and hauling occur during dry summer or frozen winter conditions. The reason for the recommendation is because of wet lowland soils.

#### 5.2.32 - Decking/landing restoration (9/13)

All decking and landing areas must have the surface area restored to a condition equal to or better than before. This is to ensure the proper regeneration of the stand. Wood debris, chips and "cookies" from trimmings must be removed or scattered away from landing and loading areas and may not be windrowed on the edge.

#### 5.2.38 - No decking against live trees (2/04)

Cut products may not be decked against unmarked or designated leave trees.

### 5.4 - Soil Protection

#### 5.4.1 - Rutting restriction, general (7/16)

Operations are to cease immediately if equipment and weather conditions result in rutting of roads and/or skid trails which is 12 inches or greater in depth and 50 feet in length. The Unit Manager or his/her representative may restrict hauling and/or skidding if ruts exceed the specified depth. With the Unit Manager or his/her representative's approval, the Purchaser may return to the area when the risk of rutting has decreased.

## 6 - Safety and Fire Prevention

### 6.2 - Signing

#### 6.2.1 - Road posting (10/20)

The Purchaser is responsible for posting and maintaining caution signs on Turner Road and Hintz Road prior to beginning operations. The road must be posted at appropriate distances from the Sale Area to warn of logging activity and truck traffic. Signs must be removed when harvest operations are suspended or completed. The Purchaser will provide these signs.



### TIMBER SALE MAP

This information provided by authority of Part 525, 1994 PA 451, as amended.

Forest Management Unit Escanaba Management Unit	County Dickinson Co.	Mapped By Debbie Goupell	Date 8/15/23	Page 1	of 3
Township 43,44N		Range 28,29W		Section(s) and Subdivision(s) R28 S6:SWNW,NWSW T44 R29 S.36: SW1/4	

Cruised By Deb Goupell & Andy Church		Scale 1:15,840
---	--	-------------------

Cover Type				Density			
A = Aspen	H = Hemlock	N = Marsh	U = Upland Brush	0 = Non Stocked	5 = Pole Timber Medium		
B = Paper Birch	J = Jack Pine	O = Oak	UM = Upland Mixed	1 = Seedling Sapling Poor	6 = Pole Timber Well		
C = Cedar	L = Lowland Brush	P = Lowland Poplar	V = Bog or Marsh	2 = Seedling Sapling Medium	7 = Saw Timber Poor		
D = Treed Bog	LM = Lowland Mixed	Q = Mixed Swamp Conifer	W = White Pine	3 = Seedling Sapling Well	8 = Saw Timber Medium		
E = Swamp Hdwoods	M = Mpl. Bch, Brch	R = Red Pine	X = Non Stocked	4 = Pole Timber Poor	9 = Saw Timber Well		
F = Spruce Fir	MC = Mixed Conifer	S = Black Spruce	Z = Water				
G = Grass	MD = Mixed Deciduous	T = Tamarack					

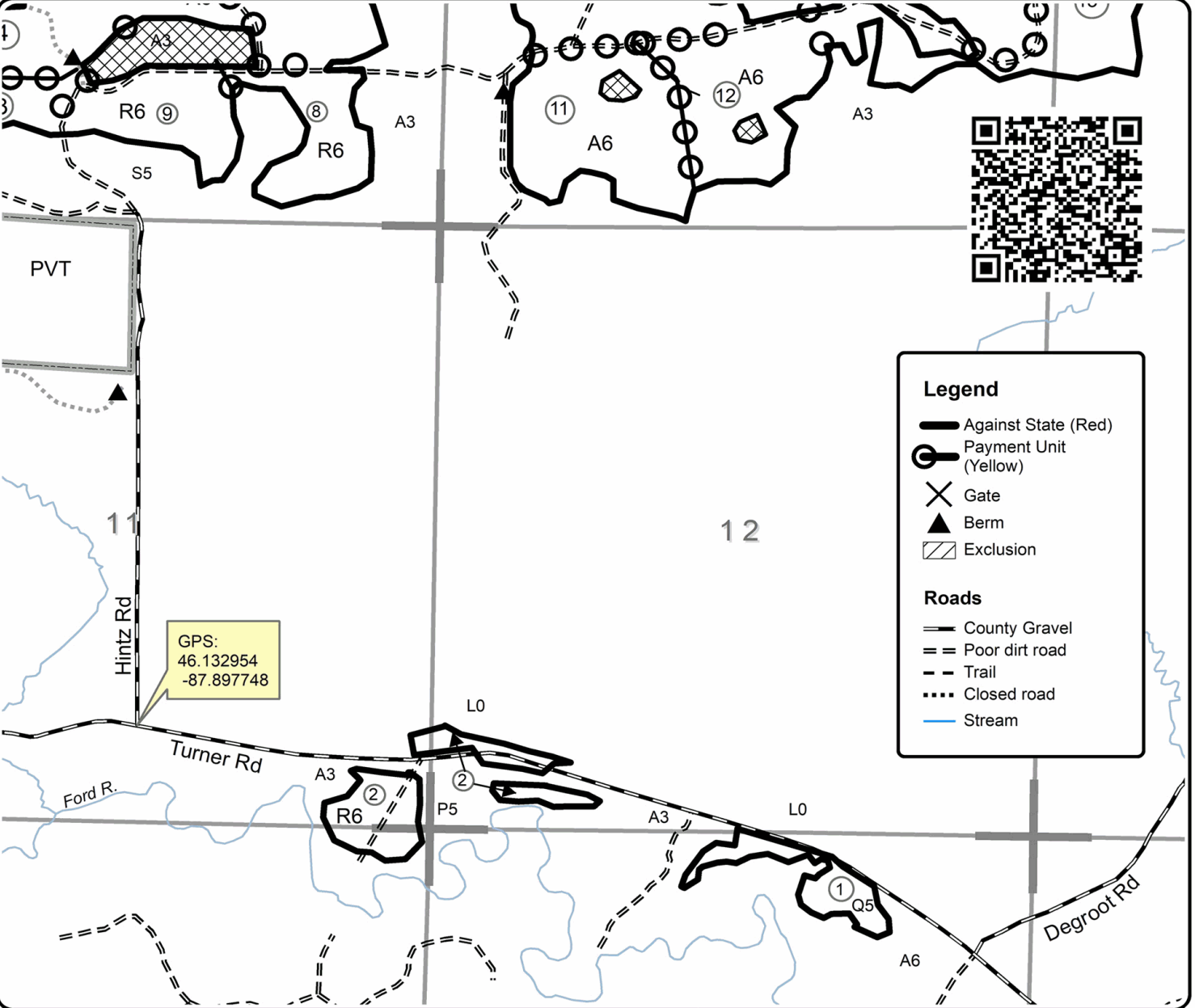


Unit	Acres	Unit	Acres	Unit	Acres	Unit	Acres	Unit	Acres
1	10.8	5	19.1	9	19.4	13	33.5	17	27.1
2	17.3	6	19.6	10	32.0	14	36.8		
3	16.2	7	34.3	11	42.8	15	25.0		
4	32.5	8	17.8	12	32.6	16	25.6		

## Turner & Hooch

### Compartment 41

442.4 Acres



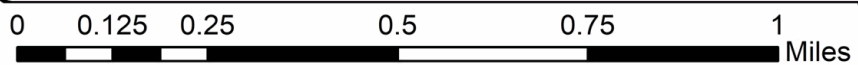
**Legend**

- Against State (Red)
- ⊙ Payment Unit (Yellow)
- ✕ Gate
- ▲ Berm
- ▨ Exclusion

**Roads**

- County Gravel
- == Poor dirt road
- - - Trail
- ⋯ Closed road
- Stream

GPS:  
46.132954  
-87.897748







### TIMBER SALE MAP

This information provided by authority of Part 525, 1994 PA 451, as amended.

Forest Management Unit Escanaba Management Unit	County Dickinson Co.	Mapped By Debbie Goupell	Date 8/15/23	Page 2	of 3
Township 43,44N	Range 28,29W	Section(s) and Subdivision(s) R28 S6:SWNW,NWSW T44 R29 S.36: SW1/4 T43 R29 S1:N1/2NW,NWNE,S1/2NE,S1/2 S2:S1/2,S1/2NW,SWNE S11:SESE S12:S1/2SW,S13:N1/2NE,NENW,S14:NENE	Scale 1:15,840		

#### Cover Type

A = Aspen	H = Hemlock	N = Marsh	U = Upland Brush
B = Paper Birch	J = Jack Pine	O = Oak	UM = Upland Mixed
C = Cedar	L = Lowland Brush	P = Lowland Poplar	V = Bog or Marsh
D = Treed Bog	LM = Lowland Mixed	Q = Mixed Swamp Conifer	W = White Pine
E = Swamp Hdwoods	M = Mpl, Bch, Brch	R = Red Pine	X = Non Stocked
F = Spruce Fir	MC = Mixed Conifer	S = Black Spruce	Z = Water
G = Grass	MD = Mixed Deciduous	T = Tamarack	

#### Density

0 = Non Stocked	5 = Pole Timber Medium
1 = Seedling Sapling Poor	6 = Pole Timber Well
2 = Seedling Sapling Medium	7 = Saw Timber Poor
3 = Seedling Sapling Well	8 = Saw Timber Medium
4 = Pole Timber Poor	9 = Saw Timber Well

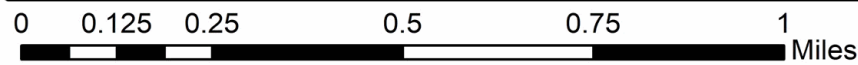
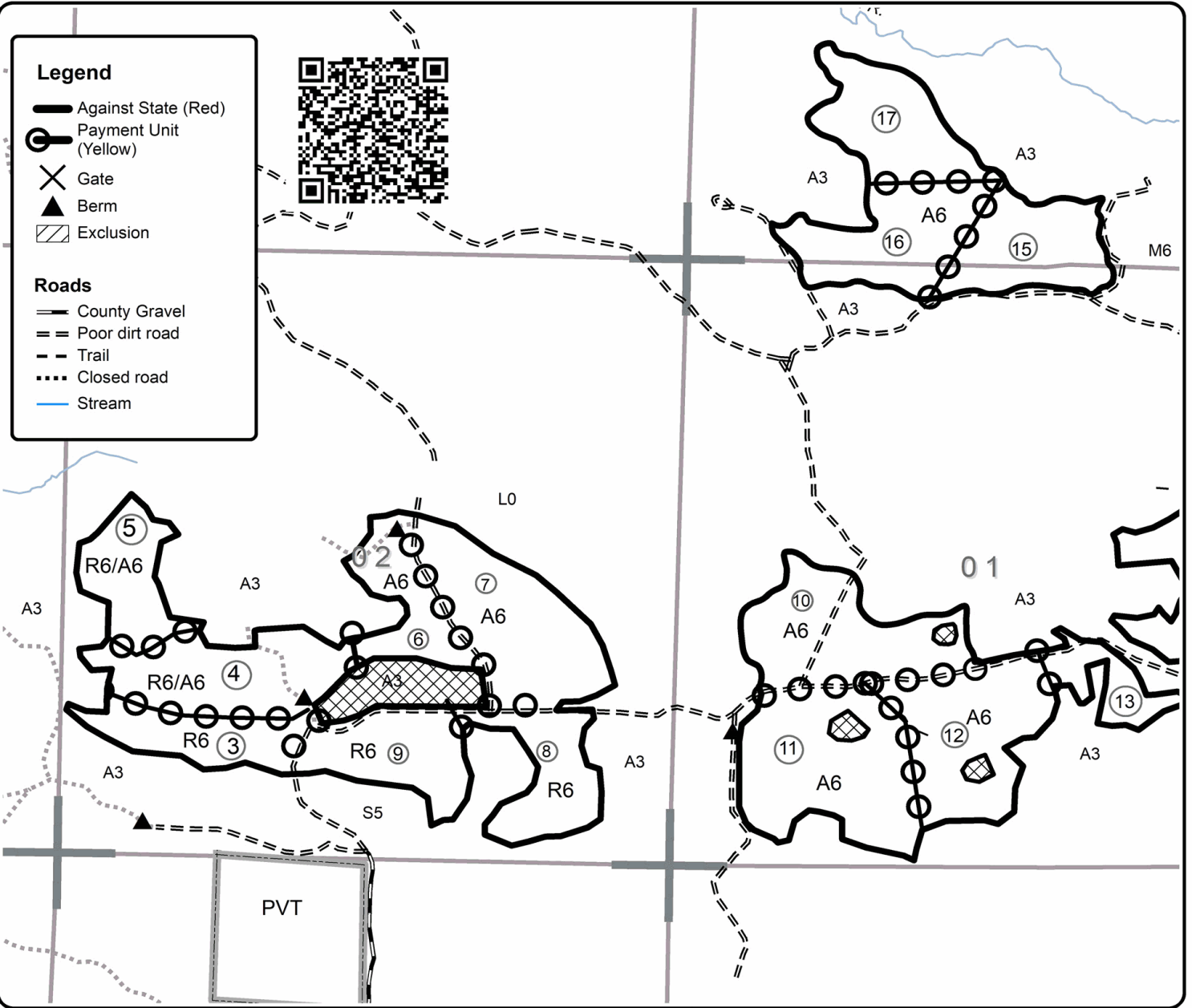


Unit	Acres	Unit	Acres	Unit	Acres	Unit	Acres	Unit	Acres
1	10.8	5	19.1	9	19.4	13	33.5	17	27.1
2	17.3	6	19.6	10	32.0	14	36.8		
3	16.2	7	34.3	11	42.8	15	25.0		
4	32.5	8	17.8	12	32.6	16	25.6		

## Turner & Hooch

### Compartment 41

#### 442.4 Acres





# TIMBER SALE MAP

This information provided by authority of Part 525, 1994 PA 451, as amended.

Forest Management Unit Escanaba Management Unit	County Dickinson Co.	Mapped By Debbie Goupell	Date 8/15/23	Page 3	of 3
Township 43,44N	Range 28,29W	Section(s) and Subdivision(s) R28 S6:SWNW,NWSW T44 R29 S.36: SW1/4 T43 R29 S1:N1/2NW,NWNE,S1/2NE,S1/2 S2:S1/2,S1/2NW,SWNE S11:SESE S12:S1/2SW,S13:N1/2NE,NENW,S14:NENE	Scale 1:15,840		

### Cover Type

A = Aspen	H = Hemlock	N = Marsh	U = Upland Brush
B = Paper Birch	J = Jack Pine	O = Oak	UM = Upland Mixed
C = Cedar	L = Lowland Brush	P = Lowland Poplar	V = Bog or Marsh
D = Treed Bog	LM = Lowland Mixed	Q = Mixed Swamp Conifer	W = White Pine
E = Swamp Hdwoods	M = Mpl, Bch, Brch	R = Red Pine	X = Non Stocked
F = Spruce Fir	MC = Mixed Conifer	S = Black Spruce	Z = Water
G = Grass	MD = Mixed Deciduous	T = Tamarack	

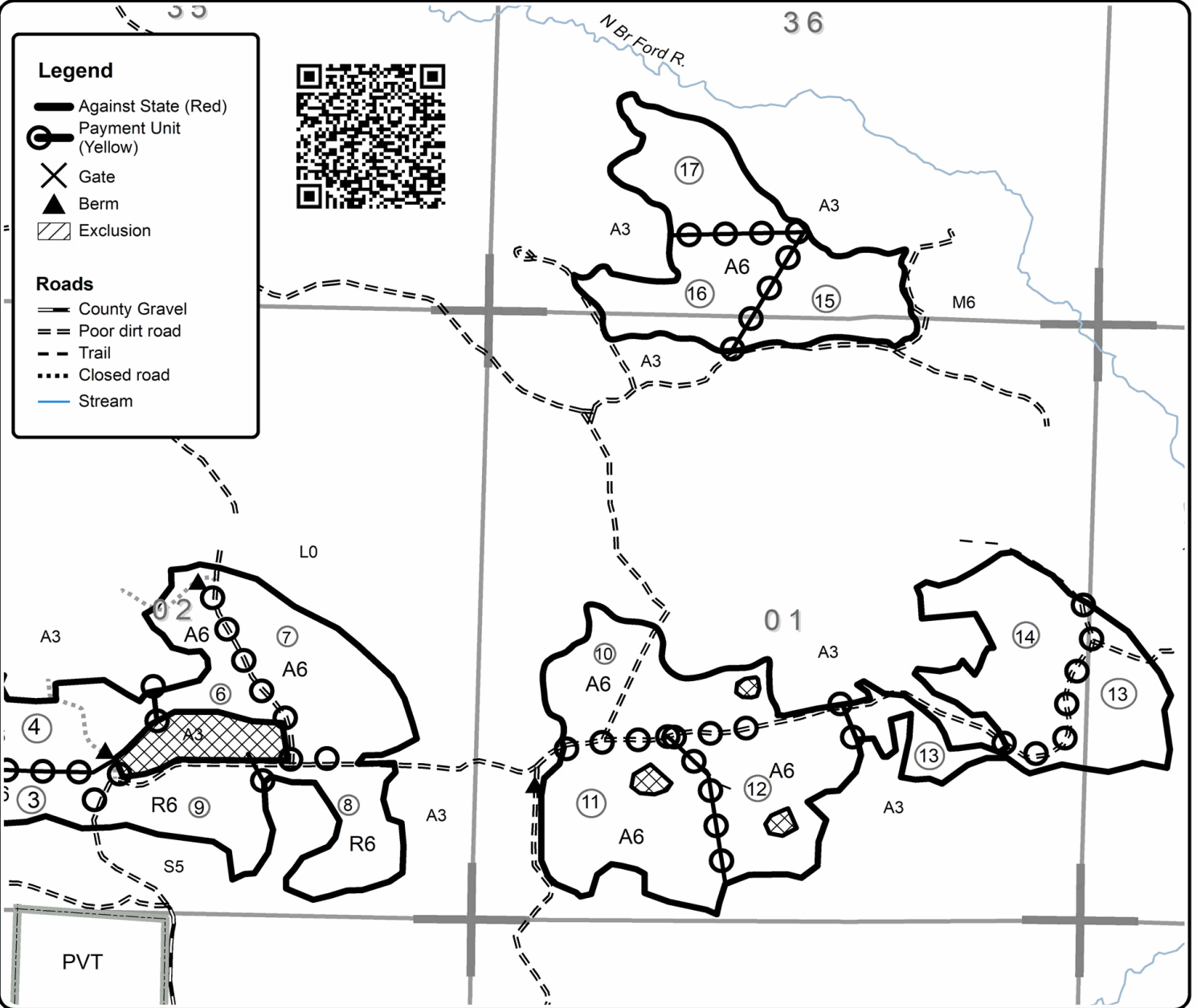
### Density

0 = Non Stocked	5 = Pole Timber Medium
1 = Seedling Sapling Poor	6 = Pole Timber Well
2 = Seedling Sapling Medium	7 = Saw Timber Poor
3 = Seedling Sapling Well	8 = Saw Timber Medium
4 = Pole Timber Poor	9 = Saw Timber Well



Unit	Acres	Unit	Acres	Unit	Acres	Unit	Acres	Unit	Acres
1	10.8	5	19.1	9	19.4	13	33.5	17	27.1
2	17.3	6	19.6	10	32.0	14	36.8		
3	16.2	7	34.3	11	42.8	15	25.0		
4	32.5	8	17.8	12	32.6	16	25.6		

**Turner & Hooch**  
 Compartment 41  
 442.4 Acres



## TIMBER SALE INFORMATION

### Six Mile Jungle (12-009-23)

T42N, R29W, SEC. 13; T42N, R29W, SEC. 14; T42N, R29W, SEC. 23; T42N, R29W, SEC. 24.  
Dickinson County (Advertised Price \$66,573.10)

A timber sale contract for this lump sum, sealed bid timber sale will be awarded to the responsible bidder offering the highest sealed bid price. All units of volume listed below were estimated using the Inventory Manager computer program and the new Michigan taper model. Bids must be at or above the following advertised price for each product and species:

<u>PRODUCTS &amp; SPECIES</u>	<u>ESTIMATED UNITS*</u>	<u>ADVERTISED PRICE</u>
Pulpwood		
Balsam Fir	187 Cords	\$ 11.55 / Cord
Mixed Aspen	1,918 Cords	\$ 31.50 / Cord
Mixed Hardwood	179 Cords	\$ 16.10 / Cord
Mixed Spruce	69 Cords	\$ 16.15 / Cord

\* The total volume is statistically estimated within plus (+) or minus (-) 15.65 percent. There are an estimated 2,239 cords on this timber sale, plus or minus 350 cords at the 95% confidence level. The estimated units are final and not subject to adjustment. Prospective bidders are urged to examine this timber and to make their own estimates of quantity and quality.

### **BOND AND PAYMENT SCHEDULE:**

1. A bond in the amount of \$3,329.00 to insure faithful performance of the conditions of the contract will be deposited by the successful bidder within 21 days of the sale award.
2. Cutting in any sale or unit without the required advance payment would be considered a trespass.
3. Total payment must be paid in advance or according to the following schedule :
  - (a) Ten percent (10%) of the sale value must be paid within 21 days of the sale award.
  - (b) The 10% down payment will be credited towards the first unit cut.
  - (c) Payment for each of the following units must be made before cutting begins in that unit:
 

PAYMENT UNIT NUMBER	PERCENT OF TOTAL SALE VALUE
01	26.3%
02	73.7%
4. If no cutting takes place, the 10% down payment will not be refunded.
5. Operations on the contract issued will terminate on 06/30/2027.

### **SALE STATISTICS**

Volumes were calculated in cubic feet using the Michigan taper model. Cubic foot volume includes all wood inside bark for the product indicated. For display purposes, cubic feet were converted to cords and MBF using a simple conversion factor, e.g. 79 cubic feet per cord and 185 cubic feet per MBF. The cubic foot volumes are precise; the cords and MBF volumes are not. Cubic foot volume cannot be directly converted to cords or boards with precision.

### **SALE VOLUMES**

The total estimated sale volume may not equal the sum of the species/products due to the nature of statistical calculations associated with double sampling methodology.

VOLUME		STATISTICAL RANGE IN CORDS		
TOTAL CUBIC FEET	TOTAL CORDS	PERCENT ERROR	MINIMUM	MAXIMUM
176,859	2,239	15.65%	1,888	2,589

**VDU VOLUMES**

A VDU is a Volume Determination Unit. Volumes and their associated statistics are calculated at the VDU level and summarized to the sale level. There is often a one to one relationship between a VDU and a Payment Unit, but not always, depending on the cruise design. Refer to the VDU TO PAYMENT UNIT table.

VDU	VOLUME		PERCENT ERROR	RANGE IN CORDS	
	TOTAL CUBIC FEET	TOTAL CORDS		MINIMUM	MAXIMUM
34	176,859	2,239	15.65%	1,888	2,589
<b>TOTAL:</b>	<b>176,859</b>	<b>2,239</b>		<b>1,888</b>	<b>2,589</b>

**VDU TO PAYMENT UNIT**

When a VDU is associated with more than one Payment Unit (PU), the VDU volumes are assigned to the PU based on acres of the VDU within the PU.

VDU	VDU ACRES	PU	PU ACRES
34	74.2	1	19.5
		2	54.7
<b>TOTAL:</b>	<b>74.2</b>		<b>74.2</b>

**DESCRIPTION OF TIMBER BY PAYMENT UNIT (PU)**

PU	MARKET GROUP	PRODUCT	QUANTITY	UNIT	ACRES	ADVERTISE PRICE
1	Balsam Fir	Pulpwood	49	Cords	19.5	\$17,489.35
	Mixed Aspen		504	Cords		
	<i>Balsam Poplar</i>		3	<i>Cords</i>		
	<i>Quaking Aspen</i>		501	<i>Cords</i>		
	Mixed Hardwood		47	Cords		
	<i>Black Ash</i>		2	<i>Cords</i>		
	<i>Black Cherry</i>		14	<i>Cords</i>		
	<i>Red Maple</i>		27	<i>Cords</i>		
	<i>Sugar Maple</i>		4	<i>Cords</i>		
	Mixed Spruce		18	Cords		
	<i>Black Spruce</i>		5	<i>Cords</i>		
	<i>White Spruce</i>		13	<i>Cords</i>		
	2		Balsam Fir	Pulpwood		
Mixed Aspen		1,414	Cords			
<i>Balsam Poplar</i>		7	<i>Cords</i>			
<i>Quaking Aspen</i>		1,407	<i>Cords</i>			
Mixed Hardwood		132	Cords			
<i>Black Ash</i>		4	<i>Cords</i>			
<i>Black Cherry</i>		41	<i>Cords</i>			
<i>Red Maple</i>		75	<i>Cords</i>			
<i>Sugar Maple</i>		12	<i>Cords</i>			
Mixed Spruce		51	Cords			
<i>Black Spruce</i>		15	<i>Cords</i>			
<i>White Spruce</i>		36	<i>Cords</i>			
<b>TOTAL:</b>			2,353		Cords	

## Sale Specific Conditions & Requirements

**Sale Name: Six Mile Jungle**

**Sale Number: 12-009-23 Seq#: 1**

### 1 - Sale Area

#### 1.2 - Boundaries

##### 1.2.1 - Painted boundaries (9/19)

The sale boundary and Payment Unit boundaries are marked and identified by blue and red paint. Exterior sale boundary lines against private property are marked with blue paint. Exterior sale boundary lines against state are marked with red paint. The painted boundary line trees are not Included Timber.

### 2 - Timber Specifications

#### 2.1 - Included Timber

##### 2.1.2 - Clearcut unit(s) w/o unmerchantable trees (8/11)

Within Payment Unit(s) #'s 1-2, cut all trees which meet minimum piece specifications in 2.2 Utilization except northern white cedar, hemlock, oak, pine, and any trees marked with green paint.

### 3 - Payments

#### 3.3 - Pre-measured Sales

##### 3.3.4 - Dividing payment units (7/14)

Payment Unit(s) #2 may be divided at the request of the Purchaser and upon approval of the Unit Manager. Dividing Payment Units is a contract modification which requires a Timber Sale Contract Amendment.

### 4 - Transportation

#### 4.1 - Construction

##### 4.1.6 - Road construction (1/09)

Construction of new roads or improvements of existing roads shall be done in such a way as to minimize the environmental and visual impacts. Merchantable trees shall be cut and utilized unless otherwise directed. Non-merchantable trees shall be severed and laid flat on the ground. Slash shall be scattered, and not left in windrows and kept a minimum of 10 feet back from the road edge. Stumps shall be set upright, not left on edge, and be moved at least 10 feet away from the road edge. Disturbed soil shall be feathered into the woods and not left in berms or windrows.

##### 4.1.7 - Road closure (10/11)

All new roads built into the sale must be blocked to vehicle traffic upon completion of the sale. Overgrown roads that are reopened shall be considered new roads. In general, this will require constructing a four (4') foot high berm of stumps and logs covered with earth. These roads must be rendered impassable to cars and trucks. Contact the sale administrator for specific details of design and placement.

#### 4.4 - Access

##### 4.4.2 - Alternate route on private property (2/04)

It is the Purchaser's responsibility to obtain access across private land for any routes other than the route shown on the Timber Sale Map.

### 5 - Operations

#### 5.2 - Conduct of Operations

##### 5.2.2 - Hazard Trees/Snags

###### 5.2.2.1 - Den trees (10/16)

Obvious hollow and/or den trees shall be protected and left standing unless they are a safety hazard.

#### 5.4 - Soil Protection

5.4.1 - Rutting restriction, general (7/16)

Operations are to cease immediately if equipment and weather conditions result in rutting of roads and/or skid trails which is 12 inches or greater in depth and 50 feet in length. The Unit Manager or his/her representative may restrict hauling and/or skidding if ruts exceed the specified depth. With the Unit Manager or his/her representative's approval, the Purchaser may return to the area when the risk of rutting has decreased.



# TIMBER SALE MAP

This information provided by authority of Part 525, 1994 PA 451, as amended.

Sale Number	Year
12 - 009	23

Forest Management Unit Escanaba Unit	County Dickinson	Mapped By Andy Church	Date 07/28/2023	Page 1	of 1
Township 42N	Range 29W	Section(s) and Subdivision(s) Sec 13: SESW,SWSE; Sec 14: SWSE; Sec 23: N1/2NE; Sec 24: N1/2NW	Cruised By Andy Church		
			Scale 1:15,840		

Cover Type				Density	
A = Aspen	H = Hemlock	N = Marsh	U = Upland Brush	0 = Non Stocked	5 = Pole Timber Medium
B = Paper Birch	J = Jack Pine	O = Oak	UM = Upland Mixed	1 = Seeding Sapling Poor	6 = Pole Timber Well
C = Cedar	L = Lowland Brush	P = Lowland Poplar	V = Bog or Marsh	2 = Seeding Sapling Medium	7 = Saw Timber Poor
D = Tread Bog	LM = Lowland Mixed	Q = Mixed Swamp Conifer	W = White Pine	3 = Seeding Sapling Well	8 = Saw Timber Medium
E = Swamp Hdwoods	M = Mpl, Bch, Bach	R = Red Pine	X = Non Stocked	4 = Pole Timber Poor	9 = Saw Timber Well
F = Spruce Fir	MC = Mixed Conifer	S = Black Spruce	Z = Water		
G = Grass	MD = Mixed Deciduous	T = Tamarack			

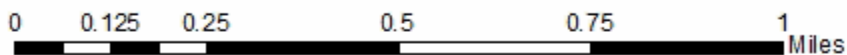
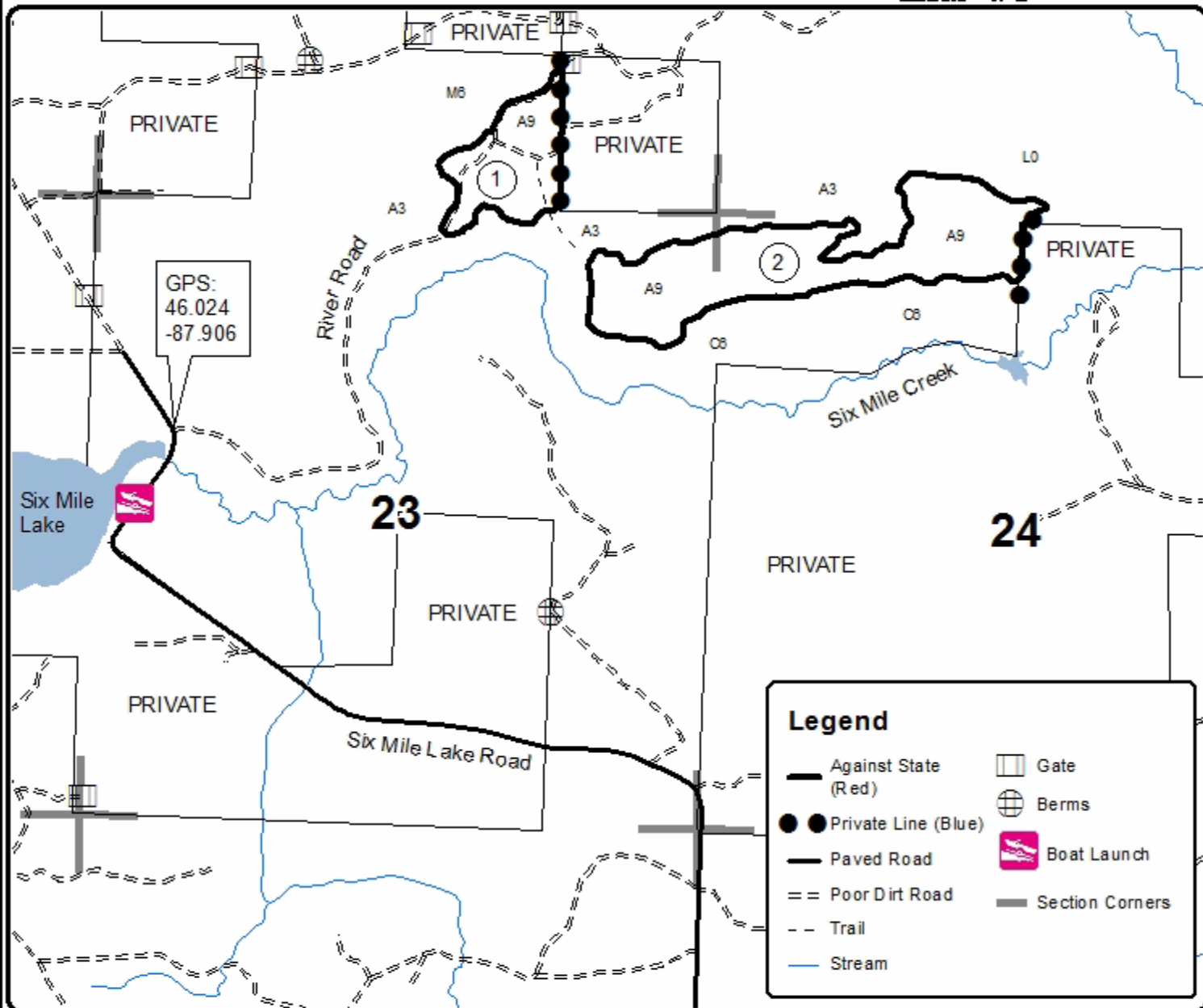
PU	Acres
1	19.5
2	54.7

## Six Mile Jungle

### Compartment 57

74.2 Acres

QR Code for GeoRef PDF







## TIMBER SALE INFORMATION

### Comp 40 Mix (12-012-23)

T43N, R28W, SEC. 19; T43N, R29W, SEC. 14; T43N, R29W, SEC. 15; T43N, R29W, SEC. 23; T43N, R29W, SEC. 24; T43N, R29W, SEC. 26.

A timber sale contract for this lump sum, sealed bid timber sale will be awarded to the responsible bidder offering the highest sealed bid price. All units of volume listed below were estimated using the Inventory Manager computer program and the new Michigan taper model. Bids must be at or above the following advertised price for each product and species:

<u>PRODUCTS &amp; SPECIES</u>	<u>ESTIMATED UNITS*</u>	<u>ADVERTISED PRICE</u>
<b>Sawtimber</b>		
Basswood	289.7 MBF	\$ 101.00 / MBF
Paper Birch	11.4 MBF	\$ 84.00 / MBF
Red Pine	32.7 MBF	\$ 70.00 / MBF
Sugar Maple	281.6 MBF	\$ 157.00 / MBF
White Ash	29.5 MBF	\$ 66.00 / MBF
<b>Pulpwood</b>		
Balsam Fir	15 Cords	\$ 7.70 / Cord
Basswood	224 Cords	\$ 5.90 / Cord
Mixed Hardwood	780 Cords	\$ 10.75 / Cord
Quaking Aspen	625 Cords	\$ 15.00 / Cord
Red Pine	164 Cords	\$ 20.00 / Cord
White Spruce	6 Cords	\$ 10.80 / Cord

\* The total volume is statistically estimated within plus (+) or minus (-) 11.76 percent. There are an estimated 3,344 cords on this timber sale, plus or minus 394 cords at the 95% confidence level. The estimated units are final and not subject to adjustment. Prospective bidders are urged to examine this timber and to make their own estimates of quantity and quality.

### **BOND AND PAYMENT SCHEDULE:**

1. A bond in the amount of \$5,400.00 to insure faithful performance of the conditions of the contract will be deposited by the successful bidder within 21 days of the sale award.
2. Cutting in any sale or unit without the required advance payment would be considered a trespass.
3. Total payment must be paid in advance or according to the following schedule :
  - (a) Ten percent (10%) of the sale value must be paid within 21 days of the sale award.
  - (b) The 10% down payment will be credited towards the first unit cut.
  - (c) Payment for each of the following units must be made before cutting begins in that unit:
 

PAYMENT UNIT NUMBER	PERCENT OF TOTAL SALE VALUE
01	9.3%
02	3.8%
03	1.7%
04	26.7%
05	24.3%
06	18.5%
07	15.7%
4. If no cutting takes place, the 10% down payment will not be refunded.
5. Operations on the contract issued will terminate on 06/30/2027.

### **SALE STATISTICS**

Volumes were calculated in cubic feet using the Michigan taper model. Cubic foot volume includes all wood inside bark for the product indicated. For display purposes, cubic feet were converted to cords and MBF using a simple conversion factor, e.g. 79 cubic feet per cord and 185 cubic feet per MBF. The cubic foot volumes are precise; the cords and MBF volumes are not. Cubic foot volume cannot be directly converted to cords or boards with precision.

## SALE VOLUMES

The total estimated sale volume may not equal the sum of the species/products due to the nature of statistical calculations associated with double sampling methodology.

VOLUME			STATISTICAL RANGE IN CORDS	
TOTAL CUBIC FEET	TOTAL CORDS	PERCENT ERROR	MINIMUM	MAXIMUM
264,207	3,344	11.76%	2,951	3,738

## VDU VOLUMES

A VDU is a Volume Determination Unit. Volumes and their associated statistics are calculated at the VDU level and summarized to the sale level. There is often a one to one relationship between a VDU and a Payment Unit, but not always, depending on the cruise design. Refer to the VDU TO PAYMENT UNIT table.

	VOLUME			RANGE IN CORDS	
VDU	TOTAL CUBIC FEET	TOTAL CORDS	PERCENT ERROR	MINIMUM	MAXIMUM
2	14,251	180	32.60%	122	239
5	26,593	337	29.00%	239	434
11	5,920	75	46.35%	40	110
23	113,285	1,434	11.80%	1,265	1,603
32	21,475	272	32.41%	184	360
44	82,683	1,047	14.94%	890	1,203
<b>TOTAL:</b>	<b>264,207</b>	<b>3,344</b>		<b>2,740</b>	<b>3,949</b>

## VDU TO PAYMENT UNIT

When a VDU is associated with more than one Payment Unit (PU), the VDU volumes are assigned to the PU based on acres of the VDU within the PU.

VDU	VDU ACRES	PU	PU ACRES
2	35.3	2	35.3
5	16.3	1	16.3
11	28.6	3	28.6
23	111.4	4	58.3
		5	53.1
32	11.6	1	11.6
44	123.8	6	67.1
		7	56.7
<b>TOTAL:</b>	<b>327.0</b>		<b>327.0</b>

**DESCRIPTION OF TIMBER BY PAYMENT UNIT (PU)**

PU	MARKET GROUP	PRODUCT	QUANTITY	UNIT	ACRES	ADVERTISE PRICE
1	Balsam Fir	Pulpwood	15	Cords	27.9	\$9,399.20
	Mixed Hardwood		14	Cords		
	<i>Black Cherry</i>		4	<i>Cords</i>		
	<i>Ironwood</i>		2	<i>Cords</i>		
	<i>Red Maple</i>		3	<i>Cords</i>		
	<i>Sugar Maple</i>		5	<i>Cords</i>		
	Quaking Aspen		606	Cords		
	White Spruce		4	Cords		
2	Red Pine	Sawtimber	21.8	MBF	35.3	\$3,887.60
	Red Pine	Pulpwood	117	Cords		
	White Spruce		2	Cords		
3	Red Pine	Sawtimber	10.9	MBF	28.6	\$1,703.00
	Red Pine	Pulpwood	47	Cords		
4	Basswood	Sawtimber	115.2	MBF	58.3	\$26,993.35
	Sugar Maple		81.9	MBF		
	Basswood	Pulpwood	94	Cords		
	Mixed Hardwood		167	Cords		
	<i>Ironwood</i>		1	<i>Cords</i>		
	<i>Sugar Maple</i>		166	<i>Cords</i>		
	Quaking Aspen		10	Cords		
5	Basswood	Sawtimber	105.0	MBF	53.1	\$24,604.35
	Sugar Maple		74.6	MBF		
	Basswood	Pulpwood	86	Cords		
	Mixed Hardwood		153	Cords		
	<i>Ironwood</i>		1	<i>Cords</i>		
	<i>Sugar Maple</i>		152	<i>Cords</i>		
	Quaking Aspen		9	Cords		
6	Basswood	Sawtimber	37.7	MBF	67.1	\$18,772.20
	Paper Birch		6.2	MBF		
	Sugar Maple		67.8	MBF		
	White Ash		16.0	MBF		
	Basswood	Pulpwood	24	Cords		
	Mixed Hardwood		242	Cords		
	<i>Ironwood</i>		4	<i>Cords</i>		
	<i>Paper Birch</i>		10	<i>Cords</i>		
	<i>Red Maple</i>		8	<i>Cords</i>		
	<i>Sugar Maple</i>		212	<i>Cords</i>		
	<i>White Ash</i>		8	<i>Cords</i>		
	7	Basswood	Sawtimber	31.8		
Paper Birch			5.2	MBF		
Sugar Maple			57.3	MBF		
White Ash			13.5	MBF		
Basswood		Pulpwood	20	Cords		
Mixed Hardwood			204	Cords		
<i>Ironwood</i>			3	<i>Cords</i>		
<i>Paper Birch</i>			9	<i>Cords</i>		
<i>Red Maple</i>			6	<i>Cords</i>		
<i>Sugar Maple</i>			179	<i>Cords</i>		
<i>White Ash</i>			7	<i>Cords</i>		
TOTAL:			644.9	MBF		
TOTAL:			1,814	Cords		

## Sale Specific Conditions & Requirements

**Sale Name: Comp 40 Mix**

**Sale Number: 12-012-23 Seq#: 1**

### 1 - Sale Area

#### 1.2 - Boundaries

##### 1.2.1 - Painted boundaries (9/19)

The sale boundary lines against private property are marked with blue paint. Sale boundary lines against state land are marked with double red paint dots. Interior Payment Unit Lines are marked with double red paint slashes.

### 2 - Timber Specifications

#### 2.1 - Included Timber

##### 2.1.2 - Clearcut unit(s) w/o unmerchantable trees (8/11)

Within Payment Unit(s) 1, cut all aspen and maple trees which meet minimum piece specifications in 2.2 Utilization (one 100" piece to a top diameter inside bark of 4 inches). Cut spruce/fir with a stump diameter of 10" and larger. Do not cut trees marked with green paint. No other tree species may be cut.

##### 2.1.3 - Cut tree marked unit(s) (12/08)

Within Payment Unit(s) 2 - 7, all trees are designated for cutting when marked with orange paint above and below stump height, regardless of merchantability.

#### 2.2 - Utilization

##### 2.2.3 - Stump heights (4/07)

Stump heights within the Sale Area shall not exceed 12 inches for trees greater than 10 inches DBH and 4 inches for trees smaller than 10 inches DBH.

##### 2.2.11 - Chipping restriction (9/14)

If chipping occurs on this sale, then no woody debris present on the ground at the start of the sale may be chipped. Chip piles must be removed within 60 days of the sale expiration. In addition, after chip pile removal, residual chip depth at the landing may not exceed 4 inches.

### 3 - Payments

#### 3.4 - Damaged Timber

##### 3.4.1 - Damaged timber (7/16)

General Condition and Requirement 3.4 Damaged Timber, defines liquidated damages for undesignated live merchantable trees which are cut or injured. In addition, extreme care should be taken to avoid damage to tree seedlings and saplings. No damage is acceptable to undesignated live merchantable trees. Liquidated damages will be assessed for all trees damaged. Rates will be in accordance with General Condition and Requirement 3.4 Damaged Timber.

### 4 - Transportation

#### 4.1 - Construction

##### 4.1.2 - Stream crossings, specific (3/11)

There is an intermittent stream south of Payment Units 6 and 7 as shown on the Timber Sale Map. Should this road be used, a temporary culvert 14" in diameter may be required. The culvert and installation are the responsibility of the Purchaser.

##### 4.1.3 - Slash and earthen piles (8/04)

Piles or windrows of earth along roads and landings that have been widened or constructed shall be leveled. Slash from road maintenance or construction, including stumps, shall be dispersed throughout the sale.

##### 4.1.6 - Road construction (1/09)

Improvements of existing roads shall be done in such a way as to minimize the environmental and visual impacts. Merchantable trees shall be cut and utilized unless otherwise directed. Non-merchantable trees shall be severed and laid flat on the ground. Slash shall be scattered, and not left in windrows. Stumps shall be set upright, not left on edge, and be moved

at least 5 feet away from the road edge. Disturbed soil shall be feathered into the woods and not left in berms or windrows.

#### 4.1.7 - Road closure (10/11)

Overgrown roads that are reopened shall be closed after completing the sale. In general, this will require scattering stumps and brush in the road course. These roads must be made impassable to ORVs. Contact the sale administrator for specific design and placement.

#### 4.1.12 - No new roads (1/12)

No new roads will be permitted. Existing overgrown roads may be opened up and utilized with approval from the sale administrator.

### 4.4 - Access

#### 4.4.1 - Private property access (3/11)

Permission for access across private land is the responsibility of the Purchaser.

## 5 - Operations

### 5.2 - Conduct of Operations

#### 5.2.1 - Slash

##### 5.2.1.8 - Slash height (12/08)

No slash or tree tops may exceed 24 inches in height.

##### 5.2.1.11 - Slash for reforestation (3/21)

To facilitate reforestation, the Sale Area shall be left with slash evenly distributed. Bunched tops within the cutting area shall be broken up and scattered. Stumps shall be cut low to the ground. Processing sites shall not be left with a compacted layer of slash; tops from these sites shall be hauled back into the cut area and scattered.

#### 5.2.2 - Hazard Trees/Snags

##### 5.2.2.1 - Den trees (10/16)

Obvious hollow and/or den trees shall be protected and left standing unless they are a safety hazard.

#### 5.2.3 - Operating Restrictions

##### 5.2.3.1 - Operating restrictions (9/11)

Within Payment Unit(s) 1 cutting, skidding, and hauling are not permitted from March 1 to May 15. Within Payment Units 2 - 7 cutting, skidding, and hauling are not permitted from March 1 to July 15. Also within Payment Units 2 - 7 cutting, skidding, and hauling, are not permitted from October 15 to December 1 unless changed by written agreement. This restriction is to avoid resource damage during spring break up, wet, late fall conditions, and bark slip. If prolonged wet weather conditions occur throughout the operating season, the sale administrator may suspend operations until favorable weather and ground conditions are present.

##### 5.2.38 - No decking against live trees (2/04)

Cut products may not be decked against unmarked or designated leave trees.

### 5.4 - Soil Protection

#### 5.4.1 - Rutting restriction, general (7/16)

Operations are to cease immediately if equipment and weather conditions result in rutting of roads and/or skid trails which is 12 inches or greater in depth and 50 feet in length. The Unit Manager or his/her representative may restrict hauling and/or skidding if ruts exceed the specified depth. With the Unit Manager or his/her representative's approval, the Purchaser may return to the area when the risk of rutting has decreased.

#### 5.4.6 - Wet area protection (5/10)

No harvesting operations, including skidding and felling, are to take place within any vernal pond areas or drainages. When harvesting occurs, there should be no disturbance to any vernal pond depression. All equipment, trees and tops should be kept out of these areas. Within 100 feet of the pond, equipment should only be used when the soil is in a dry or frozen condition. Care must be taken by the Purchaser to identify and avoid operating in these areas of the timber sale.

## 5.8 - Protection of Endangered Species

### 5.8.5 - Protection of raptor nests (3/13)

All trees with raptor nests will be protected if found during harvesting operations. Notification will be made to the Unit Manager or his/her representative who will notify the Wildlife Biologist so an on-site evaluation and recommendation can be made, if necessary.



# TIMBER SALE MAP

This information provided by authority of Part 525, 1994 PA 451, as amended.

Forest Management Unit <b>ESCANABA</b>	County <b>DICKINSON</b>	Mapped By <b>Rice</b>	Date <b>05/31/23</b>	Page <b>1</b>	of <b>2</b>
Township <b>43N</b>	Range <b>29/28W</b>	Section(s) and Subdivision(s) sec 14: entire, sec 15: E1/2NE sec 23:N1/2NE,SW1/4 sec 24:N1/2NW, SENW, NE1/4, N1/2SE T43N R28W sec19:SWNW	Scale <b>4 inches = 1 mile</b>		

### Cover Type

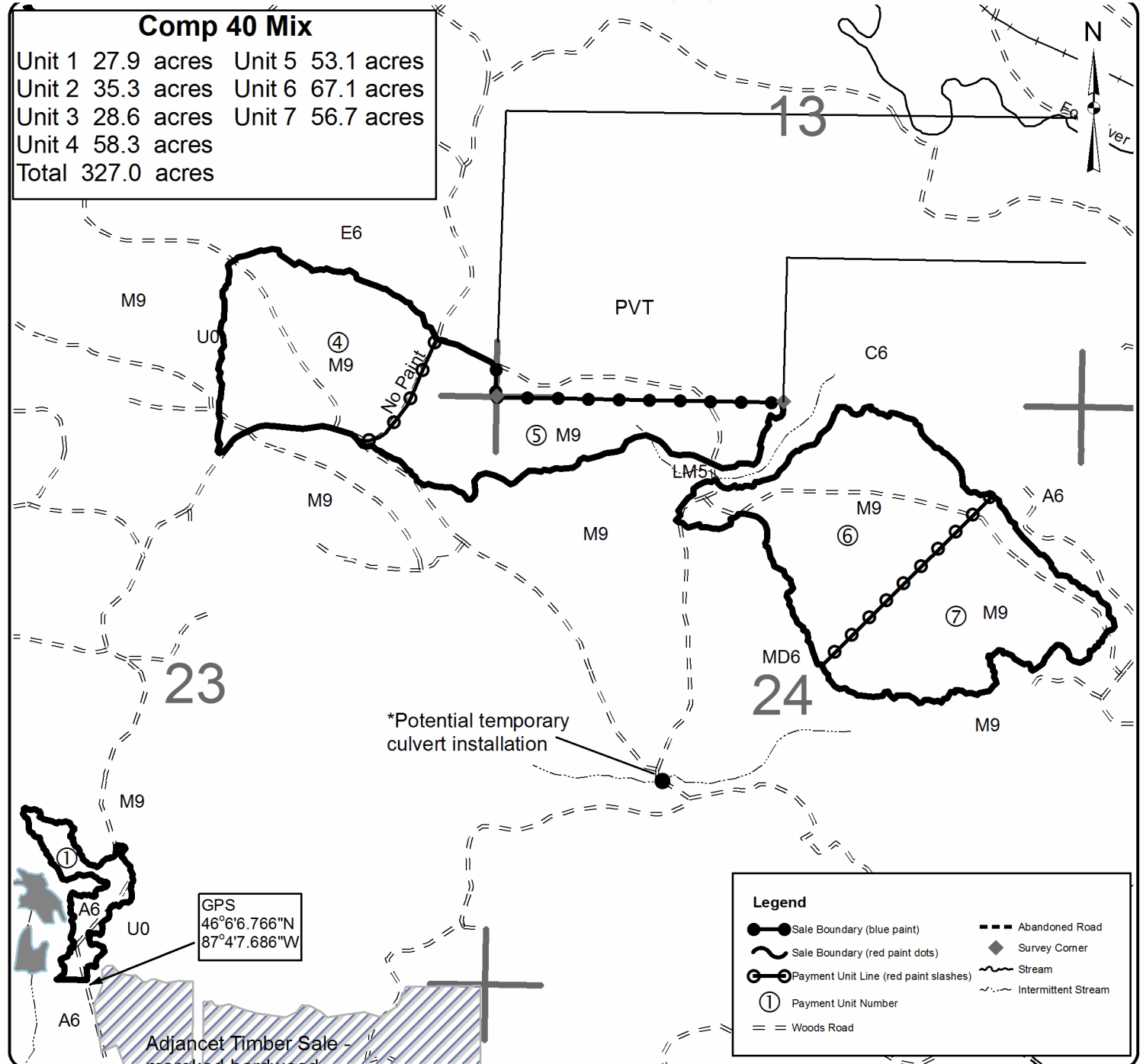
A = Aspen	H = Hemlock	N = Marsh	U = Upland Brush
B = Paper Birch	J = Jack Pine	O = Oak	UM = Upland Mixed
C = Cedar	L = Lowland Brush	P = Lowland Poplar	V = Bog or Marsh
D = Treed Bog	LM = Lowland Mixed	Q = Mixed Swamp Conifer	W = White Pine
E = Swamp Hdwoods	M = Mpl, Bch, Brch	R = Red Pine	X = Non Stocked
F = Spruce Fir	MC = Mixed Conifer	S = Black Spruce	Z = Water
G = Grass	MD = Mixed Deciduous	T = Tamarack	

### Density

0 = Non Stocked	5 = Pole Timber Medium
1 = Seedling Sapling Poor	6 = Pole Timber Well
2 = Seedling Sapling Medium	7 = Saw Timber Poor
3 = Seedling Sapling Well	8 = Saw Timber Medium
4 = Pole Timber Poor	9 = Saw Timber Well

## Comp 40 Mix

Unit 1 27.9 acres	Unit 5 53.1 acres
Unit 2 35.3 acres	Unit 6 67.1 acres
Unit 3 28.6 acres	Unit 7 56.7 acres
Unit 4 58.3 acres	
<b>Total 327.0 acres</b>	



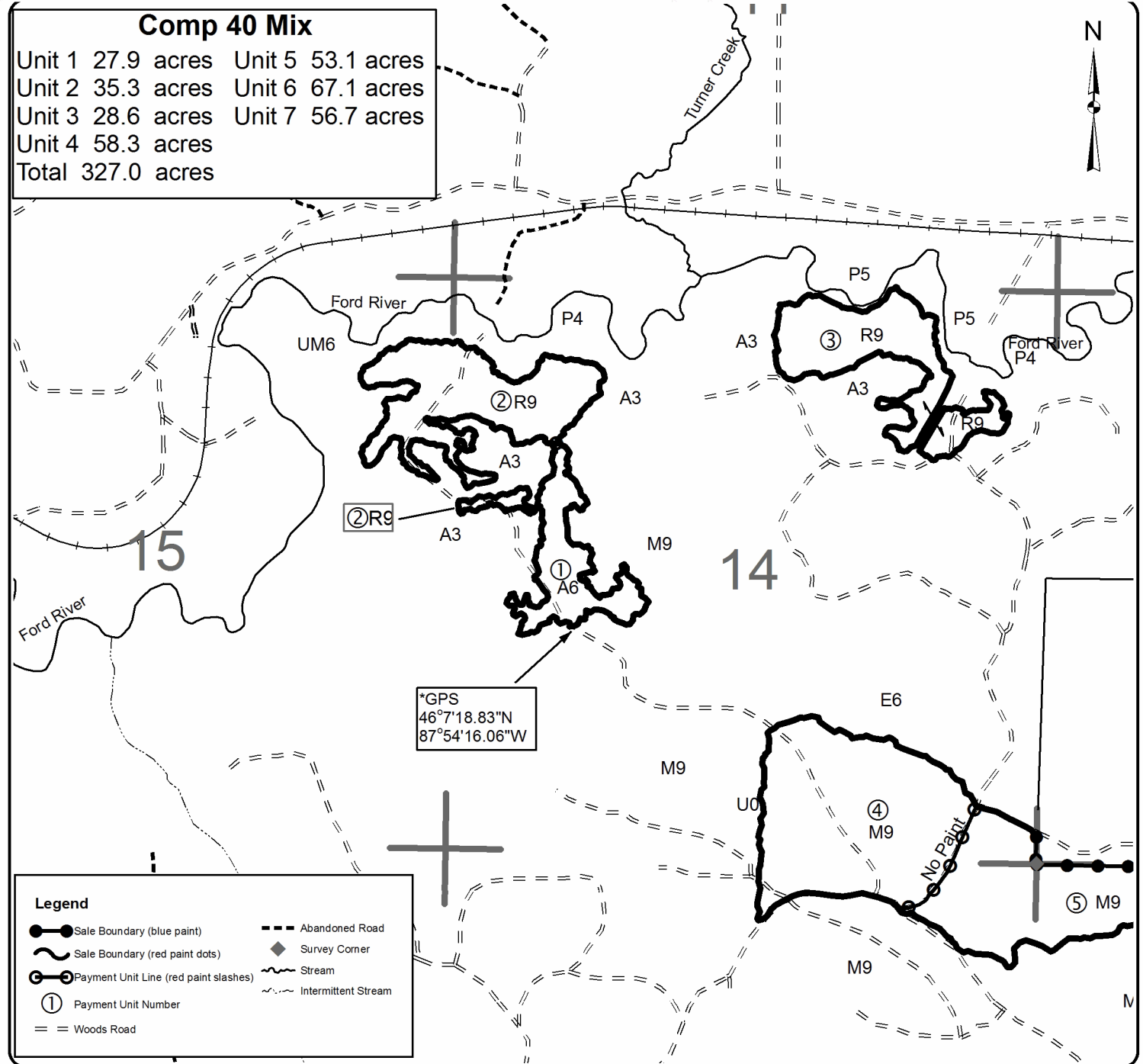


# TIMBER SALE MAP

This information provided by authority of Part 525, 1994 PA 451, as amended.

Forest Management Unit ESCANABA	County DICKINSON	Mapped By Rice	Date 05/31/23	Page 2	of 2
Township 43N	Range 29/28W	Section(s) and Subdivision(s) sec 14: entire, sec 15: E1/2NE sec 23:N1/2NE,SW1/4 sec 24:N1/2NW, SENW, NE1/4, N1/2SE T43N R28W sec19:SNNW	Scale 4 inches = 1 mile		
Cruised By Rice					

Cover Type				Density			
A = Aspen	H = Hemlock	N = Marsh	U = Upland Brush	0 = Non Stocked	5 = Pole Timber Medium		
B = Paper Birch	J = Jack Pine	O = Oak	UM = Upland Mixed	1 = Seedling Sapling Poor	6 = Pole Timber Well		
C = Cedar	L = Lowland Brush	P = Lowland Poplar	V = Bog or Marsh	2 = Seedling Sapling Medium	7 = Saw Timber Poor		
D = Treed Bog	LM = Lowland Mixed	Q = Mixed Swamp Conifer	W = White Pine	3 = Seedling Sapling Well	8 = Saw Timber Medium		
E = Swamp Hdwoods	M = Mpl, Bch, Brch	R = Red Pine	X = Non Stocked	4 = Pole Timber Poor	9 = Saw Timber Well		
F = Spruce Fir	MC = Mixed Conifer	S = Black Spruce	Z = Water				
G = Grass	MD = Mixed Deciduous	T = Tamarack					





Turner & Hooch (12-008-23)

T43N, R28W, SEC. 6; T43N, R29W, SEC. 1; T43N, R29W, SEC. 11; T43N, R29W,

In response to the notice of sale to be held 3:00 p.m. (local time) on November 2, 2023, I am hereby submitting my sealed bid (firm offer) for the following forest products to be cut. Bids for individual species must be at or above the advertised price. All non-responsive bid forms may be rejected.

<u>PRODUCTS &amp; SPECIES</u>	<u>ESTIMATED VOLUME*</u>	<u>ADVERTISED PRICE</u>	<u>BID PRICE/UNIT</u>
<b>Sawtimber</b>			
Basswood	60.3 MBF	\$ 151.00/MBF	\$ _____
Red Pine	666.2 MBF	\$ 105.00/MBF	\$ _____
Sugar Maple	149.6 MBF	\$ 236.00/MBF	\$ _____
<b>Pulpwood</b>			
Balsam Fir	482 Cords	\$ 11.55/Cord	\$ _____
Basswood	160 Cords	\$ 8.90/Cord	\$ _____
Mixed Aspen	7,501 Cords	\$ 31.50/Cord	\$ _____
Mixed Hardwood	1,307 Cords	\$ 16.10/Cord	\$ _____
Mixed Spruce	82 Cords	\$ 16.15/Cord	\$ _____
Paper Birch	6 Cords	\$ 5.30/Cord	\$ _____
Red Pine	1,682 Cords	\$ 44.80/Cord	\$ _____
Tamarack	65 Cords	\$ 8.80/Cord	\$ _____

\*The volumes are statistically estimated within plus (+) or minus (-) 7.70 percent at 95% confidence level. These estimated volumes are final and not subject to adjustment. Prospective bidders are urged to examine this timber and to make their own estimates of quantity and quality.

I understand that any or all bids may be rejected. All bids must be signed and all bid items must be bid or the bid form may be rejected. I also understand that consideration and awarding a contract will be based upon my past performance and ability to complete the contract based upon equipment and staffing subject to my control.

FEDERAL ID: \_\_\_\_\_ or SOCIAL SECURITY NUMBER: \_\_\_\_\_

Company or individual bidding: \_\_\_\_\_

Company representative's name: \_\_\_\_\_

Address: \_\_\_\_\_

City: \_\_\_\_\_ State: \_\_\_\_\_ Zip: \_\_\_\_\_

IF AVAILABLE, PLEASE PLACE THE PERSONALIZED LABEL FROM YOUR PROSPECTUS IN THE ABOVE BOX.

Individual or company representative's signature: \_\_\_\_\_ Date: \_\_\_\_\_

Phone number : \_\_\_\_\_ Email (optional): \_\_\_\_\_

**THE WINNING BIDDER MUST COMPLETE THE VERIFICATION OF WORKER'S DISABILITY COMPENSATION ACT COMPLIANCE (ON REVERSE SIDE IF DOUBLE SIDED) WITHIN 21 DAYS OF SALE AWARD DATE**



<b>FOR DEPARTMENT USE ONLY</b>
Sale Number (XX - XXX - XX - XX)
Forest Management Unit:

## TIMBER SALE VERIFICATION OF WORKER'S DISABILITY COMPENSATION ACT COMPLIANCE

*As required by Act 317, P.A. 1969 (Worker's Compensation) and  
Part 5 of Act 451 of 1994, as amended.*

### VERIFICATION OF WORKER'S DISABILITY COMPENSATION ACT COMPLIANCE

- This verification must be completed and submitted within 21 days of contract award and prior to the issuance of the timber sale contract.
- In addition, if boxes 2B or 2C are checked, then Notice of Exclusion or Certificate of Insurance must be submitted within twenty-one (21) days of the contract award and prior to the issuance of the timber sale contract.
- All information must be typed or printed except for written signatures.

Please Check Appropriate Categories:

1. My business is organized as (you **must** check one of the boxes below):
  - A.  Sole Proprietorship (individual)
  - B.  Partnership
  - C.  Corporation
2. You **must** check one of the boxes below:
  - A.  I certify my business is a sole proprietorship and it has no employees but the sole proprietor. I am not subject to the Worker's Compensation Laws.
  - B.  I certify my business has satisfied its obligation to the Worker's Compensation Act through the use of an approved Notice of Exclusion (BWC-337, Rev. 5/96). I will provide a copy of the Notice of Exclusion within 21 days of the contract award. (For questions or a copy of the BWC-337, please call the Worker's Compensation Bureau at 517-322-1195).
  - C.  I certify my business has a Worker's Compensation Policy. I will provide an original Certificate of Insurance within twenty-one (21) days of the contract award.
3. If you have checked item 2(A) or 2(B), you **must** indicate the number of **both** full-time and part-time employees, other than yourself, including family members and active partners (if none, you must enter "0").

\_\_\_\_\_ Full-time Employees

\_\_\_\_\_ Part-time Employees

Name of Business		Federal ID (or) Social Security No.	
Address		Telephone (       )	
City	State	ZIP	

*I hereby certify that the above information is true and correct. I agree to notify the Michigan DNR of any changes that occur in factors affecting my coverage during any of my present and future operations.*

\_\_\_\_\_  
Signature of Owner or Authorized Representative

\_\_\_\_\_  
Title

\_\_\_\_\_  
Date

**Please complete the "SEALED BID" information on the next page**

Six Mile Jungle (12-009-23)

T42N, R29W, SEC. 13; T42N, R29W, SEC. 14; T42N, R29W, SEC. 23; T42N,

In response to the notice of sale to be held 3:00 p.m. (local time) on November 2, 2023, I am hereby submitting my sealed bid (firm offer) for the following forest products to be cut. Bids for individual species must be at or above the advertised price. All non-responsive bid forms may be rejected.

<u>PRODUCTS &amp; SPECIES</u>	<u>ESTIMATED VOLUME*</u>	<u>ADVERTISED PRICE</u>	<u>BID PRICE/UNIT</u>
Pulpwood			
Balsam Fir	187 Cords	\$ 11.55/Cord	\$ _____
Mixed Aspen	1,918 Cords	\$ 31.50/Cord	\$ _____
Mixed Hardwood	179 Cords	\$ 16.10/Cord	\$ _____
Mixed Spruce	69 Cords	\$ 16.15/Cord	\$ _____

\*The volumes are statistically estimated within plus (+) or minus (-) 15.65 percent at 95% confidence level. These estimated volumes are final and not subject to adjustment. Prospective bidders are urged to examine this timber and to make their own estimates of quantity and quality.

I understand that any or all bids may be rejected. All bids must be signed and all bid items must be bid or the bid form may be rejected. I also understand that consideration and awarding a contract will be based upon my past performance and ability to complete the contract based upon equipment and staffing subject to my control.

FEDERAL ID: \_\_\_ - \_\_\_ - \_\_\_ or SOCIAL SECURITY NUMBER: \_\_\_ - \_\_\_ - \_\_\_

Company or individual bidding: \_\_\_\_\_

Company representative's name: \_\_\_\_\_

Address: \_\_\_\_\_

City: \_\_\_\_\_ State: \_\_\_\_\_ Zip: \_\_\_\_\_

IF AVAILABLE, PLEASE PLACE THE PERSONALIZED LABEL FROM YOUR PROSPECTUS IN THE ABOVE BOX.

Individual or company representative's signature: \_\_\_\_\_ Date: \_\_\_\_\_

Phone number : \_\_\_\_\_ Email (optional): \_\_\_\_\_

**THE WINNING BIDDER MUST COMPLETE THE VERIFICATION OF WORKER'S DISABILITY COMPENSATION ACT COMPLIANCE (ON REVERSE SIDE IF DOUBLE SIDED) WITHIN 21 DAYS OF SALE AWARD DATE**



<b>FOR DEPARTMENT USE ONLY</b>
Sale Number (XX - XXX - XX - XX)
Forest Management Unit:

## TIMBER SALE VERIFICATION OF WORKER'S DISABILITY COMPENSATION ACT COMPLIANCE

*As required by Act 317, P.A. 1969 (Worker's Compensation) and  
Part 5 of Act 451 of 1994, as amended.*

### VERIFICATION OF WORKER'S DISABILITY COMPENSATION ACT COMPLIANCE

- This verification must be completed and submitted within 21 days of contract award and prior to the issuance of the timber sale contract.
- In addition, if boxes 2B or 2C are checked, then Notice of Exclusion or Certificate of Insurance must be submitted within twenty-one (21) days of the contract award and prior to the issuance of the timber sale contract.
- All information must be typed or printed except for written signatures.

Please Check Appropriate Categories:

1. My business is organized as (you **must** check one of the boxes below):
  - A.  Sole Proprietorship (individual)
  - B.  Partnership
  - C.  Corporation
2. You **must** check one of the boxes below:
  - A.  I certify my business is a sole proprietorship and it has no employees but the sole proprietor. I am not subject to the Worker's Compensation Laws.
  - B.  I certify my business has satisfied its obligation to the Worker's Compensation Act through the use of an approved Notice of Exclusion (BWC-337, Rev. 5/96). I will provide a copy of the Notice of Exclusion within 21 days of the contract award. (For questions or a copy of the BWC-337, please call the Worker's Compensation Bureau at 517-322-1195).
  - C.  I certify my business has a Worker's Compensation Policy. I will provide an original Certificate of Insurance within twenty-one (21) days of the contract award.
3. If you have checked item 2(A) or 2(B), you **must** indicate the number of **both** full-time and part-time employees, other than yourself, including family members and active partners (if none, you must enter "0").

\_\_\_\_\_ Full-time Employees

\_\_\_\_\_ Part-time Employees

Name of Business		Federal ID (or) Social Security No.	
Address		Telephone (       )	
City	State	ZIP	

*I hereby certify that the above information is true and correct. I agree to notify the Michigan DNR of any changes that occur in factors affecting my coverage during any of my present and future operations.*

\_\_\_\_\_  
Signature of Owner or Authorized Representative

\_\_\_\_\_  
Title

\_\_\_\_\_  
Date

**Please complete the "SEALED BID" information on the next page**

Comp 40 Mix (12-012-23)

T43N, R28W, SEC. 19; T43N, R29W, SEC. 14; T43N, R29W, SEC. 15; T43N,

In response to the notice of sale to be held 3:00 p.m. (local time) on November 2, 2023, I am hereby submitting my sealed bid (firm offer) for the following forest products to be cut. Bids for individual species must be at or above the advertised price. All non-responsive bid forms may be rejected.

<u>PRODUCTS &amp; SPECIES</u>	<u>ESTIMATED VOLUME*</u>	<u>ADVERTISED PRICE</u>	<u>BID PRICE/UNIT</u>
<b>Sawtimber</b>			
Basswood	289.7 MBF	\$ 101.00/MBF	\$ _____
Paper Birch	11.4 MBF	\$ 84.00/MBF	\$ _____
Red Pine	32.7 MBF	\$ 70.00/MBF	\$ _____
Sugar Maple	281.6 MBF	\$ 157.00/MBF	\$ _____
White Ash	29.5 MBF	\$ 66.00/MBF	\$ _____
<b>Pulpwood</b>			
Balsam Fir	15 Cords	\$ 7.70/Cord	\$ _____
Basswood	224 Cords	\$ 5.90/Cord	\$ _____
Mixed Hardwood	780 Cords	\$ 10.75/Cord	\$ _____
Quaking Aspen	625 Cords	\$ 15.00/Cord	\$ _____
Red Pine	164 Cords	\$ 20.00/Cord	\$ _____
White Spruce	6 Cords	\$ 10.80/Cord	\$ _____

\*The volumes are statistically estimated within plus (+) or minus (-) 11.76 percent at 95% confidence level. These estimated volumes are final and not subject to adjustment. Prospective bidders are urged to examine this timber and to make their own estimates of quantity and quality.

I understand that any or all bids may be rejected. All bids must be signed and all bid items must be bid or the bid form may be rejected. I also understand that consideration and awarding a contract will be based upon my past performance and ability to complete the contract based upon equipment and staffing subject to my control.

FEDERAL ID: \_\_\_\_\_ or SOCIAL SECURITY NUMBER: \_\_\_\_\_

Company or individual bidding: \_\_\_\_\_

Company representative's name: \_\_\_\_\_

Address: \_\_\_\_\_

City: \_\_\_\_\_ State: \_\_\_\_\_ Zip: \_\_\_\_\_

IF AVAILABLE, PLEASE PLACE THE PERSONALIZED LABEL FROM YOUR PROSPECTUS IN THE ABOVE BOX.

Individual or company representative's signature: \_\_\_\_\_ Date: \_\_\_\_\_

Phone number : \_\_\_\_\_ Email (optional): \_\_\_\_\_

**THE WINNING BIDDER MUST COMPLETE THE VERIFICATION OF WORKER'S DISABILITY COMPENSATION ACT COMPLIANCE (ON REVERSE SIDE IF DOUBLE SIDED) WITHIN 21 DAYS OF SALE AWARD DATE**



<b>FOR DEPARTMENT USE ONLY</b>
Sale Number (XX - XXX - XX - XX)
Forest Management Unit:

## TIMBER SALE VERIFICATION OF WORKER'S DISABILITY COMPENSATION ACT COMPLIANCE

*As required by Act 317, P.A. 1969 (Worker's Compensation) and  
Part 5 of Act 451 of 1994, as amended.*

### VERIFICATION OF WORKER'S DISABILITY COMPENSATION ACT COMPLIANCE

- This verification must be completed and submitted within 21 days of contract award and prior to the issuance of the timber sale contract.
- In addition, if boxes 2B or 2C are checked, then Notice of Exclusion or Certificate of Insurance must be submitted within twenty-one (21) days of the contract award and prior to the issuance of the timber sale contract.
- All information must be typed or printed except for written signatures.

Please Check Appropriate Categories:

1. My business is organized as (you **must** check one of the boxes below):
  - A.  Sole Proprietorship (individual)
  - B.  Partnership
  - C.  Corporation
2. You **must** check one of the boxes below:
  - A.  I certify my business is a sole proprietorship and it has no employees but the sole proprietor. I am not subject to the Worker's Compensation Laws.
  - B.  I certify my business has satisfied its obligation to the Worker's Compensation Act through the use of an approved Notice of Exclusion (BWC-337, Rev. 5/96). I will provide a copy of the Notice of Exclusion within 21 days of the contract award. (For questions or a copy of the BWC-337, please call the Worker's Compensation Bureau at 517-322-1195).
  - C.  I certify my business has a Worker's Compensation Policy. I will provide an original Certificate of Insurance within twenty-one (21) days of the contract award.
3. If you have checked item 2(A) or 2(B), you **must** indicate the number of **both** full-time and part-time employees, other than yourself, including family members and active partners (if none, you must enter "0").

\_\_\_\_\_ Full-time Employees

\_\_\_\_\_ Part-time Employees

Name of Business		Federal ID (or) Social Security No.	
Address		Telephone (       )	
City	State	ZIP	

*I hereby certify that the above information is true and correct. I agree to notify the Michigan DNR of any changes that occur in factors affecting my coverage during any of my present and future operations.*

\_\_\_\_\_  
Signature of Owner or Authorized Representative

\_\_\_\_\_  
Title

\_\_\_\_\_  
Date

**Please complete the "SEALED BID" information on the next page**

Three Section Mix (12-002-23)

T40N, R29W, SEC. 14; T40N, R29W, SEC. 15; T40N, R29W, SEC. 16; T40N,

In response to the notice of sale to be held 3:00 p.m. (local time) on November 2, 2023, I am hereby submitting my sealed bid (firm offer) for the following forest products to be cut. Bids for individual species must be at or above the advertised price. All non-responsive bid forms may be rejected.

<u>PRODUCTS &amp; SPECIES</u>	<u>ESTIMATED VOLUME*</u>	<u>ADVERTISED PRICE</u>	<u>BID PRICE/UNIT</u>
Pulpwood			
Balsam Fir	44 Cords	\$ 5.40/Cord	\$ _____
Basswood	18 Cords	\$ 4.15/Cord	\$ _____
Mixed Aspen	647 Cords	\$ 14.70/Cord	\$ _____
Mixed Hardwood	259 Cords	\$ 7.50/Cord	\$ _____
Mixed Spruce	38 Cords	\$ 7.55/Cord	\$ _____
Paper Birch	21 Cords	\$ 2.50/Cord	\$ _____
Tamarack	120 Cords	\$ 4.10/Cord	\$ _____

\*The volumes are statistically estimated within plus (+) or minus (-) 18.60 percent at 95% confidence level. These estimated volumes are final and not subject to adjustment. Prospective bidders are urged to examine this timber and to make their own estimates of quantity and quality.

I understand that any or all bids may be rejected. All bids must be signed and all bid items must be bid or the bid form may be rejected. I also understand that consideration and awarding a contract will be based upon my past performance and ability to complete the contract based upon equipment and staffing subject to my control.

FEDERAL ID: \_\_\_\_ - \_\_\_\_ - \_\_\_\_ or SOCIAL SECURITY NUMBER: \_\_\_\_ - \_\_\_\_ - \_\_\_\_

Company or individual bidding: \_\_\_\_\_

Company representative's name: \_\_\_\_\_

Address: \_\_\_\_\_

City: \_\_\_\_\_ State: \_\_\_\_\_ Zip: \_\_\_\_\_

IF AVAILABLE, PLEASE PLACE THE PERSONALIZED LABEL FROM YOUR PROSPECTUS IN THE ABOVE BOX.

Individual or company representative's signature: \_\_\_\_\_ Date: \_\_\_\_\_

Phone number : \_\_\_\_\_ Email (optional): \_\_\_\_\_

**THE WINNING BIDDER MUST COMPLETE THE VERIFICATION OF WORKER'S DISABILITY COMPENSATION ACT COMPLIANCE (ON REVERSE SIDE IF DOUBLE SIDED) WITHIN 21 DAYS OF SALE AWARD DATE**



FOR DEPARTMENT USE ONLY	
Sale Number (XX - XXX - XX - XX)	
Forest Management Unit:	

# TIMBER SALE VERIFICATION OF WORKER'S DISABILITY COMPENSATION ACT COMPLIANCE

As required by Act 317, P.A. 1969 (Worker's Compensation) and  
Part 5 of Act 451 of 1994, as amended.

## VERIFICATION OF WORKER'S DISABILITY COMPENSATION ACT COMPLIANCE

- This verification must be completed and submitted within 21 days of contract award and prior to the issuance of the timber sale contract.
- In addition, if boxes 2B or 2C are checked, then Notice of Exclusion or Certificate of Insurance must be submitted within twenty-one (21) days of the contract award and prior to the issuance of the timber sale contract.
- All information must be typed or printed except for written signatures.

Please Check Appropriate Categories:

1. My business is organized as (you **must** check one of the boxes below):
  - A.  Sole Proprietorship (individual)
  - B.  Partnership
  - C.  Corporation
2. You **must** check one of the boxes below:
  - A.  I certify my business is a sole proprietorship and it has no employees but the sole proprietor. I am not subject to the Worker's Compensation Laws.
  - B.  I certify my business has satisfied its obligation to the Worker's Compensation Act through the use of an approved Notice of Exclusion (BWC-337, Rev. 5/96). I will provide a copy of the Notice of Exclusion within 21 days of the contract award. (For questions or a copy of the BWC-337, please call the Worker's Compensation Bureau at 517-322-1195).
  - C.  I certify my business has a Worker's Compensation Policy. I will provide an original Certificate of Insurance within twenty-one (21) days of the contract award.
3. If you have checked item 2(A) or 2(B), you **must** indicate the number of **both** full-time and part-time employees, other than yourself, including family members and active partners (if none, you must enter "0").

\_\_\_\_\_ Full-time Employees

\_\_\_\_\_ Part-time Employees

Name of Business		Federal ID (or) Social Security No.	
Address		Telephone (       )	
City	State	ZIP	

*I hereby certify that the above information is true and correct. I agree to notify the Michigan DNR of any changes that occur in factors affecting my coverage during any of my present and future operations.*

\_\_\_\_\_  
Signature of Owner or Authorized Representative

\_\_\_\_\_  
Title

\_\_\_\_\_  
Date

Please complete the "SEALED BID" information on the next page