



**DEPARTMENT OF NATURAL RESOURCES
STATE OF MICHIGAN
TIMBER SALE PROSPECTUS #7418**

SCHEDULED SALE DATE AND TIME: 3:00 p.m. (local time) on May 10, 2024.

LOCATION: ESCANABA MGMT UNIT, 6833 HWY'S 2, 41 & M-35, GLADSTONE, MI 49837.

PROSPECTUS NOTE: The bidder is advised to inspect the sale area and review the location, estimated volumes, operating costs and contract terms of proposed sales. Please be aware that some landowners may request 60 days or more notice for access across their land.

Notice is hereby given that bids will be received by the Unit Manager, CRYSTAL FALLS MANAGEMENT UNIT, for certain timber on the following described lands:

Two Section Aspen (12-001-24) / T40N, R29W, SEC. 14, SWNW.
T40N, R29W, SEC. 15, SWNW,NWSW.
T40N, R29W, SEC. 16, SENE.
T40N, R29W, SEC. 17, S1/2NE,N1/2SE.

Dickinson County, Advertised Price \$19,879.55, 53.5 Acres, Aspen, Hardwood.

SALE NOTE: Payment Unit 2 is an optional unit. If it is cut it will be scaled. The access to Payment Unit 2 is through private property.

A recreation site such as a trail, pathway, or campground is within the sale area or the vicinity. Certain restrictions/specifications may be applicable including time restrictions. Access may be through private land.

Ancient Alleys (12-002-24) / T44N, R27W, SEC. 7 , NW,NWSW.
T44N, R28W, SEC. 12, E1/2NE,NESE.

Dickinson County, Advertised Price \$64,689.85, 80.2 Acres, Aspen, Hardwood.

SALE NOTE: A replacement cross drainage culvert 18" in diameter and 24 feet long, along with 550 cubic yards of pit run will be required roadwork prior to starting this sale. In addition, if wood is hauled south on Simpson Road, another culvert will need to be replaced by the Purchaser. This will require a permit, which will also be obtained by the Purchaser.

A recreation site such as a trail, pathway, or campground is within the sale area or the vicinity. Certain restrictions/specifications may be applicable including time restrictions.

The Golden Goose (12-003-24) / T44N, R27W, SEC. 19, SENE.
T44N, R27W, SEC. 20, NW,SW.
T44N, R27W, SEC. 29, NENW.

Dickinson County, Advertised Price \$136,702.25, 154.5 Acres, Aspen, Hardwood.

SALE NOTE: A recreation site such as a trail, pathway, or campground is within the sale area or the vicinity. Certain restrictions/specifications may be applicable including time restrictions.

Watershed Valley (12-004-24) / T42N, R27W, SEC. 18, NENW,NWNE.
T42N, R27W, SEC. 7 , SENW,S1/2NE,N1/2SW,SE.

Dickinson County, Advertised Price \$84,225.45, 162.6 Acres, Hardwood, Aspen.

SALE NOTE: Permission from private landowners is the responsibility of the Purchaser, but all wood can be accessed from State.

BID INSTRUCTIONS (VER. 10/10/2022):

1. Scheduled Bid Location, Date, and Time (2/11)

Bids must be received by the Unit Manager, ESCANABA OFFICE, 6833 Hwy's 2, 41 & M-35, Gladstone, MI 49837, no later than 3:00 p.m. (local time) on May 10, 2024. For further information concerning this sale, contact Eric Thompson at 906-789-8231.

2. Bidder's Qualifications (10/22)

If all or part of a timber sale was prepared by a private contractor, the contractor and that contractor's company are not permitted to bid on the timber sale. A person must be 18 years of age or older to purchase timber. Permanent employees of the Department of Natural Resources or members of their immediate household may not bid. Former employees, in the permanent or seasonal class, may not bid until 3 months after the last day of active duty. Bids will not be accepted from individuals or companies appearing on the DNR/FRD No-Bid List. This list contains the names of purchasers who previously failed to execute a contract within 21-days or who have a history of poor performance.

3. Preparation of Sealed Bids (5/16)

Bid Forms may be completed online thru Michigan DNR Timber Sale Online Bidding (OLB) at www.michigan.gov/timberbidding or by completing the hardcopy Bid Form found in the Timber Sale Prospectus. Hardcopy Bid Forms shall be manually signed in ink. Registration in OLB is considered your 'signature' for all bids submitted thru that system. Bid prices must be entered for each species and product in the Bid Price column for all material subject to bidding and all fill-in blanks must be completed. If erasures or other changes appear on the hardcopy Bid Form, each erasure or change must be initialed by the person signing the bid.

4. Submission of Sealed Bids (5/16)

Bid forms may be obtained from the Unit Manager or thru OLB. Bids may be submitted hardcopy or thru OLB. All hardcopy bids must be submitted on the bid form and in an envelope clearly identified as described in this section. NOTE: Only one bid form per bid envelope. Sealed bids must be submitted to the Unit office designated in the prospectus and must be submitted at or prior to the time established in the prospectus. The envelope should show on the outside (a) the sale name or number and (b) the date and time of bid opening, as shown in the prospectus. Bids received after the time specified in the sale prospectus are late bids and will be rejected.

It is possible for a bidder to submit multiple bids on a single sale. For example, a bid may be submitted hardcopy and a bid may be submitted thru OLB. Or, two bidders from the same company could both submit bids on the same sale. If this were to happen, the State would accept all bids received and award the contract accordingly. All bidding and contractual requirements would apply to all bids received.

5. Public Opening of Sealed Bids (7/16)

If conditions permit, the sealed bids will be publicly opened and posted at the time and place set in the prospectus.

If a bidder, present at a bid opening, has submitted bids on more than one sale, that bidder may withdraw their unopened bid envelopes or announce the withdrawal of their online bid after being declared the successful bidder on one sale.

6. Award of Contract (1/11)

Award of the contract will be made to the Bidder whose bid, conforming to the prospectus, is most advantageous to the State of Michigan on the basis of total value at rates bid for the estimated quantities. The State reserves the right to reject any bid or waive any minor irregularity in bids received. A written award mailed (or otherwise furnished) to the successful Bidder shall be deemed to result in a binding contract without further action by either party.

7. Down Payment (1/11)

The Bidder to whom award is made must make a down payment within 21 days of the sale award. The amount of the down payment will be calculated as shown in the Bond and Payment Schedule of this prospectus. Only cash may be used to meet this requirement.

8. Performance Security (1/11)

As guarantee of faithful performance, a cash bond, certificate of deposit, surety bond or irrevocable letter of credit (LOC) is required within 21 days of the sale award. The amount of the performance security is shown in the Bond and

Payment Schedule of this prospectus. If an LOC or surety is used, the coverage must extend for at least 6 months beyond the contract expiration.

9. Worker's Compensation (10/22)

Purchaser shall obtain worker's compensation insurance to cover claims under Michigan's Worker's Disability Compensation Act of 1969 or similar employee benefit act of any other state applicable to an employee. Verification of Worker's Disability Compensation Act Compliance must be completed and submitted within 21 days of contract award and prior to the issuance of the timber sale contract. In addition, if applicable, Notice of Exclusion or Certificate of Insurance must also be submitted.

10. Timber Sale Contract (10/22)

Additional conditions and requirements common to all timber sales are listed on the timber sale contract (R4031) and are available on line at www.michigan.gov/timber. Contact the Unit Manager for additional information or a sample contract. Within 21 days of the date of the award letter, the bidder must sign the contract and provide the required down payment, performance security, and verification of worker's disability compensation. The down payment and performance security shall be in accordance with the provisions of the timber sale contract, in the sums stated in this prospectus. If these actions are not taken, then the Bidder, the Bidder's corporation, and the corporation's principals may not be permitted to bid on State timber sales for a period of 3 months after the first offense, 6 months after the second offense, and 1 year after the third offense. An offense will only be counted against the Bidder for 5 years. In addition, the Bidder certifies that if awarded this contract, the Bidder will complete the timber sale contract in accordance with its terms and any modifications thereof including requirements to purchase, cut, and remove the included timber by the expiration date.

Payment Unit values in the State Forest Timber Sale Contract are calculated based on the advertised value of the Payment Unit as a percentage of the total advertised value of the contract. The advertised value of each Payment Unit is given in the Description of Timber by Payment Unit table on the Timber Sale Information page. For example, if the value of Payment Unit 1 is advertised as \$1,500 and the total Timber Sale value is advertised as \$10,000, the contract price for Payment Unit 1 will be 15% of the total bid price ($\$1,500/\$10,000 * 100$).

11. Disclaimer of Estimates and Bidder's Warranty of Inspection (10/22)

Before submitting this bid, the Bidder is advised and cautioned to inspect the sale area, review the requirements of the sale contract, and take other steps as may be reasonably necessary to ascertain the location, estimated volumes, construction estimates, and operating costs of the proposed sale. Failure to do so will not relieve the Bidder from responsibility for completing the contract.

The Bidder warrants that this bid is submitted solely on the basis of the Bidder's examination and inspection of the quality and quantity of the timber offered for sale and the Bidder's opinion of the value thereof and the costs of recovery. No reliance should be placed on the State of Michigan's estimates of timber quality, quantity or costs of recovery. Bidder further acknowledges that the State of Michigan: (i) expressly disclaims any warranty of fitness of timber for any purpose; (ii) offers this timber as is without any warranty of quality (merchantability) or quantity and (iii) expressly disclaims any warranty as to the quantity or quality of timber sold.

12. Certification and Chain-of-Custody (10/22)

Unless otherwise indicated in the contract under section 7 – Other Conditions of the Sale Specific Conditions & Requirements, the area encompassed by this timber sale is certified to the standards of the Forest Stewardship Council (FSC) - Certificate #SCS-FM/COC-00090N and the Sustainable Forestry Initiative (SFI) - Certificate #NSF-SFIS-5Y031-SF5. Forest products from this sale may be delivered to the mill as "FSC 100% and / or SFI certified" as long as the contractor hauling the forest products is chain-of-custody (COC) certified or covered under a COC certificate from the destination mill. The purchaser is responsible for maintaining COC after leaving the sale area.

13. Good Neighbor Authority (GNA) Requirements (10/22)

If the name of this timber sales contains the acronym GNA, it is authorized by the Good Neighbor Authority (GNA) and covered by various agreements between the U.S. Forest Service and the State. The timber sale occurs on federal land and the following conditions apply:

GNA contracts on US Forest Service land will not be awarded to purchasers on the Federal list of excluded parties. The System for Award Management (SAM) will be checked for active excluded parties prior to award of contract. In

addition, the Bidder to whom award is made must complete an Assurance Regarding Felony Conviction or Tax Delinquent Status for Corporate Applicants (AD-3031).

14. Good Neighbor Authority (GNA) Requirements, con't (10/22)

Bidder certifies, by signing this bid form, that to the best of Bidder's knowledge that the following representations are accurate and complete.

- a. That the Bidder and its principals are not presently debarred, suspended, proposed for debarment, declared ineligible, or voluntary excluded from timber sales (covered transactions) by any Federal department or agency.
- b. That the Bidder and its principals have not within a 3-year period preceding this bid been convicted of or had a civil judgment rendered against them for commission of fraud or a criminal offense in connection with obtaining , attempting to obtain, or performing a public (Federal, State, or local) transaction or contract under a public transaction; violation of Federal or State antitrust statutes or commission of embezzlement, theft, forgery, bribery, falsification or destruction of records, making false statements, or receiving stolen property.
- c. That the Bidder and its principals are not presently indicted for or otherwise criminally or civilly charged by a governmental entity (Federal, State, or local) with commission of any of the offenses enumerated in paragraph b of this certification.
- d. That the Bidder and its principals have not within a 3-year period preceding this bid had one or more public transactions (Federal, State, or local) terminated for breach or default of a timber or forest product contract.

Bidders that cannot certify this requirement, in whole or in part, shall submit an explanation with their bid.

Scott Bowen
Director

TIMBER SALE INFORMATION

Two Section Aspen (12-001-24)

T40N, R29W, SEC. 14; T40N, R29W, SEC. 15; T40N, R29W, SEC. 16; T40N, R29W, SEC. 17.
Dickinson County (Advertised Price \$19,879.55)

SALE NOTE: Payment Unit 2 is an optional unit. If it is cut it will be scaled. The access to Payment Unit 2 is through private property.

A recreation site such as a trail, pathway, or campground is within the sale area or the vicinity. Certain restrictions/specifications may be applicable including time restrictions. Access may be through private land.

A timber sale contract for this mixed, sealed bid timber sale will be awarded to the responsible bidder offering the highest sealed bid price. All units of volume listed below were estimated using the Inventory Manager computer program and the new Michigan taper model. Bids must be at or above the following advertised price for each product and species:

<u>PRODUCTS & SPECIES</u>	<u>ESTIMATED UNITS*</u>	<u>ADVERTISED PRICE</u>
Sawtimber		
Basswood	4.0 MBF	\$ 96.00 / MBF
Paper Birch	1.9 MBF	\$ 170.00 / MBF
Sugar Maple	3.2 MBF	\$ 198.00 / MBF
Pulpwood		
Balsam Fir	53 Cords	\$ 6.40 / Cord
Basswood	9 Cords	\$ 7.70 / Cord
Mixed Aspen	651 Cords	\$ 21.85 / Cord
Mixed Hardwood	237 Cords	\$ 11.65 / Cord
Mixed Spruce	35 Cords	\$ 14.85 / Cord
Paper Birch	16 Cords	\$ 3.25 / Cord
Tamarack	117 Cords	\$ 4.90 / Cord

* The total volume is statistically estimated within plus (+) or minus (-) 32.08 percent. There are an estimated 1,139 cords on this timber sale, plus or minus 365 cords at the 95% confidence level. The estimated units are final and not subject to adjustment. Prospective bidders are urged to examine this timber and to make their own estimates of quantity and quality.

BOND AND PAYMENT SCHEDULE:

1. A bond in the amount of \$1,988.00 to insure faithful performance of the conditions of the contract will be deposited by the successful bidder within 21 days of the sale award.
2. Cutting in any sale or unit without the required advance payment would be considered a trespass.
3. Total payment must be paid in advance or according to the following schedule :
 - (a) Ten percent (10%) of the sale value must be paid within 21 days of the sale award.
 - (b) The 10% down payment will be credited towards the first unit cut.
 - (c) Payment for each of the following units must be made before cutting begins in that unit:

PAYMENT UNIT NUMBER	PERCENT OF TOTAL SALE VALUE
01	50.1%
02	3.6%
03	46.3%
4. If no cutting takes place, the 10% down payment will not be refunded.
5. Operations on the contract issued will terminate on 06/30/2027.

SALE STATISTICS

Volumes were calculated in cubic feet using the Michigan taper model. Cubic foot volume includes all wood inside bark for the product indicated. For display purposes, cubic feet were converted to cords and MBF using a simple conversion factor, e.g. 79 cubic feet per cord and 185 cubic feet per MBF. The cubic foot volumes are precise; the cords and MBF volumes are not. Cubic foot volume cannot be directly converted to cords or boards with precision.

SALE VOLUMES

The total estimated sale volume may not equal the sum of the species/products due to the nature of statistical calculations associated with double sampling methodology.

VOLUME		STATISTICAL RANGE IN CORDS		
TOTAL CUBIC FEET	TOTAL CORDS	PERCENT ERROR	MINIMUM	MAXIMUM
89,983	1,139	32.08%	774	1,504

VDU VOLUMES

A VDU is a Volume Determination Unit. Volumes and their associated statistics are calculated at the VDU level and summarized to the sale level. There is often a one to one relationship between a VDU and a Payment Unit, but not always, depending on the cruise design. Refer to the VDU TO PAYMENT UNIT table.

VDU	VOLUME		PERCENT ERROR	RANGE IN CORDS	
	TOTAL CUBIC FEET	TOTAL CORDS		MINIMUM	MAXIMUM
9	37,496	475	24.72%	357	592
24	10,019	127	46.80%	67	186
32	42,468	538	28.70%	383	692
TOTAL:	89,983	1,139		808	1,470

VDU TO PAYMENT UNIT

When a VDU is associated with more than one Payment Unit (PU), the VDU volumes are assigned to the PU based on acres of the VDU within the PU.

VDU	VDU ACRES	PU	PU ACRES
9	19.0	3	19.0
24	14.2	2	14.2
32	20.3	1	20.3
TOTAL:	53.5		53.5

DESCRIPTION OF TIMBER BY PAYMENT UNIT (PU)

PU	MARKET GROUP	PRODUCT	QUANTITY	UNIT	ACRES	ADVERTISE PRICE
1	Basswood	Sawtimber	1.1	MBF	20.3	\$9,948.30
	Paper Birch		1.9	MBF		
	Sugar Maple		1.1	MBF		
	Balsam Fir	Pulpwood	29	Cords		
	Basswood		7	Cords		
	Mixed Aspen		335	Cords		
	<i>Balsam Poplar</i>		26	Cords		
	<i>Quaking Aspen</i>		309	Cords		
	Mixed Hardwood		126	Cords		
	<i>Red Maple</i>	Sawtimber	0.9	MBF		
	<i>Red Maple</i>	Pulpwood	50	Cords		
	<i>Sugar Maple</i>		74	Cords		
	Mixed Spruce		15	Cords		
	<i>White Spruce</i>		15	Cords		
	Paper Birch		16	Cords		
2	Mixed Spruce	Pulpwood	10	Cords	14.2	\$721.80
	<i>Black Spruce</i>		10	Cords		
	Tamarack		117	Cords		
3	Basswood	Sawtimber	2.9	MBF	19.0	\$9,209.45
	Sugar Maple		2.1	MBF		
	Balsam Fir	Pulpwood	24	Cords		
	Basswood		2	Cords		
	Mixed Aspen		316	Cords		
	<i>B. T. Aspen</i>		55	Cords		
	<i>Balsam Poplar</i>		15	Cords		
	<i>Quaking Aspen</i>		246	Cords		
	Mixed Hardwood		111	Cords		
	<i>Red Maple</i>		12	Cords		
	<i>Sugar Maple</i>		99	Cords		
	Mixed Spruce		10	Cords		
	<i>Black Spruce</i>		3	Cords		
	<i>White Spruce</i>		7	Cords		
TOTAL:			9.1	MBF		
TOTAL:			1,118	Cords		

Sale Specific Conditions & Requirements

Sale Name: Two Section Aspen

Sale Number: 12-001-24 Seq#: 1

1 - Sale Area

1.2 - Boundaries

1.2.1 - Painted boundaries (9/19)

The sale boundary and Payment Unit boundaries are marked and identified by red paint. Exterior sale boundary lines against state are marked with red paint. The painted boundary line trees are not Included Timber and are to be protected unless marked with orange paint.

2 - Timber Specifications

2.1 - Included Timber

2.1.1 - Clearcut unit(s) with unmerchantable trees (6/14)

Within Payment Unit(s) 1-3, cut all trees that are two (2) inches or more at DBH, except do not cut any cedar. Additionally, the following exceptions apply:

- Within Payment Unit 1, do not cut hemlock, oak, or pine.
- Within Payment Unit 3, do not cut spruce or fir that are six (6) inches or less at DBH. In addition, do not cut any hemlock, oak, pine, paper birch, or black ash.

Payment Unit 2 is an optional Payment Unit. This Payment Unit will be scaled if it is cut.

4 - Transportation

4.2 - Maintenance

4.2.4 - Grading (10/16)

For completion of the sale, state forest roads must be graded. In general, this will require a road grader or bulldozer to shape up the roads after forest products have been hauled off site. This includes cleaning of drainage areas, grading, crowning and filling with gravel, if necessary. The grading equipment to be used must be approved by the Unit Manager or his/her representative.

4.4 - Access

4.4.1 - Private property access (3/11)

Permission for access across private land is the responsibility of the Purchaser.

5 - Operations

5.2 - Conduct of Operations

5.2.1 - Slash

5.2.1.13 - Dispose of slash as directed (12/05)

Slash is to be disposed of as directed by the Sale Administrator.

5.2.3 - Operating Restrictions

5.2.3.1 - Operating restrictions (9/11)

Within Payment Unit(s) 2, unless changed by written agreement, cutting, skidding, and hauling are limited to the period of frozen ground only. This restriction is because of wet soils.

5.2.32 - Decking/landing restoration (9/13)

All decking and landing areas must have the surface area restored to a condition equal to or better than before. This is to ensure the proper regeneration of the stand. Wood debris, chips and "cookies" from trimmings must be removed or scattered away from landing and loading areas and may not be windrowed on the edge.

5.2.39 - ORV trail/route protection (4/18)

There is an ORV trail or route shown on the Timber Sale Map. Trees with yellow ORV markers shall be cut off above the markers and at least 5 feet above ground. All stumps within 5 feet of the trail must be cut flush with the ground. Maintain a 20-foot-wide slash, debris, and rut free zone daily using the ORV trail or route as the centerline. Do not run equipment down the ORV trail or route. Skidding across the trail or route may only occur in locations approved by the Sale Administrator.

5.2.41 - Snowmobile trail protection (9/11)

Trail 115 is a snowmobile trail and is shown on the Timber Sale Map. Do not cut or damage posts with orange trail markers or traffic control signs. If the trail is used, it must be maintained and restored to a condition equal to or better than before the sale. The road maintenance/restoration must be done prior to December 1. If the trail is used for hauling, it must be graded to the satisfaction of the Unit Manager or his/her representative prior to December 1. If the trail road is to be used for hauling during the snowmobile season, then a snow-covered base must be left on the trail. The snowmobile trail may not be used for any timber sale operations from December 1 to March 31. The snowmobile trail may only be crossed at right angles. Maintain a 20-foot-wide slash, debris, and rut free zone daily using the snowmobile trail as the centerline. All stumps within 20 feet of the snowmobile trail must be cut at ground level. In addition, any trees cut within 5 feet of the trail must have the stumps removed and be disposed of according to the direction of the Unit Manager or his/her representative.

5.4 - Soil Protection

5.4.1 - Rutting restriction, general (7/16)

Operations are to cease immediately if equipment and weather conditions result in rutting of roads and/or skid trails which is 12 inches or greater in depth and 50 feet in length. The Unit Manager or his/her representative may restrict hauling and/or skidding if ruts exceed the specified depth. With the Unit Manager or his/her representative's approval, the Purchaser may return to the area when the risk of rutting has decreased.

6 - Safety and Fire Prevention

6.2 - Signing

6.2.1 - Road posting (10/20)

The Purchaser is responsible for posting and maintaining caution signs on Benton's Lake Road and Norway Truck Trail prior to beginning operations. The road must be posted at appropriate distances from the Sale Area to warn of logging activity and truck traffic. Signs must be removed when harvest operations are suspended or completed. The Purchaser will provide these signs.

6.2.2 - Snowmobile trail posting (10/20)

The Purchaser is responsible for posting and maintaining caution signs on Trail 115 prior to beginning operations during the snowmobile season (approximately December 1 to March 31). The trail must be posted at appropriate distances from the Sale Area to warn of logging activity and truck traffic. Signs must be removed when harvest operations are suspended or completed. The Purchaser will provide these signs.

6.2.3 - Recreational trail posting (10/20)

The Purchaser is responsible for posting and maintaining caution signs on the ORV trail prior to beginning operations. The trail must be posted at appropriate distances from the Sale Area to warn of logging activity and truck traffic at both ends of the trail. Signs must be removed when harvest operations are suspended or completed. The Purchaser will provide these signs.

7 - Other Conditions

7.5 - Loss

7.5.1 - Deteriorating timber (7/09)

The sale area has received damage from eastern larch borer in Payment Unit 2. The Purchaser should harvest the wood as soon as possible. The Department of Natural Resources is held free of responsibility of any further damage or deterioration due to delay in harvesting.



TIMBER SALE MAP

This information provided by authority of Part 525, 1994 PA 451, as amended.

Sale Number

12-001-24

Date

02/28/2024

Forest Management Unit

County

Mapped By: R Goupell

Scale

Page

Of

Crystal Falls Mgt Unit

Dickinson

Cruised By: R Goupell

1:31,680

1

1

Township
40N

Range
29W

Section(s) and
Subdivision(s) Sec. 14 SWNW; Sec. 15 SWNW,NWSW; Sec. 16 SENE; Sec. 17 S1/2NE,N1/2SE;

Cover Type

A = Aspen	J = Jack Pine	O = Oak	U = Upland Brush
B = Paper Birch	K = Rock	P = Lowland Poplar	UM = Upland Mix Forest
C = Cedar	L = Lowland Brush	Q = Mixed Swamp Conifer	V = Bog or Marsh
D = Treed Bog	LM = Lowland Mix Forest	R = Red Pine	W = White Pine
E = Swamp Hardwoods	M = Maple, Beech, Birch	S = Black Spruce	X = Non Stocked
F = Spruce/Fir	MC = Mixed Conifer	T = Tamarack	Y = Sand
G = Grass	MD = Mixed Deciduous	Z = Water	
H = Hemlock	N = Marsh		

Density

0 = Non Stocked	5 = Pole Timber Medium
1 = Seedling Sapling Poor	6 = Pole Timber Well
2 = Seedling Sapling Medium	7 = Saw Timber Poor
3 = Seedling Sapling Well	8 = Saw Timber Medium
4 = Pole Timber Poor	9 = Saw Timber Well

PU #	Acres
1	20.3
2	14.2
3	19

Two Section Aspen 53.5 Acres



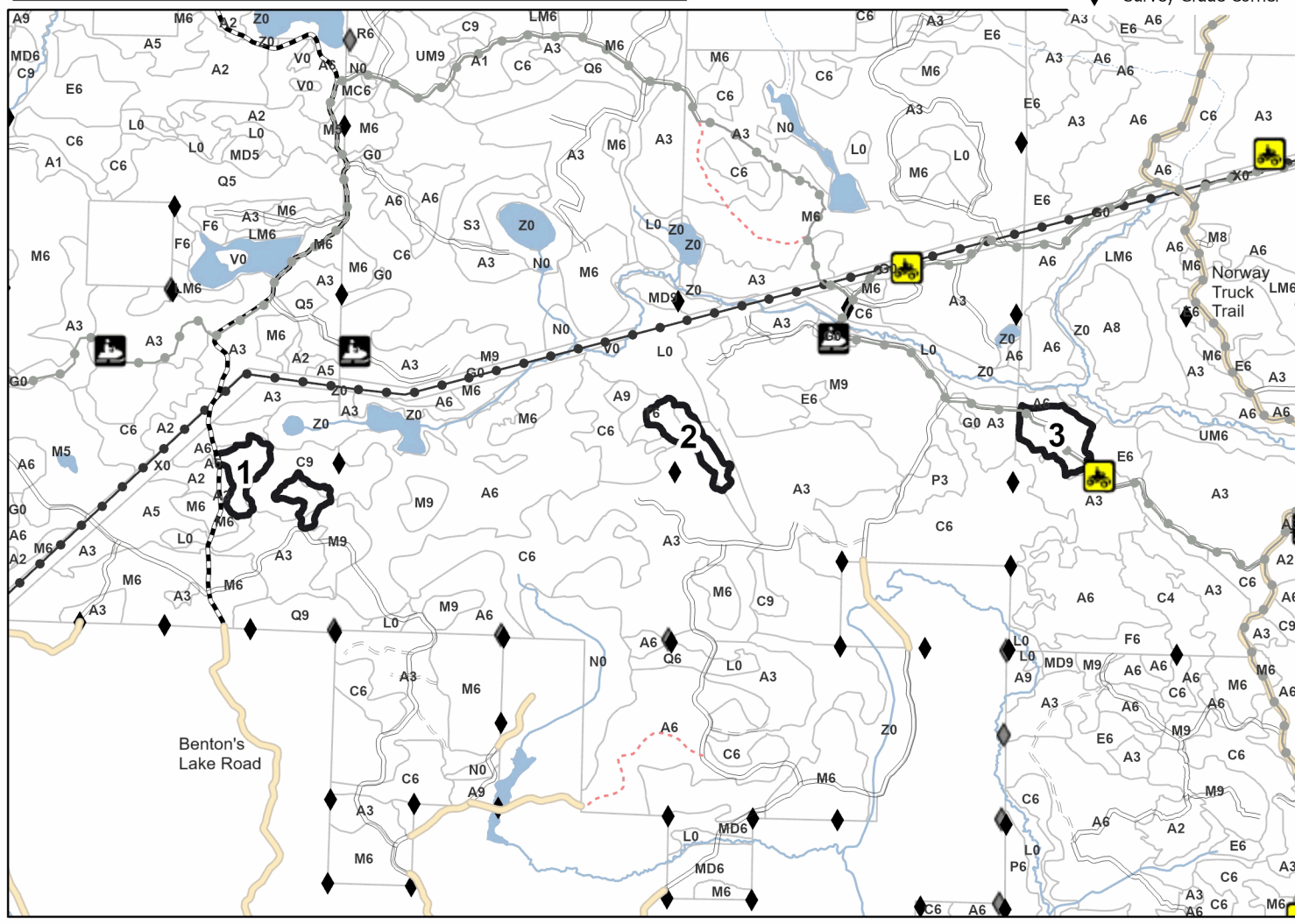
Legend

- Against State (Red)
- Stand
- Recreational Trail
- Primary Forest Road
- Secondary Forest Road
- Forest Access Route
- Administrative Access Only
- Non-DNR Road
- Powerline
- Field Grade Corner
- Survey Grade Corner

Use QR Code to open Map in App



0 0.5 1 2 Miles



TIMBER SALE INFORMATION

Ancient Alleys (12-002-24)

T44N, R27W, SEC. 7; T44N, R28W, SEC. 12.
Dickinson County (Advertised Price \$64,689.85)

SALE NOTE: A replacement cross drainage culvert 18" in diameter and 24 feet long, along with 550 cubic yards of pit run will be required roadwork prior to starting this sale. In addition, if wood is hauled south on Simpson Road, another culvert will need to be replaced by the Purchaser. This will require a permit, which will also be obtained by the Purchaser.

A recreation site such as a trail, pathway, or campground is within the sale area or the vicinity. Certain restrictions/specifications may be applicable including time restrictions.

A timber sale contract for this lump sum, sealed bid timber sale will be awarded to the responsible bidder offering the highest sealed bid price. All units of volume listed below were estimated using the Inventory Manager computer program and the new Michigan taper model. Bids must be at or above the following advertised price for each product and species:

<u>PRODUCTS & SPECIES</u>	<u>ESTIMATED UNITS*</u>	<u>ADVERTISED PRICE</u>
Sawtimber		
Paper Birch	19.0 MBF	\$ 170.00 / MBF
Red Maple	46.7 MBF	\$ 114.00 / MBF
Sugar Maple	10.9 MBF	\$ 198.00 / MBF
Pulpwood		
Balsam Fir	11 Cords	\$ 6.40 / Cord
Mixed Aspen	2,066 Cords	\$ 21.85 / Cord
Mixed Hardwood	720 Cords	\$ 11.65 / Cord
Paper Birch	43 Cords	\$ 3.25 / Cord
White Spruce	16 Cords	\$ 14.85 / Cord

* The total volume is statistically estimated within plus (+) or minus (-) 21.97 percent. There are an estimated 3,036 cords on this timber sale, plus or minus 667 cords at the 95% confidence level. The estimated units are final and not subject to adjustment. Prospective bidders are urged to examine this timber and to make their own estimates of quantity and quality.

BOND AND PAYMENT SCHEDULE:

1. A bond in the amount of \$5,175.00 to insure faithful performance of the conditions of the contract will be deposited by the successful bidder within 21 days of the sale award.
2. Cutting in any sale or unit without the required advance payment would be considered a trespass.
3. Total payment must be paid in advance or according to the following schedule :
 - (a) Ten percent (10%) of the sale value must be paid within 21 days of the sale award.
 - (b) The 10% down payment will be credited towards the first unit cut.
 - (c) Payment for each of the following units must be made before cutting begins in that unit:

PAYMENT UNIT NUMBER	PERCENT OF TOTAL SALE VALUE
01	37.2%
02	23.9%
03	38.9%
4. If no cutting takes place, the 10% down payment will not be refunded.
5. Operations on the contract issued will terminate on 06/30/2027.

SALE STATISTICS

Volumes were calculated in cubic feet using the Michigan taper model. Cubic foot volume includes all wood inside bark for the product indicated. For display purposes, cubic feet were converted to cords and MBF using a simple conversion factor, e.g. 79 cubic feet per cord and 185 cubic feet per MBF. The cubic foot volumes are precise; the cords and MBF volumes are not. Cubic foot volume cannot be directly converted to cords or boards with precision.

SALE VOLUMES

The total estimated sale volume may not equal the sum of the species/products due to the nature of statistical calculations associated with double sampling methodology.

VOLUME		STATISTICAL RANGE IN CORDS		
TOTAL CUBIC FEET	TOTAL CORDS	PERCENT ERROR	MINIMUM	MAXIMUM
239,853	3,036	21.97%	2,369	3,703

VDU VOLUMES

A VDU is a Volume Determination Unit. Volumes and their associated statistics are calculated at the VDU level and summarized to the sale level. There is often a one to one relationship between a VDU and a Payment Unit, but not always, depending on the cruise design. Refer to the VDU TO PAYMENT UNIT table.

VDU	VOLUME		PERCENT ERROR	RANGE IN CORDS	
	TOTAL CUBIC FEET	TOTAL CORDS		MINIMUM	MAXIMUM
1	225,361	2,853	16.66%	2,377	3,328
15	14,492	183	87.90%	22	345
TOTAL:	239,853	3,036		2,400	3,673

VDU TO PAYMENT UNIT

When a VDU is associated with more than one Payment Unit (PU), the VDU volumes are assigned to the PU based on acres of the VDU within the PU.

VDU	VDU ACRES	PU	PU ACRES
1	74.2	1	29.4
		2	18.9
		3	25.9
15	6.0	3	6.0
TOTAL:	80.2		80.2

DESCRIPTION OF TIMBER BY PAYMENT UNIT (PU)

PU	MARKET GROUP	PRODUCT	QUANTITY	UNIT	ACRES	ADVERTISE PRICE	
1	Paper Birch	Sawtimber	7.6	MBF	29.4	\$24,042.70	
	Red Maple		18.5	MBF			
	Sugar Maple		4.3	MBF			
	Balsam Fir		Pulpwood	4			Cords
	Mixed Aspen			746			Cords
	<i>Balsam Poplar</i>			10			Cords
	<i>Quaking Aspen</i>			736			Cords
	Mixed Hardwood			285			Cords
	<i>Black Ash</i>			4			Cords
	<i>Black Cherry</i>			4			Cords
	<i>Red Maple</i>			231			Cords
	<i>Sugar Maple</i>			46			Cords
	Paper Birch			17			Cords
	White Spruce			6			Cords
	2			Paper Birch			Sawtimber
Red Maple		11.9		MBF			
Sugar Maple		2.8		MBF			
Balsam Fir		Pulpwood	3	Cords			
Mixed Aspen			480	Cords			
<i>Balsam Poplar</i>			7	Cords			
<i>Quaking Aspen</i>			473	Cords			
Mixed Hardwood			184	Cords			
<i>Black Ash</i>			2	Cords			
<i>Black Cherry</i>			3	Cords			
<i>Red Maple</i>			149	Cords			
<i>Sugar Maple</i>			30	Cords			
Paper Birch			11	Cords			
White Spruce			4	Cords			
3			Paper Birch	Sawtimber	6.6	MBF	
	Red Maple		16.3		MBF		
	Sugar Maple		3.8		MBF		
	Balsam Fir	Pulpwood	4		Cords		
	Mixed Aspen		840		Cords		
	<i>Balsam Poplar</i>		9		Cords		
	<i>Quaking Aspen</i>		831		Cords		
	Mixed Hardwood		251		Cords		
	<i>Black Ash</i>		3		Cords		
	<i>Black Cherry</i>		4		Cords		
	<i>Red Maple</i>		204		Cords		
	<i>Sugar Maple</i>		40		Cords		
	Paper Birch		15		Cords		
	White Spruce		6		Cords		
	TOTAL:				76.6	MBF	
TOTAL:			2,856	Cords			

Sale Specific Conditions & Requirements

Sale Name: Ancient Alleys

Sale Number: 12-002-24 Seq#: 1

1 - Sale Area

1.2 - Boundaries

1.2.1 - Painted boundaries (9/19)

The sale boundary and Payment Unit boundaries are marked and identified by red and yellow paint. Exterior sale boundary lines against state are marked with red paint. Interior Payment Unit boundaries are marked with yellow paint. The painted boundary line trees are not Included Timber and are to be protected unless marked with orange paint. Yellow painted trees designating an interior Payment Unit boundary are only to be cut when all surrounding Payment Units have been paid.

2 - Timber Specifications

2.1 - Included Timber

2.1.1 - Clearcut unit(s) with unmerchantable trees (6/14)

Within Payment Unit(s) 1-3, cut all trees that are two (2) inches or more at DBH, except do not cut any red pine, white pine, cedar, or if present, oak.

4 - Transportation

4.1 - Construction

4.1.5 - Culverts (5/14)

Simpson Road will require the installation of a culvert for cross drainage at the location shown on the map, prior to hauling. The culverts shall be new, double-walled, plastic gauge, a minimum of 18 inches in diameter and 24 feet in length. Culverts will be permanently set in place. Soils shall be maintained and left in a non-erodible condition as directed by the Sale Administrator and as specified in the BMP manual.

****If wood is hauled south on the Simpson Road, the culvert over Little Brook Creek will need to be replaced; permit will be required and will be the responsibility of the Purchaser.**

4.1.6 - Road construction (1/09)

Construction of new roads or improvements of existing roads shall be done in such a way as to minimize the environmental and visual impacts. Merchantable trees shall be cut and utilized unless otherwise directed. Non-merchantable trees shall be severed and laid flat on the ground. Slash shall be scattered, and not left in windrows and kept a minimum of 10 feet back from the road edge. Stumps shall be set upright, not left on edge, and be moved at least 5 feet away from the road edge. Disturbed soil shall be feathered into the woods and not left in berms or windrows.

4.1.7 - Road closure (10/11)

All new roads built into the sale must be blocked to vehicle traffic upon completion of the sale. All new roads built into the sale must be blocked to vehicle traffic within 30 days of completion of hauling. Overgrown roads that are reopened shall be considered new roads. In general, this will require constructing a four (4') foot high berm of stumps and logs covered with earth. Contact the Sale Administrator for specific details of design and placement.

4.1.8 - Road work (1) (8/07)

The following road work is required: install a new, double-walled plastic culvert 18 inches in diameter and 24 feet in length at the location showed by a star on the map. Also, approximately 550 yards of pit run is to be spread on Simpson Road, as shown on map. This is to be 10 feet wide x 6 inches deep x 2065 feet in length.

Several State borrow pits are located within a 3-mile radius for pit run gravel. Details can be discussed with the Sale Administrator.

If hauling south on Simpson Road, the culvert over Little Brook Creek will need to be replaced; permit will be required and will be the responsibility of the Purchaser.

4.2 - Maintenance

4.2.1 - Hauling restriction (12/08)

Hauling may be restricted on forest roads by the Unit Manager or his/her representative. The restriction may occur during spring breakup or prolonged wet weather conditions.

4.2.4 - Grading (10/16)

For completion of the sale, state forest roads must be graded. In general, this will require a road grader or bulldozer to shape up the roads after forest products have been hauled off site. This includes cleaning of drainage areas, grading, crowning and filling with gravel, if necessary. The grading equipment to be used must be approved by the Unit Manager or his/her representative.

5 - Operations

5.2 - Conduct of Operations

5.2.4 - Dead and Down Creation

5.2.4.2 - Dead and down creation, hare and grouse (1/14)

To improve habitat for snowshoe hare, grouse, and other species, the Purchaser is to leave two loosely-stacked piles of brush and tops approximately 5 feet in height on the ground for every Payment Unit. They should be scattered throughout the sale or positioned per the Sale Administrator's instructions.

5.2.32 - Decking/landing restoration (9/13)

All decking and landing areas must have the surface area restored to a condition equal to or better than before. This is to ensure the proper regeneration of the stand. Wood debris, chips and "cookies" from trimmings must be removed or scattered away from landing and loading areas and may not be windrowed on the edge.

5.2.41 - Snowmobile trail protection (9/11)

A portion of the Simpson Road is a snowmobile trail and is located south of the Timber Sale Map area. Do not cut or damage posts with orange trail markers or traffic control signs. If the trail is used for hauling, it must be maintained and restored to a condition equal to or better than before the sale. The road maintenance/restoration must be done prior to December 1. If the trail road is to be used for hauling during the snowmobile season, then a snow-covered base must be left on the trail. Signs must be posted if using the trail during snowmobile season.

5.4 - Soil Protection

5.4.1 - Rutting restriction, general (7/16)

Operations are to cease immediately if equipment and weather conditions result in rutting of roads and/or skid trails which is 12 inches or greater in depth and 50 feet in length. The Unit Manager or his/her representative may restrict hauling and/or skidding if ruts exceed the specified depth. With the Unit Manager or his/her representative's approval, the Purchaser may return to the area when the risk of rutting has decreased.

6 - Safety and Fire Prevention

6.2 - Signing

6.2.1 - Road posting (10/20)

The Purchaser is responsible for posting and maintaining caution signs on Simpson road prior to beginning operations. The road must be posted at appropriate distances from the Sale Area to warn of logging activity and truck traffic. Signs must be removed when harvest operations are suspended or completed. The Purchaser will provide these signs.



TIMBER SALE MAP

This information provided by authority of Part 525, 1994 PA 451, as amended.

Sale Number

12-002-24

Date

03/05/2024

Forest Management Unit

Crystal Falls Mgt Unit

County

Dickinson

Mapped By: Andy Church

Cruised By: Andy Church

Scale

1:15,840

Page

1

Of

1

Township
44N

Range
27W / 28W

Section(s) and
Subdivision(s) Sec. 12 E1/2NE,NESE; Sec. 7 NW,NWSW;

Cover Type

A = Aspen	J = Jack Pine	O = Oak	U = Upland Brush
B = Paper Birch	K = Rock	P = Lowland Poplar	UM = Upland Mix Forest
C = Cedar	L = Lowland Brush	Q = Mixed Swamp Conifer	V = Bog or Marsh
D = Treed Bog	LM = Lowland Mix Forest	R = Red Pine	W = White Pine
E = Swamp Hardwoods	M = Maple, Beech, Birch	S = Black Spruce	X = Non Stocked
F = Spruce/Fir	MC = Mixed Conifer	T = Tamarack	Y = Sand
G = Grass	MD = Mixed Deciduous	Z = Water	
H = Hemlock	N = Marsh		

Density

0 = Non Stocked	5 = Pole Timber Medium
1 = Seedling Sapling Poor	6 = Pole Timber Well
2 = Seedling Sapling Medium	7 = Saw Timber Poor
3 = Seedling Sapling Well	8 = Saw Timber Medium
4 = Pole Timber Poor	9 = Saw Timber Well

PU # Acres

1	29.4
2	18.9
3	31.9

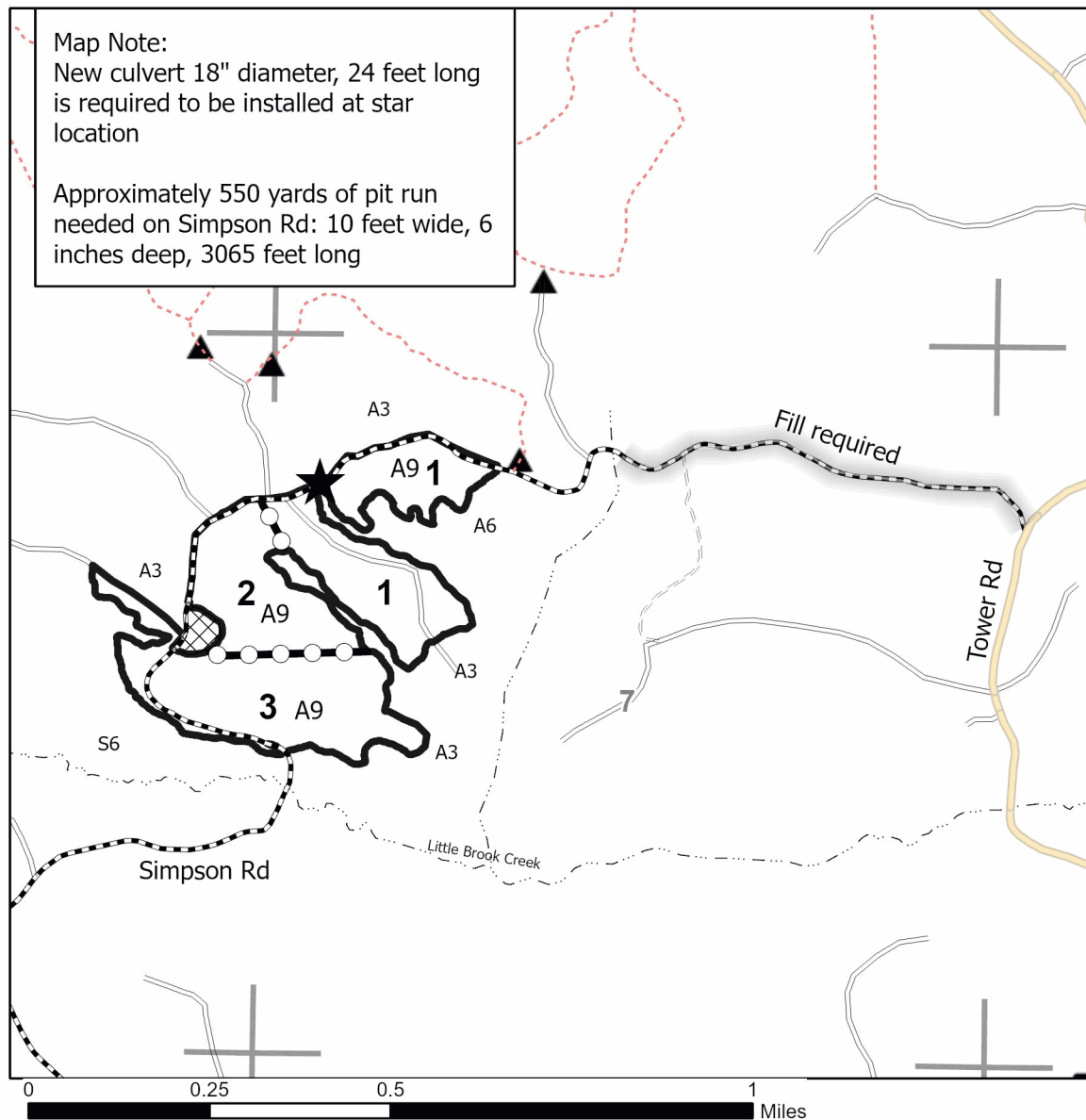
Ancient Alleys

80.2 Acres
Comp 20



Map Note:
New culvert 18" diameter, 24 feet long
is required to be installed at star
location

Approximately 550 yards of pit run
needed on Simpson Rd: 10 feet wide, 6
inches deep, 3065 feet long



Legend

- Against State (Red)
- Payment Unit (Yellow)
- Exclusion
- Primary Forest Road
- Secondary Forest Road
- Forest Access Route
- Administrative Access Only
- Non-DNR Road
- Stream
- Fill required
- Culvert needed
- Berm

TIMBER SALE INFORMATION

The Golden Goose (12-003-24)
 T44N, R27W, SEC. 19; T44N, R27W, SEC. 20; T44N, R27W, SEC. 29.
 Dickinson County (Advertised Price \$136,702.25)

SALE NOTE: A recreation site such as a trail, pathway, or campground is within the sale area or the vicinity. Certain restrictions/specifications may be applicable including time restrictions.

A timber sale contract for this lump sum, sealed bid timber sale will be awarded to the responsible bidder offering the highest sealed bid price. All units of volume listed below were estimated using the Inventory Manager computer program and the new Michigan taper model. Bids must be at or above the following advertised price for each product and species:

<u>PRODUCTS & SPECIES</u>	<u>ESTIMATED UNITS*</u>	<u>ADVERTISED PRICE</u>
Sawtimber		
Basswood	4.9 MBF	\$ 96.00 / MBF
Sugar Maple	30.5 MBF	\$ 198.00 / MBF
Pulpwood		
Balsam Fir	95 Cords	\$ 6.40 / Cord
Basswood	6 Cords	\$ 7.70 / Cord
Mixed Hardwood	210 Cords	\$ 11.65 / Cord
Quaking Aspen	5,769 Cords	\$ 21.85 / Cord
White Spruce	70 Cords	\$ 14.85 / Cord

* The total volume is statistically estimated within plus (+) or minus (-) 13.51 percent. There are an estimated 6,234 cords on this timber sale, plus or minus 842 cords at the 95% confidence level. The estimated units are final and not subject to adjustment. Prospective bidders are urged to examine this timber and to make their own estimates of quantity and quality.

BOND AND PAYMENT SCHEDULE:

1. A bond in the amount of \$10,936.00 to insure faithful performance of the conditions of the contract will be deposited by the successful bidder within 21 days of the sale award.
2. Cutting in any sale or unit without the required advance payment would be considered a trespass.
3. Total payment must be paid in advance or according to the following schedule :
 - (a) Ten percent (10%) of the sale value must be paid within 21 days of the sale award.
 - (b) The 10% down payment will be credited towards the first unit cut.
 - (c) Payment for each of the following units must be made before cutting begins in that unit:

PAYMENT UNIT NUMBER	PERCENT OF TOTAL SALE VALUE
01	5.3%
02	28.8%
03	30.4%
04	35.5%
4. If no cutting takes place, the 10% down payment will not be refunded.
5. Operations on the contract issued will terminate on 06/30/2027.

SALE STATISTICS

Volumes were calculated in cubic feet using the Michigan taper model. Cubic foot volume includes all wood inside bark for the product indicated. For display purposes, cubic feet were converted to cords and MBF using a simple conversion factor, e.g. 79 cubic feet per cord and 185 cubic feet per MBF. The cubic foot volumes are precise; the cords and MBF volumes are not. Cubic foot volume cannot be directly converted to cords or boards with precision.

SALE VOLUMES

The total estimated sale volume may not equal the sum of the species/products due to the nature of statistical calculations associated with double sampling methodology.

VOLUME		STATISTICAL RANGE IN CORDS		
TOTAL CUBIC FEET	TOTAL CORDS	PERCENT ERROR	MINIMUM	MAXIMUM
492,492	6,234	13.51%	5,392	7,076

VDU VOLUMES

A VDU is a Volume Determination Unit. Volumes and their associated statistics are calculated at the VDU level and summarized to the sale level. There is often a one to one relationship between a VDU and a Payment Unit, but not always, depending on the cruise design. Refer to the VDU TO PAYMENT UNIT table.

VDU	VOLUME		PERCENT ERROR	RANGE IN CORDS	
	TOTAL CUBIC FEET	TOTAL CORDS		MINIMUM	MAXIMUM
38	474,136	6,002	11.56%	5,308	6,695
40	18,356	232	27.60%	168	296
TOTAL:	492,492	6,234		5,476	6,992

VDU TO PAYMENT UNIT

When a VDU is associated with more than one Payment Unit (PU), the VDU volumes are assigned to the PU based on acres of the VDU within the PU.

VDU	VDU ACRES	PU	PU ACRES
38	135.7	2	41.3
		3	43.5
		4	50.9
40	18.8	1	18.8
TOTAL:	154.5		154.5

DESCRIPTION OF TIMBER BY PAYMENT UNIT (PU)

PU	MARKET GROUP	PRODUCT	QUANTITY	UNIT	ACRES	ADVERTISE PRICE
1	Basswood	Sawtimber	4.9	MBF	18.8	\$7,267.45
	Sugar Maple		24.6	MBF		
	Basswood	Pulpwood	6	Cords		
	Mixed Hardwood		152	Cords		
	<i>Ironwood</i>		3	<i>Cords</i>		
	<i>Sugar Maple</i>		149	<i>Cords</i>		
	Quaking Aspen		5	Cords		
2	Sugar Maple	Sawtimber	1.8	MBF	41.3	\$39,376.80
	Balsam Fir	Pulpwood	29	Cords		
	Mixed Hardwood		17	Cords		
	<i>Ironwood</i>		2	<i>Cords</i>		
	<i>Red Maple</i>		5	<i>Cords</i>		
	<i>Sugar Maple</i>		10	<i>Cords</i>		
	Quaking Aspen		1,754	Cords		
	White Spruce		21	Cords		
3	Sugar Maple	Sawtimber	1.9	MBF	43.5	\$41,495.05
	Balsam Fir	Pulpwood	30	Cords		
	Mixed Hardwood		19	Cords		
	<i>Ironwood</i>		2	<i>Cords</i>		
	<i>Red Maple</i>		6	<i>Cords</i>		
	<i>Sugar Maple</i>		11	<i>Cords</i>		
	Quaking Aspen		1,848	Cords		
	White Spruce		22	Cords		
4	Sugar Maple	Sawtimber	2.2	MBF	50.9	\$48,562.95
	Balsam Fir	Pulpwood	36	Cords		
	Mixed Hardwood		22	Cords		
	<i>Ironwood</i>		3	<i>Cords</i>		
	<i>Red Maple</i>		7	<i>Cords</i>		
	<i>Sugar Maple</i>		12	<i>Cords</i>		
	Quaking Aspen		2,162	Cords		
	White Spruce		27	Cords		
TOTAL:			35.4	MBF		
TOTAL:			6,150	Cords		

Sale Specific Conditions & Requirements

Sale Name: The Golden Goose

Sale Number: 12-003-24 Seq#: 1

1 - Sale Area

1.2 - Boundaries

1.2.1 - Painted boundaries (9/19)

The sale boundary and Payment Unit boundaries are marked and identified by blue, red and yellow paint. Exterior sale boundary lines against private property are marked with blue paint, with the exception of the southern boundary of Payment Unit 4, which is marked with red paint, except for the short western edge that is marked in blue (see Timber Sale Map). Exterior sale boundary lines against state are marked with red paint. Interior Payment Unit boundaries are marked with yellow paint. Retention patches are marked with chevrons in red paint; no harvesting activities may occur within these areas. Yellow painted trees designating an interior Payment Unit boundary are only to be cut when all surrounding Payment Units have been paid.

2 - Timber Specifications

2.1 - Included Timber

2.1.1 - Clearcut unit(s) with unmerchantable trees (6/14)

Within Payment Unit(s) 2-4, cut all trees that are four (4) inches or more at DBH, except do not cut any cedar, white pine, red pine, hemlock, or if present, oak.

2.1.3 - Cut tree marked unit(s) (12/08)

Within Payment Unit(s) 1, all trees are designated for cutting when marked with orange paint above and below stump height, regardless of merchantability.

4 - Transportation

4.1 - Construction

4.1.7 - Road closure (10/11)

All new roads built into the sale must be blocked to vehicle traffic upon completion of the sale. Overgrown roads that are reopened shall be considered new roads. In general, this will require constructing a four (4') foot high berm of stumps and logs covered with earth. Contact the Sale Administrator for specific details of design and placement.

4.3 - Public Right-of-Way

4.3.2 - County R-O-W (12/06)

The county must be contacted prior to decking along the county road R-O-W. This applies to Payment Units 1 & 4, adjacent to Tower Road and County Road 581, respectively. Dickinson County Road Commission may require a permit for decking activities.

5 - Operations

5.2 - Conduct of Operations

5.2.3 - Operating Restrictions

5.2.3.3 - Bark slippage restriction (3/09)

Within Payment Unit(s) 1, unless changed by written agreement, cutting and skidding are not permitted during the period of April 15 to July 15. This restriction is because of bark slippage.

5.2.4 - Dead and Down Creation

5.2.4.2 - Dead and down creation, hare and grouse (1/14)

To improve habitat for snowshoe hare, grouse, and other species, the Purchaser is to leave two piles of loosely stacked tops, brush or logs a minimum of 8 feet wide by 6 feet tall on the ground for every Payment Unit, except for Payment Unit 1. They should be scattered throughout the sale.

5.2.32 - Decking/landing restoration (9/13)

All decking and landing areas must have the surface area restored to a condition equal to or better than before. This is to ensure the proper regeneration of the stand. Wood debris, chips and "cookies" from trimmings must be removed or scattered away from landing and loading areas and may not be windrowed on the edge.

5.2.38 - No decking against live trees (2/04)

Cut products may not be decked against unmarked or designated leave trees.

5.4 - Soil Protection

5.4.1 - Rutting restriction, general (7/16)

Operations are to cease immediately if equipment and weather conditions result in rutting of roads and/or skid trails which is 12 inches or greater in depth and 50 feet in length. The Unit Manager or his/her representative may restrict hauling and/or skidding if ruts exceed the specified depth. With the Unit Manager or his/her representative's approval, the Purchaser may return to the area when the risk of rutting has decreased.

6 - Safety and Fire Prevention

6.2 - Signing

6.2.1 - Road posting (10/20)

The Purchaser is responsible for posting and maintaining caution signs on Tower Road & County Road 581 prior to beginning operations. The road must be posted approximately 350 feet from the Sale Area to warn of logging activity and truck traffic. Signs must be removed when harvest operations are suspended or completed. The Purchaser will provide these signs.



TIMBER SALE MAP

This information provided by authority of Part 525, 1994 PA 451, as amended.

Sale Number

12-003-24

Date

03/12/2024

Forest Management Unit

Crystal Falls Mgt Unit

County

Dickinson

Mapped By: Andy Church

Cruised By: Andy Church

Scale

1:15,840

Page

1

Of

1

Township
44N

Range
27W

Section(s) and
Subdivision(s) Sec. 19 SENE; Sec. 20 NW,SW; Sec. 29 NENW;

Cover Type

A = Aspen	J = Jack Pine	O = Oak	U = Upland Brush
B = Paper Birch	K = Rock	P = Lowland Poplar	UM = Upland Mix Forest
C = Cedar	L = Lowland Brush	Q = Mixed Swamp Conifer	V = Bog or Marsh
D = Treed Bog	LM = Lowland Mix Forest	R = Red Pine	W = White Pine
E = Swamp Hardwoods	M = Maple, Beech, Birch	S = Black Spruce	X = Non Stocked
F = Spruce/Fir	MC = Mixed Conifer	T = Tamarack	Y = Sand
G = Grass	MD = Mixed Deciduous	Z = Water	
H = Hemlock	N = Marsh		

Density

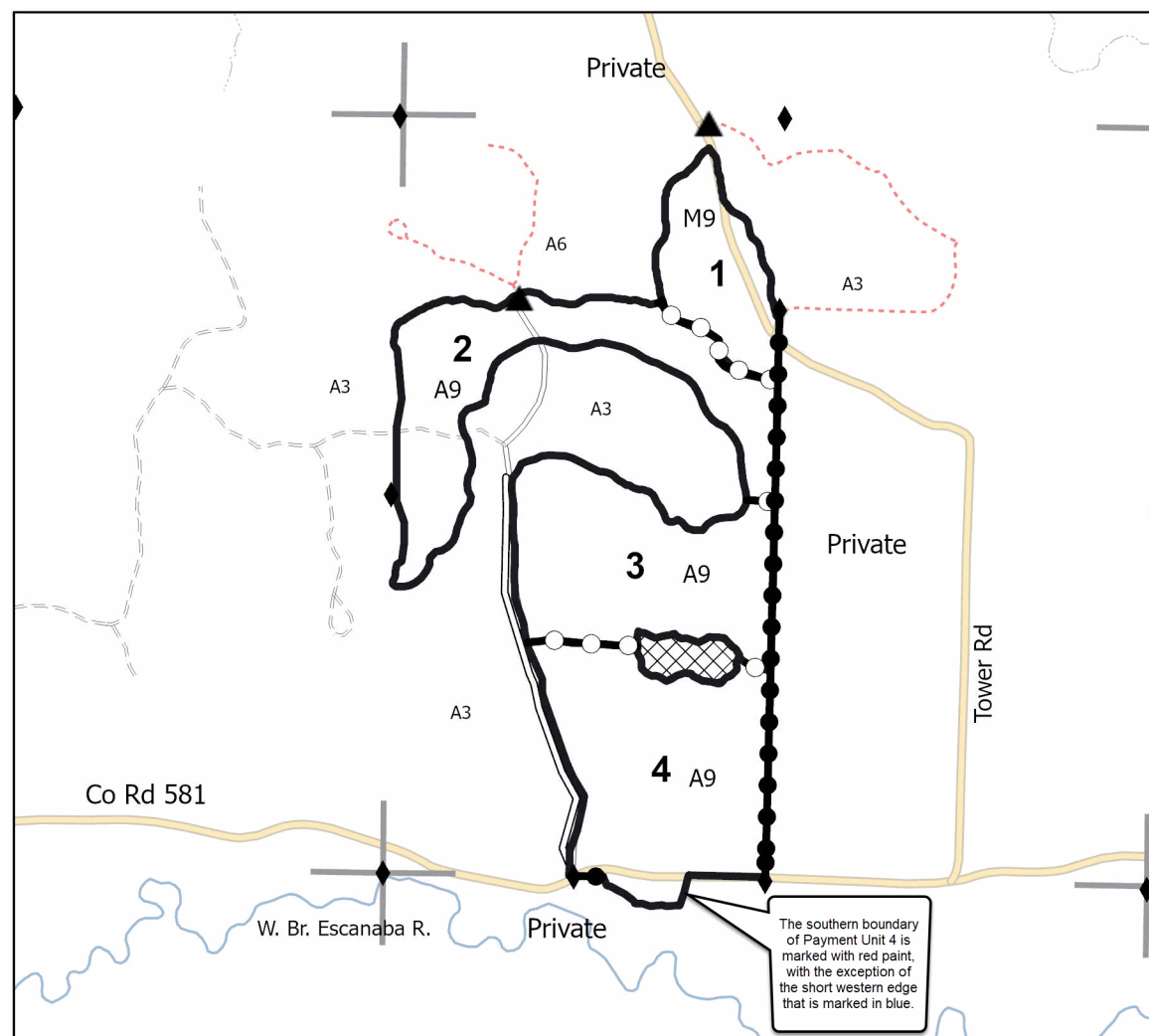
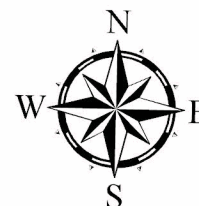
0 = Non Stocked	5 = Pole Timber Medium
1 = Seedling Sapling Poor	6 = Pole Timber Well
2 = Seedling Sapling Medium	7 = Saw Timber Poor
3 = Seedling Sapling Well	8 = Saw Timber Medium
4 = Pole Timber Poor	9 = Saw Timber Well

PU # Acres

1	18.8
2	41.3
3	43.5
4	50.9

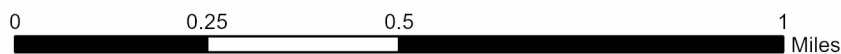
The Golden Goose

**154.5 Acres
Comp 20**



Legend

- Against State (Red)
- Exclusion (Red)
- Against State (Yellow)
- Payment Unit (Yellow)
- Private Line (Blue)
- Secondary Forest Road
- Forest Access Route
- Administrative Access Only
- Non-DNR Road
- Intermittent Stream
- Perennial River
- Survey Corner
- Berm
- Section Corner



TIMBER SALE INFORMATION

Watershed Valley (12-004-24)
 T42N, R27W, SEC. 18; T42N, R27W, SEC. 7.
 Dickinson County (Advertised Price \$84,225.45)

SALE NOTE: Permission from private landowners is the responsibility of the Purchaser, but all wood can be accessed from State.

A timber sale contract for this lump sum, sealed bid timber sale will be awarded to the responsible bidder offering the highest sealed bid price. All units of volume listed below were estimated using the Inventory Manager computer program and the new Michigan taper model. Bids must be at or above the following advertised price for each product and species:

<u>PRODUCTS & SPECIES</u>	<u>ESTIMATED UNITS*</u>	<u>ADVERTISED PRICE</u>
Sawtimber		
Basswood	25.6 MBF	\$ 96.00 / MBF
Paper Birch	15.9 MBF	\$ 170.00 / MBF
Red Maple	118.2 MBF	\$ 114.00 / MBF
Sugar Maple	168.7 MBF	\$ 198.00 / MBF
Pulpwood		
Balsam Fir	49 Cords	\$ 6.40 / Cord
Basswood	34 Cords	\$ 7.70 / Cord
Mixed Aspen	373 Cords	\$ 21.85 / Cord
Mixed Hardwood	1,803 Cords	\$ 11.65 / Cord
Paper Birch	194 Cords	\$ 3.25 / Cord
White Spruce	123 Cords	\$ 14.85 / Cord

* The total volume is statistically estimated within plus (+) or minus (-) 22.64 percent. There are an estimated 3,345 cords on this timber sale, plus or minus 757 cords at the 95% confidence level. The estimated units are final and not subject to adjustment. Prospective bidders are urged to examine this timber and to make their own estimates of quantity and quality.

BOND AND PAYMENT SCHEDULE:

1. A bond in the amount of \$6,738.00 to insure faithful performance of the conditions of the contract will be deposited by the successful bidder within 21 days of the sale award.
2. Cutting in any sale or unit without the required advance payment would be considered a trespass.
3. Total payment must be paid in advance or according to the following schedule :
 - (a) Ten percent (10%) of the sale value must be paid within 21 days of the sale award.
 - (b) The 10% down payment will be credited towards the first unit cut.
 - (c) Payment for each of the following units must be made before cutting begins in that unit:

PAYMENT UNIT NUMBER	PERCENT OF TOTAL SALE VALUE
01	21.1%
02	17.0%
03	28.2%
04	23.0%
05	10.7%
4. If no cutting takes place, the 10% down payment will not be refunded.
5. Operations on the contract issued will terminate on 06/30/2027.

SALE STATISTICS

Volumes were calculated in cubic feet using the Michigan taper model. Cubic foot volume includes all wood inside bark for the product indicated. For display purposes, cubic feet were converted to cords and MBF using a simple conversion factor, e.g. 79 cubic feet per cord and 185 cubic feet per MBF. The cubic foot volumes are precise; the cords and MBF volumes are not. Cubic foot volume cannot be directly converted to cords or boards with precision.

SALE VOLUMES

The total estimated sale volume may not equal the sum of the species/products due to the nature of statistical calculations associated with double sampling methodology.

VOLUME		STATISTICAL RANGE IN CORDS		
TOTAL CUBIC FEET	TOTAL CORDS	PERCENT ERROR	MINIMUM	MAXIMUM
264,252	3,345	22.64%	2,588	4,102

VDU VOLUMES

A VDU is a Volume Determination Unit. Volumes and their associated statistics are calculated at the VDU level and summarized to the sale level. There is often a one to one relationship between a VDU and a Payment Unit, but not always, depending on the cruise design. Refer to the VDU TO PAYMENT UNIT table.

VDU	VOLUME		PERCENT ERROR	RANGE IN CORDS	
	TOTAL CUBIC FEET	TOTAL CORDS		MINIMUM	MAXIMUM
4	74,286	940	21.46%	739	1,142
6	161,944	2,050	21.03%	1,619	2,481
13	28,022	355	42.95%	202	507
TOTAL:	264,252	3,345		2,560	4,130

VDU TO PAYMENT UNIT

When a VDU is associated with more than one Payment Unit (PU), the VDU volumes are assigned to the PU based on acres of the VDU within the PU.

VDU	VDU ACRES	PU	PU ACRES
4	80.4	1	44.5
		2	35.9
6	71.8	3	39.6
		4	32.2
13	10.4	5	10.4
TOTAL:	162.6		162.6

DESCRIPTION OF TIMBER BY PAYMENT UNIT (PU)

PU	MARKET GROUP	PRODUCT	QUANTITY	UNIT	ACRES	ADVERTISE PRICE				
1	Basswood	Sawtimber	6.3	MBF	44.5	\$17,769.90				
	Paper Birch		0.8	MBF						
	Red Maple		12.2	MBF						
	Sugar Maple		59.3	MBF						
	Basswood	Pulpwood	13	Cords						
	Mixed Aspen		3	Cords						
	<i>Balsam Poplar</i>		3	Cords						
	Mixed Hardwood		320	Cords						
	<i>Ironwood</i>		1	Cords						
	<i>Red Maple</i>		52	Cords						
	<i>Sugar Maple</i>		267	Cords						
	Paper Birch		1	Cords						
	2		Basswood	Sawtimber			5.0	MBF	35.9	\$14,298.60
Paper Birch		0.7	MBF							
Red Maple		9.8	MBF							
Sugar Maple		47.8	MBF							
Basswood		Pulpwood	10	Cords						
Mixed Aspen			2	Cords						
<i>Balsam Poplar</i>			2	Cords						
Mixed Hardwood			257	Cords						
<i>Red Maple</i>			42	Cords						
<i>Sugar Maple</i>			215	Cords						
Paper Birch			1	Cords						
3			Basswood	Sawtimber	3.6	MBF	39.6	\$23,773.00		
			Paper Birch		7.9	MBF				
	Red Maple	37.9	MBF							
	Sugar Maple	27.1	MBF							
	Balsam Fir	Pulpwood	15	Cords						
	Basswood		3	Cords						
	Mixed Aspen		203	Cords						
	<i>Balsam Poplar</i>		26	Cords						
	<i>Quaking Aspen</i>		177	Cords						
	Mixed Hardwood		557	Cords						
	<i>Black Ash</i>		22	Cords						
	<i>Red Maple</i>		224	Cords						
	<i>Sugar Maple</i>		311	Cords						
	Paper Birch		106	Cords						
	White Spruce		68	Cords						
	4		Basswood	Sawtimber	3.0	MBF			32.2	\$19,365.00
Paper Birch		6.5	MBF							
Red Maple		30.9	MBF							
Sugar Maple		22.1	MBF							
Balsam Fir		Pulpwood	13	Cords						
Basswood			3	Cords						
Mixed Aspen			165	Cords						
<i>Balsam Poplar</i>			21	Cords						
<i>Quaking Aspen</i>			144	Cords						
Mixed Hardwood			452	Cords						
<i>Black Ash</i>			17	Cords						
<i>Red Maple</i>			182	Cords						
<i>Sugar Maple</i>			253	Cords						
Paper Birch			86	Cords						
White Spruce			55	Cords						
5			Basswood	Sawtimber	7.7	MBF	10.4	\$9,018.95		
	Red Maple	27.4	MBF							
	Sugar Maple	12.4	MBF							

DESCRIPTION OF TIMBER BY PAYMENT UNIT (PU), CON'T

PU	MARKET GROUP	PRODUCT	QUANTITY	UNIT	ACRES	ADVERTISE PRICE
5 con't	Balsam Fir	Pulpwood	21	Cords		
	Basswood		5	Cords		
	Mixed Hardwood		217	Cords		
	<i>Red Maple</i>		138	<i>Cords</i>		
	<i>Sugar Maple</i>		79	<i>Cords</i>		
TOTAL:			328.4	MBF		
TOTAL:			2,576	Cords		

Sale Specific Conditions & Requirements

Sale Name: Watershed Valley

Sale Number: 12-004-24 Seq#: 1

1 - Sale Area

1.2 - Boundaries

1.2.1 - Painted boundaries (9/19)

The sale boundary and Payment Unit boundaries are marked and identified by blue, red and yellow paint. Exterior sale boundary lines against private property are marked with blue paint. Exterior sale boundary lines against state are marked with red paint. Interior Payment Unit boundaries are marked with yellow paint. Yellow painted trees designating an interior Payment Unit boundary between Payment Units 3 & 4 are only to be cut when all surrounding Payment Units have been paid.

2 - Timber Specifications

2.1 - Included Timber

2.1.1 - Clearcut unit(s) with unmerchantable trees (6/14)

Within Payment Unit(s) 3-5, cut all trees that are four (4) inches or more at DBH, except do not cut cedar, hemlock, pine or yellow birch.

2.1.3 - Cut tree marked unit(s) (12/08)

Within Payment Unit(s) 1 & 2, all trees are designated for cutting when marked with orange paint above and below stump height, regardless of merchantability.

2.2 - Utilization

2.2.4 - Skidding length (2/14)

Skidding of unlimbed tops or lengths over 17 feet is not permissible in Payment Units 1 & 2, unless approved by the Unit Manager or his/her representative.

3 - Payments

3.3 - Pre-measured Sales

3.3.4 - Dividing payment units (7/14)

Payment Unit(s) 1-4 may be divided at the request of the Purchaser and upon approval of the Unit Manager. Dividing Payment Units is a contract modification which requires a Timber Sale Contract Amendment. There will be only one division per Payment Unit.

4 - Transportation

4.1 - Construction

4.1.1 - Stream crossings, general (3/11)

All stream crossing structures will be temporary and therefore, shall be provided by the Purchaser, and must be removed upon completion of the sale. All permits for stream crossings will be provided by the Purchaser.

4.1.6 - Road construction (1/09)

Construction of new roads or improvements of existing roads shall be done in such a way as to minimize the environmental and visual impacts. Merchantable trees shall be cut and utilized unless otherwise directed. Non-merchantable trees shall be severed and laid flat on the ground. Slash shall be scattered, and not left in windrows and kept a minimum of 10 feet back from the road edge. Stumps shall be set upright, not left on edge, and be moved at least 5 feet away from the road edge. Disturbed soil shall be feathered into the woods and not left in berms or windrows.

4.1.7 - Road closure (10/11)

All new roads built into the sale must be blocked to vehicle traffic upon completion of the sale. Overgrown roads that are reopened shall be considered new roads. In general, this will require constructing a four (4') foot high berm of stumps and logs covered with earth. Contact the Sale Administrator for specific details of design and placement.

4.2 - Maintenance

4.2.4 - Grading (10/16)

For completion of the sale, state forest roads must be graded. In general, this will require a road grader or bulldozer to shape up the roads after forest products have been hauled off site. This includes cleaning of drainage areas, grading, crowning and filling with gravel, if necessary. The grading equipment to be used must be approved by the Unit Manager or his/her representative.

4.4 - Access

4.4.1 - Private property access (3/11)

Permission for access across private land is the responsibility of the Purchaser.

5 - Operations

5.2 - Conduct of Operations

5.2.3 - Operating Restrictions

5.2.3.3 - Bark slippage restriction (3/09)

Within Payment Unit(s) 1 & 2, unless changed by written agreement, cutting and skidding are not permitted during the period of April 15 to July 15. This restriction is because of bark slippage.

5.2.22 - Operating Caution

5.2.22.1 - Operating caution (6/11)

It is recommended, but not required, that within Payment Unit(s) 3-5, cutting and skidding occur during dry summer or frozen winter conditions. The reason for the recommendation is because of shallower soils.

5.2.32 - Decking/landing restoration (9/13)

All decking and landing areas must have the surface area restored to a condition equal to or better than before. This is to ensure the proper regeneration of the stand. Wood debris, chips and "cookies" from trimmings must be removed or scattered away from landing and loading areas and may not be windrowed on the edge.

5.2.38 - No decking against live trees (2/04)

Cut products may not be decked against unmarked or designated leave trees.

5.4 - Soil Protection

5.4.1 - Rutting restriction, general (7/16)

Operations are to cease immediately if equipment and weather conditions result in rutting of roads and/or skid trails which is 12 inches or greater in depth and 50 feet in length. The Unit Manager or his/her representative may restrict hauling and/or skidding if ruts exceed the specified depth. With the Unit Manager or his/her representative's approval, the Purchaser may return to the area when the risk of rutting has decreased.

6 - Safety and Fire Prevention

6.2 - Signing

6.2.1 - Road posting (10/20)

The Purchaser is responsible for posting and maintaining caution signs on Lantz Road and Skunk Creek Road prior to beginning operations. The road must be posted at appropriate distances from the Sale Area to warn of logging activity and truck traffic. Signs must be removed when harvest operations are suspended or completed. The Purchaser will provide these signs.



TIMBER SALE MAP

This information provided by authority of Part 525, 1994 PA 451, as amended.

Sale Number

12-004-24

Date

03/12/2024

Forest Management Unit

Crystal Falls Mgt Unit

County

Dickinson

Mapped By: Andy Church

Cruised By: Andy Church

Scale

1:15,840

Page

1

Of

1

Township
42N

Range
27W

Section(s) and
Subdivision(s) Sec. 18 NENW,NWNE; Sec. 7 SENW,S1/2NE,N1/2SW,SE;

Cover Type

A = Aspen	J = Jack Pine	O = Oak	U = Upland Brush
B = Paper Birch	K = Rock	P = Lowland Poplar	UM = Upland Mix Forest
C = Cedar	L = Lowland Brush	Q = Mixed Swamp Conifer	V = Bog or Marsh
D = Treed Bog	LM = Lowland Mix Forest	R = Red Pine	W = White Pine
E = Swamp Hardwoods	M = Maple, Beech, Birch	S = Black Spruce	X = Non Stocked
F = Spruce/Fir	MC = Mixed Conifer	T = Tamarack	Y = Sand
G = Grass	MD = Mixed Deciduous	Z = Water	
H = Hemlock	N = Marsh		

Density

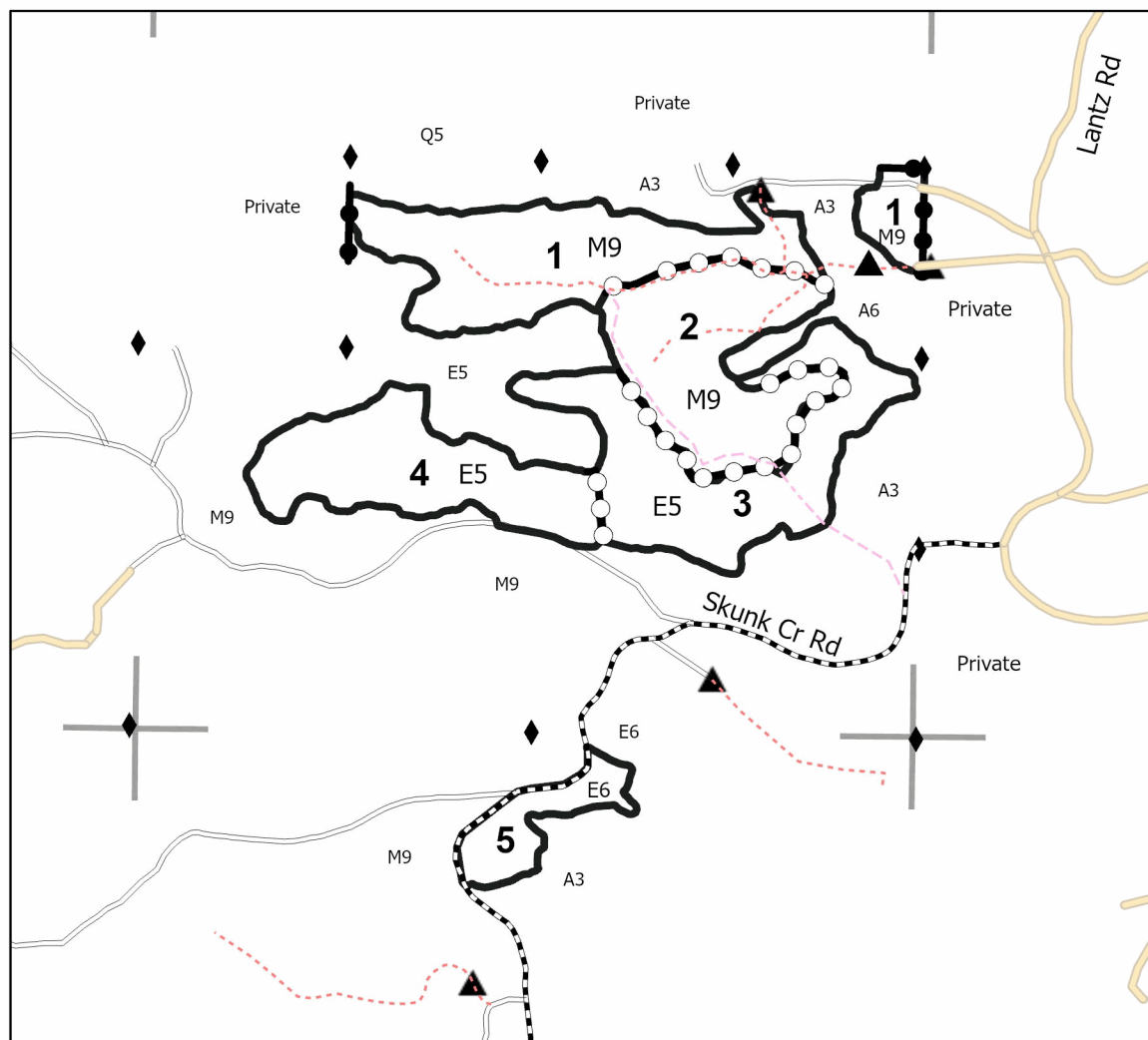
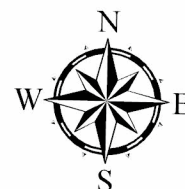
0 = Non Stocked	5 = Pole Timber Medium
1 = Seedling Sapling Poor	6 = Pole Timber Well
2 = Seedling Sapling Medium	7 = Saw Timber Poor
3 = Seedling Sapling Well	8 = Saw Timber Medium
4 = Pole Timber Poor	9 = Saw Timber Well

PU # Acres

1	44.5
2	35.9
3	39.6
4	32.2
5	10.4

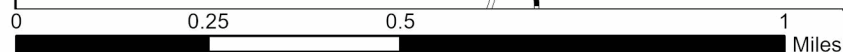
Watershed Valley

162.6 Acres Comp 65



Legend

- Against State (Red)
- Payment Unit (Yellow)
- Private Line (Blue)
- Primary Forest Road
- Secondary Forest Road
- Administrative Access Only
- Non-DNR Road
- Survey Corner
- Berm
- Section Corner



Two Section Aspen (12-001-24)

T40N, R29W, SEC. 14; T40N, R29W, SEC. 15; T40N, R29W, SEC. 16; T40N,

In response to the notice of sale to be held 3:00 p.m. (local time) on May 10, 2024, I am hereby submitting my sealed bid (firm offer) for the following forest products to be cut. Bids for individual species must be at or above the advertised price. All non-responsive bid forms may be rejected.

<u>PRODUCTS & SPECIES</u>	<u>ESTIMATED VOLUME*</u>	<u>ADVERTISED PRICE</u>	<u>BID PRICE/UNIT</u>
Sawtimber			
Basswood	4.0 MBF	\$ 96.00/MBF	\$ _____
Paper Birch	1.9 MBF	\$ 170.00/MBF	\$ _____
Sugar Maple	3.2 MBF	\$ 198.00/MBF	\$ _____
Pulpwood			
Balsam Fir	53 Cords	\$ 6.40/Cord	\$ _____
Basswood	9 Cords	\$ 7.70/Cord	\$ _____
Mixed Aspen	651 Cords	\$ 21.85/Cord	\$ _____
Mixed Hardwood	237 Cords	\$ 11.65/Cord	\$ _____
Mixed Spruce	35 Cords	\$ 14.85/Cord	\$ _____
Paper Birch	16 Cords	\$ 3.25/Cord	\$ _____
Tamarack	117 Cords	\$ 4.90/Cord	\$ _____

*The volumes are statistically estimated within plus (+) or minus (-) 32.08 percent at 95% confidence level. These estimated volumes are final and not subject to adjustment. Prospective bidders are urged to examine this timber and to make their own estimates of quantity and quality.

I understand that any or all bids may be rejected. All bids must be signed and all bid items must be bid or the bid form may be rejected. I also understand that consideration and awarding a contract will be based upon my past performance and ability to complete the contract based upon equipment and staffing subject to my control.

FEDERAL ID: _____ or SOCIAL SECURITY NUMBER: _____

Company or individual bidding: _____

Company representative's name: _____

Address: _____

City: _____ State: _____ Zip: _____

IF AVAILABLE, PLEASE PLACE THE PERSONALIZED LABEL FROM YOUR PROSPECTUS IN THE ABOVE BOX.

Individual or company representative's signature: _____ Date: _____

Phone number : _____ Email (optional): _____

THE WINNING BIDDER MUST COMPLETE THE VERIFICATION OF WORKER'S DISABILITY COMPENSATION ACT COMPLIANCE (ON REVERSE SIDE IF DOUBLE SIDED) WITHIN 21 DAYS OF SALE AWARD DATE



FOR DEPARTMENT USE ONLY	
Sale Number (XX - XXX - XX - XX)	
Forest Management Unit:	

TIMBER SALE VERIFICATION OF WORKER'S DISABILITY COMPENSATION ACT COMPLIANCE

As required by Act 317, P.A. 1969 (Worker's Compensation) and
Part 5 of Act 451 of 1994, as amended.

VERIFICATION OF WORKER'S DISABILITY COMPENSATION ACT COMPLIANCE

- This verification must be completed and submitted within 21 days of contract award and prior to the issuance of the timber sale contract.
- In addition, if boxes 2B or 2C are checked, then Notice of Exclusion or Certificate of Insurance must be submitted within twenty-one (21) days of the contract award and prior to the issuance of the timber sale contract.
- All information must be typed or printed except for written signatures.

Please Check Appropriate Categories:

1. My business is organized as (you **must** check one of the boxes below):
 - A. Sole Proprietorship (individual)
 - B. Partnership
 - C. Corporation
2. You **must** check one of the boxes below:
 - A. I certify my business is a sole proprietorship and it has no employees but the sole proprietor. I am not subject to the Worker's Compensation Laws.
 - B. I certify my business has satisfied its obligation to the Worker's Compensation Act through the use of an approved Notice of Exclusion (BWC-337, Rev. 5/96). I will provide a copy of the Notice of Exclusion within 21 days of the contract award. (For questions or a copy of the BWC-337, please call the Worker's Compensation Bureau at 517-322-1195).
 - C. I certify my business has a Worker's Compensation Policy. I will provide an original Certificate of Insurance within twenty-one (21) days of the contract award.
3. If you have checked item 2(A) or 2(B), you **must** indicate the number of **both** full-time and part-time employees, other than yourself, including family members and active partners (if none, you must enter "0").

_____ Full-time Employees

_____ Part-time Employees

Name of Business		Federal ID (or) Social Security No.	
Address		Telephone ()	
City	State	ZIP	

I hereby certify that the above information is true and correct. I agree to notify the Michigan DNR of any changes that occur in factors affecting my coverage during any of my present and future operations.

Signature of Owner or Authorized Representative

Title

Date

Please complete the "SEALED BID" information on the next page

Ancient Alleys (12-002-24)
T44N, R27W, SEC. 7; T44N, R28W, SEC. 12; Dickinson COUNTY

In response to the notice of sale to be held 3:00 p.m. (local time) on May 10, 2024, I am hereby submitting my sealed bid (firm offer) for the following forest products to be cut. Bids for individual species must be at or above the advertised price. All non-responsive bid forms may be rejected.

<u>PRODUCTS & SPECIES</u>	<u>ESTIMATED VOLUME*</u>	<u>ADVERTISED PRICE</u>	<u>BID PRICE/UNIT</u>
Sawtimber			
Paper Birch	19.0 MBF	\$ 170.00/MBF	\$ _____
Red Maple	46.7 MBF	\$ 114.00/MBF	\$ _____
Sugar Maple	10.9 MBF	\$ 198.00/MBF	\$ _____
Pulpwood			
Balsam Fir	11 Cords	\$ 6.40/Cord	\$ _____
Mixed Aspen	2,066 Cords	\$ 21.85/Cord	\$ _____
Mixed Hardwood	720 Cords	\$ 11.65/Cord	\$ _____
Paper Birch	43 Cords	\$ 3.25/Cord	\$ _____
White Spruce	16 Cords	\$ 14.85/Cord	\$ _____

*The volumes are statistically estimated within plus (+) or minus (-) 21.97 percent at 95% confidence level. These estimated volumes are final and not subject to adjustment. Prospective bidders are urged to examine this timber and to make their own estimates of quantity and quality.

I understand that any or all bids may be rejected. All bids must be signed and all bid items must be bid or the bid form may be rejected. I also understand that consideration and awarding a contract will be based upon my past performance and ability to complete the contract based upon equipment and staffing subject to my control .

FEDERAL ID: ____ - ____ - ____ or SOCIAL SECURITY NUMBER: ____ - ____ - ____

Company or individual bidding: _____

Company representative's name: _____

Address: _____

City: _____ State: _____ Zip: _____

IF AVAILABLE, PLEASE PLACE THE PERSONALIZED LABEL FROM YOUR PROSPECTUS IN THE ABOVE BOX.

Individual or company representative's signature: _____ Date: _____

Phone number : _____ Email (optional): _____

THE WINNING BIDDER MUST COMPLETE THE VERIFICATION OF WORKER'S DISABILITY COMPENSATION ACT COMPLIANCE (ON REVERSE SIDE IF DOUBLE SIDED) WITHIN 21 DAYS OF SALE AWARD DATE



FOR DEPARTMENT USE ONLY
Sale Number (XX - XXX - XX - XX)
Forest Management Unit:

TIMBER SALE VERIFICATION OF WORKER'S DISABILITY COMPENSATION ACT COMPLIANCE

*As required by Act 317, P.A. 1969 (Worker's Compensation) and
Part 5 of Act 451 of 1994, as amended.*

VERIFICATION OF WORKER'S DISABILITY COMPENSATION ACT COMPLIANCE

- This verification must be completed and submitted within 21 days of contract award and prior to the issuance of the timber sale contract.
- In addition, if boxes 2B or 2C are checked, then Notice of Exclusion or Certificate of Insurance must be submitted within twenty-one (21) days of the contract award and prior to the issuance of the timber sale contract.
- All information must be typed or printed except for written signatures.

Please Check Appropriate Categories:

1. My business is organized as (you **must** check one of the boxes below):
 - A. Sole Proprietorship (individual)
 - B. Partnership
 - C. Corporation

2. You **must** check one of the boxes below:
 - A. I certify my business is a sole proprietorship and it has no employees but the sole proprietor. I am not subject to the Worker's Compensation Laws.
 - B. I certify my business has satisfied its obligation to the Worker's Compensation Act through the use of an approved Notice of Exclusion (BWC-337, Rev. 5/96). I will provide a copy of the Notice of Exclusion within 21 days of the contract award. (For questions or a copy of the BWC-337, please call the Worker's Compensation Bureau at 517-322-1195).
 - C. I certify my business has a Worker's Compensation Policy. I will provide an original Certificate of Insurance within twenty-one (21) days of the contract award.

3. If you have checked item 2(A) or 2(B), you **must** indicate the number of **both** full-time and part-time employees, other than yourself, including family members and active partners (if none, you must enter "0").

_____ Full-time Employees

_____ Part-time Employees

Name of Business		Federal ID (or) Social Security No.	
Address		Telephone ()	
City	State	ZIP	

I hereby certify that the above information is true and correct. I agree to notify the Michigan DNR of any changes that occur in factors affecting my coverage during any of my present and future operations.

Signature of Owner or Authorized Representative

Title

Date

Please complete the "SEALED BID" information on the next page

The Golden Goose (12-003-24)
T44N, R27W, SEC. 19; T44N, R27W, SEC. 20; T44N, R27W, SEC. 29; Dickinson

In response to the notice of sale to be held 3:00 p.m. (local time) on May 10, 2024, I am hereby submitting my sealed bid (firm offer) for the following forest products to be cut. Bids for individual species must be at or above the advertised price. All non-responsive bid forms may be rejected.

<u>PRODUCTS & SPECIES</u>	<u>ESTIMATED VOLUME*</u>	<u>ADVERTISED PRICE</u>	<u>BID PRICE/UNIT</u>
Sawtimber			
Basswood	4.9 MBF	\$ 96.00/MBF	\$ _____
Sugar Maple	30.5 MBF	\$ 198.00/MBF	\$ _____
Pulpwood			
Balsam Fir	95 Cords	\$ 6.40/Cord	\$ _____
Basswood	6 Cords	\$ 7.70/Cord	\$ _____
Mixed Hardwood	210 Cords	\$ 11.65/Cord	\$ _____
Quaking Aspen	5,769 Cords	\$ 21.85/Cord	\$ _____
White Spruce	70 Cords	\$ 14.85/Cord	\$ _____

*The volumes are statistically estimated within plus (+) or minus (-) 13.51 percent at 95% confidence level. These estimated volumes are final and not subject to adjustment. Prospective bidders are urged to examine this timber and to make their own estimates of quantity and quality.

I understand that any or all bids may be rejected. All bids must be signed and all bid items must be bid or the bid form may be rejected. I also understand that consideration and awarding a contract will be based upon my past performance and ability to complete the contract based upon equipment and staffing subject to my control.

FEDERAL ID: _____ or SOCIAL SECURITY NUMBER: _____

Company or individual bidding: _____

Company representative's name: _____

Address: _____

City: _____ State: _____ Zip: _____

IF AVAILABLE, PLEASE PLACE THE PERSONALIZED LABEL FROM YOUR PROSPECTUS IN THE ABOVE BOX.

Individual or company representative's signature: _____ Date: _____

Phone number : _____ Email (optional): _____

THE WINNING BIDDER MUST COMPLETE THE VERIFICATION OF WORKER'S DISABILITY COMPENSATION ACT COMPLIANCE (ON REVERSE SIDE IF DOUBLE SIDED) WITHIN 21 DAYS OF SALE AWARD DATE



FOR DEPARTMENT USE ONLY
Sale Number (XX - XXX - XX - XX)
Forest Management Unit:

TIMBER SALE VERIFICATION OF WORKER'S DISABILITY COMPENSATION ACT COMPLIANCE

*As required by Act 317, P.A. 1969 (Worker's Compensation) and
Part 5 of Act 451 of 1994, as amended.*

VERIFICATION OF WORKER'S DISABILITY COMPENSATION ACT COMPLIANCE

- This verification must be completed and submitted within 21 days of contract award and prior to the issuance of the timber sale contract.
- In addition, if boxes 2B or 2C are checked, then Notice of Exclusion or Certificate of Insurance must be submitted within twenty-one (21) days of the contract award and prior to the issuance of the timber sale contract.
- All information must be typed or printed except for written signatures.

Please Check Appropriate Categories:

1. My business is organized as (you **must** check one of the boxes below):
 - A. Sole Proprietorship (individual)
 - B. Partnership
 - C. Corporation
2. You **must** check one of the boxes below:
 - A. I certify my business is a sole proprietorship and it has no employees but the sole proprietor. I am not subject to the Worker's Compensation Laws.
 - B. I certify my business has satisfied its obligation to the Worker's Compensation Act through the use of an approved Notice of Exclusion (BWC-337, Rev. 5/96). I will provide a copy of the Notice of Exclusion within 21 days of the contract award. (For questions or a copy of the BWC-337, please call the Worker's Compensation Bureau at 517-322-1195).
 - C. I certify my business has a Worker's Compensation Policy. I will provide an original Certificate of Insurance within twenty-one (21) days of the contract award.
3. If you have checked item 2(A) or 2(B), you **must** indicate the number of **both** full-time and part-time employees, other than yourself, including family members and active partners (if none, you must enter "0").

_____ Full-time Employees

_____ Part-time Employees

Name of Business		Federal ID (or) Social Security No.	
Address		Telephone ()	
City	State	ZIP	

I hereby certify that the above information is true and correct. I agree to notify the Michigan DNR of any changes that occur in factors affecting my coverage during any of my present and future operations.

Signature of Owner or Authorized Representative

Title

Date

Please complete the "SEALED BID" information on the next page

Watershed Valley (12-004-24)
T42N, R27W, SEC. 18; T42N, R27W, SEC. 7; Dickinson COUNTY

In response to the notice of sale to be held 3:00 p.m. (local time) on May 10, 2024, I am hereby submitting my sealed bid (firm offer) for the following forest products to be cut. Bids for individual species must be at or above the advertised price. All non-responsive bid forms may be rejected.

<u>PRODUCTS & SPECIES</u>	<u>ESTIMATED VOLUME*</u>	<u>ADVERTISED PRICE</u>	<u>BID PRICE/UNIT</u>
Sawtimber			
Basswood	25.6 MBF	\$ 96.00/MBF	\$ _____
Paper Birch	15.9 MBF	\$ 170.00/MBF	\$ _____
Red Maple	118.2 MBF	\$ 114.00/MBF	\$ _____
Sugar Maple	168.7 MBF	\$ 198.00/MBF	\$ _____
Pulpwood			
Balsam Fir	49 Cords	\$ 6.40/Cord	\$ _____
Basswood	34 Cords	\$ 7.70/Cord	\$ _____
Mixed Aspen	373 Cords	\$ 21.85/Cord	\$ _____
Mixed Hardwood	1,803 Cords	\$ 11.65/Cord	\$ _____
Paper Birch	194 Cords	\$ 3.25/Cord	\$ _____
White Spruce	123 Cords	\$ 14.85/Cord	\$ _____

*The volumes are statistically estimated within plus (+) or minus (-) 22.64 percent at 95% confidence level. These estimated volumes are final and not subject to adjustment. Prospective bidders are urged to examine this timber and to make their own estimates of quantity and quality.

I understand that any or all bids may be rejected. All bids must be signed and all bid items must be bid or the bid form may be rejected. I also understand that consideration and awarding a contract will be based upon my past performance and ability to complete the contract based upon equipment and staffing subject to my control.

FEDERAL ID: _____ - _____ or SOCIAL SECURITY NUMBER: _____ - _____ - _____

Company or individual bidding: _____

Company representative's name: _____

Address: _____

City: _____ State: _____ Zip: _____

IF AVAILABLE, PLEASE PLACE THE PERSONALIZED LABEL FROM YOUR PROSPECTUS IN THE ABOVE BOX.

Individual or company representative's signature: _____ Date: _____

Phone number : _____ Email (optional): _____

THE WINNING BIDDER MUST COMPLETE THE VERIFICATION OF WORKER'S DISABILITY COMPENSATION ACT COMPLIANCE (ON REVERSE SIDE IF DOUBLE SIDED) WITHIN 21 DAYS OF SALE AWARD DATE



FOR DEPARTMENT USE ONLY	
Sale Number (XX - XXX - XX - XX)	
Forest Management Unit:	

TIMBER SALE VERIFICATION OF WORKER'S DISABILITY COMPENSATION ACT COMPLIANCE

As required by Act 317, P.A. 1969 (Worker's Compensation) and
Part 5 of Act 451 of 1994, as amended.

VERIFICATION OF WORKER'S DISABILITY COMPENSATION ACT COMPLIANCE

- This verification must be completed and submitted within 21 days of contract award and prior to the issuance of the timber sale contract.
- In addition, if boxes 2B or 2C are checked, then Notice of Exclusion or Certificate of Insurance must be submitted within twenty-one (21) days of the contract award and prior to the issuance of the timber sale contract.
- All information must be typed or printed except for written signatures.

Please Check Appropriate Categories:

1. My business is organized as (you **must** check one of the boxes below):
 - A. Sole Proprietorship (individual)
 - B. Partnership
 - C. Corporation
2. You **must** check one of the boxes below:
 - A. I certify my business is a sole proprietorship and it has no employees but the sole proprietor. I am not subject to the Worker's Compensation Laws.
 - B. I certify my business has satisfied its obligation to the Worker's Compensation Act through the use of an approved Notice of Exclusion (BWC-337, Rev. 5/96). I will provide a copy of the Notice of Exclusion within 21 days of the contract award. (For questions or a copy of the BWC-337, please call the Worker's Compensation Bureau at 517-322-1195).
 - C. I certify my business has a Worker's Compensation Policy. I will provide an original Certificate of Insurance within twenty-one (21) days of the contract award.
3. If you have checked item 2(A) or 2(B), you **must** indicate the number of **both** full-time and part-time employees, other than yourself, including family members and active partners (if none, you must enter "0").

_____ Full-time Employees

_____ Part-time Employees

Name of Business		Federal ID (or) Social Security No.	
Address		Telephone ()	
City	State	ZIP	

I hereby certify that the above information is true and correct. I agree to notify the Michigan DNR of any changes that occur in factors affecting my coverage during any of my present and future operations.

Signature of Owner or Authorized Representative

Title

Date

Please complete the "SEALED BID" information on the next page