



**DEPARTMENT OF NATURAL RESOURCES
STATE OF MICHIGAN
TIMBER SALE PROSPECTUS #7470**

SCHEDULED SALE DATE AND TIME: 3:00 p.m. (local time) on July 30, 2024.

LOCATION: NAUBINWAY DNR FIELD OFFICE, PO BOX 287, US 2 W11569, NAUBINWAY, MI 49762.

PROSPECTUS NOTE: The bidder is advised to inspect the sale area and review the location, estimated volumes, operating costs and contract terms of proposed sales. Please be aware that some landowners may request 60 days or more notice for access across their land.

Notice is hereby given that bids will be received by the Unit Manager, SAULT STE MARIE MANAGEMENT UNIT, for certain timber on the following described lands:

Ryerse Lake HW (45-103-24) / T43N, R07W, SEC. 16, NENE.

T43N, R07W, SEC. 9 , SENE,S1/2SW,SE.

Mackinac County, Advertised Price \$102,510.90, 118.2 Acres, Hardwood, Sugar Maple.

OK Aspen (45-108-23) / T43N, R08W, SEC. 10, NW,NWNE,N1/2SW.

T43N, R08W, SEC. 3 , S1/2SW,SWSE.

T43N, R08W, SEC. 4 , S1/2SW,SWSE.

T43N, R08W, SEC. 9 , N1/2NW,SEW,W1/2NE.

Mackinac County, Advertised Price \$97,427.00, 149.4 Acres, Aspen, Spruce/Fir/Tamarack.

DT Snail Mix (45-113-23) / T43N, R07W, SEC. 10, N1/2NW,SWNW,SW,SWSE.

T43N, R07W, SEC. 11, E1/2NW,W1/2NE.

T43N, R07W, SEC. 15, NENW,NWNE.

T43N, R07W, SEC. 35, SENE.

T43N, R07W, SEC. 36, SWNW,N1/2SW.

Mackinac County, Advertised Price \$46,418.65, 163.7 Acres, Hardwood, Spruce/Fir/Tamarack.

BID INSTRUCTIONS (VER. 10/10/2022):

1. Scheduled Bid Location, Date, and Time (2/11)

Bids must be received by the Unit Manager, NAUBINWAY DNR FIELD OFFICE, PO Box 287 US 2 W11569, Naubinway, MI 49762, no later than 3:00 p.m. (local time) on July 30, 2024. For further information concerning this sale, contact Josh Brinks at 906-203-0210 extension .

2. Bidder's Qualifications (10/22)

If all or part of a timber sale was prepared by a private contractor, the contractor and that contractor's company are not permitted to bid on the timber sale. A person must be 18 years of age or older to purchase timber. Permanent employees of the Department of Natural Resources or members of their immediate household may not bid. Former employees, in the permanent or seasonal class, may not bid until 3 months after the last day of active duty. Bids will not be accepted from individuals or companies appearing on the DNR/FRD No-Bid List. This list contains the names of purchasers who previously failed to execute a contract within 21-days or who have a history of poor performance.

3. Preparation of Sealed Bids (5/16)

Bid Forms may be completed online thru Michigan DNR Timber Sale Online Bidding (OLB) at www.michigan.gov/timberbidding or by completing the hardcopy Bid Form found in the Timber Sale Prospectus . Hardcopy Bid Forms shall be manually signed in ink. Registration in OLB is considered your 'signature' for all bids submitted thru that system. Bid prices must be entered for each species and product in the Bid Price column for all material subject to bidding and all fill-in blanks must be completed. If erasures or other changes appear on the hardcopy Bid Form, each erasure or change must be initialed by the person signing the bid.

4. Submission of Sealed Bids (5/16)

Bid forms may be obtained from the Unit Manager or thru OLB. Bids may be submitted hardcopy or thru OLB. All hardcopy bids must be submitted on the bid form and in an envelope clearly identified as described in this section. NOTE: Only one bid form per bid envelope. Sealed bids must be submitted to the Unit office designated in the prospectus and must be submitted at or prior to the time established in the prospectus. The envelope should show on the outside (a) the sale name or number and (b) the date and time of bid opening, as shown in the prospectus. Bids received after the time specified in the sale prospectus are late bids and will be rejected.

It is possible for a bidder to submit multiple bids on a single sale. For example, a bid may be submitted hardcopy and a bid may be submitted thru OLB. Or, two bidders from the same company could both submit bids on the same sale. If this were to happen, the State would accept all bids received and award the contract accordingly. All bidding and contractual requirements would apply to all bids received.

5. Public Opening of Sealed Bids (7/16)

If conditions permit, the sealed bids will be publicly opened and posted at the time and place set in the prospectus.

If a bidder, present at a bid opening, has submitted bids on more than one sale, that bidder may withdraw their unopened bid envelopes or announce the withdrawal of their online bid after being declared the successful bidder on one sale.

6. Award of Contract (1/11)

Award of the contract will be made to the Bidder whose bid, conforming to the prospectus, is most advantageous to the State of Michigan on the basis of total value at rates bid for the estimated quantities. The State reserves the right to reject any bid or waive any minor irregularity in bids received. A written award mailed (or otherwise furnished) to the successful Bidder shall be deemed to result in a binding contract without further action by either party.

7. Down Payment (1/11)

The Bidder to whom award is made must make a down payment within 21 days of the sale award. The amount of the down payment will be calculated as shown in the Bond and Payment Schedule of this prospectus. Only cash may be used to meet this requirement.

8. Performance Security (1/11)

As guarantee of faithful performance, a cash bond, certificate of deposit, surety bond or irrevocable letter of credit (LOC) is required within 21 days of the sale award. The amount of the performance security is shown in the Bond and

Payment Schedule of this prospectus. If an LOC or surety is used, the coverage must extend for at least 6 months beyond the contract expiration.

9. Worker's Compensation (10/22)

Purchaser shall obtain worker's compensation insurance to cover claims under Michigan's Worker's Disability Compensation Act of 1969 or similar employee benefit act of any other state applicable to an employee. Verification of Worker's Disability Compensation Act Compliance must be completed and submitted within 21 days of contract award and prior to the issuance of the timber sale contract. In addition, if applicable, Notice of Exclusion or Certificate of Insurance must also be submitted.

10. Timber Sale Contract (10/22)

Additional conditions and requirements common to all timber sales are listed on the timber sale contract (R4031) and are available on line at www.michigan.gov/timber. Contact the Unit Manager for additional information or a sample contract. Within 21 days of the date of the award letter, the bidder must sign the contract and provide the required down payment, performance security, and verification of worker's disability compensation. The down payment and performance security shall be in accordance with the provisions of the timber sale contract, in the sums stated in this prospectus. If these actions are not taken, then the Bidder, the Bidder's corporation, and the corporation's principals may not be permitted to bid on State timber sales for a period of 3 months after the first offense, 6 months after the second offense, and 1 year after the third offense. An offense will only be counted against the Bidder for 5 years. In addition, the Bidder certifies that if awarded this contract, the Bidder will complete the timber sale contract in accordance with its terms and any modifications thereof including requirements to purchase, cut, and remove the included timber by the expiration date.

Payment Unit values in the State Forest Timber Sale Contract are calculated based on the advertised value of the Payment Unit as a percentage of the total advertised value of the contract. The advertised value of each Payment Unit is given in the Description of Timber by Payment Unit table on the Timber Sale Information page. For example, if the value of Payment Unit 1 is advertised as \$1,500 and the total Timber Sale value is advertised as \$10,000, the contract price for Payment Unit 1 will be 15% of the total bid price ($\$1,500/\$10,000 * 100$).

11. Disclaimer of Estimates and Bidder's Warranty of Inspection (10/22)

Before submitting this bid, the Bidder is advised and cautioned to inspect the sale area, review the requirements of the sale contract, and take other steps as may be reasonably necessary to ascertain the location, estimated volumes, construction estimates, and operating costs of the proposed sale. Failure to do so will not relieve the Bidder from responsibility for completing the contract.

The Bidder warrants that this bid is submitted solely on the basis of the Bidder's examination and inspection of the quality and quantity of the timber offered for sale and the Bidder's opinion of the value thereof and the costs of recovery. No reliance should be placed on the State of Michigan's estimates of timber quality, quantity or costs of recovery. Bidder further acknowledges that the State of Michigan: (i) expressly disclaims any warranty of fitness of timber for any purpose; (ii) offers this timber as is without any warranty of quality (merchantability) or quantity and (iii) expressly disclaims any warranty as to the quantity or quality of timber sold.

12. Certification and Chain-of-Custody (10/22)

Unless otherwise indicated in the contract under section 7 – Other Conditions of the Sale Specific Conditions & Requirements, the area encompassed by this timber sale is certified to the standards of the Forest Stewardship Council (FSC) - Certificate #SCS-FM/COC-00090N and the Sustainable Forestry Initiative (SFI) - Certificate #NSF-SFIS-5Y031-SF5. Forest products from this sale may be delivered to the mill as "FSC 100% and / or SFI certified" as long as the contractor hauling the forest products is chain-of-custody (COC) certified or covered under a COC certificate from the destination mill. The purchaser is responsible for maintaining COC after leaving the sale area.

13. Good Neighbor Authority (GNA) Requirements (10/22)

If the name of this timber sales contains the acronym GNA, it is authorized by the Good Neighbor Authority (GNA) and covered by various agreements between the U.S. Forest Service and the State. The timber sale occurs on federal land and the following conditions apply:

GNA contracts on US Forest Service land will not be awarded to purchasers on the Federal list of excluded parties. The System for Award Management (SAM) will be checked for active excluded parties prior to award of contract. In

addition, the Bidder to whom award is made must complete an Assurance Regarding Felony Conviction or Tax Delinquent Status for Corporate Applicants (AD-3031).

14. Good Neighbor Authority (GNA) Requirements, con't (10/22)

Bidder certifies, by signing this bid form, that to the best of Bidder's knowledge that the following representations are accurate and complete.

- a. That the Bidder and its principals are not presently debarred, suspended, proposed for debarment, declared ineligible, or voluntary excluded from timber sales (covered transactions) by any Federal department or agency.
- b. That the Bidder and its principals have not within a 3-year period preceding this bid been convicted of or had a civil judgment rendered against them for commission of fraud or a criminal offense in connection with obtaining , attempting to obtain, or performing a public (Federal, State, or local) transaction or contract under a public transaction; violation of Federal or State antitrust statutes or commission of embezzlement, theft, forgery, bribery, falsification or destruction of records, making false statements, or receiving stolen property.
- c. That the Bidder and its principals are not presently indicted for or otherwise criminally or civilly charged by a governmental entity (Federal, State, or local) with commission of any of the offenses enumerated in paragraph b of this certification.
- d. That the Bidder and its principals have not within a 3-year period preceding this bid had one or more public transactions (Federal, State, or local) terminated for breach or default of a timber or forest product contract.

Bidders that cannot certify this requirement, in whole or in part, shall submit an explanation with their bid.

Scott Bowen
Director

TIMBER SALE INFORMATION

Ryerse Lake HW (45-103-24)
T43N, R07W, SEC. 16; T43N, R07W, SEC. 9.
Mackinac County (Advertised Price \$102,510.90)

A timber sale contract for this lump sum, sealed bid timber sale will be awarded to the responsible bidder offering the highest sealed bid price. All units of volume listed below were estimated using the Inventory Manager computer program and the new Michigan taper model. Bids must be at or above the following advertised price for each product and species:

| <u>PRODUCTS & SPECIES</u> | <u>ESTIMATED UNITS*</u> | <u>ADVERTISED PRICE</u> |
|-------------------------------|-------------------------|-------------------------|
| Sawtimber | | |
| Beech | 1.5 MBF | \$ 59.00 / MBF |
| Black Cherry | 12.1 MBF | \$ 95.00 / MBF |
| Red Maple | 39.7 MBF | \$ 152.00 / MBF |
| Sugar Maple | 245.4 MBF | \$ 307.00 / MBF |
| Pulpwood | | |
| Balsam Fir | 24 Cords | \$ 11.15 / Cord |
| Mixed Aspen | 130 Cords | \$ 21.05 / Cord |
| Mixed Hardwood | 1,341 Cords | \$ 12.60 / Cord |

* The total volume is statistically estimated within plus (+) or minus (-) 31.22 percent. There are an estimated 2,195 cords on this timber sale, plus or minus 685 cords at the 95% confidence level. The estimated units are final and not subject to adjustment. Prospective bidders are urged to examine this timber and to make their own estimates of quantity and quality.

BOND AND PAYMENT SCHEDULE:

1. A bond in the amount of \$5,126.00 to insure faithful performance of the conditions of the contract will be deposited by the successful bidder within 21 days of the sale award.
2. Cutting in any sale or unit without the required advance payment would be considered a trespass.
3. Total payment must be paid in advance or according to the following schedule :
 - (a) Ten percent (10%) of the sale value must be paid within 21 days of the sale award.
 - (b) The 10% down payment will be credited towards the first unit cut.
 - (c) Payment for each of the following units must be made before cutting begins in that unit:

| PAYMENT UNIT NUMBER | PERCENT OF TOTAL SALE VALUE |
|---------------------|-----------------------------|
| 01 | 13.7% |
| 02 | 24.3% |
| 03 | 20.9% |
| 04 | 7.8% |
| 05 | 30.9% |
| 06 | 2.4% |
4. If no cutting takes place, the 10% down payment will not be refunded.
5. Operations on the contract issued will terminate on 12/31/2027.

SALE STATISTICS

Volumes were calculated in cubic feet using the Michigan taper model. Cubic foot volume includes all wood inside bark for the product indicated. For display purposes, cubic feet were converted to cords and MBF using a simple conversion factor, e.g. 79 cubic feet per cord and 185 cubic feet per MBF. The cubic foot volumes are precise; the cords and MBF volumes are not. Cubic foot volume cannot be directly converted to cords or boards with precision.

SALE VOLUMES

The total estimated sale volume may not equal the sum of the species/products due to the nature of statistical calculations associated with double sampling methodology.

| VOLUME | | | STATISTICAL RANGE IN CORDS | |
|------------------|-------------|---------------|----------------------------|---------|
| TOTAL CUBIC FEET | TOTAL CORDS | PERCENT ERROR | MINIMUM | MAXIMUM |
| 173,420 | 2,195 | 31.22% | 1,510 | 2,881 |

VDU VOLUMES

A VDU is a Volume Determination Unit. Volumes and their associated statistics are calculated at the VDU level and summarized to the sale level. There is often a one to one relationship between a VDU and a Payment Unit, but not always, depending on the cruise design. Refer to the VDU TO PAYMENT UNIT table.

| VDU | VOLUME | | PERCENT ERROR | RANGE IN CORDS | |
|---------------|------------------|--------------|---------------|----------------|--------------|
| | TOTAL CUBIC FEET | TOTAL CORDS | | MINIMUM | MAXIMUM |
| 64 | 163,603 | 2,071 | 16.22% | 1,735 | 2,407 |
| 74 | 9,817 | 124 | 96.07% | 5 | 244 |
| TOTAL: | 173,420 | 2,195 | | 1,740 | 2,650 |

VDU TO PAYMENT UNIT

When a VDU is associated with more than one Payment Unit (PU), the VDU volumes are assigned to the PU based on acres of the VDU within the PU.

| VDU | VDU ACRES | PU | PU ACRES |
|---------------|--------------|----|--------------|
| 64 | 115.0 | 1 | 16.1 |
| | | 2 | 28.7 |
| | | 3 | 24.7 |
| | | 4 | 9.2 |
| | | 5 | 36.3 |
| 74 | 3.2 | 6 | 3.2 |
| TOTAL: | 118.2 | | 118.2 |

DESCRIPTION OF TIMBER BY PAYMENT UNIT (PU)

| PU | MARKET GROUP | PRODUCT | QUANTITY | UNIT | ACRES | ADVERTISE PRICE |
|--------------------|---------------------|-----------|--------------|--------------|-------|-----------------|
| 1 | Beech | Sawtimber | 0.2 | MBF | 16.1 | \$14,025.50 |
| | Black Cherry | | 1.7 | MBF | | |
| | Red Maple | | 5.6 | MBF | | |
| | Sugar Maple | | 34.4 | MBF | | |
| | Balsam Fir | Pulpwood | 3 | Cords | | |
| | Mixed Aspen | | 3 | Cords | | |
| | <i>B. T. Aspen</i> | | 3 | <i>Cords</i> | | |
| | Mixed Hardwood | | 186 | Cords | | |
| | <i>Beech</i> | | 18 | <i>Cords</i> | | |
| | <i>Black Cherry</i> | | 3 | <i>Cords</i> | | |
| | <i>Red Maple</i> | | 48 | <i>Cords</i> | | |
| <i>Sugar Maple</i> | | 117 | <i>Cords</i> | | | |
| 2 | Beech | Sawtimber | 0.4 | MBF | 28.7 | \$24,931.95 |
| | Black Cherry | | 3.0 | MBF | | |
| | Red Maple | | 9.9 | MBF | | |
| | Sugar Maple | | 61.2 | MBF | | |
| | Balsam Fir | Pulpwood | 6 | Cords | | |
| | Mixed Aspen | | 5 | Cords | | |
| | <i>B. T. Aspen</i> | | 5 | <i>Cords</i> | | |
| | Mixed Hardwood | | 330 | Cords | | |
| | <i>Beech</i> | | 32 | <i>Cords</i> | | |
| | <i>Black Cherry</i> | | 4 | <i>Cords</i> | | |
| | <i>Red Maple</i> | | 86 | <i>Cords</i> | | |
| <i>Sugar Maple</i> | | 208 | <i>Cords</i> | | | |
| 3 | Beech | Sawtimber | 0.3 | MBF | 24.7 | \$21,466.55 |
| | Black Cherry | | 2.6 | MBF | | |
| | Red Maple | | 8.5 | MBF | | |
| | Sugar Maple | | 52.7 | MBF | | |
| | Balsam Fir | Pulpwood | 5 | Cords | | |
| | Mixed Aspen | | 4 | Cords | | |
| | <i>B. T. Aspen</i> | | 4 | <i>Cords</i> | | |
| | Mixed Hardwood | | 285 | Cords | | |
| | <i>Beech</i> | | 28 | <i>Cords</i> | | |
| | <i>Black Cherry</i> | | 4 | <i>Cords</i> | | |
| | <i>Red Maple</i> | | 74 | <i>Cords</i> | | |
| <i>Sugar Maple</i> | | 179 | <i>Cords</i> | | | |
| 4 | Beech | Sawtimber | 0.1 | MBF | 9.2 | \$8,004.50 |
| | Black Cherry | | 1.0 | MBF | | |
| | Red Maple | | 3.2 | MBF | | |
| | Sugar Maple | | 19.6 | MBF | | |
| | Balsam Fir | Pulpwood | 2 | Cords | | |
| | Mixed Aspen | | 2 | Cords | | |
| | <i>B. T. Aspen</i> | | 2 | <i>Cords</i> | | |
| | Mixed Hardwood | | 106 | Cords | | |
| | <i>Beech</i> | | 10 | <i>Cords</i> | | |
| | <i>Black Cherry</i> | | 1 | <i>Cords</i> | | |
| | <i>Red Maple</i> | | 28 | <i>Cords</i> | | |
| <i>Sugar Maple</i> | | 67 | <i>Cords</i> | | | |
| 5 | Beech | Sawtimber | 0.5 | MBF | 36.3 | \$31,590.50 |
| | Black Cherry | | 3.8 | MBF | | |
| | Red Maple | | 12.5 | MBF | | |
| | Sugar Maple | | 77.5 | MBF | | |
| | Balsam Fir | Pulpwood | 8 | Cords | | |
| | Mixed Aspen | | 6 | Cords | | |
| | <i>B. T. Aspen</i> | | 6 | <i>Cords</i> | | |
| | Mixed Hardwood | | 420 | Cords | | |

DESCRIPTION OF TIMBER BY PAYMENT UNIT (PU), CON'T

| PU | MARKET GROUP | PRODUCT | QUANTITY | UNIT | ACRES | ADVERTISE PRICE |
|---------|---------------------|-----------------|----------|--------------|-------|-----------------|
| 5 con't | <i>Beech</i> | <i>Pulpwood</i> | 41 | <i>Cords</i> | | |
| | <i>Black Cherry</i> | | 6 | <i>Cords</i> | | |
| | <i>Red Maple</i> | | 110 | <i>Cords</i> | | |
| | <i>Sugar Maple</i> | | 263 | <i>Cords</i> | | |
| 6 | Mixed Aspen | Pulpwood | 110 | Cords | 3.2 | \$2,491.90 |
| | <i>B. T. Aspen</i> | | 110 | <i>Cords</i> | | |
| | Mixed Hardwood | | 14 | Cords | | |
| | <i>Black Cherry</i> | | 3 | <i>Cords</i> | | |
| | <i>Sugar Maple</i> | | 11 | <i>Cords</i> | | |
| TOTAL: | | | 298.7 | MBF | | |
| TOTAL: | | | 1,495 | Cords | | |

Sale Specific Conditions & Requirements

Sale Name: Ryerse Lake HW

Sale Number: 45-103-24 Seq#: 1

1 - Sale Area

1.2 - Boundaries

1.2.1 - Painted boundaries (9/19)

The sale boundary and Payment Unit boundaries are marked and identified by blue, red and yellow paint. Exterior sale boundary lines against private property are marked with blue paint. Exterior sale boundary lines against state are marked with red paint. Interior Payment Unit boundaries are marked with yellow paint. The painted boundary line trees are not Included Timber and are to be protected unless marked with orange paint. Yellow painted trees designating an interior Payment Unit boundary are only to be cut if they are marked with orange paint.

2 - Timber Specifications

2.1 - Included Timber

2.1.1 - Clearcut unit(s) with unmerchantable trees (6/14)

Within Payment Unit(s) 6, cut all trees that are two (2) inches or more at DBH, except do not cut any white pine.

2.1.3 - Cut tree marked unit(s) (12/08)

Within Payment Unit(s) 1-5, all trees are designated for cutting when marked with orange paint above and below stump height, regardless of merchantability. In addition, cut all balsam fir and aspen which meet minimum piece specifications, except do not cut trees marked with green paint.

2.2 - Utilization

2.2.9 - No chipping permitted (12/08)

Within Payment Unit(s) 1-6, all wood must be removed by whole tree, tree segment, or roundwood. No chipping is permitted.

3 - Payments

3.3 - Pre-measured Sales

3.3.4 - Dividing payment units (7/14)

Payment Unit(s) 1-6 may be divided at the request of the Purchaser and upon approval of the Unit Manager. Dividing Payment Units is a contract modification which requires a Timber Sale Contract Amendment. There will be only one division per Payment Unit.

4 - Transportation

4.1 - Construction

4.1.3 - Slash and earthen piles (8/04)

Piles or windrows of earth along roads and landings that have been widened or constructed shall be leveled. Slash from road maintenance or construction, including stumps, shall be dispersed throughout the sale.

4.1.6 - Road construction (1/09)

Construction of new roads or improvements of existing roads shall be done in such a way as to minimize the environmental and visual impacts. Merchantable trees shall be cut and utilized unless otherwise directed. Non-merchantable trees shall be severed and laid flat on the ground. Slash shall be scattered, and not left in windrows and kept a minimum of 10 feet back from the road edge. Stumps shall be set upright, not left on edge, and be moved at least 10 feet away from the road edge. Disturbed soil shall be feathered into the woods and not left in berms or windrows.

4.1.7 - Road closure (10/11)

All new roads built into the sale must be blocked to vehicle traffic upon completion of the sale. Overgrown roads that are reopened shall be considered new roads. In general, this will require constructing a four (4') foot high berm of stumps and logs covered with earth. These roads must be rendered impassable to cars and trucks. Temporary berms may be required if no sale activity occurs for 30 or more consecutive days. Contact the Sale Administrator for specific details of design and placement.

4.2 - Maintenance

4.2.3 - Road maintenance (8/13)

The following road maintenance may be needed: Within 60 days of completion of hauling, or if no hauling occurs for 60 days, the road must be maintained and graded. This includes cleaning of drainage areas, grading, crowning and filling with gravel, if necessary. Damages will be assessed if grading/repair does not occur.

4.2.5 - Two wheel drive condition (2/04)

All existing trail roads on and adjacent to the sale area must be passable by two-wheel drive traffic for the duration of the sale.

5 - Operations

5.2 - Conduct of Operations

5.2.2 - Hazard Trees/Snags

5.2.2.1 - Den trees (10/16)

Obvious hollow and/or den trees shall be protected and left standing unless they are a safety hazard.

5.2.3 - Operating Restrictions

5.2.3.3 - Bark slippage restriction (3/09)

Within Payment Unit(s) 1-5, unless changed by written agreement, cutting and skidding are not permitted during the period of May 1 to July 15. This restriction is because of bark slippage.

5.2.32 - Decking/landing restoration (9/13)

All decking and landing areas must have the surface area restored to a condition equal to or better than before. This is to ensure the proper regeneration of the stand. Wood debris, chips and "cookies" from trimmings must be removed or scattered away from landing and loading areas and may not be windrowed on the edge.

5.2.38 - No decking against live trees (2/04)

Cut products may not be decked against unmarked or designated leave trees.

5.8 - Protection of Endangered Species

5.8.5 - Protection of raptor nests (3/13)

All trees with raptor nests will be protected if found during harvesting operations. Notification will be made to the Unit Manager or his/her representative who will notify the Wildlife Biologist so an on-site evaluation and recommendation can be made, if necessary.

6 - Safety and Fire Prevention

6.2 - Signing

6.2.1 - Road posting (10/20)

The Purchaser is responsible for posting and maintaining caution signs on Durusha Road and/or Town Hall Road prior to beginning operations. The road must be posted at appropriate distances from the Sale Area to warn of logging activity and truck traffic. Signs must be removed when harvest operations are suspended or completed. The Purchaser will provide these signs.



TIMBER SALE MAP

This information provided by authority of Part 525, 1994 PA 451, as amended.

| | |
|---------------------------------|--------------------|
| Sale Number 45-103-24 | Date 02/20/2024 |
| Scale 1:15,840 | Page 1 |
| | Of 1 |

| | | |
|--|--------------------|-------------------------------|
| Forest Management Unit Sault Ste Marie Mgt Unit | County Mackinac | Mapped By: Naubinway DNR |
| | | Cruised By: Grossman Forestry |

| | | |
|-----------------|--------------|---|
| Township 43N | Range 07W | Section(s) and Subdivision(s) Sec. 16 NENE; Sec. 9 SENE,S1/2SW,SE; |
|-----------------|--------------|---|

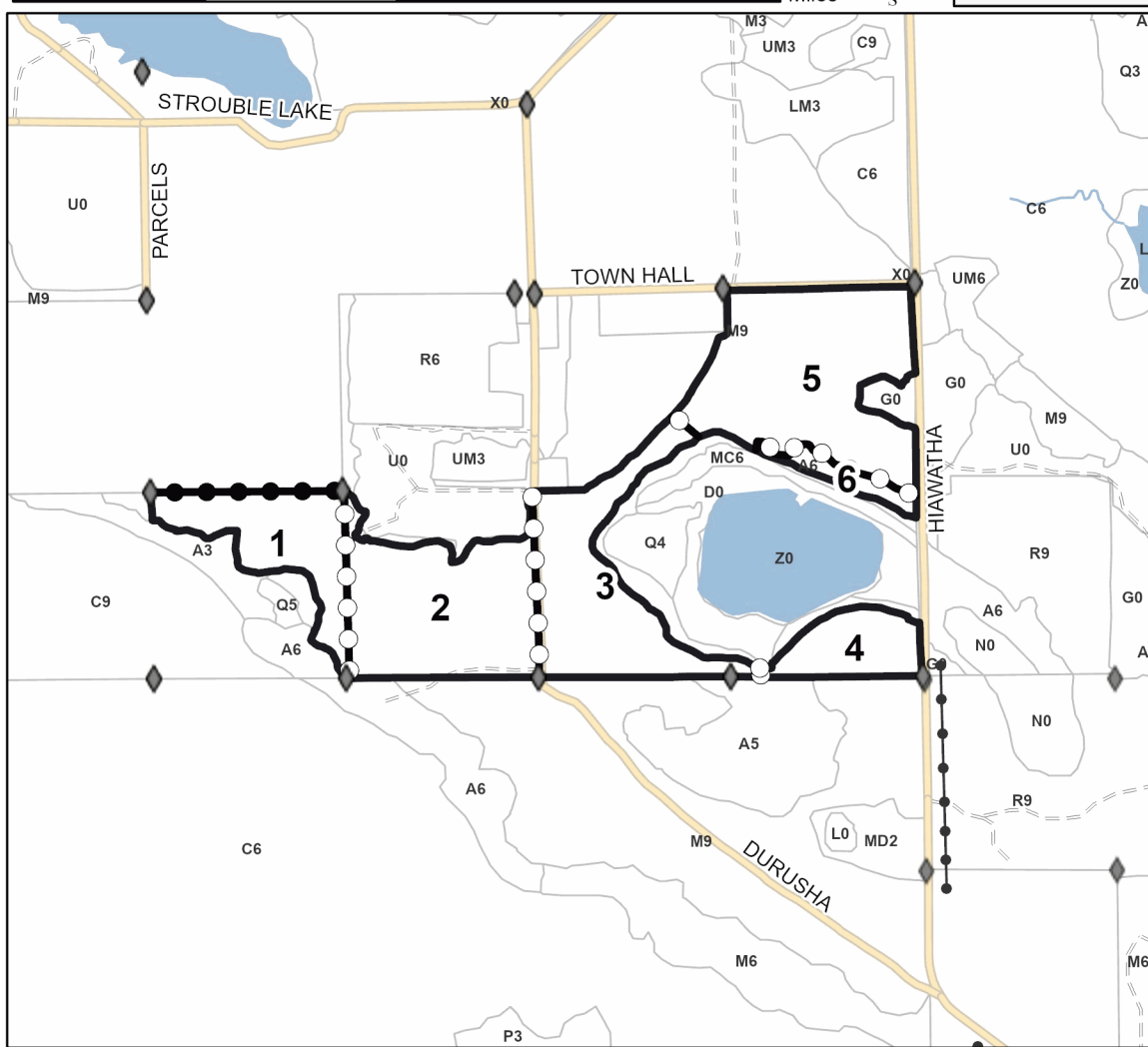
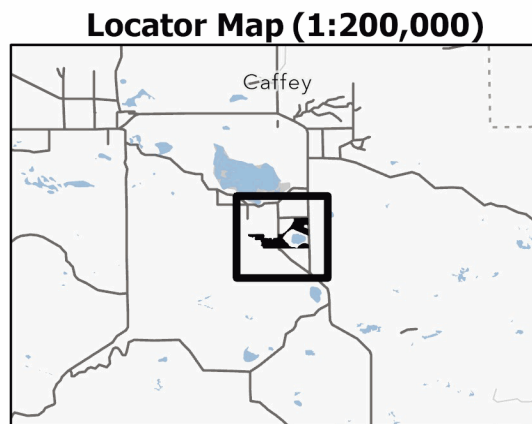
| Cover Type | | | |
|---------------------|-------------------------|-------------------------|------------------------|
| A = Aspen | J = Jack Pine | O = Oak | U = Upland Brush |
| B = Paper Birch | K = Rock | P = Lowland Poplar | UM = Upland Mix Forest |
| C = Cedar | L = Lowland Brush | Q = Mixed Swamp Conifer | V = Bog or Marsh |
| D = Treed Bog | LM = Lowland Mix Forest | R = Red Pine | W = White Pine |
| E = Swamp Hardwoods | M = Maple, Beech, Birch | S = Black Spruce | X = Non Stocked |
| F = Spruce/Fir | MC = Mixed Conifer | T = Tamarack | Y = Sand |
| G = Grass | MD = Mixed Deciduous | Z = Water | |
| H = Hemlock | N = Marsh | | |

| Density | |
|-----------------------------|------------------------|
| 0 = Non Stocked | 5 = Pole Timber Medium |
| 1 = Seedling Sapling Poor | 6 = Pole Timber Well |
| 2 = Seedling Sapling Medium | 7 = Saw Timber Poor |
| 3 = Seedling Sapling Well | 8 = Saw Timber Medium |
| 4 = Pole Timber Poor | 9 = Saw Timber Well |

| PU # | Acres | PU # | Acres |
|------|-------|------|-------|
| 1 | 16.1 | 4 | 9.2 |
| 2 | 28.7 | 5 | 36.3 |
| 3 | 24.7 | 6 | 3.2 |

Ryerse Lake HW

Compartment 136
118.2 Acres



| Legend | |
|--------|-----------------------|
| | Against State (Red) |
| | Stand |
| | Payment Unit (Yellow) |
| | Private Line (Blue) |
| | Forest Access Route |
| | Non-DNR Road |
| | Powerline |
| | Field Grade Corner |

Use QR Code to open Map in App



TIMBER SALE INFORMATION

OK Aspen (45-108-23)

T43N, R08W, SEC. 10; T43N, R08W, SEC. 3; T43N, R08W, SEC. 4; T43N, R08W, SEC. 9.
Mackinac County (Advertised Price \$97,427.00)

A timber sale contract for this lump sum, sealed bid timber sale will be awarded to the responsible bidder offering the highest sealed bid price. All units of volume listed below were estimated using the Inventory Manager computer program and the new Michigan taper model. Bids must be at or above the following advertised price for each product and species:

| <u>PRODUCTS & SPECIES</u> | <u>ESTIMATED UNITS*</u> | <u>ADVERTISED PRICE</u> |
|-------------------------------|-------------------------|-------------------------|
| Sawtimber | | |
| Paper Birch | 12.1 MBF | \$ 42.00 / MBF |
| Red Maple | 8.4 MBF | \$ 152.00 / MBF |
| Pulpwood | | |
| B. T. Aspen | 238 Cords | \$ 21.05 / Cord |
| Balsam Fir | 1,448 Cords | \$ 11.15 / Cord |
| Balsam Poplar | 626 Cords | \$ 21.05 / Cord |
| Black Cherry | 87 Cords | \$ 12.60 / Cord |
| Black Spruce | 46 Cords | \$ 11.90 / Cord |
| N. White Cedar | 21 Cords | \$ 4.20 / Cord |
| Paper Birch | 119 Cords | \$ 5.65 / Cord |
| Quaking Aspen | 2,263 Cords | \$ 21.05 / Cord |
| Red Maple | 187 Cords | \$ 12.60 / Cord |
| White Spruce | 749 Cords | \$ 11.90 / Cord |

* The total volume is statistically estimated within plus (+) or minus (-) 5.41 percent. There are an estimated 5,865 cords on this timber sale, plus or minus 317 cords at the 95% confidence level. The estimated units are final and not subject to adjustment. Prospective bidders are urged to examine this timber and to make their own estimates of quantity and quality.

BOND AND PAYMENT SCHEDULE:

1. A bond in the amount of \$9,743.00 to insure faithful performance of the conditions of the contract will be deposited by the successful bidder within 21 days of the sale award.
2. Cutting in any sale or unit without the required advance payment would be considered a trespass.
3. Total payment must be paid in advance or according to the following schedule :
 - (a) Ten percent (10%) of the sale value must be paid within 21 days of the sale award.
 - (b) The 10% down payment will be credited towards the first unit cut.
 - (c) Payment for each of the following units must be made before cutting begins in that unit:

| PAYMENT UNIT NUMBER | PERCENT OF TOTAL SALE VALUE |
|---------------------|-----------------------------|
| 01 | 4.4% |
| 02 | 10.2% |
| 03 | 26.5% |
| 04 | 19.5% |
| 05 | 13.9% |
| 06 | 11.0% |
| 07 | 14.5% |
4. If no cutting takes place, the 10% down payment will not be refunded.
5. Operations on the contract issued will terminate on 06/30/2028.

SALE STATISTICS

Volumes were calculated in cubic feet using the Michigan taper model. Cubic foot volume includes all wood inside bark for the product indicated. For display purposes, cubic feet were converted to cords and MBF using a simple conversion factor, e.g. 79 cubic feet per cord and 185 cubic feet per MBF. The cubic foot volumes are precise; the cords and MBF volumes are not. Cubic foot volume cannot be directly converted to cords or boards with precision.

SALE VOLUMES

The total estimated sale volume may not equal the sum of the species/products due to the nature of statistical calculations associated with double sampling methodology.

| VOLUME | | | STATISTICAL RANGE IN CORDS | |
|------------------|-------------|---------------|----------------------------|---------|
| TOTAL CUBIC FEET | TOTAL CORDS | PERCENT ERROR | MINIMUM | MAXIMUM |
| 463,313 | 5,865 | 5.41% | 5,547 | 6,182 |

VDU VOLUMES

A VDU is a Volume Determination Unit. Volumes and their associated statistics are calculated at the VDU level and summarized to the sale level. There is often a one to one relationship between a VDU and a Payment Unit, but not always, depending on the cruise design. Refer to the VDU TO PAYMENT UNIT table.

| | VOLUME | | | RANGE IN CORDS | |
|---------------|------------------|--------------|---------------|----------------|--------------|
| VDU | TOTAL CUBIC FEET | TOTAL CORDS | PERCENT ERROR | MINIMUM | MAXIMUM |
| 6 | 21,278 | 269 | 34.89% | 175 | 363 |
| 8 | 46,374 | 587 | 24.02% | 446 | 728 |
| 20 | 128,008 | 1,620 | 8.15% | 1,488 | 1,752 |
| 43 | 125,727 | 1,591 | 9.54% | 1,440 | 1,743 |
| 64 | 141,927 | 1,797 | 10.88% | 1,601 | 1,992 |
| TOTAL: | 463,313 | 5,865 | | 5,150 | 6,579 |

VDU TO PAYMENT UNIT

When a VDU is associated with more than one Payment Unit (PU), the VDU volumes are assigned to the PU based on acres of the VDU within the PU.

| VDU | VDU ACRES | PU | PU ACRES |
|---------------|--------------|----|--------------|
| 6 | 8.4 | 1 | 8.4 |
| 8 | 14.3 | 2 | 14.3 |
| 20 | 38.7 | 3 | 38.7 |
| 43 | 46.7 | 6 | 20.2 |
| | | 7 | 26.5 |
| 64 | 41.3 | 4 | 24.1 |
| | | 5 | 17.2 |
| TOTAL: | 149.4 | | 149.4 |

DESCRIPTION OF TIMBER BY PAYMENT UNIT (PU)

| PU | MARKET GROUP | PRODUCT | QUANTITY | UNIT | ACRES | ADVERTISE PRICE |
|---------------|----------------|-------------|-----------|-------|-------|-----------------|
| 1 | Paper Birch | Sawtimber | 7.9 | MBF | 8.4 | \$4,245.95 |
| | Red Maple | | 4.2 | MBF | | |
| | B. T. Aspen | Pulpwood | 16 | Cords | | |
| | Balsam Fir | | 8 | Cords | | |
| | Black Cherry | | 8 | Cords | | |
| | Paper Birch | | 54 | Cords | | |
| | Quaking Aspen | | 59 | Cords | | |
| | Red Maple | | 68 | Cords | | |
| | White Spruce | | 29 | Cords | | |
| | 2 | Paper Birch | Sawtimber | 4.2 | | |
| Red Maple | | | 4.2 | MBF | | |
| Balsam Fir | | Pulpwood | 97 | Cords | | |
| Balsam Poplar | | | 21 | Cords | | |
| Black Cherry | | | 3 | Cords | | |
| Paper Birch | | | 26 | Cords | | |
| Quaking Aspen | | | 280 | Cords | | |
| Red Maple | | | 94 | Cords | | |
| White Spruce | | | 25 | Cords | | |
| 3 | | B. T. Aspen | Pulpwood | 83 | Cords | 38.7 |
| | Balsam Fir | | 444 | Cords | | |
| | Balsam Poplar | | 77 | Cords | | |
| | Black Cherry | | 35 | Cords | | |
| | Black Spruce | | 23 | Cords | | |
| | N. White Cedar | | 21 | Cords | | |
| | Paper Birch | | 5 | Cords | | |
| | Quaking Aspen | | 551 | Cords | | |
| | Red Maple | | 2 | Cords | | |
| | White Spruce | | 432 | Cords | | |
| 4 | B. T. Aspen | Pulpwood | 51 | Cords | 24.1 | \$18,990.20 |
| | Balsam Fir | | 204 | Cords | | |
| | Balsam Poplar | | 245 | Cords | | |
| | Black Cherry | | 5 | Cords | | |
| | Paper Birch | | 4 | Cords | | |
| | Quaking Aspen | | 448 | Cords | | |
| | Red Maple | | 7 | Cords | | |
| | White Spruce | | 74 | Cords | | |
| 5 | B. T. Aspen | Pulpwood | 37 | Cords | 17.2 | \$13,548.25 |
| | Balsam Fir | | 146 | Cords | | |
| | Balsam Poplar | | 175 | Cords | | |
| | Black Cherry | | 3 | Cords | | |
| | Paper Birch | | 2 | Cords | | |
| | Quaking Aspen | | 319 | Cords | | |
| | Red Maple | | 5 | Cords | | |
| | White Spruce | | 53 | Cords | | |
| 6 | B. T. Aspen | Pulpwood | 22 | Cords | 20.2 | \$10,738.40 |
| | Balsam Fir | | 237 | Cords | | |
| | Balsam Poplar | | 47 | Cords | | |
| | Black Cherry | | 14 | Cords | | |
| | Black Spruce | | 10 | Cords | | |
| | Paper Birch | | 12 | Cords | | |
| | Quaking Aspen | | 262 | Cords | | |
| | Red Maple | | 5 | Cords | | |
| | White Spruce | | 59 | Cords | | |
| | 7 | B. T. Aspen | Pulpwood | 29 | | |
| Balsam Fir | | | 312 | Cords | | |

DESCRIPTION OF TIMBER BY PAYMENT UNIT (PU), CON'T

| PU | MARKET GROUP | PRODUCT | QUANTITY | UNIT | ACRES | ADVERTISE PRICE |
|---------|---------------|----------|----------|-------|-------|-----------------|
| 7 con't | Balsam Poplar | Pulpwood | 61 | Cords | | |
| | Black Cherry | | 19 | Cords | | |
| | Black Spruce | | 13 | Cords | | |
| | Paper Birch | | 16 | Cords | | |
| | Quaking Aspen | | 344 | Cords | | |
| | Red Maple | | 6 | Cords | | |
| | White Spruce | | 77 | Cords | | |
| TOTAL: | | | 20.5 | MBF | | |
| TOTAL: | | | 5,784 | Cords | | |

Sale Specific Conditions & Requirements

Sale Name: OK Aspen

Sale Number: 45-108-23 Seq#: 1

1 - Sale Area

1.2 - Boundaries

1.2.1 - Painted boundaries (9/19)

The sale boundary and Payment Unit boundaries are marked and identified by blue, red and green paint. Exterior sale boundary lines against private property are marked with blue paint. Exterior sale boundary lines against state are marked with red paint. Interior Payment Unit boundaries are marked with green paint. The painted boundary line trees are not Included Timber and are to be protected unless marked with orange paint. Yellow painted trees designating an interior Payment Unit boundary are only to be cut when all surrounding Payment Units have been paid.

2 - Timber Specifications

2.1 - Included Timber

2.1.1 - Clearcut unit(s) with unmerchantable trees (6/14)

Within Payment Unit(s) 1, cut all trees that are four (4) inches or more at DBH. Within Payment Unit(s) 2, 6 and 7 cut all deciduous trees that are two (2) inches or more at DBH and all conifers that are four (4) inches or more at DBH. Do not cut any cedar or hemlock within these Payment Units. Within Payment Unit 3, cut all trees that are two (2) inches or more at DBH except for hemlock. Within Payment Units 4 and 5, cut all trees that are two (2) inches or more at DBH except for cedar, hemlock and white pine over six (6) inches DBH.

3 - Payments

3.3 - Pre-measured Sales

3.3.4 - Dividing payment units (7/14)

Payment Unit(s) 1-7 may be divided at the request of the Purchaser and upon approval of the Unit Manager. Dividing Payment Units is a contract modification which requires a Timber Sale Contract Amendment. There will be only one division per Payment Unit.

4 - Transportation

4.1 - Construction

4.1.3 - Slash and earthen piles (8/04)

Piles or windrows of earth along roads and landings that have been widened or constructed shall be leveled. Slash from road maintenance or construction, including stumps, shall be dispersed throughout the sale.

4.1.4 - Timber removed for construction (3/23)

Trees cut or damaged in the process of pre-approved road, landing or skid trail construction will be decked in an area separate from other Designated Timber and not removed until measured by the sale administrator. Payment will be made at contract prices or average prices, if not on the contract.

4.1.5 - Culverts (5/14)

Roads may require the installation of culverts for cross drainage or at natural drainage-ways. If culverts are needed in these locations, their placement will be specified by the sale administrator and they shall be installed prior to hauling. The culverts shall be new, corrugated metal or plastic gauge. Culverts will be a minimum of 12 inches in diameter and 24 feet in length. If culverts are removed, fill shall be removed from wetland soils as specified. Soils shall be maintained and left in a non-erodible condition, with water bars, seed, fertilizer, mulch, and slash installed as directed by the sale administrator and as specified in the BMP manual. Stream crossing permits, if needed, will be obtained by the DNR.

4.1.6 - Road construction (1/09)

Construction of new roads or improvements of existing roads shall be done in such a way as to minimize the environmental and visual impacts. Merchantable trees shall be cut and utilized unless otherwise directed. Non-merchantable trees shall be severed and laid flat on the ground. Slash shall be scattered, and not left in windrows and kept a minimum of 10 feet back from the road edge. Stumps shall be set upright, not left on edge, and be moved at least 10 feet away from the road edge.

Disturbed soil shall be feathered into the woods and not left in berms or windrows.

4.1.7 - Road closure (10/11)

All new roads built into the sale must be blocked to vehicle traffic upon completion of the sale. Overgrown roads that are reopened shall be considered new roads. In general, this will require constructing a four (4') foot high berm of stumps and logs covered with earth. These roads must be rendered impassable to cars and trucks. Contact the sale administrator for specific details of design and placement.

4.1.8 - Road work (1) (8/07)

The following road work is required if the Purchaser uses the southern access to the road into Payment Units 6 and 7 to access the sale: A culvert will be needed on this section of road for a stream crossing. Discuss with the Unit Manager or sale administrator at the pre-sale conference if this section of road will be used for access. A stream crossing permit may be required, but will be obtained by the DNR.

4.1.11 - Permits (2/12)

The DNR will secure any necessary stream crossing permits that may be required.

4.2 - Maintenance

4.2.3 - Road maintenance (8/13)

The following road maintenance is required: Within 60 days of completion of hauling, or if no hauling occurs for 60 days, the road must be maintained and graded. This includes cleaning of drainage areas, grading, crowning and filling with gravel, if necessary. Damages will be assessed if grading/repair does not occur.

4.2.5 - Two wheel drive condition (2/04)

All existing trail roads on and adjacent to the sale area must be passable by two-wheel drive traffic for the duration of the sale.

5 - Operations

5.2 - Conduct of Operations

5.2.2 - Hazard Trees/Snags

5.2.2.1 - Den trees (10/16)

Obvious hollow and/or den trees shall be protected and left standing unless they are a safety hazard.

5.2.4 - Dead and Down Creation

5.2.4.6 - Dead and down creation, other (9/09)

To improve habitat for wildlife, the Purchaser is to leave one brush pile on the ground for every two acres within Payment Units 2, 4, 5, 6 and 7. Piles must be at least 4 feet tall and scattered throughout the Sale Area. Note: Piles can be created by encouraging limbing in piles during normal harvesting procedures..

5.2.17 - Timber Mats and Interlocking Composite Mats (5/23)

Some roads or skid trails may require extra protection such as that afforded by timber mats, interlocking composite mats, or another approved system. If available, mats may be borrowed from the DNR. A Timber Sale Contract Amendment will be used to document the Purchaser's use of the DNR's mats. Contact the sale administrator regarding availability and pick-up. Timber mats are available from various field offices. Composite mats are only available from the Grayling field office and the Marquette ICC. The Purchaser is responsible for picking up and hauling the mats to and from the site. The composite mats will require DNR staff onsite for installation and removal. Contact the sale administrator to schedule at least 30 days before desired install/removal date. All mats must be cleaned prior to drop off. This may include, but is not limited to, power washing and brushing to remove mud and debris. A charge of \$700.00 per timber mat and \$2,000.00 per composite mat will be assessed for all damaged or non-returned mats. Damage for the crane/timber mats is defined as three or more broken cants. Damage for the composite mats is defined as cracked or broken mats.

5.2.22 - Operating Caution

5.2.22.1 - Operating caution (6/11)

It is recommended, but not required, that within Payment Unit(s) 1, 4-7, cutting, skidding, and hauling occur during dry summer or frozen winter conditions. The reason for the recommendation is because of wet, sensitive soils.

5.2.32 - Decking/landing restoration (9/13)

All decking and landing areas must have the surface area restored to a condition equal to or better than before. This is to ensure the proper regeneration of the stand. Wood debris, chips and "cookies" from trimmings must be removed or scattered away from landing and loading areas and may not be windrowed on the edge.

5.2.37 - No decking areas (12/08)

No decking is allowed within 50 feet of Borgstrom Road.

5.2.38 - No decking against live trees (2/04)

Cut products may not be decked against unmarked or designated leave trees.

5.8 - Protection of Endangered Species

5.8.5 - Protection of raptor nests (3/13)

All trees with raptor nests will be protected if found during harvesting operations. Notification will be made to the Unit Manager or his/her representative who will notify the Wildlife Biologist so an on-site evaluation and recommendation can be made, if necessary.

6 - Safety and Fire Prevention

6.2 - Signing

6.2.1 - Road posting (10/20)

The Purchaser is responsible for posting and maintaining caution signs on all haul roads prior to beginning operations. The road must be posted at appropriate distances from the sale area to warn of logging activity and truck traffic. Signs must be removed when harvest operations are suspended or completed. The Purchaser will provide these signs.



TIMBER SALE MAP

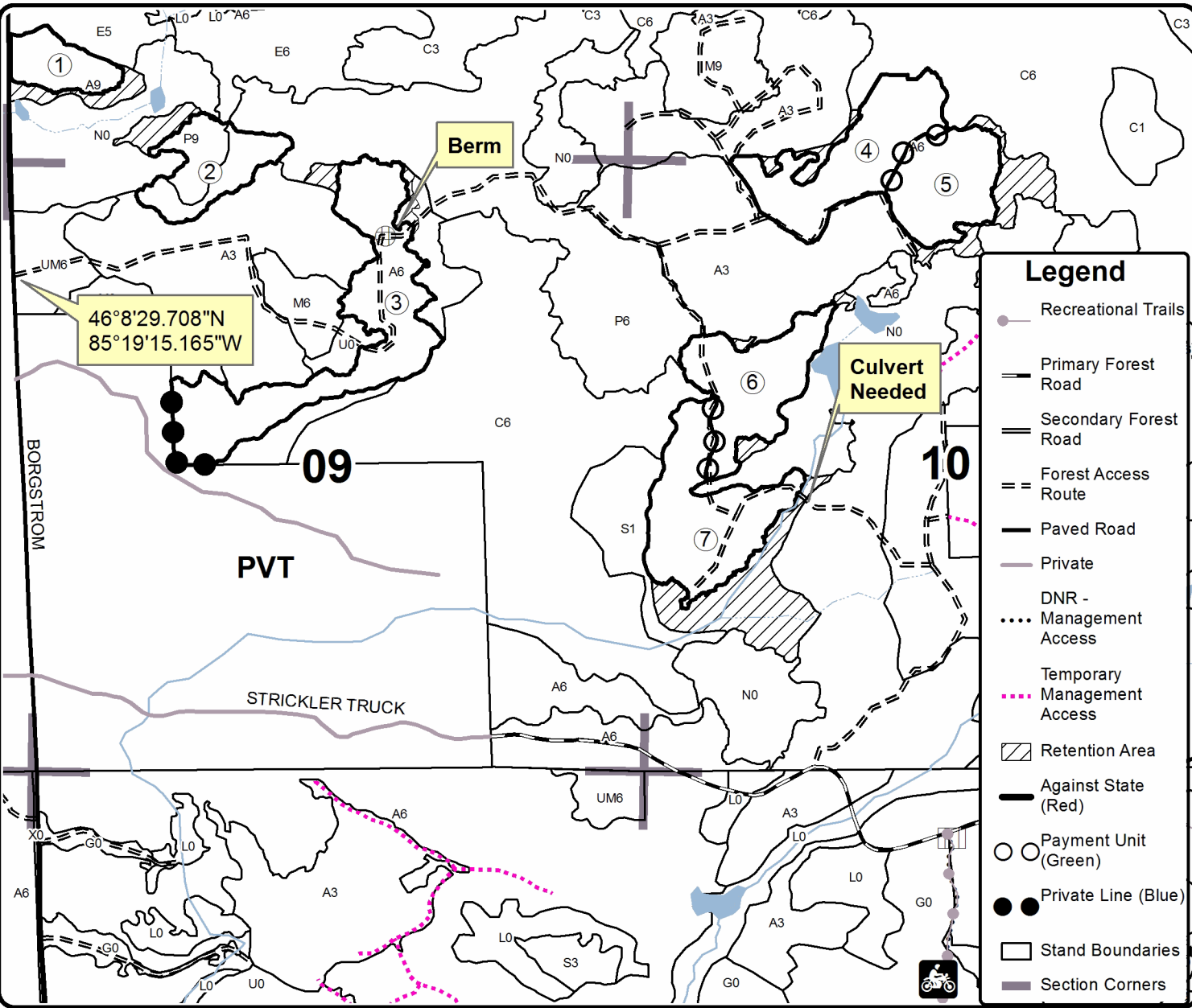
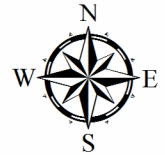
This information provided by authority of Part 525, 1994 PA 451, as amended.

| | | | | | |
|---|--------------------|--|--------------------|-----------|---------|
| Forest Management Unit Sault Ste Marie | County Mackinac | Mapped By Plato | Date 08/21/2023 | Page 1 | of 1 |
| Township 43N | Range 08W | Section(s) and Subdivision(s) Sec. 3 S1/2SW,SWSE, Sec. 4 S1/2SW,SWSE Sec. 9 N1/2NW,SENW,W1/2NE, Sec. 10 NW,NWNE,N1/2SW | Scale 1:15,840 | | |

| Cover Type | | | | Density | |
|-------------------|----------------------|-------------------------|-------------------|-----------------------------|------------------------|
| A = Aspen | H = Hemlock | N = Marsh | U = Upland Brush | 0 = Non Stocked | 5 = Pole Timber Medium |
| B = Paper Birch | J = Jack Pine | O = Oak | UM = Upland Mixed | 1 = Seedling Sapling Poor | 6 = Pole Timber Well |
| C = Cedar | L = Lowland Brush | P = Lowland Poplar | V = Bog or Marsh | 2 = Seedling Sapling Medium | 7 = Saw Timber Poor |
| D = Treed Bog | LM = Lowland Mixed | Q = Mixed Swamp Conifer | W = White Pine | 3 = Seedling Sapling Well | 8 = Saw Timber Medium |
| E = Swamp Hdwoods | M = Mpl. Bch, Brch | R = Red Pine | X = Non Stocked | 4 = Pole Timber Poor | 9 = Saw Timber Well |
| F = Spruce Fir | MC = Mixed Conifer | S = Black Spruce | Z = Water | | |
| G = Grass | MD = Mixed Deciduous | T = Tamarack | | | |

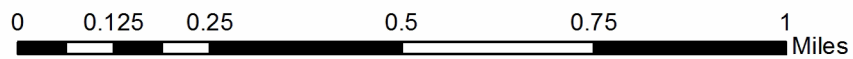
| PU | Acres | PU | Acres | PU | Acres |
|----|-------|----|-------|----|-------|
| 1 | 8.4 | 4 | 24.1 | 7 | 26.5 |
| 2 | 14.3 | 5 | 17.2 | | |
| 3 | 38.7 | 6 | 20.2 | | |

OK Aspen
Compartment 159
149.4 Acres



Legend

- Recreational Trails
- Primary Forest Road
- Secondary Forest Road
- Forest Access Route
- Paved Road
- Private
- DNR - Management Access
- Temporary Management Access
- Retention Area
- Against State (Red)
- Payment Unit (Green)
- Private Line (Blue)
- Stand Boundaries
- Section Corners



TIMBER SALE INFORMATION

DT Snail Mix (45-113-23)

T43N, R07W, SEC. 10; T43N, R07W, SEC. 11; T43N, R07W, SEC. 15; T43N, R07W, SEC. 35; T43N, R07W, SEC. 36.
Mackinac County (Advertised Price \$46,418.65)

A timber sale contract for this lump sum, sealed bid timber sale will be awarded to the responsible bidder offering the highest sealed bid price. All units of volume listed below were estimated using the Inventory Manager computer program and the new Michigan taper model. Bids must be at or above the following advertised price for each product and species:

| <u>PRODUCTS & SPECIES</u> | <u>ESTIMATED UNITS*</u> | <u>ADVERTISED PRICE</u> |
|-------------------------------|-------------------------|-------------------------|
| Sawtimber | | |
| Paper Birch | 24.6 MBF | \$ 42.00 / MBF |
| Red Maple | 18.1 MBF | \$ 152.00 / MBF |
| Yellow Birch | 1.5 MBF | \$ 88.00 / MBF |
| Pulpwood | | |
| Balsam Fir | 326 Cords | \$ 11.15 / Cord |
| Jack Pine | 5 Cords | \$ 31.80 / Cord |
| Misc. Species 1 | 46.8 Acres | \$ 11.00 / Acre |
| Mixed Aspen | 666 Cords | \$ 21.05 / Cord |
| Mixed Hardwood | 1,039 Cords | \$ 13.35 / Cord |
| Mixed Spruce | 690 Cords | \$ 11.90 / Cord |
| N. White Cedar | 12 Cords | \$ 5.00 / Cord |
| Red Pine | 4 Cords | \$ 77.40 / Cord |
| Tamarack | 3 Cords | \$ 9.40 / Cord |
| White Pine | 76 Cords | \$ 22.30 / Cord |

* The total volume is statistically estimated within plus (+) or minus (-) 25.60 percent. There are an estimated 3,014 cords on this timber sale, plus or minus 772 cords at the 95% confidence level. The estimated units are final and not subject to adjustment. Prospective bidders are urged to examine this timber and to make their own estimates of quantity and quality.

BOND AND PAYMENT SCHEDULE:

1. A bond in the amount of \$4,642.00 to insure faithful performance of the conditions of the contract will be deposited by the successful bidder within 21 days of the sale award.
2. Cutting in any sale or unit without the required advance payment would be considered a trespass.
3. Total payment must be paid in advance or according to the following schedule :
 - (a) Ten percent (10%) of the sale value must be paid within 21 days of the sale award.
 - (b) The 10% down payment will be credited towards the first unit cut.
 - (c) Payment for each of the following units must be made before cutting begins in that unit:

| PAYMENT UNIT NUMBER | PERCENT OF TOTAL SALE VALUE |
|---------------------|-----------------------------|
| 01 | 12.3% |
| 02 | 0.0% |
| 03 | 21.3% |
| 04 | 11.0% |
| 05 | 2.4% |
| 06 | 0.4% |
| 07 | 0.5% |
| 08 | 32.1% |
| 09 | 0.2% |
| 10 | 19.8% |

4. If no cutting takes place, the 10% down payment will not be refunded.
5. Operations on the contract issued will terminate on 06/30/2028.

SALE STATISTICS

Volumes were calculated in cubic feet using the Michigan taper model. Cubic foot volume includes all wood inside bark for the product indicated. For display purposes, cubic feet were converted to cords and MBF using a simple conversion factor, e.g. 79 cubic feet per cord and 185 cubic feet per MBF. The cubic foot volumes are precise; the cords and MBF volumes are not. Cubic foot volume cannot be directly converted to cords or boards with precision.

SALE VOLUMES

The total estimated sale volume may not equal the sum of the species/products due to the nature of statistical calculations associated with double sampling methodology.

| VOLUME | | | STATISTICAL RANGE IN CORDS | |
|--|-------------|---------------|----------------------------|---------|
| TOTAL CUBIC FEET | TOTAL CORDS | PERCENT ERROR | MINIMUM | MAXIMUM |
| 238,089 | 3,014 | 25.60% | 2,242 | 3,786 |
| 46.90 acres are being sold by the acre and do not have cubic foot or cord volumes. | | | | |

VDU VOLUMES

A VDU is a Volume Determination Unit. Volumes and their associated statistics are calculated at the VDU level and summarized to the sale level. There is often a one to one relationship between a VDU and a Payment Unit, but not always, depending on the cruise design. Refer to the VDU TO PAYMENT UNIT table.

| VDU | VOLUME | | | RANGE IN CORDS | |
|---------------|------------------|--------------|---------------|----------------|--------------|
| | TOTAL CUBIC FEET | TOTAL CORDS | PERCENT ERROR | MINIMUM | MAXIMUM |
| 1 | 29,576 | 374 | 37.88% | 233 | 516 |
| 6 | 6,658 | 84 | 56.54% | 37 | 132 |
| 7 * | | | N/A | | |
| 9 | 25,195 | 319 | 26.02% | 236 | 402 |
| 17 | 46,475 | 588 | 31.09% | 405 | 771 |
| 18 | 21,661 | 274 | 41.00% | 162 | 387 |
| 25 | 54,456 | 689 | 20.57% | 548 | 831 |
| 37 | 50,814 | 643 | 21.49% | 505 | 781 |
| TOTAL: | 234,835 | 2,973 | | 2,125 | 3,820 |

* This VDU is being sold by the acre. There are no cruise statistics available.

VDU TO PAYMENT UNIT

When a VDU is associated with more than one Payment Unit (PU), the VDU volumes are assigned to the PU based on acres of the VDU within the PU.

| VDU | VDU ACRES | PU | PU ACRES |
|---------------|--------------|----|--------------|
| 1 | 9.9 | 1 | 9.9 |
| 6 | 7.6 | 5 | 7.6 |
| 7 | 46.9 | 2 | 1.3 |
| | | 6 | 16.8 |
| | | 7 | 19.7 |
| | | 9 | 9.1 |
| 9 | 8.3 | 4 | 8.3 |
| 17 | 12.6 | 8 | 12.6 |
| 18 | 6.9 | 8 | 6.9 |
| 25 | 29.0 | 3 | 29.0 |
| 37 | 42.5 | 10 | 42.5 |
| TOTAL: | 163.7 | | 163.7 |

DESCRIPTION OF TIMBER BY PAYMENT UNIT (PU)

| PU | MARKET GROUP | PRODUCT | QUANTITY | UNIT | ACRES | ADVERTISE PRICE |
|---------------------|----------------------|-----------|-----------|-----------|-------|-----------------|
| 1 | Balsam Fir | Pulpwood | 68 | Cords | 9.9 | \$5,690.55 |
| | Mixed Aspen | | 117 | Cords | | |
| | <i>Quaking Aspen</i> | | 117 | Cords | | |
| | Mixed Hardwood | | 152 | Cords | | |
| | <i>Black Cherry</i> | | 12 | Cords | | |
| | <i>Paper Birch</i> | | 28 | Cords | | |
| | <i>Red Maple</i> | | 112 | Cords | | |
| | Mixed Spruce | | 37 | Cords | | |
| | <i>Black Spruce</i> | | 9 | Cords | | |
| | <i>White Spruce</i> | | 28 | Cords | | |
| 2 | Misc. Species 1 | Pulpwood | 1.3 | Acres | 1.3 | \$14.30 |
| 3 | Paper Birch | Sawtimber | 15.8 | MBF | 29.0 | \$9,885.50 |
| | Red Maple | | 4.1 | MBF | | |
| | Balsam Fir | Pulpwood | 142 | Cords | | |
| | Mixed Aspen | | 34 | Cords | | |
| | <i>Balsam Poplar</i> | | 7 | Cords | | |
| | <i>Quaking Aspen</i> | | 27 | Cords | | |
| | Mixed Hardwood | | 304 | Cords | | |
| | <i>Black Ash</i> | | 3 | Cords | | |
| | <i>Black Cherry</i> | | 10 | Cords | | |
| | <i>Paper Birch</i> | | 162 | Cords | | |
| | <i>Red Maple</i> | | 129 | Cords | | |
| | Mixed Spruce | | 134 | Cords | | |
| | <i>Black Spruce</i> | | 22 | Cords | | |
| | <i>White Spruce</i> | | 112 | Cords | | |
| | White Pine | | 29 | Cords | | |
| | 4 | | Red Maple | Sawtimber | | |
| Yellow Birch | | 1.5 | MBF | | | |
| Balsam Fir | | Pulpwood | 8 | Cords | | |
| Mixed Aspen | | | 5 | Cords | | |
| <i>B. T. Aspen</i> | | | 5 | Cords | | |
| Mixed Hardwood | | | 200 | Cords | | |
| <i>Paper Birch</i> | | | 4 | Cords | | |
| <i>Red Maple</i> | | | 184 | Cords | | |
| <i>Sugar Maple</i> | | | 4 | Cords | | |
| <i>Yellow Birch</i> | | | 8 | Cords | | |
| Mixed Spruce | | | 35 | Cords | | |
| <i>Black Spruce</i> | | | 7 | Cords | | |
| <i>White Spruce</i> | | | 28 | Cords | | |
| N. White Cedar | | | 12 | Cords | | |
| 5 | Red Maple | Sawtimber | 0.5 | MBF | 7.6 | \$1,113.65 |
| | Balsam Fir | Pulpwood | 32 | Cords | | |
| | Mixed Hardwood | | 51 | Cords | | |
| | <i>Red Maple</i> | | 23 | Cords | | |
| | <i>Sugar Maple</i> | | 28 | Cords | | |
| 6 | Misc. Species 1 | Pulpwood | 16.8 | Acres | 16.8 | \$184.80 |
| 7 | Misc. Species 1 | Pulpwood | 19.6 | Acres | 19.7 | \$215.60 |
| 8 | Balsam Fir | Pulpwood | 53 | Cords | 19.5 | \$14,922.55 |
| | Jack Pine | | 5 | Cords | | |
| | Mixed Aspen | | 470 | Cords | | |
| | <i>B. T. Aspen</i> | | 464 | Cords | | |
| | <i>Quaking Aspen</i> | | 6 | Cords | | |
| | Mixed Hardwood | | 210 | Cords | | |
| | <i>Black Cherry</i> | | 41 | Cords | | |
| | <i>Paper Birch</i> | | 17 | Cords | | |

DESCRIPTION OF TIMBER BY PAYMENT UNIT (PU), CON'T

| PU | MARKET GROUP | PRODUCT | QUANTITY | UNIT | ACRES | ADVERTISE PRICE |
|---------|----------------------|-----------------|----------|--------------|-------|-----------------|
| 8 con't | <i>Red Maple</i> | <i>Pulpwood</i> | 128 | <i>Cords</i> | | |
| | <i>Sugar Maple</i> | | 24 | <i>Cords</i> | | |
| | Mixed Spruce | | 124 | <i>Cords</i> | | |
| | <i>Black Spruce</i> | | 7 | <i>Cords</i> | | |
| | <i>White Spruce</i> | | 117 | <i>Cords</i> | | |
| 9 | Misc. Species 1 | Pulpwood | 9.1 | Acres | 9.1 | \$100.10 |
| 10 | Paper Birch | Sawtimber | 8.8 | MBF | 42.5 | \$9,207.45 |
| | Red Maple | | 2.9 | MBF | | |
| | Balsam Fir | Pulpwood | 23 | <i>Cords</i> | | |
| | Mixed Aspen | | 40 | <i>Cords</i> | | |
| | <i>B. T. Aspen</i> | | 3 | <i>Cords</i> | | |
| | <i>Quaking Aspen</i> | | 37 | <i>Cords</i> | | |
| | Mixed Hardwood | | 122 | <i>Cords</i> | | |
| | <i>Paper Birch</i> | | 69 | <i>Cords</i> | | |
| | <i>Red Maple</i> | | 53 | <i>Cords</i> | | |
| | Mixed Spruce | | 360 | <i>Cords</i> | | |
| | <i>Black Spruce</i> | | 336 | <i>Cords</i> | | |
| | <i>White Spruce</i> | | 24 | <i>Cords</i> | | |
| | Red Pine | | 4 | <i>Cords</i> | | |
| | Tamarack | | 3 | <i>Cords</i> | | |
| | White Pine | | 47 | <i>Cords</i> | | |
| TOTAL: | | | 44.2 | MBF | | |
| TOTAL: | | | 2,821 | <i>Cords</i> | | |
| TOTAL: | | | 46.8 | Acres | | |

Sale Specific Conditions & Requirements

Sale Name: DT Snail Mix

Sale Number: 45-113-23 Seq#: 2

1 - Sale Area

1.2 - Boundaries

1.2.1 - Painted boundaries (9/19)

The sale boundary and Payment Unit boundaries are marked and identified by blue, red and yellow paint. Exterior sale boundary lines against private property are marked with blue paint. Exterior sale boundary lines against state are marked with red paint. Interior Payment Unit boundaries are marked with yellow paint. Retention patches are marked with red paint; no harvesting activities may occur within these areas. Yellow painted trees designating an interior Payment Unit boundary are only to be cut when all surrounding Payment Units have been paid.

2 - Timber Specifications

2.1 - Included Timber

2.1.1 - Clearcut unit(s) with unmerchantable trees (6/14)

Within Payment Unit(s) 1 - 2 and 6 - 9, cut all trees that are two (2) inches or more at DBH, with the following exceptions:

- Within Payment Units 1 & 8, do not cut any cedar.
- Within Payment Units 6 - 8, do not cut any trees marked with green paint.
- Within Payment Unit 8, do not cut any hemlock.

Within Payment Unit(s) 3, 4 & 10, cut all deciduous trees that are two (2) inches or more at DBH and all conifer trees that are four (4) inches or more at DBH, with the following exceptions:

- Within Payment Units 3 & 10, do not cut any cedar.
- Within Payment Units 4 & 10, do not cut any hemlock.
- Within Payment Unit 4, do not cut any trees marked with green paint.

2.1.3 - Cut tree marked unit(s) (12/08)

Within Payment Unit(s) 5, all trees are designated for cutting when marked with orange paint above and below stump height, regardless of merchantability. In addition, all balsam fir over four (4) inches at DBH are designated for cutting.

2.1.9 - Harvest exception (12/08)

Do not cut any cedar trees within Payment Units 3, 8 and 10 other than those that are necessary to remove in order to operate within the sale area. Every effort must be made to preserve the existing cedar and to leave an intact stand upon sale completion. All cut cedar shall be piled separately by products and scaled in the woods unless other scaling arrangements are agreed to by the Unit Manager or his/her representative. Stumpage price for cedar shall be \$25.00 per cord for posts and pulpwood, and \$50.00 per cord for bolts and sawlogs.

2.1.11 - Description of timber note (2/04)

Note that Misc. Species 1 refers to the species being sold by the acre in Payment Units 2, 6, 7, & 9. These units are openings with minimal volume consisting of merchantable and sub merchantable species. Species consists of a mix of maple, cherry, spruce, fir, pine, and aspen.

2.2 - Utilization

2.2.9 - No chipping permitted (12/08)

Within Payment Unit(s) 5, all wood must be removed by tree segment or roundwood. No chipping is permitted.

3 - Payments

3.6 - Payment Unit Cutting Schedule

3.6.1 - Order of cutting (1/09)

Payment Units 8 & 9 must be paid for and cut at the same time.

4 - Transportation

4.1 - Construction

4.1.3 - Slash and earthen piles (8/04)

Piles or windrows of earth along roads and landings that have been widened or constructed shall be leveled. Slash from road maintenance or construction, including stumps, shall be dispersed throughout the sale.

4.1.6 - Road construction (1/09)

Construction of new roads or improvements of existing roads shall be done in such a way as to minimize the environmental and visual impacts. Merchantable trees shall be cut and utilized unless otherwise directed. Non-merchantable trees shall be severed and laid flat on the ground. Slash shall be scattered, and not left in windrows and kept a minimum of 10 feet back from the road edge. Stumps shall be set upright, not left on edge, and be moved at least 10 feet away from the road edge. Disturbed soil shall be feathered into the woods and not left in berms or windrows.

4.1.7 - Road closure (10/11)

All new roads built into the sale must be blocked to vehicle traffic upon completion of the sale. Overgrown roads that are reopened shall be considered new roads. In general, this will require constructing a four (4') foot high berm of stumps and logs covered with earth. These roads must be rendered impassable to cars and trucks. Contact the Sale Administrator for specific details of design and placement.

4.1.8 - Road work (1) (8/07)

The following road work is required: Access to Payment Unit 4 will require building of a road or high-speed skid trail. All cut products from construction of this road must be decked separately until the Sale Administrator can scale the cut products. Stumpage will be charged at the Unit price. The Unit Manager or Sale Administrator must be contacted prior to starting this unit to discuss and agree on road placement.

4.2 - Maintenance

4.2.3 - Road maintenance (8/13)

The following road maintenance is required: Within 60 days of completion of hauling, or if no hauling occurs for 60 days, the road must be maintained and graded. This includes cleaning of drainage areas, grading, crowning and filling with gravel, if necessary. Damages will be assessed if grading/repair does not occur.

4.2.5 - Two wheel drive condition (2/04)

All existing trail roads on and adjacent to the sale area must be passable by two-wheel drive traffic for the duration of the sale.

5 - Operations

5.2 - Conduct of Operations

5.2.2 - Hazard Trees/Snags

5.2.2.1 - Den trees (10/16)

Obvious hollow and/or den trees shall be protected and left standing unless they are a safety hazard.

5.2.3 - Operating Restrictions

5.2.3.1 - Operating restrictions (9/11)

Within Payment Unit(s) 3, 4 and 10, unless changed by written agreement, cutting, skidding, and hauling are limited to the period of December 1 to March 31. This restriction is wet ground and sensitive soils.

5.2.3.3 - Bark slippage restriction (3/09)

Within Payment Unit(s) 5, unless changed by written agreement, cutting and skidding are not permitted during the period of April 15 to July 15. This restriction is because of bark slippage.

5.2.32 - Decking/landing restoration (9/13)

All decking and landing areas must have the surface area restored to a condition equal to or better than before. This is to ensure the proper regeneration of the stand. Wood debris, chips and "cookies" from trimmings must be removed or scattered away from landing and loading areas and may not be windrowed on the edge.

5.2.37 - No decking areas (12/08)

No decking is allowed within 50 feet of the Hiawatha Trail. Decking should be kept to interior woods roads.

5.2.38 - No decking against live trees (2/04)

Cut products may not be decked against unmarked or designated leave trees.

5.8 - Protection of Endangered Species

5.8.5 - Protection of raptor nests (3/13)

All trees with raptor nests will be protected if found during harvesting operations. Notification will be made to the Unit Manager or his/her representative who will notify the Wildlife Biologist so an on-site evaluation and recommendation can be made, if necessary.

6 - Safety and Fire Prevention

6.2 - Signing

6.2.1 - Road posting (10/20)

The Purchaser is responsible for posting and maintaining caution signs on Hiawatha Trail prior to beginning operations. The road must be posted at appropriate distances from the Sale Area to warn of logging activity and truck traffic. Signs must be removed when harvest operations are suspended or completed. The Purchaser will provide these signs.



TIMBER SALE MAP

This information provided by authority of Part 525, 1994 PA 451, as amended.

| | | |
|---------------------------------|---------------------------|----------------|
| Sale Number 45-113-23 | Date 06/12/2024 | |
| Scale 1:20,000 | Page 1 | Of 2 |

| | | |
|--|--------------------|-----------------------------------|
| Forest Management Unit Sault Ste Marie Mgt Unit | County Mackinac | Mapped By: Plato |
| | | Cruised By: Plato, Flatt, Fanelli |

| | | |
|-----------------|--------------|--|
| Township 43N | Range 07W | Section(s) and Sec. 36 SWNW,N1/2SW; Subdivision(s) Sec. 10 N1/2NW,SWNW,SW,SWSE; Sec. 11 E1/2NW,W1/2NE; Sec. 15 NENW,NWNE; Sec. 35 SENE; |
|-----------------|--------------|--|

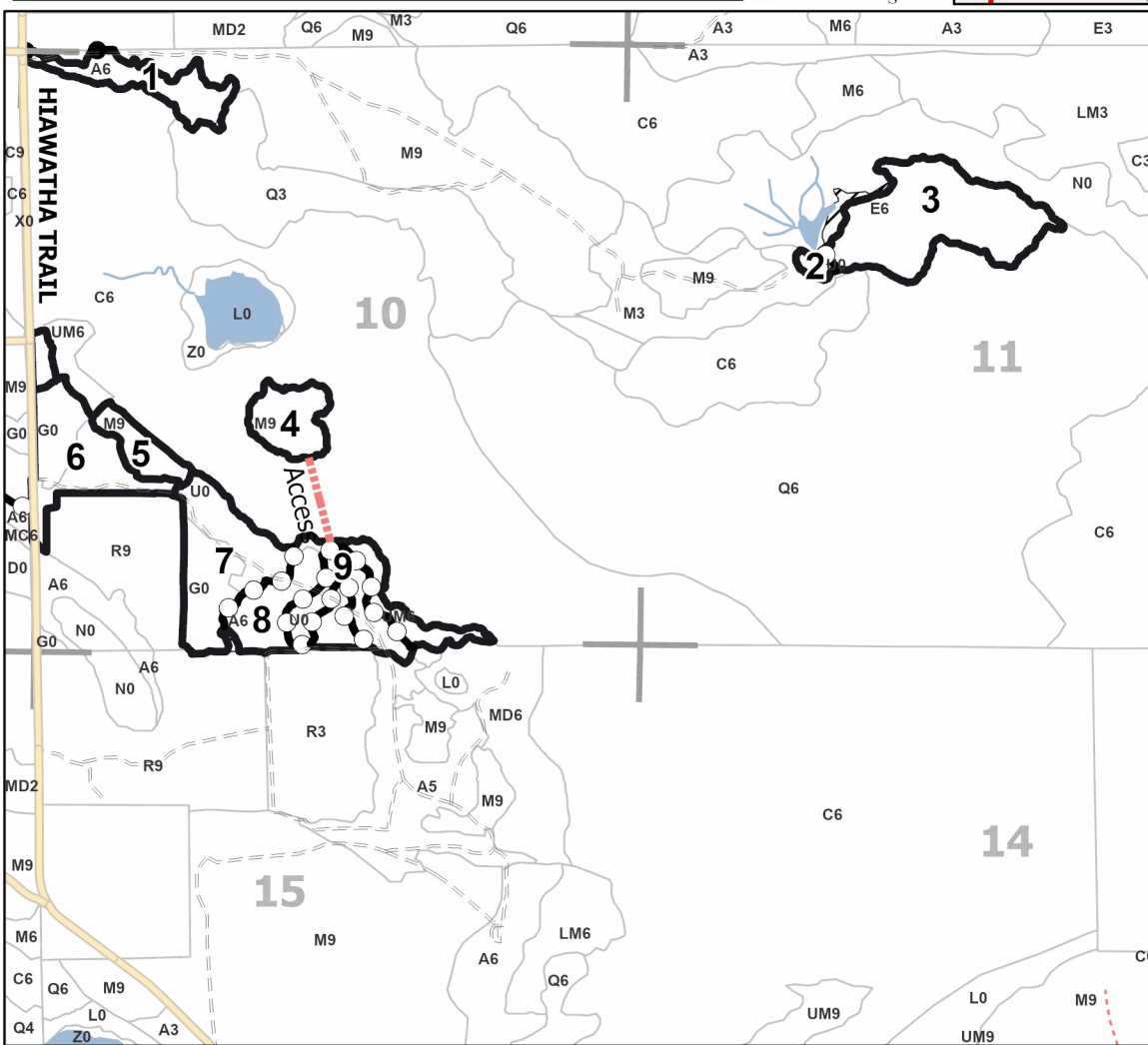
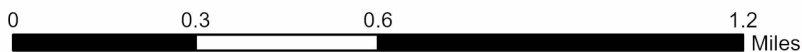
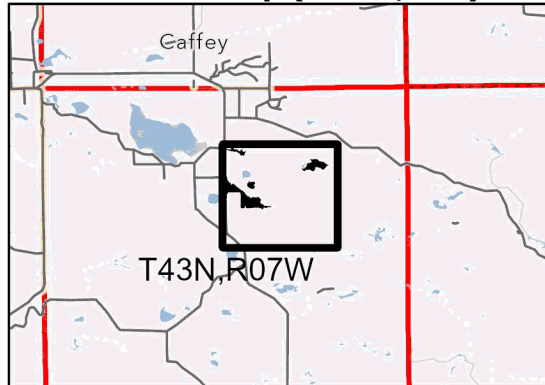
| Cover Type | | | |
|---------------------|-------------------------|-------------------------|------------------------|
| A = Aspen | J = Jack Pine | O = Oak | U = Upland Brush |
| B = Paper Birch | K = Rock | P = Lowland Poplar | UM = Upland Mix Forest |
| C = Cedar | L = Lowland Brush | Q = Mixed Swamp Conifer | V = Bog or Marsh |
| D = Treed Bog | LM = Lowland Mix Forest | R = Red Pine | W = White Pine |
| E = Swamp Hardwoods | M = Maple, Beech, Birch | S = Black Spruce | X = Non Stocked |
| F = Spruce/Fir | MC = Mixed Conifer | T = Tamarack | Y = Sand |
| G = Grass | MD = Mixed Deciduous | Z = Water | |
| H = Hemlock | N = Marsh | | |

| Density | |
|-----------------------------|------------------------|
| 0 = Non Stocked | 5 = Pole Timber Medium |
| 1 = Seedling Sapling Poor | 6 = Pole Timber Well |
| 2 = Seedling Sapling Medium | 7 = Saw Timber Poor |
| 3 = Seedling Sapling Well | 8 = Saw Timber Medium |
| 4 = Pole Timber Poor | 9 = Saw Timber Well |

| PU # | Acres | PU # | Acres |
|------|-------|------|-------|
| 1 | 9.9 | 6 | 16.8 |
| 2 | 1.3 | 7 | 19.7 |
| 3 | 29 | 8 | 19.5 |
| 4 | 8.3 | 9 | 9.1 |
| 5 | 7.6 | 10 | 42.5 |

DT Snail Mix
163.7 Acres

Locator Map (1:200,000)



Legend

- Against State (Red)
- Payment Unit (Yellow)
- Private Line (Blue)
- Retention Areas
- Stand
- Access Route
- Primary Forest Road
- Secondary Forest Road
- Forest Access Route
- Administrative Access Only
- Non-DNR Road
- MIRIS Section Corner

Use QR Code to open Map in App





TIMBER SALE MAP

This information provided by authority of Part 525, 1994 PA 451, as amended.

| | |
|---------------------------------|--------------------|
| Sale Number 45-113-23 | Date 06/11/2024 |
| Scale 1:20,000 | Page 2 |
| | Of 2 |

| | | |
|--|--------------------|-----------------------------------|
| Forest Management Unit Sault Ste Marie Mgt Unit | County Mackinac | Mapped By: Plato |
| | | Cruised By: Plato, Flatt, Fanelli |

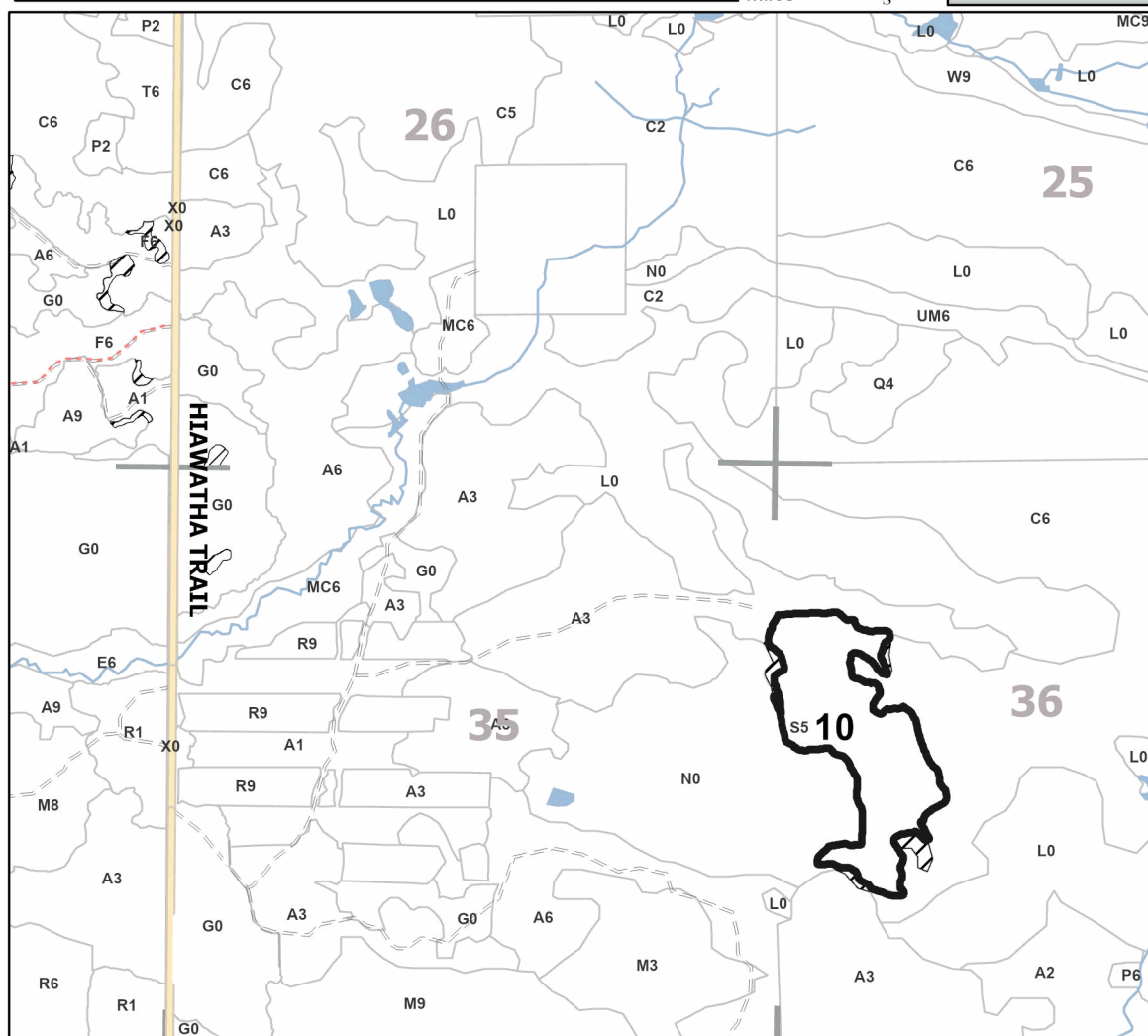
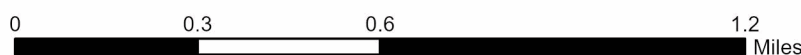
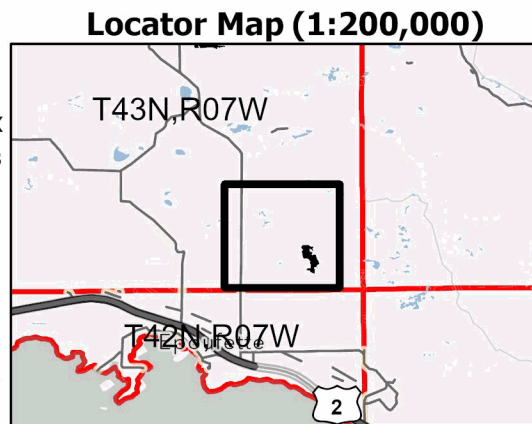
| | | | |
|-----------------|--------------|----------------------------------|--|
| Township 43N | Range 07W | Section(s) and Subdivision(s) | Sec. 36 SWNW,N1/2SE; Sec. 10 N1/2NW,SWNW,SW,SWSE; Sec. 11 E1/2NW,W1/2NE; Sec. 15 NENW,NWNE; Sec. 35 SENE; |
|-----------------|--------------|----------------------------------|--|

| Cover Type | | | |
|---------------------|-------------------------|-------------------------|------------------------|
| A = Aspen | J = Jack Pine | O = Oak | U = Upland Brush |
| B = Paper Birch | K = Rock | P = Lowland Poplar | UM = Upland Mix Forest |
| C = Cedar | L = Lowland Brush | Q = Mixed Swamp Conifer | V = Bog or Marsh |
| D = Treed Bog | LM = Lowland Mix Forest | R = Red Pine | W = White Pine |
| E = Swamp Hardwoods | M = Maple, Beech, Birch | S = Black Spruce | X = Non Stocked |
| F = Spruce/Fir | MC = Mixed Conifer | T = Tamarack | Y = Sand |
| G = Grass | MD = Mixed Deciduous | Z = Water | |
| H = Hemlock | N = Marsh | | |

| Density | |
|-----------------------------|------------------------|
| 0 = Non Stocked | 5 = Pole Timber Medium |
| 1 = Seedling Sapling Poor | 6 = Pole Timber Well |
| 2 = Seedling Sapling Medium | 7 = Saw Timber Poor |
| 3 = Seedling Sapling Well | 8 = Saw Timber Medium |
| 4 = Pole Timber Poor | 9 = Saw Timber Well |

| PU # | Acres | PU # | Acres |
|------|-------|------|-------|
| 1 | 9.9 | 6 | 16.8 |
| 2 | 1.3 | 7 | 19.7 |
| 3 | 29 | 8 | 19.5 |
| 4 | 8.3 | 9 | 9.1 |
| 5 | 7.6 | 10 | 42.5 |

DT Snail Mix
163.7 Acres



| Legend | |
|--------|----------------------------|
| | Against State (Red) |
| | Stand |
| | Retention Areas |
| | Primary Forest Road |
| | Secondary Forest Road |
| | Forest Access Route |
| | Administrative Access Only |
| | Non-DNR Road |
| | MIRIS Section Corner |

Use QR Code to open Map in App



OK Aspen (45-108-23)

T43N, R08W, SEC. 10; T43N, R08W, SEC. 3; T43N, R08W, SEC. 4; T43N, R08W,

In response to the notice of sale to be held 3:00 p.m. (local time) on July 30, 2024, I am hereby submitting my sealed bid (firm offer) for the following forest products to be cut. Bids for individual species must be at or above the advertised price. All non-responsive bid forms may be rejected.

| <u>PRODUCTS & SPECIES</u> | <u>ESTIMATED VOLUME*</u> | <u>ADVERTISED PRICE</u> | <u>BID PRICE/UNIT</u> |
|-------------------------------|--------------------------|-------------------------|-----------------------|
| Sawtimber | | | |
| Paper Birch | 12.1 MBF | \$ 42.00/MBF | \$ _____ |
| Red Maple | 8.4 MBF | \$ 152.00/MBF | \$ _____ |
| Pulpwood | | | |
| B. T. Aspen | 238 Cords | \$ 21.05/Cord | \$ _____ |
| Balsam Fir | 1,448 Cords | \$ 11.15/Cord | \$ _____ |
| Balsam Poplar | 626 Cords | \$ 21.05/Cord | \$ _____ |
| Black Cherry | 87 Cords | \$ 12.60/Cord | \$ _____ |
| Black Spruce | 46 Cords | \$ 11.90/Cord | \$ _____ |
| N. White Cedar | 21 Cords | \$ 4.20/Cord | \$ _____ |
| Paper Birch | 119 Cords | \$ 5.65/Cord | \$ _____ |
| Quaking Aspen | 2,263 Cords | \$ 21.05/Cord | \$ _____ |
| Red Maple | 187 Cords | \$ 12.60/Cord | \$ _____ |
| White Spruce | 749 Cords | \$ 11.90/Cord | \$ _____ |

*The volumes are statistically estimated within plus (+) or minus (-) 5.41 percent at 95% confidence level. These estimated volumes are final and not subject to adjustment. Prospective bidders are urged to examine this timber and to make their own estimates of quantity and quality.

I understand that any or all bids may be rejected. All bids must be signed and all bid items must be bid or the bid form may be rejected. I also understand that consideration and awarding a contract will be based upon my past performance and ability to complete the contract based upon equipment and staffing subject to my control.

FEDERAL ID: ____ - ____ - ____ or SOCIAL SECURITY NUMBER: ____ - ____ - ____

Company or individual bidding: _____

Company representative's name: _____

Address: _____

City: _____ State: _____ Zip: _____

IF AVAILABLE, PLEASE PLACE THE PERSONALIZED LABEL FROM YOUR PROSPECTUS IN THE ABOVE BOX.

Individual or company representative's signature: _____ Date: _____

Phone number : _____ Email (optional): _____

THE WINNING BIDDER MUST COMPLETE THE VERIFICATION OF WORKER'S DISABILITY COMPENSATION ACT COMPLIANCE (ON REVERSE SIDE IF DOUBLE SIDED) WITHIN 21 DAYS OF SALE AWARD DATE



| |
|----------------------------------|
| FOR DEPARTMENT USE ONLY |
| Sale Number (XX - XXX - XX - XX) |
| Forest Management Unit: |

TIMBER SALE VERIFICATION OF WORKER'S DISABILITY COMPENSATION ACT COMPLIANCE

*As required by Act 317, P.A. 1969 (Worker's Compensation) and
Part 5 of Act 451 of 1994, as amended.*

VERIFICATION OF WORKER'S DISABILITY COMPENSATION ACT COMPLIANCE

- This verification must be completed and submitted within 21 days of contract award and prior to the issuance of the timber sale contract.
- In addition, if boxes 2B or 2C are checked, then Notice of Exclusion or Certificate of Insurance must be submitted within twenty-one (21) days of the contract award and prior to the issuance of the timber sale contract.
- All information must be typed or printed except for written signatures.

Please Check Appropriate Categories:

1. My business is organized as (you **must** check one of the boxes below):
 - A. Sole Proprietorship (individual)
 - B. Partnership
 - C. Corporation
2. You **must** check one of the boxes below:
 - A. I certify my business is a sole proprietorship and it has no employees but the sole proprietor. I am not subject to the Worker's Compensation Laws.
 - B. I certify my business has satisfied its obligation to the Worker's Compensation Act through the use of an approved Notice of Exclusion (BWC-337, Rev. 5/96). I will provide a copy of the Notice of Exclusion within 21 days of the contract award. (For questions or a copy of the BWC-337, please call the Worker's Compensation Bureau at 517-322-1195).
 - C. I certify my business has a Worker's Compensation Policy. I will provide an original Certificate of Insurance within twenty-one (21) days of the contract award.
3. If you have checked item 2(A) or 2(B), you **must** indicate the number of **both** full-time and part-time employees, other than yourself, including family members and active partners (if none, you must enter "0").

_____ Full-time Employees

_____ Part-time Employees

| | | | |
|------------------|-------|-------------------------------------|--|
| Name of Business | | Federal ID (or) Social Security No. | |
| Address | | Telephone () | |
| City | State | ZIP | |

I hereby certify that the above information is true and correct. I agree to notify the Michigan DNR of any changes that occur in factors affecting my coverage during any of my present and future operations.

Signature of Owner or Authorized Representative

Title

Date

Please complete the "SEALED BID" information on the next page

Ryerse Lake HW (45-103-24)
T43N, R07W, SEC. 16; T43N, R07W, SEC. 9; Mackinac COUNTY

In response to the notice of sale to be held 3:00 p.m. (local time) on July 30, 2024, I am hereby submitting my sealed bid (firm offer) for the following forest products to be cut. Bids for individual species must be at or above the advertised price. All non-responsive bid forms may be rejected.

| <u>PRODUCTS & SPECIES</u> | <u>ESTIMATED VOLUME*</u> | <u>ADVERTISED PRICE</u> | <u>BID PRICE/UNIT</u> |
|-------------------------------|--------------------------|-------------------------|-----------------------|
| Sawtimber | | | |
| Beech | 1.5 MBF | \$ 59.00/MBF | \$ _____ |
| Black Cherry | 12.1 MBF | \$ 95.00/MBF | \$ _____ |
| Red Maple | 39.7 MBF | \$ 152.00/MBF | \$ _____ |
| Sugar Maple | 245.4 MBF | \$ 307.00/MBF | \$ _____ |
| Pulpwood | | | |
| Balsam Fir | 24 Cords | \$ 11.15/Cord | \$ _____ |
| Mixed Aspen | 130 Cords | \$ 21.05/Cord | \$ _____ |
| Mixed Hardwood | 1,341 Cords | \$ 12.60/Cord | \$ _____ |

*The volumes are statistically estimated within plus (+) or minus (-) 31.22 percent at 95% confidence level. These estimated volumes are final and not subject to adjustment. Prospective bidders are urged to examine this timber and to make their own estimates of quantity and quality.

I understand that any or all bids may be rejected. All bids must be signed and all bid items must be bid or the bid form may be rejected. I also understand that consideration and awarding a contract will be based upon my past performance and ability to complete the contract based upon equipment and staffing subject to my control .

FEDERAL ID: _____ or SOCIAL SECURITY NUMBER: _____

Company or individual bidding: _____

Company representative's name: _____

Address: _____

City: _____ State: _____ Zip: _____

IF AVAILABLE, PLEASE PLACE THE PERSONALIZED LABEL FROM YOUR PROSPECTUS IN THE ABOVE BOX.

Individual or company representative's signature: _____ Date: _____
Phone number : _____ Email (optional): _____

THE WINNING BIDDER MUST COMPLETE THE VERIFICATION OF WORKER'S DISABILITY COMPENSATION ACT COMPLIANCE (ON REVERSE SIDE IF DOUBLE SIDED) WITHIN 21 DAYS OF SALE AWARD DATE



TIMBER SALE VERIFICATION OF WORKER'S DISABILITY COMPENSATION ACT COMPLIANCE

As required by Act 317, P.A. 1969 (Worker's Compensation) and
Part 5 of Act 451 of 1994, as amended.

| FOR DEPARTMENT USE ONLY | |
|----------------------------------|--|
| Sale Number (XX - XXX - XX - XX) | |
| Forest Management Unit: | |

VERIFICATION OF WORKER'S DISABILITY COMPENSATION ACT COMPLIANCE

- This verification must be completed and submitted within 21 days of contract award and prior to the issuance of the timber sale contract.
- In addition, if boxes 2B or 2C are checked, then Notice of Exclusion or Certificate of Insurance must be submitted within twenty-one (21) days of the contract award and prior to the issuance of the timber sale contract.
- All information must be typed or printed except for written signatures.

Please Check Appropriate Categories:

1. My business is organized as (you **must** check one of the boxes below):
 - A. Sole Proprietorship (individual)
 - B. Partnership
 - C. Corporation
2. You **must** check one of the boxes below:
 - A. I certify my business is a sole proprietorship and it has no employees but the sole proprietor. I am not subject to the Worker's Compensation Laws.
 - B. I certify my business has satisfied its obligation to the Worker's Compensation Act through the use of an approved Notice of Exclusion (BWC-337, Rev. 5/96). I will provide a copy of the Notice of Exclusion within 21 days of the contract award. (For questions or a copy of the BWC-337, please call the Worker's Compensation Bureau at 517-322-1195).
 - C. I certify my business has a Worker's Compensation Policy. I will provide an original Certificate of Insurance within twenty-one (21) days of the contract award.
3. If you have checked item 2(A) or 2(B), you **must** indicate the number of **both** full-time and part-time employees, other than yourself, including family members and active partners (if none, you must enter "0").

_____ Full-time Employees _____ Part-time Employees

| | | | |
|------------------|-------|-------------------------------------|--|
| Name of Business | | Federal ID (or) Social Security No. | |
| Address | | Telephone () | |
| City | State | ZIP | |

I hereby certify that the above information is true and correct. I agree to notify the Michigan DNR of any changes that occur in factors affecting my coverage during any of my present and future operations.

Signature of Owner or Authorized Representative

_____ Date

Please complete the "SEALED BID" information on the next page

DT Snail Mix (45-113-23)

T43N, R07W, SEC. 10; T43N, R07W, SEC. 11; T43N, R07W, SEC. 15; T43N,

In response to the notice of sale to be held 3:00 p.m. (local time) on July 30, 2024, I am hereby submitting my sealed bid (firm offer) for the following forest products to be cut. Bids for individual species must be at or above the advertised price. All non-responsive bid forms may be rejected.

| <u>PRODUCTS & SPECIES</u> | <u>ESTIMATED VOLUME*</u> | <u>ADVERTISED PRICE</u> | <u>BID PRICE/UNIT</u> |
|-------------------------------|--------------------------|-------------------------|-----------------------|
| Sawtimber | | | |
| Paper Birch | 24.6 MBF | \$ 42.00/MBF | \$ _____ |
| Red Maple | 18.1 MBF | \$ 152.00/MBF | \$ _____ |
| Yellow Birch | 1.5 MBF | \$ 88.00/MBF | \$ _____ |
| Pulpwood | | | |
| Balsam Fir | 326 Cords | \$ 11.15/Cord | \$ _____ |
| Jack Pine | 5 Cords | \$ 31.80/Cord | \$ _____ |
| Misc. Species 1 | 46.8 Acres | \$ 11.00/Acres | \$ _____ |
| Mixed Aspen | 666 Cords | \$ 21.05/Cord | \$ _____ |
| Mixed Hardwood | 1,039 Cords | \$ 13.35/Cord | \$ _____ |
| Mixed Spruce | 690 Cords | \$ 11.90/Cord | \$ _____ |
| N. White Cedar | 12 Cords | \$ 5.00/Cord | \$ _____ |
| Red Pine | 4 Cords | \$ 77.40/Cord | \$ _____ |
| Tamarack | 3 Cords | \$ 9.40/Cord | \$ _____ |
| White Pine | 76 Cords | \$ 22.30/Cord | \$ _____ |

*The volumes are statistically estimated within plus (+) or minus (-) 25.60 percent at 95% confidence level. These estimated volumes are final and not subject to adjustment. Prospective bidders are urged to examine this timber and to make their own estimates of quantity and quality.

I understand that any or all bids may be rejected. All bids must be signed and all bid items must be bid or the bid form may be rejected. I also understand that consideration and awarding a contract will be based upon my past performance and ability to complete the contract based upon equipment and staffing subject to my control.

FEDERAL ID: _____ or SOCIAL SECURITY NUMBER: _____

Company or individual bidding: _____

Company representative's name: _____

Address: _____

City: _____ State: _____ Zip: _____

IF AVAILABLE, PLEASE PLACE THE PERSONALIZED LABEL FROM YOUR PROSPECTUS IN THE ABOVE BOX.

Individual or company representative's signature: _____ Date: _____

Phone number : _____ Email (optional): _____

THE WINNING BIDDER MUST COMPLETE THE VERIFICATION OF WORKER'S DISABILITY COMPENSATION ACT COMPLIANCE (ON REVERSE SIDE IF DOUBLE SIDED) WITHIN 21 DAYS OF SALE AWARD DATE



| | |
|----------------------------------|--|
| FOR DEPARTMENT USE ONLY | |
| Sale Number (XX – XXX – XX – XX) | |
| Forest Management Unit: | |

TIMBER SALE VERIFICATION OF WORKER'S DISABILITY COMPENSATION ACT COMPLIANCE

As required by Act 317, P.A. 1969 (Worker's Compensation) and
Part 5 of Act 451 of 1994, as amended.

VERIFICATION OF WORKER'S DISABILITY COMPENSATION ACT COMPLIANCE

- This verification must be completed and submitted within 21 days of contract award and prior to the issuance of the timber sale contract.
- In addition, if boxes 2B or 2C are checked, then Notice of Exclusion or Certificate of Insurance must be submitted within twenty-one (21) days of the contract award and prior to the issuance of the timber sale contract.
- All information must be typed or printed except for written signatures.

Please Check Appropriate Categories:

1. My business is organized as (you **must** check one of the boxes below):
 - A. Sole Proprietorship (individual)
 - B. Partnership
 - C. Corporation
2. You **must** check one of the boxes below:
 - A. I certify my business is a sole proprietorship and it has no employees but the sole proprietor. I am not subject to the Worker's Compensation Laws.
 - B. I certify my business has satisfied its obligation to the Worker's Compensation Act through the use of an approved Notice of Exclusion (BWC-337, Rev. 5/96). I will provide a copy of the Notice of Exclusion within 21 days of the contract award. (For questions or a copy of the BWC-337, please call the Worker's Compensation Bureau at 517-322-1195).
 - C. I certify my business has a Worker's Compensation Policy. I will provide an original Certificate of Insurance within twenty-one (21) days of the contract award.
3. If you have checked item 2(A) or 2(B), you **must** indicate the number of **both** full-time and part-time employees, other than yourself, including family members and active partners (if none, you must enter "0").

_____ Full-time Employees

_____ Part-time Employees

| | | | |
|------------------|-------|-------------------------------------|--|
| Name of Business | | Federal ID (or) Social Security No. | |
| Address | | Telephone () | |
| City | State | ZIP | |

I hereby certify that the above information is true and correct. I agree to notify the Michigan DNR of any changes that occur in factors affecting my coverage during any of my present and future operations.

Signature of Owner or Authorized Representative

Title

Date

Please complete the "SEALED BID" information on the next page