



**DEPARTMENT OF NATURAL RESOURCES  
STATE OF MICHIGAN  
TIMBER SALE PROSPECTUS #7494**

SCHEDULED SALE DATE AND TIME: 3:00 p.m. (local time) on September 17, 2024.

LOCATION: NAUBINWAY DNR FIELD OFFICE, PO BOX 287, US 2 W11569, NAUBINWAY, MI 49762.

PROSPECTUS NOTE: The bidder is advised to inspect the sale area and review the location, estimated volumes, operating costs and contract terms of proposed sales. Please be aware that some landowners may request 60 days or more notice for access across their land.

Notice is hereby given that bids will be received by the Unit Manager, SAULT STE MARIE MANAGEMENT UNIT, for certain timber on the following described lands:

Mega Pint Mix (45-107-24) / T43N, R06W, SEC. 10, E1/2NE,NESE.

T43N, R06W, SEC. 11, N1/2SW,NWSE.

T43N, R06W, SEC. 11, NENW,S1/2NW,N1/2NE,SWNE.

T43N, R06W, SEC. 2 , SWSE.

Mackinac County, Advertised Price \$37,519.45, 78.4 Acres, Spruce/Fir/Tamarack, Hardwood.

SALE NOTE: A recreation site such as a trail, pathway, or campground is within the sale area or the vicinity. Certain restrictions/specifications may be applicable including time restrictions.

Skeeter Surplus Mix (45-105-23) / T41N, R11W, SEC. 5 , SENE,NESE.

T41N, R11W, SEC. 6 , S1/2NE,NESE.

T42N, R11W, SEC. 31, N1/2SE.

T42N, R11W, SEC. 32, SENE,NESE.

Mackinac County, Advertised Price \$5,896.75, 49.2 Acres, Hardwood, Aspen.

Add On HW Mix (45-109-23) / T43N, R08W, SEC. 25, NWNW.

T43N, R08W, SEC. 26, NWNE,S1/2NE,SE.

T43N, R08W, SEC. 35, N1/2NE.

Mackinac County, Advertised Price \$17,651.45, 72.1 Acres, Hardwood, Spruce/Fir/Tamarack.

SALE NOTE: A recreation site such as a trail, pathway, or campground is within the sale area or the vicinity. Certain restrictions/specifications may be applicable including time restrictions.

Double Barrel Mix (45-114-23) / T43N, R08W, SEC. 23, E1/2NE.

T43N, R08W, SEC. 26, SWNW,NWSW.

T43N, R08W, SEC. 27, NWNW,S1/2NW,NWNE,SENE.

Mackinac County, Advertised Price \$17,571.20, 68.0 Acres, Spruce/Fir/Tamarack, Paper Birch.

SALE NOTE: A recreation site such as a trail, pathway, or campground is within the sale area or the vicinity. Certain restrictions/specifications may be applicable including time restrictions.

## BID INSTRUCTIONS (VER. 10/10/2022):

### 1. Scheduled Bid Location, Date, and Time (2/11)

Bids must be received by the Unit Manager, NAUBINWAY DNR FIELD OFFICE, PO Box 287 US 2 W11569, Naubinway, MI 49762, no later than 3:00 p.m. (local time) on September 17, 2024. For further information concerning this sale, contact Josh Brinks at 906-203-0210 extension .

### 2. Bidder's Qualifications (10/22)

If all or part of a timber sale was prepared by a private contractor, the contractor and that contractor's company are not permitted to bid on the timber sale. A person must be 18 years of age or older to purchase timber. Permanent employees of the Department of Natural Resources or members of their immediate household may not bid. Former employees, in the permanent or seasonal class, may not bid until 3 months after the last day of active duty. Bids will not be accepted from individuals or companies appearing on the DNR/FRD No-Bid List. This list contains the names of purchasers who previously failed to execute a contract within 21-days or who have a history of poor performance.

### 3. Preparation of Sealed Bids (5/16)

Bid Forms may be completed online thru Michigan DNR Timber Sale Online Bidding (OLB) at [www.michigan.gov/timberbidding](http://www.michigan.gov/timberbidding) or by completing the hardcopy Bid Form found in the Timber Sale Prospectus . Hardcopy Bid Forms shall be manually signed in ink. Registration in OLB is considered your 'signature' for all bids submitted thru that system. Bid prices must be entered for each species and product in the Bid Price column for all material subject to bidding and all fill-in blanks must be completed. If erasures or other changes appear on the hardcopy Bid Form, each erasure or change must be initialed by the person signing the bid.

### 4. Submission of Sealed Bids (5/16)

Bid forms may be obtained from the Unit Manager or thru OLB. Bids may be submitted hardcopy or thru OLB. All hardcopy bids must be submitted on the bid form and in an envelope clearly identified as described in this section. NOTE: Only one bid form per bid envelope. Sealed bids must be submitted to the Unit office designated in the prospectus and must be submitted at or prior to the time established in the prospectus. The envelope should show on the outside (a) the sale name or number and (b) the date and time of bid opening, as shown in the prospectus. Bids received after the time specified in the sale prospectus are late bids and will be rejected.

It is possible for a bidder to submit multiple bids on a single sale. For example, a bid may be submitted hardcopy and a bid may be submitted thru OLB. Or, two bidders from the same company could both submit bids on the same sale. If this were to happen, the State would accept all bids received and award the contract accordingly. All bidding and contractual requirements would apply to all bids received.

### 5. Public Opening of Sealed Bids (7/16)

If conditions permit, the sealed bids will be publicly opened and posted at the time and place set in the prospectus.

If a bidder, present at a bid opening, has submitted bids on more than one sale, that bidder may withdraw their unopened bid envelopes or announce the withdrawal of their online bid after being declared the successful bidder on one sale.

### 6. Award of Contract (1/11)

Award of the contract will be made to the Bidder whose bid, conforming to the prospectus, is most advantageous to the State of Michigan on the basis of total value at rates bid for the estimated quantities. The State reserves the right to reject any bid or waive any minor irregularity in bids received. A written award mailed (or otherwise furnished) to the successful Bidder shall be deemed to result in a binding contract without further action by either party.

### 7. Down Payment (1/11)

The Bidder to whom award is made must make a down payment within 21 days of the sale award. The amount of the down payment will be calculated as shown in the Bond and Payment Schedule of this prospectus. Only cash may be used to meet this requirement.

### 8. Performance Security (1/11)

As guarantee of faithful performance, a cash bond, certificate of deposit, surety bond or irrevocable letter of credit (LOC) is required within 21 days of the sale award. The amount of the performance security is shown in the Bond and

Payment Schedule of this prospectus. If an LOC or surety is used, the coverage must extend for at least 6 months beyond the contract expiration.

#### 9. Worker's Compensation (10/22)

Purchaser shall obtain worker's compensation insurance to cover claims under Michigan's Worker's Disability Compensation Act of 1969 or similar employee benefit act of any other state applicable to an employee. Verification of Worker's Disability Compensation Act Compliance must be completed and submitted within 21 days of contract award and prior to the issuance of the timber sale contract. In addition, if applicable, Notice of Exclusion or Certificate of Insurance must also be submitted.

#### 10. Timber Sale Contract (10/22)

Additional conditions and requirements common to all timber sales are listed on the timber sale contract (R4031) and are available on line at [www.michigan.gov/timber](http://www.michigan.gov/timber). Contact the Unit Manager for additional information or a sample contract. Within 21 days of the date of the award letter, the bidder must sign the contract and provide the required down payment, performance security, and verification of worker's disability compensation. The down payment and performance security shall be in accordance with the provisions of the timber sale contract, in the sums stated in this prospectus. If these actions are not taken, then the Bidder, the Bidder's corporation, and the corporation's principals may not be permitted to bid on State timber sales for a period of 3 months after the first offense, 6 months after the second offense, and 1 year after the third offense. An offense will only be counted against the Bidder for 5 years. In addition, the Bidder certifies that if awarded this contract, the Bidder will complete the timber sale contract in accordance with its terms and any modifications thereof including requirements to purchase, cut, and remove the included timber by the expiration date.

Payment Unit values in the State Forest Timber Sale Contract are calculated based on the advertised value of the Payment Unit as a percentage of the total advertised value of the contract. The advertised value of each Payment Unit is given in the Description of Timber by Payment Unit table on the Timber Sale Information page. For example, if the value of Payment Unit 1 is advertised as \$1,500 and the total Timber Sale value is advertised as \$10,000, the contract price for Payment Unit 1 will be 15% of the total bid price ( $\$1,500/\$10,000 * 100$ ).

#### 11. Disclaimer of Estimates and Bidder's Warranty of Inspection (10/22)

Before submitting this bid, the Bidder is advised and cautioned to inspect the sale area, review the requirements of the sale contract, and take other steps as may be reasonably necessary to ascertain the location, estimated volumes, construction estimates, and operating costs of the proposed sale. Failure to do so will not relieve the Bidder from responsibility for completing the contract.

The Bidder warrants that this bid is submitted solely on the basis of the Bidder's examination and inspection of the quality and quantity of the timber offered for sale and the Bidder's opinion of the value thereof and the costs of recovery. No reliance should be placed on the State of Michigan's estimates of timber quality, quantity or costs of recovery. Bidder further acknowledges that the State of Michigan: (i) expressly disclaims any warranty of fitness of timber for any purpose; (ii) offers this timber as is without any warranty of quality (merchantability) or quantity and (iii) expressly disclaims any warranty as to the quantity or quality of timber sold.

#### 12. Certification and Chain-of-Custody (10/22)

Unless otherwise indicated in the contract under section 7 – Other Conditions of the Sale Specific Conditions & Requirements, the area encompassed by this timber sale is certified to the standards of the Forest Stewardship Council (FSC) - Certificate #SCS-FM/COC-00090N and the Sustainable Forestry Initiative (SFI) - Certificate # NSF-SFIS-5Y031-SF5. Forest products from this sale may be delivered to the mill as "FSC 100% and / or SFI certified" as long as the contractor hauling the forest products is chain-of-custody (COC) certified or covered under a COC certificate from the destination mill. The purchaser is responsible for maintaining COC after leaving the sale area.

#### 13. Good Neighbor Authority (GNA) Requirements (10/22)

If the name of this timber sales contains the acronym GNA, it is authorized by the Good Neighbor Authority (GNA) and covered by various agreements between the U.S. Forest Service and the State. The timber sale occurs on federal land and the following conditions apply:

GNA contracts on US Forest Service land will not be awarded to purchasers on the Federal list of excluded parties. The System for Award Management (SAM) will be checked for active excluded parties prior to award of contract. In

addition, the Bidder to whom award is made must complete an Assurance Regarding Felony Conviction or Tax Delinquent Status for Corporate Applicants (AD-3031).

14. Good Neighbor Authority (GNA) Requirements, con't (10/22)

Bidder certifies, by signing this bid form, that to the best of Bidder's knowledge that the following representations are accurate and complete.

- a. That the Bidder and its principals are not presently debarred, suspended, proposed for debarment, declared ineligible, or voluntary excluded from timber sales (covered transactions) by any Federal department or agency.
- b. That the Bidder and its principals have not within a 3-year period preceding this bid been convicted of or had a civil judgment rendered against them for commission of fraud or a criminal offense in connection with obtaining , attempting to obtain, or performing a public (Federal, State, or local) transaction or contract under a public transaction; violation of Federal or State antitrust statutes or commission of embezzlement, theft, forgery, bribery, falsification or destruction of records, making false statements, or receiving stolen property.
- c. That the Bidder and its principals are not presently indicted for or otherwise criminally or civilly charged by a governmental entity (Federal, State, or local) with commission of any of the offenses enumerated in paragraph b of this certification.
- d. That the Bidder and its principals have not within a 3-year period preceding this bid had one or more public transactions (Federal, State, or local) terminated for breach or default of a timber or forest product contract.

Bidders that cannot certify this requirement, in whole or in part, shall submit an explanation with their bid.

Scott Bowen  
Director

## TIMBER SALE INFORMATION

### Mega Pint Mix (45-107-24)

T43N, R06W, SEC. 10; T43N, R06W, SEC. 11; T43N, R06W, SEC. 2.  
Mackinac County (Advertised Price \$37,519.45)

SALE NOTE: A recreation site such as a trail, pathway, or campground is within the sale area or the vicinity. Certain restrictions/specifications may be applicable including time restrictions.

A timber sale contract for this lump sum, sealed bid timber sale will be awarded to the responsible bidder offering the highest sealed bid price. All units of volume listed below were estimated using the Inventory Manager computer program and the new Michigan taper model. Bids must be at or above the following advertised price for each product and species:

<u>PRODUCTS &amp; SPECIES</u>	<u>ESTIMATED UNITS*</u>	<u>ADVERTISED PRICE</u>
Sawtimber		
Red Maple	12.5 MBF	\$ 90.00 / MBF
Pulpwood		
Balsam Fir	303 Cords	\$ 10.30 / Cord
Jack Pine	65 Cords	\$ 31.80 / Cord
Misc. Species 1	2.4 Acres	\$ 15.00 / Acre
Mixed Aspen	259 Cords	\$ 25.05 / Cord
Mixed Hardwood	544 Cords	\$ 13.35 / Cord
Mixed Spruce	501 Cords	\$ 11.55 / Cord
N. White Cedar	259 Cords	\$ 5.00 / Cord
Paper Birch	177 Cords	\$ 7.60 / Cord
Red Pine	49 Cords	\$ 56.55 / Cord
Tamarack	76 Cords	\$ 9.40 / Cord
White Pine	247 Cords	\$ 22.30 / Cord

\* The total volume is statistically estimated within plus (+) or minus (-) 26.72 percent. There are an estimated 2,511 cords on this timber sale, plus or minus 671 cords at the 95% confidence level. The estimated units are final and not subject to adjustment. Prospective bidders are urged to examine this timber and to make their own estimates of quantity and quality.

### **BOND AND PAYMENT SCHEDULE:**

1. A bond in the amount of \$3,752.00 to insure faithful performance of the conditions of the contract will be deposited by the successful bidder within 21 days of the sale award.
2. Cutting in any sale or unit without the required advance payment would be considered a trespass.
3. Total payment must be paid in advance or according to the following schedule:
  - (a) Ten percent (10%) of the sale value must be paid within 21 days of the sale award.
  - (b) The 10% down payment will be credited towards the first unit cut.
  - (c) Payment for each of the following units must be made before cutting begins in that unit:

PAYMENT UNIT NUMBER	PERCENT OF TOTAL SALE VALUE
01	0.1%
02	23.1%
03	42.0%
04	11.5%
05	18.5%
06	4.8%

4. If no cutting takes place, the 10% down payment will not be refunded.
5. Operations on the contract issued will terminate on 06/30/2027.

### **SALE STATISTICS**

Volumes were calculated in cubic feet using the Michigan taper model. Cubic foot volume includes all wood inside bark for the product indicated. For display purposes, cubic feet were converted to cords and MBF using a simple conversion factor, e.g. 79 cubic feet per cord and 185 cubic feet per MBF. The cubic foot volumes are precise; the cords and MBF volumes are not. Cubic foot volume cannot be directly converted to cords or boards with precision.

## SALE VOLUMES

The total estimated sale volume may not equal the sum of the species/products due to the nature of statistical calculations associated with double sampling methodology.

VOLUME			STATISTICAL RANGE IN CORDS	
TOTAL CUBIC FEET	TOTAL CORDS	PERCENT ERROR	MINIMUM	MAXIMUM
198,385	2,511	26.72%	1,840	3,182
2.40 acres are being sold by the acre and do not have cubic foot or cord volumes.				

## VDU VOLUMES

A VDU is a Volume Determination Unit. Volumes and their associated statistics are calculated at the VDU level and summarized to the sale level. There is often a one to one relationship between a VDU and a Payment Unit, but not always, depending on the cruise design. Refer to the VDU TO PAYMENT UNIT table.

VDU	VOLUME			RANGE IN CORDS	
	TOTAL CUBIC FEET	TOTAL CORDS	PERCENT ERROR	MINIMUM	MAXIMUM
14	27,640	350	31.88%	238	461
21	36,282	459	25.34%	343	576
28	82,714	1,047	20.57%	832	1,262
29	27,333	346	32.13%	235	457
30 *			N/A		
57	24,217	307	40.99%	181	432
<b>TOTAL:</b>	<b>198,187</b>	<b>2,509</b>		<b>1,829</b>	<b>3,189</b>

\* This VDU is being sold by the acre. There are no cruise statistics available.

## VDU TO PAYMENT UNIT

When a VDU is associated with more than one Payment Unit (PU), the VDU volumes are assigned to the PU based on acres of the VDU within the PU.

VDU	VDU ACRES	PU	PU ACRES
14	10.3	4	10.3
21	12.8	5	12.8
28	32.4	3	32.4
29	14.6	2	14.6
30	2.4	1	2.4
57	5.9	6	5.9
<b>TOTAL:</b>	<b>78.4</b>		<b>78.4</b>

**DESCRIPTION OF TIMBER BY PAYMENT UNIT (PU)**

PU	MARKET GROUP	PRODUCT	QUANTITY	UNIT	ACRES	ADVERTISE PRICE
1	Misc. Species 1	Pulpwood	2.4	Acres	2.4	\$36.00
2	Balsam Fir	Pulpwood	11	Cords	14.6	\$8,664.85
	Jack Pine		65	Cords		
	Mixed Aspen		75	Cords		
	<i>B. T. Aspen</i>		4	Cords		
	<i>Quaking Aspen</i>		71	Cords		
	Mixed Hardwood		11	Cords		
	<i>Red Maple</i>		9	Cords		
	<i>Sugar Maple</i>		2	Cords		
	Mixed Spruce		37	Cords		
	<i>White Spruce</i>		37	Cords		
	Red Pine		22	Cords		
	White Pine		125	Cords		
3	Balsam Fir	Pulpwood	181	Cords	32.4	\$15,769.00
	Mixed Aspen		135	Cords		
	<i>Balsam Poplar</i>		9	Cords		
	<i>Quaking Aspen</i>		126	Cords		
	Mixed Hardwood		259	Cords		
	<i>Red Maple</i>		256	Cords		
	<i>Sugar Maple</i>		3	Cords		
	Mixed Spruce		181	Cords		
	<i>Black Spruce</i>		42	Cords		
	<i>White Spruce</i>		139	Cords		
	Paper Birch		144	Cords		
	Red Pine		27	Cords		
	Tamarack		25	Cords		
	White Pine		95	Cords		
4	Balsam Fir	Pulpwood	3	Cords	10.3	\$4,323.75
	Mixed Aspen		13	Cords		
	<i>B. T. Aspen</i>		13	Cords		
	Mixed Spruce		238	Cords		
	<i>Black Spruce</i>		238	Cords		
	Paper Birch		18	Cords		
	Tamarack		51	Cords		
	White Pine		27	Cords		
5	Red Maple		Sawtimber	12.5		
	Balsam Fir	Pulpwood	83	Cords		
	Mixed Aspen		36	Cords		
	<i>Quaking Aspen</i>		36	Cords		
	Mixed Hardwood		266	Cords		
	<i>Red Maple</i>		266	Cords		
	Mixed Spruce		40	Cords		
	<i>White Spruce</i>		40	Cords		
	Paper Birch		6	Cords		
6	Balsam Fir	Pulpwood	25	Cords	5.9	\$1,785.45
	Mixed Hardwood		8	Cords		
	<i>Red Maple</i>		8	Cords		
	Mixed Spruce		5	Cords		
	<i>Black Spruce</i>		5	Cords		
	N. White Cedar		259	Cords		
	Paper Birch		9	Cords		
TOTAL:			12.5	MBF		
TOTAL:			2,480	Cords		
TOTAL:			2.4	Acres		

## Sale Specific Conditions & Requirements

**Sale Name: Mega Pint Mix**

**Sale Number: 45-107-24 Seq#: 1**

### 1 - Sale Area

#### 1.2 - Boundaries

##### 1.2.1 - Painted boundaries (9/19)

The sale boundary and Payment Unit boundaries are marked and identified by red and purple paint. Exterior sale boundary lines against state are marked with red paint. Interior Payment Unit boundaries are marked with purple paint. Retention patches are marked with red paint; no harvesting activities may occur within these areas. The painted boundary line trees are not Included Timber. Purple painted trees designating an interior Payment Unit boundary are only to be cut when all surrounding Payment Units have been paid.

### 2 - Timber Specifications

#### 2.1 - Included Timber

##### 2.1.1 - Clearcut unit(s) with unmerchantable trees (6/14)

Within Payment Unit(s) 1, 2 & 4, cut all trees that are two (2) inches or more at DBH.

Within Payment Unit(s) 3, cut all deciduous trees that are two (2) inches or more at DBH, and all conifers over four (4) inches DBH. In addition, do not cut any white pine or hemlock greater than 18 inches at DBH, any cedar 8 inches at DBH or less, or any trees marked with green paint.

Within Payment Unit(s) 5, cut all trees that are four (4) inches or more at DBH, except do not cut any hemlock or trees marked with green paint.

Within Payment Unit(s) 6, cut all trees that are two (2) inches or more at DBH, except do not cut any cedar 8 inches at DBH or less.

##### 2.1.11 - Description of timber note (2/04)

Note that Misc. Species 1 for Payment Unit 1 is sold by the acre.

#### 2.2 - Utilization

##### 2.2.3 - Stump heights (4/07)

Stump heights within Payment Unit(s) 1 & 2 shall not exceed 6 inches for all trees. This is in order to facilitate planting operations. A written waiver of this requirement may be obtained if wet summer weather makes winter logging necessary.

##### 2.2.11 - Chipping restriction (9/14)

If chipping occurs on this sale, then no woody debris present on the ground at the start of the sale may be chipped. In addition, brush or chips may not be stored or stockpiled on-site for more than 60 days.

### 3 - Payments

#### 3.3 - Pre-measured Sales

##### 3.3.4 - Dividing payment units (7/14)

Payment Unit(s) 1-6 may be divided at the request of the Purchaser and upon approval of the Unit Manager. Dividing Payment Units is a contract modification which requires a Timber Sale Contract Amendment. There will be only one division per Payment Unit.

### 4 - Transportation

#### 4.1 - Construction

##### 4.1.3 - Slash and earthen piles (8/04)

Piles or windrows of earth along roads and landings that have been widened or constructed shall be leveled. Slash from road maintenance or construction, including stumps, shall be dispersed throughout the sale.



#### 4.1.4 - Timber removed for construction (3/23)

Trees cut or damaged in the process of pre-approved road, landing or skid trail construction will be decked in an area separate from other Designated Timber and not removed until measured by the sale administrator. Payment will be made at contract prices or average prices, if not on the contract.

#### 4.1.6 - Road construction (1/09)

Construction of new roads or improvements of existing roads shall be done in such a way as to minimize the environmental and visual impacts. Merchantable trees shall be cut and utilized unless otherwise directed. Non-merchantable trees shall be severed and laid flat on the ground. Slash shall be scattered, and not left in windrows and kept a minimum of 10 feet back from the road edge. Stumps shall be set upright, not left on edge, and be moved at least 10 feet away from the road edge. Disturbed soil shall be feathered into the woods and not left in berms or windrows.

#### 4.1.7 - Road closure (10/11)

All new roads built into the sale must be blocked to vehicle traffic upon completion of the sale. Overgrown roads that are reopened shall be considered new roads. In general, this will require constructing a four (4') foot high berm of stumps and logs covered with earth. These roads must be rendered impassable to cars and trucks. Contact the Sale Administrator for specific details of design and placement.

### 4.2 - Maintenance

#### 4.2.1 - Hauling restriction (12/08)

Hauling is restricted on the southern portion of Schoolhouse Road that is maintained by Mackinac County Road Commission. The restriction may occur during spring breakup.

#### 4.2.3 - Road maintenance (8/13)

The following road maintenance is required: Within 60 days of completion of hauling, or if no hauling occurs for 60 days, the road must be maintained and graded. This includes cleaning of drainage areas, grading, crowning and filling with gravel, if necessary. Damages will be assessed if grading/repair does not occur.

#### 4.2.4 - Grading (10/16)

For completion of the sale, state forest roads must be graded. In general, this will require a road grader or bulldozer to shape up the roads after forest products have been hauled off site. This includes cleaning of drainage areas, grading, crowning and filling with gravel, if necessary. The grading equipment to be used must be approved by the Unit Manager or his/her representative.

#### 4.2.5 - Two wheel drive condition (2/04)

All existing trail roads on and adjacent to the sale area must be passable by two-wheel drive traffic for the duration of the sale.

## 5 - Operations

### 5.2 - Conduct of Operations

#### 5.2.1 - Slash

##### 5.2.1.11 - Slash for reforestation (3/21)

To facilitate reforestation, Payment Unit(s) 1 & 2 shall be left with slash evenly distributed. Bunched tops within the cutting area shall be broken up and scattered. Stumps shall be cut low to the ground. Processing sites shall not be left with a compacted layer of slash; tops from these sites shall be hauled back into the cut area and scattered.

#### 5.2.2 - Hazard Trees/Snags

##### 5.2.2.1 - Den trees (10/16)

Obvious hollow and/or den trees shall be protected and left standing unless they are a safety hazard.

#### 5.2.22 - Operating Caution

##### 5.2.22.1 - Operating caution (6/11)

It is recommended, but not required, that within Payment Unit(s) 3, 4 & 6, cutting, skidding, and hauling occur during dry summer or frozen winter conditions. The reason for the recommendation is because of wet, sensitive soils.

#### 5.2.32 - Decking/landing restoration (9/13)

All decking and landing areas must have the surface area restored to a condition equal to or better than before. This is to ensure the proper regeneration of the stand. Wood debris, chips and "cookies" from trimmings must be removed or scattered away from landing and loading areas and may not be windrowed on the edge.

#### 5.2.38 - No decking against live trees (2/04)

Cut products may not be decked against unmarked or designated leave trees.

#### 5.2.39 - ORV trail/route protection (4/18)

The motorcycle trail is shown on the Timber Sale Map. Do not damage posts with motorcycle trail markers. All stumps within 5 feet of the trail must be cut flush with the ground. Maintain a 20-foot-wide slash, debris, and rut free zone daily using the motorcycle trail as the centerline. Do not run equipment down the motorcycle trail. Skidding across the trail may only occur in locations approved by the Sale Administrator.

#### 5.2.41 - Snowmobile trail protection (9/11)

Trail 473 is a snowmobile trail and is shown on the Timber Sale Map. Do not cut or damage posts with orange trail markers or traffic control signs. If the trail is used, it must be maintained and restored to a condition equal to or better than before the sale. The road maintenance/restoration must be done prior to December 1. If the trail is used for hauling, it must be graded to the satisfaction of the Unit Manager or his/her representative prior to December 1st. If the trail road is to be used for hauling during the snowmobile season, then a snow covered base must be left on the trail. No decking of forest products will be permitted within 50 feet of the snowmobile trail.

### 5.8 - Protection of Endangered Species

#### 5.8.5 - Protection of raptor nests (3/13)

All trees with raptor nests will be protected if found during harvesting operations. Notification will be made to the Unit Manager or his/her representative who will notify the Wildlife Biologist so an on-site evaluation and recommendation can be made, if necessary.

## 6 - Safety and Fire Prevention

### 6.2 - Signing

#### 6.2.2 - Snowmobile trail posting (10/20)

The Purchaser is responsible for posting and maintaining caution signs on Trail 473 prior to beginning operations during the snowmobile season (approximately December 1 to March 31). The trail must be posted at appropriate distances from the Sale Area to warn of logging activity and truck traffic. Signs must be removed when harvest operations are suspended or completed. The Purchaser will provide these signs.

#### 6.2.3 - Recreational trail posting (10/20)

The Purchaser is responsible for posting and maintaining caution signs on the motorcycle trail prior to beginning operations. The trail must be posted at appropriate distances from the Sale Area to warn of logging activity and truck traffic at both ends of the trail. Signs must be removed when harvest operations are suspended or completed. The Purchaser will provide these signs.

## 8 - Performance and Settlement

### 8.3 - Uncompleted or Terminated Contracts

#### 8.3.1 - Completion of contract, chipping (1/16)

In addition to cutting, all chipping must be completed by the contract expiration date. If chipping has not been completed, an extension fee or damages may be charged per General Condition & Requirement 7.2 and 8.3.



### TIMBER SALE MAP

This information provided by authority of Part 525, 1994 PA 451, as amended.

Sale Number <b>45-107-24</b>	Date 01/30/2024	
Scale 1:15,840	Page 1	Of 1

Forest Management Unit Sault Ste Marie Mgt Unit	County Mackinac	Mapped By: Plato
		Cruised By: Plato

Township 43N	Range 06W	Section(s) and Subdivision(s) Sec. 10 E1/2NE,NESE; Sec. 11 N1/2SW,NWSE; Sec. 11 NENW,S1/2NW,N1/2NE,SWNE; Sec. 2 SWSE;
-----------------	--------------	--

Cover Type			
A = Aspen	J = Jack Pine	O = Oak	U = Upland Brush
B = Paper Birch	K = Rock	P = Lowland Poplar	UM = Upland Mix Forest
C = Cedar	L = Lowland Brush	Q = Mixed Swamp Conifer	V = Bog or Marsh
D = Treed Bog	LM = Lowland Mix Forest	R = Red Pine	W = White Pine
E = Swamp Hardwoods	M = Maple, Beech, Birch	S = Black Spruce	X = Non Stocked
F = Spruce/Fir	MC = Mixed Conifer	T = Tamarack	Y = Sand
G = Grass	MD = Mixed Deciduous	Z = Water	
H = Hemlock	N = Marsh		

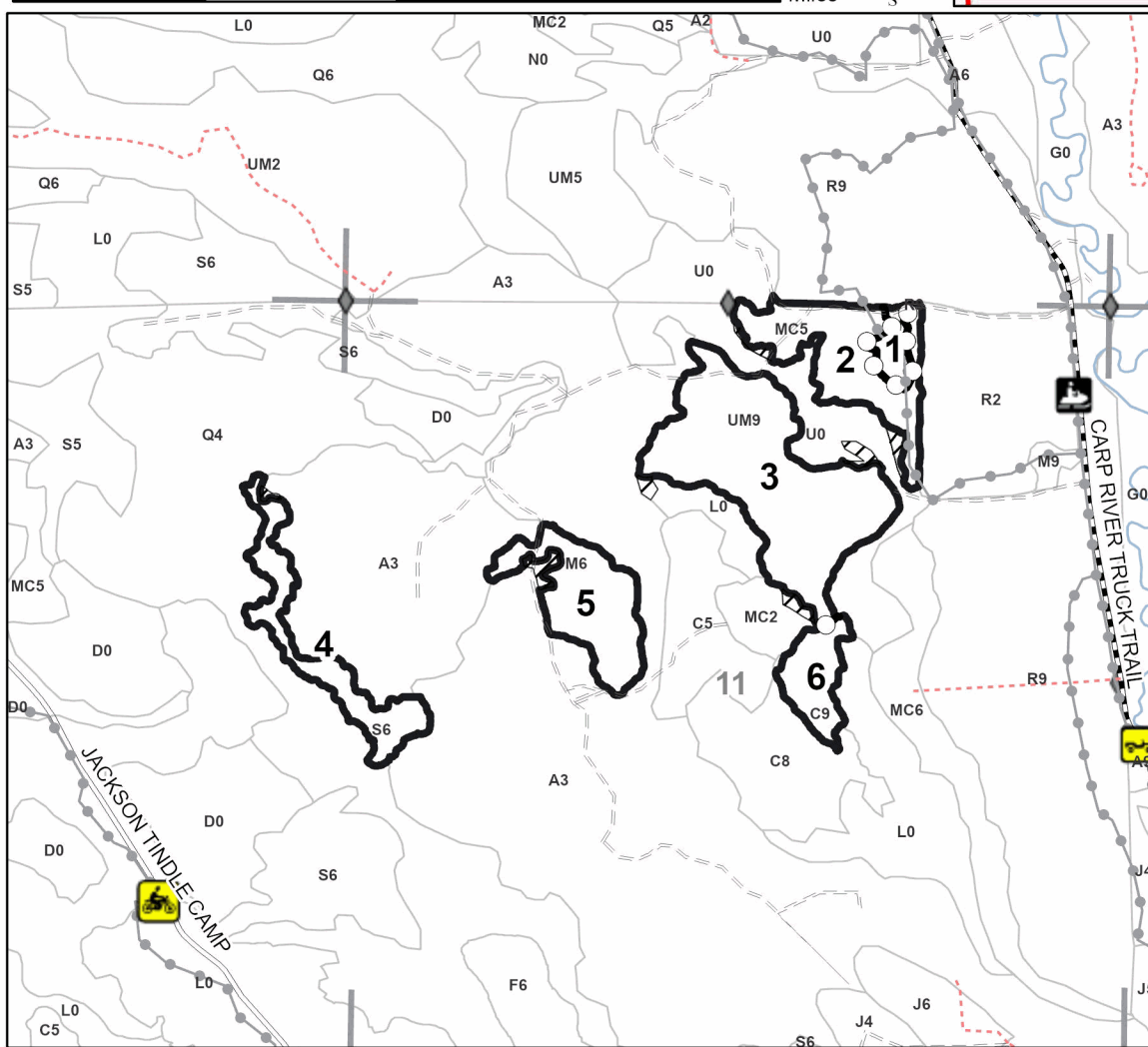
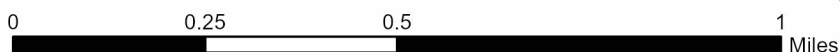
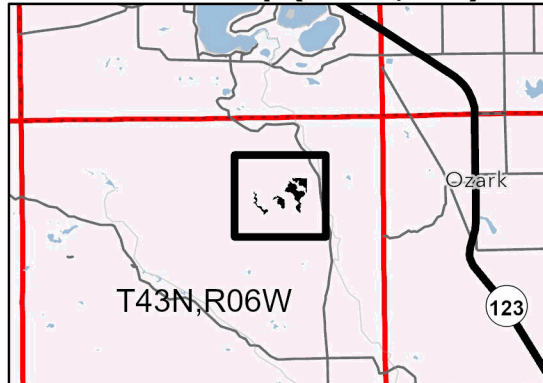
Density	
0 = Non Stocked	5 = Pole Timber Medium
1 = Seedling Sapling Poor	6 = Pole Timber Well
2 = Seedling Sapling Medium	7 = Saw Timber Poor
3 = Seedling Sapling Well	8 = Saw Timber Medium
4 = Pole Timber Poor	9 = Saw Timber Well

PU #	Acres	PU #	Acres
1	2.4	4	10.3
2	14.6	5	12.8
3	32.4	6	5.9

## Mega Pint Mix

### 78.4 Acres

### Locator Map (1:200,000)



### Legend

- Sale Boundary - Red
- Stand
- Sections
- Payment Unit (Purple)
- Recreational Trail
- Paved Road
- Gravel Road
- County Road - Seasonal
- Private Road
- Primary Forest Road
- Secondary Forest Road
- Forest Access Route
- Administrative Access Only
- Field Grade Corner
- MIRIS Section Corner
- Retention Areas - Red

Use QR Code to open Map in App





**TIMBER SALE INFORMATION**

Skeeter Surplus Mix (45-105-23)

T41N, R11W, SEC. 5; T41N, R11W, SEC. 6; T42N, R11W, SEC. 31; T42N, R11W, SEC. 32.  
Mackinac County (Advertised Price \$5,896.75)

A timber sale contract for this lump sum, sealed bid timber sale will be awarded to the responsible bidder offering the highest sealed bid price. All units of volume listed below were estimated using the Inventory Manager computer program and the new Michigan taper model. Bids must be at or above the following advertised price for each product and species:

<u>PRODUCTS &amp; SPECIES</u>	<u>ESTIMATED UNITS*</u>	<u>ADVERTISED PRICE</u>
Sawtimber		
Paper Birch	0.7 MBF	\$ 9.00 / MBF
Red Maple	54.5 MBF	\$ 25.00 / MBF
Sugar Maple	4.6 MBF	\$ 157.00 / MBF
Yellow Birch	54.0 MBF	\$ 2.00 / MBF
Pulpwood		
Balsam Fir	47 Cords	\$ 3.80 / Cord
Hemlock	34 Cords	\$ 1.00 / Cord
Mixed Aspen	148 Cords	\$ 9.95 / Cord
Mixed Hardwood	447 Cords	\$ 3.70 / Cord
Mixed Spruce	40 Cords	\$ 4.05 / Cord
Paper Birch	23 Cords	\$ 1.30 / Cord
Tamarack	4 Cords	\$ 1.00 / Cord
White Pine	31 Cords	\$ 5.25 / Cord

\* The total volume is statistically estimated within plus (+) or minus (-) 14.87 percent. There are an estimated 1,274 cords on this timber sale, plus or minus 190 cords at the 95% confidence level. The estimated units are final and not subject to adjustment. Prospective bidders are urged to examine this timber and to make their own estimates of quantity and quality.

**BOND AND PAYMENT SCHEDULE:**

- A bond in the amount of \$590.00 to insure faithful performance of the conditions of the contract will be deposited by the successful bidder within 21 days of the sale award.
- Cutting in any sale or unit without the required advance payment would be considered a trespass.
- Total payment must be paid in advance or according to the following schedule :
  - Ten percent (10%) of the sale value must be paid within 21 days of the sale award.
  - The 10% down payment will be credited towards the first unit cut.
  - Payment for each of the following units must be made before cutting begins in that unit:
 

PAYMENT UNIT NUMBER	PERCENT OF TOTAL SALE VALUE
01	6.5%
02	23.6%
03	15.6%
04	54.3%
- If no cutting takes place, the 10% down payment will not be refunded.
- Operations on the contract issued will terminate on 06/30/2028.

**SALE STATISTICS**

Volumes were calculated in cubic feet using the Michigan taper model. Cubic foot volume includes all wood inside bark for the product indicated. For display purposes, cubic feet were converted to cords and MBF using a simple conversion factor, e.g. 79 cubic feet per cord and 185 cubic feet per MBF. The cubic foot volumes are precise; the cords and MBF volumes are not. Cubic foot volume cannot be directly converted to cords or boards with precision.

**SALE VOLUMES**

The total estimated sale volume may not equal the sum of the species/products due to the nature of statistical calculations associated with double sampling methodology.

VOLUME		STATISTICAL RANGE IN CORDS		
TOTAL CUBIC FEET	TOTAL CORDS	PERCENT ERROR	MINIMUM	MAXIMUM
100,670	1,274	14.87%	1,085	1,464

**VDU VOLUMES**

A VDU is a Volume Determination Unit. Volumes and their associated statistics are calculated at the VDU level and summarized to the sale level. There is often a one to one relationship between a VDU and a Payment Unit, but not always, depending on the cruise design. Refer to the VDU TO PAYMENT UNIT table.

VDU	VOLUME		PERCENT ERROR	RANGE IN CORDS	
	TOTAL CUBIC FEET	TOTAL CORDS		MINIMUM	MAXIMUM
19	7,798	99	33.04%	66	131
55	33,750	427	19.44%	344	510
80	5,899	75	55.91%	33	116
86	53,224	674	21.77%	527	820
<b>TOTAL:</b>	<b>100,670</b>	<b>1,274</b>		<b>970</b>	<b>1,578</b>

**VDU TO PAYMENT UNIT**

When a VDU is associated with more than one Payment Unit (PU), the VDU volumes are assigned to the PU based on acres of the VDU within the PU.

VDU	VDU ACRES	PU	PU ACRES
19	7.5	1	7.5
55	17.6	2	17.6
80	3.4	3	3.4
86	20.7	4	20.7
<b>TOTAL:</b>	<b>49.2</b>		<b>49.2</b>

**DESCRIPTION OF TIMBER BY PAYMENT UNIT (PU)**

PU	MARKET GROUP	PRODUCT	QUANTITY	UNIT	ACRES	ADVERTISE PRICE
1	Red Maple	Sawtimber	3.1	MBF	7.5	\$382.35
	Balsam Fir	Pulpwood	5	Cords		
	Mixed Aspen		1	Cords		
	<i>Balsam Poplar</i>		1	Cords		
	Mixed Hardwood		31	Cords		
	<i>Red Maple</i>		31	Cords		
	Mixed Spruce		34	Cords		
	<i>Black Spruce</i>	Sawtimber	1.9	MBF		
	<i>Black Spruce</i>	Pulpwood	30	Cords		
	Paper Birch		15	Cords		
	Tamarack		4	Cords		
2	Red Maple	Sawtimber	9.6	MBF	17.6	\$1,390.80
	Yellow Birch		33.3	MBF		
	Balsam Fir	Pulpwood	42	Cords		
	Hemlock		34	Cords		
	<i>Hemlock</i>	Sawtimber	13.0	MBF		
	<i>Hemlock</i>	Pulpwood	8	Cords		
	Mixed Aspen		6	Cords		
	<i>Balsam Poplar</i>	Sawtimber	1.3	MBF		
	<i>Balsam Poplar</i>	Pulpwood	3	Cords		
	Mixed Hardwood		218	Cords		
	<i>Black Ash</i>		6	Cords		
	<i>Red Maple</i>		56	Cords		
	<i>Yellow Birch</i>		156	Cords		
	Mixed Spruce		6	Cords		
	<i>White Spruce</i>	Sawtimber	2.4	MBF		
	<i>White Spruce</i>	Pulpwood	1	Cords		
	3	Mixed Aspen	Pulpwood	91		
<i>B. T. Aspen</i>		Sawtimber	11.5	MBF		
<i>B. T. Aspen</i>		Pulpwood	68	Cords		
Mixed Hardwood			1	Cords		
<i>Sugar Maple</i>			1	Cords		
Paper Birch			6	Cords		
4	Paper Birch	Sawtimber	0.7	MBF	20.7	\$3,206.65
	Red Maple		41.8	MBF		
	Sugar Maple		4.6	MBF		
	Yellow Birch		20.7	MBF		
	Mixed Aspen	Pulpwood	50	Cords		
	<i>Balsam Poplar</i>		50	Cords		
	Mixed Hardwood		197	Cords		
	<i>Red Maple</i>		66	Cords		
	<i>Sugar Maple</i>		10	Cords		
	<i>Yellow Birch</i>		121	Cords		
	Paper Birch		2	Cords		
	White Pine		31	Cords		
	<i>White Pine</i>	Sawtimber	12.8	MBF		
	<i>White Pine</i>	Pulpwood	5	Cords		
TOTAL:			113.8	MBF		
TOTAL:			774	Cords		

## Sale Specific Conditions & Requirements

Sale Name: Skeeter Surplus Mix

Sale Number: 45-105-23 Seq#: 3

### 1 - Sale Area

#### 1.2 - Boundaries

##### 1.2.1 - Painted boundaries (9/19)

The sale boundary and Payment Unit boundaries are marked and identified by blue and red paint. Exterior sale boundary lines against private property are marked with blue paint. Exterior sale boundary lines against state are marked with red paint. Retention patches are marked with red paint; no harvesting activities may occur within these areas. The painted boundary line trees are not Included Timber and are to be protected unless marked with orange paint.

### 2 - Timber Specifications

#### 2.1 - Included Timber

##### 2.1.1 - Clearcut unit(s) with unmerchantable trees (6/14)

Within Payment Unit(s) 1, cut all trees that are two (2) inches or more at DBH, except do not cut any cedar or hemlock.

Within Payment Unit(s) 2, cut all trees that are four (4) inches or more at DBH, except do not cut any cedar.

Within Payment Unit(s) 3, cut all trees that are two (2) inches or more at DBH, except do not cut white pine less than six (6) inches at DBH.

Within Payment Unit(s) 4, cut all deciduous trees that are two (2) inches or more at DBH, and all conifers that are four (4) inches or more at DBH, except do not cut cedar, hemlock, or any trees marked with green paint.

##### 2.1.9 - Harvest exception (12/08)

Do not cut any cedar within Payment Units 1, 2, & 4, or any hemlock within Payment Units 1 & 4, other than those that are necessary to remove in order to operate within the sale area. Every effort must be made to preserve the existing cedar and hemlock and to leave an intact stand upon sale completion. All cut cedar and hemlock shall be piled separately by products and scaled in the woods unless other scaling arrangements are agreed to by the Unit Manager or his/her representative. Stumpage price for cedar and hemlock shall be \$20.00 per cord for posts and pulpwood, and \$40.00 per cord for bolts and sawlogs.

### 3 - Payments

#### 3.6 - Payment Unit Cutting Schedule

##### 3.6.2 - One active unit (12/08)

Each Payment Unit must be completed to the satisfaction of the Unit Manager or his/her representative before the next unit may be opened. The Purchaser must give a one week notice before finishing a unit to allow for inspection.

### 4 - Transportation

#### 4.1 - Construction

##### 4.1.2 - Stream crossings, specific (3/11)

Within Payment Unit 2, the Hudson Creek crossing will require the installation of a portable bridge which may be borrowed from the DNR. This installation will be performed in accordance with the specifications on the appropriate permits which shall be provided by the DNR. A six-month notice is required prior to bridge installation.

##### 4.1.3 - Slash and earthen piles (8/04)

Piles or windrows of earth along roads and landings that have been widened or constructed shall be leveled. Slash from road maintenance or construction, including stumps, shall be dispersed throughout the sale.

##### 4.1.6 - Road construction (4/24)

Construction of new roads or improvements of existing roads shall be done in such a way as to minimize the environmental and visual impacts. Merchantable trees shall be cut and utilized unless otherwise directed. Non-merchantable trees shall be



severed and laid flat on the ground. Slash shall be scattered, and not left in windrows and kept a minimum of 10 feet back from the road edge. Stumps shall be set upright, not left on edge, and be moved at least 10 feet away from the road edge. Disturbed soil shall be feathered into the woods and not left in berms or windrows.

#### 4.1.7 - Road closure (10/11)

All new roads built into the sale must be blocked to vehicle traffic upon completion of the sale. Overgrown roads that are reopened shall be considered new roads. In general, this will require constructing a four (4') foot high berm of stumps and logs covered with earth. These roads must be rendered impassable to cars and trucks. Contact the Sale Administrator for specific details of design and placement.

#### 4.1.11 - Permits (2/12)

The DNR will secure any necessary stream crossing permits that may be required.

### 4.2 - Maintenance

#### 4.2.3 - Road maintenance (8/13)

The following road maintenance is required: Within 60 days of completion of hauling, or if no hauling occurs for 60 days, the road must be maintained and graded. This includes cleaning of drainage areas, grading, crowning and filling with gravel, if necessary. Damages will be assessed if grading/repair does not occur.

#### 4.2.5 - Two wheel drive condition (2/04)

All existing trail roads on and adjacent to the sale area must be passable by two-wheel drive traffic for the duration of the sale.

## 5 - Operations

### 5.2 - Conduct of Operations

#### 5.2.2 - Hazard Trees/Snags

##### 5.2.2.1 - Den trees (10/16)

Obvious hollow and/or den trees shall be protected and left standing unless they are a safety hazard.

#### 5.2.3 - Operating Restrictions

##### 5.2.3.2 - Operating restrictions (9/11)

Within Payment Unit(s) 1, unless changed by written agreement, cutting, skidding, and hauling are limited to the period of December 1 to March 31. This restriction is because of deer wintering habitat and wet, sensitive soils.

#### 5.2.22 - Operating Caution

##### 5.2.22.1 - Operating caution (6/11)

It is recommended, but not required, that within Payment Unit(s) 2, 3, & 4, cutting occur during dry summer or frozen winter conditions. The reason for the recommendation is because of wet, sensitive soils in certain areas.

#### 5.2.32 - Decking/landing restoration (9/13)

All decking and landing areas must have the surface area restored to a condition equal to or better than before. This is to ensure the proper regeneration of the stand. Wood debris, chips and "cookies" from trimmings must be removed or scattered away from landing and loading areas and may not be windrowed on the edge.

#### 5.2.38 - No decking against live trees (2/04)

Cut products may not be decked against unmarked or designated leave trees.

### 5.8 - Protection of Endangered Species

#### 5.8.3 - Red shoulder hawk or goshawk (1) (2/16)

In the event that an active red shoulder hawk or goshawk nest is found, the contract may be amended to protect the nest site until the nest is determined to be inactive. The value of the trees in this excluded area will be refunded or credited to the Purchaser. The nest will be buffered with a five-chain radius (eight acre) protection area, centered on the nest tree, in which there will be no cutting or new roads constructed. Avoid human disturbance, including loading and skidding, in the protection area.

An additional zone of five chains (ten chains centered on the active nest tree) will be established in which there is no management activity from April 1 to July 30. Limit biomass harvesting and chipping operations within this ten-chain zone, retain the maximum one-third of residues per the Woody Biomass Harvesting Guidelines (Michigan DNR 2010). Nests determined to be inactive will be protected with a one-chain no-harvest buffer.



# TIMBER SALE MAP

This information provided by authority of Part 525, 1994 PA 451, as amended.

Forest Management Unit Sault Ste. Marie	County Mackinac	Mapped By Plato	Date 07/20/2023	Page 1	of 1
Township 41N, 42N	Range 11W	Section(s) and Subdivision(s) Sec 5 SENE, NESE Sec 6 S1/2NE, NESE (Sec 31 N1/2SE Sec 32 SENE, NESE)	Scale 1:15,840		

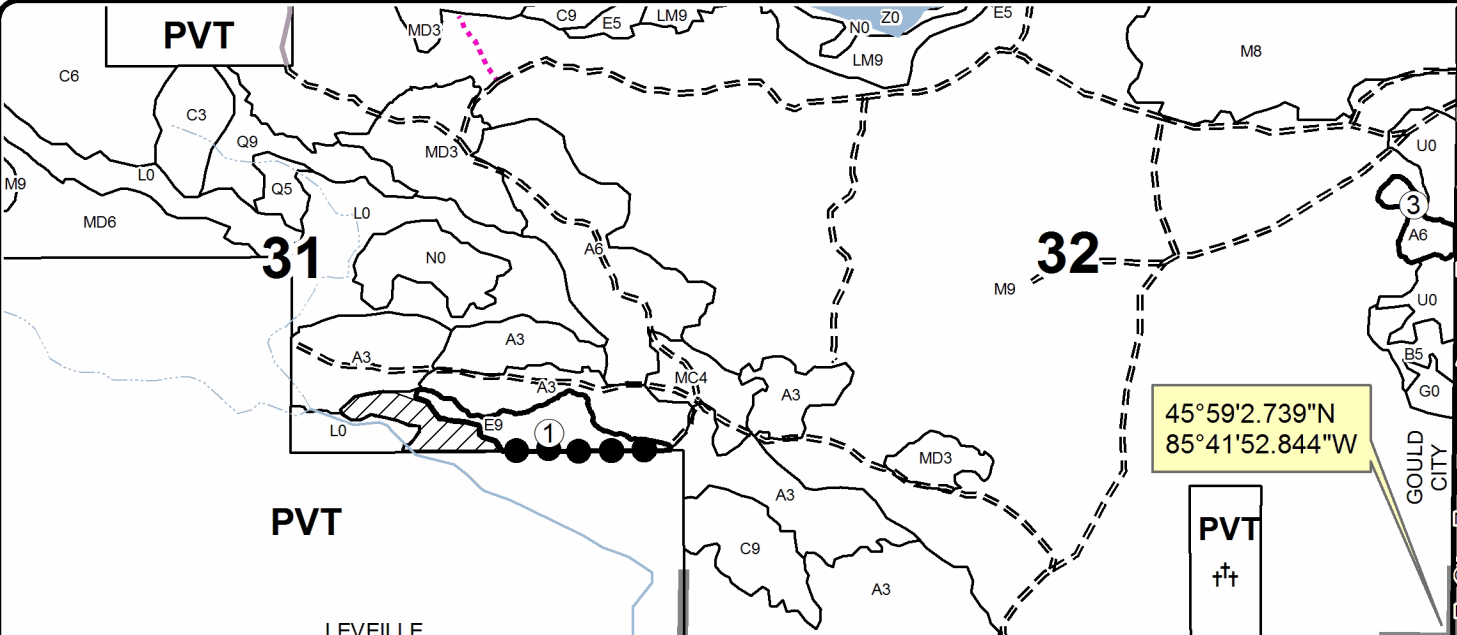
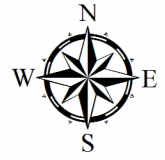
Cover Type				Density	
A = Aspen	H = Hemlock	N = Marsh	U = Upland Brush	0 = Non Stocked	5 = Pole Timber Medium
B = Paper Birch	J = Jack Pine	O = Oak	UM = Upland Mixed	1 = Seedling Sapling Poor	6 = Pole Timber Well
C = Cedar	L = Lowland Brush	P = Lowland Poplar	V = Bog or Marsh	2 = Seedling Sapling Medium	7 = Saw Timber Poor
D = Treed Bog	LM = Lowland Mixed	Q = Mixed Swamp Conifer	W = White Pine	3 = Seedling Sapling Well	8 = Saw Timber Medium
E = Swamp Hdwoods	M = Mpl, Bch, Brch	R = Red Pine	X = Non Stocked	4 = Pole Timber Poor	9 = Saw Timber Well
F = Spruce Fir	MC = Mixed Conifer	S = Black Spruce	Z = Water		
G = Grass	MD = Mixed Deciduous	T = Tamarack			

PU	Acres	PU	Acres
1	7.5	4	20.7
2	17.6		
3	3.4		

## Skeeter Surplus Mix

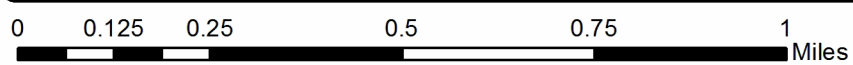
### Compartment 198

#### 49.2 Acres



**Legend**

- == Forest Access Route
- Paved Road
- - Gravel Road
- - Temporary
- Management Access
- ▨ Retention Area
- Against State (Red)
- Private Line (Blue)
- Stand Boundaries
- Section Corners





## TIMBER SALE INFORMATION

Add On HW Mix (45-109-23)

T43N, R08W, SEC. 25; T43N, R08W, SEC. 26; T43N, R08W, SEC. 35.  
Mackinac County (Advertised Price \$17,651.45)

SALE NOTE: A recreation site such as a trail, pathway, or campground is within the sale area or the vicinity. Certain restrictions/specifications may be applicable including time restrictions.

A timber sale contract for this lump sum, sealed bid timber sale will be awarded to the responsible bidder offering the highest sealed bid price. All units of volume listed below were estimated using the Inventory Manager computer program and the new Michigan taper model. Bids must be at or above the following advertised price for each product and species:

<u>PRODUCTS &amp; SPECIES</u>	<u>ESTIMATED UNITS*</u>	<u>ADVERTISED PRICE</u>
Sawtimber		
Red Maple	50.9 MBF	\$ 54.00 / MBF
Sugar Maple	7.1 MBF	\$ 336.00 / MBF
Pulpwood		
Balsam Fir	177 Cords	\$ 8.15 / Cord
Mixed Aspen	229 Cords	\$ 21.35 / Cord
Mixed Hardwood	644 Cords	\$ 7.95 / Cord
Mixed Spruce	105 Cords	\$ 8.65 / Cord
White Pine	14 Cords	\$ 11.25 / Cord

\* The total volume is statistically estimated within plus (+) or minus (-) 12.12 percent. There are an estimated 1,278 cords on this timber sale, plus or minus 155 cords at the 95% confidence level. The estimated units are final and not subject to adjustment. Prospective bidders are urged to examine this timber and to make their own estimates of quantity and quality.

### **BOND AND PAYMENT SCHEDULE:**

1. A bond in the amount of \$1,765.00 to insure faithful performance of the conditions of the contract will be deposited by the successful bidder within 21 days of the sale award.
2. Cutting in any sale or unit without the required advance payment would be considered a trespass.
3. Total payment must be paid in advance or according to the following schedule :
  - (a) Ten percent (10%) of the sale value must be paid within 21 days of the sale award.
  - (b) The 10% down payment will be credited towards the first unit cut.
  - (c) Payment for each of the following units must be made before cutting begins in that unit:
 

PAYMENT UNIT NUMBER	PERCENT OF TOTAL SALE VALUE
01	14.4%
02	30.1%
03	5.0%
04	42.0%
05	4.9%
06	3.6%
4. If no cutting takes place, the 10% down payment will not be refunded.
5. Operations on the contract issued will terminate on 06/30/2028.

### **SALE STATISTICS**

Volumes were calculated in cubic feet using the Michigan taper model. Cubic foot volume includes all wood inside bark for the product indicated. For display purposes, cubic feet were converted to cords and MBF using a simple conversion factor, e.g. 79 cubic feet per cord and 185 cubic feet per MBF. The cubic foot volumes are precise; the cords and MBF volumes are not. Cubic foot volume cannot be directly converted to cords or boards with precision.

### **SALE VOLUMES**

The total estimated sale volume may not equal the sum of the species/products due to the nature of statistical calculations associated with double sampling methodology.

VOLUME			STATISTICAL RANGE IN CORDS	
TOTAL CUBIC FEET	TOTAL CORDS	PERCENT ERROR	MINIMUM	MAXIMUM
100,934	1,278	12.12%	1,123	1,433

## VDU VOLUMES

A VDU is a Volume Determination Unit. Volumes and their associated statistics are calculated at the VDU level and summarized to the sale level. There is often a one to one relationship between a VDU and a Payment Unit, but not always, depending on the cruise design. Refer to the VDU TO PAYMENT UNIT table.

VDU	VOLUME		PERCENT ERROR	RANGE IN CORDS	
	TOTAL CUBIC FEET	TOTAL CORDS		MINIMUM	MAXIMUM
15	5,941	75	57.83%	32	119
16	5,131	65	51.97%	31	99
19	30,084	381	16.93%	316	445
22	6,578	83	54.87%	38	129
31	36,557	463	16.78%	385	540
32	16,643	211	45.19%	115	306
<b>TOTAL:</b>	<b>100,934</b>	<b>1,278</b>		<b>917</b>	<b>1,638</b>

## VDU TO PAYMENT UNIT

When a VDU is associated with more than one Payment Unit (PU), the VDU volumes are assigned to the PU based on acres of the VDU within the PU.

VDU	VDU ACRES	PU	PU ACRES
15	6.5	5	6.5
16	4.1	6	4.1
19	15.4	2	15.4
22	5.4	3	5.4
31	32.6	4	32.6
32	8.1	1	8.1
<b>TOTAL:</b>	<b>72.1</b>		<b>72.1</b>

**DESCRIPTION OF TIMBER BY PAYMENT UNIT (PU)**

PU	MARKET GROUP	PRODUCT	QUANTITY	UNIT	ACRES	ADVERTISE PRICE
1	Balsam Fir	Pulpwood	67	Cords	8.1	\$2,547.75
	Mixed Aspen		60	Cords		
	<i>Quaking Aspen</i>		60	<i>Cords</i>		
	Mixed Hardwood		27	Cords		
	<i>Black Cherry</i>		3	<i>Cords</i>		
	<i>Paper Birch</i>		8	<i>Cords</i>		
	<i>Red Maple</i>		16	<i>Cords</i>		
	Mixed Spruce		52	Cords		
	<i>White Spruce</i>		52	<i>Cords</i>		
	White Pine		5	Cords		
2	Balsam Fir	Pulpwood	90	Cords	15.4	\$5,308.85
	Mixed Aspen		165	Cords		
	<i>B. T. Aspen</i>		73	<i>Cords</i>		
	<i>Quaking Aspen</i>		92	<i>Cords</i>		
	Mixed Hardwood		62	Cords		
	<i>Paper Birch</i>		4	<i>Cords</i>		
	<i>Red Maple</i>		53	<i>Cords</i>		
	<i>Yellow Birch</i>		5	<i>Cords</i>		
	Mixed Spruce		53	Cords		
	<i>Black Spruce</i>		7	<i>Cords</i>		
	<i>White Spruce</i>		46	<i>Cords</i>		
	White Pine		9	Cords		
3	Red Maple	Sawtimber	6.1	MBF	5.4	\$886.90
	Balsam Fir	Pulpwood	5	Cords		
	Mixed Hardwood		65	Cords		
	<i>Beech</i>		10	<i>Cords</i>		
	<i>Paper Birch</i>		5	<i>Cords</i>		
<i>Red Maple</i>	50		<i>Cords</i>			
4	Red Maple	Sawtimber	35.4	MBF	32.6	\$7,408.65
	Sugar Maple	Pulpwood	7.1	MBF		
	Balsam Fir		15	Cords		
	Mixed Hardwood		376	Cords		
	<i>Beech</i>		10	<i>Cords</i>		
	<i>Red Maple</i>		300	<i>Cords</i>		
	<i>Sugar Maple</i>		64	<i>Cords</i>		
	<i>Yellow Birch</i>		2	<i>Cords</i>		
5	Red Maple		Sawtimber	6.0	MBF	6.5
	Mixed Aspen	Pulpwood	4	Cords		
	<i>Quaking Aspen</i>		4	<i>Cords</i>		
	Mixed Hardwood		57	Cords		
	<i>Red Maple</i>		54	<i>Cords</i>		
<i>Sugar Maple</i>	3		<i>Cords</i>			
6	Red Maple	Sawtimber	3.4	MBF	4.1	\$636.75
	Mixed Hardwood	Pulpwood	57	Cords		
	<i>Red Maple</i>		57	<i>Cords</i>		
TOTAL:			58.0	MBF		
TOTAL:			1,169	Cords		

## Sale Specific Conditions & Requirements

Sale Name: Add On HW Mix

Sale Number: 45-109-23 Seq#: 2

### 1 - Sale Area

#### 1.2 - Boundaries

##### 1.2.1 - Painted boundaries (9/19)

The sale boundary and Payment Unit boundaries are marked and identified by red and green paint. Exterior sale boundary lines against state are marked with red paint. Interior Payment Unit boundaries are marked with green paint. Retention patches are marked with red paint; no harvesting activities may occur within these areas. The painted boundary line trees are not Included Timber and are to be protected unless marked with orange paint.

### 2 - Timber Specifications

#### 2.1 - Included Timber

##### 2.1.1 - Clearcut unit(s) with unmerchantable trees (6/14)

Within Payment Unit(s) 1 and 2, cut all deciduous trees that are two (2) inches or more at DBH and all conifer trees that are four (4) inches or more at DBH except, within Payment Unit 2, do not cut cedar, hemlock, or white pine that is marked with red paint.

##### 2.1.3 - Cut tree marked unit(s) (12/08)

Within Payment Unit(s) 3-6, all trees are designated for cutting when marked with orange paint above and below stump height, regardless of merchantability. Also within Payment Units 3-6, all beech may be cut unless marked with red paint. Additionally, within Payment Unit 3, all balsam fir and aspen may be cut unless marked with red paint.

#### 2.2 - Utilization

##### 2.2.9 - No chipping permitted (12/08)

Within Payment Unit(s) 3-6, all wood must be removed by tree segment or roundwood. No chipping is permitted.

### 4 - Transportation

#### 4.1 - Construction

##### 4.1.3 - Slash and earthen piles (8/04)

Piles or windrows of earth along roads and landings that have been widened or constructed shall be leveled. Slash from road maintenance or construction, including stumps, shall be dispersed throughout the sale.

##### 4.1.12 - No new roads (1/12)

No new roads will be permitted in any Payment Unit. All operations are limited to existing roads. Skid trails only will be allowed.

#### 4.2 - Maintenance

##### 4.2.1 - Hauling restriction (12/08)

Hauling is restricted on Hog Island Road. The restriction is a permanent weight restriction. Hauling will be restricted unless permission is granted from Mackinac County Road Commission.

##### 4.2.3 - Road maintenance (8/13)

The following road maintenance is required: Within 60 days of completion of hauling, or if no hauling occurs for 60 days, the road must be maintained and graded. This includes cleaning of drainage areas, grading, crowning and filling with gravel, if necessary. Damages will be assessed if grading/repair does not occur.

##### 4.2.5 - Two wheel drive condition (2/04)

All existing trail roads on and adjacent to the sale area must be passable by two-wheel drive traffic for the duration of the sale.

### 5 - Operations

#### 5.1 - Notification



#### 5.1.6 - Utility R.O.W. (4/19)

It is the responsibility of the Purchaser to obtain permission from the utility company to utilize the Great Lakes Gas Transmission pipeline R.O.W. for operations. Contact TC Energy.

### 5.2 - Conduct of Operations

#### 5.2.2 - Hazard Trees/Snags

##### 5.2.2.1 - Den trees (10/16)

Obvious hollow and/or den trees shall be protected and left standing unless they are a safety hazard.

#### 5.2.3 - Operating Restrictions

##### 5.2.3.1 - Operating restrictions (9/11)

Within Payment Unit(s) 1-6, unless changed by written agreement, cutting and skidding are limited to the period of December 1 to March 31. This restriction is for deer browse within the deer wintering complex.

#### 5.2.32 - Decking/landing restoration (9/13)

All decking and landing areas must have the surface area restored to a condition equal to or better than before. This is to ensure the proper regeneration of the stand. Wood debris, chips and "cookies" from trimmings must be removed or scattered away from landing and loading areas and may not be windrowed on the edge.

#### 5.2.37 - No decking areas (12/08)

No decking is allowed within 50 feet of Hog Island Road without permission of Mackinac County Road Commission.

#### 5.2.38 - No decking against live trees (2/04)

Cut products may not be decked against unmarked or designated leave trees.

#### 5.2.41 - Snowmobile trail protection (9/11)

The Sand Lake Road is a snowmobile trail and is shown on the Timber Sale Map. Do not cut or damage posts with orange trail markers or traffic control signs. If the trail is used, it must be maintained and restored to a condition equal to or better than before the sale. The road maintenance/restoration must be done prior to December 1. If the trail is used for hauling, it must be graded to the satisfaction of the Unit Manager or his/her representative prior to December 1st. If the trail road is to be used for hauling during the snowmobile season, then a snow-covered base must be left on the trail. The snowmobile trail may only be crossed at right angles. Maintain a 20-foot-wide slash, debris, and rut free zone daily using the snowmobile trail as the centerline. No decking of forest products will be permitted along the snowmobile trail. All stumps within 20 feet of the snowmobile trail must be cut at ground level.

### 5.8 - Protection of Endangered Species

#### 5.8.5 - Protection of raptor nests (3/13)

All trees with raptor nests will be protected if found during harvesting operations. Notification will be made to the Unit Manager or his/her representative who will notify the Wildlife Biologist so an on-site evaluation and recommendation can be made, if necessary.

## 6 - Safety and Fire Prevention

### 6.2 - Signing

#### 6.2.1 - Road posting (10/20)

The Purchaser is responsible for posting and maintaining caution signs on Hog Island Road prior to beginning operations. The road must be posted at appropriate distances from the Sale Area to warn of logging activity and truck traffic. Signs must be removed when harvest operations are suspended or completed. The Purchaser will provide these signs.

#### 6.2.2 - Snowmobile trail posting (10/20)

The Purchaser is responsible for posting and maintaining caution signs on the Sand Lake Road snowmobile trail prior to beginning operations during the snowmobile season (approximately December 1 to March 31). The trail must be posted at appropriate distances from the Sale Area to warn of logging activity and truck traffic. Signs must be removed when harvest operations are suspended or completed. The Purchaser will provide these signs.



### TIMBER SALE MAP

This information provided by authority of Part 525, 1994 PA 451, as amended.

Sale Number <b>45-109-23</b>	Date 11/20/2023
Scale 1:15,840	Page 1
	Of 1

Forest Management Unit Sault Ste Marie Mgt Unit	County Mackinac	Mapped By: C. Flatt
		Cruised By: Naubinway DNR Staff

Township 43N	Range 08W	Section(s) and Subdivision(s) Sec. 25 NWNW; Sec. 26 NWNE,S1/2NE,SE; Sec. 35 N1/2NE;
-----------------	--------------	---

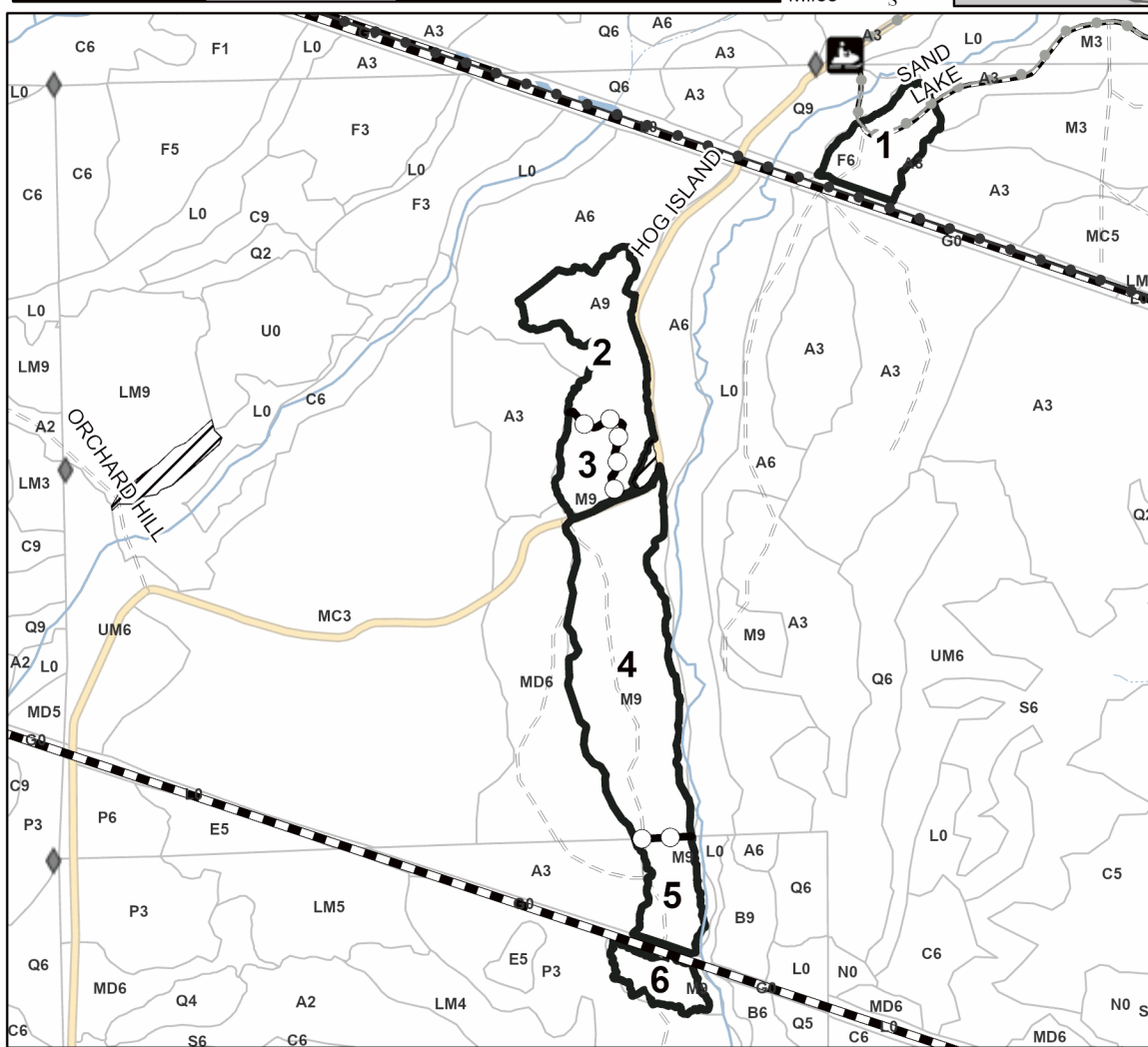
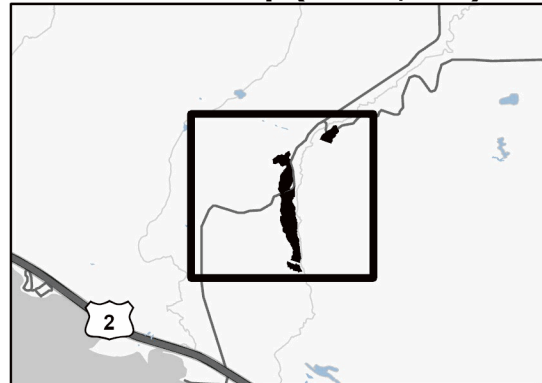
Cover Type			
A = Aspen	J = Jack Pine	O = Oak	U = Upland Brush
B = Paper Birch	K = Rock	P = Lowland Poplar	UM = Upland Mix Forest
C = Cedar	L = Lowland Brush	Q = Mixed Swamp Conifer	V = Bog or Marsh
D = Treed Bog	LM = Lowland Mix Forest	R = Red Pine	W = White Pine
E = Swamp Hardwoods	M = Maple, Beech, Birch	S = Black Spruce	X = Non Stocked
F = Spruce/Fir	MC = Mixed Conifer	T = Tamarack	Y = Sand
G = Grass	MD = Mixed Deciduous	Z = Water	
H = Hemlock	N = Marsh		

Density	
0 = Non Stocked	5 = Pole Timber Medium
1 = Seedling Sapling Poor	6 = Pole Timber Well
2 = Seedling Sapling Medium	7 = Saw Timber Poor
3 = Seedling Sapling Well	8 = Saw Timber Medium
4 = Pole Timber Poor	9 = Saw Timber Well

PU #	Acres	PU #	Acres
1	8.1	4	32.6
2	15.4	5	6.5
3	5.4	6	4.1

**Add On HW Mix**  
**Compartment 143 & 144**  
**72.1 Acres**

### Locator Map (1:200,000)



### Legend

- Against State (Red)
- Payment Unit (Green)
- Stand
- Retention Areas
- Recreational Trail
- Primary Forest Road
- Forest Access Route
- Non-DNR Road
- Pipeline
- Powerline
- Snowmobile
- Field Grade Corner

Use QR Code to open Map in App



## TIMBER SALE INFORMATION

### Double Barrel Mix (45-114-23)

T43N, R08W, SEC. 23; T43N, R08W, SEC. 26; T43N, R08W, SEC. 27.  
Mackinac County (Advertised Price \$17,571.20)

SALE NOTE: A recreation site such as a trail, pathway, or campground is within the sale area or the vicinity. Certain restrictions/specifications may be applicable including time restrictions.

A timber sale contract for this lump sum, sealed bid timber sale will be awarded to the responsible bidder offering the highest sealed bid price. All units of volume listed below were estimated using the Inventory Manager computer program and the new Michigan taper model. Bids must be at or above the following advertised price for each product and species:

<u>PRODUCTS &amp; SPECIES</u>	<u>ESTIMATED UNITS*</u>	<u>ADVERTISED PRICE</u>
Sawtimber		
Red Maple	3.8 MBF	\$ 54.00 / MBF
Pulpwood		
Balsam Fir	181 Cords	\$ 10.25 / Cord
Mixed Aspen	157 Cords	\$ 21.35 / Cord
Mixed Spruce	491 Cords	\$ 11.45 / Cord
N. White Cedar	150 Cords	\$ 5.10 / Cord
Paper Birch	252 Cords	\$ 7.55 / Cord
Red Maple	215 Cords	\$ 13.25 / Cord
Tamarack	20 Cords	\$ 9.40 / Cord
White Pine	74 Cords	\$ 11.25 / Cord

\* The total volume is statistically estimated within plus (+) or minus (-) 28.12 percent. There are an estimated 1,548 cords on this timber sale, plus or minus 435 cords at the 95% confidence level. The estimated units are final and not subject to adjustment. Prospective bidders are urged to examine this timber and to make their own estimates of quantity and quality.

### **BOND AND PAYMENT SCHEDULE:**

1. A bond in the amount of \$1,757.00 to insure faithful performance of the conditions of the contract will be deposited by the successful bidder within 21 days of the sale award.
2. Cutting in any sale or unit without the required advance payment would be considered a trespass.
3. Total payment must be paid in advance or according to the following schedule :
  - (a) Ten percent (10%) of the sale value must be paid within 21 days of the sale award.
  - (b) The 10% down payment will be credited towards the first unit cut.
  - (c) Payment for each of the following units must be made before cutting begins in that unit:
 

PAYMENT UNIT NUMBER	PERCENT OF TOTAL SALE VALUE
01	17.9%
02	7.8%
03	35.1%
04	39.2%
4. If no cutting takes place, the 10% down payment will not be refunded.
5. Operations on the contract issued will terminate on 06/30/2028.

### **SALE STATISTICS**

Volumes were calculated in cubic feet using the Michigan taper model. Cubic foot volume includes all wood inside bark for the product indicated. For display purposes, cubic feet were converted to cords and MBF using a simple conversion factor, e.g. 79 cubic feet per cord and 185 cubic feet per MBF. The cubic foot volumes are precise; the cords and MBF volumes are not. Cubic foot volume cannot be directly converted to cords or boards with precision.

### **SALE VOLUMES**

The total estimated sale volume may not equal the sum of the species/products due to the nature of statistical calculations associated with double sampling methodology.

VOLUME		STATISTICAL RANGE IN CORDS		
TOTAL CUBIC FEET	TOTAL CORDS	PERCENT ERROR	MINIMUM	MAXIMUM
122,271	1,548	28.12%	1,112	1,983

## VDU VOLUMES

A VDU is a Volume Determination Unit. Volumes and their associated statistics are calculated at the VDU level and summarized to the sale level. There is often a one to one relationship between a VDU and a Payment Unit, but not always, depending on the cruise design. Refer to the VDU TO PAYMENT UNIT table.

VDU	VOLUME		PERCENT ERROR	RANGE IN CORDS	
	TOTAL CUBIC FEET	TOTAL CORDS		MINIMUM	MAXIMUM
6	48,561	615	23.41%	471	759
42	11,810	149	46.75%	80	219
58	41,786	529	26.51%	389	669
102	20,114	255	39.76%	153	356
<b>TOTAL:</b>	<b>122,271</b>	<b>1,548</b>		<b>1,092</b>	<b>2,003</b>

## VDU TO PAYMENT UNIT

When a VDU is associated with more than one Payment Unit (PU), the VDU volumes are assigned to the PU based on acres of the VDU within the PU.

VDU	VDU ACRES	PU	PU ACRES
6	34.2	4	34.2
42	7.0	2	7.0
58	15.1	3	15.1
102	11.7	1	11.7
<b>TOTAL:</b>	<b>68.0</b>		<b>68.0</b>

**DESCRIPTION OF TIMBER BY PAYMENT UNIT (PU)**

PU	MARKET GROUP	PRODUCT	QUANTITY	UNIT	ACRES	ADVERTISE PRICE
1	Red Maple	Sawtimber	3.8	MBF	11.7	\$3,141.30
	Balsam Fir	Pulpwood	28	Cords		
	Mixed Aspen		25	Cords		
	<i>B. T. Aspen</i>		6	<i>Cords</i>		
	<i>Quaking Aspen</i>		19	<i>Cords</i>		
	Mixed Spruce		8	Cords		
	<i>Black Spruce</i>		5	<i>Cords</i>		
	<i>White Spruce</i>		3	<i>Cords</i>		
	Paper Birch		75	Cords		
	Red Maple		110	Cords		
2	Balsam Fir		Pulpwood	5	Cords	7.0
	Mixed Aspen	11		Cords		
	<i>Quaking Aspen</i>	11		<i>Cords</i>		
	Mixed Spruce	21		Cords		
	<i>Black Spruce</i>	18		<i>Cords</i>		
	<i>White Spruce</i>	3		<i>Cords</i>		
	N. White Cedar	64		Cords		
	Paper Birch	19		Cords		
	Red Maple	28		Cords		
	3	Balsam Fir		Pulpwood	136	
Mixed Aspen		105	Cords			
<i>Quaking Aspen</i>		105	<i>Cords</i>			
Mixed Spruce		50	Cords			
<i>White Spruce</i>		50	<i>Cords</i>			
N. White Cedar		86	Cords			
Paper Birch		89	Cords			
Red Maple		64	Cords			
4	Balsam Fir	Pulpwood	12	Cords	34.2	\$6,895.70
	Mixed Aspen		16	Cords		
	<i>B. T. Aspen</i>		11	<i>Cords</i>		
	<i>Quaking Aspen</i>		5	<i>Cords</i>		
	Mixed Spruce		412	Cords		
	<i>Black Spruce</i>		412	<i>Cords</i>		
	Paper Birch		69	Cords		
	Red Maple		13	Cords		
	Tamarack		20	Cords		
	White Pine		74	Cords		
	TOTAL:			3.8		
TOTAL:			1,540	Cords		

## Sale Specific Conditions & Requirements

Sale Name: Double Barrel Mix

Sale Number: 45-114-23 Seq#: 2

### 1 - Sale Area

#### 1.2 - Boundaries

##### 1.2.1 - Painted boundaries (9/19)

The sale boundary and Payment Unit boundaries are marked and identified by red paint. Exterior sale boundary lines against state are marked with red paint. The painted boundary line trees are not Included Timber and are to be protected.

### 2 - Timber Specifications

#### 2.1 - Included Timber

##### 2.1.1 - Clearcut unit(s) with unmerchantable trees (6/14)

Within Payment Unit(s) 1-4, cut all deciduous trees that are two (2) inches or more at DBH, and all coniferous trees that are four (4) inches or more at DBH. In addition, the following exceptions apply:

- Within Payment Unit 1, do not cut any cedar, hemlock, yellow birch, or white pine.
- Within Payment Unit 4, do not cut any cedar and do not cut any white pine over 14 inches at DBH.

#### 2.2 - Utilization

##### 2.2.9 - No chipping permitted (12/08)

Within Payment Unit(s) 1-4, all wood must be removed by whole tree, tree segment, or roundwood. No chipping is permitted.

### 4 - Transportation

#### 4.1 - Construction

##### 4.1.3 - Slash and earthen piles (8/04)

Piles or windrows of earth along roads and landings that have been widened or constructed shall be leveled. Slash from road maintenance or construction, including stumps, shall be dispersed throughout the sale.

##### 4.1.6 - Road construction (1/09)

Construction of new roads or improvements of existing roads shall be done in such a way as to minimize the environmental and visual impacts. Merchantable trees shall be cut and utilized unless otherwise directed. Non-merchantable trees shall be severed and laid flat on the ground. Slash shall be scattered, and not left in windrows and kept a minimum of 10 feet back from the road edge. Stumps shall be set upright, not left on edge, and be moved at least 10 feet away from the road edge. Disturbed soil shall be feathered into the woods and not left in berms or windrows.

##### 4.1.7 - Road closure (10/11)

All new roads built into the sale must be blocked to vehicle traffic upon completion of the sale. In general, this will require constructing a four (4') foot high berm of stumps and logs covered with earth. These roads must be rendered impassable to cars and trucks. Contact the Sale Administrator for specific details of design and placement.

#### 4.2 - Maintenance

##### 4.2.1 - Hauling restriction (12/08)

Hauling is restricted on Hog Island Road. The restriction is a permanent weight restriction. Hauling will be restricted unless permission is granted from Mackinac County Road Commission.

##### 4.2.3 - Road maintenance (8/13)

The following road maintenance may be needed: Within 60 days of completion of hauling, or if no hauling occurs for 60 days, the road must be maintained and graded. This includes cleaning of drainage areas, grading, crowning and filling with gravel, if necessary. Damages will be assessed if grading/repair does not occur.

##### 4.2.5 - Two wheel drive condition (2/04)

All existing trail roads on and adjacent to the sale area must be passable by two-wheel drive traffic for the duration of the sale.

## 5 - Operations

### 5.2 - Conduct of Operations

#### 5.2.2 - Hazard Trees/Snags

##### 5.2.2.1 - Den trees (10/16)

Obvious hollow and/or den trees shall be protected and left standing unless they are a safety hazard.

#### 5.2.3 - Operating Restrictions

##### 5.2.3.1 - Operating restrictions (9/11)

Within Payment Unit(s) 1-4, unless changed by written agreement, cutting and skidding are limited to the period of December 1st to April 15th. This restriction is because of deer yard.

#### 5.2.4 - Dead and Down Creation

##### 5.2.4.6 - Dead and down creation, other (9/09)

To improve habitat for wildlife, the Purchaser is to leave one brush pile on the ground for every two acres within Payment Unit 4. Piles must be at least 4 feet tall and scattered throughout the Sale Area. These piles can be created during normal harvesting procedures.

##### 5.2.32 - Decking/landing restoration (9/13)

All decking and landing areas must have the surface area restored to a condition equal to or better than before. This is to ensure the proper regeneration of the stand. Wood debris, chips and "cookies" from trimmings must be removed or scattered away from landing and loading areas and may not be windrowed on the edge.

##### 5.2.38 - No decking against live trees (2/04)

Cut products may not be decked against unmarked or designated leave trees.

##### 5.2.41 - Snowmobile trail protection (9/11)

Sand Lake Road (Trail #473) is shown on the Timber Sale Map. Do not cut or damage posts with orange trail markers or traffic control signs. If the trail is used, it must be maintained and restored to a condition equal to or better than before the sale. The road maintenance/restoration must be done prior to December 1. If the trail is used for hauling, it must be graded to the satisfaction of the Unit Manager or his/her representative prior to December 1st. If the trail road is to be used for hauling during the snowmobile season, then a snow-covered base must be left on the trail. Maintain a 20-foot-wide slash, debris, and rut free zone daily using the snowmobile trail as the centerline. No decking of forest products will be permitted along the snowmobile trail.

### 5.8 - Protection of Endangered Species

#### 5.8.5 - Protection of raptor nests (3/13)

All trees with raptor nests will be protected if found during harvesting operations. Notification will be made to the Unit Manager or his/her representative who will notify the Wildlife Biologist so an on-site evaluation and recommendation can be made, if necessary.

## 6 - Safety and Fire Prevention

### 6.2 - Signing

#### 6.2.1 - Road posting (10/20)

The Purchaser is responsible for posting and maintaining caution signs on roads used for harvesting operations and hauling prior to beginning operations. The road must be posted at appropriate distances from the Sale Area to warn of logging activity and truck traffic. Signs must be removed when harvest operations are suspended or completed. The Purchaser will provide these signs.

#### 6.2.2 - Snowmobile trail posting (10/20)

The Purchaser is responsible for posting and maintaining caution signs on Sand Lake Road (Trail #473) prior to beginning operations during the snowmobile season (approximately December 1 to March 31). The trail must be posted at appropriate distances from the Sale Area to warn of logging activity and truck traffic. Signs must be removed when harvest operations are suspended or completed. The Purchaser will provide these signs.









Double Barrel Mix (45-114-23)  
T43N, R08W, SEC. 23; T43N, R08W, SEC. 26; T43N, R08W, SEC. 27; Mackinac

In response to the notice of sale to be held 3:00 p.m. (local time) on September 17, 2024, I am hereby submitting my sealed bid (firm offer) for the following forest products to be cut. Bids for individual species must be at or above the advertised price. All non-responsive bid forms may be rejected.

<u>PRODUCTS &amp; SPECIES</u>	<u>ESTIMATED VOLUME*</u>	<u>ADVERTISED PRICE</u>	<u>BID PRICE/UNIT</u>
<b>Sawtimber</b>			
Red Maple	3.8 MBF	\$ 54.00/MBF	\$ _____
<b>Pulpwood</b>			
Balsam Fir	181 Cords	\$ 10.25/Cord	\$ _____
Mixed Aspen	157 Cords	\$ 21.35/Cord	\$ _____
Mixed Spruce	491 Cords	\$ 11.45/Cord	\$ _____
N. White Cedar	150 Cords	\$ 5.10/Cord	\$ _____
Paper Birch	252 Cords	\$ 7.55/Cord	\$ _____
Red Maple	215 Cords	\$ 13.25/Cord	\$ _____
Tamarack	20 Cords	\$ 9.40/Cord	\$ _____
White Pine	74 Cords	\$ 11.25/Cord	\$ _____

\*The volumes are statistically estimated within plus (+) or minus (-) 28.12 percent at 95% confidence level. These estimated volumes are final and not subject to adjustment. Prospective bidders are urged to examine this timber and to make their own estimates of quantity and quality.

I understand that any or all bids may be rejected. All bids must be signed and all bid items must be bid or the bid form may be rejected. I also understand that consideration and awarding a contract will be based upon my past performance and ability to complete the contract based upon equipment and staffing subject to my control.

FEDERAL ID: \_\_\_\_ - \_\_\_\_ - \_\_\_\_ or SOCIAL SECURITY NUMBER: \_\_\_\_ - \_\_\_\_ - \_\_\_\_

Company or individual bidding: \_\_\_\_\_

Company representative's name: \_\_\_\_\_

Address: \_\_\_\_\_

City: \_\_\_\_\_ State: \_\_\_\_\_ Zip: \_\_\_\_\_

IF AVAILABLE, PLEASE PLACE THE PERSONALIZED LABEL FROM YOUR PROSPECTUS IN THE ABOVE BOX.

Individual or company representative's signature: \_\_\_\_\_ Date: \_\_\_\_\_

Phone number : \_\_\_\_\_ Email (optional): \_\_\_\_\_

**THE WINNING BIDDER MUST COMPLETE THE VERIFICATION OF WORKER'S DISABILITY COMPENSATION ACT COMPLIANCE (ON REVERSE SIDE IF DOUBLE SIDED) WITHIN 21 DAYS OF SALE AWARD DATE**



FOR DEPARTMENT USE ONLY	
Sale Number (XX - XXX - XX - XX)	
Forest Management Unit:	

## TIMBER SALE VERIFICATION OF WORKER'S DISABILITY COMPENSATION ACT COMPLIANCE

As required by Act 317, P.A. 1969 (Worker's Compensation) and  
Part 5 of Act 451 of 1994, as amended.

### VERIFICATION OF WORKER'S DISABILITY COMPENSATION ACT COMPLIANCE

- This verification must be completed and submitted within 21 days of contract award and prior to the issuance of the timber sale contract.
- In addition, if boxes 2B or 2C are checked, then Notice of Exclusion or Certificate of Insurance must be submitted within twenty-one (21) days of the contract award and prior to the issuance of the timber sale contract.
- All information must be typed or printed except for written signatures.

Please Check Appropriate Categories:

1. My business is organized as (you **must** check one of the boxes below):
  - A.  Sole Proprietorship (individual)
  - B.  Partnership
  - C.  Corporation
2. You **must** check one of the boxes below:
  - A.  I certify my business is a sole proprietorship and it has no employees but the sole proprietor. I am not subject to the Worker's Compensation Laws.
  - B.  I certify my business has satisfied its obligation to the Worker's Compensation Act through the use of an approved Notice of Exclusion (BWC-337, Rev. 5/96). I will provide a copy of the Notice of Exclusion within 21 days of the contract award. (For questions or a copy of the BWC-337, please call the Worker's Compensation Bureau at 517-322-1195).
  - C.  I certify my business has a Worker's Compensation Policy. I will provide an original Certificate of Insurance within twenty-one (21) days of the contract award.
3. If you have checked item 2(A) or 2(B), you **must** indicate the number of **both** full-time and part-time employees, other than yourself, including family members and active partners (if none, you must enter "0").

\_\_\_\_\_ Full-time Employees

\_\_\_\_\_ Part-time Employees

Name of Business		Federal ID (or) Social Security No.	
Address		Telephone (       )	
City	State	ZIP	

*I hereby certify that the above information is true and correct. I agree to notify the Michigan DNR of any changes that occur in factors affecting my coverage during any of my present and future operations.*

\_\_\_\_\_  
Signature of Owner or Authorized Representative

\_\_\_\_\_  
Title

\_\_\_\_\_  
Date

Please complete the "SEALED BID" information on the next page

Add On HW Mix (45-109-23)

T43N, R08W, SEC. 25; T43N, R08W, SEC. 26; T43N, R08W, SEC. 35; Mackinac

In response to the notice of sale to be held 3:00 p.m. (local time) on September 17, 2024, I am hereby submitting my sealed bid (firm offer) for the following forest products to be cut. Bids for individual species must be at or above the advertised price. All non-responsive bid forms may be rejected.

<u>PRODUCTS &amp; SPECIES</u>	<u>ESTIMATED VOLUME*</u>	<u>ADVERTISED PRICE</u>	<u>BID PRICE/UNIT</u>
<b>Sawtimber</b>			
Red Maple	50.9 MBF	\$ 54.00/MBF	\$ _____
Sugar Maple	7.1 MBF	\$ 336.00/MBF	\$ _____
<b>Pulpwood</b>			
Balsam Fir	177 Cords	\$ 8.15/Cord	\$ _____
Mixed Aspen	229 Cords	\$ 21.35/Cord	\$ _____
Mixed Hardwood	644 Cords	\$ 7.95/Cord	\$ _____
Mixed Spruce	105 Cords	\$ 8.65/Cord	\$ _____
White Pine	14 Cords	\$ 11.25/Cord	\$ _____

\*The volumes are statistically estimated within plus (+) or minus (-) 12.12 percent at 95% confidence level. These estimated volumes are final and not subject to adjustment. Prospective bidders are urged to examine this timber and to make their own estimates of quantity and quality.

I understand that any or all bids may be rejected. All bids must be signed and all bid items must be bid or the bid form may be rejected. I also understand that consideration and awarding a contract will be based upon my past performance and ability to complete the contract based upon equipment and staffing subject to my control.

FEDERAL ID: \_\_\_\_\_ or SOCIAL SECURITY NUMBER: \_\_\_\_\_  
 Company or individual bidding: \_\_\_\_\_  
 Company representative's name: \_\_\_\_\_  
 Address: \_\_\_\_\_  
 City: \_\_\_\_\_ State: \_\_\_\_\_ Zip: \_\_\_\_\_

IF AVAILABLE, PLEASE PLACE THE PERSONALIZED LABEL FROM YOUR PROSPECTUS IN THE ABOVE BOX.

Individual or company representative's signature: \_\_\_\_\_ Date: \_\_\_\_\_  
Phone number : \_\_\_\_\_ Email (optional): \_\_\_\_\_

**THE WINNING BIDDER MUST COMPLETE THE VERIFICATION OF WORKER'S DISABILITY COMPENSATION ACT COMPLIANCE (ON REVERSE SIDE IF DOUBLE SIDED) WITHIN 21 DAYS OF SALE AWARD DATE**



FOR DEPARTMENT USE ONLY	
Sale Number (XX - XXX - XX - XX)	
Forest Management Unit:	

## TIMBER SALE VERIFICATION OF WORKER'S DISABILITY COMPENSATION ACT COMPLIANCE

As required by Act 317, P.A. 1969 (Worker's Compensation) and  
Part 5 of Act 451 of 1994, as amended.

### VERIFICATION OF WORKER'S DISABILITY COMPENSATION ACT COMPLIANCE

- This verification must be completed and submitted within 21 days of contract award and prior to the issuance of the timber sale contract.
- In addition, if boxes 2B or 2C are checked, then Notice of Exclusion or Certificate of Insurance must be submitted within twenty-one (21) days of the contract award and prior to the issuance of the timber sale contract.
- All information must be typed or printed except for written signatures.

Please Check Appropriate Categories:

1. My business is organized as (you **must** check one of the boxes below):
  - A.  Sole Proprietorship (individual)
  - B.  Partnership
  - C.  Corporation
2. You **must** check one of the boxes below:
  - A.  I certify my business is a sole proprietorship and it has no employees but the sole proprietor. I am not subject to the Worker's Compensation Laws.
  - B.  I certify my business has satisfied its obligation to the Worker's Compensation Act through the use of an approved Notice of Exclusion (BWC-337, Rev. 5/96). I will provide a copy of the Notice of Exclusion within 21 days of the contract award. (For questions or a copy of the BWC-337, please call the Worker's Compensation Bureau at 517-322-1195).
  - C.  I certify my business has a Worker's Compensation Policy. I will provide an original Certificate of Insurance within twenty-one (21) days of the contract award.
3. If you have checked item 2(A) or 2(B), you **must** indicate the number of **both** full-time and part-time employees, other than yourself, including family members and active partners (if none, you must enter "0").

\_\_\_\_\_ Full-time Employees

\_\_\_\_\_ Part-time Employees

Name of Business		Federal ID (or) Social Security No.	
Address		Telephone (       )	
City	State	ZIP	

*I hereby certify that the above information is true and correct. I agree to notify the Michigan DNR of any changes that occur in factors affecting my coverage during any of my present and future operations.*

\_\_\_\_\_  
Signature of Owner or Authorized Representative

\_\_\_\_\_  
Title

\_\_\_\_\_  
Date

Please complete the "SEALED BID" information on the next page

Mega Pint Mix (45-107-24)

T43N, R06W, SEC. 10; T43N, R06W, SEC. 11; T43N, R06W, SEC. 2; Mackinac

In response to the notice of sale to be held 3:00 p.m. (local time) on September 17, 2024, I am hereby submitting my sealed bid (firm offer) for the following forest products to be cut. Bids for individual species must be at or above the advertised price. All non-responsive bid forms may be rejected.

<u>PRODUCTS &amp; SPECIES</u>	<u>ESTIMATED VOLUME*</u>	<u>ADVERTISED PRICE</u>	<u>BID PRICE/UNIT</u>
<b>Sawtimber</b>			
Red Maple	12.5 MBF	\$ 90.00/MBF	\$ _____
<b>Pulpwood</b>			
Balsam Fir	303 Cords	\$ 10.30/Cord	\$ _____
Jack Pine	65 Cords	\$ 31.80/Cord	\$ _____
Misc. Species 1	2.4 Acres	\$ 15.00/Acres	\$ _____
Mixed Aspen	259 Cords	\$ 25.05/Cord	\$ _____
Mixed Hardwood	544 Cords	\$ 13.35/Cord	\$ _____
Mixed Spruce	501 Cords	\$ 11.55/Cord	\$ _____
N. White Cedar	259 Cords	\$ 5.00/Cord	\$ _____
Paper Birch	177 Cords	\$ 7.60/Cord	\$ _____
Red Pine	49 Cords	\$ 56.55/Cord	\$ _____
Tamarack	76 Cords	\$ 9.40/Cord	\$ _____
White Pine	247 Cords	\$ 22.30/Cord	\$ _____

\*The volumes are statistically estimated within plus (+) or minus (-) 26.72 percent at 95% confidence level. These estimated volumes are final and not subject to adjustment. Prospective bidders are urged to examine this timber and to make their own estimates of quantity and quality.

I understand that any or all bids may be rejected. All bids must be signed and all bid items must be bid or the bid form may be rejected. I also understand that consideration and awarding a contract will be based upon my past performance and ability to complete the contract based upon equipment and staffing subject to my control.

FEDERAL ID: \_\_\_\_ - \_\_\_\_ - \_\_\_\_ or SOCIAL SECURITY NUMBER: \_\_\_\_ - \_\_\_\_ - \_\_\_\_

Company or individual bidding: \_\_\_\_\_

Company representative's name: \_\_\_\_\_

Address: \_\_\_\_\_

City: \_\_\_\_\_ State: \_\_\_\_\_ Zip: \_\_\_\_\_

IF AVAILABLE, PLEASE PLACE THE PERSONALIZED LABEL FROM YOUR PROSPECTUS IN THE ABOVE BOX.

Individual or company representative's signature: \_\_\_\_\_ Date: \_\_\_\_\_

Phone number : \_\_\_\_\_ Email (optional): \_\_\_\_\_

**THE WINNING BIDDER MUST COMPLETE THE VERIFICATION OF WORKER'S DISABILITY COMPENSATION ACT COMPLIANCE (ON REVERSE SIDE IF DOUBLE SIDED) WITHIN 21 DAYS OF SALE AWARD DATE**



<b>FOR DEPARTMENT USE ONLY</b>	
Sale Number (XX - XXX - XX - XX)	
Forest Management Unit:	

# TIMBER SALE VERIFICATION OF WORKER'S DISABILITY COMPENSATION ACT COMPLIANCE

As required by Act 317, P.A. 1969 (Worker's Compensation) and  
Part 5 of Act 451 of 1994, as amended.

## VERIFICATION OF WORKER'S DISABILITY COMPENSATION ACT COMPLIANCE

- This verification must be completed and submitted within 21 days of contract award and prior to the issuance of the timber sale contract.
- In addition, if boxes 2B or 2C are checked, then Notice of Exclusion or Certificate of Insurance must be submitted within twenty-one (21) days of the contract award and prior to the issuance of the timber sale contract.
- All information must be typed or printed except for written signatures.

Please Check Appropriate Categories:

1. My business is organized as (you **must** check one of the boxes below):
  - A.  Sole Proprietorship (individual)
  - B.  Partnership
  - C.  Corporation
2. You **must** check one of the boxes below:
  - A.  I certify my business is a sole proprietorship and it has no employees but the sole proprietor. I am not subject to the Worker's Compensation Laws.
  - B.  I certify my business has satisfied its obligation to the Worker's Compensation Act through the use of an approved Notice of Exclusion (BWC-337, Rev. 5/96). I will provide a copy of the Notice of Exclusion within 21 days of the contract award. (For questions or a copy of the BWC-337, please call the Worker's Compensation Bureau at 517-322-1195).
  - C.  I certify my business has a Worker's Compensation Policy. I will provide an original Certificate of Insurance within twenty-one (21) days of the contract award.
3. If you have checked item 2(A) or 2(B), you **must** indicate the number of **both** full-time and part-time employees, other than yourself, including family members and active partners (if none, you must enter "0").

\_\_\_\_\_ Full-time Employees

\_\_\_\_\_ Part-time Employees

Name of Business		Federal ID (or) Social Security No.	
Address		Telephone (       )	
City	State	ZIP	

*I hereby certify that the above information is true and correct. I agree to notify the Michigan DNR of any changes that occur in factors affecting my coverage during any of my present and future operations.*

\_\_\_\_\_  
Signature of Owner or Authorized Representative

\_\_\_\_\_  
Title

\_\_\_\_\_  
Date

Please complete the "SEALED BID" information on the next page



Skeeter Surplus Mix (45-105-23)

T41N, R11W, SEC. 5; T41N, R11W, SEC. 6; T42N, R11W, SEC. 31; T42N, R11W,

In response to the notice of sale to be held 3:00 p.m. (local time) on September 17, 2024, I am hereby submitting my sealed bid (firm offer) for the following forest products to be cut. Bids for individual species must be at or above the advertised price. All non-responsive bid forms may be rejected.

<u>PRODUCTS &amp; SPECIES</u>	<u>ESTIMATED VOLUME*</u>	<u>ADVERTISED PRICE</u>	<u>BID PRICE/UNIT</u>
<b>Sawtimber</b>			
Paper Birch	0.7 MBF	\$ 9.00/MBF	\$ _____
Red Maple	54.5 MBF	\$ 25.00/MBF	\$ _____
Sugar Maple	4.6 MBF	\$ 157.00/MBF	\$ _____
Yellow Birch	54.0 MBF	\$ 2.00/MBF	\$ _____
<b>Pulpwood</b>			
Balsam Fir	47 Cords	\$ 3.80/Cord	\$ _____
Hemlock	34 Cords	\$ 1.00/Cord	\$ _____
Mixed Aspen	148 Cords	\$ 9.95/Cord	\$ _____
Mixed Hardwood	447 Cords	\$ 3.70/Cord	\$ _____
Mixed Spruce	40 Cords	\$ 4.05/Cord	\$ _____
Paper Birch	23 Cords	\$ 1.30/Cord	\$ _____
Tamarack	4 Cords	\$ 1.00/Cord	\$ _____
White Pine	31 Cords	\$ 5.25/Cord	\$ _____

\*The volumes are statistically estimated within plus (+) or minus (-) 14.87 percent at 95% confidence level. These estimated volumes are final and not subject to adjustment. Prospective bidders are urged to examine this timber and to make their own estimates of quantity and quality.

I understand that any or all bids may be rejected. All bids must be signed and all bid items must be bid or the bid form may be rejected. I also understand that consideration and awarding a contract will be based upon my past performance and ability to complete the contract based upon equipment and staffing subject to my control.

FEDERAL ID: \_\_\_\_ - \_\_\_\_ - \_\_\_\_ or SOCIAL SECURITY NUMBER: \_\_\_\_ - \_\_\_\_ - \_\_\_\_

Company or individual bidding: \_\_\_\_\_

Company representative's name: \_\_\_\_\_

Address: \_\_\_\_\_

City: \_\_\_\_\_ State: \_\_\_\_\_ Zip: \_\_\_\_\_

IF AVAILABLE, PLEASE PLACE THE PERSONALIZED LABEL FROM YOUR PROSPECTUS IN THE ABOVE BOX.

Individual or company representative's signature: \_\_\_\_\_ Date: \_\_\_\_\_

Phone number : \_\_\_\_\_ Email (optional): \_\_\_\_\_

**THE WINNING BIDDER MUST COMPLETE THE VERIFICATION OF WORKER'S DISABILITY COMPENSATION ACT COMPLIANCE (ON REVERSE SIDE IF DOUBLE SIDED) WITHIN 21 DAYS OF SALE AWARD DATE**



<b>FOR DEPARTMENT USE ONLY</b>	
Sale Number (XX - XXX - XX - XX)	
Forest Management Unit:	

## TIMBER SALE VERIFICATION OF WORKER'S DISABILITY COMPENSATION ACT COMPLIANCE

As required by Act 317, P.A. 1969 (Worker's Compensation) and  
Part 5 of Act 451 of 1994, as amended.

### VERIFICATION OF WORKER'S DISABILITY COMPENSATION ACT COMPLIANCE

- This verification must be completed and submitted within 21 days of contract award and prior to the issuance of the timber sale contract.
- In addition, if boxes 2B or 2C are checked, then Notice of Exclusion or Certificate of Insurance must be submitted within twenty-one (21) days of the contract award and prior to the issuance of the timber sale contract.
- All information must be typed or printed except for written signatures.

Please Check Appropriate Categories:

1. My business is organized as (you **must** check one of the boxes below):
  - A.  Sole Proprietorship (individual)
  - B.  Partnership
  - C.  Corporation
2. You **must** check one of the boxes below:
  - A.  I certify my business is a sole proprietorship and it has no employees but the sole proprietor. I am not subject to the Worker's Compensation Laws.
  - B.  I certify my business has satisfied its obligation to the Worker's Compensation Act through the use of an approved Notice of Exclusion (BWC-337, Rev. 5/96). I will provide a copy of the Notice of Exclusion within 21 days of the contract award. (For questions or a copy of the BWC-337, please call the Worker's Compensation Bureau at 517-322-1195).
  - C.  I certify my business has a Worker's Compensation Policy. I will provide an original Certificate of Insurance within twenty-one (21) days of the contract award.
3. If you have checked item 2(A) or 2(B), you **must** indicate the number of **both** full-time and part-time employees, other than yourself, including family members and active partners (if none, you must enter "0").

\_\_\_\_\_ Full-time Employees

\_\_\_\_\_ Part-time Employees

Name of Business		Federal ID (or) Social Security No.	
Address		Telephone (       )	
City	State	ZIP	

*I hereby certify that the above information is true and correct. I agree to notify the Michigan DNR of any changes that occur in factors affecting my coverage during any of my present and future operations.*

\_\_\_\_\_  
Signature of Owner or Authorized Representative

\_\_\_\_\_  
Title

\_\_\_\_\_  
Date

Please complete the "SEALED BID" information on the next page