



**DEPARTMENT OF NATURAL RESOURCES  
STATE OF MICHIGAN  
TIMBER SALE PROSPECTUS #7377**

**SCHEDULED SALE DATE AND TIME: 9:00 a.m. (local time) on February 15, 2024.**

**LOCATION: PIGEON RIVER COUNTRY MGMT UNIT, PO BOX 456, 9966 TWIN LAKES ROAD, VANDERBILT, MI 49795.**

**PROSPECTUS NOTE:** The bidder is advised to inspect the sale area and review the location, estimated volumes, operating costs and contract terms of proposed sales. Please be aware that some landowners may request 60 days or more notice for access across their land.

Notice is hereby given that bids will be received by the Unit Manager, PIGEON RIVER COUNTRY MANAGEMENT UNIT, for certain timber on the following described lands:

Cord Voldemort (53-009-23) / T32N, R01E, SEC. 19, S1/2SW,SE.

T32N, R01E, SEC. 30, NWNW,NWNE.

Montmorency County, Advertised Price \$23,538.45, 45.7 Acres, Aspen, Red Pine.

Jack and Piante (53-010-23) / T32N, R01E, SEC. 20, SENW,S1/2NE.

Montmorency County, Advertised Price \$6,566.30, 33.1 Acres, Jack Pine, Hardwood.

The Silence of the Limbs (53-024-23) / T32N, R01W, SEC. 14, SWNW,NWSW.

Otsego County, Advertised Price \$10,485.20, 27.6 Acres, Aspen, Jack Pine.

SALE NOTE: See Oak Wilt restriction and Pathway Protection for the Shore to Shore Horse Trail.

A recreation site such as a trail, pathway, or campground is within the sale area or the vicinity. Certain restrictions/specifications may be applicable including time restrictions.

## BID INSTRUCTIONS (VER. 10/10/2022):

### 1. Scheduled Bid Location, Date, and Time (2/11)

Bids must be received by the Unit Manager, PIGEON RIVER COUNTRY OFFICE, PO Box 456 9966 Twin Lakes Road, Vanderbilt, MI 49795, no later than 9:00 a.m. (local time) on February 15, 2024. For further information concerning this sale, contact Mark Monroe at 989-983-4101 extension .

### 2. Bidder's Qualifications (10/22)

If all or part of a timber sale was prepared by a private contractor, the contractor and that contractor's company are not permitted to bid on the timber sale. A person must be 18 years of age or older to purchase timber. Permanent employees of the Department of Natural Resources or members of their immediate household may not bid. Former employees, in the permanent or seasonal class, may not bid until 3 months after the last day of active duty. Bids will not be accepted from individuals or companies appearing on the DNR/FRD No-Bid List. This list contains the names of purchasers who previously failed to execute a contract within 21-days or who have a history of poor performance.

### 3. Preparation of Sealed Bids (5/16)

Bid Forms may be completed online thru Michigan DNR Timber Sale Online Bidding (OLB) at [www.michigan.gov/timberbidding](http://www.michigan.gov/timberbidding) or by completing the hardcopy Bid Form found in the Timber Sale Prospectus . Hardcopy Bid Forms shall be manually signed in ink. Registration in OLB is considered your 'signature' for all bids submitted thru that system. Bid prices must be entered for each species and product in the Bid Price column for all material subject to bidding and all fill-in blanks must be completed. If erasures or other changes appear on the hardcopy Bid Form, each erasure or change must be initialed by the person signing the bid.

### 4. Submission of Sealed Bids (5/16)

Bid forms may be obtained from the Unit Manager or thru OLB. Bids may be submitted hardcopy or thru OLB. All hardcopy bids must be submitted on the bid form and in an envelope clearly identified as described in this section. NOTE: Only one bid form per bid envelope. Sealed bids must be submitted to the Unit office designated in the prospectus and must be submitted at or prior to the time established in the prospectus. The envelope should show on the outside (a) the sale name or number and (b) the date and time of bid opening, as shown in the prospectus. Bids received after the time specified in the sale prospectus are late bids and will be rejected.

It is possible for a bidder to submit multiple bids on a single sale. For example, a bid may be submitted hardcopy and a bid may be submitted thru OLB. Or, two bidders from the same company could both submit bids on the same sale. If this were to happen, the State would accept all bids received and award the contract accordingly. All bidding and contractual requirements would apply to all bids received.

### 5. Public Opening of Sealed Bids (7/16)

If conditions permit, the sealed bids will be publicly opened and posted at the time and place set in the prospectus.

If a bidder, present at a bid opening, has submitted bids on more than one sale, that bidder may withdraw their unopened bid envelopes or announce the withdrawal of their online bid after being declared the successful bidder on one sale.

### 6. Award of Contract (1/11)

Award of the contract will be made to the Bidder whose bid, conforming to the prospectus, is most advantageous to the State of Michigan on the basis of total value at rates bid for the estimated quantities. The State reserves the right to reject any bid or waive any minor irregularity in bids received. A written award mailed (or otherwise furnished) to the successful Bidder shall be deemed to result in a binding contract without further action by either party.

### 7. Down Payment (1/11)

The Bidder to whom award is made must make a down payment within 21 days of the sale award. The amount of the down payment will be calculated as shown in the Bond and Payment Schedule of this prospectus. Only cash may be used to meet this requirement.

### 8. Performance Security (1/11)

As guarantee of faithful performance, a cash bond, certificate of deposit, surety bond or irrevocable letter of credit (LOC) is required within 21 days of the sale award. The amount of the performance security is shown in the Bond and

Payment Schedule of this prospectus. If an LOC or surety is used, the coverage must extend for at least 6 months beyond the contract expiration.

#### 9. Worker's Compensation (10/22)

Purchaser shall obtain worker's compensation insurance to cover claims under Michigan's Worker's Disability Compensation Act of 1969 or similar employee benefit act of any other state applicable to an employee. Verification of Worker's Disability Compensation Act Compliance must be completed and submitted within 21 days of contract award and prior to the issuance of the timber sale contract. In addition, if applicable, Notice of Exclusion or Certificate of Insurance must also be submitted.

#### 10. Timber Sale Contract (10/22)

Additional conditions and requirements common to all timber sales are listed on the timber sale contract (R4031) and are available on line at [www.michigan.gov/timber](http://www.michigan.gov/timber). Contact the Unit Manager for additional information or a sample contract. Within 21 days of the date of the award letter, the bidder must sign the contract and provide the required down payment, performance security, and verification of worker's disability compensation. The down payment and performance security shall be in accordance with the provisions of the timber sale contract, in the sums stated in this prospectus. If these actions are not taken, then the Bidder, the Bidder's corporation, and the corporation's principals may not be permitted to bid on State timber sales for a period of 3 months after the first offense, 6 months after the second offense, and 1 year after the third offense. An offense will only be counted against the Bidder for 5 years. In addition, the Bidder certifies that if awarded this contract, the Bidder will complete the timber sale contract in accordance with its terms and any modifications thereof including requirements to purchase, cut, and remove the included timber by the expiration date.

Payment Unit values in the State Forest Timber Sale Contract are calculated based on the advertised value of the Payment Unit as a percentage of the total advertised value of the contract. The advertised value of each Payment Unit is given in the Description of Timber by Payment Unit table on the Timber Sale Information page. For example, if the value of Payment Unit 1 is advertised as \$1,500 and the total Timber Sale value is advertised as \$10,000, the contract price for Payment Unit 1 will be 15% of the total bid price ( $\$1,500/\$10,000 * 100$ ).

#### 11. Disclaimer of Estimates and Bidder's Warranty of Inspection (10/22)

Before submitting this bid, the Bidder is advised and cautioned to inspect the sale area, review the requirements of the sale contract, and take other steps as may be reasonably necessary to ascertain the location, estimated volumes, construction estimates, and operating costs of the proposed sale. Failure to do so will not relieve the Bidder from responsibility for completing the contract.

The Bidder warrants that this bid is submitted solely on the basis of the Bidder's examination and inspection of the quality and quantity of the timber offered for sale and the Bidder's opinion of the value thereof and the costs of recovery. No reliance should be placed on the State of Michigan's estimates of timber quality, quantity or costs of recovery. Bidder further acknowledges that the State of Michigan: (i) expressly disclaims any warranty of fitness of timber for any purpose; (ii) offers this timber as is without any warranty of quality (merchantability) or quantity and (iii) expressly disclaims any warranty as to the quantity or quality of timber sold.

#### 12. Certification and Chain-of-Custody (10/22)

Unless otherwise indicated in the contract under section 7 – Other Conditions of the Sale Specific Conditions & Requirements, the area encompassed by this timber sale is certified to the standards of the Forest Stewardship Council (FSC) - Certificate #SCS-FM/COC-00090N and the Sustainable Forestry Initiative (SFI) - Certificate #NSF-SFIS-5Y031-SF5. Forest products from this sale may be delivered to the mill as "FSC 100% and / or SFI certified" as long as the contractor hauling the forest products is chain-of-custody (COC) certified or covered under a COC certificate from the destination mill. The purchaser is responsible for maintaining COC after leaving the sale area.

#### 13. Good Neighbor Authority (GNA) Requirements (10/22)

If the name of this timber sales contains the acronym GNA, it is authorized by the Good Neighbor Authority (GNA) and covered by various agreements between the U.S. Forest Service and the State. The timber sale occurs on federal land and the following conditions apply:

GNA contracts on US Forest Service land will not be awarded to purchasers on the Federal list of excluded parties. The System for Award Management (SAM) will be checked for active excluded parties prior to award of contract. In

addition, the Bidder to whom award is made must complete an Assurance Regarding Felony Conviction or Tax Delinquent Status for Corporate Applicants (AD-3031).

14. Good Neighbor Authority (GNA) Requirements, con't (10/22)

Bidder certifies, by signing this bid form, that to the best of Bidder's knowledge that the following representations are accurate and complete.

- a. That the Bidder and its principals are not presently debarred, suspended, proposed for debarment, declared ineligible, or voluntary excluded from timber sales (covered transactions) by any Federal department or agency.
- b. That the Bidder and its principals have not within a 3-year period preceding this bid been convicted of or had a civil judgment rendered against them for commission of fraud or a criminal offense in connection with obtaining , attempting to obtain, or performing a public (Federal, State, or local) transaction or contract under a public transaction; violation of Federal or State antitrust statutes or commission of embezzlement, theft, forgery, bribery, falsification or destruction of records, making false statements, or receiving stolen property.
- c. That the Bidder and its principals are not presently indicted for or otherwise criminally or civilly charged by a governmental entity (Federal, State, or local) with commission of any of the offenses enumerated in paragraph b of this certification.
- d. That the Bidder and its principals have not within a 3-year period preceding this bid had one or more public transactions (Federal, State, or local) terminated for breach or default of a timber or forest product contract.

Bidders that cannot certify this requirement, in whole or in part, shall submit an explanation with their bid.

Scott Bowen  
Director

## TIMBER SALE INFORMATION

Cord Voldemort (53-009-23)

T32N, R01E, SEC. 19; T32N, R01E, SEC. 30.  
Montmorency County (Advertised Price \$23,538.45)

A timber sale contract for this lump sum, sealed bid timber sale will be awarded to the responsible bidder offering the highest sealed bid price. All units of volume listed below were estimated using the Inventory Manager computer program and the new Michigan taper model. Bids must be at or above the following advertised price for each product and species:

<u>PRODUCTS &amp; SPECIES</u>	<u>ESTIMATED UNITS*</u>	<u>ADVERTISED PRICE</u>
Sawtimber		
Mixed Aspen	23.5 MBF	\$ 36.00 / MBF
Red Maple	2.9 MBF	\$ 35.00 / MBF
Red Oak	17.9 MBF	\$ 88.00 / MBF
Red Pine	40.2 MBF	\$ 89.00 / MBF
White Oak	20.3 MBF	\$ 55.00 / MBF
White Pine	19.6 MBF	\$ 75.00 / MBF
Pulpwood		
Jack Pine	38 Cords	\$ 9.30 / Cord
Mixed Aspen	254 Cords	\$ 17.25 / Cord
Mixed Hardwood	36 Cords	\$ 11.30 / Cord
Red Oak	31 Cords	\$ 20.05 / Cord
Red Pine	167 Cords	\$ 38.75 / Cord
White Oak	43 Cords	\$ 20.05 / Cord
White Pine	107 Cords	\$ 16.40 / Cord

\* The total volume is statistically estimated within plus (+) or minus (-) 24.42 percent. There are an estimated 935 cords on this timber sale, plus or minus 228 cords at the 95% confidence level. The estimated units are final and not subject to adjustment. Prospective bidders are urged to examine this timber and to make their own estimates of quantity and quality.

### **BOND AND PAYMENT SCHEDULE:**

1. A bond in the amount of \$2,354.00 to insure faithful performance of the conditions of the contract will be deposited by the successful bidder within 21 days of the sale award.
2. Cutting in any sale or unit without the required advance payment would be considered a trespass.
3. Total payment must be paid in advance or according to the following schedule :
  - (a) Ten percent (10%) of the sale value must be paid within 21 days of the sale award.
  - (b) The 10% down payment will be credited towards the first unit cut.
  - (c) Payment for each of the following units must be made before cutting begins in that unit:

PAYMENT UNIT NUMBER	PERCENT OF TOTAL SALE VALUE
01	22.9%
02	34.7%
03	21.1%
04	21.3%

4. If no cutting takes place, the 10% down payment will not be refunded.
5. Operations on the contract issued will terminate on 06/30/2027.

### **SALE STATISTICS**

Volumes were calculated in cubic feet using the Michigan taper model. Cubic foot volume includes all wood inside bark for the product indicated. For display purposes, cubic feet were converted to cords and MBF using a simple conversion factor, e.g. 79 cubic feet per cord and 185 cubic feet per MBF. The cubic foot volumes are precise; the cords and MBF volumes are not. Cubic foot volume cannot be directly converted to cords or boards with precision.

### **SALE VOLUMES**

The total estimated sale volume may not equal the sum of the species/products due to the nature of statistical calculations associated with double sampling methodology.

VOLUME		STATISTICAL RANGE IN CORDS		
TOTAL CUBIC FEET	TOTAL CORDS	PERCENT ERROR	MINIMUM	MAXIMUM
73,895	935	24.42%	707	1,164

**VDU VOLUMES**

A VDU is a Volume Determination Unit. Volumes and their associated statistics are calculated at the VDU level and summarized to the sale level. There is often a one to one relationship between a VDU and a Payment Unit, but not always, depending on the cruise design. Refer to the VDU TO PAYMENT UNIT table.

VDU	VOLUME		PERCENT ERROR	RANGE IN CORDS	
	TOTAL CUBIC FEET	TOTAL CORDS		MINIMUM	MAXIMUM
65	23,791	301	64.16%	108	494
74	16,515	209	34.52%	137	281
76	23,062	292	25.14%	219	365
186	10,527	133	96.59%	5	262
<b>TOTAL:</b>	<b>73,895</b>	<b>935</b>		<b>468</b>	<b>1,403</b>

**VDU TO PAYMENT UNIT**

When a VDU is associated with more than one Payment Unit (PU), the VDU volumes are assigned to the PU based on acres of the VDU within the PU.

VDU	VDU ACRES	PU	PU ACRES
65	7.4	1	7.4
74	16.9	3	16.9
76	15.0	2	15.0
186	6.4	4	6.4
<b>TOTAL:</b>	<b>45.7</b>		<b>45.7</b>

**DESCRIPTION OF TIMBER BY PAYMENT UNIT (PU)**

PU	MARKET GROUP	PRODUCT	QUANTITY	UNIT	ACRES	ADVERTISE PRICE		
1	Mixed Aspen	Sawtimber	19.1	MBF	7.4	\$5,382.15		
	<i>B. T. Aspen</i>		18.0	<i>MBF</i>				
	<i>Quaking Aspen</i>		1.1	<i>MBF</i>				
	Red Maple		0.8	MBF				
	Red Pine		1.4	MBF				
	White Pine		0.9	MBF				
	Mixed Aspen		Pulpwood	244			Cords	
	<i>B. T. Aspen</i>			194			<i>Cords</i>	
	<i>Quaking Aspen</i>			50			<i>Cords</i>	
	Mixed Hardwood			7			Cords	
	<i>Red Maple</i>	7	<i>Cords</i>					
	Red Pine	1	Cords					
	White Pine	9	Cords					
	2	Mixed Aspen	Sawtimber	1.3			MBF	15.0
<i>B. T. Aspen</i>		1.3		<i>MBF</i>				
Red Maple		0.8		MBF				
Red Oak		17.9		MBF				
Red Pine		16.0		MBF				
White Oak		20.3		MBF				
White Pine		8.4		MBF				
Mixed Aspen		Pulpwood		4	Cords			
<i>B. T. Aspen</i>				4	<i>Cords</i>			
Mixed Hardwood				16	Cords			
<i>Red Maple</i>				16	<i>Cords</i>			
Red Oak				31	Cords			
Red Pine				30	Cords			
White Oak				43	Cords			
White Pine				28	Cords			
3	Mixed Aspen	Sawtimber	3.1	MBF	16.9	\$4,963.90		
	<i>B. T. Aspen</i>		3.1	<i>MBF</i>				
	Red Maple		1.3	MBF				
	Red Pine		13.0	MBF				
	White Pine		9.2	MBF				
	Jack Pine		Pulpwood	34			Cords	
	<i>Jack Pine</i>			<i>Sawtimber</i>			5.1	<i>MBF</i>
	<i>Jack Pine</i>			<i>Pulpwood</i>			24	<i>Cords</i>
	Mixed Aspen		6	Cords				
	<i>B. T. Aspen</i>		6	<i>Cords</i>				
	Mixed Hardwood		7	Cords				
	<i>Black Cherry</i>		1	<i>Cords</i>				
	<i>Red Maple</i>		6	<i>Cords</i>				
	Red Pine		36	Cords				
	White Pine		65	Cords				
4	Red Pine	Sawtimber	9.8	MBF	6.4	\$5,016.70		
	White Pine		1.1	MBF				
	Jack Pine	Pulpwood	4	Cords				
	<i>Jack Pine</i>		4	<i>Cords</i>				
	Mixed Hardwood		6	Cords				
	<i>Red Maple</i>		6	<i>Cords</i>				
	Red Pine		100	Cords				
	White Pine		5	Cords				
TOTAL:			124.4	MBF				
TOTAL:			676	Cords				

## Sale Specific Conditions & Requirements

**Sale Name: Cord Voldemort**

**Sale Number: 53-009-23 Seq#: 2**

### 1 - Sale Area

#### 1.2 - Boundaries

##### 1.2.1 - Painted boundaries (9/19)

The sale boundary and Payment Unit boundaries are marked and identified by red and yellow paint. Exterior sale boundary lines against state are marked with red paint. Interior Payment Unit boundaries are marked with yellow paint. Retention patches are marked with red paint; no harvesting activities may occur within these areas. The painted boundary line trees are not Included Timber and are to be protected.

### 2 - Timber Specifications

#### 2.1 - Included Timber

##### 2.1.7 - Leave tree marked unit(s) (6/14)

Within Payment Unit(s) 1-4, cut all trees that are two (2) inches or more at DBH, except in Payment Units 1, 3, & 4, do not cut any oak, cedar, or hemlock and in Payment Units 1-4, do not cut any trees marked with green paint above & below stump height. Additionally, if any pockets of young red & jack pine regeneration exist, try to protect them. Special protection trees identified in accordance with condition 3.4.2, within clearcutting unit boundaries, are not Included Timber and are to be protected.

#### 2.2 - Utilization

##### 2.2.2 - Chipping required (2/18)

Payment Units 2, 3, & 4 must be chip harvested to facilitate future silvicultural activities. The Purchaser has the option to produce sawlogs or pulpwood bolts, but the remaining portion of the trees must be chipped and hauled. Products may be produced as roundwood and forwarded to decking areas in final product length, but the tops must be left intact and skidded to the landing for chipping in order to minimize the amount of residual slash. Whole tree harvesting may also be allowed, as long as desired scarification is still met. Within these Payment Units, the requirement to retain approximately 1/6 to 1/3 of tree tops and limbs less than four inches in diameter does not apply (G. C. & R. 2.2).

### 3 - Payments

#### 3.4 - Damaged Timber

##### 3.4.1 - Damaged timber (7/16)

General Condition and Requirement 3.4 Damaged Timber, defines liquidated damages for undesignated live merchantable trees which are cut or injured. In addition, extreme care should be taken to avoid damage to pockets of red & jack pine seedlings and saplings.

No damage is acceptable to undesignated live merchantable trees. Within the Sale Area, if more than 10 % of trees (> 4.5" DBH) within a specified area of the sale are damaged, liquidated damages will be assessed for all trees damaged. Rates will be in accordance with General Condition and Requirement 3.4 Damaged Timber.

##### 3.4.2 - Special Protection Trees (4/14)

The Purchaser shall not cut live or dead special protection trees within cutting units or clearings. Special protection trees are marked with green paint or are the non-included designated species for each respective Payment Unit. If the Purchaser's operations have cut or damaged special protection trees through carelessness, the Purchaser shall pay \$500 as fixed, agreed and liquidated damages for each special protection tree cut or damaged. Such payment does not constitute ownership of the undesignated timber.

### 4 - Transportation

#### 4.1 - Construction

##### 4.1.3 - Slash and earthen piles (8/04)

Piles or windrows of earth along roads and landings that have been widened or constructed shall be leveled. Slash from road



maintenance or construction, including stumps, shall be chipped, utilized or otherwise removed from the sale, depending on the Payment Unit.

#### 4.1.6 - Road construction (1/09)

Construction of new roads or improvements of existing roads shall be done in such a way as to minimize the environmental and visual impacts. Merchantable trees shall be cut and utilized unless otherwise directed. Non-merchantable trees shall be severed and laid flat on the ground. Slash shall be chipped, utilized or distributed evenly throughout the sale. Stumps shall be set upright, not left on edge, and be moved at least 10 feet away from the road edge. Disturbed soil shall be feathered into the woods and not left in berms or windrows.

### 4.2 - Maintenance

#### 4.2.5 - Two wheel drive condition (2/04)

All existing trail roads on and adjacent to the sale area must be passable by two-wheel drive traffic for the duration of the sale.

## 5 - Operations

### 5.2 - Conduct of Operations

#### 5.2.1 - Slash

##### 5.2.1.11 - Slash for reforestation (3/21)

To facilitate reforestation, Payment Unit 1 shall be left with slash evenly distributed. Bunched tops within the cutting area shall be broken up and scattered.

#### 5.2.2 - Hazard Trees/Snags

##### 5.2.2.1 - Den trees (10/16)

Obvious hollow and/or den trees shall be protected and left standing unless they are a safety hazard.

#### 5.2.3 - Operating Restrictions

##### 5.2.3.1 - Operating restrictions (9/11)

Within Payment Unit(s) 2, 3, & 4, unless changed by written agreement, cutting, skidding, and hauling are not permitted during the period of 12/01 to 04/01. This restriction is to help encourage adequate ground scarification in snow free conditions to assist with natural pine regeneration.

##### 5.2.3.4 - Oak wilt restriction, no exceptions (1/18)

Within Payment Unit(s) 1-4, cutting, skidding, hauling within the sale and brushing of access roads to the sale are not permitted during the period of April 15 to July 15. No exceptions will be granted. This is necessary to reduce the spread of oak wilt.

#### 5.2.4 - Dead and Down Creation

##### 5.2.4.1 - Dead and down creation, marked trees (10/13)

All trees marked with a band of pink paint must be left standing, until all merchantable trees are cut and moved to the landing. At which time, they are to be pushed over and left on the ground with their root ball still attached.

##### 5.2.4.3 - Dead and down creation, dead trees (6/07)

Except as provided for in General Condition and Requirement 5.2.2, no dead trees, standing or down, are to be cut, skidded, or processed.

#### 5.2.32 - Decking/landing restoration (9/13)

All decking and landing areas must have the surface area restored to a condition equal to or better than before. This is to ensure the proper regeneration of the stand. Wood debris, chips and "cookies" from trimmings must be removed or scattered away from landing and loading areas and may not be windrowed on the edge.

#### 5.2.38 - No decking against live trees (2/04)

Cut products may not be decked against unmarked or designated leave trees.

### 5.4 - Soil Protection

#### 5.4.1 - Rutting restriction, general (7/16)

Operations are to cease immediately if equipment and weather conditions result in rutting of roads and/or skid trails which is 12 inches or greater in depth and 25 feet in length. The Unit Manager or his/her representative may restrict hauling and/or skidding if ruts exceed the specified depth. With the Unit Manager or his/her representative's approval, the Purchaser may return to the area when the risk of rutting has decreased.

#### 5.8 - Protection of Endangered Species

##### 5.8.5 - Protection of raptor nests (3/13)

All trees with raptor nests will be protected if found during harvesting operations. Notification will be made to the Unit Manager or his/her representative who will notify the Wildlife Biologist so an on-site evaluation and recommendation can be made, if necessary.





## TIMBER SALE INFORMATION

Jack and Piene (53-010-23)

T32N, R01E, SEC. 20.

Montmorency County (Advertised Price \$6,566.30)

A timber sale contract for this lump sum, sealed bid timber sale will be awarded to the responsible bidder offering the highest sealed bid price. All units of volume listed below were estimated using the Inventory Manager computer program and the new Michigan taper model. Bids must be at or above the following advertised price for each product and species:

<u>PRODUCTS &amp; SPECIES</u>	<u>ESTIMATED UNITS*</u>	<u>ADVERTISED PRICE</u>
Sawtimber		
Jack Pine	39.1 MBF	\$ 44.00 / MBF
Pulpwood		
Black Cherry	2 Cords	\$ 15.45 / Cord
Jack Pine	171 Cords	\$ 12.70 / Cord
Red Maple	58 Cords	\$ 15.45 / Cord
Red Pine	21 Cords	\$ 52.80 / Cord
Scotch Pine	60 Cords	\$ 9.15 / Cord
White Pine	4 Cords	\$ 22.35 / Cord

\* The total volume is statistically estimated within plus (+) or minus (-) 29.38 percent. There are an estimated 398 cords on this timber sale, plus or minus 117 cords at the 95% confidence level. The estimated units are final and not subject to adjustment. Prospective bidders are urged to examine this timber and to make their own estimates of quantity and quality.

### **BOND AND PAYMENT SCHEDULE:**

1. A bond in the amount of \$657.00 to insure faithful performance of the conditions of the contract will be deposited by the successful bidder within 21 days of the sale award.
2. Cutting in any sale or unit without the required advance payment would be considered a trespass.
3. Total payment must be paid in advance or according to the following schedule :
  - (a) Ten percent (10%) of the sale value must be paid within 21 days of the sale award.
  - (b) The remainder is due before cutting begins.
  - (c) Payment for each of the following units must be made before cutting begins in that unit:
 

PAYMENT UNIT NUMBER	PERCENT OF TOTAL SALE VALUE
01	100.0%
4. If no cutting takes place, the 10% down payment will not be refunded.
5. Operations on the contract issued will terminate on 06/30/2027.

### **SALE STATISTICS**

Volumes were calculated in cubic feet using the Michigan taper model. Cubic foot volume includes all wood inside bark for the product indicated. For display purposes, cubic feet were converted to cords and MBF using a simple conversion factor, e.g. 79 cubic feet per cord and 185 cubic feet per MBF. The cubic foot volumes are precise; the cords and MBF volumes are not. Cubic foot volume cannot be directly converted to cords or boards with precision.

### **SALE VOLUMES**

The total estimated sale volume may not equal the sum of the species/products due to the nature of statistical calculations associated with double sampling methodology.

VOLUME		STATISTICAL RANGE IN CORDS		
TOTAL CUBIC FEET	TOTAL CORDS	PERCENT ERROR	MINIMUM	MAXIMUM
31,413	398	29.38%	281	514

**VDU VOLUMES**

A VDU is a Volume Determination Unit. Volumes and their associated statistics are calculated at the VDU level and summarized to the sale level. There is often a one to one relationship between a VDU and a Payment Unit, but not always, depending on the cruise design. Refer to the VDU TO PAYMENT UNIT table.

VDU	VOLUME		PERCENT ERROR	RANGE IN CORDS	
	TOTAL CUBIC FEET	TOTAL CORDS		MINIMUM	MAXIMUM
71	31,413	398	29.38%	281	514
<b>TOTAL:</b>	<b>31,413</b>	<b>398</b>		<b>281</b>	<b>514</b>

**VDU TO PAYMENT UNIT**

When a VDU is associated with more than one Payment Unit (PU), the VDU volumes are assigned to the PU based on acres of the VDU within the PU.

VDU	VDU ACRES	PU	PU ACRES
71	33.1	1	33.1
<b>TOTAL:</b>	<b>33.1</b>		<b>33.1</b>

**DESCRIPTION OF TIMBER BY PAYMENT UNIT (PU)**

PU	MARKET GROUP	PRODUCT	QUANTITY	UNIT	ACRES	ADVERTISE PRICE
1	Jack Pine	Sawtimber	39.1	MBF	33.1	\$6,566.30
	Black Cherry	Pulpwood	2	Cords		
	Jack Pine		171	Cords		
	Red Maple		58	Cords		
	<i>Red Maple</i>	<i>Sawtimber</i>	<i>3.1</i>	<i>MBF</i>		
	<i>Red Maple</i>	<i>Pulpwood</i>	<i>52</i>	<i>Cords</i>		
	Red Pine		21	Cords		
	Scotch Pine		60	Cords		
	<i>Scotch Pine</i>	<i>Sawtimber</i>	<i>9.7</i>	<i>MBF</i>		
	<i>Scotch Pine</i>	<i>Pulpwood</i>	<i>41</i>	<i>Cords</i>		
	White Pine		4	Cords		
	<i>White Pine</i>	<i>Sawtimber</i>	<i>1.3</i>	<i>MBF</i>		
	<i>White Pine</i>	<i>Pulpwood</i>	<i>1</i>	<i>Cords</i>		
	TOTAL:			39.1		
TOTAL:			316	Cords		

# Sale Specific Conditions & Requirements

**Sale Name: Jack and Plane**

**Sale Number: 53-010-23 Seq#: 1**

## 1 - Sale Area

### 1.2 - Boundaries

#### 1.2.1 - Painted boundaries (9/19)

The sale boundary and Payment Unit boundaries are marked and identified by red & blue paint. Exterior sale boundary lines against private property are marked with blue paint. Exterior sale boundary lines against state land are marked with red paint. Retention patches are marked with red X's; no harvesting activities may occur within these areas. The painted boundary line trees are not Included Timber and are to be protected unless marked with orange paint.

## 2 - Timber Specifications

### 2.1 - Included Timber

#### 2.1.1 - Clearcut unit(s) with unmerchantable trees (6/14)

Within Payment Unit(s) 1, cut all trees that are two (2) inches or more at DBH, except do not cut any oak or trees that are marked with green paint above and below stump height. These trees are not included timber and are to be protected.

#### 2.1.16 - Timber along county or forest roads (6/14)

Cut and remove all trees directly adjacent to County Road R-O-Ws on Blue Lakes Road. Cut stumps must be left at least two (2) feet high to facilitate plowing and grading of road.

### 2.2 - Utilization

#### 2.2.2 - Chipping required (2/18)

The Sale Area must be chip harvested to facilitate future silvicultural activities. The Purchaser has the option to produce sawlogs or pulpwood bolts, but the remaining portion of the trees must be chipped and hauled. Products may be produced as roundwood and forwarded to decking areas in final product length, but the tops must be left intact and skidded to the landing for chipping in order to minimize the amount of residual slash. Skidding of the tops must be done in a way which scarifies the ground to help with regeneration. Alternatively whole tree harvesting will also be allowed. If the deadline is not met, damages will be collected determined by the cost to complete this work. The requirement to retain approximately 1/6 to 1/3 of treetops and limbs less than four inches in diameter does not apply (G. C. & R. 2.2).

## 3 - Payments

### 3.4 - Damaged Timber

#### 3.4.1 - Damaged timber (7/16)

General Condition and Requirement 3.4 Damaged Timber, defines liquidated damages for undesignated live merchantable trees which are cut or injured. In addition, extreme care should be taken to avoid damage to pockets of red & white pine seedlings and saplings.

No damage is acceptable to undesignated live merchantable trees. Within the Sale Area, if more than 10% of trees (> 4.5" DBH) within a specified area of the sale are damaged, liquidated damages will be assessed for all trees damaged. Rates will be in accordance with General Condition and Requirement 3.4 Damaged Timber.

## 4 - Transportation

### 4.1 - Construction

#### 4.1.3 - Slash and earthen piles (8/04)

Piles or windrows of earth along roads and landings that have been widened or constructed shall be leveled. Slash from road maintenance or construction, including stumps, shall be chipped, utilized or otherwise removed from the sale.

#### 4.1.12 - No new roads (1/12)

No new roads will be permitted in the Sale Area. All operations are limited to existing roads. Only skid trails will be allowed.

## 4.2 - Maintenance

### 4.2.5 - Two wheel drive condition (2/04)

All existing trail roads on and adjacent to the sale area must be passable by two-wheel drive traffic for the duration of the sale.

## 5 - Operations

### 5.2 - Conduct of Operations

#### 5.2.2 - Hazard Trees/Snags

##### 5.2.2.1 - Den trees (10/16)

Obvious hollow and/or den trees shall be protected and left standing unless they are a safety hazard.

#### 5.2.3 - Operating Restrictions

##### 5.2.3.2 - Operating restrictions (9/11)

Within Payment Unit(s) 1, unless changed by written agreement, cutting and skidding are limited during the period of 04/01 to 11/30. This restriction is to facilitate regeneration through ground scarification that would otherwise be hindered by snow.

#### 5.2.4 - Dead and Down Creation

##### 5.2.4.3 - Dead and down creation, dead trees (6/07)

Except as provided for in General Condition and Requirement 5.2.2, no dead trees, standing or down, are to be cut, skidded, or processed.

##### 5.2.32 - Decking/landing restoration (9/13)

All decking and landing areas must have the surface area restored to a condition equal to or better than before. This is to ensure the proper regeneration of the stand. Wood debris, chips and "cookies" from trimmings must be removed or scattered away from landing and loading areas and may not be windrowed on the edge.

##### 5.2.38 - No decking against live trees (2/04)

Cut products may not be decked against unmarked or designated leave trees.

### 5.4 - Soil Protection

#### 5.4.1 - Rutting restriction, general (7/16)

Operations are to cease immediately if equipment and weather conditions result in rutting of roads and/or skid trails which is 12 inches or greater in depth and 25 feet in length. The Unit Manager or his/her representative may restrict hauling and/or skidding if ruts exceed the specified depth. With the Unit Manager or his/her representative's approval, the Purchaser may return to the area when the risk of rutting has decreased.

### 5.8 - Protection of Endangered Species

#### 5.8.5 - Protection of raptor nests (3/13)

All trees with raptor nests will be protected if found during harvesting operations. Notification will be made to the Unit Manager or his/her representative who will notify the Wildlife Biologist so an on-site evaluation and recommendation can be made, if necessary.

## 8 - Performance and Settlement

### 8.3 - Uncompleted or Terminated Contracts

#### 8.3.1 - Completion of contract, chipping (1/16)

In addition to cutting, all chipping must be completed by the contract expiration date. If chipping has not been completed, an extension fee or damages may be charged per General Condition & Requirement 7.2 and 8.3.





# TIMBER SALE MAP

This information provided by authority of Part 525, 1994 PA 451, as amended.

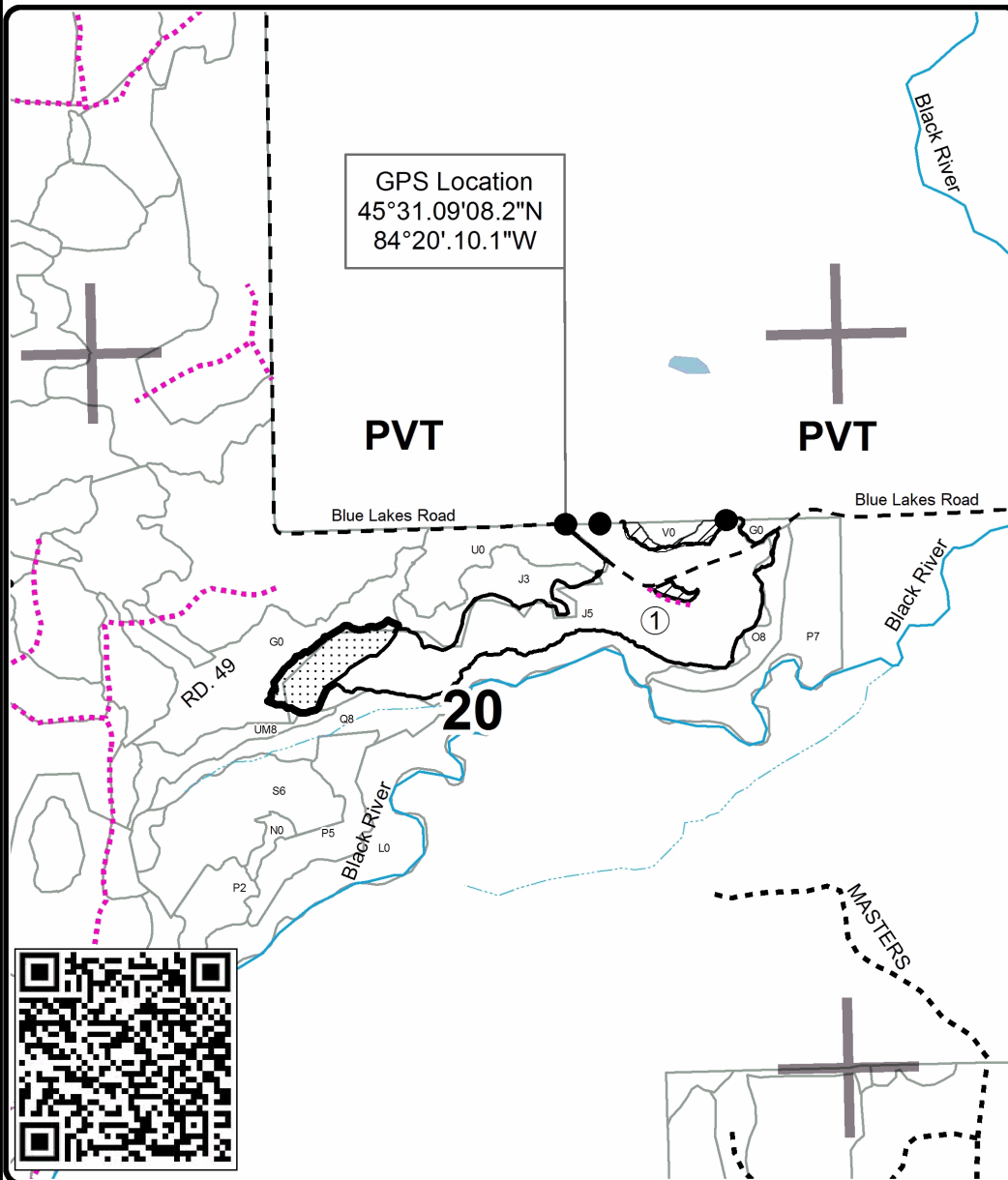
Forest Management Unit Pigeon River Country		County Montmorency	Mapped By Barnes	Date 07/05/2023	Page 1	of 1
Township 32N	Range 01E	Section(s) and Subdivision(s) 20: SENW,S1/2NE		Scale 1:15,840		

Cover Type				Density	
A = Aspen	H = Hemlock	N = Marsh	U = Upland Brush	0 = Non Stocked	5 = Pole Timber Medium
B = Paper Birch	J = Jack Pine	O = Oak	UM = Upland Mixed	1 = Seedling Sapling Poor	6 = Pole Timber Well
C = Cedar	L = Lowland Brush	P = Lowland Poplar	V = Bog or Marsh	2 = Seedling Sapling Medium	7 = Saw Timber Poor
D = Treed Bog	LM = Lowland Mixed	Q = Mixed Swamp Conifer	W = White Pine	3 = Seedling Sapling Well	8 = Saw Timber Medium
E = Swamp Hdwoods	M = Mpl, Bch, Brch	R = Red Pine	X = Non Stocked	4 = Pole Timber Poor	9 = Saw Timber Well
F = Spruce Fir	MC = Mixed Conifer	S = Black Spruce	Z = Water		
G = Grass	MD = Mixed Deciduous	T = Tamarack			

**PU Acres**  
1 33.1

## Jack and Plane

Compartment 059  
33.1 Acres

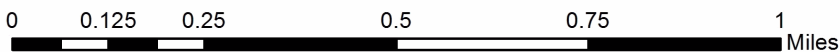
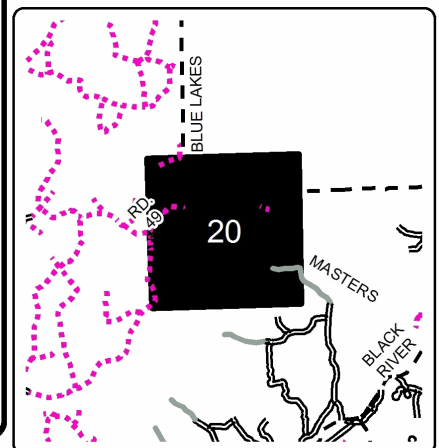


### Legend

- Against State (Red)
- Private Line (Blue)
- Retention Area
- Nearby Sales
- Stand Boundaries
- Gravel Road
- Temp Management Access
- Intermittent Stream
- Perennial River
- Section Corners

### Locator Map

1:80,000





## TIMBER SALE INFORMATION

The Silence of the Limbs (53-024-23)  
T32N, R01W, SEC. 14.  
Otsego County (Advertised Price \$10,485.20)

SALE NOTE: See Oak Wilt restriction and Pathway Protection for the Shore to Shore Horse Trail .

A recreation site such as a trail, pathway, or campground is within the sale area or the vicinity. Certain restrictions/specifications may be applicable including time restrictions.

A timber sale contract for this lump sum, sealed bid timber sale will be awarded to the responsible bidder offering the highest sealed bid price. All units of volume listed below were estimated using the Inventory Manager computer program and the new Michigan taper model. Bids must be at or above the following advertised price for each product and species:

<u>PRODUCTS &amp; SPECIES</u>	<u>ESTIMATED UNITS*</u>	<u>ADVERTISED PRICE</u>
Sawtimber		
B. T. Aspen	29.5 MBF	\$ 49.00 / MBF
Pulpwood		
B. T. Aspen	246 Cords	\$ 23.55 / Cord
Black Cherry	1 Cords	\$ 15.45 / Cord
Jack Pine	85 Cords	\$ 12.70 / Cord
Red Maple	63 Cords	\$ 15.45 / Cord
Red Pine	13 Cords	\$ 52.80 / Cord
White Pine	22 Cords	\$ 22.35 / Cord

\* The total volume is statistically estimated within plus (+) or minus (-) 22.87 percent. There are an estimated 484 cords on this timber sale, plus or minus 111 cords at the 95% confidence level. The estimated units are final and not subject to adjustment. Prospective bidders are urged to examine this timber and to make their own estimates of quantity and quality.

### **BOND AND PAYMENT SCHEDULE:**

1. A bond in the amount of \$1,049.00 to insure faithful performance of the conditions of the contract will be deposited by the successful bidder within 21 days of the sale award.
2. Cutting in any sale or unit without the required advance payment would be considered a trespass.
3. Total payment must be paid in advance or according to the following schedule :
  - (a) Ten percent (10%) of the sale value must be paid within 21 days of the sale award.
  - (b) The remainder is due before cutting begins.
  - (c) Payment for each of the following units must be made before cutting begins in that unit:
 

PAYMENT UNIT NUMBER	PERCENT OF TOTAL SALE VALUE
01	100.0%
4. If no cutting takes place, the 10% down payment will not be refunded.
5. Operations on the contract issued will terminate on 06/30/2027.

### **SALE STATISTICS**

Volumes were calculated in cubic feet using the Michigan taper model. Cubic foot volume includes all wood inside bark for the product indicated. For display purposes, cubic feet were converted to cords and MBF using a simple conversion factor, e.g. 79 cubic feet per cord and 185 cubic feet per MBF. The cubic foot volumes are precise; the cords and MBF volumes are not. Cubic foot volume cannot be directly converted to cords or boards with precision.

### **SALE VOLUMES**

The total estimated sale volume may not equal the sum of the species/products due to the nature of statistical calculations associated with double sampling methodology.

VOLUME		STATISTICAL RANGE IN CORDS		
TOTAL CUBIC FEET	TOTAL CORDS	PERCENT ERROR	MINIMUM	MAXIMUM
38,240	484	22.87%	373	595

**VDU VOLUMES**

A VDU is a Volume Determination Unit. Volumes and their associated statistics are calculated at the VDU level and summarized to the sale level. There is often a one to one relationship between a VDU and a Payment Unit, but not always, depending on the cruise design. Refer to the VDU TO PAYMENT UNIT table.

VDU	VOLUME		PERCENT ERROR	RANGE IN CORDS	
	TOTAL CUBIC FEET	TOTAL CORDS		MINIMUM	MAXIMUM
42	20,360	258	28.82%	183	332
43	11,166	141	52.11%	68	215
53	6,714	85	116.55%	0	184
<b>TOTAL:</b>	<b>38,240</b>	<b>484</b>		<b>251</b>	<b>731</b>

**VDU TO PAYMENT UNIT**

When a VDU is associated with more than one Payment Unit (PU), the VDU volumes are assigned to the PU based on acres of the VDU within the PU.

VDU	VDU ACRES	PU	PU ACRES
42	17.7	1	17.7
43	6.1	1	6.1
53	3.8	1	3.8
<b>TOTAL:</b>	<b>27.6</b>		<b>27.6</b>

**DESCRIPTION OF TIMBER BY PAYMENT UNIT (PU)**

PU	MARKET GROUP	PRODUCT	QUANTITY	UNIT	ACRES	ADVERTISE PRICE
1	B. T. Aspen	Sawtimber	29.5	MBF	27.6	\$10,538.00
	B. T. Aspen	Pulpwood	246	Cords		
	Black Cherry		1	Cords		
	Jack Pine		85	Cords		
	Red Maple		63	Cords		
	<i>Red Maple</i>	<i>Sawtimber</i>	<i>0.8</i>	<i>MBF</i>		
	<i>Red Maple</i>	<i>Pulpwood</i>	<i>61</i>	<i>Cords</i>		
	Red Pine		14	Cords		
	<i>Red Pine</i>	<i>Sawtimber</i>	<i>2.9</i>	<i>MBF</i>		
	<i>Red Pine</i>	<i>Pulpwood</i>	<i>8</i>	<i>Cords</i>		
	White Pine		22	Cords		
	<i>White Pine</i>	<i>Sawtimber</i>	<i>1.7</i>	<i>MBF</i>		
	<i>White Pine</i>	<i>Pulpwood</i>	<i>19</i>	<i>Cords</i>		
	TOTAL:			29.5		
TOTAL:			431	Cords		

# Sale Specific Conditions & Requirements

**Sale Name: The Silence of the Limbs**

**Sale Number: 53-024-23 Seq#: 1**

## 1 - Sale Area

### 1.2 - Boundaries

#### 1.2.1 - Painted boundaries (9/19)

The sale boundary is marked and identified by red paint. The eastern part of the sale boundary that borders the field (G0) does not have a painted boundary, and as such the field edge is to be treated as the sale boundary. Retention patches are marked with red painted X's; no harvesting activities may occur within these areas. The painted boundary line trees are not Included Timber and are to be protected.

## 2 - Timber Specifications

### 2.1 - Included Timber

#### 2.1.1 - Clearcut unit(s) with unmerchantable trees (6/14)

Within Payment Unit(s) 1, cut all trees that are two (2) inches or more at DBH except for all oak or birch species, regardless of merchantability; as well as any trees marked with green paint above and below stump height. Special protection trees identified in accordance with condition 3.4.2, within clearcutting unit boundaries, are not Included Timber and are to be protected.

### 2.2 - Utilization

#### 2.2.2 - Chipping required (2/18)

The sale area must be chip harvested to facilitate silvicultural regeneration requirements. The Purchaser has the option to produce sawlogs or pulpwood bolts, but the remaining portion of the trees must be chipped and hauled. Products may be produced as roundwood and forwarded to decking areas in final product length, but the tops must be left intact and skidded to the landing for chipping in order to minimize the amount of residual slash. If the deadline is not met, damages will be collected determined by the cost to complete this work. The requirement to retain approximately 1/6 to 1/3 of tree tops and limbs less than four inches in diameter does not apply (G. C. & R. 2.2).

## 3 - Payments

### 3.4 - Damaged Timber

#### 3.4.1 - Damaged timber (7/16)

General Condition and Requirement 3.4 Damaged Timber, defines liquidated damages for undesignated live merchantable trees which are cut or injured. In addition, extreme care should be taken to avoid damage to oak tree seedlings and saplings. No damage is acceptable to undesignated live merchantable trees. Within the sale area, if more than 10% of trees (> 4.5" DBH) within a specified area of the sale are damaged, liquidated damages will be assessed for all trees damaged. Rates will be in accordance with General Condition and Requirement 3.4 Damaged Timber.

## 4 - Transportation

### 4.1 - Construction

#### 4.1.6 - Road construction (1/09)

Construction of new roads or improvements of existing roads shall be done in such a way as to minimize the environmental and visual impacts. Merchantable trees shall be cut and utilized unless otherwise directed. Non-merchantable trees shall be severed and laid flat on the ground. Slash shall be scattered, and not left in windrows and kept a minimum of 10 feet back from the road edge. Stumps shall be set upright, not left on edge, and be moved at least 10 feet away from the road edge. Disturbed soil shall be feathered into the woods and not left in berms or windrows.

#### 4.1.7 - Road closure (10/11)

All new roads built into the sale must be blocked to vehicle traffic upon completion of the sale. Overgrown roads that are reopened shall be considered new roads. In general, this will require constructing a four (4') foot high berm of stumps and logs covered with earth. Temporary berms may be required if no sale activity occurs for 30 or more consecutive days. Contact the sale administrator for specific details of design and placement.

## 4.2 - Maintenance

### 4.2.5 - Two wheel drive condition (2/04)

All existing trail roads on and adjacent to the sale area must be passable by two-wheel drive traffic for the duration of the sale.

## 5 - Operations

### 5.2 - Conduct of Operations

#### 5.2.2 - Hazard Trees/Snags

##### 5.2.2.1 - Den trees (10/16)

Obvious hollow and/or den trees shall be protected and left standing unless they are a safety hazard.

#### 5.2.3 - Operating Restrictions

##### 5.2.3.2 - Operating restrictions (9/11)

Within Payment Unit(s) 1, unless changed by written agreement, cutting, skidding, and hauling are limited to snow free conditions. This restriction is to only allow harvest operations in snow free conditions to allow for ground scarification for regeneration purposes. If snow free conditions persist outside of these time constraints, exceptions can be agreed upon to allow operations.

##### 5.2.3.4 - Oak wilt restriction, no exceptions (1/18)

Within Payment Unit(s) 1, cutting, skidding, hauling within the sale and brushing of access roads to the sale are not permitted during the period of April 15 to July 15. No exceptions will be granted. This is necessary to reduce the spread of oak wilt.

#### 5.2.4 - Dead and Down Creation

##### 5.2.4.3 - Dead and down creation, dead trees (6/07)

Except as provided for in General Condition and Requirement 5.2.2, no dead trees, standing or down, are to be cut, skidded, or processed.

#### 5.2.32 - Decking/landing restoration (9/13)

All decking and landing areas must have the surface area restored to a condition equal to or better than before. This is to ensure the proper regeneration of the stand. Wood debris, chips and "cookies" from trimmings must be removed or scattered away from landing and loading areas and may not be windrowed on the edge.

#### 5.2.38 - No decking against live trees (2/04)

Cut products may not be decked against unmarked or designated leave trees.

#### 5.2.40 - Pathway protection (10/10)

Road 84 also acts as the Shore to Shore Trail, which is a horse trail and is shown on the Timber Sale Map. Do not cut trees or damage posts with blue pathway markers.

### 5.4 - Soil Protection

#### 5.4.1 - Rutting restriction, general (7/16)

Operations are to cease immediately if equipment and weather conditions result in rutting of roads and/or skid trails which is 12 inches or greater in depth and 25 feet in length. The Unit Manager or his/her representative may restrict hauling and/or skidding if ruts exceed the specified depth. With the Unit Manager or his/her representative's approval, the Purchaser may return to the area when the risk of rutting has decreased.

### 5.8 - Protection of Endangered Species

#### 5.8.5 - Protection of raptor nests (3/13)

All trees with raptor nests will be protected if found during harvesting operations. Notification will be made to the Unit Manager or his/her representative who will notify the Wildlife Biologist so an on-site evaluation and recommendation can be made, if necessary.

## 6 - Safety and Fire Prevention

## 6.2 - Signing

### 6.2.1 - Road posting (10/20)

The Purchaser is responsible for posting and maintaining caution signs on Road 84 prior to beginning operations. The road must be posted at appropriate distances from the sale area to warn of logging activity and truck traffic. Signs must be removed when harvest operations are suspended or completed. The Purchaser will provide these signs.

### 6.2.3 - Recreational trail posting (10/20)

The Purchaser is responsible for posting and maintaining caution signs on Shore to Shore Trail prior to beginning operations. The trail must be posted at appropriate distances from the sale area to warn of logging activity and truck traffic at both ends of the trail. Signs must be removed when harvest operations are suspended or completed. The Purchaser will provide these signs.

## 8 - Performance and Settlement

### 8.3 - Uncompleted or Terminated Contracts

#### 8.3.1 - Completion of contract, chipping (1/16)

In addition to cutting, all chipping must be completed by the contract expiration date. If chipping has not been completed, an extension fee or damages may be charged per General Condition & Requirement 7.2 and 8.3.



Sale Number	Year
53-024	23

# TIMBER SALE MAP

This information provided by authority of Part 525, 1994 PA 451, as amended.

Forest Management Unit Pigeon River Country	County Otsego	Mapped By Halabut	Date 09/06/2023	Page 1	of 1
Township 32N	Range 01W	Section(s) and Subdivision(s) 14: SWNW, NWSW	Scale 1:15,840		

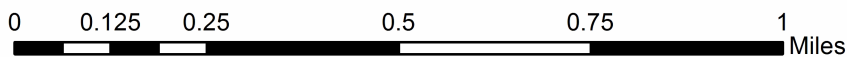
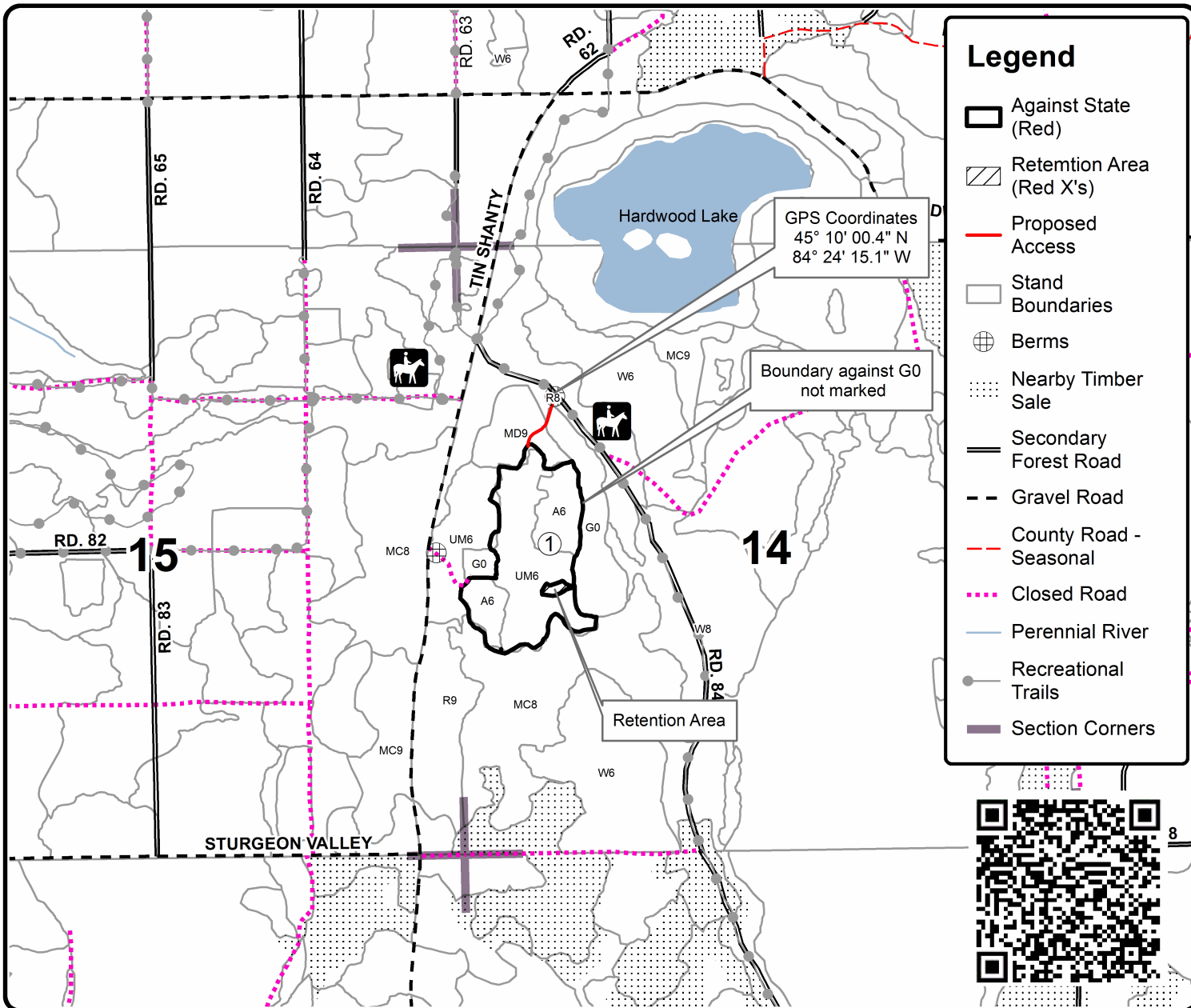
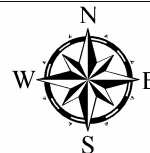
Cover Type				Density	
A = Aspen	H = Hemlock	N = Marsh	U = Upland Brush	0 = Non Stocked	5 = Pole Timber Medium
B = Paper Birch	J = Jack Pine	O = Oak	UM = Upland Mixed	1 = Seedling Sapling Poor	6 = Pole Timber Well
C = Cedar	L = Lowland Brush	P = Lowland Poplar	V = Bog or Marsh	2 = Seedling Sapling Medium	7 = Saw Timber Poor
D = Treed Bog	LM = Lowland Mixed	Q = Mixed Swamp Conifer	W = White Pine	3 = Seedling Sapling Well	8 = Saw Timber Medium
E = Swamp Hdwoods	M = Mpl, Bch, Brch	R = Red Pine	X = Non Stocked	4 = Pole Timber Poor	9 = Saw Timber Well
F = Spruce Fir	MC = Mixed Conifer	S = Black Spruce	Z = Water		
G = Grass	MD = Mixed Deciduous	T = Tamarack			

**PU Acres**  
1 27.6

## The Silence of the Limbs

### Compartment 37

27.6 Acres





Jack and Piene (53-010-23)  
T32N, R01E, SEC. 20; Montmorency COUNTY

In response to the notice of sale to be held 9:00 a.m. (local time) on February 15, 2024, I am hereby submitting my sealed bid (firm offer) for the following forest products to be cut. Bids for individual species must be at or above the advertised price. All non-responsive bid forms may be rejected.

<u>PRODUCTS &amp; SPECIES</u>	<u>ESTIMATED VOLUME*</u>	<u>ADVERTISED PRICE</u>	<u>BID PRICE/UNIT</u>
Sawtimber			
Jack Pine	39.1 MBF	\$ 44.00/MBF	\$ _____
Pulpwood			
Black Cherry	2 Cords	\$ 15.45/Cord	\$ _____
Jack Pine	171 Cords	\$ 12.70/Cord	\$ _____
Red Maple	58 Cords	\$ 15.45/Cord	\$ _____
Red Pine	21 Cords	\$ 52.80/Cord	\$ _____
Scotch Pine	60 Cords	\$ 9.15/Cord	\$ _____
White Pine	4 Cords	\$ 22.35/Cord	\$ _____

\*The volumes are statistically estimated within plus (+) or minus (-) 29.38 percent at 95% confidence level. These estimated volumes are final and not subject to adjustment. Prospective bidders are urged to examine this timber and to make their own estimates of quantity and quality.

I understand that any or all bids may be rejected. All bids must be signed and all bid items must be bid or the bid form may be rejected. I also understand that consideration and awarding a contract will be based upon my past performance and ability to complete the contract based upon equipment and staffing subject to my control.

FEDERAL ID: \_\_\_\_\_ or SOCIAL SECURITY NUMBER: \_\_\_\_\_

Company or individual bidding: \_\_\_\_\_

Company representative's name: \_\_\_\_\_

Address: \_\_\_\_\_

City: \_\_\_\_\_ State: \_\_\_\_\_ Zip: \_\_\_\_\_

IF AVAILABLE, PLEASE PLACE THE PERSONALIZED LABEL FROM YOUR PROSPECTUS IN THE ABOVE BOX.

Individual or company representative's signature: \_\_\_\_\_ Date: \_\_\_\_\_  
Phone number : \_\_\_\_\_ Email (optional): \_\_\_\_\_

**THE WINNING BIDDER MUST COMPLETE THE VERIFICATION OF WORKER'S DISABILITY COMPENSATION ACT COMPLIANCE (ON REVERSE SIDE IF DOUBLE SIDED) WITHIN 21 DAYS OF SALE AWARD DATE**



The Silence of the Limbs (53-024-23)  
T32N, R01W, SEC. 14; Otsego COUNTY

In response to the notice of sale to be held 9:00 a.m. (local time) on February 15, 2024, I am hereby submitting my sealed bid (firm offer) for the following forest products to be cut. Bids for individual species must be at or above the advertised price. All non-responsive bid forms may be rejected.

<u>PRODUCTS &amp; SPECIES</u>	<u>ESTIMATED VOLUME*</u>	<u>ADVERTISED PRICE</u>	<u>BID PRICE/UNIT</u>
<b>Sawtimber</b>			
B. T. Aspen	29.5 MBF	\$ 49.00/MBF	\$ _____
<b>Pulpwood</b>			
B. T. Aspen	246 Cords	\$ 23.55/Cord	\$ _____
Black Cherry	1 Cords	\$ 15.45/Cord	\$ _____
Jack Pine	85 Cords	\$ 12.70/Cord	\$ _____
Red Maple	63 Cords	\$ 15.45/Cord	\$ _____
Red Pine	13 Cords	\$ 52.80/Cord	\$ _____
White Pine	22 Cords	\$ 22.35/Cord	\$ _____

\*The volumes are statistically estimated within plus (+) or minus (-) 22.87 percent at 95% confidence level. These estimated volumes are final and not subject to adjustment. Prospective bidders are urged to examine this timber and to make their own estimates of quantity and quality.

I understand that any or all bids may be rejected. All bids must be signed and all bid items must be bid or the bid form may be rejected. I also understand that consideration and awarding a contract will be based upon my past performance and ability to complete the contract based upon equipment and staffing subject to my control.

FEDERAL ID: \_\_\_\_\_ or SOCIAL SECURITY NUMBER: \_\_\_\_\_  
 Company or individual bidding: \_\_\_\_\_  
 Company representative's name: \_\_\_\_\_  
 Address: \_\_\_\_\_  
 City: \_\_\_\_\_ State: \_\_\_\_\_ Zip: \_\_\_\_\_

IF AVAILABLE, PLEASE PLACE THE PERSONALIZED LABEL FROM YOUR PROSPECTUS IN THE ABOVE BOX.

Individual or company representative's signature: \_\_\_\_\_ Date: \_\_\_\_\_  
Phone number : \_\_\_\_\_ Email (optional): \_\_\_\_\_

**THE WINNING BIDDER MUST COMPLETE THE VERIFICATION OF WORKER'S DISABILITY COMPENSATION ACT COMPLIANCE (ON REVERSE SIDE IF DOUBLE SIDED) WITHIN 21 DAYS OF SALE AWARD DATE**



# TIMBER SALE VERIFICATION OF WORKER'S DISABILITY COMPENSATION ACT COMPLIANCE

As required by Act 317, P.A. 1969 (Worker's Compensation) and  
Part 5 of Act 451 of 1994, as amended.

FOR DEPARTMENT USE ONLY	
Sale Number (XX - XXX - XX - XX)	
Forest Management Unit:	

## VERIFICATION OF WORKER'S DISABILITY COMPENSATION ACT COMPLIANCE

- This verification must be completed and submitted within 21 days of contract award and prior to the issuance of the timber sale contract.
- In addition, if boxes 2B or 2C are checked, then Notice of Exclusion or Certificate of Insurance must be submitted within twenty-one (21) days of the contract award and prior to the issuance of the timber sale contract.
- All information must be typed or printed except for written signatures.

Please Check Appropriate Categories:

1. My business is organized as (you **must** check one of the boxes below):
  - A.  Sole Proprietorship (individual)
  - B.  Partnership
  - C.  Corporation
2. You **must** check one of the boxes below:
  - A.  I certify my business is a sole proprietorship and it has no employees but the sole proprietor. I am not subject to the Worker's Compensation Laws.
  - B.  I certify my business has satisfied its obligation to the Worker's Compensation Act through the use of an approved Notice of Exclusion (BWC-337, Rev. 5/96). I will provide a copy of the Notice of Exclusion within 21 days of the contract award. (For questions or a copy of the BWC-337, please call the Worker's Compensation Bureau at 517-322-1195).
  - C.  I certify my business has a Worker's Compensation Policy. I will provide an original Certificate of Insurance within twenty-one (21) days of the contract award.
3. If you have checked item 2(A) or 2(B), you **must** indicate the number of **both** full-time and part-time employees, other than yourself, including family members and active partners (if none, you must enter "0").

\_\_\_\_\_ Full-time Employees

\_\_\_\_\_ Part-time Employees

Name of Business		Federal ID (or) Social Security No.	
Address		Telephone (       )	
City	State	ZIP	

*I hereby certify that the above information is true and correct. I agree to notify the Michigan DNR of any changes that occur in factors affecting my coverage during any of my present and future operations.*

\_\_\_\_\_  
Signature of Owner or Authorized Representative

\_\_\_\_\_  
Title

\_\_\_\_\_  
Date

Please complete the "SEALED BID" information on the next page

Cord Voldemort (53-009-23)  
T32N, R01E, SEC. 19; T32N, R01E, SEC. 30; Montmorency COUNTY

In response to the notice of sale to be held 9:00 a.m. (local time) on February 15, 2024, I am hereby submitting my sealed bid (firm offer) for the following forest products to be cut. Bids for individual species must be at or above the advertised price. All non-responsive bid forms may be rejected.

<u>PRODUCTS &amp; SPECIES</u>	<u>ESTIMATED VOLUME*</u>	<u>ADVERTISED PRICE</u>	<u>BID PRICE/UNIT</u>
<b>Sawtimber</b>			
Mixed Aspen	23.5 MBF	\$ 36.00/MBF	\$ _____
Red Maple	2.9 MBF	\$ 35.00/MBF	\$ _____
Red Oak	17.9 MBF	\$ 88.00/MBF	\$ _____
Red Pine	40.2 MBF	\$ 89.00/MBF	\$ _____
White Oak	20.3 MBF	\$ 55.00/MBF	\$ _____
White Pine	19.6 MBF	\$ 75.00/MBF	\$ _____
<b>Pulpwood</b>			
Jack Pine	38 Cords	\$ 9.30/Cord	\$ _____
Mixed Aspen	254 Cords	\$ 17.25/Cord	\$ _____
Mixed Hardwood	36 Cords	\$ 11.30/Cord	\$ _____
Red Oak	31 Cords	\$ 20.05/Cord	\$ _____
Red Pine	167 Cords	\$ 38.75/Cord	\$ _____
White Oak	43 Cords	\$ 20.05/Cord	\$ _____
White Pine	107 Cords	\$ 16.40/Cord	\$ _____

\*The volumes are statistically estimated within plus (+) or minus (-) 24.42 percent at 95% confidence level. These estimated volumes are final and not subject to adjustment. Prospective bidders are urged to examine this timber and to make their own estimates of quantity and quality.

I understand that any or all bids may be rejected. All bids must be signed and all bid items must be bid or the bid form may be rejected. I also understand that consideration and awarding a contract will be based upon my past performance and ability to complete the contract based upon equipment and staffing subject to my control.

FEDERAL ID: \_\_\_\_\_ or SOCIAL SECURITY NUMBER: \_\_\_\_\_

Company or individual bidding: \_\_\_\_\_

Company representative's name: \_\_\_\_\_

Address: \_\_\_\_\_

City: \_\_\_\_\_ State: \_\_\_\_\_ Zip: \_\_\_\_\_

IF AVAILABLE, PLEASE PLACE THE PERSONALIZED LABEL FROM YOUR PROSPECTUS IN THE ABOVE BOX.

Individual or company representative's signature: \_\_\_\_\_ Date: \_\_\_\_\_

Phone number : \_\_\_\_\_ Email (optional): \_\_\_\_\_

**THE WINNING BIDDER MUST COMPLETE THE VERIFICATION OF WORKER'S DISABILITY COMPENSATION ACT COMPLIANCE (ON REVERSE SIDE IF DOUBLE SIDED) WITHIN 21 DAYS OF SALE AWARD DATE**



<b>FOR DEPARTMENT USE ONLY</b>
Sale Number (XX - XXX - XX - XX)
Forest Management Unit:

## TIMBER SALE VERIFICATION OF WORKER'S DISABILITY COMPENSATION ACT COMPLIANCE

*As required by Act 317, P.A. 1969 (Worker's Compensation) and  
Part 5 of Act 451 of 1994, as amended.*

### VERIFICATION OF WORKER'S DISABILITY COMPENSATION ACT COMPLIANCE

- This verification must be completed and submitted within 21 days of contract award and prior to the issuance of the timber sale contract.
- In addition, if boxes 2B or 2C are checked, then Notice of Exclusion or Certificate of Insurance must be submitted within twenty-one (21) days of the contract award and prior to the issuance of the timber sale contract.
- All information must be typed or printed except for written signatures.

Please Check Appropriate Categories:

1. My business is organized as (you **must** check one of the boxes below):
  - A.  Sole Proprietorship (individual)
  - B.  Partnership
  - C.  Corporation
  
2. You **must** check one of the boxes below:
  - A.  I certify my business is a sole proprietorship and it has no employees but the sole proprietor. I am not subject to the Worker's Compensation Laws.
  - B.  I certify my business has satisfied its obligation to the Worker's Compensation Act through the use of an approved Notice of Exclusion (BWC-337, Rev. 5/96). I will provide a copy of the Notice of Exclusion within 21 days of the contract award. (For questions or a copy of the BWC-337, please call the Worker's Compensation Bureau at 517-322-1195).
  - C.  I certify my business has a Worker's Compensation Policy. I will provide an original Certificate of Insurance within twenty-one (21) days of the contract award.
  
3. If you have checked item 2(A) or 2(B), you **must** indicate the number of **both** full-time and part-time employees, other than yourself, including family members and active partners (if none, you must enter "0").

\_\_\_\_\_ Full-time Employees

\_\_\_\_\_ Part-time Employees

Name of Business		Federal ID (or) Social Security No.	
Address		Telephone (       )	
City	State	ZIP	

*I hereby certify that the above information is true and correct. I agree to notify the Michigan DNR of any changes that occur in factors affecting my coverage during any of my present and future operations.*

\_\_\_\_\_  
Signature of Owner or Authorized Representative

\_\_\_\_\_  
Title

\_\_\_\_\_  
Date

**Please complete the "SEALED BID" information on the next page**