



**DEPARTMENT OF NATURAL RESOURCES
STATE OF MICHIGAN
TIMBER SALE PROSPECTUS #7331**

SCHEDULED SALE DATE AND TIME: 10:00 a.m. (local time) on January 8, 2024.

LOCATION: SAULT DNR CUSTOMER SERVICE CENTER, 4131 S. M-129, SAULT STE MARIE, MI 49783.

PROSPECTUS NOTE: The bidder is advised to inspect the sale area and review the location, estimated volumes, operating costs and contract terms of proposed sales. Please be aware that some landowners may request 60 days or more notice for access across their land.

Notice is hereby given that bids will be received by the Unit Manager, SAULT STE MARIE MANAGEMENT UNIT, for certain timber on the following described lands:

D.I. Sheep Ranch (45-009-23) / T41N, R07E, SEC. 17, NENW,N1/2NE.

T41N, R07E, SEC. 4 , W1/2NE,E1/2SW,W1/2SE.

T41N, R07E, SEC. 5 , NWSW,S1/2SW,SE.

T41N, R07E, SEC. 6 , NESE,S1/2SE.

T41N, R07E, SEC. 7 , NENE.

T41N, R07E, SEC. 8 , NW,NE,SESW,S1/2SE.

Chippewa County, Advertised Price \$38,273.25, 292.9 Acres, Aspen, Spruce/Fir/Tamarack.

SALE NOTE: Aspen mixed sale with some units winter restricted.

A recreation site such as a trail, pathway, or campground is within the sale area or the vicinity. Certain restrictions/specifications may be applicable including time restrictions.

D.I. Scraping the Barrel (45-010-23) / T41N, R05E, SEC. 3 , SENW,N1/2SW.

T41N, R05E, SEC. 4 , N1/2SE.

T42N, R05E, SEC. 32, SW.

Chippewa County, Advertised Price \$3,917.50, 29.7 Acres, Aspen, Spruce/Fir/Tamarack.

SALE NOTE: Payment Unit 2 of the sale is winter restricted.

Access will require use of quarry haul road.

A recreation site such as a trail, pathway, or campground is within the sale area or the vicinity. Certain restrictions/specifications may be applicable including time restrictions. Access may be through private land.

D.I. Boot Lake Mix (45-011-23) / T41N, R05E, SEC. 1 , S1/2NE,N1/2SE,SWSE.

T41N, R05E, SEC. 11, N1/2NE.

T41N, R05E, SEC. 2 , SWNE,N1/2SW,SESW,NWSE,S1/2SE.

T41N, R05E, SEC. 3 , S1/2NE,N1/2SE.

T42N, R05E, SEC. 36, SWSE.

Chippewa County, Advertised Price \$37,538.05, 174.7 Acres, Aspen, Hardwood.

SALE NOTE: All units are winter restricted for Deer Wintering Complex. Most units are along the snowmobile trail.

A recreation site such as a trail, pathway, or campground is within the sale area or the vicinity. Certain restrictions/specifications may be applicable including time restrictions. Access may be through private land.

BID INSTRUCTIONS (VER. 10/10/2022):

1. Scheduled Bid Location, Date, and Time (2/11)

Bids must be received by the Unit Manager, SAULT STE MARIE OFFICE, 4131 S. M-129, Sault Ste Marie, MI 49783, no later than 10:00 a.m. (local time) on January 8, 2024. For further information concerning this sale, contact Kenny Fanelli at 906-287-1380 extension .

2. Bidder's Qualifications (10/22)

If all or part of a timber sale was prepared by a private contractor, the contractor and that contractor's company are not permitted to bid on the timber sale. A person must be 18 years of age or older to purchase timber. Permanent employees of the Department of Natural Resources or members of their immediate household may not bid. Former employees, in the permanent or seasonal class, may not bid until 3 months after the last day of active duty. Bids will not be accepted from individuals or companies appearing on the DNR/FRD No-Bid List. This list contains the names of purchasers who previously failed to execute a contract within 21-days or who have a history of poor performance.

3. Preparation of Sealed Bids (5/16)

Bid Forms may be completed online thru Michigan DNR Timber Sale Online Bidding (OLB) at www.michigan.gov/timberbidding or by completing the hardcopy Bid Form found in the Timber Sale Prospectus . Hardcopy Bid Forms shall be manually signed in ink. Registration in OLB is considered your 'signature' for all bids submitted thru that system. Bid prices must be entered for each species and product in the Bid Price column for all material subject to bidding and all fill-in blanks must be completed. If erasures or other changes appear on the hardcopy Bid Form, each erasure or change must be initialed by the person signing the bid.

4. Submission of Sealed Bids (5/16)

Bid forms may be obtained from the Unit Manager or thru OLB. Bids may be submitted hardcopy or thru OLB. All hardcopy bids must be submitted on the bid form and in an envelope clearly identified as described in this section. NOTE: Only one bid form per bid envelope. Sealed bids must be submitted to the Unit office designated in the prospectus and must be submitted at or prior to the time established in the prospectus. The envelope should show on the outside (a) the sale name or number and (b) the date and time of bid opening, as shown in the prospectus. Bids received after the time specified in the sale prospectus are late bids and will be rejected.

It is possible for a bidder to submit multiple bids on a single sale. For example, a bid may be submitted hardcopy and a bid may be submitted thru OLB. Or, two bidders from the same company could both submit bids on the same sale. If this were to happen, the State would accept all bids received and award the contract accordingly. All bidding and contractual requirements would apply to all bids received.

5. Public Opening of Sealed Bids (7/16)

If conditions permit, the sealed bids will be publicly opened and posted at the time and place set in the prospectus.

If a bidder, present at a bid opening, has submitted bids on more than one sale, that bidder may withdraw their unopened bid envelopes or announce the withdrawal of their online bid after being declared the successful bidder on one sale.

6. Award of Contract (1/11)

Award of the contract will be made to the Bidder whose bid, conforming to the prospectus, is most advantageous to the State of Michigan on the basis of total value at rates bid for the estimated quantities. The State reserves the right to reject any bid or waive any minor irregularity in bids received. A written award mailed (or otherwise furnished) to the successful Bidder shall be deemed to result in a binding contract without further action by either party.

7. Down Payment (1/11)

The Bidder to whom award is made must make a down payment within 21 days of the sale award. The amount of the down payment will be calculated as shown in the Bond and Payment Schedule of this prospectus. Only cash may be used to meet this requirement.

8. Performance Security (1/11)

As guarantee of faithful performance, a cash bond, certificate of deposit, surety bond or irrevocable letter of credit (LOC) is required within 21 days of the sale award. The amount of the performance security is shown in the Bond and

Payment Schedule of this prospectus. If an LOC or surety is used, the coverage must extend for at least 6 months beyond the contract expiration.

9. Worker's Compensation (10/22)

Purchaser shall obtain worker's compensation insurance to cover claims under Michigan's Worker's Disability Compensation Act of 1969 or similar employee benefit act of any other state applicable to an employee. Verification of Worker's Disability Compensation Act Compliance must be completed and submitted within 21 days of contract award and prior to the issuance of the timber sale contract. In addition, if applicable, Notice of Exclusion or Certificate of Insurance must also be submitted.

10. Timber Sale Contract (10/22)

Additional conditions and requirements common to all timber sales are listed on the timber sale contract (R4031) and are available on line at www.michigan.gov/timber. Contact the Unit Manager for additional information or a sample contract. Within 21 days of the date of the award letter, the bidder must sign the contract and provide the required down payment, performance security, and verification of worker's disability compensation. The down payment and performance security shall be in accordance with the provisions of the timber sale contract, in the sums stated in this prospectus. If these actions are not taken, then the Bidder, the Bidder's corporation, and the corporation's principals may not be permitted to bid on State timber sales for a period of 3 months after the first offense, 6 months after the second offense, and 1 year after the third offense. An offense will only be counted against the Bidder for 5 years. In addition, the Bidder certifies that if awarded this contract, the Bidder will complete the timber sale contract in accordance with its terms and any modifications thereof including requirements to purchase, cut, and remove the included timber by the expiration date.

Payment Unit values in the State Forest Timber Sale Contract are calculated based on the advertised value of the Payment Unit as a percentage of the total advertised value of the contract. The advertised value of each Payment Unit is given in the Description of Timber by Payment Unit table on the Timber Sale Information page. For example, if the value of Payment Unit 1 is advertised as \$1,500 and the total Timber Sale value is advertised as \$10,000, the contract price for Payment Unit 1 will be 15% of the total bid price ($\$1,500/\$10,000 * 100$).

11. Disclaimer of Estimates and Bidder's Warranty of Inspection (10/22)

Before submitting this bid, the Bidder is advised and cautioned to inspect the sale area, review the requirements of the sale contract, and take other steps as may be reasonably necessary to ascertain the location, estimated volumes, construction estimates, and operating costs of the proposed sale. Failure to do so will not relieve the Bidder from responsibility for completing the contract.

The Bidder warrants that this bid is submitted solely on the basis of the Bidder's examination and inspection of the quality and quantity of the timber offered for sale and the Bidder's opinion of the value thereof and the costs of recovery. No reliance should be placed on the State of Michigan's estimates of timber quality, quantity or costs of recovery. Bidder further acknowledges that the State of Michigan: (i) expressly disclaims any warranty of fitness of timber for any purpose; (ii) offers this timber as is without any warranty of quality (merchantability) or quantity and (iii) expressly disclaims any warranty as to the quantity or quality of timber sold.

12. Certification and Chain-of-Custody (10/22)

Unless otherwise indicated in the contract under section 7 – Other Conditions of the Sale Specific Conditions & Requirements, the area encompassed by this timber sale is certified to the standards of the Forest Stewardship Council (FSC) - Certificate #SCS-FM/COC-00090N and the Sustainable Forestry Initiative (SFI) - Certificate #NSF-SFIS-5Y031-SF5. Forest products from this sale may be delivered to the mill as "FSC 100% and / or SFI certified" as long as the contractor hauling the forest products is chain-of-custody (COC) certified or covered under a COC certificate from the destination mill. The purchaser is responsible for maintaining COC after leaving the sale area.

13. Good Neighbor Authority (GNA) Requirements (10/22)

If the name of this timber sales contains the acronym GNA, it is authorized by the Good Neighbor Authority (GNA) and covered by various agreements between the U.S. Forest Service and the State. The timber sale occurs on federal land and the following conditions apply:

GNA contracts on US Forest Service land will not be awarded to purchasers on the Federal list of excluded parties. The System for Award Management (SAM) will be checked for active excluded parties prior to award of contract. In

addition, the Bidder to whom award is made must complete an Assurance Regarding Felony Conviction or Tax Delinquent Status for Corporate Applicants (AD-3031).

14. Good Neighbor Authority (GNA) Requirements, con't (10/22)

Bidder certifies, by signing this bid form, that to the best of Bidder's knowledge that the following representations are accurate and complete.

- a. That the Bidder and its principals are not presently debarred, suspended, proposed for debarment, declared ineligible, or voluntary excluded from timber sales (covered transactions) by any Federal department or agency.
- b. That the Bidder and its principals have not within a 3-year period preceding this bid been convicted of or had a civil judgment rendered against them for commission of fraud or a criminal offense in connection with obtaining , attempting to obtain, or performing a public (Federal, State, or local) transaction or contract under a public transaction; violation of Federal or State antitrust statutes or commission of embezzlement, theft, forgery, bribery, falsification or destruction of records, making false statements, or receiving stolen property.
- c. That the Bidder and its principals are not presently indicted for or otherwise criminally or civilly charged by a governmental entity (Federal, State, or local) with commission of any of the offenses enumerated in paragraph b of this certification.
- d. That the Bidder and its principals have not within a 3-year period preceding this bid had one or more public transactions (Federal, State, or local) terminated for breach or default of a timber or forest product contract.

Bidders that cannot certify this requirement, in whole or in part, shall submit an explanation with their bid.

Scott Bowen
Director

TIMBER SALE INFORMATION

D.I. Sheep Ranch (45-009-23)

T41N, R07E, SEC. 17; T41N, R07E, SEC. 4; T41N, R07E, SEC. 5; T41N, R07E, SEC. 6; T41N, R07E, SEC. 7; T41N, R07E, SEC. 8.
Chippewa County (Advertised Price \$38,273.25)

SALE NOTE: Aspen mixed sale with some units winter restricted.

A recreation site such as a trail, pathway, or campground is within the sale area or the vicinity. Certain restrictions/specifications may be applicable including time restrictions.

A timber sale contract for this lump sum, sealed bid timber sale will be awarded to the responsible bidder offering the highest sealed bid price. All units of volume listed below were estimated using the Inventory Manager computer program and the new Michigan taper model. Bids must be at or above the following advertised price for each product and species:

<u>PRODUCTS & SPECIES</u>	<u>ESTIMATED UNITS*</u>	<u>ADVERTISED PRICE</u>
Sawtimber		
Sugar Maple	3.8 MBF	\$ 143.00 / MBF
Pulpwood		
Balsam Fir	294 Cords	\$ 5.05 / Cord
Mixed Aspen	3,394 Cords	\$ 7.50 / Cord
Mixed Hardwood	650 Cords	\$ 7.50 / Cord
Mixed Spruce	1,163 Cords	\$ 5.05 / Cord
Tamarack	21 Cords	\$ 2.00 / Cord

* The total volume is statistically estimated within plus (+) or minus (-) 8.89 percent. There are an estimated 5,453 cords on this timber sale, plus or minus 485 cords at the 95% confidence level. The estimated units are final and not subject to adjustment. Prospective bidders are urged to examine this timber and to make their own estimates of quantity and quality.

BOND AND PAYMENT SCHEDULE:

1. A bond in the amount of \$3,062.00 to insure faithful performance of the conditions of the contract will be deposited by the successful bidder within 21 days of the sale award.
2. Cutting in any sale or unit without the required advance payment would be considered a trespass.
3. Total payment must be paid in advance or according to the following schedule :
 - (a) Ten percent (10%) of the sale value must be paid within 21 days of the sale award.
 - (b) The 10% down payment will be credited towards the first unit cut.

(c) Payment for each of the following units must be made before cutting begins in that unit:

PAYMENT UNIT NUMBER	PERCENT OF TOTAL SALE VALUE
01	19.8%
02	16.1%
03	17.4%
04	7.7%
05	8.3%
06	18.7%
07	2.7%
08	9.3%

4. If no cutting takes place, the 10% down payment will not be refunded.
5. Operations on the contract issued will terminate on 06/30/2027.

SALE STATISTICS

Volumes were calculated in cubic feet using the Michigan taper model. Cubic foot volume includes all wood inside bark for the product indicated. For display purposes, cubic feet were converted to cords and MBF using a simple conversion factor, e.g. 79 cubic feet per cord and 185 cubic feet per MBF. The cubic foot volumes are precise; the cords and MBF volumes are not. Cubic foot volume cannot be directly converted to cords or boards with precision.

SALE VOLUMES

The total estimated sale volume may not equal the sum of the species/products due to the nature of statistical calculations associated with double sampling methodology.

VOLUME			STATISTICAL RANGE IN CORDS	
TOTAL CUBIC FEET	TOTAL CORDS	PERCENT ERROR	MINIMUM	MAXIMUM
430,768	5,453	8.89%	4,968	5,938

VDU VOLUMES

A VDU is a Volume Determination Unit. Volumes and their associated statistics are calculated at the VDU level and summarized to the sale level. There is often a one to one relationship between a VDU and a Payment Unit, but not always, depending on the cruise design. Refer to the VDU TO PAYMENT UNIT table.

	VOLUME			RANGE IN CORDS	
VDU	TOTAL CUBIC FEET	TOTAL CORDS	PERCENT ERROR	MINIMUM	MAXIMUM
4	13,588	172	70.12%	51	293
20	83,251	1,054	30.22%	735	1,372
24	52,182	661	26.06%	488	833
27	6,492	82	66.84%	27	137
29	127,900	1,619	14.95%	1,377	1,861
45	46,434	588	20.33%	468	707
55	21,679	274	30.19%	192	357
59	10,699	135	53.63%	63	208
60	68,543	868	14.75%	740	996
TOTAL:	430,768	5,453		4,142	6,764

VDU TO PAYMENT UNIT

When a VDU is associated with more than one Payment Unit (PU), the VDU volumes are assigned to the PU based on acres of the VDU within the PU.

VDU	VDU ACRES	PU	PU ACRES
4	5.9	6	5.9
20	41.4	1	41.4
24	50.5	8	50.5
27	6.0	2	6.0
29	73.1	2	33.4
		3	39.7
45	49.9	4	35.3
		5	14.6
55	14.3	5	14.3
59	10.5	7	10.5
60	41.3	6	41.3
TOTAL:	292.9		292.9

DESCRIPTION OF TIMBER BY PAYMENT UNIT (PU)

PU	MARKET GROUP	PRODUCT	QUANTITY	UNIT	ACRES	ADVERTISE PRICE	
1	Balsam Fir	Pulpwood	47	Cords	41.4	\$7,600.20	
	Mixed Aspen		855	Cords			
	<i>B. T. Aspen</i>		313	<i>Cords</i>			
	<i>Balsam Poplar</i>		28	<i>Cords</i>			
	<i>Quaking Aspen</i>		514	<i>Cords</i>			
	Mixed Hardwood		21	Cords			
	<i>Paper Birch</i>		21	<i>Cords</i>			
	Mixed Spruce		157	Cords			
	<i>White Spruce</i>		157	<i>Cords</i>			
	2		Sugar Maple	Sawtimber			1.7
Balsam Fir		Pulpwood	54	Cords			
Mixed Aspen			530	Cords			
<i>B. T. Aspen</i>			265	<i>Cords</i>			
<i>Balsam Poplar</i>			15	<i>Cords</i>			
<i>Quaking Aspen</i>			250	<i>Cords</i>			
Mixed Hardwood			185	Cords			
<i>Beech</i>			3	<i>Cords</i>			
<i>Ironwood</i>			11	<i>Cords</i>			
<i>Paper Birch</i>			34	<i>Cords</i>			
<i>Red Maple</i>			13	<i>Cords</i>			
<i>Sugar Maple</i>			124	<i>Cords</i>			
Mixed Spruce			57	Cords			
<i>White Spruce</i>			57	<i>Cords</i>			
3			Sugar Maple	Sawtimber	2.1	MBF	39.7
	Balsam Fir		Pulpwood	47	Cords		
	Mixed Aspen	576		Cords			
	<i>B. T. Aspen</i>	315		<i>Cords</i>			
	<i>Balsam Poplar</i>	16		<i>Cords</i>			
	<i>Quaking Aspen</i>	245		<i>Cords</i>			
	Mixed Hardwood	211		Cords			
	<i>Beech</i>	4		<i>Cords</i>			
	<i>Ironwood</i>	12		<i>Cords</i>			
	<i>Paper Birch</i>	41		<i>Cords</i>			
	<i>Red Maple</i>	14		<i>Cords</i>			
	<i>Sugar Maple</i>	140		<i>Cords</i>			
	Mixed Spruce	45		Cords			
	<i>White Spruce</i>	45		<i>Cords</i>			
	4	Balsam Fir		Pulpwood	13	Cords	
Mixed Aspen		282			Cords		
<i>Balsam Poplar</i>		17	<i>Cords</i>				
<i>Quaking Aspen</i>		265	<i>Cords</i>				
Mixed Hardwood		38	Cords				
<i>Paper Birch</i>		25	<i>Cords</i>				
<i>White Ash</i>		13	<i>Cords</i>				
Mixed Spruce		93	Cords				
<i>White Spruce</i>		93	<i>Cords</i>				
5		Balsam Fir	Pulpwood		13	Cords	28.9
	Mixed Aspen	272		Cords			
	<i>Balsam Poplar</i>	34		<i>Cords</i>			
	<i>Quaking Aspen</i>	238		<i>Cords</i>			
	Mixed Hardwood	64		Cords			
	<i>Beech</i>	2		<i>Cords</i>			
	<i>Green Ash</i>	31		<i>Cords</i>			
	<i>Paper Birch</i>	26		<i>Cords</i>			
	<i>White Ash</i>	5		<i>Cords</i>			
	Mixed Spruce	120		Cords			

DESCRIPTION OF TIMBER BY PAYMENT UNIT (PU), CON'T

PU	MARKET GROUP	PRODUCT	QUANTITY	UNIT	ACRES	ADVERTISE PRICE
5 con't	<i>White Spruce</i>	<i>Pulpwood</i>	120	<i>Cords</i>		
6	Balsam Fir	Pulpwood	114	Cords	47.2	\$7,145.05
	Mixed Aspen		661	Cords		
	<i>B. T. Aspen</i>		69	<i>Cords</i>		
	<i>Balsam Poplar</i>		92	<i>Cords</i>		
	<i>Quaking Aspen</i>		500	<i>Cords</i>		
	Mixed Hardwood		89	Cords		
	<i>Beech</i>		2	<i>Cords</i>		
	<i>Ironwood</i>		11	<i>Cords</i>		
	<i>Paper Birch</i>		76	<i>Cords</i>		
	Mixed Spruce		187	Cords		
	<i>Black Spruce</i>		3	<i>Cords</i>		
	<i>White Spruce</i>		184	<i>Cords</i>		
7	Mixed Aspen	Pulpwood	92	Cords	10.5	\$1,015.10
	<i>B. T. Aspen</i>		42	<i>Cords</i>		
	<i>Balsam Poplar</i>		21	<i>Cords</i>		
	<i>Quaking Aspen</i>		29	<i>Cords</i>		
	Mixed Hardwood		42	Cords		
	<i>Ironwood</i>		4	<i>Cords</i>		
	<i>Paper Birch</i>		35	<i>Cords</i>		
	<i>Sugar Maple</i>		3	<i>Cords</i>		
	Mixed Spruce		2	Cords		
	<i>White Spruce</i>		2	<i>Cords</i>		
8	Balsam Fir	Pulpwood	6	Cords	50.5	\$3,552.40
	Mixed Aspen		126	Cords		
	<i>B. T. Aspen</i>		46	<i>Cords</i>		
	<i>Quaking Aspen</i>		80	<i>Cords</i>		
	Mixed Spruce		502	Cords		
	<i>White Spruce</i>		502	<i>Cords</i>		
	Tamarack		21	Cords		
TOTAL:			3.8	MBF		
TOTAL:			5,522	Cords		

Sale Specific Conditions & Requirements

Sale Name: D.I. Sheep Ranch

Sale Number: 45-009-23 Seq#: 1

1 - Sale Area

1.2 - Boundaries

1.2.1 - Painted boundaries (9/19)

The sale boundary and Payment Unit boundaries are marked and identified by red and yellow paint. Exterior sale boundary lines against state are marked with red paint. Interior Payment Unit boundaries are marked with yellow paint. Retention patches are marked with red paint; no harvesting activities may occur within these areas. The painted boundary line trees are not Included Timber and are to be protected. Yellow painted trees designating an interior Payment Unit boundary are only to be cut when all surrounding Payment Units have been paid.

2 - Timber Specifications

2.1 - Included Timber

2.1.1 - Clearcut unit(s) with unmerchantable trees (6/14)

Within Payment Unit(s) 1-6 & 8, cut all trees that are two (2) inches or more at DBH, except do not cut any cedar, maple, pine, hemlock, oak, or yellow birch, along with any beech over twelve (12) inches at DBH in Payment Unit 6, or any paper birch and sugar maple in Payment Unit 8.

2.1.3 - Cut tree marked unit(s) (12/08)

Within Payment Unit(s) 7, all aspen, paper birch, balsam poplar, and spruce trees are designated for cutting which are two (2) inches or greater at DBH. Additionally, all other species are designated for cutting when marked with orange paint above and below stump height, regardless of merchantability.

3 - Payments

3.3 - Pre-measured Sales

3.3.4 - Dividing payment units (7/14)

Payment Unit(s) 1-8 may be divided at the request of the Purchaser and upon approval of the Unit Manager. Dividing Payment Units is a contract modification which requires a Timber Sale Contract Amendment. There will be only one division per Payment Unit.

4 - Transportation

4.1 - Construction

4.1.6 - Road construction (1/09)

Construction of new roads or improvements of existing roads shall be done in such a way as to minimize the environmental and visual impacts. Merchantable trees shall be cut and utilized unless otherwise directed. Non-merchantable trees shall be severed and laid flat on the ground. Slash shall be scattered, and not left in windrows and kept a minimum of 10 feet back from the road edge. Stumps shall be set upright, not left on edge, and be moved at least 10 feet away from the road edge. Disturbed soil shall be feathered into the woods and not left in berms or windrows. The Unit Manager and his/her representatives must be notified prior to beginning any road improvements or road construction.

4.1.7 - Road closure (10/11)

All new roads built into the sale must be blocked to vehicle traffic upon completion of the sale. Overgrown roads that are reopened shall be considered new roads. In general, this will require constructing double earthen berms at strategic locations. Stumps and brush must be placed along the remainder of the trail. These roads must be rendered impassable to cars and trucks. All stumps from road building and landing construction must be reserved to block any newly constructed roads upon completion of the sale. These stumps must be scattered along the road system to prohibit vehicular movement. Temporary berms may be required if no sale activity occurs for 30 or more consecutive days. Contact the Sale Administrator for specific details of design and placement.

4.1.8 - Road work (1) (8/07)

The following road work is required: improvement of the two-track running east-west across the Sheep Ranch opening and

the building of a new road south to Payment Units 6 & 7.

4.2 - Maintenance

4.2.1 - Hauling restriction (12/08)

Hauling may be restricted on forest roads by the Unit Manager or his/her representative. The restriction may occur during spring breakup or during wet weather conditions.

4.2.2 - Fill material (4/07)

To maintain roads, fill material may be needed in areas where "holes" exist or may be expected to develop. This fill material should be placed before trucking begins. Approval from the Sale Administrator must be acquired before removing any material from adjacent State-owned lands.

4.2.4 - Grading (10/16)

For completion of the sale, state forest roads must be graded. In general, this will require a road grader or bulldozer to shape up the roads after forest products have been hauled off site. This includes cleaning of drainage areas, grading, crowning and filling with gravel, if necessary. The grading equipment to be used must be approved by the Unit Manager or his/her representative.

4.2.5 - Two wheel drive condition (2/04)

All existing trail roads on and adjacent to the sale area must be passable by two-wheel drive traffic for the duration of the sale.

5 - Operations

5.2 - Conduct of Operations

5.2.1 - Slash

5.2.1.10 - No slash in openings (5/10)

No brush or logging debris is to be left in the maintained wildlife opening which is indicated by "G0" on the Timber Sale Map. Any damage to the opening shall be repaired according to specifications of the Unit Manager or his/her representative.

5.2.2 - Hazard Trees/Snags

5.2.2.1 - Den trees (10/16)

Obvious hollow and/or den trees shall be protected and left standing unless they are a safety hazard.

5.2.3 - Operating Restrictions

5.2.3.1 - Operating restrictions (9/11)

Within Payment Unit(s) 6 & 7, unless changed by written agreement, cutting is limited to the period of December 1 to March 31. This restriction is because of the adjacent winter deer yard.

5.2.4 - Dead and Down Creation

5.2.4.3 - Dead and down creation, dead trees (6/07)

Except as provided for in General Condition and Requirement 5.2.2, no dead trees, standing or down, are to be cut, skidded, or processed.

5.2.22 - Operating Caution

5.2.22.1 - Operating caution (6/11)

It is recommended, but not required, that within Payment Unit(s) 1-5, cutting, skidding, and hauling occur during dry summer or frozen winter conditions. The reason for the recommendation is because of marginally wet ground conditions.

5.2.32 - Decking/landing restoration (9/13)

All decking and landing areas must have the surface area restored to a condition equal to or better than before. This is to ensure the proper regeneration of the stand. Wood debris, chips and "cookies" from trimmings must be removed or scattered away from landing and loading areas and may not be windrowed on the edge.

5.2.37 - No decking areas (12/08)

No decking is allowed along any ORV Route without permission from the Unit Manager or his/her representatives. This includes Glen Cove Road and Turkey Ranch Road. Spur roads should be constructed and utilized for loading trucks. Additionally, no decking is allowed along the edge of the Sheep Ranch opening which is indicated by "G0" on the Timber Sale Map.

5.2.38 - No decking against live trees (2/04)

Cut products may not be decked against unmarked or designated leave trees.

5.2.39 - ORV trail/route protection (4/18)

Glen Cove and Turkey Ranch are ORV routes and are shown on the Timber Sale Map. Do not cut trees or damage posts with yellow ORV markers. All stumps within 5 feet of the trail must be cut flush with the ground. Maintain a 20-foot-wide slash, debris, and rut free zone daily using the ORV trail or route as the centerline. Skidding across the trail or route may only occur in locations approved by the Sale Administrator.

5.2.41 - Snowmobile trail protection (9/11)

A snowmobile trail is shown on the Timber Sale Map. Do not cut or damage posts with orange trail markers or traffic control signs. If the trail is used, it must be maintained and restored to a condition equal to or better than before the sale. The road maintenance/restoration must be done prior to December 1. If the trail is used for hauling, it must be graded to the satisfaction of the Unit Manager or his/her representative prior to December 1. If the trail road is to be used for hauling during the snowmobile season, then a snow covered base must be left on the trail. The snowmobile trail may only be crossed at right angles. Maintain a 20-foot-wide slash, debris, and rut free zone daily using the snowmobile trail as the centerline. No decking of forest products will be permitted along the snowmobile trail. All stumps within 5 feet of the snowmobile trail must be cut at ground level.

5.2.43 - Opening protection (2/21)

No activities are permitted in openings marked on the Timber Sale Map with the letter "G". Any damage to the openings shall be repaired according to specifications of the Unit Manager or his/her representative.

5.8 - Protection of Endangered Species

5.8.5 - Protection of raptor nests (3/13)

All trees with raptor nests will be protected if found during harvesting operations. Notification will be made to the Unit Manager or his/her representative who will notify the Wildlife Biologist so an on-site evaluation and recommendation can be made, if necessary.

6 - Safety and Fire Prevention

6.2 - Signing

6.2.1 - Road posting (10/20)

The Purchaser is responsible for posting and maintaining caution signs on Glen Cove Road and Turkey Ranch Road prior to beginning operations. The road must be posted at appropriate distances from the Sale Area to warn of logging activity and truck traffic. Signs must be removed when harvest operations are suspended or completed. The Purchaser will provide these signs.

6.2.2 - Snowmobile trail posting (10/20)

The Purchaser is responsible for posting and maintaining caution signs on the snowmobile trail prior to beginning operations during the snowmobile season (approximately December 1 to March 31). The trail must be posted at appropriate distances from the Sale Area to warn of logging activity and truck traffic. Signs must be removed when harvest operations are suspended or completed. The Purchaser will provide these signs.

6.2.3 - Recreational trail posting (10/20)

The Purchaser is responsible for posting and maintaining caution signs on the ATV trail prior to beginning operations. The trail must be posted at appropriate distances from the Sale Area to warn of logging activity and truck traffic at both ends of the trail. Signs must be removed when harvest operations are suspended or completed. The Purchaser will provide these signs.

7 - Other Conditions

7.5 - Loss

7.5.1 - Deteriorating timber (7/09)

The sale area has received damage from spruce budworm in Payment Unit 8. The Purchaser should harvest the wood as soon as possible. The Department of Natural Resources is held free of responsibility of any further damage or deterioration due to delay in harvesting.



TIMBER SALE MAP

This information provided by authority of Part 525, 1994 PA 451, as amended.

Sale Number 45-009-23	Date 08/24/2023
---------------------------------	---------------------------

Forest Management Unit Sault Ste Marie Mgt Unit	County Chippewa	Mapped By: Fanelli Cruised By: Fanelli/Brinks	Scale 1:15,840	Page 2	Of 2
--	--------------------	--	-------------------	-----------	---------

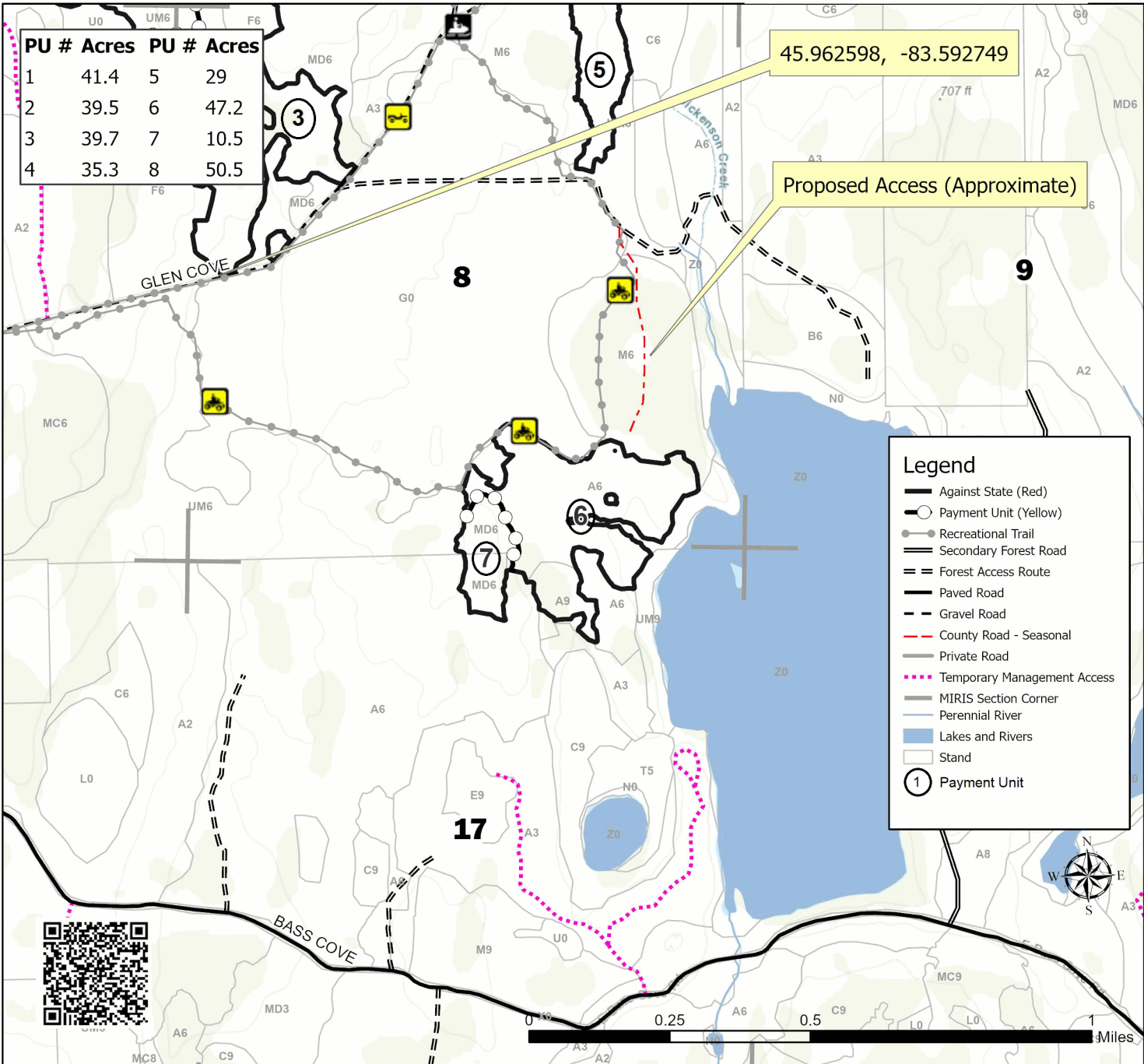
Township 41N	Range 07E	Section(s) and Subdivision(s)	Sec. 17 NENW,N1/2NE; Sec. 4 W1/2NE,E1/2SW,W1/2SE; Sec. 5 NWSW,S1/2SW,SE; Sec. 6 NESE,S1/2SE; Sec. 7 NENE; Sec. 8 NW,NE,SESW,S1/2SE;
-----------------	--------------	----------------------------------	---

Cover Type			
A = Aspen	J = Jack Pine	O = Oak	U = Upland Brush
B = Paper Birch	K = Rock	P = Lowland Poplar	UM = Upland Mix Forest
C = Cedar	L = Lowland Brush	Q = Mixed Swamp Conifer	V = Bog or Marsh
D = Treed Bog	LM = Lowland Mix Forest	R = Red Pine	W = White Pine
E = Swamp Hardwoods	M = Maple, Beech, Birch	S = Black Spruce	X = Non Stocked
F = Spruce/Fir	MC = Mixed Conifer	T = Tamarack	Y = Sand
G = Grass	MD = Mixed Deciduous	Z = Water	
H = Hemlock	N = Marsh		

Density	
0 = Non Stocked	5 = Pole Timber Medium
1 = Seedling Sapling Poor	6 = Pole Timber Well
2 = Seedling Sapling Medium	7 = Saw Timber Poor
3 = Seedling Sapling Well	8 = Saw Timber Medium
4 = Pole Timber Poor	9 = Saw Timber Well

D.I. Sheep Ranch

292.9 Acres





TIMBER SALE MAP

This information provided by authority of Part 525, 1994 PA 451, as amended.

Sale Number	Date
45-009-23	08/24/2023

Forest Management Unit	County	Mapped By: Fanelli	Scale	Page	Of
Sault Ste Marie Mgt Unit	Chippewa	Cruised By: Fanelli/Brinks	1:15,840	1	2

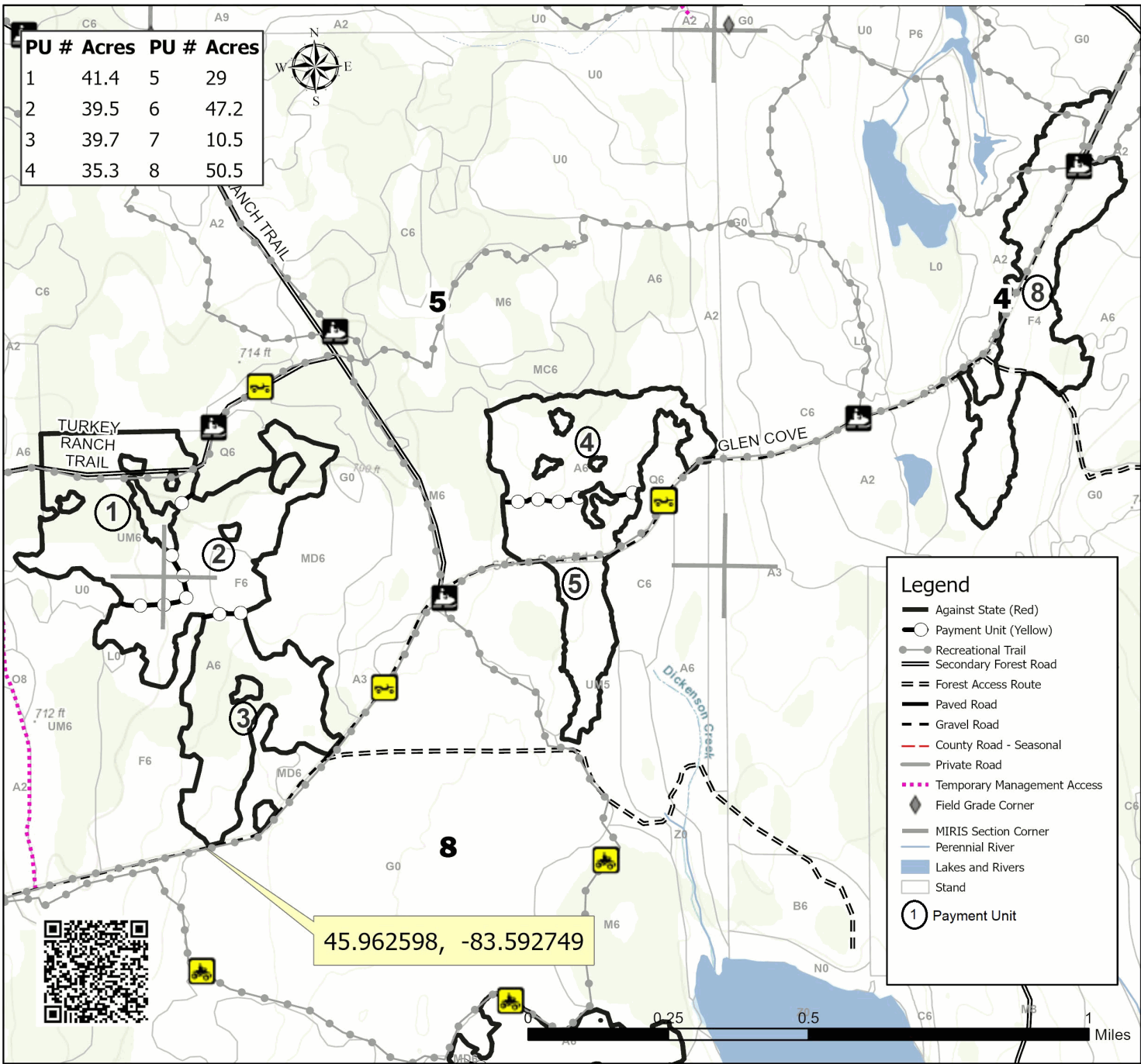
Township	Range	Section(s) and Subdivision(s)	Sec. 17 NENW,N1/2NE; Sec. 4 W1/2NE,E1/2SW,W1/2SE; Sec. 5 NWSW,S1/2SW,SE; Sec. 6 NESE,S1/2SE; Sec. 7 NENE; Sec. 8 NW,NE,SESW,S1/2SE;
41N	07E		

Cover Type			
A = Aspen	J = Jack Pine	O = Oak	U = Upland Brush
B = Paper Birch	K = Rock	P = Lowland Poplar	UM = Upland Mix Forest
C = Cedar	L = Lowland Brush	Q = Mixed Swamp Conifer	V = Bog or Marsh
D = Treed Bog	LM = Lowland Mix Forest	R = Red Pine	W = White Pine
E = Swamp Hardwoods	M = Maple, Beech, Birch	S = Black Spruce	X = Non Stocked
F = Spruce/Fir	MC = Mixed Conifer	T = Tamarack	Y = Sand
G = Grass	MD = Mixed Deciduous	Z = Water	
H = Hemlock	N = Marsh		

Density	
0 = Non Stocked	5 = Pole Timber Medium
1 = Seedling Sapling Poor	6 = Pole Timber Well
2 = Seedling Sapling Medium	7 = Saw Timber Poor
3 = Seedling Sapling Well	8 = Saw Timber Medium
4 = Pole Timber Poor	9 = Saw Timber Well

D.I. Sheep Ranch

292.9 Acres



TIMBER SALE INFORMATION

D.I. Scraping the Barrel (45-010-23)
T41N, R05E, SEC. 3; T41N, R05E, SEC. 4; T42N, R05E, SEC. 32.
Chippewa County (Advertised Price \$3,917.50)

SALE NOTE: Payment Unit 2 of the sale is winter restricted.
Access will require use of quarry haul road.

A recreation site such as a trail, pathway, or campground is within the sale area or the vicinity. Certain restrictions/specifications may be applicable including time restrictions. Access may be through private land.

A timber sale contract for this lump sum, sealed bid timber sale will be awarded to the responsible bidder offering the highest sealed bid price. All units of volume listed below were estimated using the Inventory Manager computer program and the new Michigan taper model. Bids must be at or above the following advertised price for each product and species:

<u>PRODUCTS & SPECIES</u>	<u>ESTIMATED UNITS*</u>	<u>ADVERTISED PRICE</u>
Pulpwood		
Balsam Fir	113 Cords	\$ 4.05 / Cord
Mixed Aspen	301 Cords	\$ 6.00 / Cord
Mixed Hardwood	70 Cords	\$ 6.00 / Cord
Mixed Spruce	67 Cords	\$ 4.05 / Cord
N. White Cedar	175 Cords	\$ 5.50 / Cord

* The total volume is statistically estimated within plus (+) or minus (-) 27.22 percent. There are an estimated 750 cords on this timber sale, plus or minus 204 cords at the 95% confidence level. The estimated units are final and not subject to adjustment. Prospective bidders are urged to examine this timber and to make their own estimates of quantity and quality.

BOND AND PAYMENT SCHEDULE:

1. A bond in the amount of \$313.00 to insure faithful performance of the conditions of the contract will be deposited by the successful bidder within 21 days of the sale award.
2. Cutting in any sale or unit without the required advance payment would be considered a trespass.
3. Total payment must be paid in advance or according to the following schedule :
 - (a) Ten percent (10%) of the sale value must be paid within 21 days of the sale award.
 - (b) The 10% down payment will be credited towards the first unit cut.
 - (c) Payment for each of the following units must be made before cutting begins in that unit:

PAYMENT UNIT NUMBER	PERCENT OF TOTAL SALE VALUE
01	30.6%
02	69.4%
4. If no cutting takes place, the 10% down payment will not be refunded.
5. Operations on the contract issued will terminate on 06/30/2028.

SALE STATISTICS

Volumes were calculated in cubic feet using the Michigan taper model. Cubic foot volume includes all wood inside bark for the product indicated. For display purposes, cubic feet were converted to cords and MBF using a simple conversion factor, e.g. 79 cubic feet per cord and 185 cubic feet per MBF. The cubic foot volumes are precise; the cords and MBF volumes are not. Cubic foot volume cannot be directly converted to cords or boards with precision.

SALE VOLUMES

The total estimated sale volume may not equal the sum of the species/products due to the nature of statistical calculations associated with double sampling methodology.

VOLUME		STATISTICAL RANGE IN CORDS		
TOTAL CUBIC FEET	TOTAL CORDS	PERCENT ERROR	MINIMUM	MAXIMUM
59,212	750	27.22%	545	954

VDU VOLUMES

A VDU is a Volume Determination Unit. Volumes and their associated statistics are calculated at the VDU level and summarized to the sale level. There is often a one to one relationship between a VDU and a Payment Unit, but not always, depending on the cruise design. Refer to the VDU TO PAYMENT UNIT table.

VDU	VOLUME		PERCENT ERROR	RANGE IN CORDS	
	TOTAL CUBIC FEET	TOTAL CORDS		MINIMUM	MAXIMUM
12	40,995	519	36.07%	332	706
16	8,601	109	60.60%	43	175
24	9,617	122	44.69%	67	176
TOTAL:	59,212	750		442	1,057

VDU TO PAYMENT UNIT

When a VDU is associated with more than one Payment Unit (PU), the VDU volumes are assigned to the PU based on acres of the VDU within the PU.

VDU	VDU ACRES	PU	PU ACRES
12	16.7	2	16.7
16	5.0	1	5.0
24	8.0	1	8.0
TOTAL:	29.7		29.7

DESCRIPTION OF TIMBER BY PAYMENT UNIT (PU)

PU	MARKET GROUP	PRODUCT	QUANTITY	UNIT	ACRES	ADVERTISE PRICE
1	Balsam Fir	Pulpwood	37	Cords	13.0	\$1,198.95
	Mixed Aspen		75	Cords		
	<i>B. T. Aspen</i>		36	<i>Cords</i>		
	<i>Quaking Aspen</i>		39	<i>Cords</i>		
	Mixed Hardwood		58	Cords		
	<i>American Elm</i>		5	<i>Cords</i>		
	<i>Paper Birch</i>		16	<i>Cords</i>		
	<i>Sugar Maple</i>		37	<i>Cords</i>		
	Mixed Spruce		62	Cords		
	<i>White Spruce</i>		62	<i>Cords</i>		
2	Balsam Fir	Pulpwood	76	Cords	16.7	\$2,718.55
	Mixed Aspen		226	Cords		
	<i>B. T. Aspen</i>		6	<i>Cords</i>		
	<i>Quaking Aspen</i>		220	<i>Cords</i>		
	Mixed Hardwood		12	Cords		
	<i>Paper Birch</i>		4	<i>Cords</i>		
	<i>Red Maple</i>		4	<i>Cords</i>		
	<i>Sugar Maple</i>		4	<i>Cords</i>		
	Mixed Spruce		5	Cords		
	<i>White Spruce</i>		5	<i>Cords</i>		
N. White Cedar	175	Cords				
TOTAL:			726	Cords		

Sale Specific Conditions & Requirements

Sale Name: D.I. Scraping the Barrel

Sale Number: 45-010-23 Seq#: 1

1 - Sale Area

1.2 - Boundaries

1.2.1 - Painted boundaries (9/19)

The sale boundary is marked and identified by red paint. Exterior sale boundary lines against state are marked with red paint. Retention patches are marked with red paint; no harvesting activities may occur within these areas. The painted boundary line trees are not Included Timber and are to be protected.

2 - Timber Specifications

2.1 - Included Timber

2.1.1 - Clearcut unit(s) with unmerchantable trees (6/14)

Within Payment Unit(s) 1 & 2, cut all trees that are two (2) inches or more at DBH, with the following exceptions:

- Within Payment Unit 1, do not cut cedar, pine, hemlock, oak or yellow birch.
- Within Payment Unit 2, do not cut pine or oak.

4 - Transportation

4.1 - Construction

4.1.3 - Slash and earthen piles (8/04)

Piles or windrows of earth along roads and landings that have been widened or constructed shall be leveled. Slash from road maintenance or construction, including stumps, shall be dispersed throughout the sale.

4.1.6 - Road construction (1/09)

Construction of new roads or improvements of existing roads shall be done in such a way as to minimize the environmental and visual impacts. Merchantable trees shall be cut and utilized unless otherwise directed. Non-merchantable trees shall be severed and laid flat on the ground. Slash shall be scattered, and not left in windrows and kept a minimum of 10 feet back from the road edge. Stumps shall be set upright, not left on edge, and be moved at least 10 feet away from the road edge. Disturbed soil shall be feathered into the woods and not left in berms or windrows.

4.1.7 - Road closure (10/11)

All new roads built into the sale must be blocked to vehicle traffic upon completion of the sale. Overgrown roads that are reopened shall be considered new roads. In general, this will require constructing double earthen berms at strategic locations. Stumps and brush must be placed along the remainder of the trail. These roads must be rendered impassable to cars and trucks. All stumps from road building and landing construction must be reserved to block any newly constructed roads upon completion of the sale. These stumps must be scattered along the road system to prohibit vehicular movement. Temporary berms may be required if no sale activity occurs for 30 or more consecutive days. Contact the Sale Administrator for specific details of design and placement.

4.2 - Maintenance

4.2.1 - Hauling restriction (12/08)

Hauling may be restricted on forest roads by the Unit Manager or his/her representative. The restriction may occur during spring breakup or during wet weather conditions.

4.2.2 - Fill material (4/07)

To maintain roads, fill material may be needed in areas where "holes" exist or may be expected to develop. This fill material should be placed before trucking begins. Approval from the Sale Administrator must be acquired before removing any material from State-owned land.

4.2.4 - Grading (10/16)

For completion of the sale, state forest roads must be graded. In general, this will require a road grader or bulldozer to shape up the roads after forest products have been hauled off site. This includes cleaning of drainage areas, grading, crowning and

filling with gravel, if necessary. The grading equipment to be used must be approved by the Unit Manager or his/her representative.

4.2.5 - Two wheel drive condition (2/04)

All existing trail roads on and adjacent to the sale area must be passable by two-wheel drive traffic for the duration of the sale.

4.4 - Access

4.4.1 - Private property access (3/11)

Permission for access across private land is the responsibility of the Purchaser. Should the Purchaser desire to cross private land, a copy of the written permission from the private landowner may be required by the DNR. Permission must include access for the DNR to administer the sale.

4.4.4 - Restricted access (10/05)

Access for this sale will require the use of the Drummond Island Quarry haul road. Special permission from the quarry is needed to utilize the road.

5 - Operations

5.2 - Conduct of Operations

5.2.1 - Slash

5.2.1.8 - Slash height (12/08)

No slash or tree tops may exceed 24 inches in height.

5.2.2 - Hazard Trees/Snags

5.2.2.1 - Den trees (10/16)

Obvious hollow and/or den trees shall be protected and left standing unless they are a safety hazard.

5.2.3 - Operating Restrictions

5.2.3.1 - Operating restrictions (9/11)

Within Payment Unit(s) 2, unless changed by written agreement, cutting is limited to the period of December 1 through March 31. This restriction is because of winter deer yarding.

5.2.4 - Dead and Down Creation

5.2.4.3 - Dead and down creation, dead trees (6/07)

Except as provided for in General Condition and Requirement 5.2.2, no dead trees, standing or down, are to be cut, skidded, or processed.

5.2.32 - Decking/landing restoration (9/13)

All decking and landing areas must have the surface area restored to a condition equal to or better than before. This is to ensure the proper regeneration of the stand. Wood debris, chips and "cookies" from trimmings must be removed or scattered away from landing and loading areas and may not be windrowed on the edge.

5.2.38 - No decking against live trees (2/04)

Cut products may not be decked against unmarked or designated leave trees.

5.2.41 - Snowmobile trail protection (9/11)

The snowmobile trail is shown on the Timber Sale Map. Do not cut or damage posts with orange trail markers or traffic control signs. If the trail is used, it must be maintained and restored to a condition equal to or better than before the sale. The road maintenance/restoration must be done prior to December 1. If the trail is used for hauling, it must be graded to the satisfaction of the Unit Manager or his/her representative prior to December 1. If the trail road is to be used for hauling during the snowmobile season, then a snow-covered base must be left on the trail. Maintain a 20-foot-wide slash, debris, and rut free zone daily using the snowmobile trail as the centerline. No decking of forest products will be permitted along the snowmobile trail. All stumps within 5 feet of the snowmobile trail must be cut at ground level.

5.4 - Soil Protection

5.4.6 - Wet area protection (5/10)

No harvesting operations, including skidding and felling, are to take place within the buffer zone between Payment Unit 1 and Jones Lake. Care must be taken by the Purchaser to identify and avoid operating in these areas of the timber sale.

5.8 - Protection of Endangered Species

5.8.5 - Protection of raptor nests (3/13)

All trees with raptor nests will be protected if found during harvesting operations. Notification will be made to the Unit Manager or his/her representative who will notify the Wildlife Biologist so an on-site evaluation and recommendation can be made, if necessary.

5.8.7 - Protection of walking fern habitat (9/08)

If walking fern is discovered on boulders within the sale area, operations in that immediate area should be suspended and the Unit Manager contacted. The contract may be amended to protect these sites. An area surrounding the boulders could be designated as a "no-cut" zone with appropriate adjustments made to the State Forest Timber Sale Contract.

6 - Safety and Fire Prevention

6.2 - Signing

6.2.1 - Road posting (10/20)

The Purchaser is responsible for posting and maintaining caution signs on forest roads prior to beginning operations. The road must be posted at appropriate distances from the Sale Area to warn of logging activity and truck traffic. Signs must be removed when harvest operations are suspended or completed. The Purchaser will provide these signs.

6.2.2 - Snowmobile trail posting (10/20)

The Purchaser is responsible for posting and maintaining caution signs on the snowmobile trail prior to beginning operations during the snowmobile season (approximately December 1 to March 31). The trail must be posted at appropriate distances from the Sale Area to warn of logging activity and truck traffic. Signs must be removed when harvest operations are suspended or completed. The Purchaser will provide these signs.



TIMBER SALE MAP

This information provided by authority of Part 525, 1994 PA 451, as amended.

Sale Number	Date
45-010-23	09/06/2023

Forest Management Unit	County	Mapped By: Fanelli	Scale	Page	Of
Sault Ste Marie Mgt Unit	Chippewa	Cruised By: Fanelli	1:7,920	2	2

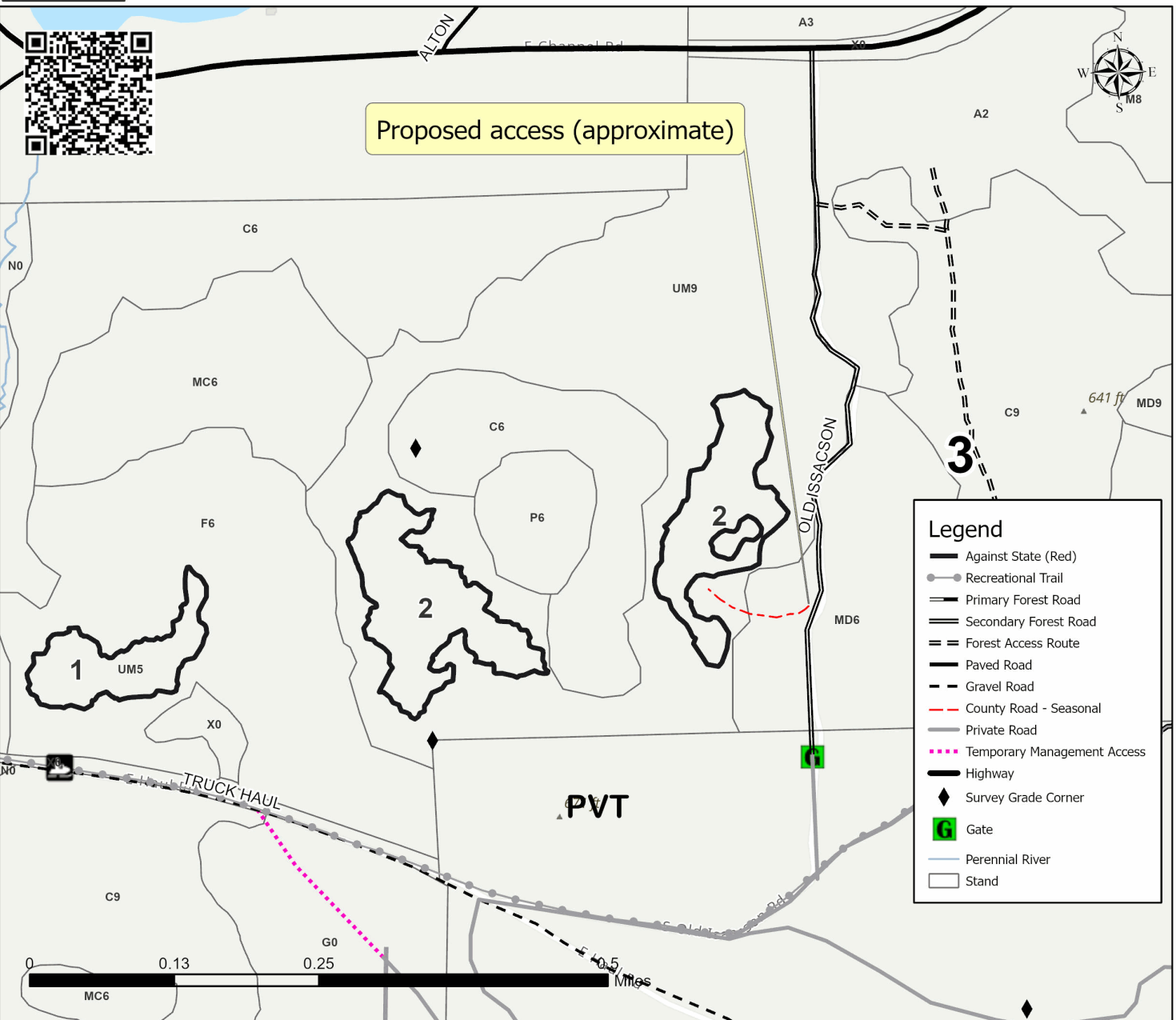
Township	Range	Section(s) and Subdivision(s)
41N / 42N	05E	Sec. 3 SENW,N1/2SW; Sec. 32 SW; Sec. 4 N1/2SE;

Cover Type			
A = Aspen	J = Jack Pine	O = Oak	U = Upland Brush
B = Paper Birch	K = Rock	P = Lowland Poplar	UM = Upland Mix Forest
C = Cedar	L = Lowland Brush	Q = Mixed Swamp Conifer	V = Bog or Marsh
D = Treed Bog	LM = Lowland Mix Forest	R = Red Pine	W = White Pine
E = Swamp Hardwoods	M = Maple, Beech, Birch	S = Black Spruce	X = Non Stocked
F = Spruce/Fir	MC = Mixed Conifer	T = Tamarack	Y = Sand
G = Grass	MD = Mixed Deciduous	Z = Water	
H = Hemlock	N = Marsh		

Density	
0 = Non Stocked	5 = Pole Timber Medium
1 = Seedling Sapling Poor	6 = Pole Timber Well
2 = Seedling Sapling Medium	7 = Saw Timber Poor
3 = Seedling Sapling Well	8 = Saw Timber Medium
4 = Pole Timber Poor	9 = Saw Timber Well

D.I. Scraping the Barrel
29.7 Acres

PU #	Acres
1	13
2	16.7





TIMBER SALE MAP

This information provided by authority of Part 525, 1994 PA 451, as amended.

Sale Number	Date
45-010-23	09/06/2023

Forest Management Unit	County	Mapped By: Fanelli	Scale	Page	Of
Sault Ste Marie Mgt Unit	Chippewa	Cruised By: Fanelli	1:7,920	1	2

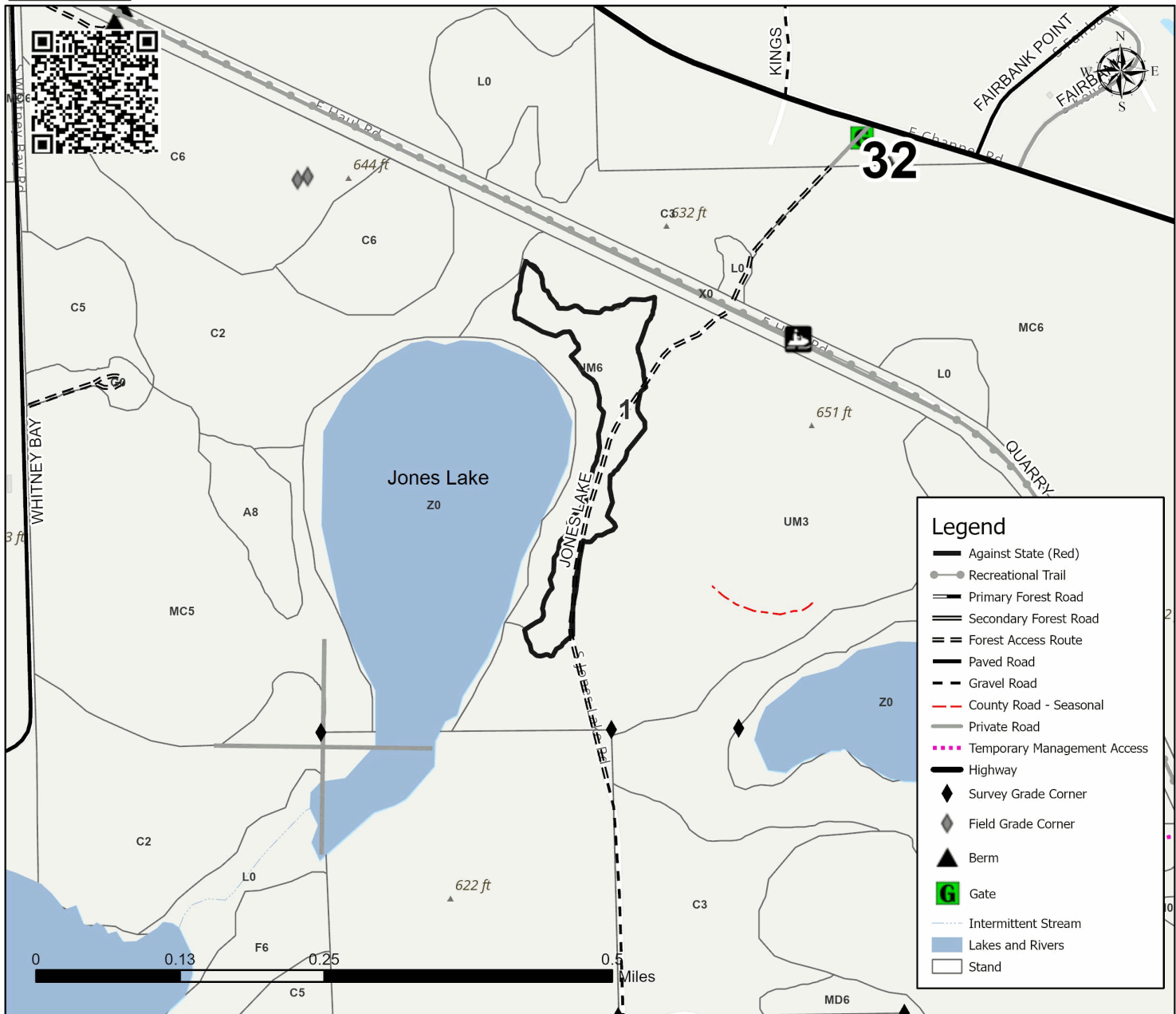
Township	Range	Section(s) and Subdivision(s)
41N / 42N	05E	Sec. 3 SENW,N1/2SW; Sec. 32 SW; Sec. 4 N1/2SE;

Cover Type			
A = Aspen	J = Jack Pine	O = Oak	U = Upland Brush
B = Paper Birch	K = Rock	P = Lowland Poplar	UM = Upland Mix Forest
C = Cedar	L = Lowland Brush	Q = Mixed Swamp Conifer	V = Bog or Marsh
D = Treed Bog	LM = Lowland Mix Forest	R = Red Pine	W = White Pine
E = Swamp Hardwoods	M = Maple, Beech, Birch	S = Black Spruce	X = Non Stocked
F = Spruce/Fir	MC = Mixed Conifer	T = Tamarack	Y = Sand
G = Grass	MD = Mixed Deciduous	Z = Water	
H = Hemlock	N = Marsh		

Density	
0 = Non Stocked	5 = Pole Timber Medium
1 = Seedling Sapling Poor	6 = Pole Timber Well
2 = Seedling Sapling Medium	7 = Saw Timber Poor
3 = Seedling Sapling Well	8 = Saw Timber Medium
4 = Pole Timber Poor	9 = Saw Timber Well

D.I. Scraping the Barrel
29.7 Acres

PU #	Acres
1	13
2	16.7



TIMBER SALE INFORMATION

D.I. Boot Lake Mix (45-011-23)

T41N, R05E, SEC. 1; T41N, R05E, SEC. 11; T41N, R05E, SEC. 2; T41N, R05E, SEC. 3; T42N, R05E, SEC. 36.
Chippewa County (Advertised Price \$37,538.05)

SALE NOTE: All units are winter restricted for Deer Wintering Complex. Most units are along the snowmobile trail.

A recreation site such as a trail, pathway, or campground is within the sale area or the vicinity. Certain restrictions/specifications may be applicable including time restrictions. Access may be through private land.

A timber sale contract for this lump sum, sealed bid timber sale will be awarded to the responsible bidder offering the highest sealed bid price. All units of volume listed below were estimated using the Inventory Manager computer program and the new Michigan taper model. Bids must be at or above the following advertised price for each product and species:

<u>PRODUCTS & SPECIES</u>	<u>ESTIMATED UNITS*</u>	<u>ADVERTISED PRICE</u>
Sawtimber		
Paper Birch	8.1 MBF	\$ 76.00 / MBF
Red Maple	23.6 MBF	\$ 99.00 / MBF
Sugar Maple	85.2 MBF	\$ 143.00 / MBF
Pulpwood		
Balsam Fir	180 Cords	\$ 5.05 / Cord
Balsam Poplar	93 Cords	\$ 6.00 / Cord
Mixed Aspen	1,197 Cords	\$ 7.50 / Cord
Mixed Hardwood	969 Cords	\$ 7.50 / Cord
Mixed Spruce	475 Cords	\$ 5.05 / Cord
N. White Cedar	253 Cords	\$ 6.90 / Cord
Tamarack	273 Cords	\$ 2.00 / Cord

* The total volume is statistically estimated within plus (+) or minus (-) 10.14 percent. There are an estimated 3,682 cords on this timber sale, plus or minus 373 cords at the 95% confidence level. The estimated units are final and not subject to adjustment. Prospective bidders are urged to examine this timber and to make their own estimates of quantity and quality.

BOND AND PAYMENT SCHEDULE:

1. A bond in the amount of \$3,003.00 to insure faithful performance of the conditions of the contract will be deposited by the successful bidder within 21 days of the sale award.
2. Cutting in any sale or unit without the required advance payment would be considered a trespass.
3. Total payment must be paid in advance or according to the following schedule :
 - (a) Ten percent (10%) of the sale value must be paid within 21 days of the sale award.
 - (b) The 10% down payment will be credited towards the first unit cut.
 - (c) Payment for each of the following units must be made before cutting begins in that unit:

PAYMENT UNIT NUMBER	PERCENT OF TOTAL SALE VALUE
01	17.3%
02	28.6%
03	12.3%
04	22.6%
05	7.4%
06	8.5%
07	3.3%

4. If no cutting takes place, the 10% down payment will not be refunded.
5. Operations on the contract issued will terminate on 06/30/2028.

SALE STATISTICS

Volumes were calculated in cubic feet using the Michigan taper model. Cubic foot volume includes all wood inside bark for the product indicated. For display purposes, cubic feet were converted to cords and MBF using a simple conversion factor, e.g. 79 cubic feet per cord and 185 cubic feet per MBF. The cubic foot volumes are precise; the cords and MBF volumes are not. Cubic foot volume cannot be directly converted to cords or boards with precision.

SALE VOLUMES

The total estimated sale volume may not equal the sum of the species/products due to the nature of statistical calculations associated with double sampling methodology.

VOLUME			STATISTICAL RANGE IN CORDS	
TOTAL CUBIC FEET	TOTAL CORDS	PERCENT ERROR	MINIMUM	MAXIMUM
290,863	3,682	10.14%	3,308	4,055

VDU VOLUMES

A VDU is a Volume Determination Unit. Volumes and their associated statistics are calculated at the VDU level and summarized to the sale level. There is often a one to one relationship between a VDU and a Payment Unit, but not always, depending on the cruise design. Refer to the VDU TO PAYMENT UNIT table.

	VOLUME			RANGE IN CORDS	
VDU	TOTAL CUBIC FEET	TOTAL CORDS	PERCENT ERROR	MINIMUM	MAXIMUM
4	45,557	577	20.97%	456	698
26	40,612	514	19.44%	414	614
35	85,368	1,081	16.81%	899	1,262
41	58,555	741	13.41%	642	841
51	11,796	149	36.75%	94	204
58	48,975	620	15.83%	522	718
TOTAL:	290,863	3,682		3,027	4,337

VDU TO PAYMENT UNIT

When a VDU is associated with more than one Payment Unit (PU), the VDU volumes are assigned to the PU based on acres of the VDU within the PU.

VDU	VDU ACRES	PU	PU ACRES
4	22.1	5	22.1
26	40.8	1	40.8
35	27.3	2	27.3
41	50.9	3	18.0
		4	32.9
51	7.9	7	7.9
58	25.7	6	25.7
TOTAL:	174.7		174.7

DESCRIPTION OF TIMBER BY PAYMENT UNIT (PU)

PU	MARKET GROUP	PRODUCT	QUANTITY	UNIT	ACRES	ADVERTISE PRICE	
1	Paper Birch	Sawtimber	1.0	MBF	40.8	\$6,491.95	
	Red Maple		3.0	MBF			
	Sugar Maple		18.8	MBF			
	Balsam Fir		Pulpwood	11			Cords
	Mixed Aspen			147			Cords
	<i>B. T. Aspen</i>			12			<i>Cords</i>
	<i>Quaking Aspen</i>			135			<i>Cords</i>
	Mixed Hardwood			303			Cords
	<i>Beech</i>			3			<i>Cords</i>
	<i>Ironwood</i>			24			<i>Cords</i>
	<i>Paper Birch</i>			13			<i>Cords</i>
	<i>Red Maple</i>			19			<i>Cords</i>
	<i>Sugar Maple</i>			244			<i>Cords</i>
2	Paper Birch	Sawtimber	6.3	MBF	27.3	\$10,704.90	
	Red Maple		8.6	MBF			
	Sugar Maple		13.5	MBF			
	Balsam Fir		Pulpwood	34			Cords
	Balsam Poplar			6			Cords
	Mixed Aspen			541			Cords
	<i>B. T. Aspen</i>			58			<i>Cords</i>
	<i>Quaking Aspen</i>			483			<i>Cords</i>
	Mixed Hardwood			201			Cords
	<i>Ironwood</i>			7			<i>Cords</i>
	<i>Paper Birch</i>			29			<i>Cords</i>
	<i>Red Maple</i>			63			<i>Cords</i>
	<i>Sugar Maple</i>			102			<i>Cords</i>
	Mixed Spruce			14			Cords
	<i>White Spruce</i>			14			<i>Cords</i>
N. White Cedar	232	Cords					
3	Red Maple	Sawtimber		4.2	MBF	18.0	\$4,626.05
	Sugar Maple		18.1	MBF			
	Balsam Fir		Pulpwood	1	Cords		
	Balsam Poplar			1	Cords		
	Mixed Aspen			58	Cords		
	<i>Quaking Aspen</i>			58	<i>Cords</i>		
	Mixed Hardwood			149	Cords		
	<i>Beech</i>			2	<i>Cords</i>		
	<i>Red Maple</i>			31	<i>Cords</i>		
	<i>Sugar Maple</i>			116	<i>Cords</i>		
	Mixed Spruce			2	Cords		
	<i>White Spruce</i>			2	<i>Cords</i>		
	N. White Cedar			7	Cords		
4	Red Maple	Sawtimber		7.8	MBF	32.9	\$8,499.70
	Sugar Maple		33.2	MBF			
	Balsam Fir		Pulpwood	3	Cords		
	Balsam Poplar			3	Cords		
	Mixed Aspen			105	Cords		
	<i>Quaking Aspen</i>			105	<i>Cords</i>		
	Mixed Hardwood			273	Cords		
	<i>Beech</i>			4	<i>Cords</i>		
	<i>Red Maple</i>			57	<i>Cords</i>		
	<i>Sugar Maple</i>			212	<i>Cords</i>		
	Mixed Spruce			3	Cords		
	<i>White Spruce</i>			3	<i>Cords</i>		
	N. White Cedar			14	Cords		
5	Balsam Fir	Pulpwood		61	Cords	22.1	\$2,785.05

DESCRIPTION OF TIMBER BY PAYMENT UNIT (PU), CON'T

PU	MARKET GROUP	PRODUCT	QUANTITY	UNIT	ACRES	ADVERTISE PRICE
5 con't	Balsam Poplar	Pulpwood	50	Cords		
	Mixed Aspen		120	Cords		
	<i>Quaking Aspen</i>		120	<i>Cords</i>		
	Mixed Hardwood		15	Cords		
	<i>Paper Birch</i>		15	<i>Cords</i>		
	Mixed Spruce		170	Cords		
	<i>White Spruce</i>		170	<i>Cords</i>		
	Tamarack		153	Cords		
6	Balsam Fir	Pulpwood	48	Cords	25.7	\$3,195.65
	Balsam Poplar		33	Cords		
	Mixed Aspen		146	Cords		
	<i>Quaking Aspen</i>		146	<i>Cords</i>		
	Mixed Hardwood		12	Cords		
	<i>Paper Birch</i>		12	<i>Cords</i>		
	Mixed Spruce		265	Cords		
	<i>White Spruce</i>		265	<i>Cords</i>		
	Tamarack		116	Cords		
7	Paper Birch	Sawtimber	0.8	MBF	7.9	\$1,234.75
	Sugar Maple		1.6	MBF		
	Balsam Fir	Pulpwood	22	Cords		
	Mixed Aspen		80	Cords		
	<i>Quaking Aspen</i>		80	<i>Cords</i>		
	Mixed Hardwood		16	Cords		
	<i>Paper Birch</i>		11	<i>Cords</i>		
	<i>Sugar Maple</i>		5	<i>Cords</i>		
	Mixed Spruce		21	Cords		
	<i>White Spruce</i>		21	<i>Cords</i>		
	Tamarack		4	Cords		
TOTAL:			116.9	MBF		
TOTAL:			3,440	Cords		

Sale Specific Conditions & Requirements

Sale Name: D.I. Boot Lake Mix

Sale Number: 45-011-23 Seq#: 1

1 - Sale Area

1.2 - Boundaries

1.2.1 - Painted boundaries (9/19)

The sale boundary and Payment Unit boundaries are marked and identified by blue, red and yellow paint. Exterior sale boundary lines against private property are marked with blue paint. Exterior sale boundary lines against state are marked with red paint. Interior Payment Unit boundaries are marked with yellow paint. Retention patches are marked with red paint; no harvesting activities may occur within these areas. The painted boundary line trees are not Included Timber and are to be protected unless marked with orange paint. Yellow painted trees designating an interior Payment Unit boundary are only to be cut when all surrounding Payment Units have been paid if the units are clearcut units. Yellow painted trees along or within single tree selection units may only be cut if marked with orange paint.

2 - Timber Specifications

2.1 - Included Timber

2.1.1 - Clearcut unit(s) with unmerchantable trees (6/14)

Within Payment Unit(s) 2 & 5-7, cut all trees that are two (2) inches or more at DBH, except within Payment Unit 2 do not cut hemlock, yellow birch, oak, or pine. In addition, within Payment Units 5-7 do not cut cedar, pine, or hemlock.

2.1.3 - Cut tree marked unit(s) (12/08)

Within Payment Unit(s) 1, 3 & 4, all trees are designated for cutting when marked with orange paint above and below stump height, regardless of merchantability.

3 - Payments

3.3 - Pre-measured Sales

3.3.4 - Dividing payment units (7/14)

Payment Unit(s) 1-7, may be divided at the request of the Purchaser and upon approval of the Unit Manager. Dividing Payment Units is a contract modification which requires a Timber Sale Contract Amendment. There will be only one division per Payment Unit.

3.4 - Damaged Timber

3.4.1 - Damaged timber (7/16)

General Condition and Requirement 3.4 Damaged Timber, defines liquidated damages for undesignated live merchantable trees which are cut or injured. In addition, extreme care should be taken to avoid damage to tree seedlings and saplings.

Within the Sale Area, if more than 10% of the tree seedlings or saplings (1/4" to 4.5" DBH) within a specified portion of the Sale Area are damaged, liquidated damages will be assessed at \$500 per acre for all acreage within that specified portion of the Sale Area that was damaged.

No damage is acceptable to undesignated live merchantable trees. Within the Sale Area, if more than 5% of trees (> 4.5" DBH) within a specified area of the sale are damaged, liquidated damages will be assessed for all trees damaged. Rates will be in accordance with General Condition and Requirement 3.4 Damaged Timber.

4 - Transportation

4.1 - Construction

4.1.3 - Slash and earthen piles (8/04)

Piles or windrows of earth along roads and landings that have been widened or constructed shall be leveled. Slash from road maintenance or construction, including stumps, shall be dispersed throughout the sale.

4.1.6 - Road construction (1/09)

Construction of new roads or improvements of existing roads shall be done in such a way as to minimize the environmental and visual impacts. Merchantable trees shall be cut and utilized unless otherwise directed. Non-merchantable trees shall be severed and laid flat on the ground. Slash shall be scattered, and not left in windrows and kept a minimum of 10 feet back from the road edge. Stumps shall be set upright, not left on edge, and be moved at least 10 feet away from the road edge. Disturbed soil shall be feathered into the woods and not left in berms or windrows.

4.1.7 - Road closure (10/11)

All new roads built into the sale must be blocked to vehicle traffic upon completion of the sale. Overgrown roads that are reopened shall be considered new roads. In general, this will require constructing double earthen berms at strategic locations. These roads must be rendered impassable to cars and trucks. All stumps from road building and landing construction must be reserved to block any newly constructed roads upon completion of the sale. These stumps must be scattered along the road system to prohibit vehicular movement. Temporary berms may be required if no sale activity occurs for 30 or more consecutive days. Contact the Sale Administrator for specific details of design and placement.

4.2 - Maintenance

4.2.1 - Hauling restriction (12/08)

Hauling may be restricted on forest roads by the Unit Manager or his/her representative. The restriction may occur during spring breakup or wet weather conditions.

4.2.2 - Fill material (4/07)

To maintain roads, fill material may be needed in areas where "holes" exist or may be expected to develop. This fill material should be placed before trucking begins. Approval from the Sale Administrator must be acquired before removing any material from State owned land.

4.2.4 - Grading (10/16)

For completion of the sale, state forest roads must be graded. In general, this will require a road grader or bulldozer to shape up the roads after forest products have been hauled off site. This includes cleaning of drainage areas, grading, crowning and filling with gravel, if necessary. The grading equipment to be used must be approved by the Unit Manager or his/her representative.

4.2.5 - Two wheel drive condition (2/04)

All existing trail roads on and adjacent to the sale area must be passable by two-wheel drive traffic for the duration of the sale.

4.4 - Access

4.4.1 - Private property access (3/11)

Permission for access across private land is the responsibility of the Purchaser. Access into Payment Unit 7 must occur across private property. A copy of the written permission from the private land-owner may be required by the DNR. Permission to cross private property must also include permission for the DNR to administer the sale.

5 - Operations

5.2 - Conduct of Operations

5.2.2 - Hazard Trees/Snags

5.2.2.1 - Den trees (10/16)

Obvious hollow and/or den trees shall be protected and left standing unless they are a safety hazard.

5.2.3 - Operating Restrictions

5.2.3.1 - Operating restrictions (9/11)

Within Payment Unit(s) 1-7, unless changed by written agreement, cutting is limited to the period of December 1 to March 31. This restriction is because of the deer yard.

5.2.3.3 - Bark slippage restriction (3/09)

Within Payment Unit(s) 1, 3, & 4, unless changed by written agreement, cutting and skidding are not permitted during the period of May 1 to June 30. This restriction is because of bark slippage.

5.2.4 - Dead and Down Creation

5.2.4.2 - Dead and down creation, hare and grouse (1/14)

To improve habitat for snowshoe hare, grouse, and other species, the Purchaser is to leave one pile of slash on the ground for every two acres within Payment Units 1, 5 & 6. They should be placed along lowland and conifer edges around the perimeter of the Payment Units. These piles should be approximately 6 feet high and 12 feet in diameter.

5.2.4.3 - Dead and down creation, dead trees (6/07)

Except as provided for in General Condition and Requirement 5.2.2, no dead trees, standing or down, are to be cut, skidded, or processed.

5.2.32 - Decking/landing restoration (9/13)

All decking and landing areas must have the surface area restored to a condition equal to or better than before. This is to ensure the proper regeneration of the stand. Wood debris, chips and "cookies" from trimmings must be removed or scattered away from landing and loading areas and may not be windrowed on the edge.

5.2.37 - No decking areas (12/08)

No decking is allowed along the snowmobile trail during snowmobile season (Approximately Dec 1-March31); without permission of the Unit Manager or his/her representative.

5.2.38 - No decking against live trees (2/04)

Cut products may not be decked against unmarked or designated leave trees.

5.2.41 - Snowmobile trail protection (9/11)

The snowmobile trail and is shown on the Timber Sale Map. Do not cut or damage posts with orange trail markers or traffic control signs. If the trail is used, it must be maintained and restored to a condition equal to or better than before the sale. The road maintenance/restoration must be done prior to December 1. If the trail is used for hauling, it must be graded to the satisfaction of the Unit Manager or his/her representative prior to December 1. If the trail road is to be used for hauling during the snowmobile season, then a snow covered base must be left on the trail. The snowmobile trail may only be crossed at right angles. Maintain a 20-foot-wide slash, debris, and rut free zone daily using the snowmobile trail as the centerline. No decking of forest products will be permitted along the snowmobile trail during snowmobile season without approval from the Unit Manager or his/her representatives. All stumps within 5 feet of the snowmobile trail must be cut at ground level.

5.8 - Protection of Endangered Species

5.8.5 - Protection of raptor nests (3/13)

All trees with raptor nests will be protected if found during harvesting operations. Notification will be made to the Unit Manager or his/her representative who will notify the Wildlife Biologist so an on-site evaluation and recommendation can be made, if necessary.

6 - Safety and Fire Prevention

6.2 - Signing

6.2.1 - Road posting (10/20)

The Purchaser is responsible for posting and maintaining caution signs on all forest roads prior to beginning operations. The road must be posted at appropriate distances from the Sale Area to warn of logging activity and truck traffic. Signs must be removed when harvest operations are suspended or completed. The Purchaser will provide these signs.

6.2.2 - Snowmobile trail posting (10/20)

The Purchaser is responsible for posting and maintaining caution signs on the snowmobile trail prior to beginning operations during the snowmobile season (approximately December 1 to March 31). The trail must be posted at appropriate distances from the Sale Area to warn of logging activity and truck traffic. Signs must be removed when harvest operations are suspended or completed. The Purchaser will provide these signs.



TIMBER SALE MAP

This information provided by authority of Part 525, 1994 PA 451, as amended.

Sale Number 45-011-23	Date 09/06/2023
---------------------------------	---------------------------

Forest Management Unit Sault Ste Marie Mgt Unit	County Chippewa	Mapped By: Fanelli Cruised By: Contract	Scale 1:15,840	Page 1	Of 2
--	--------------------	--	-------------------	-----------	---------

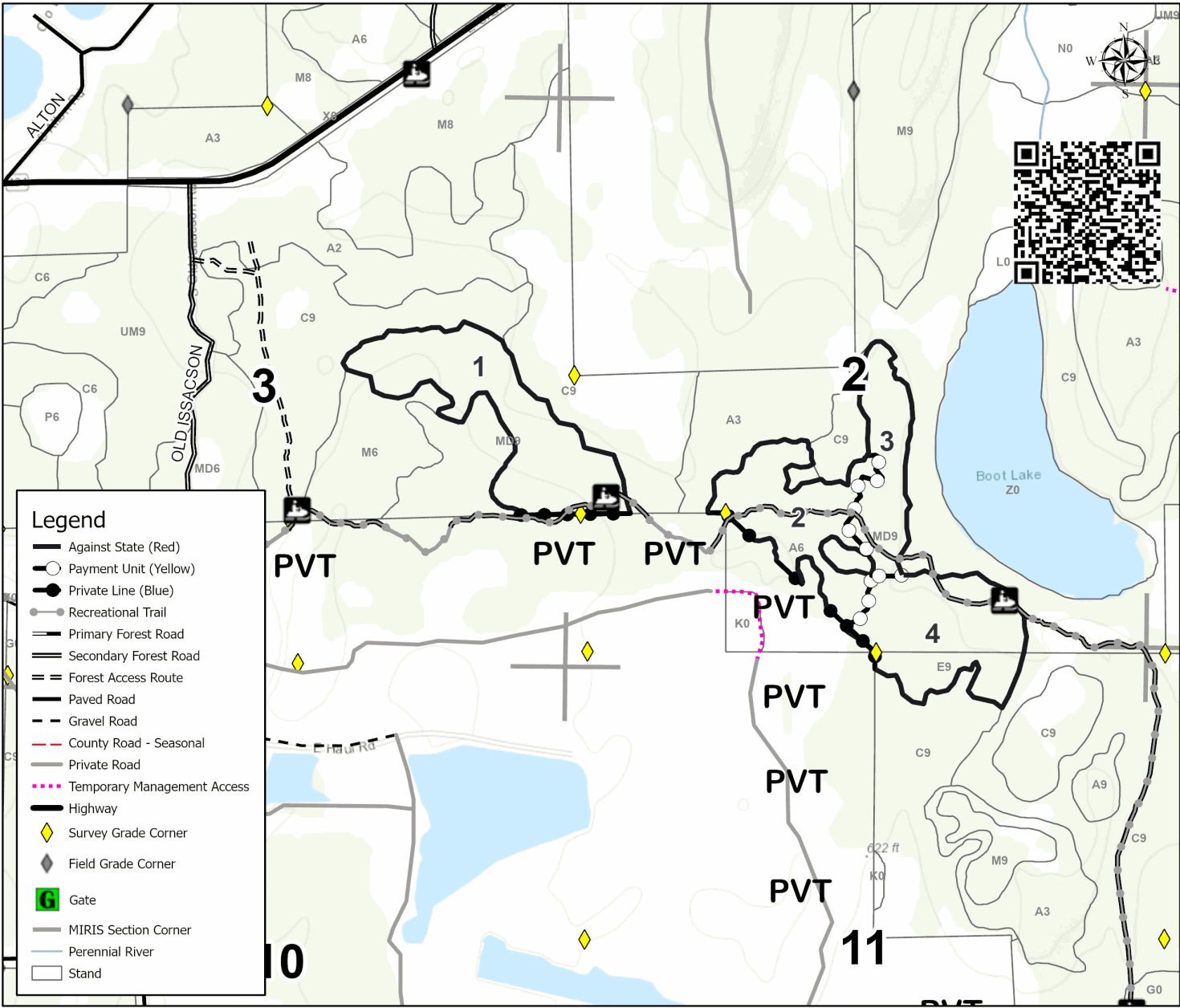
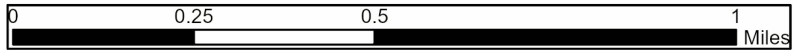
Township 41N / 42N	Range 05E	Section(s) and Subdivision(s) Sec. 1 S1/2NE,N1/2SE,SWSE; Sec. 11 N1/2NE; Sec. 2 SWNE,N1/2SW,SESW,NWSE,S1/2SE; Sec. 3 S1/2NE,N1/2SE; Sec. 36 SWSE;
-----------------------	--------------	---

Cover Type			
A = Aspen	J = Jack Pine	O = Oak	U = Upland Brush
B = Paper Birch	K = Rock	P = Lowland Poplar	UM = Upland Mix Forest
C = Cedar	L = Lowland Brush	Q = Mixed Swamp Conifer	V = Bog or Marsh
D = Treed Bog	LM = Lowland Mix Forest	R = Red Pine	W = White Pine
E = Swamp Hardwoods	M = Maple, Beech, Birch	S = Black Spruce	X = Non Stocked
F = Spruce/Fir	MC = Mixed Conifer	T = Tamarack	Y = Sand
G = Grass	MD = Mixed Deciduous	Z = Water	
H = Hemlock	N = Marsh		

Density	
0 = Non Stocked	5 = Pole Timber Medium
1 = Seedling Sapling Poor	6 = Pole Timber Well
2 = Seedling Sapling Medium	7 = Saw Timber Poor
3 = Seedling Sapling Well	8 = Saw Timber Medium
4 = Pole Timber Poor	9 = Saw Timber Well

D.I. Boot Lake Mix
174.7 Acres

PU #	Acres	PU #	Acres	PU #	Acres	PU #	Acres
1	40.8	3	18	5	22.1	7	7.9
2	27.3	4	32.9	6	25.7		



Legend	
	Against State (Red)
	Payment Unit (Yellow)
	Private Line (Blue)
	Recreational Trail
	Primary Forest Road
	Secondary Forest Road
	Forest Access Route
	Paved Road
	Gravel Road
	County Road - Seasonal
	Private Road
	Temporary Management Access
	Highway
	Survey Grade Corner
	Field Grade Corner
	Gate
	MIRIS Section Corner
	Perennial River
	Stand



TIMBER SALE MAP

This information provided by authority of Part 525, 1994 PA 451, as amended.

Sale Number	Date
45-011-23	09/06/2023

Forest Management Unit	County	Mapped By: Fanelli	Scale	Page	Of
Sault Ste Marie Mgt Unit	Chippewa	Cruised By: Contract	1:15,840	2	2

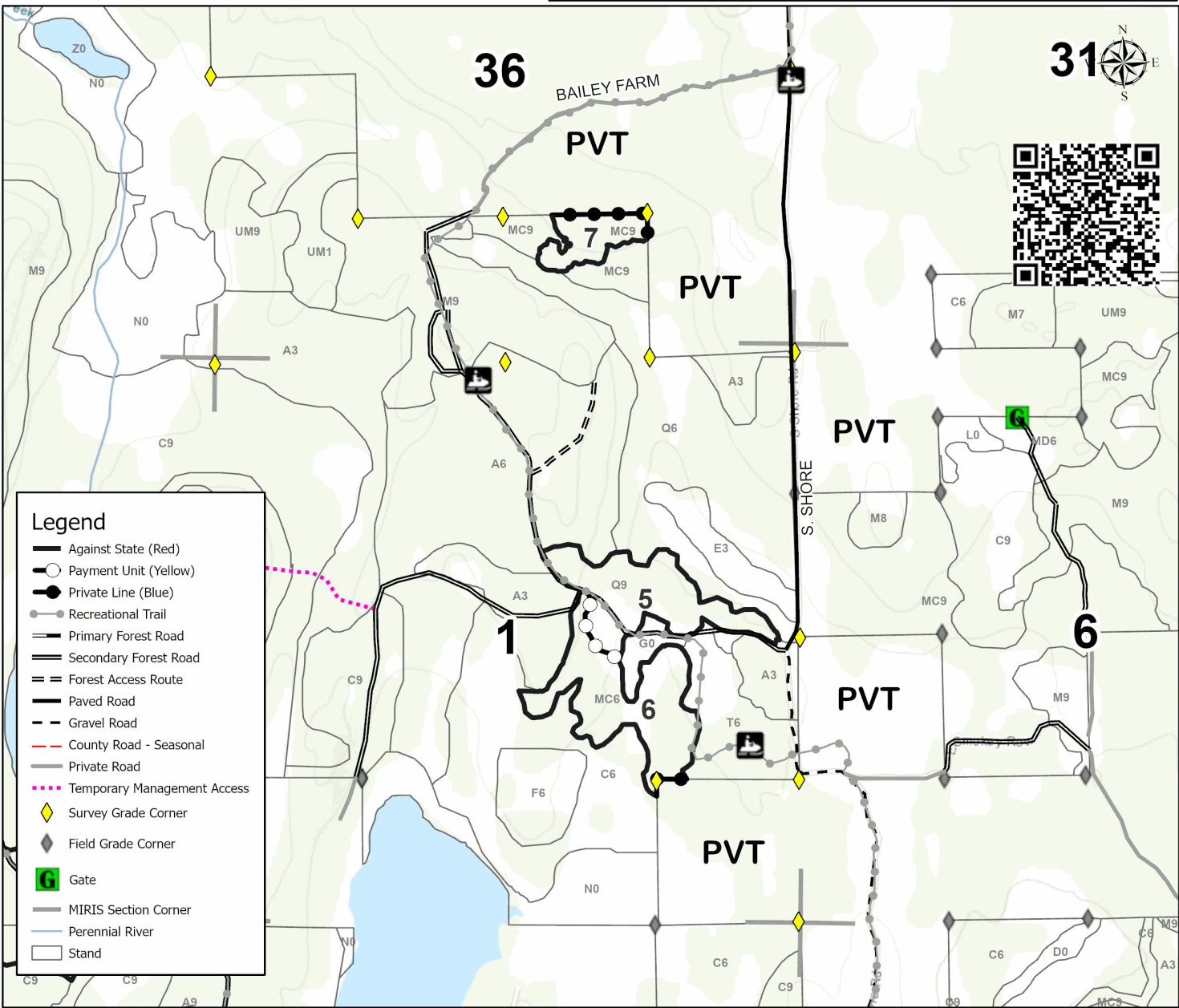
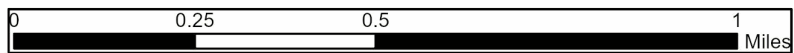
Township	Range	Section(s) and Subdivision(s)
41N / 42N	05E	Sec. 1 S1/2NE,N1/2SE,SWSE; Sec. 11 N1/2NE; Sec. 2 SWNE,N1/2SW,SESW,NWSE,S1/2SE; Sec. 3 S1/2NE,N1/2SE; Sec. 36 SWSE;

Cover Type			
A = Aspen	J = Jack Pine	O = Oak	U = Upland Brush
B = Paper Birch	K = Rock	P = Lowland Poplar	UM = Upland Mix Forest
C = Cedar	L = Lowland Brush	Q = Mixed Swamp Conifer	V = Bog or Marsh
D = Treed Bog	LM = Lowland Mix Forest	R = Red Pine	W = White Pine
E = Swamp Hardwoods	M = Maple, Beech, Birch	S = Black Spruce	X = Non Stocked
F = Spruce/Fir	MC = Mixed Conifer	T = Tamarack	Y = Sand
G = Grass	MD = Mixed Deciduous	Z = Water	
H = Hemlock	N = Marsh		

Density	
0 = Non Stocked	5 = Pole Timber Medium
1 = Seedling Sapling Poor	6 = Pole Timber Well
2 = Seedling Sapling Medium	7 = Saw Timber Poor
3 = Seedling Sapling Well	8 = Saw Timber Medium
4 = Pole Timber Poor	9 = Saw Timber Well

D.I. Boot Lake Mix
174.7 Acres

PU #	Acres	PU #	Acres	PU #	Acres	PU #	Acres
1	40.8	3	18	5	22.1	7	7.9
2	27.3	4	32.9	6	25.7		



D.I. Sheep Ranch (45-009-23)
T41N, R07E, SEC. 17; T41N, R07E, SEC. 4; T41N, R07E, SEC. 5; T41N, R07E,

In response to the notice of sale to be held 10:00 a.m. (local time) on January 8, 2024, I am hereby submitting my sealed bid (firm offer) for the following forest products to be cut. Bids for individual species must be at or above the advertised price. All non-responsive bid forms may be rejected.

<u>PRODUCTS & SPECIES</u>	<u>ESTIMATED VOLUME*</u>	<u>ADVERTISED PRICE</u>	<u>BID PRICE/UNIT</u>
Sawtimber			
Sugar Maple	3.8 MBF	\$ 143.00/MBF	\$ _____
Pulpwood			
Balsam Fir	294 Cords	\$ 5.05/Cord	\$ _____
Mixed Aspen	3,394 Cords	\$ 7.50/Cord	\$ _____
Mixed Hardwood	650 Cords	\$ 7.50/Cord	\$ _____
Mixed Spruce	1,163 Cords	\$ 5.05/Cord	\$ _____
Tamarack	21 Cords	\$ 2.00/Cord	\$ _____

*The volumes are statistically estimated within plus (+) or minus (-) 8.89 percent at 95% confidence level. These estimated volumes are final and not subject to adjustment. Prospective bidders are urged to examine this timber and to make their own estimates of quantity and quality.

I understand that any or all bids may be rejected. All bids must be signed and all bid items must be bid or the bid form may be rejected. I also understand that consideration and awarding a contract will be based upon my past performance and ability to complete the contract based upon equipment and staffing subject to my control.

FEDERAL ID: _____ - _____ or SOCIAL SECURITY NUMBER: _____ - _____ - _____

Company or individual bidding: _____

Company representative's name: _____

Address: _____

City: _____ State: _____ Zip: _____

IF AVAILABLE, PLEASE PLACE THE PERSONALIZED LABEL FROM YOUR PROSPECTUS IN THE ABOVE BOX.

Individual or company representative's signature: _____ Date: _____

Phone number : _____ Email (optional): _____

THE WINNING BIDDER MUST COMPLETE THE VERIFICATION OF WORKER'S DISABILITY COMPENSATION ACT COMPLIANCE (ON REVERSE SIDE IF DOUBLE SIDED) WITHIN 21 DAYS OF SALE AWARD DATE



FOR DEPARTMENT USE ONLY
Sale Number (XX - XXX - XX - XX)
Forest Management Unit:

TIMBER SALE VERIFICATION OF WORKER'S DISABILITY COMPENSATION ACT COMPLIANCE

*As required by Act 317, P.A. 1969 (Worker's Compensation) and
Part 5 of Act 451 of 1994, as amended.*

VERIFICATION OF WORKER'S DISABILITY COMPENSATION ACT COMPLIANCE

- This verification must be completed and submitted within 21 days of contract award and prior to the issuance of the timber sale contract.
- In addition, if boxes 2B or 2C are checked, then Notice of Exclusion or Certificate of Insurance must be submitted within twenty-one (21) days of the contract award and prior to the issuance of the timber sale contract.
- All information must be typed or printed except for written signatures.

Please Check Appropriate Categories:

1. My business is organized as (you **must** check one of the boxes below):
 - A. Sole Proprietorship (individual)
 - B. Partnership
 - C. Corporation
2. You **must** check one of the boxes below:
 - A. I certify my business is a sole proprietorship and it has no employees but the sole proprietor. I am not subject to the Worker's Compensation Laws.
 - B. I certify my business has satisfied its obligation to the Worker's Compensation Act through the use of an approved Notice of Exclusion (BWC-337, Rev. 5/96). I will provide a copy of the Notice of Exclusion within 21 days of the contract award. (For questions or a copy of the BWC-337, please call the Worker's Compensation Bureau at 517-322-1195).
 - C. I certify my business has a Worker's Compensation Policy. I will provide an original Certificate of Insurance within twenty-one (21) days of the contract award.
3. If you have checked item 2(A) or 2(B), you **must** indicate the number of **both** full-time and part-time employees, other than yourself, including family members and active partners (if none, you must enter "0").

_____ Full-time Employees

_____ Part-time Employees

Name of Business		Federal ID (or) Social Security No.	
Address		Telephone ()	
City	State	ZIP	

I hereby certify that the above information is true and correct. I agree to notify the Michigan DNR of any changes that occur in factors affecting my coverage during any of my present and future operations.

Signature of Owner or Authorized Representative

Title

Date

Please complete the "SEALED BID" information on the next page

D.I. Scraping the Barrel (45-010-23)

T41N, R05E, SEC. 3; T41N, R05E, SEC. 4; T42N, R05E, SEC. 32; Chippewa

In response to the notice of sale to be held 10:00 a.m. (local time) on January 8, 2024, I am hereby submitting my sealed bid (firm offer) for the following forest products to be cut. Bids for individual species must be at or above the advertised price. All non-responsive bid forms may be rejected.

<u>PRODUCTS & SPECIES</u>	<u>ESTIMATED VOLUME*</u>	<u>ADVERTISED PRICE</u>	<u>BID PRICE/UNIT</u>
Pulpwood			
Balsam Fir	113 Cords	\$ 4.05/Cord	\$ _____
Mixed Aspen	301 Cords	\$ 6.00/Cord	\$ _____
Mixed Hardwood	70 Cords	\$ 6.00/Cord	\$ _____
Mixed Spruce	67 Cords	\$ 4.05/Cord	\$ _____
N. White Cedar	175 Cords	\$ 5.50/Cord	\$ _____

*The volumes are statistically estimated within plus (+) or minus (-) 27.22 percent at 95% confidence level. These estimated volumes are final and not subject to adjustment. Prospective bidders are urged to examine this timber and to make their own estimates of quantity and quality.

I understand that any or all bids may be rejected. All bids must be signed and all bid items must be bid or the bid form may be rejected. I also understand that consideration and awarding a contract will be based upon my past performance and ability to complete the contract based upon equipment and staffing subject to my control.

FEDERAL ID: _____ - _____ or SOCIAL SECURITY NUMBER: _____ - _____ - _____

Company or individual bidding: _____

Company representative's name: _____

Address: _____

City: _____ State: _____ Zip: _____

IF AVAILABLE, PLEASE PLACE THE PERSONALIZED LABEL FROM YOUR PROSPECTUS IN THE ABOVE BOX.

Individual or company representative's signature: _____ Date: _____

Phone number : _____ Email (optional): _____

THE WINNING BIDDER MUST COMPLETE THE VERIFICATION OF WORKER'S DISABILITY COMPENSATION ACT COMPLIANCE (ON REVERSE SIDE IF DOUBLE SIDED) WITHIN 21 DAYS OF SALE AWARD DATE



FOR DEPARTMENT USE ONLY
Sale Number (XX - XXX - XX - XX)
Forest Management Unit:

TIMBER SALE VERIFICATION OF WORKER'S DISABILITY COMPENSATION ACT COMPLIANCE

*As required by Act 317, P.A. 1969 (Worker's Compensation) and
Part 5 of Act 451 of 1994, as amended.*

VERIFICATION OF WORKER'S DISABILITY COMPENSATION ACT COMPLIANCE

- This verification must be completed and submitted within 21 days of contract award and prior to the issuance of the timber sale contract.
- In addition, if boxes 2B or 2C are checked, then Notice of Exclusion or Certificate of Insurance must be submitted within twenty-one (21) days of the contract award and prior to the issuance of the timber sale contract.
- All information must be typed or printed except for written signatures.

Please Check Appropriate Categories:

1. My business is organized as (you **must** check one of the boxes below):
 - A. Sole Proprietorship (individual)
 - B. Partnership
 - C. Corporation

2. You **must** check one of the boxes below:
 - A. I certify my business is a sole proprietorship and it has no employees but the sole proprietor. I am not subject to the Worker's Compensation Laws.
 - B. I certify my business has satisfied its obligation to the Worker's Compensation Act through the use of an approved Notice of Exclusion (BWC-337, Rev. 5/96). I will provide a copy of the Notice of Exclusion within 21 days of the contract award. (For questions or a copy of the BWC-337, please call the Worker's Compensation Bureau at 517-322-1195).
 - C. I certify my business has a Worker's Compensation Policy. I will provide an original Certificate of Insurance within twenty-one (21) days of the contract award.

3. If you have checked item 2(A) or 2(B), you **must** indicate the number of **both** full-time and part-time employees, other than yourself, including family members and active partners (if none, you must enter "0").

_____ Full-time Employees

_____ Part-time Employees

Name of Business		Federal ID (or) Social Security No.	
Address		Telephone ()	
City	State	ZIP	

I hereby certify that the above information is true and correct. I agree to notify the Michigan DNR of any changes that occur in factors affecting my coverage during any of my present and future operations.

Signature of Owner or Authorized Representative

Title

Date

Please complete the "SEALED BID" information on the next page

D.I. Boot Lake Mix (45-011-23)

T41N, R05E, SEC. 1; T41N, R05E, SEC. 11; T41N, R05E, SEC. 2; T41N, R05E,

In response to the notice of sale to be held 10:00 a.m. (local time) on January 8, 2024, I am hereby submitting my sealed bid (firm offer) for the following forest products to be cut. Bids for individual species must be at or above the advertised price. All non-responsive bid forms may be rejected.

<u>PRODUCTS & SPECIES</u>	<u>ESTIMATED VOLUME*</u>	<u>ADVERTISED PRICE</u>	<u>BID PRICE/UNIT</u>
Sawtimber			
Paper Birch	8.1 MBF	\$ 76.00/MBF	\$ _____
Red Maple	23.6 MBF	\$ 99.00/MBF	\$ _____
Sugar Maple	85.2 MBF	\$ 143.00/MBF	\$ _____
Pulpwood			
Balsam Fir	180 Cords	\$ 5.05/Cord	\$ _____
Balsam Poplar	93 Cords	\$ 6.00/Cord	\$ _____
Mixed Aspen	1,197 Cords	\$ 7.50/Cord	\$ _____
Mixed Hardwood	969 Cords	\$ 7.50/Cord	\$ _____
Mixed Spruce	475 Cords	\$ 5.05/Cord	\$ _____
N. White Cedar	253 Cords	\$ 6.90/Cord	\$ _____
Tamarack	273 Cords	\$ 2.00/Cord	\$ _____

*The volumes are statistically estimated within plus (+) or minus (-) 10.14 percent at 95% confidence level. These estimated volumes are final and not subject to adjustment. Prospective bidders are urged to examine this timber and to make their own estimates of quantity and quality.

I understand that any or all bids may be rejected. All bids must be signed and all bid items must be bid or the bid form may be rejected. I also understand that consideration and awarding a contract will be based upon my past performance and ability to complete the contract based upon equipment and staffing subject to my control.

FEDERAL ID: _____ - _____ or SOCIAL SECURITY NUMBER: _____ - _____ - _____

Company or individual bidding: _____

Company representative's name: _____

Address: _____

City: _____ State: _____ Zip: _____

IF AVAILABLE, PLEASE PLACE THE PERSONALIZED LABEL FROM YOUR PROSPECTUS IN THE ABOVE BOX.

Individual or company representative's signature: _____ Date: _____

Phone number : _____ Email (optional): _____

THE WINNING BIDDER MUST COMPLETE THE VERIFICATION OF WORKER'S DISABILITY COMPENSATION ACT COMPLIANCE (ON REVERSE SIDE IF DOUBLE SIDED) WITHIN 21 DAYS OF SALE AWARD DATE



FOR DEPARTMENT USE ONLY
Sale Number (XX - XXX - XX - XX)
Forest Management Unit:

TIMBER SALE VERIFICATION OF WORKER'S DISABILITY COMPENSATION ACT COMPLIANCE

*As required by Act 317, P.A. 1969 (Worker's Compensation) and
Part 5 of Act 451 of 1994, as amended.*

VERIFICATION OF WORKER'S DISABILITY COMPENSATION ACT COMPLIANCE

- This verification must be completed and submitted within 21 days of contract award and prior to the issuance of the timber sale contract.
- In addition, if boxes 2B or 2C are checked, then Notice of Exclusion or Certificate of Insurance must be submitted within twenty-one (21) days of the contract award and prior to the issuance of the timber sale contract.
- All information must be typed or printed except for written signatures.

Please Check Appropriate Categories:

1. My business is organized as (you **must** check one of the boxes below):
 - A. Sole Proprietorship (individual)
 - B. Partnership
 - C. Corporation
2. You **must** check one of the boxes below:
 - A. I certify my business is a sole proprietorship and it has no employees but the sole proprietor. I am not subject to the Worker's Compensation Laws.
 - B. I certify my business has satisfied its obligation to the Worker's Compensation Act through the use of an approved Notice of Exclusion (BWC-337, Rev. 5/96). I will provide a copy of the Notice of Exclusion within 21 days of the contract award. (For questions or a copy of the BWC-337, please call the Worker's Compensation Bureau at 517-322-1195).
 - C. I certify my business has a Worker's Compensation Policy. I will provide an original Certificate of Insurance within twenty-one (21) days of the contract award.
3. If you have checked item 2(A) or 2(B), you **must** indicate the number of **both** full-time and part-time employees, other than yourself, including family members and active partners (if none, you must enter "0").

_____ Full-time Employees

_____ Part-time Employees

Name of Business		Federal ID (or) Social Security No.	
Address		Telephone ()	
City	State	ZIP	

I hereby certify that the above information is true and correct. I agree to notify the Michigan DNR of any changes that occur in factors affecting my coverage during any of my present and future operations.

Signature of Owner or Authorized Representative

Title

Date

Please complete the "SEALED BID" information on the next page