



**DEPARTMENT OF NATURAL RESOURCES
STATE OF MICHIGAN
TIMBER SALE PROSPECTUS #7421**

SCHEDULED SALE DATE AND TIME: 2:00 p.m. (local time) on May 22, 2024.

LOCATION: SHINGLETON MGMT UNIT, PO BOX 67, M 28 WEST, SHINGLETON, MI 49884.

PROSPECTUS NOTE: The bidder is advised to inspect the sale area and review the location, estimated volumes, operating costs and contract terms of proposed sales. Please be aware that some landowners may request 60 days or more notice for access across their land.

Notice is hereby given that bids will be received by the Unit Manager, SHINGLETON MANAGEMENT UNIT, for certain timber on the following described lands:

Hagrids Hardwood (41-012-23) / T47N, R17W, SEC. 1 , SWNE,SW,NWSE.

T47N, R17W, SEC. 10, E1/2NW,NE.

T47N, R17W, SEC. 11, W1/2NW,W1/2SW.

T47N, R17W, SEC. 2 , NE,N1/2SE.

T47N, R17W, SEC. 3 , NW,W1/2NE,N1/2SW,SESW,SE.

T48N, R17W, SEC. 35, SESE.

Alger County, Advertised Price \$426,875.80, 443.0 Acres, Hardwood, Sugar Maple.

SALE NOTE: Road work is required on this sale. See Sale Spec 4.1.8.

The county must be contacted prior to crossing or harvesting in the county road R-O-W. This applies to Payment Units 5, 6, 9 and H-58.

Permission for access across private land is the responsibility of the Purchaser. See Sale Spec 4.4.1 for additional information.

Access may be through private land.

Million Dollar Hardwood (41-013-23) / T46N, R17W, SEC. 12, SENE,SW,NWSE.

T46N, R17W, SEC. 13, NENW,S1/2NW,NE,SW,N1/2SE.

Alger County, Advertised Price \$175,688.55, 284.6 Acres, Hardwood, Sugar Maple.

SALE NOTE: Within Payment Units 1-9, unless changed by written agreement, cutting and skidding are not permitted during the period of April 15 to July 15 because of bark slippage.

It is recommended, but not required, that within Payment Units 10 & 11, harvesting occur during dry summer or frozen winter conditions because of the saturated soils.

East Melstrand Mix (41-015-23) / T47N, R17W, SEC. 23, SWSE.
T47N, R17W, SEC. 25, SENW,NE,NESW,N1/2SE.
T47N, R17W, SEC. 26, W1/2NE,SE.

Alger County, Advertised Price \$62,856.60, 165.5 Acres, Hardwood, Paper Birch.

SALE NOTE: The county must be contacted prior to crossing or harvesting in the county road R-O-W. This applies to the Melstrand Truck Trail.

It is the Purchaser's responsibility to obtain access across private land for any routes other than the route shown on the Timber Sale Map.

Within Payment Unit(s) 1-4, unless changed by written agreement, harvesting is limited to frozen conditions (in general this period is December 1 to March 31) because of soft soils.

The Sunrise Grade is a snowmobile trail and is shown on the Timber Sale Map. See Sale Spec 5.2.41 for additional information/restrictions.

A recreation site such as a trail, pathway, or campground is within the sale area or the vicinity. Certain restrictions/specifications may be applicable including time restrictions.

BID INSTRUCTIONS (VER. 10/10/2022):

1. Scheduled Bid Location, Date, and Time (2/11)

Bids must be received by the Unit Manager, SHINGLETON OFFICE, PO Box 67 M 28 West, Shingleton, MI 49884, no later than 2:00 p.m. (local time) on May 22, 2024. For further information concerning this sale, contact Robert Burnham at 906-420-1645 extension n/a.

2. Bidder's Qualifications (10/22)

If all or part of a timber sale was prepared by a private contractor, the contractor and that contractor's company are not permitted to bid on the timber sale. A person must be 18 years of age or older to purchase timber. Permanent employees of the Department of Natural Resources or members of their immediate household may not bid. Former employees, in the permanent or seasonal class, may not bid until 3 months after the last day of active duty. Bids will not be accepted from individuals or companies appearing on the DNR/FRD No-Bid List. This list contains the names of purchasers who previously failed to execute a contract within 21-days or who have a history of poor performance.

3. Preparation of Sealed Bids (5/16)

Bid Forms may be completed online thru Michigan DNR Timber Sale Online Bidding (OLB) at www.michigan.gov/timberbidding or by completing the hardcopy Bid Form found in the Timber Sale Prospectus. Hardcopy Bid Forms shall be manually signed in ink. Registration in OLB is considered your 'signature' for all bids submitted thru that system. Bid prices must be entered for each species and product in the Bid Price column for all material subject to bidding and all fill-in blanks must be completed. If erasures or other changes appear on the hardcopy Bid Form, each erasure or change must be initialed by the person signing the bid.

4. Submission of Sealed Bids (5/16)

Bid forms may be obtained from the Unit Manager or thru OLB. Bids may be submitted hardcopy or thru OLB. All hardcopy bids must be submitted on the bid form and in an envelope clearly identified as described in this section. NOTE: Only one bid form per bid envelope. Sealed bids must be submitted to the Unit office designated in the prospectus and must be submitted at or prior to the time established in the prospectus. The envelope should show on the outside (a) the sale name or number and (b) the date and time of bid opening, as shown in the prospectus. Bids received after the time specified in the sale prospectus are late bids and will be rejected.

It is possible for a bidder to submit multiple bids on a single sale. For example, a bid may be submitted hardcopy and a bid may be submitted thru OLB. Or, two bidders from the same company could both submit bids on the same sale. If this were to happen, the State would accept all bids received and award the contract accordingly. All bidding and contractual requirements would apply to all bids received.

5. Public Opening of Sealed Bids (7/16)

If conditions permit, the sealed bids will be publicly opened and posted at the time and place set in the prospectus.

If a bidder, present at a bid opening, has submitted bids on more than one sale, that bidder may withdraw their unopened bid envelopes or announce the withdrawal of their online bid after being declared the successful bidder on one sale.

6. Award of Contract (1/11)

Award of the contract will be made to the Bidder whose bid, conforming to the prospectus, is most advantageous to the State of Michigan on the basis of total value at rates bid for the estimated quantities. The State reserves the right to reject any bid or waive any minor irregularity in bids received. A written award mailed (or otherwise furnished) to the successful Bidder shall be deemed to result in a binding contract without further action by either party.

7. Down Payment (1/11)

The Bidder to whom award is made must make a down payment within 21 days of the sale award. The amount of the down payment will be calculated as shown in the Bond and Payment Schedule of this prospectus. Only cash may be used to meet this requirement.

8. Performance Security (1/11)

As guarantee of faithful performance, a cash bond, certificate of deposit, surety bond or irrevocable letter of credit (LOC) is required within 21 days of the sale award. The amount of the performance security is shown in the Bond and

Payment Schedule of this prospectus. If an LOC or surety is used, the coverage must extend for at least 6 months beyond the contract expiration.

9. Worker's Compensation (10/22)

Purchaser shall obtain worker's compensation insurance to cover claims under Michigan's Worker's Disability Compensation Act of 1969 or similar employee benefit act of any other state applicable to an employee. Verification of Worker's Disability Compensation Act Compliance must be completed and submitted within 21 days of contract award and prior to the issuance of the timber sale contract. In addition, if applicable, Notice of Exclusion or Certificate of Insurance must also be submitted.

10. Timber Sale Contract (10/22)

Additional conditions and requirements common to all timber sales are listed on the timber sale contract (R4031) and are available on line at www.michigan.gov/timber. Contact the Unit Manager for additional information or a sample contract. Within 21 days of the date of the award letter, the bidder must sign the contract and provide the required down payment, performance security, and verification of worker's disability compensation. The down payment and performance security shall be in accordance with the provisions of the timber sale contract, in the sums stated in this prospectus. If these actions are not taken, then the Bidder, the Bidder's corporation, and the corporation's principals may not be permitted to bid on State timber sales for a period of 3 months after the first offense, 6 months after the second offense, and 1 year after the third offense. An offense will only be counted against the Bidder for 5 years. In addition, the Bidder certifies that if awarded this contract, the Bidder will complete the timber sale contract in accordance with its terms and any modifications thereof including requirements to purchase, cut, and remove the included timber by the expiration date.

Payment Unit values in the State Forest Timber Sale Contract are calculated based on the advertised value of the Payment Unit as a percentage of the total advertised value of the contract. The advertised value of each Payment Unit is given in the Description of Timber by Payment Unit table on the Timber Sale Information page. For example, if the value of Payment Unit 1 is advertised as \$1,500 and the total Timber Sale value is advertised as \$10,000, the contract price for Payment Unit 1 will be 15% of the total bid price ($\$1,500/\$10,000 * 100$).

11. Disclaimer of Estimates and Bidder's Warranty of Inspection (10/22)

Before submitting this bid, the Bidder is advised and cautioned to inspect the sale area, review the requirements of the sale contract, and take other steps as may be reasonably necessary to ascertain the location, estimated volumes, construction estimates, and operating costs of the proposed sale. Failure to do so will not relieve the Bidder from responsibility for completing the contract.

The Bidder warrants that this bid is submitted solely on the basis of the Bidder's examination and inspection of the quality and quantity of the timber offered for sale and the Bidder's opinion of the value thereof and the costs of recovery. No reliance should be placed on the State of Michigan's estimates of timber quality, quantity or costs of recovery. Bidder further acknowledges that the State of Michigan: (i) expressly disclaims any warranty of fitness of timber for any purpose; (ii) offers this timber as is without any warranty of quality (merchantability) or quantity and (iii) expressly disclaims any warranty as to the quantity or quality of timber sold.

12. Certification and Chain-of-Custody (10/22)

Unless otherwise indicated in the contract under section 7 – Other Conditions of the Sale Specific Conditions & Requirements, the area encompassed by this timber sale is certified to the standards of the Forest Stewardship Council (FSC) - Certificate #SCS-FM/COC-00090N and the Sustainable Forestry Initiative (SFI) - Certificate #NSF-SFIS-5Y031-SF5. Forest products from this sale may be delivered to the mill as "FSC 100% and / or SFI certified" as long as the contractor hauling the forest products is chain-of-custody (COC) certified or covered under a COC certificate from the destination mill. The purchaser is responsible for maintaining COC after leaving the sale area.

13. Good Neighbor Authority (GNA) Requirements (10/22)

If the name of this timber sales contains the acronym GNA, it is authorized by the Good Neighbor Authority (GNA) and covered by various agreements between the U.S. Forest Service and the State. The timber sale occurs on federal land and the following conditions apply:

GNA contracts on US Forest Service land will not be awarded to purchasers on the Federal list of excluded parties. The System for Award Management (SAM) will be checked for active excluded parties prior to award of contract. In

addition, the Bidder to whom award is made must complete an Assurance Regarding Felony Conviction or Tax Delinquent Status for Corporate Applicants (AD-3031).

14. Good Neighbor Authority (GNA) Requirements, con't (10/22)

Bidder certifies, by signing this bid form, that to the best of Bidder's knowledge that the following representations are accurate and complete.

- a. That the Bidder and its principals are not presently debarred, suspended, proposed for debarment, declared ineligible, or voluntary excluded from timber sales (covered transactions) by any Federal department or agency.
- b. That the Bidder and its principals have not within a 3-year period preceding this bid been convicted of or had a civil judgment rendered against them for commission of fraud or a criminal offense in connection with obtaining , attempting to obtain, or performing a public (Federal, State, or local) transaction or contract under a public transaction; violation of Federal or State antitrust statutes or commission of embezzlement, theft, forgery, bribery, falsification or destruction of records, making false statements, or receiving stolen property.
- c. That the Bidder and its principals are not presently indicted for or otherwise criminally or civilly charged by a governmental entity (Federal, State, or local) with commission of any of the offenses enumerated in paragraph b of this certification.
- d. That the Bidder and its principals have not within a 3-year period preceding this bid had one or more public transactions (Federal, State, or local) terminated for breach or default of a timber or forest product contract.

Bidders that cannot certify this requirement, in whole or in part, shall submit an explanation with their bid.

Scott Bowen
Director

TIMBER SALE INFORMATION

Hagrids Hardwood (41-012-23)

T47N, R17W, SEC. 1; T47N, R17W, SEC. 10; T47N, R17W, SEC. 11; T47N, R17W, SEC. 2; T47N, R17W, SEC. 3; T48N, R17W, SEC. 35.

SALE NOTE: Road work is required on this sale. See Sale Spec 4.1.8.

The county must be contacted prior to crossing or harvesting in the county road R-O-W. This applies to Payment Units 5, 6, 9 and H-58.

Permission for access across private land is the responsibility of the Purchaser. See Sale Spec 4.4.1 for additional information.

Access may be through private land.

A timber sale contract for this lump sum, sealed bid timber sale will be awarded to the responsible bidder offering the highest sealed bid price. All units of volume listed below were estimated using the Inventory Manager computer program and the new Michigan taper model. Bids must be at or above the following advertised price for each product and species:

<u>PRODUCTS & SPECIES</u>	<u>ESTIMATED UNITS*</u>	<u>ADVERTISED PRICE</u>
Sawtimber		
Basswood	51.9 MBF	\$ 119.00 / MBF
Black Cherry	31.6 MBF	\$ 98.00 / MBF
Paper Birch	47.2 MBF	\$ 86.00 / MBF
Red Maple	386.5 MBF	\$ 87.00 / MBF
Sugar Maple	767.7 MBF	\$ 349.00 / MBF
Yellow Birch	5.8 MBF	\$ 93.00 / MBF
Pulpwood		
Balsam Fir	201 Cords	\$ 13.50 / Cord
Basswood	28 Cords	\$ 8.10 / Cord
Mixed Aspen	13 Cords	\$ 29.20 / Cord
Mixed Hardwood	4,661 Cords	\$ 22.25 / Cord
Paper Birch	275 Cords	\$ 13.55 / Cord
White Spruce	39 Cords	\$ 17.90 / Cord

* The total volume is statistically estimated within plus (+) or minus (-) 6.71 percent. There are an estimated 8,544 cords on this timber sale, plus or minus 574 cords at the 95% confidence level. The estimated units are final and not subject to adjustment. Prospective bidders are urged to examine this timber and to make their own estimates of quantity and quality.

BOND AND PAYMENT SCHEDULE:

1. A bond in the amount of \$21,344.00 to insure faithful performance of the conditions of the contract will be deposited by the successful bidder within 21 days of the sale award.
2. Cutting in any sale or unit without the required advance payment would be considered a trespass.
3. Total payment must be paid in advance or according to the following schedule :
 - (a) Ten percent (10%) of the sale value must be paid within 21 days of the sale award.
 - (b) The 10% down payment will be credited towards the first unit cut.
 - (c) Payment for each of the following units must be made before cutting begins in that unit:

PAYMENT UNIT NUMBER	PERCENT OF TOTAL SALE VALUE
01	6.9%
02	9.2%
03	3.3%
04	5.1%
05	5.3%
06	2.0%
07	2.4%
08	6.5%
09	3.4%
10	3.1%
11	14.3%
12	8.9%
13	12.2%
14	12.7%
15	3.8%
16	0.9%

4. If no cutting takes place, the 10% down payment will not be refunded.
5. Operations on the contract issued will terminate on 06/30/2028.

SALE STATISTICS

Volumes were calculated in cubic feet using the Michigan taper model. Cubic foot volume includes all wood inside bark for the product indicated. For display purposes, cubic feet were converted to cords and MBF using a simple conversion factor, e.g. 79 cubic feet per cord and 185 cubic feet per MBF. The cubic foot volumes are precise; the cords and MBF volumes are not. Cubic foot volume cannot be directly converted to cords or boards with precision.

SALE VOLUMES

The total estimated sale volume may not equal the sum of the species/products due to the nature of statistical calculations associated with double sampling methodology.

VOLUME			STATISTICAL RANGE IN CORDS	
TOTAL CUBIC FEET	TOTAL CORDS	PERCENT ERROR	MINIMUM	MAXIMUM
674,983	8,544	6.71%	7,970	9,118

VDU VOLUMES

A VDU is a Volume Determination Unit. Volumes and their associated statistics are calculated at the VDU level and summarized to the sale level. There is often a one to one relationship between a VDU and a Payment Unit, but not always, depending on the cruise design. Refer to the VDU TO PAYMENT UNIT table.

VDU	VOLUME			RANGE IN CORDS	
	TOTAL CUBIC FEET	TOTAL CORDS	PERCENT ERROR	MINIMUM	MAXIMUM
1	233,501	2,956	9.44%	2,677	3,235
2	293,267	3,712	9.38%	3,364	4,060
3	65,018	823	13.53%	712	934
4	69,024	874	14.12%	750	997
5	14,174	179	56.12%	79	280
TOTAL:	674,983	8,544		7,582	9,507

VDU TO PAYMENT UNIT

When a VDU is associated with more than one Payment Unit (PU), the VDU volumes are assigned to the PU based on acres of the VDU within the PU.

VDU	VDU ACRES	PU	PU ACRES
1	167.9	1	36.4
		2	48.7
		3	17.3
		4	27.1
		5	28.0
		6	10.4
2	217.9	7	9.8
		10	12.4
		11	58.5
		12	36.0
		13	49.6
		14	51.6
		8	21.8
3	33.1	9	11.3
		15	19.2
4	19.2		
5	4.9	16	4.9
TOTAL:	443.0		443.0

DESCRIPTION OF TIMBER BY PAYMENT UNIT (PU)

PU	MARKET GROUP	PRODUCT	QUANTITY	UNIT	ACRES	ADVERTISE PRICE
1	Black Cherry	Sawtimber	6.0	MBF	36.4	\$29,321.15
	Red Maple		37.5	MBF		
	Sugar Maple		46.9	MBF		
	Balsam Fir	Pulpwood	14	Cords		
	Mixed Hardwood		399	Cords		
	<i>Beech</i>		38	<i>Cords</i>		
	<i>Black Cherry</i>		15	<i>Cords</i>		
	<i>Red Maple</i>		151	<i>Cords</i>		
	<i>Sugar Maple</i>		195	<i>Cords</i>		
	White Spruce		2	Cords		
2	Black Cherry	Sawtimber	8.0	MBF	48.7	\$39,265.15
	Red Maple		50.0	MBF		
	Sugar Maple		62.8	MBF		
	Balsam Fir	Pulpwood	19	Cords		
	Mixed Hardwood		535	Cords		
	<i>Beech</i>		50	<i>Cords</i>		
	<i>Black Cherry</i>		21	<i>Cords</i>		
	<i>Red Maple</i>		203	<i>Cords</i>		
	<i>Sugar Maple</i>		261	<i>Cords</i>		
	White Spruce		3	Cords		
3	Black Cherry	Sawtimber	2.8	MBF	17.3	\$13,945.60
	Red Maple		17.8	MBF		
	Sugar Maple		22.3	MBF		
	Balsam Fir	Pulpwood	7	Cords		
	Mixed Hardwood		190	Cords		
	<i>Beech</i>		18	<i>Cords</i>		
	<i>Black Cherry</i>		7	<i>Cords</i>		
	<i>Red Maple</i>		72	<i>Cords</i>		
	<i>Sugar Maple</i>		93	<i>Cords</i>		
	White Spruce		1	Cords		
4	Black Cherry	Sawtimber	4.5	MBF	27.1	\$21,840.95
	Red Maple		27.9	MBF		
	Sugar Maple		34.9	MBF		
	Balsam Fir	Pulpwood	11	Cords		
	Mixed Hardwood		297	Cords		
	<i>Beech</i>		28	<i>Cords</i>		
	<i>Black Cherry</i>		11	<i>Cords</i>		
	<i>Red Maple</i>		113	<i>Cords</i>		
	<i>Sugar Maple</i>		145	<i>Cords</i>		
	White Spruce		2	Cords		
5	Black Cherry	Sawtimber	4.6	MBF	28.0	\$22,570.35
	Red Maple		28.8	MBF		
	Sugar Maple		36.1	MBF		
	Balsam Fir	Pulpwood	11	Cords		
	Mixed Hardwood		307	Cords		
	<i>Beech</i>		29	<i>Cords</i>		
	<i>Black Cherry</i>		12	<i>Cords</i>		
	<i>Red Maple</i>		116	<i>Cords</i>		
	<i>Sugar Maple</i>		150	<i>Cords</i>		
	White Spruce		2	Cords		
6	Black Cherry	Sawtimber	1.7	MBF	10.4	\$8,382.50
	Red Maple		10.7	MBF		
	Sugar Maple		13.4	MBF		
	Balsam Fir	Pulpwood	4	Cords		
	Mixed Hardwood		114	Cords		
	<i>Beech</i>		11	<i>Cords</i>		

DESCRIPTION OF TIMBER BY PAYMENT UNIT (PU), CON'T

PU	MARKET GROUP	PRODUCT	QUANTITY	UNIT	ACRES	ADVERTISE PRICE	
6 con't	<i>Black Cherry</i>	<i>Pulpwood</i>	4	<i>Cords</i>			
	<i>Red Maple</i>		43	<i>Cords</i>			
	<i>Sugar Maple</i>		56	<i>Cords</i>			
	White Spruce		1	<i>Cords</i>			
7	Basswood	Sawtimber	1.2	MBF	9.8	\$10,346.80	
	Black Cherry		0.2	MBF			
	Paper Birch		0.1	MBF			
	Red Maple		7.0	MBF			
	Sugar Maple		21.4	MBF			
	Balsam Fir	Pulpwood	3	<i>Cords</i>			
	Basswood		1	<i>Cords</i>			
	Mixed Aspen		1	<i>Cords</i>			
	<i>Quaking Aspen</i>		1	<i>Cords</i>			
	Mixed Hardwood		90	<i>Cords</i>			
	<i>Beech</i>		21	<i>Cords</i>			
	<i>Black Cherry</i>		1	<i>Cords</i>			
	<i>Red Maple</i>		17	<i>Cords</i>			
	<i>Sugar Maple</i>		51	<i>Cords</i>			
	White Spruce		1	<i>Cords</i>			
8	Basswood	Sawtimber	16.7	MBF	21.8	\$27,728.10	
	Red Maple		11.5	MBF			
	Sugar Maple		49.5	MBF			
	Balsam Fir		Pulpwood	7			<i>Cords</i>
	Basswood			10			<i>Cords</i>
	Mixed Hardwood	326		<i>Cords</i>			
	<i>Beech</i>	3		<i>Cords</i>			
	<i>Red Maple</i>	38		<i>Cords</i>			
	<i>Sugar Maple</i>	285	<i>Cords</i>				
	White Spruce	2	<i>Cords</i>				
9	Basswood	Sawtimber	8.7	MBF	11.3	\$14,363.50	
	Red Maple		6.0	MBF			
	Sugar Maple		25.7	MBF			
	Balsam Fir		Pulpwood	3			<i>Cords</i>
	Basswood			5			<i>Cords</i>
	Mixed Hardwood	168		<i>Cords</i>			
	<i>Beech</i>	1		<i>Cords</i>			
	<i>Red Maple</i>	19		<i>Cords</i>			
	<i>Sugar Maple</i>	148	<i>Cords</i>				
	White Spruce	1	<i>Cords</i>				
10	Basswood	Sawtimber	1.5	MBF	12.4	\$13,040.15	
	Black Cherry		0.2	MBF			
	Paper Birch		0.1	MBF			
	Red Maple		8.8	MBF			
	Sugar Maple		27.1	MBF			
	Balsam Fir	Pulpwood	3	<i>Cords</i>			
	Basswood		1	<i>Cords</i>			
	Mixed Aspen		1	<i>Cords</i>			
	<i>Quaking Aspen</i>		1	<i>Cords</i>			
	Mixed Hardwood		113	<i>Cords</i>			
	<i>Beech</i>		26	<i>Cords</i>			
	<i>Black Cherry</i>		1	<i>Cords</i>			
	<i>Red Maple</i>		21	<i>Cords</i>			
	<i>Sugar Maple</i>		65	<i>Cords</i>			
	White Spruce		1	<i>Cords</i>			
11	Basswood	Sawtimber	7.1	MBF	58.5	\$61,587.30	
	Black Cherry		1.1	MBF			

DESCRIPTION OF TIMBER BY PAYMENT UNIT (PU), CON'T

PU	MARKET GROUP	PRODUCT	QUANTITY	UNIT	ACRES	ADVERTISE PRICE	
11 con't	Paper Birch	Sawtimber	0.4	MBF			
	Red Maple		41.6	MBF			
	Sugar Maple		127.9	MBF			
	Balsam Fir		Pulpwood	16			Cords
	Basswood			3			Cords
	Mixed Aspen			3			Cords
	<i>Quaking Aspen</i>			3			<i>Cords</i>
	Mixed Hardwood			534			Cords
	<i>Beech</i>			123			<i>Cords</i>
	<i>Black Cherry</i>			5			<i>Cords</i>
	<i>Red Maple</i>			99			<i>Cords</i>
	<i>Sugar Maple</i>			306			<i>Cords</i>
	<i>Yellow Birch</i>			1			<i>Cords</i>
	Paper Birch		2	Cords			
White Spruce	6	Cords					
12	Basswood	Sawtimber	4.4	MBF	36.0	\$37,905.25	
	Black Cherry		0.7	MBF			
	Paper Birch		0.2	MBF			
	Red Maple		25.6	MBF			
	Sugar Maple		78.6	MBF			
	Balsam Fir		Pulpwood	10			Cords
	Basswood			2			Cords
	Mixed Aspen			2			Cords
	<i>Quaking Aspen</i>			2			<i>Cords</i>
	Mixed Hardwood			330			Cords
	<i>Beech</i>			76			<i>Cords</i>
	<i>Black Cherry</i>			3			<i>Cords</i>
	<i>Red Maple</i>			61			<i>Cords</i>
	<i>Sugar Maple</i>			189			<i>Cords</i>
<i>Yellow Birch</i>	1	<i>Cords</i>					
Paper Birch	1	Cords					
White Spruce	4	Cords					
13	Basswood	Sawtimber	6.0	MBF	49.6	\$52,213.95	
	Black Cherry		0.9	MBF			
	Paper Birch		0.3	MBF			
	Red Maple		35.2	MBF			
	Sugar Maple		108.4	MBF			
	Balsam Fir		Pulpwood	13			Cords
	Basswood			3			Cords
	Mixed Aspen			3			Cords
	<i>Quaking Aspen</i>			3			<i>Cords</i>
	Mixed Hardwood			454			Cords
	<i>Beech</i>			105			<i>Cords</i>
	<i>Black Cherry</i>			4			<i>Cords</i>
	<i>Red Maple</i>			84			<i>Cords</i>
	<i>Sugar Maple</i>			260			<i>Cords</i>
<i>Yellow Birch</i>	1	<i>Cords</i>					
Paper Birch	1	Cords					
White Spruce	5	Cords					
14	Basswood	Sawtimber	6.3	MBF	51.6	\$54,294.85	
	Black Cherry		0.9	MBF			
	Paper Birch		0.3	MBF			
	Red Maple		36.7	MBF			
	Sugar Maple		112.7	MBF			
	Balsam Fir		Pulpwood	14			Cords
	Basswood			3			Cords

DESCRIPTION OF TIMBER BY PAYMENT UNIT (PU), CON'T

PU	MARKET GROUP	PRODUCT	QUANTITY	UNIT	ACRES	ADVERTISE PRICE
14 con't	Mixed Aspen	Pulpwood	3	Cords		
	<i>Quaking Aspen</i>		3	<i>Cords</i>		
	Mixed Hardwood		472	Cords		
	<i>Beech</i>		109	<i>Cords</i>		
	<i>Black Cherry</i>		4	<i>Cords</i>		
	<i>Red Maple</i>		88	<i>Cords</i>		
	<i>Sugar Maple</i>		270	<i>Cords</i>		
	<i>Yellow Birch</i>		1	<i>Cords</i>		
	Paper Birch		1	Cords		
	White Spruce		5	Cords		
15	Paper Birch	Sawtimber	45.8	MBF	19.2	\$16,226.25
	Red Maple		31.2	MBF		
	Yellow Birch		3.7	MBF		
	Balsam Fir	Pulpwood	51	Cords		
	Mixed Hardwood		217	Cords		
	<i>Black Ash</i>		2	<i>Cords</i>		
	<i>Red Maple</i>		141	<i>Cords</i>		
	<i>Sugar Maple</i>		20	<i>Cords</i>		
	<i>Yellow Birch</i>		54	<i>Cords</i>		
	Paper Birch		270	Cords		
	White Spruce		3	Cords		
	16		Red Maple	Sawtimber		
Yellow Birch		2.1	MBF			
Balsam Fir		Pulpwood	15	Cords		
Mixed Hardwood			115	Cords		
<i>Red Maple</i>			109	<i>Cords</i>		
<i>Yellow Birch</i>			6	<i>Cords</i>		
TOTAL:			1,290.7	MBF		
TOTAL:			5,217	Cords		

Sale Specific Conditions & Requirements

Sale Name: Hagrids Hardwood

Sale Number: 41-012-23 Seq#: 2

1 - Sale Area

1.2 - Boundaries

1.2.1 - Painted boundaries (9/19)

The sale boundary and Payment Unit boundaries are marked and identified by blue, red and yellow paint. Exterior sale boundary lines against private property are marked with blue paint. Exterior sale boundary lines against state are marked with red paint. Interior Payment Unit boundaries are marked with yellow paint. The painted boundary line trees are not Included Timber and are to be protected unless marked with orange paint.

2 - Timber Specifications

2.1 - Included Timber

2.1.2 - Clearcut unit(s) w/o unmerchantable trees (8/11)

Within Payment Unit(s) 15 & 16, cut all trees which meet minimum piece specifications in 2.2 Utilization, except do not cut any hemlock or cedar. Special protection trees identified in accordance with condition 3.4.2, within clearcutting unit boundaries, are not Included Timber and are to be protected.

2.1.3 - Cut tree marked unit(s) (12/08)

Within Payment Unit(s) 1-9 & 12-14, all trees are designated for cutting when marked with orange paint above and below stump height, regardless of merchantability.

Within Payment Units 10 & 11, all trees are designated for cutting when marked with purple paint above and below stump height, regardless of merchantability. Trees marked with orange paint within Payment Units 10 & 11 are to be left uncut, unless also marked with purple paint.

2.2 - Utilization

2.2.10 - No chipping tops and limbs (8/16)

Within Payment Unit(s) 1-16, chipping of the bole, 2-inches in diameter or greater, is allowed. Chipping of limbs or portions of the tree less than 2-inches in diameter is not permitted. Limbs and the remaining top must be left on site and scattered.

3 - Payments

3.3 - Pre-measured Sales

3.3.4 - Dividing payment units (7/14)

Payment Unit(s) that are \$20,000 or greater in value, may be divided at the request of the Purchaser and upon approval of the Unit Manager. Dividing Payment Units is a contract modification which requires a Timber Sale Contract Amendment.

3.4 - Damaged Timber

3.4.2 - Special Protection Trees (4/14)

The Purchaser shall not cut live or dead special protection trees within cutting units or clearings. Special protection trees are hemlock and oak. If the Purchaser's operations have cut or damaged special protection trees through carelessness, the Purchaser shall pay \$100 as fixed, agreed and liquidated damages for each special protection tree cut or damaged. Such payment does not constitute ownership of the undesignated timber.

4 - Transportation

4.1 - Construction

4.1.3 - Slash and earthen piles (8/04)

Piles or windrows of earth along roads and landings that have been widened or constructed shall be leveled. Slash from road maintenance or construction, including stumps, shall be dispersed throughout the sale.

4.1.6 - Road construction (1/09)

Construction of new roads or improvements of existing roads shall be done in such a way as to minimize the environmental and visual impacts. Merchantable trees shall be cut and utilized unless otherwise directed. Non-merchantable trees shall be severed and laid flat on the ground. Slash shall be scattered, and not left in windrows and kept a minimum of 10 feet back from the road edge. Stumps shall be set upright, not left on edge, and be moved at least 10 feet away from the road edge. Disturbed soil shall be feathered into the woods and not left in berms or windrows.

4.1.7 - Road closure (10/11)

All new roads built into the sale must be blocked to vehicle traffic upon completion of the sale. Overgrown roads that are reopened shall be considered new roads. In general, this will require constructing a four (4') foot high berm of stumps and logs covered with earth. Stumps and brush must be placed along the remainder of the trail. These roads must be rendered impassable to cars and trucks. All stumps from road building and landing construction must be reserved to block any newly constructed roads upon completion of the sale. These stumps must be scattered along the road system to prohibit vehicular movement. Contact the Sale Administrator for specific details of design and placement.

4.1.8 - Road work (1) (8/07)

The following road work is required: 300 cubic yards of 3" minus gravel must be purchased, hauled and spread by the purchaser. The road work will be determined at the Pre-Sale meeting and must be placed before hauling can begin.

4.1.10 - Oversight (12/08)

The Unit Manager, or his/her representative, must be present when the road improvement project is initiated.

4.2 - Maintenance

4.2.4 - Grading (10/16)

For completion of the sale, state forest roads must be graded. In general, this will require a road grader or bulldozer to shape up the roads after forest products have been hauled off site. This includes cleaning of drainage areas, grading, crowning and filling with gravel, if necessary. The grading equipment to be used must be approved by the Unit Manager or his/her representative.

4.3 - Public Right-of-Way

4.3.2 - County R-O-W (12/06)

The county must be contacted prior to crossing or harvesting in the county road R-O-W. This applies to Payment Units 5, 6, 9, and Highway H-58.

4.4 - Access

4.4.1 - Private property access (3/11)

Permission for access across private land is the responsibility of the Purchaser. If crossing Manulife Management Property, a permit is required. When the sale is purchased, they should be contacted about crossing their property. Allow 30-60 days for permit processing. A copy of the permit should be provided to the Unit Manager by the pre-sale conference.

5 - Operations

5.2 - Conduct of Operations

5.2.2 - Hazard Trees/Snags

5.2.2.1 - Den trees (10/16)

Obvious hollow and/or den trees shall be protected and left standing unless they are a safety hazard.

5.2.3 - Operating Restrictions

5.2.3.3 - Bark slippage restriction (3/09)

Within Payment Unit(s) 1-14, unless changed by written agreement, cutting and skidding are not permitted during the period of April 15 to July 15. This restriction is because of bark slippage.

5.2.32 - Decking/landing restoration (9/13)

All decking and landing areas must have the surface area restored to a condition equal to or better than before. This is to ensure the proper regeneration of the stand. Wood debris, chips and "cookies" from trimmings must be removed or scattered away from landing and loading areas and may not be windrowed on the edge.

5.2.38 - No decking against live trees (2/04)

Cut products may not be decked against unmarked or designated leave trees.

5.4 - Soil Protection

5.4.6 - Wet area protection (5/10)

No harvesting operations, including skidding and felling, are to take place within the vernal pond in Payment Unit 2. The vernal pond is excluded with red paint. Care must be taken by the Purchaser to identify and avoid operating in these areas of the timber sale.

5.8 - Protection of Endangered Species

5.8.3 - Red shoulder hawk or goshawk (1) (2/16)

In the event that an active red shoulder hawk or goshawk nest is found, the contract may be amended to protect the nest site until the nest is determined to be inactive. The value of the trees in this excluded area will be refunded or credited to the Purchaser. The nest will be buffered with a five-chain radius (eight acre) protection area, centered on the nest tree, in which there will be no cutting or new roads constructed. Avoid human disturbance, including loading and skidding, in the protection area.

An additional zone of five chains (ten chains centered on the active nest tree) will be established in which there is no management activity from April 1 to July 30. Limit biomass harvesting and chipping operations within this ten-chain zone, retain the maximum one-third of residues per the Woody Biomass Harvesting Guidelines (Michigan DNR 2010). Nests determined to be inactive will be protected with a one-chain no-harvest buffer.

6 - Safety and Fire Prevention

6.2 - Signing

6.2.1 - Road posting (10/20)

The Purchaser is responsible for posting and maintaining caution signs on Highway H-58 prior to beginning operations. The road must be posted at appropriate distances from the Sale Area to warn of logging activity and truck traffic. Signs must be removed when harvest operations are suspended or completed. The Purchaser will provide these signs.



TIMBER SALE MAP

This information provided by authority of Part 525, 1994 PA 451, as amended.

Sale Number 41-012-23	Date 02/23/2024	
Scale 1:15,840	Page 1	Of 2

Forest Management Unit Shingleton Mgt Unit	County Alger	Mapped By: Kentner
		Cruised By: UMLM

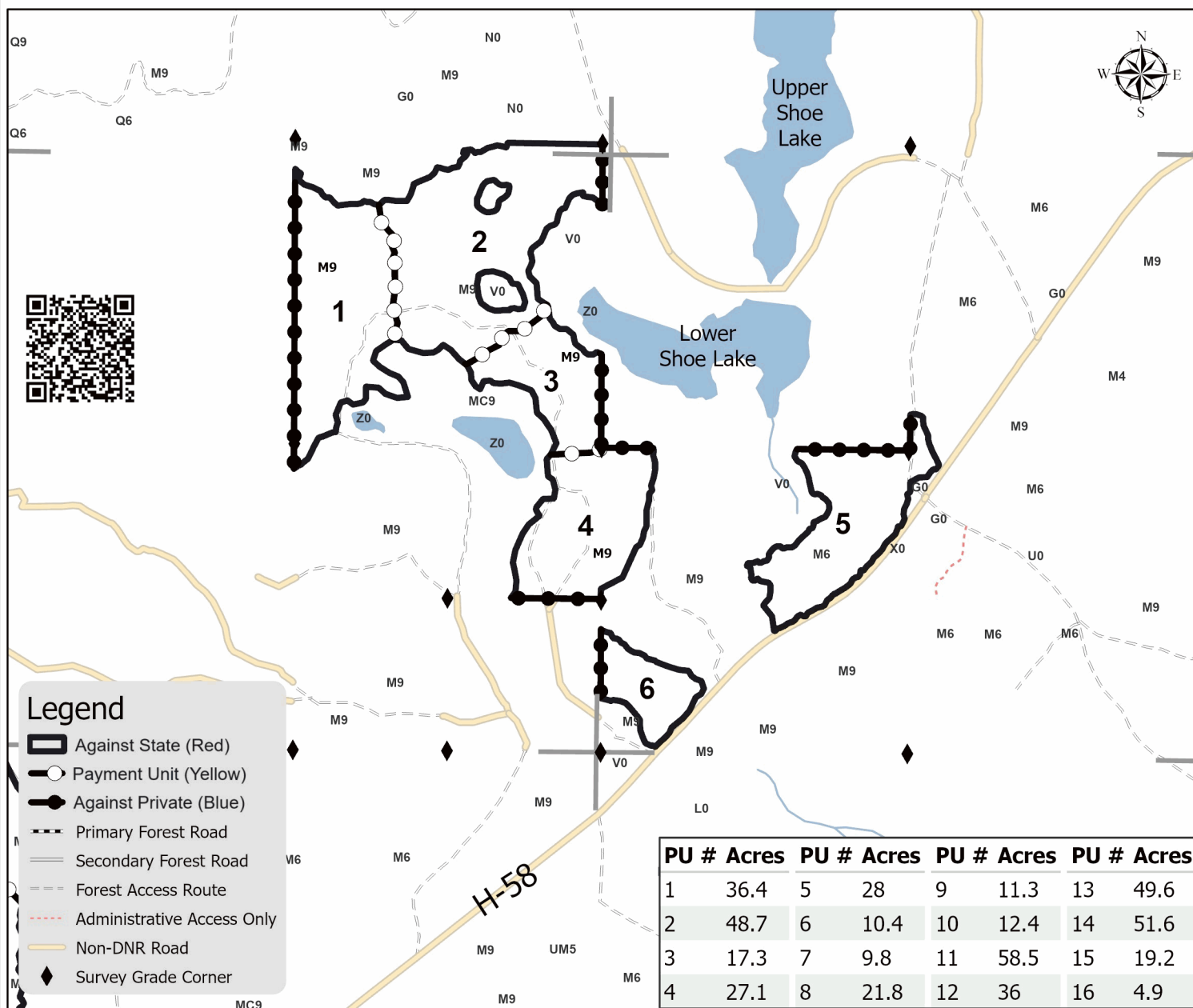
Township 47N / 48N Range 17W Section(s) and 3 NW,W1/2NE,N1/2SW,SESW,SE; Sec. 35 SESE;
Subdivision(s) Sec. 1 SWNE,SW,NWSE; Sec. 10 E1/2NW,NE; Sec. 11 W1/2NW,W1/2SW; Sec. 2 NE,N1/2SE; Sec.

Cover Type			
A = Aspen	J = Jack Pine	O = Oak	U = Upland Brush
B = Paper Birch	K = Rock	P = Lowland Poplar	UM = Upland Mix Forest
C = Cedar	L = Lowland Brush	Q = Mixed Swamp Conifer	V = Bog or Marsh
D = Treed Bog	LM = Lowland Mix Forest	R = Red Pine	W = White Pine
E = Swamp Hardwoods	M = Maple, Beech, Birch	S = Black Spruce	X = Non Stocked
F = Spruce/Fir	MC = Mixed Conifer	T = Tamarack	Y = Sand
G = Grass	MD = Mixed Deciduous	Z = Water	
H = Hemlock	N = Marsh		

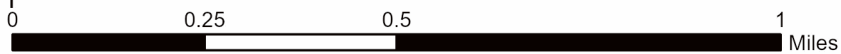
Density	
0 = Non Stocked	5 = Pole Timber Medium
1 = Seedling Sapling Poor	6 = Pole Timber Well
2 = Seedling Sapling Medium	7 = Saw Timber Poor
3 = Seedling Sapling Well	8 = Saw Timber Medium
4 = Pole Timber Poor	9 = Saw Timber Well

Hagrids Hardwood

443.0 Acres



PU #	Acres	PU #	Acres	PU #	Acres	PU #	Acres
1	36.4	5	28	9	11.3	13	49.6
2	48.7	6	10.4	10	12.4	14	51.6
3	17.3	7	9.8	11	58.5	15	19.2
4	27.1	8	21.8	12	36	16	4.9





TIMBER SALE MAP

This information provided by authority of Part 525, 1994 PA 451, as amended.

Sale Number
41-012-23

Date
10/02/2023

Forest Management Unit	County	Mapped By: Kentner
Shingleton Mgt Unit	Alger	Cruised By: UMLM

Scale	Page	Of
1:20,000	2	2

Township 47N / 48N Range 17W Section(s) and Subdivision(s) 3 NW,W1/2NE,N1/2SW,SESW,SE; Sec. 35 SESE; Sec. 1 SWNE,SW,NWSE; Sec. 10 E1/2NW,NE; Sec. 11 W1/2NW,W1/2SW; Sec. 2 NE,N1/2SE; Sec.

Cover Type

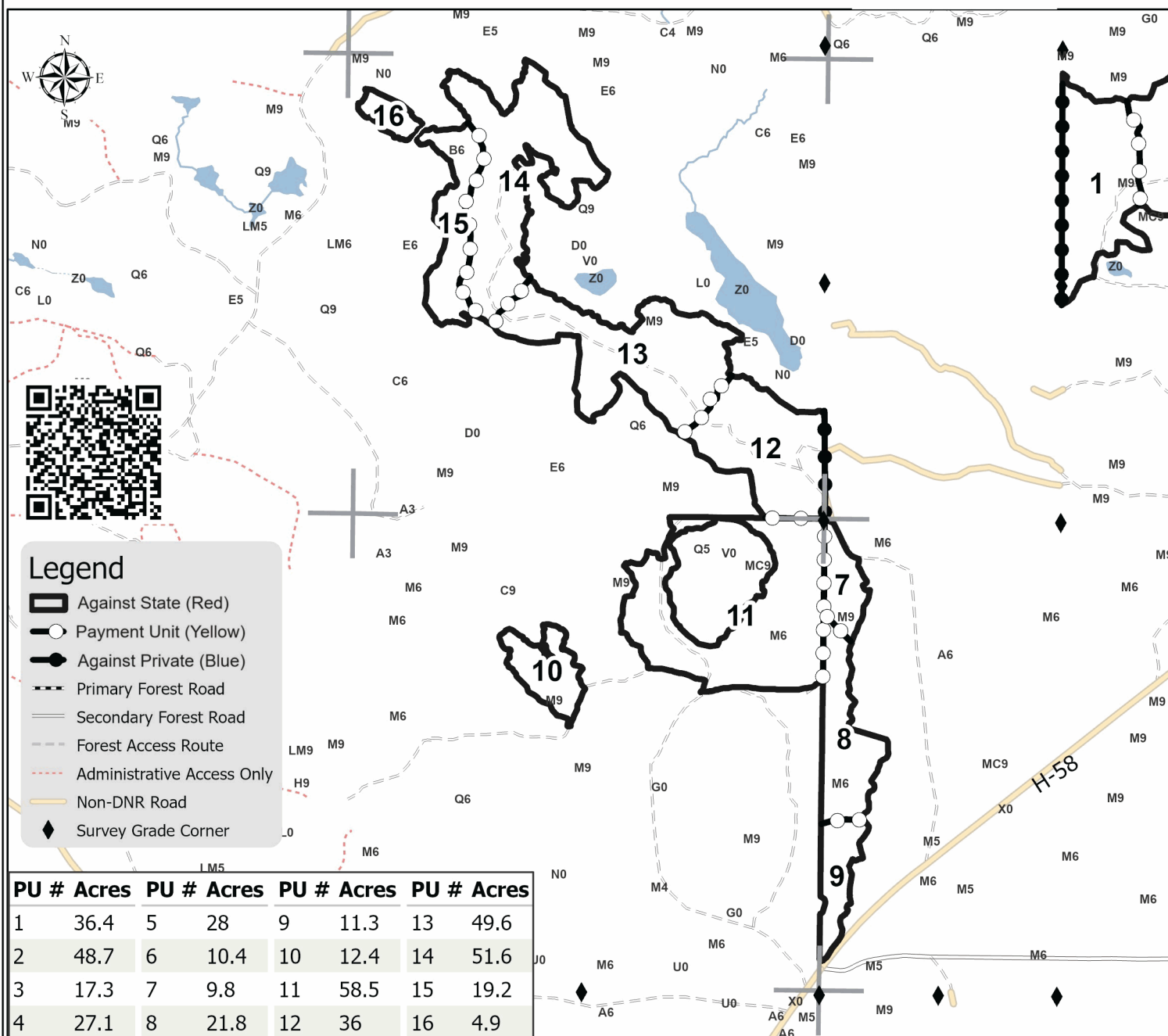
A = Aspen	J = Jack Pine	O = Oak	U = Upland Brush
B = Paper Birch	K = Rock	P = Lowland Poplar	UM = Upland Mix Forest
C = Cedar	L = Lowland Brush	Q = Mixed Swamp Conifer	V = Bog or Marsh
D = Treed Bog	LM = Lowland Mix Forest	R = Red Pine	W = White Pine
E = Swamp Hardwoods	M = Maple, Beech, Birch	S = Black Spruce	X = Non Stocked
F = Spruce/Fir	MC = Mixed Conifer	T = Tamarack	Y = Sand
G = Grass	MD = Mixed Deciduous	Z = Water	
H = Hemlock	N = Marsh		

Density

0 = Non Stocked	5 = Pole Timber Medium
1 = Seedling Sapling Poor	6 = Pole Timber Well
2 = Seedling Sapling Medium	7 = Saw Timber Poor
3 = Seedling Sapling Well	8 = Saw Timber Medium
4 = Pole Timber Poor	9 = Saw Timber Well

Hagrids Hardwood

443.0 Acres



Legend

- Against State (Red)
- Payment Unit (Yellow)
- Against Private (Blue)
- Primary Forest Road
- Secondary Forest Road
- Forest Access Route
- Administrative Access Only
- Non-DNR Road
- Survey Grade Corner

PU #	Acres	PU #	Acres	PU #	Acres	PU #	Acres
1	36.4	5	28	9	11.3	13	49.6
2	48.7	6	10.4	10	12.4	14	51.6
3	17.3	7	9.8	11	58.5	15	19.2
4	27.1	8	21.8	12	36	16	4.9

TIMBER SALE INFORMATION

Million Dollar Hardwood (41-013-23)
 T46N, R17W, SEC. 12; T46N, R17W, SEC. 13.
 Alger County (Advertised Price \$175,688.55)

SALE NOTE: Within Payment Units 1-9, unless changed by written agreement, cutting and skidding are not permitted during the period of April 15 to July 15 because of bark slippage.

It is recommended, but not required, that within Payment Units 10 & 11, harvesting occur during dry summer or frozen winter conditions because of the saturated soils.

A timber sale contract for this lump sum, sealed bid timber sale will be awarded to the responsible bidder offering the highest sealed bid price. All units of volume listed below were estimated using the Inventory Manager computer program and the new Michigan taper model. Bids must be at or above the following advertised price for each product and species:

<u>PRODUCTS & SPECIES</u>	<u>ESTIMATED UNITS*</u>	<u>ADVERTISED PRICE</u>
Sawtimber		
Basswood	48.7 MBF	\$ 119.00 / MBF
Black Cherry	1.7 MBF	\$ 98.00 / MBF
Red Maple	8.2 MBF	\$ 87.00 / MBF
Sugar Maple	384.5 MBF	\$ 349.00 / MBF
Pulpwood		
Balsam Fir	13 Cords	\$ 13.50 / Cord
Basswood	37 Cords	\$ 8.10 / Cord
Black Spruce	72 Cords	\$ 17.90 / Cord
Mixed Hardwood	1,409 Cords	\$ 22.25 / Cord
N. White Cedar	135 Cords	\$ 6.70 / Cord
Paper Birch	5 Cords	\$ 13.55 / Cord
White Pine	31 Cords	\$ 23.75 / Cord

* The total volume is statistically estimated within plus (+) or minus (-) 11.45 percent. There are an estimated 2,884 cords on this timber sale, plus or minus 330 cords at the 95% confidence level. The estimated units are final and not subject to adjustment. Prospective bidders are urged to examine this timber and to make their own estimates of quantity and quality.

BOND AND PAYMENT SCHEDULE:

1. A bond in the amount of \$8,784.00 to insure faithful performance of the conditions of the contract will be deposited by the successful bidder within 21 days of the sale award.
2. Cutting in any sale or unit without the required advance payment would be considered a trespass.
3. Total payment must be paid in advance or according to the following schedule :
 - (a) Ten percent (10%) of the sale value must be paid within 21 days of the sale award.
 - (b) The 10% down payment will be credited towards the first unit cut.
 - (c) Payment for each of the following units must be made before cutting begins in that unit:

PAYMENT UNIT NUMBER	PERCENT OF TOTAL SALE VALUE
01	6.0%
02	12.2%
03	9.2%
04	10.4%
05	11.6%
06	8.3%
07	7.3%
08	17.6%
09	13.1%
10	1.1%
11	3.2%

4. If no cutting takes place, the 10% down payment will not be refunded.
5. Operations on the contract issued will terminate on 06/30/2028.

SALE STATISTICS

Volumes were calculated in cubic feet using the Michigan taper model. Cubic foot volume includes all wood inside bark for the product indicated. For display purposes, cubic feet were converted to cords and MBF using a simple conversion factor, e.g. 79 cubic feet per cord and 185 cubic feet per MBF. The cubic foot volumes are precise; the cords and MBF volumes are not. Cubic foot volume cannot be directly converted to cords or boards with precision.

SALE VOLUMES

The total estimated sale volume may not equal the sum of the species/products due to the nature of statistical calculations associated with double sampling methodology.

VOLUME			STATISTICAL RANGE IN CORDS	
TOTAL CUBIC FEET	TOTAL CORDS	PERCENT ERROR	MINIMUM	MAXIMUM
227,809	2,884	11.45%	2,553	3,214

VDU VOLUMES

A VDU is a Volume Determination Unit. Volumes and their associated statistics are calculated at the VDU level and summarized to the sale level. There is often a one to one relationship between a VDU and a Payment Unit, but not always, depending on the cruise design. Refer to the VDU TO PAYMENT UNIT table.

VDU	VOLUME			RANGE IN CORDS	
	TOTAL CUBIC FEET	TOTAL CORDS	PERCENT ERROR	MINIMUM	MAXIMUM
1	178,612	2,261	10.10%	2,032	2,489
2	12,183	154	16.93%	128	180
3	37,014	469	27.00%	342	595
TOTAL:	227,809	2,884		2,503	3,265

VDU TO PAYMENT UNIT

When a VDU is associated with more than one Payment Unit (PU), the VDU volumes are assigned to the PU based on acres of the VDU within the PU.

VDU	VDU ACRES	PU	PU ACRES
1	249.2	1	15.6
		2	31.7
		3	24.1
		4	27.1
		5	30.1
		6	21.7
		7	19.0
		8	45.8
		9	34.1
2	13.3	10	13.3
3	22.1	11	22.1
TOTAL:	284.6		284.6

DESCRIPTION OF TIMBER BY PAYMENT UNIT (PU)

PU	MARKET GROUP	PRODUCT	QUANTITY	UNIT	ACRES	ADVERTISE PRICE
1	Basswood	Sawtimber	3.0	MBF	15.6	\$10,506.15
	Black Cherry		0.1	MBF		
	Red Maple		0.5	MBF		
	Sugar Maple		24.1	MBF		
	Basswood	Pulpwood	2	Cords		
	Mixed Hardwood		75	Cords		
	<i>Beech</i>		1	<i>Cords</i>		
	<i>Red Maple</i>		3	<i>Cords</i>		
	<i>Sugar Maple</i>		71	<i>Cords</i>		
2	Basswood	Sawtimber	6.2	MBF	31.7	\$21,377.50
	Black Cherry		0.2	MBF		
	Red Maple		1.0	MBF		
	Sugar Maple		48.9	MBF		
	Basswood	Pulpwood	5	Cords		
	Mixed Hardwood		154	Cords		
	<i>American Elm</i>		1	<i>Cords</i>		
	<i>Beech</i>		3	<i>Cords</i>		
	<i>Black Cherry</i>		1	<i>Cords</i>		
	<i>Red Maple</i>		5	<i>Cords</i>		
	<i>Sugar Maple</i>		144	<i>Cords</i>		
	3		Basswood	Sawtimber		
Black Cherry		0.2	MBF			
Red Maple		0.8	MBF			
Sugar Maple		37.2	MBF			
Basswood		Pulpwood	4	Cords		
Mixed Hardwood			115	Cords		
<i>Beech</i>			2	<i>Cords</i>		
<i>Red Maple</i>			4	<i>Cords</i>		
<i>Sugar Maple</i>			109	<i>Cords</i>		
4	Basswood	Sawtimber	5.3	MBF	27.1	\$18,286.20
	Black Cherry		0.2	MBF		
	Red Maple		0.9	MBF		
	Sugar Maple		41.8	MBF		
	Basswood	Pulpwood	4	Cords		
	Mixed Hardwood		132	Cords		
	<i>American Elm</i>		1	<i>Cords</i>		
	<i>Beech</i>		2	<i>Cords</i>		
	<i>Black Cherry</i>		1	<i>Cords</i>		
	<i>Red Maple</i>		5	<i>Cords</i>		
	<i>Sugar Maple</i>		123	<i>Cords</i>		
	5		Basswood	Sawtimber		
Black Cherry		0.2	MBF			
Red Maple		1.0	MBF			
Sugar Maple		46.4	MBF			
Basswood		Pulpwood	4	Cords		
Mixed Hardwood			147	Cords		
<i>American Elm</i>			1	<i>Cords</i>		
<i>Beech</i>			3	<i>Cords</i>		
<i>Black Cherry</i>			1	<i>Cords</i>		
<i>Red Maple</i>			5	<i>Cords</i>		
<i>Sugar Maple</i>			137	<i>Cords</i>		
6			Basswood	Sawtimber	4.2	MBF
	Black Cherry	0.1	MBF			
	Red Maple	0.7	MBF			
	Sugar Maple	33.5	MBF			
	Basswood	Pulpwood	3	Cords		

DESCRIPTION OF TIMBER BY PAYMENT UNIT (PU), CON'T

PU	MARKET GROUP	PRODUCT	QUANTITY	UNIT	ACRES	ADVERTISE PRICE				
6 con't	Mixed Hardwood	Pulpwood	104	Cords						
	<i>Beech</i>		2	<i>Cords</i>						
	<i>Red Maple</i>		4	<i>Cords</i>						
	<i>Sugar Maple</i>		98	<i>Cords</i>						
7	Basswood	Sawtimber	3.7	MBF	19.0	\$12,777.05				
	Black Cherry		0.1	MBF						
	Red Maple		0.6	MBF						
	Sugar Maple		29.3	MBF						
	Basswood	Pulpwood	3	Cords						
	Mixed Hardwood		91	Cords						
	<i>Beech</i>		2	<i>Cords</i>						
	<i>Red Maple</i>		3	<i>Cords</i>						
	<i>Sugar Maple</i>		86	<i>Cords</i>						
8	Basswood	Sawtimber	9.0	MBF	45.8	\$30,919.90				
	Black Cherry		0.4	MBF						
	Red Maple		1.6	MBF						
	Sugar Maple		70.7	MBF						
	Basswood	Pulpwood	7	Cords						
	Mixed Hardwood		222	Cords						
	<i>American Elm</i>		1	<i>Cords</i>						
	<i>Beech</i>		4	<i>Cords</i>						
	<i>Black Cherry</i>		1	<i>Cords</i>						
	<i>Red Maple</i>		8	<i>Cords</i>						
	<i>Sugar Maple</i>		208	<i>Cords</i>						
	9		Basswood	Sawtimber			6.7	MBF	34.1	\$23,004.00
			Black Cherry				0.2	MBF		
Red Maple		1.1	MBF							
Sugar Maple		52.6	MBF							
Basswood		Pulpwood	5	Cords						
Mixed Hardwood			166	Cords						
<i>American Elm</i>			1	<i>Cords</i>						
<i>Beech</i>			3	<i>Cords</i>						
<i>Black Cherry</i>			1	<i>Cords</i>						
<i>Red Maple</i>			6	<i>Cords</i>						
<i>Sugar Maple</i>			155	<i>Cords</i>						
10			Balsam Fir	Pulpwood	6	Cords	13.3	\$2,019.75		
	Mixed Hardwood	60	Cords							
	<i>Red Maple</i>	60	<i>Cords</i>							
	N. White Cedar	80	Cords							
	Paper Birch	5	Cords							
11	Balsam Fir	Pulpwood	7	Cords	22.1	\$5,669.80				
	Black Spruce		72	Cords						
	Mixed Hardwood		143	Cords						
	<i>Red Maple</i>		123	<i>Cords</i>						
	<i>Yellow Birch</i>		20	<i>Cords</i>						
	N. White Cedar		55	Cords						
	White Pine		31	Cords						
TOTAL:			443.1	MBF						
TOTAL:			1,702	Cords						

Sale Specific Conditions & Requirements

Sale Name: Million Dollar Hardwood

Sale Number: 41-013-23 Seq#: 2

1 - Sale Area

1.2 - Boundaries

1.2.1 - Painted boundaries (9/19)

The sale boundary and Payment Unit boundaries are marked and identified by blue, red and yellow paint. Exterior sale boundary lines against private property are marked with blue paint. Exterior sale boundary lines against state are marked with red paint. Interior Payment Unit boundaries are marked with yellow paint. The painted boundary line trees are not Included Timber and are to be protected unless marked with orange paint. Yellow painted trees designating an interior Payment Unit boundary are only to be cut when all surrounding Payment Units have been paid.

2 - Timber Specifications

2.1 - Included Timber

2.1.2 - Clearcut unit(s) w/o unmerchantable trees (8/11)

Within Payment Unit(s) 10 & 11, cut all trees which meet minimum piece specifications in 2.2 Utilization, except do not cut any hemlock, trees marked with green paint or areas excluded with green paint. Special protection trees identified in accordance with condition 3.4.2, within clearcutting unit boundaries, are not Included Timber and are to be protected.

2.1.3 - Cut tree marked unit(s) (12/08)

Within Payment Unit(s) 1-9, all trees are designated for cutting when marked with orange paint above and below stump height, regardless of merchantability.

3 - Payments

3.3 - Pre-measured Sales

3.3.4 - Dividing payment units (7/14)

Payment Unit(s) that are \$20,000 or greater in value may be divided at the request of the Purchaser and upon approval of the Unit Manager. Dividing Payment Units is a contract modification which requires a Timber Sale Contract Amendment.

3.4 - Damaged Timber

3.4.2 - Special Protection Trees (4/14)

The Purchaser shall not cut live or dead special protection trees within cutting units or clearings. Special protection trees are hemlock. If the Purchaser's operations have cut or damaged special protection trees through carelessness, the Purchaser shall pay \$100 as fixed, agreed and liquidated damages for each special protection tree cut or damaged. Such payment does not constitute ownership of the undesignated timber.

4 - Transportation

4.1 - Construction

4.1.3 - Slash and earthen piles (8/04)

Piles or windrows of earth along roads and landings that have been widened or constructed shall be leveled. Slash from road maintenance or construction, including stumps, shall be dispersed throughout the sale.

4.1.6 - Road construction (1/09)

Construction of new roads or improvements of existing roads shall be done in such a way as to minimize the environmental and visual impacts. Merchantable trees shall be cut and utilized unless otherwise directed. Non-merchantable trees shall be severed and laid flat on the ground. Slash shall be scattered, and not left in windrows and kept a minimum of 10 feet back from the road edge. Stumps shall be set upright, not left on edge, and be moved at least 10 feet away from the road edge. Disturbed soil shall be feathered into the woods and not left in berms or windrows.

4.1.7 - Road closure (10/11)

All new roads built into the sale must be blocked to vehicle traffic upon completion of the sale. Overgrown roads that are reopened shall be considered new roads. In general, this will require constructing a four (4') foot high berm of stumps and

logs covered with earth. Stumps and brush must be placed along the remainder of the trail. These roads must be rendered impassable to cars and trucks. All stumps from road building and landing construction must be reserved to block any newly constructed roads upon completion of the sale. These stumps must be scattered along the road system to prohibit vehicular movement. Contact the Sale Administrator for specific details of design and placement.

4.2 - Maintenance

4.2.2 - Fill material (4/07)

To maintain roads, fill material may be needed in areas where "holes" exist or may be expected to develop. This fill material should be placed before trucking begins.

4.2.4 - Grading (10/16)

For completion of the sale, state forest roads must be graded. In general, this will require a road grader or bulldozer to shape up the roads after forest products have been hauled off site. This includes cleaning of drainage areas, grading, crowning and filling with gravel, if necessary. The grading equipment to be used must be approved by the Unit Manager or his/her representative.

5 - Operations

5.2 - Conduct of Operations

5.2.2 - Hazard Trees/Snags

5.2.2.1 - Den trees (10/16)

Obvious hollow and/or den trees shall be protected and left standing unless they are a safety hazard.

5.2.3 - Operating Restrictions

5.2.3.3 - Bark slippage restriction (3/09)

Within Payment Unit(s) 1-9, unless changed by written agreement, cutting and skidding are not permitted during the period of April 15 to July 15. This restriction is because of bark slippage.

5.2.22 - Operating Caution

5.2.22.1 - Operating caution (6/11)

It is recommended, but not required, that within Payment Unit(s) 10 & 11, cutting, skidding, and hauling occur during dry summer or frozen winter conditions. The reason for the recommendation is because of the saturated soils present within the Payment Units.

5.2.32 - Decking/landing restoration (9/13)

All decking and landing areas must have the surface area restored to a condition equal to or better than before. This is to ensure the proper regeneration of the stand. Wood debris, chips and "cookies" from trimmings must be removed or scattered away from landing and loading areas and may not be windrowed on the edge.

5.2.38 - No decking against live trees (2/04)

Cut products may not be decked against unmarked or designated leave trees.

5.8 - Protection of Endangered Species

5.8.3 - Red shoulder hawk or goshawk (1) (2/16)

In the event that an active red shoulder hawk or goshawk nest is found, the contract may be amended to protect the nest site until the nest is determined to be inactive. The value of the trees in this excluded area will be refunded or credited to the Purchaser. The nest will be buffered with a five-chain radius (eight acre) protection area, centered on the nest tree, in which there will be no cutting or new roads constructed. Avoid human disturbance, including loading and skidding, in the protection area.

An additional zone of five chains (ten chains centered on the active nest tree) will be established in which there is no management activity from April 1 to July 30. Limit biomass harvesting and chipping operations within this ten-chain zone, retain the maximum one-third of residues per the Woody Biomass Harvesting Guidelines (Michigan DNR 2010). Nests determined to be inactive will be protected with a one-chain no-harvest buffer.



TIMBER SALE MAP

This information provided by authority of Part 525, 1994 PA 451, as amended.

Sale Number 41-013-23	Date 01/30/2024	
Scale 1:20,000	Page 1	Of 1

Forest Management Unit Shingleton Mgt Unit	County Alger	Mapped By: Kentner
		Cruised By: UMLM

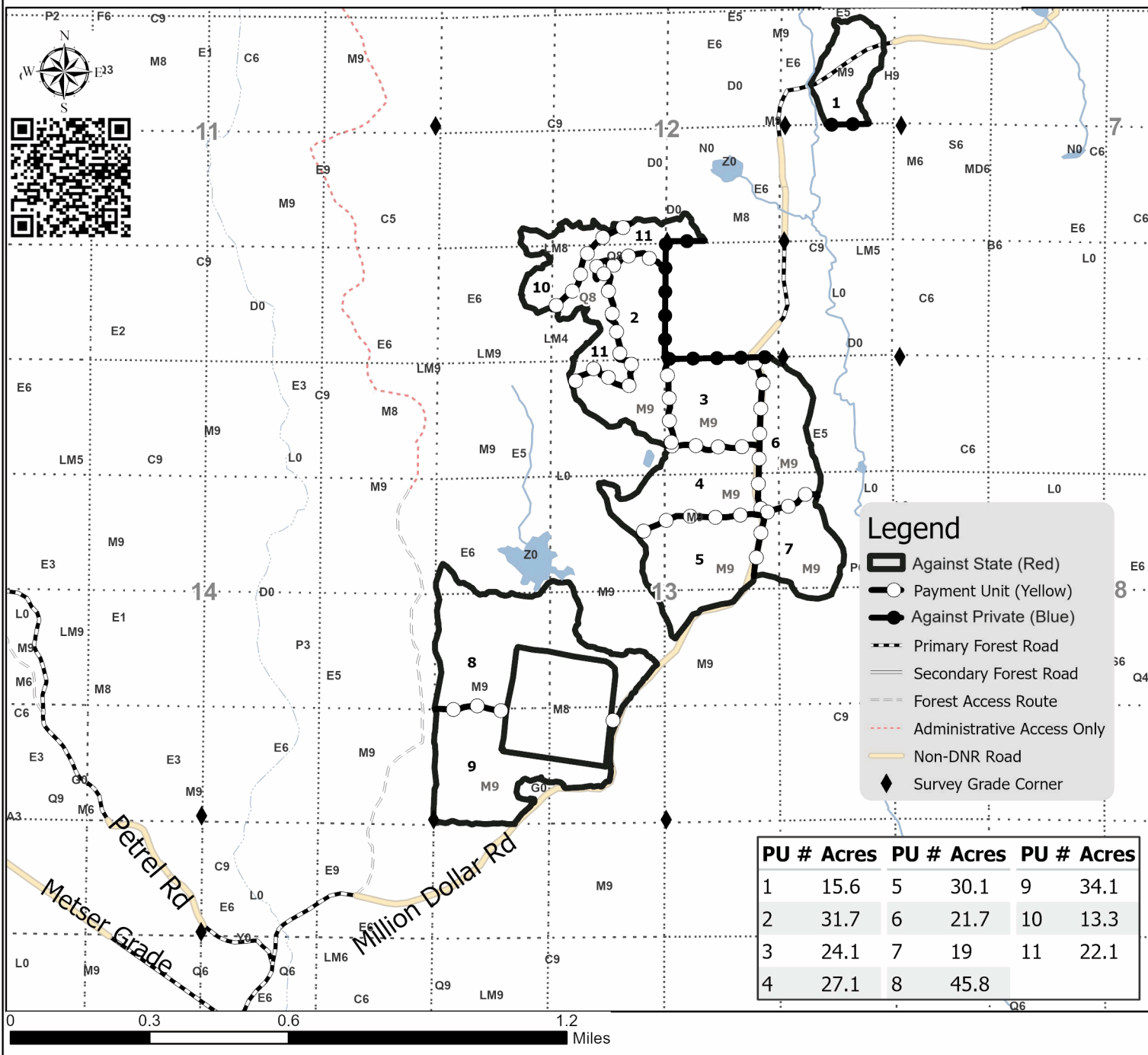
Township 46N	Range 17W	Section(s) and Subdivision(s) Sec. 12 SENE,SW,NWSE; Sec. 13 NENW,S1/2NW,NE,SW,N1/2SE;
-----------------	--------------	---

Cover Type			
A = Aspen	J = Jack Pine	O = Oak	U = Upland Brush
B = Paper Birch	K = Rock	P = Lowland Poplar	UM = Upland Mix Forest
C = Cedar	L = Lowland Brush	Q = Mixed Swamp Conifer	V = Bog or Marsh
D = Treed Bog	LM = Lowland Mix Forest	R = Red Pine	W = White Pine
E = Swamp Hardwoods	M = Maple, Beech, Birch	S = Black Spruce	X = Non Stocked
F = Spruce/Fir	MC = Mixed Conifer	T = Tamarack	Y = Sand
G = Grass	MD = Mixed Deciduous	Z = Water	
H = Hemlock	N = Marsh		

Density	
0 = Non Stocked	5 = Pole Timber Medium
1 = Seedling Sapling Poor	6 = Pole Timber Well
2 = Seedling Sapling Medium	7 = Saw Timber Poor
3 = Seedling Sapling Well	8 = Saw Timber Medium
4 = Pole Timber Poor	9 = Saw Timber Well

Million Dollar Hardwood

284.6 Acres



TIMBER SALE INFORMATION

East Melstrand Mix (41-015-23)

T47N, R17W, SEC. 23; T47N, R17W, SEC. 25; T47N, R17W, SEC. 26.
Alger County (Advertised Price \$62,856.60)

SALE NOTE: The county must be contacted prior to crossing or harvesting in the county road R-O-W. This applies to the Melstrand Truck Trail.

It is the Purchaser's responsibility to obtain access across private land for any routes other than the route shown on the Timber Sale Map.

Within Payment Unit(s) 1-4, unless changed by written agreement, harvesting is limited to frozen conditions (in general this period is December 1 to March 31) because of soft soils.

The Sunrise Grade is a snowmobile trail and is shown on the Timber Sale Map. See Sale Spec 5.2.41 for additional information/restrictions.

A recreation site such as a trail, pathway, or campground is within the sale area or the vicinity. Certain restrictions/specifications may be applicable including time restrictions.

A timber sale contract for this lump sum, sealed bid timber sale will be awarded to the responsible bidder offering the highest sealed bid price. All units of volume listed below were estimated using the Inventory Manager computer program and the new Michigan taper model. Bids must be at or above the following advertised price for each product and species:

<u>PRODUCTS & SPECIES</u>	<u>ESTIMATED UNITS*</u>	<u>ADVERTISED PRICE</u>
Sawtimber		
Paper Birch	52.7 MBF	\$ 75.00 / MBF
Red Maple	32.8 MBF	\$ 75.00 / MBF
Sugar Maple	47.1 MBF	\$ 303.00 / MBF
Yellow Birch	24.6 MBF	\$ 80.00 / MBF
Pulpwood		
Balsam Fir	85 Cords	\$ 11.70 / Cord
Basswood	19 Cords	\$ 7.00 / Cord
Black Spruce	319 Cords	\$ 15.50 / Cord
Mixed Hardwood	1,269 Cords	\$ 19.30 / Cord
N. White Cedar	434 Cords	\$ 5.80 / Cord
Paper Birch	602 Cords	\$ 11.75 / Cord
Tamarack	36 Cords	\$ 1.40 / Cord

* The total volume is statistically estimated within plus (+) or minus (-) 13.11 percent. There are an estimated 3,196 cords on this timber sale, plus or minus 419 cords at the 95% confidence level. The estimated units are final and not subject to adjustment. Prospective bidders are urged to examine this timber and to make their own estimates of quantity and quality.

BOND AND PAYMENT SCHEDULE:

1. A bond in the amount of \$3,143.00 to insure faithful performance of the conditions of the contract will be deposited by the successful bidder within 21 days of the sale award.
2. Cutting in any sale or unit without the required advance payment would be considered a trespass.
3. Total payment must be paid in advance or according to the following schedule:
 - (a) Ten percent (10%) of the sale value must be paid within 21 days of the sale award.
 - (b) The 10% down payment will be credited towards the first unit cut.
 - (c) Payment for each of the following units must be made before cutting begins in that unit:

PAYMENT UNIT NUMBER	PERCENT OF TOTAL SALE VALUE
01	13.4%
02	15.9%
03	23.1%
04	9.5%
05	13.9%
06	4.2%
07	20.0%

4. If no cutting takes place, the 10% down payment will not be refunded.
5. Operations on the contract issued will terminate on 06/20/2028.

SALE STATISTICS

Volumes were calculated in cubic feet using the Michigan taper model. Cubic foot volume includes all wood inside bark for the product indicated. For display purposes, cubic feet were converted to cords and MBF using a simple conversion factor, e.g. 79 cubic feet per cord and 185 cubic feet per MBF. The cubic foot volumes are precise; the cords and MBF volumes are not. Cubic foot volume cannot be directly converted to cords or boards with precision.

SALE VOLUMES

The total estimated sale volume may not equal the sum of the species/products due to the nature of statistical calculations associated with double sampling methodology.

VOLUME			STATISTICAL RANGE IN CORDS	
TOTAL CUBIC FEET	TOTAL CORDS	PERCENT ERROR	MINIMUM	MAXIMUM
252,504	3,196	13.11%	2,777	3,615

VDU VOLUMES

A VDU is a Volume Determination Unit. Volumes and their associated statistics are calculated at the VDU level and summarized to the sale level. There is often a one to one relationship between a VDU and a Payment Unit, but not always, depending on the cruise design. Refer to the VDU TO PAYMENT UNIT table.

	VOLUME			RANGE IN CORDS	
VDU	TOTAL CUBIC FEET	TOTAL CORDS	PERCENT ERROR	MINIMUM	MAXIMUM
1	149,870	1,897	11.35%	1,682	2,112
2	56,508	715	24.43%	541	890
3	9,435	119	47.39%	63	176
4	36,690	464	23.64%	355	574
TOTAL:	252,504	3,196		2,640	3,753

VDU TO PAYMENT UNIT

When a VDU is associated with more than one Payment Unit (PU), the VDU volumes are assigned to the PU based on acres of the VDU within the PU.

VDU	VDU ACRES	PU	PU ACRES
1	87.2	1	22.3
		2	26.4
		3	38.5
2	16.5	4	16.5
3	10.0	6	10.0
4	51.8	5	21.2
		7	30.6
TOTAL:	165.5		165.5

DESCRIPTION OF TIMBER BY PAYMENT UNIT (PU)

PU	MARKET GROUP	PRODUCT	QUANTITY	UNIT	ACRES	ADVERTISE PRICE
1	Paper Birch	Sawtimber Pulpwood	13.5	MBF	22.3	\$8,423.85
	Red Maple		6.2	MBF		
	Yellow Birch		6.3	MBF		
	Balsam Fir		20	Cords		
	Black Spruce		45	Cords		
	Mixed Hardwood		207	Cords		
	<i>Ironwood</i>		1	<i>Cords</i>		
	<i>Red Maple</i>		164	<i>Cords</i>		
	<i>Sugar Maple</i>		5	<i>Cords</i>		
	<i>Yellow Birch</i>		37	<i>Cords</i>		
	Paper Birch		129	Cords		
2	Paper Birch	Sawtimber Pulpwood	16.0	MBF	26.4	\$9,994.85
	Red Maple		7.4	MBF		
	Yellow Birch		7.4	MBF		
	Balsam Fir		24	Cords		
	Black Spruce		53	Cords		
	Mixed Hardwood		246	Cords		
	<i>Ironwood</i>		1	<i>Cords</i>		
	<i>Red Maple</i>		195	<i>Cords</i>		
	<i>Sugar Maple</i>		6	<i>Cords</i>		
	<i>Yellow Birch</i>		44	<i>Cords</i>		
	Paper Birch		153	Cords		
3	Paper Birch	Sawtimber Pulpwood	23.2	MBF	38.5	\$14,566.40
	Red Maple		10.8	MBF		
	Yellow Birch		10.9	MBF		
	Balsam Fir		35	Cords		
	Black Spruce		77	Cords		
	Mixed Hardwood		358	Cords		
	<i>Ironwood</i>		1	<i>Cords</i>		
	<i>Red Maple</i>		284	<i>Cords</i>		
	<i>Sugar Maple</i>		8	<i>Cords</i>		
	<i>Yellow Birch</i>		65	<i>Cords</i>		
	Paper Birch		224	Cords		
4	Black Spruce	Pulpwood	130	Cords	16.5	\$5,990.00
	Mixed Hardwood		23	Cords		
	<i>Red Maple</i>		23	<i>Cords</i>		
	N. White Cedar		434	Cords		
	Paper Birch		82	Cords		
	Tamarack		36	Cords		
5	Red Maple	Sawtimber Pulpwood	3.4	MBF	21.2	\$8,706.80
	Sugar Maple		19.3	MBF		
	Balsam Fir		2	Cords		
	Basswood		8	Cords		
	Black Spruce		1	Cords		
	Mixed Hardwood		130	Cords		
	<i>Beech</i>		25	<i>Cords</i>		
	<i>Red Maple</i>		16	<i>Cords</i>		
<i>Sugar Maple</i>	89	<i>Cords</i>				
6	Balsam Fir	Pulpwood	2	Cords	10.0	\$2,616.50
	Black Spruce		11	Cords		
	Mixed Hardwood		117	Cords		
	<i>Beech</i>		16	<i>Cords</i>		
	<i>Red Maple</i>		86	<i>Cords</i>		
	<i>Sugar Maple</i>		2	<i>Cords</i>		
	<i>Yellow Birch</i>		13	<i>Cords</i>		
	Paper Birch		14	Cords		

DESCRIPTION OF TIMBER BY PAYMENT UNIT (PU), CON'T

PU	MARKET GROUP	PRODUCT	QUANTITY	UNIT	ACRES	ADVERTISE PRICE
7	Red Maple	Sawtimber	5.0	MBF	30.6	\$12,558.20
	Sugar Maple		27.8	MBF		
	Balsam Fir	Pulpwood	2	Cords		
	Basswood		11	Cords		
	Black Spruce		2	Cords		
	Mixed Hardwood		188	Cords		
	<i>Beech</i>		36	<i>Cords</i>		
	<i>Red Maple</i>		23	<i>Cords</i>		
	<i>Sugar Maple</i>		129	<i>Cords</i>		
TOTAL:			157.2	MBF		
TOTAL:			2,764	Cords		

Sale Specific Conditions & Requirements

Sale Name: East Melstrand Mix

Sale Number: 41-015-23 Seq#: 1

1 - Sale Area

1.2 - Boundaries

1.2.1 - Painted boundaries (9/19)

The sale boundary and Payment Unit boundaries are marked and identified by blue, red and yellow paint. Exterior sale boundary lines against private property are marked with blue paint. Exterior sale boundary lines against state are marked with red paint. Interior Payment Unit boundaries are marked with yellow paint. The painted boundary line trees are not Included Timber and are to be protected unless marked with orange paint. Yellow painted trees designating an interior Payment Unit boundary between Payment Units 1-4 are only to be cut when all surrounding Payment Units have been paid.

2 - Timber Specifications

2.1 - Included Timber

2.1.1 - Clearcut unit(s) with unmerchantable trees (6/14)

Within Payment Unit(s) 6, cut all maple, birch and aspen trees that are two (2) inches or more at DBH. In addition, cut all other trees which meet minimum piece specifications in 2.2 Utilization, except do not cut hemlock, oak and cedar. Special protection trees identified in accordance with condition 3.4.2, and special protection areas identified in accordance with condition 3.4.3, within clearcutting unit boundaries, are not Included Timber and are to be protected.

2.1.2 - Clearcut unit(s) w/o unmerchantable trees (8/11)

Within Payment Unit(s) 1-3, cut all trees which meet minimum piece specifications in 2.2 Utilization, except do not cut cedar, hemlock, oak, and white pine. In addition, within Payment Units 1 & 2, do not cut yellow birch less than 8 inches in diameter at a stump height of 1 foot.

Note that: Within Payment Units 1-3, cedar may be cut for operability. In addition, cedar is to be decked separately and scaled in the woods, cedar will be invoiced at \$50 per cord.

Within Payment Unit 4, cut all trees that meet minimum piece specifications in 2.2 Utilization, except do not cut hemlock and oak.

2.1.3 - Cut tree marked unit(s) (12/08)

Within Payment Unit(s) 5 & 7, all trees are designated for cutting when marked with orange paint above and below stump height, regardless of merchantability.

2.2 - Utilization

2.2.9 - No chipping permitted (12/08)

Within Payment Unit(s) 1-4, all wood must be removed by whole tree, tree segment, or roundwood. No chipping is permitted. Chipping is not allowed because these are lowland Payment Units, and tops will be needed for winter operation.

3 - Payments

3.3 - Pre-measured Sales

3.3.4 - Dividing payment units (7/14)

Payment Unit(s) with a value over \$20,000, may be divided at the request of the Purchaser and upon approval of the Unit Manager. Dividing Payment Units is a contract modification which requires a Timber Sale Contract Amendment.

3.4 - Damaged Timber

3.4.2 - Special Protection Trees (4/14)

The Purchaser shall not cut live or dead special protection trees within cutting units or clearings. Special protection trees are hemlock and oak. If the Purchaser's operations have cut or damaged special protection trees through carelessness, the Purchaser shall pay \$100 as fixed, agreed and liquidated damages for each special protection tree cut or damaged. Such payment does not constitute ownership of the undesignated timber.

3.4.3 - Special Protection Areas (8/11)

The Purchaser shall protect special protection areas from damage by the Purchaser's operations. Special protection areas are east of Payment Units 6 & 7 as shown on the Timber Sale Map. The Purchaser shall not operate equipment within the special protection areas or cut live or dead trees within special protection areas. If the Purchaser's operations have cut or damaged special protection areas through carelessness, the Purchaser shall pay \$1000 as fixed, agreed and liquidated damages for each acre or part thereof cut or damaged. Such payment does not constitute ownership of the undesignated timber.

4 - Transportation

4.1 - Construction

4.1.3 - Slash and earthen piles (8/04)

Piles or windrows of earth along roads and landings that have been widened or constructed shall be leveled. Slash from road maintenance or construction, including stumps, shall be dispersed throughout the sale.

4.1.6 - Road construction (1/09)

Construction of new roads or improvements of existing roads, shall be done in such a way as to minimize the environmental and visual impacts. Merchantable trees shall be cut and utilized unless otherwise directed. Non-merchantable trees shall be severed and laid flat on the ground. Slash shall be scattered, and not left in windrows and kept a minimum of 10 feet back from the road edge. Stumps shall be set upright, not left on edge, and be moved at least 10 feet away from the road edge. Disturbed soil shall be feathered into the woods and not left in berms or windrows.

4.1.7 - Road closure (10/11)

All new roads built into the sale must be blocked to vehicle traffic upon completion of the sale. Overgrown roads that are reopened shall be considered new roads. In general, this will require constructing a four (4') foot high berm of stumps and logs covered with earth. These roads must be rendered impassable to cars and trucks. Contact the Sale Administrator for specific details of design and placement.

4.3 - Public Right-of-Way

4.3.2 - County R-O-W (12/06)

The county must be contacted prior to crossing or harvesting in the county road R-O-W. This applies to the Melstrand Truck Trail.

4.4 - Access

4.4.2 - Alternate route on private property (2/04)

It is the Purchaser's responsibility to obtain access across private land for any routes other than the route shown on the Timber Sale Map.

5 - Operations

5.2 - Conduct of Operations

5.2.2 - Hazard Trees/Snags

5.2.2.1 - Den trees (10/16)

Obvious hollow and/or den trees shall be protected and left standing unless they are a safety hazard.

5.2.3 - Operating Restrictions

5.2.3.1 - Operating restrictions (9/11)

Within Payment Unit(s) 1-4, unless changed by written agreement, cutting, skidding, and hauling are limited to frozen conditions, in general this period is December 1 to March 31. This restriction is because of soft soils.

5.2.3.3 - Bark slippage restriction (3/09)

Within Payment Unit(s) 5 & 7, unless changed by written agreement, cutting and skidding are not permitted during the period of April 15 to July 15. This restriction is because of bark slippage.

5.2.32 - Decking/landing restoration (9/13)

All decking and landing areas must have the surface area restored to a condition equal to or better than before. This is to ensure the proper regeneration of the stand. Wood debris, chips and "cookies" from trimmings must be removed or scattered away from landing and loading areas and may not be windrowed on the edge.

5.2.38 - No decking against live trees (2/04)

Cut products may not be decked against unmarked or designated leave trees.

5.2.41 - Snowmobile trail protection (9/11)

The Sunrise Grade is a snowmobile trail and is shown on the Timber Sale Map. Do not cut or damage posts with orange trail markers or traffic control signs. The snowmobile trail may not be used for any timber sale operations.

5.8 - Protection of Endangered Species

5.8.3 - Red shoulder hawk or goshawk (1) (2/16)

In the event that an active red shoulder hawk or goshawk nest is found, the contract may be amended to protect the nest site until the nest is determined to be inactive. The value of the trees in this excluded area will be refunded or credited to the Purchaser. The nest will be buffered with a five-chain radius (eight acre) protection area, centered on the nest tree, in which there will be no cutting or new roads constructed. Avoid human disturbance, including loading and skidding, in the protection area.

An additional zone of five chains (ten chains centered on the active nest tree) will be established in which there is no management activity from April 1 to July 30. Limit biomass harvesting and chipping operations within this ten-chain zone, retain the maximum one-third of residues per the Woody Biomass Harvesting Guidelines (Michigan DNR 2010). Nests determined to be inactive will be protected with a one-chain no-harvest buffer.

6 - Safety and Fire Prevention

6.2 - Signing

6.2.1 - Road posting (10/20)

The Purchaser is responsible for posting and maintaining caution signs on the Melstrand Truck Trail, prior to beginning operations. The road must be posted at appropriate distances from the Sale Area to warn of logging activity and truck traffic. Signs must be removed when harvest operations are suspended or completed. The Purchaser will provide these signs.



TIMBER SALE MAP

This information provided by authority of Part 525, 1994 PA 451, as amended.

Sale Number
41-015-23

Date
10/03/2023

Forest Management Unit
Shingleton Mgt Unit

County
Alger

Mapped By: Steve Tuovila
Cruised By: Steve Tuovila

Scale
1:24,000

Page
1

Of
1

Township 47N Range 17W Section(s) and Subdivision(s) Sec. 23 SWSE; Sec. 25 SENW,NE,NESW,N1/2SE; Sec. 26 W1/2NE,SE;

Cover Type

A = Aspen	J = Jack Pine	O = Oak	U = Upland Brush
B = Paper Birch	K = Rock	P = Lowland Poplar	UM = Upland Mix Forest
C = Cedar	L = Lowland Brush	Q = Mixed Swamp Conifer	V = Bog or Marsh
D = Treed Bog	LM = Lowland Mix Forest	R = Red Pine	W = White Pine
E = Swamp Hardwoods	M = Maple, Beech, Birch	S = Black Spruce	X = Non Stocked
F = Spruce/Fir	MC = Mixed Conifer	T = Tamarack	Y = Sand
G = Grass	MD = Mixed Deciduous	Z = Water	
H = Hemlock	N = Marsh		

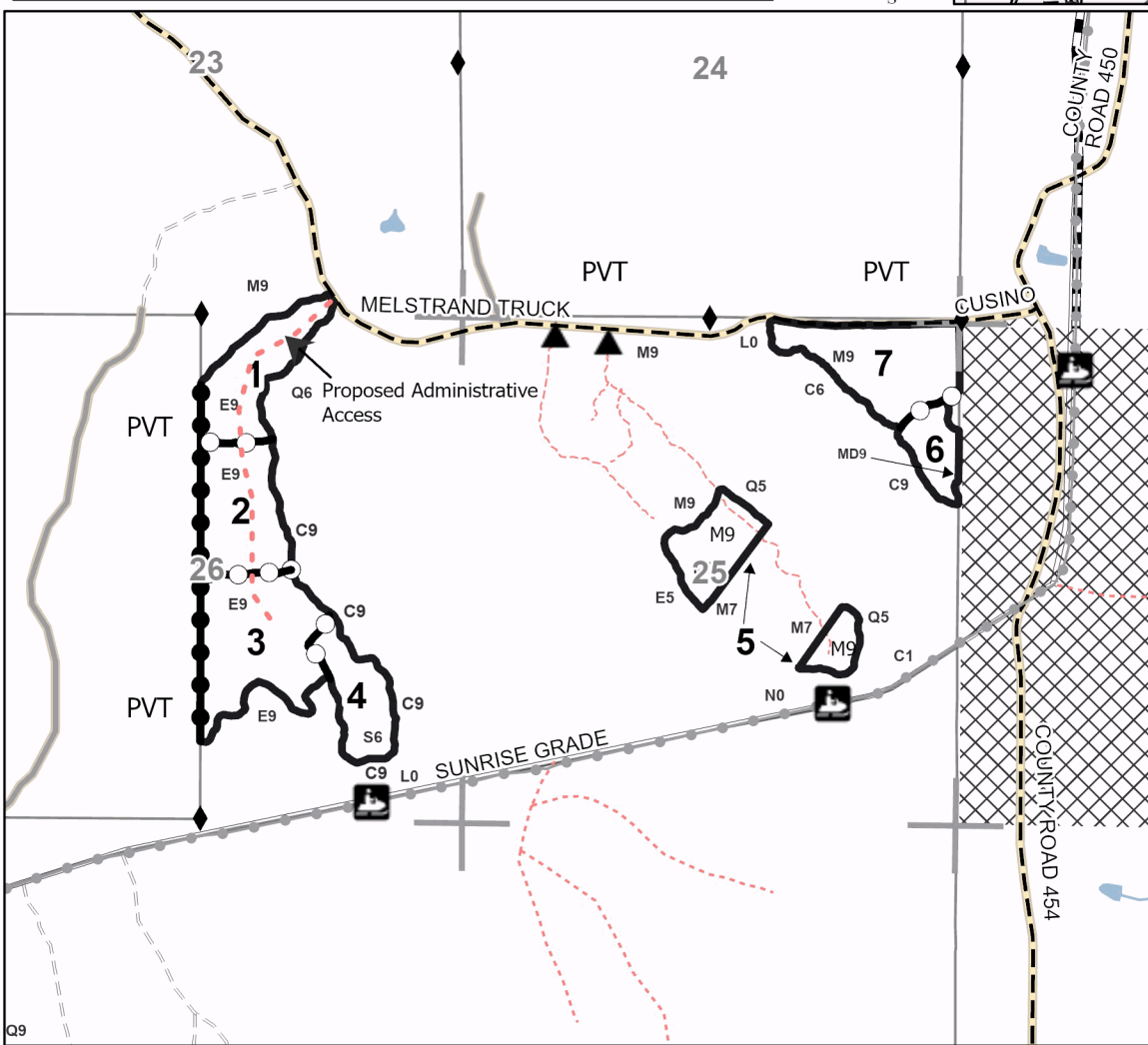
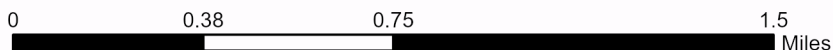
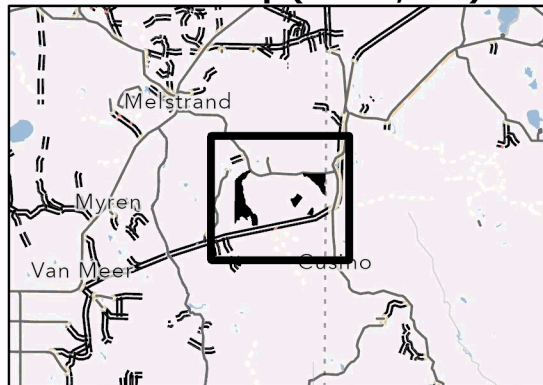
Density

0 = Non Stocked	5 = Pole Timber Medium
1 = Seedling Sapling Poor	6 = Pole Timber Well
2 = Seedling Sapling Medium	7 = Saw Timber Poor
3 = Seedling Sapling Well	8 = Saw Timber Medium
4 = Pole Timber Poor	9 = Saw Timber Well

PU #	Acres	PU #	Acres
1	22.3	5	21.2
2	26.4	6	10
3	38.5	7	30.6
4	16.5		

East Melstrand Mix
165.5 Acres

Locator Map (1:200,000)



Legend

- Against State (Red)
- Special Protection Area
- Payment Unit (Yellow)
- Private Line (Blue)
- Recreational Trail
- Gravel Road
- Private Road
- Primary Forest Road
- Secondary Forest Road
- Forest Access Route
- Administrative Access Only
- Non-DNR Road
- Survey Corner
- Berm
- MIRIS Section Corner
- Lakes and Rivers

Use QR Code to open Map in App



East Melstrand Mix (41-015-23)
T47N, R17W, SEC. 23; T47N, R17W, SEC. 25; T47N, R17W, SEC. 26; Alger

In response to the notice of sale to be held 2:00 p.m. (local time) on May 22, 2024, I am hereby submitting my sealed bid (firm offer) for the following forest products to be cut. Bids for individual species must be at or above the advertised price. All non-responsive bid forms may be rejected.

<u>PRODUCTS & SPECIES</u>	<u>ESTIMATED VOLUME*</u>	<u>ADVERTISED PRICE</u>	<u>BID PRICE/UNIT</u>
Sawtimber			
Paper Birch	52.7 MBF	\$ 75.00/MBF	\$ _____
Red Maple	32.8 MBF	\$ 75.00/MBF	\$ _____
Sugar Maple	47.1 MBF	\$ 303.00/MBF	\$ _____
Yellow Birch	24.6 MBF	\$ 80.00/MBF	\$ _____
Pulpwood			
Balsam Fir	85 Cords	\$ 11.70/Cord	\$ _____
Basswood	19 Cords	\$ 7.00/Cord	\$ _____
Black Spruce	319 Cords	\$ 15.50/Cord	\$ _____
Mixed Hardwood	1,269 Cords	\$ 19.30/Cord	\$ _____
N. White Cedar	434 Cords	\$ 5.80/Cord	\$ _____
Paper Birch	602 Cords	\$ 11.75/Cord	\$ _____
Tamarack	36 Cords	\$ 1.40/Cord	\$ _____

*The volumes are statistically estimated within plus (+) or minus (-) 13.11 percent at 95% confidence level. These estimated volumes are final and not subject to adjustment. Prospective bidders are urged to examine this timber and to make their own estimates of quantity and quality.

I understand that any or all bids may be rejected. All bids must be signed and all bid items must be bid or the bid form may be rejected. I also understand that consideration and awarding a contract will be based upon my past performance and ability to complete the contract based upon equipment and staffing subject to my control.

FEDERAL ID: _____ or SOCIAL SECURITY NUMBER: _____

Company or individual bidding: _____

Company representative's name: _____

Address: _____

City: _____ State: _____ Zip: _____

IF AVAILABLE, PLEASE PLACE THE PERSONALIZED LABEL FROM YOUR PROSPECTUS IN THE ABOVE BOX.

Individual or company representative's signature: _____ Date: _____

Phone number : _____ Email (optional): _____

THE WINNING BIDDER MUST COMPLETE THE VERIFICATION OF WORKER'S DISABILITY COMPENSATION ACT COMPLIANCE (ON REVERSE SIDE IF DOUBLE SIDED) WITHIN 21 DAYS OF SALE AWARD DATE



FOR DEPARTMENT USE ONLY	
Sale Number (XX - XXX - XX - XX)	
Forest Management Unit:	

TIMBER SALE VERIFICATION OF WORKER'S DISABILITY COMPENSATION ACT COMPLIANCE

As required by Act 317, P.A. 1969 (Worker's Compensation) and
Part 5 of Act 451 of 1994, as amended.

VERIFICATION OF WORKER'S DISABILITY COMPENSATION ACT COMPLIANCE

- This verification must be completed and submitted within 21 days of contract award and prior to the issuance of the timber sale contract.
- In addition, if boxes 2B or 2C are checked, then Notice of Exclusion or Certificate of Insurance must be submitted within twenty-one (21) days of the contract award and prior to the issuance of the timber sale contract.
- All information must be typed or printed except for written signatures.

Please Check Appropriate Categories:

1. My business is organized as (you **must** check one of the boxes below):
 - A. Sole Proprietorship (individual)
 - B. Partnership
 - C. Corporation
2. You **must** check one of the boxes below:
 - A. I certify my business is a sole proprietorship and it has no employees but the sole proprietor. I am not subject to the Worker's Compensation Laws.
 - B. I certify my business has satisfied its obligation to the Worker's Compensation Act through the use of an approved Notice of Exclusion (BWC-337, Rev. 5/96). I will provide a copy of the Notice of Exclusion within 21 days of the contract award. (For questions or a copy of the BWC-337, please call the Worker's Compensation Bureau at 517-322-1195).
 - C. I certify my business has a Worker's Compensation Policy. I will provide an original Certificate of Insurance within twenty-one (21) days of the contract award.
3. If you have checked item 2(A) or 2(B), you **must** indicate the number of **both** full-time and part-time employees, other than yourself, including family members and active partners (if none, you must enter "0").

_____ Full-time Employees

_____ Part-time Employees

Name of Business		Federal ID (or) Social Security No.	
Address		Telephone ()	
City	State	ZIP	

I hereby certify that the above information is true and correct. I agree to notify the Michigan DNR of any changes that occur in factors affecting my coverage during any of my present and future operations.

Signature of Owner or Authorized Representative

Title

Date

Please complete the "SEALED BID" information on the next page

Million Dollar Hardwood (41-013-23)
T46N, R17W, SEC. 12; T46N, R17W, SEC. 13; Alger COUNTY

In response to the notice of sale to be held 2:00 p.m. (local time) on May 22, 2024, I am hereby submitting my sealed bid (firm offer) for the following forest products to be cut. Bids for individual species must be at or above the advertised price. All non-responsive bid forms may be rejected.

<u>PRODUCTS & SPECIES</u>	<u>ESTIMATED VOLUME*</u>	<u>ADVERTISED PRICE</u>	<u>BID PRICE/UNIT</u>
Sawtimber			
Basswood	48.7 MBF	\$ 119.00/MBF	\$ _____
Black Cherry	1.7 MBF	\$ 98.00/MBF	\$ _____
Red Maple	8.2 MBF	\$ 87.00/MBF	\$ _____
Sugar Maple	384.5 MBF	\$ 349.00/MBF	\$ _____
Pulpwood			
Balsam Fir	13 Cords	\$ 13.50/Cord	\$ _____
Basswood	37 Cords	\$ 8.10/Cord	\$ _____
Black Spruce	72 Cords	\$ 17.90/Cord	\$ _____
Mixed Hardwood	1,409 Cords	\$ 22.25/Cord	\$ _____
N. White Cedar	135 Cords	\$ 6.70/Cord	\$ _____
Paper Birch	5 Cords	\$ 13.55/Cord	\$ _____
White Pine	31 Cords	\$ 23.75/Cord	\$ _____

*The volumes are statistically estimated within plus (+) or minus (-) 11.45 percent at 95% confidence level. These estimated volumes are final and not subject to adjustment. Prospective bidders are urged to examine this timber and to make their own estimates of quantity and quality.

I understand that any or all bids may be rejected. All bids must be signed and all bid items must be bid or the bid form may be rejected. I also understand that consideration and awarding a contract will be based upon my past performance and ability to complete the contract based upon equipment and staffing subject to my control.

FEDERAL ID: _____ or SOCIAL SECURITY NUMBER: _____

Company or individual bidding: _____

Company representative's name: _____

Address: _____

City: _____ State: _____ Zip: _____

IF AVAILABLE, PLEASE PLACE THE PERSONALIZED LABEL FROM YOUR PROSPECTUS IN THE ABOVE BOX.

Individual or company representative's signature: _____ Date: _____

Phone number : _____ Email (optional): _____

THE WINNING BIDDER MUST COMPLETE THE VERIFICATION OF WORKER'S DISABILITY COMPENSATION ACT COMPLIANCE (ON REVERSE SIDE IF DOUBLE SIDED) WITHIN 21 DAYS OF SALE AWARD DATE



FOR DEPARTMENT USE ONLY	
Sale Number (XX - XXX - XX - XX)	
Forest Management Unit:	

TIMBER SALE VERIFICATION OF WORKER'S DISABILITY COMPENSATION ACT COMPLIANCE

As required by Act 317, P.A. 1969 (Worker's Compensation) and
Part 5 of Act 451 of 1994, as amended.

VERIFICATION OF WORKER'S DISABILITY COMPENSATION ACT COMPLIANCE

- This verification must be completed and submitted within 21 days of contract award and prior to the issuance of the timber sale contract.
- In addition, if boxes 2B or 2C are checked, then Notice of Exclusion or Certificate of Insurance must be submitted within twenty-one (21) days of the contract award and prior to the issuance of the timber sale contract.
- All information must be typed or printed except for written signatures.

Please Check Appropriate Categories:

1. My business is organized as (you **must** check one of the boxes below):
 - A. Sole Proprietorship (individual)
 - B. Partnership
 - C. Corporation
2. You **must** check one of the boxes below:
 - A. I certify my business is a sole proprietorship and it has no employees but the sole proprietor. I am not subject to the Worker's Compensation Laws.
 - B. I certify my business has satisfied its obligation to the Worker's Compensation Act through the use of an approved Notice of Exclusion (BWC-337, Rev. 5/96). I will provide a copy of the Notice of Exclusion within 21 days of the contract award. (For questions or a copy of the BWC-337, please call the Worker's Compensation Bureau at 517-322-1195).
 - C. I certify my business has a Worker's Compensation Policy. I will provide an original Certificate of Insurance within twenty-one (21) days of the contract award.
3. If you have checked item 2(A) or 2(B), you **must** indicate the number of **both** full-time and part-time employees, other than yourself, including family members and active partners (if none, you must enter "0").

_____ Full-time Employees

_____ Part-time Employees

Name of Business		Federal ID (or) Social Security No.	
Address		Telephone ()	
City	State	ZIP	

I hereby certify that the above information is true and correct. I agree to notify the Michigan DNR of any changes that occur in factors affecting my coverage during any of my present and future operations.

Signature of Owner or Authorized Representative

Title

Date

Please complete the "SEALED BID" information on the next page

Hagrids Hardwood (41-012-23)

T47N, R17W, SEC. 1; T47N, R17W, SEC. 10; T47N, R17W, SEC. 11; T47N, R17W,

In response to the notice of sale to be held 2:00 p.m. (local time) on May 22, 2024, I am hereby submitting my sealed bid (firm offer) for the following forest products to be cut. Bids for individual species must be at or above the advertised price. All non-responsive bid forms may be rejected.

<u>PRODUCTS & SPECIES</u>	<u>ESTIMATED VOLUME*</u>	<u>ADVERTISED PRICE</u>	<u>BID PRICE/UNIT</u>
Sawtimber			
Basswood	51.9 MBF	\$ 119.00/MBF	\$ _____
Black Cherry	31.6 MBF	\$ 98.00/MBF	\$ _____
Paper Birch	47.2 MBF	\$ 86.00/MBF	\$ _____
Red Maple	386.5 MBF	\$ 87.00/MBF	\$ _____
Sugar Maple	767.7 MBF	\$ 349.00/MBF	\$ _____
Yellow Birch	5.8 MBF	\$ 93.00/MBF	\$ _____
Pulpwood			
Balsam Fir	201 Cords	\$ 13.50/Cord	\$ _____
Basswood	28 Cords	\$ 8.10/Cord	\$ _____
Mixed Aspen	13 Cords	\$ 29.20/Cord	\$ _____
Mixed Hardwood	4,661 Cords	\$ 22.25/Cord	\$ _____
Paper Birch	275 Cords	\$ 13.55/Cord	\$ _____
White Spruce	39 Cords	\$ 17.90/Cord	\$ _____

*The volumes are statistically estimated within plus (+) or minus (-) 6.71 percent at 95% confidence level. These estimated volumes are final and not subject to adjustment. Prospective bidders are urged to examine this timber and to make their own estimates of quantity and quality.

I understand that any or all bids may be rejected. All bids must be signed and all bid items must be bid or the bid form may be rejected. I also understand that consideration and awarding a contract will be based upon my past performance and ability to complete the contract based upon equipment and staffing subject to my control.

FEDERAL ID: ____ - ____ - ____ or SOCIAL SECURITY NUMBER: ____ - ____ - ____

Company or individual bidding: _____

Company representative's name: _____

Address: _____

City: _____ State: _____ Zip: _____

IF AVAILABLE, PLEASE PLACE THE PERSONALIZED LABEL FROM YOUR PROSPECTUS IN THE ABOVE BOX.

Individual or company representative's signature: _____ Date: _____

Phone number : _____ Email (optional): _____

THE WINNING BIDDER MUST COMPLETE THE VERIFICATION OF WORKER'S DISABILITY COMPENSATION ACT COMPLIANCE (ON REVERSE SIDE IF DOUBLE SIDED) WITHIN 21 DAYS OF SALE AWARD DATE



FOR DEPARTMENT USE ONLY
Sale Number (XX – XXX – XX – XX)
Forest Management Unit:

TIMBER SALE VERIFICATION OF WORKER'S DISABILITY COMPENSATION ACT COMPLIANCE

*As required by Act 317, P.A. 1969 (Worker's Compensation) and
Part 5 of Act 451 of 1994, as amended.*

VERIFICATION OF WORKER'S DISABILITY COMPENSATION ACT COMPLIANCE

- This verification must be completed and submitted within 21 days of contract award and prior to the issuance of the timber sale contract.
- In addition, if boxes 2B or 2C are checked, then Notice of Exclusion or Certificate of Insurance must be submitted within twenty-one (21) days of the contract award and prior to the issuance of the timber sale contract.
- All information must be typed or printed except for written signatures.

Please Check Appropriate Categories:

1. My business is organized as (you **must** check one of the boxes below):
 - A. Sole Proprietorship (individual)
 - B. Partnership
 - C. Corporation

2. You **must** check one of the boxes below:
 - A. I certify my business is a sole proprietorship and it has no employees but the sole proprietor. I am not subject to the Worker's Compensation Laws.
 - B. I certify my business has satisfied its obligation to the Worker's Compensation Act through the use of an approved Notice of Exclusion (BWC-337, Rev. 5/96). I will provide a copy of the Notice of Exclusion within 21 days of the contract award. (For questions or a copy of the BWC-337, please call the Worker's Compensation Bureau at 517-322-1195).
 - C. I certify my business has a Worker's Compensation Policy. I will provide an original Certificate of Insurance within twenty-one (21) days of the contract award.

3. If you have checked item 2(A) or 2(B), you **must** indicate the number of **both** full-time and part-time employees, other than yourself, including family members and active partners (if none, you must enter "0").

_____ Full-time Employees

_____ Part-time Employees

Name of Business		Federal ID (or) Social Security No.	
Address		Telephone ()	
City	State	ZIP	

I hereby certify that the above information is true and correct. I agree to notify the Michigan DNR of any changes that occur in factors affecting my coverage during any of my present and future operations.

Signature of Owner or Authorized Representative

Title

Date

Please complete the "SEALED BID" information on the next page