



**DEPARTMENT OF NATURAL RESOURCES
STATE OF MICHIGAN
TIMBER SALE PROSPECTUS #7289**

SCHEDULED SALE DATE AND TIME: 3:00 p.m. (local time) on October 17, 2023.

LOCATION: NAUBINWAY DNR FIELD OFFICE, PO BOX 287, US 2 W11569, NAUBINWAY, MI 49762.

PROSPECTUS NOTE: The bidder is advised to inspect the sale area and review the location, estimated volumes, operating costs and contract terms of proposed sales. Please be aware that some landowners may request 60 days or more notice for access across their land.

Notice is hereby given that bids will be received by the Unit Manager, SAULT STE MARIE MANAGEMENT UNIT, for certain timber on the following described lands:

A River Ran Through It (45-102-23) / T42N, R12W, SEC. 16, S1/2NW,E1/2NE,SW,SE.

T42N, R12W, SEC. 17, NENW,S1/2NW,NE,N1/2SW,SE.

T42N, R12W, SEC. 21, NWNW,NE.

T42N, R12W, SEC. 22, NENW,NWNE.

Mackinac County, Advertised Price \$106,183.55, 313.6 Acres, Spruce/Fir/Tamarack, Aspen.

Skeeter Surplus Mix (45-105-23) / T41N, R11W, SEC. 5 , SENE,NESE.

T41N, R11W, SEC. 6 , S1/2NE,NESE.

T42N, R11W, SEC. 31, N1/2SE.

T42N, R11W, SEC. 32, SENE,NESE.

Mackinac County, Advertised Price \$31,008.75, 49.2 Acres, Hardwood, Aspen.

BID INSTRUCTIONS (VER. 10/10/2022):

1. Scheduled Bid Location, Date, and Time (2/11)

Bids must be received by the Unit Manager, NAUBINWAY DNR FIELD OFFICE, PO Box 287 US 2 W11569, Naubinway, MI 49762, no later than 3:00 p.m. (local time) on October 17, 2023. For further information concerning this sale, contact Scott Lakosky at 906-630-0518 extension .

2. Bidder's Qualifications (10/22)

If all or part of a timber sale was prepared by a private contractor, the contractor and that contractor's company are not permitted to bid on the timber sale. A person must be 18 years of age or older to purchase timber. Permanent employees of the Department of Natural Resources or members of their immediate household may not bid. Former employees, in the permanent or seasonal class, may not bid until 3 months after the last day of active duty. Bids will not be accepted from individuals or companies appearing on the DNR/FRD No-Bid List. This list contains the names of purchasers who previously failed to execute a contract within 21-days or who have a history of poor performance.

3. Preparation of Sealed Bids (5/16)

Bid Forms may be completed online thru Michigan DNR Timber Sale Online Bidding (OLB) at www.michigan.gov/timberbidding or by completing the hardcopy Bid Form found in the Timber Sale Prospectus . Hardcopy Bid Forms shall be manually signed in ink. Registration in OLB is considered your 'signature' for all bids submitted thru that system. Bid prices must be entered for each species and product in the Bid Price column for all material subject to bidding and all fill-in blanks must be completed. If erasures or other changes appear on the hardcopy Bid Form, each erasure or change must be initialed by the person signing the bid.

4. Submission of Sealed Bids (5/16)

Bid forms may be obtained from the Unit Manager or thru OLB. Bids may be submitted hardcopy or thru OLB. All hardcopy bids must be submitted on the bid form and in an envelope clearly identified as described in this section. NOTE: Only one bid form per bid envelope. Sealed bids must be submitted to the Unit office designated in the prospectus and must be submitted at or prior to the time established in the prospectus. The envelope should show on the outside (a) the sale name or number and (b) the date and time of bid opening, as shown in the prospectus. Bids received after the time specified in the sale prospectus are late bids and will be rejected.

It is possible for a bidder to submit multiple bids on a single sale. For example, a bid may be submitted hardcopy and a bid may be submitted thru OLB. Or, two bidders from the same company could both submit bids on the same sale. If this were to happen, the State would accept all bids received and award the contract accordingly. All bidding and contractual requirements would apply to all bids received.

5. Public Opening of Sealed Bids (7/16)

If conditions permit, the sealed bids will be publicly opened and posted at the time and place set in the prospectus.

If a bidder, present at a bid opening, has submitted bids on more than one sale, that bidder may withdraw their unopened bid envelopes or announce the withdrawal of their online bid after being declared the successful bidder on one sale.

6. Award of Contract (1/11)

Award of the contract will be made to the Bidder whose bid, conforming to the prospectus, is most advantageous to the State of Michigan on the basis of total value at rates bid for the estimated quantities. The State reserves the right to reject any bid or waive any minor irregularity in bids received. A written award mailed (or otherwise furnished) to the successful Bidder shall be deemed to result in a binding contract without further action by either party.

7. Down Payment (1/11)

The Bidder to whom award is made must make a down payment within 21 days of the sale award. The amount of the down payment will be calculated as shown in the Bond and Payment Schedule of this prospectus. Only cash may be used to meet this requirement.

8. Performance Security (1/11)

As guarantee of faithful performance, a cash bond, certificate of deposit, surety bond or irrevocable letter of credit (LOC) is required within 21 days of the sale award. The amount of the performance security is shown in the Bond and

Payment Schedule of this prospectus. If an LOC or surety is used, the coverage must extend for at least 6 months beyond the contract expiration.

9. Worker's Compensation (10/22)

Purchaser shall obtain worker's compensation insurance to cover claims under Michigan's Worker's Disability Compensation Act of 1969 or similar employee benefit act of any other state applicable to an employee. Verification of Worker's Disability Compensation Act Compliance must be completed and submitted within 21 days of contract award and prior to the issuance of the timber sale contract. In addition, if applicable, Notice of Exclusion or Certificate of Insurance must also be submitted.

10. Timber Sale Contract (10/22)

Additional conditions and requirements common to all timber sales are listed on the timber sale contract (R4031) and are available on line at www.michigan.gov/timber. Contact the Unit Manager for additional information or a sample contract. Within 21 days of the date of the award letter, the bidder must sign the contract and provide the required down payment, performance security, and verification of worker's disability compensation. The down payment and performance security shall be in accordance with the provisions of the timber sale contract, in the sums stated in this prospectus. If these actions are not taken, then the Bidder, the Bidder's corporation, and the corporation's principals may not be permitted to bid on State timber sales for a period of 3 months after the first offense, 6 months after the second offense, and 1 year after the third offense. An offense will only be counted against the Bidder for 5 years. In addition, the Bidder certifies that if awarded this contract, the Bidder will complete the timber sale contract in accordance with its terms and any modifications thereof including requirements to purchase, cut, and remove the included timber by the expiration date.

Payment Unit values in the State Forest Timber Sale Contract are calculated based on the advertised value of the Payment Unit as a percentage of the total advertised value of the contract. The advertised value of each Payment Unit is given in the Description of Timber by Payment Unit table on the Timber Sale Information page. For example, if the value of Payment Unit 1 is advertised as \$1,500 and the total Timber Sale value is advertised as \$10,000, the contract price for Payment Unit 1 will be 15% of the total bid price ($\$1,500/\$10,000 * 100$).

11. Disclaimer of Estimates and Bidder's Warranty of Inspection (10/22)

Before submitting this bid, the Bidder is advised and cautioned to inspect the sale area, review the requirements of the sale contract, and take other steps as may be reasonably necessary to ascertain the location, estimated volumes, construction estimates, and operating costs of the proposed sale. Failure to do so will not relieve the Bidder from responsibility for completing the contract.

The Bidder warrants that this bid is submitted solely on the basis of the Bidder's examination and inspection of the quality and quantity of the timber offered for sale and the Bidder's opinion of the value thereof and the costs of recovery. No reliance should be placed on the State of Michigan's estimates of timber quality, quantity or costs of recovery. Bidder further acknowledges that the State of Michigan: (i) expressly disclaims any warranty of fitness of timber for any purpose; (ii) offers this timber as is without any warranty of quality (merchantability) or quantity and (iii) expressly disclaims any warranty as to the quantity or quality of timber sold.

12. Certification and Chain-of-Custody (10/22)

Unless otherwise indicated in the contract under section 7 – Other Conditions of the Sale Specific Conditions & Requirements, the area encompassed by this timber sale is certified to the standards of the Forest Stewardship Council (FSC) - Certificate #SCS-FM/COC-00090N and the Sustainable Forestry Initiative (SFI) - Certificate #NSF-SFIS-5Y031-SF5. Forest products from this sale may be delivered to the mill as "FSC 100% and / or SFI certified" as long as the contractor hauling the forest products is chain-of-custody (COC) certified or covered under a COC certificate from the destination mill. The purchaser is responsible for maintaining COC after leaving the sale area.

13. Good Neighbor Authority (GNA) Requirements (10/22)

If the name of this timber sales contains the acronym GNA, it is authorized by the Good Neighbor Authority (GNA) and covered by various agreements between the U.S. Forest Service and the State. The timber sale occurs on federal land and the following conditions apply:

GNA contracts on US Forest Service land will not be awarded to purchasers on the Federal list of excluded parties. The System for Award Management (SAM) will be checked for active excluded parties prior to award of contract. In

addition, the Bidder to whom award is made must complete an Assurance Regarding Felony Conviction or Tax Delinquent Status for Corporate Applicants (AD-3031).

14. Good Neighbor Authority (GNA) Requirements, con't (10/22)

Bidder certifies, by signing this bid form, that to the best of Bidder's knowledge that the following representations are accurate and complete.

- a. That the Bidder and its principals are not presently debarred, suspended, proposed for debarment, declared ineligible, or voluntary excluded from timber sales (covered transactions) by any Federal department or agency.
- b. That the Bidder and its principals have not within a 3-year period preceding this bid been convicted of or had a civil judgment rendered against them for commission of fraud or a criminal offense in connection with obtaining , attempting to obtain, or performing a public (Federal, State, or local) transaction or contract under a public transaction; violation of Federal or State antitrust statutes or commission of embezzlement, theft, forgery, bribery, falsification or destruction of records, making false statements, or receiving stolen property.
- c. That the Bidder and its principals are not presently indicted for or otherwise criminally or civilly charged by a governmental entity (Federal, State, or local) with commission of any of the offenses enumerated in paragraph b of this certification.
- d. That the Bidder and its principals have not within a 3-year period preceding this bid had one or more public transactions (Federal, State, or local) terminated for breach or default of a timber or forest product contract.

Bidders that cannot certify this requirement, in whole or in part, shall submit an explanation with their bid.

Scott Bowen
Director

TIMBER SALE INFORMATION

A River Ran Through It (45-102-23)

T42N, R12W, SEC. 16; T42N, R12W, SEC. 17; T42N, R12W, SEC. 21; T42N, R12W, SEC. 22.
Mackinac County (Advertised Price \$106,183.55)

A timber sale contract for this lump sum, sealed bid timber sale will be awarded to the responsible bidder offering the highest sealed bid price. All units of volume listed below were estimated using the Inventory Manager computer program and the new Michigan taper model. Bids must be at or above the following advertised price for each product and species:

<u>PRODUCTS & SPECIES</u>	<u>ESTIMATED UNITS*</u>	<u>ADVERTISED PRICE</u>
Sawtimber		
Paper Birch	15.5 MBF	\$ 35.00 / MBF
Red Maple	23.8 MBF	\$ 116.00 / MBF
Sugar Maple	13.8 MBF	\$ 213.00 / MBF
Yellow Birch	10.8 MBF	\$ 63.00 / MBF
Pulpwood		
Balsam Fir	1,314 Cords	\$ 9.60 / Cord
Misc. Species 1	41.7 Acres	\$ 10.00 / Acre
Mixed Aspen	2,209 Cords	\$ 22.60 / Cord
Mixed Hardwood	1,012 Cords	\$ 11.05 / Cord
Mixed Spruce	1,624 Cords	\$ 8.80 / Cord
N. White Cedar	1,253 Cords	\$ 2.50 / Cord
Paper Birch	960 Cords	\$ 6.10 / Cord
Tamarack	13 Cords	\$ 1.25 / Cord
White Pine	121 Cords	\$ 15.10 / Cord

* The total volume is statistically estimated within plus (+) or minus (-) 8.17 percent. There are an estimated 8,834 cords on this timber sale, plus or minus 722 cords at the 95% confidence level. The estimated units are final and not subject to adjustment. Prospective bidders are urged to examine this timber and to make their own estimates of quantity and quality.

BOND AND PAYMENT SCHEDULE:

1. A bond in the amount of \$10,618.00 to insure faithful performance of the conditions of the contract will be deposited by the successful bidder within 21 days of the sale award.
2. Cutting in any sale or unit without the required advance payment would be considered a trespass.
3. Total payment must be paid in advance or according to the following schedule :
 - (a) Ten percent (10%) of the sale value must be paid within 21 days of the sale award.
 - (b) The 10% down payment will be credited towards the first unit cut.
 - (c) Payment for each of the following units must be made before cutting begins in that unit:

PAYMENT UNIT NUMBER	PERCENT OF TOTAL SALE VALUE
01	0.7%
02	0.2%
03	21.7%
04	1.7%
05	2.1%
06	8.3%
07	3.3%
08	2.2%
09	0.2%
10	21.3%
11	5.5%
12	11.0%
13	3.1%
14	12.1%
15	6.6%

4. If no cutting takes place, the 10% down payment will not be refunded.
5. Operations on the contract issued will terminate on 06/30/2028.

SALE STATISTICS

Volumes were calculated in cubic feet using the Michigan taper model. Cubic foot volume includes all wood inside bark for the product indicated. For display purposes, cubic feet were converted to cords and MBF using a simple conversion factor, e.g. 79 cubic feet per cord and 185 cubic feet per MBF. The cubic foot volumes are precise; the cords and MBF volumes are not. Cubic foot volume cannot be directly converted to cords or boards with precision.

SALE VOLUMES

The total estimated sale volume may not equal the sum of the species/products due to the nature of statistical calculations associated with double sampling methodology.

VOLUME			STATISTICAL RANGE IN CORDS	
TOTAL CUBIC FEET	TOTAL CORDS	PERCENT ERROR	MINIMUM	MAXIMUM
697,905	8,834	8.17%	8,112	9,557
41.70 acres are being sold by the acre and do not have cubic foot or cord volumes.				

VDU VOLUMES

A VDU is a Volume Determination Unit. Volumes and their associated statistics are calculated at the VDU level and summarized to the sale level. There is often a one to one relationship between a VDU and a Payment Unit, but not always, depending on the cruise design. Refer to the VDU TO PAYMENT UNIT table.

VDU	VOLUME		PERCENT ERROR	RANGE IN CORDS	
	TOTAL CUBIC FEET	TOTAL CORDS		MINIMUM	MAXIMUM
2	40,372	511	20.25%	408	615
5	5,900	75	38.13%	46	103
6	56,537	716	34.02%	472	959
7 *			N/A		
8	41,228	522	39.16%	318	726
9	24,757	313	57.23%	134	493
18	38,875	492	17.89%	404	580
23	14,710	186	48.85%	95	277
27	12,051	153	65.26%	53	252
38	42,370	536	37.46%	335	737
41	5,541	70	91.78%	6	135
47	44,971	569	31.66%	389	749
49	49,068	621	18.56%	506	736
50 *			N/A		
51	27,909	353	52.49%	168	539
57	34,869	441	17.09%	366	517
63	61,305	776	22.24%	603	949
66	39,468	500	28.01%	360	640
68	65,576	830	24.51%	627	1,034
70	86,490	1,095	20.08%	875	1,315
TOTAL:	691,999	8,759		6,164	11,355

* This VDU is being sold by the acre. There are no cruise statistics available.

VDU TO PAYMENT UNIT

When a VDU is associated with more than one Payment Unit (PU), the VDU volumes are assigned to the PU based on acres of the VDU within the PU.

VDU	VDU ACRES	PU	PU ACRES
2	22.9	15	22.9
5	13.7	1	13.7
6	20.3	3	20.3
7	21.8	2	21.8
8	15.7	3	15.7
9	13.0	3	13.0
18	13.6	14	13.6
23	8.7	5	8.7
27	6.4	4	6.4
38	10.5	6	10.5
41	2.2	8	2.2
47	26.0	10	26.0
49	19.5	10	19.5
50	19.9	9	19.9
51	8.4	10	8.4
57	18.4	7	18.4
63	27.3	14	27.3
66	11.5	13	11.5
68	11.3	11	11.3
70	22.5	12	22.5
TOTAL:	313.6		313.6

DESCRIPTION OF TIMBER BY PAYMENT UNIT (PU)

PU	MARKET GROUP	PRODUCT	QUANTITY	UNIT	ACRES	ADVERTISE PRICE
	Balsam Fir	Pulpwood	7	Cords		
	Mixed Aspen		3	Cords		
	Mixed Hardwood		28	Cords		
	Paper Birch		16	Cords		
	Balsam Fir		374	Cords		
	Mixed Aspen		649	Cords		
	Mixed Hardwood		56	Cords		
	Balsam Fir		36	Cords		
	Mixed Aspen		30	Cords		
	Balsam Fir		53	Cords		
	Mixed Hardwood		39	Cords		
	Paper Birch		46	Cords		
	Balsam Fir		171	Cords		
	Mixed Aspen		292	Cords		
	Balsam Fir		116	Cords		
	Mixed Aspen		15	Cords		
	Mixed Hardwood		3	Cords		
	N. White Cedar		90	Cords		
	Paper Birch		35	Cords		
	Sugar Maple	Sawtimber	8.2	MBF		
	Sugar Maple		5.6	MBF		
	Balsam Fir	Pulpwood	281	Cords		
	Mixed Aspen		561	Cords		
	Mixed Hardwood		164	Cords		
	N. White Cedar		9	Cords		
	Paper Birch		124	Cords		
	Tamarack		5	Cords		
	Balsam Fir		63	Cords		
	Mixed Aspen		114	Cords		
	Mixed Hardwood		6	Cords		
	N. White Cedar		418	Cords		
	Paper Birch		141	Cords		
	Paper Birch	Sawtimber	5.5	MBF		
	Balsam Fir	Pulpwood	32	Cords		
	Mixed Aspen		395	Cords		
	Mixed Hardwood		25	Cords		
	N. White Cedar		508	Cords		
	Paper Birch		108	Cords		
	Paper Birch	Sawtimber	1.6	MBF		
	Balsam Fir	Pulpwood	3	Cords		
	Mixed Aspen		7	Cords		
	Mixed Hardwood		137	Cords		
	N. White Cedar		228	Cords		
	Paper Birch		87	Cords		
	White Pine		21	Cords		
	Paper Birch	Sawtimber	3.8	MBF		
	Red Maple		3.7	MBF		
	Yellow Birch		3.8	MBF		
	Balsam Fir	Pulpwood	160	Cords		
	Mixed Aspen		97	Cords		
	Mixed Hardwood		205	Cords		
	Paper Birch		369	Cords		
	Tamarack		8	Cords		
	White Pine		100	Cords		
	Paper Birch	Sawtimber	4.6	MBF		
	Red Maple		20.1	MBF		

DESCRIPTION OF TIMBER BY PAYMENT UNIT (PU), CON'T

PU	MARKET GROUP	PRODUCT	QUANTITY	UNIT	ACRES	ADVERTISE PRICE
	Yellow Birch Balsam Fir Mixed Hardwood Paper Birch	Sawtimber Pulpwood	7.0 18 297 34	MBF Cords Cords Cords		
	Mixed Spruce <i>Black Spruce</i> <i>White Spruce</i>	Pulpwood	20 19 1	Cords Cords Cords	13.7	
2	Misc. Species 1 <i>Misc. Species 1</i>	Pulpwood	21.8 21.8	Acres Acres	21.8	\$218.00
3	Mixed Spruce <i>Black Spruce</i> <i>White Spruce</i>	Pulpwood	474 9 465	Cords Cords Cords	49.0	\$23,047.80
4	Mixed Spruce <i>White Spruce</i>	Pulpwood	85 85	Cords Cords	6.4	\$1,771.60
5	Mixed Aspen <i>Balsam Poplar</i> <i>Quaking Aspen</i>	Pulpwood	46 19 27	Cords Cords Cords	8.7	\$2,259.95
6	Mixed Spruce <i>White Spruce</i>	Pulpwood	65 65	Cords Cords	10.5	\$8,812.80
7	Mixed Spruce <i>Black Spruce</i> <i>White Spruce</i>	Pulpwood	177 53 124	Cords Cords Cords	18.4	\$3,481.85
8	Mixed Hardwood <i>Ironwood</i> <i>Sugar Maple</i>	Pulpwood	52 2 50	Cords Cords Cords	2.2	\$2,321.20
9	Misc. Species 1 <i>Misc. Species 2</i>	Pulpwood	19.9 19.9	Acres Acres	19.9	\$199.00
10	Mixed Spruce <i>Black Spruce</i> <i>White Spruce</i>	Pulpwood	395 78 317	Cords Cords Cords	53.9	\$22,642.35
11	Mixed Spruce <i>Black Spruce</i> <i>White Spruce</i>	Pulpwood	75 51 24	Cords Cords Cords	11.3	\$5,812.60
12	Mixed Spruce <i>White Spruce</i>	Pulpwood	10 10	Cords Cords	22.5	\$11,719.75
13	Mixed Spruce <i>White Spruce</i>	Pulpwood	8 8	Cords Cords	11.5	\$3,245.05
14	Mixed Spruce <i>Black Spruce</i> <i>White Spruce</i>	Pulpwood	263 141 122	Cords Cords Cords	40.9	\$12,880.35
15	Mixed Spruce <i>Black Spruce</i> <i>White Spruce</i>	Pulpwood	52 46 6	Cords Cords Cords	22.9	\$7,053.25
TOTAL:			63.9	MBF		
TOTAL:			8,506	Cords		
TOTAL:			83.4	Acres		

Sale Specific Conditions & Requirements

Sale Name: A River Ran Through It

Sale Number: 45-102-23 Seq#: 1

1 - Sale Area

1.2 - Boundaries

1.2.1 - Painted boundaries (9/19)

The sale boundary and Payment Unit boundaries are marked and identified by blue, red and yellow paint. Exterior sale boundary lines against private property are marked with blue paint. Exterior sale boundary lines against state are marked with red paint. Interior Payment Unit boundaries are marked with yellow paint. Retention patches are marked with red paint; no harvesting activities may occur within these areas. The painted boundary line trees are not Included Timber and are to be protected. Yellow painted trees designating an interior Payment Unit boundary are only to be cut when all surrounding Payment Units have been paid.

2 - Timber Specifications

2.1 - Included Timber

2.1.1 - Clearcut unit(s) with unmerchantable trees (6/14)

Within Payment Unit(s) 1-15, cut all trees that are two (2) inches or more at DBH, with the following exceptions:

- Within Payment Units 3, 5, 10 & 14, do not cut cedar or reach into cedar pockets to harvest other species.
- Within Payment Unit 15, do not cut any cedar, hemlock or white pine.

2.1.9 - Harvest exception (12/08)

Do not cut any cedar, hemlock or white pine trees within Payment Unit 15 other than those that are necessary to remove in order to operate within the sale area. Every effort must be made to preserve the existing aforementioned species and to leave an intact stand upon sale completion. All cut cedar, hemlock and white pine shall be piled separately by products and scaled in the woods unless other scaling arrangements are agreed to by the Unit Manager or his/her representative. Stumpage price for cedar, hemlock and white pine shall be \$20.00 per cord for posts and pulpwood, and \$40.00 per cord for bolts and sawlogs.

2.1.11 - Description of timber note (2/04)

Note that two openings within Payment Units 2 & 9 are being sold by the acre. Misc. Species 1 & 2 represent the volume included in those openings.

3 - Payments

3.4 - Damaged Timber

3.4.3 - Special Protection Areas (8/11)

The Purchaser shall protect special protection areas from damage by the Purchaser's operations. Special protection areas are indicated by the retention area adjacent to Payment Unit 9 on Timber Sale Map. There shall be no cutting, skidding, or decking within this area. Use of the haul road through this area is allowed, but disturbance outside the roadbed must be kept to a minimum. More detailed instructions will be provided at the pre-sale meeting.

4 - Transportation

4.1 - Construction

4.1.2 - Stream crossings, specific (3/11)

The North Branch of the Milakokia River crossing will require the installation of a culvert or portable bridge in potentially two locations. A 40 foot portable bridge may be borrowed from the DNR. This installation will be performed in accordance with the specifications on the appropriate permits which shall be provided by the DNR. Six month notice is required prior to bridge installation.

4.1.3 - Slash and earthen piles (8/04)

Piles or windrows of earth along roads and landings that have been widened or constructed shall be leveled. Slash from road maintenance or construction, including stumps, shall be dispersed throughout the sale.

4.1.4 - Timber removed for construction (12/09)

Trees cut or damaged in the process of pre-approved road, landing or skid trail construction will be decked in an area separate from other Designated Timber and not removed until measured by the sale administrator. Payment will be made at the specified Purchase Unit Price.

4.1.5 - Culverts (5/14)

Roads may require the installation of culverts for cross drainage or at natural drainage-ways. If culverts are needed in these locations, their placement will be specified by the sale administrator and they shall be installed prior to hauling. The culverts shall be new, corrugated metal or plastic gauge. The DNR will provide any culvert(s) of appropriate size if available. If appropriately sized culvert(s) are not available, the Purchaser will be responsible for providing any required culvert(s). Culverts will be a minimum of 12 inches in diameter and 24 feet in length. If culverts are removed, fill shall be removed from wetland soils as specified. Soils shall be maintained and left in a non-erodible condition, with water bars, seed, fertilizer, mulch, and slash installed as directed by the sale administrator and as specified in the BMP manual. Stream crossing permits, if needed, will be obtained from EGLE.

4.1.6 - Road construction (1/09)

Construction of new roads or improvements of existing roads shall be done in such a way as to minimize the environmental and visual impacts. Merchantable trees shall be cut and utilized unless otherwise directed. Non-merchantable trees shall be severed and laid flat on the ground. Slash shall be scattered, and not left in windrows and kept a minimum of 10 feet back from the road edge. Stumps shall be set upright, not left on edge, and be moved at least 10 feet away from the road edge. Disturbed soil shall be feathered into the woods and not left in berms or windrows.

4.1.7 - Road closure (10/11)

All new roads built into the sale must be blocked to vehicle traffic upon completion of the sale. Overgrown roads that are reopened shall be considered new roads. In general, this will require constructing double earthen berms at strategic locations. These roads must be rendered impassable to cars and trucks. Contact the sale administrator for specific details of design and placement.

4.1.11 - Permits (2/12)

The DNR will secure any necessary permits that may be required. These permits will be for multiple stream/wetland crossings throughout the sale. These areas are identified on the Timber Sale Map.

4.2 - Maintenance

4.2.1 - Hauling restriction (12/08)

Hauling may be restricted on forest roads by the Unit Manager or his/her representative. The restriction may occur during spring breakup.

4.2.3 - Road maintenance (8/13)

The following road maintenance is required: Within 60 days of completion of hauling, or if no hauling occurs for 60 days, the road must be maintained and graded. This includes cleaning of drainage areas, grading, crowning and filling with gravel, if necessary. Damages will be assessed if grading/repair does not occur.

4.2.5 - Two wheel drive condition (2/04)

All existing trail roads on and adjacent to the sale area must be passable by two-wheel drive traffic for the duration of the sale.

4.4 - Access

4.4.1 - Private property access (3/11)

Permission for access across private land is the responsibility of the Purchaser. Should the Purchaser desire to cross private land, a copy of the written permission from the private land-owner may be required by the DNR. Permission also must include DNR staff for timber sale administration during harvesting activities.

5 - Operations

5.2 - Conduct of Operations

5.2.2 - Hazard Trees/Snags

5.2.2.1 - Den trees (10/16)

Obvious hollow and/or den trees shall be protected and left standing unless they are a safety hazard.

5.2.3 - Operating Restrictions

5.2.3.2 - Operating restrictions (9/11)

Within Payment Unit(s) 1-15, unless changed by written agreement, cutting, skidding, and hauling are limited to the period of December 1 to March 31. This restriction is because of deer wintering habitat and wet, sensitive soils.

5.2.17 - Timber Mats and Interlocking Composite Mats (10/20)

Some roads or skid trails may require extra protection such as that afforded by timber mats, interlocking composite mats, or another approved system. If available, mats may be borrowed from the DNR. A Timber Sale Contract Supplement will be used to document the Purchaser's use of the DNR's mats. Contact the sale administrator regarding availability and pick-up. Timber mats are available from various field offices. Composite mats are only available from the Grayling field office and the Marquette ICC. The Purchaser is responsible for picking up and hauling the mats to and from the site. The composite mats will require DNR staff onsite for installation and removal. Contact the sale administrator to schedule at least 30 days before desired install/removal date. All mats must be cleaned prior to drop off. This may include, but is not limited to, power washing and brushing to remove mud and debris. A charge of \$700.00 per timber mat and \$2,000.00 per composite mat will be assessed for all damaged or non-returned mats. Damage for the crane/timber mats is defined as three or more broken cants. Damage for the composite mats is defined as cracked or broken mats.

5.2.32 - Decking/landing restoration (9/13)

All decking and landing areas must have the surface area restored to a condition equal to or better than before. This is to ensure the proper regeneration of the stand. Wood debris, chips and "cookies" from trimmings must be removed or scattered away from landing and loading areas and may not be windrowed on the edge.

5.2.38 - No decking against live trees (2/04)

Cut products may not be decked against unmarked or designated leave trees.



TIMBER SALE MAP

This information provided by authority of Part 525, 1994 PA 451, as amended.

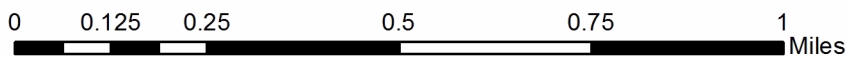
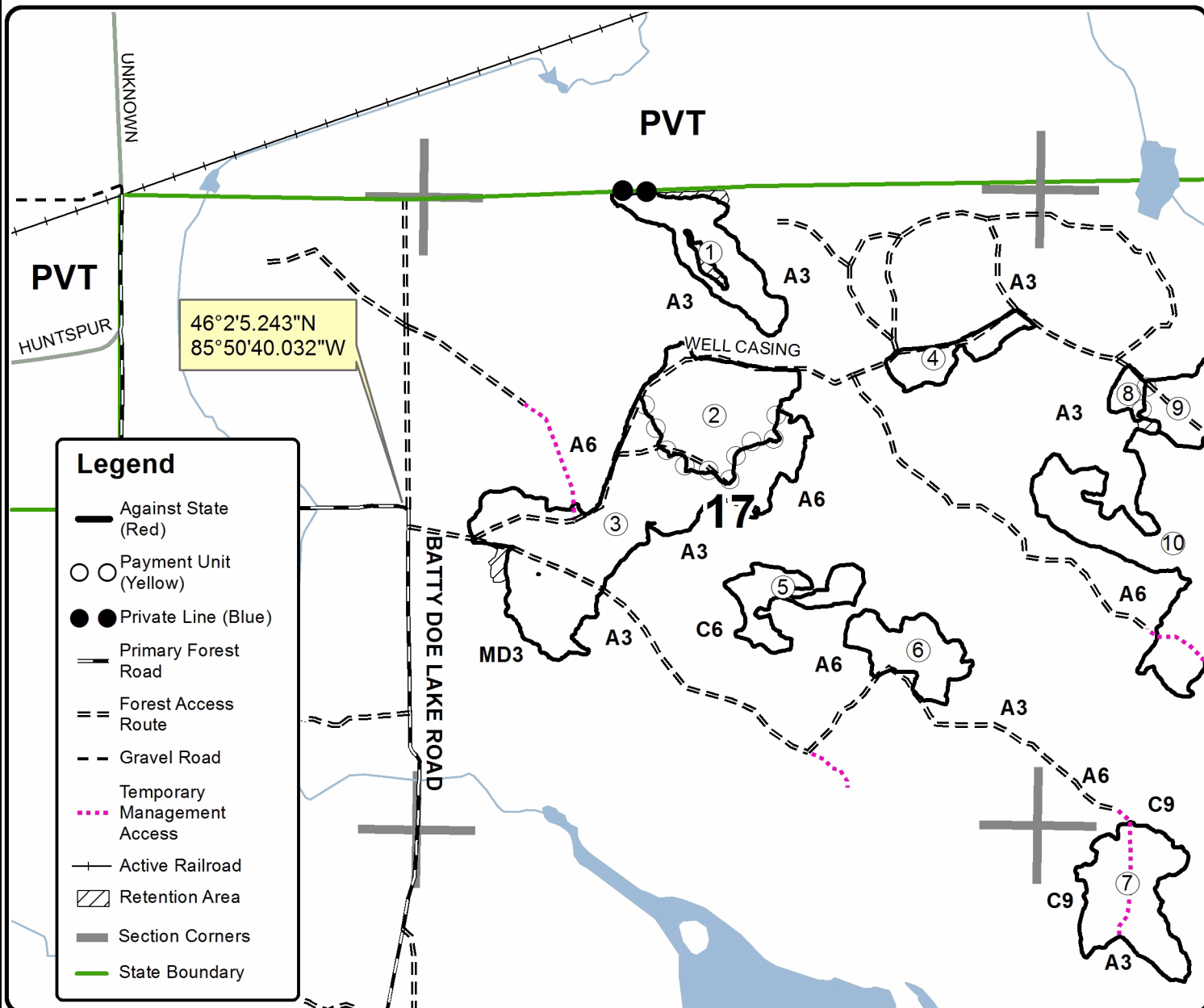
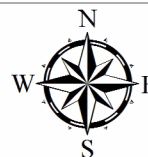
Sale Number	Year
45-102	23

Forest Management Unit	County	Mapped By	Date	Page	of
Sault Ste Marie- Naubinway	Mackinac	Plato	07/14/2023	1	2
Township	Range	Section(s) and Subdivision(s)	Scale		
42N	12W	Sec. 17- NENW,S1/2NW,NE,N1/2SW,SE	1:15,840		
Cruised By		Contractor, Plato, Flatt			

Cover Type				Density	
A = Aspen	H = Hemlock	N = Marsh	U = Upland Brush	0 = Non Stocked	5 = Pole Timber Medium
B = Paper Birch	J = Jack Pine	O = Oak	UM = Upland Mixed	1 = Seedling Sapling Poor	6 = Pole Timber Well
C = Cedar	L = Lowland Brush	P = Lowland Poplar	V = Bog or Marsh	2 = Seedling Sapling Medium	7 = Saw Timber Poor
D = Treed Bog	LM = Lowland Mixed	Q = Mixed Swamp Conifer	W = White Pine	3 = Seedling Sapling Well	8 = Saw Timber Medium
E = Swamp Hdwoods	M = Mpl, Bch, Brch	R = Red Pine	X = Non Stocked	4 = Pole Timber Poor	9 = Saw Timber Well
F = Spruce Fir	MC = Mixed Conifer	S = Black Spruce	Z = Water		
G = Grass	MD = Mixed Deciduous	T = Tamarack			

PU	Acres	PU	Acres	PU	Acres
1	13.7	4	6.4	7	18.4
2	21.8	5	8.7		
3	49.0	6	10.5		

A River Ran Through It
Compartment 191/195
313.6 Acres





Sale Number	Year
45-102	23

TIMBER SALE MAP

This information provided by authority of Part 525, 1994 PA 451, as amended.

Forest Management Unit	County	Mapped By	Date	Page	of
Sault Ste Marie- Naubinway	Mackinac	Plato	07/14/2023	2	2
Township	Range	Section(s) and Subdivision(s)	Scale		
42N	12W	Sec. 21- NWNW,NE Sec. 16- S1/2NW,SENE,N1/2SW,SWSW,SE SEC.22- NENW,NWNE	1:15,840		

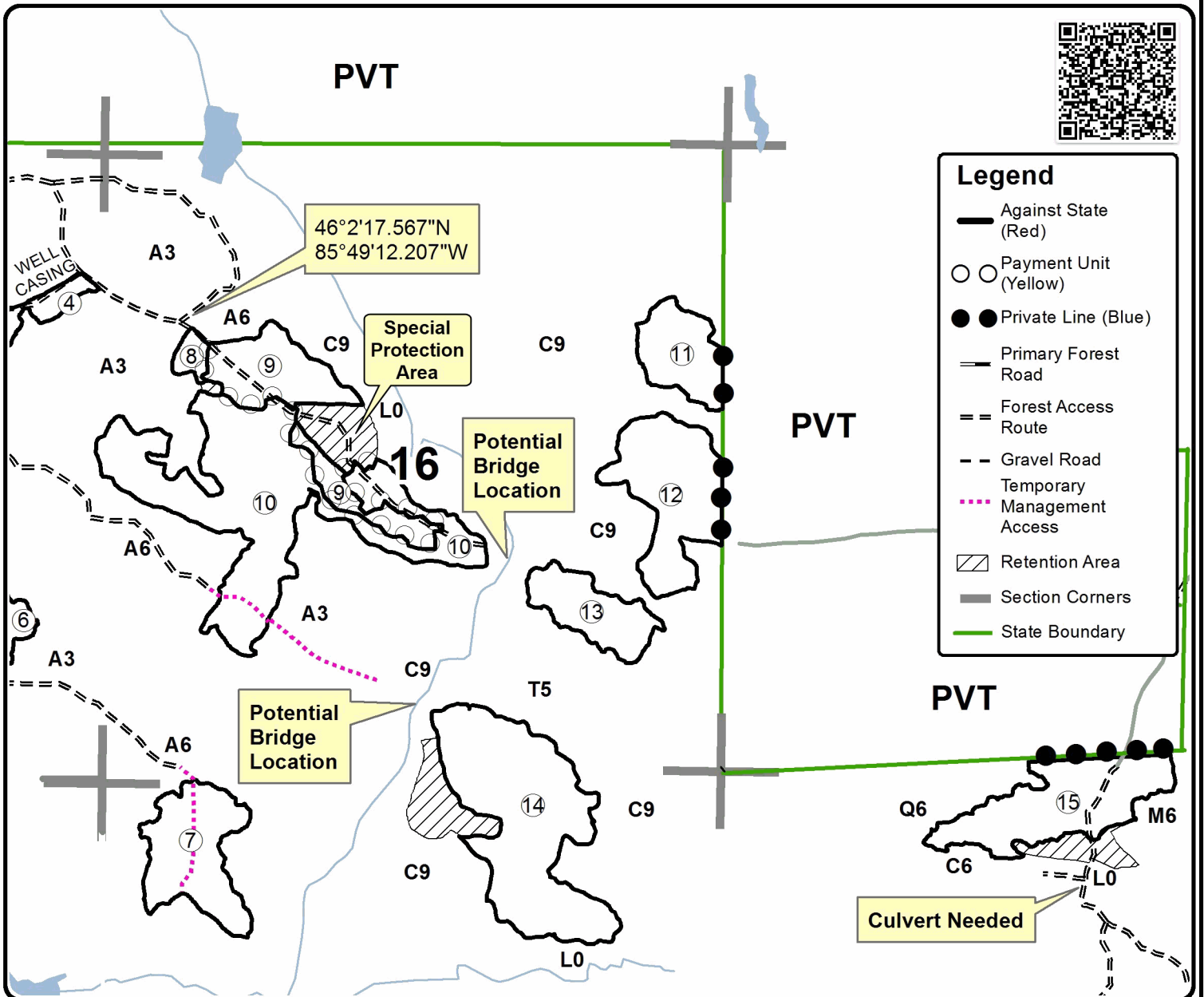
Cover Type				Density			
A = Aspen	H = Hemlock	N = Marsh	U = Upland Brush	0 = Non Stocked	5 = Pole Timber Medium		
B = Paper Birch	J = Jack Pine	O = Oak	UM = Upland Mixed	1 = Seedling Sapling Poor	6 = Pole Timber Well		
C = Cedar	L = Lowland Brush	P = Lowland Poplar	V = Bog or Marsh	2 = Seedling Sapling Medium	7 = Saw Timber Poor		
D = Treed Bog	LM = Lowland Mixed	Q = Mixed Swamp Conifer	W = White Pine	3 = Seedling Sapling Well	8 = Saw Timber Medium		
E = Swamp Hdwoods	M = Mpl, Bch, Brch	R = Red Pine	X = Non Stocked	4 = Pole Timber Poor	9 = Saw Timber Well		
F = Spruce Fir	MC = Mixed Conifer	S = Black Spruce	Z = Water				
G = Grass	MD = Mixed Deciduous	T = Tamarack					

PU	Acres	PU	Acres	PU	Acres
8	2.2	11	11.3	14	40.9
9	19.9	12	22.5	15	22.9
10	53.9	13	11.5		

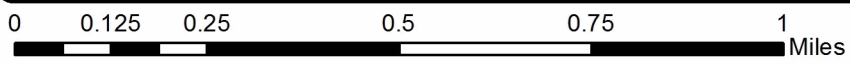
A River Ran Through It

Compartment 191/195

313.6 Acres



Legend	
	Against State (Red)
	Payment Unit (Yellow)
	Private Line (Blue)
	Primary Forest Road
	Forest Access Route
	Gravel Road
	Temporary Management Access
	Retention Area
	Section Corners
	State Boundary



TIMBER SALE INFORMATION

Skeeter Surplus Mix (45-105-23)

T41N, R11W, SEC. 5; T41N, R11W, SEC. 6; T42N, R11W, SEC. 31; T42N, R11W, SEC. 32.
Mackinac County (Advertised Price \$31,008.75)

A timber sale contract for this lump sum, sealed bid timber sale will be awarded to the responsible bidder offering the highest sealed bid price. All units of volume listed below were estimated using the Inventory Manager computer program and the new Michigan taper model. Bids must be at or above the following advertised price for each product and species:

<u>PRODUCTS & SPECIES</u>	<u>ESTIMATED UNITS*</u>	<u>ADVERTISED PRICE</u>
Sawtimber		
Paper Birch	0.7 MBF	\$ 53.00 / MBF
Red Maple	54.5 MBF	\$ 174.00 / MBF
Sugar Maple	4.6 MBF	\$ 319.00 / MBF
Yellow Birch	54.0 MBF	\$ 94.00 / MBF
Pulpwood		
Balsam Fir	47 Cords	\$ 14.40 / Cord
Hemlock	34 Cords	\$ 11.70 / Cord
Mixed Aspen	148 Cords	\$ 33.95 / Cord
Mixed Hardwood	447 Cords	\$ 16.55 / Cord
Mixed Spruce	40 Cords	\$ 13.20 / Cord
Paper Birch	23 Cords	\$ 9.15 / Cord
Tamarack	4 Cords	\$ 1.90 / Cord
White Pine	31 Cords	\$ 22.65 / Cord

* The total volume is statistically estimated within plus (+) or minus (-) 14.87 percent. There are an estimated 1,274 cords on this timber sale, plus or minus 190 cords at the 95% confidence level. The estimated units are final and not subject to adjustment. Prospective bidders are urged to examine this timber and to make their own estimates of quantity and quality.

BOND AND PAYMENT SCHEDULE:

1. A bond in the amount of \$3,101.00 to insure faithful performance of the conditions of the contract will be deposited by the successful bidder within 21 days of the sale award.
2. Cutting in any sale or unit without the required advance payment would be considered a trespass.
3. Total payment must be paid in advance or according to the following schedule :
 - (a) Ten percent (10%) of the sale value must be paid within 21 days of the sale award.
 - (b) The 10% down payment will be credited towards the first unit cut.
 - (c) Payment for each of the following units must be made before cutting begins in that unit:

PAYMENT UNIT NUMBER	PERCENT OF TOTAL SALE VALUE
01	5.7%
02	31.3%
03	10.2%
04	52.8%
4. If no cutting takes place, the 10% down payment will not be refunded.
5. Operations on the contract issued will terminate on 06/30/2027.

SALE STATISTICS

Volumes were calculated in cubic feet using the Michigan taper model. Cubic foot volume includes all wood inside bark for the product indicated. For display purposes, cubic feet were converted to cords and MBF using a simple conversion factor, e.g. 79 cubic feet per cord and 185 cubic feet per MBF. The cubic foot volumes are precise; the cords and MBF volumes are not. Cubic foot volume cannot be directly converted to cords or boards with precision.

SALE VOLUMES

The total estimated sale volume may not equal the sum of the species/products due to the nature of statistical calculations associated with double sampling methodology.

VOLUME		STATISTICAL RANGE IN CORDS		
TOTAL CUBIC FEET	TOTAL CORDS	PERCENT ERROR	MINIMUM	MAXIMUM
100,670	1,274	14.87%	1,085	1,464

VDU VOLUMES

A VDU is a Volume Determination Unit. Volumes and their associated statistics are calculated at the VDU level and summarized to the sale level. There is often a one to one relationship between a VDU and a Payment Unit, but not always, depending on the cruise design. Refer to the VDU TO PAYMENT UNIT table.

VDU	VOLUME		PERCENT ERROR	RANGE IN CORDS	
	TOTAL CUBIC FEET	TOTAL CORDS		MINIMUM	MAXIMUM
19	7,798	99	33.04%	66	131
55	33,750	427	19.44%	344	510
80	5,899	75	55.91%	33	116
86	53,224	674	21.77%	527	820
TOTAL:	100,670	1,274		970	1,578

VDU TO PAYMENT UNIT

When a VDU is associated with more than one Payment Unit (PU), the VDU volumes are assigned to the PU based on acres of the VDU within the PU.

VDU	VDU ACRES	PU	PU ACRES
19	7.5	1	7.5
55	17.6	2	17.6
80	3.4	3	3.4
86	20.7	4	20.7
TOTAL:	49.2		49.2

DESCRIPTION OF TIMBER BY PAYMENT UNIT (PU)

PU	MARKET GROUP	PRODUCT	QUANTITY	UNIT	ACRES	ADVERTISE PRICE
	Red Maple	Sawtimber	3.1	MBF		
	Balsam Fir	Pulpwood	5	Cords		
	Mixed Aspen		1	Cords		
	Mixed Hardwood		31	Cords		
	Paper Birch		15	Cords		
	Tamarack		4	Cords		
	Red Maple	Sawtimber	9.6	MBF		
	Yellow Birch		33.3	MBF		
	Balsam Fir	Pulpwood	42	Cords		
	Hemlock		34	Cords		
	Mixed Aspen		6	Cords		
	Mixed Hardwood		218	Cords		
	Mixed Hardwood		1	Cords		
	Paper Birch		6	Cords		
	Paper Birch	Sawtimber	0.7	MBF		
	Red Maple		41.8	MBF		
	Sugar Maple		4.6	MBF		
	Yellow Birch		20.7	MBF		
	Mixed Aspen	Pulpwood	50	Cords		
	Mixed Hardwood		197	Cords		
	Paper Birch		2	Cords		
	Mixed Spruce	Pulpwood	34	Cords	7.5	
	<i>Black Spruce</i>	<i>Sawtimber</i>	1.9	<i>MBF</i>		
	<i>Black Spruce</i>	<i>Pulpwood</i>	30	<i>Cords</i>		
2	Mixed Spruce	Pulpwood	6	Cords	17.6	\$9,694.00
	<i>White Spruce</i>	<i>Sawtimber</i>	2.4	<i>MBF</i>		
	<i>White Spruce</i>	<i>Pulpwood</i>	1	<i>Cords</i>		
3	Mixed Aspen	Pulpwood	91	Cords	3.4	\$3,160.90
	<i>B. T. Aspen</i>	<i>Sawtimber</i>	11.5	<i>MBF</i>		
	<i>B. T. Aspen</i>	<i>Pulpwood</i>	68	<i>Cords</i>		
4	White Pine	Pulpwood	31	Cords	20.7	\$16,401.80
	<i>White Pine</i>	<i>Sawtimber</i>	12.8	<i>MBF</i>		
	<i>White Pine</i>	<i>Pulpwood</i>	5	<i>Cords</i>		
TOTAL:			113.8	MBF		
TOTAL:			774	Cords		

Sale Specific Conditions & Requirements

Sale Name: Skeeter Surplus Mix

Sale Number: 45-105-23 Seq#: 1

1 - Sale Area

1.2 - Boundaries

1.2.1 - Painted boundaries (9/19)

The sale boundary and Payment Unit boundaries are marked and identified by blue and red paint. Exterior sale boundary lines against private property are marked with blue paint. Exterior sale boundary lines against state are marked with red paint. Retention patches are marked with red paint; no harvesting activities may occur within these areas. The painted boundary line trees are not Included Timber and are to be protected unless marked with orange paint.

2 - Timber Specifications

2.1 - Included Timber

2.1.1 - Clearcut unit(s) with unmerchantable trees (6/14)

Within Payment Unit(s) 1, cut all trees that are two (2) inches or more at DBH, except do not cut cedar and hemlock.

Within Payment Unit(s) 2, cut all trees that are four (4) inches or more at DBH, except do not cut cedar.

Within Payment Unit(s) 3, cut all trees that are two (2) inches or more at DBH, except do not cut white pine less than six (6) inches at DBH.

Within Payment Unit(s) 4, cut all deciduous trees that are two (2) inches or more at DBH, and all conifers that are four (4) inches or more at DBH, except do not cut cedar, hemlock or any trees marked with green paint.

2.1.9 - Harvest exception (12/08)

Do not cut any cedar or hemlock trees within Payment Units 1, 2, & 4 other than those that are necessary to remove in order to operate within the sale area. Every effort must be made to preserve the existing cedar and hemlock and to leave an intact stand upon sale completion. All cut cedar and hemlock shall be piled separately by products and scaled in the woods unless other scaling arrangements are agreed to by the Unit Manager or his/her representative. Stumpage price for cedar and hemlock shall be \$20.00 per cord for posts and pulpwood, and \$40.00 per cord for bolts and sawlogs.

3 - Payments

3.6 - Payment Unit Cutting Schedule

3.6.2 - One active unit (12/08)

Each Payment Unit must be completed to the satisfaction of the Unit Manager or his/her representative before the next unit may be opened. The Purchaser must give a one week notice before finishing a unit to allow for inspection.

4 - Transportation

4.1 - Construction

4.1.2 - Stream crossings, specific (3/11)

Within Payment Unit 2, the Hudson Creek crossing will require the installation of a portable bridge which may be borrowed from the DNR. This installation will be performed in accordance with the specifications on the appropriate permits which shall be provided by the DNR. A six-month notice is required prior to bridge installation.

4.1.3 - Slash and earthen piles (8/04)

Piles or windrows of earth along roads and landings that have been widened or constructed shall be leveled. Slash from road maintenance or construction, including stumps, shall be dispersed throughout the sale.

4.1.6 - Road construction (1/09)

Construction of new roads or improvements of existing roads shall be done in such a way as to minimize the environmental and visual impacts. Merchantable trees shall be cut and utilized unless otherwise directed. Non-merchantable trees shall be severed and laid flat on the ground. Slash shall be scattered, and not left in windrows and kept a minimum of 10 feet back

from the road edge. Stumps shall be set upright, not left on edge, and be moved at least 10 feet away from the road edge. Disturbed soil shall be feathered into the woods and not left in berms or windrows.

4.1.7 - Road closure (10/11)

All new roads built into the sale must be blocked to vehicle traffic upon completion of the sale. Overgrown roads that are reopened shall be considered new roads. In general, this will require constructing a four (4') foot high berm of stumps and logs covered with earth. These roads must be rendered impassable to cars and trucks. Contact the Sale Administrator for specific details of design and placement.

4.1.11 - Permits (2/12)

The DNR will secure any necessary stream crossing permits that may be required.

4.2 - Maintenance

4.2.3 - Road maintenance (8/13)

The following road maintenance is required: Within 60 days of completion of hauling, or if no hauling occurs for 60 days, the road must be maintained and graded. This includes cleaning of drainage areas, grading, crowning and filling with gravel, if necessary. Damages will be assessed if grading/repair does not occur.

4.2.5 - Two wheel drive condition (2/04)

All existing trail roads on and adjacent to the sale area must be passable by two-wheel drive traffic for the duration of the sale.

5 - Operations

5.2 - Conduct of Operations

5.2.2 - Hazard Trees/Snags

5.2.2.1 - Den trees (10/16)

Obvious hollow and/or den trees shall be protected and left standing unless they are a safety hazard.

5.2.3 - Operating Restrictions

5.2.3.2 - Operating restrictions (9/11)

Within Payment Unit(s) 1, unless changed by written agreement, cutting, skidding, and hauling are limited to the period of December 1 to March 31. This restriction is because of deer wintering habitat and wet, sensitive soils.

5.2.22 - Operating Caution

5.2.22.1 - Operating caution (6/11)

It is recommended, but not required, that within Payment Unit(s) 2, 3, & 4, cutting occur during dry summer or frozen winter conditions. The reason for the recommendation is because of wet, sensitive soils in certain areas.

5.2.32 - Decking/landing restoration (9/13)

All decking and landing areas must have the surface area restored to a condition equal to or better than before. This is to ensure the proper regeneration of the stand. Wood debris, chips and "cookies" from trimmings must be removed or scattered away from landing and loading areas and may not be windrowed on the edge.

5.2.38 - No decking against live trees (2/04)

Cut products may not be decked against unmarked or designated leave trees.

5.8 - Protection of Endangered Species

5.8.3 - Red shoulder hawk or goshawk (2/16)

In the event that an active red shoulder hawk or goshawk nest is found, the contract may be amended to protect the nest site until the nest is determined to be inactive. The value of the trees in this excluded area will be refunded or credited to the Purchaser. The nest will be buffered with a five-chain radius (eight acre) protection area, centered on the nest tree, in which there will be no cutting or new roads constructed. Avoid human disturbance, including loading and skidding, in the protection area.

An additional zone of five chains (ten chains centered on the active nest tree) will be established in which there is no

management activity from April 1 to July 30. Limit biomass harvesting and chipping operations within this ten-chain zone, retain the maximum one-third of residues per the Woody Biomass Harvesting Guidelines (Michigan DNR 2010). Nests determined to be inactive will be protected with a one-chain no-harvest buffer.



TIMBER SALE MAP

This information provided by authority of Part 525, 1994 PA 451, as amended.

Sale Number	Year
45-105	23

Forest Management Unit Sault Ste. Marie	County Mackinac	Mapped By Plato	Date 07/20/2023	Page 1	of 1
Township 41N, 42N	Range 11W	Section(s) and Subdivision(s) Sec 5 SENE, NESE Sec 6 S1/2NE, NESE (Sec 31 N1/2SE Sec 32 SENE, NESE)	Scale 1:15,840		

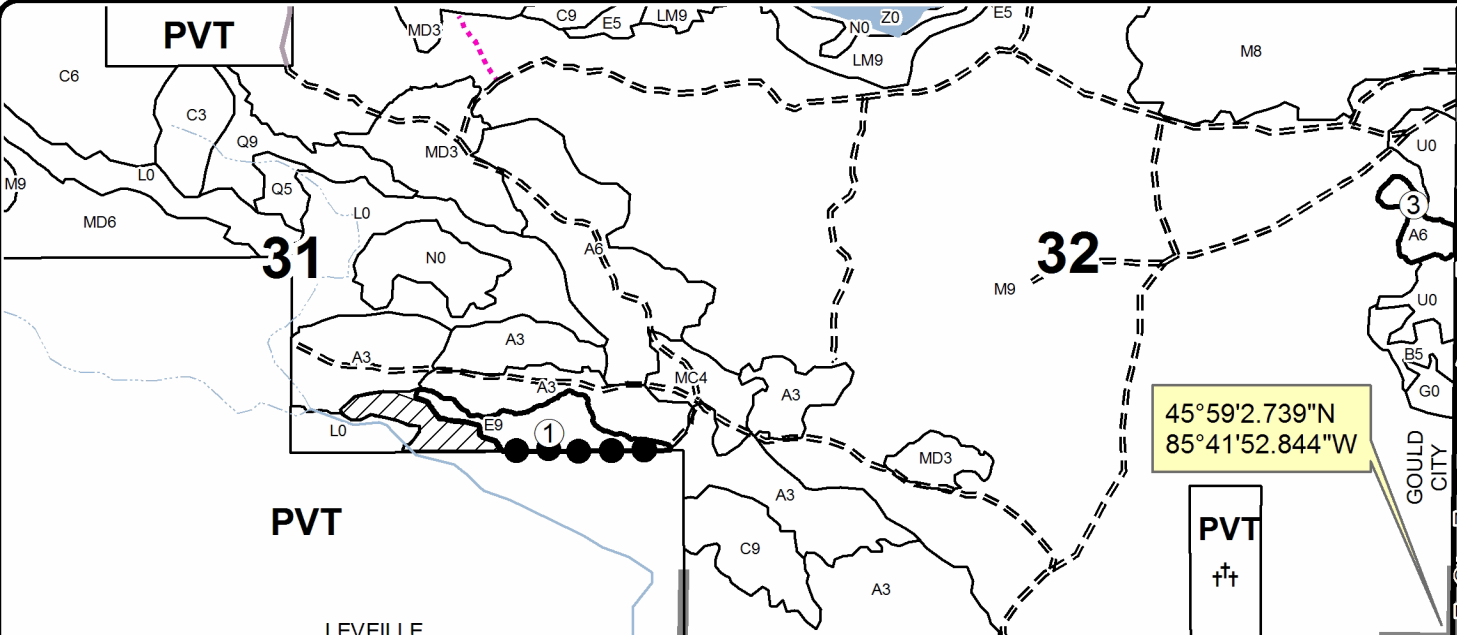
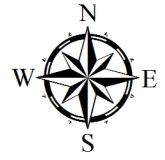
Cover Type				Density	
A = Aspen	H = Hemlock	N = Marsh	U = Upland Brush	0 = Non Stocked	5 = Pole Timber Medium
B = Paper Birch	J = Jack Pine	O = Oak	UM = Upland Mixed	1 = Seedling Sapling Poor	6 = Pole Timber Well
C = Cedar	L = Lowland Brush	P = Lowland Poplar	V = Bog or Marsh	2 = Seedling Sapling Medium	7 = Saw Timber Poor
D = Treed Bog	LM = Lowland Mixed	Q = Mixed Swamp Conifer	W = White Pine	3 = Seedling Sapling Well	8 = Saw Timber Medium
E = Swamp Hdwoods	M = Mpl, Bch, Brch	R = Red Pine	X = Non Stocked	4 = Pole Timber Poor	9 = Saw Timber Well
F = Spruce Fir	MC = Mixed Conifer	S = Black Spruce	Z = Water		
G = Grass	MD = Mixed Deciduous	T = Tamarack			

PU	Acres	PU	Acres
1	7.5	4	20.7
2	17.6		
3	3.4		

Skeeter Surplus Mix

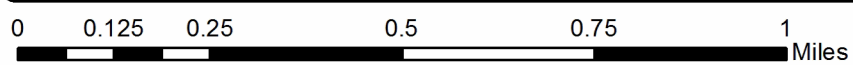
Compartment 198

49.2 Acres



Legend

- == Forest Access Route
- Paved Road
- - Gravel Road
- - Temporary
- Management Access
- ▨ Retention Area
- Against State (Red)
- Private Line (Blue)
- Stand Boundaries
- Section Corners



A River Ran Through It (45-102-23)

T42N, R12W, SEC. 16; T42N, R12W, SEC. 17; T42N, R12W, SEC. 21; T42N,

In response to the notice of sale to be held 3:00 p.m. (local time) on October 17, 2023, I am hereby submitting my sealed bid (firm offer) for the following forest products to be cut. Bids for individual species must be at or above the advertised price. All non-responsive bid forms may be rejected.

<u>PRODUCTS & SPECIES</u>	<u>ESTIMATED VOLUME*</u>	<u>ADVERTISED PRICE</u>	<u>BID PRICE/UNIT</u>
Sawtimber			
Paper Birch	15.5 MBF	\$ 35.00/MBF	\$ _____
Red Maple	23.8 MBF	\$ 116.00/MBF	\$ _____
Sugar Maple	13.8 MBF	\$ 213.00/MBF	\$ _____
Yellow Birch	10.8 MBF	\$ 63.00/MBF	\$ _____
Pulpwood			
Balsam Fir	1,314 Cords	\$ 9.60/Cord	\$ _____
Misc. Species 1	41.7 Acres	\$ 10.00/Acres	\$ _____
Mixed Aspen	2,209 Cords	\$ 22.60/Cord	\$ _____
Mixed Hardwood	1,012 Cords	\$ 11.05/Cord	\$ _____
Mixed Spruce	1,624 Cords	\$ 8.80/Cord	\$ _____
N. White Cedar	1,253 Cords	\$ 2.50/Cord	\$ _____
Paper Birch	960 Cords	\$ 6.10/Cord	\$ _____
Tamarack	13 Cords	\$ 1.25/Cord	\$ _____
White Pine	121 Cords	\$ 15.10/Cord	\$ _____

*The volumes are statistically estimated within plus (+) or minus (-) 8.17 percent at 95% confidence level. These estimated volumes are final and not subject to adjustment. Prospective bidders are urged to examine this timber and to make their own estimates of quantity and quality.

I understand that any or all bids may be rejected. All bids must be signed and all bid items must be bid or the bid form may be rejected. I also understand that consideration and awarding a contract will be based upon my past performance and ability to complete the contract based upon equipment and staffing subject to my control.

FEDERAL ID: _____ or SOCIAL SECURITY NUMBER: _____

Company or individual bidding: _____

Company representative's name: _____

Address: _____

City: _____ State: _____ Zip: _____

IF AVAILABLE, PLEASE PLACE THE PERSONALIZED LABEL FROM YOUR PROSPECTUS IN THE ABOVE BOX.

Individual or company representative's signature: _____ Date: _____

Phone number : _____ Email (optional): _____

THE WINNING BIDDER MUST COMPLETE THE VERIFICATION OF WORKER'S DISABILITY COMPENSATION ACT COMPLIANCE (ON REVERSE SIDE IF DOUBLE SIDED) WITHIN 21 DAYS OF SALE AWARD DATE

Skeeter Surplus Mix (45-105-23)

T41N, R11W, SEC. 5; T41N, R11W, SEC. 6; T42N, R11W, SEC. 31; T42N, R11W,

In response to the notice of sale to be held 3:00 p.m. (local time) on October 17, 2023, I am hereby submitting my sealed bid (firm offer) for the following forest products to be cut. Bids for individual species must be at or above the advertised price. All non-responsive bid forms may be rejected.

<u>PRODUCTS & SPECIES</u>	<u>ESTIMATED VOLUME*</u>	<u>ADVERTISED PRICE</u>	<u>BID PRICE/UNIT</u>
Sawtimber			
Paper Birch	0.7 MBF	\$ 53.00/MBF	\$ _____
Red Maple	54.5 MBF	\$ 174.00/MBF	\$ _____
Sugar Maple	4.6 MBF	\$ 319.00/MBF	\$ _____
Yellow Birch	54.0 MBF	\$ 94.00/MBF	\$ _____
Pulpwood			
Balsam Fir	47 Cords	\$ 14.40/Cord	\$ _____
Hemlock	34 Cords	\$ 11.70/Cord	\$ _____
Mixed Aspen	148 Cords	\$ 33.95/Cord	\$ _____
Mixed Hardwood	447 Cords	\$ 16.55/Cord	\$ _____
Mixed Spruce	40 Cords	\$ 13.20/Cord	\$ _____
Paper Birch	23 Cords	\$ 9.15/Cord	\$ _____
Tamarack	4 Cords	\$ 1.90/Cord	\$ _____
White Pine	31 Cords	\$ 22.65/Cord	\$ _____

*The volumes are statistically estimated within plus (+) or minus (-) 14.87 percent at 95% confidence level. These estimated volumes are final and not subject to adjustment. Prospective bidders are urged to examine this timber and to make their own estimates of quantity and quality.

I understand that any or all bids may be rejected. All bids must be signed and all bid items must be bid or the bid form may be rejected. I also understand that consideration and awarding a contract will be based upon my past performance and ability to complete the contract based upon equipment and staffing subject to my control.

FEDERAL ID: ____ - ____ - ____ or SOCIAL SECURITY NUMBER: ____ - ____ - ____

Company or individual bidding: _____

Company representative's name: _____

Address: _____

City: _____ State: _____ Zip: _____

IF AVAILABLE, PLEASE PLACE THE PERSONALIZED LABEL FROM YOUR PROSPECTUS IN THE ABOVE BOX.

Individual or company representative's signature: _____ Date: _____

Phone number : _____ Email (optional): _____

THE WINNING BIDDER MUST COMPLETE THE VERIFICATION OF WORKER'S DISABILITY COMPENSATION ACT COMPLIANCE (ON REVERSE SIDE IF DOUBLE SIDED) WITHIN 21 DAYS OF SALE AWARD DATE



FOR DEPARTMENT USE ONLY
Sale Number (XX – XXX – XX – XX)
Forest Management Unit:

TIMBER SALE VERIFICATION OF WORKER'S DISABILITY COMPENSATION ACT COMPLIANCE

*As required by Act 317, P.A. 1969 (Worker's Compensation) and
Part 5 of Act 451 of 1994, as amended.*

VERIFICATION OF WORKER'S DISABILITY COMPENSATION ACT COMPLIANCE

- This verification must be completed and submitted within 21 days of contract award and prior to the issuance of the timber sale contract.
- In addition, if boxes 2B or 2C are checked, then Notice of Exclusion or Certificate of Insurance must be submitted within twenty-one (21) days of the contract award and prior to the issuance of the timber sale contract.
- All information must be typed or printed except for written signatures.

Please Check Appropriate Categories:

1. My business is organized as (you **must** check one of the boxes below):
 - A. Sole Proprietorship (individual)
 - B. Partnership
 - C. Corporation
2. You **must** check one of the boxes below:
 - A. I certify my business is a sole proprietorship and it has no employees but the sole proprietor. I am not subject to the Worker's Compensation Laws.
 - B. I certify my business has satisfied its obligation to the Worker's Compensation Act through the use of an approved Notice of Exclusion (BWC-337, Rev. 5/96). I will provide a copy of the Notice of Exclusion within 21 days of the contract award. (For questions or a copy of the BWC-337, please call the Worker's Compensation Bureau at 517-322-1195).
 - C. I certify my business has a Worker's Compensation Policy. I will provide an original Certificate of Insurance within twenty-one (21) days of the contract award.
3. If you have checked item 2(A) or 2(B), you **must** indicate the number of **both** full-time and part-time employees, other than yourself, including family members and active partners (if none, you must enter "0").

_____ Full-time Employees

_____ Part-time Employees

Name of Business		Federal ID (or) Social Security No.	
Address		Telephone ()	
City	State	ZIP	

I hereby certify that the above information is true and correct. I agree to notify the Michigan DNR of any changes that occur in factors affecting my coverage during any of my present and future operations.

Signature of Owner or Authorized Representative

Title

Date

Please complete the "SEALED BID" information on the next page