



**DEPARTMENT OF NATURAL RESOURCES
STATE OF MICHIGAN
TIMBER SALE PROSPECTUS #7267**

SCHEDULED SALE DATE AND TIME: 4:00 p.m. (local time) on October 17, 2023.

LOCATION: TRAVERSE CITY MGMT UNIT, 2122 M 37 SOUTH, TRAVERSE CITY, MI 49685.

PROSPECTUS NOTE: Effective immediately: all bid openings for the Traverse City Management Unit (Kalkaska Field Office and Traverse City Field Office) will be held at the Traverse City Field Office regardless of sale location within the unit. All payments will now be handled through the Traverse City Field Office. The Kalkaska Field Office will no longer accept payments or hard paper copies of timber sale bids. Payments for all contracts, use permits, bonds, etc. should be sent to the Traverse City Field Office.

The bidder is advised to inspect the sale area and review the location, estimated volumes, operating costs and contract terms of proposed sales. Please be aware that some landowners may request 60 days or more notice for access across their land.

Notice is hereby given that bids will be received by the Unit Manager, TRAVERSE CITY MANAGEMENT UNIT, for certain timber on the following described lands:

Consumer Cleanup (61-107-23) / T25N, R07W, SEC. 29, SWSE.
T25N, R07W, SEC. 31, S1/2NE,SW,NESE.
T25N, R07W, SEC. 32, N1/2SW,N1/2SE.
T25N, R07W, SEC. 32, NENW,S1/2NW,NWNE,S1/2NE.
T25N, R08W, SEC. 36, SESE.

Kalkaska County, Advertised Price \$124,425.35, 195.4 Acres, Aspen, Hardwood.

SALE NOTE: A recreation site such as a trail, pathway, or campground is within the sale area or the vicinity. Certain restrictions/specifications may be applicable including time restrictions.

Snoopy Pine (61-109-23) / T26N, R08W, SEC. 18, SWNE,NWSE.

Kalkaska County, Advertised Price \$29,251.35, 34.1 Acres, Red Pine, White Pine.

Big Foot Aspen (61-111-23) / T25N, R07W, SEC. 36, NENW,S1/2NW,W1/2NE.

Kalkaska County, Advertised Price \$74,007.70, 52.7 Acres, Aspen, White Pine.

SALE NOTE: Spec. 5.2.3.5 - Oak wilt restriction is applied to entire sale area.

A recreation site such as a trail, pathway, or campground is within the sale area or the vicinity. Certain restrictions/specifications may be applicable including time restrictions.

Blue Monster Mix (61-112-23) / T25N, R06W, SEC. 31, NWNW.

T25N, R07W, SEC. 25, S1/2SE.
T25N, R07W, SEC. 36, E1/2NE,NESE.

Kalkaska County, Advertised Price \$86,843.35, 76.9 Acres, Aspen, Red Oak.

SALE NOTE: A recreation site such as a trail, pathway, or campground is within the sale area or the vicinity. Certain restrictions/specifications may be applicable including time restrictions.

BID INSTRUCTIONS (VER. 10/10/2022):

1. Scheduled Bid Location, Date, and Time (2/11)

Bids must be received by the Unit Manager, TRAVERSE CITY OFFICE, 2122 M 37 South, Traverse City, MI 49685, no later than 4:00 p.m. (local time) on October 17, 2023. For further information concerning this sale, contact Patrick Cotant at 231-649-0544.

2. Bidder's Qualifications (10/22)

If all or part of a timber sale was prepared by a private contractor, the contractor and that contractor's company are not permitted to bid on the timber sale. A person must be 18 years of age or older to purchase timber. Permanent employees of the Department of Natural Resources or members of their immediate household may not bid. Former employees, in the permanent or seasonal class, may not bid until 3 months after the last day of active duty. Bids will not be accepted from individuals or companies appearing on the DNR/FRD No-Bid List. This list contains the names of purchasers who previously failed to execute a contract within 21-days or who have a history of poor performance.

3. Preparation of Sealed Bids (5/16)

Bid Forms may be completed online thru Michigan DNR Timber Sale Online Bidding (OLB) at www.michigan.gov/timberbidding or by completing the hardcopy Bid Form found in the Timber Sale Prospectus. Hardcopy Bid Forms shall be manually signed in ink. Registration in OLB is considered your 'signature' for all bids submitted thru that system. Bid prices must be entered for each species and product in the Bid Price column for all material subject to bidding and all fill-in blanks must be completed. If erasures or other changes appear on the hardcopy Bid Form, each erasure or change must be initialed by the person signing the bid.

4. Submission of Sealed Bids (5/16)

Bid forms may be obtained from the Unit Manager or thru OLB. Bids may be submitted hardcopy or thru OLB. All hardcopy bids must be submitted on the bid form and in an envelope clearly identified as described in this section. NOTE: Only one bid form per bid envelope. Sealed bids must be submitted to the Unit office designated in the prospectus and must be submitted at or prior to the time established in the prospectus. The envelope should show on the outside (a) the sale name or number and (b) the date and time of bid opening, as shown in the prospectus. Bids received after the time specified in the sale prospectus are late bids and will be rejected.

It is possible for a bidder to submit multiple bids on a single sale. For example, a bid may be submitted hardcopy and a bid may be submitted thru OLB. Or, two bidders from the same company could both submit bids on the same sale. If this were to happen, the State would accept all bids received and award the contract accordingly. All bidding and contractual requirements would apply to all bids received.

5. Public Opening of Sealed Bids (7/16)

If conditions permit, the sealed bids will be publicly opened and posted at the time and place set in the prospectus.

If a bidder, present at a bid opening, has submitted bids on more than one sale, that bidder may withdraw their unopened bid envelopes or announce the withdrawal of their online bid after being declared the successful bidder on one sale.

6. Award of Contract (1/11)

Award of the contract will be made to the Bidder whose bid, conforming to the prospectus, is most advantageous to the State of Michigan on the basis of total value at rates bid for the estimated quantities. The State reserves the right to reject any bid or waive any minor irregularity in bids received. A written award mailed (or otherwise furnished) to the successful Bidder shall be deemed to result in a binding contract without further action by either party.

7. Down Payment (1/11)

The Bidder to whom award is made must make a down payment within 21 days of the sale award. The amount of the down payment will be calculated as shown in the Bond and Payment Schedule of this prospectus. Only cash may be used to meet this requirement.

8. Performance Security (1/11)

As guarantee of faithful performance, a cash bond, certificate of deposit, surety bond or irrevocable letter of credit (LOC) is required within 21 days of the sale award. The amount of the performance security is shown in the Bond and

Payment Schedule of this prospectus. If an LOC or surety is used, the coverage must extend for at least 6 months beyond the contract expiration.

9. Worker's Compensation (10/22)

Purchaser shall obtain worker's compensation insurance to cover claims under Michigan's Worker's Disability Compensation Act of 1969 or similar employee benefit act of any other state applicable to an employee. Verification of Worker's Disability Compensation Act Compliance must be completed and submitted within 21 days of contract award and prior to the issuance of the timber sale contract. In addition, if applicable, Notice of Exclusion or Certificate of Insurance must also be submitted.

10. Timber Sale Contract (10/22)

Additional conditions and requirements common to all timber sales are listed on the timber sale contract (R4031) and are available on line at www.michigan.gov/timber. Contact the Unit Manager for additional information or a sample contract. Within 21 days of the date of the award letter, the bidder must sign the contract and provide the required down payment, performance security, and verification of worker's disability compensation. The down payment and performance security shall be in accordance with the provisions of the timber sale contract, in the sums stated in this prospectus. If these actions are not taken, then the Bidder, the Bidder's corporation, and the corporation's principals may not be permitted to bid on State timber sales for a period of 3 months after the first offense, 6 months after the second offense, and 1 year after the third offense. An offense will only be counted against the Bidder for 5 years. In addition, the Bidder certifies that if awarded this contract, the Bidder will complete the timber sale contract in accordance with its terms and any modifications thereof including requirements to purchase, cut, and remove the included timber by the expiration date.

Payment Unit values in the State Forest Timber Sale Contract are calculated based on the advertised value of the Payment Unit as a percentage of the total advertised value of the contract. The advertised value of each Payment Unit is given in the Description of Timber by Payment Unit table on the Timber Sale Information page. For example, if the value of Payment Unit 1 is advertised as \$1,500 and the total Timber Sale value is advertised as \$10,000, the contract price for Payment Unit 1 will be 15% of the total bid price ($\$1,500/\$10,000 * 100$).

11. Disclaimer of Estimates and Bidder's Warranty of Inspection (10/22)

Before submitting this bid, the Bidder is advised and cautioned to inspect the sale area, review the requirements of the sale contract, and take other steps as may be reasonably necessary to ascertain the location, estimated volumes, construction estimates, and operating costs of the proposed sale. Failure to do so will not relieve the Bidder from responsibility for completing the contract.

The Bidder warrants that this bid is submitted solely on the basis of the Bidder's examination and inspection of the quality and quantity of the timber offered for sale and the Bidder's opinion of the value thereof and the costs of recovery. No reliance should be placed on the State of Michigan's estimates of timber quality, quantity or costs of recovery. Bidder further acknowledges that the State of Michigan: (i) expressly disclaims any warranty of fitness of timber for any purpose; (ii) offers this timber as is without any warranty of quality (merchantability) or quantity and (iii) expressly disclaims any warranty as to the quantity or quality of timber sold.

12. Certification and Chain-of-Custody (10/22)

Unless otherwise indicated in the contract under section 7 – Other Conditions of the Sale Specific Conditions & Requirements, the area encompassed by this timber sale is certified to the standards of the Forest Stewardship Council (FSC) - Certificate #SCS-FM/COC-00090N and the Sustainable Forestry Initiative (SFI) - Certificate #NSF-SFIS-5Y031-SF5. Forest products from this sale may be delivered to the mill as "FSC 100% and / or SFI certified" as long as the contractor hauling the forest products is chain-of-custody (COC) certified or covered under a COC certificate from the destination mill. The purchaser is responsible for maintaining COC after leaving the sale area.

13. Good Neighbor Authority (GNA) Requirements (10/22)

If the name of this timber sales contains the acronym GNA, it is authorized by the Good Neighbor Authority (GNA) and covered by various agreements between the U.S. Forest Service and the State. The timber sale occurs on federal land and the following conditions apply:

GNA contracts on US Forest Service land will not be awarded to purchasers on the Federal list of excluded parties. The System for Award Management (SAM) will be checked for active excluded parties prior to award of contract. In

addition, the Bidder to whom award is made must complete an Assurance Regarding Felony Conviction or Tax Delinquent Status for Corporate Applicants (AD-3031).

14. Good Neighbor Authority (GNA) Requirements, con't (10/22)

Bidder certifies, by signing this bid form, that to the best of Bidder's knowledge that the following representations are accurate and complete.

- a. That the Bidder and its principals are not presently debarred, suspended, proposed for debarment, declared ineligible, or voluntary excluded from timber sales (covered transactions) by any Federal department or agency.
- b. That the Bidder and its principals have not within a 3-year period preceding this bid been convicted of or had a civil judgment rendered against them for commission of fraud or a criminal offense in connection with obtaining , attempting to obtain, or performing a public (Federal, State, or local) transaction or contract under a public transaction; violation of Federal or State antitrust statutes or commission of embezzlement, theft, forgery, bribery, falsification or destruction of records, making false statements, or receiving stolen property.
- c. That the Bidder and its principals are not presently indicted for or otherwise criminally or civilly charged by a governmental entity (Federal, State, or local) with commission of any of the offenses enumerated in paragraph b of this certification.
- d. That the Bidder and its principals have not within a 3-year period preceding this bid had one or more public transactions (Federal, State, or local) terminated for breach or default of a timber or forest product contract.

Bidders that cannot certify this requirement, in whole or in part, shall submit an explanation with their bid.

Scott Bowen
Director

TIMBER SALE INFORMATION

Consumer Cleanup (61-107-23)

T25N, R07W, SEC. 29; T25N, R07W, SEC. 31; T25N, R07W, SEC. 32; T25N, R08W, SEC. 36.
Kalkaska County (Advertised Price \$124,425.35)

SALE NOTE: A recreation site such as a trail, pathway, or campground is within the sale area or the vicinity. Certain restrictions/specifications may be applicable including time restrictions.

A timber sale contract for this lump sum, sealed bid timber sale will be awarded to the responsible bidder offering the highest sealed bid price. All units of volume listed below were estimated using the Inventory Manager computer program and the new Michigan taper model. Bids must be at or above the following advertised price for each product and species:

<u>PRODUCTS & SPECIES</u>	<u>ESTIMATED UNITS*</u>	<u>ADVERTISED PRICE</u>
Sawtimber		
B. T. Aspen	166.2 MBF	\$ 128.00 / MBF
Black Cherry	4.1 MBF	\$ 186.00 / MBF
Red Maple	132.9 MBF	\$ 140.00 / MBF
Red Oak	19.4 MBF	\$ 106.00 / MBF
Red Pine	61.6 MBF	\$ 128.00 / MBF
Sugar Maple	11.1 MBF	\$ 331.00 / MBF
White Pine	176.2 MBF	\$ 76.00 / MBF
Pulpwood		
B. T. Aspen	893 Cords	\$ 20.85 / Cord
Balsam Fir	56 Cords	\$ 29.80 / Cord
Mixed Hardwood	841 Cords	\$ 29.15 / Cord
N. White Cedar	16 Cords	\$ 28.15 / Cord
Red Oak	23 Cords	\$ 26.75 / Cord
Red Pine	122 Cords	\$ 54.30 / Cord
White Pine	177 Cords	\$ 24.20 / Cord

* The total volume is statistically estimated within plus (+) or minus (-) 15.70 percent. There are an estimated 3,442 cords on this timber sale, plus or minus 541 cords at the 95% confidence level. The estimated units are final and not subject to adjustment. Prospective bidders are urged to examine this timber and to make their own estimates of quantity and quality.

BOND AND PAYMENT SCHEDULE:

1. A bond in the amount of \$6,221.00 to insure faithful performance of the conditions of the contract will be deposited by the successful bidder within 21 days of the sale award.
2. Cutting in any sale or unit without the required advance payment would be considered a trespass.
3. Total payment must be paid in advance or according to the following schedule :
 - (a) Ten percent (10%) of the sale value must be paid within 21 days of the sale award.
 - (b) The 10% down payment will be credited towards the first unit cut.
 - (c) Payment for each of the following units must be made before cutting begins in that unit:

PAYMENT UNIT NUMBER	PERCENT OF TOTAL SALE VALUE
01	5.9%
02	5.3%
03	31.0%
04	26.5%
05	31.3%

4. If no cutting takes place, the 10% down payment will not be refunded.
5. Operations on the contract issued will terminate on 12/31/2025.

SALE STATISTICS

Volumes were calculated in cubic feet using the Michigan taper model. Cubic foot volume includes all wood inside bark for the product indicated. For display purposes, cubic feet were converted to cords and MBF using a simple conversion factor, e.g. 79 cubic feet per cord and 185 cubic feet per MBF. The cubic foot volumes are precise; the cords and MBF volumes are not. Cubic foot volume cannot be directly converted to cords or boards with precision.

SALE VOLUMES

The total estimated sale volume may not equal the sum of the species/products due to the nature of statistical calculations associated with double sampling methodology.

VOLUME			STATISTICAL RANGE IN CORDS	
TOTAL CUBIC FEET	TOTAL CORDS	PERCENT ERROR	MINIMUM	MAXIMUM
271,921	3,442	15.70%	2,901	3,983

VDU VOLUMES

A VDU is a Volume Determination Unit. Volumes and their associated statistics are calculated at the VDU level and summarized to the sale level. There is often a one to one relationship between a VDU and a Payment Unit, but not always, depending on the cruise design. Refer to the VDU TO PAYMENT UNIT table.

	VOLUME			RANGE IN CORDS	
VDU	TOTAL CUBIC FEET	TOTAL CORDS	PERCENT ERROR	MINIMUM	MAXIMUM
4	9,036	114	96.11%	4	224
36	52,207	661	38.93%	404	918
40	95,709	1,212	22.70%	937	1,487
50	16,307	206	45.45%	113	300
55	13,082	166	80.25%	33	298
60	23,371	296	64.40%	105	486
66	29,652	375	52.86%	177	574
67	15,256	193	46.25%	104	282
73	17,302	219	44.96%	121	317
TOTAL:	271,921	3,442		1,996	4,888

VDU TO PAYMENT UNIT

When a VDU is associated with more than one Payment Unit (PU), the VDU volumes are assigned to the PU based on acres of the VDU within the PU.

VDU	VDU ACRES	PU	PU ACRES
4	7.5	4	7.5
36	53.1	4	53.1
40	36.2	5	36.2
50	7.6	1	7.6
55	17.2	3	17.2
60	12.0	3	12.0
66	44.3	3	44.3
67	8.9	3	8.9
73	8.6	2	8.6
TOTAL:	195.4		195.4

DESCRIPTION OF TIMBER BY PAYMENT UNIT (PU)

PU	MARKET GROUP	PRODUCT	QUANTITY	UNIT	ACRES	ADVERTISE PRICE
1	B. T. Aspen	Sawtimber	21.8	MBF	7.6	\$7,298.75
	Red Oak		10.7	MBF		
	Red Pine		2.2	MBF		
	B. T. Aspen	Pulpwood	69	Cords		
	Mixed Hardwood		42	Cords		
	<i>Red Maple</i>		42	<i>Cords</i>		
	Red Oak		12	Cords		
	Red Pine		2	Cords		
2	Black Cherry	Sawtimber	2.5	MBF	8.6	\$6,535.40
	Red Maple		7.2	MBF		
	Sugar Maple		2.2	MBF		
	B. T. Aspen	Pulpwood	117	Cords		
	Mixed Hardwood		65	Cords		
	<i>Black Cherry</i>		3	<i>Cords</i>		
	<i>Red Maple</i>		44	<i>Cords</i>		
	<i>Sugar Maple</i>		18	<i>Cords</i>		
3	B. T. Aspen	Sawtimber	139.9	MBF	82.4	\$38,515.95
	Red Maple		13.6	MBF		
	Red Pine		1.5	MBF		
	White Pine		11.7	MBF		
	B. T. Aspen	Pulpwood	351	Cords		
	Balsam Fir		56	Cords		
	Mixed Hardwood		269	Cords		
	<i>Black Cherry</i>		3	<i>Cords</i>		
	<i>Paper Birch</i>		8	<i>Cords</i>		
	<i>Red Maple</i>		258	<i>Cords</i>		
	N. White Cedar		13	Cords		
	<i>N. White Cedar</i>		13	<i>Cords</i>		
	Red Pine		3	Cords		
	White Pine		11	Cords		
4	B. T. Aspen	Sawtimber	4.5	MBF	60.6	\$32,910.80
	Black Cherry		1.6	MBF		
	Red Maple		96.5	MBF		
	Red Oak		8.7	MBF		
	Sugar Maple		8.9	MBF		
	White Pine		47.3	MBF		
	B. T. Aspen	Pulpwood	5	Cords		
	Mixed Hardwood		346	Cords		
	<i>Black Cherry</i>		8	<i>Cords</i>		
	<i>Red Maple</i>		318	<i>Cords</i>		
	<i>Sugar Maple</i>		20	<i>Cords</i>		
	N. White Cedar		3	Cords		
	<i>N. White Cedar</i>	<i>Sawtimber</i>	1.0	<i>MBF</i>		
	<i>N. White Cedar</i>	<i>Pulpwood</i>	1	<i>Cords</i>		
Red Oak		6	Cords			
White Pine		26	Cords			
5	Red Maple	Sawtimber	15.6	MBF	36.2	\$39,164.45
	Red Pine		57.9	MBF		
	White Pine		117.2	MBF		
	B. T. Aspen	Pulpwood	351	Cords		
	Mixed Hardwood		119	Cords		
	<i>Black Cherry</i>		28	<i>Cords</i>		
	<i>Red Maple</i>		91	<i>Cords</i>		
	Red Oak		5	Cords		
	Red Pine		117	Cords		
	White Pine		140	Cords		

TOTAL:	571.5	MBF
--------	-------	-----

TOTAL:	2,128	Cords
--------	-------	-------

Sale Specific Conditions & Requirements

Sale Name: Consumer Cleanup

Sale Number: 61-107-23 Seq#: 1

1 - Sale Area

1.2 - Boundaries

1.2.1 - Painted boundaries (9/19)

The sale boundary and Payment Unit boundaries are marked and identified by red paint. Exterior sale boundary lines against state are marked with red paint. Retention patches are marked with red paint; no harvesting activities may occur within these areas. The painted boundary line trees are not Included Timber.

2 - Timber Specifications

2.1 - Included Timber

2.1.1 - Clearcut unit(s) with unmerchantable trees (6/14)

Within Payment Unit(s) 1-5, cut all trees that are four (4) inches or more at DBH.

4 - Transportation

4.2 - Maintenance

4.2.5 - Two wheel drive condition (2/04)

All existing trail roads on and adjacent to the sale area must be passable by two-wheel drive traffic for the duration of the sale.

5 - Operations

5.1 - Notification

5.1.1 - Pre-sale conference (10/16)

A pre-sale conference on site between the Purchaser and sale administrator is required prior to beginning any operations a Payment Unit to determine landing and road locations. The Unit Manager or his/her representative must be contacted at least 10 days in advance to schedule the conference.

5.1.4 - Post-sale conference (10/16)

A post-sale conference on site between the Purchaser and sale administrator is required 5 days prior to the completion of active logging operations to determine clean-up and repair of landings, road edges, and the fulfillment of other contract specifications.

5.2 - Conduct of Operations

5.2.1 - Slash

5.2.1.8 - Slash height (12/08)

No slash may exceed 24 inches in height.

5.2.3 - Operating Restrictions

5.2.3.1 - Operating restrictions (9/11)

Within Payment Unit(s) 1-5, unless changed by written agreement, cutting and skidding are limited to the period of December 1 to April 1. This restriction is because of a seasonal request to protect sensitive areas.

5.2.29 - Shrub protection (1/20)

Do not cut or damage hawthorn, witch-hazel, dogwood or juneberry. These woody-shrub plants are highly beneficial to various wildlife species.

5.2.39 - ORV trail/route protection (4/18)

There is an ORV trail within Unit 5 and is shown on the Timber Sale Map. Do not cut damage posts with yellow ORV markers. Trees with yellow ORV markers shall be cut off above the markers and at least 5 feet above ground. All stumps within 5 feet of the trail must be cut flush with the ground. Maintain a 20 foot wide slash, debris, and rut free zone daily using

the ORV trail or route as the centerline. Do not run equipment down the ORV trail or route. Skidding across the trail or route may only occur in locations approved by the sale administrator.

5.4 - Soil Protection

5.4.1 - Rutting restriction, general (7/16)

Operations are to cease immediately if equipment and weather conditions result in rutting of roads and/or skid trails which is 12 inches or greater in depth and 50 feet in length. The Unit Manager or his/her representative may restrict hauling and/or skidding if ruts exceed the specified depth. With the Unit Manager or his/her representative's approval, the Purchaser may return to the area when the risk of rutting has decreased.

6 - Safety and Fire Prevention

6.2 - Signing

6.2.3 - Recreational trail posting (10/20)

The Purchaser is responsible for posting and maintaining caution signs on prior to beginning operations. The trail must be posted to warn of logging activity and truck traffic at both ends of the trail. Signs must be removed when harvest operations are suspended or completed.



TIMBER SALE MAP

This information provided by authority of Part 525, 1994 PA 451, as amended.

Forest Management Unit	County	Maped By	Date	Sale Number	Year
Township City	Kalkaska	Roell	07/06/2023	61 - 107	23
Range	Section(s) and Subdivision(s)	Cruised By	Page	of	
07W	SWS E Sec 29, Portions of Sec 31 and 32; 25N 08W SESE Sec 36	Roell	1	1	
25N	Scale				
	1:15,840				

Cover Type

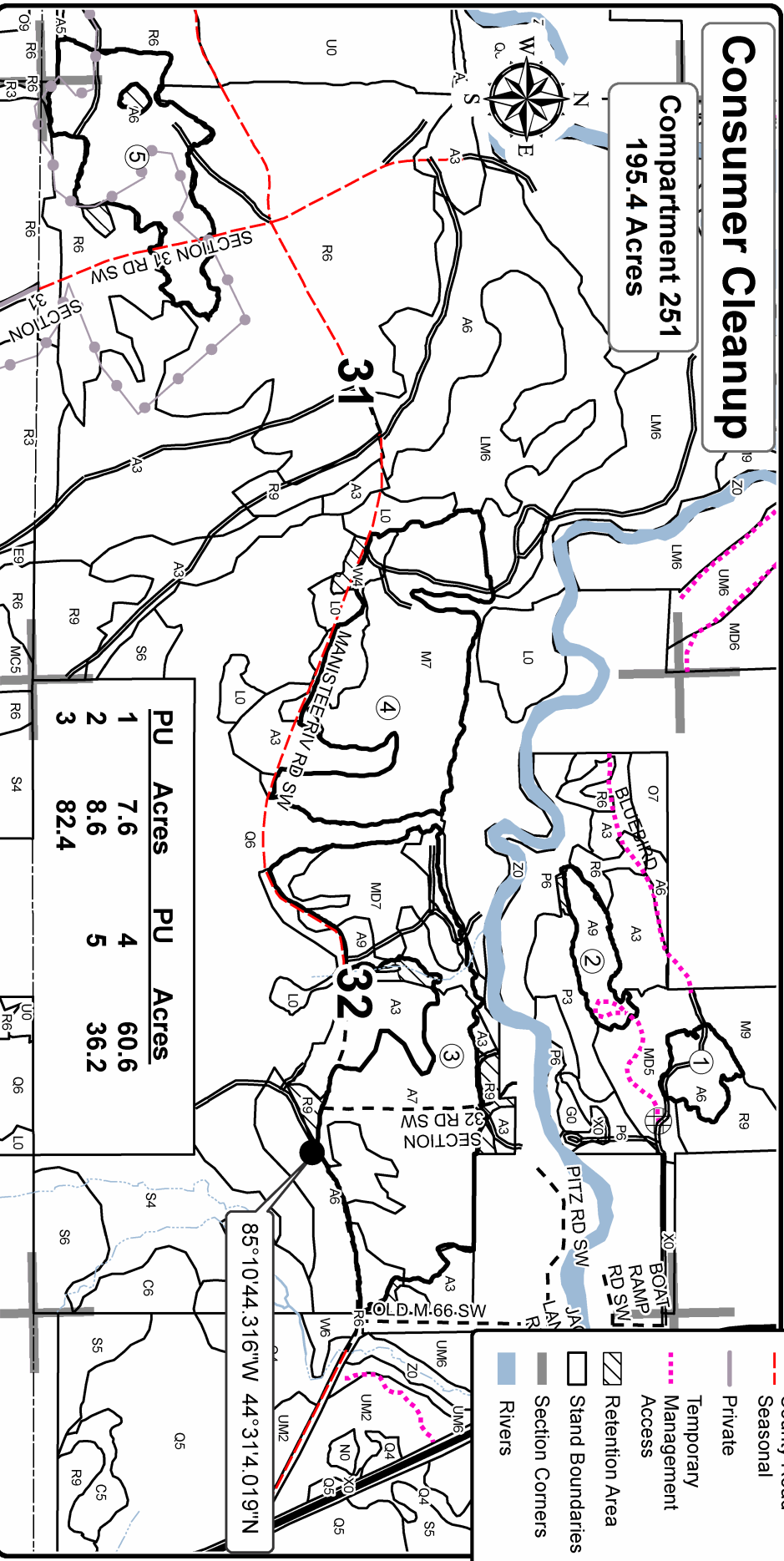
- A = Aspen
- B = Paper Birch
- C = Cedar
- D = Tread Bog
- E = Swamp Hdwoods
- F = Spruce Fir
- G = Grass
- H = Hemlock
- J = Jack Pine
- L = Lowland Brush
- LM = Lowland Mixed
- M = Mpl. Bch, Birch
- MC = Mixed Conifer
- MD = Mixed Deciduous
- N = Marsh
- O = Oak
- P = Lowland Poplar
- Q = Mixed Swamp Conifer
- R = Red Pine
- S = Black Spruce
- T = Tamarack
- U = Upland Brush
- UM = Upland Mixed
- V = Bog or Marsh
- W = White Pine
- X = Non Stocked
- Z = Water

Density

- 0 = Non Stocked
- 1 = Seeding Sapling Poor
- 2 = Seeding Sapling Medium
- 3 = Seeding Sapling Well
- 4 = Pole Timber Poor
- 5 = Pole Timber Medium
- 6 = Pole Timber Well
- 7 = Saw Timber Poor
- 8 = Saw Timber Medium
- 9 = Saw Timber Well

Consumer Cleanup

Compartment 251
195.4 Acres



PU	Acres	PU	Acres
1	7.6	4	60.6
2	8.6	5	36.2
3	82.4		



Legend

- Recreational Trails
- Against State (Red)
- Highways
- Secondary Forest Road
- Paved Road
- Gravel Road
- County Road - Seasonal
- Private
- Temporary Management Access
- ▨ Retention Area
- Stand Boundaries
- Section Corners
- Rivers

85°10'44.316"W 44°31'4.019"N

TIMBER SALE INFORMATION

Snoopy Pine (61-109-23)

T26N, R08W, SEC. 18.

Kalkaska County (Advertised Price \$29,251.35)

A timber sale contract for this lump sum, sealed bid timber sale will be awarded to the responsible bidder offering the highest sealed bid price. All units of volume listed below were estimated using the Inventory Manager computer program and the new Michigan taper model. Bids must be at or above the following advertised price for each product and species:

<u>PRODUCTS & SPECIES</u>	<u>ESTIMATED UNITS*</u>	<u>ADVERTISED PRICE</u>
Sawtimber		
B. T. Aspen	5.0 MBF	\$ 128.00 / MBF
Red Maple	1.6 MBF	\$ 140.00 / MBF
Red Pine	71.3 MBF	\$ 128.00 / MBF
White Pine	37.6 MBF	\$ 76.00 / MBF
Pulpwood		
B. T. Aspen	57 Cords	\$ 20.85 / Cord
Jack Pine	14 Cords	\$ 23.65 / Cord
Red Maple	50 Cords	\$ 29.15 / Cord
Red Pine	233 Cords	\$ 54.30 / Cord
White Pine	32 Cords	\$ 24.20 / Cord

* The total volume is statistically estimated within plus (+) or minus (-) 35.45 percent. There are an estimated 650 cords on this timber sale, plus or minus 230 cords at the 95% confidence level. The estimated units are final and not subject to adjustment. Prospective bidders are urged to examine this timber and to make their own estimates of quantity and quality.

BOND AND PAYMENT SCHEDULE:

1. A bond in the amount of \$1,463.00 to insure faithful performance of the conditions of the contract will be deposited by the successful bidder within 21 days of the sale award.
2. Cutting in any sale or unit without the required advance payment would be considered a trespass.
3. Total payment must be paid in advance or according to the following schedule :
 - (a) Ten percent (10%) of the sale value must be paid within 21 days of the sale award.
 - (b) The remainder is due before cutting begins.
 - (c) Payment for each of the following units must be made before cutting begins in that unit:

PAYMENT UNIT NUMBER	PERCENT OF TOTAL SALE VALUE
01	100.0%
4. If no cutting takes place, the 10% down payment will not be refunded.
5. Operations on the contract issued will terminate on 12/31/2025.

SALE STATISTICS

Volumes were calculated in cubic feet using the Michigan taper model. Cubic foot volume includes all wood inside bark for the product indicated. For display purposes, cubic feet were converted to cords and MBF using a simple conversion factor, e.g. 79 cubic feet per cord and 185 cubic feet per MBF. The cubic foot volumes are precise; the cords and MBF volumes are not. Cubic foot volume cannot be directly converted to cords or boards with precision.

SALE VOLUMES

The total estimated sale volume may not equal the sum of the species/products due to the nature of statistical calculations associated with double sampling methodology.

VOLUME		STATISTICAL RANGE IN CORDS		
TOTAL CUBIC FEET	TOTAL CORDS	PERCENT ERROR	MINIMUM	MAXIMUM
51,340	650	35.45%	419	880

VDU VOLUMES

A VDU is a Volume Determination Unit. Volumes and their associated statistics are calculated at the VDU level and summarized to the sale level. There is often a one to one relationship between a VDU and a Payment Unit, but not always, depending on the cruise design. Refer to the VDU TO PAYMENT UNIT table.

VDU	VOLUME		PERCENT ERROR	RANGE IN CORDS	
	TOTAL CUBIC FEET	TOTAL CORDS		MINIMUM	MAXIMUM
85	51,340	650	35.45%	419	880
TOTAL:	51,340	650		419	880

VDU TO PAYMENT UNIT

When a VDU is associated with more than one Payment Unit (PU), the VDU volumes are assigned to the PU based on acres of the VDU within the PU.

VDU	VDU ACRES	PU	PU ACRES
85	34.1	1	34.1
TOTAL:	34.1		34.1

DESCRIPTION OF TIMBER BY PAYMENT UNIT (PU)

PU	MARKET GROUP	PRODUCT	QUANTITY	UNIT	ACRES	ADVERTISE PRICE
1	B. T. Aspen	Sawtimber	5.0	MBF	34.1	\$29,251.35
	Red Maple		1.6	MBF		
	Red Pine		71.3	MBF		
	White Pine		37.6	MBF		
	B. T. Aspen	Pulpwood	57	Cords		
	Jack Pine		14	Cords		
	Red Maple		50	Cords		
	Red Pine		233	Cords		
	White Pine		32	Cords		
TOTAL:			115.5	MBF		
TOTAL:			386	Cords		

Sale Specific Conditions & Requirements

Sale Name: Snoopy Pine

Sale Number: 61-109-23 Seq#: 1

1 - Sale Area

1.2 - Boundaries

1.2.1 - Painted boundaries (9/19)

The sale boundary and Payment Unit boundaries are marked and identified by blue and red paint. Exterior sale boundary lines against private property are marked with blue paint. Exterior sale boundary lines against state are marked with red paint. The painted boundary line trees are not Included Timber and are to be protected unless marked with orange paint.

2 - Timber Specifications

2.1 - Included Timber

2.1.3 - Cut tree marked unit(s) (12/08)

Within Payment Unit(s) 1, all trees are designated for cutting when marked with orange paint above and below stump height, regardless of merchantability. In addition, cut all aspen, red maple, and jack pine which meet minimum piece specifications in 2.2 Utilization.

4 - Transportation

4.2 - Maintenance

4.2.1 - Hauling restriction (12/08)

Hauling is restricted to the forest road that runs diagonally through the Sale Area and is shown on the Timber Sale Map. The restriction is to avoid user conflict.

4.2.5 - Two wheel drive condition (2/04)

All existing trail roads on and adjacent to the sale area must be passable by two-wheel drive traffic for the duration of the sale.

5 - Operations

5.1 - Notification

5.1.1 - Pre-sale conference (10/16)

A pre-sale conference on site between the Purchaser and sale administrator is required prior to beginning any operations in a Payment Unit to determine landing and road locations. The Unit Manager or his/her representative must be contacted at least 5 days in advance to schedule the conference.

5.1.4 - Post-sale conference (10/16)

A post-sale conference on site between the Purchaser and sale administrator is required 5 days prior to the completion of active logging operations to determine clean-up and repair of landings, road edges, and the fulfillment of other contract specifications.

5.2 - Conduct of Operations

5.2.1 - Slash

5.2.1.8 - Slash height (12/08)

No slash or tree tops may exceed 24 inches in height.

5.2.3 - Operating Restrictions

5.2.3.3 - Bark slippage restriction (3/09)

Within Payment Unit(s) 1, unless changed by written agreement, cutting and skidding are not permitted during the period of April 15 to July 15. This restriction is because of bark slippage.

5.2.3.5 - Oak wilt restriction (1/18)

Within Payment Unit(s) 1, unless changed by written agreement, cutting, skidding, hauling within the sale and brushing of

access roads to the sale are not permitted during the period of April 15 to July 15. Operations may be allowed if specific steps are taken to prevent damaging uncut oak during the high risk period. Those steps may include completing all road brushing before April 15th and clearing a tree-length buffer along uncut oak cover before April 15th. This is necessary to reduce the spread of oak wilt. For more information, contact the Unit Manager or his/her representative.

5.4 - Soil Protection

5.4.1 - Rutting restriction, general (7/16)

Operations are to cease immediately if equipment and weather conditions result in rutting of roads and/or skid trails which is 12 inches or greater in depth and 50 feet in length. The Unit Manager or his/her representative may restrict hauling and/or skidding if ruts exceed the specified depth. With the Unit Manager or his/her representative's approval, the Purchaser may return to the area when the risk of rutting has decreased.



TIMBER SALE MAP

This information provided by authority of Part 525, 1994 PA 451, as amended.

Sale Number	Year
61 - 109	23

Forest Management Unit Traverse City	County Kalkaska	Mapped By Roell	Date 07/06/2023	Page 1	of 1
Township 26N		Range 08W		Section(s) and Subdivision(s) NWSE SWNE Sec 18	

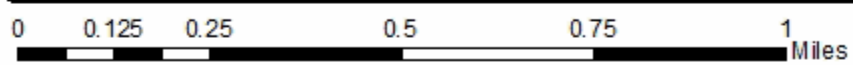
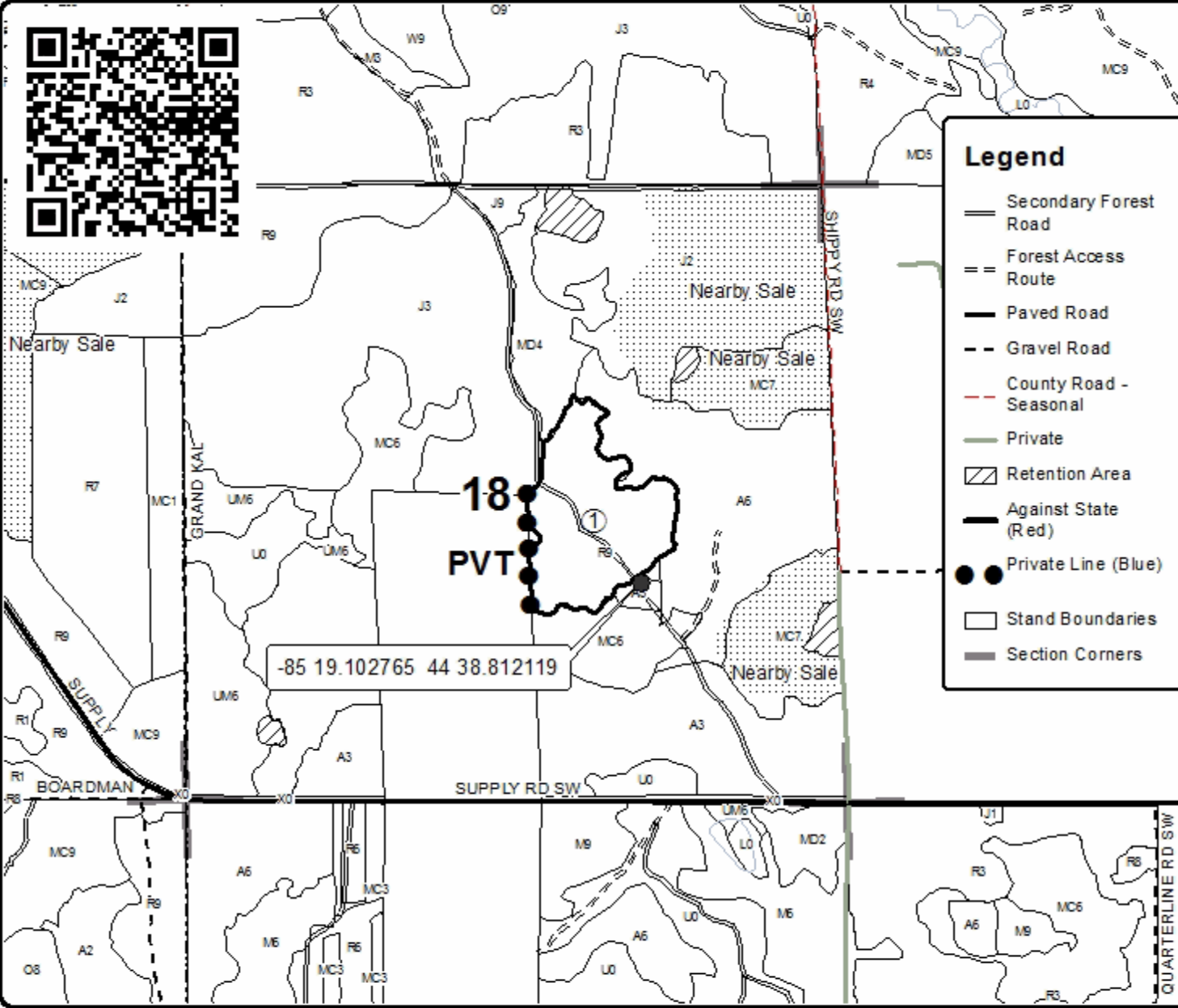
Scale 1:15,840		
-------------------	--	--

Cover Type				Density	
A = Aspen	H = Hemlock	N = Marsh	U = Upland Brush	0 = Non Stocked	5 = Pole Timber Medium
B = Paper Birch	J = Jack Pine	O = Oak	UM = Upland Mixed	1 = Seeding Sapling Poor	6 = Pole Timber Well
C = Cedar	L = Lowland Brush	P = Lowland Poplar	V = Bog or Marsh	2 = Seeding Sapling Medium	7 = Saw Timber Poor
D = Tread Bog	LM = Lowland Mixed	Q = Mixed Swamp Conifer	W = White Pine	3 = Seeding Sapling Well	8 = Saw Timber Medium
E = Swamp Hdwoods	M = Mpl, Bch, Bach	R = Red Pine	X = Non Stocked	4 = Pole Timber Poor	9 = Saw Timber Well
F = Spruce Fir	MC = Mixed Conifer	S = Black Spruce	Z = Water		
G = Grass	MD = Mixed Deciduous	T = Tamarack			

PU Acres
1 34.1

Snoopy Pine

Compartment 154
34.1 Acres



TIMBER SALE INFORMATION

Big Foot Aspen (61-111-23)

T25N, R07W, SEC. 36.

Kalkaska County (Advertised Price \$74,007.70)

SALE NOTE: Spec. 5.2.3.5 - Oak wilt restriction is applied to entire sale area.

A recreation site such as a trail, pathway, or campground is within the sale area or the vicinity. Certain restrictions/specifications may be applicable including time restrictions.

A timber sale contract for this lump sum, sealed bid timber sale will be awarded to the responsible bidder offering the highest sealed bid price. All units of volume listed below were estimated using the Inventory Manager computer program and the new Michigan taper model. Bids must be at or above the following advertised price for each product and species:

<u>PRODUCTS & SPECIES</u>	<u>ESTIMATED UNITS*</u>	<u>ADVERTISED PRICE</u>
Sawtimber		
Paper Birch	1.7 MBF	\$ 52.00 / MBF
Red Maple	51.6 MBF	\$ 159.00 / MBF
Red Oak	63.3 MBF	\$ 120.00 / MBF
Red Pine	28.5 MBF	\$ 145.00 / MBF
White Pine	78.8 MBF	\$ 86.00 / MBF
Pulpwood		
B. T. Aspen	1,266 Cords	\$ 23.60 / Cord
Balsam Fir	26 Cords	\$ 33.75 / Cord
Paper Birch	2 Cords	\$ 18.95 / Cord
Red Maple	242 Cords	\$ 33.05 / Cord
Red Oak	93 Cords	\$ 30.35 / Cord
Red Pine	5 Cords	\$ 61.55 / Cord
White Pine	193 Cords	\$ 27.40 / Cord

* The total volume is statistically estimated within plus (+) or minus (-) 11.95 percent. There are an estimated 2,437 cords on this timber sale, plus or minus 291 cords at the 95% confidence level. The estimated units are final and not subject to adjustment. Prospective bidders are urged to examine this timber and to make their own estimates of quantity and quality.

BOND AND PAYMENT SCHEDULE:

1. A bond in the amount of \$3,700.00 to insure faithful performance of the conditions of the contract will be deposited by the successful bidder within 21 days of the sale award.
2. Cutting in any sale or unit without the required advance payment would be considered a trespass.
3. Total payment must be paid in advance or according to the following schedule :
 - (a) Ten percent (10%) of the sale value must be paid within 21 days of the sale award.
 - (b) The 10% down payment will be credited towards the first unit cut.
 - (c) Payment for each of the following units must be made before cutting begins in that unit:

PAYMENT UNIT NUMBER	PERCENT OF TOTAL SALE VALUE
01	9.5%
02	43.8%
03	46.7%

4. If no cutting takes place, the 10% down payment will not be refunded.
5. Operations on the contract issued will terminate on 04/15/2026.

SALE STATISTICS

Volumes were calculated in cubic feet using the Michigan taper model. Cubic foot volume includes all wood inside bark for the product indicated. For display purposes, cubic feet were converted to cords and MBF using a simple conversion factor, e.g. 79 cubic feet per cord and 185 cubic feet per MBF. The cubic foot volumes are precise; the cords and MBF volumes are not. Cubic foot volume cannot be directly converted to cords or boards with precision.

SALE VOLUMES

The total estimated sale volume may not equal the sum of the species/products due to the nature of statistical calculations associated with double sampling methodology.

VOLUME			STATISTICAL RANGE IN CORDS	
TOTAL CUBIC FEET	TOTAL CORDS	PERCENT ERROR	MINIMUM	MAXIMUM
192,501	2,437	11.95%	2,145	2,728

VDU VOLUMES

A VDU is a Volume Determination Unit. Volumes and their associated statistics are calculated at the VDU level and summarized to the sale level. There is often a one to one relationship between a VDU and a Payment Unit, but not always, depending on the cruise design. Refer to the VDU TO PAYMENT UNIT table.

	VOLUME			RANGE IN CORDS	
VDU	TOTAL CUBIC FEET	TOTAL CORDS	PERCENT ERROR	MINIMUM	MAXIMUM
37	17,388	220	63.95%	79	361
47	175,114	2,217	11.92%	1,952	2,481
TOTAL:	192,501	2,437		2,032	2,842

VDU TO PAYMENT UNIT

When a VDU is associated with more than one Payment Unit (PU), the VDU volumes are assigned to the PU based on acres of the VDU within the PU.

VDU	VDU ACRES	PU	PU ACRES
37	6.4	1	6.4
47	46.3	2	22.4
		3	23.9
TOTAL:	52.7		52.7

DESCRIPTION OF TIMBER BY PAYMENT UNIT (PU)

PU	MARKET GROUP	PRODUCT	QUANTITY	UNIT	ACRES	ADVERTISE PRICE			
1	Paper Birch	Sawtimber	1.7	MBF	6.4	\$7,002.40			
	Red Maple		5.8	MBF					
	Red Oak		3.4	MBF					
	Red Pine		8.1	MBF					
	White Pine		12.4	MBF					
	B. T. Aspen	Pulpwood	89	Cords					
	<i>B. T. Aspen</i>	<i>Sawtimber</i>	<i>10.1</i>	<i>MBF</i>					
	<i>B. T. Aspen</i>	<i>Pulpwood</i>	<i>69</i>	<i>Cords</i>					
	Paper Birch		2	Cords					
	Red Maple		9	Cords					
	Red Oak		8	Cords					
	Red Pine		1	Cords					
	White Pine		22	Cords					
	2	Red Maple	Sawtimber	22.2			MBF	22.4	\$32,449.35
Red Oak			29.0	MBF					
Red Pine			9.9	MBF					
White Pine			32.1	MBF					
B. T. Aspen		Pulpwood	569	Cords					
<i>B. T. Aspen</i>		<i>Sawtimber</i>	<i>147.7</i>	<i>MBF</i>					
<i>B. T. Aspen</i>		<i>Pulpwood</i>	<i>274</i>	<i>Cords</i>					
Balsam Fir			13	Cords					
Red Maple			113	Cords					
Red Oak			41	Cords					
Red Pine			2	Cords					
White Pine			83	Cords					
3		Red Maple	Sawtimber	23.6	MBF	23.9	\$34,555.95		
		Red Oak		30.9	MBF				
	Red Pine		10.5	MBF					
	White Pine		34.3	MBF					
	B. T. Aspen	Pulpwood	608	Cords					
	<i>B. T. Aspen</i>	<i>Sawtimber</i>	<i>157.5</i>	<i>MBF</i>					
	<i>B. T. Aspen</i>	<i>Pulpwood</i>	<i>293</i>	<i>Cords</i>					
	Balsam Fir		13	Cords					
	Red Maple		120	Cords					
	Red Oak		44	Cords					
	Red Pine		2	Cords					
	White Pine		88	Cords					
	TOTAL:			223.9	MBF				
	TOTAL:			1,827	Cords				

Sale Specific Conditions & Requirements

Sale Name: Big Foot Aspen

Sale Number: 61-111-23 Seq#: 1

1 - Sale Area

1.2 - Boundaries

1.2.1 - Painted boundaries (9/19)

The sale boundary and Payment Unit boundaries are marked and identified by blue, red, and yellow paint. Exterior sale boundary lines against private property are marked with blue paint. Exterior sale boundary lines against state are marked with red paint. Interior Payment Unit boundaries are marked with yellow paint. Retention patches are marked with red paint; no harvesting activities may occur within these areas. The painted boundary line trees are not Included Timber and are to be protected. Yellow painted trees designating an interior Payment Unit boundary are only to be cut when all surrounding Payment Units have been paid.

2 - Timber Specifications

2.1 - Included Timber

2.1.1 - Clearcut unit(s) with unmerchantable trees (6/14)

Within Payment Unit(s) 1-3, cut all trees that are two (2) inches or more at DBH. In addition, the following specifications apply:

- Within Payment Unit 1, do not cut any balsam fir, white oak, northern white cedar or trees marked with green paint.
- Within Payment Units 2 & 3, do not cut any northern white cedar, white oak, balsam fir under 5 inches at DBH, or any trees marked with green paint.

2.2 - Utilization

2.2.3 - Stump heights (4/07)

Stump heights within the Sale Area shall not exceed 12 inches for all trees.

3 - Payments

3.3 - Pre-measured Sales

3.3.4 - Dividing payment units (7/14)

Payment Unit(s) with a value greater than \$30,000 may be divided at the request of the Purchaser and upon approval of the Unit Manager. Dividing Payment Units is a contract modification which requires a Timber Sale Contract Amendment. There will be only one division per Payment Unit.

4 - Transportation

4.1 - Construction

4.1.3 - Slash and earthen piles (8/04)

Piles or windrows of earth along roads and landings that have been widened or constructed shall be leveled. Slash from road maintenance or construction, including stumps, shall be dispersed throughout the sale.

4.1.11 - Permits (2/12)

The Purchaser will secure any necessary county road permits that may be required.

4.1.12 - No new roads (1/12)

No new roads will be permitted in any Payment Unit. All operations are limited to existing roads. Skid trails will only be allowed.

4.2 - Maintenance

4.2.5 - Two wheel drive condition (2/04)

All existing trail roads on and adjacent to the sale area must be passable by two-wheel drive traffic for the duration of the sale.

5 - Operations

5.1 - Notification

5.1.1 - Pre-sale conference (10/16)

A pre-sale conference on site between the Purchaser and sale administrator is required prior to beginning any operations to determine landing and road locations. The Unit Manager or his/her representative must be contacted at least 5 days in advance to schedule the conference.

5.2 - Conduct of Operations

5.2.1 - Slash

5.2.1.8 - Slash height (12/08)

No slash or tree tops may exceed 30 inches in height.

5.2.3 - Operating Restrictions

5.2.3.5 - Oak wilt restriction (1/18)

Within Payment Unit(s) 1-3, unless changed by written agreement, cutting, skidding, hauling within the sale and brushing of access roads to the sale are not permitted during the period of April 15 to July 15. Operations may be allowed if specific steps are taken to prevent damaging uncut oak during the high risk period. Those steps may include completing all road brushing before April 15th and clearing a tree-length buffer along uncut oak cover before April 15th. Brushing out all haul roads before April 15. This is necessary to reduce the spread of oak wilt. For more information, contact the Unit Manager or his/her representative.

5.2.4 - Dead and Down Creation

5.2.4.2 - Dead and down creation, hare and grouse (1/14)

To improve habitat for snowshoe hare, grouse, and other species, the Purchaser is to leave one tree, nine (9) inches or larger in diameter, on the ground for every two acres. They should be scattered throughout the sale or positioned per the Sale Administrator's instructions. Note these pieces should have a minimum length of five feet. They can be of any tree species and can be an un-merchantable piece of wood or a full tree.

5.2.32 - Decking/landing restoration (9/13)

All decking and landing areas must have the surface area restored to a condition equal to or better than before. This is to ensure the proper regeneration of the stand. Wood debris, chips and "cookies" from trimmings must be removed or scattered away from landing and loading areas and may not be windrowed on the edge.

5.2.38 - No decking against live trees (2/04)

Cut products may not be decked against unmarked or designated leave trees.

5.2.39 - ORV trail/route protection (4/18)

The trail is an ORV trail or route and is shown on the Timber Sale Map. Trees with yellow ORV markers shall be cut off above the markers and at least 5 feet above ground. All stumps within 5 feet of the trail must be cut flush with the ground. Maintain a 20-foot-wide slash, debris, and rut free zone daily using the ORV trail or route as the centerline. Do not run equipment down the ORV trail or route. Skidding across the trail or route may only occur in locations approved by the Sale Administrator.

5.4 - Soil Protection

5.4.1 - Rutting restriction, general (7/16)

Operations are to cease immediately if equipment and weather conditions result in rutting of roads and/or skid trails which are 12 inches or greater in depth and 50 feet in length. The Unit Manager or his/her representative may restrict hauling and/or skidding if ruts exceed the specified depth. With the Unit Manager or his/her representative's approval, the Purchaser may return to the area when the risk of rutting has decreased.

6 - Safety and Fire Prevention

6.2 - Signing

6.2.1 - Road posting (10/20)

The Purchaser is responsible for posting and maintaining caution signs on county or state roads prior to beginning operations. The road must be posted at appropriate distances from the Sale Area to warn of logging activity and truck traffic. Signs must be removed when harvest operations are suspended or completed. The Purchaser will provide these signs.

6.2.3 - Recreational trail posting (10/20)

The Purchaser is responsible for posting and maintaining caution signs on the ORV Trail prior to beginning operations. The trail must be posted at appropriate distances from the Sale Area to warn of logging activity and truck traffic at both ends of the trail. Signs must be removed when harvest operations are suspended or completed. The Purchaser will provide these signs.



TIMBER SALE MAP

This information provided by authority of Part 525, 1994 PA 451, as amended.

Forest Management Unit	County	Mapped By	Date	Page	of
Traverse City Management Unit	Kalkaska County	Tom Peterson	05/17/2023	1	1
Township	Range	Section(s) and Subdivision(s)	Scale		
25N	07W	Section 36 - NENW,S1/2NW,W1/2NE	1:15,840		

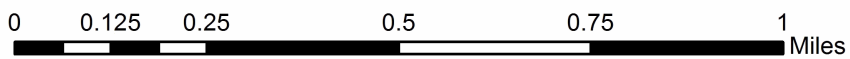
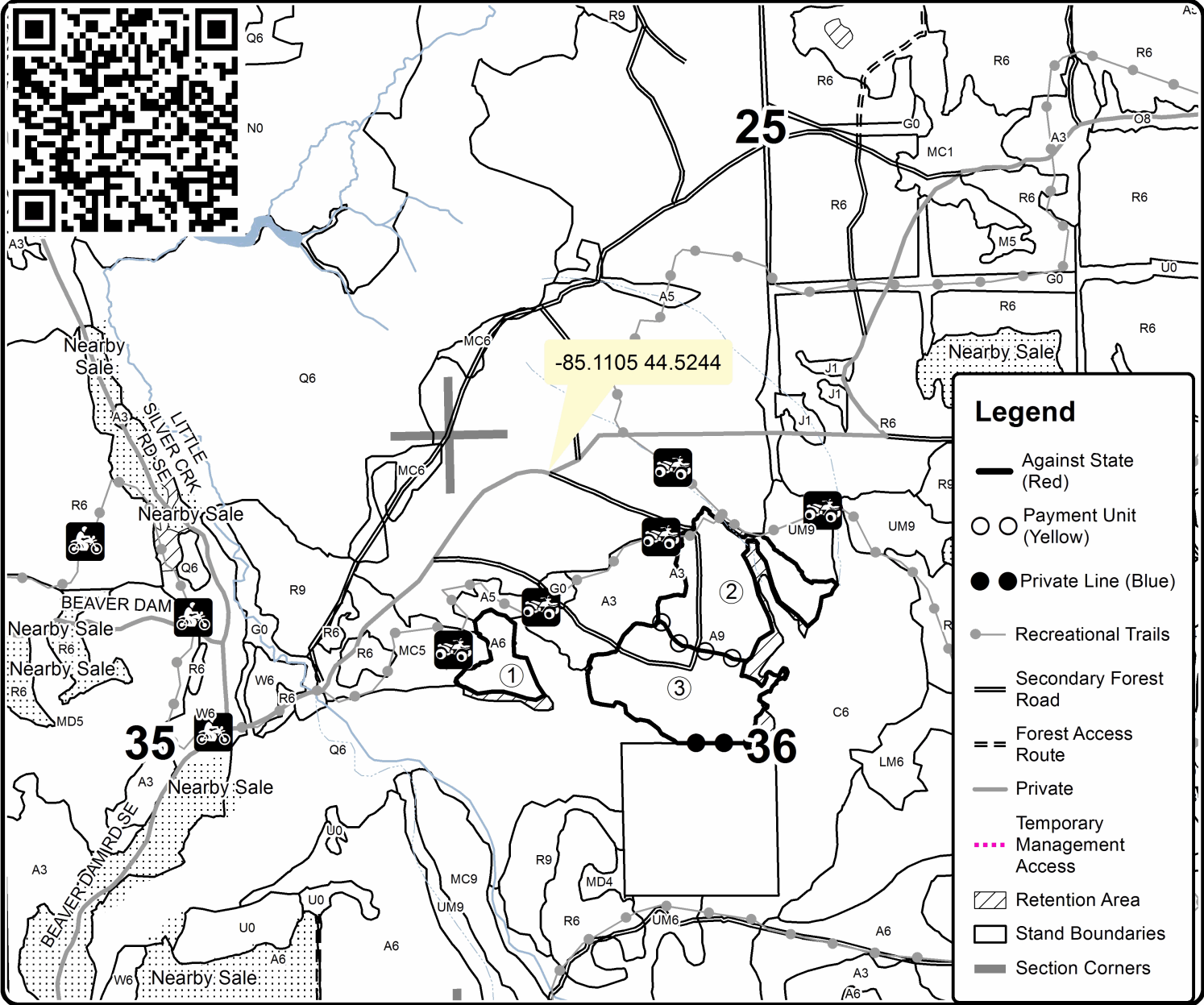
Cover Type				Density	
A = Aspen	H = Hemlock	N = Marsh	U = Upland Brush	0 = Non Stocked	5 = Pole Timber Medium
B = Paper Birch	J = Jack Pine	O = Oak	UM = Upland Mixed	1 = Seedling Sapling Poor	6 = Pole Timber Well
C = Cedar	L = Lowland Brush	P = Lowland Poplar	V = Bog or Marsh	2 = Seedling Sapling Medium	7 = Saw Timber Poor
D = Treed Bog	LM = Lowland Mixed	Q = Mixed Swamp Conifer	W = White Pine	3 = Seedling Sapling Well	8 = Saw Timber Medium
E = Swamp Hdwoods	M = Mpl, Bch, Brch	R = Red Pine	X = Non Stocked	4 = Pole Timber Poor	9 = Saw Timber Well
F = Spruce Fir	MC = Mixed Conifer	S = Black Spruce	Z = Water		
G = Grass	MD = Mixed Deciduous	T = Tamarack			

PU	Acres
1	6.4
2	22.4
3	23.9

Big Foot Aspen

Compartment 61244

52.7 Acres



TIMBER SALE INFORMATION

Blue Monster Mix (61-112-23)

T25N, R06W, SEC. 31; T25N, R07W, SEC. 25; T25N, R07W, SEC. 36.
Kalkaska County (Advertised Price \$86,843.35)

SALE NOTE: A recreation site such as a trail, pathway, or campground is within the sale area or the vicinity. Certain restrictions/specifications may be applicable including time restrictions.

A timber sale contract for this lump sum, sealed bid timber sale will be awarded to the responsible bidder offering the highest sealed bid price. All units of volume listed below were estimated using the Inventory Manager computer program and the new Michigan taper model. Bids must be at or above the following advertised price for each product and species:

<u>PRODUCTS & SPECIES</u>	<u>ESTIMATED UNITS*</u>	<u>ADVERTISED PRICE</u>
Sawtimber		
Red Maple	28.0 MBF	\$ 140.00 / MBF
Red Oak	128.4 MBF	\$ 106.00 / MBF
Red Pine	125.4 MBF	\$ 128.00 / MBF
White Pine	51.4 MBF	\$ 76.00 / MBF
Pulpwood		
B. T. Aspen	984 Cords	\$ 20.85 / Cord
Paper Birch	12 Cords	\$ 16.75 / Cord
Red Maple	298 Cords	\$ 29.15 / Cord
Red Oak	251 Cords	\$ 26.75 / Cord
Red Pine	164 Cords	\$ 54.30 / Cord
White Pine	179 Cords	\$ 24.20 / Cord

* The total volume is statistically estimated within plus (+) or minus (-) 12.13 percent. There are an estimated 2,665 cords on this timber sale, plus or minus 323 cords at the 95% confidence level. The estimated units are final and not subject to adjustment. Prospective bidders are urged to examine this timber and to make their own estimates of quantity and quality.

BOND AND PAYMENT SCHEDULE:

1. A bond in the amount of \$4,342.00 to insure faithful performance of the conditions of the contract will be deposited by the successful bidder within 21 days of the sale award.
2. Cutting in any sale or unit without the required advance payment would be considered a trespass.
3. Total payment must be paid in advance or according to the following schedule :
 - (a) Ten percent (10%) of the sale value must be paid within 21 days of the sale award.
 - (b) The 10% down payment will be credited towards the first unit cut.
 - (c) Payment for each of the following units must be made before cutting begins in that unit:

PAYMENT UNIT NUMBER	PERCENT OF TOTAL SALE VALUE
01	22.0%
02	44.4%
03	33.6%
4. If no cutting takes place, the 10% down payment will not be refunded.
5. Operations on the contract issued will terminate on 12/31/2025.

SALE STATISTICS

Volumes were calculated in cubic feet using the Michigan taper model. Cubic foot volume includes all wood inside bark for the product indicated. For display purposes, cubic feet were converted to cords and MBF using a simple conversion factor, e.g. 79 cubic feet per cord and 185 cubic feet per MBF. The cubic foot volumes are precise; the cords and MBF volumes are not. Cubic foot volume cannot be directly converted to cords or boards with precision.

SALE VOLUMES

The total estimated sale volume may not equal the sum of the species/products due to the nature of statistical calculations associated with double sampling methodology.

VOLUME		STATISTICAL RANGE IN CORDS		
TOTAL CUBIC FEET	TOTAL CORDS	PERCENT ERROR	MINIMUM	MAXIMUM
210,543	2,665	12.13%	2,342	2,989

VDU VOLUMES

A VDU is a Volume Determination Unit. Volumes and their associated statistics are calculated at the VDU level and summarized to the sale level. There is often a one to one relationship between a VDU and a Payment Unit, but not always, depending on the cruise design. Refer to the VDU TO PAYMENT UNIT table.

VDU	VOLUME		PERCENT ERROR	RANGE IN CORDS	
	TOTAL CUBIC FEET	TOTAL CORDS		MINIMUM	MAXIMUM
59	37,257	472	30.59%	327	616
65	92,956	1,177	20.46%	936	1,417
68	80,330	1,017	16.19%	852	1,181
TOTAL:	210,543	2,665		2,115	3,215

VDU TO PAYMENT UNIT

When a VDU is associated with more than one Payment Unit (PU), the VDU volumes are assigned to the PU based on acres of the VDU within the PU.

VDU	VDU ACRES	PU	PU ACRES
59	19.7	1	19.7
65	30.0	2	30.0
68	27.2	2	3.1
		3	24.1
TOTAL:	76.9		76.9

DESCRIPTION OF TIMBER BY PAYMENT UNIT (PU)

PU	MARKET GROUP	PRODUCT	QUANTITY	UNIT	ACRES	ADVERTISE PRICE	
1	Red Maple	Sawtimber	10.9	MBF	19.7	\$19,141.75	
	Red Oak		65.5	MBF			
	Red Pine		8.6	MBF			
	White Pine		5.0	MBF			
	B. T. Aspen		Pulpwood	35			Cords
	Red Maple			70			Cords
	Red Oak			72			Cords
	Red Pine			77			Cords
	White Pine			13			Cords
2	Red Maple	Sawtimber	1.9	MBF	33.1	\$38,514.05	
	Red Oak		57.9	MBF			
	Red Pine		48.9	MBF			
	White Pine		5.3	MBF			
	B. T. Aspen		Pulpwood	572			Cords
	Paper Birch			1			Cords
	Red Maple			151			Cords
	Red Oak			167			Cords
	Red Pine			64			Cords
	White Pine			48			Cords
3	Red Maple	Sawtimber	15.2	MBF	24.1	\$29,187.55	
	Red Oak		5.0	MBF			
	Red Pine		67.9	MBF			
	White Pine		41.1	MBF			
	B. T. Aspen		Pulpwood	377			Cords
	Paper Birch			11			Cords
	Red Maple			77			Cords
	Red Oak			12			Cords
	Red Pine			23			Cords
	White Pine			118			Cords
TOTAL:			333.2	MBF			
TOTAL:			1,888	Cords			

Sale Specific Conditions & Requirements

Sale Name: Blue Monster Mix

Sale Number: 61-112-23 Seq#: 1

1 - Sale Area

1.2 - Boundaries

1.2.1 - Painted boundaries (9/19)

The sale boundary and Payment Unit boundaries are marked and identified by red and yellow paint. Exterior sale boundary lines against state are marked with red paint. Interior Payment Unit boundaries are marked with yellow paint. Retention patches are marked with red paint; no harvesting activities may occur within these areas. Yellow painted trees designating an interior Payment Unit boundary are only to be cut when all surrounding Payment Units have been paid.

2 - Timber Specifications

2.1 - Included Timber

2.1.1 - Clearcut unit(s) with unmerchantable trees (6/14)

Within Payment Unit(s) 2 & 3, cut all trees that are two (2) inches or more at DBH, except do not cut any green marked trees, white oak, balsam fir, or red and white pine under 5 inches at DBH.

2.1.7 - Leave tree marked unit(s) (6/14)

Within Payment Unit(s) 1, cut all trees that are two (2) inches or more at DBH, except do not cut any trees marked with green paint above and below stump height, white oak, balsam fir, or red and white pine under 5 inches at DBH.

2.2 - Utilization

2.2.3 - Stump heights (4/07)

Stump heights within the Sale Area shall not exceed 12 inches for all trees.

3 - Payments

3.3 - Pre-measured Sales

3.3.4 - Dividing payment units (7/14)

Payment Unit(s) over \$30,000 may be divided at the request of the Purchaser and upon approval of the Unit Manager.

Dividing Payment Units is a contract modification which requires a Timber Sale Contract Amendment. There will be only one division per Payment Unit.

4 - Transportation

4.1 - Construction

4.1.3 - Slash and earthen piles (8/04)

Piles or windrows of earth along roads and landings that have been widened or constructed shall be leveled. Slash from road maintenance or construction, including stumps, shall be dispersed throughout the sale.

4.1.11 - Permits (2/12)

The Purchaser will secure any necessary county road permits that may be required.

4.1.12 - No new roads (1/12)

No new roads will be permitted in any Payment Unit. All operations are limited to existing roads. Skid trails will only be allowed.

4.2 - Maintenance

4.2.5 - Two wheel drive condition (2/04)

All existing trail roads on and adjacent to the sale area must be passable by two-wheel drive traffic for the duration of the sale.

5 - Operations

5.1 - Notification

5.1.1 - Pre-sale conference (10/16)

A pre-sale conference on site between the Purchaser and sale administrator is required prior to beginning any operations, to determine landing and road locations. The Unit Manager or his/her representative must be contacted at least 5 days in advance to schedule the conference.

5.2 - Conduct of Operations

5.2.1 - Slash

5.2.1.8 - Slash height (12/08)

No slash or tree tops may exceed 24 inches in height.

5.2.3 - Operating Restrictions

5.2.3.4 - Oak wilt restriction, no exceptions (1/18)

Within Payment Unit(s) 1, cutting, skidding, and brushing of access roads to the sale are not permitted during the period of April 15 to July 15. No exceptions will be granted. This is necessary to reduce the spread of oak wilt.

5.2.3.5 - Oak wilt restriction (1/18)

Within Payment Unit(s) 2 & 3, unless changed by written agreement, cutting, skidding, hauling within the sale and brushing of access roads to the sale are not permitted during the period of April 15 to July 15. Operations may be allowed if specific steps are taken to prevent damaging uncut oak during the high risk period. Those steps may include completing all road brushing before April 15th and clearing a tree-length buffer along uncut oak cover before April 15th. This is necessary to reduce the spread of oak wilt. For more information, contact the Unit Manager or his/her representative.

5.2.4 - Dead and Down Creation

5.2.4.4 - Dead and down creation, grouse (6/18)

To encourage grouse and other wildlife, in Payment Unit(s) 2 & 3, leave one, 12" diameter or larger log-length (8 foot minimum) piece on the ground for every 2 acres. These trees will be evenly scattered throughout the unit, preferably at least two chains from any roads, two-tracks, or trails open to vehicles. This can be an unmerchantable piece or a full tree. Each log must be clearly identified by a piece of blue flagging.

5.2.32 - Decking/landing restoration (9/13)

All decking and landing areas must have the surface area restored to a condition equal to or better than before. This is to ensure the proper regeneration of the stand. Wood debris, chips and "cookies" from trimmings must be removed or scattered away from landing and loading areas and may not be windrowed on the edge.

5.2.38 - No decking against live trees (2/04)

Cut products may not be decked against unmarked or designated leave trees.

5.2.39 - ORV trail/route protection (4/18)

The trail is an ORV trail or route and is shown on the Timber Sale Map. Do not cut trees or damage posts with yellow ORV markers. All stumps within 5 feet of the trail must be cut flush with the ground. Maintain a 20-foot-wide slash, debris, and rut free zone daily using the ORV trail or route as the centerline. Do not run equipment down the ORV trail or route. Skidding across the trail or route may only occur in locations approved by the Sale Administrator.

5.4 - Soil Protection

5.4.1 - Rutting restriction, general (7/16)

Operations are to cease immediately if equipment and weather conditions result in rutting of roads and/or skid trails which are 12 inches or greater in depth and 50 feet in length. The Unit Manager or his/her representative may restrict hauling and/or skidding if ruts exceed the specified depth. With the Unit Manager or his/her representative's approval, the Purchaser may return to the area when the risk of rutting has decreased.

5.8 - Protection of Endangered Species

5.8.5 - Protection of raptor nests (3/13)

All trees with raptor nests will be protected if found during harvesting operations. Notification will be made to the Unit Manager or his/her representative who will notify the Wildlife Biologist so an on-site evaluation and recommendation can be

made, if necessary.

6 - Safety and Fire Prevention

6.2 - Signing

6.2.1 - Road posting (10/20)

The Purchaser is responsible for posting and maintaining caution signs on all county and state roads prior to beginning operations. The road must be posted at appropriate distances from the Sale Area to warn of logging activity and truck traffic. Signs must be removed when harvest operations are suspended or completed. The Purchaser will provide these signs.

6.2.3 - Recreational trail posting (10/20)

The Purchaser is responsible for posting and maintaining caution signs on ORV Trail prior to beginning operations. The trail must be posted at appropriate distances from the Sale Area to warn of logging activity and truck traffic at both ends of the trail. Signs must be removed when harvest operations are suspended or completed. The Purchaser will provide these signs.



TIMBER SALE MAP

This information provided by authority of Part 525, 1994 PA 451, as amended.

Sale Number	Year
61-112	23

Forest Management Unit	County	Mapped By	Date	Page	of
Traverse City Management Unit	Kalkaska County	Tom Peterson	6/06/23	1	1
Township	Range	Section(s) and Subdivision(s)	Scale		
25N	06W & 07W	06W - Sec 31, 07W - Sec 25 & 07W - Sec 36	1:15,840		

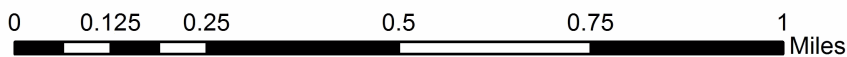
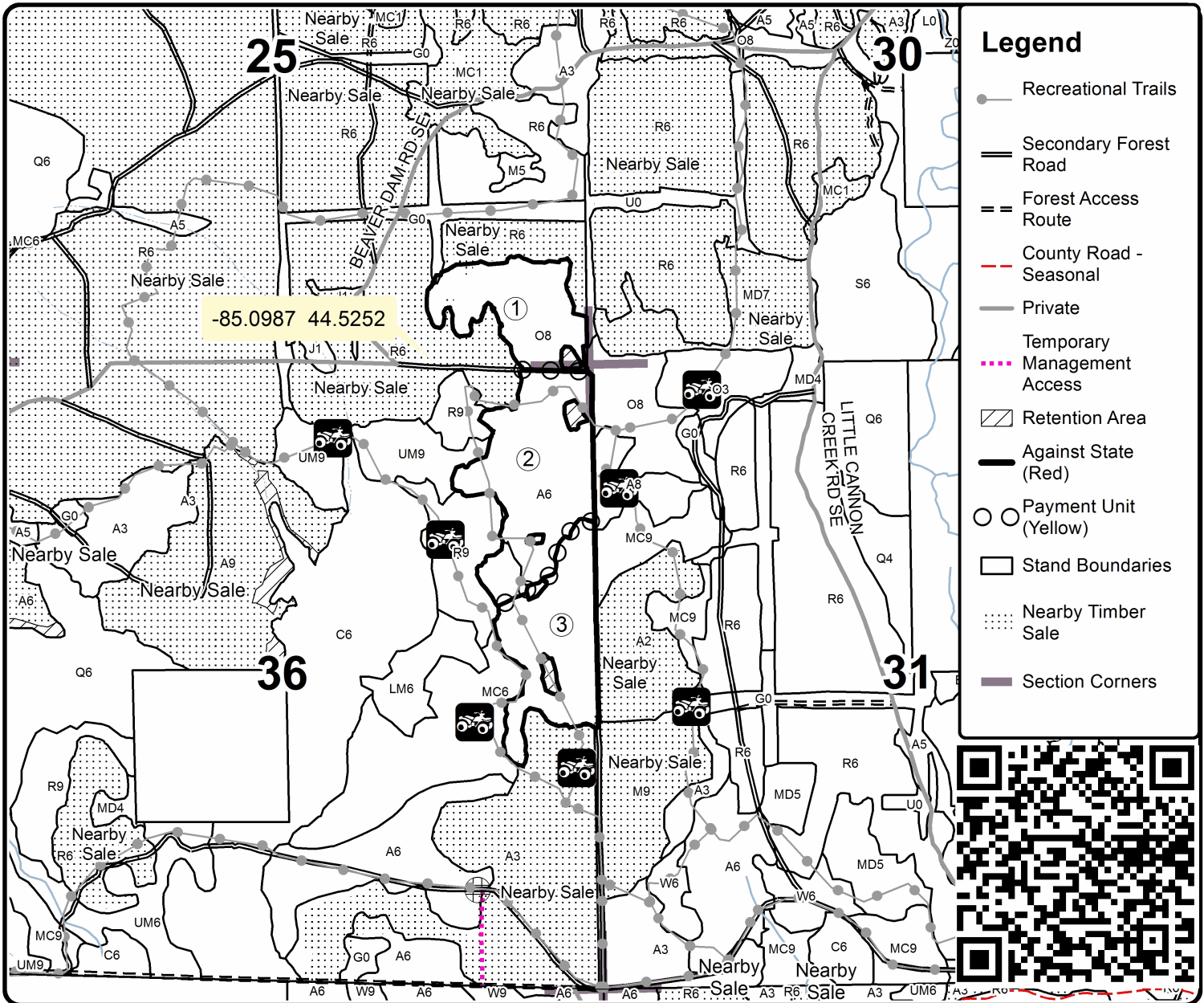
Cover Type				Density	
A = Aspen	H = Hemlock	N = Marsh	U = Upland Brush	0 = Non Stocked	5 = Pole Timber Medium
B = Paper Birch	J = Jack Pine	O = Oak	UM = Upland Mixed	1 = Seedling Sapling Poor	6 = Pole Timber Well
C = Cedar	L = Lowland Brush	P = Lowland Poplar	V = Bog or Marsh	2 = Seedling Sapling Medium	7 = Saw Timber Poor
D = Treed Bog	LM = Lowland Mixed	Q = Mixed Swamp Conifer	W = White Pine	3 = Seedling Sapling Well	8 = Saw Timber Medium
E = Swamp Hdwoods	M = Mpl, Bch, Brch	R = Red Pine	X = Non Stocked	4 = Pole Timber Poor	9 = Saw Timber Well
F = Spruce Fir	MC = Mixed Conifer	S = Black Spruce	Z = Water		
G = Grass	MD = Mixed Deciduous	T = Tamarack			

PU	Acres
1	19.7
2	33.1
3	24.1

Blue Monster Mix

Compartment 61244

76.9 Acres



Big Foot Aspen (61-111-23)
T25N, R07W, SEC. 36; Kalkaska COUNTY

In response to the notice of sale to be held 4:00 p.m. (local time) on October 17, 2023, I am hereby submitting my sealed bid (firm offer) for the following forest products to be cut. Bids for individual species must be at or above the advertised price. All non-responsive bid forms may be rejected.

<u>PRODUCTS & SPECIES</u>	<u>ESTIMATED VOLUME*</u>	<u>ADVERTISED PRICE</u>	<u>BID PRICE/UNIT</u>
Sawtimber			
Paper Birch	1.7 MBF	\$ 52.00/MBF	\$ _____
Red Maple	51.6 MBF	\$ 159.00/MBF	\$ _____
Red Oak	63.3 MBF	\$ 120.00/MBF	\$ _____
Red Pine	28.5 MBF	\$ 145.00/MBF	\$ _____
White Pine	78.8 MBF	\$ 86.00/MBF	\$ _____
Pulpwood			
B. T. Aspen	1,266 Cords	\$ 23.60/Cord	\$ _____
Balsam Fir	26 Cords	\$ 33.75/Cord	\$ _____
Paper Birch	2 Cords	\$ 18.95/Cord	\$ _____
Red Maple	242 Cords	\$ 33.05/Cord	\$ _____
Red Oak	93 Cords	\$ 30.35/Cord	\$ _____
Red Pine	5 Cords	\$ 61.55/Cord	\$ _____
White Pine	193 Cords	\$ 27.40/Cord	\$ _____

*The volumes are statistically estimated within plus (+) or minus (-) 11.95 percent at 95% confidence level. These estimated volumes are final and not subject to adjustment. Prospective bidders are urged to examine this timber and to make their own estimates of quantity and quality.

I understand that any or all bids may be rejected. All bids must be signed and all bid items must be bid or the bid form may be rejected. I also understand that consideration and awarding a contract will be based upon my past performance and ability to complete the contract based upon equipment and staffing subject to my control.

FEDERAL ID: ____ - ____ - ____ or SOCIAL SECURITY NUMBER: ____ - ____ - ____

Company or individual bidding: _____

Company representative's name: _____

Address: _____

City: _____ State: _____ Zip: _____

IF AVAILABLE, PLEASE PLACE THE PERSONALIZED LABEL FROM YOUR PROSPECTUS IN THE ABOVE BOX.

Individual or company representative's signature: _____ Date: _____

Phone number : _____ Email (optional): _____

THE WINNING BIDDER MUST COMPLETE THE VERIFICATION OF WORKER'S DISABILITY COMPENSATION ACT COMPLIANCE (ON REVERSE SIDE IF DOUBLE SIDED) WITHIN 21 DAYS OF SALE AWARD DATE



FOR DEPARTMENT USE ONLY	
Sale Number (XX - XXX - XX - XX)	
Forest Management Unit:	

TIMBER SALE VERIFICATION OF WORKER'S DISABILITY COMPENSATION ACT COMPLIANCE

As required by Act 317, P.A. 1969 (Worker's Compensation) and
Part 5 of Act 451 of 1994, as amended.

VERIFICATION OF WORKER'S DISABILITY COMPENSATION ACT COMPLIANCE

- This verification must be completed and submitted within 21 days of contract award and prior to the issuance of the timber sale contract.
- In addition, if boxes 2B or 2C are checked, then Notice of Exclusion or Certificate of Insurance must be submitted within twenty-one (21) days of the contract award and prior to the issuance of the timber sale contract.
- All information must be typed or printed except for written signatures.

Please Check Appropriate Categories:

1. My business is organized as (you **must** check one of the boxes below):
 - A. Sole Proprietorship (individual)
 - B. Partnership
 - C. Corporation
2. You **must** check one of the boxes below:
 - A. I certify my business is a sole proprietorship and it has no employees but the sole proprietor. I am not subject to the Worker's Compensation Laws.
 - B. I certify my business has satisfied its obligation to the Worker's Compensation Act through the use of an approved Notice of Exclusion (BWC-337, Rev. 5/96). I will provide a copy of the Notice of Exclusion within 21 days of the contract award. (For questions or a copy of the BWC-337, please call the Worker's Compensation Bureau at 517-322-1195).
 - C. I certify my business has a Worker's Compensation Policy. I will provide an original Certificate of Insurance within twenty-one (21) days of the contract award.
3. If you have checked item 2(A) or 2(B), you **must** indicate the number of **both** full-time and part-time employees, other than yourself, including family members and active partners (if none, you must enter "0").

_____ Full-time Employees

_____ Part-time Employees

Name of Business		Federal ID (or) Social Security No.	
Address		Telephone ()	
City	State	ZIP	

I hereby certify that the above information is true and correct. I agree to notify the Michigan DNR of any changes that occur in factors affecting my coverage during any of my present and future operations.

Signature of Owner or Authorized Representative

Title

Date

Please complete the "SEALED BID" information on the next page

Blue Monster Mix (61-112-23)

T25N, R06W, SEC. 31; T25N, R07W, SEC. 25; T25N, R07W, SEC. 36; Kalkaska

In response to the notice of sale to be held 4:00 p.m. (local time) on October 17, 2023, I am hereby submitting my sealed bid (firm offer) for the following forest products to be cut. Bids for individual species must be at or above the advertised price. All non-responsive bid forms may be rejected.

<u>PRODUCTS & SPECIES</u>	<u>ESTIMATED VOLUME*</u>	<u>ADVERTISED PRICE</u>	<u>BID PRICE/UNIT</u>
Sawtimber			
Red Maple	28.0 MBF	\$ 140.00/MBF	\$ _____
Red Oak	128.4 MBF	\$ 106.00/MBF	\$ _____
Red Pine	125.4 MBF	\$ 128.00/MBF	\$ _____
White Pine	51.4 MBF	\$ 76.00/MBF	\$ _____
Pulpwood			
B. T. Aspen	984 Cords	\$ 20.85/Cord	\$ _____
Paper Birch	12 Cords	\$ 16.75/Cord	\$ _____
Red Maple	298 Cords	\$ 29.15/Cord	\$ _____
Red Oak	251 Cords	\$ 26.75/Cord	\$ _____
Red Pine	164 Cords	\$ 54.30/Cord	\$ _____
White Pine	179 Cords	\$ 24.20/Cord	\$ _____

*The volumes are statistically estimated within plus (+) or minus (-) 12.13 percent at 95% confidence level. These estimated volumes are final and not subject to adjustment. Prospective bidders are urged to examine this timber and to make their own estimates of quantity and quality.

I understand that any or all bids may be rejected. All bids must be signed and all bid items must be bid or the bid form may be rejected. I also understand that consideration and awarding a contract will be based upon my past performance and ability to complete the contract based upon equipment and staffing subject to my control.

FEDERAL ID: _____ or SOCIAL SECURITY NUMBER: _____

Company or individual bidding: _____

Company representative's name: _____

Address: _____

City: _____ State: _____ Zip: _____

IF AVAILABLE, PLEASE PLACE THE PERSONALIZED LABEL FROM YOUR PROSPECTUS IN THE ABOVE BOX.

Individual or company representative's signature: _____ Date: _____

Phone number : _____ Email (optional): _____

THE WINNING BIDDER MUST COMPLETE THE VERIFICATION OF WORKER'S DISABILITY COMPENSATION ACT COMPLIANCE (ON REVERSE SIDE IF DOUBLE SIDED) WITHIN 21 DAYS OF SALE AWARD DATE

Consumer Cleanup (61-107-23)

T25N, R07W, SEC. 29; T25N, R07W, SEC. 31; T25N, R07W, SEC. 32; T25N,

In response to the notice of sale to be held 4:00 p.m. (local time) on October 17, 2023, I am hereby submitting my sealed bid (firm offer) for the following forest products to be cut. Bids for individual species must be at or above the advertised price. All non-responsive bid forms may be rejected.

<u>PRODUCTS & SPECIES</u>	<u>ESTIMATED VOLUME*</u>	<u>ADVERTISED PRICE</u>	<u>BID PRICE/UNIT</u>
Sawtimber			
B. T. Aspen	166.2 MBF	\$ 128.00/MBF	\$ _____
Black Cherry	4.1 MBF	\$ 186.00/MBF	\$ _____
Red Maple	132.9 MBF	\$ 140.00/MBF	\$ _____
Red Oak	19.4 MBF	\$ 106.00/MBF	\$ _____
Red Pine	61.6 MBF	\$ 128.00/MBF	\$ _____
Sugar Maple	11.1 MBF	\$ 331.00/MBF	\$ _____
White Pine	176.2 MBF	\$ 76.00/MBF	\$ _____
Pulpwood			
B. T. Aspen	893 Cords	\$ 20.85/Cord	\$ _____
Balsam Fir	56 Cords	\$ 29.80/Cord	\$ _____
Mixed Hardwood	841 Cords	\$ 29.15/Cord	\$ _____
N. White Cedar	16 Cords	\$ 28.15/Cord	\$ _____
Red Oak	23 Cords	\$ 26.75/Cord	\$ _____
Red Pine	122 Cords	\$ 54.30/Cord	\$ _____
White Pine	177 Cords	\$ 24.20/Cord	\$ _____

*The volumes are statistically estimated within plus (+) or minus (-) 15.70 percent at 95% confidence level. These estimated volumes are final and not subject to adjustment. Prospective bidders are urged to examine this timber and to make their own estimates of quantity and quality.

I understand that any or all bids may be rejected. All bids must be signed and all bid items must be bid or the bid form may be rejected. I also understand that consideration and awarding a contract will be based upon my past performance and ability to complete the contract based upon equipment and staffing subject to my control.

FEDERAL ID: _____ - _____ or SOCIAL SECURITY NUMBER: _____ - _____ - _____

Company or individual bidding: _____

Company representative's name: _____

Address: _____

City: _____ State: _____ Zip: _____

IF AVAILABLE, PLEASE PLACE THE PERSONALIZED LABEL FROM YOUR PROSPECTUS IN THE ABOVE BOX.

Individual or company representative's signature: _____ Date: _____

Phone number : _____ Email (optional): _____

THE WINNING BIDDER MUST COMPLETE THE VERIFICATION OF WORKER'S DISABILITY COMPENSATION ACT COMPLIANCE (ON REVERSE SIDE IF DOUBLE SIDED) WITHIN 21 DAYS OF SALE AWARD DATE



FOR DEPARTMENT USE ONLY	
Sale Number (XX - XXX - XX - XX)	
Forest Management Unit:	

TIMBER SALE VERIFICATION OF WORKER'S DISABILITY COMPENSATION ACT COMPLIANCE

As required by Act 317, P.A. 1969 (Worker's Compensation) and
Part 5 of Act 451 of 1994, as amended.

VERIFICATION OF WORKER'S DISABILITY COMPENSATION ACT COMPLIANCE

- This verification must be completed and submitted within 21 days of contract award and prior to the issuance of the timber sale contract.
- In addition, if boxes 2B or 2C are checked, then Notice of Exclusion or Certificate of Insurance must be submitted within twenty-one (21) days of the contract award and prior to the issuance of the timber sale contract.
- All information must be typed or printed except for written signatures.

Please Check Appropriate Categories:

1. My business is organized as (you **must** check one of the boxes below):
 - A. Sole Proprietorship (individual)
 - B. Partnership
 - C. Corporation
2. You **must** check one of the boxes below:
 - A. I certify my business is a sole proprietorship and it has no employees but the sole proprietor. I am not subject to the Worker's Compensation Laws.
 - B. I certify my business has satisfied its obligation to the Worker's Compensation Act through the use of an approved Notice of Exclusion (BWC-337, Rev. 5/96). I will provide a copy of the Notice of Exclusion within 21 days of the contract award. (For questions or a copy of the BWC-337, please call the Worker's Compensation Bureau at 517-322-1195).
 - C. I certify my business has a Worker's Compensation Policy. I will provide an original Certificate of Insurance within twenty-one (21) days of the contract award.
3. If you have checked item 2(A) or 2(B), you **must** indicate the number of **both** full-time and part-time employees, other than yourself, including family members and active partners (if none, you must enter "0").

_____ Full-time Employees

_____ Part-time Employees

Name of Business		Federal ID (or) Social Security No.	
Address		Telephone ()	
City	State	ZIP	

I hereby certify that the above information is true and correct. I agree to notify the Michigan DNR of any changes that occur in factors affecting my coverage during any of my present and future operations.

Signature of Owner or Authorized Representative

Title

Date

Please complete the "SEALED BID" information on the next page

Snoopy Pine (61-109-23)
T26N, R08W, SEC. 18; Kalkaska COUNTY

In response to the notice of sale to be held 4:00 p.m. (local time) on October 17, 2023, I am hereby submitting my sealed bid (firm offer) for the following forest products to be cut. Bids for individual species must be at or above the advertised price. All non-responsive bid forms may be rejected.

<u>PRODUCTS & SPECIES</u>	<u>ESTIMATED VOLUME*</u>	<u>ADVERTISED PRICE</u>	<u>BID PRICE/UNIT</u>
Sawtimber			
B. T. Aspen	5.0 MBF	\$ 128.00/MBF	\$ _____
Red Maple	1.6 MBF	\$ 140.00/MBF	\$ _____
Red Pine	71.3 MBF	\$ 128.00/MBF	\$ _____
White Pine	37.6 MBF	\$ 76.00/MBF	\$ _____
Pulpwood			
B. T. Aspen	57 Cords	\$ 20.85/Cord	\$ _____
Jack Pine	14 Cords	\$ 23.65/Cord	\$ _____
Red Maple	50 Cords	\$ 29.15/Cord	\$ _____
Red Pine	233 Cords	\$ 54.30/Cord	\$ _____
White Pine	32 Cords	\$ 24.20/Cord	\$ _____

*The volumes are statistically estimated within plus (+) or minus (-) 35.45 percent at 95% confidence level. These estimated volumes are final and not subject to adjustment. Prospective bidders are urged to examine this timber and to make their own estimates of quantity and quality.

I understand that any or all bids may be rejected. All bids must be signed and all bid items must be bid or the bid form may be rejected. I also understand that consideration and awarding a contract will be based upon my past performance and ability to complete the contract based upon equipment and staffing subject to my control.

FEDERAL ID: ____ - ____ - ____ or SOCIAL SECURITY NUMBER: ____ - ____ - ____

Company or individual bidding: _____

Company representative's name: _____

Address: _____

City: _____ State: _____ Zip: _____

IF AVAILABLE, PLEASE PLACE THE PERSONALIZED LABEL FROM YOUR PROSPECTUS IN THE ABOVE BOX.

Individual or company representative's signature: _____ Date: _____

Phone number : _____ Email (optional): _____

THE WINNING BIDDER MUST COMPLETE THE VERIFICATION OF WORKER'S DISABILITY COMPENSATION ACT COMPLIANCE (ON REVERSE SIDE IF DOUBLE SIDED) WITHIN 21 DAYS OF SALE AWARD DATE



FOR DEPARTMENT USE ONLY	
Sale Number (XX - XXX - XX - XX)	
Forest Management Unit:	

TIMBER SALE VERIFICATION OF WORKER'S DISABILITY COMPENSATION ACT COMPLIANCE

As required by Act 317, P.A. 1969 (Worker's Compensation) and
Part 5 of Act 451 of 1994, as amended.

VERIFICATION OF WORKER'S DISABILITY COMPENSATION ACT COMPLIANCE

- This verification must be completed and submitted within 21 days of contract award and prior to the issuance of the timber sale contract.
- In addition, if boxes 2B or 2C are checked, then Notice of Exclusion or Certificate of Insurance must be submitted within twenty-one (21) days of the contract award and prior to the issuance of the timber sale contract.
- All information must be typed or printed except for written signatures.

Please Check Appropriate Categories:

1. My business is organized as (you **must** check one of the boxes below):
 - A. Sole Proprietorship (individual)
 - B. Partnership
 - C. Corporation
2. You **must** check one of the boxes below:
 - A. I certify my business is a sole proprietorship and it has no employees but the sole proprietor. I am not subject to the Worker's Compensation Laws.
 - B. I certify my business has satisfied its obligation to the Worker's Compensation Act through the use of an approved Notice of Exclusion (BWC-337, Rev. 5/96). I will provide a copy of the Notice of Exclusion within 21 days of the contract award. (For questions or a copy of the BWC-337, please call the Worker's Compensation Bureau at 517-322-1195).
 - C. I certify my business has a Worker's Compensation Policy. I will provide an original Certificate of Insurance within twenty-one (21) days of the contract award.
3. If you have checked item 2(A) or 2(B), you **must** indicate the number of **both** full-time and part-time employees, other than yourself, including family members and active partners (if none, you must enter "0").

_____ Full-time Employees

_____ Part-time Employees

Name of Business		Federal ID (or) Social Security No.	
Address		Telephone ()	
City	State	ZIP	

I hereby certify that the above information is true and correct. I agree to notify the Michigan DNR of any changes that occur in factors affecting my coverage during any of my present and future operations.

Signature of Owner or Authorized Representative

Title

Date

Please complete the "SEALED BID" information on the next page