



**DEPARTMENT OF NATURAL RESOURCES
STATE OF MICHIGAN
TIMBER SALE PROSPECTUS #7296**

SCHEDULED SALE DATE AND TIME: **9:00 a.m. (local time) on November 2, 2023.**

LOCATION: **BARAGA MGMT UNIT, 427 US 41 NORTH, BARAGA, MI 49908.**

PROSPECTUS NOTE: The bidder is advised to inspect the sale area and review the location, estimated volumes, operating costs and contract terms of proposed sales. Please be aware that some landowners may request 60 days or more notice for access across their land.

Notice is hereby given that bids will be received by the Unit Manager, BARAGA MANAGEMENT UNIT, for certain timber on the following described lands:

Horoscope Hardwoods (11-011-23) / T52N, R35W, SEC. 34, SENE,E1/2SE.

T52N, R35W, SEC. 35, NENW,S1/2NW,W1/2NE,N1/2SW.

Houghton County, Advertised Price \$54,507.50, 252.4 Acres, Hardwood, Sugar Maple.

Under Over (11-012-23) / T51N, R36W, SEC. 21, S1/2NW,SWNE,SW,NWSE,S1/2SE.

T51N, R36W, SEC. 28, N1/2NW,SENE,NE,E1/2SW.

T51N, R36W, SEC. 33, N1/2NE.

Houghton County, Advertised Price \$119,177.75, 338.0 Acres, Hardwood.

Liver Lake Mix (12-057-23) / T44N, R32W, SEC. 10, NWSW.

T44N, R32W, SEC. 16, NENE.

T44N, R32W, SEC. 8 , SENE.

T44N, R32W, SEC. 9 , NENW,SWNW,S1/2NE,NWSW,N1/2SE.

T44N, R32W, SEC. 9 , SESE.

Iron County, Advertised Price \$34,028.50, 156.6 Acres, Hardwood, Aspen.

SALE NOTE: Access may be through private land.

BID INSTRUCTIONS (VER. 10/10/2022):

1. Scheduled Bid Location, Date, and Time (2/11)

Bids must be received by the Unit Manager, BARAGA OFFICE, 427 US 41 North, Baraga, MI 49908, no later than 9:00 a.m. (local time) on November 2, 2023. For further information concerning this sale, contact Brad Carlson at 906-353-6651.

2. Bidder's Qualifications (10/22)

If all or part of a timber sale was prepared by a private contractor, the contractor and that contractor's company are not permitted to bid on the timber sale. A person must be 18 years of age or older to purchase timber. Permanent employees of the Department of Natural Resources or members of their immediate household may not bid. Former employees, in the permanent or seasonal class, may not bid until 3 months after the last day of active duty. Bids will not be accepted from individuals or companies appearing on the DNR/FRD No-Bid List. This list contains the names of purchasers who previously failed to execute a contract within 21-days or who have a history of poor performance.

3. Preparation of Sealed Bids (5/16)

Bid Forms may be completed online thru Michigan DNR Timber Sale Online Bidding (OLB) at www.michigan.gov/timberbidding or by completing the hardcopy Bid Form found in the Timber Sale Prospectus. Hardcopy Bid Forms shall be manually signed in ink. Registration in OLB is considered your 'signature' for all bids submitted thru that system. Bid prices must be entered for each species and product in the Bid Price column for all material subject to bidding and all fill-in blanks must be completed. If erasures or other changes appear on the hardcopy Bid Form, each erasure or change must be initialed by the person signing the bid.

4. Submission of Sealed Bids (5/16)

Bid forms may be obtained from the Unit Manager or thru OLB. Bids may be submitted hardcopy or thru OLB. All hardcopy bids must be submitted on the bid form and in an envelope clearly identified as described in this section. NOTE: Only one bid form per bid envelope. Sealed bids must be submitted to the Unit office designated in the prospectus and must be submitted at or prior to the time established in the prospectus. The envelope should show on the outside (a) the sale name or number and (b) the date and time of bid opening, as shown in the prospectus. Bids received after the time specified in the sale prospectus are late bids and will be rejected.

It is possible for a bidder to submit multiple bids on a single sale. For example, a bid may be submitted hardcopy and a bid may be submitted thru OLB. Or, two bidders from the same company could both submit bids on the same sale. If this were to happen, the State would accept all bids received and award the contract accordingly. All bidding and contractual requirements would apply to all bids received.

5. Public Opening of Sealed Bids (7/16)

If conditions permit, the sealed bids will be publicly opened and posted at the time and place set in the prospectus.

If a bidder, present at a bid opening, has submitted bids on more than one sale, that bidder may withdraw their unopened bid envelopes or announce the withdrawal of their online bid after being declared the successful bidder on one sale.

6. Award of Contract (1/11)

Award of the contract will be made to the Bidder whose bid, conforming to the prospectus, is most advantageous to the State of Michigan on the basis of total value at rates bid for the estimated quantities. The State reserves the right to reject any bid or waive any minor irregularity in bids received. A written award mailed (or otherwise furnished) to the successful Bidder shall be deemed to result in a binding contract without further action by either party.

7. Down Payment (1/11)

The Bidder to whom award is made must make a down payment within 21 days of the sale award. The amount of the down payment will be calculated as shown in the Bond and Payment Schedule of this prospectus. Only cash may be used to meet this requirement.

8. Performance Security (1/11)

As guarantee of faithful performance, a cash bond, certificate of deposit, surety bond or irrevocable letter of credit (LOC) is required within 21 days of the sale award. The amount of the performance security is shown in the Bond and

Payment Schedule of this prospectus. If an LOC or surety is used, the coverage must extend for at least 6 months beyond the contract expiration.

9. Worker's Compensation (10/22)

Purchaser shall obtain worker's compensation insurance to cover claims under Michigan's Worker's Disability Compensation Act of 1969 or similar employee benefit act of any other state applicable to an employee. Verification of Worker's Disability Compensation Act Compliance must be completed and submitted within 21 days of contract award and prior to the issuance of the timber sale contract. In addition, if applicable, Notice of Exclusion or Certificate of Insurance must also be submitted.

10. Timber Sale Contract (10/22)

Additional conditions and requirements common to all timber sales are listed on the timber sale contract (R4031) and are available on line at www.michigan.gov/timber. Contact the Unit Manager for additional information or a sample contract. Within 21 days of the date of the award letter, the bidder must sign the contract and provide the required down payment, performance security, and verification of worker's disability compensation. The down payment and performance security shall be in accordance with the provisions of the timber sale contract, in the sums stated in this prospectus. If these actions are not taken, then the Bidder, the Bidder's corporation, and the corporation's principals may not be permitted to bid on State timber sales for a period of 3 months after the first offense, 6 months after the second offense, and 1 year after the third offense. An offense will only be counted against the Bidder for 5 years. In addition, the Bidder certifies that if awarded this contract, the Bidder will complete the timber sale contract in accordance with its terms and any modifications thereof including requirements to purchase, cut, and remove the included timber by the expiration date.

Payment Unit values in the State Forest Timber Sale Contract are calculated based on the advertised value of the Payment Unit as a percentage of the total advertised value of the contract. The advertised value of each Payment Unit is given in the Description of Timber by Payment Unit table on the Timber Sale Information page. For example, if the value of Payment Unit 1 is advertised as \$1,500 and the total Timber Sale value is advertised as \$10,000, the contract price for Payment Unit 1 will be 15% of the total bid price ($\$1,500/\$10,000 * 100$).

11. Disclaimer of Estimates and Bidder's Warranty of Inspection (10/22)

Before submitting this bid, the Bidder is advised and cautioned to inspect the sale area, review the requirements of the sale contract, and take other steps as may be reasonably necessary to ascertain the location, estimated volumes, construction estimates, and operating costs of the proposed sale. Failure to do so will not relieve the Bidder from responsibility for completing the contract.

The Bidder warrants that this bid is submitted solely on the basis of the Bidder's examination and inspection of the quality and quantity of the timber offered for sale and the Bidder's opinion of the value thereof and the costs of recovery. No reliance should be placed on the State of Michigan's estimates of timber quality, quantity or costs of recovery. Bidder further acknowledges that the State of Michigan: (i) expressly disclaims any warranty of fitness of timber for any purpose; (ii) offers this timber as is without any warranty of quality (merchantability) or quantity and (iii) expressly disclaims any warranty as to the quantity or quality of timber sold.

12. Certification and Chain-of-Custody (10/22)

Unless otherwise indicated in the contract under section 7 – Other Conditions of the Sale Specific Conditions & Requirements, the area encompassed by this timber sale is certified to the standards of the Forest Stewardship Council (FSC) - Certificate #SCS-FM/COC-00090N and the Sustainable Forestry Initiative (SFI) - Certificate #NSF-SFIS-5Y031-SF5. Forest products from this sale may be delivered to the mill as "FSC 100% and / or SFI certified" as long as the contractor hauling the forest products is chain-of-custody (COC) certified or covered under a COC certificate from the destination mill. The purchaser is responsible for maintaining COC after leaving the sale area.

13. Good Neighbor Authority (GNA) Requirements (10/22)

If the name of this timber sales contains the acronym GNA, it is authorized by the Good Neighbor Authority (GNA) and covered by various agreements between the U.S. Forest Service and the State. The timber sale occurs on federal land and the following conditions apply:

GNA contracts on US Forest Service land will not be awarded to purchasers on the Federal list of excluded parties. The System for Award Management (SAM) will be checked for active excluded parties prior to award of contract. In

addition, the Bidder to whom award is made must complete an Assurance Regarding Felony Conviction or Tax Delinquent Status for Corporate Applicants (AD-3031).

14. Good Neighbor Authority (GNA) Requirements, con't (10/22)

Bidder certifies, by signing this bid form, that to the best of Bidder's knowledge that the following representations are accurate and complete.

- a. That the Bidder and its principals are not presently debarred, suspended, proposed for debarment, declared ineligible, or voluntary excluded from timber sales (covered transactions) by any Federal department or agency.
- b. That the Bidder and its principals have not within a 3-year period preceding this bid been convicted of or had a civil judgment rendered against them for commission of fraud or a criminal offense in connection with obtaining , attempting to obtain, or performing a public (Federal, State, or local) transaction or contract under a public transaction; violation of Federal or State antitrust statutes or commission of embezzlement, theft, forgery, bribery, falsification or destruction of records, making false statements, or receiving stolen property.
- c. That the Bidder and its principals are not presently indicted for or otherwise criminally or civilly charged by a governmental entity (Federal, State, or local) with commission of any of the offenses enumerated in paragraph b of this certification.
- d. That the Bidder and its principals have not within a 3-year period preceding this bid had one or more public transactions (Federal, State, or local) terminated for breach or default of a timber or forest product contract.

Bidders that cannot certify this requirement, in whole or in part, shall submit an explanation with their bid.

Scott Bowen
Director

TIMBER SALE INFORMATION

Horoscope Hardwoods (11-011-23)
T52N, R35W, SEC. 34; T52N, R35W, SEC. 35.
Houghton County (Advertised Price \$54,507.50)

A timber sale contract for this lump sum, sealed bid timber sale will be awarded to the responsible bidder offering the highest sealed bid price. All units of volume listed below were estimated using the Inventory Manager computer program and the new Michigan taper model. Bids must be at or above the following advertised price for each product and species:

<u>PRODUCTS & SPECIES</u>	<u>ESTIMATED UNITS*</u>	<u>ADVERTISED PRICE</u>
Sawtimber		
Basswood	8.2 MBF	\$ 101.00 / MBF
Red Maple	166.1 MBF	\$ 78.00 / MBF
Sugar Maple	74.5 MBF	\$ 157.00 / MBF
Yellow Birch	18.4 MBF	\$ 79.00 / MBF
Pulpwood		
Balsam Fir	33 Cords	\$ 7.70 / Cord
Basswood	50 Cords	\$ 5.90 / Cord
Hemlock	4 Cords	\$ 6.80 / Cord
Mixed Hardwood	2,264 Cords	\$ 10.75 / Cord
Mixed Spruce	90 Cords	\$ 10.80 / Cord
Paper Birch	2 Cords	\$ 3.55 / Cord
Quaking Aspen	80 Cords	\$ 21.00 / Cord

* The total volume is statistically estimated within plus (+) or minus (-) 12.75 percent. There are an estimated 3,272 cords on this timber sale, plus or minus 417 cords at the 95% confidence level. The estimated units are final and not subject to adjustment. Prospective bidders are urged to examine this timber and to make their own estimates of quantity and quality.

BOND AND PAYMENT SCHEDULE:

1. A bond in the amount of \$5,500.00 to insure faithful performance of the conditions of the contract will be deposited by the successful bidder within 21 days of the sale award.
2. Cutting in any sale or unit without the required advance payment would be considered a trespass.
3. Total payment must be paid in advance or according to the following schedule :
 - (a) Ten percent (10%) of the sale value must be paid within 21 days of the sale award.
 - (b) The 10% down payment will be credited towards the first unit cut.
 - (c) Payment for each of the following units must be made before cutting begins in that unit:

PAYMENT UNIT NUMBER	PERCENT OF TOTAL SALE VALUE
01	12.0%
02	16.0%
03	16.3%
04	14.3%
05	18.5%
06	22.9%
4. If no cutting takes place, the 10% down payment will not be refunded.
5. Operations on the contract issued will terminate on 06/30/2027.

SALE STATISTICS

Volumes were calculated in cubic feet using the Michigan taper model. Cubic foot volume includes all wood inside bark for the product indicated. For display purposes, cubic feet were converted to cords and MBF using a simple conversion factor, e.g. 79 cubic feet per cord and 185 cubic feet per MBF. The cubic foot volumes are precise; the cords and MBF volumes are not. Cubic foot volume cannot be directly converted to cords or boards with precision.

SALE VOLUMES

The total estimated sale volume may not equal the sum of the species/products due to the nature of statistical calculations associated with double sampling methodology.

VOLUME		STATISTICAL RANGE IN CORDS		
TOTAL CUBIC FEET	TOTAL CORDS	PERCENT ERROR	MINIMUM	MAXIMUM
258,503	3,272	12.75%	2,855	3,690

VDU VOLUMES

A VDU is a Volume Determination Unit. Volumes and their associated statistics are calculated at the VDU level and summarized to the sale level. There is often a one to one relationship between a VDU and a Payment Unit, but not always, depending on the cruise design. Refer to the VDU TO PAYMENT UNIT table.

VDU	VOLUME		PERCENT ERROR	RANGE IN CORDS	
	TOTAL CUBIC FEET	TOTAL CORDS		MINIMUM	MAXIMUM
1	54,403	689	24.85%	518	860
2	23,579	298	40.89%	176	420
24	175,317	2,219	12.92%	1,933	2,506
824	5,205	66	89.94%	7	125
TOTAL:	258,503	3,272		2,633	3,911

VDU TO PAYMENT UNIT

When a VDU is associated with more than one Payment Unit (PU), the VDU volumes are assigned to the PU based on acres of the VDU within the PU.

VDU	VDU ACRES	PU	PU ACRES
1	24.6	6	24.6
2	17.1	6	17.1
24	206.8	1	32.1
		2	43.1
		3	43.7
		4	38.3
		5	49.6
824	3.9	6	3.9
TOTAL:	252.4		252.4

DESCRIPTION OF TIMBER BY PAYMENT UNIT (PU)

PU	MARKET GROUP	PRODUCT	QUANTITY	UNIT	ACRES	ADVERTISE PRICE	
1	Basswood	Sawtimber	1.3	MBF	32.1	\$6,536.35	
	Red Maple		23.7	MBF			
	Sugar Maple		11.6	MBF			
	Yellow Birch		2.0	MBF			
	Balsam Fir		Pulpwood	1			Cords
	Basswood			8			Cords
	Hemlock			1			Cords
	Mixed Hardwood			233			Cords
	<i>Ironwood</i>			1			<i>Cords</i>
	<i>Red Maple</i>			121			<i>Cords</i>
	<i>Sugar Maple</i>			82			<i>Cords</i>
	<i>Yellow Birch</i>			29			<i>Cords</i>
	Mixed Spruce			1			Cords
	<i>White Spruce</i>			1			<i>Cords</i>
2	Basswood	Sawtimber	1.7	MBF	43.1	\$8,747.95	
	Red Maple		31.8	MBF			
	Sugar Maple		15.5	MBF			
	Yellow Birch		2.7	MBF			
	Balsam Fir		Pulpwood	1			Cords
	Basswood			10			Cords
	Hemlock			1			Cords
	Mixed Hardwood			313			Cords
	<i>Ironwood</i>			1			<i>Cords</i>
	<i>Red Maple</i>			163			<i>Cords</i>
	<i>Sugar Maple</i>			110			<i>Cords</i>
	<i>Yellow Birch</i>			39			<i>Cords</i>
	Mixed Spruce			1			Cords
	<i>White Spruce</i>			1			<i>Cords</i>
3	Basswood	Sawtimber	1.7	MBF	43.7	\$8,867.35	
	Red Maple		32.2	MBF			
	Sugar Maple		15.7	MBF			
	Yellow Birch		2.8	MBF			
	Balsam Fir		Pulpwood	1			Cords
	Basswood			11			Cords
	Hemlock			1			Cords
	Mixed Hardwood			317			Cords
	<i>Ironwood</i>			1			<i>Cords</i>
	<i>Red Maple</i>			165			<i>Cords</i>
	<i>Sugar Maple</i>			111			<i>Cords</i>
	<i>Yellow Birch</i>			40			<i>Cords</i>
	Mixed Spruce			1			Cords
	<i>White Spruce</i>			1			<i>Cords</i>
4	Basswood	Sawtimber	1.5	MBF	38.3	\$7,774.20	
	Red Maple		28.2	MBF			
	Sugar Maple		13.8	MBF			
	Yellow Birch		2.4	MBF			
	Balsam Fir		Pulpwood	1			Cords
	Basswood			9			Cords
	Hemlock			1			Cords
	Mixed Hardwood			278			Cords
	<i>Ironwood</i>			1			<i>Cords</i>
	<i>Red Maple</i>			144			<i>Cords</i>
	<i>Sugar Maple</i>			98			<i>Cords</i>
	<i>Yellow Birch</i>			35			<i>Cords</i>
	Mixed Spruce			1			Cords
	<i>White Spruce</i>			1			<i>Cords</i>

DESCRIPTION OF TIMBER BY PAYMENT UNIT (PU), CON'T

PU	MARKET GROUP	PRODUCT	QUANTITY	UNIT	ACRES	ADVERTISE PRICE			
5	Basswood	Sawtimber	2.0	MBF	49.6	\$10,085.05			
	Red Maple		36.5	MBF					
	Sugar Maple	17.9	MBF						
	Yellow Birch	3.1	MBF						
	Balsam Fir	Pulpwood	1	Cords					
	Basswood		12	Cords					
	Mixed Hardwood		361	Cords					
	<i>Ironwood</i>		3	<i>Cords</i>					
	<i>Red Maple</i>		187	<i>Cords</i>					
	<i>Sugar Maple</i>		126	<i>Cords</i>					
	<i>Yellow Birch</i>		45	<i>Cords</i>					
	Mixed Spruce		2	Cords					
	<i>White Spruce</i>		2	<i>Cords</i>					
	6		Red Maple	Sawtimber			13.7	MBF	45.6
Yellow Birch		5.4	MBF						
Balsam Fir		Pulpwood	28	Cords					
Mixed Hardwood			762	Cords					
<i>Red Maple</i>			543	<i>Cords</i>					
<i>Sugar Maple</i>			8	<i>Cords</i>					
<i>Yellow Birch</i>			211	<i>Cords</i>					
Mixed Spruce			84	Cords					
<i>Black Spruce</i>			17	<i>Cords</i>					
<i>White Spruce</i>			67	<i>Cords</i>					
Paper Birch			2	Cords					
Quaking Aspen			80	Cords					
TOTAL:			267.2	MBF					
TOTAL:			2,523	Cords					

Sale Specific Conditions & Requirements

Sale Name: Horoscope Hardwoods

Sale Number: 11-011-23 Seq#: 2

1 - Sale Area

1.2 - Boundaries

1.2.1 - Painted boundaries (9/19)

The sale boundary and Payment Unit boundaries are marked and identified by blue and red paint. Exterior sale boundary lines against private property are marked with blue paint. Exterior sale boundary lines against state are marked with red paint. Interior Payment Unit boundaries are marked with red paint. The painted boundary line trees are not Included Timber and are to be protected unless marked with orange paint. Red painted trees designating an interior Payment Unit boundary are only to be cut when all surrounding Payment Units have been paid.

2 - Timber Specifications

2.1 - Included Timber

2.1.2 - Clearcut unit(s) w/o unmerchantable trees (8/11)

Within Payment Unit(s) 6, cut all trees which meet minimum piece specifications in 2.2 Utilization, except do not cut hemlock, white pine, red oak, and cedar. In addition, do not cut any yellow birch that are 18" at DBH or larger.

2.1.3 - Cut tree marked unit(s) (12/08)

Within Payment Unit(s) 1-5, all trees are designated for cutting when marked with orange paint above and below stump height, regardless of merchantability.

2.2 - Utilization

2.2.3 - Stump heights (4/07)

Stump heights within the Sale Area shall not exceed 12 inches for trees greater than 10 inches at DBH and 4 inches for trees smaller than 10 inches at DBH. A written waiver of this requirement may be obtained if wet summer weather makes winter logging necessary.

2.2.4 - Skidding length (2/14)

Skidding of unlimbed tops over 17 feet is not permissible unless approved by the Unit Manager or his/her representative. Skidding of lengths over 17 feet is permissible as long as the Sale Administrator approves the method and machinery used. If at any point damage exceeds specification 3.4.1, all of the remaining wood must be skid in lengths less than 17 feet.

2.2.7 - Uncut designated trees (2/04)

Liquidated damages of \$10.00 per tree will be assessed for every marked tree not cut.

2.2.8 - Utilization and removal (5/14)

All products meeting standards set forth in General Condition and Requirement 2.2 - Utilization must be removed from the Sale Area. This is because excessive woody debris inhibits regeneration.

2.2.11 - Chipping restriction (9/14)

If chipping occurs on this sale, then no woody debris present on the ground at the start of the sale may be chipped. In addition, brush or chips may not be stored or stockpiled on-site.

3 - Payments

3.4 - Damaged Timber

3.4.1 - Damaged timber (7/16)

General Condition and Requirement 3.4 Damaged Timber, defines liquidated damages for undesignated live merchantable trees which are cut or injured. In addition, extreme care should be taken to avoid damage to tree seedlings and saplings.

No damage is acceptable to undesignated live merchantable trees. Within the Sale Area, if more than 5% of trees (> 4.5" DBH) within a specified area of the sale are damaged, liquidated damages will be assessed for all trees damaged. Rates will be in accordance with General Condition and Requirement 3.4 Damaged Timber.

4 - Transportation

4.1 - Construction

4.1.1 - Stream crossings, general (3/11)

All stream crossing structures will be temporary and therefore, shall be provided by the Purchaser, and must be removed upon completion of the sale. All permits for stream crossings will be provided by the DNR for crossings located on state land.

4.1.3 - Slash and earthen piles (8/04)

Piles or windrows of earth along roads and landings that have been widened or constructed shall be leveled. Slash from road maintenance or construction, including stumps, shall be dispersed throughout the sale, chipped, utilized or otherwise removed from the sale.

4.1.5 - Culverts (5/14)

Roads may require the installation of culverts for cross drainage or at natural drainage-ways. If culverts are needed in these locations, their placement will be specified by the Sale Administrator and they shall be installed prior to hauling. The culverts shall be new, corrugated metal or plastic gauge. Culverts will be a minimum of 12 inches in diameter and 24 feet in length. If culverts are removed, fill shall be removed from wetland soils as specified. Soils shall be maintained and left in a non-erodible condition, with water bars, seed, fertilizer, mulch, and slash installed as directed by the Sale Administrator and as specified in the BMP manual. Stream crossing permits, if needed, will be obtained by the DNR for crossing located on state land.

4.1.6 - Road construction (1/09)

Construction of new roads, or improvements of existing roads, shall be done in such a way as to minimize the environmental and visual impacts. Merchantable trees shall be cut and utilized unless otherwise directed. Non-merchantable trees shall be severed and laid flat on the ground. Slash shall be scattered, and not left in windrows and kept a minimum of 10 feet back from the road edge, or be chipped, utilized or otherwise removed from the sale. Stumps shall be set upright, not left on edge, and be moved at least 10 feet away from the road edge. Disturbed soil shall be feathered into the woods and not left in berms or windrows.

4.1.7 - Road closure (10/11)

All new roads built into the sale must be blocked to vehicle traffic upon completion of the sale. Overgrown roads that are reopened shall be considered new roads. In general, this will require constructing a four (4') foot high berm of stumps and logs covered with earth. Contact the Sale Administrator for specific details of design and placement.

4.2 - Maintenance

4.2.2 - Fill material (4/07)

To maintain roads, fill material may be needed in areas where "holes" exist or may be expected to develop. This fill material should be placed before trucking begins. Contact the Sale Administrator regarding the availability of onsite sand or gravel from adjacent State-owned lands.

4.2.4 - Grading (10/16)

For completion of the sale, state forest roads must be graded. In general, this will require a road grader or bulldozer to shape up the roads after forest products have been hauled off site. This includes cleaning of drainage areas, grading, crowning and filling with gravel, if necessary. The grading equipment to be used must be approved by the Unit Manager or his/her representative.

4.2.5 - Two wheel drive condition (2/04)

All existing trail roads on and adjacent to the sale area must be passable by two-wheel drive traffic for the duration of the sale.

5 - Operations

5.2 - Conduct of Operations

5.2.1 - Slash

5.2.1.1 - Slash within sale area (9/16)

No trees are to be felled outside the sale area and all slash is to be kept at least 10 feet back from the red paint line. If sale boundary lines are along a public road or highway, then slash must be removed 50' from these lines per General

Condition & Requirement 5.2.1.

5.2.1.2 - Slash Removal

5.2.1.2.1 - Slash removal, right-of-way (9/16)

All slash must be removed at least 10 feet from the cleared right-of-way of forest roads.

5.2.2 - Hazard Trees/Snags

5.2.2.1 - Den trees (10/16)

Obvious hollow and/or den trees shall be protected and left standing unless they are a safety hazard.

5.2.3 - Operating Restrictions

5.2.3.2 - Operating restrictions (9/11)

Within Payment Unit(s) 1-6, unless changed by written agreement, all clean up activities must be completed by June 15 for all areas that were harvested during the previous harvest season. This restriction is to allow the clean up areas to revegetate before the dry season.

5.2.3.3 - Bark slippage restriction (3/09)

Within Payment Unit(s) 1-5, unless changed by written agreement, cutting and skidding are not permitted during the period of April 15 to July 15. This restriction is because of bark slippage.

5.2.32 - Decking/landing restoration (9/13)

All decking and landing areas must have the surface area restored to a condition equal to or better than before. This is to ensure the proper regeneration of the stand. Wood debris, chips and "cookies" from trimmings must be removed or scattered away from landing and loading areas and may not be windrowed on the edge.

5.2.37 - No decking areas (12/08)

No decking is allowed along Horoscope Road without permission of the Unit Manager or his/her representative. Contact the Sale Administrator if additional landing area is needed.

5.2.38 - No decking against live trees (2/04)

Cut products may not be decked against unmarked or designated leave trees.

5.2.40 - Pathway protection (10/10)

The Hazel GEM Trail is a Hunter Walking trail and is shown on the Timber Sale Map. Maintain a 20-foot-wide slash, debris, and rut free zone daily, using the pathway as the centerline. Do not run equipment down the pathway. Skidding across the trail may only occur in locations approved by the Sale Administrator.

5.4 - Soil Protection

5.4.1 - Rutting restriction, general (7/16)

Operations are to cease immediately if equipment and weather conditions result in rutting of roads and/or skid trails which are 12 inches or greater in depth and 50 feet in length. The Unit Manager or his/her representative may restrict hauling and/or skidding if ruts exceed the specified depth. With the Unit Manager or his/her representative's approval, the Purchaser may return to the area when the risk of rutting has decreased.

5.4.2 - Skid trails (2/04)

Skid trails up and down slopes should be avoided. If however this is unavoidable, these trails will be left in a non-erodible condition using water bars, logs, and slash. Placing of slash on these skid trails while logging is ongoing may alleviate need for any further action. At the direction of the sale administrator, seed, fertilizer, and mulch may also be required.

5.8 - Protection of Endangered Species

5.8.5 - Protection of raptor nests (3/13)

All trees with raptor nests will be protected if found during harvesting operations. Notification will be made to the Unit Manager or his/her representative who will notify the Wildlife Biologist so an on-site evaluation and recommendation can be made, if necessary.

6 - Safety and Fire Prevention

6.2 - Signing

6.2.1 - Road posting (10/20)

The Purchaser is responsible for posting and maintaining caution signs on the Horoscope Road prior to beginning operations. The road must be posted at appropriate distances from the Sale Area to warn of logging activity and truck traffic. Signs must be removed when harvest operations are suspended or completed. The Purchaser will provide these signs.



TIMBER SALE MAP

This information provided by authority of Part 525, 1994 PA 451, as amended.

Forest Management Unit Baraga		County Houghton	Mapped By Carlson	Date 07/13/2023	Page 1	of 1
Township 52N	Range 35W	Section(s) and Subdivision(s) Sec 34-SENE,E1/2SE; Sec 35-NENW,S1/2NW,W1/2NE,N1/2SW		Scale 1:15,840		

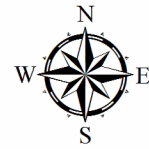
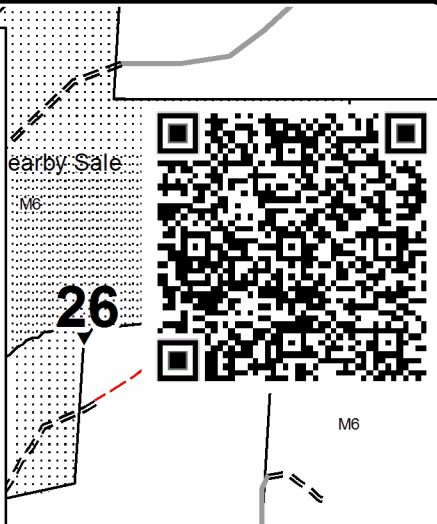
Cover Type

A = Aspen	H = Hemlock	N = Marsh	U = Upland Brush
B = Paper Birch	J = Jack Pine	O = Oak	UM = Upland Mixed
C = Cedar	L = Lowland Brush	P = Lowland Poplar	V = Bog or Marsh
D = Treed Bog	LM = Lowland Mixed	Q = Mixed Swamp Conifer	W = White Pine
E = Swamp Hdwoods	M = Mpl, Bch, Brch	R = Red Pine	X = Non Stocked
F = Spruce Fir	MC = Mixed Conifer	S = Black Spruce	Z = Water
G = Grass	MD = Mixed Deciduous	T = Tamarack	

Density

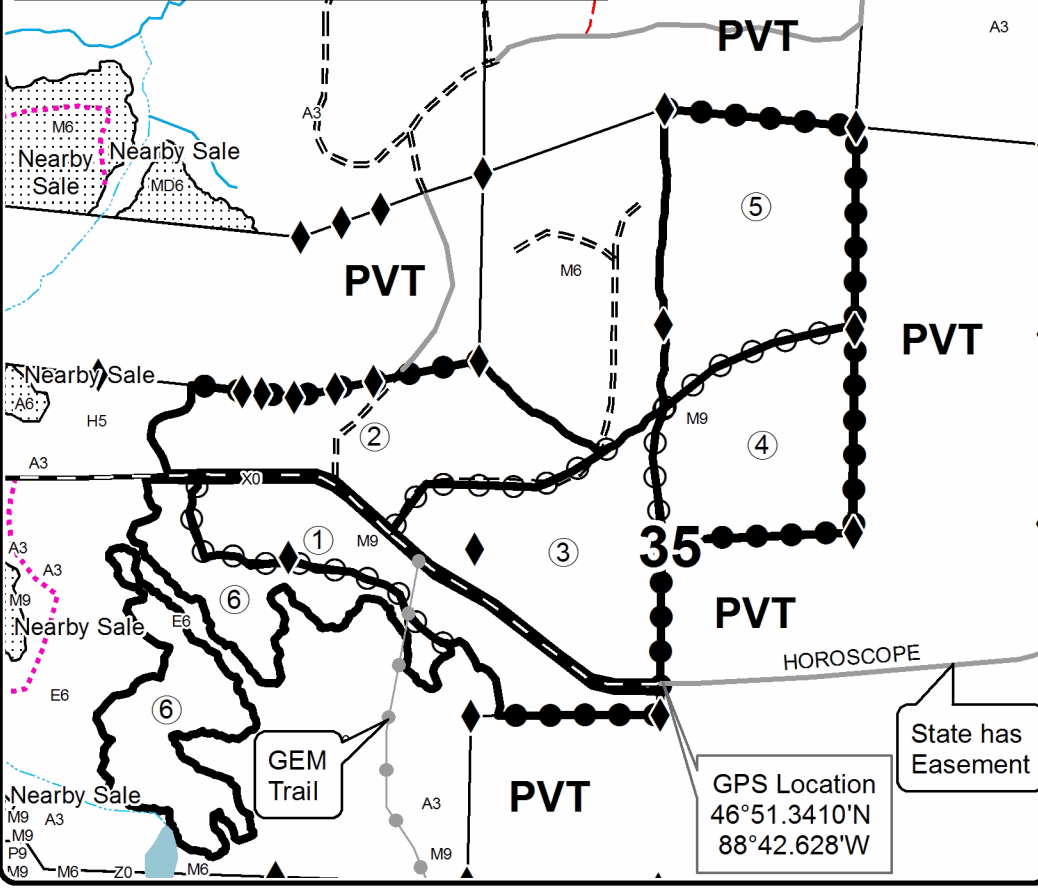
0 = Non Stocked	5 = Pole Timber Medium
1 = Seedling Sapling Poor	6 = Pole Timber Well
2 = Seedling Sapling Medium	7 = Saw Timber Poor
3 = Seedling Sapling Well	8 = Saw Timber Medium
4 = Pole Timber Poor	9 = Saw Timber Well

Horoscope Hardwoods							
Houghton County, Compartment 40							
UNIT	1	2	3	4	5	6	TOTALS
ACRES	32.1	43.1	43.7	38.3	49.6	45.6	252.4
Sawlogs MBF							
Basswood	1.3	1.7	1.7	1.5	2.0	0.0	8.2
Red Maple	23.7	31.8	32.2	28.2	36.5	13.7	166.1
Sugar Maple	11.6	15.5	15.7	13.8	17.9	0.0	74.5
Yellow Birch	2.0	2.7	2.8	2.4	3.1	5.4	18.4
TOTAL	38.6	51.7	52.4	45.9	59.5	19.1	267.2
Pulpwood CORDS							
Balsam Fir	1	1	1	1	1	28	33
Basswood	8	10	11	9	12	0	50
Hemlock	1	1	1	1	0	0	4
Mixed Aspen	0	0	0	0	0	80	80
Mixed Hardwood	233	313	317	278	361	764	2266
Mixed Spruce	1	1	1	1	2	84	90
TOTAL	244	326	331	290	376	956	2523

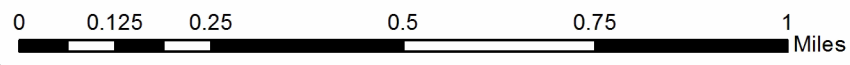
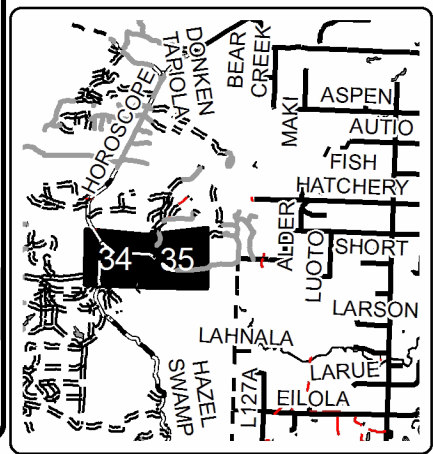


Legend

- Recreational Trail
- Primary Forest Road
- Forest Access Route
- County Road - Seasonal
- Private
- Temporary Management Access
- Intermittent Stream
- Perennial River
- Lakes and Rivers
- Against State (Red)
- Payment Unit (Red)
- Private Line (Blue)
- Survey Corners



Locator Map 1:200,000



TIMBER SALE INFORMATION

Under Over (11-012-23)

T51N, R36W, SEC. 21; T51N, R36W, SEC. 28; T51N, R36W, SEC. 33.
Houghton County (Advertised Price \$119,177.75)

A timber sale contract for this lump sum, sealed bid timber sale will be awarded to the responsible bidder offering the highest sealed bid price. All units of volume listed below were estimated using the Inventory Manager computer program and the new Michigan taper model. Bids must be at or above the following advertised price for each product and species:

<u>PRODUCTS & SPECIES</u>	<u>ESTIMATED UNITS*</u>	<u>ADVERTISED PRICE</u>
Sawtimber		
Basswood	28.3 MBF	\$ 151.00 / MBF
Black Cherry	11.0 MBF	\$ 103.00 / MBF
Red Maple	166.6 MBF	\$ 117.00 / MBF
Red Oak	1.3 MBF	\$ 133.00 / MBF
Sugar Maple	156.4 MBF	\$ 236.00 / MBF
Yellow Birch	14.1 MBF	\$ 118.00 / MBF
Pulpwood		
Balsam Fir	210 Cords	\$ 11.55 / Cord
Basswood	49 Cords	\$ 8.90 / Cord
Mixed Aspen	55 Cords	\$ 31.50 / Cord
Mixed Hardwood	2,888 Cords	\$ 16.10 / Cord
Mixed Spruce	275 Cords	\$ 16.15 / Cord

* The total volume is statistically estimated within plus (+) or minus (-) 10.75 percent. There are an estimated 4,476 cords on this timber sale, plus or minus 481 cords at the 95% confidence level. The estimated units are final and not subject to adjustment. Prospective bidders are urged to examine this timber and to make their own estimates of quantity and quality.

BOND AND PAYMENT SCHEDULE:

1. A bond in the amount of \$11,918.00 to insure faithful performance of the conditions of the contract will be deposited by the successful bidder within 21 days of the sale award.
2. Cutting in any sale or unit without the required advance payment would be considered a trespass.
3. Total payment must be paid in advance or according to the following schedule :
 - (a) Ten percent (10%) of the sale value must be paid within 21 days of the sale award.
 - (b) The 10% down payment will be credited towards the first unit cut.
 - (c) Payment for each of the following units must be made before cutting begins in that unit:

PAYMENT UNIT NUMBER	PERCENT OF TOTAL SALE VALUE
01	14.0%
02	18.2%
03	15.3%
04	13.3%
05	13.6%
06	9.8%
07	11.9%
08	3.9%
4. If no cutting takes place, the 10% down payment will not be refunded.
5. Operations on the contract issued will terminate on 06/30/2027.

SALE STATISTICS

Volumes were calculated in cubic feet using the Michigan taper model. Cubic foot volume includes all wood inside bark for the product indicated. For display purposes, cubic feet were converted to cords and MBF using a simple conversion factor, e.g. 79 cubic feet per cord and 185 cubic feet per MBF. The cubic foot volumes are precise; the cords and MBF volumes are not. Cubic foot volume cannot be directly converted to cords or boards with precision.

SALE VOLUMES

The total estimated sale volume may not equal the sum of the species/products due to the nature of statistical calculations associated with double sampling methodology.

VOLUME			STATISTICAL RANGE IN CORDS	
TOTAL CUBIC FEET	TOTAL CORDS	PERCENT ERROR	MINIMUM	MAXIMUM
353,616	4,476	10.75%	3,995	4,958

VDU VOLUMES

A VDU is a Volume Determination Unit. Volumes and their associated statistics are calculated at the VDU level and summarized to the sale level. There is often a one to one relationship between a VDU and a Payment Unit, but not always, depending on the cruise design. Refer to the VDU TO PAYMENT UNIT table.

	VOLUME			RANGE IN CORDS	
VDU	TOTAL CUBIC FEET	TOTAL CORDS	PERCENT ERROR	MINIMUM	MAXIMUM
10	36,724	465	20.71%	369	561
12	87,854	1,112	20.96%	879	1,345
19	44,747	566	19.25%	457	675
28	59,719	756	16.54%	631	881
30	71,109	900	22.81%	695	1,105
44	17,036	216	24.98%	162	270
521	36,427	461	24.79%	347	575
TOTAL:	353,616	4,476		3,539	5,413

VDU TO PAYMENT UNIT

When a VDU is associated with more than one Payment Unit (PU), the VDU volumes are assigned to the PU based on acres of the VDU within the PU.

VDU	VDU ACRES	PU	PU ACRES
10	33.3	3	33.3
12	42.4	2	42.4
19	68.6	4	68.5
		5	0.1
28	84.6	6	38.3
		7	46.3
30	34.6	1	34.6
44	19.4	8	19.4
521	55.1	5	55.1
TOTAL:	338.0		338.0

DESCRIPTION OF TIMBER BY PAYMENT UNIT (PU)

PU	MARKET GROUP	PRODUCT	QUANTITY	UNIT	ACRES	ADVERTISE PRICE	
1	Black Cherry	Sawtimber	2.4	MBF	34.6	\$16,683.95	
	Red Maple		24.3	MBF			
	Sugar Maple		4.6	MBF			
	Yellow Birch		2.9	MBF			
	Balsam Fir		Pulpwood	66			Cords
	Mixed Hardwood			613			Cords
	<i>Black Ash</i>			18			Cords
	<i>Black Cherry</i>			14			Cords
	<i>Red Maple</i>			468			Cords
	<i>Sugar Maple</i>			19			Cords
	<i>Yellow Birch</i>			94			Cords
	Mixed Spruce			95			Cords
	<i>White Spruce</i>			95			Cords
2	Red Maple	Sawtimber		52.9	MBF	42.4	\$21,559.80
	Yellow Birch		3.0	MBF			
	Balsam Fir		Pulpwood	118	Cords		
	Mixed Aspen			55	Cords		
	<i>Quaking Aspen</i>			55	Cords		
	Mixed Hardwood			598	Cords		
	<i>Black Cherry</i>			16	Cords		
	<i>Paper Birch</i>			9	Cords		
	<i>Red Maple</i>			479	Cords		
	<i>Sugar Maple</i>			63	Cords		
	<i>Yellow Birch</i>			31	Cords		
	Mixed Spruce			142	Cords		
	<i>Black Spruce</i>		57	Cords			
<i>White Spruce</i>	85	Cords					
3	Black Cherry	Sawtimber	3.5	MBF	33.3	\$18,193.65	
	Red Maple		14.1	MBF			
	Sugar Maple		47.9	MBF			
	Mixed Hardwood		Pulpwood	288			Cords
	<i>Black Cherry</i>			9			Cords
	<i>Red Maple</i>			152			Cords
	<i>Sugar Maple</i>			123			Cords
	<i>Yellow Birch</i>			4			Cords
	Mixed Spruce			15			Cords
	<i>White Spruce</i>			15			Cords
4	Basswood	Sawtimber	19.6	MBF	68.5	\$15,897.35	
	Red Maple		20.8	MBF			
	Red Oak		1.3	MBF			
	Sugar Maple		15.7	MBF			
	Yellow Birch		6.4	MBF			
	Balsam Fir		Pulpwood	17			Cords
	Basswood			37			Cords
	Mixed Hardwood			332			Cords
	<i>Ironwood</i>			2			Cords
	<i>Red Maple</i>			156			Cords
	<i>Red Oak</i>			2			Cords
	<i>Sugar Maple</i>			148			Cords
	<i>Yellow Birch</i>			24			Cords
5	Red Maple	Sawtimber	32.0	MBF	55.2	\$16,258.80	
	Sugar Maple		30.7	MBF			
	Balsam Fir	Pulpwood	6	Cords			
	Mixed Hardwood		323	Cords			
	<i>Black Cherry</i>		9	Cords			
	<i>Red Maple</i>		172	Cords			

DESCRIPTION OF TIMBER BY PAYMENT UNIT (PU), CON'T

PU	MARKET GROUP	PRODUCT	QUANTITY	UNIT	ACRES	ADVERTISE PRICE		
5 con't	<i>Sugar Maple</i>	<i>Pulpwood</i>	142	Cords				
6	Basswood	Sawtimber	3.9	MBF	38.3	\$11,709.05		
	Black Cherry		2.3	MBF				
	Red Maple		8.2	MBF				
	Sugar Maple		24.2	MBF				
	Yellow Birch		0.8	MBF				
	Basswood	Pulpwood	5	Cords				
	Mixed Hardwood		244	Cords				
	<i>Black Cherry</i>		3	<i>Cords</i>				
	<i>Red Maple</i>		97	<i>Cords</i>				
	<i>Sugar Maple</i>		127	<i>Cords</i>				
	<i>Yellow Birch</i>		17	<i>Cords</i>				
	Mixed Spruce		9	Cords				
	<i>White Spruce</i>		9	<i>Cords</i>				
7	Basswood	Sawtimber	4.8	MBF			46.3	\$14,189.30
	Black Cherry		2.8	MBF				
	Red Maple		10.0	MBF				
	Sugar Maple		29.3	MBF				
	Yellow Birch		1.0	MBF				
	Basswood	Pulpwood	7	Cords				
	Mixed Hardwood		295	Cords				
	<i>Black Cherry</i>		3	<i>Cords</i>				
	<i>Red Maple</i>		117	<i>Cords</i>				
	<i>Sugar Maple</i>		154	<i>Cords</i>				
	<i>Yellow Birch</i>		21	<i>Cords</i>				
	Mixed Spruce		10	Cords				
	<i>White Spruce</i>		10	<i>Cords</i>				
8	Red Maple	Sawtimber	4.3	MBF	19.4	\$4,685.85		
	Sugar Maple		4.0	MBF				
	Balsam Fir	Pulpwood	3	Cords				
	Mixed Hardwood		195	Cords				
	<i>Black Cherry</i>		3	<i>Cords</i>				
	<i>Red Maple</i>		117	<i>Cords</i>				
	<i>Sugar Maple</i>		75	<i>Cords</i>				
	Mixed Spruce		4	Cords				
	<i>White Spruce</i>		4	<i>Cords</i>				
TOTAL:			377.7	MBF				
TOTAL:			3,477	Cords				

Sale Specific Conditions & Requirements

Sale Name: Under Over

Sale Number: 11-012-23 Seq#: 1

1 - Sale Area

1.2 - Boundaries

1.2.1 - Painted boundaries (9/19)

The sale boundary and Payment Unit boundaries are marked and identified by blue and red paint. Exterior sale boundary lines against private property are marked with blue paint. Exterior sale boundary lines against state are marked with red paint. Interior Payment Unit boundaries are marked with red paint. The painted boundary line trees are not Included Timber and are to be protected unless marked with orange paint.

2 - Timber Specifications

2.1 - Included Timber

2.1.2 - Clearcut unit(s) w/o unmerchantable trees (8/11)

Within Payment Unit(s) 1 and 2, cut all trees which meet minimum piece specifications in 2.2 Utilization except hemlock, cedar, red oak, white pine, and elm, and all trees >22 inches DBH.

2.1.3 - Cut tree marked unit(s) (12/08)

Within Payment Unit(s) 3 - 8, all trees are designated for cutting when marked with orange paint above and below stump height, regardless of merchantability.

2.2 - Utilization

2.2.3 - Stump heights (4/07)

Stump heights within the Sale Area shall not exceed 12 inches for trees greater than 10 inches DBH and 4 inches for trees smaller than 10 inches DBH. A written waiver of this requirement may be obtained if wet summer weather makes winter logging necessary.

2.2.4 - Skidding length (2/14)

Skidding of unlimbed tops is not permissible, unless approved by the Unit Manager or his/her representative. Skidding of lengths over 17 feet is permissible as long as the timber sale administrator approves the method and machinery used. If at any point damage exceeds specification 3.4.1, all of the remaining wood must be skid in lengths less than 17 feet.

2.2.7 - Uncut designated trees (2/04)

Liquidated damages of \$10.00 per tree will be assessed for every marked tree not cut.

2.2.8 - Utilization and removal (5/14)

All products meeting standards set forth in General Condition and Requirement 2.2 - Utilization must be removed from the sale area. This is because excessive woody debris inhibits regeneration.

2.2.11 - Chipping restriction (9/14)

If chipping occurs on this sale, then no woody debris present on the ground at the start of the sale may be chipped. In addition, brush or chips may not be stored or stockpiled on-site.

3 - Payments

3.4 - Damaged Timber

3.4.1 - Damaged timber (7/16)

General Condition and Requirement 3.4 Damaged Timber, defines liquidated damages for undesignated live merchantable trees which are cut or injured. In addition, extreme care should be taken to avoid damage to tree seedlings and saplings. No damage is acceptable to undesignated live merchantable trees. Within the sale area, if more than 5% of trees (> 4.5" DBH) within a specified area of the sale are damaged, liquidated damages will be assessed for all trees damaged. Rates will be in accordance with General Condition and Requirement 3.4 Damaged Timber.

4 - Transportation

4.1 - Construction

4.1.1 - Stream crossings, general (3/11)

All stream crossing structures will be temporary and therefore, shall be provided by the Purchaser, and must be removed upon completion of the sale. All permits for stream crossings will be provided by the DNR for crossings located on state land.

4.1.3 - Slash and earthen piles (8/04)

Piles or windrows of earth along roads and landings that have been widened or constructed shall be leveled. Slash from road maintenance or construction, including stumps, shall be dispersed throughout the sale or chipped, utilized or otherwise removed from the sale.

4.1.4 - Timber removed for construction (3/23)

Trees cut or damaged in the process of pre-approved road, landing or skid trail construction will be decked in an area separate from other Designated Timber and not removed until measured by the sale administrator. Payment will be made at contract prices or average prices, if not on the contract.

4.1.5 - Culverts (5/14)

Roads may require the installation of culverts for cross drainage or at natural drainage-ways. If culverts are needed in these locations, their placement will be specified by the sale administrator and they shall be installed prior to hauling. The culverts shall be new or pre approved by the unit manager or there representative, corrugated metal. Culverts will be a minimum of 12 inches in diameter and 24 feet in length. If culverts are removed, fill shall be removed from wetland soils as specified. Soils shall be maintained and left in a non-erodible condition, with water bars, seed, fertilizer, mulch, and slash installed as directed by the sale administrator and as specified in the BMP manual. Stream crossing permits, if needed, will be obtained by the DNR for Crossings located on state land.

4.1.6 - Road construction (1/09)

Construction of new roads or improvements of existing roads shall be done in such a way as to minimize the environmental and visual impacts. Merchantable trees shall be cut and utilized unless otherwise directed. Non-merchantable trees shall be severed and laid flat on the ground. Slash shall be scattered, and not left in windrows and kept a minimum of 10 feet back from the road edge or be chipped, utilized or otherwise removed from the sale. Stumps shall be set upright, not left on edge, and be moved at least 10 feet away from the road edge. Disturbed soil shall be feathered into the woods and not left in berms or windrows.

4.1.7 - Road closure (10/11)

All new roads built into the sale must be blocked to vehicle traffic upon completion of the sale. Overgrown roads that are reopened shall be considered new roads. In general, this will require constructing a four (4') foot high berm of stumps and logs covered with earth. Temporary berms may be required if no sale activity occurs for 30 or more consecutive days. Contact the sale administrator for specific details of design and placement.

4.2 - Maintenance

4.2.2 - Fill material (4/07)

To maintain roads, fill material may be needed in areas where "holes" exist or may be expected to develop. This fill material should be placed before trucking begins. Contact the sale administrator regarding the availability of onsite sand or gravel from adjacent State-owned lands.

4.2.4 - Grading (10/16)

For completion of the sale, state forest roads must be graded. In general, this will require a road grader or bull dozer to shape up the roads after forest products have been hauled off site. This includes cleaning of drainage areas, grading, crowning and filling with gravel, if necessary. The grading equipment to be used must be approved by the Unit Manager or his/her representative.

4.2.5 - Two wheel drive condition (2/04)

All existing trail roads on and adjacent to the sale area must be passable by two-wheel drive traffic for the duration of the sale.

5 - Operations

5.1 - Notification

5.1.1 - Pre-sale conference (10/16)

A pre-sale conference between the Purchaser and sale administrator is required prior to beginning any operations to determine landing and road locations. The Unit Manager or his/her representative must be contacted at least 10 days in advance to schedule the conference.

5.1.4 - Post-sale conference (10/16)

A post-sale conference on site between the Purchaser and sale administrator is required 5 days prior to the completion of active logging operations to determine clean-up and repair of landings, road edges, and the fulfillment of other contract specifications.

5.2 - Conduct of Operations

5.2.1 - Slash

5.2.1.11 - Slash for reforestation (3/21)

To facilitate reforestation, the Sale Area shall be left with slash evenly distributed. Bunched tops within the cutting area shall be broken up and scattered. Stumps shall be cut low to the ground. Processing sites shall not be left with a compacted layer of slash; tops from these sites shall be hauled back into the cut area and scattered.

5.2.2 - Hazard Trees/Snags

5.2.2.1 - Den trees (10/16)

Obvious hollow and/or den trees shall be protected and left standing unless they are a safety hazard.

5.2.3 - Operating Restrictions

5.2.3.2 - Operating restrictions (9/11)

Within Payment Unit(s) 1-8, unless changed by written agreement, all clean up activities must be completed by 6/15 for all areas that were harvested during the previous harvest season. This restriction is to allow the clean up areas to revegetate before the dry season.

5.2.3.3 - Bark slippage restriction (3/09)

Within Payment Unit(s) 1-8, unless changed by written agreement, cutting and skidding are not permitted during the period of April 15 to July 15. This restriction is because of bark slippage.

5.2.30 - Landing/road top soil protection (2/15)

Top soil on landings and new roads must be removed, stockpiled and saved. Upon completion of the timber sale, soil must be evenly distributed back over the area for revegetation. In addition, the area must be seeded and mulched per instructions of the sale administrator.

5.2.32 - Decking/landing restoration (9/13)

All decking and landing areas must have the surface area restored to a condition equal to or better than before. This is to ensure the proper regeneration of the stand. Wood debris, chips and "cookies" from trimmings must be removed or scattered away from landing and loading areas and may not be windrowed on the edge.

5.2.38 - No decking against live trees (2/04)

Cut products may not be decked against unmarked or designated leave trees.

5.4 - Soil Protection

5.4.1 - Rutting restriction, general (7/16)

Operations are to cease immediately if equipment and weather conditions result in rutting of roads and/or skid trails which is 12 inches or greater in depth and 50 feet in length. The Unit Manager or his/her representative may restrict hauling and/or skidding if ruts exceed the specified depth. With the Unit Manager or his/her representative's approval, the Purchaser may return to the area when the risk of rutting has decreased.

5.4.2 - Skid trails (2/04)

Skid trails up and down slopes should be avoided. If however this is unavoidable, these trails will be left in a non-erodible condition using water bars, logs, and slash. Placing of slash on these skid trails while logging is ongoing may alleviate need for any further action. At the direction of the sale administrator, seed, fertilizer, and mulch may also be required.

5.8 - Protection of Endangered Species

5.8.3 - Red shoulder hawk or goshawk (2/16)

In the event that an active red shoulder hawk or goshawk nest is found, the contract may be amended to protect the nest site until the nest is determined to be inactive. The value of the trees in this excluded area will be refunded or credited to the Purchaser. The nest will be buffered with a five-chain radius (eight acre) protection area, centered on the nest tree, in which there will be no cutting or new roads constructed. Avoid human disturbance, including loading and skidding, in the protection area.

An additional zone of five chains (ten chains centered on the active nest tree) will be established in which there is no management activity from April 1 to July 30. Limit biomass harvesting and chipping operations within this ten-chain zone, retain the maximum one-third of residues per the Woody Biomass Harvesting Guidelines (Michigan DNR 2010). Nests determined to be inactive will be protected with a one-chain no-harvest buffer.

5.8.5 - Protection of raptor nests (3/13)

All trees with raptor nests will be protected if found during harvesting operations. Notification will be made to the Unit Manager or his/her representative who will notify the Wildlife Biologist so an on-site evaluation and recommendation can be made, if necessary.



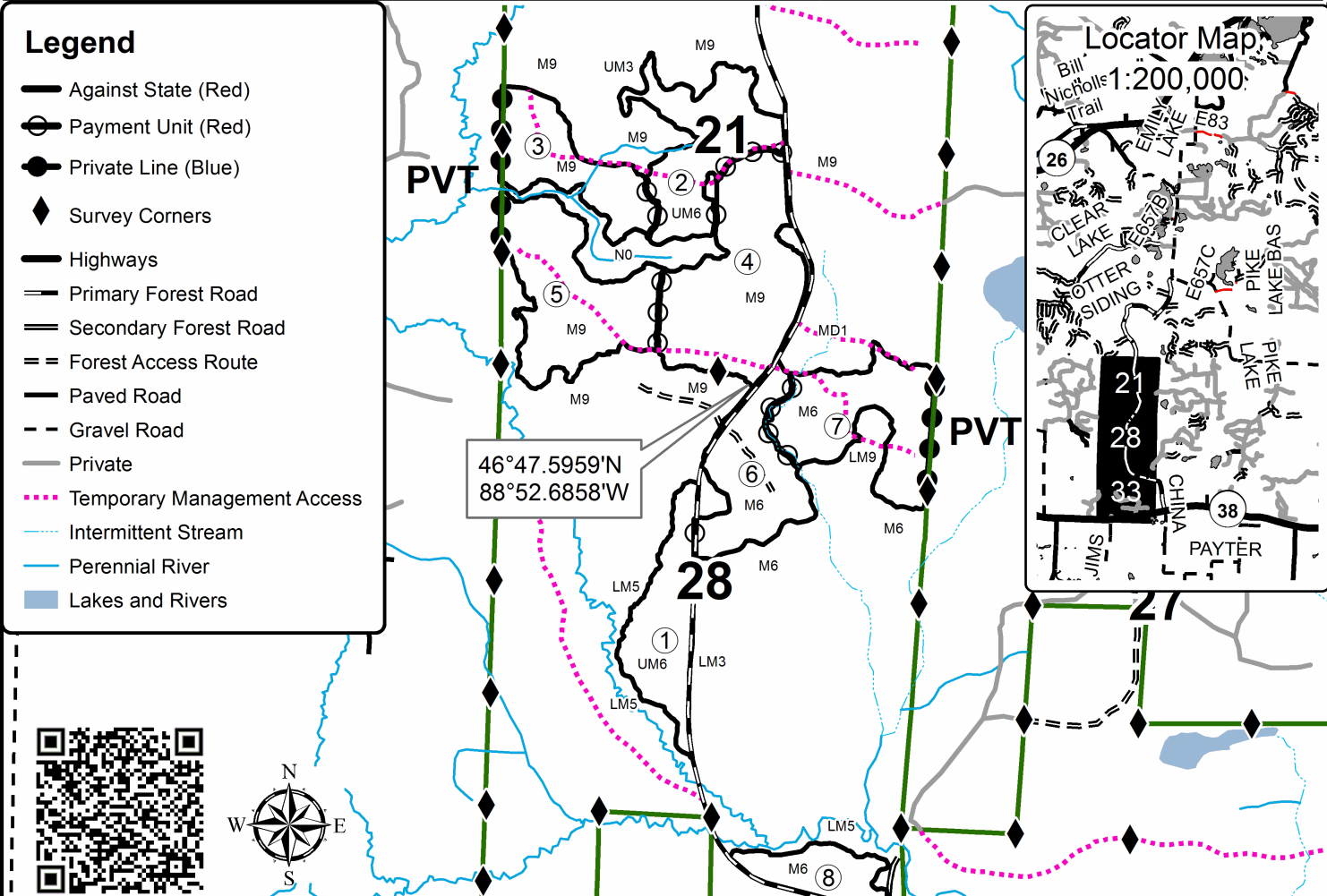
TIMBER SALE MAP

This information provided by authority of Part 525, 1994 PA 451, as amended.

Sale Number	Year
11 - 010	23

Forest Management Unit Baraga Management Unit	County Houghton	Mapped By Ryan Mattila	Date 8/11/2023	Page 1	of 1
Township 51N	Range 36W	Section(s) and Subdivision(s) See Map Below	Scale 1:24,000		
Cruised By Baraga Staff					

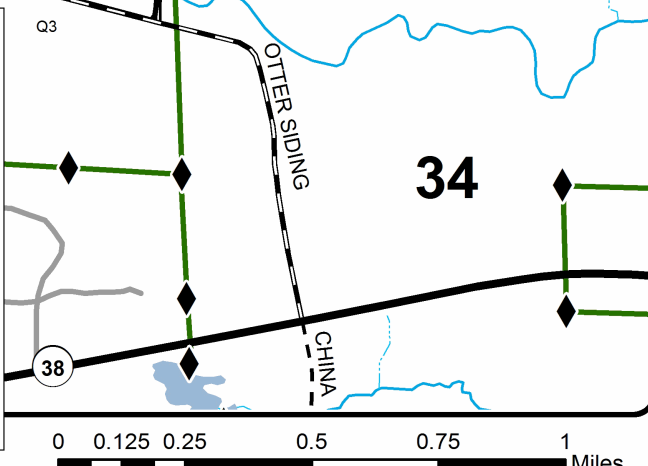
Cover Type				Density			
A = Aspen	H = Hemlock	N = Marsh	U = Upland Brush	0 = Non Stocked	5 = Pole Timber Medium		
B = Paper Birch	J = Jack Pine	O = Oak	UM = Upland Mixed	1 = Seedling Sapling Poor	6 = Pole Timber Well		
C = Cedar	L = Lowland Brush	P = Lowland Poplar	V = Bog or Marsh	2 = Seedling Sapling Medium	7 = Saw Timber Poor		
D = Treed Bog	LM = Lowland Mixed	Q = Mixed Swamp Conifer	W = White Pine	3 = Seedling Sapling Well	8 = Saw Timber Medium		
E = Swamp Hdwoods	M = Mpl, Bch, Brch	R = Red Pine	X = Non Stocked	4 = Pole Timber Poor	9 = Saw Timber Well		
F = Spruce Fir	MC = Mixed Conifer	S = Black Spruce	Z = Water				
G = Grass	MD = Mixed Deciduous	T = Tamarack					



Legend

- Against State (Red)
- Payment Unit (Red)
- Private Line (Blue)
- Survey Corners
- Highways
- Primary Forest Road
- Secondary Forest Road
- Forest Access Route
- Paved Road
- Gravel Road
- Private
- Temporary Management Access
- Intermittent Stream
- Perennial River
- Lakes and Rivers

Under Over								
Houghton County, Compartment 11048								
UNIT	1	2	3	4	5	6	7	8 TOTALS
ACRES	34.6	42.4	33.3	68.5	55.2	38.3	46.3	19.4 338.0
Sawlogs MBF								
Basswood	0.0	0.0	0.0	19.6	0.0	3.9	4.8	0.0 28.3
Black Cherry	2.4	0.0	3.5	0.0	0.0	2.3	2.8	0.0 11.0
Red Maple	24.3	52.9	14.1	20.8	32.0	8.2	10.0	4.3 166.6
Red Oak	0.0	0.0	0.0	1.3	0.0	0.0	0.0	0.0 1.3
Sugar Maple	4.6	0.0	47.9	15.7	30.7	24.2	29.3	4.0 156.4
Yellow Birch	2.9	3.0	0.0	6.4	0.0	0.8	1.0	0.0 14.1
TOTAL	34.2	55.9	65.5	63.8	62.7	39.4	47.9	8.3 377.7
Pulpwood CORDS								
Balsam Fir	66	118	0	17	6	0	0	3 210
Basswood	0	0	0	37	0	5	7	0 49
Mixed Aspen	0	55	0	0	0	0	0	0 55
Mixed Hardwood	613	598	288	332	323	244	295	195 2888
Mixed Spruce	95	142	15	0	0	9	10	4 275
TOTAL	774	913	303	386	329	258	312	202 3477



BID INSTRUCTIONS (VER. 10/10/2022):

1. Scheduled Bid Location, Date, and Time (2/11)

Bids must be received by the Unit Manager, BARAGA OFFICE, 427 US 41 North, Baraga, MI 49908, no later than 9:00 a.m. (local time) on November 2, 2023. For further information concerning this sale, contact Brad Carlson at 906-353-6651.

2. Bidder's Qualifications (10/22)

If all or part of a timber sale was prepared by a private contractor, the contractor and that contractor's company are not permitted to bid on the timber sale. A person must be 18 years of age or older to purchase timber. Permanent employees of the Department of Natural Resources or members of their immediate household may not bid. Former employees, in the permanent or seasonal class, may not bid until 3 months after the last day of active duty. Bids will not be accepted from individuals or companies appearing on the DNR/FRD No-Bid List. This list contains the names of purchasers who previously failed to execute a contract within 21-days or who have a history of poor performance.

3. Preparation of Sealed Bids (5/16)

Bid Forms may be completed online thru Michigan DNR Timber Sale Online Bidding (OLB) at www.michigan.gov/timberbidding or by completing the hardcopy Bid Form found in the Timber Sale Prospectus. Hardcopy Bid Forms shall be manually signed in ink. Registration in OLB is considered your 'signature' for all bids submitted thru that system. Bid prices must be entered for each species and product in the Bid Price column for all material subject to bidding and all fill-in blanks must be completed. If erasures or other changes appear on the hardcopy Bid Form, each erasure or change must be initialed by the person signing the bid.

4. Submission of Sealed Bids (5/16)

Bid forms may be obtained from the Unit Manager or thru OLB. Bids may be submitted hardcopy or thru OLB. All hardcopy bids must be submitted on the bid form and in an envelope clearly identified as described in this section. NOTE: Only one bid form per bid envelope. Sealed bids must be submitted to the Unit office designated in the prospectus and must be submitted at or prior to the time established in the prospectus. The envelope should show on the outside (a) the sale name or number and (b) the date and time of bid opening, as shown in the prospectus. Bids received after the time specified in the sale prospectus are late bids and will be rejected.

It is possible for a bidder to submit multiple bids on a single sale. For example, a bid may be submitted hardcopy and a bid may be submitted thru OLB. Or, two bidders from the same company could both submit bids on the same sale. If this were to happen, the State would accept all bids received and award the contract accordingly. All bidding and contractual requirements would apply to all bids received.

5. Public Opening of Sealed Bids (7/16)

If conditions permit, the sealed bids will be publicly opened and posted at the time and place set in the prospectus.

If a bidder, present at a bid opening, has submitted bids on more than one sale, that bidder may withdraw their unopened bid envelopes or announce the withdrawal of their online bid after being declared the successful bidder on one sale.

6. Award of Contract (1/11)

Award of the contract will be made to the Bidder whose bid, conforming to the prospectus, is most advantageous to the State of Michigan on the basis of total value at rates bid for the estimated quantities. The State reserves the right to reject any bid or waive any minor irregularity in bids received. A written award mailed (or otherwise furnished) to the successful Bidder shall be deemed to result in a binding contract without further action by either party.

7. Down Payment (1/11)

The Bidder to whom award is made must make a down payment within 21 days of the sale award. The amount of the down payment will be calculated as shown in the Bond and Payment Schedule of this prospectus. Only cash may be used to meet this requirement.

8. Performance Security (1/11)

As guarantee of faithful performance, a cash bond, certificate of deposit, surety bond or irrevocable letter of credit (LOC) is required within 21 days of the sale award. The amount of the performance security is shown in the Bond and

Payment Schedule of this prospectus. If an LOC or surety is used, the coverage must extend for at least 6 months beyond the contract expiration.

9. Worker's Compensation (10/22)

Purchaser shall obtain worker's compensation insurance to cover claims under Michigan's Worker's Disability Compensation Act of 1969 or similar employee benefit act of any other state applicable to an employee. Verification of Worker's Disability Compensation Act Compliance must be completed and submitted within 21 days of contract award and prior to the issuance of the timber sale contract. In addition, if applicable, Notice of Exclusion or Certificate of Insurance must also be submitted.

10. Timber Sale Contract (10/22)

Additional conditions and requirements common to all timber sales are listed on the timber sale contract (R4031) and are available on line at www.michigan.gov/timber. Contact the Unit Manager for additional information or a sample contract. Within 21 days of the date of the award letter, the bidder must sign the contract and provide the required down payment, performance security, and verification of worker's disability compensation. The down payment and performance security shall be in accordance with the provisions of the timber sale contract, in the sums stated in this prospectus. If these actions are not taken, then the Bidder, the Bidder's corporation, and the corporation's principals may not be permitted to bid on State timber sales for a period of 3 months after the first offense, 6 months after the second offense, and 1 year after the third offense. An offense will only be counted against the Bidder for 5 years. In addition, the Bidder certifies that if awarded this contract, the Bidder will complete the timber sale contract in accordance with its terms and any modifications thereof including requirements to purchase, cut, and remove the included timber by the expiration date.

Payment Unit values in the State Forest Timber Sale Contract are calculated based on the advertised value of the Payment Unit as a percentage of the total advertised value of the contract. The advertised value of each Payment Unit is given in the Description of Timber by Payment Unit table on the Timber Sale Information page. For example, if the value of Payment Unit 1 is advertised as \$1,500 and the total Timber Sale value is advertised as \$10,000, the contract price for Payment Unit 1 will be 15% of the total bid price ($\$1,500/\$10,000 * 100$).

11. Disclaimer of Estimates and Bidder's Warranty of Inspection (10/22)

Before submitting this bid, the Bidder is advised and cautioned to inspect the sale area, review the requirements of the sale contract, and take other steps as may be reasonably necessary to ascertain the location, estimated volumes, construction estimates, and operating costs of the proposed sale. Failure to do so will not relieve the Bidder from responsibility for completing the contract.

The Bidder warrants that this bid is submitted solely on the basis of the Bidder's examination and inspection of the quality and quantity of the timber offered for sale and the Bidder's opinion of the value thereof and the costs of recovery. No reliance should be placed on the State of Michigan's estimates of timber quality, quantity or costs of recovery. Bidder further acknowledges that the State of Michigan: (i) expressly disclaims any warranty of fitness of timber for any purpose; (ii) offers this timber as is without any warranty of quality (merchantability) or quantity and (iii) expressly disclaims any warranty as to the quantity or quality of timber sold.

12. Certification and Chain-of-Custody (10/22)

Unless otherwise indicated in the contract under section 7 – Other Conditions of the Sale Specific Conditions & Requirements, the area encompassed by this timber sale is certified to the standards of the Forest Stewardship Council (FSC) - Certificate #SCS-FM/COC-00090N and the Sustainable Forestry Initiative (SFI) - Certificate #NSF-SFIS-5Y031-SF5. Forest products from this sale may be delivered to the mill as "FSC 100% and / or SFI certified" as long as the contractor hauling the forest products is chain-of-custody (COC) certified or covered under a COC certificate from the destination mill. The purchaser is responsible for maintaining COC after leaving the sale area.

13. Good Neighbor Authority (GNA) Requirements (10/22)

If the name of this timber sales contains the acronym GNA, it is authorized by the Good Neighbor Authority (GNA) and covered by various agreements between the U.S. Forest Service and the State. The timber sale occurs on federal land and the following conditions apply:

GNA contracts on US Forest Service land will not be awarded to purchasers on the Federal list of excluded parties. The System for Award Management (SAM) will be checked for active excluded parties prior to award of contract. In

addition, the Bidder to whom award is made must complete an Assurance Regarding Felony Conviction or Tax Delinquent Status for Corporate Applicants (AD-3031).

14. Good Neighbor Authority (GNA) Requirements, con't (10/22)

Bidder certifies, by signing this bid form, that to the best of Bidder's knowledge that the following representations are accurate and complete.

- a. That the Bidder and its principals are not presently debarred, suspended, proposed for debarment, declared ineligible, or voluntary excluded from timber sales (covered transactions) by any Federal department or agency.
- b. That the Bidder and its principals have not within a 3-year period preceding this bid been convicted of or had a civil judgment rendered against them for commission of fraud or a criminal offense in connection with obtaining , attempting to obtain, or performing a public (Federal, State, or local) transaction or contract under a public transaction; violation of Federal or State antitrust statutes or commission of embezzlement, theft, forgery, bribery, falsification or destruction of records, making false statements, or receiving stolen property.
- c. That the Bidder and its principals are not presently indicted for or otherwise criminally or civilly charged by a governmental entity (Federal, State, or local) with commission of any of the offenses enumerated in paragraph b of this certification.
- d. That the Bidder and its principals have not within a 3-year period preceding this bid had one or more public transactions (Federal, State, or local) terminated for breach or default of a timber or forest product contract.

Bidders that cannot certify this requirement, in whole or in part, shall submit an explanation with their bid.

Scott Bowen
Director

TIMBER SALE INFORMATION

Liver Lake Mix (12-057-23)

T44N, R32W, SEC. 10; T44N, R32W, SEC. 16; T44N, R32W, SEC. 8; T44N, R32W, SEC. 9.

Iron County (Advertised Price \$34,028.50)

SALE NOTE: Access may be through private land.

A timber sale contract for this lump sum, sealed bid timber sale will be awarded to the responsible bidder offering the highest sealed bid price. All units of volume listed below were estimated using the Inventory Manager computer program and the new Michigan taper model. Bids must be at or above the following advertised price for each product and species:

<u>PRODUCTS & SPECIES</u>	<u>ESTIMATED UNITS*</u>	<u>ADVERTISED PRICE</u>
Sawtimber		
Red Maple	3.6 MBF	\$ 78.00 / MBF
Sugar Maple	107.6 MBF	\$ 157.00 / MBF
Pulpwood		
Balsam Fir	16 Cords	\$ 7.70 / Cord
Mixed Hardwood	721 Cords	\$ 10.75 / Cord
Paper Birch	17 Cords	\$ 3.55 / Cord
Quaking Aspen	581 Cords	\$ 15.00 / Cord
White Spruce	19 Cords	\$ 10.80 / Cord

* The total volume is statistically estimated within plus (+) or minus (-) 12.26 percent. There are an estimated 1,649 cords on this timber sale, plus or minus 202 cords at the 95% confidence level. The estimated units are final and not subject to adjustment. Prospective bidders are urged to examine this timber and to make their own estimates of quantity and quality.

BOND AND PAYMENT SCHEDULE:

1. A bond in the amount of \$2,000.00 to insure faithful performance of the conditions of the contract will be deposited by the successful bidder within 21 days of the sale award.
2. Cutting in any sale or unit without the required advance payment would be considered a trespass.
3. Total payment must be paid in advance or according to the following schedule :
 - (a) Ten percent (10%) of the sale value must be paid within 21 days of the sale award.
 - (b) The 10% down payment will be credited towards the first unit cut.
 - (c) Payment for each of the following units must be made before cutting begins in that unit:

PAYMENT UNIT NUMBER	PERCENT OF TOTAL SALE VALUE
01	14.7%
02	2.4%
03	35.7%
04	37.2%
05	10.0%
4. If no cutting takes place, the 10% down payment will not be refunded.
5. Operations on the contract issued will terminate on 06/30/2027.

SALE STATISTICS

Volumes were calculated in cubic feet using the Michigan taper model. Cubic foot volume includes all wood inside bark for the product indicated. For display purposes, cubic feet were converted to cords and MBF using a simple conversion factor, e.g. 79 cubic feet per cord and 185 cubic feet per MBF. The cubic foot volumes are precise; the cords and MBF volumes are not. Cubic foot volume cannot be directly converted to cords or boards with precision.

SALE VOLUMES

The total estimated sale volume may not equal the sum of the species/products due to the nature of statistical calculations associated with double sampling methodology.

VOLUME		STATISTICAL RANGE IN CORDS		
TOTAL CUBIC FEET	TOTAL CORDS	PERCENT ERROR	MINIMUM	MAXIMUM
130,308	1,649	12.26%	1,447	1,852

VDU VOLUMES

A VDU is a Volume Determination Unit. Volumes and their associated statistics are calculated at the VDU level and summarized to the sale level. There is often a one to one relationship between a VDU and a Payment Unit, but not always, depending on the cruise design. Refer to the VDU TO PAYMENT UNIT table.

VDU	VOLUME		PERCENT ERROR	RANGE IN CORDS	
	TOTAL CUBIC FEET	TOTAL CORDS		MINIMUM	MAXIMUM
37	26,433	335	18.41%	273	396
39	4,786	61	70.91%	18	104
65	81,909	1,037	14.81%	883	1,190
73	17,180	217	23.81%	166	269
TOTAL:	130,308	1,649		1,340	1,959

VDU TO PAYMENT UNIT

When a VDU is associated with more than one Payment Unit (PU), the VDU volumes are assigned to the PU based on acres of the VDU within the PU.

VDU	VDU ACRES	PU	PU ACRES
37	24.8	1	24.8
39	8.7	2	8.7
65	114.3	3	56.0
		4	58.3
73	8.8	5	8.8
TOTAL:	156.6		156.6

DESCRIPTION OF TIMBER BY PAYMENT UNIT (PU)

PU	MARKET GROUP	PRODUCT	QUANTITY	UNIT	ACRES	ADVERTISE PRICE
1	Balsam Fir	Pulpwood	1	Cords	24.8	\$5,014.75
	Mixed Hardwood		18	Cords		
	<i>Red Maple</i>		18	<i>Cords</i>		
	Paper Birch		17	Cords		
	Quaking Aspen		314	Cords		
	White Spruce		4	Cords		
2	Balsam Fir	Pulpwood	7	Cords	8.7	\$820.10
	Quaking Aspen		41	Cords		
	White Spruce		14	Cords		
3	Red Maple	Sawtimber	1.8	MBF	56.0	\$12,157.30
	Sugar Maple		52.7	MBF		
	Mixed Hardwood	Pulpwood	344	Cords		
	<i>Red Maple</i>		24	<i>Cords</i>		
	<i>Sugar Maple</i>		320	<i>Cords</i>		
	Quaking Aspen		3	Cords		
4	Red Maple	Sawtimber	1.8	MBF	58.3	\$12,642.45
	Sugar Maple		54.9	MBF		
	Mixed Hardwood	Pulpwood	357	Cords		
	<i>Red Maple</i>		24	<i>Cords</i>		
	<i>Sugar Maple</i>		333	<i>Cords</i>		
	Quaking Aspen		3	Cords		
5	Balsam Fir	Pulpwood	8	Cords	8.8	\$3,393.90
	Mixed Hardwood		2	Cords		
	<i>Red Maple</i>		2	<i>Cords</i>		
	Quaking Aspen		220	Cords		
	White Spruce		1	Cords		
TOTAL:			111.2	MBF		
TOTAL:			1,354	Cords		

Sale Specific Conditions & Requirements

Sale Name: Liver Lake Mix

Sale Number: 12-057-23 Seq#: 1

1 - Sale Area

1.2 - Boundaries

1.2.1 - Painted boundaries (9/19)

The sale boundary and Payment Unit boundaries are marked and identified by blue and red paint. Exterior sale boundary lines against private property are marked with blue paint. Exterior sale boundary lines against state are marked with double red paint dots. Interior Payment Unit boundaries are marked with red paint slashes.

2 - Timber Specifications

2.1 - Included Timber

2.1.2 - Clearcut unit(s) w/o unmerchantable trees (8/11)

Within Payment Unit(s) 1 & 2, cut all aspen trees which meet minimum piece specifications in 2.2 Utilization (one 100" piece to a top diameter inside bark of 4 inches). In addition, cut spruce and balsam fir with a stump diameter of 10 inches or larger at a stump height of 6 inches. Do not cut any trees marked with green paint. Only cut maple or white birch when necessary for equipment access (this must be kept to a minimum).

Within Payment Unit(s) 5, cut all aspen, maple, white birch, spruce, and balsam fir trees which meet minimum piece specifications in 2.2 Utilization (one 100" piece to a top diameter inside bark of 4 inches). Do not cut any trees marked with green paint.

2.1.3 - Cut tree marked unit(s) (12/08)

Within Payment Unit(s) 3 & 4, all trees are designated for cutting when marked with orange paint above and below stump height, regardless of merchantability.

2.2 - Utilization

2.2.3 - Stump heights (4/07)

Stump heights within the Sale Area shall not exceed 12 inches for trees greater than 10 inches DBH and 4 inches for trees smaller than 10 inches DBH.

2.2.11 - Chipping restriction (9/14)

If chipping occurs on this sale, then no woody debris present on the ground at the start of the sale may be chipped. Chip piles must be removed within 60 days of the sale expiration. In addition, after chip pile removal, residual chip depth at the landing may not exceed 4 inches.

3 - Payments

3.4 - Damaged Timber

3.4.1 - Damaged timber (7/16)

General Condition and Requirement 3.4 Damaged Timber, defines liquidated damages for undesignated live merchantable trees which are cut or injured. In addition, extreme care should be taken to avoid damage to tree seedlings and saplings. No damage is acceptable to undesignated live merchantable trees. Liquidated damages will be assessed for all trees damaged. Rates will be in accordance with General Condition and Requirement 3.4 Damaged Timber.

4 - Transportation

4.1 - Construction

4.1.3 - Slash and earthen piles (8/04)

Piles or windrows of earth along roads and landings that have been widened or constructed shall be leveled. Slash from road maintenance or construction, including stumps, shall be dispersed throughout the sale.

4.1.6 - Road construction (1/09)

Improvements of existing roads shall be done in such a way as to minimize the environmental and visual impacts.

Merchantable trees shall be cut and utilized unless otherwise directed. Non-merchantable trees shall be severed and laid flat on the ground. Slash shall be scattered, and not left in windrows. Stumps shall be set upright, not left on edge, and be moved at least 5 feet away from the road edge. Disturbed soil shall be feathered into the woods and not left in berms or windrows.

4.1.7 - Road closure (10/11)

Any overgrown roads opened up must be blocked to vehicle traffic within 60 days of the sale expiration. In general, this will require scattering stumps and brush in the road course. These roads must be made impassable to ORVs. Contact the Sale Administrator for specific design and placement.

4.1.12 - No new roads (1/12)

No new roads will be permitted. Existing overgrown roads may be opened up and utilized with approval from the Sale Administrator.

4.2 - Maintenance

4.2.5 - Two wheel drive condition (2/04)

All existing trail roads on and adjacent to the sale area must be passable by two-wheel drive traffic for the duration of the sale.

4.4 - Access

4.4.1 - Private property access (3/11)

Permission for access across private land has been verbally obtained by the DNR. It is the responsibility of the Purchaser to confirm access across private land.

5 - Operations

5.2 - Conduct of Operations

5.2.1 - Slash

5.2.1.8 - Slash height (12/08)

No slash or tree tops may exceed 24 inches in height.

5.2.1.11 - Slash for reforestation (3/21)

To facilitate reforestation, the Sale Area shall be left with slash evenly distributed. Bunched tops within the cutting area shall be broken up and scattered. Stumps shall be cut low to the ground. Processing sites shall not be left with a compacted layer of slash; tops from these sites shall be hauled back into the cut area and scattered.

5.2.2 - Hazard Trees/Snags

5.2.2.1 - Den trees (10/16)

Obvious hollow and/or den trees shall be protected and left standing unless they are a safety hazard.

5.2.3 - Operating Restrictions

5.2.3.1 - Operating restrictions (9/11)

Within Payment Unit(s) 1, 2, & 5, cutting, skidding, and hauling are not permitted from March 1 to May 15.

Within Payment Units 3 & 4, cutting, skidding, and hauling are not permitted from March 1 to July 15.

- This restriction is to avoid resource damage during spring break up. If prolonged wet weather conditions occur throughout the operating season, the Sale Administrator may suspend operations until favorable weather and ground conditions are present.

5.2.38 - No decking against live trees (2/04)

Cut products may not be decked against unmarked or designated leave trees.

5.4 - Soil Protection

5.4.1 - Rutting restriction, general (7/16)

Operations are to cease immediately if equipment and weather conditions result in rutting of roads and/or skid trails which is

12 inches or greater in depth and 50 feet in length. The Unit Manager or his/her representative may restrict hauling and/or skidding if ruts exceed the specified depth. With the Unit Manager or his/her representative's approval, the Purchaser may return to the area when the risk of rutting has decreased.

5.4.6 - Wet area protection (5/10)

No harvesting operations, including skidding and felling, are to take place within any vernal pond areas or drainages. When harvesting occurs, there should be no disturbance to any vernal pond depression. All equipment, trees and tops should be kept out of these areas. Within 100 feet of the vernal pond depression, equipment should only be used when the soil is in a dry or frozen condition. Care must be taken by the Purchaser to identify and avoid operating in these areas of the timber sale.

5.8 - Protection of Endangered Species

5.8.5 - Protection of raptor nests (3/13)

All trees with raptor nests will be protected if found during harvesting operations. Notification will be made to the Unit Manager or his/her representative who will notify the Wildlife Biologist so an on-site evaluation and recommendation can be made, if necessary.



TIMBER SALE MAP

This information provided by authority of Part 525, 1994 PA 451, as amended.

Forest Management Unit BARAGA	County IRON	Mapped By Rice	Date 7/20/23	Page 1	of 1
Township 44N	Range 32W	Section(s) and Subdivision(s) sec 8: SENE sec 9: SWNW, NWSW,S1/2NE, SE1/4 sec 10: SWNW, NWSW sec16: NENE	Scale 4 inches = 1 mile		

Cover Type

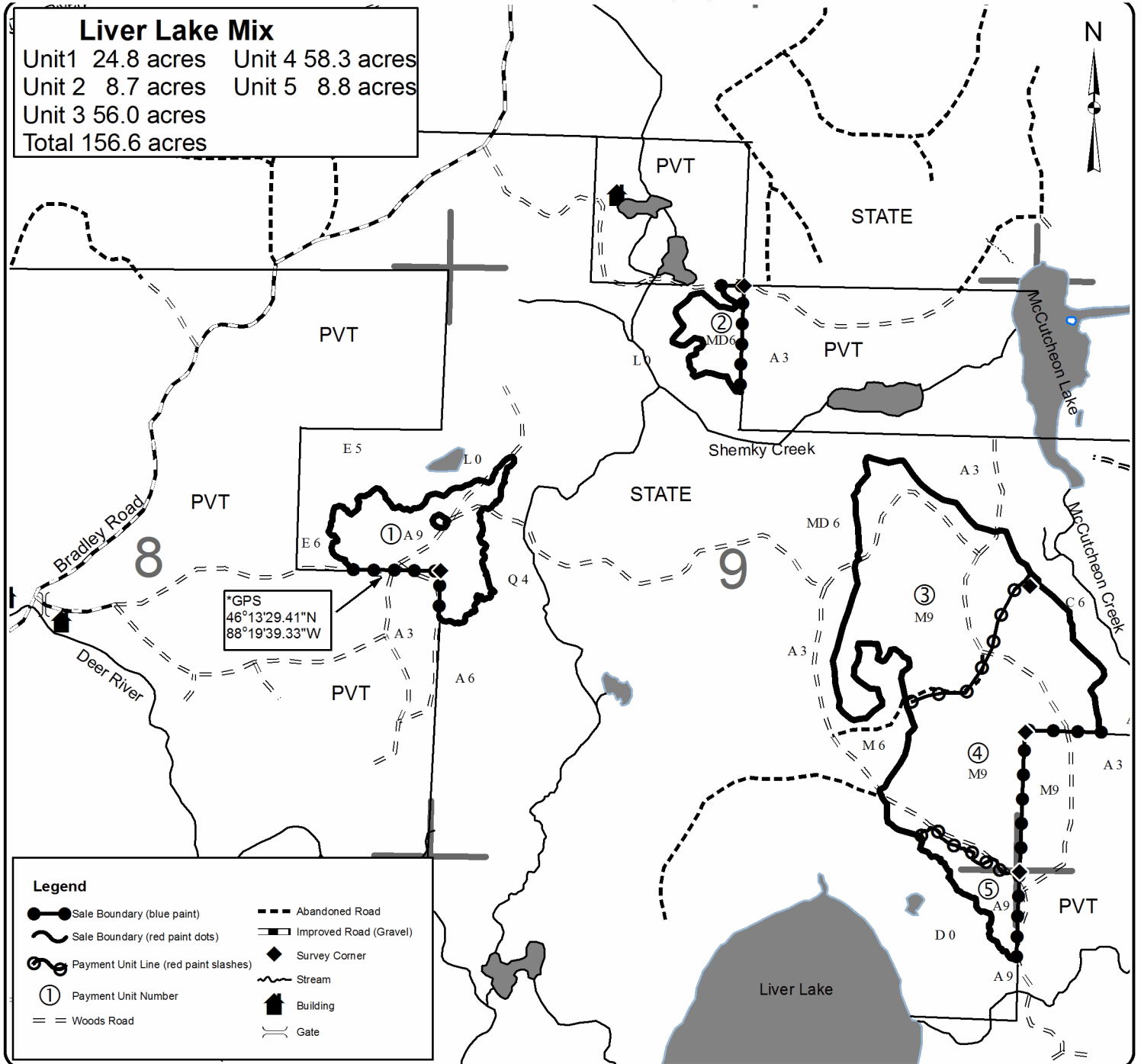
A = Aspen	H = Hemlock	N = Marsh	U = Upland Brush
B = Paper Birch	J = Jack Pine	O = Oak	UM = Upland Mixed
C = Cedar	L = Lowland Brush	P = Lowland Poplar	V = Bog or Marsh
D = Tread Bog	LM = Lowland Mixed	Q = Mixed Swamp Conifer	W = White Pine
E = Swamp Hdwoods	M = Mpl, Bch, Brch	R = Red Pine	X = Non Stocked
F = Spruce Fir	MC = Mixed Conifer	S = Black Spruce	Z = Water
G = Grass	MD = Mixed Deciduous	T = Tamarack	

Density

0 = Non Stocked	5 = Pole Timber Medium
1 = Seedling Sapling Poor	6 = Pole Timber Well
2 = Seedling Sapling Medium	7 = Saw Timber Poor
3 = Seedling Sapling Well	8 = Saw Timber Medium
4 = Pole Timber Poor	9 = Saw Timber Well

Liver Lake Mix

Unit 1 24.8 acres	Unit 4 58.3 acres
Unit 2 8.7 acres	Unit 5 8.8 acres
Unit 3 56.0 acres	
Total 156.6 acres	



Under Over (11-012-23)

T51N, R36W, SEC. 21; T51N, R36W, SEC. 28; T51N, R36W, SEC. 33; Houghton

In response to the notice of sale to be held 9:00 a.m. (local time) on November 2, 2023, I am hereby submitting my sealed bid (firm offer) for the following forest products to be cut. Bids for individual species must be at or above the advertised price. All non-responsive bid forms may be rejected.

<u>PRODUCTS & SPECIES</u>	<u>ESTIMATED VOLUME*</u>	<u>ADVERTISED PRICE</u>	<u>BID PRICE/UNIT</u>
Sawtimber			
Basswood	28.3 MBF	\$ 151.00/MBF	\$ _____
Black Cherry	11.0 MBF	\$ 103.00/MBF	\$ _____
Red Maple	166.6 MBF	\$ 117.00/MBF	\$ _____
Red Oak	1.3 MBF	\$ 133.00/MBF	\$ _____
Sugar Maple	156.4 MBF	\$ 236.00/MBF	\$ _____
Yellow Birch	14.1 MBF	\$ 118.00/MBF	\$ _____
Pulpwood			
Balsam Fir	210 Cords	\$ 11.55/Cord	\$ _____
Basswood	49 Cords	\$ 8.90/Cord	\$ _____
Mixed Aspen	55 Cords	\$ 31.50/Cord	\$ _____
Mixed Hardwood	2,888 Cords	\$ 16.10/Cord	\$ _____
Mixed Spruce	275 Cords	\$ 16.15/Cord	\$ _____

*The volumes are statistically estimated within plus (+) or minus (-) 10.75 percent at 95% confidence level. These estimated volumes are final and not subject to adjustment. Prospective bidders are urged to examine this timber and to make their own estimates of quantity and quality.

I understand that any or all bids may be rejected. All bids must be signed and all bid items must be bid or the bid form may be rejected. I also understand that consideration and awarding a contract will be based upon my past performance and ability to complete the contract based upon equipment and staffing subject to my control.

FEDERAL ID: _____ or SOCIAL SECURITY NUMBER: _____

Company or individual bidding: _____

Company representative's name: _____

Address: _____

City: _____ State: _____ Zip: _____

IF AVAILABLE, PLEASE PLACE THE PERSONALIZED LABEL FROM YOUR PROSPECTUS IN THE ABOVE BOX.

Individual or company representative's signature: _____ Date: _____

Phone number : _____ Email (optional): _____

THE WINNING BIDDER MUST COMPLETE THE VERIFICATION OF WORKER'S DISABILITY COMPENSATION ACT COMPLIANCE (ON REVERSE SIDE IF DOUBLE SIDED) WITHIN 21 DAYS OF SALE AWARD DATE



FOR DEPARTMENT USE ONLY
Sale Number (XX – XXX – XX – XX)
Forest Management Unit:

TIMBER SALE VERIFICATION OF WORKER'S DISABILITY COMPENSATION ACT COMPLIANCE

*As required by Act 317, P.A. 1969 (Worker's Compensation) and
Part 5 of Act 451 of 1994, as amended.*

VERIFICATION OF WORKER'S DISABILITY COMPENSATION ACT COMPLIANCE

- This verification must be completed and submitted within 21 days of contract award and prior to the issuance of the timber sale contract.
- In addition, if boxes 2B or 2C are checked, then Notice of Exclusion or Certificate of Insurance must be submitted within twenty-one (21) days of the contract award and prior to the issuance of the timber sale contract.
- All information must be typed or printed except for written signatures.

Please Check Appropriate Categories:

1. My business is organized as (you **must** check one of the boxes below):
 - A. Sole Proprietorship (individual)
 - B. Partnership
 - C. Corporation
2. You **must** check one of the boxes below:
 - A. I certify my business is a sole proprietorship and it has no employees but the sole proprietor. I am not subject to the Worker's Compensation Laws.
 - B. I certify my business has satisfied its obligation to the Worker's Compensation Act through the use of an approved Notice of Exclusion (BWC-337, Rev. 5/96). I will provide a copy of the Notice of Exclusion within 21 days of the contract award. (For questions or a copy of the BWC-337, please call the Worker's Compensation Bureau at 517-322-1195).
 - C. I certify my business has a Worker's Compensation Policy. I will provide an original Certificate of Insurance within twenty-one (21) days of the contract award.
3. If you have checked item 2(A) or 2(B), you **must** indicate the number of **both** full-time and part-time employees, other than yourself, including family members and active partners (if none, you must enter "0").

_____ Full-time Employees

_____ Part-time Employees

Name of Business		Federal ID (or) Social Security No.	
Address		Telephone ()	
City	State	ZIP	

I hereby certify that the above information is true and correct. I agree to notify the Michigan DNR of any changes that occur in factors affecting my coverage during any of my present and future operations.

Signature of Owner or Authorized Representative

Title

Date

Please complete the "SEALED BID" information on the next page

Liver Lake Mix (12-057-23)

T44N, R32W, SEC. 10; T44N, R32W, SEC. 16; T44N, R32W, SEC. 8; T44N, R32W,

In response to the notice of sale to be held 9:00 a.m. (local time) on November 2, 2023, I am hereby submitting my sealed bid (firm offer) for the following forest products to be cut. Bids for individual species must be at or above the advertised price. All non-responsive bid forms may be rejected.

<u>PRODUCTS & SPECIES</u>	<u>ESTIMATED VOLUME*</u>	<u>ADVERTISED PRICE</u>	<u>BID PRICE/UNIT</u>
Sawtimber			
Red Maple	3.6 MBF	\$ 78.00/MBF	\$ _____
Sugar Maple	107.6 MBF	\$ 157.00/MBF	\$ _____
Pulpwood			
Balsam Fir	16 Cords	\$ 7.70/Cord	\$ _____
Mixed Hardwood	721 Cords	\$ 10.75/Cord	\$ _____
Paper Birch	17 Cords	\$ 3.55/Cord	\$ _____
Quaking Aspen	581 Cords	\$ 15.00/Cord	\$ _____
White Spruce	19 Cords	\$ 10.80/Cord	\$ _____

*The volumes are statistically estimated within plus (+) or minus (-) 12.26 percent at 95% confidence level. These estimated volumes are final and not subject to adjustment. Prospective bidders are urged to examine this timber and to make their own estimates of quantity and quality.

I understand that any or all bids may be rejected. All bids must be signed and all bid items must be bid or the bid form may be rejected. I also understand that consideration and awarding a contract will be based upon my past performance and ability to complete the contract based upon equipment and staffing subject to my control.

FEDERAL ID: _____ or SOCIAL SECURITY NUMBER: _____

Company or individual bidding: _____

Company representative's name: _____

Address: _____

City: _____ State: _____ Zip: _____

IF AVAILABLE, PLEASE PLACE THE PERSONALIZED LABEL FROM YOUR PROSPECTUS IN THE ABOVE BOX.

Individual or company representative's signature: _____ Date: _____

Phone number : _____ Email (optional): _____

THE WINNING BIDDER MUST COMPLETE THE VERIFICATION OF WORKER'S DISABILITY COMPENSATION ACT COMPLIANCE (ON REVERSE SIDE IF DOUBLE SIDED) WITHIN 21 DAYS OF SALE AWARD DATE



FOR DEPARTMENT USE ONLY
Sale Number (XX - XXX - XX - XX)
Forest Management Unit:

TIMBER SALE VERIFICATION OF WORKER'S DISABILITY COMPENSATION ACT COMPLIANCE

*As required by Act 317, P.A. 1969 (Worker's Compensation) and
Part 5 of Act 451 of 1994, as amended.*

VERIFICATION OF WORKER'S DISABILITY COMPENSATION ACT COMPLIANCE

- This verification must be completed and submitted within 21 days of contract award and prior to the issuance of the timber sale contract.
- In addition, if boxes 2B or 2C are checked, then Notice of Exclusion or Certificate of Insurance must be submitted within twenty-one (21) days of the contract award and prior to the issuance of the timber sale contract.
- All information must be typed or printed except for written signatures.

Please Check Appropriate Categories:

1. My business is organized as (you **must** check one of the boxes below):
 - A. Sole Proprietorship (individual)
 - B. Partnership
 - C. Corporation

2. You **must** check one of the boxes below:
 - A. I certify my business is a sole proprietorship and it has no employees but the sole proprietor. I am not subject to the Worker's Compensation Laws.
 - B. I certify my business has satisfied its obligation to the Worker's Compensation Act through the use of an approved Notice of Exclusion (BWC-337, Rev. 5/96). I will provide a copy of the Notice of Exclusion within 21 days of the contract award. (For questions or a copy of the BWC-337, please call the Worker's Compensation Bureau at 517-322-1195).
 - C. I certify my business has a Worker's Compensation Policy. I will provide an original Certificate of Insurance within twenty-one (21) days of the contract award.

3. If you have checked item 2(A) or 2(B), you **must** indicate the number of **both** full-time and part-time employees, other than yourself, including family members and active partners (if none, you must enter "0").

_____ Full-time Employees

_____ Part-time Employees

Name of Business		Federal ID (or) Social Security No.	
Address		Telephone ()	
City	State	ZIP	

I hereby certify that the above information is true and correct. I agree to notify the Michigan DNR of any changes that occur in factors affecting my coverage during any of my present and future operations.

Signature of Owner or Authorized Representative

Title

Date

Please complete the "SEALED BID" information on the next page

Horoscope Hardwoods (11-011-23)
T52N, R35W, SEC. 34; T52N, R35W, SEC. 35; Houghton COUNTY

In response to the notice of sale to be held 9:00 a.m. (local time) on November 2, 2023, I am hereby submitting my sealed bid (firm offer) for the following forest products to be cut. Bids for individual species must be at or above the advertised price. All non-responsive bid forms may be rejected.

<u>PRODUCTS & SPECIES</u>	<u>ESTIMATED VOLUME*</u>	<u>ADVERTISED PRICE</u>	<u>BID PRICE/UNIT</u>
Sawtimber			
Basswood	8.2 MBF	\$ 101.00/MBF	\$ _____
Red Maple	166.1 MBF	\$ 78.00/MBF	\$ _____
Sugar Maple	74.5 MBF	\$ 157.00/MBF	\$ _____
Yellow Birch	18.4 MBF	\$ 79.00/MBF	\$ _____
Pulpwood			
Balsam Fir	33 Cords	\$ 7.70/Cord	\$ _____
Basswood	50 Cords	\$ 5.90/Cord	\$ _____
Hemlock	4 Cords	\$ 6.80/Cord	\$ _____
Mixed Hardwood	2,264 Cords	\$ 10.75/Cord	\$ _____
Mixed Spruce	90 Cords	\$ 10.80/Cord	\$ _____
Paper Birch	2 Cords	\$ 3.55/Cord	\$ _____
Quaking Aspen	80 Cords	\$ 21.00/Cord	\$ _____

*The volumes are statistically estimated within plus (+) or minus (-) 12.75 percent at 95% confidence level. These estimated volumes are final and not subject to adjustment. Prospective bidders are urged to examine this timber and to make their own estimates of quantity and quality.

I understand that any or all bids may be rejected. All bids must be signed and all bid items must be bid or the bid form may be rejected. I also understand that consideration and awarding a contract will be based upon my past performance and ability to complete the contract based upon equipment and staffing subject to my control.

FEDERAL ID: _____ - _____ or SOCIAL SECURITY NUMBER: _____ - _____ - _____

Company or individual bidding: _____

Company representative's name: _____

Address: _____

City: _____ State: _____ Zip: _____

IF AVAILABLE, PLEASE PLACE THE PERSONALIZED LABEL FROM YOUR PROSPECTUS IN THE ABOVE BOX.

Individual or company representative's signature: _____ Date: _____

Phone number : _____ Email (optional): _____

THE WINNING BIDDER MUST COMPLETE THE VERIFICATION OF WORKER'S DISABILITY COMPENSATION ACT COMPLIANCE (ON REVERSE SIDE IF DOUBLE SIDED) WITHIN 21 DAYS OF SALE AWARD DATE



FOR DEPARTMENT USE ONLY	
Sale Number (XX - XXX - XX - XX)	
Forest Management Unit:	

TIMBER SALE VERIFICATION OF WORKER'S DISABILITY COMPENSATION ACT COMPLIANCE

As required by Act 317, P.A. 1969 (Worker's Compensation) and
Part 5 of Act 451 of 1994, as amended.

VERIFICATION OF WORKER'S DISABILITY COMPENSATION ACT COMPLIANCE

- This verification must be completed and submitted within 21 days of contract award and prior to the issuance of the timber sale contract.
- In addition, if boxes 2B or 2C are checked, then Notice of Exclusion or Certificate of Insurance must be submitted within twenty-one (21) days of the contract award and prior to the issuance of the timber sale contract.
- All information must be typed or printed except for written signatures.

Please Check Appropriate Categories:

1. My business is organized as (you **must** check one of the boxes below):
 - A. Sole Proprietorship (individual)
 - B. Partnership
 - C. Corporation
2. You **must** check one of the boxes below:
 - A. I certify my business is a sole proprietorship and it has no employees but the sole proprietor. I am not subject to the Worker's Compensation Laws.
 - B. I certify my business has satisfied its obligation to the Worker's Compensation Act through the use of an approved Notice of Exclusion (BWC-337, Rev. 5/96). I will provide a copy of the Notice of Exclusion within 21 days of the contract award. (For questions or a copy of the BWC-337, please call the Worker's Compensation Bureau at 517-322-1195).
 - C. I certify my business has a Worker's Compensation Policy. I will provide an original Certificate of Insurance within twenty-one (21) days of the contract award.
3. If you have checked item 2(A) or 2(B), you **must** indicate the number of **both** full-time and part-time employees, other than yourself, including family members and active partners (if none, you must enter "0").

_____ Full-time Employees

_____ Part-time Employees

Name of Business		Federal ID (or) Social Security No.	
Address		Telephone ()	
City	State	ZIP	

I hereby certify that the above information is true and correct. I agree to notify the Michigan DNR of any changes that occur in factors affecting my coverage during any of my present and future operations.

Signature of Owner or Authorized Representative

Title

Date

Please complete the "SEALED BID" information on the next page