



**DEPARTMENT OF NATURAL RESOURCES
STATE OF MICHIGAN
TIMBER SALE PROSPECTUS #7305**

SCHEDULED SALE DATE AND TIME: 2:00 p.m. (local time) on January 8, 2024.

LOCATION: **GWINN MGMT UNIT, 410 WEST M 35, GWINN, MI 49841.**

PROSPECTUS NOTE: The bidder is advised to inspect the sale area and review the location, estimated volumes, operating costs and contract terms of proposed sales. Please be aware that some landowners may request 60 days or more notice for access across their land.

Notice is hereby given that bids will be received by the Unit Manager, GWINN MANAGEMENT UNIT, for certain timber on the following described lands:

West Gwinn Wood (32-008-23) / T45N, R25W, SEC. 18, SWNW,NWSW,S1/2SW.
T45N, R25W, SEC. 30, NENW,S1/2NW,NWNE.
T45N, R26W, SEC. 13, NE,E1/2SE.

Marquette County, Advertised Price \$224,602.00, 221.2 Acres, Red Pine, White Pine.

SALE NOTE: Within Payment Units 9-14, some aspen may be marked with orange paint. Note that these Payment Units are to have all merchantable aspen removed, regardless of being marked with orange or not.

Fraidy Frog Aspen and Spruce (32-009-23) / T45N, R28W, SEC. 20, SENE,NESE.
T45N, R28W, SEC. 21, S1/2NW,N1/2SW,SESW,SWSE.
T45N, R28W, SEC. 28, NENW,S1/2NW,NE,N1/2SW,SWSW.
T45N, R28W, SEC. 29, SESE.

Marquette County, Advertised Price \$54,314.55, 99.7 Acres, Spruce/Fir/Tamarack, Aspen.

BID INSTRUCTIONS (VER. 10/10/2022):

1. Scheduled Bid Location, Date, and Time (2/11)

Bids must be received by the Unit Manager, GWINN OFFICE, 410 WEST M 35, GWINN, MI 49841, no later than 2:00 p.m. (local time) on January 8, 2024. For further information concerning this sale, contact Mike Brodeur at 906-346-9201 extension 103.

2. Bidder's Qualifications (10/22)

If all or part of a timber sale was prepared by a private contractor, the contractor and that contractor's company are not permitted to bid on the timber sale. A person must be 18 years of age or older to purchase timber. Permanent employees of the Department of Natural Resources or members of their immediate household may not bid. Former employees, in the permanent or seasonal class, may not bid until 3 months after the last day of active duty. Bids will not be accepted from individuals or companies appearing on the DNR/FRD No-Bid List. This list contains the names of purchasers who previously failed to execute a contract within 21-days or who have a history of poor performance.

3. Preparation of Sealed Bids (5/16)

Bid Forms may be completed online thru Michigan DNR Timber Sale Online Bidding (OLB) at www.michigan.gov/timberbidding or by completing the hardcopy Bid Form found in the Timber Sale Prospectus. Hardcopy Bid Forms shall be manually signed in ink. Registration in OLB is considered your 'signature' for all bids submitted thru that system. Bid prices must be entered for each species and product in the Bid Price column for all material subject to bidding and all fill-in blanks must be completed. If erasures or other changes appear on the hardcopy Bid Form, each erasure or change must be initialed by the person signing the bid.

4. Submission of Sealed Bids (5/16)

Bid forms may be obtained from the Unit Manager or thru OLB. Bids may be submitted hardcopy or thru OLB. All hardcopy bids must be submitted on the bid form and in an envelope clearly identified as described in this section. NOTE: Only one bid form per bid envelope. Sealed bids must be submitted to the Unit office designated in the prospectus and must be submitted at or prior to the time established in the prospectus. The envelope should show on the outside (a) the sale name or number and (b) the date and time of bid opening, as shown in the prospectus. Bids received after the time specified in the sale prospectus are late bids and will be rejected.

It is possible for a bidder to submit multiple bids on a single sale. For example, a bid may be submitted hardcopy and a bid may be submitted thru OLB. Or, two bidders from the same company could both submit bids on the same sale. If this were to happen, the State would accept all bids received and award the contract accordingly. All bidding and contractual requirements would apply to all bids received.

5. Public Opening of Sealed Bids (7/16)

If conditions permit, the sealed bids will be publicly opened and posted at the time and place set in the prospectus.

If a bidder, present at a bid opening, has submitted bids on more than one sale, that bidder may withdraw their unopened bid envelopes or announce the withdrawal of their online bid after being declared the successful bidder on one sale.

6. Award of Contract (1/11)

Award of the contract will be made to the Bidder whose bid, conforming to the prospectus, is most advantageous to the State of Michigan on the basis of total value at rates bid for the estimated quantities. The State reserves the right to reject any bid or waive any minor irregularity in bids received. A written award mailed (or otherwise furnished) to the successful Bidder shall be deemed to result in a binding contract without further action by either party.

7. Down Payment (1/11)

The Bidder to whom award is made must make a down payment within 21 days of the sale award. The amount of the down payment will be calculated as shown in the Bond and Payment Schedule of this prospectus. Only cash may be used to meet this requirement.

8. Performance Security (1/11)

As guarantee of faithful performance, a cash bond, certificate of deposit, surety bond or irrevocable letter of credit (LOC) is required within 21 days of the sale award. The amount of the performance security is shown in the Bond and

Payment Schedule of this prospectus. If an LOC or surety is used, the coverage must extend for at least 6 months beyond the contract expiration.

9. Worker's Compensation (10/22)

Purchaser shall obtain worker's compensation insurance to cover claims under Michigan's Worker's Disability Compensation Act of 1969 or similar employee benefit act of any other state applicable to an employee. Verification of Worker's Disability Compensation Act Compliance must be completed and submitted within 21 days of contract award and prior to the issuance of the timber sale contract. In addition, if applicable, Notice of Exclusion or Certificate of Insurance must also be submitted.

10. Timber Sale Contract (10/22)

Additional conditions and requirements common to all timber sales are listed on the timber sale contract (R4031) and are available on line at www.michigan.gov/timber. Contact the Unit Manager for additional information or a sample contract. Within 21 days of the date of the award letter, the bidder must sign the contract and provide the required down payment, performance security, and verification of worker's disability compensation. The down payment and performance security shall be in accordance with the provisions of the timber sale contract, in the sums stated in this prospectus. If these actions are not taken, then the Bidder, the Bidder's corporation, and the corporation's principals may not be permitted to bid on State timber sales for a period of 3 months after the first offense, 6 months after the second offense, and 1 year after the third offense. An offense will only be counted against the Bidder for 5 years. In addition, the Bidder certifies that if awarded this contract, the Bidder will complete the timber sale contract in accordance with its terms and any modifications thereof including requirements to purchase, cut, and remove the included timber by the expiration date.

Payment Unit values in the State Forest Timber Sale Contract are calculated based on the advertised value of the Payment Unit as a percentage of the total advertised value of the contract. The advertised value of each Payment Unit is given in the Description of Timber by Payment Unit table on the Timber Sale Information page. For example, if the value of Payment Unit 1 is advertised as \$1,500 and the total Timber Sale value is advertised as \$10,000, the contract price for Payment Unit 1 will be 15% of the total bid price ($\$1,500/\$10,000 * 100$).

11. Disclaimer of Estimates and Bidder's Warranty of Inspection (10/22)

Before submitting this bid, the Bidder is advised and cautioned to inspect the sale area, review the requirements of the sale contract, and take other steps as may be reasonably necessary to ascertain the location, estimated volumes, construction estimates, and operating costs of the proposed sale. Failure to do so will not relieve the Bidder from responsibility for completing the contract.

The Bidder warrants that this bid is submitted solely on the basis of the Bidder's examination and inspection of the quality and quantity of the timber offered for sale and the Bidder's opinion of the value thereof and the costs of recovery. No reliance should be placed on the State of Michigan's estimates of timber quality, quantity or costs of recovery. Bidder further acknowledges that the State of Michigan: (i) expressly disclaims any warranty of fitness of timber for any purpose; (ii) offers this timber as is without any warranty of quality (merchantability) or quantity and (iii) expressly disclaims any warranty as to the quantity or quality of timber sold.

12. Certification and Chain-of-Custody (10/22)

Unless otherwise indicated in the contract under section 7 – Other Conditions of the Sale Specific Conditions & Requirements, the area encompassed by this timber sale is certified to the standards of the Forest Stewardship Council (FSC) - Certificate #SCS-FM/COC-00090N and the Sustainable Forestry Initiative (SFI) - Certificate #NSF-SFIS-5Y031-SF5. Forest products from this sale may be delivered to the mill as "FSC 100% and / or SFI certified" as long as the contractor hauling the forest products is chain-of-custody (COC) certified or covered under a COC certificate from the destination mill. The purchaser is responsible for maintaining COC after leaving the sale area.

13. Good Neighbor Authority (GNA) Requirements (10/22)

If the name of this timber sales contains the acronym GNA, it is authorized by the Good Neighbor Authority (GNA) and covered by various agreements between the U.S. Forest Service and the State. The timber sale occurs on federal land and the following conditions apply:

GNA contracts on US Forest Service land will not be awarded to purchasers on the Federal list of excluded parties. The System for Award Management (SAM) will be checked for active excluded parties prior to award of contract. In

addition, the Bidder to whom award is made must complete an Assurance Regarding Felony Conviction or Tax Delinquent Status for Corporate Applicants (AD-3031).

14. Good Neighbor Authority (GNA) Requirements, con't (10/22)

Bidder certifies, by signing this bid form, that to the best of Bidder's knowledge that the following representations are accurate and complete.

- a. That the Bidder and its principals are not presently debarred, suspended, proposed for debarment, declared ineligible, or voluntary excluded from timber sales (covered transactions) by any Federal department or agency.
- b. That the Bidder and its principals have not within a 3-year period preceding this bid been convicted of or had a civil judgment rendered against them for commission of fraud or a criminal offense in connection with obtaining , attempting to obtain, or performing a public (Federal, State, or local) transaction or contract under a public transaction; violation of Federal or State antitrust statutes or commission of embezzlement, theft, forgery, bribery, falsification or destruction of records, making false statements, or receiving stolen property.
- c. That the Bidder and its principals are not presently indicted for or otherwise criminally or civilly charged by a governmental entity (Federal, State, or local) with commission of any of the offenses enumerated in paragraph b of this certification.
- d. That the Bidder and its principals have not within a 3-year period preceding this bid had one or more public transactions (Federal, State, or local) terminated for breach or default of a timber or forest product contract.

Bidders that cannot certify this requirement, in whole or in part, shall submit an explanation with their bid.

Scott Bowen
Director

TIMBER SALE INFORMATION

West Gwinn Wood (32-008-23)

T45N, R25W, SEC. 18; T45N, R25W, SEC. 30; T45N, R26W, SEC. 13.
Marquette County (Advertised Price \$224,602.00)

SALE NOTE: Within Payment Units 9-14, some aspen may be marked with orange paint. Note that these Payment Units are to have all merchantable aspen removed, regardless of being marked with orange or not.

A timber sale contract for this lump sum, sealed bid timber sale will be awarded to the responsible bidder offering the highest sealed bid price. All units of volume listed below were estimated using the Inventory Manager computer program and the new Michigan taper model. Bids must be at or above the following advertised price for each product and species:

<u>PRODUCTS & SPECIES</u>	<u>ESTIMATED UNITS*</u>	<u>ADVERTISED PRICE</u>
Sawtimber		
Basswood	1.9 MBF	\$ 39.00 / MBF
Paper Birch	2.9 MBF	\$ 82.00 / MBF
Red Maple	8.8 MBF	\$ 132.00 / MBF
Red Oak	36.8 MBF	\$ 108.00 / MBF
Sugar Maple	50.8 MBF	\$ 173.00 / MBF
Pulpwood		
Balsam Fir	179 Cords	\$ 15.45 / Cord
Jack Pine	38 Cords	\$ 44.30 / Cord
Mixed Aspen	110 Cords	\$ 27.95 / Cord
Mixed Hardwood	1,194 Cords	\$ 18.35 / Cord
Mixed Spruce	85 Cords	\$ 23.75 / Cord
Red Pine	2,014 Cords	\$ 65.65 / Cord
Tamarack	6 Cords	\$ 29.80 / Cord
White Pine	1,726 Cords	\$ 26.95 / Cord

* The total volume is statistically estimated within plus (+) or minus (-) 10.91 percent. There are an estimated 5,412 cords on this timber sale, plus or minus 591 cords at the 95% confidence level. The estimated units are final and not subject to adjustment. Prospective bidders are urged to examine this timber and to make their own estimates of quantity and quality.

BOND AND PAYMENT SCHEDULE:

1. A bond in the amount of \$11,230.00 to insure faithful performance of the conditions of the contract will be deposited by the successful bidder within 21 days of the sale award.
2. Cutting in any sale or unit without the required advance payment would be considered a trespass.
3. Total payment must be paid in advance or according to the following schedule :
 - (a) Ten percent (10%) of the sale value must be paid within 21 days of the sale award.
 - (b) The 10% down payment will be credited towards the first unit cut.
 - (c) Payment for each of the following units must be made before cutting begins in that unit:

PAYMENT UNIT NUMBER	PERCENT OF TOTAL SALE VALUE
01	21.0%
02	8.2%
03	11.8%
04	7.0%
05	13.5%
06	10.7%
07	9.2%
08	3.5%
09	3.0%
10	3.3%
11	3.4%
12	2.1%
13	1.7%
14	1.6%

4. If no cutting takes place, the 10% down payment will not be refunded.
5. Operations on the contract issued will terminate on 06/30/2027.

SALE STATISTICS

Volumes were calculated in cubic feet using the Michigan taper model. Cubic foot volume includes all wood inside bark for the product indicated. For display purposes, cubic feet were converted to cords and MBF using a simple conversion factor, e.g. 79 cubic feet per cord and 185 cubic feet per MBF. The cubic foot volumes are precise; the cords and MBF volumes are not. Cubic foot volume cannot be directly converted to cords or boards with precision.

SALE VOLUMES

The total estimated sale volume may not equal the sum of the species/products due to the nature of statistical calculations associated with double sampling methodology.

VOLUME			STATISTICAL RANGE IN CORDS	
TOTAL CUBIC FEET	TOTAL CORDS	PERCENT ERROR	MINIMUM	MAXIMUM
427,567	5,412	10.91%	4,821	6,003

VDU VOLUMES

A VDU is a Volume Determination Unit. Volumes and their associated statistics are calculated at the VDU level and summarized to the sale level. There is often a one to one relationship between a VDU and a Payment Unit, but not always, depending on the cruise design. Refer to the VDU TO PAYMENT UNIT table.

VDU	VOLUME		PERCENT ERROR	RANGE IN CORDS	
	TOTAL CUBIC FEET	TOTAL CORDS		MINIMUM	MAXIMUM
1	58,980	747	15.17%	633	860
2	23,037	292	41.99%	169	414
3	46,085	583	21.90%	456	711
4	43,078	545	28.06%	392	698
5	60,740	769	35.69%	494	1,043
6	76,286	966	20.10%	772	1,160
7	16,754	212	44.97%	117	307
8	102,607	1,299	14.57%	1,110	1,488
TOTAL:	427,567	5,412		4,143	6,682

VDU TO PAYMENT UNIT

When a VDU is associated with more than one Payment Unit (PU), the VDU volumes are assigned to the PU based on acres of the VDU within the PU.

VDU	VDU ACRES	PU	PU ACRES
1	15.5	1	15.5
2	24.3	9	24.3
3	38.9	10	19.3
4	46.9	11	19.6
		12	18.3
		13	14.6
		14	14.0
5	18.1	7	18.1
6	25.2	2	10.3
		3	14.9
7	13.3	8	13.3
8	39.0	4	8.7
		5	16.9
		6	13.4
TOTAL:	221.2		221.2

DESCRIPTION OF TIMBER BY PAYMENT UNIT (PU)

PU	MARKET GROUP	PRODUCT	QUANTITY	UNIT	ACRES	ADVERTISE PRICE	
1	Mixed Spruce	Pulpwood	3	Cords	15.5	\$47,105.55	
	<i>White Spruce</i>		3	<i>Cords</i>			
	Red Pine		668	Cords			
	<i>Red Pine</i>		668	<i>Cords</i>			
	White Pine		118	Cords			
	<i>White Pine</i>		118	<i>Cords</i>			
2	Balsam Fir	Pulpwood	6	Cords	10.3	\$18,311.85	
	Mixed Hardwood		1	Cords			
	<i>Red Maple</i>		1	<i>Cords</i>			
	Mixed Spruce		3	Cords			
	<i>White Spruce</i>		3	<i>Cords</i>			
	Red Pine		192	Cords			
	<i>Red Pine</i>		<i>Sawtimber</i>	73.4			<i>MBF</i>
	<i>Red Pine</i>		<i>Pulpwood</i>	45			<i>Cords</i>
	White Pine			205			Cords
	<i>White Pine</i>		<i>Sawtimber</i>	58.9			<i>MBF</i>
<i>White Pine</i>	<i>Pulpwood</i>	87	<i>Cords</i>				
3	Balsam Fir	Pulpwood	8	Cords	14.9	\$26,533.90	
	Mixed Hardwood		2	Cords			
	<i>Red Maple</i>		2	<i>Cords</i>			
	Mixed Spruce		5	Cords			
	<i>White Spruce</i>		5	<i>Cords</i>			
	Red Pine		278	Cords			
	<i>Red Pine</i>		<i>Sawtimber</i>	106.3			<i>MBF</i>
	<i>Red Pine</i>		<i>Pulpwood</i>	65			<i>Cords</i>
	White Pine			297			Cords
	<i>White Pine</i>		<i>Sawtimber</i>	85.3			<i>MBF</i>
<i>White Pine</i>	<i>Pulpwood</i>	126	<i>Cords</i>				
4	Balsam Fir	Pulpwood	3	Cords	8.7	\$15,617.50	
	Jack Pine		8	Cords			
	Mixed Aspen		4	Cords			
	<i>Quaking Aspen</i>		4	<i>Cords</i>			
	Mixed Hardwood		13	Cords			
	<i>Paper Birch</i>		1	<i>Cords</i>			
	<i>Red Maple</i>		8	<i>Cords</i>			
	<i>Red Oak</i>		4	<i>Cords</i>			
	Mixed Spruce		5	Cords			
	<i>White Spruce</i>		5	<i>Cords</i>			
	Red Pine		184	Cords			
	<i>Red Pine</i>		184	<i>Cords</i>			
	White Pine		99	Cords			
	<i>White Pine</i>		99	<i>Cords</i>			
5	Balsam Fir	Pulpwood	7	Cords	16.9	\$30,364.60	
	Jack Pine		17	Cords			
	Mixed Aspen		7	Cords			
	<i>Quaking Aspen</i>		7	<i>Cords</i>			
	Mixed Hardwood		25	Cords			
	<i>Paper Birch</i>		2	<i>Cords</i>			
	<i>Red Maple</i>		15	<i>Cords</i>			
	<i>Red Oak</i>		8	<i>Cords</i>			
	Mixed Spruce		10	Cords			
	<i>White Spruce</i>		10	<i>Cords</i>			
	Red Pine		357	Cords			
	<i>Red Pine</i>		357	<i>Cords</i>			
	White Pine		192	Cords			
	<i>White Pine</i>		192	<i>Cords</i>			

DESCRIPTION OF TIMBER BY PAYMENT UNIT (PU), CON'T

PU	MARKET GROUP	PRODUCT	QUANTITY	UNIT	ACRES	ADVERTISE PRICE	
6	Balsam Fir	Pulpwood	5	Cords	13.4	\$24,025.25	
	Jack Pine		13	Cords			
	Mixed Aspen		5	Cords			
	<i>Quaking Aspen</i>		5	<i>Cords</i>			
	Mixed Hardwood		20	Cords			
	<i>Paper Birch</i>		1	<i>Cords</i>			
	<i>Red Maple</i>		12	<i>Cords</i>			
	<i>Red Oak</i>		7	<i>Cords</i>			
	Mixed Spruce		8	Cords			
	<i>White Spruce</i>		8	<i>Cords</i>			
	Red Pine		283	Cords			
	<i>Red Pine</i>		283	<i>Cords</i>			
	White Pine		152	Cords			
	<i>White Pine</i>		152	<i>Cords</i>			
7	Red Maple	Sawtimber	4.9	MBF	18.1	\$20,763.15	
	Sugar Maple		6.5	MBF			
	Balsam Fir	Pulpwood	19	Cords			
	Mixed Aspen		11	Cords			
	<i>Quaking Aspen</i>		11	<i>Cords</i>			
	Mixed Hardwood		198	Cords			
	<i>Paper Birch</i>		9	<i>Cords</i>			
	<i>Red Maple</i>		114	<i>Cords</i>			
	<i>Sugar Maple</i>		75	<i>Cords</i>			
	Mixed Spruce		27	Cords			
	<i>White Spruce</i>		27	<i>Cords</i>			
	Red Pine		11	Cords			
	<i>Red Pine</i>		11	<i>Cords</i>			
	White Pine		497	Cords			
<i>White Pine</i>	497		<i>Cords</i>				
8	Balsam Fir		Pulpwood	5	Cords	13.3	\$7,922.20
	Mixed Hardwood	27		Cords			
	<i>Paper Birch</i>	6		<i>Cords</i>			
	<i>Red Maple</i>	21		<i>Cords</i>			
	Mixed Spruce	2		Cords			
	<i>White Spruce</i>	2		<i>Cords</i>			
	Red Pine	42		Cords			
	<i>Red Pine</i>	42		<i>Cords</i>			
	Tamarack	6		Cords			
	White Pine	162		Cords			
	<i>White Pine</i>	162		<i>Cords</i>			
9	Red Maple	Sawtimber	1.8	MBF	24.3	\$6,847.50	
	Red Oak		22.8	MBF			
	Balsam Fir	Pulpwood	33	Cords			
	Mixed Aspen		17	Cords			
	<i>B. T. Aspen</i>		17	<i>Cords</i>			
	Mixed Hardwood		165	Cords			
	<i>Red Maple</i>		61	<i>Cords</i>			
	<i>Red Oak</i>		50	<i>Cords</i>			
	<i>Sugar Maple</i>		54	<i>Cords</i>			
	White Pine		5	Cords			
	<i>White Pine</i>		5	<i>Cords</i>			
10	Basswood		Sawtimber	0.9	MBF	19.3	\$7,460.30
	Paper Birch			0.7	MBF		
	Red Maple	0.9		MBF			
	Red Oak	6.9		MBF			
	Sugar Maple	12.3		MBF			

DESCRIPTION OF TIMBER BY PAYMENT UNIT (PU), CON'T

PU	MARKET GROUP	PRODUCT	QUANTITY	UNIT	ACRES	ADVERTISE PRICE
10 con't	Balsam Fir	Pulpwood	14	Cords		
	Mixed Aspen		23	Cords		
	<i>B. T. Aspen</i>		9	<i>Cords</i>		
	<i>Quaking Aspen</i>		14	<i>Cords</i>		
	Mixed Hardwood		180	Cords		
	<i>Basswood</i>		10	<i>Cords</i>		
	<i>Paper Birch</i>		4	<i>Cords</i>		
	<i>Red Maple</i>		5	<i>Cords</i>		
	<i>Red Oak</i>		20	<i>Cords</i>		
	<i>Sugar Maple</i>		141	<i>Cords</i>		
	Mixed Spruce		9	Cords		
	<i>White Spruce</i>		9	<i>Cords</i>		
11	Basswood	Sawtimber	1.0	MBF	19.6	\$7,607.30
	Paper Birch		0.9	MBF		
	Red Maple		0.9	MBF		
	Red Oak		7.1	MBF		
	Sugar Maple		12.5	MBF		
	Balsam Fir		Pulpwood	15		
	Mixed Aspen	23		Cords		
	<i>B. T. Aspen</i>	9		<i>Cords</i>		
	<i>Quaking Aspen</i>	14		<i>Cords</i>		
	Mixed Hardwood	183		Cords		
	<i>Basswood</i>	10		<i>Cords</i>		
	<i>Paper Birch</i>	4		<i>Cords</i>		
	<i>Red Maple</i>	5		<i>Cords</i>		
	<i>Red Oak</i>	21		<i>Cords</i>		
	<i>Sugar Maple</i>	143		<i>Cords</i>		
	Mixed Spruce	9		Cords		
	<i>White Spruce</i>	9		<i>Cords</i>		
	12	Paper Birch	Sawtimber	0.5		
Red Maple		0.1		MBF		
Sugar Maple		7.6		MBF		
Balsam Fir		Pulpwood	25	Cords		
Mixed Aspen			8	Cords		
<i>B. T. Aspen</i>			3	<i>Cords</i>		
<i>Quaking Aspen</i>			5	<i>Cords</i>		
Mixed Hardwood			148	Cords		
<i>Ironwood</i>			3	<i>Cords</i>		
<i>Paper Birch</i>			1	<i>Cords</i>		
<i>Red Maple</i>			37	<i>Cords</i>		
<i>Sugar Maple</i>			107	<i>Cords</i>		
Mixed Spruce			2	Cords		
<i>Black Spruce</i>			2	<i>Cords</i>		
13			Paper Birch	Sawtimber	0.4	MBF
	Red Maple	0.1	MBF			
	Sugar Maple	6.1	MBF			
	Balsam Fir	Pulpwood	20	Cords		
	Mixed Aspen		6	Cords		
	<i>B. T. Aspen</i>		2	<i>Cords</i>		
	<i>Quaking Aspen</i>		4	<i>Cords</i>		
	Mixed Hardwood		118	Cords		
	<i>Ironwood</i>		2	<i>Cords</i>		
	<i>Paper Birch</i>		1	<i>Cords</i>		
	<i>Red Maple</i>		30	<i>Cords</i>		
	<i>Sugar Maple</i>		85	<i>Cords</i>		
	Mixed Spruce		1	Cords		

DESCRIPTION OF TIMBER BY PAYMENT UNIT (PU), CON'T

PU	MARKET GROUP	PRODUCT	QUANTITY	UNIT	ACRES	ADVERTISE PRICE
13 con't	<i>Black Spruce</i>	<i>Pulpwood</i>	1	<i>Cords</i>		
14	Paper Birch	Sawtimber	0.4	MBF	14.0	\$3,626.30
	Red Maple		0.1	MBF		
	Sugar Maple		5.8	MBF		
	Balsam Fir	Pulpwood	19	Cords		
	Mixed Aspen		6	Cords		
	<i>B. T. Aspen</i>		2	<i>Cords</i>		
	<i>Quaking Aspen</i>		4	<i>Cords</i>		
	Mixed Hardwood		114	Cords		
	<i>Ironwood</i>		2	<i>Cords</i>		
	<i>Paper Birch</i>		1	<i>Cords</i>		
	<i>Red Maple</i>		29	<i>Cords</i>		
	<i>Sugar Maple</i>		82	<i>Cords</i>		
	Mixed Spruce		1	Cords		
	<i>Black Spruce</i>		1	<i>Cords</i>		
TOTAL:			101.2	MBF		
TOTAL:			5,354	Cords		

Sale Specific Conditions & Requirements

Sale Name: West Gwinn Wood

Sale Number: 32-008-23 Seq#: 1

1 - Sale Area

1.2 - Boundaries

1.2.1 - Painted boundaries (9/19)

The sale boundary and Payment Unit boundaries are marked and identified by blue, red, and yellow paint. Exterior sale boundary lines against private are marked with blue paint. Exterior sale boundary lines against state are marked with red paint. Interior Payment Unit boundaries are marked with yellow paint. The painted boundary line trees are not Included Timber and are to be protected unless marked with orange paint. Yellow painted trees designating an interior Payment Unit boundary are only to be cut when all surrounding Payment Units have been paid.

2 - Timber Specifications

2.1 - Included Timber

2.1.1 - Clearcut unit(s) with unmerchantable trees (6/14)

Within Payment Unit(s) 1 and 4-6, cut all trees that are two (2) inches or more at DBH.

Within Payment Unit(s) 2 and 3, cut all trees that are two (2) inches or more at DBH, do not cut oak.

2.1.3 - Cut tree marked unit(s) (12/08)

Within Payment Unit(s) 9-14, all trees are designated for cutting when marked with orange paint above and below stump height, regardless of merchantability. In addition, cut all merchantable spruce, fir, and aspen.

2.1.7 - Leave tree marked unit(s) (6/14)

Within Payment Unit(s) 7 and 8, cut all trees that are two (2) inches or more at DBH, do not cut cedar, hemlock, oak, yellow birch, and trees marked with green paint above and below stump height.

2.2 - Utilization

2.2.3 - Stump heights (4/07)

Stump heights within Payment Units 1-6, shall not exceed 12 inches for trees greater than 10 inches DBH and 4 inches for trees smaller than 10 inches DBH. This is in order to facilitate planting operations.

2.2.4 - Skidding length (2/14)

Skidding of unlimbed tops or lengths over 17 feet within Payment Units 7-14 is not permissible unless approved by the Unit Manager or his/her representative.

3 - Payments

3.4 - Damaged Timber

3.4.1 - Damaged timber (7/16)

General Condition and Requirement 3.4 Damaged Timber, defines liquidated damages for undesignated live merchantable trees which are cut or injured. In addition, extreme care should be taken to avoid damage to tree seedlings and saplings within Payment Units 9-14.

No damage is acceptable to undesignated live merchantable trees. Within the sale area, if more than 5% of trees (> 4.5" DBH) within a specified area of the sale are damaged, liquidated damages will be assessed for all trees damaged. Rates will be in accordance with General Condition and Requirement 3.4 Damaged Timber.

4 - Transportation

4.1 - Construction

4.1.3 - Slash and earthen piles (8/04)

Piles or windrows of earth along roads and landings that have been widened or constructed shall be leveled. Slash from road maintenance or construction, including stumps, shall be dispersed throughout the sale.

4.1.4 - Timber removed for construction (3/23)

Trees cut or damaged in the process of pre-approved road, landing or skid trail construction will be decked in an area separate from other Designated Timber and not removed until measured by the sale administrator. Payment will be made at contract prices or average prices, if not on the contract.

4.1.6 - Road construction (1/09)

Construction of new roads or improvements of existing roads shall be done in such a way as to minimize the environmental and visual impacts. Merchantable trees shall be cut and utilized unless otherwise directed. Non-merchantable trees shall be severed and laid flat on the ground. Slash shall be scattered, and not left in windrows and kept a minimum of 10 feet back from the road edge. Stumps shall be set upright, not left on edge, and be moved at least 10 feet away from the road edge. Disturbed soil shall be feathered into the woods and not left in berms or windrows.

4.1.7 - Road closure (10/11)

All new roads built into the sale must be blocked to vehicle traffic upon completion of the sale. Overgrown roads that are reopened shall be considered new roads. In general, this will require constructing a four (4') foot high berm of stumps and logs covered with earth. Contact the sale administrator for specific details of design and placement.

4.2 - Maintenance

4.2.2 - Fill material (4/07)

To maintain roads, fill material may be needed in areas where "holes" exist or may be expected to develop. This fill material should be placed before trucking begins. Depending on the time of year, multiple areas may require fill material for access across the sale area. Contact the sale administrator regarding the availability of onsite sand or gravel from adjacent State-owned lands.

4.2.4 - Grading (10/16)

For completion of the sale, state forest roads must be graded. In general, this will require a road grader or bull dozer to shape up the roads after forest products have been hauled off site. This includes cleaning of drainage areas, grading, crowning and filling with gravel, if necessary. The grading equipment to be used must be approved by the Unit Manager or his/her representative.

5 - Operations

5.1 - Notification

5.1.1 - Pre-sale conference (10/16)

A pre-sale conference between the Purchaser and sale administrator is required prior to beginning any operations. The Unit Manager or his/her representative must be contacted at least 3 business days in advance to schedule the conference.

5.2 - Conduct of Operations

5.2.1 - Slash

5.2.1.11 - Slash for reforestation (3/21)

To facilitate reforestation, Payment Units 1-6 shall be left with slash evenly distributed. Bunched tops within the cutting area shall be broken up and scattered. Stumps shall be cut low to the ground. Processing sites shall not be left with a compacted layer of slash; tops from these sites shall be hauled back into the cut area and scattered.

5.2.1.12 - Slash for prescribed burning (1/05)

To facilitate prescribed burning, slash shall be moved at least 10 feet inside the sale boundary within Payment Units 2-6. Slash cannot be piled or placed near residual trees.

5.2.2 - Hazard Trees/Snags

5.2.2.1 - Den trees (10/16)

Obvious hollow and/or den trees shall be protected and left standing unless they are a safety hazard.

5.2.3 - Operating Restrictions

5.2.3.3 - Bark slippage restriction (3/09)

Within Payment Unit(s) 9-14, unless changed by written agreement, cutting and skidding are not permitted during the

period of April 15 to July 15. This restriction is because of bark slippage.

5.2.32 - Decking/landing restoration (9/13)

All decking and landing areas must have the surface area restored to a condition equal to or better than before. This is to ensure the proper regeneration of the stand. Wood debris, chips and "cookies" from trimmings must be removed or scattered away from landing and loading areas and may not be windrowed on the edge.

5.2.37 - No decking areas (12/08)

No decking is allowed within 50 feet of County Road 557, Knudsen Road, Serenity Drive, or Highway M-35.

5.2.38 - No decking against live trees (2/04)

Cut products may not be decked against unmarked or designated leave trees.

5.4 - Soil Protection

5.4.1 - Rutting restriction, general (7/16)

Operations are to cease immediately if equipment and weather conditions result in rutting of roads and/or skid trails which is 12 inches or greater in depth and 50 feet in length. The Unit Manager or his/her representative may restrict hauling and/or skidding if ruts exceed the specified depth. With the Unit Manager or his/her representative's approval, the Purchaser may return to the area when the risk of rutting has decreased.

5.4.2 - Skid trails (2/04)

Skid trails up and down slopes should be avoided. If however this is unavoidable, these trails will be left in a non-erodible condition using water bars, logs, and slash. Placing of slash on these skid trails while logging is ongoing may alleviate need for any further action. At the direction of the sale administrator, seed, fertilizer, and mulch may also be required.

5.8 - Protection of Endangered Species

5.8.5 - Protection of raptor nests (3/13)

All trees with raptor nests will be protected if found during harvesting operations. Notification will be made to the Unit Manager or his/her representative who will notify the Wildlife Biologist so an on-site evaluation and recommendation can be made, if necessary.

6 - Safety and Fire Prevention

6.2 - Signing

6.2.1 - Road posting (10/20)

The Purchaser is responsible for posting and maintaining caution signs on all active sale roads including County Road 557, Knudsen Road, Serenity Drive, Highway M-35, and any woods roads used, from both directions, prior to beginning operations. The road must be posted at appropriate distances from the sale area to warn of logging activity and truck traffic. Signs must be removed when harvest operations are suspended or completed. The Purchaser will provide these signs.

7 - Other Conditions

7.3 - Contract Modifications

7.3.3 - Modification for reforestation (8/05)

When contractual work of Purchaser has been accepted for any Payment Unit identified on Sale Area Map, Payment Unit will be eliminated from the Sale Area on written notice so that reforestation operations can begin.



TIMBER SALE MAP

This information provided by authority of Part 525, 1994 PA 451, as amended.

Sale Number

32-008-23

Date

10/12/2023

Forest Management Unit

Gwinn Mng Unit

County

Marquette

Mapped By: Brolin

Cruised By: Brolin, Gould, Holodnick

Scale

1:31,680

Page

1

Of

1

Township
45N

Range
25/26W

Section(s) and
Subdivision(s)

Sec. 13 NE,E1/2SE; Sec. 18 SWNW,NWSW,S1/2SW; Sec. 30 NENW,S1/2NW,NWNE;

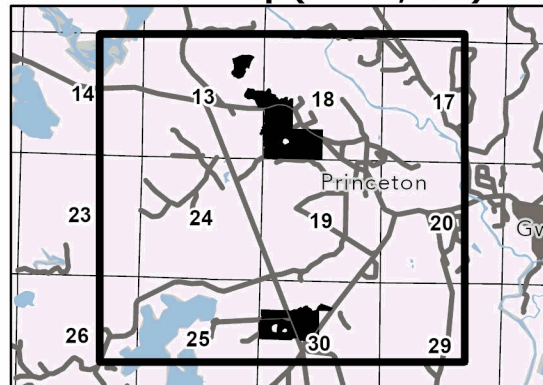
Cover Type

A = Aspen	J = Jack Pine	O = Oak	U = Upland Brush
B = Paper Birch	K = Rock	P = Lowland Poplar	UM = Upland Mix Forest
C = Cedar	L = Lowland Brush	Q = Mixed Swamp Conifer	V = Bog or Marsh
D = Treed Bog	LM = Lowland Mix Forest	R = Red Pine	W = White Pine
E = Swamp Hardwoods	M = Maple, Beech, Birch	S = Black Spruce	X = Non Stocked
F = Spruce/Fir	MC = Mixed Conifer	T = Tamarack	Y = Sand
G = Grass	MD = Mixed Deciduous	Z = Water	
H = Hemlock	N = Marsh		

Density

0 = Non Stocked	5 = Pole Timber Medium
1 = Seedling Sapling Poor	6 = Pole Timber Well
2 = Seedling Sapling Medium	7 = Saw Timber Poor
3 = Seedling Sapling Well	8 = Saw Timber Medium
4 = Pole Timber Poor	9 = Saw Timber Well

Locator Map (1:100,000)

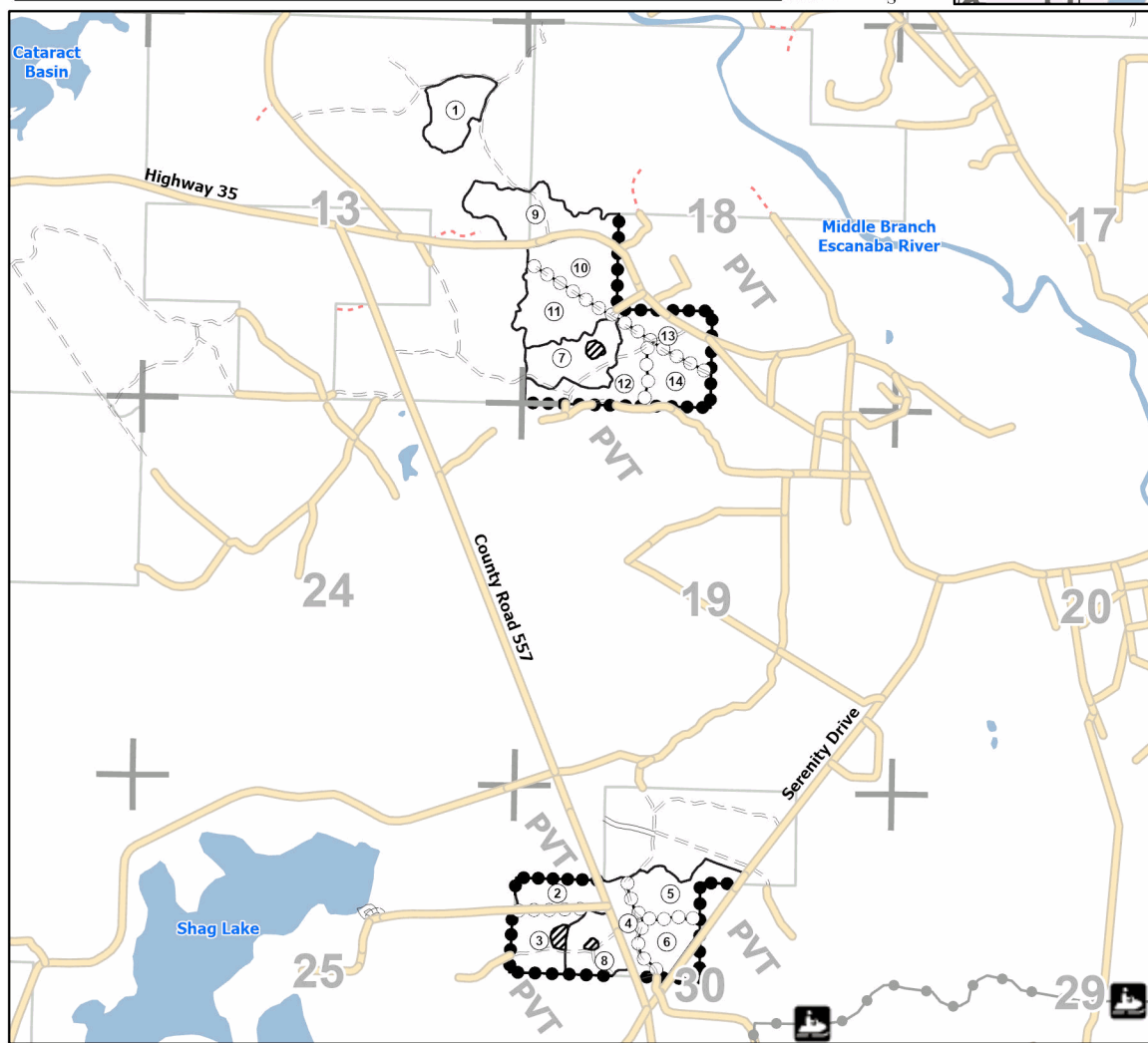
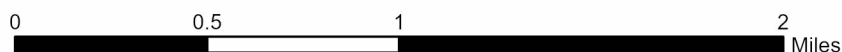


PU #	Acres	PU #	Acres	PU #	Acres
1	15.5	6	13.4	11	19.6
2	10.3	7	18.1	12	18.3
3	14.9	8	13.3	13	14.7
4	8.7	9	24.3	14	14
5	16.9	10	19.3		

West Gwinn Wood

Compartments 30/32

221.2 Acres



Legend

- Against State (Red)
- Payment Unit (Yellow)
- Private Line (Blue)
- Recreational Trail
- Retention Areas
- Primary Forest Road
- Secondary Forest Road
- Forest Access Route
- Administrative Access Only
- Non-DNR Road
- Lakes and Rivers
- MIRIS Section Corner

Use QR Code to open Map in App



TIMBER SALE INFORMATION

Fraidy Frog Aspen and Spruce (32-009-23)

T45N, R28W, SEC. 20; T45N, R28W, SEC. 21; T45N, R28W, SEC. 28; T45N, R28W, SEC. 29.
Marquette County (Advertised Price \$54,314.55)

A timber sale contract for this lump sum, sealed bid timber sale will be awarded to the responsible bidder offering the highest sealed bid price. All units of volume listed below were estimated using the Inventory Manager computer program and the new Michigan taper model. Bids must be at or above the following advertised price for each product and species:

<u>PRODUCTS & SPECIES</u>	<u>ESTIMATED UNITS*</u>	<u>ADVERTISED PRICE</u>
Pulpwood		
Balsam Fir	51 Cords	\$ 15.45 / Cord
Mixed Aspen	888 Cords	\$ 27.95 / Cord
Mixed Hardwood	47 Cords	\$ 18.35 / Cord
Mixed Spruce	531 Cords	\$ 23.75 / Cord
N. White Cedar	210 Cords	\$ 10.65 / Cord
Paper Birch	75 Cords	\$ 21.10 / Cord
Red Pine	10 Cords	\$ 65.65 / Cord
Tamarack	361 Cords	\$ 29.80 / Cord

* The total volume is statistically estimated within plus (+) or minus (-) 15.82 percent. There are an estimated 2, 117 cords on this timber sale, plus or minus 335 cords at the 95% confidence level. The estimated units are final and not subject to adjustment. Prospective bidders are urged to examine this timber and to make their own estimates of quantity and quality.

BOND AND PAYMENT SCHEDULE:

1. A bond in the amount of \$2,716.00 to insure faithful performance of the conditions of the contract will be deposited by the successful bidder within 21 days of the sale award.
2. Cutting in any sale or unit without the required advance payment would be considered a trespass.
3. Total payment must be paid in advance or according to the following schedule :
 - (a) Ten percent (10%) of the sale value must be paid within 21 days of the sale award.
 - (b) The 10% down payment will be credited towards the first unit cut.
 - (c) Payment for each of the following units must be made before cutting begins in that unit:

PAYMENT UNIT NUMBER	PERCENT OF TOTAL SALE VALUE
01	38.5%
02	3.0%
03	10.1%
04	17.9%
05	25.4%
06	5.1%
4. If no cutting takes place, the 10% down payment will not be refunded.
5. Operations on the contract issued will terminate on 06/30/2027.

SALE STATISTICS

Volumes were calculated in cubic feet using the Michigan taper model. Cubic foot volume includes all wood inside bark for the product indicated. For display purposes, cubic feet were converted to cords and MBF using a simple conversion factor, e.g. 79 cubic feet per cord and 185 cubic feet per MBF. The cubic foot volumes are precise; the cords and MBF volumes are not. Cubic foot volume cannot be directly converted to cords or boards with precision.

SALE VOLUMES

The total estimated sale volume may not equal the sum of the species/products due to the nature of statistical calculations associated with double sampling methodology.

VOLUME			STATISTICAL RANGE IN CORDS	
TOTAL CUBIC FEET	TOTAL CORDS	PERCENT ERROR	MINIMUM	MAXIMUM
167,268	2,117	15.82%	1,782	2,452

VDU VOLUMES

A VDU is a Volume Determination Unit. Volumes and their associated statistics are calculated at the VDU level and summarized to the sale level. There is often a one to one relationship between a VDU and a Payment Unit, but not always, depending on the cruise design. Refer to the VDU TO PAYMENT UNIT table.

VDU	VOLUME		PERCENT ERROR	RANGE IN CORDS	
	TOTAL CUBIC FEET	TOTAL CORDS		MINIMUM	MAXIMUM
1	72,386	916	23.86%	698	1,135
15	19,935	252	23.85%	192	313
17	5,909	75	67.67%	24	125
21	61,044	773	19.03%	626	920
54	7,995	101	30.42%	70	132
TOTAL:	167,268	2,117		1,610	2,625

VDU TO PAYMENT UNIT

When a VDU is associated with more than one Payment Unit (PU), the VDU volumes are assigned to the PU based on acres of the VDU within the PU.

VDU	VDU ACRES	PU	PU ACRES
1	43.0	1	43.0
15	16.5	3	16.5
17	8.4	2	8.4
21	20.6	4	8.5
		5	12.1
54	11.2	6	11.2
TOTAL:	99.7		99.7

DESCRIPTION OF TIMBER BY PAYMENT UNIT (PU)

PU	MARKET GROUP	PRODUCT	QUANTITY	UNIT	ACRES	ADVERTISE PRICE
1	Balsam Fir	Pulpwood	6	Cords	43.0	\$20,867.60
	Mixed Aspen		18	Cords		
	<i>Quaking Aspen</i>		18	<i>Cords</i>		
	Mixed Hardwood		13	Cords		
	<i>Red Maple</i>		13	<i>Cords</i>		
	Mixed Spruce		339	Cords		
	<i>Black Spruce</i>		339	<i>Cords</i>		
	N. White Cedar		210	Cords		
	Red Pine		10	Cords		
	Tamarack		305	Cords		
2	Balsam Fir	Pulpwood	15	Cords	8.4	\$1,639.95
	Mixed Aspen		32	Cords		
	<i>Quaking Aspen</i>		32	<i>Cords</i>		
	Mixed Hardwood		28	Cords		
	<i>Red Maple</i>		11	<i>Cords</i>		
	<i>Sugar Maple</i>		17	<i>Cords</i>		
3	Mixed Aspen	Pulpwood	6	Cords	16.5	\$5,512.25
	<i>Quaking Aspen</i>		6	<i>Cords</i>		
	Mixed Spruce		115	Cords		
	<i>Black Spruce</i>		115	<i>Cords</i>		
	Paper Birch		49	Cords		
	Tamarack		53	Cords		
4	Balsam Fir	Pulpwood	12	Cords	8.5	\$9,710.05
	Mixed Aspen		327	Cords		
	<i>Quaking Aspen</i>		327	<i>Cords</i>		
	Mixed Hardwood		2	Cords		
	<i>Red Maple</i>		2	<i>Cords</i>		
	Mixed Spruce		12	Cords		
	<i>White Spruce</i>		12	<i>Cords</i>		
	Paper Birch		3	Cords		
5	Balsam Fir	Pulpwood	17	Cords	12.1	\$13,788.45
	Mixed Aspen		466	Cords		
	<i>Quaking Aspen</i>		466	<i>Cords</i>		
	Mixed Hardwood		2	Cords		
	<i>Red Maple</i>		2	<i>Cords</i>		
	Mixed Spruce		16	Cords		
	<i>White Spruce</i>		16	<i>Cords</i>		
	Paper Birch		4	Cords		
6	Balsam Fir	Pulpwood	1	Cords	11.2	\$2,796.25
	Mixed Aspen		39	Cords		
	<i>Quaking Aspen</i>		39	<i>Cords</i>		
	Mixed Hardwood		2	Cords		
	<i>Red Maple</i>		2	<i>Cords</i>		
	Mixed Spruce		49	Cords		
	<i>Black Spruce</i>		49	<i>Cords</i>		
	Paper Birch		19	Cords		
	Tamarack		3	Cords		
	TOTAL:			2,173		

Sale Specific Conditions & Requirements

Sale Name: Fraidy Frog Aspen and Spruce

Sale Number: 32-009-23 Seq#: 1

1 - Sale Area

1.2 - Boundaries

1.2.1 - Painted boundaries (9/19)

The sale boundary and Payment Unit boundaries are marked and identified by red and yellow paint. Exterior sale boundary lines against state are marked with red paint. Payment unit lines are marked in yellow paint. The painted boundary line trees are not Included Timber and are to be protected. Yellow painted trees designating an interior Payment Unit boundary are only to be cut when all surrounding Payment Units have been paid.

2 - Timber Specifications

2.1 - Included Timber

2.1.1 - Clearcut unit(s) with unmerchantable trees (6/14)

Within Payment Unit(s) 2, 4, 5, & 6, cut all trees that are two (2) inches or more at DBH, except do not cut cedar, hemlock, oak, red pine or white pine. In addition, within Payment Units 1 & 3, cut all trees that are two (2) inches or more at DBH, except in Payment Unit 1 do not cut paper birch and in Payment Unit 3 do not cut cedar, white pine or red pine.

3 - Payments

3.4 - Damaged Timber

3.4.1 - Damaged timber (7/16)

General Condition and Requirement 3.4 Damaged Timber, defines liquidated damages for undesignated live merchantable trees which are cut or injured. In addition, extreme care should be taken to avoid damage to tree seedlings and saplings. No damage is acceptable to undesignated live merchantable trees. Within the Sale Area, if more than 5 % of trees (> 4.5" DBH) within a specified area of the sale are damaged, liquidated damages will be assessed for all trees damaged. Rates will be in accordance with General Condition and Requirement 3.4 Damaged Timber.

4 - Transportation

4.1 - Construction

4.1.3 - Slash and earthen piles (8/04)

Piles or windrows of earth along roads and landings that have been widened or constructed shall be leveled. Slash from road maintenance or construction, including stumps, shall be dispersed throughout the sale.

4.1.4 - Timber removed for construction (3/23)

Trees cut or damaged in the process of pre-approved road, landing or skid trail construction will be decked in an area separate from other Designated Timber and not removed until measured by the sale administrator. Payment will be made at contract prices or average prices, if not on the contract.

4.1.6 - Road construction (1/09)

Construction of new roads or improvements of existing roads shall be done in such a way as to minimize the environmental and visual impacts. Merchantable trees shall be cut and utilized unless otherwise directed. Non-merchantable trees shall be severed and laid flat on the ground. Slash shall be scattered, and not left in windrows and kept a minimum of 10 feet back from the road edge. Stumps shall be set upright, not left on edge, and be moved at least 10 feet away from the road edge. Disturbed soil shall be feathered into the woods and not left in berms or windrows.

4.1.7 - Road closure (10/11)

All new roads built into the sale must be blocked to vehicle traffic upon completion of the sale. Overgrown roads that are reopened shall be considered new roads. In general, this will require constructing a four (4') foot high berm of stumps and logs covered with earth. Contact the Sale Administrator for specific details of design and placement.

4.1.8 - Road work (1) (8/07)

The following road work is required: 100 cubic yards of gravel must be added to state forest roads. Contact the Sale

Administrator for specifics on where to place the gravel.

4.2 - Maintenance

4.2.2 - Fill material (4/07)

To maintain roads, fill material may be needed in areas where "holes" exist or may be expected to develop. This fill material should be placed before trucking begins. Depending on the time of year, multiple areas may require fill material for access across the Sale Area. Contact the Sale Administrator regarding the availability of onsite sand or gravel from adjacent State-owned lands.

4.2.4 - Grading (10/16)

For completion of the sale, state forest roads must be graded. In general, this will require a road grader or bulldozer to shape up the roads after forest products have been hauled off site. This includes cleaning of drainage areas, grading, crowning and filling with gravel, if necessary. The grading equipment to be used must be approved by the Unit Manager or his/her representative.

5 - Operations

5.1 - Notification

5.1.1 - Pre-sale conference (10/16)

A pre-sale conference between the Purchaser and sale administrator is required prior to beginning any operations to determine landing and road locations. The Unit Manager or his/her representative must be contacted at least 3 days in advance to schedule the conference.

5.2 - Conduct of Operations

5.2.1 - Slash

5.2.1.11 - Slash for reforestation (3/21)

To facilitate reforestation, the Sale Area shall be left with slash evenly distributed. Bunched tops within the cutting area shall be broken up and scattered. Stumps shall be cut low to the ground. Processing sites shall not be left with a compacted layer of slash; tops from these sites shall be hauled back into the cut area and scattered.

5.2.2 - Hazard Trees/Snags

5.2.2.1 - Den trees (10/16)

Obvious hollow and/or den trees shall be protected and left standing unless they are a safety hazard.

5.2.3 - Operating Restrictions

5.2.3.1 - Operating restrictions (9/11)

Within Payment Unit(s) 1, 2, 3 & 6, unless changed by written agreement, cutting, and skidding are limited to the period of 12/15 to 4/1. This restriction is due to wet soil conditions.

5.2.32 - Decking/landing restoration (9/13)

All decking and landing areas must have the surface area restored to a condition equal to or better than before. This is to ensure the proper regeneration of the stand. Wood debris, chips and "cookies" from trimmings must be removed or scattered away from landing and loading areas and may not be windrowed on the edge.

5.2.38 - No decking against live trees (2/04)

Cut products may not be decked against unmarked or designated leave trees.

5.4 - Soil Protection

5.4.1 - Rutting restriction, general (7/16)

Operations are to cease immediately if equipment and weather conditions result in rutting of roads and/or skid trails which is 12 inches or greater in depth and 50 feet in length. The Unit Manager or his/her representative may restrict hauling and/or skidding if ruts exceed the specified depth. With the Unit Manager or his/her representative's approval, the Purchaser may return to the area when the risk of rutting has decreased.

5.8 - Protection of Endangered Species

5.8.5 - Protection of raptor nests (3/13)

All trees with raptor nests will be protected if found during harvesting operations. Notification will be made to the Unit Manager or his/her representative who will notify the Wildlife Biologist so an on-site evaluation and recommendation can be made, if necessary.

6 - Safety and Fire Prevention

6.2 - Signing

6.2.1 - Road posting (10/20)

The Purchaser is responsible for posting and maintaining caution signs on Camp Hope Road and Flat Rock Road prior to beginning operations. The road must be posted at appropriate distances from the Sale Area to warn of logging activity and truck traffic. Signs must be removed when harvest operations are suspended or completed. The Purchaser will provide these signs.

7 - Other Conditions

7.5 - Loss

7.5.1 - Deteriorating timber (7/09)

The sale area has received damage from spruce budworm. The Purchaser should harvest the wood as soon as possible. The Department of Natural Resources is held free of responsibility of any further damage or deterioration due to delay in harvesting.



TIMBER SALE MAP

This information provided by authority of Part 525, 1994 PA 451, as amended.

Sale Number 32-009-23	Date 11/27/2023	
Scale 1:24,000	Page 1	Of 1

Forest Management Unit Gwinn Mgt Unit	County Marquette	Mapped By: Gould
		Cruised By: Gould

Township 45N	Range 28N	Section(s) and NENW,S1/2NW,NE,N1/2SW,SWSW; Sec. 29 SESE; Sec 20 SENE,NESE; SEC. 21 Subdivision(s) S1/2NW,N1/2SW,SESW,SWSE; Sec. 28
------------------------	---------------------	---

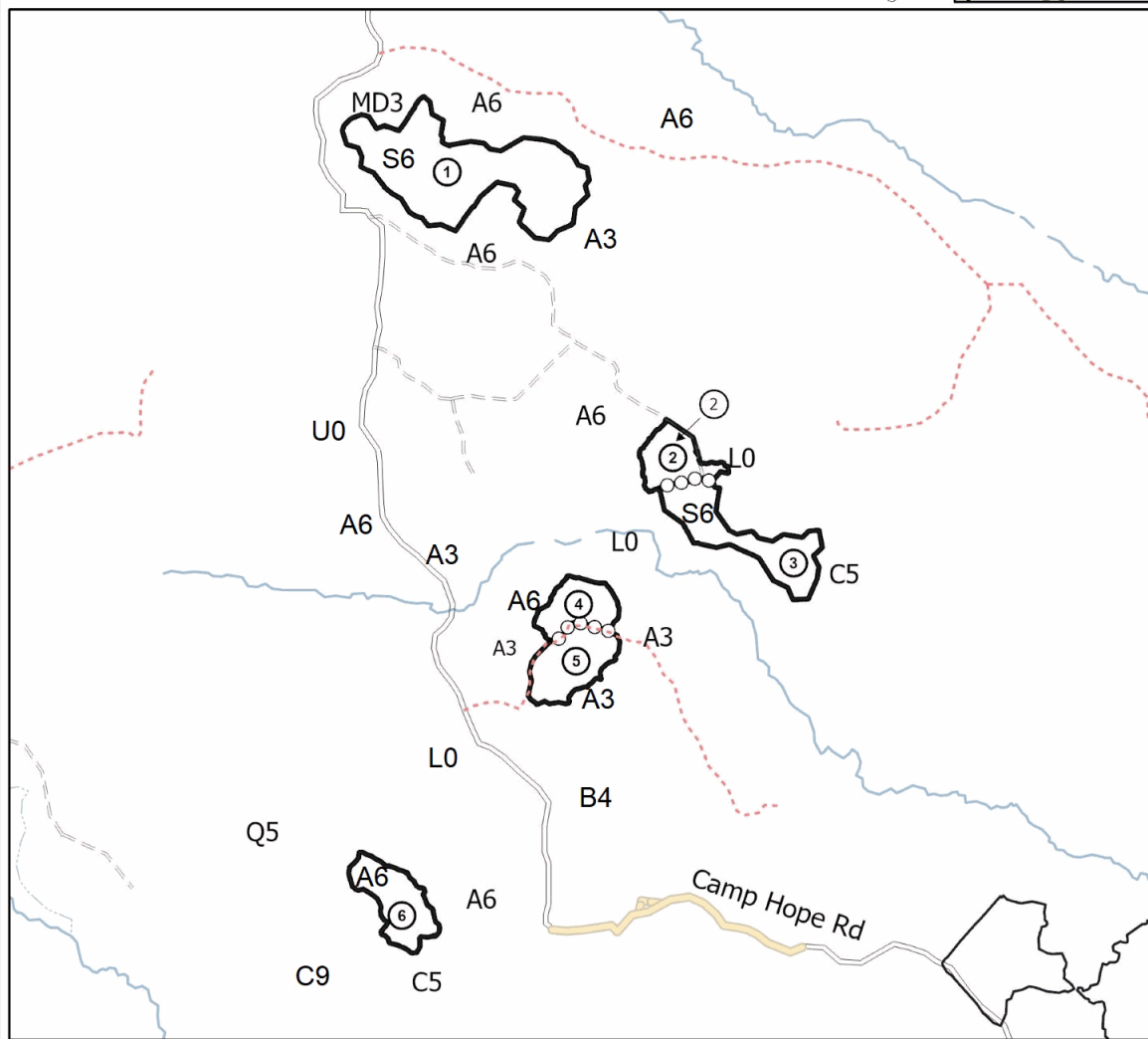
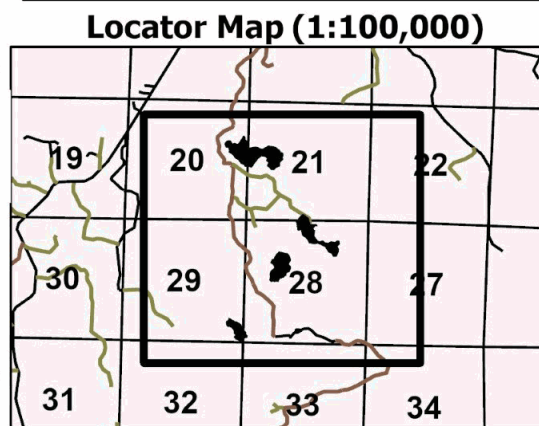
Cover Type			
A = Aspen	J = Jack Pine	O = Oak	U = Upland Brush
B = Paper Birch	K = Rock	P = Lowland Poplar	UM = Upland Mix Forest
C = Cedar	L = Lowland Brush	Q = Mixed Swamp Conifer	V = Bog or Marsh
D = Treed Bog	LM = Lowland Mix Forest	R = Red Pine	W = White Pine
E = Swamp Hardwoods	M = Maple, Beech, Birch	S = Black Spruce	X = Non Stocked
F = Spruce/Fir	MC = Mixed Conifer	T = Tamarack	Y = Sand
G = Grass	MD = Mixed Deciduous	Z = Water	
H = Hemlock	N = Marsh		

Density	
0 = Non Stocked	5 = Pole Timber Medium
1 = Seedling Sapling Poor	6 = Pole Timber Well
2 = Seedling Sapling Medium	7 = Saw Timber Poor
3 = Seedling Sapling Well	8 = Saw Timber Medium
4 = Pole Timber Poor	9 = Saw Timber Well

PU #	Acres	PU #	Acres
1	43	4	8.5
2	8.5	5	12
3	16.5	6	11.2

Fraidy Frog Aspen and Spruce

99.7 Acres



Legend

- Against State (Red)
- Payment Unit (Yellow)
- Intermittent Stream
- Perennial River
- Primary Forest Road
- Secondary Forest Road
- Forest Access Route
- Administrative Access Only
- Non-DNR Road

Use QR Code to open Map in App



West Gwinn Wood (32-008-23)

T45N, R25W, SEC. 18; T45N, R25W, SEC. 30; T45N, R26W, SEC. 13; Marquette

In response to the notice of sale to be held 2:00 p.m. (local time) on January 8, 2024, I am hereby submitting my sealed bid (firm offer) for the following forest products to be cut. Bids for individual species must be at or above the advertised price. All non-responsive bid forms may be rejected.

<u>PRODUCTS & SPECIES</u>	<u>ESTIMATED VOLUME*</u>	<u>ADVERTISED PRICE</u>	<u>BID PRICE/UNIT</u>
Sawtimber			
Basswood	1.9 MBF	\$ 39.00/MBF	\$ _____
Paper Birch	2.9 MBF	\$ 82.00/MBF	\$ _____
Red Maple	8.8 MBF	\$ 132.00/MBF	\$ _____
Red Oak	36.8 MBF	\$ 108.00/MBF	\$ _____
Sugar Maple	50.8 MBF	\$ 173.00/MBF	\$ _____
Pulpwood			
Balsam Fir	179 Cords	\$ 15.45/Cord	\$ _____
Jack Pine	38 Cords	\$ 44.30/Cord	\$ _____
Mixed Aspen	110 Cords	\$ 27.95/Cord	\$ _____
Mixed Hardwood	1,194 Cords	\$ 18.35/Cord	\$ _____
Mixed Spruce	85 Cords	\$ 23.75/Cord	\$ _____
Red Pine	2,014 Cords	\$ 65.65/Cord	\$ _____
Tamarack	6 Cords	\$ 29.80/Cord	\$ _____
White Pine	1,726 Cords	\$ 26.95/Cord	\$ _____

*The volumes are statistically estimated within plus (+) or minus (-) 10.91 percent at 95% confidence level. These estimated volumes are final and not subject to adjustment. Prospective bidders are urged to examine this timber and to make their own estimates of quantity and quality.

I understand that any or all bids may be rejected. All bids must be signed and all bid items must be bid or the bid form may be rejected. I also understand that consideration and awarding a contract will be based upon my past performance and ability to complete the contract based upon equipment and staffing subject to my control.

FEDERAL ID: _____ or SOCIAL SECURITY NUMBER: _____

Company or individual bidding: _____

Company representative's name: _____

Address: _____

City: _____ State: _____ Zip: _____

IF AVAILABLE, PLEASE PLACE THE PERSONALIZED LABEL FROM YOUR PROSPECTUS IN THE ABOVE BOX.

Individual or company representative's signature: _____ Date: _____

Phone number : _____ Email (optional): _____

THE WINNING BIDDER MUST COMPLETE THE VERIFICATION OF WORKER'S DISABILITY COMPENSATION ACT COMPLIANCE (ON REVERSE SIDE IF DOUBLE SIDED) WITHIN 21 DAYS OF SALE AWARD DATE

Fraidy Frog Aspen and Spruce (32-009-23)
T45N, R28W, SEC. 20; T45N, R28W, SEC. 21; T45N, R28W, SEC. 28; T45N,

In response to the notice of sale to be held 2:00 p.m. (local time) on January 8, 2024, I am hereby submitting my sealed bid (firm offer) for the following forest products to be cut. Bids for individual species must be at or above the advertised price. All non-responsive bid forms may be rejected.

<u>PRODUCTS & SPECIES</u>	<u>ESTIMATED VOLUME*</u>	<u>ADVERTISED PRICE</u>	<u>BID PRICE/UNIT</u>
Pulpwood			
Balsam Fir	51 Cords	\$ 15.45/Cord	\$ _____
Mixed Aspen	888 Cords	\$ 27.95/Cord	\$ _____
Mixed Hardwood	47 Cords	\$ 18.35/Cord	\$ _____
Mixed Spruce	531 Cords	\$ 23.75/Cord	\$ _____
N. White Cedar	210 Cords	\$ 10.65/Cord	\$ _____
Paper Birch	75 Cords	\$ 21.10/Cord	\$ _____
Red Pine	10 Cords	\$ 65.65/Cord	\$ _____
Tamarack	361 Cords	\$ 29.80/Cord	\$ _____

*The volumes are statistically estimated within plus (+) or minus (-) 15.82 percent at 95% confidence level. These estimated volumes are final and not subject to adjustment. Prospective bidders are urged to examine this timber and to make their own estimates of quantity and quality.

I understand that any or all bids may be rejected. All bids must be signed and all bid items must be bid or the bid form may be rejected. I also understand that consideration and awarding a contract will be based upon my past performance and ability to complete the contract based upon equipment and staffing subject to my control .

FEDERAL ID: ____ - ____ - ____ or SOCIAL SECURITY NUMBER: ____ - ____ - ____

Company or individual bidding: _____

Company representative's name: _____

Address: _____

City: _____ State: _____ Zip: _____

IF AVAILABLE, PLEASE PLACE THE PERSONALIZED LABEL FROM YOUR PROSPECTUS IN THE ABOVE BOX.

Individual or company representative's signature: _____ Date: _____

Phone number : _____ Email (optional): _____

THE WINNING BIDDER MUST COMPLETE THE VERIFICATION OF WORKER'S DISABILITY COMPENSATION ACT COMPLIANCE (ON REVERSE SIDE IF DOUBLE SIDED) WITHIN 21 DAYS OF SALE AWARD DATE



FOR DEPARTMENT USE ONLY	
Sale Number (XX - XXX - XX - XX)	
Forest Management Unit:	

TIMBER SALE VERIFICATION OF WORKER'S DISABILITY COMPENSATION ACT COMPLIANCE

As required by Act 317, P.A. 1969 (Worker's Compensation) and
Part 5 of Act 451 of 1994, as amended.

VERIFICATION OF WORKER'S DISABILITY COMPENSATION ACT COMPLIANCE

- This verification must be completed and submitted within 21 days of contract award and prior to the issuance of the timber sale contract.
- In addition, if boxes 2B or 2C are checked, then Notice of Exclusion or Certificate of Insurance must be submitted within twenty-one (21) days of the contract award and prior to the issuance of the timber sale contract.
- All information must be typed or printed except for written signatures.

Please Check Appropriate Categories:

1. My business is organized as (you **must** check one of the boxes below):
 - A. Sole Proprietorship (individual)
 - B. Partnership
 - C. Corporation
2. You **must** check one of the boxes below:
 - A. I certify my business is a sole proprietorship and it has no employees but the sole proprietor. I am not subject to the Worker's Compensation Laws.
 - B. I certify my business has satisfied its obligation to the Worker's Compensation Act through the use of an approved Notice of Exclusion (BWC-337, Rev. 5/96). I will provide a copy of the Notice of Exclusion within 21 days of the contract award. (For questions or a copy of the BWC-337, please call the Worker's Compensation Bureau at 517-322-1195).
 - C. I certify my business has a Worker's Compensation Policy. I will provide an original Certificate of Insurance within twenty-one (21) days of the contract award.
3. If you have checked item 2(A) or 2(B), you **must** indicate the number of **both** full-time and part-time employees, other than yourself, including family members and active partners (if none, you must enter "0").

_____ Full-time Employees

_____ Part-time Employees

Name of Business		Federal ID (or) Social Security No.	
Address		Telephone ()	
City	State	ZIP	

I hereby certify that the above information is true and correct. I agree to notify the Michigan DNR of any changes that occur in factors affecting my coverage during any of my present and future operations.

Signature of Owner or Authorized Representative

Title

Date

Please complete the "SEALED BID" information on the next page