



**DEPARTMENT OF NATURAL RESOURCES
STATE OF MICHIGAN
TIMBER SALE PROSPECTUS #7367**

SCHEDULED SALE DATE AND TIME: 9:00 a.m. (local time) on January 9, 2024.

LOCATION: ROSCOMMON MGMT UNIT, PO BOX 218, ROSCOMMON, MI 48653.

PROSPECTUS NOTE: The bidder is advised to inspect the sale area and review the location, estimated volumes, operating costs and contract terms of proposed sales. Please be aware that some landowners may request 60 days or more notice for access across their land.

Notice is hereby given that bids will be received by the Unit Manager, ROSCOMMON MANAGEMENT UNIT, for certain timber on the following described lands:

Natural 20 Mix (71-002-24) / T23N, R01E, SEC. 31, E1/2NW,NE,SESW,SWSE.

T23N, R01E, SEC. 32, SWNW,SW.

Ogemaw County, Advertised Price \$108,437.45, 117.4 Acres, White Pine, Hardwood.

SALE NOTE: Sale consists of an upland mix clearcut, an aspen clearcut, two units of oak thinnings, and an oak shelterwood. Residual trees and regeneration are protected under specs 3.4.1 & 5.2.3. 11. Oak wilt restrictions have also been applied through spec 5.2.3.5.

A recreation site such as a trail, pathway, or campground is within the sale area or the vicinity. Certain restrictions/specifications may be applicable including time restrictions.

Tag Team Mix (71-003-24) / T22N, R04W, SEC. 30, SW,NWSE,S1/2SE.

T22N, R04W, SEC. 31, NWNW.

Roscommon County, Advertised Price \$70,136.70, 100.1 Acres, Hardwood, Red Oak.

SALE NOTE: Sale consists of an oak thinning, an oak seed tree, a mixed deciduous shelterwood, and a red pine shelterwood. Sale area consists of rolling terrain and some stepper ridges. Oak wilt restrictions have also been applied through spec 5.2.3.5.

Zig Zag Aspen Pine (71-013-23) / T22N, R02W, SEC. 17, SWSW.

T22N, R02W, SEC. 19, NENE,SW.

T22N, R02W, SEC. 20, NW,W1/2NE,NESW,SE.

T22N, R02W, SEC. 31, N1/2NE,SWNE.

Roscommon County, Advertised Price \$318,196.35, 157.4 Acres, Aspen, Red Pine.

SALE NOTE: Sale consists of a mix of aspen, red pine & mixed pine clearcuts. Chipping is required in Payment Units 2 & 5. Oak wilt restrictions are in place for Units 3 & 4.

A recreation site such as a trail, pathway, or campground is within the sale area or the vicinity. Certain restrictions/specifications may be applicable including time restrictions.

South 18 Aspen (71-014-23) / T21N, R03W, SEC. 25, SENE,E1/2SE.

T21N, R03W, SEC. 36, E1/2NW,NE,NWSE.

Roscommon County, Advertised Price \$220,825.85, 124.9 Acres, Aspen, Hardwood.

BID INSTRUCTIONS (VER. 10/10/2022):

1. Scheduled Bid Location, Date, and Time (2/11)

Bids must be received by the Unit Manager, ROSCOMMON OFFICE, PO BOX 218, ROSCOMMON, MI 48653, no later than 9:00 a.m. (local time) on January 9, 2024. For further information concerning this sale, contact Brian Martell at 989-889-6314 extension .

2. Bidder's Qualifications (10/22)

If all or part of a timber sale was prepared by a private contractor, the contractor and that contractor's company are not permitted to bid on the timber sale. A person must be 18 years of age or older to purchase timber. Permanent employees of the Department of Natural Resources or members of their immediate household may not bid. Former employees, in the permanent or seasonal class, may not bid until 3 months after the last day of active duty. Bids will not be accepted from individuals or companies appearing on the DNR/FRD No-Bid List. This list contains the names of purchasers who previously failed to execute a contract within 21-days or who have a history of poor performance.

3. Preparation of Sealed Bids (5/16)

Bid Forms may be completed online thru Michigan DNR Timber Sale Online Bidding (OLB) at www.michigan.gov/timberbidding or by completing the hardcopy Bid Form found in the Timber Sale Prospectus . Hardcopy Bid Forms shall be manually signed in ink. Registration in OLB is considered your 'signature' for all bids submitted thru that system. Bid prices must be entered for each species and product in the Bid Price column for all material subject to bidding and all fill-in blanks must be completed. If erasures or other changes appear on the hardcopy Bid Form, each erasure or change must be initialed by the person signing the bid.

4. Submission of Sealed Bids (5/16)

Bid forms may be obtained from the Unit Manager or thru OLB. Bids may be submitted hardcopy or thru OLB. All hardcopy bids must be submitted on the bid form and in an envelope clearly identified as described in this section. NOTE: Only one bid form per bid envelope. Sealed bids must be submitted to the Unit office designated in the prospectus and must be submitted at or prior to the time established in the prospectus. The envelope should show on the outside (a) the sale name or number and (b) the date and time of bid opening, as shown in the prospectus. Bids received after the time specified in the sale prospectus are late bids and will be rejected.

It is possible for a bidder to submit multiple bids on a single sale. For example, a bid may be submitted hardcopy and a bid may be submitted thru OLB. Or, two bidders from the same company could both submit bids on the same sale. If this were to happen, the State would accept all bids received and award the contract accordingly. All bidding and contractual requirements would apply to all bids received.

5. Public Opening of Sealed Bids (7/16)

If conditions permit, the sealed bids will be publicly opened and posted at the time and place set in the prospectus.

If a bidder, present at a bid opening, has submitted bids on more than one sale, that bidder may withdraw their unopened bid envelopes or announce the withdrawal of their online bid after being declared the successful bidder on one sale.

6. Award of Contract (1/11)

Award of the contract will be made to the Bidder whose bid, conforming to the prospectus, is most advantageous to the State of Michigan on the basis of total value at rates bid for the estimated quantities. The State reserves the right to reject any bid or waive any minor irregularity in bids received. A written award mailed (or otherwise furnished) to the successful Bidder shall be deemed to result in a binding contract without further action by either party.

7. Down Payment (1/11)

The Bidder to whom award is made must make a down payment within 21 days of the sale award. The amount of the down payment will be calculated as shown in the Bond and Payment Schedule of this prospectus. Only cash may be used to meet this requirement.

8. Performance Security (1/11)

As guarantee of faithful performance, a cash bond, certificate of deposit, surety bond or irrevocable letter of credit (LOC) is required within 21 days of the sale award. The amount of the performance security is shown in the Bond and

Payment Schedule of this prospectus. If an LOC or surety is used, the coverage must extend for at least 6 months beyond the contract expiration.

9. Worker's Compensation (10/22)

Purchaser shall obtain worker's compensation insurance to cover claims under Michigan's Worker's Disability Compensation Act of 1969 or similar employee benefit act of any other state applicable to an employee. Verification of Worker's Disability Compensation Act Compliance must be completed and submitted within 21 days of contract award and prior to the issuance of the timber sale contract. In addition, if applicable, Notice of Exclusion or Certificate of Insurance must also be submitted.

10. Timber Sale Contract (10/22)

Additional conditions and requirements common to all timber sales are listed on the timber sale contract (R4031) and are available on line at www.michigan.gov/timber. Contact the Unit Manager for additional information or a sample contract. Within 21 days of the date of the award letter, the bidder must sign the contract and provide the required down payment, performance security, and verification of worker's disability compensation. The down payment and performance security shall be in accordance with the provisions of the timber sale contract, in the sums stated in this prospectus. If these actions are not taken, then the Bidder, the Bidder's corporation, and the corporation's principals may not be permitted to bid on State timber sales for a period of 3 months after the first offense, 6 months after the second offense, and 1 year after the third offense. An offense will only be counted against the Bidder for 5 years. In addition, the Bidder certifies that if awarded this contract, the Bidder will complete the timber sale contract in accordance with its terms and any modifications thereof including requirements to purchase, cut, and remove the included timber by the expiration date.

Payment Unit values in the State Forest Timber Sale Contract are calculated based on the advertised value of the Payment Unit as a percentage of the total advertised value of the contract. The advertised value of each Payment Unit is given in the Description of Timber by Payment Unit table on the Timber Sale Information page. For example, if the value of Payment Unit 1 is advertised as \$1,500 and the total Timber Sale value is advertised as \$10,000, the contract price for Payment Unit 1 will be 15% of the total bid price ($\$1,500/\$10,000 * 100$).

11. Disclaimer of Estimates and Bidder's Warranty of Inspection (10/22)

Before submitting this bid, the Bidder is advised and cautioned to inspect the sale area, review the requirements of the sale contract, and take other steps as may be reasonably necessary to ascertain the location, estimated volumes, construction estimates, and operating costs of the proposed sale. Failure to do so will not relieve the Bidder from responsibility for completing the contract.

The Bidder warrants that this bid is submitted solely on the basis of the Bidder's examination and inspection of the quality and quantity of the timber offered for sale and the Bidder's opinion of the value thereof and the costs of recovery. No reliance should be placed on the State of Michigan's estimates of timber quality, quantity or costs of recovery. Bidder further acknowledges that the State of Michigan: (i) expressly disclaims any warranty of fitness of timber for any purpose; (ii) offers this timber as is without any warranty of quality (merchantability) or quantity and (iii) expressly disclaims any warranty as to the quantity or quality of timber sold.

12. Certification and Chain-of-Custody (10/22)

Unless otherwise indicated in the contract under section 7 – Other Conditions of the Sale Specific Conditions & Requirements, the area encompassed by this timber sale is certified to the standards of the Forest Stewardship Council (FSC) - Certificate #SCS-FM/COC-00090N and the Sustainable Forestry Initiative (SFI) - Certificate #NSF-SFIS-5Y031-SF5. Forest products from this sale may be delivered to the mill as "FSC 100% and / or SFI certified" as long as the contractor hauling the forest products is chain-of-custody (COC) certified or covered under a COC certificate from the destination mill. The purchaser is responsible for maintaining COC after leaving the sale area.

13. Good Neighbor Authority (GNA) Requirements (10/22)

If the name of this timber sales contains the acronym GNA, it is authorized by the Good Neighbor Authority (GNA) and covered by various agreements between the U.S. Forest Service and the State. The timber sale occurs on federal land and the following conditions apply:

GNA contracts on US Forest Service land will not be awarded to purchasers on the Federal list of excluded parties. The System for Award Management (SAM) will be checked for active excluded parties prior to award of contract. In

addition, the Bidder to whom award is made must complete an Assurance Regarding Felony Conviction or Tax Delinquent Status for Corporate Applicants (AD-3031).

14. Good Neighbor Authority (GNA) Requirements, con't (10/22)

Bidder certifies, by signing this bid form, that to the best of Bidder's knowledge that the following representations are accurate and complete.

- a. That the Bidder and its principals are not presently debarred, suspended, proposed for debarment, declared ineligible, or voluntary excluded from timber sales (covered transactions) by any Federal department or agency.
- b. That the Bidder and its principals have not within a 3-year period preceding this bid been convicted of or had a civil judgment rendered against them for commission of fraud or a criminal offense in connection with obtaining , attempting to obtain, or performing a public (Federal, State, or local) transaction or contract under a public transaction; violation of Federal or State antitrust statutes or commission of embezzlement, theft, forgery, bribery, falsification or destruction of records, making false statements, or receiving stolen property.
- c. That the Bidder and its principals are not presently indicted for or otherwise criminally or civilly charged by a governmental entity (Federal, State, or local) with commission of any of the offenses enumerated in paragraph b of this certification.
- d. That the Bidder and its principals have not within a 3-year period preceding this bid had one or more public transactions (Federal, State, or local) terminated for breach or default of a timber or forest product contract.

Bidders that cannot certify this requirement, in whole or in part, shall submit an explanation with their bid.

Scott Bowen
Director

TIMBER SALE INFORMATION

Natural 20 Mix (71-002-24)

T23N, R01E, SEC. 31; T23N, R01E, SEC. 32.
Ogemaw County (Advertised Price \$108,437.45)

SALE NOTE: Sale consists of an upland mix clearcut, an aspen clearcut, two units of oak thinnings, and an oak shelterwood. Residual trees and regeneration are protected under specs 3.4.1 & 5.2.3. 11. Oak wilt restrictions have also been applied through spec 5.2.3.5.

A recreation site such as a trail, pathway, or campground is within the sale area or the vicinity. Certain restrictions/specifications may be applicable including time restrictions.

A timber sale contract for this lump sum, sealed bid timber sale will be awarded to the responsible bidder offering the highest sealed bid price. All units of volume listed below were estimated using the Inventory Manager computer program and the new Michigan taper model. Bids must be at or above the following advertised price for each product and species:

<u>PRODUCTS & SPECIES</u>	<u>ESTIMATED UNITS*</u>	<u>ADVERTISED PRICE</u>
Sawtimber		
Black/Red (Hybrid) Oak	104.1 MBF	\$ 111.00 / MBF
Jack Pine	8.9 MBF	\$ 43.00 / MBF
Mixed Aspen	133.8 MBF	\$ 91.00 / MBF
Red Maple	6.9 MBF	\$ 76.00 / MBF
Red Oak	6.6 MBF	\$ 148.00 / MBF
Red Pine	83.7 MBF	\$ 134.00 / MBF
White Oak	18.5 MBF	\$ 66.00 / MBF
White Pine	186.8 MBF	\$ 56.00 / MBF
Pulpwood		
Balsam Fir	7 Cords	\$ 30.00 / Cord
Black Cherry	19 Cords	\$ 18.60 / Cord
Jack Pine	174 Cords	\$ 13.50 / Cord
Mixed Aspen	336 Cords	\$ 42.40 / Cord
Mixed Oak	397 Cords	\$ 20.20 / Cord
Red Maple	171 Cords	\$ 18.60 / Cord
Red Oak	20 Cords	\$ 20.20 / Cord
Red Pine	119 Cords	\$ 50.35 / Cord
White Pine	546 Cords	\$ 46.10 / Cord

* The total volume is statistically estimated within plus (+) or minus (-) 20.38 percent. There are an estimated 3,074 cords on this timber sale, plus or minus 627 cords at the 95% confidence level. The estimated units are final and not subject to adjustment. Prospective bidders are urged to examine this timber and to make their own estimates of quantity and quality.

BOND AND PAYMENT SCHEDULE:

1. A bond in the amount of \$5,422.00 to insure faithful performance of the conditions of the contract will be deposited by the successful bidder within 21 days of the sale award.
2. Cutting in any sale or unit without the required advance payment would be considered a trespass.
3. Total payment must be paid in advance or according to the following schedule :
 - (a) Ten percent (10%) of the sale value must be paid within 21 days of the sale award.
 - (b) The 10% down payment will be credited towards the first unit cut.
 - (c) Payment for each of the following units must be made before cutting begins in that unit:

PAYMENT UNIT NUMBER	PERCENT OF TOTAL SALE VALUE
01	14.0%
02	19.3%
03	3.2%
04	45.6%
05	3.5%
06	14.4%
4. If no cutting takes place, the 10% down payment will not be refunded.
5. Operations on the contract issued will terminate on 12/31/2025.

SALE STATISTICS

Volumes were calculated in cubic feet using the Michigan taper model. Cubic foot volume includes all wood inside bark for the product indicated. For display purposes, cubic feet were converted to cords and MBF using a simple conversion factor, e.g. 79 cubic feet per cord and 185 cubic feet per MBF. The cubic foot volumes are precise; the cords and MBF volumes are not. Cubic foot volume cannot be directly converted to cords or boards with precision.

SALE VOLUMES

The total estimated sale volume may not equal the sum of the species/products due to the nature of statistical calculations associated with double sampling methodology.

VOLUME			STATISTICAL RANGE IN CORDS	
TOTAL CUBIC FEET	TOTAL CORDS	PERCENT ERROR	MINIMUM	MAXIMUM
242,813	3,074	20.38%	2,447	3,700

VDU VOLUMES

A VDU is a Volume Determination Unit. Volumes and their associated statistics are calculated at the VDU level and summarized to the sale level. There is often a one to one relationship between a VDU and a Payment Unit, but not always, depending on the cruise design. Refer to the VDU TO PAYMENT UNIT table.

VDU	VOLUME			RANGE IN CORDS	
	TOTAL CUBIC FEET	TOTAL CORDS	PERCENT ERROR	MINIMUM	MAXIMUM
37	87,937	1,113	21.00%	879	1,347
49	33,350	422	22.27%	328	516
51	8,401	106	60.20%	42	170
53	107,276	1,358	25.85%	1,007	1,709
60	5,849	74	83.99%	12	136
TOTAL:	242,813	3,074		2,269	3,879

VDU TO PAYMENT UNIT

When a VDU is associated with more than one Payment Unit (PU), the VDU volumes are assigned to the PU based on acres of the VDU within the PU.

VDU	VDU ACRES	PU	PU ACRES
37	56.8	1	23.8
		2	33.0
49	13.1	6	13.1
51	8.3	3	8.3
53	31.0	4	31.0
60	8.2	5	8.2
TOTAL:	117.4		117.4

DESCRIPTION OF TIMBER BY PAYMENT UNIT (PU)

PU	MARKET GROUP	PRODUCT	QUANTITY	UNIT	ACRES	ADVERTISE PRICE	
1	Black/Red (Hybrid	Sawtimber	23.3	MBF	23.8	\$15,167.75	
	Jack Pine		3.7	MBF			
	Mixed Aspen		0.6	MBF			
	<i>Quaking Aspen</i>		0.6	MBF			
	Red Pine		19.1	MBF			
	White Pine		34.9	MBF			
	Jack Pine		Pulpwood	73			Cords
	Mixed Aspen			2			Cords
	<i>Quaking Aspen</i>			2			Cords
	Mixed Oak			98			Cords
	<i>/Red (Hybrid) Oak</i>			98			Cords
	Red Maple			4			Cords
	Red Pine			39			Cords
	White Pine			60			Cords
2	Black/Red (Hybrid	Sawtimber	32.4	MBF	33.0	\$20,959.90	
	Jack Pine		5.2	MBF			
	Mixed Aspen		0.8	MBF			
	<i>Quaking Aspen</i>		0.8	MBF			
	Red Pine		26.4	MBF			
	White Pine		48.5	MBF			
	Jack Pine		Pulpwood	101			Cords
	Mixed Aspen			2			Cords
	<i>Quaking Aspen</i>			2			Cords
	Mixed Oak			135			Cords
	<i>/Red (Hybrid) Oak</i>			135			Cords
	Red Maple			5			Cords
	Red Pine			54			Cords
	White Pine			83			Cords
3	Black/Red (Hybrid	Sawtimber	8.7	MBF	8.3	\$3,497.05	
	Mixed Aspen		8.5	MBF			
	<i>B. T. Aspen</i>		8.5	MBF			
	Red Maple		0.7	MBF			
	White Oak		1.9	MBF			
	Mixed Aspen		Pulpwood	4			Cords
	<i>B. T. Aspen</i>			4			Cords
	Mixed Oak			33			Cords
	<i>/Red (Hybrid) Oak</i>			25			Cords
	<i>White Oak</i>			8			Cords
	Red Maple			12			Cords
	Red Pine			3			Cords
	White Pine		8	Cords			
4	Mixed Aspen	Sawtimber	121.8	MBF	31.0	\$49,407.70	
	<i>B. T. Aspen</i>		45.0	MBF			
	<i>Quaking Aspen</i>		76.8	MBF			
	Red Maple		3.9	MBF			
	Red Oak		6.6	MBF			
	Red Pine		11.8	MBF			
	White Oak		14.4	MBF			
	White Pine		85.6	MBF			
	Balsam Fir		Pulpwood	7			Cords
	Black Cherry			18			Cords
	Mixed Aspen			327			Cords
	<i>B. T. Aspen</i>			52			Cords
	<i>Balsam Poplar</i>			6			Cords
	<i>Quaking Aspen</i>			269			Cords
	Mixed Oak			22			Cords

DESCRIPTION OF TIMBER BY PAYMENT UNIT (PU), CON'T

PU	MARKET GROUP	PRODUCT	QUANTITY	UNIT	ACRES	ADVERTISE PRICE
4 con't	<i>/Red (Hybrid) Oak</i> <i>White Oak</i> Red Maple Red Oak Red Pine White Pine	<i>Pulpwood</i>	7	<i>Cords</i>		
			15	<i>Cords</i>		
			137	Cords		
			20	Cords		
			6	Cords		
			252	Cords		
			5	Black/Red (Hybrid) Red Pine Black Cherry Mixed Oak <i>/Red (Hybrid) Oak</i> Red Pine		
6	Black/Red (Hybrid) Mixed Aspen <i>B. T. Aspen</i> Red Maple Red Pine White Oak White Pine Mixed Aspen <i>B. T. Aspen</i> Mixed Oak <i>/Red (Hybrid) Oak</i> <i>White Oak</i> Red Maple Red Pine White Pine	Sawtimber Pulpwood	37.1 2.1 2.1 2.3 4.6 2.2 17.8 1 1 104 62 42 13 7 143	MBF MBF <i>MBF</i> MBF MBF MBF MBF Cords <i>Cords</i> Cords <i>Cords</i> <i>Cords</i> Cords Cords Cords	13.1	\$15,572.15
TOTAL:			549.3	MBF		
TOTAL:			1,789	Cords		

Sale Specific Conditions & Requirements

Sale Name: Natural 20 Mix

Sale Number: 71-002-24 Seq#: 1

1 - Sale Area

1.2 - Boundaries

1.2.1 - Painted boundaries (9/19)

The sale boundary and Payment Unit boundaries are marked and identified by blue, red and yellow paint along with a road. Exterior sale boundary lines against private property are marked with blue paint, except for western boundaries of Payment Units 3 & 5, which are unpainted and designated by the unnamed dirt road. Exterior sale boundary lines against state are marked with red paint. Interior Payment Unit boundaries are marked with yellow paint. Retention patches are marked with red paint; no harvesting activities may occur within these areas. The painted boundary line trees are not Included Timber and are to be protected. Yellow painted trees designating an interior Payment Unit boundary are only to be cut when all surrounding Payment Units have been paid.

2 - Timber Specifications

2.1 - Included Timber

2.1.1 - Clearcut unit(s) with unmerchantable trees (6/14)

Within Payment Unit(s) 1, 2, & 4, cut all trees that are two (2) inches or more at DBH, except in Payment Units 1 & 2 do not cut white oak of any size or any white pine that are twenty (20) inches or more at DBH.

2.1.3 - Cut tree marked unit(s) (12/08)

Within Payment Unit(s) 3 & 5, all trees are designated for cutting when marked with orange paint above and below stump height, regardless of merchantability.

2.1.7 - Leave tree marked unit(s) (6/14)

Within Payment Unit(s) 6, all trees, which meet minimum piece specifications in 2.2 Utilization, are designated for cutting, except trees marked with green paint above and below stump height.

2.2 - Utilization

2.2.3 - Stump heights (4/07)

Stump heights within the Sale Area shall not exceed 6 inches for all trees.

3 - Payments

3.3 - Pre-measured Sales

3.3.4 - Dividing payment units (7/14)

Payment Unit(s) may be divided at the request of the Purchaser and upon approval of the Unit Manager. Dividing Payment Units is a contract modification which requires a Timber Sale Contract Amendment.

3.4 - Damaged Timber

3.4.1 - Damaged timber (7/16)

General Condition and Requirement 3.4 Damaged Timber, defines liquidated damages for undesignated live merchantable trees which are cut or injured. In addition, extreme care should be taken to avoid damage to tree seedlings and saplings. Within Payment units 3, 5, & 6, if more than 33% of the tree seedlings or saplings (1/4" to 4.5" DBH) within a specified portion of the Sale Area are damaged, liquidated damages will be assessed at \$500 per acre for all acreage within that specified portion of the sale area that was damaged.

No damage is acceptable to undesignated live merchantable trees. Within the Sale Area, if more than 5 % of trees (> 4.5" DBH) within a specified area of the sale are damaged, liquidated damages will be assessed for all trees damaged. Rates will be in accordance with General Condition and Requirement 3.4 Damaged Timber.

4 - Transportation

4.1 - Construction

4.1.6 - Road construction (1/09)

Construction of new roads or improvements of existing roads shall be done in such a way as to minimize the environmental and visual impacts. Merchantable trees shall be cut and utilized unless otherwise directed. Non-merchantable trees shall be severed and laid flat on the ground. Slash shall be scattered, and not left in windrows and kept a minimum of 10 feet back from the road edge. Stumps shall be set upright, not left on edge, and be moved at least 10 feet away from the road edge. Disturbed soil shall be feathered into the woods and not left in berms or windrows.

4.1.7 - Road closure (10/11)

All new roads built into the sale must be blocked to vehicle traffic upon completion of the sale. Overgrown roads that are reopened shall be considered new roads. In general, this will require constructing a four (4') foot high berm of stumps and logs covered with earth. Stumps and brush must be placed along the remainder of the trail. Berms must also be placed at intervals of not over 50 feet and at all junctions. These roads must be rendered impassable to cars and trucks. All stumps from road building and landing construction must be reserved to block any newly constructed roads upon completion of the sale. These stumps must be scattered along the road system to prohibit vehicular movement. Contact the Sale Administrator for specific details of design and placement.

4.1.11 - Permits (2/12)

The Purchaser will secure any necessary permits that may be required.

4.2 - Maintenance

4.2.5 - Two wheel drive condition (2/04)

All existing trail roads on and adjacent to the sale area must be passable by two-wheel drive traffic for the duration of the sale.

5 - Operations

5.1 - Notification

5.1.1 - Pre-sale conference (10/16)

A pre-sale conference on site between the Purchaser and sale administrator is required prior to beginning any operations to determine landing and road locations. The Unit Manager or his/her representative must be contacted at least 10 days in advance to schedule the conference.

5.1.4 - Post-sale conference (10/16)

A post-sale conference on site between the Purchaser and sale administrator is required 5 days prior to the completion of active logging operations to determine clean-up and repair of landings, road edges, and the fulfillment of other contract specifications.

5.2 - Conduct of Operations

5.2.1 - Slash

5.2.1.8 - Slash height (12/08)

No slash or tree tops may exceed 24 inches in height.

5.2.2 - Hazard Trees/Snags

5.2.2.1 - Den trees (10/16)

Obvious hollow and/or den trees shall be protected and left standing unless they are a safety hazard.

5.2.3 - Operating Restrictions

5.2.3.1 - Operating restrictions (9/11)

Within Payment Unit(s) 4, unless changed by written agreement, cutting, skidding, and hauling are limited to the dry summer or frozen winter conditions. This restriction is to protect the edges of low wet ground that has been excluded within the Payment Unit.

5.2.3.5 - Oak wilt restriction (1/18)

Within Payment Units 3 & 6, unless changed by written agreement, cutting, skidding, hauling within the sale and brushing of access roads to the sale are not permitted during the period of April 15 to July 15. Operations may be allowed if

specific steps are taken to prevent damaging uncut oak during the high risk period. Those steps may include completing all road brushing before April 15th and clearing a tree-length buffer along uncut oak cover before April 15th. This is necessary to reduce the spread of oak wilt. For more information, contact the Unit Manager or his/her representative.

5.2.3.11 - Coppice regeneration protection (4/10)

Timber harvesting in Payment Unit 4 must be completed before significant aspen sprouting occurs in that Payment Unit so as to minimize damage to the new regeneration. Any post harvest operations, such as chipping, must be completed before sprouting of regeneration occurs. Should damages occur to the new regeneration, the damages will be assessed per Specification 3.4.1 - Damaged Timber. If it is anticipated that chipping will be delayed, then tops shall be carried to one central location, preferably the landing. A third-party entity may be brought in to chip the tops/slash, before new sprouting occurs, should the contract holder fail to present in a timely manner arrangements approved by the Unit Manager for protecting the new regeneration. The Unit Manager or his/her representative may also cease such operations if sprouting occurs before the operation is complete and the Payment Unit will be counted as incomplete with liquidated damages assessed accordingly.

5.2.4 - Dead and Down Creation

5.2.4.4 - Dead and down creation, grouse (6/18)

To encourage grouse and other wildlife, in Payment Unit(s) 4, leave one 12" or larger diameter (or largest diameter trees within stand) whole tree or 8 foot log on the ground for every 2 acres, preferably a hardwood species such as oak or maple or if no hardwoods are present, a pine species (white or red). These will be evenly scattered throughout the Payment Unit, preferably at least two chains from any roads, two-tracks, or trails open to vehicles. This can be an unmerchantable piece or a full tree. Each log must be clearly identified by a piece of blue flagging.

5.2.32 - Decking/landing restoration (9/13)

All decking and landing areas must have the surface area restored to a condition equal to or better than before. This is to ensure the proper regeneration of the stand. Wood debris, chips and "cookies" from trimmings must be removed or scattered away from landing and loading areas and may not be windrowed on the edge.

5.2.38 - No decking against live trees (2/04)

Cut products may not be decked against unmarked or designated leave trees.

5.2.39 - ORV trail/route protection (4/18)

There are several ORV trails or routes in and adjacent to the Sale Area that are shown on the Timber Sale Map. Trees with yellow ORV markers shall be cut off above the markers and at least 5 feet above ground. All stumps within 5 feet of the trail must be cut flush with the ground. Maintain a 20-foot-wide slash, debris, and rut free zone daily using the ORV trail or route as the centerline. Do not run equipment down the ORV trail or route. Skidding across the trail or route may only occur in locations approved by the Sale Administrator.

5.4 - Soil Protection

5.4.1 - Rutting restriction, general (7/16)

Operations are to cease immediately if equipment and weather conditions result in rutting of roads and/or skid trails which is 12 inches or greater in depth and 50 feet in length. The Unit Manager or his/her representative may restrict hauling and/or skidding if ruts exceed the specified depth. With the Unit Manager or his/her representative's approval, the Purchaser may return to the area when the risk of rutting has decreased.

5.4.4 - Slope protection (9/19)

Skid trails and roads on slopes shall be water barred with slash, stumps, and/or clean straw bales native to the area as soon as use is complete to prevent erosion.

5.8 - Protection of Endangered Species

5.8.1 - Kirtland's warbler (1) (10/12)

This sale is adjacent to a young jack pine stand which may be used by the endangered Kirtland's Warbler. The Department reserves the right to temporarily restrict all harvesting operations in a buffer zone of up to 500 feet if it is determined that Warbler territory has been established in the adjacent stand. The restricted period, if put into effect, would apply from May 1 to August 15.

6 - Safety and Fire Prevention

6.2 - Signing

6.2.1 - Road posting (10/20)

The Purchaser is responsible for posting and maintaining caution signs on Knoch Road, Beaver Lake Trail, and St Helen Trail prior to beginning operations. The road must be posted at appropriate distances from the Sale Area to warn of logging activity and truck traffic. Signs must be removed when harvest operations are suspended or completed. The Purchaser will provide these signs.

6.2.3 - Recreational trail posting (10/20)

The Purchaser is responsible for posting and maintaining caution signs on the ORV trails prior to beginning operations. The trail must be posted at appropriate distances from the Sale Area to warn of logging activity and truck traffic at both ends of the trail. Signs must be removed when harvest operations are suspended or completed. The Purchaser will provide these signs.



TIMBER SALE MAP

This information provided by authority of Part 525, 1994 PA 451, as amended.

Sale Number

71-002-24

Date

10/25/2023

Forest Management Unit

County

Mapped By: Ewald

Scale

Page

Of

Roscommon Mgt Unit

Ogemaw

Cruised By: Ewald, Lewicki, & Martell

1:10,000

1

1

Township
23N

Range
01E

Section(s) and
Subdivision(s) Sec. 31 E1/2NW,NE,SESW,SWSE; Sec. 32 SWNW,SW;

Cover Type

A = Aspen	J = Jack Pine	O = Oak	U = Upland Brush
B = Paper Birch	K = Rock	P = Lowland Poplar	UM = Upland Mix Forest
C = Cedar	L = Lowland Brush	Q = Mixed Swamp Conifer	V = Bog or Marsh
D = Treed Bog	LM = Lowland Mix Forest	R = Red Pine	W = White Pine
E = Swamp Hardwoods	M = Maple, Beech, Birch	S = Black Spruce	X = Non Stocked
F = Spruce/Fir	MC = Mixed Conifer	T = Tamarack	Y = Sand
G = Grass	MD = Mixed Deciduous	Z = Water	
H = Hemlock	N = Marsh		

Density

0 = Non Stocked	5 = Pole Timber Medium
1 = Seedling Sapling Poor	6 = Pole Timber Well
2 = Seedling Sapling Medium	7 = Saw Timber Poor
3 = Seedling Sapling Well	8 = Saw Timber Medium
4 = Pole Timber Poor	9 = Saw Timber Well

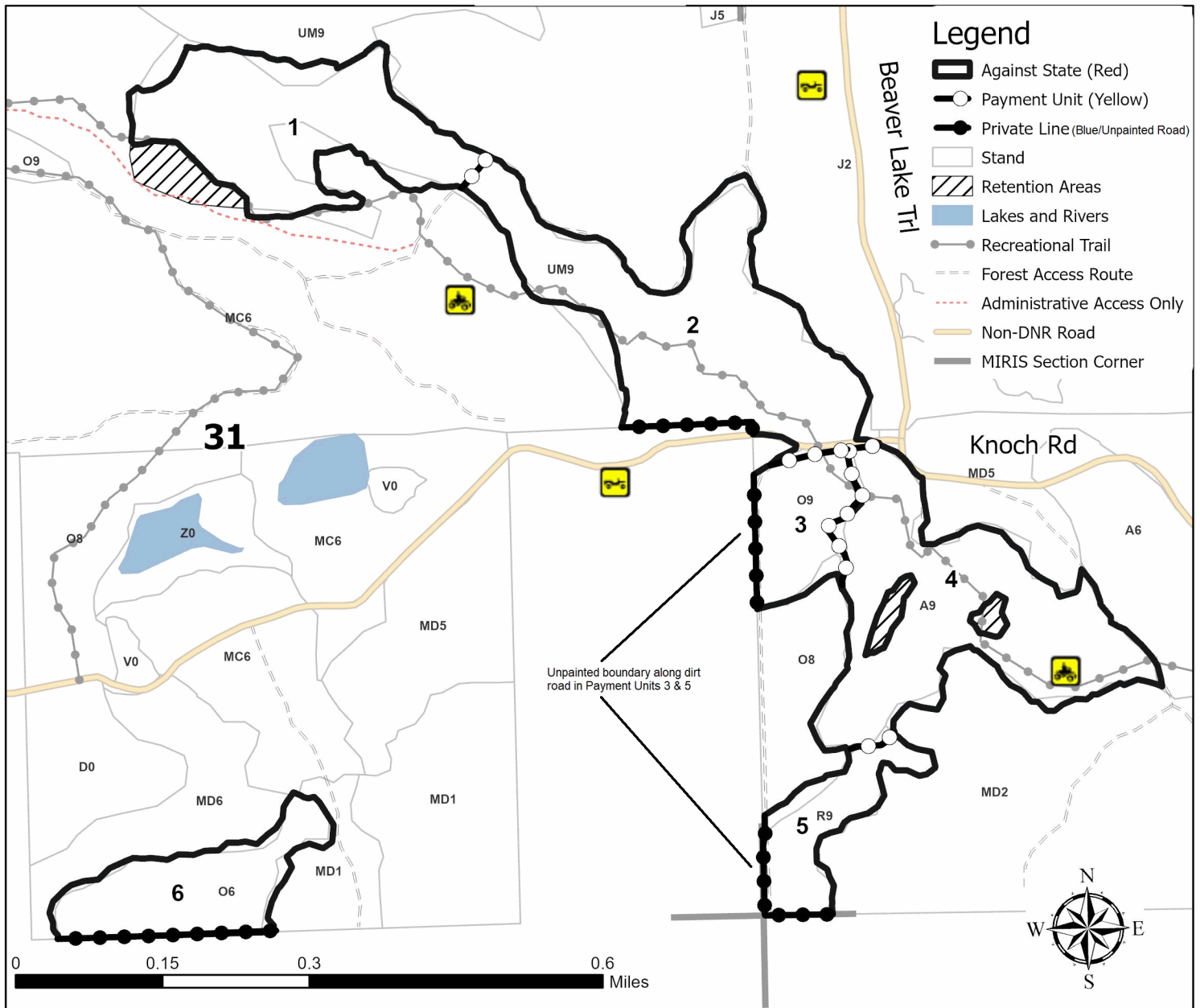
Use QR Code to open Map in App



PU #	Acres	PU #	Acres	PU #	Acres
1	23.8	3	8.3	5	8.2
2	33	4	31	6	13.1

Natural 20 Mix

117.4 Acres



TIMBER SALE INFORMATION

Tag Team Mix (71-003-24)

T22N, R04W, SEC. 30; T22N, R04W, SEC. 31.
Roscommon County (Advertised Price \$70,136.70)

SALE NOTE: Sale consists of an oak thinning, an oak seed tree, a mixed deciduous shelterwood, and a red pine shelterwood. Sale area consists of rolling terrain and some stepper ridges. Oak wilt restrictions have also been applied through spec 5.2.3.5.

A timber sale contract for this lump sum, sealed bid timber sale will be awarded to the responsible bidder offering the highest sealed bid price. All units of volume listed below were estimated using the Inventory Manager computer program and the new Michigan taper model. Bids must be at or above the following advertised price for each product and species:

<u>PRODUCTS & SPECIES</u>	<u>ESTIMATED UNITS*</u>	<u>ADVERTISED PRICE</u>
Sawtimber		
B. T. Aspen	4.7 MBF	\$ 91.00 / MBF
Black Cherry	0.4 MBF	\$ 215.00 / MBF
Black/Red (Hybrid) Oak	293.5 MBF	\$ 111.00 / MBF
Red Maple	0.4 MBF	\$ 76.00 / MBF
Red Oak	43.0 MBF	\$ 148.00 / MBF
Red Pine	41.8 MBF	\$ 134.00 / MBF
White Oak	98.7 MBF	\$ 66.00 / MBF
White Pine	4.6 MBF	\$ 56.00 / MBF
Pulpwood		
B. T. Aspen	10 Cords	\$ 42.40 / Cord
Mixed Hardwood	42 Cords	\$ 18.60 / Cord
Mixed Oak	661 Cords	\$ 20.20 / Cord
Red Oak	83 Cords	\$ 20.20 / Cord
Red Pine	36 Cords	\$ 50.35 / Cord
White Pine	5 Cords	\$ 46.10 / Cord

* The total volume is statistically estimated within plus (+) or minus (-) 21.16 percent. There are an estimated 1,977 cords on this timber sale, plus or minus 418 cords at the 95% confidence level. The estimated units are final and not subject to adjustment. Prospective bidders are urged to examine this timber and to make their own estimates of quantity and quality.

BOND AND PAYMENT SCHEDULE:

1. A bond in the amount of \$3,507.00 to insure faithful performance of the conditions of the contract will be deposited by the successful bidder within 21 days of the sale award.
2. Cutting in any sale or unit without the required advance payment would be considered a trespass.
3. Total payment must be paid in advance or according to the following schedule :
 - (a) Ten percent (10%) of the sale value must be paid within 21 days of the sale award.
 - (b) The 10% down payment will be credited towards the first unit cut.
 - (c) Payment for each of the following units must be made before cutting begins in that unit:

PAYMENT UNIT NUMBER	PERCENT OF TOTAL SALE VALUE
01	29.6%
02	49.2%
03	10.6%
04	10.6%

4. If no cutting takes place, the 10% down payment will not be refunded.
5. Operations on the contract issued will terminate on 12/31/2025.

SALE STATISTICS

Volumes were calculated in cubic feet using the Michigan taper model. Cubic foot volume includes all wood inside bark for the product indicated. For display purposes, cubic feet were converted to cords and MBF using a simple conversion factor, e.g. 79 cubic feet per cord and 185 cubic feet per MBF. The cubic foot volumes are precise; the cords and MBF volumes are not. Cubic foot volume cannot be directly converted to cords or boards with precision.

SALE VOLUMES

The total estimated sale volume may not equal the sum of the species/products due to the nature of statistical calculations associated with double sampling methodology.

VOLUME			STATISTICAL RANGE IN CORDS	
TOTAL CUBIC FEET	TOTAL CORDS	PERCENT ERROR	MINIMUM	MAXIMUM
156,181	1,977	21.16%	1,559	2,395

VDU VOLUMES

A VDU is a Volume Determination Unit. Volumes and their associated statistics are calculated at the VDU level and summarized to the sale level. There is often a one to one relationship between a VDU and a Payment Unit, but not always, depending on the cruise design. Refer to the VDU TO PAYMENT UNIT table.

	VOLUME			RANGE IN CORDS	
VDU	TOTAL CUBIC FEET	TOTAL CORDS	PERCENT ERROR	MINIMUM	MAXIMUM
23	17,489	221	30.98%	153	290
157	80,612	1,020	20.76%	809	1,232
158	10,985	139	48.80%	71	207
159	47,096	596	27.92%	430	763
TOTAL:	156,181	1,977		1,462	2,492

VDU TO PAYMENT UNIT

When a VDU is associated with more than one Payment Unit (PU), the VDU volumes are assigned to the PU based on acres of the VDU within the PU.

VDU	VDU ACRES	PU	PU ACRES
23	18.6	4	18.6
157	48.5	2	48.5
158	5.3	3	5.3
159	27.7	1	27.7
TOTAL:	100.1		100.1

DESCRIPTION OF TIMBER BY PAYMENT UNIT (PU)

PU	MARKET GROUP	PRODUCT	QUANTITY	UNIT	ACRES	ADVERTISE PRICE
1	B. T. Aspen	Sawtimber	2.9	MBF	27.7	\$20,747.70
	Black Cherry		0.4	MBF		
	Black/Red (Hybrid		94.2	MBF		
	Red Oak		19.4	MBF		
	White Oak		27.8	MBF		
	B. T. Aspen	Pulpwood	3	Cords		
	Mixed Hardwood		14	Cords		
	<i>Black Cherry</i>		3	<i>Cords</i>		
	<i>Red Maple</i>		11	<i>Cords</i>		
	Mixed Oak		206	Cords		
	<i>/Red (Hybrid) Oak</i>		158	<i>Cords</i>		
	<i>White Oak</i>		48	<i>Cords</i>		
	Red Oak		34	Cords		
2	Black/Red (Hybrid	Sawtimber	168.5	MBF	48.5	\$34,520.30
	Red Oak		18.5	MBF		
	White Oak		64.5	MBF		
	B. T. Aspen	Pulpwood	6	Cords		
	Mixed Hardwood		11	Cords		
	<i>Red Maple</i>		11	<i>Cords</i>		
	Mixed Oak		378	Cords		
	<i>/Red (Hybrid) Oak</i>		180	<i>Cords</i>		
	<i>White Oak</i>		198	<i>Cords</i>		
	Red Oak		36	Cords		
3	Red Oak	Sawtimber	2.0	MBF	5.3	\$7,425.25
	Red Pine		41.8	MBF		
	White Pine		4.6	MBF		
	Red Oak	Pulpwood	1	Cords		
	Red Pine		23	Cords		
	White Pine		2	Cords		
4	B. T. Aspen	Sawtimber	1.8	MBF	18.6	\$7,443.45
	Black/Red (Hybrid		30.8	MBF		
	Red Maple		0.4	MBF		
	Red Oak		3.1	MBF		
	White Oak		6.4	MBF		
	B. T. Aspen	Pulpwood	1	Cords		
	Mixed Hardwood		17	Cords		
	<i>Red Maple</i>		17	<i>Cords</i>		
	Mixed Oak		77	Cords		
	<i>/Red (Hybrid) Oak</i>		48	<i>Cords</i>		
	<i>White Oak</i>		29	<i>Cords</i>		
	Red Oak		12	Cords		
	Red Pine		13	Cords		
	White Pine		3	Cords		
TOTAL:			487.1	MBF		
TOTAL:			837	Cords		

Sale Specific Conditions & Requirements

Sale Name: Tag Team Mix

Sale Number: 71-003-24 Seq#: 1

1 - Sale Area

1.2 - Boundaries

1.2.1 - Painted boundaries (9/19)

The sale boundary and Payment Unit boundaries are marked and identified by blue, red and yellow paint. Exterior sale boundary lines against private property are marked with blue paint. Exterior sale boundary lines against state are marked with red paint. Interior Payment Unit boundaries are marked with yellow paint. The painted boundary line trees are not Included Timber and are to be protected. Yellow painted trees designating an interior Payment Unit boundary are only to be cut when all surrounding Payment Units have been paid.

2 - Timber Specifications

2.1 - Included Timber

2.1.3 - Cut tree marked unit(s) (12/08)

Within Payment Unit(s) 4, all trees are designated for cutting when marked with orange paint above and below stump height, regardless of merchantability.

2.1.7 - Leave tree marked unit(s) (6/14)

Within Payment Unit(s) 1 & 3, all trees, which meet minimum piece specifications in 2.2 Utilization, are designated for cutting & in Payment Unit 2, cut all trees that are one (1) inch or more at DBH with the following exceptions:

- Within Payment Units 1-3, do not cut any trees marked with green paint above and below stump height.
- Within Payment Units 1 & 2, do not cut any red pine or white pine.

2.2 - Utilization

2.2.3 - Stump heights (4/07)

Stump heights within the Sale Area shall not exceed 6 inches for all trees.

3 - Payments

3.3 - Pre-measured Sales

3.3.4 - Dividing payment units (7/14)

Payment Unit(s) 1-4 may be divided at the request of the Purchaser and upon approval of the Unit Manager. Dividing Payment Units is a contract modification which requires a Timber Sale Contract Amendment.

3.4 - Damaged Timber

3.4.1 - Damaged timber (7/16)

General Condition and Requirement 3.4 Damaged Timber, defines liquidated damages for undesignated live merchantable trees which are cut or injured. In addition, extreme care should be taken to avoid damage to tree seedlings and saplings.

Within Payment Units 1, 3, & 4, if more than 33 % of the tree seedlings or saplings (1/4" to 4.5" DBH) within a specified portion of the Sale Area are damaged, liquidated damages will be assessed at \$500 per acre for all acreage within that specified portion of the Sale Area that was damaged.

No damage is acceptable to undesignated live merchantable trees. Within the Sale Area, if more than 5 % of trees (> 4.5" DBH) within a specified area of the sale are damaged, liquidated damages will be assessed for all trees damaged. Rates will be in accordance with General Condition and Requirement 3.4 Damaged Timber.

4 - Transportation

4.1 - Construction

4.1.6 - Road construction (1/09)

Construction of new roads or improvements of existing roads shall be done in such a way as to minimize the environmental and visual impacts. Merchantable trees shall be cut and utilized unless otherwise directed. Non-merchantable trees shall be severed and laid flat on the ground. Slash shall be scattered, and not left in windrows and kept a minimum of 10 feet back from the road edge. Stumps shall be set upright, not left on edge, and be moved at least 10 feet away from the road edge. Disturbed soil shall be feathered into the woods and not left in berms or windrows.

4.1.7 - Road closure (10/11)

All new roads built into the sale must be blocked to vehicle traffic upon completion of the sale. Overgrown roads that are reopened shall be considered new roads. In general, this will require constructing a four (4') foot high berm of stumps and logs covered with earth. Stumps and brush must be placed along the remainder of the trail. Berms must also be placed at intervals of not over 50 feet and at all junctions. These roads must be rendered impassable to cars and trucks. All stumps from road building and landing construction must be reserved to block any newly constructed roads upon completion of the sale. These stumps must be scattered along the road system to prohibit vehicular movement. Contact the Sale Administrator for specific details of design and placement.

4.1.11 - Permits (2/12)

The Purchaser will secure any necessary permits that may be required.

4.2 - Maintenance

4.2.5 - Two wheel drive condition (2/04)

All existing trail roads on and adjacent to the sale area must be passable by two-wheel drive traffic for the duration of the sale.

5 - Operations

5.1 - Notification

5.1.1 - Pre-sale conference (10/16)

A pre-sale conference on site between the Purchaser and sale administrator is required prior to beginning any operations to determine landing and road locations. The Unit Manager or his/her representative must be contacted at least 10 days in advance to schedule the conference.

5.1.4 - Post-sale conference (10/16)

A post-sale conference on site between the Purchaser and sale administrator is required 5 days prior to the completion of active logging operations to determine clean-up and repair of landings, road edges, and the fulfillment of other contract specifications.

5.2 - Conduct of Operations

5.2.1 - Slash

5.2.1.8 - Slash height (12/08)

No slash or tree tops may exceed 24 inches in height.

5.2.2 - Hazard Trees/Snags

5.2.2.1 - Den trees (10/16)

Obvious hollow and/or den trees shall be protected and left standing unless they are a safety hazard.

5.2.3 - Operating Restrictions

5.2.3.5 - Oak wilt restriction (1/18)

Within the Sale Area, unless changed by written agreement, cutting, skidding, hauling within the sale and brushing of access roads to the sale are not permitted during the period of April 15 to July 15. Operations may be allowed if specific steps are taken to prevent damaging uncut oak during the high risk period. Those steps may include completing all road brushing before April 15th and clearing a tree-length buffer along uncut oak cover before April 15th. This is necessary to reduce the spread of oak wilt. For more information, contact the Unit Manager or his/her representative.

5.2.32 - Decking/landing restoration (9/13)

All decking and landing areas must have the surface area restored to a condition equal to or better than before. This is to

ensure the proper regeneration of the stand. Wood debris, chips and "cookies" from trimmings must be removed or scattered away from landing and loading areas and may not be windrowed on the edge.

5.2.38 - No decking against live trees (2/04)

Cut products may not be decked against unmarked or designated leave trees.

5.4 - Soil Protection

5.4.1 - Rutting restriction, general (7/16)

Operations are to cease immediately if equipment and weather conditions result in rutting of roads and/or skid trails which is 12 inches or greater in depth and 50 feet in length. The Unit Manager or his/her representative may restrict hauling and/or skidding if ruts exceed the specified depth. With the Unit Manager or his/her representative's approval, the Purchaser may return to the area when the risk of rutting has decreased.

5.4.4 - Slope protection (9/19)

Skid trails and roads on slopes shall be water barred with slash, stumps, and/or clean straw bales native to the area as soon as use is complete to prevent erosion.

6 - Safety and Fire Prevention

6.2 - Signing

6.2.1 - Road posting (10/20)

The Purchaser is responsible for posting and maintaining caution signs on Parrot Road, Sparrow Road, & Panther Drive prior to beginning operations. The road must be posted at appropriate distances from the Sale Area to warn of logging activity and truck traffic. Signs must be removed when harvest operations are suspended or completed. The Purchaser will provide these signs.



TIMBER SALE MAP

This information provided by authority of Part 525, 1994 PA 451, as amended.

Sale Number 71-003-24	Date 10/27/2023
Scale 1:7,920	Page 1
	Of 1

Forest Management Unit Roscommon Mgt Unit	County Roscommon	Mapped By: Ewald
		Cruised By: Ewald, Lewicki, Martell

Township 22N	Range 04W	Section(s) and Subdivision(s) Sec. 30 SW,NWSE,S1/2SE; Sec. 31 NWNW;
-----------------	--------------	---

Cover Type			
A = Aspen	J = Jack Pine	O = Oak	U = Upland Brush
B = Paper Birch	K = Rock	P = Lowland Poplar	UM = Upland Mix Forest
C = Cedar	L = Lowland Brush	Q = Mixed Swamp Conifer	V = Bog or Marsh
D = Treed Bog	LM = Lowland Mix Forest	R = Red Pine	W = White Pine
E = Swamp Hardwoods	M = Maple, Beech, Birch	S = Black Spruce	X = Non Stocked
F = Spruce/Fir	MC = Mixed Conifer	T = Tamarack	Y = Sand
G = Grass	MD = Mixed Deciduous	Z = Water	
H = Hemlock	N = Marsh		

Density	
0 = Non Stocked	5 = Pole Timber Medium
1 = Seedling Sapling Poor	6 = Pole Timber Well
2 = Seedling Sapling Medium	7 = Saw Timber Poor
3 = Seedling Sapling Well	8 = Saw Timber Medium
4 = Pole Timber Poor	9 = Saw Timber Well

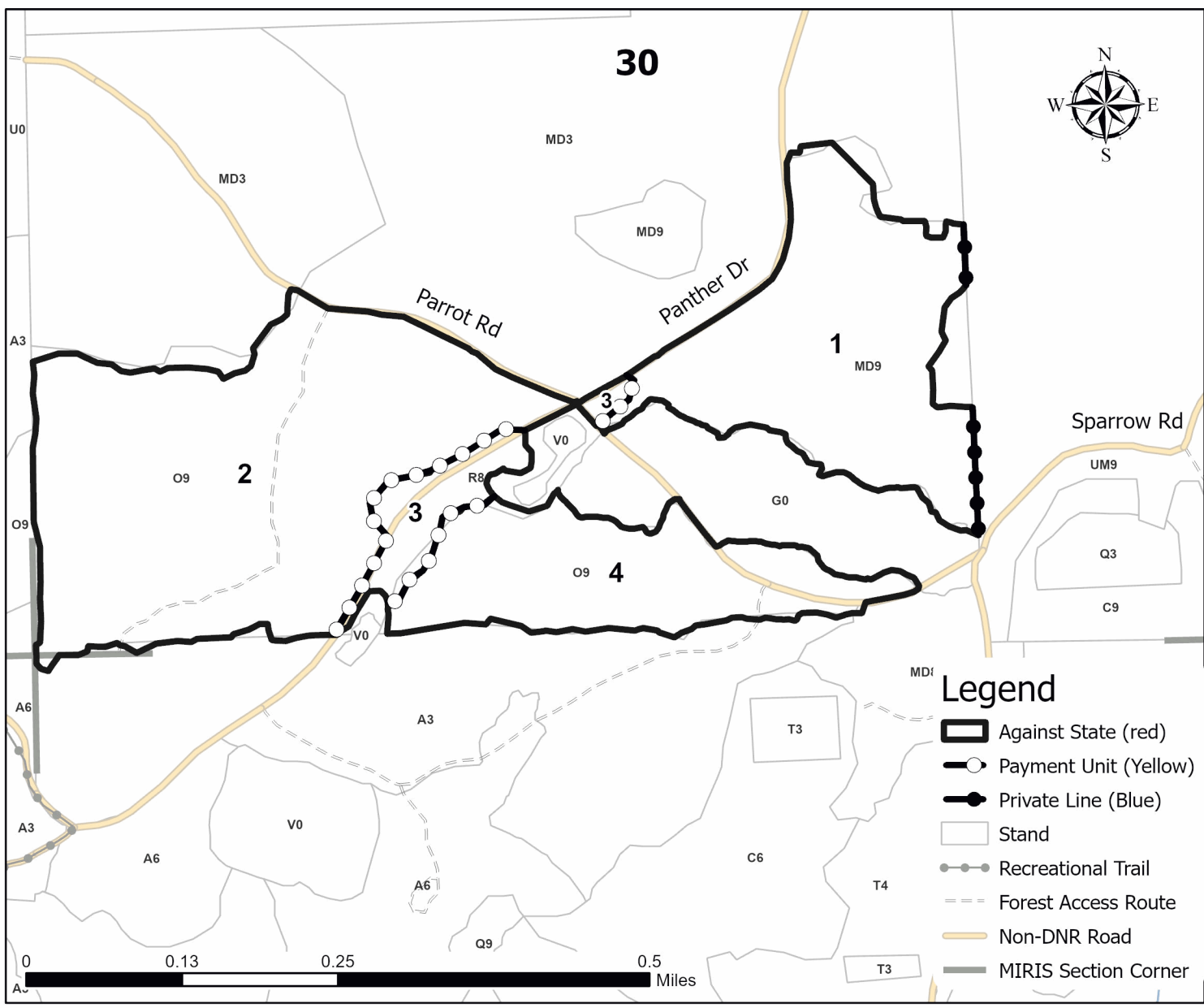
Use QR Code to open Map in App



PU #	Acres	PU #	Acres
1	27.7	3	5.3
2	48.5	4	18.6

Tag Team Mix

100.1 Acres



TIMBER SALE INFORMATION

Zig Zag Aspen Pine (71-013-23)

T22N, R02W, SEC. 17; T22N, R02W, SEC. 19; T22N, R02W, SEC. 20; T22N, R02W, SEC. 31.
Roscommon County (Advertised Price \$318,196.35)

SALE NOTE: Sale consists of a mix of aspen, red pine & mixed pine clearcuts. Chipping is required in Payment Units 2 & 5. Oak wilt restrictions are in place for Units 3 & 4.

A recreation site such as a trail, pathway, or campground is within the sale area or the vicinity. Certain restrictions/specifications may be applicable including time restrictions.

A timber sale contract for this lump sum, sealed bid timber sale will be awarded to the responsible bidder offering the highest sealed bid price. All units of volume listed below were estimated using the Inventory Manager computer program and the new Michigan taper model. Bids must be at or above the following advertised price for each product and species:

<u>PRODUCTS & SPECIES</u>	<u>ESTIMATED UNITS*</u>		<u>ADVERTISED PRICE</u>
Sawtimber			
Mixed Aspen	274.7	MBF	\$ 91.00 / MBF
Mixed Oak	85.2	MBF	\$ 111.00 / MBF
Paper Birch	3.1	MBF	\$ 53.00 / MBF
Red Maple	66.6	MBF	\$ 76.00 / MBF
Red Oak	2.7	MBF	\$ 148.00 / MBF
Red Pine	764.9	MBF	\$ 134.00 / MBF
White Oak	16.0	MBF	\$ 66.00 / MBF
White Pine	331.9	MBF	\$ 56.00 / MBF
Pulpwood			
Balsam Fir	27	Cords	\$ 30.00 / Cord
Black Spruce	10	Cords	\$ 39.65 / Cord
Hemlock	12	Cords	\$ 11.85 / Cord
Jack Pine	7	Cords	\$ 13.50 / Cord
Mixed Aspen	2,135	Cords	\$ 42.40 / Cord
Mixed Hardwood	679	Cords	\$ 18.60 / Cord
Mixed Oak	186	Cords	\$ 20.20 / Cord
N. White Cedar	21	Cords	\$ 18.35 / Cord
Paper Birch	13	Cords	\$ 21.85 / Cord
Red Oak	1	Cords	\$ 20.20 / Cord
Red Pine	489	Cords	\$ 50.35 / Cord
White Pine	484	Cords	\$ 46.10 / Cord

* The total volume is statistically estimated within plus (+) or minus (-) 15.54 percent. There are an estimated 7,684 cords on this timber sale, plus or minus 1,195 cords at the 95% confidence level. The estimated units are final and not subject to adjustment. Prospective bidders are urged to examine this timber and to make their own estimates of quantity and quality.

BOND AND PAYMENT SCHEDULE:

1. A bond in the amount of \$15,910.00 to insure faithful performance of the conditions of the contract will be deposited by the successful bidder within 21 days of the sale award.
2. Cutting in any sale or unit without the required advance payment would be considered a trespass.
3. Total payment must be paid in advance or according to the following schedule :
 - (a) Ten percent (10%) of the sale value must be paid within 21 days of the sale award.
 - (b) The 10% down payment will be credited towards the first unit cut.
 - (c) Payment for each of the following units must be made before cutting begins in that unit:

PAYMENT UNIT NUMBER	PERCENT OF TOTAL SALE VALUE
01	14.7%
02	30.9%
03	22.8%
04	16.0%
05	15.6%
4. If no cutting takes place, the 10% down payment will not be refunded.
5. Operations on the contract issued will terminate on 12/31/2025.

SALE STATISTICS

Volumes were calculated in cubic feet using the Michigan taper model. Cubic foot volume includes all wood inside bark for the product indicated. For display purposes, cubic feet were converted to cords and MBF using a simple conversion factor, e.g. 79 cubic feet per cord and 185 cubic feet per MBF. The cubic foot volumes are precise; the cords and MBF volumes are not. Cubic foot volume cannot be directly converted to cords or boards with precision.

SALE VOLUMES

The total estimated sale volume may not equal the sum of the species/products due to the nature of statistical calculations associated with double sampling methodology.

VOLUME			STATISTICAL RANGE IN CORDS	
TOTAL CUBIC FEET	TOTAL CORDS	PERCENT ERROR	MINIMUM	MAXIMUM
607,074	7,684	15.54%	6,490	8,879

VDU VOLUMES

A VDU is a Volume Determination Unit. Volumes and their associated statistics are calculated at the VDU level and summarized to the sale level. There is often a one to one relationship between a VDU and a Payment Unit, but not always, depending on the cruise design. Refer to the VDU TO PAYMENT UNIT table.

VDU	VOLUME			RANGE IN CORDS	
	TOTAL CUBIC FEET	TOTAL CORDS	PERCENT ERROR	MINIMUM	MAXIMUM
66	94,834	1,200	26.53%	882	1,519
88	114,205	1,446	23.13%	1,111	1,780
133	143,985	1,823	18.28%	1,489	2,156
135	157,040	1,988	18.55%	1,619	2,357
154	97,010	1,228	20.80%	973	1,483
TOTAL:	607,074	7,684		6,074	9,295

VDU TO PAYMENT UNIT

When a VDU is associated with more than one Payment Unit (PU), the VDU volumes are assigned to the PU based on acres of the VDU within the PU.

VDU	VDU ACRES	PU	PU ACRES
66	25.4	1	25.4
88	39.0	4	39.0
133	38.2	3	38.2
135	26.1	2	26.1
154	28.7	5	28.7
TOTAL:	157.4		157.4

DESCRIPTION OF TIMBER BY PAYMENT UNIT (PU)

PU	MARKET GROUP	PRODUCT	QUANTITY	UNIT	ACRES	ADVERTISE PRICE	
1	Mixed Aspen	Sawtimber	24.5	MBF	25.4	\$46,670.90	
	<i>B. T. Aspen</i>		21.9	<i>MBF</i>			
	<i>Quaking Aspen</i>		2.6	<i>MBF</i>			
	Mixed Oak		1.5	MBF			
	<i>/Red (Hybrid) Oak</i>		1.5	<i>MBF</i>			
	Red Maple		1.5	MBF			
	Red Pine		51.3	MBF			
	White Oak		12.9	MBF			
	White Pine		78.8	MBF			
	Balsam Fir		Pulpwood	3			Cords
	Black Spruce			10			Cords
	Mixed Aspen			584			Cords
	<i>B. T. Aspen</i>			311			<i>Cords</i>
	<i>Quaking Aspen</i>			273			<i>Cords</i>
	Mixed Hardwood			91			Cords
	<i>Red Maple</i>			91			<i>Cords</i>
	Mixed Oak			9			Cords
	<i>/Red (Hybrid) Oak</i>			2			<i>Cords</i>
	<i>White Oak</i>	7		<i>Cords</i>			
	Red Pine	14		Cords			
	White Pine	91		Cords			
2	Mixed Aspen	Sawtimber		1.8	MBF	26.1	\$98,340.60
	<i>B. T. Aspen</i>		1.8	<i>MBF</i>			
	Mixed Oak		2.1	MBF			
	<i>Northern Pin Oak</i>		2.1	<i>MBF</i>			
	Red Maple		3.7	MBF			
	Red Pine		509.8	MBF			
	White Pine		71.9	MBF			
	Balsam Fir		Pulpwood	4	Cords		
	Mixed Aspen			201	Cords		
	<i>B. T. Aspen</i>			198	<i>Cords</i>		
	<i>Quaking Aspen</i>			3	<i>Cords</i>		
	Mixed Hardwood			105	Cords		
	<i>Red Maple</i>			105	<i>Cords</i>		
	Mixed Oak			3	Cords		
	<i>Northern Pin Oak</i>			3	<i>Cords</i>		
	Red Pine			262	Cords		
	White Pine			32	Cords		
3	Mixed Aspen	Sawtimber	156.8	MBF	38.2	\$72,524.35	
	<i>B. T. Aspen</i>		156.8	<i>MBF</i>			
	Mixed Oak		35.2	MBF			
	<i>/Red (Hybrid) Oak</i>		29.2	<i>MBF</i>			
	<i>Northern Pin Oak</i>		6.0	<i>MBF</i>			
	Red Maple		25.7	MBF			
	Red Pine		85.9	MBF			
	White Pine		27.3	MBF			
	Balsam Fir		Pulpwood	16			Cords
	Mixed Aspen			743			Cords
	<i>B. T. Aspen</i>			743			<i>Cords</i>
	Mixed Hardwood			192			Cords
	<i>Red Maple</i>			192			<i>Cords</i>
	Mixed Oak			29			Cords
	<i>/Red (Hybrid) Oak</i>			17			<i>Cords</i>
	<i>Northern Pin Oak</i>			12			<i>Cords</i>
	Red Pine			19			Cords
White Pine	49	Cords					

DESCRIPTION OF TIMBER BY PAYMENT UNIT (PU), CON'T

PU	MARKET GROUP	PRODUCT	QUANTITY	UNIT	ACRES	ADVERTISE PRICE			
4	Mixed Aspen	Sawtimber	42.9	MBF	39.0	\$50,972.40			
	<i>B. T. Aspen</i>		42.9	<i>MBF</i>					
	Mixed Oak		29.5	MBF					
	<i>/Red (Hybrid) Oak</i>		6.4	<i>MBF</i>					
	<i>Northern Pin Oak</i>		23.1	<i>MBF</i>					
	Red Pine		1.8	MBF					
	White Oak		3.1	MBF					
	White Pine		107.5	MBF					
	Jack Pine	Pulpwood	7	Cords					
	<i>Jack Pine</i>	<i>Sawtimber</i>	2.3	<i>MBF</i>					
	<i>Jack Pine</i>	<i>Pulpwood</i>	2	<i>Cords</i>					
	Mixed Aspen		574	Cords					
	<i>B. T. Aspen</i>		520	<i>Cords</i>					
	<i>Quaking Aspen</i>		54	<i>Cords</i>					
	Mixed Hardwood		140	Cords					
	<i>Pin Cherry</i>		4	<i>Cords</i>					
	<i>Red Maple</i>		136	<i>Cords</i>					
	Mixed Oak		124	Cords					
	<i>/Red (Hybrid) Oak</i>		10	<i>Cords</i>					
	<i>Northern Pin Oak</i>		112	<i>Cords</i>					
	<i>White Oak</i>		2	<i>Cords</i>					
	Red Pine		10	Cords					
	White Pine		158	Cords					
	5	Mixed Aspen	Sawtimber	48.7			MBF	28.7	\$49,688.10
		<i>B. T. Aspen</i>		48.7			<i>MBF</i>		
		Mixed Oak		16.9			MBF		
		<i>Northern Pin Oak</i>		16.9			<i>MBF</i>		
Paper Birch			3.1	MBF					
Red Maple			35.7	MBF					
Red Oak			2.7	MBF					
Red Pine			116.1	MBF					
White Pine			46.4	MBF					
Balsam Fir		Pulpwood	4	Cords					
Hemlock			12	Cords					
<i>Hemlock</i>		<i>Sawtimber</i>	2.2	<i>MBF</i>					
<i>Hemlock</i>		<i>Pulpwood</i>	8	<i>Cords</i>					
Mixed Aspen			33	Cords					
<i>B. T. Aspen</i>			33	<i>Cords</i>					
Mixed Hardwood			151	Cords					
<i>Red Maple</i>			151	<i>Cords</i>					
Mixed Oak			21	Cords					
<i>Northern Pin Oak</i>			21	<i>Cords</i>					
N. White Cedar			21	Cords					
<i>N. White Cedar</i>		<i>Sawtimber</i>	0.7	<i>MBF</i>					
<i>N. White Cedar</i>		<i>Pulpwood</i>	20	<i>Cords</i>					
Paper Birch			13	Cords					
Red Oak			1	Cords					
Red Pine			184	Cords					
White Pine			154	Cords					
TOTAL:			1,545.1	MBF					
TOTAL:			4,064	Cords					

Sale Specific Conditions & Requirements

Sale Name: Zig Zag Aspen Pine

Sale Number: 71-013-23 Seq#: 1

1 - Sale Area

1.2 - Boundaries

1.2.1 - Painted boundaries (9/19)

The sale boundary and Payment Unit boundaries are marked and identified by blue, red & yellow paint, or are unpainted and designated by roads & powerline right-of-ways. Exterior sale boundary lines against private property are marked with blue paint. Exterior sale boundary lines against state are marked with red paint, except for portions of Payment Units 2, 3, & 4. The Eastern boundaries of Payment Units 2 & 3 are unpainted and designated by Crooked Road. The Western boundary of Payment Unit 4 is unpainted and designated by Roscommon Road. The Northern boundary of Payment Unit 4 is unpainted and designated by the powerline right-of-way. Interior Payment Unit boundaries are marked with yellow paint. Retention patches are marked with red paint; no harvesting activities may occur within these areas. The painted boundary line trees are not Included Timber and are to be protected. Yellow painted trees designating an interior Payment Unit boundary are only to be cut when all surrounding Payment Units have been paid.

2 - Timber Specifications

2.1 - Included Timber

2.1.1 - Clearcut unit(s) with unmerchantable trees (6/14)

Within Payment Unit(s) 1-4, cut all trees that are one (1) inch or more at DBH, except within Payment Unit 3, do not cut any white oak twelve (12) inches or larger at DBH & within Payment Unit 4, do not cut any trees marked with green paint. Additionally, within all Payment Units, do not cut any red or white pine twenty-six (26) inches or larger at DBH.

2.2 - Utilization

2.2.2 - Chipping required (2/18)

Payment Units 2 & 5 must be chip harvested to facilitate subsequent planting operations. The Purchaser has the option to produce sawlogs or pulpwood bolts, but the remaining portion of the trees must be chipped and hauled. The requirement to retain approximately 1/6 to 1/3 of tree tops and limbs less than four inches in diameter is still applicable (G. C. & R. 2.2).

2.2.3 - Stump heights (4/07)

Stump heights within the Sale Area shall not exceed 6 inches for all trees. This is in order to facilitate planting operations.

3 - Payments

3.3 - Pre-measured Sales

3.3.4 - Dividing payment units (7/14)

Payment Unit(s) may be divided at the request of the Purchaser and upon approval of the Unit Manager. Dividing Payment Units is a contract modification which requires a Timber Sale Contract Amendment.

3.4 - Damaged Timber

3.4.1 - Damaged timber (7/16)

General Condition and Requirement 3.4 Damaged Timber, defines liquidated damages for undesignated live merchantable trees which are cut or injured. No damage is acceptable to undesignated live merchantable trees. Within the Sale Area, if more than 5 % of trees (> 4.5" DBH) within a specified area of the sale are damaged, liquidated damages will be assessed for all trees damaged. Rates will be in accordance with General Condition and Requirement 3.4 Damaged Timber.

4 - Transportation

4.1 - Construction

4.1.6 - Road construction (1/09)

Construction of new roads or improvements of existing roads shall be done in such a way as to minimize the environmental and visual impacts. Merchantable trees shall be cut and utilized unless otherwise directed. Non-merchantable trees shall be

severed and laid flat on the ground. Slash shall be chipped, utilized or otherwise removed from the sale. Stumps shall be set upright, not left on edge, and be moved at least 10 feet away from the road edge. Disturbed soil shall be feathered into the woods and not left in berms or windrows.

4.1.7 - Road closure (10/11)

All new roads built into the sale must be blocked to vehicle traffic upon completion of the sale. Overgrown roads that are reopened shall be considered new roads. Some existing roads may also need to be closed, as directed by the sale administrator. In general, this will require constructing a four (4') foot high berm of stumps and logs covered with earth. Stumps and brush must be placed along the remainder of the trail. These roads must be rendered impassable to cars and trucks. All stumps from road building and landing construction must be reserved to block any newly constructed roads upon completion of the sale. These stumps must be scattered along the road system to prohibit vehicular movement. Temporary berms may be required if no sale activity occurs for 30 or more consecutive days. Contact the Sale Administrator for specific details of design and placement.

4.1.11 - Permits (2/12)

The Purchaser will secure any necessary permits that may be required.

4.2 - Maintenance

4.2.5 - Two wheel drive condition (2/04)

All existing trail roads on and adjacent to the sale area must be passable by two-wheel drive traffic for the duration of the sale.

5 - Operations

5.1 - Notification

5.1.1 - Pre-sale conference (10/16)

A pre-sale conference on site between the Purchaser and sale administrator is required prior to beginning any operations to determine landing and road locations. The Unit Manager or his/her representative must be contacted at least 10 days in advance to schedule the conference.

5.1.4 - Post-sale conference (10/16)

A post-sale conference on site between the Purchaser and sale administrator is required 5 days prior to the completion of active logging operations to determine clean-up and repair of landings, road edges, and the fulfillment of other contract specifications.

5.2 - Conduct of Operations

5.2.1 - Slash

5.2.1.8 - Slash height (12/08)

No slash or tree tops within Payment Units 1, 3, & 4 may exceed 24 inches in height.

5.2.2 - Hazard Trees/Snags

5.2.2.1 - Den trees (10/16)

Obvious hollow and/or den trees shall be protected and left standing unless they are a safety hazard.

5.2.3 - Operating Restrictions

5.2.3.5 - Oak wilt restriction (1/18)

Within Payment Units 3 & 4, unless changed by written agreement, cutting, skidding, hauling within the sale and brushing of access roads to the sale are not permitted during the period of April 15 to July 15. Operations may be allowed if specific steps are taken to prevent damaging uncut oak during the high risk period. Those steps may include completing all road brushing before April 15th and clearing a tree-length buffer along uncut oak cover before April 15th. This is necessary to reduce the spread of oak wilt. For more information, contact the Unit Manager or his/her representative.

5.2.3.11 - Coppice regeneration protection (4/10)

Within Payment Units 1, 3, & 4, timber harvesting must be completed before significant aspen sprouting occurs so as to minimize damage to the new regeneration. Any post harvest operations, such as chipping, must be completed before sprouting of regeneration occurs. If it is anticipated that chipping will be delayed, then tops shall be carried to one central

location or left unchipped. The Unit Manager or his/her representative may cease such operations if sprouting occurs before the operation is complete.

5.2.4 - Dead and Down Creation

5.2.4.2 - Dead and down creation, hare and grouse (1/14)

To improve habitat for snowshoe hare, grouse, and other species, the Purchaser is to leave one brush pile on the ground for every two acres. They should be positioned along the swamp and low ground edges in all Payment Units. Piles should consist of large diameter pieces of wood on the bottom & smaller diameters on the top to create cavities. They can be of any tree species and can consist of un-merchantable pieces of wood or a full tree.

5.2.4.4 - Dead and down creation, grouse (6/18)

To encourage grouse and other wildlife, in Payment Unit(s) 1, 3, & 4 leave one 12" or larger diameter (or largest diameter trees within stand) whole tree or log on the ground for every 2 acres, preferably a hardwood species such as oak or maple or if no hardwoods are present, a pine species (white or red). These will be evenly scattered throughout the Payment Units, preferably at least two chains from any roads, two-tracks, or trails open to vehicles. This can be an unmerchantable piece or a full tree.

5.2.32 - Decking/landing restoration (9/13)

All decking and landing areas must have the surface area restored to a condition equal to or better than before. This is to ensure the proper regeneration of the stand. Wood debris, chips and "cookies" from trimmings must be removed or scattered away from landing and loading areas and may not be windrowed on the edge.

5.2.38 - No decking against live trees (2/04)

Cut products may not be decked against unmarked or designated leave trees.

5.2.39 - ORV trail/route protection (4/18)

An ORV trail or route runs through the Sale Area and is shown on the Timber Sale Map. Trees with yellow ORV markers shall be cut off above the markers and at least 5 feet above ground. All stumps within 5 feet of the trail must be cut flush with the ground. Maintain a 20-foot-wide slash, debris, and rut free zone daily using the ORV trail or route as the centerline. Do not run equipment down the ORV trail or route. Skidding across the trail or route may only occur in locations approved by the Sale Administrator.

5.2.41 - Snowmobile trail protection (9/11)

LP6 is a snowmobile trail and is shown on the Timber Sale Map. Do not cut or damage posts with orange trail markers or traffic control signs. If the trail is used, it must be maintained and restored to a condition equal to or better than before the sale. The road maintenance/restoration must be done prior to December 1. If the trail road is to be used for hauling during the snowmobile season, then a snow covered base must be left on the trail. The snowmobile trail may only be crossed at right angles. Maintain a 20-foot-wide slash, debris, and rut free zone daily using the snowmobile trail as the centerline. No decking of forest products will be permitted along the snowmobile trail. All stumps within 20 feet of the snowmobile trail must be cut at ground level.

5.2.43 - Opening protection (2/21)

No activities are permitted in openings marked on the Timber Sale Map with the letter "G". Any damage to the openings shall be repaired according to specifications of the Unit Manager or his/her representative.

5.4 - Soil Protection

5.4.1 - Rutting restriction, general (7/16)

Operations are to cease immediately if equipment and weather conditions result in rutting of roads and/or skid trails which is 12 inches or greater in depth and 50 feet in length. The Unit Manager or his/her representative may restrict hauling and/or skidding if ruts exceed the specified depth. With the Unit Manager or his/her representative's approval, the Purchaser may return to the area when the risk of rutting has decreased.

6 - Safety and Fire Prevention

6.2 - Signing

6.2.1 - Road posting (10/20)

The Purchaser is responsible for posting and maintaining caution signs on Roscommon Road and Crooked Road prior to beginning operations. The road must be posted at appropriate distances from the Sale Area to warn of logging activity and

truck traffic. Signs must be removed when harvest operations are suspended or completed. The Purchaser will provide these signs.

6.2.2 - Snowmobile trail posting (10/20)

The Purchaser is responsible for posting and maintaining caution signs on snowmobile trail LP6 prior to beginning operations during the snowmobile season (approximately December 1 to March 31). The trail must be posted at appropriate distances from the Sale Area to warn of logging activity and truck traffic. Signs must be removed when harvest operations are suspended or completed. The Purchaser will provide these signs.

6.2.3 - Recreational trail posting (10/20)

The Purchaser is responsible for posting and maintaining caution signs on the ORV trail prior to beginning operations. The trail must be posted at appropriate distances from the Sale Area to warn of logging activity and truck traffic at both ends of the trail. Signs must be removed when harvest operations are suspended or completed. The Purchaser will provide these signs.



TIMBER SALE MAP

This information provided by authority of Part 525, 1994 PA 451, as amended.

Sale Number 71-013-23	Date 10/13/2023	
Scale 1:10,000	Page 1	Of 1

Forest Management Unit Roscommon Mgt Unit	County Roscommon	Mapped By: Ewald
		Cruised By: Ewald

Township 22N	Range 02W	Section(s) and Subdivision(s) Sec. 17 SWSW; Sec. 19 NENE,SW; Sec. 20 NW,W1/2NE,NESW,SE; Sec. 31 N1/2NE,SWNE;
-----------------	--------------	--

Cover Type			
A = Aspen	J = Jack Pine	O = Oak	U = Upland Brush
B = Paper Birch	K = Rock	P = Lowland Poplar	UM = Upland Mix Forest
C = Cedar	L = Lowland Brush	Q = Mixed Swamp Conifer	V = Bog or Marsh
D = Treed Bog	LM = Lowland Mix Forest	R = Red Pine	W = White Pine
E = Swamp Hardwoods	M = Maple, Beech, Birch	S = Black Spruce	X = Non Stocked
F = Spruce/Fir	MC = Mixed Conifer	T = Tamarack	Y = Sand
G = Grass	MD = Mixed Deciduous	Z = Water	
H = Hemlock	N = Marsh		

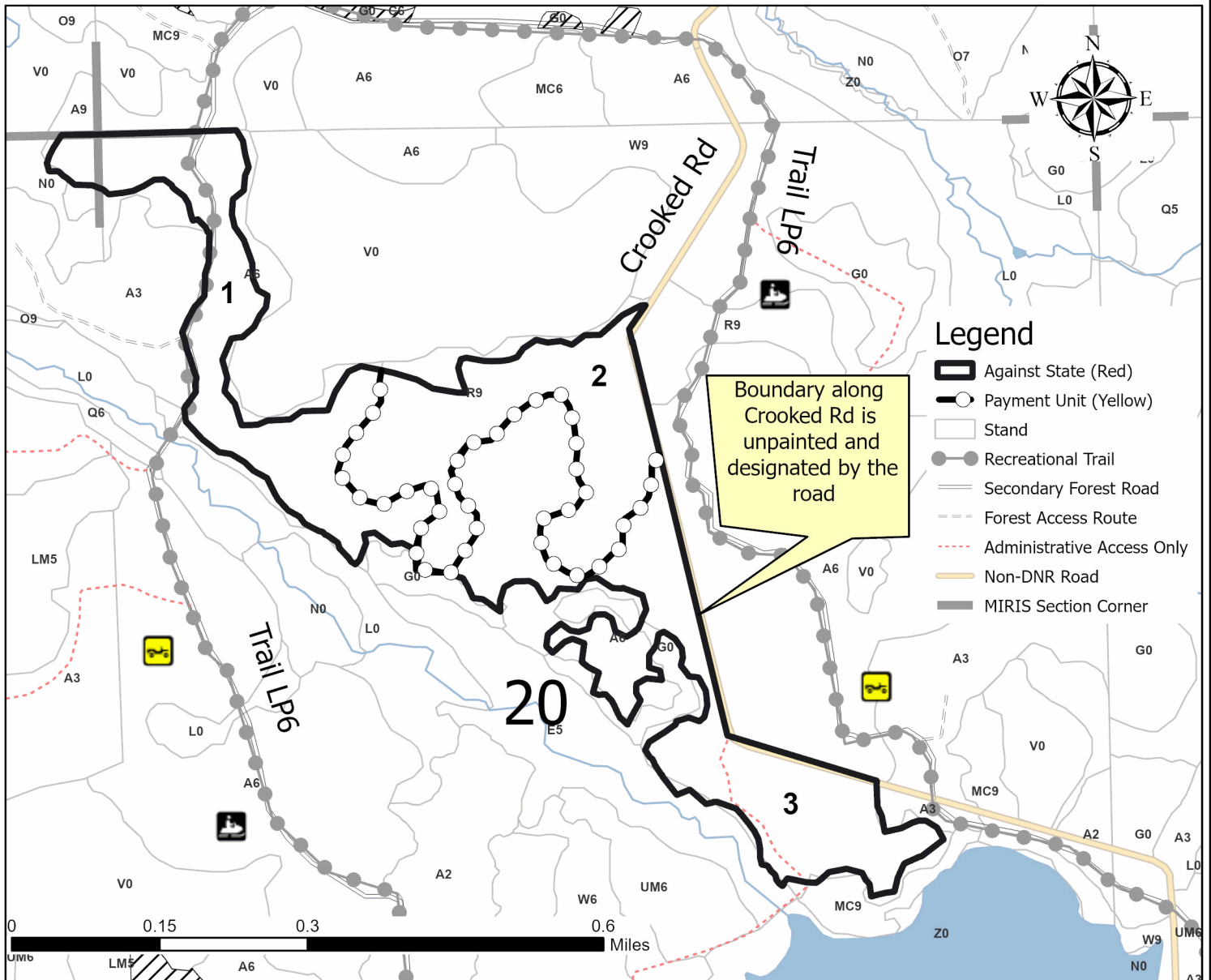
Density	
0 = Non Stocked	5 = Pole Timber Medium
1 = Seedling Sapling Poor	6 = Pole Timber Well
2 = Seedling Sapling Medium	7 = Saw Timber Poor
3 = Seedling Sapling Well	8 = Saw Timber Medium
4 = Pole Timber Poor	9 = Saw Timber Well

Use QR Code to open Map in App



PU #	Acres	PU #	Acres	PU #	Acres
1	25.4	3	38.2	5	28.7
2	26.1	4	39		

**Zig Zag
Aspen Pine
157.4 Acres**





TIMBER SALE MAP

This information provided by authority of Part 525, 1994 PA 451, as amended.

Sale Number

71-013-23

Date

10/13/2023

Forest Management Unit

County

Mapped By: Ewald

Scale

Page

Of

Roscommon Mgt Unit

Roscommon

Cruised By: Ewald

1:7,920

1

1

Township
22N

Range
02W

Section(s) and
Subdivision(s) Sec. 17 SWSW; Sec. 19 NENE,SW; Sec. 20 NW,W1/2NE,NESW,SE; Sec. 31 N1/2NE,SWNE;

Cover Type

A = Aspen	J = Jack Pine	O = Oak	U = Upland Brush
B = Paper Birch	K = Rock	P = Lowland Poplar	UM = Upland Mix Forest
C = Cedar	L = Lowland Brush	Q = Mixed Swamp Conifer	V = Bog or Marsh
D = Treed Bog	LM = Lowland Mix Forest	R = Red Pine	W = White Pine
E = Swamp Hardwoods	M = Maple, Beech, Birch	S = Black Spruce	X = Non Stocked
F = Spruce/Fir	MC = Mixed Conifer	T = Tamarack	Y = Sand
G = Grass	MD = Mixed Deciduous	Z = Water	
H = Hemlock	N = Marsh		

Density

0 = Non Stocked	5 = Pole Timber Medium
1 = Seedling Sapling Poor	6 = Pole Timber Well
2 = Seedling Sapling Medium	7 = Saw Timber Poor
3 = Seedling Sapling Well	8 = Saw Timber Medium
4 = Pole Timber Poor	9 = Saw Timber Well

Use QR Code to open Map in App



PU # Acres PU # Acres PU # Acres

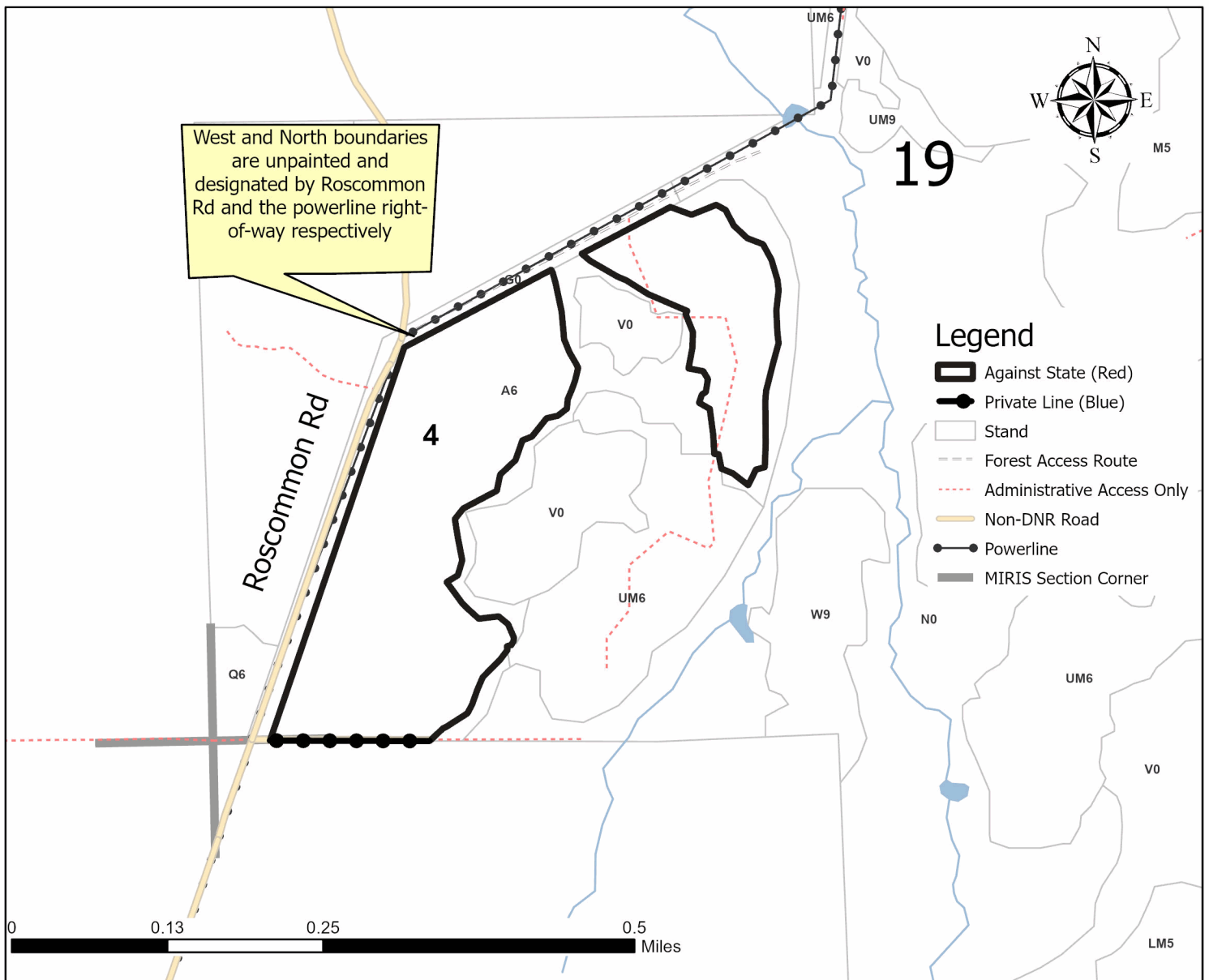
1 25.4 3 38.2 5 28.7

2 26.1 4 39

Zig Zag Aspen Pine

157.4 Acres

West and North boundaries are unpainted and designated by Roscommon Rd and the powerline right-of-way respectively





TIMBER SALE MAP

This information provided by authority of Part 525, 1994 PA 451, as amended.

Sale Number	Date	
71-013-23	10/13/2023	
Scale	Page	Of
1:7,920	3	3

Forest Management Unit	County	Mapped By: Ewald
Roscommon Mgt Unit	Roscommon	Cruised By: Ewald

Township	Range	Section(s) and Subdivision(s)
22N	02W	Sec. 17 SWSW; Sec. 19 NENE,SW; Sec. 20 NW,W1/2NE,NESW,SE; Sec. 31 N1/2NE,SWNE;

Cover Type			
A = Aspen	J = Jack Pine	O = Oak	U = Upland Brush
B = Paper Birch	K = Rock	P = Lowland Poplar	UM = Upland Mix Forest
C = Cedar	L = Lowland Brush	Q = Mixed Swamp Conifer	V = Bog or Marsh
D = Treed Bog	LM = Lowland Mix Forest	R = Red Pine	W = White Pine
E = Swamp Hardwoods	M = Maple, Beech, Birch	S = Black Spruce	X = Non Stocked
F = Spruce/Fir	MC = Mixed Conifer	T = Tamarack	Y = Sand
G = Grass	MD = Mixed Deciduous	Z = Water	
H = Hemlock	N = Marsh		

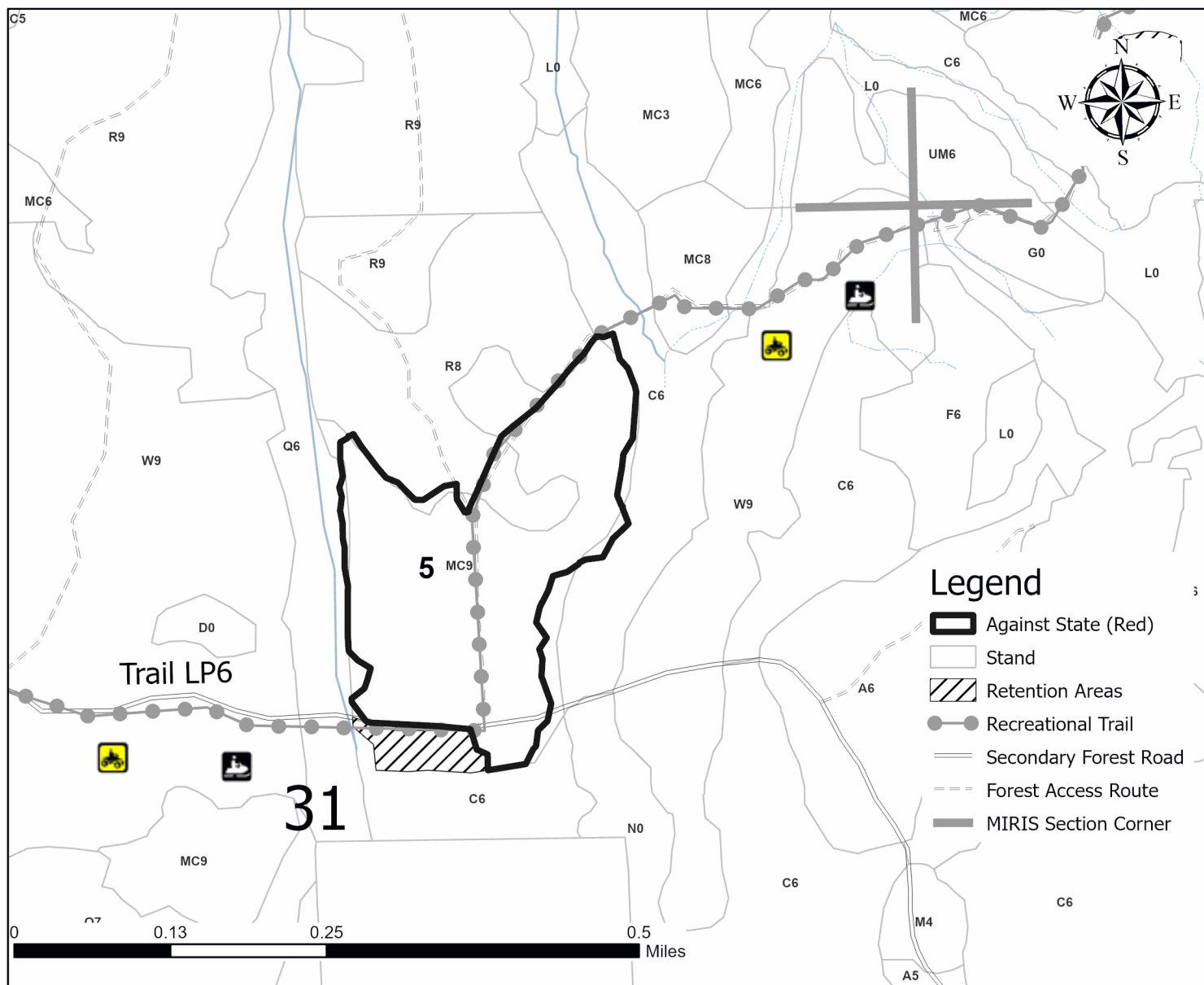
Density	
0 = Non Stocked	5 = Pole Timber Medium
1 = Seedling Sapling Poor	6 = Pole Timber Well
2 = Seedling Sapling Medium	7 = Saw Timber Poor
3 = Seedling Sapling Well	8 = Saw Timber Medium
4 = Pole Timber Poor	9 = Saw Timber Well

Use QR Code to open Map in App



PU #	Acres	PU #	Acres	PU #	Acres
1	25.4	3	38.2	5	28.7
2	26.1	4	39		

Zig Zag Aspen Pine 157.4 Acres



TIMBER SALE INFORMATION

South 18 Aspen (71-014-23)
 T21N, R03W, SEC. 25; T21N, R03W, SEC. 36.
 Roscommon County (Advertised Price \$220,825.85)

A timber sale contract for this lump sum, sealed bid timber sale will be awarded to the responsible bidder offering the highest sealed bid price. All units of volume listed below were estimated using the Inventory Manager computer program and the new Michigan taper model. Bids must be at or above the following advertised price for each product and species:

<u>PRODUCTS & SPECIES</u>	<u>ESTIMATED UNITS*</u>	<u>ADVERTISED PRICE</u>
Sawtimber		
B. T. Aspen	421.3 MBF	\$ 91.00 / MBF
Black/Red (Hybrid) Oak	46.0 MBF	\$ 111.00 / MBF
Quaking Aspen	110.2 MBF	\$ 91.00 / MBF
Red Oak	36.4 MBF	\$ 148.00 / MBF
Red Pine	10.2 MBF	\$ 134.00 / MBF
White Pine	10.3 MBF	\$ 56.00 / MBF
Pulpwood		
B. T. Aspen	2,697 Cords	\$ 42.40 / Cord
Black Cherry	82 Cords	\$ 18.60 / Cord
Jack Pine	11 Cords	\$ 13.50 / Cord
Mixed Oak	277 Cords	\$ 20.20 / Cord
Quaking Aspen	535 Cords	\$ 42.40 / Cord
Red Maple	490 Cords	\$ 18.60 / Cord
Red Oak	209 Cords	\$ 20.20 / Cord
Red Pine	7 Cords	\$ 50.35 / Cord
White Pine	44 Cords	\$ 46.10 / Cord

* The total volume is statistically estimated within plus (+) or minus (-) 27.03 percent. There are an estimated 5,843 cords on this timber sale, plus or minus 1,580 cords at the 95% confidence level. The estimated units are final and not subject to adjustment. Prospective bidders are urged to examine this timber and to make their own estimates of quantity and quality.

BOND AND PAYMENT SCHEDULE:

1. A bond in the amount of \$11,041.00 to insure faithful performance of the conditions of the contract will be deposited by the successful bidder within 21 days of the sale award.
2. Cutting in any sale or unit without the required advance payment would be considered a trespass.
3. Total payment must be paid in advance or according to the following schedule :
 - (a) Ten percent (10%) of the sale value must be paid within 21 days of the sale award.
 - (b) The 10% down payment will be credited towards the first unit cut.
 - (c) Payment for each of the following units must be made before cutting begins in that unit:

PAYMENT UNIT NUMBER	PERCENT OF TOTAL SALE VALUE
01	4.2%
02	1.9%
03	47.6%
04	46.3%
4. If no cutting takes place, the 10% down payment will not be refunded.
5. Operations on the contract issued will terminate on 12/31/2025.

SALE STATISTICS

Volumes were calculated in cubic feet using the Michigan taper model. Cubic foot volume includes all wood inside bark for the product indicated. For display purposes, cubic feet were converted to cords and MBF using a simple conversion factor, e.g. 79 cubic feet per cord and 185 cubic feet per MBF. The cubic foot volumes are precise; the cords and MBF volumes are not. Cubic foot volume cannot be directly converted to cords or boards with precision.

SALE VOLUMES

The total estimated sale volume may not equal the sum of the species/products due to the nature of statistical calculations associated with double sampling methodology.

VOLUME			STATISTICAL RANGE IN CORDS	
TOTAL CUBIC FEET	TOTAL CORDS	PERCENT ERROR	MINIMUM	MAXIMUM
461,587	5,843	27.03%	4,263	7,422

VDU VOLUMES

A VDU is a Volume Determination Unit. Volumes and their associated statistics are calculated at the VDU level and summarized to the sale level. There is often a one to one relationship between a VDU and a Payment Unit, but not always, depending on the cruise design. Refer to the VDU TO PAYMENT UNIT table.

	VOLUME			RANGE IN CORDS	
VDU	TOTAL CUBIC FEET	TOTAL CORDS	PERCENT ERROR	MINIMUM	MAXIMUM
79	430,192	5,445	18.87%	4,418	6,473
82	9,143	116	48.69%	59	172
83	2,893	37	154.36%	0	93
111	19,359	245	50.30%	122	368
TOTAL:	461,587	5,843		4,599	7,106

VDU TO PAYMENT UNIT

When a VDU is associated with more than one Payment Unit (PU), the VDU volumes are assigned to the PU based on acres of the VDU within the PU.

VDU	VDU ACRES	PU	PU ACRES
79	101.7	3	51.7
		4	50.0
82	9.8	2	9.8
83	4.0	3	0.6
		4	3.4
111	9.4	1	9.4
TOTAL:	124.9		124.9

DESCRIPTION OF TIMBER BY PAYMENT UNIT (PU)

PU	MARKET GROUP	PRODUCT	QUANTITY	UNIT	ACRES	ADVERTISE PRICE
1	B. T. Aspen	Sawtimber	12.0	MBF	9.4	\$9,295.80
	Black/Red (Hybrid		1.5	MBF		
	Quaking Aspen		19.4	MBF		
	B. T. Aspen	Pulpwood	8	Cords		
	Black Cherry		4	Cords		
	Jack Pine		11	Cords		
	<i>Jack Pine</i>	<i>Sawtimber</i>	0.9	<i>MBF</i>		
	<i>Jack Pine</i>	<i>Pulpwood</i>	9	<i>Cords</i>		
	Mixed Oak		12	Cords		
	/Red (Hybrid) Oak		12	Cords		
	Quaking Aspen		125	Cords		
	Red Maple		9	Cords		
	<i>Red Maple</i>		9	<i>Cords</i>		
	2	B. T. Aspen	Sawtimber	6.9		
Black/Red (Hybrid			3.1	MBF		
Red Oak			8.4	MBF		
Red Pine			2.9	MBF		
B. T. Aspen		Pulpwood	3	Cords		
Mixed Oak			20	Cords		
<i>White Oak</i>		<i>Sawtimber</i>	2.0	<i>MBF</i>		
<i>/Red (Hybrid) Oak</i>		<i>Pulpwood</i>	4	<i>Cords</i>		
<i>White Oak</i>			12	<i>Cords</i>		
Red Maple			21	Cords		
<i>Red Maple</i>		<i>Sawtimber</i>	2.7	<i>MBF</i>		
<i>Red Maple</i>		<i>Pulpwood</i>	16	<i>Cords</i>		
Red Oak			7	Cords		
Red Pine			2	Cords		
White Pine		10	Cords			
3	B. T. Aspen	Sawtimber	204.6	MBF	52.3	\$104,976.55
	Black/Red (Hybrid		20.7	MBF		
	Quaking Aspen		43.7	MBF		
	Red Oak		14.2	MBF		
	Red Pine		3.7	MBF		
	White Pine		5.2	MBF		
	B. T. Aspen	Pulpwood	1,365	Cords		
	Black Cherry		36	Cords		
	Mixed Oak		124	Cords		
	/Red (Hybrid) Oak		102	Cords		
	<i>White Oak</i>		22	Cords		
	Quaking Aspen		207	Cords		
	Red Maple		234	Cords		
	<i>Red Maple</i>	<i>Sawtimber</i>	3.0	<i>MBF</i>		
	<i>Red Maple</i>	<i>Pulpwood</i>	228	<i>Cords</i>		
	Red Oak		103	Cords		
	Red Pine		3	Cords		
	White Pine		17	Cords		
4	B. T. Aspen	Sawtimber	197.8	MBF	53.4	\$102,324.80
	Black/Red (Hybrid		20.7	MBF		
	Quaking Aspen		47.1	MBF		
	Red Oak		13.8	MBF		
	Red Pine		3.6	MBF		
	White Pine		5.1	MBF		
	B. T. Aspen	Pulpwood	1,321	Cords		
	Black Cherry		42	Cords		
	Mixed Oak		121	Cords		
	/Red (Hybrid) Oak		100	Cords		

DESCRIPTION OF TIMBER BY PAYMENT UNIT (PU), CON'T

PU	MARKET GROUP	PRODUCT	QUANTITY	UNIT	ACRES	ADVERTISE PRICE
4 con't	<i>White Oak</i>	<i>Pulpwood</i>	21	<i>Cords</i>		
	Quaking Aspen		203	Cords		
	Red Maple		226	Cords		
	<i>Red Maple</i>	<i>Sawtimber</i>	2.9	<i>MBF</i>		
	<i>Red Maple</i>	<i>Pulpwood</i>	220	<i>Cords</i>		
	Red Oak		99	Cords		
	Red Pine		2	Cords		
	White Pine		17	Cords		
TOTAL:			634.4	MBF		
TOTAL:			4,352	Cords		

Sale Specific Conditions & Requirements

Sale Name: South 18 Aspen

Sale Number: 71-014-23 Seq#: 1

1 - Sale Area

1.2 - Boundaries

1.2.1 - Painted boundaries (9/19)

The sale boundary and Payment Unit boundaries are marked and identified by red and yellow paint. Exterior sale boundary lines against state are marked with red paint. Interior Payment Unit boundaries are marked with yellow paint. Retention patches are marked with red paint; no harvesting activities may occur within these areas. The painted boundary line trees are not Included Timber and are to be protected. Yellow painted trees designating an interior Payment Unit boundary are only to be cut when all surrounding Payment Units have been paid.

2 - Timber Specifications

2.1 - Included Timber

2.1.1 - Clearcut unit(s) with unmerchantable trees (6/14)

Within Payment Unit(s) 1, 3, & 4, cut all trees that are two (2) inches or more at DBH.

2.1.3 - Cut tree marked unit(s) (12/08)

Within Payment Unit(s) 2, all trees are designated for cutting when marked with orange paint above and below stump height, regardless of merchantability.

2.2 - Utilization

2.2.3 - Stump heights (4/07)

Stump heights within the Sale Area shall not exceed 12 inches for trees greater than 10 inches DBH and 4 inches for trees smaller than 10 inches DBH.

2.2.6 - Roundwood operation required (3/21)

The skidding of whole trees or tree segments with limbs attached is prohibited within Payment Unit 2. All products must be produced as roundwood and forwarded to existing roads or landing areas in final product length.

3 - Payments

3.3 - Pre-measured Sales

3.3.4 - Dividing payment units (7/14)

Payment Unit(s) may be divided at the request of the Purchaser and upon approval of the Unit Manager. Dividing Payment Units is a contract modification which requires a Timber Sale Contract Amendment.

3.4 - Damaged Timber

3.4.1 - Damaged timber (7/16)

General Condition and Requirement 3.4 Damaged Timber, defines liquidated damages for undesignated live merchantable trees which are cut or injured. No damage is acceptable to undesignated live merchantable trees. Within Payment Unit 2, if more than 5% of trees (> 4.5" DBH) within a specified area of the sale are damaged, liquidated damages will be assessed for all trees damaged. Rates will be in accordance with General Condition and Requirement 3.4 Damaged Timber. In addition, should chipping occur in any Payment Unit, it must be done before sprouting of new regeneration. If more than 33% of the newly sprouted tree seedlings within a specified portion of the Sale Area are damaged, liquidated damages will be assessed at \$500 per acre for all acreage within that specified portion of the Sale Area that was damaged.

4 - Transportation

4.1 - Construction

4.1.6 - Road construction (1/09)

Construction of new roads or improvements of existing roads shall be done in such a way as to minimize the environmental and visual impacts. Merchantable trees shall be cut and utilized unless otherwise directed. Non-merchantable trees shall be

severed and laid flat on the ground. Slash shall be scattered, and not left in windrows and kept a minimum of 10 feet back from the road edge, or be chipped, utilized or otherwise removed from the sale. Stumps shall be set upright, not left on edge, and be moved at least 10 feet away from the road edge. Disturbed soil shall be feathered into the woods and not left in berms or windrows.

4.1.7 - Road closure (10/11)

All new roads built into the sale must be blocked to vehicle traffic upon completion of the sale. In general, this will require constructing a four (4') foot high berm of stumps and logs covered with earth. Stumps and brush must be placed along the remainder of the trail. These roads must be rendered impassable to cars and trucks. All stumps from road building and landing construction must be reserved to block any newly constructed roads upon completion of the sale. These stumps must be scattered along the road system to prohibit vehicular movement. Contact the Sale Administrator for specific details of design and placement.

4.2 - Maintenance

4.2.3 - Road maintenance (8/13)

The following road maintenance is required: Within 60 days of completion of hauling, or if no hauling occurs for 60 days, the road must be maintained and graded. This includes cleaning of drainage areas, grading, crowning and filling with gravel, if necessary. Damages will be assessed if grading/repair does not occur.

4.2.5 - Two wheel drive condition (2/04)

All existing trail roads on and adjacent to the sale area must be passable by two-wheel drive traffic for the duration of the sale.

5 - Operations

5.1 - Notification

5.1.1 - Pre-sale conference (10/16)

A pre-sale conference between the Purchaser and sale administrator is required prior to beginning any operations to determine landing and road locations.

5.1.4 - Post-sale conference (10/16)

A post-sale conference on site between the Purchaser and sale administrator is required prior to the completion of active logging operations to determine clean-up and repair of landings, road edges, and the fulfillment of other contract specifications.

5.2 - Conduct of Operations

5.2.1 - Slash

5.2.1.8 - Slash height (12/08)

No slash or tree tops may exceed 24 inches in height.

5.2.2 - Hazard Trees/Snags

5.2.2.1 - Den trees (10/16)

Obvious hollow and/or den trees shall be protected and left standing unless they are a safety hazard.

5.2.3 - Operating Restrictions

5.2.3.11 - Coppice regeneration protection (4/10)

Timber harvesting in any Payment Unit must be completed before significant aspen sprouting occurs in that Payment Unit so as to minimize damage to the new regeneration. Timber harvesting in any Payment Unit must be completed before significant aspen sprouting occurs in that Payment Unit so as to minimize damage to the new regeneration. Any post harvest operations, such as chipping, must be completed before sprouting of regeneration occurs. Should damages occur to the new regeneration, the damages will be assessed per Specification 3.4.1 - Damaged Timber. If it is anticipated that chipping will be delayed, then tops shall be carried to one central location, preferably the landing. A third-party entity may be brought in to chip the tops/slash, before new sprouting occurs, should the contract holder fail to present in a timely manner arrangements approved by the Unit Manager for protecting the new regeneration. The Unit Manager or his/her representative may also cease such operations if sprouting occurs before the operation is complete and the Payment Unit(s) will be counted as incomplete with liquidated damages assessed accordingly.

5.2.4 - Dead and Down Creation

5.2.4.2 - Dead and down creation, hare and grouse (1/14)

To improve habitat for snowshoe hare, grouse, and other species, the Purchaser is to leave two trees, nine (9) inches or larger in diameter on the ground for every two acres within Payment Units 1, 3 & 4. They should be scattered throughout the sale or positioned per the Sale Administrator's instructions. If possible, the logs or trees should be felled so they overlap. Note these pieces should have a minimum length of five feet. They can be of any tree species and can be an un-merchantable piece of wood or a full tree.

5.2.4.3 - Dead and down creation, dead trees (6/07)

Except as provided for in General Condition and Requirement 5.2.2, no dead trees, standing or down, are to be cut, skidded, or processed.

5.2.30 - Landing/road top soil protection (2/15)

Top soil on new landings and new roads must be removed, stockpiled and saved. Upon completion of the timber sale, soil must be evenly distributed back over the area for revegetation.

5.2.32 - Decking/landing restoration (9/13)

All decking and landing areas must have the surface area restored to a condition equal to or better than before. This is to ensure the proper regeneration of the stand. Wood debris, chips and "cookies" from trimmings must be removed or scattered away from landing and loading areas and may not be windrowed on the edge.

5.2.38 - No decking against live trees (2/04)

Cut products may not be decked against unmarked or designated leave trees.

5.4 - Soil Protection

5.4.1 - Rutting restriction, general (7/16)

The Unit Manager or his/her representative may restrict hauling and/or skidding if ruts exceed the specified depth. With the Unit Manager or his/her representative's approval, the Purchaser may return to the area when the risk of rutting has decreased.

6 - Safety and Fire Prevention

6.2 - Signing

6.2.1 - Road posting (10/20)

The Purchaser is responsible for posting and maintaining caution signs on M-18 prior to beginning operations. The road must be posted at appropriate distances from the Sale Area to warn of logging activity and truck traffic. Signs must be removed when harvest operations are suspended or completed. The Purchaser will provide these signs.



TIMBER SALE MAP

This information provided by authority of Part 525, 1994 PA 451, as amended.

Sale Number	Year
71-014	23

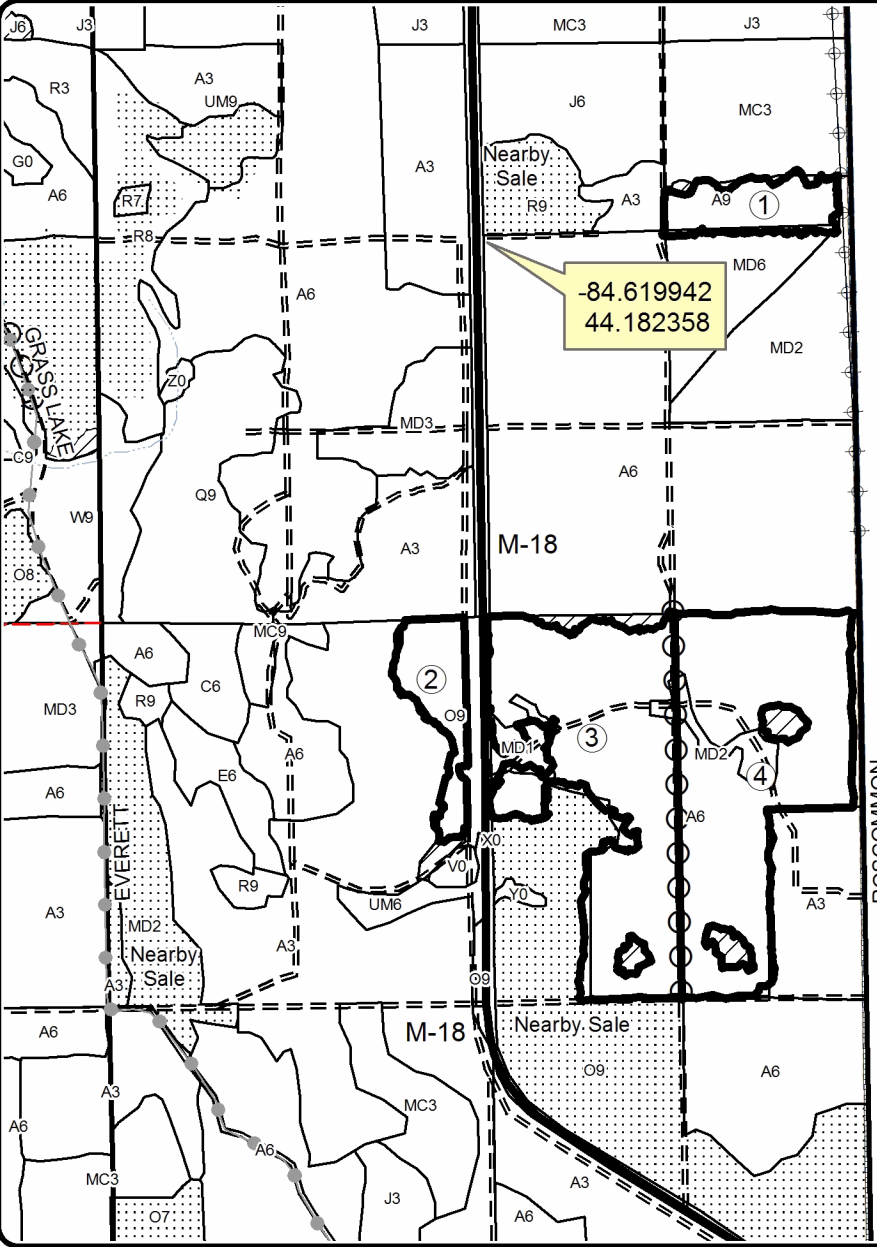
Forest Management Unit	County	Mapped By	Date	Page	of
Roscommon Management Unit	Roscommon County	Lewicki	10/13/23	1	1
		Cruised By			
		Lewicki, Martell, Ewald			

Township	Range	Section(s) and Subdivision(s)	Scale
21N	03W	S.25-SENE;E1/2SE S.36E1/2NW;NE;NWSE	1:15,840

Cover Type				Density	
A = Aspen	H = Hemlock	N = Marsh	U = Upland Brush	0 = Non Stocked	5 = Pole Timber Medium
B = Paper Birch	J = Jack Pine	O = Oak	UM = Upland Mixed	1 = Seedling Sapling Poor	6 = Pole Timber Well
C = Cedar	L = Lowland Brush	P = Lowland Poplar	V = Bog or Marsh	2 = Seedling Sapling Medium	7 = Saw Timber Poor
D = Treed Bog	LM = Lowland Mixed	Q = Mixed Swamp Conifer	W = White Pine	3 = Seedling Sapling Well	8 = Saw Timber Medium
E = Swamp Hdwoods	M = Mpl, Bch, Brch	R = Red Pine	X = Non Stocked	4 = Pole Timber Poor	9 = Saw Timber Well
F = Spruce Fir	MC = Mixed Conifer	S = Black Spruce	Z = Water		
G = Grass	MD = Mixed Deciduous	T = Tamarack			

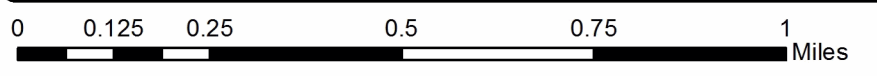
PU	Acres	PU	Acres
1	9.4	4	53.4
2	9.8		
3	52.3		

South 18 Aspen Compartment #28 124.9 Acres



Legend

- Recreational Trails
- Highways
- Secondary Forest Road
- Forest Access Route
- Paved Road
- Gravel Road
- County Road - Seasonal
- Retention Area
- Against State (Red)
- Payment Unit (Yellow)
- Stand Boundaries
- Nearby Timber Sale



Zig Zag Aspen Pine (71-013-23)

T22N, R02W, SEC. 17; T22N, R02W, SEC. 19; T22N, R02W, SEC. 20; T22N,

In response to the notice of sale to be held 9:00 a.m. (local time) on January 9, 2024, I am hereby submitting my sealed bid (firm offer) for the following forest products to be cut. Bids for individual species must be at or above the advertised price. All non-responsive bid forms may be rejected.

<u>PRODUCTS & SPECIES</u>	<u>ESTIMATED VOLUME*</u>	<u>ADVERTISED PRICE</u>	<u>BID PRICE/UNIT</u>
Sawtimber			
Mixed Aspen	274.7 MBF	\$ 91.00/MBF	\$ _____
Mixed Oak	85.2 MBF	\$ 111.00/MBF	\$ _____
Paper Birch	3.1 MBF	\$ 53.00/MBF	\$ _____
Red Maple	66.6 MBF	\$ 76.00/MBF	\$ _____
Red Oak	2.7 MBF	\$ 148.00/MBF	\$ _____
Red Pine	764.9 MBF	\$ 134.00/MBF	\$ _____
White Oak	16.0 MBF	\$ 66.00/MBF	\$ _____
White Pine	331.9 MBF	\$ 56.00/MBF	\$ _____
Pulpwood			
Balsam Fir	27 Cords	\$ 30.00/Cord	\$ _____
Black Spruce	10 Cords	\$ 39.65/Cord	\$ _____
Hemlock	12 Cords	\$ 11.85/Cord	\$ _____
Jack Pine	7 Cords	\$ 13.50/Cord	\$ _____
Mixed Aspen	2,135 Cords	\$ 42.40/Cord	\$ _____
Mixed Hardwood	679 Cords	\$ 18.60/Cord	\$ _____
Mixed Oak	186 Cords	\$ 20.20/Cord	\$ _____
N. White Cedar	21 Cords	\$ 18.35/Cord	\$ _____
Paper Birch	13 Cords	\$ 21.85/Cord	\$ _____
Red Oak	1 Cords	\$ 20.20/Cord	\$ _____
Red Pine	489 Cords	\$ 50.35/Cord	\$ _____
White Pine	484 Cords	\$ 46.10/Cord	\$ _____

*The volumes are statistically estimated within plus (+) or minus (-) 15.54 percent at 95% confidence level. These estimated volumes are final and not subject to adjustment. Prospective bidders are urged to examine this timber and to make their own estimates of quantity and quality.

I understand that any or all bids may be rejected. All bids must be signed and all bid items must be bid or the bid form may be rejected. I also understand that consideration and awarding a contract will be based upon my past performance and ability to complete the contract based upon equipment and staffing subject to my control .

FEDERAL ID: _____ - _____ or SOCIAL SECURITY NUMBER: _____ - _____ - _____

Company or individual bidding: _____

Company representative's name: _____

Address: _____

City: _____ State: _____ Zip: _____

IF AVAILABLE, PLEASE PLACE THE PERSONALIZED LABEL FROM YOUR PROSPECTUS IN THE ABOVE BOX.

Individual or company representative's signature: _____ Date: _____

Phone number : _____ Email (optional): _____

THE WINNING BIDDER MUST COMPLETE THE VERIFICATION OF WORKER'S DISABILITY COMPENSATION ACT COMPLIANCE (ON REVERSE SIDE IF DOUBLE SIDED) WITHIN 21 DAYS OF SALE AWARD DATE



FOR DEPARTMENT USE ONLY	
Sale Number (XX - XXX - XX - XX)	
Forest Management Unit:	

TIMBER SALE VERIFICATION OF WORKER'S DISABILITY COMPENSATION ACT COMPLIANCE

As required by Act 317, P.A. 1969 (Worker's Compensation) and
Part 5 of Act 451 of 1994, as amended.

VERIFICATION OF WORKER'S DISABILITY COMPENSATION ACT COMPLIANCE

- This verification must be completed and submitted within 21 days of contract award and prior to the issuance of the timber sale contract.
- In addition, if boxes 2B or 2C are checked, then Notice of Exclusion or Certificate of Insurance must be submitted within twenty-one (21) days of the contract award and prior to the issuance of the timber sale contract.
- All information must be typed or printed except for written signatures.

Please Check Appropriate Categories:

1. My business is organized as (you **must** check one of the boxes below):
 - A. Sole Proprietorship (individual)
 - B. Partnership
 - C. Corporation
2. You **must** check one of the boxes below:
 - A. I certify my business is a sole proprietorship and it has no employees but the sole proprietor. I am not subject to the Worker's Compensation Laws.
 - B. I certify my business has satisfied its obligation to the Worker's Compensation Act through the use of an approved Notice of Exclusion (BWC-337, Rev. 5/96). I will provide a copy of the Notice of Exclusion within 21 days of the contract award. (For questions or a copy of the BWC-337, please call the Worker's Compensation Bureau at 517-322-1195).
 - C. I certify my business has a Worker's Compensation Policy. I will provide an original Certificate of Insurance within twenty-one (21) days of the contract award.
3. If you have checked item 2(A) or 2(B), you **must** indicate the number of **both** full-time and part-time employees, other than yourself, including family members and active partners (if none, you must enter "0").

_____ Full-time Employees

_____ Part-time Employees

Name of Business		Federal ID (or) Social Security No.	
Address		Telephone ()	
City	State	ZIP	

I hereby certify that the above information is true and correct. I agree to notify the Michigan DNR of any changes that occur in factors affecting my coverage during any of my present and future operations.

Signature of Owner or Authorized Representative

Title

Date

Please complete the "SEALED BID" information on the next page

South 18 Aspen (71-014-23)
T21N, R03W, SEC. 25; T21N, R03W, SEC. 36; Roscommon COUNTY

In response to the notice of sale to be held 9:00 a.m. (local time) on January 9, 2024, I am hereby submitting my sealed bid (firm offer) for the following forest products to be cut. Bids for individual species must be at or above the advertised price. All non-responsive bid forms may be rejected.

<u>PRODUCTS & SPECIES</u>	<u>ESTIMATED VOLUME*</u>	<u>ADVERTISED PRICE</u>	<u>BID PRICE/UNIT</u>
Sawtimber			
B. T. Aspen	421.3 MBF	\$ 91.00/MBF	\$ _____
Black/Red (Hybrid) Oak	46.0 MBF	\$ 111.00/MBF	\$ _____
Quaking Aspen	110.2 MBF	\$ 91.00/MBF	\$ _____
Red Oak	36.4 MBF	\$ 148.00/MBF	\$ _____
Red Pine	10.2 MBF	\$ 134.00/MBF	\$ _____
White Pine	10.3 MBF	\$ 56.00/MBF	\$ _____
Pulpwood			
B. T. Aspen	2,697 Cords	\$ 42.40/Cord	\$ _____
Black Cherry	82 Cords	\$ 18.60/Cord	\$ _____
Jack Pine	11 Cords	\$ 13.50/Cord	\$ _____
Mixed Oak	277 Cords	\$ 20.20/Cord	\$ _____
Quaking Aspen	535 Cords	\$ 42.40/Cord	\$ _____
Red Maple	490 Cords	\$ 18.60/Cord	\$ _____
Red Oak	209 Cords	\$ 20.20/Cord	\$ _____
Red Pine	7 Cords	\$ 50.35/Cord	\$ _____
White Pine	44 Cords	\$ 46.10/Cord	\$ _____

*The volumes are statistically estimated within plus (+) or minus (-) 27.03 percent at 95% confidence level. These estimated volumes are final and not subject to adjustment. Prospective bidders are urged to examine this timber and to make their own estimates of quantity and quality.

I understand that any or all bids may be rejected. All bids must be signed and all bid items must be bid or the bid form may be rejected. I also understand that consideration and awarding a contract will be based upon my past performance and ability to complete the contract based upon equipment and staffing subject to my control.

FEDERAL ID: ____ - ____ - ____ or SOCIAL SECURITY NUMBER: ____ - ____ - ____

Company or individual bidding: _____

Company representative's name: _____

Address: _____

City: _____ State: _____ Zip: _____

IF AVAILABLE, PLEASE PLACE THE PERSONALIZED LABEL FROM YOUR PROSPECTUS IN THE ABOVE BOX.

Individual or company representative's signature: _____ Date: _____

Phone number : _____ Email (optional): _____

THE WINNING BIDDER MUST COMPLETE THE VERIFICATION OF WORKER'S DISABILITY COMPENSATION ACT COMPLIANCE (ON REVERSE SIDE IF DOUBLE SIDED) WITHIN 21 DAYS OF SALE AWARD DATE



FOR DEPARTMENT USE ONLY
Sale Number (XX - XXX - XX - XX)
Forest Management Unit:

TIMBER SALE VERIFICATION OF WORKER'S DISABILITY COMPENSATION ACT COMPLIANCE

*As required by Act 317, P.A. 1969 (Worker's Compensation) and
Part 5 of Act 451 of 1994, as amended.*

VERIFICATION OF WORKER'S DISABILITY COMPENSATION ACT COMPLIANCE

- This verification must be completed and submitted within 21 days of contract award and prior to the issuance of the timber sale contract.
- In addition, if boxes 2B or 2C are checked, then Notice of Exclusion or Certificate of Insurance must be submitted within twenty-one (21) days of the contract award and prior to the issuance of the timber sale contract.
- All information must be typed or printed except for written signatures.

Please Check Appropriate Categories:

1. My business is organized as (you **must** check one of the boxes below):
 - A. Sole Proprietorship (individual)
 - B. Partnership
 - C. Corporation
2. You **must** check one of the boxes below:
 - A. I certify my business is a sole proprietorship and it has no employees but the sole proprietor. I am not subject to the Worker's Compensation Laws.
 - B. I certify my business has satisfied its obligation to the Worker's Compensation Act through the use of an approved Notice of Exclusion (BWC-337, Rev. 5/96). I will provide a copy of the Notice of Exclusion within 21 days of the contract award. (For questions or a copy of the BWC-337, please call the Worker's Compensation Bureau at 517-322-1195).
 - C. I certify my business has a Worker's Compensation Policy. I will provide an original Certificate of Insurance within twenty-one (21) days of the contract award.
3. If you have checked item 2(A) or 2(B), you **must** indicate the number of **both** full-time and part-time employees, other than yourself, including family members and active partners (if none, you must enter "0").

_____ Full-time Employees

_____ Part-time Employees

Name of Business		Federal ID (or) Social Security No.	
Address		Telephone ()	
City	State	ZIP	

I hereby certify that the above information is true and correct. I agree to notify the Michigan DNR of any changes that occur in factors affecting my coverage during any of my present and future operations.

Signature of Owner or Authorized Representative

Title

Date

Please complete the "SEALED BID" information on the next page

Tag Team Mix (71-003-24)
T22N, R04W, SEC. 30; T22N, R04W, SEC. 31; Roscommon COUNTY

In response to the notice of sale to be held 9:00 a.m. (local time) on January 9, 2024, I am hereby submitting my sealed bid (firm offer) for the following forest products to be cut. Bids for individual species must be at or above the advertised price. All non-responsive bid forms may be rejected.

<u>PRODUCTS & SPECIES</u>	<u>ESTIMATED VOLUME*</u>	<u>ADVERTISED PRICE</u>	<u>BID PRICE/UNIT</u>
Sawtimber			
B. T. Aspen	4.7 MBF	\$ 91.00/MBF	\$ _____
Black Cherry	0.4 MBF	\$ 215.00/MBF	\$ _____
Black/Red (Hybrid) Oak	293.5 MBF	\$ 111.00/MBF	\$ _____
Red Maple	0.4 MBF	\$ 76.00/MBF	\$ _____
Red Oak	43.0 MBF	\$ 148.00/MBF	\$ _____
Red Pine	41.8 MBF	\$ 134.00/MBF	\$ _____
White Oak	98.7 MBF	\$ 66.00/MBF	\$ _____
White Pine	4.6 MBF	\$ 56.00/MBF	\$ _____
Pulpwood			
B. T. Aspen	10 Cords	\$ 42.40/Cord	\$ _____
Mixed Hardwood	42 Cords	\$ 18.60/Cord	\$ _____
Mixed Oak	661 Cords	\$ 20.20/Cord	\$ _____
Red Oak	83 Cords	\$ 20.20/Cord	\$ _____
Red Pine	36 Cords	\$ 50.35/Cord	\$ _____
White Pine	5 Cords	\$ 46.10/Cord	\$ _____

*The volumes are statistically estimated within plus (+) or minus (-) 21.16 percent at 95% confidence level. These estimated volumes are final and not subject to adjustment. Prospective bidders are urged to examine this timber and to make their own estimates of quantity and quality.

I understand that any or all bids may be rejected. All bids must be signed and all bid items must be bid or the bid form may be rejected. I also understand that consideration and awarding a contract will be based upon my past performance and ability to complete the contract based upon equipment and staffing subject to my control .

FEDERAL ID: _____ or SOCIAL SECURITY NUMBER: _____

Company or individual bidding: _____

Company representative's name: _____

Address: _____

City: _____ State: _____ Zip: _____

IF AVAILABLE, PLEASE PLACE THE PERSONALIZED LABEL FROM YOUR PROSPECTUS IN THE ABOVE BOX.

Individual or company representative's signature: _____ Date: _____

Phone number : _____ Email (optional): _____

THE WINNING BIDDER MUST COMPLETE THE VERIFICATION OF WORKER'S DISABILITY COMPENSATION ACT COMPLIANCE (ON REVERSE SIDE IF DOUBLE SIDED) WITHIN 21 DAYS OF SALE AWARD DATE



FOR DEPARTMENT USE ONLY	
Sale Number (XX - XXX - XX - XX)	
Forest Management Unit:	

TIMBER SALE VERIFICATION OF WORKER'S DISABILITY COMPENSATION ACT COMPLIANCE

As required by Act 317, P.A. 1969 (Worker's Compensation) and
Part 5 of Act 451 of 1994, as amended.

VERIFICATION OF WORKER'S DISABILITY COMPENSATION ACT COMPLIANCE

- This verification must be completed and submitted within 21 days of contract award and prior to the issuance of the timber sale contract.
- In addition, if boxes 2B or 2C are checked, then Notice of Exclusion or Certificate of Insurance must be submitted within twenty-one (21) days of the contract award and prior to the issuance of the timber sale contract.
- All information must be typed or printed except for written signatures.

Please Check Appropriate Categories:

1. My business is organized as (you **must** check one of the boxes below):
 - A. Sole Proprietorship (individual)
 - B. Partnership
 - C. Corporation
2. You **must** check one of the boxes below:
 - A. I certify my business is a sole proprietorship and it has no employees but the sole proprietor. I am not subject to the Worker's Compensation Laws.
 - B. I certify my business has satisfied its obligation to the Worker's Compensation Act through the use of an approved Notice of Exclusion (BWC-337, Rev. 5/96). I will provide a copy of the Notice of Exclusion within 21 days of the contract award. (For questions or a copy of the BWC-337, please call the Worker's Compensation Bureau at 517-322-1195).
 - C. I certify my business has a Worker's Compensation Policy. I will provide an original Certificate of Insurance within twenty-one (21) days of the contract award.
3. If you have checked item 2(A) or 2(B), you **must** indicate the number of **both** full-time and part-time employees, other than yourself, including family members and active partners (if none, you must enter "0").

_____ Full-time Employees

_____ Part-time Employees

Name of Business		Federal ID (or) Social Security No.	
Address		Telephone ()	
City	State	ZIP	

I hereby certify that the above information is true and correct. I agree to notify the Michigan DNR of any changes that occur in factors affecting my coverage during any of my present and future operations.

Signature of Owner or Authorized Representative

Title

Date

Please complete the "SEALED BID" information on the next page

Natural 20 Mix (71-002-24)
T23N, R01E, SEC. 31; T23N, R01E, SEC. 32; Ogemaw COUNTY

In response to the notice of sale to be held 9:00 a.m. (local time) on January 9, 2024, I am hereby submitting my sealed bid (firm offer) for the following forest products to be cut. Bids for individual species must be at or above the advertised price. All non-responsive bid forms may be rejected.

<u>PRODUCTS & SPECIES</u>	<u>ESTIMATED VOLUME*</u>	<u>ADVERTISED PRICE</u>	<u>BID PRICE/UNIT</u>
Sawtimber			
Black/Red (Hybrid) Oak	104.1 MBF	\$ 111.00/MBF	\$ _____
Jack Pine	8.9 MBF	\$ 43.00/MBF	\$ _____
Mixed Aspen	133.8 MBF	\$ 91.00/MBF	\$ _____
Red Maple	6.9 MBF	\$ 76.00/MBF	\$ _____
Red Oak	6.6 MBF	\$ 148.00/MBF	\$ _____
Red Pine	83.7 MBF	\$ 134.00/MBF	\$ _____
White Oak	18.5 MBF	\$ 66.00/MBF	\$ _____
White Pine	186.8 MBF	\$ 56.00/MBF	\$ _____
Pulpwood			
Balsam Fir	7 Cords	\$ 30.00/Cord	\$ _____
Black Cherry	19 Cords	\$ 18.60/Cord	\$ _____
Jack Pine	174 Cords	\$ 13.50/Cord	\$ _____
Mixed Aspen	336 Cords	\$ 42.40/Cord	\$ _____
Mixed Oak	397 Cords	\$ 20.20/Cord	\$ _____
Red Maple	171 Cords	\$ 18.60/Cord	\$ _____
Red Oak	20 Cords	\$ 20.20/Cord	\$ _____
Red Pine	119 Cords	\$ 50.35/Cord	\$ _____
White Pine	546 Cords	\$ 46.10/Cord	\$ _____

*The volumes are statistically estimated within plus (+) or minus (-) 20.38 percent at 95% confidence level. These estimated volumes are final and not subject to adjustment. Prospective bidders are urged to examine this timber and to make their own estimates of quantity and quality.

I understand that any or all bids may be rejected. All bids must be signed and all bid items must be bid or the bid form may be rejected. I also understand that consideration and awarding a contract will be based upon my past performance and ability to complete the contract based upon equipment and staffing subject to my control.

FEDERAL ID: _____ or SOCIAL SECURITY NUMBER: _____

Company or individual bidding: _____

Company representative's name: _____

Address: _____

City: _____ State: _____ Zip: _____

IF AVAILABLE, PLEASE PLACE THE PERSONALIZED LABEL FROM YOUR PROSPECTUS IN THE ABOVE BOX.

Individual or company representative's signature: _____ Date: _____

Phone number : _____ Email (optional): _____

THE WINNING BIDDER MUST COMPLETE THE VERIFICATION OF WORKER'S DISABILITY COMPENSATION ACT COMPLIANCE (ON REVERSE SIDE IF DOUBLE SIDED) WITHIN 21 DAYS OF SALE AWARD DATE



FOR DEPARTMENT USE ONLY
Sale Number (XX - XXX - XX - XX)
Forest Management Unit:

TIMBER SALE VERIFICATION OF WORKER'S DISABILITY COMPENSATION ACT COMPLIANCE

*As required by Act 317, P.A. 1969 (Worker's Compensation) and
Part 5 of Act 451 of 1994, as amended.*

VERIFICATION OF WORKER'S DISABILITY COMPENSATION ACT COMPLIANCE

- This verification must be completed and submitted within 21 days of contract award and prior to the issuance of the timber sale contract.
- In addition, if boxes 2B or 2C are checked, then Notice of Exclusion or Certificate of Insurance must be submitted within twenty-one (21) days of the contract award and prior to the issuance of the timber sale contract.
- All information must be typed or printed except for written signatures.

Please Check Appropriate Categories:

1. My business is organized as (you **must** check one of the boxes below):
 - A. Sole Proprietorship (individual)
 - B. Partnership
 - C. Corporation

2. You **must** check one of the boxes below:
 - A. I certify my business is a sole proprietorship and it has no employees but the sole proprietor. I am not subject to the Worker's Compensation Laws.
 - B. I certify my business has satisfied its obligation to the Worker's Compensation Act through the use of an approved Notice of Exclusion (BWC-337, Rev. 5/96). I will provide a copy of the Notice of Exclusion within 21 days of the contract award. (For questions or a copy of the BWC-337, please call the Worker's Compensation Bureau at 517-322-1195).
 - C. I certify my business has a Worker's Compensation Policy. I will provide an original Certificate of Insurance within twenty-one (21) days of the contract award.

3. If you have checked item 2(A) or 2(B), you **must** indicate the number of **both** full-time and part-time employees, other than yourself, including family members and active partners (if none, you must enter "0").

_____ Full-time Employees

_____ Part-time Employees

Name of Business		Federal ID (or) Social Security No.	
Address		Telephone ()	
City	State	ZIP	

I hereby certify that the above information is true and correct. I agree to notify the Michigan DNR of any changes that occur in factors affecting my coverage during any of my present and future operations.

Signature of Owner or Authorized Representative

Title

Date

Please complete the "SEALED BID" information on the next page