



**DEPARTMENT OF NATURAL RESOURCES
STATE OF MICHIGAN
TIMBER SALE PROSPECTUS #7392**

SCHEDULED SALE DATE AND TIME: 10:00 a.m. (local time) on June 13, 2024.

LOCATION: **GLADWIN MGMT UNIT, 801 NORTH SILVERLEAF, GLADWIN, MI 48624.**

PROSPECTUS NOTE: The bidder is advised to inspect the sale area and review the location, estimated volumes, operating costs and contract terms of proposed sales. Please be aware that some landowners may request 60 days or more notice for access across their land.

Notice is hereby given that bids will be received by the Unit Manager, GLADWIN MANAGEMENT UNIT, for certain timber on the following described lands:

Oakie Bobby (73-007-23) / T20N, R03W, SEC. 17, S1/2NE.
T20N, R03W, SEC. 8 , NENE,S1/2NE,E1/2SW,N1/2SE,SWSE.
Clare County, Advertised Price \$119,884.15, 127.4 Acres, Hardwood, Aspen.

Mop up Oak (73-009-23) / T20N, R03W, SEC. 1 , NENW,S1/2NW,W1/2NE,NWSW,SESE.
T20N, R03W, SEC. 12, NENE.
T20N, R03W, SEC. 5 , NWSE.
T20N, R03W, SEC. 8 , NW,W1/2NE,N1/2SW.
Clare County, Advertised Price \$111,578.30, 107.0 Acres, Hardwood, Red Oak.

SALE NOTE: All units of volume listed for this sale were estimated using the Inventory Manager computer program and the new Michigan taper model.

A recreation site such as a trail, pathway, or campground is within the sale area or the vicinity. Certain restrictions/specifications may be applicable including time restrictions.

BID INSTRUCTIONS (VER. 10/10/2022):

1. Scheduled Bid Location, Date, and Time (2/11)

Bids must be received by the Unit Manager, GLADWIN OFFICE, 801 NORTH SILVERLEAF, GLADWIN, MI 48624, no later than 10:00 a.m. (local time) on June 13, 2024. For further information concerning this sale, contact Blair Tweedale at 989-426-9205 extension 7640.

2. Bidder's Qualifications (10/22)

If all or part of a timber sale was prepared by a private contractor, the contractor and that contractor's company are not permitted to bid on the timber sale. A person must be 18 years of age or older to purchase timber. Permanent employees of the Department of Natural Resources or members of their immediate household may not bid. Former employees, in the permanent or seasonal class, may not bid until 3 months after the last day of active duty. Bids will not be accepted from individuals or companies appearing on the DNR/FRD No-Bid List. This list contains the names of purchasers who previously failed to execute a contract within 21-days or who have a history of poor performance.

3. Preparation of Sealed Bids (5/16)

Bid Forms may be completed online thru Michigan DNR Timber Sale Online Bidding (OLB) at www.michigan.gov/timberbidding or by completing the hardcopy Bid Form found in the Timber Sale Prospectus. Hardcopy Bid Forms shall be manually signed in ink. Registration in OLB is considered your 'signature' for all bids submitted thru that system. Bid prices must be entered for each species and product in the Bid Price column for all material subject to bidding and all fill-in blanks must be completed. If erasures or other changes appear on the hardcopy Bid Form, each erasure or change must be initialed by the person signing the bid.

4. Submission of Sealed Bids (5/16)

Bid forms may be obtained from the Unit Manager or thru OLB. Bids may be submitted hardcopy or thru OLB. All hardcopy bids must be submitted on the bid form and in an envelope clearly identified as described in this section. NOTE: Only one bid form per bid envelope. Sealed bids must be submitted to the Unit office designated in the prospectus and must be submitted at or prior to the time established in the prospectus. The envelope should show on the outside (a) the sale name or number and (b) the date and time of bid opening, as shown in the prospectus. Bids received after the time specified in the sale prospectus are late bids and will be rejected.

It is possible for a bidder to submit multiple bids on a single sale. For example, a bid may be submitted hardcopy and a bid may be submitted thru OLB. Or, two bidders from the same company could both submit bids on the same sale. If this were to happen, the State would accept all bids received and award the contract accordingly. All bidding and contractual requirements would apply to all bids received.

5. Public Opening of Sealed Bids (7/16)

If conditions permit, the sealed bids will be publicly opened and posted at the time and place set in the prospectus.

If a bidder, present at a bid opening, has submitted bids on more than one sale, that bidder may withdraw their unopened bid envelopes or announce the withdrawal of their online bid after being declared the successful bidder on one sale.

6. Award of Contract (1/11)

Award of the contract will be made to the Bidder whose bid, conforming to the prospectus, is most advantageous to the State of Michigan on the basis of total value at rates bid for the estimated quantities. The State reserves the right to reject any bid or waive any minor irregularity in bids received. A written award mailed (or otherwise furnished) to the successful Bidder shall be deemed to result in a binding contract without further action by either party.

7. Down Payment (1/11)

The Bidder to whom award is made must make a down payment within 21 days of the sale award. The amount of the down payment will be calculated as shown in the Bond and Payment Schedule of this prospectus. Only cash may be used to meet this requirement.

8. Performance Security (1/11)

As guarantee of faithful performance, a cash bond, certificate of deposit, surety bond or irrevocable letter of credit (LOC) is required within 21 days of the sale award. The amount of the performance security is shown in the Bond and

Payment Schedule of this prospectus. If an LOC or surety is used, the coverage must extend for at least 6 months beyond the contract expiration.

9. Worker's Compensation (10/22)

Purchaser shall obtain worker's compensation insurance to cover claims under Michigan's Worker's Disability Compensation Act of 1969 or similar employee benefit act of any other state applicable to an employee. Verification of Worker's Disability Compensation Act Compliance must be completed and submitted within 21 days of contract award and prior to the issuance of the timber sale contract. In addition, if applicable, Notice of Exclusion or Certificate of Insurance must also be submitted.

10. Timber Sale Contract (10/22)

Additional conditions and requirements common to all timber sales are listed on the timber sale contract (R4031) and are available on line at www.michigan.gov/timber. Contact the Unit Manager for additional information or a sample contract. Within 21 days of the date of the award letter, the bidder must sign the contract and provide the required down payment, performance security, and verification of worker's disability compensation. The down payment and performance security shall be in accordance with the provisions of the timber sale contract, in the sums stated in this prospectus. If these actions are not taken, then the Bidder, the Bidder's corporation, and the corporation's principals may not be permitted to bid on State timber sales for a period of 3 months after the first offense, 6 months after the second offense, and 1 year after the third offense. An offense will only be counted against the Bidder for 5 years. In addition, the Bidder certifies that if awarded this contract, the Bidder will complete the timber sale contract in accordance with its terms and any modifications thereof including requirements to purchase, cut, and remove the included timber by the expiration date.

Payment Unit values in the State Forest Timber Sale Contract are calculated based on the advertised value of the Payment Unit as a percentage of the total advertised value of the contract. The advertised value of each Payment Unit is given in the Description of Timber by Payment Unit table on the Timber Sale Information page. For example, if the value of Payment Unit 1 is advertised as \$1,500 and the total Timber Sale value is advertised as \$10,000, the contract price for Payment Unit 1 will be 15% of the total bid price ($\$1,500/\$10,000 * 100$).

11. Disclaimer of Estimates and Bidder's Warranty of Inspection (10/22)

Before submitting this bid, the Bidder is advised and cautioned to inspect the sale area, review the requirements of the sale contract, and take other steps as may be reasonably necessary to ascertain the location, estimated volumes, construction estimates, and operating costs of the proposed sale. Failure to do so will not relieve the Bidder from responsibility for completing the contract.

The Bidder warrants that this bid is submitted solely on the basis of the Bidder's examination and inspection of the quality and quantity of the timber offered for sale and the Bidder's opinion of the value thereof and the costs of recovery. No reliance should be placed on the State of Michigan's estimates of timber quality, quantity or costs of recovery. Bidder further acknowledges that the State of Michigan: (i) expressly disclaims any warranty of fitness of timber for any purpose; (ii) offers this timber as is without any warranty of quality (merchantability) or quantity and (iii) expressly disclaims any warranty as to the quantity or quality of timber sold.

12. Certification and Chain-of-Custody (10/22)

Unless otherwise indicated in the contract under section 7 – Other Conditions of the Sale Specific Conditions & Requirements, the area encompassed by this timber sale is certified to the standards of the Forest Stewardship Council (FSC) - Certificate #SCS-FM/COC-00090N and the Sustainable Forestry Initiative (SFI) - Certificate #NSF-SFIS-5Y031-SF5. Forest products from this sale may be delivered to the mill as "FSC 100% and / or SFI certified" as long as the contractor hauling the forest products is chain-of-custody (COC) certified or covered under a COC certificate from the destination mill. The purchaser is responsible for maintaining COC after leaving the sale area.

13. Good Neighbor Authority (GNA) Requirements (10/22)

If the name of this timber sales contains the acronym GNA, it is authorized by the Good Neighbor Authority (GNA) and covered by various agreements between the U.S. Forest Service and the State. The timber sale occurs on federal land and the following conditions apply:

GNA contracts on US Forest Service land will not be awarded to purchasers on the Federal list of excluded parties. The System for Award Management (SAM) will be checked for active excluded parties prior to award of contract. In

addition, the Bidder to whom award is made must complete an Assurance Regarding Felony Conviction or Tax Delinquent Status for Corporate Applicants (AD-3031).

14. Good Neighbor Authority (GNA) Requirements, con't (10/22)

Bidder certifies, by signing this bid form, that to the best of Bidder's knowledge that the following representations are accurate and complete.

- a. That the Bidder and its principals are not presently debarred, suspended, proposed for debarment, declared ineligible, or voluntary excluded from timber sales (covered transactions) by any Federal department or agency.
- b. That the Bidder and its principals have not within a 3-year period preceding this bid been convicted of or had a civil judgment rendered against them for commission of fraud or a criminal offense in connection with obtaining , attempting to obtain, or performing a public (Federal, State, or local) transaction or contract under a public transaction; violation of Federal or State antitrust statutes or commission of embezzlement, theft, forgery, bribery, falsification or destruction of records, making false statements, or receiving stolen property.
- c. That the Bidder and its principals are not presently indicted for or otherwise criminally or civilly charged by a governmental entity (Federal, State, or local) with commission of any of the offenses enumerated in paragraph b of this certification.
- d. That the Bidder and its principals have not within a 3-year period preceding this bid had one or more public transactions (Federal, State, or local) terminated for breach or default of a timber or forest product contract.

Bidders that cannot certify this requirement, in whole or in part, shall submit an explanation with their bid.

Scott Bowen
Director

TIMBER SALE INFORMATION

Oakie Bobby (73-007-23)

T20N, R03W, SEC. 17; T20N, R03W, SEC. 8.
Clare County (Advertised Price \$119,884.15)

A timber sale contract for this lump sum, sealed bid timber sale will be awarded to the responsible bidder offering the highest sealed bid price. All units of volume listed below were estimated using the Inventory Manager computer program and the new Michigan taper model. Bids must be at or above the following advertised price for each product and species:

<u>PRODUCTS & SPECIES</u>	<u>ESTIMATED UNITS*</u>		<u>ADVERTISED PRICE</u>
Sawtimber			
Black/Red (Hybrid) Oak	233.3	MBF	\$ 133.00 / MBF
Mixed Aspen	124.4	MBF	\$ 67.00 / MBF
Red Maple	33.3	MBF	\$ 67.00 / MBF
Red Oak	50.5	MBF	\$ 146.00 / MBF
White Oak	150.7	MBF	\$ 79.00 / MBF
White Pine	4.4	MBF	\$ 64.00 / MBF
Pulpwood			
Balsam Fir	3	Cords	\$ 27.55 / Cord
Mixed Aspen	882	Cords	\$ 29.35 / Cord
Mixed Hardwood	575	Cords	\$ 20.30 / Cord
Mixed Oak	1,203	Cords	\$ 16.95 / Cord
Red Pine	9	Cords	\$ 56.05 / Cord
White Pine	6	Cords	\$ 32.05 / Cord

* The total volume is statistically estimated within plus (+) or minus (-) 8.79 percent. There are an estimated 3,989 cords on this timber sale, plus or minus 351 cords at the 95% confidence level. The estimated units are final and not subject to adjustment. Prospective bidders are urged to examine this timber and to make their own estimates of quantity and quality.

BOND AND PAYMENT SCHEDULE:

1. A bond in the amount of \$5,994.00 to insure faithful performance of the conditions of the contract will be deposited by the successful bidder within 21 days of the sale award.
2. Cutting in any sale or unit without the required advance payment would be considered a trespass.
3. Total payment must be paid in advance or according to the following schedule :
 - (a) Ten percent (10%) of the sale value must be paid within 21 days of the sale award.
 - (b) The 10% down payment will be credited towards the first unit cut.
 - (c) Payment for each of the following units must be made before cutting begins in that unit:

PAYMENT UNIT NUMBER	PERCENT OF TOTAL SALE VALUE
01	24.1%
02	24.8%
03	30.4%
04	6.6%
05	14.1%
4. If no cutting takes place, the 10% down payment will not be refunded.
5. Operations on the contract issued will terminate on 09/30/2026.

SALE STATISTICS

Volumes were calculated in cubic feet using the Michigan taper model. Cubic foot volume includes all wood inside bark for the product indicated. For display purposes, cubic feet were converted to cords and MBF using a simple conversion factor, e.g. 79 cubic feet per cord and 185 cubic feet per MBF. The cubic foot volumes are precise; the cords and MBF volumes are not. Cubic foot volume cannot be directly converted to cords or boards with precision.

SALE VOLUMES

The total estimated sale volume may not equal the sum of the species/products due to the nature of statistical calculations associated with double sampling methodology.

VOLUME		STATISTICAL RANGE IN CORDS		
TOTAL CUBIC FEET	TOTAL CORDS	PERCENT ERROR	MINIMUM	MAXIMUM
315,167	3,989	8.79%	3,639	4,340

VDU VOLUMES

A VDU is a Volume Determination Unit. Volumes and their associated statistics are calculated at the VDU level and summarized to the sale level. There is often a one to one relationship between a VDU and a Payment Unit, but not always, depending on the cruise design. Refer to the VDU TO PAYMENT UNIT table.

VDU	VOLUME		PERCENT ERROR	RANGE IN CORDS	
	TOTAL CUBIC FEET	TOTAL CORDS		MINIMUM	MAXIMUM
30	22,087	280	28.40%	200	359
32	84,537	1,070	15.23%	907	1,233
55	31,990	405	21.17%	319	491
107	176,553	2,235	11.71%	1,973	2,497
TOTAL:	315,167	3,989		3,400	4,579

VDU TO PAYMENT UNIT

When a VDU is associated with more than one Payment Unit (PU), the VDU volumes are assigned to the PU based on acres of the VDU within the PU.

VDU	VDU ACRES	PU	PU ACRES
30	11.0	4	11.0
32	39.2	3	39.2
55	19.1	5	19.1
107	58.1	1	28.6
		2	29.5
TOTAL:	127.4		127.4

DESCRIPTION OF TIMBER BY PAYMENT UNIT (PU)

PU	MARKET GROUP	PRODUCT	QUANTITY	UNIT	ACRES	ADVERTISE PRICE		
1	Black/Red (Hybrid) Mixed Aspen	Sawtimber	18.6	MBF	28.6	\$28,883.00		
			56.7	MBF				
			5.2	MBF				
			51.5	MBF				
			12.8	MBF				
			2.2	MBF				
			423	Pulpwood			423	Cords
							51	Cords
							372	Cords
							191	Cords
							191	Cords
							310	Cords
							301	Cords
							9	Cords
1	Cords							
2	Black/Red (Hybrid) Mixed Aspen	Sawtimber	19.1	MBF	29.5	\$29,713.40		
			58.4	MBF				
			5.3	MBF				
			53.1	MBF				
			13.2	MBF				
			2.2	MBF				
			435	Pulpwood			435	Cords
							52	Cords
							383	Cords
							196	Cords
							196	Cords
							320	Cords
							310	Cords
							10	Cords
1	Cords							
3	Black/Red (Hybrid) Mixed Aspen	Sawtimber	143.6	MBF	39.2	\$36,448.75		
			3.6	MBF				
			3.6	MBF				
			6.6	MBF				
			88.6	MBF				
			2.5	MBF				
			15	Pulpwood			15	Cords
							15	Cords
							73	Cords
							5	Cords
							68	Cords
							395	Cords
							188	Cords
							15	Cords
192	Cords							
6	Cords							
1	Cords							
4	Black/Red (Hybrid) Mixed Aspen	Sawtimber	15.9	MBF	11.0	\$7,895.90		
			5.7	MBF				
			5.7	MBF				
			7.3	MBF				
			21.0	MBF				
			3	Pulpwood			3	Cords
							6	Cords
							6	Cords
100	Cords							

DESCRIPTION OF TIMBER BY PAYMENT UNIT (PU), CON'T

PU	MARKET GROUP	PRODUCT	QUANTITY	UNIT	ACRES	ADVERTISE PRICE	
4 con't	<i>Red Maple</i>	<i>Pulpwood</i>	100	<i>Cords</i>			
	Mixed Oak		53	<i>Cords</i>			
	<i>/Red (Hybrid) Oak</i>		24	<i>Cords</i>			
	<i>White Oak</i>		29	<i>Cords</i>			
	White Pine		2	<i>Cords</i>			
5	Black/Red (Hybrid)	Sawtimber	36.1	MBF	19.1	\$16,943.10	
	Red Oak		43.9	MBF			
	White Oak		36.7	MBF			
	White Pine		1.9	MBF			
	Mixed Aspen		3	<i>Cords</i>			
	<i>Quaking Aspen</i>	3	<i>Cords</i>				
	Mixed Hardwood	<i>Pulpwood</i>	15	<i>Cords</i>			
	<i>Red Maple</i>		15	<i>Cords</i>			
	Mixed Oak		125	<i>Cords</i>			
	<i>/Red (Hybrid) Oak</i>		34	<i>Cords</i>			
	<i>Red Oak</i>		33	<i>Cords</i>			
	<i>White Oak</i>		58	<i>Cords</i>			
	Red Pine		3	<i>Cords</i>			
	White Pine		1	<i>Cords</i>			
	TOTAL:			596.6			MBF
TOTAL:			2,678	<i>Cords</i>			

Sale Specific Conditions & Requirements

Sale Name: Oakie Bobby

Sale Number: 73-007-23 Seq#: 2

1 - Sale Area

1.2 - Boundaries

1.2.1 - Painted boundaries (9/19)

The sale boundary and Payment Unit boundaries are marked and identified by blue, red and yellow paint. Exterior sale boundary lines against private property are marked with blue paint. Exterior sale boundary lines against state are marked with red paint. Interior Payment Unit boundaries are marked with yellow paint. Retention patches are marked with red paint; no harvesting activities may occur within these areas. The painted boundary line trees are not included timber and are to be protected unless marked with orange paint. Yellow painted trees designating an interior Payment Unit boundary are only to be cut when all surrounding Payment Units have been paid.

2 - Timber Specifications

2.1 - Included Timber

2.1.1 - Clearcut unit(s) with unmerchantable trees (6/14)

Within Payment Unit(s) 1-5, cut all trees that are two (2) inches or more at DBH.

2.2 - Utilization

2.2.2 - Chipping required (2/18)

Payment Unit 4 must be chip harvested to facilitate subsequent planting operations. The Purchaser has the option to produce sawlogs or pulpwood bolts, but the remaining portion of the trees must be chipped and hauled. If market conditions limit the practicality of chipping, tops and slash must be arranged in a way that will not inhibit future planting operations, as directed by the Sale Administrator. The requirement to retain approximately 1/6 to 1/3 of treetops and limbs less than four inches in diameter is still applicable (G. C. & R. 2.2).

2.2.3 - Stump heights (4/07)

Stump heights within Payment Unit(s) 4, shall not exceed 6 inches for all trees. This is in order to facilitate planting operations.

3 - Payments

3.3 - Pre-measured Sales

3.3.4 - Dividing payment units (7/14)

Payment Unit(s) may be divided at the request of the Purchaser and upon approval of the Unit Manager. Dividing Payment Units is a contract modification which requires a Timber Sale Contract Amendment. There will be only one division per Payment Unit.

4 - Transportation

4.1 - Construction

4.1.6 - Road construction (1/09)

Construction of new roads or improvements of existing roads shall be done in such a way as to minimize the environmental and visual impacts. Merchantable trees shall be cut and utilized unless otherwise directed. Non-merchantable trees shall be severed and laid flat on the ground. Slash shall be scattered, and not left in windrows and kept a minimum of 10 feet back from the road edge. Stumps shall be set upright, not left on edge, and be moved at least 10 feet away from the road edge. Disturbed soil shall be feathered into the woods and not left in berms or windrows.

4.1.7 - Road closure (10/11)

All new roads built into the sale must be blocked to vehicle traffic upon completion of the sale. Overgrown roads that are reopened shall be considered new roads. In general, this will require constructing a four (4') foot high berm of stumps and logs covered with earth. Stumps and brush must be placed along the remainder of the trail. These roads must be rendered impassable to cars and trucks. Contact the Sale Administrator for specific details of design and placement.

5 - Operations

5.1 - Notification

5.1.3 - Well heads and natural gas pipelines (11/15)

The Purchaser is responsible for contacting the gas or pipeline company prior to operating equipment in the vicinity of well heads or natural gas pipelines.

5.2 - Conduct of Operations

5.2.1 - Slash

5.2.1.8 - Slash height (12/08)

No slash or tree tops may exceed 24 inches in height. Within Payment Unit(s) 1-3 and 5.

5.2.3 - Operating Restrictions

5.2.3.5 - Oak wilt restriction (1/18)

Within Payment Units 1-5, unless changed by written agreement, cutting, skidding, hauling within the sale and brushing of access roads to the sale are not permitted during the period of April 15 to July 15. Operations may be allowed if specific steps are taken to prevent damaging uncut oak during the high risk period. Those steps may include completing all road brushing before April 15th and clearing a tree-length buffer along uncut oak cover before April 15th. This is necessary to reduce the spread of oak wilt. For more information, contact the Unit Manager or his/her representative.

5.2.4 - Dead and Down Creation

5.2.4.4 - Dead and down creation, grouse (6/18)

To encourage grouse and other wildlife, in Payment Unit(s) 1 and 2 leave one 12" or larger diameter whole tree on the ground for every 3 acres. Trees should be scattered throughout the sale and at least two chains from any roads, two-tracks, or trails open to vehicles, or positioned per the Sale Administrator's instructions. Stumps must be at least 3 feet tall.

5.2.32 - Decking/landing restoration (9/13)

All decking and landing areas must have the surface area restored to a condition equal to or better than before. This is to ensure the proper regeneration of the stand. Wood debris, chips and "cookies" from trimmings must be removed or scattered away from landing and loading areas and may not be windrowed on the edge.

5.2.38 - No decking against live trees (2/04)

Cut products may not be decked against unmarked or designated leave trees.

6 - Safety and Fire Prevention

6.2 - Signing

6.2.1 - Road posting (10/20)

The Purchaser is responsible for posting and maintaining caution signs on Angle Road prior to beginning operations. The road must be posted at appropriate distances from the Sale Area to warn of logging activity and truck traffic. Signs must be removed when harvest operations are suspended or completed. The Purchaser will provide these signs.



TIMBER SALE MAP

This information provided by authority of Part 525, 1994 PA 451, as amended.

Sale Number	Year
73-007	23

Forest Management Unit	County	Mapped By	Date	Page	of
Gladwin Management Unit	Clare County	Owens	08/15/2023	1	1
Township	Range	Section(s) and Subdivision(s)	Scale		
20N	03W	Sec 08 SENE, NESE, NWSE, NESW, SESW, Sec 17 SWNE	1:15,840		

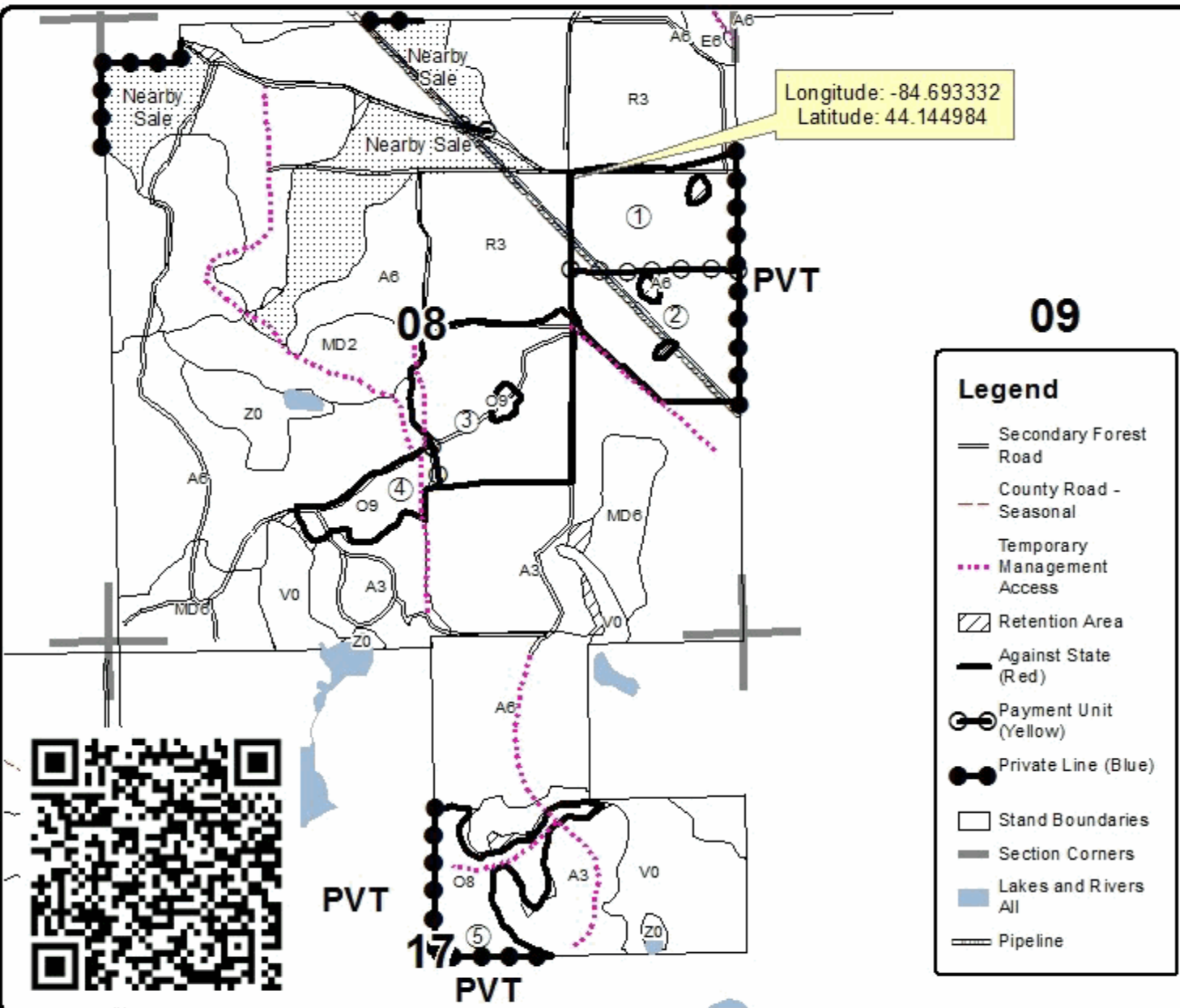
Cover Type				Density	
A = Aspen	H = Hemlock	N = Marsh	U = Upland Brush	0 = Non Stocked	5 = Pole Timber Medium
B = Paper Birch	J = Jack Pine	O = Oak	UM = Upland Mixed	1 = Seeding Sapling Poor	6 = Pole Timber Well
C = Cedar	L = Lowland Brush	P = Lowland Poplar	V = Bog or Marsh	2 = Seeding Sapling Medium	7 = Saw Timber Poor
D = Tread Bog	LM = Lowland Mixed	Q = Mixed Swamp Conifer	W = White Pine	3 = Seeding Sapling Well	8 = Saw Timber Medium
E = Swamp Hdwoods	M = Mpl, Bch, Bach	R = Red Pine	X = Non Stocked	4 = Pole Timber Poor	9 = Saw Timber Well
F = Spruce Fir	MC = Mixed Conifer	S = Black Spruce	Z = Water		
G = Grass	MD = Mixed Deciduous	T = Tamarack			

PU	Acres	PU	Acres
1	28.6	4	11
2	29.5	5	19.1
3	39.2		

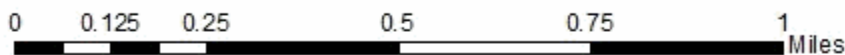
Oakie Bobby
 Compartment 002
 127.4 Acres



Longitude: -84.693332
 Latitude: 44.144984



Legend	
	Secondary Forest Road
	County Road - Seasonal
	Temporary Management Access
	Retention Area
	Against State (Red)
	Payment Unit (Yellow)
	Private Line (Blue)
	Stand Boundaries
	Section Corners
	Lakes and Rivers All
	Pipeline



TIMBER SALE INFORMATION

Mop up Oak (73-009-23)

T20N, R03W, SEC. 1; T20N, R03W, SEC. 12; T20N, R03W, SEC. 5; T20N, R03W, SEC. 8.
Clare County (Advertised Price \$111,578.30)

SALE NOTE: All units of volume listed for this sale were estimated using the Inventory Manager computer program and the new Michigan taper model.

A recreation site such as a trail, pathway, or campground is within the sale area or the vicinity. Certain restrictions/specifications may be applicable including time restrictions.

A timber sale contract for this lump sum, sealed bid timber sale will be awarded to the responsible bidder offering the highest sealed bid price. All units of volume listed below were estimated using the Inventory Manager computer program and the new Michigan taper model. Bids must be at or above the following advertised price for each product and species:

<u>PRODUCTS & SPECIES</u>	<u>ESTIMATED UNITS*</u>	<u>ADVERTISED PRICE</u>
Sawtimber		
B. T. Aspen	59.2 MBF	\$ 67.00 / MBF
Black/Red (Hybrid) Oak	186.1 MBF	\$ 133.00 / MBF
Red Maple	62.1 MBF	\$ 67.00 / MBF
Red Oak	217.0 MBF	\$ 146.00 / MBF
Red Pine	18.1 MBF	\$ 134.00 / MBF
White Oak	207.7 MBF	\$ 79.00 / MBF
White Pine	16.1 MBF	\$ 64.00 / MBF
Pulpwood		
Mixed Aspen	84 Cords	\$ 29.35 / Cord
Mixed Hardwood	369 Cords	\$ 20.30 / Cord
Mixed Oak	885 Cords	\$ 16.95 / Cord
Paper Birch	8 Cords	\$ 22.30 / Cord
Red Pine	16 Cords	\$ 56.05 / Cord
White Pine	35 Cords	\$ 32.05 / Cord

* The total volume is statistically estimated within plus (+) or minus (-) 9.14 percent. There are an estimated 3,174 cords on this timber sale, plus or minus 290 cords at the 95% confidence level. The estimated units are final and not subject to adjustment. Prospective bidders are urged to examine this timber and to make their own estimates of quantity and quality.

BOND AND PAYMENT SCHEDULE:

1. A bond in the amount of \$5,579.00 to insure faithful performance of the conditions of the contract will be deposited by the successful bidder within 21 days of the sale award.
2. Cutting in any sale or unit without the required advance payment would be considered a trespass.
3. Total payment must be paid in advance or according to the following schedule:
 - (a) Ten percent (10%) of the sale value must be paid within 21 days of the sale award.
 - (b) The 10% down payment will be credited towards the first unit cut.
 - (c) Payment for each of the following units must be made before cutting begins in that unit:

PAYMENT UNIT NUMBER	PERCENT OF TOTAL SALE VALUE
01	16.8%
02	5.7%
03	11.8%
04	11.7%
05	12.5%
06	29.7%
07	11.8%
4. If no cutting takes place, the 10% down payment will not be refunded.
5. Operations on the contract issued will terminate on 09/30/2026.

SALE STATISTICS

Volumes were calculated in cubic feet using the Michigan taper model. Cubic foot volume includes all wood inside bark for the product indicated. For display purposes, cubic feet were converted to cords and MBF using a simple conversion factor, e.g. 79 cubic feet per cord and 185 cubic feet per MBF. The cubic foot volumes are precise; the cords and MBF volumes are not. Cubic foot volume cannot be directly converted to cords or boards with precision.

SALE VOLUMES

The total estimated sale volume may not equal the sum of the species/products due to the nature of statistical calculations associated with double sampling methodology.

VOLUME			STATISTICAL RANGE IN CORDS	
TOTAL CUBIC FEET	TOTAL CORDS	PERCENT ERROR	MINIMUM	MAXIMUM
250,779	3,174	9.14%	2,884	3,465

VDU VOLUMES

A VDU is a Volume Determination Unit. Volumes and their associated statistics are calculated at the VDU level and summarized to the sale level. There is often a one to one relationship between a VDU and a Payment Unit, but not always, depending on the cruise design. Refer to the VDU TO PAYMENT UNIT table.

	VOLUME			RANGE IN CORDS	
VDU	TOTAL CUBIC FEET	TOTAL CORDS	PERCENT ERROR	MINIMUM	MAXIMUM
10	25,360	321	39.20%	195	447
11	72,640	919	15.95%	773	1,066
23	31,131	394	24.95%	296	492
44	25,704	325	28.35%	233	418
113	12,008	152	29.99%	106	198
128	47,526	602	23.21%	462	741
150	36,409	461	20.67%	366	556
TOTAL:	250,779	3,174		2,431	3,918

VDU TO PAYMENT UNIT

When a VDU is associated with more than one Payment Unit (PU), the VDU volumes are assigned to the PU based on acres of the VDU within the PU.

VDU	VDU ACRES	PU	PU ACRES
10	12.6	4	12.6
11	35.0	6	35.0
23	9.1	5	9.1
44	14.4	7	14.4
113	5.5	2	5.5
128	18.3	1	18.3
150	12.1	3	12.1
TOTAL:	107.0		107.0

DESCRIPTION OF TIMBER BY PAYMENT UNIT (PU)

PU	MARKET GROUP	PRODUCT	QUANTITY	UNIT	ACRES	ADVERTISE PRICE	
1	B. T. Aspen	Sawtimber	14.8	MBF	18.3	\$18,767.50	
	Black/Red (Hybrid		50.5	MBF			
	Red Pine		5.3	MBF			
	White Oak		46.9	MBF			
	White Pine		8.8	MBF			
	Mixed Aspen		Pulpwood	23			Cords
	<i>B. T. Aspen</i>			23			<i>Cords</i>
	Mixed Hardwood			41			Cords
	<i>Black Cherry</i>			3			<i>Cords</i>
	<i>Red Maple</i>			38			<i>Cords</i>
	Mixed Oak			215			Cords
	<i>/Red (Hybrid) Oak</i>			85			<i>Cords</i>
	<i>White Oak</i>			130			<i>Cords</i>
	Red Pine			4			Cords
White Pine	22	Cords					
2	Black/Red (Hybrid	Sawtimber	20.5	MBF	5.5	\$6,403.40	
	Red Pine		11.4	MBF			
	White Oak		10.9	MBF			
	White Pine		0.9	MBF			
	Mixed Hardwood		Pulpwood	2			Cords
	<i>Red Maple</i>			2			<i>Cords</i>
	Mixed Oak			48			Cords
	<i>/Red (Hybrid) Oak</i>			19			<i>Cords</i>
	<i>White Oak</i>			29			<i>Cords</i>
	Red Pine			5			Cords
	White Pine			3			Cords
3	B. T. Aspen	Sawtimber	8.3	MBF	12.1	\$13,139.45	
	Black/Red (Hybrid		42.7	MBF			
	White Oak		29.1	MBF			
	Mixed Aspen		Pulpwood	5			Cords
	<i>B. T. Aspen</i>			5			<i>Cords</i>
	Mixed Hardwood			66			Cords
	<i>Red Maple</i>			66			<i>Cords</i>
	Mixed Oak			184			Cords
	<i>/Red (Hybrid) Oak</i>			79			<i>Cords</i>
	<i>White Oak</i>			105			<i>Cords</i>
4	Black/Red (Hybrid	Sawtimber		67.1	MBF	12.6	\$13,021.65
	Red Maple		1.2	MBF			
	White Oak		23.3	MBF			
	Mixed Aspen		Pulpwood	4	Cords		
	<i>Quaking Aspen</i>			4	<i>Cords</i>		
	Mixed Hardwood			25	Cords		
	<i>Red Maple</i>			25	<i>Cords</i>		
	Mixed Oak			81	Cords		
	<i>/Red (Hybrid) Oak</i>			57	<i>Cords</i>		
	<i>White Oak</i>			24	<i>Cords</i>		
	Paper Birch			8	Cords		
5	B. T. Aspen	Sawtimber	29.8	MBF	9.1	\$13,909.70	
	Red Maple		35.8	MBF			
	Red Oak		36.9	MBF			
	White Oak		6.2	MBF			
	Mixed Aspen		Pulpwood	47			Cords
	<i>B. T. Aspen</i>			41			<i>Cords</i>
	<i>Quaking Aspen</i>			6			<i>Cords</i>
	Mixed Hardwood			82			Cords
	<i>Red Maple</i>			82			<i>Cords</i>

DESCRIPTION OF TIMBER BY PAYMENT UNIT (PU), CON'T

PU	MARKET GROUP	PRODUCT	QUANTITY	UNIT	ACRES	ADVERTISE PRICE	
5 con't	Mixed Oak	Pulpwood	35	Cords			
	<i>Red Oak</i>		30	<i>Cords</i>			
	<i>White Oak</i>		5	<i>Cords</i>			
6	B. T. Aspen	Sawtimber	6.3	MBF	35.0	\$33,188.80	
	Black/Red (Hybrid		5.3	MBF			
	Red Maple		24.2	MBF			
	Red Oak		128.1	MBF			
	Red Pine		1.4	MBF			
	White Oak		48.4	MBF			
	White Pine		3.9	MBF			
	Mixed Aspen		Pulpwood	5			Cords
	<i>B. T. Aspen</i>			5			<i>Cords</i>
	Mixed Hardwood		128	Cords			
	<i>Red Maple</i>		128	<i>Cords</i>			
	Mixed Oak		239	Cords			
	<i>/Red (Hybrid) Oak</i>		2	<i>Cords</i>			
	<i>Red Oak</i>		165	<i>Cords</i>			
	<i>White Oak</i>		72	<i>Cords</i>			
	Red Pine		7	Cords			
	White Pine	9	Cords				
7	Red Maple	Sawtimber	0.9	MBF	14.4	\$13,147.80	
	Red Oak		52.0	MBF			
	White Oak		42.9	MBF			
	White Pine	2.5	MBF				
	Mixed Hardwood	Pulpwood	25	Cords			
	<i>Red Maple</i>		25	<i>Cords</i>			
	Mixed Oak		83	Cords			
	<i>Red Oak</i>		45	<i>Cords</i>			
	<i>White Oak</i>		38	<i>Cords</i>			
White Pine	1		Cords				
TOTAL:			766.3	MBF			
TOTAL:			1,397	Cords			

Sale Specific Conditions & Requirements

Sale Name: Mop up Oak

Sale Number: 73-009-23 Seq#: 2

1 - Sale Area

1.2 - Boundaries

1.2.1 - Painted boundaries (9/19)

The sale boundary and Payment Unit boundaries are marked and identified by blue, red and yellow paint or are unmarked and designated by roads. Exterior sale boundary lines against private property are marked with blue paint. Exterior sale boundary lines against state are marked with red paint or are unpainted and designated by roads (see Timber Sale Maps). Interior Payment Unit boundaries are marked with yellow paint. Retention patches are marked with red paint; no harvesting activities may occur within these areas. The painted boundary line trees are not Included Timber and are to be protected unless marked with orange paint. Yellow painted trees designating an interior Payment Unit boundary are only to be cut when all surrounding Payment Units have been paid.

2 - Timber Specifications

2.1 - Included Timber

2.1.1 - Clearcut unit(s) with unmerchantable trees (6/14)

Within Payment Unit(s) 1-7, cut all trees that are two (2) inches or more at DBH.

2.1.15 - Hazard trees near roads (11/20)

Cut and remove all standing dead trees within 100 feet of the cleared portion of designated county roads. These trees may be utilized or must be scattered back into the Sale Area.

2.2 - Utilization

2.2.2 - Chipping required (2/18)

Payment Unit(s) 5 and 7, must be chip harvested to facilitate subsequent planting operations. The Purchaser has the option to produce sawlogs or pulpwood bolts, but the remaining portion of the trees must be chipped and hauled. If market conditions limit the practicality of chipping, tops and slash must be arranged in a way that will not inhibit future planting operations, as directed by the Sale Administrator. The requirement to retain approximately 1/6 to 1/3 of tree tops and limbs less than four inches in diameter is still applicable (G. C. & R. 2.2).

2.2.3 - Stump heights (4/07)

Stump heights within Payment Unit(s) 5 and 7 shall not exceed 6 inches for all trees. This is in order to facilitate planting operations.

3 - Payments

3.3 - Pre-measured Sales

3.3.4 - Dividing payment units (7/14)

Payment Unit(s) may be divided at the request of the Purchaser and upon approval of the Unit Manager. Dividing Payment Units is a contract modification which requires a Timber Sale Contract Amendment. There will be only one division per Payment Unit.

4 - Transportation

4.1 - Construction

4.1.6 - Road construction (1/09)

Construction of new roads or improvements of existing roads shall be done in such a way as to minimize the environmental and visual impacts. Merchantable trees shall be cut and utilized unless otherwise directed. Non-merchantable trees shall be severed and laid flat on the ground. Slash shall be scattered, and not left in windrows and kept a minimum of 10 feet back from the road edge. Stumps shall be set upright, not left on edge, and be moved at least 10 feet away from the road edge. Disturbed soil shall be feathered into the woods and not left in berms or windrows.

4.1.7 - Road closure (10/11)

All new roads built into the sale must be blocked to vehicle traffic upon completion of the sale. Overgrown roads that are reopened shall be considered new roads. In general, this will require constructing a four (4') foot high berm of stumps and logs covered with earth. Stumps and brush must be placed along the remainder of the trail. These roads must be rendered impassable to cars and trucks. Contact the Sale Administrator for specific details of design and placement.

5 - Operations

5.1 - Notification

5.1.3 - Well heads and natural gas pipelines (11/15)

The Purchaser is responsible for contacting the gas or pipeline company prior to operating equipment in the vicinity of well heads or natural gas pipelines.

5.2 - Conduct of Operations

5.2.1 - Slash

5.2.1.8 - Slash height (12/08)

No slash or tree tops may exceed 24 inches in height. Within Payment Unit(s) 1-4 and 6.

5.2.3 - Operating Restrictions

5.2.3.5 - Oak wilt restriction (1/18)

Within Payment Unit(s) 1-7, unless changed by written agreement, cutting, skidding, hauling within the sale and brushing of access roads to the sale are not permitted during the period of April 15 to July 15. Operations may be allowed if specific steps are taken to prevent damaging uncut oak during the high risk period. Those steps may include completing all road brushing before April 15th and clearing a tree-length buffer along uncut oak cover before April 15th. This is necessary to reduce the spread of oak wilt. For more information, contact the Unit Manager or his/her representative.

5.2.32 - Decking/landing restoration (9/13)

All decking and landing areas must have the surface area restored to a condition equal to or better than before. This is to ensure the proper regeneration of the stand. Wood debris, chips and "cookies" from trimmings must be removed or scattered away from landing and loading areas and may not be windrowed on the edge.

5.2.38 - No decking against live trees (2/04)

Cut products may not be decked against unmarked or designated leave trees.

5.2.41 - Snowmobile trail protection (9/11)

The LP 655 is a snowmobile trail and is shown on the Timber Sale Map. Do not cut or damage posts with orange trail markers or traffic control signs. If the trail is used, it must be maintained and restored to a condition equal to or better than before the sale. If the trail road is to be used for hauling during the snowmobile season, then a snow covered base must be left on the trail. The snowmobile trail may only be crossed at right angles. Maintain a 20-foot-wide slash, debris, and rut free zone daily using the snowmobile trail as the centerline. No decking of forest products will be permitted along the snowmobile trail. All stumps within 20 feet of the snowmobile trail must be cut at ground level.

6 - Safety and Fire Prevention

6.2 - Signing

6.2.1 - Road posting (10/20)

The Purchaser is responsible for posting and maintaining caution signs on Claroskee, Angle, and M-18 prior to beginning operations. The road must be posted at appropriate distances from the Sale Area to warn of logging activity and truck traffic. Signs must be removed when harvest operations are suspended or completed. The Purchaser will provide these signs.

6.2.2 - Snowmobile trail posting (10/20)

The Purchaser is responsible for posting and maintaining caution signs on LP 655 prior to beginning operations during the snowmobile season (approximately December 1 to March 31). The trail must be posted at appropriate distances from the Sale Area to warn of logging activity and truck traffic. Signs must be removed when harvest operations are suspended or completed. The Purchaser will provide these signs.



TIMBER SALE MAP

This information provided by authority of Part 525, 1994 PA 451, as amended.

Sale Number	Year
73-009	23

Forest Management Unit	County	Mapped By	Date	Page	of
Gladwin Management Unit	Clare County	Owens	08/15/2023	1	2
Township	Range	Section(s) and Subdivision(s)	Scale		
20N	03W	Sec 01, NWNE, SWNE, NENW, SENW, SWNW, NWSW, SESE Sec 12 NENE	1:15,840		

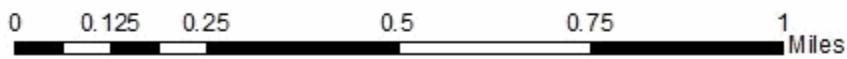
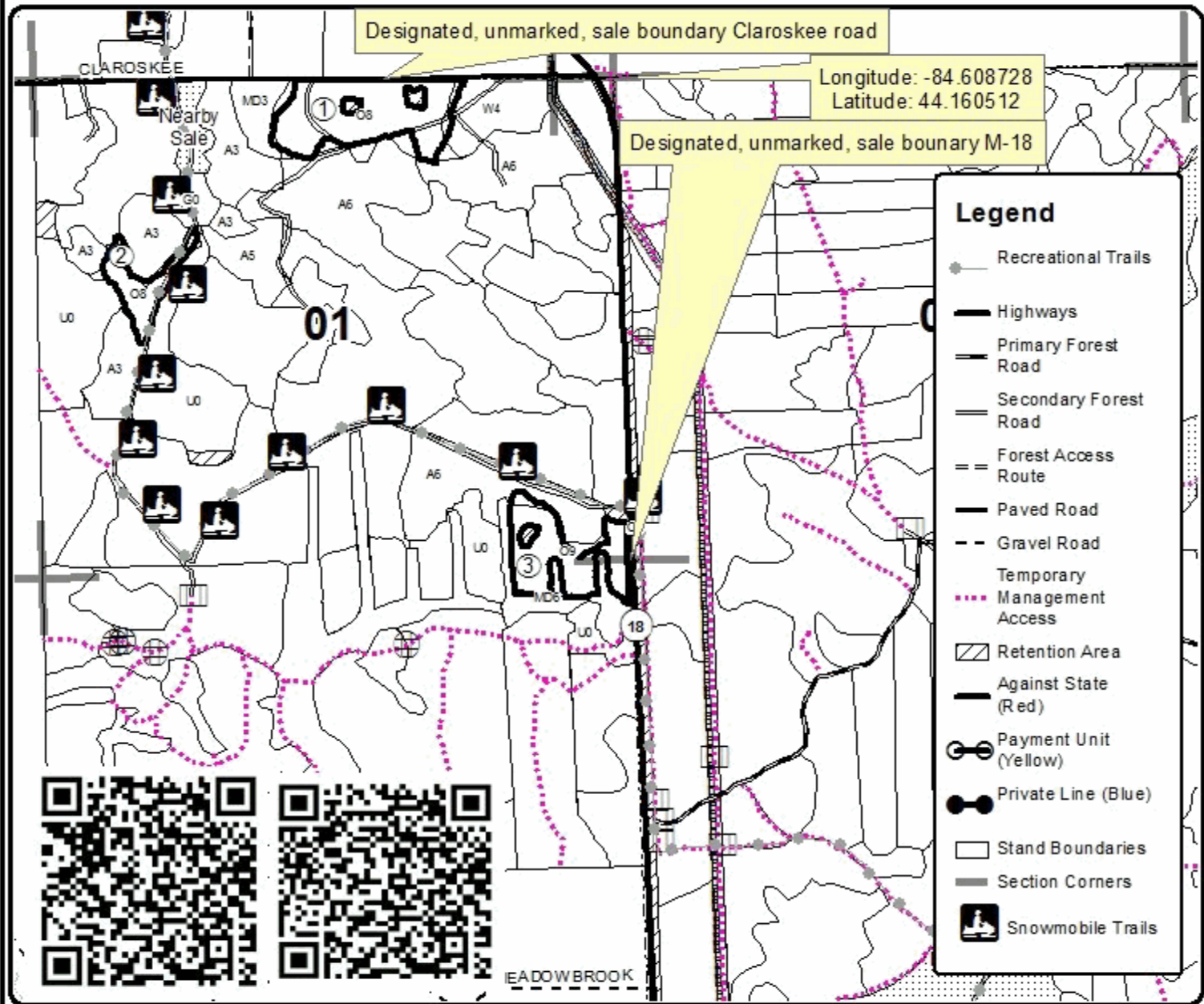
Cover Type				Density	
A = Aspen	H = Hemlock	N = Marsh	U = Upland Brush	0 = Non Stocked	5 = Pole Timber Medium
B = Paper Birch	J = Jack Pine	O = Oak	UM = Upland Mixed	1 = Seeding Sapling Poor	6 = Pole Timber Well
C = Cedar	L = Lowland Brush	P = Lowland Poplar	V = Bog or Marsh	2 = Seeding Sapling Medium	7 = Saw Timber Poor
D = Tread Bog	LM = Lowland Mixed	Q = Mixed Swamp Conifer	W = White Pine	3 = Seeding Sapling Well	8 = Saw Timber Medium
E = Swamp Hdwoods	M = Mpl, Bch, Bach	R = Red Pine	X = Non Stocked	4 = Pole Timber Poor	9 = Saw Timber Well
F = Spruce Fir	MC = Mixed Conifer	S = Black Spruce	Z = Water		
G = Green	MD = Mixed Deciduous	T = Tamarack			

PU	Acres	PU	Acres	PU	Acres
1	18.3	4	12.6	7	14.4
2	5.5	5	9.1		
3	12.1	6	35		

Mop Up Oak

Compartment 002

107 Acres





TIMBER SALE MAP

This information provided by authority of Part 525, 1994 PA 451, as amended.

Sale Number	Year
73-009	23

Forest Management Unit	County	Mapped By	Date	Page	of
Gladwin Management Unit	Clare County	Owens	08/29/2023	2	2
		Cruised By			
		Behrmann Owens			

Township	Range	Section(s) and Subdivision(s)	Scale
20N	03W	Sec 05 NWSE, Sec 08 NWNE, NENW, SENW, NWNW	1:15,840

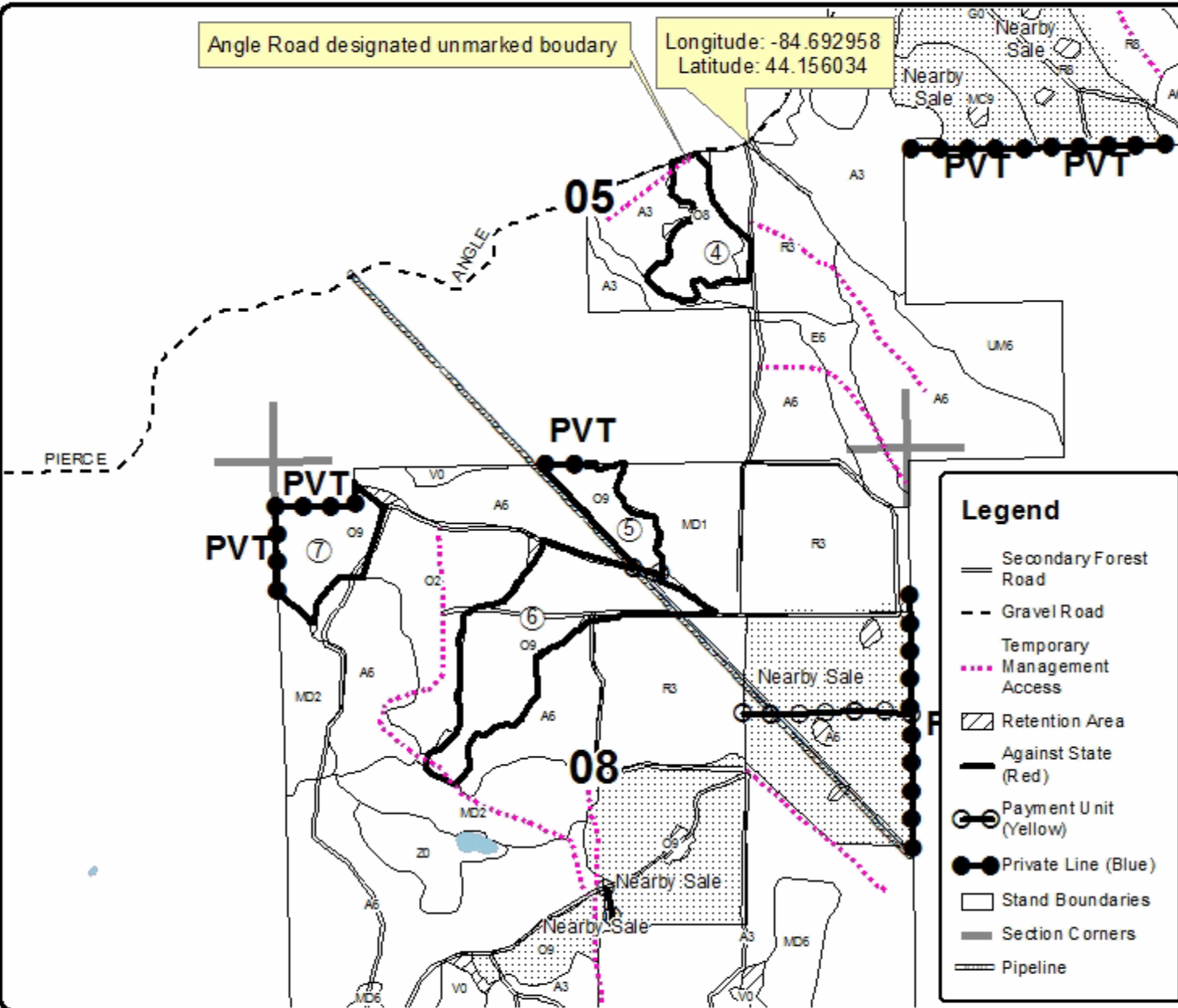
Cover Type				Density	
A = Aspen	H = Hemlock	N = Marsh	U = Upland Brush	0 = Non Stocked	5 = Pole Timber Medium
B = Paper Birch	J = Jack Pine	O = Oak	UM = Upland Mixed	1 = Seeding Sapling Poor	6 = Pole Timber Well
C = Cedar	L = Lowland Brush	P = Lowland Poplar	V = Bog or Marsh	2 = Seeding Sapling Medium	7 = Saw Timber Poor
D = Tread Bog	LM = Lowland Mixed	Q = Mixed Swamp Conifer	W = White Pine	3 = Seeding Sapling Well	8 = Saw Timber Medium
E = Swamp Hdwoods	M = Mpl, Bch, Bach	R = Red Pine	X = Non Stocked	4 = Pole Timber Poor	9 = Saw Timber Well
F = Spruce Fir	MC = Mixed Conifer	S = Black Spruce	Z = Water		
G = Grass	MD = Mixed Deciduous	T = Tamarack			

PU	Acres	PU	Acres	PU	Acres
1	18.3	4	12.6	7	14.4
2	5.5	5	9.1		
3	12.1	6	35		

Mop Up Oak

Compartment 002

107 Acres



Mop up Oak (73-009-23)

T20N, R03W, SEC. 1; T20N, R03W, SEC. 12; T20N, R03W, SEC. 5; T20N, R03W,

In response to the notice of sale to be held 10:00 a.m. (local time) on June 13, 2024, I am hereby submitting my sealed bid (firm offer) for the following forest products to be cut. Bids for individual species must be at or above the advertised price. All non-responsive bid forms may be rejected.

<u>PRODUCTS & SPECIES</u>	<u>ESTIMATED VOLUME*</u>	<u>ADVERTISED PRICE</u>	<u>BID PRICE/UNIT</u>
Sawtimber			
B. T. Aspen	59.2 MBF	\$ 67.00/MBF	\$ _____
Black/Red (Hybrid) Oak	186.1 MBF	\$ 133.00/MBF	\$ _____
Red Maple	62.1 MBF	\$ 67.00/MBF	\$ _____
Red Oak	217.0 MBF	\$ 146.00/MBF	\$ _____
Red Pine	18.1 MBF	\$ 134.00/MBF	\$ _____
White Oak	207.7 MBF	\$ 79.00/MBF	\$ _____
White Pine	16.1 MBF	\$ 64.00/MBF	\$ _____
Pulpwood			
Mixed Aspen	84 Cords	\$ 29.35/Cord	\$ _____
Mixed Hardwood	369 Cords	\$ 20.30/Cord	\$ _____
Mixed Oak	885 Cords	\$ 16.95/Cord	\$ _____
Paper Birch	8 Cords	\$ 22.30/Cord	\$ _____
Red Pine	16 Cords	\$ 56.05/Cord	\$ _____
White Pine	35 Cords	\$ 32.05/Cord	\$ _____

*The volumes are statistically estimated within plus (+) or minus (-) 9.14 percent at 95% confidence level. These estimated volumes are final and not subject to adjustment. Prospective bidders are urged to examine this timber and to make their own estimates of quantity and quality.

I understand that any or all bids may be rejected. All bids must be signed and all bid items must be bid or the bid form may be rejected. I also understand that consideration and awarding a contract will be based upon my past performance and ability to complete the contract based upon equipment and staffing subject to my control.

FEDERAL ID: _____ or SOCIAL SECURITY NUMBER: _____

Company or individual bidding: _____

Company representative's name: _____

Address: _____

City: _____ State: _____ Zip: _____

IF AVAILABLE, PLEASE PLACE THE PERSONALIZED LABEL FROM YOUR PROSPECTUS IN THE ABOVE BOX.

Individual or company representative's signature: _____ Date: _____

Phone number : _____ Email (optional): _____

THE WINNING BIDDER MUST COMPLETE THE VERIFICATION OF WORKER'S DISABILITY COMPENSATION ACT COMPLIANCE (ON REVERSE SIDE IF DOUBLE SIDED) WITHIN 21 DAYS OF SALE AWARD DATE



TIMBER SALE VERIFICATION OF WORKER'S DISABILITY COMPENSATION ACT COMPLIANCE

As required by Act 317, P.A. 1969 (Worker's Compensation) and
Part 5 of Act 451 of 1994, as amended.

FOR DEPARTMENT USE ONLY	
Sale Number (XX - XXX - XX - XX)	
Forest Management Unit:	

VERIFICATION OF WORKER'S DISABILITY COMPENSATION ACT COMPLIANCE

- This verification must be completed and submitted within 21 days of contract award and prior to the issuance of the timber sale contract.
- In addition, if boxes 2B or 2C are checked, then Notice of Exclusion or Certificate of Insurance must be submitted within twenty-one (21) days of the contract award and prior to the issuance of the timber sale contract.
- All information must be typed or printed except for written signatures.

Please Check Appropriate Categories:

1. My business is organized as (you **must** check one of the boxes below):
 - A. Sole Proprietorship (individual)
 - B. Partnership
 - C. Corporation
2. You **must** check one of the boxes below:
 - A. I certify my business is a sole proprietorship and it has no employees but the sole proprietor. I am not subject to the Worker's Compensation Laws.
 - B. I certify my business has satisfied its obligation to the Worker's Compensation Act through the use of an approved Notice of Exclusion (BWC-337, Rev. 5/96). I will provide a copy of the Notice of Exclusion within 21 days of the contract award. (For questions or a copy of the BWC-337, please call the Worker's Compensation Bureau at 517-322-1195).
 - C. I certify my business has a Worker's Compensation Policy. I will provide an original Certificate of Insurance within twenty-one (21) days of the contract award.
3. If you have checked item 2(A) or 2(B), you **must** indicate the number of **both** full-time and part-time employees, other than yourself, including family members and active partners (if none, you must enter "0").

_____ Full-time Employees

_____ Part-time Employees

Name of Business		Federal ID (or) Social Security No.	
Address		Telephone ()	
City	State	ZIP	

I hereby certify that the above information is true and correct. I agree to notify the Michigan DNR of any changes that occur in factors affecting my coverage during any of my present and future operations.

Signature of Owner or Authorized Representative

Title

Date

Please complete the "SEALED BID" information on the next page

Oakie Bobby (73-007-23)
T20N, R03W, SEC. 17; T20N, R03W, SEC. 8; Clare COUNTY

In response to the notice of sale to be held 10:00 a.m. (local time) on June 13, 2024, I am hereby submitting my sealed bid (firm offer) for the following forest products to be cut. Bids for individual species must be at or above the advertised price. All non-responsive bid forms may be rejected.

<u>PRODUCTS & SPECIES</u>	<u>ESTIMATED VOLUME*</u>	<u>ADVERTISED PRICE</u>	<u>BID PRICE/UNIT</u>
Sawtimber			
Black/Red (Hybrid) Oak	233.3 MBF	\$ 133.00/MBF	\$ _____
Mixed Aspen	124.4 MBF	\$ 67.00/MBF	\$ _____
Red Maple	33.3 MBF	\$ 67.00/MBF	\$ _____
Red Oak	50.5 MBF	\$ 146.00/MBF	\$ _____
White Oak	150.7 MBF	\$ 79.00/MBF	\$ _____
White Pine	4.4 MBF	\$ 64.00/MBF	\$ _____
Pulpwood			
Balsam Fir	3 Cords	\$ 27.55/Cord	\$ _____
Mixed Aspen	882 Cords	\$ 29.35/Cord	\$ _____
Mixed Hardwood	575 Cords	\$ 20.30/Cord	\$ _____
Mixed Oak	1,203 Cords	\$ 16.95/Cord	\$ _____
Red Pine	9 Cords	\$ 56.05/Cord	\$ _____
White Pine	6 Cords	\$ 32.05/Cord	\$ _____

*The volumes are statistically estimated within plus (+) or minus (-) 8.79 percent at 95% confidence level. These estimated volumes are final and not subject to adjustment. Prospective bidders are urged to examine this timber and to make their own estimates of quantity and quality.

I understand that any or all bids may be rejected. All bids must be signed and all bid items must be bid or the bid form may be rejected. I also understand that consideration and awarding a contract will be based upon my past performance and ability to complete the contract based upon equipment and staffing subject to my control.

FEDERAL ID: ____ - ____ - ____ or SOCIAL SECURITY NUMBER: ____ - ____ - ____

Company or individual bidding: _____

Company representative's name: _____

Address: _____

City: _____ State: _____ Zip: _____

IF AVAILABLE, PLEASE PLACE THE PERSONALIZED LABEL FROM YOUR PROSPECTUS IN THE ABOVE BOX.

Individual or company representative's signature: _____ Date: _____

Phone number : _____ Email (optional): _____

THE WINNING BIDDER MUST COMPLETE THE VERIFICATION OF WORKER'S DISABILITY COMPENSATION ACT COMPLIANCE (ON REVERSE SIDE IF DOUBLE SIDED) WITHIN 21 DAYS OF SALE AWARD DATE



FOR DEPARTMENT USE ONLY
Sale Number (XX - XXX - XX - XX)
Forest Management Unit:

TIMBER SALE VERIFICATION OF WORKER'S DISABILITY COMPENSATION ACT COMPLIANCE

*As required by Act 317, P.A. 1969 (Worker's Compensation) and
Part 5 of Act 451 of 1994, as amended.*

VERIFICATION OF WORKER'S DISABILITY COMPENSATION ACT COMPLIANCE

- This verification must be completed and submitted within 21 days of contract award and prior to the issuance of the timber sale contract.
- In addition, if boxes 2B or 2C are checked, then Notice of Exclusion or Certificate of Insurance must be submitted within twenty-one (21) days of the contract award and prior to the issuance of the timber sale contract.
- All information must be typed or printed except for written signatures.

Please Check Appropriate Categories:

1. My business is organized as (you **must** check one of the boxes below):
 - A. Sole Proprietorship (individual)
 - B. Partnership
 - C. Corporation
2. You **must** check one of the boxes below:
 - A. I certify my business is a sole proprietorship and it has no employees but the sole proprietor. I am not subject to the Worker's Compensation Laws.
 - B. I certify my business has satisfied its obligation to the Worker's Compensation Act through the use of an approved Notice of Exclusion (BWC-337, Rev. 5/96). I will provide a copy of the Notice of Exclusion within 21 days of the contract award. (For questions or a copy of the BWC-337, please call the Worker's Compensation Bureau at 517-322-1195).
 - C. I certify my business has a Worker's Compensation Policy. I will provide an original Certificate of Insurance within twenty-one (21) days of the contract award.
3. If you have checked item 2(A) or 2(B), you **must** indicate the number of **both** full-time and part-time employees, other than yourself, including family members and active partners (if none, you must enter "0").

_____ Full-time Employees

_____ Part-time Employees

Name of Business		Federal ID (or) Social Security No.	
Address		Telephone ()	
City	State	ZIP	

I hereby certify that the above information is true and correct. I agree to notify the Michigan DNR of any changes that occur in factors affecting my coverage during any of my present and future operations.

Signature of Owner or Authorized Representative

Title

Date

Please complete the "SEALED BID" information on the next page