



**DEPARTMENT OF NATURAL RESOURCES
STATE OF MICHIGAN
TIMBER SALE PROSPECTUS #7440**

SCHEDULED SALE DATE AND TIME: 3:00 p.m. (local time) on June 26, 2024.

LOCATION: **BALDWIN OFFICE, 2468 W 24TH STREET, BALDWIN, MI 49304.**

PROSPECTUS NOTE: The bidder is advised to inspect the sale area and review the location, estimated volumes, operating costs and contract terms of proposed sales. Please be aware that some landowners may request 60 days or more notice for access across their land.

Notice is hereby given that bids will be received by the Unit Manager, CADILLAC MANAGEMENT UNIT, for certain timber on the following described lands:

Alrihty Aspen (63-006-23) / T24N, R11W, SEC. 12, SWNW,W1/2SW.
T24N, R11W, SEC. 13, NWNW,S1/2NW,N1/2SW.
Wexford County, Advertised Price \$111,113.85, 82.7 Acres, Aspen, Hardwood.

Hognose Hardwoods (63-020-23) / T24N, R07W, SEC. 29, SESW,S1/2SE.
T24N, R07W, SEC. 32, N1/2NW,SENE,NE,E1/2SW,N1/2SE.
T24N, R07W, SEC. 32, SWSE.
T24N, R07W, SEC. 33, W1/2NW.
Missaukee County, Advertised Price \$401,816.85, 321.2 Acres, Hardwood, Sugar Maple.

OVT Oak (63-021-23) / T24N, R05W, SEC. 1 , NWNW.
T24N, R05W, SEC. 2 , NW,N1/2NE,SW,NWSE.
Missaukee County, Advertised Price \$158,352.00, 176.1 Acres, Hardwood, Aspen.

SALE NOTE: A recreation site such as a trail, pathway, or campground is within the sale area or the vicinity. Certain restrictions/specifications may be applicable including time restrictions.

108 Island Take 2 (63-030-23) / T22N, R06W, SEC. 10, SESW,SE.
Missaukee County, Advertised Price \$186,611.35, 89.8 Acres, Hardwood, Red Oak.

SALE NOTE: The sale area has been harvested recently and there is old faded paint within the sale area that is to be ignored.

Access may be through other public land.

BID INSTRUCTIONS (VER. 10/10/2022):

1. Scheduled Bid Location, Date, and Time (2/11)

Bids must be received by the Unit Manager, BALDWIN OFFICE, 2468 W 24th Street, Baldwin, MI 49304, no later than 3:00 p.m. (local time) on June 26, 2024. For further information concerning this sale, contact David Fisher at 231-745-4651 extension 9064.

2. Bidder's Qualifications (10/22)

If all or part of a timber sale was prepared by a private contractor, the contractor and that contractor's company are not permitted to bid on the timber sale. A person must be 18 years of age or older to purchase timber. Permanent employees of the Department of Natural Resources or members of their immediate household may not bid. Former employees, in the permanent or seasonal class, may not bid until 3 months after the last day of active duty. Bids will not be accepted from individuals or companies appearing on the DNR/FRD No-Bid List. This list contains the names of purchasers who previously failed to execute a contract within 21-days or who have a history of poor performance.

3. Preparation of Sealed Bids (5/16)

Bid Forms may be completed online thru Michigan DNR Timber Sale Online Bidding (OLB) at www.michigan.gov/timberbidding or by completing the hardcopy Bid Form found in the Timber Sale Prospectus. Hardcopy Bid Forms shall be manually signed in ink. Registration in OLB is considered your 'signature' for all bids submitted thru that system. Bid prices must be entered for each species and product in the Bid Price column for all material subject to bidding and all fill-in blanks must be completed. If erasures or other changes appear on the hardcopy Bid Form, each erasure or change must be initialed by the person signing the bid.

4. Submission of Sealed Bids (5/16)

Bid forms may be obtained from the Unit Manager or thru OLB. Bids may be submitted hardcopy or thru OLB. All hardcopy bids must be submitted on the bid form and in an envelope clearly identified as described in this section. NOTE: Only one bid form per bid envelope. Sealed bids must be submitted to the Unit office designated in the prospectus and must be submitted at or prior to the time established in the prospectus. The envelope should show on the outside (a) the sale name or number and (b) the date and time of bid opening, as shown in the prospectus. Bids received after the time specified in the sale prospectus are late bids and will be rejected.

It is possible for a bidder to submit multiple bids on a single sale. For example, a bid may be submitted hardcopy and a bid may be submitted thru OLB. Or, two bidders from the same company could both submit bids on the same sale. If this were to happen, the State would accept all bids received and award the contract accordingly. All bidding and contractual requirements would apply to all bids received.

5. Public Opening of Sealed Bids (7/16)

If conditions permit, the sealed bids will be publicly opened and posted at the time and place set in the prospectus.

If a bidder, present at a bid opening, has submitted bids on more than one sale, that bidder may withdraw their unopened bid envelopes or announce the withdrawal of their online bid after being declared the successful bidder on one sale.

6. Award of Contract (1/11)

Award of the contract will be made to the Bidder whose bid, conforming to the prospectus, is most advantageous to the State of Michigan on the basis of total value at rates bid for the estimated quantities. The State reserves the right to reject any bid or waive any minor irregularity in bids received. A written award mailed (or otherwise furnished) to the successful Bidder shall be deemed to result in a binding contract without further action by either party.

7. Down Payment (1/11)

The Bidder to whom award is made must make a down payment within 21 days of the sale award. The amount of the down payment will be calculated as shown in the Bond and Payment Schedule of this prospectus. Only cash may be used to meet this requirement.

8. Performance Security (1/11)

As guarantee of faithful performance, a cash bond, certificate of deposit, surety bond or irrevocable letter of credit (LOC) is required within 21 days of the sale award. The amount of the performance security is shown in the Bond and

Payment Schedule of this prospectus. If an LOC or surety is used, the coverage must extend for at least 6 months beyond the contract expiration.

9. Worker's Compensation (10/22)

Purchaser shall obtain worker's compensation insurance to cover claims under Michigan's Worker's Disability Compensation Act of 1969 or similar employee benefit act of any other state applicable to an employee. Verification of Worker's Disability Compensation Act Compliance must be completed and submitted within 21 days of contract award and prior to the issuance of the timber sale contract. In addition, if applicable, Notice of Exclusion or Certificate of Insurance must also be submitted.

10. Timber Sale Contract (10/22)

Additional conditions and requirements common to all timber sales are listed on the timber sale contract (R4031) and are available on line at www.michigan.gov/timber. Contact the Unit Manager for additional information or a sample contract. Within 21 days of the date of the award letter, the bidder must sign the contract and provide the required down payment, performance security, and verification of worker's disability compensation. The down payment and performance security shall be in accordance with the provisions of the timber sale contract, in the sums stated in this prospectus. If these actions are not taken, then the Bidder, the Bidder's corporation, and the corporation's principals may not be permitted to bid on State timber sales for a period of 3 months after the first offense, 6 months after the second offense, and 1 year after the third offense. An offense will only be counted against the Bidder for 5 years. In addition, the Bidder certifies that if awarded this contract, the Bidder will complete the timber sale contract in accordance with its terms and any modifications thereof including requirements to purchase, cut, and remove the included timber by the expiration date.

Payment Unit values in the State Forest Timber Sale Contract are calculated based on the advertised value of the Payment Unit as a percentage of the total advertised value of the contract. The advertised value of each Payment Unit is given in the Description of Timber by Payment Unit table on the Timber Sale Information page. For example, if the value of Payment Unit 1 is advertised as \$1,500 and the total Timber Sale value is advertised as \$10,000, the contract price for Payment Unit 1 will be 15% of the total bid price ($\$1,500/\$10,000 * 100$).

11. Disclaimer of Estimates and Bidder's Warranty of Inspection (10/22)

Before submitting this bid, the Bidder is advised and cautioned to inspect the sale area, review the requirements of the sale contract, and take other steps as may be reasonably necessary to ascertain the location, estimated volumes, construction estimates, and operating costs of the proposed sale. Failure to do so will not relieve the Bidder from responsibility for completing the contract.

The Bidder warrants that this bid is submitted solely on the basis of the Bidder's examination and inspection of the quality and quantity of the timber offered for sale and the Bidder's opinion of the value thereof and the costs of recovery. No reliance should be placed on the State of Michigan's estimates of timber quality, quantity or costs of recovery. Bidder further acknowledges that the State of Michigan: (i) expressly disclaims any warranty of fitness of timber for any purpose; (ii) offers this timber as is without any warranty of quality (merchantability) or quantity and (iii) expressly disclaims any warranty as to the quantity or quality of timber sold.

12. Certification and Chain-of-Custody (10/22)

Unless otherwise indicated in the contract under section 7 – Other Conditions of the Sale Specific Conditions & Requirements, the area encompassed by this timber sale is certified to the standards of the Forest Stewardship Council (FSC) - Certificate #SCS-FM/COC-00090N and the Sustainable Forestry Initiative (SFI) - Certificate #NSF-SFIS-5Y031-SF5. Forest products from this sale may be delivered to the mill as "FSC 100% and / or SFI certified" as long as the contractor hauling the forest products is chain-of-custody (COC) certified or covered under a COC certificate from the destination mill. The purchaser is responsible for maintaining COC after leaving the sale area.

13. Good Neighbor Authority (GNA) Requirements (10/22)

If the name of this timber sales contains the acronym GNA, it is authorized by the Good Neighbor Authority (GNA) and covered by various agreements between the U.S. Forest Service and the State. The timber sale occurs on federal land and the following conditions apply:

GNA contracts on US Forest Service land will not be awarded to purchasers on the Federal list of excluded parties. The System for Award Management (SAM) will be checked for active excluded parties prior to award of contract. In

addition, the Bidder to whom award is made must complete an Assurance Regarding Felony Conviction or Tax Delinquent Status for Corporate Applicants (AD-3031).

14. Good Neighbor Authority (GNA) Requirements, con't (10/22)

Bidder certifies, by signing this bid form, that to the best of Bidder's knowledge that the following representations are accurate and complete.

- a. That the Bidder and its principals are not presently debarred, suspended, proposed for debarment, declared ineligible, or voluntary excluded from timber sales (covered transactions) by any Federal department or agency.
- b. That the Bidder and its principals have not within a 3-year period preceding this bid been convicted of or had a civil judgment rendered against them for commission of fraud or a criminal offense in connection with obtaining , attempting to obtain, or performing a public (Federal, State, or local) transaction or contract under a public transaction; violation of Federal or State antitrust statutes or commission of embezzlement, theft, forgery, bribery, falsification or destruction of records, making false statements, or receiving stolen property.
- c. That the Bidder and its principals are not presently indicted for or otherwise criminally or civilly charged by a governmental entity (Federal, State, or local) with commission of any of the offenses enumerated in paragraph b of this certification.
- d. That the Bidder and its principals have not within a 3-year period preceding this bid had one or more public transactions (Federal, State, or local) terminated for breach or default of a timber or forest product contract.

Bidders that cannot certify this requirement, in whole or in part, shall submit an explanation with their bid.

Scott Bowen
Director

TIMBER SALE INFORMATION

Alrighty Aspen (63-006-23)

T24N, R11W, SEC. 12; T24N, R11W, SEC. 13.
Wexford County (Advertised Price \$111,113.85)

A timber sale contract for this lump sum, sealed bid timber sale will be awarded to the responsible bidder offering the highest sealed bid price. All units of volume listed below were estimated using the Inventory Manager computer program and the new Michigan taper model. Bids must be at or above the following advertised price for each product and species:

<u>PRODUCTS & SPECIES</u>	<u>ESTIMATED UNITS*</u>	<u>ADVERTISED PRICE</u>
Sawtimber		
B. T. Aspen	364.6 MBF	\$ 85.00 / MBF
Basswood	45.6 MBF	\$ 126.00 / MBF
Jack Pine	4.7 MBF	\$ 40.00 / MBF
Red Maple	81.8 MBF	\$ 90.00 / MBF
Red Pine	44.6 MBF	\$ 98.00 / MBF
Sugar Maple	8.1 MBF	\$ 252.00 / MBF
White Pine	30.2 MBF	\$ 72.00 / MBF
Pulpwood		
B. T. Aspen	1,796 Cords	\$ 25.35 / Cord
Basswood	75 Cords	\$ 16.20 / Cord
Jack Pine	155 Cords	\$ 19.75 / Cord
Mixed Hardwood	218 Cords	\$ 21.70 / Cord
Mixed Oak	31 Cords	\$ 30.80 / Cord
Red Pine	24 Cords	\$ 46.15 / Cord
White Pine	53 Cords	\$ 31.00 / Cord

* The total volume is statistically estimated within plus (+) or minus (-) 10.63 percent. There are an estimated 3,490 cords on this timber sale, plus or minus 371 cords at the 95% confidence level. The estimated units are final and not subject to adjustment. Prospective bidders are urged to examine this timber and to make their own estimates of quantity and quality.

BOND AND PAYMENT SCHEDULE:

1. A bond in the amount of \$11,111.00 to insure faithful performance of the conditions of the contract will be deposited by the successful bidder within 21 days of the sale award.
2. Cutting in any sale or unit without the required advance payment would be considered a trespass.
3. Total payment must be paid in advance or according to the following schedule :
 - (a) Ten percent (10%) of the sale value must be paid within 21 days of the sale award.
 - (b) The 10% down payment will be credited towards the first unit cut.
 - (c) Payment for each of the following units must be made before cutting begins in that unit:

PAYMENT UNIT NUMBER	PERCENT OF TOTAL SALE VALUE
01	10.9%
02	28.8%
03	60.3%
4. If no cutting takes place, the 10% down payment will not be refunded.
5. Operations on the contract issued will terminate on 08/31/2026.

SALE STATISTICS

Volumes were calculated in cubic feet using the Michigan taper model. Cubic foot volume includes all wood inside bark for the product indicated. For display purposes, cubic feet were converted to cords and MBF using a simple conversion factor, e.g. 79 cubic feet per cord and 185 cubic feet per MBF. The cubic foot volumes are precise; the cords and MBF volumes are not. Cubic foot volume cannot be directly converted to cords or boards with precision.

SALE VOLUMES

The total estimated sale volume may not equal the sum of the species/products due to the nature of statistical calculations associated with double sampling methodology.

VOLUME		STATISTICAL RANGE IN CORDS		
TOTAL CUBIC FEET	TOTAL CORDS	PERCENT ERROR	MINIMUM	MAXIMUM
275,716	3,490	10.63%	3,119	3,861

VDU VOLUMES

A VDU is a Volume Determination Unit. Volumes and their associated statistics are calculated at the VDU level and summarized to the sale level. There is often a one to one relationship between a VDU and a Payment Unit, but not always, depending on the cruise design. Refer to the VDU TO PAYMENT UNIT table.

VDU	VOLUME		PERCENT ERROR	RANGE IN CORDS	
	TOTAL CUBIC FEET	TOTAL CORDS		MINIMUM	MAXIMUM
11	275,716	3,490	10.64%	3,119	3,861
TOTAL:	275,716	3,490		3,119	3,861

VDU TO PAYMENT UNIT

When a VDU is associated with more than one Payment Unit (PU), the VDU volumes are assigned to the PU based on acres of the VDU within the PU.

VDU	VDU ACRES	PU	PU ACRES
11	82.7	1	9.0
		2	23.8
		3	49.9
TOTAL:	82.7		82.7

DESCRIPTION OF TIMBER BY PAYMENT UNIT (PU)

PU	MARKET GROUP	PRODUCT	QUANTITY	UNIT	ACRES	ADVERTISE PRICE
1	B. T. Aspen	Sawtimber	39.7	MBF	9.0	\$12,147.15
	Basswood		5.0	MBF		
	Jack Pine		0.5	MBF		
	Red Maple		8.9	MBF		
	Red Pine		4.9	MBF		
	Sugar Maple		0.9	MBF		
	White Pine		3.3	MBF		
	B. T. Aspen		Pulpwood	195		
	Basswood	8		Cords		
	Jack Pine	17		Cords		
	Mixed Hardwood	24		Cords		
	<i>Black Cherry</i>	1		Cords		
	<i>Ironwood</i>	1		Cords		
	<i>Red Maple</i>	19		Cords		
	<i>Sugar Maple</i>	3		Cords		
	Mixed Oak	4		Cords		
	<i>/Red (Hybrid) Oak</i>	1		Cords		
	<i>Red Oak</i>	3		Cords		
	Red Pine	3		Cords		
	White Pine	6	Cords			
2	B. T. Aspen	Sawtimber	104.9	MBF	23.8	\$31,981.95
	Basswood		13.1	MBF		
	Jack Pine		1.4	MBF		
	Red Maple		23.5	MBF		
	Red Pine		12.8	MBF		
	Sugar Maple		2.3	MBF		
	White Pine		8.7	MBF		
	B. T. Aspen		Pulpwood	517		
	Basswood	22		Cords		
	Jack Pine	45		Cords		
	Mixed Hardwood	63		Cords		
	<i>Black Cherry</i>	2		Cords		
	<i>Ironwood</i>	2		Cords		
	<i>Red Maple</i>	50		Cords		
	<i>Sugar Maple</i>	9		Cords		
	Mixed Oak	9		Cords		
	<i>/Red (Hybrid) Oak</i>	2		Cords		
	<i>Red Oak</i>	7		Cords		
	Red Pine	7		Cords		
	White Pine	15	Cords			
3	B. T. Aspen	Sawtimber	220.0	MBF	49.9	\$66,984.75
	Basswood		27.5	MBF		
	Jack Pine		2.8	MBF		
	Red Maple		49.4	MBF		
	Red Pine		26.9	MBF		
	Sugar Maple		4.9	MBF		
	White Pine		18.2	MBF		
	B. T. Aspen	Pulpwood	1,084	Cords		
	Basswood		45	Cords		
	Jack Pine		93	Cords		
	Mixed Hardwood		131	Cords		
	<i>Black Cherry</i>		4	Cords		
	<i>Ironwood</i>		5	Cords		
	<i>Red Maple</i>		104	Cords		
	<i>Sugar Maple</i>		18	Cords		
	Mixed Oak		18	Cords		

DESCRIPTION OF TIMBER BY PAYMENT UNIT (PU), CON'T

PU	MARKET GROUP	PRODUCT	QUANTITY	UNIT	ACRES	ADVERTISE PRICE
3 con't	<i>/Red (Hybrid) Oak</i>	<i>Pulpwood</i>	4	<i>Cords</i>		
	<i>Red Oak</i>		14	<i>Cords</i>		
	Red Pine		14	Cords		
	White Pine		32	Cords		
TOTAL:			579.6	MBF		
TOTAL:			2,352	Cords		

Sale Specific Conditions & Requirements

Sale Name: **Alrighty Aspen**

Sale Number: **63-006-23** Seq#: **1**

1 - Sale Area

1.2 - Boundaries

1.2.1 - Painted boundaries (9/19)

The sale boundary and Payment Unit boundaries are marked and identified red and blue paint. Exterior sale boundary lines against private property are marked with blue paint. Exterior sale boundary lines against state are marked with red paint. Retention patches are marked with red paint; no harvesting activities may occur within these areas. The painted boundary line trees are not Included Timber and are to be protected unless marked with orange paint.

2 - Timber Specifications

2.1 - Included Timber

2.1.7 - Leave tree marked unit(s) (6/14)

Within Payment Unit(s) 1, 2 and 3, cut all trees that are two (2) inches or more at DBH, except do not cut any white oak or trees marked with green paint above and below stump height.

3 - Payments

3.3 - Pre-measured Sales

3.3.4 - Dividing payment units (7/14)

Payment Unit(s) 3, may be divided at the request of the Purchaser and upon approval of the Unit Manager. Dividing Payment Units is a contract modification which requires a Timber Sale Contract Amendment. There will be only one division per Payment Unit.

4 - Transportation

4.1 - Construction

4.1.3 - Slash and earthen piles (8/04)

Piles or windrows of earth along roads and landings that have been widened or constructed shall be leveled. Slash from road maintenance or construction, including stumps, shall be dispersed throughout the sale or be chipped, utilized or otherwise removed from the sale.

4.1.12 - No new roads (1/12)

No new roads will be permitted in any Payment Unit. All operations are limited to existing roads. Skid trails only will be allowed.

4.2 - Maintenance

4.2.1 - Hauling restriction (12/08)

Hauling may be restricted on forest roads by the Unit Manager or his/her representative. The restriction may occur during spring breakup or during wet weather conditions.

4.2.5 - Two wheel drive condition (2/04)

All existing trail roads on and adjacent to the sale area must be passable by two-wheel drive traffic for the duration of the sale.

5 - Operations

5.2 - Conduct of Operations

5.2.1 - Slash

5.2.1.8 - Slash height (12/08)

No slash or tree tops may exceed 24 inches in height.

5.2.2 - Hazard Trees/Snags

5.2.2.1 - Den trees (10/16)

Obvious hollow and/or den trees shall be protected and left standing unless they are a safety hazard.

5.2.3 - Operating Restrictions

5.2.3.5 - Oak wilt restriction (1/18)

Within Payment Unit(s) unless changed by written agreement, cutting, skidding, hauling within the sale and brushing of access roads to the sale are not permitted during the period of April 15 to July 15. Operations may be allowed if specific steps are taken to prevent damaging uncut oak during the high risk period. Those steps may include completing all road brushing before April 15th and clearing a tree-length buffer along uncut oak cover before April 15th. This is necessary to reduce the spread of oak wilt. For more information, contact the Unit Manager or his/her representative.

5.2.3.11 - Coppice regeneration protection (4/10)

To promote aspen regeneration, timber harvesting in any Payment Unit must be completed before significant aspen sprouting occurs in that Payment Unit so as to minimize damage to the new regeneration. Any post harvest operations, such as chipping, must be completed before sprouting of regeneration occurs. If it is anticipated that chipping will be delayed, then tops shall be carried to one central location or left unchipped. The Unit Manager or his/her representative may cease such operations if sprouting occurs before the operation is complete.

5.2.4 - Dead and Down Creation

5.2.4.4 - Dead and down creation, grouse (6/18)

To encourage grouse and other wildlife, in Payment Unit(s) 1, 2 and 3, leave one, 12" diameter or larger log-length (8 foot minimum) piece on the ground for every 2 acres. These will be evenly scattered throughout the unit. This can be an unmerchantable piece or a full tree.

5.2.32 - Decking/landing restoration (9/13)

All decking and landing areas must have the surface area restored to a condition equal to or better than before. This is to ensure the proper regeneration of the stand. Wood debris, chips and "cookies" from trimmings must be removed or scattered away from landing and loading areas and may not be windrowed on the edge.

5.4 - Soil Protection

5.4.1 - Rutting restriction, general (7/16)

Operations are to cease immediately if equipment and weather conditions result in rutting of roads and/or skid trails which is 12 inches or greater in depth and 50 feet in length. The Unit Manager or his/her representative may restrict hauling and/or skidding if ruts exceed the specified depth. With the Unit Manager or his/her representative's approval, the Purchaser may return to the area when the risk of rutting has decreased.

5.8 - Protection of Endangered Species

5.8.5 - Protection of raptor nests (3/13)

All trees with raptor nests will be protected if found during harvesting operations. Notification will be made to the Unit Manager or his/her representative who will notify the Wildlife Biologist so an on-site evaluation and recommendation can be made, if necessary.

6 - Safety and Fire Prevention

6.2 - Signing

6.2.1 - Road posting (10/20)

The Purchaser is responsible for posting and maintaining caution signs on forest roads prior to beginning operations. The road must be posted at appropriate distances from the Sale Area to warn of logging activity and truck traffic. Signs must be removed when harvest operations are suspended or completed. The Purchaser will provide these signs.



TIMBER SALE MAP

This information provided by authority of Part 525, 1994 PA 451, as amended.

Forest Management Unit	County	Mapped By	Joel Taylor	Date	Page	of
Cadillac Management Unit	Wexford County	Cruised By	Joel Taylor	09/06/2023	1	1
Township	Range	Section(s) and Subdivision(s)	Scale			
24N	11W	S12 SWNW,W1/2SW and S13 NWNW,S1/2NW,N1/2SW	1:15,840			

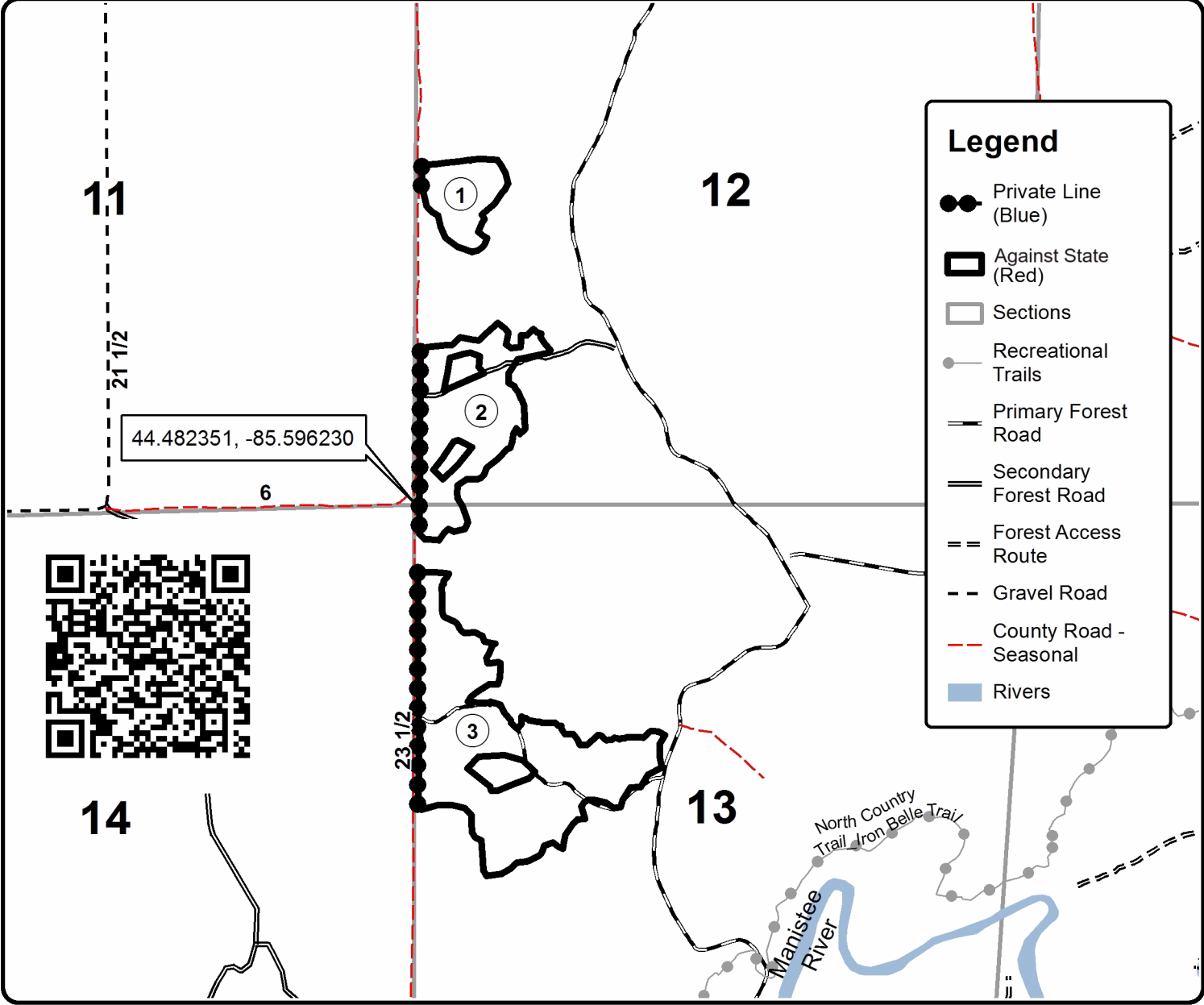
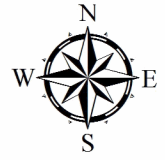
Cover Type				Density	
A = Aspen	H = Hemlock	N = Marsh	U = Upland Brush	0 = Non Stocked	5 = Pole Timber Medium
B = Paper Birch	J = Jack Pine	O = Oak	UM = Upland Mixed	1 = Seedling Sapling Poor	6 = Pole Timber Well
C = Cedar	L = Lowland Brush	P = Lowland Poplar	V = Bog or Marsh	2 = Seedling Sapling Medium	7 = Saw Timber Poor
D = Treed Bog	LM = Lowland Mixed	Q = Mixed Swamp Conifer	W = White Pine	3 = Seedling Sapling Well	8 = Saw Timber Medium
E = Swamp Hdwoods	M = Mpl, Bch, Brch	R = Red Pine	X = Non Stocked	4 = Pole Timber Poor	9 = Saw Timber Well
F = Spruce Fir	MC = Mixed Conifer	S = Black Spruce	Z = Water		
G = Grass	MD = Mixed Deciduous	T = Tamarack			

PU	Acres
1	9.0
2	23.8
3	49.9

Alrighty Aspen

Compartment 63132

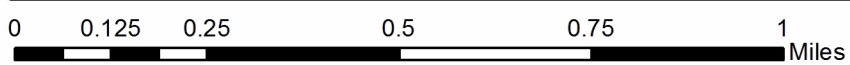
82.7 Acres



44.482351, -85.596230

Legend

- Private Line (Blue)
- ▭ Against State (Red)
- ▭ Sections
- Recreational Trails
- Primary Forest Road
- Secondary Forest Road
- == Forest Access Route
- - Gravel Road
- - - County Road - Seasonal
- ▭ Rivers



TIMBER SALE INFORMATION

Hognose Hardwoods (63-020-23)
T24N, R07W, SEC. 29; T24N, R07W, SEC. 32; T24N, R07W, SEC. 33.
Missaukee County (Advertised Price \$401,816.85)

A timber sale contract for this lump sum, sealed bid timber sale will be awarded to the responsible bidder offering the highest sealed bid price. All units of volume listed below were estimated using the Inventory Manager computer program and the new Michigan taper model. Bids must be at or above the following advertised price for each product and species:

<u>PRODUCTS & SPECIES</u>	<u>ESTIMATED UNITS*</u>	<u>ADVERTISED PRICE</u>
Sawtimber		
Basswood	642.9 MBF	\$ 126.00 / MBF
Beech	106.5 MBF	\$ 134.00 / MBF
Black Cherry	42.7 MBF	\$ 233.00 / MBF
Quaking Aspen	14.1 MBF	\$ 85.00 / MBF
Red Maple	20.2 MBF	\$ 90.00 / MBF
Red Oak	77.8 MBF	\$ 167.00 / MBF
Sugar Maple	795.3 MBF	\$ 252.00 / MBF
Pulpwood		
Basswood	1,117 Cords	\$ 16.20 / Cord
Mixed Hardwood	2,718 Cords	\$ 21.70 / Cord
Quaking Aspen	15 Cords	\$ 25.35 / Cord
Red Oak	88 Cords	\$ 30.80 / Cord

* The total volume is statistically estimated within plus (+) or minus (-) 7.78 percent. There are an estimated 8,128 cords on this timber sale, plus or minus 633 cords at the 95% confidence level. The estimated units are final and not subject to adjustment. Prospective bidders are urged to examine this timber and to make their own estimates of quantity and quality.

BOND AND PAYMENT SCHEDULE:

1. A bond in the amount of \$40,182.00 to insure faithful performance of the conditions of the contract will be deposited by the successful bidder within 21 days of the sale award.
2. Cutting in any sale or unit without the required advance payment would be considered a trespass.
3. Total payment must be paid in advance or according to the following schedule :
 - (a) Ten percent (10%) of the sale value must be paid within 21 days of the sale award.
 - (b) The 10% down payment will be credited towards the first unit cut.
 - (c) Payment for each of the following units must be made before cutting begins in that unit:

PAYMENT UNIT NUMBER	PERCENT OF TOTAL SALE VALUE
01	34.8%
02	28.5%
03	17.3%
04	19.4%
4. If no cutting takes place, the 10% down payment will not be refunded.
5. Operations on the contract issued will terminate on 06/30/2026.

SALE STATISTICS

Volumes were calculated in cubic feet using the Michigan taper model. Cubic foot volume includes all wood inside bark for the product indicated. For display purposes, cubic feet were converted to cords and MBF using a simple conversion factor, e.g. 79 cubic feet per cord and 185 cubic feet per MBF. The cubic foot volumes are precise; the cords and MBF volumes are not. Cubic foot volume cannot be directly converted to cords or boards with precision.

SALE VOLUMES

The total estimated sale volume may not equal the sum of the species/products due to the nature of statistical calculations associated with double sampling methodology.

VOLUME		STATISTICAL RANGE IN CORDS		
TOTAL CUBIC FEET	TOTAL CORDS	PERCENT ERROR	MINIMUM	MAXIMUM
642,090	8,128	7.78%	7,495	8,761

VDU VOLUMES

A VDU is a Volume Determination Unit. Volumes and their associated statistics are calculated at the VDU level and summarized to the sale level. There is often a one to one relationship between a VDU and a Payment Unit, but not always, depending on the cruise design. Refer to the VDU TO PAYMENT UNIT table.

VDU	VOLUME		PERCENT ERROR	RANGE IN CORDS	
	TOTAL CUBIC FEET	TOTAL CORDS		MINIMUM	MAXIMUM
47	642,090	8,128	7.79%	7,495	8,761
TOTAL:	642,090	8,128		7,495	8,761

VDU TO PAYMENT UNIT

When a VDU is associated with more than one Payment Unit (PU), the VDU volumes are assigned to the PU based on acres of the VDU within the PU.

VDU	VDU ACRES	PU	PU ACRES
47	321.2	1	111.8
		2	91.5
		3	55.5
		4	62.4
TOTAL:	321.2		321.2

DESCRIPTION OF TIMBER BY PAYMENT UNIT (PU)

PU	MARKET GROUP	PRODUCT	QUANTITY	UNIT	ACRES	ADVERTISE PRICE	
1	Basswood	Sawtimber	223.8	MBF	111.8	\$139,886.15	
	Beech		37.1	MBF			
	Black Cherry		14.8	MBF			
	Quaking Aspen		5.0	MBF			
	Red Maple		7.0	MBF			
	Red Oak		27.1	MBF			
	Sugar Maple		276.8	MBF			
	Basswood		Pulpwood	389			Cords
	Mixed Hardwood			947			Cords
	<i>Beech</i>			137			<i>Cords</i>
	<i>Black Cherry</i>	25		<i>Cords</i>			
	<i>Ironwood</i>	24		<i>Cords</i>			
	<i>Red Maple</i>	13		<i>Cords</i>			
	<i>Sugar Maple</i>	748		<i>Cords</i>			
Quaking Aspen	5	Cords					
Red Oak	31	Cords					
2	Basswood	Sawtimber	183.1	MBF	91.5	\$114,464.80	
	Beech		30.3	MBF			
	Black Cherry		12.2	MBF			
	Quaking Aspen		4.0	MBF			
	Red Maple		5.8	MBF			
	Red Oak		22.2	MBF			
	Sugar Maple		226.6	MBF			
	Basswood		Pulpwood	318			Cords
	Mixed Hardwood			774			Cords
	<i>Beech</i>			113			<i>Cords</i>
	<i>Black Cherry</i>	20		<i>Cords</i>			
	<i>Ironwood</i>	19		<i>Cords</i>			
	<i>Red Maple</i>	10		<i>Cords</i>			
	<i>Sugar Maple</i>	612		<i>Cords</i>			
Quaking Aspen	4	Cords					
Red Oak	25	Cords					
3	Basswood	Sawtimber	111.1	MBF	55.5	\$69,411.95	
	Beech		18.4	MBF			
	Black Cherry		7.4	MBF			
	Quaking Aspen		2.4	MBF			
	Red Maple		3.5	MBF			
	Red Oak		13.4	MBF			
	Sugar Maple		137.4	MBF			
	Basswood		Pulpwood	193			Cords
	Mixed Hardwood			469			Cords
	<i>Beech</i>			68			<i>Cords</i>
	<i>Black Cherry</i>	12		<i>Cords</i>			
	<i>Ironwood</i>	12		<i>Cords</i>			
	<i>Red Maple</i>	6		<i>Cords</i>			
	<i>Sugar Maple</i>	371		<i>Cords</i>			
Quaking Aspen	3	Cords					
Red Oak	15	Cords					
4	Basswood	Sawtimber	124.9	MBF	62.4	\$78,053.95	
	Beech		20.7	MBF			
	Black Cherry		8.3	MBF			
	Quaking Aspen		2.7	MBF			
	Red Maple		3.9	MBF			
	Red Oak		15.1	MBF			
	Sugar Maple		154.5	MBF			
	Basswood		Pulpwood	217			Cords

DESCRIPTION OF TIMBER BY PAYMENT UNIT (PU), CON'T

PU	MARKET GROUP	PRODUCT	QUANTITY	UNIT	ACRES	ADVERTISE PRICE
4 con't	Mixed Hardwood	Pulpwood	528	Cords		
	<i>Beech</i>		77	<i>Cords</i>		
	<i>Black Cherry</i>		14	<i>Cords</i>		
	<i>Ironwood</i>		13	<i>Cords</i>		
	<i>Red Maple</i>		7	<i>Cords</i>		
	<i>Sugar Maple</i>		417	<i>Cords</i>		
	Quaking Aspen		3	Cords		
	Red Oak		17	Cords		
TOTAL:			1,699.5	MBF		
TOTAL:			3,938	Cords		

Sale Specific Conditions & Requirements

Sale Name: Hognose Hardwoods

Sale Number: 63-020-23 Seq#: 2

1 - Sale Area

1.2 - Boundaries

1.2.1 - Painted boundaries (9/19)

The sale boundary and Payment Unit boundaries are marked and identified by red and yellow paint. Exterior sale boundary lines against state are marked with red paint. Interior Payment Unit boundaries are marked with yellow paint. The painted boundary line trees are not Included Timber and are to be protected unless marked with orange paint. Yellow painted trees designating an interior Payment Unit boundary are only to be cut when all surrounding Payment Units have been paid.

2 - Timber Specifications

2.1 - Included Timber

2.1.3 - Cut tree marked unit(s) (12/08)

Within Payment Unit(s) 1-4, all trees are designated for cutting when marked with orange paint above and below stump height, regardless of merchantability. In addition, within the regen gaps marked with green paint, cut all trees which meet minimum piece specifications in 2.2 Utilization - Gap locations are shown on the Timber Sale Map.

2.2 - Utilization

2.2.7 - Uncut designated trees (2/04)

Liquidated damages of \$50.00 per tree will be assessed for every marked tree not cut.

3 - Payments

3.3 - Pre-measured Sales

3.3.4 - Dividing payment units (7/14)

Payment Unit(s) 1-4, may be divided at the request of the Purchaser and upon approval of the Unit Manager. Dividing Payment Units is a contract modification which requires a Timber Sale Contract Amendment. There will be only one division per Payment Unit.

4 - Transportation

4.1 - Construction

4.1.7 - Road closure (10/11)

All new roads built into the sale must be blocked to vehicle traffic within 30 days of completion of hauling. Overgrown roads that are reopened shall be considered new roads. In general, this will require constructing a four (4') foot high berm of stumps and logs covered with earth. Stumps and brush must be placed along the remainder of the trail. These roads must be rendered impassable to cars and trucks. All stumps from road building and landing construction must be reserved to block any newly constructed roads upon completion of the sale. These stumps must be scattered along the road system to prohibit vehicular movement. Temporary berms may be required if no sale activity occurs for 30 or more consecutive days. Contact the Sale Administrator for specific details of design and placement.

4.2 - Maintenance

4.2.5 - Two wheel drive condition (2/04)

All existing trail roads on and adjacent to the sale area must be passable by two-wheel drive traffic for the duration of the sale.

5 - Operations

5.2 - Conduct of Operations

5.2.1 - Slash

5.2.1.8 - Slash height (12/08)

No slash or tree tops may exceed 24 inches in height.

5.2.2 - Hazard Trees/Snags

5.2.2.1 - Den trees (10/16)

Obvious hollow and/or den trees shall be protected and left standing unless they are a safety hazard.

5.2.3 - Operating Restrictions

5.2.3.5 - Oak wilt restriction (1/18)

Within Payment Unit(s) 1-4, unless changed by written agreement, cutting, skidding, hauling within the sale and brushing of access roads to the sale are not permitted during the period of April 15 to July 15. Operations may be allowed if specific steps are taken to prevent damaging uncut oak during the high risk period. Those steps may include completing all road brushing before April 15th and clearing a tree-length buffer along uncut oak cover before April 15th. This is necessary to reduce the spread of oak wilt. For more information, contact the Unit Manager or his/her representative.

5.2.32 - Decking/landing restoration (9/13)

All decking and landing areas must have the surface area restored to a condition equal to or better than before. This is to ensure the proper regeneration of the stand. Wood debris, chips and "cookies" from trimmings must be removed or scattered away from landing and loading areas and may not be windrowed on the edge.

5.2.38 - No decking against live trees (2/04)

Cut products may not be decked against unmarked or designated leave trees.

5.4 - Soil Protection

5.4.1 - Rutting restriction, general (7/16)

Operations are to cease immediately if equipment and weather conditions result in rutting of roads and/or skid trails which is 12 inches or greater in depth and 50 feet in length. The Unit Manager or his/her representative may restrict hauling and/or skidding if ruts exceed the specified depth. With the Unit Manager or his/her representative's approval, the Purchaser may return to the area when the risk of rutting has decreased.

5.8 - Protection of Endangered Species

5.8.5 - Protection of raptor nests (3/13)

All trees with raptor nests will be protected if found during harvesting operations. Notification will be made to the Unit Manager or his/her representative who will notify the Wildlife Biologist so an on-site evaluation and recommendation can be made, if necessary.

6 - Safety and Fire Prevention

6.2 - Signing

6.2.1 - Road posting (10/20)

The Purchaser is responsible for posting and maintaining caution signs on Rhoby Rd prior to beginning operations. The road must be posted at appropriate distances from the Sale Area to warn of logging activity and truck traffic. Signs must be removed when harvest operations are suspended or completed. The Purchaser will provide these signs.

7 - Other Conditions

7.3 - Contract Modifications

7.3.2 - Modification for oak wilt (2/05)

Within the sale area, there may be patches of oak wilt. If oak wilt is identified within the sale area, this contract may be modified. The following modifications could occur: time of cutting, species to cut, volume to harvest, or various others dealing with the treatment of oak wilt. If a species is not specified in this contract, it shall be paid for at the average price received for that species and product.



TIMBER SALE MAP

This information provided by authority of Part 525, 1994 PA 451, as amended.

Forest Management Unit Cadillac Management Unit		County Missaukee	Mapped By Krugh	Date 09/11/2023	Page 1	of 1
Township 24N	Range 07W	Section(s) and Subdivision(s) 29: SESW,S1/2SE 32: SWSE N1/2NW,SEW,NE,E1/2SW,N1/2SE 33: W1/2NW		Scale 1:15,840		

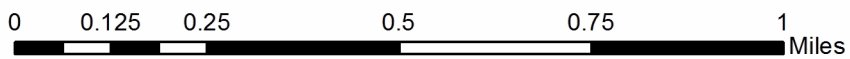
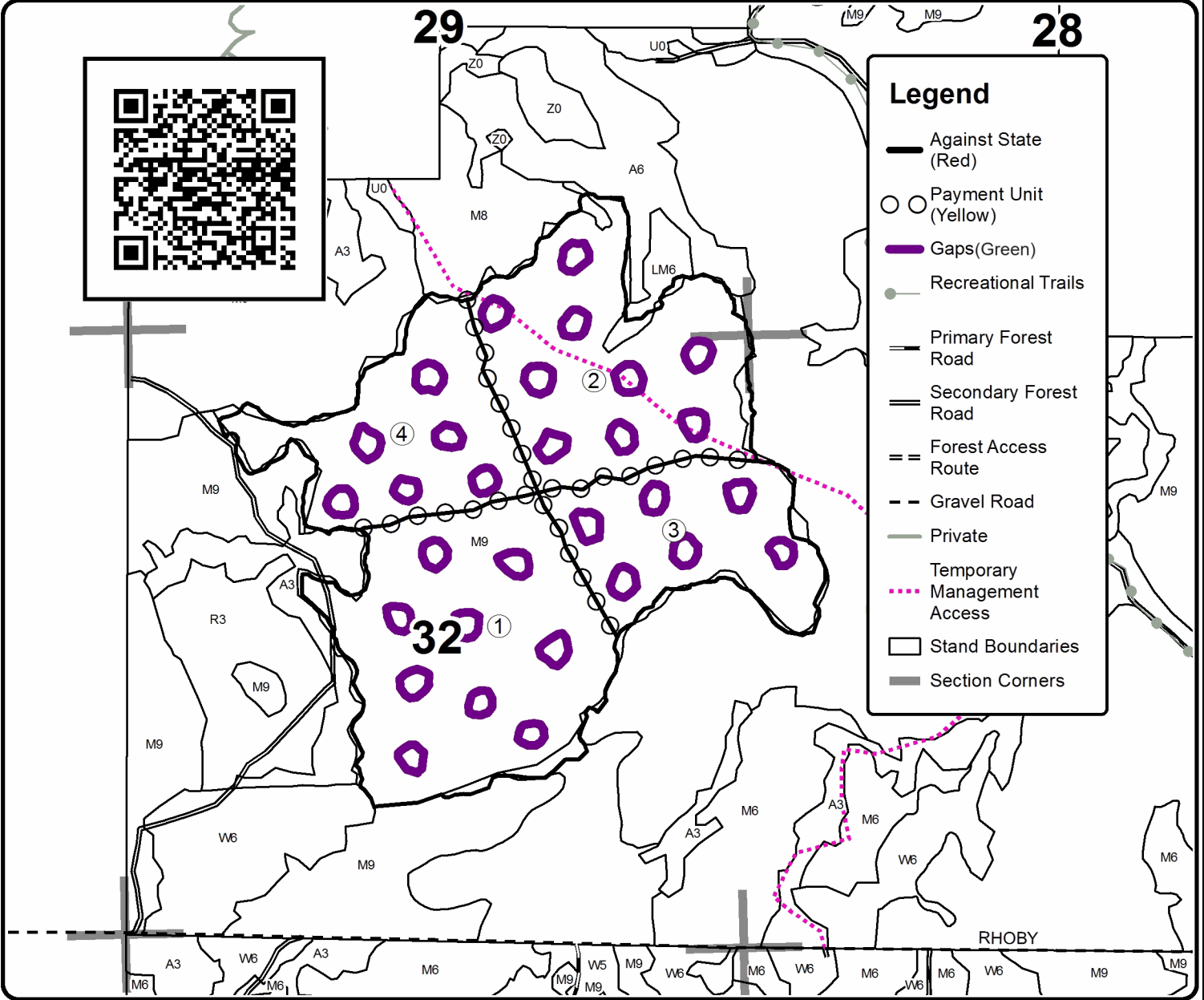
Cover Type				Density	
A = Aspen	H = Hemlock	N = Marsh	U = Upland Brush	0 = Non Stocked	5 = Pole Timber Medium
B = Paper Birch	J = Jack Pine	O = Oak	UM = Upland Mixed	1 = Seedling Sapling Poor	6 = Pole Timber Well
C = Cedar	L = Lowland Brush	P = Lowland Poplar	V = Bog or Marsh	2 = Seedling Sapling Medium	7 = Saw Timber Poor
D = Treed Bog	LM = Lowland Mixed	Q = Mixed Swamp Conifer	W = White Pine	3 = Seedling Sapling Well	8 = Saw Timber Medium
E = Swamp Hdwoods	M = Mpl. Bch, Brch	R = Red Pine	X = Non Stocked	4 = Pole Timber Poor	9 = Saw Timber Well
F = Spruce Fir	MC = Mixed Conifer	S = Black Spruce	Z = Water		
G = Grass	MD = Mixed Deciduous	T = Tamarack			

PU	Acres	PU	Acres
1	111.8	4	62.4
2	91.5		
3	55.5		

Hognose Hardwoods

Compartment 117

321.2 Acres



TIMBER SALE INFORMATION

OVT Oak (63-021-23)

T24N, R05W, SEC. 1; T24N, R05W, SEC. 2.
Missaukee County (Advertised Price \$158,352.00)

SALE NOTE: A recreation site such as a trail, pathway, or campground is within the sale area or the vicinity. Certain restrictions/specifications may be applicable including time restrictions.

A timber sale contract for this lump sum, sealed bid timber sale will be awarded to the responsible bidder offering the highest sealed bid price. All units of volume listed below were estimated using the Inventory Manager computer program and the new Michigan taper model. Bids must be at or above the following advertised price for each product and species:

<u>PRODUCTS & SPECIES</u>	<u>ESTIMATED UNITS*</u>		<u>ADVERTISED PRICE</u>
Sawtimber			
Black Cherry	21.0	MBF	\$ 233.00 / MBF
Mixed Oak	1,037.5	MBF	\$ 99.00 / MBF
Quaking Aspen	39.6	MBF	\$ 85.00 / MBF
Red Maple	77.5	MBF	\$ 90.00 / MBF
Pulpwood			
Black Cherry	28	Cords	\$ 21.70 / Cord
Jack Pine	6	Cords	\$ 19.75 / Cord
Mixed Oak	1,003	Cords	\$ 30.80 / Cord
Quaking Aspen	172	Cords	\$ 25.35 / Cord
Red Maple	204	Cords	\$ 21.70 / Cord

* The total volume is statistically estimated within plus (+) or minus (-) 10.60 percent. There are an estimated 4,042 cords on this timber sale, plus or minus 429 cords at the 95% confidence level. The estimated units are final and not subject to adjustment. Prospective bidders are urged to examine this timber and to make their own estimates of quantity and quality.

BOND AND PAYMENT SCHEDULE:

1. A bond in the amount of \$15,835.00 to insure faithful performance of the conditions of the contract will be deposited by the successful bidder within 21 days of the sale award.
2. Cutting in any sale or unit without the required advance payment would be considered a trespass.
3. Total payment must be paid in advance or according to the following schedule :
 - (a) Ten percent (10%) of the sale value must be paid within 21 days of the sale award.
 - (b) The 10% down payment will be credited towards the first unit cut.
 - (c) Payment for each of the following units must be made before cutting begins in that unit:

PAYMENT UNIT NUMBER	PERCENT OF TOTAL SALE VALUE
01	57.8%
02	42.2%
4. If no cutting takes place, the 10% down payment will not be refunded.
5. Operations on the contract issued will terminate on 06/30/2026.

SALE STATISTICS

Volumes were calculated in cubic feet using the Michigan taper model. Cubic foot volume includes all wood inside bark for the product indicated. For display purposes, cubic feet were converted to cords and MBF using a simple conversion factor, e.g. 79 cubic feet per cord and 185 cubic feet per MBF. The cubic foot volumes are precise; the cords and MBF volumes are not. Cubic foot volume cannot be directly converted to cords or boards with precision.

SALE VOLUMES

The total estimated sale volume may not equal the sum of the species/products due to the nature of statistical calculations associated with double sampling methodology.

VOLUME		STATISTICAL RANGE IN CORDS		
TOTAL CUBIC FEET	TOTAL CORDS	PERCENT ERROR	MINIMUM	MAXIMUM
319,340	4,042	10.60%	3,614	4,471

VDU VOLUMES

A VDU is a Volume Determination Unit. Volumes and their associated statistics are calculated at the VDU level and summarized to the sale level. There is often a one to one relationship between a VDU and a Payment Unit, but not always, depending on the cruise design. Refer to the VDU TO PAYMENT UNIT table.

VDU	VOLUME		PERCENT ERROR	RANGE IN CORDS	
	TOTAL CUBIC FEET	TOTAL CORDS		MINIMUM	MAXIMUM
6	180,500	2,285	16.19%	1,915	2,655
15	138,840	1,757	13.33%	1,523	1,992
TOTAL:	319,340	4,042		3,438	4,647

VDU TO PAYMENT UNIT

When a VDU is associated with more than one Payment Unit (PU), the VDU volumes are assigned to the PU based on acres of the VDU within the PU.

VDU	VDU ACRES	PU	PU ACRES
6	105.1	1	105.1
15	71.0	2	71.0
TOTAL:	176.1		176.1

DESCRIPTION OF TIMBER BY PAYMENT UNIT (PU)

PU	MARKET GROUP	PRODUCT	QUANTITY	UNIT	ACRES	ADVERTISE PRICE	
1	Black Cherry	Sawtimber	21.0	MBF	105.1	\$91,493.70	
	Mixed Oak		537.1	MBF			
	<i>/Red (Hybrid) Oak</i>		334.3	MBF			
	<i>Red Oak</i>		10.9	MBF			
	<i>White Oak</i>		191.9	MBF			
	Quaking Aspen		39.6	MBF			
	Red Maple	77.5	MBF				
	Black Cherry	Pulpwood	28	Cords			
	Jack Pine		6	Cords			
	Mixed Oak		471	Cords			
	<i>/Red (Hybrid) Oak</i>		258	Cords			
	<i>Northern Pin Oak</i>		14	Cords			
	<i>Red Oak</i>		16	Cords			
	<i>White Oak</i>		183	Cords			
	Quaking Aspen		172	Cords			
	Red Maple		161	Cords			
	2		Mixed Oak	Sawtimber			500.4
<i>/Red (Hybrid) Oak</i>			66.4		MBF		
<i>Red Oak</i>		349.6	MBF				
<i>White Oak</i>		84.4	MBF				
Mixed Oak		Pulpwood	532	Cords			
<i>/Red (Hybrid) Oak</i>			43	Cords			
<i>Red Oak</i>			347	Cords			
<i>White Oak</i>			142	Cords			
Red Maple	43	Cords					
TOTAL:			1,175.6	MBF			
TOTAL:			1,413	Cords			

Sale Specific Conditions & Requirements

Sale Name: OVT Oak

Sale Number: 63-021-23 Seq#: 2

1 - Sale Area

1.2 - Boundaries

1.2.1 - Painted boundaries (9/19)

The sale boundary is marked and identified by red paint. Exterior sale boundary lines against state are marked with red paint.

2 - Timber Specifications

2.1 - Included Timber

2.1.2 - Clearcut unit(s) w/o unmerchantable trees (8/11)

Within Payment Unit(s) 2, cut all trees which meet minimum piece specifications in 2.2 Utilization, except do not cut red or white pine.

2.1.5 - Overstory removal unit(s) (8/11)

Within Payment Unit(s) 1, all trees with DBH equal to or greater than 6 inches which meet minimum piece specifications in 2.2 Utilization, are designated for cutting, except do not cut red pine or white pine.

3 - Payments

3.3 - Pre-measured Sales

3.3.4 - Dividing payment units (7/14)

Payment Unit(s) 1 and 2, may be divided at the request of the Purchaser and upon approval of the Unit Manager. Dividing Payment Units is a contract modification which requires a Timber Sale Contract Amendment.

4 - Transportation

4.1 - Construction

4.1.12 - No new roads (1/12)

No new roads will be permitted in any Payment Unit. All operations are limited to existing roads. Skid trails will only be allowed.

4.2 - Maintenance

4.2.4 - Grading (10/16)

For completion of the sale, state forest roads must be graded. In general, this will require a road grader or bulldozer to shape up the roads after forest products have been hauled off site. This includes cleaning of drainage areas, grading, crowning and filling with gravel, if necessary. The grading equipment to be used must be approved by the Unit Manager or his/her representative.

4.2.5 - Two wheel drive condition (2/04)

All existing trail roads on and adjacent to the sale area must be passable by two-wheel drive traffic for the duration of the sale.

5 - Operations

5.1 - Notification

5.1.3 - Well heads and natural gas pipelines (11/15)

The Purchaser is responsible for contacting the gas or pipeline company 30 days prior to operating equipment in the vicinity of well heads or natural gas pipelines. Written permission is required before harvest operations begin and must be submitted to the Unit Manager.

5.2 - Conduct of Operations

5.2.1 - Slash

5.2.1.8 - Slash height (12/08)

No slash or tree tops may exceed 24 inches in height.

5.2.2 - Hazard Trees/Snags

5.2.2.1 - Den trees (10/16)

Obvious hollow and/or den trees shall be protected and left standing unless they are a safety hazard.

5.2.3 - Operating Restrictions

5.2.3.5 - Oak wilt restriction (1/18)

Within Payment Unit(s) 1 and 2, unless changed by written agreement, cutting, skidding, hauling within the sale and brushing of access roads to the sale are not permitted during the period of April 15 to July 15. Operations may be allowed if specific steps are taken to prevent damaging uncut oak during the high risk period. Those steps may include completing all road brushing before April 15th and clearing a tree-length buffer along uncut oak cover before April 15th. This is necessary to reduce the spread of oak wilt. For more information, contact the Unit Manager or his/her representative.

5.2.4 - Dead and Down Creation

5.2.4.4 - Dead and down creation, grouse (6/18)

To encourage grouse and other wildlife, in Payment Unit(s) 1 and 2, leave one, 12" diameter or larger log-length (8 foot minimum) piece on the ground for every 2 acres. These will be evenly scattered throughout the unit. These trees will be evenly scattered throughout the unit, preferably at least two chains from any roads, two-tracks, or trails open to vehicles. This can be an unmerchantable piece or a full tree.

5.2.32 - Decking/landing restoration (9/13)

All decking and landing areas must have the surface area restored to a condition equal to or better than before. This is to ensure the proper regeneration of the stand. Wood debris, chips and "cookies" from trimmings must be removed or scattered away from landing and loading areas and may not be windrowed on the edge.

5.2.39 - ORV trail/route protection (4/18)

An ORV trail or route and is shown on the Timber Sale Map. Do not cut trees or damage posts with yellow ORV markers. All stumps within 5 feet of the trail must be cut flush with the ground. Maintain a 20-foot-wide slash, debris, and rut free zone daily using the ORV trail or route as the centerline. Do not run equipment down the ORV trail or route. Skidding across the trail or route may only occur in locations approved by the Sale Administrator.

5.4 - Soil Protection

5.4.1 - Rutting restriction, general (7/16)

Operations are to cease immediately if equipment and weather conditions result in rutting of roads and/or skid trails which is 12 inches or greater in depth and 50 feet in length. The Unit Manager or his/her representative may restrict hauling and/or skidding if ruts exceed the specified depth. With the Unit Manager or his/her representative's approval, the Purchaser may return to the area when the risk of rutting has decreased.

5.8 - Protection of Endangered Species

5.8.5 - Protection of raptor nests (3/13)

All trees with raptor nests will be protected if found during harvesting operations. Notification will be made to the Unit Manager or his/her representative who will notify the Wildlife Biologist so an on-site evaluation and recommendation can be made, if necessary.

6 - Safety and Fire Prevention

6.2 - Signing

6.2.1 - Road posting (10/20)

The Purchaser is responsible for posting and maintaining caution signs on county roads prior to beginning operations. The road must be posted at appropriate distances from the Sale Area to warn of logging activity and truck traffic. Signs must be removed when harvest operations are suspended or completed. The Purchaser will provide these signs.

6.2.3 - Recreational trail posting (10/20)

The Purchaser is responsible for posting and maintaining caution signs on recreational trails prior to beginning operations. The trail must be posted at appropriate distances from the Sale Area to warn of logging activity and truck traffic at both ends of the trail. Signs must be removed when harvest operations are suspended or completed. The Purchaser will provide these signs.



TIMBER SALE MAP

This information provided by authority of Part 525, 1994 PA 451, as amended.

Sale Number	Year
63-021	23

Forest Management Unit	County	Mapped By	Date	Page	of
Cadillac Management Unit	Missaukee	Krugh	09/20/2023	1	1
Township	Range	Section(s) and Subdivision(s)	Scale		
24N	05W	Sec1: NWNW Sec 2: NW,N1/2NE,SW,NWSE	1:15,840		

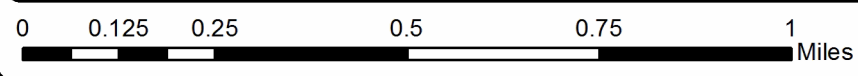
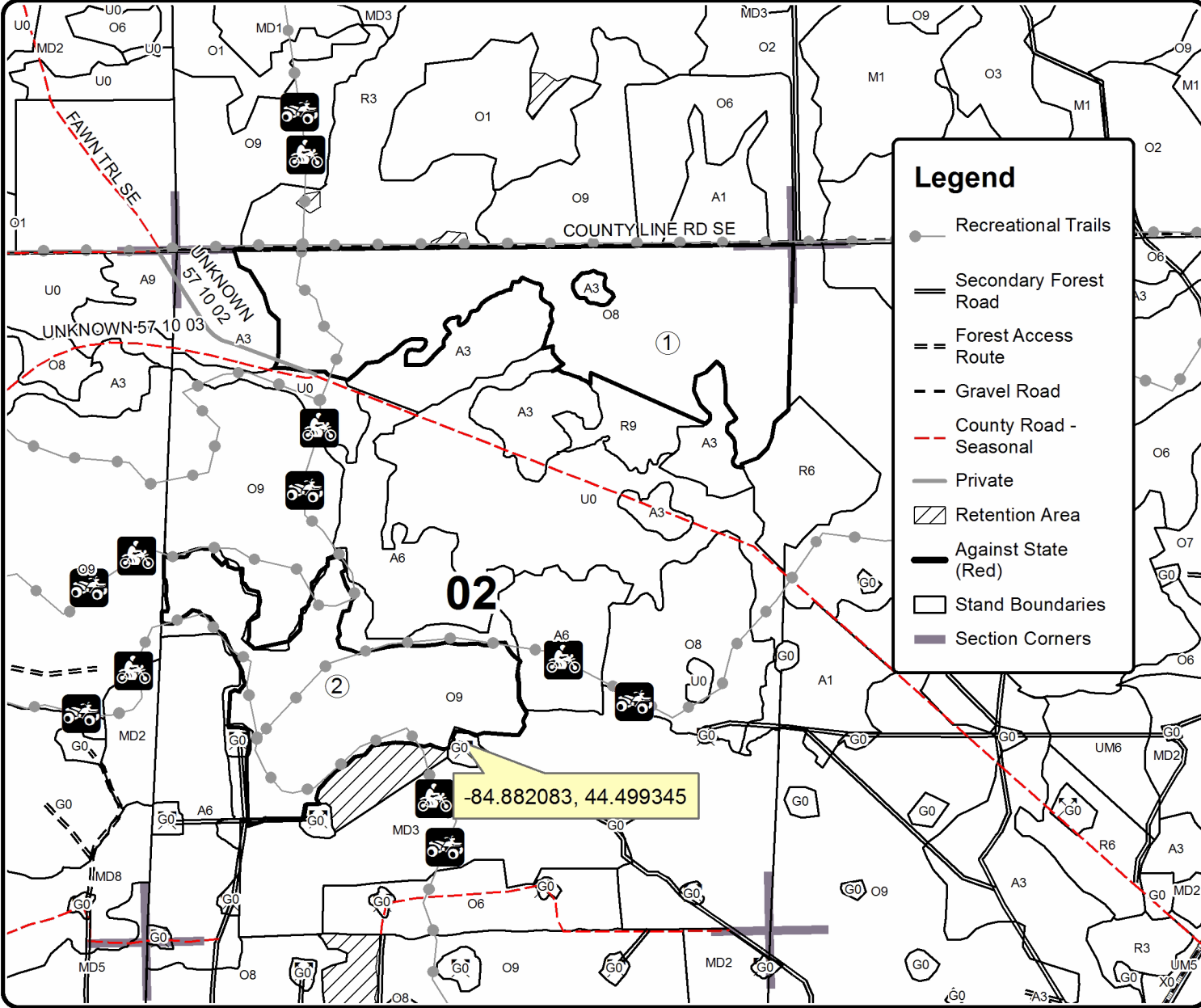
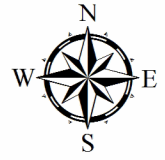
Cover Type				Density	
A = Aspen	H = Hemlock	N = Marsh	U = Upland Brush	0 = Non Stocked	5 = Pole Timber Medium
B = Paper Birch	J = Jack Pine	O = Oak	UM = Upland Mixed	1 = Seedling Sapling Poor	6 = Pole Timber Well
C = Cedar	L = Lowland Brush	P = Lowland Poplar	V = Bog or Marsh	2 = Seedling Sapling Medium	7 = Saw Timber Poor
D = Tread Bog	LM = Lowland Mixed	Q = Mixed Swamp Conifer	W = White Pine	3 = Seedling Sapling Well	8 = Saw Timber Medium
E = Swamp Hdwoods	M = Mpl, Bch, Brch	R = Red Pine	X = Non Stocked	4 = Pole Timber Poor	9 = Saw Timber Well
F = Spruce Fir	MC = Mixed Conifer	S = Black Spruce	Z = Water		
G = Grass	MD = Mixed Deciduous	T = Tamarack			

PU	Acres
1	105.1
2	71

OVT Oak

Compartment 77

176.1 Acres



TIMBER SALE INFORMATION

108 Island Take 2 (63-030-23)

T22N, R06W, SEC. 10.

Missaukee County (Advertised Price \$186,611.35)

SALE NOTE: The sale area has been harvested recently and there is old faded paint within the sale area that is to be ignored.

Access may be through other public land.

A timber sale contract for this lump sum, sealed bid timber sale will be awarded to the responsible bidder offering the highest sealed bid price. All units of volume listed below were estimated using the Inventory Manager computer program and the new Michigan taper model. Bids must be at or above the following advertised price for each product and species:

<u>PRODUCTS & SPECIES</u>	<u>ESTIMATED UNITS*</u>	<u>ADVERTISED PRICE</u>
Sawtimber		
Basswood	77.8 MBF	\$ 126.00 / MBF
Beech	22.7 MBF	\$ 134.00 / MBF
Black/Red (Hybrid) Oak	73.6 MBF	\$ 99.00 / MBF
Mixed Aspen	83.7 MBF	\$ 85.00 / MBF
Red Oak	815.7 MBF	\$ 167.00 / MBF
Pulpwood		
Basswood	75 Cords	\$ 16.20 / Cord
Beech	155 Cords	\$ 21.70 / Cord
Mixed Aspen	103 Cords	\$ 25.35 / Cord
Mixed Oak	518 Cords	\$ 30.80 / Cord

* The total volume is statistically estimated within plus (+) or minus (-) 21.26 percent. There are an estimated 3,508 cords on this timber sale, plus or minus 746 cords at the 95% confidence level. The estimated units are final and not subject to adjustment. Prospective bidders are urged to examine this timber and to make their own estimates of quantity and quality.

BOND AND PAYMENT SCHEDULE:

1. A bond in the amount of \$18,661.00 to insure faithful performance of the conditions of the contract will be deposited by the successful bidder within 21 days of the sale award.
2. Cutting in any sale or unit without the required advance payment would be considered a trespass.
3. Total payment must be paid in advance or according to the following schedule :
 - (a) Ten percent (10%) of the sale value must be paid within 21 days of the sale award.
 - (b) The remainder is due before cutting begins.
 - (c) Payment for each of the following units must be made before cutting begins in that unit:

PAYMENT UNIT NUMBER	PERCENT OF TOTAL SALE VALUE
01	100.0%
4. If no cutting takes place, the 10% down payment will not be refunded.
5. Operations on the contract issued will terminate on 06/30/2026.

SALE STATISTICS

Volumes were calculated in cubic feet using the Michigan taper model. Cubic foot volume includes all wood inside bark for the product indicated. For display purposes, cubic feet were converted to cords and MBF using a simple conversion factor, e.g. 79 cubic feet per cord and 185 cubic feet per MBF. The cubic foot volumes are precise; the cords and MBF volumes are not. Cubic foot volume cannot be directly converted to cords or boards with precision.

SALE VOLUMES

The total estimated sale volume may not equal the sum of the species/products due to the nature of statistical calculations associated with double sampling methodology.

VOLUME		STATISTICAL RANGE IN CORDS		
TOTAL CUBIC FEET	TOTAL CORDS	PERCENT ERROR	MINIMUM	MAXIMUM
277,115	3,508	21.26%	2,762	4,254

VDU VOLUMES

A VDU is a Volume Determination Unit. Volumes and their associated statistics are calculated at the VDU level and summarized to the sale level. There is often a one to one relationship between a VDU and a Payment Unit, but not always, depending on the cruise design. Refer to the VDU TO PAYMENT UNIT table.

VDU	VOLUME		PERCENT ERROR	RANGE IN CORDS	
	TOTAL CUBIC FEET	TOTAL CORDS		MINIMUM	MAXIMUM
5	236,197	2,990	14.92%	2,544	3,436
31	40,919	518	47.16%	274	762
TOTAL:	277,115	3,508		2,817	4,198

VDU TO PAYMENT UNIT

When a VDU is associated with more than one Payment Unit (PU), the VDU volumes are assigned to the PU based on acres of the VDU within the PU.

VDU	VDU ACRES	PU	PU ACRES
5	77.2	1	77.2
31	12.6	1	12.6
TOTAL:	89.8		89.8

DESCRIPTION OF TIMBER BY PAYMENT UNIT (PU)

PU	MARKET GROUP	PRODUCT	QUANTITY	UNIT	ACRES	ADVERTISE PRICE
1	Basswood	Sawtimber	77.8	MBF	89.8	\$186,611.35
	Beech		22.7	MBF		
	Black/Red (Hybrid)		73.6	MBF		
	Mixed Aspen		83.7	MBF		
	<i>B. T. Aspen</i>		10.7	<i>MBF</i>		
	<i>Quaking Aspen</i>		73.0	<i>MBF</i>		
	Red Oak	815.7	MBF			
	Basswood	Pulpwood	75	Cords		
	Beech		155	Cords		
	Mixed Aspen		103	Cords		
	<i>B. T. Aspen</i>		13	<i>Cords</i>		
	<i>Quaking Aspen</i>		90	<i>Cords</i>		
	Mixed Oak		518	Cords		
	<i>/Red (Hybrid) Oak</i>	43	<i>Cords</i>			
	<i>Red Oak</i>	475	<i>Cords</i>			
	TOTAL:			1,073.5	MBF	
TOTAL:			851	Cords		

Sale Specific Conditions & Requirements

Sale Name: 108 Island Take 2

Sale Number: 63-030-23 Seq#: 1

1 - Sale Area

1.2 - Boundaries

1.2.1 - Painted boundaries (9/19)

The sale boundary and Payment Unit boundaries are marked and identified by blue and red paint. Exterior sale boundary lines against private property are marked with blue paint. Exterior sale boundary lines against state are marked with red paint. Retention patches are marked with red paint; no harvesting activities may occur within these areas. The painted boundary line trees are not Included Timber and are to be protected.

2 - Timber Specifications

2.1 - Included Timber

2.1.2 - Clearcut unit(s) w/o unmerchantable trees (8/11)

Within Payment Unit(s) 1, cut all aspen and beech trees which meet minimum piece specifications in 2.2 Utilization. In addition, cut all basswood and oak 12 inches and greater at DBH, except do not cut oak 24 inches and greater at DBH.

3 - Payments

3.3 - Pre-measured Sales

3.3.4 - Dividing payment units (7/14)

Payment Unit(s) may be divided at the request of the Purchaser and upon approval of the Unit Manager. Dividing Payment Units is a contract modification which requires a Timber Sale Contract Amendment.

4 - Transportation

4.1 - Construction

4.1.6 - Road construction (1/09)

Construction of new roads or improvements of existing roads shall be done in such a way as to minimize the environmental and visual impacts. Merchantable trees shall be cut and utilized unless otherwise directed. Non-merchantable trees shall be severed and laid flat on the ground. Slash shall be scattered, and not left in windrows and kept a minimum of 10 feet back from the road edge. Stumps shall be set upright, not left on edge, and be moved at least 10 feet away from the road edge. Disturbed soil shall be feathered into the woods and not left in berms or windrows.

4.1.7 - Road closure (10/11)

All new roads built into the sale must be blocked to vehicle traffic within 30 days of completion of hauling. Overgrown roads that are reopened shall be considered new roads. Some existing roads may also need to be closed, see the Timber Sale Map for locations. In general, this will require constructing a four (4') foot high berm of stumps and logs covered with earth. Stumps and brush must be placed along the remainder of the trail. These roads must be rendered impassable to cars and trucks. All stumps from road building and landing construction must be reserved to block any newly constructed roads upon completion of the sale. These stumps must be scattered along the road system to prohibit vehicular movement. Temporary berms may be required if no sale activity occurs for 30 or more consecutive days. Contact the Sale Administrator for specific details of design and placement.

4.1.8 - Road work (1) (8/07)

The following road work is required: The access road coming into the Sale Area is on a slope and will require pit run and 23A for capping.

4.2 - Maintenance

4.2.2 - Fill material (4/07)

To maintain roads, fill material may be needed in areas where "holes" exist or may be expected to develop. This fill material should be placed before trucking begins. Contact the Sale Administrator regarding the availability of onsite sand or gravel from adjacent State-owned lands.

4.2.5 - Two wheel drive condition (2/04)

All existing trail roads on and adjacent to the sale area must be passable by two-wheel drive traffic for the duration of the sale.

5 - Operations

5.2 - Conduct of Operations

5.2.1 - Slash

5.2.1.8 - Slash height (12/08)

No slash or tree tops may exceed 24 inches in height.

5.2.2 - Hazard Trees/Snags

5.2.2.1 - Den trees (10/16)

Obvious hollow and/or den trees shall be protected and left standing unless they are a safety hazard.

5.2.3 - Operating Restrictions

5.2.3.3 - Bark slippage restriction (3/09)

Within Payment Unit(s) , unless changed by written agreement, cutting and skidding are not permitted during the period of April 15 to July 15. This restriction is because of bark slippage.

5.2.3.5 - Oak wilt restriction (1/18)

Within Payment Unit(s) 1, unless changed by written agreement, cutting, skidding, hauling within the sale and brushing of access roads to the sale are not permitted during the period of April 15 to July 15. Operations may be allowed if specific steps are taken to prevent damaging uncut oak during the high risk period. Those steps may include completing all road brushing before April 15th and clearing a tree-length buffer along uncut oak cover before April 15th. This is necessary to reduce the spread of oak wilt. For more information, contact the Unit Manager or his/her representative.

5.2.32 - Decking/landing restoration (9/13)

All decking and landing areas must have the surface area restored to a condition equal to or better than before. This is to ensure the proper regeneration of the stand. Wood debris, chips and "cookies" from trimmings must be removed or scattered away from landing and loading areas and may not be windrowed on the edge.

5.2.38 - No decking against live trees (2/04)

Cut products may not be decked against unmarked or designated leave trees.

5.4 - Soil Protection

5.4.1 - Rutting restriction, general (7/16)

Operations are to cease immediately if equipment and weather conditions result in rutting of roads and/or skid trails which is 12 inches or greater in depth and 50 feet in length. The Unit Manager or his/her representative may restrict hauling and/or skidding if ruts exceed the specified depth. With the Unit Manager or his/her representative's approval, the Purchaser may return to the area when the risk of rutting has decreased.

5.4.2 - Skid trails (2/04)

Skid trails up and down slopes should be avoided. If however this is unavoidable, these trails will be left in a non-erodible condition using water bars, logs, and slash. Placing of slash on these skid trails while logging is ongoing may alleviate need for any further action. At the direction of the sale administrator, seed, fertilizer, and mulch may also be required.

5.8 - Protection of Endangered Species

5.8.5 - Protection of raptor nests (3/13)

All trees with raptor nests will be protected if found during harvesting operations. Notification will be made to the Unit Manager or his/her representative who will notify the Wildlife Biologist so an on-site evaluation and recommendation can be made, if necessary.

6 - Safety and Fire Prevention

6.2 - Signing

6.2.1 - Road posting (10/20)

The Purchaser is responsible for posting and maintaining caution signs on forest roads prior to beginning operations. The road must be posted at appropriate distances from the Sale Area to warn of logging activity and truck traffic. Signs must be removed when harvest operations are suspended or completed. The Purchaser will provide these signs.



TIMBER SALE MAP

This information provided by authority of Part 525, 1994 PA 451, as amended.

Forest Management Unit	County	Mapped By	Date	Page	of
Cadillac Management Unit	Missaukee	Krugh	08/19/2023	1	1
Township	Range	Section(s) and Subdivision(s)	Scale		
22N	06W	Sec 10: SESW,SE	1:15,840		

Cover Type				Density	
A = Aspen	H = Hemlock	N = Marsh	U = Upland Brush	0 = Non Stocked	5 = Pole Timber Medium
B = Paper Birch	J = Jack Pine	O = Oak	UM = Upland Mixed	1 = Seedling Sapling Poor	6 = Pole Timber Well
C = Cedar	L = Lowland Brush	P = Lowland Poplar	V = Bog or Marsh	2 = Seedling Sapling Medium	7 = Saw Timber Poor
D = Treed Bog	LM = Lowland Mixed	Q = Mixed Swamp Conifer	W = White Pine	3 = Seedling Sapling Well	8 = Saw Timber Medium
E = Swamp Hdwoods	M = Mpl, Bch, Brch	R = Red Pine	X = Non Stocked	4 = Pole Timber Poor	9 = Saw Timber Well
F = Spruce Fir	MC = Mixed Conifer	S = Black Spruce	Z = Water		
G = Grass	MD = Mixed Deciduous	T = Tamarack			

PU Acres
1 89.8

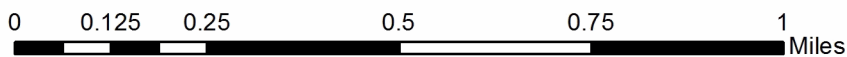
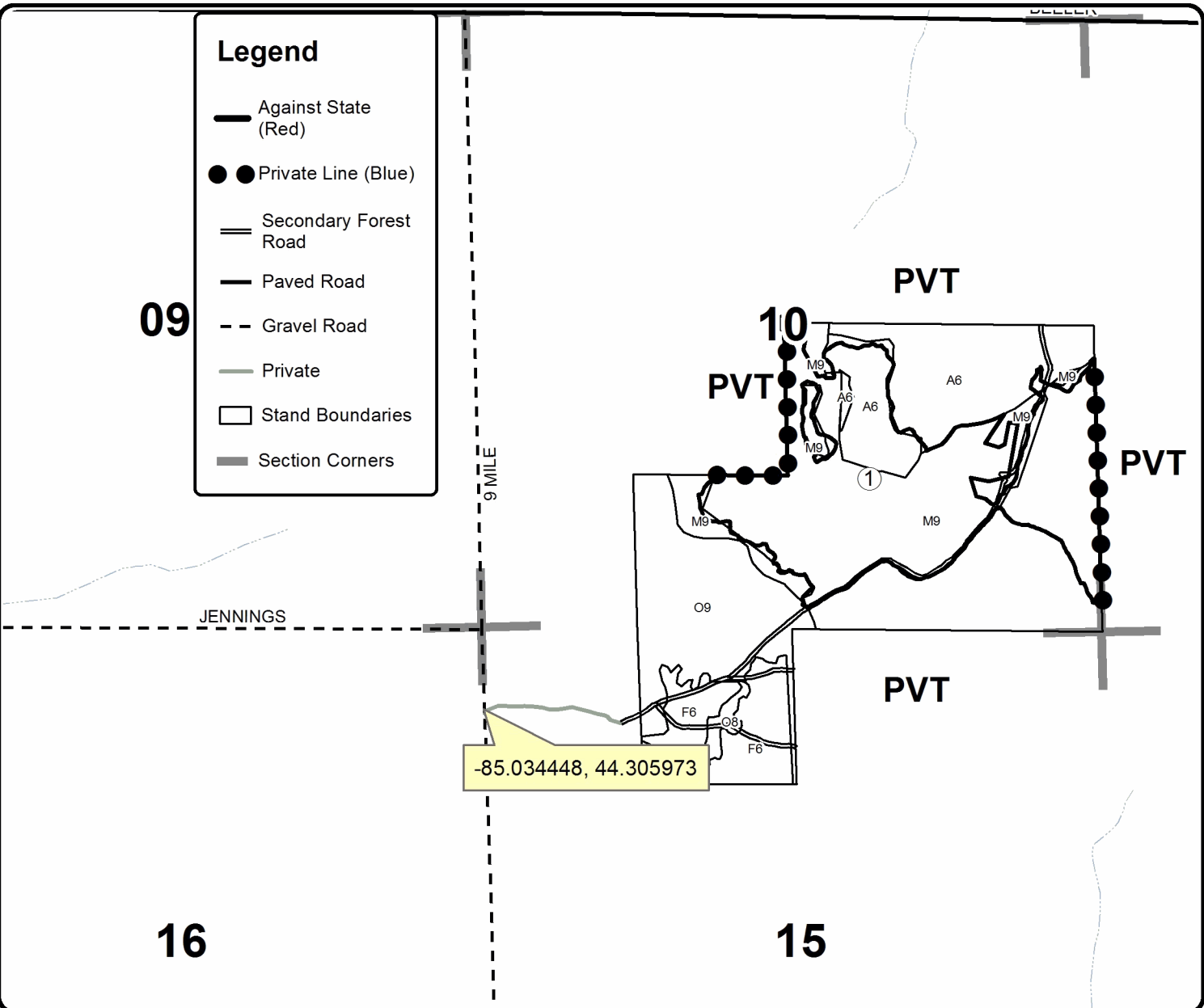
108 Island Take 2

Compartment 108
89.8 Acres



Legend

- Against State (Red)
- Private Line (Blue)
- Secondary Forest Road
- Paved Road
- Gravel Road
- Private
- Stand Boundaries
- Section Corners



Alrighty Aspen (63-006-23)
T24N, R11W, SEC. 12; T24N, R11W, SEC. 13; Wexford COUNTY

In response to the notice of sale to be held 3:00 p.m. (local time) on June 26, 2024, I am hereby submitting my sealed bid (firm offer) for the following forest products to be cut. Bids for individual species must be at or above the advertised price. All non-responsive bid forms may be rejected.

<u>PRODUCTS & SPECIES</u>	<u>ESTIMATED VOLUME*</u>	<u>ADVERTISED PRICE</u>	<u>BID PRICE/UNIT</u>
Sawtimber			
B. T. Aspen	364.6 MBF	\$ 85.00/MBF	\$ _____
Basswood	45.6 MBF	\$ 126.00/MBF	\$ _____
Jack Pine	4.7 MBF	\$ 40.00/MBF	\$ _____
Red Maple	81.8 MBF	\$ 90.00/MBF	\$ _____
Red Pine	44.6 MBF	\$ 98.00/MBF	\$ _____
Sugar Maple	8.1 MBF	\$ 252.00/MBF	\$ _____
White Pine	30.2 MBF	\$ 72.00/MBF	\$ _____
Pulpwood			
B. T. Aspen	1,796 Cords	\$ 25.35/Cord	\$ _____
Basswood	75 Cords	\$ 16.20/Cord	\$ _____
Jack Pine	155 Cords	\$ 19.75/Cord	\$ _____
Mixed Hardwood	218 Cords	\$ 21.70/Cord	\$ _____
Mixed Oak	31 Cords	\$ 30.80/Cord	\$ _____
Red Pine	24 Cords	\$ 46.15/Cord	\$ _____
White Pine	53 Cords	\$ 31.00/Cord	\$ _____

*The volumes are statistically estimated within plus (+) or minus (-) 10.63 percent at 95% confidence level. These estimated volumes are final and not subject to adjustment. Prospective bidders are urged to examine this timber and to make their own estimates of quantity and quality.

I understand that any or all bids may be rejected. All bids must be signed and all bid items must be bid or the bid form may be rejected. I also understand that consideration and awarding a contract will be based upon my past performance and ability to complete the contract based upon equipment and staffing subject to my control.

FEDERAL ID: _____ - _____ or SOCIAL SECURITY NUMBER: _____ - _____ - _____

Company or individual bidding: _____

Company representative's name: _____

Address: _____

City: _____ State: _____ Zip: _____

IF AVAILABLE, PLEASE PLACE THE PERSONALIZED LABEL FROM YOUR PROSPECTUS IN THE ABOVE BOX.

Individual or company representative's signature: _____ Date: _____

Phone number : _____ Email (optional): _____

THE WINNING BIDDER MUST COMPLETE THE VERIFICATION OF WORKER'S DISABILITY COMPENSATION ACT COMPLIANCE (ON REVERSE SIDE IF DOUBLE SIDED) WITHIN 21 DAYS OF SALE AWARD DATE



FOR DEPARTMENT USE ONLY	
Sale Number (XX - XXX - XX - XX)	
Forest Management Unit:	

TIMBER SALE VERIFICATION OF WORKER'S DISABILITY COMPENSATION ACT COMPLIANCE

As required by Act 317, P.A. 1969 (Worker's Compensation) and
Part 5 of Act 451 of 1994, as amended.

VERIFICATION OF WORKER'S DISABILITY COMPENSATION ACT COMPLIANCE

- This verification must be completed and submitted within 21 days of contract award and prior to the issuance of the timber sale contract.
- In addition, if boxes 2B or 2C are checked, then Notice of Exclusion or Certificate of Insurance must be submitted within twenty-one (21) days of the contract award and prior to the issuance of the timber sale contract.
- All information must be typed or printed except for written signatures.

Please Check Appropriate Categories:

1. My business is organized as (you **must** check one of the boxes below):
 - A. Sole Proprietorship (individual)
 - B. Partnership
 - C. Corporation
2. You **must** check one of the boxes below:
 - A. I certify my business is a sole proprietorship and it has no employees but the sole proprietor. I am not subject to the Worker's Compensation Laws.
 - B. I certify my business has satisfied its obligation to the Worker's Compensation Act through the use of an approved Notice of Exclusion (BWC-337, Rev. 5/96). I will provide a copy of the Notice of Exclusion within 21 days of the contract award. (For questions or a copy of the BWC-337, please call the Worker's Compensation Bureau at 517-322-1195).
 - C. I certify my business has a Worker's Compensation Policy. I will provide an original Certificate of Insurance within twenty-one (21) days of the contract award.
3. If you have checked item 2(A) or 2(B), you **must** indicate the number of **both** full-time and part-time employees, other than yourself, including family members and active partners (if none, you must enter "0").

_____ Full-time Employees

_____ Part-time Employees

Name of Business		Federal ID (or) Social Security No.	
Address		Telephone ()	
City	State	ZIP	

I hereby certify that the above information is true and correct. I agree to notify the Michigan DNR of any changes that occur in factors affecting my coverage during any of my present and future operations.

Signature of Owner or Authorized Representative

Title

Date

Please complete the "SEALED BID" information on the next page

108 Island Take 2 (63-030-23)
T22N, R06W, SEC. 10; Missaukee COUNTY

In response to the notice of sale to be held 3:00 p.m. (local time) on June 26, 2024, I am hereby submitting my sealed bid (firm offer) for the following forest products to be cut. Bids for individual species must be at or above the advertised price. All non-responsive bid forms may be rejected.

<u>PRODUCTS & SPECIES</u>	<u>ESTIMATED VOLUME*</u>	<u>ADVERTISED PRICE</u>	<u>BID PRICE/UNIT</u>
Sawtimber			
Basswood	77.8 MBF	\$ 126.00/MBF	\$ _____
Beech	22.7 MBF	\$ 134.00/MBF	\$ _____
Black/Red (Hybrid) Oak	73.6 MBF	\$ 99.00/MBF	\$ _____
Mixed Aspen	83.7 MBF	\$ 85.00/MBF	\$ _____
Red Oak	815.7 MBF	\$ 167.00/MBF	\$ _____
Pulpwood			
Basswood	75 Cords	\$ 16.20/Cord	\$ _____
Beech	155 Cords	\$ 21.70/Cord	\$ _____
Mixed Aspen	103 Cords	\$ 25.35/Cord	\$ _____
Mixed Oak	518 Cords	\$ 30.80/Cord	\$ _____

*The volumes are statistically estimated within plus (+) or minus (-) 21.26 percent at 95% confidence level. These estimated volumes are final and not subject to adjustment. Prospective bidders are urged to examine this timber and to make their own estimates of quantity and quality.

I understand that any or all bids may be rejected. All bids must be signed and all bid items must be bid or the bid form may be rejected. I also understand that consideration and awarding a contract will be based upon my past performance and ability to complete the contract based upon equipment and staffing subject to my control.

FEDERAL ID: ____ - ____ - ____ or SOCIAL SECURITY NUMBER: ____ - ____ - ____

Company or individual bidding: _____

Company representative's name: _____

Address: _____

City: _____ State: _____ Zip: _____

IF AVAILABLE, PLEASE PLACE THE PERSONALIZED LABEL FROM YOUR PROSPECTUS IN THE ABOVE BOX.

Individual or company representative's signature: _____ Date: _____

Phone number : _____ Email (optional): _____

THE WINNING BIDDER MUST COMPLETE THE VERIFICATION OF WORKER'S DISABILITY COMPENSATION ACT COMPLIANCE (ON REVERSE SIDE IF DOUBLE SIDED) WITHIN 21 DAYS OF SALE AWARD DATE



FOR DEPARTMENT USE ONLY	
Sale Number (XX - XXX - XX - XX)	
Forest Management Unit:	

TIMBER SALE VERIFICATION OF WORKER'S DISABILITY COMPENSATION ACT COMPLIANCE

As required by Act 317, P.A. 1969 (Worker's Compensation) and
Part 5 of Act 451 of 1994, as amended.

VERIFICATION OF WORKER'S DISABILITY COMPENSATION ACT COMPLIANCE

- This verification must be completed and submitted within 21 days of contract award and prior to the issuance of the timber sale contract.
- In addition, if boxes 2B or 2C are checked, then Notice of Exclusion or Certificate of Insurance must be submitted within twenty-one (21) days of the contract award and prior to the issuance of the timber sale contract.
- All information must be typed or printed except for written signatures.

Please Check Appropriate Categories:

1. My business is organized as (you **must** check one of the boxes below):
 - A. Sole Proprietorship (individual)
 - B. Partnership
 - C. Corporation
2. You **must** check one of the boxes below:
 - A. I certify my business is a sole proprietorship and it has no employees but the sole proprietor. I am not subject to the Worker's Compensation Laws.
 - B. I certify my business has satisfied its obligation to the Worker's Compensation Act through the use of an approved Notice of Exclusion (BWC-337, Rev. 5/96). I will provide a copy of the Notice of Exclusion within 21 days of the contract award. (For questions or a copy of the BWC-337, please call the Worker's Compensation Bureau at 517-322-1195).
 - C. I certify my business has a Worker's Compensation Policy. I will provide an original Certificate of Insurance within twenty-one (21) days of the contract award.
3. If you have checked item 2(A) or 2(B), you **must** indicate the number of **both** full-time and part-time employees, other than yourself, including family members and active partners (if none, you must enter "0").

_____ Full-time Employees

_____ Part-time Employees

Name of Business		Federal ID (or) Social Security No.	
Address		Telephone ()	
City	State	ZIP	

I hereby certify that the above information is true and correct. I agree to notify the Michigan DNR of any changes that occur in factors affecting my coverage during any of my present and future operations.

Signature of Owner or Authorized Representative

Title

Date

Please complete the "SEALED BID" information on the next page

Hognose Hardwoods (63-020-23)
T24N, R07W, SEC. 29; T24N, R07W, SEC. 32; T24N, R07W, SEC. 33; Missaukee

In response to the notice of sale to be held 3:00 p.m. (local time) on June 26, 2024, I am hereby submitting my sealed bid (firm offer) for the following forest products to be cut. Bids for individual species must be at or above the advertised price. All non-responsive bid forms may be rejected.

<u>PRODUCTS & SPECIES</u>	<u>ESTIMATED VOLUME*</u>	<u>ADVERTISED PRICE</u>	<u>BID PRICE/UNIT</u>
Sawtimber			
Basswood	642.9 MBF	\$ 126.00/MBF	\$ _____
Beech	106.5 MBF	\$ 134.00/MBF	\$ _____
Black Cherry	42.7 MBF	\$ 233.00/MBF	\$ _____
Quaking Aspen	14.1 MBF	\$ 85.00/MBF	\$ _____
Red Maple	20.2 MBF	\$ 90.00/MBF	\$ _____
Red Oak	77.8 MBF	\$ 167.00/MBF	\$ _____
Sugar Maple	795.3 MBF	\$ 252.00/MBF	\$ _____
Pulpwood			
Basswood	1,117 Cords	\$ 16.20/Cord	\$ _____
Mixed Hardwood	2,718 Cords	\$ 21.70/Cord	\$ _____
Quaking Aspen	15 Cords	\$ 25.35/Cord	\$ _____
Red Oak	88 Cords	\$ 30.80/Cord	\$ _____

*The volumes are statistically estimated within plus (+) or minus (-) 7.78 percent at 95% confidence level. These estimated volumes are final and not subject to adjustment. Prospective bidders are urged to examine this timber and to make their own estimates of quantity and quality.

I understand that any or all bids may be rejected. All bids must be signed and all bid items must be bid or the bid form may be rejected. I also understand that consideration and awarding a contract will be based upon my past performance and ability to complete the contract based upon equipment and staffing subject to my control.

FEDERAL ID: _____ or SOCIAL SECURITY NUMBER: _____

Company or individual bidding: _____

Company representative's name: _____

Address: _____

City: _____ State: _____ Zip: _____

IF AVAILABLE, PLEASE PLACE THE PERSONALIZED LABEL FROM YOUR PROSPECTUS IN THE ABOVE BOX.

Individual or company representative's signature: _____ Date: _____

Phone number : _____ Email (optional): _____

THE WINNING BIDDER MUST COMPLETE THE VERIFICATION OF WORKER'S DISABILITY COMPENSATION ACT COMPLIANCE (ON REVERSE SIDE IF DOUBLE SIDED) WITHIN 21 DAYS OF SALE AWARD DATE



FOR DEPARTMENT USE ONLY
Sale Number (XX - XXX - XX - XX)
Forest Management Unit:

TIMBER SALE VERIFICATION OF WORKER'S DISABILITY COMPENSATION ACT COMPLIANCE

*As required by Act 317, P.A. 1969 (Worker's Compensation) and
Part 5 of Act 451 of 1994, as amended.*

VERIFICATION OF WORKER'S DISABILITY COMPENSATION ACT COMPLIANCE

- This verification must be completed and submitted within 21 days of contract award and prior to the issuance of the timber sale contract.
- In addition, if boxes 2B or 2C are checked, then Notice of Exclusion or Certificate of Insurance must be submitted within twenty-one (21) days of the contract award and prior to the issuance of the timber sale contract.
- All information must be typed or printed except for written signatures.

Please Check Appropriate Categories:

1. My business is organized as (you **must** check one of the boxes below):
 - A. Sole Proprietorship (individual)
 - B. Partnership
 - C. Corporation
2. You **must** check one of the boxes below:
 - A. I certify my business is a sole proprietorship and it has no employees but the sole proprietor. I am not subject to the Worker's Compensation Laws.
 - B. I certify my business has satisfied its obligation to the Worker's Compensation Act through the use of an approved Notice of Exclusion (BWC-337, Rev. 5/96). I will provide a copy of the Notice of Exclusion within 21 days of the contract award. (For questions or a copy of the BWC-337, please call the Worker's Compensation Bureau at 517-322-1195).
 - C. I certify my business has a Worker's Compensation Policy. I will provide an original Certificate of Insurance within twenty-one (21) days of the contract award.
3. If you have checked item 2(A) or 2(B), you **must** indicate the number of **both** full-time and part-time employees, other than yourself, including family members and active partners (if none, you must enter "0").

_____ Full-time Employees

_____ Part-time Employees

Name of Business		Federal ID (or) Social Security No.	
Address		Telephone ()	
City	State	ZIP	

I hereby certify that the above information is true and correct. I agree to notify the Michigan DNR of any changes that occur in factors affecting my coverage during any of my present and future operations.

Signature of Owner or Authorized Representative

Title

Date

Please complete the "SEALED BID" information on the next page

OVT Oak (63-021-23)
T24N, R05W, SEC. 1; T24N, R05W, SEC. 2; Missaukee COUNTY

In response to the notice of sale to be held 3:00 p.m. (local time) on June 26, 2024, I am hereby submitting my sealed bid (firm offer) for the following forest products to be cut. Bids for individual species must be at or above the advertised price. All non-responsive bid forms may be rejected.

<u>PRODUCTS & SPECIES</u>	<u>ESTIMATED VOLUME*</u>	<u>ADVERTISED PRICE</u>	<u>BID PRICE/UNIT</u>
Sawtimber			
Black Cherry	21.0 MBF	\$ 233.00/MBF	\$ _____
Mixed Oak	1,037.5 MBF	\$ 99.00/MBF	\$ _____
Quaking Aspen	39.6 MBF	\$ 85.00/MBF	\$ _____
Red Maple	77.5 MBF	\$ 90.00/MBF	\$ _____
Pulpwood			
Black Cherry	28 Cords	\$ 21.70/Cord	\$ _____
Jack Pine	6 Cords	\$ 19.75/Cord	\$ _____
Mixed Oak	1,003 Cords	\$ 30.80/Cord	\$ _____
Quaking Aspen	172 Cords	\$ 25.35/Cord	\$ _____
Red Maple	204 Cords	\$ 21.70/Cord	\$ _____

*The volumes are statistically estimated within plus (+) or minus (-) 10.60 percent at 95% confidence level. These estimated volumes are final and not subject to adjustment. Prospective bidders are urged to examine this timber and to make their own estimates of quantity and quality.

I understand that any or all bids may be rejected. All bids must be signed and all bid items must be bid or the bid form may be rejected. I also understand that consideration and awarding a contract will be based upon my past performance and ability to complete the contract based upon equipment and staffing subject to my control.

FEDERAL ID: ____ - ____ - ____ or SOCIAL SECURITY NUMBER: ____ - ____ - ____

Company or individual bidding: _____

Company representative's name: _____

Address: _____

City: _____ State: _____ Zip: _____

IF AVAILABLE, PLEASE PLACE THE PERSONALIZED LABEL FROM YOUR PROSPECTUS IN THE ABOVE BOX.

Individual or company representative's signature: _____ Date: _____

Phone number : _____ Email (optional): _____

THE WINNING BIDDER MUST COMPLETE THE VERIFICATION OF WORKER'S DISABILITY COMPENSATION ACT COMPLIANCE (ON REVERSE SIDE IF DOUBLE SIDED) WITHIN 21 DAYS OF SALE AWARD DATE



FOR DEPARTMENT USE ONLY	
Sale Number (XX - XXX - XX - XX)	
Forest Management Unit:	

TIMBER SALE VERIFICATION OF WORKER'S DISABILITY COMPENSATION ACT COMPLIANCE

As required by Act 317, P.A. 1969 (Worker's Compensation) and
Part 5 of Act 451 of 1994, as amended.

VERIFICATION OF WORKER'S DISABILITY COMPENSATION ACT COMPLIANCE

- This verification must be completed and submitted within 21 days of contract award and prior to the issuance of the timber sale contract.
- In addition, if boxes 2B or 2C are checked, then Notice of Exclusion or Certificate of Insurance must be submitted within twenty-one (21) days of the contract award and prior to the issuance of the timber sale contract.
- All information must be typed or printed except for written signatures.

Please Check Appropriate Categories:

1. My business is organized as (you **must** check one of the boxes below):
 - A. Sole Proprietorship (individual)
 - B. Partnership
 - C. Corporation
2. You **must** check one of the boxes below:
 - A. I certify my business is a sole proprietorship and it has no employees but the sole proprietor. I am not subject to the Worker's Compensation Laws.
 - B. I certify my business has satisfied its obligation to the Worker's Compensation Act through the use of an approved Notice of Exclusion (BWC-337, Rev. 5/96). I will provide a copy of the Notice of Exclusion within 21 days of the contract award. (For questions or a copy of the BWC-337, please call the Worker's Compensation Bureau at 517-322-1195).
 - C. I certify my business has a Worker's Compensation Policy. I will provide an original Certificate of Insurance within twenty-one (21) days of the contract award.
3. If you have checked item 2(A) or 2(B), you **must** indicate the number of **both** full-time and part-time employees, other than yourself, including family members and active partners (if none, you must enter "0").

_____ Full-time Employees

_____ Part-time Employees

Name of Business		Federal ID (or) Social Security No.	
Address		Telephone ()	
City	State	ZIP	

I hereby certify that the above information is true and correct. I agree to notify the Michigan DNR of any changes that occur in factors affecting my coverage during any of my present and future operations.

Signature of Owner or Authorized Representative

Title

Date

Please complete the "SEALED BID" information on the next page