



**DEPARTMENT OF NATURAL RESOURCES  
STATE OF MICHIGAN  
TIMBER SALE PROSPECTUS #7431**

SCHEDULED SALE DATE AND TIME: 3:00 p.m. (local time) on June 27, 2024.

LOCATION: NEWBERRY MGMT UNIT, PO BOX 428, 5666 S STATE HWY M 123, NEWBERRY, MI 49868.

PROSPECTUS NOTE: The bidder is advised to inspect the sale area and review the location, estimated volumes, operating costs and contract terms of proposed sales. Please be aware that some landowners may request 60 days or more notice for access across their land.

Notice is hereby given that bids will be received by the Unit Manager, NEWBERRY MANAGEMENT UNIT, for certain timber on the following described lands:

Spring Hill Cedar (42-012-23) / T46N, R10W, SEC. 10, NWNW.

T46N, R10W, SEC. 3, NENW, SWSW.

T46N, R10W, SEC. 4, SESE.

Luce County, Advertised Price \$7,092.30, 38.1 Acres, N White Cedar, Hardwood.

SALE NOTE: No new roads will be permitted in any Payment Unit. See Sale Spec 4.1.12 for details.

Permission for access across private land is the responsibility of the Purchaser.

The access gate(s) must be locked at the completion of each day unless otherwise approved by the landowner who controls them.

Within Payment Unit(s) 1-5, harvesting is limited to the period of December 15 to April 1 because of lowland soils.

To enhance snowshoe hare habitat, two brush piles must be constructed in Payment Unit 5, one at the west edge of the unit and one at the southeast edge of the unit. See Sale Spec 5.2.4.6 for additional information.

Access may be through private land.

Brant Creek Mix (42-013-23) / T46N, R10W, SEC. 10, S1/2SE.

T46N, R10W, SEC. 11, S1/2SW.

T46N, R10W, SEC. 15, NW, NE.

T46N, R10W, SEC. 16, NENE.

Luce County, Advertised Price \$31,495.90, 126.8 Acres, Aspen, N White Cedar.

SALE NOTE: Permission for access across private land is the responsibility of the Purchaser.

Within Payment Unit(s) 1-9, harvesting is limited to the period of December 1 to April 1 because of wet ground present in some areas of the sale.

The snowmobile trail is shown on the Timber Sale Map. See Sale Spec 5.2.41 for restrictions.

Note that Payment Units 7 is optional to harvest due to potential access issues. Removing any or all of these Payment Units is a contract modification which requires a Timber Sale Contract Amendment.

A recreation site such as a trail, pathway, or campground is within the sale area or the vicinity. Certain restrictions/specifications may be applicable including time restrictions. Access may be through private land.

Slow Slalom Mix (42-019-23) / T46N, R10W, SEC. 18, NWNW.

T46N, R10W, SEC. 7 , SWSW.

T46N, R11W, SEC. 12, SENW,SWNE,NESW,SE.

T46N, R11W, SEC. 13, NENE.

Luce County, Advertised Price \$13,124.10, 114.9 Acres, Spruce/Fir/Tamarack, Hardwood.

SALE NOTE: Within Payment Unit(s) 1-4, harvesting is limited to the period of December 1 to April 1 because of wet, low ground within the Payment Units.

To provide and enhance snowshoe hare habitat, purchaser is to create two (2) long linear brush piles along the eastern side of Payment Units 1 and 2. See Sale Spec 5.2.4.6 for additional information.

The Silver Creek Trail is an ORV trail or route and is shown on the Timber Sale Map. See Sale Spec 5.2.39 for restrictions.

Care must be taken to minimize soil damage due to the wet soil types. Tracked equipment may be necessary.

## BID INSTRUCTIONS (VER. 10/10/2022):

### 1. Scheduled Bid Location, Date, and Time (2/11)

Bids must be received by the Unit Manager, NEWBERRY OFFICE, PO Box 428 5666 S STATE HWY M 123, NEWBERRY, MI 49868, no later than 3:00 p.m. (local time) on June 27, 2024. For further information concerning this sale, contact Keith Magnusson at 906-291-0120 extension n/a.

### 2. Bidder's Qualifications (10/22)

If all or part of a timber sale was prepared by a private contractor, the contractor and that contractor's company are not permitted to bid on the timber sale. A person must be 18 years of age or older to purchase timber. Permanent employees of the Department of Natural Resources or members of their immediate household may not bid. Former employees, in the permanent or seasonal class, may not bid until 3 months after the last day of active duty. Bids will not be accepted from individuals or companies appearing on the DNR/FRD No-Bid List. This list contains the names of purchasers who previously failed to execute a contract within 21-days or who have a history of poor performance.

### 3. Preparation of Sealed Bids (5/16)

Bid Forms may be completed online thru Michigan DNR Timber Sale Online Bidding (OLB) at [www.michigan.gov/timberbidding](http://www.michigan.gov/timberbidding) or by completing the hardcopy Bid Form found in the Timber Sale Prospectus. Hardcopy Bid Forms shall be manually signed in ink. Registration in OLB is considered your 'signature' for all bids submitted thru that system. Bid prices must be entered for each species and product in the Bid Price column for all material subject to bidding and all fill-in blanks must be completed. If erasures or other changes appear on the hardcopy Bid Form, each erasure or change must be initialed by the person signing the bid.

### 4. Submission of Sealed Bids (5/16)

Bid forms may be obtained from the Unit Manager or thru OLB. Bids may be submitted hardcopy or thru OLB. All hardcopy bids must be submitted on the bid form and in an envelope clearly identified as described in this section. NOTE: Only one bid form per bid envelope. Sealed bids must be submitted to the Unit office designated in the prospectus and must be submitted at or prior to the time established in the prospectus. The envelope should show on the outside (a) the sale name or number and (b) the date and time of bid opening, as shown in the prospectus. Bids received after the time specified in the sale prospectus are late bids and will be rejected.

It is possible for a bidder to submit multiple bids on a single sale. For example, a bid may be submitted hardcopy and a bid may be submitted thru OLB. Or, two bidders from the same company could both submit bids on the same sale. If this were to happen, the State would accept all bids received and award the contract accordingly. All bidding and contractual requirements would apply to all bids received.

### 5. Public Opening of Sealed Bids (7/16)

If conditions permit, the sealed bids will be publicly opened and posted at the time and place set in the prospectus.

If a bidder, present at a bid opening, has submitted bids on more than one sale, that bidder may withdraw their unopened bid envelopes or announce the withdrawal of their online bid after being declared the successful bidder on one sale.

### 6. Award of Contract (1/11)

Award of the contract will be made to the Bidder whose bid, conforming to the prospectus, is most advantageous to the State of Michigan on the basis of total value at rates bid for the estimated quantities. The State reserves the right to reject any bid or waive any minor irregularity in bids received. A written award mailed (or otherwise furnished) to the successful Bidder shall be deemed to result in a binding contract without further action by either party.

### 7. Down Payment (1/11)

The Bidder to whom award is made must make a down payment within 21 days of the sale award. The amount of the down payment will be calculated as shown in the Bond and Payment Schedule of this prospectus. Only cash may be used to meet this requirement.

### 8. Performance Security (1/11)

As guarantee of faithful performance, a cash bond, certificate of deposit, surety bond or irrevocable letter of credit (LOC) is required within 21 days of the sale award. The amount of the performance security is shown in the Bond and

Payment Schedule of this prospectus. If an LOC or surety is used, the coverage must extend for at least 6 months beyond the contract expiration.

#### 9. Worker's Compensation (10/22)

Purchaser shall obtain worker's compensation insurance to cover claims under Michigan's Worker's Disability Compensation Act of 1969 or similar employee benefit act of any other state applicable to an employee. Verification of Worker's Disability Compensation Act Compliance must be completed and submitted within 21 days of contract award and prior to the issuance of the timber sale contract. In addition, if applicable, Notice of Exclusion or Certificate of Insurance must also be submitted.

#### 10. Timber Sale Contract (10/22)

Additional conditions and requirements common to all timber sales are listed on the timber sale contract (R4031) and are available on line at [www.michigan.gov/timber](http://www.michigan.gov/timber). Contact the Unit Manager for additional information or a sample contract. Within 21 days of the date of the award letter, the bidder must sign the contract and provide the required down payment, performance security, and verification of worker's disability compensation. The down payment and performance security shall be in accordance with the provisions of the timber sale contract, in the sums stated in this prospectus. If these actions are not taken, then the Bidder, the Bidder's corporation, and the corporation's principals may not be permitted to bid on State timber sales for a period of 3 months after the first offense, 6 months after the second offense, and 1 year after the third offense. An offense will only be counted against the Bidder for 5 years. In addition, the Bidder certifies that if awarded this contract, the Bidder will complete the timber sale contract in accordance with its terms and any modifications thereof including requirements to purchase, cut, and remove the included timber by the expiration date.

Payment Unit values in the State Forest Timber Sale Contract are calculated based on the advertised value of the Payment Unit as a percentage of the total advertised value of the contract. The advertised value of each Payment Unit is given in the Description of Timber by Payment Unit table on the Timber Sale Information page. For example, if the value of Payment Unit 1 is advertised as \$1,500 and the total Timber Sale value is advertised as \$10,000, the contract price for Payment Unit 1 will be 15% of the total bid price ( $\$1,500/\$10,000 * 100$ ).

#### 11. Disclaimer of Estimates and Bidder's Warranty of Inspection (10/22)

Before submitting this bid, the Bidder is advised and cautioned to inspect the sale area, review the requirements of the sale contract, and take other steps as may be reasonably necessary to ascertain the location, estimated volumes, construction estimates, and operating costs of the proposed sale. Failure to do so will not relieve the Bidder from responsibility for completing the contract.

The Bidder warrants that this bid is submitted solely on the basis of the Bidder's examination and inspection of the quality and quantity of the timber offered for sale and the Bidder's opinion of the value thereof and the costs of recovery. No reliance should be placed on the State of Michigan's estimates of timber quality, quantity or costs of recovery. Bidder further acknowledges that the State of Michigan: (i) expressly disclaims any warranty of fitness of timber for any purpose; (ii) offers this timber as is without any warranty of quality (merchantability) or quantity and (iii) expressly disclaims any warranty as to the quantity or quality of timber sold.

#### 12. Certification and Chain-of-Custody (10/22)

Unless otherwise indicated in the contract under section 7 – Other Conditions of the Sale Specific Conditions & Requirements, the area encompassed by this timber sale is certified to the standards of the Forest Stewardship Council (FSC) - Certificate #SCS-FM/COC-00090N and the Sustainable Forestry Initiative (SFI) - Certificate #NSF-SFIS-5Y031-SF5. Forest products from this sale may be delivered to the mill as "FSC 100% and / or SFI certified" as long as the contractor hauling the forest products is chain-of-custody (COC) certified or covered under a COC certificate from the destination mill. The purchaser is responsible for maintaining COC after leaving the sale area.

#### 13. Good Neighbor Authority (GNA) Requirements (10/22)

If the name of this timber sales contains the acronym GNA, it is authorized by the Good Neighbor Authority (GNA) and covered by various agreements between the U.S. Forest Service and the State. The timber sale occurs on federal land and the following conditions apply:

GNA contracts on US Forest Service land will not be awarded to purchasers on the Federal list of excluded parties. The System for Award Management (SAM) will be checked for active excluded parties prior to award of contract. In

addition, the Bidder to whom award is made must complete an Assurance Regarding Felony Conviction or Tax Delinquent Status for Corporate Applicants (AD-3031).

14. Good Neighbor Authority (GNA) Requirements, con't (10/22)

Bidder certifies, by signing this bid form, that to the best of Bidder's knowledge that the following representations are accurate and complete.

- a. That the Bidder and its principals are not presently debarred, suspended, proposed for debarment, declared ineligible, or voluntary excluded from timber sales (covered transactions) by any Federal department or agency.
- b. That the Bidder and its principals have not within a 3-year period preceding this bid been convicted of or had a civil judgment rendered against them for commission of fraud or a criminal offense in connection with obtaining , attempting to obtain, or performing a public (Federal, State, or local) transaction or contract under a public transaction; violation of Federal or State antitrust statutes or commission of embezzlement, theft, forgery, bribery, falsification or destruction of records, making false statements, or receiving stolen property.
- c. That the Bidder and its principals are not presently indicted for or otherwise criminally or civilly charged by a governmental entity (Federal, State, or local) with commission of any of the offenses enumerated in paragraph b of this certification.
- d. That the Bidder and its principals have not within a 3-year period preceding this bid had one or more public transactions (Federal, State, or local) terminated for breach or default of a timber or forest product contract.

Bidders that cannot certify this requirement, in whole or in part, shall submit an explanation with their bid.

Scott Bowen  
Director



# TIMBER SALE INFORMATION

Spring Hill Cedar (42-012-23)  
T46N, R10W, SEC. 10; T46N, R10W, SEC. 3; T46N, R10W, SEC. 4.  
Luce County (Advertised Price \$7,092.30)

SALE NOTE: No new roads will be permitted in any Payment Unit. See Sale Spec 4.1.12 for details.

Permission for access across private land is the responsibility of the Purchaser.

The access gate(s) must be locked at the completion of each day unless otherwise approved by the landowner who controls them.

Within Payment Unit(s) 1-5, harvesting is limited to the period of December 15 to April 1 because of lowland soils.

To enhance snowshoe hare habitat, two brush piles must be constructed in Payment Unit 5, one at the west edge of the unit and one at the southeast edge of the unit. See Sale Spec 5.2.4.6 for additional information.

Access may be through private land.

A timber sale contract for this lump sum, sealed bid timber sale will be awarded to the responsible bidder offering the highest sealed bid price. All units of volume listed below were estimated using the Inventory Manager computer program and the new Michigan taper model. Bids must be at or above the following advertised price for each product and species:

<u>PRODUCTS &amp; SPECIES</u>	<u>ESTIMATED UNITS*</u>	<u>ADVERTISED PRICE</u>
Sawtimber		
Paper Birch	14.9 MBF	\$ 47.00 / MBF
Yellow Birch	6.2 MBF	\$ 87.00 / MBF
Pulpwood		
Balsam Fir	40 Cords	\$ 10.60 / Cord
Mixed Aspen	24 Cords	\$ 26.85 / Cord
Mixed Hardwood	124 Cords	\$ 12.80 / Cord
N. White Cedar	884 Cords	\$ 3.10 / Cord
Paper Birch	50 Cords	\$ 4.10 / Cord
White Spruce	34 Cords	\$ 7.40 / Cord

\* The total volume is statistically estimated within plus (+) or minus (-) 15.69 percent. There are an estimated 1,415 cords on this timber sale, plus or minus 222 cords at the 95% confidence level. The estimated units are final and not subject to adjustment. Prospective bidders are urged to examine this timber and to make their own estimates of quantity and quality.

## BOND AND PAYMENT SCHEDULE:

1. A bond in the amount of \$355.00 to insure faithful performance of the conditions of the contract will be deposited by the successful bidder within 21 days of the sale award.
2. Cutting in any sale or unit without the required advance payment would be considered a trespass.
3. Total payment must be paid in advance or according to the following schedule :
  - (a) Ten percent (10%) of the sale value must be paid within 21 days of the sale award.
  - (b) The 10% down payment will be credited towards the first unit cut.
  - (c) Payment for each of the following units must be made before cutting begins in that unit:

<u>PAYMENT UNIT NUMBER</u>	<u>PERCENT OF TOTAL SALE VALUE</u>
01	13.0%
02	8.7%
03	8.5%
04	6.3%
05	63.5%

4. If no cutting takes place, the 10% down payment will not be refunded.
5. Operations on the contract issued will terminate on 06/30/2027.

## SALE STATISTICS

Volumes were calculated in cubic feet using the Michigan taper model. Cubic foot volume includes all wood inside bark for the product indicated. For display purposes, cubic feet were converted to cords and MBF using a simple conversion factor, e.g. 79 cubic feet per cord and 185 cubic feet per MBF. The cubic foot volumes are precise; the cords and MBF volumes are not. Cubic foot volume cannot be directly converted to cords or boards with precision.

## SALE VOLUMES

The total estimated sale volume may not equal the sum of the species/products due to the nature of statistical calculations associated with double sampling methodology.

VOLUME			STATISTICAL RANGE IN CORDS	
TOTAL CUBIC FEET	TOTAL CORDS	PERCENT ERROR	MINIMUM	MAXIMUM
111,804	1,415	15.69%	1,193	1,637

## VDU VOLUMES

A VDU is a Volume Determination Unit. Volumes and their associated statistics are calculated at the VDU level and summarized to the sale level. There is often a one to one relationship between a VDU and a Payment Unit, but not always, depending on the cruise design. Refer to the VDU TO PAYMENT UNIT table.

	VOLUME			RANGE IN CORDS	
VDU	TOTAL CUBIC FEET	TOTAL CORDS	PERCENT ERROR	MINIMUM	MAXIMUM
2	46,523	589	32.61%	397	781
9	65,281	826	19.54%	665	988
<b>TOTAL:</b>	<b>111,804</b>	<b>1,415</b>		<b>1,062</b>	<b>1,769</b>

## VDU TO PAYMENT UNIT

When a VDU is associated with more than one Payment Unit (PU), the VDU volumes are assigned to the PU based on acres of the VDU within the PU.

VDU	VDU ACRES	PU	PU ACRES
2	14.0	1	5.0
		2	3.3
		3	3.2
		4	2.5
9	24.1	5	24.1
<b>TOTAL:</b>	<b>38.1</b>		<b>38.1</b>



**DESCRIPTION OF TIMBER BY PAYMENT UNIT (PU)**

PU	MARKET GROUP	PRODUCT	QUANTITY	UNIT	ACRES	ADVERTISE PRICE
1	Paper Birch	Sawtimber	0.9	MBF	5.0	\$920.90
	Balsam Fir	Pulpwood	15	Cords		
	Mixed Aspen		4	Cords		
	<i>Quaking Aspen</i>		4	<i>Cords</i>		
	Mixed Hardwood		8	Cords		
	<i>Black Ash</i>		5	<i>Cords</i>		
	<i>Red Maple</i>		3	<i>Cords</i>		
	N. White Cedar		143	Cords		
	Paper Birch		9	Cords		
	White Spruce		4	Cords		
2	Paper Birch	Sawtimber	0.6	MBF	3.3	\$619.15
	Balsam Fir	Pulpwood	9	Cords		
	Mixed Aspen		3	Cords		
	<i>Quaking Aspen</i>		3	<i>Cords</i>		
	Mixed Hardwood		6	Cords		
	<i>Black Ash</i>		4	<i>Cords</i>		
	<i>Red Maple</i>		2	<i>Cords</i>		
	N. White Cedar		94	Cords		
	Paper Birch		6	Cords		
	White Spruce		3	Cords		
3	Paper Birch	Sawtimber	0.6	MBF	3.2	\$605.75
	Balsam Fir	Pulpwood	9	Cords		
	Mixed Aspen		3	Cords		
	<i>Quaking Aspen</i>		3	<i>Cords</i>		
	Mixed Hardwood		6	Cords		
	<i>Black Ash</i>		4	<i>Cords</i>		
	<i>Red Maple</i>		2	<i>Cords</i>		
	N. White Cedar		91	Cords		
	Paper Birch		5	Cords		
	White Spruce		3	Cords		
4	Paper Birch	Sawtimber	0.4	MBF	2.5	\$449.20
	Balsam Fir	Pulpwood	7	Cords		
	Mixed Aspen		2	Cords		
	<i>Quaking Aspen</i>		2	<i>Cords</i>		
	Mixed Hardwood		4	Cords		
	<i>Black Ash</i>		3	<i>Cords</i>		
	<i>Red Maple</i>		1	<i>Cords</i>		
	N. White Cedar		71	Cords		
	Paper Birch		4	Cords		
	White Spruce		2	Cords		
5	Paper Birch	Sawtimber	12.4	MBF	24.1	\$4,497.30
	Yellow Birch		6.2	MBF		
	Mixed Aspen	Pulpwood	12	Cords		
	<i>Balsam Poplar</i>		12	<i>Cords</i>		
	Mixed Hardwood		100	Cords		
	<i>Red Maple</i>		78	<i>Cords</i>		
	<i>Yellow Birch</i>		22	<i>Cords</i>		
	N. White Cedar		485	Cords		
	Paper Birch		26	Cords		
	White Spruce		22	Cords		
TOTAL:			21.1	MBF		
TOTAL:			1,156	Cords		

## Sale Specific Conditions & Requirements

Sale Name: Spring Hill Cedar

Sale Number: 42-012-23 Seq#: 2

### 1 - Sale Area

#### 1.2 - Boundaries

##### 1.2.1 - Painted boundaries (9/19)

The sale boundary and Payment Unit boundaries are marked and identified by blue and red paint. Exterior sale boundary lines against private property are marked with blue paint. Exterior sale boundary lines against state are marked with red paint. The painted boundary line trees are not Included Timber and are to be protected unless marked with orange paint.

### 2 - Timber Specifications

#### 2.1 - Included Timber

##### 2.1.1 - Clearcut unit(s) with unmerchantable trees (6/14)

Within Payment Unit(s) 1-4, cut all trees that are two (2) inches or more at DBH, except do not cut sub-merchantable cedar. This is an attempt to promote any advanced cedar regeneration that is present.

### 4 - Transportation

#### 4.1 - Construction

##### 4.1.12 - No new roads (1/12)

No new roads will be permitted in any Payment Unit. All operations are limited to existing roads. Skid trails and back in spurs only will be allowed.

#### 4.4 - Access

##### 4.4.1 - Private property access (3/11)

Permission for access across private land is the responsibility of the Purchaser.

##### 4.4.3 - Access gate (12/08)

The access gate must be locked at the completion of each day unless otherwise approved by the landowner who controls them.

### 5 - Operations

#### 5.2 - Conduct of Operations

##### 5.2.2 - Hazard Trees/Snags

###### 5.2.2.1 - Den trees (10/16)

Obvious hollow and/or den trees shall be protected and left standing unless they are a safety hazard.

##### 5.2.3 - Operating Restrictions

###### 5.2.3.1 - Operating restrictions (9/11)

Within Payment Unit(s) 1-5, unless changed by written agreement, cutting, skidding, and hauling are limited to the period of December 15 to April 1. This restriction is because of lowland soils.

##### 5.2.4 - Dead and Down Creation

###### 5.2.4.6 - Dead and down creation, other (9/09)

To enhance snowshoe hare habitat, two brush piles must be constructed in Payment Unit 5, one at the west edge of the unit and one at the southeast edge of the unit. Create long linear brush piles a minimum of 50 ft in length using forest products such as stumps and larger unmerchantable woody material (from within the sale boundaries where available), formed into a line as a base. Place tops onto the base along its length to construct a linear pile 6 feet in height. The brush pile should be a jumble of logging slash piled on top of the base. If no unmerchantable products are available for a base, use whole trees 8–16 inches at DBH. Place brush pile perpendicular to the edge of the harvested stand, reaching into the adjacent stand at least 20 feet.

#### 5.2.32 - Decking/landing restoration (9/13)

All decking and landing areas must have the surface area restored to a condition equal to or better than before. This is to ensure the proper regeneration of the stand. Wood debris, chips and "cookies" from trimmings must be removed or scattered away from landing and loading areas and may not be windrowed on the edge.

#### 5.8 - Protection of Endangered Species

##### 5.8.5 - Protection of raptor nests (3/13)

All trees with raptor nests will be protected if found during harvesting operations. Notification will be made to the Unit Manager or his/her representative who will notify the Wildlife Biologist so an on-site evaluation and recommendation can be made, if necessary.

### **6 - Safety and Fire Prevention**

#### 6.2 - Signing

##### 6.2.1 - Road posting (10/20)

The Purchaser is responsible for posting and maintaining caution signs on County Road 407 prior to beginning operations. The road must be posted at appropriate distances from the Sale Area to warn of logging activity and truck traffic. Signs must be removed when harvest operations are suspended or completed. The Purchaser will provide these signs.



### TIMBER SALE MAP

This information provided by authority of Part 525, 1994 PA 451, as amended.

Sale Number  
42-012-23

Date  
09/26/2023

Forest Management Unit  
Newberry Mgt Unit

County  
Luce

Mapped By: Amy Livermore  
Cruised By: Contractor

Scale  
1:15,840

Page  
1  
Of  
1

Township 46N Range 10W Section(s) and Subdivision(s) Sec. 10 NWNW; Sec. 3 NENW,SWSW; Sec. 4 SESE;

#### Cover Type

A = Aspen	J = Jack Pine	O = Oak	U = Upland Brush
B = Paper Birch	K = Rock	P = Lowland Poplar	UM = Upland Mix Forest
C = Cedar	L = Lowland Brush	Q = Mixed Swamp Conifer	V = Bog or Marsh
D = Treed Bog	LM = Lowland Mix Forest	R = Red Pine	W = White Pine
E = Swamp Hardwoods	M = Maple, Beech, Birch	S = Black Spruce	X = Non Stocked
F = Spruce/Fir	MC = Mixed Conifer	T = Tamarack	Y = Sand
G = Grass	MD = Mixed Deciduous	Z = Water	
H = Hemlock	N = Marsh		

#### Density

0 = Non Stocked	5 = Pole Timber Medium
1 = Seedling Sapling Poor	6 = Pole Timber Well
2 = Seedling Sapling Medium	7 = Saw Timber Poor
3 = Seedling Sapling Well	8 = Saw Timber Medium
4 = Pole Timber Poor	9 = Saw Timber Well

### Spring Hill Cedar

Acres: **38.1**

QR Code

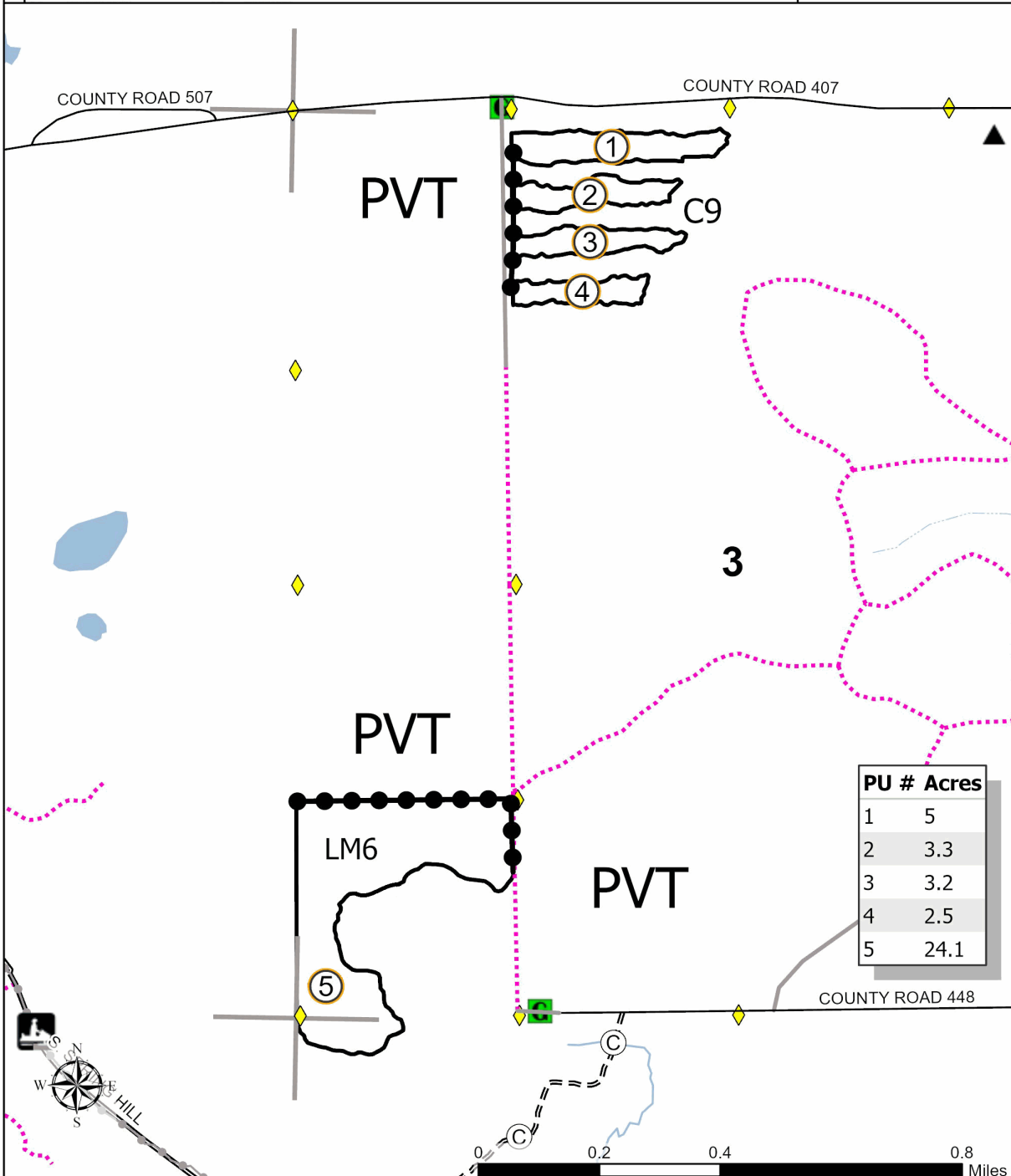
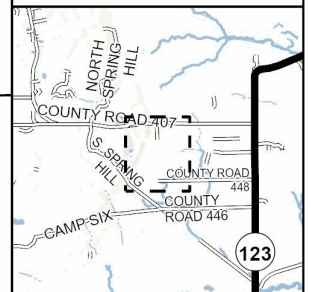


Legend

- Against State (red)
- Private Boundary (blue)
- Recreational Trail
- Survey Grade Corner
- Berm
- Gate
- MIRIS Section Corner
- Intermittent Stream
- Perennial River
- Lakes and Rivers
- Primary Forest Road
- Secondary Forest Road
- Forest Access Route
- Paved Road
- Gravel Road
- County Road - Seasonal
- Private Road
- Temporary Management Access
- Counties
- Culvert
- Bridge

PU #	Acres
1	5
2	3.3
3	3.2
4	2.5
5	24.1

Locator Map



## TIMBER SALE INFORMATION

### Brant Creek Mix (42-013-23)

T46N, R10W, SEC. 10; T46N, R10W, SEC. 11; T46N, R10W, SEC. 15; T46N, R10W, SEC. 16.  
Luce County (Advertised Price \$31,495.90)

SALE NOTE: Permission for access across private land is the responsibility of the Purchaser.

Within Payment Unit(s) 1-9, harvesting is limited to the period of December 1 to April 1 because of wet ground present in some areas of the sale.

The snowmobile trail is shown on the Timber Sale Map. See Sale Spec 5.2.41 for restrictions.

Note that Payment Units 7 is optional to harvest due to potential access issues. Removing any or all of these Payment Units is a contract modification which requires a Timber Sale Contract Amendment.

A recreation site such as a trail, pathway, or campground is within the sale area or the vicinity. Certain restrictions/specifications may be applicable including time restrictions. Access may be through private land.

A timber sale contract for this lump sum, sealed bid timber sale will be awarded to the responsible bidder offering the highest sealed bid price. All units of volume listed below were estimated using the Inventory Manager computer program and the new Michigan taper model. Bids must be at or above the following advertised price for each product and species:

<u>PRODUCTS &amp; SPECIES</u>	<u>ESTIMATED UNITS*</u>	<u>ADVERTISED PRICE</u>
Sawtimber		
Paper Birch	1.5 MBF	\$ 44.00 / MBF
Pulpwood		
Balsam Fir	63 Cords	\$ 9.85 / Cord
Mixed Aspen	1,057 Cords	\$ 24.95 / Cord
Mixed Hardwood	131 Cords	\$ 11.90 / Cord
Mixed Spruce	199 Cords	\$ 6.85 / Cord
N. White Cedar	448 Cords	\$ 2.90 / Cord
Paper Birch	38 Cords	\$ 3.80 / Cord
Tamarack	53 Cords	\$ 1.35 / Cord

\* The total volume is statistically estimated within plus (+) or minus (-) 18.20 percent. There are an estimated 2,046 cords on this timber sale, plus or minus 372 cords at the 95% confidence level. The estimated units are final and not subject to adjustment. Prospective bidders are urged to examine this timber and to make their own estimates of quantity and quality.

### **BOND AND PAYMENT SCHEDULE:**

1. A bond in the amount of \$1,575.00 to insure faithful performance of the conditions of the contract will be deposited by the successful bidder within 21 days of the sale award.
2. Cutting in any sale or unit without the required advance payment would be considered a trespass.
3. Total payment must be paid in advance or according to the following schedule :
  - (a) Ten percent (10%) of the sale value must be paid within 21 days of the sale award.
  - (b) The 10% down payment will be credited towards the first unit cut.
  - (c) Payment for each of the following units must be made before cutting begins in that unit:

PAYMENT UNIT NUMBER	PERCENT OF TOTAL SALE VALUE
01	1.2%
02	1.9%
03	1.8%
04	1.5%
05	1.2%
06	1.0%
07	36.2%
08	25.6%
09	29.6%

4. If no cutting takes place, the 10% down payment will not be refunded.
5. Operations on the contract issued will terminate on 06/30/2028.

### **SALE STATISTICS**

Volumes were calculated in cubic feet using the Michigan taper model. Cubic foot volume includes all wood inside bark for the product indicated. For display purposes, cubic feet were converted to cords and MBF using a simple conversion factor, e.g. 79 cubic feet per cord and 185 cubic feet per MBF. The cubic foot volumes are precise; the cords and MBF volumes are not. Cubic foot volume cannot be directly converted to cords or boards with precision.

### SALE VOLUMES

The total estimated sale volume may not equal the sum of the species/products due to the nature of statistical calculations associated with double sampling methodology.

VOLUME			STATISTICAL RANGE IN CORDS	
TOTAL CUBIC FEET	TOTAL CORDS	PERCENT ERROR	MINIMUM	MAXIMUM
161,638	2,046	18.20%	1,674	2,419

### VDU VOLUMES

A VDU is a Volume Determination Unit. Volumes and their associated statistics are calculated at the VDU level and summarized to the sale level. There is often a one to one relationship between a VDU and a Payment Unit, but not always, depending on the cruise design. Refer to the VDU TO PAYMENT UNIT table.

VDU	VOLUME			RANGE IN CORDS	
	TOTAL CUBIC FEET	TOTAL CORDS	PERCENT ERROR	MINIMUM	MAXIMUM
29	28,351	359	32.42%	243	475
30	31,095	394	33.78%	261	527
31	42,299	535	20.53%	425	645
34	51,929	657	46.19%	354	961
97	7,964	101	49.79%	51	151
<b>TOTAL:</b>	<b>161,638</b>	<b>2,046</b>		<b>1,333</b>	<b>2,759</b>

### VDU TO PAYMENT UNIT

When a VDU is associated with more than one Payment Unit (PU), the VDU volumes are assigned to the PU based on acres of the VDU within the PU.

VDU	VDU ACRES	PU	PU ACRES
29	20.6	8	20.6
30	16.4	9	16.4
31	49.9	7	49.9
34	37.2	1	5.7
		2	6.3
		3	7.7
		4	7.2
		5	5.7
		6	4.6
97	2.7	2	2.0
		3	0.7
<b>TOTAL:</b>	<b>126.8</b>		<b>126.8</b>

**DESCRIPTION OF TIMBER BY PAYMENT UNIT (PU)**

PU	MARKET GROUP	PRODUCT	QUANTITY	UNIT	ACRES	ADVERTISE PRICE
1	Mixed Spruce	Pulpwood	27	Cords	5.7	\$371.35
	<i>Black Spruce</i>		27	<i>Cords</i>		
	N. White Cedar		54	Cords		
	Paper Birch		5	Cords		
	Tamarack		8	Cords		
2	Mixed Spruce	Pulpwood	29	Cords	8.3	\$584.50
	<i>Black Spruce</i>		29	<i>Cords</i>		
	N. White Cedar		121	Cords		
	Paper Birch		6	Cords		
	Tamarack		9	Cords		
3	Mixed Spruce	Pulpwood	35	Cords	8.4	\$553.80
	<i>Black Spruce</i>		35	<i>Cords</i>		
	N. White Cedar		94	Cords		
	Paper Birch		7	Cords		
	Tamarack		11	Cords		
4	Mixed Spruce	Pulpwood	34	Cords	7.2	\$470.20
	<i>Black Spruce</i>		34	<i>Cords</i>		
	N. White Cedar		68	Cords		
	Paper Birch		7	Cords		
	Tamarack		10	Cords		
5	Mixed Spruce	Pulpwood	27	Cords	5.7	\$371.35
	<i>Black Spruce</i>		27	<i>Cords</i>		
	N. White Cedar		54	Cords		
	Paper Birch		5	Cords		
	Tamarack		8	Cords		
6	Mixed Spruce	Pulpwood	22	Cords	4.6	\$302.95
	<i>Black Spruce</i>		22	<i>Cords</i>		
	N. White Cedar		44	Cords		
	Paper Birch		4	Cords		
	Tamarack		7	Cords		
7	Balsam Fir	Pulpwood	51	Cords	49.9	\$11,458.95
	Mixed Aspen		407	Cords		
	<i>Balsam Poplar</i>		82	<i>Cords</i>		
	<i>Quaking Aspen</i>		325	<i>Cords</i>		
	Mixed Hardwood		53	Cords		
	<i>Red Elm</i>		2.7	<i>MBF</i>		
	<i>Red Maple</i>		1.1	<i>MBF</i>		
	<i>Black Ash</i>		5	<i>Cords</i>		
	<i>Red Elm</i>		18	<i>Cords</i>		
	<i>Red Maple</i>		16	<i>Cords</i>		
	<i>Sugar Maple</i>		7	<i>Cords</i>		
	Mixed Spruce		25	Cords		
	<i>Black Spruce</i>		7	<i>Cords</i>		
	<i>White Spruce</i>		18	<i>Cords</i>		
8	Mixed Aspen	Pulpwood	305	Cords	20.6	\$8,050.05
	<i>Balsam Poplar</i>		116	<i>Cords</i>		
	<i>Quaking Aspen</i>		189	<i>Cords</i>		
	Mixed Hardwood		37	Cords		
	<i>Red Elm</i>		1.1	<i>MBF</i>		
	<i>Red Elm</i>		2	<i>Cords</i>		
	<i>Red Maple</i>		33	<i>Cords</i>		
	Paper Birch		Sawtimber	1.5		
Balsam Fir	Pulpwood	12		Cords		
Mixed Aspen		345		Cords		
<i>B. T. Aspen</i>		7	<i>Cords</i>			

**DESCRIPTION OF TIMBER BY PAYMENT UNIT (PU), CON'T**

PU	MARKET GROUP	PRODUCT	QUANTITY	UNIT	ACRES	ADVERTISE PRICE
9 con't	<i>Balsam Poplar</i>	<i>Pulpwood</i>	131	<i>Cords</i>		
	<i>Quaking Aspen</i>		207	<i>Cords</i>		
	Mixed Hardwood		41	<i>Cords</i>		
	<i>Red Maple</i>	<i>Sawtimber</i>	1.8	<i>MBF</i>		
	<i>Black Cherry</i>	<i>Pulpwood</i>	8	<i>Cords</i>		
	<i>Red Maple</i>		29	<i>Cords</i>		
	N. White Cedar		13	<i>Cords</i>		
	Paper Birch		4	<i>Cords</i>		
TOTAL:			1.5	MBF		
TOTAL:			1,989	Cords		



## Sale Specific Conditions & Requirements

Sale Name: Brant Creek Mix

Sale Number: 42-013-23 Seq#: 1

### 1 - Sale Area

#### 1.2 - Boundaries

##### 1.2.1 - Painted boundaries (9/19)

The sale boundary and Payment Unit boundaries are marked and identified by blue and red paint. Exterior sale boundary lines against private property are marked with blue paint. Exterior sale boundary lines against state are marked with red paint. Retention patches are marked with red paint; no harvesting activities may occur within these areas. The painted boundary line trees are not Included Timber and are to be protected unless marked with orange paint.

### 2 - Timber Specifications

#### 2.1 - Included Timber

##### 2.1.1 - Clearcut unit(s) with unmerchantable trees (6/14)

Within Payment Unit(s) 1-9, cut all trees that are two (2) inches or more at DBH, except within Payment Unit 7, do not cut any trees ringed with green paint.

Special protection areas identified in accordance with condition 3.4.3, within clearcutting unit boundaries of Payment Unit 9, are not Included Timber and are to be protected.

##### 2.1.11 - Description of timber note (2/04)

Note that Payment Unit 7 is optional to harvest due to potential access issues. Removing any or all of these Payment Units is a contract modification which requires a Timber Sale Contract Amendment.

### 3 - Payments

#### 3.3 - Pre-measured Sales

##### 3.3.4 - Dividing payment units (7/14)

Payment Unit(s) 7-9, may be divided at the request of the Purchaser and upon approval of the Unit Manager. Dividing Payment Units is a contract modification which requires a Timber Sale Contract Amendment.

#### 3.4 - Damaged Timber

##### 3.4.3 - Special Protection Areas (8/11)

The Purchaser shall protect special protection areas from damage by the Purchaser's operations. Special protection areas are marked in Payment Unit 9 with a red boundary line. The Purchaser shall not cut live or dead trees within this special protection areas. If the Purchaser's operations have cut or damaged special protection areas through carelessness, the Purchaser shall pay double stumpage as fixed, agreed and liquidated damages for each acre or part thereof cut or damaged. Such payment does not constitute ownership of the undesignated timber.

### 4 - Transportation

#### 4.1 - Construction

##### 4.1.4 - Timber removed for construction (3/23)

Trees cut or damaged in the process of pre-approved road, landing or skid trail construction will be decked in an area separate from other Designated Timber and not removed until measured by the sale administrator. Payment will be made at contract prices or average prices, if not on the contract.

##### 4.1.6 - Road construction (1/09)

Construction of new roads or improvements of existing roads shall be done in such a way as to minimize the environmental and visual impacts. Merchantable trees shall be cut and utilized unless otherwise directed. Non-merchantable trees shall be severed and laid flat on the ground. Slash shall be scattered, and not left in windrows and kept a minimum of 10 feet back from the road edge. Stumps shall be set upright, not left on edge, and be moved at least 10 feet away from the road edge. Disturbed soil shall be feathered into the woods and not left in berms or windrows.

#### 4.1.7 - Road closure (10/11)

All new roads built into the sale must be blocked to vehicle traffic upon completion of the sale. Overgrown roads that are reopened shall be considered new roads. In general, this will require constructing a four (4') foot high berm of stumps and logs covered with earth. All stumps from road building and landing construction must be reserved to block any newly constructed roads upon completion of the sale. These stumps must be scattered along the road system to prohibit vehicular movement. Contact the Sale Administrator for specific details of design and placement.

#### 4.4 - Access

##### 4.4.1 - Private property access (3/11)

Permission for access across private land is the responsibility of the Purchaser.

### 5 - Operations

#### 5.2 - Conduct of Operations

##### 5.2.1 - Slash

###### 5.2.1.8 - Slash height (12/08)

No slash may exceed 36 inches in height.

##### 5.2.2 - Hazard Trees/Snags

###### 5.2.2.1 - Den trees (10/16)

Obvious hollow and/or den trees shall be protected and left standing unless they are a safety hazard.

##### 5.2.3 - Operating Restrictions

###### 5.2.3.1 - Operating restrictions (9/11)

Within Payment Unit(s) 1-9, unless changed by written agreement, cutting, skidding, and hauling are limited to the period of December 1 to April 1. This restriction is because of wet ground present in some areas of the sale.

###### 5.2.3.2 - Decking/landing restoration (9/13)

All decking and landing areas must have the surface area restored to a condition equal to or better than before. This is to ensure the proper regeneration of the stand. Wood debris, chips and "cookies" from trimmings must be removed or scattered away from landing and loading areas and may not be windrowed on the edge.

###### 5.2.4.1 - Snowmobile trail protection (9/11)

The snowmobile trail is shown on the Timber Sale Map. Do not cut or damage posts with orange trail markers or traffic control signs. If the trail is used, it must be maintained and restored to a condition equal to or better than before the sale. If the trail road is to be used for hauling during the snowmobile season, then a snow-covered base must be left on the trail. The snowmobile trail may only be crossed at right angles. Maintain a 20-foot-wide slash, debris, and rut free zone daily using the snowmobile trail as the centerline. All stumps within 20 feet of the snowmobile trail must be cut at ground level.

#### 5.3 - Stream Protection

##### 5.3.1 - Operating near stream (7/04)

No tracked or wheeled vehicles shall be operated within 50 feet of Brandt Creek, except at an approved crossing.

#### 5.4 - Soil Protection

##### 5.4.1 - Rutting restriction, general (7/16)

Operations are to cease immediately if equipment and weather conditions result in rutting of roads and/or skid trails which is 12 inches or greater in depth and 50 feet in length. The Unit Manager or his/her representative may restrict hauling and/or skidding if ruts exceed the specified depth. With the Unit Manager or his/her representative's approval, the Purchaser may return to the area when the risk of rutting has decreased.

#### 5.8 - Protection of Endangered Species

##### 5.8.5 - Protection of raptor nests (3/13)

All trees with raptor nests will be protected if found during harvesting operations. Notification will be made to the Unit Manager or his/her representative who will notify the Wildlife Biologist so an on-site evaluation and recommendation can be

made, if necessary.

## **6 - Safety and Fire Prevention**

### 6.2 - Signing

#### 6.2.2 - Snowmobile trail posting (10/20)

The Purchaser is responsible for posting and maintaining caution signs on the snowmobile trail prior to beginning operations during the snowmobile season (approximately December 1 to March 31). The trail must be posted at appropriate distances from the Sale Area to warn of logging activity and truck traffic. Signs must be removed when harvest operations are suspended or completed. The DNR will provide these signs.



### TIMBER SALE MAP

This information provided by authority of Part 525, 1994 PA 451, as amended.

Sale Number  
42-013-23

Date  
09/26/2023

Forest Management Unit Newberry Mgt Unit	County Luce	Mapped By: Amy Livermore	Scale 1:20,000	Page 1	Of 1
		Cruised By: Contractor			

Township 46N	Range 10W	Section(s) and Subdivision(s) Sec. 10 S1/2SE; Sec. 11 S1/2SW; Sec. 15 NW,NE; Sec. 16 NENE;
-----------------	--------------	--

#### Cover Type

A = Aspen	J = Jack Pine	O = Oak	U = Upland Brush
B = Paper Birch	K = Rock	P = Lowland Poplar	UM = Upland Mix Forest
C = Cedar	L = Lowland Brush	Q = Mixed Swamp Conifer	V = Bog or Marsh
D = Treed Bog	LM = Lowland Mix Forest	R = Red Pine	W = White Pine
E = Swamp Hardwoods	M = Maple, Beech, Birch	S = Black Spruce	X = Non Stocked
F = Spruce/Fir	MC = Mixed Conifer	T = Tamarack	Y = Sand
G = Grass	MD = Mixed Deciduous	Z = Water	
H = Hemlock	N = Marsh		

#### Density

0 = Non Stocked	5 = Pole Timber Medium
1 = Seedling Sapling Poor	6 = Pole Timber Well
2 = Seedling Sapling Medium	7 = Saw Timber Poor
3 = Seedling Sapling Well	8 = Saw Timber Medium
4 = Pole Timber Poor	9 = Saw Timber Well

## Brant Creek Mix

Acres: **126.8**

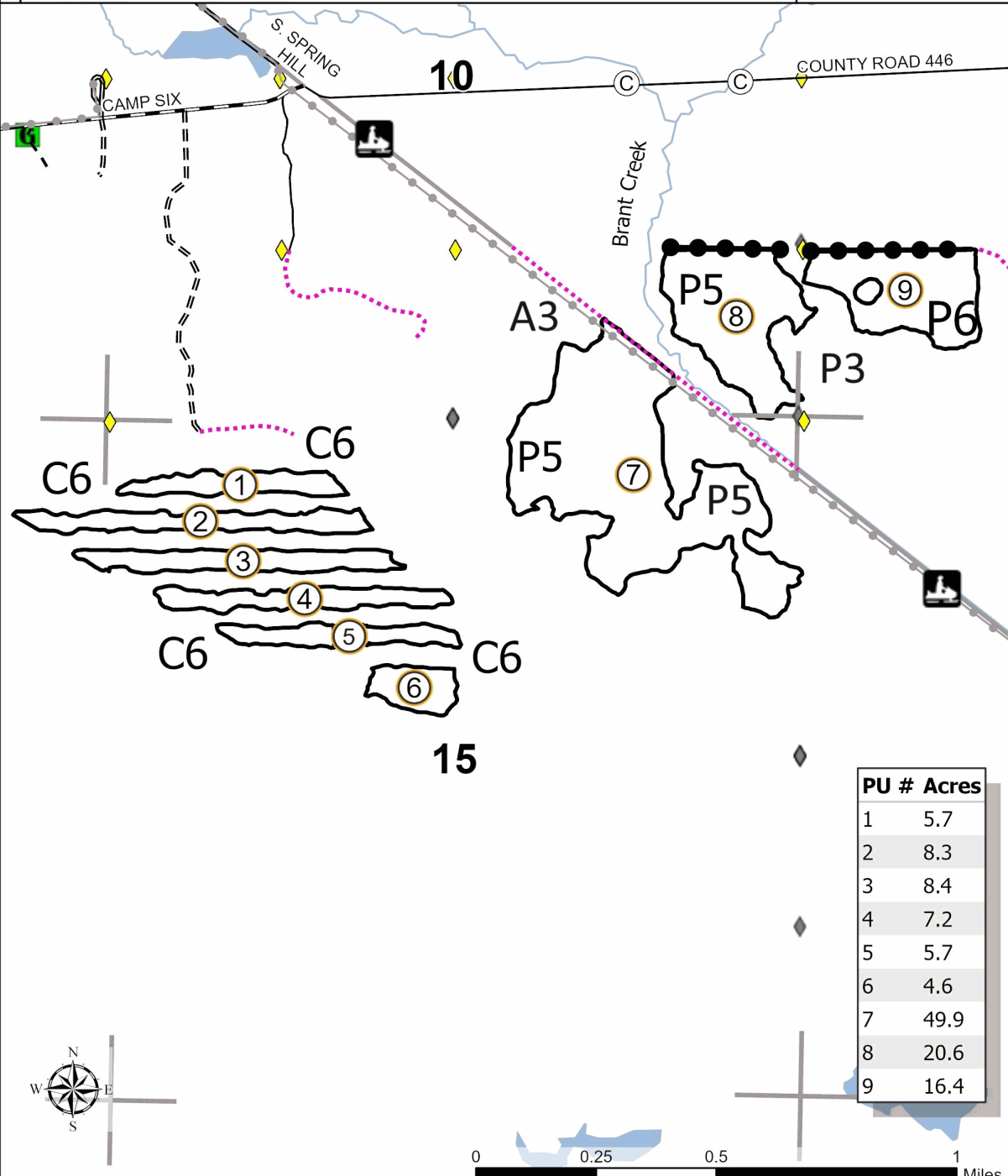
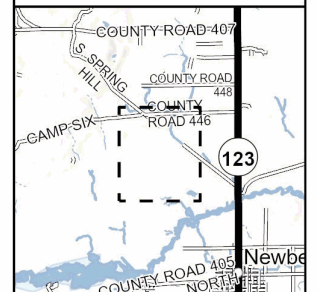
QR Code



#### Legend

- Against State (red)
- Private Boundary (blue)
- Recreational Trail
- Survey Grade Corner
- Field Grade Corner
- Gate
- MIRIS Section Corner
- Perennial River
- Lakes and Rivers
- Primary Forest Road
- Secondary Forest Road
- Forest Access Route
- Paved Road
- Gravel Road
- County Road - Seasonal
- Private Road
- Temporary Management Access
- Counties
- Culvert
- Trail Symbols
- Snowmobile Trails
- Section #

#### Locator Map



PU #	Acres
1	5.7
2	8.3
3	8.4
4	7.2
5	5.7
6	4.6
7	49.9
8	20.6
9	16.4

## TIMBER SALE INFORMATION

### Slow Slalom Mix (42-019-23)

T46N, R10W, SEC. 18; T46N, R10W, SEC. 7; T46N, R11W, SEC. 12; T46N, R11W, SEC. 13.  
Luce County (Advertised Price \$13,124.10)

SALE NOTE: Within Payment Unit(s) 1-4, harvesting is limited to the period of December 1 to April 1 because of wet, low ground within the Payment Units.

To provide and enhance snowshoe hare habitat, purchaser is to create two (2) long linear brush piles along the eastern side of Payment Units 1 and 2. See Sale Spec 5.2.4.6 for additional information.

The Silver Creek Trail is an ORV trail or route and is shown on the Timber Sale Map. See Sale Spec 5.2.39 for restrictions.

Care must be taken to minimize soil damage due to the wet soil types. Tracked equipment may be necessary.

A timber sale contract for this lump sum, sealed bid timber sale will be awarded to the responsible bidder offering the highest sealed bid price. All units of volume listed below were estimated using the Inventory Manager computer program and the new Michigan taper model. Bids must be at or above the following advertised price for each product and species:

<u>PRODUCTS &amp; SPECIES</u>	<u>ESTIMATED UNITS*</u>	<u>ADVERTISED PRICE</u>
Sawtimber		
N. White Cedar	51.5 MBF	\$ 19.00 / MBF
Paper Birch	0.6 MBF	\$ 44.00 / MBF
Red Maple	4.9 MBF	\$ 66.00 / MBF
Pulpwood		
Balsam Fir	186 Cords	\$ 9.85 / Cord
Hemlock	54 Cords	\$ 9.05 / Cord
Mixed Hardwood	293 Cords	\$ 11.90 / Cord
Mixed Spruce	528 Cords	\$ 6.85 / Cord
N. White Cedar	117 Cords	\$ 2.90 / Cord
Paper Birch	61 Cords	\$ 3.80 / Cord
Quaking Aspen	53 Cords	\$ 24.95 / Cord
Tamarack	3 Cords	\$ 1.35 / Cord
White Pine	24 Cords	\$ 19.75 / Cord

\* The total volume is statistically estimated within plus (+) or minus (-) 12.10 percent. There are an estimated 1,434 cords on this timber sale, plus or minus 174 cords at the 95% confidence level. The estimated units are final and not subject to adjustment. Prospective bidders are urged to examine this timber and to make their own estimates of quantity and quality.

### **BOND AND PAYMENT SCHEDULE:**

1. A bond in the amount of \$656.00 to insure faithful performance of the conditions of the contract will be deposited by the successful bidder within 21 days of the sale award.
2. Cutting in any sale or unit without the required advance payment would be considered a trespass.
3. Total payment must be paid in advance or according to the following schedule :
  - (a) Ten percent (10%) of the sale value must be paid within 21 days of the sale award.
  - (b) The 10% down payment will be credited towards the first unit cut.
  - (c) Payment for each of the following units must be made before cutting begins in that unit:
 

PAYMENT UNIT NUMBER	PERCENT OF TOTAL SALE VALUE
01	21.3%
02	30.7%
03	32.4%
04	15.6%
4. If no cutting takes place, the 10% down payment will not be refunded.
5. Operations on the contract issued will terminate on 06/30/2028.

### **SALE STATISTICS**

Volumes were calculated in cubic feet using the Michigan taper model. Cubic foot volume includes all wood inside bark for the product indicated. For display purposes, cubic feet were converted to cords and MBF using a simple conversion factor, e.g. 79 cubic feet per cord and 185 cubic feet per MBF. The cubic foot volumes are precise; the cords and MBF volumes are not. Cubic foot volume cannot be directly converted to cords or boards with precision.

## SALE VOLUMES

The total estimated sale volume may not equal the sum of the species/products due to the nature of statistical calculations associated with double sampling methodology.

VOLUME			STATISTICAL RANGE IN CORDS	
TOTAL CUBIC FEET	TOTAL CORDS	PERCENT ERROR	MINIMUM	MAXIMUM
113,319	1,434	12.10%	1,261	1,608

## VDU VOLUMES

A VDU is a Volume Determination Unit. Volumes and their associated statistics are calculated at the VDU level and summarized to the sale level. There is often a one to one relationship between a VDU and a Payment Unit, but not always, depending on the cruise design. Refer to the VDU TO PAYMENT UNIT table.

	VOLUME			RANGE IN CORDS	
VDU	TOTAL CUBIC FEET	TOTAL CORDS	PERCENT ERROR	MINIMUM	MAXIMUM
49	67,591	856	16.87%	711	1,000
54	31,330	397	20.16%	317	477
59	14,399	182	28.50%	130	234
<b>TOTAL:</b>	<b>113,319</b>	<b>1,434</b>		<b>1,158</b>	<b>1,711</b>

## VDU TO PAYMENT UNIT

When a VDU is associated with more than one Payment Unit (PU), the VDU volumes are assigned to the PU based on acres of the VDU within the PU.

VDU	VDU ACRES	PU	PU ACRES
49	57.9	1	23.7
		2	34.2
54	36.7	3	36.7
59	20.3	4	20.3
<b>TOTAL:</b>	<b>114.9</b>		<b>114.9</b>

**DESCRIPTION OF TIMBER BY PAYMENT UNIT (PU)**

PU	MARKET GROUP	PRODUCT	QUANTITY	UNIT	ACRES	ADVERTISE PRICE
1	N. White Cedar	Sawtimber	20.7	MBF	23.7	\$2,789.70
	Paper Birch		0.2	MBF		
	Red Maple		0.5	MBF		
	Balsam Fir	Pulpwood	7	Cords		
	Hemlock		22	Cords		
	<i>Hemlock</i>	<i>Sawtimber</i>	0.5	<i>MBF</i>		
	<i>Hemlock</i>	<i>Pulpwood</i>	21	<i>Cords</i>		
	Mixed Hardwood		36	Cords		
	<i>Red Maple</i>		29	<i>Cords</i>		
	<i>Yellow Birch</i>		7	<i>Cords</i>		
	Mixed Spruce		178	Cords		
	<i>Black Spruce</i>		178	<i>Cords</i>		
	N. White Cedar		43	Cords		
	Paper Birch		11	Cords		
	Quaking Aspen		3	Cords		
	White Pine		10	Cords		
	<i>White Pine</i>	<i>Sawtimber</i>	0.6	<i>MBF</i>		
<i>White Pine</i>	<i>Pulpwood</i>	9	<i>Cords</i>			
2	N. White Cedar	Sawtimber	29.9	MBF	34.2	\$4,028.95
	Paper Birch		0.4	MBF		
	Red Maple		0.8	MBF		
	Balsam Fir	Pulpwood	10	Cords		
	Hemlock		32	Cords		
	<i>Hemlock</i>	<i>Sawtimber</i>	0.6	<i>MBF</i>		
	<i>Hemlock</i>	<i>Pulpwood</i>	31	<i>Cords</i>		
	Mixed Hardwood		51	Cords		
	<i>Red Maple</i>		41	<i>Cords</i>		
	<i>Yellow Birch</i>		10	<i>Cords</i>		
	Mixed Spruce		256	Cords		
	<i>Black Spruce</i>		256	<i>Cords</i>		
	N. White Cedar		62	Cords		
	Paper Birch		16	Cords		
	Quaking Aspen		5	Cords		
	White Pine		14	Cords		
	<i>White Pine</i>	<i>Sawtimber</i>	0.8	<i>MBF</i>		
<i>White Pine</i>	<i>Pulpwood</i>	12	<i>Cords</i>			
3	N. White Cedar	Sawtimber	0.9	MBF	36.7	\$4,255.55
	Red Maple		3.6	MBF		
	Balsam Fir	Pulpwood	91	Cords		
	Mixed Hardwood		134	Cords		
	<i>American Elm</i>		1	<i>Cords</i>		
	<i>Red Maple</i>		133	<i>Cords</i>		
	Mixed Spruce		81	Cords		
	<i>Black Spruce</i>		73	<i>Cords</i>		
	<i>White Spruce</i>		8	<i>Cords</i>		
	N. White Cedar		12	Cords		
	Paper Birch		31	Cords		
	Quaking Aspen		32	Cords		
	Tamarack		3	Cords		
4	Balsam Fir	Pulpwood	78	Cords	20.3	\$2,049.90
	Mixed Hardwood		72	Cords		
	<i>Black Ash</i>		4	<i>Cords</i>		
	<i>Red Maple</i>		68	<i>Cords</i>		
	Mixed Spruce		13	Cords		
	<i>Black Spruce</i>		13	<i>Cords</i>		
	Paper Birch		3	Cords		

**DESCRIPTION OF TIMBER BY PAYMENT UNIT (PU), CON'T**

PU	MARKET GROUP	PRODUCT	QUANTITY	UNIT	ACRES	ADVERTISE PRICE
4 con't	Quaking Aspen	Pulpwood	13	Cords		
TOTAL:			57.0	MBF		
TOTAL:			1,319	Cords		



# Sale Specific Conditions & Requirements

**Sale Name: Slow Slalom Mix**

**Sale Number: 42-019-23 Seq#: 2**

## 1 - Sale Area

### 1.2 - Boundaries

#### 1.2.1 - Painted boundaries (9/19)

The sale boundary and Payment Unit boundaries are marked and identified by red and yellow paint. Exterior sale boundary lines against state are marked with red paint. Interior Payment Unit boundaries are marked with yellow paint. Retention patches are marked with red paint; no harvesting activities may occur within these areas. The painted boundary line trees are not Included Timber and are to be protected unless marked with orange paint. Yellow painted trees designating an interior Payment Unit boundary are only to be cut when all surrounding Payment Units have been paid.

## 2 - Timber Specifications

### 2.1 - Included Timber

#### 2.1.1 - Clearcut unit(s) with unmerchantable trees (6/14)

Within Payment Unit(s) 1-4, cut all trees that are two (2) inches or more at DBH, with the following exceptions:

- Within Payment Unit(s) 1 & 2, do not cut white pine or hemlock over 18 inches at DBH.
- Within Payment Unit(s) 3 & 4, do not cut any white pine or hemlock.

Special protection areas identified in accordance with condition 3.4.3, within clearcutting unit boundaries, are not Included Timber and are to be protected.

## 3 - Payments

### 3.4 - Damaged Timber

#### 3.4.3 - Special Protection Areas (8/11)

The Purchaser shall protect special protection areas from damage by the Purchaser's operations. Special protection areas are marked with a red boundary line. The Purchaser shall not cut live or dead trees within special protection areas. If the Purchaser's operations have cut or damaged special protection areas through carelessness, the Purchaser shall pay double stumpage as fixed, agreed and liquidated damages for each acre or part thereof cut or damaged. Such payment does not constitute ownership of the undesignated timber.

## 4 - Transportation

### 4.1 - Construction

#### 4.1.4 - Timber removed for construction (3/23)

Trees cut or damaged in the process of pre-approved road, landing or skid trail construction will be decked in an area separate from other Designated Timber and not removed until measured by the sale administrator. Payment will be made at contract prices or average prices, if not on the contract.

#### 4.1.6 - Road construction (1/09)

Construction of new roads or improvements of existing roads shall be done in such a way as to minimize the environmental and visual impacts. Merchantable trees shall be cut and utilized unless otherwise directed. Non-merchantable trees shall be severed and laid flat on the ground. Slash shall be scattered, and not left in windrows and kept a minimum of 10 feet back from the road edge. Stumps shall be set upright, not left on edge, and be moved at least 10 feet away from the road edge. Disturbed soil shall be feathered into the woods and not left in berms or windrows.

#### 4.1.7 - Road closure (10/11)

All new roads built into the sale must be blocked to vehicle traffic upon completion of the sale. Overgrown roads that are reopened shall be considered new roads. All stumps from road building and landing construction must be reserved to block any newly constructed roads upon completion of the sale. These stumps must be scattered along the road system to prohibit vehicular movement. Contact the Sale Administrator for specific details of design and placement.

## 4.2 - Maintenance

### 4.2.4 - Grading (10/16)

For completion of the sale, state forest roads must be graded. In general, this will require a road grader or bulldozer to shape up the roads after forest products have been hauled off site. This includes cleaning of drainage areas, grading, crowning and filling with gravel, if necessary. The grading equipment to be used must be approved by the Unit Manager or his/her representative.

### 4.2.5 - Two wheel drive condition (2/04)

All existing trail roads on and adjacent to the sale area must be passable by two-wheel drive traffic for the duration of the sale.

## 5 - Operations

### 5.2 - Conduct of Operations

#### 5.2.2 - Hazard Trees/Snags

##### 5.2.2.1 - Den trees (10/16)

Obvious hollow and/or den trees shall be protected and left standing unless they are a safety hazard.

#### 5.2.3 - Operating Restrictions

##### 5.2.3.1 - Operating restrictions (9/11)

Within Payment Unit(s) 1-4, unless changed by written agreement, cutting and skidding are limited to the period of December 1 to April 1. This restriction is because of wet, low ground within the Payment Units.

#### 5.2.4 - Dead and Down Creation

##### 5.2.4.6 - Dead and down creation, other (9/09)

To provide and enhance snowshoe hare habitat, Purchaser is to create two (2) long, linear brush piles along the eastern side of Payment Units 1 & 2. These piles should be a minimum of 50 feet in length, using forest products such as stumps and larger unmerchantable woody material (from within the sale boundaries where available), formed into a line as a base. Place tops onto the base along its length to construct a linear pile 6 feet in height. The brush pile should be a jumble of logging slash piled on top of the base. If no unmerchantable products are available for a base, use whole trees 8–16 inches at DBH. Place brush piles perpendicular to the edge of the harvested stand, reaching into the adjacent stand at least 20 feet.

##### 5.2.16 - Equipment recommended (11/18)

Tracked equipment may be necessary. This is because of wet soil types.

##### 5.2.32 - Decking/landing restoration (9/13)

All decking and landing areas must have the surface area restored to a condition equal to or better than before. This is to ensure the proper regeneration of the stand. Wood debris, chips and "cookies" from trimmings must be removed or scattered away from landing and loading areas and may not be windrowed on the edge.

##### 5.2.39 - ORV trail/route protection (4/18)

The Silver Creek Trail is an ORV trail or route and is shown on the Timber Sale Map. Do not cut trees or damage posts with yellow ORV markers.

### 5.4 - Soil Protection

#### 5.4.5 - Soil caution (11/04)

Care must be taken to minimize soil damage due to the wet soil types.

### 5.8 - Protection of Endangered Species

#### 5.8.5 - Protection of raptor nests (3/13)

All trees with raptor nests will be protected if found during harvesting operations. Notification will be made to the Unit Manager or his/her representative who will notify the Wildlife Biologist so an on-site evaluation and recommendation can be made, if necessary.

## **7 - Other Conditions**

### 7.2 - Extensions

#### 7.2.5 - Weather related extension (1/13)

If weather conditions during the operating period of this contract prevent harvesting, this sale may qualify for a weather related extension. If approved, the normal extension fee would be waived. To qualify, there must be a documented attempt each year to harvest in the difficult portion of the sale.



### TIMBER SALE MAP

This information provided by authority of Part 525, 1994 PA 451, as amended.

Sale Number

42-019-23

Date

10/11/2023

Forest Management Unit  
Newberry Mgt Unit

County  
Luce

Mapped By: L. Livermore  
Cruised By: Kriehn, Livermore, Porteous

Scale  
1:20,000

Page  
1

Of  
1

Township 46N Range 10W / 11W Section(s) and Subdivision(s) Sec. 12 SENW,SWNE,NESW,SE; Sec. 13 NENE; Sec. 18 NWNW; Sec. 7 SWSW;

#### Cover Type

A = Aspen	J = Jack Pine	O = Oak	U = Upland Brush
B = Paper Birch	K = Rock	P = Lowland Poplar	UM = Upland Mix Forest
C = Cedar	L = Lowland Brush	Q = Mixed Swamp Conifer	V = Bog or Marsh
D = Treed Bog	LM = Lowland Mix Forest	R = Red Pine	W = White Pine
E = Swamp Hardwoods	M = Maple, Beech, Birch	S = Black Spruce	X = Non Stocked
F = Spruce/Fir	MC = Mixed Conifer	T = Tamarack	Y = Sand
G = Grass	MD = Mixed Deciduous	Z = Water	
H = Hemlock	N = Marsh		

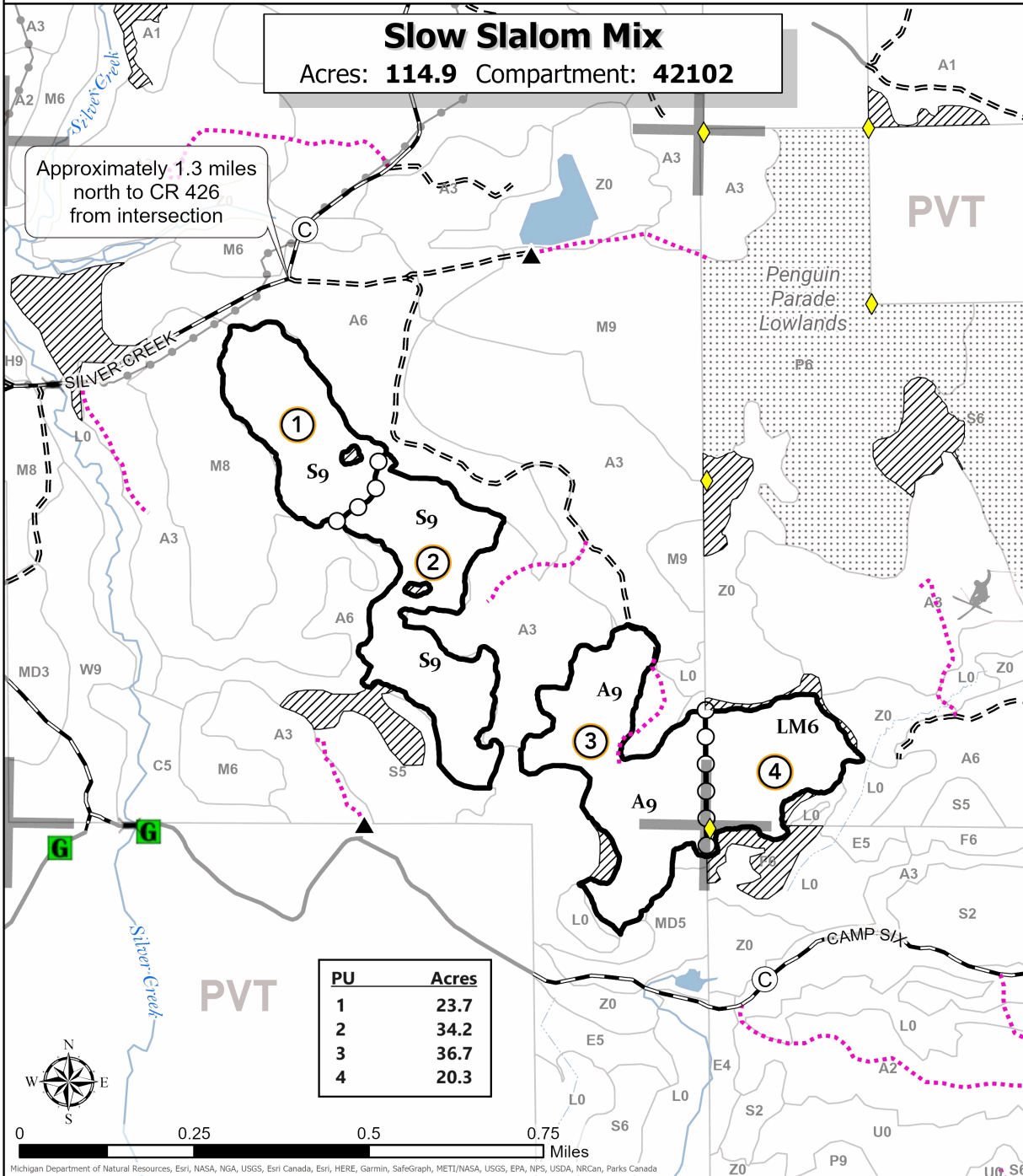
#### Density

0 = Non Stocked	5 = Pole Timber Medium
1 = Seedling Sapling Poor	6 = Pole Timber Well
2 = Seedling Sapling Medium	7 = Saw Timber Poor
3 = Seedling Sapling Well	8 = Saw Timber Medium
4 = Pole Timber Poor	9 = Saw Timber Well

## Slow Slalom Mix

Acres: **114.9** Compartment: **42102**

Approximately 1.3 miles north to CR 426 from intersection



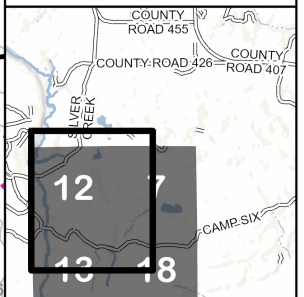
#### QR Code



#### Legend

- Against State (Red)
- Payment Unit (Yellow)
- Retention Area
- Survey Grade Corner
- Berm
- Gate
- MIRIS Section Corner
- Intermittent Stream
- Perennial River
- Lakes and Rivers
- Stand
- Culvert
- Bridge
- Recreational Trail
- Nearby Timber Sale
- Primary Forest Road
- Forest Access Route
- Gravel Road
- Private Road
- Administrative Access Only

#### Locator Map (1:200,000)



PU	Acres
1	23.7
2	34.2
3	36.7
4	20.3



Brant Creek Mix (42-013-23)  
T46N, R10W, SEC. 10; T46N, R10W, SEC. 11; T46N, R10W, SEC. 15; T46N,

In response to the notice of sale to be held 3:00 p.m. (local time) on June 27, 2024, I am hereby submitting my sealed bid ( firm offer) for the following forest products to be cut. Bids for individual species must be at or above the advertised price. All non-responsive bid forms may be rejected.

<u>PRODUCTS &amp; SPECIES</u>	<u>ESTIMATED VOLUME*</u>	<u>ADVERTISED PRICE</u>	<u>BID PRICE/UNIT</u>
<b>Sawtimber</b>			
Paper Birch	1.5 MBF	\$ 44.00/MBF	\$ _____
<b>Pulpwood</b>			
Balsam Fir	63 Cords	\$ 9.85/Cord	\$ _____
Mixed Aspen	1,057 Cords	\$ 24.95/Cord	\$ _____
Mixed Hardwood	131 Cords	\$ 11.90/Cord	\$ _____
Mixed Spruce	199 Cords	\$ 6.85/Cord	\$ _____
N. White Cedar	448 Cords	\$ 2.90/Cord	\$ _____
Paper Birch	38 Cords	\$ 3.80/Cord	\$ _____
Tamarack	53 Cords	\$ 1.35/Cord	\$ _____

\*The volumes are statistically estimated within plus (+) or minus (-) 18.20 percent at 95% confidence level. These estimated volumes are final and not subject to adjustment. Prospective bidders are urged to examine this timber and to make their own estimates of quantity and quality.

I understand that any or all bids may be rejected. All bids must be signed and all bid items must be bid or the bid form may be rejected. I also understand that consideration and awarding a contract will be based upon my past performance and ability to complete the contract based upon equipment and staffing subject to my control .

FEDERAL ID: \_\_\_\_ - \_\_\_\_ - \_\_\_\_ or SOCIAL SECURITY NUMBER: \_\_\_\_ - \_\_\_\_ - \_\_\_\_

Company or individual bidding: \_\_\_\_\_

Company representative's name: \_\_\_\_\_

Address: \_\_\_\_\_

City: \_\_\_\_\_ State: \_\_\_\_\_ Zip: \_\_\_\_\_

IF AVAILABLE, PLEASE PLACE THE PERSONALIZED LABEL FROM YOUR PROSPECTUS IN THE ABOVE BOX.

Individual or company representative's signature: \_\_\_\_\_ Date: \_\_\_\_\_

Phone number : \_\_\_\_\_ Email (optional): \_\_\_\_\_

**THE WINNING BIDDER MUST COMPLETE THE VERIFICATION OF WORKER'S DISABILITY COMPENSATION ACT COMPLIANCE (ON REVERSE SIDE IF DOUBLE SIDED) WITHIN 21 DAYS OF SALE AWARD DATE**



<b>FOR DEPARTMENT USE ONLY</b>
Sale Number (XX – XXX – XX – XX)
Forest Management Unit:

## TIMBER SALE VERIFICATION OF WORKER'S DISABILITY COMPENSATION ACT COMPLIANCE

*As required by Act 317, P.A. 1969 (Worker's Compensation) and  
Part 5 of Act 451 of 1994, as amended.*

### VERIFICATION OF WORKER'S DISABILITY COMPENSATION ACT COMPLIANCE

- This verification must be completed and submitted within 21 days of contract award and prior to the issuance of the timber sale contract.
- In addition, if boxes 2B or 2C are checked, then Notice of Exclusion or Certificate of Insurance must be submitted within twenty-one (21) days of the contract award and prior to the issuance of the timber sale contract.
- All information must be typed or printed except for written signatures.

Please Check Appropriate Categories:

1. My business is organized as (you **must** check one of the boxes below):
  - A.  Sole Proprietorship (individual)
  - B.  Partnership
  - C.  Corporation
  
2. You **must** check one of the boxes below:
  - A.  I certify my business is a sole proprietorship and it has no employees but the sole proprietor. I am not subject to the Worker's Compensation Laws.
  - B.  I certify my business has satisfied its obligation to the Worker's Compensation Act through the use of an approved Notice of Exclusion (BWC-337, Rev. 5/96). I will provide a copy of the Notice of Exclusion within 21 days of the contract award. (For questions or a copy of the BWC-337, please call the Worker's Compensation Bureau at 517-322-1195).
  - C.  I certify my business has a Worker's Compensation Policy. I will provide an original Certificate of Insurance within twenty-one (21) days of the contract award.
  
3. If you have checked item 2(A) or 2(B), you **must** indicate the number of **both** full-time and part-time employees, other than yourself, including family members and active partners (if none, you must enter "0").

\_\_\_\_\_ Full-time Employees

\_\_\_\_\_ Part-time Employees

Name of Business		Federal ID (or) Social Security No.	
Address		Telephone (       )	
City	State	ZIP	

*I hereby certify that the above information is true and correct. I agree to notify the Michigan DNR of any changes that occur in factors affecting my coverage during any of my present and future operations.*

\_\_\_\_\_  
Signature of Owner or Authorized Representative

\_\_\_\_\_  
Title

\_\_\_\_\_  
Date

**Please complete the "SEALED BID" information on the next page**

Spring Hill Cedar (42-012-23)

T46N, R10W, SEC. 10; T46N, R10W, SEC. 3; T46N, R10W, SEC. 4; Luce COUNTY

In response to the notice of sale to be held 3:00 p.m. (local time) on June 27, 2024, I am hereby submitting my sealed bid ( firm offer) for the following forest products to be cut. Bids for individual species must be at or above the advertised price. All non-responsive bid forms may be rejected.

<u>PRODUCTS &amp; SPECIES</u>	<u>ESTIMATED VOLUME*</u>	<u>ADVERTISED PRICE</u>	<u>BID PRICE/UNIT</u>
<b>Sawtimber</b>			
Paper Birch	14.9 MBF	\$ 47.00/MBF	\$ _____
Yellow Birch	6.2 MBF	\$ 87.00/MBF	\$ _____
<b>Pulpwood</b>			
Balsam Fir	40 Cords	\$ 10.60/Cord	\$ _____
Mixed Aspen	24 Cords	\$ 26.85/Cord	\$ _____
Mixed Hardwood	124 Cords	\$ 12.80/Cord	\$ _____
N. White Cedar	884 Cords	\$ 3.10/Cord	\$ _____
Paper Birch	50 Cords	\$ 4.10/Cord	\$ _____
White Spruce	34 Cords	\$ 7.40/Cord	\$ _____

\*The volumes are statistically estimated within plus (+) or minus (-) 15.69 percent at 95% confidence level. These estimated volumes are final and not subject to adjustment. Prospective bidders are urged to examine this timber and to make their own estimates of quantity and quality.

I understand that any or all bids may be rejected. All bids must be signed and all bid items must be bid or the bid form may be rejected. I also understand that consideration and awarding a contract will be based upon my past performance and ability to complete the contract based upon equipment and staffing subject to my control.

FEDERAL ID: \_\_\_\_\_ - \_\_\_\_\_ or SOCIAL SECURITY NUMBER: \_\_\_\_\_ - \_\_\_\_\_ - \_\_\_\_\_

Company or individual bidding: \_\_\_\_\_

Company representative's name: \_\_\_\_\_

Address: \_\_\_\_\_

City: \_\_\_\_\_ State: \_\_\_\_\_ Zip: \_\_\_\_\_

IF AVAILABLE, PLEASE PLACE THE PERSONALIZED LABEL FROM YOUR PROSPECTUS IN THE ABOVE BOX.

Individual or company representative's signature: \_\_\_\_\_ Date: \_\_\_\_\_

Phone number : \_\_\_\_\_ Email (optional): \_\_\_\_\_

**THE WINNING BIDDER MUST COMPLETE THE VERIFICATION OF WORKER'S DISABILITY COMPENSATION ACT COMPLIANCE (ON REVERSE SIDE IF DOUBLE SIDED) WITHIN 21 DAYS OF SALE AWARD DATE**



<b>FOR DEPARTMENT USE ONLY</b>
Sale Number (XX - XXX - XX - XX)
Forest Management Unit:

## TIMBER SALE VERIFICATION OF WORKER'S DISABILITY COMPENSATION ACT COMPLIANCE

*As required by Act 317, P.A. 1969 (Worker's Compensation) and  
Part 5 of Act 451 of 1994, as amended.*

### VERIFICATION OF WORKER'S DISABILITY COMPENSATION ACT COMPLIANCE

- This verification must be completed and submitted within 21 days of contract award and prior to the issuance of the timber sale contract.
- In addition, if boxes 2B or 2C are checked, then Notice of Exclusion or Certificate of Insurance must be submitted within twenty-one (21) days of the contract award and prior to the issuance of the timber sale contract.
- All information must be typed or printed except for written signatures.

Please Check Appropriate Categories:

1. My business is organized as (you **must** check one of the boxes below):
  - A.  Sole Proprietorship (individual)
  - B.  Partnership
  - C.  Corporation
  
2. You **must** check one of the boxes below:
  - A.  I certify my business is a sole proprietorship and it has no employees but the sole proprietor. I am not subject to the Worker's Compensation Laws.
  - B.  I certify my business has satisfied its obligation to the Worker's Compensation Act through the use of an approved Notice of Exclusion (BWC-337, Rev. 5/96). I will provide a copy of the Notice of Exclusion within 21 days of the contract award. (For questions or a copy of the BWC-337, please call the Worker's Compensation Bureau at 517-322-1195).
  - C.  I certify my business has a Worker's Compensation Policy. I will provide an original Certificate of Insurance within twenty-one (21) days of the contract award.
  
3. If you have checked item 2(A) or 2(B), you **must** indicate the number of **both** full-time and part-time employees, other than yourself, including family members and active partners (if none, you must enter "0").

\_\_\_\_\_ Full-time Employees

\_\_\_\_\_ Part-time Employees

Name of Business		Federal ID (or) Social Security No.	
Address		Telephone (       )	
City	State	ZIP	

*I hereby certify that the above information is true and correct. I agree to notify the Michigan DNR of any changes that occur in factors affecting my coverage during any of my present and future operations.*

\_\_\_\_\_  
Signature of Owner or Authorized Representative

\_\_\_\_\_  
Title

\_\_\_\_\_  
Date

**Please complete the "SEALED BID" information on the next page**



Slow Slalom Mix (42-019-23)

T46N, R10W, SEC. 18; T46N, R10W, SEC. 7; T46N, R11W, SEC. 12; T46N, R11W,

In response to the notice of sale to be held 3:00 p.m. (local time) on June 27, 2024, I am hereby submitting my sealed bid ( firm offer) for the following forest products to be cut. Bids for individual species must be at or above the advertised price. All non-responsive bid forms may be rejected.

<u>PRODUCTS &amp; SPECIES</u>	<u>ESTIMATED VOLUME*</u>	<u>ADVERTISED PRICE</u>	<u>BID PRICE/UNIT</u>
<b>Sawtimber</b>			
N. White Cedar	51.5 MBF	\$ 19.00/MBF	\$ _____
Paper Birch	0.6 MBF	\$ 44.00/MBF	\$ _____
Red Maple	4.9 MBF	\$ 66.00/MBF	\$ _____
<b>Pulpwood</b>			
Balsam Fir	186 Cords	\$ 9.85/Cord	\$ _____
Hemlock	54 Cords	\$ 9.05/Cord	\$ _____
Mixed Hardwood	293 Cords	\$ 11.90/Cord	\$ _____
Mixed Spruce	528 Cords	\$ 6.85/Cord	\$ _____
N. White Cedar	117 Cords	\$ 2.90/Cord	\$ _____
Paper Birch	61 Cords	\$ 3.80/Cord	\$ _____
Quaking Aspen	53 Cords	\$ 24.95/Cord	\$ _____
Tamarack	3 Cords	\$ 1.35/Cord	\$ _____
White Pine	24 Cords	\$ 19.75/Cord	\$ _____

\*The volumes are statistically estimated within plus (+) or minus (-) 12.10 percent at 95% confidence level. These estimated volumes are final and not subject to adjustment. Prospective bidders are urged to examine this timber and to make their own estimates of quantity and quality.

I understand that any or all bids may be rejected. All bids must be signed and all bid items must be bid or the bid form may be rejected. I also understand that consideration and awarding a contract will be based upon my past performance and ability to complete the contract based upon equipment and staffing subject to my control.

FEDERAL ID: \_\_\_\_ - \_\_\_\_ - \_\_\_\_ or SOCIAL SECURITY NUMBER: \_\_\_\_ - \_\_\_\_ - \_\_\_\_

Company or individual bidding: \_\_\_\_\_

Company representative's name: \_\_\_\_\_

Address: \_\_\_\_\_

City: \_\_\_\_\_ State: \_\_\_\_\_ Zip: \_\_\_\_\_

IF AVAILABLE, PLEASE PLACE THE PERSONALIZED LABEL FROM YOUR PROSPECTUS IN THE ABOVE BOX.

Individual or company representative's signature: \_\_\_\_\_ Date: \_\_\_\_\_

Phone number : \_\_\_\_\_ Email (optional): \_\_\_\_\_

**THE WINNING BIDDER MUST COMPLETE THE VERIFICATION OF WORKER'S DISABILITY COMPENSATION ACT COMPLIANCE (ON REVERSE SIDE IF DOUBLE SIDED) WITHIN 21 DAYS OF SALE AWARD DATE**

