



**DEPARTMENT OF NATURAL RESOURCES  
STATE OF MICHIGAN  
TIMBER SALE PROSPECTUS #7393**

SCHEDULED SALE DATE AND TIME: 10:00 a.m. (local time) on July 18, 2024.

LOCATION: GLADWIN MGMT UNIT, 801 NORTH SILVERLEAF, GLADWIN, MI 48624.

PROSPECTUS NOTE: The bidder is advised to inspect the sale area and review the location, estimated volumes, operating costs and contract terms of proposed sales. Please be aware that some landowners may request 60 days or more notice for access across their land.

Notice is hereby given that bids will be received by the Unit Manager, GLADWIN MANAGEMENT UNIT, for certain timber on the following described lands:

End of the world hardwoods (73-003-23) / T15N, R03W, SEC. 26, SWNW,SWSE.

T15N, R03W, SEC. 35, SENW,NE.

T15N, R03W, SEC. 36, SWNW.

Isabella County, Advertised Price \$91,083.15, 117.6 Acres, Hardwood, Aspen.

SALE NOTE: The forest road access for Payment Units 1 & 2 is wet & will need minor road work.

Castor Wilds (73-011-23) / T15N, R01W, SEC. 19, S1/2SE.

T15N, R01W, SEC. 29, W1/2SW.

T15N, R01W, SEC. 30, N1/2SW,SESW,SE.

T15N, R02W, SEC. 24, NESE,S1/2SE.

Midland County, Advertised Price \$78,028.40, 148.0 Acres, Hardwood, Aspen.

SALE NOTE: Difficult access for Payment Units 4-6. New temporary road constructions required across wet ground, intermittent drainages, and narrow ridges. Approximately 5-10 culvert installs will be required. Culverts will be removed upon sale completion. Dead oak throughout the Sale Area may be cut and decked separately to be scaled by the Sale Administrator.

Teed Up Mix (73-012-23) / T15N, R01W, SEC. 16, SWNW,W1/2SW.

T15N, R01W, SEC. 17, N1/2SE,SESE.

T15N, R01W, SEC. 20, NENE.

T15N, R01W, SEC. 21, NWNW.

Midland County, Advertised Price \$26,289.45, 60.5 Acres, Hardwood, White Pine.

SALE NOTE: Temporary driveway permit required to access Payment Units 1 and 2 (see specs 4.1.8 and 4.1.11). A large culvert will be required. Culvert will be removed at the end of the sale.

## BID INSTRUCTIONS (VER. 10/10/2022):

### 1. Scheduled Bid Location, Date, and Time (2/11)

Bids must be received by the Unit Manager, GLADWIN OFFICE, 801 NORTH SILVERLEAF, GLADWIN, MI 48624, no later than 10:00 a.m. (local time) on July 18, 2024. For further information concerning this sale, contact Blair Tweedale at 989-426-9205 extension 7640.

### 2. Bidder's Qualifications (10/22)

If all or part of a timber sale was prepared by a private contractor, the contractor and that contractor's company are not permitted to bid on the timber sale. A person must be 18 years of age or older to purchase timber. Permanent employees of the Department of Natural Resources or members of their immediate household may not bid. Former employees, in the permanent or seasonal class, may not bid until 3 months after the last day of active duty. Bids will not be accepted from individuals or companies appearing on the DNR/FRD No-Bid List. This list contains the names of purchasers who previously failed to execute a contract within 21-days or who have a history of poor performance.

### 3. Preparation of Sealed Bids (5/16)

Bid Forms may be completed online thru Michigan DNR Timber Sale Online Bidding (OLB) at [www.michigan.gov/timberbidding](http://www.michigan.gov/timberbidding) or by completing the hardcopy Bid Form found in the Timber Sale Prospectus. Hardcopy Bid Forms shall be manually signed in ink. Registration in OLB is considered your 'signature' for all bids submitted thru that system. Bid prices must be entered for each species and product in the Bid Price column for all material subject to bidding and all fill-in blanks must be completed. If erasures or other changes appear on the hardcopy Bid Form, each erasure or change must be initialed by the person signing the bid.

### 4. Submission of Sealed Bids (5/16)

Bid forms may be obtained from the Unit Manager or thru OLB. Bids may be submitted hardcopy or thru OLB. All hardcopy bids must be submitted on the bid form and in an envelope clearly identified as described in this section. NOTE: Only one bid form per bid envelope. Sealed bids must be submitted to the Unit office designated in the prospectus and must be submitted at or prior to the time established in the prospectus. The envelope should show on the outside (a) the sale name or number and (b) the date and time of bid opening, as shown in the prospectus. Bids received after the time specified in the sale prospectus are late bids and will be rejected.

It is possible for a bidder to submit multiple bids on a single sale. For example, a bid may be submitted hardcopy and a bid may be submitted thru OLB. Or, two bidders from the same company could both submit bids on the same sale. If this were to happen, the State would accept all bids received and award the contract accordingly. All bidding and contractual requirements would apply to all bids received.

### 5. Public Opening of Sealed Bids (7/16)

If conditions permit, the sealed bids will be publicly opened and posted at the time and place set in the prospectus.

If a bidder, present at a bid opening, has submitted bids on more than one sale, that bidder may withdraw their unopened bid envelopes or announce the withdrawal of their online bid after being declared the successful bidder on one sale.

### 6. Award of Contract (1/11)

Award of the contract will be made to the Bidder whose bid, conforming to the prospectus, is most advantageous to the State of Michigan on the basis of total value at rates bid for the estimated quantities. The State reserves the right to reject any bid or waive any minor irregularity in bids received. A written award mailed (or otherwise furnished) to the successful Bidder shall be deemed to result in a binding contract without further action by either party.

### 7. Down Payment (1/11)

The Bidder to whom award is made must make a down payment within 21 days of the sale award. The amount of the down payment will be calculated as shown in the Bond and Payment Schedule of this prospectus. Only cash may be used to meet this requirement.

### 8. Performance Security (1/11)

As guarantee of faithful performance, a cash bond, certificate of deposit, surety bond or irrevocable letter of credit (LOC) is required within 21 days of the sale award. The amount of the performance security is shown in the Bond and

Payment Schedule of this prospectus. If an LOC or surety is used, the coverage must extend for at least 6 months beyond the contract expiration.

#### 9. Worker's Compensation (10/22)

Purchaser shall obtain worker's compensation insurance to cover claims under Michigan's Worker's Disability Compensation Act of 1969 or similar employee benefit act of any other state applicable to an employee. Verification of Worker's Disability Compensation Act Compliance must be completed and submitted within 21 days of contract award and prior to the issuance of the timber sale contract. In addition, if applicable, Notice of Exclusion or Certificate of Insurance must also be submitted.

#### 10. Timber Sale Contract (10/22)

Additional conditions and requirements common to all timber sales are listed on the timber sale contract (R4031) and are available on line at [www.michigan.gov/timber](http://www.michigan.gov/timber). Contact the Unit Manager for additional information or a sample contract. Within 21 days of the date of the award letter, the bidder must sign the contract and provide the required down payment, performance security, and verification of worker's disability compensation. The down payment and performance security shall be in accordance with the provisions of the timber sale contract, in the sums stated in this prospectus. If these actions are not taken, then the Bidder, the Bidder's corporation, and the corporation's principals may not be permitted to bid on State timber sales for a period of 3 months after the first offense, 6 months after the second offense, and 1 year after the third offense. An offense will only be counted against the Bidder for 5 years. In addition, the Bidder certifies that if awarded this contract, the Bidder will complete the timber sale contract in accordance with its terms and any modifications thereof including requirements to purchase, cut, and remove the included timber by the expiration date.

Payment Unit values in the State Forest Timber Sale Contract are calculated based on the advertised value of the Payment Unit as a percentage of the total advertised value of the contract. The advertised value of each Payment Unit is given in the Description of Timber by Payment Unit table on the Timber Sale Information page. For example, if the value of Payment Unit 1 is advertised as \$1,500 and the total Timber Sale value is advertised as \$10,000, the contract price for Payment Unit 1 will be 15% of the total bid price ( $\$1,500/\$10,000 * 100$ ).

#### 11. Disclaimer of Estimates and Bidder's Warranty of Inspection (10/22)

Before submitting this bid, the Bidder is advised and cautioned to inspect the sale area, review the requirements of the sale contract, and take other steps as may be reasonably necessary to ascertain the location, estimated volumes, construction estimates, and operating costs of the proposed sale. Failure to do so will not relieve the Bidder from responsibility for completing the contract.

The Bidder warrants that this bid is submitted solely on the basis of the Bidder's examination and inspection of the quality and quantity of the timber offered for sale and the Bidder's opinion of the value thereof and the costs of recovery. No reliance should be placed on the State of Michigan's estimates of timber quality, quantity or costs of recovery. Bidder further acknowledges that the State of Michigan: (i) expressly disclaims any warranty of fitness of timber for any purpose; (ii) offers this timber as is without any warranty of quality (merchantability) or quantity and (iii) expressly disclaims any warranty as to the quantity or quality of timber sold.

#### 12. Certification and Chain-of-Custody (10/22)

Unless otherwise indicated in the contract under section 7 – Other Conditions of the Sale Specific Conditions & Requirements, the area encompassed by this timber sale is certified to the standards of the Forest Stewardship Council (FSC) - Certificate #SCS-FM/COC-00090N and the Sustainable Forestry Initiative (SFI) - Certificate #NSF-SFIS-5Y031-SF5. Forest products from this sale may be delivered to the mill as "FSC 100% and / or SFI certified" as long as the contractor hauling the forest products is chain-of-custody (COC) certified or covered under a COC certificate from the destination mill. The purchaser is responsible for maintaining COC after leaving the sale area.

#### 13. Good Neighbor Authority (GNA) Requirements (10/22)

If the name of this timber sales contains the acronym GNA, it is authorized by the Good Neighbor Authority (GNA) and covered by various agreements between the U.S. Forest Service and the State. The timber sale occurs on federal land and the following conditions apply:

GNA contracts on US Forest Service land will not be awarded to purchasers on the Federal list of excluded parties. The System for Award Management (SAM) will be checked for active excluded parties prior to award of contract. In

addition, the Bidder to whom award is made must complete an Assurance Regarding Felony Conviction or Tax Delinquent Status for Corporate Applicants (AD-3031).

14. Good Neighbor Authority (GNA) Requirements, con't (10/22)

Bidder certifies, by signing this bid form, that to the best of Bidder's knowledge that the following representations are accurate and complete.

- a. That the Bidder and its principals are not presently debarred, suspended, proposed for debarment, declared ineligible, or voluntary excluded from timber sales (covered transactions) by any Federal department or agency.
- b. That the Bidder and its principals have not within a 3-year period preceding this bid been convicted of or had a civil judgment rendered against them for commission of fraud or a criminal offense in connection with obtaining , attempting to obtain, or performing a public (Federal, State, or local) transaction or contract under a public transaction; violation of Federal or State antitrust statutes or commission of embezzlement, theft, forgery, bribery, falsification or destruction of records, making false statements, or receiving stolen property.
- c. That the Bidder and its principals are not presently indicted for or otherwise criminally or civilly charged by a governmental entity (Federal, State, or local) with commission of any of the offenses enumerated in paragraph b of this certification.
- d. That the Bidder and its principals have not within a 3-year period preceding this bid had one or more public transactions (Federal, State, or local) terminated for breach or default of a timber or forest product contract.

Bidders that cannot certify this requirement, in whole or in part, shall submit an explanation with their bid.

Scott Bowen  
Director

## TIMBER SALE INFORMATION

End of the world hardwoods (73-003-23)  
 T15N, R03W, SEC. 26; T15N, R03W, SEC. 35; T15N, R03W, SEC. 36.  
 Isabella County (Advertised Price \$91,083.15)

SALE NOTE: The forest road access for Payment Units 1 & 2 is wet & will need minor road work.

A timber sale contract for this lump sum, sealed bid timber sale will be awarded to the responsible bidder offering the highest sealed bid price. All units of volume listed below were estimated using the Inventory Manager computer program and the new Michigan taper model. Bids must be at or above the following advertised price for each product and species:

<u>PRODUCTS &amp; SPECIES</u>	<u>ESTIMATED UNITS*</u>	<u>ADVERTISED PRICE</u>
Sawtimber		
B. T. Aspen	201.4 MBF	\$ 66.00 / MBF
Black/Red (Hybrid) Oak	57.2 MBF	\$ 128.00 / MBF
Paper Birch	3.8 MBF	\$ 61.00 / MBF
Red Maple	296.6 MBF	\$ 65.00 / MBF
White Oak	47.9 MBF	\$ 75.00 / MBF
Pulpwood		
B. T. Aspen	381 Cords	\$ 29.85 / Cord
Mixed Hardwood	1,260 Cords	\$ 21.75 / Cord
Mixed Oak	297 Cords	\$ 20.75 / Cord
Paper Birch	109 Cords	\$ 22.25 / Cord

\* The total volume is statistically estimated within plus (+) or minus (-) 10.61 percent. There are an estimated 3,551 cords on this timber sale, plus or minus 377 cords at the 95% confidence level. The estimated units are final and not subject to adjustment. Prospective bidders are urged to examine this timber and to make their own estimates of quantity and quality.

### **BOND AND PAYMENT SCHEDULE:**

1. A bond in the amount of \$4,554.00 to insure faithful performance of the conditions of the contract will be deposited by the successful bidder within 21 days of the sale award.
2. Cutting in any sale or unit without the required advance payment would be considered a trespass.
3. Total payment must be paid in advance or according to the following schedule :
  - (a) Ten percent (10%) of the sale value must be paid within 21 days of the sale award.
  - (b) The 10% down payment will be credited towards the first unit cut.
  - (c) Payment for each of the following units must be made before cutting begins in that unit:
 

PAYMENT UNIT NUMBER	PERCENT OF TOTAL SALE VALUE
01	46.5%
02	20.8%
03	32.7%
4. If no cutting takes place, the 10% down payment will not be refunded.
5. Operations on the contract issued will terminate on 09/30/2027.

### **SALE STATISTICS**

Volumes were calculated in cubic feet using the Michigan taper model. Cubic foot volume includes all wood inside bark for the product indicated. For display purposes, cubic feet were converted to cords and MBF using a simple conversion factor, e.g. 79 cubic feet per cord and 185 cubic feet per MBF. The cubic foot volumes are precise; the cords and MBF volumes are not. Cubic foot volume cannot be directly converted to cords or boards with precision.

### **SALE VOLUMES**

The total estimated sale volume may not equal the sum of the species/products due to the nature of statistical calculations associated with double sampling methodology.

VOLUME		STATISTICAL RANGE IN CORDS		
TOTAL CUBIC FEET	TOTAL CORDS	PERCENT ERROR	MINIMUM	MAXIMUM
280,511	3,551	10.61%	3,174	3,928

## VDU VOLUMES

A VDU is a Volume Determination Unit. Volumes and their associated statistics are calculated at the VDU level and summarized to the sale level. There is often a one to one relationship between a VDU and a Payment Unit, but not always, depending on the cruise design. Refer to the VDU TO PAYMENT UNIT table.

VDU	VOLUME		PERCENT ERROR	RANGE IN CORDS	
	TOTAL CUBIC FEET	TOTAL CORDS		MINIMUM	MAXIMUM
7	89,918	1,138	19.42%	917	1,359
35	59,340	751	22.54%	582	920
54	131,253	1,661	16.24%	1,392	1,931
<b>TOTAL:</b>	<b>280,511</b>	<b>3,551</b>		<b>2,891</b>	<b>4,211</b>

## VDU TO PAYMENT UNIT

When a VDU is associated with more than one Payment Unit (PU), the VDU volumes are assigned to the PU based on acres of the VDU within the PU.

VDU	VDU ACRES	PU	PU ACRES
7	38.3	3	38.3
35	21.9	2	21.9
54	57.4	1	57.4
<b>TOTAL:</b>	<b>117.6</b>		<b>117.6</b>

**DESCRIPTION OF TIMBER BY PAYMENT UNIT (PU)**

PU	MARKET GROUP	PRODUCT	QUANTITY	UNIT	ACRES	ADVERTISE PRICE
1	B. T. Aspen	Sawtimber	25.6	MBF	57.4	\$42,336.40
	Black/Red (Hybrid		42.7	MBF		
	Red Maple		143.7	MBF		
	White Oak		42.1	MBF		
	B. T. Aspen	Pulpwood	162	Cords		
	Mixed Hardwood		550	Cords		
	<i>Red Maple</i>		550	<i>Cords</i>		
	Mixed Oak		230	Cords		
	<i>/Red (Hybrid) Oak</i>		134	<i>Cords</i>		
	<i>White Oak</i>		96	<i>Cords</i>		
	Paper Birch		50	Cords		
2	B. T. Aspen	Sawtimber	60.6	MBF	21.9	\$18,978.80
	Black/Red (Hybrid		9.1	MBF		
	Paper Birch		3.8	MBF		
	Red Maple		67.9	MBF		
	White Oak		5.8	MBF		
	B. T. Aspen	Pulpwood	46	Cords		
	Mixed Hardwood		264	Cords		
	<i>Beech</i>	<i>Sawtimber</i>	1.2	<i>MBF</i>		
	<i>Beech</i>	<i>Pulpwood</i>	4	<i>Cords</i>		
	<i>Red Maple</i>		258	<i>Cords</i>		
	Mixed Oak		48	Cords		
	<i>/Red (Hybrid) Oak</i>		44	<i>Cords</i>		
	<i>White Oak</i>		4	<i>Cords</i>		
	Paper Birch		28	Cords		
3	B. T. Aspen	Sawtimber	115.2	MBF	38.3	\$29,767.95
	Black/Red (Hybrid		5.4	MBF		
	Red Maple		85.0	MBF		
	B. T. Aspen	Pulpwood	173	Cords		
	Mixed Hardwood		446	Cords		
	<i>Black Cherry</i>		6	<i>Cords</i>		
	<i>Red Maple</i>		440	<i>Cords</i>		
	Mixed Oak		19	Cords		
	<i>/Red (Hybrid) Oak</i>		9	<i>Cords</i>		
	<i>White Oak</i>		10	<i>Cords</i>		
	Paper Birch		31	Cords		
TOTAL:			606.9	MBF		
TOTAL:			2,047	Cords		

# Sale Specific Conditions & Requirements

**Sale Name: End of the world hardwoods**

**Sale Number: 73-003-23 Seq#: 2**

## 1 - Sale Area

### 1.2 - Boundaries

#### 1.2.1 - Painted boundaries (9/19)

The sale boundary and Payment Unit boundaries are marked and identified by blue, red and yellow paint. Exterior sale boundary lines against private property are marked with blue paint. Exterior sale boundary lines against state are marked with red paint. Interior Payment Unit boundaries are marked with yellow paint. Retention patches are marked with red paint; no harvesting activities may occur within these areas. The painted boundary line trees are not included timber and are to be protected unless marked with orange paint. Yellow painted trees designating an interior Payment Unit boundary are only to be cut when all surrounding Payment Units have been paid.

## 2 - Timber Specifications

### 2.1 - Included Timber

#### 2.1.1 - Clearcut unit(s) with unmerchantable trees (6/14)

Within Payment Unit(s) 1-3, cut all trees that are two (2) inches or more at DBH. In addition, within Payment Unit 3, do not cut white oak six (6) inches or less at DBH.

## 3 - Payments

### 3.3 - Pre-measured Sales

#### 3.3.4 - Dividing payment units (7/14)

Payment Unit(s) may be divided at the request of the Purchaser and upon approval of the Unit Manager. Dividing Payment Units is a contract modification which requires a Timber Sale Contract Amendment. There will be only one division per Payment Unit.

### 3.4 - Damaged Timber

#### 3.4.1 - Damaged timber (7/16)

General Condition and Requirement 3.4 Damaged Timber, defines liquidated damages for undesignated live merchantable trees which are cut or injured. In addition, extreme care should be taken to avoid damage to tree seedlings and saplings.

Within Payment Unit 3, if more than 25% of the white oak seedlings or saplings (1/4" to 4.5" DBH) within a specified portion of the Sale Area are damaged, liquidated damages will be assessed at \$500 per acre for all acreage within that specified portion of the Sale Area that was damaged.

No damage is acceptable to undesignated live merchantable trees. Within Payment Unit 3, if more than 25% of white oak trees (4.6" to 6" DBH) within a specified portion of the Sale Area are damaged, liquidated damages will be assessed at \$500 per acre for all acreage within that specified portion of the Sale Area that was damaged.

## 4 - Transportation

### 4.1 - Construction

#### 4.1.12 - No new roads (1/12)

No new roads will be permitted in any Payment Unit. All operations are limited to existing roads. Skid trails only will be allowed.

## 5 - Operations

### 5.2 - Conduct of Operations

#### 5.2.4 - Dead and Down Creation

##### 5.2.4.4 - Dead and down creation, grouse (6/18)



To encourage grouse and other wildlife, in Payment Unit(s) 3, leave one, 12" or larger diameter whole tree on the ground for every 3 acres. Trees should be scattered throughout the sale and at least two chains from any roads, two-tracks, or trails open to vehicles, or positioned per the Sale Administrator's instructions.

#### 5.2.22 - Operating Caution

##### 5.2.22.1 - Operating caution (6/11)

It is recommended, but not required, that within Payment Unit(s) 1 & 2, cutting, skidding, and hauling occur during dry summer or frozen winter conditions. The reason for the recommendation is because of saturated soils.

#### 5.2.32 - Decking/landing restoration (9/13)

All decking and landing areas must have the surface area restored to a condition equal to or better than before. This is to ensure the proper regeneration of the stand. Wood debris, chips and "cookies" from trimmings must be removed or scattered away from landing and loading areas and may not be windrowed on the edge.

### 6 - Safety and Fire Prevention

#### 6.2 - Signing

##### 6.2.1 - Road posting (10/20)

The Purchaser is responsible for posting and maintaining caution signs on Beal City and Chippewa road prior to beginning operations. The road must be posted at appropriate distances from the Sale Area to warn of logging activity and truck traffic. Signs must be removed when harvest operations are suspended or completed. The Purchaser will provide these signs.



# TIMBER SALE MAP

This information provided by authority of Part 525, 1994 PA 451, as amended.

Forest Management Unit Gladwin Management Unit	County Isabella	Mapped By Behrmann	Date 06/29/2023	Page 1	of 1
Township 15N	Range 03W	Section(s) and Subdivision(s) Sec 26 SWNW, Sec 35 NE	Scale 1:15,840		

Cover Type				Density	
A = Aspen	H = Hemlock	N = Marsh	U = Upland Brush	0 = Non Stocked	5 = Pole Timber Medium
B = Paper Birch	J = Jack Pine	O = Oak	UM = Upland Mixed	1 = Seedling Sapling Poor	6 = Pole Timber Well
C = Cedar	L = Lowland Brush	P = Lowland Poplar	V = Bog or Marsh	2 = Seedling Sapling Medium	7 = Saw Timber Poor
D = Tired Bog	LM = Lowland Mixed	Q = Mxed Swamp Conifer	W = White Pine	3 = Seedling Sapling Well	8 = Saw Timber Medium
E = Swamp Hardwoods	M = Mpl, Boh, Brch	R = Red Pine	X = Non Stocked	4 = Pole Timber Poor	9 = Saw Timber Well
F = Spruce Fir	MC = Mixed Conifer	S = Black Spruce	Z = Water		
G = Grass	MD = Mixed Deciduous	T = Tamarack			

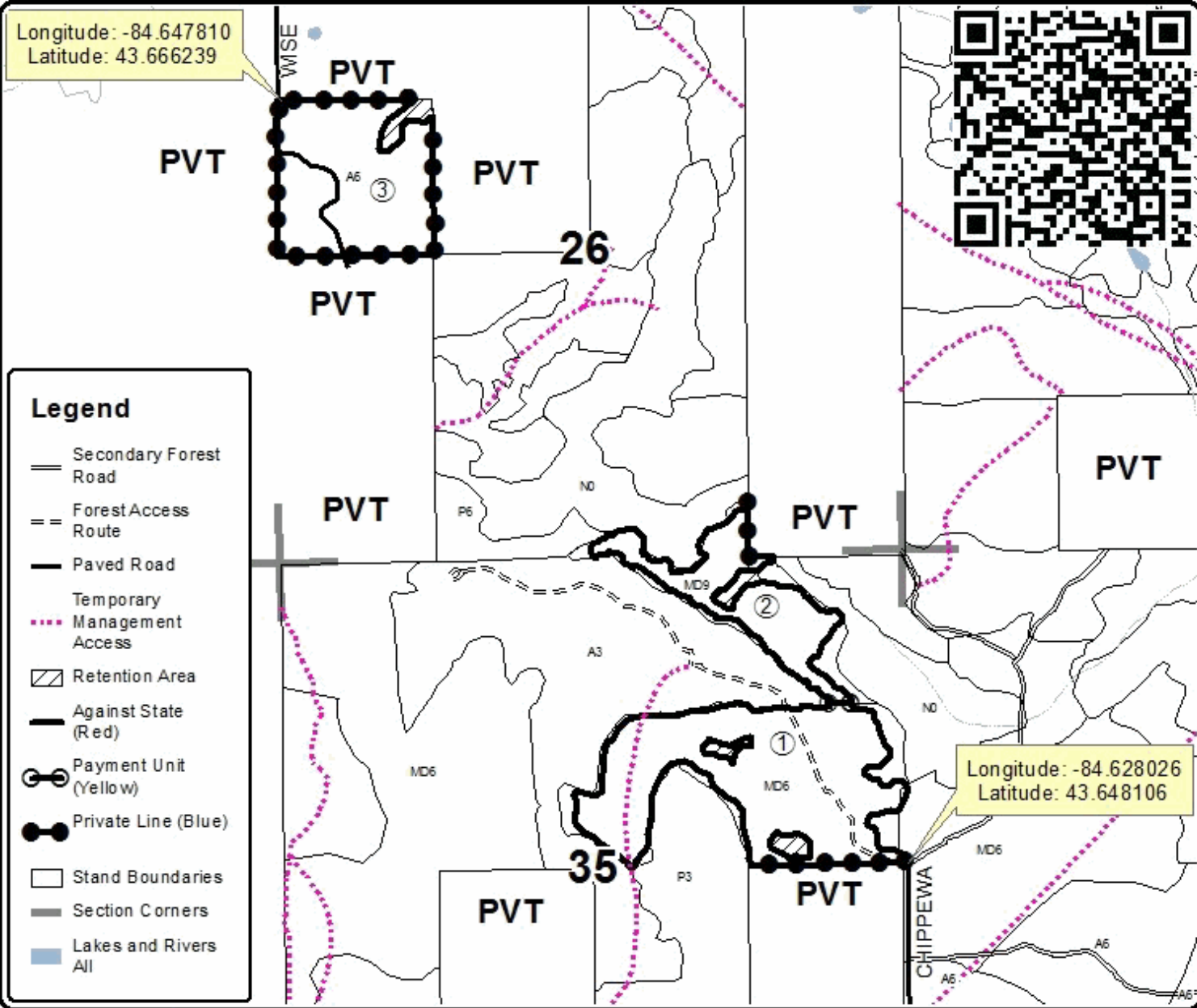
PU	Acres
1	57.4
2	21.9
3	38.3

## End of the world hardwoods

Compartment 120  
117.6 Acres



Longitude: -84.647810  
Latitude: 43.666239



Longitude: -84.628026  
Latitude: 43.648106

### Legend

- Secondary Forest Road (solid line)
- Road (dashed line)
- Forest Access Route (double line)
- Paved Road (thick solid line)
- Temporary Management Access (dotted line)
- Retention Area (hatched box)
- Against State (Red) (thick solid line)
- Payment Unit (Yellow) (yellow circle)
- Private Line (Blue) (blue circle)
- Stand Boundaries (thin solid line)
- Section Corners (grey square)
- Lakes and Rivers All (blue area)



## TIMBER SALE INFORMATION

### Castor Wilds (73-011-23)

T15N, R01W, SEC. 19; T15N, R01W, SEC. 29; T15N, R01W, SEC. 30; T15N, R02W, SEC. 24.  
Midland County (Advertised Price \$78,028.40)

SALE NOTE: Difficult access for Payment Units 4-6. New temporary road constructions required across wet ground, intermittent drainages, and narrow ridges. Approximately 5-10 culvert installs will be required. Culverts will be removed upon sale completion. Dead oak throughout the Sale Area may be cut and decked separately to be scaled by the Sale Administrator .

A timber sale contract for this lump sum, sealed bid timber sale will be awarded to the responsible bidder offering the highest sealed bid price. All units of volume listed below were estimated using the Inventory Manager computer program and the new Michigan taper model. Bids must be at or above the following advertised price for each product and species:

<u>PRODUCTS &amp; SPECIES</u>	<u>ESTIMATED UNITS*</u>	<u>ADVERTISED PRICE</u>
<b>Sawtimber</b>		
Black Cherry	0.9 MBF	\$ 137.00 / MBF
Mixed Aspen	90.1 MBF	\$ 53.00 / MBF
Mixed Oak	337.0 MBF	\$ 103.00 / MBF
Paper Birch	2.4 MBF	\$ 49.00 / MBF
Red Maple	84.0 MBF	\$ 52.00 / MBF
White Oak	23.4 MBF	\$ 60.00 / MBF
<b>Pulpwood</b>		
Mixed Aspen	642 Cords	\$ 23.90 / Cord
Mixed Hardwood	495 Cords	\$ 17.40 / Cord
Mixed Oak	451 Cords	\$ 16.60 / Cord
Paper Birch	61 Cords	\$ 17.80 / Cord

\* The total volume is statistically estimated within plus (+) or minus (-) 12.99 percent. There are an estimated 2,836 cords on this timber sale, plus or minus 369 cords at the 95% confidence level. The estimated units are final and not subject to adjustment. Prospective bidders are urged to examine this timber and to make their own estimates of quantity and quality.

### **BOND AND PAYMENT SCHEDULE:**

1. A bond in the amount of \$3,901.00 to insure faithful performance of the conditions of the contract will be deposited by the successful bidder within 21 days of the sale award.
2. Cutting in any sale or unit without the required advance payment would be considered a trespass.
3. Total payment must be paid in advance or according to the following schedule :
  - (a) Ten percent (10%) of the sale value must be paid within 21 days of the sale award.
  - (b) The 10% down payment will be credited towards the first unit cut.
  - (c) Payment for each of the following units must be made before cutting begins in that unit:

PAYMENT UNIT NUMBER	PERCENT OF TOTAL SALE VALUE
01	28.3%
02	11.0%
03	3.4%
04	10.5%
05	17.7%
06	29.1%

4. If no cutting takes place, the 10% down payment will not be refunded.
5. Operations on the contract issued will terminate on 09/30/2027.

### **SALE STATISTICS**

Volumes were calculated in cubic feet using the Michigan taper model. Cubic foot volume includes all wood inside bark for the product indicated. For display purposes, cubic feet were converted to cords and MBF using a simple conversion factor, e.g. 79 cubic feet per cord and 185 cubic feet per MBF. The cubic foot volumes are precise; the cords and MBF volumes are not. Cubic foot volume cannot be directly converted to cords or boards with precision.

## SALE VOLUMES

The total estimated sale volume may not equal the sum of the species/products due to the nature of statistical calculations associated with double sampling methodology.

VOLUME			STATISTICAL RANGE IN CORDS	
TOTAL CUBIC FEET	TOTAL CORDS	PERCENT ERROR	MINIMUM	MAXIMUM
224,009	2,836	12.99%	2,467	3,204

## VDU VOLUMES

A VDU is a Volume Determination Unit. Volumes and their associated statistics are calculated at the VDU level and summarized to the sale level. There is often a one to one relationship between a VDU and a Payment Unit, but not always, depending on the cruise design. Refer to the VDU TO PAYMENT UNIT table.

	VOLUME			RANGE IN CORDS	
VDU	TOTAL CUBIC FEET	TOTAL CORDS	PERCENT ERROR	MINIMUM	MAXIMUM
1	78,067	988	18.22%	808	1,168
2	6,710	85	67.32%	28	142
99	73,480	930	23.82%	709	1,152
114	23,085	292	33.53%	194	390
218	42,666	540	29.66%	380	700
<b>TOTAL:</b>	<b>224,009</b>	<b>2,836</b>		<b>2,119</b>	<b>3,552</b>

## VDU TO PAYMENT UNIT

When a VDU is associated with more than one Payment Unit (PU), the VDU volumes are assigned to the PU based on acres of the VDU within the PU.

VDU	VDU ACRES	PU	PU ACRES
1	33.1	1	33.1
2	8.8	3	8.8
99	50.1	4	15.0
		5	25.3
		6	9.8
114	26.0	2	26.0
218	30.0	6	30.0
<b>TOTAL:</b>	<b>148.0</b>		<b>148.0</b>

**DESCRIPTION OF TIMBER BY PAYMENT UNIT (PU)**

PU	MARKET GROUP	PRODUCT	QUANTITY	UNIT	ACRES	ADVERTISE PRICE	
1	Mixed Aspen	Sawtimber	33.1	MBF	33.1	\$22,084.20	
	<i>B. T. Aspen</i>		33.1	<i>MBF</i>			
	Mixed Oak		23.8	MBF			
	<i>Northern Pin Oak</i>		23.8	<i>MBF</i>			
	Paper Birch		1.0	MBF			
	Red Maple		18.8	MBF			
	White Oak		2.1	MBF			
	Mixed Aspen		Pulpwood	427			Cords
	<i>B. T. Aspen</i>			427			<i>Cords</i>
	Mixed Hardwood			240			Cords
	<i>Black Cherry</i>	8		<i>Cords</i>			
	<i>Red Maple</i>	232		<i>Cords</i>			
	Mixed Oak	108	Cords				
	<i>Northern Pin Oak</i>	88	<i>Cords</i>				
	<i>White Oak</i>	20	<i>Cords</i>				
Paper Birch	31	Cords					
2	Black Cherry	Sawtimber	0.9	MBF	26.0	\$8,552.60	
	Mixed Aspen		2.8	MBF			
	<i>B. T. Aspen</i>		2.3	<i>MBF</i>			
	<i>Quaking Aspen</i>		0.5	<i>MBF</i>			
	Mixed Oak		37.2	MBF			
	<i>/Red (Hybrid) Oak</i>		37.2	<i>MBF</i>			
	Red Maple		25.9	MBF			
	White Oak		7.3	MBF			
	Mixed Aspen		Pulpwood	7			Cords
	<i>B. T. Aspen</i>			5			<i>Cords</i>
	<i>Quaking Aspen</i>	2		<i>Cords</i>			
	Mixed Hardwood	92		Cords			
	<i>Black Cherry</i>	2		<i>Cords</i>			
	<i>Red Maple</i>	90	<i>Cords</i>				
	Mixed Oak	54	Cords				
<i>/Red (Hybrid) Oak</i>	28	<i>Cords</i>					
<i>White Oak</i>	26	<i>Cords</i>					
3	Mixed Aspen	Sawtimber	1.4	MBF	8.8	\$2,638.00	
	<i>B. T. Aspen</i>		1.4	<i>MBF</i>			
	Mixed Oak		16.5	MBF			
	<i>Northern Pin Oak</i>		16.5	<i>MBF</i>			
	Red Maple		1.9	MBF			
	White Oak		3.5	MBF			
	Mixed Aspen	Pulpwood	7	Cords			
	<i>B. T. Aspen</i>		7	<i>Cords</i>			
	Mixed Hardwood		8	Cords			
	<i>Red Maple</i>		8	<i>Cords</i>			
	Mixed Oak		15	Cords			
	<i>Northern Pin Oak</i>		11	<i>Cords</i>			
<i>White Oak</i>	4	<i>Cords</i>					
4	Mixed Aspen	Sawtimber	11.0	MBF	15.0	\$8,185.20	
	<i>B. T. Aspen</i>		11.0	<i>MBF</i>			
	Mixed Oak		43.7	MBF			
	<i>/Red (Hybrid) Oak</i>		43.7	<i>MBF</i>			
	Paper Birch		0.4	MBF			
	Red Maple		7.6	MBF			
	White Oak	3.1	MBF				
	Mixed Aspen	Pulpwood	45	Cords			
	<i>B. T. Aspen</i>		45	<i>Cords</i>			
Mixed Hardwood	32		Cords				

**DESCRIPTION OF TIMBER BY PAYMENT UNIT (PU), CON'T**

PU	MARKET GROUP	PRODUCT	QUANTITY	UNIT	ACRES	ADVERTISE PRICE
4 con't	<i>Red Maple</i>	<i>Pulpwood</i>	32	<i>Cords</i>		
	Mixed Oak		48	<i>Cords</i>		
	<i>/Red (Hybrid) Oak</i>		45	<i>Cords</i>		
	<i>White Oak</i>		3	<i>Cords</i>		
	Paper Birch		4	<i>Cords</i>		
5	Mixed Aspen	Sawtimber	18.5	MBF	25.3	\$13,825.00
	<i>B. T. Aspen</i>		18.5	<i>MBF</i>		
	Mixed Oak		73.8	MBF		
	<i>/Red (Hybrid) Oak</i>		73.8	<i>MBF</i>		
	Paper Birch		0.7	MBF		
	Red Maple		12.8	MBF		
	White Oak	5.3	MBF			
	Mixed Aspen	Pulpwood	76	<i>Cords</i>		
	<i>B. T. Aspen</i>		76	<i>Cords</i>		
	Mixed Hardwood		54	<i>Cords</i>		
	<i>Red Maple</i>		54	<i>Cords</i>		
	Mixed Oak		81	<i>Cords</i>		
	<i>/Red (Hybrid) Oak</i>		76	<i>Cords</i>		
	<i>White Oak</i>		5	<i>Cords</i>		
	Paper Birch		7	<i>Cords</i>		
6	Mixed Aspen		Sawtimber	23.3	MBF	39.8
	<i>B. T. Aspen</i>	23.3		<i>MBF</i>		
	Mixed Oak	142.0		MBF		
	<i>/Red (Hybrid) Oak</i>	142.0		<i>MBF</i>		
	Paper Birch	0.3		MBF		
	Red Maple	17.0		MBF		
	White Oak	2.1	MBF			
	Mixed Aspen	Pulpwood	80	<i>Cords</i>		
	<i>B. T. Aspen</i>		80	<i>Cords</i>		
	Mixed Hardwood		69	<i>Cords</i>		
	<i>Red Maple</i>		69	<i>Cords</i>		
	Mixed Oak		145	<i>Cords</i>		
	<i>/Red (Hybrid) Oak</i>		143	<i>Cords</i>		
	<i>White Oak</i>		2	<i>Cords</i>		
	Paper Birch		19	<i>Cords</i>		
TOTAL:			537.8	MBF		
TOTAL:			1,649	Cords		

# Sale Specific Conditions & Requirements

**Sale Name: Castor Wilds**

**Sale Number: 73-011-23 Seq#: 1**

## 1 - Sale Area

### 1.2 - Boundaries

#### 1.2.1 - Painted boundaries (9/19)

The sale boundary and Payment Unit boundaries are marked and identified by red and yellow paint. Exterior sale boundary lines against state are marked with red paint. Interior Payment Unit boundaries are marked with yellow paint. Red painted boundary trees shall not be cut unless marked with orange paint above and below stump height. Yellow painted trees designating an interior Payment Unit boundary are only to be cut when all surrounding Payment Units have been paid.

## 2 - Timber Specifications

### 2.1 - Included Timber

#### 2.1.1 - Clearcut unit(s) with unmerchantable trees (6/14)

Within Payment Unit(s) 1, cut all trees that are two (2) inches or more at DBH, except do not cut any oak that are two (2) to four (4) inches at DBH.

#### 2.1.3 - Cut tree marked unit(s) (12/08)

Within Payment Unit(s) 2, all trees are designated for cutting when marked with orange paint above and below stump height, regardless of merchantability.

#### 2.1.7 - Leave tree marked unit(s) (6/14)

Within Payment Unit(s) 3-6, cut all oak & maple trees that are ten (10) inches or more at DBH. In addition, cut all aspen & paper birch trees that are two (2) inches or more at DBH. Furthermore, do not cut trees marked with green paint above and below stump height.

#### 2.1.14 - Dead oak (1/15)

Dead oak (defined as loose bark and no live branches) may be cut throughout the sale area. If cut, it must be skidded and piled separately on the landing. The sale administrator will measure the dead oak and the wood cannot be hauled prior to scaling. The Purchaser will be invoiced at \$10.00 per cord. The contractor has 30 days to pay from the date of the invoice.

### 2.2 - Utilization

#### 2.2.10 - No chipping tops and limbs (8/16)

Within Payment Unit(s) 1-6, chipping of limbs or tops is not permitted. Limbs and the remaining top must be left on site and scattered.

## 3 - Payments

### 3.3 - Pre-measured Sales

#### 3.3.4 - Dividing payment units (7/14)

Payment Unit(s) 4-6, may be divided at the request of the Purchaser and upon approval of the Unit Manager. Dividing Payment Units is a contract modification which requires a Timber Sale Contract Amendment. There will be only one division per Payment Unit.

## 4 - Transportation

### 4.1 - Construction

#### 4.1.5 - Culverts (5/14)

Roads will require the installation of culverts for cross drainage or at natural drainage-ways. Culvert locations will be specified by the Sale Administrator and they shall be installed prior to hauling. The culverts shall be new, corrugated metal or plastic gauge. Culverts will be a minimum of 12 inches in diameter and 24 feet in length. All culverts and fill shall be removed from wetland soils as specified. Soils shall be maintained and left in a non-erodible condition, with water bars, seed, fertilizer, mulch, and slash installed as directed by the Sale Administrator and as specified in the BMP manual. Stream crossing permits, if needed, will be obtained by the DNR.

#### 4.1.6 - Road construction (1/09)

Construction of new roads or improvements of existing roads shall be done in such a way as to minimize the environmental and visual impacts. Merchantable trees shall be cut and utilized unless otherwise directed. Non-merchantable trees shall be severed and laid flat on the ground. Slash shall be scattered, and not left in windrows and kept a minimum of 10 feet back from the road edge. Stumps shall be set upright, not left on edge, and be moved at least 10 feet away from the road edge. Disturbed soil shall be feathered into the woods and not left in berms or windrows.

#### 4.1.7 - Road closure (10/11)

All new roads built into the sale must be blocked to vehicle traffic upon completion of the sale. Overgrown roads that are reopened shall be considered new roads. In general, this will require constructing a four (4') foot high berm of stumps and logs covered with earth. Stumps and brush must be placed along the remainder of the trail. These roads must be rendered impassable to cars and trucks. All stumps from road building and landing construction must be reserved to block any newly constructed roads upon completion of the sale. These stumps must be scattered along the road system to prohibit vehicular movement. Contact the Sale Administrator for specific details of design and placement.

### 4.2 - Maintenance

#### 4.2.2 - Fill material (4/07)

To maintain roads, fill material may be needed in areas where "holes" exist or may be expected to develop. This fill material should be placed before trucking begins. Contact the Sale Administrator regarding the availability of onsite sand or gravel from adjacent State-owned lands.

## 5 - Operations

### 5.2 - Conduct of Operations

#### 5.2.1 - Slash

##### 5.2.1.8 - Slash height (12/08)

No slash or treetops may exceed 24 inches in height.

#### 5.2.3 - Operating Restrictions

##### 5.2.3.1 - Operating restrictions (9/11)

Within Payment Unit(s) 1-6, unless changed by written agreement, cutting, skidding, and hauling are not permitted during the period of April 15 to July 15. This restriction is because seasonally saturated soils.

##### 5.2.3.3 - Bark slippage restriction (3/09)

Within Payment Unit(s) 2-6, unless changed by written agreement, cutting and skidding are not permitted during the period of April 15 to July 15. This restriction is because of bark slippage.

##### 5.2.3.4 - Oak wilt restriction, no exceptions (1/18)

Within Payment Units 2-6, cutting, skidding, hauling within the sale and brushing of access roads to the sale are not permitted during the period of April 15 to July 15. No exceptions will be granted. This is necessary to reduce the spread of oak wilt.

#### 5.2.4 - Dead and Down Creation

##### 5.2.4.4 - Dead and down creation, grouse (6/18)

To encourage grouse and other wildlife, in Payment Unit(s) 1, leave one, 12" or larger diameter whole tree on the ground for every 3 acres. Trees should be scattered throughout the sale and at least two chains from any roads, two-tracks, or trails open to vehicles, or positioned per the Sale Administrator's instructions. Stumps must be at least 3 feet tall.

#### 5.2.31 - Landing locations (9/13)

Recommended landing areas are marked on the Timber Sale Map. These locations are recommendations only, all landing locations must be authorized by the Unit Manager or his/her representative.

#### 5.2.32 - Decking/landing restoration (9/13)

All decking and landing areas must have the surface area restored to a condition equal to or better than before. This is to ensure the proper regeneration of the stand. Wood debris, chips and "cookies" from trimmings must be removed or scattered away from landing and loading areas and may not be windrowed on the edge. Topsoil removed during construction must be



stored and spread over the landing area after operations are complete.

5.2.38 - No decking against live trees (2/04)

Cut products may not be decked against unmarked or designated leave trees.

## **7 - Other Conditions**

### 7.2 - Extensions

7.2.5 - Weather related extension (1/13)

If weather conditions during the operating period of this contract prevent harvesting, this sale may qualify for a weather related extension. If approved, the normal extension fee would be waived. To qualify, there must be a documented attempt each year to harvest in the difficult portion of the sale.



### TIMBER SALE MAP

This information provided by authority of Part 525, 1994 PA 451, as amended.

Sale Number

**73-011-23**

Date

**09/29/2023**

Forest Management Unit

Gladwin Mgt Unit

County

Midland

Mapped By: Scott Shooltz

Cruised By: Scott Shooltz

Scale

1:20,000

Page

1

Of

1

Township  
15N

Range  
01W / 02W

Section(s) and  
Subdivision(s)

Sec. 19 S1/2SE; Sec. 24 NESE,S1/2SE; Sec. 29 W1/2SW; Sec. 30 N1/2SW,SES,SE;

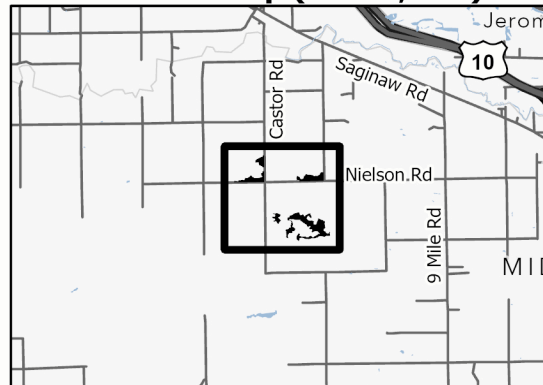
#### Cover Type

A = Aspen	J = Jack Pine	O = Oak	U = Upland Brush
B = Paper Birch	K = Rock	P = Lowland Poplar	UM = Upland Mix Forest
C = Cedar	L = Lowland Brush	Q = Mixed Swamp Conifer	V = Bog or Marsh
D = Treed Bog	LM = Lowland Mix Forest	R = Red Pine	W = White Pine
E = Swamp Hardwoods	M = Maple, Beech, Birch	S = Black Spruce	X = Non Stocked
F = Spruce/Fir	MC = Mixed Conifer	T = Tamarack	Y = Sand
G = Grass	MD = Mixed Deciduous	Z = Water	
H = Hemlock	N = Marsh		

#### Density

0 = Non Stocked	5 = Pole Timber Medium
1 = Seedling Sapling Poor	6 = Pole Timber Well
2 = Seedling Sapling Medium	7 = Saw Timber Poor
3 = Seedling Sapling Well	8 = Saw Timber Medium
4 = Pole Timber Poor	9 = Saw Timber Well

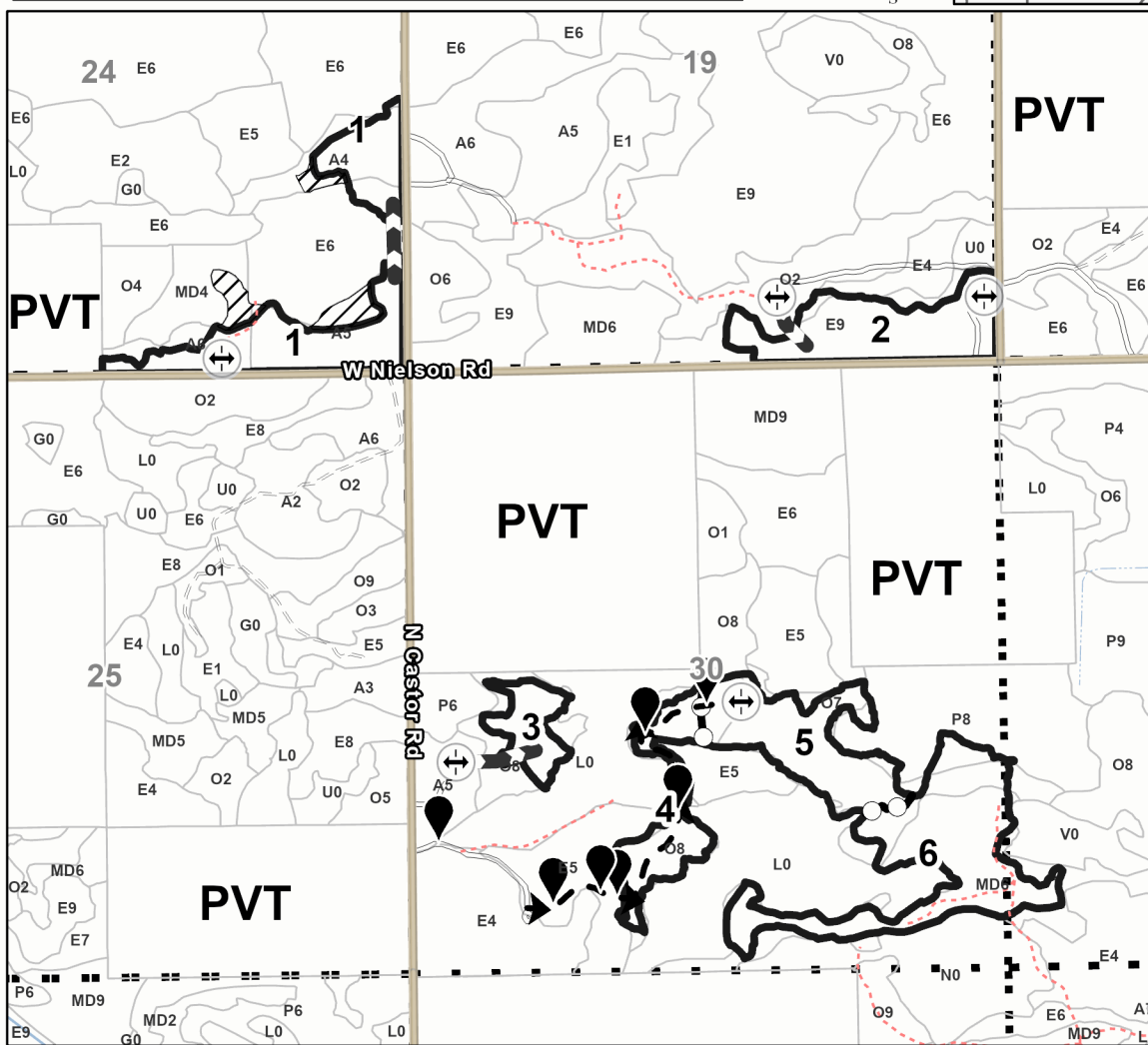
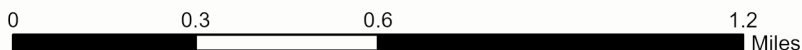
#### Locator Map (1:200,000)



#### Castor Wilds

**148.0 Acres**

PU #	Acres	PU #	Acres
1	33.1	4	15
2	26	5	25.3
3	8.8	6	39.8



#### Legend

- Against State (Red)
- Payment Unit (Yellow)
- Retention Areas
- Stand
- Temporary Logging Road
- Skid Trail
- Culvert Installation
- Landing
- Primary Forest Road
- Secondary Forest Road
- Forest Access Route
- Administrative Access Only
- Non-DNR Road
- Sections

Use QR Code to open Map in App



## TIMBER SALE INFORMATION

### Teed Up Mix (73-012-23)

T15N, R01W, SEC. 16; T15N, R01W, SEC. 17; T15N, R01W, SEC. 20; T15N, R01W, SEC. 21.  
Midland County (Advertised Price \$26,289.45)

SALE NOTE: Temporary driveway permit required to access Payment Units 1 and 2 (see specs 4.1.8 and 4.1.11). A large culvert will be required. Culvert will be removed at the end of the sale.

A timber sale contract for this lump sum, sealed bid timber sale will be awarded to the responsible bidder offering the highest sealed bid price. All units of volume listed below were estimated using the Inventory Manager computer program and the new Michigan taper model. Bids must be at or above the following advertised price for each product and species:

<u>PRODUCTS &amp; SPECIES</u>	<u>ESTIMATED UNITS*</u>	<u>ADVERTISED PRICE</u>
<b>Sawtimber</b>		
B. T. Aspen	22.1 MBF	\$ 57.00 / MBF
Black/Red (Hybrid) Oak	107.9 MBF	\$ 111.00 / MBF
Red Maple	21.7 MBF	\$ 56.00 / MBF
White Oak	15.1 MBF	\$ 65.00 / MBF
White Pine	18.1 MBF	\$ 55.00 / MBF
<b>Pulpwood</b>		
B. T. Aspen	31 Cords	\$ 25.90 / Cord
Mixed Hardwood	242 Cords	\$ 18.85 / Cord
Mixed Oak	166 Cords	\$ 18.00 / Cord
Paper Birch	9 Cords	\$ 19.25 / Cord
White Pine	47 Cords	\$ 28.40 / Cord

\* The total volume is statistically estimated within plus (+) or minus (-) 19.99 percent. There are an estimated 933 cords on this timber sale, plus or minus 187 cords at the 95% confidence level. The estimated units are final and not subject to adjustment. Prospective bidders are urged to examine this timber and to make their own estimates of quantity and quality.

### **BOND AND PAYMENT SCHEDULE:**

1. A bond in the amount of \$1,314.00 to insure faithful performance of the conditions of the contract will be deposited by the successful bidder within 21 days of the sale award.
2. Cutting in any sale or unit without the required advance payment would be considered a trespass.
3. Total payment must be paid in advance or according to the following schedule :
  - (a) Ten percent (10%) of the sale value must be paid within 21 days of the sale award.
  - (b) The 10% down payment will be credited towards the first unit cut.
  - (c) Payment for each of the following units must be made before cutting begins in that unit:
 

PAYMENT UNIT NUMBER	PERCENT OF TOTAL SALE VALUE
01	45.9%
02	23.6%
03	30.5%
4. If no cutting takes place, the 10% down payment will not be refunded.
5. Operations on the contract issued will terminate on 09/30/2027.

### **SALE STATISTICS**

Volumes were calculated in cubic feet using the Michigan taper model. Cubic foot volume includes all wood inside bark for the product indicated. For display purposes, cubic feet were converted to cords and MBF using a simple conversion factor, e.g. 79 cubic feet per cord and 185 cubic feet per MBF. The cubic foot volumes are precise; the cords and MBF volumes are not. Cubic foot volume cannot be directly converted to cords or boards with precision.

### **SALE VOLUMES**

The total estimated sale volume may not equal the sum of the species/products due to the nature of statistical calculations associated with double sampling methodology.

VOLUME		STATISTICAL RANGE IN CORDS		
TOTAL CUBIC FEET	TOTAL CORDS	PERCENT ERROR	MINIMUM	MAXIMUM
73,703	933	19.99%	746	1,119

## VDU VOLUMES

A VDU is a Volume Determination Unit. Volumes and their associated statistics are calculated at the VDU level and summarized to the sale level. There is often a one to one relationship between a VDU and a Payment Unit, but not always, depending on the cruise design. Refer to the VDU TO PAYMENT UNIT table.

VDU	VOLUME		PERCENT ERROR	RANGE IN CORDS	
	TOTAL CUBIC FEET	TOTAL CORDS		MINIMUM	MAXIMUM
44	14,842	188	46.99%	100	276
51	32,881	416	31.14%	287	546
64	13,085	166	46.02%	89	242
66	12,894	163	42.43%	94	232
<b>TOTAL:</b>	<b>73,703</b>	<b>933</b>		<b>570</b>	<b>1,296</b>

## VDU TO PAYMENT UNIT

When a VDU is associated with more than one Payment Unit (PU), the VDU volumes are assigned to the PU based on acres of the VDU within the PU.

VDU	VDU ACRES	PU	PU ACRES
44	19.8	2	19.8
51	19.5	1	19.5
64	8.3	3	8.3
66	12.9	3	12.9
<b>TOTAL:</b>	<b>60.5</b>		<b>60.5</b>

**DESCRIPTION OF TIMBER BY PAYMENT UNIT (PU)**

PU	MARKET GROUP	PRODUCT	QUANTITY	UNIT	ACRES	ADVERTISE PRICE			
1	B. T. Aspen	Sawtimber	4.1	MBF	19.5	\$12,091.30			
	Black/Red (Hybrid		56.2	MBF					
	Red Maple		15.5	MBF					
	White Oak		5.4	MBF					
	B. T. Aspen		Pulpwood	1			Cords		
	Mixed Hardwood	170		Cords					
	<i>Black Cherry</i>	6		<i>Cords</i>					
	<i>Red Maple</i>	164		<i>Cords</i>					
	Mixed Oak	65		Cords					
	<i>/Red (Hybrid) Oak</i>	26		<i>Cords</i>					
	<i>White Oak</i>	39		<i>Cords</i>					
	2	B. T. Aspen		Sawtimber			3.6	MBF	19.8
		Black/Red (Hybrid	32.5				MBF		
Red Maple		5.9	MBF						
White Oak		3.6	MBF						
White Pine		2.3	MBF						
B. T. Aspen		Pulpwood	3	Cords					
Mixed Hardwood			8	Cords					
<i>Black Cherry</i>			3	<i>Cords</i>					
<i>Red Maple</i>			5	<i>Cords</i>					
Mixed Oak			59	Cords					
<i>/Red (Hybrid) Oak</i>			48	<i>Cords</i>					
<i>White Oak</i>			11	<i>Cords</i>					
White Pine			14	Cords					
3	B. T. Aspen	Sawtimber	14.4	MBF	21.2	\$8,006.45			
	Black/Red (Hybrid		19.2	MBF					
	Red Maple		0.3	MBF					
	White Oak		6.1	MBF					
	White Pine		15.8	MBF					
	B. T. Aspen	Pulpwood	27	Cords					
	Mixed Hardwood		64	Cords					
	<i>Red Maple</i>		64	<i>Cords</i>					
	Mixed Oak		42	Cords					
	<i>/Red (Hybrid) Oak</i>		23	<i>Cords</i>					
	<i>White Oak</i>		19	<i>Cords</i>					
	Paper Birch		9	Cords					
	White Pine		33	Cords					
TOTAL:			184.9	MBF					
TOTAL:			495	Cords					

## Sale Specific Conditions & Requirements

**Sale Name: Teed Up Mix**

**Sale Number: 73-012-23 Seq#: 2**

### 1 - Sale Area

#### 1.2 - Boundaries

##### 1.2.1 - Painted boundaries (9/19)

The sale boundary and Payment Unit boundaries are marked and identified by blue, red and yellow paint. Exterior sale boundary lines against private property are marked with blue paint. Exterior sale boundary lines against state are marked with red paint. Interior Payment Unit boundaries are marked with yellow paint. The painted boundary line trees are not Included Timber and are to be protected unless marked with orange paint. Yellow painted trees designating an interior Payment Unit boundary are only to be cut when all surrounding Payment Units have been paid.

### 2 - Timber Specifications

#### 2.1 - Included Timber

##### 2.1.3 - Cut tree marked unit(s) (12/08)

Within Payment Unit(s) 3, all trees are designated for cutting when marked with orange paint above and below stump height, regardless of merchantability.

##### 2.1.5 - Overstory removal unit(s) (8/11)

Within Payment Unit(s) 2, all trees with DBH equal to or greater than 8 inches which meet minimum piece specifications in 2.2 Utilization, are designated for cutting, except do not cut trees marked with green paint above and below stump height.

##### 2.1.7 - Leave tree marked unit(s) (6/14)

Within Payment Unit(s) 1, cut all trees that are five (5) inches or more at DBH, except do not cut trees marked with green paint above and below stump height.

#### 2.2 - Utilization

##### 2.2.10 - No chipping tops and limbs (8/16)

Within Payment Unit(s) 1, 2 and 3, chipping of limbs or tops is not permitted. Limbs and the remaining top must be left on site and scattered.

### 4 - Transportation

#### 4.1 - Construction

##### 4.1.3 - Slash and earthen piles (8/04)

Piles or windrows of earth along roads and landings that have been widened or constructed shall be leveled. Slash from road maintenance or construction, including stumps, shall be scattered back into the Sale Area.

##### 4.1.6 - Road construction (1/09)

Construction of new roads or improvements of existing roads shall be done in such a way as to minimize the environmental and visual impacts. Merchantable trees shall be cut and utilized unless otherwise directed. Non-merchantable trees shall be severed and laid flat on the ground. Slash shall be scattered, and not left in windrows and kept a minimum of 10 feet back from the road edge. Stumps shall be set upright, not left on edge, and be moved at least 10 feet away from the road edge. Disturbed soil shall be feathered into the woods and not left in berms or windrows.

##### 4.1.7 - Road closure (10/11)

All new roads built into the sale must be blocked to vehicle traffic upon completion of the sale. Overgrown roads that are reopened shall be considered new roads. In general, this will require constructing a four (4') foot high berm of stumps and logs covered with earth. Stumps and brush must be placed along the remainder of the trail. These roads must be rendered impassable to cars and trucks. All stumps from road building and landing construction must be reserved to block any newly constructed roads upon completion of the sale. These stumps must be scattered along the road system to prohibit vehicular movement. Contact the Sale Administrator for specific details of design and placement.

##### 4.1.8 - Road work (1) (8/07)

The following road work is required: A temporary driveway from 10 1/2 Mile Rd to access Payment Units 1 and 2. The driveway will require a permit from the Midland County Road Commission (see spec 4.1.11). A culvert and fill will be required. The temporary driveway will be removed after contract work is completed.

#### 4.1.11 - Permits (2/12)

The Purchaser will secure any necessary permits that may be required.

## 5 - Operations

### 5.1 - Notification

#### 5.1.6 - Utility R.O.W. (4/19)

It is the responsibility of the Purchaser to obtain permission from the utility company to utilize the power line R.O.W. for operations. Contact Consumer's Energy at 1-800-477-5050.

### 5.2 - Conduct of Operations

#### 5.2.1 - Slash

##### 5.2.1.8 - Slash height (12/08)

No slash or tree tops may exceed 24 inches in height.

#### 5.2.3 - Operating Restrictions

##### 5.2.3.1 - Operating restrictions (9/11)

Within Payment Unit(s) 1, 2 and 3, unless changed by written agreement, cutting, skidding, and hauling are not permitted during the period of April 15 to July 15. This restriction is because of seasonally saturated soils.

##### 5.2.3.3 - Bark slippage restriction (3/09)

Within Payment Unit(s) 1, 2 and 3, unless changed by written agreement, cutting and skidding are not permitted during the period of April 15 to July 15. This restriction is because of bark slippage.

##### 5.2.3.4 - Oak wilt restriction, no exceptions (1/18)

Within Payment Unit(s) 1, 2 and 3, cutting, skidding, hauling within the sale and brushing of access roads to the sale are not permitted during the period of April 15 to July 15. No exceptions will be granted. This is necessary to reduce the spread of oak wilt.

#### 5.2.31 - Landing locations (9/13)

Recommended landing areas are marked on the Timber Sale Map. These locations are recommendations only. All landings must be authorized by the Unit Manager or his/her representative.

#### 5.2.38 - No decking against live trees (2/04)

Cut products may not be decked against unmarked or designated leave trees.



**TIMBER SALE MAP**

This information provided by authority of Part 525, 1994 PA 451, as amended.

Sale Number

73-012-23

Date

09/25/2023

Forest Management Unit

Gladwin

County

Midland

Mapped By: Scott Shooltz

Cruised By: Scott Shooltz

Scale

1:10,000

Page

1

Of

1

Township  
15N

Range  
1W

Section(s) and  
Subdivision(s)

Section 16: SWNW, W 1/2 SW; Section 17: N 1/2 SE, SESE; Section 20: NENE; Section 21: NWNW

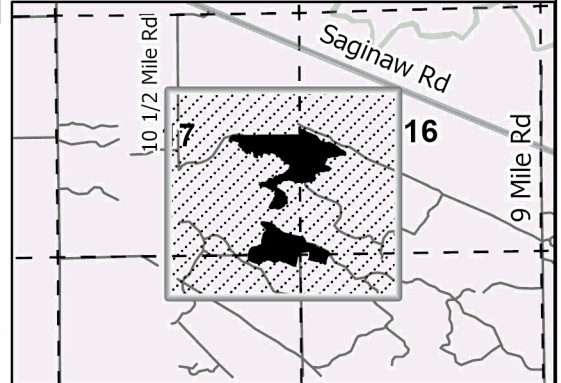
**Cover Type**

A = Aspen	J = Jack Pine	O = Oak	U = Upland Brush
B = Paper Birch	K = Rock	P = Lowland Poplar	UM = Upland Mix Forest
C = Cedar	L = Lowland Brush	Q = Mixed Swamp Conifer	V = Bog or Marsh
D = Treed Bog	LM = Lowland Mix Forest	R = Red Pine	W = White Pine
E = Swamp Hardwoods	M = Maple, Beech, Birch	S = Black Spruce	X = Non Stocked
F = Spruce/Fir	MC = Mixed Conifer	T = Tamarack	Y = Sand
G = Grass	MD = Mixed Deciduous	Z = Water	
H = Hemlock	N = Marsh		

**Density**

0 = Non Stocked	5 = Pole Timber Medium
1 = Seedling Sapling Poor	6 = Pole Timber Well
2 = Seedling Sapling Medium	7 = Saw Timber Poor
3 = Seedling Sapling Well	8 = Saw Timber Medium
4 = Pole Timber Poor	9 = Saw Timber Well

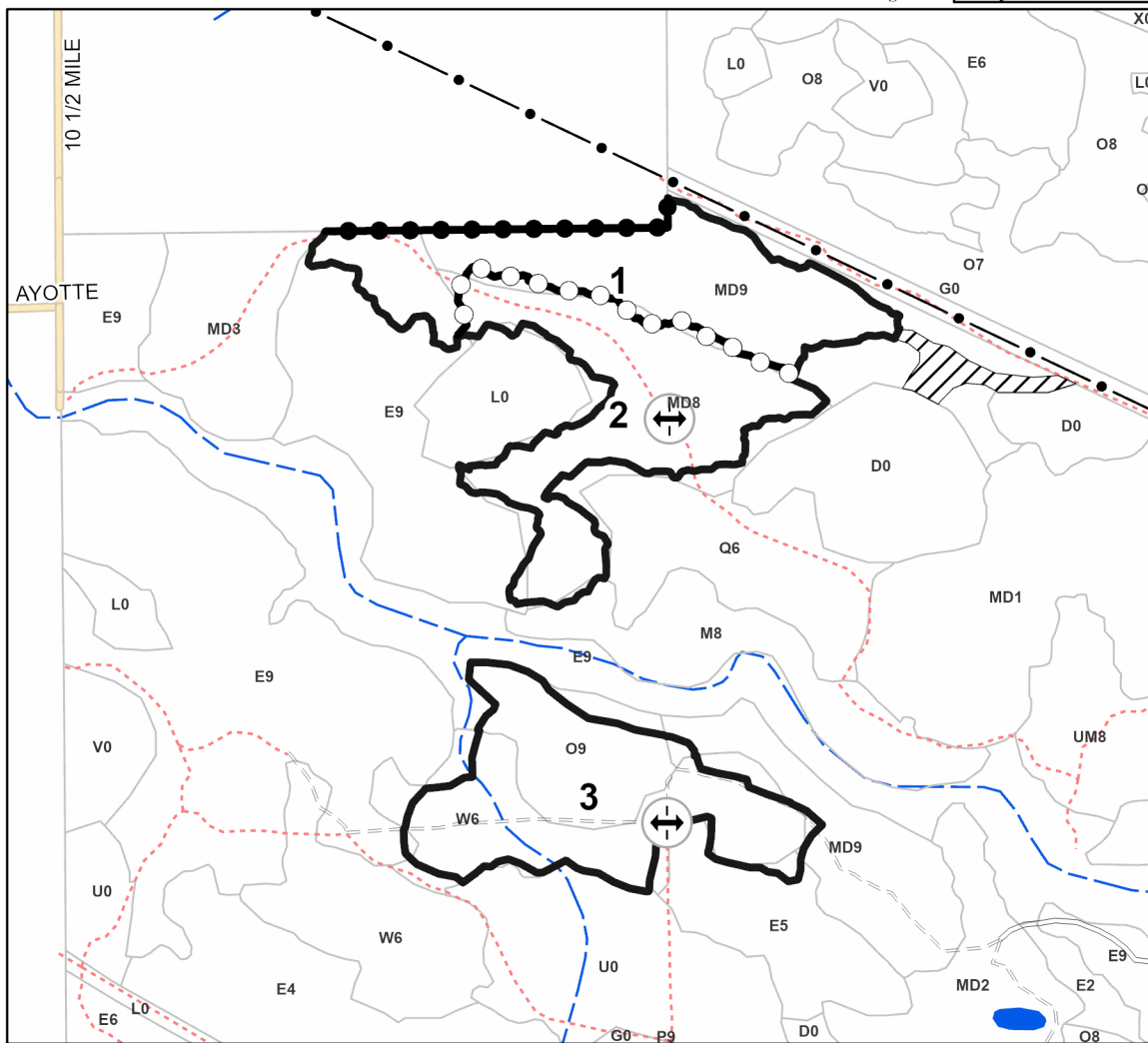
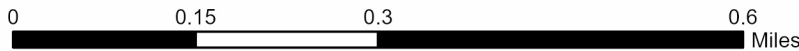
**Locator Map (1:50,000)**



**PU # Acres**

1	19.5
2	19.8
3	21.2

**Teed Up Mix  
60.5 Acres**



**Legend**

- Against State (Red)
- Payment Unit (Yellow)
- Private Line (Blue)
- Retention Areas
- Overhead Power Line
- Landing Area
- Primary Forest Road
- Secondary Forest Road
- Forest Access Route
- Administrative Access Only
- Non-DNR Road
- Stand
- Intermittent Stream
- Lakes and Rivers

Use QR Code to open Map in App





Castor Wilds (73-011-23)

T15N, R01W, SEC. 19; T15N, R01W, SEC. 29; T15N, R01W, SEC. 30; T15N,

In response to the notice of sale to be held 10:00 a.m. (local time) on July 18, 2024, I am hereby submitting my sealed bid ( firm offer) for the following forest products to be cut. Bids for individual species must be at or above the advertised price. All non-responsive bid forms may be rejected.

<u>PRODUCTS &amp; SPECIES</u>	<u>ESTIMATED VOLUME*</u>	<u>ADVERTISED PRICE</u>	<u>BID PRICE/UNIT</u>
<b>Sawtimber</b>			
Black Cherry	0.9 MBF	\$ 137.00/MBF	\$ _____
Mixed Aspen	90.1 MBF	\$ 53.00/MBF	\$ _____
Mixed Oak	337.0 MBF	\$ 103.00/MBF	\$ _____
Paper Birch	2.4 MBF	\$ 49.00/MBF	\$ _____
Red Maple	84.0 MBF	\$ 52.00/MBF	\$ _____
White Oak	23.4 MBF	\$ 60.00/MBF	\$ _____
<b>Pulpwood</b>			
Mixed Aspen	642 Cords	\$ 23.90/Cord	\$ _____
Mixed Hardwood	495 Cords	\$ 17.40/Cord	\$ _____
Mixed Oak	451 Cords	\$ 16.60/Cord	\$ _____
Paper Birch	61 Cords	\$ 17.80/Cord	\$ _____

\*The volumes are statistically estimated within plus (+) or minus (-) 12.99 percent at 95% confidence level. These estimated volumes are final and not subject to adjustment. Prospective bidders are urged to examine this timber and to make their own estimates of quantity and quality.

I understand that any or all bids may be rejected. All bids must be signed and all bid items must be bid or the bid form may be rejected. I also understand that consideration and awarding a contract will be based upon my past performance and ability to complete the contract based upon equipment and staffing subject to my control.

FEDERAL ID: \_\_\_\_\_ - \_\_\_\_\_ or SOCIAL SECURITY NUMBER: \_\_\_\_\_ - \_\_\_\_\_ - \_\_\_\_\_

Company or individual bidding: \_\_\_\_\_

Company representative's name: \_\_\_\_\_

Address: \_\_\_\_\_

City: \_\_\_\_\_ State: \_\_\_\_\_ Zip: \_\_\_\_\_

IF AVAILABLE, PLEASE PLACE THE PERSONALIZED LABEL FROM YOUR PROSPECTUS IN THE ABOVE BOX.

Individual or company representative's signature: \_\_\_\_\_ Date: \_\_\_\_\_

Phone number : \_\_\_\_\_ Email (optional): \_\_\_\_\_

**THE WINNING BIDDER MUST COMPLETE THE VERIFICATION OF WORKER'S DISABILITY COMPENSATION ACT COMPLIANCE (ON REVERSE SIDE IF DOUBLE SIDED) WITHIN 21 DAYS OF SALE AWARD DATE**



End of the world hardwoods (73-003-23)  
T15N, R03W, SEC. 26; T15N, R03W, SEC. 35; T15N, R03W, SEC. 36; Isabella

In response to the notice of sale to be held 10:00 a.m. (local time) on July 18, 2024, I am hereby submitting my sealed bid ( firm offer) for the following forest products to be cut. Bids for individual species must be at or above the advertised price. All non-responsive bid forms may be rejected.

<u>PRODUCTS &amp; SPECIES</u>	<u>ESTIMATED VOLUME*</u>	<u>ADVERTISED PRICE</u>	<u>BID PRICE/UNIT</u>
<b>Sawtimber</b>			
B. T. Aspen	201.4 MBF	\$ 66.00/MBF	\$ _____
Black/Red (Hybrid) Oak	57.2 MBF	\$ 128.00/MBF	\$ _____
Paper Birch	3.8 MBF	\$ 61.00/MBF	\$ _____
Red Maple	296.6 MBF	\$ 65.00/MBF	\$ _____
White Oak	47.9 MBF	\$ 75.00/MBF	\$ _____
<b>Pulpwood</b>			
B. T. Aspen	381 Cords	\$ 29.85/Cord	\$ _____
Mixed Hardwood	1,260 Cords	\$ 21.75/Cord	\$ _____
Mixed Oak	297 Cords	\$ 20.75/Cord	\$ _____
Paper Birch	109 Cords	\$ 22.25/Cord	\$ _____

\*The volumes are statistically estimated within plus (+) or minus (-) 10.61 percent at 95% confidence level. These estimated volumes are final and not subject to adjustment. Prospective bidders are urged to examine this timber and to make their own estimates of quantity and quality.

I understand that any or all bids may be rejected. All bids must be signed and all bid items must be bid or the bid form may be rejected. I also understand that consideration and awarding a contract will be based upon my past performance and ability to complete the contract based upon equipment and staffing subject to my control.

FEDERAL ID: \_\_\_\_ - \_\_\_\_ - \_\_\_\_ or SOCIAL SECURITY NUMBER: \_\_\_\_ - \_\_\_\_ - \_\_\_\_

Company or individual bidding: \_\_\_\_\_

Company representative's name: \_\_\_\_\_

Address: \_\_\_\_\_

City: \_\_\_\_\_ State: \_\_\_\_\_ Zip: \_\_\_\_\_

IF AVAILABLE, PLEASE PLACE THE PERSONALIZED LABEL FROM YOUR PROSPECTUS IN THE ABOVE BOX.

Individual or company representative's signature: \_\_\_\_\_ Date: \_\_\_\_\_

Phone number : \_\_\_\_\_ Email (optional): \_\_\_\_\_

**THE WINNING BIDDER MUST COMPLETE THE VERIFICATION OF WORKER'S DISABILITY COMPENSATION ACT COMPLIANCE (ON REVERSE SIDE IF DOUBLE SIDED) WITHIN 21 DAYS OF SALE AWARD DATE**



# TIMBER SALE VERIFICATION OF WORKER'S DISABILITY COMPENSATION ACT COMPLIANCE

As required by Act 317, P.A. 1969 (Worker's Compensation) and  
Part 5 of Act 451 of 1994, as amended.

FOR DEPARTMENT USE ONLY	
Sale Number (XX - XXX - XX - XX)	
Forest Management Unit:	

## VERIFICATION OF WORKER'S DISABILITY COMPENSATION ACT COMPLIANCE

- This verification must be completed and submitted within 21 days of contract award and prior to the issuance of the timber sale contract.
- In addition, if boxes 2B or 2C are checked, then Notice of Exclusion or Certificate of Insurance must be submitted within twenty-one (21) days of the contract award and prior to the issuance of the timber sale contract.
- All information must be typed or printed except for written signatures.

Please Check Appropriate Categories:

1. My business is organized as (you **must** check one of the boxes below):
  - A.  Sole Proprietorship (individual)
  - B.  Partnership
  - C.  Corporation
2. You **must** check one of the boxes below:
  - A.  I certify my business is a sole proprietorship and it has no employees but the sole proprietor. I am not subject to the Worker's Compensation Laws.
  - B.  I certify my business has satisfied its obligation to the Worker's Compensation Act through the use of an approved Notice of Exclusion (BWC-337, Rev. 5/96). I will provide a copy of the Notice of Exclusion within 21 days of the contract award. (For questions or a copy of the BWC-337, please call the Worker's Compensation Bureau at 517-322-1195).
  - C.  I certify my business has a Worker's Compensation Policy. I will provide an original Certificate of Insurance within twenty-one (21) days of the contract award.
3. If you have checked item 2(A) or 2(B), you **must** indicate the number of **both** full-time and part-time employees, other than yourself, including family members and active partners (if none, you must enter "0").

\_\_\_\_\_ Full-time Employees

\_\_\_\_\_ Part-time Employees

Name of Business		Federal ID (or) Social Security No.	
Address		Telephone (       )	
City	State	ZIP	

*I hereby certify that the above information is true and correct. I agree to notify the Michigan DNR of any changes that occur in factors affecting my coverage during any of my present and future operations.*

\_\_\_\_\_  
Signature of Owner or Authorized Representative

\_\_\_\_\_  
Title

\_\_\_\_\_  
Date

Please complete the "SEALED BID" information on the next page

Teed Up Mix (73-012-23)

T15N, R01W, SEC. 16; T15N, R01W, SEC. 17; T15N, R01W, SEC. 20; T15N,

In response to the notice of sale to be held 10:00 a.m. (local time) on July 18, 2024, I am hereby submitting my sealed bid ( firm offer) for the following forest products to be cut. Bids for individual species must be at or above the advertised price. All non-responsive bid forms may be rejected.

<u>PRODUCTS &amp; SPECIES</u>	<u>ESTIMATED VOLUME*</u>	<u>ADVERTISED PRICE</u>	<u>BID PRICE/UNIT</u>
<b>Sawtimber</b>			
B. T. Aspen	22.1 MBF	\$ 57.00/MBF	\$ _____
Black/Red (Hybrid) Oak	107.9 MBF	\$ 111.00/MBF	\$ _____
Red Maple	21.7 MBF	\$ 56.00/MBF	\$ _____
White Oak	15.1 MBF	\$ 65.00/MBF	\$ _____
White Pine	18.1 MBF	\$ 55.00/MBF	\$ _____
<b>Pulpwood</b>			
B. T. Aspen	31 Cords	\$ 25.90/Cord	\$ _____
Mixed Hardwood	242 Cords	\$ 18.85/Cord	\$ _____
Mixed Oak	166 Cords	\$ 18.00/Cord	\$ _____
Paper Birch	9 Cords	\$ 19.25/Cord	\$ _____
White Pine	47 Cords	\$ 28.40/Cord	\$ _____

\*The volumes are statistically estimated within plus (+) or minus (-) 19.99 percent at 95% confidence level. These estimated volumes are final and not subject to adjustment. Prospective bidders are urged to examine this timber and to make their own estimates of quantity and quality.

I understand that any or all bids may be rejected. All bids must be signed and all bid items must be bid or the bid form may be rejected. I also understand that consideration and awarding a contract will be based upon my past performance and ability to complete the contract based upon equipment and staffing subject to my control.

FEDERAL ID: \_\_\_\_\_ - \_\_\_\_\_ or SOCIAL SECURITY NUMBER: \_\_\_\_\_ - \_\_\_\_\_ - \_\_\_\_\_

Company or individual bidding: \_\_\_\_\_

Company representative's name: \_\_\_\_\_

Address: \_\_\_\_\_

City: \_\_\_\_\_ State: \_\_\_\_\_ Zip: \_\_\_\_\_

IF AVAILABLE, PLEASE PLACE THE PERSONALIZED LABEL FROM YOUR PROSPECTUS IN THE ABOVE BOX.

Individual or company representative's signature: \_\_\_\_\_ Date: \_\_\_\_\_

Phone number : \_\_\_\_\_ Email (optional): \_\_\_\_\_

**THE WINNING BIDDER MUST COMPLETE THE VERIFICATION OF WORKER'S DISABILITY COMPENSATION ACT COMPLIANCE (ON REVERSE SIDE IF DOUBLE SIDED) WITHIN 21 DAYS OF SALE AWARD DATE**



<b>FOR DEPARTMENT USE ONLY</b>	
Sale Number (XX - XXX - XX - XX)	
Forest Management Unit:	

## TIMBER SALE VERIFICATION OF WORKER'S DISABILITY COMPENSATION ACT COMPLIANCE

As required by Act 317, P.A. 1969 (Worker's Compensation) and  
Part 5 of Act 451 of 1994, as amended.

### VERIFICATION OF WORKER'S DISABILITY COMPENSATION ACT COMPLIANCE

- This verification must be completed and submitted within 21 days of contract award and prior to the issuance of the timber sale contract.
- In addition, if boxes 2B or 2C are checked, then Notice of Exclusion or Certificate of Insurance must be submitted within twenty-one (21) days of the contract award and prior to the issuance of the timber sale contract.
- All information must be typed or printed except for written signatures.

Please Check Appropriate Categories:

1. My business is organized as (you **must** check one of the boxes below):
  - A.  Sole Proprietorship (individual)
  - B.  Partnership
  - C.  Corporation
2. You **must** check one of the boxes below:
  - A.  I certify my business is a sole proprietorship and it has no employees but the sole proprietor. I am not subject to the Worker's Compensation Laws.
  - B.  I certify my business has satisfied its obligation to the Worker's Compensation Act through the use of an approved Notice of Exclusion (BWC-337, Rev. 5/96). I will provide a copy of the Notice of Exclusion within 21 days of the contract award. (For questions or a copy of the BWC-337, please call the Worker's Compensation Bureau at 517-322-1195).
  - C.  I certify my business has a Worker's Compensation Policy. I will provide an original Certificate of Insurance within twenty-one (21) days of the contract award.
3. If you have checked item 2(A) or 2(B), you **must** indicate the number of **both** full-time and part-time employees, other than yourself, including family members and active partners (if none, you must enter "0").

\_\_\_\_\_ Full-time Employees

\_\_\_\_\_ Part-time Employees

Name of Business		Federal ID (or) Social Security No.	
Address		Telephone (       )	
City	State	ZIP	

*I hereby certify that the above information is true and correct. I agree to notify the Michigan DNR of any changes that occur in factors affecting my coverage during any of my present and future operations.*

\_\_\_\_\_  
Signature of Owner or Authorized Representative

\_\_\_\_\_  
Title

\_\_\_\_\_  
Date

Please complete the "SEALED BID" information on the next page