



**DEPARTMENT OF NATURAL RESOURCES
STATE OF MICHIGAN
TIMBER SALE PROSPECTUS #7481**

SCHEDULED SALE DATE AND TIME: 10:00 a.m. (local time) on October 22, 2024.

LOCATION: ATLANTA MGMT UNIT, 13501 M 33, ATLANTA, MI 49709.

PROSPECTUS NOTE: The bidder is advised to inspect the sale area and review the location, estimated volumes, operating costs and contract terms of proposed sales. Please be aware that some landowners may request 60 days or more notice for access across their land.

Notice is hereby given that bids will be received by the Unit Manager, ATLANTA MANAGEMENT UNIT, for certain timber on the following described lands:

Hubert Rd Aspen & Fir (54-015-24) / T32N, R04E, SEC. 9 , S1/2NW,N1/2SW.

Montmorency County, Advertised Price \$87,683.35, 87.2 Acres, Aspen, Spruce/Fir/Tamarack.

SALE NOTE: 5.2.3.5 - Oak wilt restriction in Payment Units 1-4.

Access through private property will be needed.

Access may be through private land.

Big Cut Mix1 (54-500-24) / T34N, R03E, SEC. 11, NESE.

T34N, R03E, SEC. 12, SWNW,N1/2SW,SWSW.

T34N, R03E, SEC. 13, N1/2NW,NWNE.

T34N, R03E, SEC. 14, NE.

Presque Isle County, Advertised Price \$156,864.15, 128.9 Acres, Hardwood, Aspen.

SALE NOTE: Good access from Big Cut HWY. Some seasonal restrictions in all units, oak wilt in units 1-5. Dry summer or frozen winter for units 3 and 4. Mixed aspen saw contains bigtooth and quaking aspen, mixed aspen pulp contains bigtooth, quaking aspen, and 11 cords of balsam poplar. Mixed oak pulp contains 530 red, 37 white, 27 northern pin, and 5 hybrid oak cords. N. white cedar pulp includes 3.2 MBF in the pulp volume.

A recreation site such as a trail, pathway, or campground is within the sale area or the vicinity. Certain restrictions/specifications may be applicable including time restrictions.

Deer In The Headlights Mix 2! (54-999-24) / T32N, R04E, SEC. 17, W1/2NW,NWNE,NWSW.

T32N, R04E, SEC. 18, E1/2NE.

T32N, R04E, SEC. 6 , E1/2SW,W1/2SE.

T32N, R04E, SEC. 7 , SESE.

T32N, R04E, SEC. 8 , SESW,SWSE.

Montmorency County, Advertised Price \$179,772.45, 147.3 Acres, Aspen, Hardwood.

SALE NOTE: Fair to good quality timber. Oak wilt specs on all Payment Units and good access from Hubert Road.

Piper Railway Mix (54-040-23) / T30N, R08E, SEC. 21, SESW.

T30N, R08E, SEC. 28, NW,SWNE,N1/2SW,W1/2SE.

Alpena County, Advertised Price \$18,589.90, 82.2 Acres, Hardwood, Aspen.

SALE NOTE: -Extensive road work is required. Refer to timber sale spec 4.1.8 for details.

-Within Payment Unit(s) 2 and 3 cutting, skidding, and hauling are not permitted during the period of 5/15 to 9/15. Refer to timber sale spec 5.8.8 for details.

-Oak wilt restrictions apply. Refer to timber sale spec 5.2.3.5 for details.

A recreation site such as a trail, pathway, or campground is within the sale area or the vicinity. Certain restrictions/specifications may be applicable including time restrictions.

Eagle Camp Mix (54-041-23) / T30N, R08E, SEC. 31, SENE.

T30N, R08E, SEC. 32, NW,NESW.

Alpena County, Advertised Price \$32,418.35, 48.0 Acres, Hardwood, Aspen.

SALE NOTE: -Extensive road work is required. Refer to timber sale spec 4.1.8 for details.

-Private landowner access is required. Refer to timber sale spec 4.4.1 for details.

-Seasonal operational restrictions apply. Refer to timber sale specs 5.2.3.1, 5.8.6, and 5.2.3.5 for details.

Access may be through private or other public land.

BID INSTRUCTIONS (VER. 10/10/2022):

1. Scheduled Bid Location, Date, and Time (2/11)

Bids must be received by the Unit Manager, ATLANTA OFFICE, 13501 M 33, ATLANTA, MI 49709, no later than 10:00 a.m. (local time) on October 22, 2024. For further information concerning this sale, contact Matt Foster at 989-619-5921 extension .

2. Bidder's Qualifications (10/22)

If all or part of a timber sale was prepared by a private contractor, the contractor and that contractor's company are not permitted to bid on the timber sale. A person must be 18 years of age or older to purchase timber. Permanent employees of the Department of Natural Resources or members of their immediate household may not bid. Former employees, in the permanent or seasonal class, may not bid until 3 months after the last day of active duty. Bids will not be accepted from individuals or companies appearing on the DNR/FRD No-Bid List. This list contains the names of purchasers who previously failed to execute a contract within 21-days or who have a history of poor performance.

3. Preparation of Sealed Bids (5/16)

Bid Forms may be completed online thru Michigan DNR Timber Sale Online Bidding (OLB) at www.michigan.gov/timberbidding or by completing the hardcopy Bid Form found in the Timber Sale Prospectus . Hardcopy Bid Forms shall be manually signed in ink. Registration in OLB is considered your 'signature' for all bids submitted thru that system. Bid prices must be entered for each species and product in the Bid Price column for all material subject to bidding and all fill-in blanks must be completed. If erasures or other changes appear on the hardcopy Bid Form, each erasure or change must be initialed by the person signing the bid.

4. Submission of Sealed Bids (5/16)

Bid forms may be obtained from the Unit Manager or thru OLB. Bids may be submitted hardcopy or thru OLB. All hardcopy bids must be submitted on the bid form and in an envelope clearly identified as described in this section. NOTE: Only one bid form per bid envelope. Sealed bids must be submitted to the Unit office designated in the prospectus and must be submitted at or prior to the time established in the prospectus. The envelope should show on the outside (a) the sale name or number and (b) the date and time of bid opening, as shown in the prospectus. Bids received after the time specified in the sale prospectus are late bids and will be rejected.

It is possible for a bidder to submit multiple bids on a single sale. For example, a bid may be submitted hardcopy and a bid may be submitted thru OLB. Or, two bidders from the same company could both submit bids on the same sale. If this were to happen, the State would accept all bids received and award the contract accordingly. All bidding and contractual requirements would apply to all bids received.

5. Public Opening of Sealed Bids (7/16)

If conditions permit, the sealed bids will be publicly opened and posted at the time and place set in the prospectus.

If a bidder, present at a bid opening, has submitted bids on more than one sale, that bidder may withdraw their unopened bid envelopes or announce the withdrawal of their online bid after being declared the successful bidder on one sale.

6. Award of Contract (1/11)

Award of the contract will be made to the Bidder whose bid, conforming to the prospectus, is most advantageous to the State of Michigan on the basis of total value at rates bid for the estimated quantities. The State reserves the right to reject any bid or waive any minor irregularity in bids received. A written award mailed (or otherwise furnished) to the successful Bidder shall be deemed to result in a binding contract without further action by either party.

7. Down Payment (1/11)

The Bidder to whom award is made must make a down payment within 21 days of the sale award. The amount of the down payment will be calculated as shown in the Bond and Payment Schedule of this prospectus. Only cash may be used to meet this requirement.

8. Performance Security (1/11)

As guarantee of faithful performance, a cash bond, certificate of deposit, surety bond or irrevocable letter of credit (LOC) is required within 21 days of the sale award. The amount of the performance security is shown in the Bond and

Payment Schedule of this prospectus. If an LOC or surety is used, the coverage must extend for at least 6 months beyond the contract expiration.

9. Worker's Compensation (10/22)

Purchaser shall obtain worker's compensation insurance to cover claims under Michigan's Worker's Disability Compensation Act of 1969 or similar employee benefit act of any other state applicable to an employee. Verification of Worker's Disability Compensation Act Compliance must be completed and submitted within 21 days of contract award and prior to the issuance of the timber sale contract. In addition, if applicable, Notice of Exclusion or Certificate of Insurance must also be submitted.

10. Timber Sale Contract (10/22)

Additional conditions and requirements common to all timber sales are listed on the timber sale contract (R4031) and are available on line at www.michigan.gov/timber. Contact the Unit Manager for additional information or a sample contract. Within 21 days of the date of the award letter, the bidder must sign the contract and provide the required down payment, performance security, and verification of worker's disability compensation. The down payment and performance security shall be in accordance with the provisions of the timber sale contract, in the sums stated in this prospectus. If these actions are not taken, then the Bidder, the Bidder's corporation, and the corporation's principals may not be permitted to bid on State timber sales for a period of 3 months after the first offense, 6 months after the second offense, and 1 year after the third offense. An offense will only be counted against the Bidder for 5 years. In addition, the Bidder certifies that if awarded this contract, the Bidder will complete the timber sale contract in accordance with its terms and any modifications thereof including requirements to purchase, cut, and remove the included timber by the expiration date.

Payment Unit values in the State Forest Timber Sale Contract are calculated based on the advertised value of the Payment Unit as a percentage of the total advertised value of the contract. The advertised value of each Payment Unit is given in the Description of Timber by Payment Unit table on the Timber Sale Information page. For example, if the value of Payment Unit 1 is advertised as \$1,500 and the total Timber Sale value is advertised as \$10,000, the contract price for Payment Unit 1 will be 15% of the total bid price ($\$1,500/\$10,000 * 100$).

11. Disclaimer of Estimates and Bidder's Warranty of Inspection (10/22)

Before submitting this bid, the Bidder is advised and cautioned to inspect the sale area, review the requirements of the sale contract, and take other steps as may be reasonably necessary to ascertain the location, estimated volumes, construction estimates, and operating costs of the proposed sale. Failure to do so will not relieve the Bidder from responsibility for completing the contract.

The Bidder warrants that this bid is submitted solely on the basis of the Bidder's examination and inspection of the quality and quantity of the timber offered for sale and the Bidder's opinion of the value thereof and the costs of recovery. No reliance should be placed on the State of Michigan's estimates of timber quality, quantity or costs of recovery. Bidder further acknowledges that the State of Michigan: (i) expressly disclaims any warranty of fitness of timber for any purpose; (ii) offers this timber as is without any warranty of quality (merchantability) or quantity and (iii) expressly disclaims any warranty as to the quantity or quality of timber sold.

12. Certification and Chain-of-Custody (10/22)

Unless otherwise indicated in the contract under section 7 – Other Conditions of the Sale Specific Conditions & Requirements, the area encompassed by this timber sale is certified to the standards of the Forest Stewardship Council (FSC) - Certificate #SCS-FM/COC-00090N and the Sustainable Forestry Initiative (SFI) - Certificate #NSF-SFIS-5Y031-SF5. Forest products from this sale may be delivered to the mill as "FSC 100% and / or SFI certified" as long as the contractor hauling the forest products is chain-of-custody (COC) certified or covered under a COC certificate from the destination mill. The purchaser is responsible for maintaining COC after leaving the sale area.

13. Good Neighbor Authority (GNA) Requirements (10/22)

If the name of this timber sales contains the acronym GNA, it is authorized by the Good Neighbor Authority (GNA) and covered by various agreements between the U.S. Forest Service and the State. The timber sale occurs on federal land and the following conditions apply:

GNA contracts on US Forest Service land will not be awarded to purchasers on the Federal list of excluded parties. The System for Award Management (SAM) will be checked for active excluded parties prior to award of contract. In

addition, the Bidder to whom award is made must complete an Assurance Regarding Felony Conviction or Tax Delinquent Status for Corporate Applicants (AD-3031).

14. Good Neighbor Authority (GNA) Requirements, con't (10/22)

Bidder certifies, by signing this bid form, that to the best of Bidder's knowledge that the following representations are accurate and complete.

- a. That the Bidder and its principals are not presently debarred, suspended, proposed for debarment, declared ineligible, or voluntary excluded from timber sales (covered transactions) by any Federal department or agency.
- b. That the Bidder and its principals have not within a 3-year period preceding this bid been convicted of or had a civil judgment rendered against them for commission of fraud or a criminal offense in connection with obtaining , attempting to obtain, or performing a public (Federal, State, or local) transaction or contract under a public transaction; violation of Federal or State antitrust statutes or commission of embezzlement, theft, forgery, bribery, falsification or destruction of records, making false statements, or receiving stolen property.
- c. That the Bidder and its principals are not presently indicted for or otherwise criminally or civilly charged by a governmental entity (Federal, State, or local) with commission of any of the offenses enumerated in paragraph b of this certification.
- d. That the Bidder and its principals have not within a 3-year period preceding this bid had one or more public transactions (Federal, State, or local) terminated for breach or default of a timber or forest product contract.

Bidders that cannot certify this requirement, in whole or in part, shall submit an explanation with their bid.

Scott Bowen
Director

TIMBER SALE INFORMATION

Hubert Rd Aspen & Fir (54-015-24)
 T32N, R04E, SEC. 9.
 Montmorency County (Advertised Price \$87,683.35)

SALE NOTE: 5.2.3.5 - Oak wilt restriction in Payment Units 1-4.
 Access through private property will be needed.

Access may be through private land.

A timber sale contract for this lump sum, sealed bid timber sale will be awarded to the responsible bidder offering the highest sealed bid price. All units of volume listed below were estimated using the Inventory Manager computer program and the new Michigan taper model. Bids must be at or above the following advertised price for each product and species:

<u>PRODUCTS & SPECIES</u>	<u>ESTIMATED UNITS*</u>	<u>ADVERTISED PRICE</u>
Sawtimber		
Beech	7.7 MBF	\$ 111.00 / MBF
Red Maple	14.3 MBF	\$ 59.00 / MBF
Red Oak	134.1 MBF	\$ 195.00 / MBF
Pulpwood		
Balsam Fir	588 Cords	\$ 18.20 / Cord
Beech	13 Cords	\$ 20.85 / Cord
Black Spruce	32 Cords	\$ 9.10 / Cord
Mixed Aspen	1,136 Cords	\$ 21.80 / Cord
Paper Birch	354 Cords	\$ 14.55 / Cord
Red Maple	450 Cords	\$ 20.85 / Cord
Red Oak	322 Cords	\$ 28.80 / Cord

* The total volume is statistically estimated within plus (+) or minus (-) 17.37 percent. There are an estimated 3,262 cords on this timber sale, plus or minus 567 cords at the 95% confidence level. The estimated units are final and not subject to adjustment. Prospective bidders are urged to examine this timber and to make their own estimates of quantity and quality.

BOND AND PAYMENT SCHEDULE:

1. A bond in the amount of \$4,384.00 to insure faithful performance of the conditions of the contract will be deposited by the successful bidder within 21 days of the sale award.
2. Cutting in any sale or unit without the required advance payment would be considered a trespass.
3. Total payment must be paid in advance or according to the following schedule :
 - (a) Ten percent (10%) of the sale value must be paid within 21 days of the sale award.
 - (b) The 10% down payment will be credited towards the first unit cut.
 - (c) Payment for each of the following units must be made before cutting begins in that unit:

PAYMENT UNIT NUMBER	PERCENT OF TOTAL SALE VALUE
01	35.2%
02	23.9%
03	19.3%
04	21.6%

4. If no cutting takes place, the 10% down payment will not be refunded.
5. Operations on the contract issued will terminate on 12/31/2027.

SALE STATISTICS

Volumes were calculated in cubic feet using the Michigan taper model. Cubic foot volume includes all wood inside bark for the product indicated. For display purposes, cubic feet were converted to cords and MBF using a simple conversion factor, e.g. 79 cubic feet per cord and 185 cubic feet per MBF. The cubic foot volumes are precise; the cords and MBF volumes are not. Cubic foot volume cannot be directly converted to cords or boards with precision.

SALE VOLUMES

The total estimated sale volume may not equal the sum of the species/products due to the nature of statistical calculations associated with double sampling methodology.

VOLUME		STATISTICAL RANGE IN CORDS		
TOTAL CUBIC FEET	TOTAL CORDS	PERCENT ERROR	MINIMUM	MAXIMUM
257,673	3,262	17.37%	2,695	3,829

VDU VOLUMES

A VDU is a Volume Determination Unit. Volumes and their associated statistics are calculated at the VDU level and summarized to the sale level. There is often a one to one relationship between a VDU and a Payment Unit, but not always, depending on the cruise design. Refer to the VDU TO PAYMENT UNIT table.

VDU	VOLUME		PERCENT ERROR	RANGE IN CORDS	
	TOTAL CUBIC FEET	TOTAL CORDS		MINIMUM	MAXIMUM
106	181,029	2,292	19.82%	1,837	2,746
145	76,645	970	35.97%	621	1,319
TOTAL:	257,673	3,262		2,458	4,065

VDU TO PAYMENT UNIT

When a VDU is associated with more than one Payment Unit (PU), the VDU volumes are assigned to the PU based on acres of the VDU within the PU.

VDU	VDU ACRES	PU	PU ACRES
106	61.6	1	29.0
		2	9.6
		3	7.9
		4	15.1
145	25.6	2	12.4
		3	9.9
		4	3.3
		TOTAL:	87.2

DESCRIPTION OF TIMBER BY PAYMENT UNIT (PU)

PU	MARKET GROUP	PRODUCT	QUANTITY	UNIT	ACRES	ADVERTISE PRICE
1	Beech	Sawtimber	3.6	MBF	29.0	\$30,901.35
	Red Maple		6.8	MBF		
	Red Oak		55.1	MBF		
	Balsam Fir	Pulpwood	194	Cords		
	Beech		6	Cords		
	Mixed Aspen		293	Cords		
	<i>B. T. Aspen</i>		111	<i>Cords</i>		
	<i>Quaking Aspen</i>		182	<i>Cords</i>		
	Paper Birch		134	Cords		
	Red Maple		157	Cords		
	Red Oak		142	Cords		
	2	Beech	Sawtimber	1.2		
Red Maple			2.2	MBF		
Red Oak			26.5	MBF		
Balsam Fir		Pulpwood	149	Cords		
Beech			2	Cords		
Black Spruce			16	Cords		
Mixed Aspen			346	Cords		
<i>B. T. Aspen</i>			111	<i>Cords</i>		
<i>Quaking Aspen</i>			235	<i>Cords</i>		
Paper Birch			78	Cords		
Red Maple			109	Cords		
Red Oak			57	Cords		
3	Beech	Sawtimber	1.0	MBF	17.8	\$16,947.75
	Red Maple		1.8	MBF		
	Red Oak		21.6	MBF		
	Balsam Fir	Pulpwood	121	Cords		
	Beech		2	Cords		
	Black Spruce		12	Cords		
	Mixed Aspen		278	Cords		
	<i>B. T. Aspen</i>		89	<i>Cords</i>		
	<i>Quaking Aspen</i>		189	<i>Cords</i>		
	Paper Birch		63	Cords		
	Red Maple		88	Cords		
	Red Oak		47	Cords		
4	Beech	Sawtimber	1.9	MBF	18.4	\$18,912.70
	Red Maple		3.5	MBF		
	Red Oak		30.9	MBF		
	Balsam Fir	Pulpwood	124	Cords		
	Beech		3	Cords		
	Black Spruce		4	Cords		
	Mixed Aspen		219	Cords		
	<i>B. T. Aspen</i>		78	<i>Cords</i>		
	<i>Quaking Aspen</i>		141	<i>Cords</i>		
	Paper Birch		79	Cords		
	Red Maple		96	Cords		
	Red Oak		76	Cords		
TOTAL:			156.1	MBF		
TOTAL:			2,895	Cords		

Sale Specific Conditions & Requirements

Sale Name: Hubert Rd Aspen & Fir

Sale Number: 54-015-24 Seq#: 1

1 - Sale Area

1.2 - Boundaries

1.2.1 - Painted boundaries (9/19)

The sale boundary and Payment Unit boundaries are marked and identified by blue, red, and yellow paint. Exterior sale boundary lines against private property are marked with blue paint. Exterior sale boundary lines against state are marked with red paint. Interior Payment Unit boundaries are marked with yellow paint. Retention patches are marked with red paint; no harvesting activities may occur within these areas. The painted boundary line trees are not Included Timber and are to be protected. Yellow painted trees designating an interior Payment Unit boundary are only to be cut when all surrounding Payment Units have been paid.

2 - Timber Specifications

2.1 - Included Timber

2.1.1 - Clearcut unit(s) with unmerchantable trees (6/14)

Within Payment Unit(s) 1-4, cut all trees that are two (2) inches or more at DBH, except do not cut red pine or white pine.

3 - Payments

3.3 - Pre-measured Sales

3.3.4 - Dividing payment units (7/14)

Payment Unit(s) 1-4 may be divided at the request of the Purchaser and upon approval of the Unit Manager. Dividing Payment Units is a contract modification which requires a Timber Sale Contract Amendment. There will be only one division per Payment Unit.

3.4 - Damaged Timber

3.4.1 - Damaged timber (7/16)

General Condition and Requirement 3.4 Damaged Timber, defines liquidated damages for undesignated live merchantable trees which are cut or injured.

No damage is acceptable to undesignated live merchantable trees. Within the Sale Area, if more than 5% of trees (> 4.5" DBH) within a specified area of the sale are damaged, liquidated damages will be assessed for all trees damaged. Rates will be in accordance with General Condition and Requirement 3.4 Damaged Timber.

4 - Transportation

4.1 - Construction

4.1.3 - Slash and earthen piles (8/04)

Piles or windrows of earth along roads and landings that have been widened or constructed shall be leveled. Slash from road maintenance or construction, including stumps, shall be dispersed throughout the sale, chipped, utilized or otherwise removed from the sale.

4.1.6 - Road construction (4/24)

Construction of new roads or improvements of existing roads shall be done in such a way as to minimize the environmental and visual impacts. Merchantable trees shall be cut and utilized unless otherwise directed. Non-merchantable trees shall be severed and laid flat on the ground. Slash shall be scattered, and not left in windrows and kept a minimum of 10 feet back from the road edge. Stumps shall be set upright, not left on edge, and be moved at least 10 feet away from the road edge. Disturbed soil shall be feathered into the woods and not left in berms or windrows.

4.1.7 - Road closure (10/11)

All new roads built into the sale must be blocked to vehicle traffic upon completion of the sale. Stumps and brush must be placed along the remainder of the trail. These roads must be rendered impassable to cars and trucks. All stumps from road building and landing construction must be reserved to block any newly constructed roads upon completion of the sale. These

stumps must be scattered along the road system to prohibit vehicular movement. Temporary berms may be required if no sale activity occurs for 30 or more consecutive days. Contact the Sale Administrator for specific details of design and placement.

4.2 - Maintenance

4.2.5 - Two wheel drive condition (2/04)

All existing trail roads on and adjacent to the sale area must be passable by two-wheel drive traffic for the duration of the sale.

4.4 - Access

4.4.1 - Private property access (3/11)

Permission for access across private land is required for the harvesting of Payment Units 1-4. Permission for access across private land is the responsibility of the Purchaser. A copy of the written permission from the private landowner must be given to the Unit Manager within 30 days of the bid opening and prior to the beginning of operations. Contact DNR Forest Technician Allison Bundschuh at 989-619-0691 for private landowner contact information.

5 - Operations

5.1 - Notification

5.1.1 - Pre-sale conference (10/16)

A pre-sale conference on site between the Purchaser and sale administrator is required prior to beginning any operations. The Unit Manager or his/her representative must be contacted at least 5 days in advance to schedule the conference.

5.1.4 - Post-sale conference (10/16)

A post-sale conference on site between the Purchaser and sale administrator is required 5 days prior to the completion of active logging operations to determine clean-up and repair of landings, road edges, and the fulfillment of other contract specifications.

5.2 - Conduct of Operations

5.2.2 - Hazard Trees/Snags

5.2.2.1 - Den trees (10/16)

Obvious hollow and/or den trees shall be protected and left standing unless they are a safety hazard.

5.2.3 - Operating Restrictions

5.2.3.5 - Oak wilt restriction (1/18)

Within Payment Unit(s) 1-4, unless changed by written agreement, cutting, skidding, hauling within the sale and brushing of access roads to the sale are not permitted during the period of April 15 to July 15. Operations may be allowed if specific steps are taken to prevent damaging uncut oak during the high risk period. Those steps may include completing all road brushing before April 15th and clearing a tree-length buffer along uncut oak cover before April 15th. This is necessary to reduce the spread of oak wilt. For more information, contact the Unit Manager or his/her representative.

5.2.4 - Dead and Down Creation

5.2.4.4 - Dead and down creation, grouse (6/18)

To encourage grouse and other wildlife, in Payment Unit(s) 2, 3, and 4, leave one 12" or larger diameter or larger log-length (8-foot minimum) piece or whole tree on the ground for every 2 acres, preferably a hardwood species such as oak or maple or if no hardwoods present, a pine species (white or red). These trees will be evenly scattered throughout the unit, preferably at least two chains (120 feet) from any roads, two-tracks, or trails open to vehicles.

5.2.32 - Decking/landing restoration (9/13)

All decking and landing areas must have the surface area restored to a condition equal to or better than before. This is to ensure the proper regeneration of the stand. Wood debris, chips and "cookies" from trimmings must be removed or scattered away from landing and loading areas and may not be windrowed on the edge.

5.2.38 - No decking against live trees (2/04)

Cut products may not be decked against unmarked or designated leave trees.

5.4 - Soil Protection

5.4.1 - Rutting restriction, general (7/16)

Operations are to cease immediately if equipment and weather conditions result in rutting of roads and/or skid trails which is 12 inches or greater in depth and 50 feet in length. The Unit Manager or his/her representative may restrict hauling and/or skidding if ruts exceed the specified depth. With the Unit Manager or his/her representative's approval, the Purchaser may return to the area when the risk of rutting has decreased.

5.8 - Protection of Endangered Species

5.8.5 - Protection of raptor nests (3/13)

All trees with raptor nests will be protected if found during harvesting operations. Notification will be made to the Unit Manager or his/her representative who will notify the Wildlife Biologist so an on-site evaluation and recommendation can be made, if necessary.



TIMBER SALE MAP

This information provided by authority of Part 525, 1994 PA 451, as amended.

Sale Number 54-015-24	Date 04/09/2024
Scale 1:7,920	Page 1
	Of 1

Forest Management Unit Atlanta Mgt Unit	County Montmorency	Mapped By: Allison Bundschuh
		Cruised By: Allison Bundschuh

Township 32N	Range 04E	Section(s) and Subdivision(s) Sec. 9 S1/2NW,N1/2SW;
-----------------	--------------	---

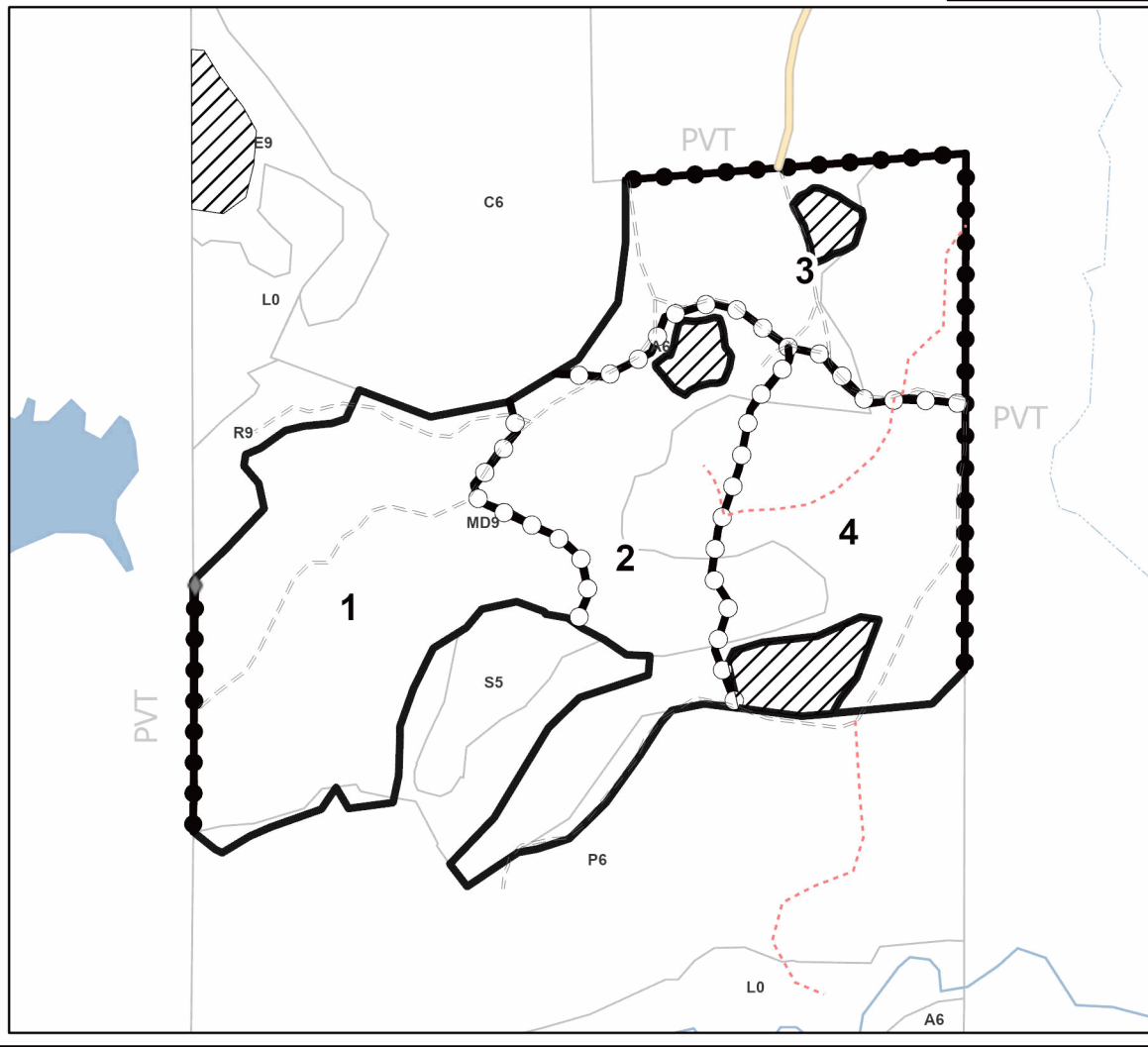
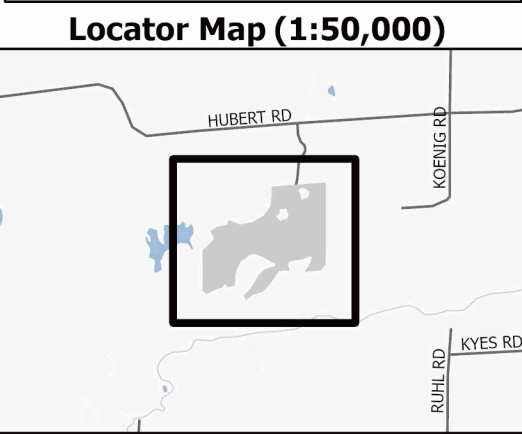
Cover Type			
A = Aspen	J = Jack Pine	O = Oak	U = Upland Brush
B = Paper Birch	K = Rock	P = Lowland Poplar	UM = Upland Mix Forest
C = Cedar	L = Lowland Brush	Q = Mixed Swamp Conifer	V = Bog or Marsh
D = Treed Bog	LM = Lowland Mix Forest	R = Red Pine	W = White Pine
E = Swamp Hardwoods	M = Maple, Beech, Birch	S = Black Spruce	X = Non Stocked
F = Spruce/Fir	MC = Mixed Conifer	T = Tamarack	Y = Sand
G = Grass	MD = Mixed Deciduous	Z = Water	
H = Hemlock	N = Marsh		

Density	
0 = Non Stocked	5 = Pole Timber Medium
1 = Seedling Sapling Poor	6 = Pole Timber Well
2 = Seedling Sapling Medium	7 = Saw Timber Poor
3 = Seedling Sapling Well	8 = Saw Timber Medium
4 = Pole Timber Poor	9 = Saw Timber Well

PU #	Acres
1	29
2	22
3	17.8
4	18.4

Hubert Rd Aspen & Fir

87.2 Acres



Legend

- Against State (Red)
- Payment Unit (Yellow)
- Private Line (Blue)
- Stand
- ▨ Retention Areas
- - - Forest Access Route
- · - · - Administrative Access Only
- Non-DNR Road
- ◆ Field Grade Corner

Use QR Code to open Map in App



TIMBER SALE INFORMATION

Big Cut Mix1 (54-500-24)

T34N, R03E, SEC. 11; T34N, R03E, SEC. 12; T34N, R03E, SEC. 13; T34N, R03E, SEC. 14.
Presque Isle County (Advertised Price \$156,864.15)

SALE NOTE: Good access from Big Cut HWY. Some seasonal restrictions in all units, oak wilt in units 1-5. Dry summer or frozen winter for units 3 and 4. Mixed aspen saw contains bigtooth and quaking aspen, mixed aspen pulp contains bigtooth, quaking aspen, and 11 cords of balsam poplar. Mixed oak pulp contains 530 red, 37 white, 27 northern pin, and 5 hybrid oak cords. N. white cedar pulp includes 3.2 MBF in the pulp volume.

A recreation site such as a trail, pathway, or campground is within the sale area or the vicinity. Certain restrictions/specifications may be applicable including time restrictions.

A timber sale contract for this lump sum, sealed bid timber sale will be awarded to the responsible bidder offering the highest sealed bid price. All units of volume listed below were estimated using the Inventory Manager computer program and the new Michigan taper model. Bids must be at or above the following advertised price for each product and species:

<u>PRODUCTS & SPECIES</u>	<u>ESTIMATED UNITS*</u>	<u>ADVERTISED PRICE</u>
Sawtimber		
Mixed Aspen	177.5 MBF	\$ 93.00 / MBF
Northern Pin Oak	5.4 MBF	\$ 122.00 / MBF
Red Maple	19.7 MBF	\$ 63.00 / MBF
Red Oak	279.4 MBF	\$ 208.00 / MBF
Red Pine	112.7 MBF	\$ 131.00 / MBF
White Oak	22.3 MBF	\$ 79.00 / MBF
White Pine	24.5 MBF	\$ 114.00 / MBF
Pulpwood		
Balsam Fir	306 Cords	\$ 19.40 / Cord
Jack Pine	48 Cords	\$ 12.45 / Cord
Mixed Aspen	699 Cords	\$ 23.25 / Cord
Mixed Oak	599 Cords	\$ 30.75 / Cord
N. White Cedar	23 Cords	\$ 9.90 / Cord
Paper Birch	60 Cords	\$ 15.50 / Cord
Red Maple	328 Cords	\$ 22.25 / Cord
Red Pine	225 Cords	\$ 43.45 / Cord
White Pine	53 Cords	\$ 27.00 / Cord
White Spruce	16 Cords	\$ 9.70 / Cord

* The total volume is statistically estimated within plus (+) or minus (-) 14.32 percent. There are an estimated 3,857 cords on this timber sale, plus or minus 553 cords at the 95% confidence level. The estimated units are final and not subject to adjustment. Prospective bidders are urged to examine this timber and to make their own estimates of quantity and quality.

BOND AND PAYMENT SCHEDULE:

1. A bond in the amount of \$7,843.00 to insure faithful performance of the conditions of the contract will be deposited by the successful bidder within 21 days of the sale award.
2. Cutting in any sale or unit without the required advance payment would be considered a trespass.
3. Total payment must be paid in advance or according to the following schedule :
 - (a) Ten percent (10%) of the sale value must be paid within 21 days of the sale award.
 - (b) The 10% down payment will be credited towards the first unit cut.
 - (c) Payment for each of the following units must be made before cutting begins in that unit:

PAYMENT UNIT NUMBER	PERCENT OF TOTAL SALE VALUE
01	22.1%
02	22.5%
03	14.4%
04	16.6%
05	24.4%
4. If no cutting takes place, the 10% down payment will not be refunded.
5. Operations on the contract issued will terminate on 12/31/2027.

SALE STATISTICS

Volumes were calculated in cubic feet using the Michigan taper model. Cubic foot volume includes all wood inside bark for the product indicated. For display purposes, cubic feet were converted to cords and MBF using a simple conversion factor, e.g. 79 cubic feet per cord and 185 cubic feet per MBF. The cubic foot volumes are precise; the cords and MBF volumes are not. Cubic foot volume cannot be directly converted to cords or boards with precision.

SALE VOLUMES

The total estimated sale volume may not equal the sum of the species/products due to the nature of statistical calculations associated with double sampling methodology.

VOLUME			STATISTICAL RANGE IN CORDS	
TOTAL CUBIC FEET	TOTAL CORDS	PERCENT ERROR	MINIMUM	MAXIMUM
304,742	3,857	14.32%	3,305	4,410

VDU VOLUMES

A VDU is a Volume Determination Unit. Volumes and their associated statistics are calculated at the VDU level and summarized to the sale level. There is often a one to one relationship between a VDU and a Payment Unit, but not always, depending on the cruise design. Refer to the VDU TO PAYMENT UNIT table.

VDU	VOLUME			RANGE IN CORDS	
	TOTAL CUBIC FEET	TOTAL CORDS	PERCENT ERROR	MINIMUM	MAXIMUM
52	57,742	731	27.96%	527	935
59	49,917	632	29.40%	446	818
64	7,892	100	50.57%	49	150
74	32,996	418	42.41%	241	595
79	99,024	1,253	33.46%	834	1,673
92	57,172	724	25.09%	542	905
TOTAL:	304,742	3,857		2,639	5,076

VDU TO PAYMENT UNIT

When a VDU is associated with more than one Payment Unit (PU), the VDU volumes are assigned to the PU based on acres of the VDU within the PU.

VDU	VDU ACRES	PU	PU ACRES
52	23.5	1	23.1
		2	0.4
59	26.1	1	0.5
		2	25.6
64	6.9	3	6.9
74	11.9	3	11.9
79	40.8	3	10.1
		4	30.7
92	19.7	5	19.7
TOTAL:	128.9		128.9

DESCRIPTION OF TIMBER BY PAYMENT UNIT (PU)

PU	MARKET GROUP	PRODUCT	QUANTITY	UNIT	ACRES	ADVERTISE PRICE		
1	Mixed Aspen	Sawtimber	7.1	MBF	23.6	\$34,601.85		
	<i>B. T. Aspen</i>		7.1	<i>MBF</i>				
	Red Oak		54.4	MBF				
	Red Pine		73.1	MBF				
	White Oak		0.1	MBF				
	White Pine		4.4	MBF				
	Jack Pine		Pulpwood	32			Cords	
	Mixed Aspen			109			Cords	
	<i>B. T. Aspen</i>			109			<i>Cords</i>	
	Mixed Oak			129			Cords	
	<i>Red Oak</i>			112			<i>Cords</i>	
	<i>White Oak</i>			17			<i>Cords</i>	
	Red Pine			123			Cords	
	White Pine			11			Cords	
2	Mixed Aspen	Sawtimber	0.1	MBF	26.0	\$35,318.00		
	<i>B. T. Aspen</i>		0.1	<i>MBF</i>				
	Red Oak		96.2	MBF				
	Red Pine		26.3	MBF				
	White Oak		3.1	MBF				
	White Pine		11.2	MBF				
	Jack Pine		Pulpwood	1			Cords	
	Mixed Aspen			2			Cords	
	<i>B. T. Aspen</i>			2			<i>Cords</i>	
	Mixed Oak			198			Cords	
	<i>Red Oak</i>			196			<i>Cords</i>	
	<i>White Oak</i>			2			<i>Cords</i>	
	Red Maple			5			Cords	
	Red Pine			72			Cords	
White Pine	35	Cords						
3	Mixed Aspen	Sawtimber	87.2	MBF	28.9	\$22,564.15		
	<i>B. T. Aspen</i>		19.8	<i>MBF</i>				
	<i>Quaking Aspen</i>		67.4	<i>MBF</i>				
	Northern Pin Oak		2.9	MBF				
	Red Maple		13.9	MBF				
	Red Oak		3.4	MBF				
	Red Pine		2.2	MBF				
	Balsam Fir		Pulpwood	139			Cords	
	<i>Balsam Fir</i>			<i>Sawtimber</i>			1.7	<i>MBF</i>
	<i>Balsam Fir</i>			<i>Pulpwood</i>			136	<i>Cords</i>
	Jack Pine		4	Cords				
	Mixed Aspen		184	Cords				
	<i>B. T. Aspen</i>		99	<i>Cords</i>				
	<i>Balsam Poplar</i>		6	<i>Cords</i>				
	<i>Quaking Aspen</i>		79	<i>Cords</i>				
	Mixed Oak		28	Cords				
	<i>Red (Hybrid) Oak</i>		1	<i>Cords</i>				
	<i>Northern Pin Oak</i>		18	<i>Cords</i>				
	<i>Red Oak</i>		9	<i>Cords</i>				
	N. White Cedar		12	Cords				
	<i>N. White Cedar</i>		<i>Sawtimber</i>	2.0			<i>MBF</i>	
	<i>N. White Cedar</i>			<i>Pulpwood</i>			8	<i>Cords</i>
	Paper Birch						40	Cords
	Red Maple		149	Cords				
	Red Pine		4	Cords				
	White Spruce		12	Cords				
4	Mixed Aspen	Sawtimber	62.6	MBF	30.7	\$26,107.40		

DESCRIPTION OF TIMBER BY PAYMENT UNIT (PU), CON'T

PU	MARKET GROUP	PRODUCT	QUANTITY	UNIT	ACRES	ADVERTISE PRICE
4 con't	<i>B. T. Aspen</i>	<i>Sawtimber</i>	41.2	<i>MBF</i>		
	<i>Quaking Aspen</i>		21.4	<i>MBF</i>		
	Northern Pin Oak		2.5	MBF		
	Red Maple		5.8	MBF		
	Red Oak		10.4	MBF		
	Red Pine		6.5	MBF		
	Balsam Fir	Pulpwood	135	Cords		
	<i>Balsam Fir</i>		135	<i>Cords</i>		
	Jack Pine		11	Cords		
	Mixed Aspen		361	Cords		
	<i>B. T. Aspen</i>		213	<i>Cords</i>		
	<i>Balsam Poplar</i>		5	<i>Cords</i>		
	<i>Quaking Aspen</i>		143	<i>Cords</i>		
	Mixed Oak		42	Cords		
	<i>/Red (Hybrid) Oak</i>		4	<i>Cords</i>		
	<i>Northern Pin Oak</i>		9	<i>Cords</i>		
	<i>Red Oak</i>		29	<i>Cords</i>		
	N. White Cedar		11	Cords		
	<i>N. White Cedar</i>	<i>Sawtimber</i>	1.2	<i>MBF</i>		
	<i>N. White Cedar</i>	<i>Pulpwood</i>	9	<i>Cords</i>		
	Paper Birch		20	Cords		
	Red Maple		141	Cords		
	Red Pine		13	Cords		
	White Spruce		4	Cords		
5	Mixed Aspen	Sawtimber	20.5	MBF	19.7	\$38,272.75
	<i>B. T. Aspen</i>		20.5	<i>MBF</i>		
	Red Oak		115.0	MBF		
	Red Pine		4.6	MBF		
	White Oak		19.1	MBF		
	White Pine		8.9	MBF		
	Balsam Fir	Pulpwood	32	Cords		
	<i>Balsam Fir</i>		32	<i>Cords</i>		
	Mixed Aspen		43	Cords		
	<i>B. T. Aspen</i>		43	<i>Cords</i>		
	Mixed Oak		202	Cords		
	<i>Red Oak</i>		184	<i>Cords</i>		
	<i>White Oak</i>		18	<i>Cords</i>		
	Red Maple		33	Cords		
	Red Pine		13	Cords		
	White Pine		7	Cords		
TOTAL:			641.5	MBF		
TOTAL:			2,357	Cords		

Sale Specific Conditions & Requirements

Sale Name: Big Cut Mix1

Sale Number: 54-500-24 Seq#: 1

1 - Sale Area

1.2 - Boundaries

1.2.1 - Painted boundaries (9/19)

The sale boundary and Payment Unit boundaries are marked and identified by blue, red and yellow paint. Exterior sale boundary lines against private property are marked with blue paint. Exterior sale boundary lines against state are marked with red paint. Interior Payment Unit boundaries are marked with yellow paint. Retention patches are marked with red paint; no harvesting activities may occur within these areas. The painted boundary line trees are not Included Timber and are to be protected. Yellow painted trees designating an interior Payment Unit boundary are only to be cut when all surrounding Payment Units have been paid.

2 - Timber Specifications

2.1 - Included Timber

2.1.1 - Clearcut unit(s) with unmerchantable trees (6/14)

Within Payment Unit(s) 1-5, cut all trees that are two (2) inches or more at DBH, except do not cut white pine and green painted legacy trees within Payment Unit(s) 3 and 4. In addition, protect all pine regeneration (<4.5" DBH) in Payment Unit(s) 2 and 5, in accordance with sale spec 3.4.1.

2.2 - Utilization

2.2.2 - Chipping required (2/18)

Payment Unit 1 must be chip harvested to facilitate subsequent planting operations. The Purchaser has the option to produce sawlogs or pulpwood bolts, but the remaining portion of the trees must be chipped and hauled. Products may be produced as roundwood and forwarded to decking areas in final product length, but the tops must be left intact and skidded to the landing for chipping in order to minimize the amount of residual slash. If market conditions limit the practicality of chipping, tops and slash must be arranged in a way that will not inhibit future planting operations, as directed by the Sale Administrator. The requirement to retain approximately 1/6 to 1/3 of tree tops and limbs less than four inches in diameter is still applicable (G. C. & R. 2.2).

2.2.3 - Stump heights (4/07)

Stump heights within Payment Unit 1 shall not exceed 6 inches for all trees. This is in order to facilitate planting operations.

3 - Payments

3.3 - Pre-measured Sales

3.3.4 - Dividing payment units (7/14)

Payment Unit(s) 1-5 may be divided at the request of the Purchaser and upon approval of the Unit Manager. Dividing Payment Units is a contract modification which requires a Timber Sale Contract Amendment. There will be only one division per Payment Unit.

3.4 - Damaged Timber

3.4.1 - Damaged timber (7/16)

General Condition and Requirement 3.4 Damaged Timber, defines liquidated damages for undesignated live merchantable trees which are cut or injured. In addition, extreme care should be taken to avoid damage to white pine seedlings and saplings (1/4" to 4.5" DBH) within Payment Unit(s) 2 and 5. Within Payment Unit(s) 3 and 4 no damage is acceptable to undesignated live merchantable trees. Within the Sale Area, if more than 5% of white pine and/or green painted trees (> 4.5" DBH) within a specified area of the sale are damaged, liquidated damages will be assessed for all trees damaged. Rates will be in accordance with General Condition and Requirement 3.4 Damaged Timber.

4 - Transportation

4.1 - Construction

4.1.3 - Slash and earthen piles (8/04)

Piles or windrows of earth along roads and landings that have been widened or constructed shall be leveled. Slash from road maintenance or construction, including stumps, shall be dispersed throughout the sale.

4.1.6 - Road construction (4/24)

Construction of new roads or improvements of existing roads shall be done in such a way as to minimize the environmental and visual impacts. Merchantable trees shall be cut and utilized unless otherwise directed. Non-merchantable trees shall be severed and laid flat on the ground. Slash shall be scattered, and not left in windrows and kept a minimum of 10 feet back from the road edge. Stumps shall be set upright, not left on edge, and be moved at least 10 feet away from the road edge. Disturbed soil shall be feathered into the woods and not left in berms or windrows.

4.1.7 - Road closure (10/11)

All new roads built into the sale must be blocked to vehicle traffic upon completion of the sale. Overgrown roads that are reopened shall be considered new roads. In general, this will require constructing double earthen berms at strategic locations. Stumps and brush must be placed along the remainder of the trail. These roads must be rendered impassable to cars and trucks. All stumps from road building and landing construction must be reserved to block any newly constructed roads upon completion of the sale. These stumps must be scattered along the road system to prohibit vehicular movement. Contact the Sale Administrator for specific details of design and placement.

4.2 - Maintenance

4.2.5 - Two wheel drive condition (2/04)

All existing trail roads on and adjacent to the sale area must be passable by two-wheel drive traffic for the duration of the sale.

5 - Operations

5.1 - Notification

5.1.1 - Pre-sale conference (10/16)

A pre-sale conference on site between the Purchaser and sale administrator is required prior to beginning any operations to determine landing and road locations. The Unit Manager or his/her representative must be contacted at least 10 days in advance to schedule the conference.

5.1.4 - Post-sale conference (10/16)

A post-sale conference on site between the Purchaser and sale administrator is required 5 days prior to the completion of active logging operations to determine clean-up and repair of landings, road edges, and the fulfillment of other contract specifications.

5.2 - Conduct of Operations

5.2.1 - Slash

5.2.1.8 - Slash height (12/08)

No slash or tree tops may exceed 24 inches in height.

5.2.1.10 - No slash in openings (5/10)

No brush or logging debris is to be left in the maintained wildlife opening which is indicated by G0 on the Timber Sale Map. Any damage to the opening shall be repaired according to specifications of the Unit Manager or his/her representative.

5.2.2 - Hazard Trees/Snags

5.2.2.1 - Den trees (10/16)

Obvious hollow and/or den trees shall be protected and left standing unless they are a safety hazard.

5.2.3 - Operating Restrictions

5.2.3.5 - Oak wilt restriction (1/18)

Within Payment Unit(s) 1, 2, and 5, unless changed by written agreement, cutting, skidding, hauling within the sale and brushing of access roads to the sale are not permitted during the period of April 15 to July 15. Operations may be allowed if specific steps are taken to prevent damaging uncut oak during the high risk period. Those steps may include completing

all road brushing before April 15th and clearing a tree-length buffer along uncut oak cover before April 15th. This is necessary to reduce the spread of oak wilt. For more information, contact the Unit Manager or his/her representative.

5.2.3.11 - Coppice regeneration protection (4/10)

Timber harvesting in any Payment Unit must be completed before significant aspen sprouting occurs in that Payment Unit so as to minimize damage to the new regeneration. Any post harvest operations, such as chipping, must be completed before sprouting of regeneration occurs. If it is anticipated that chipping will be delayed, then tops shall be carried to one central location or left unchipped. The Unit Manager or his/her representative may cease such operations if sprouting occurs before the operation is complete.

5.2.4 - Dead and Down Creation

5.2.4.7 - Dead and down creation: hare, grouse, deer and other species (5/15)

To improve horizontal cover habitat for snowshoe hare, grouse, deer, and other species, the Purchaser is to push over one 12-inch in diameter tree per every 2 acres. These trees should be tipped over with the root ball still attached so the base of the tree is suspended off the ground. The crown of the fallen tree should be at or near ground level after it is pushed over. Good example of these trees are hardwood species that are in poor form, have excessive branching, or do not contain desirable products. Target species for this process are aspen, red maple, and oak. This applies to Payment Unit(s) 3 and 4.

5.2.22 - Operating Caution

5.2.22.1 - Operating caution (6/11)

It is recommended, but not required, that within Payment Unit(s) 3 and 4, cutting, skidding, and hauling occur during dry summer or frozen winter conditions. The reason for the recommendation is because of seasonally wet soils.

5.2.32 - Decking/landing restoration (9/13)

All decking and landing areas must have the surface area restored to a condition equal to or better than before. This is to ensure the proper regeneration of the stand. Wood debris, chips and "cookies" from trimmings must be removed or scattered away from landing and loading areas and may not be windrowed on the edge.

5.2.38 - No decking against live trees (2/04)

Cut products may not be decked against unmarked or designated leave trees.

5.2.41 - Snowmobile trail protection (9/11)

The Snowmobile Trail 990 is a snowmobile trail and is shown on the Timber Sale Map. Do not cut or damage posts with orange trail markers or traffic control signs. If the trail is used, it must be maintained and restored to a condition equal to or better than before the sale. The road maintenance/restoration must be done prior to December 1. If the trail is used for hauling, it must be graded to the satisfaction of the Unit Manager or his/her representative prior to December 1. If the trail road is to be used for hauling during the snowmobile season, then a snow covered base must be left on the trail. Maintain a 20-foot-wide slash, debris, and rut free zone daily using the snowmobile trail as the centerline. No decking of forest products will be permitted along the snowmobile trail. All stumps within 20 feet of the snowmobile trail must be cut at ground level.

5.4 - Soil Protection

5.4.1 - Rutting restriction, general (7/16)

Operations are to cease immediately if equipment and weather conditions result in rutting of roads and/or skid trails which is 12 inches or greater in depth and 50 feet in length. The Unit Manager or his/her representative may restrict hauling and/or skidding if ruts exceed the specified depth. With the Unit Manager or his/her representative's approval, the Purchaser may return to the area when the risk of rutting has decreased.

5.7 - Protection of Historical Sites

5.7.2 - Potential historical site(s) (9/06)

The State Historic Preservation Office has identified the potential for a historic site within the boundary of this timber sale. Note that if the site is discovered during operations, General Condition and Requirement 5.7 - Protection of Historical Sites will apply.

5.8 - Protection of Endangered Species

5.8.5 - Protection of raptor nests (3/13)

All trees with raptor nests will be protected if found during harvesting operations. Notification will be made to the Unit Manager or his/her representative who will notify the Wildlife Biologist so an on-site evaluation and recommendation can be made, if necessary.

6 - Safety and Fire Prevention

6.2 - Signing

6.2.1 - Road posting (10/20)

The Purchaser is responsible for posting and maintaining caution signs on Big Cut Highway prior to beginning operations. The road must be posted at appropriate distances from the Sale Area to warn of logging activity and truck traffic. Signs must be removed when harvest operations are suspended or completed. The Purchaser will provide these signs.

6.2.2 - Snowmobile trail posting (10/20)

The Purchaser is responsible for posting and maintaining caution signs on Snowmobile Trail 990 prior to beginning operations during the snowmobile season (approximately December 1 to March 31). The trail must be posted at appropriate distances from the Sale Area to warn of logging activity and truck traffic. Signs must be removed when harvest operations are suspended or completed. The Purchaser will provide these signs.

TIMBER SALE MAP

This information provided by authority of Part 525, 1994 PA 451, as amended.

Sale Number	Date	
54-500-24	07/25/2024	
Scale	Page	Of
1:15,840	1	1

Forest Management Unit	County	Mapped By: Michaud
Atlanta Mgt Unit	Presque Isle	Cruised By: Michaud

Township	Range	Section(s) and Subdivision(s)
34N	03E	Sec. 11 NESE; Sec. 12 SWNW,N1/2SW,SWSW; Sec. 13 N1/2NW,NWNE; Sec. 14 NE;

Cover Type			
A = Aspen	J = Jack Pine	O = Oak	U = Upland Brush
B = Paper Birch	K = Rock	P = Lowland Poplar	UM = Upland Mix Forest
C = Cedar	L = Lowland Brush	Q = Mixed Swamp Conifer	V = Bog or Marsh
D = Treed Bog	LM = Lowland Mix Forest	R = Red Pine	W = White Pine
E = Swamp Hardwoods	M = Maple, Beech, Birch	S = Black Spruce	X = Non Stocked
F = Spruce/Fir	MC = Mixed Conifer	T = Tamarack	Y = Sand
G = Grass	MD = Mixed Deciduous	Z = Water	
H = Hemlock	N = Marsh		

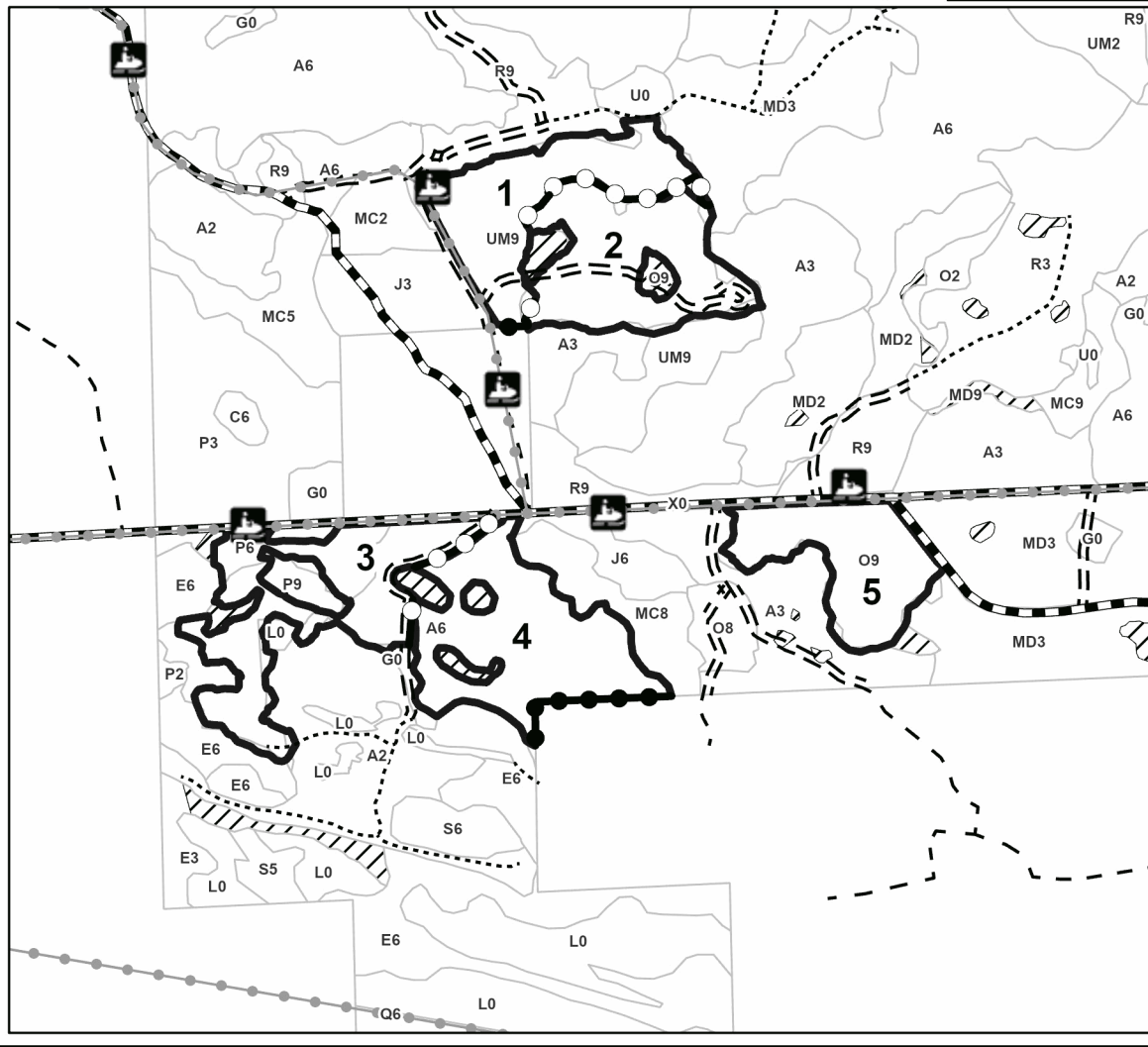
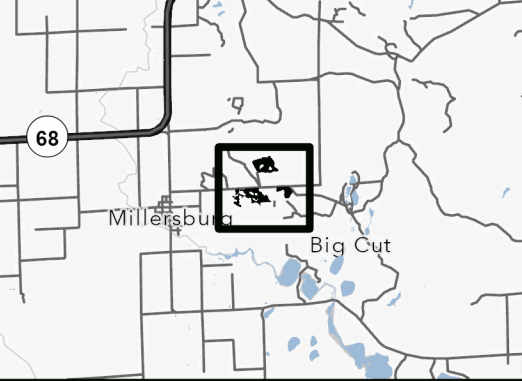
Density	
0 = Non Stocked	5 = Pole Timber Medium
1 = Seedling Sapling Poor	6 = Pole Timber Well
2 = Seedling Sapling Medium	7 = Saw Timber Poor
3 = Seedling Sapling Well	8 = Saw Timber Medium
4 = Pole Timber Poor	9 = Saw Timber Well

PU #	Acres
1	23.6
2	26
3	28.9
4	30.7
5	19.7

Big Cut Mix1

128.9 Acres

Locator Map (1:200,000)



Legend	
	Sale Boundary (Red)
	Payment Unit (Yellow)
	Private Line (Blue)
	Retention Areas
	Stand
	Recreational Trail
	Primary Forest Road
	Forest Access Route
	Administrative Access Only
	Paved Road
	Government Gravel/Dirt
	Private Gravel/Dirt

Use QR Code to open Map in App



TIMBER SALE INFORMATION

Deer In The Headlights Mix 2! (54-999-24)

T32N, R04E, SEC. 17; T32N, R04E, SEC. 18; T32N, R04E, SEC. 6; T32N, R04E, SEC. 7; T32N, R04E, SEC. 8.
Montmorency County (Advertised Price \$179,772.45)

SALE NOTE: Fair to good quality timber. Oak wilt specs on all Payment Units and good access from Hubert Road.

A timber sale contract for this lump sum, sealed bid timber sale will be awarded to the responsible bidder offering the highest sealed bid price. All units of volume listed below were estimated using the Inventory Manager computer program and the new Michigan taper model. Bids must be at or above the following advertised price for each product and species:

<u>PRODUCTS & SPECIES</u>	<u>ESTIMATED UNITS*</u>		<u>ADVERTISED PRICE</u>
Sawtimber			
Black/Red (Hybrid) Oak	13.7	MBF	\$ 114.00 / MBF
Mixed Aspen	351.4	MBF	\$ 87.00 / MBF
Red Maple	34.5	MBF	\$ 59.00 / MBF
Red Oak	328.9	MBF	\$ 195.00 / MBF
Red Pine	14.8	MBF	\$ 123.00 / MBF
Pulpwood			
Balsam Fir	203	Cords	\$ 18.20 / Cord
Mixed Aspen	1,990	Cords	\$ 21.80 / Cord
Mixed Oak	698	Cords	\$ 28.80 / Cord
Paper Birch	22	Cords	\$ 14.55 / Cord
Red Maple	513	Cords	\$ 20.85 / Cord
Red Pine	33	Cords	\$ 40.70 / Cord
White Spruce	12	Cords	\$ 9.10 / Cord

* The total volume is statistically estimated within plus (+) or minus (-) 13.65 percent. There are an estimated 5,212 cords on this timber sale, plus or minus 712 cords at the 95% confidence level. The estimated units are final and not subject to adjustment. Prospective bidders are urged to examine this timber and to make their own estimates of quantity and quality.

BOND AND PAYMENT SCHEDULE:

1. A bond in the amount of \$8,989.00 to insure faithful performance of the conditions of the contract will be deposited by the successful bidder within 21 days of the sale award.
2. Cutting in any sale or unit without the required advance payment would be considered a trespass.
3. Total payment must be paid in advance or according to the following schedule :
 - (a) Ten percent (10%) of the sale value must be paid within 21 days of the sale award.
 - (b) The 10% down payment will be credited towards the first unit cut.
 - (c) Payment for each of the following units must be made before cutting begins in that unit:

PAYMENT UNIT NUMBER	PERCENT OF TOTAL SALE VALUE
01	6.5%
02	8.7%
03	10.7%
04	12.8%
05	10.1%
06	15.6%
07	17.3%
08	18.3%

4. If no cutting takes place, the 10% down payment will not be refunded.
5. Operations on the contract issued will terminate on 12/31/2027.

SALE STATISTICS

Volumes were calculated in cubic feet using the Michigan taper model. Cubic foot volume includes all wood inside bark for the product indicated. For display purposes, cubic feet were converted to cords and MBF using a simple conversion factor, e.g. 79 cubic feet per cord and 185 cubic feet per MBF. The cubic foot volumes are precise; the cords and MBF volumes are not. Cubic foot volume cannot be directly converted to cords or boards with precision.

SALE VOLUMES

The total estimated sale volume may not equal the sum of the species/products due to the nature of statistical calculations associated with double sampling methodology.

VOLUME			STATISTICAL RANGE IN CORDS	
TOTAL CUBIC FEET	TOTAL CORDS	PERCENT ERROR	MINIMUM	MAXIMUM
411,718	5,212	13.65%	4,500	5,923

VDU VOLUMES

A VDU is a Volume Determination Unit. Volumes and their associated statistics are calculated at the VDU level and summarized to the sale level. There is often a one to one relationship between a VDU and a Payment Unit, but not always, depending on the cruise design. Refer to the VDU TO PAYMENT UNIT table.

	VOLUME			RANGE IN CORDS	
VDU	TOTAL CUBIC FEET	TOTAL CORDS	PERCENT ERROR	MINIMUM	MAXIMUM
15	38,165	483	35.50%	312	655
23	19,345	245	44.68%	135	354
60	113,804	1,441	29.63%	1,014	1,867
83	94,334	1,194	25.62%	888	1,500
96	10,279	130	46.35%	70	190
117	135,791	1,719	26.36%	1,266	2,172
TOTAL:	411,718	5,212		3,685	6,739

VDU TO PAYMENT UNIT

When a VDU is associated with more than one Payment Unit (PU), the VDU volumes are assigned to the PU based on acres of the VDU within the PU.

VDU	VDU ACRES	PU	PU ACRES
15	20.1	1	14.2
		2	5.9
23	12.2	2	12.2
		3	16.3
60	34.7	4	18.4
		7	18.2
83	37.5	8	19.3
		3	3.8
96	10.0	4	6.2
		5	12.9
117	32.8	6	19.9
TOTAL:	147.3		147.3

DESCRIPTION OF TIMBER BY PAYMENT UNIT (PU)

PU	MARKET GROUP	PRODUCT	QUANTITY	UNIT	ACRES	ADVERTISE PRICE	
1	Mixed Aspen	Sawtimber	13.5	MBF	14.2	\$11,597.00	
	<i>B. T. Aspen</i>		13.5	<i>MBF</i>			
	Red Maple		13.1	MBF			
	Red Oak		19.8	MBF			
	Red Pine		8.8	MBF			
	Balsam Fir		Pulpwood	25			Cords
	Mixed Aspen			70			Cords
	<i>B. T. Aspen</i>			47			<i>Cords</i>
	<i>Quaking Aspen</i>			23			<i>Cords</i>
	Mixed Oak			27			Cords
	<i>Red Oak</i>			27			<i>Cords</i>
	Red Maple			78			Cords
	<i>Red Maple</i>			78			<i>Cords</i>
	Red Pine			7			Cords
	White Spruce			4			Cords
2	Mixed Aspen	Sawtimber	15.3	MBF	18.1	\$15,601.15	
	<i>B. T. Aspen</i>		15.3	<i>MBF</i>			
	Red Maple		5.5	MBF			
	Red Oak		38.6	MBF			
	Red Pine		6.0	MBF			
	Balsam Fir		Pulpwood	11			Cords
	Mixed Aspen			49			Cords
	<i>B. T. Aspen</i>			39			<i>Cords</i>
	<i>Quaking Aspen</i>			10			<i>Cords</i>
	Mixed Oak			84			Cords
	<i>Red Oak</i>			84			<i>Cords</i>
	Red Maple			83			Cords
	<i>Red Maple</i>			83			<i>Cords</i>
	Red Pine			6			Cords
	White Spruce			2			Cords
3	Mixed Aspen	Sawtimber	28.8	MBF	20.1	\$19,241.35	
	<i>B. T. Aspen</i>		16.8	<i>MBF</i>			
	<i>Quaking Aspen</i>		12.0	<i>MBF</i>			
	Red Maple		4.7	MBF			
	Red Oak		15.1	MBF			
	Balsam Fir		Pulpwood	23			Cords
	Mixed Aspen			496			Cords
	<i>B. T. Aspen</i>			215			<i>Cords</i>
	<i>Quaking Aspen</i>			281			<i>Cords</i>
	Mixed Oak			49			Cords
	<i>Red Oak</i>			49			<i>Cords</i>
	Paper Birch			4			Cords
	Red Maple			39			Cords
	<i>Red Maple</i>			39			<i>Cords</i>
	4			Mixed Aspen			Sawtimber
<i>B. T. Aspen</i>		18.9	<i>MBF</i>				
<i>Quaking Aspen</i>		13.5	<i>MBF</i>				
Red Maple		5.3	MBF				
Red Oak		21.1	MBF				
Balsam Fir		Pulpwood	27	Cords			
Mixed Aspen			559	Cords			
<i>B. T. Aspen</i>			242	<i>Cords</i>			
<i>Quaking Aspen</i>			317	<i>Cords</i>			
Mixed Oak			72	Cords			
<i>Red Oak</i>			72	<i>Cords</i>			
Paper Birch			5	Cords			

DESCRIPTION OF TIMBER BY PAYMENT UNIT (PU), CON'T

PU	MARKET GROUP	PRODUCT	QUANTITY	UNIT	ACRES	ADVERTISE PRICE	
4 con't	Red Maple	Pulpwood	45	Cords			
	<i>Red Maple</i>		45	<i>Cords</i>			
5	Black/Red (Hybrid)	Sawtimber	5.4	MBF	12.9	\$18,164.45	
	Mixed Aspen		87.0	MBF			
	<i>B. T. Aspen</i>		61.0	<i>MBF</i>			
	<i>Quaking Aspen</i>		26.0	<i>MBF</i>			
	Red Maple		1.8	MBF			
	Red Oak		0.7	MBF			
	Balsam Fir		46	Cords			
	Mixed Aspen		296	Cords			
	<i>B. T. Aspen</i>		139	<i>Cords</i>			
	<i>Quaking Aspen</i>		157	<i>Cords</i>			
	Mixed Oak		21	Cords			
	<i>/Red (Hybrid) Oak</i>		6	<i>Cords</i>			
	<i>Red Oak</i>		15	<i>Cords</i>			
	Paper Birch		5	Cords			
	Red Maple		84	Cords			
	<i>Red Maple</i>		83	<i>Cords</i>			
	<i>Sugar Maple</i>		1	<i>Cords</i>			
White Spruce	2	Cords					
6	Black/Red (Hybrid)	Sawtimber	8.3	MBF	19.9	\$28,000.45	
	Mixed Aspen		134.3	MBF			
	<i>B. T. Aspen</i>		94.2	<i>MBF</i>			
	<i>Quaking Aspen</i>		40.1	<i>MBF</i>			
	Red Maple		2.9	MBF			
	Red Oak		1.0	MBF			
	Balsam Fir		71	Cords			
	Mixed Aspen		455	Cords			
	<i>B. T. Aspen</i>		214	<i>Cords</i>			
	<i>Quaking Aspen</i>		241	<i>Cords</i>			
	Mixed Oak		33	Cords			
	<i>/Red (Hybrid) Oak</i>		10	<i>Cords</i>			
	<i>Red Oak</i>		23	<i>Cords</i>			
	Paper Birch		8	Cords			
	Red Maple		129	Cords			
	<i>Red Maple</i>		127	<i>Cords</i>			
	<i>Sugar Maple</i>		2	<i>Cords</i>			
White Spruce	4	Cords					
7	Mixed Aspen	Sawtimber	19.5	MBF	18.2	\$31,174.95	
	<i>B. T. Aspen</i>		19.5	<i>MBF</i>			
	Red Maple		0.6	MBF			
	Red Oak		112.9	MBF			
	Mixed Aspen		Pulpwood	32			Cords
	<i>B. T. Aspen</i>			32			<i>Cords</i>
	Mixed Oak			200			Cords
	<i>Red Oak</i>			200			<i>Cords</i>
	Red Maple			27			Cords
<i>Red Maple</i>	27	<i>Cords</i>					
Red Pine	10	Cords					
8	Mixed Aspen	Sawtimber	20.6	MBF	19.3	\$32,984.90	
	<i>B. T. Aspen</i>		20.6	<i>MBF</i>			
	Red Maple		0.6	MBF			
	Red Oak		119.7	MBF			
	Mixed Aspen		Pulpwood	33			Cords
	<i>B. T. Aspen</i>			33			<i>Cords</i>
Mixed Oak	212	Cords					

DESCRIPTION OF TIMBER BY PAYMENT UNIT (PU), CON'T

PU	MARKET GROUP	PRODUCT	QUANTITY	UNIT	ACRES	ADVERTISE PRICE
8 con't	<i>Red Oak</i>	<i>Pulpwood</i>	212	<i>Cords</i>		
	Red Maple		28	Cords		
	<i>Red Maple</i>		28	<i>Cords</i>		
	Red Pine		10	Cords		
TOTAL:			743.3	MBF		
TOTAL:			3,471	Cords		

Sale Specific Conditions & Requirements

Sale Name: Deer In The Headlights Mix 2!

Sale Number: 54-999-24 Seq#: 1

1 - Sale Area

1.2 - Boundaries

1.2.1 - Painted boundaries (9/19)

The sale boundary and Payment Unit boundaries are marked and identified by blue, red and yellow paint, and by the wildlife opening (indicated by G0 on the Timber Sale Map). Exterior sale boundary lines against private property are marked with blue paint. Exterior sale boundary lines against state are marked with red paint. Interior Payment Unit boundaries are marked with yellow paint, with the exception of the east boundary of Payment Unit 7 which is unpainted and identified by the wildlife opening, G0. Retention patches are marked with red paint; no harvesting activities may occur within these areas. The painted boundary line trees are not Included Timber and are to be protected. Yellow painted trees designating an interior Payment Unit boundary are only to be cut when all surrounding Payment Units have been paid.

2 - Timber Specifications

2.1 - Included Timber

2.1.1 - Clearcut unit(s) with unmerchantable trees (6/14)

Within Payment Unit(s) 1-8, cut all trees that are two (2) inches or more at DBH, except do not cut white pine. In addition, within Payment Units 7 and 8, do not cut any hemlock.

2.1.11 - Description of timber note (2/04)

Note that species market group labeled Mixed Aspen includes quaking and bigtooth aspen.

2.2 - Utilization

2.2.9 - No chipping permitted (12/08)

Within Payment Unit(s) 7 and 8, no chipping of tops and limbs is permitted. Tree tops and limbs are to be placed on and around severed oak stumps in such a way as to deter deer browse within these units. For more information, contact the Unit Manager or his/her representative.

3 - Payments

3.4 - Damaged Timber

3.4.1 - Damaged timber (7/16)

General Condition and Requirement 3.4 Damaged Timber, defines liquidated damages for undesignated live merchantable trees which are cut or injured. In addition, extreme care should be taken to avoid damage to tree seedlings and saplings.

Within Payment Units 1 and 2, if more than 50% of the pine seedlings or saplings (1/4" to 4.5" DBH) within a specified portion of Payment Units 1 and 2 are damaged, liquidated damages will be assessed at \$250 per acre for all acreage within that specified portion of the sale area that was damaged.

No damage is acceptable to undesignated live merchantable trees. Within the Sale Area, if more than 5% of white pine or hemlock trees (> 4.5" DBH) within a specified area of the sale are damaged, liquidated damages will be assessed for all trees damaged. Rates will be in accordance with General Condition and Requirement 3.4 Damaged Timber.

4 - Transportation

4.1 - Construction

4.1.3 - Slash and earthen piles (8/04)

Piles or windrows of earth along roads and landings that have been widened or constructed shall be leveled. Slash from road maintenance or construction, including stumps, shall be dispersed throughout the sale.

4.1.6 - Road construction (4/24)

Construction of new roads or improvements of existing roads shall be done in such a way as to minimize the environmental

and visual impacts. Merchantable trees shall be cut and utilized unless otherwise directed. Non-merchantable trees shall be severed and laid flat on the ground. Slash shall be scattered, and not left in windrows and kept a minimum of 10 feet back from the road edge. Stumps shall be set upright, not left on edge, and be moved at least 10 feet away from the road edge. Disturbed soil shall be feathered into the woods and not left in berms or windrows.

4.1.7 - Road closure (10/11)

All new roads built into the sale must be blocked to vehicle traffic upon completion of the sale. Overgrown roads that are reopened shall be considered new roads. In general, this will require constructing double earthen berms at strategic locations. These roads must be rendered impassable to cars and trucks. All stumps from road building and landing construction must be reserved to block any newly constructed roads upon completion of the sale. These stumps must be scattered along the road system to prohibit vehicular movement. Contact the Sale Administrator for specific details of design and placement.

4.2 - Maintenance

4.2.5 - Two wheel drive condition (2/04)

All existing trail roads on and adjacent to the sale area must be passable by two-wheel drive traffic for the duration of the sale.

4.3 - Public Right-of-Way

4.3.2 - County R-O-W (12/06)

The county must be contacted prior to harvesting in the county road R-O-W. This applies to Payment Unit 2 and Hubert Road.

5 - Operations

5.1 - Notification

5.1.1 - Pre-sale conference (10/16)

A pre-sale conference on site between the Purchaser and sale administrator is required prior to beginning any operations to determine landing and road locations. The Unit Manager or his/her representative must be contacted at least 10 days in advance to schedule the conference.

5.1.4 - Post-sale conference (10/16)

A post-sale conference on site between the Purchaser and sale administrator is required 5 days prior to the completion of active logging operations to determine clean-up and repair of landings, road edges, and the fulfillment of other contract specifications.

5.2 - Conduct of Operations

5.2.1 - Slash

5.2.1.10 - No slash in openings (5/10)

No brush or logging debris is to be left in the maintained wildlife opening which is indicated by G0 on the Timber Sale Map. Any damage to the opening shall be repaired according to specifications of the Unit Manager or his/her representative.

5.2.2 - Hazard Trees/Snags

5.2.2.1 - Den trees (10/16)

Obvious hollow and/or den trees shall be protected and left standing unless they are a safety hazard.

5.2.3 - Operating Restrictions

5.2.3.5 - Oak wilt restriction (1/18)

Within Payment Unit(s) 1-8, unless changed by written agreement, cutting, skidding, hauling within the sale and brushing of access roads to the sale are not permitted during the period of April 15 to July 15. Operations may be allowed if specific steps are taken to prevent damaging uncut oak during the high risk period. Those steps may include completing all road brushing before April 15th and clearing a tree-length buffer along uncut oak cover before April 15th. This is necessary to reduce the spread of oak wilt. For more information, contact the Unit Manager or his/her representative.

5.2.4 - Dead and Down Creation

5.2.4.7 - Dead and down creation: hare, grouse, deer and other species (5/15)

To improve horizontal cover habitat for snowshoe hare, grouse, deer, and other species, the Purchaser is to push over one 12-inches in diameter tree for every 2 acres. These trees should be tipped over with the root ball still attached so the base of the tree is suspended off the ground. The crown of the fallen tree should be at or near ground level after it is pushed over. Good example of these trees are hardwood species that are in poor form, have excessive branching, or do not contain desirable products. Target species for this process are aspen, red maple, and oak. This is required for Payment Unit(s) 3-6.

5.2.32 - Decking/landing restoration (9/13)

All decking and landing areas must have the surface area restored to a condition equal to or better than before. This is to ensure the proper regeneration of the stand. Wood debris, chips and "cookies" from trimmings must be removed or scattered away from landing and loading areas and may not be windrowed on the edge.

5.4 - Soil Protection

5.4.1 - Rutting restriction, general (7/16)

Operations are to cease immediately if equipment and weather conditions result in rutting of roads and/or skid trails which is 12 inches or greater in depth and 50 feet in length. The Unit Manager or his/her representative may restrict hauling and/or skidding if ruts exceed the specified depth. With the Unit Manager or his/her representative's approval, the Purchaser may return to the area when the risk of rutting has decreased.

5.4.2 - Skid trails (2/04)

Skid trails up and down slopes should be avoided. If however this is unavoidable, these trails will be left in a non-erodible condition using water bars, logs, and slash. Placing of slash on these skid trails while logging is ongoing may alleviate need for any further action. At the direction of the sale administrator, seed, fertilizer, and mulch may also be required.

5.8 - Protection of Endangered Species

5.8.5 - Protection of raptor nests (3/13)

All trees with raptor nests will be protected if found during harvesting operations. Notification will be made to the Unit Manager or his/her representative who will notify the Wildlife Biologist so an on-site evaluation and recommendation can be made, if necessary.

6 - Safety and Fire Prevention

6.2 - Signing

6.2.1 - Road posting (10/20)

The Purchaser is responsible for posting and maintaining caution signs on Hubert Road and Ribble Lake Road prior to beginning operations. The road must be posted at appropriate distances from the Sale Area to warn of logging activity and truck traffic. Signs must be removed when harvest operations are suspended or completed. The Purchaser will provide these signs.



TIMBER SALE MAP

This information provided by authority of Part 525, 1994 PA 451, as amended.

Sale Number 54-999-24	Date 07/23/2024
Scale 1:7,920	Page 1
	Of 2

Forest Management Unit Atlanta Mgt Unit	County Montmorency	Mapped By: Michaud Cruised By: Michaud
--	-----------------------	---

Township 32N	Range 04E	Section(s) and Subdivision(s) Sec. 6 E1/2SW, W1/2SE, Sec. 7 SESE, Sec. 8 SESW, SWSE, Sec. 17 W1/2NW, NWNE, NWSW, Sec 18. E1/2NE
-----------------	--------------	--

Cover Type			
A = Aspen	J = Jack Pine	O = Oak	U = Upland Brush
B = Paper Birch	K = Rock	P = Lowland Poplar	UM = Upland Mix Forest
C = Cedar	L = Lowland Brush	Q = Mixed Swamp Conifer	V = Bog or Marsh
D = Treed Bog	LM = Lowland Mix Forest	R = Red Pine	W = White Pine
E = Swamp Hardwoods	M = Maple, Beech, Birch	S = Black Spruce	X = Non Stocked
F = Spruce/Fir	MC = Mixed Conifer	T = Tamarack	Y = Sand
G = Grass	MD = Mixed Deciduous	Z = Water	
H = Hemlock	N = Marsh		

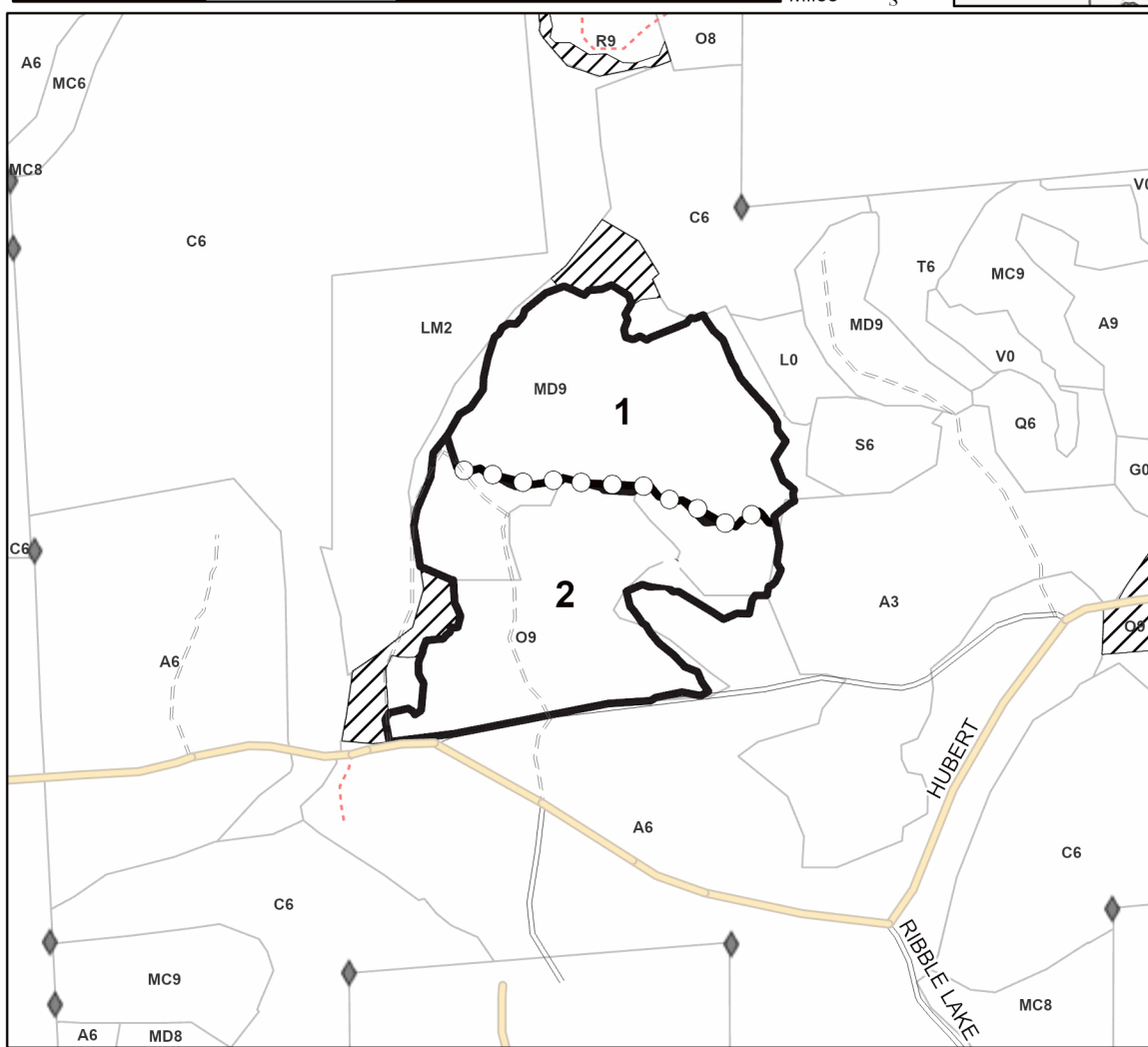
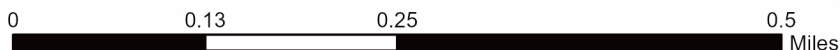
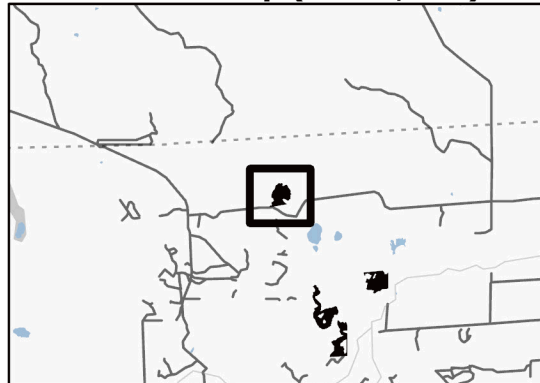
Density	
0 = Non Stocked	5 = Pole Timber Medium
1 = Seedling Sapling Poor	6 = Pole Timber Well
2 = Seedling Sapling Medium	7 = Saw Timber Poor
3 = Seedling Sapling Well	8 = Saw Timber Medium
4 = Pole Timber Poor	9 = Saw Timber Well

PU #	Acres	PU #	Acres
1	14.2	5	12.9
2	18.1	6	19.9
3	20.1	7	18.2
4	24.6	8	19.3

Deer In The Headlights Mix 2!

147.3 Acres

Locator Map (1:150,000)



Legend

- Sale Boundary (Red)
- Payment Unit (Yellow)
- Retention Areas
- Paved Road
- Gravel Road
- County Road - Seasonal
- Private Road
- Secondary Forest Road
- Forest Access Route
- Administrative Access Only
- Non-DNR Road
- Field Grade Corner

Use QR Code to open Map in App





TIMBER SALE MAP

This information provided by authority of Part 525, 1994 PA 451, as amended.

Sale Number
54-999-24

Date
07/23/2024

Forest Management Unit		County	Mapped By: Michaud	Scale	Page	Of	
Atlanta Mgt Unit		Montmorency	Cruised By: Michaud	1:15,840	2	2	
Township	Range	Section(s) and Subdivision(s)					
32N	04E	Sec. 6 E1/2SW, W1/2SE, Sec. 7 SESE, Sec. 8 SESW, SWSE, Sec. 17 W1/2NW, NWNE, NWSW, Sec 18. E1/2NE					

Cover Type

A = Aspen	J = Jack Pine	O = Oak	U = Upland Brush
B = Paper Birch	K = Rock	P = Lowland Poplar	UM = Upland Mix Forest
C = Cedar	L = Lowland Brush	Q = Mixed Swamp Conifer	V = Bog or Marsh
D = Treed Bog	LM = Lowland Mix Forest	R = Red Pine	W = White Pine
E = Swamp Hardwoods	M = Maple, Beech, Birch	S = Black Spruce	X = Non Stocked
F = Spruce/Fir	MC = Mixed Conifer	T = Tamarack	Y = Sand
G = Grass	MD = Mixed Deciduous	Z = Water	
H = Hemlock	N = Marsh		

Density

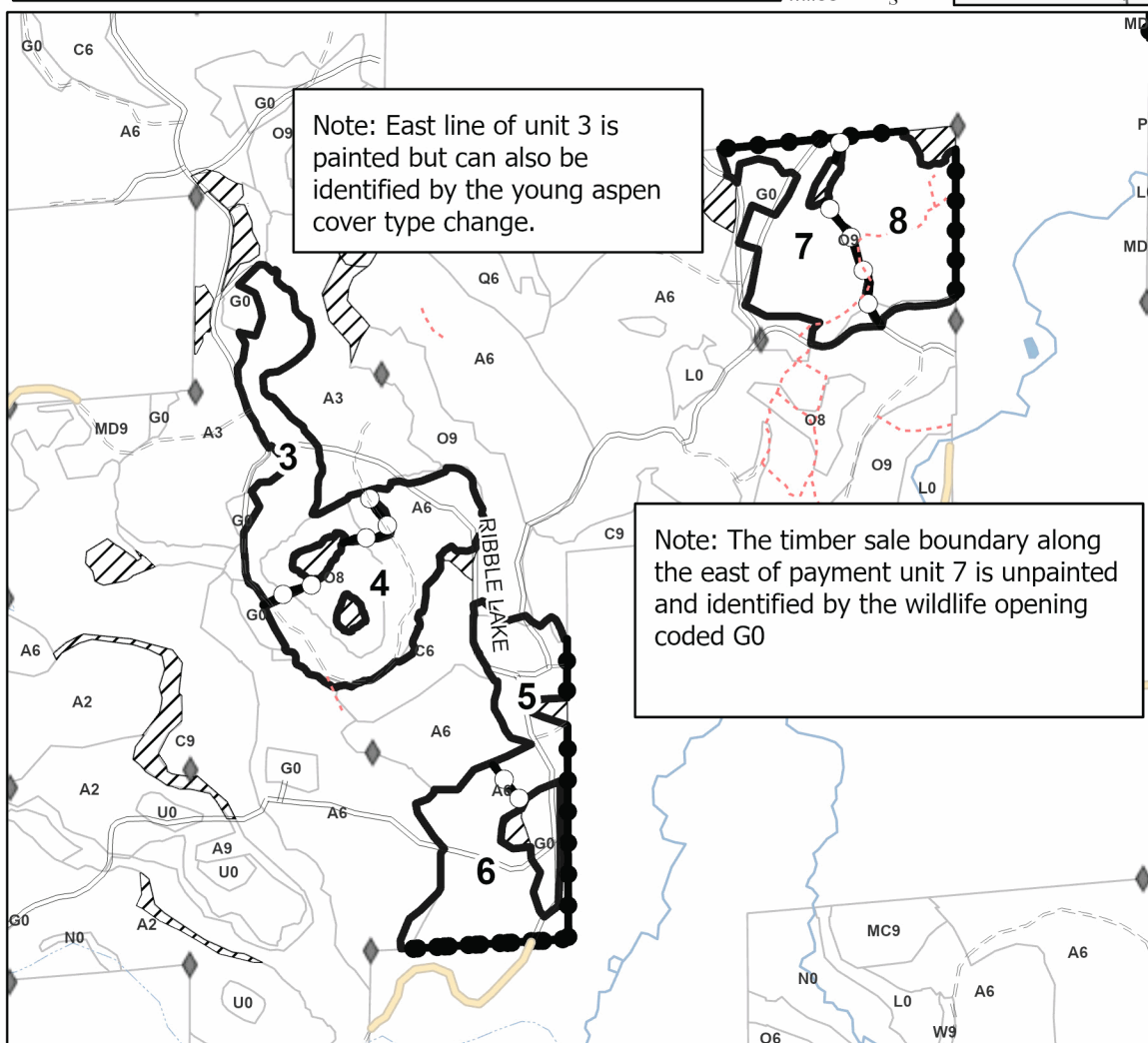
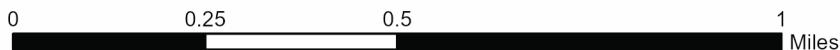
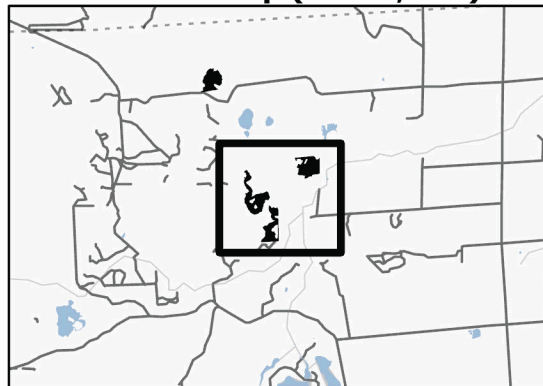
0 = Non Stocked	5 = Pole Timber Medium
1 = Seedling Sapling Poor	6 = Pole Timber Well
2 = Seedling Sapling Medium	7 = Saw Timber Poor
3 = Seedling Sapling Well	8 = Saw Timber Medium
4 = Pole Timber Poor	9 = Saw Timber Well

Deer In The Headlights Mix 2!

147.3 Acres

PU #	Acres	PU #	Acres
1	14.2	5	12.9
2	18.1	6	19.9
3	20.1	7	18.2
4	24.6	8	19.3

Locator Map (1:150,000)



Legend

- Sale Boundary (Red)
- Payment Unit (Yellow)
- Private Line (Blue)
- Retention Areas
- Paved Road
- Gravel Road
- County Road - Seasonal
- Private Road
- Secondary Forest Road
- Forest Access Route
- Administrative Access Only
- Non-DNR Road
- Field Grade Corner

Use QR Code to open Map in App



TIMBER SALE INFORMATION

Piper Railway Mix (54-040-23)

T30N, R08E, SEC. 21; T30N, R08E, SEC. 28.
Alpena County (Advertised Price \$18,589.90)

SALE NOTE: -Extensive road work is required. Refer to timber sale spec 4.1.8 for details.

-Within Payment Unit(s) 2 and 3 cutting, skidding, and hauling are not permitted during the period of 5/15 to 9/15. Refer to timber sale spec 5.8.8 for details.

-Oak wilt restrictions apply. Refer to timber sale spec 5.2.3.5 for details.

A recreation site such as a trail, pathway, or campground is within the sale area or the vicinity. Certain restrictions/specifications may be applicable including time restrictions.

A timber sale contract for this lump sum, sealed bid timber sale will be awarded to the responsible bidder offering the highest sealed bid price. All units of volume listed below were estimated using the Inventory Manager computer program and the new Michigan taper model. Bids must be at or above the following advertised price for each product and species:

<u>PRODUCTS & SPECIES</u>	<u>ESTIMATED UNITS*</u>	<u>ADVERTISED PRICE</u>
Sawtimber		
B. T. Aspen	7.6 MBF	\$ 35.00 / MBF
Black/Red (Hybrid) Oak	33.5 MBF	\$ 46.00 / MBF
Red Oak	3.2 MBF	\$ 78.00 / MBF
Red Pine	10.6 MBF	\$ 49.00 / MBF
Pulpwood		
B. T. Aspen	577 Cords	\$ 8.70 / Cord
Balsam Fir	3 Cords	\$ 7.30 / Cord
Jack Pine	198 Cords	\$ 4.65 / Cord
Mixed Oak	749 Cords	\$ 11.50 / Cord
Red Maple	55 Cords	\$ 8.35 / Cord
Red Pine	37 Cords	\$ 16.30 / Cord
White Pine	37 Cords	\$ 10.15 / Cord

* The total volume is statistically estimated within plus (+) or minus (-) 24.41 percent. There are an estimated 1,788 cords on this timber sale, plus or minus 436 cords at the 95% confidence level. The estimated units are final and not subject to adjustment. Prospective bidders are urged to examine this timber and to make their own estimates of quantity and quality.

BOND AND PAYMENT SCHEDULE:

1. A bond in the amount of \$1,000.00 to insure faithful performance of the conditions of the contract will be deposited by the successful bidder within 21 days of the sale award.
2. Cutting in any sale or unit without the required advance payment would be considered a trespass.
3. Total payment must be paid in advance or according to the following schedule :
 - (a) Ten percent (10%) of the sale value must be paid within 21 days of the sale award.
 - (b) The 10% down payment will be credited towards the first unit cut.
 - (c) Payment for each of the following units must be made before cutting begins in that unit:

PAYMENT UNIT NUMBER	PERCENT OF TOTAL SALE VALUE
01	14.9%
02	28.8%
03	31.3%
04	14.8%
05	10.2%

4. If no cutting takes place, the 10% down payment will not be refunded.
5. Operations on the contract issued will terminate on 12/31/2026.

SALE STATISTICS

Volumes were calculated in cubic feet using the Michigan taper model. Cubic foot volume includes all wood inside bark for the product indicated. For display purposes, cubic feet were converted to cords and MBF using a simple conversion factor, e.g. 79 cubic feet per cord and 185 cubic feet per MBF. The cubic foot volumes are precise; the cords and MBF volumes are not. Cubic foot volume cannot be directly converted to cords or boards with precision.

SALE VOLUMES

The total estimated sale volume may not equal the sum of the species/products due to the nature of statistical calculations associated with double sampling methodology.

VOLUME			STATISTICAL RANGE IN CORDS	
TOTAL CUBIC FEET	TOTAL CORDS	PERCENT ERROR	MINIMUM	MAXIMUM
141,223	1,788	24.41%	1,351	2,224

VDU VOLUMES

A VDU is a Volume Determination Unit. Volumes and their associated statistics are calculated at the VDU level and summarized to the sale level. There is often a one to one relationship between a VDU and a Payment Unit, but not always, depending on the cruise design. Refer to the VDU TO PAYMENT UNIT table.

	VOLUME			RANGE IN CORDS	
VDU	TOTAL CUBIC FEET	TOTAL CORDS	PERCENT ERROR	MINIMUM	MAXIMUM
39	23,535	298	27.27%	217	379
53	19,733	250	20.36%	199	301
55	83,230	1,054	21.45%	828	1,279
60	14,725	186	31.78%	127	246
TOTAL:	141,223	1,788		1,370	2,205

VDU TO PAYMENT UNIT

When a VDU is associated with more than one Payment Unit (PU), the VDU volumes are assigned to the PU based on acres of the VDU within the PU.

VDU	VDU ACRES	PU	PU ACRES
39	17.2	1	17.2
53	15.2	4	15.2
55	33.8	2	16.2
		3	17.6
60	16.0	5	16.0
TOTAL:	82.2		82.2

DESCRIPTION OF TIMBER BY PAYMENT UNIT (PU)

PU	MARKET GROUP	PRODUCT	QUANTITY	UNIT	ACRES	ADVERTISE PRICE
1	B. T. Aspen	Sawtimber	2.5	MBF	17.2	\$2,764.80
	Black/Red (Hybrid		3.1	MBF		
	B. T. Aspen	Pulpwood	41	Cords		
	Jack Pine		90	Cords		
	<i>Jack Pine</i>		90	<i>Cords</i>		
	Mixed Oak		153	Cords		
	<i>/Red (Hybrid) Oak</i>		153	<i>Cords</i>		
2	B. T. Aspen	Sawtimber	2.4	MBF	16.2	\$5,357.45
	Black/Red (Hybrid		11.0	MBF		
	Red Pine		4.8	MBF		
	B. T. Aspen	Pulpwood	257	Cords		
	Balsam Fir		1	Cords		
	Jack Pine		4	Cords		
	<i>Jack Pine</i>		4	<i>Cords</i>		
	Mixed Oak		149	Cords		
	<i>/Red (Hybrid) Oak</i>		149	<i>Cords</i>		
	Red Maple		26	Cords		
	Red Pine		14	Cords		
	White Pine		11	Cords		
	<i>White Pine</i>		11	<i>Cords</i>		
3	B. T. Aspen	Sawtimber	2.7	MBF	17.6	\$5,813.40
	Black/Red (Hybrid		12.0	MBF		
	Red Pine		5.2	MBF		
	B. T. Aspen	Pulpwood	279	Cords		
	Balsam Fir		2	Cords		
	Jack Pine		4	Cords		
	<i>Jack Pine</i>		4	<i>Cords</i>		
	Mixed Oak		161	Cords		
	<i>/Red (Hybrid) Oak</i>		161	<i>Cords</i>		
	Red Maple		28	Cords		
	Red Pine		15	Cords		
	White Pine		12	Cords		
	<i>White Pine</i>		12	<i>Cords</i>		
4	Black/Red (Hybrid	Sawtimber	4.4	MBF	15.2	\$2,760.25
	Red Oak		3.2	MBF		
	Jack Pine	Pulpwood	53	Cords		
	<i>Jack Pine</i>	<i>Sawtimber</i>	1.4	<i>MBF</i>		
	<i>Jack Pine</i>	<i>Pulpwood</i>	50	<i>Cords</i>		
	Mixed Oak		160	Cords		
	<i>/Red (Hybrid) Oak</i>		158	<i>Cords</i>		
	<i>Red Oak</i>		2	<i>Cords</i>		
	Red Maple		1	Cords		
	Red Pine		5	Cords		
	White Pine		13	Cords		
	<i>White Pine</i>	<i>Sawtimber</i>	0.7	<i>MBF</i>		
	<i>White Pine</i>	<i>Pulpwood</i>	12	<i>Cords</i>		
5	Black/Red (Hybrid	Sawtimber	3.0	MBF	16.0	\$1,894.00
	Red Pine		0.6	MBF		
	Jack Pine	Pulpwood	47	Cords		
	<i>Jack Pine</i>	<i>Sawtimber</i>	2.6	<i>MBF</i>		
	<i>Jack Pine</i>	<i>Pulpwood</i>	42	<i>Cords</i>		
	Mixed Oak		126	Cords		
	<i>/Red (Hybrid) Oak</i>		126	<i>Cords</i>		
	Red Pine		3	Cords		
	White Pine		1	Cords		
	<i>White Pine</i>		1	<i>Cords</i>		

TOTAL:	54.9	MBF
--------	------	-----

TOTAL:	1,656	Cords
--------	-------	-------

Sale Specific Conditions & Requirements

Sale Name: Piper Railway Mix

Sale Number: 54-040-23 Seq#: 4

1 - Sale Area

1.2 - Boundaries

1.2.1 - Painted boundaries (9/19)

The sale boundary and Payment Unit boundaries are marked and identified by blue, red and yellow paint. Exterior sale boundary lines against private property are marked with blue paint. Exterior sale boundary lines against state are marked with red paint. Interior Payment Unit boundaries are marked with yellow paint. Retention patches are marked with red paint; no harvesting activities may occur within these areas. The painted boundary line trees are not Included Timber and are to be protected. Yellow painted trees designating an interior Payment Unit boundary are only to be cut when all surrounding Payment Units have been paid.

2 - Timber Specifications

2.1 - Included Timber

2.1.1 - Clearcut unit(s) with unmerchantable trees (6/14)

Within Payment Unit(s) 1-5, cut all trees that are two (2) inches or more at DBH, with the following exceptions:

- Within Payment Units 2-4, do not cut any sub-merchantable red or white pine seedlings and saplings in accordance with sale spec 3.4.1 or any green marked trees.

- Within Payment Units 5, do not cut any sub-merchantable red or white pine seedlings and saplings in accordance with sale spec 3.4.1.

Special protection trees identified in accordance with condition 3.4.2, within clearcutting unit boundaries, are not Included Timber and are to be protected.

3 - Payments

3.3 - Pre-measured Sales

3.3.4 - Dividing payment units (7/14)

Payment Unit(s) \$25,000 in value or greater, may be divided at the request of the Purchaser and upon approval of the Unit Manager. Dividing Payment Units is a contract modification which requires a Timber Sale Contract Amendment. There will be only one division per Payment Unit.

3.4 - Damaged Timber

3.4.1 - Damaged timber (7/16)

General Condition and Requirement 3.4 Damaged Timber, defines liquidated damages for undesignated live merchantable trees which are cut or injured. In addition, extreme care should be taken to avoid damage to specified tree seedlings and saplings.

Within Payment Units 2-5, if more than 20% of the red pine and/or white pine seedlings/saplings (1/4" to 4.5" DBH) within a specified portion of the Sale Area are damaged, liquidated damages will be assessed at \$250 per acre for all acreage within that specified portion of the Sale Area that was damaged.

3.4.2 - Special Protection Trees (4/14)

The Purchaser shall not cut live or dead special protection trees within cutting units or clearings. Special protection trees are marked with green paint. If the Purchaser's operations have cut or damaged special protection trees through carelessness, the Purchaser shall pay \$250 as fixed, agreed and liquidated damages for each special protection tree cut or damaged. Such payment does not constitute ownership of the undesignated timber.

4 - Transportation

4.1 - Construction

4.1.3 - Slash and earthen piles (8/04)

Piles or windrows of earth along roads and landings that have been widened or constructed shall be leveled. Slash from road maintenance or construction, including stumps, shall be dispersed throughout the sale.

4.1.6 - Road construction (4/24)

Improvements of existing roads shall be done in such a way as to minimize the environmental and visual impacts. Merchantable trees shall be cut and utilized unless otherwise directed. Non-merchantable trees shall be severed and laid flat on the ground. Slash shall be scattered, and not left in windrows and kept a minimum of 10 feet back from the road edge. Stumps shall be set upright, not left on edge, and be moved at least 10 feet away from the road edge. Disturbed soil shall be feathered into the woods and not left in berms or windrows.

4.1.8 - Road work (1) (8/07)

The following road work is required: Approximately 2.25 miles of forest road/ORV Route from Piper Road to Payment Units 2 and 3 will need widening and grading for the hauling of wood. Sandy soils in this forest road can make hauling wood difficult.

4.1.12 - No new roads (1/12)

No new roads will be permitted in any Payment Unit. All operations are limited to existing roads. Skid trails only will be allowed.

4.2 - Maintenance

4.2.4 - Grading (10/16)

For completion of the sale, state forest roads/ORV Routes must be graded. In general, this will require a road grader or bulldozer to shape up the roads after forest products have been hauled off site. This includes cleaning of drainage areas, grading, crowning and filling with gravel, if necessary. The grading equipment to be used must be approved by the Unit Manager or his/her representative.

5 - Operations

5.1 - Notification

5.1.1 - Pre-sale conference (10/16)

A pre-sale conference on site between the Purchaser and sale administrator is required prior to beginning any operations, within a Payment Unit, to determine landing and road locations. The Unit Manager or his/her representative must be contacted at least 5 days in advance to schedule the conference.

5.1.4 - Post-sale conference (10/16)

A post-sale conference on site between the Purchaser and sale administrator is required 5 days prior to the completion of active logging operations to determine clean-up and repair of landings, road edges, and the fulfillment of other contract specifications.

5.2 - Conduct of Operations

5.2.1 - Slash

5.2.1.10 - No slash in openings (5/10)

No brush or logging debris is to be left in the opening which is indicated by 'X0' on the Timber Sale Map is located along the west edge of Payment Units 1, 4 and 5. Any damage to the opening shall be repaired according to specifications of the Unit Manager or his/her representative.

5.2.1.11 - Slash for reforestation (3/21)

To facilitate reforestation, Payment Unit 1 shall be left with slash evenly distributed. Bunched tops within the cutting area shall be broken up and scattered. Stumps shall be cut low to the ground. Processing sites shall not be left with a compacted layer of slash; tops from these sites shall be hauled back into the cut area and scattered.

5.2.2 - Hazard Trees/Snags

5.2.2.1 - Den trees (10/16)

Obvious hollow and/or den trees shall be protected and left standing unless they are a safety hazard.

5.2.3 - Operating Restrictions

5.2.3.5 - Oak wilt restriction (1/18)

Within Payment Unit(s) 1-5, unless changed by written agreement, cutting, skidding, hauling within the sale and brushing of access roads to the sale are not permitted during the period of April 15 to July 15. Operations may be allowed if specific steps are taken to prevent damaging uncut oak during the high risk period. Those steps may include completing all road brushing before April 15th and clearing a tree-length buffer along uncut oak cover before April 15th. This is necessary to reduce the spread of oak wilt. For more information, contact the Unit Manager or his/her representative.

5.2.3.11 - Coppice regeneration protection (4/10)

Timber harvesting in any Payment Unit must be completed before significant deciduous tree sprouting occurs in that Payment Unit so as to minimize damage to the new regeneration. Any post harvest operations, such as chipping, must be completed before sprouting of regeneration occurs. If it is anticipated that chipping will be delayed, then tops shall be carried to one central location or left unchipped. The Unit Manager or his/her representative may cease such operations if sprouting occurs before the operation is complete.

5.2.4 - Dead and Down Creation

5.2.4.7 - Dead and down creation: hare, grouse, deer and other species (5/15)

To improve horizontal cover habitat for snowshoe hare, grouse, deer, and other species, the Purchaser is to push over all purple ringed trees after all designated wood has been forwarded from Payment Units 2 and 3. These trees should be tipped over with the root ball still attached so the base of the tree is suspended off the ground. The crown of the fallen tree should be at or near ground level after it is pushed over.

5.2.32 - Decking/landing restoration (9/13)

All decking and landing areas must have the surface area restored to a condition equal to or better than before. This is to ensure the proper regeneration of the stand. Wood debris, chips and "cookies" from trimmings must be removed or scattered away from landing and loading areas and may not be windrowed on the edge.

5.2.38 - No decking against live trees (2/04)

Cut products may not be decked against unmarked or designated leave trees.

5.2.39 - ORV trail/route protection (4/18)

The Devils Lake Route is an ORV trail or route and is shown on the Timber Sale Map. Do not damage posts with yellow ORV markers. Trees with yellow ORV markers shall be cut off above the markers and at least 5 feet above ground. All stumps within 5 feet of the trail must be cut flush with the ground. Maintain a 20-foot-wide slash, debris, and rut free zone daily using the ORV trail or route as the centerline. Do not run equipment down the ORV trail or route. Skidding across the trail or route may only occur in locations approved by the Sale Administrator.

5.3 - Stream Protection

5.3.2 - Parking equipment near water (10/23)

Within Payment Unit(s) 2 and 3, the parking of or storage of equipment is prohibited within 100 feet of water bodies or ground water supplies. All equipment, when not in use for harvest operations, must be parked a minimum of 100 feet away from water sources (streams, rivers, lakes, ponds, vernal pools, ground water sources) and 50 feet away from slopes leading to water sources and/or riparian areas. This restriction is for preventing unforeseen oil and/or fluid leaks from contaminating water bodies and/or ground water supplies.

5.4 - Soil Protection

5.4.1 - Rutting restriction, general (7/16)

Operations are to cease immediately if equipment and weather conditions result in rutting of roads and/or skid trails which is 12 inches or greater in depth and 50 feet in length. The Unit Manager or his/her representative may restrict hauling and/or skidding if ruts exceed the specified depth. With the Unit Manager or his/her representative's approval, the Purchaser may return to the area when the risk of rutting has decreased.

5.8 - Protection of Endangered Species

5.8.5 - Protection of raptor nests (3/13)

All trees with raptor nests will be protected if found during harvesting operations. Notification will be made to the Unit

Manager or his/her representative who will notify the Wildlife Biologist so an on-site evaluation and recommendation can be made, if necessary.

5.8.8 - Protected species, other (2/12)

Within Payment Unit(s) 2 and 3, cutting, skidding, and hauling are not permitted during the period of May 15 to September 15. This restriction is for protecting special concerns species.

6 - Safety and Fire Prevention

6.2 - Signing

6.2.1 - Road posting (10/20)

The Purchaser is responsible for posting and maintaining caution signs on forest roads prior to beginning operations. The road must be posted at appropriate distances from the Sale Area to warn of logging activity and truck traffic. Signs must be removed when harvest operations are suspended or completed. The Purchaser will provide these signs.

6.2.3 - Recreational trail posting (10/20)

The Purchaser is responsible for posting and maintaining caution signs on Devils Lake Route prior to beginning operations. The trail must be posted at appropriate distances from the Sale Area to warn of logging activity and truck traffic at both ends of the trail. Signs must be removed when harvest operations are suspended or completed. The Purchaser will provide these signs.



TIMBER SALE MAP

This information provided by authority of Part 525, 1994 PA 451, as amended.

Sale Number	Date	
54-040-23	10/12/2023	
Scale	Page	Of
1:15,840	1	1

Forest Management Unit	County	Mapped By: D. Parris
Atlanta Mgt Unit	Alpena	Cruised By: D. Parris

Township	Range	Section(s) and Subdivision(s)
30N	08E	Sec. 21 SESW; Sec. 28 NW,SWNE,N1/2SW,W1/2SE;

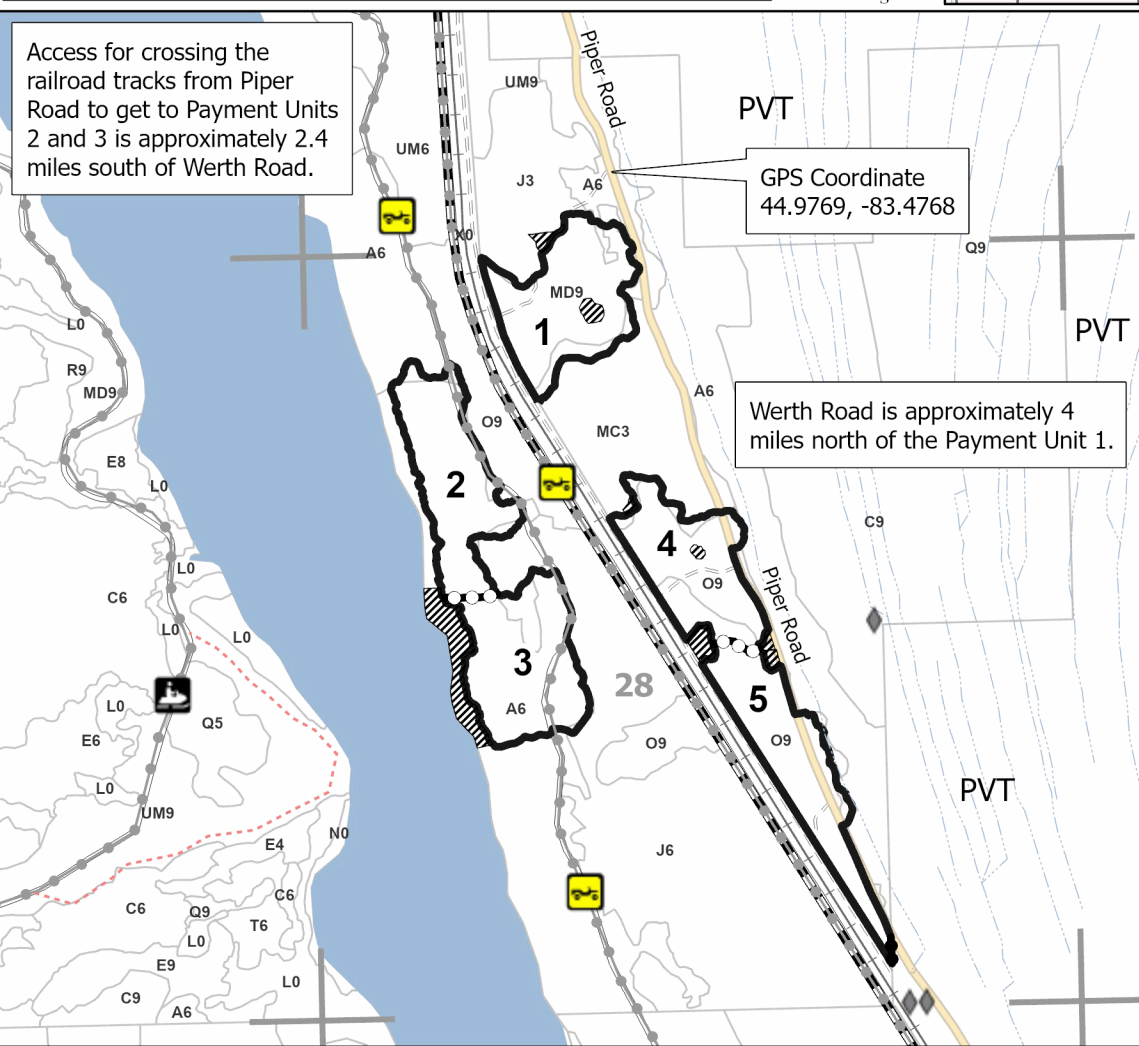
Cover Type			
A = Aspen	J = Jack Pine	O = Oak	U = Upland Brush
B = Paper Birch	K = Rock	P = Lowland Poplar	UM = Upland Mix Forest
C = Cedar	L = Lowland Brush	Q = Mixed Swamp Conifer	V = Bog or Marsh
D = Treed Bog	LM = Lowland Mix Forest	R = Red Pine	W = White Pine
E = Swamp Hardwoods	M = Maple, Beech, Birch	S = Black Spruce	X = Non Stocked
F = Spruce/Fir	MC = Mixed Conifer	T = Tamarack	Y = Sand
G = Grass	MD = Mixed Deciduous	Z = Water	
H = Hemlock	N = Marsh		

Density	
0 = Non Stocked	5 = Pole Timber Medium
1 = Seedling Sapling Poor	6 = Pole Timber Well
2 = Seedling Sapling Medium	7 = Saw Timber Poor
3 = Seedling Sapling Well	8 = Saw Timber Medium
4 = Pole Timber Poor	9 = Saw Timber Well

PU #	Acres
1	17.2
2	16.2
3	17.6
4	15.2
5	16

Piper Railway Mix 82.2 Acres

Locator Map (1:200,000)



Legend

- Against State (Red)
- Payment Unit (Yellow)
- Private Line (Blue)
- Retention Areas
- Stand
- Lakes and Rivers
- Recreational Trail
- Pipeline
- Active Railroad
- Intermittent Stream
- Secondary Forest Road
- Forest Access Route
- Administrative Access Only
- Non-DNR Road
- Survey Corner
- Section Corner

Use QR Code to open Map in App



TIMBER SALE INFORMATION

Eagle Camp Mix (54-041-23)
T30N, R08E, SEC. 31; T30N, R08E, SEC. 32.
Alpena County (Advertised Price \$32,418.35)

SALE NOTE: -Extensive road work is required. Refer to timber sale spec 4.1.8 for details.
-Private landowner access is required. Refer to timber sale spec 4.4.1 for details.
-Seasonal operational restrictions apply. Refer to timber sale specs 5.2.3.1, 5.8.6, and 5.2.3.5 for details.

Access may be through private or other public land.

A timber sale contract for this lump sum, sealed bid timber sale will be awarded to the responsible bidder offering the highest sealed bid price. All units of volume listed below were estimated using the Inventory Manager computer program and the new Michigan taper model. Bids must be at or above the following advertised price for each product and species:

<u>PRODUCTS & SPECIES</u>	<u>ESTIMATED UNITS*</u>	<u>ADVERTISED PRICE</u>
Sawtimber		
Black/Red (Hybrid) Oak	3.6 MBF	\$ 53.00 / MBF
Mixed Aspen	89.1 MBF	\$ 41.00 / MBF
Red Maple	8.8 MBF	\$ 28.00 / MBF
Red Oak	84.0 MBF	\$ 91.00 / MBF
Red Pine	51.1 MBF	\$ 57.00 / MBF
White Pine	50.7 MBF	\$ 50.00 / MBF
Pulpwood		
Balsam Fir	67 Cords	\$ 8.50 / Cord
Mixed Aspen	460 Cords	\$ 10.15 / Cord
Mixed Hardwood	287 Cords	\$ 9.75 / Cord
Mixed Oak	297 Cords	\$ 13.45 / Cord
Mixed Spruce	22 Cords	\$ 4.25 / Cord
N. White Cedar	3 Cords	\$ 4.35 / Cord
Paper Birch	47 Cords	\$ 6.80 / Cord
Red Pine	68 Cords	\$ 19.00 / Cord
White Pine	126 Cords	\$ 11.80 / Cord

* The total volume is statistically estimated within plus (+) or minus (-) 35.72 percent. There are an estimated 2,053 cords on this timber sale, plus or minus 733 cords at the 95% confidence level. The estimated units are final and not subject to adjustment. Prospective bidders are urged to examine this timber and to make their own estimates of quantity and quality.

BOND AND PAYMENT SCHEDULE:

1. A bond in the amount of \$1,621.00 to insure faithful performance of the conditions of the contract will be deposited by the successful bidder within 21 days of the sale award.
2. Cutting in any sale or unit without the required advance payment would be considered a trespass.
3. Total payment must be paid in advance or according to the following schedule :
 - (a) Ten percent (10%) of the sale value must be paid within 21 days of the sale award.
 - (b) The 10% down payment will be credited towards the first unit cut.
 - (c) Payment for each of the following units must be made before cutting begins in that unit:

PAYMENT UNIT NUMBER	PERCENT OF TOTAL SALE VALUE
01	12.7%
02	20.8%
03	41.0%
04	25.5%
4. If no cutting takes place, the 10% down payment will not be refunded.
5. Operations on the contract issued will terminate on 12/31/2026.

SALE STATISTICS

Volumes were calculated in cubic feet using the Michigan taper model. Cubic foot volume includes all wood inside bark for the product indicated. For display purposes, cubic feet were converted to cords and MBF using a simple conversion factor, e.g. 79 cubic feet per cord and 185 cubic feet per MBF. The cubic foot volumes are precise; the cords and MBF volumes are not. Cubic foot volume cannot be directly converted to cords or boards with precision.

SALE VOLUMES

The total estimated sale volume may not equal the sum of the species/products due to the nature of statistical calculations associated with double sampling methodology.

VOLUME			STATISTICAL RANGE IN CORDS	
TOTAL CUBIC FEET	TOTAL CORDS	PERCENT ERROR	MINIMUM	MAXIMUM
162,188	2,053	35.72%	1,320	2,786

VDU VOLUMES

A VDU is a Volume Determination Unit. Volumes and their associated statistics are calculated at the VDU level and summarized to the sale level. There is often a one to one relationship between a VDU and a Payment Unit, but not always, depending on the cruise design. Refer to the VDU TO PAYMENT UNIT table.

	VOLUME			RANGE IN CORDS	
VDU	TOTAL CUBIC FEET	TOTAL CORDS	PERCENT ERROR	MINIMUM	MAXIMUM
2	38,227	484	28.68%	345	623
9	48,560	615	22.13%	479	751
15	46,628	590	35.83%	379	802
61	28,774	364	37.91%	226	502
TOTAL:	162,188	2,053		1,429	2,677

VDU TO PAYMENT UNIT

When a VDU is associated with more than one Payment Unit (PU), the VDU volumes are assigned to the PU based on acres of the VDU within the PU.

VDU	VDU ACRES	PU	PU ACRES
2	12.0	2	12.0
9	16.5	3	16.5
15	11.1	4	11.1
61	8.4	1	8.4
TOTAL:	48.0		48.0

DESCRIPTION OF TIMBER BY PAYMENT UNIT (PU)

PU	MARKET GROUP	PRODUCT	QUANTITY	UNIT	ACRES	ADVERTISE PRICE
1	Mixed Aspen	Sawtimber	16.4	MBF	8.4	\$4,104.75
	<i>B. T. Aspen</i>		16.4	<i>MBF</i>		
	Red Maple		6.6	MBF		
	Red Oak		3.1	MBF		
	Red Pine		0.5	MBF		
	Balsam Fir	Pulpwood	20	Cords		
	<i>Balsam Fir</i>	<i>Sawtimber</i>	1.3	<i>MBF</i>		
	<i>Balsam Fir</i>	<i>Pulpwood</i>	17	<i>Cords</i>		
	Mixed Aspen		79	Cords		
	<i>B. T. Aspen</i>		79	<i>Cords</i>		
	Mixed Hardwood		157	Cords		
	<i>Sugar Maple</i>	<i>Sawtimber</i>	0.6	<i>MBF</i>		
	<i>Beech</i>	<i>Pulpwood</i>	20	<i>Cords</i>		
	<i>Red Maple</i>		96	<i>Cords</i>		
	<i>Sugar Maple</i>		39	<i>Cords</i>		
	<i>Yellow Birch</i>		1	<i>Cords</i>		
	Mixed Oak		14	Cords		
	<i>Red Oak</i>		14	<i>Cords</i>		
	N. White Cedar		3	Cords		
	<i>N. White Cedar</i>	<i>Sawtimber</i>	1.0	<i>MBF</i>		
	<i>N. White Cedar</i>	<i>Pulpwood</i>	1	<i>Cords</i>		
	Paper Birch		20	Cords		
	<i>Paper Birch</i>	<i>Sawtimber</i>	2.6	<i>MBF</i>		
	<i>Paper Birch</i>	<i>Pulpwood</i>	15	<i>Cords</i>		
	Red Pine		2	Cords		
	White Pine		5	Cords		
	2	Black/Red (Hybrid)	Sawtimber	3.6		
Mixed Aspen			27.2	MBF		
<i>B. T. Aspen</i>			14.0	<i>MBF</i>		
<i>Quaking Aspen</i>			13.2	<i>MBF</i>		
Red Oak			6.9	MBF		
Red Pine			4.2	MBF		
White Pine			5.2	MBF		
Balsam Fir		Pulpwood	27	Cords		
<i>Balsam Fir</i>			27	<i>Cords</i>		
Mixed Aspen			172	Cords		
<i>B. T. Aspen</i>			163	<i>Cords</i>		
<i>Quaking Aspen</i>			9	<i>Cords</i>		
Mixed Hardwood			10	Cords		
<i>Red Maple</i>			10	<i>Cords</i>		
Mixed Oak			117	Cords		
<i>/Red (Hybrid) Oak</i>			51	<i>Cords</i>		
<i>Red Oak</i>			66	<i>Cords</i>		
Red Pine			15	Cords		
White Pine			32	Cords		
3	Mixed Aspen	Sawtimber	0.7	MBF	16.5	\$13,309.75
	<i>B. T. Aspen</i>		0.7	<i>MBF</i>		
	Red Maple		0.6	MBF		
	Red Oak		74.0	MBF		
	Red Pine		8.5	MBF		
	White Pine		43.1	MBF		
	Balsam Fir	Pulpwood	3	Cords		
	<i>Balsam Fir</i>		3	<i>Cords</i>		
	Mixed Aspen		18	Cords		
	<i>B. T. Aspen</i>		18	<i>Cords</i>		
Mixed Hardwood		40	Cords			

DESCRIPTION OF TIMBER BY PAYMENT UNIT (PU), CON'T

PU	MARKET GROUP	PRODUCT	QUANTITY	UNIT	ACRES	ADVERTISE PRICE
3 con't	<i>Red Maple</i>	<i>Pulpwood</i>	40	<i>Cords</i>		
	Mixed Oak		159	Cords		
	<i>Red Oak</i>		159	<i>Cords</i>		
	Mixed Spruce		8	Cords		
	<i>White Spruce</i>	<i>Sawtimber</i>	0.9	<i>MBF</i>		
	<i>White Spruce</i>	<i>Pulpwood</i>	6	<i>Cords</i>		
	Paper Birch		10	Cords		
	<i>Paper Birch</i>		10	<i>Cords</i>		
	Red Pine		15	Cords		
	White Pine		65	Cords		
4	Mixed Aspen	Sawtimber	44.8	MBF	11.1	\$8,261.50
	<i>B. T. Aspen</i>		44.8	<i>MBF</i>		
	Red Maple		1.6	MBF		
	Red Pine		37.9	MBF		
	White Pine		2.4	MBF		
	Balsam Fir	Pulpwood	17	Cords		
	<i>Balsam Fir</i>		17	<i>Cords</i>		
	Mixed Aspen		191	Cords		
	<i>B. T. Aspen</i>		191	<i>Cords</i>		
	Mixed Hardwood		80	Cords		
	<i>Red Maple</i>		80	<i>Cords</i>		
	Mixed Oak		7	Cords		
	<i>/Red (Hybrid) Oak</i>		7	<i>Cords</i>		
	Mixed Spruce		14	Cords		
	<i>White Spruce</i>	<i>Sawtimber</i>	4.3	<i>MBF</i>		
	<i>White Spruce</i>	<i>Pulpwood</i>	5	<i>Cords</i>		
	Paper Birch		17	Cords		
	<i>Paper Birch</i>	<i>Sawtimber</i>	2.4	<i>MBF</i>		
	<i>Paper Birch</i>	<i>Pulpwood</i>	12	<i>Cords</i>		
	Red Pine		36	Cords		
White Pine		24	Cords			
TOTAL:			287.3	MBF		
TOTAL:			1,377	Cords		

Sale Specific Conditions & Requirements

Sale Name: Eagle Camp Mix

Sale Number: 54-041-23 Seq#: 4

1 - Sale Area

1.2 - Boundaries

1.2.1 - Painted boundaries (9/19)

The sale boundary and Payment Unit boundaries are marked and identified by blue and red paint. Exterior sale boundary lines against private property are marked with blue paint. Exterior sale boundary lines against state are marked with red paint. Retention patches are marked with red paint; no harvesting activities may occur within these areas. The painted boundary line trees are not Included Timber and are to be protected.

2 - Timber Specifications

2.1 - Included Timber

2.1.1 - Clearcut unit(s) with unmerchantable trees (6/14)

Within Payment Unit(s) 1-3, cut all trees that are two (2) inches or more at DBH, with the following exceptions:

- Within Payment Unit(s) 1 and 2, do not cut green painted trees or sub-merchantable pine tree seedlings and saplings in accordance with sale spec 3.4.1.

- Within Payment Unit(s) 3, do not cut green painted trees.

Special protection trees identified in accordance with condition 3.4.2, within clearcutting unit boundaries, are not Included Timber and are to be protected. Orange marked habitat trees in Payment Units 1 and 2 are to be handled as detailed in spec 5.2.4.7.

2.1.7 - Leave tree marked unit(s) (6/14)

Within Payment Unit(s) 4, cut all trees that are two (2) inches or more at DBH, except do not cut any trees marked with purple paint (above and below stump height), cedar, or hemlock, or sub-merchantable pine seedlings and saplings in accordance with sale spec 3.4.1.

Special protection trees identified in accordance with condition 3.4.2, within clearcutting unit boundaries, are not Included Timber and are to be protected. Orange marked habitat trees are to be handled as detailed in timber sale spec 5.2.4.7.

2.2 - Utilization

2.2.6 - Roundwood operation required (3/21)

The skidding of whole trees or tree segments with limbs attached is prohibited within Payment Unit(s) 1, 2 and 4. All products must be produced as roundwood and forwarded to existing roads or landing areas in final product length.

3 - Payments

3.3 - Pre-measured Sales

3.3.4 - Dividing payment units (7/14)

Payment Unit(s) \$25,000 in value or greater, may be divided at the request of the Purchaser and upon approval of the Unit Manager. Dividing Payment Units is a contract modification which requires a Timber Sale Contract Amendment. There will be only one division per Payment Unit.

3.4 - Damaged Timber

3.4.1 - Damaged timber (7/16)

General Condition and Requirement 3.4 Damaged Timber, defines liquidated damages for undesignated live merchantable trees which are cut or injured. In addition, extreme care should be taken to avoid damage to specified tree seedlings and saplings.

Within Payment Units 1, 2 and 4, if more than 20% of pine tree seedlings or saplings (1/4" to 4.5" DBH) within a specified portion of the Sale Area are damaged, liquidated damages will be assessed at \$250 per acre for all acreage within that specified portion of the Sale Area that was damaged.

3.4.2 - Special Protection Trees (4/14)

The Purchaser shall not cut live or dead special protection trees within cutting units or clearings. Special protection trees are marked with green paint within Payments Units 1 and 2 or marked with purple paint within Payment Unit 4. If the Purchaser's operations have cut or damaged special protection trees through carelessness, the Purchaser shall pay \$250 per green painted tree and \$150 per purple painted tree as fixed, agreed and liquidated damages for each special protection tree cut or damaged. Such payment does not constitute ownership of the undesignated timber.

4 - Transportation

4.1 - Construction

4.1.3 - Slash and earthen piles (8/04)

Piles or windrows of earth along roads and landings that have been widened or constructed shall be leveled. Slash from road maintenance or construction, including stumps, shall be dispersed throughout the sale.

4.1.5 - Culverts (5/14)

Multiple culverts are present in the 1.6 mile stretch of forest road called "Devils Lake Trail" south from Spruce Road. It is the Purchaser's responsibility to protect these culverts from damage during all operations. Fill required to protect these culverts is the responsibility of the Purchaser and all fill material must be approved by the Sale Administrator prior to placement. If the Purchaser's operations damage any of these culverts, the Purchaser will replace each culvert damaged according to the Michigan Forestry Best Management Practices (BMPs) IC4011 Revision dated July 10, 2023.

In addition, a drainage culvert is present at the west edge of the northern portion of Payment Unit 4 as called out on the Timber Sale Map. If damaged by timber sale operations, the Purchaser must also replace this culvert per BMPs.

Any permits required for replacing damaged culverts is the responsibility of the Purchaser.

4.1.6 - Road construction (4/24)

Improvements of existing roads shall be done in such a way as to minimize the environmental and visual impacts. Merchantable trees shall be cut and utilized unless otherwise directed. Non-merchantable trees shall be severed and laid flat on the ground. Slash shall be scattered, and not left in windrows and kept a minimum of 10 feet back from the road edge. Stumps shall be set upright, not left on edge, and be moved at least 10 feet away from the road edge. Disturbed soil shall be feathered into the woods and not left in berms or windrows.

4.1.8 - Road work (1) (8/07)

The following road work is required: Extensive road work may be required for hauling wood from Payment Units 2-4 north approximately 2.4 miles to Spruce Road. The road condition of this stretch of forest road varies seasonally.

4.1.12 - No new roads (1/12)

No new roads will be permitted in any Payment Unit. All operations are limited to existing roads. Skid trails only will be allowed.

4.2 - Maintenance

4.2.2 - Fill material (4/07)

To maintain roads, fill material may be needed in areas where "holes" exist or may be expected to develop. This fill material should be placed before trucking begins. This fill material must be crushed rock or cobble, and may not contain clay.

4.2.3 - Road maintenance (8/13)

The following road maintenance is required: Within 30 days of completion of hauling, or if no hauling occurs for 30 days, the forest road south from Spruce Road to where it terminates north of Payment Unit 4 and south of Payment Unit 3, must be maintained and graded. This includes cleaning of drainage areas, grading, crowning and filling with gravel, if necessary. Damages will be assessed if grading/repair does not occur.

4.4 - Access

4.4.1 - Private property access (3/11)

Permission for access across private land is required for the harvesting of Payment Unit 1 and the south portion of Payment Unit 4. Permission for access across private land is the responsibility of the Purchaser. A copy of the written permission from the private landowner must be given to the Unit Manager within 30 days of the bid opening and prior to the beginning of operations. Contact DNR Forester Dale Parris at (989) 590-1204 for private landowner contact information.

5 - Operations

5.1 - Notification

5.1.1 - Pre-sale conference (10/16)

A pre-sale conference on site between the Purchaser and sale administrator is required prior to beginning any operations, within a Payment Unit, to determine landing and road locations. The Unit Manager or his/her representative must be contacted at least 5 days in advance to schedule the conference.

5.1.4 - Post-sale conference (10/16)

A post-sale conference on site between the Purchaser and sale administrator is required 5 days prior to the completion of active logging operations to determine clean-up and repair of landings, road edges, and the fulfillment of other contract specifications.

5.2 - Conduct of Operations

5.2.2 - Hazard Trees/Snags

5.2.2.1 - Den trees (10/16)

Obvious hollow and/or den trees shall be protected and left standing unless they are a safety hazard.

5.2.3 - Operating Restrictions

5.2.3.1 - Operating restrictions (9/11)

Within Payment Unit(s) 1 and the southern portion of Payment Unit 4, unless changed by written agreement, cutting, skidding, and hauling are not permitted during the period of September 25 to January 1. This restriction is in place to protect private landowner interests.

5.2.3.5 - Oak wilt restriction (1/18)

Within Payment Unit(s) 1-4, unless changed by written agreement, cutting, skidding, hauling within the sale and brushing of access roads to the sale are not permitted during the period of April 15 to July 15. Operations may be allowed if specific steps are taken to prevent damaging uncut oak during the high risk period. Those steps may include completing all road brushing before April 15th and clearing a tree-length buffer along uncut oak cover before April 15th. This is necessary to reduce the spread of oak wilt. For more information, contact the Unit Manager or his/her representative.

5.2.3.11 - Coppice regeneration protection (4/10)

Timber harvesting in any Payment Unit must be completed before significant deciduous tree sprouting occurs in that Payment Unit so as to minimize damage to the new regeneration. Any post harvest operations, such as chipping, must be completed before sprouting of regeneration occurs. If it is anticipated that chipping will be delayed, then tops shall be carried to one central location or left unchipped. The Unit Manager or his/her representative may cease such operations if sprouting occurs before the operation is complete.

5.2.4 - Dead and Down Creation

5.2.4.7 - Dead and down creation: hare, grouse, deer and other species (5/15)

To improve horizontal cover habitat for snowshoe hare, grouse, deer, and other species, the Purchaser is to push over all orange ringed trees after all designated wood has been forwarded from Payment Unit 1, 2 and 4. These trees should be tipped over with the root ball still attached so the base of the tree is suspended off the ground. The crown of the fallen tree should be at or near ground level after it is pushed over.

5.2.17 - Timber Mats and Interlocking Composite Mats (5/23)

Some roads or skid trails may require extra protection such as that afforded by timber mats, interlocking composite mats, or another approved system. Approximately 100 feet of wood forwarding trail may need extra protection at southeast edge of the northern portion of Payment Unit 4 as shown on the Timber Sale Map. If available, mats may be borrowed from the DNR. A Timber Sale Contract Amendment will be used to document the Purchaser's use of the DNR's mats. Contact the Sale Administrator regarding availability and pick-up. Timber mats are available from various field offices. Composite mats

are only available from the Grayling field office and the Marquette ICC. The Purchaser is responsible for picking up and hauling the mats to and from the site. The composite mats will require DNR staff onsite for installation and removal. Contact the Sale Administrator to schedule at least 30 days before desired install/removal date. All mats must be cleaned prior to drop off. This may include, but is not limited to, power washing and brushing to remove mud and debris. A charge of \$700.00 per timber mat and \$2,000.00 per composite mat will be assessed for all damaged or non-returned mats. Damage for the crane/timber mats is defined as three or more broken cants. Damage for the composite mats is defined as cracked or broken mats.

5.2.32 - Decking/landing restoration (9/13)

All decking and landing areas must have the surface area restored to a condition equal to or better than before. This is to ensure the proper regeneration of the stand. Wood debris, chips and "cookies" from trimmings must be removed or scattered away from landing and loading areas and may not be windrowed on the edge.

5.2.38 - No decking against live trees (2/04)

Cut products may not be decked against unmarked or designated leave trees.

5.3 - Stream Protection

5.3.2 - Parking equipment near water (10/23)

Within Payment Unit(s) 1 and 4, the parking of or storage of equipment is prohibited within 100 feet of water bodies or ground water supplies. All equipment, when not in use for harvest operations, must be parked a minimum of 100 feet away from water sources (streams, rivers, lakes, ponds, vernal pools, ground water sources) and 50 feet away from slopes leading to water sources and/or riparian areas. This restriction is for preventing unforeseen oil and/or fluid leaks from contaminating water bodies and/or ground water supplies.

5.4 - Soil Protection

5.4.1 - Rutting restriction, general (7/16)

Operations are to cease immediately if equipment and weather conditions result in rutting of roads and/or skid trails which is 12 inches or greater in depth and 50 feet in length. The Unit Manager or his/her representative may restrict hauling and/or skidding if ruts exceed the specified depth. With the Unit Manager or his/her representative's approval, the Purchaser may return to the area when the risk of rutting has decreased.

5.4.4 - Slope protection (9/19)

Skid trails and roads on slopes shall be water barred with slash, as soon as use is complete to prevent erosion. Steep slope forwarding is required in Payment Unit 1.

5.7 - Protection of Historical Sites

5.7.1 - Historical sites (7/12)

The Purchaser shall not cut live or dead trees or operate equipment within historical sites. Historical sites are present within the vicinity of the Sale Area. The Purchaser shall protect historical sites from damage by the Purchaser's operations. If Purchaser's operations have cut or damaged historical sites through carelessness, the Purchaser shall pay \$1,000 as fixed, agreed and liquidated damages for each acre or part thereof cut or damaged. The Purchaser is required to contact DNR Forester Dale Parris at (989) 590-1204 prior to beginning sale operations in each Payment Unit for specifics towards protecting these designated historic areas.

5.8 - Protection of Endangered Species

5.8.5 - Protection of raptor nests (3/13)

All trees with raptor nests will be protected if found during harvesting operations. Notification will be made to the Unit Manager or his/her representative who will notify the Wildlife Biologist so an on-site evaluation and recommendation can be made, if necessary.

5.8.6 - Protection of eagle nests (5/12)

To protect an active eagle's nest, all harvesting operations within the northern portion of Payment Unit 4 and north from Payment Unit 4 to the southern edge of Payment Unit 3 are limited to the period of September 1 through December 31. If the eagle's nest is used as the primary rearing nest in a given year, the southern 330 feet of Payment Unit 3 will be added to the aforementioned no operations zone.

6 - Safety and Fire Prevention

6.2 - Signing

6.2.1 - Road posting (10/20)

The Purchaser is responsible for posting and maintaining caution signs on forest roads prior to beginning operations. The road must be posted at appropriate distances from the Sale Area to warn of logging activity and truck traffic. Signs must be removed when harvest operations are suspended or completed. The Purchaser will provide these signs.



TIMBER SALE MAP

This information provided by authority of Part 525, 1994 PA 451, as amended.

Sale Number	Date	
54-041-23	11/01/2023	
Scale	Page	Of
1:15,840	1	1

Forest Management Unit	County	Mapped By: D. Parris
Atlanta Mgt Unit	Alpena	Cruised By: D. Parris

Township	Range	Section(s) and Subdivision(s)
30N	08E	Sec. 31 SENE; Sec. 32 NW,NESW;

Cover Type			
A = Aspen	J = Jack Pine	O = Oak	U = Upland Brush
B = Paper Birch	K = Rock	P = Lowland Poplar	UM = Upland Mix Forest
C = Cedar	L = Lowland Brush	Q = Mixed Swamp Conifer	V = Bog or Marsh
D = Treed Bog	LM = Lowland Mix Forest	R = Red Pine	W = White Pine
E = Swamp Hardwoods	M = Maple, Beech, Birch	S = Black Spruce	X = Non Stocked
F = Spruce/Fir	MC = Mixed Conifer	T = Tamarack	Y = Sand
G = Grass	MD = Mixed Deciduous	Z = Water	
H = Hemlock	N = Marsh		

Density	
0 = Non Stocked	5 = Pole Timber Medium
1 = Seedling Sapling Poor	6 = Pole Timber Well
2 = Seedling Sapling Medium	7 = Saw Timber Poor
3 = Seedling Sapling Well	8 = Saw Timber Medium
4 = Pole Timber Poor	9 = Saw Timber Well

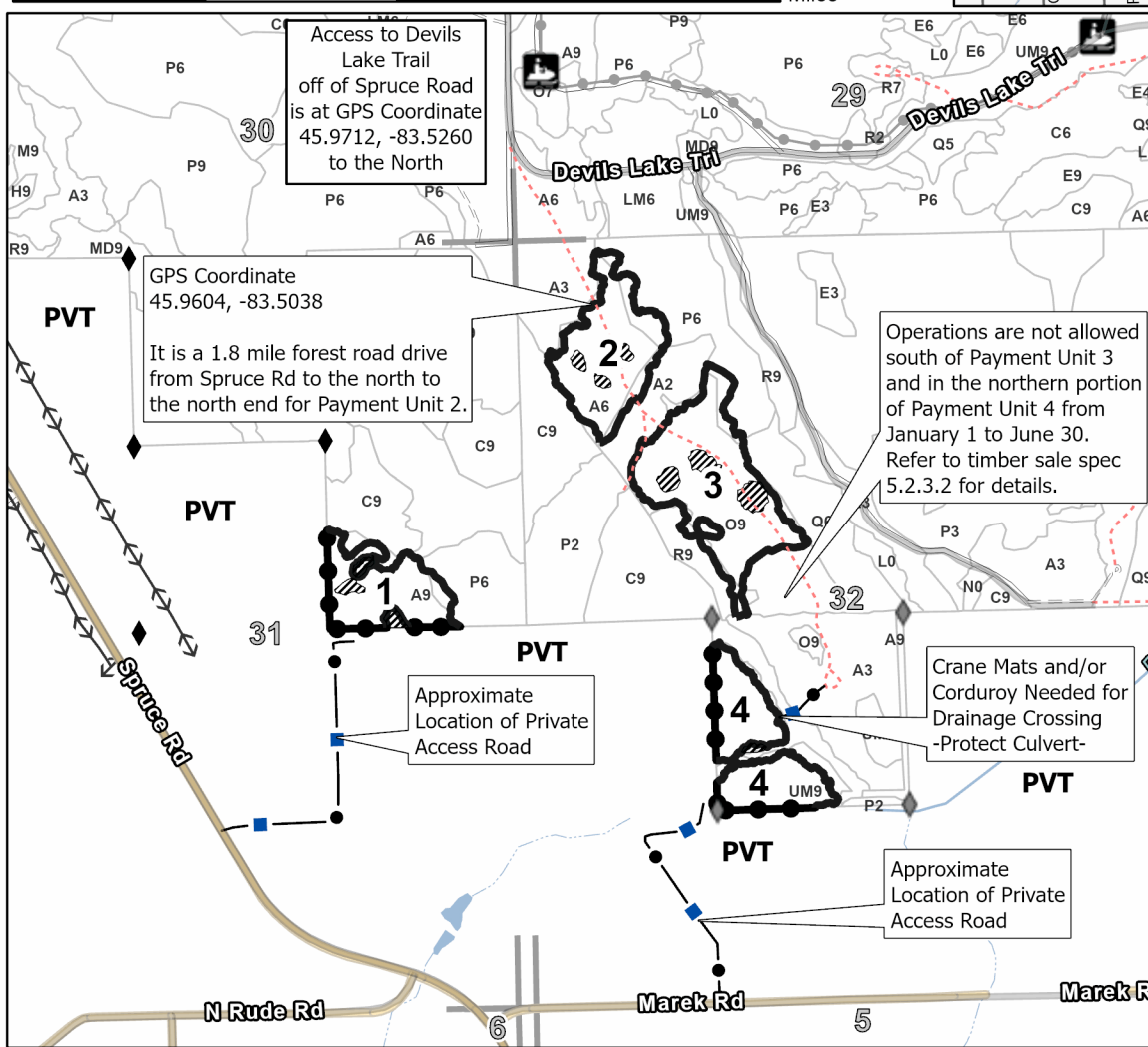
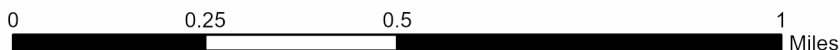
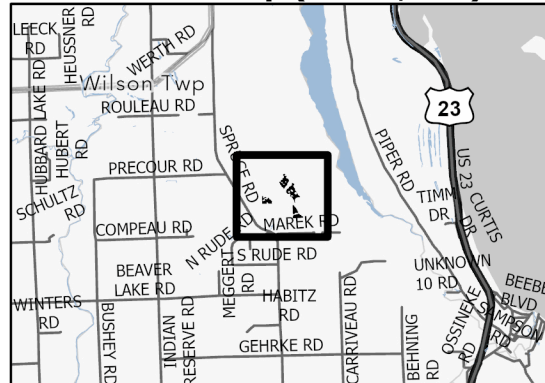
PU #	Acres
1	8.4
2	12
3	16.5
4	11.1

Eagle Camp Mix

48.0 Acres



Locator Map (1:200,000)



Legend

- Against State (Red)
- Private Line (Blue)
- Retention Areas (Red)
- Stand
- Lakes and Rivers
- Access Routes
- Recreational Trail
- Powerline
- Intermittent Stream
- Perennial River
- Secondary Forest Road
- Forest Access Route
- Administrative Access Only
- Non-DNR Road
- Survey Corner
- Section Corner

Use QR Code to open Map in App



Hubert Rd Aspen & Fir (54-015-24)
T32N, R04E, SEC. 9; Montmorency COUNTY

In response to the notice of sale to be held 10:00 a.m. (local time) on October 22, 2024, I am hereby submitting my sealed bid (firm offer) for the following forest products to be cut. Bids for individual species must be at or above the advertised price. All non-responsive bid forms may be rejected.

<u>PRODUCTS & SPECIES</u>	<u>ESTIMATED VOLUME*</u>	<u>ADVERTISED PRICE</u>	<u>BID PRICE/UNIT</u>
Sawtimber			
Beech	7.7 MBF	\$ 111.00/MBF	\$ _____
Red Maple	14.3 MBF	\$ 59.00/MBF	\$ _____
Red Oak	134.1 MBF	\$ 195.00/MBF	\$ _____
Pulpwood			
Balsam Fir	588 Cords	\$ 18.20/Cord	\$ _____
Beech	13 Cords	\$ 20.85/Cord	\$ _____
Black Spruce	32 Cords	\$ 9.10/Cord	\$ _____
Mixed Aspen	1,136 Cords	\$ 21.80/Cord	\$ _____
Paper Birch	354 Cords	\$ 14.55/Cord	\$ _____
Red Maple	450 Cords	\$ 20.85/Cord	\$ _____
Red Oak	322 Cords	\$ 28.80/Cord	\$ _____

*The volumes are statistically estimated within plus (+) or minus (-) 17.37 percent at 95% confidence level. These estimated volumes are final and not subject to adjustment. Prospective bidders are urged to examine this timber and to make their own estimates of quantity and quality.

I understand that any or all bids may be rejected. All bids must be signed and all bid items must be bid or the bid form may be rejected. I also understand that consideration and awarding a contract will be based upon my past performance and ability to complete the contract based upon equipment and staffing subject to my control.

FEDERAL ID: _____ - _____ or SOCIAL SECURITY NUMBER: _____ - _____ - _____

Company or individual bidding: _____

Company representative's name: _____

Address: _____

City: _____ State: _____ Zip: _____

IF AVAILABLE, PLEASE PLACE THE PERSONALIZED LABEL FROM YOUR PROSPECTUS IN THE ABOVE BOX.

Individual or company representative's signature: _____ Date: _____

Phone number : _____ Email (optional): _____

THE WINNING BIDDER MUST COMPLETE THE VERIFICATION OF WORKER'S DISABILITY COMPENSATION ACT COMPLIANCE (ON REVERSE SIDE IF DOUBLE SIDED) WITHIN 21 DAYS OF SALE AWARD DATE



FOR DEPARTMENT USE ONLY
Sale Number (XX - XXX - XX - XX)
Forest Management Unit:

TIMBER SALE VERIFICATION OF WORKER'S DISABILITY COMPENSATION ACT COMPLIANCE

*As required by Act 317, P.A. 1969 (Worker's Compensation) and
Part 5 of Act 451 of 1994, as amended.*

VERIFICATION OF WORKER'S DISABILITY COMPENSATION ACT COMPLIANCE

- This verification must be completed and submitted within 21 days of contract award and prior to the issuance of the timber sale contract.
- In addition, if boxes 2B or 2C are checked, then Notice of Exclusion or Certificate of Insurance must be submitted within twenty-one (21) days of the contract award and prior to the issuance of the timber sale contract.
- All information must be typed or printed except for written signatures.

Please Check Appropriate Categories:

1. My business is organized as (you **must** check one of the boxes below):
 - A. Sole Proprietorship (individual)
 - B. Partnership
 - C. Corporation
2. You **must** check one of the boxes below:
 - A. I certify my business is a sole proprietorship and it has no employees but the sole proprietor. I am not subject to the Worker's Compensation Laws.
 - B. I certify my business has satisfied its obligation to the Worker's Compensation Act through the use of an approved Notice of Exclusion (BWC-337, Rev. 5/96). I will provide a copy of the Notice of Exclusion within 21 days of the contract award. (For questions or a copy of the BWC-337, please call the Worker's Compensation Bureau at 517-322-1195).
 - C. I certify my business has a Worker's Compensation Policy. I will provide an original Certificate of Insurance within twenty-one (21) days of the contract award.
3. If you have checked item 2(A) or 2(B), you **must** indicate the number of **both** full-time and part-time employees, other than yourself, including family members and active partners (if none, you must enter "0").

_____ Full-time Employees

_____ Part-time Employees

Name of Business		Federal ID (or) Social Security No.	
Address		Telephone ()	
City	State	ZIP	

I hereby certify that the above information is true and correct. I agree to notify the Michigan DNR of any changes that occur in factors affecting my coverage during any of my present and future operations.

Signature of Owner or Authorized Representative

Title

Date

Please complete the "SEALED BID" information on the next page

Deer In The Headlights Mix 2! (54-999-24)
T32N, R04E, SEC. 17; T32N, R04E, SEC. 18; T32N, R04E, SEC. 6; T32N, R04E,

In response to the notice of sale to be held 10:00 a.m. (local time) on October 22, 2024, I am hereby submitting my sealed bid (firm offer) for the following forest products to be cut. Bids for individual species must be at or above the advertised price. All non-responsive bid forms may be rejected.

<u>PRODUCTS & SPECIES</u>	<u>ESTIMATED VOLUME*</u>	<u>ADVERTISED PRICE</u>	<u>BID PRICE/UNIT</u>
Sawtimber			
Black/Red (Hybrid) Oak	13.7 MBF	\$ 114.00/MBF	\$ _____
Mixed Aspen	351.4 MBF	\$ 87.00/MBF	\$ _____
Red Maple	34.5 MBF	\$ 59.00/MBF	\$ _____
Red Oak	328.9 MBF	\$ 195.00/MBF	\$ _____
Red Pine	14.8 MBF	\$ 123.00/MBF	\$ _____
Pulpwood			
Balsam Fir	203 Cords	\$ 18.20/Cord	\$ _____
Mixed Aspen	1,990 Cords	\$ 21.80/Cord	\$ _____
Mixed Oak	698 Cords	\$ 28.80/Cord	\$ _____
Paper Birch	22 Cords	\$ 14.55/Cord	\$ _____
Red Maple	513 Cords	\$ 20.85/Cord	\$ _____
Red Pine	33 Cords	\$ 40.70/Cord	\$ _____
White Spruce	12 Cords	\$ 9.10/Cord	\$ _____

*The volumes are statistically estimated within plus (+) or minus (-) 13.65 percent at 95% confidence level. These estimated volumes are final and not subject to adjustment. Prospective bidders are urged to examine this timber and to make their own estimates of quantity and quality.

I understand that any or all bids may be rejected. All bids must be signed and all bid items must be bid or the bid form may be rejected. I also understand that consideration and awarding a contract will be based upon my past performance and ability to complete the contract based upon equipment and staffing subject to my control.

FEDERAL ID: ____ - ____ - ____ or SOCIAL SECURITY NUMBER: ____ - ____ - ____

Company or individual bidding: _____

Company representative's name: _____

Address: _____

City: _____ State: _____ Zip: _____

IF AVAILABLE, PLEASE PLACE THE PERSONALIZED LABEL FROM YOUR PROSPECTUS IN THE ABOVE BOX.

Individual or company representative's signature: _____ Date: _____

Phone number : _____ Email (optional): _____

THE WINNING BIDDER MUST COMPLETE THE VERIFICATION OF WORKER'S DISABILITY COMPENSATION ACT COMPLIANCE (ON REVERSE SIDE IF DOUBLE SIDED) WITHIN 21 DAYS OF SALE AWARD DATE

Big Cut Mix1 (54-500-24)

T34N, R03E, SEC. 11; T34N, R03E, SEC. 12; T34N, R03E, SEC. 13; T34N, R03E,

In response to the notice of sale to be held 10:00 a.m. (local time) on October 22, 2024, I am hereby submitting my sealed bid (firm offer) for the following forest products to be cut. Bids for individual species must be at or above the advertised price. All non-responsive bid forms may be rejected.

<u>PRODUCTS & SPECIES</u>	<u>ESTIMATED VOLUME*</u>	<u>ADVERTISED PRICE</u>	<u>BID PRICE/UNIT</u>
Sawtimber			
Mixed Aspen	177.5 MBF	\$ 93.00/MBF	\$ _____
Northern Pin Oak	5.4 MBF	\$ 122.00/MBF	\$ _____
Red Maple	19.7 MBF	\$ 63.00/MBF	\$ _____
Red Oak	279.4 MBF	\$ 208.00/MBF	\$ _____
Red Pine	112.7 MBF	\$ 131.00/MBF	\$ _____
White Oak	22.3 MBF	\$ 79.00/MBF	\$ _____
White Pine	24.5 MBF	\$ 114.00/MBF	\$ _____
Pulpwood			
Balsam Fir	306 Cords	\$ 19.40/Cord	\$ _____
Jack Pine	48 Cords	\$ 12.45/Cord	\$ _____
Mixed Aspen	699 Cords	\$ 23.25/Cord	\$ _____
Mixed Oak	599 Cords	\$ 30.75/Cord	\$ _____
N. White Cedar	23 Cords	\$ 9.90/Cord	\$ _____
Paper Birch	60 Cords	\$ 15.50/Cord	\$ _____
Red Maple	328 Cords	\$ 22.25/Cord	\$ _____
Red Pine	225 Cords	\$ 43.45/Cord	\$ _____
White Pine	53 Cords	\$ 27.00/Cord	\$ _____
White Spruce	16 Cords	\$ 9.70/Cord	\$ _____

*The volumes are statistically estimated within plus (+) or minus (-) 14.32 percent at 95% confidence level. These estimated volumes are final and not subject to adjustment. Prospective bidders are urged to examine this timber and to make their own estimates of quantity and quality.

I understand that any or all bids may be rejected. All bids must be signed and all bid items must be bid or the bid form may be rejected. I also understand that consideration and awarding a contract will be based upon my past performance and ability to complete the contract based upon equipment and staffing subject to my control.

FEDERAL ID: _____ or SOCIAL SECURITY NUMBER: _____

Company or individual bidding: _____

Company representative's name: _____

Address: _____

City: _____ State: _____ Zip: _____

IF AVAILABLE, PLEASE PLACE THE PERSONALIZED LABEL FROM YOUR PROSPECTUS IN THE ABOVE BOX.

Individual or company representative's signature: _____ Date: _____

Phone number : _____ Email (optional): _____

THE WINNING BIDDER MUST COMPLETE THE VERIFICATION OF WORKER'S DISABILITY COMPENSATION ACT COMPLIANCE (ON REVERSE SIDE IF DOUBLE SIDED) WITHIN 21 DAYS OF SALE AWARD DATE



FOR DEPARTMENT USE ONLY	
Sale Number (XX - XXX - XX - XX)	
Forest Management Unit:	

TIMBER SALE VERIFICATION OF WORKER'S DISABILITY COMPENSATION ACT COMPLIANCE

As required by Act 317, P.A. 1969 (Worker's Compensation) and
Part 5 of Act 451 of 1994, as amended.

VERIFICATION OF WORKER'S DISABILITY COMPENSATION ACT COMPLIANCE

- This verification must be completed and submitted within 21 days of contract award and prior to the issuance of the timber sale contract.
- In addition, if boxes 2B or 2C are checked, then Notice of Exclusion or Certificate of Insurance must be submitted within twenty-one (21) days of the contract award and prior to the issuance of the timber sale contract.
- All information must be typed or printed except for written signatures.

Please Check Appropriate Categories:

1. My business is organized as (you **must** check one of the boxes below):
 - A. Sole Proprietorship (individual)
 - B. Partnership
 - C. Corporation
2. You **must** check one of the boxes below:
 - A. I certify my business is a sole proprietorship and it has no employees but the sole proprietor. I am not subject to the Worker's Compensation Laws.
 - B. I certify my business has satisfied its obligation to the Worker's Compensation Act through the use of an approved Notice of Exclusion (BWC-337, Rev. 5/96). I will provide a copy of the Notice of Exclusion within 21 days of the contract award. (For questions or a copy of the BWC-337, please call the Worker's Compensation Bureau at 517-322-1195).
 - C. I certify my business has a Worker's Compensation Policy. I will provide an original Certificate of Insurance within twenty-one (21) days of the contract award.
3. If you have checked item 2(A) or 2(B), you **must** indicate the number of **both** full-time and part-time employees, other than yourself, including family members and active partners (if none, you must enter "0").

_____ Full-time Employees

_____ Part-time Employees

Name of Business		Federal ID (or) Social Security No.	
Address		Telephone ()	
City	State	ZIP	

I hereby certify that the above information is true and correct. I agree to notify the Michigan DNR of any changes that occur in factors affecting my coverage during any of my present and future operations.

Signature of Owner or Authorized Representative

Title

Date

Please complete the "SEALED BID" information on the next page

Piper Railway Mix (54-040-23)
T30N, R08E, SEC. 21; T30N, R08E, SEC. 28; Alpena COUNTY

In response to the notice of sale to be held 10:00 a.m. (local time) on October 22, 2024, I am hereby submitting my sealed bid (firm offer) for the following forest products to be cut. Bids for individual species must be at or above the advertised price. All non-responsive bid forms may be rejected.

<u>PRODUCTS & SPECIES</u>	<u>ESTIMATED VOLUME*</u>	<u>ADVERTISED PRICE</u>	<u>BID PRICE/UNIT</u>
Sawtimber			
B. T. Aspen	7.6 MBF	\$ 35.00/MBF	\$ _____
Black/Red (Hybrid) Oak	33.5 MBF	\$ 46.00/MBF	\$ _____
Red Oak	3.2 MBF	\$ 78.00/MBF	\$ _____
Red Pine	10.6 MBF	\$ 49.00/MBF	\$ _____
Pulpwood			
B. T. Aspen	577 Cords	\$ 8.70/Cord	\$ _____
Balsam Fir	3 Cords	\$ 7.30/Cord	\$ _____
Jack Pine	198 Cords	\$ 4.65/Cord	\$ _____
Mixed Oak	749 Cords	\$ 11.50/Cord	\$ _____
Red Maple	55 Cords	\$ 8.35/Cord	\$ _____
Red Pine	37 Cords	\$ 16.30/Cord	\$ _____
White Pine	37 Cords	\$ 10.15/Cord	\$ _____

*The volumes are statistically estimated within plus (+) or minus (-) 24.41 percent at 95% confidence level. These estimated volumes are final and not subject to adjustment. Prospective bidders are urged to examine this timber and to make their own estimates of quantity and quality.

I understand that any or all bids may be rejected. All bids must be signed and all bid items must be bid or the bid form may be rejected. I also understand that consideration and awarding a contract will be based upon my past performance and ability to complete the contract based upon equipment and staffing subject to my control.

FEDERAL ID: _____ or SOCIAL SECURITY NUMBER: _____

Company or individual bidding: _____

Company representative's name: _____

Address: _____

City: _____ State: _____ Zip: _____

IF AVAILABLE, PLEASE PLACE THE PERSONALIZED LABEL FROM YOUR PROSPECTUS IN THE ABOVE BOX.

Individual or company representative's signature: _____ Date: _____

Phone number : _____ Email (optional): _____

THE WINNING BIDDER MUST COMPLETE THE VERIFICATION OF WORKER'S DISABILITY COMPENSATION ACT COMPLIANCE (ON REVERSE SIDE IF DOUBLE SIDED) WITHIN 21 DAYS OF SALE AWARD DATE



FOR DEPARTMENT USE ONLY
Sale Number (XX - XXX - XX - XX)
Forest Management Unit:

TIMBER SALE VERIFICATION OF WORKER'S DISABILITY COMPENSATION ACT COMPLIANCE

*As required by Act 317, P.A. 1969 (Worker's Compensation) and
Part 5 of Act 451 of 1994, as amended.*

VERIFICATION OF WORKER'S DISABILITY COMPENSATION ACT COMPLIANCE

- This verification must be completed and submitted within 21 days of contract award and prior to the issuance of the timber sale contract.
- In addition, if boxes 2B or 2C are checked, then Notice of Exclusion or Certificate of Insurance must be submitted within twenty-one (21) days of the contract award and prior to the issuance of the timber sale contract.
- All information must be typed or printed except for written signatures.

Please Check Appropriate Categories:

1. My business is organized as (you **must** check one of the boxes below):
 - A. Sole Proprietorship (individual)
 - B. Partnership
 - C. Corporation
2. You **must** check one of the boxes below:
 - A. I certify my business is a sole proprietorship and it has no employees but the sole proprietor. I am not subject to the Worker's Compensation Laws.
 - B. I certify my business has satisfied its obligation to the Worker's Compensation Act through the use of an approved Notice of Exclusion (BWC-337, Rev. 5/96). I will provide a copy of the Notice of Exclusion within 21 days of the contract award. (For questions or a copy of the BWC-337, please call the Worker's Compensation Bureau at 517-322-1195).
 - C. I certify my business has a Worker's Compensation Policy. I will provide an original Certificate of Insurance within twenty-one (21) days of the contract award.
3. If you have checked item 2(A) or 2(B), you **must** indicate the number of **both** full-time and part-time employees, other than yourself, including family members and active partners (if none, you must enter "0").

_____ Full-time Employees

_____ Part-time Employees

Name of Business		Federal ID (or) Social Security No.	
Address		Telephone ()	
City	State	ZIP	

I hereby certify that the above information is true and correct. I agree to notify the Michigan DNR of any changes that occur in factors affecting my coverage during any of my present and future operations.

Signature of Owner or Authorized Representative

Title

Date

Please complete the "SEALED BID" information on the next page

Eagle Camp Mix (54-041-23)
T30N, R08E, SEC. 31; T30N, R08E, SEC. 32; Alpena COUNTY

In response to the notice of sale to be held 10:00 a.m. (local time) on October 22, 2024, I am hereby submitting my sealed bid (firm offer) for the following forest products to be cut. Bids for individual species must be at or above the advertised price. All non-responsive bid forms may be rejected.

<u>PRODUCTS & SPECIES</u>	<u>ESTIMATED VOLUME*</u>	<u>ADVERTISED PRICE</u>	<u>BID PRICE/UNIT</u>
Sawtimber			
Black/Red (Hybrid) Oak	3.6 MBF	\$ 53.00/MBF	\$ _____
Mixed Aspen	89.1 MBF	\$ 41.00/MBF	\$ _____
Red Maple	8.8 MBF	\$ 28.00/MBF	\$ _____
Red Oak	84.0 MBF	\$ 91.00/MBF	\$ _____
Red Pine	51.1 MBF	\$ 57.00/MBF	\$ _____
White Pine	50.7 MBF	\$ 50.00/MBF	\$ _____
Pulpwood			
Balsam Fir	67 Cords	\$ 8.50/Cord	\$ _____
Mixed Aspen	460 Cords	\$ 10.15/Cord	\$ _____
Mixed Hardwood	287 Cords	\$ 9.75/Cord	\$ _____
Mixed Oak	297 Cords	\$ 13.45/Cord	\$ _____
Mixed Spruce	22 Cords	\$ 4.25/Cord	\$ _____
N. White Cedar	3 Cords	\$ 4.35/Cord	\$ _____
Paper Birch	47 Cords	\$ 6.80/Cord	\$ _____
Red Pine	68 Cords	\$ 19.00/Cord	\$ _____
White Pine	126 Cords	\$ 11.80/Cord	\$ _____

*The volumes are statistically estimated within plus (+) or minus (-) 35.72 percent at 95% confidence level. These estimated volumes are final and not subject to adjustment. Prospective bidders are urged to examine this timber and to make their own estimates of quantity and quality.

I understand that any or all bids may be rejected. All bids must be signed and all bid items must be bid or the bid form may be rejected. I also understand that consideration and awarding a contract will be based upon my past performance and ability to complete the contract based upon equipment and staffing subject to my control.

FEDERAL ID: ____ - ____ - ____ or SOCIAL SECURITY NUMBER: ____ - ____ - ____

Company or individual bidding: _____

Company representative's name: _____

Address: _____

City: _____ State: _____ Zip: _____

IF AVAILABLE, PLEASE PLACE THE PERSONALIZED LABEL FROM YOUR PROSPECTUS IN THE ABOVE BOX.

Individual or company representative's signature: _____ Date: _____

Phone number : _____ Email (optional): _____

THE WINNING BIDDER MUST COMPLETE THE VERIFICATION OF WORKER'S DISABILITY COMPENSATION ACT COMPLIANCE (ON REVERSE SIDE IF DOUBLE SIDED) WITHIN 21 DAYS OF SALE AWARD DATE



FOR DEPARTMENT USE ONLY	
Sale Number (XX - XXX - XX - XX)	
Forest Management Unit:	

TIMBER SALE VERIFICATION OF WORKER'S DISABILITY COMPENSATION ACT COMPLIANCE

As required by Act 317, P.A. 1969 (Worker's Compensation) and
Part 5 of Act 451 of 1994, as amended.

VERIFICATION OF WORKER'S DISABILITY COMPENSATION ACT COMPLIANCE

- This verification must be completed and submitted within 21 days of contract award and prior to the issuance of the timber sale contract.
- In addition, if boxes 2B or 2C are checked, then Notice of Exclusion or Certificate of Insurance must be submitted within twenty-one (21) days of the contract award and prior to the issuance of the timber sale contract.
- All information must be typed or printed except for written signatures.

Please Check Appropriate Categories:

1. My business is organized as (you **must** check one of the boxes below):
 - A. Sole Proprietorship (individual)
 - B. Partnership
 - C. Corporation
2. You **must** check one of the boxes below:
 - A. I certify my business is a sole proprietorship and it has no employees but the sole proprietor. I am not subject to the Worker's Compensation Laws.
 - B. I certify my business has satisfied its obligation to the Worker's Compensation Act through the use of an approved Notice of Exclusion (BWC-337, Rev. 5/96). I will provide a copy of the Notice of Exclusion within 21 days of the contract award. (For questions or a copy of the BWC-337, please call the Worker's Compensation Bureau at 517-322-1195).
 - C. I certify my business has a Worker's Compensation Policy. I will provide an original Certificate of Insurance within twenty-one (21) days of the contract award.
3. If you have checked item 2(A) or 2(B), you **must** indicate the number of **both** full-time and part-time employees, other than yourself, including family members and active partners (if none, you must enter "0").

_____ Full-time Employees

_____ Part-time Employees

Name of Business		Federal ID (or) Social Security No.	
Address		Telephone ()	
City	State	ZIP	

I hereby certify that the above information is true and correct. I agree to notify the Michigan DNR of any changes that occur in factors affecting my coverage during any of my present and future operations.

Signature of Owner or Authorized Representative

Title

Date

Please complete the "SEALED BID" information on the next page