



**DEPARTMENT OF NATURAL RESOURCES
STATE OF MICHIGAN
TIMBER SALE PROSPECTUS #7482**

SCHEDULED SALE DATE AND TIME: 10:00 a.m. (local time) on November 19, 2024.

LOCATION: ATLANTA MGMT UNIT, 13501 M 33, ATLANTA, MI 49709.

PROSPECTUS NOTE: The bidder is advised to inspect the sale area and review the location, estimated volumes, operating costs and contract terms of proposed sales. Please be aware that some landowners may request 60 days or more notice for access across their land.

Notice is hereby given that bids will be received by the Unit Manager, ATLANTA MANAGEMENT UNIT, for certain timber on the following described lands:

Who's Line Red Pine (54-003-24) / T35N, R03E, SEC. 10, S1/2SW.

T35N, R03E, SEC. 14, SESW,S1/2SE.

T35N, R03E, SEC. 15, NWNW,S1/2NW,SW,W1/2SE.

Presque Isle County, Advertised Price \$271,853.80, 223.4 Acres, Red Pine, Jack Pine.

SALE NOTE: No extensions allowed. Minor road work will be needed to access Payment Unit 1. Payment Units 2-7 contain good access from county roads. Snowmobile trail is within the vicinity of the sale but will not be impacted by operations.

A recreation site such as a trail, pathway, or campground is within the sale area or the vicinity. Certain restrictions/specifications may be applicable including time restrictions.

Black Mountain Scramble (54-005-24) / T36N, R01E, SEC. 1 , NW,NWNE,SWSW.

T36N, R01E, SEC. 12, N1/2SW,SESW,SE.

T36N, R01E, SEC. 2 , N1/2NE,S1/2SE.

Cheboygan County, Advertised Price \$162,424.85, 157.1 Acres, Hardwood, Aspen.

SALE NOTE: High recreational use area containing various motorized and non-motorized trails. It is encouraged operations take place between October 1st and April 1st to reduce any potential conflict with trail users. Payment Units 2-4 contain a mandatory chipping spec (no exceptions) which is reflected in the advertised price. Steep slopes within Units 6 & 7 with a road needed to access unit 7.

A recreation site such as a trail, pathway, or campground is within the sale area or the vicinity. Certain restrictions/specifications may be applicable including time restrictions.

Thunder Bay River Mix (54-014-24) / T30N, R03E, SEC. 19, NENE.

T30N, R03E, SEC. 20, NWNW,SENE,NESW,SWSW.

T30N, R03E, SEC. 31, SWNE,NESW,NWSE.

Montmorency County, Advertised Price \$172,733.40, 108.5 Acres, Red Oak, Aspen.

SALE NOTE: There is an oak wilt restriction on Payment Units 1-7. Refer to sale spec 5.2.3.5 for details. Private access or stream crossing is required for harvesting Payment Units 4 and 5. Refer to timber sale specs 4.1.1 and 4.4.1 for details.

Access may be through private or other public land.

Horseshoe Hardwoods (54-018-24) / T31N, R01E, SEC. 4 , NW,N1/2SW.

T31N, R01E, SEC. 5 , SENW,SW,W1/2SE.

T31N, R01E, SEC. 6 , E1/2SE.

Montmorency County, Advertised Price \$209,718.65, 281.6 Acres, Hardwood, Red Oak.

SALE NOTE: Large acreage with minimal restrictions and relatively flat operating terrain. No recreational trails present. Road work into Payment Units 1 & 2 will be needed, with long skids. Fill material such as gravel will be required on existing access roads through wildlife openings to prevent further damage to current roads. No new roads will be allowed through Wildlife Maintained Openings.

Chopsticks Red Pine (54-017-23) / T31N, R02E, SEC. 23, W1/2NE.

Montmorency County, Advertised Price \$1,874.80, 8.9 Acres, White Pine, Red Pine.

SALE NOTE: 5.2.3.3 - Bark slippage restriction (3/09)

Within Payment Unit(s) 1, unless changed by written agreement, cutting and skidding are not permitted during the

period of April 15 to July 15. This restriction is because of bark slippage.

BID INSTRUCTIONS (VER. 10/10/2022):

1. Scheduled Bid Location, Date, and Time (2/11)

Bids must be received by the Unit Manager, ATLANTA OFFICE, 13501 M 33, ATLANTA, MI 49709, no later than 10:00 a.m. (local time) on November 19, 2024. For further information concerning this sale, contact Matt Foster at 989-619-5921 extension .

2. Bidder's Qualifications (10/22)

If all or part of a timber sale was prepared by a private contractor, the contractor and that contractor's company are not permitted to bid on the timber sale. A person must be 18 years of age or older to purchase timber. Permanent employees of the Department of Natural Resources or members of their immediate household may not bid. Former employees, in the permanent or seasonal class, may not bid until 3 months after the last day of active duty. Bids will not be accepted from individuals or companies appearing on the DNR/FRD No-Bid List. This list contains the names of purchasers who previously failed to execute a contract within 21-days or who have a history of poor performance.

3. Preparation of Sealed Bids (5/16)

Bid Forms may be completed online thru Michigan DNR Timber Sale Online Bidding (OLB) at www.michigan.gov/timberbidding or by completing the hardcopy Bid Form found in the Timber Sale Prospectus . Hardcopy Bid Forms shall be manually signed in ink. Registration in OLB is considered your 'signature' for all bids submitted thru that system. Bid prices must be entered for each species and product in the Bid Price column for all material subject to bidding and all fill-in blanks must be completed. If erasures or other changes appear on the hardcopy Bid Form, each erasure or change must be initialed by the person signing the bid.

4. Submission of Sealed Bids (5/16)

Bid forms may be obtained from the Unit Manager or thru OLB. Bids may be submitted hardcopy or thru OLB. All hardcopy bids must be submitted on the bid form and in an envelope clearly identified as described in this section. NOTE: Only one bid form per bid envelope. Sealed bids must be submitted to the Unit office designated in the prospectus and must be submitted at or prior to the time established in the prospectus. The envelope should show on the outside (a) the sale name or number and (b) the date and time of bid opening, as shown in the prospectus. Bids received after the time specified in the sale prospectus are late bids and will be rejected.

It is possible for a bidder to submit multiple bids on a single sale. For example, a bid may be submitted hardcopy and a bid may be submitted thru OLB. Or, two bidders from the same company could both submit bids on the same sale. If this were to happen, the State would accept all bids received and award the contract accordingly. All bidding and contractual requirements would apply to all bids received.

5. Public Opening of Sealed Bids (7/16)

If conditions permit, the sealed bids will be publicly opened and posted at the time and place set in the prospectus.

If a bidder, present at a bid opening, has submitted bids on more than one sale, that bidder may withdraw their unopened bid envelopes or announce the withdrawal of their online bid after being declared the successful bidder on one sale.

6. Award of Contract (1/11)

Award of the contract will be made to the Bidder whose bid, conforming to the prospectus, is most advantageous to the State of Michigan on the basis of total value at rates bid for the estimated quantities. The State reserves the right to reject any bid or waive any minor irregularity in bids received. A written award mailed (or otherwise furnished) to the successful Bidder shall be deemed to result in a binding contract without further action by either party.

7. Down Payment (1/11)

The Bidder to whom award is made must make a down payment within 21 days of the sale award. The amount of the down payment will be calculated as shown in the Bond and Payment Schedule of this prospectus. Only cash may be used to meet this requirement.

8. Performance Security (1/11)

As guarantee of faithful performance, a cash bond, certificate of deposit, surety bond or irrevocable letter of credit (LOC) is required within 21 days of the sale award. The amount of the performance security is shown in the Bond and

Payment Schedule of this prospectus. If an LOC or surety is used, the coverage must extend for at least 6 months beyond the contract expiration.

9. Worker's Compensation (10/22)

Purchaser shall obtain worker's compensation insurance to cover claims under Michigan's Worker's Disability Compensation Act of 1969 or similar employee benefit act of any other state applicable to an employee. Verification of Worker's Disability Compensation Act Compliance must be completed and submitted within 21 days of contract award and prior to the issuance of the timber sale contract. In addition, if applicable, Notice of Exclusion or Certificate of Insurance must also be submitted.

10. Timber Sale Contract (10/22)

Additional conditions and requirements common to all timber sales are listed on the timber sale contract (R4031) and are available on line at www.michigan.gov/timber. Contact the Unit Manager for additional information or a sample contract. Within 21 days of the date of the award letter, the bidder must sign the contract and provide the required down payment, performance security, and verification of worker's disability compensation. The down payment and performance security shall be in accordance with the provisions of the timber sale contract, in the sums stated in this prospectus. If these actions are not taken, then the Bidder, the Bidder's corporation, and the corporation's principals may not be permitted to bid on State timber sales for a period of 3 months after the first offense, 6 months after the second offense, and 1 year after the third offense. An offense will only be counted against the Bidder for 5 years. In addition, the Bidder certifies that if awarded this contract, the Bidder will complete the timber sale contract in accordance with its terms and any modifications thereof including requirements to purchase, cut, and remove the included timber by the expiration date.

Payment Unit values in the State Forest Timber Sale Contract are calculated based on the advertised value of the Payment Unit as a percentage of the total advertised value of the contract. The advertised value of each Payment Unit is given in the Description of Timber by Payment Unit table on the Timber Sale Information page. For example, if the value of Payment Unit 1 is advertised as \$1,500 and the total Timber Sale value is advertised as \$10,000, the contract price for Payment Unit 1 will be 15% of the total bid price ($\$1,500/\$10,000 * 100$).

11. Disclaimer of Estimates and Bidder's Warranty of Inspection (10/22)

Before submitting this bid, the Bidder is advised and cautioned to inspect the sale area, review the requirements of the sale contract, and take other steps as may be reasonably necessary to ascertain the location, estimated volumes, construction estimates, and operating costs of the proposed sale. Failure to do so will not relieve the Bidder from responsibility for completing the contract.

The Bidder warrants that this bid is submitted solely on the basis of the Bidder's examination and inspection of the quality and quantity of the timber offered for sale and the Bidder's opinion of the value thereof and the costs of recovery. No reliance should be placed on the State of Michigan's estimates of timber quality, quantity or costs of recovery. Bidder further acknowledges that the State of Michigan: (i) expressly disclaims any warranty of fitness of timber for any purpose; (ii) offers this timber as is without any warranty of quality (merchantability) or quantity and (iii) expressly disclaims any warranty as to the quantity or quality of timber sold.

12. Certification and Chain-of-Custody (10/22)

Unless otherwise indicated in the contract under section 7 – Other Conditions of the Sale Specific Conditions & Requirements, the area encompassed by this timber sale is certified to the standards of the Forest Stewardship Council (FSC) - Certificate #SCS-FM/COC-00090N and the Sustainable Forestry Initiative (SFI) - Certificate #NSF-SFIS-5Y031-SF5. Forest products from this sale may be delivered to the mill as "FSC 100% and / or SFI certified" as long as the contractor hauling the forest products is chain-of-custody (COC) certified or covered under a COC certificate from the destination mill. The purchaser is responsible for maintaining COC after leaving the sale area.

13. Good Neighbor Authority (GNA) Requirements (10/22)

If the name of this timber sales contains the acronym GNA, it is authorized by the Good Neighbor Authority (GNA) and covered by various agreements between the U.S. Forest Service and the State. The timber sale occurs on federal land and the following conditions apply:

GNA contracts on US Forest Service land will not be awarded to purchasers on the Federal list of excluded parties. The System for Award Management (SAM) will be checked for active excluded parties prior to award of contract. In

addition, the Bidder to whom award is made must complete an Assurance Regarding Felony Conviction or Tax Delinquent Status for Corporate Applicants (AD-3031).

14. Good Neighbor Authority (GNA) Requirements, con't (10/22)

Bidder certifies, by signing this bid form, that to the best of Bidder's knowledge that the following representations are accurate and complete.

- a. That the Bidder and its principals are not presently debarred, suspended, proposed for debarment, declared ineligible, or voluntary excluded from timber sales (covered transactions) by any Federal department or agency.
- b. That the Bidder and its principals have not within a 3-year period preceding this bid been convicted of or had a civil judgment rendered against them for commission of fraud or a criminal offense in connection with obtaining , attempting to obtain, or performing a public (Federal, State, or local) transaction or contract under a public transaction; violation of Federal or State antitrust statutes or commission of embezzlement, theft, forgery, bribery, falsification or destruction of records, making false statements, or receiving stolen property.
- c. That the Bidder and its principals are not presently indicted for or otherwise criminally or civilly charged by a governmental entity (Federal, State, or local) with commission of any of the offenses enumerated in paragraph b of this certification.
- d. That the Bidder and its principals have not within a 3-year period preceding this bid had one or more public transactions (Federal, State, or local) terminated for breach or default of a timber or forest product contract.

Bidders that cannot certify this requirement, in whole or in part, shall submit an explanation with their bid.

Scott Bowen
Director

TIMBER SALE INFORMATION

Who's Line Red Pine (54-003-24)

T35N, R03E, SEC. 10; T35N, R03E, SEC. 14; T35N, R03E, SEC. 15.

Presque Isle County (Advertised Price \$271,853.80)

SALE NOTE: No extensions allowed. Minor road work will be needed to access Payment Unit 1. Payment Units 2-7 contain good access from county roads. Snowmobile trail is within the vicinity of the sale but will not be impacted by operations.

A recreation site such as a trail, pathway, or campground is within the sale area or the vicinity. Certain restrictions/specifications may be applicable including time restrictions.

A timber sale contract for this lump sum, sealed bid timber sale will be awarded to the responsible bidder offering the highest sealed bid price. All units of volume listed below were estimated using the Inventory Manager computer program and the new Michigan taper model. Bids must be at or above the following advertised price for each product and species:

<u>PRODUCTS & SPECIES</u>	<u>ESTIMATED UNITS*</u>	<u>ADVERTISED PRICE</u>
Sawtimber		
Black/Red (Hybrid) Oak	44.7 MBF	\$ 113.00 / MBF
Red Oak	2.4 MBF	\$ 185.00 / MBF
Red Pine	1,207.1 MBF	\$ 121.00 / MBF
White Pine	38.6 MBF	\$ 102.00 / MBF
Pulpwood		
Balsam Fir	12 Cords	\$ 17.75 / Cord
Jack Pine	1,819 Cords	\$ 11.70 / Cord
Mixed Aspen	149 Cords	\$ 21.25 / Cord
Mixed Oak	55 Cords	\$ 27.95 / Cord
Paper Birch	16 Cords	\$ 16.10 / Cord
Red Maple	34 Cords	\$ 20.25 / Cord
Red Pine	2,206 Cords	\$ 39.45 / Cord
White Pine	63 Cords	\$ 30.00 / Cord
White Spruce	32 Cords	\$ 9.40 / Cord

* The total volume is statistically estimated within plus (+) or minus (-) 8.16 percent. There are an estimated 7,416 cords on this timber sale, plus or minus 605 cords at the 95% confidence level. The estimated units are final and not subject to adjustment. Prospective bidders are urged to examine this timber and to make their own estimates of quantity and quality.

BOND AND PAYMENT SCHEDULE:

1. A bond in the amount of \$13,593.00 to insure faithful performance of the conditions of the contract will be deposited by the successful bidder within 21 days of the sale award.
2. Cutting in any sale or unit without the required advance payment would be considered a trespass.
3. Total payment must be paid in advance or according to the following schedule :
 - (a) Ten percent (10%) of the sale value must be paid within 21 days of the sale award.
 - (b) The 10% down payment will be credited towards the first unit cut.
 - (c) Payment for each of the following units must be made before cutting begins in that unit:

PAYMENT UNIT NUMBER	PERCENT OF TOTAL SALE VALUE
01	2.4%
02	20.2%
03	22.6%
04	11.8%
05	13.6%
06	10.6%
07	18.8%

4. If no cutting takes place, the 10% down payment will not be refunded.
5. Operations on the contract issued will terminate on 12/31/2027.

SALE STATISTICS

Volumes were calculated in cubic feet using the Michigan taper model. Cubic foot volume includes all wood inside bark for the product indicated. For display purposes, cubic feet were converted to cords and MBF using a simple conversion factor, e.g. 79 cubic feet per cord and 185 cubic feet per MBF. The cubic foot volumes are precise; the cords and MBF volumes are not. Cubic foot volume cannot be directly converted to cords or boards with precision.

SALE VOLUMES

The total estimated sale volume may not equal the sum of the species/products due to the nature of statistical calculations associated with double sampling methodology.

VOLUME			STATISTICAL RANGE IN CORDS	
TOTAL CUBIC FEET	TOTAL CORDS	PERCENT ERROR	MINIMUM	MAXIMUM
585,869	7,416	8.16%	6,811	8,021

VDU VOLUMES

A VDU is a Volume Determination Unit. Volumes and their associated statistics are calculated at the VDU level and summarized to the sale level. There is often a one to one relationship between a VDU and a Payment Unit, but not always, depending on the cruise design. Refer to the VDU TO PAYMENT UNIT table.

	VOLUME			RANGE IN CORDS	
VDU	TOTAL CUBIC FEET	TOTAL CORDS	PERCENT ERROR	MINIMUM	MAXIMUM
4	98,126	1,242	23.70%	948	1,537
9	81,436	1,031	22.32%	801	1,261
10	20,866	264	36.19%	169	360
13	211,463	2,677	13.49%	2,316	3,038
19	354	4	287.02%	0	17
25	100,778	1,276	19.59%	1,026	1,526
26	38,181	483	27.73%	349	617
110	34,665	439	34.71%	286	591
TOTAL:	585,869	7,416		5,894	8,946

VDU TO PAYMENT UNIT

When a VDU is associated with more than one Payment Unit (PU), the VDU volumes are assigned to the PU based on acres of the VDU within the PU.

VDU	VDU ACRES	PU	PU ACRES
4	28.3	2	28.3
9	18.5	3	18.5
10	13.4	3	13.4
13	100.9	4	46.8
		5	54.1
19	1.0	6	1.0
25	28.6	6	11.2
		7	17.4
26	11.9	6	3.3
		7	8.6
110	20.8	1	20.8
TOTAL:	223.4		223.4

DESCRIPTION OF TIMBER BY PAYMENT UNIT (PU)

PU	MARKET GROUP	PRODUCT	QUANTITY	UNIT	ACRES	ADVERTISE PRICE
1	White Pine	Sawtimber	2.1	MBF	20.8	\$6,591.00
	Balsam Fir	Pulpwood	12	Cords		
	Jack Pine		242	Cords		
	Mixed Aspen		122	Cords		
	<i>B. T. Aspen</i>		90	<i>Cords</i>		
	<i>Quaking Aspen</i>		32	<i>Cords</i>		
	Paper Birch		16	Cords		
	<i>Paper Birch</i>	Sawtimber	4.2	<i>MBF</i>		
	<i>Paper Birch</i>	Pulpwood	8	<i>Cords</i>		
	Red Maple		6	Cords		
	White Pine		2	Cords		
White Spruce		32	Cords			
2	Red Pine	Sawtimber	221.6	MBF	28.3	\$54,891.95
	Jack Pine	Pulpwood	16	Cords		
	Red Pine		707	Cords		
3	Red Pine	Sawtimber	371.2	MBF	31.9	\$61,640.05
	White Pine		3.2	MBF		
	Jack Pine	Pulpwood	2	Cords		
	Red Pine		409	Cords		
	White Pine		8	Cords		
4	Black/Red (Hybrid)	Sawtimber	20.1	MBF	46.8	\$31,962.10
	Red Pine		117.1	MBF		
	White Pine		3.2	MBF		
	Jack Pine	Pulpwood	721	Cords		
	Mixed Aspen		13	Cords		
	<i>B. T. Aspen</i>		13	<i>Cords</i>		
	Mixed Oak		22	Cords		
	<i>/Red (Hybrid) Oak</i>		22	<i>Cords</i>		
	Red Maple		13	Cords		
	Red Pine		136	Cords		
	White Pine		8	Cords		
5	Black/Red (Hybrid)	Sawtimber	23.2	MBF	54.1	\$36,914.05
	Red Pine		135.4	MBF		
	White Pine		3.8	MBF		
	Jack Pine	Pulpwood	834	Cords		
	Mixed Aspen		14	Cords		
	<i>B. T. Aspen</i>		14	<i>Cords</i>		
	Mixed Oak		25	Cords		
	<i>/Red (Hybrid) Oak</i>		25	<i>Cords</i>		
	Red Maple		15	Cords		
	Red Pine		157	Cords		
	White Pine		9	Cords		
6	Black/Red (Hybrid)	Sawtimber	0.4	MBF	15.5	\$28,812.20
	Red Oak		0.9	MBF		
	Red Pine		129.9	MBF		
	White Pine		9.9	MBF		
	Jack Pine	Pulpwood	4	Cords		
	Mixed Oak		3	Cords		
	<i>/Red (Hybrid) Oak</i>		2	<i>Cords</i>		
	<i>Red Oak</i>		1	<i>Cords</i>		
	Red Pine		287	Cords		
	White Pine		14	Cords		
	7	Black/Red (Hybrid)	Sawtimber	1.0		
Red Oak			1.5	MBF		
Red Pine			231.9	MBF		

DESCRIPTION OF TIMBER BY PAYMENT UNIT (PU), CON'T

PU	MARKET GROUP	PRODUCT	QUANTITY	UNIT	ACRES	ADVERTISE PRICE
7 con't	White Pine	Sawtimber	16.4	MBF		
	Mixed Oak	Pulpwood	5	Cords		
	<i>/Red (Hybrid) Oak</i>		4	<i>Cords</i>		
	<i>Red Oak</i>		1	<i>Cords</i>		
	Red Pine		510	Cords		
	White Pine		22	Cords		
TOTAL:			1,292.8	MBF		
TOTAL:			4,386	Cords		

Sale Specific Conditions & Requirements

Sale Name: Who's Line Red Pine

Sale Number: 54-003-24 Seq#: 1

1 - Sale Area

1.2 - Boundaries

1.2.1 - Painted boundaries (9/19)

The sale boundary and Payment Unit boundaries are marked and identified by blue, red and yellow paint. Exterior sale boundary lines against private property are marked with blue paint. Exterior sale boundary lines against state are marked with red paint. Interior Payment Unit boundaries are marked with yellow paint, with the exception of the interior Payment Unit boundary between Payment Units 6 & 7, which is unpainted and designated by Silver Creek Road. Retention patches are marked with Red "X"s, no harvesting activities may occur within these areas. The painted boundary line trees are not Included Timber and are to be protected. Yellow painted trees designating an interior Payment Unit boundary are only to be cut when all surrounding Payment Units have been paid.

2 - Timber Specifications

2.1 - Included Timber

2.1.1 - Clearcut unit(s) with unmerchantable trees (6/14)

Within Payment Unit(s) 1-7, cut all trees that are two (2) inches or more at DBH, except do not cut any trees marked with teal paint within Payment Units 1, 3, and 4.

Special protection trees identified in accordance with condition 3.4.2, within clearcutting unit boundaries, are not Included Timber and are to be protected.

2.2 - Utilization

2.2.2 - Chipping required (2/18)

Payment Units 2-7 must be chip harvested to facilitate subsequent planting operations. The Purchaser has the option to produce sawlogs or pulpwood bolts, but the remaining portion of the trees must be chipped and hauled. Products may be produced as roundwood and forwarded to decking areas in final product length, but the tops must be left intact and skidded to the landing for chipping to minimize the amount of residual slash. If chipping occurs, it must be completed within 60 days of severing stem(s) to not delay follow-up cultivation work. If market conditions limit the practicality of chipping the following is required: Tops must be cut into lengths 4 feet or less and trees greater than 4 inches at DBH must be cut to a 2-inch top or smaller. Sub-merchantable trees, and hardwood limbs 4 inches or greater where they attach to the stem, are to be cut/reduced to 4-foot lengths. Tops and slash must also be spread evenly across the sale. This is to speed the breakdown of tops and slash. The requirement to retain approximately 1/6 to 1/3 of tree tops and limbs less than four inches in diameter is still applicable (G. C. & R. 2.2).

2.2.3 - Stump heights (4/07)

Stump heights within Payment Units 2-7 shall not exceed 6 inches for all trees. This is in order to facilitate planting operations. To meet stump height requirements, it may require the Producer to utilize a feller buncher.

3 - Payments

3.3 - Pre-measured Sales

3.3.4 - Dividing payment units (7/14)

Payment Unit(s) with a value greater than \$25,000 may be divided at the request of the Purchaser and upon approval of the Unit Manager. Dividing Payment Units is a contract modification which requires a Timber Sale Contract Amendment. There will be only one division per Payment Unit.

3.4 - Damaged Timber

3.4.2 - Special Protection Trees (4/14)

The Purchaser shall not cut live or dead special protection trees within cutting units or clearings. Special protection trees are marked with teal paint. If the Purchaser's operations have cut or damaged special protection trees through carelessness, the

Purchaser shall pay \$500 as fixed, agreed and liquidated damages for each special protection tree cut or damaged. Such payment does not constitute ownership of the undesignated timber.

4 - Transportation

4.1 - Construction

4.1.3 - Slash and earthen piles (8/04)

Piles or windrows of earth along roads and landings that have been widened or constructed shall be leveled. Slash from road maintenance or construction, including stumps, shall be chipped, utilized or otherwise removed from the sale.

4.1.6 - Road construction (4/24)

Construction of new roads or improvements of existing roads shall be done in such a way as to minimize the environmental and visual impacts. Merchantable trees shall be cut and utilized unless otherwise directed. Non-merchantable trees shall be severed and laid flat on the ground. Slash shall be chipped, utilized or otherwise removed from the sale. Stumps shall be set upright, not left on edge, and be moved at least 10 feet away from the road edge. Disturbed soil shall be feathered into the woods and not left in berms or windrows.

4.1.7 - Road closure (10/11)

All new roads built into the sale must be blocked to vehicle traffic within 30 days of completion of hauling. Overgrown roads that are reopened shall be considered new roads. Some existing roads may also need to be closed, see the Timber Sale Map for locations. In general, this will require constructing double earthen berms at strategic locations and/or constructing a four (4') foot high berm of stumps and logs covered with earth. Stumps and brush must be placed along the remainder of the trail. These roads must be rendered impassable to cars and trucks. All stumps from road building and landing construction must be reserved to block any newly constructed roads upon completion of the sale. These stumps must be scattered along the road system to prohibit vehicular movement. Temporary berms may be required if no sale activity occurs for 30 or more consecutive days. Contact the Sale Administrator for specific details of design and placement.

4.1.11 - Permits (2/12)

The Purchaser will secure any necessary permits that may be required.

4.2 - Maintenance

4.2.5 - Two wheel drive condition (2/04)

All existing trail roads on and adjacent to the sale area must be passable by two-wheel drive traffic for the duration of the sale.

5 - Operations

5.1 - Notification

5.1.4 - Post-sale conference (10/16)

A post-sale conference on site between the Purchaser and sale administrator is required 5 days prior to the completion of active logging operations to determine clean-up and repair of landings, road edges, and the fulfillment of other contract specifications.

5.2 - Conduct of Operations

5.2.2 - Hazard Trees/Snags

5.2.2.1 - Den trees (10/16)

Obvious hollow and/or den trees shall be protected and left standing unless they are a safety hazard.

5.2.3 - Operating Restrictions

5.2.3.6 - Bark beetle restriction (12/08)

In the event drought creates a high risk of pine bark beetle infestation, pine is not to be cut during the period March 1 through July 1, unless all portions of trees greater than two inches in diameter are removed from the sale area, reduced to chips, or treated to the satisfaction of the Unit Manager or his/her representative, within fifteen days of being severed from the stump. Pine log decks, pulpwood piles and treetops that are piled for chipping in the fall or winter within a 1/4 mile of susceptible sites must be removed before March 15. Residual slash must not be placed in piles or rows and must

be spread over the site for quick drying. The Department of Natural Resources will exercise this specification if the risk of damage warrants.

5.2.32 - Decking/landing restoration (9/13)

All decking and landing areas must have the surface area restored to a condition equal to or better than before. This is to ensure the proper regeneration of the stand. Wood debris, chips and "cookies" from trimmings must be removed or scattered away from landing and loading areas and may not be windrowed on the edge.

5.2.38 - No decking against live trees (2/04)

Cut products may not be decked against unmarked or designated leave trees.

5.2.41 - Snowmobile trail protection (9/11)

Snowmobile trail LP 99 is within the vicinity of the Timber Sale and is shown on the Timber Sale Map. Do not cut or damage posts with orange trail markers or traffic control signs. If the trail is used, it must be maintained and restored to a condition equal to or better than before the sale. The road maintenance/restoration must be done prior to December 1. If the trail is used for hauling, it must be graded to the satisfaction of the Unit Manager or his/her representative prior to December 1. If the trail road is to be used for hauling during the snowmobile season, then a snow-covered base must be left on the trail. The snowmobile trail may only be crossed at right angles. Maintain a 20-foot-wide slash, debris, and rut free zone daily using the snowmobile trail as the centerline. No decking of forest products will be permitted along the snowmobile trail. All stumps within 20 feet of the snowmobile trail must be cut at ground level.

5.8 - Protection of Endangered Species

5.8.5 - Protection of raptor nests (3/13)

All trees with raptor nests will be protected if found during harvesting operations. Notification will be made to the Unit Manager or his/her representative who will notify the Wildlife Biologist so an on-site evaluation and recommendation can be made, if necessary.

6 - Safety and Fire Prevention

6.2 - Signing

6.2.1 - Road posting (10/20)

The Purchaser is responsible for posting and maintaining caution signs on any haul routes prior to beginning operations. The road must be posted at appropriate distances from the Sale Area to warn of logging activity and truck traffic. Signs must be removed when harvest operations are suspended or completed. The Purchaser will provide these signs.

6.2.2 - Snowmobile trail posting (10/20)

The Purchaser is responsible for posting and maintaining caution signs on Snowmobile Trail LP 99 prior to beginning operations during the snowmobile season (approximately December 1 to March 31). The trail must be posted at appropriate distances from the Sale Area to warn of logging activity and truck traffic. Signs must be removed when harvest operations are suspended or completed. The Purchaser will provide these signs. This will only be required if the trail is used for hauling.

7 - Other Conditions

7.2 - Extensions

7.2.2 - No extensions (3/09)

There will be no extensions granted on this contract. This is due to planned reforestation work.



TIMBER SALE MAP

This information provided by authority of Part 525, 1994 PA 451, as amended.

Sale Number	Date	
54-003-24	07/29/2024	
Scale	Page	Of
1:24,000	1	1

Forest Management Unit	County	Mapped By: T. Kubitskey
Atlanta Mgt Unit	Presque Isle	Cruised By: T. Kubitskey

Township	Range	Section(s) and Subdivision(s)
35N	03E	Sec. 10 S1/2SW; Sec. 14 SESW,S1/2SE; Sec. 15 NWNW,S1/2NW,SW,W1/2SE;

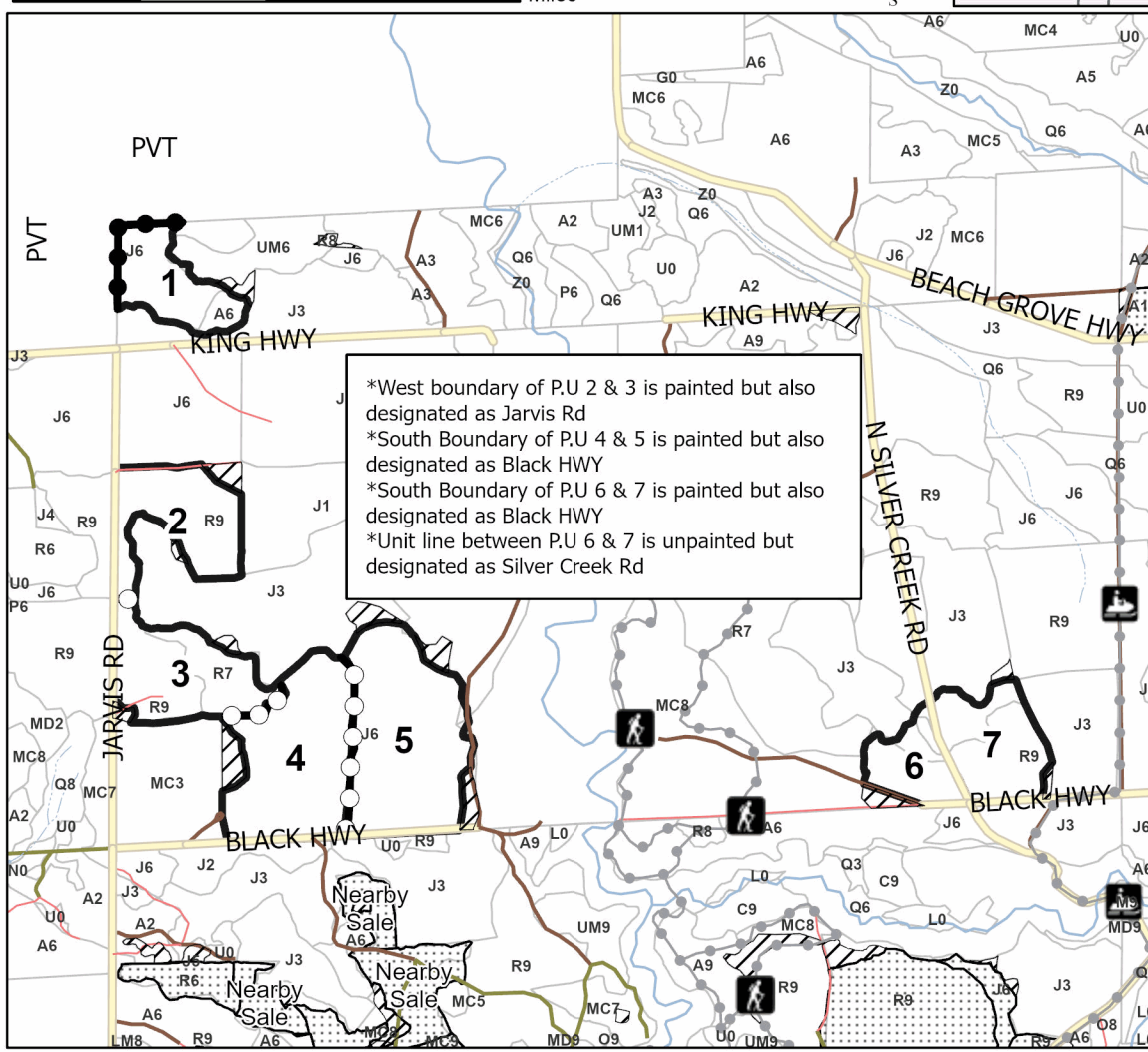
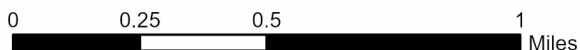
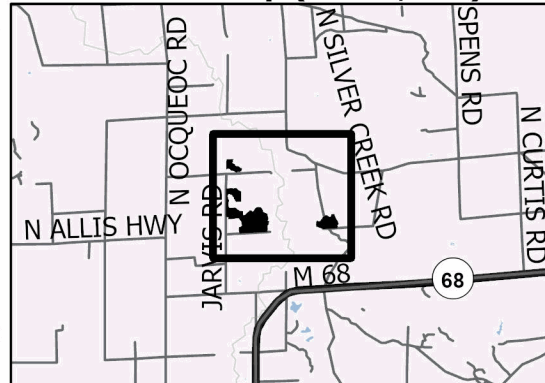
Cover Type			
A = Aspen	J = Jack Pine	O = Oak	U = Upland Brush
B = Paper Birch	K = Rock	P = Lowland Poplar	UM = Upland Mix Forest
C = Cedar	L = Lowland Brush	Q = Mixed Swamp Conifer	V = Bog or Marsh
D = Treed Bog	LM = Lowland Mix Forest	R = Red Pine	W = White Pine
E = Swamp Hardwoods	M = Maple, Beech, Birch	S = Black Spruce	X = Non Stocked
F = Spruce/Fir	MC = Mixed Conifer	T = Tamarack	Y = Sand
G = Grass	MD = Mixed Deciduous	Z = Water	
H = Hemlock	N = Marsh		

Density	
0 = Non Stocked	5 = Pole Timber Medium
1 = Seedling Sapling Poor	6 = Pole Timber Well
2 = Seedling Sapling Medium	7 = Saw Timber Poor
3 = Seedling Sapling Well	8 = Saw Timber Medium
4 = Pole Timber Poor	9 = Saw Timber Well

PU #	Acres	PU #	Acres
1	20.8	5	54.1
2	28.3	6	15.6
3	31.9	7	25.9
4	46.8		

Who's Line Red Pine
223.4 Acres
 Compartments
 147 & 148

Locator Map (1:200,000)



*West boundary of P.U 2 & 3 is painted but also designated as Jarvis Rd
 *South Boundary of P.U 4 & 5 is painted but also designated as Black Hwy
 *South Boundary of P.U 6 & 7 is painted but also designated as Black Hwy
 *Unit line between P.U 6 & 7 is unpainted but designated as Silver Creek Rd

Legend

- Sale Boundary (Red)
- Payment Unit (Yellow)
- Private Line (Blue)
- Nearby Timber Sale
- Stand
- Retention Areas
- Recreational Trail
- Drain
- Intermittent Stream
- Perennial River
- Primary Forest Road
- Secondary Forest Road
- Forest Access Route
- Administrative Access Only
- County Road

Use QR Code to open Map in App



TIMBER SALE INFORMATION

Black Mountain Scramble (54-005-24)

T36N, R01E, SEC. 1; T36N, R01E, SEC. 12; T36N, R01E, SEC. 2.
Cheboygan County (Advertised Price \$162,424.85)

SALE NOTE: High recreational use area containing various motorized and non-motorized trails. It is encouraged operations take place between October 1st and April 1st to reduce any potential conflict with trail users. Payment Units 2-4 contain a mandatory chipping spec (no exceptions) which is reflected in the advertised price. Steep slopes within Units 6 & 7 with a road needed to access unit 7.

A recreation site such as a trail, pathway, or campground is within the sale area or the vicinity. Certain restrictions/specifications may be applicable including time restrictions.

A timber sale contract for this lump sum, sealed bid timber sale will be awarded to the responsible bidder offering the highest sealed bid price. All units of volume listed below were estimated using the Inventory Manager computer program and the new Michigan taper model. Bids must be at or above the following advertised price for each product and species:

<u>PRODUCTS & SPECIES</u>	<u>ESTIMATED UNITS*</u>		<u>ADVERTISED PRICE</u>
Sawtimber			
Basswood	24.7	MBF	\$ 42.00 / MBF
Black/Red (Hybrid) Oak	129.8	MBF	\$ 75.00 / MBF
Red Maple	7.8	MBF	\$ 38.00 / MBF
Red Oak	298.8	MBF	\$ 123.00 / MBF
Red Pine	119.9	MBF	\$ 81.00 / MBF
Sugar Maple	156.6	MBF	\$ 212.00 / MBF
White Pine	37.0	MBF	\$ 68.00 / MBF
Pulpwood			
Basswood	97	Cords	\$ 8.00 / Cord
Jack Pine	31	Cords	\$ 7.80 / Cord
Mixed Aspen	1,422	Cords	\$ 14.20 / Cord
Mixed Hardwood	1,083	Cords	\$ 13.50 / Cord
Mixed Oak	1,131	Cords	\$ 18.65 / Cord
Red Pine	329	Cords	\$ 26.30 / Cord
White Pine	180	Cords	\$ 20.00 / Cord

* The total volume is statistically estimated within plus (+) or minus (-) 10.65 percent. There are an estimated 6,088 cords on this timber sale, plus or minus 649 cords at the 95% confidence level. The estimated units are final and not subject to adjustment. Prospective bidders are urged to examine this timber and to make their own estimates of quantity and quality.

BOND AND PAYMENT SCHEDULE:

1. A bond in the amount of \$8,121.00 to insure faithful performance of the conditions of the contract will be deposited by the successful bidder within 21 days of the sale award.
2. Cutting in any sale or unit without the required advance payment would be considered a trespass.
3. Total payment must be paid in advance or according to the following schedule :
 - (a) Ten percent (10%) of the sale value must be paid within 21 days of the sale award.
 - (b) The 10% down payment will be credited towards the first unit cut.
 - (c) Payment for each of the following units must be made before cutting begins in that unit:

PAYMENT UNIT NUMBER	PERCENT OF TOTAL SALE VALUE
01	3.8%
02	11.5%
03	17.6%
04	15.4%
05	4.0%
06	15.8%
07	16.2%
08	15.7%

4. If no cutting takes place, the 10% down payment will not be refunded.
5. Operations on the contract issued will terminate on 12/31/2027.

SALE STATISTICS

Volumes were calculated in cubic feet using the Michigan taper model. Cubic foot volume includes all wood inside bark for the product indicated. For display purposes, cubic feet were converted to cords and MBF using a simple conversion factor, e.g. 79 cubic feet per cord and 185 cubic feet per MBF. The cubic foot volumes are precise; the cords and MBF volumes are not. Cubic foot volume cannot be directly converted to cords or boards with precision.

SALE VOLUMES

The total estimated sale volume may not equal the sum of the species/products due to the nature of statistical calculations associated with double sampling methodology.

VOLUME			STATISTICAL RANGE IN CORDS	
TOTAL CUBIC FEET	TOTAL CORDS	PERCENT ERROR	MINIMUM	MAXIMUM
480,939	6,088	10.65%	5,439	6,736

VDU VOLUMES

A VDU is a Volume Determination Unit. Volumes and their associated statistics are calculated at the VDU level and summarized to the sale level. There is often a one to one relationship between a VDU and a Payment Unit, but not always, depending on the cruise design. Refer to the VDU TO PAYMENT UNIT table.

VDU	VOLUME			RANGE IN CORDS	
	TOTAL CUBIC FEET	TOTAL CORDS	PERCENT ERROR	MINIMUM	MAXIMUM
14	29,831	378	28.63%	270	486
26	75,418	955	21.52%	749	1,160
28	176,734	2,237	19.64%	1,798	2,677
35	26,416	334	50.48%	166	503
64	84,806	1,073	27.01%	784	1,363
69	87,734	1,111	25.18%	831	1,390
TOTAL:	480,939	6,088		4,596	7,579

VDU TO PAYMENT UNIT

When a VDU is associated with more than one Payment Unit (PU), the VDU volumes are assigned to the PU based on acres of the VDU within the PU.

VDU	VDU ACRES	PU	PU ACRES
14	7.5	1	7.5
26	23.2	6	23.2
28	66.0	2	17.0
		3	26.1
		4	22.9
35	7.9	5	7.9
64	28.1	8	28.1
69	24.4	7	24.4
TOTAL:	157.1		157.1

DESCRIPTION OF TIMBER BY PAYMENT UNIT (PU)

PU	MARKET GROUP	PRODUCT	QUANTITY	UNIT	ACRES	ADVERTISE PRICE
1	Red Pine	Sawtimber	4.5	MBF	7.5	\$6,180.80
	Sugar Maple		1.8	MBF		
	White Pine		5.9	MBF		
	Mixed Aspen	Pulpwood	294	Cords		
	<i>B. T. Aspen</i>		294	<i>Cords</i>		
	Mixed Hardwood		41	Cords		
	<i>Beech</i>		12	<i>Cords</i>		
	<i>Sugar Maple</i>		29	<i>Cords</i>		
	Red Pine		4	Cords		
	White Pine		10	Cords		
2	Basswood	Sawtimber	6.4	MBF	17.0	\$18,635.45
	Red Oak		30.3	MBF		
	Red Pine		6.6	MBF		
	Sugar Maple		39.9	MBF		
	White Pine		0.9	MBF		
	Basswood	Pulpwood	25	Cords		
	Mixed Aspen		23	Cords		
	<i>B. T. Aspen</i>		23	<i>Cords</i>		
	Mixed Hardwood		227	Cords		
	<i>Beech</i>		46	<i>Cords</i>		
	<i>Red Maple</i>		10	<i>Cords</i>		
	<i>Sugar Maple</i>		171	<i>Cords</i>		
	Mixed Oak		87	Cords		
	<i>Red Oak</i>		87	<i>Cords</i>		
	Red Pine		5	Cords		
White Pine		12	Cords			
3	Basswood	Sawtimber	9.7	MBF	26.1	\$28,610.50
	Red Oak		46.5	MBF		
	Red Pine		10.1	MBF		
	Sugar Maple		61.2	MBF		
	White Pine		1.3	MBF		
	Basswood	Pulpwood	38	Cords		
	Mixed Aspen		36	Cords		
	<i>B. T. Aspen</i>		36	<i>Cords</i>		
	Mixed Hardwood		348	Cords		
	<i>Beech</i>		70	<i>Cords</i>		
	<i>Red Maple</i>		15	<i>Cords</i>		
	<i>Sugar Maple</i>		263	<i>Cords</i>		
	Mixed Oak		134	Cords		
	<i>Red Oak</i>		134	<i>Cords</i>		
	Red Pine		8	Cords		
White Pine		19	Cords			
4	Basswood	Sawtimber	8.6	MBF	22.9	\$25,094.20
	Red Oak		40.8	MBF		
	Red Pine		8.9	MBF		
	Sugar Maple		53.7	MBF		
	White Pine		1.1	MBF		
	Basswood	Pulpwood	34	Cords		
	Mixed Aspen		31	Cords		
	<i>B. T. Aspen</i>		31	<i>Cords</i>		
	Mixed Hardwood		305	Cords		
	<i>Beech</i>		61	<i>Cords</i>		
	<i>Red Maple</i>		14	<i>Cords</i>		
	<i>Sugar Maple</i>		230	<i>Cords</i>		
	Mixed Oak		118	Cords		
	<i>Red Oak</i>		118	<i>Cords</i>		

Sale Specific Conditions & Requirements

Sale Name: Black Mountain Scramble

Sale Number: 54-005-24 Seq#: 1

1 - Sale Area

1.2 - Boundaries

1.2.1 - Painted boundaries (9/19)

The sale boundary and Payment Unit boundaries are marked and identified by red and yellow paint. Exterior sale boundary lines against state are marked with red paint. Interior Payment Unit boundaries are marked with yellow paint. Retention patches are marked with red paint; no harvesting activities may occur within these areas. The painted boundary line trees are not Included Timber. Yellow painted trees designating an interior Payment Unit boundary are only to be cut when all surrounding Payment Units have been paid.

2 - Timber Specifications

2.1 - Included Timber

2.1.1 - Clearcut unit(s) with unmerchantable trees (6/14)

Within Payment Unit(s) 1-8, cut all trees that are two (2) inches or more at DBH, except do not cut any trees marked in teal or pink paint. In addition:

- Within Payment Unit 1, do not cut hemlock.
- Within Payment Unit 8, do not cut red pine or white pine.

Special protection areas identified in accordance with condition 3.4.3, within clearcutting unit boundaries, are not Included Timber and are to be protected.

2.2 - Utilization

2.2.2 - Chipping required (2/18)

Payment Units 2-4 must be chip harvested to facilitate subsequent planting operations. The Purchaser has the option to produce sawlogs or pulpwood bolts, but the remaining portion of the trees must be chipped and hauled. The chipping requirement cannot be waived. Products may be produced as roundwood and forwarded to decking areas in final product length, but the tops must be left intact and skidded to the landing for chipping in order to minimize the amount of residual slash. The requirement to retain approximately 1/6 to 1/3 of tree tops and limbs less than four inches in diameter is still applicable (G. C. & R. 2.2).

2.2.3 - Stump heights (4/07)

Stump heights within Payment Units 2-4 shall not exceed 6 inches for all trees. This is in order to facilitate planting operations. If harvested with snow on conditions, the Purchaser may be required to come back during snow-off conditions and cut stumps down to specified height.

3 - Payments

3.3 - Pre-measured Sales

3.3.4 - Dividing payment units (7/14)

Payment Unit(s) may be divided at the request of the Purchaser and upon approval of the Unit Manager. Dividing Payment Units is a contract modification which requires a Timber Sale Contract Amendment. There will be only one division per Payment Unit.

3.4 - Damaged Timber

3.4.1 - Damaged timber (7/16)

General Condition and Requirement 3.4 Damaged Timber, defines liquidated damages for undesignated live merchantable trees which are cut or injured. No damage is acceptable to undesignated live merchantable trees. Within the Sale Area, if more than 5% of trees (> 4.5" DBH) within a specified area of the sale are damaged, liquidated damages will be assessed for all trees damaged. Rates will be in accordance with General Condition and Requirement 3.4 Damaged Timber.

3.4.2 - Special Protection Trees (4/14)

The Purchaser shall not cut live or dead special protection trees within cutting units or clearings. Special protection trees are

marked with teal or pink paint. If the Purchaser's operations have cut or damaged special protection trees through carelessness, the Purchaser shall pay \$300 as fixed, agreed and liquidated damages for each special protection tree cut or damaged. Such payment does not constitute ownership of the undesignated timber.

3.4.3 - Special Protection Areas (8/11)

The Purchaser shall protect special protection areas from damage by the Purchaser's operations. Special protection areas are vernal pools marked with Red X's within Payment Unit 5. The Purchaser shall not cut live or dead trees within special protection areas. If the Purchaser's operations have cut or damaged special protection areas through carelessness, the Purchaser shall pay \$500 as fixed, agreed and liquidated damages for each acre or part thereof cut or damaged. Such payment does not constitute ownership of the undesignated timber.

4 - Transportation

4.1 - Construction

4.1.3 - Slash and earthen piles (8/04)

Piles or windrows of earth along roads and landings that have been widened or constructed shall be leveled. Slash from road maintenance or construction, including stumps, shall be chipped, utilized or otherwise removed from the sale.

4.1.6 - Road construction (4/24)

Construction of new roads or improvements of existing roads shall be done in such a way as to minimize the environmental and visual impacts. Merchantable trees shall be cut and utilized unless otherwise directed. Non-merchantable trees shall be severed and laid flat on the ground. Slash shall be chipped, utilized or otherwise removed from the sale. Stumps shall be set upright, not left on edge, and be moved at least 10 feet away from the road edge. Disturbed soil shall be feathered into the woods and not left in berms or windrows.

4.1.7 - Road closure (10/11)

All new roads built into the sale must be blocked to vehicle traffic within 30 days of completion of hauling. Overgrown roads that are reopened shall be considered new roads. In general, this will require constructing a four (4') foot high berm of stumps and logs covered with earth. These roads must be rendered impassable to cars and trucks. All stumps from road building and landing construction must be reserved to block any newly constructed roads upon completion of the sale. These stumps must be scattered along the road system to prohibit vehicular movement. Temporary berms may be required if no sale activity occurs for 30 or more consecutive days. Contact the Sale Administrator for specific details of design and placement.

4.1.11 - Permits (2/12)

The Purchaser will secure any necessary permits that may be required.

4.2 - Maintenance

4.2.4 - Grading (10/16)

For completion of the sale, state forest roads must be graded. In general, this will require a road grader or bulldozer to shape up the roads after forest products have been hauled off site. This includes cleaning of drainage areas, grading, crowning and filling with gravel, if necessary. The grading equipment to be used must be approved by the Unit Manager or his/her representative.

4.2.5 - Two wheel drive condition (2/04)

All existing trail roads on and adjacent to the sale area must be passable by two-wheel drive traffic for the duration of the sale.

5 - Operations

5.1 - Notification

5.1.1 - Pre-sale conference (10/16)

A pre-sale conference on site between the Purchaser and sale administrator is required prior to beginning any operations to determine landing and road locations. The Unit Manager or his/her representative must be contacted at least 10 days in advance to schedule the conference.

5.1.4 - Post-sale conference (10/16)

A post-sale conference on site between the Purchaser and sale administrator is required 5 days prior to the completion of active logging operations to determine clean-up and repair of landings, road edges, and the fulfillment of other contract

specifications.

5.2 - Conduct of Operations

5.2.1 - Slash

5.2.1.8 - Slash height (12/08)

No slash or tree tops, within Payment Unit(s) 1 and 5-8, may exceed 24 inches in height.

5.2.2 - Hazard Trees/Snags

5.2.2.1 - Den trees (10/16)

Obvious hollow and/or den trees shall be protected and left standing unless they are a safety hazard.

5.2.3 - Operating Restrictions

5.2.3.5 - Oak wilt restriction (1/18)

Within the Sale Area, unless changed by written agreement, cutting, skidding, hauling within the sale and brushing of access roads to the sale are not permitted during the period of April 15 to July 15. Operations may be allowed if specific steps are taken to prevent damaging uncut oak during the high risk period. Those steps may include completing all road brushing before April 15th and clearing a tree-length buffer along uncut oak cover before April 15th. This is necessary to reduce the spread of oak wilt. For more information, contact the Unit Manager or his/her representative.

5.2.4 - Dead and Down Creation

5.2.4.4 - Dead and down creation, grouse (6/18)

To encourage grouse and other wildlife, in Payment Unit(s) 1 and 5-8, leave one 12" or larger diameter (or largest diameter trees within stand) whole tree on the ground for every 2 acres, preferably a hardwood species such as oak or maple or if no hardwoods are present, a pine species (white or red). These trees will be evenly scattered throughout the unit, preferably at least two chains from any roads, two-tracks, or trails open to vehicles.

5.2.32 - Decking/landing restoration (9/13)

All decking and landing areas must have the surface area restored to a condition equal to or better than before. This is to ensure the proper regeneration of the stand. Wood debris, chips and "cookies" from trimmings must be removed or scattered away from landing and loading areas and may not be windrowed on the edge.

5.2.38 - No decking against live trees (2/04)

Cut products may not be decked against unmarked or designated leave trees.

5.2.39 - ORV trail/route protection (4/18)

The Black Lake ORV Trail and Route is present within the sale boundary and is shown on the Timber Sale Map. Trees with orange ORV markers shall be cut off above the markers and at least 5 feet above ground. All stumps within 5 feet of the trail must be cut flush with the ground. Maintain a 20-foot-wide slash, debris, and rut free zone daily using the ORV trail or route as the centerline. Do not run equipment down the ORV trail or route. Skidding across the trail or route may only occur in 1 or 2 locations per Payment Unit and approved by the Sale Administrator.

5.2.40 - Pathway protection (10/10)

The Black Mountain Pathway is a Non-Motorized (Biking, Hiking, Horse and Skiing) Trail that is within Payment Units 7 & 8 and is shown on the Timber Sale Map. Do not cut or damage posts with blue pathway markers. Any trees with blue pathway markers should be cut above the marker. Maintain a 20-foot-wide slash, debris, and rut free zone daily, using the pathway as the centerline. Do not run equipment or trucks down the pathway. Skidding across the trail may only occur in locations approved by the Sale Administrator.

5.2.41 - Snowmobile trail protection (9/11)

LP 99 is a snowmobile trail within Payment Units 4 & 6 and is shown on the Timber Sale Map. Do not cut or damage posts with orange trail markers or traffic control signs. If the trail is used, it must be maintained and restored to a condition equal to or better than before the sale. The road maintenance/restoration must be done prior to December 1. If the trail is used for hauling, it must be graded to the satisfaction of the Unit Manager or his/her representative prior to December 1. If the trail road is to be used for hauling during the snowmobile season, then a snow-covered base must be left on the trail. The snowmobile trail may only be crossed at right angles and in approved locations. Maintain a 20-foot-wide slash, debris, and rut free zone daily using the snowmobile trail as the centerline. No decking of forest products will be permitted along the

snowmobile trail. All stumps within 20 feet of the snowmobile trail must be cut at ground level.

5.4 - Soil Protection

5.4.4 - Slope protection (9/19)

Skid trails and roads on slopes shall be water barred with slash, stumps, and/or clean straw bales native to the area as soon as use is complete to prevent erosion.

5.8 - Protection of Endangered Species

5.8.5 - Protection of raptor nests (3/13)

All trees with raptor nests will be protected if found during harvesting operations. Notification will be made to the Unit Manager or his/her representative who will notify the Wildlife Biologist so an on-site evaluation and recommendation can be made, if necessary.

6 - Safety and Fire Prevention

6.2 - Signing

6.2.1 - Road posting (10/20)

The Purchaser is responsible for posting and maintaining caution signs on any haul routes prior to beginning operations. The road must be posted at appropriate distances from the Sale Area to warn of logging activity and truck traffic. Signs must be removed when harvest operations are suspended or completed. The Purchaser will provide these signs.

6.2.2 - Snowmobile trail posting (10/20)

The Purchaser is responsible for posting and maintaining caution signs on the Snowmobile Trail (LP 99) prior to beginning operations during the snowmobile season (approximately December 1 to March 31). The trail must be posted at appropriate distances from the Sale Area to warn of logging activity and truck traffic. Signs must be removed when harvest operations are suspended or completed. The Purchaser will provide these signs.

6.2.3 - Recreational trail posting (10/20)

The Purchaser is responsible for posting and maintaining caution signs on the Black Lake ORV Trail/Route and The Black Mountain Pathway prior to beginning operations. The trail must be posted at appropriate distances from the Sale Area to warn of logging activity and truck traffic at both ends of the trail. Signs must be removed when harvest operations are suspended or completed. The Purchaser will provide these signs.



TIMBER SALE MAP

This information provided by authority of Part 525, 1994 PA 451, as amended.

Sale Number	Date	
54-005-24	05/19/2024	
Scale	Page	Of
1:15,840	1	2

Forest Management Unit	County	Mapped By: T. Kubitskey
Atlanta Mgt Unit	Cheboygan	Cruised By: T. Kubitskey

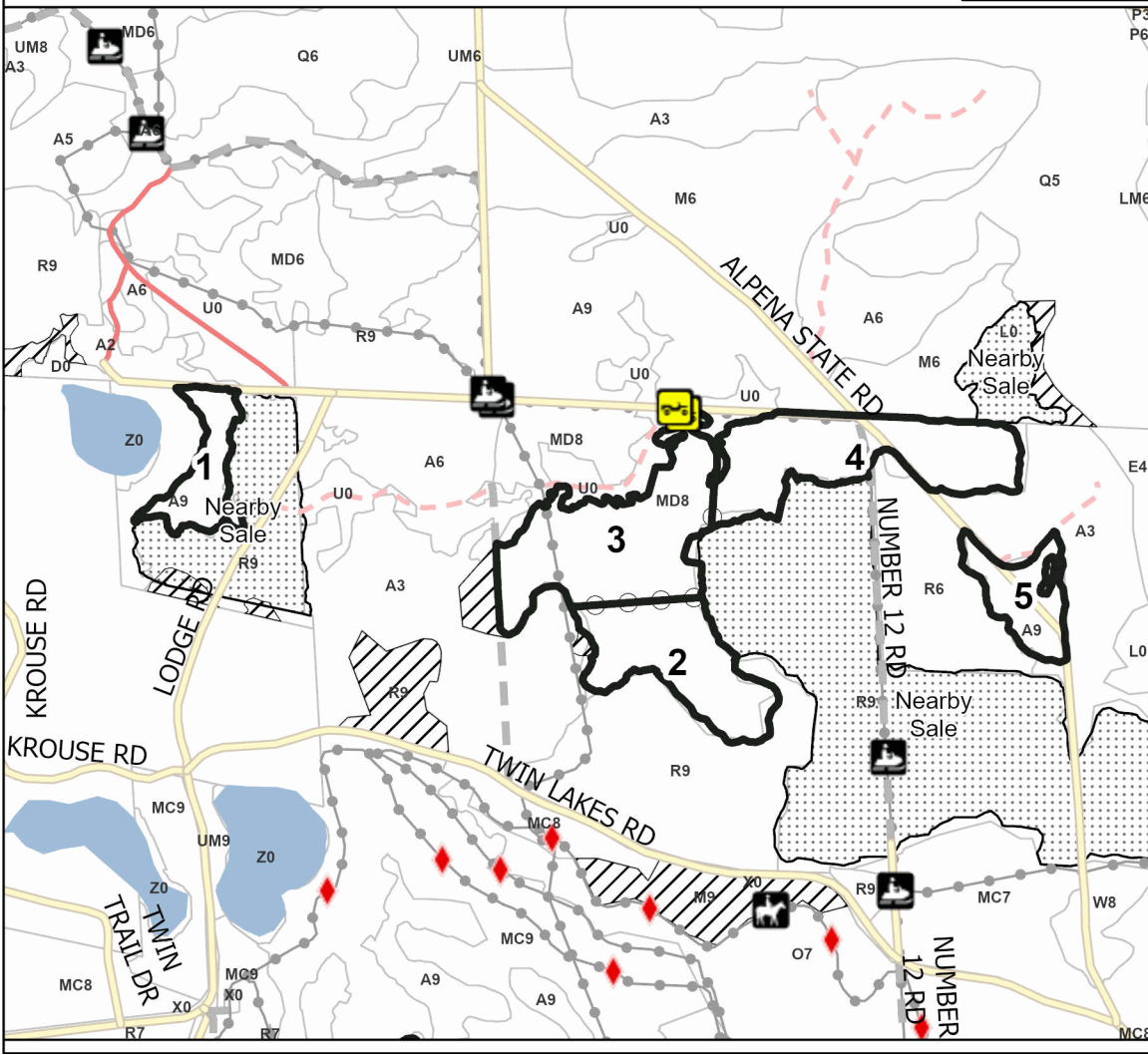
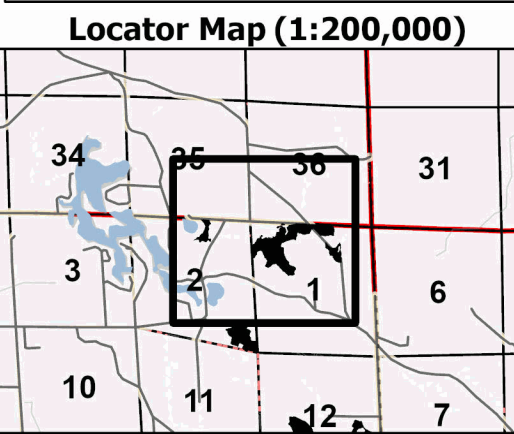
Township	Range	Section(s) and Subdivision(s)
36N	01E	Sec. 1 NW,NWNE,SWSW; Sec. 12 N1/2SW,SESW,SE; Sec. 2 N1/2NE,S1/2SE;

Cover Type			
A = Aspen	J = Jack Pine	O = Oak	U = Upland Brush
B = Paper Birch	K = Rock	P = Lowland Poplar	UM = Upland Mix Forest
C = Cedar	L = Lowland Brush	Q = Mixed Swamp Conifer	V = Bog or Marsh
D = Treed Bog	LM = Lowland Mix Forest	R = Red Pine	W = White Pine
E = Swamp Hardwoods	M = Maple, Beech, Birch	S = Black Spruce	X = Non Stocked
F = Spruce/Fir	MC = Mixed Conifer	T = Tamarack	Y = Sand
G = Grass	MD = Mixed Deciduous	Z = Water	
H = Hemlock	N = Marsh		

Density	
0 = Non Stocked	5 = Pole Timber Medium
1 = Seedling Sapling Poor	6 = Pole Timber Well
2 = Seedling Sapling Medium	7 = Saw Timber Poor
3 = Seedling Sapling Well	8 = Saw Timber Medium
4 = Pole Timber Poor	9 = Saw Timber Well

PU #	Acres	PU #	Acres
1	7.5	5	7.9
2	17	6	23.2
3	26.1	7	24.4
4	22.9	8	28.1

Black Mountain Scramble
157.1 Acres



Legend

- Against State (Red)
- Payment Unit (Yellow)
- Retention Areas
- Nearby Timber Sales
- Stand
- Secondary Forest Road
- Forest Access Route
- Admin Access Route
- County Road
- Recreational Trail
- Lakes and Rivers

Use QR Code to open Map in App





TIMBER SALE MAP

This information provided by authority of Part 525, 1994 PA 451, as amended.

Sale Number
54-005-24

Date
05/19/2024

Forest Management Unit
Atlanta Mgt Unit

County
Cheboygan

Mapped By: T. Kubitskey
Cruised By: T. Kubitskey

Scale
1:15,840

Page
2

Of
2

Township 36N Range 01E Section(s) and Subdivision(s) Sec. 1 NW,NWNE,SWSW; Sec. 12 N1/2SW,SES,SE; Sec. 2 N1/2NE,S1/2SE;

Cover Type

A = Aspen	J = Jack Pine	O = Oak	U = Upland Brush
B = Paper Birch	K = Rock	P = Lowland Poplar	UM = Upland Mix Forest
C = Cedar	L = Lowland Brush	Q = Mixed Swamp Conifer	V = Bog or Marsh
D = Treed Bog	LM = Lowland Mix Forest	R = Red Pine	W = White Pine
E = Swamp Hardwoods	M = Maple, Beech, Birch	S = Black Spruce	X = Non Stocked
F = Spruce/Fir	MC = Mixed Conifer	T = Tamarack	Y = Sand
G = Grass	MD = Mixed Deciduous	Z = Water	
H = Hemlock	N = Marsh		

Density

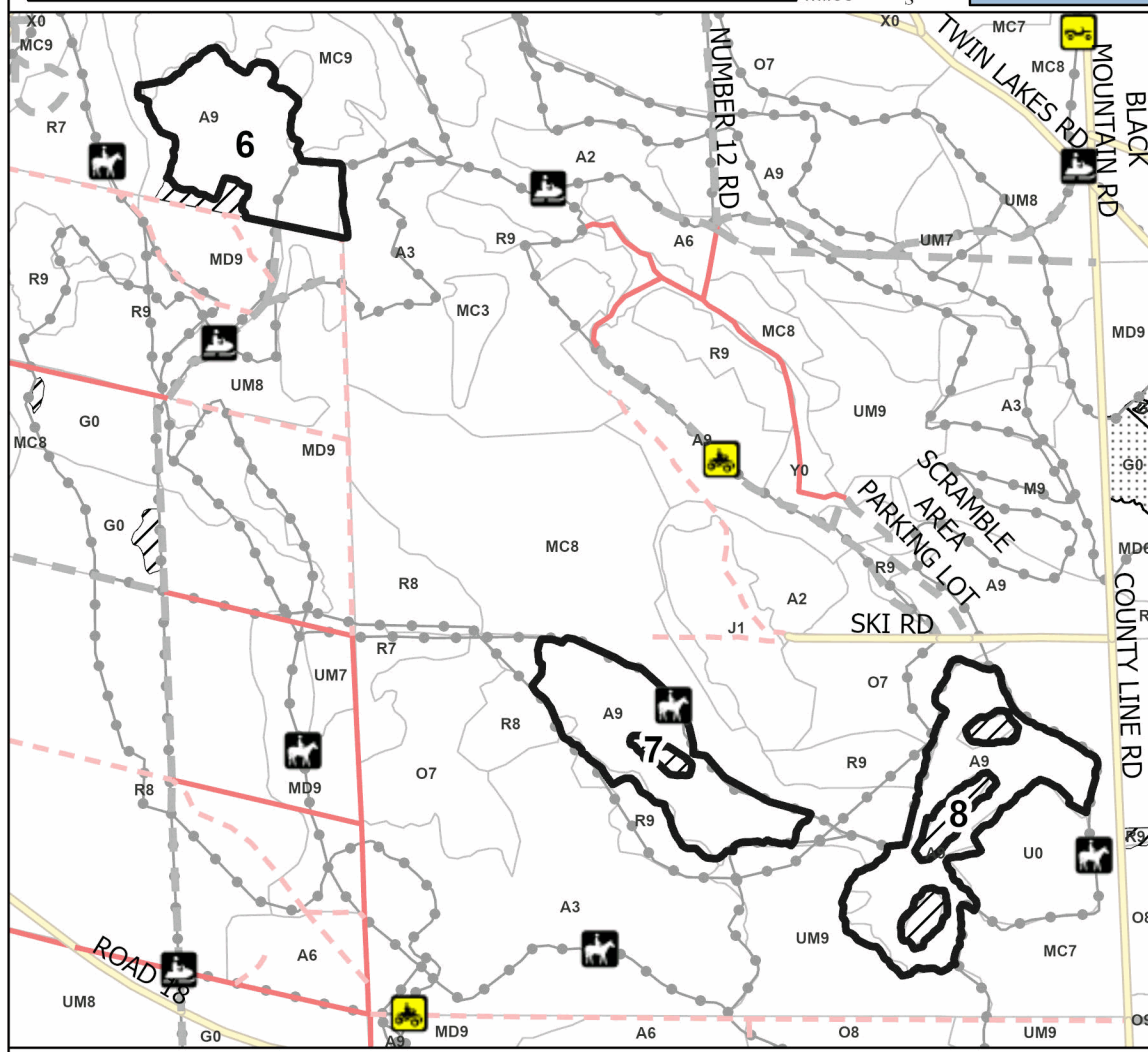
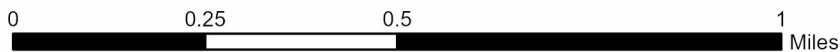
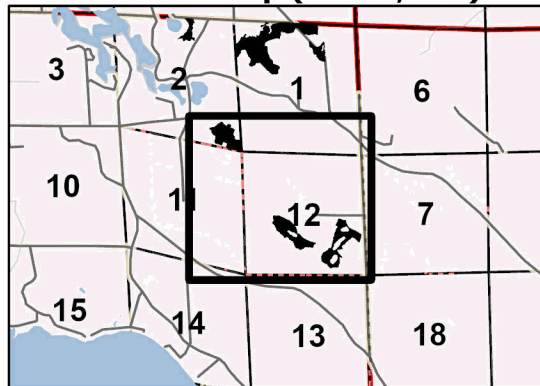
0 = Non Stocked	5 = Pole Timber Medium
1 = Seedling Sapling Poor	6 = Pole Timber Well
2 = Seedling Sapling Medium	7 = Saw Timber Poor
3 = Seedling Sapling Well	8 = Saw Timber Medium
4 = Pole Timber Poor	9 = Saw Timber Well

PU #	Acres	PU #	Acres
1	7.5	5	7.9
2	17	6	23.2
3	26.1	7	24.4
4	22.9	8	28.1

Black Mountain Scramble

157.1 Acres

Locator Map (1:200,000)



Legend

- Against State (Red)
- Retention Areas
- Nearby Timber Sales
- Stand
- Secondary Forest Road
- Forest Access Route
- Admin Access Route
- County Road
- Recreational Trail

Map Note: The only access into unit 6 is the Snowmobile Trail/ORV Route from the south. Access for Units 7 & 8 will be from Ski Rd.

Use QR Code to open Map in App



TIMBER SALE INFORMATION

Thunder Bay River Mix (54-014-24)

T30N, R03E, SEC. 19; T30N, R03E, SEC. 20; T30N, R03E, SEC. 31.
Montmorency County (Advertised Price \$172,733.40)

SALE NOTE: There is an oak wilt restriction on Payment Units 1-7. Refer to sale spec 5.2.3.5 for details. Private access or stream crossing is required for harvesting Payment Units 4 and 5. Refer to timber sale specs 4.1.1 and 4.4.1 for details.

Access may be through private or other public land.

A timber sale contract for this lump sum, sealed bid timber sale will be awarded to the responsible bidder offering the highest sealed bid price. All units of volume listed below were estimated using the Inventory Manager computer program and the new Michigan taper model. Bids must be at or above the following advertised price for each product and species:

<u>PRODUCTS & SPECIES</u>	<u>ESTIMATED UNITS*</u>		<u>ADVERTISED PRICE</u>
Sawtimber			
Balsam Fir	24.9	MBF	\$ 36.00 / MBF
Mixed Aspen	168.0	MBF	\$ 85.00 / MBF
Red Maple	19.0	MBF	\$ 57.00 / MBF
Red Oak	492.1	MBF	\$ 185.00 / MBF
Red Pine	38.1	MBF	\$ 121.00 / MBF
White Pine	90.6	MBF	\$ 102.00 / MBF
Pulpwood			
Balsam Fir	357	Cords	\$ 17.75 / Cord
Mixed Aspen	774	Cords	\$ 21.25 / Cord
N. White Cedar	11	Cords	\$ 8.95 / Cord
Paper Birch	3	Cords	\$ 16.10 / Cord
Red Maple	247	Cords	\$ 20.25 / Cord
Red Oak	694	Cords	\$ 27.95 / Cord
Red Pine	47	Cords	\$ 39.45 / Cord
White Pine	80	Cords	\$ 30.00 / Cord

* The total volume is statistically estimated within plus (+) or minus (-) 12.69 percent. There are an estimated 4,163 cords on this timber sale, plus or minus 528 cords at the 95% confidence level. The estimated units are final and not subject to adjustment. Prospective bidders are urged to examine this timber and to make their own estimates of quantity and quality.

BOND AND PAYMENT SCHEDULE:

1. A bond in the amount of \$8,637.00 to insure faithful performance of the conditions of the contract will be deposited by the successful bidder within 21 days of the sale award.
2. Cutting in any sale or unit without the required advance payment would be considered a trespass.
3. Total payment must be paid in advance or according to the following schedule:
 - (a) Ten percent (10%) of the sale value must be paid within 21 days of the sale award.
 - (b) The 10% down payment will be credited towards the first unit cut.
 - (c) Payment for each of the following units must be made before cutting begins in that unit:

PAYMENT UNIT NUMBER	PERCENT OF TOTAL SALE VALUE
01	21.5%
02	18.4%
03	17.7%
04	4.3%
05	5.3%
06	8.2%
07	24.6%
4. If no cutting takes place, the 10% down payment will not be refunded.
5. Operations on the contract issued will terminate on 12/31/2027.

SALE STATISTICS

Volumes were calculated in cubic feet using the Michigan taper model. Cubic foot volume includes all wood inside bark for the product indicated. For display purposes, cubic feet were converted to cords and MBF using a simple conversion factor, e.g. 79 cubic feet per cord and 185 cubic feet per MBF. The cubic foot volumes are precise; the cords and MBF volumes are not. Cubic foot volume cannot be directly converted to cords or boards with precision.

SALE VOLUMES

The total estimated sale volume may not equal the sum of the species/products due to the nature of statistical calculations associated with double sampling methodology.

VOLUME			STATISTICAL RANGE IN CORDS	
TOTAL CUBIC FEET	TOTAL CORDS	PERCENT ERROR	MINIMUM	MAXIMUM
328,902	4,163	12.69%	3,635	4,692

VDU VOLUMES

A VDU is a Volume Determination Unit. Volumes and their associated statistics are calculated at the VDU level and summarized to the sale level. There is often a one to one relationship between a VDU and a Payment Unit, but not always, depending on the cruise design. Refer to the VDU TO PAYMENT UNIT table.

	VOLUME			RANGE IN CORDS	
VDU	TOTAL CUBIC FEET	TOTAL CORDS	PERCENT ERROR	MINIMUM	MAXIMUM
27	118,771	1,503	23.88%	1,144	1,862
40	12,642	160	55.44%	71	249
46	27,714	351	32.94%	235	466
57	46,876	593	26.71%	435	752
84	55,608	704	27.15%	513	895
117	67,289	852	32.98%	571	1,133
TOTAL:	328,902	4,163		2,969	5,357

VDU TO PAYMENT UNIT

When a VDU is associated with more than one Payment Unit (PU), the VDU volumes are assigned to the PU based on acres of the VDU within the PU.

VDU	VDU ACRES	PU	PU ACRES
27	41.4	1	22.3
		2	19.1
40	2.8	4	2.8
46	9.6	5	9.6
57	13.7	6	13.7
84	16.7	7	16.7
117	24.3	3	24.3
TOTAL:	108.5		108.5

DESCRIPTION OF TIMBER BY PAYMENT UNIT (PU)

PU	MARKET GROUP	PRODUCT	QUANTITY	UNIT	ACRES	ADVERTISE PRICE			
1	Mixed Aspen	Sawtimber	16.4	MBF	22.3	\$37,073.65			
	<i>B. T. Aspen</i>		12.9	<i>MBF</i>					
	<i>Quaking Aspen</i>		3.5	<i>MBF</i>					
	Red Maple		1.7	MBF					
	Red Oak		102.6	MBF					
	Red Pine		20.5	MBF					
	White Pine		40.7	MBF					
	Mixed Aspen		Pulpwood	137			Cords		
	<i>B. T. Aspen</i>			86			<i>Cords</i>		
	<i>Quaking Aspen</i>			51			<i>Cords</i>		
	Red Maple			26			Cords		
	Red Oak			163			Cords		
	Red Pine			25			Cords		
	White Pine			33			Cords		
	2	Mixed Aspen		Sawtimber			14.1	MBF	19.1
<i>B. T. Aspen</i>		11.1	<i>MBF</i>						
<i>Quaking Aspen</i>		3.0	<i>MBF</i>						
Red Maple		1.4	MBF						
Red Oak		87.8	MBF						
Red Pine		17.6	MBF						
White Pine		34.8	MBF						
Mixed Aspen		Pulpwood	116		Cords				
<i>B. T. Aspen</i>			73		<i>Cords</i>				
<i>Quaking Aspen</i>			43		<i>Cords</i>				
Red Maple			22		Cords				
Red Oak			140		Cords				
Red Pine			22		Cords				
White Pine			29		Cords				
3			Mixed Aspen	Sawtimber	68.0	MBF	24.3	\$30,657.65	
	<i>B. T. Aspen</i>	48.8	<i>MBF</i>						
	<i>Quaking Aspen</i>	19.2	<i>MBF</i>						
	Red Maple	8.6	MBF						
	Red Oak	65.9	MBF						
	White Pine	6.7	MBF						
	Balsam Fir	Pulpwood	26		Cords				
	Mixed Aspen		254		Cords				
	<i>B. T. Aspen</i>		174		<i>Cords</i>				
	<i>Quaking Aspen</i>		80		<i>Cords</i>				
	Red Maple		74		Cords				
	Red Oak		139		Cords				
	White Pine		9		Cords				
	4		Mixed Aspen		Sawtimber	6.2			MBF
		<i>Quaking Aspen</i>	6.2	<i>MBF</i>					
Red Maple		1.9	MBF						
Red Oak		25.2	MBF						
Balsam Fir		Pulpwood	2	Cords					
Mixed Aspen			3	Cords					
<i>Quaking Aspen</i>			3	<i>Cords</i>					
Red Maple			25	Cords					
Red Oak	52	Cords							
5	Balsam Fir	Sawtimber	8.6	MBF	9.6	\$9,228.30			
	Mixed Aspen		27.8	MBF					
	<i>B. T. Aspen</i>		3.3	<i>MBF</i>					
	<i>Quaking Aspen</i>		24.5	<i>MBF</i>					
	Red Maple		1.4	MBF					
	Red Oak		8.6	MBF					

DESCRIPTION OF TIMBER BY PAYMENT UNIT (PU), CON'T

PU	MARKET GROUP	PRODUCT	QUANTITY	UNIT	ACRES	ADVERTISE PRICE
5 con't	Balsam Fir	Pulpwood	77	Cords		
	Mixed Aspen		115	Cords		
	<i>B. T. Aspen</i>		18	<i>Cords</i>		
	<i>Quaking Aspen</i>		97	<i>Cords</i>		
	N. White Cedar		11	Cords		
	<i>N. White Cedar</i>		4.4	<i>MBF</i>		
	<i>N. White Cedar</i>		2	<i>Cords</i>		
	Paper Birch		3	Cords		
	<i>Paper Birch</i>		0.8	<i>MBF</i>		
	<i>Paper Birch</i>		1	<i>Cords</i>		
	Red Maple		11	Cords		
	Red Oak		22	Cords		
	White Pine		3	Cords		
6	Balsam Fir	Sawtimber	16.3	MBF	13.7	\$14,198.50
	Mixed Aspen		35.5	MBF		
	<i>Quaking Aspen</i>		35.5	<i>MBF</i>		
	Red Maple		4.0	MBF		
	Red Oak		6.6	MBF		
	White Pine		8.4	MBF		
	Balsam Fir	Pulpwood	252	Cords		
	Mixed Aspen		139	Cords		
	<i>Quaking Aspen</i>		139	<i>Cords</i>		
	Red Maple		24	Cords		
	Red Oak		7	Cords		
	White Pine		6	Cords		
	7		Red Oak	Sawtimber		
Mixed Aspen		Pulpwood	10	Cords		
<i>Quaking Aspen</i>			10	<i>Cords</i>		
Red Maple			65	Cords		
Red Oak			171	Cords		
TOTAL:			832.7	MBF		
TOTAL:			2,213	Cords		

Sale Specific Conditions & Requirements

Sale Name: Thunder Bay River Mix

Sale Number: 54-014-24 Seq#: 1

1 - Sale Area

1.2 - Boundaries

1.2.1 - Painted boundaries (9/19)

The sale boundary and Payment Unit boundaries are marked and identified by blue, red, and yellow paint, or are unpainted and designated by a road. Exterior sale boundary lines against private property are marked with blue paint. Exterior sale boundary lines against state are marked with red paint, with the exception of the northern boundary of Payment Units 1 & 2, which is unpainted and designated by Sturgis Rd, the southern boundary of Payment Units 1 & 2, which is unpainted and designated by Tibbets Dr, and the western boundary of Payment Unit 7, which is unpainted and designated by County Rd 487. Interior Payment Unit boundaries are marked with yellow paint. Retention patches are marked with red paint; no harvesting activities may occur within these areas. The painted boundary line trees are not Included Timber and are to be protected. Yellow painted trees designating an interior Payment Unit boundary are only to be cut when all surrounding Payment Units have been paid.

2 - Timber Specifications

2.1 - Included Timber

2.1.1 - Clearcut unit(s) with unmerchantable trees (6/14)

Within Payment Unit(s) 1-7, cut all trees that are two (2) inches or more at DBH, with the following exceptions:

- Within Payment Units 1 & 2, do not cut green painted trees. In addition, protect pine and oak tree seedlings and saplings in accordance with spec 3.4.1.
- Within Payment Unit 3, do not cut sub-merchantable white pine.
- Within Payment Units 5 & 6, do not cut green painted trees.
- Within Payment Unit 7, do not cut red or white pine.

Special protection trees identified in accordance with condition 3.4.2, within clear-cutting unit boundaries, are not Included Timber and are to be protected.

2.2 - Utilization

2.2.6 - Roundwood operation required (3/21)

The skidding of whole trees or tree segments with limbs attached is prohibited within Payment Units 1-3 & 7. All products must be produced as roundwood and forwarded to existing roads or landing areas in final product length. Trees must be harvested with in-woods processor (feller bunching harvester will not be allowed) in order to retain existing understory.

3 - Payments

3.3 - Pre-measured Sales

3.3.4 - Dividing payment units (7/14)

Payment Unit(s) \$25,000 in value or greater, may be divided at the request of the Purchaser and upon approval of the Unit Manager. Dividing Payment Units is a contract modification which requires a Timber Sale Contract Amendment. There will be only one division per Payment Unit.

3.4 - Damaged Timber

3.4.1 - Damaged timber (7/16)

General Condition and Requirement 3.4 Damaged Timber, defines liquidated damages for undesignated live merchantable trees which are cut or injured. In addition, extreme care should be taken to avoid damage to pine and oak seedlings and saplings.

Within a Payment Unit, if more than 50% of pine or oak tree seedlings or saplings (1/4" to 4.5" DBH) within a specified portion of the Sale Area are damaged, liquidated damages will be assessed at \$250.00 per acre for all acreage within that

specified portion of the Sale Area that was damaged.

No damage is acceptable to undesignated live merchantable trees. Within the Sale Area, if more than 5% of trees (> 4.5" DBH) within a specified area of the sale are damaged, liquidated damages will be assessed for all trees damaged. Rates will be in accordance with General Condition and Requirement 3.4 Damaged Timber.

3.4.2 - Special Protection Trees (4/14)

The Purchaser shall not cut live or dead special protection trees within cutting units or clearings. Special protection trees are marked with green paint. If the Purchaser's operations have cut or damaged special protection trees through carelessness, the Purchaser shall pay \$250 as fixed, agreed and liquidated damages for each special protection tree cut or damaged. Such payment does not constitute ownership of the undesignated timber.

4 - Transportation

4.1 - Construction

4.1.1 - Stream crossings, general (3/11)

All stream crossing structures will be temporary and therefore, shall be provided by the Purchaser, and must be removed upon completion of the sale. All permits for stream crossings will be provided by the DNR. A clear-span bridge stream crossing may be required (if private access is not granted) for the forwarding of wood from the north side of the stream to the south side of the stream in Payment Unit 5 as called out on the Timber Sale Map. The stream crossing permit provided by the DNR will be for a clear-span bridge constructed using timber mats. If the Purchaser desires to construct the clear-span bridge using other means, the DNR must be contacted 60 days ahead of time for securing the proper permit.

4.1.2 - Stream crossings, specific (3/11)

The stream crossing will require the installation of a culvert or portable bridge which may be borrowed from the DNR. This installation will be performed in accordance with the specifications on the appropriate permits which shall be provided by the DNR. The Payment Units are accessible without the necessity of crossing the stream (if private access is granted).

4.1.3 - Slash and earthen piles (8/04)

Piles or windrows of earth along roads and landings that have been widened or constructed shall be leveled. Slash from road maintenance or construction, including stumps, shall be dispersed throughout the sale chipped, utilized or otherwise removed from the sale.

4.1.12 - No new roads (1/12)

No new roads will be permitted in any Payment Unit. All operations are limited to existing roads. Skid trails will only be allowed.

4.2 - Maintenance

4.2.5 - Two wheel drive condition (2/04)

All existing trail roads on and adjacent to the sale area must be passable by two-wheel drive traffic for the duration of the sale.

4.4 - Access

4.4.1 - Private property access (3/11)

Permission for access across private land is the responsibility of the Purchaser and may be required for the harvesting of Payment Units 4 and 5. A copy of the written permission from the private landowner must be given to the Unit Manager within 30 days of the bid opening and prior to the beginning of operations. Contact DNR Forest Technician Allison Bundschuh at 989-619-0691 for private landowner contact information.

5 - Operations

5.1 - Notification

5.1.1 - Pre-sale conference (10/16)

A pre-sale conference on site between the Purchaser and sale administrator is required prior to beginning any operations, to determine landing and road locations. The Unit Manager or his/her representative must be contacted at least 5 days in advance to schedule the conference.

5.1.3 - Well heads and natural gas pipelines (11/15)

The Purchaser is responsible for contacting the gas or pipeline company 14 days prior to operating equipment in the vicinity of well heads or natural gas pipelines.

5.1.4 - Post-sale conference (10/16)

A post-sale conference on site between the Purchaser and sale administrator is required 5 days prior to the completion of active logging operations to determine clean-up and repair of landings, road edges, and the fulfillment of other contract specifications.

5.2 - Conduct of Operations

5.2.1 - Slash

5.2.1.10 - No slash in openings (5/10)

No brush or logging debris is to be left in the maintained wildlife opening which is indicated by "G0" on the Timber Sale Map. Any damage to the opening shall be repaired according to specifications of the Unit Manager or his/her representative.

5.2.1.11 - Slash for reforestation (3/21)

To facilitate reforestation and to protect oak stump sprout regeneration from browsing, chipping or removal of sub-merchantable treetops in Payment Units 1-3 and 7 is not permitted. Sub-merchantable oak tops and slash are to be placed high and wide centered over harvested oak stumps with the goal of making the slash impenetrable to deer.

5.2.2 - Hazard Trees/Snags

5.2.2.1 - Den trees (10/16)

Obvious hollow and/or den trees shall be protected and left standing unless they are a safety hazard.

5.2.3 - Operating Restrictions

5.2.3.5 - Oak wilt restriction (1/18)

Within Payment Units 1-7, unless changed by written agreement, cutting, skidding, hauling within the sale and brushing of access roads to the sale are not permitted during the period of April 15 to July 15. Operations may be allowed if specific steps are taken to prevent damaging uncut oak during the high risk period. Those steps may include completing all road brushing before April 15th and clearing a tree-length buffer along uncut oak cover before April 15th. This is necessary to reduce the spread of oak wilt. For more information, contact the Unit Manager or his/her representative.

5.2.3.11 - Coppice regeneration protection (4/10)

Timber harvesting in any Payment Unit must be completed before significant deciduous tree sprouting occurs in that Payment Unit so as to minimize damage to the new regeneration. Any post-harvest operations, such as chipping, must be completed before sprouting of regeneration occurs. If it is anticipated that chipping will be delayed, then tops shall be carried to one central location or left unchipped. The Unit Manager or his/her representative may cease such operations if sprouting occurs before the operation is complete.

5.2.4 - Dead and Down Creation

5.2.4.4 - Dead and down creation, grouse (6/18)

To encourage grouse and other wildlife, in Payment Unit(s) 3, 5 and 6, leave one, 12" diameter or larger log-length (8 foot minimum) piece or whole tree on the ground for every 2 acres, preferably a hardwood species such as oak or maple, or if no hardwoods present, a pine species (white or red). These trees will be evenly scattered throughout the unit, preferably at least two chains from any roads, two-tracks, or trails open to vehicles.

5.2.17 - Timber Mats and Interlocking Composite Mats (5/23)

The stream crossing called out on the Timber Sale Map in Payment Unit 5 will require extra protection such as a clear-span bridge constructed of timber mats or another approved system. The stream crossing will span approximately 9 feet between banks and will be placed over the stream for the forwarding of wood. If available, mats may be borrowed from the DNR for the construction of this clear-span bridge. A Timber Sale Contract Supplement will be used to document the Purchaser's use of the DNR's mats. Contact the Sale Administrator regarding availability and pick-up. Timber mats are available from various field offices. The Purchaser is responsible for picking up and hauling the mats to and from the site. Contact the Sale Administrator to schedule at least 30 days before desired install/removal date. All mats must be cleaned prior to drop off.

This may include, but is not limited to, power washing and brushing to remove mud and debris. A charge of \$700.00 per timber mat will be assessed for all damaged or non-returned mats. Damage for the timber mats is defined as three or more broken cants.

5.2.32 - Decking/landing restoration (9/13)

All decking and landing areas must have the surface area restored to a condition equal to or better than before. This is to ensure the proper regeneration of the stand. Wood debris, chips and "cookies" from trimmings must be removed or scattered away from landing and loading areas and may not be windrowed on the edge.

5.2.33 - Gas well re-vegetation (12/08)

In the event that the gas well is utilized for a landing, the site must be re-vegetated with a seeding mixture specified by the Unit Manager or his/her representative.

5.2.38 - No decking against live trees (2/04)

Cut products may not be decked against unmarked or designated leave trees.

5.3 - Stream Protection

5.3.2 - Parking equipment near water (10/23)

Within Payment Unit(s) 4 and 5, the parking of or storage of equipment is prohibited within 100 feet of water bodies or ground water supplies. All equipment, when not in use for harvest operations, must be parked a minimum of 100 feet away from water sources (streams, rivers, lakes, ponds, vernal pools, ground water sources) and 50 feet away from slopes leading to water sources and/or riparian areas. This restriction is for preventing unforeseen oil and/or fluid leaks from contaminating water bodies and/or ground water supplies.

5.4 - Soil Protection

5.4.1 - Rutting restriction, general (7/16)

Operations are to cease immediately if equipment and weather conditions result in rutting of roads and/or skid trails which is 12 inches or greater in depth and 50 feet in length. The Unit Manager or his/her representative may restrict hauling and/or skidding if ruts exceed the specified depth. With the Unit Manager or his/her representative's approval, the Purchaser may return to the area when the risk of rutting has decreased.

5.4.4 - Slope protection (9/19)

Skid trails and roads on slopes shall be water barred with slash and stumps as soon as use is complete to prevent erosion.

5.8 - Protection of Endangered Species

5.8.5 - Protection of raptor nests (3/13)

All trees with raptor nests will be protected if found during harvesting operations. Notification will be made to the Unit Manager or his/her representative who will notify the Wildlife Biologist so an on-site evaluation and recommendation can be made, if necessary.

6 - Safety and Fire Prevention

6.2 - Signing

6.2.1 - Road posting (10/20)

The Purchaser is responsible for posting and maintaining caution signs on the following roads: Sturgis Road, Tibbets Drive, McMurphy Road, DeWyse Road, County Road 487, and Hardwood Hills Lane prior to beginning operations. The road must be posted at appropriate distances from the Sale Area to warn of logging activity and truck traffic. Signs must be removed when harvest operations are suspended or completed. The Purchaser will provide these signs.



TIMBER SALE MAP

This information provided by authority of Part 525, 1994 PA 451, as amended.

Sale Number	Date	
54-014-24	06/25/2024	
Scale	Page	Of
1:15,840	1	2

Forest Management Unit	County	Mapped By: Allison Bundschuh
Atlanta Mgt Unit	Montmorency	Cruised By: Allison Bundschuh

Township	Range	Section(s) and Subdivision(s)
30N	03E	Sec. 19 NENE; Sec. 20 NWNW,SENE,NESW,SWSW; Sec. 31 SWNE,NESW,NWSE;

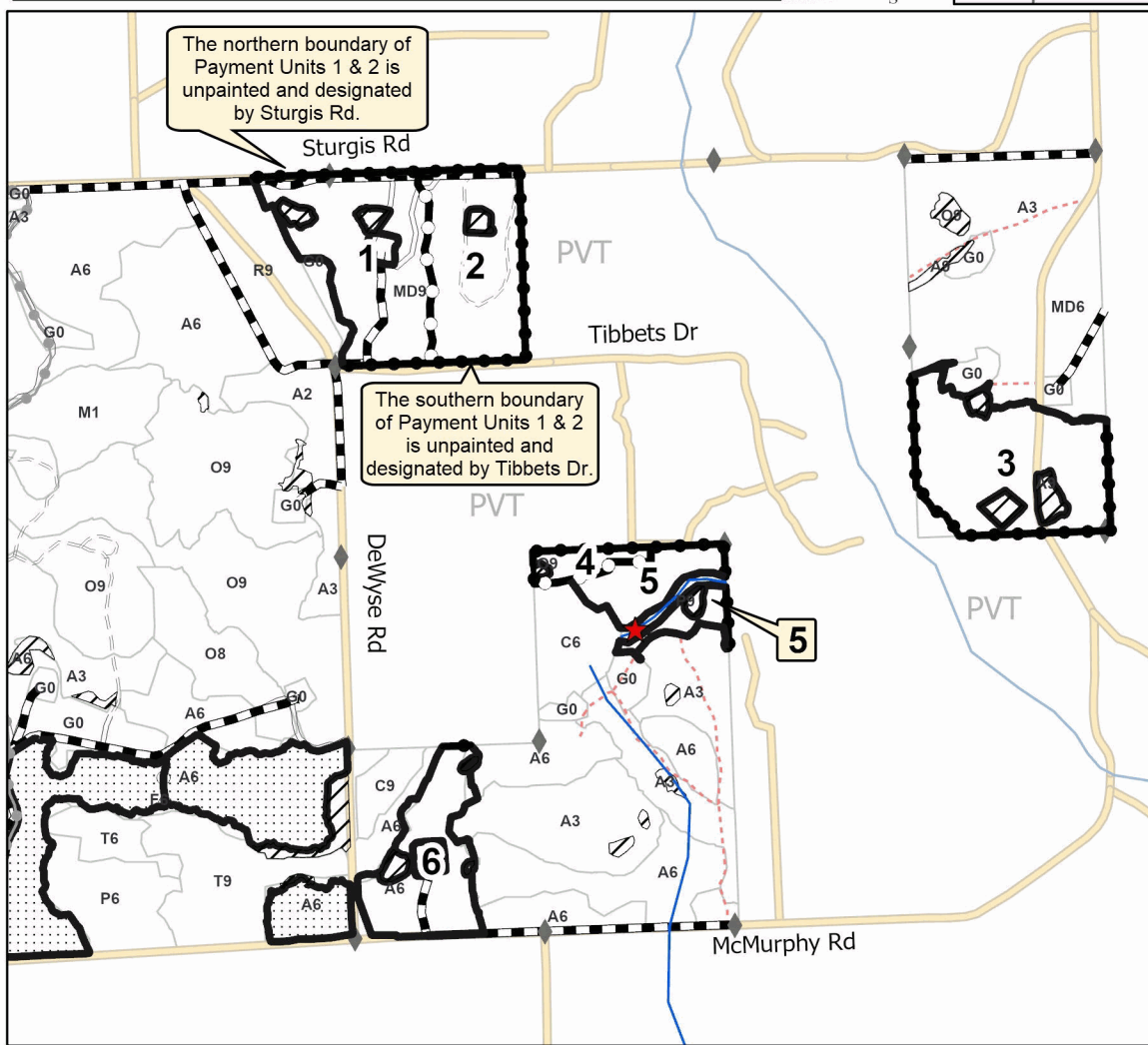
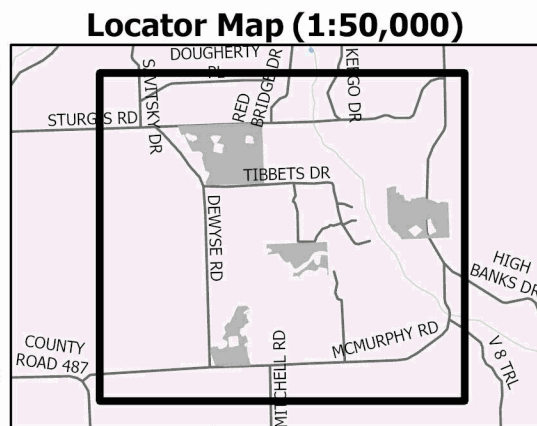
Cover Type			
A = Aspen	J = Jack Pine	O = Oak	U = Upland Brush
B = Paper Birch	K = Rock	P = Lowland Poplar	UM = Upland Mix Forest
C = Cedar	L = Lowland Brush	Q = Mixed Swamp Conifer	V = Bog or Marsh
D = Treed Bog	LM = Lowland Mix Forest	R = Red Pine	W = White Pine
E = Swamp Hardwoods	M = Maple, Beech, Birch	S = Black Spruce	X = Non Stocked
F = Spruce/Fir	MC = Mixed Conifer	T = Tamarack	Y = Sand
G = Grass	MD = Mixed Deciduous	Z = Water	
H = Hemlock	N = Marsh		

Density	
0 = Non Stocked	5 = Pole Timber Medium
1 = Seedling Sapling Poor	6 = Pole Timber Well
2 = Seedling Sapling Medium	7 = Saw Timber Poor
3 = Seedling Sapling Well	8 = Saw Timber Medium
4 = Pole Timber Poor	9 = Saw Timber Well

PU #	Acres	PU #	Acres
1	22.3	5	9.6
2	19.1	6	13.7
3	24.3	7	16.7
4	2.8		

Thunder Bay River Mix

108.5 Acres



Legend

- Against State (Red)
- Payment Unit (Yellow)
- Private Line (Blue)
- Stand
- Retention Areas
- Nearby Timber Sales
- Recreational Trail
- Secondary Forest Road
- Forest Access Route
- Administrative Access Only
- Non-DNR Road
- Pipeline
- Intermittent Stream
- Perennial River
- Survey Grade Corner
- Stream Crossing

Use QR Code to open Map in App





TIMBER SALE MAP

This information provided by authority of Part 525, 1994 PA 451, as amended.

Sale Number
54-014-24

Date
06/25/2024

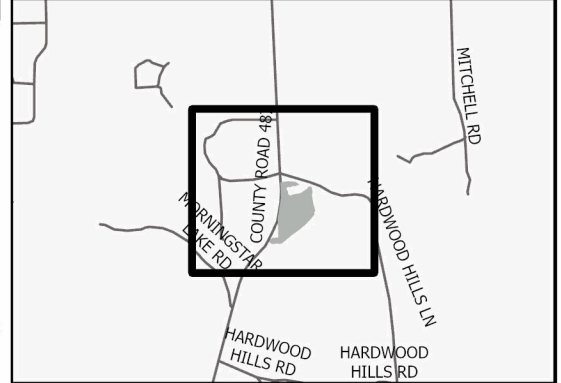
Forest Management Unit	County	Mapped By: Allison Bundschuh	Scale	Page	Of
Atlanta Mgt Unit	Montmorency	Cruised By: Allison Bundschuh	1:7,920	2	2

Township	Range	Section(s) and Subdivision(s)
30N	03E	Sec. 19 NENE; Sec. 20 NWNW,SENE,NESW,SWSW; Sec. 31 SWNE,NESW,NWSE;

Cover Type			
A = Aspen	J = Jack Pine	O = Oak	U = Upland Brush
B = Paper Birch	K = Rock	P = Lowland Poplar	UM = Upland Mix Forest
C = Cedar	L = Lowland Brush	Q = Mixed Swamp Conifer	V = Bog or Marsh
D = Treed Bog	LM = Lowland Mix Forest	R = Red Pine	W = White Pine
E = Swamp Hardwoods	M = Maple, Beech, Birch	S = Black Spruce	X = Non Stocked
F = Spruce/Fir	MC = Mixed Conifer	T = Tamarack	Y = Sand
G = Grass	MD = Mixed Deciduous	Z = Water	
H = Hemlock	N = Marsh		

Density	
0 = Non Stocked	5 = Pole Timber Medium
1 = Seedling Sapling Poor	6 = Pole Timber Well
2 = Seedling Sapling Medium	7 = Saw Timber Poor
3 = Seedling Sapling Well	8 = Saw Timber Medium
4 = Pole Timber Poor	9 = Saw Timber Well

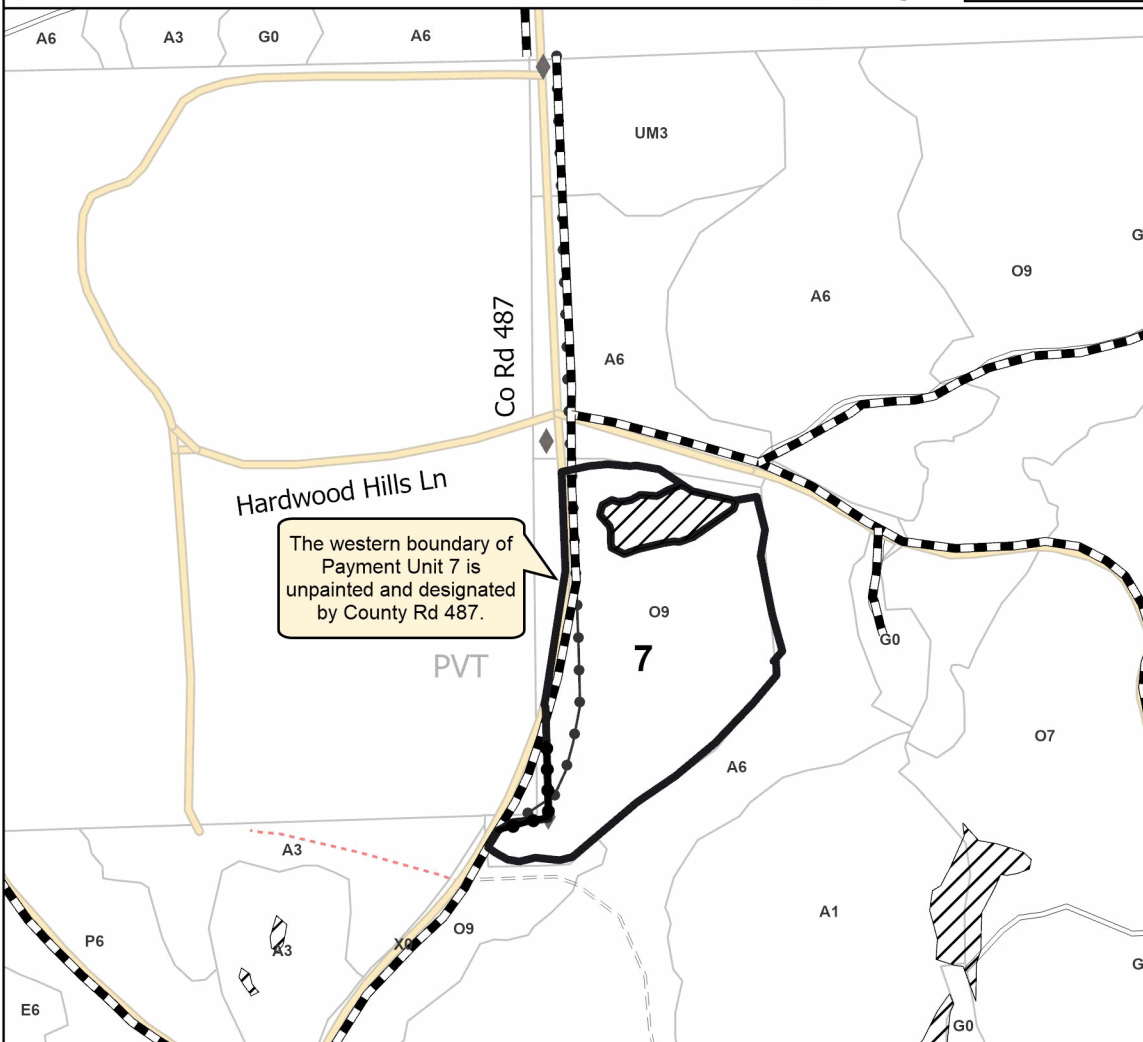
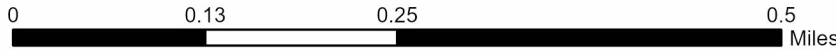
Locator Map (1:50,000)



PU #	Acres	PU #	Acres
1	22.3	5	9.6
2	19.1	6	13.7
3	24.3	7	16.7
4	2.8		

Thunder Bay River Mix

108.5 Acres



The western boundary of Payment Unit 7 is unpainted and designated by County Rd 487.

Legend

- Against State (Red)
- Private Line (Blue)
- Stand
- Retention Areas
- Secondary Forest Road
- Forest Access Route
- Administrative Access Only
- Non-DNR Road
- Pipeline
- Powerline
- Survey Grade Corner

Use QR Code to open Map in App



TIMBER SALE INFORMATION

Horseshoe Hardwoods (54-018-24)

T31N, R01E, SEC. 4; T31N, R01E, SEC. 5; T31N, R01E, SEC. 6.
Montmorency County (Advertised Price \$209,718.65)

SALE NOTE: Large acreage with minimal restrictions and relatively flat operating terrain. No recreational trails present. Road work into Payment Units 1 & 2 will be needed, with long skids. Fill material such as gravel will be required on existing access roads through wildlife openings to prevent further damage to current roads. No new roads will be allowed through Wildlife Maintained Openings.

A timber sale contract for this lump sum, sealed bid timber sale will be awarded to the responsible bidder offering the highest sealed bid price. All units of volume listed below were estimated using the Inventory Manager computer program and the new Michigan taper model. Bids must be at or above the following advertised price for each product and species:

<u>PRODUCTS & SPECIES</u>	<u>ESTIMATED UNITS*</u>	<u>ADVERTISED PRICE</u>
Sawtimber		
Basswood	349.8 MBF	\$ 59.00 / MBF
Red Maple	25.9 MBF	\$ 53.00 / MBF
Red Oak	344.0 MBF	\$ 172.00 / MBF
Sugar Maple	230.4 MBF	\$ 297.00 / MBF
Pulpwood		
Basswood	667 Cords	\$ 11.20 / Cord
Mixed Aspen	460 Cords	\$ 19.85 / Cord
Mixed Hardwood	1,748 Cords	\$ 18.90 / Cord
Paper Birch	25 Cords	\$ 15.05 / Cord
Red Oak	384 Cords	\$ 26.10 / Cord
Red Pine	2 Cords	\$ 36.85 / Cord

* The total volume is statistically estimated within plus (+) or minus (-) 10.02 percent. There are an estimated 5,513 cords on this timber sale, plus or minus 553 cords at the 95% confidence level. The estimated units are final and not subject to adjustment. Prospective bidders are urged to examine this timber and to make their own estimates of quantity and quality.

BOND AND PAYMENT SCHEDULE:

1. A bond in the amount of \$10,486.00 to insure faithful performance of the conditions of the contract will be deposited by the successful bidder within 21 days of the sale award.
2. Cutting in any sale or unit without the required advance payment would be considered a trespass.
3. Total payment must be paid in advance or according to the following schedule :
 - (a) Ten percent (10%) of the sale value must be paid within 21 days of the sale award.
 - (b) The 10% down payment will be credited towards the first unit cut.
 - (c) Payment for each of the following units must be made before cutting begins in that unit:

PAYMENT UNIT NUMBER	PERCENT OF TOTAL SALE VALUE
01	28.8%
02	30.3%
03	40.9%
4. If no cutting takes place, the 10% down payment will not be refunded.
5. Operations on the contract issued will terminate on 12/31/2027.

SALE STATISTICS

Volumes were calculated in cubic feet using the Michigan taper model. Cubic foot volume includes all wood inside bark for the product indicated. For display purposes, cubic feet were converted to cords and MBF using a simple conversion factor, e.g. 79 cubic feet per cord and 185 cubic feet per MBF. The cubic foot volumes are precise; the cords and MBF volumes are not. Cubic foot volume cannot be directly converted to cords or boards with precision.

SALE VOLUMES

The total estimated sale volume may not equal the sum of the species/products due to the nature of statistical calculations associated with double sampling methodology.

VOLUME		STATISTICAL RANGE IN CORDS		
TOTAL CUBIC FEET	TOTAL CORDS	PERCENT ERROR	MINIMUM	MAXIMUM
435,504	5,513	10.02%	4,960	6,065

VDU VOLUMES

A VDU is a Volume Determination Unit. Volumes and their associated statistics are calculated at the VDU level and summarized to the sale level. There is often a one to one relationship between a VDU and a Payment Unit, but not always, depending on the cruise design. Refer to the VDU TO PAYMENT UNIT table.

VDU	VOLUME		PERCENT ERROR	RANGE IN CORDS	
	TOTAL CUBIC FEET	TOTAL CORDS		MINIMUM	MAXIMUM
2	170,069	2,153	17.55%	1,775	2,530
26	123,120	1,558	17.25%	1,290	1,827
30	142,315	1,801	17.05%	1,494	2,109
TOTAL:	435,504	5,513		4,559	6,466

VDU TO PAYMENT UNIT

When a VDU is associated with more than one Payment Unit (PU), the VDU volumes are assigned to the PU based on acres of the VDU within the PU.

VDU	VDU ACRES	PU	PU ACRES
2	97.3	3	97.3
26	98.8	1	98.8
30	85.5	2	85.5
TOTAL:	281.6		281.6

DESCRIPTION OF TIMBER BY PAYMENT UNIT (PU)

PU	MARKET GROUP	PRODUCT	QUANTITY	UNIT	ACRES	ADVERTISE PRICE				
1	Basswood	Sawtimber	42.1	MBF	98.8	\$60,464.60				
	Red Maple		25.9	MBF						
	Red Oak		149.7	MBF						
	Sugar Maple		38.3	MBF						
	Basswood	Pulpwood	80	Cords						
	Mixed Hardwood		604	Cords						
	<i>Beech</i>		6	<i>Cords</i>						
	<i>Ironwood</i>		34	<i>Cords</i>						
	<i>Red Maple</i>		123	<i>Cords</i>						
	<i>Sugar Maple</i>		441	<i>Cords</i>						
	Red Oak		272	Cords						
	Red Pine		2	Cords						
	2		Basswood	Sawtimber			173.8	MBF	85.5	\$63,502.05
Red Oak		46.8	MBF							
Sugar Maple		92.8	MBF							
Basswood		Pulpwood	362	Cords						
Mixed Aspen			162	Cords						
<i>B. T. Aspen</i>			<i>5.0</i>	<i>MBF</i>						
<i>B. T. Aspen</i>			<i>121</i>	<i>Cords</i>						
<i>Quaking Aspen</i>			<i>31</i>	<i>Cords</i>						
Mixed Hardwood			505	Cords						
<i>Beech</i>			<i>10</i>	<i>Cords</i>						
<i>Ironwood</i>			<i>26</i>	<i>Cords</i>						
<i>Sugar Maple</i>			<i>469</i>	<i>Cords</i>						
Paper Birch			13	Cords						
<i>Paper Birch</i>			<i>3.4</i>	<i>MBF</i>						
<i>Paper Birch</i>			<i>6</i>	<i>Cords</i>						
Red Oak			24	Cords						
3			Basswood	Sawtimber	133.9	MBF	97.3	\$85,752.00		
	Red Oak	147.5	MBF							
	Sugar Maple	99.3	MBF							
	Basswood	Pulpwood	225	Cords						
	Mixed Aspen		298	Cords						
	<i>B. T. Aspen</i>		<i>247</i>	<i>Cords</i>						
	<i>Quaking Aspen</i>		<i>51</i>	<i>Cords</i>						
	Mixed Hardwood		639	Cords						
	<i>Beech</i>		<i>40</i>	<i>Cords</i>						
	<i>Ironwood</i>		<i>18</i>	<i>Cords</i>						
	<i>Sugar Maple</i>		<i>581</i>	<i>Cords</i>						
	Paper Birch		12	Cords						
	<i>Paper Birch</i>		<i>1.1</i>	<i>MBF</i>						
	<i>Paper Birch</i>		<i>10</i>	<i>Cords</i>						
	Red Oak		88	Cords						
	TOTAL:			950.1	MBF					
	TOTAL:			3,286	Cords					

Sale Specific Conditions & Requirements

Sale Name: Horseshoe Hardwoods

Sale Number: 54-018-24 Seq#: 1

1 - Sale Area

1.2 - Boundaries

1.2.1 - Painted boundaries (9/19)

The sale boundary and Payment Unit boundaries are marked and identified by blue, red and yellow paint. Exterior sale boundary lines against private property are marked with blue paint. Exterior sale boundary lines against state are marked with red paint. Interior Payment Unit boundaries are marked with yellow paint. The painted boundary line trees are not Included Timber and are to be protected. Yellow painted trees designating an interior Payment Unit boundary are only to be cut when all surrounding Payment Units have been paid.

2 - Timber Specifications

2.1 - Included Timber

2.1.3 - Cut tree marked unit(s) (12/08)

Within Payment Unit(s) 1-3, all trees are designated for cutting when marked with orange paint above and below stump height, regardless of merchantability. In addition, cut all aspen and beech, unless marked with green paint.

2.2 - Utilization

2.2.6 - Roundwood operation required (3/21)

The skidding of whole trees or tree segments with limbs attached is prohibited. All products must be produced as roundwood and forwarded to existing roads or landing areas in final product length.

3 - Payments

3.3 - Pre-measured Sales

3.3.4 - Dividing payment units (7/14)

Payment Unit(s) may be divided at the request of the Purchaser and upon approval of the Unit Manager. Dividing Payment Units is a contract modification which requires a Timber Sale Contract Amendment. There will be only one division per Payment Unit.

3.4 - Damaged Timber

3.4.1 - Damaged timber (7/16)

General Condition and Requirement 3.4 Damaged Timber, defines liquidated damages for undesignated live merchantable trees which are cut or injured. No damage is acceptable to undesignated live merchantable trees. Within the Sale Area, if more than 5% of trees (> 4.5" DBH) within a specified area of the sale are damaged, liquidated damages will be assessed for all trees damaged. Rates will be in accordance with General Condition and Requirement 3.4 Damaged Timber.

4 - Transportation

4.1 - Construction

4.1.6 - Road construction (4/24)

Construction of new roads or improvements of existing roads shall be done in such a way as to minimize the environmental and visual impacts. Merchantable trees shall be cut and utilized unless otherwise directed. Non-merchantable trees shall be severed and laid flat on the ground. Slash shall be scattered, chipped, utilized or otherwise removed from the sale. Stumps shall be set upright, not left on edge, and be moved at least 10 feet away from the road edge. Disturbed soil shall be feathered into the woods and not left in berms or windrows.

4.1.7 - Road closure (10/11)

All new roads built into the sale must be blocked to vehicle traffic within 30 days of completion of hauling. This is due to heavy vehicle and ORV traffic in the area. Some existing roads may also need to be closed, speak with Sale Administrator for location(s). In general, this will require constructing a four (4') foot high berm of stumps and logs covered with earth.

Stumps and brush must be placed along the remainder of the trail. These roads must be rendered impassable to cars, trucks and ORVs. All stumps from road building and landing construction must be reserved to block any newly constructed roads upon completion of the sale. These stumps must be scattered along the road system to prohibit vehicular movement. Temporary berms may be required if no sale activity occurs for 30 or more consecutive days. Contact the Sale Administrator for specific details of design and placement.

4.1.11 - Permits (2/12)

The Purchaser will secure any necessary permits that may be required.

4.2 - Maintenance

4.2.2 - Fill material (4/07)

To maintain roads, fill material may be needed in areas where "holes" exist or may be expected to develop. This fill material should be placed before trucking begins. Acceptable fill material must be gravel or stone and cannot contain clay or any other organic matter.

4.2.4 - Grading (10/16)

For completion of the sale, state forest roads must be graded. These include the roads through the Wildlife Maintained Openings. In general, this will require a road grader or bulldozer to shape up the roads after forest products have been hauled off site. This includes cleaning of drainage areas, grading, crowning and filling with gravel, if necessary. The grading equipment to be used must be approved by the Unit Manager or his/her representative.

4.4 - Access

4.4.3 - Access gate (12/08)

The access gate must be locked at the completion of each day unless otherwise approved by the Unit Manager or his/her representative.

5 - Operations

5.1 - Notification

5.1.1 - Pre-sale conference (10/16)

A pre-sale conference on site between the Purchaser and sale administrator is required prior to beginning any operations to determine landing and road locations. The Unit Manager or his/her representative must be contacted at least 5 days in advance to schedule the conference.

5.1.3 - Well heads and natural gas pipelines (11/15)

The Purchaser is responsible for contacting the gas or pipeline company (VCP Michigan LLC at 989-732-8499) 14 days prior to operating equipment in the vicinity of well heads or natural gas pipelines. It is encouraged for Purchaser to contact 'MISS DIG' prior to hauling to identify locations of buried pipelines along access roads.

5.1.4 - Post-sale conference (10/16)

A post-sale conference on site between the Purchaser and sale administrator is required 5 days prior to the completion of active logging operations to determine clean-up and repair of landings, road edges, and the fulfillment of other contract specifications.

5.2 - Conduct of Operations

5.2.1 - Slash

5.2.1.8 - Slash height (12/08)

No slash or tree tops may exceed 36 inches in height.

5.2.1.10 - No slash in openings (5/10)

No brush, chips, slash or any other logging debris is to be left in the maintained wildlife opening after operations are completed. These openings are indicated by G0 on the Timber Sale Map. Any damage to the opening shall be repaired according to specifications of the Unit Manager or his/her representative. These openings may be used for a landing location but will be closely monitored.

5.2.2 - Hazard Trees/Snags

5.2.2.1 - Den trees (10/16)

Obvious hollow and/or den trees shall be protected and left standing unless they are a safety hazard.

5.2.3 - Operating Restrictions

5.2.3.3 - Bark slippage restriction (3/09)

Within Payment Unit(s) 1-3, unless changed by written agreement, cutting and skidding are not permitted during the period of April 15 to July 15. This restriction is because of bark slippage.

5.2.3.4 - Oak wilt restriction, no exceptions (1/18)

Within the Sale Area, cutting, and skidding within the sale and brushing of access roads to the sale are not permitted during the period of April 15 to July 15. No exceptions will be granted. This is necessary to reduce the spread of oak wilt. Hauling will be allowed only if precautions such as brushing of roads is completed and approved by Sale Administrator.

5.2.3.5 - Oak wilt restriction (1/18)

Within the Sale Area, unless changed by written agreement, cutting, skidding, hauling within the sale and brushing of access roads to the sale are not permitted during the period of April 15 to July 15. Operations may be allowed if specific steps are taken to prevent damaging uncut oak during the high risk period. Those steps may include completing all road brushing before April 15th and clearing a tree-length buffer along uncut oak cover before April 15th. These steps must be approved by the Sale Administrator in order to allow for hauling. This is necessary to reduce the spread of oak wilt. For more information, contact the Unit Manager or his/her representative.

5.2.32 - Decking/landing restoration (9/13)

All decking and landing areas must have the surface area restored to a condition equal to or better than before. This is to ensure the proper regeneration of the stand. Wood debris, chips and "cookies" from trimmings must be removed or scattered away from landing and loading areas and may not be windrowed on the edge. See spec 5.2.1.10 if the wildlife openings (labeled G0 on sale map) are used for a landing.

5.2.38 - No decking against live trees (2/04)

Cut products may not be decked against unmarked or designated leave trees.

5.8 - Protection of Endangered Species

5.8.5 - Protection of raptor nests (3/13)

All trees with raptor nests will be protected if found during harvesting operations. Notification will be made to the Unit Manager or his/her representative who will notify the Wildlife Biologist so an on-site evaluation and recommendation can be made, if necessary.



TIMBER SALE MAP

This information provided by authority of Part 525, 1994 PA 451, as amended.

Sale Number	Date	
54-018-24	07/08/2024	
Scale	Page	Of
1:20,000	1	1

Forest Management Unit	County	Mapped By: T.Kubitskey
Atlanta Mgt Unit	Montmorency	Cruised By: Kubitskey, Coy, Bundschuh

Township	Range	Section(s) and Subdivision(s)
31N	01E	Sec. 4 NW,N1/2SW; Sec. 5 SENW,SW,W1/2SE; Sec. 6 E1/2SE;

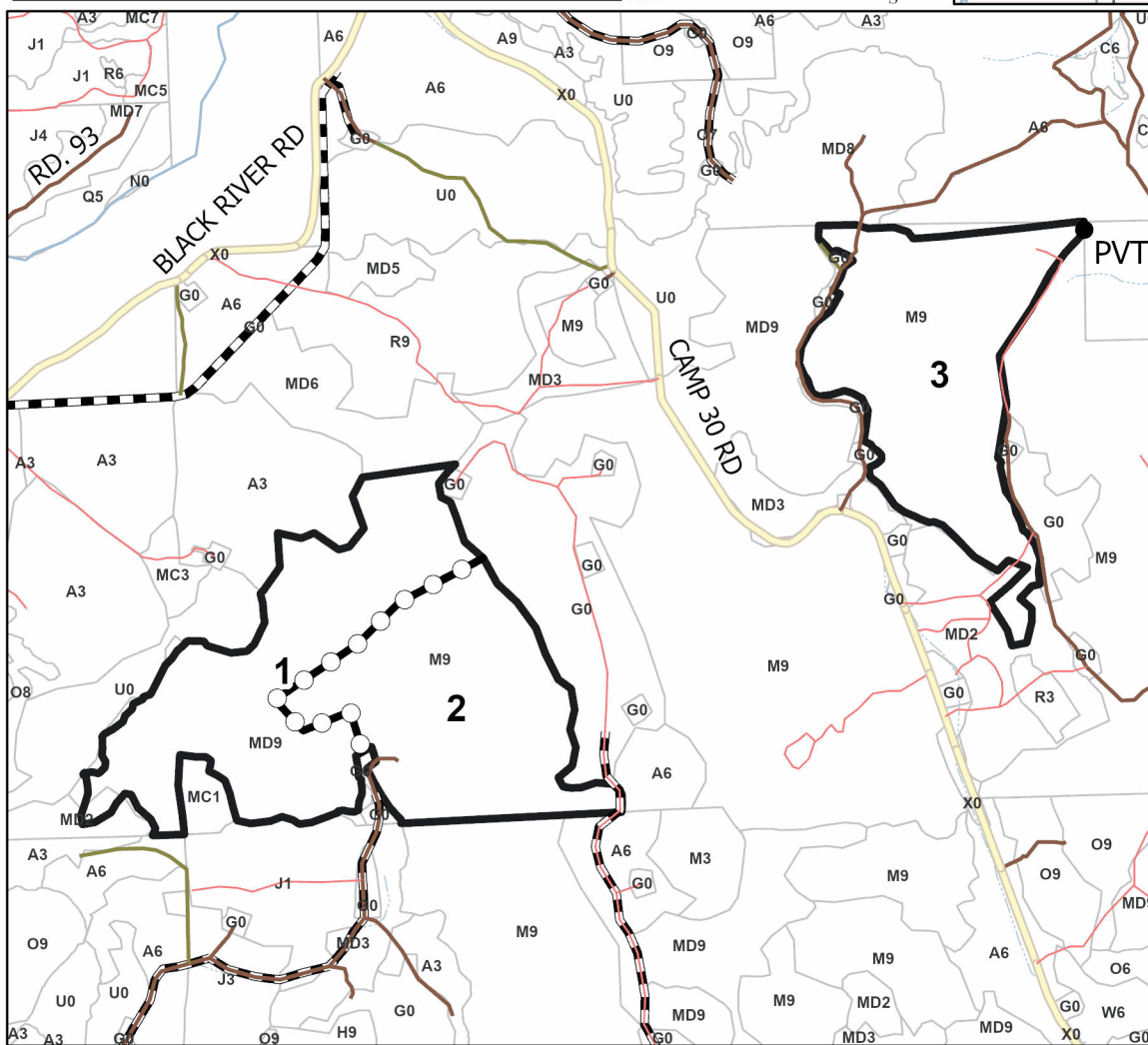
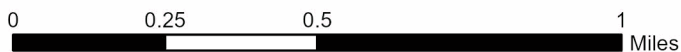
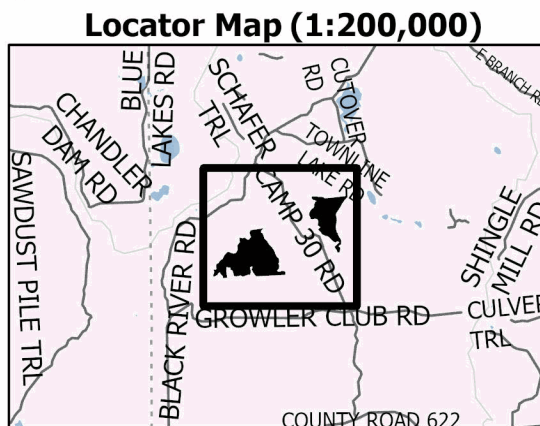
Cover Type			
A = Aspen	J = Jack Pine	O = Oak	U = Upland Brush
B = Paper Birch	K = Rock	P = Lowland Poplar	UM = Upland Mix Forest
C = Cedar	L = Lowland Brush	Q = Mixed Swamp Conifer	V = Bog or Marsh
D = Treed Bog	LM = Lowland Mix Forest	R = Red Pine	W = White Pine
E = Swamp Hardwoods	M = Maple, Beech, Birch	S = Black Spruce	X = Non Stocked
F = Spruce/Fir	MC = Mixed Conifer	T = Tamarack	Y = Sand
G = Grass	MD = Mixed Deciduous	Z = Water	
H = Hemlock	N = Marsh		

Density	
0 = Non Stocked	5 = Pole Timber Medium
1 = Seedling Sapling Poor	6 = Pole Timber Well
2 = Seedling Sapling Medium	7 = Saw Timber Poor
3 = Seedling Sapling Well	8 = Saw Timber Medium
4 = Pole Timber Poor	9 = Saw Timber Well

PU #	Acres
1	98.8
2	85.5
3	97.3

Horseshoe Hardwoods

281.6 Acres



Legend

- Against State (Red)
- Payment Unit (Yellow)
- Private Line (Blue)
- Stand
- Pipeline
- Intermittent Stream
- Perennial River
- Primary Forest Road
- Secondary Forest Road
- Forest Access Route
- Administrative Access Only
- County Road

Best access into Units 1 & 2 is from the south. Landing locations are to be determined during pre-sale conference.

Use QR Code to open Map in App



TIMBER SALE INFORMATION

Chopsticks Red Pine (54-017-23)

T31N, R02E, SEC. 23.

Montmorency County (Advertised Price \$1,874.80)

SALE NOTE: 5.2.3.3 - Bark slippage restriction (3/09)

Within Payment Unit(s) 1, unless changed by written agreement, cutting and skidding are not permitted during the period of April 15 to July 15. This restriction is because of bark slippage.

A timber sale contract for this lump sum, sealed bid timber sale will be awarded to the responsible bidder offering the highest sealed bid price. All units of volume listed below were estimated using the Inventory Manager computer program and the new Michigan taper model. Bids must be at or above the following advertised price for each product and species:

<u>PRODUCTS & SPECIES</u>	<u>ESTIMATED UNITS*</u>	<u>ADVERTISED PRICE</u>
Pulpwood		
Mixed Hardwood	11 Cords	\$ 14.85 / Cord
Red Pine	31 Cords	\$ 28.95 / Cord
White Pine	37 Cords	\$ 22.00 / Cord

* The total volume is statistically estimated within plus (+) or minus (-) 54.72 percent. There are an estimated 81 cords on this timber sale, plus or minus 44 cords at the 95% confidence level. The estimated units are final and not subject to adjustment. Prospective bidders are urged to examine this timber and to make their own estimates of quantity and quality.

BOND AND PAYMENT SCHEDULE:

1. A bond in the amount of \$1,000.00 to insure faithful performance of the conditions of the contract will be deposited by the successful bidder within 21 days of the sale award.
2. Cutting in any sale or unit without the required advance payment would be considered a trespass.
3. Total payment must be paid in advance or according to the following schedule :
 - (a) Ten percent (10%) of the sale value must be paid within 21 days of the sale award.
 - (b) The remainder is due before cutting begins.
 - (c) Payment for each of the following units must be made before cutting begins in that unit:

PAYMENT UNIT NUMBER	PERCENT OF TOTAL SALE VALUE
01	100.0%

4. If no cutting takes place, the 10% down payment will not be refunded.
5. Operations on the contract issued will terminate on 12/31/2026.

SALE STATISTICS

Volumes were calculated in cubic feet using the Michigan taper model. Cubic foot volume includes all wood inside bark for the product indicated. For display purposes, cubic feet were converted to cords and MBF using a simple conversion factor, e.g. 79 cubic feet per cord and 185 cubic feet per MBF. The cubic foot volumes are precise; the cords and MBF volumes are not. Cubic foot volume cannot be directly converted to cords or boards with precision.

SALE VOLUMES

The total estimated sale volume may not equal the sum of the species/products due to the nature of statistical calculations associated with double sampling methodology.

VOLUME		STATISTICAL RANGE IN CORDS		
TOTAL CUBIC FEET	TOTAL CORDS	PERCENT ERROR	MINIMUM	MAXIMUM
6,408	81	54.72%	37	126

VDU VOLUMES

A VDU is a Volume Determination Unit. Volumes and their associated statistics are calculated at the VDU level and summarized to the sale level. There is often a one to one relationship between a VDU and a Payment Unit, but not always, depending on the cruise design. Refer to the VDU TO PAYMENT UNIT table.

VDU	VOLUME		PERCENT ERROR	RANGE IN CORDS	
	TOTAL CUBIC FEET	TOTAL CORDS		MINIMUM	MAXIMUM
48	6,408	81	54.72%	37	126
TOTAL:	6,408	81		37	126

VDU TO PAYMENT UNIT

When a VDU is associated with more than one Payment Unit (PU), the VDU volumes are assigned to the PU based on acres of the VDU within the PU.

VDU	VDU ACRES	PU	PU ACRES
48	8.9	1	8.9
TOTAL:	8.9		8.9

DESCRIPTION OF TIMBER BY PAYMENT UNIT (PU)

PU	MARKET GROUP	PRODUCT	QUANTITY	UNIT	ACRES	ADVERTISE PRICE
1	Mixed Hardwood	Pulpwood	11	Cords	8.9	\$1,874.80
	<i>Red Maple</i>		8	<i>Cords</i>		
	<i>Sugar Maple</i>		3	<i>Cords</i>		
	Red Pine		31	Cords		
	<i>Red Pine</i>	<i>Sawtimber</i>	2.9	<i>MBF</i>		
	<i>Red Pine</i>	<i>Pulpwood</i>	25	<i>Cords</i>		
	White Pine		37	Cords		
	<i>White Pine</i>	<i>Sawtimber</i>	6.0	<i>MBF</i>		
	<i>White Pine</i>	<i>Pulpwood</i>	25	<i>Cords</i>		
	TOTAL:			79		

Sale Specific Conditions & Requirements

Sale Name: Chopsticks Red Pine

Sale Number: 54-017-23 Seq#: 2

1 - Sale Area

1.2 - Boundaries

1.2.1 - Painted boundaries (9/19)

The sale boundary is identified by red paint. Exterior sale boundary lines against state are marked with red paint.

2 - Timber Specifications

2.1 - Included Timber

2.1.3 - Cut tree marked unit(s) (12/08)

Within Payment Unit(s) 1, all trees are designated for cutting when marked with orange paint above and below stump height, regardless of merchantability.

3 - Payments

3.4 - Damaged Timber

3.4.1 - Damaged timber (7/16)

General Condition and Requirement 3.4 Damaged Timber, defines liquidated damages for undesignated live merchantable trees which are cut or injured.

No damage is acceptable to undesignated live merchantable trees. Within the Sale Area, if more than 5% of trees (> 4.5" DBH) within a specified area of the sale are damaged, liquidated damages will be assessed for all trees damaged. Rates will be in accordance with General Condition and Requirement 3.4 Damaged Timber.

4 - Transportation

4.1 - Construction

4.1.3 - Slash and earthen piles (8/04)

Piles or windrows of earth along roads and landings that have been widened or constructed shall be leveled. Slash from road maintenance or construction, including stumps, shall be dispersed throughout the sale.

4.1.6 - Road construction (4/24)

Improvements of existing roads shall be done in such a way as to minimize the environmental and visual impacts.

Merchantable trees shall be cut and utilized unless otherwise directed. Non-merchantable trees shall be severed and laid flat on the ground. Slash shall be scattered, and not left in windrows and kept a minimum of 10 feet back from the road edge.

Stumps shall be set upright, not left on edge, and be moved at least 10 feet away from the road edge. Disturbed soil shall be feathered into the woods and not left in berms or windrows.

4.2 - Maintenance

4.2.2 - Fill material (4/07)

To maintain roads, fill material may be needed in areas where "holes" exist or may be expected to develop. This fill material should be placed before trucking begins. Acceptable fill material shall not contain clay or organic matter.

4.2.3 - Road maintenance (8/13)

The following road maintenance is required: Within 60 days of completion of hauling, or if no hauling occurs for 60 days, the road must be maintained and graded. This includes cleaning of drainage areas, grading, crowning and filling with gravel, if necessary. Damages will be assessed if grading/repair does not occur.

4.2.4 - Grading (10/16)

For completion of the sale, state forest roads must be graded. In general, this will require a road grader or bulldozer to shape up the roads after forest products have been hauled off site. This includes cleaning of drainage areas, grading, crowning and filling with gravel, if necessary. The grading equipment to be used must be approved by the Unit Manager or his/her representative.

4.2.5 - Two wheel drive condition (2/04)

All existing trail roads on and adjacent to the sale area must be passable by two-wheel drive traffic for the duration of the sale.

5 - Operations

5.1 - Notification

5.1.1 - Pre-sale conference (10/16)

A pre-sale conference between the Purchaser and sale administrator is required prior to beginning any operations, to determine landing and road locations. The Unit Manager or his/her representative must be contacted at least 10 days in advance to schedule the conference.

5.1.4 - Post-sale conference (10/16)

A post-sale conference on site between the Purchaser and sale administrator is required 5 days prior to the completion of active logging operations to determine clean-up and repair of landings, road edges, and the fulfillment of other contract specifications.

5.2 - Conduct of Operations

5.2.2 - Hazard Trees/Snags

5.2.2.1 - Den trees (10/16)

Obvious hollow and/or den trees shall be protected and left standing unless they are a safety hazard.

5.2.3 - Operating Restrictions

5.2.3.3 - Bark slippage restriction (3/09)

Within Payment Unit(s) 1, unless changed by written agreement, cutting and skidding are not permitted during the period of April 15 to July 15. This restriction is because of bark slippage.

5.2.3.6 - Bark beetle restriction (12/08)

In the event drought creates a high risk of pine bark beetle infestation, pine is not to be cut during the period March 1 through July 1, unless all portions of trees greater than two inches in diameter are removed from the sale area, reduced to chips, or treated to the satisfaction of the Unit Manager or his/her representative, within fifteen days of being severed from the stump. Pine log decks, pulpwood piles and treetops that are piled for chipping in the fall or winter within a 1/4 mile of susceptible sites must be removed before March 15. Residual slash must not be placed in piles or rows and must be spread over the site for quick drying. The Department of Natural Resources will exercise this specification if the risk of damage warrants.

5.2.32 - Decking/landing restoration (9/13)

All decking and landing areas must have the surface area restored to a condition equal to or better than before. This is to ensure the proper regeneration of the stand. Wood debris, chips and "cookies" from trimmings must be removed or scattered away from landing and loading areas and may not be windrowed on the edge.

5.2.38 - No decking against live trees (2/04)

Cut products may not be decked against unmarked or designated leave trees.

5.4 - Soil Protection

5.4.1 - Rutting restriction, general (7/16)

Operations are to cease immediately if equipment and weather conditions result in rutting of roads and/or skid trails which is 12 inches or greater in depth and 50 feet in length. The Unit Manager or his/her representative may restrict hauling and/or skidding if ruts exceed the specified depth. With the Unit Manager or his/her representative's approval, the Purchaser may return to the area when the risk of rutting has decreased.

5.8 - Protection of Endangered Species

5.8.5 - Protection of raptor nests (3/13)

All trees with raptor nests will be protected if found during harvesting operations. Notification will be made to the Unit Manager or his/her representative who will notify the Wildlife Biologist so an on-site evaluation and recommendation can be

made, if necessary.



TIMBER SALE MAP

This information provided by authority of Part 525, 1994 PA 451, as amended.

Sale Number	Year
54 - 017	23

Forest Management Unit Atlanta	County Montmorency	Mapped By Natzke	Date 08/29/2023	Page 1	of 1
Township 31N	Range 02E	Section(s) and Subdivision(s) Sec 23 W1/2NE	Cruised By Natzke	Scale 1:15,840	

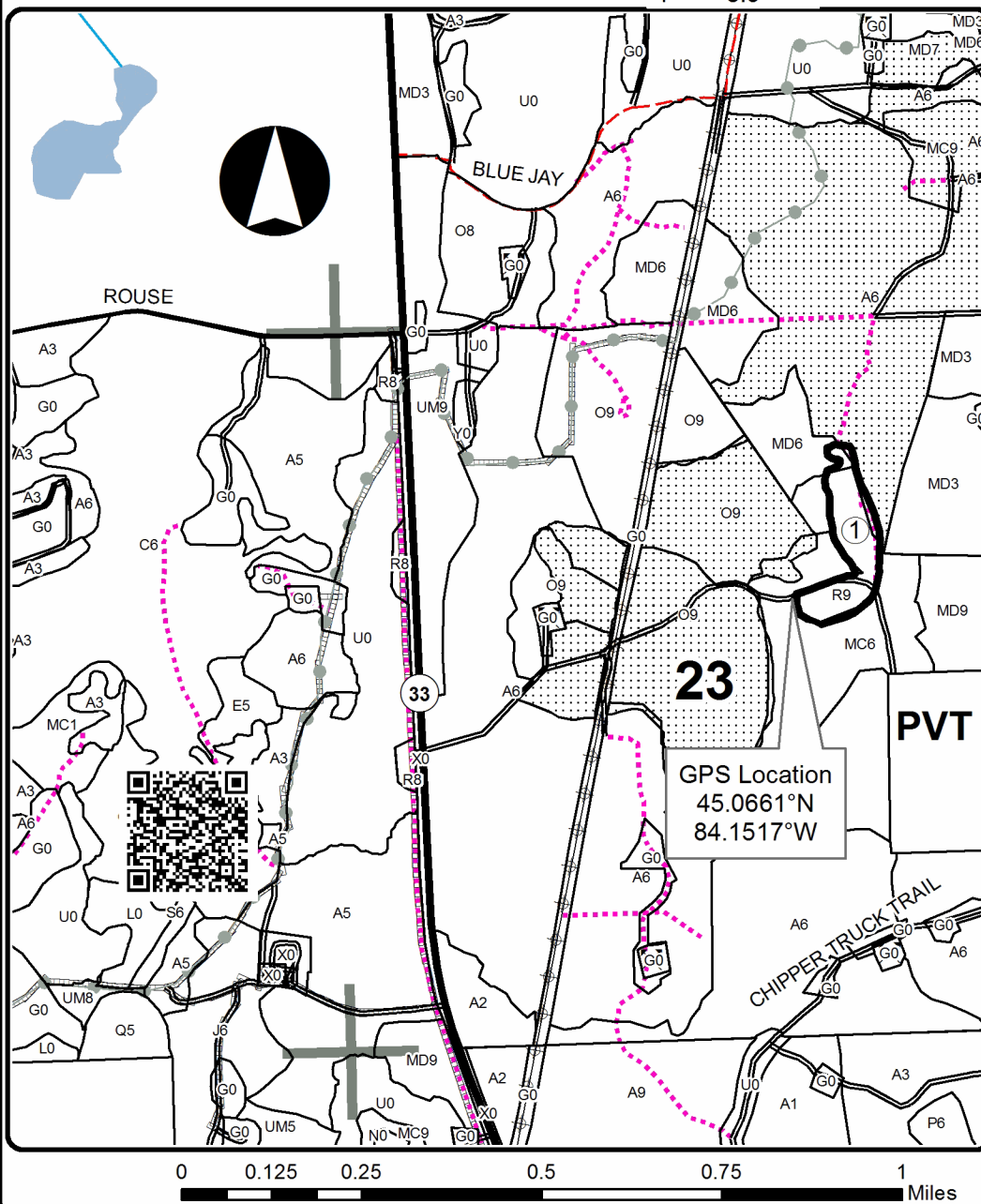
Cover Type				Density	
A = Aspen	H = Hemlock	N = Marsh	U = Upland Brush	0 = Non Stocked	5 = Pole Timber Medium
B = Paper Birch	J = Jack Pine	O = Oak	UM = Upland Mixed	1 = Seedling Sapling Poor	6 = Pole Timber Well
C = Cedar	L = Lowland Brush	P = Lowland Poplar	V = Bog or Marsh	2 = Seedling Sapling Medium	7 = Saw Timber Poor
D = Treed Bog	LM = Lowland Mixed	Q = Mixed Swamp Conifer	W = White Pine	3 = Seedling Sapling Well	8 = Saw Timber Medium
E = Swamp Hdwoods	M = Mpl, Bch, Brch	R = Red Pine	X = Non Stocked	4 = Pole Timber Poor	9 = Saw Timber Well
F = Spruce Fir	MC = Mixed Conifer	S = Black Spruce	Z = Water		
G = Grass	MD = Mixed Deciduous	T = Tamarack			

Chopsticks Red Pine Compartment 46

8.9 Acres

PU Acres

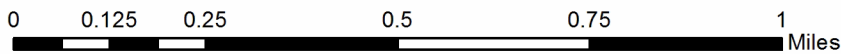
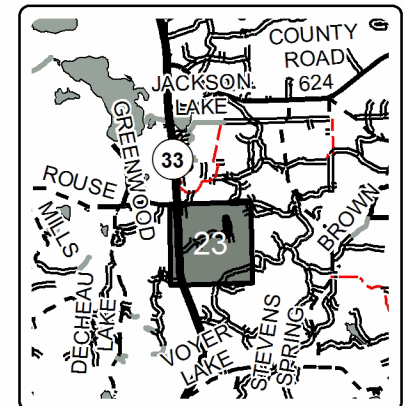
1 8.9



Legend

- Against State (Red)
- Payment Unit
- Nearby Timber Sales
- Stand Boundaries
- Pipeline
- Powerline
- Recreational Trail
- Highways
- Secondary Forest Road
- Paved Road
- County Road - Seasonal
- Temporary Management Access
- Perennial River
- Lakes and Rivers
- Section Corners

Locator Map
1:150,000



Who's Line Red Pine (54-003-24)

T35N, R03E, SEC. 10; T35N, R03E, SEC. 14; T35N, R03E, SEC. 15; Presque Isle

In response to the notice of sale to be held 10:00 a.m. (local time) on November 19, 2024, I am hereby submitting my sealed bid (firm offer) for the following forest products to be cut. Bids for individual species must be at or above the advertised price. All non-responsive bid forms may be rejected.

<u>PRODUCTS & SPECIES</u>	<u>ESTIMATED VOLUME*</u>	<u>ADVERTISED PRICE</u>	<u>BID PRICE/UNIT</u>
Sawtimber			
Black/Red (Hybrid) Oak	44.7 MBF	\$ 113.00/MBF	\$ _____
Red Oak	2.4 MBF	\$ 185.00/MBF	\$ _____
Red Pine	1,207.1 MBF	\$ 121.00/MBF	\$ _____
White Pine	38.6 MBF	\$ 102.00/MBF	\$ _____
Pulpwood			
Balsam Fir	12 Cords	\$ 17.75/Cord	\$ _____
Jack Pine	1,819 Cords	\$ 11.70/Cord	\$ _____
Mixed Aspen	149 Cords	\$ 21.25/Cord	\$ _____
Mixed Oak	55 Cords	\$ 27.95/Cord	\$ _____
Paper Birch	16 Cords	\$ 16.10/Cord	\$ _____
Red Maple	34 Cords	\$ 20.25/Cord	\$ _____
Red Pine	2,206 Cords	\$ 39.45/Cord	\$ _____
White Pine	63 Cords	\$ 30.00/Cord	\$ _____
White Spruce	32 Cords	\$ 9.40/Cord	\$ _____

*The volumes are statistically estimated within plus (+) or minus (-) 8.16 percent at 95% confidence level. These estimated volumes are final and not subject to adjustment. Prospective bidders are urged to examine this timber and to make their own estimates of quantity and quality.

I understand that any or all bids may be rejected. All bids must be signed and all bid items must be bid or the bid form may be rejected. I also understand that consideration and awarding a contract will be based upon my past performance and ability to complete the contract based upon equipment and staffing subject to my control.

FEDERAL ID: _____ or SOCIAL SECURITY NUMBER: _____

Company or individual bidding: _____

Company representative's name: _____

Address: _____

City: _____ State: _____ Zip: _____

IF AVAILABLE, PLEASE PLACE THE PERSONALIZED LABEL FROM YOUR PROSPECTUS IN THE ABOVE BOX.

Individual or company representative's signature: _____ Date: _____

Phone number : _____ Email (optional): _____

THE WINNING BIDDER MUST COMPLETE THE VERIFICATION OF WORKER'S DISABILITY COMPENSATION ACT COMPLIANCE (ON REVERSE SIDE IF DOUBLE SIDED) WITHIN 21 DAYS OF SALE AWARD DATE



FOR DEPARTMENT USE ONLY	
Sale Number (XX - XXX - XX - XX)	
Forest Management Unit:	

TIMBER SALE VERIFICATION OF WORKER'S DISABILITY COMPENSATION ACT COMPLIANCE

As required by Act 317, P.A. 1969 (Worker's Compensation) and
Part 5 of Act 451 of 1994, as amended.

VERIFICATION OF WORKER'S DISABILITY COMPENSATION ACT COMPLIANCE

- This verification must be completed and submitted within 21 days of contract award and prior to the issuance of the timber sale contract.
- In addition, if boxes 2B or 2C are checked, then Notice of Exclusion or Certificate of Insurance must be submitted within twenty-one (21) days of the contract award and prior to the issuance of the timber sale contract.
- All information must be typed or printed except for written signatures.

Please Check Appropriate Categories:

1. My business is organized as (you **must** check one of the boxes below):
 - A. Sole Proprietorship (individual)
 - B. Partnership
 - C. Corporation
2. You **must** check one of the boxes below:
 - A. I certify my business is a sole proprietorship and it has no employees but the sole proprietor. I am not subject to the Worker's Compensation Laws.
 - B. I certify my business has satisfied its obligation to the Worker's Compensation Act through the use of an approved Notice of Exclusion (BWC-337, Rev. 5/96). I will provide a copy of the Notice of Exclusion within 21 days of the contract award. (For questions or a copy of the BWC-337, please call the Worker's Compensation Bureau at 517-322-1195).
 - C. I certify my business has a Worker's Compensation Policy. I will provide an original Certificate of Insurance within twenty-one (21) days of the contract award.
3. If you have checked item 2(A) or 2(B), you **must** indicate the number of **both** full-time and part-time employees, other than yourself, including family members and active partners (if none, you must enter "0").

_____ Full-time Employees

_____ Part-time Employees

Name of Business		Federal ID (or) Social Security No.	
Address		Telephone ()	
City	State	ZIP	

I hereby certify that the above information is true and correct. I agree to notify the Michigan DNR of any changes that occur in factors affecting my coverage during any of my present and future operations.

Signature of Owner or Authorized Representative

Title

Date

Please complete the "SEALED BID" information on the next page

Black Mountain Scramble (54-005-24)

T36N, R01E, SEC. 1; T36N, R01E, SEC. 12; T36N, R01E, SEC. 2; Cheboygan

In response to the notice of sale to be held 10:00 a.m. (local time) on November 19, 2024, I am hereby submitting my sealed bid (firm offer) for the following forest products to be cut. Bids for individual species must be at or above the advertised price. All non-responsive bid forms may be rejected.

<u>PRODUCTS & SPECIES</u>	<u>ESTIMATED VOLUME*</u>	<u>ADVERTISED PRICE</u>	<u>BID PRICE/UNIT</u>
Sawtimber			
Basswood	24.7 MBF	\$ 42.00/MBF	\$ _____
Black/Red (Hybrid) Oak	129.8 MBF	\$ 75.00/MBF	\$ _____
Red Maple	7.8 MBF	\$ 38.00/MBF	\$ _____
Red Oak	298.8 MBF	\$ 123.00/MBF	\$ _____
Red Pine	119.9 MBF	\$ 81.00/MBF	\$ _____
Sugar Maple	156.6 MBF	\$ 212.00/MBF	\$ _____
White Pine	37.0 MBF	\$ 68.00/MBF	\$ _____
Pulpwood			
Basswood	97 Cords	\$ 8.00/Cord	\$ _____
Jack Pine	31 Cords	\$ 7.80/Cord	\$ _____
Mixed Aspen	1,422 Cords	\$ 14.20/Cord	\$ _____
Mixed Hardwood	1,083 Cords	\$ 13.50/Cord	\$ _____
Mixed Oak	1,131 Cords	\$ 18.65/Cord	\$ _____
Red Pine	329 Cords	\$ 26.30/Cord	\$ _____
White Pine	180 Cords	\$ 20.00/Cord	\$ _____

*The volumes are statistically estimated within plus (+) or minus (-) 10.65 percent at 95% confidence level. These estimated volumes are final and not subject to adjustment. Prospective bidders are urged to examine this timber and to make their own estimates of quantity and quality.

I understand that any or all bids may be rejected. All bids must be signed and all bid items must be bid or the bid form may be rejected. I also understand that consideration and awarding a contract will be based upon my past performance and ability to complete the contract based upon equipment and staffing subject to my control.

FEDERAL ID: _____ - _____ or SOCIAL SECURITY NUMBER: _____ - _____ - _____

Company or individual bidding: _____

Company representative's name: _____

Address: _____

City: _____ State: _____ Zip: _____

IF AVAILABLE, PLEASE PLACE THE PERSONALIZED LABEL FROM YOUR PROSPECTUS IN THE ABOVE BOX.

Individual or company representative's signature: _____ Date: _____

Phone number : _____ Email (optional): _____

THE WINNING BIDDER MUST COMPLETE THE VERIFICATION OF WORKER'S DISABILITY COMPENSATION ACT COMPLIANCE (ON REVERSE SIDE IF DOUBLE SIDED) WITHIN 21 DAYS OF SALE AWARD DATE



FOR DEPARTMENT USE ONLY	
Sale Number (XX - XXX - XX - XX)	
Forest Management Unit:	

TIMBER SALE VERIFICATION OF WORKER'S DISABILITY COMPENSATION ACT COMPLIANCE

As required by Act 317, P.A. 1969 (Worker's Compensation) and
Part 5 of Act 451 of 1994, as amended.

VERIFICATION OF WORKER'S DISABILITY COMPENSATION ACT COMPLIANCE

- This verification must be completed and submitted within 21 days of contract award and prior to the issuance of the timber sale contract.
- In addition, if boxes 2B or 2C are checked, then Notice of Exclusion or Certificate of Insurance must be submitted within twenty-one (21) days of the contract award and prior to the issuance of the timber sale contract.
- All information must be typed or printed except for written signatures.

Please Check Appropriate Categories:

1. My business is organized as (you **must** check one of the boxes below):
 - A. Sole Proprietorship (individual)
 - B. Partnership
 - C. Corporation
2. You **must** check one of the boxes below:
 - A. I certify my business is a sole proprietorship and it has no employees but the sole proprietor. I am not subject to the Worker's Compensation Laws.
 - B. I certify my business has satisfied its obligation to the Worker's Compensation Act through the use of an approved Notice of Exclusion (BWC-337, Rev. 5/96). I will provide a copy of the Notice of Exclusion within 21 days of the contract award. (For questions or a copy of the BWC-337, please call the Worker's Compensation Bureau at 517-322-1195).
 - C. I certify my business has a Worker's Compensation Policy. I will provide an original Certificate of Insurance within twenty-one (21) days of the contract award.
3. If you have checked item 2(A) or 2(B), you **must** indicate the number of **both** full-time and part-time employees, other than yourself, including family members and active partners (if none, you must enter "0").

_____ Full-time Employees

_____ Part-time Employees

Name of Business		Federal ID (or) Social Security No.	
Address		Telephone ()	
City	State	ZIP	

I hereby certify that the above information is true and correct. I agree to notify the Michigan DNR of any changes that occur in factors affecting my coverage during any of my present and future operations.

Signature of Owner or Authorized Representative

Title

Date

Please complete the "SEALED BID" information on the next page

Thunder Bay River Mix (54-014-24)
T30N, R03E, SEC. 19; T30N, R03E, SEC. 20; T30N, R03E, SEC. 31; Montmorency

In response to the notice of sale to be held 10:00 a.m. (local time) on November 19, 2024, I am hereby submitting my sealed bid (firm offer) for the following forest products to be cut. Bids for individual species must be at or above the advertised price. All non-responsive bid forms may be rejected.

<u>PRODUCTS & SPECIES</u>	<u>ESTIMATED VOLUME*</u>	<u>ADVERTISED PRICE</u>	<u>BID PRICE/UNIT</u>
Sawtimber			
Balsam Fir	24.9 MBF	\$ 36.00/MBF	\$ _____
Mixed Aspen	168.0 MBF	\$ 85.00/MBF	\$ _____
Red Maple	19.0 MBF	\$ 57.00/MBF	\$ _____
Red Oak	492.1 MBF	\$ 185.00/MBF	\$ _____
Red Pine	38.1 MBF	\$ 121.00/MBF	\$ _____
White Pine	90.6 MBF	\$ 102.00/MBF	\$ _____
Pulpwood			
Balsam Fir	357 Cords	\$ 17.75/Cord	\$ _____
Mixed Aspen	774 Cords	\$ 21.25/Cord	\$ _____
N. White Cedar	11 Cords	\$ 8.95/Cord	\$ _____
Paper Birch	3 Cords	\$ 16.10/Cord	\$ _____
Red Maple	247 Cords	\$ 20.25/Cord	\$ _____
Red Oak	694 Cords	\$ 27.95/Cord	\$ _____
Red Pine	47 Cords	\$ 39.45/Cord	\$ _____
White Pine	80 Cords	\$ 30.00/Cord	\$ _____

*The volumes are statistically estimated within plus (+) or minus (-) 12.69 percent at 95% confidence level. These estimated volumes are final and not subject to adjustment. Prospective bidders are urged to examine this timber and to make their own estimates of quantity and quality.

I understand that any or all bids may be rejected. All bids must be signed and all bid items must be bid or the bid form may be rejected. I also understand that consideration and awarding a contract will be based upon my past performance and ability to complete the contract based upon equipment and staffing subject to my control.

FEDERAL ID: _____ - _____ or SOCIAL SECURITY NUMBER: _____ - _____ - _____

Company or individual bidding: _____

Company representative's name: _____

Address: _____

City: _____ State: _____ Zip: _____

IF AVAILABLE, PLEASE PLACE THE PERSONALIZED LABEL FROM YOUR PROSPECTUS IN THE ABOVE BOX.

Individual or company representative's signature: _____ Date: _____

Phone number : _____ Email (optional): _____

THE WINNING BIDDER MUST COMPLETE THE VERIFICATION OF WORKER'S DISABILITY COMPENSATION ACT COMPLIANCE (ON REVERSE SIDE IF DOUBLE SIDED) WITHIN 21 DAYS OF SALE AWARD DATE



FOR DEPARTMENT USE ONLY
Sale Number (XX - XXX - XX - XX)
Forest Management Unit:

TIMBER SALE VERIFICATION OF WORKER'S DISABILITY COMPENSATION ACT COMPLIANCE

*As required by Act 317, P.A. 1969 (Worker's Compensation) and
Part 5 of Act 451 of 1994, as amended.*

VERIFICATION OF WORKER'S DISABILITY COMPENSATION ACT COMPLIANCE

- This verification must be completed and submitted within 21 days of contract award and prior to the issuance of the timber sale contract.
- In addition, if boxes 2B or 2C are checked, then Notice of Exclusion or Certificate of Insurance must be submitted within twenty-one (21) days of the contract award and prior to the issuance of the timber sale contract.
- All information must be typed or printed except for written signatures.

Please Check Appropriate Categories:

1. My business is organized as (you **must** check one of the boxes below):
 - A. Sole Proprietorship (individual)
 - B. Partnership
 - C. Corporation
2. You **must** check one of the boxes below:
 - A. I certify my business is a sole proprietorship and it has no employees but the sole proprietor. I am not subject to the Worker's Compensation Laws.
 - B. I certify my business has satisfied its obligation to the Worker's Compensation Act through the use of an approved Notice of Exclusion (BWC-337, Rev. 5/96). I will provide a copy of the Notice of Exclusion within 21 days of the contract award. (For questions or a copy of the BWC-337, please call the Worker's Compensation Bureau at 517-322-1195).
 - C. I certify my business has a Worker's Compensation Policy. I will provide an original Certificate of Insurance within twenty-one (21) days of the contract award.
3. If you have checked item 2(A) or 2(B), you **must** indicate the number of **both** full-time and part-time employees, other than yourself, including family members and active partners (if none, you must enter "0").

_____ Full-time Employees

_____ Part-time Employees

Name of Business		Federal ID (or) Social Security No.	
Address		Telephone ()	
City	State	ZIP	

I hereby certify that the above information is true and correct. I agree to notify the Michigan DNR of any changes that occur in factors affecting my coverage during any of my present and future operations.

Signature of Owner or Authorized Representative

Title

Date

Please complete the "SEALED BID" information on the next page

Horseshoe Hardwoods (54-018-24)

T31N, R01E, SEC. 4; T31N, R01E, SEC. 5; T31N, R01E, SEC. 6; Montmorency

In response to the notice of sale to be held 10:00 a.m. (local time) on November 19, 2024, I am hereby submitting my sealed bid (firm offer) for the following forest products to be cut. Bids for individual species must be at or above the advertised price. All non-responsive bid forms may be rejected.

<u>PRODUCTS & SPECIES</u>	<u>ESTIMATED VOLUME*</u>	<u>ADVERTISED PRICE</u>	<u>BID PRICE/UNIT</u>
Sawtimber			
Basswood	349.8 MBF	\$ 59.00/MBF	\$ _____
Red Maple	25.9 MBF	\$ 53.00/MBF	\$ _____
Red Oak	344.0 MBF	\$ 172.00/MBF	\$ _____
Sugar Maple	230.4 MBF	\$ 297.00/MBF	\$ _____
Pulpwood			
Basswood	667 Cords	\$ 11.20/Cord	\$ _____
Mixed Aspen	460 Cords	\$ 19.85/Cord	\$ _____
Mixed Hardwood	1,748 Cords	\$ 18.90/Cord	\$ _____
Paper Birch	25 Cords	\$ 15.05/Cord	\$ _____
Red Oak	384 Cords	\$ 26.10/Cord	\$ _____
Red Pine	2 Cords	\$ 36.85/Cord	\$ _____

*The volumes are statistically estimated within plus (+) or minus (-) 10.02 percent at 95% confidence level. These estimated volumes are final and not subject to adjustment. Prospective bidders are urged to examine this timber and to make their own estimates of quantity and quality.

I understand that any or all bids may be rejected. All bids must be signed and all bid items must be bid or the bid form may be rejected. I also understand that consideration and awarding a contract will be based upon my past performance and ability to complete the contract based upon equipment and staffing subject to my control.

FEDERAL ID: _____ - _____ or SOCIAL SECURITY NUMBER: _____ - _____ - _____

Company or individual bidding: _____

Company representative's name: _____

Address: _____

City: _____ State: _____ Zip: _____

IF AVAILABLE, PLEASE PLACE THE PERSONALIZED LABEL FROM YOUR PROSPECTUS IN THE ABOVE BOX.

Individual or company representative's signature: _____ Date: _____

Phone number : _____ Email (optional): _____

THE WINNING BIDDER MUST COMPLETE THE VERIFICATION OF WORKER'S DISABILITY COMPENSATION ACT COMPLIANCE (ON REVERSE SIDE IF DOUBLE SIDED) WITHIN 21 DAYS OF SALE AWARD DATE



FOR DEPARTMENT USE ONLY
Sale Number (XX - XXX - XX - XX)
Forest Management Unit:

TIMBER SALE VERIFICATION OF WORKER'S DISABILITY COMPENSATION ACT COMPLIANCE

*As required by Act 317, P.A. 1969 (Worker's Compensation) and
Part 5 of Act 451 of 1994, as amended.*

VERIFICATION OF WORKER'S DISABILITY COMPENSATION ACT COMPLIANCE

- This verification must be completed and submitted within 21 days of contract award and prior to the issuance of the timber sale contract.
- In addition, if boxes 2B or 2C are checked, then Notice of Exclusion or Certificate of Insurance must be submitted within twenty-one (21) days of the contract award and prior to the issuance of the timber sale contract.
- All information must be typed or printed except for written signatures.

Please Check Appropriate Categories:

1. My business is organized as (you **must** check one of the boxes below):
 - A. Sole Proprietorship (individual)
 - B. Partnership
 - C. Corporation

2. You **must** check one of the boxes below:
 - A. I certify my business is a sole proprietorship and it has no employees but the sole proprietor. I am not subject to the Worker's Compensation Laws.
 - B. I certify my business has satisfied its obligation to the Worker's Compensation Act through the use of an approved Notice of Exclusion (BWC-337, Rev. 5/96). I will provide a copy of the Notice of Exclusion within 21 days of the contract award. (For questions or a copy of the BWC-337, please call the Worker's Compensation Bureau at 517-322-1195).
 - C. I certify my business has a Worker's Compensation Policy. I will provide an original Certificate of Insurance within twenty-one (21) days of the contract award.

3. If you have checked item 2(A) or 2(B), you **must** indicate the number of **both** full-time and part-time employees, other than yourself, including family members and active partners (if none, you must enter "0").

_____ Full-time Employees

_____ Part-time Employees

Name of Business		Federal ID (or) Social Security No.	
Address		Telephone ()	
City	State	ZIP	

I hereby certify that the above information is true and correct. I agree to notify the Michigan DNR of any changes that occur in factors affecting my coverage during any of my present and future operations.

Signature of Owner or Authorized Representative

Title

Date

Please complete the "SEALED BID" information on the next page

Chopsticks Red Pine (54-017-23)
T31N, R02E, SEC. 23; Montmorency COUNTY

In response to the notice of sale to be held 10:00 a.m. (local time) on November 19, 2024, I am hereby submitting my sealed bid (firm offer) for the following forest products to be cut. Bids for individual species must be at or above the advertised price. All non-responsive bid forms may be rejected.

<u>PRODUCTS & SPECIES</u>	<u>ESTIMATED VOLUME*</u>	<u>ADVERTISED PRICE</u>	<u>BID PRICE/UNIT</u>
Pulpwood			
Mixed Hardwood	11 Cords	\$ 14.85/Cord	\$ _____
Red Pine	31 Cords	\$ 28.95/Cord	\$ _____
White Pine	37 Cords	\$ 22.00/Cord	\$ _____

*The volumes are statistically estimated within plus (+) or minus (-) 54.72 percent at 95% confidence level. These estimated volumes are final and not subject to adjustment. Prospective bidders are urged to examine this timber and to make their own estimates of quantity and quality.

I understand that any or all bids may be rejected. All bids must be signed and all bid items must be bid or the bid form may be rejected. I also understand that consideration and awarding a contract will be based upon my past performance and ability to complete the contract based upon equipment and staffing subject to my control.

FEDERAL ID: ____ - ____ - ____ or SOCIAL SECURITY NUMBER: ____ - ____ - ____

Company or individual bidding: _____

Company representative's name: _____

Address: _____

City: _____ State: _____ Zip: _____

IF AVAILABLE, PLEASE PLACE THE PERSONALIZED LABEL FROM YOUR PROSPECTUS IN THE ABOVE BOX.

Individual or company representative's signature: _____ Date: _____

Phone number : _____ Email (optional): _____

THE WINNING BIDDER MUST COMPLETE THE VERIFICATION OF WORKER'S DISABILITY COMPENSATION ACT COMPLIANCE (ON REVERSE SIDE IF DOUBLE SIDED) WITHIN 21 DAYS OF SALE AWARD DATE



FOR DEPARTMENT USE ONLY
Sale Number (XX - XXX - XX - XX)
Forest Management Unit:

TIMBER SALE VERIFICATION OF WORKER'S DISABILITY COMPENSATION ACT COMPLIANCE

*As required by Act 317, P.A. 1969 (Worker's Compensation) and
Part 5 of Act 451 of 1994, as amended.*

VERIFICATION OF WORKER'S DISABILITY COMPENSATION ACT COMPLIANCE

- This verification must be completed and submitted within 21 days of contract award and prior to the issuance of the timber sale contract.
- In addition, if boxes 2B or 2C are checked, then Notice of Exclusion or Certificate of Insurance must be submitted within twenty-one (21) days of the contract award and prior to the issuance of the timber sale contract.
- All information must be typed or printed except for written signatures.

Please Check Appropriate Categories:

1. My business is organized as (you **must** check one of the boxes below):
 - A. Sole Proprietorship (individual)
 - B. Partnership
 - C. Corporation
2. You **must** check one of the boxes below:
 - A. I certify my business is a sole proprietorship and it has no employees but the sole proprietor. I am not subject to the Worker's Compensation Laws.
 - B. I certify my business has satisfied its obligation to the Worker's Compensation Act through the use of an approved Notice of Exclusion (BWC-337, Rev. 5/96). I will provide a copy of the Notice of Exclusion within 21 days of the contract award. (For questions or a copy of the BWC-337, please call the Worker's Compensation Bureau at 517-322-1195).
 - C. I certify my business has a Worker's Compensation Policy. I will provide an original Certificate of Insurance within twenty-one (21) days of the contract award.
3. If you have checked item 2(A) or 2(B), you **must** indicate the number of **both** full-time and part-time employees, other than yourself, including family members and active partners (if none, you must enter "0").

_____ Full-time Employees

_____ Part-time Employees

Name of Business		Federal ID (or) Social Security No.	
Address		Telephone ()	
City	State	ZIP	

I hereby certify that the above information is true and correct. I agree to notify the Michigan DNR of any changes that occur in factors affecting my coverage during any of my present and future operations.

Signature of Owner or Authorized Representative

Title

Date

Please complete the "SEALED BID" information on the next page