



**DEPARTMENT OF NATURAL RESOURCES
STATE OF MICHIGAN
TIMBER SALE PROSPECTUS #7483**

SCHEDULED SALE DATE AND TIME: 10:00 a.m. (local time) on December 17, 2024.

LOCATION: ATLANTA MGMT UNIT, 13501 M 33, ATLANTA, MI 49709.

PROSPECTUS NOTE: The bidder is advised to inspect the sale area and review the location, estimated volumes, operating costs and contract terms of proposed sales. Please be aware that some landowners may request 60 days or more notice for access across their land.

Notice is hereby given that bids will be received by the Unit Manager, ATLANTA MANAGEMENT UNIT, for certain timber on the following described lands:

92 Problems (54-001-24) / T36N, R01E, SEC. 13, NW,NWNE,N1/2SW,SESW,NWSE.
Cheboygan County, Advertised Price \$130,541.85, 92.1 Acres, Aspen, Hardwood.

SALE NOTE: Overall fair to good quality timber. Operation is limited to existing roads; road maintenance will be required. Heavy recreational use area. Payment Units do contain leave trees; please read sale spec '2.1.1 - Clearcut unit(s) with unmerchantable trees' carefully.

A recreation site such as a trail, pathway, or campground is within the sale area or the vicinity. Certain restrictions/specifications may be applicable including time restrictions.

Antlerless Aspen (54-025-24) / T35N, R03E, SEC. 13, E1/2NE,NESE,S1/2SE.
T35N, R03E, SEC. 14, N1/2NW.
Presque Isle County, Advertised Price \$55,439.20, 76.3 Acres, Aspen, Red Oak.

SALE NOTE: Good access into all Payment Units. A snowmobile trail is within the vicinity but not affected by operations. Winter harvest only for Payment Units 2 & 3 (Dec 1 - March 31) due to forest health concerns. Payment Unit 2 contains some variable density and size timber.

A recreation site such as a trail, pathway, or campground is within the sale area or the vicinity. Certain restrictions/specifications may be applicable including time restrictions.

Ranch Mix (54-027-24) / T33N, R02E, SEC. 29, S1/2SW.
T33N, R02E, SEC. 31, NENW,S1/2NW,SW,W1/2SE.
T33N, R02E, SEC. 32, N1/2NW,SESW.
Presque Isle County, Advertised Price \$100,233.35, 161.2 Acres, Hardwood, Aspen.

SALE NOTE: There is an oak wilt restriction on Payment Units 1-5. Refer to sale spec 5.2.3.5 for details. The Michigan Cross-Country Cycle Trail runs throughout the Sale Area. Refer to sale spec 5.2.39 for details.

Bearly Aspen (54-029-24) / T34N, R07E, SEC. 29, SENW,NESW,NWSE.
T34N, R07E, SEC. 32, W1/2NE.
Presque Isle County, Advertised Price \$11,195.90, 28.6 Acres, Aspen, Hardwood.

SALE NOTE: There are special protection trees in Payment Unit 1. Refer to sale spec 3.4.2 for details.

BID INSTRUCTIONS (VER. 10/10/2022):

1. Scheduled Bid Location, Date, and Time (2/11)

Bids must be received by the Unit Manager, ATLANTA OFFICE, 13501 M 33, ATLANTA, MI 49709, no later than 10:00 a.m. (local time) on December 17, 2024. For further information concerning this sale, contact Matt Foster at 989-619-5921 extension .

2. Bidder's Qualifications (10/22)

If all or part of a timber sale was prepared by a private contractor, the contractor and that contractor's company are not permitted to bid on the timber sale. A person must be 18 years of age or older to purchase timber. Permanent employees of the Department of Natural Resources or members of their immediate household may not bid. Former employees, in the permanent or seasonal class, may not bid until 3 months after the last day of active duty. Bids will not be accepted from individuals or companies appearing on the DNR/FRD No-Bid List. This list contains the names of purchasers who previously failed to execute a contract within 21-days or who have a history of poor performance.

3. Preparation of Sealed Bids (5/16)

Bid Forms may be completed online thru Michigan DNR Timber Sale Online Bidding (OLB) at www.michigan.gov/timberbidding or by completing the hardcopy Bid Form found in the Timber Sale Prospectus . Hardcopy Bid Forms shall be manually signed in ink. Registration in OLB is considered your 'signature' for all bids submitted thru that system. Bid prices must be entered for each species and product in the Bid Price column for all material subject to bidding and all fill-in blanks must be completed. If erasures or other changes appear on the hardcopy Bid Form, each erasure or change must be initialed by the person signing the bid.

4. Submission of Sealed Bids (5/16)

Bid forms may be obtained from the Unit Manager or thru OLB. Bids may be submitted hardcopy or thru OLB. All hardcopy bids must be submitted on the bid form and in an envelope clearly identified as described in this section. NOTE: Only one bid form per bid envelope. Sealed bids must be submitted to the Unit office designated in the prospectus and must be submitted at or prior to the time established in the prospectus. The envelope should show on the outside (a) the sale name or number and (b) the date and time of bid opening, as shown in the prospectus. Bids received after the time specified in the sale prospectus are late bids and will be rejected.

It is possible for a bidder to submit multiple bids on a single sale. For example, a bid may be submitted hardcopy and a bid may be submitted thru OLB. Or, two bidders from the same company could both submit bids on the same sale. If this were to happen, the State would accept all bids received and award the contract accordingly. All bidding and contractual requirements would apply to all bids received.

5. Public Opening of Sealed Bids (7/16)

If conditions permit, the sealed bids will be publicly opened and posted at the time and place set in the prospectus.

If a bidder, present at a bid opening, has submitted bids on more than one sale, that bidder may withdraw their unopened bid envelopes or announce the withdrawal of their online bid after being declared the successful bidder on one sale.

6. Award of Contract (1/11)

Award of the contract will be made to the Bidder whose bid, conforming to the prospectus, is most advantageous to the State of Michigan on the basis of total value at rates bid for the estimated quantities. The State reserves the right to reject any bid or waive any minor irregularity in bids received. A written award mailed (or otherwise furnished) to the successful Bidder shall be deemed to result in a binding contract without further action by either party.

7. Down Payment (1/11)

The Bidder to whom award is made must make a down payment within 21 days of the sale award. The amount of the down payment will be calculated as shown in the Bond and Payment Schedule of this prospectus. Only cash may be used to meet this requirement.

8. Performance Security (1/11)

As guarantee of faithful performance, a cash bond, certificate of deposit, surety bond or irrevocable letter of credit (LOC) is required within 21 days of the sale award. The amount of the performance security is shown in the Bond and

Payment Schedule of this prospectus. If an LOC or surety is used, the coverage must extend for at least 6 months beyond the contract expiration.

9. Worker's Compensation (10/22)

Purchaser shall obtain worker's compensation insurance to cover claims under Michigan's Worker's Disability Compensation Act of 1969 or similar employee benefit act of any other state applicable to an employee. Verification of Worker's Disability Compensation Act Compliance must be completed and submitted within 21 days of contract award and prior to the issuance of the timber sale contract. In addition, if applicable, Notice of Exclusion or Certificate of Insurance must also be submitted.

10. Timber Sale Contract (10/22)

Additional conditions and requirements common to all timber sales are listed on the timber sale contract (R4031) and are available on line at www.michigan.gov/timber. Contact the Unit Manager for additional information or a sample contract. Within 21 days of the date of the award letter, the bidder must sign the contract and provide the required down payment, performance security, and verification of worker's disability compensation. The down payment and performance security shall be in accordance with the provisions of the timber sale contract, in the sums stated in this prospectus. If these actions are not taken, then the Bidder, the Bidder's corporation, and the corporation's principals may not be permitted to bid on State timber sales for a period of 3 months after the first offense, 6 months after the second offense, and 1 year after the third offense. An offense will only be counted against the Bidder for 5 years. In addition, the Bidder certifies that if awarded this contract, the Bidder will complete the timber sale contract in accordance with its terms and any modifications thereof including requirements to purchase, cut, and remove the included timber by the expiration date.

Payment Unit values in the State Forest Timber Sale Contract are calculated based on the advertised value of the Payment Unit as a percentage of the total advertised value of the contract. The advertised value of each Payment Unit is given in the Description of Timber by Payment Unit table on the Timber Sale Information page. For example, if the value of Payment Unit 1 is advertised as \$1,500 and the total Timber Sale value is advertised as \$10,000, the contract price for Payment Unit 1 will be 15% of the total bid price ($\$1,500/\$10,000 * 100$).

11. Disclaimer of Estimates and Bidder's Warranty of Inspection (10/22)

Before submitting this bid, the Bidder is advised and cautioned to inspect the sale area, review the requirements of the sale contract, and take other steps as may be reasonably necessary to ascertain the location, estimated volumes, construction estimates, and operating costs of the proposed sale. Failure to do so will not relieve the Bidder from responsibility for completing the contract.

The Bidder warrants that this bid is submitted solely on the basis of the Bidder's examination and inspection of the quality and quantity of the timber offered for sale and the Bidder's opinion of the value thereof and the costs of recovery. No reliance should be placed on the State of Michigan's estimates of timber quality, quantity or costs of recovery. Bidder further acknowledges that the State of Michigan: (i) expressly disclaims any warranty of fitness of timber for any purpose; (ii) offers this timber as is without any warranty of quality (merchantability) or quantity and (iii) expressly disclaims any warranty as to the quantity or quality of timber sold.

12. Certification and Chain-of-Custody (10/22)

Unless otherwise indicated in the contract under section 7 – Other Conditions of the Sale Specific Conditions & Requirements, the area encompassed by this timber sale is certified to the standards of the Forest Stewardship Council (FSC) - Certificate #SCS-FM/COC-00090N and the Sustainable Forestry Initiative (SFI) - Certificate #NSF-SFIS-5Y031-SF5. Forest products from this sale may be delivered to the mill as "FSC 100% and / or SFI certified" as long as the contractor hauling the forest products is chain-of-custody (COC) certified or covered under a COC certificate from the destination mill. The purchaser is responsible for maintaining COC after leaving the sale area.

13. Good Neighbor Authority (GNA) Requirements (10/22)

If the name of this timber sales contains the acronym GNA, it is authorized by the Good Neighbor Authority (GNA) and covered by various agreements between the U.S. Forest Service and the State. The timber sale occurs on federal land and the following conditions apply:

GNA contracts on US Forest Service land will not be awarded to purchasers on the Federal list of excluded parties. The System for Award Management (SAM) will be checked for active excluded parties prior to award of contract. In

addition, the Bidder to whom award is made must complete an Assurance Regarding Felony Conviction or Tax Delinquent Status for Corporate Applicants (AD-3031).

14. Good Neighbor Authority (GNA) Requirements, con't (10/22)

Bidder certifies, by signing this bid form, that to the best of Bidder's knowledge that the following representations are accurate and complete.

- a. That the Bidder and its principals are not presently debarred, suspended, proposed for debarment, declared ineligible, or voluntary excluded from timber sales (covered transactions) by any Federal department or agency.
- b. That the Bidder and its principals have not within a 3-year period preceding this bid been convicted of or had a civil judgment rendered against them for commission of fraud or a criminal offense in connection with obtaining , attempting to obtain, or performing a public (Federal, State, or local) transaction or contract under a public transaction; violation of Federal or State antitrust statutes or commission of embezzlement, theft, forgery, bribery, falsification or destruction of records, making false statements, or receiving stolen property.
- c. That the Bidder and its principals are not presently indicted for or otherwise criminally or civilly charged by a governmental entity (Federal, State, or local) with commission of any of the offenses enumerated in paragraph b of this certification.
- d. That the Bidder and its principals have not within a 3-year period preceding this bid had one or more public transactions (Federal, State, or local) terminated for breach or default of a timber or forest product contract.

Bidders that cannot certify this requirement, in whole or in part, shall submit an explanation with their bid.

Scott Bowen
Director

TIMBER SALE INFORMATION

92 Problems (54-001-24)

T36N, R01E, SEC. 13.

Cheboygan County (Advertised Price \$130,541.85)

SALE NOTE: Overall fair to good quality timber. Operation is limited to existing roads; road maintenance will be required. Heavy recreational use area. Payment Units do contain leave trees; please read sale spec '2.1.1 - Clearcut unit(s) with unmerchantable trees' carefully.

A recreation site such as a trail, pathway, or campground is within the sale area or the vicinity. Certain restrictions/specifications may be applicable including time restrictions.

A timber sale contract for this lump sum, sealed bid timber sale will be awarded to the responsible bidder offering the highest sealed bid price. All units of volume listed below were estimated using the Inventory Manager computer program and the new Michigan taper model. Bids must be at or above the following advertised price for each product and species:

<u>PRODUCTS & SPECIES</u>	<u>ESTIMATED UNITS*</u>	<u>ADVERTISED PRICE</u>
Sawtimber		
Black/Red (Hybrid) Oak	62.8 MBF	\$ 107.00 / MBF
Red Maple	23.4 MBF	\$ 59.00 / MBF
Red Oak	58.8 MBF	\$ 183.00 / MBF
Red Pine	218.1 MBF	\$ 120.00 / MBF
Pulpwood		
B. T. Aspen	2,644 Cords	\$ 20.60 / Cord
Mixed Oak	657 Cords	\$ 26.30 / Cord
Red Maple	287 Cords	\$ 19.70 / Cord
Red Pine	203 Cords	\$ 39.95 / Cord

* The total volume is statistically estimated within plus (+) or minus (-) 14.05 percent. There are an estimated 4,642 cords on this timber sale, plus or minus 653 cords at the 95% confidence level. The estimated units are final and not subject to adjustment. Prospective bidders are urged to examine this timber and to make their own estimates of quantity and quality.

BOND AND PAYMENT SCHEDULE:

1. A bond in the amount of \$6,527.00 to insure faithful performance of the conditions of the contract will be deposited by the successful bidder within 21 days of the sale award.
2. Cutting in any sale or unit without the required advance payment would be considered a trespass.
3. Total payment must be paid in advance or according to the following schedule:
 - (a) Ten percent (10%) of the sale value must be paid within 21 days of the sale award.
 - (b) The 10% down payment will be credited towards the first unit cut.
 - (c) Payment for each of the following units must be made before cutting begins in that unit:

<u>PAYMENT UNIT NUMBER</u>	<u>PERCENT OF TOTAL SALE VALUE</u>
01	24.4%
02	18.3%
03	11.9%
04	10.5%
05	14.7%
06	20.2%

4. If no cutting takes place, the 10% down payment will not be refunded.
5. Operations on the contract issued will terminate on 12/31/2027.

SALE STATISTICS

Volumes were calculated in cubic feet using the Michigan taper model. Cubic foot volume includes all wood inside bark for the product indicated. For display purposes, cubic feet were converted to cords and MBF using a simple conversion factor, e.g. 79 cubic feet per cord and 185 cubic feet per MBF. The cubic foot volumes are precise; the cords and MBF volumes are not. Cubic foot volume cannot be directly converted to cords or boards with precision.

SALE VOLUMES

The total estimated sale volume may not equal the sum of the species/products due to the nature of statistical calculations associated with double sampling methodology.

VOLUME			STATISTICAL RANGE IN CORDS	
TOTAL CUBIC FEET	TOTAL CORDS	PERCENT ERROR	MINIMUM	MAXIMUM
366,720	4,642	14.05%	3,990	5,295

VDU VOLUMES

A VDU is a Volume Determination Unit. Volumes and their associated statistics are calculated at the VDU level and summarized to the sale level. There is often a one to one relationship between a VDU and a Payment Unit, but not always, depending on the cruise design. Refer to the VDU TO PAYMENT UNIT table.

	VOLUME			RANGE IN CORDS	
VDU	TOTAL CUBIC FEET	TOTAL CORDS	PERCENT ERROR	MINIMUM	MAXIMUM
38	14,393	182	39.60%	110	254
39	108,736	1,376	25.02%	1,032	1,721
41	110,677	1,401	28.54%	1,001	1,801
61	132,914	1,682	23.56%	1,286	2,079
TOTAL:	366,720	4,642		3,429	5,855

VDU TO PAYMENT UNIT

When a VDU is associated with more than one Payment Unit (PU), the VDU volumes are assigned to the PU based on acres of the VDU within the PU.

VDU	VDU ACRES	PU	PU ACRES
38	1.8	2	1.8
39	29.7	3	15.8
		4	13.9
41	30.1	1	18.9
		2	11.2
61	30.5	5	12.8
		6	17.7
TOTAL:	92.1		92.1

DESCRIPTION OF TIMBER BY PAYMENT UNIT (PU)

PU	MARKET GROUP	PRODUCT	QUANTITY	UNIT	ACRES	ADVERTISE PRICE
1	Black/Red (Hybrid)	Sawtimber	33.0	MBF	18.9	\$31,947.40
	Red Maple		5.2	MBF		
	Red Oak		23.3	MBF		
	Red Pine		81.9	MBF		
	B. T. Aspen	Pulpwood	178	Cords		
	Mixed Oak		212	Cords		
	<i>/Red (Hybrid) Oak</i>		113	Cords		
	<i>Red Oak</i>		99	Cords		
	Red Maple		68	Cords		
	Red Pine		86	Cords		
2	Black/Red (Hybrid)	Sawtimber	28.2	MBF	13.0	\$23,880.90
	Red Maple		3.1	MBF		
	Red Oak		13.8	MBF		
	Red Pine		55.8	MBF		
	B. T. Aspen	Pulpwood	209	Cords		
	Mixed Oak		142	Cords		
	<i>/Red (Hybrid) Oak</i>		83	Cords		
	<i>Red Oak</i>		59	Cords		
	Red Maple		60	Cords		
	Red Pine		56	Cords		
3	Black/Red (Hybrid)	Sawtimber	0.9	MBF	15.8	\$15,484.20
	B. T. Aspen	Pulpwood	642	Cords		
	Mixed Oak		68	Cords		
	<i>/Red (Hybrid) Oak</i>		45	Cords		
	<i>Red Oak</i>		23	Cords		
	Red Maple		19	Cords		
4	Black/Red (Hybrid)	Sawtimber	0.7	MBF	13.9	\$13,653.10
	B. T. Aspen	Pulpwood	565	Cords		
	Mixed Oak		61	Cords		
	<i>/Red (Hybrid) Oak</i>		40	Cords		
	<i>Red Oak</i>		21	Cords		
	Red Maple		17	Cords		
5	Red Maple	Sawtimber	6.3	MBF	12.8	\$19,148.60
	Red Oak		9.1	MBF		
	Red Pine		33.7	MBF		
	B. T. Aspen	Pulpwood	441	Cords		
	Mixed Oak		73	Cords		
	<i>Red Oak</i>		73	Cords		
	Red Maple		52	Cords		
	Red Pine		26	Cords		
6	Red Maple	Sawtimber	8.8	MBF	17.7	\$26,427.65
	Red Oak		12.6	MBF		
	Red Pine		46.7	MBF		
	B. T. Aspen	Pulpwood	609	Cords		
	Mixed Oak		101	Cords		
	<i>Red Oak</i>		101	Cords		
	Red Maple		71	Cords		
	Red Pine		35	Cords		
TOTAL:			363.1	MBF		
TOTAL:			3,791	Cords		

Sale Specific Conditions & Requirements

Sale Name: 92 Problems

Sale Number: 54-001-24 Seq#: 2

1 - Sale Area

1.2 - Boundaries

1.2.1 - Painted boundaries (9/19)

The sale boundary and Payment Unit boundaries are marked and identified by blue, red and yellow paint. Exterior sale boundary lines against private property are marked with blue paint. Exterior sale boundary lines against state are marked with red paint. Interior Payment Unit boundaries are marked with yellow paint. Retention patches are marked with Red X's; no harvesting activities may occur within these areas. The painted boundary line trees are not Included Timber and are to be protected. Yellow painted trees designating an interior Payment Unit boundary are only to be cut when all surrounding Payment Units have been paid.

2 - Timber Specifications

2.1 - Included Timber

2.1.1 - Clearcut unit(s) with unmerchantable trees (6/14)

Within Payment Unit(s) 1-6, cut all trees that are two (2) inches or more at DBH, with the following exceptions:

-Within Payment Units 1-2 and 5-6, do not cut white pine or any trees marked with green paint.

-Within Payment Units 3 and 4, do not cut any pine.

3 - Payments

3.3 - Pre-measured Sales

3.3.4 - Dividing payment units (7/14)

Payment Unit(s) valued at \$25,000 or more may be divided at the request of the Purchaser and upon approval of the Unit Manager. Dividing Payment Units is a contract modification which requires a Timber Sale Contract Amendment. There will be only one division per Payment Unit.

3.4 - Damaged Timber

3.4.1 - Damaged timber (7/16)

General Condition and Requirement 3.4 Damaged Timber, defines liquidated damages for undesignated live merchantable trees which are cut or injured. No damage is acceptable to undesignated live merchantable trees. Within the Sale Area, if more than 5 % of trees (> 4.5" DBH) within a specified area of the sale are damaged, liquidated damages will be assessed for all trees damaged. Rates will be in accordance with General Condition and Requirement 3.4 Damaged Timber.

4 - Transportation

4.1 - Construction

4.1.3 - Slash and earthen piles (8/04)

Piles or windrows of earth along roads and landings that have been widened or constructed shall be leveled. Slash from road maintenance or construction, including stumps, shall be chipped, utilized or otherwise removed from the sale.

4.1.11 - Permits (2/12)

The Purchaser will secure any necessary permits that may be required.

4.1.12 - No new roads (1/12)

No new roads will be permitted within the Sale Area. All operations are limited to existing roads. Only skid trails and landings will be allowed. The use of the Cross-Country Ski Trail/Road as a haul route, skid trail or road will not be permitted.

4.2 - Maintenance

4.2.2 - Fill material (4/07)

To maintain roads, fill material may be needed in areas where "holes" exist or may be expected to develop. This fill material should be placed before trucking begins.

4.2.4 - Grading (10/16)

For completion of the sale, state forest roads must be graded. In general, this will require a road grader or bulldozer to shape up the roads after forest products have been hauled off site. This includes cleaning of drainage areas, grading, crowning and filling with gravel, if necessary. The grading equipment to be used must be approved by the Unit Manager or his/her representative.

5 - Operations

5.1 - Notification

5.1.1 - Pre-sale conference (10/16)

A pre-sale conference on site between the Purchaser and sale administrator is required prior to beginning any operations to determine landing and road locations. The Unit Manager or his/her representative must be contacted at least 5 days in advance to schedule the conference.

5.1.4 - Post-sale conference (10/16)

A post-sale conference on site between the Purchaser and sale administrator is required 5 days prior to the completion of active logging operations to determine clean-up and repair of landings, road edges, and the fulfillment of other contract specifications.

5.2 - Conduct of Operations

5.2.1 - Slash

5.2.1.8 - Slash height (12/08)

No slash or tree tops may exceed 24 inches in height.

5.2.2 - Hazard Trees/Snags

5.2.2.1 - Den trees (10/16)

Obvious hollow and/or den trees shall be protected and left standing unless they are a safety hazard.

5.2.3 - Operating Restrictions

5.2.3.5 - Oak wilt restriction (1/18)

Within the Sale Area, unless changed by written agreement, cutting, skidding, hauling within the sale and brushing of access roads to the sale are not permitted during the period of April 15 to July 15. Operations may be allowed if specific steps are taken to prevent damaging uncut oak during the high risk period. Those steps may include completing all road brushing before April 15th and clearing a tree-length buffer along uncut oak cover before April 15th. This is necessary to reduce the spread of oak wilt. For more information, contact the Unit Manager or his/her representative.

5.2.4 - Dead and Down Creation

5.2.4.4 - Dead and down creation, grouse (6/18)

To encourage grouse and other wildlife, in Payment Unit(s) 1-6 leave one 12-inch or larger diameter (or largest diameter trees within stand) whole tree on the ground for every 2 acres, preferably a hardwood species such as oak or maple or if no hardwoods are present, a pine species (white or red). These trees will be evenly scattered throughout the unit, preferably at least two chains from any roads, two-tracks, or trails open to vehicles. This can be an unmerchantable piece or a full tree.

5.2.29 - Shrub protection (1/20)

Within Payment Units 1 and 2, do not cut or damage Juniper. These woody-shrub plants are highly beneficial to various wildlife species.

5.2.32 - Decking/landing restoration (9/13)

All decking and landing areas must have the surface area restored to a condition equal to or better than before. This is to ensure the proper regeneration of the stand. Wood debris, chips and "cookies" from trimmings must be removed or scattered away from landing and loading areas and may not be windrowed on the edge.

5.2.38 - No decking against live trees (2/04)

Cut products may not be decked against unmarked or designated leave trees.

5.2.39 - ORV trail/route protection (4/18)

The Black Lake ORV trail is present within the Sale Area and is shown on the Timber Sale Map. Trees with yellow ORV markers shall be cut off above the markers and at least 5 feet above ground. All stumps within 5 feet of the trail must be cut flush with the ground. Maintain a 20-foot-wide slash, debris, and rut free zone daily using the ORV trail or route as the centerline. Do not run equipment down the ORV trail or route. Skidding across the trail or route may only occur in locations approved by the Sale Administrator.

5.2.40 - Pathway protection (10/10)

The Black Mountain Pathway is a multi-use, non-motorized trail is within the Sale Area and is shown on the Timber Sale Map. Any trees containing blue pathway markers may be harvested above the markers. In addition, do not cut or damage any posts containing blue pathway markers or trail signs. The Producer will be held responsible for any damages associated with trail signs and/or posts. Maintain a 20-foot-wide slash, debris, and rut free zone daily, using the pathway as the centerline. No equipment, log trucks or vehicles will be permitted on the pathway. Skid trails across the pathway within Payment Unit 5 will be limited to two (2) crossings. Talk to Sale Administrator about location.

5.4 - Soil Protection

5.4.2 - Skid trails (2/04)

Skid trails up and down slopes should be avoided. If however this is unavoidable, these trails will be left in a non-erodible condition using water bars, logs, and slash. Placing of slash on these skid trails while logging is ongoing may alleviate need for any further action. At the direction of the sale administrator, seed, fertilizer, and mulch may also be required.

5.8 - Protection of Endangered Species

5.8.5 - Protection of raptor nests (3/13)

All trees with raptor nests will be protected if found during harvesting operations. Notification will be made to the Unit Manager or his/her representative who will notify the Wildlife Biologist so an on-site evaluation and recommendation can be made, if necessary.

6 - Safety and Fire Prevention

6.2 - Signing

6.2.1 - Road posting (10/20)

The Purchaser is responsible for posting and maintaining caution signs on access roads prior to beginning operations. The road must be posted at appropriate distances from the Sale Area to warn of logging activity and truck traffic. Signs must be removed when harvest operations are suspended or completed. The Purchaser will provide these signs.

6.2.3 - Recreational trail posting (10/20)

The Purchaser is responsible for posting and maintaining caution signs on the Black Mountain Pathway and the Black Lake ORV Trail prior to beginning operations. The trail must be posted at appropriate distances from the Sale Area to warn of logging activity and truck traffic at both ends of the trail. Signs must be removed when harvest operations are suspended or completed. The Purchaser will provide these signs.

TIMBER SALE MAP

This information provided by authority of Part 525, 1994 PA 451, as amended.

Sale Number	Date	
54-001-24	09/24/2024	
Scale	Page	Of
1:15,840	1	1

Forest Management Unit	County	Mapped By: T.Kubitskey
Atlanta Mgt Unit	Cheboygan	Cruised By: T.Kubitskey

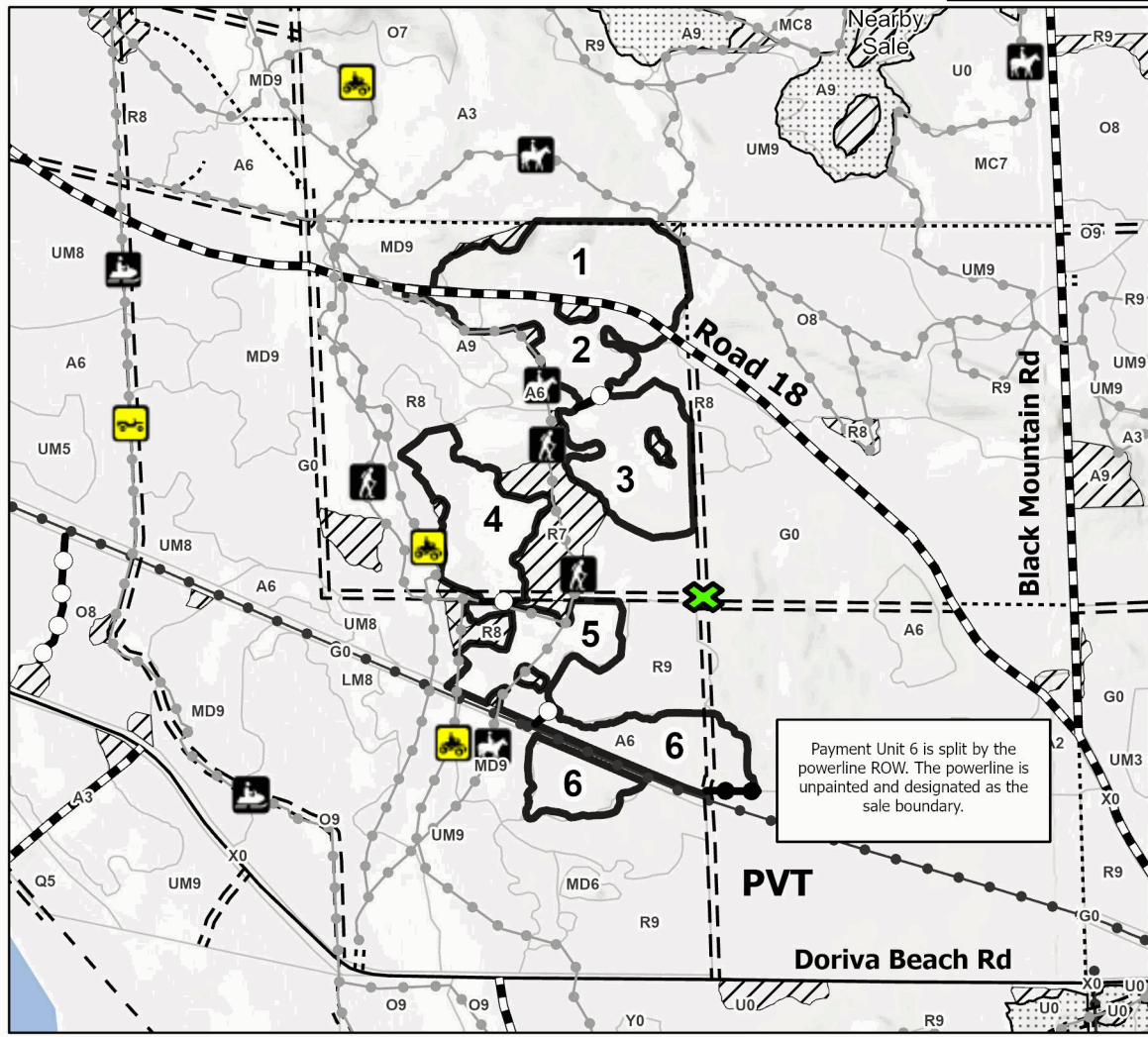
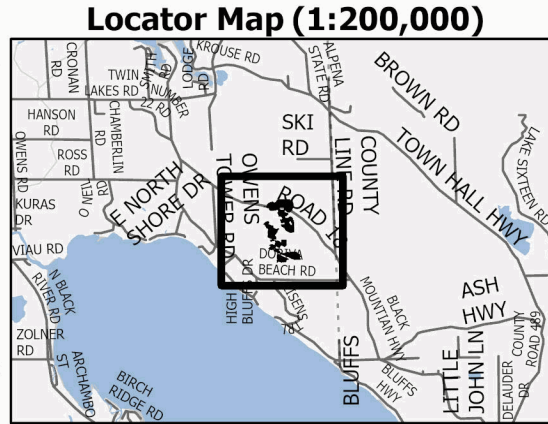
Township	Range	Section(s) and Subdivision(s)
36N	01E	Sec. 13 NW,NWNE,N1/2SW,SESW,NWSE;

Cover Type			
A = Aspen	J = Jack Pine	O = Oak	U = Upland Brush
B = Paper Birch	K = Rock	P = Lowland Poplar	UM = Upland Mix Forest
C = Cedar	L = Lowland Brush	Q = Mixed Swamp Conifer	V = Bog or Marsh
D = Treed Bog	LM = Lowland Mix Forest	R = Red Pine	W = White Pine
E = Swamp Hardwoods	M = Maple, Beech, Birch	S = Black Spruce	X = Non Stocked
F = Spruce/Fir	MC = Mixed Conifer	T = Tamarack	Y = Sand
G = Grass	MD = Mixed Deciduous	Z = Water	
H = Hemlock	N = Marsh		

Density	
0 = Non Stocked	5 = Pole Timber Medium
1 = Seedling Sapling Poor	6 = Pole Timber Well
2 = Seedling Sapling Medium	7 = Saw Timber Poor
3 = Seedling Sapling Well	8 = Saw Timber Medium
4 = Pole Timber Poor	9 = Saw Timber Well

PU #	Acres	PU #	Acres
1	18.9	4	13.9
2	13	5	12.8
3	15.8	6	17.7

92 Problems
92.1 Acres
 Compartment 176



Legend	
	Sale Boundary (Red)
	Payment Unit (Yellow)
	Private Line (Blue)
	Nearby Timber Sale
	Stand
	Retention Areas (Red)
	Recreational Trail
	Pipeline
	Powerline
	Forest Access Route
	Administrative Access Only
	Paved Road
	County Gravel/Dirt
	Private Gravel/Dirt

X -84.2592674°W
 45.5023136°N

Payment Unit 6 is split by the powerline ROW. The powerline is unpainted and designated as the sale boundary.

Use QR Code to open Map in App



TIMBER SALE INFORMATION

Antlerless Aspen (54-025-24)
 T35N, R03E, SEC. 13; T35N, R03E, SEC. 14.
 Presque Isle County (Advertised Price \$55,439.20)

SALE NOTE: Good access into all Payment Units. A snowmobile trail is within the vicinity but not affected by operations. Winter harvest only for Payment Units 2 & 3 (Dec 1 - March 31) due to forest health concerns. Payment Unit 2 contains some variable density and size timber.

A timber sale contract for this lump sum, sealed bid timber sale will be awarded to the responsible bidder offering the highest sealed bid price. All units of volume listed below were estimated using the Inventory Manager computer program and the new Michigan taper model. Bids must be at or above the following advertised price for each product and species:

<u>PRODUCTS & SPECIES</u>	<u>ESTIMATED UNITS*</u>	<u>ADVERTISED PRICE</u>
Sawtimber		
Red Maple	4.3 MBF	\$ 59.00 / MBF
Red Oak	18.2 MBF	\$ 183.00 / MBF
Red Pine	66.8 MBF	\$ 120.00 / MBF
White Pine	15.3 MBF	\$ 97.00 / MBF
Pulpwood		
Balsam Fir	43 Cords	\$ 17.20 / Cord
Jack Pine	80 Cords	\$ 11.25 / Cord
Mixed Aspen	1,337 Cords	\$ 20.60 / Cord
Red Maple	105 Cords	\$ 19.70 / Cord
Red Oak	293 Cords	\$ 26.30 / Cord
Red Pine	59 Cords	\$ 39.95 / Cord
White Pine	37 Cords	\$ 28.15 / Cord

* The total volume is statistically estimated within plus (+) or minus (-) 19.80 percent. There are an estimated 2,196 cords on this timber sale, plus or minus 435 cords at the 95% confidence level. The estimated units are final and not subject to adjustment. Prospective bidders are urged to examine this timber and to make their own estimates of quantity and quality.

BOND AND PAYMENT SCHEDULE:

1. A bond in the amount of \$2,772.00 to insure faithful performance of the conditions of the contract will be deposited by the successful bidder within 21 days of the sale award.
2. Cutting in any sale or unit without the required advance payment would be considered a trespass.
3. Total payment must be paid in advance or according to the following schedule :
 - (a) Ten percent (10%) of the sale value must be paid within 21 days of the sale award.
 - (b) The 10% down payment will be credited towards the first unit cut.
 - (c) Payment for each of the following units must be made before cutting begins in that unit:

PAYMENT UNIT NUMBER	PERCENT OF TOTAL SALE VALUE
01	11.7%
02	38.5%
03	49.8%
4. If no cutting takes place, the 10% down payment will not be refunded.
5. Operations on the contract issued will terminate on 12/31/2027.

SALE STATISTICS

Volumes were calculated in cubic feet using the Michigan taper model. Cubic foot volume includes all wood inside bark for the product indicated. For display purposes, cubic feet were converted to cords and MBF using a simple conversion factor, e.g. 79 cubic feet per cord and 185 cubic feet per MBF. The cubic foot volumes are precise; the cords and MBF volumes are not. Cubic foot volume cannot be directly converted to cords or boards with precision.

SALE VOLUMES

The total estimated sale volume may not equal the sum of the species/products due to the nature of statistical calculations associated with double sampling methodology.

VOLUME		STATISTICAL RANGE IN CORDS		
TOTAL CUBIC FEET	TOTAL CORDS	PERCENT ERROR	MINIMUM	MAXIMUM
173,495	2,196	19.80%	1,761	2,631

VDU VOLUMES

A VDU is a Volume Determination Unit. Volumes and their associated statistics are calculated at the VDU level and summarized to the sale level. There is often a one to one relationship between a VDU and a Payment Unit, but not always, depending on the cruise design. Refer to the VDU TO PAYMENT UNIT table.

VDU	VOLUME		PERCENT ERROR	RANGE IN CORDS	
	TOTAL CUBIC FEET	TOTAL CORDS		MINIMUM	MAXIMUM
15	25,585	324	46.75%	172	475
53	73,265	927	24.82%	697	1,158
54	74,646	945	36.87%	596	1,293
TOTAL:	173,495	2,196		1,466	2,926

VDU TO PAYMENT UNIT

When a VDU is associated with more than one Payment Unit (PU), the VDU volumes are assigned to the PU based on acres of the VDU within the PU.

VDU	VDU ACRES	PU	PU ACRES
15	12.6	1	12.6
53	41.1	2	35.8
		3	5.3
54	22.6	3	22.6
TOTAL:	76.3		76.3

DESCRIPTION OF TIMBER BY PAYMENT UNIT (PU)

PU	MARKET GROUP	PRODUCT	QUANTITY	UNIT	ACRES	ADVERTISE PRICE
1	Red Maple	Sawtimber	2.8	MBF	12.6	\$6,480.60
	Red Pine		6.9	MBF		
	Balsam Fir	Pulpwood	38	Cords		
	Jack Pine		74	Cords		
	Mixed Aspen		152	Cords		
	<i>B. T. Aspen</i>		152	<i>Cords</i>		
	Red Maple		32	Cords		
	Red Pine		6	Cords		
2	Red Oak	Sawtimber	10.1	MBF	35.8	\$21,318.75
	Red Pine		14.0	MBF		
	White Pine		10.7	MBF		
	Jack Pine	Pulpwood	5	Cords		
	Mixed Aspen		456	Cords		
	<i>B. T. Aspen</i>		456	<i>Cords</i>		
	Red Maple		7	Cords		
	Red Oak		206	Cords		
	Red Pine		24	Cords		
	White Pine		28	Cords		
3	Red Maple	Sawtimber	1.5	MBF	27.9	\$27,639.85
	Red Oak		8.1	MBF		
	Red Pine		45.9	MBF		
	White Pine		4.6	MBF		
	Balsam Fir	Pulpwood	5	Cords		
	Jack Pine		1	Cords		
	Mixed Aspen		729	Cords		
	<i>B. T. Aspen</i>		566	<i>Cords</i>		
	<i>Quaking Aspen</i>		163	<i>Cords</i>		
	Red Maple		66	Cords		
	Red Oak		87	Cords		
	Red Pine		29	Cords		
	White Pine		9	Cords		
TOTAL:			104.6	MBF		
TOTAL:			1,954	Cords		

Sale Specific Conditions & Requirements

Sale Name: Antlerless Aspen

Sale Number: 54-025-24 Seq#: 1

1 - Sale Area

1.2 - Boundaries

1.2.1 - Painted boundaries (9/19)

The sale boundary and Payment Unit boundaries are marked and identified by blue, red and yellow paint. Exterior sale boundary lines against private property are marked with blue paint. Exterior sale boundary lines against state are marked with red paint. Interior Payment Unit boundaries are marked with yellow paint. Retention patches are marked with Red X's; no harvesting activities may occur within these areas. The painted boundary line trees are not Included Timber and are to be protected. Yellow painted trees designating an interior Payment Unit boundary are only to be cut when all surrounding Payment Units have been paid.

2 - Timber Specifications

2.1 - Included Timber

2.1.1 - Clearcut unit(s) with unmerchantable trees (6/14)

Within Payment Unit(s) 1-3, cut all trees that are two (2) inches or more at DBH, except do not cut any trees marked in green paint. In addition, within Payment Unit 1, do not cut any white pine.

Special protection trees identified in accordance with condition 3.4.2, within clearcutting unit boundaries, are not Included Timber and are to be protected.

3 - Payments

3.4 - Damaged Timber

3.4.1 - Damaged timber (7/16)

General Condition and Requirement 3.4 Damaged Timber, defines liquidated damages for undesignated live merchantable trees which are cut or injured. In addition, extreme care should be taken to avoid damage to tree seedlings and saplings.

Within Payment Unit 1, if more than 50% of white pine seedlings or saplings (1/4" to 4.5" DBH) within a specified portion of the Payment Unit are damaged, liquidated damages will be assessed at \$500 per acre for all acreage within that specified portion of the Sale Area that was damaged.

No damage is acceptable to undesignated live merchantable trees. Within Payment Unit 1, if more than 5% of trees (> 4.5" DBH) within a specified area of the sale are damaged, liquidated damages will be assessed for all trees damaged. Rates will be in accordance with General Condition and Requirement 3.4 Damaged Timber.

3.4.2 - Special Protection Trees (4/14)

The Purchaser shall not cut live or dead special protection trees within cutting units or clearings. Special protection trees are marked with green paint. If the Purchaser's operations have cut or damaged special protection trees through carelessness, the Purchaser shall pay \$300 as fixed, agreed and liquidated damages for each special protection tree cut or damaged. Such payment does not constitute ownership of the undesignated timber.

4 - Transportation

4.1 - Construction

4.1.3 - Slash and earthen piles (8/04)

Piles or windrows of earth along roads and landings that have been widened or constructed shall be leveled. Slash from road maintenance or construction, including stumps, shall be dispersed throughout the sale, chipped, utilized or otherwise removed from the sale.

4.1.12 - No new roads (1/12)

No new roads will be permitted in any Payment Unit. All operations are limited to existing roads. Only skid trails and

landings will be allowed.

4.2 - Maintenance

4.2.5 - Two wheel drive condition (2/04)

All existing trail roads on and adjacent to the sale area must be passable by two-wheel drive traffic for the duration of the sale.

5 - Operations

5.1 - Notification

5.1.4 - Post-sale conference (10/16)

A post-sale conference on site between the Purchaser and sale administrator is required 5 days prior to the completion of active logging operations to determine clean-up and repair of landings, road edges, and the fulfillment of other contract specifications.

5.2 - Conduct of Operations

5.2.1 - Slash

5.2.1.8 - Slash height (12/08)

No slash or tree tops may exceed 36 inches in height.

5.2.2 - Hazard Trees/Snags

5.2.2.1 - Den trees (10/16)

Obvious hollow and/or den trees shall be protected and left standing unless they are a safety hazard.

5.2.3 - Operating Restrictions

5.2.3.1 - Operating restrictions (9/11)

Within Payment Unit(s) 2-3, cutting, skidding, and hauling are limited to the period of December 1 to March 31. This restriction is because of Forest Health Concerns within the area.

5.2.4 - Dead and Down Creation

5.2.4.4 - Dead and down creation, grouse (6/18)

To encourage grouse and other wildlife, in Payment Unit(s) 1-3 leave one 12-inch or larger diameter (or largest diameter trees within stand) whole tree on the ground for every 2 acres, preferably a hardwood species such as oak or maple or if no hardwoods are present, a pine species (white or red). These trees will be evenly scattered throughout the unit, preferably at least two chains from any roads, two-tracks, or trails open to vehicles. This can be an unmerchantable piece or a full tree.

5.2.32 - Decking/landing restoration (9/13)

All decking and landing areas must have the surface area restored to a condition equal to or better than before. This is to ensure the proper regeneration of the stand. Wood debris, chips and "cookies" from trimmings must be removed or scattered away from landing and loading areas and may not be windrowed on the edge.

5.2.38 - No decking against live trees (2/04)

Cut products may not be decked against unmarked or designated leave trees.

5.4 - Soil Protection

5.4.5 - Soil caution (11/04)

Portions of Payment Unit 3 contain seasonally wet areas. Use caution when operating in these areas.

5.8 - Protection of Endangered Species

5.8.5 - Protection of raptor nests (3/13)

All trees with raptor nests will be protected if found during harvesting operations. Notification will be made to the Unit Manager or his/her representative who will notify the Wildlife Biologist so an on-site evaluation and recommendation can be made, if necessary.

6 - Safety and Fire Prevention

6.2 - Signing

6.2.1 - Road posting (10/20)

The Purchaser is responsible for posting and maintaining caution signs on Beach Grove Highway and/or Silver Creek Road prior to beginning operations. The road must be posted at appropriate distances from the Sale Area to warn of logging activity and truck traffic. Signs must be removed when harvest operations are suspended or completed. The Purchaser will provide these signs.

TIMBER SALE MAP

This information provided by authority of Part 525, 1994 PA 451, as amended.

Sale Number	Date	
54-025-24	09/23/2024	
Scale	Page	Of
1:10,000	1	2

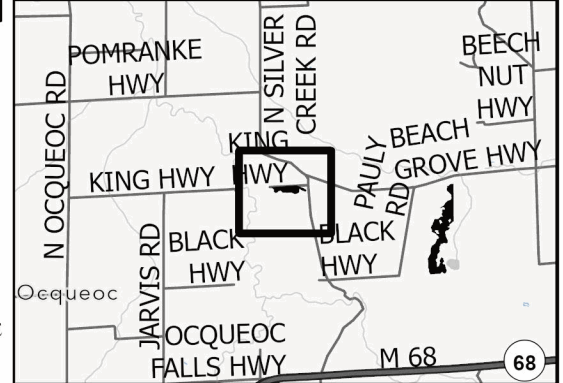
Forest Management Unit	County	Mapped By: T.Kubitsky
Atlanta Mgt Unit	Presque Isle	Cruised By: T. Kubitsky

Township	Range	Section(s) and Subdivision(s)
35N	03E	Sec. 13 E1/2NE,NESE,S1/2SE; Sec. 14 N1/2NW;

Cover Type			
A = Aspen	J = Jack Pine	O = Oak	U = Upland Brush
B = Paper Birch	K = Rock	P = Lowland Poplar	UM = Upland Mix Forest
C = Cedar	L = Lowland Brush	Q = Mixed Swamp Conifer	V = Bog or Marsh
D = Treed Bog	LM = Lowland Mix Forest	R = Red Pine	W = White Pine
E = Swamp Hardwoods	M = Maple, Beech, Birch	S = Black Spruce	X = Non Stocked
F = Spruce/Fir	MC = Mixed Conifer	T = Tamarack	Y = Sand
G = Grass	MD = Mixed Deciduous	Z = Water	
H = Hemlock	N = Marsh		

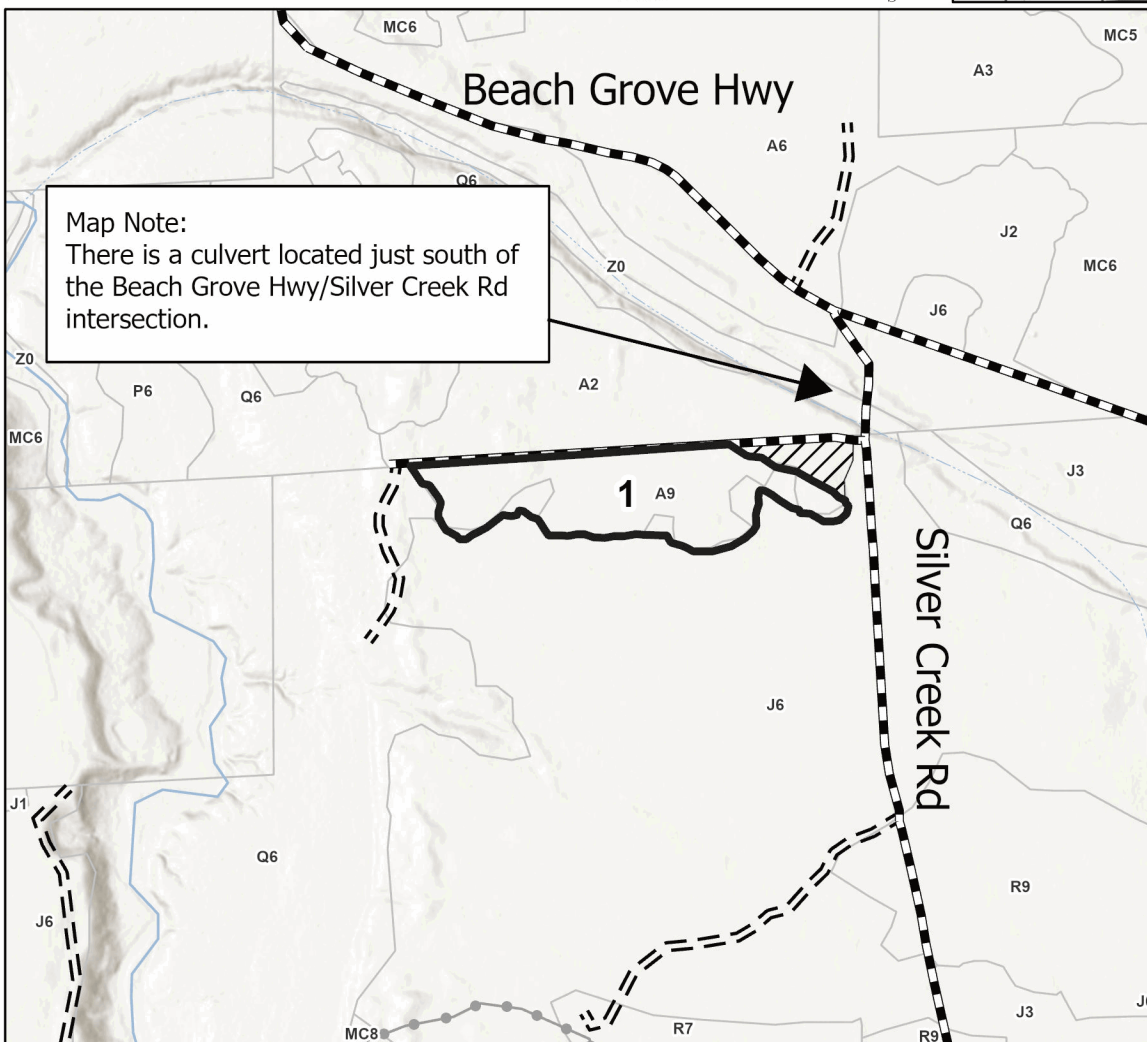
Density	
0 = Non Stocked	5 = Pole Timber Medium
1 = Seedling Sapling Poor	6 = Pole Timber Well
2 = Seedling Sapling Medium	7 = Saw Timber Poor
3 = Seedling Sapling Well	8 = Saw Timber Medium
4 = Pole Timber Poor	9 = Saw Timber Well

Locator Map (1:125,000)



PU #	Acres
1	12.6
2	35.8
3	27.9

Antlerless Aspen
76.3 Acres
Compartment 148



Map Note:
 There is a culvert located just south of the Beach Grove Hwy/Silver Creek Rd intersection.

Legend

- Sale Boundary (Red)
- Stand
- Retention Areas (Red X's)
- Recreational Trail
- Intermittent Stream
- Perennial River
- Primary Forest Road
- Forest Access Route
- Administrative Access Only
- Paved Road
- Government Gravel/Dirt
- Private Gravel/Dirt

Use QR Code to open Map in App



TIMBER SALE MAP

This information provided by authority of Part 525, 1994 PA 451, as amended.

Sale Number	Date	
54-025-24	09/23/2024	
Scale	Page	Of
1:15,840	2	2

Forest Management Unit	County	Mapped By: T.Kubitskey
Atlanta Mgt Unit	Presque Isle	Cruised By: T. Kubitskey

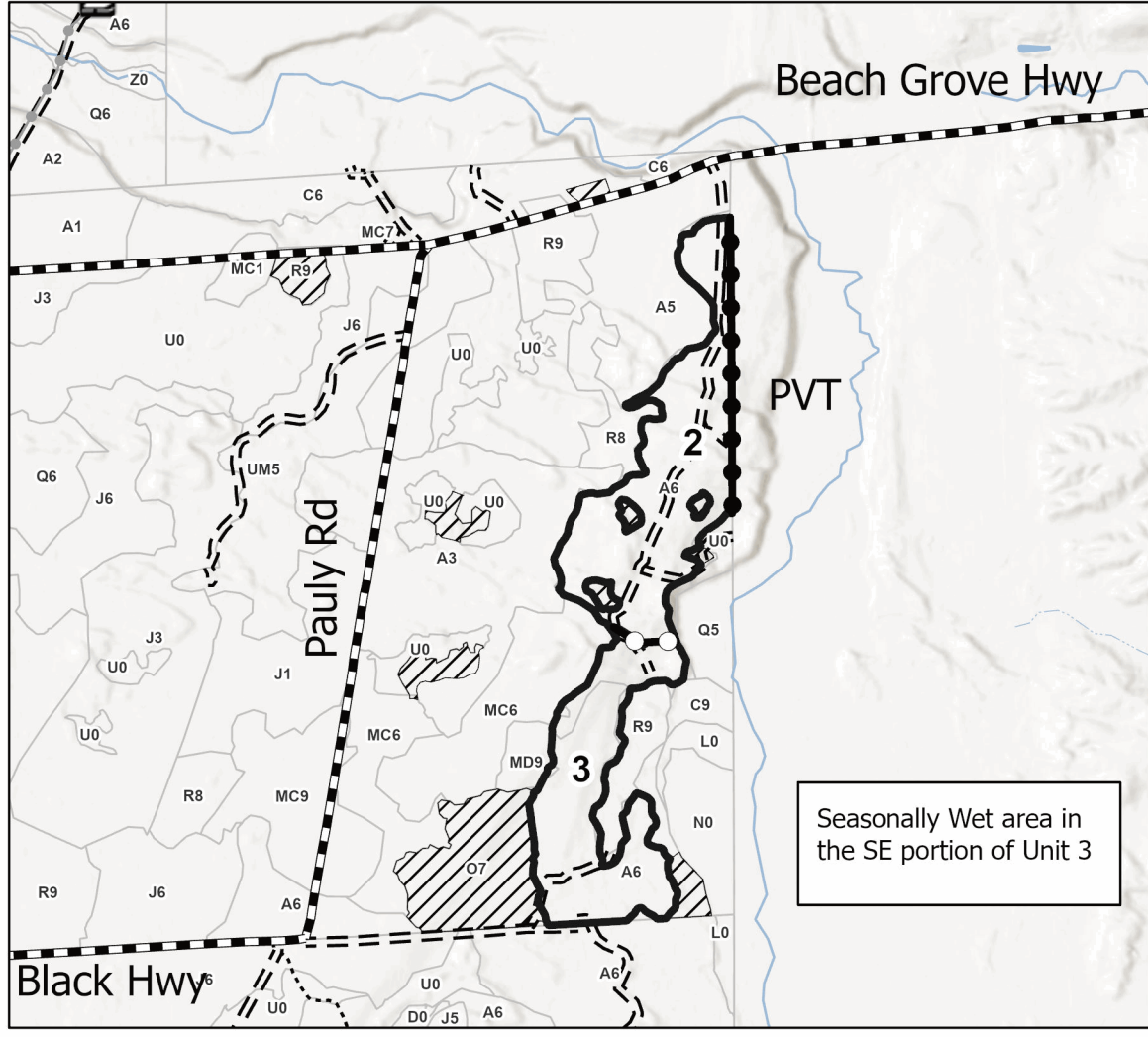
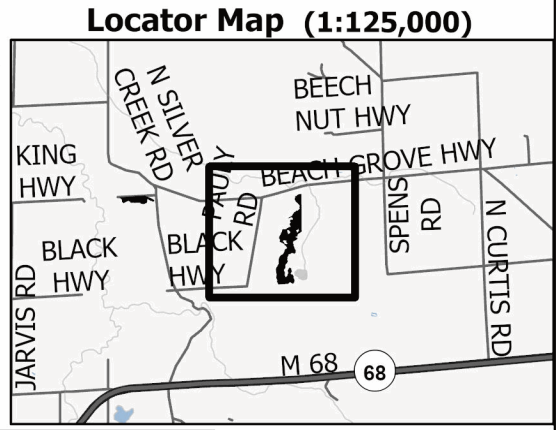
Township	Range	Section(s) and Subdivision(s)
35N	03E	Sec. 13 E1/2NE,NESE,S1/2SE; Sec. 14 N1/2NW;

Cover Type			
A = Aspen	J = Jack Pine	O = Oak	U = Upland Brush
B = Paper Birch	K = Rock	P = Lowland Poplar	UM = Upland Mix Forest
C = Cedar	L = Lowland Brush	Q = Mixed Swamp Conifer	V = Bog or Marsh
D = Treed Bog	LM = Lowland Mix Forest	R = Red Pine	W = White Pine
E = Swamp Hardwoods	M = Maple, Beech, Birch	S = Black Spruce	X = Non Stocked
F = Spruce/Fir	MC = Mixed Conifer	T = Tamarack	Y = Sand
G = Grass	MD = Mixed Deciduous	Z = Water	
H = Hemlock	N = Marsh		

Density	
0 = Non Stocked	5 = Pole Timber Medium
1 = Seedling Sapling Poor	6 = Pole Timber Well
2 = Seedling Sapling Medium	7 = Saw Timber Poor
3 = Seedling Sapling Well	8 = Saw Timber Medium
4 = Pole Timber Poor	9 = Saw Timber Well

PU #	Acres
1	12.6
2	35.8
3	27.9

Antlerless Aspen
76.3 Acres
Compartment 148



- Legend**
- Sale Boundary (Red)
 - Payment Unit (Yellow)
 - Private Line (Blue)
 - Stand
 - Retention Areas (Red X's)
 - Recreational Trail
 - Intermittent Stream
 - Perennial River
 - Primary Forest Road
 - Forest Access Route
 - Administrative Access Only
 - Paved Road
 - Government Gravel/Dirt
 - Private Gravel/Dirt

Seasonally Wet area in the SE portion of Unit 3

Use QR Code to open Map in App



TIMBER SALE INFORMATION

Ranch Mix (54-027-24)

T33N, R02E, SEC. 29; T33N, R02E, SEC. 31; T33N, R02E, SEC. 32.
Presque Isle County (Advertised Price \$100,233.35)

SALE NOTE: There is an oak wilt restriction on Payment Units 1-5. Refer to sale spec 5.2.3.5 for details. The Michigan Cross-Country Cycle Trail runs throughout the Sale Area. Refer to sale spec 5.2.39 for details.

A recreation site such as a trail, pathway, or campground is within the sale area or the vicinity. Certain restrictions/specifications may be applicable including time restrictions.

A timber sale contract for this lump sum, sealed bid timber sale will be awarded to the responsible bidder offering the highest sealed bid price. All units of volume listed below were estimated using the Inventory Manager computer program and the new Michigan taper model. Bids must be at or above the following advertised price for each product and species:

<u>PRODUCTS & SPECIES</u>	<u>ESTIMATED UNITS*</u>		<u>ADVERTISED PRICE</u>
Sawtimber			
Black/Red (Hybrid) Oak	113.6	MBF	\$ 107.00 / MBF
Northern Pin Oak	13.4	MBF	\$ 107.00 / MBF
Red Maple	2.9	MBF	\$ 59.00 / MBF
Red Pine	50.1	MBF	\$ 120.00 / MBF
White Oak	32.5	MBF	\$ 78.00 / MBF
White Pine	21.3	MBF	\$ 97.00 / MBF
Pulpwood			
Jack Pine	315	Cords	\$ 11.25 / Cord
Mixed Aspen	923	Cords	\$ 20.60 / Cord
Mixed Oak	1,325	Cords	\$ 26.30 / Cord
Red Maple	235	Cords	\$ 19.70 / Cord
Red Pine	122	Cords	\$ 39.95 / Cord
White Pine	318	Cords	\$ 28.15 / Cord

* The total volume is statistically estimated within plus (+) or minus (-) 13.88 percent. There are an estimated 3,787 cords on this timber sale, plus or minus 526 cords at the 95% confidence level. The estimated units are final and not subject to adjustment. Prospective bidders are urged to examine this timber and to make their own estimates of quantity and quality.

BOND AND PAYMENT SCHEDULE:

1. A bond in the amount of \$5,012.00 to insure faithful performance of the conditions of the contract will be deposited by the successful bidder within 21 days of the sale award.
2. Cutting in any sale or unit without the required advance payment would be considered a trespass.
3. Total payment must be paid in advance or according to the following schedule :
 - (a) Ten percent (10%) of the sale value must be paid within 21 days of the sale award.
 - (b) The 10% down payment will be credited towards the first unit cut.
 - (c) Payment for each of the following units must be made before cutting begins in that unit:

PAYMENT UNIT NUMBER	PERCENT OF TOTAL SALE VALUE
01	16.1%
02	6.2%
03	40.7%
04	33.2%
05	3.8%

4. If no cutting takes place, the 10% down payment will not be refunded.
5. Operations on the contract issued will terminate on 12/31/2027.

SALE STATISTICS

Volumes were calculated in cubic feet using the Michigan taper model. Cubic foot volume includes all wood inside bark for the product indicated. For display purposes, cubic feet were converted to cords and MBF using a simple conversion factor, e.g. 79 cubic feet per cord and 185 cubic feet per MBF. The cubic foot volumes are precise; the cords and MBF volumes are not. Cubic foot volume cannot be directly converted to cords or boards with precision.

SALE VOLUMES

The total estimated sale volume may not equal the sum of the species/products due to the nature of statistical calculations associated with double sampling methodology.

VOLUME			STATISTICAL RANGE IN CORDS	
TOTAL CUBIC FEET	TOTAL CORDS	PERCENT ERROR	MINIMUM	MAXIMUM
299,187	3,787	13.88%	3,262	4,313

VDU VOLUMES

A VDU is a Volume Determination Unit. Volumes and their associated statistics are calculated at the VDU level and summarized to the sale level. There is often a one to one relationship between a VDU and a Payment Unit, but not always, depending on the cruise design. Refer to the VDU TO PAYMENT UNIT table.

	VOLUME			RANGE IN CORDS	
VDU	TOTAL CUBIC FEET	TOTAL CORDS	PERCENT ERROR	MINIMUM	MAXIMUM
23	17,040	216	34.81%	141	291
28	118,773	1,503	28.44%	1,076	1,931
43	54,298	687	23.12%	528	846
50	61,701	781	22.16%	608	954
53	34,606	438	43.56%	247	629
77	12,769	162	39.31%	98	225
TOTAL:	299,187	3,787		2,698	4,876

VDU TO PAYMENT UNIT

When a VDU is associated with more than one Payment Unit (PU), the VDU volumes are assigned to the PU based on acres of the VDU within the PU.

VDU	VDU ACRES	PU	PU ACRES
23	12.8	2	12.8
28	50.3	3	50.3
43	46.7	1	46.7
50	33.2	4	33.2
53	9.6	4	9.6
77	8.6	5	8.6
TOTAL:	161.2		161.2

DESCRIPTION OF TIMBER BY PAYMENT UNIT (PU)

PU	MARKET GROUP	PRODUCT	QUANTITY	UNIT	ACRES	ADVERTISE PRICE
1	Black/Red (Hybrid	Sawtimber	5.5	MBF	46.7	\$16,167.75
	Northern Pin Oak		5.0	MBF		
	Red Pine		10.0	MBF		
	White Pine		3.8	MBF		
	Jack Pine	Pulpwood	177	Cords		
	<i>Jack Pine</i>		177	<i>Cords</i>		
	Mixed Aspen		187	Cords		
	<i>Quaking Aspen</i>		187	<i>Cords</i>		
	Mixed Oak		151	Cords		
	<i>/Red (Hybrid) Oak</i>		7	<i>Cords</i>		
	<i>Northern Pin Oak</i>		144	<i>Cords</i>		
	Red Maple		30	Cords		
	Red Pine		55	Cords		
	White Pine		31	Cords		
2	Black/Red (Hybrid	Sawtimber	18.1	MBF	12.8	\$6,170.40
	Red Maple		1.0	MBF		
	Red Pine		3.1	MBF		
	White Oak		0.7	MBF		
	White Pine		1.5	MBF		
	Jack Pine	Pulpwood	10	Cords		
	<i>Jack Pine</i>	<i>Sawtimber</i>	2.7	<i>MBF</i>		
	<i>Jack Pine</i>	<i>Pulpwood</i>	5	<i>Cords</i>		
	Mixed Aspen		16	Cords		
	<i>Quaking Aspen</i>		16	<i>Cords</i>		
	Mixed Oak		76	Cords		
	<i>/Red (Hybrid) Oak</i>		55	<i>Cords</i>		
	<i>White Oak</i>		21	<i>Cords</i>		
	Red Maple		48	Cords		
	Red Pine		4	Cords		
	White Pine		2	Cords		
3	Black/Red (Hybrid	Sawtimber	65.4	MBF	50.3	\$40,770.70
	Northern Pin Oak		6.3	MBF		
	Red Maple		1.3	MBF		
	Red Pine		3.0	MBF		
	White Oak		11.1	MBF		
	White Pine		8.2	MBF		
	Jack Pine	Pulpwood	23	Cords		
	<i>Jack Pine</i>		23	<i>Cords</i>		
	Mixed Aspen		457	Cords		
	<i>B. T. Aspen</i>		449	<i>Cords</i>		
	<i>Quaking Aspen</i>		8	<i>Cords</i>		
	Mixed Oak		589	Cords		
	<i>/Red (Hybrid) Oak</i>		318	<i>Cords</i>		
	<i>Northern Pin Oak</i>		88	<i>Cords</i>		
	<i>White Oak</i>		183	<i>Cords</i>		
	Red Maple		35	Cords		
	Red Pine		14	Cords		
White Pine		163	Cords			
4	Black/Red (Hybrid	Sawtimber	21.4	MBF	42.8	\$33,319.00
	Northern Pin Oak		2.1	MBF		
	Red Maple		0.6	MBF		
	Red Pine		34.0	MBF		
	White Oak		20.2	MBF		
	White Pine		6.7	MBF		
	Jack Pine	Pulpwood	63	Cords		
	<i>Jack Pine</i>	<i>Sawtimber</i>	3.9	<i>MBF</i>		

DESCRIPTION OF TIMBER BY PAYMENT UNIT (PU), CON'T

PU	MARKET GROUP	PRODUCT	QUANTITY	UNIT	ACRES	ADVERTISE PRICE
4 con't	<i>Jack Pine</i>	<i>Pulpwood</i>	55	<i>Cords</i>		
	Mixed Aspen		263	Cords		
	<i>B. T. Aspen</i>		243	<i>Cords</i>		
	<i>Quaking Aspen</i>		20	<i>Cords</i>		
	Mixed Oak		412	Cords		
	<i>/Red (Hybrid) Oak</i>		145	<i>Cords</i>		
	<i>Northern Pin Oak</i>		79	<i>Cords</i>		
	<i>White Oak</i>		188	<i>Cords</i>		
	Red Maple		114	Cords		
	Red Pine		47	Cords		
	White Pine		120	Cords		
5	Black/Red (Hybrid)	Sawtimber	3.2	MBF	8.6	\$3,805.50
	White Oak		0.5	MBF		
	White Pine		1.1	MBF		
	Jack Pine	Pulpwood	42	Cords		
	<i>Jack Pine</i>		42	<i>Cords</i>		
	Mixed Oak		97	Cords		
	<i>/Red (Hybrid) Oak</i>		94	<i>Cords</i>		
	<i>White Oak</i>		3	<i>Cords</i>		
	Red Maple		8	Cords		
	Red Pine		2	Cords		
	White Pine		2	Cords		
TOTAL:			233.8	MBF		
TOTAL:			3,238	Cords		

Sale Specific Conditions & Requirements

Sale Name: Ranch Mix

Sale Number: 54-027-24 Seq#: 1

1 - Sale Area

1.2 - Boundaries

1.2.1 - Painted boundaries (9/19)

The sale boundary and Payment Unit boundaries are marked and identified by blue, red and yellow paint. Exterior sale boundary lines against private property are marked with blue paint. Exterior sale boundary lines against state are marked with red paint, with the exception of the southern boundary of Payment Unit 4 and the western boundary of Payment Unit 5, which are unpainted and designated by the forest road. Interior Payment Unit boundaries are marked with yellow paint. Retention patches are marked with red paint; no harvesting activities may occur within these areas. The painted boundary line trees are not Included Timber and are to be protected. Yellow painted trees designating an interior Payment Unit boundary are only to be cut when all surrounding Payment Units have been paid.

2 - Timber Specifications

2.1 - Included Timber

2.1.1 - Clearcut unit(s) with unmerchantable trees (6/14)

Within Payment Unit(s) 1-5, cut all trees that are two (2) inches or more at DBH.

2.2 - Utilization

2.2.3 - Stump heights (4/07)

Stump heights within Payment Units 1-4 shall not exceed 6 inches for all trees. This is in order to facilitate planting operations.

2.2.6 - Roundwood operation required (3/21)

The skidding of whole trees or tree segments with limbs attached is prohibited within Payment Units 1-5. All products must be produced as roundwood and forwarded to existing roads or landing areas in final product length.

3 - Payments

3.3 - Pre-measured Sales

3.3.4 - Dividing payment units (7/14)

Payment Unit(s) \$25,000 in value may be divided at the request of the Purchaser and upon approval of the Unit Manager.

Dividing Payment Units is a contract modification which requires a Timber Sale Contract Amendment. There will be only one division per Payment Unit.

3.4 - Damaged Timber

3.4.1 - Damaged timber (7/16)

General Condition and Requirement 3.4 Damaged Timber, defines liquidated damages for undesignated live merchantable trees which are cut or injured. In addition, extreme care should be taken to avoid damage to tree seedlings and saplings.

Within the Sale Area, if more than 50% of the white pine seedlings or saplings (1/4" to 2" DBH) within a specified portion of the Sale Area are damaged, liquidated damages will be assessed at \$300 per acre for all acreage within that specified portion of the Sale Area that was damaged.

4 - Transportation

4.1 - Construction

4.1.3 - Slash and earthen piles (8/04)

Piles or windrows of earth along roads and landings that have been widened or constructed shall be leveled. Slash from road maintenance or construction, including stumps, shall be dispersed throughout the sale, chipped, utilized or otherwise removed from the sale.

4.1.6 - Road construction (4/24)

Construction of new roads or improvements of existing roads shall be done in such a way as to minimize the environmental and visual impacts. Merchantable trees shall be cut and utilized unless otherwise directed. Non-merchantable trees shall be severed and laid flat on the ground. Slash shall be scattered, and not left in windrows and kept a minimum of 10 feet back from the road edge. Stumps shall be set upright, not left on edge, and be moved at least 10 feet away from the road edge. Disturbed soil shall be feathered into the woods and not left in berms or windrows.

4.1.7 - Road closure (10/11)

All new roads built into the sale must be blocked to vehicle traffic upon completion of the sale. Overgrown roads that are reopened shall be considered new roads. These roads must be rendered impassable to cars and trucks. Temporary berms may be required if no sale activity occurs for 30 or more consecutive days. Contact the Sale Administrator for specific details of design and placement.

4.2 - Maintenance

4.2.5 - Two wheel drive condition (2/04)

All existing trail roads on and adjacent to the sale area must be passable by two-wheel drive traffic for the duration of the sale.

5 - Operations

5.1 - Notification

5.1.1 - Pre-sale conference (10/16)

A pre-sale conference on site between the Purchaser and sale administrator is required prior to beginning any operations to determine landing and road locations. The Unit Manager or his/her representative must be contacted at least 5 days in advance to schedule the conference.

5.1.4 - Post-sale conference (10/16)

A post-sale conference on site between the Purchaser and sale administrator is required 5 days prior to the completion of active logging operations to determine clean-up and repair of landings, road edges, and the fulfillment of other contract specifications.

5.2 - Conduct of Operations

5.2.1 - Slash

5.2.1.10 - No slash in openings (5/10)

No brush or logging debris is to be left in the maintained wildlife opening which is indicated by G0 on the Timber Sale Map. Any damage to the opening shall be repaired according to specifications of the Unit Manager or his/her representative.

5.2.2 - Hazard Trees/Snags

5.2.2.1 - Den trees (10/16)

Obvious hollow and/or den trees shall be protected and left standing unless they are a safety hazard.

5.2.3 - Operating Restrictions

5.2.3.5 - Oak wilt restriction (1/18)

Within Payment Units 1-5, unless changed by written agreement, cutting, skidding, hauling within the sale and brushing of access roads to the sale are not permitted during the period of April 15 to July 15. Operations may be allowed if specific steps are taken to prevent damaging uncut oak during the high risk period. Those steps may include completing all road brushing before April 15th and clearing a tree-length buffer along uncut oak cover before April 15th. This is necessary to reduce the spread of oak wilt. For more information, contact the Unit Manager or his/her representative.

5.2.4 - Dead and Down Creation

5.2.4.4 - Dead and down creation, grouse (6/18)

To encourage grouse and other wildlife, in Payment Unit(s) 4, leave one 12-inch or larger log-length (8 ft minimum) piece or whole tree on the ground for every 2 acres, preferably a hardwood species such as oak or maple or if no hardwoods

are present, a pine species (white or red). These trees will be evenly scattered throughout the unit, preferably at least two chains (120 ft) from any roads, two-tracks, or trails open to vehicles.

5.2.32 - Decking/landing restoration (9/13)

All decking and landing areas must have the surface area restored to a condition equal to or better than before. This is to ensure the proper regeneration of the stand. Wood debris, chips and "cookies" from trimmings must be removed or scattered away from landing and loading areas and may not be windrowed on the edge.

5.2.38 - No decking against live trees (2/04)

Cut products may not be decked against unmarked or designated leave trees.

5.2.39 - ORV trail/route protection (4/18)

The Red Bridge to Atlanta is a motorcycle trail or route and is shown on the Timber Sale Map. Do not cut trees or damage posts with orange ORV markers. Trees with orange ORV markers shall be cut off above the markers and at least 5 feet above ground. All stumps within 5 feet of the trail must be cut flush with the ground. Maintain a 20-foot-wide slash, debris, and rut free zone daily using the ORV trail or route as the centerline. Do not run equipment down the Motorcycle trail or route. Skidding across the trail or route may only occur in locations approved by the Sale Administrator.

5.3 - Stream Protection

5.3.1 - Operating near stream (7/04)

No tracked or wheeled vehicles shall be operated within 100 feet of Oxbow Creek. No crossings will be approved.

5.3.2 - Parking equipment near water (10/23)

Within Payment Unit(s) 3 and 4 the parking of or storage of equipment is prohibited within 100 feet of water bodies or ground water supplies. All equipment, when not in use for harvest operations, must be parked a minimum of 100 feet away from water sources (streams, rivers, lakes, ponds, vernal pools, ground water sources) and 50 feet away from slopes leading to water sources and/or riparian areas. This restriction is for preventing unforeseen oil and/or fluid leaks from contaminating water bodies and/or ground water supplies.

5.4 - Soil Protection

5.4.1 - Rutting restriction, general (7/16)

Operations are to cease immediately if equipment and weather conditions result in rutting of roads and/or skid trails which is 12 inches or greater in depth and 50 feet in length. The Unit Manager or his/her representative may restrict hauling and/or skidding if ruts exceed the specified depth. With the Unit Manager or his/her representative's approval, the Purchaser may return to the area when the risk of rutting has decreased.

5.4.2 - Skid trails (2/04)

Skid trails up and down slopes should be avoided. If however this is unavoidable, these trails will be left in a non-erodible condition using water bars, logs, and slash. Placing of slash on these skid trails while logging is ongoing may alleviate need for any further action. At the direction of the sale administrator, seed, fertilizer, and mulch may also be required.

5.8 - Protection of Endangered Species

5.8.5 - Protection of raptor nests (3/13)

All trees with raptor nests will be protected if found during harvesting operations. Notification will be made to the Unit Manager or his/her representative who will notify the Wildlife Biologist so an on-site evaluation and recommendation can be made, if necessary.

6 - Safety and Fire Prevention

6.2 - Signing

6.2.1 - Road posting (10/20)

The Purchaser is responsible for posting and maintaining caution signs on Bear Den Lake Road prior to beginning operations. The road must be posted at appropriate distances from the Sale Area to warn of logging activity and truck traffic. Signs must be removed when harvest operations are suspended or completed. The Purchaser will provide these signs.

6.2.3 - Recreational trail posting (10/20)

The Purchaser is responsible for posting and maintaining caution signs on Red Bridge to Atlanta MCCCT prior to beginning

operations. The trail must be posted at appropriate distances from the Sale Area to warn of logging activity and truck traffic at both ends of the trail. Signs must be removed when harvest operations are suspended or completed. The Purchaser will provide these signs.

TIMBER SALE MAP

This information provided by authority of Part 525, 1994 PA 451, as amended.

Sale Number	Date	
54-027-24	10/10/2024	
Scale	Page	Of
1:20,000	1	1

Forest Management Unit	County	Mapped By: Allison Bundschuh
Atlanta Mgt Unit	Presque Isle	Cruised By: Allison Bundschuh

Township	Range	Section(s) and Subdivision(s)
33N	02E	Sec. 29 S1/2SW; Sec. 31 NENW,S1/2NW,SW,W1/2SE; Sec. 32 N1/2NW,SESW;

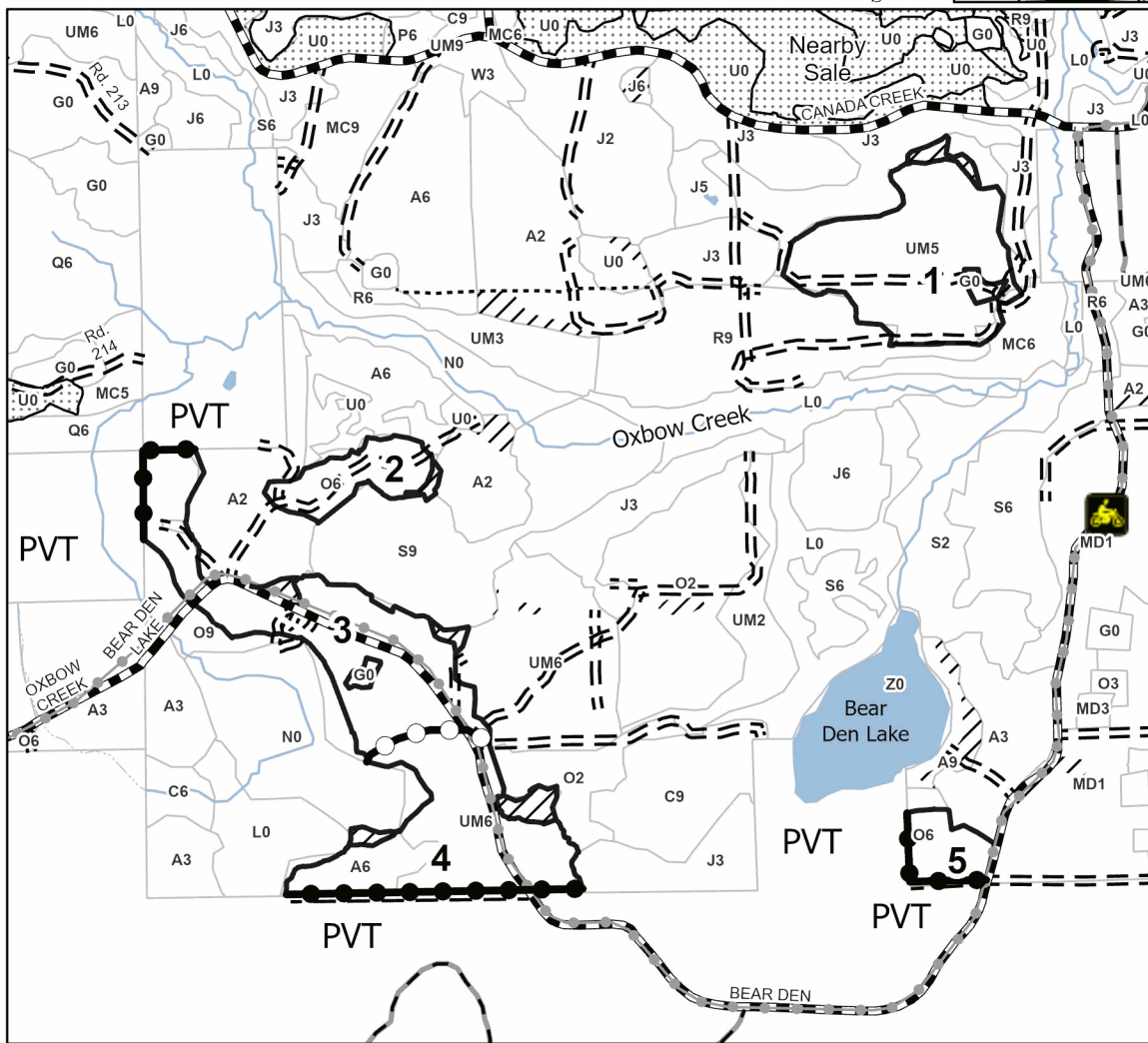
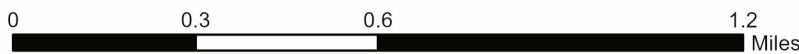
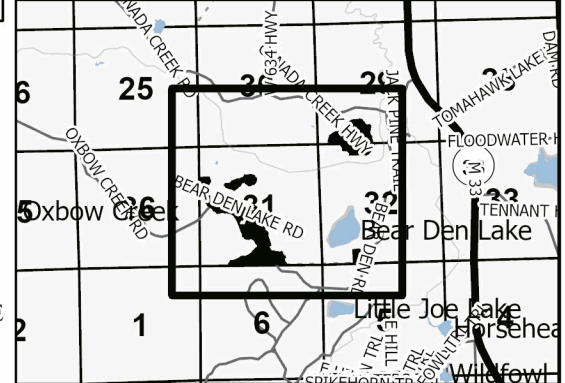
Cover Type			
A = Aspen	J = Jack Pine	O = Oak	U = Upland Brush
B = Paper Birch	K = Rock	P = Lowland Poplar	UM = Upland Mix Forest
C = Cedar	L = Lowland Brush	Q = Mixed Swamp Conifer	V = Bog or Marsh
D = Treed Bog	LM = Lowland Mix Forest	R = Red Pine	W = White Pine
E = Swamp Hardwoods	M = Maple, Beech, Birch	S = Black Spruce	X = Non Stocked
F = Spruce/Fir	MC = Mixed Conifer	T = Tamarack	Y = Sand
G = Grass	MD = Mixed Deciduous	Z = Water	
H = Hemlock	N = Marsh		

Density	
0 = Non Stocked	5 = Pole Timber Medium
1 = Seedling Sapling Poor	6 = Pole Timber Well
2 = Seedling Sapling Medium	7 = Saw Timber Poor
3 = Seedling Sapling Well	8 = Saw Timber Medium
4 = Pole Timber Poor	9 = Saw Timber Well

PU #	Acres
1	46.7
2	12.8
3	50.3
4	42.8
5	8.6

**Ranch Mix
Compartment 122
161.2 Acres**

Locator Map (1:100,000)



Legend

- Sale Boundary-Red Paint
- Against State (Red)
- Payment Unit (Yellow)
- Private Line (Blue)
- Retention Areas
- Nearby Timber Sale
- Stand
- Primary Forest Road
- Forest Access Route
- Administrative Access Only
- Paved Road
- Government Gravel/Dirt
- Private Gravel/Dirt
- Gravel Road
- County Road - Seasonal
- Private Road
- Recreational Trail
- Motorcycle (SOS License)
- Intermittent Stream
- Perennial River

Use QR Code to open Map in App



TIMBER SALE INFORMATION

Bearly Aspen (54-029-24)

T34N, R07E, SEC. 29; T34N, R07E, SEC. 32.

Presque Isle County (Advertised Price \$11,195.90)

SALE NOTE: There are special protection trees in Payment Unit 1. Refer to sale spec 3.4.2 for details.

A timber sale contract for this lump sum, sealed bid timber sale will be awarded to the responsible bidder offering the highest sealed bid price. All units of volume listed below were estimated using the Inventory Manager computer program and the new Michigan taper model. Bids must be at or above the following advertised price for each product and species:

<u>PRODUCTS & SPECIES</u>	<u>ESTIMATED UNITS*</u>	<u>ADVERTISED PRICE</u>
Sawtimber		
Sugar Maple	10.4 MBF	\$ 318.00 / MBF
Pulpwood		
Balsam Fir	12 Cords	\$ 17.20 / Cord
Mixed Aspen	136 Cords	\$ 20.60 / Cord
Mixed Hardwood	129 Cords	\$ 19.70 / Cord
Mixed Spruce	27 Cords	\$ 10.10 / Cord
Paper Birch	115 Cords	\$ 15.50 / Cord
Red Pine	5 Cords	\$ 39.95 / Cord
White Pine	3 Cords	\$ 28.15 / Cord

* The total volume is statistically estimated within plus (+) or minus (-) 26.20 percent. There are an estimated 451 cords on this timber sale, plus or minus 118 cords at the 95% confidence level. The estimated units are final and not subject to adjustment. Prospective bidders are urged to examine this timber and to make their own estimates of quantity and quality.

BOND AND PAYMENT SCHEDULE:

1. A bond in the amount of \$1,000.00 to insure faithful performance of the conditions of the contract will be deposited by the successful bidder within 21 days of the sale award.
2. Cutting in any sale or unit without the required advance payment would be considered a trespass.
3. Total payment must be paid in advance or according to the following schedule :
 - (a) Ten percent (10%) of the sale value must be paid within 21 days of the sale award.
 - (b) The 10% down payment will be credited towards the first unit cut.
 - (c) Payment for each of the following units must be made before cutting begins in that unit:

PAYMENT UNIT NUMBER	PERCENT OF TOTAL SALE VALUE
01	37.0%
02	63.0%
4. If no cutting takes place, the 10% down payment will not be refunded.
5. Operations on the contract issued will terminate on 12/31/2026.

SALE STATISTICS

Volumes were calculated in cubic feet using the Michigan taper model. Cubic foot volume includes all wood inside bark for the product indicated. For display purposes, cubic feet were converted to cords and MBF using a simple conversion factor, e.g. 79 cubic feet per cord and 185 cubic feet per MBF. The cubic foot volumes are precise; the cords and MBF volumes are not. Cubic foot volume cannot be directly converted to cords or boards with precision.

SALE VOLUMES

The total estimated sale volume may not equal the sum of the species/products due to the nature of statistical calculations associated with double sampling methodology.

VOLUME		STATISTICAL RANGE IN CORDS		
TOTAL CUBIC FEET	TOTAL CORDS	PERCENT ERROR	MINIMUM	MAXIMUM
35,616	451	26.20%	333	569

VDU VOLUMES

A VDU is a Volume Determination Unit. Volumes and their associated statistics are calculated at the VDU level and summarized to the sale level. There is often a one to one relationship between a VDU and a Payment Unit, but not always, depending on the cruise design. Refer to the VDU TO PAYMENT UNIT table.

VDU	VOLUME		PERCENT ERROR	RANGE IN CORDS	
	TOTAL CUBIC FEET	TOTAL CORDS		MINIMUM	MAXIMUM
48	10,485	133	46.68%	71	195
71	25,131	318	32.84%	214	423
TOTAL:	35,616	451		284	617

VDU TO PAYMENT UNIT

When a VDU is associated with more than one Payment Unit (PU), the VDU volumes are assigned to the PU based on acres of the VDU within the PU.

VDU	VDU ACRES	PU	PU ACRES
48	8.3	1	8.3
71	20.3	2	20.3
TOTAL:	28.6		28.6

DESCRIPTION OF TIMBER BY PAYMENT UNIT (PU)

PU	MARKET GROUP	PRODUCT	QUANTITY	UNIT	ACRES	ADVERTISE PRICE
1	Sugar Maple	Sawtimber	5.7	MBF	8.3	\$4,138.95
	Mixed Aspen	Pulpwood	23	Cords		
	<i>Quaking Aspen</i>		23	<i>Cords</i>		
	Mixed Hardwood		54	Cords		
	<i>Sugar Maple</i>		54	<i>Cords</i>		
	Paper Birch		38	Cords		
	Red Pine		5	Cords		
	<i>Red Pine</i>	<i>Sawtimber</i>	0.6	<i>MBF</i>		
	<i>Red Pine</i>	<i>Pulpwood</i>	4	<i>Cords</i>		
	2	Sugar Maple	Sawtimber	4.7		
Balsam Fir		Pulpwood	12	Cords		
Mixed Aspen			113	Cords		
<i>B. T. Aspen</i>			22	<i>Cords</i>		
<i>Quaking Aspen</i>			91	<i>Cords</i>		
Mixed Hardwood			75	Cords		
<i>Ironwood</i>			18	<i>Cords</i>		
<i>Sugar Maple</i>			57	<i>Cords</i>		
Mixed Spruce			27	Cords		
<i>Black Spruce</i>			11	<i>Cords</i>		
<i>White Spruce</i>			16	<i>Cords</i>		
Paper Birch			77	Cords		
White Pine			3	Cords		
<i>White Pine</i>		<i>Sawtimber</i>	1.2	<i>MBF</i>		
<i>White Pine</i>		<i>Pulpwood</i>	1	<i>Cords</i>		
TOTAL:			10.4	MBF		
TOTAL:			427	Cords		

Sale Specific Conditions & Requirements

Sale Name: Bearly Aspen

Sale Number: 54-029-24 Seq#: 1

1 - Sale Area

1.2 - Boundaries

1.2.1 - Painted boundaries (9/19)

The sale boundary and Payment Unit boundaries are marked and identified by blue and red paint. Exterior sale boundary lines against private property are marked with blue paint. Exterior sale boundary lines against state are marked with red paint. Retention patches are marked with red paint; no harvesting activities may occur within these areas. The painted boundary line trees are not Included Timber and are to be protected.

2 - Timber Specifications

2.1 - Included Timber

2.1.1 - Clearcut unit(s) with unmerchantable trees (6/14)

Within Payment Unit(s) 1 and 2, cut all trees that are 2 inches or more at DBH, except do not cut trees marked with teal paint in Payment Unit 1.

Special protection trees identified in accordance with 3.4.2, within clearcutting unit boundaries, are not Included Timber and are to be protected.

3 - Payments

3.4 - Damaged Timber

3.4.2 - Special Protection Trees (4/14)

The Purchaser shall not cut live or dead special protection trees within cutting units or clearings. Special protection trees are marked with teal paint. If the Purchaser's operations have cut or damaged special protection trees through carelessness, the Purchaser shall pay \$250 as fixed, agreed and liquidated damages for each special protection tree cut or damaged. Such payment does not constitute ownership of the undesignated timber.

4 - Transportation

4.1 - Construction

4.1.3 - Slash and earthen piles (8/04)

Piles or windrows of earth along roads and landings that have been widened or constructed shall be leveled. Slash from road maintenance or construction, including stumps, shall be dispersed throughout the sale, chipped, utilized or otherwise removed from the sale.

4.1.6 - Road construction (4/24)

Construction of new roads or improvements of existing roads shall be done in such a way as to minimize the environmental and visual impacts. Merchantable trees shall be cut and utilized unless otherwise directed. Non-merchantable trees shall be severed and laid flat on the ground. Slash shall be scattered, and not left in windrows and kept a minimum of 10 feet back from the road edge. Stumps shall be set upright, not left on edge, and be moved at least 10 feet away from the road edge. Disturbed soil shall be feathered into the woods and not left in berms or windrows.

4.1.7 - Road closure (10/11)

All new roads built into the sale must be blocked to vehicle traffic upon completion of the sale. Overgrown roads that are reopened shall be considered new roads. These roads must be rendered impassable to cars and trucks. All stumps from road building and landing construction must be reserved to block any newly constructed roads upon completion of the sale. These stumps must be scattered along the road system to prohibit vehicular movement. Temporary berms may be required if no sale activity occurs for 30 or more consecutive days. Contact the Sale Administrator for specific details of design and placement.

4.2 - Maintenance

4.2.5 - Two wheel drive condition (2/04)

All existing trail roads on and adjacent to the sale area must be passable by two-wheel drive traffic for the duration of the sale.

5 - Operations

5.1 - Notification

5.1.1 - Pre-sale conference (10/16)

A pre-sale conference on site between the Purchaser and sale administrator is required prior to beginning any operations to determine landing and road locations. The Unit Manager or his/her representative must be contacted at least 5 days in advance to schedule the conference.

5.1.4 - Post-sale conference (10/16)

A post-sale conference on site between the Purchaser and sale administrator is required 5 days prior to the completion of active logging operations to determine clean-up and repair of landings, road edges, and the fulfillment of other contract specifications.

5.2 - Conduct of Operations

5.2.2 - Hazard Trees/Snags

5.2.2.1 - Den trees (10/16)

Obvious hollow and/or den trees shall be protected and left standing unless they are a safety hazard.

5.2.3 - Operating Restrictions

5.2.3.11 - Coppice regeneration protection (4/10)

Timber harvesting in Payment Unit 2 must be completed before significant aspen sprouting occurs in that Payment Unit so as to minimize damage to the new regeneration. Any post-harvest operations, such as chipping, must be completed before sprouting of regeneration occurs. If it is anticipated that chipping will be delayed, then tops shall be carried to one central location or left unchipped. The Unit Manager or his/her representative may cease such operations if sprouting occurs before the operation is complete.

5.2.4 - Dead and Down Creation

5.2.4.4 - Dead and down creation, grouse (6/18)

To encourage grouse and other wildlife, in Payment Unit(s) 2, leave one 12-inch diameter or larger log-length (8ft minimum) piece or whole tree on the ground for every two acres, preferably a hardwood species such as oak or maple or if no hardwoods present, a pine species (white or red). These trees will be scattered throughout the unit, preferably at least two chains from any roads, two-tracks, or trails open to vehicles.

5.2.32 - Decking/landing restoration (9/13)

All decking and landing areas must have the surface area restored to a condition equal to or better than before. This is to ensure the proper regeneration of the stand. Wood debris, chips and "cookies" from trimmings must be removed or scattered away from landing and loading areas and may not be windrowed on the edge.

5.2.38 - No decking against live trees (2/04)

Cut products may not be decked against unmarked or designated leave trees.

5.4 - Soil Protection

5.4.1 - Rutting restriction, general (7/16)

Operations are to cease immediately if equipment and weather conditions result in rutting of roads and/or skid trails which is 12 inches or greater in depth and 50 feet in length. The Unit Manager or his/her representative may restrict hauling and/or skidding if ruts exceed the specified depth. With the Unit Manager or his/her representative's approval, the Purchaser may return to the area when the risk of rutting has decreased.

5.8 - Protection of Endangered Species

5.8.5 - Protection of raptor nests (3/13)

All trees with raptor nests will be protected if found during harvesting operations. Notification will be made to the Unit Manager or his/her representative who will notify the Wildlife Biologist so an on-site evaluation and recommendation can be

made, if necessary.

6 - Safety and Fire Prevention

6.2 - Signing

6.2.1 - Road posting (10/20)

The Purchaser is responsible for posting and maintaining caution signs on Miller Road prior to beginning operations. The road must be posted at appropriate distances from the Sale Area to warn of logging activity and truck traffic. Signs must be removed when harvest operations are suspended or completed. The Purchaser will provide these signs.

TIMBER SALE MAP

This information provided by authority of Part 525, 1994 PA 451, as amended.

Sale Number

54-029-24

Date

09/20/2024

Forest Management Unit	County	Mapped By: Allison Bundschuh
Atlanta Mgt Unit	Presque Isle	Cruised By: Allison Bundschuh

Scale	Page	Of
1:10,000	1	2

Township	Range	Section(s) and Subdivision(s)
34N	07E	Sec. 29 SENW,NESW,NWSE; Sec. 32 W1/2NE;

Cover Type

A = Aspen	J = Jack Pine	O = Oak	U = Upland Brush
B = Paper Birch	K = Rock	P = Lowland Poplar	UM = Upland Mix Forest
C = Cedar	L = Lowland Brush	Q = Mixed Swamp Conifer	V = Bog or Marsh
D = Treed Bog	LM = Lowland Mix Forest	R = Red Pine	W = White Pine
E = Swamp Hardwoods	M = Maple, Beech, Birch	S = Black Spruce	X = Non Stocked
F = Spruce/Fir	MC = Mixed Conifer	T = Tamarack	Y = Sand
G = Grass	MD = Mixed Deciduous	Z = Water	
H = Hemlock	N = Marsh		

Density

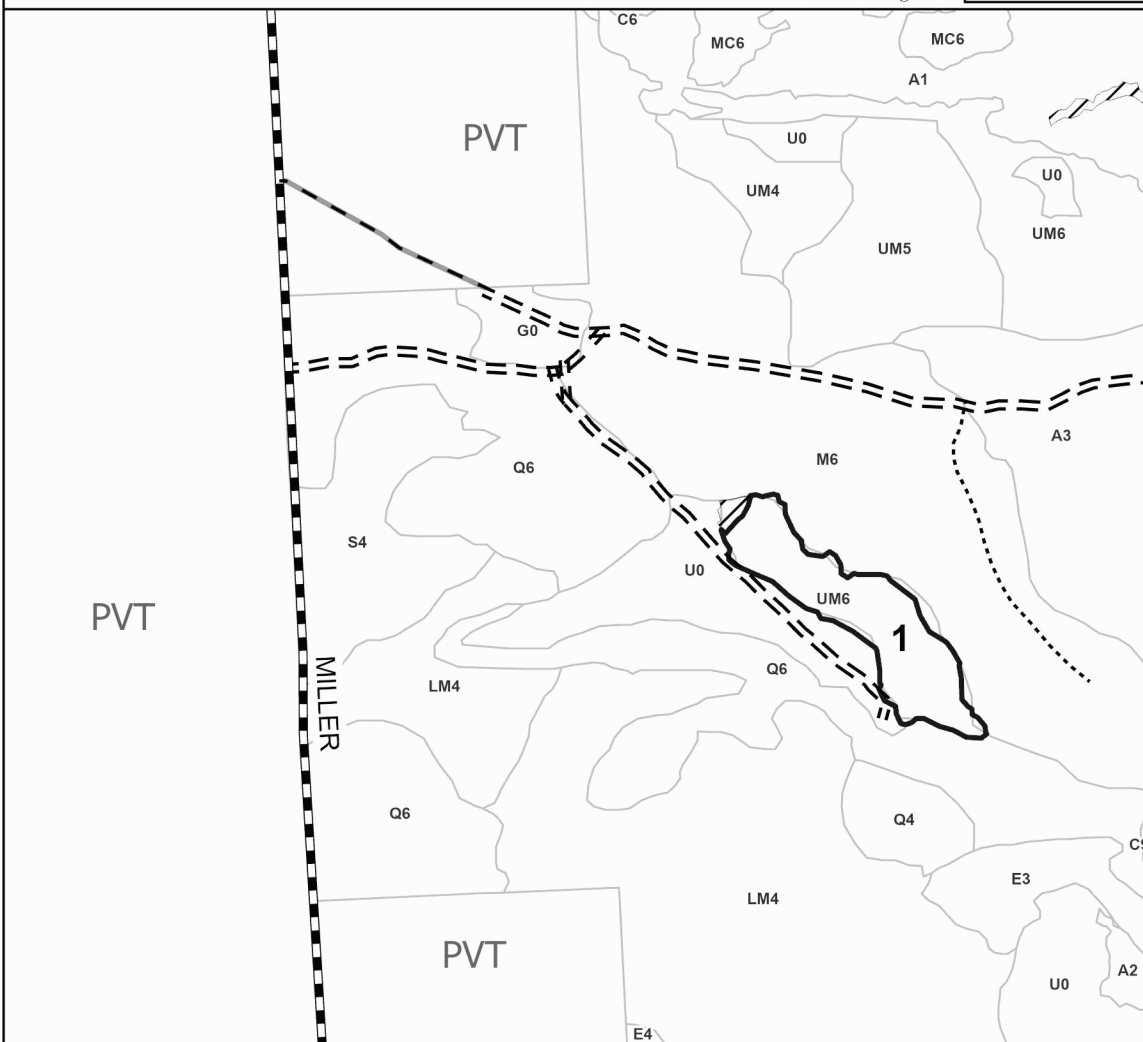
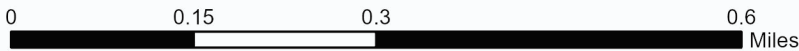
0 = Non Stocked	5 = Pole Timber Medium
1 = Seedling Sapling Poor	6 = Pole Timber Well
2 = Seedling Sapling Medium	7 = Saw Timber Poor
3 = Seedling Sapling Well	8 = Saw Timber Medium
4 = Pole Timber Poor	9 = Saw Timber Well

Locator Map (1:100,000)



PU #	Acres
1	8.3
2	20.3

Bearly Aspen
28.6 Acres



Legend

- Sale Boundary-Red
- Stand
- Retention Areas
- Primary Forest Road
- Forest Access Route
- Administrative Access Only
- Paved Road
- Government Gravel/Dirt
- Private Gravel/Dirt

Use QR Code to open Map in App



TIMBER SALE MAP

This information provided by authority of Part 525, 1994 PA 451, as amended.

Sale Number	Date
54-029-24	09/20/2024

Forest Management Unit	County	Mapped By: Allison Bundschuh	Scale	Page	Of
Atlanta Mgt Unit	Presque Isle	Cruised By: Allison Bundschuh	1:10,000	2	2

Township	Range	Section(s) and Subdivision(s)
34N	07E	Sec. 29 SENW,NESW,NWSE; Sec. 32 W1/2NE;

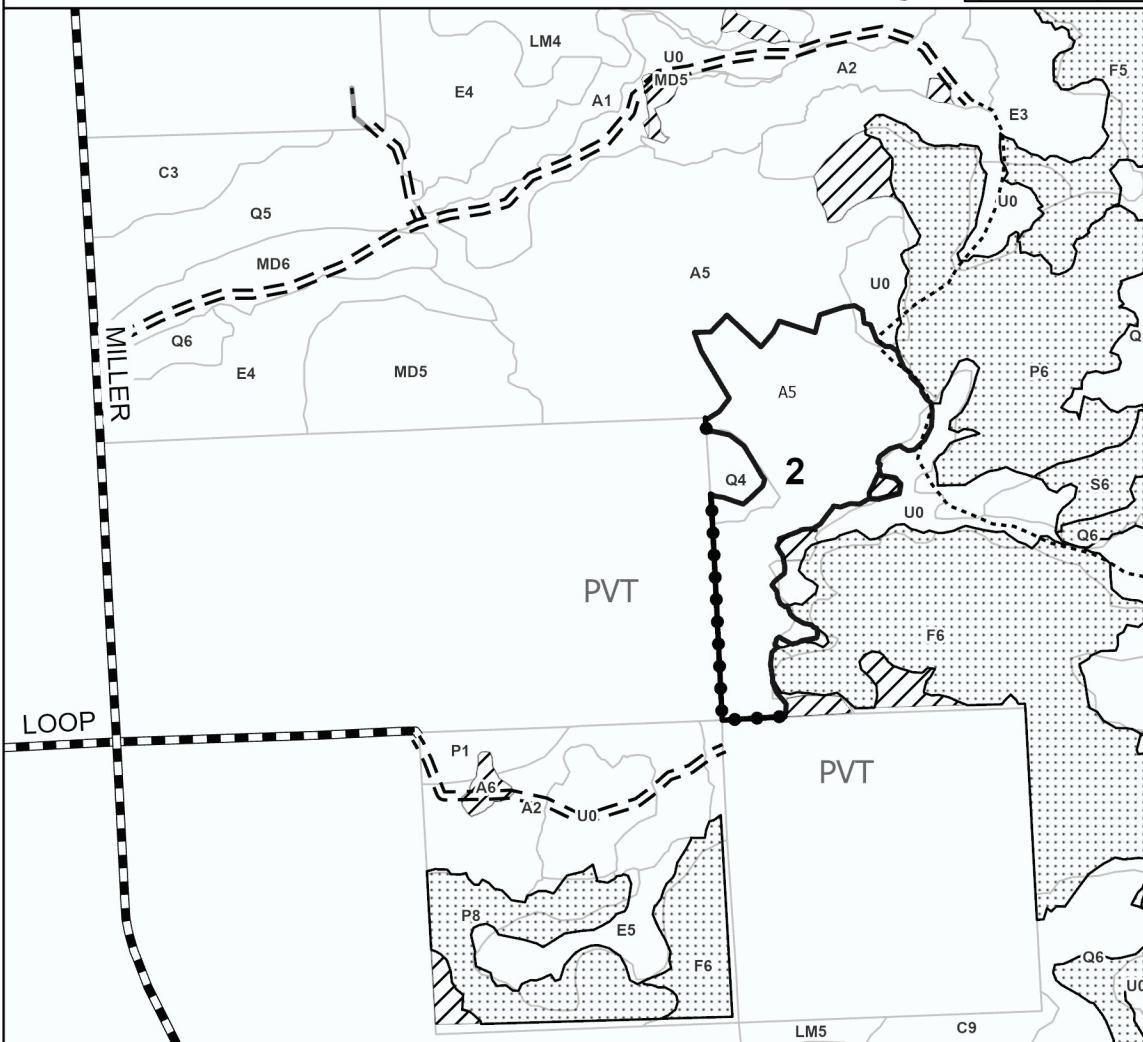
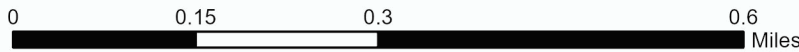
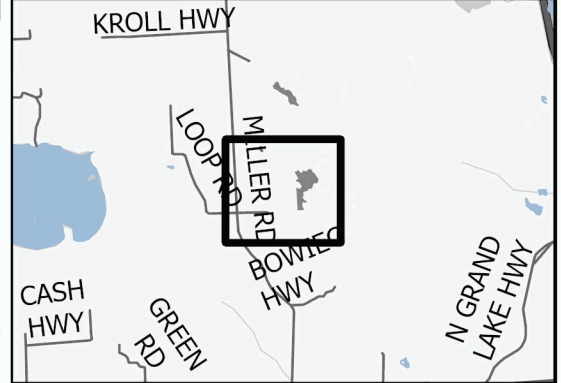
Cover Type			
A = Aspen	J = Jack Pine	O = Oak	U = Upland Brush
B = Paper Birch	K = Rock	P = Lowland Poplar	UM = Upland Mix Forest
C = Cedar	L = Lowland Brush	Q = Mixed Swamp Conifer	V = Bog or Marsh
D = Treed Bog	LM = Lowland Mix Forest	R = Red Pine	W = White Pine
E = Swamp Hardwoods	M = Maple, Beech, Birch	S = Black Spruce	X = Non Stocked
F = Spruce/Fir	MC = Mixed Conifer	T = Tamarack	Y = Sand
G = Grass	MD = Mixed Deciduous	Z = Water	
H = Hemlock	N = Marsh		

Density	
0 = Non Stocked	5 = Pole Timber Medium
1 = Seedling Sapling Poor	6 = Pole Timber Well
2 = Seedling Sapling Medium	7 = Saw Timber Poor
3 = Seedling Sapling Well	8 = Saw Timber Medium
4 = Pole Timber Poor	9 = Saw Timber Well

PU #	Acres
1	8.3
2	20.3

Bearly Aspen
28.6 Acres

Locator Map (1:100,000)



Legend

- Sale Boundary-Red
- Nearby Timber Sale
- Stand
- Retention Areas
- Private Line (Blue)
- Primary Forest Road
- Forest Access Route
- Administrative Access Only
- Paved Road
- Government Gravel/Dirt
- Private Gravel/Dirt

Use QR Code to open Map in App



Antlerless Aspen (54-025-24)
T35N, R03E, SEC. 13; T35N, R03E, SEC. 14; Presque Isle COUNTY

In response to the notice of sale to be held 10:00 a.m. (local time) on December 17, 2024, I am hereby submitting my sealed bid (firm offer) for the following forest products to be cut. Bids for individual species must be at or above the advertised price. All non-responsive bid forms may be rejected.

<u>PRODUCTS & SPECIES</u>	<u>ESTIMATED VOLUME*</u>	<u>ADVERTISED PRICE</u>	<u>BID PRICE/UNIT</u>
Sawtimber			
Red Maple	4.3 MBF	\$ 59.00/MBF	\$ _____
Red Oak	18.2 MBF	\$ 183.00/MBF	\$ _____
Red Pine	66.8 MBF	\$ 120.00/MBF	\$ _____
White Pine	15.3 MBF	\$ 97.00/MBF	\$ _____
Pulpwood			
Balsam Fir	43 Cords	\$ 17.20/Cord	\$ _____
Jack Pine	80 Cords	\$ 11.25/Cord	\$ _____
Mixed Aspen	1,337 Cords	\$ 20.60/Cord	\$ _____
Red Maple	105 Cords	\$ 19.70/Cord	\$ _____
Red Oak	293 Cords	\$ 26.30/Cord	\$ _____
Red Pine	59 Cords	\$ 39.95/Cord	\$ _____
White Pine	37 Cords	\$ 28.15/Cord	\$ _____

*The volumes are statistically estimated within plus (+) or minus (-) 19.80 percent at 95% confidence level. These estimated volumes are final and not subject to adjustment. Prospective bidders are urged to examine this timber and to make their own estimates of quantity and quality.

I understand that any or all bids may be rejected. All bids must be signed and all bid items must be bid or the bid form may be rejected. I also understand that consideration and awarding a contract will be based upon my past performance and ability to complete the contract based upon equipment and staffing subject to my control.

FEDERAL ID: _____ - _____ or SOCIAL SECURITY NUMBER: _____ - _____ - _____

Company or individual bidding: _____

Company representative's name: _____

Address: _____

City: _____ State: _____ Zip: _____

IF AVAILABLE, PLEASE PLACE THE PERSONALIZED LABEL FROM YOUR PROSPECTUS IN THE ABOVE BOX.

Individual or company representative's signature: _____ Date: _____

Phone number : _____ Email (optional): _____

THE WINNING BIDDER MUST COMPLETE THE VERIFICATION OF WORKER'S DISABILITY COMPENSATION ACT COMPLIANCE (ON REVERSE SIDE IF DOUBLE SIDED) WITHIN 21 DAYS OF SALE AWARD DATE



FOR DEPARTMENT USE ONLY
Sale Number (XX - XXX - XX - XX)
Forest Management Unit:

TIMBER SALE VERIFICATION OF WORKER'S DISABILITY COMPENSATION ACT COMPLIANCE

*As required by Act 317, P.A. 1969 (Worker's Compensation) and
Part 5 of Act 451 of 1994, as amended.*

VERIFICATION OF WORKER'S DISABILITY COMPENSATION ACT COMPLIANCE

- This verification must be completed and submitted within 21 days of contract award and prior to the issuance of the timber sale contract.
- In addition, if boxes 2B or 2C are checked, then Notice of Exclusion or Certificate of Insurance must be submitted within twenty-one (21) days of the contract award and prior to the issuance of the timber sale contract.
- All information must be typed or printed except for written signatures.

Please Check Appropriate Categories:

1. My business is organized as (you **must** check one of the boxes below):
 - A. Sole Proprietorship (individual)
 - B. Partnership
 - C. Corporation

2. You **must** check one of the boxes below:
 - A. I certify my business is a sole proprietorship and it has no employees but the sole proprietor. I am not subject to the Worker's Compensation Laws.
 - B. I certify my business has satisfied its obligation to the Worker's Compensation Act through the use of an approved Notice of Exclusion (BWC-337, Rev. 5/96). I will provide a copy of the Notice of Exclusion within 21 days of the contract award. (For questions or a copy of the BWC-337, please call the Worker's Compensation Bureau at 517-322-1195).
 - C. I certify my business has a Worker's Compensation Policy. I will provide an original Certificate of Insurance within twenty-one (21) days of the contract award.

3. If you have checked item 2(A) or 2(B), you **must** indicate the number of **both** full-time and part-time employees, other than yourself, including family members and active partners (if none, you must enter "0").

_____ Full-time Employees

_____ Part-time Employees

Name of Business		Federal ID (or) Social Security No.	
Address		Telephone ()	
City	State	ZIP	

I hereby certify that the above information is true and correct. I agree to notify the Michigan DNR of any changes that occur in factors affecting my coverage during any of my present and future operations.

Signature of Owner or Authorized Representative

Title

Date

Please complete the "SEALED BID" information on the next page

Ranch Mix (54-027-24)

T33N, R02E, SEC. 29; T33N, R02E, SEC. 31; T33N, R02E, SEC. 32; Presque Isle

In response to the notice of sale to be held 10:00 a.m. (local time) on December 17, 2024, I am hereby submitting my sealed bid (firm offer) for the following forest products to be cut. Bids for individual species must be at or above the advertised price. All non-responsive bid forms may be rejected.

<u>PRODUCTS & SPECIES</u>	<u>ESTIMATED VOLUME*</u>	<u>ADVERTISED PRICE</u>	<u>BID PRICE/UNIT</u>
Sawtimber			
Black/Red (Hybrid) Oak	113.6 MBF	\$ 107.00/MBF	\$ _____
Northern Pin Oak	13.4 MBF	\$ 107.00/MBF	\$ _____
Red Maple	2.9 MBF	\$ 59.00/MBF	\$ _____
Red Pine	50.1 MBF	\$ 120.00/MBF	\$ _____
White Oak	32.5 MBF	\$ 78.00/MBF	\$ _____
White Pine	21.3 MBF	\$ 97.00/MBF	\$ _____
Pulpwood			
Jack Pine	315 Cords	\$ 11.25/Cord	\$ _____
Mixed Aspen	923 Cords	\$ 20.60/Cord	\$ _____
Mixed Oak	1,325 Cords	\$ 26.30/Cord	\$ _____
Red Maple	235 Cords	\$ 19.70/Cord	\$ _____
Red Pine	122 Cords	\$ 39.95/Cord	\$ _____
White Pine	318 Cords	\$ 28.15/Cord	\$ _____

*The volumes are statistically estimated within plus (+) or minus (-) 13.88 percent at 95% confidence level. These estimated volumes are final and not subject to adjustment. Prospective bidders are urged to examine this timber and to make their own estimates of quantity and quality.

I understand that any or all bids may be rejected. All bids must be signed and all bid items must be bid or the bid form may be rejected. I also understand that consideration and awarding a contract will be based upon my past performance and ability to complete the contract based upon equipment and staffing subject to my control.

FEDERAL ID: ____ - ____ - ____ or SOCIAL SECURITY NUMBER: ____ - ____ - ____

Company or individual bidding: _____

Company representative's name: _____

Address: _____

City: _____ State: _____ Zip: _____

IF AVAILABLE, PLEASE PLACE THE PERSONALIZED LABEL FROM YOUR PROSPECTUS IN THE ABOVE BOX.

Individual or company representative's signature: _____ Date: _____

Phone number : _____ Email (optional): _____

THE WINNING BIDDER MUST COMPLETE THE VERIFICATION OF WORKER'S DISABILITY COMPENSATION ACT COMPLIANCE (ON REVERSE SIDE IF DOUBLE SIDED) WITHIN 21 DAYS OF SALE AWARD DATE



FOR DEPARTMENT USE ONLY
Sale Number (XX - XXX - XX - XX)
Forest Management Unit:

TIMBER SALE VERIFICATION OF WORKER'S DISABILITY COMPENSATION ACT COMPLIANCE

*As required by Act 317, P.A. 1969 (Worker's Compensation) and
Part 5 of Act 451 of 1994, as amended.*

VERIFICATION OF WORKER'S DISABILITY COMPENSATION ACT COMPLIANCE

- This verification must be completed and submitted within 21 days of contract award and prior to the issuance of the timber sale contract.
- In addition, if boxes 2B or 2C are checked, then Notice of Exclusion or Certificate of Insurance must be submitted within twenty-one (21) days of the contract award and prior to the issuance of the timber sale contract.
- All information must be typed or printed except for written signatures.

Please Check Appropriate Categories:

1. My business is organized as (you **must** check one of the boxes below):
 - A. Sole Proprietorship (individual)
 - B. Partnership
 - C. Corporation
2. You **must** check one of the boxes below:
 - A. I certify my business is a sole proprietorship and it has no employees but the sole proprietor. I am not subject to the Worker's Compensation Laws.
 - B. I certify my business has satisfied its obligation to the Worker's Compensation Act through the use of an approved Notice of Exclusion (BWC-337, Rev. 5/96). I will provide a copy of the Notice of Exclusion within 21 days of the contract award. (For questions or a copy of the BWC-337, please call the Worker's Compensation Bureau at 517-322-1195).
 - C. I certify my business has a Worker's Compensation Policy. I will provide an original Certificate of Insurance within twenty-one (21) days of the contract award.
3. If you have checked item 2(A) or 2(B), you **must** indicate the number of **both** full-time and part-time employees, other than yourself, including family members and active partners (if none, you must enter "0").

_____ Full-time Employees

_____ Part-time Employees

Name of Business		Federal ID (or) Social Security No.	
Address		Telephone ()	
City	State	ZIP	

I hereby certify that the above information is true and correct. I agree to notify the Michigan DNR of any changes that occur in factors affecting my coverage during any of my present and future operations.

Signature of Owner or Authorized Representative

Title

Date

Please complete the "SEALED BID" information on the next page

Bearly Aspen (54-029-24)
T34N, R07E, SEC. 29; T34N, R07E, SEC. 32; Presque Isle COUNTY

In response to the notice of sale to be held 10:00 a.m. (local time) on December 17, 2024, I am hereby submitting my sealed bid (firm offer) for the following forest products to be cut. Bids for individual species must be at or above the advertised price. All non-responsive bid forms may be rejected.

<u>PRODUCTS & SPECIES</u>	<u>ESTIMATED VOLUME*</u>	<u>ADVERTISED PRICE</u>	<u>BID PRICE/UNIT</u>
Sawtimber			
Sugar Maple	10.4 MBF	\$ 318.00/MBF	\$ _____
Pulpwood			
Balsam Fir	12 Cords	\$ 17.20/Cord	\$ _____
Mixed Aspen	136 Cords	\$ 20.60/Cord	\$ _____
Mixed Hardwood	129 Cords	\$ 19.70/Cord	\$ _____
Mixed Spruce	27 Cords	\$ 10.10/Cord	\$ _____
Paper Birch	115 Cords	\$ 15.50/Cord	\$ _____
Red Pine	5 Cords	\$ 39.95/Cord	\$ _____
White Pine	3 Cords	\$ 28.15/Cord	\$ _____

*The volumes are statistically estimated within plus (+) or minus (-) 26.20 percent at 95% confidence level. These estimated volumes are final and not subject to adjustment. Prospective bidders are urged to examine this timber and to make their own estimates of quantity and quality.

I understand that any or all bids may be rejected. All bids must be signed and all bid items must be bid or the bid form may be rejected. I also understand that consideration and awarding a contract will be based upon my past performance and ability to complete the contract based upon equipment and staffing subject to my control.

FEDERAL ID: ____ - ____ - ____ or SOCIAL SECURITY NUMBER: ____ - ____ - ____

Company or individual bidding: _____

Company representative's name: _____

Address: _____

City: _____ State: _____ Zip: _____

IF AVAILABLE, PLEASE PLACE THE PERSONALIZED LABEL FROM YOUR PROSPECTUS IN THE ABOVE BOX.

Individual or company representative's signature: _____ Date: _____

Phone number : _____ Email (optional): _____

THE WINNING BIDDER MUST COMPLETE THE VERIFICATION OF WORKER'S DISABILITY COMPENSATION ACT COMPLIANCE (ON REVERSE SIDE IF DOUBLE SIDED) WITHIN 21 DAYS OF SALE AWARD DATE

92 Problems (54-001-24)
T36N, R01E, SEC. 13; Cheboygan COUNTY

In response to the notice of sale to be held 10:00 a.m. (local time) on December 17, 2024, I am hereby submitting my sealed bid (firm offer) for the following forest products to be cut. Bids for individual species must be at or above the advertised price. All non-responsive bid forms may be rejected.

<u>PRODUCTS & SPECIES</u>	<u>ESTIMATED VOLUME*</u>	<u>ADVERTISED PRICE</u>	<u>BID PRICE/UNIT</u>
Sawtimber			
Black/Red (Hybrid) Oak	62.8 MBF	\$ 107.00/MBF	\$ _____
Red Maple	23.4 MBF	\$ 59.00/MBF	\$ _____
Red Oak	58.8 MBF	\$ 183.00/MBF	\$ _____
Red Pine	218.1 MBF	\$ 120.00/MBF	\$ _____
Pulpwood			
B. T. Aspen	2,644 Cords	\$ 20.60/Cord	\$ _____
Mixed Oak	657 Cords	\$ 26.30/Cord	\$ _____
Red Maple	287 Cords	\$ 19.70/Cord	\$ _____
Red Pine	203 Cords	\$ 39.95/Cord	\$ _____

*The volumes are statistically estimated within plus (+) or minus (-) 14.05 percent at 95% confidence level. These estimated volumes are final and not subject to adjustment. Prospective bidders are urged to examine this timber and to make their own estimates of quantity and quality.

I understand that any or all bids may be rejected. All bids must be signed and all bid items must be bid or the bid form may be rejected. I also understand that consideration and awarding a contract will be based upon my past performance and ability to complete the contract based upon equipment and staffing subject to my control.

FEDERAL ID: ____ - ____ - ____ or SOCIAL SECURITY NUMBER: ____ - ____ - ____

Company or individual bidding: _____

Company representative's name: _____

Address: _____

City: _____ State: _____ Zip: _____

IF AVAILABLE, PLEASE PLACE THE PERSONALIZED LABEL FROM YOUR PROSPECTUS IN THE ABOVE BOX.

Individual or company representative's signature: _____ Date: _____

Phone number : _____ Email (optional): _____

THE WINNING BIDDER MUST COMPLETE THE VERIFICATION OF WORKER'S DISABILITY COMPENSATION ACT COMPLIANCE (ON REVERSE SIDE IF DOUBLE SIDED) WITHIN 21 DAYS OF SALE AWARD DATE



FOR DEPARTMENT USE ONLY
Sale Number (XX - XXX - XX - XX)
Forest Management Unit:

TIMBER SALE VERIFICATION OF WORKER'S DISABILITY COMPENSATION ACT COMPLIANCE

*As required by Act 317, P.A. 1969 (Worker's Compensation) and
Part 5 of Act 451 of 1994, as amended.*

VERIFICATION OF WORKER'S DISABILITY COMPENSATION ACT COMPLIANCE

- This verification must be completed and submitted within 21 days of contract award and prior to the issuance of the timber sale contract.
- In addition, if boxes 2B or 2C are checked, then Notice of Exclusion or Certificate of Insurance must be submitted within twenty-one (21) days of the contract award and prior to the issuance of the timber sale contract.
- All information must be typed or printed except for written signatures.

Please Check Appropriate Categories:

1. My business is organized as (you **must** check one of the boxes below):
 - A. Sole Proprietorship (individual)
 - B. Partnership
 - C. Corporation
2. You **must** check one of the boxes below:
 - A. I certify my business is a sole proprietorship and it has no employees but the sole proprietor. I am not subject to the Worker's Compensation Laws.
 - B. I certify my business has satisfied its obligation to the Worker's Compensation Act through the use of an approved Notice of Exclusion (BWC-337, Rev. 5/96). I will provide a copy of the Notice of Exclusion within 21 days of the contract award. (For questions or a copy of the BWC-337, please call the Worker's Compensation Bureau at 517-322-1195).
 - C. I certify my business has a Worker's Compensation Policy. I will provide an original Certificate of Insurance within twenty-one (21) days of the contract award.
3. If you have checked item 2(A) or 2(B), you **must** indicate the number of **both** full-time and part-time employees, other than yourself, including family members and active partners (if none, you must enter "0").

_____ Full-time Employees

_____ Part-time Employees

Name of Business		Federal ID (or) Social Security No.	
Address		Telephone ()	
City	State	ZIP	

I hereby certify that the above information is true and correct. I agree to notify the Michigan DNR of any changes that occur in factors affecting my coverage during any of my present and future operations.

Signature of Owner or Authorized Representative

Title

Date

Please complete the "SEALED BID" information on the next page