



**DEPARTMENT OF NATURAL RESOURCES
STATE OF MICHIGAN
TIMBER SALE PROSPECTUS #7491**

SCHEDULED SALE DATE AND TIME: 9:00 a.m. (local time) on October 24, 2024.

LOCATION: BARAGA MGMT UNIT, 427 US 41 NORTH, BARAGA, MI 49908.

PROSPECTUS NOTE: The bidder is advised to inspect the sale area and review the location, estimated volumes, operating costs and contract terms of proposed sales. Please be aware that some landowners may request 60 days or more notice for access across their land.

Notice is hereby given that bids will be received by the Unit Manager, BARAGA MANAGEMENT UNIT, for certain timber on the following described lands:

Blind Two Hole (11-013-24) / T52N, R36W, SEC. 25, NW,W1/2NE,N1/2SW.

Houghton County, Advertised Price \$42,814.20, 164.4 Acres, Hardwood, Sugar Maple.

SALE NOTE: Access may be through private or other public land.

GNA2 Cisco North (11-811-24) / T46N, R37W, SEC. 18, NW,NWSW.

T46N, R37W, SEC. 7 , S1/2NW,SW.

T46N, R38W, SEC. 12, S1/2NW,E1/2NE,SE.

T46N, R38W, SEC. 13, NENW,NE,NESE.

Ontonagon County, Advertised Price \$94,600.05, 324.8 Acres, Hardwood, Aspen.

SALE NOTE: A recreation site such as a trail, pathway, or campground is within the sale area or the vicinity. Certain restrictions/specifications may be applicable including time restrictions. Access may be through other public land.

BID INSTRUCTIONS (VER. 10/10/2022):

1. Scheduled Bid Location, Date, and Time (2/11)

Bids must be received by the Unit Manager, BARAGA OFFICE, 427 US 41 North, Baraga, MI 49908, no later than 9:00 a.m. (local time) on October 24, 2024. For further information concerning this sale, contact Brad Carlson at 906-353-6651.

2. Bidder's Qualifications (10/22)

If all or part of a timber sale was prepared by a private contractor, the contractor and that contractor's company are not permitted to bid on the timber sale. A person must be 18 years of age or older to purchase timber. Permanent employees of the Department of Natural Resources or members of their immediate household may not bid. Former employees, in the permanent or seasonal class, may not bid until 3 months after the last day of active duty. Bids will not be accepted from individuals or companies appearing on the DNR/FRD No-Bid List. This list contains the names of purchasers who previously failed to execute a contract within 21-days or who have a history of poor performance.

3. Preparation of Sealed Bids (5/16)

Bid Forms may be completed online thru Michigan DNR Timber Sale Online Bidding (OLB) at www.michigan.gov/timberbidding or by completing the hardcopy Bid Form found in the Timber Sale Prospectus. Hardcopy Bid Forms shall be manually signed in ink. Registration in OLB is considered your 'signature' for all bids submitted thru that system. Bid prices must be entered for each species and product in the Bid Price column for all material subject to bidding and all fill-in blanks must be completed. If erasures or other changes appear on the hardcopy Bid Form, each erasure or change must be initialed by the person signing the bid.

4. Submission of Sealed Bids (5/16)

Bid forms may be obtained from the Unit Manager or thru OLB. Bids may be submitted hardcopy or thru OLB. All hardcopy bids must be submitted on the bid form and in an envelope clearly identified as described in this section. NOTE: Only one bid form per bid envelope. Sealed bids must be submitted to the Unit office designated in the prospectus and must be submitted at or prior to the time established in the prospectus. The envelope should show on the outside (a) the sale name or number and (b) the date and time of bid opening, as shown in the prospectus. Bids received after the time specified in the sale prospectus are late bids and will be rejected.

It is possible for a bidder to submit multiple bids on a single sale. For example, a bid may be submitted hardcopy and a bid may be submitted thru OLB. Or, two bidders from the same company could both submit bids on the same sale. If this were to happen, the State would accept all bids received and award the contract accordingly. All bidding and contractual requirements would apply to all bids received.

5. Public Opening of Sealed Bids (7/16)

If conditions permit, the sealed bids will be publicly opened and posted at the time and place set in the prospectus.

If a bidder, present at a bid opening, has submitted bids on more than one sale, that bidder may withdraw their unopened bid envelopes or announce the withdrawal of their online bid after being declared the successful bidder on one sale.

6. Award of Contract (1/11)

Award of the contract will be made to the Bidder whose bid, conforming to the prospectus, is most advantageous to the State of Michigan on the basis of total value at rates bid for the estimated quantities. The State reserves the right to reject any bid or waive any minor irregularity in bids received. A written award mailed (or otherwise furnished) to the successful Bidder shall be deemed to result in a binding contract without further action by either party.

7. Down Payment (1/11)

The Bidder to whom award is made must make a down payment within 21 days of the sale award. The amount of the down payment will be calculated as shown in the Bond and Payment Schedule of this prospectus. Only cash may be used to meet this requirement.

8. Performance Security (1/11)

As guarantee of faithful performance, a cash bond, certificate of deposit, surety bond or irrevocable letter of credit (LOC) is required within 21 days of the sale award. The amount of the performance security is shown in the Bond and

Payment Schedule of this prospectus. If an LOC or surety is used, the coverage must extend for at least 6 months beyond the contract expiration.

9. Worker's Compensation (10/22)

Purchaser shall obtain worker's compensation insurance to cover claims under Michigan's Worker's Disability Compensation Act of 1969 or similar employee benefit act of any other state applicable to an employee. Verification of Worker's Disability Compensation Act Compliance must be completed and submitted within 21 days of contract award and prior to the issuance of the timber sale contract. In addition, if applicable, Notice of Exclusion or Certificate of Insurance must also be submitted.

10. Timber Sale Contract (10/22)

Additional conditions and requirements common to all timber sales are listed on the timber sale contract (R4031) and are available on line at www.michigan.gov/timber. Contact the Unit Manager for additional information or a sample contract. Within 21 days of the date of the award letter, the bidder must sign the contract and provide the required down payment, performance security, and verification of worker's disability compensation. The down payment and performance security shall be in accordance with the provisions of the timber sale contract, in the sums stated in this prospectus. If these actions are not taken, then the Bidder, the Bidder's corporation, and the corporation's principals may not be permitted to bid on State timber sales for a period of 3 months after the first offense, 6 months after the second offense, and 1 year after the third offense. An offense will only be counted against the Bidder for 5 years. In addition, the Bidder certifies that if awarded this contract, the Bidder will complete the timber sale contract in accordance with its terms and any modifications thereof including requirements to purchase, cut, and remove the included timber by the expiration date.

Payment Unit values in the State Forest Timber Sale Contract are calculated based on the advertised value of the Payment Unit as a percentage of the total advertised value of the contract. The advertised value of each Payment Unit is given in the Description of Timber by Payment Unit table on the Timber Sale Information page. For example, if the value of Payment Unit 1 is advertised as \$1,500 and the total Timber Sale value is advertised as \$10,000, the contract price for Payment Unit 1 will be 15% of the total bid price ($\$1,500/\$10,000 * 100$).

11. Disclaimer of Estimates and Bidder's Warranty of Inspection (10/22)

Before submitting this bid, the Bidder is advised and cautioned to inspect the sale area, review the requirements of the sale contract, and take other steps as may be reasonably necessary to ascertain the location, estimated volumes, construction estimates, and operating costs of the proposed sale. Failure to do so will not relieve the Bidder from responsibility for completing the contract.

The Bidder warrants that this bid is submitted solely on the basis of the Bidder's examination and inspection of the quality and quantity of the timber offered for sale and the Bidder's opinion of the value thereof and the costs of recovery. No reliance should be placed on the State of Michigan's estimates of timber quality, quantity or costs of recovery. Bidder further acknowledges that the State of Michigan: (i) expressly disclaims any warranty of fitness of timber for any purpose; (ii) offers this timber as is without any warranty of quality (merchantability) or quantity and (iii) expressly disclaims any warranty as to the quantity or quality of timber sold.

12. Certification and Chain-of-Custody (10/22)

Unless otherwise indicated in the contract under section 7 – Other Conditions of the Sale Specific Conditions & Requirements, the area encompassed by this timber sale is certified to the standards of the Forest Stewardship Council (FSC) - Certificate #SCS-FM/COC-00090N and the Sustainable Forestry Initiative (SFI) - Certificate #NSF-SFIS-5Y031-SF5. Forest products from this sale may be delivered to the mill as "FSC 100% and / or SFI certified" as long as the contractor hauling the forest products is chain-of-custody (COC) certified or covered under a COC certificate from the destination mill. The purchaser is responsible for maintaining COC after leaving the sale area.

13. Good Neighbor Authority (GNA) Requirements (10/22)

If the name of this timber sales contains the acronym GNA, it is authorized by the Good Neighbor Authority (GNA) and covered by various agreements between the U.S. Forest Service and the State. The timber sale occurs on federal land and the following conditions apply:

GNA contracts on US Forest Service land will not be awarded to purchasers on the Federal list of excluded parties. The System for Award Management (SAM) will be checked for active excluded parties prior to award of contract. In

addition, the Bidder to whom award is made must complete an Assurance Regarding Felony Conviction or Tax Delinquent Status for Corporate Applicants (AD-3031).

14. Good Neighbor Authority (GNA) Requirements, con't (10/22)

Bidder certifies, by signing this bid form, that to the best of Bidder's knowledge that the following representations are accurate and complete.

- a. That the Bidder and its principals are not presently debarred, suspended, proposed for debarment, declared ineligible, or voluntary excluded from timber sales (covered transactions) by any Federal department or agency.
- b. That the Bidder and its principals have not within a 3-year period preceding this bid been convicted of or had a civil judgment rendered against them for commission of fraud or a criminal offense in connection with obtaining , attempting to obtain, or performing a public (Federal, State, or local) transaction or contract under a public transaction; violation of Federal or State antitrust statutes or commission of embezzlement, theft, forgery, bribery, falsification or destruction of records, making false statements, or receiving stolen property.
- c. That the Bidder and its principals are not presently indicted for or otherwise criminally or civilly charged by a governmental entity (Federal, State, or local) with commission of any of the offenses enumerated in paragraph b of this certification.
- d. That the Bidder and its principals have not within a 3-year period preceding this bid had one or more public transactions (Federal, State, or local) terminated for breach or default of a timber or forest product contract.

Bidders that cannot certify this requirement, in whole or in part, shall submit an explanation with their bid.

Scott Bowen
Director

TIMBER SALE INFORMATION

Blind Two Hole (11-013-24)

T52N, R36W, SEC. 25.

Houghton County (Advertised Price \$42,814.20)

SALE NOTE: Access may be through private or other public land.

A timber sale contract for this lump sum, sealed bid timber sale will be awarded to the responsible bidder offering the highest sealed bid price. All units of volume listed below were estimated using the Inventory Manager computer program and the new Michigan taper model. Bids must be at or above the following advertised price for each product and species:

<u>PRODUCTS & SPECIES</u>	<u>ESTIMATED UNITS*</u>	<u>ADVERTISED PRICE</u>
Sawtimber		
Basswood	8.3 MBF	\$ 84.00 / MBF
Black Cherry	2.7 MBF	\$ 37.00 / MBF
Red Maple	45.7 MBF	\$ 124.00 / MBF
Sugar Maple	76.9 MBF	\$ 232.00 / MBF
Yellow Birch	2.2 MBF	\$ 112.00 / MBF
Pulpwood		
Balsam Fir	38 Cords	\$ 5.00 / Cord
Basswood	36 Cords	\$ 6.25 / Cord
Mixed Hardwood	1,333 Cords	\$ 12.40 / Cord
Mixed Spruce	109 Cords	\$ 12.10 / Cord

* The total volume is statistically estimated within plus (+) or minus (-) 11.43 percent. There are an estimated 1,833 cords on this timber sale, plus or minus 210 cords at the 95% confidence level. The estimated units are final and not subject to adjustment. Prospective bidders are urged to examine this timber and to make their own estimates of quantity and quality.

BOND AND PAYMENT SCHEDULE:

1. A bond in the amount of \$4,000.00 to insure faithful performance of the conditions of the contract will be deposited by the successful bidder within 21 days of the sale award.
2. Cutting in any sale or unit without the required advance payment would be considered a trespass.
3. Total payment must be paid in advance or according to the following schedule :
 - (a) Ten percent (10%) of the sale value must be paid within 21 days of the sale award.
 - (b) The 10% down payment will be credited towards the first unit cut.
 - (c) Payment for each of the following units must be made before cutting begins in that unit:

PAYMENT UNIT NUMBER	PERCENT OF TOTAL SALE VALUE
01	18.4%
02	19.1%
03	34.5%
04	28.0%
4. If no cutting takes place, the 10% down payment will not be refunded.
5. Operations on the contract issued will terminate on 06/30/2028.

SALE STATISTICS

Volumes were calculated in cubic feet using the Michigan taper model. Cubic foot volume includes all wood inside bark for the product indicated. For display purposes, cubic feet were converted to cords and MBF using a simple conversion factor, e.g. 79 cubic feet per cord and 185 cubic feet per MBF. The cubic foot volumes are precise; the cords and MBF volumes are not. Cubic foot volume cannot be directly converted to cords or boards with precision.

SALE VOLUMES

The total estimated sale volume may not equal the sum of the species/products due to the nature of statistical calculations associated with double sampling methodology.

VOLUME		STATISTICAL RANGE IN CORDS		
TOTAL CUBIC FEET	TOTAL CORDS	PERCENT ERROR	MINIMUM	MAXIMUM
144,832	1,833	11.43%	1,624	2,043

VDU VOLUMES

A VDU is a Volume Determination Unit. Volumes and their associated statistics are calculated at the VDU level and summarized to the sale level. There is often a one to one relationship between a VDU and a Payment Unit, but not always, depending on the cruise design. Refer to the VDU TO PAYMENT UNIT table.

VDU	VOLUME		PERCENT ERROR	RANGE IN CORDS	
	TOTAL CUBIC FEET	TOTAL CORDS		MINIMUM	MAXIMUM
1	43,362	549	20.51%	436	661
2	101,470	1,284	13.91%	1,106	1,463
TOTAL:	144,832	1,833		1,542	2,125

VDU TO PAYMENT UNIT

When a VDU is associated with more than one Payment Unit (PU), the VDU volumes are assigned to the PU based on acres of the VDU within the PU.

VDU	VDU ACRES	PU	PU ACRES
1	21.2	1	21.2
2	143.2	2	33.5
		3	60.5
		4	49.2
TOTAL:	164.4		164.4

DESCRIPTION OF TIMBER BY PAYMENT UNIT (PU)

PU	MARKET GROUP	PRODUCT	QUANTITY	UNIT	ACRES	ADVERTISE PRICE
1	Red Maple	Sawtimber	9.0	MBF	21.2	\$7,887.20
	Sugar Maple		1.6	MBF		
	Balsam Fir	Pulpwood	11	Cords		
	Mixed Hardwood		459	Cords		
	<i>Black Ash</i>		6	<i>Cords</i>		
	<i>Red Maple</i>		413	<i>Cords</i>		
	<i>Sugar Maple</i>		30	<i>Cords</i>		
	<i>Yellow Birch</i>		10	<i>Cords</i>		
	Mixed Spruce		54	Cords		
	<i>White Spruce</i>		54	<i>Cords</i>		
2	Basswood	Sawtimber	1.9	MBF	33.5	\$8,166.70
	Black Cherry		0.6	MBF		
	Red Maple	8.6	MBF			
	Sugar Maple	17.6	MBF			
	Yellow Birch	0.5	MBF			
	Balsam Fir	Pulpwood	6	Cords		
	Basswood		8	Cords		
	Mixed Hardwood		205	Cords		
	<i>Black Cherry</i>		13	<i>Cords</i>		
	<i>Red Maple</i>		68	<i>Cords</i>		
	<i>Sugar Maple</i>		120	<i>Cords</i>		
	<i>Yellow Birch</i>		4	<i>Cords</i>		
	Mixed Spruce		13	Cords		
	<i>White Spruce</i>	13	<i>Cords</i>			
3	Basswood	Sawtimber	3.5	MBF	60.5	\$14,752.70
	Black Cherry		1.2	MBF		
	Red Maple	15.5	MBF			
	Sugar Maple	31.8	MBF			
	Yellow Birch	0.9	MBF			
	Balsam Fir	Pulpwood	12	Cords		
	Basswood		16	Cords		
	Mixed Hardwood		369	Cords		
	<i>Black Cherry</i>		23	<i>Cords</i>		
	<i>Red Maple</i>		122	<i>Cords</i>		
	<i>Sugar Maple</i>		218	<i>Cords</i>		
	<i>Yellow Birch</i>		6	<i>Cords</i>		
	Mixed Spruce		23	Cords		
	<i>White Spruce</i>	23	<i>Cords</i>			
4	Basswood	Sawtimber	2.9	MBF	49.2	\$12,007.60
	Black Cherry		0.9	MBF		
	Red Maple	12.6	MBF			
	Sugar Maple	25.9	MBF			
	Yellow Birch	0.8	MBF			
	Balsam Fir	Pulpwood	9	Cords		
	Basswood		12	Cords		
	Mixed Hardwood		300	Cords		
	<i>Black Cherry</i>		19	<i>Cords</i>		
	<i>Red Maple</i>		99	<i>Cords</i>		
	<i>Sugar Maple</i>		177	<i>Cords</i>		
	<i>Yellow Birch</i>		5	<i>Cords</i>		
	Mixed Spruce		19	Cords		
	<i>White Spruce</i>	19	<i>Cords</i>			
TOTAL:			135.8	MBF		
TOTAL:			1,516	Cords		

Sale Specific Conditions & Requirements

Sale Name: Blind Two Hole

Sale Number: 11-013-24 Seq#: 1

1 - Sale Area

1.2 - Boundaries

1.2.1 - Painted boundaries (9/19)

The sale boundary and Payment Unit boundaries are marked and identified by blue and yellow paint. Exterior sale boundary lines against private property are marked with blue paint. Exterior sale boundary lines against state are marked with yellow paint. Interior Payment Unit boundaries are marked with yellow paint. The retention patch in Payment Unit 4 is marked with red paint; no harvesting activities may occur within this area. The painted boundary line trees are not Included Timber and are to be protected unless marked with orange paint.

2 - Timber Specifications

2.1 - Included Timber

2.1.2 - Clearcut unit(s) w/o unmerchantable trees (8/11)

Within Payment Unit(s) 1, cut all trees which meet minimum piece specifications in 2.2 Utilization, except do not cut any mixed hardwoods or basswood that are twenty (20) inches or more at DBH, red oak, black cherry, hemlock, cedar, white pine, or red pine (see spec 3.4.1).

2.1.3 - Cut tree marked unit(s) (12/08)

Within Payment Unit(s) 2-4, all trees are designated for cutting when marked with orange paint above and below stump height, regardless of merchantability.

2.2 - Utilization

2.2.3 - Stump heights (4/07)

Stump heights within the Sale Area shall not exceed 12 inches for trees greater than 10 inches at DBH and 4 inches for trees smaller than 10 inches at DBH. A written waiver of this requirement may be obtained if wet summer weather makes winter logging necessary.

2.2.4 - Skidding length (2/14)

Skidding of lengths over 17 feet is permissible as long as the Sale Administrator approves the method and machinery used. If at any point damage exceeds specification 3.4.1, all of the remaining wood must be skid in lengths less than 17 feet.

2.2.7 - Uncut designated trees (2/04)

Liquidated damages of \$10.00 per tree will be assessed for every marked tree not cut.

2.2.8 - Utilization and removal (5/14)

All products meeting standards set forth in General Condition and Requirement 2.2 Utilization must be removed from the Sale Area. This is because excessive woody debris inhibits regeneration.

2.2.11 - Chipping restriction (9/14)

If chipping occurs on this sale, then no woody debris present on the ground at the start of the sale may be chipped. In addition, brush or chips may not be stored or stockpiled on-site for more than 30 days.

3 - Payments

3.4 - Damaged Timber

3.4.1 - Damaged timber (7/16)

General Condition and Requirement 3.4 Damaged Timber, defines liquidated damages for undesignated live merchantable trees which are cut or injured. In addition, extreme care should be taken to avoid damage to tree seedlings and saplings.

No damage is acceptable to undesignated live merchantable trees. Within the Sale Area, if more than 5% of trees (> 4.5" DBH) within a specified area of the sale are damaged, liquidated damages will be assessed for all trees damaged. Rates will be in accordance with General Condition and Requirement 3.4 Damaged Timber.

4 - Transportation

4.1 - Construction

4.1.1 - Stream crossings, general (3/11)

All stream crossing structures will be temporary and therefore, shall be provided by the Purchaser, and must be removed upon completion of the sale. All permits for stream crossings will be provided by the DNR for crossings located on state land.

4.1.3 - Slash and earthen piles (8/04)

Piles or windrows of earth along roads and landings that have been widened or constructed shall be leveled. Slash from road maintenance or construction, including stumps, shall be dispersed throughout the sale, or be chipped, utilized or otherwise removed from the sale.

4.1.4 - Timber removed for construction (3/23)

Trees cut or damaged in the process of pre-approved road, landing or skid trail construction will be decked in an area separate from other Designated Timber and not removed until measured by the sale administrator. Payment will be made at contract prices or average prices, if not on the contract.

4.1.5 - Culverts (5/14)

Roads may require the installation of culverts for cross drainage or at natural drainage-ways. If culverts are needed in these locations, their placement will be specified by the Sale Administrator, and they shall be installed prior to hauling. The culverts shall be new, corrugated metal or plastic gauge. Culverts will be a minimum of 12 inches in diameter and 24 feet in length. If culverts are removed, fill shall be removed from wetland soils as specified. Soils shall be maintained and left in a non-erodible condition, with water bars, seed, fertilizer, mulch, and slash installed as directed by the Sale Administrator and as specified in the BMP manual. Stream crossing permits, if needed, will be obtained by the DNR for crossings located on state land.

4.1.6 - Road construction (1/09)

Construction of new roads or improvements of existing roads shall be done in such a way as to minimize the environmental and visual impacts. Merchantable trees shall be cut and utilized unless otherwise directed. Non-merchantable trees shall be severed and laid flat on the ground. Slash shall be scattered, and not left in windrows and kept a minimum of 10 feet back from the road edge, or be chipped, utilized or otherwise removed from the sale. Stumps shall be set upright, not left on edge, and be moved at least 10 feet away from the road edge. Disturbed soil shall be feathered into the woods and not left in berms or windrows.

4.1.7 - Road closure (10/11)

All new roads built into the sale must be blocked to vehicle traffic upon completion of the sale. Overgrown roads that are reopened shall be considered new roads. In general, this will require constructing a four (4') foot high berm of stumps and logs covered with earth. These roads must be rendered impassable to cars and trucks. Temporary berms may be required if no sale activity occurs for 30 or more consecutive days. Contact the Sale Administrator for specific details of design and placement.

4.2 - Maintenance

4.2.2 - Fill material (4/07)

To maintain roads, fill material may be needed in areas where "holes" exist or may be expected to develop. This fill material should be placed before trucking begins. Contact the Sale Administrator regarding the availability of onsite sand or gravel from adjacent State-owned lands.

4.2.4 - Grading (10/16)

For completion of the sale, state forest roads must be graded. In general, this will require a road grader or bulldozer to shape up the roads after forest products have been hauled off site. This includes cleaning of drainage areas, grading, crowning and filling with gravel, if necessary. The grading equipment to be used must be approved by the Unit Manager or his/her representative.

4.2.5 - Two wheel drive condition (2/04)

All existing trail roads on and adjacent to the sale area must be passable by two-wheel drive traffic for the duration of the sale.

4.4 - Access

4.4.1 - Private property access (3/11)

Permission for access across private land is the responsibility of the Purchaser. A copy of the written permission from the private landowner must be given to the Unit Manager within 30 days of the bid opening and prior to the beginning of operations.

5 - Operations

5.1 - Notification

5.1.1 - Pre-sale conference (10/16)

A pre-sale conference between the Purchaser and sale administrator is required prior to beginning any operations, to determine landing and road locations. The Unit Manager or his/her representative must be contacted at least 10 days in advance to schedule the conference.

5.1.4 - Post-sale conference (10/16)

A post-sale conference on site between the Purchaser and sale administrator is required 5 days prior to the completion of active logging operations to determine clean-up and repair of landings, road edges, and the fulfillment of other contract specifications.

5.2 - Conduct of Operations

5.2.1 - Slash

5.2.1.1 - Slash within sale area (9/16)

No trees are to be felled outside the sale area and all slash is to be kept at least 10 feet back from the red & blue paint line. If sale boundary lines are along a public road or highway, then slash must be removed 50' from these lines per General Condition & Requirement 5.2.1.

5.2.2 - Hazard Trees/Snags

5.2.2.1 - Den trees (10/16)

Obvious hollow and/or den trees shall be protected and left standing unless they are a safety hazard.

5.2.3 - Operating Restrictions

5.2.3.2 - Operating restrictions (9/11)

Within Payment Unit(s) 1-4, unless changed by written agreement, all clean-up activities must be completed by June 30 of that harvest year. This restriction is to allow clean-up areas to revegetate before the dry season.

5.2.3.3 - Bark slippage restriction (3/09)

Within Payment Unit(s) 2-4, unless changed by written agreement, cutting and skidding are not permitted during the period of April 15 to July 15. This restriction is because of bark slippage.

5.2.30 - Landing/road top soil protection (2/15)

Top soil on landings and new roads must be removed, stockpiled and saved. Upon completion of the timber sale, soil must be evenly distributed back over the area for revegetation. In addition, the area must be seeded and mulched per instructions of the Sale Administrator.

5.2.32 - Decking/landing restoration (9/13)

All decking and landing areas must have the surface area restored to a condition equal to or better than before. This is to ensure the proper regeneration of the stand. Wood debris, chips and "cookies" from trimmings must be removed or scattered away from landing and loading areas and may not be windrowed on the edge.

5.2.38 - No decking against live trees (2/04)

Cut products may not be decked against unmarked or designated leave trees.

5.4 - Soil Protection

5.4.1 - Rutting restriction, general (7/16)

Operations are to cease immediately if equipment and weather conditions result in rutting of roads and/or skid trails which is 12 inches or greater in depth and 50 feet in length. The Unit Manager or his/her representative may restrict hauling and/or skidding if ruts exceed the specified depth. With the Unit Manager or his/her representative's approval, the Purchaser may

return to the area when the risk of rutting has decreased.

5.8 - Protection of Endangered Species

5.8.5 - Protection of raptor nests (3/13)

All trees with raptor nests will be protected if found during harvesting operations. Notification will be made to the Unit Manager or his/her representative who will notify the Wildlife Biologist so an on-site evaluation and recommendation can be made, if necessary.

TIMBER SALE MAP

This information provided by authority of Part 525, 1994 PA 451, as amended.

Sale Number 11-013-24	Date 06/18/2024
Scale 1:15,840	Page 1
	Of 1

Forest Management Unit Baraga Mgt Unit	County Houghton	Mapped By: Hansen
		Cruised By: Hansen

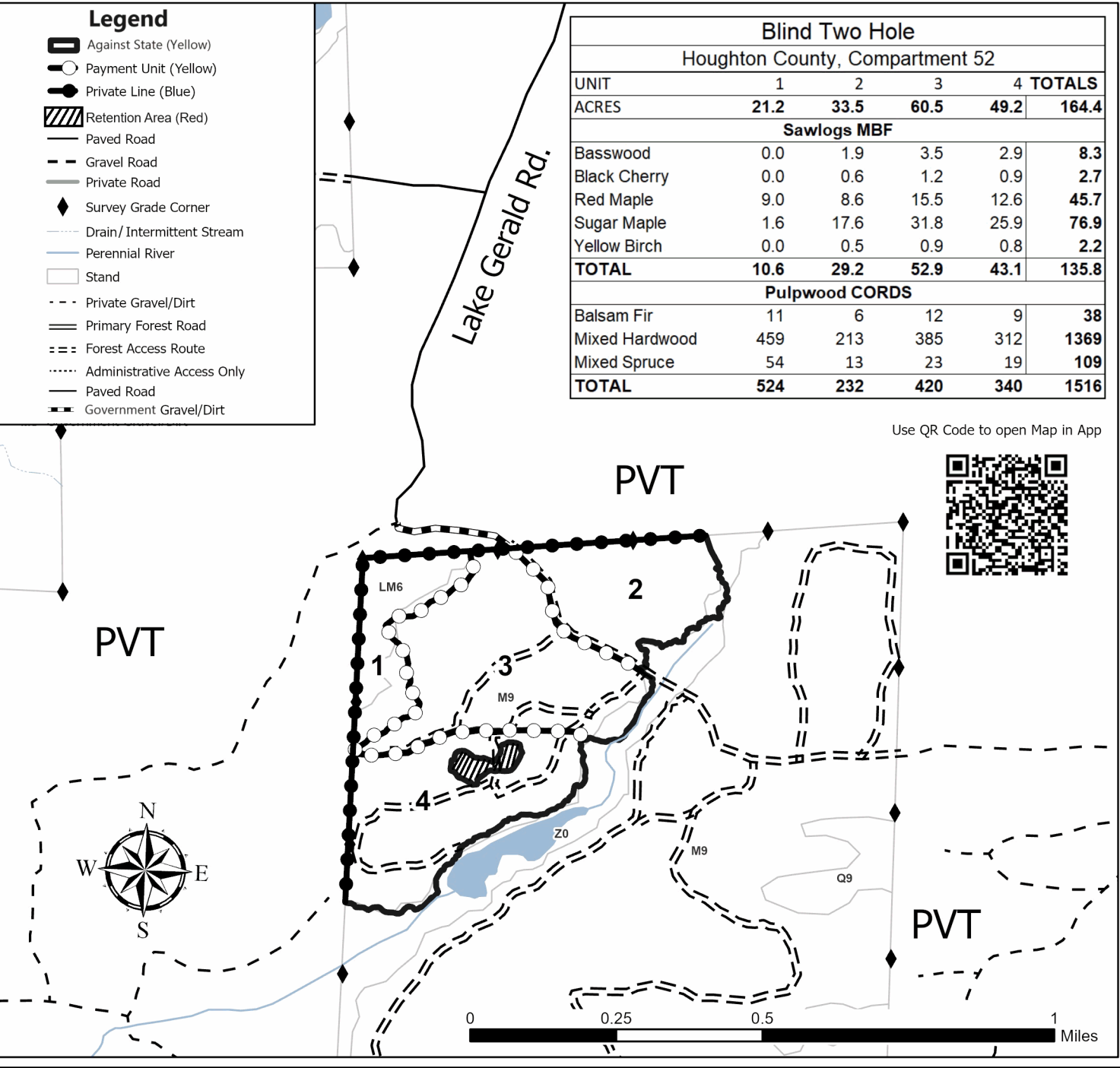
Township 52N	Range 36W	Section(s) and Subdivision(s) Sec. 25 NW,W1/2NE,N1/2SW;
-----------------	--------------	---

Cover Type			
A = Aspen	J = Jack Pine	O = Oak	U = Upland Brush
B = Paper Birch	K = Rock	P = Lowland Poplar	UM = Upland Mix Forest
C = Cedar	L = Lowland Brush	Q = Mixed Swamp Conifer	V = Bog or Marsh
D = Treed Bog	LM = Lowland Mix Forest	R = Red Pine	W = White Pine
E = Swamp Hardwoods	M = Maple, Beech, Birch	S = Black Spruce	X = Non Stocked
F = Spruce/Fir	MC = Mixed Conifer	T = Tamarack	Y = Sand
G = Grass	MD = Mixed Deciduous	Z = Water	
H = Hemlock	N = Marsh		

Density	
0 = Non Stocked	5 = Pole Timber Medium
1 = Seedling Sapling Poor	6 = Pole Timber Well
2 = Seedling Sapling Medium	7 = Saw Timber Poor
3 = Seedling Sapling Well	8 = Saw Timber Medium
4 = Pole Timber Poor	9 = Saw Timber Well

Legend	
	Against State (Yellow)
	Payment Unit (Yellow)
	Private Line (Blue)
	Retention Area (Red)
	Paved Road
	Gravel Road
	Private Road
	Survey Grade Corner
	Drain/ Intermittent Stream
	Perennial River
	Stand
	Private Gravel/Dirt
	Primary Forest Road
	Forest Access Route
	Administrative Access Only
	Paved Road
	Government Gravel/Dirt

Blind Two Hole					
Houghton County, Compartment 52					
UNIT	1	2	3	4	TOTALS
ACRES	21.2	33.5	60.5	49.2	164.4
Sawlogs MBF					
Basswood	0.0	1.9	3.5	2.9	8.3
Black Cherry	0.0	0.6	1.2	0.9	2.7
Red Maple	9.0	8.6	15.5	12.6	45.7
Sugar Maple	1.6	17.6	31.8	25.9	76.9
Yellow Birch	0.0	0.5	0.9	0.8	2.2
TOTAL	10.6	29.2	52.9	43.1	135.8
Pulpwood CORDS					
Balsam Fir	11	6	12	9	38
Mixed Hardwood	459	213	385	312	1369
Mixed Spruce	54	13	23	19	109
TOTAL	524	232	420	340	1516



Use QR Code to open Map in App



TIMBER SALE INFORMATION

GNA2 Cisco North (11-811-24)

T46N, R37W, SEC. 18; T46N, R37W, SEC. 7; T46N, R38W, SEC. 12; T46N, R38W, SEC. 13.
Ontonagon County (Advertised Price \$94,600.05)

SALE NOTE: A recreation site such as a trail, pathway, or campground is within the sale area or the vicinity. Certain restrictions/specifications may be applicable including time restrictions. Access may be through other public land.

A timber sale contract for this lump sum, sealed bid timber sale will be awarded to the responsible bidder offering the highest sealed bid price. All units of volume listed below were estimated using the Inventory Manager computer program and the new Michigan taper model. Bids must be at or above the following advertised price for each product and species:

<u>PRODUCTS & SPECIES</u>	<u>ESTIMATED UNITS*</u>	<u>ADVERTISED PRICE</u>
Sawtimber		
Basswood	39.8 MBF	\$ 84.00 / MBF
Black Cherry	0.6 MBF	\$ 37.00 / MBF
Red Maple	63.0 MBF	\$ 124.00 / MBF
Red Oak	5.1 MBF	\$ 81.00 / MBF
Sugar Maple	124.8 MBF	\$ 232.00 / MBF
Yellow Birch	6.7 MBF	\$ 112.00 / MBF
Pulpwood		
Balsam Fir	92 Cords	\$ 5.00 / Cord
Basswood	57 Cords	\$ 6.25 / Cord
Mixed Aspen	639 Cords	\$ 21.10 / Cord
Mixed Hardwood	3,081 Cords	\$ 12.40 / Cord
Mixed Spruce	41 Cords	\$ 12.10 / Cord
Red Oak	23 Cords	\$ 13.30 / Cord

* The total volume is statistically estimated within plus (+) or minus (-) 10.10 percent. There are an estimated 4,493 cords on this timber sale, plus or minus 454 cords at the 95% confidence level. The estimated units are final and not subject to adjustment. Prospective bidders are urged to examine this timber and to make their own estimates of quantity and quality.

BOND AND PAYMENT SCHEDULE:

1. A bond in the amount of \$9,000.00 to insure faithful performance of the conditions of the contract will be deposited by the successful bidder within 21 days of the sale award.
2. Cutting in any sale or unit without the required advance payment would be considered a trespass.
3. Total payment must be paid in advance or according to the following schedule :
 - (a) Ten percent (10%) of the sale value must be paid within 21 days of the sale award.
 - (b) The 10% down payment will be credited towards the first unit cut.
 - (c) Payment for each of the following units must be made before cutting begins in that unit:

PAYMENT UNIT NUMBER	PERCENT OF TOTAL SALE VALUE
01	3.6%
02	4.3%
03	17.4%
04	8.4%
05	9.5%
06	14.1%
07	12.7%
08	13.6%
09	16.4%
4. If no cutting takes place, the 10% down payment will not be refunded.
5. Operations on the contract issued will terminate on 06/30/2028.

SALE STATISTICS

Volumes were calculated in cubic feet using the Michigan taper model. Cubic foot volume includes all wood inside bark for the product indicated. For display purposes, cubic feet were converted to cords and MBF using a simple conversion factor, e.g. 79 cubic feet per cord and 185 cubic feet per MBF. The cubic foot volumes are precise; the cords and MBF volumes are not. Cubic foot volume cannot be directly converted to cords or boards with precision.

SALE VOLUMES

The total estimated sale volume may not equal the sum of the species/products due to the nature of statistical calculations associated with double sampling methodology.

VOLUME			STATISTICAL RANGE IN CORDS	
TOTAL CUBIC FEET	TOTAL CORDS	PERCENT ERROR	MINIMUM	MAXIMUM
354,908	4,493	10.10%	4,039	4,946

VDU VOLUMES

A VDU is a Volume Determination Unit. Volumes and their associated statistics are calculated at the VDU level and summarized to the sale level. There is often a one to one relationship between a VDU and a Payment Unit, but not always, depending on the cruise design. Refer to the VDU TO PAYMENT UNIT table.

	VOLUME			RANGE IN CORDS	
VDU	TOTAL CUBIC FEET	TOTAL CORDS	PERCENT ERROR	MINIMUM	MAXIMUM
1	227,680	2,882	12.80%	2,513	3,251
11	97,818	1,238	19.28%	999	1,477
26	15,065	191	39.56%	115	266
30	14,345	182	55.87%	80	283
TOTAL:	354,908	4,493		3,708	5,277

VDU TO PAYMENT UNIT

When a VDU is associated with more than one Payment Unit (PU), the VDU volumes are assigned to the PU based on acres of the VDU within the PU.

VDU	VDU ACRES	PU	PU ACRES
1	207.0	5	29.7
		6	44.0
		7	39.7
		8	42.5
		9	51.1
11	102.4	3	68.7
		4	33.7
26	11.1	1	11.1
30	4.3	2	4.3
TOTAL:	324.8		324.8

DESCRIPTION OF TIMBER BY PAYMENT UNIT (PU)

PU	MARKET GROUP	PRODUCT	QUANTITY	UNIT	ACRES	ADVERTISE PRICE			
1	Sugar Maple	Sawtimber	1.4	MBF	11.1	\$3,432.00			
	Balsam Fir	Pulpwood	8	Cords					
	Mixed Aspen		96	Cords					
	<i>B. T. Aspen</i>		38	<i>Cords</i>					
	<i>Quaking Aspen</i>		58	<i>Cords</i>					
	Mixed Hardwood		84	Cords					
	<i>Red Maple</i>		27	<i>Cords</i>					
	<i>Sugar Maple</i>		57	<i>Cords</i>					
	2	Red Maple	Sawtimber	1.6			MBF	4.3	\$4,082.80
Sugar Maple			2.9	MBF					
Mixed Aspen		Pulpwood	124	Cords					
<i>B. T. Aspen</i>			99	<i>Cords</i>					
<i>Quaking Aspen</i>			25	<i>Cords</i>					
Mixed Hardwood			48	Cords					
<i>Paper Birch</i>			4	<i>Cords</i>					
<i>Red Maple</i>			28	<i>Cords</i>					
<i>Sugar Maple</i>			11	<i>Cords</i>					
<i>Yellow Birch</i>			5	<i>Cords</i>					
3		Black Cherry	Sawtimber	0.4	MBF	68.7	\$16,276.90		
		Red Maple		11.1	MBF				
	Sugar Maple		21.2	MBF					
	Balsam Fir	Pulpwood	42	Cords					
	Mixed Aspen		107	Cords					
	<i>B. T. Aspen</i>		5	<i>Cords</i>					
	<i>Quaking Aspen</i>		102	<i>Cords</i>					
	Mixed Hardwood		597	Cords					
	<i>Black Cherry</i>		17	<i>Cords</i>					
	<i>Red Maple</i>		269	<i>Cords</i>					
	<i>Sugar Maple</i>		304	<i>Cords</i>					
	<i>Yellow Birch</i>		7	<i>Cords</i>					
	Mixed Spruce		8	Cords					
	<i>White Spruce</i>		8	<i>Cords</i>					
	4	Black Cherry	Sawtimber	0.2	MBF			33.7	\$7,980.70
Red Maple			5.4	MBF					
Sugar Maple			10.4	MBF					
Balsam Fir		Pulpwood	20	Cords					
Mixed Aspen			52	Cords					
<i>B. T. Aspen</i>			2	<i>Cords</i>					
<i>Quaking Aspen</i>			50	<i>Cords</i>					
Mixed Hardwood			293	Cords					
<i>Black Cherry</i>			9	<i>Cords</i>					
<i>Red Maple</i>			132	<i>Cords</i>					
<i>Sugar Maple</i>			149	<i>Cords</i>					
<i>Yellow Birch</i>			3	<i>Cords</i>					
Mixed Spruce			5	Cords					
<i>White Spruce</i>			5	<i>Cords</i>					
5	Basswood	Sawtimber	5.7	MBF	29.7	\$9,002.70			
	Red Maple		6.4	MBF					
	Red Oak		0.7	MBF					
	Sugar Maple		12.8	MBF					
	Yellow Birch		1.0	MBF					
	Balsam Fir	Pulpwood	3	Cords					
	Basswood		8	Cords					
	Mixed Aspen		37	Cords					
	<i>B. T. Aspen</i>		6	<i>Cords</i>					
	<i>Quaking Aspen</i>		31	<i>Cords</i>					

DESCRIPTION OF TIMBER BY PAYMENT UNIT (PU), CON'T

PU	MARKET GROUP	PRODUCT	QUANTITY	UNIT	ACRES	ADVERTISE PRICE				
5 con't	Mixed Hardwood	Pulpwood	295	Cords						
	<i>Paper Birch</i>		1	<i>Cords</i>						
	<i>Red Maple</i>		114	<i>Cords</i>						
	<i>Sugar Maple</i>		174	<i>Cords</i>						
	<i>Yellow Birch</i>		6	<i>Cords</i>						
	Mixed Spruce		4	Cords						
	<i>White Spruce</i>		4	<i>Cords</i>						
	Red Oak		3	Cords						
6	Basswood	Sawtimber	8.5	MBF	44.0	\$13,374.60				
	Red Maple		9.5	MBF						
	Red Oak		1.1	MBF						
	Sugar Maple		18.9	MBF						
	Yellow Birch		1.4	MBF						
	Balsam Fir	Pulpwood	5	Cords						
	Basswood		12	Cords						
	Mixed Aspen		56	Cords						
	<i>B. T. Aspen</i>		9	<i>Cords</i>						
	<i>Quaking Aspen</i>		47	<i>Cords</i>						
	Mixed Hardwood		438	Cords						
	<i>Paper Birch</i>		1	<i>Cords</i>						
	<i>Red Maple</i>		169	<i>Cords</i>						
	<i>Sugar Maple</i>		258	<i>Cords</i>						
	<i>Yellow Birch</i>		10	<i>Cords</i>						
	Mixed Spruce		6	Cords						
	<i>White Spruce</i>		6	<i>Cords</i>						
	Red Oak		5	Cords						
	7		Basswood	Sawtimber			7.6	MBF	39.7	\$12,054.05
			Red Maple				8.6	MBF		
Red Oak		1.0	MBF							
Sugar Maple		17.1	MBF							
Yellow Birch		1.3	MBF							
Balsam Fir		Pulpwood	4	Cords						
Basswood			11	Cords						
Mixed Aspen			50	Cords						
<i>B. T. Aspen</i>			8	<i>Cords</i>						
<i>Quaking Aspen</i>			42	<i>Cords</i>						
Mixed Hardwood			395	Cords						
<i>Paper Birch</i>			1	<i>Cords</i>						
<i>Red Maple</i>			152	<i>Cords</i>						
<i>Sugar Maple</i>			233	<i>Cords</i>						
<i>Yellow Birch</i>			9	<i>Cords</i>						
Mixed Spruce			5	Cords						
<i>White Spruce</i>			5	<i>Cords</i>						
Red Oak			4	Cords						
8			Basswood	Sawtimber	8.2	MBF	42.5	\$12,903.20		
			Red Maple		9.2	MBF				
	Red Oak	1.0	MBF							
	Sugar Maple	18.3	MBF							
	Yellow Birch	1.4	MBF							
	Balsam Fir	Pulpwood	5	Cords						
	Basswood		12	Cords						
	Mixed Aspen		53	Cords						
	<i>B. T. Aspen</i>		8	<i>Cords</i>						
	<i>Quaking Aspen</i>		45	<i>Cords</i>						
	Mixed Hardwood		422	Cords						
	<i>Paper Birch</i>		1	<i>Cords</i>						

DESCRIPTION OF TIMBER BY PAYMENT UNIT (PU), CON'T

PU	MARKET GROUP	PRODUCT	QUANTITY	UNIT	ACRES	ADVERTISE PRICE			
8 con't	<i>Red Maple</i>	<i>Pulpwood</i>	163	<i>Cords</i>					
	<i>Sugar Maple</i>		249	<i>Cords</i>					
	<i>Yellow Birch</i>		9	<i>Cords</i>					
	Mixed Spruce		6	<i>Cords</i>					
	<i>White Spruce</i>		6	<i>Cords</i>					
	Red Oak		5	<i>Cords</i>					
9	Basswood	Sawtimber	9.8	MBF	51.1	\$15,493.10			
	Red Maple		11.2	MBF					
	Red Oak		1.3	MBF					
	Sugar Maple		21.8	MBF					
	Yellow Birch		1.6	MBF					
	Balsam Fir		Pulpwood	5			<i>Cords</i>		
	Basswood	14		<i>Cords</i>					
	Mixed Aspen	64		<i>Cords</i>					
	<i>B. T. Aspen</i>	10		<i>Cords</i>					
	<i>Quaking Aspen</i>	54		<i>Cords</i>					
	Mixed Hardwood	509		<i>Cords</i>					
	<i>Paper Birch</i>	2		<i>Cords</i>					
	<i>Red Maple</i>	196		<i>Cords</i>					
	<i>Sugar Maple</i>	300		<i>Cords</i>					
	<i>Yellow Birch</i>	11		<i>Cords</i>					
	Mixed Spruce	7		<i>Cords</i>					
	<i>White Spruce</i>	7		<i>Cords</i>					
	Red Oak	6		<i>Cords</i>					
	TOTAL:			240.0			MBF		
	TOTAL:			3,933			<i>Cords</i>		

Sale Specific Conditions & Requirements

Sale Name: GNA2 Cisco North

Sale Number: 11-811-24 Seq#: 1

1 - Sale Area

1.2 - Boundaries

1.2.1 - Painted boundaries (9/19)

The sale boundary and Payment Unit boundaries are marked and identified by orange paint slash or are unpainted and designated by USFS roads. Exterior sale boundary lines against USFS are marked with triple orange paint slash, with the exception of the boundaries along FDR 4500 and FDR 5350, which are unpainted and designated by FDR 4500 and FDR 5350 (see Timber Sale Map). Interior Payment Unit boundaries are marked with double orange paint slash. The painted boundary line trees are not Included Timber and are to be protected unless marked with blue paint.

2 - Timber Specifications

2.1 - Included Timber

2.1.2 - Clearcut unit(s) w/o unmerchantable trees (8/11)

Within Payment Unit(s) 2, cut all trees which meet minimum piece specifications in 2.2 Utilization, except do not cut american elm, oak, black cherry, northern white cedar, hemlock, white pine or red pine.

Special protection areas identified in accordance with condition 3.4.3, within clearcutting unit boundaries, are not Included Timber and are to be protected.

2.1.3 - Cut tree marked unit(s) (12/08)

Within Payment Unit(s) 1 and 3-9, all trees are designated for cutting when marked with blue paint above and below stump height, regardless of merchantability.

2.2 - Utilization

2.2.3 - Stump heights (4/07)

Stump heights within Payment Units 1 and 3-9 shall not exceed 12 inches for trees greater than 10 inches at DBH and 4 inches for trees smaller than 10 inches at DBH. A written waiver of this requirement may be obtained if wet summer weather makes winter logging necessary.

2.2.4 - Skidding length (2/14)

Skidding of unlimbed tops or lengths over 17 feet is not permissible unless approved by the Unit Manager or his/her representative.

2.2.7 - Uncut designated trees (2/04)

Liquidated damages of \$10.00 per tree will be assessed for every marked tree not cut.

2.2.8 - Utilization and removal (5/14)

All products meeting standards set forth in General Condition and Requirement 2.2 Utilization must be removed from the Sale Area. This is because excess woody debris inhibits regeneration.

2.2.9 - No chipping permitted (12/08)

Within Payment Unit(s) 1-9, tops may not be chipped.

2.2.12 - GNA, cut and remove Included Timber (3/18)

Unless provided otherwise herein, the DNR agrees to sell and permit Purchaser to cut and remove Included Timber and Purchaser agrees to purchase, cut, and remove Included Timber.

3 - Payments

3.4 - Damaged Timber

3.4.1 - Damaged timber (7/16)

General Condition and Requirement 3.4 Damaged Timber, defines liquidated damages for undesignated live merchantable trees which are cut or injured. In addition, extreme care should be taken to avoid damage to tree seedlings and saplings.

No damage is acceptable to undesignated live merchantable trees. Within the Sale Area, if more than 5% of trees (> 4.5" DBH) within a specified area of the sale are damaged, liquidated damages will be assessed for all trees damaged. Rates will be in accordance with General Condition and Requirement 3.4 Damaged Timber.

4 - Transportation

4.1 - Construction

4.1.1 - Stream crossings, general (3/11)

All stream crossing structures will be temporary and therefore, shall be provided by the Purchaser, and must be removed upon completion of the sale. All permits for stream crossings will be provided by the DNR on USFS land.

4.1.3 - Slash and earthen piles (8/04)

Piles or windrows of earth along roads and landings that have been widened or constructed shall be leveled. Slash from road maintenance or construction, including stumps, shall be dispersed throughout the sale.

4.1.4 - Timber removed for construction (3/23)

Trees cut or damaged in the process of pre-approved road, landing or skid trail construction will be decked in an area separate from other Designated Timber and not removed until measured by the sale administrator. Payment will be made at contract prices or average prices, if not on the contract.

4.1.5 - Culverts (5/14)

Roads may require the installation of culverts for cross drainage or at natural drainage-ways. If culverts are needed in these locations, their placement will be specified by the Sale Administrator, and they shall be installed prior to hauling. The culverts shall be new, corrugated metal or plastic gauge. Culverts will be a minimum of 12 inches in diameter and 24 feet in length. If culverts are removed, fill shall be removed from wetland soils as specified. Soils shall be maintained and left in a non-erodible condition, with water bars, seed, fertilizer, mulch, and slash installed as directed by the Sale Administrator and as specified in the BMP manual. Stream crossing permits, if needed, will be obtained by the DNR.

4.1.7 - Road closure (10/11)

All new roads built into the sale must be blocked to vehicle traffic within 30 days of completion of hauling. Overgrown roads that are reopened shall be considered new roads. Some existing roads may also need to be closed, see the Timber Sale Map for locations. Temporary access roads will need to be closed at the time of sale completion, see the Timber Sale map for locations. In general, this will require constructing a four (4') foot high berm of stumps and logs covered with earth. These roads must be rendered impassable to cars and trucks. All stumps from road building and landing construction must be reserved to block any newly constructed roads upon completion of the sale. These stumps must be scattered along the road system to prohibit vehicular movement. Temporary berms may be required if no sale activity occurs for 30 or more consecutive days. Contact the Sale Administrator for specific details of design and placement.

4.1.8 - Road work (1) (8/07)

The following road work is required: The Purchaser will gravel all transitions onto FDR 4500, FDR 5350 and FDR 4558 used during the timber sale. This work needs to be completed prior to any hauling. Gravel must be from a weed free source. In general, this will require between five (5) and ten (10) yards of gravel per transition and must be completed to the satisfaction of the Sale Administrator. In addition, temporary access roads will need to be built into Payment Units 3 and 4. One will be an extension of FDR 4558 (See Timber Sale Map) into Payment Unit 3. The second will be from where Payment Unit 4 attaches to FDR 4500 and will extend into Payment Unit 4. Exact location into Payment Unit 4 will be determined at the time of harvest. These temporary roads will need to be blocked to vehicle access when harvesting is completed in these Payment Units (see spec 4.1.7).

4.2 - Maintenance

4.2.1 - Hauling restriction (12/08)

Hauling may be restricted on forest roads by the Unit Manager or his/her representative. The restriction may occur during wet weather conditions.

4.2.2 - Fill material (4/07)

To maintain roads, fill material may be needed in areas where "holes" exist or may be expected to develop. This fill material should be placed before trucking begins. Contact the Sale Administrator regarding the availability of onsite sand or gravel from adjacent USFS-owned lands.

4.2.4 - Grading (10/16)

For completion of the sale, USFS roads must be graded. In general, this will require a road grader or bulldozer to shape up the roads after forest products have been hauled off site. This includes cleaning of drainage areas, grading, crowning and filling with gravel, if necessary. The grading equipment to be used must be approved by the Unit Manager or his/her representative.

5 - Operations

5.1 - Notification

5.1.1 - Pre-sale conference (10/16)

A pre-sale conference on site between the Purchaser and sale administrator is required prior to beginning any operations, to determine landing and road locations. The Unit Manager or his/her representative must be contacted at least 10 days in advance to schedule the conference.

5.1.4 - Post-sale conference (10/16)

A post-sale conference on site between the Purchaser and sale administrator is required 5 days prior to the completion of active logging operations to determine clean-up and repair of landings, road edges, and the fulfillment of other contract specifications.

5.2 - Conduct of Operations

5.2.1 - Slash

5.2.1.11 - Slash for reforestation (3/21)

To facilitate reforestation, slash shall be left evenly distributed. Bunched tops within the cutting area shall be broken up and scattered. Stumps shall be cut low to the ground. Processing sites shall not be left with a compacted layer of slash; tops from these sites shall be hauled back into the cut area and scattered.

5.2.2 - Hazard Trees/Snags

5.2.2.1 - Den trees (10/16)

Obvious hollow and/or den trees shall be protected and left standing unless they are a safety hazard.

5.2.3 - Operating Restrictions

5.2.3.1 - Operating restrictions (9/11)

Within Payment Unit(s) 1, 3, 5 and 7-9, unless changed by written agreement, cutting, skidding, and hauling are limited to the period(s) of July 15 to September 30 and December 15 to March 15 or frozen winter conditions.

Within Payment Unit(s) 2, 4 and 6, unless changed by written agreement, cutting, skidding, and hauling are limited to the period(s) of August 1 to August 31 and December 15 to March 15 or frozen winter conditions. This restriction is because of USFS Seasonal Operating Restrictions.

5.2.30 - Landing/road top soil protection (2/15)

Top soil on landings and new roads must be removed, stockpiled and saved. Upon completion of the timber sale, soil must be evenly distributed back over the area for revegetation. In addition, the area must be seeded and mulched per instructions of the Sale Administrator.

5.2.32 - Decking/landing restoration (9/13)

All decking and landing areas must have the surface area restored to a condition equal to or better than before. This is to ensure the proper regeneration of the stand. Wood debris, chips and "cookies" from trimmings must be removed or scattered away from landing and loading areas and may not be windrowed on the edge.

5.2.38 - No decking against live trees (2/04)

Cut products may not be decked against unmarked or designated leave trees.

5.2.41 - Snowmobile trail protection (9/11)

The trail 107 is a snowmobile trail and is shown on the Timber Sale Map. Do not cut or damage posts with orange trail markers or traffic control signs. If the trail is used, it must be maintained and restored to a condition equal to or better than before the sale. The road maintenance/restoration must be done prior to December 1. If the trail is used for hauling, it must be graded to the satisfaction of the Unit Manager or his/her representative prior to December 1. If the trail road is to be used

for hauling during the snowmobile season, then a snow-covered base must be left on the trail. The hauling of forest products on the snowmobile trail are limited to Monday through Friday daylight hours during the snowmobile season. Maintain a 20-foot-wide slash, debris, and rut free zone daily using the snowmobile trail as the centerline. No decking of forest products will be permitted along the snowmobile trail. All stumps within 20 feet of the snowmobile trail must be cut at ground level.

5.4 - Soil Protection

5.4.1 - Rutting restriction, general (7/16)

Operations are to cease immediately if equipment and weather conditions result in rutting of roads and/or skid trails which are 6 inches or greater in depth and 25 feet in length. The Unit Manager or his/her representative may restrict hauling and/or skidding if ruts exceed the specified depth. With the Unit Manager or his/her representative's approval, the Purchaser may return to the area when the risk of rutting has decreased.

5.4.2 - Skid trails (2/04)

Skid trails up and down slopes should be avoided. If however this is unavoidable, these trails will be left in a non-erodible condition using water bars, logs, and slash. Placing of slash on these skid trails while logging is ongoing may alleviate need for any further action. At the direction of the sale administrator, seed, fertilizer, and mulch may also be required.

5.4.6 - Wet area protection (5/10)

No harvesting operations, including skidding and felling, are to take place within the vernal pond areas or drainages. When harvesting occurs, there should be no disturbance to the vernal pond depression. All equipment, trees and tops should be kept out of this area. Within 100 feet of the pond, equipment should only be used when the soil is in a dry or frozen condition. Care must be taken by the Purchaser to identify and avoid operating in these areas of the timber sale.

5.6 - Debris and Waste Material

5.6.2 - GNA, equipment cleaning (4/24)

(a) Areas, known by the DNR prior to timber sale advertisement, that are infested with invasive species of concern are shown on the Timber Sale Map. A current list of invasive species of concern and a map showing the extent of known infestations is available from the DNR. For purposes of this provision, "Off-Road Equipment" includes all logging and construction machinery, except for log trucks, chip vans, service vehicles, water trucks, pickup trucks, cars, and similar vehicles.

(b) Purchaser shall adhere to the following requirements with regard to cleaning "Off-Road Equipment":

(i) Prior to moving Off-Road Equipment onto the Sale Area, Purchaser shall identify the location of the equipment's most recent operation. Purchaser shall not move any Off-Road Equipment that last operated in an area infested with one or more invasive species of concern onto Sale Area without having cleaned such equipment of seeds, soil, vegetative matter, and other debris that could contain or hold seeds, and having notified the DNR, as provided in (iii). If the location of prior operation cannot be identified, then Purchaser shall assume that the location is infested with invasive species of concern.

(ii) Prior to moving Off-Road Equipment from a cutting unit that is shown on the Timber Sale Map to be infested with invasive species of concern to, or through any other area that is shown as being free of invasive species of concern, or infested with a different invasive species, Purchaser shall clean such equipment of seeds, soil, vegetative matter, and other debris that could contain or hold seeds, and shall notify the DNR, as provided in (iii).

(iii) Prior to moving any Off-Road Equipment subject to the cleaning requirements set forth above, Purchaser shall advise DNR of its cleaning measures and make the equipment available for inspection. DNR shall have 2 days, excluding weekends and State holidays, to inspect equipment after it has been made available. After satisfactory inspection or after such 2 day period, Purchaser may move the equipment as planned. Equipment shall be considered clean when a visual inspection does not disclose seeds, soil, vegetative matter, and other debris that could contain or hold seeds. Purchaser shall not be required to disassemble equipment unless so directed by the DNR after inspection.

(iv) If Purchaser desires to clean Off-Road Equipment on National Forest land, such as at the end of a project or prior to moving to, or through an area that is free of invasive species of concern, Purchaser shall obtain prior approval from the Unit Manager or his/her representative as to the location for such cleaning and measures, if any, for controlling impacts.

(v) Unit Manager or his/her representative may order delay, interruption, or modification of this Contract pursuant to Condition

& Requirement 7.3 or 7.3.4.

(c) Nothing contained in this Condition & Requirement shall be interpreted as creating any warranty on the part of the DNR that all locations of invasive species of concern have been described herein, elsewhere in this Contract, or designated on the ground. Following sale advertisement, additional locations may be described or designated, and other species may be added to the list of invasive species of concern. In such event, the Unit Manager or his/her representative may order delay, interruption, or modification of this Contract pursuant to Condition & Requirement 7.3 or 7.3.4.

(d) The parties shall promptly communicate with one another with respect to description or designation of additional locations; discovery of locations of new species or new infestation; and, addition of species to the list of invasive species of concern.

5.8 - Protection of Endangered Species

5.8.5 - Protection of raptor nests (3/13)

All trees with raptor nests will be protected if found during harvesting operations. Notification will be made to the Unit Manager or his/her representative who will notify the Wildlife Biologist so an on-site evaluation and recommendation can be made, if necessary.

6 - Safety and Fire Prevention

6.2 - Signing

6.2.1 - Road posting (10/20)

The Purchaser is responsible for posting and maintaining caution signs on FDR 4500 and FDR 5350 prior to beginning operations. The road must be posted at appropriate distances from the Sale Area to warn of logging activity and truck traffic. Signs must be removed when harvest operations are suspended or completed. The Purchaser will provide these signs.

6.2.2 - Snowmobile trail posting (10/20)

The Purchaser is responsible for posting and maintaining caution signs on snowmobile trail 107 prior to beginning operations during the snowmobile season (approximately December 1 to March 31). The trail must be posted at appropriate distances from the Sale Area to warn of logging activity and truck traffic. Signs must be removed when harvest operations are suspended or completed. The Purchaser will provide these signs.

7 - Other Conditions

SKIP

7.1.1 - GNA, title (7/16)

General Condition & Requirement 7.1 is inapplicable. The following applies to this contract.

All right, title, and interest in and to any Included Timber shall remain in USDA Forest Service with the State of Michigan acting on behalf of the USDA Forest Service under this GNA contract, until it has been Measured, removed from Sale Area or other authorized cutting area, and paid for, at which time title shall vest in Purchaser. Title to any Included Timber that has been Measured and paid for, but not removed from Sale Area or other authorized cutting area by Purchaser on or prior to Termination Date, shall remain in USDA Forest Service.

7.3 - Contract Modifications

7.3.4 - GNA, contract suspension and modification (5/16)

(a) The Unit Manager may, by written order, delay or interrupt authorized operations under this contract or, notwithstanding Condition & Requirement 7.3, modify this contract, in whole or in part:

(i) To prevent environmental degradation or resource damage, including, but not limited to, harm to habitat, plants, animals, cultural resources, or cave resources;

(ii) To ensure consistency with land and resource management plans or other documents prepared pursuant to the National Environmental Policy Act of 1969, 42 USC 4321-4347;

(iii) To conduct environmental analysis, including, but not limited to, engaging in consultation pursuant to the Endangered

Species Act of 1973, 16 USC 1531, et seq.; or

(iv) Upon agreement of the Forest Service, due to administrative appeal or litigation, regardless of whether the Unit Manager's order is required by a court order or this contract is named in such a proceeding.

(b) In the event of an order delaying or interrupting Purchaser's Operations under this Condition & Requirement, Purchaser's remedy shall be:

(i) a no cost contract extension,

(ii) reimbursement for Out-of-Pocket Expenses,

however, the foregoing remedies shall be available only to the extent that the Unit Manager's order was the sole and exclusive cause of the delay or interruption of Purchaser's operations.

(c) Remedies awarded to the Purchaser shall not be duplicative, and the Unit Manager shall have the right to structure remedies provided herein to avoid duplicative compensation.

(d) Purchaser agrees that this Condition & Requirement, and the remedies provided herein shall apply regardless of any finding by any court that the DNR failed to comply with any statute, regulation and/or policy in connection with awarding, advertising, or authorizing this sale, or a similar sale.

7.5 - Loss

7.5.2 - GNA, liability for loss (7/16)

If Included Timber is destroyed or damaged by an unexpected event that changes the nature of Included Timber, such as wind, flood, insects, disease, or similar cause, the Purchaser shall bear the timber value loss resulting from such destruction or damage.

Deterioration or loss of timber value due to delay or interruption under 7.3.4 - GNA, contract suspension and modification, shall be borne by the party holding title. In this event, Included Timber to which USDA Forest Service holds title, Purchaser of the State GNA contract will not be obligated to remove and pay for such timber. This Subsection shall not be construed to relieve either party of liability for negligence.

7.10 - Certified Timber

7.10.1 - Non-certified timber (2/16)

The area encompassed by this timber sale is not certified to the standards of the Forest Stewardship Council (FSC) or the Sustainable Forestry Initiative (SFI). Forest products from this sale may not be delivered to the mill as "FSC and / or SFI certified". The lands within this sale belong to the National Forest system and are being managed by the State as part of a Good Neighbor Authority (GNA) agreement.



TIMBER SALE MAP

This information provided by authority of Part 525, 1994 PA 451, as amended.

Sale Number 11-811-24	Date 08/30/2024
Scale 1:15,840	Page 1
	Of 1

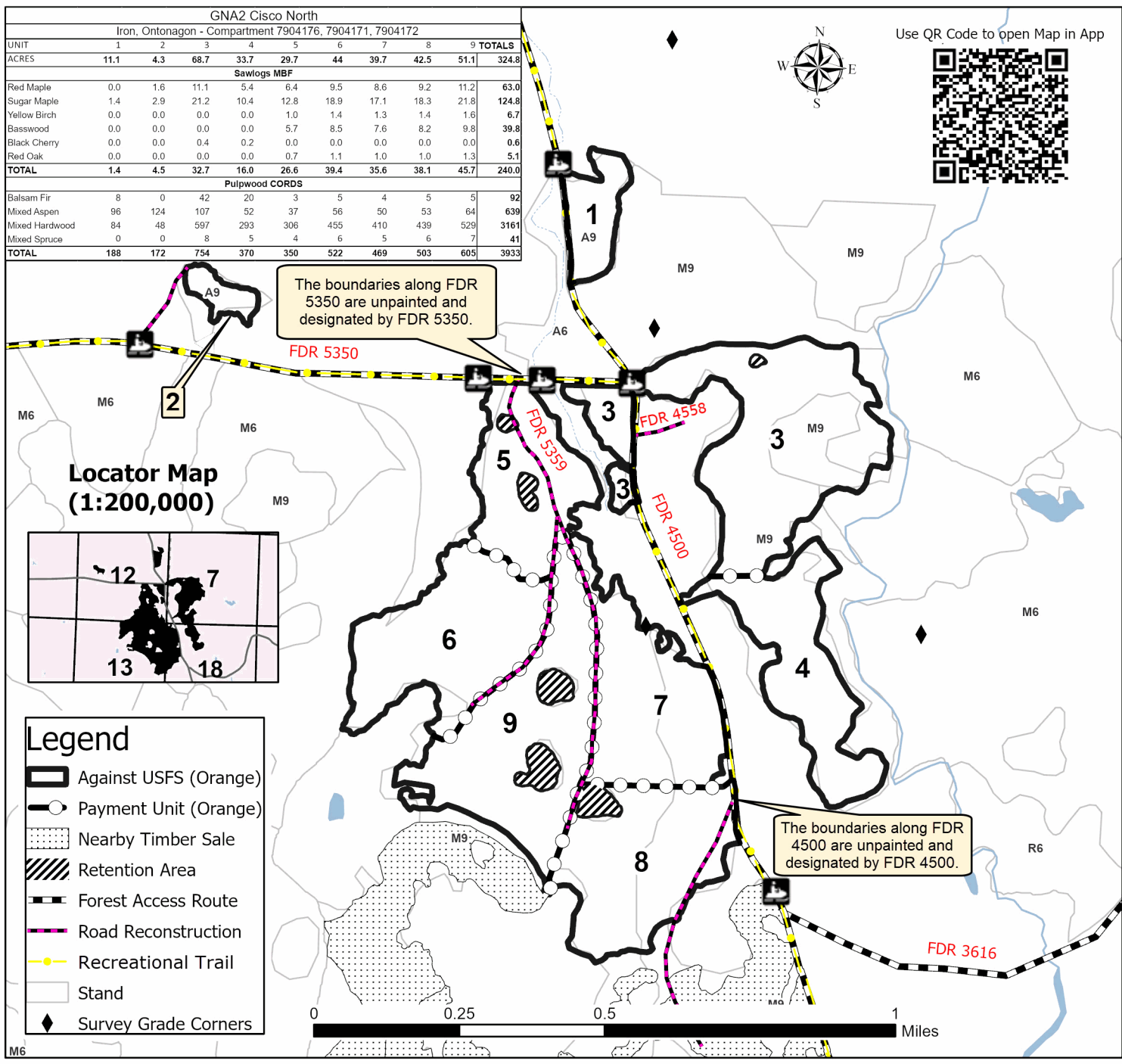
Forest Management Unit Baraga Mgt Unit	County Ontonagon	Mapped By: Sullivan
		Cruised By: Baraga DNR Staff

Township 46N	Range 37W /	Section(s) and Subdivision(s) Sec. 12 S1/2NW,E1/2NE,SE; Sec. 13 NENW,NE,NESE; Sec. 18 NW,NWSW; Sec. 7 S1/2NW,SW;
-----------------	----------------	--

Cover Type			
A = Aspen	J = Jack Pine	O = Oak	U = Upland Brush
B = Paper Birch	K = Rock	P = Lowland Poplar	UM = Upland Mix Forest
C = Cedar	L = Lowland Brush	Q = Mixed Swamp Conifer	V = Bog or Marsh
D = Treed Bog	LM = Lowland Mix Forest	R = Red Pine	W = White Pine
E = Swamp Hardwoods	M = Maple, Beech, Birch	S = Black Spruce	X = Non Stocked
F = Spruce/Fir	MC = Mixed Conifer	T = Tamarack	Y = Sand
G = Grass	MD = Mixed Deciduous	Z = Water	
H = Hemlock	N = Marsh		

Density	
0 = Non Stocked	5 = Pole Timber Medium
1 = Seedling Sapling Poor	6 = Pole Timber Well
2 = Seedling Sapling Medium	7 = Saw Timber Poor
3 = Seedling Sapling Well	8 = Saw Timber Medium
4 = Pole Timber Poor	9 = Saw Timber Well

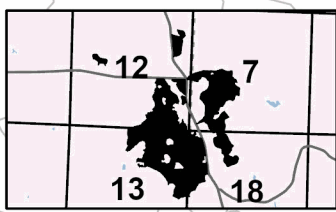
GNA2 Cisco North										
Iron, Ontonagon - Compartment 7904176, 7904171, 7904172										
UNIT	1	2	3	4	5	6	7	8	9	TOTALS
ACRES	11.1	4.3	68.7	33.7	29.7	44	39.7	42.5	51.1	324.8
Sawlogs MBF										
Red Maple	0.0	1.6	11.1	5.4	6.4	9.5	8.6	9.2	11.2	63.0
Sugar Maple	1.4	2.9	21.2	10.4	12.8	18.9	17.1	18.3	21.8	124.8
Yellow Birch	0.0	0.0	0.0	0.0	1.0	1.4	1.3	1.4	1.6	6.7
Basswood	0.0	0.0	0.0	0.0	5.7	8.5	7.6	8.2	9.8	39.8
Black Cherry	0.0	0.0	0.4	0.2	0.0	0.0	0.0	0.0	0.0	0.6
Red Oak	0.0	0.0	0.0	0.0	0.7	1.1	1.0	1.0	1.3	5.1
TOTAL	1.4	4.5	32.7	16.0	26.6	39.4	35.6	38.1	45.7	240.0
Pulpwood CORDS										
Balsam Fir	8	0	42	20	3	5	4	5	5	92
Mixed Aspen	96	124	107	52	37	56	50	53	64	639
Mixed Hardwood	84	48	597	293	306	455	410	439	529	3161
Mixed Spruce	0	0	8	5	4	6	5	6	7	41
TOTAL	188	172	754	370	350	522	469	503	605	3933



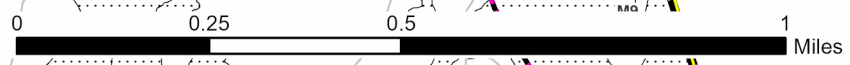
The boundaries along FDR 5350 are unpainted and designated by FDR 5350.

The boundaries along FDR 4500 are unpainted and designated by FDR 4500.

Locator Map (1:200,000)



Legend	
	Against USFS (Orange)
	Payment Unit (Orange)
	Nearby Timber Sale
	Retention Area
	Forest Access Route
	Road Reconstruction
	Recreational Trail
	Stand
	Survey Grade Corners



GNA2 Cisco North (11-811-24)

T46N, R37W, SEC. 18; T46N, R37W, SEC. 7; T46N, R38W, SEC. 12; T46N, R38W,

In response to the notice of sale to be held 9:00 a.m. (local time) on October 24, 2024, I am hereby submitting my sealed bid (firm offer) for the following forest products to be cut. Bids for individual species must be at or above the advertised price. All non-responsive bid forms may be rejected.

<u>PRODUCTS & SPECIES</u>	<u>ESTIMATED VOLUME*</u>	<u>ADVERTISED PRICE</u>	<u>BID PRICE/UNIT</u>
Sawtimber			
Basswood	39.8 MBF	\$ 84.00/MBF	\$ _____
Black Cherry	0.6 MBF	\$ 37.00/MBF	\$ _____
Red Maple	63.0 MBF	\$ 124.00/MBF	\$ _____
Red Oak	5.1 MBF	\$ 81.00/MBF	\$ _____
Sugar Maple	124.8 MBF	\$ 232.00/MBF	\$ _____
Yellow Birch	6.7 MBF	\$ 112.00/MBF	\$ _____
Pulpwood			
Balsam Fir	92 Cords	\$ 5.00/Cord	\$ _____
Basswood	57 Cords	\$ 6.25/Cord	\$ _____
Mixed Aspen	639 Cords	\$ 21.10/Cord	\$ _____
Mixed Hardwood	3,081 Cords	\$ 12.40/Cord	\$ _____
Mixed Spruce	41 Cords	\$ 12.10/Cord	\$ _____
Red Oak	23 Cords	\$ 13.30/Cord	\$ _____

*The volumes are statistically estimated within plus (+) or minus (-) 10.10 percent at 95% confidence level. These estimated volumes are final and not subject to adjustment. Prospective bidders are urged to examine this timber and to make their own estimates of quantity and quality.

I understand that any or all bids may be rejected. All bids must be signed and all bid items must be bid or the bid form may be rejected. I also understand that consideration and awarding a contract will be based upon my past performance and ability to complete the contract based upon equipment and staffing subject to my control.

FEDERAL ID: ____ - ____ - ____ or SOCIAL SECURITY NUMBER: ____ - ____ - ____

Company or individual bidding: _____

Company representative's name: _____

Address: _____

City: _____ State: _____ Zip: _____

IF AVAILABLE, PLEASE PLACE THE PERSONALIZED LABEL FROM YOUR PROSPECTUS IN THE ABOVE BOX.

Individual or company representative's signature: _____ Date: _____

Phone number : _____ Email (optional): _____

THE WINNING BIDDER MUST COMPLETE THE VERIFICATION OF WORKER'S DISABILITY COMPENSATION ACT COMPLIANCE (ON REVERSE SIDE IF DOUBLE SIDED) WITHIN 21 DAYS OF SALE AWARD DATE



FOR DEPARTMENT USE ONLY	
Sale Number (XX - XXX - XX - XX)	
Forest Management Unit:	

TIMBER SALE VERIFICATION OF WORKER'S DISABILITY COMPENSATION ACT COMPLIANCE

As required by Act 317, P.A. 1969 (Worker's Compensation) and
Part 5 of Act 451 of 1994, as amended.

VERIFICATION OF WORKER'S DISABILITY COMPENSATION ACT COMPLIANCE

- This verification must be completed and submitted within 21 days of contract award and prior to the issuance of the timber sale contract.
- In addition, if boxes 2B or 2C are checked, then Notice of Exclusion or Certificate of Insurance must be submitted within twenty-one (21) days of the contract award and prior to the issuance of the timber sale contract.
- All information must be typed or printed except for written signatures.

Please Check Appropriate Categories:

1. My business is organized as (you **must** check one of the boxes below):
 - A. Sole Proprietorship (individual)
 - B. Partnership
 - C. Corporation
2. You **must** check one of the boxes below:
 - A. I certify my business is a sole proprietorship and it has no employees but the sole proprietor. I am not subject to the Worker's Compensation Laws.
 - B. I certify my business has satisfied its obligation to the Worker's Compensation Act through the use of an approved Notice of Exclusion (BWC-337, Rev. 5/96). I will provide a copy of the Notice of Exclusion within 21 days of the contract award. (For questions or a copy of the BWC-337, please call the Worker's Compensation Bureau at 517-322-1195).
 - C. I certify my business has a Worker's Compensation Policy. I will provide an original Certificate of Insurance within twenty-one (21) days of the contract award.
3. If you have checked item 2(A) or 2(B), you **must** indicate the number of **both** full-time and part-time employees, other than yourself, including family members and active partners (if none, you must enter "0").

_____ Full-time Employees

_____ Part-time Employees

Name of Business		Federal ID (or) Social Security No.	
Address		Telephone ()	
City	State	ZIP	

I hereby certify that the above information is true and correct. I agree to notify the Michigan DNR of any changes that occur in factors affecting my coverage during any of my present and future operations.

Signature of Owner or Authorized Representative

Title

Date

Please complete the "SEALED BID" information on the next page

Blind Two Hole (11-013-24)
T52N, R36W, SEC. 25; Houghton COUNTY

In response to the notice of sale to be held 9:00 a.m. (local time) on October 24, 2024, I am hereby submitting my sealed bid (firm offer) for the following forest products to be cut. Bids for individual species must be at or above the advertised price. All non-responsive bid forms may be rejected.

<u>PRODUCTS & SPECIES</u>	<u>ESTIMATED VOLUME*</u>	<u>ADVERTISED PRICE</u>	<u>BID PRICE/UNIT</u>
Sawtimber			
Basswood	8.3 MBF	\$ 84.00/MBF	\$ _____
Black Cherry	2.7 MBF	\$ 37.00/MBF	\$ _____
Red Maple	45.7 MBF	\$ 124.00/MBF	\$ _____
Sugar Maple	76.9 MBF	\$ 232.00/MBF	\$ _____
Yellow Birch	2.2 MBF	\$ 112.00/MBF	\$ _____
Pulpwood			
Balsam Fir	38 Cords	\$ 5.00/Cord	\$ _____
Basswood	36 Cords	\$ 6.25/Cord	\$ _____
Mixed Hardwood	1,333 Cords	\$ 12.40/Cord	\$ _____
Mixed Spruce	109 Cords	\$ 12.10/Cord	\$ _____

*The volumes are statistically estimated within plus (+) or minus (-) 11.43 percent at 95% confidence level. These estimated volumes are final and not subject to adjustment. Prospective bidders are urged to examine this timber and to make their own estimates of quantity and quality.

I understand that any or all bids may be rejected. All bids must be signed and all bid items must be bid or the bid form may be rejected. I also understand that consideration and awarding a contract will be based upon my past performance and ability to complete the contract based upon equipment and staffing subject to my control.

FEDERAL ID: ____ - ____ - ____ or SOCIAL SECURITY NUMBER: ____ - ____ - ____

Company or individual bidding: _____

Company representative's name: _____

Address: _____

City: _____ State: _____ Zip: _____

IF AVAILABLE, PLEASE PLACE THE PERSONALIZED LABEL FROM YOUR PROSPECTUS IN THE ABOVE BOX.

Individual or company representative's signature: _____ Date: _____

Phone number : _____ Email (optional): _____

THE WINNING BIDDER MUST COMPLETE THE VERIFICATION OF WORKER'S DISABILITY COMPENSATION ACT COMPLIANCE (ON REVERSE SIDE IF DOUBLE SIDED) WITHIN 21 DAYS OF SALE AWARD DATE

