



**DEPARTMENT OF NATURAL RESOURCES
STATE OF MICHIGAN
TIMBER SALE PROSPECTUS #7598**

SCHEDULED SALE DATE AND TIME: 10:00 a.m. (local time) on September 23, 2025.

LOCATION: GLADWIN MGMT UNIT, 801 NORTH SILVERLEAF, GLADWIN, MI 48624.

PROSPECTUS NOTE: The bidder is advised to inspect the sale area and review the location, estimated volumes, operating costs and contract terms of proposed sales. Please be aware that some landowners may request 60 days or more notice for access across their land.

Notice is hereby given that bids will be received by the Unit Manager, GLADWIN MANAGEMENT UNIT, for certain timber on the following described lands:

Lake Mix (73-007-24) / T20N, R02W, SEC. 8 , W1/2NE,NWSE.

T20N, R02W, SEC. 9 , NWNW,S1/2NW,N1/2SW,SESW.

Gladwin County, Advertised Price \$104,457.30, 100.6 Acres, Hardwood, Red Oak.

SALE NOTE: Lake Mix is located within the Gladwin Field Trial Area & restrictions are in place. Operations, including cutting, skidding and hauling, are only permitted between December 1 and March 15 unless permission is obtained from the Unit Manager or his/her representative.

A recreation site such as a trail, pathway, or campground is within the sale area or the vicinity. Certain restrictions/specifications may be applicable including time restrictions.

Bird Dog Bonanza (73-008-24) / T20N, R02W, SEC. 5 , SWNW,NWSW.

T20N, R02W, SEC. 6 , SENE,SE.

T20N, R02W, SEC. 7 , NESW,S1/2SW,W1/2SE.

Gladwin County, Advertised Price \$210,951.45, 132.8 Acres, Aspen, Hardwood.

SALE NOTE: Bird Dog Bonanza is located within the Gladwin Field Trial Area & restrictions are in place. Operations, including cutting, skidding and hauling, are only permitted between December 1 and March 15 unless permission is obtained from the Unit Manager or his/her representative.

A recreation site such as a trail, pathway, or campground is within the sale area or the vicinity. Certain restrictions/specifications may be applicable including time restrictions.

Young Sow Hideaway (73-009-24) / T20N, R02W, SEC. 10, NW,N1/2NE,SWNE,N1/2SW,SESW.

T20N, R02W, SEC. 10, S1/2SE.

T20N, R02W, SEC. 3 , SESW,NESE,S1/2SE.

Gladwin County, Advertised Price \$219,870.25, 148.0 Acres, Aspen, Hardwood.

SALE NOTE: Young Sow Hideaway is located within the Gladwin Field Trial Area & restrictions are in place. Operations, including cutting, skidding and hauling, are only permitted between December 1 and March 15 unless permission is obtained from the Unit Manager or his/her representative.

BID INSTRUCTIONS (VER. 10/10/2022):

1. Scheduled Bid Location, Date, and Time (2/11)

Bids must be received by the Unit Manager, GLADWIN OFFICE, 801 NORTH SILVERLEAF, GLADWIN, MI 48624, no later than 10:00 a.m. (local time) on September 23, 2025. For further information concerning this sale, contact Blair Tweedale at 989-426-9205 extension 7640.

2. Bidder's Qualifications (10/22)

If all or part of a timber sale was prepared by a private contractor, the contractor and that contractor's company are not permitted to bid on the timber sale. A person must be 18 years of age or older to purchase timber. Permanent employees of the Department of Natural Resources or members of their immediate household may not bid. Former employees, in the permanent or seasonal class, may not bid until 3 months after the last day of active duty. Bids will not be accepted from individuals or companies appearing on the DNR/FRD No-Bid List. This list contains the names of purchasers who previously failed to execute a contract within 21-days or who have a history of poor performance.

3. Preparation of Sealed Bids (5/16)

Bid Forms may be completed online thru Michigan DNR Timber Sale Online Bidding (OLB) at www.michigan.gov/timberbidding or by completing the hardcopy Bid Form found in the Timber Sale Prospectus. Hardcopy Bid Forms shall be manually signed in ink. Registration in OLB is considered your 'signature' for all bids submitted thru that system. Bid prices must be entered for each species and product in the Bid Price column for all material subject to bidding and all fill-in blanks must be completed. If erasures or other changes appear on the hardcopy Bid Form, each erasure or change must be initialed by the person signing the bid.

4. Submission of Sealed Bids (5/16)

Bid forms may be obtained from the Unit Manager or thru OLB. Bids may be submitted hardcopy or thru OLB. All hardcopy bids must be submitted on the bid form and in an envelope clearly identified as described in this section. NOTE: Only one bid form per bid envelope. Sealed bids must be submitted to the Unit office designated in the prospectus and must be submitted at or prior to the time established in the prospectus. The envelope should show on the outside (a) the sale name or number and (b) the date and time of bid opening, as shown in the prospectus. Bids received after the time specified in the sale prospectus are late bids and will be rejected.

It is possible for a bidder to submit multiple bids on a single sale. For example, a bid may be submitted hardcopy and a bid may be submitted thru OLB. Or, two bidders from the same company could both submit bids on the same sale. If this were to happen, the State would accept all bids received and award the contract accordingly. All bidding and contractual requirements would apply to all bids received.

5. Public Opening of Sealed Bids (7/16)

If conditions permit, the sealed bids will be publicly opened and posted at the time and place set in the prospectus.

If a bidder, present at a bid opening, has submitted bids on more than one sale, that bidder may withdraw their unopened bid envelopes or announce the withdrawal of their online bid after being declared the successful bidder on one sale.

6. Award of Contract (1/11)

Award of the contract will be made to the Bidder whose bid, conforming to the prospectus, is most advantageous to the State of Michigan on the basis of total value at rates bid for the estimated quantities. The State reserves the right to reject any bid or waive any minor irregularity in bids received. A written award mailed (or otherwise furnished) to the successful Bidder shall be deemed to result in a binding contract without further action by either party.

7. Down Payment (1/11)

The Bidder to whom award is made must make a down payment within 21 days of the sale award. The amount of the down payment will be calculated as shown in the Bond and Payment Schedule of this prospectus. Only cash may be used to meet this requirement.

8. Performance Security (1/11)

As guarantee of faithful performance, a cash bond, certificate of deposit, surety bond or irrevocable letter of credit (LOC) is required within 21 days of the sale award. The amount of the performance security is shown in the Bond and

Payment Schedule of this prospectus. If an LOC or surety is used, the coverage must extend for at least 6 months beyond the contract expiration.

9. Worker's Compensation (10/22)

Purchaser shall obtain worker's compensation insurance to cover claims under Michigan's Worker's Disability Compensation Act of 1969 or similar employee benefit act of any other state applicable to an employee. Verification of Worker's Disability Compensation Act Compliance must be completed and submitted within 21 days of contract award and prior to the issuance of the timber sale contract. In addition, if applicable, Notice of Exclusion or Certificate of Insurance must also be submitted.

10. Timber Sale Contract (10/22)

Additional conditions and requirements common to all timber sales are listed on the timber sale contract (R4031) and are available on line at www.michigan.gov/timber. Contact the Unit Manager for additional information or a sample contract. Within 21 days of the date of the award letter, the bidder must sign the contract and provide the required down payment, performance security, and verification of worker's disability compensation. The down payment and performance security shall be in accordance with the provisions of the timber sale contract, in the sums stated in this prospectus. If these actions are not taken, then the Bidder, the Bidder's corporation, and the corporation's principals may not be permitted to bid on State timber sales for a period of 3 months after the first offense, 6 months after the second offense, and 1 year after the third offense. An offense will only be counted against the Bidder for 5 years. In addition, the Bidder certifies that if awarded this contract, the Bidder will complete the timber sale contract in accordance with its terms and any modifications thereof including requirements to purchase, cut, and remove the included timber by the expiration date.

Payment Unit values in the State Forest Timber Sale Contract are calculated based on the advertised value of the Payment Unit as a percentage of the total advertised value of the contract. The advertised value of each Payment Unit is given in the Description of Timber by Payment Unit table on the Timber Sale Information page. For example, if the value of Payment Unit 1 is advertised as \$1,500 and the total Timber Sale value is advertised as \$10,000, the contract price for Payment Unit 1 will be 15% of the total bid price ($\$1,500/\$10,000 * 100$).

11. Disclaimer of Estimates and Bidder's Warranty of Inspection (10/22)

Before submitting this bid, the Bidder is advised and cautioned to inspect the sale area, review the requirements of the sale contract, and take other steps as may be reasonably necessary to ascertain the location, estimated volumes, construction estimates, and operating costs of the proposed sale. Failure to do so will not relieve the Bidder from responsibility for completing the contract.

The Bidder warrants that this bid is submitted solely on the basis of the Bidder's examination and inspection of the quality and quantity of the timber offered for sale and the Bidder's opinion of the value thereof and the costs of recovery. No reliance should be placed on the State of Michigan's estimates of timber quality, quantity or costs of recovery. Bidder further acknowledges that the State of Michigan: (i) expressly disclaims any warranty of fitness of timber for any purpose; (ii) offers this timber as is without any warranty of quality (merchantability) or quantity and (iii) expressly disclaims any warranty as to the quantity or quality of timber sold.

12. Certification and Chain-of-Custody (10/22)

Unless otherwise indicated in the contract under section 7 – Other Conditions of the Sale Specific Conditions & Requirements, the area encompassed by this timber sale is certified to the standards of the Forest Stewardship Council (FSC) - Certificate #SCS-FM/COC-00090N and the Sustainable Forestry Initiative (SFI) - Certificate #NSF-SFIS-5Y031-SF5. Forest products from this sale may be delivered to the mill as "FSC 100% and / or SFI certified" as long as the contractor hauling the forest products is chain-of-custody (COC) certified or covered under a COC certificate from the destination mill. The purchaser is responsible for maintaining COC after leaving the sale area.

13. Good Neighbor Authority (GNA) Requirements (10/22)

If the name of this timber sales contains the acronym GNA, it is authorized by the Good Neighbor Authority (GNA) and covered by various agreements between the U.S. Forest Service and the State. The timber sale occurs on federal land and the following conditions apply:

GNA contracts on US Forest Service land will not be awarded to purchasers on the Federal list of excluded parties. The System for Award Management (SAM) will be checked for active excluded parties prior to award of contract. In

addition, the Bidder to whom award is made must complete an Assurance Regarding Felony Conviction or Tax Delinquent Status for Corporate Applicants (AD-3031).

14. Good Neighbor Authority (GNA) Requirements, con't (10/22)

Bidder certifies, by signing this bid form, that to the best of Bidder's knowledge that the following representations are accurate and complete.

- a. That the Bidder and its principals are not presently debarred, suspended, proposed for debarment, declared ineligible, or voluntary excluded from timber sales (covered transactions) by any Federal department or agency.
- b. That the Bidder and its principals have not within a 3-year period preceding this bid been convicted of or had a civil judgment rendered against them for commission of fraud or a criminal offense in connection with obtaining , attempting to obtain, or performing a public (Federal, State, or local) transaction or contract under a public transaction; violation of Federal or State antitrust statutes or commission of embezzlement, theft, forgery, bribery, falsification or destruction of records, making false statements, or receiving stolen property.
- c. That the Bidder and its principals are not presently indicted for or otherwise criminally or civilly charged by a governmental entity (Federal, State, or local) with commission of any of the offenses enumerated in paragraph b of this certification.
- d. That the Bidder and its principals have not within a 3-year period preceding this bid had one or more public transactions (Federal, State, or local) terminated for breach or default of a timber or forest product contract.

Bidders that cannot certify this requirement, in whole or in part, shall submit an explanation with their bid.

Scott Bowen
Director

TIMBER SALE INFORMATION

Lake Mix (73-007-24)

T20N, R02W, SEC. 8; T20N, R02W, SEC. 9.
Gladwin County (Advertised Price \$104,457.30)

SALE NOTE: Lake Mix is located within the Gladwin Field Trial Area & restrictions are in place. Operations, including cutting, skidding and hauling, are only permitted between December 1 and March 15 unless permission is obtained from the Unit Manager or his/her representative.

A recreation site such as a trail, pathway, or campground is within the sale area or the vicinity. Certain restrictions/specifications may be applicable including time restrictions.

A timber sale contract for this lump sum, sealed bid timber sale will be awarded to the responsible bidder offering the highest sealed bid price. All units of volume listed below were estimated using the Inventory Manager computer program and the new Michigan taper model. Bids must be at or above the following advertised price for each product and species:

<u>PRODUCTS & SPECIES</u>	<u>ESTIMATED UNITS*</u>		<u>ADVERTISED PRICE</u>
Sawtimber			
B. T. Aspen	137.3	MBF	\$ 77.00 / MBF
Basswood	6.0	MBF	\$ 58.00 / MBF
Black Cherry	5.5	MBF	\$ 152.00 / MBF
Black/Red (Hybrid) Oak	32.0	MBF	\$ 102.00 / MBF
Red Maple	32.6	MBF	\$ 56.00 / MBF
Red Oak	409.5	MBF	\$ 133.00 / MBF
Red Pine	8.5	MBF	\$ 124.00 / MBF
Sugar Maple	16.0	MBF	\$ 248.00 / MBF
White Oak	23.1	MBF	\$ 112.00 / MBF
Pulpwood			
B. T. Aspen	292	Cords	\$ 25.10 / Cord
Mixed Hardwood	350	Cords	\$ 19.05 / Cord
Mixed Oak	501	Cords	\$ 19.60 / Cord
Paper Birch	8	Cords	\$ 32.20 / Cord
Red Pine	15	Cords	\$ 53.45 / Cord
White Pine	16	Cords	\$ 27.05 / Cord
White Spruce	11	Cords	\$ 20.95 / Cord

* The total volume is statistically estimated within plus (+) or minus (-) 13.12 percent. There are an estimated 2,767 cords on this timber sale, plus or minus 363 cords at the 95% confidence level. The estimated units are final and not subject to adjustment. Prospective bidders are urged to examine this timber and to make their own estimates of quantity and quality.

BOND AND PAYMENT SCHEDULE:

1. A bond in the amount of \$5,223.00 to insure faithful performance of the conditions of the contract will be deposited by the successful bidder within 21 days of the sale award.
2. Cutting in any sale or unit without the required advance payment would be considered a trespass.
3. Total payment must be paid in advance or according to the following schedule :
 - (a) Ten percent (10%) of the sale value must be paid within 21 days of the sale award.
 - (b) The 10% down payment will be credited towards the first unit cut.
 - (c) Payment for each of the following units must be made before cutting begins in that unit:

<u>PAYMENT UNIT NUMBER</u>	<u>PERCENT OF TOTAL SALE VALUE</u>
01	8.1%
02	17.8%
03	44.3%
04	13.4%
05	9.1%
06	7.3%

4. If no cutting takes place, the 10% down payment will not be refunded.
5. Operations on the contract issued will terminate on 09/30/2028.

SALE STATISTICS

Volumes were calculated in cubic feet using the Michigan taper model. Cubic foot volume includes all wood inside bark for the product indicated. For display purposes, cubic feet were converted to cords and MBF using a simple conversion factor, e.g. 79 cubic feet per cord and 185 cubic feet per MBF. The cubic foot volumes are precise; the cords and MBF volumes are not. Cubic foot volume cannot be directly converted to cords or boards with precision.

SALE VOLUMES

The total estimated sale volume may not equal the sum of the species/products due to the nature of statistical calculations associated with double sampling methodology.

VOLUME			STATISTICAL RANGE IN CORDS	
TOTAL CUBIC FEET	TOTAL CORDS	PERCENT ERROR	MINIMUM	MAXIMUM
218,609	2,767	13.12%	2,404	3,130

VDU VOLUMES

A VDU is a Volume Determination Unit. Volumes and their associated statistics are calculated at the VDU level and summarized to the sale level. There is often a one to one relationship between a VDU and a Payment Unit, but not always, depending on the cruise design. Refer to the VDU TO PAYMENT UNIT table.

	VOLUME			RANGE IN CORDS	
VDU	TOTAL CUBIC FEET	TOTAL CORDS	PERCENT ERROR	MINIMUM	MAXIMUM
107	16,802	213	44.36%	118	307
111	34,093	432	27.07%	315	548
112	85,841	1,087	18.80%	882	1,291
113	24,844	314	55.89%	139	490
114	33,711	427	47.87%	222	631
177	23,318	295	27.11%	215	375
TOTAL:	218,609	2,767		1,892	3,643

VDU TO PAYMENT UNIT

When a VDU is associated with more than one Payment Unit (PU), the VDU volumes are assigned to the PU based on acres of the VDU within the PU.

VDU	VDU ACRES	PU	PU ACRES
107	3.5	6	3.5
111	10.1	2	10.1
112	22.7	3	22.7
113	5.8	5	5.8
114	10.0	4	10.0
177	48.5	1	48.5
TOTAL:	100.6		100.6

DESCRIPTION OF TIMBER BY PAYMENT UNIT (PU)

PU	MARKET GROUP	PRODUCT	QUANTITY	UNIT	ACRES	ADVERTISE PRICE
1	B. T. Aspen	Sawtimber	7.4	MBF	48.5	\$8,472.60
	Black/Red (Hybrid		32.0	MBF		
	Red Maple		6.3	MBF		
	White Oak		8.3	MBF		
	B. T. Aspen	Pulpwood	17	Cords		
	Mixed Hardwood		90	Cords		
	<i>Black Cherry</i>		3	<i>Cords</i>		
	<i>Red Maple</i>		87	<i>Cords</i>		
	Mixed Oak		62	Cords		
	<i>/Red (Hybrid) Oak</i>		35	<i>Cords</i>		
	<i>White Oak</i>		27	<i>Cords</i>		
2	Red Maple	Sawtimber	0.7	MBF	10.1	\$18,541.80
	Red Oak		108.6	MBF		
	Sugar Maple		0.9	MBF		
	White Oak		6.7	MBF		
	B. T. Aspen	Pulpwood	5	Cords		
	Mixed Hardwood		17	Cords		
	<i>Red Maple</i>		14	<i>Cords</i>		
	<i>Sugar Maple</i>		3	<i>Cords</i>		
	Mixed Oak		127	Cords		
	<i>Red Oak</i>		120	<i>Cords</i>		
	<i>White Oak</i>		7	<i>Cords</i>		
	White Spruce		7	Cords		
3	B. T. Aspen	Sawtimber	14.8	MBF	22.7	\$46,421.55
	Basswood		3.7	MBF		
	Red Maple		6.6	MBF		
	Red Oak		230.4	MBF		
	Red Pine		8.5	MBF		
	Sugar Maple		15.1	MBF		
	White Oak		2.2	MBF		
	B. T. Aspen	Pulpwood	32	Cords		
	Mixed Hardwood		147	Cords		
	<i>American Elm</i>		8	<i>Cords</i>		
	<i>Basswood</i>		9	<i>Cords</i>		
	<i>Ironwood</i>		2	<i>Cords</i>		
	<i>Red Maple</i>		73	<i>Cords</i>		
	<i>Sugar Maple</i>		55	<i>Cords</i>		
	Mixed Oak		228	Cords		
	<i>Red Oak</i>		226	<i>Cords</i>		
	<i>White Oak</i>		2	<i>Cords</i>		
	Red Pine		15	Cords		
	White Pine		5	Cords		
	<i>White Pine</i>	<i>Sawtimber</i>	2.1	<i>MBF</i>		
	<i>White Pine</i>	<i>Pulpwood</i>	1	<i>Cords</i>		
4	B. T. Aspen	Sawtimber	66.7	MBF	10.0	\$13,964.85
	Black Cherry		5.5	MBF		
	Red Maple		7.7	MBF		
	Red Oak		21.3	MBF		
	White Oak		5.9	MBF		
	B. T. Aspen	Pulpwood	109	Cords		
	Mixed Hardwood		21	Cords		
	<i>Black Cherry</i>		5	<i>Cords</i>		
	<i>Red Maple</i>		16	<i>Cords</i>		
	Mixed Oak		35	Cords		
	<i>Red Oak</i>		32	<i>Cords</i>		
	<i>White Oak</i>		3	<i>Cords</i>		

DESCRIPTION OF TIMBER BY PAYMENT UNIT (PU), CON'T

PU	MARKET GROUP	PRODUCT	QUANTITY	UNIT	ACRES	ADVERTISE PRICE
4 con't	White Pine	Pulpwood	6	Cords		
	White Pine	Sawtimber	2.2	MBF		
	White Pine	Pulpwood	2	Cords		
	White Spruce		4	Cords		
5	B. T. Aspen	Sawtimber	48.4	MBF	5.8	\$9,466.80
	Basswood		2.3	MBF		
	Red Oak		10.8	MBF		
	B. T. Aspen	Pulpwood	129	Cords		
	Mixed Hardwood		17	Cords		
	White Ash	Sawtimber	2.4	MBF		
	Basswood	Pulpwood	2	Cords		
	Red Maple		8	Cords		
	White Ash		2	Cords		
	Mixed Oak		11	Cords		
	Red Oak		11	Cords		
	Paper Birch		8	Cords		
	White Pine		5	Cords		
	White Pine		5	Cords		
	6	Red Maple	Sawtimber	11.3		
Red Oak			38.4	MBF		
Mixed Hardwood		Pulpwood	58	Cords		
Red Maple			58	Cords		
Mixed Oak			38	Cords		
Red Oak			38	Cords		
TOTAL:			670.5	MBF		
TOTAL:			1,193	Cords		

Sale Specific Conditions & Requirements

Sale Name: Lake Mix

Sale Number: 73-007-24 Seq#: 2

1 - Sale Area

1.2 - Boundaries

1.2.1 - Painted Boundaries (9/19)

The sale boundary and Payment Unit boundaries are marked and identified by red and yellow paint. Exterior sale boundary lines against state are marked with red paint. Interior Payment Unit boundaries are marked with yellow paint. Retention patches are marked with red paint; no harvesting activities may occur within these areas. The painted boundary line trees are not Included Timber and are to be protected unless marked with orange paint. Yellow painted trees designating an interior Payment Unit boundary are only to be cut when all surrounding Payment Units have been paid.

2 - Timber Specifications

2.1 - Included Timber

2.1.1 - Clearcut Unit(s) with Unmerchantable Trees (6/14)

Within Payment Unit(s) 2-6, cut all trees that are two (2) inches or more at DBH, with the following exceptions:

Within Payment Unit 2, do not cut any green marked trees or white oak.

Within Payment Unit 3-, do not cut any green marked trees or any white spruce. In addition, do not cut any white or red pine that is 18 inches or more at DBH.

Within Payment Unit 4, do not cut any white spruce. In addition, do not cut any white or red pine that are 18 inches or more at DBH.

Within Payment Unit 6, do not cut white spruce or hemlock.

2.1.3 - Cut Tree Marked Unit(s) (12/08)

Within Payment Unit(s) 1, all trees are designated for cutting when marked with orange paint above and below stump height, regardless of merchantability. In addition, do not cut any red or white pine, regardless of any paint.

2.2 - Utilization

2.2.2 - Chipping required (2/18)

Payment Unit 1 must be chip harvested to facilitate future silvicultural activities. The Purchaser has the option to produce sawlogs or pulpwood bolts, but the remaining portion of the trees must be chipped. The requirement to retain approximately 1/6 to 1/3 of tree tops and limbs less than four inches in diameter is still applicable (G. C. & R. 2.2).

2.2.7 - Uncut Designated Trees (2/04)

Liquidated damages of \$5.00 per tree will be assessed for every marked tree not cut.

2.2.9 - No Chipping Permitted (12/08)

Within Payment Unit(s) 2-3, all wood must be removed by whole tree, tree segment, or roundwood. No chipping is permitted.

3 - Payments

3.3 - Pre-measured Sales

3.3.4 - Dividing Payment Units (7/14)

Payment Unit(s) may be divided at the request of the Purchaser and upon approval of the Unit Manager. Dividing Payment Units is a contract modification which requires a Timber Sale Contract Amendment. There will be only one division per Payment Unit.

3.4 - Damaged Timber

3.4.1 - Damaged timber (7/16)

General Condition and Requirement 3.4 Damaged Timber, defines liquidated damages for undesignated live merchantable trees which are cut or injured. No damage is acceptable to undesignated live merchantable trees. Within the Sale Area, if more than 20% of trees (> 4.5" DBH) within a specified area of the sale are damaged, liquidated damages will be assessed for all trees damaged. Rates will be in accordance with General Condition and Requirement 3.4 Damaged Timber.

4 - Transportation

4.1 - Construction

4.1.6 - Road Construction (4/24)

Construction of new roads or improvements of existing roads shall be done in such a way as to minimize the environmental and visual impacts. Merchantable trees shall be cut and utilized unless otherwise directed. Non-merchantable trees shall be severed and laid flat on the ground. Slash shall be scattered, and not left in windrows and kept a minimum of 10 feet back from the road edge. Stumps shall be set upright, not left on edge, and be moved at least 10 feet away from the road edge. Disturbed soil shall be feathered into the woods and not left in berms or windrows.

4.1.7 - Road Closure (10/11)

All new roads built into the sale must be blocked to vehicle traffic upon completion of the sale. Overgrown roads that are reopened shall be considered new roads. In general, this will require constructing a four (4') foot high berm of stumps and logs covered with earth. Stumps and brush must be placed along the remainder of the trail. These roads must be rendered impassable to cars and trucks. All stumps from road building and landing construction must be reserved to block any newly constructed roads upon completion of the sale. These stumps must be scattered along the road system to prohibit vehicular movement. Contact the Sale Administrator for specific details of design and placement.

5 - Operations

5.2 - Conduct of Operations

5.2.1 - Slash

5.2.1.8 - Slash Height (12/08)

No slash or tree tops may exceed 24 inches in height.

5.2.2 - Hazard Trees/Snags

5.2.2.1 - Den Trees (10/16)

Obvious hollow and/or den trees shall be protected and left standing unless they are a safety hazard.

5.2.3 - Operating Restrictions

5.2.3.4 - Oak Wilt Restriction, No Exceptions (1/18)

Within Payment Units 1-6, cutting, skidding, hauling within the sale and brushing of access roads to the sale are not permitted during the period of April 15 to July 15. No exceptions will be granted. This is necessary to reduce the spread of oak wilt.

5.2.3.10 - Gladwin Field Trial Area Restriction (10/10)

Operations, including cutting, skidding, and hauling are only permitted between December 1 to March 15, unless permission is obtained from the Unit Manager or his/her representative.

5.2.4 - Dead and Down Creation

5.2.4.4 - Dead and Down Creation, Grouse (6/18)

To encourage grouse and other wildlife, in Payment Unit(s) 4-5 leave one 12-inch or larger diameter whole tree on the ground for every 3 acres. Trees should be scattered throughout the sale and at least two chains from any roads, two-tracks, or trails open to vehicles, or positioned per the Sale Administrator's instructions. Stumps must be at least 3 feet tall.

5.2.32 - Decking/Landing Restoration (9/13)

All decking and landing areas must have the surface area restored to a condition equal to or better than before. This is to ensure the proper regeneration of the stand. Wood debris, chips and "cookies" from trimmings must be removed or scattered away from landing and loading areas and may not be windrowed on the edge.

5.2.40 - Pathway Protection (10/10)

The Trout Lake is a bike, hiking, ski trail and is shown on the Timber Sale Map. Do not cut trees or damage posts with blue pathway markers. Maintain a 20-foot-wide slash, debris, and rut free zone daily, using the pathway as the centerline. Do not run equipment down the pathway.



TIMBER SALE MAP

This information provided by authority of Part 525, 1994 PA 451, as amended.

Sale Number

73-007-24

Date

02/18/2025

Forest Management Unit

Gladwin Mgt Unit

County

Gladwin

Mapped By: Owens

Cruised By: Owens

Scale

1:15,840

Page

1

Of

1

Township
20N

Range
02W

Section(s) and

Subdivision(s) Sec. 8 W1/2NE,NWSE; Sec. 9 NWNW,S1/2NW,N1/2SW,SESW;

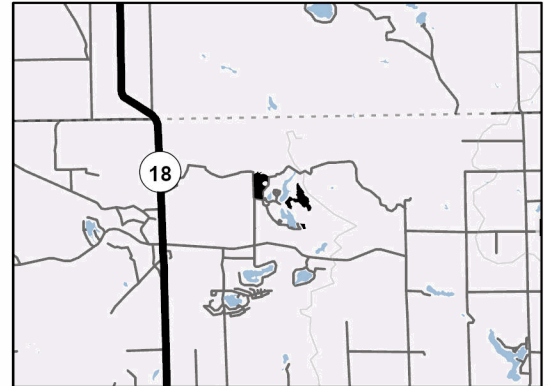
Cover Type

A = Aspen	J = Jack Pine	O = Oak	U = Upland Brush
B = Paper Birch	K = Rock	P = Lowland Poplar	UM = Upland Mix Forest
C = Cedar	L = Lowland Brush	Q = Mixed Swamp Conifer	V = Bog or Marsh
D = Treed Bog	LM = Lowland Mix Forest	R = Red Pine	W = White Pine
E = Swamp Hardwoods	M = Maple, Beech, Birch	S = Black Spruce	X = Non Stocked
F = Spruce/Fir	MC = Mixed Conifer	T = Tamarack	Y = Sand
G = Grass	MD = Mixed Deciduous	Z = Water	
H = Hemlock	N = Marsh		

Density

0 = Non Stocked	5 = Pole Timber Medium
1 = Seedling Sapling Poor	6 = Pole Timber Well
2 = Seedling Sapling Medium	7 = Saw Timber Poor
3 = Seedling Sapling Well	8 = Saw Timber Medium
4 = Pole Timber Poor	9 = Saw Timber Well

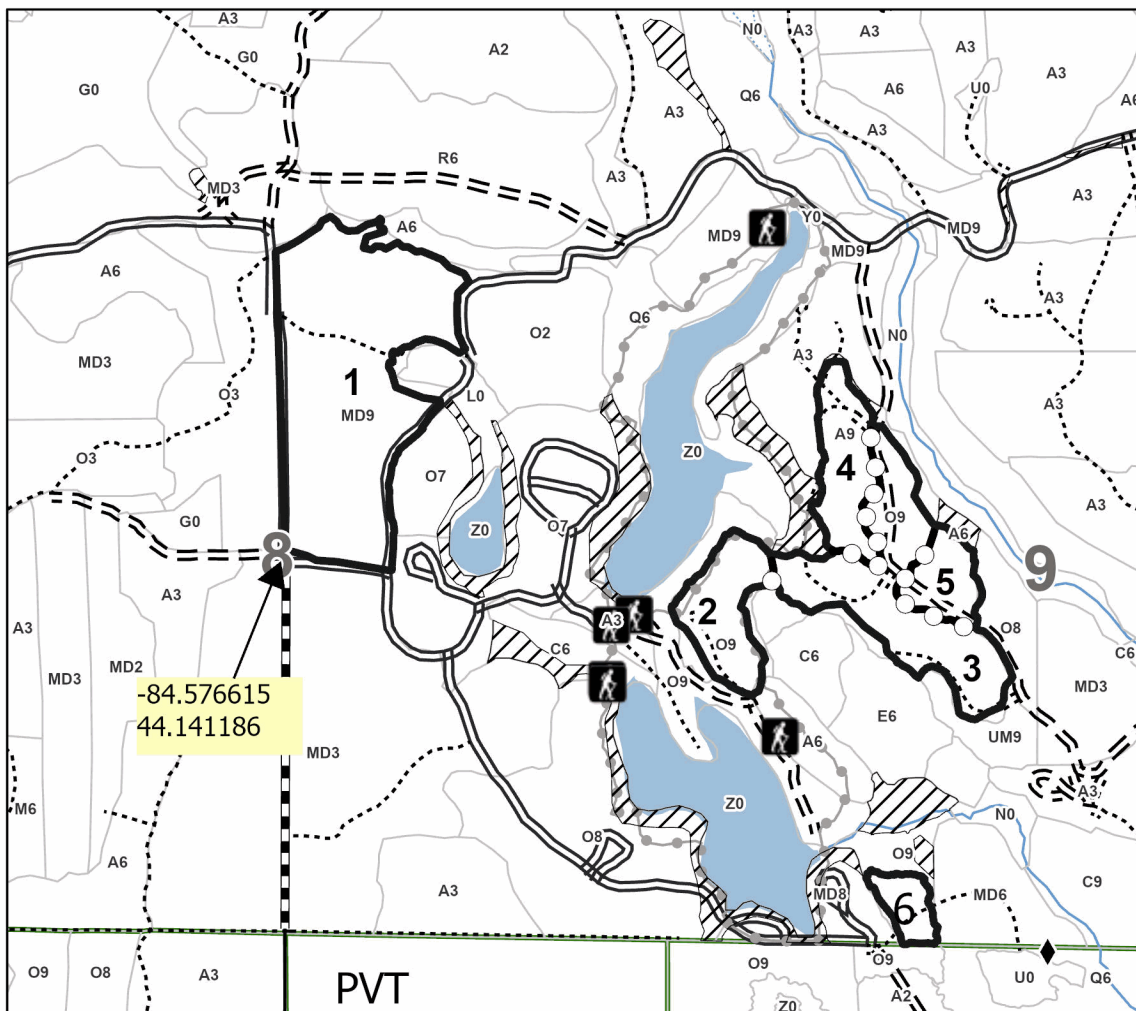
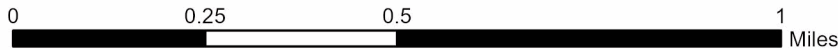
Locator Map 1:200,000



Lake Mix

100.6 Acres

Payment Unit Number	Acres	Payment Unit Number	Acres
1	48.5	4	10
2	10.1	5	5.8
3	22.7	6	3.5



Legend

- Payment Unit
- Payment Unit (Yellow)
- Primary Forest Road
- Forest Access Route
- Administrative Access Only
- Paved Road
- Government Gravel/Dirt
- Recreational Trails
- Survey Corner

Use QR Code to open Map in App



TIMBER SALE INFORMATION

Bird Dog Bonanza (73-008-24)

T20N, R02W, SEC. 5; T20N, R02W, SEC. 6; T20N, R02W, SEC. 7.

Gladwin County (Advertised Price \$210,951.45)

SALE NOTE: Bird Dog Bonanza is located within the Gladwin Field Trial Area & restrictions are in place. Operations, including cutting, skidding and hauling, are only permitted between December 1 and March 15 unless permission is obtained from the Unit Manager or his/her representative.

A recreation site such as a trail, pathway, or campground is within the sale area or the vicinity. Certain restrictions/specifications may be applicable including time restrictions.

A timber sale contract for this lump sum, sealed bid timber sale will be awarded to the responsible bidder offering the highest sealed bid price. All units of volume listed below were estimated using the Inventory Manager computer program and the new Michigan taper model. Bids must be at or above the following advertised price for each product and species:

<u>PRODUCTS & SPECIES</u>	<u>ESTIMATED UNITS*</u>		<u>ADVERTISED PRICE</u>
Sawtimber			
B. T. Aspen	835.4	MBF	\$ 77.00 / MBF
Black/Red (Hybrid) Oak	264.6	MBF	\$ 102.00 / MBF
Red Maple	95.8	MBF	\$ 56.00 / MBF
White Oak	39.4	MBF	\$ 112.00 / MBF
Pulpwood			
B. T. Aspen	3,143	Cords	\$ 25.10 / Cord
Black/Red (Hybrid) Oak	602	Cords	\$ 19.60 / Cord
Mixed Hardwood	917	Cords	\$ 19.05 / Cord
Paper Birch	31	Cords	\$ 32.20 / Cord
White Pine	26	Cords	\$ 27.05 / Cord

* The total volume is statistically estimated within plus (+) or minus (-) 12.54 percent. There are an estimated 7,611 cords on this timber sale, plus or minus 955 cords at the 95% confidence level. The estimated units are final and not subject to adjustment. Prospective bidders are urged to examine this timber and to make their own estimates of quantity and quality.

BOND AND PAYMENT SCHEDULE:

1. A bond in the amount of \$10,548.00 to insure faithful performance of the conditions of the contract will be deposited by the successful bidder within 21 days of the sale award.
2. Cutting in any sale or unit without the required advance payment would be considered a trespass.
3. Total payment must be paid in advance or according to the following schedule:
 - (a) Ten percent (10%) of the sale value must be paid within 21 days of the sale award.
 - (b) The 10% down payment will be credited towards the first unit cut.
 - (c) Payment for each of the following units must be made before cutting begins in that unit:

<u>PAYMENT UNIT NUMBER</u>	<u>PERCENT OF TOTAL SALE VALUE</u>
01	19.5%
02	22.7%
03	26.6%
04	31.2%

4. If no cutting takes place, the 10% down payment will not be refunded.
5. Operations on the contract issued will terminate on 09/30/2028.

SALE STATISTICS

Volumes were calculated in cubic feet using the Michigan taper model. Cubic foot volume includes all wood inside bark for the product indicated. For display purposes, cubic feet were converted to cords and MBF using a simple conversion factor, e.g. 79 cubic feet per cord and 185 cubic feet per MBF. The cubic foot volumes are precise; the cords and MBF volumes are not. Cubic foot volume cannot be directly converted to cords or boards with precision.

SALE VOLUMES

The total estimated sale volume may not equal the sum of the species/products due to the nature of statistical calculations associated with double sampling methodology.

VOLUME			STATISTICAL RANGE IN CORDS	
TOTAL CUBIC FEET	TOTAL CORDS	PERCENT ERROR	MINIMUM	MAXIMUM
601,277	7,611	12.54%	6,656	8,566

VDU VOLUMES

A VDU is a Volume Determination Unit. Volumes and their associated statistics are calculated at the VDU level and summarized to the sale level. There is often a one to one relationship between a VDU and a Payment Unit, but not always, depending on the cruise design. Refer to the VDU TO PAYMENT UNIT table.

	VOLUME			RANGE IN CORDS	
VDU	TOTAL CUBIC FEET	TOTAL CORDS	PERCENT ERROR	MINIMUM	MAXIMUM
165	332,956	4,215	19.32%	3,400	5,029
239	268,321	3,396	14.94%	2,889	3,904
TOTAL:	601,277	7,611		6,289	8,933

VDU TO PAYMENT UNIT

When a VDU is associated with more than one Payment Unit (PU), the VDU volumes are assigned to the PU based on acres of the VDU within the PU.

VDU	VDU ACRES	PU	PU ACRES
165	70.0	3	32.2
		4	37.8
239	62.8	1	29.0
		2	33.8
TOTAL:	132.8		132.8

DESCRIPTION OF TIMBER BY PAYMENT UNIT (PU)

PU	MARKET GROUP	PRODUCT	QUANTITY	UNIT	ACRES	ADVERTISE PRICE	
1	B. T. Aspen	Sawtimber	116.8	MBF	29.0	\$41,167.95	
	Black/Red (Hybrid		35.2	MBF			
	Red Maple		22.5	MBF			
	White Oak		2.4	MBF			
	B. T. Aspen	Pulpwood	784	Cords			
	Black/Red (Hybrid		143	Cords			
	Mixed Hardwood		209	Cords			
	<i>Beech</i>		3	<i>Cords</i>			
	<i>Black Cherry</i>		2	<i>Cords</i>			
	<i>Red Maple</i>		198	<i>Cords</i>			
	<i>White Oak</i>		6	<i>Cords</i>			
	Paper Birch		10	Cords			
	White Pine		10	Cords			
2	B. T. Aspen	Sawtimber	136.2	MBF	33.8	\$47,922.40	
	Black/Red (Hybrid		41.1	MBF			
	Red Maple		26.2	MBF			
	White Oak		2.9	MBF			
	B. T. Aspen	Pulpwood	913	Cords			
	Black/Red (Hybrid		166	Cords			
	Mixed Hardwood		243	Cords			
	<i>Beech</i>		4	<i>Cords</i>			
	<i>Black Cherry</i>		3	<i>Cords</i>			
	<i>Red Maple</i>		230	<i>Cords</i>			
	<i>White Oak</i>		6	<i>Cords</i>			
	Paper Birch		11	Cords			
	White Pine		11	Cords			
3	B. T. Aspen	Sawtimber	267.9	MBF	32.2	\$56,064.40	
	Black/Red (Hybrid		86.6	MBF			
	Red Maple		21.7	MBF			
	White Oak		15.7	MBF			
	B. T. Aspen	Pulpwood	665	Cords			
	Black/Red (Hybrid		135	Cords			
	Mixed Hardwood		214	Cords			
	<i>Black Cherry</i>		<i>Sawtimber</i>	0.4			<i>MBF</i>
	<i>Black Cherry</i>		<i>Pulpwood</i>	4			<i>Cords</i>
	<i>Red Maple</i>		197	<i>Cords</i>			
	<i>White Oak</i>		12	<i>Cords</i>			
	Paper Birch		5	Cords			
	White Pine		2	Cords			
4	B. T. Aspen	Sawtimber	314.5	MBF	37.8	\$65,796.70	
	Black/Red (Hybrid		101.7	MBF			
	Red Maple		25.4	MBF			
	White Oak		18.4	MBF			
	B. T. Aspen	Pulpwood	781	Cords			
	Black/Red (Hybrid		158	Cords			
	Mixed Hardwood		251	Cords			
	<i>Black Cherry</i>	<i>Sawtimber</i>	0.5	<i>MBF</i>			
	<i>Black Cherry</i>	<i>Pulpwood</i>	5	<i>Cords</i>			
	<i>Red Maple</i>	232	<i>Cords</i>				
	<i>White Oak</i>	13	<i>Cords</i>				
	Paper Birch	5	Cords				
	White Pine	3	Cords				
TOTAL:			1,235.2	MBF			
TOTAL:			4,719	Cords			

Sale Specific Conditions & Requirements

Sale Name: Bird Dog Bonanza

Sale Number: 73-008-24 Seq#: 1

1 - Sale Area

1.2 - Boundaries

1.2.1 - Painted Boundaries (9/19)

The sale boundary and Payment Unit boundaries are marked and identified by red and yellow paint. Exterior sale boundary lines against state are marked with red paint. Interior Payment Unit boundaries are marked with yellow paint, with the exception of the interior Payment Unit boundaries between Payment Units 1 and 2, which is unpainted and designated by the snowmobile trail. Retention patches are marked with red paint; no harvesting activities may occur within these areas. The painted boundary line trees are not Included Timber and are to be protected unless marked with orange paint. Yellow painted trees designating an interior Payment Unit boundary are only to be cut when all surrounding Payment Units have been paid.

2 - Timber Specifications

2.1 - Included Timber

2.1.1 - Clearcut Unit(s) with Unmerchantable Trees (6/14)

Within Payment Unit(s) 1-4, cut all trees that are two (2) inches or more at DBH

3 - Payments

3.3 - Pre-measured Sales

3.3.4 - Dividing Payment Units (7/14)

Payment Unit(s) may be divided at the request of the Purchaser and upon approval of the Unit Manager. Dividing Payment Units is a contract modification which requires a Timber Sale Contract Amendment. There will be only one division per Payment Unit.

4 - Transportation

4.1 - Construction

4.1.12 - No New Roads (1/12)

No new roads will be permitted in any Payment Unit. All operations are limited to existing roads. Skid trails only will be allowed.

4.4 - Access

4.4.3 - Access gate (12/08)

The access gate must be locked at the completion of each day unless otherwise approved by the Unit Manager or his/her representative.

5 - Operations

5.2 - Conduct of Operations

5.2.1 - Slash

5.2.1.13 - Dispose of Slash as Directed (12/05)

Slash is to be disposed of as directed by the Sale Administrator. Stumps and slash removed for operations must be utilized to prevent ORV and vehicular traffic around the southern gate of Payment Units 1 and 2.

5.2.3 - Operating Restrictions

5.2.3.10 - Gladwin Field Trial Area Restriction (10/10)

Operations, including cutting, skidding, and hauling are only permitted between December 1 to March 15, unless permission is obtained from the Unit Manager or his/her representative.

5.2.4 - Dead and Down Creation

5.2.4.4 - Dead and Down Creation, Grouse (6/18)

To encourage grouse and other wildlife, in Payment Unit(s) 1-4, leave one 12-inch or larger diameter whole tree on the ground for every 3 acres. Trees should be scattered throughout the sale and at least two chains from any roads, two-tracks, or trails open to vehicles, or positioned per the Sale Administrator's instructions. Stumps must be at least 3 feet tall.

5.2.32 - Decking/Landing Restoration (9/13)

All decking and landing areas must have the surface area restored to a condition equal to or better than before. This is to ensure the proper regeneration of the stand. Wood debris, chips and "cookies" from trimmings must be removed or scattered away from landing and loading areas and may not be windrowed on the edge.

5.2.41 - Snowmobile Trail Protection (9/11)

LP 655 is a snowmobile trail and is shown on the Timber Sale Map. Do not cut or damage posts with orange trail markers or traffic control signs. If the trail is used, it must be maintained and restored to a condition equal to or better than before the sale. If the trail is used for hauling, it must be graded to the satisfaction of the Unit Manager or his/her representative prior to December 1. The snowmobile trail may only be crossed at right angles. Maintain a 20-foot-wide slash, debris, and rut free zone daily using the snowmobile trail as the centerline. All stumps within 20 feet of the snowmobile trail must be cut at ground level.

6 - Safety and Fire Prevention

6.2 - Signing

6.2.1 - Road Posting (10/20)

The Purchaser is responsible for posting and maintaining caution signs on Meredith Grade Road & M-18 prior to beginning operations. The road must be posted at appropriate distances from the Sale Area to warn of logging activity and truck traffic. Signs must be removed when harvest operations are suspended or completed. The Purchaser will provide these signs.

6.2.2 - Snowmobile Trail Posting (10/20)

The Purchaser is responsible for posting and maintaining caution signs on LP 655 prior to beginning operations during the snowmobile season (approximately December 1 to March 31). The trail must be posted at appropriate distances from the Sale Area to warn of logging activity and truck traffic. Signs must be removed when harvest operations are suspended or completed. The Purchaser will provide these signs.

**TIMBER SALE MAP**

This information provided by authority of Part 525, 1994 PA 451, as amended.

Sale Number

73-008-24

Date

01/31/2025

Forest Management Unit

County

Mapped By: Behrmann

Scale

Page

Of

Gladwin Mgt Unit

Gladwin

Cruised By: Behrmann

1:10,000

1

2

Township
20NRange
02W

Section(s) and

Subdivision(s) Sec. 5 SWNW,NWSW; Sec. 6 SENE,SE; Sec. 7 NESW,S1/2SW,W1/2SE;

Cover Type

A = Aspen	J = Jack Pine	O = Oak	U = Upland Brush
B = Paper Birch	K = Rock	P = Lowland Poplar	UM = Upland Mix Forest
C = Cedar	L = Lowland Brush	Q = Mixed Swamp Conifer	V = Bog or Marsh
D = Treed Bog	LM = Lowland Mix Forest	R = Red Pine	W = White Pine
E = Swamp Hardwoods	M = Maple, Beech, Birch	S = Black Spruce	X = Non Stocked
F = Spruce/Fir	MC = Mixed Conifer	T = Tamarack	Y = Sand
G = Grass	MD = Mixed Deciduous		Z = Water
H = Hemlock	N = Marsh		

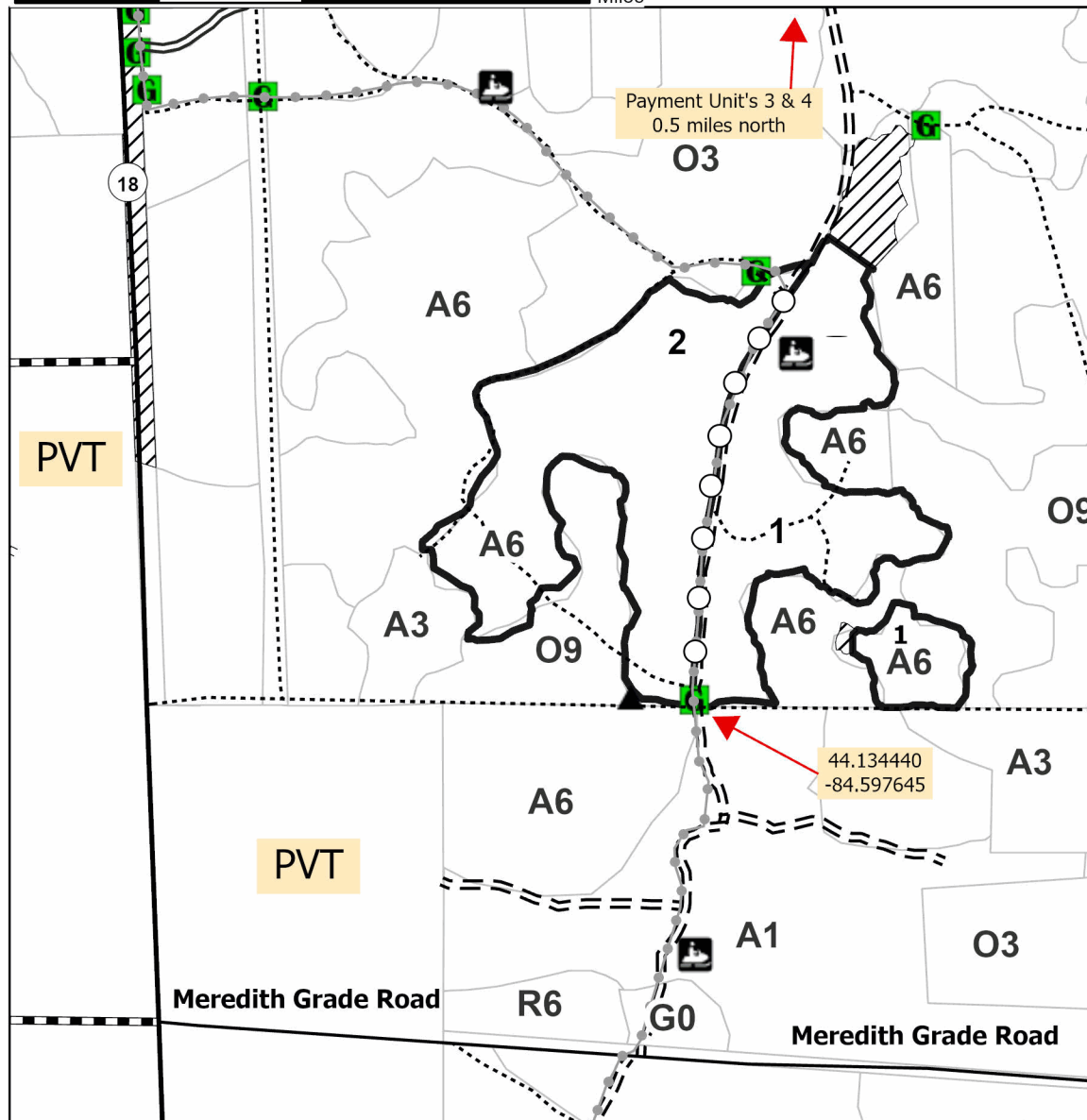
Density

0 = Non Stocked	5 = Pole Timber Medium
1 = Seedling Sapling Poor	6 = Pole Timber Well
2 = Seedling Sapling Medium	7 = Saw Timber Poor
3 = Seedling Sapling Well	8 = Saw Timber Medium
4 = Pole Timber Poor	9 = Saw Timber Well

Bird Dog Bonanza**132.8 Acres**

PU #	Acres	PU #	Acres
1	29	3	32.2
2	33.8	4	37.9

0 0.13 0.25 0.5 Miles

**Legend**

- Against State (Red)
- Stand
- Retention Areas
- Recreational Trail
- Highway
- Berm
- Gate
- Payment Unit (Trail)

Use QR Code to open Map in App



**TIMBER SALE MAP**

This information provided by authority of Part 525, 1994 PA 451, as amended.

Sale Number

73-008-24

Date

01/31/2025

Forest Management Unit Gladwin Mgt Unit	County Gladwin	Mapped By: Behrmann	Scale 1:10,000	Page 2	Of 2
		Cruised By: Behrmann			

Township 20N	Range 02W	Section(s) and Subdivision(s)
-----------------	--------------	----------------------------------

Sec. 5 SWNW,NWSW; Sec. 6 SENE,SE; Sec. 7 NESW,S1/2SW,W1/2SE;

Cover Type

A = Aspen	J = Jack Pine	O = Oak	U = Upland Brush
B = Paper Birch	K = Rock	P = Lowland Poplar	UM = Upland Mix Forest
C = Cedar	L = Lowland Brush	Q = Mixed Swamp Conifer	V = Bog or Marsh
D = Treed Bog	LM = Lowland Mix Forest	R = Red Pine	W = White Pine
E = Swamp Hardwoods	M = Maple, Beech, Birch	S = Black Spruce	X = Non Stocked
F = Spruce/Fir	MC = Mixed Conifer	T = Tamarack	Y = Sand
G = Grass	MD = Mixed Deciduous		Z = Water
H = Hemlock	N = Marsh		

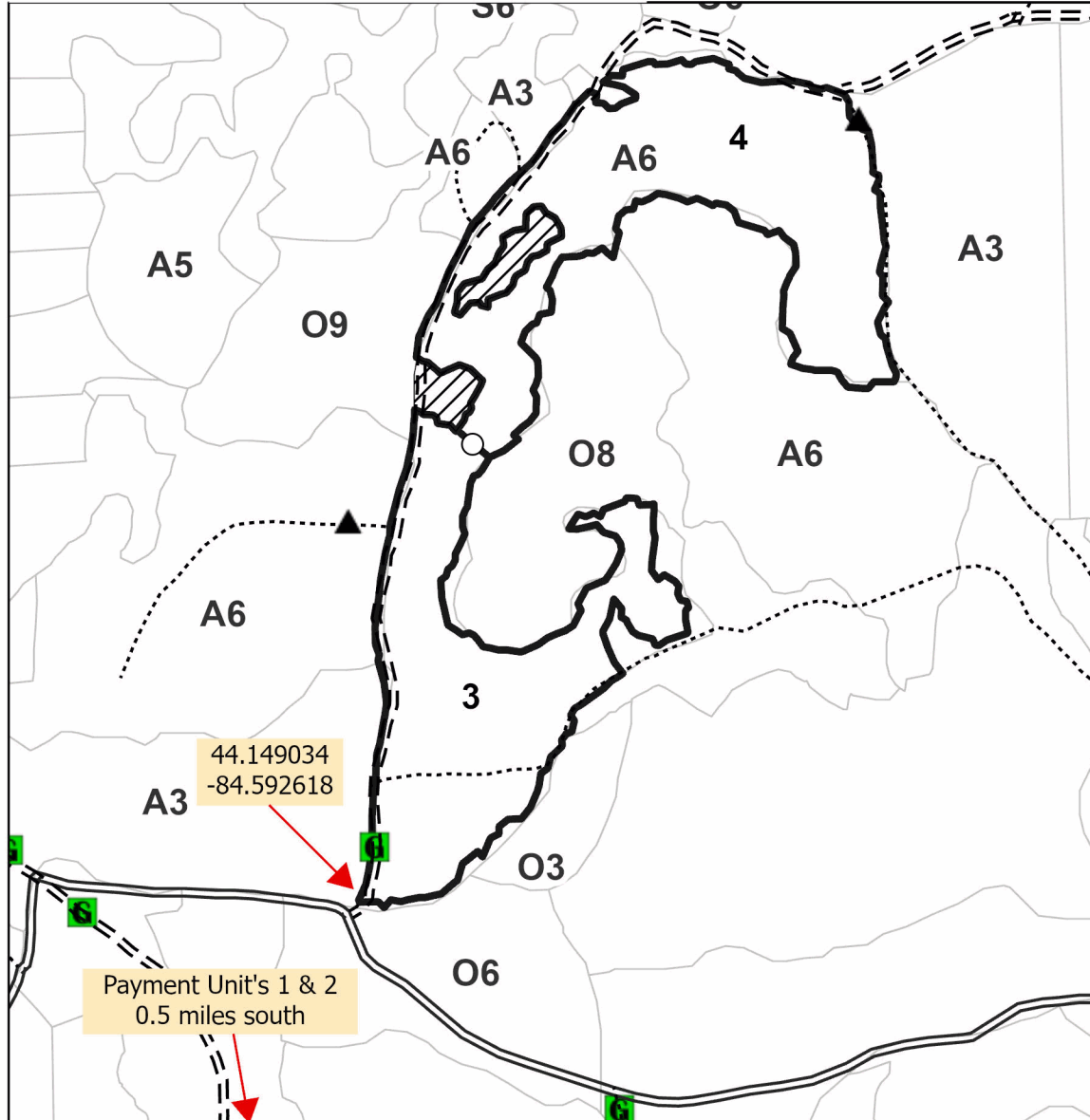
Density

0 = Non Stocked	5 = Pole Timber Medium
1 = Seedling Sapling Poor	6 = Pole Timber Well
2 = Seedling Sapling Medium	7 = Saw Timber Poor
3 = Seedling Sapling Well	8 = Saw Timber Medium
4 = Pole Timber Poor	9 = Saw Timber Well

Bird Dog Bonanza**132.8 Acres**

PU #	Acres	PU #	Acres
1	29	3	32.2
2	33.8	4	37.9

0 0.13 0.25 0.5 Miles

**Legend**

- Against State (Red)
- Stand
- Retention Areas
- Berm
- Gate
- Payment Unit (Yellow)

Use QR Code to open Map in App



TIMBER SALE INFORMATION

Young Sow Hideaway (73-009-24)

T20N, R02W, SEC. 10; T20N, R02W, SEC. 3.
Gladwin County (Advertised Price \$219,870.25)

SALE NOTE: Young Sow Hideaway is located within the Gladwin Field Trial Area & restrictions are in place. Operations, including cutting, skidding and hauling, are only permitted between December 1 and March 15 unless permission is obtained from the Unit Manager or his/her representative.

A timber sale contract for this lump sum, sealed bid timber sale will be awarded to the responsible bidder offering the highest sealed bid price. All units of volume listed below were estimated using the Inventory Manager computer program and the new Michigan taper model. Bids must be at or above the following advertised price for each product and species:

<u>PRODUCTS & SPECIES</u>	<u>ESTIMATED UNITS*</u>	<u>ADVERTISED PRICE</u>
Sawtimber		
Basswood	3.8 MBF	\$ 58.00 / MBF
Beech	4.7 MBF	\$ 159.00 / MBF
Black/Red (Hybrid) Oak	428.3 MBF	\$ 102.00 / MBF
Mixed Aspen	688.9 MBF	\$ 77.00 / MBF
Red Maple	42.0 MBF	\$ 56.00 / MBF
Red Oak	10.2 MBF	\$ 133.00 / MBF
Red Pine	109.7 MBF	\$ 124.00 / MBF
White Oak	70.9 MBF	\$ 112.00 / MBF
Pulpwood		
Black/Red (Hybrid) Oak	322 Cords	\$ 19.60 / Cord
Mixed Aspen	2,554 Cords	\$ 25.10 / Cord
Mixed Hardwood	74 Cords	\$ 19.05 / Cord
N. White Cedar	4 Cords	\$ 8.15 / Cord
Paper Birch	35 Cords	\$ 32.20 / Cord
Red Maple	649 Cords	\$ 19.05 / Cord
Red Oak	51 Cords	\$ 19.60 / Cord
Red Pine	153 Cords	\$ 53.45 / Cord
White Oak	82 Cords	\$ 19.60 / Cord
White Pine	29 Cords	\$ 27.05 / Cord

* The total volume is statistically estimated within plus (+) or minus (-) 10.99 percent. There are an estimated 7,138 cords on this timber sale, plus or minus 785 cords at the 95% confidence level. The estimated units are final and not subject to adjustment. Prospective bidders are urged to examine this timber and to make their own estimates of quantity and quality.

BOND AND PAYMENT SCHEDULE:

1. A bond in the amount of \$10,994.00 to insure faithful performance of the conditions of the contract will be deposited by the successful bidder within 21 days of the sale award.
2. Cutting in any sale or unit without the required advance payment would be considered a trespass.
3. Total payment must be paid in advance or according to the following schedule :
 - (a) Ten percent (10%) of the sale value must be paid within 21 days of the sale award.
 - (b) The 10% down payment will be credited towards the first unit cut.
 - (c) Payment for each of the following units must be made before cutting begins in that unit:

PAYMENT UNIT NUMBER	PERCENT OF TOTAL SALE VALUE
01	17.4%
02	27.6%
03	15.4%
04	28.2%
05	4.2%
06	7.2%

4. If no cutting takes place, the 10% down payment will not be refunded.
5. Operations on the contract issued will terminate on 09/30/2029.

SALE STATISTICS

Volumes were calculated in cubic feet using the Michigan taper model. Cubic foot volume includes all wood inside bark for the product indicated. For display purposes, cubic feet were converted to cords and MBF using a simple conversion factor, e.g. 79 cubic feet per cord and 185 cubic feet per MBF. The cubic foot volumes are precise; the cords and MBF volumes are not. Cubic foot volume cannot be directly converted to cords or boards with precision.

SALE VOLUMES

The total estimated sale volume may not equal the sum of the species/products due to the nature of statistical calculations associated with double sampling methodology.

VOLUME			STATISTICAL RANGE IN CORDS	
TOTAL CUBIC FEET	TOTAL CORDS	PERCENT ERROR	MINIMUM	MAXIMUM
563,916	7,138	10.99%	6,353	7,923

VDU VOLUMES

A VDU is a Volume Determination Unit. Volumes and their associated statistics are calculated at the VDU level and summarized to the sale level. There is often a one to one relationship between a VDU and a Payment Unit, but not always, depending on the cruise design. Refer to the VDU TO PAYMENT UNIT table.

	VOLUME			RANGE IN CORDS	
VDU	TOTAL CUBIC FEET	TOTAL CORDS	PERCENT ERROR	MINIMUM	MAXIMUM
33	242,614	3,071	17.74%	2,526	3,616
58	178,053	2,254	19.75%	1,809	2,699
59	93,380	1,182	25.86%	876	1,488
72	24,706	313	38.81%	191	434
76	25,162	319	55.57%	142	496
TOTAL:	563,916	7,138		5,544	8,732

VDU TO PAYMENT UNIT

When a VDU is associated with more than one Payment Unit (PU), the VDU volumes are assigned to the PU based on acres of the VDU within the PU.

VDU	VDU ACRES	PU	PU ACRES
33	73.4	1	28.4
		2	45.0
58	31.4	4	31.4
59	18.6	3	18.6
72	12.6	6	12.6
76	12.0	5	12.0
TOTAL:	148.0		148.0

DESCRIPTION OF TIMBER BY PAYMENT UNIT (PU)

PU	MARKET GROUP	PRODUCT	QUANTITY	UNIT	ACRES	ADVERTISE PRICE
1	Beech	Sawtimber	0.4	MBF	28.4	\$38,227.25
	Black/Red (Hybrid		161.2	MBF		
	Mixed Aspen		52.2	MBF		
	<i>B. T. Aspen</i>		52.2	<i>MBF</i>		
	Red Maple		12.8	MBF		
	Red Pine		14.6	MBF		
	White Oak		25.7	MBF		
	Black/Red (Hybrid	Pulpwood	118	Cords		
	Mixed Aspen		231	Cords		
	<i>B. T. Aspen</i>		231	<i>Cords</i>		
	Mixed Hardwood		2	Cords		
	<i>Beech</i>		2	<i>Cords</i>		
	N. White Cedar		2	Cords		
	<i>N. White Cedar</i>	<i>Sawtimber</i>	0.3	<i>MBF</i>		
	<i>N. White Cedar</i>	<i>Pulpwood</i>	1	<i>Cords</i>		
	Red Maple		176	Cords		
	Red Pine		3	Cords		
	White Oak		26	Cords		
	White Pine		4	Cords		
	<i>White Pine</i>	<i>Sawtimber</i>	2.2	<i>MBF</i>		
2	Beech	Sawtimber	0.7	MBF	45.0	\$60,695.10
	Black/Red (Hybrid		255.5	MBF		
	Mixed Aspen		82.7	MBF		
	<i>B. T. Aspen</i>		82.7	<i>MBF</i>		
	Red Maple		20.2	MBF		
	Red Pine		23.2	MBF		
	White Oak		40.7	MBF		
	Black/Red (Hybrid	Pulpwood	186	Cords		
	Mixed Aspen		366	Cords		
	<i>B. T. Aspen</i>		366	<i>Cords</i>		
	Mixed Hardwood		3	Cords		
	<i>Beech</i>		3	<i>Cords</i>		
	N. White Cedar		3	Cords		
	<i>N. White Cedar</i>	<i>Sawtimber</i>	0.4	<i>MBF</i>		
	<i>N. White Cedar</i>	<i>Pulpwood</i>	2	<i>Cords</i>		
	Red Maple		280	Cords		
	Red Pine		6	Cords		
	White Oak		41	Cords		
	White Pine		8	Cords		
	<i>White Pine</i>	<i>Sawtimber</i>	3.4	<i>MBF</i>		
	<i>White Pine</i>	<i>Pulpwood</i>	1	<i>Cords</i>		
3	Basswood	Sawtimber	3.8	MBF	18.6	\$33,852.95
	Beech		3.6	MBF		
	Mixed Aspen		224.9	MBF		
	<i>B. T. Aspen</i>		219.8	<i>MBF</i>		
	<i>Quaking Aspen</i>		5.1	<i>MBF</i>		
	Red Maple		5.3	MBF		
	Mixed Aspen	Pulpwood	502	Cords		
	<i>B. T. Aspen</i>		453	<i>Cords</i>		
	<i>Quaking Aspen</i>		49	<i>Cords</i>		
	Mixed Hardwood		37	Cords		
	<i>Basswood</i>		17	<i>Cords</i>		
	<i>Beech</i>		13	<i>Cords</i>		
	<i>Sugar Maple</i>		7	<i>Cords</i>		
	Paper Birch		29	Cords		
	<i>Paper Birch</i>		3.7	<i>MBF</i>		

DESCRIPTION OF TIMBER BY PAYMENT UNIT (PU), CON'T

PU	MARKET GROUP	PRODUCT	QUANTITY	UNIT	ACRES	ADVERTISE PRICE
3 con't	<i>Paper Birch</i>	<i>Pulpwood</i>	22	<i>Cords</i>		
	Red Maple		31	Cords		
	Red Oak		8	Cords		
	White Pine		17	Cords		
	<i>White Pine</i>		17	<i>Cords</i>		
4	Mixed Aspen	Sawtimber	304.9	MBF	31.4	\$61,834.90
	<i>B. T. Aspen</i>		304.9	<i>MBF</i>		
	Red Oak		10.2	MBF		
	Mixed Aspen	Pulpwood	1,328	Cords		
	<i>B. T. Aspen</i>		1,328	<i>Cords</i>		
	Mixed Hardwood		12	Cords		
	<i>Sugar Maple</i>		7	<i>Cords</i>		
	<i>White Ash</i>		5	<i>Cords</i>		
	Paper Birch		6	Cords		
	<i>Paper Birch</i>		6	<i>Cords</i>		
	Red Maple		120	Cords		
	Red Oak		43	Cords		
	White Oak		6	Cords		
5	Black/Red (Hybrid)	Sawtimber	11.6	MBF	12.0	\$9,327.95
	Mixed Aspen		24.2	MBF		
	<i>B. T. Aspen</i>		24.2	<i>MBF</i>		
	Red Maple		3.7	MBF		
	Red Pine		7.2	MBF		
	White Oak		4.5	MBF		
	Black/Red (Hybrid)	Pulpwood	18	Cords		
	Mixed Aspen		127	Cords		
	<i>B. T. Aspen</i>		127	<i>Cords</i>		
	Red Maple		42	Cords		
	Red Pine		3	Cords		
	White Oak		9	Cords		
6	Red Pine	Sawtimber	64.7	MBF	12.6	\$15,940.25
	Mixed Hardwood	Pulpwood	20	Cords		
	<i>Black Cherry</i>		20	<i>Cords</i>		
	Red Pine		141	Cords		
TOTAL:			1,358.5	MBF		
TOTAL:			3,954	Cords		

Sale Specific Conditions & Requirements

Sale Name: Young Sow Hideaway

Sale Number: 73-009-24 Seq#: 2

1 - Sale Area

1.2 - Boundaries

1.2.1 - Painted Boundaries (9/19)

The sale boundary and Payment Unit boundaries are marked and identified by red and yellow paint. Exterior sale boundary lines against state are marked with red paint. Interior Payment Unit boundaries are marked with yellow paint. Retention patches are marked with red paint; no harvesting activities may occur within these areas. The painted boundary line trees are not Included Timber and are to be protected unless marked with orange paint. Yellow painted trees designating an interior Payment Unit boundary are only to be cut when all surrounding Payment Units have been paid.

2 - Timber Specifications

2.1 - Included Timber

2.1.1 - Clearcut Unit(s) with Unmerchantable Trees (6/14)

Within Payment Unit(s) 1-5, cut all trees that are two (2) inches or more at DBH, except do not cut trees marked with green paint above and below stump height.

2.1.3 - Cut Tree Marked Unit(s) (12/08)

Within Payment Unit(s) 6, all trees are designated for cutting when marked with orange paint above and below stump height, regardless of merchantability.

2.2 - Utilization

2.2.9 - No Chipping Permitted (12/08)

Within Payment Unit(s) 6, all wood must be removed by roundwood. No chipping is permitted.

3 - Payments

3.3 - Pre-measured Sales

3.3.4 - Dividing Payment Units (7/14)

Payment Unit(s) may be divided at the request of the Purchaser and upon approval of the Unit Manager. Dividing Payment Units is a contract modification which requires a Timber Sale Contract Amendment. There will be only one division per Payment Unit.

3.4 - Damaged Timber

3.4.1 - Damaged timber (7/16)

General Condition and Requirement 3.4 Damaged Timber, defines liquidated damages for undesignated live merchantable trees which are cut or injured. No damage is acceptable to undesignated live merchantable trees. Within Payment Unit 6, if more than 20% of trees (> 4.5" DBH) within a specified area of the sale are damaged, liquidated damages will be assessed for all trees damaged. Rates will be in accordance with General Condition and Requirement 3.4 Damaged Timber.

4 - Transportation

4.1 - Construction

4.1.6 - Road Construction (4/24)

Construction of new roads or improvements of existing roads shall be done in such a way as to minimize the environmental and visual impacts. Merchantable trees shall be cut and utilized unless otherwise directed. Non-merchantable trees shall be severed and laid flat on the ground. Slash shall be scattered, and not left in windrows and kept a minimum of 10 feet back from the road edge. Stumps shall be set upright, not left on edge, and be moved at least 10 feet away from the road edge. Disturbed soil shall be feathered into the woods and not left in berms or windrows.

4.1.7 - Road Closure (10/11)

All new roads built into the sale must be blocked to vehicle traffic upon completion of the sale. Overgrown roads that are

reopened shall be considered new roads. In general, this will require constructing a four (4') foot high berm of stumps and logs covered with earth. Stumps and brush must be placed along the remainder of the trail. These roads must be rendered impassable to cars and trucks. Contact the Sale Administrator for specific details of design and placement.

4.4 - Access

4.4.3 - Access gate (12/08)

The access gate must be locked at the completion of each day unless otherwise approved by the Unit Manager or his/her representative.

5 - Operations

5.2 - Conduct of Operations

5.2.3 - Operating Restrictions

5.2.3.10 - Gladwin Field Trial Area Restriction (10/10)

Operations, including cutting, skidding, and hauling are only permitted between December 1 to March 15, unless permission is obtained from the Unit Manager or his/her representative.

5.2.4 - Dead and Down Creation

5.2.4.4 - Dead and Down Creation, Grouse (6/18)

To encourage grouse and other wildlife, in Payment Unit(s) 1-5 leave one 12-inch or larger diameter whole tree on the ground for every 3 acres. Trees should be scattered throughout the sale and at least two chains from any roads, two-tracks, or trails open to vehicles, or positioned per the Sale Administrator's instructions. Stumps must be at least 3 feet tall.

5.2.32 - Decking/Landing Restoration (9/13)

All decking and landing areas must have the surface area restored to a condition equal to or better than before. This is to ensure the proper regeneration of the stand. Wood debris, chips and "cookies" from trimmings must be removed or scattered away from landing and loading areas and may not be windrowed on the edge.

5.4 - Soil Protection

5.4.2 - Skid Trails (2/04)

Skid trails up and down slopes should be avoided. If, however, this is unavoidable, these trails will be left in a non-erodible condition using water bars, logs, and slash. Placing of slash on these skid trails while logging is ongoing may alleviate need for any further action. At the direction of the Sale Administrator, seed, fertilizer, and mulch may also be required.

6 - Safety and Fire Prevention

6.2 - Signing

6.2.1 - Road Posting (10/20)

The Purchaser is responsible for posting and maintaining caution signs on Chappel Dam Road prior to beginning operations. The road must be posted at appropriate distances from the Sale Area to warn of logging activity and truck traffic. Signs must be removed when harvest operations are suspended or completed. The Purchaser will provide these signs.

**TIMBER SALE MAP**

This information provided by authority of Part 525, 1994 PA 451, as amended.

Sale Number

73-009-24

Date

02/12/2025

Forest Management Unit

Gladwin Mgt Unit

County

Gladwin

Mapped By: Behrmann

Cruised By: Behrmann

Scale

1:15,840

Page

1

Of

1Township
20NRange
02WSection(s) and
Subdivision(s)

Sec. 10 NW,N1/2NE,SWNE,N1/2SW,SESW; Sec. 10 S1/2SE; Sec. 3 SESW,NESE,S1/2SE;

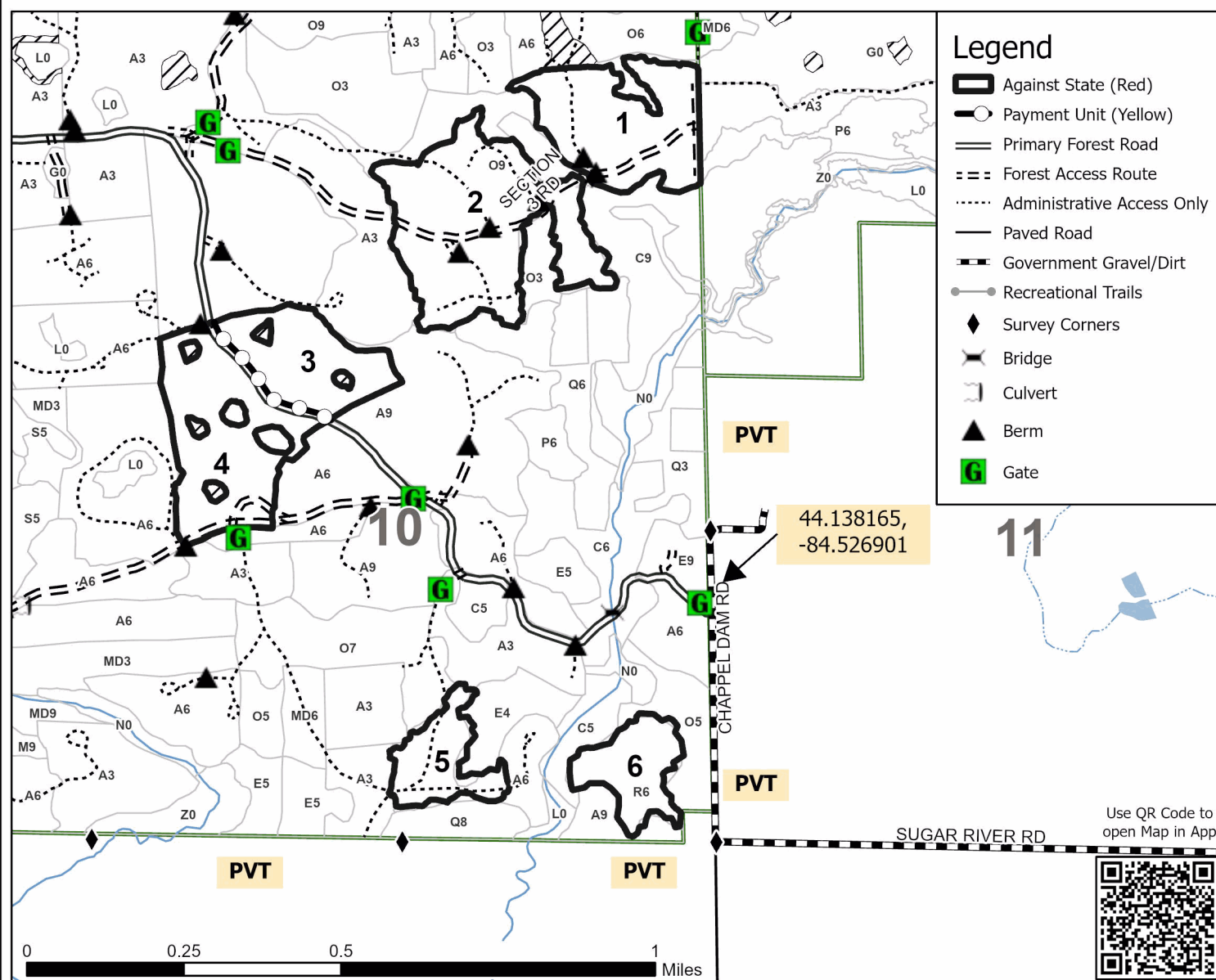
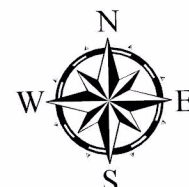
Cover Type

A = Aspen	J = Jack Pine	O = Oak	U = Upland Brush
B = Paper Birch	K = Rock	P = Lowland Poplar	UM = Upland Mix Forest
C = Cedar	L = Lowland Brush	Q = Mixed Swamp Conifer	V = Bog or Marsh
D = Treed Bog	LM = Lowland Mix Forest	R = Red Pine	W = White Pine
E = Swamp Hardwoods	M = Maple, Beech, Birch	S = Black Spruce	X = Non Stocked
F = Spruce/Fir	MC = Mixed Conifer	T = Tamarack	Y = Sand
G = Grass	MD = Mixed Deciduous		Z = Water
H = Hemlock	N = Marsh		

Density

0 = Non Stocked	5 = Pole Timber Medium
1 = Seedling Sapling Poor	6 = Pole Timber Well
2 = Seedling Sapling Medium	7 = Saw Timber Poor
3 = Seedling Sapling Well	8 = Saw Timber Medium
4 = Pole Timber Poor	9 = Saw Timber Well

Payment Unit Number	Acres	Payment Unit Number	Acres
1	28.4	4	31.4
2	45	5	12
3	18.6	6	12.6

Young Sow Hideaway**148.0 Acres**

Bird Dog Bonanza (73-008-24)

T20N, R02W, SEC. 5; T20N, R02W, SEC. 6; T20N, R02W, SEC. 7; Gladwin

In response to the notice of sale to be held 10:00 a.m. (local time) on September 23, 2025, I am hereby submitting my sealed bid (firm offer) for the following forest products to be cut. Bids for individual species must be at or above the advertised price. All non-responsive bid forms may be rejected.

<u>PRODUCTS & SPECIES</u>	<u>ESTIMATED VOLUME*</u>	<u>ADVERTISED PRICE</u>	<u>BID PRICE/UNIT</u>
Sawtimber			
B. T. Aspen	835.4 MBF	\$ 77.00/MBF	\$ _____
Black/Red (Hybrid) Oak	264.6 MBF	\$ 102.00/MBF	\$ _____
Red Maple	95.8 MBF	\$ 56.00/MBF	\$ _____
White Oak	39.4 MBF	\$ 112.00/MBF	\$ _____
Pulpwood			
B. T. Aspen	3,143 Cords	\$ 25.10/Cord	\$ _____
Black/Red (Hybrid) Oak	602 Cords	\$ 19.60/Cord	\$ _____
Mixed Hardwood	917 Cords	\$ 19.05/Cord	\$ _____
Paper Birch	31 Cords	\$ 32.20/Cord	\$ _____
White Pine	26 Cords	\$ 27.05/Cord	\$ _____

*The volumes are statistically estimated within plus (+) or minus (-) 12.54 percent at 95% confidence level. These estimated volumes are final and not subject to adjustment. Prospective bidders are urged to examine this timber and to make their own estimates of quantity and quality.

I understand that any or all bids may be rejected. All bids must be signed and all bid items must be bid or the bid form may be rejected. I also understand that consideration and awarding a contract will be based upon my past performance and ability to complete the contract based upon equipment and staffing subject to my control.

FEDERAL ID: ____ - ____ - ____ or SOCIAL SECURITY NUMBER: ____ - ____ - ____

Company or individual bidding: _____

Company representative's name: _____

Address: _____

City: _____ State: _____ Zip: _____

IF AVAILABLE, PLEASE PLACE THE PERSONALIZED LABEL FROM YOUR PROSPECTUS IN THE ABOVE BOX.

Individual or company representative's signature: _____ Date: _____

Phone number : _____ Email (optional): _____

**THE WINNING BIDDER MUST COMPLETE THE VERIFICATION OF WORKER'S DISABILITY COMPENSATION ACT
COMPLIANCE (ON REVERSE SIDE IF DOUBLE SIDED) WITHIN 21 DAYS OF SALE AWARD DATE**



TIMBER SALE VERIFICATION OF WORKER'S DISABILITY COMPENSATION ACT COMPLIANCE

As required by Act 317, P.A. 1969 (Worker's Compensation) and
Part 5 of Act 451 of 1994, as amended.

FOR DEPARTMENT USE ONLY

Sale Number (XX - XXX - XX - XX)

Forest Management Unit:

VERIFICATION OF WORKER'S DISABILITY COMPENSATION ACT COMPLIANCE

- This verification must be completed and submitted within 21 days of contract award and prior to the issuance of the timber sale contract.
- In addition, if boxes 2B or 2C are checked, then Notice of Exclusion or Certificate of Insurance must be submitted within twenty-one (21) days of the contract award and prior to the issuance of the timber sale contract.
- All information must be typed or printed except for written signatures.

Please Check Appropriate Categories:

1. My business is organized as (you **must** check one of the boxes below):
 - A. ☐ Sole Proprietorship (individual)
 - B. ☐ Partnership
 - C. ☐ Corporation
2. You **must** check one of the boxes below:
 - A. ☐ I certify my business is a sole proprietorship and it has no employees but the sole proprietor. I am not subject to the Worker's Compensation Laws.
 - B. ☐ I certify my business has satisfied its obligation to the Worker's Compensation Act through the use of an approved Notice of Exclusion (BWC-337, Rev. 5/96). I will provide a copy of the Notice of Exclusion within 21 days of the contract award. (For questions or a copy of the BWC-337, please call the Worker's Compensation Bureau at 517-322-1195).
 - C. ☐ I certify my business has a Worker's Compensation Policy. I will provide an original Certificate of Insurance within twenty-one (21) days of the contract award.
3. If you have checked item 2(A) or 2(B), you **must** indicate the number of **both** full-time and part-time employees, other than yourself, including family members and active partners (if none, you must enter "0").

_____ Full-time Employees

_____ Part-time Employees

Name of Business		Federal ID (or) Social Security No.
Address		Telephone ()
City	State	ZIP

I hereby certify that the above information is true and correct. I agree to notify the Michigan DNR of any changes that occur in factors affecting my coverage during any of my present and future operations.

Signature of Owner or Authorized Representative

Title

Date

Please complete the "SEALED BID" information on the next page

Lake Mix (73-007-24)

T20N, R02W, SEC. 8; T20N, R02W, SEC. 9; Gladwin COUNTY

In response to the notice of sale to be held 10:00 a.m. (local time) on September 23, 2025, I am hereby submitting my sealed bid (firm offer) for the following forest products to be cut. Bids for individual species must be at or above the advertised price. All non-responsive bid forms may be rejected.

<u>PRODUCTS & SPECIES</u>	<u>ESTIMATED VOLUME*</u>	<u>ADVERTISED PRICE</u>	<u>BID PRICE/UNIT</u>
Sawtimber			
B. T. Aspen	137.3 MBF	\$ 77.00/MBF	\$ _____
Basswood	6.0 MBF	\$ 58.00/MBF	\$ _____
Black Cherry	5.5 MBF	\$ 152.00/MBF	\$ _____
Black/Red (Hybrid) Oak	32.0 MBF	\$ 102.00/MBF	\$ _____
Red Maple	32.6 MBF	\$ 56.00/MBF	\$ _____
Red Oak	409.5 MBF	\$ 133.00/MBF	\$ _____
Red Pine	8.5 MBF	\$ 124.00/MBF	\$ _____
Sugar Maple	16.0 MBF	\$ 248.00/MBF	\$ _____
White Oak	23.1 MBF	\$ 112.00/MBF	\$ _____
Pulpwood			
B. T. Aspen	292 Cords	\$ 25.10/Cord	\$ _____
Mixed Hardwood	350 Cords	\$ 19.05/Cord	\$ _____
Mixed Oak	501 Cords	\$ 19.60/Cord	\$ _____
Paper Birch	8 Cords	\$ 32.20/Cord	\$ _____
Red Pine	15 Cords	\$ 53.45/Cord	\$ _____
White Pine	16 Cords	\$ 27.05/Cord	\$ _____
White Spruce	11 Cords	\$ 20.95/Cord	\$ _____

*The volumes are statistically estimated within plus (+) or minus (-) 13.12 percent at 95% confidence level. These estimated volumes are final and not subject to adjustment. Prospective bidders are urged to examine this timber and to make their own estimates of quantity and quality.

I understand that any or all bids may be rejected. All bids must be signed and all bid items must be bid or the bid form may be rejected. I also understand that consideration and awarding a contract will be based upon my past performance and ability to complete the contract based upon equipment and staffing subject to my control.

FEDERAL ID: ____ - ____ - ____ or SOCIAL SECURITY NUMBER: ____ - ____ - ____

Company or individual bidding: _____

Company representative's name: _____

Address: _____

City: _____ State: _____ Zip: _____

IF AVAILABLE, PLEASE PLACE THE PERSONALIZED LABEL FROM YOUR PROSPECTUS IN THE ABOVE BOX.

Individual or company representative's signature: _____ Date: _____

Phone number : _____ Email (optional): _____

**THE WINNING BIDDER MUST COMPLETE THE VERIFICATION OF WORKER'S DISABILITY COMPENSATION ACT
COMPLIANCE (ON REVERSE SIDE IF DOUBLE SIDED) WITHIN 21 DAYS OF SALE AWARD DATE**



TIMBER SALE VERIFICATION OF WORKER'S DISABILITY COMPENSATION ACT COMPLIANCE

As required by Act 317, P.A. 1969 (Worker's Compensation) and
Part 5 of Act 451 of 1994, as amended.

FOR DEPARTMENT USE ONLY

Sale Number (XX - XXX - XX - XX)

Forest Management Unit:

VERIFICATION OF WORKER'S DISABILITY COMPENSATION ACT COMPLIANCE

- This verification must be completed and submitted within 21 days of contract award and prior to the issuance of the timber sale contract.
- In addition, if boxes 2B or 2C are checked, then Notice of Exclusion or Certificate of Insurance must be submitted within twenty-one (21) days of the contract award and prior to the issuance of the timber sale contract.
- All information must be typed or printed except for written signatures.

Please Check Appropriate Categories:

1. My business is organized as (you **must** check one of the boxes below):
 - A. ☐ Sole Proprietorship (individual)
 - B. ☐ Partnership
 - C. ☐ Corporation
2. You **must** check one of the boxes below:
 - A. ☐ I certify my business is a sole proprietorship and it has no employees but the sole proprietor. I am not subject to the Worker's Compensation Laws.
 - B. ☐ I certify my business has satisfied its obligation to the Worker's Compensation Act through the use of an approved Notice of Exclusion (BWC-337, Rev. 5/96). I will provide a copy of the Notice of Exclusion within 21 days of the contract award. (For questions or a copy of the BWC-337, please call the Worker's Compensation Bureau at 517-322-1195).
 - C. ☐ I certify my business has a Worker's Compensation Policy. I will provide an original Certificate of Insurance within twenty-one (21) days of the contract award.
3. If you have checked item 2(A) or 2(B), you **must** indicate the number of **both** full-time and part-time employees, other than yourself, including family members and active partners (if none, you must enter "0").

_____ Full-time Employees

_____ Part-time Employees

Name of Business		Federal ID (or) Social Security No.
Address		Telephone ()
City	State	ZIP

I hereby certify that the above information is true and correct. I agree to notify the Michigan DNR of any changes that occur in factors affecting my coverage during any of my present and future operations.

Signature of Owner or Authorized Representative

Title

Date

Please complete the "SEALED BID" information on the next page

Young Sow Hideaway (73-009-24)
T20N, R02W, SEC. 10; T20N, R02W, SEC. 3; Gladwin COUNTY

In response to the notice of sale to be held 10:00 a.m. (local time) on September 23, 2025, I am hereby submitting my sealed bid (firm offer) for the following forest products to be cut. Bids for individual species must be at or above the advertised price. All non-responsive bid forms may be rejected.

<u>PRODUCTS & SPECIES</u>	<u>ESTIMATED VOLUME*</u>	<u>ADVERTISED PRICE</u>	<u>BID PRICE/UNIT</u>
Sawtimber			
Basswood	3.8 MBF	\$ 58.00/MBF	\$ _____
Beech	4.7 MBF	\$ 159.00/MBF	\$ _____
Black/Red (Hybrid) Oak	428.3 MBF	\$ 102.00/MBF	\$ _____
Mixed Aspen	688.9 MBF	\$ 77.00/MBF	\$ _____
Red Maple	42.0 MBF	\$ 56.00/MBF	\$ _____
Red Oak	10.2 MBF	\$ 133.00/MBF	\$ _____
Red Pine	109.7 MBF	\$ 124.00/MBF	\$ _____
White Oak	70.9 MBF	\$ 112.00/MBF	\$ _____
Pulpwood			
Black/Red (Hybrid) Oak	322 Cords	\$ 19.60/Cord	\$ _____
Mixed Aspen	2,554 Cords	\$ 25.10/Cord	\$ _____
Mixed Hardwood	74 Cords	\$ 19.05/Cord	\$ _____
N. White Cedar	4 Cords	\$ 8.15/Cord	\$ _____
Paper Birch	35 Cords	\$ 32.20/Cord	\$ _____
Red Maple	649 Cords	\$ 19.05/Cord	\$ _____
Red Oak	51 Cords	\$ 19.60/Cord	\$ _____
Red Pine	153 Cords	\$ 53.45/Cord	\$ _____
White Oak	82 Cords	\$ 19.60/Cord	\$ _____
White Pine	29 Cords	\$ 27.05/Cord	\$ _____

*The volumes are statistically estimated within plus (+) or minus (-) 10.99 percent at 95% confidence level. These estimated volumes are final and not subject to adjustment. Prospective bidders are urged to examine this timber and to make their own estimates of quantity and quality.

I understand that any or all bids may be rejected. All bids must be signed and all bid items must be bid or the bid form may be rejected. I also understand that consideration and awarding a contract will be based upon my past performance and ability to complete the contract based upon equipment and staffing subject to my control.

FEDERAL ID: ____ - ____ - ____ or SOCIAL SECURITY NUMBER: ____ - ____ - ____

Company or individual bidding: _____

Company representative's name: _____

Address: _____

City: _____ State: _____ Zip: _____

IF AVAILABLE, PLEASE PLACE THE PERSONALIZED LABEL FROM YOUR PROSPECTUS IN THE ABOVE BOX.

Individual or company representative's signature: _____ Date: _____

Phone number : _____ Email (optional): _____

**THE WINNING BIDDER MUST COMPLETE THE VERIFICATION OF WORKER'S DISABILITY COMPENSATION ACT
COMPLIANCE (ON REVERSE SIDE IF DOUBLE SIDED) WITHIN 21 DAYS OF SALE AWARD DATE**



TIMBER SALE VERIFICATION OF WORKER'S DISABILITY COMPENSATION ACT COMPLIANCE

As required by Act 317, P.A. 1969 (Worker's Compensation) and
Part 5 of Act 451 of 1994, as amended.

FOR DEPARTMENT USE ONLY

Sale Number (XX - XXX - XX - XX)

Forest Management Unit:

VERIFICATION OF WORKER'S DISABILITY COMPENSATION ACT COMPLIANCE

- This verification must be completed and submitted within 21 days of contract award and prior to the issuance of the timber sale contract.
- In addition, if boxes 2B or 2C are checked, then Notice of Exclusion or Certificate of Insurance must be submitted within twenty-one (21) days of the contract award and prior to the issuance of the timber sale contract.
- All Information must be typed or printed except for written signatures.

Please Check Appropriate Categories:

1. My business is organized as (you **must** check one of the boxes below):
 - A. ☐ Sole Proprietorship (individual)
 - B. ☐ Partnership
 - C. ☐ Corporation
2. You **must** check one of the boxes below:
 - A. ☐ I certify my business is a sole proprietorship and it has no employees but the sole proprietor. I am not subject to the Worker's Compensation Laws.
 - B. ☐ I certify my business has satisfied its obligation to the Worker's Compensation Act through the use of an approved Notice of Exclusion (BWC-337, Rev. 5/96). I will provide a copy of the Notice of Exclusion within 21 days of the contract award. (For questions or a copy of the BWC-337, please call the Worker's Compensation Bureau at 517-322-1195).
 - C. ☐ I certify my business has a Worker's Compensation Policy. I will provide an original Certificate of Insurance within twenty-one (21) days of the contract award.
3. If you have checked item 2(A) or 2(B), you **must** indicate the number of **both** full-time and part-time employees, other than yourself, including family members and active partners (if none, you must enter "0").

_____ Full-time Employees

_____ Part-time Employees

Name of Business		Federal ID (or) Social Security No.
Address		Telephone ()
City	State	ZIP

I hereby certify that the above information is true and correct. I agree to notify the Michigan DNR of any changes that occur in factors affecting my coverage during any of my present and future operations.

Signature of Owner or Authorized Representative

Title

Date

Please complete the "SEALED BID" information on the next page