



**DEPARTMENT OF NATURAL RESOURCES  
STATE OF MICHIGAN  
TIMBER SALE PROSPECTUS #7556**

SCHEDULED SALE DATE AND TIME: **9:00 a.m. (local time) on January 30, 2025.**

LOCATION: **GRAYLING MGMT UNIT, 1955 HARTWICK PINES ROAD, GRAYLING, MI 49738.**

PROSPECTUS NOTE: The bidder is advised to inspect the sale area and review the location, estimated volumes, operating costs and contract terms of proposed sales. Please be aware that some landowners may request 60 days or more notice for access across their land.

Notice is hereby given that bids will be received by the Unit Manager, GRAYLING MANAGEMENT UNIT, for certain timber on the following described lands:

Bring a Buncher Oak (72-001-24) / T25N, R02W, SEC. 17, SW,NWSE,S1/2SE.

T25N, R02W, SEC. 18, SESE.

T25N, R02W, SEC. 20, NENW,N1/2NE,SENE,N1/2SE,SWSE.

T25N, R02W, SEC. 21, NWNW.

Crawford County, Advertised Price \$158,317.60, 303.4 Acres, Hardwood, Red Pine.

SALE NOTE: Payment Units 2 and 3 are being converted to red pine and must be clearcut, chipped, and low stumps. Within Payment Units 1, 4, and 5, all advanced regeneration is being protected. Hard and soft oak wilt restrictions on sale due to oak wilt having been found and treated in the area. Oak wilt no exceptions to protect advanced regeneration in Payment Units 1, 4, and 5. Soft oak wilt restriction spec to protect retention and oak in stands adjacent to Payment Units 2 and 3.

Shocked Top Oak Removal (72-002-24) / T25N, R02W, SEC. 17, E1/2NW,W1/2NE.

T25N, R02W, SEC. 8 , N1/2SW,SWSW.

Crawford County, Advertised Price \$16,777.70, 60.9 Acres, Hardwood, Aspen.

SALE NOTE: Sale's advertised price was reduced due to declining oak. Oak wilt restrictions (no exceptions) included due to oak regen protection in understory and oak in the surrounding stands. Both units are overstory removals and advanced regeneration is being protected.

Cordie Howes JP (72-607-24) / T27N, R04W, SEC. 31, SENE,NESW,N1/2SE.

T27N, R04W, SEC. 32, SWNW,NWSW,SESW,N1/2SE,SWSE.

Crawford County, Advertised Price \$17,467.45, 93.3 Acres, Jack Pine, Red Pine.

SALE NOTE: Sale has been reduced in price due to the restrictions and requirements associated with Payment Units 1 and 2. These units are low volume jack pine thinning units that contain pulpwood and sub-merchantable trees that need to be cut to facilitate future prescribed burn treatments. Payment Units 1 and 2 may only be harvested during snow on winter conditions to protect rare and sensitive ground flora. To ensure this work gets completed we may require Payment Units 1 and 2 be cut prior to allowing entry into Payment Units 3 and 4 (see spec 3.6.1). This sale is located on military lands and therefore is non-certified and contains standard military specs. Gate access for Payment Unit 1 will be coordinated through Range Control. Equipment should be clean and free of debris upon entry to minimize the spread of invasives on site. Payment Units 3 and 4 has Class A access.

The S.S. Minnoak (72-616-24) / T28N, R02W, SEC. 27, SWSW.  
T28N, R02W, SEC. 28, SESE.

Crawford County, Advertised Price \$17,592.10, 27.8 Acres, Hardwood, Red Oak.

SALE NOTE: Sale contains standard military specs and restrictions. Hard oak wilt restrictions to protect advanced oak regeneration. Sale is accessed via KP Lake Rd from County Rd 612.

Gardenia Tr Aspen (72-032-21) / T28N, R03W, SEC. 32, SWSE.  
T28N, R03W, SEC. 33, SENE, SE.

Crawford County, Advertised Price \$73,422.75, 104.0 Acres, Aspen, Hardwood.

SALE NOTE: The sale has a mix of overmature aspen, lower quality hardwoods, and white pine. There are pockets of dense hardwood regen and shrub cover that will need to be worked around. The terrain is rolling, with a few steep holes. There is a raptor nest north of Payment Unit 1; if the nest is found to be active at time of harvest, seasonal operating restrictions will apply to a small portion of that Payment Unit. If a new nest is found, a no-cut buffer may need to be removed from the harvest area to protect it.

Red Shouldered Pine (72-045-21) / T28N, R03W, SEC. 31, S1/2NW, SW.  
T28N, R03W, SEC. 33, E1/2NE, NESE.

Crawford County, Advertised Price \$113,733.10, 76.9 Acres, Red Pine.

SALE NOTE: The sale has an operating restriction from April 15 to July 15 for bark slippage (see spec 5.2.3.3).

The southern portion of Payment Unit 2 (~4.5 acres) has a seasonal operating restriction from March 15 to July 15 (see spec 5.8.5 and the Stick Nest Buffer shown on the Timber Sale Map).

Payment Unit 2 also contains a red pine mortality pocket. All trees within this area have been marked to cut (see Timber Sale Map).

## BID INSTRUCTIONS (VER. 10/10/2022):

### 1. Scheduled Bid Location, Date, and Time (2/11)

Bids must be received by the Unit Manager, GRAYLING OFFICE, 1955 HARTWICK PINES ROAD, GRAYLING, MI 49738, no later than 9:00 a.m. (local time) on January 30, 2025. For further information concerning this sale, contact Scott McClarren at 989-348-6371 extension .

### 2. Bidder's Qualifications (10/22)

If all or part of a timber sale was prepared by a private contractor, the contractor and that contractor's company are not permitted to bid on the timber sale. A person must be 18 years of age or older to purchase timber. Permanent employees of the Department of Natural Resources or members of their immediate household may not bid. Former employees, in the permanent or seasonal class, may not bid until 3 months after the last day of active duty. Bids will not be accepted from individuals or companies appearing on the DNR/FRD No-Bid List. This list contains the names of purchasers who previously failed to execute a contract within 21-days or who have a history of poor performance.

### 3. Preparation of Sealed Bids (5/16)

Bid Forms may be completed online thru Michigan DNR Timber Sale Online Bidding (OLB) at [www.michigan.gov/timberbidding](http://www.michigan.gov/timberbidding) or by completing the hardcopy Bid Form found in the Timber Sale Prospectus . Hardcopy Bid Forms shall be manually signed in ink. Registration in OLB is considered your 'signature' for all bids submitted thru that system. Bid prices must be entered for each species and product in the Bid Price column for all material subject to bidding and all fill-in blanks must be completed. If erasures or other changes appear on the hardcopy Bid Form, each erasure or change must be initialed by the person signing the bid.

### 4. Submission of Sealed Bids (5/16)

Bid forms may be obtained from the Unit Manager or thru OLB. Bids may be submitted hardcopy or thru OLB. All hardcopy bids must be submitted on the bid form and in an envelope clearly identified as described in this section. NOTE: Only one bid form per bid envelope. Sealed bids must be submitted to the Unit office designated in the prospectus and must be submitted at or prior to the time established in the prospectus. The envelope should show on the outside (a) the sale name or number and (b) the date and time of bid opening, as shown in the prospectus. Bids received after the time specified in the sale prospectus are late bids and will be rejected.

It is possible for a bidder to submit multiple bids on a single sale. For example, a bid may be submitted hardcopy and a bid may be submitted thru OLB. Or, two bidders from the same company could both submit bids on the same sale. If this were to happen, the State would accept all bids received and award the contract accordingly. All bidding and contractual requirements would apply to all bids received.

### 5. Public Opening of Sealed Bids (7/16)

If conditions permit, the sealed bids will be publicly opened and posted at the time and place set in the prospectus.

If a bidder, present at a bid opening, has submitted bids on more than one sale, that bidder may withdraw their unopened bid envelopes or announce the withdrawal of their online bid after being declared the successful bidder on one sale.

### 6. Award of Contract (1/11)

Award of the contract will be made to the Bidder whose bid, conforming to the prospectus, is most advantageous to the State of Michigan on the basis of total value at rates bid for the estimated quantities. The State reserves the right to reject any bid or waive any minor irregularity in bids received. A written award mailed (or otherwise furnished) to the successful Bidder shall be deemed to result in a binding contract without further action by either party.

### 7. Down Payment (1/11)

The Bidder to whom award is made must make a down payment within 21 days of the sale award. The amount of the down payment will be calculated as shown in the Bond and Payment Schedule of this prospectus. Only cash may be used to meet this requirement.

### 8. Performance Security (1/11)

As guarantee of faithful performance, a cash bond, certificate of deposit, surety bond or irrevocable letter of credit (LOC) is required within 21 days of the sale award. The amount of the performance security is shown in the Bond and

Payment Schedule of this prospectus. If an LOC or surety is used, the coverage must extend for at least 6 months beyond the contract expiration.

#### 9. Worker's Compensation (10/22)

Purchaser shall obtain worker's compensation insurance to cover claims under Michigan's Worker's Disability Compensation Act of 1969 or similar employee benefit act of any other state applicable to an employee. Verification of Worker's Disability Compensation Act Compliance must be completed and submitted within 21 days of contract award and prior to the issuance of the timber sale contract. In addition, if applicable, Notice of Exclusion or Certificate of Insurance must also be submitted.

#### 10. Timber Sale Contract (10/22)

Additional conditions and requirements common to all timber sales are listed on the timber sale contract (R4031) and are available on line at [www.michigan.gov/timber](http://www.michigan.gov/timber). Contact the Unit Manager for additional information or a sample contract. Within 21 days of the date of the award letter, the bidder must sign the contract and provide the required down payment, performance security, and verification of worker's disability compensation. The down payment and performance security shall be in accordance with the provisions of the timber sale contract, in the sums stated in this prospectus. If these actions are not taken, then the Bidder, the Bidder's corporation, and the corporation's principals may not be permitted to bid on State timber sales for a period of 3 months after the first offense, 6 months after the second offense, and 1 year after the third offense. An offense will only be counted against the Bidder for 5 years. In addition, the Bidder certifies that if awarded this contract, the Bidder will complete the timber sale contract in accordance with its terms and any modifications thereof including requirements to purchase, cut, and remove the included timber by the expiration date.

Payment Unit values in the State Forest Timber Sale Contract are calculated based on the advertised value of the Payment Unit as a percentage of the total advertised value of the contract. The advertised value of each Payment Unit is given in the Description of Timber by Payment Unit table on the Timber Sale Information page. For example, if the value of Payment Unit 1 is advertised as \$1,500 and the total Timber Sale value is advertised as \$10,000, the contract price for Payment Unit 1 will be 15% of the total bid price ( $\$1,500/\$10,000 * 100$ ).

#### 11. Disclaimer of Estimates and Bidder's Warranty of Inspection (10/22)

Before submitting this bid, the Bidder is advised and cautioned to inspect the sale area, review the requirements of the sale contract, and take other steps as may be reasonably necessary to ascertain the location, estimated volumes, construction estimates, and operating costs of the proposed sale. Failure to do so will not relieve the Bidder from responsibility for completing the contract.

The Bidder warrants that this bid is submitted solely on the basis of the Bidder's examination and inspection of the quality and quantity of the timber offered for sale and the Bidder's opinion of the value thereof and the costs of recovery. No reliance should be placed on the State of Michigan's estimates of timber quality, quantity or costs of recovery. Bidder further acknowledges that the State of Michigan: (i) expressly disclaims any warranty of fitness of timber for any purpose; (ii) offers this timber as is without any warranty of quality (merchantability) or quantity and (iii) expressly disclaims any warranty as to the quantity or quality of timber sold.

#### 12. Certification and Chain-of-Custody (10/22)

Unless otherwise indicated in the contract under section 7 – Other Conditions of the Sale Specific Conditions & Requirements, the area encompassed by this timber sale is certified to the standards of the Forest Stewardship Council (FSC) - Certificate #SCS-FM/COC-00090N and the Sustainable Forestry Initiative (SFI) - Certificate #NSF-SFIS-5Y031-SF5. Forest products from this sale may be delivered to the mill as "FSC 100% and / or SFI certified" as long as the contractor hauling the forest products is chain-of-custody (COC) certified or covered under a COC certificate from the destination mill. The purchaser is responsible for maintaining COC after leaving the sale area.

#### 13. Good Neighbor Authority (GNA) Requirements (10/22)

If the name of this timber sales contains the acronym GNA, it is authorized by the Good Neighbor Authority (GNA) and covered by various agreements between the U.S. Forest Service and the State. The timber sale occurs on federal land and the following conditions apply:

GNA contracts on US Forest Service land will not be awarded to purchasers on the Federal list of excluded parties. The System for Award Management (SAM) will be checked for active excluded parties prior to award of contract. In

addition, the Bidder to whom award is made must complete an Assurance Regarding Felony Conviction or Tax Delinquent Status for Corporate Applicants (AD-3031).

14. Good Neighbor Authority (GNA) Requirements, con't (10/22)

Bidder certifies, by signing this bid form, that to the best of Bidder's knowledge that the following representations are accurate and complete.

- a. That the Bidder and its principals are not presently debarred, suspended, proposed for debarment, declared ineligible, or voluntary excluded from timber sales (covered transactions) by any Federal department or agency.
- b. That the Bidder and its principals have not within a 3-year period preceding this bid been convicted of or had a civil judgment rendered against them for commission of fraud or a criminal offense in connection with obtaining, attempting to obtain, or performing a public (Federal, State, or local) transaction or contract under a public transaction; violation of Federal or State antitrust statutes or commission of embezzlement, theft, forgery, bribery, falsification or destruction of records, making false statements, or receiving stolen property.
- c. That the Bidder and its principals are not presently indicted for or otherwise criminally or civilly charged by a governmental entity (Federal, State, or local) with commission of any of the offenses enumerated in paragraph b of this certification.
- d. That the Bidder and its principals have not within a 3-year period preceding this bid had one or more public transactions (Federal, State, or local) terminated for breach or default of a timber or forest product contract.

Bidders that cannot certify this requirement, in whole or in part, shall submit an explanation with their bid.

Scott Bowen  
Director



# TIMBER SALE INFORMATION

## Bring a Buncher Oak (72-001-24)

T25N, R02W, SEC. 17; T25N, R02W, SEC. 18; T25N, R02W, SEC. 20; T25N, R02W, SEC. 21.  
Crawford County (Advertised Price \$158,317.60)

SALE NOTE: Payment Units 2 and 3 are being converted to red pine and must be clearcut, chipped, and low stumps. Within Payment Units 1, 4, and 5, all advanced regeneration is being protected. Hard and soft oak wilt restrictions on sale due to oak wilt having been found and treated in the area. Oak wilt no exceptions to protect advanced regeneration in Payment Units 1, 4, and 5. Soft oak wilt restriction spec to protect retention and oak in stands adjacent to Payment Units 2 and 3.

A timber sale contract for this lump sum, sealed bid timber sale will be awarded to the responsible bidder offering the highest sealed bid price. All units of volume listed below were estimated using the Inventory Manager computer program and the new Michigan taper model. Bids must be at or above the following advertised price for each product and species:

<u>PRODUCTS &amp; SPECIES</u>	<u>ESTIMATED UNITS*</u>	<u>ADVERTISED PRICE</u>
<b>Sawtimber</b>		
Black/Red (Hybrid) Oak	777.3 MBF	\$ 137.00 / MBF
White Oak	96.4 MBF	\$ 111.00 / MBF
<b>Pulpwood</b>		
B. T. Aspen	49 Cords	\$ 26.60 / Cord
Misc. Species 1	30 Cords	\$ 5.00 / Cord
Mixed Oak	1,321 Cords	\$ 25.05 / Cord
Red Maple	20 Cords	\$ 32.50 / Cord
Red Pine	92 Cords	\$ 48.50 / Cord
White Pine	67 Cords	\$ 21.95 / Cord

\* The total volume is statistically estimated within plus (+) or minus (-) 9.79 percent. There are an estimated 3,627 cords on this timber sale, plus or minus 355 cords at the 95% confidence level. The estimated units are final and not subject to adjustment. Prospective bidders are urged to examine this timber and to make their own estimates of quantity and quality.

### **BOND AND PAYMENT SCHEDULE:**

1. A bond in the amount of \$7,916.00 to insure faithful performance of the conditions of the contract will be deposited by the successful bidder within 21 days of the sale award.
2. Cutting in any sale or unit without the required advance payment would be considered a trespass.
3. Total payment must be paid in advance or according to the following schedule :
  - (a) Ten percent (10%) of the sale value must be paid within 21 days of the sale award.
  - (b) The 10% down payment will be credited towards the first unit cut.
  - (c) Payment for each of the following units must be made before cutting begins in that unit:
 

PAYMENT UNIT NUMBER	PERCENT OF TOTAL SALE VALUE
01	18.9%
02	23.5%
03	17.4%
04	16.7%
05	23.5%
4. If no cutting takes place, the 10% down payment will not be refunded.
5. Operations on the contract issued will terminate on 03/31/2027.

### **SALE STATISTICS**

Volumes were calculated in cubic feet using the Michigan taper model. Cubic foot volume includes all wood inside bark for the product indicated. For display purposes, cubic feet were converted to cords and MBF using a simple conversion factor, e.g. 79 cubic feet per cord and 185 cubic feet per MBF. The cubic foot volumes are precise; the cords and MBF volumes are not. Cubic foot volume cannot be directly converted to cords or boards with precision.

### **SALE VOLUMES**

The total estimated sale volume may not equal the sum of the species/products due to the nature of statistical calculations associated with double sampling methodology.

VOLUME		STATISTICAL RANGE IN CORDS		
TOTAL CUBIC FEET	TOTAL CORDS	PERCENT ERROR	MINIMUM	MAXIMUM
286,545	3,627	9.79%	3,272	3,982

**VDU VOLUMES**

A VDU is a Volume Determination Unit. Volumes and their associated statistics are calculated at the VDU level and summarized to the sale level. There is often a one to one relationship between a VDU and a Payment Unit, but not always, depending on the cruise design. Refer to the VDU TO PAYMENT UNIT table.

VDU	VOLUME		PERCENT ERROR	RANGE IN CORDS	
	TOTAL CUBIC FEET	TOTAL CORDS		MINIMUM	MAXIMUM
31	61,338	776	16.52%	648	905
61	225,207	2,851	11.66%	2,518	3,183
<b>TOTAL:</b>	<b>286,545</b>	<b>3,627</b>		<b>3,166</b>	<b>4,088</b>

**VDU TO PAYMENT UNIT**

When a VDU is associated with more than one Payment Unit (PU), the VDU volumes are assigned to the PU based on acres of the VDU within the PU.

VDU	VDU ACRES	PU	PU ACRES
31	63.2	1	63.2
61	240.2	2	69.9
61	240.2	3	51.4
61	240.2	4	49.4
61	240.2	5	69.5
<b>TOTAL:</b>	<b>1,024.0</b>		<b>303.4</b>



**DESCRIPTION OF TIMBER BY PAYMENT UNIT (PU)**

PU	MARKET GROUP	PRODUCT	QUANTITY	UNIT	ACRES	ADVERTISE PRICE
1	Black/Red (Hybrid	Sawtimber	132.9	MBF	63.2	\$29,950.30
	White Oak		6.7	MBF		
	Misc. Species 1	Pulpwood	10	Cords		
	Mixed Oak		393	Cords		
	/Red (Hybrid) Oak		300	Cords		
	White Oak		93	Cords		
	Red Maple		9	Cords		
	White Pine		37	Cords		
2	Black/Red (Hybrid	Sawtimber	187.5	MBF	69.9	\$37,333.15
	White Oak		26.1	MBF		
	B. T. Aspen	Pulpwood	15	Cords		
	Misc. Species 1		6	Cords		
	Mixed Oak		270	Cords		
	/Red (Hybrid) Oak		209	Cords		
	White Oak		61	Cords		
	Red Maple		3	Cords		
	Red Pine		26	Cords		
White Pine		9	Cords			
3	Black/Red (Hybrid	Sawtimber	137.9	MBF	51.4	\$27,493.65
	White Oak		19.2	MBF		
	B. T. Aspen	Pulpwood	10	Cords		
	Misc. Species 1		4	Cords		
	Mixed Oak		199	Cords		
	/Red (Hybrid) Oak		154	Cords		
	White Oak		45	Cords		
	Red Maple		3	Cords		
	Red Pine		20	Cords		
White Pine		6	Cords			
4	Black/Red (Hybrid	Sawtimber	132.5	MBF	49.4	\$26,383.65
	White Oak		18.4	MBF		
	B. T. Aspen	Pulpwood	10	Cords		
	Misc. Species 1		4	Cords		
	Mixed Oak		191	Cords		
	/Red (Hybrid) Oak		148	Cords		
	White Oak		43	Cords		
	Red Maple		2	Cords		
	Red Pine		19	Cords		
White Pine		6	Cords			
5	Black/Red (Hybrid	Sawtimber	186.5	MBF	69.5	\$37,156.85
	White Oak		26.0	MBF		
	B. T. Aspen	Pulpwood	14	Cords		
	Misc. Species 1		6	Cords		
	Mixed Oak		268	Cords		
	/Red (Hybrid) Oak		208	Cords		
	White Oak		60	Cords		
	Red Maple		3	Cords		
	Red Pine		27	Cords		
White Pine		9	Cords			
TOTAL:			873.7	MBF		
TOTAL:			1,579	Cords		

## Sale Specific Conditions & Requirements

**Sale Name: Bring a Buncher Oak**

**Sale Number: 72-001-24 Seq#: 2**

### 1 - Sale Area

#### 1.2 - Boundaries

##### 1.2.1 - Painted Boundaries (9/19)

The sale boundary and Payment Unit boundaries are marked and identified by blue, red and yellow paint, as well as existing roads and immature stands (see Timber Sale Map). Exterior sale boundary lines against private property are marked with blue paint. Exterior sale boundary lines against state are marked with red paint with the following exceptions: the northwest portion of Payment Unit 1 is unmarked and designated by Stephan Bridge Rd; the southeast portion of Payment Unit 1, the south portion of Payment Unit 2, and the west boundaries of Payment Units 3 and 4 are unmarked and designated by the same immature stand; and the west boundaries of Payment Units 3 and 4 are unmarked and designated by immature stands. Interior Payment Unit boundaries are marked with yellow paint. Retention patches are marked with red paint; no harvesting activities may occur within these areas. The painted boundary line trees are not Included Timber and are to be protected except the trees with red paint on the backside adjacent to the nearby sale along the east boundaries of Payment Units 3 and 4 which may be harvested. Yellow painted trees designating an interior Payment Unit boundary are only to be cut when all surrounding Payment Units have been paid.

### 2 - Timber Specifications

#### 2.1 - Included Timber

##### 2.1.1 - Clearcut Unit(s) with Unmerchantable Trees (6/14)

Within Payment Unit(s) 2 and 3, cut all trees that are two (2) inches or more at DBH, , except do not cut trees marked with green paint.

Special protection trees identified in accordance with condition 3.4.2, within clearcutting unit boundaries, are not Included Timber and are to be protected.

##### 2.1.5 - Overstory Removal Unit(s) (8/11)

Within Payment Unit(s) 1, 4, and 5, all trees which meet minimum piece specifications in 2.2 Utilization, are designated for cutting, except do not cut trees marked with green paint.

Special protection trees identified in accordance with condition 3.4.2, within clearcutting unit boundaries, are not Included Timber and are to be protected.

##### 2.1.11 - Description of Timber Note (2/04)

Note that Misc. Species 1 is dead oak.

#### 2.2 - Utilization

##### 2.2.2 - Chipping required (2/18)

Payment Units 2 and 3 must be chip harvested to facilitate subsequent planting operations. The Purchaser has the option to produce sawlogs or pulpwood bolts, but the remaining portion of the trees must be chipped and hauled. If market conditions limit the practicality of chipping, tops and slash must be arranged in a way that will not inhibit future planting operations, as directed by the Sale Administrator. A chipping exemption can be obtained if proposed operations are determined to be suitable for planting by reforestation staff. The requirement to retain approximately 1/6 to 1/3 of tree tops and limbs less than four inches in diameter is still applicable (G. C. & R. 2.2).

##### 2.2.3 - Stump heights (4/07)

Stump heights within Payment Units 2 and 3 shall not exceed 6 inches for all trees. This is in order to facilitate planting operations.

### 3 - Payments

#### 3.3 - Pre-measured Sales

##### 3.3.4 - Dividing payment units (7/14)

Payment Unit(s) may be divided at the request of the Purchaser and upon approval of the Unit Manager. Dividing Payment Units is a contract modification which requires a Timber Sale Contract Amendment.

### 3.4 - Damaged Timber

#### 3.4.1 - Damaged timber (7/16)

General Condition and Requirement 3.4 Damaged Timber, defines liquidated damages for undesignated live merchantable trees which are cut or injured. In addition, reasonable care should be taken to avoid damage to tree seedlings and saplings.

Within the Sale Area, if more than 30% of the tree seedlings or saplings (1/4" to 4.5" DBH) within a specified portion of the Sale Area are damaged, liquidated damages will be assessed at \$400 per acre for all acreage within that specified portion of the Sale Area that was damaged. Trees cut cleanly for skid trails and operational pathways will not be counted as damaged timber.

#### 3.4.2 - Special Protection Trees (4/14)

The Purchaser shall not cut live or dead special protection trees within cutting units or clearings. Special protection trees are marked with green paint. If the Purchaser's operations have cut or damaged special protection trees through carelessness, the Purchaser shall pay \$500 as fixed, agreed and liquidated damages for each special protection tree cut or damaged. Such payment does not constitute ownership of the undesignated timber.

## 4 - Transportation

### 4.1 - Construction

#### 4.1.6 - Road construction (4/24)

Construction of new roads or improvements of existing roads shall be done in such a way as to minimize the environmental and visual impacts. Merchantable trees shall be cut and utilized unless otherwise directed. Non-merchantable trees shall be severed and laid flat on the ground. Slash shall be scattered, and not left in windrows and kept a minimum of 10 feet back from the road edge. Stumps shall be set upright, not left on edge, and be moved at least 10 feet away from the road edge. Disturbed soil shall be feathered into the woods and not left in berms or windrows.

#### 4.1.7 - Road closure (10/11)

All new roads built into the sale must be blocked to vehicle traffic upon completion of the sale. Overgrown roads that are reopened shall be considered new roads. In general, this will require constructing a four (4') foot high berm of stumps and logs covered with earth. Stumps and brush must be placed along the remainder of the trail. These roads must be rendered impassable to cars and trucks. All stumps from road building and landing construction must be reserved to block any newly constructed roads upon completion of the sale. These stumps must be scattered along the road system to prohibit vehicular movement. Contact the Sale Administrator for specific details of design and placement.

#### 4.1.11 - Permits (2/12)

The Purchaser will secure any necessary permits that may be required.

## 5 - Operations

### 5.2 - Conduct of Operations

#### 5.2.2 - Hazard Trees/Snags

##### 5.2.2.1 - Den trees (10/16)

Obvious hollow and/or den trees shall be protected and left standing unless they are a safety hazard.

#### 5.2.3 - Operating Restrictions

##### 5.2.3.4 - Oak wilt restriction, no exceptions (1/18)

Within Payment Units 1, 4, and 5, cutting, skidding, and hauling within the sale and brushing of access roads to the sale are not permitted during the period of April 15 to July 15. No exceptions will be granted. This is necessary to reduce the spread of oak wilt. Hauling from landings may be permitted if all haul road brushing is completed prior to oak wilt restricted time.

##### 5.2.3.5 - Oak wilt restriction (1/18)

Within Payment Units 2 and 3, unless changed by written agreement, cutting, skidding, hauling within the sale and

brushing of access roads to the sale are not permitted during the period of April 15 to July 15. Operations may be allowed if specific steps are taken to prevent damaging uncut oak during the high risk period. Those steps may include completing all road brushing before April 15th and clearing a tree-length buffer along uncut oak cover before April 15th. This is necessary to reduce the spread of oak wilt. For more information, contact the Unit Manager or his/her representative.

#### 5.2.32 - Decking/landing restoration (9/13)

All decking and landing areas must have the surface area restored to a condition equal to or better than before. This is to ensure the proper regeneration of the stand. Wood debris, chips and "cookies" from trimmings must be removed or scattered away from landing and loading areas and may not be windrowed on the edge.

### 5.4 - Soil Protection

#### 5.4.2 - Skid trails (2/04)

Skid trails up and down slopes should be avoided. If however this is unavoidable, these trails will be left in a non-erodible condition using water bars, logs, and slash. Placing of slash on these skid trails while logging is ongoing may alleviate need for any further action. At the direction of the sale administrator, seed, fertilizer, and mulch may also be required.

## 6 - Safety and Fire Prevention

### 6.2 - Signing

#### 6.2.1 - Road posting (10/20)

The Purchaser is responsible for posting and maintaining caution signs on haul roads prior to beginning operations. The road must be posted at appropriate distances from the Sale Area to warn of logging activity and truck traffic. Signs must be removed when harvest operations are suspended or completed. The Purchaser will provide these signs.



### TIMBER SALE MAP

This information provided by authority of Part 525, 1994 PA 451, as amended.

Sale Number

**72-001-24**

Date

05/15/2024

Forest Management Unit

County

Mapped By: Scott McClarren

Scale

Page

Of

Grayling Mgt Unit

Crawford

Cruised By: Scott McClarren

1:15,840

1

1

Township  
25N

Range  
02W

Section(s) and  
Subdivision(s) Sec 21: NWNW  
Sec 17: SW,NWSE,S1/2SE, Sec 18: SESE, Sec 20: NENW,N1/2NE,SENE,N1/2SE,SWSE,

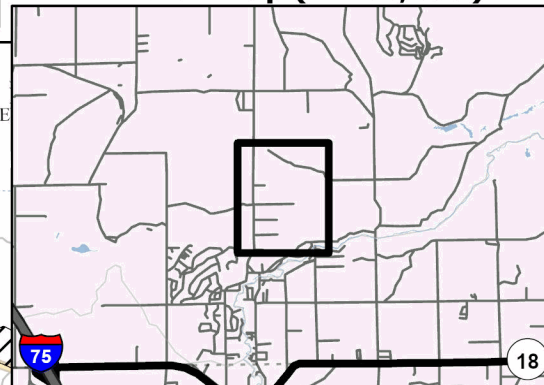
#### Cover Type

A = Aspen	J = Jack Pine	O = Oak	U = Upland Brush
B = Paper Birch	K = Rock	P = Lowland Poplar	UM = Upland Mix Forest
C = Cedar	L = Lowland Brush	Q = Mixed Swamp Conifer	V = Bog or Marsh
D = Treed Bog	LM = Lowland Mix Forest	R = Red Pine	W = White Pine
E = Swamp Hardwoods	M = Maple, Beech, Birch	S = Black Spruce	X = Non Stocked
F = Spruce/Fir	MC = Mixed Conifer	T = Tamarack	Y = Sand
G = Grass	MD = Mixed Deciduous	Z = Water	
H = Hemlock	N = Marsh		

#### Density

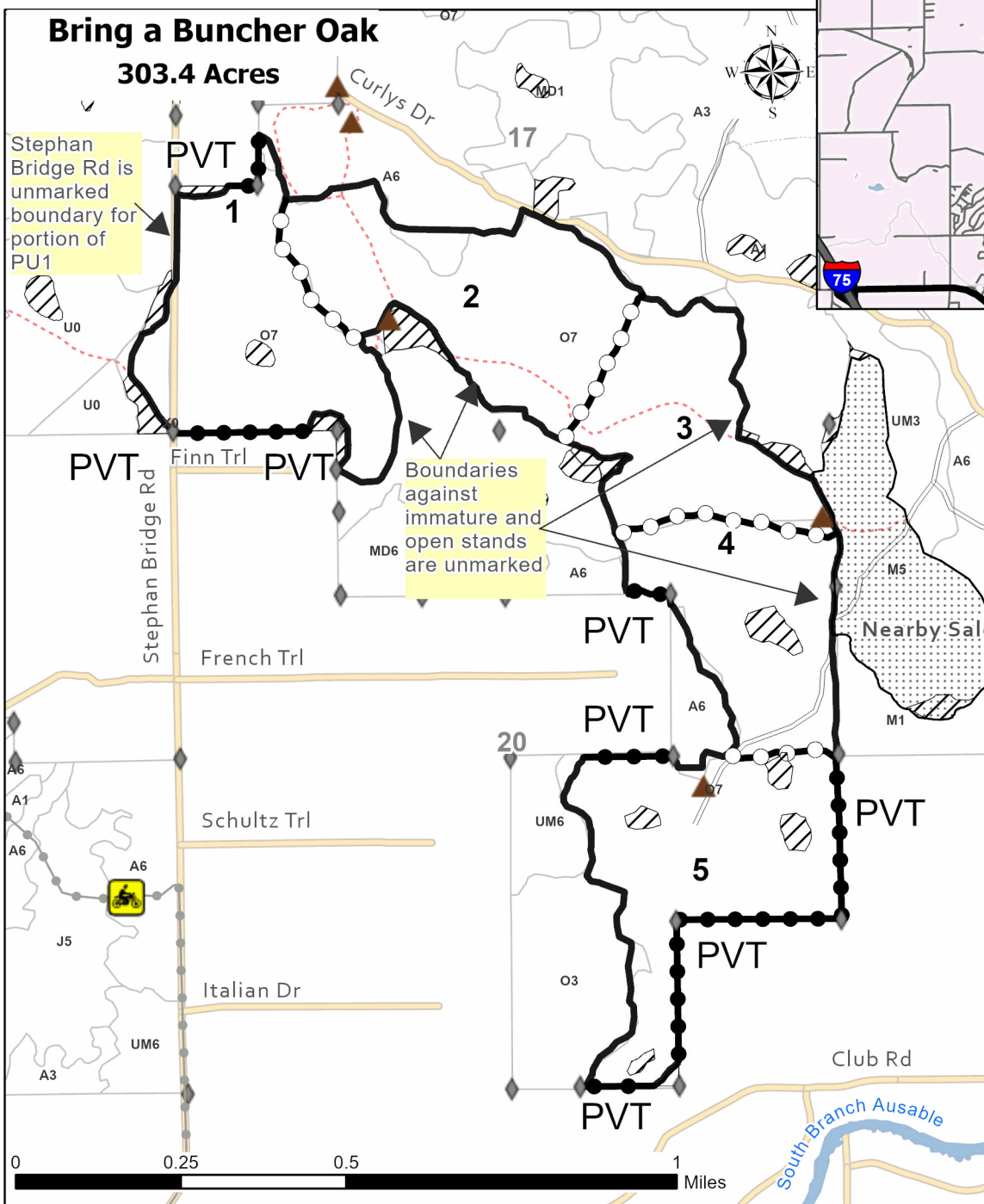
0 = Non Stocked	5 = Pole Timber Medium
1 = Seedling Sapling Poor	6 = Pole Timber Well
2 = Seedling Sapling Medium	7 = Saw Timber Poor
3 = Seedling Sapling Well	8 = Saw Timber Medium
4 = Pole Timber Poor	9 = Saw Timber Well

#### Locator Map (1:200,000)



## Bring a Buncher Oak

303.4 Acres



Stephan Bridge Rd is unmarked boundary for portion of PU1

Boundaries against immature and open stands are unmarked

#### Legend

- Stand
- Retention Areas (Red)
- Nearby Sale
- Lakes and Rivers
- Against State (Red/Unmarked)
- Payment Unit (Yellow)
- Private Line (Blue)
- Recreational Trail
- Secondary Forest Road
- Administrative Access Only
- Non-DNR Road
- Field Grade Corner
- Berm

PU #	Acres
1	63.2
2	69.9
3	51.3
4	49.4
5	69.5

Use QR Code to open Map in App





## TIMBER SALE INFORMATION

Shocked Top Oak Removal (72-002-24)  
T25N, R02W, SEC. 17; T25N, R02W, SEC. 8.  
Crawford County (Advertised Price \$16,777.70)

SALE NOTE: Sale's advertised price was reduced due to declining oak. Oak wilt restrictions (no exceptions) included due to oak regen protection in understory and oak in the surrounding stands. Both units are overstory removals and advanced regeneration is being protected.

A timber sale contract for this lump sum, sealed bid timber sale will be awarded to the responsible bidder offering the highest sealed bid price. All units of volume listed below were estimated using the Inventory Manager computer program and the new Michigan taper model. Bids must be at or above the following advertised price for each product and species:

<u>PRODUCTS &amp; SPECIES</u>	<u>ESTIMATED UNITS*</u>	<u>ADVERTISED PRICE</u>
Sawtimber		
Black/Red (Hybrid) Oak	42.9 MBF	\$ 110.00 / MBF
White Oak	57.1 MBF	\$ 89.00 / MBF
Pulpwood		
B. T. Aspen	36 Cords	\$ 21.30 / Cord
Misc. Species 1	24 Cords	\$ 3.35 / Cord
Mixed Oak	224 Cords	\$ 20.00 / Cord
Red Maple	12 Cords	\$ 26.00 / Cord
Red Pine	20 Cords	\$ 38.80 / Cord
White Pine	32 Cords	\$ 17.55 / Cord

\* The total volume is statistically estimated within plus (+) or minus (-) 19.71 percent. There are an estimated 581 cords on this timber sale, plus or minus 115 cords at the 95% confidence level. The estimated units are final and not subject to adjustment. Prospective bidders are urged to examine this timber and to make their own estimates of quantity and quality.

### **BOND AND PAYMENT SCHEDULE:**

- A bond in the amount of \$1,000.00 to insure faithful performance of the conditions of the contract will be deposited by the successful bidder within 21 days of the sale award.
- Cutting in any sale or unit without the required advance payment would be considered a trespass.
- Total payment must be paid in advance or according to the following schedule :
  - Ten percent (10%) of the sale value must be paid within 21 days of the sale award.
  - The 10% down payment will be credited towards the first unit cut.
  - Payment for each of the following units must be made before cutting begins in that unit:
 

PAYMENT UNIT NUMBER	PERCENT OF TOTAL SALE VALUE
01	79.1%
02	20.9%
- If no cutting takes place, the 10% down payment will not be refunded.
- Operations on the contract issued will terminate on 03/31/2027.

### **SALE STATISTICS**

Volumes were calculated in cubic feet using the Michigan taper model. Cubic foot volume includes all wood inside bark for the product indicated. For display purposes, cubic feet were converted to cords and MBF using a simple conversion factor, e.g. 79 cubic feet per cord and 185 cubic feet per MBF. The cubic foot volumes are precise; the cords and MBF volumes are not. Cubic foot volume cannot be directly converted to cords or boards with precision.

### **SALE VOLUMES**

The total estimated sale volume may not equal the sum of the species/products due to the nature of statistical calculations associated with double sampling methodology.

VOLUME		STATISTICAL RANGE IN CORDS		
TOTAL CUBIC FEET	TOTAL CORDS	PERCENT ERROR	MINIMUM	MAXIMUM
45,908	581	19.71%	467	696

**VDU VOLUMES**

A VDU is a Volume Determination Unit. Volumes and their associated statistics are calculated at the VDU level and summarized to the sale level. There is often a one to one relationship between a VDU and a Payment Unit, but not always, depending on the cruise design. Refer to the VDU TO PAYMENT UNIT table.

VDU	VOLUME		PERCENT ERROR	RANGE IN CORDS	
	TOTAL CUBIC FEET	TOTAL CORDS		MINIMUM	MAXIMUM
15	36,117	457	23.54%	350	565
28	9,791	124	33.18%	83	165
<b>TOTAL:</b>	<b>45,908</b>	<b>581</b>		<b>432</b>	<b>730</b>

**VDU TO PAYMENT UNIT**

When a VDU is associated with more than one Payment Unit (PU), the VDU volumes are assigned to the PU based on acres of the VDU within the PU.

VDU	VDU ACRES	PU	PU ACRES
15	42.6	1	42.6
28	18.3	2	18.3
<b>TOTAL:</b>	<b>60.9</b>		<b>60.9</b>

**DESCRIPTION OF TIMBER BY PAYMENT UNIT (PU)**

PU	MARKET GROUP	PRODUCT	QUANTITY	UNIT	ACRES	ADVERTISE PRICE
1	Black/Red (Hybrid White Oak	Sawtimber	42.9	MBF	42.6	\$13,265.50
			35.3	MBF		
	Pulpwood	B. T. Aspen	36	Cords		
		Misc. Species 1	24	Cords		
		Mixed Oak	166	Cords		
		/Red (Hybrid) Oak	70	Cords		
		White Oak	96	Cords		
		Red Maple	12	Cords		
		Red Pine	13	Cords		
		White Pine	24	Cords		
2	White Oak	Sawtimber	21.8	MBF	18.3	\$3,512.20
		Mixed Oak	58	Cords		
	Pulpwood	/Red (Hybrid) Oak	1	Cords		
		White Oak	57	Cords		
		Red Pine	7	Cords		
		White Pine	8	Cords		
TOTAL:			100.0	MBF		
TOTAL:			348	Cords		



# Sale Specific Conditions & Requirements

**Sale Name: Shocked Top Oak Removal**

**Sale Number: 72-002-24 Seq#: 1**

## 1 - Sale Area

### 1.2 - Boundaries

#### 1.2.1 - Painted Boundaries (9/19)

The sale boundaries and Payment Unit boundaries are marked and identified by blue and red paint or are unmarked and designated by covertype changes or existing roads (see Timber Sale Map). Exterior sale boundary lines against private property are marked with blue paint with the exception of the north and west boundaries of Payment Unit 1 which are unmarked and designated by Pere Cheney Road and Stephan Bridge Road. Exterior sale boundary lines against state are marked with red paint with the exception of the north boundary line of Payment Unit 2 which is unmarked and designated by immature or open stands identified as A2 and X0. Retention patches are marked with red paint; no harvesting activities may occur within these areas. The painted boundary line trees are not Included Timber and are to be protected.

## 2 - Timber Specifications

### 2.1 - Included Timber

#### 2.1.5 - Overstory Removal Unit(s) (8/11)

Within Payment Unit(s) 1 & 2, all trees which meet minimum piece specifications in 2.2 Utilization, are designated for cutting, except do not cut trees marked with green paint.

Special protection trees identified in accordance with condition 3.4.2, within clearcutting unit boundaries, are not Included Timber and are to be protected.

#### 2.1.11 - Description of Timber Note (2/04)

Note that Misc Species 1 is dead oak.

## 3 - Payments

### 3.4 - Damaged Timber

#### 3.4.1 - Damaged timber (7/16)

General Condition and Requirement 3.4 Damaged Timber, defines liquidated damages for undesignated live merchantable trees which are cut or injured. In addition, reasonable care should be taken to avoid damage to tree seedlings and saplings.

Within the Sale Area, if more than 30% of the tree seedlings or saplings (1/4" to 4.5" DBH) within a specified portion of the Sale Area are damaged, liquidated damages will be assessed at \$400 per acre for all acreage within that specified portion of the Sale Area that was damaged. Trees cut cleanly for skid trails and operational pathways will not be counted as damage.

#### 3.4.2 - Special Protection Trees (4/14)

The Purchaser shall not cut live or dead special protection trees within cutting units or clearings. Special protection trees are legacy trees and have been marked with green paint. If the Purchaser's operations have cut or damaged special protection trees through carelessness, the Purchaser shall pay \$500 as fixed, agreed and liquidated damages for each special protection tree cut or damaged. Such payment does not constitute ownership of the undesignated timber.

## 4 - Transportation

### 4.1 - Construction

#### 4.1.6 - Road construction (4/24)

Construction of new roads or improvements of existing roads shall be done in such a way as to minimize the environmental and visual impacts. Merchantable trees shall be cut and utilized unless otherwise directed. Non-merchantable trees shall be severed and laid flat on the ground. Slash shall be scattered, and not left in windrows and kept a minimum of 10 feet back from the road edge. Stumps shall be set upright, not left on edge, and be moved at least 10 feet away from the road edge. Disturbed soil shall be feathered into the woods and not left in berms or windrows.

#### 4.1.7 - Road closure (10/11)

All new roads built into the sale must be blocked to vehicle traffic upon completion of the sale. Overgrown roads that are reopened shall be considered new roads. In general, this will require constructing a four (4') foot high berm of stumps and logs covered with earth. Stumps and brush must be placed along the remainder of the trail. These roads must be rendered impassable to cars and trucks. All stumps from road building and landing construction must be reserved to block any newly constructed roads upon completion of the sale. These stumps must be scattered along the road system to prohibit vehicular movement. Contact the Sale Administrator for specific details of design and placement.

#### 4.1.11 - Permits (2/12)

The Purchaser will secure any necessary permits that may be required.

### 5 - Operations

#### 5.1 - Notification

##### 5.1.3 - Well heads and natural gas pipelines (11/15)

The Purchaser is responsible for contacting the gas or pipeline company prior to operating equipment in the vicinity of well heads or natural gas pipelines.

#### 5.2 - Conduct of Operations

##### 5.2.2 - Hazard Trees/Snags

###### 5.2.2.1 - Den trees (10/16)

Obvious hollow and/or den trees shall be protected and left standing unless they are a safety hazard.

##### 5.2.3 - Operating Restrictions

###### 5.2.3.4 - Oak wilt restriction, no exceptions (1/18)

Within Payment Unit(s) 1 & 2, cutting, skidding, and hauling within the sale and brushing of access roads to the sale are not permitted during the period of April 15 to July 15. No exceptions will be granted. This is necessary to reduce the spread of oak wilt. Hauling from the landing may be permitted if haul roads have been brushed prior to restrictions.

##### 5.2.29 - Shrub protection (1/20)

Reasonable care should be taken to avoid cutting or damaging hawthorn or juneberry. These woody-shrub plants are highly beneficial to various wildlife species.

##### 5.2.32 - Decking/landing restoration (9/13)

All decking and landing areas must have the surface area restored to a condition equal to or better than before. This is to ensure the proper regeneration of the stand. Wood debris, chips and "cookies" from trimmings must be removed or scattered away from landing and loading areas and may not be windrowed on the edge.

### 6 - Safety and Fire Prevention

#### 6.2 - Signing

##### 6.2.1 - Road posting (10/20)

The Purchaser is responsible for posting and maintaining caution signs on Pere Cheney Road and Stephan Bridge Road prior to beginning operations. The road must be posted at appropriate distances from the Sale Area to warn of logging activity and truck traffic. Signs must be removed when harvest operations are suspended or completed. The Purchaser will provide these signs.

### 7 - Other Conditions

#### 7.5 - Loss

##### 7.5.1 - Deteriorating timber (7/09)

The sale area has received damage from oak decline and oak wilt. The Purchaser should harvest the wood as soon as possible. The Department of Natural Resources is held free of responsibility of any further damage or deterioration due to delay in harvesting.



### TIMBER SALE MAP

This information provided by authority of Part 525, 1994 PA 451, as amended.

Sale Number <b>72-002-24</b>	Date 10/06/2024
Scale 1:10,000	Page 1
	Of 1

Forest Management Unit Grayling Mgt Unit	County Crawford	Mapped By: Scott McClarren
		Cruised By: Scott McClarren

Township 25N	Range 02W	Section(s) and Subdivision(s) Sec. 17 E1/2NW,W1/2NE; Sec. 8 N1/2SW,SWSW;
-----------------	--------------	--

Cover Type			
A = Aspen	J = Jack Pine	O = Oak	U = Upland Brush
B = Paper Birch	K = Rock	P = Lowland Poplar	UM = Upland Mix Forest
C = Cedar	L = Lowland Brush	Q = Mixed Swamp Conifer	V = Bog or Marsh
D = Treed Bog	LM = Lowland Mix Forest	R = Red Pine	W = White Pine
E = Swamp Hardwoods	M = Maple, Beech, Birch	S = Black Spruce	X = Non Stocked
F = Spruce/Fir	MC = Mixed Conifer	T = Tamarack	Y = Sand
G = Grass	MD = Mixed Deciduous	Z = Water	
H = Hemlock	N = Marsh		

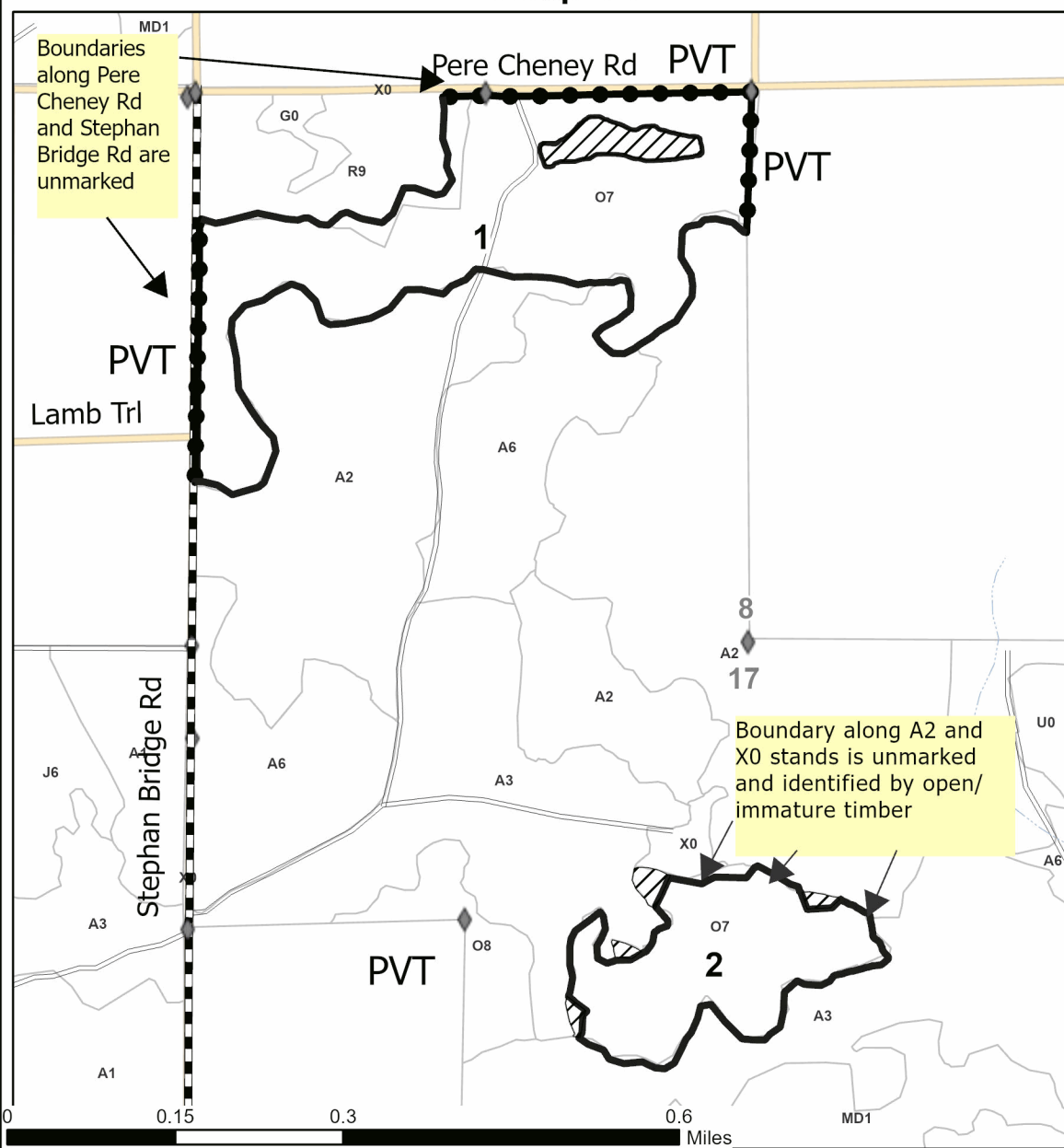
Density	
0 = Non Stocked	5 = Pole Timber Medium
1 = Seedling Sapling Poor	6 = Pole Timber Well
2 = Mixed Sapling Medium	7 = Saw Timber Poor
3 = Seedling Sapling Well	8 = Saw Timber Medium
4 = Pole Timber Poor	9 = Saw Timber Well

PU #	Acres
1	42.6
2	18.3

## Shocked Top Oak Removal

60.9 Acres

Comp 296



### Legend

- Stand
- Retention Areas (Red)
- Against State (Red/Unmarked)
- Private Line (Blue/Unmarked Road)
- Secondary Forest Road
- Non-DNR Road
- Pipeline
- Field Grade Corner



Use QR Code to open Map in App





## TIMBER SALE INFORMATION

Cordie Howes JP (72-607-24)  
T27N, R04W, SEC. 31; T27N, R04W, SEC. 32.  
Crawford County (Advertised Price \$17,467.45)

SALE NOTE: Sale has been reduced in price due to the restrictions and requirements associated with Payment Units 1 and 2. These units are low volume jack pine thinning units that contain pulpwood and sub-merchantable trees that need to be cut to facilitate future prescribed burn treatments. Payment Units 1 and 2 may only be harvested during snow on winter conditions to protect rare and sensitive ground flora. To ensure this work gets completed we may require Payment Units 1 and 2 be cut prior to allowing entry into Payment Units 3 and 4 (see spec 3.6.1). This sale is located on military lands and therefore is non-certified and contains standard military specs. Gate access for Payment Unit 1 will be coordinated through Range Control. Equipment should be clean and free of debris upon entry to minimize the spread of invasives on site. Payment Units 3 and 4 has Class A access.

A timber sale contract for this lump sum, sealed bid timber sale will be awarded to the responsible bidder offering the highest sealed bid price. All units of volume listed below were estimated using the Inventory Manager computer program and the new Michigan taper model. Bids must be at or above the following advertised price for each product and species:

<u>PRODUCTS &amp; SPECIES</u>	<u>ESTIMATED UNITS*</u>	<u>ADVERTISED PRICE</u>
Pulpwood		
Jack Pine	869 Cords	\$ 18.85 / Cord
Mixed Hardwood	3 Cords	\$ 26.00 / Cord
Red Pine	26 Cords	\$ 38.80 / Cord

\* The total volume is statistically estimated within plus (+) or minus (-) 15.57 percent. There are an estimated 898 cords on this timber sale, plus or minus 140 cords at the 95% confidence level. The estimated units are final and not subject to adjustment. Prospective bidders are urged to examine this timber and to make their own estimates of quantity and quality.

### **BOND AND PAYMENT SCHEDULE:**

1. A bond in the amount of \$873.00 to insure faithful performance of the conditions of the contract will be deposited by the successful bidder within 21 days of the sale award.
2. Cutting in any sale or unit without the required advance payment would be considered a trespass.
3. Total payment must be paid in advance or according to the following schedule :
  - (a) Ten percent (10%) of the sale value must be paid within 21 days of the sale award.
  - (b) The 10% down payment will be credited towards the first unit cut.
  - (c) Payment for each of the following units must be made before cutting begins in that unit:

PAYMENT UNIT NUMBER	PERCENT OF TOTAL SALE VALUE
01	11.1%
02	4.0%
03	29.3%
04	55.6%
4. If no cutting takes place, the 10% down payment will not be refunded.
5. Operations on the contract issued will terminate on 03/31/2028.

### **SALE STATISTICS**

Volumes were calculated in cubic feet using the Michigan taper model. Cubic foot volume includes all wood inside bark for the product indicated. For display purposes, cubic feet were converted to cords and MBF using a simple conversion factor, e.g. 79 cubic feet per cord and 185 cubic feet per MBF. The cubic foot volumes are precise; the cords and MBF volumes are not. Cubic foot volume cannot be directly converted to cords or boards with precision.

### **SALE VOLUMES**

The total estimated sale volume may not equal the sum of the species/products due to the nature of statistical calculations associated with double sampling methodology.

VOLUME		STATISTICAL RANGE IN CORDS		
TOTAL CUBIC FEET	TOTAL CORDS	PERCENT ERROR	MINIMUM	MAXIMUM
70,952	898	15.57%	758	1,038

## VDU VOLUMES

A VDU is a Volume Determination Unit. Volumes and their associated statistics are calculated at the VDU level and summarized to the sale level. There is often a one to one relationship between a VDU and a Payment Unit, but not always, depending on the cruise design. Refer to the VDU TO PAYMENT UNIT table.

VDU	VOLUME		PERCENT ERROR	RANGE IN CORDS	
	TOTAL CUBIC FEET	TOTAL CORDS		MINIMUM	MAXIMUM
6	59,959	759	17.70%	625	893
12	2,061	26	99.26%	0	52
35	8,932	113	30.74%	78	148
<b>TOTAL:</b>	<b>70,952</b>	<b>898</b>		<b>703</b>	<b>1,093</b>

## VDU TO PAYMENT UNIT

When a VDU is associated with more than one Payment Unit (PU), the VDU volumes are assigned to the PU based on acres of the VDU within the PU.

VDU	VDU ACRES	PU	PU ACRES
6	60.2	3	20.8
6	60.2	4	39.4
12	14.6	2	14.6
35	18.5	1	16.9
35	18.5	2	1.6
<b>TOTAL:</b>	<b>172.0</b>		<b>93.3</b>

## DESCRIPTION OF TIMBER BY PAYMENT UNIT (PU)

PU	MARKET GROUP	PRODUCT	QUANTITY	UNIT	ACRES	ADVERTISE PRICE
1	Jack Pine	Pulpwood	103	Cords	16.9	\$1,941.55
2	Jack Pine Mixed Hardwood <i>Red Maple</i>	Pulpwood	34	Cords	16.2	\$692.90
			2	Cords		
			2	<i>Cords</i>		
3	Jack Pine Red Pine	Pulpwood	253	Cords	20.8	\$5,118.25
			9	Cords		
4	Jack Pine Mixed Hardwood <i>Black Cherry</i> Red Pine	Pulpwood	479	Cords	39.4	\$9,714.75
			1	Cords		
			1	<i>Cords</i>		
			17	Cords		
<b>TOTAL:</b>			898	Cords		

## Sale Specific Conditions & Requirements

**Sale Name: Cordie Howes JP**

**Sale Number: 72-607-24 Seq#: 2**

### 1 - Sale Area

#### 1.2 - Boundaries

##### 1.2.1 - Painted Boundaries (9/19)

The sale boundary and Payment Unit boundaries are marked and identified by blue, red and yellow paint, as well as roads (see Timber Sale Map). Exterior sale boundary lines against private property are marked with blue paint. Exterior sale boundary lines against state are marked with red paint with the exception of the boundaries adjacent to Manistee River Road (Payment Units 3 and 4), M-72 (Payment Unit 3), Arrowhead Road (Payment Unit 1), and Howes Lake Road (Payment Unit 2) which are unmarked and designated by the roads. Interior Payment Unit boundaries are marked with yellow paint with the exception of the boundary between Payment Units 1 and 2 which is unmarked and designated by Howes Lake Road. Retention patches are marked with red paint with the exception of the excluded retention west of Manistee River Rd which is unmarked; no harvesting activities may occur within these areas. The painted boundary line trees are not Included Timber and are to be protected. Yellow painted trees designating an interior Payment Unit boundary are only to be cut when all surrounding Payment Units have been paid.

### 2 - Timber Specifications

#### 2.1 - Included Timber

##### 2.1.1 - Clearcut Unit(s) with Unmerchantable Trees (6/14)

Within Payment Unit(s) 3 and 4, cut all trees that are two (2) inches or more at DBH, , except do not cut trees marked with green paint.

Special protection trees identified in accordance with condition 3.4.2, within clearcutting unit boundaries, are not Included Timber and are to be protected.

##### 2.1.3 - Cut Tree Marked Unit(s) (12/08)

Within Payment Unit(s) 2, all trees are designated for cutting when marked with orange paint above and below stump height, regardless of merchantability. In addition, all cherry trees and all dead standing jack pine are designated for cutting, regardless of merchantability.

##### 2.1.7 - Leave Tree Marked Unit(s) (6/14)

Within Payment Unit(s) 1, cut all trees that are one (1) inch or more at DBH, except do not cut trees marked with green paint above and below stump height. In addition, all standing dead jack pine is designated for cutting, regardless of any paint or merchantability.

Special protection areas identified in accordance with condition 3.4.3, within cutting unit boundaries, are not Included Timber and are to be protected.

#### 2.2 - Utilization

##### 2.2.2 - Chipping required (2/18)

This area must be chip harvested to facilitate future silvicultural activities and to meet National Guard requirements. However, the chipping requirement could be waived with military approval, if chip markets are depressed. The Purchaser has the option to produce sawlogs or pulpwood bolts, but the remaining portion of the trees must be chipped and hauled. The requirement to retain approximately 1/6 to 1/3 of tree tops and limbs less than four inches in diameter does not apply (G. C. & R. 2.2). This is because the sale is located on military lands.

##### 2.2.3 - Stump heights (4/07)

Stump heights within the Sale Area shall not exceed 6 inches for all trees. This is in order to facilitate military requirements.

### 3 - Payments

#### 3.4 - Damaged Timber

##### 3.4.1 - Damaged timber (7/16)

General Condition and Requirement 3.4 Damaged Timber, defines liquidated damages for undesignated live merchantable trees which are cut or injured.

No damage is acceptable to undesignated live merchantable trees. Within Payment Units 1 and 2, if more than 10% of trees (> 4.5" DBH) within a specified area of the sale are damaged, liquidated damages will be assessed for all trees damaged. Rates will be in accordance with General Condition and Requirement 3.4 Damaged Timber. Additional trees may need to be removed for operability within thinning units and will be identified prior to cutting.

#### 3.4.2 - Special Protection Trees (4/14)

The Purchaser shall not cut live or dead special protection trees within cutting units or clearings. Special protection trees are witness trees identifying section or private corners that are marked with blue or green paint. If the Purchaser's operations have cut or damaged special protection trees through carelessness, the Purchaser shall pay \$300 as fixed, agreed and liquidated damages for each special protection tree cut or damaged. Such payment does not constitute ownership of the undesignated timber.

#### 3.4.3 - Special Protection Areas (8/11)

The Purchaser shall protect special protection areas from damage by the Purchaser's operations. Special protection areas are marked with a red boundary line in Payment Unit 1. The Purchaser shall not cut live or dead trees or operate equipment within the special protection area. If the Purchaser's operations have cut or damaged special protection areas through carelessness, the Purchaser shall pay \$500 as fixed, agreed and liquidated damages for each acre or part thereof cut or damaged. Such payment does not constitute ownership of the undesignated timber.

### 3.6 - Payment Unit Cutting Schedule

#### 3.6.1 - Order of cutting (1/09)

Payment Units 1 and 2 shall be cut first, unless approved by the Unit Manager or his/her representative.

## 4 - Transportation

### 4.1 - Construction

#### 4.1.6 - Road construction (4/24)

Construction of new roads or improvements of existing roads shall be done in such a way as to minimize the environmental and visual impacts. Merchantable trees shall be cut and utilized unless otherwise directed. Non-merchantable trees shall be severed and laid flat on the ground. Slash shall be scattered, and not left in windrows and kept a minimum of 10 feet back from the road edge. Stumps shall be set upright, not left on edge, and be moved at least 10 feet away from the road edge. Disturbed soil shall be feathered into the woods and not left in berms or windrows.

#### 4.1.7 - Road closure (10/11)

All new roads built into the sale must be blocked to vehicle traffic upon completion of the sale. Overgrown roads that are reopened shall be considered new roads. In general, this will require constructing a four (4') foot high berm of stumps and logs covered with earth. Stumps and brush must be placed along the remainder of the trail. These roads must be rendered impassable to cars and trucks. All stumps from road building and landing construction must be reserved to block any newly constructed roads upon completion of the sale. These stumps must be scattered along the road system to prohibit vehicular movement. Temporary berms may be required if no sale activity occurs for 30 or more consecutive days. Contact the Sale Administrator for specific details of design and placement.

#### 4.1.11 - Permits (2/12)

The Purchaser will secure any necessary permits that may be required.

### 4.4 - Access

#### 4.4.3 - Access gate (12/08)

The access gates around Howes Lake must be locked at the completion of each day unless otherwise approved by the Unit Manager or his/her representative.

## 5 - Operations

### 5.1 - Notification

#### 5.1.5 - National Guard notification (2/15)



This sale is upon lands utilized for training by the Michigan National Guard - Camp Grayling. A minimum of five (5) business days prior to opening this sale, the producer must request that the sale administrator contact the military for information regarding training plans that may impact sale operations.

## 5.2 - Conduct of Operations

### 5.2.3 - Operating Restrictions

#### 5.2.3.1 - Operating restrictions (9/11)

Within Payment Unit(s) 1 and 2, cutting, skidding, and hauling are limited to frozen snow on conditions. This restriction is to protect the rare and protected ground flora present on site and to reduce the risk of rutting.

#### 5.2.3.7 - National Guard training restriction (1/09)

Operations on this contract may not be allowed during National Guard training operations. Typically, the restricted period is from May 1 to October 31. The contractor must check with the Unit Manager who will coordinate the cutting schedule with the Military.

#### 5.2.31 - Landing locations (9/13)

Recommended landing areas are marked on the Timber Sale Map with the letter "L". Landings must be confined to these designated sites unless otherwise authorized by the Unit Manager or his/her representative.

#### 5.2.32 - Decking/landing restoration (9/13)

All decking and landing areas must have the surface area restored to a condition equal to or better than before. This is to ensure the proper regeneration of the stand. Wood debris, chips and "cookies" from trimmings must be removed or scattered away from landing and loading areas and may not be windrowed on the edge.

#### 5.2.38 - No decking against live trees (2/04)

Cut products may not be decked against unmarked or designated leave trees.

## 5.3 - Stream Protection

### 5.3.2 - Parking equipment near water (10/23)

Within Payment Unit(s) 2, the parking of or storage of equipment is prohibited within 100 feet of water bodies or ground water supplies. All equipment, when not in use for harvest operations, must be parked a minimum of 100 feet away from water sources (streams, rivers, lakes, ponds, vernal pools, ground water sources) and 50 feet away from slopes leading to water sources and/or riparian areas. This restriction is for preventing unforeseen oil and/or fluid leaks from contaminating water bodies and/or ground water supplies.

## 5.4 - Soil Protection

### 5.4.1 - Rutting restriction, general (7/16)

Withing Payment Units 1 and 2 operations are to cease immediately if equipment and weather conditions result in rutting of roads and/or skid trails which is 6 inches or greater in depth and 25 feet in length. The Unit Manager or his/her representative may restrict hauling and/or skidding if ruts exceed the specified depth. With the Unit Manager or his/her representative's approval, the Purchaser may return to the area when the risk of rutting has decreased.

## 5.5 - Protection of Improvements

### 5.5.3 - Protection of improvements detail (10/13)

The following are specific protection measures for this sale: Protect the gates and guard rails within Payment Unit 2.

## 5.6 - Debris and Waste Material

### 5.6.3 - Equipment cleaning (12/17)

For purposes of this provision, "Off-Road Equipment" includes all logging and construction machinery, except for log trucks, chip vans, service vehicles, water trucks, pickup trucks, cars, and similar vehicles. Off-Road Equipment brought on site must be clean and free from plant material and soil prior to arrival on any Payment Unit. Off-Road Equipment shall be cleaned of plant material and dirt prior to being moved to a new stand within the sale. Plant material includes leaves, stems, roots and seeds. Equipment shall be considered clean when a visual inspection does not disclose seeds, soil, vegetative matter, and other debris that could contain or hold seeds. This is to prevent the spread of invasive plant species.

## 6 - Safety and Fire Prevention

## 6.2 - Signing

### 6.2.1 - Road posting (10/20)

The Purchaser is responsible for posting and maintaining caution signs on Howes Lake Road and Manistee River Road prior to beginning operations. The road must be posted at appropriate distances from the Sale Area to warn of logging activity and truck traffic. Signs must be removed when harvest operations are suspended or completed. The Purchaser will provide these signs.

## 7 - Other Conditions

### 7.10 - Certified Timber

#### 7.10.1 - Non-certified timber (2/16)

The area encompassed by this timber sale is not certified to the standards of the Forest Stewardship Council (FSC) or the Sustainable Forestry Initiative (SFI). Forest products from this sale may not be delivered to the mill as "FSC and / or SFI certified". The lands within this sale are managed for military training.





## TIMBER SALE INFORMATION

The S.S. Minnoak (72-616-24)  
T28N, R02W, SEC. 27; T28N, R02W, SEC. 28.  
Crawford County (Advertised Price \$17,592.10)

SALE NOTE: Sale contains standard military specs and restrictions. Hard oak wilt restrictions to protect advanced oak regeneration. Sale is accessed via KP Lake Rd from County Rd 612.

A timber sale contract for this lump sum, sealed bid timber sale will be awarded to the responsible bidder offering the highest sealed bid price. All units of volume listed below were estimated using the Inventory Manager computer program and the new Michigan taper model. Bids must be at or above the following advertised price for each product and species:

<u>PRODUCTS &amp; SPECIES</u>	<u>ESTIMATED UNITS*</u>	<u>ADVERTISED PRICE</u>
Sawtimber		
Red Oak	89.0 MBF	\$ 136.00 / MBF
Pulpwood		
B. T. Aspen	7 Cords	\$ 26.60 / Cord
Mixed Oak	174 Cords	\$ 25.05 / Cord
Red Maple	19 Cords	\$ 32.50 / Cord
Red Pine	4 Cords	\$ 48.50 / Cord
White Pine	6 Cords	\$ 21.95 / Cord

\* The total volume is statistically estimated within plus (+) or minus (-) 18.89 percent. There are an estimated 420 cords on this timber sale, plus or minus 79 cords at the 95% confidence level. The estimated units are final and not subject to adjustment. Prospective bidders are urged to examine this timber and to make their own estimates of quantity and quality.

### **BOND AND PAYMENT SCHEDULE:**

1. A bond in the amount of \$1,000.00 to insure faithful performance of the conditions of the contract will be deposited by the successful bidder within 21 days of the sale award.
2. Cutting in any sale or unit without the required advance payment would be considered a trespass.
3. Total payment must be paid in advance or according to the following schedule :
  - (a) Ten percent (10%) of the sale value must be paid within 21 days of the sale award.
  - (b) The remainder is due before cutting begins.
  - (c) Payment for each of the following units must be made before cutting begins in that unit:
 

PAYMENT UNIT NUMBER	PERCENT OF TOTAL SALE VALUE
01	100.0%
4. If no cutting takes place, the 10% down payment will not be refunded.
5. Operations on the contract issued will terminate on 03/31/2028.

### **SALE STATISTICS**

Volumes were calculated in cubic feet using the Michigan taper model. Cubic foot volume includes all wood inside bark for the product indicated. For display purposes, cubic feet were converted to cords and MBF using a simple conversion factor, e.g. 79 cubic feet per cord and 185 cubic feet per MBF. The cubic foot volumes are precise; the cords and MBF volumes are not. Cubic foot volume cannot be directly converted to cords or boards with precision.

### **SALE VOLUMES**

The total estimated sale volume may not equal the sum of the species/products due to the nature of statistical calculations associated with double sampling methodology.

VOLUME		STATISTICAL RANGE IN CORDS		
TOTAL CUBIC FEET	TOTAL CORDS	PERCENT ERROR	MINIMUM	MAXIMUM
33,156	420	18.89%	340	499

**VDU VOLUMES**

A VDU is a Volume Determination Unit. Volumes and their associated statistics are calculated at the VDU level and summarized to the sale level. There is often a one to one relationship between a VDU and a Payment Unit, but not always, depending on the cruise design. Refer to the VDU TO PAYMENT UNIT table.

VDU	VOLUME		PERCENT ERROR	RANGE IN CORDS	
	TOTAL CUBIC FEET	TOTAL CORDS		MINIMUM	MAXIMUM
27	33,156	420	18.90%	340	499
<b>TOTAL:</b>	<b>33,156</b>	<b>420</b>		<b>340</b>	<b>499</b>

**VDU TO PAYMENT UNIT**

When a VDU is associated with more than one Payment Unit (PU), the VDU volumes are assigned to the PU based on acres of the VDU within the PU.

VDU	VDU ACRES	PU	PU ACRES
27	27.8	1	27.8
<b>TOTAL:</b>	<b>27.8</b>		<b>27.8</b>

**DESCRIPTION OF TIMBER BY PAYMENT UNIT (PU)**

PU	MARKET GROUP	PRODUCT	QUANTITY	UNIT	ACRES	ADVERTISE PRICE
1	Red Oak	Sawtimber	89.0	MBF	27.8	\$17,592.10
	B. T. Aspen	Pulpwood	7	Cords		
	Mixed Oak		174	Cords		
	<i>White Oak</i>	<i>Sawtimber</i>	3.9	<i>MBF</i>		
	<i>Red Oak</i>	<i>Pulpwood</i>	158	<i>Cords</i>		
	<i>White Oak</i>		8	<i>Cords</i>		
	Red Maple		19	Cords		
	Red Pine		4	Cords		
	White Pine		6	Cords		
	TOTAL:			89.0		
TOTAL:			210	Cords		

## Sale Specific Conditions & Requirements

**Sale Name: The S.S. Minnoak**

**Sale Number: 72-616-24 Seq#: 2**

### 1 - Sale Area

#### 1.2 - Boundaries

##### 1.2.1 - Painted Boundaries (9/19)

The sale boundary and Payment Unit boundaries are marked and identified by blue and red paint or are unmarked and identified by existing roads. Exterior sale boundary lines against private property are marked with blue paint. Exterior sale boundary lines against state are marked with red paint with the exception of the portions of Payment Unit 1 that are adjacent to KP Lake Road which are unmarked and designated by the road. Retention patches are marked with red paint; no harvesting activities may occur within these areas. The painted boundary line trees are not Included Timber and are to be protected.

### 2 - Timber Specifications

#### 2.1 - Included Timber

##### 2.1.5 - Overstory Removal Unit(s) (8/11)

Within Payment Unit(s) 1, all trees which meet minimum piece specifications in 2.2 Utilization, are designated for cutting.

#### 2.2 - Utilization

##### 2.2.2 - Chipping required (2/18)

Payment Unit 1 must be chip harvested to meet National Guard requirements. However, the chipping requirement could be waived with military approval, if chip markets are depressed. The Purchaser has the option to produce sawlogs or pulpwood bolts, but the remaining portion of the trees must be chipped and hauled. The requirement to retain approximately 1/6 to 1/3 of tree tops and limbs less than four inches in diameter does not apply (G. C. & R. 2.2). This is because this is non-certified military land.

##### 2.2.3 - Stump heights (4/07)

Stump heights within Payment Unit 1 shall not exceed 6 inches for all trees. This is in order to facilitate military requirements.

### 3 - Payments

#### 3.3 - Pre-measured Sales

##### 3.3.4 - Dividing payment units (7/14)

Payment Unit(s) 1 may be divided at the request of the Purchaser and upon approval of the Unit Manager. Dividing Payment Units is a contract modification which requires a Timber Sale Contract Amendment. There will be only one division per Payment Unit.

#### 3.4 - Damaged Timber

##### 3.4.1 - Damaged timber (7/16)

General Condition and Requirement 3.4 Damaged Timber, defines liquidated damages for undesignated live merchantable trees which are cut or injured. In addition, reasonable care should be taken to avoid damage to tree seedlings and saplings.

Within the Sale Area, if more than 30% of the tree seedlings or saplings (1/4" to 4.5" DBH) within a specified portion of the Sale Area are damaged, liquidated damages will be assessed at \$400 per acre for all acreage within that specified portion of the Sale Area that was damaged. Trees cut cleanly in skid trails will not count as damaged timber.

### 4 - Transportation

#### 4.1 - Construction

##### 4.1.6 - Road construction (4/24)

Construction of new roads or improvements of existing roads shall be done in such a way as to minimize the environmental and visual impacts. Merchantable trees shall be cut and utilized unless otherwise directed. Non-merchantable trees shall be

severed and laid flat on the ground. Slash shall be chipped, utilized or otherwise removed from the sale. Stumps shall be set upright, not left on edge, and be moved at least 10 feet away from the road edge. Disturbed soil shall be feathered into the woods and not left in berms or windrows.

#### 4.1.7 - Road closure (10/11)

All new roads built into the sale must be blocked to vehicle traffic upon completion of the sale. Overgrown roads that are reopened shall be considered new roads. In general, this will require constructing a four (4') foot high berm of stumps and logs covered with earth. Stumps and brush must be placed along the remainder of the trail. These roads must be rendered impassable to cars and trucks. All stumps from road building and landing construction must be reserved to block any newly constructed roads upon completion of the sale. These stumps must be scattered along the road system to prohibit vehicular movement. Contact the Sale Administrator for specific details of design and placement.

#### 4.1.11 - Permits (2/12)

The Purchaser will secure any necessary permits that may be required.

## 5 - Operations

### 5.1 - Notification

#### 5.1.5 - National Guard notification (2/15)

This sale is upon lands utilized for training by the Michigan National Guard - Camp Grayling. A minimum of five (5) business days prior to opening this sale, the producer must request that the sale administrator contact the military for information regarding training plans that may impact sale operations.

### 5.2 - Conduct of Operations

#### 5.2.2 - Hazard Trees/Snags

##### 5.2.2.1 - Den trees (10/16)

Obvious hollow and/or den trees shall be protected and left standing unless they are a safety hazard.

#### 5.2.3 - Operating Restrictions

##### 5.2.3.4 - Oak wilt restriction, no exceptions (1/18)

Within Payment Unit 1, cutting, skidding, and hauling within the sale and brushing of access roads to the sale are not permitted during the period of April 15 to July 15. No exceptions will be granted. This is necessary to reduce the spread of oak wilt.

##### 5.2.3.7 - National Guard training restriction (1/09)

Operations on this contract may not be allowed during National Guard training operations. Typically, the restricted period is from May 1 to October 31. The contractor must check with the Unit Manager who will coordinate the cutting schedule with the Military.

#### 5.2.32 - Decking/landing restoration (9/13)

All decking and landing areas must have the surface area restored to a condition equal to or better than before. This is to ensure the proper regeneration of the stand. Wood debris, chips and "cookies" from trimmings must be removed or scattered away from landing and loading areas and may not be windrowed on the edge.

## 6 - Safety and Fire Prevention

### 6.2 - Signing

#### 6.2.1 - Road posting (10/20)

The Purchaser is responsible for posting and maintaining caution signs on KP Lake Road prior to beginning operations. The road must be posted at appropriate distances from the Sale Area to warn of logging activity and truck traffic. Signs must be removed when harvest operations are suspended or completed. The Purchaser will provide these signs.

## 7 - Other Conditions

### 7.10 - Certified Timber

#### 7.10.1 - Non-certified timber (2/16)



The area encompassed by this timber sale is not certified to the standards of the Forest Stewardship Council (FSC) or the Sustainable Forestry Initiative (SFI). Forest products from this sale may not be delivered to the mill as "FSC and / or SFI certified". The lands within this sale are managed for military training.



### TIMBER SALE MAP

This information provided by authority of Part 525, 1994 PA 451, as amended.

Sale Number <b>72-616-24</b>	Date 08/15/2024
Scale 1:5,000	Page 1
	Of 1

Forest Management Unit Grayling Mgt Unit	County Crawford	Mapped By: Scott McClarren
		Cruised By: Scott McClarren

Township 28N	Range 02W	Section(s) and Subdivision(s) Sec. 27 SWSW; Sec. 28 SESE;
-----------------	--------------	---

Cover Type			
A = Aspen	J = Jack Pine	O = Oak	U = Upland Brush
B = Paper Birch	K = Rock	P = Lowland Poplar	UM = Upland Mix Forest
C = Cedar	L = Lowland Brush	Q = Mixed Swamp Conifer	V = Bog or Marsh
D = Treed Bog	LM = Lowland Mix Forest	R = Red Pine	W = White Pine
E = Swamp Hardwoods	M = Maple, Beech, Birch	S = Black Spruce	X = Non Stocked
F = Spruce/Fir	MC = Mixed Conifer	T = Tamarack	Y = Sand
G = Grass	MD = Mixed Deciduous	Z = Water	
H = Hemlock	N = Marsh		

Density	
0 = Non Stocked	5 = Pole Timber Medium
1 = Seedling Sapling Poor	6 = Pole Timber Well
2 = Seedling Sapling Medium	7 = Saw Timber Poor
3 = Seedling Sapling Well	8 = Saw Timber Medium
4 = Pole Timber Poor	9 = Saw Timber Well

PU #	Acres
1	27.8

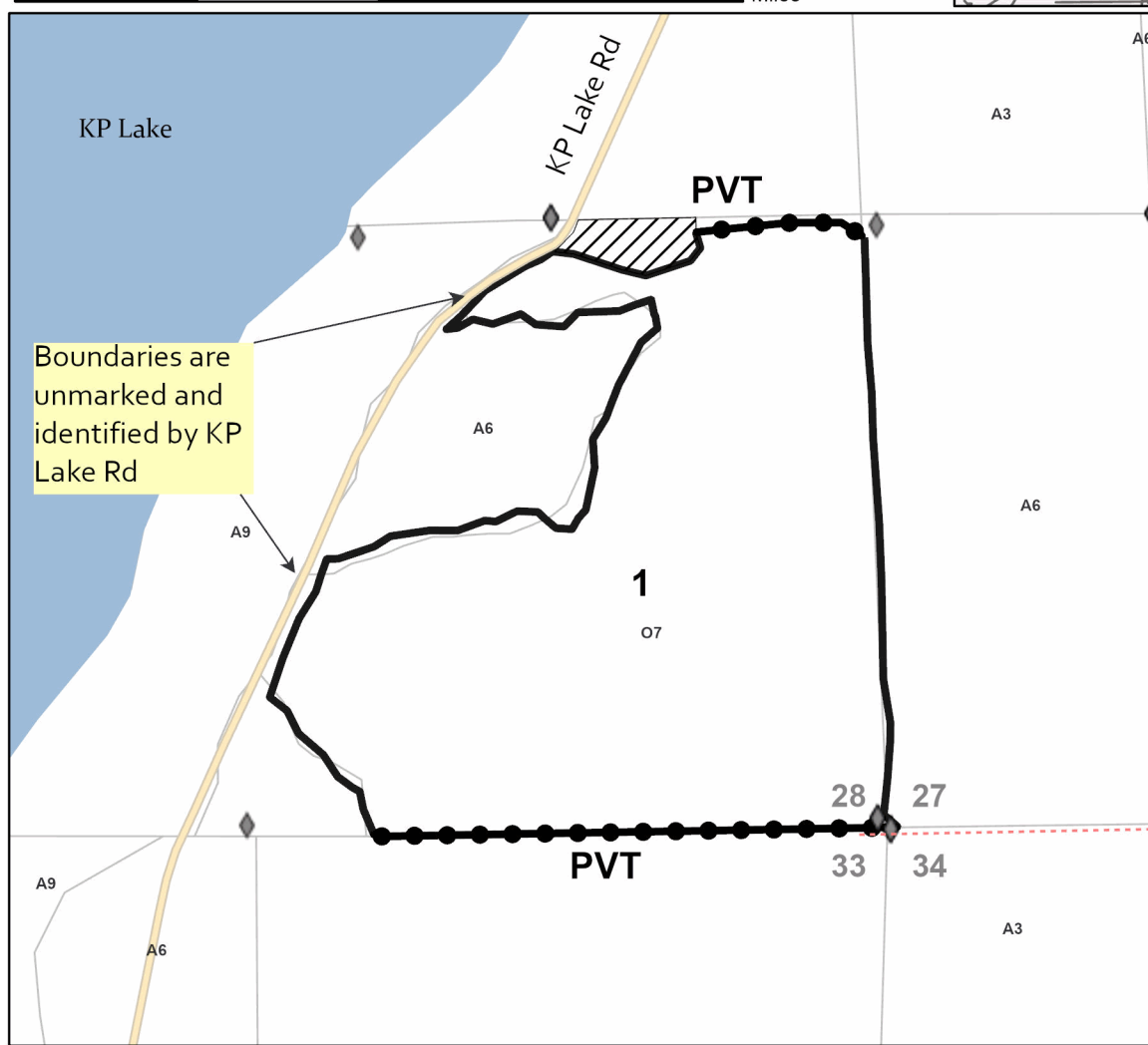
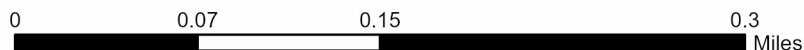
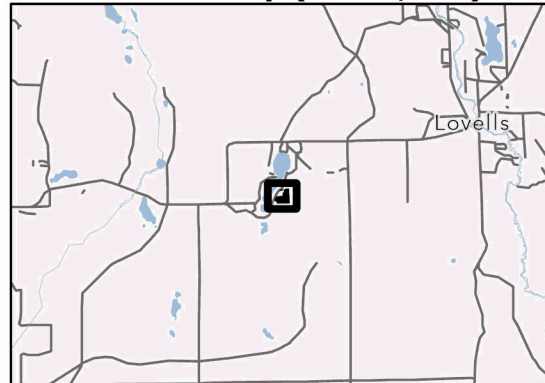
## The S.S. Minnoak

### COMP 265

### 27.8 Acres



### Locator Map (1:200,000)



### Legend

- Stand
- Retention Areas
- Lakes and Rivers
- Against State (Red/Unmarked)
- Private Line (Blue)
- Administrative Access Only
- Non-DNR Road
- Field Grade Corner

Use QR Code to open Map in App



## TIMBER SALE INFORMATION

Gardenia Tr Aspen (72-032-21)  
T28N, R03W, SEC. 32; T28N, R03W, SEC. 33.  
Crawford County (Advertised Price \$73,422.75)

SALE NOTE: The sale has a mix of overmature aspen, lower quality hardwoods, and white pine. There are pockets of dense hardwood regen and shrub cover that will need to be worked around. The terrain is rolling, with a few steep holes. There is a raptor nest north of Payment Unit 1; if the nest is found to be active at time of harvest, seasonal operating restrictions will apply to a small portion of that Payment Unit. If a new nest is found, a no-cut buffer may need to be removed from the harvest area to protect it.

A timber sale contract for this lump sum, sealed bid timber sale will be awarded to the responsible bidder offering the highest sealed bid price. All units of volume listed below were estimated using the Inventory Manager computer program and the new Michigan taper model. Bids must be at or above the following advertised price for each product and species:

<u>PRODUCTS &amp; SPECIES</u>	<u>ESTIMATED UNITS*</u>	<u>ADVERTISED PRICE</u>
<b>Sawtimber</b>		
Basswood	16.1 MBF	\$ 65.00 / MBF
Red Maple	27.3 MBF	\$ 70.00 / MBF
Red Pine	13.4 MBF	\$ 82.00 / MBF
Sugar Maple	105.4 MBF	\$ 180.00 / MBF
White Pine	84.4 MBF	\$ 55.00 / MBF
<b>Pulpwood</b>		
Basswood	18 Cords	\$ 10.00 / Cord
Mixed Aspen	1,096 Cords	\$ 21.30 / Cord
Mixed Hardwood	640 Cords	\$ 26.00 / Cord
Red Pine	54 Cords	\$ 38.80 / Cord
White Pine	199 Cords	\$ 17.55 / Cord

\* The total volume is statistically estimated within plus (+) or minus (-) 26.22 percent. There are an estimated 2,588 cords on this timber sale, plus or minus 679 cords at the 95% confidence level. The estimated units are final and not subject to adjustment. Prospective bidders are urged to examine this timber and to make their own estimates of quantity and quality.

### **BOND AND PAYMENT SCHEDULE:**

1. A bond in the amount of \$3,671.00 to insure faithful performance of the conditions of the contract will be deposited by the successful bidder within 21 days of the sale award.
2. Cutting in any sale or unit without the required advance payment would be considered a trespass.
3. Total payment must be paid in advance or according to the following schedule :
  - (a) Ten percent (10%) of the sale value must be paid within 21 days of the sale award.
  - (b) The 10% down payment will be credited towards the first unit cut.
  - (c) Payment for each of the following units must be made before cutting begins in that unit:

PAYMENT UNIT NUMBER	PERCENT OF TOTAL SALE VALUE
01	64.6%
02	6.6%
03	14.5%
04	14.3%

4. If no cutting takes place, the 10% down payment will not be refunded.
5. Operations on the contract issued will terminate on 03/31/2027.

### **SALE STATISTICS**

Volumes were calculated in cubic feet using the Michigan taper model. Cubic foot volume includes all wood inside bark for the product indicated. For display purposes, cubic feet were converted to cords and MBF using a simple conversion factor, e.g. 79 cubic feet per cord and 185 cubic feet per MBF. The cubic foot volumes are precise; the cords and MBF volumes are not. Cubic foot volume cannot be directly converted to cords or boards with precision.

## SALE VOLUMES

The total estimated sale volume may not equal the sum of the species/products due to the nature of statistical calculations associated with double sampling methodology.

VOLUME			STATISTICAL RANGE IN CORDS	
TOTAL CUBIC FEET	TOTAL CORDS	PERCENT ERROR	MINIMUM	MAXIMUM
204,473	2,588	26.22%	1,910	3,267

## VDU VOLUMES

A VDU is a Volume Determination Unit. Volumes and their associated statistics are calculated at the VDU level and summarized to the sale level. There is often a one to one relationship between a VDU and a Payment Unit, but not always, depending on the cruise design. Refer to the VDU TO PAYMENT UNIT table.

	VOLUME			RANGE IN CORDS	
VDU	TOTAL CUBIC FEET	TOTAL CORDS	PERCENT ERROR	MINIMUM	MAXIMUM
31	29,508	374	34.58%	244	503
36	126,901	1,606	21.28%	1,265	1,948
136	48,064	608	32.18%	413	804
<b>TOTAL:</b>	<b>204,473</b>	<b>2,588</b>		<b>1,922</b>	<b>3,255</b>

## VDU TO PAYMENT UNIT

When a VDU is associated with more than one Payment Unit (PU), the VDU volumes are assigned to the PU based on acres of the VDU within the PU.

VDU	VDU ACRES	PU	PU ACRES
31	16.6	4	16.6
36	60.5	1	60.5
136	26.9	2	8.4
136	26.9	3	18.5
<b>TOTAL:</b>	<b>130.9</b>		<b>104.0</b>

**DESCRIPTION OF TIMBER BY PAYMENT UNIT (PU)**

PU	MARKET GROUP	PRODUCT	QUANTITY	UNIT	ACRES	ADVERTISE PRICE		
1	Basswood	Sawtimber	10.7	MBF	60.5	\$47,395.05		
	Red Maple		17.0	MBF				
	Sugar Maple		84.7	MBF				
	White Pine		34.6	MBF				
	Basswood		Pulpwood	10			Cords	
	Mixed Aspen	794		Cords				
	<i>B. T. Aspen</i>	19		<i>Cords</i>				
	<i>Quaking Aspen</i>	775		<i>Cords</i>				
	Mixed Hardwood	398		Cords				
	<i>Black Cherry</i>	Sawtimber		9.6			MBF	
	<i>Black Cherry</i>			Pulpwood			34	Cords
	<i>Ironwood</i>						36	Cords
	<i>Red Maple</i>						93	Cords
	<i>Sugar Maple</i>						216	Cords
	White Pine	57	Cords					
2	Basswood	Sawtimber	1.7	MBF	8.4	\$4,866.85		
	Red Maple		0.7	MBF				
	Sugar Maple		3.7	MBF				
	White Pine		3.6	MBF				
	Basswood		Pulpwood	2			Cords	
	Mixed Aspen	88		Cords				
	<i>B. T. Aspen</i>	50		<i>Cords</i>				
	<i>Quaking Aspen</i>	38		<i>Cords</i>				
	Mixed Hardwood	33		Cords				
	<i>Black Cherry</i>	2		<i>Cords</i>				
	<i>Red Maple</i>	7		<i>Cords</i>				
	<i>Sugar Maple</i>	24		<i>Cords</i>				
	Red Pine	15		Cords				
	White Pine	29		Cords				
	3	Basswood	Sawtimber	3.7			MBF	18.5
Red Maple		1.6		MBF				
Sugar Maple		8.1		MBF				
White Pine		7.8		MBF				
Basswood		Pulpwood		6	Cords			
Mixed Aspen			193	Cords				
<i>B. T. Aspen</i>			109	<i>Cords</i>				
<i>Quaking Aspen</i>			84	<i>Cords</i>				
Mixed Hardwood			72	Cords				
<i>Black Cherry</i>			3	<i>Cords</i>				
<i>Ironwood</i>			1	<i>Cords</i>				
<i>Red Maple</i>			15	<i>Cords</i>				
<i>Sugar Maple</i>			53	<i>Cords</i>				
Red Pine			32	Cords				
White Pine		65	Cords					
4	Red Maple	Sawtimber	8.0	MBF	16.6	\$10,496.10		
	Red Pine		13.4	MBF				
	Sugar Maple		8.9	MBF				
	White Pine		38.4	MBF				
	Mixed Aspen		Pulpwood	21			Cords	
	<i>B. T. Aspen</i>	14		<i>Cords</i>				
	<i>Quaking Aspen</i>	7		<i>Cords</i>				
	Mixed Hardwood	137		Cords				
	<i>Beech</i>	13		<i>Cords</i>				
	<i>Red Maple</i>	62		<i>Cords</i>				
	<i>Sugar Maple</i>	62		<i>Cords</i>				
	Red Pine	7		Cords				

**DESCRIPTION OF TIMBER BY PAYMENT UNIT (PU), CON'T**

PU	MARKET GROUP	PRODUCT	QUANTITY	UNIT	ACRES	ADVERTISE PRICE
4 con't	White Pine	Pulpwood	48	Cords		
TOTAL:			246.6	MBF		
TOTAL:			2,007	Cords		

# Sale Specific Conditions & Requirements

**Sale Name: Gardenia Tr Aspen**

**Sale Number: 72-032-21 Seq#: 2**

## 1 - Sale Area

### 1.2 - Boundaries

#### 1.2.1 - Painted Boundaries (9/19)

The sale boundary and Payment Unit boundaries are marked and identified by blue, red, and yellow paint. Exterior sale boundary lines against private property are marked with blue paint. Exterior sale boundary lines against state are marked with red paint. Interior Payment Unit boundaries are marked with yellow paint. The red and blue painted boundary line trees are not Included Timber and are to be protected. Yellow painted boundary line trees are only to be cut when all surrounding Payment Units have been paid.

## 2 - Timber Specifications

### 2.1 - Included Timber

#### 2.1.2 - Clearcut Unit(s) w/o Unmerchantable Trees (8/11)

Within Payment Unit(s) 1-4, cut all trees which meet minimum piece specifications in 2.2 Utilization, except do not cut trees marked with green paint.

### 2.2 - Utilization

#### 2.2.3 - Stump heights (4/07)

Stump heights within the Sale Area shall not exceed 12 inches for trees less than 24 inches in diameter. Stump heights within the Sale Area shall not exceed 18 inches for trees and multiple stem clumps 24 inches or more in diameter.

## 3 - Payments

### 3.3 - Pre-measured Sales

#### 3.3.4 - Dividing payment units (7/14)

Payment Unit(s) 1 may be divided at the request of the Purchaser and upon approval of the Unit Manager. Dividing Payment Units is a contract modification which requires a Timber Sale Contract Amendment.

### 3.4 - Damaged Timber

#### 3.4.1 - Damaged timber (7/16)

General Condition and Requirement 3.4 Damaged Timber, defines liquidated damages for undesignated live merchantable trees which are cut or injured. In addition, reasonable care should be taken to avoid damage to tree seedlings and saplings.

Within the Sale Area, if more than 25% of the tree seedlings or saplings (1/4" to 4.5" DBH) within a specified portion of the Sale Area are damaged, liquidated damages will be assessed at \$500 per acre for all acreage within that specified portion of the Sale Area that was damaged. Operational paths will have to be cut through areas with dense regeneration. Provided those paths are cut cleanly, not leaving bent/broken stems, they will not count as damaged areas. Ironwood regeneration may be cut throughout the Sale Area.

No damage is acceptable to undesignated live merchantable trees. Within the Sale Area, if more than 10% of trees (> 4.5" DBH) within a specified area of the sale are damaged, liquidated damages will be assessed for all trees damaged. Rates will be in accordance with General Condition and Requirement 3.4 Damaged Timber, or at a rate of \$50 per sawtimber tree and \$20 per pole sized tree, whichever is greater.

## 4 - Transportation

### 4.1 - Construction

#### 4.1.6 - Road construction (1/09)

Construction of new roads and landings or improvements of existing roads shall be done in such a way as to minimize the environmental and visual impacts. Merchantable trees shall be cut and utilized unless otherwise directed. Non-merchantable

trees shall be severed and laid flat on the ground. Slash shall be chipped or scattered, not left in piles, and be kept at least 10 feet back from the road edge. Stumps shall be set upright, not left on edge, and be moved at least 10 feet away from the road edge. Disturbed soil shall be feathered into the woods and not left in berms or windrows.

#### 4.1.7 - Road closure (10/11)

All new roads built into the sale must be blocked to vehicle traffic upon completion of the sale. Overgrown roads that are reopened shall be considered new roads. In general, this will require constructing a four (4') foot high berm of stumps and logs covered with earth. Stumps and brush must also be placed along the first 50 feet of trail behind the berms. These roads must be rendered impassable to cars and trucks. Contact the Sale Administrator for specific details of design and placement.

#### 4.1.11 - Permits (2/12)

The Purchaser will secure any necessary permits that may be required.

## 5 - Operations

### 5.1 - Notification

#### 5.1.1 - Pre-sale conference (10/16)

A pre-sale conference on site between the Purchaser and sale administrator is required prior to beginning any operations. The Unit Manager or his/her representative must be contacted at least 5 days in advance to schedule the conference.

#### 5.1.4 - Post-sale conference (10/16)

A post-sale conference on site between the Purchaser and sale administrator is required prior to the completion of active logging operations to determine clean-up and repair of landings, road edges, and the fulfillment of other contract specifications.

### 5.2 - Conduct of Operations

#### 5.2.1 - Slash

##### 5.2.1.13 - Dispose of slash as directed (12/05)

Slash is to be disposed of as directed by the Sale Administrator, ie: flattening taller slash piles within sight of cabins.

#### 5.2.2 - Hazard Trees/Snags

##### 5.2.2.1 - Den trees (10/16)

Obvious hollow and/or den trees shall be protected and left standing unless they are a safety hazard.

#### 5.2.3 - Operating Restrictions

##### 5.2.3.1 - Operating restrictions (9/11)

Within Payment Unit(s) 2 & 3, harvest equipment must stay off of the mapped forest road except to cross it at one spot identified by the Sale Administrator in Payment Unit 3. This restriction is designed to minimize the harvest's impact on this access road.

#### 5.2.4 - Dead and Down Creation

##### 5.2.4.2 - Dead and down creation, hare and grouse (1/14)

To improve habitat for snowshoe hare, grouse, and other species, the Purchaser is to leave two 12 inch diameter or larger log size pieces or whole trees on the ground for every two acres. They should be scattered throughout the Sale Area, except avoid placing them near roads or private property. If possible, the logs or trees should be felled so they overlap. Note these pieces should have a minimum length of 8 feet. They can be of any tree species and can be an un-merchantable piece of wood or a full tree.

#### 5.2.29 - Shrub protection (1/20)

Reasonable care should be taken to avoid cutting or damaging hawthorn or juneberry. These woody-shrub plants are highly beneficial to various wildlife species.

#### 5.2.38 - No decking against live trees (2/04)

Cut products may not be decked against unmarked or designated leave trees.

### 5.4 - Soil Protection

#### 5.4.2 - Skid trails (2/04)



Skid trails up and down slopes should be avoided. If however this is unavoidable, these trails will be left in a non-erodible condition using water bars, logs, and slash. Placing of slash on these skid trails while logging is ongoing may alleviate need for any further action. At the direction of the sale administrator, seed, fertilizer, and mulch may also be required.

## 5.8 - Protection of Endangered Species

### 5.8.5 - Protection of raptor nests (3/13)

A red shouldered hawk nest was found northeast of Payment Unit 1. The nest was protected by excluding a 330-foot no-cut buffer from the nearby sale it occupies. Additionally, within 660 feet of the nest there will be no harvest activity permitted from March 15 to July 15 if the nest is active (see the "Seasonal Restriction Zone" on the Timber Sale Map). This zone picks up an acre of Payment Unit 1 and will limit use of the forest road segment within the zone. Retain all slash within that zone of Payment Unit 1. If the nest is found to be active and the seasonal operating restriction needs to be applied, the boundary of that 660-foot zone will be identified on the ground. All trees with raptor nests will be protected if found during harvesting operations. Notification will be made to the Unit Manager or his/her representative who will notify the Wildlife Biologist so an on-site evaluation and recommendation can be made, if necessary.

## 6 - Safety and Fire Prevention

### 6.2 - Signing

#### 6.2.1 - Road posting (10/20)

The Purchaser is responsible for posting and maintaining caution signs on the forest road haul route prior to beginning operations. The road must be posted where the haul route leaves the county road to warn of logging activity and truck traffic. Signs must be removed when harvest operations are suspended or completed. The Purchaser will provide these signs.

## 7 - Other Conditions

### 7.5 - Loss

#### 7.5.1 - Deteriorating timber (7/09)

The sale area has received damage from age-related decline and mortality in the aspen. The Purchaser should harvest the wood as soon as possible. The Department of Natural Resources is held free of responsibility of any further damage or deterioration due to delay in harvesting.



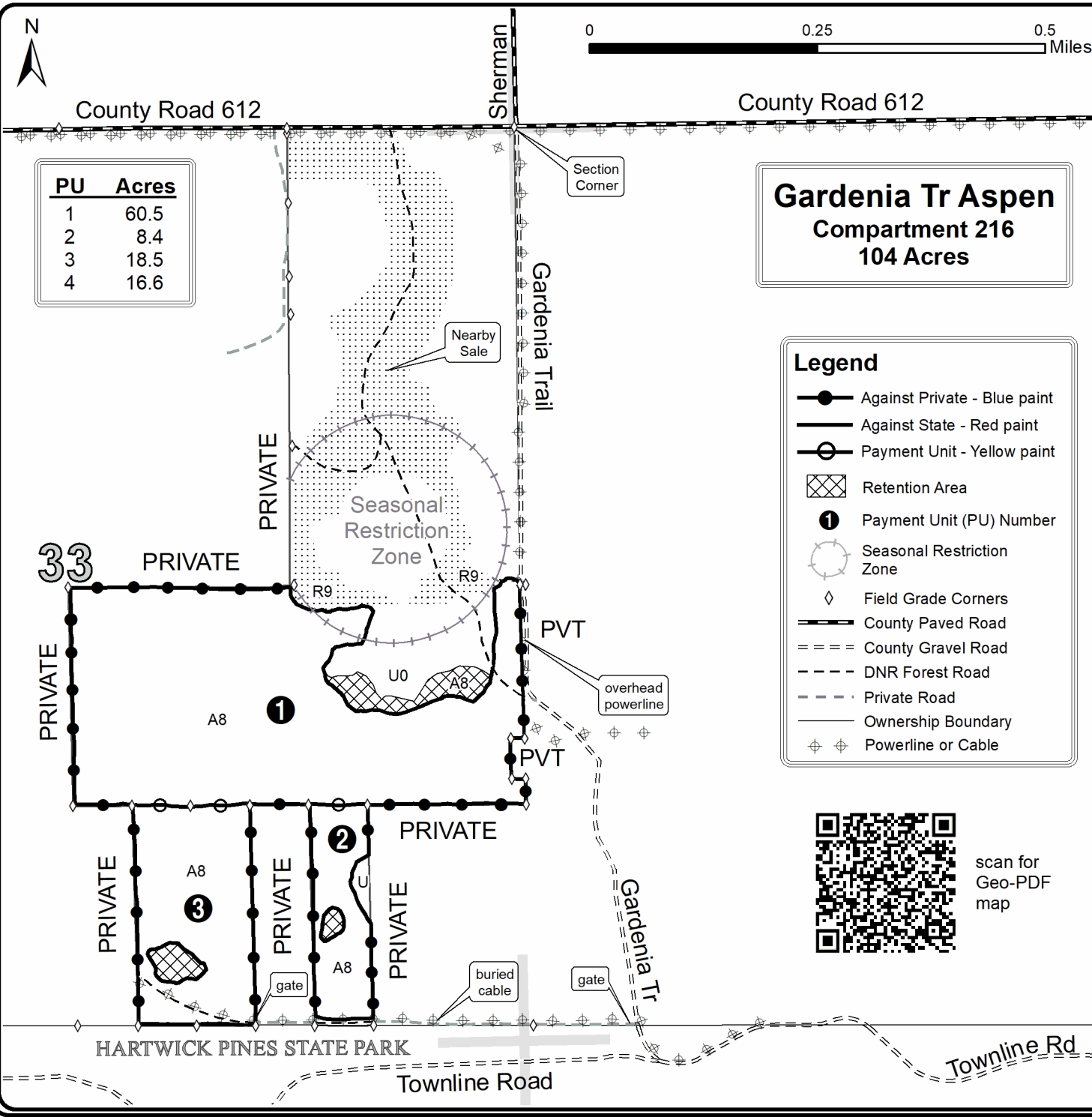
Sale Number	Year
72 - 032	21

# TIMBER SALE MAP

This information provided by authority of Part 525, 1994 PA 451, as amended.

Forest Management Unit	County	Mapped By	Charlebois	Date	Page	of
Grayling	Crawford	Cruised By	Charlebois	01/05/2024	1	3
Township	Range	Section(s) and Subdivision(s)	Sec 32: SWSE Sec 33: SE, SENE	Scale	1:10,000	
28N	3W					

Cover Type				Density	
A = Aspen	H = Hemlock	N = Marsh	U = Upland Brush	0 = Non Stocked	5 = Pole Timber Medium
B = Paper Birch	J = Jack Pine	O = Oak	UM = Upland Mixed	1 = Seedling Sapling Poor	6 = Pole Timber Well
C = Cedar	L = Lowland Brush	P = Lowland Poplar	V = Bog or Marsh	2 = Seedling Sapling Medium	7 = Saw Timber Poor
D = Treed Bog	LM = Lowland Mixed	Q = Mixed Swamp Conifer	W = White Pine	3 = Seedling Sapling Well	8 = Saw Timber Medium
E = Swamp Hdwoods	M = Mpl, Bch, Brch	R = Red Pine	X = Non Stocked	4 = Pole Timber Poor	9 = Saw Timber Well
F = Spruce Fir	MC = Mixed Conifer	S = Black Spruce	Z = Water		
G = Grass	MD = Mixed Deciduous	T = Tamarack			



**Gardenia Tr Aspen**  
**Compartment 216**  
**104 Acres**

**Legend**

- Against Private - Blue paint
- Against State - Red paint
- Payment Unit - Yellow paint
- ▣ Retention Area
- ① Payment Unit (PU) Number
- ⊙ Seasonal Restriction Zone
- ◇ Field Grade Corners
- County Paved Road
- === County Gravel Road
- - - DNR Forest Road
- - - Private Road
- Ownership Boundary
- ⊕ ⊕ Powerline or Cable



scan for Geo-PDF map



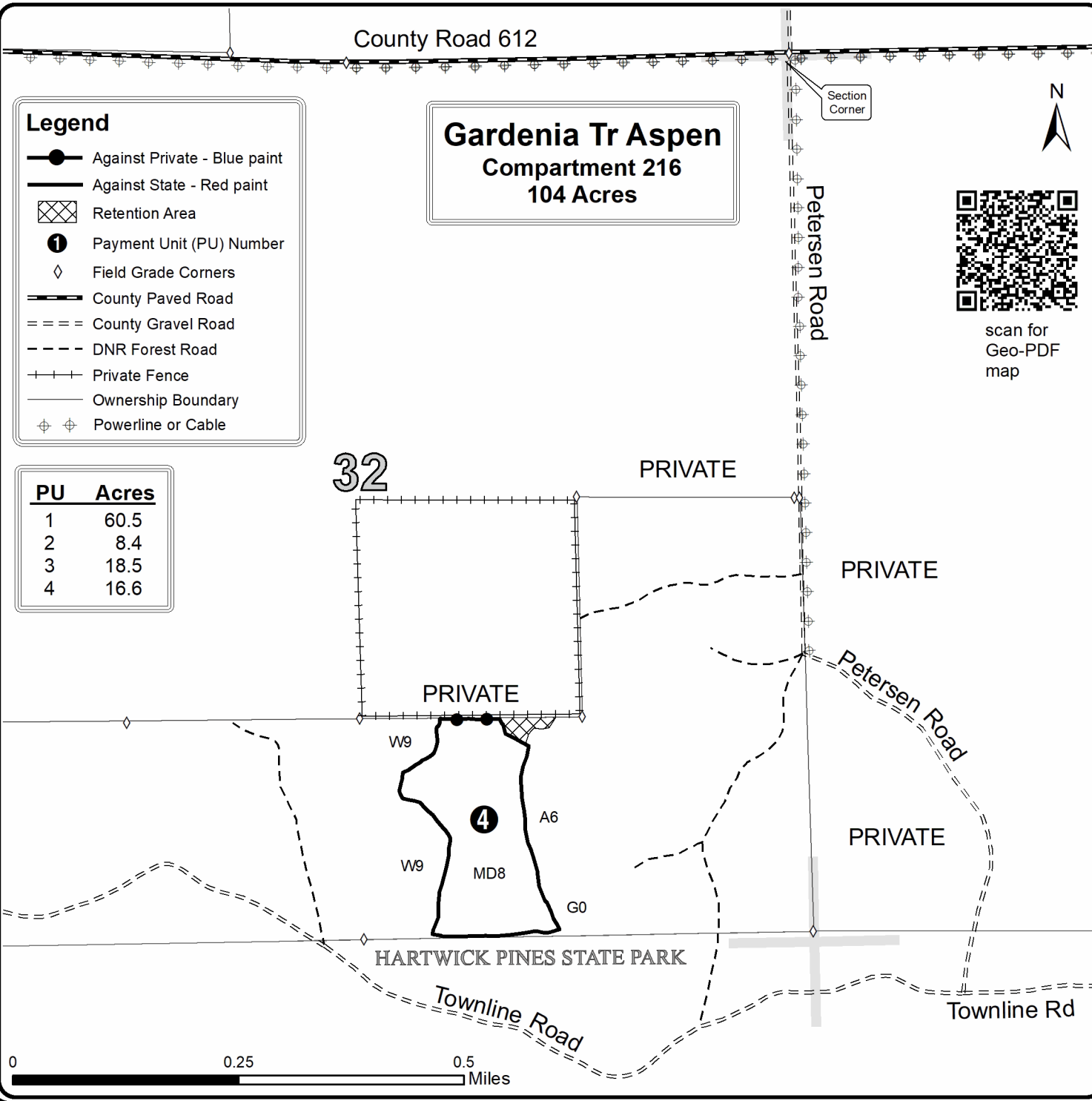
# TIMBER SALE MAP

This information provided by authority of Part 525, 1994 PA 451, as amended.

Sale Number	Year
72 - 032	21

Forest Management Unit	County	Mapped By	Date	Page	of
Grayling	Crawford	Charlebois	01/05/2024	2	3
Township	Range	Section(s) and Subdivision(s)	Scale		
28N	3W	Sec 32: SWSE Sec 33: SE, SENE	1:10,000		

Cover Type				Density	
A = Aspen	H = Hemlock	N = Marsh	U = Upland Brush	0 = Non Stocked	5 = Pole Timber Medium
B = Paper Birch	J = Jack Pine	O = Oak	UM = Upland Mixed	1 = Seedling Sapling Poor	6 = Pole Timber Well
C = Cedar	L = Lowland Brush	P = Lowland Poplar	V = Bog or Marsh	2 = Seedling Sapling Medium	7 = Saw Timber Poor
D = Treed Bog	LM = Lowland Mixed	Q = Mixed Swamp Conifer	W = White Pine	3 = Seedling Sapling Well	8 = Saw Timber Medium
E = Swamp Hdwoods	M = Mpl, Bch, Brch	R = Red Pine	X = Non Stocked	4 = Pole Timber Poor	9 = Saw Timber Well
F = Spruce Fir	MC = Mixed Conifer	S = Black Spruce	Z = Water		
G = Grass	MD = Mixed Deciduous	T = Tamarack			





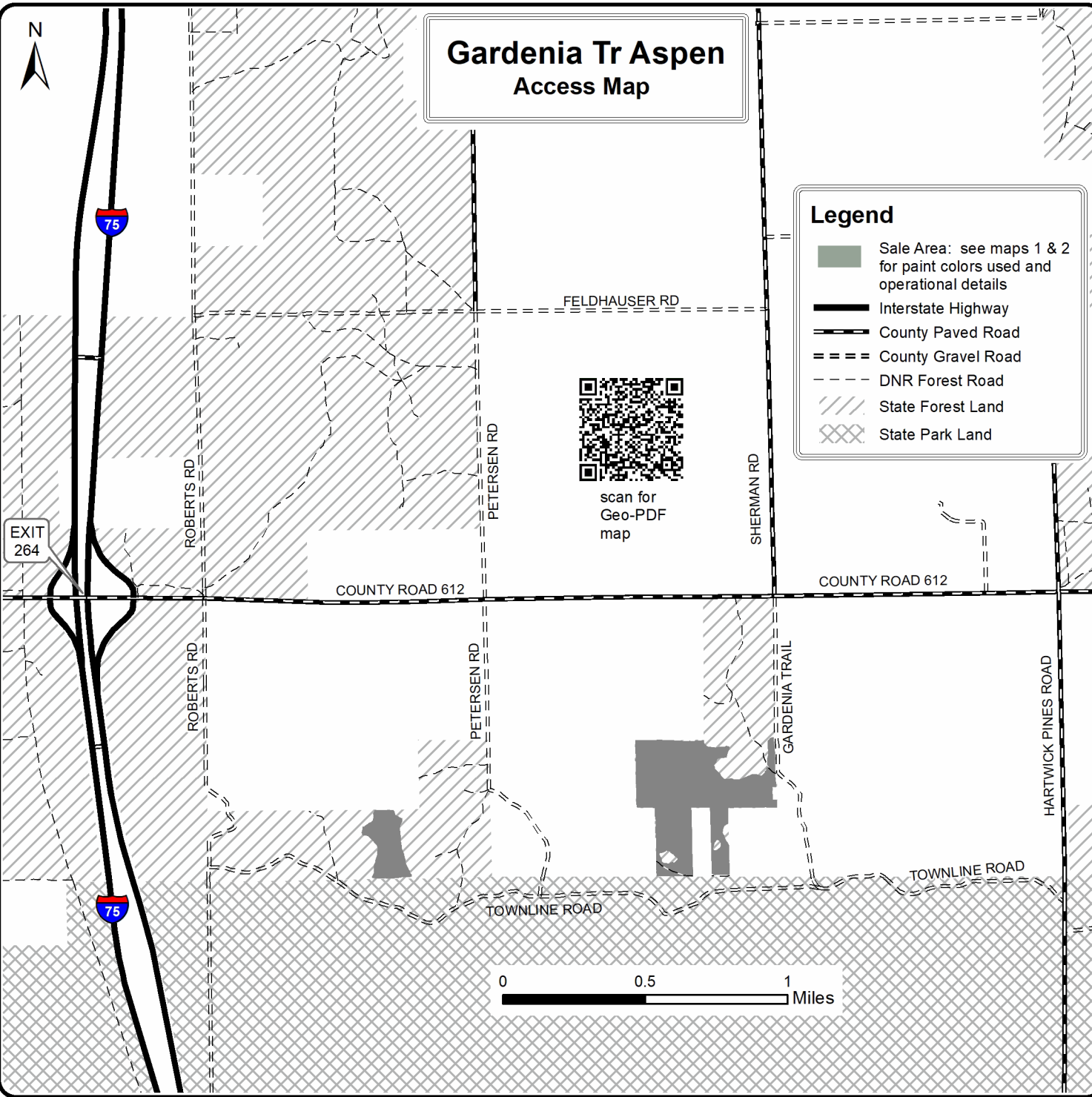
# TIMBER SALE MAP

This information provided by authority of Part 525, 1994 PA 451, as amended.

Sale Number	Year
72 - 032	21

Forest Management Unit	County	Mapped By	Date	Page	of
Grayling	Crawford	Charlebois	01/05/2024	3	3
Township	Range	Section(s) and Subdivision(s)	Scale		
28N	3W	Sec 32: SWSE Sec 33: SE, SENE	1:31,680		

Cover Type				Density	
A = Aspen	H = Hemlock	N = Marsh	U = Upland Brush	0 = Non Stocked	5 = Pole Timber Medium
B = Paper Birch	J = Jack Pine	O = Oak	UM = Upland Mixed	1 = Seedling Sapling Poor	6 = Pole Timber Well
C = Cedar	L = Lowland Brush	P = Lowland Poplar	V = Bog or Marsh	2 = Seedling Sapling Medium	7 = Saw Timber Poor
D = Treed Bog	LM = Lowland Mixed	Q = Mixed Swamp Conifer	W = White Pine	3 = Seedling Sapling Well	8 = Saw Timber Medium
E = Swamp Hdwoods	M = Mpl, Bch, Brch	R = Red Pine	X = Non Stocked	4 = Pole Timber Poor	9 = Saw Timber Well
F = Spruce Fir	MC = Mixed Conifer	S = Black Spruce	Z = Water		
G = Grass	MD = Mixed Deciduous	T = Tamarack			



## TIMBER SALE INFORMATION

Red Shouldered Pine (72-045-21)  
T28N, R03W, SEC. 31; T28N, R03W, SEC. 33.  
Crawford County (Advertised Price \$113,733.10)

SALE NOTE: The sale has an operating restriction from April 15 to July 15 for bark slippage (see spec 5.2.3.3).

The southern portion of Payment Unit 2 (~4.5 acres) has a seasonal operating restriction from March 15 to July 15 (see spec 5.8.5 and the Stick Nest Buffer shown on the Timber Sale Map).

Payment Unit 2 also contains a red pine mortality pocket. All trees within this area have been marked to cut ( see Timber Sale Map).

A timber sale contract for this lump sum, sealed bid timber sale will be awarded to the responsible bidder offering the highest sealed bid price. All units of volume listed below were estimated using the Inventory Manager computer program and the new Michigan taper model. Bids must be at or above the following advertised price for each product and species:

<u>PRODUCTS &amp; SPECIES</u>	<u>ESTIMATED UNITS*</u>	<u>ADVERTISED PRICE</u>
Sawtimber		
Red Pine	223.2 MBF	\$ 103.00 / MBF
Pulpwood		
Red Pine	1,871 Cords	\$ 48.50 / Cord

\* The total volume is statistically estimated within plus (+) or minus (-) 7.13 percent. There are an estimated 4,584 cords on this timber sale, plus or minus 327 cords at the 95% confidence level. The estimated units are final and not subject to adjustment. Prospective bidders are urged to examine this timber and to make their own estimates of quantity and quality.

### **BOND AND PAYMENT SCHEDULE:**

1. A bond in the amount of \$5,687.00 to insure faithful performance of the conditions of the contract will be deposited by the successful bidder within 21 days of the sale award.
2. Cutting in any sale or unit without the required advance payment would be considered a trespass.
3. Total payment must be paid in advance or according to the following schedule :
  - (a) Ten percent (10%) of the sale value must be paid within 21 days of the sale award.
  - (b) The 10% down payment will be credited towards the first unit cut.
  - (c) Payment for each of the following units must be made before cutting begins in that unit:

PAYMENT UNIT NUMBER	PERCENT OF TOTAL SALE VALUE
01	54.8%
02	45.2%
4. If no cutting takes place, the 10% down payment will not be refunded.
5. Operations on the contract issued will terminate on 03/31/2027.

### **SALE STATISTICS**

Volumes were calculated in cubic feet using the Michigan taper model. Cubic foot volume includes all wood inside bark for the product indicated. For display purposes, cubic feet were converted to cords and MBF using a simple conversion factor, e.g. 79 cubic feet per cord and 185 cubic feet per MBF. The cubic foot volumes are precise; the cords and MBF volumes are not. Cubic foot volume cannot be directly converted to cords or boards with precision.

### **SALE VOLUMES**

The total estimated sale volume may not equal the sum of the species/products due to the nature of statistical calculations associated with double sampling methodology.

VOLUME		STATISTICAL RANGE IN CORDS		
TOTAL CUBIC FEET	TOTAL CORDS	PERCENT ERROR	MINIMUM	MAXIMUM
362,116	4,584	7.13%	4,257	4,911

## VDU VOLUMES

A VDU is a Volume Determination Unit. Volumes and their associated statistics are calculated at the VDU level and summarized to the sale level. There is often a one to one relationship between a VDU and a Payment Unit, but not always, depending on the cruise design. Refer to the VDU TO PAYMENT UNIT table.

VDU	VOLUME		PERCENT ERROR	RANGE IN CORDS	
	TOTAL CUBIC FEET	TOTAL CORDS		MINIMUM	MAXIMUM
8	207,404	2,625	10.27%	2,356	2,895
37	148,144	1,875	9.72%	1,693	2,057
38	6,568	83	40.82%	49	117
<b>TOTAL:</b>	<b>362,116</b>	<b>4,584</b>		<b>4,098</b>	<b>5,070</b>

## VDU TO PAYMENT UNIT

When a VDU is associated with more than one Payment Unit (PU), the VDU volumes are assigned to the PU based on acres of the VDU within the PU.

VDU	VDU ACRES	PU	PU ACRES
8	42.9	1	42.9
37	32.6	2	32.6
38	1.4	2	1.4
<b>TOTAL:</b>	<b>76.9</b>		<b>76.9</b>

## DESCRIPTION OF TIMBER BY PAYMENT UNIT (PU)

PU	MARKET GROUP	PRODUCT	QUANTITY	UNIT	ACRES	ADVERTISE PRICE
1	Red Pine	Sawtimber	118.6	MBF	42.9	\$62,364.80
	Red Pine	Pulpwood	1,034	Cords		
2	Red Pine	Sawtimber	104.6	MBF	34.0	\$51,368.30
	Red Pine	Pulpwood	837	Cords		
TOTAL:			223.2	MBF		
TOTAL:			1,871	Cords		

## Sale Specific Conditions & Requirements

Sale Name: Red Shouldered Pine

Sale Number: 72-045-21 Seq#: 2

### 1 - Sale Area

#### 1.2 - Boundaries

##### 1.2.1 - Painted Boundaries (9/19)

The sale boundary and Payment Unit boundaries are marked and identified by blue, red, and purple paint. Exterior sale boundary lines against private property are marked with blue paint. Exterior sale boundary lines against state are marked with red paint. The stick nest buffer in the southern portion of Payment Unit 2 is marked with purple paint. The painted boundary line trees are not Included Timber and are to be protected unless marked with orange paint.

### 2 - Timber Specifications

#### 2.1 - Included Timber

##### 2.1.3 - Cut Tree Marked Unit(s) (12/08)

Within Payment Unit(s) 1 & 2, all trees are designated for cutting when marked with orange paint above and below stump height, regardless of merchantability.

#### 2.2 - Utilization

##### 2.2.3 - Stump heights (4/07)

Stump heights within the Sale Area shall not exceed 6 inches for all trees. A written waiver of this requirement may be obtained if wet summer weather makes winter logging necessary.

##### 2.2.5 - Limbed tree skidding (1/09)

The skidding of whole trees or tree segments with limbs attached is prohibited unless approved by the Unit Manager or his/her representative.

### 3 - Payments

#### 3.3 - Pre-measured Sales

##### 3.3.4 - Dividing payment units (7/14)

Payment Unit(s) 1 & 2, may be divided at the request of the Purchaser and upon approval of the Unit Manager. Dividing Payment Units is a contract modification which requires a Timber Sale Contract Amendment. There will be only one division per Payment Unit.

#### 3.4 - Damaged Timber

##### 3.4.1 - Damaged timber (7/16)

General Condition and Requirement 3.4 Damaged Timber, defines liquidated damages for undesignated live merchantable trees which are cut or injured. No damage is acceptable to undesignated live merchantable trees. Within the sale area, if more than 10% of trees (> 4.5" DBH) within a specified area of the sale are damaged, liquidated damages will be assessed for all trees damaged. Rates will be in accordance with General Condition and Requirement 3.4 Damaged Timber, or at a rate of \$150 per sawtimber tree and \$75 per pole sized tree, whichever is greater.

### 4 - Transportation

#### 4.1 - Construction

##### 4.1.3 - Slash and earthen piles (8/04)

Piles or windrows of earth along roads and landings that have been widened or constructed shall be leveled. Slash from road maintenance or construction, including stumps, shall be dispersed throughout the sale.

##### 4.1.6 - Road construction (1/09)

Construction of new roads or improvements of existing roads shall be done in such a way as to minimize the environmental and visual impacts. Merchantable trees shall be cut and utilized unless otherwise directed. Non-merchantable trees shall be severed and laid flat on the ground. Slash shall be scattered, and not left in windrows and kept a minimum of 10 feet back

from the road edge. Stumps shall be set upright, not left on edge, and be moved at least 10 feet away from the road edge. Disturbed soil shall be feathered into the woods and not left in berms or windrows. Cutting of trees outside of the harvest boundary needs prior approval from the sale administrator.

#### 4.1.7 - Road closure (10/11)

All new roads built into the sale must be blocked to vehicle traffic upon completion of the sale. Overgrown roads that are reopened shall be considered new roads. In general, this will require constructing a four (4') foot high berm of stumps and logs covered with earth. These roads must be rendered impassable to cars and trucks. Temporary berms may be required if no sale activity occurs for 30 or more consecutive days. Contact the sale administrator for specific details of design and placement.

#### 4.1.11 - Permits (2/12)

The Purchaser will secure any necessary highway permits that may be required.

## 5 - Operations

### 5.1 - Notification

#### 5.1.1 - Pre-sale conference (10/16)

A pre-sale conference between the Purchaser and sale administrator is required prior to beginning any operations. The Unit Manager or his/her representative must be contacted at least 10 days in advance to schedule the conference.

#### 5.1.3 - Well heads and natural gas pipelines (11/15)

The Purchaser is responsible for contacting the gas or pipeline company prior to operating equipment in the vicinity of well heads or natural gas pipelines. Contact DTE at (231) 258-3750 to coordinate operations if equipment needs to operate within the cleared pipeline corridor on the east edge of Payment Unit 1.

#### 5.1.4 - Post-sale conference (10/16)

A post-sale conference on site between the Purchaser and sale administrator is required 5 days prior to the completion of active logging operations to determine clean-up and repair of landings, road edges, and the fulfillment of other contract specifications.

### 5.2 - Conduct of Operations

#### 5.2.3 - Operating Restrictions

##### 5.2.3.3 - Bark slippage restriction (3/09)

Within Payment Unit(s) 1 & 2, unless changed by written agreement, cutting and skidding are not permitted during the period of April 15 to July 15. This restriction is because of bark slippage.

##### 5.2.3.6 - Bark beetle restriction (12/08)

In the event drought creates a high risk of pine bark beetle infestation, pine is not to be cut during the period March 1 through July 1, unless all portions of trees greater than two inches in diameter are removed from the sale area, reduced to chips, or treated to the satisfaction of the Unit Manager or his/her representative, within fifteen days of being severed from the stump. Pine log decks, pulpwood piles and treetops that are piled for chipping in the fall or winter within a 1/4 mile of susceptible sites must be removed before March 15. Residual slash must not be placed in piles or rows and must be spread over the site for quick drying. The Department of Natural Resources will exercise this specification if the risk of damage warrants.

#### 5.2.32 - Decking/landing restoration (9/13)

All decking and landing areas must have the surface area restored to a condition equal to or better than before. This is to ensure the proper regeneration of the stand. Wood debris, chips and "cookies" from trimmings must be removed or scattered away from landing and loading areas and may not be windrowed on the edge. Landing locations shall be approved by the sale administrator during the pre-sale meeting.

#### 5.2.38 - No decking against live trees (2/04)

Cut products may not be decked against unmarked or designated leave trees.

#### 5.2.43 - Opening protection (2/21)

No activities are permitted in openings marked on the Timber Sale Map. Equipment may use the existing roads through the opening. Any damage to the openings shall be repaired, according to specifications of the Unit Manager or his/her



representative.

#### 5.4 - Soil Protection

##### 5.4.1 - Rutting restriction, general (7/16)

Operations are to cease immediately if equipment and weather conditions result in rutting of roads and/or skid trails which is 12 inches or greater in depth and 50 feet in length. The Unit Manager or his/her representative may restrict hauling and/or skidding if ruts exceed the specified depth. With the Unit Manager or his/her representative's approval, the Purchaser may return to the area when the risk of rutting has decreased.

#### 5.8 - Protection of Endangered Species

##### 5.8.5 - Protection of raptor nests (3/13)

An active red shouldered hawk or goshawk nest was found in the southern portion of Payment Unit 2. The nest was protected with a five-chain buffer and excluded from the Sale Area. There will be no cutting or new roads constructed within this protected area. Avoid human disturbance, including loading and skidding, in the protection area.

An additional zone of five chains has been established and there will be no management activity within that zone from March 15 to July 15 (see the "Stick Nest Buffer" area on the Timber Sale Map). Limit biomass harvesting and chipping operations within this ten-chain zone, retain the maximum one-third of residues per the Woody Biomass Harvesting Guidelines (Michigan DNR 2010).

All trees with raptor nests will be protected if found during harvesting operations. Notification will be made to the Unit Manager or his/her representative who will notify the Wildlife Biologist so an on-site evaluation and recommendation can be made, if necessary.

### 6 - Safety and Fire Prevention

#### 6.2 - Signing

##### 6.2.1 - Road posting (10/20)

The Purchaser is responsible for posting and maintaining caution signs on forest roads prior to beginning operations. The road must be posted at appropriate distances from the sale area to warn of logging activity and truck traffic. Signs must be removed when harvest operations are suspended or completed. The Purchaser will provide these signs.



# TIMBER SALE MAP

This information provided by authority of Part 525, 1994 PA 451, as amended.

Sale Number	Year
	21

Forest Management Unit Grayling	County Crawford	Mapped By Derek Nellis	Date 9/30/21	Page 1	of 2
Township 28N	Range 03W	Section(s) and Subdivision(s) Sec 31 S1/2NW,SW	Scale 1:7,920		

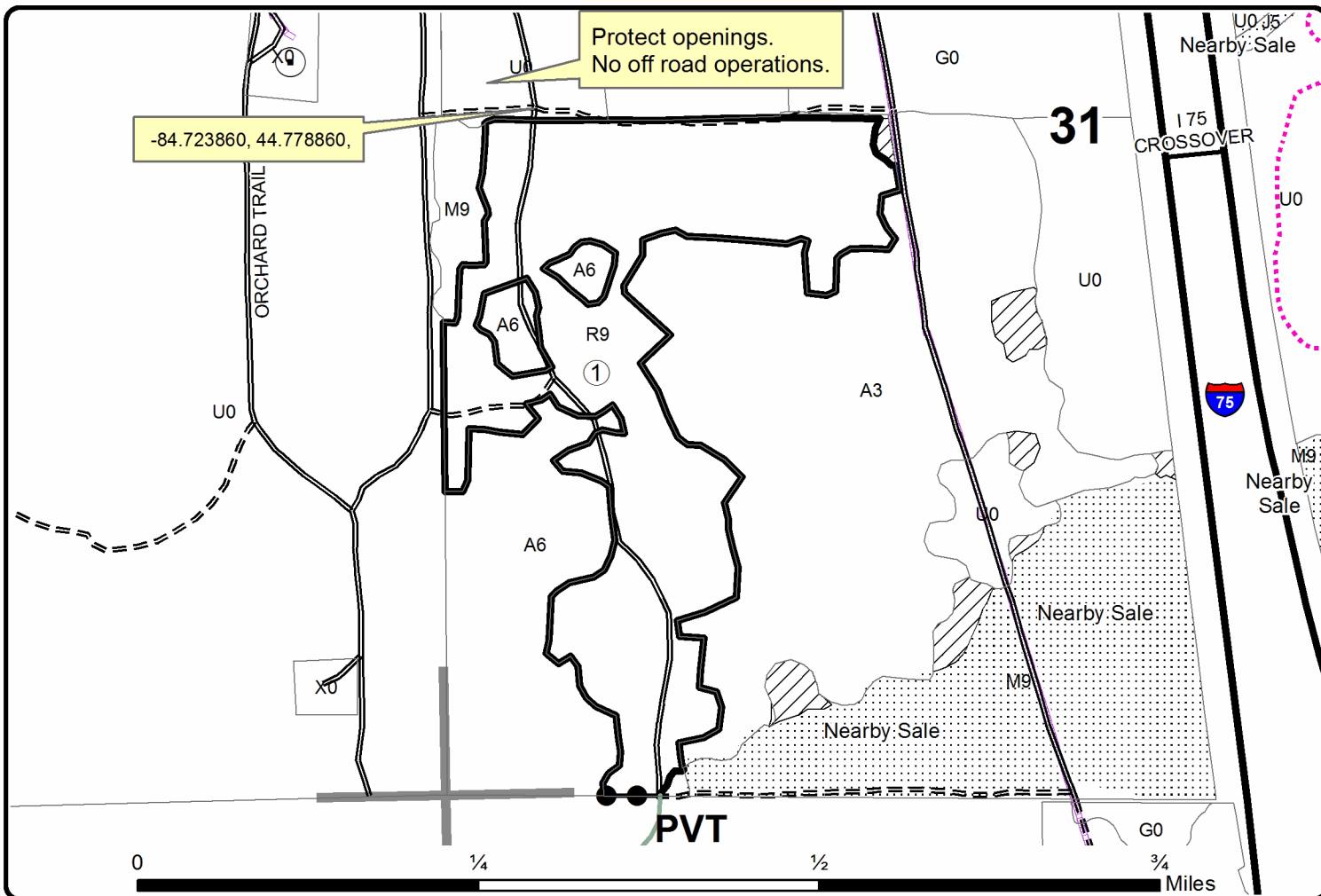
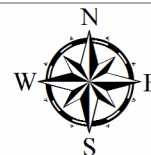
Cover Type				Density	
A = Aspen	H = Hemlock	N = Marsh	U = Upland Brush	0 = Non Stocked	5 = Pole Timber Medium
B = Paper Birch	J = Jack Pine	O = Oak	UM = Upland Mixed	1 = Seedling Sapling Poor	6 = Pole Timber Well
C = Cedar	L = Lowland Brush	P = Lowland Poplar	V = Bog or Marsh	2 = Seedling Sapling Medium	7 = Saw Timber Poor
D = Treed Bog	LM = Lowland Mixed	Q = Mixed Swamp Conifer	W = White Pine	3 = Seedling Sapling Well	8 = Saw Timber Medium
E = Swamp Hdwoods	M = Mpl, Bch, Brch	R = Red Pine	X = Non Stocked	4 = Pole Timber Poor	9 = Saw Timber Well
F = Spruce Fir	MC = Mixed Conifer	S = Black Spruce	Z = Water		
G = Grass	MD = Mixed Deciduous	T = Tamarack			

PU	Acres
1	42.9
2	34.0

## Red Shouldered Pine

### Compartment 216

76.9 Acres



### Legend

- Recreational Trails
- ==== Forest Access Route
- Pipeline
- ⊕—⊕ Oil & Gas Well Surface Locations
- Paved Road
- ⊕—⊕ Powerline
- Highway
- - - Gravel Road
- Against State (Red)
- Primary Forest Road
- - - County Road - Seasonal
- Private Line (Blue)
- Secondary Forest Road
- Private Road
- Section Corners
- ⋯ Temporary Management Access
- ① Payment Unit Label



# TIMBER SALE MAP

This information provided by authority of Part 525, 1994 PA 451, as amended.

Sale Number	Year
72-045	21

Forest Management Unit	County	Mapped By	Date	Page	of
Grayling	Crawford	Derek Nellis	09/01/21	2	2
Township	Range	Section(s) and Subdivision(s)	Scale		
28N	03W	Sec 31 S1/2NW,SW and Sec E1/2NE,NESE	1:7,920		

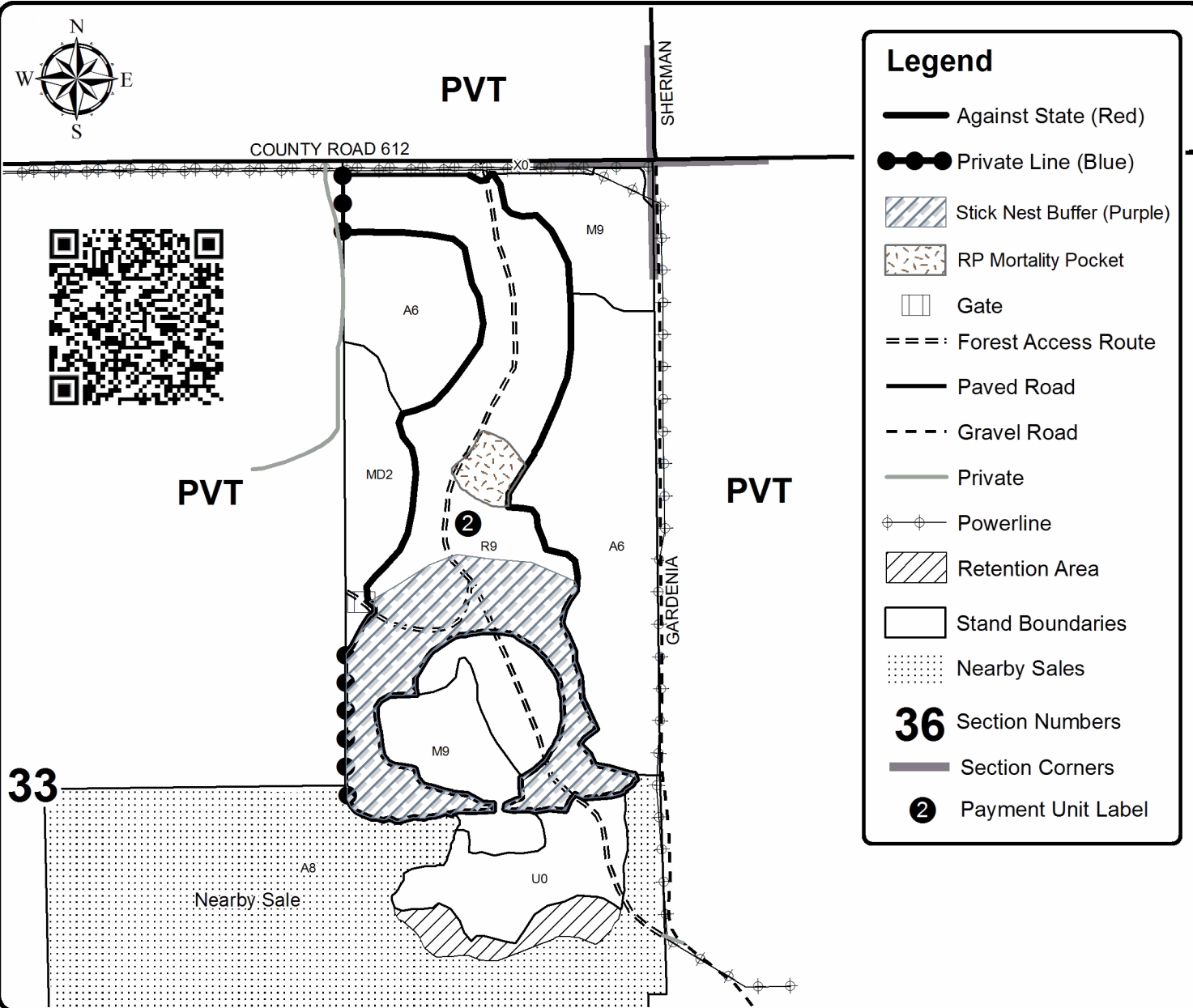
Cover Type				Density	
A = Aspen	H = Hemlock	N = Marsh	U = Upland Brush	0 = Non Stocked	5 = Pole Timber Medium
B = Paper Birch	J = Jack Pine	O = Oak	UM = Upland Mixed	1 = Seedling Sapling Poor	6 = Pole Timber Well
C = Cedar	L = Lowland Brush	P = Lowland Poplar	V = Bog or Marsh	2 = Seedling Sapling Medium	7 = Saw Timber Poor
D = Treed Bog	LM = Lowland Mixed	Q = Mixed Swamp Conifer	W = White Pine	3 = Seedling Sapling Well	8 = Saw Timber Medium
E = Swamp Hdwoods	M = Mpl, Bch, Brch	R = Red Pine	X = Non Stocked	4 = Pole Timber Poor	9 = Saw Timber Well
F = Spruce Fir	MC = Mixed Conifer	S = Black Spruce	Z = Water		
G = Grass	MD = Mixed Deciduous	T = Tamarack			

PU	Acres
1	42.9
2	34.0

## Red Shouldered Pine

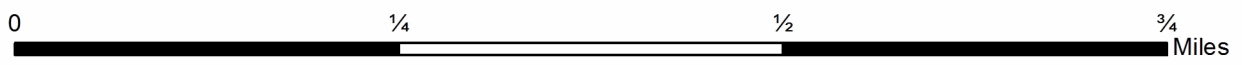
### Compartment 216

### 76.9 Acres



### Legend

- Against State (Red)
- Private Line (Blue)
- ▨ Stick Nest Buffer (Purple)
- ▨ RP Mortality Pocket
- Gate
- === Forest Access Route
- Paved Road
- - - Gravel Road
- Private
- ⊕ Powerline
- ▨ Retention Area
- Stand Boundaries
- ⋯ Nearby Sales
- 36** Section Numbers
- Section Corners
- 2** Payment Unit Label





Red Shouldered Pine (72-045-21)  
T28N, R03W, SEC. 31; T28N, R03W, SEC. 33; Crawford COUNTY

In response to the notice of sale to be held 9:00 a.m. (local time) on January 30, 2025, I am hereby submitting my sealed bid (firm offer) for the following forest products to be cut. Bids for individual species must be at or above the advertised price. All non-responsive bid forms may be rejected.

<u>PRODUCTS &amp; SPECIES</u>	<u>ESTIMATED VOLUME*</u>	<u>ADVERTISED PRICE</u>	<u>BID PRICE/UNIT</u>
Sawtimber			
Red Pine	223.2 MBF	\$ 103.00/MBF	\$ _____
Pulpwood			
Red Pine	1,871 Cords	\$ 48.50/Cord	\$ _____

\*The volumes are statistically estimated within plus (+) or minus (-) 7.13 percent at 95% confidence level. These estimated volumes are final and not subject to adjustment. Prospective bidders are urged to examine this timber and to make their own estimates of quantity and quality.

I understand that any or all bids may be rejected. All bids must be signed and all bid items must be bid or the bid form may be rejected. I also understand that consideration and awarding a contract will be based upon my past performance and ability to complete the contract based upon equipment and staffing subject to my control.

FEDERAL ID: \_\_\_\_ - \_\_\_\_ - \_\_\_\_ or SOCIAL SECURITY NUMBER: \_\_\_\_ - \_\_\_\_ - \_\_\_\_

Company or individual bidding: \_\_\_\_\_

Company representative's name: \_\_\_\_\_

Address: \_\_\_\_\_

City: \_\_\_\_\_ State: \_\_\_\_\_ Zip: \_\_\_\_\_

IF AVAILABLE, PLEASE PLACE THE PERSONALIZED LABEL FROM YOUR PROSPECTUS IN THE ABOVE BOX.

Individual or company representative's signature: \_\_\_\_\_ Date: \_\_\_\_\_

Phone number : \_\_\_\_\_ Email (optional): \_\_\_\_\_

**THE WINNING BIDDER MUST COMPLETE THE VERIFICATION OF WORKER'S DISABILITY COMPENSATION ACT COMPLIANCE (ON REVERSE SIDE IF DOUBLE SIDED) WITHIN 21 DAYS OF SALE AWARD DATE**



FOR DEPARTMENT USE ONLY	
Sale Number (XX - XXX - XX - XX)	
Forest Management Unit:	

### TIMBER SALE VERIFICATION OF WORKER'S DISABILITY COMPENSATION ACT COMPLIANCE

As required by Act 317, P.A. 1969 (Worker's Compensation) and  
Part 5 of Act 451 of 1994, as amended.

#### VERIFICATION OF WORKER'S DISABILITY COMPENSATION ACT COMPLIANCE

- This verification must be completed and submitted within 21 days of contract award and prior to the issuance of the timber sale contract.
- In addition, if boxes 2B or 2C are checked, then Notice of Exclusion or Certificate of Insurance must be submitted within twenty-one (21) days of the contract award and prior to the issuance of the timber sale contract.
- All information must be typed or printed except for written signatures.

Please Check Appropriate Categories:

1. My business is organized as (you **must** check one of the boxes below):
  - A.  Sole Proprietorship (individual)
  - B.  Partnership
  - C.  Corporation
2. You **must** check one of the boxes below:
  - A.  I certify my business is a sole proprietorship and it has no employees but the sole proprietor. I am not subject to the Worker's Compensation Laws.
  - B.  I certify my business has satisfied its obligation to the Worker's Compensation Act through the use of an approved Notice of Exclusion (BWC-337, Rev. 5/96). I will provide a copy of the Notice of Exclusion within 21 days of the contract award. (For questions or a copy of the BWC-337, please call the Worker's Compensation Bureau at 517-322-1195).
  - C.  I certify my business has a Worker's Compensation Policy. I will provide an original Certificate of Insurance within twenty-one (21) days of the contract award.
3. If you have checked item 2(A) or 2(B), you **must** indicate the number of **both** full-time and part-time employees, other than yourself, including family members and active partners (if none, you must enter "0").

\_\_\_\_\_ Full-time Employees

\_\_\_\_\_ Part-time Employees

Name of Business		Federal ID (or) Social Security No.	
Address		Telephone (       )	
City	State	ZIP	

I hereby certify that the above information is true and correct. I agree to notify the Michigan DNR of any changes that occur in factors affecting my coverage during any of my present and future operations.

\_\_\_\_\_  
Signature of Owner or Authorized Representative

\_\_\_\_\_  
Title

\_\_\_\_\_  
Date

Please complete the "SEALED BID" information on the next page

Gardenia Tr Aspen (72-032-21)  
T28N, R03W, SEC. 32; T28N, R03W, SEC. 33; Crawford COUNTY

In response to the notice of sale to be held 9:00 a.m. (local time) on January 30, 2025, I am hereby submitting my sealed bid (firm offer) for the following forest products to be cut. Bids for individual species must be at or above the advertised price. All non-responsive bid forms may be rejected.

<u>PRODUCTS &amp; SPECIES</u>	<u>ESTIMATED VOLUME*</u>	<u>ADVERTISED PRICE</u>	<u>BID PRICE/UNIT</u>
<b>Sawtimber</b>			
Basswood	16.1 MBF	\$ 65.00/MBF	\$ _____
Red Maple	27.3 MBF	\$ 70.00/MBF	\$ _____
Red Pine	13.4 MBF	\$ 82.00/MBF	\$ _____
Sugar Maple	105.4 MBF	\$ 180.00/MBF	\$ _____
White Pine	84.4 MBF	\$ 55.00/MBF	\$ _____
<b>Pulpwood</b>			
Basswood	18 Cords	\$ 10.00/Cord	\$ _____
Mixed Aspen	1,096 Cords	\$ 21.30/Cord	\$ _____
Mixed Hardwood	640 Cords	\$ 26.00/Cord	\$ _____
Red Pine	54 Cords	\$ 38.80/Cord	\$ _____
White Pine	199 Cords	\$ 17.55/Cord	\$ _____

\*The volumes are statistically estimated within plus (+) or minus (-) 26.22 percent at 95% confidence level. These estimated volumes are final and not subject to adjustment. Prospective bidders are urged to examine this timber and to make their own estimates of quantity and quality.

I understand that any or all bids may be rejected. All bids must be signed and all bid items must be bid or the bid form may be rejected. I also understand that consideration and awarding a contract will be based upon my past performance and ability to complete the contract based upon equipment and staffing subject to my control.

FEDERAL ID: \_\_\_\_\_ or SOCIAL SECURITY NUMBER: \_\_\_\_\_

Company or individual bidding: \_\_\_\_\_

Company representative's name: \_\_\_\_\_

Address: \_\_\_\_\_

City: \_\_\_\_\_ State: \_\_\_\_\_ Zip: \_\_\_\_\_

IF AVAILABLE, PLEASE PLACE THE PERSONALIZED LABEL FROM YOUR PROSPECTUS IN THE ABOVE BOX.

Individual or company representative's signature: \_\_\_\_\_ Date: \_\_\_\_\_

Phone number : \_\_\_\_\_ Email (optional): \_\_\_\_\_

**THE WINNING BIDDER MUST COMPLETE THE VERIFICATION OF WORKER'S DISABILITY COMPENSATION ACT COMPLIANCE (ON REVERSE SIDE IF DOUBLE SIDED) WITHIN 21 DAYS OF SALE AWARD DATE**



<b>FOR DEPARTMENT USE ONLY</b>	
Sale Number (XX - XXX - XX - XX)	
Forest Management Unit:	

## TIMBER SALE VERIFICATION OF WORKER'S DISABILITY COMPENSATION ACT COMPLIANCE

As required by Act 317, P.A. 1969 (Worker's Compensation) and  
Part 5 of Act 451 of 1994, as amended.

### VERIFICATION OF WORKER'S DISABILITY COMPENSATION ACT COMPLIANCE

- This verification must be completed and submitted within 21 days of contract award and prior to the issuance of the timber sale contract.
- In addition, if boxes 2B or 2C are checked, then Notice of Exclusion or Certificate of Insurance must be submitted within twenty-one (21) days of the contract award and prior to the issuance of the timber sale contract.
- All information must be typed or printed except for written signatures.

Please Check Appropriate Categories:

1. My business is organized as (you **must** check one of the boxes below):
  - A.  Sole Proprietorship (individual)
  - B.  Partnership
  - C.  Corporation
2. You **must** check one of the boxes below:
  - A.  I certify my business is a sole proprietorship and it has no employees but the sole proprietor. I am not subject to the Worker's Compensation Laws.
  - B.  I certify my business has satisfied its obligation to the Worker's Compensation Act through the use of an approved Notice of Exclusion (BWC-337, Rev. 5/96). I will provide a copy of the Notice of Exclusion within 21 days of the contract award. (For questions or a copy of the BWC-337, please call the Worker's Compensation Bureau at 517-322-1195).
  - C.  I certify my business has a Worker's Compensation Policy. I will provide an original Certificate of Insurance within twenty-one (21) days of the contract award.
3. If you have checked item 2(A) or 2(B), you **must** indicate the number of **both** full-time and part-time employees, other than yourself, including family members and active partners (if none, you must enter "0").

\_\_\_\_\_ Full-time Employees

\_\_\_\_\_ Part-time Employees

Name of Business		Federal ID (or) Social Security No.	
Address		Telephone (       )	
City	State	ZIP	

*I hereby certify that the above information is true and correct. I agree to notify the Michigan DNR of any changes that occur in factors affecting my coverage during any of my present and future operations.*

\_\_\_\_\_  
Signature of Owner or Authorized Representative

\_\_\_\_\_  
Title

\_\_\_\_\_  
Date

Please complete the "SEALED BID" information on the next page



Shocked Top Oak Removal (72-002-24)  
T25N, R02W, SEC. 17; T25N, R02W, SEC. 8; Crawford COUNTY

In response to the notice of sale to be held 9:00 a.m. (local time) on January 30, 2025, I am hereby submitting my sealed bid (firm offer) for the following forest products to be cut. Bids for individual species must be at or above the advertised price. All non-responsive bid forms may be rejected.

<u>PRODUCTS &amp; SPECIES</u>	<u>ESTIMATED VOLUME*</u>	<u>ADVERTISED PRICE</u>	<u>BID PRICE/UNIT</u>
<b>Sawtimber</b>			
Black/Red (Hybrid) Oak	42.9 MBF	\$ 110.00/MBF	\$ _____
White Oak	57.1 MBF	\$ 89.00/MBF	\$ _____
<b>Pulpwood</b>			
B. T. Aspen	36 Cords	\$ 21.30/Cord	\$ _____
Misc. Species 1	24 Cords	\$ 3.35/Cord	\$ _____
Mixed Oak	224 Cords	\$ 20.00/Cord	\$ _____
Red Maple	12 Cords	\$ 26.00/Cord	\$ _____
Red Pine	20 Cords	\$ 38.80/Cord	\$ _____
White Pine	32 Cords	\$ 17.55/Cord	\$ _____

\*The volumes are statistically estimated within plus (+) or minus (-) 19.71 percent at 95% confidence level. These estimated volumes are final and not subject to adjustment. Prospective bidders are urged to examine this timber and to make their own estimates of quantity and quality.

I understand that any or all bids may be rejected. All bids must be signed and all bid items must be bid or the bid form may be rejected. I also understand that consideration and awarding a contract will be based upon my past performance and ability to complete the contract based upon equipment and staffing subject to my control.

FEDERAL ID: \_\_\_\_ - \_\_\_\_ - \_\_\_\_ or SOCIAL SECURITY NUMBER: \_\_\_\_ - \_\_\_\_ - \_\_\_\_

Company or individual bidding: \_\_\_\_\_

Company representative's name: \_\_\_\_\_

Address: \_\_\_\_\_

City: \_\_\_\_\_ State: \_\_\_\_\_ Zip: \_\_\_\_\_

IF AVAILABLE, PLEASE PLACE THE PERSONALIZED LABEL FROM YOUR PROSPECTUS IN THE ABOVE BOX.

Individual or company representative's signature: \_\_\_\_\_ Date: \_\_\_\_\_

Phone number : \_\_\_\_\_ Email (optional): \_\_\_\_\_

**THE WINNING BIDDER MUST COMPLETE THE VERIFICATION OF WORKER'S DISABILITY COMPENSATION ACT COMPLIANCE (ON REVERSE SIDE IF DOUBLE SIDED) WITHIN 21 DAYS OF SALE AWARD DATE**



<b>FOR DEPARTMENT USE ONLY</b>	
Sale Number (XX - XXX - XX - XX)	
Forest Management Unit:	

# TIMBER SALE VERIFICATION OF WORKER'S DISABILITY COMPENSATION ACT COMPLIANCE

As required by Act 317, P.A. 1969 (Worker's Compensation) and  
Part 5 of Act 451 of 1994, as amended.

## VERIFICATION OF WORKER'S DISABILITY COMPENSATION ACT COMPLIANCE

- This verification must be completed and submitted within 21 days of contract award and prior to the issuance of the timber sale contract.
- In addition, if boxes 2B or 2C are checked, then Notice of Exclusion or Certificate of Insurance must be submitted within twenty-one (21) days of the contract award and prior to the issuance of the timber sale contract.
- All information must be typed or printed except for written signatures.

Please Check Appropriate Categories:

1. My business is organized as (you **must** check one of the boxes below):
  - A.  Sole Proprietorship (individual)
  - B.  Partnership
  - C.  Corporation
2. You **must** check one of the boxes below:
  - A.  I certify my business is a sole proprietorship and it has no employees but the sole proprietor. I am not subject to the Worker's Compensation Laws.
  - B.  I certify my business has satisfied its obligation to the Worker's Compensation Act through the use of an approved Notice of Exclusion (BWC-337, Rev. 5/96). I will provide a copy of the Notice of Exclusion within 21 days of the contract award. (For questions or a copy of the BWC-337, please call the Worker's Compensation Bureau at 517-322-1195).
  - C.  I certify my business has a Worker's Compensation Policy. I will provide an original Certificate of Insurance within twenty-one (21) days of the contract award.
3. If you have checked item 2(A) or 2(B), you **must** indicate the number of **both** full-time and part-time employees, other than yourself, including family members and active partners (if none, you must enter "0").

\_\_\_\_\_ Full-time Employees

\_\_\_\_\_ Part-time Employees

Name of Business		Federal ID (or) Social Security No.	
Address		Telephone (       )	
City	State	ZIP	

*I hereby certify that the above information is true and correct. I agree to notify the Michigan DNR of any changes that occur in factors affecting my coverage during any of my present and future operations.*

\_\_\_\_\_  
Signature of Owner or Authorized Representative

\_\_\_\_\_  
Title

\_\_\_\_\_  
Date

Please complete the "SEALED BID" information on the next page

Cordie Howes JP (72-607-24)  
T27N, R04W, SEC. 31; T27N, R04W, SEC. 32; Crawford COUNTY

In response to the notice of sale to be held 9:00 a.m. (local time) on January 30, 2025, I am hereby submitting my sealed bid (firm offer) for the following forest products to be cut. Bids for individual species must be at or above the advertised price. All non-responsive bid forms may be rejected.

<u>PRODUCTS &amp; SPECIES</u>	<u>ESTIMATED VOLUME*</u>	<u>ADVERTISED PRICE</u>	<u>BID PRICE/UNIT</u>
Pulpwood			
Jack Pine	869 Cords	\$ 18.85/Cord	\$ _____
Mixed Hardwood	3 Cords	\$ 26.00/Cord	\$ _____
Red Pine	26 Cords	\$ 38.80/Cord	\$ _____

\*The volumes are statistically estimated within plus (+) or minus (-) 15.57 percent at 95% confidence level. These estimated volumes are final and not subject to adjustment. Prospective bidders are urged to examine this timber and to make their own estimates of quantity and quality.

I understand that any or all bids may be rejected. All bids must be signed and all bid items must be bid or the bid form may be rejected. I also understand that consideration and awarding a contract will be based upon my past performance and ability to complete the contract based upon equipment and staffing subject to my control.

FEDERAL ID: \_\_\_\_ - \_\_\_\_ - \_\_\_\_ or SOCIAL SECURITY NUMBER: \_\_\_\_ - \_\_\_\_ - \_\_\_\_

Company or individual bidding: \_\_\_\_\_

Company representative's name: \_\_\_\_\_

Address: \_\_\_\_\_

City: \_\_\_\_\_ State: \_\_\_\_\_ Zip: \_\_\_\_\_

IF AVAILABLE, PLEASE PLACE THE PERSONALIZED LABEL FROM YOUR PROSPECTUS IN THE ABOVE BOX.

Individual or company representative's signature: \_\_\_\_\_ Date: \_\_\_\_\_

Phone number : \_\_\_\_\_ Email (optional): \_\_\_\_\_

**THE WINNING BIDDER MUST COMPLETE THE VERIFICATION OF WORKER'S DISABILITY COMPENSATION ACT COMPLIANCE (ON REVERSE SIDE IF DOUBLE SIDED) WITHIN 21 DAYS OF SALE AWARD DATE**



<b>FOR DEPARTMENT USE ONLY</b>
Sale Number (XX - XXX - XX - XX)
Forest Management Unit:

## TIMBER SALE VERIFICATION OF WORKER'S DISABILITY COMPENSATION ACT COMPLIANCE

*As required by Act 317, P.A. 1969 (Worker's Compensation) and  
Part 5 of Act 451 of 1994, as amended.*

### VERIFICATION OF WORKER'S DISABILITY COMPENSATION ACT COMPLIANCE

- This verification must be completed and submitted within 21 days of contract award and prior to the issuance of the timber sale contract.
- In addition, if boxes 2B or 2C are checked, then Notice of Exclusion or Certificate of Insurance must be submitted within twenty-one (21) days of the contract award and prior to the issuance of the timber sale contract.
- All information must be typed or printed except for written signatures.

Please Check Appropriate Categories:

1. My business is organized as (you **must** check one of the boxes below):
  - A.  Sole Proprietorship (individual)
  - B.  Partnership
  - C.  Corporation
  
2. You **must** check one of the boxes below:
  - A.  I certify my business is a sole proprietorship and it has no employees but the sole proprietor. I am not subject to the Worker's Compensation Laws.
  - B.  I certify my business has satisfied its obligation to the Worker's Compensation Act through the use of an approved Notice of Exclusion (BWC-337, Rev. 5/96). I will provide a copy of the Notice of Exclusion within 21 days of the contract award. (For questions or a copy of the BWC-337, please call the Worker's Compensation Bureau at 517-322-1195).
  - C.  I certify my business has a Worker's Compensation Policy. I will provide an original Certificate of Insurance within twenty-one (21) days of the contract award.
  
3. If you have checked item 2(A) or 2(B), you **must** indicate the number of **both** full-time and part-time employees, other than yourself, including family members and active partners (if none, you must enter "0").

\_\_\_\_\_ Full-time Employees

\_\_\_\_\_ Part-time Employees

Name of Business		Federal ID (or) Social Security No.	
Address		Telephone (       )	
City	State	ZIP	

*I hereby certify that the above information is true and correct. I agree to notify the Michigan DNR of any changes that occur in factors affecting my coverage during any of my present and future operations.*

\_\_\_\_\_  
Signature of Owner or Authorized Representative

\_\_\_\_\_  
Title

\_\_\_\_\_  
Date

**Please complete the "SEALED BID" information on the next page**

Bring a Buncher Oak (72-001-24)  
T25N, R02W, SEC. 17; T25N, R02W, SEC. 18; T25N, R02W, SEC. 20; T25N,

In response to the notice of sale to be held 9:00 a.m. (local time) on January 30, 2025, I am hereby submitting my sealed bid (firm offer) for the following forest products to be cut. Bids for individual species must be at or above the advertised price. All non-responsive bid forms may be rejected.

<u>PRODUCTS &amp; SPECIES</u>	<u>ESTIMATED VOLUME*</u>	<u>ADVERTISED PRICE</u>	<u>BID PRICE/UNIT</u>
<b>Sawtimber</b>			
Black/Red (Hybrid) Oak	777.3 MBF	\$ 137.00/MBF	\$ _____
White Oak	96.4 MBF	\$ 111.00/MBF	\$ _____
<b>Pulpwood</b>			
B. T. Aspen	49 Cords	\$ 26.60/Cord	\$ _____
Misc. Species 1	30 Cords	\$ 5.00/Cord	\$ _____
Mixed Oak	1,321 Cords	\$ 25.05/Cord	\$ _____
Red Maple	20 Cords	\$ 32.50/Cord	\$ _____
Red Pine	92 Cords	\$ 48.50/Cord	\$ _____
White Pine	67 Cords	\$ 21.95/Cord	\$ _____

\*The volumes are statistically estimated within plus (+) or minus (-) 9.79 percent at 95% confidence level. These estimated volumes are final and not subject to adjustment. Prospective bidders are urged to examine this timber and to make their own estimates of quantity and quality.

I understand that any or all bids may be rejected. All bids must be signed and all bid items must be bid or the bid form may be rejected. I also understand that consideration and awarding a contract will be based upon my past performance and ability to complete the contract based upon equipment and staffing subject to my control.

FEDERAL ID: \_\_\_\_ - \_\_\_\_ - \_\_\_\_ or SOCIAL SECURITY NUMBER: \_\_\_\_ - \_\_\_\_ - \_\_\_\_

Company or individual bidding: \_\_\_\_\_

Company representative's name: \_\_\_\_\_

Address: \_\_\_\_\_

City: \_\_\_\_\_ State: \_\_\_\_\_ Zip: \_\_\_\_\_

IF AVAILABLE, PLEASE PLACE THE PERSONALIZED LABEL FROM YOUR PROSPECTUS IN THE ABOVE BOX.

Individual or company representative's signature: \_\_\_\_\_ Date: \_\_\_\_\_

Phone number : \_\_\_\_\_ Email (optional): \_\_\_\_\_

**THE WINNING BIDDER MUST COMPLETE THE VERIFICATION OF WORKER'S DISABILITY COMPENSATION ACT COMPLIANCE (ON REVERSE SIDE IF DOUBLE SIDED) WITHIN 21 DAYS OF SALE AWARD DATE**



<b>FOR DEPARTMENT USE ONLY</b>	
Sale Number (XX - XXX - XX - XX)	
Forest Management Unit:	

# TIMBER SALE VERIFICATION OF WORKER'S DISABILITY COMPENSATION ACT COMPLIANCE

As required by Act 317, P.A. 1969 (Worker's Compensation) and  
Part 5 of Act 451 of 1994, as amended.

## VERIFICATION OF WORKER'S DISABILITY COMPENSATION ACT COMPLIANCE

- This verification must be completed and submitted within 21 days of contract award and prior to the issuance of the timber sale contract.
- In addition, if boxes 2B or 2C are checked, then Notice of Exclusion or Certificate of Insurance must be submitted within twenty-one (21) days of the contract award and prior to the issuance of the timber sale contract.
- All information must be typed or printed except for written signatures.

Please Check Appropriate Categories:

1. My business is organized as (you **must** check one of the boxes below):
  - A.  Sole Proprietorship (individual)
  - B.  Partnership
  - C.  Corporation
2. You **must** check one of the boxes below:
  - A.  I certify my business is a sole proprietorship and it has no employees but the sole proprietor. I am not subject to the Worker's Compensation Laws.
  - B.  I certify my business has satisfied its obligation to the Worker's Compensation Act through the use of an approved Notice of Exclusion (BWC-337, Rev. 5/96). I will provide a copy of the Notice of Exclusion within 21 days of the contract award. (For questions or a copy of the BWC-337, please call the Worker's Compensation Bureau at 517-322-1195).
  - C.  I certify my business has a Worker's Compensation Policy. I will provide an original Certificate of Insurance within twenty-one (21) days of the contract award.
3. If you have checked item 2(A) or 2(B), you **must** indicate the number of **both** full-time and part-time employees, other than yourself, including family members and active partners (if none, you must enter "0").

\_\_\_\_\_ Full-time Employees

\_\_\_\_\_ Part-time Employees

Name of Business		Federal ID (or) Social Security No.	
Address		Telephone (       )	
City	State	ZIP	

*I hereby certify that the above information is true and correct. I agree to notify the Michigan DNR of any changes that occur in factors affecting my coverage during any of my present and future operations.*

\_\_\_\_\_  
Signature of Owner or Authorized Representative

\_\_\_\_\_  
Title

\_\_\_\_\_  
Date

Please complete the "SEALED BID" information on the next page

The S.S. Minnoak (72-616-24)  
T28N, R02W, SEC. 27; T28N, R02W, SEC. 28; Crawford COUNTY

In response to the notice of sale to be held 9:00 a.m. (local time) on January 30, 2025, I am hereby submitting my sealed bid (firm offer) for the following forest products to be cut. Bids for individual species must be at or above the advertised price. All non-responsive bid forms may be rejected.

<u>PRODUCTS &amp; SPECIES</u>	<u>ESTIMATED VOLUME*</u>	<u>ADVERTISED PRICE</u>	<u>BID PRICE/UNIT</u>
Sawtimber			
Red Oak	89.0 MBF	\$ 136.00/MBF	\$ _____
Pulpwood			
B. T. Aspen	7 Cords	\$ 26.60/Cord	\$ _____
Mixed Oak	174 Cords	\$ 25.05/Cord	\$ _____
Red Maple	19 Cords	\$ 32.50/Cord	\$ _____
Red Pine	4 Cords	\$ 48.50/Cord	\$ _____
White Pine	6 Cords	\$ 21.95/Cord	\$ _____

\*The volumes are statistically estimated within plus (+) or minus (-) 18.89 percent at 95% confidence level. These estimated volumes are final and not subject to adjustment. Prospective bidders are urged to examine this timber and to make their own estimates of quantity and quality.

I understand that any or all bids may be rejected. All bids must be signed and all bid items must be bid or the bid form may be rejected. I also understand that consideration and awarding a contract will be based upon my past performance and ability to complete the contract based upon equipment and staffing subject to my control.

FEDERAL ID: \_\_\_\_\_ - \_\_\_\_\_ or SOCIAL SECURITY NUMBER: \_\_\_\_\_ - \_\_\_\_\_ - \_\_\_\_\_

Company or individual bidding: \_\_\_\_\_

Company representative's name: \_\_\_\_\_

Address: \_\_\_\_\_

City: \_\_\_\_\_ State: \_\_\_\_\_ Zip: \_\_\_\_\_

IF AVAILABLE, PLEASE PLACE THE PERSONALIZED LABEL FROM YOUR PROSPECTUS IN THE ABOVE BOX.

Individual or company representative's signature: \_\_\_\_\_ Date: \_\_\_\_\_

Phone number : \_\_\_\_\_ Email (optional): \_\_\_\_\_

**THE WINNING BIDDER MUST COMPLETE THE VERIFICATION OF WORKER'S DISABILITY COMPENSATION ACT COMPLIANCE (ON REVERSE SIDE IF DOUBLE SIDED) WITHIN 21 DAYS OF SALE AWARD DATE**



<b>FOR DEPARTMENT USE ONLY</b>
Sale Number (XX - XXX - XX - XX)
Forest Management Unit:

## TIMBER SALE VERIFICATION OF WORKER'S DISABILITY COMPENSATION ACT COMPLIANCE

*As required by Act 317, P.A. 1969 (Worker's Compensation) and  
Part 5 of Act 451 of 1994, as amended.*

### VERIFICATION OF WORKER'S DISABILITY COMPENSATION ACT COMPLIANCE

- This verification must be completed and submitted within 21 days of contract award and prior to the issuance of the timber sale contract.
- In addition, if boxes 2B or 2C are checked, then Notice of Exclusion or Certificate of Insurance must be submitted within twenty-one (21) days of the contract award and prior to the issuance of the timber sale contract.
- All information must be typed or printed except for written signatures.

Please Check Appropriate Categories:

1. My business is organized as (you **must** check one of the boxes below):
  - A.  Sole Proprietorship (individual)
  - B.  Partnership
  - C.  Corporation
2. You **must** check one of the boxes below:
  - A.  I certify my business is a sole proprietorship and it has no employees but the sole proprietor. I am not subject to the Worker's Compensation Laws.
  - B.  I certify my business has satisfied its obligation to the Worker's Compensation Act through the use of an approved Notice of Exclusion (BWC-337, Rev. 5/96). I will provide a copy of the Notice of Exclusion within 21 days of the contract award. (For questions or a copy of the BWC-337, please call the Worker's Compensation Bureau at 517-322-1195).
  - C.  I certify my business has a Worker's Compensation Policy. I will provide an original Certificate of Insurance within twenty-one (21) days of the contract award.
3. If you have checked item 2(A) or 2(B), you **must** indicate the number of **both** full-time and part-time employees, other than yourself, including family members and active partners (if none, you must enter "0").

\_\_\_\_\_ Full-time Employees

\_\_\_\_\_ Part-time Employees

Name of Business		Federal ID (or) Social Security No.	
Address		Telephone (       )	
City	State	ZIP	

*I hereby certify that the above information is true and correct. I agree to notify the Michigan DNR of any changes that occur in factors affecting my coverage during any of my present and future operations.*

\_\_\_\_\_  
Signature of Owner or Authorized Representative

\_\_\_\_\_  
Title

\_\_\_\_\_  
Date

**Please complete the "SEALED BID" information on the next page**