



**DEPARTMENT OF NATURAL RESOURCES
STATE OF MICHIGAN
TIMBER SALE PROSPECTUS #7524**

SCHEDULED SALE DATE AND TIME: 2:00 p.m. (local time) on January 13, 2025.

LOCATION: **GWINN MGMT UNIT, 410 WEST M 35, GWINN, MI 49841.**

PROSPECTUS NOTE: The bidder is advised to inspect the sale area and review the location, estimated volumes, operating costs and contract terms of proposed sales. Please be aware that some landowners may request 60 days or more notice for access across their land.

Notice is hereby given that bids will be received by the Unit Manager, GWINN MANAGEMENT UNIT, for certain timber on the following described lands:

Rolling Hardwood (32-002-24) / T45N, R27W, SEC. 4 , N1/2NW,NWNE.

T46N, R27W, SEC. 20, SESE.

T46N, R27W, SEC. 21, SWSW.

T46N, R27W, SEC. 28, NWNW.

T46N, R27W, SEC. 33, S1/2NW,S1/2NE,SW,SE.

Marquette County, Advertised Price \$168,989.25, 366.0 Acres, Aspen, Hardwood.

Mosquito Machine (32-003-24) / T44N, R26W, SEC. 1 , NWNW,S1/2NW,E1/2SW,N1/2SE,SWSE.

T44N, R26W, SEC. 10, NENW,NE.

T44N, R26W, SEC. 11, NW,N1/2NE,NWSW.

T44N, R26W, SEC. 2 , E1/2NW,NE,SW,SE.

T44N, R26W, SEC. 3 , SENW,SW.

Marquette County, Advertised Price \$67,224.25, 476.6 Acres, Hardwood, Spruce/Fir/Tamarack.

SALE NOTE: A recreation site such as a trail, pathway, or campground is within the sale area or the vicinity. Certain restrictions/specifications may be applicable including time restrictions. Access may be through private or other public land.

BID INSTRUCTIONS (VER. 10/10/2022):

1. Scheduled Bid Location, Date, and Time (2/11)

Bids must be received by the Unit Manager, GWINN OFFICE, 410 WEST M 35, GWINN, MI 49841, no later than 2:00 p.m. (local time) on January 13, 2025. For further information concerning this sale, contact Mike Brodeur at 906-346-9201 extension 103.

2. Bidder's Qualifications (10/22)

If all or part of a timber sale was prepared by a private contractor, the contractor and that contractor's company are not permitted to bid on the timber sale. A person must be 18 years of age or older to purchase timber. Permanent employees of the Department of Natural Resources or members of their immediate household may not bid. Former employees, in the permanent or seasonal class, may not bid until 3 months after the last day of active duty. Bids will not be accepted from individuals or companies appearing on the DNR/FRD No-Bid List. This list contains the names of purchasers who previously failed to execute a contract within 21-days or who have a history of poor performance.

3. Preparation of Sealed Bids (5/16)

Bid Forms may be completed online thru Michigan DNR Timber Sale Online Bidding (OLB) at www.michigan.gov/timberbidding or by completing the hardcopy Bid Form found in the Timber Sale Prospectus. Hardcopy Bid Forms shall be manually signed in ink. Registration in OLB is considered your 'signature' for all bids submitted thru that system. Bid prices must be entered for each species and product in the Bid Price column for all material subject to bidding and all fill-in blanks must be completed. If erasures or other changes appear on the hardcopy Bid Form, each erasure or change must be initialed by the person signing the bid.

4. Submission of Sealed Bids (5/16)

Bid forms may be obtained from the Unit Manager or thru OLB. Bids may be submitted hardcopy or thru OLB. All hardcopy bids must be submitted on the bid form and in an envelope clearly identified as described in this section. NOTE: Only one bid form per bid envelope. Sealed bids must be submitted to the Unit office designated in the prospectus and must be submitted at or prior to the time established in the prospectus. The envelope should show on the outside (a) the sale name or number and (b) the date and time of bid opening, as shown in the prospectus. Bids received after the time specified in the sale prospectus are late bids and will be rejected.

It is possible for a bidder to submit multiple bids on a single sale. For example, a bid may be submitted hardcopy and a bid may be submitted thru OLB. Or, two bidders from the same company could both submit bids on the same sale. If this were to happen, the State would accept all bids received and award the contract accordingly. All bidding and contractual requirements would apply to all bids received.

5. Public Opening of Sealed Bids (7/16)

If conditions permit, the sealed bids will be publicly opened and posted at the time and place set in the prospectus.

If a bidder, present at a bid opening, has submitted bids on more than one sale, that bidder may withdraw their unopened bid envelopes or announce the withdrawal of their online bid after being declared the successful bidder on one sale.

6. Award of Contract (1/11)

Award of the contract will be made to the Bidder whose bid, conforming to the prospectus, is most advantageous to the State of Michigan on the basis of total value at rates bid for the estimated quantities. The State reserves the right to reject any bid or waive any minor irregularity in bids received. A written award mailed (or otherwise furnished) to the successful Bidder shall be deemed to result in a binding contract without further action by either party.

7. Down Payment (1/11)

The Bidder to whom award is made must make a down payment within 21 days of the sale award. The amount of the down payment will be calculated as shown in the Bond and Payment Schedule of this prospectus. Only cash may be used to meet this requirement.

8. Performance Security (1/11)

As guarantee of faithful performance, a cash bond, certificate of deposit, surety bond or irrevocable letter of credit (LOC) is required within 21 days of the sale award. The amount of the performance security is shown in the Bond and

Payment Schedule of this prospectus. If an LOC or surety is used, the coverage must extend for at least 6 months beyond the contract expiration.

9. Worker's Compensation (10/22)

Purchaser shall obtain worker's compensation insurance to cover claims under Michigan's Worker's Disability Compensation Act of 1969 or similar employee benefit act of any other state applicable to an employee. Verification of Worker's Disability Compensation Act Compliance must be completed and submitted within 21 days of contract award and prior to the issuance of the timber sale contract. In addition, if applicable, Notice of Exclusion or Certificate of Insurance must also be submitted.

10. Timber Sale Contract (10/22)

Additional conditions and requirements common to all timber sales are listed on the timber sale contract (R4031) and are available on line at www.michigan.gov/timber. Contact the Unit Manager for additional information or a sample contract. Within 21 days of the date of the award letter, the bidder must sign the contract and provide the required down payment, performance security, and verification of worker's disability compensation. The down payment and performance security shall be in accordance with the provisions of the timber sale contract, in the sums stated in this prospectus. If these actions are not taken, then the Bidder, the Bidder's corporation, and the corporation's principals may not be permitted to bid on State timber sales for a period of 3 months after the first offense, 6 months after the second offense, and 1 year after the third offense. An offense will only be counted against the Bidder for 5 years. In addition, the Bidder certifies that if awarded this contract, the Bidder will complete the timber sale contract in accordance with its terms and any modifications thereof including requirements to purchase, cut, and remove the included timber by the expiration date.

Payment Unit values in the State Forest Timber Sale Contract are calculated based on the advertised value of the Payment Unit as a percentage of the total advertised value of the contract. The advertised value of each Payment Unit is given in the Description of Timber by Payment Unit table on the Timber Sale Information page. For example, if the value of Payment Unit 1 is advertised as \$1,500 and the total Timber Sale value is advertised as \$10,000, the contract price for Payment Unit 1 will be 15% of the total bid price ($\$1,500/\$10,000 * 100$).

11. Disclaimer of Estimates and Bidder's Warranty of Inspection (10/22)

Before submitting this bid, the Bidder is advised and cautioned to inspect the sale area, review the requirements of the sale contract, and take other steps as may be reasonably necessary to ascertain the location, estimated volumes, construction estimates, and operating costs of the proposed sale. Failure to do so will not relieve the Bidder from responsibility for completing the contract.

The Bidder warrants that this bid is submitted solely on the basis of the Bidder's examination and inspection of the quality and quantity of the timber offered for sale and the Bidder's opinion of the value thereof and the costs of recovery. No reliance should be placed on the State of Michigan's estimates of timber quality, quantity or costs of recovery. Bidder further acknowledges that the State of Michigan: (i) expressly disclaims any warranty of fitness of timber for any purpose; (ii) offers this timber as is without any warranty of quality (merchantability) or quantity and (iii) expressly disclaims any warranty as to the quantity or quality of timber sold.

12. Certification and Chain-of-Custody (10/22)

Unless otherwise indicated in the contract under section 7 – Other Conditions of the Sale Specific Conditions & Requirements, the area encompassed by this timber sale is certified to the standards of the Forest Stewardship Council (FSC) - Certificate #SCS-FM/COC-00090N and the Sustainable Forestry Initiative (SFI) - Certificate #NSF-SFIS-5Y031-SF5. Forest products from this sale may be delivered to the mill as "FSC 100% and / or SFI certified" as long as the contractor hauling the forest products is chain-of-custody (COC) certified or covered under a COC certificate from the destination mill. The purchaser is responsible for maintaining COC after leaving the sale area.

13. Good Neighbor Authority (GNA) Requirements (10/22)

If the name of this timber sales contains the acronym GNA, it is authorized by the Good Neighbor Authority (GNA) and covered by various agreements between the U.S. Forest Service and the State. The timber sale occurs on federal land and the following conditions apply:

GNA contracts on US Forest Service land will not be awarded to purchasers on the Federal list of excluded parties. The System for Award Management (SAM) will be checked for active excluded parties prior to award of contract. In

addition, the Bidder to whom award is made must complete an Assurance Regarding Felony Conviction or Tax Delinquent Status for Corporate Applicants (AD-3031).

14. Good Neighbor Authority (GNA) Requirements, con't (10/22)

Bidder certifies, by signing this bid form, that to the best of Bidder's knowledge that the following representations are accurate and complete.

- a. That the Bidder and its principals are not presently debarred, suspended, proposed for debarment, declared ineligible, or voluntary excluded from timber sales (covered transactions) by any Federal department or agency.
- b. That the Bidder and its principals have not within a 3-year period preceding this bid been convicted of or had a civil judgment rendered against them for commission of fraud or a criminal offense in connection with obtaining , attempting to obtain, or performing a public (Federal, State, or local) transaction or contract under a public transaction; violation of Federal or State antitrust statutes or commission of embezzlement, theft, forgery, bribery, falsification or destruction of records, making false statements, or receiving stolen property.
- c. That the Bidder and its principals are not presently indicted for or otherwise criminally or civilly charged by a governmental entity (Federal, State, or local) with commission of any of the offenses enumerated in paragraph b of this certification.
- d. That the Bidder and its principals have not within a 3-year period preceding this bid had one or more public transactions (Federal, State, or local) terminated for breach or default of a timber or forest product contract.

Bidders that cannot certify this requirement, in whole or in part, shall submit an explanation with their bid.

Scott Bowen
Director

TIMBER SALE INFORMATION

Rolling Hardwood (32-002-24)

T45N, R27W, SEC. 4; T46N, R27W, SEC. 20; T46N, R27W, SEC. 21; T46N, R27W, SEC. 28; T46N, R27W, SEC. 33.
Marquette County (Advertised Price \$168,989.25)

A timber sale contract for this lump sum, sealed bid timber sale will be awarded to the responsible bidder offering the highest sealed bid price. All units of volume listed below were estimated using the Inventory Manager computer program and the new Michigan taper model. Bids must be at or above the following advertised price for each product and species:

<u>PRODUCTS & SPECIES</u>	<u>ESTIMATED UNITS*</u>	<u>ADVERTISED PRICE</u>
Sawtimber		
Paper Birch	21.7 MBF	\$ 62.00 / MBF
Red Maple	96.7 MBF	\$ 80.00 / MBF
Red Oak	99.2 MBF	\$ 131.00 / MBF
Sugar Maple	432.9 MBF	\$ 163.00 / MBF
Yellow Birch	0.7 MBF	\$ 20.00 / MBF
Pulpwood		
Balsam Fir	61 Cords	\$ 9.05 / Cord
Mixed Aspen	2,687 Cords	\$ 19.55 / Cord
Mixed Hardwood	2,040 Cords	\$ 9.35 / Cord
Red Oak	153 Cords	\$ 14.65 / Cord
Red Pine	32 Cords	\$ 60.55 / Cord

* The total volume is statistically estimated within plus (+) or minus (-) 11.34 percent. There are an estimated 6,500 cords on this timber sale, plus or minus 737 cords at the 95% confidence level. The estimated units are final and not subject to adjustment. Prospective bidders are urged to examine this timber and to make their own estimates of quantity and quality.

BOND AND PAYMENT SCHEDULE:

1. A bond in the amount of \$16,899.00 to insure faithful performance of the conditions of the contract will be deposited by the successful bidder within 21 days of the sale award.
2. Cutting in any sale or unit without the required advance payment would be considered a trespass.
3. Total payment must be paid in advance or according to the following schedule :
 - (a) Ten percent (10%) of the sale value must be paid within 21 days of the sale award.
 - (b) The 10% down payment will be credited towards the first unit cut.
 - (c) Payment for each of the following units must be made before cutting begins in that unit:

PAYMENT UNIT NUMBER	PERCENT OF TOTAL SALE VALUE
01	6.0%
02	6.5%
03	5.4%
04	6.0%
05	5.6%
06	7.0%
07	6.7%
08	7.9%
09	8.0%
10	8.2%
11	13.7%
12	16.3%
13	2.7%

4. If no cutting takes place, the 10% down payment will not be refunded.
5. Operations on the contract issued will terminate on 06/30/2028.

SALE STATISTICS

Volumes were calculated in cubic feet using the Michigan taper model. Cubic foot volume includes all wood inside bark for the product indicated. For display purposes, cubic feet were converted to cords and MBF using a simple conversion factor, e.g. 79 cubic feet per cord and 185 cubic feet per MBF. The cubic foot volumes are precise; the cords and MBF volumes are not. Cubic foot volume cannot be directly converted to cords or boards with precision.

SALE VOLUMES

The total estimated sale volume may not equal the sum of the species/products due to the nature of statistical calculations associated with double sampling methodology.

VOLUME			STATISTICAL RANGE IN CORDS	
TOTAL CUBIC FEET	TOTAL CORDS	PERCENT ERROR	MINIMUM	MAXIMUM
513,526	6,500	11.34%	5,763	7,238

VDU VOLUMES

A VDU is a Volume Determination Unit. Volumes and their associated statistics are calculated at the VDU level and summarized to the sale level. There is often a one to one relationship between a VDU and a Payment Unit, but not always, depending on the cruise design. Refer to the VDU TO PAYMENT UNIT table.

	VOLUME			RANGE IN CORDS	
VDU	TOTAL CUBIC FEET	TOTAL CORDS	PERCENT ERROR	MINIMUM	MAXIMUM
32	277,456	3,512	14.04%	3,019	4,005
34	216,874	2,745	18.45%	2,239	3,252
101	19,197	243	97.79%	5	481
TOTAL:	513,526	6,500		5,263	7,737

VDU TO PAYMENT UNIT

When a VDU is associated with more than one Payment Unit (PU), the VDU volumes are assigned to the PU based on acres of the VDU within the PU.

VDU	VDU ACRES	PU	PU ACRES
32	280.4	1	25.0
32	280.4	2	26.9
32	280.4	3	22.3
32	280.4	4	25.0
32	280.4	5	23.4
32	280.4	6	29.3
32	280.4	7	28.0
32	280.4	8	32.8
32	280.4	9	33.3
32	280.4	10	34.4
34	74.4	11	34.1
34	74.4	12	40.3
101	11.2	13	11.2
TOTAL:	2,964.0		366.0

DESCRIPTION OF TIMBER BY PAYMENT UNIT (PU)

PU	MARKET GROUP	PRODUCT	QUANTITY	UNIT	ACRES	ADVERTISE PRICE	
1	Paper Birch	Sawtimber	0.7	MBF	25.0	\$10,144.85	
	Red Maple		8.6	MBF			
	Red Oak		8.8	MBF			
	Sugar Maple		38.2	MBF			
	Yellow Birch		0.1	MBF			
	Balsam Fir		Pulpwood	1			Cords
	Mixed Aspen			11			Cords
	<i>B. T. Aspen</i>			11			<i>Cords</i>
	Mixed Hardwood			152			Cords
	<i>Paper Birch</i>			2			<i>Cords</i>
	<i>Red Maple</i>			31			<i>Cords</i>
	<i>Sugar Maple</i>			115			<i>Cords</i>
	<i>Yellow Birch</i>			4			<i>Cords</i>
	Red Oak			14			Cords
Red Pine	3	Cords					
2	Paper Birch	Sawtimber	0.8	MBF	26.9	\$10,908.50	
	Red Maple		9.3	MBF			
	Red Oak		9.5	MBF			
	Sugar Maple		41.1	MBF			
	Yellow Birch		0.1	MBF			
	Balsam Fir		Pulpwood	1			Cords
	Mixed Aspen			12			Cords
	<i>B. T. Aspen</i>			12			<i>Cords</i>
	Mixed Hardwood			163			Cords
	<i>Paper Birch</i>			2			<i>Cords</i>
	<i>Red Maple</i>			33			<i>Cords</i>
	<i>Sugar Maple</i>			123			<i>Cords</i>
	<i>Yellow Birch</i>			5			<i>Cords</i>
	Red Oak			15			Cords
Red Pine	3	Cords					
3	Paper Birch	Sawtimber	0.7	MBF	22.3	\$9,078.85	
	Red Maple		7.7	MBF			
	Red Oak		7.9	MBF			
	Sugar Maple		34.1	MBF			
	Yellow Birch		0.1	MBF			
	Balsam Fir		Pulpwood	1			Cords
	Mixed Aspen			10			Cords
	<i>B. T. Aspen</i>			10			<i>Cords</i>
	Mixed Hardwood			135			Cords
	<i>Paper Birch</i>			2			<i>Cords</i>
	<i>Red Maple</i>			27			<i>Cords</i>
	<i>Sugar Maple</i>			102			<i>Cords</i>
	<i>Yellow Birch</i>			4			<i>Cords</i>
	Red Oak			12			Cords
Red Pine	3	Cords					
4	Paper Birch	Sawtimber	0.7	MBF	25.0	\$10,144.85	
	Red Maple		8.6	MBF			
	Red Oak		8.8	MBF			
	Sugar Maple		38.2	MBF			
	Yellow Birch		0.1	MBF			
	Balsam Fir		Pulpwood	1			Cords
	Mixed Aspen			11			Cords
	<i>B. T. Aspen</i>			11			<i>Cords</i>
	Mixed Hardwood			152			Cords
	<i>Paper Birch</i>			2			<i>Cords</i>
	<i>Red Maple</i>			31			<i>Cords</i>

DESCRIPTION OF TIMBER BY PAYMENT UNIT (PU), CON'T

PU	MARKET GROUP	PRODUCT	QUANTITY	UNIT	ACRES	ADVERTISE PRICE
4 con't	<i>Sugar Maple</i>	<i>Pulpwood</i>	115	<i>Cords</i>		
	<i>Yellow Birch</i>		4	<i>Cords</i>		
	Red Oak		14	Cords		
	Red Pine		3	Cords		
5	Paper Birch	Sawtimber	0.7	MBF	23.4	\$9,540.00
	Red Maple		8.1	MBF		
	Red Oak		8.3	MBF		
	Sugar Maple		35.8	MBF		
	Yellow Birch		0.1	MBF		
	Balsam Fir	Pulpwood	1	Cords		
	Mixed Aspen		11	Cords		
	<i>B. T. Aspen</i>		11	<i>Cords</i>		
	Mixed Hardwood		142	Cords		
	<i>Paper Birch</i>		2	<i>Cords</i>		
	<i>Red Maple</i>		29	<i>Cords</i>		
	<i>Sugar Maple</i>		107	<i>Cords</i>		
	<i>Yellow Birch</i>		4	<i>Cords</i>		
	Red Oak		13	Cords		
	Red Pine		3	Cords		
6	Paper Birch	Sawtimber	0.9	MBF	29.3	\$11,874.15
	Red Maple		10.1	MBF		
	Red Oak		10.4	MBF		
	Sugar Maple		44.8	MBF		
	Yellow Birch		0.1	MBF		
	Balsam Fir	Pulpwood	1	Cords		
	Mixed Aspen		13	Cords		
	<i>B. T. Aspen</i>		13	<i>Cords</i>		
	Mixed Hardwood		178	Cords		
	<i>Ironwood</i>		1	<i>Cords</i>		
	<i>Paper Birch</i>		2	<i>Cords</i>		
	<i>Red Maple</i>		36	<i>Cords</i>		
	<i>Sugar Maple</i>		134	<i>Cords</i>		
	<i>Yellow Birch</i>		5	<i>Cords</i>		
	Red Oak		16	Cords		
Red Pine	3	Cords				
7	Paper Birch	Sawtimber	0.8	MBF	28.0	\$11,345.65
	Red Maple		9.7	MBF		
	Red Oak		9.9	MBF		
	Sugar Maple		42.8	MBF		
	Yellow Birch		0.1	MBF		
	Balsam Fir	Pulpwood	1	Cords		
	Mixed Aspen		13	Cords		
	<i>B. T. Aspen</i>		13	<i>Cords</i>		
	Mixed Hardwood		169	Cords		
	<i>Paper Birch</i>		2	<i>Cords</i>		
	<i>Red Maple</i>		34	<i>Cords</i>		
	<i>Sugar Maple</i>		128	<i>Cords</i>		
	<i>Yellow Birch</i>		5	<i>Cords</i>		
	Red Oak		15	Cords		
	Red Pine		3	Cords		
8	Paper Birch	Sawtimber	1.0	MBF	32.8	\$13,339.05
	Red Maple		11.3	MBF		
	Red Oak		11.6	MBF		
	Sugar Maple		50.2	MBF		
	Yellow Birch		0.1	MBF		
	Balsam Fir	Pulpwood	1	Cords		

DESCRIPTION OF TIMBER BY PAYMENT UNIT (PU), CON'T

PU	MARKET GROUP	PRODUCT	QUANTITY	UNIT	ACRES	ADVERTISE PRICE			
8 con't	Mixed Aspen	Pulpwood	15	Cords					
	<i>B. T. Aspen</i>		15	<i>Cords</i>					
	Mixed Hardwood		199	Cords					
	<i>Ironwood</i>		1	<i>Cords</i>					
	<i>Paper Birch</i>		2	<i>Cords</i>					
	<i>Red Maple</i>		40	<i>Cords</i>					
	<i>Sugar Maple</i>		150	<i>Cords</i>					
	<i>Yellow Birch</i>		6	<i>Cords</i>					
	Red Oak		18	Cords					
Red Pine	4	Cords							
9	Paper Birch	Sawtimber	1.0	MBF	33.3	\$13,532.75			
	Red Maple		11.5	MBF					
	Red Oak		11.8	MBF					
	Sugar Maple		50.9	MBF					
	Yellow Birch		0.1	MBF					
	Balsam Fir	Pulpwood	1	Cords					
	Mixed Aspen		15	Cords					
	<i>B. T. Aspen</i>		15	<i>Cords</i>					
	Mixed Hardwood		203	Cords					
	<i>Ironwood</i>		1	<i>Cords</i>					
	<i>Paper Birch</i>		2	<i>Cords</i>					
	<i>Red Maple</i>		41	<i>Cords</i>					
	<i>Sugar Maple</i>		153	<i>Cords</i>					
	<i>Yellow Birch</i>		6	<i>Cords</i>					
	Red Oak		18	Cords					
	Red Pine		4	Cords					
	10		Paper Birch	Sawtimber			1.0	MBF	34.4
Red Maple		11.8	MBF						
Red Oak		12.2	MBF						
Sugar Maple		52.7	MBF						
Balsam Fir		Pulpwood	1		Cords				
Mixed Aspen			16	Cords					
<i>B. T. Aspen</i>			16	<i>Cords</i>					
Mixed Hardwood			210	Cords					
<i>Ironwood</i>			2	<i>Cords</i>					
<i>Paper Birch</i>			3	<i>Cords</i>					
<i>Red Maple</i>			42	<i>Cords</i>					
<i>Sugar Maple</i>			158	<i>Cords</i>					
<i>Yellow Birch</i>			5	<i>Cords</i>					
Red Oak			18	Cords					
Red Pine			3	Cords					
11			Paper Birch	Sawtimber	4.8	MBF	34.1	\$23,198.50	
		Sugar Maple	1.9		MBF				
	Balsam Fir	Pulpwood	23	Cords					
	Mixed Aspen		1,077	Cords					
	<i>B. T. Aspen</i>		517	<i>Cords</i>					
	<i>Quaking Aspen</i>		560	<i>Cords</i>					
	Mixed Hardwood		142	Cords					
	<i>Paper Birch</i>		7	<i>Cords</i>					
	<i>Red Maple</i>		104	<i>Cords</i>					
	<i>Sugar Maple</i>		31	<i>Cords</i>					
12	Paper Birch	Sawtimber	5.7	MBF	40.3	\$27,442.90			
	Sugar Maple		2.2	MBF					
	Balsam Fir	Pulpwood	28	Cords					
	Mixed Aspen		1,274	Cords					
	<i>B. T. Aspen</i>		613	<i>Cords</i>					

DESCRIPTION OF TIMBER BY PAYMENT UNIT (PU), CON'T

PU	MARKET GROUP	PRODUCT	QUANTITY	UNIT	ACRES	ADVERTISE PRICE
12 con't	<i>Quaking Aspen</i>	<i>Pulpwood</i>	661	<i>Cords</i>		
	Mixed Hardwood		168	<i>Cords</i>		
	<i>Paper Birch</i>		9	<i>Cords</i>		
	<i>Red Maple</i>		122	<i>Cords</i>		
	<i>Sugar Maple</i>		37	<i>Cords</i>		
13	Paper Birch	Sawtimber	2.9	MBF	11.2	\$4,518.20
	Mixed Aspen	Pulpwood	209	<i>Cords</i>		
	<i>B. T. Aspen</i>		106	<i>Cords</i>		
	<i>Quaking Aspen</i>		103	<i>Cords</i>		
	Mixed Hardwood		27	<i>Cords</i>		
	<i>Paper Birch</i>		9	<i>Cords</i>		
	<i>Red Maple</i>		18	<i>Cords</i>		
TOTAL:			651.4	MBF		
TOTAL:			4,973	Cords		

Sale Specific Conditions & Requirements

Sale Name: Rolling Hardwood

Sale Number: 32-002-24 Seq#: 1

1 - Sale Area

1.2 - Boundaries

1.2.1 - Painted boundaries (9/19)

The sale boundary and Payment Unit boundaries are marked and identified by blue, red, and yellow paint. Exterior sale boundary lines against private are marked with blue paint. Exterior sale boundary lines against state are marked with red paint. Interior Payment Unit boundaries are marked with yellow paint. The painted boundary line trees are not Included Timber and are to be protected unless marked with orange paint. Yellow painted trees designating an interior Payment Unit boundary are only to be cut when all surrounding Payment Units have been paid.

2 - Timber Specifications

2.1 - Included Timber

2.1.1 - Clearcut unit(s) with unmerchantable trees (6/14)

Within Payment Unit(s) 11-13, cut all trees that are two (2) inches or more at DBH, except do not cut oak, cedar, hemlock, white pine, and red pine.

2.1.3 - Cut tree marked unit(s) (12/08)

Within Payment Unit(s) 1-10, all trees are designated for cutting when marked with orange paint above and below stump height, regardless of merchantability.

3 - Payments

3.4 - Damaged Timber

3.4.1 - Damaged timber (7/16)

General Condition and Requirement 3.4 Damaged Timber, defines liquidated damages for undesignated live merchantable trees which are cut or injured. No damage is acceptable to undesignated live merchantable trees. Within the sale area, if more than 5% of trees (> 4.5" DBH) within a specified area of the sale are damaged, liquidated damages will be assessed for all trees damaged. Rates will be in accordance with General Condition and Requirement 3.4 Damaged Timber.

4 - Transportation

4.1 - Construction

4.1.3 - Slash and earthen piles (8/04)

Piles or windrows of earth along roads and landings that have been widened or constructed shall be leveled. Slash from road maintenance or construction, including stumps, shall be dispersed throughout the sale.

4.1.4 - Timber removed for construction (3/23)

Trees cut or damaged in the process of pre-approved road, landing or skid trail construction will be decked in an area separate from other Designated Timber and not removed until measured by the sale administrator. Payment will be made at contract prices or average prices, if not on the contract.

4.1.6 - Road construction (4/24)

Construction of new roads or improvements of existing roads shall be done in such a way as to minimize the environmental and visual impacts. Merchantable trees shall be cut and utilized unless otherwise directed. Non-merchantable trees shall be severed and laid flat on the ground. Slash shall be scattered, and not left in windrows and kept a minimum of 10 feet back from the road edge. Stumps shall be set upright, not left on edge, and be moved at least 10 feet away from the road edge. Disturbed soil shall be feathered into the woods and not left in berms or windrows.

4.1.7 - Road closure (10/11)

All new roads built into the sale must be blocked to vehicle traffic upon completion of the sale. Overgrown roads that are reopened shall be considered new roads. In general, this will require constructing a four (4') foot high berm of stumps and logs covered with earth. Contact the Sale Administrator for specific details of design and placement.

4.2 - Maintenance

4.2.2 - Fill material (4/07)

To maintain roads, fill material may be needed in areas where "holes" exist or may be expected to develop. This fill material should be placed before trucking begins. Depending on the time of year, multiple areas may require fill material for access across the sale area. Contact the Sale Administrator regarding the availability of onsite sand or gravel from adjacent State-owned lands.

4.2.3 - Road maintenance (8/13)

The following road maintenance may be needed: Within 60 days of completion of hauling, or if no hauling occurs for 60 days, the Unit Manager or his/her representative may require the road to be maintained and graded. This includes cleaning of drainage areas, grading, crowning and filling with gravel, if necessary. Damages will be assessed if grading/repair does not occur.

4.2.4 - Grading (10/16)

For completion of the sale, state forest roads must be graded. In general, this will require a road grader or bulldozer to shape up the roads after forest products have been hauled off site. This includes cleaning of drainage areas, grading, crowning and filling with gravel, if necessary. The grading equipment to be used must be approved by the Unit Manager or his/her representative.

5 - Operations

5.1 - Notification

5.1.1 - Pre-sale conference (10/16)

A pre-sale conference between the Purchaser and sale administrator is required prior to beginning any operations. The Unit Manager or his/her representative must be contacted at least 5 business days in advance to schedule the conference.

5.2 - Conduct of Operations

5.2.1 - Slash

5.2.1.11 - Slash for reforestation (3/21)

To facilitate reforestation, all payment units shall be left with slash evenly distributed. Bunched tops within the cutting area shall be broken up and scattered. Stumps shall be cut low to the ground. Processing sites shall not be left with a compacted layer of slash; tops from these sites shall be hauled back into the cut area and scattered.

5.2.2 - Hazard Trees/Snags

5.2.2.1 - Den trees (10/16)

Obvious hollow and/or den trees shall be protected and left standing unless they are a safety hazard.

5.2.3 - Operating Restrictions

5.2.3.3 - Bark slippage restriction (3/09)

Within Payment Unit(s) 1-10, unless changed by written agreement, cutting and skidding are not permitted during the period of April 15 to July 15. This restriction is because of bark slippage.

5.2.3.5 - Oak wilt restriction (1/18)

Within Payment Unit(s) 1-13, unless changed by written agreement, cutting, skidding, hauling within the sale and brushing of access roads to the sale are not permitted during the period of April 15 to July 15. Operations may be allowed if specific steps are taken to prevent damaging uncut oak during the high risk period. Those steps may include completing all road brushing before April 15th and clearing a tree-length buffer along uncut oak cover before April 15th. This is necessary to reduce the spread of oak wilt. For more information, contact the Unit Manager or his/her representative.

5.2.32 - Decking/landing restoration (9/13)

All decking and landing areas must have the surface area restored to a condition equal to or better than before. This is to ensure the proper regeneration of the stand. Wood debris, chips and "cookies" from trimmings must be removed or scattered away from landing and loading areas and may not be windrowed on the edge.

5.2.37 - No decking areas (12/08)

No decking is allowed within 50 feet of Hemmings Lake Road without permission of the County and Unit Manager or his/her representative.

5.2.38 - No decking against live trees (2/04)

Cut products may not be decked against unmarked or designated leave trees.

5.4 - Soil Protection

5.4.1 - Rutting restriction, general (7/16)

Operations are to cease immediately if equipment and weather conditions result in rutting of roads and/or skid trails which is 12 inches or greater in depth and 50 feet in length. The Unit Manager or his/her representative may restrict hauling and/or skidding if ruts exceed the specified depth. With the Unit Manager or his/her representative's approval, the Purchaser may return to the area when the risk of rutting has decreased.

5.4.2 - Skid trails (2/04)

Skid trails up and down slopes should be avoided. If however this is unavoidable, these trails will be left in a non-erodible condition using water bars, logs, and slash. Placing of slash on these skid trails while logging is ongoing may alleviate need for any further action. At the direction of the sale administrator, seed, fertilizer, and mulch may also be required.

5.4.4 - Slope protection (9/19)

Skid trails and roads on slopes shall be water barred with

5.8 - Protection of Endangered Species

5.8.5 - Protection of raptor nests (3/13)

All trees with raptor nests will be protected if found during harvesting operations. Notification will be made to the Unit Manager or his/her representative who will notify the Wildlife Biologist so an on-site evaluation and recommendation can be made, if necessary.

6 - Safety and Fire Prevention

6.2 - Signing

6.2.1 - Road posting (10/20)

The Purchaser is responsible for posting and maintaining caution signs on Hemmings Lake Road prior to beginning operations. The road must be posted at appropriate distances from the sale area to warn of logging activity and truck traffic. Signs must be removed when harvest operations are suspended or completed. The Purchaser will provide these signs.

TIMBER SALE MAP

This information provided by authority of Part 525, 1994 PA 451, as amended.

Sale Number	Date	
32-002-24	10/15/2024	
Scale	Page	Of
1:31,680	1	1

Forest Management Unit	County	Mapped By: Gould
Gwinn Mgt Unit	Marquette	Cruised By: VanOss, Gould, Siler

Township	Range	Section(s) and	N1/2NW,NWNE;
45N / 46N	27W	Subdivision(s)	Sec. 20 SESE; Sec. 21 SWSW; Sec. 28 NWNW; Sec. 33 S1/2NW,S1/2NE,SW,SE; Sec. 4

Cover Type			
A = Aspen	J = Jack Pine	O = Oak	U = Upland Brush
B = Paper Birch	K = Rock	P = Lowland Poplar	UM = Upland Mix Forest
C = Cedar	L = Lowland Brush	Q = Mixed Swamp Conifer	V = Bog or Marsh
D = Treed Bog	LM = Lowland Mix Forest	R = Red Pine	W = White Pine
E = Swamp Hardwoods	M = Maple, Beech, Birch	S = Black Spruce	X = Non Stocked
F = Spruce/Fir	MC = Mixed Conifer	T = Tamarack	Y = Sand
G = Grass	MD = Mixed Deciduous	Z = Water	
H = Hemlock	N = Marsh		

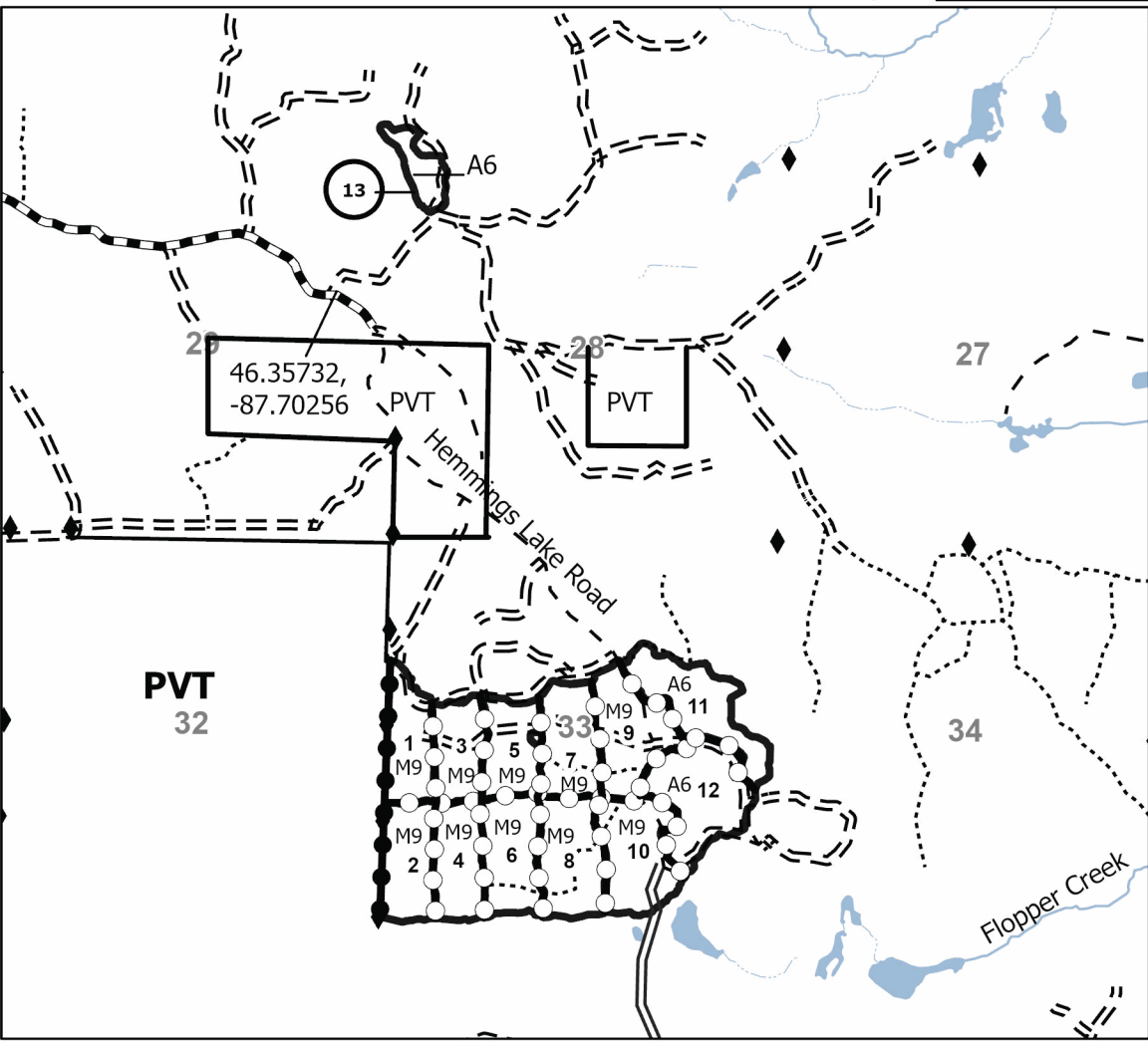
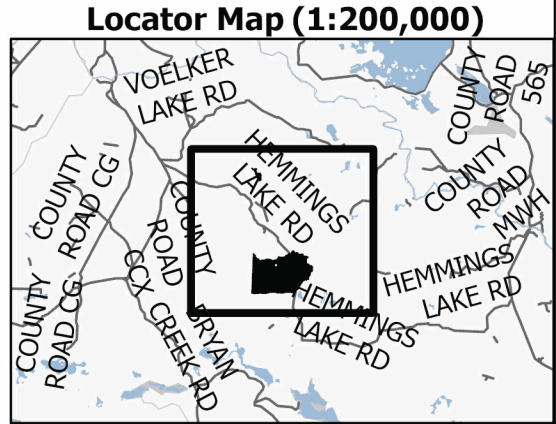
Density	
0 = Non Stocked	5 = Pole Timber Medium
1 = Seedling Sapling Poor	6 = Pole Timber Well
2 = Seedling Sapling Medium	7 = Saw Timber Poor
3 = Seedling Sapling Well	8 = Saw Timber Medium
4 = Pole Timber Poor	9 = Saw Timber Well

PU #	Acres	PU #	Acres	PU #	Acres
1	25	6	29.3	11	34.1
2	26.9	7	28	12	40.2
3	22.3	8	32.8	13	11.2
4	25	9	33.3		
5	23.4	10	34.4		

Rolling Hardwood

366.0 Acres

Compartment 32252



Legend

- Against State (Red)
- Payment Unit (Yellow)
- Private Line (Blue)
- Primary Forest Road
- == Forest Access Route
- Administrative Access Only
- Paved Road
- Government Gravel/Dirt
- - - Private Gravel/Dirt
- ◆ Survey Grade Corner

Use QR Code to open Map in App



TIMBER SALE INFORMATION

Mosquito Machine (32-003-24)

T44N, R26W, SEC. 1; T44N, R26W, SEC. 10; T44N, R26W, SEC. 11; T44N, R26W, SEC. 2; T44N, R26W, SEC. 3.
Marquette County (Advertised Price \$67,224.25)

SALE NOTE: A recreation site such as a trail, pathway, or campground is within the sale area or the vicinity. Certain restrictions/specifications may be applicable including time restrictions. Access may be through private or other public land.

A timber sale contract for this lump sum, sealed bid timber sale will be awarded to the responsible bidder offering the highest sealed bid price. All units of volume listed below were estimated using the Inventory Manager computer program and the new Michigan taper model. Bids must be at or above the following advertised price for each product and species:

<u>PRODUCTS & SPECIES</u>	<u>ESTIMATED UNITS*</u>	<u>ADVERTISED PRICE</u>
Sawtimber		
Black Cherry	2.1 MBF	\$ 69.00 / MBF
Red Maple	115.5 MBF	\$ 80.00 / MBF
Sugar Maple	80.6 MBF	\$ 163.00 / MBF
Yellow Birch	3.5 MBF	\$ 20.00 / MBF
Pulpwood		
Balsam Fir	211 Cords	\$ 9.05 / Cord
Mixed Aspen	440 Cords	\$ 19.55 / Cord
Mixed Hardwood	2,854 Cords	\$ 9.35 / Cord
Mixed Spruce	700 Cords	\$ 9.20 / Cord
Red Pine	6 Cords	\$ 60.55 / Cord
Tamarack	52 Cords	\$ 12.15 / Cord

* The total volume is statistically estimated within plus (+) or minus (-) 9.20 percent. There are an estimated 4,720 cords on this timber sale, plus or minus 435 cords at the 95% confidence level. The estimated units are final and not subject to adjustment. Prospective bidders are urged to examine this timber and to make their own estimates of quantity and quality.

BOND AND PAYMENT SCHEDULE:

1. A bond in the amount of \$3,361.00 to insure faithful performance of the conditions of the contract will be deposited by the successful bidder within 21 days of the sale award.
2. Cutting in any sale or unit without the required advance payment would be considered a trespass.
3. Total payment must be paid in advance or according to the following schedule :
 - (a) Ten percent (10%) of the sale value must be paid within 21 days of the sale award.
 - (b) The 10% down payment will be credited towards the first unit cut.
 - (c) Payment for each of the following units must be made before cutting begins in that unit:

PAYMENT UNIT NUMBER	PERCENT OF TOTAL SALE VALUE
01	6.8%
02	8.1%
03	3.3%
04	9.5%
05	12.9%
06	2.5%
07	3.0%
08	3.3%
09	2.4%
10	1.8%
11	3.0%
12	3.1%
13	2.3%
14	3.8%
15	2.8%
16	17.7%
17	3.2%
18	2.4%
19	2.4%
20	3.2%
21	2.5%

4. If no cutting takes place, the 10% down payment will not be refunded.
5. Operations on the contract issued will terminate on 06/30/2028.

SALE STATISTICS

Volumes were calculated in cubic feet using the Michigan taper model. Cubic foot volume includes all wood inside bark for the product indicated. For display purposes, cubic feet were converted to cords and MBF using a simple conversion factor, e.g. 79 cubic feet per cord and 185 cubic feet per MBF. The cubic foot volumes are precise; the cords and MBF volumes are not. Cubic foot volume cannot be directly converted to cords or boards with precision.

SALE VOLUMES

The total estimated sale volume may not equal the sum of the species/products due to the nature of statistical calculations associated with double sampling methodology.

VOLUME			STATISTICAL RANGE IN CORDS	
TOTAL CUBIC FEET	TOTAL CORDS	PERCENT ERROR	MINIMUM	MAXIMUM
372,897	4,720	9.20%	4,286	5,155

VDU VOLUMES

A VDU is a Volume Determination Unit. Volumes and their associated statistics are calculated at the VDU level and summarized to the sale level. There is often a one to one relationship between a VDU and a Payment Unit, but not always, depending on the cruise design. Refer to the VDU TO PAYMENT UNIT table.

VDU	VOLUME		PERCENT ERROR	RANGE IN CORDS	
	TOTAL CUBIC FEET	TOTAL CORDS		MINIMUM	MAXIMUM
2	8,315	105	63.34%	39	172
5	15,258	193	35.43%	125	262
12	13,335	169	40.75%	100	238
19	74,697	946	26.17%	698	1,193
23	17,518	222	32.09%	151	293
24	13,583	172	56.65%	75	269
46	7,662	97	96.93%	3	191
50	50,368	638	22.30%	495	780
51	53,542	678	19.76%	544	812
52	118,620	1,502	16.46%	1,254	1,749
TOTAL:	372,897	4,720		3,483	5,957

VDU TO PAYMENT UNIT

When a VDU is associated with more than one Payment Unit (PU), the VDU volumes are assigned to the PU based on acres of the VDU within the PU.

VDU	VDU ACRES	PU	PU ACRES
2	7.9	19	7.9
5	13.7	20	13.7
12	12.8	21	12.8
19	52.5	16	52.5
23	36.7	17	36.7
24	9.5	18	9.5
46	4.1	15	4.1
50	107.4	9	20.6
50	107.4	10	15.4
50	107.4	11	25.6
50	107.4	12	26.1
50	107.4	13	19.7
51	91.4	6	18.3
51	91.4	7	21.6
51	91.4	8	23.8
51	91.4	14	27.7
52	140.6	1	23.7
52	140.6	2	27.9
52	140.6	3	11.4
52	140.6	4	32.9
52	140.6	5	44.7
TOTAL:	1,742.8		476.6

DESCRIPTION OF TIMBER BY PAYMENT UNIT (PU)

PU	MARKET GROUP	PRODUCT	QUANTITY	UNIT	ACRES	ADVERTISE PRICE
1	Red Maple	Sawtimber	7.2	MBF	23.7	\$4,599.85
	Sugar Maple		12.4	MBF		
	Yellow Birch		0.4	MBF		
	Balsam Fir	Pulpwood	7	Cords		
	Mixed Aspen		7	Cords		
	<i>B. T. Aspen</i>		1	<i>Cords</i>		
	<i>Quaking Aspen</i>		6	<i>Cords</i>		
	Mixed Hardwood		187	Cords		
	<i>Black Cherry</i>		2	<i>Cords</i>		
	<i>Red Maple</i>		97	<i>Cords</i>		
	<i>Sugar Maple</i>		87	<i>Cords</i>		
	<i>Yellow Birch</i>		1	<i>Cords</i>		
	Mixed Spruce		5	Cords		
	<i>White Spruce</i>		5	<i>Cords</i>		
2	Red Maple	Sawtimber	8.5	MBF	27.9	\$5,419.85
	Sugar Maple		14.6	MBF		
	Yellow Birch		0.5	MBF		
	Balsam Fir	Pulpwood	9	Cords		
	Mixed Aspen		8	Cords		
	<i>B. T. Aspen</i>		1	<i>Cords</i>		
	<i>Quaking Aspen</i>		7	<i>Cords</i>		
	Mixed Hardwood		220	Cords		
	<i>Black Cherry</i>		3	<i>Cords</i>		
	<i>Red Maple</i>		114	<i>Cords</i>		
	<i>Sugar Maple</i>		102	<i>Cords</i>		
	<i>Yellow Birch</i>		1	<i>Cords</i>		
	Mixed Spruce		6	Cords		
	<i>White Spruce</i>		6	<i>Cords</i>		
3	Red Maple	Sawtimber	3.5	MBF	11.4	\$2,236.60
	Sugar Maple		6.0	MBF		
	Yellow Birch		0.2	MBF		
	Balsam Fir	Pulpwood	3	Cords		
	Mixed Aspen		4	Cords		
	<i>B. T. Aspen</i>		1	<i>Cords</i>		
	<i>Quaking Aspen</i>		3	<i>Cords</i>		
	Mixed Hardwood		91	Cords		
	<i>Black Cherry</i>		1	<i>Cords</i>		
	<i>Red Maple</i>		47	<i>Cords</i>		
	<i>Sugar Maple</i>		42	<i>Cords</i>		
	<i>Yellow Birch</i>		1	<i>Cords</i>		
	Mixed Spruce		2	Cords		
	<i>White Spruce</i>		2	<i>Cords</i>		
4	Red Maple	Sawtimber	10.1	MBF	32.9	\$6,411.95
	Sugar Maple		17.3	MBF		
	Yellow Birch		0.6	MBF		
	Balsam Fir	Pulpwood	10	Cords		
	Mixed Aspen		10	Cords		
	<i>B. T. Aspen</i>		2	<i>Cords</i>		
	<i>Quaking Aspen</i>		8	<i>Cords</i>		
	Mixed Hardwood		259	Cords		
	<i>Black Cherry</i>		3	<i>Cords</i>		
	<i>Red Maple</i>		134	<i>Cords</i>		
	<i>Sugar Maple</i>		120	<i>Cords</i>		
	<i>Yellow Birch</i>		2	<i>Cords</i>		
	Mixed Spruce		7	Cords		
	<i>White Spruce</i>		7	<i>Cords</i>		

DESCRIPTION OF TIMBER BY PAYMENT UNIT (PU), CON'T

PU	MARKET GROUP	PRODUCT	QUANTITY	UNIT	ACRES	ADVERTISE PRICE
9 con't	<i>Sugar Maple</i> Mixed Spruce <i>Black Spruce</i> <i>White Spruce</i>	<i>Pulpwood</i>	11 9 1 8	<i>Cords</i> Cords <i>Cords</i> <i>Cords</i>		
10	Red Maple Sugar Maple Balsam Fir Mixed Hardwood <i>Red Maple</i> <i>Sugar Maple</i> Mixed Spruce <i>Black Spruce</i> <i>White Spruce</i>	Sawtimber Pulpwood	5.0 0.5 11 61 53 8 7 1 6	MBF MBF Cords Cords <i>Cords</i> <i>Cords</i> Cords <i>Cords</i> <i>Cords</i>	15.4	\$1,215.80
11	Red Maple Sugar Maple Balsam Fir Mixed Hardwood <i>Red Maple</i> <i>Sugar Maple</i> Mixed Spruce <i>Black Spruce</i> <i>White Spruce</i>	Sawtimber Pulpwood	8.3 0.8 18 101 87 14 12 2 10	MBF MBF Cords Cords <i>Cords</i> <i>Cords</i> Cords <i>Cords</i> <i>Cords</i>	25.6	\$2,012.05
12	Red Maple Sugar Maple Balsam Fir Mixed Hardwood <i>Red Maple</i> <i>Sugar Maple</i> Mixed Spruce <i>Black Spruce</i> <i>White Spruce</i>	Sawtimber Pulpwood	8.5 0.9 18 103 89 14 12 2 10	MBF MBF Cords Cords <i>Cords</i> <i>Cords</i> Cords <i>Cords</i> <i>Cords</i>	26.1	\$2,063.05
13	Red Maple Sugar Maple Balsam Fir Mixed Hardwood <i>Red Maple</i> <i>Sugar Maple</i> Mixed Spruce <i>Black Spruce</i> <i>White Spruce</i>	Sawtimber Pulpwood	6.4 0.6 14 78 67 11 9 1 8	MBF MBF Cords Cords <i>Cords</i> <i>Cords</i> Cords <i>Cords</i> <i>Cords</i>	19.7	\$1,548.60
14	Black Cherry Red Maple Sugar Maple Yellow Birch Balsam Fir Mixed Hardwood <i>Black Cherry</i> <i>Red Maple</i> <i>Sugar Maple</i> <i>Yellow Birch</i> Mixed Spruce <i>Black Spruce</i> <i>White Spruce</i>	Sawtimber Pulpwood	0.7 8.2 1.0 0.3 15 155 5 118 31 1 12 5 7	MBF MBF MBF MBF Cords Cords <i>Cords</i> <i>Cords</i> <i>Cords</i> <i>Cords</i> Cords <i>Cords</i> <i>Cords</i>	27.7	\$2,568.70
15	Mixed Aspen <i>B. T. Aspen</i>	Pulpwood	64 26	Cords <i>Cords</i>	4.1	\$1,857.45

DESCRIPTION OF TIMBER BY PAYMENT UNIT (PU), CON'T

PU	MARKET GROUP	PRODUCT	QUANTITY	UNIT	ACRES	ADVERTISE PRICE
15 con't	<i>Quaking Aspen</i>	<i>Pulpwood</i>	38	<i>Cords</i>		
	Mixed Hardwood		25	Cords		
	<i>Red Maple</i>		25	<i>Cords</i>		
	Mixed Spruce		1	Cords		
	<i>Black Spruce</i>		1	<i>Cords</i>		
	Red Pine		6	Cords		
16	Red Maple	Sawtimber	6.3	MBF	52.5	\$11,905.95
	Balsam Fir	Pulpwood	43	Cords		
	Mixed Aspen		269	Cords		
	<i>Quaking Aspen</i>		269	<i>Cords</i>		
	Mixed Hardwood		455	Cords		
	<i>Black Cherry</i>		16	<i>Cords</i>		
	<i>Paper Birch</i>		21	<i>Cords</i>		
	<i>Red Maple</i>		391	<i>Cords</i>		
	<i>Sugar Maple</i>		27	<i>Cords</i>		
	Mixed Spruce		163	Cords		
	<i>White Spruce</i>		163	<i>Cords</i>		
17	Mixed Hardwood	Pulpwood	4	Cords	36.7	\$2,145.90
	<i>Yellow Birch</i>		4	<i>Cords</i>		
	Mixed Spruce		179	Cords		
	<i>Black Spruce</i>		179	<i>Cords</i>		
	Tamarack		38	Cords		
18	Mixed Hardwood	Pulpwood	115	Cords	9.5	\$1,599.65
	<i>Red Maple</i>		115	<i>Cords</i>		
	Mixed Spruce		57	Cords		
	<i>Black Spruce</i>		57	<i>Cords</i>		
19	Mixed Aspen	Pulpwood	41	Cords	7.9	\$1,591.20
	<i>Quaking Aspen</i>		41	<i>Cords</i>		
	Mixed Hardwood		21	Cords		
	<i>Paper Birch</i>		7	<i>Cords</i>		
	<i>Red Maple</i>		14	<i>Cords</i>		
	Mixed Spruce		46	Cords		
	<i>Black Spruce</i>		46	<i>Cords</i>		
	Tamarack		14	Cords		
20	Red Maple	Sawtimber	4.0	MBF	13.7	\$2,140.00
	Mixed Aspen	Pulpwood	10	Cords		
	<i>Quaking Aspen</i>		10	<i>Cords</i>		
	Mixed Hardwood		158	Cords		
	<i>Paper Birch</i>		9	<i>Cords</i>		
	<i>Red Maple</i>		149	<i>Cords</i>		
	Mixed Spruce		16	Cords		
	<i>White Spruce</i>		16	<i>Cords</i>		
21	Mixed Aspen	Pulpwood	14	Cords	12.8	\$1,695.45
	<i>Quaking Aspen</i>		14	<i>Cords</i>		
	Mixed Hardwood		33	Cords		
	<i>Paper Birch</i>		15	<i>Cords</i>		
	<i>Red Maple</i>		18	<i>Cords</i>		
	Mixed Spruce		121	Cords		
	<i>Black Spruce</i>		121	<i>Cords</i>		
TOTAL:			201.7	MBF		
TOTAL:			4,263	Cords		

Sale Specific Conditions & Requirements

Sale Name: Mosquito Machine

Sale Number: 32-003-24 Seq#: 1

1 - Sale Area

1.2 - Boundaries

1.2.1 - Painted boundaries (9/19)

The sale boundary and Payment Unit boundaries are marked and identified by blue, red and yellow paint. Exterior sale boundary lines against private property are marked with blue paint. Exterior sale boundary lines against state are marked with red paint. Interior Payment Unit boundaries are marked with yellow paint. Retention patches are marked with red paint; no harvesting activities may occur within these areas. The painted boundary line trees are not Included Timber and are to be protected unless marked with orange paint. Yellow painted trees designating an interior Payment Unit boundary are only to be cut when all surrounding Payment Units have been paid.

2 - Timber Specifications

2.1 - Included Timber

2.1.1 - Clearcut unit(s) with unmerchantable trees (6/14)

Within Payment Unit(s) 15-17 and 19-21, cut all trees that are two (2) inches or more at DBH except:

Within Unit(s) 15-17, 19, and 21, do not cut cedar, hemlock, and white pine.

Within Unit(s) 20, do not cut cedar, hemlock, white pine, and yellow birch.

2.1.3 - Cut tree marked unit(s) (12/08)

Within Payment Unit(s) 1-14, all trees are designated for cutting when marked with orange paint above and below stump height, regardless of merchantability. Within Payment Unit(s) 1 and 2, cut all white and black spruce, balsam fir and aspen, which meets minimum piece specifications in 2.2 utilization. Within Payment Unit(s) 3-14, cut all white spruce, black spruce, and balsam fir and aspen, which meets minimum piece specifications in 2.2 utilization.

2.1.7 - Leave tree marked unit(s) (6/14)

Within Payment Unit(s) 18, cut all trees that are two (2) inches or more at DBH except leave all cedar, hemlock, white pine, yellow birch, and trees marked with green paint above and below stump height.

3 - Payments

3.4 - Damaged Timber

3.4.1 - Damaged timber (7/16)

General Condition and Requirement 3.4 Damaged Timber, defines liquidated damages for undesignated live merchantable trees which are cut or injured. In addition, extreme care should be taken to avoid damage to tree seedlings and saplings.

No damage is acceptable to undesignated live merchantable trees. Within the sale area, if more than 5% of trees (> 4.5" DBH) within a specified area of the sale are damaged, liquidated damages will be assessed for all trees damaged. Rates will be in accordance with General Condition and Requirement 3.4 Damaged Timber.

4 - Transportation

4.1 - Construction

4.1.3 - Slash and earthen piles (8/04)

Piles or windrows of earth along roads and landings that have been widened or constructed shall be leveled. Slash from road maintenance or construction, including stumps, shall be dispersed throughout the sale.

4.1.4 - Timber removed for construction (3/23)

Trees cut or damaged in the process of pre-approved road, landing or skid trail construction will be decked in an area separate from other Designated Timber and not removed until measured by the sale administrator. Payment will be made at contract prices or average prices, if not on the contract.

4.1.6 - Road construction (4/24)

Construction of new roads or improvements of existing roads shall be done in such a way as to minimize the environmental and visual impacts. Merchantable trees shall be cut and utilized unless otherwise directed. Non-merchantable trees shall be severed and laid flat on the ground. Slash shall be scattered, and not left in windrows and kept a minimum of 10 feet back from the road edge. Stumps shall be set upright, not left on edge, and be moved at least 10 feet away from the road edge. Disturbed soil shall be feathered into the woods and not left in berms or windrows.

4.1.7 - Road closure (10/11)

All new roads built into the sale must be blocked to vehicle traffic within 60 days of completion of hauling. In general, this will require constructing a four (4') foot high berm of stumps and logs covered with earth. Overgrown roads that are reopened shall be considered new roads. Temporary berms may be required if no sale activity occurs for 60 or more consecutive days. Contact the Sale Administrator for specific details of design and placement.

4.1.8 - Road work (1) (8/07)

The following road work is required: The Purchaser is responsible for hauling and spreading approximately 100 yards of 3" minus rock on Miller Creek Road. Contact the Sale Administrator for the location(s) of where this material is to be placed.

4.4 - Access

4.4.1 - Private property access (3/11)

Permission for access across private land is the responsibility of the Purchaser. Should the Purchaser desire to cross private land, a copy of the written permission from the private land-owner may be required by the DNR.

5 - Operations

5.1 - Notification

5.1.1 - Pre-sale conference (10/16)

A pre-sale conference between the Purchaser and sale administrator is required prior to beginning any operations. The Unit Manager or his/her representative must be contacted at least 3 days in advance to schedule the conference.

5.2 - Conduct of Operations

5.2.1 - Slash

5.2.1.11 - Slash for reforestation (3/21)

To facilitate reforestation, the Sale Area shall be left with slash evenly distributed. Bunched tops within the cutting area shall be broken up and scattered. Stumps shall be cut low to the ground. Processing sites shall not be left with a compacted layer of slash; tops from these sites shall be hauled back into the cut area and scattered.

5.2.3 - Operating Restrictions

5.2.3.2 - Operating restrictions (9/11)

Within Payment Unit(s) 17,18, 19, and 21, unless changed by written agreement, cutting, skidding, and hauling are limited to frozen conditions, generally the period of 12/1 to 4/1. This restriction is due to wet soils.

5.2.3.3 - Bark slippage restriction (3/09)

Within Payment Unit(s) 1-14, unless changed by written agreement, cutting and skidding are not permitted during the period of April 15 to July 15. This restriction is because of bark slippage.

5.2.32 - Decking/landing restoration (9/13)

All decking and landing areas must have the surface area restored to a condition equal to or better than before. This is to ensure the proper regeneration of the stand. Wood debris, chips and "cookies" from trimmings must be removed or scattered away from landing and loading areas and may not be windrowed on the edge.

5.2.37 - No decking areas (12/08)

No decking is allowed within 50 feet of Miller Creek Road and Perrin Brothers Trail.

5.2.38 - No decking against live trees (2/04)

Cut products may not be decked against unmarked or designated leave trees.

5.2.39 - ORV trail/route protection (4/18)

The Perrin Brothers Trail is an ORV trail or route and is shown on the Timber Sale Map. Do not cut trees or damage posts with yellow ORV markers. Trees with yellow ORV markers shall be cut off above the markers and at least 5 feet above ground. All stumps within 5 feet of the trail must be cut flush with the ground. Maintain a 20-foot-wide slash, debris, and rut free zone daily using the ORV trail or route as the centerline. Do not run equipment down the ORV trail or route. Skidding across the trail or route may only occur in locations approved by the Sale Administrator.

5.2.41 - Snowmobile trail protection (9/11)

Trails 32 and 33 are snowmobile trails and are shown on the Timber Sale Map. Do not cut or damage posts with orange trail markers or traffic control signs. If the trails are used, they must be maintained and restored to a condition equal to or better than before the sale. The road maintenance/restoration must be done prior to December 1. If the trails are used for hauling, they must be graded to the satisfaction of the Unit Manager or his/her representative prior to December 1st. If the trail road is to be used for hauling during the snowmobile season, then a snow-covered base must be left on the trail. The hauling of forest products on the snowmobile trail are limited to Monday through Friday daylight hours during the snowmobile season. Maintain a 20-foot-wide slash, debris, and rut free zone daily using the snowmobile trail as the centerline. No decking of forest products will be permitted along the snowmobile trail. All stumps within 20 feet of the snowmobile trail must be cut at ground level.

5.4 - Soil Protection

5.4.1 - Rutting restriction, general (7/16)

Operations are to cease immediately if equipment and weather conditions result in rutting of roads and/or skid trails which is 12 inches or greater in depth and 50 feet in length. The Unit Manager or his/her representative may restrict hauling and/or skidding if ruts exceed the specified depth. With the Unit Manager or his/her representative's approval, the Purchaser may return to the area when the risk of rutting has decreased.

5.4.2 - Skid trails (2/04)

Skid trails up and down slopes should be avoided. If however this is unavoidable, these trails will be left in a non-erodible condition using water bars, logs, and slash. Placing of slash on these skid trails while logging is ongoing may alleviate need for any further action. At the direction of the sale administrator, seed, fertilizer, and mulch may also be required.

5.7 - Protection of Historical Sites

5.7.1 - Historical sites (7/12)

The Purchaser shall not cut live or dead trees or operate equipment within historical sites. Historical sites are marked on the map. The Purchaser shall protect historical sites from damage by the Purchaser's operations. If Purchaser's operations have cut or damaged historical sites through carelessness, the Purchaser shall pay \$10,000 as fixed, agreed and liquidated damages for each acre or part thereof cut or damaged.

6 - Safety and Fire Prevention

6.2 - Signing

6.2.1 - Road posting (10/20)

The Purchaser is responsible for posting and maintaining caution signs on Perrin Brothers Trail and Miller Creek Road prior to beginning operations. The road must be posted at appropriate distances from the sale area to warn of logging activity and truck traffic. Signs must be removed when harvest operations are suspended or completed. The Purchaser will provide these signs.

6.2.2 - Snowmobile trail posting (10/20)

The Purchaser is responsible for posting and maintaining caution signs on Trails 32 and 33 prior to beginning operations during the snowmobile season (approximately December 1 to March 31). The trail must be posted at appropriate distances from the sale area to warn of logging activity and truck traffic. Signs must be removed when harvest operations are suspended or completed. The Purchaser will provide these signs.

6.2.3 - Recreational trail posting (10/20)

The Purchaser is responsible for posting and maintaining caution signs on the ski trail along the south end of Payment Unit 2 prior to beginning operations. The trail must be posted at appropriate distances from the sale area to warn of logging activity and truck traffic at both ends of the trail. Signs must be removed when harvest operations are suspended or completed. The

Purchaser will provide these signs.



TIMBER SALE MAP

This information provided by authority of Part 525, 1994 PA 451, as amended.

Sale Number

32-003-24

Date

10/15/2024

Forest Management Unit		County	Mapped By: Siler	Scale	Page	Of
Gwinn Mgt Unit		Marquette	Cruised By: VanOss, Gould, Siler	1:15,840	2	2

Township	Range	Section(s) and Subdivision(s)	E1/2NW,NE,SW,SE; Sec. 3 SENW,SW; Sec. 1 NWNW,S1/2NW,E1/2SW,N1/2SE,SWSE; Sec. 10 NENW,NE; Sec. 11 NW,N1/2NE,NWSW; Sec. 2
44N	26W		

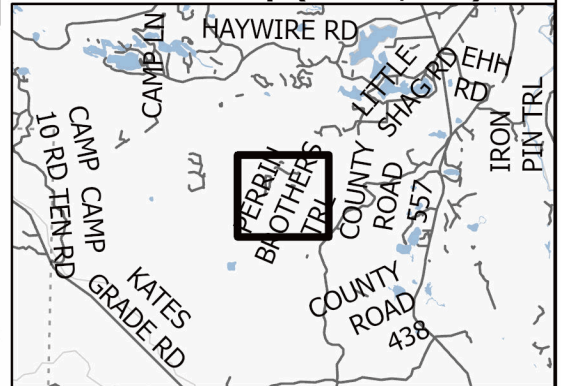
Cover Type

A = Aspen	J = Jack Pine	O = Oak	U = Upland Brush
B = Paper Birch	K = Rock	P = Lowland Poplar	UM = Upland Mix Forest
C = Cedar	L = Lowland Brush	Q = Mixed Swamp Conifer	V = Bog or Marsh
D = Treed Bog	LM = Lowland Mix Forest	R = Red Pine	W = White Pine
E = Swamp Hardwoods	M = Maple, Beech, Birch	S = Black Spruce	X = Non Stocked
F = Spruce/Fir	MC = Mixed Conifer	T = Tamarack	Y = Sand
G = Grass	MD = Mixed Deciduous	Z = Water	
H = Hemlock	N = Marsh		

Density

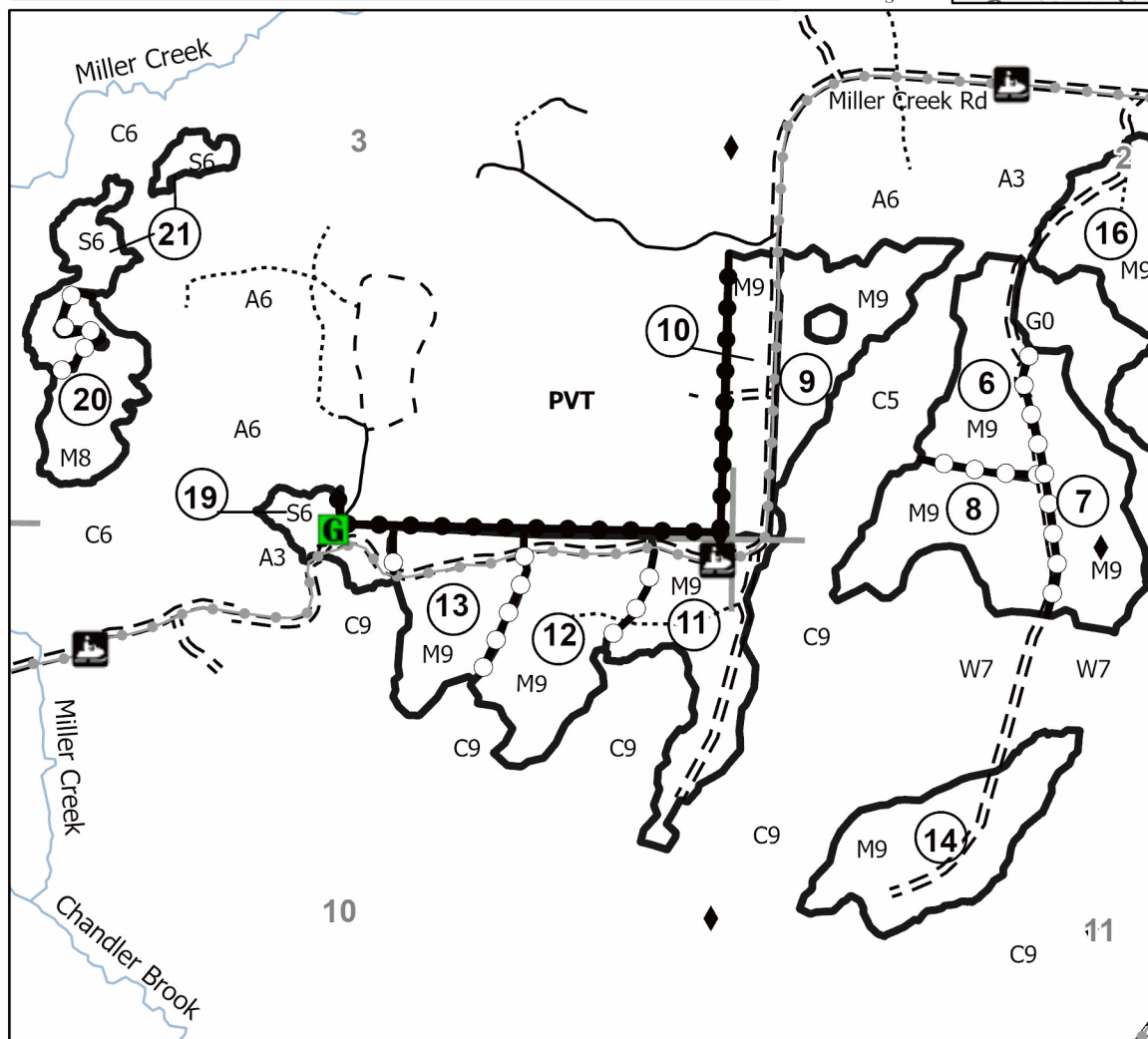
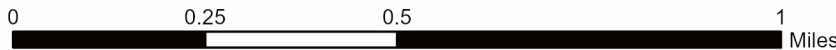
0 = Non Stocked	5 = Pole Timber Medium
1 = Seedling Sapling Poor	6 = Pole Timber Well
2 = Seedling Sapling Medium	7 = Saw Timber Poor
3 = Seedling Sapling Well	8 = Saw Timber Medium
4 = Pole Timber Poor	9 = Saw Timber Well

Locator Map (1:200,000)



PU #	Acres	PU #	Acres	PU #	Acres	PU #	Acres
1	23.7	7	21.6	13	19.7	19	7.9
2	27.9	8	23.8	14	27.7	20	13.7
3	11.4	9	20.6	15	4.1	21	12.8
4	32.9	10	15.4	16	52.5		
5	44.7	11	25.6	17	36.7		
6	18.3	12	26.1	18	9.5		

Mosquito Machine
476.6 Acres



Legend

- Against State (Red)
- Payment Unit (Yellow)
- Private Line (Blue)
- Recreational Trail
- Lakes and Rivers
- Perennial River
- Primary Forest Road
- Forest Access Route
- Administrative Access Only
- Paved Road
- Government Gravel/Dirt
- Private Gravel/Dirt
- Payment Unit
- Special Protection Area
- Survey Grade Corner
- Gate
- Section Corner

Use QR Code to open Map in App



Mosquito Machine (32-003-24)

T44N, R26W, SEC. 1; T44N, R26W, SEC. 10; T44N, R26W, SEC. 11; T44N, R26W,

In response to the notice of sale to be held 2:00 p.m. (local time) on January 13, 2025, I am hereby submitting my sealed bid (firm offer) for the following forest products to be cut. Bids for individual species must be at or above the advertised price. All non-responsive bid forms may be rejected.

<u>PRODUCTS & SPECIES</u>	<u>ESTIMATED VOLUME*</u>	<u>ADVERTISED PRICE</u>	<u>BID PRICE/UNIT</u>
Sawtimber			
Black Cherry	2.1 MBF	\$ 69.00/MBF	\$ _____
Red Maple	115.5 MBF	\$ 80.00/MBF	\$ _____
Sugar Maple	80.6 MBF	\$ 163.00/MBF	\$ _____
Yellow Birch	3.5 MBF	\$ 20.00/MBF	\$ _____
Pulpwood			
Balsam Fir	211 Cords	\$ 9.05/Cord	\$ _____
Mixed Aspen	440 Cords	\$ 19.55/Cord	\$ _____
Mixed Hardwood	2,854 Cords	\$ 9.35/Cord	\$ _____
Mixed Spruce	700 Cords	\$ 9.20/Cord	\$ _____
Red Pine	6 Cords	\$ 60.55/Cord	\$ _____
Tamarack	52 Cords	\$ 12.15/Cord	\$ _____

*The volumes are statistically estimated within plus (+) or minus (-) 9.20 percent at 95% confidence level. These estimated volumes are final and not subject to adjustment. Prospective bidders are urged to examine this timber and to make their own estimates of quantity and quality.

I understand that any or all bids may be rejected. All bids must be signed and all bid items must be bid or the bid form may be rejected. I also understand that consideration and awarding a contract will be based upon my past performance and ability to complete the contract based upon equipment and staffing subject to my control.

FEDERAL ID: _____ - _____ or SOCIAL SECURITY NUMBER: _____ - _____ - _____

Company or individual bidding: _____

Company representative's name: _____

Address: _____

City: _____ State: _____ Zip: _____

IF AVAILABLE, PLEASE PLACE THE PERSONALIZED LABEL FROM YOUR PROSPECTUS IN THE ABOVE BOX.

Individual or company representative's signature: _____ Date: _____

Phone number : _____ Email (optional): _____

THE WINNING BIDDER MUST COMPLETE THE VERIFICATION OF WORKER'S DISABILITY COMPENSATION ACT COMPLIANCE (ON REVERSE SIDE IF DOUBLE SIDED) WITHIN 21 DAYS OF SALE AWARD DATE



FOR DEPARTMENT USE ONLY	
Sale Number (XX - XXX - XX - XX)	
Forest Management Unit:	

TIMBER SALE VERIFICATION OF WORKER'S DISABILITY COMPENSATION ACT COMPLIANCE

As required by Act 317, P.A. 1969 (Worker's Compensation) and
Part 5 of Act 451 of 1994, as amended.

VERIFICATION OF WORKER'S DISABILITY COMPENSATION ACT COMPLIANCE

- This verification must be completed and submitted within 21 days of contract award and prior to the issuance of the timber sale contract.
- In addition, if boxes 2B or 2C are checked, then Notice of Exclusion or Certificate of Insurance must be submitted within twenty-one (21) days of the contract award and prior to the issuance of the timber sale contract.
- All information must be typed or printed except for written signatures.

Please Check Appropriate Categories:

1. My business is organized as (you **must** check one of the boxes below):
 - A. Sole Proprietorship (individual)
 - B. Partnership
 - C. Corporation
2. You **must** check one of the boxes below:
 - A. I certify my business is a sole proprietorship and it has no employees but the sole proprietor. I am not subject to the Worker's Compensation Laws.
 - B. I certify my business has satisfied its obligation to the Worker's Compensation Act through the use of an approved Notice of Exclusion (BWC-337, Rev. 5/96). I will provide a copy of the Notice of Exclusion within 21 days of the contract award. (For questions or a copy of the BWC-337, please call the Worker's Compensation Bureau at 517-322-1195).
 - C. I certify my business has a Worker's Compensation Policy. I will provide an original Certificate of Insurance within twenty-one (21) days of the contract award.
3. If you have checked item 2(A) or 2(B), you **must** indicate the number of **both** full-time and part-time employees, other than yourself, including family members and active partners (if none, you must enter "0").

_____ Full-time Employees

_____ Part-time Employees

Name of Business		Federal ID (or) Social Security No.	
Address		Telephone ()	
City	State	ZIP	

I hereby certify that the above information is true and correct. I agree to notify the Michigan DNR of any changes that occur in factors affecting my coverage during any of my present and future operations.

Signature of Owner or Authorized Representative

Title

Date

Please complete the "SEALED BID" information on the next page

Rolling Hardwood (32-002-24)

T45N, R27W, SEC. 4; T46N, R27W, SEC. 20; T46N, R27W, SEC. 21; T46N, R27W,

In response to the notice of sale to be held 2:00 p.m. (local time) on January 13, 2025, I am hereby submitting my sealed bid (firm offer) for the following forest products to be cut. Bids for individual species must be at or above the advertised price. All non-responsive bid forms may be rejected.

<u>PRODUCTS & SPECIES</u>	<u>ESTIMATED VOLUME*</u>	<u>ADVERTISED PRICE</u>	<u>BID PRICE/UNIT</u>
Sawtimber			
Paper Birch	21.7 MBF	\$ 62.00/MBF	\$ _____
Red Maple	96.7 MBF	\$ 80.00/MBF	\$ _____
Red Oak	99.2 MBF	\$ 131.00/MBF	\$ _____
Sugar Maple	432.9 MBF	\$ 163.00/MBF	\$ _____
Yellow Birch	0.7 MBF	\$ 20.00/MBF	\$ _____
Pulpwood			
Balsam Fir	61 Cords	\$ 9.05/Cord	\$ _____
Mixed Aspen	2,687 Cords	\$ 19.55/Cord	\$ _____
Mixed Hardwood	2,040 Cords	\$ 9.35/Cord	\$ _____
Red Oak	153 Cords	\$ 14.65/Cord	\$ _____
Red Pine	32 Cords	\$ 60.55/Cord	\$ _____

*The volumes are statistically estimated within plus (+) or minus (-) 11.34 percent at 95% confidence level. These estimated volumes are final and not subject to adjustment. Prospective bidders are urged to examine this timber and to make their own estimates of quantity and quality.

I understand that any or all bids may be rejected. All bids must be signed and all bid items must be bid or the bid form may be rejected. I also understand that consideration and awarding a contract will be based upon my past performance and ability to complete the contract based upon equipment and staffing subject to my control.

FEDERAL ID: _____ or SOCIAL SECURITY NUMBER: _____

Company or individual bidding: _____

Company representative's name: _____

Address: _____

City: _____ State: _____ Zip: _____

IF AVAILABLE, PLEASE PLACE THE PERSONALIZED LABEL FROM YOUR PROSPECTUS IN THE ABOVE BOX.

Individual or company representative's signature: _____ Date: _____

Phone number : _____ Email (optional): _____

THE WINNING BIDDER MUST COMPLETE THE VERIFICATION OF WORKER'S DISABILITY COMPENSATION ACT COMPLIANCE (ON REVERSE SIDE IF DOUBLE SIDED) WITHIN 21 DAYS OF SALE AWARD DATE



FOR DEPARTMENT USE ONLY	
Sale Number (XX - XXX - XX - XX)	
Forest Management Unit:	

TIMBER SALE VERIFICATION OF WORKER'S DISABILITY COMPENSATION ACT COMPLIANCE

As required by Act 317, P.A. 1969 (Worker's Compensation) and
Part 5 of Act 451 of 1994, as amended.

VERIFICATION OF WORKER'S DISABILITY COMPENSATION ACT COMPLIANCE

- This verification must be completed and submitted within 21 days of contract award and prior to the issuance of the timber sale contract.
- In addition, if boxes 2B or 2C are checked, then Notice of Exclusion or Certificate of Insurance must be submitted within twenty-one (21) days of the contract award and prior to the issuance of the timber sale contract.
- All information must be typed or printed except for written signatures.

Please Check Appropriate Categories:

1. My business is organized as (you **must** check one of the boxes below):
 - A. Sole Proprietorship (individual)
 - B. Partnership
 - C. Corporation
2. You **must** check one of the boxes below:
 - A. I certify my business is a sole proprietorship and it has no employees but the sole proprietor. I am not subject to the Worker's Compensation Laws.
 - B. I certify my business has satisfied its obligation to the Worker's Compensation Act through the use of an approved Notice of Exclusion (BWC-337, Rev. 5/96). I will provide a copy of the Notice of Exclusion within 21 days of the contract award. (For questions or a copy of the BWC-337, please call the Worker's Compensation Bureau at 517-322-1195).
 - C. I certify my business has a Worker's Compensation Policy. I will provide an original Certificate of Insurance within twenty-one (21) days of the contract award.
3. If you have checked item 2(A) or 2(B), you **must** indicate the number of **both** full-time and part-time employees, other than yourself, including family members and active partners (if none, you must enter "0").

_____ Full-time Employees

_____ Part-time Employees

Name of Business		Federal ID (or) Social Security No.	
Address		Telephone ()	
City	State	ZIP	

I hereby certify that the above information is true and correct. I agree to notify the Michigan DNR of any changes that occur in factors affecting my coverage during any of my present and future operations.

Signature of Owner or Authorized Representative

Title

Date

Please complete the "SEALED BID" information on the next page