



**DEPARTMENT OF NATURAL RESOURCES  
STATE OF MICHIGAN  
TIMBER SALE PROSPECTUS #7525**

SCHEDULED SALE DATE AND TIME: 2:00 p.m. (local time) on February 10, 2025.

LOCATION: **GWINN MGMT UNIT, 410 WEST M 35, GWINN, MI 49841.**

PROSPECTUS NOTE: The bidder is advised to inspect the sale area and review the location, estimated volumes, operating costs and contract terms of proposed sales. Please be aware that some landowners may request 60 days or more notice for access across their land.

Notice is hereby given that bids will be received by the Unit Manager, GWINN MANAGEMENT UNIT, for certain timber on the following described lands:

Marvelous McFarland Mix (32-007-24) / T43N, R24W, SEC. 16, S1/2NW,N1/2NE,SWNE,N1/2SW,SESW.

T43N, R24W, SEC. 17, SENE,NWSE.

T43N, R24W, SEC. 18, NE,SE.

T43N, R24W, SEC. 19, N1/2NE.

T43N, R24W, SEC. 7 , SESE.

T43N, R24W, SEC. 9 , SESE.

Marquette County, Advertised Price \$105,798.75, 285.8 Acres, Hardwood, Red Pine.

SALE NOTE: Additional road work is required on this sale.

Access may be through private land.

Grouse Picnic Pine (32-008-24) / T46N, R27W, SEC. 23, W1/2SE.

T46N, R27W, SEC. 26, N1/2NE,SESE.

T46N, R27W, SEC. 35, NW,NE,SESW,NWSE,S1/2SE.

T46N, R27W, SEC. 36, SWSW.

Marquette County, Advertised Price \$152,566.60, 222.2 Acres, Red Pine, Jack Pine.

SALE NOTE: Some units require private property access. This sale has operating restrictions. See spec 5.2.3.

Access may be through private land.

Mangum East Maple (32-025-23) / T47N, R22W, SEC. 19, NW,W1/2NE,N1/2SW,SESW,SWSE.

T47N, R22W, SEC. 30, NENW,NWNE.

T47N, R23W, SEC. 24, E1/2NE,E1/2SE.

Alger County, Advertised Price \$26,021.40, 152.2 Acres, Hardwood, Spruce/Fir/Tamarack.

SALE NOTE: A recreation site such as a trail, pathway, or campground is within the sale area or the vicinity. Certain restrictions/specifications may be applicable including time restrictions.

## BID INSTRUCTIONS (VER. 10/10/2022):

### 1. Scheduled Bid Location, Date, and Time (2/11)

Bids must be received by the Unit Manager, GWINN OFFICE, 410 WEST M 35, GWINN, MI 49841, no later than 2:00 p.m. (local time) on February 10, 2025. For further information concerning this sale, contact Mike Brodeur at 906-346-9201 extension 103.

### 2. Bidder's Qualifications (10/22)

If all or part of a timber sale was prepared by a private contractor, the contractor and that contractor's company are not permitted to bid on the timber sale. A person must be 18 years of age or older to purchase timber. Permanent employees of the Department of Natural Resources or members of their immediate household may not bid. Former employees, in the permanent or seasonal class, may not bid until 3 months after the last day of active duty. Bids will not be accepted from individuals or companies appearing on the DNR/FRD No-Bid List. This list contains the names of purchasers who previously failed to execute a contract within 21-days or who have a history of poor performance.

### 3. Preparation of Sealed Bids (5/16)

Bid Forms may be completed online thru Michigan DNR Timber Sale Online Bidding (OLB) at [www.michigan.gov/timberbidding](http://www.michigan.gov/timberbidding) or by completing the hardcopy Bid Form found in the Timber Sale Prospectus. Hardcopy Bid Forms shall be manually signed in ink. Registration in OLB is considered your 'signature' for all bids submitted thru that system. Bid prices must be entered for each species and product in the Bid Price column for all material subject to bidding and all fill-in blanks must be completed. If erasures or other changes appear on the hardcopy Bid Form, each erasure or change must be initialed by the person signing the bid.

### 4. Submission of Sealed Bids (5/16)

Bid forms may be obtained from the Unit Manager or thru OLB. Bids may be submitted hardcopy or thru OLB. All hardcopy bids must be submitted on the bid form and in an envelope clearly identified as described in this section. NOTE: Only one bid form per bid envelope. Sealed bids must be submitted to the Unit office designated in the prospectus and must be submitted at or prior to the time established in the prospectus. The envelope should show on the outside (a) the sale name or number and (b) the date and time of bid opening, as shown in the prospectus. Bids received after the time specified in the sale prospectus are late bids and will be rejected.

It is possible for a bidder to submit multiple bids on a single sale. For example, a bid may be submitted hardcopy and a bid may be submitted thru OLB. Or, two bidders from the same company could both submit bids on the same sale. If this were to happen, the State would accept all bids received and award the contract accordingly. All bidding and contractual requirements would apply to all bids received.

### 5. Public Opening of Sealed Bids (7/16)

If conditions permit, the sealed bids will be publicly opened and posted at the time and place set in the prospectus.

If a bidder, present at a bid opening, has submitted bids on more than one sale, that bidder may withdraw their unopened bid envelopes or announce the withdrawal of their online bid after being declared the successful bidder on one sale.

### 6. Award of Contract (1/11)

Award of the contract will be made to the Bidder whose bid, conforming to the prospectus, is most advantageous to the State of Michigan on the basis of total value at rates bid for the estimated quantities. The State reserves the right to reject any bid or waive any minor irregularity in bids received. A written award mailed (or otherwise furnished) to the successful Bidder shall be deemed to result in a binding contract without further action by either party.

### 7. Down Payment (1/11)

The Bidder to whom award is made must make a down payment within 21 days of the sale award. The amount of the down payment will be calculated as shown in the Bond and Payment Schedule of this prospectus. Only cash may be used to meet this requirement.

### 8. Performance Security (1/11)

As guarantee of faithful performance, a cash bond, certificate of deposit, surety bond or irrevocable letter of credit (LOC) is required within 21 days of the sale award. The amount of the performance security is shown in the Bond and

Payment Schedule of this prospectus. If an LOC or surety is used, the coverage must extend for at least 6 months beyond the contract expiration.

#### 9. Worker's Compensation (10/22)

Purchaser shall obtain worker's compensation insurance to cover claims under Michigan's Worker's Disability Compensation Act of 1969 or similar employee benefit act of any other state applicable to an employee. Verification of Worker's Disability Compensation Act Compliance must be completed and submitted within 21 days of contract award and prior to the issuance of the timber sale contract. In addition, if applicable, Notice of Exclusion or Certificate of Insurance must also be submitted.

#### 10. Timber Sale Contract (10/22)

Additional conditions and requirements common to all timber sales are listed on the timber sale contract (R4031) and are available on line at [www.michigan.gov/timber](http://www.michigan.gov/timber). Contact the Unit Manager for additional information or a sample contract. Within 21 days of the date of the award letter, the bidder must sign the contract and provide the required down payment, performance security, and verification of worker's disability compensation. The down payment and performance security shall be in accordance with the provisions of the timber sale contract, in the sums stated in this prospectus. If these actions are not taken, then the Bidder, the Bidder's corporation, and the corporation's principals may not be permitted to bid on State timber sales for a period of 3 months after the first offense, 6 months after the second offense, and 1 year after the third offense. An offense will only be counted against the Bidder for 5 years. In addition, the Bidder certifies that if awarded this contract, the Bidder will complete the timber sale contract in accordance with its terms and any modifications thereof including requirements to purchase, cut, and remove the included timber by the expiration date.

Payment Unit values in the State Forest Timber Sale Contract are calculated based on the advertised value of the Payment Unit as a percentage of the total advertised value of the contract. The advertised value of each Payment Unit is given in the Description of Timber by Payment Unit table on the Timber Sale Information page. For example, if the value of Payment Unit 1 is advertised as \$1,500 and the total Timber Sale value is advertised as \$10,000, the contract price for Payment Unit 1 will be 15% of the total bid price ( $\$1,500/\$10,000 * 100$ ).

#### 11. Disclaimer of Estimates and Bidder's Warranty of Inspection (10/22)

Before submitting this bid, the Bidder is advised and cautioned to inspect the sale area, review the requirements of the sale contract, and take other steps as may be reasonably necessary to ascertain the location, estimated volumes, construction estimates, and operating costs of the proposed sale. Failure to do so will not relieve the Bidder from responsibility for completing the contract.

The Bidder warrants that this bid is submitted solely on the basis of the Bidder's examination and inspection of the quality and quantity of the timber offered for sale and the Bidder's opinion of the value thereof and the costs of recovery. No reliance should be placed on the State of Michigan's estimates of timber quality, quantity or costs of recovery. Bidder further acknowledges that the State of Michigan: (i) expressly disclaims any warranty of fitness of timber for any purpose; (ii) offers this timber as is without any warranty of quality (merchantability) or quantity and (iii) expressly disclaims any warranty as to the quantity or quality of timber sold.

#### 12. Certification and Chain-of-Custody (10/22)

Unless otherwise indicated in the contract under section 7 – Other Conditions of the Sale Specific Conditions & Requirements, the area encompassed by this timber sale is certified to the standards of the Forest Stewardship Council (FSC) - Certificate #SCS-FM/COC-00090N and the Sustainable Forestry Initiative (SFI) - Certificate #NSF-SFIS-5Y031-SF5. Forest products from this sale may be delivered to the mill as "FSC 100% and / or SFI certified" as long as the contractor hauling the forest products is chain-of-custody (COC) certified or covered under a COC certificate from the destination mill. The purchaser is responsible for maintaining COC after leaving the sale area.

#### 13. Good Neighbor Authority (GNA) Requirements (10/22)

If the name of this timber sales contains the acronym GNA, it is authorized by the Good Neighbor Authority (GNA) and covered by various agreements between the U.S. Forest Service and the State. The timber sale occurs on federal land and the following conditions apply:

GNA contracts on US Forest Service land will not be awarded to purchasers on the Federal list of excluded parties. The System for Award Management (SAM) will be checked for active excluded parties prior to award of contract. In

addition, the Bidder to whom award is made must complete an Assurance Regarding Felony Conviction or Tax Delinquent Status for Corporate Applicants (AD-3031).

14. Good Neighbor Authority (GNA) Requirements, con't (10/22)

Bidder certifies, by signing this bid form, that to the best of Bidder's knowledge that the following representations are accurate and complete.

- a. That the Bidder and its principals are not presently debarred, suspended, proposed for debarment, declared ineligible, or voluntary excluded from timber sales (covered transactions) by any Federal department or agency.
- b. That the Bidder and its principals have not within a 3-year period preceding this bid been convicted of or had a civil judgment rendered against them for commission of fraud or a criminal offense in connection with obtaining , attempting to obtain, or performing a public (Federal, State, or local) transaction or contract under a public transaction; violation of Federal or State antitrust statutes or commission of embezzlement, theft, forgery, bribery, falsification or destruction of records, making false statements, or receiving stolen property.
- c. That the Bidder and its principals are not presently indicted for or otherwise criminally or civilly charged by a governmental entity (Federal, State, or local) with commission of any of the offenses enumerated in paragraph b of this certification.
- d. That the Bidder and its principals have not within a 3-year period preceding this bid had one or more public transactions (Federal, State, or local) terminated for breach or default of a timber or forest product contract.

Bidders that cannot certify this requirement, in whole or in part, shall submit an explanation with their bid.

Scott Bowen  
Director

## TIMBER SALE INFORMATION

### Marvelous McFarland Mix (32-007-24)

T43N, R24W, SEC. 16; T43N, R24W, SEC. 17; T43N, R24W, SEC. 18; T43N, R24W, SEC. 19; T43N, R24W, SEC. 7; T43N, R24W, SEC. 9.

SALE NOTE: Additional road work is required on this sale.

Access may be through private land.

A timber sale contract for this lump sum, sealed bid timber sale will be awarded to the responsible bidder offering the highest sealed bid price. All units of volume listed below were estimated using the Inventory Manager computer program and the new Michigan taper model. Bids must be at or above the following advertised price for each product and species:

<u>PRODUCTS &amp; SPECIES</u>	<u>ESTIMATED UNITS*</u>	<u>ADVERTISED PRICE</u>
Sawtimber		
Basswood	27.3 MBF	\$ 34.00 / MBF
Red Maple	26.5 MBF	\$ 86.00 / MBF
Sugar Maple	39.4 MBF	\$ 171.00 / MBF
Yellow Birch	2.9 MBF	\$ 21.00 / MBF
Pulpwood		
Balsam Fir	662 Cords	\$ 8.50 / Cord
Mixed Hardwood	1,558 Cords	\$ 9.35 / Cord
Mixed Spruce	212 Cords	\$ 8.95 / Cord
Quaking Aspen	241 Cords	\$ 19.45 / Cord
Red Pine	1,077 Cords	\$ 63.20 / Cord
Tamarack	78 Cords	\$ 12.15 / Cord

\* The total volume is statistically estimated within plus (+) or minus (-) 8.98 percent. There are an estimated 4,049 cords on this timber sale, plus or minus 364 cords at the 95% confidence level. The estimated units are final and not subject to adjustment. Prospective bidders are urged to examine this timber and to make their own estimates of quantity and quality.

### **BOND AND PAYMENT SCHEDULE:**

1. A bond in the amount of \$10,580.00 to insure faithful performance of the conditions of the contract will be deposited by the successful bidder within 21 days of the sale award.
2. Cutting in any sale or unit without the required advance payment would be considered a trespass.
3. Total payment must be paid in advance or according to the following schedule :
  - (a) Ten percent (10%) of the sale value must be paid within 21 days of the sale award.
  - (b) The 10% down payment will be credited towards the first unit cut.
  - (c) Payment for each of the following units must be made before cutting begins in that unit:

PAYMENT UNIT NUMBER	PERCENT OF TOTAL SALE VALUE
01	6.1%
02	5.3%
03	3.3%
04	1.5%
05	0.5%
06	10.5%
07	21.8%
08	33.9%
09	1.1%
10	5.0%
11	5.4%
12	1.6%
13	2.0%
14	2.0%

4. If no cutting takes place, the 10% down payment will not be refunded.
5. Operations on the contract issued will terminate on 06/30/2028.

### **SALE STATISTICS**

Volumes were calculated in cubic feet using the Michigan taper model. Cubic foot volume includes all wood inside bark for the product indicated. For display purposes, cubic feet were converted to cords and MBF using a simple conversion factor, e.g. 79 cubic feet per cord and 185 cubic feet per MBF. The cubic foot volumes are precise; the cords and MBF volumes are not. Cubic foot volume cannot be directly converted to cords or boards with precision.

### SALE VOLUMES

The total estimated sale volume may not equal the sum of the species/products due to the nature of statistical calculations associated with double sampling methodology.

VOLUME			STATISTICAL RANGE IN CORDS	
TOTAL CUBIC FEET	TOTAL CORDS	PERCENT ERROR	MINIMUM	MAXIMUM
319,858	4,049	8.98%	3,685	4,412

### VDU VOLUMES

A VDU is a Volume Determination Unit. Volumes and their associated statistics are calculated at the VDU level and summarized to the sale level. There is often a one to one relationship between a VDU and a Payment Unit, but not always, depending on the cruise design. Refer to the VDU TO PAYMENT UNIT table.

VDU	VOLUME		PERCENT ERROR	RANGE IN CORDS	
	TOTAL CUBIC FEET	TOTAL CORDS		MINIMUM	MAXIMUM
1	39,991	506	34.03%	334	678
2	45,376	574	26.33%	423	726
5	28,571	362	31.77%	247	477
8	3,586	45	98.37%	1	90
11	26,603	337	33.64%	223	450
13	78,019	988	16.66%	823	1,152
15	8,573	109	57.27%	46	171
18	42,462	537	20.76%	426	649
20	9,993	126	35.54%	82	171
22	15,587	197	28.99%	140	254
30	9,166	116	50.31%	58	174
121	11,929	151	48.25%	78	224
<b>TOTAL:</b>	<b>319,858</b>	<b>4,049</b>		<b>2,881</b>	<b>5,217</b>

**VDU TO PAYMENT UNIT**

When a VDU is associated with more than one Payment Unit (PU), the VDU volumes are assigned to the PU based on acres of the VDU within the PU.

VDU	VDU ACRES	PU	PU ACRES
1	26.2	2	26.2
2	27.6	1	27.6
5	17.6	3	17.6
8	7.2	5	7.2
11	48.2	6	48.2
13	44.7	7	17.4
13	44.7	8	27.3
15	9.7	9	9.7
18	44.5	10	21.5
18	44.5	11	23.0
20	15.6	12	15.6
22	18.2	13	18.2
30	8.9	14	8.9
121	17.4	4	17.4
<b>TOTAL:</b>	<b>375.0</b>		<b>285.8</b>

**DESCRIPTION OF TIMBER BY PAYMENT UNIT (PU)**

PU	MARKET GROUP	PRODUCT	QUANTITY	UNIT	ACRES	ADVERTISE PRICE
1	Red Maple	Sawtimber	12.4	MBF	27.6	\$6,465.70
	Yellow Birch		2.9	MBF		
	Balsam Fir	Pulpwood	30	Cords		
	Mixed Hardwood		397	Cords		
	<i>Basswood</i>		17	<i>Cords</i>		
	<i>Black Cherry</i>		10	<i>Cords</i>		
	<i>Red Maple</i>		282	<i>Cords</i>		
	<i>Yellow Birch</i>		88	<i>Cords</i>		
	Mixed Spruce		75	Cords		
	<i>Black Spruce</i>		75	<i>Cords</i>		
	Quaking Aspen		36	Cords		
2	Basswood	Sawtimber	11.0	MBF	26.2	\$5,584.95
	Sugar Maple		2.7	MBF		
	Balsam Fir	Pulpwood	175	Cords		
	Mixed Hardwood		246	Cords		
	<i>Basswood</i>		101	<i>Cords</i>		
	<i>Black Cherry</i>		14	<i>Cords</i>		
	<i>Ironwood</i>		4	<i>Cords</i>		
	<i>Sugar Maple</i>		127	<i>Cords</i>		
	Mixed Spruce		14	Cords		
	<i>White Spruce</i>		14	<i>Cords</i>		
	Quaking Aspen		43	Cords		
3	Basswood	Sawtimber	0.8	MBF	17.6	\$3,452.05
	Red Maple		0.4	MBF		
	Balsam Fir	Pulpwood	196	Cords		
	Mixed Hardwood		79	Cords		
	<i>Basswood</i>		14	<i>Cords</i>		
	<i>Black Cherry</i>		19	<i>Cords</i>		
	<i>Ironwood</i>		4	<i>Cords</i>		
	<i>Red Maple</i>		25	<i>Cords</i>		
	<i>Sugar Maple</i>		17	<i>Cords</i>		
	Mixed Spruce		20	Cords		
	<i>Black Spruce</i>		20	<i>Cords</i>		
	Quaking Aspen		4	Cords		
	Tamarack		60	Cords		
4	Basswood	Sawtimber	1.8	MBF	17.4	\$1,572.10
	Balsam Fir	Pulpwood	39	Cords		
	Mixed Hardwood		73	Cords		
	<i>Basswood</i>		24	<i>Cords</i>		
	<i>Black Cherry</i>		2	<i>Cords</i>		
	<i>Ironwood</i>		3	<i>Cords</i>		
	<i>Sugar Maple</i>		44	<i>Cords</i>		
	Mixed Spruce		5	Cords		
	<i>White Spruce</i>		5	<i>Cords</i>		
	Quaking Aspen		12	Cords		
	Tamarack		18	Cords		
5	Sugar Maple	Sawtimber	0.4	MBF	7.2	\$493.10
	Balsam Fir	Pulpwood	20	Cords		
	Mixed Hardwood		21	Cords		
	<i>Sugar Maple</i>		21	<i>Cords</i>		
	Quaking Aspen		3	Cords		
6	Balsam Fir	Pulpwood	94	Cords	48.2	\$11,091.80
	Mixed Hardwood		8	Cords		
	<i>Black Cherry</i>		8	<i>Cords</i>		
	Mixed Spruce		83	Cords		
	<i>Norway Spruce</i>		66	<i>Cords</i>		



**DESCRIPTION OF TIMBER BY PAYMENT UNIT (PU), CON'T**

PU	MARKET GROUP	PRODUCT	QUANTITY	UNIT	ACRES	ADVERTISE PRICE
6 con't	<i>White Spruce</i> Quaking Aspen Red Pine	<i>Pulpwood</i>	17 3 149	<i>Cords</i> Cords Cords		
7	Balsam Fir Mixed Hardwood <i>Black Cherry</i> Red Pine	Pulpwood	22 1 1 361	Cords Cords <i>Cords</i> Cords	17.4	\$23,011.55
8	Balsam Fir Mixed Hardwood <i>Black Cherry</i> Mixed Spruce <i>White Spruce</i> Red Pine	Pulpwood	34 1 1 1 1 567	Cords Cords <i>Cords</i> Cords <i>Cords</i> Cords	27.3	\$36,141.70
9	Red Maple Balsam Fir Mixed Hardwood <i>Red Maple</i> <i>Sugar Maple</i> <i>Yellow Birch</i> Mixed Spruce <i>White Spruce</i> Quaking Aspen	Sawtimber Pulpwood	2.2 4 87 74 10 3 8 8 4	MBF Cords Cords <i>Cords</i> <i>Cords</i> <i>Cords</i> Cords <i>Cords</i> Cords	9.7	\$1,186.05
10	Basswood Red Maple Sugar Maple Balsam Fir Mixed Hardwood <i>Basswood</i> <i>Black Cherry</i> <i>Red Maple</i> <i>Sugar Maple</i> Mixed Spruce <i>Black Spruce</i> Quaking Aspen	Sawtimber Pulpwood	5.8 0.4 16.1 13 154 18 1 10 125 3 3 37	MBF MBF MBF Cords Cords <i>Cords</i> <i>Cords</i> <i>Cords</i> <i>Cords</i> Cords <i>Cords</i> Cords	21.5	\$5,281.60
11	Basswood Red Maple Sugar Maple Balsam Fir Mixed Hardwood <i>Basswood</i> <i>Black Cherry</i> <i>Red Maple</i> <i>Sugar Maple</i> Mixed Spruce <i>Black Spruce</i> Quaking Aspen	Sawtimber Pulpwood	6.2 0.5 17.3 14 165 20 2 10 133 3 3 40	MBF MBF MBF Cords Cords <i>Cords</i> <i>Cords</i> <i>Cords</i> <i>Cords</i> Cords <i>Cords</i> Cords	23.0	\$5,678.70
12	Basswood Red Maple Sugar Maple Balsam Fir Mixed Hardwood <i>Basswood</i> <i>Red Maple</i> <i>Sugar Maple</i> Quaking Aspen	Sawtimber Pulpwood	1.7 3.2 0.4 8 89 1 77 11 18	MBF MBF MBF Cords Cords <i>Cords</i> <i>Cords</i> <i>Cords</i> Cords	15.6	\$1,651.65

**DESCRIPTION OF TIMBER BY PAYMENT UNIT (PU), CON'T**

PU	MARKET GROUP	PRODUCT	QUANTITY	UNIT	ACRES	ADVERTISE PRICE
13	Red Maple	Sawtimber	2.0	MBF	18.2	\$2,069.05
	Sugar Maple		0.7	MBF		
	Balsam Fir	Pulpwood	10	Cords		
	Mixed Hardwood		181	Cords		
	<i>Red Maple</i>		93	<i>Cords</i>		
	<i>Sugar Maple</i>		88	<i>Cords</i>		
14	Red Maple	Sawtimber	5.4	MBF	8.9	\$2,118.75
	Sugar Maple		1.8	MBF		
	Balsam Fir	Pulpwood	3	Cords		
	Mixed Hardwood		56	Cords		
	<i>Basswood</i>		3	<i>Cords</i>		
	<i>Red Maple</i>		30	<i>Cords</i>		
	<i>Sugar Maple</i>		23	<i>Cords</i>		
	Quaking Aspen		41	Cords		
TOTAL:			96.1	MBF		
TOTAL:			3,828	Cords		

# Sale Specific Conditions & Requirements

**Sale Name: Marvelous McFarland Mix**

**Sale Number: 32-007-24 Seq#: 1**

## 1 - Sale Area

### 1.2 - Boundaries

#### 1.2.1 - Painted Boundaries (9/19)

The sale boundary and Payment Unit boundaries are marked and identified by blue, red and yellow paint. Exterior sale boundary lines against private property are marked with blue paint. Exterior sale boundary lines against state are marked with red paint. Interior Payment Unit boundaries are marked with yellow paint. Retention patches are marked with red paint; no harvesting activities may occur within these areas. The painted boundary line trees are not Included Timber and are to be protected unless marked with orange paint. Yellow painted trees designating an interior Payment Unit boundary are only to be cut when all surrounding Payment Units have been paid.

## 2 - Timber Specifications

### 2.1 - Included Timber

#### 2.1.1 - Clearcut Unit(s) with Unmerchantable Trees (6/14)

Within Payment Unit(s) 1-5, cut all trees that are two (2) inches or more at DBH, , except within Payment Units 1 and 3, do not cut cedar or hemlock.

#### 2.1.3 - Cut Tree Marked Unit(s) (12/08)

Within Payment Unit(s) 6-14, all trees are designated for cutting when marked with orange paint above and below stump height, regardless of merchantability.

In addition:

Within Payment Unit 6, cut all maple, aspen, ironwood, and birch which meet minimum piece specifications in 2.2 Utilization.

Within Payment Units 9-12, cut all spruce and fir which meet minimum piece specifications in 2.2 Utilization.

Within Payment Unit 13, cut all aspen, spruce, and fir which meet minimum piece specifications in 2.2 Utilization.

### 2.2 - Utilization

#### 2.2.3 - Stump heights (4/07)

Stump heights within Payment Units 3, 4, and 6-8 shall not exceed 12 inches for trees greater than 10 inches DBH and 4 inches for trees smaller than 10 inches DBH. This is in order to facilitate planting operations.

## 3 - Payments

### 3.3 - Pre-measured Sales

#### 3.3.4 - Dividing Payment Units (7/14)

Payment Unit(s) valued at more than \$40,000 may be divided at the request of the Purchaser and upon approval of the Unit Manager. Dividing Payment Units is a contract modification which requires a Timber Sale Contract Amendment. There will be only one division per Payment Unit.

### 3.4 - Damaged Timber

#### 3.4.1 - Damaged timber (7/16)

General Condition and Requirement 3.4 Damaged Timber, defines liquidated damages for undesignated live merchantable trees which are cut or injured. In addition, extreme care should be taken to avoid damage to tree seedlings and saplings.

No damage is acceptable to undesignated live merchantable trees. Within the Sale Area, if more than 5% of trees (> 4.5" DBH) within a specified area of the sale are damaged, liquidated damages will be assessed for all trees damaged. Rates will be in accordance with General Condition and Requirement 3.4 Damaged Timber.

## 4 - Transportation

### 4.1 - Construction

#### 4.1.3 - Slash and Earthen Piles (8/04)

Piles or windrows of earth along roads and landings that have been widened or constructed shall be leveled. Slash from road maintenance or construction, including stumps, shall be dispersed throughout the sale.

#### 4.1.4 - Timber Removed for Construction (3/23)

Trees cut or damaged in the process of pre-approved road, landing, or skid trail construction will be decked in an area separate from other Designated Timber and not removed until measured by the Sale Administrator. Payment will be made at contract prices or average prices, if not on the contract.

#### 4.1.6 - Road Construction (4/24)

Construction of new roads or improvements of existing roads shall be done in such a way as to minimize the environmental and visual impacts. Merchantable trees shall be cut and utilized unless otherwise directed. Non-merchantable trees shall be severed and laid flat on the ground. Slash shall be scattered, and not left in windrows and kept a minimum of 10 feet back from the road edge. Stumps shall be set upright, not left on edge, and be moved at least 10 feet away from the road edge. Disturbed soil shall be feathered into the woods and not left in berms or windrows.

#### 4.1.7 - Road Closure (10/11)

All new roads built into the sale must be blocked to vehicle traffic within 60 days of completion of hauling. Overgrown roads that are reopened shall be considered new roads. In general, this will require constructing a four (4') foot high berm of stumps and logs covered with earth. Temporary berms may be required if no sale activity occurs for 60 or more consecutive days. Contact the Sale Administrator for specific details of design and placement.

### 4.2 - Maintenance

#### 4.2.1 - Hauling Restriction (12/08)

Hauling may be restricted on forest roads by the Unit Manager or his/her representative. The restriction may occur during spring breakup or during wet weather conditions.

#### 4.2.3 - Road maintenance (8/13)

The following road maintenance is required: 150 yards of gravel must be spread on the Hamilton Homestead Road. Within 60 days of completion of hauling, or if no hauling occurs for 60 days, the Unit Manager of his/her representative may require the road to be maintained and graded. This includes cleaning of drainage areas, grading, crowning and filling with gravel, if necessary. Damages will be assessed if grading/repair does not occur.

### 4.4 - Access

#### 4.4.1 - Private property access (3/11)

Permission for access across private land is the responsibility of the Purchaser. Should the Purchaser desire to cross private land (Lyme Great Lakes Timberland), a copy of the written permission from the private land-owner may be required by the DNR.

## 5 - Operations

### 5.2 - Conduct of Operations

#### 5.2.1 - Slash

##### 5.2.1.11 - Slash for Reforestation (3/21)

To facilitate reforestation, the Sale Area shall be left with slash evenly distributed. Bunched tops within the cutting area shall be broken up and scattered. Stumps shall be cut low to the ground. Processing sites shall not be left with a compacted layer of slash; tops from these sites shall be hauled back into the cut area and scattered.

#### 5.2.3 - Operating Restrictions

##### 5.2.3.1 - Operating Restrictions (9/11)

Within Payment Unit(s) 1-14, unless changed by written agreement, cutting and skidding are limited to December 1 to April 1. This restriction is due to the deer wintering complex.

##### 5.2.3.3 - Bark Slippage Restriction (3/09)

Within Payment Unit(s) 9-14, unless changed by written agreement, cutting and skidding are not permitted during the period of April 15 to July 15. This restriction is because of bark slippage.

#### 5.2.32 - Decking/Landing Restoration (9/13)

All decking and landing areas must have the surface area restored to a condition equal to or better than before. This is to ensure the proper regeneration of the stand. Wood debris, chips and "cookies" from trimmings must be removed or scattered away from landing and loading areas and may not be windrowed on the edge.

#### 5.2.38 - No Decking Against Live Trees (2/04)

Cut products may not be decked against unmarked or designated leave trees.

### 5.4 - Soil Protection

#### 5.4.1 - Rutting Restriction, General (7/16)

Operations are to cease immediately if equipment and weather conditions result in rutting of roads and/or skid trails which is 12 inches or greater in depth and 50 feet in length. The Unit Manager or his/her representative may restrict hauling and/or skidding if ruts exceed the specified depth. With the Unit Manager or his/her representative's approval, the Purchaser may return to the area when the risk of rutting has decreased.

#### 5.4.2 - Skid Trails (2/04)

Skid trails up and down slopes should be avoided. If, however, this is unavoidable, these trails will be left in a non-erodible condition using water bars, logs, and slash. Placing of slash on these skid trails while logging is ongoing may alleviate need for any further action. At the direction of the Sale Administrator, seed, fertilizer, and mulch may also be required.

### 5.8 - Protection of Endangered Species

#### 5.8.5 - Protection of Raptor Nests (3/13)

All trees with raptor nests will be protected if found during harvesting operations. Notification will be made to the Unit Manager or his/her representative who will notify the Wildlife Biologist so an onsite evaluation and recommendation can be made, if necessary.

## 6 - Safety and Fire Prevention

### 6.2 - Signing

#### 6.2.1 - Road Posting (10/20)

The Purchaser is responsible for posting and maintaining caution signs on Hamilton Homestead Road and Escanaba River Road prior to beginning operations. The road must be posted at appropriate distances from the Sale Area to warn of logging activity and truck traffic. Signs must be removed when harvest operations are suspended or completed. The Purchaser will provide these signs.

## 7 - Other Conditions

### 7.3 - Contract Modifications

#### 7.3.3 - Modification for Reforestation (8/05)

When contractual work of Purchaser has been accepted for any Payment Unit identified on Sale Area Map, Payment Unit will be eliminated from the Sale Area on written notice so that reforestation operations can begin.



### TIMBER SALE MAP

This information provided by authority of Part 525, 1994 PA 451, as amended.

Sale Number	Date	
<b>32-007-24</b>	10/02/2024	
Scale	Page	Of
1:15,840	1	2

Forest Management Unit	County	Mapped By: Siler
Gwinn Mgt Unit	Marquette	Cruised By: Gwinn Staff

Township	Range	Section(s) and	N1/2NE; Sec. 7 SESE; Sec. 9 SESE;
43N	24W	Subdivision(s)	Sec. 16 S1/2NW,N1/2NE,SWNE,N1/2SW,SESW; Sec. 17 SENE,NWSE; Sec. 18 NE,SE; Sec. 19

Cover Type			
A = Aspen	J = Jack Pine	O = Oak	U = Upland Brush
B = Paper Birch	K = Rock	P = Lowland Poplar	UM = Upland Mix Forest
C = Cedar	L = Lowland Brush	Q = Mixed Swamp Conifer	V = Bog or Marsh
D = Treed Bog	LM = Lowland Mix Forest	R = Red Pine	W = White Pine
E = Swamp Hardwoods	M = Maple, Beech, Birch	S = Black Spruce	X = Non Stocked
F = Spruce/Fir	MC = Mixed Conifer	T = Tamarack	Y = Sand
G = Grass	MD = Mixed Deciduous	Z = Water	
H = Hemlock	N = Marsh		

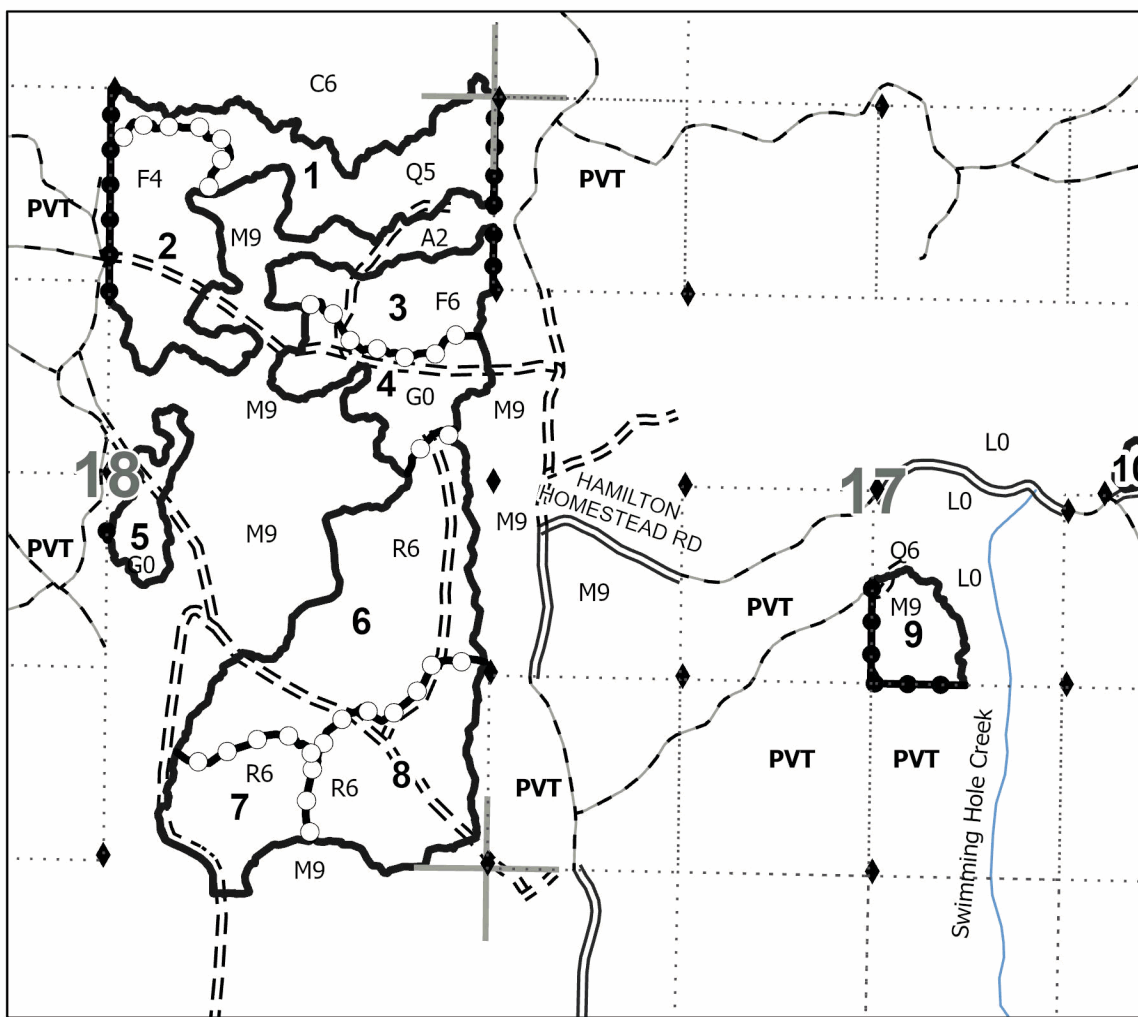
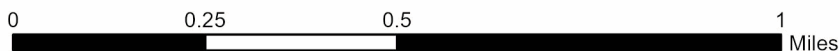
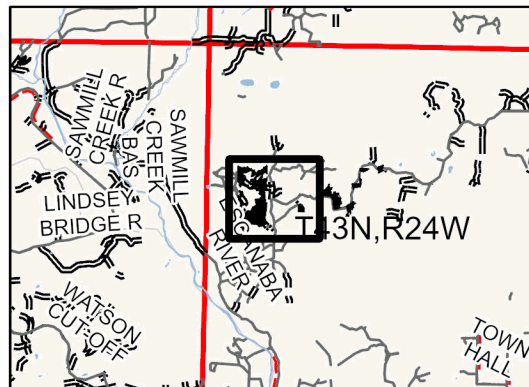
Density	
0 = Non Stocked	5 = Pole Timber Medium
1 = Seedling Sapling Poor	6 = Pole Timber Well
2 = Seedling Sapling Medium	7 = Saw Timber Poor
3 = Seedling Sapling Well	8 = Saw Timber Medium
4 = Pole Timber Poor	9 = Saw Timber Well

PU #	Acres	PU #	Acres	PU #	Acres
1	27.6	6	48.2	11	23
2	26.2	7	17.4	12	15.6
3	17.6	8	27.3	13	18.2
4	17.4	9	9.7	14	8.9
5	7.2	10	21.5		

**Marvelous  
McFarland  
Mix**

**285.8 Acres**

### Locator Map 1:200,000



### Legend

- Against State (Red)
- Private Line (Blue)
- Payment Unit (Yellow)
- Primary Forest Road
- Forest Access Route
- Private Gravel/Dirt
- Perennial River
- Survey Grade Corner
- Nearby Timber Sale
- Adjacent Private Land

Use QR Code to open Map in App





### TIMBER SALE MAP

This information provided by authority of Part 525, 1994 PA 451, as amended.

Sale Number

**32-007-24**

Date

10/02/2024

Forest Management Unit

County

Mapped By: Brodeur

Scale

Page

Of

Gwinn Mgt Unit

Marquette

Cruised By: Gwinn Staff

1:15,840

2

2

Township  
43N

Range  
24W

Section(s) and N1/2NE; Sec. 7 SESE; Sec. 9 SESE;  
Subdivision(s) Sec. 16 S1/2NW,N1/2NE,SWNE,N1/2SW,SESW; Sec. 17 SENE,NWSE; Sec. 18 NE,SE; Sec. 19

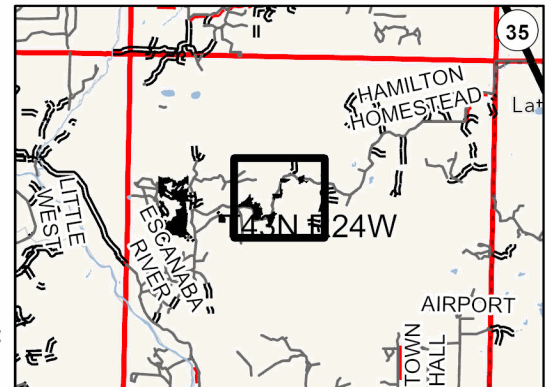
#### Cover Type

A = Aspen	J = Jack Pine	O = Oak	U = Upland Brush
B = Paper Birch	K = Rock	P = Lowland Poplar	UM = Upland Mix Forest
C = Cedar	L = Lowland Brush	Q = Mixed Swamp Conifer	V = Bog or Marsh
D = Treed Bog	LM = Lowland Mix Forest	R = Red Pine	W = White Pine
E = Swamp Hardwoods	M = Maple, Beech, Birch	S = Black Spruce	X = Non Stocked
F = Spruce/Fir	MC = Mixed Conifer	T = Tamarack	Y = Sand
G = Grass	MD = Mixed Deciduous	Z = Water	
H = Hemlock	N = Marsh		

#### Density

0 = Non Stocked	5 = Pole Timber Medium
1 = Seedling Sapling Poor	6 = Pole Timber Well
2 = Seedling Sapling Medium	7 = Saw Timber Poor
3 = Seedling Sapling Well	8 = Saw Timber Medium
4 = Pole Timber Poor	9 = Saw Timber Well

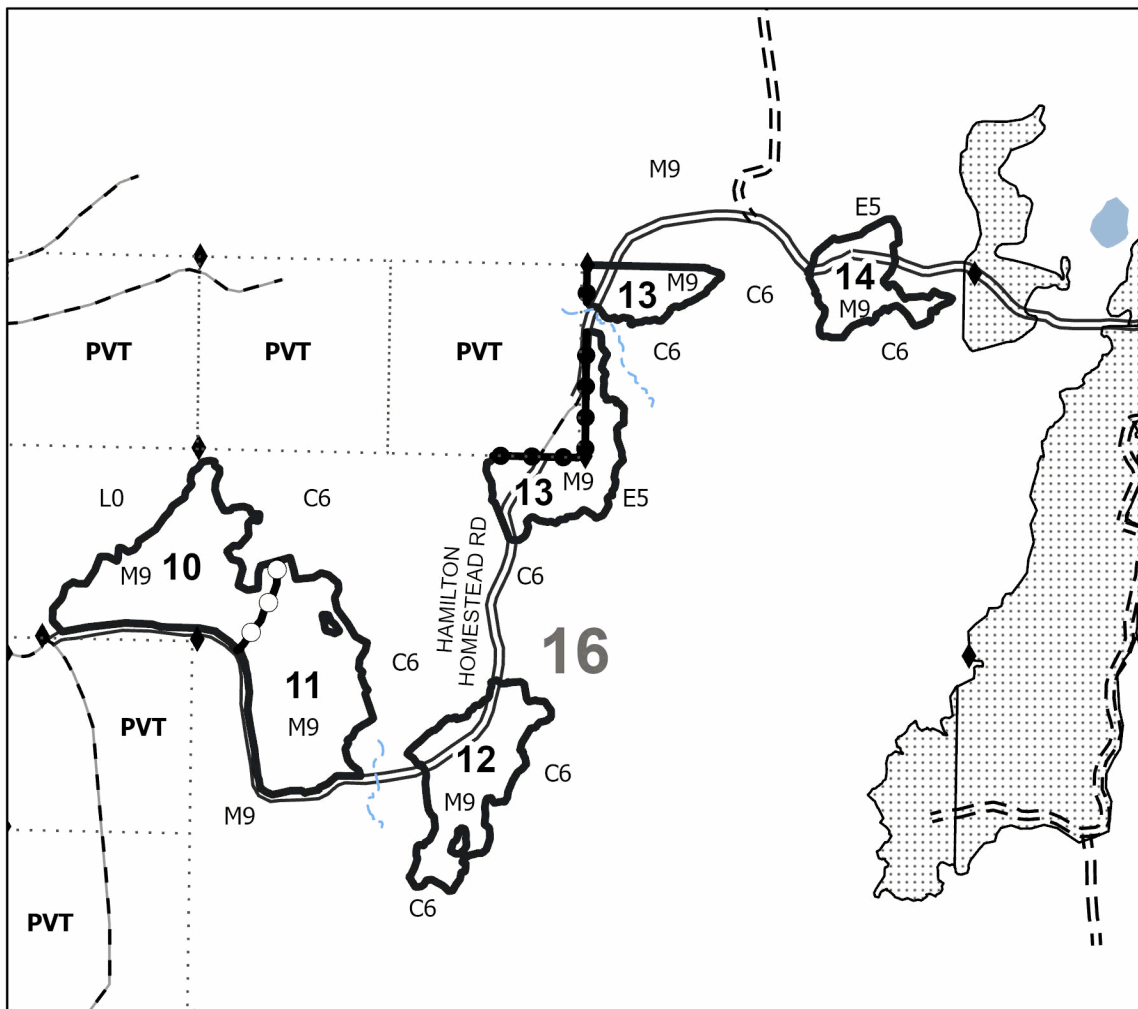
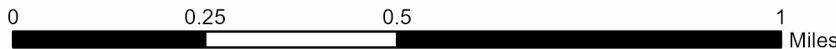
#### Locator Map 1:200,000



## Marvelous McFarland Mix

**285.8 Acres**

PU #	Acres	PU #	Acres	PU #	Acres
1	27.6	6	48.2	11	23
2	26.2	7	17.4	12	15.6
3	17.6	8	27.3	13	18.2
4	17.4	9	9.7	14	8.9
5	7.2	10	21.5		



#### Legend

- Against State (Red)
- Private Line (Blue)
- Payment Unit (Yellow)
- Nearby Timber Sale
- Adjacent Private Land
- Primary Forest Road
- Forest Access Route
- Private Gravel/Dirt
- Survey Grade Corner
- Lakes
- Stream

Use QR Code to open Map in App







## TIMBER SALE INFORMATION

### Grouse Picnic Pine (32-008-24)

T46N, R27W, SEC. 23; T46N, R27W, SEC. 26; T46N, R27W, SEC. 35; T46N, R27W, SEC. 36.  
Marquette County (Advertised Price \$152,566.60)

SALE NOTE: Some units require private property access. This sale has operating restrictions. See spec 5.2.3.

Access may be through private land.

A timber sale contract for this lump sum, sealed bid timber sale will be awarded to the responsible bidder offering the highest sealed bid price. All units of volume listed below were estimated using the Inventory Manager computer program and the new Michigan taper model. Bids must be at or above the following advertised price for each product and species:

<u>PRODUCTS &amp; SPECIES</u>	<u>ESTIMATED UNITS*</u>	<u>ADVERTISED PRICE</u>
Pulpwood		
Balsam Fir	35 Cords	\$ 8.50 / Cord
Jack Pine	370 Cords	\$ 36.05 / Cord
Mixed Hardwood	160 Cords	\$ 9.35 / Cord
Mixed Spruce	45 Cords	\$ 8.95 / Cord
Quaking Aspen	237 Cords	\$ 19.45 / Cord
Red Oak	6 Cords	\$ 14.65 / Cord
Red Pine	2,093 Cords	\$ 63.20 / Cord
White Pine	3 Cords	\$ 18.90 / Cord

\* The total volume is statistically estimated within plus (+) or minus (-) 11.46 percent. There are an estimated 2,948 cords on this timber sale, plus or minus 338 cords at the 95% confidence level. The estimated units are final and not subject to adjustment. Prospective bidders are urged to examine this timber and to make their own estimates of quantity and quality.

### **BOND AND PAYMENT SCHEDULE:**

1. A bond in the amount of \$7,628.00 to insure faithful performance of the conditions of the contract will be deposited by the successful bidder within 21 days of the sale award.
2. Cutting in any sale or unit without the required advance payment would be considered a trespass.
3. Total payment must be paid in advance or according to the following schedule :
  - (a) Ten percent (10%) of the sale value must be paid within 21 days of the sale award.
  - (b) The 10% down payment will be credited towards the first unit cut.
  - (c) Payment for each of the following units must be made before cutting begins in that unit:

PAYMENT UNIT NUMBER	PERCENT OF TOTAL SALE VALUE
01	3.5%
02	2.8%
03	6.6%
04	8.3%
05	9.7%
06	7.7%
07	6.9%
08	4.9%
09	8.6%
10	5.8%
11	6.6%
12	9.9%
13	8.7%
14	10.0%

4. If no cutting takes place, the 10% down payment will not be refunded.
5. Operations on the contract issued will terminate on 06/30/2028.

### **SALE STATISTICS**

Volumes were calculated in cubic feet using the Michigan taper model. Cubic foot volume includes all wood inside bark for the product indicated. For display purposes, cubic feet were converted to cords and MBF using a simple conversion factor, e.g. 79 cubic feet per cord and 185 cubic feet per MBF. The cubic foot volumes are precise; the cords and MBF volumes are not. Cubic foot volume cannot be directly converted to cords or boards with precision.

## SALE VOLUMES

The total estimated sale volume may not equal the sum of the species/products due to the nature of statistical calculations associated with double sampling methodology.

VOLUME			STATISTICAL RANGE IN CORDS	
TOTAL CUBIC FEET	TOTAL CORDS	PERCENT ERROR	MINIMUM	MAXIMUM
232,862	2,948	11.46%	2,610	3,286

## VDU VOLUMES

A VDU is a Volume Determination Unit. Volumes and their associated statistics are calculated at the VDU level and summarized to the sale level. There is often a one to one relationship between a VDU and a Payment Unit, but not always, depending on the cruise design. Refer to the VDU TO PAYMENT UNIT table.

	VOLUME			RANGE IN CORDS	
VDU	TOTAL CUBIC FEET	TOTAL CORDS	PERCENT ERROR	MINIMUM	MAXIMUM
1	168,383	2,131	13.72%	1,839	2,424
2	24,538	311	32.68%	209	412
3	16,897	214	45.42%	117	311
4	23,044	292	36.49%	185	398
<b>TOTAL:</b>	<b>232,862</b>	<b>2,948</b>		<b>2,350</b>	<b>3,545</b>

## VDU TO PAYMENT UNIT

When a VDU is associated with more than one Payment Unit (PU), the VDU volumes are assigned to the PU based on acres of the VDU within the PU.

VDU	VDU ACRES	PU	PU ACRES
1	184.1	4	17.5
1	184.1	5	20.5
1	184.1	6	16.3
1	184.1	7	14.7
1	184.1	8	10.3
1	184.1	9	18.1
1	184.1	10	12.2
1	184.1	11	14.1
1	184.1	12	20.9
1	184.1	13	18.3
1	184.1	14	21.2
2	11.3	3	11.3
3	10.6	1	8.1
3	10.6	2	2.5
4	16.2	1	6.9
4	16.2	2	9.3
<b>TOTAL:</b>	<b>2,090.0</b>		<b>222.2</b>

**DESCRIPTION OF TIMBER BY PAYMENT UNIT (PU)**

PU	MARKET GROUP	PRODUCT	QUANTITY	UNIT	ACRES	ADVERTISE PRICE
1	Balsam Fir	Pulpwood	18	Cords	15.0	\$5,385.05
	Jack Pine		64	Cords		
	Mixed Hardwood		74	Cords		
	<i>Paper Birch</i>		4	<i>Cords</i>		
	<i>Red Maple</i>		70	<i>Cords</i>		
	Mixed Spruce		30	Cords		
	<i>Black Spruce</i>		25	<i>Cords</i>		
	<i>White Spruce</i>		5	<i>Cords</i>		
	Quaking Aspen		101	Cords		
	2		Balsam Fir	Pulpwood		
Jack Pine		41	Cords			
Mixed Hardwood		37	Cords			
<i>Black Cherry</i>		1	<i>Cords</i>			
<i>Paper Birch</i>		1	<i>Cords</i>			
<i>Red Maple</i>		35	<i>Cords</i>			
Mixed Spruce		11	Cords			
<i>Black Spruce</i>		8	<i>Cords</i>			
<i>White Spruce</i>		3	<i>Cords</i>			
Quaking Aspen		114	Cords			
3	Jack Pine	Pulpwood	265	Cords	11.3	\$10,092.85
	Mixed Hardwood		31	Cords		
	<i>Paper Birch</i>		23	<i>Cords</i>		
	<i>Red Maple</i>		8	<i>Cords</i>		
	Mixed Spruce		4	Cords		
	<i>White Spruce</i>		4	<i>Cords</i>		
	Quaking Aspen		11	Cords		
4	Mixed Hardwood	Pulpwood	2	Cords	17.5	\$12,629.60
	<i>Red Maple</i>		2	<i>Cords</i>		
	Quaking Aspen		1	Cords		
	Red Oak		1	Cords		
	Red Pine		199	Cords		
5	Mixed Hardwood	Pulpwood	2	Cords	20.5	\$14,778.40
	<i>Red Maple</i>		2	<i>Cords</i>		
	Quaking Aspen		1	Cords		
	Red Oak		1	Cords		
	Red Pine		233	Cords		
6	Mixed Hardwood	Pulpwood	2	Cords	16.3	\$11,744.80
	<i>Red Maple</i>		2	<i>Cords</i>		
	Quaking Aspen		1	Cords		
	Red Oak		1	Cords		
	Red Pine		185	Cords		
7	Mixed Hardwood	Pulpwood	1	Cords	14.7	\$10,583.20
	<i>Red Maple</i>		1	<i>Cords</i>		
	Quaking Aspen		1	Cords		
	Red Pine		167	Cords		
8	Mixed Hardwood	Pulpwood	1	Cords	10.3	\$7,423.20
	<i>Red Maple</i>		1	<i>Cords</i>		
	Quaking Aspen		1	Cords		
	Red Pine		117	Cords		
9	Mixed Hardwood	Pulpwood	2	Cords	18.1	\$13,072.00
	<i>Red Maple</i>		2	<i>Cords</i>		
	Quaking Aspen		1	Cords		
	Red Oak		1	Cords		
	Red Pine		206	Cords		
10	Mixed Hardwood	Pulpwood	1	Cords	12.2	\$8,813.60

**DESCRIPTION OF TIMBER BY PAYMENT UNIT (PU), CON'T**

PU	MARKET GROUP	PRODUCT	QUANTITY	UNIT	ACRES	ADVERTISE PRICE
10 con't	<i>Red Maple</i> Quaking Aspen Red Pine	<i>Pulpwood</i>	1 1 139	<i>Cords</i> Cords Cords		
11	Mixed Hardwood <i>Red Maple</i> Quaking Aspen Red Pine	Pulpwood	1 1 160	Cords <i>Cords</i> Cords Cords	14.1	\$10,140.80
12	Mixed Hardwood <i>Red Maple</i> Quaking Aspen Red Oak Red Pine	Pulpwood	2 2 1 1 238	Cords <i>Cords</i> Cords Cords Cords	20.9	\$15,094.40
13	Mixed Hardwood <i>Red Maple</i> Quaking Aspen Red Oak Red Pine	Pulpwood	2 2 1 1 208	Cords <i>Cords</i> Cords Cords Cords	18.3	\$13,198.40
14	Mixed Hardwood <i>Red Maple</i> Quaking Aspen Red Pine White Pine	Pulpwood	2 2 1 241 3	Cords <i>Cords</i> Cords Cords Cords	21.2	\$15,326.05
TOTAL:			2,949	Cords		

# Sale Specific Conditions & Requirements

**Sale Name: Grouse Picnic Pine**

**Sale Number: 32-008-24 Seq#: 1**

## 1 - Sale Area

### 1.2 - Boundaries

#### 1.2.1 - Painted Boundaries (9/19)

The sale boundary and Payment Unit boundaries are marked and identified by blue, red and yellow paint. Exterior sale boundary lines against private property are marked with blue paint. Exterior sale boundary lines against state are marked with red paint. Interior Payment Unit boundaries are marked with yellow paint. The painted boundary line trees are not Included Timber and are to be protected unless marked with orange paint. Yellow painted trees designating an interior Payment Unit boundary are only to be cut when all surrounding Payment Units have been paid.

## 2 - Timber Specifications

### 2.1 - Included Timber

#### 2.1.1 - Clearcut Unit(s) with Unmerchantable Trees (6/14)

Within Payment Unit(s) 1-3, cut all trees that are two (2) inches or more at DBH, , except do not cut red pine, white pine, or any oak.

#### 2.1.3 - Cut Tree Marked Unit(s) (12/08)

Within Payment Unit(s) 4-14, all trees are designated for cutting when marked with orange paint above and below stump height, regardless of merchantability.

### 2.2 - Utilization

#### 2.2.3 - Stump heights (4/07)

Stump heights within Payment Units 3-14 shall not exceed 12 inches for trees greater than 10 inches DBH and six (6) inches for trees smaller than 10 inches DBH. This is in order to facilitate planting operations.

## 3 - Payments

### 3.4 - Damaged Timber

#### 3.4.1 - Damaged timber (7/16)

General Condition and Requirement 3.4 Damaged Timber, defines liquidated damages for undesignated live merchantable trees which are cut or injured. In addition, extreme care should be taken to avoid damage to tree seedlings and saplings. No damage is acceptable to undesignated live merchantable trees. Within the Sale Area, if more than 5% of trees (> 4.5" DBH) within a specified area of the sale are damaged, liquidated damages will be assessed for all trees damaged. Rates will be in accordance with General Condition and Requirement 3.4 Damaged Timber.

## 4 - Transportation

### 4.1 - Construction

#### 4.1.3 - Slash and Earthen Piles (8/04)

Piles or windrows of earth along roads and landings that have been widened or constructed shall be leveled. Slash from road maintenance or construction, including stumps, shall be dispersed throughout the sale.

#### 4.1.4 - Timber Removed for Construction (3/23)

Trees cut or damaged in the process of pre-approved road, landing, or skid trail construction will be decked in an area separate from other Designated Timber and not removed until measured by the Sale Administrator. Payment will be made at contract prices or average prices, if not on the contract.

#### 4.1.6 - Road Construction (4/24)

Construction of new roads or improvements of existing roads shall be done in such a way as to minimize the environmental and visual impacts. Merchantable trees shall be cut and utilized unless otherwise directed. Non-merchantable trees shall be severed and laid flat on the ground. Slash shall be scattered, and not left in windrows and kept a minimum of 10 feet back from the road edge. Stumps shall be set upright, not left on edge, and be moved at least 10 feet away from the road edge.

Disturbed soil shall be feathered into the woods and not left in berms or windrows.

#### 4.1.7 - Road Closure (10/11)

All new roads built into the sale must be blocked to vehicle traffic upon completion of the sale. Overgrown roads that are reopened shall be considered new roads. In general, this will require constructing a four (4') foot high berm of stumps and logs covered with earth. Contact the Sale Administrator for specific details of design and placement.

### 4.2 - Maintenance

#### 4.2.1 - Hauling Restriction (12/08)

Hauling may be restricted on forest roads by the Unit Manager or his/her representative. The restriction may occur during spring breakup.

#### 4.2.2 - Fill Material (4/07)

To maintain roads, fill material may be needed in areas where "holes" exist or may be expected to develop. This fill material should be placed before trucking begins. Contact the Sale Administrator regarding the availability of onsite sand or gravel from adjacent State-owned lands.

#### 4.2.3 - Road maintenance (8/13)

The following road maintenance is required: Within 60 days of completion of hauling, the Sale Administrator or Unit Manager will require Hemmings Lake Road and Hawkins Pond/Flopper Road to be maintained and graded. This includes cleaning of drainage areas, grading, crowning and filling with gravel, if necessary. Damages will be assessed if grading/repair does not occur.

### 4.4 - Access

#### 4.4.1 - Private property access (3/11)

Permission for access across private land is the responsibility of the Purchaser. Should the Purchaser desire to cross private land, a copy of the written permission from the private land-owner(s) may be required by the DNR. Contact the Unit Manager for contact information of associated land-owner(s).

## 5 - Operations

### 5.1 - Notification

#### 5.1.1 - Pre-sale Conference (10/16)

A pre-sale conference between the Purchaser and Sale Administrator is required prior to beginning any operations. The Unit Manager or his/her representative must be contacted at least 3 days in advance to schedule the conference.

### 5.2 - Conduct of Operations

#### 5.2.2 - Hazard Trees/Snags

##### 5.2.2.1 - Den Trees (10/16)

Obvious hollow and/or den trees shall be protected and left standing unless they are a safety hazard.

#### 5.2.3 - Operating Restrictions

##### 5.2.3.3 - Bark Slippage Restriction (3/09)

Within Payment Unit(s) 4-14, unless changed by written agreement, cutting and skidding are not permitted during the period of April 15 to July 15. This restriction is because of bark slippage.

##### 5.2.3.5 - Oak Wilt Restriction (1/18)

Within Payment Units 4-14, unless changed by written agreement, cutting, skidding, hauling within the sale and brushing of access roads to the sale are not permitted during the period of April 15 to July 15. Operations may be allowed if specific steps are taken to prevent damaging uncut oak during the high-risk period. Those steps may include completing all road brushing before April 15 and clearing a tree-length buffer along uncut oak cover before April 15. This is necessary to reduce the spread of oak wilt. For more information, contact the Unit Manager or his/her representative.

#### 5.2.32 - Decking/Landing Restoration (9/13)

All decking and landing areas must have the surface area restored to a condition equal to or better than before. This is to ensure the proper regeneration of the stand. Wood debris, chips and "cookies" from trimmings must be removed or scattered

away from landing and loading areas and may not be windrowed on the edge.

#### 5.2.38 - No Decking Against Live Trees (2/04)

Cut products may not be decked against unmarked or designated leave trees.

### 5.4 - Soil Protection

#### 5.4.1 - Rutting Restriction, General (7/16)

Operations are to cease immediately if equipment and weather conditions result in rutting of roads and/or skid trails which is 12 inches or greater in depth and 50 feet in length. The Unit Manager or his/her representative may restrict hauling and/or skidding if ruts exceed the specified depth. With the Unit Manager or his/her representative's approval, the Purchaser may return to the area when the risk of rutting has decreased.

## 6 - Safety and Fire Prevention

### 6.2 - Signing

#### 6.2.1 - Road Posting (10/20)

The Purchaser is responsible for posting and maintaining caution signs on County Road 565, Hemmings Lake Road, and Hawkins Pond Road prior to beginning operations. The road must be posted at appropriate distances from the Sale Area to warn of logging activity and truck traffic. Signs must be removed when harvest operations are suspended or completed. The Purchaser will provide these signs.



### TIMBER SALE MAP

This information provided by authority of Part 525, 1994 PA 451, as amended.

Sale Number	Date	
<b>32-008-24</b>	10/03/2024	
Scale	Page	Of
1:10,000	1	2

Forest Management Unit	County	Mapped By: Siler
Gwinn Mgt Unit	Marquette	Cruised By: Gwinn Staff

Township	Range	Section(s) and Subdivision(s)
46N	27W	Sec. 23 W1/2SE; Sec. 26 N1/2NE,SESE; Sec. 35 NW,NE,SESW,NWSE,S1/2SE; Sec. 36 SWSW;

Cover Type			
A = Aspen	J = Jack Pine	O = Oak	U = Upland Brush
B = Paper Birch	K = Rock	P = Lowland Poplar	UM = Upland Mix Forest
C = Cedar	L = Lowland Brush	Q = Mixed Swamp Conifer	V = Bog or Marsh
D = Treed Bog	LM = Lowland Mix Forest	R = Red Pine	W = White Pine
E = Swamp Hardwoods	M = Maple, Beech, Birch	S = Black Spruce	X = Non Stocked
F = Spruce/Fir	MC = Mixed Conifer	T = Tamarack	Y = Sand
G = Grass	MD = Mixed Deciduous	Z = Water	
H = Hemlock	N = Marsh		

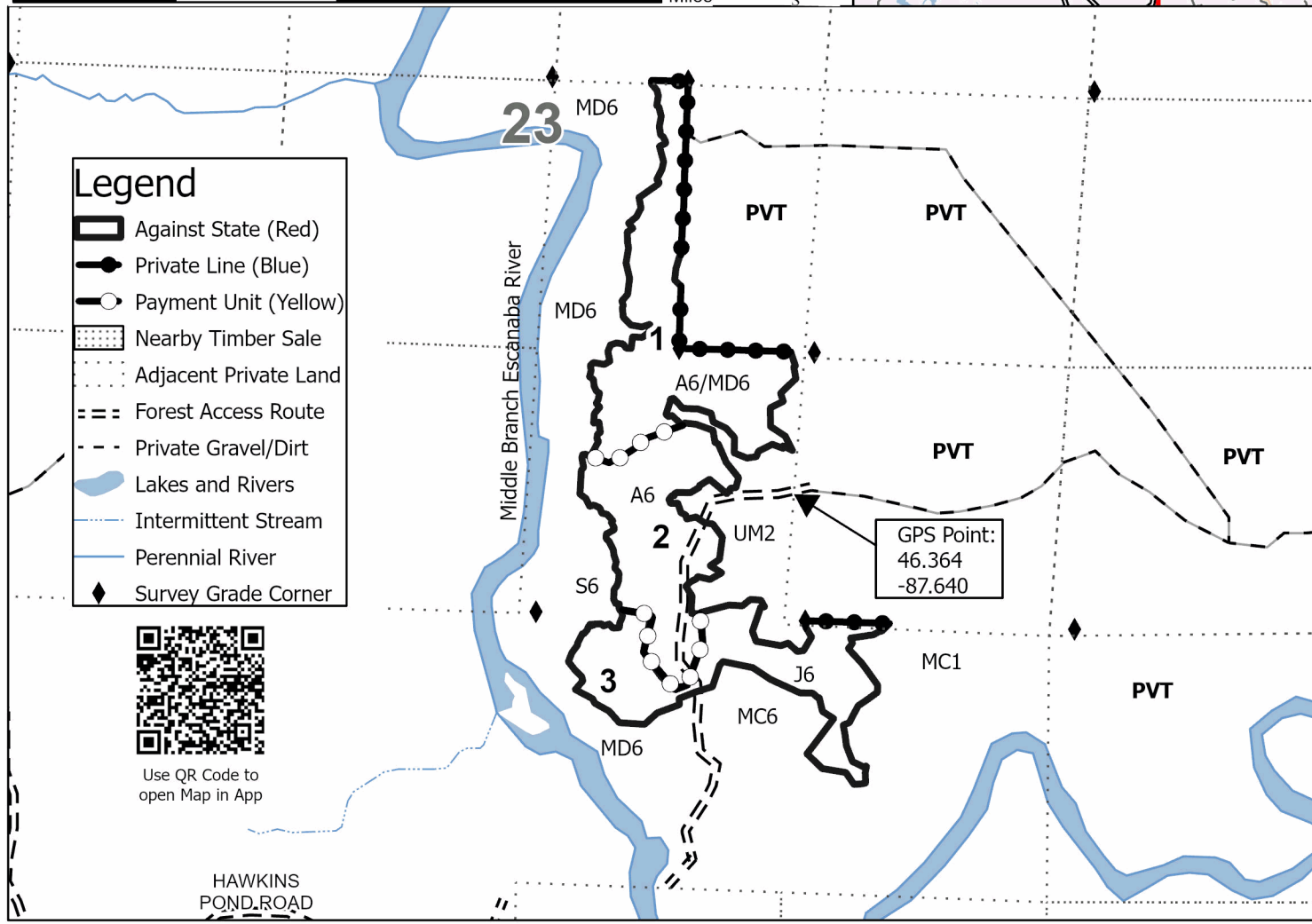
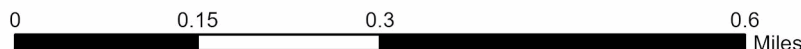
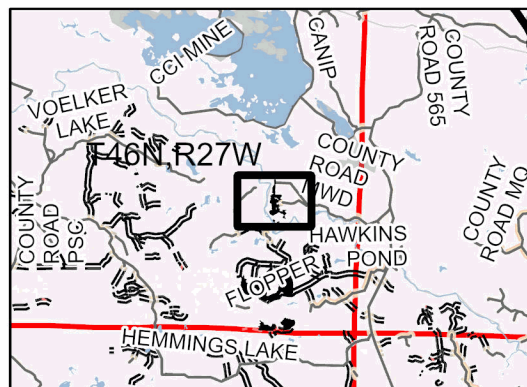
Density	
0 = Non Stocked	5 = Pole Timber Medium
1 = Seedling Sapling Poor	6 = Pole Timber Well
2 = Seedling Sapling Medium	7 = Saw Timber Poor
3 = Seedling Sapling Well	8 = Saw Timber Medium
4 = Pole Timber Poor	9 = Saw Timber Well

PU #	Acres	PU #	Acres	PU #	Acres
1	15	6	16.3	11	14.1
2	11.8	7	14.7	12	20.9
3	11.3	8	10.3	13	18.3
4	17.5	9	18.1	14	21.2
5	20.2	10	12.2		

## Grouse Picnic Pine

### 222.2 Acres

### Locator Map 1:200,000



Legend	
	Against State (Red)
	Private Line (Blue)
	Payment Unit (Yellow)
	Nearby Timber Sale
	Adjacent Private Land
	Forest Access Route
	Private Gravel/Dirt
	Lakes and Rivers
	Intermittent Stream
	Perennial River
	Survey Grade Corner



Use QR Code to open Map in App





### TIMBER SALE MAP

This information provided by authority of Part 525, 1994 PA 451, as amended.

Sale Number  
**32-008-24**

Date  
**10/02/2024**

Forest Management Unit	County	Mapped By: Brodeur
Gwinn Mgt Unit	Marquette	Cruised By: Gwinn Staff

Scale	Page	Of
1:15,840	2	2

Township	Range	Section(s) and Subdivision(s)
46N	27W	Sec. 23 W1/2SE; Sec. 26 N1/2NE,SESE; Sec. 35 NW,NE,SESW,NWSE,S1/2SE; Sec. 36 SWSW;

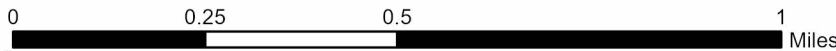
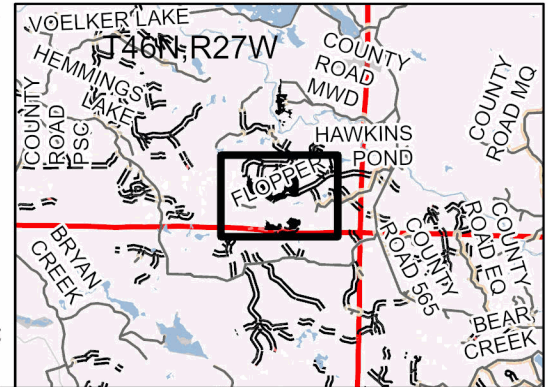
Cover Type			
A = Aspen	J = Jack Pine	O = Oak	U = Upland Brush
B = Paper Birch	K = Rock	P = Lowland Poplar	UM = Upland Mix Forest
C = Cedar	L = Lowland Brush	Q = Mixed Swamp Conifer	V = Bog or Marsh
D = Treed Bog	LM = Lowland Mix Forest	R = Red Pine	W = White Pine
E = Swamp Hardwoods	M = Maple, Beech, Birch	S = Black Spruce	X = Non Stocked
F = Spruce/Fir	MC = Mixed Conifer	T = Tamarack	Y = Sand
G = Grass	MD = Mixed Deciduous	Z = Water	
H = Hemlock	N = Marsh		

Density	
0 = Non Stocked	5 = Pole Timber Medium
1 = Seedling Sapling Poor	6 = Pole Timber Well
2 = Seedling Sapling Medium	7 = Saw Timber Poor
3 = Seedling Sapling Well	8 = Saw Timber Medium
4 = Pole Timber Poor	9 = Saw Timber Well

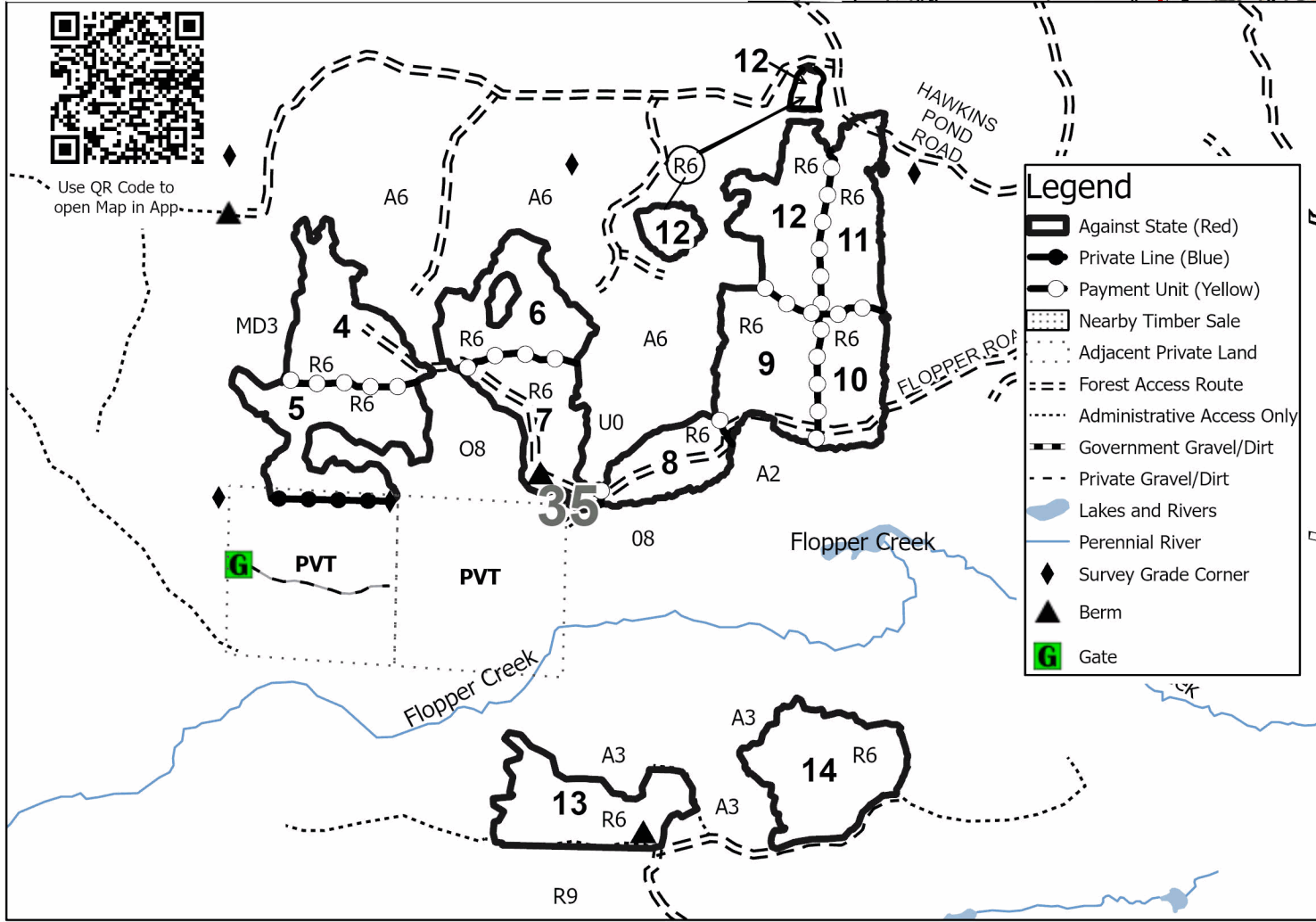
PU #	Acres	PU #	Acres	PU #	Acres
1	15	6	16.3	11	14.1
2	11.8	7	14.7	12	20.9
3	11.3	8	10.3	13	18.3
4	17.5	9	18.1	14	21.2
5	20.2	10	12.2		

## Grouse Picnic Pine 222.2 Acres

### Locator Map 1:200,000



Use QR Code to open Map in App



Legend	
	Against State (Red)
	Private Line (Blue)
	Payment Unit (Yellow)
	Nearby Timber Sale
	Adjacent Private Land
	Forest Access Route
	Administrative Access Only
	Government Gravel/Dirt
	Private Gravel/Dirt
	Lakes and Rivers
	Perennial River
	Survey Grade Corner
	Berm
	Gate



## TIMBER SALE INFORMATION

### Mangum East Maple (32-025-23)

T47N, R22W, SEC. 19; T47N, R22W, SEC. 30; T47N, R23W, SEC. 24.  
Alger County (Advertised Price \$26,021.40)

SALE NOTE: A recreation site such as a trail, pathway, or campground is within the sale area or the vicinity. Certain restrictions/specifications may be applicable including time restrictions.

A timber sale contract for this lump sum, sealed bid timber sale will be awarded to the responsible bidder offering the highest sealed bid price. All units of volume listed below were estimated using the Inventory Manager computer program and the new Michigan taper model. Bids must be at or above the following advertised price for each product and species:

<u>PRODUCTS &amp; SPECIES</u>	<u>ESTIMATED UNITS*</u>	<u>ADVERTISED PRICE</u>
Sawtimber		
Basswood	3.4 MBF	\$ 18.00 / MBF
Red Maple	246.0 MBF	\$ 46.00 / MBF
Sugar Maple	66.0 MBF	\$ 91.00 / MBF
Pulpwood		
Balsam Fir	133 Cords	\$ 4.50 / Cord
Basswood	2 Cords	\$ 4.25 / Cord
Mixed Hardwood	1,588 Cords	\$ 5.00 / Cord
Mixed Spruce	19 Cords	\$ 4.80 / Cord

\* The total volume is statistically estimated within plus (+) or minus (-) 12.87 percent. There are an estimated 2,534 cords on this timber sale, plus or minus 326 cords at the 95% confidence level. The estimated units are final and not subject to adjustment. Prospective bidders are urged to examine this timber and to make their own estimates of quantity and quality.

### **BOND AND PAYMENT SCHEDULE:**

1. A bond in the amount of \$1,301.00 to insure faithful performance of the conditions of the contract will be deposited by the successful bidder within 21 days of the sale award.
2. Cutting in any sale or unit without the required advance payment would be considered a trespass.
3. Total payment must be paid in advance or according to the following schedule :
  - (a) Ten percent (10%) of the sale value must be paid within 21 days of the sale award.
  - (b) The 10% down payment will be credited towards the first unit cut.
  - (c) Payment for each of the following units must be made before cutting begins in that unit:
 

PAYMENT UNIT NUMBER	PERCENT OF TOTAL SALE VALUE
01	10.5%
02	10.9%
03	43.0%
04	24.1%
05	11.5%
4. If no cutting takes place, the 10% down payment will not be refunded.
5. Operations on the contract issued will terminate on 06/30/2028.

### **SALE STATISTICS**

Volumes were calculated in cubic feet using the Michigan taper model. Cubic foot volume includes all wood inside bark for the product indicated. For display purposes, cubic feet were converted to cords and MBF using a simple conversion factor, e.g. 79 cubic feet per cord and 185 cubic feet per MBF. The cubic foot volumes are precise; the cords and MBF volumes are not. Cubic foot volume cannot be directly converted to cords or boards with precision.

### **SALE VOLUMES**

The total estimated sale volume may not equal the sum of the species/products due to the nature of statistical calculations associated with double sampling methodology.

VOLUME		STATISTICAL RANGE IN CORDS		
TOTAL CUBIC FEET	TOTAL CORDS	PERCENT ERROR	MINIMUM	MAXIMUM
200,161	2,534	12.87%	2,207	2,860

**VDU VOLUMES**

A VDU is a Volume Determination Unit. Volumes and their associated statistics are calculated at the VDU level and summarized to the sale level. There is often a one to one relationship between a VDU and a Payment Unit, but not always, depending on the cruise design. Refer to the VDU TO PAYMENT UNIT table.

VDU	VOLUME		PERCENT ERROR	RANGE IN CORDS	
	TOTAL CUBIC FEET	TOTAL CORDS		MINIMUM	MAXIMUM
3	20,891	264	41.43%	155	374
5	30,115	381	43.08%	217	545
6	149,155	1,888	14.98%	1,605	2,171
<b>TOTAL:</b>	<b>200,161</b>	<b>2,534</b>		<b>1,977</b>	<b>3,090</b>

**VDU TO PAYMENT UNIT**

When a VDU is associated with more than one Payment Unit (PU), the VDU volumes are assigned to the PU based on acres of the VDU within the PU.

VDU	VDU ACRES	PU	PU ACRES
3	18.3	1	18.3
5	21.7	5	21.7
6	112.2	2	15.7
6	112.2	3	61.9
6	112.2	4	34.6
<b>TOTAL:</b>	<b>376.6</b>		<b>152.2</b>

**DESCRIPTION OF TIMBER BY PAYMENT UNIT (PU)**

PU	MARKET GROUP	PRODUCT	QUANTITY	UNIT	ACRES	ADVERTISE PRICE
1	Basswood	Sawtimber    Pulpwood	3.4	MBF	18.3	\$2,740.90
	Red Maple		36.9	MBF		
	Sugar Maple		4.1	MBF		
	Balsam Fir		45	Cords		
	Basswood		2	Cords		
	Mixed Hardwood		71	Cords		
	<i>Red Maple</i>		52	<i>Cords</i>		
	<i>Sugar Maple</i>		19	<i>Cords</i>		
	Mixed Spruce		9	Cords		
	<i>White Spruce</i>		9	<i>Cords</i>		
2	Red Maple	Sawtimber   Pulpwood	25.1	MBF	15.7	\$2,845.10
	Sugar Maple		8.7	MBF		
	Balsam Fir		12	Cords		
	Mixed Hardwood		168	Cords		
	<i>Beech</i>		1	<i>Cords</i>		
	<i>Red Maple</i>		94	<i>Cords</i>		
	<i>Sugar Maple</i>		73	<i>Cords</i>		
	Mixed Spruce		1	Cords		
	<i>White Spruce</i>		1	<i>Cords</i>		
	3		Red Maple	Sawtimber   Pulpwood		
Sugar Maple		34.1	MBF			
Balsam Fir		47	Cords			
Mixed Hardwood		660	Cords			
<i>Beech</i>		4	<i>Cords</i>			
<i>Red Maple</i>		369	<i>Cords</i>			
<i>Sugar Maple</i>		287	<i>Cords</i>			
Mixed Spruce		6	Cords			
<i>White Spruce</i>		6	<i>Cords</i>			
4		Red Maple	Sawtimber   Pulpwood		55.3	MBF
	Sugar Maple	19.1		MBF		
	Balsam Fir	27		Cords		
	Mixed Hardwood	369		Cords		
	<i>Beech</i>	2		<i>Cords</i>		
	<i>Red Maple</i>	206		<i>Cords</i>		
	<i>Sugar Maple</i>	161		<i>Cords</i>		
	Mixed Spruce	3		Cords		
	<i>White Spruce</i>	3		<i>Cords</i>		
	5	Red Maple		Sawtimber	29.9	MBF
Balsam Fir		Pulpwood	2	Cords		
Mixed Hardwood			320	Cords		
<i>Red Maple</i>			320	<i>Cords</i>		
TOTAL:			315.4	MBF		
TOTAL:			1,742	Cords		

## Sale Specific Conditions & Requirements

**Sale Name: Mangum East Maple**

**Sale Number: 32-025-23 Seq#: 3**

### 1 - Sale Area

#### 1.2 - Boundaries

##### 1.2.1 - Painted Boundaries (9/19)

The sale boundary and Payment Unit boundaries are marked and identified by blue, red and yellow paint. Exterior sale boundary lines against private property are marked with blue paint, with the exception of the western boundary of Payment Unit 5, which is marked with red paint (see Timber Sale Map). Exterior sale boundary lines against state are marked with red paint. Interior Payment Unit boundaries are marked with yellow paint. The painted boundary line trees are not Included Timber and are to be protected unless marked with orange paint.

### 2 - Timber Specifications

#### 2.1 - Included Timber

##### 2.1.3 - Cut Tree Marked Unit(s) (12/08)

Within Payment Unit(s) 1-5, all trees are designated for cutting when marked with orange paint above and below stump height, regardless of merchantability. Additionally, cut all merchantable spruce, balsam fir and aspen.

### 3 - Payments

#### 3.4 - Damaged Timber

##### 3.4.1 - Damaged timber (7/16)

General Condition and Requirement 3.4 Damaged Timber, defines liquidated damages for undesignated live merchantable trees which are cut or injured. In addition, extreme care should be taken to avoid damage to tree seedlings and saplings. No damage is acceptable to undesignated live merchantable trees. Within the Sale Area, if more than 5% of trees (> 4.5" DBH) within a specified area of the sale are damaged, liquidated damages will be assessed for all trees damaged. Rates will be in accordance with General Condition and Requirement 3.4 Damaged Timber.

### 4 - Transportation

#### 4.1 - Construction

##### 4.1.3 - Slash and Earthen Piles (8/04)

Piles or windrows of earth along roads and landings that have been widened or constructed shall be leveled. Slash from road maintenance or construction, including stumps, shall be dispersed throughout the sale.

##### 4.1.4 - Timber Removed for Construction (3/23)

Trees cut or damaged in the process of pre-approved road, landing, or skid trail construction will be decked in an area separate from other Designated Timber and not removed until measured by the Sale Administrator. Payment will be made at contract prices or average prices, if not on the contract.

##### 4.1.6 - Road Construction (4/24)

Construction of new roads or improvements of existing roads shall be done in such a way as to minimize the environmental and visual impacts. Merchantable trees shall be cut and utilized unless otherwise directed. Non-merchantable trees shall be severed and laid flat on the ground. Slash shall be scattered, and not left in windrows and kept a minimum of 10 feet back from the road edge. be chipped, utilized or otherwise removed from the sale. Stumps shall be set upright, not left on edge, and be moved at least 10 feet away from the road edge. Disturbed soil shall be feathered into the woods and not left in berms or windrows.

##### 4.1.7 - Road Closure (10/11)

All new roads built into the sale must be blocked to vehicle traffic upon completion of the sale. Overgrown roads that are reopened shall be considered new roads. In general, this will require constructing a four (4') foot high berm of stumps and logs covered with earth. Contact the Sale Administrator for specific details of design and placement.

#### 4.2 - Maintenance

#### 4.2.2 - Fill Material (4/07)

To maintain roads, fill material may be needed in areas where "holes" exist or may be expected to develop. This fill material should be placed before trucking begins. Contact the Sale Administrator regarding the availability of onsite sand or gravel from adjacent State-owned lands.

#### 4.2.4 - Grading (10/16)

For completion of the sale, state forest roads must be graded. In general, this will require a road grader or bulldozer to shape up the roads after forest products have been hauled off site. This includes cleaning of drainage areas, grading, crowning and filling with gravel, if necessary. The grading equipment to be used must be approved by the Unit Manager or his/her representative.

### 5 - Operations

#### 5.1 - Notification

##### 5.1.1 - Pre-sale Conference (10/16)

A pre-sale conference between the Purchaser and Sale Administrator is required prior to beginning any operations. The Unit Manager or his/her representative must be contacted at least 3 business days in advance to schedule the conference.

#### 5.2 - Conduct of Operations

##### 5.2.1 - Slash

###### 5.2.1.11 - Slash for Reforestation (3/21)

To facilitate reforestation, the Sale Area shall be left with slash evenly distributed. Bunched tops within the cutting area shall be broken up and scattered. Stumps shall be cut low to the ground. Processing sites shall not be left with a compacted layer of slash; tops from these sites shall be hauled back into the cut area and scattered.

##### 5.2.2 - Hazard Trees/Snags

###### 5.2.2.1 - Den Trees (10/16)

Obvious hollow and/or den trees shall be protected and left standing unless they are a safety hazard.

##### 5.2.3 - Operating Restrictions

###### 5.2.3.1 - Operating Restrictions (9/11)

Within Payment Unit(s) 1-5, unless changed by written agreement, cutting, skidding, and hauling are limited to frozen conditions. This restriction is because the Sale Area is designated as a deer wintering complex. Contact the Sale Administrator to assess permissible operation conditions.

###### 5.2.32 - Decking/Landing Restoration (9/13)

All decking and landing areas must have the surface area restored to a condition equal to or better than before. This is to ensure the proper regeneration of the stand. Wood debris, chips and "cookies" from trimmings must be removed or scattered away from landing and loading areas and may not be windrowed on the edge.

###### 5.2.38 - No Decking Against Live Trees (2/04)

Cut products may not be decked against unmarked or designated leave trees.

###### 5.2.40 - Pathway Protection (10/10)

The North Country Trail is a recreation trail and is shown on the Timber Sale Map. Do not cut trees or damage posts with blue pathway markers. Maintain a 20-foot-wide slash, debris, and rut free zone daily, using the pathway as the centerline. Do not run equipment down the pathway. Skidding across the trail may only occur in locations approved by the Sale Administrator.

#### 5.4 - Soil Protection

##### 5.4.1 - Rutting Restriction, General (7/16)

Operations are to cease immediately if equipment and weather conditions result in rutting of roads and/or skid trails which is 12 inches or greater in depth and 50 feet in length. The Unit Manager or his/her representative may restrict hauling and/or skidding if ruts exceed the specified depth. With the Unit Manager or his/her representative's approval, the Purchaser may return to the area when the risk of rutting has decreased.

#### 5.4.2 - Skid Trails (2/04)

Skid trails up and down slopes should be avoided. If, however, this is unavoidable, these trails will be left in a non-erodible condition using water bars, logs, and slash. Placing of slash on these skid trails while logging is ongoing may alleviate need for any further action. At the direction of the Sale Administrator, seed, fertilizer, and mulch may also be required.

#### 5.8 - Protection of Endangered Species

##### 5.8.5 - Protection of Raptor Nests (3/13)

All trees with raptor nests will be protected if found during harvesting operations. Notification will be made to the Unit Manager or his/her representative who will notify the Wildlife Biologist so an onsite evaluation and recommendation can be made, if necessary.

### 6 - Safety and Fire Prevention

#### 6.2 - Signing

##### 6.2.1 - Road Posting (10/20)

The Purchaser is responsible for posting and maintaining caution signs on Mangum Road prior to beginning operations. The road must be posted at appropriate distances from the Sale Area to warn of logging activity and truck traffic. Signs must be removed when harvest operations are suspended or completed. The Purchaser will provide these signs.

##### 6.2.3 - Recreational Trail Posting (10/20)

The Purchaser is responsible for posting and maintaining caution signs on the North Country Trail at appropriate distances from the Sale Area prior to beginning operations. The trail must be posted to warn of logging activity and truck traffic at both ends of the trail. Signs must be removed when harvest operations are suspended or completed.

### 7 - Other Conditions

#### 7.5 - Loss

##### 7.5.1 - Deteriorating Timber (7/09)

The Sale Area has received damage from spruce budworm. The Purchaser should harvest the wood as soon as possible. The Department of Natural Resources is held free of responsibility of any further damage or deterioration due to delay in harvesting.





### TIMBER SALE MAP

This information provided by authority of Part 525, 1994 PA 451, as amended.

Sale Number

**32-025-23**

Date

09/28/2023

Forest Management Unit

Gwinn Mgt Unit

County

Alger

Mapped By: Christian Gabler

Cruised By: Contractor/Pete Holodnick

Scale

1:15,840

Page

1

Of

1

Township  
47N

Range  
22W /

Section(s) and

Subdivision(s) Sec. 19 NW,W1/2NE,N1/2SW,SESW,SWSE; Sec. 24 E1/2NE,E1/2SE; Sec. 30 NENW,NWNE;

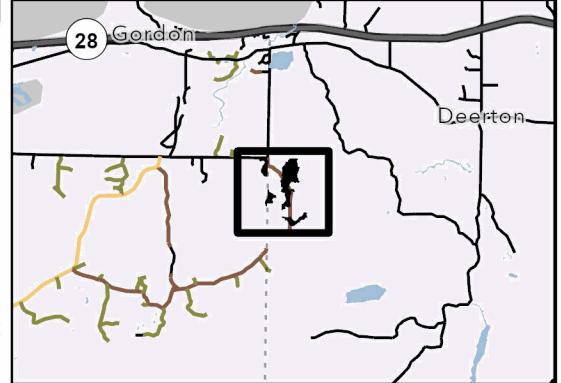
#### Cover Type

A = Aspen	J = Jack Pine	O = Oak	U = Upland Brush
B = Paper Birch	K = Rock	P = Lowland Poplar	UM = Upland Mix Forest
C = Cedar	L = Lowland Brush	Q = Mixed Swamp Conifer	V = Bog or Marsh
D = Treed Bog	LM = Lowland Mix Forest	R = Red Pine	W = White Pine
E = Swamp Hardwoods	M = Maple, Beech, Birch	S = Black Spruce	X = Non Stocked
F = Spruce/Fir	MC = Mixed Conifer	T = Tamarack	Y = Sand
G = Grass	MD = Mixed Deciduous	Z = Water	
H = Hemlock	N = Marsh		

#### Density

0 = Non Stocked	5 = Pole Timber Medium
1 = Seedling Sapling Poor	6 = Pole Timber Well
2 = Seedling Sapling Medium	7 = Saw Timber Poor
3 = Seedling Sapling Well	8 = Saw Timber Medium
4 = Pole Timber Poor	9 = Saw Timber Well

#### Locator Map (1:200,000)

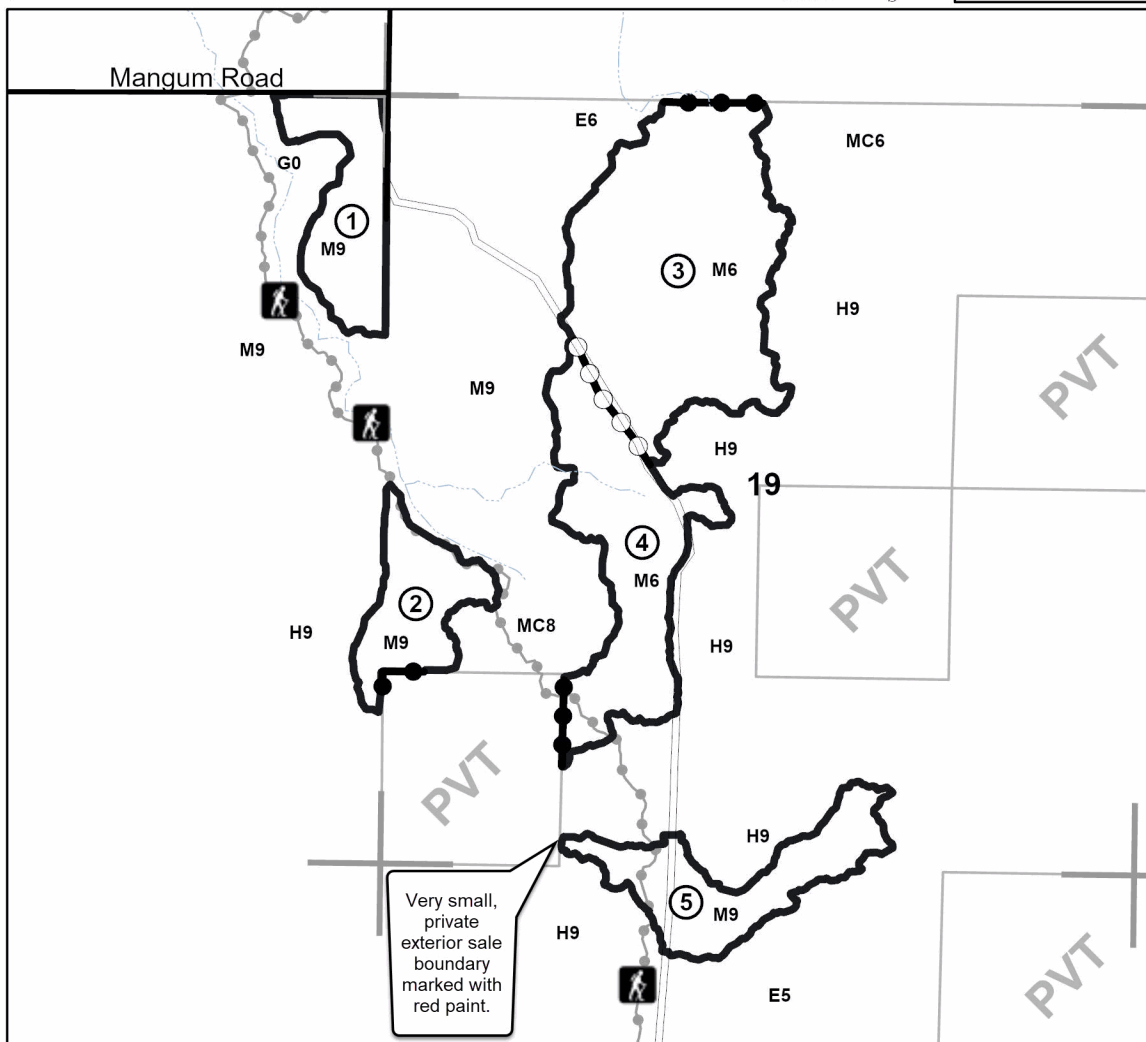
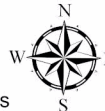
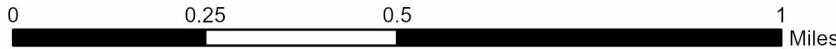


#### PU # Acres

1	18.3
2	15.7
3	61.9
4	34.6
5	21.7

## Mangum East Maple

152.2 Acres



#### Legend

- Against State (Red)
- Payment Unit (Yellow)
- Private Line (Blue)
- Recreational Trail
- Intermittent Stream
- Mangum Road
- Sand River Road

Use QR Code to open Map in App





Marvelous McFarland Mix (32-007-24)

T43N, R24W, SEC. 16; T43N, R24W, SEC. 17; T43N, R24W, SEC. 18; T43N,

In response to the notice of sale to be held 2:00 p.m. (local time) on February 10, 2025, I am hereby submitting my sealed bid (firm offer) for the following forest products to be cut. Bids for individual species must be at or above the advertised price. All non-responsive bid forms may be rejected.

<u>PRODUCTS &amp; SPECIES</u>	<u>ESTIMATED VOLUME*</u>	<u>ADVERTISED PRICE</u>	<u>BID PRICE/UNIT</u>
<b>Sawtimber</b>			
Basswood	27.3 MBF	\$ 34.00/MBF	\$ _____
Red Maple	26.5 MBF	\$ 86.00/MBF	\$ _____
Sugar Maple	39.4 MBF	\$ 171.00/MBF	\$ _____
Yellow Birch	2.9 MBF	\$ 21.00/MBF	\$ _____
<b>Pulpwood</b>			
Balsam Fir	662 Cords	\$ 8.50/Cord	\$ _____
Mixed Hardwood	1,558 Cords	\$ 9.35/Cord	\$ _____
Mixed Spruce	212 Cords	\$ 8.95/Cord	\$ _____
Quaking Aspen	241 Cords	\$ 19.45/Cord	\$ _____
Red Pine	1,077 Cords	\$ 63.20/Cord	\$ _____
Tamarack	78 Cords	\$ 12.15/Cord	\$ _____

\*The volumes are statistically estimated within plus (+) or minus (-) 8.98 percent at 95% confidence level. These estimated volumes are final and not subject to adjustment. Prospective bidders are urged to examine this timber and to make their own estimates of quantity and quality.

I understand that any or all bids may be rejected. All bids must be signed and all bid items must be bid or the bid form may be rejected. I also understand that consideration and awarding a contract will be based upon my past performance and ability to complete the contract based upon equipment and staffing subject to my control.

FEDERAL ID: \_\_\_\_\_ or SOCIAL SECURITY NUMBER: \_\_\_\_\_

Company or individual bidding: \_\_\_\_\_

Company representative's name: \_\_\_\_\_

Address: \_\_\_\_\_

City: \_\_\_\_\_ State: \_\_\_\_\_ Zip: \_\_\_\_\_

IF AVAILABLE, PLEASE PLACE THE PERSONALIZED LABEL FROM YOUR PROSPECTUS IN THE ABOVE BOX.

Individual or company representative's signature: \_\_\_\_\_ Date: \_\_\_\_\_

Phone number : \_\_\_\_\_ Email (optional): \_\_\_\_\_

**THE WINNING BIDDER MUST COMPLETE THE VERIFICATION OF WORKER'S DISABILITY COMPENSATION ACT COMPLIANCE (ON REVERSE SIDE IF DOUBLE SIDED) WITHIN 21 DAYS OF SALE AWARD DATE**



<b>FOR DEPARTMENT USE ONLY</b>
Sale Number (XX - XXX - XX - XX)
Forest Management Unit:

## TIMBER SALE VERIFICATION OF WORKER'S DISABILITY COMPENSATION ACT COMPLIANCE

*As required by Act 317, P.A. 1969 (Worker's Compensation) and  
Part 5 of Act 451 of 1994, as amended.*

### VERIFICATION OF WORKER'S DISABILITY COMPENSATION ACT COMPLIANCE

- This verification must be completed and submitted within 21 days of contract award and prior to the issuance of the timber sale contract.
- In addition, if boxes 2B or 2C are checked, then Notice of Exclusion or Certificate of Insurance must be submitted within twenty-one (21) days of the contract award and prior to the issuance of the timber sale contract.
- All information must be typed or printed except for written signatures.

Please Check Appropriate Categories:

1. My business is organized as (you **must** check one of the boxes below):
  - A.  Sole Proprietorship (individual)
  - B.  Partnership
  - C.  Corporation
2. You **must** check one of the boxes below:
  - A.  I certify my business is a sole proprietorship and it has no employees but the sole proprietor. I am not subject to the Worker's Compensation Laws.
  - B.  I certify my business has satisfied its obligation to the Worker's Compensation Act through the use of an approved Notice of Exclusion (BWC-337, Rev. 5/96). I will provide a copy of the Notice of Exclusion within 21 days of the contract award. (For questions or a copy of the BWC-337, please call the Worker's Compensation Bureau at 517-322-1195).
  - C.  I certify my business has a Worker's Compensation Policy. I will provide an original Certificate of Insurance within twenty-one (21) days of the contract award.
3. If you have checked item 2(A) or 2(B), you **must** indicate the number of **both** full-time and part-time employees, other than yourself, including family members and active partners (if none, you must enter "0").

\_\_\_\_\_ Full-time Employees

\_\_\_\_\_ Part-time Employees

Name of Business		Federal ID (or) Social Security No.	
Address		Telephone (       )	
City	State	ZIP	

*I hereby certify that the above information is true and correct. I agree to notify the Michigan DNR of any changes that occur in factors affecting my coverage during any of my present and future operations.*

\_\_\_\_\_  
Signature of Owner or Authorized Representative

\_\_\_\_\_  
Title

\_\_\_\_\_  
Date

**Please complete the "SEALED BID" information on the next page**

Grouse Picnic Pine (32-008-24)  
T46N, R27W, SEC. 23; T46N, R27W, SEC. 26; T46N, R27W, SEC. 35; T46N,

In response to the notice of sale to be held 2:00 p.m. (local time) on February 10, 2025, I am hereby submitting my sealed bid (firm offer) for the following forest products to be cut. Bids for individual species must be at or above the advertised price. All non-responsive bid forms may be rejected.

<u>PRODUCTS &amp; SPECIES</u>	<u>ESTIMATED VOLUME*</u>	<u>ADVERTISED PRICE</u>	<u>BID PRICE/UNIT</u>
Pulpwood			
Balsam Fir	35 Cords	\$ 8.50/Cord	\$ _____
Jack Pine	370 Cords	\$ 36.05/Cord	\$ _____
Mixed Hardwood	160 Cords	\$ 9.35/Cord	\$ _____
Mixed Spruce	45 Cords	\$ 8.95/Cord	\$ _____
Quaking Aspen	237 Cords	\$ 19.45/Cord	\$ _____
Red Oak	6 Cords	\$ 14.65/Cord	\$ _____
Red Pine	2,093 Cords	\$ 63.20/Cord	\$ _____
White Pine	3 Cords	\$ 18.90/Cord	\$ _____

\*The volumes are statistically estimated within plus (+) or minus (-) 11.46 percent at 95% confidence level. These estimated volumes are final and not subject to adjustment. Prospective bidders are urged to examine this timber and to make their own estimates of quantity and quality.

I understand that any or all bids may be rejected. All bids must be signed and all bid items must be bid or the bid form may be rejected. I also understand that consideration and awarding a contract will be based upon my past performance and ability to complete the contract based upon equipment and staffing subject to my control.

FEDERAL ID: \_\_\_\_ - \_\_\_\_ - \_\_\_\_ or SOCIAL SECURITY NUMBER: \_\_\_\_ - \_\_\_\_ - \_\_\_\_

Company or individual bidding: \_\_\_\_\_

Company representative's name: \_\_\_\_\_

Address: \_\_\_\_\_

City: \_\_\_\_\_ State: \_\_\_\_\_ Zip: \_\_\_\_\_

IF AVAILABLE, PLEASE PLACE THE PERSONALIZED LABEL FROM YOUR PROSPECTUS IN THE ABOVE BOX.

Individual or company representative's signature: \_\_\_\_\_ Date: \_\_\_\_\_

Phone number : \_\_\_\_\_ Email (optional): \_\_\_\_\_

**THE WINNING BIDDER MUST COMPLETE THE VERIFICATION OF WORKER'S DISABILITY COMPENSATION ACT COMPLIANCE (ON REVERSE SIDE IF DOUBLE SIDED) WITHIN 21 DAYS OF SALE AWARD DATE**



FOR DEPARTMENT USE ONLY	
Sale Number (XX - XXX - XX - XX)	
Forest Management Unit:	

# TIMBER SALE VERIFICATION OF WORKER'S DISABILITY COMPENSATION ACT COMPLIANCE

As required by Act 317, P.A. 1969 (Worker's Compensation) and  
Part 5 of Act 451 of 1994, as amended.

## VERIFICATION OF WORKER'S DISABILITY COMPENSATION ACT COMPLIANCE

- This verification must be completed and submitted within 21 days of contract award and prior to the issuance of the timber sale contract.
- In addition, if boxes 2B or 2C are checked, then Notice of Exclusion or Certificate of Insurance must be submitted within twenty-one (21) days of the contract award and prior to the issuance of the timber sale contract.
- All information must be typed or printed except for written signatures.

Please Check Appropriate Categories:

1. My business is organized as (you **must** check one of the boxes below):
  - A.  Sole Proprietorship (individual)
  - B.  Partnership
  - C.  Corporation
2. You **must** check one of the boxes below:
  - A.  I certify my business is a sole proprietorship and it has no employees but the sole proprietor. I am not subject to the Worker's Compensation Laws.
  - B.  I certify my business has satisfied its obligation to the Worker's Compensation Act through the use of an approved Notice of Exclusion (BWC-337, Rev. 5/96). I will provide a copy of the Notice of Exclusion within 21 days of the contract award. (For questions or a copy of the BWC-337, please call the Worker's Compensation Bureau at 517-322-1195).
  - C.  I certify my business has a Worker's Compensation Policy. I will provide an original Certificate of Insurance within twenty-one (21) days of the contract award.
3. If you have checked item 2(A) or 2(B), you **must** indicate the number of **both** full-time and part-time employees, other than yourself, including family members and active partners (if none, you must enter "0").

\_\_\_\_\_ Full-time Employees

\_\_\_\_\_ Part-time Employees

Name of Business		Federal ID (or) Social Security No.	
Address		Telephone (       )	
City	State	ZIP	

*I hereby certify that the above information is true and correct. I agree to notify the Michigan DNR of any changes that occur in factors affecting my coverage during any of my present and future operations.*

\_\_\_\_\_  
Signature of Owner or Authorized Representative

\_\_\_\_\_  
Title

\_\_\_\_\_  
Date

Please complete the "SEALED BID" information on the next page

Mangum East Maple (32-025-23)  
T47N, R22W, SEC. 19; T47N, R22W, SEC. 30; T47N, R23W, SEC. 24; Alger

In response to the notice of sale to be held 2:00 p.m. (local time) on February 10, 2025, I am hereby submitting my sealed bid (firm offer) for the following forest products to be cut. Bids for individual species must be at or above the advertised price. All non-responsive bid forms may be rejected.

<u>PRODUCTS &amp; SPECIES</u>	<u>ESTIMATED VOLUME*</u>	<u>ADVERTISED PRICE</u>	<u>BID PRICE/UNIT</u>
<b>Sawtimber</b>			
Basswood	3.4 MBF	\$ 18.00/MBF	\$ _____
Red Maple	246.0 MBF	\$ 46.00/MBF	\$ _____
Sugar Maple	66.0 MBF	\$ 91.00/MBF	\$ _____
<b>Pulpwood</b>			
Balsam Fir	133 Cords	\$ 4.50/Cord	\$ _____
Basswood	2 Cords	\$ 4.25/Cord	\$ _____
Mixed Hardwood	1,588 Cords	\$ 5.00/Cord	\$ _____
Mixed Spruce	19 Cords	\$ 4.80/Cord	\$ _____

\*The volumes are statistically estimated within plus (+) or minus (-) 12.87 percent at 95% confidence level. These estimated volumes are final and not subject to adjustment. Prospective bidders are urged to examine this timber and to make their own estimates of quantity and quality.

I understand that any or all bids may be rejected. All bids must be signed and all bid items must be bid or the bid form may be rejected. I also understand that consideration and awarding a contract will be based upon my past performance and ability to complete the contract based upon equipment and staffing subject to my control.

FEDERAL ID: \_\_\_\_\_ or SOCIAL SECURITY NUMBER: \_\_\_\_\_

Company or individual bidding: \_\_\_\_\_

Company representative's name: \_\_\_\_\_

Address: \_\_\_\_\_

City: \_\_\_\_\_ State: \_\_\_\_\_ Zip: \_\_\_\_\_

IF AVAILABLE, PLEASE PLACE THE PERSONALIZED LABEL FROM YOUR PROSPECTUS IN THE ABOVE BOX.

Individual or company representative's signature: \_\_\_\_\_ Date: \_\_\_\_\_  
Phone number : \_\_\_\_\_ Email (optional): \_\_\_\_\_

**THE WINNING BIDDER MUST COMPLETE THE VERIFICATION OF WORKER'S DISABILITY COMPENSATION ACT COMPLIANCE (ON REVERSE SIDE IF DOUBLE SIDED) WITHIN 21 DAYS OF SALE AWARD DATE**



<b>FOR DEPARTMENT USE ONLY</b>
Sale Number (XX - XXX - XX - XX)
Forest Management Unit:

## TIMBER SALE VERIFICATION OF WORKER'S DISABILITY COMPENSATION ACT COMPLIANCE

*As required by Act 317, P.A. 1969 (Worker's Compensation) and  
Part 5 of Act 451 of 1994, as amended.*

### VERIFICATION OF WORKER'S DISABILITY COMPENSATION ACT COMPLIANCE

- This verification must be completed and submitted within 21 days of contract award and prior to the issuance of the timber sale contract.
- In addition, if boxes 2B or 2C are checked, then Notice of Exclusion or Certificate of Insurance must be submitted within twenty-one (21) days of the contract award and prior to the issuance of the timber sale contract.
- All information must be typed or printed except for written signatures.

Please Check Appropriate Categories:

1. My business is organized as (you **must** check one of the boxes below):
  - A.  Sole Proprietorship (individual)
  - B.  Partnership
  - C.  Corporation
2. You **must** check one of the boxes below:
  - A.  I certify my business is a sole proprietorship and it has no employees but the sole proprietor. I am not subject to the Worker's Compensation Laws.
  - B.  I certify my business has satisfied its obligation to the Worker's Compensation Act through the use of an approved Notice of Exclusion (BWC-337, Rev. 5/96). I will provide a copy of the Notice of Exclusion within 21 days of the contract award. (For questions or a copy of the BWC-337, please call the Worker's Compensation Bureau at 517-322-1195).
  - C.  I certify my business has a Worker's Compensation Policy. I will provide an original Certificate of Insurance within twenty-one (21) days of the contract award.
3. If you have checked item 2(A) or 2(B), you **must** indicate the number of **both** full-time and part-time employees, other than yourself, including family members and active partners (if none, you must enter "0").

\_\_\_\_\_ Full-time Employees

\_\_\_\_\_ Part-time Employees

Name of Business		Federal ID (or) Social Security No.	
Address		Telephone (       )	
City	State	ZIP	

*I hereby certify that the above information is true and correct. I agree to notify the Michigan DNR of any changes that occur in factors affecting my coverage during any of my present and future operations.*

\_\_\_\_\_  
Signature of Owner or Authorized Representative

\_\_\_\_\_  
Title

\_\_\_\_\_  
Date

**Please complete the "SEALED BID" information on the next page**