



**DEPARTMENT OF NATURAL RESOURCES
STATE OF MICHIGAN
TIMBER SALE PROSPECTUS #7526**

SCHEDULED SALE DATE AND TIME: 2:00 p.m. (local time) on March 10, 2025.

LOCATION: **GWINN MGMT UNIT, 410 WEST M 35, GWINN, MI 49841.**

PROSPECTUS NOTE: The bidder is advised to inspect the sale area and review the location, estimated volumes, operating costs and contract terms of proposed sales. Please be aware that some landowners may request 60 days or more notice for access across their land.

Notice is hereby given that bids will be received by the Unit Manager, GWINN MANAGEMENT UNIT, for certain timber on the following described lands:

Swale Hopper Hardwoods (32-005-24) / T44N, R23W, SEC. 12, N1/2SE, SWSE.
T44N, R23W, SEC. 12, NENW, S1/2NW, S1/2NE, NESW.
T44N, R23W, SEC. 13, E1/2SE.

Marquette County, Advertised Price \$46,471.95, 129.2 Acres, Hardwood, Spruce/Fir/Tamarack.

SALE NOTE: See Sale Condition 4.1.5: Culverts - Roads may require the installation of culverts for cross drainage or at natural drainage-ways. If culverts are needed in these locations, their placement will be specified by the Sale Administrator, and they shall be installed prior to hauling. The culverts shall be new, corrugated metal or plastic gauge. Culverts will be a minimum of 12 inches in diameter and 24 feet in length. If culverts are removed, fill shall be removed from wetland soils as specified. Soils shall be maintained and left in a non-erodible condition, with water bars, seed, fertilizer, mulch, and slash installed as directed by the Sale Administrator and as specified in the BMP manual. Stream crossing permits, if needed, will be obtained by the DNR.

Access may be through private land.

Ghost Rider (32-009-24) / T45N, R27W, SEC. 26, SWNW, SW, W1/2SE.
T45N, R27W, SEC. 27, E1/2SE.
T45N, R27W, SEC. 34, S1/2NW, NENE, N1/2SW, SWSW.
T45N, R27W, SEC. 35, NW, W1/2NE.

Marquette County, Advertised Price \$113,684.90, 219.0 Acres, Aspen, Spruce/Fir/Tamarack.

SALE NOTE: This sale contains a recreational trail and has various operating restrictions. All operating restriction should be reviewed by purchaser.

A recreation site such as a trail, pathway, or campground is within the sale area or the vicinity. Certain restrictions/specifications may be applicable including time restrictions.

Hot Dog Mix (32-012-24) / T45N, R24W, SEC. 10, W1/2NE.
T45N, R24W, SEC. 3, E1/2NW, NE, SE.
T46N, R24W, SEC. 34, SESE.

Marquette County, Advertised Price \$56,231.20, 195.9 Acres, Hardwood, Sugar Maple.

SALE NOTE: Please see Sale Condition 4.4.1 - Private Access: Permission for access across private land is the responsibility of the Purchaser. Should the Purchaser desire to cross private land, a copy of the written permission from the private land-owner(s) may be required by the DNR. Please contact the Unit Manager for contact information of associated private land-owner(s).

Access may be through private land.

BID INSTRUCTIONS (VER. 10/10/2022):

1. Scheduled Bid Location, Date, and Time (2/11)

Bids must be received by the Unit Manager, GWINN OFFICE, 410 WEST M 35, GWINN, MI 49841, no later than 2:00 p.m. (local time) on March 10, 2025. For further information concerning this sale, contact Mike Brodeur at 906-346-9201 extension 103.

2. Bidder's Qualifications (10/22)

If all or part of a timber sale was prepared by a private contractor, the contractor and that contractor's company are not permitted to bid on the timber sale. A person must be 18 years of age or older to purchase timber. Permanent employees of the Department of Natural Resources or members of their immediate household may not bid. Former employees, in the permanent or seasonal class, may not bid until 3 months after the last day of active duty. Bids will not be accepted from individuals or companies appearing on the DNR/FRD No-Bid List. This list contains the names of purchasers who previously failed to execute a contract within 21-days or who have a history of poor performance.

3. Preparation of Sealed Bids (5/16)

Bid Forms may be completed online thru Michigan DNR Timber Sale Online Bidding (OLB) at www.michigan.gov/timberbidding or by completing the hardcopy Bid Form found in the Timber Sale Prospectus. Hardcopy Bid Forms shall be manually signed in ink. Registration in OLB is considered your 'signature' for all bids submitted thru that system. Bid prices must be entered for each species and product in the Bid Price column for all material subject to bidding and all fill-in blanks must be completed. If erasures or other changes appear on the hardcopy Bid Form, each erasure or change must be initialed by the person signing the bid.

4. Submission of Sealed Bids (5/16)

Bid forms may be obtained from the Unit Manager or thru OLB. Bids may be submitted hardcopy or thru OLB. All hardcopy bids must be submitted on the bid form and in an envelope clearly identified as described in this section. NOTE: Only one bid form per bid envelope. Sealed bids must be submitted to the Unit office designated in the prospectus and must be submitted at or prior to the time established in the prospectus. The envelope should show on the outside (a) the sale name or number and (b) the date and time of bid opening, as shown in the prospectus. Bids received after the time specified in the sale prospectus are late bids and will be rejected.

It is possible for a bidder to submit multiple bids on a single sale. For example, a bid may be submitted hardcopy and a bid may be submitted thru OLB. Or, two bidders from the same company could both submit bids on the same sale. If this were to happen, the State would accept all bids received and award the contract accordingly. All bidding and contractual requirements would apply to all bids received.

5. Public Opening of Sealed Bids (7/16)

If conditions permit, the sealed bids will be publicly opened and posted at the time and place set in the prospectus.

If a bidder, present at a bid opening, has submitted bids on more than one sale, that bidder may withdraw their unopened bid envelopes or announce the withdrawal of their online bid after being declared the successful bidder on one sale.

6. Award of Contract (1/11)

Award of the contract will be made to the Bidder whose bid, conforming to the prospectus, is most advantageous to the State of Michigan on the basis of total value at rates bid for the estimated quantities. The State reserves the right to reject any bid or waive any minor irregularity in bids received. A written award mailed (or otherwise furnished) to the successful Bidder shall be deemed to result in a binding contract without further action by either party.

7. Down Payment (1/11)

The Bidder to whom award is made must make a down payment within 21 days of the sale award. The amount of the down payment will be calculated as shown in the Bond and Payment Schedule of this prospectus. Only cash may be used to meet this requirement.

8. Performance Security (1/11)

As guarantee of faithful performance, a cash bond, certificate of deposit, surety bond or irrevocable letter of credit (LOC) is required within 21 days of the sale award. The amount of the performance security is shown in the Bond and

Payment Schedule of this prospectus. If an LOC or surety is used, the coverage must extend for at least 6 months beyond the contract expiration.

9. Worker's Compensation (10/22)

Purchaser shall obtain worker's compensation insurance to cover claims under Michigan's Worker's Disability Compensation Act of 1969 or similar employee benefit act of any other state applicable to an employee. Verification of Worker's Disability Compensation Act Compliance must be completed and submitted within 21 days of contract award and prior to the issuance of the timber sale contract. In addition, if applicable, Notice of Exclusion or Certificate of Insurance must also be submitted.

10. Timber Sale Contract (10/22)

Additional conditions and requirements common to all timber sales are listed on the timber sale contract (R4031) and are available on line at www.michigan.gov/timber. Contact the Unit Manager for additional information or a sample contract. Within 21 days of the date of the award letter, the bidder must sign the contract and provide the required down payment, performance security, and verification of worker's disability compensation. The down payment and performance security shall be in accordance with the provisions of the timber sale contract, in the sums stated in this prospectus. If these actions are not taken, then the Bidder, the Bidder's corporation, and the corporation's principals may not be permitted to bid on State timber sales for a period of 3 months after the first offense, 6 months after the second offense, and 1 year after the third offense. An offense will only be counted against the Bidder for 5 years. In addition, the Bidder certifies that if awarded this contract, the Bidder will complete the timber sale contract in accordance with its terms and any modifications thereof including requirements to purchase, cut, and remove the included timber by the expiration date.

Payment Unit values in the State Forest Timber Sale Contract are calculated based on the advertised value of the Payment Unit as a percentage of the total advertised value of the contract. The advertised value of each Payment Unit is given in the Description of Timber by Payment Unit table on the Timber Sale Information page. For example, if the value of Payment Unit 1 is advertised as \$1,500 and the total Timber Sale value is advertised as \$10,000, the contract price for Payment Unit 1 will be 15% of the total bid price ($\$1,500/\$10,000 * 100$).

11. Disclaimer of Estimates and Bidder's Warranty of Inspection (10/22)

Before submitting this bid, the Bidder is advised and cautioned to inspect the sale area, review the requirements of the sale contract, and take other steps as may be reasonably necessary to ascertain the location, estimated volumes, construction estimates, and operating costs of the proposed sale. Failure to do so will not relieve the Bidder from responsibility for completing the contract.

The Bidder warrants that this bid is submitted solely on the basis of the Bidder's examination and inspection of the quality and quantity of the timber offered for sale and the Bidder's opinion of the value thereof and the costs of recovery. No reliance should be placed on the State of Michigan's estimates of timber quality, quantity or costs of recovery. Bidder further acknowledges that the State of Michigan: (i) expressly disclaims any warranty of fitness of timber for any purpose; (ii) offers this timber as is without any warranty of quality (merchantability) or quantity and (iii) expressly disclaims any warranty as to the quantity or quality of timber sold.

12. Certification and Chain-of-Custody (10/22)

Unless otherwise indicated in the contract under section 7 – Other Conditions of the Sale Specific Conditions & Requirements, the area encompassed by this timber sale is certified to the standards of the Forest Stewardship Council (FSC) - Certificate #SCS-FM/COC-00090N and the Sustainable Forestry Initiative (SFI) - Certificate #NSF-SFIS-5Y031-SF5. Forest products from this sale may be delivered to the mill as "FSC 100% and / or SFI certified" as long as the contractor hauling the forest products is chain-of-custody (COC) certified or covered under a COC certificate from the destination mill. The purchaser is responsible for maintaining COC after leaving the sale area.

13. Good Neighbor Authority (GNA) Requirements (10/22)

If the name of this timber sales contains the acronym GNA, it is authorized by the Good Neighbor Authority (GNA) and covered by various agreements between the U.S. Forest Service and the State. The timber sale occurs on federal land and the following conditions apply:

GNA contracts on US Forest Service land will not be awarded to purchasers on the Federal list of excluded parties. The System for Award Management (SAM) will be checked for active excluded parties prior to award of contract. In

addition, the Bidder to whom award is made must complete an Assurance Regarding Felony Conviction or Tax Delinquent Status for Corporate Applicants (AD-3031).

14. Good Neighbor Authority (GNA) Requirements, con't (10/22)

Bidder certifies, by signing this bid form, that to the best of Bidder's knowledge that the following representations are accurate and complete.

- a. That the Bidder and its principals are not presently debarred, suspended, proposed for debarment, declared ineligible, or voluntary excluded from timber sales (covered transactions) by any Federal department or agency.
- b. That the Bidder and its principals have not within a 3-year period preceding this bid been convicted of or had a civil judgment rendered against them for commission of fraud or a criminal offense in connection with obtaining , attempting to obtain, or performing a public (Federal, State, or local) transaction or contract under a public transaction; violation of Federal or State antitrust statutes or commission of embezzlement, theft, forgery, bribery, falsification or destruction of records, making false statements, or receiving stolen property.
- c. That the Bidder and its principals are not presently indicted for or otherwise criminally or civilly charged by a governmental entity (Federal, State, or local) with commission of any of the offenses enumerated in paragraph b of this certification.
- d. That the Bidder and its principals have not within a 3-year period preceding this bid had one or more public transactions (Federal, State, or local) terminated for breach or default of a timber or forest product contract.

Bidders that cannot certify this requirement, in whole or in part, shall submit an explanation with their bid.

Scott Bowen
Director

TIMBER SALE INFORMATION

Swale Hopper Hardwoods (32-005-24)
 T44N, R23W, SEC. 12; T44N, R23W, SEC. 13.
 Marquette County (Advertised Price \$46,471.95)

SALE NOTE: See Sale Condition 4.1.5: Culverts - Roads may require the installation of culverts for cross drainage or at natural drainage-ways. If culverts are needed in these locations, their placement will be specified by the Sale Administrator, and they shall be installed prior to hauling. The culverts shall be new, corrugated metal or plastic gauge. Culverts will be a minimum of 12 inches in diameter and 24 feet in length. If culverts are removed, fill shall be removed from wetland soils as specified. Soils shall be maintained and left in a non-erodible condition, with water bars, seed, fertilizer, mulch, and slash installed as directed by the Sale Administrator and as specified in the BMP manual. Stream crossing permits, if needed, will be obtained by the DNR.

Access may be through private land.

A timber sale contract for this lump sum, sealed bid timber sale will be awarded to the responsible bidder offering the highest sealed bid price. All units of volume listed below were estimated using the Inventory Manager computer program and the new Michigan taper model. Bids must be at or above the following advertised price for each product and species:

<u>PRODUCTS & SPECIES</u>	<u>ESTIMATED UNITS*</u>	<u>ADVERTISED PRICE</u>
Sawtimber		
Basswood	1.5 MBF	\$ 41.00 / MBF
Red Maple	93.0 MBF	\$ 104.00 / MBF
Sugar Maple	42.6 MBF	\$ 218.00 / MBF
Yellow Birch	11.2 MBF	\$ 25.00 / MBF
Pulpwood		
Balsam Fir	35 Cords	\$ 10.10 / Cord
Mixed Hardwood	2,080 Cords	\$ 11.80 / Cord
Quaking Aspen	65 Cords	\$ 23.95 / Cord
White Spruce	68 Cords	\$ 10.55 / Cord

* The total volume is statistically estimated within plus (+) or minus (-) 12.15 percent. There are an estimated 2,607 cords on this timber sale, plus or minus 317 cords at the 95% confidence level. The estimated units are final and not subject to adjustment. Prospective bidders are urged to examine this timber and to make their own estimates of quantity and quality.

BOND AND PAYMENT SCHEDULE:

1. A bond in the amount of \$4,647.00 to insure faithful performance of the conditions of the contract will be deposited by the successful bidder within 21 days of the sale award.
2. Cutting in any sale or unit without the required advance payment would be considered a trespass.
3. Total payment must be paid in advance or according to the following schedule :
 - (a) Ten percent (10%) of the sale value must be paid within 21 days of the sale award.
 - (b) The 10% down payment will be credited towards the first unit cut.
 - (c) Payment for each of the following units must be made before cutting begins in that unit:

PAYMENT UNIT NUMBER	PERCENT OF TOTAL SALE VALUE
01	22.6%
02	13.6%
03	26.0%
04	6.0%
05	3.1%
06	8.4%
07	8.2%
08	0.8%
09	8.4%
10	2.9%

4. If no cutting takes place, the 10% down payment will not be refunded.
5. Operations on the contract issued will terminate on 06/30/2028.

SALE STATISTICS

Volumes were calculated in cubic feet using the Michigan taper model. Cubic foot volume includes all wood inside bark for the product indicated. For display purposes, cubic feet were converted to cords and MBF using a simple conversion factor, e.g. 79 cubic feet per cord and 185 cubic feet per MBF. The cubic foot volumes are precise; the cords and MBF volumes are not. Cubic foot volume cannot be directly converted to cords or boards with precision.

SALE VOLUMES

The total estimated sale volume may not equal the sum of the species/products due to the nature of statistical calculations associated with double sampling methodology.

VOLUME			STATISTICAL RANGE IN CORDS	
TOTAL CUBIC FEET	TOTAL CORDS	PERCENT ERROR	MINIMUM	MAXIMUM
205,933	2,607	12.15%	2,290	2,924

VDU VOLUMES

A VDU is a Volume Determination Unit. Volumes and their associated statistics are calculated at the VDU level and summarized to the sale level. There is often a one to one relationship between a VDU and a Payment Unit, but not always, depending on the cruise design. Refer to the VDU TO PAYMENT UNIT table.

VDU	VOLUME			RANGE IN CORDS	
	TOTAL CUBIC FEET	TOTAL CORDS	PERCENT ERROR	MINIMUM	MAXIMUM
1	111,483	1,411	18.48%	1,150	1,672
2	12,784	162	48.18%	84	240
3	52,896	670	20.30%	534	806
4	28,770	364	28.18%	262	467
TOTAL:	205,933	2,607		2,029	3,184

VDU TO PAYMENT UNIT

When a VDU is associated with more than one Payment Unit (PU), the VDU volumes are assigned to the PU based on acres of the VDU within the PU.

VDU	VDU ACRES	PU	PU ACRES
1	73.0	1	26.5
1	73.0	2	16.0
1	73.0	3	30.5
2	7.6	4	7.6
3	33.8	5	5.1
3	33.8	6	13.9
3	33.8	7	13.4
3	33.8	8	1.4
4	14.8	9	11.0
4	14.8	10	3.8
TOTAL:	391.4		129.2

DESCRIPTION OF TIMBER BY PAYMENT UNIT (PU)

PU	MARKET GROUP	PRODUCT	QUANTITY	UNIT	ACRES	ADVERTISE PRICE	
1	Basswood	Sawtimber	0.5	MBF	26.5	\$10,485.05	
	Red Maple		22.7	MBF			
	Sugar Maple		14.6	MBF			
	Yellow Birch		0.7	MBF			
	Balsam Fir		Pulpwood	2			Cords
	Mixed Hardwood			404			Cords
	<i>Basswood</i>			7			<i>Cords</i>
	<i>Black Cherry</i>			4			<i>Cords</i>
	<i>Ironwood</i>			2			<i>Cords</i>
	<i>Red Maple</i>			174			<i>Cords</i>
	<i>Sugar Maple</i>			216			<i>Cords</i>
	<i>Yellow Birch</i>			1			<i>Cords</i>
	White Spruce			11			Cords
	2			Basswood			Sawtimber
Red Maple		13.7	MBF				
Sugar Maple		8.8	MBF				
Yellow Birch		0.4	MBF				
Balsam Fir		Pulpwood	1	Cords			
Mixed Hardwood			243	Cords			
<i>Basswood</i>			4	<i>Cords</i>			
<i>Black Cherry</i>			2	<i>Cords</i>			
<i>Ironwood</i>			1	<i>Cords</i>			
<i>Red Maple</i>			105	<i>Cords</i>			
<i>Sugar Maple</i>			130	<i>Cords</i>			
<i>Yellow Birch</i>			1	<i>Cords</i>			
White Spruce			7	Cords			
3			Basswood	Sawtimber	0.7	MBF	
	Red Maple	26.2	MBF				
	Sugar Maple	16.8	MBF				
	Yellow Birch	0.8	MBF				
	Balsam Fir	Pulpwood	3		Cords		
	Mixed Hardwood		464		Cords		
	<i>Basswood</i>		7		<i>Cords</i>		
	<i>Black Cherry</i>		4		<i>Cords</i>		
	<i>Ironwood</i>		3		<i>Cords</i>		
	<i>Red Maple</i>		201		<i>Cords</i>		
	<i>Sugar Maple</i>		247		<i>Cords</i>		
	<i>Yellow Birch</i>		2		<i>Cords</i>		
	White Spruce		13		Cords		
	4		Red Maple		Sawtimber	5.8	MBF
Sugar Maple		2.4	MBF				
Balsam Fir		Pulpwood	8	Cords			
Mixed Hardwood			132	Cords			
<i>Red Maple</i>			52	<i>Cords</i>			
<i>Sugar Maple</i>			76	<i>Cords</i>			
<i>Yellow Birch</i>			4	<i>Cords</i>			
White Spruce			3	Cords			
5			Red Maple	Sawtimber		3.3	MBF
	Yellow Birch	0.9	MBF				
	Balsam Fir	Pulpwood	2		Cords		
	Mixed Hardwood		86		Cords		
	<i>Black Cherry</i>		1		<i>Cords</i>		
	<i>Red Maple</i>		75		<i>Cords</i>		
	<i>Sugar Maple</i>		4		<i>Cords</i>		
	<i>Yellow Birch</i>		6		<i>Cords</i>		
	White Spruce		3		Cords		

DESCRIPTION OF TIMBER BY PAYMENT UNIT (PU), CON'T

PU	MARKET GROUP	PRODUCT	QUANTITY	UNIT	ACRES	ADVERTISE PRICE
6	Red Maple	Sawtimber	9.1	MBF	13.9	\$3,916.80
	Yellow Birch		2.5	MBF		
	Balsam Fir	Pulpwood	5	Cords		
	Mixed Hardwood		235	Cords		
	<i>Black Cherry</i>		2	<i>Cords</i>		
	<i>Red Maple</i>		206	<i>Cords</i>		
	<i>Sugar Maple</i>		10	<i>Cords</i>		
	<i>Yellow Birch</i>		17	<i>Cords</i>		
	White Spruce		8	Cords		
	7	Red Maple	Sawtimber	8.8		
Yellow Birch			2.5	MBF		
Balsam Fir		Pulpwood	5	Cords		
Mixed Hardwood			227	Cords		
<i>Black Cherry</i>			2	<i>Cords</i>		
<i>Red Maple</i>			198	<i>Cords</i>		
<i>Sugar Maple</i>			10	<i>Cords</i>		
<i>Yellow Birch</i>			17	<i>Cords</i>		
White Spruce			8	Cords		
8		Red Maple	Sawtimber	0.9	MBF	1.4
	Yellow Birch		0.3	MBF		
	Mixed Hardwood	Pulpwood	24	Cords		
	<i>Red Maple</i>		21	<i>Cords</i>		
	<i>Sugar Maple</i>		1	<i>Cords</i>		
	<i>Yellow Birch</i>		2	<i>Cords</i>		
	White Spruce		1	Cords		
	9	Red Maple	Sawtimber	1.9	MBF	
Yellow Birch			2.3	MBF		
Balsam Fir		Pulpwood	7	Cords		
Mixed Hardwood			197	Cords		
<i>Red Maple</i>			142	<i>Cords</i>		
<i>Sugar Maple</i>			25	<i>Cords</i>		
<i>Yellow Birch</i>			30	<i>Cords</i>		
Quaking Aspen			48	Cords		
White Spruce			10	Cords		
10		Red Maple	Sawtimber	0.6	MBF	3.8
	Yellow Birch		0.8	MBF		
	Balsam Fir	Pulpwood	2	Cords		
	Mixed Hardwood		68	Cords		
	<i>Red Maple</i>		49	<i>Cords</i>		
	<i>Sugar Maple</i>		8	<i>Cords</i>		
	<i>Yellow Birch</i>		11	<i>Cords</i>		
	Quaking Aspen		17	Cords		
	White Spruce		4	Cords		
	TOTAL:			148.3	MBF	
TOTAL:			2,248	Cords		

Sale Specific Conditions & Requirements

Sale Name: Swale Hopper Hardwoods

Sale Number: 32-005-24 Seq#: 2

1 - Sale Area

1.2 - Boundaries

1.2.1 - Painted Boundaries (9/19)

The sale boundary and Payment Unit boundaries are marked and identified by blue, red and yellow paint. Exterior sale boundary lines against private property are marked with blue paint. Exterior sale boundary lines against state are marked with red paint. Interior Payment Unit boundaries are marked with yellow paint. Retention patches are marked with red paint; no harvesting activities may occur within these areas. The painted boundary line trees are not Included Timber and are to be protected unless marked with orange paint.

2 - Timber Specifications

2.1 - Included Timber

2.1.3 - Cut Tree Marked Unit(s) (12/08)

Within Payment Unit(s) 1-4, all trees are designated for cutting when marked with orange paint above and below stump height, regardless of merchantability.

2.1.7 - Leave Tree Marked Unit(s) (6/14)

Within Payment Unit(s) 5-10, cut all trees which meet minimum piece specifications in 2.2 Utilization, except do not cut hemlock, cedar, white pine, or trees marked with green paint above and below stump height.

3 - Payments

3.3 - Pre-measured Sales

3.3.4 - Dividing Payment Units (7/14)

Payment Unit(s) may be divided at the request of the Purchaser and upon approval of the Unit Manager. Dividing Payment Units is a contract modification which requires a Timber Sale Contract Amendment. There will be only one division per Payment Unit.

3.4 - Damaged Timber

3.4.1 - Damaged timber (7/16)

General Condition and Requirement 3.4 Damaged Timber, defines liquidated damages for undesignated live merchantable trees which are cut or injured. In addition, care should be taken to avoid damage to tree seedlings and saplings.

Within the Sale Area, if more than 10% of the tree seedlings or saplings (1/4" to 4.5" DBH) within a specified portion of the Sale Area are damaged, liquidated damages will be assessed at \$100 per acre for all acreage within that specified portion of the Sale Area that was damaged.

No damage is acceptable to undesignated live merchantable trees. Within the Sale Area, if more than 5% of trees (> 4.5" DBH) within a specified area of the sale are damaged, liquidated damages will be assessed for all trees damaged. Rates will be in accordance with General Condition and Requirement 3.4 Damaged Timber.

4 - Transportation

4.1 - Construction

4.1.3 - Slash and Earthen Piles (8/04)

Piles or windrows of earth along roads and landings that have been widened or constructed shall be leveled. Slash from road maintenance or construction, including stumps, shall be dispersed throughout the sale.

4.1.4 - Timber Removed for Construction (3/23)

Trees cut or damaged in the process of pre-approved road, landing, or skid trail construction will be decked in an area separate from other Designated Timber and not removed until measured by the Sale Administrator. Payment will be made at

contract prices or average prices, if not on the contract.

4.1.5 - Culverts (5/14)

Roads may require the installation of culverts for cross drainage or at natural drainage-ways. If culverts are needed in these locations, their placement will be specified by the Sale Administrator, and they shall be installed prior to hauling. The culverts shall be new, corrugated metal or plastic gauge. Culverts will be a minimum of 12 inches in diameter and 24 feet in length. If culverts are removed, fill shall be removed from wetland soils as specified. Soils shall be maintained and left in a non-erodible condition, with water bars, seed, fertilizer, mulch, and slash installed as directed by the Sale Administrator and as specified in the BMP manual. Stream crossing permits, if needed, will be obtained by the DNR.

4.1.6 - Road Construction (4/24)

Construction of new roads or improvements of existing roads shall be done in such a way as to minimize the environmental and visual impacts. Merchantable trees shall be cut and utilized unless otherwise directed. Non-merchantable trees shall be severed and laid flat on the ground. Slash shall be scattered, and not left in windrows and kept a minimum of 10 feet back from the road edge. Stumps shall be set upright, not left on edge, and be moved at least 10 feet away from the road edge. Disturbed soil shall be feathered into the woods and not left in berms or windrows.

4.1.7 - Road Closure (10/11)

All new roads built into the sale must be blocked to vehicle traffic upon completion of the sale. In general, this will require constructing a four (4') foot high berm of stumps and logs covered with earth. Contact the Sale Administrator for specific details of design and placement.

4.4 - Access

4.4.2 - Alternate route on private property (2/04)

It is the Purchaser's responsibility to obtain access across private land for any routes other than the route shown on the Timber Sale Map.

5 - Operations

5.1 - Notification

5.1.1 - Pre-sale Conference (10/16)

A pre-sale conference between the Purchaser and Sale Administrator is required prior to beginning any operations. The Unit Manager or his/her representative must be contacted at least 3 days in advance to schedule the conference.

5.2 - Conduct of Operations

5.2.2 - Hazard Trees/Snags

5.2.2.1 - Den Trees (10/16)

Obvious hollow and/or den trees shall be protected and left standing unless they are a safety hazard.

5.2.3 - Operating Restrictions

5.2.3.2 - Operating Restrictions (9/11)

Within Payment Unit(s) 1-10, unless changed by written agreement, cutting, skidding, and hauling are limited to frozen conditions, generally the period of December 1 to April 1. This restriction is due to wet soils and wet access roads.

5.2.3.3 - Bark Slippage Restriction (3/09)

Within Payment Unit(s) 1-4, unless changed by written agreement, cutting and skidding are not permitted during the period of April 15 to July 15. This restriction is because of bark slippage.

5.2.17 - Timber Mats and Interlocking Composite Mats (5/23)

Some roads or skid trails may require extra protection such as that afforded by timber mats, interlocking composite mats, or another approved system. If available, mats may be borrowed from the DNR. A Timber Sale Contract Amendment will be used to document the Purchaser's use of the DNR's mats. Contact the Sale Administrator regarding availability and pick-up. Timber mats are available from various field offices. Composite mats are only available from the Grayling field office and the Marquette ICC. The Purchaser is responsible for picking up and hauling the mats to and from the site. All mats must be cleaned prior to drop off. This may include, but is not limited to, power washing and brushing to remove mud and debris. A charge of \$700.00 per timber mat and \$2,000.00 per composite mat will be assessed for all damaged or non-returned mats.

Damage for the crane/timber mats is defined as three or more broken cants. Damage for the composite mats is defined as cracked or broken mats.

5.2.32 - Decking/Landing Restoration (9/13)

All decking and landing areas must have the surface area restored to a condition equal to or better than before. This is to ensure the proper regeneration of the stand. Wood debris, chips and "cookies" from trimmings must be removed or scattered away from landing and loading areas and may not be windrowed on the edge.

5.2.37 - No Decking Areas (12/08)

No decking is allowed within 50 feet of County Road 444 without permission of the county. Evidence of written permission may be requested by the Unit Manager or Sale Administrator.

5.4 - Soil Protection

5.4.1 - Rutting Restriction, General (7/16)

Operations are to cease immediately if equipment and weather conditions result in rutting of roads and/or skid trails which is 12 inches or greater in depth and 50 feet in length. The Unit Manager or his/her representative may restrict hauling and/or skidding if ruts exceed the specified depth. With the Unit Manager or his/her representative's approval, the Purchaser may return to the area when the risk of rutting has decreased.

5.4.2 - Skid Trails (2/04)

Skid trails up and down slopes should be avoided. If, however, this is unavoidable, these trails will be left in a non-erodible condition using water bars, logs, and slash. Placing of slash on these skid trails while logging is ongoing may alleviate need for any further action. At the direction of the Sale Administrator, seed, fertilizer, and mulch may also be required.

5.8 - Protection of Endangered Species

5.8.3 - Red Shoulder Hawk or Goshawk (1) (2/16)

In the event that an active red shoulder hawk or goshawk nest is found, the contract may be amended to protect the nest site until the nest is determined to be inactive. The value of the trees in this excluded area will be refunded or credited to the Purchaser. The nest will be buffered with a five-chain radius (eight acre) protection area, centered on the nest tree, in which there will be no cutting or new roads constructed. Avoid human disturbance, including loading and skidding, in the protection area.

An additional zone of five chains (ten chains centered on the active nest tree) will be established in which there is no management activity from April 1 to July 30 (UP). Limit biomass harvesting and chipping operations within this ten-chain zone, retain the maximum one-third of residues per the Woody Biomass Harvesting Guidelines (Michigan DNR 2010). Nests determined to be inactive will be protected with a one-chain no-harvest buffer.

6 - Safety and Fire Prevention

6.2 - Signing

6.2.1 - Road Posting (10/20)

The Purchaser is responsible for posting and maintaining caution signs on County Road 444 and Maple Grove Road prior to beginning operations. The road must be posted at appropriate distances from the Sale Area to warn of logging activity and truck traffic. Signs must be removed when harvest operations are suspended or completed. The Purchaser will provide these signs.



TIMBER SALE MAP

This information provided by authority of Part 525, 1994 PA 451, as amended.

Sale Number

32-005-24

Date

10/15/2024

Forest Management Unit

Gwinn Mgt Unit

County

Marquette

Mapped By: Rosten

Cruised By: Contractor, Gwinn Personnel

Scale

1:10,000

Page

1

Of

2

Township
44N

Range
23W

Section(s) and

Subdivision(s) Sec. 12 N1/2SE,SWSE; Sec. 12 NENW,S1/2NW,S1/2NE,NESW; Sec. 13 E1/2SE;

Cover Type

A = Aspen	J = Jack Pine	O = Oak	U = Upland Brush
B = Paper Birch	K = Rock	P = Lowland Poplar	UM = Upland Mix Forest
C = Cedar	L = Lowland Brush	Q = Mixed Swamp Conifer	V = Bog or Marsh
D = Treed Bog	LM = Lowland Mix Forest	R = Red Pine	W = White Pine
E = Swamp Hardwoods	M = Maple, Beech, Birch	S = Black Spruce	X = Non Stocked
F = Spruce/Fir	MC = Mixed Conifer	T = Tamarack	Y = Sand
G = Grass	MD = Mixed Deciduous	Z = Water	
H = Hemlock	N = Marsh		

Density

0 = Non Stocked	5 = Pole Timber Medium
1 = Seedling Sapling Poor	6 = Pole Timber Well
2 = Seedling Sapling Medium	7 = Saw Timber Poor
3 = Seedling Sapling Well	8 = Saw Timber Medium
4 = Pole Timber Poor	9 = Saw Timber Well

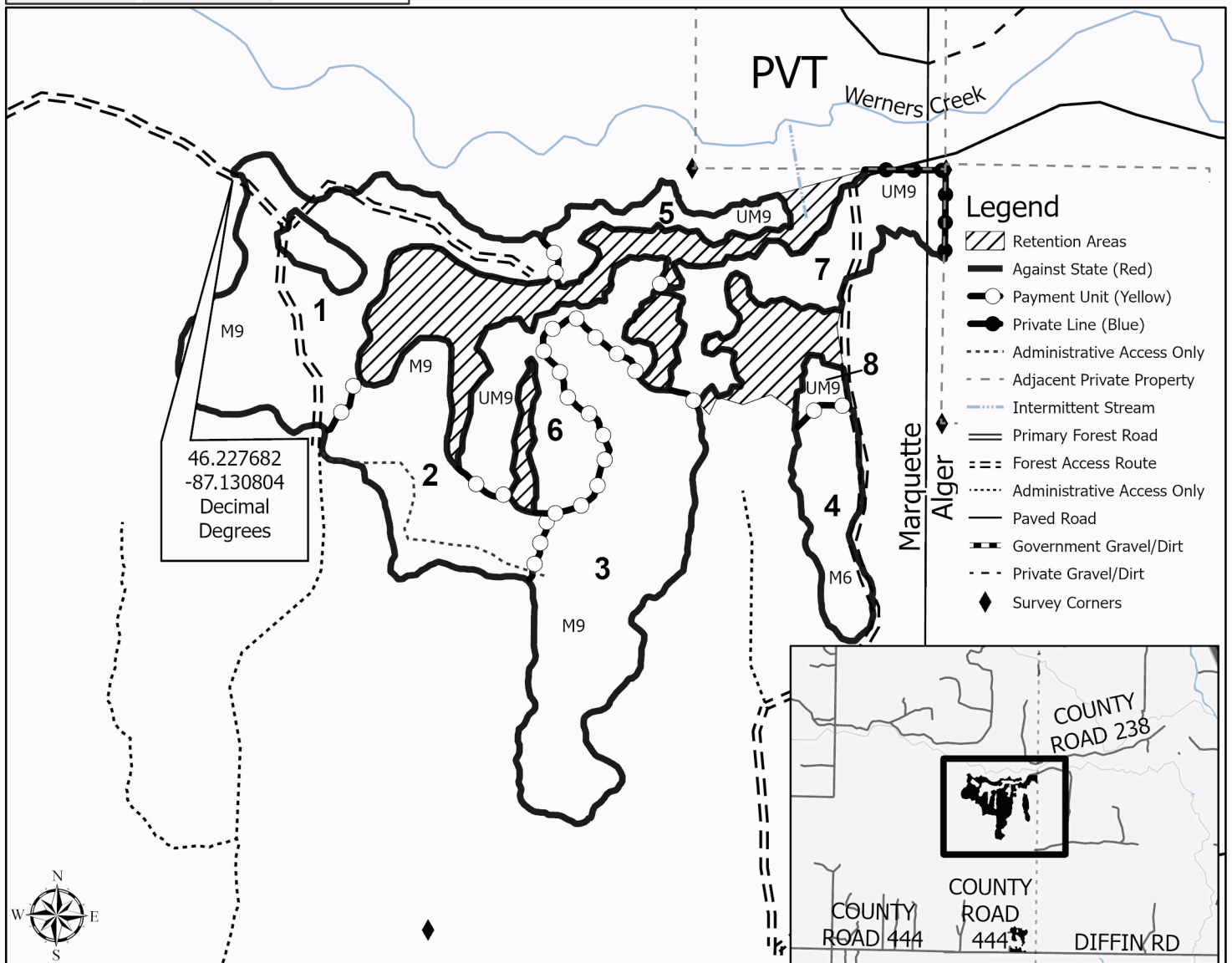
PU #	Acres	PU #	Acres	PU #	Acres
1	26.5	5	5.1	9	11
2	16	6	13.9	10	3.8
3	30.5	7	13.4		
4	7.6	8	1.4		

Swale Hopper Hardwoods Compartment 8

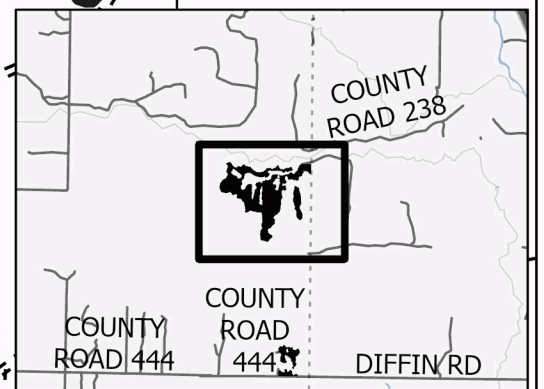
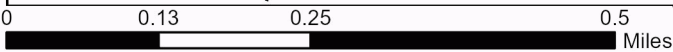
129.2 Acres



Use QR Code to open Map in App



46.227682
-87.130804
Decimal
Degrees



Locator Map (1:100,000)



TIMBER SALE MAP

This information provided by authority of Part 525, 1994 PA 451, as amended.

Sale Number 32-005-24	Date 10/15/2024
Scale 1:5,000	Page 2
	Of 2

Forest Management Unit Gwinn Mgt Unit	County Marquette	Mapped By: Rosten Cruised By: Contractor, Gwinn Personnel
--	---------------------	--

Township 44N	Range 23W	Section(s) and Subdivision(s) Sec. 12 N1/2SE,SWSE; Sec. 12 NENW,S1/2NW,S1/2NE,NESW; Sec. 13 E1/2SE;
-----------------	--------------	--

Cover Type			
A = Aspen	J = Jack Pine	O = Oak	U = Upland Brush
B = Paper Birch	K = Rock	P = Lowland Poplar	UM = Upland Mix Forest
C = Cedar	L = Lowland Brush	Q = Mixed Swamp Conifer	V = Bog or Marsh
D = Treed Bog	LM = Lowland Mix Forest	R = Red Pine	W = White Pine
E = Swamp Hardwoods	M = Maple, Beech, Birch	S = Black Spruce	X = Non Stocked
F = Spruce/Fir	MC = Mixed Conifer	T = Tamarack	Y = Sand
G = Grass	MD = Mixed Deciduous	Z = Water	
H = Hemlock	N = Marsh		

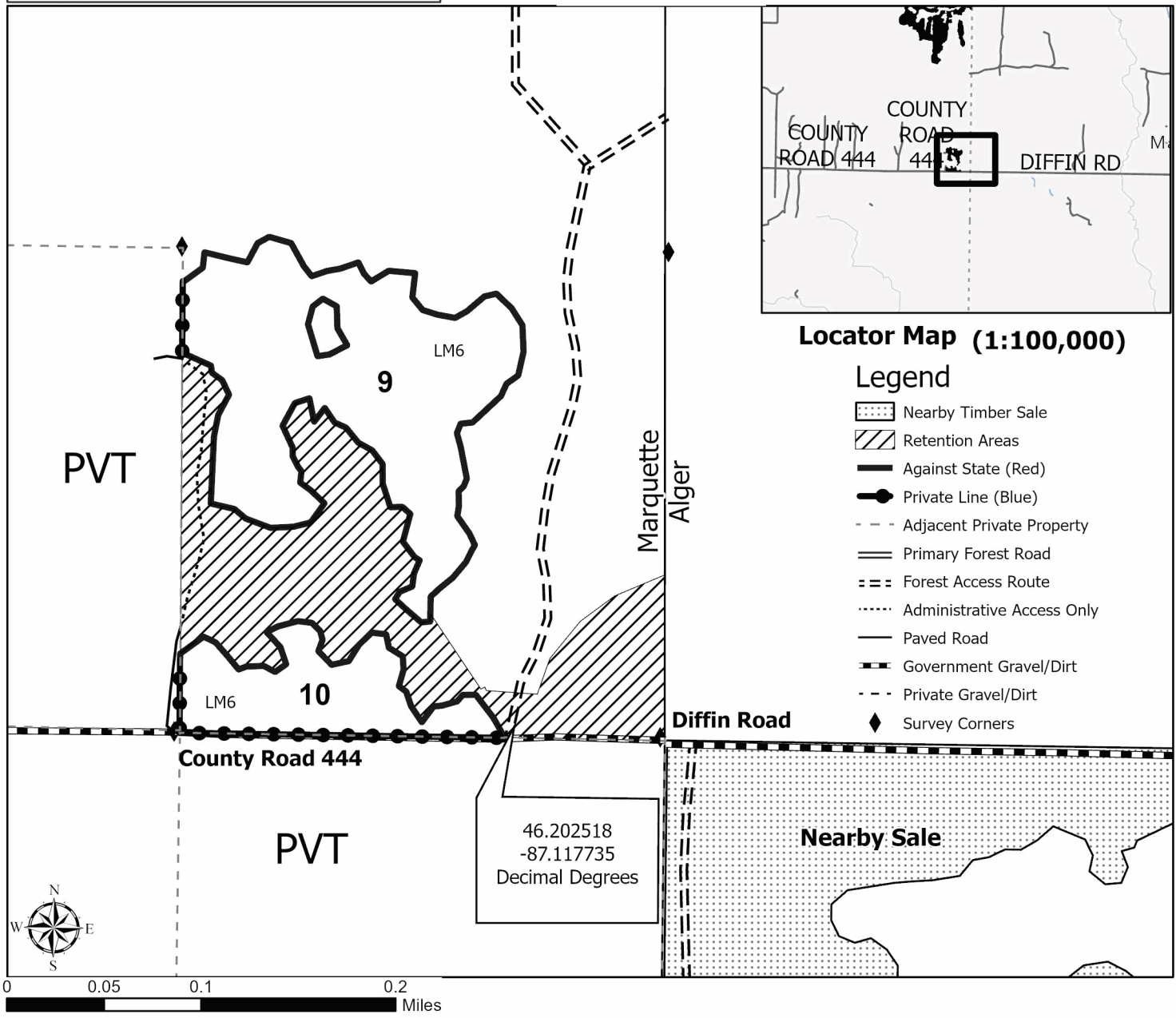
Density	
0 = Non Stocked	5 = Pole Timber Medium
1 = Seedling Sapling Poor	6 = Pole Timber Well
2 = Seedling Sapling Medium	7 = Saw Timber Poor
3 = Seedling Sapling Well	8 = Saw Timber Medium
4 = Pole Timber Poor	9 = Saw Timber Well

PU #	Acres	PU #	Acres	PU #	Acres	PU #	Acres
1	26.5	4	7.6	7	13.4	10	3.8
2	16	5	5.1	8	1.4		
3	30.5	6	13.9	9	11		

Swale Hopper Hardwoods Compartment 8 129.2 Acres



Use QR Code to open Map in App



TIMBER SALE INFORMATION

Ghost Rider (32-009-24)

T45N, R27W, SEC. 26; T45N, R27W, SEC. 27; T45N, R27W, SEC. 34; T45N, R27W, SEC. 35.
Marquette County (Advertised Price \$113,684.90)

SALE NOTE: This sale contains a recreational trail and has various operating restrictions. All operating restriction should be reviewed by purchaser.

A recreation site such as a trail, pathway, or campground is within the sale area or the vicinity. Certain restrictions/specifications may be applicable including time restrictions.

A timber sale contract for this lump sum, sealed bid timber sale will be awarded to the responsible bidder offering the highest sealed bid price. All units of volume listed below were estimated using the Inventory Manager computer program and the new Michigan taper model. Bids must be at or above the following advertised price for each product and species:

<u>PRODUCTS & SPECIES</u>	<u>ESTIMATED UNITS*</u>	<u>ADVERTISED PRICE</u>
Sawtimber		
Paper Birch	4.3 MBF	\$ 66.00 / MBF
Pulpwood		
Balsam Fir	146 Cords	\$ 8.45 / Cord
Jack Pine	227 Cords	\$ 36.05 / Cord
Mixed Aspen	4,294 Cords	\$ 19.95 / Cord
Mixed Hardwood	551 Cords	\$ 9.85 / Cord
Mixed Spruce	123 Cords	\$ 8.80 / Cord
Red Oak	6 Cords	\$ 14.35 / Cord
Red Pine	92 Cords	\$ 63.10 / Cord
Tamarack	466 Cords	\$ 12.05 / Cord
White Pine	16 Cords	\$ 18.90 / Cord

* The total volume is statistically estimated within plus (+) or minus (-) 14.14 percent. There are an estimated 5,932 cords on this timber sale, plus or minus 839 cords at the 95% confidence level. The estimated units are final and not subject to adjustment. Prospective bidders are urged to examine this timber and to make their own estimates of quantity and quality.

BOND AND PAYMENT SCHEDULE:

1. A bond in the amount of \$11,368.00 to insure faithful performance of the conditions of the contract will be deposited by the successful bidder within 21 days of the sale award.
2. Cutting in any sale or unit without the required advance payment would be considered a trespass.
3. Total payment must be paid in advance or according to the following schedule :
 - (a) Ten percent (10%) of the sale value must be paid within 21 days of the sale award.
 - (b) The 10% down payment will be credited towards the first unit cut.
 - (c) Payment for each of the following units must be made before cutting begins in that unit:

PAYMENT UNIT NUMBER	PERCENT OF TOTAL SALE VALUE
01	19.7%
02	19.9%
03	18.9%
04	18.6%
05	4.9%
06	8.5%
07	9.5%
4. If no cutting takes place, the 10% down payment will not be refunded.
5. Operations on the contract issued will terminate on 06/30/2028.

SALE STATISTICS

Volumes were calculated in cubic feet using the Michigan taper model. Cubic foot volume includes all wood inside bark for the product indicated. For display purposes, cubic feet were converted to cords and MBF using a simple conversion factor, e.g. 79 cubic feet per cord and 185 cubic feet per MBF. The cubic foot volumes are precise; the cords and MBF volumes are not. Cubic foot volume cannot be directly converted to cords or boards with precision.

SALE VOLUMES

The total estimated sale volume may not equal the sum of the species/products due to the nature of statistical calculations associated with double sampling methodology.

VOLUME			STATISTICAL RANGE IN CORDS	
TOTAL CUBIC FEET	TOTAL CORDS	PERCENT ERROR	MINIMUM	MAXIMUM
468,633	5,932	14.14%	5,093	6,771

VDU VOLUMES

A VDU is a Volume Determination Unit. Volumes and their associated statistics are calculated at the VDU level and summarized to the sale level. There is often a one to one relationship between a VDU and a Payment Unit, but not always, depending on the cruise design. Refer to the VDU TO PAYMENT UNIT table.

	VOLUME			RANGE IN CORDS	
VDU	TOTAL CUBIC FEET	TOTAL CORDS	PERCENT ERROR	MINIMUM	MAXIMUM
2	63,258	801	25.89%	593	1,008
13	360,477	4,563	17.43%	3,768	5,358
14	7,228	91	48.77%	47	136
262	37,669	477	39.10%	290	663
TOTAL:	468,633	5,932		4,698	7,166

VDU TO PAYMENT UNIT

When a VDU is associated with more than one Payment Unit (PU), the VDU volumes are assigned to the PU based on acres of the VDU within the PU.

VDU	VDU ACRES	PU	PU ACRES
2	32.5	6	32.5
13	151.0	1	38.6
13	151.0	2	39.0
13	151.0	3	37.0
13	151.0	4	36.4
14	11.5	5	11.5
262	24.0	7	24.0
TOTAL:	672.0		219.0

DESCRIPTION OF TIMBER BY PAYMENT UNIT (PU)

PU	MARKET GROUP	PRODUCT	QUANTITY	UNIT	ACRES	ADVERTISE PRICE
1	Paper Birch	Sawtimber	0.8	MBF	38.6	\$22,381.20
	Balsam Fir	Pulpwood	36	Cords		
	Jack Pine		38	Cords		
	Mixed Aspen		983	Cords		
	<i>B. T. Aspen</i>		160	Cords		
	<i>Quaking Aspen</i>		823	Cords		
	Mixed Hardwood		97	Cords		
	<i>Paper Birch</i>		44	Cords		
	<i>Red Maple</i>		49	Cords		
	<i>Sugar Maple</i>		4	Cords		
	Mixed Spruce		10	Cords		
	<i>Black Spruce</i>		10	Cords		
	2	Paper Birch	Sawtimber	0.8		
Balsam Fir		Pulpwood	36	Cords		
Jack Pine			39	Cords		
Mixed Aspen			994	Cords		
<i>B. T. Aspen</i>			162	Cords		
<i>Quaking Aspen</i>			832	Cords		
Mixed Hardwood			98	Cords		
<i>Paper Birch</i>			45	Cords		
<i>Red Maple</i>			49	Cords		
<i>Sugar Maple</i>			4	Cords		
Mixed Spruce			10	Cords		
<i>Black Spruce</i>			10	Cords		
3		Paper Birch	Sawtimber	0.8	MBF	37.0
	Balsam Fir	Pulpwood	34	Cords		
	Jack Pine		37	Cords		
	Mixed Aspen		943	Cords		
	<i>B. T. Aspen</i>		154	Cords		
	<i>Quaking Aspen</i>		789	Cords		
	Mixed Hardwood		93	Cords		
	<i>Paper Birch</i>		43	Cords		
	<i>Red Maple</i>		47	Cords		
	<i>Sugar Maple</i>		3	Cords		
	Mixed Spruce		10	Cords		
	<i>Black Spruce</i>		10	Cords		
	4	Paper Birch	Sawtimber	0.7	MBF	
Balsam Fir		Pulpwood	34	Cords		
Jack Pine			36	Cords		
Mixed Aspen			927	Cords		
<i>B. T. Aspen</i>			151	Cords		
<i>Quaking Aspen</i>			776	Cords		
Mixed Hardwood			91	Cords		
<i>Paper Birch</i>			42	Cords		
<i>Red Maple</i>			46	Cords		
<i>Sugar Maple</i>			3	Cords		
Mixed Spruce			9	Cords		
<i>Black Spruce</i>			9	Cords		
5		Jack Pine	Pulpwood	5	Cords	11.5
	Red Pine		86	Cords		
6	Paper Birch	Sawtimber	1.2	MBF	32.5	\$9,651.40
	Balsam Fir	Pulpwood	2	Cords		
	Mixed Aspen		77	Cords		
	<i>Balsam Poplar</i>		22	Cords		
	<i>Quaking Aspen</i>		55	Cords		
	Mixed Hardwood		169	Cords		

DESCRIPTION OF TIMBER BY PAYMENT UNIT (PU), CON'T

PU	MARKET GROUP	PRODUCT	QUANTITY	UNIT	ACRES	ADVERTISE PRICE
6 con't	<i>Paper Birch</i>	<i>Pulpwood</i>	162	<i>Cords</i>		
	<i>Red Maple</i>		7	<i>Cords</i>		
	Mixed Spruce		84	<i>Cords</i>		
	<i>Black Spruce</i>		81	<i>Cords</i>		
	<i>White Spruce</i>		3	<i>Cords</i>		
	Tamarack		466	<i>Cords</i>		
7	Balsam Fir	Pulpwood	4	<i>Cords</i>	24.0	\$10,807.55
	Jack Pine		72	<i>Cords</i>		
	Mixed Aspen		370	<i>Cords</i>		
	<i>B. T. Aspen</i>		170	<i>Cords</i>		
	<i>Quaking Aspen</i>		200	<i>Cords</i>		
	Mixed Hardwood		3	<i>Cords</i>		
	<i>Red Maple</i>		3	<i>Cords</i>		
	Red Oak		6	<i>Cords</i>		
	Red Pine		6	<i>Cords</i>		
	White Pine		16	<i>Cords</i>		
TOTAL:			4.3	MBF		
TOTAL:			5,921	Cords		

Sale Specific Conditions & Requirements

Sale Name: Ghost Rider

Sale Number: 32-009-24 Seq#: 1

1 - Sale Area

1.2 - Boundaries

1.2.1 - Painted Boundaries (9/19)

The sale boundary and Payment Unit boundaries are marked and identified by blue, red and yellow paint, as well as roads. Exterior sale boundary lines against private property are marked with chevrons in blue paint. Exterior sale boundary lines against state are marked with red paint, with the exception of the southern boundary of Payment Unit 5 which is unpainted and designated by Charlie Lakes Road. Interior Payment Unit boundaries are marked with yellow paint. The painted exterior boundary line trees are not Included Timber and are to be protected unless marked with orange paint. Yellow painted trees designating an interior Payment Unit boundary are only to be cut when all surrounding Payment Units have been paid. Yellow trees are not to be cut if also designated as a leave tree by one of the adjoining units.

2 - Timber Specifications

2.1 - Included Timber

2.1.1 - Clearcut Unit(s) with Unmerchantable Trees (6/14)

Within Payment Unit(s) 1, cut all trees that are two (2) inches or more at DBH, except do not cut white pine, oak, cedar, or hemlock. In addition, do not cut red pine that are 19 inches or more at a stump height of 4 inches.

Within Payment Unit(s) 2, 3, 4, and 6, cut all trees that are two (2) inches or more at DBH except do not cut white pine, red pine, oak, cedar, or hemlock. In addition, all Included Timber marked with blue paint rings will be cut off at 8 feet; top wood will be utilized and bottom 8 feet left standing.

Within Payment Unit(s) 7, cut all trees that are two (2) inches or more at DBH, except do not cut trees marked with green paint.

2.1.3 - Cut Tree Marked Unit(s) (12/08)

Within Payment Unit(s) 5, all trees are designated for cutting when marked with orange paint above and below stump height, regardless of merchantability. In addition, all Included Timber marked with blue paint rings will be cut off at 8 feet; top wood will be utilized and bottom 8 feet left standing.

2.2 - Utilization

2.2.3 - Stump heights (4/07)

Stump heights within Payment Unit 5, shall not exceed 6 inches for all trees.

3 - Payments

3.4 - Damaged Timber

3.4.1 - Damaged timber (7/16)

General Condition and Requirement 3.4 Damaged Timber, defines liquidated damages for undesignated live merchantable trees which are cut or injured.

No damage is acceptable to undesignated live merchantable trees. Within the Sale Area, if more than 10% of trees (> 4.5" DBH) within a specified area of the sale are damaged, liquidated damages will be assessed for all trees damaged. Rates will be in accordance with General Condition and Requirement 3.4 Damaged Timber.

4 - Transportation

4.1 - Construction

4.1.4 - Timber Removed for Construction (3/23)

Trees cut or damaged in the process of pre-approved road, landing, or skid trail construction will be decked in an area separate from other Designated Timber and not removed until measured by the Sale Administrator. Payment will be made at

contract prices or average prices, if not on the contract.

4.1.6 - Road Construction (4/24)

Construction of new roads or opening of existing closed roads must be approved by the Sale Administrator before construction/re-opening and shall be done in such a way as to minimize the environmental and visual impacts. Merchantable trees shall be cut and utilized unless otherwise directed. Non-merchantable trees shall be severed and laid flat on the ground. Slash shall be scattered, and not left in windrows and kept a minimum of 10 feet back from the road edge. Stumps shall be set upright, not left on edge, and be moved at least 10 feet away from the road edge. Disturbed soil shall be feathered into the woods and not left in berms or windrows.

5 - Operations

5.1 - Notification

5.1.1 - Pre-sale Conference (10/16)

A pre-sale conference between the Purchaser and Sale Administrator is required prior to beginning any operations to determine landing and road locations. The Unit Manager or his/her representative must be contacted at least 7 days in advance to schedule the conference.

5.2 - Conduct of Operations

5.2.1 - Slash

5.2.1.13 - Dispose of Slash as Directed (12/05)

Slash is to be disposed of as directed by the Sale Administrator.

5.2.3 - Operating Restrictions

5.2.3.1 - Operating Restrictions (9/11)

Within Payment Unit(s) 6, unless changed by written agreement, cutting and skidding are limited to frozen ground conditions, as determined by the Sale Administrator. This restriction is due to wet soils. Frozen ground conditions generally occur from December 1 to April 1.

5.2.3.2 - Operating Restrictions (9/11)

Within Payment Unit(s) 1-7, unless changed by written agreement, all equipment, material, and debris brought onto the Sale Area as part of the operation shall be removed within 21 days of inactivity/completion of cutting, skidding, and hauling. This restriction is to maintain general job site cleanliness and order.

5.2.3.3 - Bark Slippage Restriction (3/09)

Within Payment Unit(s) 5, unless changed by written agreement, cutting and skidding are not permitted during the period of April 15 to July 15. This restriction is because of bark slippage.

5.2.3.5 - Oak Wilt Restriction (1/18)

Within Payment Unit(s) 7, unless changed by written agreement, cutting, skidding, hauling within the sale and brushing of access roads to the sale are not permitted during the period of April 15 to July 15. Operations may be allowed if specific steps are taken to prevent damaging uncut oak during the high-risk period. Those steps may include completing all road brushing before April 15 and clearing a tree-length buffer along uncut oak cover before April 15. This is necessary to reduce the spread of oak wilt. For more information, contact the Unit Manager or his/her representative.

5.2.20 - Equipment Width (2/04)

Equipment used to remove designated rows, within Payment Unit 5, must be capable of moving through cut rows without damaging residual trees.

5.2.32 - Decking/Landing Restoration (9/13)

All decking and landing areas must have the surface area restored to a condition equal to or better than before. This is to ensure the proper regeneration of the stand. Wood debris, chips and "cookies" from trimmings must be removed or scattered away from landing and loading areas and may not be windrowed on the edge.

5.2.37 - No Decking Areas (12/08)

No decking is allowed on Kates Grade or Charlie Lakes Road.

5.2.38 - No Decking Against Live Trees (2/04)

Cut products may not be decked against unmarked or designated leave trees.

5.2.39 - ORV Trail/Route Protection (4/18)

A recreational trail runs through the timber sale and is identified on the Timber Sale Map. Trees with blue paint rings, that are designated as Included Timber in spec 2.1.1 and 2.1.3, shall be cut off 8 feet above ground; top wood will be utilized and bottom 8 feet left standing. All stumps within 5 feet of the trail must have a stump height no greater than 4 inches. Maintain a 10-foot-wide slash, debris, and rut free zone daily using the recreational trail as the centerline. Do not run equipment down the recreational trail. Skidding across the recreational trail may only occur in locations approved by the Sale Administrator.

5.4 - Soil Protection

5.4.1 - Rutting Restriction, General (7/16)

Operations are to cease immediately if equipment and weather conditions result in rutting of roads and/or skid trails which is 12 inches or greater in depth and 50 feet in length. The Unit Manager or his/her representative may restrict hauling and/or skidding if ruts exceed the specified depth. With the Unit Manager or his/her representative's approval, the Purchaser may return to the area when the risk of rutting has decreased.

5.4.3 - Erosion Control (12/08)

Skid trails or haul roads may require erosion control structures or berms per direction of the Unit Manager or his/her representative.

5.5 - Protection of Improvements

5.5.3 - Protection of Improvements Detail (10/13)

Buried cable box locations are detailed on the Timber Sale Map. These locations are approximate and unmapped boxed may exist. It is the responsibility of the Purchaser to contact Miss Dig and avoid damage to buried cable and cable boxes. The Purchaser will be responsible for all damage to buried cable and cable boxes resulting from logging operations.

6 - Safety and Fire Prevention

6.2 - Signing

6.2.1 - Road Posting (10/20)

The Purchaser is responsible for posting and maintaining caution signs on Kates Grade and Charlie Lakes Road prior to beginning operations. The road must be posted at appropriate distances from the Sale Area to warn of logging activity and truck traffic. Signs must be removed when harvest operations are suspended or completed. The Purchaser will provide these signs.

6.2.3 - Recreational Trail Posting (10/20)

The Purchaser is responsible for posting and maintaining caution signs on the recreational trail prior to beginning operations. The trail must be posted at appropriate distances from the Sale Area to warn of logging activity and truck traffic at both ends of the trail. Signs must be removed when harvest operations are suspended or completed. The Purchaser will provide these signs.



TIMBER SALE MAP

This information provided by authority of Part 525, 1994 PA 451, as amended.

Sale Number 32-009-24	Date 09/13/2024
Scale 1:20,000	Page 1
	Of 1

Forest Management Unit Gwinn Mgt Unit	County Marquette	Mapped By: Siler
		Cruised By: Siler & Gould

Township 45N	Range 27W	Section(s) and Subdivision(s)	NW,W1/2NE; Sec. 26 SWNW,SW,W1/2SE; Sec. 27 E1/2SE; Sec. 34 S1/2NW,NENE,N1/2SW,SWSW; Sec. 35
-----------------	--------------	----------------------------------	--

Cover Type			
A = Aspen	J = Jack Pine	O = Oak	U = Upland Brush
B = Paper Birch	K = Rock	P = Lowland Poplar	UM = Upland Mix Forest
C = Cedar	L = Lowland Brush	Q = Mixed Swamp Conifer	V = Bog or Marsh
D = Treed Bog	LM = Lowland Mix Forest	R = Red Pine	W = White Pine
E = Swamp Hardwoods	M = Maple, Beech, Birch	S = Black Spruce	X = Non Stocked
F = Spruce/Fir	MC = Mixed Conifer	T = Tamarack	Y = Sand
G = Grass	MD = Mixed Deciduous	Z = Water	
H = Hemlock	N = Marsh		

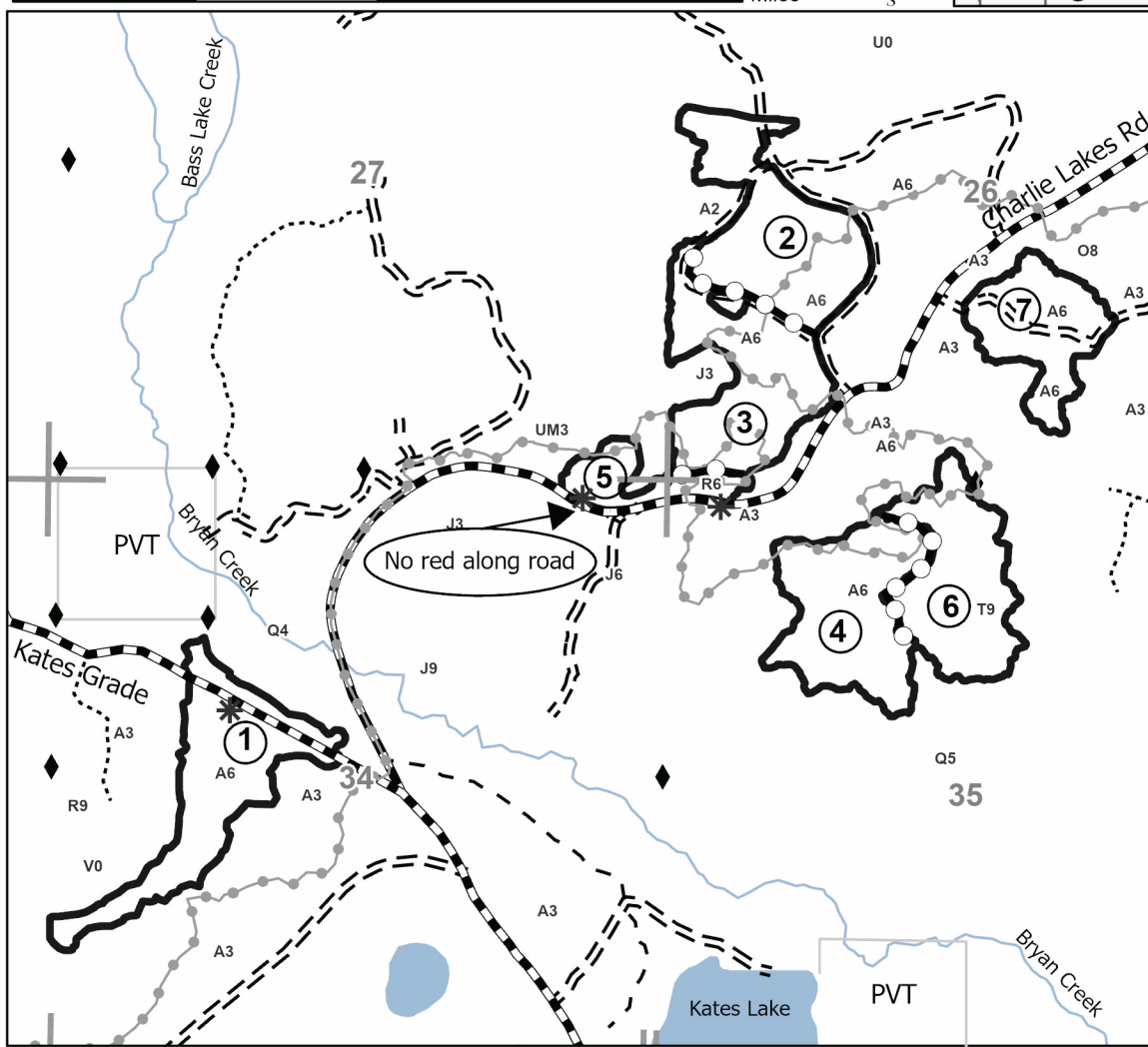
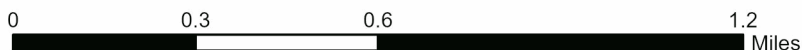
Density	
0 = Non Stocked	5 = Pole Timber Medium
1 = Seedling Sapling Poor	6 = Pole Timber Well
2 = Seedling Sapling Medium	7 = Saw Timber Poor
3 = Seedling Sapling Well	8 = Saw Timber Medium
4 = Pole Timber Poor	9 = Saw Timber Well

PU #	Acres	PU #	Acres
1	38.6	5	11.5
2	39	6	32.5
3	37	7	24
4	36.4		

Ghost Rider

Compartment: 32262
Acres: 219.0

Locator Map (1:200,000)



Legend

- Against State (Red)
- Payment Unit (Yellow)
- Recreational Trail
- Primary Forest Road
- Forest Access Route
- Administrative Access Only
- Paved Road
- Government Gravel/Dirt
- Private Gravel/Dirt
- Buried Cable Box
- Survey Grade Corner
- Section Corner
- State Boundary
- Payment Unit

Use QR Code to open Map in App



TIMBER SALE INFORMATION

Hot Dog Mix (32-012-24)

T45N, R24W, SEC. 10; T45N, R24W, SEC. 3; T46N, R24W, SEC. 34.
Marquette County (Advertised Price \$56,231.20)

SALE NOTE: Please see Sale Condition 4.4.1 - Private Access: Permission for access across private land is the responsibility of the Purchaser. Should the Purchaser desire to cross private land, a copy of the written permission from the private land-owner(s) may be required by the DNR. Please contact the Unit Manager for contact information of associated private land-owner(s).

Access may be through private land.

A timber sale contract for this lump sum, sealed bid timber sale will be awarded to the responsible bidder offering the highest sealed bid price. All units of volume listed below were estimated using the Inventory Manager computer program and the new Michigan taper model. Bids must be at or above the following advertised price for each product and species:

<u>PRODUCTS & SPECIES</u>	<u>ESTIMATED UNITS*</u>	<u>ADVERTISED PRICE</u>
Sawtimber		
Black Cherry	57.7 MBF	\$ 32.00 / MBF
Paper Birch	1.9 MBF	\$ 66.00 / MBF
Red Maple	50.3 MBF	\$ 87.00 / MBF
Sugar Maple	124.9 MBF	\$ 181.00 / MBF
Pulpwood		
Balsam Fir	51 Cords	\$ 8.45 / Cord
Mixed Hardwood	2,419 Cords	\$ 9.85 / Cord
Quaking Aspen	146 Cords	\$ 19.95 / Cord
White Spruce	12 Cords	\$ 8.80 / Cord

* The total volume is statistically estimated within plus (+) or minus (-) 14.46 percent. There are an estimated 3,178 cords on this timber sale, plus or minus 460 cords at the 95% confidence level. The estimated units are final and not subject to adjustment. Prospective bidders are urged to examine this timber and to make their own estimates of quantity and quality.

BOND AND PAYMENT SCHEDULE:

1. A bond in the amount of \$5,623.00 to insure faithful performance of the conditions of the contract will be deposited by the successful bidder within 21 days of the sale award.
2. Cutting in any sale or unit without the required advance payment would be considered a trespass.
3. Total payment must be paid in advance or according to the following schedule :
 - (a) Ten percent (10%) of the sale value must be paid within 21 days of the sale award.
 - (b) The 10% down payment will be credited towards the first unit cut.
 - (c) Payment for each of the following units must be made before cutting begins in that unit:

PAYMENT UNIT NUMBER	PERCENT OF TOTAL SALE VALUE
01	7.9%
02	15.6%
03	12.5%
04	12.2%
05	17.0%
06	15.9%
07	5.0%
08	13.9%

4. If no cutting takes place, the 10% down payment will not be refunded.
5. Operations on the contract issued will terminate on 06/30/2028.

SALE STATISTICS

Volumes were calculated in cubic feet using the Michigan taper model. Cubic foot volume includes all wood inside bark for the product indicated. For display purposes, cubic feet were converted to cords and MBF using a simple conversion factor, e.g. 79 cubic feet per cord and 185 cubic feet per MBF. The cubic foot volumes are precise; the cords and MBF volumes are not. Cubic foot volume cannot be directly converted to cords or boards with precision.

SALE VOLUMES

The total estimated sale volume may not equal the sum of the species/products due to the nature of statistical calculations associated with double sampling methodology.

VOLUME			STATISTICAL RANGE IN CORDS	
TOTAL CUBIC FEET	TOTAL CORDS	PERCENT ERROR	MINIMUM	MAXIMUM
251,046	3,178	14.46%	2,718	3,637

VDU VOLUMES

A VDU is a Volume Determination Unit. Volumes and their associated statistics are calculated at the VDU level and summarized to the sale level. There is often a one to one relationship between a VDU and a Payment Unit, but not always, depending on the cruise design. Refer to the VDU TO PAYMENT UNIT table.

	VOLUME			RANGE IN CORDS	
VDU	TOTAL CUBIC FEET	TOTAL CORDS	PERCENT ERROR	MINIMUM	MAXIMUM
1	11,557	146	49.39%	74	219
2	48,817	618	28.93%	439	797
5	190,672	2,414	17.46%	1,992	2,835
TOTAL:	251,046	3,178		2,505	3,850

VDU TO PAYMENT UNIT

When a VDU is associated with more than one Payment Unit (PU), the VDU volumes are assigned to the PU based on acres of the VDU within the PU.

VDU	VDU ACRES	PU	PU ACRES
1	4.3	7	4.3
2	15.6	8	15.6
5	176.0	1	17.2
5	176.0	2	33.9
5	176.0	3	27.1
5	176.0	4	26.4
5	176.0	5	37.0
5	176.0	6	34.4
TOTAL:	1,075.9		195.9

DESCRIPTION OF TIMBER BY PAYMENT UNIT (PU)

PU	MARKET GROUP	PRODUCT	QUANTITY	UNIT	ACRES	ADVERTISE PRICE	
1	Black Cherry	Sawtimber	5.6	MBF	17.2	\$4,461.45	
	Red Maple		3.1	MBF			
	Sugar Maple		12.0	MBF			
	Balsam Fir		Pulpwood	1			Cords
	Mixed Hardwood			186			Cords
	<i>Black Cherry</i>			35			<i>Cords</i>
	<i>Red Maple</i>			44			<i>Cords</i>
	<i>Sugar Maple</i>			107			<i>Cords</i>
2	Black Cherry	Sawtimber	11.1	MBF	33.9	\$8,797.00	
	Red Maple		6.2	MBF			
	Sugar Maple		23.6	MBF			
	Balsam Fir		Pulpwood	2			Cords
	Mixed Hardwood			366			Cords
	<i>Black Cherry</i>			68			<i>Cords</i>
	<i>Red Maple</i>			87			<i>Cords</i>
	<i>Sugar Maple</i>			211			<i>Cords</i>
	White Spruce			1			Cords
3	Black Cherry	Sawtimber	8.9	MBF	27.1	\$7,025.55	
	Red Maple		5.0	MBF			
	Sugar Maple		18.8	MBF			
	Balsam Fir		Pulpwood	2			Cords
	Mixed Hardwood			293			Cords
	<i>Black Cherry</i>			55			<i>Cords</i>
	<i>Red Maple</i>			70			<i>Cords</i>
	<i>Sugar Maple</i>			168			<i>Cords</i>
4	Black Cherry	Sawtimber	8.7	MBF	26.4	\$6,832.45	
	Red Maple		4.8	MBF			
	Sugar Maple		18.3	MBF			
	Balsam Fir		Pulpwood	2			Cords
	Mixed Hardwood			285			Cords
	<i>Black Cherry</i>			53			<i>Cords</i>
	<i>Red Maple</i>			68			<i>Cords</i>
	<i>Sugar Maple</i>			164			<i>Cords</i>
5	Black Cherry	Sawtimber	12.1	MBF	37.0	\$9,596.20	
	Red Maple		6.8	MBF			
	Sugar Maple		25.7	MBF			
	Balsam Fir		Pulpwood	2			Cords
	Mixed Hardwood			400			Cords
	<i>Black Cherry</i>			75			<i>Cords</i>
	<i>Red Maple</i>			95			<i>Cords</i>
	<i>Sugar Maple</i>			230			<i>Cords</i>
White Spruce	1	Cords					
6	Black Cherry	Sawtimber	11.3	MBF	34.4	\$8,925.50	
	Red Maple		6.3	MBF			
	Sugar Maple		23.9	MBF			
	Balsam Fir		Pulpwood	2			Cords
	Mixed Hardwood			372			Cords
	<i>Black Cherry</i>			69			<i>Cords</i>
	<i>Red Maple</i>			89			<i>Cords</i>
	<i>Sugar Maple</i>			214			<i>Cords</i>
	White Spruce			1			Cords
7	Sugar Maple	Sawtimber	0.8	MBF	4.3	\$2,795.15	
	Mixed Hardwood	Pulpwood	24	Cords			
	<i>Sugar Maple</i>		24	<i>Cords</i>			
	Quaking Aspen		121	Cords			

DESCRIPTION OF TIMBER BY PAYMENT UNIT (PU), CON'T

PU	MARKET GROUP	PRODUCT	QUANTITY	UNIT	ACRES	ADVERTISE PRICE	
8	Paper Birch	Sawtimber	1.9	MBF	15.6	\$7,797.90	
	Red Maple		18.1	MBF			
	Sugar Maple		1.8	MBF			
	Balsam Fir		Pulpwood	40			Cords
	Mixed Hardwood			493			Cords
	<i>Black Cherry</i>			35			<i>Cords</i>
	<i>Paper Birch</i>			33			<i>Cords</i>
	<i>Red Maple</i>			233			<i>Cords</i>
	<i>Sugar Maple</i>			189			<i>Cords</i>
	<i>Yellow Birch</i>			3			<i>Cords</i>
	Quaking Aspen			25			Cords
	White Spruce			9			Cords
	TOTAL:			234.8			MBF
TOTAL:			2,628	Cords			

Sale Specific Conditions & Requirements

Sale Name: Hot Dog Mix

Sale Number: 32-012-24 Seq#: 1

1 - Sale Area

1.2 - Boundaries

1.2.1 - Painted Boundaries (9/19)

The sale boundary and Payment Unit boundaries are marked and identified by blue, red and yellow paint. Exterior sale boundary lines against private property are marked with blue paint. Exterior sale boundary lines against state are marked with red paint. Interior Payment Unit boundaries are marked with yellow paint. Retention patches are marked with red paint; no harvesting activities may occur within these areas. The painted boundary line trees are not Included Timber and are to be protected unless marked with orange paint. Yellow painted trees designating an interior Payment Unit boundary are only to be cut when all surrounding Payment Units have been paid.

2 - Timber Specifications

2.1 - Included Timber

2.1.1 - Clearcut Unit(s) with Unmerchantable Trees (6/14)

Within Payment Unit(s) 7, cut all trees that are two (2) inches or more at DBH, except do not cut any hemlock.

Within Payment Unit 8, cut all trees that are two (2) inches or more at DBH, except do not cut any hemlock, white pine or red pine.

2.1.3 - Cut Tree Marked Unit(s) (12/08)

Within Payment Unit(s) 1-6, all trees are designated for cutting when marked with orange paint above and below stump height, regardless of merchantability. In addition, all white spruce and balsam fir which meet minimum piece specifications in 2.2 Utilization are designated for cutting.

3 - Payments

3.3 - Pre-measured Sales

3.3.4 - Dividing Payment Units (7/14)

Payment Unit(s) may be divided at the request of the Purchaser and upon approval of the Unit Manager. Dividing Payment Units is a contract modification which requires a Timber Sale Contract Amendment. There will be only one division per Payment Unit.

3.4 - Damaged Timber

3.4.1 - Damaged timber (7/16)

General Condition and Requirement 3.4 Damaged Timber, defines liquidated damages for undesignated live merchantable trees which are cut or injured.

Within the Sale Area, if more than 10% of the tree seedlings or saplings (1/4" to 4.5" DBH) within a specified portion of the Sale Area are damaged, liquidated damages will be assessed at \$150 per acre for all acreage within that specified portion of the Sale Area that was damaged.

4 - Transportation

4.1 - Construction

4.1.3 - Slash and Earthen Piles (8/04)

Piles or windrows of earth along roads and landings that have been widened or constructed shall be leveled. Slash from road maintenance or construction, including stumps, shall be dispersed throughout the sale.

4.1.4 - Timber Removed for Construction (3/23)

Trees cut or damaged in the process of pre-approved road, landing, or skid trail construction will be decked in an area separate from other Designated Timber and not removed until measured by the Sale Administrator. Payment will be made at

contract prices or average prices, if not on the contract.

4.1.6 - Road Construction (4/24)

Construction of new roads or improvements of existing roads shall be done in such a way as to minimize the environmental and visual impacts. Merchantable trees shall be cut and utilized unless otherwise directed. Non-merchantable trees shall be severed and laid flat on the ground. Slash shall be scattered, and not left in windrows and kept a minimum of 10 feet back from the road edge. Stumps shall be set upright, not left on edge, and be moved at least 10 feet away from the road edge. Disturbed soil shall be feathered into the woods and not left in berms or windrows.

4.1.7 - Road Closure (10/11)

All new roads built into the sale must be blocked to vehicle traffic upon completion of the sale. Overgrown roads that are reopened shall be considered new roads. In general, this will require constructing a four (4') foot high berm of stumps and logs covered with earth. Contact the Sale Administrator for specific details of design and placement.

4.2 - Maintenance

4.2.1 - Hauling Restriction (12/08)

Hauling may be restricted on forest roads by the Unit Manager or his/her representative. The restriction may occur during wet weather conditions.

4.2.2 - Fill Material (4/07)

To maintain roads, fill material may be needed in areas where "holes" exist or may be expected to develop. This fill material should be placed before trucking begins. Contact the Sale Administrator regarding the availability of onsite sand or gravel from adjacent State-owned lands.

4.2.3 - Road maintenance (8/13)

The following road maintenance may be needed: Within 60 days of completion of hauling, or if no hauling occurs for 60 days, the Unit Manager or Sale Administrator may require the road to be maintained and graded. This includes cleaning of drainage areas, grading, crowning and filling with gravel, if necessary.

4.4 - Access

4.4.1 - Private property access (3/11)

Permission for access across private land is the responsibility of the Purchaser. Should the Purchaser desire to cross private land, a copy of the written permission from the private land-owner(s) may be required by the DNR. Please contact the Unit Manager for the contact information of associated private land-owner(s).

5 - Operations

5.1 - Notification

5.1.1 - Pre-sale Conference (10/16)

A pre-sale conference between the Purchaser and Sale Administrator is required prior to beginning any operations. The Unit Manager or his/her representative must be contacted at least 3 days in advance to schedule the conference.

5.2 - Conduct of Operations

5.2.2 - Hazard Trees/Snags

5.2.2.1 - Den Trees (10/16)

Obvious hollow and/or den trees shall be protected and left standing unless they are a safety hazard.

5.2.3 - Operating Restrictions

5.2.3.3 - Bark Slippage Restriction (3/09)

Within Payment Unit(s) 1-6, unless changed by written agreement, cutting and skidding are not permitted during the period of April 15 to July 15. This restriction is because of bark slippage.

5.2.22 - Operating Caution

5.2.22.1 - Operating Caution (6/11)

It is recommended, but not required, that within Payment Unit(s) 1-8, cutting, skidding, and hauling occur during dry

summer or frozen winter conditions. The reason for the recommendation is because of hilly topography, fine-textured soils, and wet holes in forest access routes.

5.2.32 - Decking/Landing Restoration (9/13)

All decking and landing areas must have the surface area restored to a condition equal to or better than before. This is to ensure the proper regeneration of the stand. Wood debris, chips and "cookies" from trimmings must be removed or scattered away from landing and loading areas and may not be windrowed on the edge.

5.2.38 - No Decking Against Live Trees (2/04)

Cut products may not be decked against unmarked or designated leave trees.

5.4 - Soil Protection

5.4.1 - Rutting Restriction, General (7/16)

Operations are to cease immediately if equipment and weather conditions result in rutting of roads and/or skid trails which is 12 inches or greater in depth and 50 feet in length. The Unit Manager or his/her representative may restrict hauling and/or skidding if ruts exceed the specified depth. With the Unit Manager or his/her representative's approval, the Purchaser may return to the area when the risk of rutting has decreased.

5.4.2 - Skid Trails (2/04)

Skid trails up and down slopes should be avoided. If, however, this is unavoidable, these trails will be left in a non-erodible condition using water bars, logs, and slash. Placing of slash on these skid trails while logging is ongoing may alleviate need for any further action. At the direction of the Sale Administrator, seed, fertilizer, and mulch may also be required.

5.7 - Protection of Historical Sites

5.7.1 - Historical Sites (7/12)

The Purchaser shall not cut live or dead trees or operate equipment within historical sites. Historical sites are excluded from the Sale Area with a red boundary line. The Purchaser shall protect historical sites from damage by the Purchaser's operations. If Purchaser's operations have cut or damaged historical sites through carelessness, the Purchaser shall pay \$1500 as fixed, agreed and liquidated damages for each acre or part thereof cut or damaged.

5.8 - Protection of Endangered Species

5.8.5 - Protection of Raptor Nests (3/13)

All trees with raptor nests will be protected if found during harvesting operations. Notification will be made to the Unit Manager or his/her representative who will notify the Wildlife Biologist so an onsite evaluation and recommendation can be made, if necessary.



TIMBER SALE MAP

This information provided by authority of Part 525, 1994 PA 451, as amended.

Sale Number	Date	
32-012-24	11/18/2024	
Scale	Page	Of
1:15,840	1	1

Forest Management Unit	County	Mapped By: Siler
Gwinn Mgt Unit	Marquette	Cruised By: Contractor, Gwinn Staff

Township	Range	Section(s) and Subdivision(s)
45N / 46N	24W	Sec. 10 W1/2NE; Sec. 3 E1/2NW,NE,SE; Sec. 34 SESE;

Cover Type			
A = Aspen	J = Jack Pine	O = Oak	U = Upland Brush
B = Paper Birch	K = Rock	P = Lowland Poplar	UM = Upland Mix Forest
C = Cedar	L = Lowland Brush	Q = Mixed Swamp Conifer	V = Bog or Marsh
D = Treed Bog	LM = Lowland Mix Forest	R = Red Pine	W = White Pine
E = Swamp Hardwoods	M = Maple, Beech, Birch	S = Black Spruce	X = Non Stocked
F = Spruce/Fir	MC = Mixed Conifer	T = Tamarack	Y = Sand
G = Grass	MD = Mixed Deciduous	Z = Water	
H = Hemlock	N = Marsh		

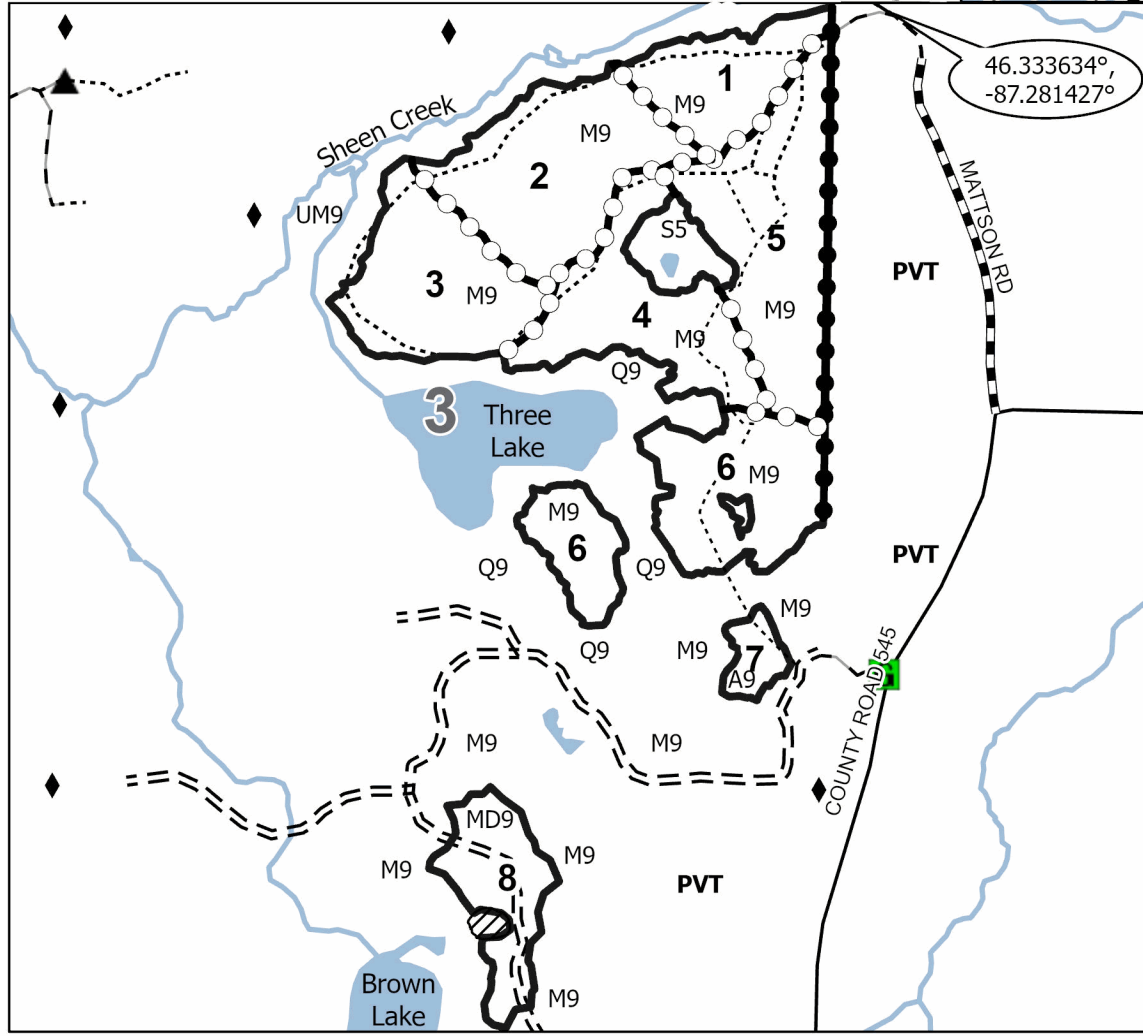
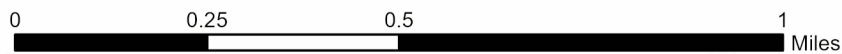
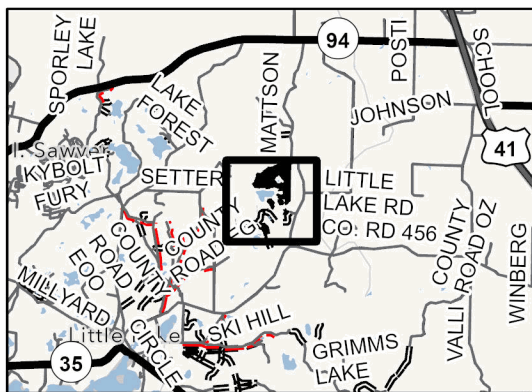
Density	
0 = Non Stocked	5 = Pole Timber Medium
1 = Seedling Sapling Poor	6 = Pole Timber Well
2 = Seedling Sapling Medium	7 = Saw Timber Poor
3 = Seedling Sapling Well	8 = Saw Timber Medium
4 = Pole Timber Poor	9 = Saw Timber Well

PU #	Acres	PU #	Acres
1	17.2	5	37
2	33.9	6	34.4
3	27.1	7	4.3
4	26.4	8	15.6

Hot Dog Mix

195.9 Acres

Locator Map 1:200,000



Legend

- Against State (Red)
- Private Line (Blue)
- Payment Unit (Yellow)
- State Boundary
- Nearby Timber Sale
- Forest Access Route
- Administrative Access Only
- Paved Road
- Government Gravel/Dirt
- Private Gravel/Dirt
- River/Creek
- Lakes
- Survey Grade Corner
- Berm
- Gate
- Archaeological Site

46.333634°
-87.281427°

Use QR Code to open Map in App



Ghost Rider (32-009-24)

T45N, R27W, SEC. 26; T45N, R27W, SEC. 27; T45N, R27W, SEC. 34; T45N,

In response to the notice of sale to be held 2:00 p.m. (local time) on March 10, 2025, I am hereby submitting my sealed bid (firm offer) for the following forest products to be cut. Bids for individual species must be at or above the advertised price. All non-responsive bid forms may be rejected.

<u>PRODUCTS & SPECIES</u>	<u>ESTIMATED VOLUME*</u>	<u>ADVERTISED PRICE</u>	<u>BID PRICE/UNIT</u>
Sawtimber			
Paper Birch	4.3 MBF	\$ 66.00/MBF	\$ _____
Pulpwood			
Balsam Fir	146 Cords	\$ 8.45/Cord	\$ _____
Jack Pine	227 Cords	\$ 36.05/Cord	\$ _____
Mixed Aspen	4,294 Cords	\$ 19.95/Cord	\$ _____
Mixed Hardwood	551 Cords	\$ 9.85/Cord	\$ _____
Mixed Spruce	123 Cords	\$ 8.80/Cord	\$ _____
Red Oak	6 Cords	\$ 14.35/Cord	\$ _____
Red Pine	92 Cords	\$ 63.10/Cord	\$ _____
Tamarack	466 Cords	\$ 12.05/Cord	\$ _____
White Pine	16 Cords	\$ 18.90/Cord	\$ _____

*The volumes are statistically estimated within plus (+) or minus (-) 14.14 percent at 95% confidence level. These estimated volumes are final and not subject to adjustment. Prospective bidders are urged to examine this timber and to make their own estimates of quantity and quality.

I understand that any or all bids may be rejected. All bids must be signed and all bid items must be bid or the bid form may be rejected. I also understand that consideration and awarding a contract will be based upon my past performance and ability to complete the contract based upon equipment and staffing subject to my control.

FEDERAL ID: _____ - _____ or SOCIAL SECURITY NUMBER: _____ - _____ - _____

Company or individual bidding: _____

Company representative's name: _____

Address: _____

City: _____ State: _____ Zip: _____

IF AVAILABLE, PLEASE PLACE THE PERSONALIZED LABEL FROM YOUR PROSPECTUS IN THE ABOVE BOX.

Individual or company representative's signature: _____ Date: _____

Phone number : _____ Email (optional): _____

THE WINNING BIDDER MUST COMPLETE THE VERIFICATION OF WORKER'S DISABILITY COMPENSATION ACT COMPLIANCE (ON REVERSE SIDE IF DOUBLE SIDED) WITHIN 21 DAYS OF SALE AWARD DATE



FOR DEPARTMENT USE ONLY
Sale Number (XX – XXX – XX – XX)
Forest Management Unit:

TIMBER SALE VERIFICATION OF WORKER'S DISABILITY COMPENSATION ACT COMPLIANCE

*As required by Act 317, P.A. 1969 (Worker's Compensation) and
Part 5 of Act 451 of 1994, as amended.*

VERIFICATION OF WORKER'S DISABILITY COMPENSATION ACT COMPLIANCE

- This verification must be completed and submitted within 21 days of contract award and prior to the issuance of the timber sale contract.
- In addition, if boxes 2B or 2C are checked, then Notice of Exclusion or Certificate of Insurance must be submitted within twenty-one (21) days of the contract award and prior to the issuance of the timber sale contract.
- All information must be typed or printed except for written signatures.

Please Check Appropriate Categories:

1. My business is organized as (you **must** check one of the boxes below):
 - A. Sole Proprietorship (individual)
 - B. Partnership
 - C. Corporation
2. You **must** check one of the boxes below:
 - A. I certify my business is a sole proprietorship and it has no employees but the sole proprietor. I am not subject to the Worker's Compensation Laws.
 - B. I certify my business has satisfied its obligation to the Worker's Compensation Act through the use of an approved Notice of Exclusion (BWC-337, Rev. 5/96). I will provide a copy of the Notice of Exclusion within 21 days of the contract award. (For questions or a copy of the BWC-337, please call the Worker's Compensation Bureau at 517-322-1195).
 - C. I certify my business has a Worker's Compensation Policy. I will provide an original Certificate of Insurance within twenty-one (21) days of the contract award.
3. If you have checked item 2(A) or 2(B), you **must** indicate the number of **both** full-time and part-time employees, other than yourself, including family members and active partners (if none, you must enter "0").

_____ Full-time Employees

_____ Part-time Employees

Name of Business		Federal ID (or) Social Security No.	
Address		Telephone ()	
City	State	ZIP	

I hereby certify that the above information is true and correct. I agree to notify the Michigan DNR of any changes that occur in factors affecting my coverage during any of my present and future operations.

Signature of Owner or Authorized Representative

Title

Date

Please complete the "SEALED BID" information on the next page

Hot Dog Mix (32-012-24)

T45N, R24W, SEC. 10; T45N, R24W, SEC. 3; T46N, R24W, SEC. 34; Marquette

In response to the notice of sale to be held 2:00 p.m. (local time) on March 10, 2025, I am hereby submitting my sealed bid (firm offer) for the following forest products to be cut. Bids for individual species must be at or above the advertised price. All non-responsive bid forms may be rejected.

<u>PRODUCTS & SPECIES</u>	<u>ESTIMATED VOLUME*</u>	<u>ADVERTISED PRICE</u>	<u>BID PRICE/UNIT</u>
Sawtimber			
Black Cherry	57.7 MBF	\$ 32.00/MBF	\$ _____
Paper Birch	1.9 MBF	\$ 66.00/MBF	\$ _____
Red Maple	50.3 MBF	\$ 87.00/MBF	\$ _____
Sugar Maple	124.9 MBF	\$ 181.00/MBF	\$ _____
Pulpwood			
Balsam Fir	51 Cords	\$ 8.45/Cord	\$ _____
Mixed Hardwood	2,419 Cords	\$ 9.85/Cord	\$ _____
Quaking Aspen	146 Cords	\$ 19.95/Cord	\$ _____
White Spruce	12 Cords	\$ 8.80/Cord	\$ _____

*The volumes are statistically estimated within plus (+) or minus (-) 14.46 percent at 95% confidence level. These estimated volumes are final and not subject to adjustment. Prospective bidders are urged to examine this timber and to make their own estimates of quantity and quality.

I understand that any or all bids may be rejected. All bids must be signed and all bid items must be bid or the bid form may be rejected. I also understand that consideration and awarding a contract will be based upon my past performance and ability to complete the contract based upon equipment and staffing subject to my control .

FEDERAL ID: ___ - ___ - ___ or SOCIAL SECURITY NUMBER: ___ - ___ - ___

Company or individual bidding: _____

Company representative's name: _____

Address: _____

City: _____ State: _____ Zip: _____

IF AVAILABLE, PLEASE PLACE THE PERSONALIZED LABEL FROM YOUR PROSPECTUS IN THE ABOVE BOX.

Individual or company representative's signature: _____ Date: _____

Phone number : _____ Email (optional): _____

THE WINNING BIDDER MUST COMPLETE THE VERIFICATION OF WORKER'S DISABILITY COMPENSATION ACT COMPLIANCE (ON REVERSE SIDE IF DOUBLE SIDED) WITHIN 21 DAYS OF SALE AWARD DATE



FOR DEPARTMENT USE ONLY	
Sale Number (XX - XXX - XX - XX)	
Forest Management Unit:	

TIMBER SALE VERIFICATION OF WORKER'S DISABILITY COMPENSATION ACT COMPLIANCE

As required by Act 317, P.A. 1969 (Worker's Compensation) and
Part 5 of Act 451 of 1994, as amended.

VERIFICATION OF WORKER'S DISABILITY COMPENSATION ACT COMPLIANCE

- This verification must be completed and submitted within 21 days of contract award and prior to the issuance of the timber sale contract.
- In addition, if boxes 2B or 2C are checked, then Notice of Exclusion or Certificate of Insurance must be submitted within twenty-one (21) days of the contract award and prior to the issuance of the timber sale contract.
- All information must be typed or printed except for written signatures.

Please Check Appropriate Categories:

1. My business is organized as (you **must** check one of the boxes below):
 - A. Sole Proprietorship (individual)
 - B. Partnership
 - C. Corporation
2. You **must** check one of the boxes below:
 - A. I certify my business is a sole proprietorship and it has no employees but the sole proprietor. I am not subject to the Worker's Compensation Laws.
 - B. I certify my business has satisfied its obligation to the Worker's Compensation Act through the use of an approved Notice of Exclusion (BWC-337, Rev. 5/96). I will provide a copy of the Notice of Exclusion within 21 days of the contract award. (For questions or a copy of the BWC-337, please call the Worker's Compensation Bureau at 517-322-1195).
 - C. I certify my business has a Worker's Compensation Policy. I will provide an original Certificate of Insurance within twenty-one (21) days of the contract award.
3. If you have checked item 2(A) or 2(B), you **must** indicate the number of **both** full-time and part-time employees, other than yourself, including family members and active partners (if none, you must enter "0").

_____ Full-time Employees

_____ Part-time Employees

Name of Business		Federal ID (or) Social Security No.	
Address		Telephone ()	
City	State	ZIP	

I hereby certify that the above information is true and correct. I agree to notify the Michigan DNR of any changes that occur in factors affecting my coverage during any of my present and future operations.

Signature of Owner or Authorized Representative

Title

Date

Please complete the "SEALED BID" information on the next page

Swale Hopper Hardwoods (32-005-24)
T44N, R23W, SEC. 12; T44N, R23W, SEC. 13; Marquette COUNTY

In response to the notice of sale to be held 2:00 p.m. (local time) on March 10, 2025, I am hereby submitting my sealed bid (firm offer) for the following forest products to be cut. Bids for individual species must be at or above the advertised price. All non-responsive bid forms may be rejected.

<u>PRODUCTS & SPECIES</u>	<u>ESTIMATED VOLUME*</u>	<u>ADVERTISED PRICE</u>	<u>BID PRICE/UNIT</u>
Sawtimber			
Basswood	1.5 MBF	\$ 41.00/MBF	\$ _____
Red Maple	93.0 MBF	\$ 104.00/MBF	\$ _____
Sugar Maple	42.6 MBF	\$ 218.00/MBF	\$ _____
Yellow Birch	11.2 MBF	\$ 25.00/MBF	\$ _____
Pulpwood			
Balsam Fir	35 Cords	\$ 10.10/Cord	\$ _____
Mixed Hardwood	2,080 Cords	\$ 11.80/Cord	\$ _____
Quaking Aspen	65 Cords	\$ 23.95/Cord	\$ _____
White Spruce	68 Cords	\$ 10.55/Cord	\$ _____

*The volumes are statistically estimated within plus (+) or minus (-) 12.15 percent at 95% confidence level. These estimated volumes are final and not subject to adjustment. Prospective bidders are urged to examine this timber and to make their own estimates of quantity and quality.

I understand that any or all bids may be rejected. All bids must be signed and all bid items must be bid or the bid form may be rejected. I also understand that consideration and awarding a contract will be based upon my past performance and ability to complete the contract based upon equipment and staffing subject to my control.

FEDERAL ID: ____ - ____ - ____ or SOCIAL SECURITY NUMBER: ____ - ____ - ____

Company or individual bidding: _____

Company representative's name: _____

Address: _____

City: _____ State: _____ Zip: _____

IF AVAILABLE, PLEASE PLACE THE PERSONALIZED LABEL FROM YOUR PROSPECTUS IN THE ABOVE BOX.

Individual or company representative's signature: _____ Date: _____

Phone number : _____ Email (optional): _____

THE WINNING BIDDER MUST COMPLETE THE VERIFICATION OF WORKER'S DISABILITY COMPENSATION ACT COMPLIANCE (ON REVERSE SIDE IF DOUBLE SIDED) WITHIN 21 DAYS OF SALE AWARD DATE



FOR DEPARTMENT USE ONLY	
Sale Number (XX - XXX - XX - XX)	
Forest Management Unit:	

TIMBER SALE VERIFICATION OF WORKER'S DISABILITY COMPENSATION ACT COMPLIANCE

As required by Act 317, P.A. 1969 (Worker's Compensation) and
Part 5 of Act 451 of 1994, as amended.

VERIFICATION OF WORKER'S DISABILITY COMPENSATION ACT COMPLIANCE

- This verification must be completed and submitted within 21 days of contract award and prior to the issuance of the timber sale contract.
- In addition, if boxes 2B or 2C are checked, then Notice of Exclusion or Certificate of Insurance must be submitted within twenty-one (21) days of the contract award and prior to the issuance of the timber sale contract.
- All information must be typed or printed except for written signatures.

Please Check Appropriate Categories:

1. My business is organized as (you **must** check one of the boxes below):
 - A. Sole Proprietorship (individual)
 - B. Partnership
 - C. Corporation
2. You **must** check one of the boxes below:
 - A. I certify my business is a sole proprietorship and it has no employees but the sole proprietor. I am not subject to the Worker's Compensation Laws.
 - B. I certify my business has satisfied its obligation to the Worker's Compensation Act through the use of an approved Notice of Exclusion (BWC-337, Rev. 5/96). I will provide a copy of the Notice of Exclusion within 21 days of the contract award. (For questions or a copy of the BWC-337, please call the Worker's Compensation Bureau at 517-322-1195).
 - C. I certify my business has a Worker's Compensation Policy. I will provide an original Certificate of Insurance within twenty-one (21) days of the contract award.
3. If you have checked item 2(A) or 2(B), you **must** indicate the number of **both** full-time and part-time employees, other than yourself, including family members and active partners (if none, you must enter "0").

_____ Full-time Employees

_____ Part-time Employees

Name of Business		Federal ID (or) Social Security No.	
Address		Telephone ()	
City	State	ZIP	

I hereby certify that the above information is true and correct. I agree to notify the Michigan DNR of any changes that occur in factors affecting my coverage during any of my present and future operations.

Signature of Owner or Authorized Representative

Title

Date

Please complete the "SEALED BID" information on the next page