



**DEPARTMENT OF NATURAL RESOURCES  
STATE OF MICHIGAN  
TIMBER SALE PROSPECTUS #7529**

**SCHEDULED SALE DATE AND TIME:** 2:00 p.m. (local time) on June 16, 2025.

**LOCATION:** GWINN MGMT UNIT, 410 WEST M 35, GWINN, MI 49841.

**PROSPECTUS NOTE:** The bidder is advised to inspect the sale area and review the location, estimated volumes, operating costs and contract terms of proposed sales. Please be aware that some landowners may request 60 days or more notice for access across their land.

Notice is hereby given that bids will be received by the Unit Manager, GWINN MANAGEMENT UNIT, for certain timber on the following described lands:

High Low Mix CRP (32-004-24) / T43N, R26W, SEC. 10, NENW,S1/2NW,W1/2NE,NESW,NWSE.  
T43N, R26W, SEC. 3 , NWSW,S1/2SW,NWSE,S1/2SE.  
T43N, R26W, SEC. 9 , SENE.

Marquette County, Advertised Price \$47,315.50, 145.0 Acres, Hardwood, Aspen.

SALE NOTE: A portion of this sale is a part of a Michigan Technological University silvicultural study for cedar regeneration. The research portion of the sale will be a SCALED SALE, measured at the landing and sold based on \$/cord rates for all species. Due to the research units (Payment Units 10-13) being scaled, volume estimates for research units are less accurate and should be regarded as having high variability, and may include other species not listed in the volume tables for those Payment Units. Bidders should review any contract specifications relating to restrictions and operations in Payment Units 10-13 (cedar research units) and contact the Unit Manager with any questions relating to the cedar research units.

See Sale Condition 4.4.1 - Private Property Access - Permission for access across private land is the responsibility of the Purchaser. Should the Purchaser desire to cross private land, a copy of the written permission from the private land-owner(s) may be required by the DNR.

Access may be through private land.

Gleason Creek Mix (32-015-24) / T43N, R26W, SEC. 2 , S1/2NW,N1/2SW,SESW,NWSE.  
T43N, R26W, SEC. 3 , SENW,NENE,S1/2NE,NESE.

Marquette County, Advertised Price \$66,311.95, 145.4 Acres, Aspen, Spruce/Fir/Tamarack.

SALE NOTE: Access may be through other public land.

## BID INSTRUCTIONS (VER. 10/10/2022):

### 1. Scheduled Bid Location, Date, and Time (2/11)

Bids must be received by the Unit Manager, GWINN OFFICE, 410 WEST M 35, GWINN, MI 49841, no later than 2:00 p.m. (local time) on June 16, 2025. For further information concerning this sale, contact Mike Brodeur at 906-346-9201 extension 103.

### 2. Bidder's Qualifications (10/22)

If all or part of a timber sale was prepared by a private contractor, the contractor and that contractor's company are not permitted to bid on the timber sale. A person must be 18 years of age or older to purchase timber. Permanent employees of the Department of Natural Resources or members of their immediate household may not bid. Former employees, in the permanent or seasonal class, may not bid until 3 months after the last day of active duty. Bids will not be accepted from individuals or companies appearing on the DNR/FRD No-Bid List. This list contains the names of purchasers who previously failed to execute a contract within 21-days or who have a history of poor performance.

### 3. Preparation of Sealed Bids (5/16)

Bid Forms may be completed online thru Michigan DNR Timber Sale Online Bidding (OLB) at [www.michigan.gov/timberbidding](http://www.michigan.gov/timberbidding) or by completing the hardcopy Bid Form found in the Timber Sale Prospectus. Hardcopy Bid Forms shall be manually signed in ink. Registration in OLB is considered your 'signature' for all bids submitted thru that system. Bid prices must be entered for each species and product in the Bid Price column for all material subject to bidding and all fill-in blanks must be completed. If erasures or other changes appear on the hardcopy Bid Form, each erasure or change must be initialed by the person signing the bid.

### 4. Submission of Sealed Bids (5/16)

Bid forms may be obtained from the Unit Manager or thru OLB. Bids may be submitted hardcopy or thru OLB. All hardcopy bids must be submitted on the bid form and in an envelope clearly identified as described in this section. NOTE: Only one bid form per bid envelope. Sealed bids must be submitted to the Unit office designated in the prospectus and must be submitted at or prior to the time established in the prospectus. The envelope should show on the outside (a) the sale name or number and (b) the date and time of bid opening, as shown in the prospectus. Bids received after the time specified in the sale prospectus are late bids and will be rejected.

It is possible for a bidder to submit multiple bids on a single sale. For example, a bid may be submitted hardcopy and a bid may be submitted thru OLB. Or, two bidders from the same company could both submit bids on the same sale. If this were to happen, the State would accept all bids received and award the contract accordingly. All bidding and contractual requirements would apply to all bids received.

### 5. Public Opening of Sealed Bids (7/16)

If conditions permit, the sealed bids will be publicly opened and posted at the time and place set in the prospectus.

If a bidder, present at a bid opening, has submitted bids on more than one sale, that bidder may withdraw their unopened bid envelopes or announce the withdrawal of their online bid after being declared the successful bidder on one sale.

### 6. Award of Contract (1/11)

Award of the contract will be made to the Bidder whose bid, conforming to the prospectus, is most advantageous to the State of Michigan on the basis of total value at rates bid for the estimated quantities. The State reserves the right to reject any bid or waive any minor irregularity in bids received. A written award mailed (or otherwise furnished) to the successful Bidder shall be deemed to result in a binding contract without further action by either party.

### 7. Down Payment (1/11)

The Bidder to whom award is made must make a down payment within 21 days of the sale award. The amount of the down payment will be calculated as shown in the Bond and Payment Schedule of this prospectus. Only cash may be used to meet this requirement.

### 8. Performance Security (1/11)

As guarantee of faithful performance, a cash bond, certificate of deposit, surety bond or irrevocable letter of credit (LOC) is required within 21 days of the sale award. The amount of the performance security is shown in the Bond and

Payment Schedule of this prospectus. If an LOC or surety is used, the coverage must extend for at least 6 months beyond the contract expiration.

#### 9. Worker's Compensation (10/22)

Purchaser shall obtain worker's compensation insurance to cover claims under Michigan's Worker's Disability Compensation Act of 1969 or similar employee benefit act of any other state applicable to an employee. Verification of Worker's Disability Compensation Act Compliance must be completed and submitted within 21 days of contract award and prior to the issuance of the timber sale contract. In addition, if applicable, Notice of Exclusion or Certificate of Insurance must also be submitted.

#### 10. Timber Sale Contract (10/22)

Additional conditions and requirements common to all timber sales are listed on the timber sale contract (R4031) and are available on line at [www.michigan.gov/timber](http://www.michigan.gov/timber). Contact the Unit Manager for additional information or a sample contract. Within 21 days of the date of the award letter, the bidder must sign the contract and provide the required down payment, performance security, and verification of worker's disability compensation. The down payment and performance security shall be in accordance with the provisions of the timber sale contract, in the sums stated in this prospectus. If these actions are not taken, then the Bidder, the Bidder's corporation, and the corporation's principals may not be permitted to bid on State timber sales for a period of 3 months after the first offense, 6 months after the second offense, and 1 year after the third offense. An offense will only be counted against the Bidder for 5 years. In addition, the Bidder certifies that if awarded this contract, the Bidder will complete the timber sale contract in accordance with its terms and any modifications thereof including requirements to purchase, cut, and remove the included timber by the expiration date.

Payment Unit values in the State Forest Timber Sale Contract are calculated based on the advertised value of the Payment Unit as a percentage of the total advertised value of the contract. The advertised value of each Payment Unit is given in the Description of Timber by Payment Unit table on the Timber Sale Information page. For example, if the value of Payment Unit 1 is advertised as \$1,500 and the total Timber Sale value is advertised as \$10,000, the contract price for Payment Unit 1 will be 15% of the total bid price ( $\$1,500/\$10,000 * 100$ ).

#### 11. Disclaimer of Estimates and Bidder's Warranty of Inspection (10/22)

Before submitting this bid, the Bidder is advised and cautioned to inspect the sale area, review the requirements of the sale contract, and take other steps as may be reasonably necessary to ascertain the location, estimated volumes, construction estimates, and operating costs of the proposed sale. Failure to do so will not relieve the Bidder from responsibility for completing the contract.

The Bidder warrants that this bid is submitted solely on the basis of the Bidder's examination and inspection of the quality and quantity of the timber offered for sale and the Bidder's opinion of the value thereof and the costs of recovery. No reliance should be placed on the State of Michigan's estimates of timber quality, quantity or costs of recovery. Bidder further acknowledges that the State of Michigan: (i) expressly disclaims any warranty of fitness of timber for any purpose; (ii) offers this timber as is without any warranty of quality (merchantability) or quantity and (iii) expressly disclaims any warranty as to the quantity or quality of timber sold.

#### 12. Certification and Chain-of-Custody (10/22)

Unless otherwise indicated in the contract under section 7 – Other Conditions of the Sale Specific Conditions & Requirements, the area encompassed by this timber sale is certified to the standards of the Forest Stewardship Council (FSC) - Certificate #SCS-FM/COC-00090N and the Sustainable Forestry Initiative (SFI) - Certificate #NSF-SFIS-5Y031-SF5. Forest products from this sale may be delivered to the mill as "FSC 100% and / or SFI certified" as long as the contractor hauling the forest products is chain-of-custody (COC) certified or covered under a COC certificate from the destination mill. The purchaser is responsible for maintaining COC after leaving the sale area.

#### 13. Good Neighbor Authority (GNA) Requirements (10/22)

If the name of this timber sales contains the acronym GNA, it is authorized by the Good Neighbor Authority (GNA) and covered by various agreements between the U.S. Forest Service and the State. The timber sale occurs on federal land and the following conditions apply:

GNA contracts on US Forest Service land will not be awarded to purchasers on the Federal list of excluded parties. The System for Award Management (SAM) will be checked for active excluded parties prior to award of contract. In

addition, the Bidder to whom award is made must complete an Assurance Regarding Felony Conviction or Tax Delinquent Status for Corporate Applicants (AD-3031).

14. Good Neighbor Authority (GNA) Requirements, con't (10/22)

Bidder certifies, by signing this bid form, that to the best of Bidder's knowledge that the following representations are accurate and complete.

- a. That the Bidder and its principals are not presently debarred, suspended, proposed for debarment, declared ineligible, or voluntary excluded from timber sales (covered transactions) by any Federal department or agency.
- b. That the Bidder and its principals have not within a 3-year period preceding this bid been convicted of or had a civil judgment rendered against them for commission of fraud or a criminal offense in connection with obtaining , attempting to obtain, or performing a public (Federal, State, or local) transaction or contract under a public transaction; violation of Federal or State antitrust statutes or commission of embezzlement, theft, forgery, bribery, falsification or destruction of records, making false statements, or receiving stolen property.
- c. That the Bidder and its principals are not presently indicted for or otherwise criminally or civilly charged by a governmental entity (Federal, State, or local) with commission of any of the offenses enumerated in paragraph b of this certification.
- d. That the Bidder and its principals have not within a 3-year period preceding this bid had one or more public transactions (Federal, State, or local) terminated for breach or default of a timber or forest product contract.

Bidders that cannot certify this requirement, in whole or in part, shall submit an explanation with their bid.

Scott Bowen  
Director

## TIMBER SALE INFORMATION

### High Low Mix CRP (32-004-24)

T43N, R26W, SEC. 10; T43N, R26W, SEC. 3; T43N, R26W, SEC. 9.  
Marquette County (Advertised Price \$47,315.50)

**SALE NOTE:** A portion of this sale is a part of a Michigan Technological University silvicultural study for cedar regeneration . The research portion of the sale will be a SCALED SALE, measured at the landing and sold based on \$/cord rates for all species. Due to the research units (Payment Units 10-13) being scaled, volume estimates for research units are less accurate and should be regarded as having high variability, and may include other species not listed in the volume tables for those Payment Units. Bidders should review any contract specifications relating to restrictions and operations in Payment Units 10-13 (cedar research units) and contact the Unit Manager with any questions relating to the cedar research units.

See Sale Condition 4.4.1 - Private Property Access - Permission for access across private land is the responsibility of the Purchaser. Should the Purchaser desire to cross private land, a copy of the written permission from the private land-owner(s) may be required by the DNR.

Access may be through private land.

A timber sale contract for this mixed, sealed bid timber sale will be awarded to the responsible bidder offering the highest sealed bid price. All units of volume listed below were estimated using the Inventory Manager computer program and the new Michigan taper model. Bids must be at or above the following advertised price for each product and species:

<u>PRODUCTS &amp; SPECIES</u>	<u>ESTIMATED UNITS*</u>	<u>ADVERTISED PRICE</u>
Sawtimber		
Basswood	15.5 MBF	\$ 35.00 / MBF
Paper Birch	2.2 MBF	\$ 85.00 / MBF
Red Maple	5.3 MBF	\$ 82.00 / MBF
Sugar Maple	125.9 MBF	\$ 170.00 / MBF
Pulpwood		
Balsam Fir	45 Cords	\$ 8.40 / Cord
Balsam Poplar	42 Cords	\$ 22.70 / Cord
Basswood	32 Cords	\$ 8.00 / Cord
Mixed Aspen	515 Cords	\$ 22.70 / Cord
Mixed Hardwood	790 Cords	\$ 9.35 / Cord
Mixed Spruce	142 Cords	\$ 8.80 / Cord
N. White Cedar	168 Cords	\$ 6.30 / Cord
Tamarack	160 Cords	\$ 11.10 / Cord

\* The total volume is statistically estimated within plus (+) or minus (-) 15.10 percent. There are an estimated 2,243 cords on this timber sale, plus or minus 339 cords at the 95% confidence level. The estimated units are final and not subject to adjustment. Prospective bidders are urged to examine this timber and to make their own estimates of quantity and quality.

### **BOND AND PAYMENT SCHEDULE:**

1. A bond in the amount of \$4,732.00 to insure faithful performance of the conditions of the contract will be deposited by the successful bidder within 21 days of the sale award.
2. Cutting in any sale or unit without the required advance payment would be considered a trespass.
3. Total payment must be paid in advance or according to the following schedule :
  - (a) Ten percent (10%) of the sale value must be paid within 21 days of the sale award.
  - (b) The 10% down payment will be credited towards the first unit cut.

(c) Payment for each of the following units must be made before cutting begins in that unit:

PAYMENT UNIT NUMBER	PERCENT OF TOTAL SALE VALUE
01	0.6%
02	18.0%
03	5.7%
04	7.7%
05	13.9%
06	16.2%
07	12.3%
08	19.2%
09	3.3%
10	1.6%
11	1.3%
12	0.2%
13	0.0%

4. If no cutting takes place, the 10% down payment will not be refunded.

5. Operations on the contract issued will terminate on 06/30/2028.

### **SALE STATISTICS**

Volumes were calculated in cubic feet using the Michigan taper model. Cubic foot volume includes all wood inside bark for the product indicated. For display purposes, cubic feet were converted to cords and MBF using a simple conversion factor, e.g. 79 cubic feet per cord and 185 cubic feet per MBF. The cubic foot volumes are precise; the cords and MBF volumes are not. Cubic foot volume cannot be directly converted to cords or boards with precision.

### **SALE VOLUMES**

The total estimated sale volume may not equal the sum of the species/products due to the nature of statistical calculations associated with double sampling methodology.

VOLUME			STATISTICAL RANGE IN CORDS	
TOTAL CUBIC FEET	TOTAL CORDS	PERCENT ERROR	MINIMUM	MAXIMUM
177,200	2,243	15.10%	1,904	2,582

### **VDU VOLUMES**

A VDU is a Volume Determination Unit. Volumes and their associated statistics are calculated at the VDU level and summarized to the sale level. There is often a one to one relationship between a VDU and a Payment Unit, but not always, depending on the cruise design. Refer to the VDU TO PAYMENT UNIT table.

	VOLUME			RANGE IN CORDS	
VDU	TOTAL CUBIC FEET	TOTAL CORDS	PERCENT ERROR	MINIMUM	MAXIMUM
2	15,384	195	61.93%	74	315
3	50,700	642	33.34%	428	856
31	83,132	1,052	19.69%	845	1,260
91	11,024	140	51.66%	67	212
991	8,393	106	22.09%	83	130
992	8,567	108	0.00%	108	108
<b>TOTAL:</b>	<b>177,200</b>	<b>2,243</b>		<b>1,606</b>	<b>2,880</b>

**VDU TO PAYMENT UNIT**

When a VDU is associated with more than one Payment Unit (PU), the VDU volumes are assigned to the PU based on acres of the VDU within the PU.

VDU	VDU ACRES	PU	PU ACRES
2	5.7	4	5.7
3	27.6	1	0.6
3	27.6	2	20.5
3	27.6	3	6.5
31	95.2	5	21.4
31	95.2	6	25.1
31	95.2	7	19.1
31	95.2	8	29.6
91	6.2	9	6.2
991	5.1	11	4.2
991	5.1	12	0.8
991	5.1	13	0.1
992	5.2	10	5.2
TOTAL:	496.0		145.0

**DESCRIPTION OF TIMBER BY PAYMENT UNIT (PU)**

PU	MARKET GROUP	PRODUCT	QUANTITY	UNIT	ACRES	ADVERTISE PRICE
1	Balsam Fir	Pulpwood	1	Cords	0.6	\$271.70
	Balsam Poplar		1	Cords		
	Mixed Aspen		9	Cords		
	<i>B. T. Aspen</i>		2	<i>Cords</i>		
	<i>Quaking Aspen</i>		7	<i>Cords</i>		
	Mixed Hardwood		2	Cords		
	<i>Ironwood</i>		1	<i>Cords</i>		
	<i>Sugar Maple</i>		1	<i>Cords</i>		
	Mixed Spruce		2	Cords		
	<i>White Spruce</i>		2	<i>Cords</i>		
2	Balsam Fir	Pulpwood	33	Cords	20.5	\$8,507.30
	Balsam Poplar		17	Cords		
	Mixed Aspen		292	Cords		
	<i>B. T. Aspen</i>		58	<i>Cords</i>		
	<i>Quaking Aspen</i>		234	<i>Cords</i>		
	Mixed Hardwood		70	Cords		
	<i>Black Cherry</i>		5	<i>Cords</i>		
	<i>Ironwood</i>		17	<i>Cords</i>		
	<i>Sugar Maple</i>		40	<i>Cords</i>		
	<i>White Ash</i>		8	<i>Cords</i>		
	Mixed Spruce		60	Cords		
	<i>Black Spruce</i>		5	<i>Cords</i>		
	<i>White Spruce</i>		55	<i>Cords</i>		
	Tamarack		3	Cords		
3	Balsam Fir	Pulpwood	11	Cords	6.5	\$2,701.00
	Balsam Poplar		6	Cords		
	Mixed Aspen		92	Cords		
	<i>B. T. Aspen</i>		18	<i>Cords</i>		
	<i>Quaking Aspen</i>		74	<i>Cords</i>		
	Mixed Hardwood		22	Cords		
	<i>Black Cherry</i>		1	<i>Cords</i>		
	<i>Ironwood</i>		5	<i>Cords</i>		
	<i>Sugar Maple</i>		13	<i>Cords</i>		
	<i>White Ash</i>		3	<i>Cords</i>		
	Mixed Spruce		19	Cords		
	<i>Black Spruce</i>		2	<i>Cords</i>		
	<i>White Spruce</i>		17	<i>Cords</i>		
	Tamarack		1	Cords		
4	Sugar Maple	Sawtimber	1.2	MBF	5.7	\$3,650.90
	Balsam Poplar	Pulpwood	11	Cords		
	Mixed Aspen		114	Cords		
	<i>Quaking Aspen</i>		114	<i>Cords</i>		
	Mixed Hardwood		36	Cords		
	<i>Sugar Maple</i>		36	<i>Cords</i>		
	Mixed Spruce		31	Cords		
	<i>White Spruce</i>		31	<i>Cords</i>		
5	Basswood	Sawtimber	3.5	MBF	21.4	\$6,563.35
	Paper Birch		0.5	MBF		
	Red Maple		1.2	MBF		
	Sugar Maple		28.0	MBF		
	Balsam Poplar	Pulpwood	2	Cords		
	Basswood		7	Cords		
	Mixed Aspen		2	Cords		
	<i>Quaking Aspen</i>		2	<i>Cords</i>		
	Mixed Hardwood		149	Cords		
	<i>Ironwood</i>		3	<i>Cords</i>		



PU	MARKET GROUP	PRODUCT	QUANTITY	UNIT	ACRES	ADVERTISE PRICE
5 con't	Paper Birch Red Maple Sugar Maple White Ash	Pulpwood	4 14 125 3	Cords Cords Cords Cords		
6	Basswood Paper Birch Red Maple Sugar Maple Balsam Poplar Basswood Mixed Aspen <i>Quaking Aspen</i> Mixed Hardwood <i>Ironwood</i> <i>Paper Birch</i> <i>Red Maple</i> <i>Sugar Maple</i> <i>White Ash</i>	Sawtimber    Pulpwood             	4.1 0.6 1.4 32.9 2 8 2 2 173 3 4 17 146 3	MBF MBF MBF MBF Cords Cords Cords Cords Cords Cords Cords Cords Cords Cords	25.1	\$7,674.65
7	Basswood Paper Birch Red Maple Sugar Maple Balsam Poplar Basswood Mixed Aspen <i>Quaking Aspen</i> Mixed Hardwood <i>Ironwood</i> <i>Paper Birch</i> <i>Red Maple</i> <i>Sugar Maple</i> <i>White Ash</i>	Sawtimber    Pulpwood             	3.1 0.4 1.1 25.0 1 6 2 2 132 3 3 13 111 2	MBF MBF MBF MBF Cords Cords Cords Cords Cords Cords Cords Cords Cords Cords	19.1	\$5,833.00
8	Basswood Paper Birch Red Maple Sugar Maple Balsam Poplar Basswood Mixed Aspen <i>Quaking Aspen</i> Mixed Hardwood <i>Ironwood</i> <i>Paper Birch</i> <i>Red Maple</i> <i>Sugar Maple</i> <i>White Ash</i>	Sawtimber    Pulpwood             	4.8 0.7 1.6 38.8 2 11 2 2 206 4 5 20 173 4	MBF MBF MBF MBF Cords Cords Cords Cords Cords Cords Cords Cords Cords Cords	29.6	\$9,059.60
9	Mixed Spruce <i>Black Spruce</i> Tamarack	Pulpwood	4 4 136	Cords Cords Cords	6.2	\$1,544.80
10	Mixed Spruce <i>Black Spruce</i> N. White Cedar Tamarack	Pulpwood	16 16 80 12	Cords Cords Cords Cords	5.2	\$778.00
11	Mixed Spruce <i>Black Spruce</i>	Pulpwood	8 8	Cords Cords	4.2	\$601.70

DESCRIPTION OF TIMBER BY PAYMENT UNIT (PU), CON'T

PU	MARKET GROUP	PRODUCT	QUANTITY	UNIT	ACRES	ADVERTISE PRICE
11 con't	N. White Cedar Tamarack	Pulpwood	72	Cords		
			7	Cords		
12	Mixed Spruce	Pulpwood	2	Cords	0.8	\$116.90
	<i>Black Spruce</i>		2	<i>Cords</i>		
	N. White Cedar		14	Cords		
	Tamarack		1	Cords		
13	N. White Cedar	Pulpwood	2	Cords	0.1	\$12.60
TOTAL:			148.9	MBF		
TOTAL:			1,894	Cords		

## Sale Specific Conditions & Requirements

**Sale Name: High Low Mix CRP**

**Sale Number: 32-004-24 Seq#: 2**

### 1 - Sale Area

#### 1.2 - Boundaries

##### 1.2.1 - Painted Boundaries (9/19)

For Payment Unit(s) 1-9, the sale boundary and Payment Unit boundaries are marked and identified by blue, red and yellow paint. Exterior sale boundary lines against private property are marked with blue paint. Exterior sale boundary lines against state are marked with red paint. Interior Payment Unit boundaries are marked with yellow paint. The painted boundary line trees are not Included Timber and are to be protected unless marked with orange paint. Yellow painted trees designating an interior Payment Unit boundary are only to be cut when all surrounding Payment Units have been paid.

For Payment Units(s) 10 and 11 (Strip Cut Units), the sale boundary and Payment Unit boundaries are marked and identified by red paint. The painted boundary line trees are not Included Timber and are to be protected unless marked with orange paint.

For Payment Unit(s) 12-Donut (Gap Unit), the sale boundary and Payment Unit boundaries are marked and identified by red paint. The painted boundary line trees are Included Timber and are to be cut.

For Payment Unit(s) 12 and 13 (Gap Units), the sale boundary and Payment Unit boundaries are marked and identified by red paint. The painted boundary line trees designating gaps are not Included Timber and are to be protected unless marked with orange paint.

### 2 - Timber Specifications

#### 2.1 - Included Timber

##### 2.1.1 - Clearcut Unit(s) with Unmerchantable Trees (6/14)

Within Payment Unit(s) 1, 2, 4 and 9, cut all trees that are two (2) inches or more at DBH, except do not cut cedar or hemlock.

Within Payment Unit(s) 3, cut all trees that are two (2) inches or more at DBH, except do not cut cedar.

##### 2.1.2 - Clearcut Unit(s) w/o Unmerchantable Trees (8/11)

Within Payment Unit(s) 11, cut all trees which meet minimum piece specifications in 2.2 Utilization.

Note that: Skid trail(s) are marked with yellow paint. No equipment can cross the yellow painted boundary during sale operations, without approval from the Unit Manager or his/her representative. Trees marked with yellow paint are designated for harvest.

##### 2.1.3 - Cut Tree Marked Unit(s) (12/08)

Within Payment Unit(s) 5-8 and 10, all trees are designated for cutting when marked with orange paint above and below stump height, regardless of merchantability.

Note that: Within Payment Unit(s) 10, skid trail boundaries are marked with yellow paint. All trees within the skid trail boundaries are designated for harvest. No equipment may cross the yellow painted boundary during sale operations, without approval from the Unit Manager and his/her representative. Trees marked in yellow are designated for harvest.

##### 2.1.7 - Leave Tree Marked Unit(s) (6/14)

Within Payment Unit(s) 12, 12-Donut, and 13 (Gap Units), cut all cedar, hemlock, yellow birch and white pine, which meet minimum piece specifications in 2.2 Utilization. In addition, cut all other trees that are one (1) inch or more at DBH, except do not cut trees marked with green paint above and below stump height.

##### 2.1.11 - Description of Timber Note (2/04)

Note that Payment Units 10-13 are Scaled Units, to be paid for after scaling by the Sale Administrator at predetermined decking locations. Payment Units 10-13 are highly variable in terms of volume and species composition. Estimates were

generated from inventory data and may not accurately reflect the composition of the cut area. Payment will be made at contract prices or average prices, if not on the contract.

## 2.2 - Utilization

### 2.2.6 - Roundwood Operation Required (3/21)

The skidding of whole trees or tree segments with limbs attached is prohibited within Payment Unit(s) 10-13 (research units). All products must be produced as roundwood and forwarded to existing roads or landing areas in final product length. Trees must be harvested with in-woods processor (feller bunching harvester will not be allowed) in order to retain existing understory.

## 3 - Payments

### 3.2 - Scaled Sales

#### 3.2.1 - Scale Location (2/04)

Forest products will be placed for measurement as specified by the Unit Manager or his/her representative for Payment Units 10-13 (research units).

### 3.3 - Pre-measured Sales

#### 3.3.4 - Dividing Payment Units (7/14)

Payment Unit(s) 1-9, may be divided at the request of the Purchaser and upon approval of the Unit Manager. Dividing Payment Units is a contract modification which requires a Timber Sale Contract Amendment. There will be only one division per Payment Unit.

### 3.4 - Damaged Timber

#### 3.4.1 - Damaged Timber (12/24)

General Condition and Requirement 3.4 Damaged Timber, defines liquidated damages for undesignated live merchantable trees which are cut or injured. In addition, extreme care should be taken to avoid damage to tree seedlings and saplings.

Within Payment Units 10-13 (research units), if more than 25% of the tree seedlings or saplings (1/4" to 4.5" DBH) within a specified portion of the Sale Area are damaged, liquidated damages will be assessed at \$500 per acre for all acreage within that specified portion of the Sale Area that was damaged.

No damage is acceptable to undesignated live merchantable trees. Within the Sale Area, if more than 5% of trees (> 4.5" DBH) within a specified area of the sale are damaged, liquidated damages will be assessed for all trees damaged. Rates will be in accordance with General Condition and Requirement 3.4 Damaged Timber.

#### 3.4.3 - Special Protection Areas (8/11)

The Purchaser shall protect special protection areas from damage by the Purchaser's operations. Special protection areas are the interior of Payment Unit(s) 12, 12-Donut, 13 (Gap Units) and areas designated as special protection areas on the supplemental sale map. The Purchaser shall not run equipment or place skid trails within these areas. If the Purchaser's operations have left equipment tracks, ruts, or other ground damage, the Purchaser shall pay \$500 as fixed, agreed and liquidated damages for each canopy gap damaged.

## 4 - Transportation

### 4.1 - Construction

#### 4.1.3 - Slash and Earthen Piles (8/04)

Piles or windrows of earth along roads and landings that have been widened or constructed shall be leveled. Slash from road maintenance or construction, including stumps, shall be dispersed outside of designated harvest area, unless otherwise designated by the Sale Administrator.

#### 4.1.4 - Timber Removed for Construction (3/23)

Trees cut or damaged in the process of pre-approved road, landing, or skid trail construction will be decked in an area separate from other Designated Timber and not removed until measured by the Sale Administrator. Payment will be made at contract prices or average prices, if not on the contract.

#### 4.1.6 - Road Construction (4/24)

Construction of new roads, and skid trails or improvements of existing roads and skid trails shall be done in such a way as to minimize the environmental and visual impacts. Merchantable trees shall be cut and utilized unless otherwise directed. Non-merchantable trees shall be severed and laid flat on the ground. Slash shall be scattered, and not left in windrows and kept a minimum of 10 feet back from the road edge. Stumps shall be set upright, not left on edge, and be moved at least 10 feet away from the road edge. Disturbed soil shall be feathered into the woods and not left in berms or windrows. In addition, within and accessing Payment Unit(s) 10-13, all skid trails and road locations must be approved by the Unit Manager or his/her representative. See Timber Sale Maps for proposed skid trail and road locations.

#### 4.1.7 - Road Closure (10/11)

All new roads built into the sale must be blocked to vehicle traffic upon completion of the sale. Overgrown roads that are reopened shall be considered new roads. In general, this will require constructing a four (4') foot high berm of stumps and logs covered with earth. Contact the Sale Administrator for specific details of design and placement.

### 4.2 - Maintenance

#### 4.2.1 - Hauling Restriction (12/08)

Hauling may be restricted on forest roads by the Unit Manager or his/her representative. The restriction may occur during wet weather conditions.

#### 4.2.2 - Fill Material (4/07)

To maintain roads, fill material may be needed in areas where "holes" exist or may be expected to develop. This fill material should be placed before trucking begins. Contact the Sale Administrator regarding the availability of onsite sand or gravel from adjacent State-owned lands.

#### 4.2.3 - Road maintenance (8/13)

The following road maintenance may be needed: Within 60 days of completion of hauling, or if no hauling occurs for 60 days, the Unit Manager or his/her representative may require that the road be maintained and graded. This includes cleaning of drainage areas, grading, crowning and filling with gravel, if necessary. Damages will be assessed if grading/repair does not occur.

### 4.4 - Access

#### 4.4.1 - Private property access (3/11)

Permission for access across private land is the responsibility of the Purchaser. Should the Purchaser desire to cross private land, a copy of the written permission from the private land-owner may be required by the DNR. Please contact the Unit Manager for contact information of associated private land-owner(s).

## 5 - Operations

### 5.1 - Notification

#### 5.1.1 - Pre-sale Conference (10/16)

A pre-sale conference between the Purchaser and Sale Administrator is required prior to beginning any operations. The Unit Manager or his/her representative must be contacted at least 5 days in advance to schedule the conference.

In addition, a pre-sale conference on site between the Purchaser and Sale Administrator is required prior to beginning Payment Unit(s) 10-13 (research units) to determine landing and skid trail locations, go over operating restrictions, and slash specs. The Unit Manager or his/her representative must be contacted at least 5 days in advance to schedule the conference.

### 5.2 - Conduct of Operations

#### 5.2.1 - Slash

##### 5.2.1.2 - Slash Removal

##### 5.2.1.2.6 - Slash Removal, General (7/05)

All slash must be removed from Payment Unit(s) 11-13. Slash can be utilized in skid trails to assist in flotation or slash can be evenly scattered outside of the Payment Unit(s).

##### 5.2.1.11 - Slash for Reforestation (3/21)

To facilitate reforestation, within Payment Unit(s) 10, slash can be used in the skid trails to support equipment flotation. If not used in skid trails, slash shall be evenly distributed throughout the Payment Unit. Bunched tops within the cutting area shall be broken up and scattered. Processing sites shall not be left with a compacted layer of slash.

Within Payment Unit(s) 13, do not process six (6) cedar trees above six (6) inches in diameter these intact tops with branches must be arranged in a jack strawed/campfire orientation within the center of the gap to impede access by deer and protect existing cedar regeneration.

## 5.2.2 - Hazard Trees/Snags

### 5.2.2.1 - Den Trees (10/16)

Obvious hollow and/or den trees shall be protected and left standing unless they are a safety hazard.

## 5.2.3 - Operating Restrictions

### 5.2.3.1 - Operating Restrictions (9/11)

Within Payment Unit(s) 1-13, unless changed by written agreement, cutting, skidding, and hauling are limited to the period of December 1 to April 1. This restriction is due to low ground conditions within the harvest area (Payment Units 2, 7, and 9-13), the need for frozen ground to prevent site damage, and deer wintering complex area.

### 5.2.3.3 - Bark Slippage Restriction (3/09)

Within Payment Unit(s) 5-8, unless changed by written agreement, cutting and skidding are not permitted during the period of April 15 to July 15. This restriction is because of bark slippage.

## 5.2.17 - Timber Mats and Interlocking Composite Mats (5/23)

Some roads or skid trails may require extra protection such as that afforded by timber mats, interlocking composite mats, or another approved system. If available, mats may be borrowed from the DNR. A Timber Sale Contract Amendment will be used to document the Purchaser's use of the DNR's mats. Contact the Sale Administrator regarding availability and pick-up. Timber mats are available from various field offices. Composite mats are only available from the Grayling field office and the Marquette ICC. The Purchaser is responsible for picking up and hauling the mats to and from the site. The composite mats will require DNR staff onsite for installation and removal. Contact the Sale Administrator to schedule at least 30 days before desired install/removal date. All mats must be cleaned prior to drop off. This may include, but is not limited to, power washing and brushing to remove mud and debris. A charge of \$700.00 per timber mat and \$2,000.00 per composite mat will be assessed for all damaged or non-returned mats. Damage for the crane/timber mats is defined as three or more broken cants. Damage for the composite mats is defined as cracked or broken mats.

## 5.2.31 - Landing Locations (9/13)

For Payment Units 10-13 (research units), landing areas will be specified by the Unit Manager or his/her representative. Landings must be confined to these designated sites unless otherwise authorized by the Unit Manager or his/her representative.

## 5.2.32 - Decking/Landing Restoration (9/13)

All decking and landing areas must have the surface area restored to a condition equal to or better than before. This is to ensure the proper regeneration of the stand. Wood debris, chips and "cookies" from trimmings must be removed or scattered away from landing and loading areas and may not be windrowed on the edge.

## 5.2.38 - No Decking Against Live Trees (2/04)

Cut products may not be decked against unmarked or designated leave trees.

## 5.4 - Soil Protection

### 5.4.1 - Rutting Restriction, General (7/16)

Operations are to cease immediately if equipment and weather conditions result in rutting of roads and/or skid trails which is 12 inches or greater in depth and 50 feet in length. The Unit Manager or his/her representative may restrict hauling and/or skidding if ruts exceed the specified depth. With the Unit Manager or his/her representative's approval, the Purchaser may return to the area when the risk of rutting has decreased.

## 5.8 - Protection of Endangered Species

### 5.8.5 - Protection of Raptor Nests (3/13)

All trees with raptor nests will be protected if found during harvesting operations. Notification will be made to the Unit

Manager or his/her representative who will notify the Wildlife Biologist so an onsite evaluation and recommendation can be made, if necessary.

## **6 - Safety and Fire Prevention**

### **6.2 - Signing**

#### **6.2.1 - Road Posting (10/20)**

The Purchaser is responsible for posting and maintaining caution signs on Ross Grade prior to beginning operations. The road must be posted at appropriate distances from the Sale Area to warn of logging activity and truck traffic. Signs must be removed when harvest operations are suspended or completed. The Purchaser will provide these signs.

## **7 - Other Conditions**

### **7.2 - Extensions**

#### **7.2.7 - Research Extension (4/25)**

Payment Units 10-13 are lowland harvests for research. These Payment Units must be harvested promptly. One (1), twelve (12) month extension can be applied to one (1) other State Forest Timber Sale Contract owned by the Purchaser or owned by one (1) designated sub-contractor of the Purchaser that works this contract. To qualify, the contract to be extended must be extended by the original expiration date of this contract. If this is the first extension on the other State Forest Timber Sale Contract, then the 5% extension fee will be waived. If this is an additional extension, the 10% fee will be reduced to 5%. The research extension must be used before this contract is closed out. This specification does not alleviate the Purchaser from any contractual obligations of the extended State Forest Timber Sale Contract. Per General Condition & Requirement 7.2, extensions are at the sole discretion of the DNR.



**TIMBER SALE MAP**

This information provided by authority of Part 525, 1994 PA 451, as amended.

Sale Number

**32-004-24**

Date

**01/21/2025**

Forest Management Unit

Gwinn Mgt Unit

County

Marquette

Mapped By: Matt Yeo

Cruised By: Contractor & Gwinn Staff

Scale

**1:15,840**

Page

**1**

Of

**2**

Township  
**43N**

Range  
**26W**

Section(s) and  
Subdivision(s)

Sec. 10 NENW, S1/2 NW, W 1/2 NE, NESW, NWSE; Sec 3 NWSW, S1/2 SW, NWSE, S 1/2 SE; Sec 9 SENE

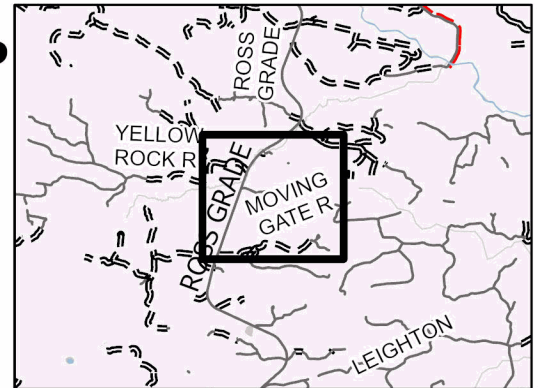
**Cover Type**

A = Aspen	J = Jack Pine	O = Oak	U = Upland Brush
B = Paper Birch	K = Rock	P = Lowland Poplar	UM = Upland Mix Forest
C = Cedar	L = Lowland Brush	Q = Mixed Swamp Conifer	V = Bog or Marsh
D = Treed Bog	LM = Lowland Mix Forest	R = Red Pine	W = White Pine
E = Swamp Hardwoods	M = Maple, Beech, Birch	S = Black Spruce	X = Non Stocked
F = Spruce/Fir	MC = Mixed Conifer	T = Tamarack	Y = Sand
G = Grass	MD = Mixed Deciduous	Z = Water	
H = Hemlock	N = Marsh		

**Density**

0 = Non Stocked	5 = Pole Timber Medium
1 = Seedling Sapling Poor	6 = Pole Timber Well
2 = Seedling Sapling Medium	7 = Saw Timber Poor
3 = Seedling Sapling Well	8 = Saw Timber Medium
4 = Pole Timber Poor	9 = Saw Timber Well

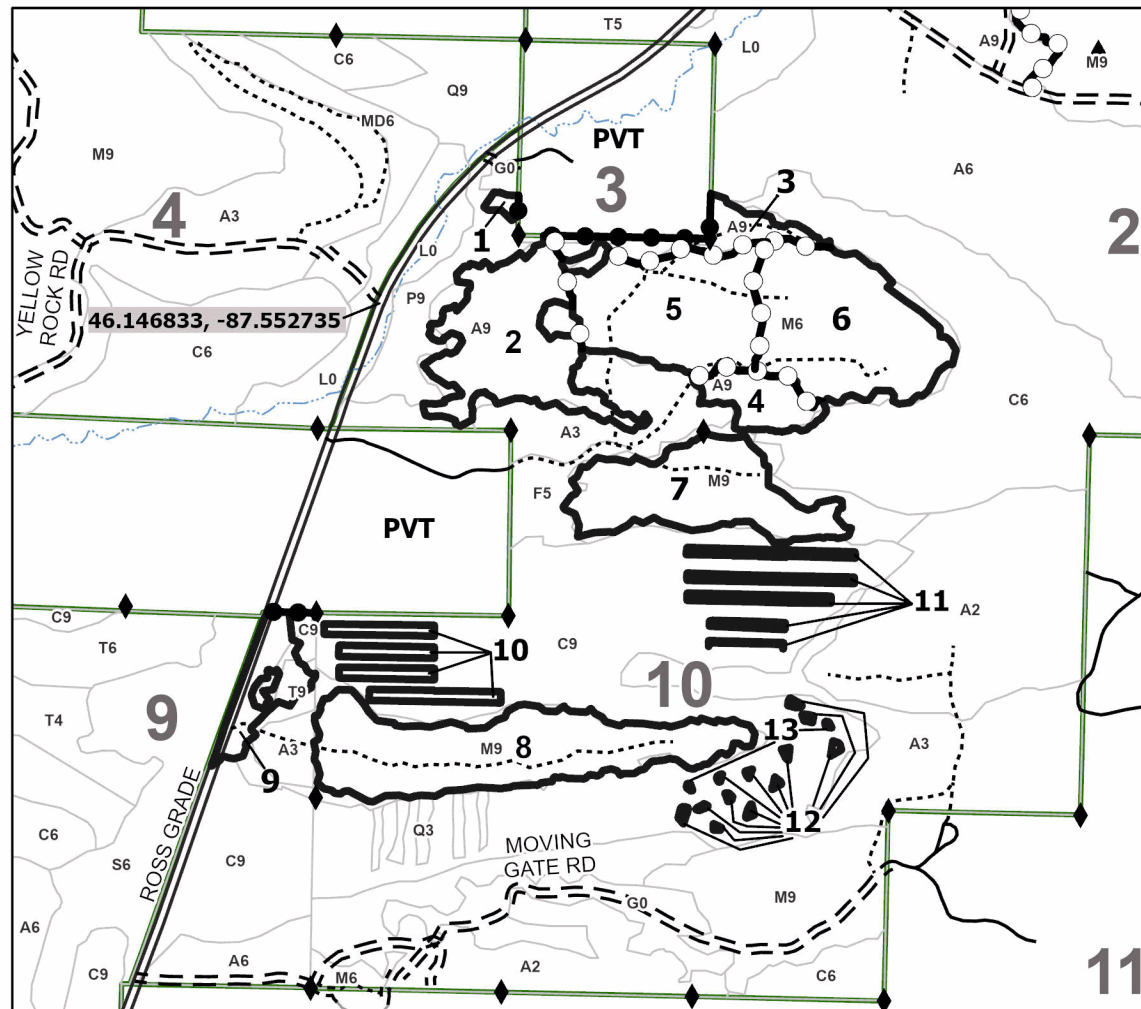
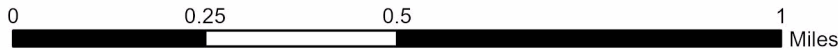
**Locator Map 1:128,000**



PU #	Acres	PU #	Acres	PU #	Acres
1	0.6	6	25.1	11	4.2
2	20.5	7	19.1	12	0.8
3	6.5	8	29.6	13	0.1
4	5.7	9	6.2		
5	21.4	10	5.2		

**High Low Mix CRP**

**145.0 Acres**



**Legend**

- Against State (Red)
- Private Line (Blue)
- Payment Unit (Yellow)
- == Primary Forest Road
- == Forest Access Route
- ... Administrative Access Only
- Paved Road
- - - Private Gravel/Dirt
- Recreational Trails
- ◆ Survey Grade Corner

Use QR Code to  
open Map in App







# Timber Sale Map

Sale Number	Date	
32-004-24	02/12/2025	
Scale	Page	Of
1:10,000	2	2

Forest Management Unit		County	Mapped By: Rick Hill	Scale 1:10,000	Page 2	Of 2
			Cruised By: Scaled			
Gwinn		Marquette				
Township 43N	Range 26W	Section(s) and Subdivision(s) Section 10				

## Legend

- Red Paint Line
- Skid Trail Location
- Patch Cut Skid Trail
- Special Protection Area
- Leave-Tops Gap Red Paint
- Gaps Red Paint
- Skid Trail Boundry Thin
- Skid Trail Marking Strip Cut
- Primary Forest Road
- Forest Access Route
- Administrative Access Only
- Non-DNR Road
- Survey Grade Corner
- Treatments

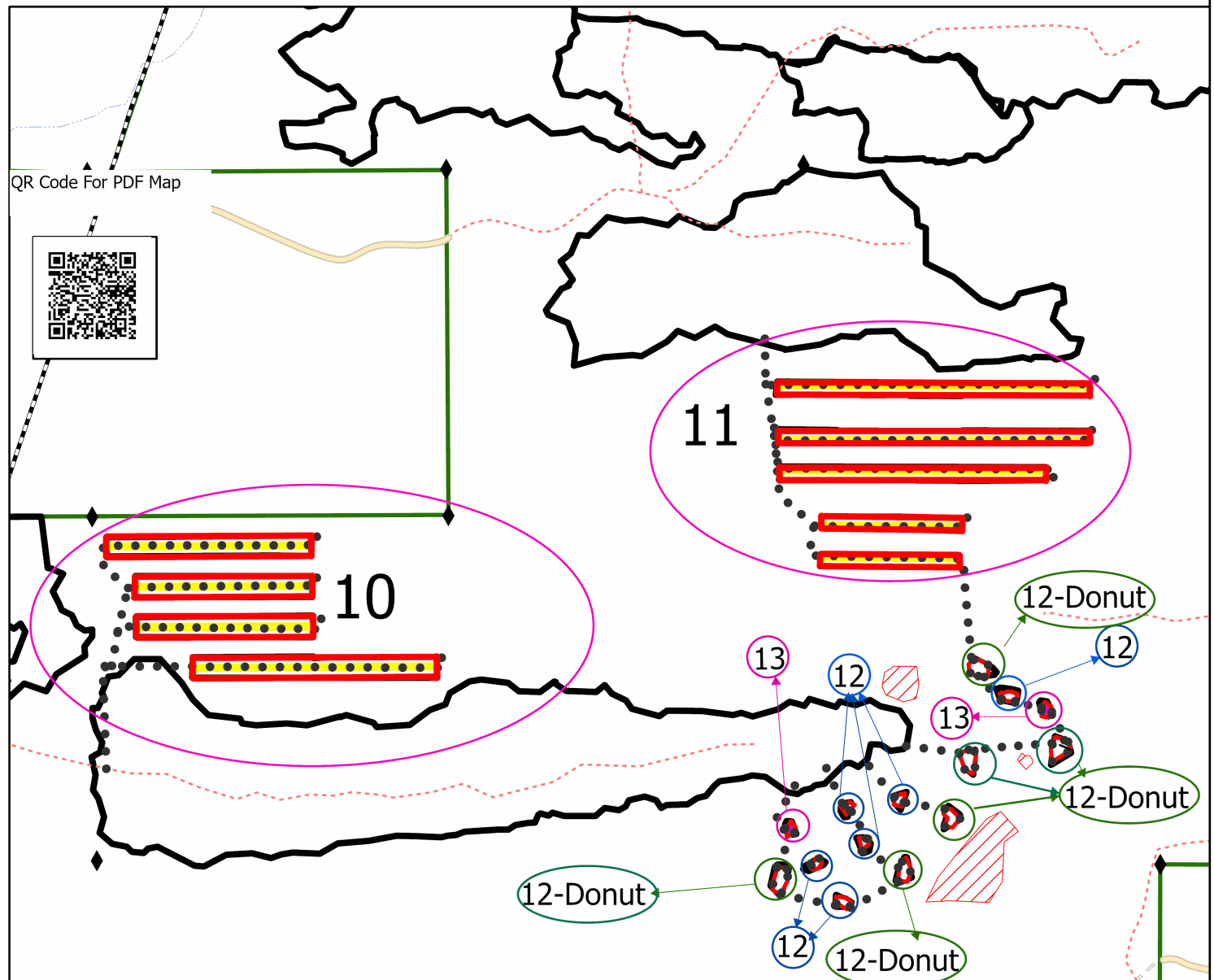


## Map Note:

Cedar Research Project Detail Map.  
Access via unit 7 or 8  
No operations allowed off of shown  
skid trails without approval

0 0.1 0.2 0.4 Miles

# High Low Mix CRP





## TIMBER SALE INFORMATION

Gleason Creek Mix (32-015-24)  
T43N, R26W, SEC. 2; T43N, R26W, SEC. 3.  
Marquette County (Advertised Price \$66,311.95)

SALE NOTE: Access may be through other public land.

A timber sale contract for this lump sum, sealed bid timber sale will be awarded to the responsible bidder offering the highest sealed bid price. All units of volume listed below were estimated using the Inventory Manager computer program and the new Michigan taper model. Bids must be at or above the following advertised price for each product and species:

<u>PRODUCTS &amp; SPECIES</u>	<u>ESTIMATED UNITS*</u>	<u>ADVERTISED PRICE</u>
Sawtimber		
Basswood	13.1 MBF	\$ 35.00 / MBF
Paper Birch	0.8 MBF	\$ 85.00 / MBF
Sugar Maple	79.0 MBF	\$ 170.00 / MBF
Pulpwood		
Balsam Fir	128 Cords	\$ 8.40 / Cord
Balsam Poplar	148 Cords	\$ 22.70 / Cord
Basswood	44 Cords	\$ 8.00 / Cord
Mixed Aspen	1,578 Cords	\$ 22.70 / Cord
Mixed Hardwood	587 Cords	\$ 9.35 / Cord
Mixed Spruce	226 Cords	\$ 8.80 / Cord
Paper Birch	34 Cords	\$ 12.00 / Cord
Tamarack	348 Cords	\$ 11.10 / Cord

\* The total volume is statistically estimated within plus (+) or minus (-) 15.22 percent. There are an estimated 3,312 cords on this timber sale, plus or minus 504 cords at the 95% confidence level. The estimated units are final and not subject to adjustment. Prospective bidders are urged to examine this timber and to make their own estimates of quantity and quality.

### **BOND AND PAYMENT SCHEDULE:**

1. A bond in the amount of \$6,631.00 to insure faithful performance of the conditions of the contract will be deposited by the successful bidder within 21 days of the sale award.
2. Cutting in any sale or unit without the required advance payment would be considered a trespass.
3. Total payment must be paid in advance or according to the following schedule:
  - (a) Ten percent (10%) of the sale value must be paid within 21 days of the sale award.
  - (b) The 10% down payment will be credited towards the first unit cut.

(c) Payment for each of the following units must be made before cutting begins in that unit:

<u>PAYMENT UNIT NUMBER</u>	<u>PERCENT OF TOTAL SALE VALUE</u>
01	9.0%
02	12.7%
03	37.7%
04	14.2%
05	10.9%
06	7.5%
07	8.0%

4. If no cutting takes place, the 10% down payment will not be refunded.
5. Operations on the contract issued will terminate on 06/30/2028.

### **SALE STATISTICS**

Volumes were calculated in cubic feet using the Michigan taper model. Cubic foot volume includes all wood inside bark for the product indicated. For display purposes, cubic feet were converted to cords and MBF using a simple conversion factor, e.g. 79 cubic feet per cord and 185 cubic feet per MBF. The cubic foot volumes are precise; the cords and MBF volumes are not. Cubic foot volume cannot be directly converted to cords or boards with precision.

SALE VOLUMES

The total estimated sale volume may not equal the sum of the species/products due to the nature of statistical calculations associated with double sampling methodology.

VOLUME			STATISTICAL RANGE IN CORDS	
TOTAL CUBIC FEET	TOTAL CORDS	PERCENT ERROR	MINIMUM	MAXIMUM
261,612	3,312	15.22%	2,808	3,816

VDU VOLUMES

A VDU is a Volume Determination Unit. Volumes and their associated statistics are calculated at the VDU level and summarized to the sale level. There is often a one to one relationship between a VDU and a Payment Unit, but not always, depending on the cruise design. Refer to the VDU TO PAYMENT UNIT table.

	VOLUME			RANGE IN CORDS	
VDU	TOTAL CUBIC FEET	TOTAL CORDS	PERCENT ERROR	MINIMUM	MAXIMUM
1	12,534	159	49.79%	80	238
2	132,812	1,681	23.98%	1,278	2,084
3	32,268	408	48.90%	209	608
31	54,206	686	28.90%	488	884
91	29,792	377	30.21%	263	491
TOTAL:	261,612	3,312		2,317	4,306

VDU TO PAYMENT UNIT

When a VDU is associated with more than one Payment Unit (PU), the VDU volumes are assigned to the PU based on acres of the VDU within the PU.

VDU	VDU ACRES	PU	PU ACRES
1	8.2	1	8.2
2	41.0	3	29.8
2	41.0	4	11.2
3	15.5	2	15.5
31	69.0	5	28.6
31	69.0	6	19.7
31	69.0	7	20.7
91	11.7	1	11.7
TOTAL:	324.4		145.4

## DESCRIPTION OF TIMBER BY PAYMENT UNIT (PU)

PU	MARKET GROUP	PRODUCT	QUANTITY	UNIT	ACRES	ADVERTISE PRICE
1	Paper Birch	Sawtimber	0.8	MBF	19.9	\$5,972.40
	Balsam Poplar	Pulpwood	24	Cords		
	Mixed Spruce		136	Cords		
	<i>Black Spruce</i>		131	Cords		
	<i>White Spruce</i>		5	Cords		
	Paper Birch		25	Cords		
	Tamarack		348	Cords		
2	Balsam Fir	Pulpwood	29	Cords	15.5	\$8,431.95
	Balsam Poplar		98	Cords		
	Mixed Aspen		250	Cords		
	<i>B. T. Aspen</i>		63	Cords		
	<i>Quaking Aspen</i>		187	Cords		
	Mixed Hardwood		13	Cords		
	<i>Black Cherry</i>		9	Cords		
	<i>Ironwood</i>		4	Cords		
	Mixed Spruce		19	Cords		
	<i>Black Spruce</i>		14	Cords		
	<i>White Spruce</i>		5	Cords		
3	Sugar Maple	Sawtimber	3.7	MBF	29.8	\$24,979.05
	Balsam Fir	Pulpwood	72	Cords		
	Balsam Poplar		19	Cords		
	Basswood		4	Cords		
	Mixed Aspen		961	Cords		
	<i>B. T. Aspen</i>		156	Cords		
	<i>Quaking Aspen</i>		805	Cords		
	Mixed Hardwood		99	Cords		
	<i>Black Cherry</i>		14	Cords		
	<i>Ironwood</i>		4	Cords		
	<i>Red Maple</i>		5	Cords		
	<i>Sugar Maple</i>		76	Cords		
	Mixed Spruce		52	Cords		
	<i>White Spruce</i>		52	Cords		
	Paper Birch		7	Cords		
4	Sugar Maple	Sawtimber	1.4	MBF	11.2	\$9,386.25
	Balsam Fir	Pulpwood	27	Cords		
	Balsam Poplar		7	Cords		
	Basswood		1	Cords		
	Mixed Aspen		362	Cords		
	<i>B. T. Aspen</i>		59	Cords		
	<i>Quaking Aspen</i>		303	Cords		
	Mixed Hardwood		37	Cords		
	<i>Black Cherry</i>		5	Cords		
	<i>Ironwood</i>		2	Cords		
	<i>Red Maple</i>		2	Cords		
	<i>Sugar Maple</i>		28	Cords		
	Mixed Spruce		19	Cords		
	<i>White Spruce</i>		19	Cords		
	Paper Birch		2	Cords		
5	Basswood	Sawtimber	5.5	MBF	28.6	\$7,260.25
	Sugar Maple		30.6	MBF		
	Basswood	Pulpwood	16	Cords		
	Mixed Aspen		2	Cords		
	<i>B. T. Aspen</i>		2	Cords		
	Mixed Hardwood		181	Cords		
	<i>Ironwood</i>		9	Cords		
	<i>Sugar Maple</i>		172	Cords		

DESCRIPTION OF TIMBER BY PAYMENT UNIT (PU), CON'T

PU	MARKET GROUP	PRODUCT	QUANTITY	UNIT	ACRES	ADVERTISE PRICE
6	Basswood	Sawtimber	3.7	MBF	19.7	\$4,995.95
	Sugar Maple		21.1	MBF		
	Basswood	Pulpwood	11	Cords		
	Mixed Aspen		1	Cords		
	<i>B. T. Aspen</i>		1	<i>Cords</i>		
	Mixed Hardwood		125	Cords		
	<i>Ironwood</i>		7	<i>Cords</i>		
	<i>Sugar Maple</i>		118	<i>Cords</i>		
7	Basswood	Sawtimber	3.9	MBF	20.7	\$5,286.10
	Sugar Maple		22.2	MBF		
	Basswood	Pulpwood	12	Cords		
	Mixed Aspen		2	Cords		
	<i>B. T. Aspen</i>		2	<i>Cords</i>		
	Mixed Hardwood		132	Cords		
	<i>Ironwood</i>		7	<i>Cords</i>		
	<i>Sugar Maple</i>		125	<i>Cords</i>		
TOTAL:			92.9	MBF		
TOTAL:			3,093	Cords		

## **Sale Specific Conditions & Requirements**

**Sale Name: Gleason Creek Mix**

**Sale Number: 32-015-24 Seq#: 1**

### **1 - Sale Area**

#### **1.2 - Boundaries**

##### **1.2.1 - Painted Boundaries (9/19)**

The sale boundary and Payment Unit boundaries are marked and identified by blue, red and yellow paint. Exterior sale boundary lines against private property are marked with blue paint. Exterior sale boundary lines against state are marked with red paint. Interior Payment Unit boundaries are marked with yellow paint. The painted boundary line trees are not Included Timber and are to be protected unless marked with orange paint. Yellow painted trees designating an interior Payment Unit boundary are only to be cut when all surrounding Payment Units have been paid.

### **2 - Timber Specifications**

#### **2.1 - Included Timber**

##### **2.1.1 - Clearcut Unit(s) with Unmerchantable Trees (6/14)**

Within Payment Unit(s) 1-4, cut all trees that are two (2) inches or more at DBH with the following exceptions:

- Within Payment Unit(s) 1, do not cut cedar.
- Within Payment Unit(s) 2-4, do not cut cedar and hemlock.

##### **2.1.3 - Cut Tree Marked Unit(s) (12/08)**

Within Payment Unit(s) 5-7, all trees are designated for cutting when marked with orange paint above and below stump height, regardless of merchantability.

### **3 - Payments**

#### **3.4 - Damaged Timber**

##### **3.4.1 - Damaged timber (7/16)**

General Condition and Requirement 3.4 Damaged Timber, defines liquidated damages for undesignated live merchantable trees which are cut or injured. In addition, extreme care should be taken to avoid damage to tree seedlings and saplings.

No damage is acceptable to undesignated live merchantable trees. Within the Sale Area, if more than 5% of trees (> 4.5" DBH) within a specified area of the sale are damaged, liquidated damages will be assessed for all trees damaged. Rates will be in accordance with General Condition and Requirement 3.4 Damaged Timber.

### **4 - Transportation**

#### **4.1 - Construction**

##### **4.1.6 - Road Construction (4/24)**

Construction of new roads or improvements of existing roads shall be done in such a way as to minimize the environmental and visual impacts. Merchantable trees shall be cut and utilized unless otherwise directed. Non-merchantable trees shall be severed and laid flat on the ground. Slash shall be scattered, and not left in windrows and kept a minimum of 10 feet back from the road edge. Stumps shall be set upright, not left on edge, and be moved at least 10 feet away from the road edge. Disturbed soil shall be feathered into the woods and not left in berms or windrows.

##### **4.1.7 - Road Closure (10/11)**

All new roads built into the sale must be blocked to vehicle traffic upon completion of the sale. Overgrown roads that are reopened shall be considered new roads. In general, this will require constructing a four (4') foot high berm of stumps and logs covered with earth. Temporary berms may be required if no sale activity occurs for 60 or more consecutive days.

Contact the Sale Administrator for specific details of design and placement.

#### **4.2 - Maintenance**

##### **4.2.1 - Hauling Restriction (12/08)**

Hauling may be restricted on forest roads by the Unit Manager or his/her representative. The restriction may occur during

spring breakup or during wet weather conditions.

#### 4.2.2 - Fill Material (4/07)

To maintain roads, fill material may be needed in areas where "holes" exist or may be expected to develop. This fill material should be placed before trucking begins. Contact the Sale Administrator regarding the availability of onsite sand or gravel from adjacent State-owned lands.

#### 4.2.3 - Road maintenance (8/13)

The following road maintenance may be required: Within 60 days of completion of hauling, or if no hauling occurs for 60 days, the Unit Manager or his/her representative may require the road to be maintained and graded. This includes cleaning of drainage areas, grading, crowning and filling with gravel, if necessary. Damages will be assessed if grading/repair does not occur.

## 5 - Operations

### 5.1 - Notification

#### 5.1.1 - Pre-sale Conference (10/16)

A pre-sale conference on site between the Purchaser and Sale Administrator is required prior to beginning any operations. Contact Sale Administrator at least 3 days before starting work to schedule the conference.

### 5.2 - Conduct of Operations

#### 5.2.3 - Operating Restrictions

##### 5.2.3.1 - Operating Restrictions (9/11)

Within Payment Unit(s) 1, unless changed by written agreement, cutting, skidding, and hauling are limited to frozen winter conditions (approximately December 1 to April 1). This restriction is due to wet soils.

##### 5.2.3.3 - Bark Slippage Restriction (3/09)

Within Payment Unit(s) 5-7, unless changed by written agreement, cutting and skidding are not permitted during the period of April 15 to July 15. This restriction is because of bark slippage.

#### 5.2.32 - Decking/Landing Restoration (9/13)

All decking and landing areas must have the surface area restored to a condition equal to or better than before. This is to ensure the proper regeneration of the stand. Wood debris, chips and "cookies" from trimmings must be removed or scattered away from landing and loading areas and may not be windrowed on the edge.

#### 5.2.38 - No Decking Against Live Trees (2/04)

Cut products may not be decked against unmarked or designated leave trees.

### 5.4 - Soil Protection

#### 5.4.1 - Rutting Restriction, General (7/16)

Operations are to cease immediately if equipment and weather conditions result in rutting of roads and/or skid trails which is 12 inches or greater in depth and 50 feet in length. The Unit Manager or his/her representative may restrict hauling and/or skidding if ruts exceed the specified depth. With the Unit Manager or his/her representative's approval, the Purchaser may return to the area when the risk of rutting has decreased.

#### 5.4.2 - Skid Trails (2/04)

Skid trails up and down slopes should be avoided. If, however, this is unavoidable, these trails will be left in a non-erodible condition using water bars, logs, and slash. Placing of slash on these skid trails while logging is ongoing may alleviate need for any further action. At the direction of the Sale Administrator, seed, fertilizer, and mulch may also be required.

## 6 - Safety and Fire Prevention

### 6.2 - Signing

#### 6.2.1 - Road Posting (10/20)

The Purchaser is responsible for posting and maintaining caution signs on Ross Grade prior to beginning operations. The road must be posted at appropriate distances from the Sale Area to warn of logging activity and truck traffic. Signs must be removed when harvest operations are suspended or completed. The Purchaser will provide these signs.







**TIMBER SALE MAP**

This information provided by authority of Part 525, 1994 PA 451, as amended.

Sale Number

**32-015-24**

Date

**10/10/2024**

Forest Management Unit

Gwinn Mgt Unit

County

Marquette

Mapped By: Siler

Cruised By: Gwinn Staff & Contractor

Scale

**1:15,840**

Page

**1**

Of

**1**

Township  
43N

Range  
26W

Section(s) and

Subdivision(s) Sec. 2 S1/2NW,N1/2SW,SES,SWSE; Sec. 3 SENW,NENE,S1/2NE,NESE;

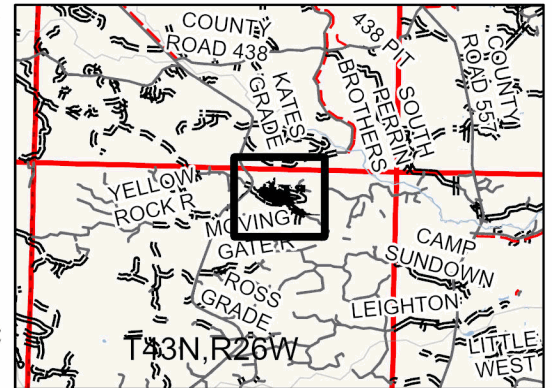
**Cover Type**

A = Aspen	J = Jack Pine	O = Oak	U = Upland Brush
B = Paper Birch	K = Rock	P = Lowland Poplar	UM = Upland Mix Forest
C = Cedar	L = Lowland Brush	Q = Mixed Swamp Conifer	V = Bog or Marsh
D = Treed Bog	LM = Lowland Mix Forest	R = Red Pine	W = White Pine
E = Swamp Hardwoods	M = Maple, Beech, Birch	S = Black Spruce	X = Non Stocked
F = Spruce/Fir	MC = Mixed Conifer	T = Tamarack	Y = Sand
G = Grass	MD = Mixed Deciduous	Z = Water	
H = Hemlock	N = Marsh		

**Density**

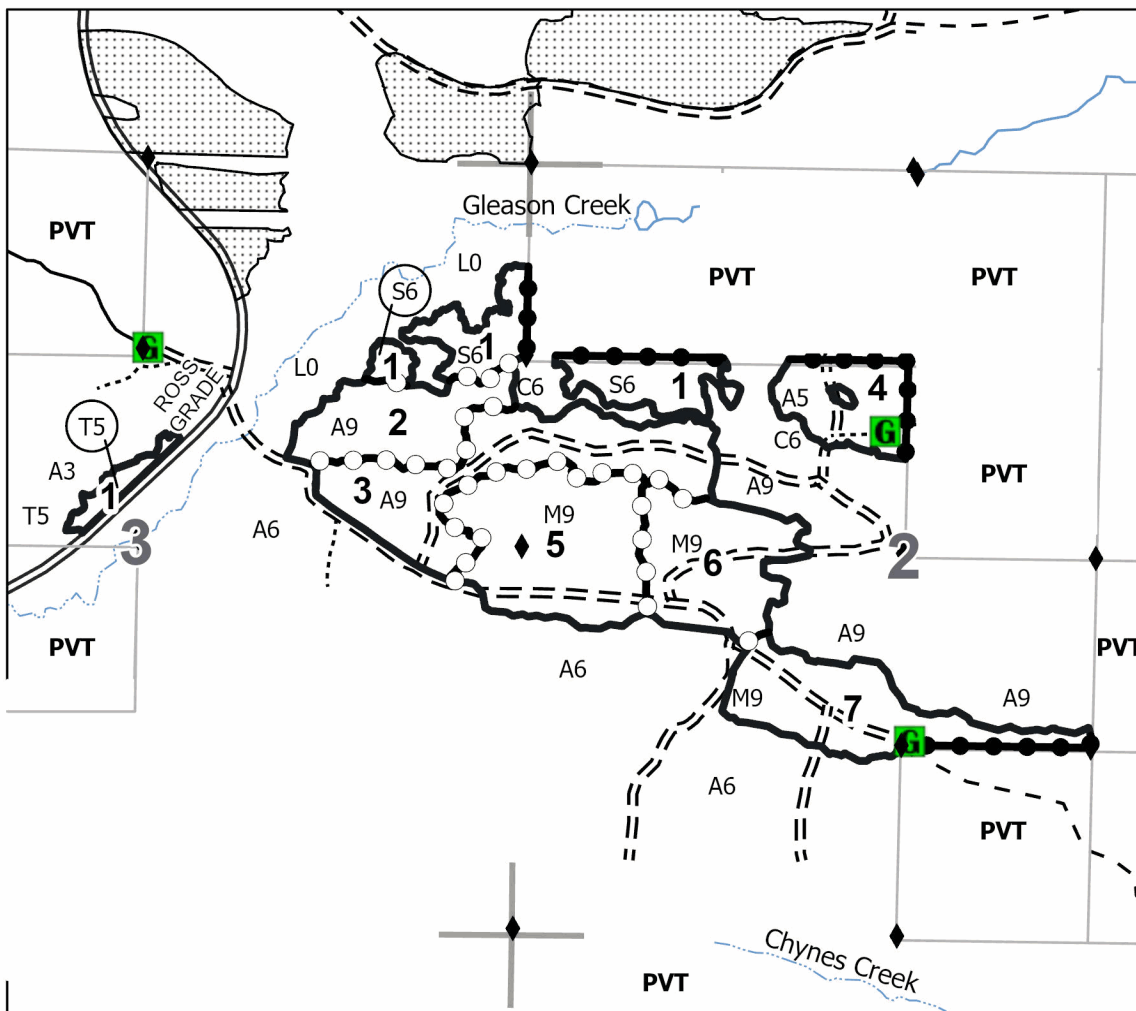
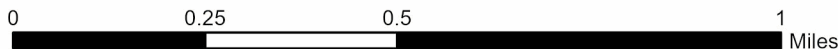
0 = Non Stocked	5 = Pole Timber Medium
1 = Seedling Sapling Poor	6 = Pole Timber Well
2 = Seedling Sapling Medium	7 = Saw Timber Poor
3 = Seedling Sapling Well	8 = Saw Timber Medium
4 = Pole Timber Poor	9 = Saw Timber Well

**Locator Map 1:200,000**



PU #	Acres	PU #	Acres
1	19.9	5	28.6
2	15.5	6	19.7
3	29.8	7	20.7
4	11.2		

**Gleason  
Creek Mix  
145.4 Acres**



**Legend**

- Against State (Red)
- Private Line (Blue)
- Payment Unit (Yellow)
- ▨ Nearby Timber Sale
- ▭ State Boundary
- Primary Forest Road
- Forest Access Route
- ..... Administrative Access Only
- Paved Road
- Private Gravel/Dirt
- Intermittent Stream
- Perennial River
- ◆ Survey Grade Corner
- Gate
- Section Corner

Use QR Code to  
open Map in App



Gleason Creek Mix (32-015-24)  
T43N, R26W, SEC. 2; T43N, R26W, SEC. 3; Marquette COUNTY

In response to the notice of sale to be held 2:00 p.m. (local time) on June 16, 2025, I am hereby submitting my sealed bid ( firm offer) for the following forest products to be cut. Bids for individual species must be at or above the advertised price. All non-responsive bid forms may be rejected.

<u>PRODUCTS &amp; SPECIES</u>	<u>ESTIMATED VOLUME*</u>	<u>ADVERTISED PRICE</u>	<u>BID PRICE/UNIT</u>
<b>Sawtimber</b>			
Basswood	13.1 MBF	\$ 35.00/MBF	\$ _____
Paper Birch	0.8 MBF	\$ 85.00/MBF	\$ _____
Sugar Maple	79.0 MBF	\$ 170.00/MBF	\$ _____
<b>Pulpwood</b>			
Balsam Fir	128 Cords	\$ 8.40/Cord	\$ _____
Balsam Poplar	148 Cords	\$ 22.70/Cord	\$ _____
Basswood	44 Cords	\$ 8.00/Cord	\$ _____
Mixed Aspen	1,578 Cords	\$ 22.70/Cord	\$ _____
Mixed Hardwood	587 Cords	\$ 9.35/Cord	\$ _____
Mixed Spruce	226 Cords	\$ 8.80/Cord	\$ _____
Paper Birch	34 Cords	\$ 12.00/Cord	\$ _____
Tamarack	348 Cords	\$ 11.10/Cord	\$ _____

\*The volumes are statistically estimated within plus (+) or minus (-) 15.22 percent at 95% confidence level. These estimated volumes are final and not subject to adjustment. Prospective bidders are urged to examine this timber and to make their own estimates of quantity and quality.

I understand that any or all bids may be rejected. All bids must be signed and all bid items must be bid or the bid form may be rejected. I also understand that consideration and awarding a contract will be based upon my past performance and ability to complete the contract based upon equipment and staffing subject to my control .

FEDERAL ID: \_\_\_\_ - \_\_\_\_ - \_\_\_\_ or SOCIAL SECURITY NUMBER: \_\_\_\_ - \_\_\_\_ - \_\_\_\_  
Company or individual bidding: \_\_\_\_\_  
Company representative's name: \_\_\_\_\_  
Address: \_\_\_\_\_  
City: \_\_\_\_\_ State: \_\_\_\_\_ Zip: \_\_\_\_\_

IF AVAILABLE, PLEASE PLACE THE PERSONALIZED LABEL FROM YOUR PROSPECTUS IN THE ABOVE BOX.

Individual or company representative's signature: \_\_\_\_\_ Date: \_\_\_\_\_

Phone number : \_\_\_\_\_ Email (optional): \_\_\_\_\_

**THE WINNING BIDDER MUST COMPLETE THE VERIFICATION OF WORKER'S DISABILITY COMPENSATION ACT  
COMPLIANCE (ON REVERSE SIDE IF DOUBLE SIDED) WITHIN 21 DAYS OF SALE AWARD DATE**



## TIMBER SALE VERIFICATION OF WORKER'S DISABILITY COMPENSATION ACT COMPLIANCE

As required by Act 317, P.A. 1969 (Worker's Compensation) and  
Part 5 of Act 451 of 1994, as amended.

### FOR DEPARTMENT USE ONLY

Sale Number (XX - XXX - XX - XX)

Forest Management Unit:

### VERIFICATION OF WORKER'S DISABILITY COMPENSATION ACT COMPLIANCE

- This verification must be completed and submitted within 21 days of contract award and prior to the issuance of the timber sale contract.
- In addition, if boxes 2B or 2C are checked, then Notice of Exclusion or Certificate of Insurance must be submitted within twenty-one (21) days of the contract award and prior to the issuance of the timber sale contract.
- All Information must be typed or printed except for written signatures.

Please Check Appropriate Categories:

1. My business is organized as (you **must** check one of the boxes below):
  - A. ☐ Sole Proprietorship (individual)
  - B. ☐ Partnership
  - C. ☐ Corporation
2. You **must** check one of the boxes below:
  - A. ☐ I certify my business is a sole proprietorship and it has no employees but the sole proprietor. I am not subject to the Worker's Compensation Laws.
  - B. ☐ I certify my business has satisfied its obligation to the Worker's Compensation Act through the use of an approved Notice of Exclusion (BWC-337, Rev. 5/96). I will provide a copy of the Notice of Exclusion within 21 days of the contract award. (For questions or a copy of the BWC-337, please call the Worker's Compensation Bureau at 517-322-1195).
  - C. ☐ I certify my business has a Worker's Compensation Policy. I will provide an original Certificate of Insurance within twenty-one (21) days of the contract award.
3. If you have checked item 2(A) or 2(B), you **must** indicate the number of **both** full-time and part-time employees, other than yourself, including family members and active partners (if none, you must enter "0").

\_\_\_\_\_ Full-time Employees

\_\_\_\_\_ Part-time Employees

Name of Business		Federal ID (or) Social Security No.
Address		Telephone (       )
City	State	ZIP

*I hereby certify that the above information is true and correct. I agree to notify the Michigan DNR of any changes that occur in factors affecting my coverage during any of my present and future operations.*

\_\_\_\_\_  
Signature of Owner or Authorized Representative

\_\_\_\_\_  
Title

\_\_\_\_\_  
Date

Please complete the "SEALED BID" information on the next page

High Low Mix CRP (32-004-24)

T43N, R26W, SEC. 10; T43N, R26W, SEC. 3; T43N, R26W, SEC. 9; Marquette

In response to the notice of sale to be held 2:00 p.m. (local time) on June 16, 2025, I am hereby submitting my sealed bid ( firm offer) for the following forest products to be cut. Bids for individual species must be at or above the advertised price. All non-responsive bid forms may be rejected.

<u>PRODUCTS &amp; SPECIES</u>	<u>ESTIMATED VOLUME*</u>	<u>ADVERTISED PRICE</u>	<u>BID PRICE/UNIT</u>
<b>Sawtimber</b>			
Basswood	15.5 MBF	\$ 35.00/MBF	\$ _____
Paper Birch	2.2 MBF	\$ 85.00/MBF	\$ _____
Red Maple	5.3 MBF	\$ 82.00/MBF	\$ _____
Sugar Maple	125.9 MBF	\$ 170.00/MBF	\$ _____
<b>Pulpwood</b>			
Balsam Fir	45 Cords	\$ 8.40/Cord	\$ _____
Balsam Poplar	42 Cords	\$ 22.70/Cord	\$ _____
Basswood	32 Cords	\$ 8.00/Cord	\$ _____
Mixed Aspen	515 Cords	\$ 22.70/Cord	\$ _____
Mixed Hardwood	790 Cords	\$ 9.35/Cord	\$ _____
Mixed Spruce	142 Cords	\$ 8.80/Cord	\$ _____
N. White Cedar	168 Cords	\$ 6.30/Cord	\$ _____
Tamarack	160 Cords	\$ 11.10/Cord	\$ _____

\*The volumes are statistically estimated within plus (+) or minus (-) 15.10 percent at 95% confidence level. These estimated volumes are final and not subject to adjustment. Prospective bidders are urged to examine this timber and to make their own estimates of quantity and quality.

I understand that any or all bids may be rejected. All bids must be signed and all bid items must be bid or the bid form may be rejected. I also understand that consideration and awarding a contract will be based upon my past performance and ability to complete the contract based upon equipment and staffing subject to my control.

FEDERAL ID: \_\_\_\_ - \_\_\_\_ - \_\_\_\_ or SOCIAL SECURITY NUMBER: \_\_\_\_ - \_\_\_\_ - \_\_\_\_

Company or individual bidding: \_\_\_\_\_

Company representative's name: \_\_\_\_\_

Address: \_\_\_\_\_

City: \_\_\_\_\_ State: \_\_\_\_\_ Zip: \_\_\_\_\_

IF AVAILABLE, PLEASE PLACE THE PERSONALIZED LABEL FROM YOUR PROSPECTUS IN THE ABOVE BOX.

Individual or company representative's signature: \_\_\_\_\_ Date: \_\_\_\_\_

Phone number : \_\_\_\_\_ Email (optional): \_\_\_\_\_

**THE WINNING BIDDER MUST COMPLETE THE VERIFICATION OF WORKER'S DISABILITY COMPENSATION ACT  
COMPLIANCE (ON REVERSE SIDE IF DOUBLE SIDED) WITHIN 21 DAYS OF SALE AWARD DATE**



## TIMBER SALE VERIFICATION OF WORKER'S DISABILITY COMPENSATION ACT COMPLIANCE

As required by Act 317, P.A. 1969 (Worker's Compensation) and  
Part 5 of Act 451 of 1994, as amended.

### FOR DEPARTMENT USE ONLY

Sale Number (XX - XXX - XX - XX)

Forest Management Unit:

### VERIFICATION OF WORKER'S DISABILITY COMPENSATION ACT COMPLIANCE

- This verification must be completed and submitted within 21 days of contract award and prior to the issuance of the timber sale contract.
- In addition, if boxes 2B or 2C are checked, then Notice of Exclusion or Certificate of Insurance must be submitted within twenty-one (21) days of the contract award and prior to the issuance of the timber sale contract.
- All information must be typed or printed except for written signatures.

Please Check Appropriate Categories:

1. My business is organized as (you **must** check one of the boxes below):
  - A. ☐ Sole Proprietorship (individual)
  - B. ☐ Partnership
  - C. ☐ Corporation
2. You **must** check one of the boxes below:
  - A. ☐ I certify my business is a sole proprietorship and it has no employees but the sole proprietor. I am not subject to the Worker's Compensation Laws.
  - B. ☐ I certify my business has satisfied its obligation to the Worker's Compensation Act through the use of an approved Notice of Exclusion (BWC-337, Rev. 5/96). I will provide a copy of the Notice of Exclusion within 21 days of the contract award. (For questions or a copy of the BWC-337, please call the Worker's Compensation Bureau at 517-322-1195).
  - C. ☐ I certify my business has a Worker's Compensation Policy. I will provide an original Certificate of Insurance within twenty-one (21) days of the contract award.
3. If you have checked item 2(A) or 2(B), you **must** indicate the number of **both** full-time and part-time employees, other than yourself, including family members and active partners (if none, you must enter "0").

\_\_\_\_\_ Full-time Employees

\_\_\_\_\_ Part-time Employees

Name of Business		Federal ID (or) Social Security No.
Address		Telephone (       )
City	State	ZIP

*I hereby certify that the above information is true and correct. I agree to notify the Michigan DNR of any changes that occur in factors affecting my coverage during any of my present and future operations.*

\_\_\_\_\_  
Signature of Owner or Authorized Representative

\_\_\_\_\_  
Title

\_\_\_\_\_  
Date

Please complete the "SEALED BID" information on the next page