



**DEPARTMENT OF NATURAL RESOURCES
STATE OF MICHIGAN
TIMBER SALE PROSPECTUS #7588**

SCHEDULED SALE DATE AND TIME: 3:00 p.m. (local time) on April 8, 2025.

LOCATION: NAUBINWAY DNR FIELD OFFICE, PO BOX 287, W11569 US2, NAUBINWAY, MI 49762.

PROSPECTUS NOTE: The bidder is advised to inspect the sale area and review the location, estimated volumes, operating costs and contract terms of proposed sales. Please be aware that some landowners may request 60 days or more notice for access across their land.

Notice is hereby given that bids will be received by the Unit Manager, SAULT STE MARIE MANAGEMENT UNIT, for certain timber on the following described lands:

Mega Pint Mix (45-107-24) / T43N, R06W, SEC. 10, E1/2NE,NESE.

T43N, R06W, SEC. 11, N1/2SW,NWSE.

T43N, R06W, SEC. 11, NENW,S1/2NW,N1/2NE,SWNE.

T43N, R06W, SEC. 2 , SWSE.

Mackinac County, Advertised Price \$29,129.60, 78.4 Acres, Spruce/Fir/Tamarack, Hardwood.

SALE NOTE: Mega Pint Mix has been reduced due to "no bid" on previous advertisement.

A recreation site such as a trail, pathway, or campground is within the sale area or the vicinity. Certain restrictions/specifications may be applicable including time restrictions.

Big Thunder Pine (45-110-24) / T43N, R06W, SEC. 1 , SESW.

T43N, R06W, SEC. 12, N1/2NW,SWNW,NE,NESE.

Mackinac County, Advertised Price \$28,629.85, 61.3 Acres, Spruce/Fir/Tamarack, Jack Pine.

SALE NOTE: A recreation site such as a trail, pathway, or campground is within the sale area or the vicinity. Certain restrictions/specifications may be applicable including time restrictions.

Walkie Talkie Mix (45-111-24) / T43N, R06W, SEC. 5 , NENW.

T44N, R06W, SEC. 28, SWNW,NESE,S1/2SE.

T44N, R06W, SEC. 29, W1/2NW,S1/2NE,NESE.

T44N, R06W, SEC. 30, SENE.

T44N, R06W, SEC. 32, S1/2SW,SWSE.

T44N, R06W, SEC. 33, NENW,N1/2NE,SWSW.

Chippewa County, Advertised Price \$25,710.00, 104.7 Acres, Hardwood, Spruce/Fir/Tamarack.

SALE NOTE: Hauling will be along snowmobile trail. The sale is comprised of small and scattered Payment Units.

This sale has been reduced due to "no bid" on previous advertisement.

A recreation site such as a trail, pathway, or campground is within the sale area or the vicinity. Certain restrictions/specifications may be applicable including time restrictions.

Broken Bridge Mix (45-112-24) / T43N, R06W, SEC. 26, SESW,SWSE.

T43N, R06W, SEC. 34, SENE,NESE.

T43N, R06W, SEC. 35, N1/2NW,NWNE,N1/2SW,SESW.

Mackinac County, Advertised Price \$17,219.85, 59.1 Acres, Spruce/Fir/Tamarack, White Pine.

SALE NOTE: Payment Units 2 and 3 are optional to harvest due to potential access issues. Removing these Payment Units is a contract modification which requires a Timber Sale Contract Amendment.

This sale has been reduced due to "no bid" on previous advertisement.

A recreation site such as a trail, pathway, or campground is within the sale area or the vicinity. Certain restrictions/specifications may be applicable including time restrictions.

Baja Red Pine (45-113-24) / T43N, R06W, SEC. 26, SWSE.

T43N, R06W, SEC. 35, NE,SE.

T43N, R06W, SEC. 36, NWNW,S1/2NW,S1/2NE.

Mackinac County, Advertised Price \$563,165.85, 146.9 Acres, Red Pine, White Pine.

SALE NOTE: A recreation site such as a trail, pathway, or campground is within the sale area or the vicinity. Certain restrictions/specifications may be applicable including time restrictions.

On The Side (45-118-22) / T42N, R06W, SEC. 6 , N1/2NW,SESW,NWNE,NESW,NWSE.

T43N, R06W, SEC. 31, S1/2SW,SWSE.

Mackinac County, Advertised Price \$9,509.70, 63.4 Acres, Spruce/Fir/Tamarack, White Pine.

SALE NOTE: A recreation site such as a trail, pathway, or campground is within the sale area or the vicinity. Certain restrictions/specifications may be applicable including time restrictions.

BID INSTRUCTIONS (VER. 10/10/2022):

1. Scheduled Bid Location, Date, and Time (2/11)

Bids must be received by the Unit Manager, NAUBINWAY DNR FIELD OFFICE, PO Box 287 W11569 US2, Naubinway, MI 49762, no later than 3:00 p.m. (local time) on April 8, 2025. For further information concerning this sale, contact Josh Brinks at 906-203-0210 extension .

2. Bidder's Qualifications (10/22)

If all or part of a timber sale was prepared by a private contractor, the contractor and that contractor's company are not permitted to bid on the timber sale. A person must be 18 years of age or older to purchase timber. Permanent employees of the Department of Natural Resources or members of their immediate household may not bid. Former employees, in the permanent or seasonal class, may not bid until 3 months after the last day of active duty. Bids will not be accepted from individuals or companies appearing on the DNR/FRD No-Bid List. This list contains the names of purchasers who previously failed to execute a contract within 21-days or who have a history of poor performance.

3. Preparation of Sealed Bids (5/16)

Bid Forms may be completed online thru Michigan DNR Timber Sale Online Bidding (OLB) at www.michigan.gov/timberbidding or by completing the hardcopy Bid Form found in the Timber Sale Prospectus . Hardcopy Bid Forms shall be manually signed in ink. Registration in OLB is considered your 'signature' for all bids submitted thru that system. Bid prices must be entered for each species and product in the Bid Price column for all material subject to bidding and all fill-in blanks must be completed. If erasures or other changes appear on the hardcopy Bid Form, each erasure or change must be initialed by the person signing the bid.

4. Submission of Sealed Bids (5/16)

Bid forms may be obtained from the Unit Manager or thru OLB. Bids may be submitted hardcopy or thru OLB. All hardcopy bids must be submitted on the bid form and in an envelope clearly identified as described in this section. NOTE: Only one bid form per bid envelope. Sealed bids must be submitted to the Unit office designated in the prospectus and must be submitted at or prior to the time established in the prospectus. The envelope should show on the outside (a) the sale name or number and (b) the date and time of bid opening, as shown in the prospectus. Bids received after the time specified in the sale prospectus are late bids and will be rejected.

It is possible for a bidder to submit multiple bids on a single sale. For example, a bid may be submitted hardcopy and a bid may be submitted thru OLB. Or, two bidders from the same company could both submit bids on the same sale. If this were to happen, the State would accept all bids received and award the contract accordingly. All bidding and contractual requirements would apply to all bids received.

5. Public Opening of Sealed Bids (7/16)

If conditions permit, the sealed bids will be publicly opened and posted at the time and place set in the prospectus.

If a bidder, present at a bid opening, has submitted bids on more than one sale, that bidder may withdraw their unopened bid envelopes or announce the withdrawal of their online bid after being declared the successful bidder on one sale.

6. Award of Contract (1/11)

Award of the contract will be made to the Bidder whose bid, conforming to the prospectus, is most advantageous to the State of Michigan on the basis of total value at rates bid for the estimated quantities. The State reserves the right to reject any bid or waive any minor irregularity in bids received. A written award mailed (or otherwise furnished) to the successful Bidder shall be deemed to result in a binding contract without further action by either party.

7. Down Payment (1/11)

The Bidder to whom award is made must make a down payment within 21 days of the sale award. The amount of the down payment will be calculated as shown in the Bond and Payment Schedule of this prospectus. Only cash may be used to meet this requirement.

8. Performance Security (1/11)

As guarantee of faithful performance, a cash bond, certificate of deposit, surety bond or irrevocable letter of credit (LOC) is required within 21 days of the sale award. The amount of the performance security is shown in the Bond and

Payment Schedule of this prospectus. If an LOC or surety is used, the coverage must extend for at least 6 months beyond the contract expiration.

9. Worker's Compensation (10/22)

Purchaser shall obtain worker's compensation insurance to cover claims under Michigan's Worker's Disability Compensation Act of 1969 or similar employee benefit act of any other state applicable to an employee. Verification of Worker's Disability Compensation Act Compliance must be completed and submitted within 21 days of contract award and prior to the issuance of the timber sale contract. In addition, if applicable, Notice of Exclusion or Certificate of Insurance must also be submitted.

10. Timber Sale Contract (10/22)

Additional conditions and requirements common to all timber sales are listed on the timber sale contract (R4031) and are available on line at www.michigan.gov/timber. Contact the Unit Manager for additional information or a sample contract. Within 21 days of the date of the award letter, the bidder must sign the contract and provide the required down payment, performance security, and verification of worker's disability compensation. The down payment and performance security shall be in accordance with the provisions of the timber sale contract, in the sums stated in this prospectus. If these actions are not taken, then the Bidder, the Bidder's corporation, and the corporation's principals may not be permitted to bid on State timber sales for a period of 3 months after the first offense, 6 months after the second offense, and 1 year after the third offense. An offense will only be counted against the Bidder for 5 years. In addition, the Bidder certifies that if awarded this contract, the Bidder will complete the timber sale contract in accordance with its terms and any modifications thereof including requirements to purchase, cut, and remove the included timber by the expiration date.

Payment Unit values in the State Forest Timber Sale Contract are calculated based on the advertised value of the Payment Unit as a percentage of the total advertised value of the contract. The advertised value of each Payment Unit is given in the Description of Timber by Payment Unit table on the Timber Sale Information page. For example, if the value of Payment Unit 1 is advertised as \$1,500 and the total Timber Sale value is advertised as \$10,000, the contract price for Payment Unit 1 will be 15% of the total bid price ($\$1,500/\$10,000 * 100$).

11. Disclaimer of Estimates and Bidder's Warranty of Inspection (10/22)

Before submitting this bid, the Bidder is advised and cautioned to inspect the sale area, review the requirements of the sale contract, and take other steps as may be reasonably necessary to ascertain the location, estimated volumes, construction estimates, and operating costs of the proposed sale. Failure to do so will not relieve the Bidder from responsibility for completing the contract.

The Bidder warrants that this bid is submitted solely on the basis of the Bidder's examination and inspection of the quality and quantity of the timber offered for sale and the Bidder's opinion of the value thereof and the costs of recovery. No reliance should be placed on the State of Michigan's estimates of timber quality, quantity or costs of recovery. Bidder further acknowledges that the State of Michigan: (i) expressly disclaims any warranty of fitness of timber for any purpose; (ii) offers this timber as is without any warranty of quality (merchantability) or quantity and (iii) expressly disclaims any warranty as to the quantity or quality of timber sold.

12. Certification and Chain-of-Custody (10/22)

Unless otherwise indicated in the contract under section 7 – Other Conditions of the Sale Specific Conditions & Requirements, the area encompassed by this timber sale is certified to the standards of the Forest Stewardship Council (FSC) - Certificate #SCS-FM/COC-00090N and the Sustainable Forestry Initiative (SFI) - Certificate #NSF-SFIS-5Y031-SF5. Forest products from this sale may be delivered to the mill as "FSC 100% and / or SFI certified" as long as the contractor hauling the forest products is chain-of-custody (COC) certified or covered under a COC certificate from the destination mill. The purchaser is responsible for maintaining COC after leaving the sale area.

13. Good Neighbor Authority (GNA) Requirements (10/22)

If the name of this timber sales contains the acronym GNA, it is authorized by the Good Neighbor Authority (GNA) and covered by various agreements between the U.S. Forest Service and the State. The timber sale occurs on federal land and the following conditions apply:

GNA contracts on US Forest Service land will not be awarded to purchasers on the Federal list of excluded parties. The System for Award Management (SAM) will be checked for active excluded parties prior to award of contract. In

addition, the Bidder to whom award is made must complete an Assurance Regarding Felony Conviction or Tax Delinquent Status for Corporate Applicants (AD-3031).

14. Good Neighbor Authority (GNA) Requirements, con't (10/22)

Bidder certifies, by signing this bid form, that to the best of Bidder's knowledge that the following representations are accurate and complete.

- a. That the Bidder and its principals are not presently debarred, suspended, proposed for debarment, declared ineligible, or voluntary excluded from timber sales (covered transactions) by any Federal department or agency.
- b. That the Bidder and its principals have not within a 3-year period preceding this bid been convicted of or had a civil judgment rendered against them for commission of fraud or a criminal offense in connection with obtaining , attempting to obtain, or performing a public (Federal, State, or local) transaction or contract under a public transaction; violation of Federal or State antitrust statutes or commission of embezzlement, theft, forgery, bribery, falsification or destruction of records, making false statements, or receiving stolen property.
- c. That the Bidder and its principals are not presently indicted for or otherwise criminally or civilly charged by a governmental entity (Federal, State, or local) with commission of any of the offenses enumerated in paragraph b of this certification.
- d. That the Bidder and its principals have not within a 3-year period preceding this bid had one or more public transactions (Federal, State, or local) terminated for breach or default of a timber or forest product contract.

Bidders that cannot certify this requirement, in whole or in part, shall submit an explanation with their bid.

Scott Bowen
Director

TIMBER SALE INFORMATION

Mega Pint Mix (45-107-24)

T43N, R06W, SEC. 10; T43N, R06W, SEC. 11; T43N, R06W, SEC. 2.
Mackinac County (Advertised Price \$29,129.60)

SALE NOTE: Mega Pint Mix has been reduced due to "no bid" on previous advertisement.

A recreation site such as a trail, pathway, or campground is within the sale area or the vicinity. Certain restrictions/specifications may be applicable including time restrictions.

A timber sale contract for this lump sum, sealed bid timber sale will be awarded to the responsible bidder offering the highest sealed bid price. All units of volume listed below were estimated using the Inventory Manager computer program and the new Michigan taper model. Bids must be at or above the following advertised price for each product and species:

<u>PRODUCTS & SPECIES</u>	<u>ESTIMATED UNITS*</u>	<u>ADVERTISED PRICE</u>
Sawtimber		
Red Maple	12.5 MBF	\$ 89.00 / MBF
Pulpwood		
Balsam Fir	303 Cords	\$ 7.00 / Cord
Jack Pine	65 Cords	\$ 20.25 / Cord
Misc. Species 1	2.4 Acres	\$ 8.00 / Acre
Mixed Aspen	259 Cords	\$ 17.20 / Cord
Mixed Hardwood	544 Cords	\$ 11.20 / Cord
Mixed Spruce	501 Cords	\$ 11.10 / Cord
N. White Cedar	259 Cords	\$ 3.15 / Cord
Paper Birch	177 Cords	\$ 4.70 / Cord
Red Pine	49 Cords	\$ 63.85 / Cord
Tamarack	76 Cords	\$ 2.70 / Cord
White Pine	247 Cords	\$ 14.05 / Cord

* The total volume is statistically estimated within plus (+) or minus (-) 26.72 percent. There are an estimated 2, 511 cords on this timber sale, plus or minus 671 cords at the 95% confidence level. The estimated units are final and not subject to adjustment. Prospective bidders are urged to examine this timber and to make their own estimates of quantity and quality.

BOND AND PAYMENT SCHEDULE:

1. A bond in the amount of \$2,913.00 to insure faithful performance of the conditions of the contract will be deposited by the successful bidder within 21 days of the sale award.
2. Cutting in any sale or unit without the required advance payment would be considered a trespass.
3. Total payment must be paid in advance or according to the following schedule :
 - (a) Ten percent (10%) of the sale value must be paid within 21 days of the sale award.
 - (b) The 10% down payment will be credited towards the first unit cut.
 - (c) Payment for each of the following units must be made before cutting begins in that unit:

PAYMENT UNIT NUMBER	PERCENT OF TOTAL SALE VALUE
01	0.1%
02	21.9%
03	42.2%
04	12.0%
05	19.8%
06	4.0%

4. If no cutting takes place, the 10% down payment will not be refunded.
5. Operations on the contract issued will terminate on 06/30/2028.

SALE STATISTICS

Volumes were calculated in cubic feet using the Michigan taper model. Cubic foot volume includes all wood inside bark for the product indicated. For display purposes, cubic feet were converted to cords and MBF using a simple conversion factor, e.g. 79 cubic feet per cord and 185 cubic feet per MBF. The cubic foot volumes are precise; the cords and MBF volumes are not. Cubic foot volume cannot be directly converted to cords or boards with precision.

SALE VOLUMES

The total estimated sale volume may not equal the sum of the species/products due to the nature of statistical calculations associated with double sampling methodology.

VOLUME			STATISTICAL RANGE IN CORDS	
TOTAL CUBIC FEET	TOTAL CORDS	PERCENT ERROR	MINIMUM	MAXIMUM
198,385	2,511	26.72%	1,840	3,182
2.40 acres are being sold by the acre and do not have cubic foot or cord volumes.				

VDU VOLUMES

A VDU is a Volume Determination Unit. Volumes and their associated statistics are calculated at the VDU level and summarized to the sale level. There is often a one to one relationship between a VDU and a Payment Unit, but not always, depending on the cruise design. Refer to the VDU TO PAYMENT UNIT table.

VDU	VOLUME			RANGE IN CORDS	
	TOTAL CUBIC FEET	TOTAL CORDS	PERCENT ERROR	MINIMUM	MAXIMUM
14	27,640	350	31.88%	238	461
21	36,282	459	25.34%	343	576
28	82,714	1,047	20.57%	832	1,262
29	27,333	346	32.13%	235	457
30 *			N/A		
57	24,217	307	40.99%	181	432
TOTAL:	198,187	2,509		1,829	3,189

* This VDU is being sold by the acre. There are no cruise statistics available.

VDU TO PAYMENT UNIT

When a VDU is associated with more than one Payment Unit (PU), the VDU volumes are assigned to the PU based on acres of the VDU within the PU.

VDU	VDU ACRES	PU	PU ACRES
14	10.3	4	10.3
21	12.8	5	12.8
28	32.4	3	32.4
29	14.6	2	14.6
30	2.4	1	2.4
57	5.9	6	5.9
TOTAL:	78.4		78.4

DESCRIPTION OF TIMBER BY PAYMENT UNIT (PU)

PU	MARKET GROUP	PRODUCT	QUANTITY	UNIT	ACRES	ADVERTISE PRICE
1	Misc. Species 1	Pulpwood	2.4	Acres	2.4	\$19.20
2	Balsam Fir	Pulpwood	11	Cords	14.6	\$6,378.10
	Jack Pine		65	Cords		
	Mixed Aspen		75	Cords		
	<i>B. T. Aspen</i>		4	Cords		
	<i>Quaking Aspen</i>		71	Cords		
	Mixed Hardwood		11	Cords		
	<i>Red Maple</i>		9	Cords		
	<i>Sugar Maple</i>		2	Cords		
	Mixed Spruce		37	Cords		
	<i>White Spruce</i>		37	Cords		
	Red Pine		22	Cords		
White Pine	125	Cords				
3	Balsam Fir	Pulpwood	181	Cords	32.4	\$12,301.90
	Mixed Aspen		135	Cords		
	<i>Balsam Poplar</i>		9	Cords		
	<i>Quaking Aspen</i>		126	Cords		
	Mixed Hardwood		259	Cords		
	<i>Red Maple</i>		256	Cords		
	<i>Sugar Maple</i>		3	Cords		
	Mixed Spruce		181	Cords		
	<i>Black Spruce</i>		42	Cords		
	<i>White Spruce</i>		139	Cords		
	Paper Birch		144	Cords		
	Red Pine		27	Cords		
	Tamarack		25	Cords		
	White Pine		95	Cords		
4	Balsam Fir	Pulpwood	3	Cords	10.3	\$3,488.05
	Mixed Aspen		13	Cords		
	<i>B. T. Aspen</i>		13	Cords		
	Mixed Spruce		238	Cords		
	<i>Black Spruce</i>		238	Cords		
	Paper Birch		18	Cords		
	Tamarack		51	Cords		
	White Pine		27	Cords		
5	Red Maple	Sawtimber	12.5	MBF	12.8	\$5,764.10
	Balsam Fir	Pulpwood	83	Cords		
	Mixed Aspen		36	Cords		
	<i>Quaking Aspen</i>		36	Cords		
	Mixed Hardwood		266	Cords		
	<i>Red Maple</i>		266	Cords		
	Mixed Spruce		40	Cords		
	<i>White Spruce</i>		40	Cords		
Paper Birch	6	Cords				
6	Balsam Fir	Pulpwood	25	Cords	5.9	\$1,178.25
	Mixed Hardwood		8	Cords		
	<i>Red Maple</i>		8	Cords		
	Mixed Spruce		5	Cords		
	<i>Black Spruce</i>		5	Cords		
	N. White Cedar		259	Cords		
	Paper Birch		9	Cords		
TOTAL:			12.5	MBF		
TOTAL:			2,480	Cords		
TOTAL:			2.4	Acres		

Sale Specific Conditions & Requirements

Sale Name: Mega Pint Mix

Sale Number: 45-107-24 Seq#: 2

1 - Sale Area

1.2 - Boundaries

1.2.1 - Painted Boundaries (9/19)

The sale boundary and Payment Unit boundaries are marked and identified by red and purple paint. Exterior sale boundary lines against state are marked with red paint. Interior Payment Unit boundaries are marked with purple paint. Retention patches are marked with red paint; no harvesting activities may occur within these areas. The painted boundary line trees are not Included Timber. Purple painted trees designating an interior Payment Unit boundary are only to be cut when all surrounding Payment Units have been paid.

2 - Timber Specifications

2.1 - Included Timber

2.1.1 - Clearcut Unit(s) with Unmerchantable Trees (6/14)

Within Payment Unit(s) 1, 2 & 4, cut all trees that are two (2) inches or more at DBH.

Within Payment Unit(s) 3, cut all deciduous trees that are two (2) inches or more at DBH, and all conifers over four (4) inches DBH. In addition, do not cut any white pine or hemlock greater than 18 inches at DBH, any cedar 8 inches at DBH or less, or any trees marked with green paint.

Within Payment Unit(s) 5, cut all trees that are four (4) inches or more at DBH, except do not cut any hemlock or trees marked with green paint.

Within Payment Unit(s) 6, cut all trees that are two (2) inches or more at DBH, except do not cut any cedar 8 inches at DBH or less.

2.1.11 - Description of Timber Note (2/04)

Note that Misc. Species 1 for Payment Unit 1 is sold by the acre. Misc. species includes white pine, jack pine, and cherry.

2.2 - Utilization

2.2.3 - Stump heights (4/07)

Stump heights within Payment Unit(s) 1 & 2 shall not exceed 6 inches for all trees. This is in order to facilitate planting operations. A written waiver of this requirement may be obtained if wet summer weather makes winter logging necessary.

2.2.11 - Chipping Restriction (9/14)

If chipping occurs on this sale, then no woody debris present on the ground at the start of the sale may be chipped. In addition, brush or chips may not be stored or stockpiled on-site for more than 60 days.

3 - Payments

3.3 - Pre-measured Sales

3.3.4 - Dividing Payment Units (7/14)

Payment Unit(s) 1-6 may be divided at the request of the Purchaser and upon approval of the Unit Manager. Dividing Payment Units is a contract modification which requires a Timber Sale Contract Amendment. There will be only one division per Payment Unit.

4 - Transportation

4.1 - Construction

4.1.3 - Slash and Earthen Piles (8/04)

Piles or windrows of earth along roads and landings that have been widened or constructed shall be leveled. Slash from road maintenance or construction, including stumps, shall be dispersed throughout the sale.

4.1.4 - Timber Removed for Construction (3/23)

Trees cut or damaged in the process of pre-approved road, landing, or skid trail construction will be decked in an area separate from other Designated Timber and not removed until measured by the Sale Administrator. Payment will be made at contract prices or average prices, if not on the contract.

4.1.6 - Road construction (1/09)

Construction of new roads or improvements of existing roads shall be done in such a way as to minimize the environmental and visual impacts. Merchantable trees shall be cut and utilized unless otherwise directed. Non-merchantable trees shall be severed and laid flat on the ground. Slash shall be scattered, and not left in windrows and kept a minimum of 10 feet back from the road edge. Stumps shall be set upright, not left on edge, and be moved at least 10 feet away from the road edge. Disturbed soil shall be feathered into the woods and not left in berms or windrows.

4.1.7 - Road Closure (10/11)

All new roads built into the sale must be blocked to vehicle traffic upon completion of the sale. Overgrown roads that are reopened shall be considered new roads. In general, this will require constructing a four (4') foot high berm of stumps and logs covered with earth. These roads must be rendered impassable to cars and trucks. Contact the Sale Administrator for specific details of design and placement.

4.2 - Maintenance

4.2.1 - Hauling Restriction (12/08)

Hauling is restricted on the southern portion of Schoolhouse Road that is maintained by Mackinac County Road Commission. The restriction may occur during spring breakup.

4.2.3 - Road maintenance (8/13)

The following road maintenance is required: Within 60 days of completion of hauling, or if no hauling occurs for 60 days, the road must be maintained and graded. This includes cleaning of drainage areas, grading, crowning and filling with gravel, if necessary. Damages will be assessed if grading/repair does not occur.

4.2.4 - Grading (10/16)

For completion of the sale, state forest roads must be graded. In general, this will require a road grader or bulldozer to shape up the roads after forest products have been hauled off site. This includes cleaning of drainage areas, grading, crowning and filling with gravel, if necessary. The grading equipment to be used must be approved by the Unit Manager or his/her representative.

4.2.5 - Two Wheel Drive Condition (2/04)

All existing trail roads on and adjacent to the Sale Area must be passable by two-wheel drive traffic for the duration of the sale.

5 - Operations

5.2 - Conduct of Operations

5.2.1 - Slash

5.2.1.11 - Slash for Reforestation (3/21)

To facilitate reforestation, Payment Unit(s) 1 & 2 shall be left with slash evenly distributed. Bunched tops within the cutting area shall be broken up and scattered. Stumps shall be cut low to the ground. Processing sites shall not be left with a compacted layer of slash; tops from these sites shall be hauled back into the cut area and scattered.

5.2.2 - Hazard Trees/Snags

5.2.2.1 - Den Trees (10/16)

Obvious hollow and/or den trees shall be protected and left standing unless they are a safety hazard.

5.2.22 - Operating Caution

5.2.22.1 - Operating Caution (6/11)

It is recommended, but not required, that within Payment Unit(s) 3, 4 & 6, cutting, skidding, and hauling occur during dry summer or frozen winter conditions. The reason for the recommendation is because of wet, sensitive soils.

5.2.32 - Decking/Landing Restoration (9/13)

All decking and landing areas must have the surface area restored to a condition equal to or better than before. This is to ensure the proper regeneration of the stand. Wood debris, chips and "cookies" from trimmings must be removed or scattered away from landing and loading areas and may not be windrowed on the edge.

5.2.38 - No Decking Against Live Trees (2/04)

Cut products may not be decked against unmarked or designated leave trees.

5.2.39 - ORV Trail/Route Protection (4/18)

The motorcycle trail is shown on the Timber Sale Map. Do not damage posts with motorcycle trail markers. All stumps within 5 feet of the trail must be cut flush with the ground. Maintain a 20-foot-wide slash, debris, and rut free zone daily using the motorcycle trail as the centerline. Do not run equipment down the motorcycle trail. Skidding across the trail may only occur in locations approved by the Sale Administrator.

5.2.41 - Snowmobile Trail Protection (9/11)

Trail 473 is a snowmobile trail and is shown on the Timber Sale Map. Do not cut or damage posts with orange trail markers or traffic control signs. If the trail is used, it must be maintained and restored to a condition equal to or better than before the sale. The road maintenance/restoration must be done prior to December 1. If the trail is used for hauling, it must be graded to the satisfaction of the Unit Manager or his/her representative prior to December 1st. If the trail road is to be used for hauling during the snowmobile season, then a snow covered base must be left on the trail. No decking of forest products will be permitted within 50 feet of the snowmobile trail.

5.8 - Protection of Endangered Species

5.8.5 - Protection of Raptor Nests (3/13)

All trees with raptor nests will be protected if found during harvesting operations. Notification will be made to the Unit Manager or his/her representative who will notify the Wildlife Biologist so an onsite evaluation and recommendation can be made, if necessary.

6 - Safety and Fire Prevention

6.2 - Signing

6.2.2 - Snowmobile Trail Posting (10/20)

The Purchaser is responsible for posting and maintaining caution signs on Trail 473 prior to beginning operations during the snowmobile season (approximately December 1 to March 31). The trail must be posted at appropriate distances from the Sale Area to warn of logging activity and truck traffic. Signs must be removed when harvest operations are suspended or completed. The Purchaser will provide these signs.

6.2.3 - Recreational Trail Posting (10/20)

The Purchaser is responsible for posting and maintaining caution signs on the motorcycle trail prior to beginning operations. The trail must be posted at appropriate distances from the Sale Area to warn of logging activity and truck traffic at both ends of the trail. Signs must be removed when harvest operations are suspended or completed. The Purchaser will provide these signs.

8 - Performance and Settlement

8.3 - Uncompleted or Terminated Contracts

8.3.1 - Completion of Contract, Chipping (1/16)

In addition to cutting, all chipping must be completed by the contract expiration date. If chipping has not been completed, an extension fee or damages may be charged per General Condition & Requirement 7.2 and 8.3.



TIMBER SALE MAP

This information provided by authority of Part 525, 1994 PA 451, as amended.

Sale Number 45-107-24	Date 01/30/2024	
Scale 1:15,840	Page 1	Of 1

Forest Management Unit Sault Ste Marie Mgt Unit	County Mackinac	Mapped By: Plato
		Cruised By: Plato

Township 43N	Range 06W	Section(s) and Subdivision(s) Sec. 10 E1/2NE,NESE; Sec. 11 N1/2SW,NWSE; Sec. 11 NENW,S1/2NW,N1/2NE,SWNE; Sec. 2 SWSE;
-----------------	--------------	--

Cover Type			
A = Aspen	J = Jack Pine	O = Oak	U = Upland Brush
B = Paper Birch	K = Rock	P = Lowland Poplar	UM = Upland Mix Forest
C = Cedar	L = Lowland Brush	Q = Mixed Swamp Conifer	V = Bog or Marsh
D = Treed Bog	LM = Lowland Mix Forest	R = Red Pine	W = White Pine
E = Swamp Hardwoods	M = Maple, Beech, Birch	S = Black Spruce	X = Non Stocked
F = Spruce/Fir	MC = Mixed Conifer	T = Tamarack	Y = Sand
G = Grass	MD = Mixed Deciduous	Z = Water	
H = Hemlock	N = Marsh		

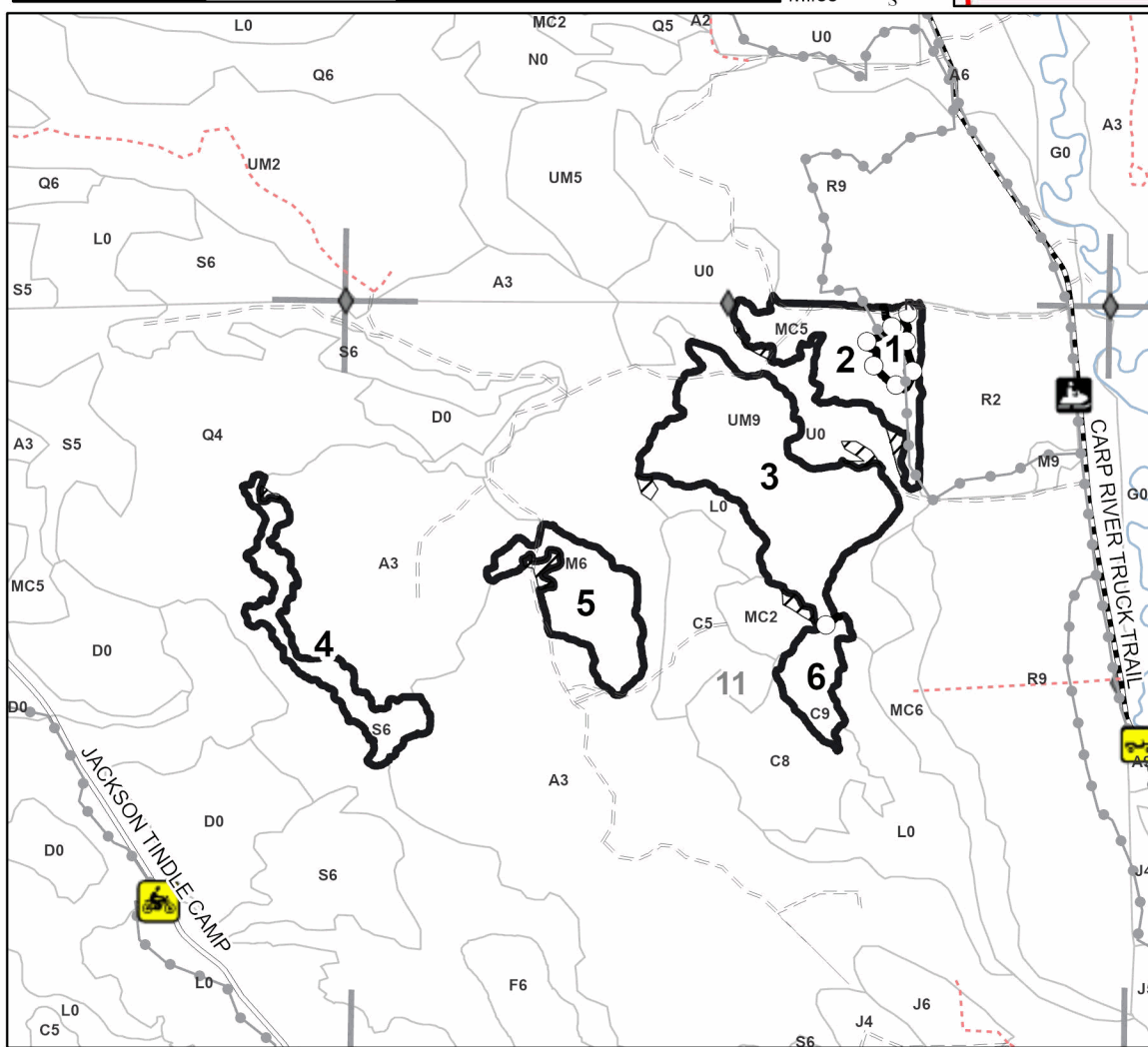
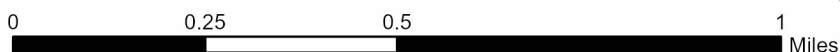
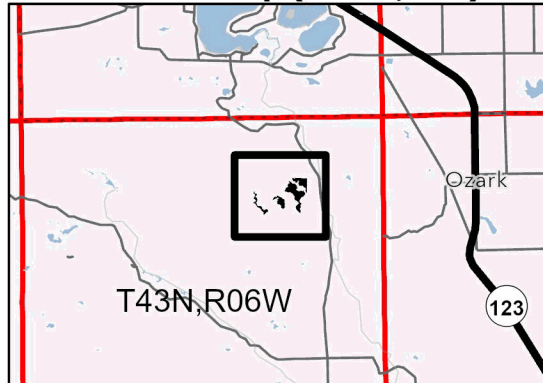
Density	
0 = Non Stocked	5 = Pole Timber Medium
1 = Seedling Sapling Poor	6 = Pole Timber Well
2 = Seedling Sapling Medium	7 = Saw Timber Poor
3 = Seedling Sapling Well	8 = Saw Timber Medium
4 = Pole Timber Poor	9 = Saw Timber Well

PU #	Acres	PU #	Acres
1	2.4	4	10.3
2	14.6	5	12.8
3	32.4	6	5.9

Mega Pint Mix

78.4 Acres

Locator Map (1:200,000)



Legend

- Sale Boundary - Red
- Stand Sections
- Payment Unit (Purple)
- Recreational Trail
- Paved Road
- Gravel Road
- County Road - Seasonal
- Private Road
- Primary Forest Road
- Secondary Forest Road
- Forest Access Route
- Administrative Access Only
- Field Grade Corner
- MIRIS Section Corner
- Retention Areas - Red

Use QR Code to open Map in App



TIMBER SALE INFORMATION

Big Thunder Pine (45-110-24)
T43N, R06W, SEC. 1; T43N, R06W, SEC. 12.
Mackinac County (Advertised Price \$28,629.85)

SALE NOTE: A recreation site such as a trail, pathway, or campground is within the sale area or the vicinity. Certain restrictions/specifications may be applicable including time restrictions.

A timber sale contract for this lump sum, sealed bid timber sale will be awarded to the responsible bidder offering the highest sealed bid price. All units of volume listed below were estimated using the Inventory Manager computer program and the new Michigan taper model. Bids must be at or above the following advertised price for each product and species:

<u>PRODUCTS & SPECIES</u>	<u>ESTIMATED UNITS*</u>	<u>ADVERTISED PRICE</u>
Sawtimber		
Paper Birch	1.0 MBF	\$ 45.00 / MBF
Pulpwood		
Balsam Fir	156 Cords	\$ 10.50 / Cord
Jack Pine	261 Cords	\$ 30.40 / Cord
Mixed Aspen	213 Cords	\$ 25.85 / Cord
Mixed Hardwood	39 Cords	\$ 16.80 / Cord
Mixed Spruce	338 Cords	\$ 16.65 / Cord
Paper Birch	45 Cords	\$ 7.00 / Cord
Red Pine	60 Cords	\$ 95.80 / Cord
White Pine	55 Cords	\$ 21.10 / Cord

* The total volume is statistically estimated within plus (+) or minus (-) 21.72 percent. There are an estimated 1,172 cords on this timber sale, plus or minus 255 cords at the 95% confidence level. The estimated units are final and not subject to adjustment. Prospective bidders are urged to examine this timber and to make their own estimates of quantity and quality.

BOND AND PAYMENT SCHEDULE:

1. A bond in the amount of \$2,290.00 to insure faithful performance of the conditions of the contract will be deposited by the successful bidder within 21 days of the sale award.
2. Cutting in any sale or unit without the required advance payment would be considered a trespass.
3. Total payment must be paid in advance or according to the following schedule :
 - (a) Ten percent (10%) of the sale value must be paid within 21 days of the sale award.
 - (b) The 10% down payment will be credited towards the first unit cut.
 - (c) Payment for each of the following units must be made before cutting begins in that unit:

PAYMENT UNIT NUMBER	PERCENT OF TOTAL SALE VALUE
01	55.9%
02	44.1%
4. If no cutting takes place, the 10% down payment will not be refunded.
5. Operations on the contract issued will terminate on 12/31/2027.

SALE STATISTICS

Volumes were calculated in cubic feet using the Michigan taper model. Cubic foot volume includes all wood inside bark for the product indicated. For display purposes, cubic feet were converted to cords and MBF using a simple conversion factor, e.g. 79 cubic feet per cord and 185 cubic feet per MBF. The cubic foot volumes are precise; the cords and MBF volumes are not. Cubic foot volume cannot be directly converted to cords or boards with precision.

SALE VOLUMES

The total estimated sale volume may not equal the sum of the species/products due to the nature of statistical calculations associated with double sampling methodology.

VOLUME		STATISTICAL RANGE IN CORDS		
TOTAL CUBIC FEET	TOTAL CORDS	PERCENT ERROR	MINIMUM	MAXIMUM
92,585	1,172	21.72%	917	1,427

VDU VOLUMES

A VDU is a Volume Determination Unit. Volumes and their associated statistics are calculated at the VDU level and summarized to the sale level. There is often a one to one relationship between a VDU and a Payment Unit, but not always, depending on the cruise design. Refer to the VDU TO PAYMENT UNIT table.

VDU	VOLUME		PERCENT ERROR	RANGE IN CORDS	
	TOTAL CUBIC FEET	TOTAL CORDS		MINIMUM	MAXIMUM
41	37,958	480	28.78%	342	619
48	54,627	691	31.40%	474	909
TOTAL:	92,585	1,172		817	1,527

VDU TO PAYMENT UNIT

When a VDU is associated with more than one Payment Unit (PU), the VDU volumes are assigned to the PU based on acres of the VDU within the PU.

VDU	VDU ACRES	PU	PU ACRES
41	30.0	1	30.0
48	31.3	2	31.3
TOTAL:	61.3		61.3

DESCRIPTION OF TIMBER BY PAYMENT UNIT (PU)

PU	MARKET GROUP	PRODUCT	QUANTITY	UNIT	ACRES	ADVERTISE PRICE
1	Paper Birch	Sawtimber	1.0	MBF	30.0	\$16,010.60
	Balsam Fir	Pulpwood	9	Cords		
	<i>Balsam Fir</i>		9	<i>Cords</i>		
	Jack Pine		134	Cords		
	Mixed Aspen		143	Cords		
	<i>B. T. Aspen</i>		20	<i>Cords</i>		
	<i>Quaking Aspen</i>		123	<i>Cords</i>		
	Mixed Hardwood		26	Cords		
	<i>Black Cherry</i>		3	<i>Cords</i>		
	<i>Red Maple</i>		23	<i>Cords</i>		
	Mixed Spruce		53	Cords		
	<i>White Spruce</i>		53	<i>Cords</i>		
	Paper Birch		6	Cords		
	Red Pine		60	Cords		
	White Pine		47	Cords		
2	Balsam Fir	Pulpwood	147	Cords	31.3	\$12,619.25
	<i>Balsam Fir</i>	<i>Sawtimber</i>	4.4	<i>MBF</i>		
	<i>Balsam Fir</i>	<i>Pulpwood</i>	138	<i>Cords</i>		
	Jack Pine		127	Cords		
	Mixed Aspen		70	Cords		
	<i>Quaking Aspen</i>		70	<i>Cords</i>		
	Mixed Hardwood		13	Cords		
	<i>Red Maple</i>		13	<i>Cords</i>		
	Mixed Spruce		285	Cords		
	<i>White Spruce</i>		285	<i>Cords</i>		
	Paper Birch		39	Cords		
White Pine		8	Cords			
TOTAL:			1.0	MBF		
TOTAL:			1,167	Cords		

Sale Specific Conditions & Requirements

Sale Name: Big Thunder Pine

Sale Number: 45-110-24 Seq#: 2

1 - Sale Area

1.2 - Boundaries

1.2.1 - Painted Boundaries (9/19)

The sale boundary and Payment Unit boundaries are marked and identified by red paint. Exterior sale boundary lines against state are marked in red paint. Retention patches are marked with red paint within Payment Unit 1 (see Timber Sale Map); no harvesting activities may occur within these areas. The painted boundary line trees are not Included Timber and are to be protected.

2 - Timber Specifications

2.1 - Included Timber

2.1.1 - Clearcut Unit(s) with Unmerchantable Trees (6/14)

Within Payment Unit(s) 1 and 2, cut all trees that are one (1) inch or more at DBH except do not cut any oak trees. In addition, do not cut any red pine marked with green paint on the stump and at DBH.

2.2 - Utilization

2.2.3 - Stump heights (4/07)

Stump heights within the Sale Area shall not exceed 6 inches for all trees. This is in order to facilitate planting operations.

3 - Payments

3.3 - Pre-measured Sales

3.3.4 - Dividing Payment Units (7/14)

Payment Unit(s) 1 and 2 may be divided at the request of the Purchaser and upon approval of the Unit Manager. Dividing Payment Units is a contract modification which requires a Timber Sale Contract Amendment. There will be only one division per Payment Unit.

4 - Transportation

4.1 - Construction

4.1.3 - Slash and Earthen Piles (8/04)

Piles or windrows of earth along roads and landings that have been widened or constructed shall be leveled. Slash from road maintenance or construction, including stumps, shall be dispersed throughout the sale.

4.1.6 - Road Construction (4/24)

Construction of new roads or improvements of existing roads shall be done in such a way as to minimize the environmental and visual impacts. Merchantable trees shall be cut and utilized unless otherwise directed. Non-merchantable trees shall be severed and laid flat on the ground. Slash shall be scattered, and not left in windrows and kept a minimum of 10 feet back from the road edge. Stumps shall be set upright, not left on edge, and be moved at least 10 feet away from the road edge. Disturbed soil shall be feathered into the woods and not left in berms or windrows.

4.1.12 - No New Roads (1/12)

No new roads will be permitted in any Payment Unit. All operations are limited to existing roads. Skid trails only will be allowed.

4.2 - Maintenance

4.2.1 - Hauling Restriction (12/08)

Hauling may be restricted on forest roads by the Unit Manager or his/her representative. The restriction may occur during wet weather conditions.

4.2.3 - Road maintenance (8/13)

The following road maintenance is required: Within 60 days of completion of hauling, or if no hauling occurs for 60 days, the road must be maintained and graded. This includes cleaning of drainage areas, grading, crowning and filling with gravel, if necessary. Damages will be assessed if grading/repair does not occur.

4.2.4 - Grading (10/16)

For completion of the sale, state forest roads must be graded. In general, this will require a road grader or bulldozer to shape up the roads after forest products have been hauled off site. This includes cleaning of drainage areas, grading, crowning and filling with gravel, if necessary. The grading equipment to be used must be approved by the Unit Manager or his/her representative.

4.2.5 - Two Wheel Drive Condition (2/04)

All existing trail roads on and adjacent to the Sale Area must be passable by two-wheel drive traffic for the duration of the sale.

5 - Operations

5.1 - Notification

5.1.1 - Pre-sale Conference (10/16)

A pre-sale conference on site between the Purchaser and Sale Administrator is required prior to beginning any operations to determine landing and road locations. The Unit Manager or his/her representative must be contacted at least 10 days in advance to schedule the conference.

5.2 - Conduct of Operations

5.2.1 - Slash

5.2.1.1 - Slash Within Sale Area (9/16)

No trees are to be felled outside the Sale Area, and all slash is to be kept at least 20 feet back from the red paint line. If sale boundary lines are along a public road or highway, then slash must be removed 50' from these lines per General Condition & Requirement 5.2.1.

5.2.1.11 - Slash for Reforestation (3/21)

To facilitate reforestation, the Sale Area shall be left with slash evenly distributed. Bunched tops within the cutting area shall be broken up and scattered. Stumps shall be cut low to the ground. Processing sites shall not be left with a compacted layer of slash; tops from these sites shall be hauled back into the cut area and scattered.

5.2.1.12 - Slash for Prescribed Burning (1/05)

To facilitate prescribed burning, slash shall be moved at least 20 feet inside the sale boundary. Slash cannot be piled or placed near residual trees.

5.2.2 - Hazard Trees/Snags

5.2.2.1 - Den Trees (10/16)

Obvious hollow and/or den trees shall be protected and left standing unless they are a safety hazard.

5.2.3 - Operating Restrictions

5.2.3.6 - Bark Beetle Restriction (12/08)

In the event drought creates a high risk of pine bark beetle infestation, pine is not to be cut during the period March 1 through July 1, unless all portions of trees greater than two inches in diameter are removed from the sale area, reduced to chips, or treated to the satisfaction of the Unit Manager or his/her representative, within fifteen days of being severed from the stump. Pine log decks, pulpwood piles and treetops that are piled for chipping in the fall or winter within a 1/4 mile of susceptible sites must be removed before March 15. Residual slash must not be placed in piles or rows and must be spread over the site for quick drying. The Department of Natural Resources will exercise this specification if the risk of damage warrants.

5.2.32 - Decking/Landing Restoration (9/13)

All decking and landing areas must have the surface area restored to a condition equal to or better than before. This is to ensure the proper regeneration of the stand. Wood debris, chips and "cookies" from trimmings must be removed or scattered away from landing and loading areas and may not be windrowed on the edge.

5.2.38 - No Decking Against Live Trees (2/04)

Cut products may not be decked against unmarked or designated leave trees.

5.2.39 - ORV Trail/Route Protection (4/18)

The Huckleberry Truck Trail is an ORV trail or route and is shown on the Timber Sale Map. Do not cut trees or damage posts with yellow ORV markers. Trees with yellow ORV markers shall be cut off above the markers and at least 5 feet above ground. All stumps within 5 feet of the trail must be cut flush with the ground. All stumps within 5 feet of the trail must be cut off at least 5 feet above ground level. Maintain a 20-foot-wide slash, debris, and rut free zone daily using the ORV trail or route as the centerline. Do not run equipment down the ORV trail or route. Skidding across the trail or route may only occur in locations approved by the Sale Administrator.

5.2.41 - Snowmobile Trail Protection (9/11)

Huckleberry Road is a snowmobile trail as shown on the Timber Sale Map. Do not cut or damage posts with orange trail markers or traffic control signs. The road maintenance/restoration must be done prior to December 1. If the trail is used for hauling, it must be graded to the satisfaction of the Unit Manager or his/her representative prior to December 1. If the trail road is to be used for hauling during the snowmobile season, then a snow-covered base must be left on the trail.

5.4 - Soil Protection

5.4.1 - Rutting Restriction, General (7/16)

Operations are to cease immediately if equipment and weather conditions result in rutting of roads and/or skid trails which is 12 inches or greater in depth and 50 feet in length. The Unit Manager or his/her representative may restrict hauling and/or skidding if ruts exceed the specified depth. With the Unit Manager or his/her representative's approval, the Purchaser may return to the area when the risk of rutting has decreased.

5.8 - Protection of Endangered Species

5.8.5 - Protection of Raptor Nests (3/13)

All trees with raptor nests will be protected if found during harvesting operations. Notification will be made to the Unit Manager or his/her representative who will notify the Wildlife Biologist so an onsite evaluation and recommendation can be made, if necessary.

6 - Safety and Fire Prevention

6.2 - Signing

6.2.1 - Road Posting (10/20)

The Purchaser is responsible for posting and maintaining caution signs on Huckleberry Road, Huckleberry Truck Trail, and any nearby roads prior to beginning operations. The road must be posted at appropriate distances from the Sale Area to warn of logging activity and truck traffic. Signs must be removed when harvest operations are suspended or completed. The Purchaser will provide these signs.

6.2.2 - Snowmobile Trail Posting (10/20)

The Purchaser is responsible for posting and maintaining caution signs on Huckleberry Road prior to beginning operations during the snowmobile season (approximately December 1 to March 31). The trail must be posted at appropriate distances from the Sale Area to warn of logging activity and truck traffic. Signs must be removed when harvest operations are suspended or completed. The Purchaser will provide these signs.

6.2.3 - Recreational Trail Posting (10/20)

The Purchaser is responsible for posting and maintaining caution signs on Huckleberry Road and Huckleberry Truck Trail prior to beginning operations. The trail must be posted at appropriate distances from the Sale Area to warn of logging activity and truck traffic at both ends of the trail. Signs must be removed when harvest operations are suspended or completed. The Purchaser will provide these signs.

7 - Other Conditions

7.5 - Loss

7.5.1 - Deteriorating Timber (7/09)

The Sale Area has received damage from windthrow or jack pine budworm. The Purchaser should harvest the wood as soon

as possible. The Department of Natural Resources is held free of responsibility of any further damage or deterioration due to delay in harvesting.



TIMBER SALE MAP

This information provided by authority of Part 525, 1994 PA 451, as amended.

Sale Number 45-110-24	Date 08/28/2024
Scale 1:10,000	Page 1
	Of 1

Forest Management Unit Sault Ste Marie Mgt Unit	County Mackinac	Mapped By: Gabler
		Cruised By: Gabler

Township 43N	Range 06W	Section(s) and Subdivision(s) Sec. 1 SESW; Sec. 12 N1/2NW,SWNW,NE,NESE;
-----------------	--------------	---

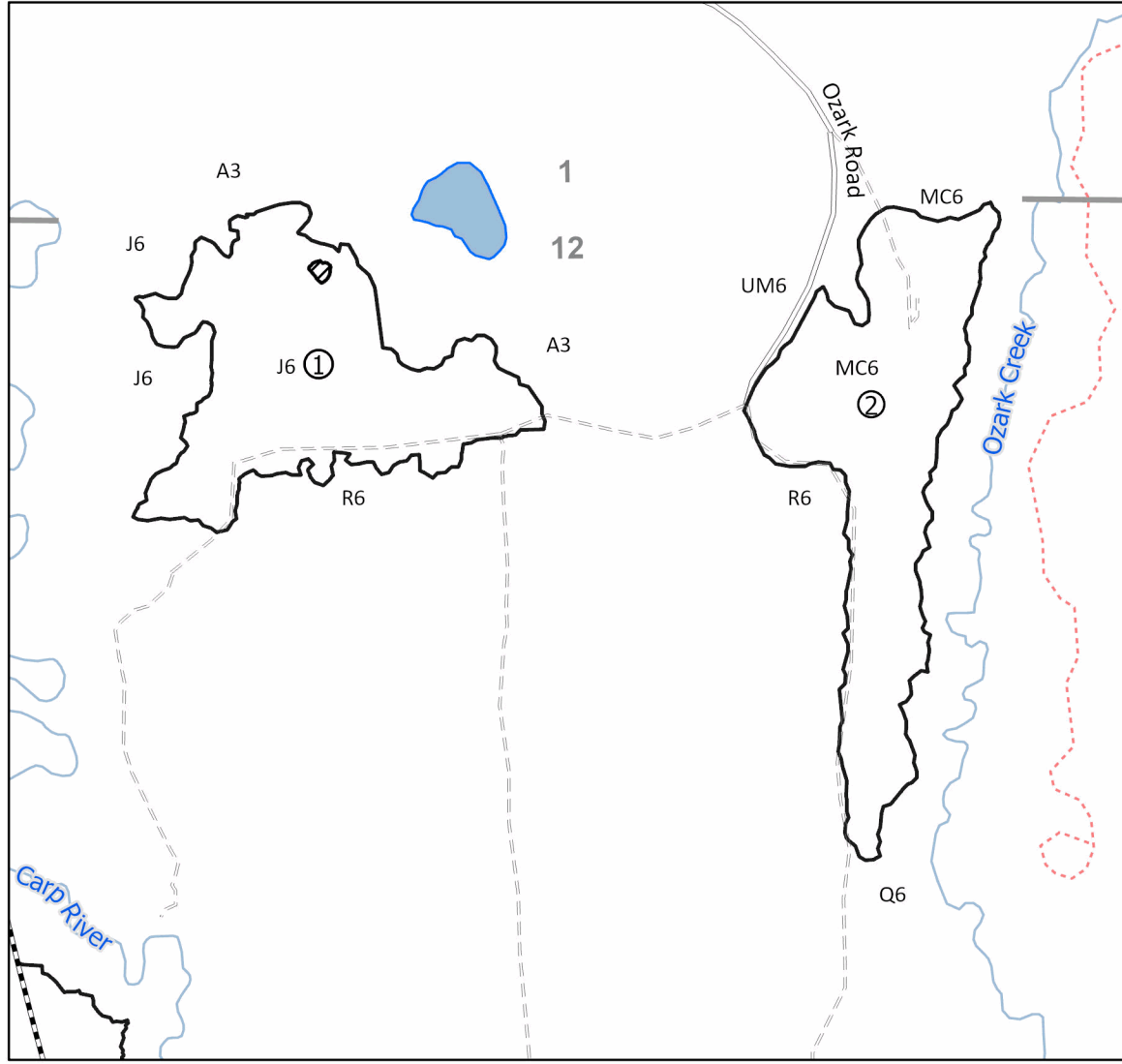
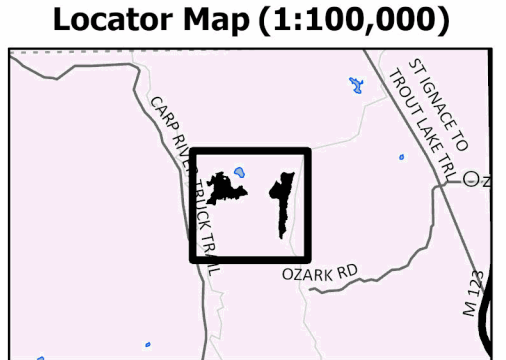
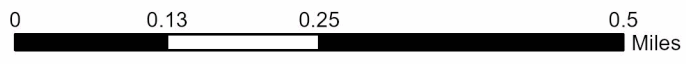
Cover Type			
A = Aspen	J = Jack Pine	O = Oak	U = Upland Brush
B = Paper Birch	K = Rock	P = Lowland Poplar	UM = Upland Mix Forest
C = Cedar	L = Lowland Brush	Q = Mixed Swamp Conifer	V = Bog or Marsh
D = Treed Bog	LM = Lowland Mix Forest	R = Red Pine	W = White Pine
E = Swamp Hardwoods	M = Maple, Beech, Birch	S = Black Spruce	X = Non Stocked
F = Spruce/Fir	MC = Mixed Conifer	T = Tamarack	Y = Sand
G = Grass	MD = Mixed Deciduous	Z = Water	
H = Hemlock	N = Marsh		

Density	
0 = Non Stocked	5 = Pole Timber Medium
1 = Seedling Sapling Poor	6 = Pole Timber Well
2 = Seedling Sapling Medium	7 = Saw Timber Poor
3 = Seedling Sapling Well	8 = Saw Timber Medium
4 = Pole Timber Poor	9 = Saw Timber Well

PU #	Acres
1	30
2	31.3

Big Thunder Pine

61.3 Acres



Legend

- Against State (Red)
- - - Primary Forest Road
- Secondary Forest Road
- - - Forest Access Route
- - - Administrative Access Only
- Perennial River
- ▨ Retention
- Lakes and Rivers

Use QR Code to open Map in App



TIMBER SALE INFORMATION

Walkie Talkie Mix (45-111-24)

T43N, R06W, SEC. 5; T44N, R06W, SEC. 28; T44N, R06W, SEC. 29; T44N, R06W, SEC. 30; T44N, R06W, SEC. 32; T44N, R06W, SEC. 33.

SALE NOTE: Hauling will be along snowmobile trail. The sale is comprised of small and scattered Payment Units.

This sale has been reduced due to "no bid" on previous advertisement.

A recreation site such as a trail, pathway, or campground is within the sale area or the vicinity. Certain restrictions/specifications may be applicable including time restrictions.

A timber sale contract for this lump sum, sealed bid timber sale will be awarded to the responsible bidder offering the highest sealed bid price. All units of volume listed below were estimated using the Inventory Manager computer program and the new Michigan taper model. Bids must be at or above the following advertised price for each product and species:

<u>PRODUCTS & SPECIES</u>	<u>ESTIMATED UNITS*</u>	<u>ADVERTISED PRICE</u>
Sawtimber		
Red Maple	4.3 MBF	\$ 89.00 / MBF
Sugar Maple	32.9 MBF	\$ 223.00 / MBF
Pulpwood		
Balsam Fir	325 Cords	\$ 7.00 / Cord
Misc. Species 1	14.1 Acres	\$ 25.00 / Acre
Mixed Aspen	379 Cords	\$ 17.20 / Cord
Mixed Hardwood	632 Cords	\$ 11.20 / Cord
Paper Birch	83 Cords	\$ 4.70 / Cord
Tamarack	8 Cords	\$ 2.70 / Cord
White Spruce	122 Cords	\$ 11.10 / Cord

* The total volume is statistically estimated within plus (+) or minus (-) 13.62 percent. There are an estimated 1,659 cords on this timber sale, plus or minus 226 cords at the 95% confidence level. The estimated units are final and not subject to adjustment. Prospective bidders are urged to examine this timber and to make their own estimates of quantity and quality.

BOND AND PAYMENT SCHEDULE:

1. A bond in the amount of \$2,057.00 to insure faithful performance of the conditions of the contract will be deposited by the successful bidder within 21 days of the sale award.
2. Cutting in any sale or unit without the required advance payment would be considered a trespass.
3. Total payment must be paid in advance or according to the following schedule :
 - (a) Ten percent (10%) of the sale value must be paid within 21 days of the sale award.
 - (b) The 10% down payment will be credited towards the first unit cut.
 - (c) Payment for each of the following units must be made before cutting begins in that unit:

PAYMENT UNIT NUMBER	PERCENT OF TOTAL SALE VALUE
01	4.2%
02	3.2%
03	14.6%
04	2.3%
05	6.0%
06	25.5%
07	42.8%
08	1.4%

4. If no cutting takes place, the 10% down payment will not be refunded.
5. Operations on the contract issued will terminate on 12/31/2027.

SALE STATISTICS

Volumes were calculated in cubic feet using the Michigan taper model. Cubic foot volume includes all wood inside bark for the product indicated. For display purposes, cubic feet were converted to cords and MBF using a simple conversion factor, e.g. 79 cubic feet per cord and 185 cubic feet per MBF. The cubic foot volumes are precise; the cords and MBF volumes are not. Cubic foot volume cannot be directly converted to cords or boards with precision.

SALE VOLUMES

The total estimated sale volume may not equal the sum of the species/products due to the nature of statistical calculations associated with double sampling methodology.

VOLUME			STATISTICAL RANGE IN CORDS	
TOTAL CUBIC FEET	TOTAL CORDS	PERCENT ERROR	MINIMUM	MAXIMUM
131,069	1,659	13.62%	1,433	1,885
14.10 acres are being sold by the acre and do not have cubic foot or cord volumes.				

VDU VOLUMES

A VDU is a Volume Determination Unit. Volumes and their associated statistics are calculated at the VDU level and summarized to the sale level. There is often a one to one relationship between a VDU and a Payment Unit, but not always, depending on the cruise design. Refer to the VDU TO PAYMENT UNIT table.

VDU	VOLUME			RANGE IN CORDS	
	TOTAL CUBIC FEET	TOTAL CORDS	PERCENT ERROR	MINIMUM	MAXIMUM
2	5,107	65	78.78%	14	116
3	4,071	52	41.29%	30	73
14 *			N/A		
16	26,032	330	33.91%	218	441
24	8,231	104	58.76%	43	165
69	37,988	481	26.73%	352	609
72	44,663	565	22.63%	437	693
99	4,976	63	54.12%	29	97
TOTAL:	131,069	1,659		1,123	2,195

* This VDU is being sold by the acre. There are no cruise statistics available.

VDU TO PAYMENT UNIT

When a VDU is associated with more than one Payment Unit (PU), the VDU volumes are assigned to the PU based on acres of the VDU within the PU.

VDU	VDU ACRES	PU	PU ACRES
2	2.2	2	2.2
3	9.2	1	9.2
14	14.1	8	14.1
16	15.7	3	15.7
24	3.0	5	3.0
69	24.8	7	24.8
72	33.0	6	33.0
99	2.7	4	2.7
TOTAL:	104.7		104.7

DESCRIPTION OF TIMBER BY PAYMENT UNIT (PU)

PU	MARKET GROUP	PRODUCT	QUANTITY	UNIT	ACRES	ADVERTISE PRICE
1	Sugar Maple	Sawtimber	2.7	MBF	9.2	\$1,080.90
	Balsam Fir	Pulpwood	6	Cords		
	Mixed Hardwood		39	Cords		
	<i>Beech</i>		6	<i>Cords</i>		
	<i>Red Maple</i>		3	<i>Cords</i>		
	<i>Sugar Maple</i>		30	<i>Cords</i>		
2	Balsam Fir	Pulpwood	14	Cords	2.2	\$813.60
	Mixed Aspen		26	Cords		
	<i>B. T. Aspen</i>		3	<i>Cords</i>		
	<i>Balsam Poplar</i>		1	<i>Cords</i>		
	<i>Quaking Aspen</i>		22	<i>Cords</i>		
	Mixed Hardwood		20	Cords		
	<i>Black Cherry</i>		2	<i>Cords</i>		
	<i>Red Maple</i>		18	<i>Cords</i>		
	White Spruce		4	Cords		
3	Balsam Fir	Pulpwood	82	Cords	15.7	\$3,751.70
	Mixed Aspen		107	Cords		
	<i>B. T. Aspen</i>		16	<i>Cords</i>		
	<i>Quaking Aspen</i>		91	<i>Cords</i>		
	Mixed Hardwood		9	Cords		
	<i>Red Maple</i>		9	<i>Cords</i>		
	Paper Birch		34	Cords		
	White Spruce		97	Cords		
4	Balsam Fir	Pulpwood	7	Cords	2.7	\$595.40
	Mixed Aspen		11	Cords		
	<i>Balsam Poplar</i>		9	<i>Cords</i>		
	<i>Quaking Aspen</i>		2	<i>Cords</i>		
	Mixed Hardwood		17	Cords		
	<i>Red Maple</i>		11	<i>Cords</i>		
	<i>Sugar Maple</i>		6	<i>Cords</i>		
	Paper Birch		12	Cords		
	Tamarack		8	Cords		
	White Spruce		8	Cords		
5	Sugar Maple	Sawtimber	1.3	MBF	3.0	\$1,535.90
	Balsam Fir	Pulpwood	28	Cords		
	Mixed Aspen		37	Cords		
	<i>Quaking Aspen</i>		37	<i>Cords</i>		
	Mixed Hardwood		29	Cords		
	<i>Red Maple</i>		13	<i>Cords</i>		
	<i>Sugar Maple</i>		16	<i>Cords</i>		
	White Spruce		8	Cords		
6	Red Maple	Sawtimber	3.0	MBF	33.0	\$6,562.00
	Balsam Fir	Pulpwood	156	Cords		
	Mixed Aspen		198	Cords		
	<i>Balsam Poplar</i>		12	<i>Cords</i>		
	<i>Quaking Aspen</i>		186	<i>Cords</i>		
	Mixed Hardwood		140	Cords		
	<i>Beech</i>		1	<i>Cords</i>		
	<i>Red Maple</i>		139	<i>Cords</i>		
	Paper Birch		37	Cords		
	White Spruce		5	Cords		
7	Red Maple	Sawtimber	1.3	MBF	24.8	\$11,018.00
	Sugar Maple		28.9	MBF		
	Balsam Fir	Pulpwood	32	Cords		
	Mixed Hardwood		378	Cords		

DESCRIPTION OF TIMBER BY PAYMENT UNIT (PU), CON'T

PU	MARKET GROUP	PRODUCT	QUANTITY	UNIT	ACRES	ADVERTISE PRICE
7 con't	<i>Beech</i>	<i>Pulpwood</i>	1	<i>Cords</i>		
	<i>Ironwood</i>		3	<i>Cords</i>		
	<i>Red Maple</i>		24	<i>Cords</i>		
	<i>Sugar Maple</i>		350	<i>Cords</i>		
8	Misc. Species 1	Pulpwood	14.1	Acres	14.1	\$352.50
TOTAL:			37.2	MBF		
TOTAL:			1,549	Cords		
TOTAL:			14.1	Acres		

Sale Specific Conditions & Requirements

Sale Name: Walkie Talkie Mix

Sale Number: 45-111-24 Seq#: 2

1 - Sale Area

1.2 - Boundaries

1.2.1 - Painted Boundaries (9/19)

The sale boundary and Payment Unit boundaries are marked and identified by red and yellow paint. Exterior sale boundary lines against state are marked with red paint. Interior Payment Unit boundaries are marked with yellow paint in Payment Units 1-2 and red paint in Payment Units 7-8. Retention patches are marked with red paint; no harvesting activities may occur within these areas. The painted boundary line trees in all Payment Units are not Included Timber and are to be protected. Painted trees designating the interior Payment Unit boundary between Payment Units 7-8 are only to be cut when all surrounding Payment Units have been paid.

2 - Timber Specifications

2.1 - Included Timber

2.1.1 - Clearcut Unit(s) with Unmerchantable Trees (6/14)

Within Payment Unit(s) 2-5, cut all trees that are two (2) inches or more at DBH, except do not cut cedar, hemlock, oak, yellow birch or white pine.

In addition, within Payment Unit 6, cut all deciduous trees that are two (2) inches or more at DBH and all conifer trees that are four (4) inches or more at DBH, except do not cut hemlock, oak, yellow birch, or white pine.

Furthermore, within Payment Unit 8, cut all trees that are one (1) inch or more at DBH.

2.1.2 - Clearcut Unit(s) w/o Unmerchantable Trees (8/11)

Within Payment Unit(s) 7, cut all trees which meet minimum piece specifications in 2.2 Utilization, except do not cut hemlock, white pine, yellow birch, cedar or oak. In addition, do not cut any green marked trees or legacy trees. One legacy tree has been identified and is designated by a double red ring.

2.1.3 - Cut Tree Marked Unit(s) (12/08)

Within Payment Unit(s) 1, all trees are designated for cutting when marked with orange paint above and below stump height, regardless of merchantability. In addition, all Balsam fir, which meet minimum piece specifications in 2.2 Utilization, are designated for cutting.

2.1.11 - Description of Timber Note (2/04)

Note that Payment Unit 8 is being sold by the acre as Misc. Species 1. This is a wildlife opening that contains various conifer species, black cherry, and aspen.

2.2 - Utilization

2.2.10 - No Chipping Tops and Limbs (8/16)

Within Payment Unit(s) 1 and 7, chipping of limbs or tops is not permitted. Limbs and the remaining top must be left on site and scattered.

3 - Payments

3.3 - Pre-measured Sales

3.3.4 - Dividing Payment Units (7/14)

Payment Unit(s) 1-8 may be divided at the request of the Purchaser and upon approval of the Unit Manager. Dividing Payment Units is a contract modification which requires a Timber Sale Contract Amendment. There will be only one division per Payment Unit.

3.4 - Damaged Timber

3.4.1 - Damaged timber (7/16)

General Condition and Requirement 3.4 Damaged Timber, defines liquidated damages for undesignated live merchantable trees which are cut or injured. In addition, extreme care should be taken to avoid damage to tree seedlings and saplings.

Within the Sale Area, if more than 10% of the tree seedlings or saplings (1/4" to 4.5" DBH) within a specified portion of the Sale Area are damaged, liquidated damages will be assessed at \$500 per acre for all acreage within that specified portion of the Sale Area that was damaged.

No damage is acceptable to undesignated live merchantable trees. Within the Sale Area, if more than 5% of trees (>4.5" DBH) within a specified area of the sale are damaged, liquidated damages will be assessed for all trees damaged. Rates will be in accordance with General Condition and Requirement 3.4 Damaged Timber.

4 - Transportation

4.1 - Construction

4.1.2 - Stream Crossings, Specific (3/11)

There is an intermittent stream blocking access into Payment Units 3 and 6, as shown on the Timber Sale Map. Crossing these streams is not permitted without a permit. The stream crossing will require the installation of a portable bridge or crane mats which may be borrowed from the DNR. A ninety (90) day notice is required for a bridge to be installed. This installation will be performed in accordance with the specifications on the appropriate permits which shall be provided by the DNR.

4.1.6 - Road Construction (4/24)

Construction of new roads or improvements of existing roads shall be done in such a way as to minimize the environmental and visual impacts. Merchantable trees shall be cut and utilized unless otherwise directed. Non-merchantable trees shall be severed and laid flat on the ground. Slash shall be scattered, and not left in windrows and kept a minimum of 10 feet back from the road edge. Stumps shall be set upright, not left on edge, and be moved at least 10 feet away from the road edge. Disturbed soil shall be feathered into the woods and not left in berms or windrows.

4.1.7 - Road Closure (10/11)

All new roads built into the sale must be blocked to vehicle traffic within 30 days of completion of hauling. In general, this will require constructing a four (4') foot high berm of stumps and logs covered with earth. Stumps and brush must be placed along the remainder of the trail. Berms must also be placed at intervals of not over 50 feet and at all junctions. These roads must be rendered impassable to cars and trucks. All stumps from road building and landing construction must be reserved to block any newly constructed roads upon completion of the sale. These stumps must be scattered along the road system to prohibit vehicular movement. Contact the Sale Administrator for specific details of design and placement.

4.1.11 - Permits (2/12)

The DNR will secure any necessary stream crossing permits that may be required.

4.2 - Maintenance

4.2.3 - Road maintenance (8/13)

The following road maintenance is required: Within 60 days of completion of hauling, or if no hauling occurs for 60 days, the road must be maintained and graded. This includes cleaning of drainage areas, grading, crowning and filling with gravel, if necessary. Damages will be assessed if grading/repair does not occur.

5 - Operations

5.2 - Conduct of Operations

5.2.1 - Slash

5.2.1.11 - Slash for Reforestation (3/21)

To facilitate reforestation, Payment Units 1 and 7, shall be left with slash unevenly distributed across low regeneration areas. Slash shall not be processed more than necessary to utilize all merchantable material. Processing sites shall not be left with a compacted layer of slash unless needed for operability. This should be done in a way that minimizes impact on areas with sufficient regeneration present.

5.2.2 - Hazard Trees/Snags

5.2.2.1 - Den Trees (10/16)

Obvious hollow and/or den trees shall be protected and left standing unless they are a safety hazard.

5.2.3 - Operating Restrictions

5.2.3.1 - Operating Restrictions (9/11)

Within Payment Unit(s) 3 and 6, unless changed by written agreement, cutting, skidding, and hauling are limited to the period of December 1 through March 31. This restriction is for winter deer browse.

5.2.3.3 - Bark Slippage Restriction (3/09)

Within Payment Unit(s) 1, unless changed by written agreement, cutting and skidding are not permitted during the period of May 1 to June 30. This restriction is because of bark slippage.

5.2.17 - Timber Mats and Interlocking Composite Mats (5/23)

Some roads or skid trails may require extra protection such as that afforded by timber mats, interlocking composite mats, or another approved system. Approximately 20 - 30 feet of road or trail will need extra protection at locations shown on the Timber Sale Map. If available, mats may be borrowed from the DNR. A Timber Sale Contract Amendment will be used to document the Purchaser's use of the DNR's mats. Contact the Sale Administrator regarding availability and pick-up. Timber mats are available from various field offices. Composite mats are only available from the Grayling field office and the Marquette ICC. The Purchaser is responsible for picking up and hauling the mats to and from the site. The composite mats will require DNR staff onsite for installation and removal. Contact the Sale Administrator to schedule at least 30 days before desired install/removal date. All mats must be cleaned prior to drop off. This may include, but is not limited to, power washing and brushing to remove mud and debris. A charge of \$700.00 per timber mat and \$2,000.00 per composite mat will be assessed for all damaged or non-returned mats. Damage for the crane/timber mats is defined as three or more broken cants. Damage for the composite mats is defined as cracked or broken mats.

5.2.22 - Operating Caution

5.2.22.1 - Operating Caution (6/11)

It is recommended, but not required, that within Payment Unit(s) 2, 4 and 6, cutting, skidding, and hauling occur during dry summer or frozen winter conditions. The reason for the recommendation is because unstable soil conditions for logging operations.

5.2.32 - Decking/Landing Restoration (9/13)

All decking and landing areas must have the surface area restored to a condition equal to or better than before. This is to ensure the proper regeneration of the stand.

5.2.37 - No Decking Areas (12/08)

No decking is allowed within 50 feet of OJ Miller Road or Huckleberry Road without the permission of the Chippewa County Road Commission.

5.2.38 - No Decking Against Live Trees (2/04)

Cut products may not be decked against unmarked or designated leave trees.

5.2.41 - Snowmobile Trail Protection (9/11)

Huckleberry Road and W Molly Gibson Rd is a snowmobile trail and is shown on the Timber Sale Map. Do not cut or damage posts with orange trail markers or traffic control signs. If the trail is used, it must be maintained and restored to a condition equal to or better than before the sale. The road maintenance/restoration must be done prior to December 1. If the trail is used for hauling, it must be graded to the satisfaction of the Unit Manager or his/her representative prior to December 1. If the trail road is to be used for hauling during the snowmobile season, then a snow covered base must be left on the trail. The snowmobile trail may only be crossed at right angles. Maintain a 20-foot-wide slash, debris, and rut free zone daily using the snowmobile trail as the centerline. No decking of forest products will be permitted along the Huckleberry Road during the snowmobile season (December 1-March 31). All stumps within 20 feet of the snowmobile trail must be cut at ground level. In addition, any trees cut within 5 feet of the trail must have the stumps removed and be disposed of according to the direction of the Unit Manager or his/her representative.

5.3 - Stream Protection

5.3.1 - Operating near stream (7/04)

No tracked or wheeled vehicles shall be operated within 20 feet of the ditches that cut through Payment Unit 6, except at an

approved crossing.

5.4 - Soil Protection

5.4.1 - Rutting Restriction, General (7/16)

Operations are to cease immediately if equipment and weather conditions result in rutting of roads and/or skid trails which is 12 inches or greater in depth and 50 feet in length. The Unit Manager or his/her representative may restrict hauling and/or skidding if ruts exceed the specified depth. With the Unit Manager or his/her representative's approval, the Purchaser may return to the area when the risk of rutting has decreased.

5.8 - Protection of Endangered Species

5.8.5 - Protection of Raptor Nests (3/13)

All trees with raptor nests will be protected if found during harvesting operations. Notification will be made to the Unit Manager or his/her representative who will notify the Wildlife Biologist so an onsite evaluation and recommendation can be made, if necessary.

5.8.7 - Protection of Walking Fern Habitat (9/08)

If walking fern is discovered on boulders within the sale area, operations in that immediate area should be suspended and the Unit Manager contacted. The contract may be amended to protect these sites. An area surrounding the boulders could be designated as a "no-cut" zone with appropriate adjustments made to the State Forest Timber Sale Contract.

6 - Safety and Fire Prevention

6.2 - Signing

6.2.1 - Road Posting (10/20)

The Purchaser is responsible for posting and maintaining caution signs on OJ Miller Road, Huckleberry Road, W Molly Gibson Rd, and W Everett Lane Row prior to beginning operations. The road must be posted at appropriate distances from the Sale Area to warn of logging activity and truck traffic. Signs must be removed when harvest operations are suspended or completed. The Purchaser will provide these signs.

6.2.2 - Snowmobile Trail Posting (10/20)

The Purchaser is responsible for posting and maintaining caution signs on Huckleberry Road prior to beginning operations during the snowmobile season (approximately December 1 to March 31). The trail must be posted at appropriate distances from the Sale Area to warn of logging activity and truck traffic. Signs must be removed when harvest operations are suspended or completed. The Purchaser will provide these signs.

7 - Other Conditions

7.5 - Loss

7.5.1 - Deteriorating Timber (7/09)

The Sale Area has received damage from windthrow or jack pine budworm. The Purchaser should harvest the wood as soon as possible. The Department of Natural Resources is held free of responsibility of any further damage or deterioration due to delay in harvesting.



TIMBER SALE MAP

This information provided by authority of Part 525, 1994 PA 451, as amended.

Sale Number 45-111-24	Date 08/12/2024	
Scale 1:10,000	Page 2	Of 2

Forest Management Unit Sault Ste Marie Mgt Unit	County Mackinac	Mapped By: Gabler
		Cruised By: Gabler/Fanelli

Township 43N / 44N	Range 06W	Section(s) and Subdivision(s)	S1/2SW,SWSE; Sec. 33 NENW,N1/2NE,SWSW; Sec. 5 NENW; Sec. 28 SWNW,NESE,S1/2SE; Sec. 29 W1/2NW,S1/2NE,NESE; Sec. 30 SENE; Sec. 32
-----------------------	--------------	----------------------------------	--

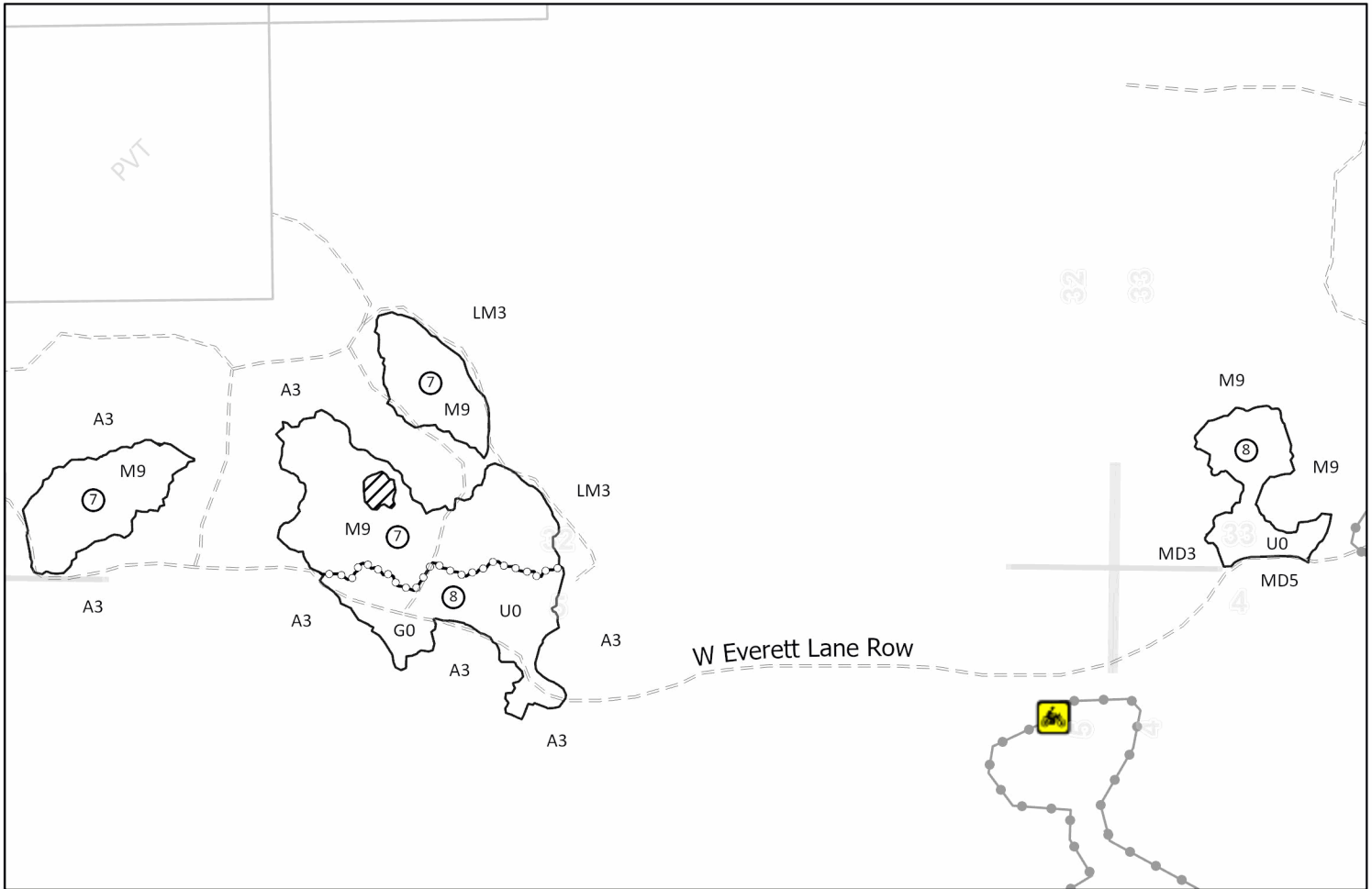
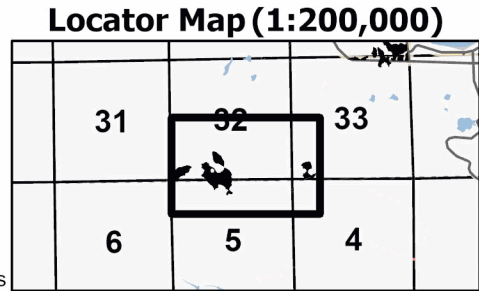
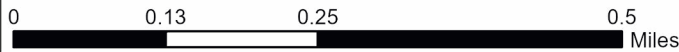
Cover Type			
A = Aspen	J = Jack Pine	O = Oak	U = Upland Brush
B = Paper Birch	K = Rock	P = Lowland Poplar	UM = Upland Mix Forest
C = Cedar	L = Lowland Brush	Q = Mixed Swamp Conifer	V = Bog or Marsh
D = Treed Bog	LM = Lowland Mix Forest	R = Red Pine	W = White Pine
E = Swamp Hardwoods	M = Maple, Beech, Birch	S = Black Spruce	X = Non Stocked
F = Spruce/Fir	MC = Mixed Conifer	T = Tamarack	Y = Sand
G = Grass	MD = Mixed Deciduous	Z = Water	
H = Hemlock	N = Marsh		

Density	
0 = Non Stocked	5 = Pole Timber Medium
1 = Seedling Sapling Poor	6 = Pole Timber Well
2 = Seedling Sapling Medium	7 = Saw Timber Poor
3 = Seedling Sapling Well	8 = Saw Timber Medium
4 = Pole Timber Poor	9 = Saw Timber Well

PU #	Acres	PU #	Acres
1	9.2	5	3
2	2.2	6	33
3	15.7	7	24.8
4	2.7	8	14.1

Walkie Talkie Mix

104.7 Acres



Legend

- Special Protection Area
- Against State (Red)
- Payment Unit (Red)
- Recreational Trail
- Private Property Boundary
- Forest Access Route
- MIRIS Section Corner



Use QR Code to open Map in App





TIMBER SALE MAP

This information provided by authority of Part 525, 1994 PA 451, as amended.

Sale Number 45-111-24	Date 08/28/2024
Scale 1:20,000	Page 1
	Of 2

Forest Management Unit Sault Ste Marie Mgt Unit	County Mackinac	Mapped By: Gabler
		Cruised By: Gabler

Township 43N / 44N	Range 06W	Section(s) and Subdivision(s)	S1/2SW,SWSE; Sec. 33 NENW,N1/2NE,SWSW; Sec. 5 NENW; Sec. 28 SWNW,NESE,S1/2SE; Sec. 29 W1/2NW,S1/2NE,NESE; Sec. 30 SENE; Sec. 32
-----------------------	--------------	----------------------------------	--

Cover Type			
A = Aspen	J = Jack Pine	O = Oak	U = Upland Brush
B = Paper Birch	K = Rock	P = Lowland Poplar	UM = Upland Mix Forest
C = Cedar	L = Lowland Brush	Q = Mixed Swamp Conifer	V = Bog or Marsh
D = Treed Bog	LM = Lowland Mix Forest	R = Red Pine	W = White Pine
E = Swamp Hardwoods	M = Maple, Beech, Birch	S = Black Spruce	X = Non Stocked
F = Spruce/Fir	MC = Mixed Conifer	T = Tamarack	Y = Sand
G = Grass	MD = Mixed Deciduous	Z = Water	
H = Hemlock	N = Marsh		

Density	
0 = Non Stocked	5 = Pole Timber Medium
1 = Seedling Sapling Poor	6 = Pole Timber Well
2 = Seedling Sapling Medium	7 = Saw Timber Poor
3 = Seedling Sapling Well	8 = Saw Timber Medium
4 = Pole Timber Poor	9 = Saw Timber Well

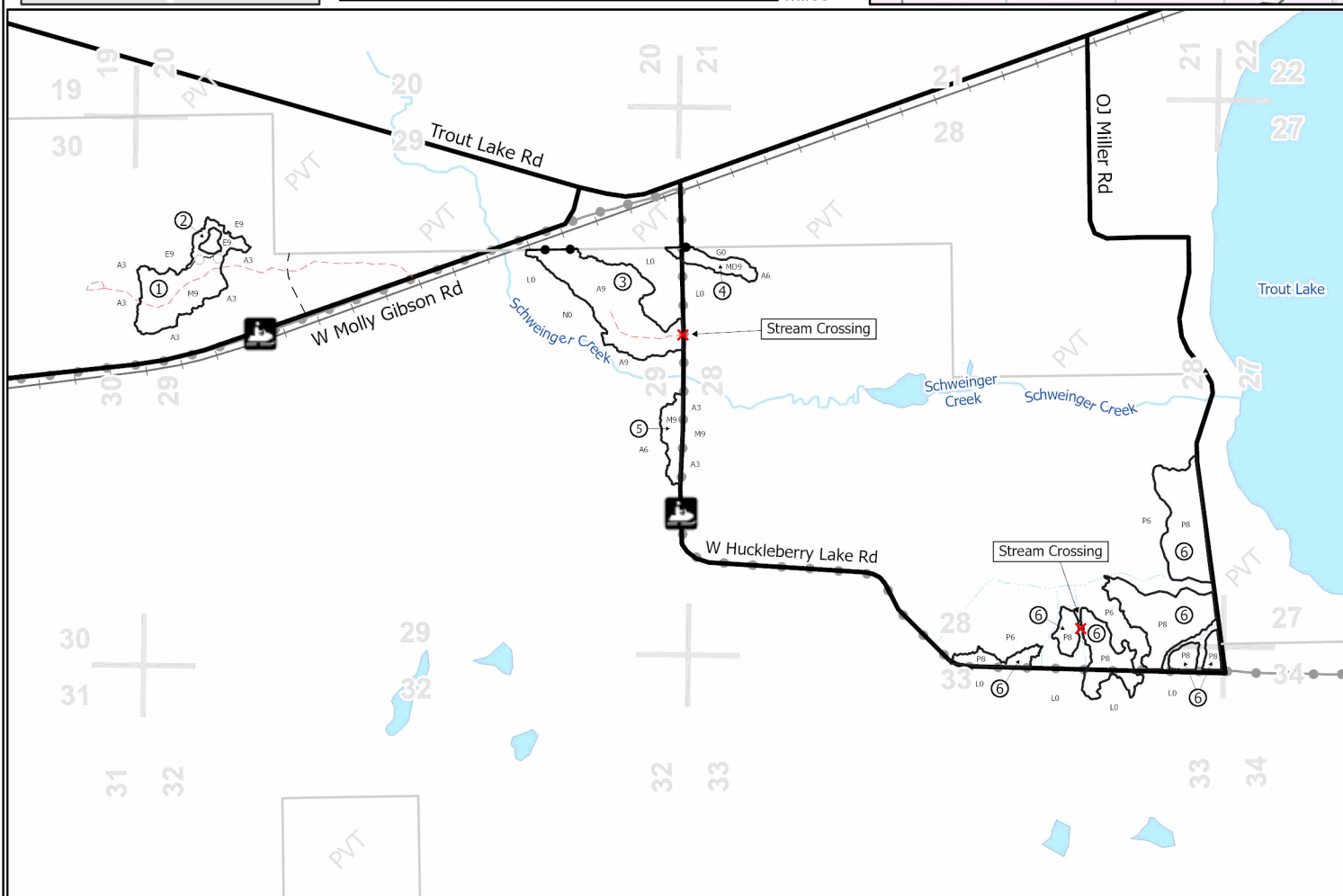
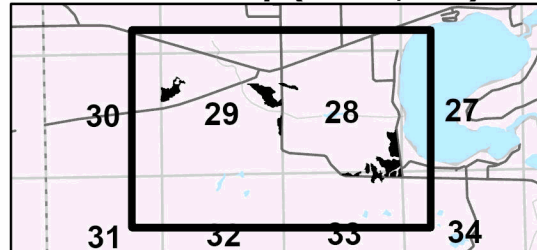
PU #	Acres	PU #	Acres
1	9.2	5	3
2	2.2	6	33
3	15.7	7	24.8
4	2.7	8	14.1

Walkie Talkie Mix

104.7 Acres



Locator Map (1:100,000)



Legend

- Lakes and Rivers
- Against State (Red)
- Payment Unit (Yellow)
- Private Line (Blue)
- Recreational Trail
- County Roads
- PVT
- - - Forest Access Route
- Active Railroad
- Drain
- Perennial River
- X Permit Crossings
- MIRIS Section Corner

Use QR Code to open Map in App



TIMBER SALE INFORMATION

Broken Bridge Mix (45-112-24)

T43N, R06W, SEC. 26; T43N, R06W, SEC. 34; T43N, R06W, SEC. 35.
Mackinac County (Advertised Price \$17,219.85)

SALE NOTE: Payment Units 2 and 3 are optional to harvest due to potential access issues. Removing these Payment Units is a contract modification which requires a Timber Sale Contract Amendment.

This sale has been reduced due to "no bid" on previous advertisement.

A recreation site such as a trail, pathway, or campground is within the sale area or the vicinity. Certain restrictions/specifications may be applicable including time restrictions.

A timber sale contract for this lump sum, sealed bid timber sale will be awarded to the responsible bidder offering the highest sealed bid price. All units of volume listed below were estimated using the Inventory Manager computer program and the new Michigan taper model. Bids must be at or above the following advertised price for each product and species:

<u>PRODUCTS & SPECIES</u>	<u>ESTIMATED UNITS*</u>	<u>ADVERTISED PRICE</u>
Sawtimber		
Paper Birch	3.4 MBF	\$ 30.00 / MBF
Red Maple	4.0 MBF	\$ 89.00 / MBF
Pulpwood		
Balsam Fir	40 Cords	\$ 7.00 / Cord
Black Spruce	848 Cords	\$ 11.10 / Cord
Jack Pine	8 Cords	\$ 20.25 / Cord
N. White Cedar	51 Cords	\$ 3.15 / Cord
Paper Birch	58 Cords	\$ 4.70 / Cord
Red Maple	132 Cords	\$ 11.20 / Cord
Red Pine	22 Cords	\$ 63.85 / Cord
Tamarack	81 Cords	\$ 2.70 / Cord
White Pine	240 Cords	\$ 14.05 / Cord

* The total volume is statistically estimated within plus (+) or minus (-) 15.47 percent. There are an estimated 1,498 cords on this timber sale, plus or minus 232 cords at the 95% confidence level. The estimated units are final and not subject to adjustment. Prospective bidders are urged to examine this timber and to make their own estimates of quantity and quality.

BOND AND PAYMENT SCHEDULE:

1. A bond in the amount of \$1,722.00 to insure faithful performance of the conditions of the contract will be deposited by the successful bidder within 21 days of the sale award.
2. Cutting in any sale or unit without the required advance payment would be considered a trespass.
3. Total payment must be paid in advance or according to the following schedule :
 - (a) Ten percent (10%) of the sale value must be paid within 21 days of the sale award.
 - (b) The 10% down payment will be credited towards the first unit cut.
 - (c) Payment for each of the following units must be made before cutting begins in that unit:

PAYMENT UNIT NUMBER	PERCENT OF TOTAL SALE VALUE
01	44.8%
02	18.8%
03	36.4%

4. If no cutting takes place, the 10% down payment will not be refunded.
5. Operations on the contract issued will terminate on 06/30/2029.

SALE STATISTICS

Volumes were calculated in cubic feet using the Michigan taper model. Cubic foot volume includes all wood inside bark for the product indicated. For display purposes, cubic feet were converted to cords and MBF using a simple conversion factor, e.g. 79 cubic feet per cord and 185 cubic feet per MBF. The cubic foot volumes are precise; the cords and MBF volumes are not. Cubic foot volume cannot be directly converted to cords or boards with precision.

SALE VOLUMES

The total estimated sale volume may not equal the sum of the species/products due to the nature of statistical calculations associated with double sampling methodology.

VOLUME			STATISTICAL RANGE IN CORDS	
TOTAL CUBIC FEET	TOTAL CORDS	PERCENT ERROR	MINIMUM	MAXIMUM
118,314	1,498	15.47%	1,266	1,729

VDU VOLUMES

A VDU is a Volume Determination Unit. Volumes and their associated statistics are calculated at the VDU level and summarized to the sale level. There is often a one to one relationship between a VDU and a Payment Unit, but not always, depending on the cruise design. Refer to the VDU TO PAYMENT UNIT table.

	VOLUME			RANGE IN CORDS	
VDU	TOTAL CUBIC FEET	TOTAL CORDS	PERCENT ERROR	MINIMUM	MAXIMUM
45	67,798	858	19.71%	689	1,027
51	50,515	639	25.12%	479	800
TOTAL:	118,314	1,498		1,168	1,827

VDU TO PAYMENT UNIT

When a VDU is associated with more than one Payment Unit (PU), the VDU volumes are assigned to the PU based on acres of the VDU within the PU.

VDU	VDU ACRES	PU	PU ACRES
45	34.7	2	11.8
45	34.7	3	22.9
51	24.4	1	24.4
TOTAL:	93.8		59.1

DESCRIPTION OF TIMBER BY PAYMENT UNIT (PU)

PU	MARKET GROUP	PRODUCT	QUANTITY	UNIT	ACRES	ADVERTISE PRICE
1	Paper Birch	Sawtimber	1.3	MBF	24.4	\$7,718.95
	Red Maple		0.7	MBF		
	Black Spruce	Pulpwood	484	Cords		
	Jack Pine		8	Cords		
	Paper Birch		3	Cords		
	Red Maple		26	Cords		
	Red Pine		22	Cords		
	Tamarack		81	Cords		
	White Pine		11	Cords		
	2	Paper Birch	Sawtimber	0.7		
Red Maple			1.1	MBF		
Balsam Fir		Pulpwood	14	Cords		
Black Spruce			124	Cords		
N. White Cedar			17	Cords		
Paper Birch			19	Cords		
Red Maple			36	Cords		
White Pine			78	Cords		
3		Paper Birch	Sawtimber	1.4	MBF	22.9
	Red Maple		2.2	MBF		
	Balsam Fir	Pulpwood	26	Cords		
	Black Spruce		240	Cords		
	N. White Cedar		34	Cords		
	Paper Birch		36	Cords		
	Red Maple		70	Cords		
	White Pine		151	Cords		
TOTAL:			7.4	MBF		
TOTAL:			1,480	Cords		

Sale Specific Conditions & Requirements

Sale Name: Broken Bridge Mix

Sale Number: 45-112-24 Seq#: 2

1 - Sale Area

1.2 - Boundaries

1.2.1 - Painted Boundaries (9/19)

The sale boundary and Payment Unit boundaries are marked and identified by red and yellow paint. Exterior sale boundary lines against state are marked with red paint. Interior Payment Unit boundaries are marked with yellow paint. The painted boundary line trees are not Included Timber. Yellow painted trees designating an interior Payment Unit boundary are only to be cut when all surrounding Payment Units have been paid.

2 - Timber Specifications

2.1 - Included Timber

2.1.1 - Clearcut Unit(s) with Unmerchantable Trees (6/14)

Within Payment Unit(s) 1-3, cut all deciduous trees that are two (2) inches or more at DBH and all conifer trees that are four (4) inches or more at DBH.

In addition, within Payment Unit 1, do not cut any cedar or hemlock. Further, do not cut any white pine that are 18 inches or more at DBH.

Furthermore, within Payment Units 2 & 3, do not cut any hemlock or trees marked in green paint. In addition, do not cut any white pine that are 24 inches or more at DBH.

2.1.11 - Description of Timber Note (2/04)

Note that Payment Units 2 and 3 are optional to harvest due to potential access issues. Removing these Payment Units is a contract modification which requires a Timber Sale Contract Amendment.

3 - Payments

3.3 - Pre-measured Sales

3.3.4 - Dividing Payment Units (7/14)

Payment Unit(s) 1-3 may be divided at the request of the Purchaser and upon approval of the Unit Manager. Dividing Payment Units is a contract modification which requires a Timber Sale Contract Amendment. There will be only one division per Payment Unit.

4 - Transportation

4.1 - Construction

4.1.3 - Slash and Earthen Piles (8/04)

Piles or windrows of earth along roads and landings that have been widened or constructed shall be leveled. Slash from road maintenance or construction, including stumps, shall be dispersed throughout the sale.

4.1.4 - Timber Removed for Construction (3/23)

Trees cut or damaged in the process of pre-approved road, landing, or skid trail construction will be decked in an area separate from other Designated Timber and not removed until measured by the Sale Administrator. Payment will be made at contract prices or average prices, if not on the contract.

4.1.6 - Road Construction (4/24)

Construction of new roads or improvements of existing roads shall be done in such a way as to minimize the environmental and visual impacts. Merchantable trees shall be cut and utilized unless otherwise directed. Non-merchantable trees shall be severed and laid flat on the ground. Slash shall be scattered, and not left in windrows and kept a minimum of 10 feet back from the road edge. Stumps shall be set upright, not left on edge, and be moved at least 10 feet away from the road edge. Disturbed soil shall be feathered into the woods and not left in berms or windrows.

4.1.7 - Road Closure (10/11)

All new roads built into the sale must be blocked to vehicle traffic upon completion of the sale. Overgrown roads that are reopened shall be considered new roads. In general, this will require constructing a four (4') foot high berm of stumps and logs covered with earth. These roads must be rendered impassable to cars and trucks. Contact the Sale Administrator for specific details of design and placement.

4.1.10 - Oversight (12/08)

The Unit Manager, or his/her representative, must be present when the road improvement project is initiated. Specifically, access into Payment Units 2 & 3 will need to be discussed with the Unit Manager or Sale Administrator prior to harvesting activities.

4.2 - Maintenance

4.2.2 - Fill Material (4/07)

To maintain roads, fill material may be needed in areas where "holes" exist or may be expected to develop. This fill material should be placed before trucking begins.

4.2.3 - Road maintenance (8/13)

The following road maintenance is required: Within 60 days of completion of hauling, or if no hauling occurs for 60 days, the road must be maintained and graded. This includes cleaning of drainage areas, grading, crowning and filling with gravel, if necessary. Damages will be assessed if grading/repair does not occur.

4.2.4 - Grading (10/16)

For completion of the sale, state forest roads must be graded. In general, this will require a road grader or bulldozer to shape up the roads after forest products have been hauled off site. This includes cleaning of drainage areas, grading, crowning and filling with gravel, if necessary. The grading equipment to be used must be approved by the Unit Manager or his/her representative.

5 - Operations

5.2 - Conduct of Operations

5.2.2 - Hazard Trees/Snags

5.2.2.1 - Den Trees (10/16)

Obvious hollow and/or den trees shall be protected and left standing unless they are a safety hazard.

5.2.17 - Timber Mats and Interlocking Composite Mats (5/23)

Some roads or skid trails may require extra protection such as that afforded by timber mats, interlocking composite mats, or another approved system. If available, mats may be borrowed from the DNR. A Timber Sale Contract Amendment will be used to document the Purchaser's use of the DNR's mats. Contact the Sale Administrator regarding availability and pick-up. Timber mats are available from various field offices. Composite mats are only available from the Grayling field office and the Marquette ICC. The Purchaser is responsible for picking up and hauling the mats to and from the site. The composite mats will require DNR staff onsite for installation and removal. Contact the Sale Administrator to schedule at least 30 days before desired install/removal date. All mats must be cleaned prior to drop off. This may include, but is not limited to, power washing and brushing to remove mud and debris. A charge of \$700.00 per timber mat and \$2,000.00 per composite mat will be assessed for all damaged or non-returned mats. Damage for the crane/timber mats is defined as three or more broken cants. Damage for the composite mats is defined as cracked or broken mats.

5.2.22 - Operating Caution

5.2.22.1 - Operating Caution (6/11)

It is recommended, but not required, that within Payment Unit(s) 1-3, cutting, skidding, and hauling occur during dry summer or frozen winter conditions. The reason for the recommendation is because of low ground with wet, sensitive soils.

5.2.32 - Decking/Landing Restoration (9/13)

All decking and landing areas must have the surface area restored to a condition equal to or better than before. This is to ensure the proper regeneration of the stand. Wood debris, chips and "cookies" from trimmings must be removed or scattered away from landing and loading areas and may not be windrowed on the edge.

5.2.38 - No Decking Against Live Trees (2/04)

Cut products may not be decked against unmarked or designated leave trees.

5.2.39 - ORV Trail/Route Protection (4/18)

The Carp River Truck Trail is an ORV trail or route and is shown on the Timber Sale Map. The motorcycle trail is adjacent to Payment Unit 1 and is also shown on the Timber Sale Map. Maintain a 20-foot-wide slash, debris and rut free zone daily using the motorcycle trail as the centerline. No decking of forest products is permitted within 50 feet of the ORV trail. Do not run equipment down the ORV trail or route. Skidding across the trail or route may only occur in locations approved by the Sale Administrator.

5.2.41 - Snowmobile Trail Protection (9/11)

The Carp River Truck Trail is a snowmobile trail and is shown on the Timber Sale Map. Do not cut or damage posts with orange trail markers or traffic control signs. If the trail is used, it must be maintained and restored to a condition equal to or better than before the sale. The road maintenance/restoration must be done prior to December 1. If the trail is used for hauling, it must be graded to the satisfaction of the Unit Manager or his/her representative prior to December 1. If the trail road is to be used for hauling during the snowmobile season, then a snow covered base must be left on the trail. The snowmobile trail may only be crossed at right angles. No decking of forest products will be permitted within 50 feet of the snowmobile trail.

5.8 - Protection of Endangered Species

5.8.5 - Protection of Raptor Nests (3/13)

All trees with raptor nests will be protected if found during harvesting operations. Notification will be made to the Unit Manager or his/her representative who will notify the Wildlife Biologist so an onsite evaluation and recommendation can be made, if necessary.

6 - Safety and Fire Prevention

6.2 - Signing

6.2.1 - Road Posting (10/20)

The Purchaser is responsible for posting and maintaining caution signs on Carp River Truck Trail prior to beginning operations. The road must be posted at appropriate distances from the Sale Area to warn of logging activity and truck traffic. Signs must be removed when harvest operations are suspended or completed. The Purchaser will provide these signs.

6.2.2 - Snowmobile Trail Posting (10/20)

The Purchaser is responsible for posting and maintaining caution signs on Carp River Truck Trail prior to beginning operations during the snowmobile season (approximately December 1 to March 31). The trail must be posted at appropriate distances from the Sale Area to warn of logging activity and truck traffic. Signs must be removed when harvest operations are suspended or completed. The Purchaser will provide these signs.

6.2.3 - Recreational Trail Posting (10/20)

The Purchaser is responsible for posting and maintaining caution signs on Carp River Truck Trail and the motorcycle trail adjacent to the Sale Area prior to beginning operations. The trail must be posted at appropriate distances from the Sale Area to warn of logging activity and truck traffic at both ends of the trail. Signs must be removed when harvest operations are suspended or completed. The Purchaser will provide these signs.



TIMBER SALE MAP

This information provided by authority of Part 525, 1994 PA 451, as amended.

Sale Number 45-112-24	Date 08/22/2024
Scale 1:15,840	Page 1
	Of 1

Forest Management Unit Sault Ste Marie Mgt Unit	County Mackinac	Mapped By: Plato
		Cruised By: Contractor

Township 43N	Range 06W	Section(s) and Subdivision(s) Sec. 26 SESW,SWSE; Sec. 34 SENE,NESE; Sec. 35 N1/2NW,NWNE,N1/2SW,SESW;
-----------------	--------------	--

Cover Type			
A = Aspen	J = Jack Pine	O = Oak	U = Upland Brush
B = Paper Birch	K = Rock	P = Lowland Poplar	UM = Upland Mix Forest
C = Cedar	L = Lowland Brush	Q = Mixed Swamp Conifer	V = Bog or Marsh
D = Treed Bog	LM = Lowland Mix Forest	R = Red Pine	W = White Pine
E = Swamp Hardwoods	M = Maple, Beech, Birch	S = Black Spruce	X = Non Stocked
F = Spruce/Fir	MC = Mixed Conifer	T = Tamarack	Y = Sand
G = Grass	MD = Mixed Deciduous	Z = Water	
H = Hemlock	N = Marsh		

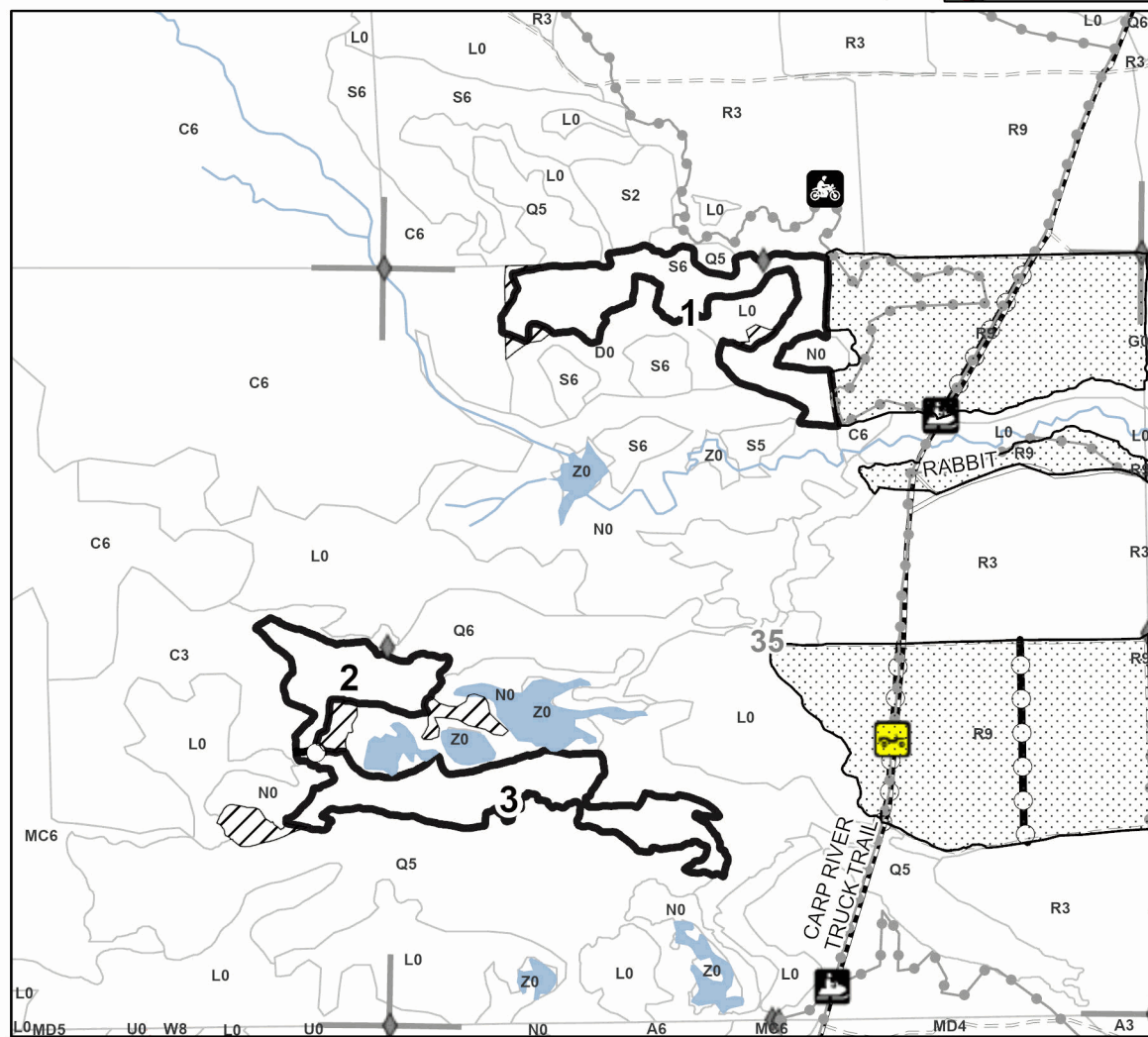
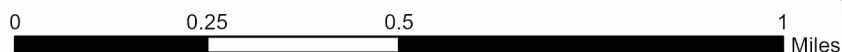
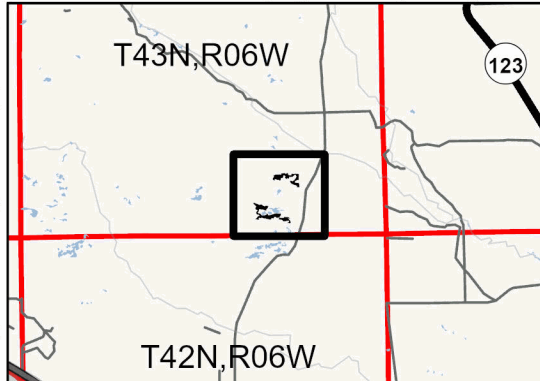
Density	
0 = Non Stocked	5 = Pole Timber Medium
1 = Seedling Sapling Poor	6 = Pole Timber Well
2 = Seedling Sapling Medium	7 = Saw Timber Poor
3 = Seedling Sapling Well	8 = Saw Timber Medium
4 = Pole Timber Poor	9 = Saw Timber Well

PU #	Acres
1	24.4
2	11.8
3	22.9

Broken Bridge Mix

59.1 Acres

Locator Map (1:200,000)



Legend

- Against State (Red)
- Stand
- Retention Areas
- Payment Unit (Yellow)
- Recreational Trail
- Paved Road
- Gravel Road
- County Road - Seasonal
- Private Road
- Primary Forest Road
- Secondary Forest Road
- Forest Access Route
- Administrative Access Only
- Field Grade Corner
- Section Corner
- Nearby Sales

Use QR Code to open Map in App



TIMBER SALE INFORMATION

Baja Red Pine (45-113-24)

T43N, R06W, SEC. 26; T43N, R06W, SEC. 35; T43N, R06W, SEC. 36.
Mackinac County (Advertised Price \$563,165.85)

SALE NOTE: A recreation site such as a trail, pathway, or campground is within the sale area or the vicinity. Certain restrictions/specifications may be applicable including time restrictions.

A timber sale contract for this lump sum, sealed bid timber sale will be awarded to the responsible bidder offering the highest sealed bid price. All units of volume listed below were estimated using the Inventory Manager computer program and the new Michigan taper model. Bids must be at or above the following advertised price for each product and species:

<u>PRODUCTS & SPECIES</u>	<u>ESTIMATED UNITS*</u>	<u>ADVERTISED PRICE</u>
Pulpwood		
Balsam Fir	6 Cords	\$ 10.50 / Cord
Jack Pine	13 Cords	\$ 30.40 / Cord
Mixed Hardwood	16 Cords	\$ 16.80 / Cord
Mixed Spruce	9 Cords	\$ 16.65 / Cord
Red Pine	5,865 Cords	\$ 95.80 / Cord
White Pine	20 Cords	\$ 21.10 / Cord

* The total volume is statistically estimated within plus (+) or minus (-) 6.48 percent. There are an estimated 5,928 cords on this timber sale, plus or minus 384 cords at the 95% confidence level. The estimated units are final and not subject to adjustment. Prospective bidders are urged to examine this timber and to make their own estimates of quantity and quality.

BOND AND PAYMENT SCHEDULE:

1. A bond in the amount of \$28,158.00 to insure faithful performance of the conditions of the contract will be deposited by the successful bidder within 21 days of the sale award.
2. Cutting in any sale or unit without the required advance payment would be considered a trespass.
3. Total payment must be paid in advance or according to the following schedule :
 - (a) Ten percent (10%) of the sale value must be paid within 21 days of the sale award.
 - (b) The 10% down payment will be credited towards the first unit cut.
 - (c) Payment for each of the following units must be made before cutting begins in that unit:

PAYMENT UNIT NUMBER	PERCENT OF TOTAL SALE VALUE
01	18.0%
02	16.2%
03	6.0%
04	11.6%
05	24.6%
06	23.6%
4. If no cutting takes place, the 10% down payment will not be refunded.
5. Operations on the contract issued will terminate on 12/31/2027.

SALE STATISTICS

Volumes were calculated in cubic feet using the Michigan taper model. Cubic foot volume includes all wood inside bark for the product indicated. For display purposes, cubic feet were converted to cords and MBF using a simple conversion factor, e.g. 79 cubic feet per cord and 185 cubic feet per MBF. The cubic foot volumes are precise; the cords and MBF volumes are not. Cubic foot volume cannot be directly converted to cords or boards with precision.

SALE VOLUMES

The total estimated sale volume may not equal the sum of the species/products due to the nature of statistical calculations associated with double sampling methodology.

VOLUME			STATISTICAL RANGE IN CORDS	
TOTAL CUBIC FEET	TOTAL CORDS	PERCENT ERROR	MINIMUM	MAXIMUM
468,308	5,928	6.48%	5,544	6,312

VDU VOLUMES

A VDU is a Volume Determination Unit. Volumes and their associated statistics are calculated at the VDU level and summarized to the sale level. There is often a one to one relationship between a VDU and a Payment Unit, but not always, depending on the cruise design. Refer to the VDU TO PAYMENT UNIT table.

VDU	VOLUME		PERCENT ERROR	RANGE IN CORDS	
	TOTAL CUBIC FEET	TOTAL CORDS		MINIMUM	MAXIMUM
62	160,997	2,038	10.09%	1,832	2,243
64	279,295	3,535	8.99%	3,217	3,853
75	28,016	355	22.39%	275	434
TOTAL:	468,308	5,928		5,325	6,531

VDU TO PAYMENT UNIT

When a VDU is associated with more than one Payment Unit (PU), the VDU volumes are assigned to the PU based on acres of the VDU within the PU.

VDU	VDU ACRES	PU	PU ACRES
62	51.5	1	27.1
62	51.5	2	24.4
64	70.3	4	13.6
64	70.3	5	29.0
64	70.3	6	27.7
75	25.1	3	25.1
TOTAL:	339.0		146.9

DESCRIPTION OF TIMBER BY PAYMENT UNIT (PU)

PU	MARKET GROUP	PRODUCT	QUANTITY	UNIT	ACRES	ADVERTISE PRICE
1	Balsam Fir	Pulpwood	2	Cords	27.1	\$101,095.60
	Jack Pine		5	Cords		
	Mixed Hardwood		4	Cords		
	<i>Paper Birch</i>		2	<i>Cords</i>		
	<i>Red Maple</i>		2	<i>Cords</i>		
	Mixed Spruce		2	Cords		
	<i>Black Spruce</i>		2	<i>Cords</i>		
	Red Pine		1,050	Cords		
	White Pine		11	Cords		
2	Balsam Fir	Pulpwood	1	Cords	24.4	\$91,046.25
	Jack Pine		5	Cords		
	Mixed Hardwood		3	Cords		
	<i>Paper Birch</i>		2	<i>Cords</i>		
	<i>Red Maple</i>		1	<i>Cords</i>		
	Mixed Spruce		1	Cords		
	<i>Black Spruce</i>		1	<i>Cords</i>		
	Red Pine		946	Cords		
	White Pine		9	Cords		
3	Red Pine	Pulpwood	355	Cords	25.1	\$34,009.00
4	Balsam Fir	Pulpwood	1	Cords	13.6	\$65,235.15
	Jack Pine		1	Cords		
	Mixed Hardwood		2	Cords		
	<i>Red Maple</i>		2	<i>Cords</i>		
	Mixed Spruce		1	Cords		
	<i>White Spruce</i>		1	<i>Cords</i>		
	Red Pine		680	Cords		
5	Balsam Fir	Pulpwood	1	Cords	29.0	\$138,955.45
	Jack Pine		1	Cords		
	Mixed Hardwood		3	Cords		
	<i>Red Maple</i>		3	<i>Cords</i>		
	Mixed Spruce		3	Cords		
	<i>White Spruce</i>		3	<i>Cords</i>		
	Red Pine		1,449	Cords		
6	Balsam Fir	Pulpwood	1	Cords	27.7	\$132,824.40
	Jack Pine		1	Cords		
	Mixed Hardwood		4	Cords		
	<i>Red Maple</i>		4	<i>Cords</i>		
	Mixed Spruce		2	Cords		
	<i>White Spruce</i>		2	<i>Cords</i>		
	Red Pine		1,385	Cords		
TOTAL:			5,929	Cords		

Sale Specific Conditions & Requirements

Sale Name: Baja Red Pine

Sale Number: 45-113-24 Seq#: 1

1 - Sale Area

1.2 - Boundaries

1.2.1 - Painted Boundaries (9/19)

The sale boundary and Payment Unit boundaries are marked and identified by red and purple paint. Exterior sale boundary lines against state are marked with red paint. Interior Payment Unit boundaries are marked with purple paint. Purple painted trees designating an interior Payment Unit boundary are only to be cut when all surrounding Payment Units have been paid.

2 - Timber Specifications

2.1 - Included Timber

2.1.1 - Clearcut Unit(s) with Unmerchantable Trees (6/14)

Within Payment Unit(s) 1, 2 and 4-6, cut all trees that are one (1) inch or more at DBH regardless of merchantability.

2.1.3 - Cut Tree Marked Unit(s) (12/08)

Within Payment Unit(s) 3, all trees are designated for cutting when marked with orange paint above and below stump height, regardless of merchantability.

2.1.11 - Description of Timber Note (2/04)

Note that Mixed Spruce includes black and white spruce. Mixed Hardwood includes red maple and paper birch.

2.2 - Utilization

2.2.3 - Stump heights (4/07)

Stump heights within the Sale Area shall not exceed 6 inches for all trees. This is in order to facilitate planting operations. A written waiver of this requirement may be obtained if wet summer weather makes winter logging necessary.

3 - Payments

3.3 - Pre-measured Sales

3.3.4 - Dividing Payment Units (7/14)

Payment Unit(s) 1-6 may be divided at the request of the Purchaser and upon approval of the Unit Manager. Dividing Payment Units is a contract modification which requires a Timber Sale Contract Amendment. There will be only one division per Payment Unit.

4 - Transportation

4.1 - Construction

4.1.3 - Slash and Earthen Piles (8/04)

Piles or windrows of earth along roads and landings that have been widened or constructed shall be leveled. Slash from road maintenance or construction, including stumps, shall be dispersed throughout the sale.

4.1.4 - Timber Removed for Construction (3/23)

Trees cut or damaged in the process of pre-approved road, landing, or skid trail construction will be decked in an area separate from other Designated Timber and not removed until measured by the Sale Administrator. Payment will be made at contract prices or average prices, if not on the contract.

4.1.6 - Road Construction (4/24)

Construction of new roads or improvements of existing roads shall be done in such a way as to minimize the environmental and visual impacts. Merchantable trees shall be cut and utilized unless otherwise directed. Non-merchantable trees shall be severed and laid flat on the ground. Slash shall be scattered, and not left in windrows and kept a minimum of 10 feet back from the road edge. Stumps shall be set upright, not left on edge, and be moved at least 10 feet away from the road edge. Disturbed soil shall be feathered into the woods and not left in berms or windrows.

4.1.7 - Road Closure (10/11)

All new roads built into the sale must be blocked to vehicle traffic upon completion of the sale. Overgrown roads that are reopened shall be considered new roads. In general, this will require constructing a four (4') foot high berm of stumps and logs covered with earth. These roads must be rendered impassable to cars and trucks. Contact the Sale Administrator for specific details of design and placement.

4.2 - Maintenance

4.2.1 - Hauling Restriction (12/08)

Hauling is restricted on the southern portion of Schoolhouse Road near Worth Road. The restriction may occur during spring breakup.

4.2.2 - Fill Material (4/07)

To maintain roads, fill material may be needed in areas where "holes" exist or may be expected to develop. This fill material should be placed before trucking begins. Contact the Sale Administrator regarding the availability of onsite sand or gravel from adjacent State-owned lands.

4.2.3 - Road maintenance (8/13)

The following road maintenance is required: Within 60 days of completion of hauling, or if no hauling occurs for 60 days, the road must be maintained and graded. This includes cleaning of drainage areas, grading, crowning and filling with gravel, if necessary. Damages will be assessed if grading/repair does not occur.

4.2.4 - Grading (10/16)

For completion of the sale, state forest roads must be graded. In general, this will require a road grader or bulldozer to shape up the roads after forest products have been hauled off site. This includes cleaning of drainage areas, grading, crowning and filling with gravel, if necessary. The grading equipment to be used must be approved by the Unit Manager or his/her representative.

5 - Operations

5.2 - Conduct of Operations

5.2.1 - Slash

5.2.1.11 - Slash for Reforestation (3/21)

Within the Payment Units 1-6, chipping is encouraged as it is the most effective and efficient way to mitigate slash for reforestation. Other tactics to mitigate slash for site preparation would need to be approved by the Unit Manager or his/her representative.

5.2.1.12 - Slash for Prescribed Burning (1/05)

To facilitate prescribed burning, slash shall be moved at least 20 feet inside the sale boundary. Slash cannot be windrowed and must be evenly scattered throughout Sale Area if not chipped.

5.2.2 - Hazard Trees/Snags

5.2.2.1 - Den Trees (10/16)

Obvious hollow and/or den trees shall be protected and left standing unless they are a safety hazard.

5.2.3 - Operating Restrictions

5.2.3.6 - Bark Beetle Restriction (12/08)

In the event drought creates a high risk of pine bark beetle infestation, pine is not to be cut during the period March 1 through July 1, unless all portions of trees greater than two inches in diameter are removed from the sale area, reduced to chips, or treated to the satisfaction of the Unit Manager or his/her representative, within fifteen days of being severed from the stump. Pine log decks, pulpwood piles and treetops that are piled for chipping in the fall or winter within a 1/4 mile of susceptible sites must be removed before March 15. Residual slash must not be placed in piles or rows and must be spread over the site for quick drying. The Department of Natural Resources will exercise this specification if the risk of damage warrants.

5.2.32 - Decking/Landing Restoration (9/13)

All decking and landing areas must have the surface area restored to a condition equal to or better than before. This is to

ensure the proper regeneration of the stand. Wood debris, chips and "cookies" from trimmings must be removed or scattered away from landing and loading areas and may not be windrowed on the edge.

5.2.38 - No Decking Against Live Trees (2/04)

Cut products may not be decked against unmarked or designated leave trees.

5.2.39 - ORV Trail/Route Protection (4/18)

The Carp River Truck Trail (Schoolhouse Road) is an ORV trail or route and is shown on the Timber Sale Map. Do not cut trees or damage posts with yellow ORV markers. No skidding within 50 feet of the ORV trail is permitted. Maintain a 20-foot-wide slash, debris, and rut free zone daily using the ORV trail or route as the centerline. Do not run equipment down the ORV trail or route. Skidding across the trail or route may only occur in locations approved by the Sale Administrator.

5.2.40 - Pathway Protection (10/10)

The Brevoort Motorcycle Trail is shown on the Timber Sale Map. Maintain a 20-foot-wide slash, debris, and rut free zone daily, using the pathway as the centerline. Do not run equipment down the pathway. Skidding across the trail may only occur in locations approved by the Sale Administrator.

5.2.41 - Snowmobile Trail Protection (9/11)

The Carp River Truck Trail (Schoolhouse Road) is a snowmobile trail and is shown on the Timber Sale Map. Do not cut or damage posts with orange trail markers or traffic control signs. If the trail is used, it must be maintained and restored to a condition equal to or better than before the sale. The road maintenance/restoration must be done prior to December 1. If the trail is used for hauling, it must be graded to the satisfaction of the Unit Manager or his/her representative prior to December 1. If the trail road is to be used for hauling during the snowmobile season, then a snow-covered base must be left on the trail. The snowmobile trail may only be crossed at right angles. Maintain a 20-foot-wide slash, debris, and rut free zone daily using the snowmobile trail as the centerline. No decking of forest products within 50 feet of the trail will be permitted. All stumps within 20 feet of the snowmobile trail must be cut at ground level.

5.8 - Protection of Endangered Species

5.8.5 - Protection of Raptor Nests (3/13)

All trees with raptor nests will be protected if found during harvesting operations. Notification will be made to the Unit Manager or his/her representative who will notify the Wildlife Biologist so an onsite evaluation and recommendation can be made, if necessary.

6 - Safety and Fire Prevention

6.2 - Signing

6.2.1 - Road Posting (10/20)

The Purchaser is responsible for posting and maintaining caution signs on the Carp River Truck Trail (Schoolhouse Road) prior to beginning operations. The road must be posted at appropriate distances from the Sale Area to warn of logging activity and truck traffic. Signs must be removed when harvest operations are suspended or completed. The Purchaser will provide these signs.

6.2.2 - Snowmobile Trail Posting (10/20)

The Purchaser is responsible for posting and maintaining caution signs on Carp River Truck Trail (Schoolhouse Road) prior to beginning operations during the snowmobile season (approximately December 1 to March 31). The trail must be posted at appropriate distances from the Sale Area to warn of logging activity and truck traffic. Signs must be removed when harvest operations are suspended or completed. The Purchaser will provide these signs.

6.2.3 - Recreational Trail Posting (10/20)

The Purchaser is responsible for posting and maintaining caution signs on Brevoort Motorcycle Trail prior to beginning operations. The trail must be posted at appropriate distances from the Sale Area to warn of logging activity and truck traffic at both ends of the trail. Signs must be removed when harvest operations are suspended or completed. The Purchaser will provide these signs.

TIMBER SALE MAP

This information provided by authority of Part 525, 1994 PA 451, as amended.

Sale Number

45-113-24

Date

08/28/2024

Forest Management Unit

Sault Ste Marie Mgt Unit

County

Mackinac

Mapped By: Plato

Cruised By: Plato

Scale

1:15,840

Page

1

Of

1

Township
43N

Range
06W

Section(s) and

Subdivision(s) Sec. 26 SWSE; Sec. 35 NE,SE; Sec. 36 NWNW,S1/2NW,S1/2NE;

Cover Type

A = Aspen	J = Jack Pine	O = Oak	U = Upland Brush
B = Paper Birch	K = Rock	P = Lowland Poplar	UM = Upland Mix Forest
C = Cedar	L = Lowland Brush	Q = Mixed Swamp Conifer	V = Bog or Marsh
D = Treed Bog	LM = Lowland Mix Forest	R = Red Pine	W = White Pine
E = Swamp Hardwoods	M = Maple, Beech, Birch	S = Black Spruce	X = Non Stocked
F = Spruce/Fir	MC = Mixed Conifer	T = Tamarack	Y = Sand
G = Grass	MD = Mixed Deciduous	Z = Water	
H = Hemlock	N = Marsh		

Density

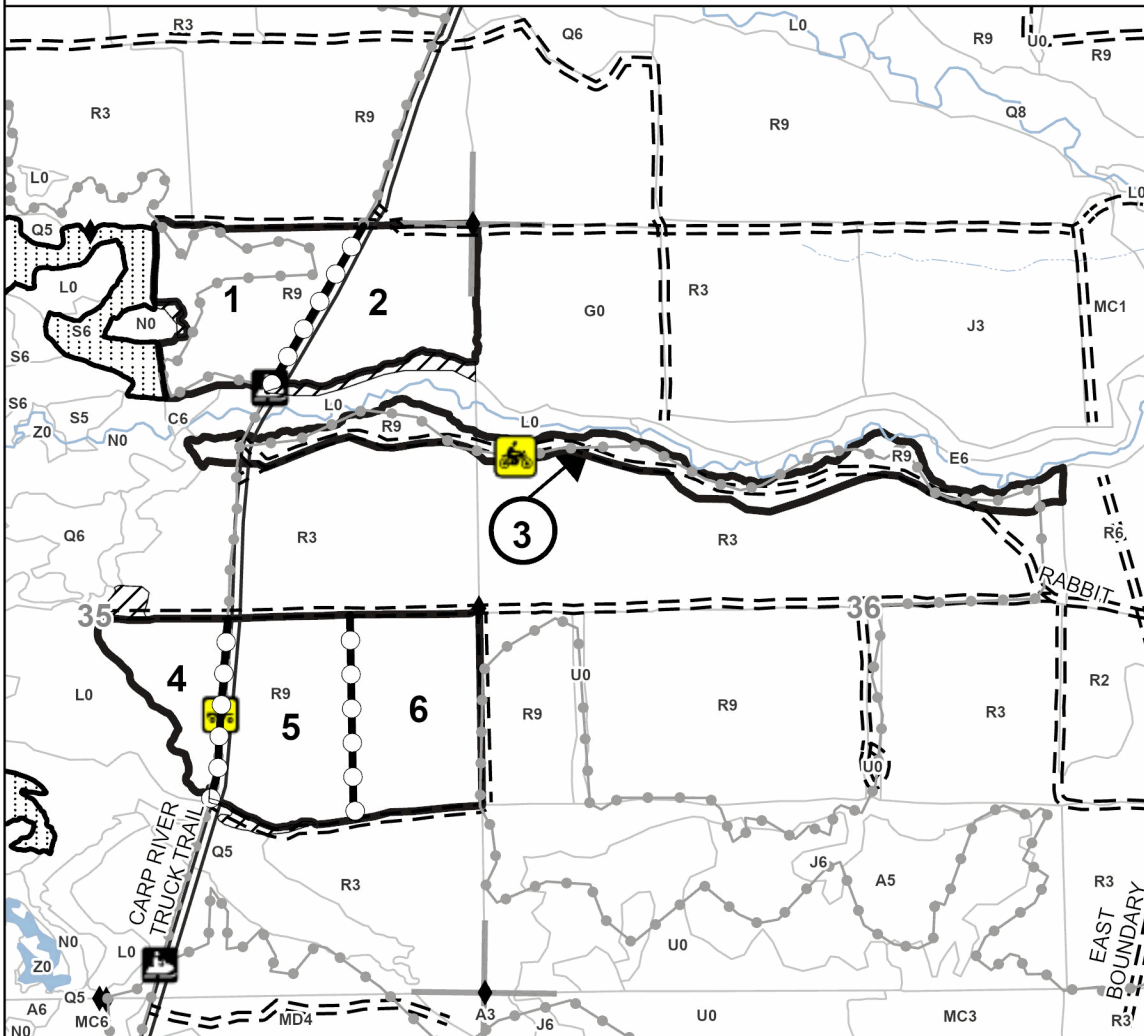
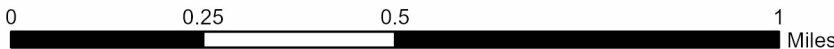
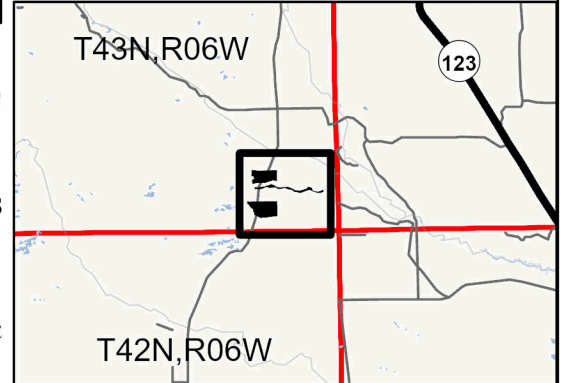
0 = Non Stocked	5 = Pole Timber Medium
1 = Seedling Sapling Poor	6 = Pole Timber Well
2 = Seedling Sapling Medium	7 = Saw Timber Poor
3 = Seedling Sapling Well	8 = Saw Timber Medium
4 = Pole Timber Poor	9 = Saw Timber Well

PU #	Acres	PU #	Acres
1	27.1	4	13.6
2	24.4	5	29
3	25.1	6	27.7

Baja Red Pine

146.9 Acres

Locator Map (1:200,000)



Legend

- Sale Boundary (Red)
- Stand
- Payment Unit (Purple)
- Recreational Trail
- Paved Road
- Gravel Road
- County Road - Seasonal
- Private Road
- Primary Forest Road
- Forest Access Route
- Administrative Access Only
- Paved Road
- Government Gravel/Dirt
- Private Gravel/Dirt
- Field Grade Corner
- Section Corners
- Retention Areas
- Nearby Sales

Use QR Code to open Map in App



TIMBER SALE INFORMATION

On The Side (45-118-22)

T42N, R06W, SEC. 6; T43N, R06W, SEC. 31.
Mackinac County (Advertised Price \$9,509.70)

SALE NOTE: A recreation site such as a trail, pathway, or campground is within the sale area or the vicinity. Certain restrictions/specifications may be applicable including time restrictions.

A timber sale contract for this lump sum, sealed bid timber sale will be awarded to the responsible bidder offering the highest sealed bid price. All units of volume listed below were estimated using the Inventory Manager computer program and the new Michigan taper model. Bids must be at or above the following advertised price for each product and species:

<u>PRODUCTS & SPECIES</u>	<u>ESTIMATED UNITS*</u>	<u>ADVERTISED PRICE</u>
Sawtimber		
Red Maple	0.9 MBF	\$ 62.00 / MBF
Pulpwood		
Balsam Fir	136 Cords	\$ 4.90 / Cord
Mixed Aspen	115 Cords	\$ 12.05 / Cord
Mixed Hardwood	116 Cords	\$ 7.85 / Cord
Mixed Spruce	261 Cords	\$ 7.75 / Cord
Paper Birch	125 Cords	\$ 3.30 / Cord
Red Pine	7 Cords	\$ 44.70 / Cord
White Pine	380 Cords	\$ 9.85 / Cord

* The total volume is statistically estimated within plus (+) or minus (-) 17.59 percent. There are an estimated 1,141 cords on this timber sale, plus or minus 201 cords at the 95% confidence level. The estimated units are final and not subject to adjustment. Prospective bidders are urged to examine this timber and to make their own estimates of quantity and quality.

BOND AND PAYMENT SCHEDULE:

1. A bond in the amount of \$951.00 to insure faithful performance of the conditions of the contract will be deposited by the successful bidder within 21 days of the sale award.
2. Cutting in any sale or unit without the required advance payment would be considered a trespass.
3. Total payment must be paid in advance or according to the following schedule :
 - (a) Ten percent (10%) of the sale value must be paid within 21 days of the sale award.
 - (b) The 10% down payment will be credited towards the first unit cut.
 - (c) Payment for each of the following units must be made before cutting begins in that unit:

PAYMENT UNIT NUMBER	PERCENT OF TOTAL SALE VALUE
01	16.0%
02	29.7%
03	20.3%
04	34.0%
4. If no cutting takes place, the 10% down payment will not be refunded.
5. Operations on the contract issued will terminate on 06/30/2029.

SALE STATISTICS

Volumes were calculated in cubic feet using the Michigan taper model. Cubic foot volume includes all wood inside bark for the product indicated. For display purposes, cubic feet were converted to cords and MBF using a simple conversion factor, e.g. 79 cubic feet per cord and 185 cubic feet per MBF. The cubic foot volumes are precise; the cords and MBF volumes are not. Cubic foot volume cannot be directly converted to cords or boards with precision.

SALE VOLUMES

The total estimated sale volume may not equal the sum of the species/products due to the nature of statistical calculations associated with double sampling methodology.

VOLUME		STATISTICAL RANGE IN CORDS		
TOTAL CUBIC FEET	TOTAL CORDS	PERCENT ERROR	MINIMUM	MAXIMUM
90,122	1,141	17.59%	940	1,342

VDU VOLUMES

A VDU is a Volume Determination Unit. Volumes and their associated statistics are calculated at the VDU level and summarized to the sale level. There is often a one to one relationship between a VDU and a Payment Unit, but not always, depending on the cruise design. Refer to the VDU TO PAYMENT UNIT table.

VDU	VOLUME		PERCENT ERROR	RANGE IN CORDS	
	TOTAL CUBIC FEET	TOTAL CORDS		MINIMUM	MAXIMUM
49	25,280	320	32.07%	217	423
751	17,014	215	43.63%	121	309
752	25,559	324	33.07%	217	431
753	22,270	282	38.82%	172	391
TOTAL:	90,122	1,141		728	1,554

VDU TO PAYMENT UNIT

When a VDU is associated with more than one Payment Unit (PU), the VDU volumes are assigned to the PU based on acres of the VDU within the PU.

VDU	VDU ACRES	PU	PU ACRES
49	20.2	4	20.2
751	10.4	1	10.4
752	15.0	2	15.0
753	17.8	3	17.8
TOTAL:	63.4		63.4

DESCRIPTION OF TIMBER BY PAYMENT UNIT (PU)

PU	MARKET GROUP	PRODUCT	QUANTITY	UNIT	ACRES	ADVERTISE PRICE
1	Balsam Fir	Pulpwood	8	Cords	10.4	\$1,520.15
	Mixed Aspen		12	Cords		
	<i>B. T. Aspen</i>		6	<i>Cords</i>		
	<i>Quaking Aspen</i>		6	<i>Cords</i>		
	Mixed Hardwood		27	Cords		
	<i>Red Maple</i>		27	<i>Cords</i>		
	Mixed Spruce		106	Cords		
	<i>Black Spruce</i>		100	<i>Cords</i>		
	<i>White Spruce</i>		6	<i>Cords</i>		
	Paper Birch		50	Cords		
	White Pine		14	Cords		
2	Red Maple	Sawtimber	0.9	MBF	15.0	\$2,827.50
	Balsam Fir	Pulpwood	49	Cords		
	Mixed Aspen		74	Cords		
	<i>Quaking Aspen</i>		74	<i>Cords</i>		
	Mixed Hardwood		61	Cords		
	<i>Red Maple</i>		61	<i>Cords</i>		
	Mixed Spruce		71	Cords		
	<i>Black Spruce</i>		7	<i>Cords</i>		
	<i>White Spruce</i>		64	<i>Cords</i>		
	Paper Birch		6	Cords		
	White Pine		60	Cords		
3	Balsam Fir		Pulpwood	66	Cords	17.8
	Mixed Aspen	29		Cords		
	<i>Quaking Aspen</i>	29		<i>Cords</i>		
	Mixed Hardwood	28		Cords		
	<i>Red Maple</i>	28		<i>Cords</i>		
	Mixed Spruce	51		Cords		
	<i>Black Spruce</i>	3		<i>Cords</i>		
	<i>White Spruce</i>	48		<i>Cords</i>		
	Paper Birch	65		Cords		
	White Pine	43		Cords		
4	Balsam Fir	Pulpwood	13	Cords	20.2	\$3,236.10
	Mixed Spruce		33	Cords		
	<i>Black Spruce</i>		4	<i>Cords</i>		
	<i>White Spruce</i>		29	<i>Cords</i>		
	Paper Birch		4	Cords		
	Red Pine		7	Cords		
	White Pine		263	Cords		
TOTAL:			0.9	MBF		
TOTAL:			1,140	Cords		

Sale Specific Conditions & Requirements

Sale Name: On The Side

Sale Number: 45-118-22 Seq#: 4

1 - Sale Area

1.2 - Boundaries

1.2.1 - Painted Boundaries (9/19)

The sale boundary and Payment Unit boundaries are marked and identified by red paint. Exterior sale boundary lines against state are marked with red paint. The painted boundary line trees are not Included Timber and are to be protected.

2 - Timber Specifications

2.1 - Included Timber

2.1.1 - Clearcut Unit(s) with Unmerchantable Trees (6/14)

Within Payment Unit(s) 1-3, cut all deciduous trees that are two (2) inches or more at DBH and all conifer trees that are four (4) inches or more at DBH, except do not cut any cedar or hemlock. In addition, do not cut any white pine that are 16 inches or more at DBH.

2.1.7 - Leave Tree Marked Unit(s) (6/14)

Within Payment Unit(s) 4, cut all trees that are two (2) inches or more at DBH, except do not cut trees marked with green paint above and below stump height.

4 - Transportation

4.1 - Construction

4.1.3 - Slash and Earthen Piles (8/04)

Piles or windrows of earth along roads and landings that have been widened or constructed shall be leveled. Slash from road maintenance or construction, including stumps, shall be dispersed throughout the sale.

4.1.6 - Road construction (1/09)

Construction of new roads or improvements of existing roads shall be done in such a way as to minimize the environmental and visual impacts. Merchantable trees shall be cut and utilized unless otherwise directed. Non-merchantable trees shall be severed and laid flat on the ground. Slash shall be scattered, and not left in windrows and kept a minimum of 10 feet back from the road edge. Stumps shall be set upright, not left on edge, and be moved at least 10 feet away from the road edge. Disturbed soil shall be feathered into the woods and not left in berms or windrows.

4.1.7 - Road Closure (10/11)

All new roads built into the sale must be blocked to vehicle traffic upon completion of the sale. Overgrown roads that are reopened shall be considered new roads. In general, this will require constructing double earthen berms at strategic locations. These roads must be rendered impassable to cars and trucks. Temporary berms may be required if no sale activity occurs for 30 or more consecutive days. Contact the Sale Administrator for specific details of design and placement.

4.2 - Maintenance

4.2.3 - Road maintenance (8/13)

The following road maintenance may be required: Within 60 days of completion of hauling, or if no hauling occurs for 60 days, the road must be maintained and graded. This includes cleaning of drainage areas, grading, crowning and filling with gravel, if necessary. Damages may be assessed if grading/repair does not occur.

4.2.5 - Two Wheel Drive Condition (2/04)

All existing trail roads on and adjacent to the Sale Area must be passable by two-wheel drive traffic for the duration of the sale.

5 - Operations

5.2 - Conduct of Operations

5.2.2 - Hazard Trees/Snags

5.2.2.1 - Den Trees (10/16)

Obvious hollow and/or den trees shall be protected and left standing unless they are a safety hazard.

5.2.3 - Operating Restrictions

5.2.3.1 - Operating Restrictions (9/11)

Within Payment Unit(s) 1-3, unless changed by written agreement, cutting, skidding, and hauling are limited to the period of Dec. 1 to March 31. This restriction is because of wet soil conditions and for winter deer browse.

5.2.32 - Decking/Landing Restoration (9/13)

All decking and landing areas must have the surface area restored to a condition equal to or better than before. This is to ensure the proper regeneration of the stand. Wood debris, chips and "cookies" from trimmings must be removed or scattered away from landing and loading areas and may not be windrowed on the edge.

5.2.38 - No Decking Against Live Trees (2/04)

Cut products may not be decked against unmarked or designated leave trees.

5.2.39 - ORV Trail/Route Protection (4/18)

"A route" is an ORV trail or route and is shown on the Timber Sale Map. Do not damage posts with yellow ORV markers. All stumps within 5 feet of the trail must be cut flush with the ground. Maintain a 20-foot-wide slash, debris, and rut free zone daily using the ORV trail or route as the centerline. No decking along trail or route.

5.2.41 - Snowmobile Trail Protection (9/11)

"A route" is a snowmobile trail and is shown on the Timber Sale Map. Do not cut or damage posts with orange trail markers or traffic control signs. If the trail is used, it must be maintained and restored to a condition equal to or better than before the sale. The road maintenance/restoration must be done prior to December 1. If the trail is used for hauling, it must be graded to the satisfaction of the Unit Manager or his/her representative prior to December 1. If the trail road is to be used for hauling during the snowmobile season, then a snow-covered base must be left on the trail. Maintain a 20-foot-wide slash, debris, and rut free zone daily using the snowmobile trail as the centerline. No decking of forest products will be permitted along the snowmobile trail.

5.8 - Protection of Endangered Species

5.8.5 - Protection of Raptor Nests (3/13)

All trees with raptor nests will be protected if found during harvesting operations. Notification will be made to the Unit Manager or his/her representative who will notify the Wildlife Biologist so an onsite evaluation and recommendation can be made, if necessary.

6 - Safety and Fire Prevention

6.2 - Signing

6.2.1 - Road Posting (10/20)

The Purchaser is responsible for posting and maintaining caution signs on Cut River Trail and/or Prout Rd (whichever is used for hauling) prior to beginning operations. The road must be posted at appropriate distances from the Sale Area to warn of logging activity and truck traffic. Signs must be removed when harvest operations are suspended or completed. The Purchaser will provide these signs.

6.2.2 - Snowmobile Trail Posting (10/20)

The Purchaser is responsible for posting and maintaining caution signs on "A route" prior to beginning operations during the snowmobile season (approximately December 1 to March 31). The trail must be posted at appropriate distances from the Sale Area to warn of logging activity and truck traffic. Signs must be removed when harvest operations are suspended or completed. The Purchaser will provide these signs.

6.2.3 - Recreational Trail Posting (10/20)

The Purchaser is responsible for posting and maintaining caution signs on "A route" prior to beginning operations. The trail must be posted at appropriate distances from the Sale Area to warn of logging activity and truck traffic at both ends of the trail. Signs must be removed when harvest operations are suspended or completed. The Purchaser will provide these signs.



TIMBER SALE MAP

This information provided by authority of Part 525, 1994 PA 451, as amended.

Sale Number 45-118-22	Date 02/07/2025
Scale 1:15,840	Page 1
	Of 1

Forest Management Unit Sault Ste Marie Mgt Unit	County Mackinac	Mapped By: Cody Flatt
		Cruised By: DNR Staff

Township 42N / 43N	Range 06W	Section(s) and Subdivision(s) Sec. 31 S1/2SW,SWSE; Sec. 6 N1/2NW,SE,SW,NWNE,NESW,NWSE;
-----------------------	--------------	--

Cover Type			
A = Aspen	J = Jack Pine	O = Oak	U = Upland Brush
B = Paper Birch	K = Rock	P = Lowland Poplar	UM = Upland Mix Forest
C = Cedar	L = Lowland Brush	Q = Mixed Swamp Conifer	V = Bog or Marsh
D = Treed Bog	LM = Lowland Mix Forest	R = Red Pine	W = White Pine
E = Swamp Hardwoods	M = Maple, Beech, Birch	S = Black Spruce	X = Non Stocked
F = Spruce/Fir	MC = Mixed Conifer	T = Tamarack	Y = Sand
G = Grass	MD = Mixed Deciduous	Z = Water	
H = Hemlock	N = Marsh		

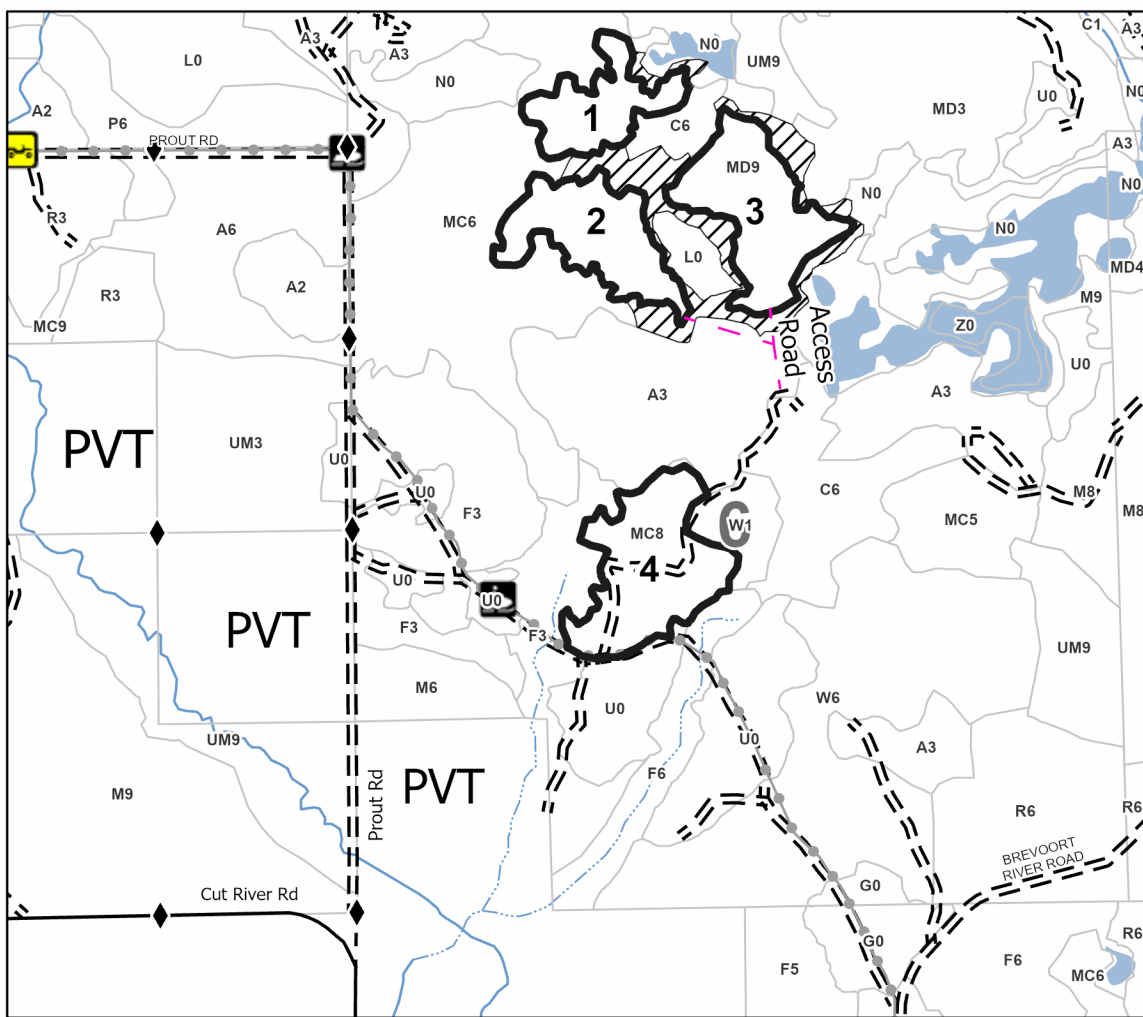
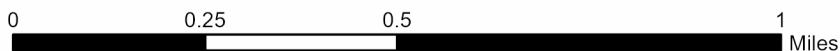
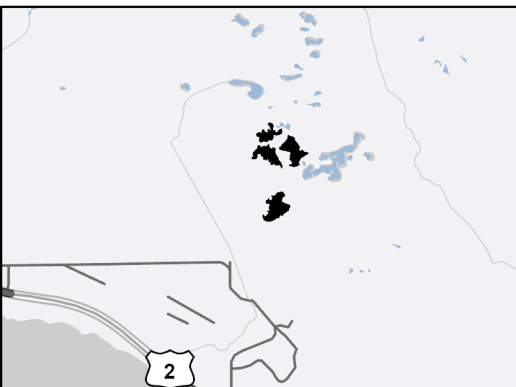
Density	
0 = Non Stocked	5 = Pole Timber Medium
1 = Seedling Sapling Poor	6 = Pole Timber Well
2 = Seedling Sapling Medium	7 = Saw Timber Poor
3 = Seedling Sapling Well	8 = Saw Timber Medium
4 = Pole Timber Poor	9 = Saw Timber Well

Payment Unit Number	Acres
1	10.4
2	15
3	17.9
4	20.2

On The Side

63.4 Acres

Locator Map 1:100,000



Legend

- Against State (Red)
- Temporary Access Road
- Forest Access Route
- Paved Road
- Private Gravel/Dirt
- Recreational Trails
- Intermittent Stream
- Perennial River
- ORV Route
- Snowmobile
- Field Grade Corner

Use QR Code to open Map in App



Baja Red Pine (45-113-24)
T43N, R06W, SEC. 26; T43N, R06W, SEC. 35; T43N, R06W, SEC. 36; Mackinac

In response to the notice of sale to be held 3:00 p.m. (local time) on April 8, 2025, I am hereby submitting my sealed bid (firm offer) for the following forest products to be cut. Bids for individual species must be at or above the advertised price. All non-responsive bid forms may be rejected.

<u>PRODUCTS & SPECIES</u>	<u>ESTIMATED VOLUME*</u>	<u>ADVERTISED PRICE</u>	<u>BID PRICE/UNIT</u>
Pulpwood			
Balsam Fir	6 Cords	\$ 10.50/Cord	\$ _____
Jack Pine	13 Cords	\$ 30.40/Cord	\$ _____
Mixed Hardwood	16 Cords	\$ 16.80/Cord	\$ _____
Mixed Spruce	9 Cords	\$ 16.65/Cord	\$ _____
Red Pine	5,865 Cords	\$ 95.80/Cord	\$ _____
White Pine	20 Cords	\$ 21.10/Cord	\$ _____

*The volumes are statistically estimated within plus (+) or minus (-) 6.48 percent at 95% confidence level. These estimated volumes are final and not subject to adjustment. Prospective bidders are urged to examine this timber and to make their own estimates of quantity and quality.

I understand that any or all bids may be rejected. All bids must be signed and all bid items must be bid or the bid form may be rejected. I also understand that consideration and awarding a contract will be based upon my past performance and ability to complete the contract based upon equipment and staffing subject to my control.

FEDERAL ID: ____ - ____ - ____ or SOCIAL SECURITY NUMBER: ____ - ____ - ____

Company or individual bidding: _____

Company representative's name: _____

Address: _____

City: _____ State: _____ Zip: _____

IF AVAILABLE, PLEASE PLACE THE PERSONALIZED LABEL FROM YOUR PROSPECTUS IN THE ABOVE BOX.

Individual or company representative's signature: _____ Date: _____

Phone number : _____ Email (optional): _____

THE WINNING BIDDER MUST COMPLETE THE VERIFICATION OF WORKER'S DISABILITY COMPENSATION ACT COMPLIANCE (ON REVERSE SIDE IF DOUBLE SIDED) WITHIN 21 DAYS OF SALE AWARD DATE



FOR DEPARTMENT USE ONLY	
Sale Number (XX - XXX - XX - XX)	
Forest Management Unit:	

TIMBER SALE VERIFICATION OF WORKER'S DISABILITY COMPENSATION ACT COMPLIANCE

As required by Act 317, P.A. 1969 (Worker's Compensation) and
Part 5 of Act 451 of 1994, as amended.

VERIFICATION OF WORKER'S DISABILITY COMPENSATION ACT COMPLIANCE

- This verification must be completed and submitted within 21 days of contract award and prior to the issuance of the timber sale contract.
- In addition, if boxes 2B or 2C are checked, then Notice of Exclusion or Certificate of Insurance must be submitted within twenty-one (21) days of the contract award and prior to the issuance of the timber sale contract.
- All information must be typed or printed except for written signatures.

Please Check Appropriate Categories:

1. My business is organized as (you **must** check one of the boxes below):
 - A. Sole Proprietorship (individual)
 - B. Partnership
 - C. Corporation
2. You **must** check one of the boxes below:
 - A. I certify my business is a sole proprietorship and it has no employees but the sole proprietor. I am not subject to the Worker's Compensation Laws.
 - B. I certify my business has satisfied its obligation to the Worker's Compensation Act through the use of an approved Notice of Exclusion (BWC-337, Rev. 5/96). I will provide a copy of the Notice of Exclusion within 21 days of the contract award. (For questions or a copy of the BWC-337, please call the Worker's Compensation Bureau at 517-322-1195).
 - C. I certify my business has a Worker's Compensation Policy. I will provide an original Certificate of Insurance within twenty-one (21) days of the contract award.
3. If you have checked item 2(A) or 2(B), you **must** indicate the number of **both** full-time and part-time employees, other than yourself, including family members and active partners (if none, you must enter "0").

_____ Full-time Employees

_____ Part-time Employees

Name of Business		Federal ID (or) Social Security No.	
Address		Telephone ()	
City	State	ZIP	

I hereby certify that the above information is true and correct. I agree to notify the Michigan DNR of any changes that occur in factors affecting my coverage during any of my present and future operations.

Signature of Owner or Authorized Representative

Title

Date

Please complete the "SEALED BID" information on the next page

Mega Pint Mix (45-107-24)

T43N, R06W, SEC. 10; T43N, R06W, SEC. 11; T43N, R06W, SEC. 2; Mackinac

In response to the notice of sale to be held 3:00 p.m. (local time) on April 8, 2025, I am hereby submitting my sealed bid (firm offer) for the following forest products to be cut. Bids for individual species must be at or above the advertised price. All non-responsive bid forms may be rejected.

<u>PRODUCTS & SPECIES</u>	<u>ESTIMATED VOLUME*</u>	<u>ADVERTISED PRICE</u>	<u>BID PRICE/UNIT</u>
Sawtimber			
Red Maple	12.5 MBF	\$ 89.00/MBF	\$ _____
Pulpwood			
Balsam Fir	303 Cords	\$ 7.00/Cord	\$ _____
Jack Pine	65 Cords	\$ 20.25/Cord	\$ _____
Misc. Species 1	2.4 Acres	\$ 8.00/Acres	\$ _____
Mixed Aspen	259 Cords	\$ 17.20/Cord	\$ _____
Mixed Hardwood	544 Cords	\$ 11.20/Cord	\$ _____
Mixed Spruce	501 Cords	\$ 11.10/Cord	\$ _____
N. White Cedar	259 Cords	\$ 3.15/Cord	\$ _____
Paper Birch	177 Cords	\$ 4.70/Cord	\$ _____
Red Pine	49 Cords	\$ 63.85/Cord	\$ _____
Tamarack	76 Cords	\$ 2.70/Cord	\$ _____
White Pine	247 Cords	\$ 14.05/Cord	\$ _____

*The volumes are statistically estimated within plus (+) or minus (-) 26.72 percent at 95% confidence level. These estimated volumes are final and not subject to adjustment. Prospective bidders are urged to examine this timber and to make their own estimates of quantity and quality.

I understand that any or all bids may be rejected. All bids must be signed and all bid items must be bid or the bid form may be rejected. I also understand that consideration and awarding a contract will be based upon my past performance and ability to complete the contract based upon equipment and staffing subject to my control.

FEDERAL ID: ____ - ____ - ____ or SOCIAL SECURITY NUMBER: ____ - ____ - ____

Company or individual bidding: _____

Company representative's name: _____

Address: _____

City: _____ State: _____ Zip: _____

IF AVAILABLE, PLEASE PLACE THE PERSONALIZED LABEL FROM YOUR PROSPECTUS IN THE ABOVE BOX.

Individual or company representative's signature: _____ Date: _____

Phone number : _____ Email (optional): _____

THE WINNING BIDDER MUST COMPLETE THE VERIFICATION OF WORKER'S DISABILITY COMPENSATION ACT COMPLIANCE (ON REVERSE SIDE IF DOUBLE SIDED) WITHIN 21 DAYS OF SALE AWARD DATE



FOR DEPARTMENT USE ONLY	
Sale Number (XX - XXX - XX - XX)	
Forest Management Unit:	

TIMBER SALE VERIFICATION OF WORKER'S DISABILITY COMPENSATION ACT COMPLIANCE

As required by Act 317, P.A. 1969 (Worker's Compensation) and
Part 5 of Act 451 of 1994, as amended.

VERIFICATION OF WORKER'S DISABILITY COMPENSATION ACT COMPLIANCE

- This verification must be completed and submitted within 21 days of contract award and prior to the issuance of the timber sale contract.
- In addition, if boxes 2B or 2C are checked, then Notice of Exclusion or Certificate of Insurance must be submitted within twenty-one (21) days of the contract award and prior to the issuance of the timber sale contract.
- All information must be typed or printed except for written signatures.

Please Check Appropriate Categories:

1. My business is organized as (you **must** check one of the boxes below):
 - A. Sole Proprietorship (individual)
 - B. Partnership
 - C. Corporation
2. You **must** check one of the boxes below:
 - A. I certify my business is a sole proprietorship and it has no employees but the sole proprietor. I am not subject to the Worker's Compensation Laws.
 - B. I certify my business has satisfied its obligation to the Worker's Compensation Act through the use of an approved Notice of Exclusion (BWC-337, Rev. 5/96). I will provide a copy of the Notice of Exclusion within 21 days of the contract award. (For questions or a copy of the BWC-337, please call the Worker's Compensation Bureau at 517-322-1195).
 - C. I certify my business has a Worker's Compensation Policy. I will provide an original Certificate of Insurance within twenty-one (21) days of the contract award.
3. If you have checked item 2(A) or 2(B), you **must** indicate the number of **both** full-time and part-time employees, other than yourself, including family members and active partners (if none, you must enter "0").

_____ Full-time Employees

_____ Part-time Employees

Name of Business		Federal ID (or) Social Security No.	
Address		Telephone ()	
City	State	ZIP	

I hereby certify that the above information is true and correct. I agree to notify the Michigan DNR of any changes that occur in factors affecting my coverage during any of my present and future operations.

Signature of Owner or Authorized Representative

Title

Date

Please complete the "SEALED BID" information on the next page

On The Side (45-118-22)
T42N, R06W, SEC. 6; T43N, R06W, SEC. 31; Mackinac COUNTY

In response to the notice of sale to be held 3:00 p.m. (local time) on April 8, 2025, I am hereby submitting my sealed bid (firm offer) for the following forest products to be cut. Bids for individual species must be at or above the advertised price. All non-responsive bid forms may be rejected.

<u>PRODUCTS & SPECIES</u>	<u>ESTIMATED VOLUME*</u>	<u>ADVERTISED PRICE</u>	<u>BID PRICE/UNIT</u>
Sawtimber			
Red Maple	0.9 MBF	\$ 62.00/MBF	\$ _____
Pulpwood			
Balsam Fir	136 Cords	\$ 4.90/Cord	\$ _____
Mixed Aspen	115 Cords	\$ 12.05/Cord	\$ _____
Mixed Hardwood	116 Cords	\$ 7.85/Cord	\$ _____
Mixed Spruce	261 Cords	\$ 7.75/Cord	\$ _____
Paper Birch	125 Cords	\$ 3.30/Cord	\$ _____
Red Pine	7 Cords	\$ 44.70/Cord	\$ _____
White Pine	380 Cords	\$ 9.85/Cord	\$ _____

*The volumes are statistically estimated within plus (+) or minus (-) 17.59 percent at 95% confidence level. These estimated volumes are final and not subject to adjustment. Prospective bidders are urged to examine this timber and to make their own estimates of quantity and quality.

I understand that any or all bids may be rejected. All bids must be signed and all bid items must be bid or the bid form may be rejected. I also understand that consideration and awarding a contract will be based upon my past performance and ability to complete the contract based upon equipment and staffing subject to my control.

FEDERAL ID: ____ - ____ - ____ or SOCIAL SECURITY NUMBER: ____ - ____ - ____

Company or individual bidding: _____

Company representative's name: _____

Address: _____

City: _____ State: _____ Zip: _____

IF AVAILABLE, PLEASE PLACE THE PERSONALIZED LABEL FROM YOUR PROSPECTUS IN THE ABOVE BOX.

Individual or company representative's signature: _____ Date: _____

Phone number : _____ Email (optional): _____

THE WINNING BIDDER MUST COMPLETE THE VERIFICATION OF WORKER'S DISABILITY COMPENSATION ACT COMPLIANCE (ON REVERSE SIDE IF DOUBLE SIDED) WITHIN 21 DAYS OF SALE AWARD DATE



FOR DEPARTMENT USE ONLY
Sale Number (XX - XXX - XX - XX)
Forest Management Unit:

TIMBER SALE VERIFICATION OF WORKER'S DISABILITY COMPENSATION ACT COMPLIANCE

*As required by Act 317, P.A. 1969 (Worker's Compensation) and
Part 5 of Act 451 of 1994, as amended.*

VERIFICATION OF WORKER'S DISABILITY COMPENSATION ACT COMPLIANCE

- This verification must be completed and submitted within 21 days of contract award and prior to the issuance of the timber sale contract.
- In addition, if boxes 2B or 2C are checked, then Notice of Exclusion or Certificate of Insurance must be submitted within twenty-one (21) days of the contract award and prior to the issuance of the timber sale contract.
- All information must be typed or printed except for written signatures.

Please Check Appropriate Categories:

1. My business is organized as (you **must** check one of the boxes below):
 - A. Sole Proprietorship (individual)
 - B. Partnership
 - C. Corporation
2. You **must** check one of the boxes below:
 - A. I certify my business is a sole proprietorship and it has no employees but the sole proprietor. I am not subject to the Worker's Compensation Laws.
 - B. I certify my business has satisfied its obligation to the Worker's Compensation Act through the use of an approved Notice of Exclusion (BWC-337, Rev. 5/96). I will provide a copy of the Notice of Exclusion within 21 days of the contract award. (For questions or a copy of the BWC-337, please call the Worker's Compensation Bureau at 517-322-1195).
 - C. I certify my business has a Worker's Compensation Policy. I will provide an original Certificate of Insurance within twenty-one (21) days of the contract award.
3. If you have checked item 2(A) or 2(B), you **must** indicate the number of **both** full-time and part-time employees, other than yourself, including family members and active partners (if none, you must enter "0").

_____ Full-time Employees

_____ Part-time Employees

Name of Business		Federal ID (or) Social Security No.	
Address		Telephone ()	
City	State	ZIP	

I hereby certify that the above information is true and correct. I agree to notify the Michigan DNR of any changes that occur in factors affecting my coverage during any of my present and future operations.

Signature of Owner or Authorized Representative

Title

Date

Please complete the "SEALED BID" information on the next page

Walkie Talkie Mix (45-111-24)

T43N, R06W, SEC. 5; T44N, R06W, SEC. 28; T44N, R06W, SEC. 29; T44N, R06W,

In response to the notice of sale to be held 3:00 p.m. (local time) on April 8, 2025, I am hereby submitting my sealed bid (firm offer) for the following forest products to be cut. Bids for individual species must be at or above the advertised price. All non-responsive bid forms may be rejected.

<u>PRODUCTS & SPECIES</u>	<u>ESTIMATED VOLUME*</u>	<u>ADVERTISED PRICE</u>	<u>BID PRICE/UNIT</u>
Sawtimber			
Red Maple	4.3 MBF	\$ 89.00/MBF	\$ _____
Sugar Maple	32.9 MBF	\$ 223.00/MBF	\$ _____
Pulpwood			
Balsam Fir	325 Cords	\$ 7.00/Cord	\$ _____
Misc. Species 1	14.1 Acres	\$ 25.00/Acres	\$ _____
Mixed Aspen	379 Cords	\$ 17.20/Cord	\$ _____
Mixed Hardwood	632 Cords	\$ 11.20/Cord	\$ _____
Paper Birch	83 Cords	\$ 4.70/Cord	\$ _____
Tamarack	8 Cords	\$ 2.70/Cord	\$ _____
White Spruce	122 Cords	\$ 11.10/Cord	\$ _____

*The volumes are statistically estimated within plus (+) or minus (-) 13.62 percent at 95% confidence level. These estimated volumes are final and not subject to adjustment. Prospective bidders are urged to examine this timber and to make their own estimates of quantity and quality.

I understand that any or all bids may be rejected. All bids must be signed and all bid items must be bid or the bid form may be rejected. I also understand that consideration and awarding a contract will be based upon my past performance and ability to complete the contract based upon equipment and staffing subject to my control.

FEDERAL ID: ____ - ____ - ____ or SOCIAL SECURITY NUMBER: ____ - ____ - ____

Company or individual bidding: _____

Company representative's name: _____

Address: _____

City: _____ State: _____ Zip: _____

IF AVAILABLE, PLEASE PLACE THE PERSONALIZED LABEL FROM YOUR PROSPECTUS IN THE ABOVE BOX.

Individual or company representative's signature: _____ Date: _____

Phone number : _____ Email (optional): _____

THE WINNING BIDDER MUST COMPLETE THE VERIFICATION OF WORKER'S DISABILITY COMPENSATION ACT COMPLIANCE (ON REVERSE SIDE IF DOUBLE SIDED) WITHIN 21 DAYS OF SALE AWARD DATE



FOR DEPARTMENT USE ONLY	
Sale Number (XX - XXX - XX - XX)	
Forest Management Unit:	

TIMBER SALE VERIFICATION OF WORKER'S DISABILITY COMPENSATION ACT COMPLIANCE

As required by Act 317, P.A. 1969 (Worker's Compensation) and
Part 5 of Act 451 of 1994, as amended.

VERIFICATION OF WORKER'S DISABILITY COMPENSATION ACT COMPLIANCE

- This verification must be completed and submitted within 21 days of contract award and prior to the issuance of the timber sale contract.
- In addition, if boxes 2B or 2C are checked, then Notice of Exclusion or Certificate of Insurance must be submitted within twenty-one (21) days of the contract award and prior to the issuance of the timber sale contract.
- All information must be typed or printed except for written signatures.

Please Check Appropriate Categories:

1. My business is organized as (you **must** check one of the boxes below):
 - A. Sole Proprietorship (individual)
 - B. Partnership
 - C. Corporation
2. You **must** check one of the boxes below:
 - A. I certify my business is a sole proprietorship and it has no employees but the sole proprietor. I am not subject to the Worker's Compensation Laws.
 - B. I certify my business has satisfied its obligation to the Worker's Compensation Act through the use of an approved Notice of Exclusion (BWC-337, Rev. 5/96). I will provide a copy of the Notice of Exclusion within 21 days of the contract award. (For questions or a copy of the BWC-337, please call the Worker's Compensation Bureau at 517-322-1195).
 - C. I certify my business has a Worker's Compensation Policy. I will provide an original Certificate of Insurance within twenty-one (21) days of the contract award.
3. If you have checked item 2(A) or 2(B), you **must** indicate the number of **both** full-time and part-time employees, other than yourself, including family members and active partners (if none, you must enter "0").

_____ Full-time Employees

_____ Part-time Employees

Name of Business		Federal ID (or) Social Security No.	
Address		Telephone ()	
City	State	ZIP	

I hereby certify that the above information is true and correct. I agree to notify the Michigan DNR of any changes that occur in factors affecting my coverage during any of my present and future operations.

Signature of Owner or Authorized Representative

Title

Date

Please complete the "SEALED BID" information on the next page

Big Thunder Pine (45-110-24)
T43N, R06W, SEC. 1; T43N, R06W, SEC. 12; Mackinac COUNTY

In response to the notice of sale to be held 3:00 p.m. (local time) on April 8, 2025, I am hereby submitting my sealed bid (firm offer) for the following forest products to be cut. Bids for individual species must be at or above the advertised price. All non-responsive bid forms may be rejected.

<u>PRODUCTS & SPECIES</u>	<u>ESTIMATED VOLUME*</u>	<u>ADVERTISED PRICE</u>	<u>BID PRICE/UNIT</u>
Sawtimber			
Paper Birch	1.0 MBF	\$ 45.00/MBF	\$ _____
Pulpwood			
Balsam Fir	156 Cords	\$ 10.50/Cord	\$ _____
Jack Pine	261 Cords	\$ 30.40/Cord	\$ _____
Mixed Aspen	213 Cords	\$ 25.85/Cord	\$ _____
Mixed Hardwood	39 Cords	\$ 16.80/Cord	\$ _____
Mixed Spruce	338 Cords	\$ 16.65/Cord	\$ _____
Paper Birch	45 Cords	\$ 7.00/Cord	\$ _____
Red Pine	60 Cords	\$ 95.80/Cord	\$ _____
White Pine	55 Cords	\$ 21.10/Cord	\$ _____

*The volumes are statistically estimated within plus (+) or minus (-) 21.72 percent at 95% confidence level. These estimated volumes are final and not subject to adjustment. Prospective bidders are urged to examine this timber and to make their own estimates of quantity and quality.

I understand that any or all bids may be rejected. All bids must be signed and all bid items must be bid or the bid form may be rejected. I also understand that consideration and awarding a contract will be based upon my past performance and ability to complete the contract based upon equipment and staffing subject to my control.

FEDERAL ID: ____ - ____ - ____ or SOCIAL SECURITY NUMBER: ____ - ____ - ____

Company or individual bidding: _____

Company representative's name: _____

Address: _____

City: _____ State: _____ Zip: _____

IF AVAILABLE, PLEASE PLACE THE PERSONALIZED LABEL FROM YOUR PROSPECTUS IN THE ABOVE BOX.

Individual or company representative's signature: _____ Date: _____

Phone number : _____ Email (optional): _____

THE WINNING BIDDER MUST COMPLETE THE VERIFICATION OF WORKER'S DISABILITY COMPENSATION ACT COMPLIANCE (ON REVERSE SIDE IF DOUBLE SIDED) WITHIN 21 DAYS OF SALE AWARD DATE



FOR DEPARTMENT USE ONLY	
Sale Number (XX - XXX - XX - XX)	
Forest Management Unit:	

TIMBER SALE VERIFICATION OF WORKER'S DISABILITY COMPENSATION ACT COMPLIANCE

As required by Act 317, P.A. 1969 (Worker's Compensation) and
Part 5 of Act 451 of 1994, as amended.

VERIFICATION OF WORKER'S DISABILITY COMPENSATION ACT COMPLIANCE

- This verification must be completed and submitted within 21 days of contract award and prior to the issuance of the timber sale contract.
- In addition, if boxes 2B or 2C are checked, then Notice of Exclusion or Certificate of Insurance must be submitted within twenty-one (21) days of the contract award and prior to the issuance of the timber sale contract.
- All information must be typed or printed except for written signatures.

Please Check Appropriate Categories:

1. My business is organized as (you **must** check one of the boxes below):
 - A. Sole Proprietorship (individual)
 - B. Partnership
 - C. Corporation
2. You **must** check one of the boxes below:
 - A. I certify my business is a sole proprietorship and it has no employees but the sole proprietor. I am not subject to the Worker's Compensation Laws.
 - B. I certify my business has satisfied its obligation to the Worker's Compensation Act through the use of an approved Notice of Exclusion (BWC-337, Rev. 5/96). I will provide a copy of the Notice of Exclusion within 21 days of the contract award. (For questions or a copy of the BWC-337, please call the Worker's Compensation Bureau at 517-322-1195).
 - C. I certify my business has a Worker's Compensation Policy. I will provide an original Certificate of Insurance within twenty-one (21) days of the contract award.
3. If you have checked item 2(A) or 2(B), you **must** indicate the number of **both** full-time and part-time employees, other than yourself, including family members and active partners (if none, you must enter "0").

_____ Full-time Employees

_____ Part-time Employees

Name of Business		Federal ID (or) Social Security No.	
Address		Telephone ()	
City	State	ZIP	

I hereby certify that the above information is true and correct. I agree to notify the Michigan DNR of any changes that occur in factors affecting my coverage during any of my present and future operations.

Signature of Owner or Authorized Representative

Title

Date

Please complete the "SEALED BID" information on the next page

Broken Bridge Mix (45-112-24)

T43N, R06W, SEC. 26; T43N, R06W, SEC. 34; T43N, R06W, SEC. 35; Mackinac

In response to the notice of sale to be held 3:00 p.m. (local time) on April 8, 2025, I am hereby submitting my sealed bid (firm offer) for the following forest products to be cut. Bids for individual species must be at or above the advertised price. All non-responsive bid forms may be rejected.

<u>PRODUCTS & SPECIES</u>	<u>ESTIMATED VOLUME*</u>	<u>ADVERTISED PRICE</u>	<u>BID PRICE/UNIT</u>
Sawtimber			
Paper Birch	3.4 MBF	\$ 30.00/MBF	\$ _____
Red Maple	4.0 MBF	\$ 89.00/MBF	\$ _____
Pulpwood			
Balsam Fir	40 Cords	\$ 7.00/Cord	\$ _____
Black Spruce	848 Cords	\$ 11.10/Cord	\$ _____
Jack Pine	8 Cords	\$ 20.25/Cord	\$ _____
N. White Cedar	51 Cords	\$ 3.15/Cord	\$ _____
Paper Birch	58 Cords	\$ 4.70/Cord	\$ _____
Red Maple	132 Cords	\$ 11.20/Cord	\$ _____
Red Pine	22 Cords	\$ 63.85/Cord	\$ _____
Tamarack	81 Cords	\$ 2.70/Cord	\$ _____
White Pine	240 Cords	\$ 14.05/Cord	\$ _____

*The volumes are statistically estimated within plus (+) or minus (-) 15.47 percent at 95% confidence level. These estimated volumes are final and not subject to adjustment. Prospective bidders are urged to examine this timber and to make their own estimates of quantity and quality.

I understand that any or all bids may be rejected. All bids must be signed and all bid items must be bid or the bid form may be rejected. I also understand that consideration and awarding a contract will be based upon my past performance and ability to complete the contract based upon equipment and staffing subject to my control.

FEDERAL ID: _____ or SOCIAL SECURITY NUMBER: _____

Company or individual bidding: _____

Company representative's name: _____

Address: _____

City: _____ State: _____ Zip: _____

IF AVAILABLE, PLEASE PLACE THE PERSONALIZED LABEL FROM YOUR PROSPECTUS IN THE ABOVE BOX.

Individual or company representative's signature: _____ Date: _____

Phone number : _____ Email (optional): _____

THE WINNING BIDDER MUST COMPLETE THE VERIFICATION OF WORKER'S DISABILITY COMPENSATION ACT COMPLIANCE (ON REVERSE SIDE IF DOUBLE SIDED) WITHIN 21 DAYS OF SALE AWARD DATE



FOR DEPARTMENT USE ONLY
Sale Number (XX - XXX - XX - XX)
Forest Management Unit:

TIMBER SALE VERIFICATION OF WORKER'S DISABILITY COMPENSATION ACT COMPLIANCE

*As required by Act 317, P.A. 1969 (Worker's Compensation) and
Part 5 of Act 451 of 1994, as amended.*

VERIFICATION OF WORKER'S DISABILITY COMPENSATION ACT COMPLIANCE

- This verification must be completed and submitted within 21 days of contract award and prior to the issuance of the timber sale contract.
- In addition, if boxes 2B or 2C are checked, then Notice of Exclusion or Certificate of Insurance must be submitted within twenty-one (21) days of the contract award and prior to the issuance of the timber sale contract.
- All information must be typed or printed except for written signatures.

Please Check Appropriate Categories:

1. My business is organized as (you **must** check one of the boxes below):
 - A. Sole Proprietorship (individual)
 - B. Partnership
 - C. Corporation
2. You **must** check one of the boxes below:
 - A. I certify my business is a sole proprietorship and it has no employees but the sole proprietor. I am not subject to the Worker's Compensation Laws.
 - B. I certify my business has satisfied its obligation to the Worker's Compensation Act through the use of an approved Notice of Exclusion (BWC-337, Rev. 5/96). I will provide a copy of the Notice of Exclusion within 21 days of the contract award. (For questions or a copy of the BWC-337, please call the Worker's Compensation Bureau at 517-322-1195).
 - C. I certify my business has a Worker's Compensation Policy. I will provide an original Certificate of Insurance within twenty-one (21) days of the contract award.
3. If you have checked item 2(A) or 2(B), you **must** indicate the number of **both** full-time and part-time employees, other than yourself, including family members and active partners (if none, you must enter "0").

_____ Full-time Employees

_____ Part-time Employees

Name of Business		Federal ID (or) Social Security No.	
Address		Telephone ()	
City	State	ZIP	

I hereby certify that the above information is true and correct. I agree to notify the Michigan DNR of any changes that occur in factors affecting my coverage during any of my present and future operations.

Signature of Owner or Authorized Representative

Title

Date

Please complete the "SEALED BID" information on the next page