



**DEPARTMENT OF NATURAL RESOURCES
STATE OF MICHIGAN
TIMBER SALE PROSPECTUS #7555**

SCHEDULED SALE DATE AND TIME: 3:00 p.m. (local time) on January 16, 2025.

LOCATION: NEWBERRY MGMT UNIT, PO BOX 428, 5666 S STATE HWY M 123, NEWBERRY, MI 49868.

PROSPECTUS NOTE: The bidder is advised to inspect the sale area and review the location, estimated volumes, operating costs and contract terms of proposed sales. Please be aware that some landowners may request 60 days or more notice for access across their land.

Notice is hereby given that bids will be received by the Unit Manager, NEWBERRY MANAGEMENT UNIT, for certain timber on the following described lands:

Colossus Mix (42-015-23) / T46N, R09W, SEC. 6 , N1/2SW,SESW,SE.

T46N, R09W, SEC. 7 , N1/2NE,N1/2SE.

T46N, R09W, SEC. 8 , NW,W1/2NE,SW,S1/2SE.

T46N, R10W, SEC. 1 , S1/2NE,SE.

T46N, R10W, SEC. 12, N1/2NE,SENE.

Luce County, Advertised Price \$117,099.15, 599.7 Acres, Hardwood, N White Cedar.

SALE NOTE: Payment Units 5 - 22 are optional to harvest (see spec 2.1.11 for details).

A recreation site such as a trail, pathway, or campground is within the sale area or the vicinity. Certain restrictions/specifications may be applicable including time restrictions. Access may be through private or other public land.

Peshim's Parade (42-036-22) / T45N, R07W, SEC. 7 , S1/2SE.

T45N, R07W, SEC. 8 , SENW,SWNE.

Chippewa County, Advertised Price \$6,585.30, 17.0 Acres, Aspen, Spruce/Fir/Tamarack.

BID INSTRUCTIONS (VER. 10/10/2022):

1. Scheduled Bid Location, Date, and Time (2/11)

Bids must be received by the Unit Manager, NEWBERRY OFFICE, PO Box 428 5666 S STATE HWY M 123, NEWBERRY, MI 49868, no later than 3:00 p.m. (local time) on January 16, 2025. For further information concerning this sale, contact Keith Magnusson at 906-291-0120 extension n/a.

2. Bidder's Qualifications (10/22)

If all or part of a timber sale was prepared by a private contractor, the contractor and that contractor's company are not permitted to bid on the timber sale. A person must be 18 years of age or older to purchase timber. Permanent employees of the Department of Natural Resources or members of their immediate household may not bid. Former employees, in the permanent or seasonal class, may not bid until 3 months after the last day of active duty. Bids will not be accepted from individuals or companies appearing on the DNR/FRD No-Bid List. This list contains the names of purchasers who previously failed to execute a contract within 21-days or who have a history of poor performance.

3. Preparation of Sealed Bids (5/16)

Bid Forms may be completed online thru Michigan DNR Timber Sale Online Bidding (OLB) at www.michigan.gov/timberbidding or by completing the hardcopy Bid Form found in the Timber Sale Prospectus. Hardcopy Bid Forms shall be manually signed in ink. Registration in OLB is considered your 'signature' for all bids submitted thru that system. Bid prices must be entered for each species and product in the Bid Price column for all material subject to bidding and all fill-in blanks must be completed. If erasures or other changes appear on the hardcopy Bid Form, each erasure or change must be initialed by the person signing the bid.

4. Submission of Sealed Bids (5/16)

Bid forms may be obtained from the Unit Manager or thru OLB. Bids may be submitted hardcopy or thru OLB. All hardcopy bids must be submitted on the bid form and in an envelope clearly identified as described in this section. NOTE: Only one bid form per bid envelope. Sealed bids must be submitted to the Unit office designated in the prospectus and must be submitted at or prior to the time established in the prospectus. The envelope should show on the outside (a) the sale name or number and (b) the date and time of bid opening, as shown in the prospectus. Bids received after the time specified in the sale prospectus are late bids and will be rejected.

It is possible for a bidder to submit multiple bids on a single sale. For example, a bid may be submitted hardcopy and a bid may be submitted thru OLB. Or, two bidders from the same company could both submit bids on the same sale. If this were to happen, the State would accept all bids received and award the contract accordingly. All bidding and contractual requirements would apply to all bids received.

5. Public Opening of Sealed Bids (7/16)

If conditions permit, the sealed bids will be publicly opened and posted at the time and place set in the prospectus.

If a bidder, present at a bid opening, has submitted bids on more than one sale, that bidder may withdraw their unopened bid envelopes or announce the withdrawal of their online bid after being declared the successful bidder on one sale.

6. Award of Contract (1/11)

Award of the contract will be made to the Bidder whose bid, conforming to the prospectus, is most advantageous to the State of Michigan on the basis of total value at rates bid for the estimated quantities. The State reserves the right to reject any bid or waive any minor irregularity in bids received. A written award mailed (or otherwise furnished) to the successful Bidder shall be deemed to result in a binding contract without further action by either party.

7. Down Payment (1/11)

The Bidder to whom award is made must make a down payment within 21 days of the sale award. The amount of the down payment will be calculated as shown in the Bond and Payment Schedule of this prospectus. Only cash may be used to meet this requirement.

8. Performance Security (1/11)

As guarantee of faithful performance, a cash bond, certificate of deposit, surety bond or irrevocable letter of credit (LOC) is required within 21 days of the sale award. The amount of the performance security is shown in the Bond and

Payment Schedule of this prospectus. If an LOC or surety is used, the coverage must extend for at least 6 months beyond the contract expiration.

9. Worker's Compensation (10/22)

Purchaser shall obtain worker's compensation insurance to cover claims under Michigan's Worker's Disability Compensation Act of 1969 or similar employee benefit act of any other state applicable to an employee. Verification of Worker's Disability Compensation Act Compliance must be completed and submitted within 21 days of contract award and prior to the issuance of the timber sale contract. In addition, if applicable, Notice of Exclusion or Certificate of Insurance must also be submitted.

10. Timber Sale Contract (10/22)

Additional conditions and requirements common to all timber sales are listed on the timber sale contract (R4031) and are available on line at www.michigan.gov/timber. Contact the Unit Manager for additional information or a sample contract. Within 21 days of the date of the award letter, the bidder must sign the contract and provide the required down payment, performance security, and verification of worker's disability compensation. The down payment and performance security shall be in accordance with the provisions of the timber sale contract, in the sums stated in this prospectus. If these actions are not taken, then the Bidder, the Bidder's corporation, and the corporation's principals may not be permitted to bid on State timber sales for a period of 3 months after the first offense, 6 months after the second offense, and 1 year after the third offense. An offense will only be counted against the Bidder for 5 years. In addition, the Bidder certifies that if awarded this contract, the Bidder will complete the timber sale contract in accordance with its terms and any modifications thereof including requirements to purchase, cut, and remove the included timber by the expiration date.

Payment Unit values in the State Forest Timber Sale Contract are calculated based on the advertised value of the Payment Unit as a percentage of the total advertised value of the contract. The advertised value of each Payment Unit is given in the Description of Timber by Payment Unit table on the Timber Sale Information page. For example, if the value of Payment Unit 1 is advertised as \$1,500 and the total Timber Sale value is advertised as \$10,000, the contract price for Payment Unit 1 will be 15% of the total bid price ($\$1,500/\$10,000 * 100$).

11. Disclaimer of Estimates and Bidder's Warranty of Inspection (10/22)

Before submitting this bid, the Bidder is advised and cautioned to inspect the sale area, review the requirements of the sale contract, and take other steps as may be reasonably necessary to ascertain the location, estimated volumes, construction estimates, and operating costs of the proposed sale. Failure to do so will not relieve the Bidder from responsibility for completing the contract.

The Bidder warrants that this bid is submitted solely on the basis of the Bidder's examination and inspection of the quality and quantity of the timber offered for sale and the Bidder's opinion of the value thereof and the costs of recovery. No reliance should be placed on the State of Michigan's estimates of timber quality, quantity or costs of recovery. Bidder further acknowledges that the State of Michigan: (i) expressly disclaims any warranty of fitness of timber for any purpose; (ii) offers this timber as is without any warranty of quality (merchantability) or quantity and (iii) expressly disclaims any warranty as to the quantity or quality of timber sold.

12. Certification and Chain-of-Custody (10/22)

Unless otherwise indicated in the contract under section 7 – Other Conditions of the Sale Specific Conditions & Requirements, the area encompassed by this timber sale is certified to the standards of the Forest Stewardship Council (FSC) - Certificate #SCS-FM/COC-00090N and the Sustainable Forestry Initiative (SFI) - Certificate #NSF-SFIS-5Y031-SF5. Forest products from this sale may be delivered to the mill as "FSC 100% and / or SFI certified" as long as the contractor hauling the forest products is chain-of-custody (COC) certified or covered under a COC certificate from the destination mill. The purchaser is responsible for maintaining COC after leaving the sale area.

13. Good Neighbor Authority (GNA) Requirements (10/22)

If the name of this timber sales contains the acronym GNA, it is authorized by the Good Neighbor Authority (GNA) and covered by various agreements between the U.S. Forest Service and the State. The timber sale occurs on federal land and the following conditions apply:

GNA contracts on US Forest Service land will not be awarded to purchasers on the Federal list of excluded parties. The System for Award Management (SAM) will be checked for active excluded parties prior to award of contract. In

addition, the Bidder to whom award is made must complete an Assurance Regarding Felony Conviction or Tax Delinquent Status for Corporate Applicants (AD-3031).

14. Good Neighbor Authority (GNA) Requirements, con't (10/22)

Bidder certifies, by signing this bid form, that to the best of Bidder's knowledge that the following representations are accurate and complete.

- a. That the Bidder and its principals are not presently debarred, suspended, proposed for debarment, declared ineligible, or voluntary excluded from timber sales (covered transactions) by any Federal department or agency.
- b. That the Bidder and its principals have not within a 3-year period preceding this bid been convicted of or had a civil judgment rendered against them for commission of fraud or a criminal offense in connection with obtaining , attempting to obtain, or performing a public (Federal, State, or local) transaction or contract under a public transaction; violation of Federal or State antitrust statutes or commission of embezzlement, theft, forgery, bribery, falsification or destruction of records, making false statements, or receiving stolen property.
- c. That the Bidder and its principals are not presently indicted for or otherwise criminally or civilly charged by a governmental entity (Federal, State, or local) with commission of any of the offenses enumerated in paragraph b of this certification.
- d. That the Bidder and its principals have not within a 3-year period preceding this bid had one or more public transactions (Federal, State, or local) terminated for breach or default of a timber or forest product contract.

Bidders that cannot certify this requirement, in whole or in part, shall submit an explanation with their bid.

Scott Bowen
Director

TIMBER SALE INFORMATION

Colossus Mix (42-015-23)

T46N, R09W, SEC. 6; T46N, R09W, SEC. 7; T46N, R09W, SEC. 8; T46N, R10W, SEC. 1; T46N, R10W, SEC. 12.
Luce County (Advertised Price \$117,099.15)

SALE NOTE: Payment Units 5 - 22 are optional to harvest (see spec 2.1.11 for details).

A recreation site such as a trail, pathway, or campground is within the sale area or the vicinity. Certain restrictions/specifications may be applicable including time restrictions. Access may be through private or other public land.

A timber sale contract for this lump sum, sealed bid timber sale will be awarded to the responsible bidder offering the highest sealed bid price. All units of volume listed below were estimated using the Inventory Manager computer program and the new Michigan taper model. Bids must be at or above the following advertised price for each product and species:

<u>PRODUCTS & SPECIES</u>	<u>ESTIMATED UNITS*</u>	<u>ADVERTISED PRICE</u>
Sawtimber		
Paper Birch	11.1 MBF	\$ 35.00 / MBF
Red Maple	23.8 MBF	\$ 31.00 / MBF
White Pine	244.8 MBF	\$ 38.00 / MBF
Pulpwood		
Balsam Fir	552 Cords	\$ 7.40 / Cord
Mixed Aspen	132 Cords	\$ 20.70 / Cord
Mixed Hardwood	6,842 Cords	\$ 9.15 / Cord
Mixed Spruce	1,650 Cords	\$ 4.50 / Cord
N. White Cedar	5,407 Cords	\$ 5.05 / Cord
Tamarack	223 Cords	\$ 8.20 / Cord
White Pine	60 Cords	\$ 11.50 / Cord

* The total volume is statistically estimated within plus (+) or minus (-) 5.73 percent. There are an estimated 18,152 cords on this timber sale, plus or minus 1,041 cords at the 95% confidence level. The estimated units are final and not subject to adjustment. Prospective bidders are urged to examine this timber and to make their own estimates of quantity and quality.

BOND AND PAYMENT SCHEDULE:

1. A bond in the amount of \$5,855.00 to insure faithful performance of the conditions of the contract will be deposited by the successful bidder within 21 days of the sale award.
2. Cutting in any sale or unit without the required advance payment would be considered a trespass.
3. Total payment must be paid in advance or according to the following schedule:
 - (a) Ten percent (10%) of the sale value must be paid within 21 days of the sale award.
 - (b) The 10% down payment will be credited towards the first unit cut.

(c) Payment for each of the following units must be made before cutting begins in that unit:

PAYMENT UNIT NUMBER	PERCENT OF TOTAL SALE VALUE
01	2.9%
02	4.2%
03	5.9%
04	2.9%
05	5.3%
06	4.8%
07	2.9%
08	5.2%
09	2.3%
10	0.9%
11	7.6%
12	6.5%
13	6.6%
14	4.3%
15	4.6%
16	6.6%
17	3.6%
18	5.0%
19	1.9%
20	3.6%
21	3.2%
22	2.9%
23	6.3%

4. If no cutting takes place, the 10% down payment will not be refunded.

5. Operations on the contract issued will terminate on 06/30/2029.

SALE STATISTICS

Volumes were calculated in cubic feet using the Michigan taper model. Cubic foot volume includes all wood inside bark for the product indicated. For display purposes, cubic feet were converted to cords and MBF using a simple conversion factor, e.g. 79 cubic feet per cord and 185 cubic feet per MBF. The cubic foot volumes are precise; the cords and MBF volumes are not. Cubic foot volume cannot be directly converted to cords or boards with precision.

SALE VOLUMES

The total estimated sale volume may not equal the sum of the species/products due to the nature of statistical calculations associated with double sampling methodology.

VOLUME		PERCENT ERROR	STATISTICAL RANGE IN CORDS	
TOTAL CUBIC FEET	TOTAL CORDS		MINIMUM	MAXIMUM
1,434,034	18,152	5.73%	17,112	19,193

VDU VOLUMES

A VDU is a Volume Determination Unit. Volumes and their associated statistics are calculated at the VDU level and summarized to the sale level. There is often a one to one relationship between a VDU and a Payment Unit, but not always, depending on the cruise design. Refer to the VDU TO PAYMENT UNIT table.

VDU	VOLUME		PERCENT ERROR	RANGE IN CORDS	
	TOTAL CUBIC FEET	TOTAL CORDS		MINIMUM	MAXIMUM
1	28,551	361	33.97%	239	484
2	6,572	83	111.06%	0	176
3	6,334	80	46.08%	43	117
4	225,296	2,852	13.58%	2,465	3,239
5	678,709	8,591	8.35%	7,874	9,308
6	170,918	2,164	14.49%	1,850	2,477
46	13,920	176	88.11%	21	331
50	37,393	473	35.66%	305	642
56	55,249	699	19.51%	563	836
57	160,288	2,029	17.81%	1,668	2,390
64	20,455	259	55.91%	114	404
70	30,348	384	37.71%	239	529
TOTAL:	1,434,034	18,152		15,380	20,934

VDU TO PAYMENT UNIT

When a VDU is associated with more than one Payment Unit (PU), the VDU volumes are assigned to the PU based on acres of the VDU within the PU.

VDU	VDU ACRES	PU	PU ACRES
1	16.0	23	16.0
2	5.2	22	5.2
3	5.2	22	5.2
4	79.8	18	29.3
4	79.8	19	11.0
4	79.8	20	21.1
4	79.8	21	18.4
5	260.0	8	28.0
5	260.0	9	12.5
5	260.0	10	4.9
5	260.0	11	40.1
5	260.0	12	35.0
5	260.0	13	36.0
5	260.0	14	23.3
5	260.0	15	24.9
5	260.0	16	35.6
5	260.0	17	19.7
6	65.5	5	26.7
6	65.5	6	24.1
6	65.5	7	14.7
46	12.3	1	12.3
50	16.6	1	6.0
50	16.6	3	10.6
56	24.1	2	24.1
57	86.9	1	17.1
57	86.9	3	63.9
57	86.9	4	5.9
64	6.2	1	3.5
64	6.2	3	2.7
70	21.9	4	21.9
TOTAL:	3,506.7		599.7

DESCRIPTION OF TIMBER BY PAYMENT UNIT (PU)

PU	MARKET GROUP	PRODUCT	QUANTITY	UNIT	ACRES	ADVERTISE PRICE
1	Paper Birch	Sawtimber	1.3	MBF	38.9	\$3,400.25
	Red Maple		3.9	MBF		
	Balsam Fir	Pulpwood	20	Cords		
	Mixed Aspen		51	Cords		
	<i>B. T. Aspen</i>		1	<i>Cords</i>		
	<i>Balsam Poplar</i>		2	<i>Cords</i>		
	<i>Quaking Aspen</i>		48	<i>Cords</i>		
	Mixed Hardwood		114	Cords		
	<i>Paper Birch</i>		57	<i>Cords</i>		
	<i>Red Maple</i>		57	<i>Cords</i>		
	Mixed Spruce		63	Cords		
	<i>Black Spruce</i>		40	<i>Cords</i>		
	<i>White Spruce</i>		23	<i>Cords</i>		
	N. White Cedar		63	Cords		
	Tamarack		47	Cords		
2	Paper Birch	Sawtimber	2.8	MBF	24.1	\$4,952.70
	Balsam Fir	Pulpwood	39	Cords		
	Mixed Hardwood		318	Cords		
	<i>Paper Birch</i>		252	<i>Cords</i>		
	<i>Red Maple</i>		66	<i>Cords</i>		
	N. White Cedar		328	Cords		
	3	Paper Birch	Sawtimber	4.9		
Red Maple			10.8	MBF		
Balsam Fir		Pulpwood	36	Cords		
Mixed Aspen			11	Cords		
<i>B. T. Aspen</i>			5	<i>Cords</i>		
<i>Balsam Poplar</i>			6	<i>Cords</i>		
Mixed Hardwood			333	Cords		
<i>Paper Birch</i>			161	<i>Cords</i>		
<i>Red Maple</i>			172	<i>Cords</i>		
Mixed Spruce			217	Cords		
<i>Black Spruce</i>			149	<i>Cords</i>		
<i>White Spruce</i>			68	<i>Cords</i>		
N. White Cedar			111	Cords		
Tamarack			162	Cords		
4	Paper Birch	Sawtimber	2.1	MBF	27.8	\$3,438.20
	Red Maple		0.7	MBF		
	Mixed Aspen	Pulpwood	39	Cords		
	<i>Balsam Poplar</i>		1	<i>Cords</i>		
	<i>Quaking Aspen</i>		38	<i>Cords</i>		
	Mixed Hardwood		85	Cords		
	<i>Paper Birch</i>		73	<i>Cords</i>		
	<i>Red Maple</i>		12	<i>Cords</i>		
	Mixed Spruce		70	Cords		
	<i>Black Spruce</i>		64	<i>Cords</i>		
	<i>White Spruce</i>		6	<i>Cords</i>		
	N. White Cedar		263	Cords		
	Tamarack		14	Cords		
	5	Balsam Fir	Pulpwood	21		
Mixed Hardwood			449	Cords		
<i>Paper Birch</i>			121	<i>Cords</i>		
<i>Red Maple</i>			328	<i>Cords</i>		
Mixed Spruce			11	Cords		
<i>Black Spruce</i>			11	<i>Cords</i>		
N. White Cedar			386	Cords		
6	Balsam Fir	Pulpwood	19	Cords	24.1	\$5,657.90

DESCRIPTION OF TIMBER BY PAYMENT UNIT (PU), CON'T

PU	MARKET GROUP	PRODUCT	QUANTITY	UNIT	ACRES	ADVERTISE PRICE
6 con't	Mixed Hardwood	Pulpwood	406	Cords		
	<i>Paper Birch</i>		110	<i>Cords</i>		
	<i>Red Maple</i>		296	<i>Cords</i>		
	Mixed Spruce		10	Cords		
	<i>Black Spruce</i>		10	<i>Cords</i>		
	N. White Cedar		348	Cords		
7	Balsam Fir	Pulpwood	11	Cords	14.7	\$3,439.05
	Mixed Hardwood		247	Cords		
	<i>Paper Birch</i>		67	<i>Cords</i>		
	<i>Red Maple</i>		180	<i>Cords</i>		
	Mixed Spruce		6	Cords		
	<i>Black Spruce</i>		6	<i>Cords</i>		
	N. White Cedar		212	Cords		
8	Balsam Fir	Pulpwood	37	Cords	28.0	\$6,062.20
	Mixed Hardwood		407	Cords		
	<i>Black Ash</i>		6	<i>Cords</i>		
	<i>Paper Birch</i>		153	<i>Cords</i>		
	<i>Red Maple</i>		241	<i>Cords</i>		
	<i>Yellow Birch</i>		7	<i>Cords</i>		
	Mixed Spruce		103	Cords		
	<i>Black Spruce</i>		103	<i>Cords</i>		
	N. White Cedar		317	Cords		
	9		Balsam Fir	Pulpwood		
Mixed Hardwood		181	Cords			
<i>Black Ash</i>		3	<i>Cords</i>			
<i>Paper Birch</i>		68	<i>Cords</i>			
<i>Red Maple</i>		107	<i>Cords</i>			
<i>Yellow Birch</i>		3	<i>Cords</i>			
Mixed Spruce		46	Cords			
<i>Black Spruce</i>		46	<i>Cords</i>			
N. White Cedar		142	Cords			
10	Balsam Fir	Pulpwood	7	Cords	4.9	\$1,065.25
	Mixed Hardwood		71	Cords		
	<i>Black Ash</i>		1	<i>Cords</i>		
	<i>Paper Birch</i>		27	<i>Cords</i>		
	<i>Red Maple</i>		42	<i>Cords</i>		
	<i>Yellow Birch</i>		1	<i>Cords</i>		
	Mixed Spruce		18	Cords		
	<i>Black Spruce</i>		18	<i>Cords</i>		
	N. White Cedar		56	Cords		
11	Balsam Fir	Pulpwood	52	Cords	40.1	\$8,700.35
	Mixed Hardwood		586	Cords		
	<i>Black Ash</i>		9	<i>Cords</i>		
	<i>Paper Birch</i>		219	<i>Cords</i>		
	<i>Red Maple</i>		348	<i>Cords</i>		
	<i>Yellow Birch</i>		10	<i>Cords</i>		
	Mixed Spruce		148	Cords		
	<i>Black Spruce</i>		148	<i>Cords</i>		
	N. White Cedar		453	Cords		
12	Balsam Fir	Pulpwood	47	Cords	35.0	\$7,567.15
	Mixed Hardwood		507	Cords		
	<i>Black Ash</i>		7	<i>Cords</i>		
	<i>Paper Birch</i>		191	<i>Cords</i>		
	<i>Red Maple</i>		301	<i>Cords</i>		
	<i>Yellow Birch</i>		8	<i>Cords</i>		

DESCRIPTION OF TIMBER BY PAYMENT UNIT (PU), CON'T

PU	MARKET GROUP	PRODUCT	QUANTITY	UNIT	ACRES	ADVERTISE PRICE
12 con't	Mixed Spruce	Pulpwood	129	Cords		
	<i>Black Spruce</i>		129	<i>Cords</i>		
	N. White Cedar		396	Cords		
13	Balsam Fir	Pulpwood	48	Cords	36.0	\$7,781.25
	Mixed Hardwood		521	Cords		
	<i>Black Ash</i>		7	<i>Cords</i>		
	<i>Paper Birch</i>		196	<i>Cords</i>		
	<i>Red Maple</i>		309	<i>Cords</i>		
	<i>Yellow Birch</i>		9	<i>Cords</i>		
	Mixed Spruce		133	Cords		
	<i>Black Spruce</i>		133	<i>Cords</i>		
	N. White Cedar		408	Cords		
14	Balsam Fir	Pulpwood	31	Cords	23.3	\$5,042.30
	Mixed Hardwood		338	Cords		
	<i>Black Ash</i>		5	<i>Cords</i>		
	<i>Paper Birch</i>		127	<i>Cords</i>		
	<i>Red Maple</i>		200	<i>Cords</i>		
	<i>Yellow Birch</i>		6	<i>Cords</i>		
	Mixed Spruce		86	Cords		
	<i>Black Spruce</i>		86	<i>Cords</i>		
	N. White Cedar		264	Cords		
	15		Balsam Fir	Pulpwood		
Mixed Hardwood		361	Cords			
<i>Black Ash</i>		5	<i>Cords</i>			
<i>Paper Birch</i>		136	<i>Cords</i>			
<i>Red Maple</i>		214	<i>Cords</i>			
<i>Yellow Birch</i>		6	<i>Cords</i>			
Mixed Spruce		92	Cords			
<i>Black Spruce</i>		92	<i>Cords</i>			
N. White Cedar		282	Cords			
16	Balsam Fir	Pulpwood	48	Cords	35.6	\$7,692.10
	Mixed Hardwood		515	Cords		
	<i>Black Ash</i>		7	<i>Cords</i>		
	<i>Paper Birch</i>		194	<i>Cords</i>		
	<i>Red Maple</i>		306	<i>Cords</i>		
	<i>Yellow Birch</i>		8	<i>Cords</i>		
	Mixed Spruce		131	Cords		
	<i>Black Spruce</i>		131	<i>Cords</i>		
	N. White Cedar		403	Cords		
17	Balsam Fir	Pulpwood	26	Cords	19.7	\$4,254.80
	Mixed Hardwood		285	Cords		
	<i>Black Ash</i>		4	<i>Cords</i>		
	<i>Paper Birch</i>		107	<i>Cords</i>		
	<i>Red Maple</i>		169	<i>Cords</i>		
	<i>Yellow Birch</i>		5	<i>Cords</i>		
	Mixed Spruce		73	Cords		
	<i>Black Spruce</i>		73	<i>Cords</i>		
	N. White Cedar		223	Cords		
18	Red Maple	Sawtimber	3.1	MBF	29.3	\$5,861.30
	Balsam Fir	Pulpwood	20	Cords		
	Mixed Hardwood		406	Cords		
	<i>Paper Birch</i>		82	<i>Cords</i>		
	<i>Red Maple</i>		312	<i>Cords</i>		
	<i>Yellow Birch</i>		12	<i>Cords</i>		
	Mixed Spruce		113	Cords		

DESCRIPTION OF TIMBER BY PAYMENT UNIT (PU), CON'T

PU	MARKET GROUP	PRODUCT	QUANTITY	UNIT	ACRES	ADVERTISE PRICE
18 con't	<i>Black Spruce</i> <i>White Spruce</i> N. White Cedar	<i>Pulpwood</i>	83 30 276	<i>Cords</i> <i>Cords</i> Cords		
19	Red Maple Balsam Fir Mixed Hardwood <i>Paper Birch</i> <i>Red Maple</i> <i>Yellow Birch</i> Mixed Spruce <i>Black Spruce</i> <i>White Spruce</i> N. White Cedar	Sawtimber Pulpwood	1.2 8 153 31 117 5 42 31 11 104	MBF Cords Cords <i>Cords</i> <i>Cords</i> <i>Cords</i> Cords <i>Cords</i> <i>Cords</i> Cords	11.0	\$2,210.55
20	Red Maple Balsam Fir Mixed Hardwood <i>Paper Birch</i> <i>Red Maple</i> <i>Yellow Birch</i> Mixed Spruce <i>Black Spruce</i> <i>White Spruce</i> N. White Cedar	Sawtimber Pulpwood	2.2 15 294 59 225 10 82 60 22 199	MBF Cords Cords <i>Cords</i> <i>Cords</i> <i>Cords</i> Cords <i>Cords</i> <i>Cords</i> Cords	21.1	\$4,243.25
21	Red Maple Balsam Fir Mixed Hardwood <i>Paper Birch</i> <i>Red Maple</i> <i>Yellow Birch</i> Mixed Spruce <i>Black Spruce</i> <i>White Spruce</i> N. White Cedar	Sawtimber Pulpwood	1.9 13 256 52 196 8 71 52 19 173	MBF Cords Cords <i>Cords</i> <i>Cords</i> <i>Cords</i> Cords <i>Cords</i> <i>Cords</i> Cords	18.4	\$3,690.65
22	White Pine Balsam Fir Mixed Aspen <i>B. T. Aspen</i> Mixed Hardwood <i>Paper Birch</i> <i>Red Maple</i> Mixed Spruce <i>Black Spruce</i> White Pine	Sawtimber Pulpwood	63.7 4 31 31 9 7 2 6 6 13	MBF Cords Cords <i>Cords</i> Cords <i>Cords</i> <i>Cords</i> Cords <i>Cords</i> Cords	10.4	\$3,350.75
23	White Pine White Pine	Sawtimber Pulpwood	181.1 47	MBF Cords	16.0	\$7,422.30
TOTAL:			279.7	MBF		
TOTAL:			14,866	Cords		

Sale Specific Conditions & Requirements

Sale Name: Colossus Mix

Sale Number: 42-015-23 Seq#: 2

1 - Sale Area

1.2 - Boundaries

1.2.1 - Painted boundaries (9/19)

The sale boundary and Payment Unit boundaries are marked and identified by blue, red and yellow paint. Exterior sale boundary lines against private property are marked with blue paint. Exterior sale boundary lines against state are marked with red paint. Interior Payment Unit boundaries are marked with yellow paint. Retention patches are marked with red paint; no harvesting activities may occur within these areas. The painted boundary line trees are not Included Timber and are to be protected unless marked with orange paint. Yellow painted trees designating an interior Payment Unit boundary are only to be cut when all surrounding Payment Units have been paid.

2 - Timber Specifications

2.1 - Included Timber

2.1.2 - Clearcut unit(s) w/o unmerchantable trees (8/11)

Within Payment Unit(s) 1 - 21, cut all trees which meet minimum piece specifications in 2.2 Utilization, except do not cut any hemlock. In addition, the following exceptions apply:

- Within Payment Units 1 - 4, do not cut any white pine or yellow birch.
- Within Payment Units 5 - 13, do not cut white pine over 20 inches at DBH.
- Within Payment Units 14 - 19, do not cut any white pine.

2.1.7 - Leave tree marked unit(s) (6/14)

Within Payment Unit(s) 22 & 23, all trees which meet minimum piece specifications in 2.2 Utilization are designated for cutting, except do not cut any hemlock or any trees marked with green paint above and below stump height.

2.1.11 - Description of timber note (2/04)

Note that Payment Units 5 - 22 are optional to harvest due to potential access issues. Removing any or all of these Payment Units is a contract modification which requires a Timber Sale Contract Amendment.

3 - Payments

3.3 - Pre-measured Sales

3.3.4 - Dividing payment units (7/14)

Payment Unit(s) may be divided at the request of the Purchaser and upon approval of the Unit Manager. Dividing Payment Units is a contract modification which requires a Timber Sale Contract Amendment. There will be only one division per Payment Unit.

4 - Transportation

4.1 - Construction

4.1.4 - Timber removed for construction (3/23)

Trees cut or damaged in the process of pre-approved road, landing or skid trail construction will be decked in an area separate from other Designated Timber and not removed until measured by the sale administrator. Payment will be made at contract prices or average prices, if not on the contract.

4.1.5 - Culverts (5/14)

Roads may require the installation of culverts for cross drainage or at natural drainage-ways. If culverts are needed in these locations, their placement will be specified by the Sale Administrator, and they shall be installed prior to hauling. The culverts shall be new, corrugated metal or plastic gauge. Culverts will be a minimum of 12 inches in diameter and 24 feet in length. If culverts are removed, fill shall be removed from wetland soils as specified. Soils shall be maintained and left in a non-erodible condition, with water bars, seed, fertilizer, mulch, and slash installed as directed by the Sale Administrator and as specified in the BMP manual. Stream crossing permits, if needed, will be obtained by the DNR.

4.1.6 - Road construction (1/09)

Construction of new roads or improvements of existing roads shall be done in such a way as to minimize the environmental and visual impacts. Merchantable trees shall be cut and utilized unless otherwise directed. Non-merchantable trees shall be severed and laid flat on the ground. Slash shall be scattered, and not left in windrows and kept a minimum of 10 feet back from the road edge. Stumps shall be set upright, not left on edge, and be moved at least 10 feet away from the road edge. Disturbed soil shall be feathered into the woods and not left in berms or windrows.

4.1.7 - Road closure (10/11)

All new roads built into the sale must be blocked to vehicle traffic upon completion of the sale. Overgrown roads that are reopened shall be considered new roads. In general, this will require constructing a four (4') foot high berm of stumps and logs covered with earth. These roads must be rendered impassable to cars and trucks. Contact the Sale Administrator for specific details of design and placement.

4.2 - Maintenance

4.2.4 - Grading (10/16)

For completion of the sale, state forest roads must be graded. In general, this will require a road grader or bulldozer to shape up the roads after forest products have been hauled off site. This includes cleaning of drainage areas, grading, crowning and filling with gravel, if necessary. The grading equipment to be used must be approved by the Unit Manager or his/her representative.

4.4 - Access

4.4.2 - Alternate route on private property (2/04)

It is the Purchaser's responsibility to obtain access across private land for any routes other than the route shown on the Timber Sale Map.

5 - Operations

5.1 - Notification

5.1.1 - Pre-sale conference (10/16)

A pre-sale conference on site between the Purchaser and sale administrator is required prior to beginning any operations to determine access, landing and road locations.

5.2 - Conduct of Operations

5.2.1 - Slash

5.2.1.8 - Slash height (12/08)

No slash or tree tops may exceed 36 inches in height.

5.2.2 - Hazard Trees/Snags

5.2.2.1 - Den trees (10/16)

Obvious hollow and/or den trees shall be protected and left standing unless they are a safety hazard.

5.2.3 - Operating Restrictions

5.2.3.1 - Operating restrictions (9/11)

Within Payment Unit(s) 1 - 23, unless changed by written agreement, cutting and skidding are limited to the period of December 31 to March 31. This restriction is because of the low ground nature of the sale.

5.2.4 - Dead and Down Creation

5.2.4.6 - Dead and down creation, other (9/09)

To create hare habitat, within Payment Units 5, 6, and 12-17, create 3-6 long linear brush piles that are 50 feet in length, at minimum. Brush piles will be created with stumps and larger unmerchantable woody material from within the Sale Area and formed into a line as a base. The brush pile should be a mix of logging slash piled on top of the base. If no unmerchantable products are available for a base, use whole trees 8-16 inches at DBH. Place tops onto the base along its length to construct a linear pile 6 feet in height. These piles should be scattered apart and located where the edge of

the harvest interfaces with adjacent uncut stands. Place brush piles perpendicular to the edge of the harvested stand, reaching into the adjacent stand at least 20 feet.

5.2.17 - Timber Mats and Interlocking Composite Mats (10/20)

Some roads or skid trails require extra protection such as that afforded by interlocking composite mats or another approved system. If available, mats may be borrowed from the DNR. A Timber Sale Contract Amendment will be used to document the Purchaser's use of the DNR's mats. Contact the Sale Administrator regarding availability and pick-up. Composite mats are only available from the Grayling field office and the Marquette ICC. The Purchaser is responsible for picking up and hauling the mats to and from the site. The composite mats will require DNR staff onsite for installation and removal. Contact the Sale Administrator to schedule at least 30 days before desired install/removal date. All mats must be cleaned prior to drop off. This may include, but is not limited to, power washing and brushing to remove mud and debris. A charge of \$2,000.00 per composite mat will be assessed for all damaged or non-returned mats. Damage for the composite mats is defined as cracked or broken mats.

5.2.32 - Decking/landing restoration (9/13)

All decking and landing areas must have the surface area restored to a condition equal to or better than before. This is to ensure the proper regeneration of the stand. Wood debris, chips and "cookies" from trimmings must be removed or scattered away from landing and loading areas and may not be windrowed on the edge.

5.2.38 - No decking against live trees (2/04)

Cut products may not be decked against unmarked or designated leave trees.

5.2.41 - Snowmobile trail protection (9/11)

The snowmobile trail is shown on the Timber Sale Map. Do not cut or damage posts with orange trail markers or traffic control signs. If the trail is used, it must be maintained and restored to a condition equal to or better than before the sale. If the trail road is to be used for hauling during the snowmobile season, then a snow covered base must be left on the trail.

5.4 - Soil Protection

5.4.2 - Skid trails (2/04)

Skid trails up and down slopes should be avoided. If however this is unavoidable, these trails will be left in a non-erodible condition using water bars, logs, and slash. Placing of slash on these skid trails while logging is ongoing may alleviate need for any further action. At the direction of the sale administrator, seed, fertilizer, and mulch may also be required.

5.8 - Protection of Endangered Species

5.8.5 - Protection of raptor nests (3/13)

All trees with raptor nests will be protected if found during harvesting operations. Notification will be made to the Unit Manager or his/her representative who will notify the Wildlife Biologist so an on-site evaluation and recommendation can be made, if necessary.

6 - Safety and Fire Prevention

6.2 - Signing

6.2.1 - Road posting (10/20)

The Purchaser is responsible for posting and maintaining caution signs on the Charcoal Grade Road prior to beginning operations. The road must be posted at appropriate distances from the Sale Area to warn of logging activity and truck traffic. Signs must be removed when harvest operations are suspended or completed. The Purchaser will provide these signs.

6.2.2 - Snowmobile trail posting (10/20)

The Purchaser is responsible for posting and maintaining caution signs on the Charcoal Grade Road prior to beginning operations during the snowmobile season (approximately December 1 to March 31). The trail must be posted at appropriate distances from the Sale Area to warn of logging activity and truck traffic. Signs must be removed when harvest operations are suspended or completed. The DNR will provide these signs.

7 - Other Conditions

7.2 - Extensions

7.2.5 - Weather related extension (1/13)

If weather conditions during the operating period of this contract prevent harvesting, this sale may qualify for a weather related extension. If approved, the normal extension fee would be waived. To qualify, there must be a documented attempt each year to harvest in the difficult portion of the sale.



TIMBER SALE MAP

This information provided by authority of Part 525, 1994 PA 451, as amended.

Sale Number
42-015-23

Date
10/05/2023

Forest Management Unit
Newberry Mgt Unit

County
Luce

Mapped By: A. Ciaramitaro
Cruised By: Newberry Unit Staff

Scale
1:31,680

Page
1
Of
1

Township 46N Range 09W / 10W Section(s) and Subdivision(s) Sec. 1 S1/2NE,SE; Sec. 12 N1/2NE,SENE; Sec. 6 N1/2SW,SESW,SE; Sec. 7 N1/2NE,N1/2SE; Sec. 8 NW,W1/2NE,SW,S1/2SE

Cover Type

- A = Aspen
- B = Paper Birch
- C = Cedar
- D = Treed Bog
- E = Swamp Hardwoods
- F = Spruce/Fir
- G = Grass
- H = Hemlock
- J = Jack Pine
- K = Rock
- L = Lowland Brush
- LM = Lowland Mix Forest
- M = Maple, Beech, Birch
- MC = Mixed Conifer
- MD = Mixed Deciduous
- N = Marsh
- O = Oak
- P = Lowland Poplar
- Q = Mixed Swamp Conifer
- R = Red Pine
- S = Black Spruce
- T = Tamarack
- U = Upland Brush
- UM = Upland Mix Forest
- V = Bog or Marsh
- W = White Pine
- X = Non Stocked
- Y = Sand
- Z = Water

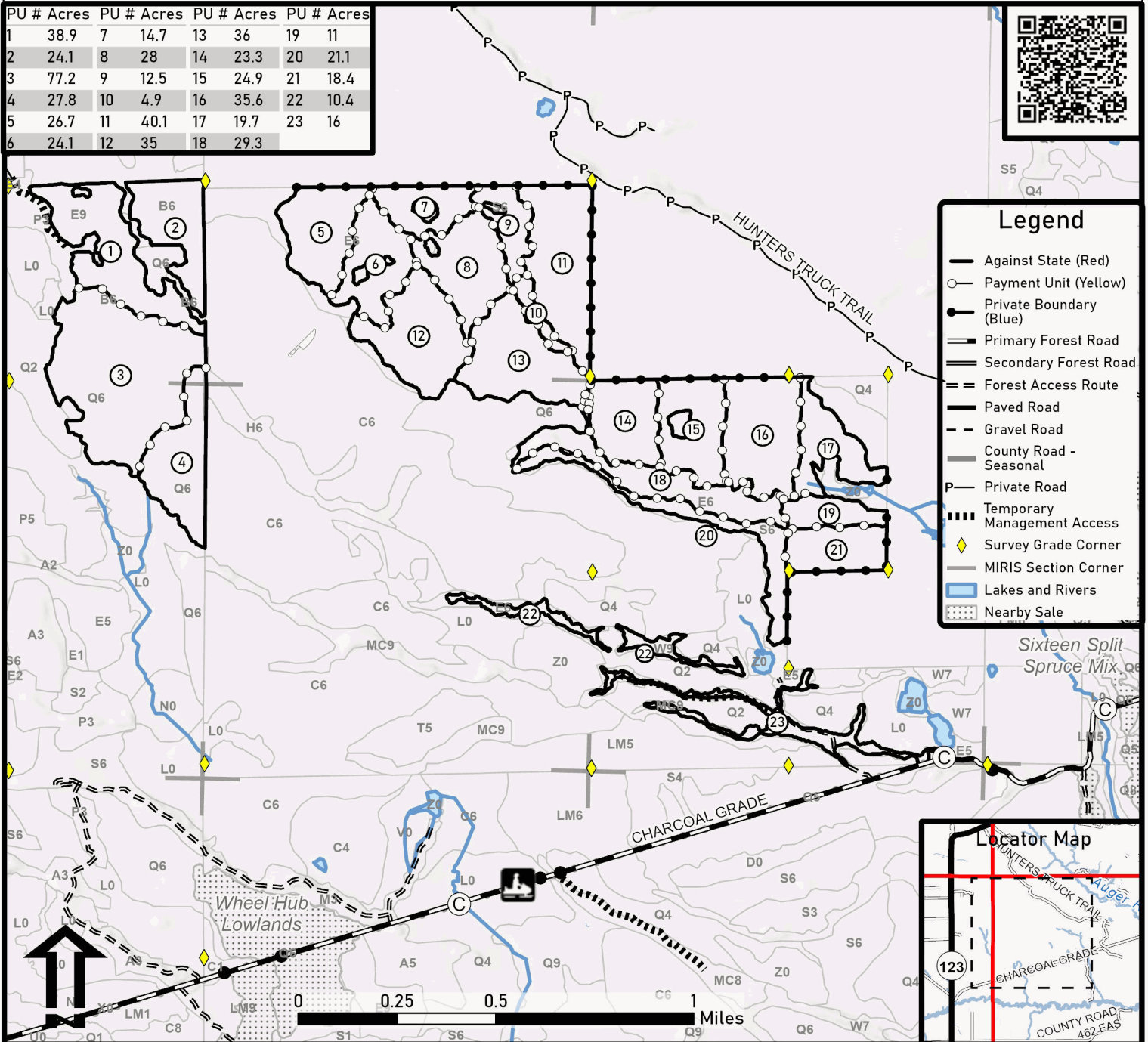
Density

- 0 = Non Stocked
- 1 = Seedling Sapling Poor
- 2 = Seedling Sapling Medium
- 3 = Seedling Sapling Well
- 4 = Pole Timber Poor
- 5 = Pole Timber Medium
- 6 = Pole Timber Well
- 7 = Saw Timber Poor
- 8 = Saw Timber Medium
- 9 = Saw Timber Well

Colossus Mix

Compartment: 113 & 114 Acres: 599.7

PU #	Acres	PU #	Acres	PU #	Acres	PU #	Acres
1	38.9	7	14.7	13	36	19	11
2	24.1	8	28	14	23.3	20	21.1
3	77.2	9	12.5	15	24.9	21	18.4
4	27.8	10	4.9	16	35.6	22	10.4
5	26.7	11	40.1	17	19.7	23	16
6	24.1	12	35	18	29.3		



TIMBER SALE INFORMATION

Peshim's Parade (42-036-22)
 T45N, R07W, SEC. 7; T45N, R07W, SEC. 8.
 Chippewa County (Advertised Price \$6,585.30)

A timber sale contract for this lump sum, sealed bid timber sale will be awarded to the responsible bidder offering the highest sealed bid price. All units of volume listed below were estimated using the Inventory Manager computer program and the new Michigan taper model. Bids must be at or above the following advertised price for each product and species:

<u>PRODUCTS & SPECIES</u>	<u>ESTIMATED UNITS*</u>	<u>ADVERTISED PRICE</u>
Pulpwood		
Balsam Fir	46 Cords	\$ 8.50 / Cord
Balsam Poplar	11 Cords	\$ 23.85 / Cord
Mixed Hardwood	72 Cords	\$ 10.55 / Cord
Mixed Spruce	137 Cords	\$ 5.20 / Cord
Quaking Aspen	187 Cords	\$ 23.85 / Cord

* The total volume is statistically estimated within plus (+) or minus (-) 21.31 percent. There are an estimated 425 cords on this timber sale, plus or minus 91 cords at the 95% confidence level. The estimated units are final and not subject to adjustment. Prospective bidders are urged to examine this timber and to make their own estimates of quantity and quality.

BOND AND PAYMENT SCHEDULE:

1. A bond in the amount of \$329.00 to insure faithful performance of the conditions of the contract will be deposited by the successful bidder within 21 days of the sale award.
2. Cutting in any sale or unit without the required advance payment would be considered a trespass.
3. Total payment must be paid in advance or according to the following schedule :
 - (a) Ten percent (10%) of the sale value must be paid within 21 days of the sale award.
 - (b) The 10% down payment will be credited towards the first unit cut.
 - (c) Payment for each of the following units must be made before cutting begins in that unit:

PAYMENT UNIT NUMBER	PERCENT OF TOTAL SALE VALUE
01	56.6%
02	43.4%
4. If no cutting takes place, the 10% down payment will not be refunded.
5. Operations on the contract issued will terminate on 06/30/2028.

SALE STATISTICS

Volumes were calculated in cubic feet using the Michigan taper model. Cubic foot volume includes all wood inside bark for the product indicated. For display purposes, cubic feet were converted to cords and MBF using a simple conversion factor, e.g. 79 cubic feet per cord and 185 cubic feet per MBF. The cubic foot volumes are precise; the cords and MBF volumes are not. Cubic foot volume cannot be directly converted to cords or boards with precision.

SALE VOLUMES

The total estimated sale volume may not equal the sum of the species/products due to the nature of statistical calculations associated with double sampling methodology.

VOLUME		STATISTICAL RANGE IN CORDS		
TOTAL CUBIC FEET	TOTAL CORDS	PERCENT ERROR	MINIMUM	MAXIMUM
33,589	425	21.31%	335	516

VDU VOLUMES

A VDU is a Volume Determination Unit. Volumes and their associated statistics are calculated at the VDU level and summarized to the sale level. There is often a one to one relationship between a VDU and a Payment Unit, but not always, depending on the cruise design. Refer to the VDU TO PAYMENT UNIT table.

VDU	VOLUME		PERCENT ERROR	RANGE IN CORDS	
	TOTAL CUBIC FEET	TOTAL CORDS		MINIMUM	MAXIMUM
48	18,295	232	36.18%	148	315
86	15,294	194	25.99%	143	244
TOTAL:	33,589	425		291	559

VDU TO PAYMENT UNIT

When a VDU is associated with more than one Payment Unit (PU), the VDU volumes are assigned to the PU based on acres of the VDU within the PU.

VDU	VDU ACRES	PU	PU ACRES
48	8.1	2	8.1
86	8.9	1	8.9
TOTAL:	17.0		17.0

DESCRIPTION OF TIMBER BY PAYMENT UNIT (PU)

PU	MARKET GROUP	PRODUCT	QUANTITY	UNIT	ACRES	ADVERTISE PRICE
1	Balsam Fir	Pulpwood	46	Cords	8.9	\$3,725.00
	Balsam Poplar		11	Cords		
	Mixed Hardwood		5	Cords		
	<i>Paper Birch</i>		5	<i>Cords</i>		
	Mixed Spruce		21	Cords		
	<i>Black Spruce</i>		21	<i>Cords</i>		
	Quaking Aspen		122	Cords		
2	Mixed Hardwood	Pulpwood	67	Cords	8.1	\$2,860.30
	<i>Red Maple</i>	<i>Sawtimber</i>	3.1	<i>MBF</i>		
	<i>Paper Birch</i>	<i>Pulpwood</i>	3	<i>Cords</i>		
	<i>Red Maple</i>		56	<i>Cords</i>		
	<i>Yellow Birch</i>		2	<i>Cords</i>		
	Mixed Spruce		116	Cords		
	<i>Black Spruce</i>		45	<i>Cords</i>		
	<i>White Spruce</i>		71	<i>Cords</i>		
	Quaking Aspen		65	Cords		
	TOTAL:			453		

Sale Specific Conditions & Requirements

Sale Name: Peshim's Parade

Sale Number: 42-036-22 Seq#: 2

1 - Sale Area

1.2 - Boundaries

1.2.1 - Painted boundaries (9/19)

The sale boundary and Payment Unit boundaries are marked and identified by blue and red. Exterior sale boundary lines against private property are marked with blue paint. Exterior sale boundary lines against state are marked with red paint. The painted boundary line trees are not Included Timber and are to be protected.

2 - Timber Specifications

2.1 - Included Timber

2.1.1 - Clearcut unit(s) with unmerchantable trees (6/14)

Within Payment Unit(s) 1 & 2, cut all trees that are two (2) inches or more at DBH except, leave all cedar and apple trees within payment unit 1 and leave all trees ringed in green within payment unit 2.

2.2 - Utilization

2.2.9 - No chipping permitted (12/08)

Within Payment Unit(s) 1 and 2, no chipping is permitted.

4 - Transportation

4.1 - Construction

4.1.3 - Slash and earthen piles (8/04)

Piles or windrows of earth along roads and landings that have been widened or constructed shall be leveled. Slash from road maintenance or construction, including stumps, shall be dispersed throughout the sale.

4.1.6 - Road construction (1/09)

Improvements of existing roads shall be done in such a way as to minimize the environmental and visual impacts. Merchantable trees shall be cut and utilized unless otherwise directed. Non-merchantable trees shall be severed and laid flat on the ground. Slash shall be scattered, not left in windrows, and kept a minimum of 10 feet back from the road edge. Stumps shall be set upright, not left on edge, and be moved at least 10 feet away from the road edge. Disturbed soil shall be feathered into the woods and not left in berms or windrows.

4.1.11 - Permits (2/12)

The Purchaser will secure any necessary highway permits that may be required.

4.1.12 - No new roads (1/12)

No new roads will be permitted. Skid trails only will be allowed.

4.3 - Public Right-of-Way

4.3.1 - MDOT R-O-W (11/14)

The Michigan Department of Transportation (MDOT) must be contacted prior to harvesting timber within the MDOT right-of-way.

5 - Operations

5.1 - Notification

5.1.6 - Utility R.O.W. (4/19)

It is the responsibility of the Purchaser to obtain permission from the utility company to utilize the power line R.O.W. for operations.

5.2 - Conduct of Operations

5.2.1 - Slash

5.2.1.8 - Slash height (12/08)

No slash or tree tops may exceed 36 inches in height.

5.2.2 - Hazard Trees/Snags

5.2.2.1 - Den trees (10/16)

Obvious hollow and/or den trees shall be protected and left standing unless they are a safety hazard.

5.2.3 - Operating Restrictions

5.2.3.1 - Operating restrictions (9/11)

Within Payment Unit(s) 1 and 2, unless changed by written agreement, cutting, skidding, and hauling are limited to the period of Oct 1 to April 1. This restriction is because of the wet ground of the site as well as deer wintering in the area.

5.2.17 - Timber Mats and Interlocking Composite Mats (10/20)

Some roads or skid trails may require extra protection such as that afforded by timber mats, interlocking composite mats, or another approved system. If available, mats may be borrowed from the DNR. A Timber Sale Contract Supplement will be used to document the Purchaser's use of the DNR's mats. Contact the sale administrator regarding availability and pick-up. Timber mats are available from various field offices. Composite mats are only available from the Grayling field office and the Marquette ICC. The Purchaser is responsible for picking up and hauling the mats to and from the site. The composite mats will require DNR staff onsite for installation and removal. Contact the sale administrator to schedule at least 30 days before desired install/removal date. All mats must be cleaned prior to drop off. This may include, but is not limited to, power washing and brushing to remove mud and debris. A charge of \$700.00 per timber mat and \$2,000.00 per composite mat will be assessed for all damaged or non-returned mats. Damage for the crane/timber mats is defined as three or more broken cants. Damage for the composite mats is defined as cracked or broken mats.

5.2.32 - Decking/landing restoration (9/13)

All decking and landing areas must have the surface area restored to a condition equal to or better than before. This is to ensure the proper regeneration of the stand. Wood debris, chips and "cookies" from trimmings must be removed or scattered away from landing and loading areas and may not be windrowed on the edge.

5.2.38 - No decking against live trees (2/04)

Cut products may not be decked against unmarked or designated leave trees.

5.4 - Soil Protection

5.4.1 - Rutting restriction, general (7/16)

Operations are to cease immediately if equipment and weather conditions result in rutting of roads and/or skid trails which is 12 inches or greater in depth and 50 feet in length. The Unit Manager or his/her representative may restrict hauling and/or skidding if ruts exceed the specified depth. With the Unit Manager or his/her representative's approval, the Purchaser may return to the area when the risk of rutting has decreased.

5.4.5 - Soil caution (11/04)

Care must be taken to minimize soil damage due to wet soil type. Tracked equipment is likely necessary for harvesting to take place.

5.8 - Protection of Endangered Species

5.8.5 - Protection of raptor nests (3/13)

All trees with raptor nests will be protected if found during harvesting operations. Notification will be made to the Unit Manager or his/her representative who will notify the Wildlife Biologist so an on-site evaluation and recommendation can be made, if necessary.

6 - Safety and Fire Prevention

6.2 - Signing

6.2.1 - Road posting (10/20)

The Purchaser is responsible for posting and maintaining caution signs on Hendrie River Road prior to beginning operations. The road must be posted at appropriate distances from the sale area, to warn of logging activity and truck traffic. Signs must

be removed when harvest operations are suspended or completed. The Purchaser will provide these signs. Signs may also be required on M28 to warn of logging trucks pulling out.



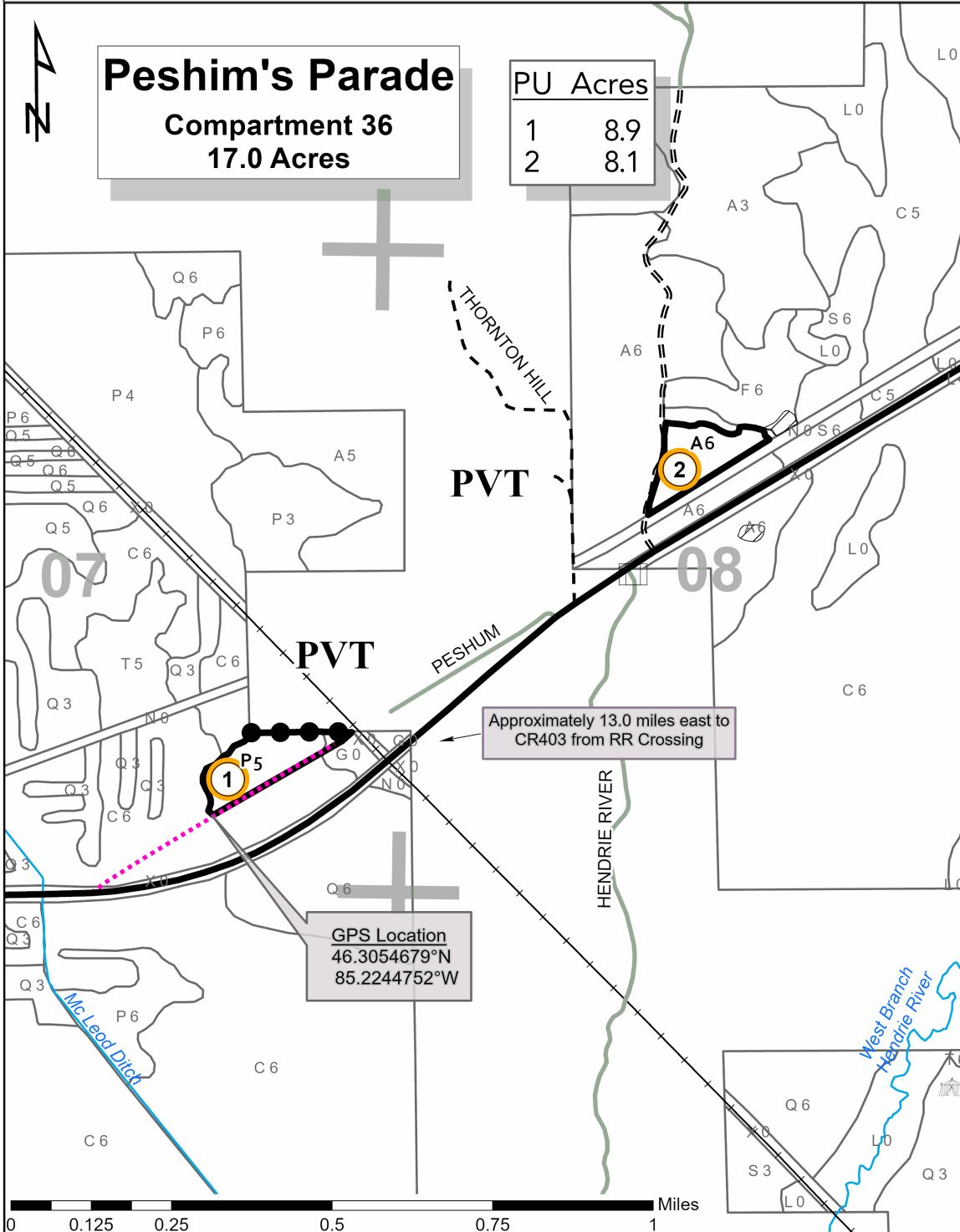
TIMBER SALE MAP

This information provided by authority of Part 525, 1994 PA 451, as amended.

Sale Number	42-036	Year	22
-------------	--------	------	----

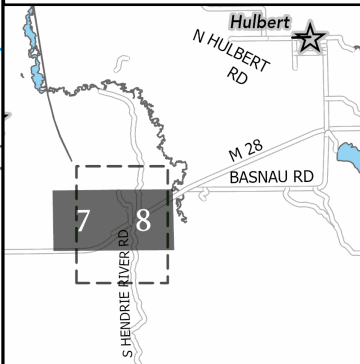
Forest Management Unit Newberry	County Chippewa	Mapped By L. Livermore	Date 10/01/2022	Page 1	of 1
Township 45N	Range 07W	Section(s) and Subdivision(s) Section 07: S½SE Section 08 SENW, SWNE	Scale 1:15,840		

Cover Type				Density		
A = Aspen	H = Hemlock	N = Marsh	U = Upland Brush	0 = Non Stocked	5 = Pole Timber Medium	
B = Paper Birch	J = Jack Pine	O = Oak	UM = Upland Mixed	1 = Seedling Sapling Poor	6 = Pole Timber Well	
C = Cedar	L = Lowland Brush	P = Lowland Poplar	V = Bog or Marsh	2 = Seedling Sapling Medium	7 = Saw Timber Poor	
D = Tread Bog	LM = Lowland Mixed	Q = Mixed Swamp Conifer	W = White Pine	3 = Seedling Sapling Well	8 = Saw Timber Medium	
E = Swamp Hdwoods	M = Mpl, Bch, Brch	R = Red Pine	X = Non Stocked	4 = Pole Timber Poor	9 = Saw Timber Well	
F = Spruce Fir	MC = Mixed Conifer	S = Black Spruce	Z = Water			
G = Grass	MD = Mixed Deciduous	T = Tamarack				



- Payment Unit Label
- Against State (Red)
- Private Line (Blue)
- PVT Private Ownership
- 01 Section Numbers
- Section Corners
- Gate
- Detail_Type
- Active Railroad
- Perennial River
- Forest Access Route
- Gravel Road
- Private
- Highway
- Temporary Management Access

Locator Map: 1:200,000
- Main Map Extent



Peshim's Parade (42-036-22)
T45N, R07W, SEC. 7; T45N, R07W, SEC. 8; Chippewa COUNTY

In response to the notice of sale to be held 3:00 p.m. (local time) on January 16, 2025, I am hereby submitting my sealed bid (firm offer) for the following forest products to be cut. Bids for individual species must be at or above the advertised price. All non-responsive bid forms may be rejected.

<u>PRODUCTS & SPECIES</u>	<u>ESTIMATED VOLUME*</u>	<u>ADVERTISED PRICE</u>	<u>BID PRICE/UNIT</u>
Pulpwood			
Balsam Fir	46 Cords	\$ 8.50/Cord	\$ _____
Balsam Poplar	11 Cords	\$ 23.85/Cord	\$ _____
Mixed Hardwood	72 Cords	\$ 10.55/Cord	\$ _____
Mixed Spruce	137 Cords	\$ 5.20/Cord	\$ _____
Quaking Aspen	187 Cords	\$ 23.85/Cord	\$ _____

*The volumes are statistically estimated within plus (+) or minus (-) 21.31 percent at 95% confidence level. These estimated volumes are final and not subject to adjustment. Prospective bidders are urged to examine this timber and to make their own estimates of quantity and quality.

I understand that any or all bids may be rejected. All bids must be signed and all bid items must be bid or the bid form may be rejected. I also understand that consideration and awarding a contract will be based upon my past performance and ability to complete the contract based upon equipment and staffing subject to my control.

FEDERAL ID: _____ - _____ or SOCIAL SECURITY NUMBER: _____ - _____ - _____

Company or individual bidding: _____

Company representative's name: _____

Address: _____

City: _____ State: _____ Zip: _____

IF AVAILABLE, PLEASE PLACE THE PERSONALIZED LABEL FROM YOUR PROSPECTUS IN THE ABOVE BOX.

Individual or company representative's signature: _____ Date: _____

Phone number : _____ Email (optional): _____

THE WINNING BIDDER MUST COMPLETE THE VERIFICATION OF WORKER'S DISABILITY COMPENSATION ACT COMPLIANCE (ON REVERSE SIDE IF DOUBLE SIDED) WITHIN 21 DAYS OF SALE AWARD DATE



FOR DEPARTMENT USE ONLY
Sale Number (XX - XXX - XX - XX)
Forest Management Unit:

TIMBER SALE VERIFICATION OF WORKER'S DISABILITY COMPENSATION ACT COMPLIANCE

*As required by Act 317, P.A. 1969 (Worker's Compensation) and
Part 5 of Act 451 of 1994, as amended.*

VERIFICATION OF WORKER'S DISABILITY COMPENSATION ACT COMPLIANCE

- This verification must be completed and submitted within 21 days of contract award and prior to the issuance of the timber sale contract.
- In addition, if boxes 2B or 2C are checked, then Notice of Exclusion or Certificate of Insurance must be submitted within twenty-one (21) days of the contract award and prior to the issuance of the timber sale contract.
- All information must be typed or printed except for written signatures.

Please Check Appropriate Categories:

1. My business is organized as (you **must** check one of the boxes below):
 - A. Sole Proprietorship (individual)
 - B. Partnership
 - C. Corporation
2. You **must** check one of the boxes below:
 - A. I certify my business is a sole proprietorship and it has no employees but the sole proprietor. I am not subject to the Worker's Compensation Laws.
 - B. I certify my business has satisfied its obligation to the Worker's Compensation Act through the use of an approved Notice of Exclusion (BWC-337, Rev. 5/96). I will provide a copy of the Notice of Exclusion within 21 days of the contract award. (For questions or a copy of the BWC-337, please call the Worker's Compensation Bureau at 517-322-1195).
 - C. I certify my business has a Worker's Compensation Policy. I will provide an original Certificate of Insurance within twenty-one (21) days of the contract award.
3. If you have checked item 2(A) or 2(B), you **must** indicate the number of **both** full-time and part-time employees, other than yourself, including family members and active partners (if none, you must enter "0").

_____ Full-time Employees

_____ Part-time Employees

Name of Business		Federal ID (or) Social Security No.	
Address		Telephone ()	
City	State	ZIP	

I hereby certify that the above information is true and correct. I agree to notify the Michigan DNR of any changes that occur in factors affecting my coverage during any of my present and future operations.

Signature of Owner or Authorized Representative

Title

Date

Please complete the "SEALED BID" information on the next page

Colossus Mix (42-015-23)

T46N, R09W, SEC. 6; T46N, R09W, SEC. 7; T46N, R09W, SEC. 8; T46N, R10W,

In response to the notice of sale to be held 3:00 p.m. (local time) on January 16, 2025, I am hereby submitting my sealed bid (firm offer) for the following forest products to be cut. Bids for individual species must be at or above the advertised price. All non-responsive bid forms may be rejected.

<u>PRODUCTS & SPECIES</u>	<u>ESTIMATED VOLUME*</u>	<u>ADVERTISED PRICE</u>	<u>BID PRICE/UNIT</u>
Sawtimber			
Paper Birch	11.1 MBF	\$ 35.00/MBF	\$ _____
Red Maple	23.8 MBF	\$ 31.00/MBF	\$ _____
White Pine	244.8 MBF	\$ 38.00/MBF	\$ _____
Pulpwood			
Balsam Fir	552 Cords	\$ 7.40/Cord	\$ _____
Mixed Aspen	132 Cords	\$ 20.70/Cord	\$ _____
Mixed Hardwood	6,842 Cords	\$ 9.15/Cord	\$ _____
Mixed Spruce	1,650 Cords	\$ 4.50/Cord	\$ _____
N. White Cedar	5,407 Cords	\$ 5.05/Cord	\$ _____
Tamarack	223 Cords	\$ 8.20/Cord	\$ _____
White Pine	60 Cords	\$ 11.50/Cord	\$ _____

*The volumes are statistically estimated within plus (+) or minus (-) 5.73 percent at 95% confidence level. These estimated volumes are final and not subject to adjustment. Prospective bidders are urged to examine this timber and to make their own estimates of quantity and quality.

I understand that any or all bids may be rejected. All bids must be signed and all bid items must be bid or the bid form may be rejected. I also understand that consideration and awarding a contract will be based upon my past performance and ability to complete the contract based upon equipment and staffing subject to my control.

FEDERAL ID: _____ or SOCIAL SECURITY NUMBER: _____

Company or individual bidding: _____

Company representative's name: _____

Address: _____

City: _____ State: _____ Zip: _____

IF AVAILABLE, PLEASE PLACE THE PERSONALIZED LABEL FROM YOUR PROSPECTUS IN THE ABOVE BOX.

Individual or company representative's signature: _____ Date: _____

Phone number : _____ Email (optional): _____

THE WINNING BIDDER MUST COMPLETE THE VERIFICATION OF WORKER'S DISABILITY COMPENSATION ACT COMPLIANCE (ON REVERSE SIDE IF DOUBLE SIDED) WITHIN 21 DAYS OF SALE AWARD DATE



FOR DEPARTMENT USE ONLY	
Sale Number (XX - XXX - XX - XX)	
Forest Management Unit:	

TIMBER SALE VERIFICATION OF WORKER'S DISABILITY COMPENSATION ACT COMPLIANCE

As required by Act 317, P.A. 1969 (Worker's Compensation) and
Part 5 of Act 451 of 1994, as amended.

VERIFICATION OF WORKER'S DISABILITY COMPENSATION ACT COMPLIANCE

- This verification must be completed and submitted within 21 days of contract award and prior to the issuance of the timber sale contract.
- In addition, if boxes 2B or 2C are checked, then Notice of Exclusion or Certificate of Insurance must be submitted within twenty-one (21) days of the contract award and prior to the issuance of the timber sale contract.
- All information must be typed or printed except for written signatures.

Please Check Appropriate Categories:

1. My business is organized as (you **must** check one of the boxes below):
 - A. Sole Proprietorship (individual)
 - B. Partnership
 - C. Corporation
2. You **must** check one of the boxes below:
 - A. I certify my business is a sole proprietorship and it has no employees but the sole proprietor. I am not subject to the Worker's Compensation Laws.
 - B. I certify my business has satisfied its obligation to the Worker's Compensation Act through the use of an approved Notice of Exclusion (BWC-337, Rev. 5/96). I will provide a copy of the Notice of Exclusion within 21 days of the contract award. (For questions or a copy of the BWC-337, please call the Worker's Compensation Bureau at 517-322-1195).
 - C. I certify my business has a Worker's Compensation Policy. I will provide an original Certificate of Insurance within twenty-one (21) days of the contract award.
3. If you have checked item 2(A) or 2(B), you **must** indicate the number of **both** full-time and part-time employees, other than yourself, including family members and active partners (if none, you must enter "0").

_____ Full-time Employees

_____ Part-time Employees

Name of Business		Federal ID (or) Social Security No.	
Address		Telephone ()	
City	State	ZIP	

I hereby certify that the above information is true and correct. I agree to notify the Michigan DNR of any changes that occur in factors affecting my coverage during any of my present and future operations.

Signature of Owner or Authorized Representative

Title

Date

Please complete the "SEALED BID" information on the next page