



**DEPARTMENT OF NATURAL RESOURCES
STATE OF MICHIGAN
TIMBER SALE PROSPECTUS #7499**

SCHEDULED SALE DATE AND TIME: 9:00 a.m. (local time) on November 21, 2024.

LOCATION: PIGEON RIVER COUNTRY MGMT UNIT, PO BOX 456, 9966 TWIN LAKES ROAD, VANDERBILT, MI 49795.

PROSPECTUS NOTE: The bidder is advised to inspect the sale area and review the location, estimated volumes, operating costs and contract terms of proposed sales. Please be aware that some landowners may request 60 days or more notice for access across their land.

Notice is hereby given that bids will be received by the Unit Manager, PIGEON RIVER COUNTRY MANAGEMENT UNIT, for certain timber on the following described lands:

Elite Hardwoods (53-001-25) / T32N, R02W, SEC. 13, NE,E1/2SW,W1/2SE.

Otsego County, Advertised Price \$36,218.65, 46.4 Acres, Hardwood, Sugar Maple.

Fisherman Aspen 2 (53-013-24) / T33N, R01W, SEC. 17, NENW,NWNE.

T33N, R01W, SEC. 19, W1/2NW.

T33N, R01W, SEC. 29, W1/2SW.

T33N, R01W, SEC. 30, SWNE,N1/2SE,SESE.

T33N, R01W, SEC. 31, NENE.

T33N, R01W, SEC. 8 , SESW,SWSE.

Cheboygan County, Advertised Price \$63,443.80, 82.3 Acres, Aspen, Hardwood.

SALE NOTE: A recreation site such as a trail, pathway, or campground is within the sale area or the vicinity. Certain restrictions/specifications may be applicable including time restrictions.

Puddingstone Pine (53-018-24) / T33N, R01E, SEC. 21, SENE.

Cheboygan County, Advertised Price \$15,794.00, 16.4 Acres, Red Pine.

Paint It Black Mix (53-029-24) / T34N, R01W, SEC. 29, SWNW,W1/2SW.

T34N, R01W, SEC. 30, SESE.

Cheboygan County, Advertised Price \$13,504.60, 22.5 Acres, Spruce/Fir/Tamarack, Aspen.

SALE NOTE: Note short contract length, crane mat requirements, and roundwood operation requirements.

BID INSTRUCTIONS (VER. 10/10/2022):

1. Scheduled Bid Location, Date, and Time (2/11)

Bids must be received by the Unit Manager, PIGEON RIVER COUNTRY OFFICE, PO Box 456 9966 Twin Lakes Road, Vanderbilt, MI 49795, no later than 9:00 a.m. (local time) on November 21, 2024. For further information concerning this sale, contact Mark Monroe at 989-983-4101 extension .

2. Bidder's Qualifications (10/22)

If all or part of a timber sale was prepared by a private contractor, the contractor and that contractor's company are not permitted to bid on the timber sale. A person must be 18 years of age or older to purchase timber. Permanent employees of the Department of Natural Resources or members of their immediate household may not bid. Former employees, in the permanent or seasonal class, may not bid until 3 months after the last day of active duty. Bids will not be accepted from individuals or companies appearing on the DNR/FRD No-Bid List. This list contains the names of purchasers who previously failed to execute a contract within 21-days or who have a history of poor performance.

3. Preparation of Sealed Bids (5/16)

Bid Forms may be completed online thru Michigan DNR Timber Sale Online Bidding (OLB) at www.michigan.gov/timberbidding or by completing the hardcopy Bid Form found in the Timber Sale Prospectus . Hardcopy Bid Forms shall be manually signed in ink. Registration in OLB is considered your 'signature' for all bids submitted thru that system. Bid prices must be entered for each species and product in the Bid Price column for all material subject to bidding and all fill-in blanks must be completed. If erasures or other changes appear on the hardcopy Bid Form, each erasure or change must be initialed by the person signing the bid.

4. Submission of Sealed Bids (5/16)

Bid forms may be obtained from the Unit Manager or thru OLB. Bids may be submitted hardcopy or thru OLB. All hardcopy bids must be submitted on the bid form and in an envelope clearly identified as described in this section. NOTE: Only one bid form per bid envelope. Sealed bids must be submitted to the Unit office designated in the prospectus and must be submitted at or prior to the time established in the prospectus. The envelope should show on the outside (a) the sale name or number and (b) the date and time of bid opening, as shown in the prospectus. Bids received after the time specified in the sale prospectus are late bids and will be rejected.

It is possible for a bidder to submit multiple bids on a single sale. For example, a bid may be submitted hardcopy and a bid may be submitted thru OLB. Or, two bidders from the same company could both submit bids on the same sale. If this were to happen, the State would accept all bids received and award the contract accordingly. All bidding and contractual requirements would apply to all bids received.

5. Public Opening of Sealed Bids (7/16)

If conditions permit, the sealed bids will be publicly opened and posted at the time and place set in the prospectus.

If a bidder, present at a bid opening, has submitted bids on more than one sale, that bidder may withdraw their unopened bid envelopes or announce the withdrawal of their online bid after being declared the successful bidder on one sale.

6. Award of Contract (1/11)

Award of the contract will be made to the Bidder whose bid, conforming to the prospectus, is most advantageous to the State of Michigan on the basis of total value at rates bid for the estimated quantities. The State reserves the right to reject any bid or waive any minor irregularity in bids received. A written award mailed (or otherwise furnished) to the successful Bidder shall be deemed to result in a binding contract without further action by either party.

7. Down Payment (1/11)

The Bidder to whom award is made must make a down payment within 21 days of the sale award. The amount of the down payment will be calculated as shown in the Bond and Payment Schedule of this prospectus. Only cash may be used to meet this requirement.

8. Performance Security (1/11)

As guarantee of faithful performance, a cash bond, certificate of deposit, surety bond or irrevocable letter of credit (LOC) is required within 21 days of the sale award. The amount of the performance security is shown in the Bond and

Payment Schedule of this prospectus. If an LOC or surety is used, the coverage must extend for at least 6 months beyond the contract expiration.

9. Worker's Compensation (10/22)

Purchaser shall obtain worker's compensation insurance to cover claims under Michigan's Worker's Disability Compensation Act of 1969 or similar employee benefit act of any other state applicable to an employee. Verification of Worker's Disability Compensation Act Compliance must be completed and submitted within 21 days of contract award and prior to the issuance of the timber sale contract. In addition, if applicable, Notice of Exclusion or Certificate of Insurance must also be submitted.

10. Timber Sale Contract (10/22)

Additional conditions and requirements common to all timber sales are listed on the timber sale contract (R4031) and are available on line at www.michigan.gov/timber. Contact the Unit Manager for additional information or a sample contract. Within 21 days of the date of the award letter, the bidder must sign the contract and provide the required down payment, performance security, and verification of worker's disability compensation. The down payment and performance security shall be in accordance with the provisions of the timber sale contract, in the sums stated in this prospectus. If these actions are not taken, then the Bidder, the Bidder's corporation, and the corporation's principals may not be permitted to bid on State timber sales for a period of 3 months after the first offense, 6 months after the second offense, and 1 year after the third offense. An offense will only be counted against the Bidder for 5 years. In addition, the Bidder certifies that if awarded this contract, the Bidder will complete the timber sale contract in accordance with its terms and any modifications thereof including requirements to purchase, cut, and remove the included timber by the expiration date.

Payment Unit values in the State Forest Timber Sale Contract are calculated based on the advertised value of the Payment Unit as a percentage of the total advertised value of the contract. The advertised value of each Payment Unit is given in the Description of Timber by Payment Unit table on the Timber Sale Information page. For example, if the value of Payment Unit 1 is advertised as \$1,500 and the total Timber Sale value is advertised as \$10,000, the contract price for Payment Unit 1 will be 15% of the total bid price ($\$1,500/\$10,000 * 100$).

11. Disclaimer of Estimates and Bidder's Warranty of Inspection (10/22)

Before submitting this bid, the Bidder is advised and cautioned to inspect the sale area, review the requirements of the sale contract, and take other steps as may be reasonably necessary to ascertain the location, estimated volumes, construction estimates, and operating costs of the proposed sale. Failure to do so will not relieve the Bidder from responsibility for completing the contract.

The Bidder warrants that this bid is submitted solely on the basis of the Bidder's examination and inspection of the quality and quantity of the timber offered for sale and the Bidder's opinion of the value thereof and the costs of recovery. No reliance should be placed on the State of Michigan's estimates of timber quality, quantity or costs of recovery. Bidder further acknowledges that the State of Michigan: (i) expressly disclaims any warranty of fitness of timber for any purpose; (ii) offers this timber as is without any warranty of quality (merchantability) or quantity and (iii) expressly disclaims any warranty as to the quantity or quality of timber sold.

12. Certification and Chain-of-Custody (10/22)

Unless otherwise indicated in the contract under section 7 – Other Conditions of the Sale Specific Conditions & Requirements, the area encompassed by this timber sale is certified to the standards of the Forest Stewardship Council (FSC) - Certificate #SCS-FM/COC-00090N and the Sustainable Forestry Initiative (SFI) - Certificate #NSF-SFIS-5Y031-SF5. Forest products from this sale may be delivered to the mill as "FSC 100% and / or SFI certified" as long as the contractor hauling the forest products is chain-of-custody (COC) certified or covered under a COC certificate from the destination mill. The purchaser is responsible for maintaining COC after leaving the sale area.

13. Good Neighbor Authority (GNA) Requirements (10/22)

If the name of this timber sales contains the acronym GNA, it is authorized by the Good Neighbor Authority (GNA) and covered by various agreements between the U.S. Forest Service and the State. The timber sale occurs on federal land and the following conditions apply:

GNA contracts on US Forest Service land will not be awarded to purchasers on the Federal list of excluded parties. The System for Award Management (SAM) will be checked for active excluded parties prior to award of contract. In

addition, the Bidder to whom award is made must complete an Assurance Regarding Felony Conviction or Tax Delinquent Status for Corporate Applicants (AD-3031).

14. Good Neighbor Authority (GNA) Requirements, con't (10/22)

Bidder certifies, by signing this bid form, that to the best of Bidder's knowledge that the following representations are accurate and complete.

- a. That the Bidder and its principals are not presently debarred, suspended, proposed for debarment, declared ineligible, or voluntary excluded from timber sales (covered transactions) by any Federal department or agency.
- b. That the Bidder and its principals have not within a 3-year period preceding this bid been convicted of or had a civil judgment rendered against them for commission of fraud or a criminal offense in connection with obtaining , attempting to obtain, or performing a public (Federal, State, or local) transaction or contract under a public transaction; violation of Federal or State antitrust statutes or commission of embezzlement, theft, forgery, bribery, falsification or destruction of records, making false statements, or receiving stolen property.
- c. That the Bidder and its principals are not presently indicted for or otherwise criminally or civilly charged by a governmental entity (Federal, State, or local) with commission of any of the offenses enumerated in paragraph b of this certification.
- d. That the Bidder and its principals have not within a 3-year period preceding this bid had one or more public transactions (Federal, State, or local) terminated for breach or default of a timber or forest product contract.

Bidders that cannot certify this requirement, in whole or in part, shall submit an explanation with their bid.

Scott Bowen
Director

TIMBER SALE INFORMATION

Elite Hardwoods (53-001-25)
T32N, R02W, SEC. 13.
Otsego County (Advertised Price \$36,218.65)

A timber sale contract for this lump sum, sealed bid timber sale will be awarded to the responsible bidder offering the highest sealed bid price. All units of volume listed below were estimated using the Inventory Manager computer program and the new Michigan taper model. Bids must be at or above the following advertised price for each product and species:

<u>PRODUCTS & SPECIES</u>	<u>ESTIMATED UNITS*</u>	<u>ADVERTISED PRICE</u>
Sawtimber		
Basswood	83.3 MBF	\$ 66.00 / MBF
Sugar Maple	114.4 MBF	\$ 215.00 / MBF
Pulpwood		
Basswood	92 Cords	\$ 12.10 / Cord
Jack Pine	9 Cords	\$ 14.60 / Cord
Mixed Aspen	57 Cords	\$ 22.20 / Cord
Mixed Hardwood	241 Cords	\$ 14.90 / Cord
White Pine	1 Cords	\$ 23.95 / Cord

* The total volume is statistically estimated within plus (+) or minus (-) 17.09 percent. There are an estimated 862 cords on this timber sale, plus or minus 147 cords at the 95% confidence level. The estimated units are final and not subject to adjustment. Prospective bidders are urged to examine this timber and to make their own estimates of quantity and quality.

BOND AND PAYMENT SCHEDULE:

1. A bond in the amount of \$3,622.00 to insure faithful performance of the conditions of the contract will be deposited by the successful bidder within 21 days of the sale award.
2. Cutting in any sale or unit without the required advance payment would be considered a trespass.
3. Total payment must be paid in advance or according to the following schedule :
 - (a) Ten percent (10%) of the sale value must be paid within 21 days of the sale award.
 - (b) The 10% down payment will be credited towards the first unit cut.
 - (c) Payment for each of the following units must be made before cutting begins in that unit:

PAYMENT UNIT NUMBER	PERCENT OF TOTAL SALE VALUE
01	73.6%
02	23.2%
03	3.2%
4. If no cutting takes place, the 10% down payment will not be refunded.
5. Operations on the contract issued will terminate on 06/30/2027.

SALE STATISTICS

Volumes were calculated in cubic feet using the Michigan taper model. Cubic foot volume includes all wood inside bark for the product indicated. For display purposes, cubic feet were converted to cords and MBF using a simple conversion factor, e.g. 79 cubic feet per cord and 185 cubic feet per MBF. The cubic foot volumes are precise; the cords and MBF volumes are not. Cubic foot volume cannot be directly converted to cords or boards with precision.

SALE VOLUMES

The total estimated sale volume may not equal the sum of the species/products due to the nature of statistical calculations associated with double sampling methodology.

VOLUME		STATISTICAL RANGE IN CORDS		
TOTAL CUBIC FEET	TOTAL CORDS	PERCENT ERROR	MINIMUM	MAXIMUM
68,120	862	17.09%	715	1,010

VDU VOLUMES

A VDU is a Volume Determination Unit. Volumes and their associated statistics are calculated at the VDU level and summarized to the sale level. There is often a one to one relationship between a VDU and a Payment Unit, but not always, depending on the cruise design. Refer to the VDU TO PAYMENT UNIT table.

VDU	VOLUME		PERCENT ERROR	RANGE IN CORDS	
	TOTAL CUBIC FEET	TOTAL CORDS		MINIMUM	MAXIMUM
84	36,851	466	22.16%	363	570
89	26,971	341	30.23%	238	445
97	4,298	54	70.30%	16	93
TOTAL:	68,120	862		617	1,107

VDU TO PAYMENT UNIT

When a VDU is associated with more than one Payment Unit (PU), the VDU volumes are assigned to the PU based on acres of the VDU within the PU.

VDU	VDU ACRES	PU	PU ACRES
84	13.4	1	13.4
89	30.4	2	30.4
97	2.6	3	2.6
TOTAL:	46.4		46.4

DESCRIPTION OF TIMBER BY PAYMENT UNIT (PU)

PU	MARKET GROUP	PRODUCT	QUANTITY	UNIT	ACRES	ADVERTISE PRICE
1	Basswood	Sawtimber	58.2	MBF	13.4	\$26,658.50
	Sugar Maple		99.6	MBF		
	Basswood	Pulpwood	15	Cords		
	Mixed Hardwood		82	Cords		
	<i>Beech</i>		24	<i>Cords</i>		
	<i>Sugar Maple</i>		58	<i>Cords</i>		
2	Basswood	Sawtimber	25.1	MBF	30.4	\$8,413.10
	Sugar Maple		14.8	MBF		
	Basswood	Pulpwood	77	Cords		
	Mixed Aspen		13	Cords		
	<i>B. T. Aspen</i>		13	<i>Cords</i>		
	Mixed Hardwood		158	Cords		
	<i>Beech</i>		3	<i>Cords</i>		
<i>Sugar Maple</i>	155	<i>Cords</i>				
3	Jack Pine	Pulpwood	9	Cords	2.6	\$1,147.05
	Mixed Aspen		44	Cords		
	<i>Quaking Aspen</i>		44	<i>Cords</i>		
	Mixed Hardwood		1	Cords		
	<i>Ironwood</i>		1	<i>Cords</i>		
	White Pine		1	Cords		
TOTAL:			197.7	MBF		
TOTAL:			400	Cords		

Sale Specific Conditions & Requirements

Sale Name: Elite Hardwoods

Sale Number: 53-001-25 Seq#: 1

1 - Sale Area

1.2 - Boundaries

1.2.1 - Painted boundaries (9/19)

The sale boundary and Payment Unit boundaries are marked and identified by red paint. Exterior sale boundary lines against state are marked with red paint. The painted boundary line trees are not Included Timber and are to be protected unless marked with orange paint.

2 - Timber Specifications

2.1 - Included Timber

2.1.1 - Clearcut unit(s) with unmerchantable trees (6/14)

Within Payment Unit(s) 1, cut all trees that are one (1) inch or more at DBH, except do not cut oak, yellow birch, elm, or trees marked with green paint. For trees that meet DNR sawlog merchantability standards (DBH greater than 10 inches DBH) only sawlogs may be cut from the tree, and all merchantable pulpwood from these trees may not be cut and must be left attached to the crown of the tree. Note that Payment Unit 1 consists of 9 clearcut patches, each separated from one another and bound by red paint.

Within Payment Unit 3, cut all trees that are one (1) inch or more at DBH, except do not cut oak, birch, or trees marked with green paint. In addition, do not cut any red or white pine greater than twenty (20) inches DBH and do not cut any cherry greater than five (5) inches DBH.

2.1.3 - Cut tree marked unit(s) (12/08)

Within Payment Unit(s) 2, all trees are designated for cutting when marked with orange paint above and below stump height, regardless of merchantability.

2.2 - Utilization

2.2.6 - Roundwood operation required (3/21)

The skidding of whole trees or tree segments with limbs attached is prohibited. All products must be produced as roundwood and forwarded to existing roads or landing areas in final product length.

2.2.9 - No chipping permitted (12/08)

Within Payment Unit(s) 1-3, all wood must be removed by roundwood. No chipping is permitted.

3 - Payments

3.4 - Damaged Timber

3.4.1 - Damaged timber (7/16)

General Condition and Requirement 3.4 Damaged Timber, defines liquidated damages for undesignated live merchantable trees which are cut or injured. In addition, extreme care should be taken to avoid damage to red oak poletimber and saplings which can be found in Payment Units 2-3. Some of these trees have been marked with green paint to aid in identification.

3.6 - Payment Unit Cutting Schedule

3.6.8 - Operating period (5/16)

Once cutting begins, operations must continue until all Payment Units are completed.

4 - Transportation

4.1 - Construction

4.1.3 - Slash and earthen piles (8/04)

Piles or windrows of earth along roads and landings that have been widened or constructed shall be leveled. Slash from road maintenance or construction, including stumps, shall be dispersed throughout the sale.

4.1.7 - Road closure (10/11)

Overgrown roads that are reopened must be blocked to vehicle traffic upon completion of the sale. In general, this will require constructing a four (4') foot high berm of stumps and logs covered with earth. These roads must be rendered impassable to cars and trucks.

4.1.12 - No new roads (1/12)

No new roads will be permitted in any Payment Unit. All operations are limited to existing roads.

4.2 - Maintenance

4.2.4 - Grading (10/16)

For completion of the sale, and if deemed necessary by the Sale Administrator, state forest roads must be graded. In general, this will require a road grader or bulldozer to shape up the roads after forest products have been hauled off site. This includes cleaning of drainage areas, grading, crowning and filling with gravel, if necessary. The grading equipment to be used must be approved by the Unit Manager or his/her representative.

4.2.5 - Two wheel drive condition (2/04)

All existing trail roads on and adjacent to the sale area must be passable by two-wheel drive traffic for the duration of the sale.

4.4 - Access

4.4.3 - Access gate (12/08)

The access gate must be locked at the completion of each day unless otherwise approved by the Unit Manager or his/her representative.

4.4.4 - Restricted access (10/05)

Access between each clearcut patch in Payment Unit 1 will be limited to one skid trail route that will be flagged in prior by the Sale Administrator.

5 - Operations

5.1 - Notification

5.1.3 - Well heads and natural gas pipelines (11/15)

The Purchaser is responsible for contacting the Enbridge Pipeline Company 30 days prior to operating equipment in the vicinity of well heads or natural gas pipelines.

5.2 - Conduct of Operations

5.2.1 - Slash

5.2.1.10 - No slash in openings (5/10)

No brush or logging debris is to be left in the maintained wildlife opening which is indicated by G0 on the Timber Sale Map. Any damage to the opening shall be repaired according to specifications of the Unit Manager or his/her representative.

5.2.1.11 - Slash for reforestation (3/21)

To facilitate reforestation, the Sale Area shall be left with slash evenly distributed. Bunched tops within the cutting area shall be broken up and scattered. Stumps shall be cut low to the ground. Processing sites shall not be left with a compacted layer of slash; tops from these sites shall be hauled back into the cut area and scattered.

In addition, in Payment Unit 1, all tops must be left intact (not processed into smaller pieces) and must be scattered evenly throughout the cut area. The objective is to leave as much slash as possible in order to deter deer and elk browse.

5.2.2 - Hazard Trees/Snags

5.2.2.1 - Den trees (10/16)

Obvious hollow and/or den trees shall be protected and left standing unless they are a safety hazard.

5.2.3 - Operating Restrictions

5.2.3.3 - Bark slippage restriction (3/09)

Within Payment Unit(s) 1-2, cutting and skidding are not permitted during the period of March 15 to July 15. This restriction is because of bark slippage.

5.2.3.4 - Oak wilt restriction, no exceptions (1/18)

Within Payment Units 1-3, cutting, skidding, and hauling within the sale and brushing of access roads to the sale are not permitted during the period of April 15 to July 15. No exceptions will be granted. This is necessary to reduce the spread of oak wilt.

5.2.4 - Dead and Down Creation

5.2.4.7 - Dead and down creation: hare, grouse, deer and other species (5/15)

To improve horizontal cover habitat for snowshoe hare, grouse, deer, and other species, the Purchaser is to push over trees marked with a pink "X". These trees should be tipped over with the root ball still attached so the base of the tree is suspended off the ground. The crown of the fallen tree should be at or near ground level after it is pushed over.

5.2.32 - Decking/landing restoration (9/13)

All decking and landing areas must have the surface area restored to a condition equal to or better than before. This is to ensure the proper regeneration of the stand. Wood debris, chips and "cookies" from trimmings must be removed or scattered away from landing and loading areas and may not be windrowed on the edge.

5.2.38 - No decking against live trees (2/04)

Cut products may not be decked against unmarked or designated leave trees.

5.4 - Soil Protection

5.4.1 - Rutting restriction, general (7/16)

Operations are to cease immediately if equipment and weather conditions result in rutting of roads and/or skid trails which is 12 inches or greater in depth and 25 feet in length. The Unit Manager or his/her representative may restrict hauling and/or skidding if ruts exceed the specified depth. With the Unit Manager or his/her representative's approval, the Purchaser may return to the area when the risk of rutting has decreased.

5.8 - Protection of Endangered Species

5.8.3 - Red shoulder hawk or goshawk (1) (2/16)

In the event that an active red shoulder hawk or goshawk nest is found, the contract may be amended to protect the nest site until the nest is determined to be inactive. The value of the trees in this excluded area will be refunded or credited to the Purchaser. The nest will be buffered with a five-chain radius (eight acre) protection area, centered on the nest tree, in which there will be no cutting or new roads constructed. Avoid human disturbance, including loading and skidding, in the protection area.

An additional zone of five chains (ten chains centered on the active nest tree) will be established in which there is no management activity from March 15 to July 15. Limit biomass harvesting and chipping operations within this ten-chain zone, retain the maximum one-third of residues per the Woody Biomass Harvesting Guidelines (Michigan DNR 2010). Nests determined to be inactive will be protected with a one-chain no-harvest buffer.

6 - Safety and Fire Prevention

6.2 - Signing

6.2.1 - Road posting (10/20)

The Purchaser is responsible for posting and maintaining caution signs on Sturgeon Valley Road prior to beginning operations. The road must be posted at appropriate distances from the Sale Area to warn of logging activity and truck traffic. Signs must be removed when harvest operations are suspended or completed. The Purchaser will provide these signs.

7 - Other Conditions

7.2 - Extensions

7.2.2 - No extensions (3/09)

There will be no extensions granted on this contract.



TIMBER SALE MAP

This information provided by authority of Part 525, 1994 PA 451, as amended.

Sale Number	Date	
53-001-25	09/03/2024	
Scale	Page	Of
1:12,000	1	1

Forest Management Unit	County	Mapped By: Rekowski
Pigeon River Country Mgt Unit	Otsego	Cruised By: Rekowski

Township	Range	Section(s) and Subdivision(s)
32N	02W	Sec. 13 NE,E1/2SW,W1/2SE;

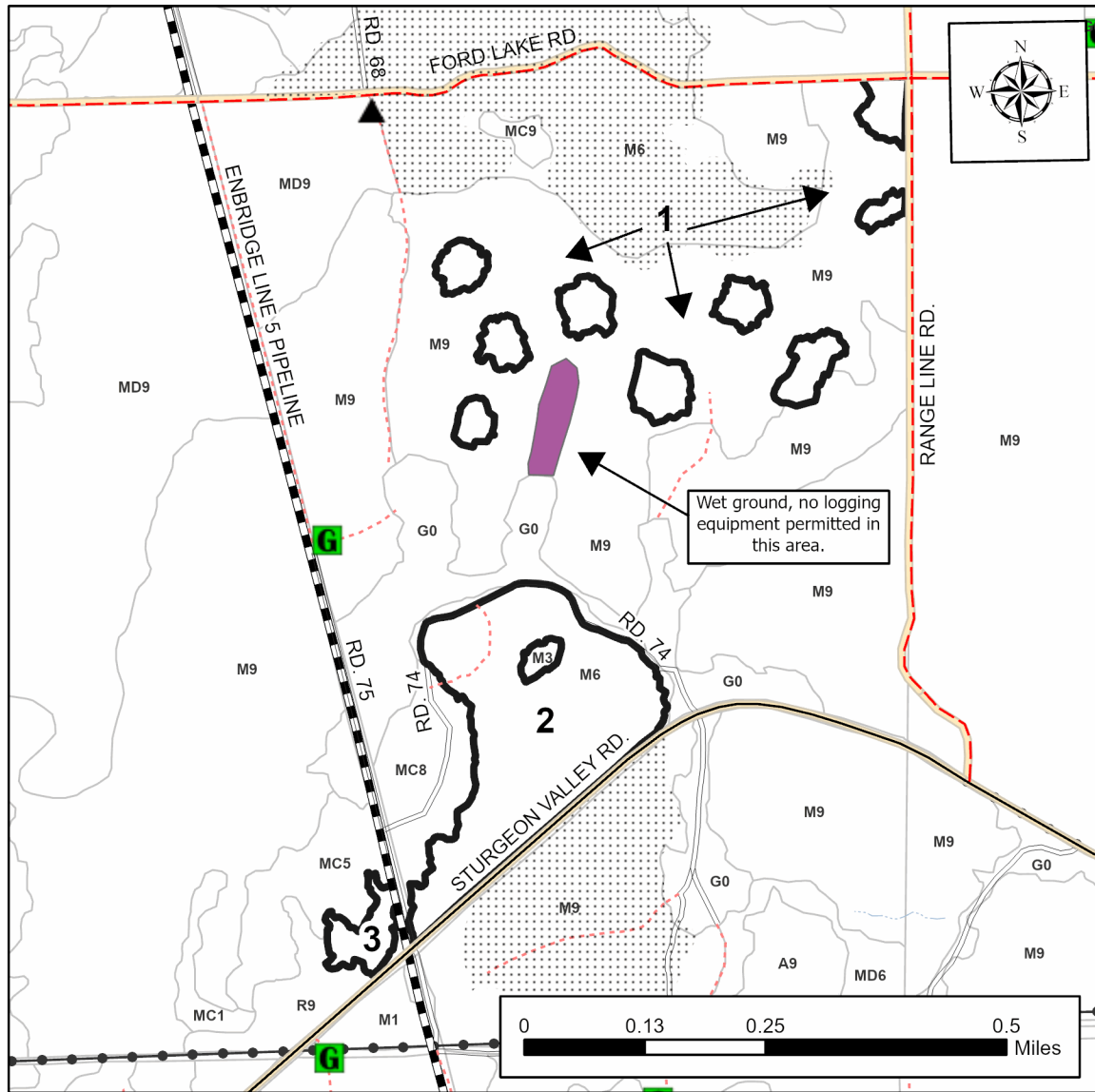
Cover Type			
A = Aspen	J = Jack Pine	O = Oak	U = Upland Brush
B = Paper Birch	K = Rock	P = Lowland Poplar	UM = Upland Mix Forest
C = Cedar	L = Lowland Brush	Q = Mixed Swamp Conifer	V = Bog or Marsh
D = Treed Bog	LM = Lowland Mix Forest	R = Red Pine	W = White Pine
E = Swamp Hardwoods	M = Maple, Beech, Birch	S = Black Spruce	X = Non Stocked
F = Spruce/Fir	MC = Mixed Conifer	T = Tamarack	Y = Sand
G = Grass	MD = Mixed Deciduous	Z = Water	
H = Hemlock	N = Marsh		

Density	
0 = Non Stocked	5 = Pole Timber Medium
1 = Seedling Sapling Poor	6 = Pole Timber Well
2 = Seedling Sapling Medium	7 = Saw Timber Poor
3 = Seedling Sapling Well	8 = Saw Timber Medium
4 = Pole Timber Poor	9 = Saw Timber Well

PU #	Acres
1	13.4
2	30.4
3	2.6

Elite Hardwoods

46.4 Acres



- ### Legend
- Against State (Red)
 - Stand Boundary
 - Wet ground
 - Nearby Timber Sales
 - Paved Road
 - County Road - Seasonal
 - Secondary Forest Road
 - Administrative Access Only
 - Non-DNR Road
 - Pipeline
 - Powerline
 - Berm
 - Gate

Use QR Code to open Map in App



TIMBER SALE INFORMATION

Fisherman Aspen 2 (53-013-24)

T33N, R01W, SEC. 17; T33N, R01W, SEC. 19; T33N, R01W, SEC. 29; T33N, R01W, SEC. 30; T33N, R01W, SEC. 31; T33N, R01W, SEC. 8.

SALE NOTE: A recreation site such as a trail, pathway, or campground is within the sale area or the vicinity. Certain restrictions/specifications may be applicable including time restrictions.

A timber sale contract for this lump sum, sealed bid timber sale will be awarded to the responsible bidder offering the highest sealed bid price. All units of volume listed below were estimated using the Inventory Manager computer program and the new Michigan taper model. Bids must be at or above the following advertised price for each product and species:

<u>PRODUCTS & SPECIES</u>	<u>ESTIMATED UNITS*</u>		<u>ADVERTISED PRICE</u>	
Sawtimber				
B. T. Aspen	123.0	MBF	\$	38.00 / MBF
Basswood	19.6	MBF	\$	55.00 / MBF
Red Maple	6.7	MBF	\$	42.00 / MBF
Sugar Maple	11.4	MBF	\$	179.00 / MBF
Pulpwood				
Balsam Fir	206	Cords	\$	22.55 / Cord
Mixed Aspen	1,880	Cords	\$	18.50 / Cord
Mixed Hardwood	598	Cords	\$	12.45 / Cord
Red Pine	22	Cords	\$	51.90 / Cord
White Pine	340	Cords	\$	19.95 / Cord
White Spruce	34	Cords	\$	16.90 / Cord

* The total volume is statistically estimated within plus (+) or minus (-) 16.41 percent. There are an estimated 3,454 cords on this timber sale, plus or minus 567 cords at the 95% confidence level. The estimated units are final and not subject to adjustment. Prospective bidders are urged to examine this timber and to make their own estimates of quantity and quality.

BOND AND PAYMENT SCHEDULE:

1. A bond in the amount of \$6,344.00 to insure faithful performance of the conditions of the contract will be deposited by the successful bidder within 21 days of the sale award.
2. Cutting in any sale or unit without the required advance payment would be considered a trespass.
3. Total payment must be paid in advance or according to the following schedule :
 - (a) Ten percent (10%) of the sale value must be paid within 21 days of the sale award.
 - (b) The 10% down payment will be credited towards the first unit cut.
 - (c) Payment for each of the following units must be made before cutting begins in that unit:

PAYMENT UNIT NUMBER	PERCENT OF TOTAL SALE VALUE
01	35.7%
02	27.4%
03	13.0%
04	4.5%
05	19.4%
4. If no cutting takes place, the 10% down payment will not be refunded.
5. Operations on the contract issued will terminate on 06/30/2027.

SALE STATISTICS

Volumes were calculated in cubic feet using the Michigan taper model. Cubic foot volume includes all wood inside bark for the product indicated. For display purposes, cubic feet were converted to cords and MBF using a simple conversion factor, e.g. 79 cubic feet per cord and 185 cubic feet per MBF. The cubic foot volumes are precise; the cords and MBF volumes are not. Cubic foot volume cannot be directly converted to cords or boards with precision.

SALE VOLUMES

The total estimated sale volume may not equal the sum of the species/products due to the nature of statistical calculations associated with double sampling methodology.

VOLUME		STATISTICAL RANGE IN CORDS		
TOTAL CUBIC FEET	TOTAL CORDS	PERCENT ERROR	MINIMUM	MAXIMUM
272,870	3,454	16.41%	2,887	4,021

VDU VOLUMES

A VDU is a Volume Determination Unit. Volumes and their associated statistics are calculated at the VDU level and summarized to the sale level. There is often a one to one relationship between a VDU and a Payment Unit, but not always, depending on the cruise design. Refer to the VDU TO PAYMENT UNIT table.

VDU	VOLUME		PERCENT ERROR	RANGE IN CORDS	
	TOTAL CUBIC FEET	TOTAL CORDS		MINIMUM	MAXIMUM
4	15,318	194	66.99%	64	324
33	32,868	416	34.43%	273	559
34	171,161	2,167	23.40%	1,660	2,674
74	53,523	678	28.14%	487	868
TOTAL:	272,870	3,454		2,483	4,425

VDU TO PAYMENT UNIT

When a VDU is associated with more than one Payment Unit (PU), the VDU volumes are assigned to the PU based on acres of the VDU within the PU.

VDU	VDU ACRES	PU	PU ACRES
4	5.5	4	5.5
33	9.8	3	9.8
34	51.7	1	29.3
		2	22.4
74	15.3	5	15.3
TOTAL:	82.3		82.3

DESCRIPTION OF TIMBER BY PAYMENT UNIT (PU)

PU	MARKET GROUP	PRODUCT	QUANTITY	UNIT	ACRES	ADVERTISE PRICE
1	B. T. Aspen	Sawtimber	54.1	MBF	29.3	\$22,696.55
	Basswood		11.1	MBF		
	Sugar Maple		4.6	MBF		
	Balsam Fir	Pulpwood	88	Cords		
	Mixed Aspen		784	Cords		
	<i>B. T. Aspen</i>		588	<i>Cords</i>		
	<i>Balsam Poplar</i>		6	<i>Cords</i>		
	<i>Quaking Aspen</i>		190	<i>Cords</i>		
	Mixed Hardwood		171	Cords		
	<i>Basswood</i>		56	<i>Cords</i>		
	<i>Beech</i>		3	<i>Cords</i>		
	<i>Black Cherry</i>		2	<i>Cords</i>		
	<i>Ironwood</i>		1	<i>Cords</i>		
	<i>Paper Birch</i>		32	<i>Cords</i>		
	<i>Red Maple</i>		8	<i>Cords</i>		
	<i>Sugar Maple</i>		69	<i>Cords</i>		
	Red Pine		5	Cords		
	<i>Red Pine</i>	Sawtimber	0.8	<i>MBF</i>		
	<i>Red Pine</i>	Pulpwood	3	<i>Cords</i>		
	White Pine		14	Cords		
<i>White Pine</i>		14	<i>Cords</i>			
White Spruce		3	Cords			
2	B. T. Aspen	Sawtimber	41.3	MBF	22.4	\$17,365.45
	Basswood		8.5	MBF		
	Sugar Maple		3.6	MBF		
	Balsam Fir	Pulpwood	67	Cords		
	Mixed Aspen		599	Cords		
	<i>B. T. Aspen</i>		449	<i>Cords</i>		
	<i>Balsam Poplar</i>		5	<i>Cords</i>		
	<i>Quaking Aspen</i>		145	<i>Cords</i>		
	Mixed Hardwood		131	Cords		
	<i>Basswood</i>		42	<i>Cords</i>		
	<i>Beech</i>		3	<i>Cords</i>		
	<i>Black Cherry</i>		2	<i>Cords</i>		
	<i>Ironwood</i>		1	<i>Cords</i>		
	<i>Paper Birch</i>		25	<i>Cords</i>		
	<i>Red Maple</i>		6	<i>Cords</i>		
	<i>Sugar Maple</i>		52	<i>Cords</i>		
	Red Pine		4	Cords		
	<i>Red Pine</i>	Sawtimber	0.6	<i>MBF</i>		
	<i>Red Pine</i>	Pulpwood	3	<i>Cords</i>		
	White Pine		11	Cords		
<i>White Pine</i>		11	<i>Cords</i>			
White Spruce		2	Cords			
3	B. T. Aspen	Sawtimber	26.2	MBF	9.8	\$8,229.60
	Red Maple		1.6	MBF		
	Sugar Maple		3.2	MBF		
	Balsam Fir	Pulpwood	12	Cords		
	Mixed Aspen		188	Cords		
	<i>B. T. Aspen</i>		149	<i>Cords</i>		
	<i>Quaking Aspen</i>		39	<i>Cords</i>		
	Mixed Hardwood		57	Cords		
	<i>Ironwood</i>		4	<i>Cords</i>		
	<i>Paper Birch</i>		6	<i>Cords</i>		
	<i>Red Maple</i>		31	<i>Cords</i>		
	<i>Sugar Maple</i>		16	<i>Cords</i>		

DESCRIPTION OF TIMBER BY PAYMENT UNIT (PU), CON'T

PU	MARKET GROUP	PRODUCT	QUANTITY	UNIT	ACRES	ADVERTISE PRICE
3 con't	Red Pine	Pulpwood	13	Cords		
	<i>Red Pine</i>	<i>Sawtimber</i>	2.5	<i>MBF</i>		
	<i>Red Pine</i>	<i>Pulpwood</i>	8	<i>Cords</i>		
	White Pine		69	Cords		
	<i>White Pine</i>		69	<i>Cords</i>		
	White Spruce		5	Cords		
4	Balsam Fir	Pulpwood	6	Cords	5.5	\$2,844.95
	Mixed Aspen		61	Cords		
	<i>Quaking Aspen</i>		61	<i>Cords</i>		
	Mixed Hardwood		127	Cords		
	<i>Black Cherry</i>		12	<i>Cords</i>		
	<i>Red Maple</i>		107	<i>Cords</i>		
	<i>Sugar Maple</i>		8	<i>Cords</i>		
5	B. T. Aspen	Sawtimber	1.4	MBF	15.3	\$12,307.25
	Red Maple		5.1	MBF		
	Balsam Fir	Pulpwood	33	Cords		
	Mixed Aspen		248	Cords		
	<i>B. T. Aspen</i>		95	<i>Cords</i>		
	<i>Quaking Aspen</i>		153	<i>Cords</i>		
	Mixed Hardwood		112	Cords		
	<i>Red Maple</i>		112	<i>Cords</i>		
	White Pine		246	Cords		
	<i>White Pine</i>	<i>Sawtimber</i>	2.8	<i>MBF</i>		
	<i>White Pine</i>	<i>Pulpwood</i>	240	<i>Cords</i>		
	White Spruce		24	Cords		
TOTAL:			160.7	MBF		
TOTAL:			3,080	Cords		

Sale Specific Conditions & Requirements

Sale Name: Fisherman Aspen 2

Sale Number: 53-013-24 Seq#: 1

1 - Sale Area

1.2 - Boundaries

1.2.1 - Painted boundaries (9/19)

The sale boundary is marked and identified by red and blue paint. The exterior sale boundary lines against private property is marked with blue paint. Exterior sale boundary lines against state are marked with red paint. The Interior Payment Unit boundary lines are not painted and can be designated by the access road that runs from the gate to the north end of the sale between Payment Units 1 and 2. The painted boundary line trees are not Included Timber and are to be protected.

2 - Timber Specifications

2.1 - Included Timber

2.1.1 - Clearcut unit(s) with unmerchantable trees (6/14)

Within Payment Unit(s) 1 - 5, cut all trees that are two (2) inches or more at DBH, except do not cut trees ringed in green paint. In addition, within Payment Unit 3, do not cut any sugar maple that are 14 inches or more at DBH.

Special protection trees identified in accordance with condition 3.4.2, within clearcutting unit boundaries, are not Included Timber and are to be protected.

3 - Payments

3.4 - Damaged Timber

3.4.2 - Special Protection Trees (4/14)

The Purchaser shall not cut live or dead special protection trees within cutting units or clearings. Special protection trees are marked with green paint. If the Purchaser's operations have cut or damaged special protection trees through carelessness, the Purchaser shall pay \$500 as fixed, agreed and liquidated damages for each special protection tree cut or damaged. Such payment does not constitute ownership of the undesignated timber.

4 - Transportation

4.1 - Construction

4.1.3 - Slash and earthen piles (8/04)

Piles or windrows of earth along roads and landings that have been widened or constructed shall be leveled. Slash from road maintenance or construction, including stumps, shall be dispersed throughout the sale.

4.1.7 - Road closure (10/11)

Overgrown or bermed access roads that are reopened must be blocked to vehicle traffic upon completion of the sale. In general, this will require constructing a four (4') foot high berm of stumps and logs covered with earth. Stumps and brush must be placed along the remainder of the trail. These roads must be rendered impassable to cars and trucks. Contact the Sale Administrator for specific details of design and placement.

4.1.12 - No new roads (1/12)

No new roads will be permitted. All operations are limited to existing roads. Skid trails only will be allowed.

4.2 - Maintenance

4.2.5 - Two wheel drive condition (2/04)

All existing trail roads on and adjacent to the sale area must be passable by two-wheel drive traffic for the duration of the sale.

4.4 - Access

4.4.3 - Access gate (12/08)

The access gate along Payment Unit 1 and 2 and the access gate west of Payment Unit 5 must be locked at the completion of

each day.

5 - Operations

5.1 - Notification

5.1.1 - Pre-sale conference (10/16)

A pre-sale conference on site between the Purchaser and sale administrator is required prior to beginning any operations. The Unit Manager or his/her representative must be contacted at least 3 days in advance to schedule the conference.

5.1.4 - Post-sale conference (10/16)

A post-sale conference on site between the Purchaser and sale administrator is required 2 days prior to the completion of active logging operations to determine clean-up and repair of landings, road edges, and the fulfillment of other contract specifications.

5.2 - Conduct of Operations

5.2.1 - Slash

5.2.1.10 - No slash in openings (5/10)

No brush or logging debris is to be left in the maintained wildlife opening which is indicated by G0 on the Timber Sale Map. Any damage to the opening shall be repaired according to specifications of the Unit Manager or his/her representative.

5.2.3 - Operating Restrictions

5.2.3.11 - Coppice regeneration protection (4/10)

To promote aspen regeneration, harvesting is limited to December 1 through March 31. Timber harvesting in any Payment Unit must be completed before significant aspen sprouting occurs in that Payment Unit so as to minimize damage to the new regeneration. Any post harvest operations, such as chipping, must be completed before sprouting of regeneration occurs. If it is anticipated that chipping will be delayed, then tops shall be carried to one central location or left unchipped. The Unit Manager or his/her representative may cease such operations if sprouting occurs before the operation is complete.

5.2.4 - Dead and Down Creation

5.2.4.7 - Dead and down creation: hare, grouse, deer and other species (5/15)

To improve horizontal cover habitat for snowshoe hare, grouse, deer, and other species, the Purchaser is to push over trees ringed with pink paint. These trees should be tipped over with the root ball still attached so the base of the tree is suspended off the ground. The crown of the fallen tree should be at or near ground level after it is pushed over. If this is not feasible, the Producer has the option to sever the tree and set the bole on or near the stump.

5.2.32 - Decking/landing restoration (9/13)

All decking and landing areas must have the surface area restored to a condition equal to or better than before. This is to ensure the proper regeneration of the stand. Wood debris, chips and "cookies" from trimmings must be removed or scattered away from landing and loading areas and may not be windrowed on the edge.

5.2.38 - No decking against live trees (2/04)

Cut products may not be decked against unmarked or designated leave trees.

5.2.40 - Pathway protection (10/10)

The High Country Pathway is a hiking/ski trail that is also open to bicycles. The trail runs through Payment Unit 1 and is shown on the Timber Sale Map. Do not cut trees or damage posts with blue pathway markers. Crossing of the of the trail by equipment will be limited to one location, possibly two with permission from the Sale Administrator. The Trail shall be kept free of slash at all times.

5.4 - Soil Protection

5.4.1 - Rutting restriction, general (7/16)

Operations are to cease immediately if equipment and weather conditions result in rutting of roads and/or skid trails which is 12 inches or greater in depth and 25 feet in length. The Unit Manager or his/her representative may restrict hauling and/or skidding if ruts exceed the specified depth. With the Unit Manager or his/her representative's approval, the Purchaser may

return to the area when the risk of rutting has decreased.

5.8 - Protection of Endangered Species

5.8.5 - Protection of raptor nests (3/13)

All trees with raptor nests will be protected if found during harvesting operations. Notification will be made to the Unit Manager or his/her representative who will notify the Wildlife Biologist so an on-site evaluation and recommendation can be made, if necessary.

6 - Safety and Fire Prevention

6.2 - Signing

6.2.1 - Road posting (10/20)

The Purchaser is responsible for posting and maintaining caution signs on Fisherman Road prior to beginning operations. The road must be posted at appropriate distances from the Sale Area to warn of logging activity and truck traffic. Signs must be removed when harvest operations are suspended or completed. The Purchaser will provide these signs.

6.2.3 - Recreational trail posting (10/20)

The Purchaser is responsible for posting and maintaining caution signs on the High Country Pathway prior to beginning operations. The trail must be posted at appropriate distances from the Sale Area to warn of logging activity and truck traffic at both ends of the trail. Signs must be removed when harvest operations are suspended or completed. The Purchaser will provide these signs.



TIMBER SALE MAP

This information provided by authority of Part 525, 1994 PA 451, as amended.

Sale Number

53-013-24

Date

09/21/2024

Forest Management Unit

County

Mapped By: Joy Mittig

Scale

Page

Of

Pigeon River Country Mgt Unit

Cheboygan

Cruised By: Joy Mittig

1:10,000

1

3

Township
33N

Range
01W

Section(s) and
Subdivision(s) NENE; Sec. 8 SESW,SWSE;

Sec. 17 NENW,NWNE; Sec. 19 W1/2NW; Sec. 29 W1/2SW; Sec. 30 SWNE,N1/2SE,SESE; Sec. 31

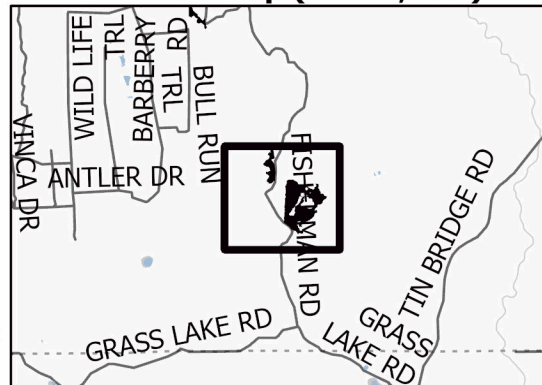
Cover Type

A = Aspen	J = Jack Pine	O = Oak	U = Upland Brush
B = Paper Birch	K = Rock	P = Lowland Poplar	UM = Upland Mix Forest
C = Cedar	L = Lowland Brush	Q = Mixed Swamp Conifer	V = Bog or Marsh
D = Treed Bog	LM = Lowland Mix Forest	R = Red Pine	W = White Pine
E = Swamp Hardwoods	M = Maple, Beech, Birch	S = Black Spruce	X = Non Stocked
F = Spruce/Fir	MC = Mixed Conifer	T = Tamarack	Y = Sand
G = Grass	MD = Mixed Deciduous	Z = Water	
H = Hemlock	N = Marsh		

Density

0 = Non Stocked	5 = Pole Timber Medium
1 = Seedling Sapling Poor	6 = Pole Timber Well
2 = Seedling Sapling Medium	7 = Saw Timber Poor
3 = Seedling Sapling Well	8 = Saw Timber Medium
4 = Pole Timber Poor	9 = Saw Timber Well

Locator Map (1:100,000)

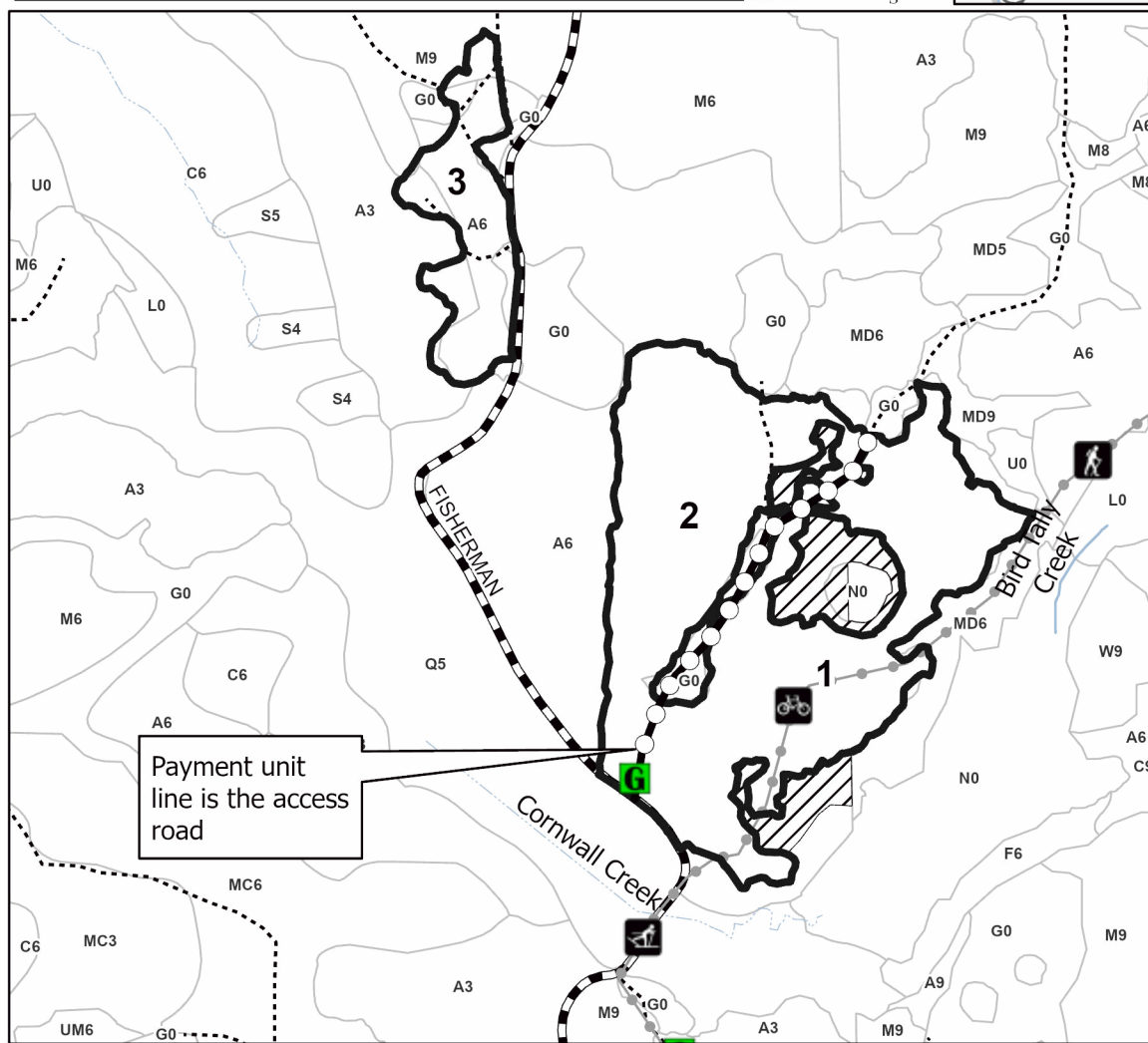
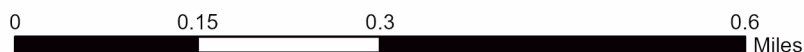


PU # Acres

1	29.3
2	22.4
3	9.8
4	5.5
5	15.3

Fisherman Aspen 2

82.3 Acres



Payment unit line is the access road

Legend

- Against State (Red)
- Payment Unit (Access Road)
- Retention Areas
- Stand
- Recreational Trail
- Intermittent Stream
- Perennial River
- Administrative Access Only
- Government Gravel/Dirt
- Gate

Use QR Code to open Map in App





TIMBER SALE MAP

This information provided by authority of Part 525, 1994 PA 451, as amended.

Sale Number

53-013-24

Date

09/21/2024

Forest Management Unit

County

Mapped By: Joy Mittig

Scale

Page

Of

Pigeon River Country Mgt Unit

Cheboygan

Cruised By: Joy Mittig

1:7,920

2

3

Township
33N

Range
01W

Section(s) and Subdivision(s) NENE; Sec. 8 SESW,SWSE;
Sec. 17 NENW,NWNE; Sec. 19 W1/2NW; Sec. 29 W1/2SW; Sec. 30 SWNE,N1/2SE,SESE; Sec. 31

Cover Type

A = Aspen	J = Jack Pine	O = Oak	U = Upland Brush
B = Paper Birch	K = Rock	P = Lowland Poplar	UM = Upland Mix Forest
C = Cedar	L = Lowland Brush	Q = Mixed Swamp Conifer	V = Bog or Marsh
D = Treed Bog	LM = Lowland Mix Forest	R = Red Pine	W = White Pine
E = Swamp Hardwoods	M = Maple, Beech, Birch	S = Black Spruce	X = Non Stocked
F = Spruce/Fir	MC = Mixed Conifer	T = Tamarack	Y = Sand
G = Grass	MD = Mixed Deciduous	Z = Water	
H = Hemlock	N = Marsh		

Density

0 = Non Stocked	5 = Pole Timber Medium
1 = Seedling Sapling Poor	6 = Pole Timber Well
2 = Seedling Sapling Medium	7 = Saw Timber Poor
3 = Seedling Sapling Well	8 = Saw Timber Medium
4 = Pole Timber Poor	9 = Saw Timber Well

Locator Map (1:100,000)

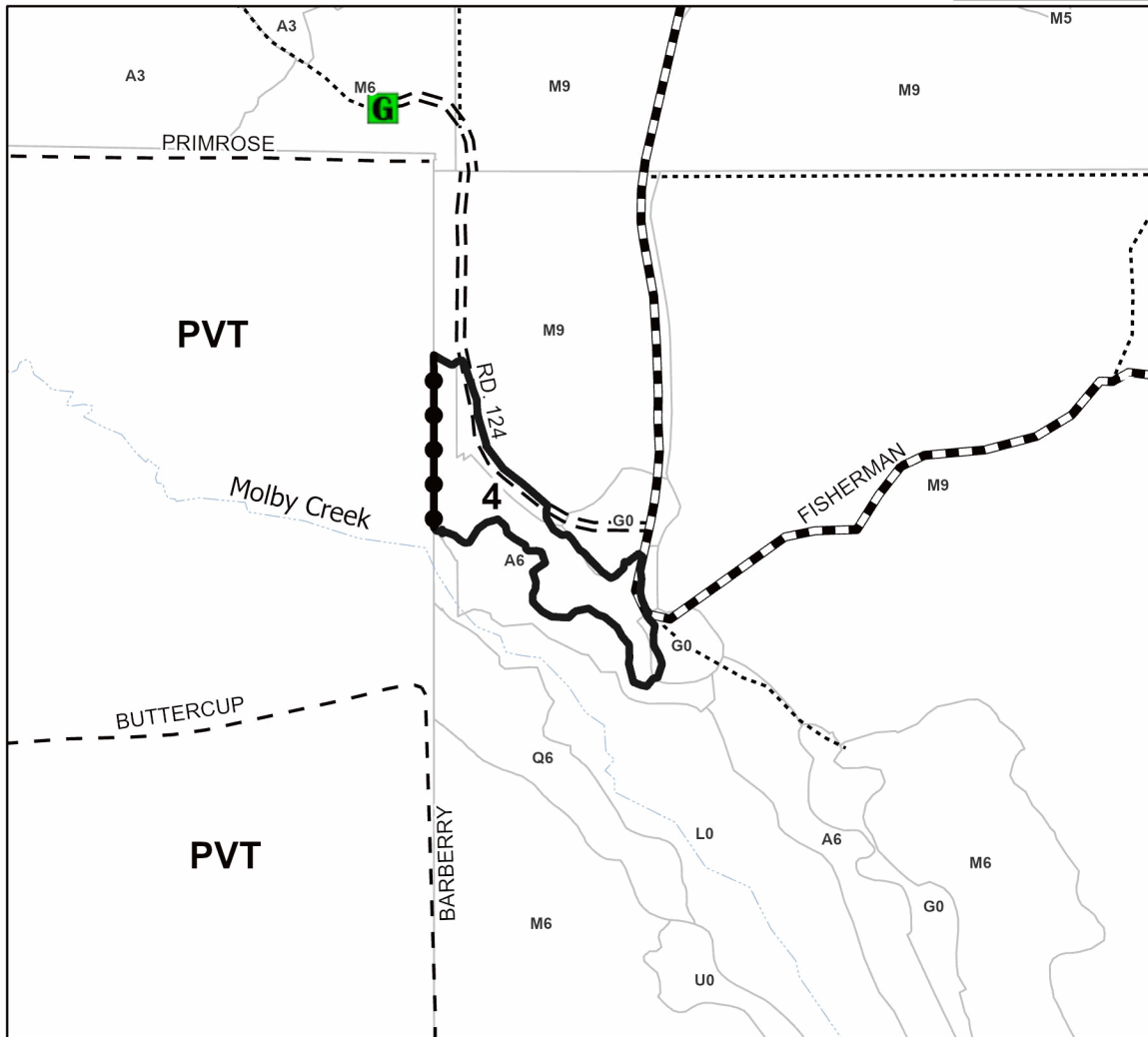
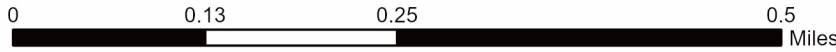


PU # Acres

1	29.3
2	22.4
3	9.8
4	5.5
5	15.3

Fisherman Aspen 2

82.3 Acres



Legend

- Against State (Red)
- Private Line (Blue)
- Stand
- Intermittent Stream
- Forest Access Route
- Administrative Access Only
- Government Gravel/Dirt
- Private Gravel/Dirt
- Gate

Use QR Code to open Map in App





TIMBER SALE MAP

This information provided by authority of Part 525, 1994 PA 451, as amended.

Sale Number 53-013-24	Date 09/21/2024
Scale 1:10,000	Page 3
	Of 3

Forest Management Unit Pigeon River Country Mgt Unit	County Cheboygan	Mapped By: Joy Mittig
		Cruised By: Joy Mittig

Township 33N	Range 01W	Section(s) and Subdivision(s) NENE; Sec. 8 SESW,SWSE; Sec. 17 NENW,NWNE; Sec. 19 W1/2NW; Sec. 29 W1/2SW; Sec. 30 SWNE,N1/2SE,SESE; Sec. 31
-----------------	--------------	--

Cover Type			
A = Aspen	J = Jack Pine	O = Oak	U = Upland Brush
B = Paper Birch	K = Rock	P = Lowland Poplar	UM = Upland Mix Forest
C = Cedar	L = Lowland Brush	Q = Mixed Swamp Conifer	V = Bog or Marsh
D = Treed Bog	LM = Lowland Mix Forest	R = Red Pine	W = White Pine
E = Swamp Hardwoods	M = Maple, Beech, Birch	S = Black Spruce	X = Non Stocked
F = Spruce/Fir	MC = Mixed Conifer	T = Tamarack	Y = Sand
G = Grass	MD = Mixed Deciduous	Z = Water	
H = Hemlock	N = Marsh		

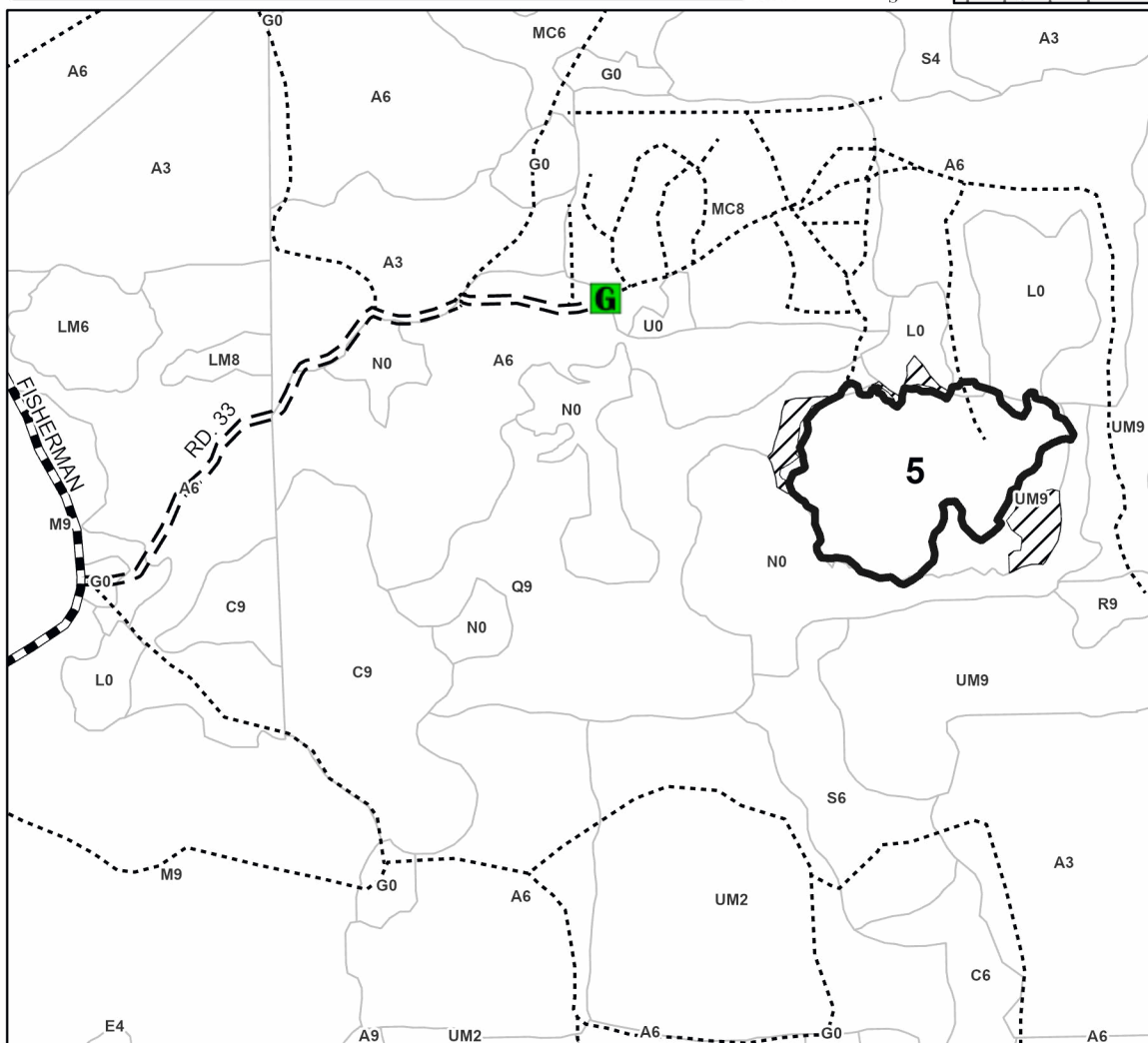
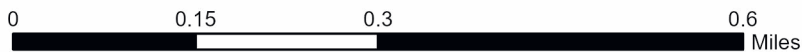
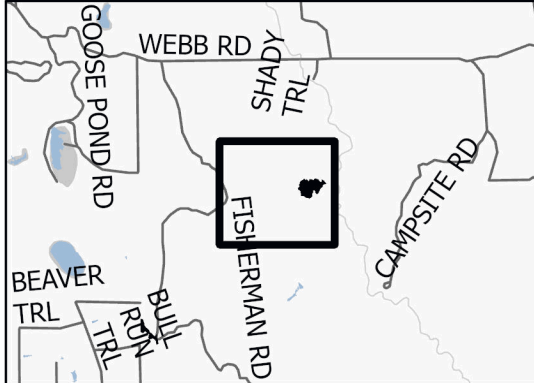
Density	
0 = Non Stocked	5 = Pole Timber Medium
1 = Seedling Sapling Poor	6 = Pole Timber Well
2 = Seedling Sapling Medium	7 = Saw Timber Poor
3 = Seedling Sapling Well	8 = Saw Timber Medium
4 = Pole Timber Poor	9 = Saw Timber Well

PU #	Acres
1	29.3
2	22.4
3	9.8
4	5.5
5	15.3

Fisherman Aspen 2

82.3 Acres

Locator Map (1:100,000)



Legend

- Against State (Red)
- Retention Areas
- Stand
- Forest Access Route
- Administrative Access Only
- Government Gravel/Dirt
- Gate

Use QR Code to open Map in App



TIMBER SALE INFORMATION

Puddingstone Pine (53-018-24)
 T33N, R01E, SEC. 21.
 Cheboygan County (Advertised Price \$15,794.00)

A timber sale contract for this lump sum, sealed bid timber sale will be awarded to the responsible bidder offering the highest sealed bid price. All units of volume listed below were estimated using the Inventory Manager computer program and the new Michigan taper model. Bids must be at or above the following advertised price for each product and species:

<u>PRODUCTS & SPECIES</u>	<u>ESTIMATED UNITS*</u>	<u>ADVERTISED PRICE</u>
Sawtimber		
Red Pine	64.9 MBF	\$ 137.00 / MBF
Pulpwood		
Red Pine	133 Cords	\$ 51.90 / Cord

* The total volume is statistically estimated within plus (+) or minus (-) 43.59 percent. There are an estimated 285 cords on this timber sale, plus or minus 124 cords at the 95% confidence level. The estimated units are final and not subject to adjustment. Prospective bidders are urged to examine this timber and to make their own estimates of quantity and quality.

BOND AND PAYMENT SCHEDULE:

1. A bond in the amount of \$1,579.00 to insure faithful performance of the conditions of the contract will be deposited by the successful bidder within 21 days of the sale award.
2. Cutting in any sale or unit without the required advance payment would be considered a trespass.
3. Total payment must be paid in advance or according to the following schedule :
 - (a) Ten percent (10%) of the sale value must be paid within 21 days of the sale award.
 - (b) The remainder is due before cutting begins.
 - (c) Payment for each of the following units must be made before cutting begins in that unit:

PAYMENT UNIT NUMBER	PERCENT OF TOTAL SALE VALUE
01	100.0%
4. If no cutting takes place, the 10% down payment will not be refunded.
5. Operations on the contract issued will terminate on 06/30/2027.

SALE STATISTICS

Volumes were calculated in cubic feet using the Michigan taper model. Cubic foot volume includes all wood inside bark for the product indicated. For display purposes, cubic feet were converted to cords and MBF using a simple conversion factor, e.g. 79 cubic feet per cord and 185 cubic feet per MBF. The cubic foot volumes are precise; the cords and MBF volumes are not. Cubic foot volume cannot be directly converted to cords or boards with precision.

SALE VOLUMES

The total estimated sale volume may not equal the sum of the species/products due to the nature of statistical calculations associated with double sampling methodology.

VOLUME		STATISTICAL RANGE IN CORDS		
TOTAL CUBIC FEET	TOTAL CORDS	PERCENT ERROR	MINIMUM	MAXIMUM
22,489	285	43.59%	161	409

VDU VOLUMES

A VDU is a Volume Determination Unit. Volumes and their associated statistics are calculated at the VDU level and summarized to the sale level. There is often a one to one relationship between a VDU and a Payment Unit, but not always, depending on the cruise design. Refer to the VDU TO PAYMENT UNIT table.

VDU	VOLUME			RANGE IN CORDS	
	TOTAL CUBIC FEET	TOTAL CORDS	PERCENT ERROR	MINIMUM	MAXIMUM
88	22,489	285	43.59%	161	409
TOTAL:	22,489	285		161	409

VDU TO PAYMENT UNIT

When a VDU is associated with more than one Payment Unit (PU), the VDU volumes are assigned to the PU based on acres of the VDU within the PU.

VDU	VDU ACRES	PU	PU ACRES
88	16.4	1	16.4
TOTAL:	16.4		16.4

DESCRIPTION OF TIMBER BY PAYMENT UNIT (PU)

PU	MARKET GROUP	PRODUCT	QUANTITY	UNIT	ACRES	ADVERTISE PRICE
1	Red Pine	Sawtimber	64.9	MBF	16.4	\$15,794.00
	Red Pine	Pulpwood	133	Cords		
TOTAL:			64.9	MBF		
TOTAL:			133	Cords		

Sale Specific Conditions & Requirements

Sale Name: Puddingstone Pine

Sale Number: 53-018-24 Seq#: 1

1 - Sale Area

1.2 - Boundaries

1.2.1 - Painted boundaries (9/19)

The sale boundary and Payment Unit boundaries are marked and identified by red paint. Exterior sale boundary lines against state are marked with red paint. The painted boundary line trees are not Included Timber and are to be protected.

2 - Timber Specifications

2.1 - Included Timber

2.1.3 - Cut tree marked unit(s) (12/08)

Within Payment Unit(s) 1, all trees are designated for cutting when marked with orange paint above and below stump height, regardless of merchantability.

2.2 - Utilization

2.2.3 - Stump heights (4/07)

Stump heights within the Sale Area shall not exceed 6 inches for all trees. This is in order to facilitate future planting operations.

4 - Transportation

4.1 - Construction

4.1.12 - No new roads (1/12)

No new roads will be permitted in any Payment Unit. All operations are limited to existing roads. Skid trails only will be allowed.

4.2 - Maintenance

4.2.5 - Two wheel drive condition (2/04)

All existing trail roads on and adjacent to the sale area must be passable by two-wheel drive traffic for the duration of the sale.

5 - Operations

5.1 - Notification

5.1.1 - Pre-sale conference (10/16)

A pre-sale conference on site between the Purchaser and sale administrator is required prior to beginning any operations. The Unit Manager or his/her representative must be contacted at least 3 days in advance to schedule the conference.

5.1.4 - Post-sale conference (10/16)

A post-sale conference on site between the Purchaser and sale administrator is required 2 days prior to the completion of active logging operations to determine clean-up and repair of landings, road edges, and the fulfillment of other contract specifications.

5.2 - Conduct of Operations

5.2.3 - Operating Restrictions

5.2.3.3 - Bark slippage restriction (3/09)

Within Payment Unit(s) 1, unless changed by written agreement, cutting and skidding are not permitted during the period of April 15 to July 15. This restriction is because of bark slippage.

5.2.3.6 - Bark beetle restriction (12/08)

In the event drought creates a high risk of pine bark beetle infestation, pine is not to be cut during the period March 1

through July 1, unless all portions of trees greater than two inches in diameter are removed from the sale area, reduced to chips, or treated to the satisfaction of the Unit Manager or his/her representative, within fifteen days of being severed from the stump. Pine log decks, pulpwood piles and treetops that are piled for chipping in the fall or winter within a 1/4 mile of susceptible sites must be removed before March 15. Residual slash must not be placed in piles or rows and must be spread over the site for quick drying. The Department of Natural Resources will exercise this specification if the risk of damage warrants.

5.2.31 - Landing locations (9/13)

Recommended landing areas are marked on the Timber Sale Map. Landings must be confined to these designated sites unless otherwise authorized by the Unit Manager or his/her representative. In general, landings are limited to a "T" turnaround which will accommodate a truck with a 50 foot trailer.

5.2.32 - Decking/landing restoration (9/13)

All decking and landing areas must have the surface area restored to a condition equal to or better than before. This is to ensure the proper regeneration of the stand. Wood debris, chips and "cookies" from trimmings must be removed or scattered away from landing and loading areas and may not be windrowed on the edge.

5.2.38 - No decking against live trees (2/04)

Cut products may not be decked against unmarked or designated leave trees.

5.8 - Protection of Endangered Species

5.8.5 - Protection of raptor nests (3/13)

All trees with raptor nests will be protected if found during harvesting operations. Notification will be made to the Unit Manager or his/her representative who will notify the Wildlife Biologist so an on-site evaluation and recommendation can be made, if necessary.

6 - Safety and Fire Prevention

6.2 - Signing

6.2.1 - Road posting (10/20)

The Purchaser is responsible for posting and maintaining caution signs on Shan-Gra-La Road prior to beginning operations. The road must be posted at appropriate distances from the Sale Area to warn of logging activity and truck traffic. Signs must be removed when harvest operations are suspended or completed. The Purchaser will provide these signs.



TIMBER SALE MAP

This information provided by authority of Part 525, 1994 PA 451, as amended.

Sale Number	Date	
53-018-24	08/16/2024	
Scale	Page	Of
1:5,000	1	1

Forest Management Unit	County	Mapped By: Joyanne Mittig
Pigeon River Country Mgt Unit	Cheboygan	Cruised By: Joyanne Mittig

Township	Range	Section(s) and Subdivision(s)
33N	01E	Sec. 21 SENE;

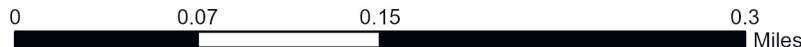
Cover Type			
A = Aspen	J = Jack Pine	O = Oak	U = Upland Brush
B = Paper Birch	K = Rock	P = Lowland Poplar	UM = Upland Mix Forest
C = Cedar	L = Lowland Brush	Q = Mixed Swamp Conifer	V = Bog or Marsh
D = Treed Bog	LM = Lowland Mix Forest	R = Red Pine	W = White Pine
E = Swamp Hardwoods	M = Maple, Beech, Birch	S = Black Spruce	X = Non Stocked
F = Spruce/Fir	MC = Mixed Conifer	T = Tamarack	Y = Sand
G = Grass	MD = Mixed Deciduous	Z = Water	
H = Hemlock	N = Marsh		

Density	
0 = Non Stocked	5 = Pole Timber Medium
1 = Seedling Sapling Poor	6 = Pole Timber Well
2 = Seedling Sapling Medium	7 = Saw Timber Poor
3 = Seedling Sapling Well	8 = Saw Timber Medium
4 = Pole Timber Poor	9 = Saw Timber Well

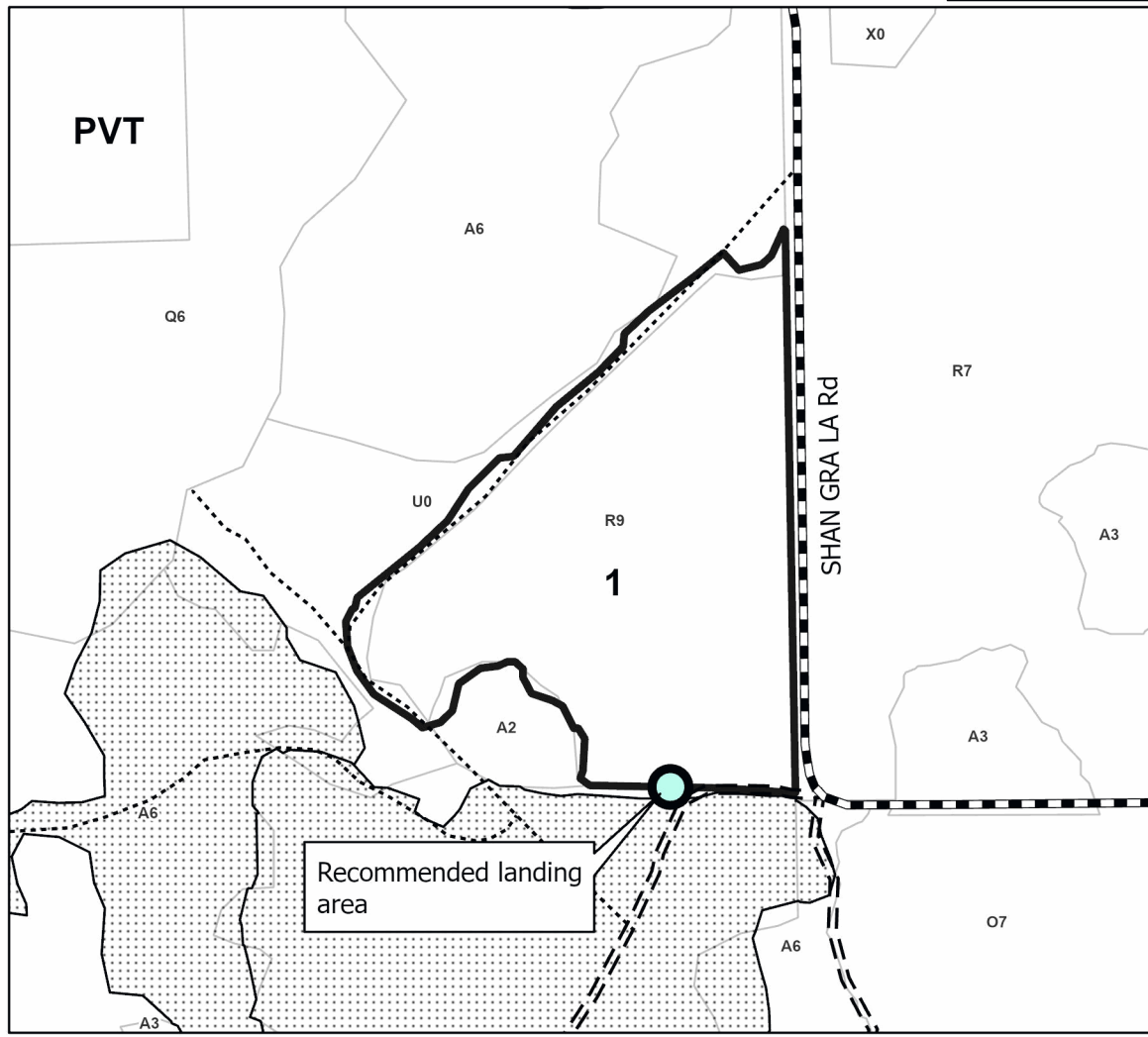
PU #	Acres
1	16.4

Puddingstone Pine

16.4 Acres



Locator Map (1:100,000)



Legend

- Against State (Red)
- Nearby Timber Sale
- Stand
- Forest Access Route
- Administrative Access Only
- Government Gravel/Dirt

Use QR Code to open Map in App



TIMBER SALE INFORMATION

Paint It Black Mix (53-029-24)
 T34N, R01W, SEC. 29; T34N, R01W, SEC. 30.
 Cheboygan County (Advertised Price \$13,504.60)

SALE NOTE: Note short contract length, crane mat requirements, and roundwood operation requirements.

A timber sale contract for this lump sum, sealed bid timber sale will be awarded to the responsible bidder offering the highest sealed bid price. All units of volume listed below were estimated using the Inventory Manager computer program and the new Michigan taper model. Bids must be at or above the following advertised price for each product and species:

<u>PRODUCTS & SPECIES</u>	<u>ESTIMATED UNITS*</u>	<u>ADVERTISED PRICE</u>
Pulpwood		
Balsam Fir	293 Cords	\$ 22.55 / Cord
Mixed Aspen	264 Cords	\$ 18.50 / Cord
Mixed Hardwood	121 Cords	\$ 12.45 / Cord
White Spruce	30 Cords	\$ 16.90 / Cord

* The total volume is statistically estimated within plus (+) or minus (-) 30.11 percent. There are an estimated 711 cords on this timber sale, plus or minus 214 cords at the 95% confidence level. The estimated units are final and not subject to adjustment. Prospective bidders are urged to examine this timber and to make their own estimates of quantity and quality.

BOND AND PAYMENT SCHEDULE:

1. A bond in the amount of \$1,350.00 to insure faithful performance of the conditions of the contract will be deposited by the successful bidder within 21 days of the sale award.
2. Cutting in any sale or unit without the required advance payment would be considered a trespass.
3. Total payment must be paid in advance or according to the following schedule :
 - (a) Ten percent (10%) of the sale value must be paid within 21 days of the sale award.
 - (b) The 10% down payment will be credited towards the first unit cut.
 - (c) Payment for each of the following units must be made before cutting begins in that unit:

PAYMENT UNIT NUMBER	PERCENT OF TOTAL SALE VALUE
01	50.2%
02	30.9%
03	18.9%
4. If no cutting takes place, the 10% down payment will not be refunded.
5. Operations on the contract issued will terminate on 06/30/2027.

SALE STATISTICS

Volumes were calculated in cubic feet using the Michigan taper model. Cubic foot volume includes all wood inside bark for the product indicated. For display purposes, cubic feet were converted to cords and MBF using a simple conversion factor, e.g. 79 cubic feet per cord and 185 cubic feet per MBF. The cubic foot volumes are precise; the cords and MBF volumes are not. Cubic foot volume cannot be directly converted to cords or boards with precision.

SALE VOLUMES

The total estimated sale volume may not equal the sum of the species/products due to the nature of statistical calculations associated with double sampling methodology.

VOLUME		STATISTICAL RANGE IN CORDS		
TOTAL CUBIC FEET	TOTAL CORDS	PERCENT ERROR	MINIMUM	MAXIMUM
56,185	711	30.11%	497	925

VDU VOLUMES

A VDU is a Volume Determination Unit. Volumes and their associated statistics are calculated at the VDU level and summarized to the sale level. There is often a one to one relationship between a VDU and a Payment Unit, but not always, depending on the cruise design. Refer to the VDU TO PAYMENT UNIT table.

VDU	VOLUME		PERCENT ERROR	RANGE IN CORDS	
	TOTAL CUBIC FEET	TOTAL CORDS		MINIMUM	MAXIMUM
30	10,730	136	57.36%	58	214
39	22,232	281	46.61%	150	413
301	16,587	210	76.18%	50	370
302	2,201	28	133.01%	0	65
303	4,436	56	113.12%	0	120
TOTAL:	56,185	711		258	1,181

VDU TO PAYMENT UNIT

When a VDU is associated with more than one Payment Unit (PU), the VDU volumes are assigned to the PU based on acres of the VDU within the PU.

VDU	VDU ACRES	PU	PU ACRES
30	7.3	3	7.3
39	5.8	1	5.8
301	6.9	2	6.9
302	0.9	1	0.9
303	1.6	1	1.6
TOTAL:	22.5		22.5

DESCRIPTION OF TIMBER BY PAYMENT UNIT (PU)

PU	MARKET GROUP	PRODUCT	QUANTITY	UNIT	ACRES	ADVERTISE PRICE
1	Balsam Fir	Pulpwood	75	Cords	8.3	\$6,772.65
	Mixed Aspen		234	Cords		
	<i>B. T. Aspen</i>		23	<i>Cords</i>		
	<i>Quaking Aspen</i>		211	<i>Cords</i>		
	Mixed Hardwood		36	Cords		
	<i>Paper Birch</i>		0.9	<i>MBF</i>		
	<i>Red Maple</i>		5.0	<i>MBF</i>		
	<i>Paper Birch</i>		10	<i>Cords</i>		
	<i>Red Maple</i>		14	<i>Cords</i>		
	White Spruce		18	Cords		
2	Balsam Fir	Pulpwood	153	Cords	6.9	\$4,178.50
	Mixed Hardwood		49	Cords		
	<i>Red Maple</i>		1.6	<i>MBF</i>		
	<i>Paper Birch</i>		22	<i>Cords</i>		
	<i>Red Maple</i>		22	<i>Cords</i>		
	<i>Sugar Maple</i>		2	<i>Cords</i>		
	White Spruce		7	Cords		
3	Balsam Fir	Pulpwood	65	Cords	7.3	\$2,553.45
	Mixed Aspen		30	Cords		
	<i>B. T. Aspen</i>		24	<i>Cords</i>		
	<i>Quaking Aspen</i>		6	<i>Cords</i>		
	Mixed Hardwood		36	Cords		
	<i>Paper Birch</i>		21	<i>Cords</i>		
	<i>Red Maple</i>		15	<i>Cords</i>		
	White Spruce		5	Cords		
TOTAL:			708	Cords		

Sale Specific Conditions & Requirements

Sale Name: Paint It Black Mix

Sale Number: 53-029-24 Seq#: 1

1 - Sale Area

1.2 - Boundaries

1.2.1 - Painted boundaries (9/19)

The sale boundary and Payment Unit boundaries are marked and identified by red paint. Exterior sale boundary lines against state are marked with red paint. The painted boundary line trees are not Included Timber and are to be protected.

2 - Timber Specifications

2.1 - Included Timber

2.1.1 - Clearcut unit(s) with unmerchantable trees (6/14)

Within Payment Unit(s) 1-3, cut all trees that are two (2) inches or more at DBH, except do not cut elm, oak, cedar, or trees marked with green paint. In addition, do not cut black cherry that are five (5) inches or more at DBH.

2.2 - Utilization

2.2.6 - Roundwood operation required (3/21)

The skidding of whole trees or tree segments with limbs attached is prohibited. All products must be produced as roundwood and forwarded to existing roads or landing areas in final product length.

2.2.9 - No chipping permitted (12/08)

Within Payment Unit(s) 1-3, all wood must be removed by roundwood. No chipping is permitted.

3 - Payments

3.6 - Payment Unit Cutting Schedule

3.6.8 - Operating period (5/16)

Once cutting begins, operations must continue until all Payment Units are completed. This requirement is in place in order to spread out browse pressure.

4 - Transportation

4.1 - Construction

4.1.3 - Slash and earthen piles (8/04)

Piles or windrows of earth along roads and landings that have been widened or constructed shall be leveled. Slash from road maintenance or construction, including stumps, shall be dispersed throughout the sale.

4.1.6 - Road construction (4/24)

Improvements of existing roads shall be done in such a way as to minimize the environmental and visual impacts. Merchantable trees shall be cut and utilized unless otherwise directed. Non-merchantable trees shall be severed and laid flat on the ground. Slash shall be scattered, and not left in windrows and kept a minimum of 10 feet back from the road edge. Stumps shall be set upright, not left on edge, and be moved at least 10 feet away from the road edge. Disturbed soil shall be feathered into the woods and not left in berms or windrows.

4.1.7 - Road closure (10/11)

Overgrown roads that are reopened must be blocked to vehicle traffic upon completion of the sale. In general, this will require constructing double earthen berms at strategic locations. These roads must be rendered impassable to cars and trucks.

4.1.12 - No new roads (1/12)

No new roads will be permitted in any Payment Unit. All operations are limited to existing roads.

4.2 - Maintenance

4.2.2 - Fill material (4/07)

To maintain roads, fill material may be needed in areas where "holes" exist or may be expected to develop. This fill material should be placed before trucking begins. All fill material must be 3A crushed limestone or larger aggregate. No sand or gravel may be sourced from adjacent State-owned lands.

4.2.5 - Two wheel drive condition (2/04)

All existing trail roads on and adjacent to the sale area must be passable by two-wheel drive traffic for the duration of the sale.

5 - Operations

5.2 - Conduct of Operations

5.2.1 - Slash

5.2.1.11 - Slash for reforestation (3/21)

To facilitate reforestation, the Sale Area shall be left with slash evenly distributed. Bunched tops within the cutting area shall be broken up and scattered. Stumps shall be cut low to the ground. Processing sites shall not be left with a compacted layer of slash; tops from these sites shall be hauled back into the cut area and scattered.

In addition, all areas of blowdown must be avoided as much as possible by harvesting equipment. Areas of blowdown are most prevalent in the north end of Payment Unit 1.

5.2.2 - Hazard Trees/Snags

5.2.2.1 - Den trees (10/16)

Obvious hollow and/or den trees shall be protected and left standing unless they are a safety hazard.

5.2.4 - Dead and Down Creation

5.2.4.3 - Dead and down creation, dead trees (6/07)

Except as provided for in General Condition and Requirement 5.2.2, no dead trees, standing or down, are to be cut, skidded, or processed.

5.2.4.7 - Dead and down creation: hare, grouse, deer and other species (5/15)

To improve horizontal cover habitat for snowshoe hare, grouse, deer, and other species, the Purchaser is to push over all trees marked with a pink X. These trees should be tipped over with the root ball still attached so the base of the tree is suspended off the ground. The crown of the fallen tree should be at or near ground level after it is pushed over.

5.2.17 - Timber Mats and Interlocking Composite Mats (5/23)

The closed State forest road that accesses the timber sale will require extra protection such as that afforded by timber mats or interlocking composite mats. Approximately 200 feet of road or trail will need extra protection at locations shown on the Timber Sale Map. If available, mats may be borrowed from the DNR. A Timber Sale Contract Amendment will be used to document the Purchaser's use of the DNR's mats. Contact the Sale Administrator regarding availability and pick-up. Timber mats are available from various field offices. Composite mats are only available from the Grayling field office and the Marquette ICC. The Purchaser is responsible for picking up and hauling the mats to and from the site. The composite mats will require DNR staff onsite for installation and removal. Contact the Sale Administrator to schedule at least 30 days before desired install/removal date. All mats must be cleaned prior to drop off. This may include, but is not limited to, power washing and brushing to remove mud and debris. A charge of \$700.00 per timber mat and \$2,000.00 per composite mat will be assessed for all damaged or non-returned mats. Damage for the crane/timber mats is defined as three or more broken cants. Damage for the composite mats is defined as cracked or broken mats.

5.2.22 - Operating Caution

5.2.22.1 - Operating caution (6/11)

It is recommended, but not required, that within Payment Unit(s) 1-3, cutting, skidding, and hauling occur during dry summer or frozen winter conditions. The reason for the recommendation is because of wet ground.

5.2.29 - Shrub protection (1/20)

Do not cut or damage hawthorn or juneberry (serviceberry). These woody-shrub plants are highly beneficial to various wildlife species. Some of these shrubs have been marked with green paint to aid in identification.

5.2.32 - Decking/landing restoration (9/13)

All decking and landing areas must have the surface area restored to a condition equal to or better than before. This is to ensure the proper regeneration of the stand. Wood debris, chips and "cookies" from trimmings must be removed or scattered away from landing and loading areas and may not be windrowed on the edge.

5.2.38 - No decking against live trees (2/04)

Cut products may not be decked against unmarked or designated leave trees.

5.4 - Soil Protection

5.4.1 - Rutting restriction, general (7/16)

Operations are to cease immediately if equipment and weather conditions result in rutting of roads and/or skid trails which is 12 inches or greater in depth and 25 feet in length. The Unit Manager or his/her representative may restrict hauling and/or skidding if ruts exceed the specified depth. With the Unit Manager or his/her representative's approval, the Purchaser may return to the area when the risk of rutting has decreased.

5.4.6 - Wet area protection (5/10)

No harvesting operations, including skidding and felling, are to take place within the narrow drainages that are present between each Payment Unit. Care must be taken by the Purchaser to identify and avoid operating in these areas of the timber sale.

5.8 - Protection of Endangered Species

5.8.5 - Protection of raptor nests (3/13)

All trees with raptor nests will be protected if found during harvesting operations. Notification will be made to the Unit Manager or his/her representative who will notify the Wildlife Biologist so an on-site evaluation and recommendation can be made, if necessary.

6 - Safety and Fire Prevention

6.2 - Signing

6.2.1 - Road posting (10/20)

The Purchaser is responsible for posting and maintaining caution signs on Webber Road prior to beginning operations. The road must be posted at appropriate distances from the Sale Area to warn of logging activity and truck traffic. Signs must be removed when harvest operations are suspended or completed. The Purchaser will provide these signs.

7 - Other Conditions

7.2 - Extensions

7.2.2 - No extensions (3/09)

There will be no extensions granted on this contract.

7.2.6 - Forest health extension (6/13)

This sale contains trees infected with spruce budworm. It is considered at high risk for mortality and/or loss of timber value. The sale must be harvested promptly. One (1), twelve (12) month extension can be applied to one (1) other State Forest Timber Sale Contract owned by the purchaser or owned by one (1) designated sub-contractor of the Purchaser that works this contract. To qualify, the contract expiration date of the contract to be extended must be within twelve (12) months from the issue date of this contract. If this is the first extension on the other State Forest Timber Sale Contract, then the 5% extension fee will be waived. If this is an additional extension, the 10% fee will be reduced to 5%. The forest health extension must be used before this contract is closed-out. This specification does not alleviate the purchaser from any contractual obligations of the extended State Forest Timber Sale Contract. Per General Condition & Requirement 7.2, extensions are at the sole discretion of the DNR.

7.5 - Loss

7.5.1 - Deteriorating timber (7/09)

The sale area has received damage from spruce budworm. The Purchaser should harvest the wood as soon as possible. The Department of Natural Resources is held free of responsibility of any further damage or deterioration due to delay in harvesting.



TIMBER SALE MAP

This information provided by authority of Part 525, 1994 PA 451, as amended.

Sale Number

53-029-24

Date

09/24/2024

Forest Management Unit

Pigeon River Country Mgt Unit

County

Cheboygan

Mapped By: Rekowski

Cruised By: Rekowski

Scale

1:8,000

Page

1

Of

1

Township
34N

Range
01W

Section(s) and
Subdivision(s) Sec. 29 SWNW,W1/2SW; Sec. 30 SESE;

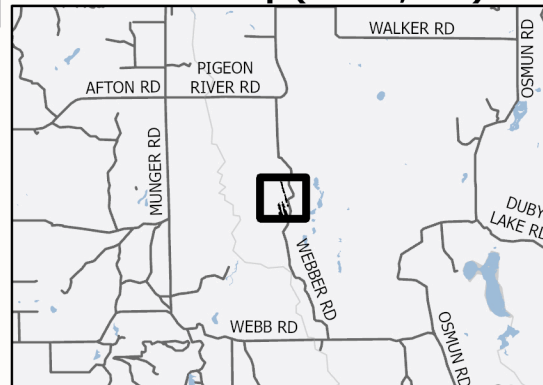
Cover Type

A = Aspen	J = Jack Pine	O = Oak	U = Upland Brush
B = Paper Birch	K = Rock	P = Lowland Poplar	UM = Upland Mix Forest
C = Cedar	L = Lowland Brush	Q = Mixed Swamp Conifer	V = Bog or Marsh
D = Treed Bog	LM = Lowland Mix Forest	R = Red Pine	W = White Pine
E = Swamp Hardwoods	M = Maple, Beech, Birch	S = Black Spruce	X = Non Stocked
F = Spruce/Fir	MC = Mixed Conifer	T = Tamarack	Y = Sand
G = Grass	MD = Mixed Deciduous	Z = Water	
H = Hemlock	N = Marsh		

Density

0 = Non Stocked	5 = Pole Timber Medium
1 = Seedling Sapling Poor	6 = Pole Timber Well
2 = Seedling Sapling Medium	7 = Saw Timber Poor
3 = Seedling Sapling Well	8 = Saw Timber Medium
4 = Pole Timber Poor	9 = Saw Timber Well

Locator Map (1:200,000)

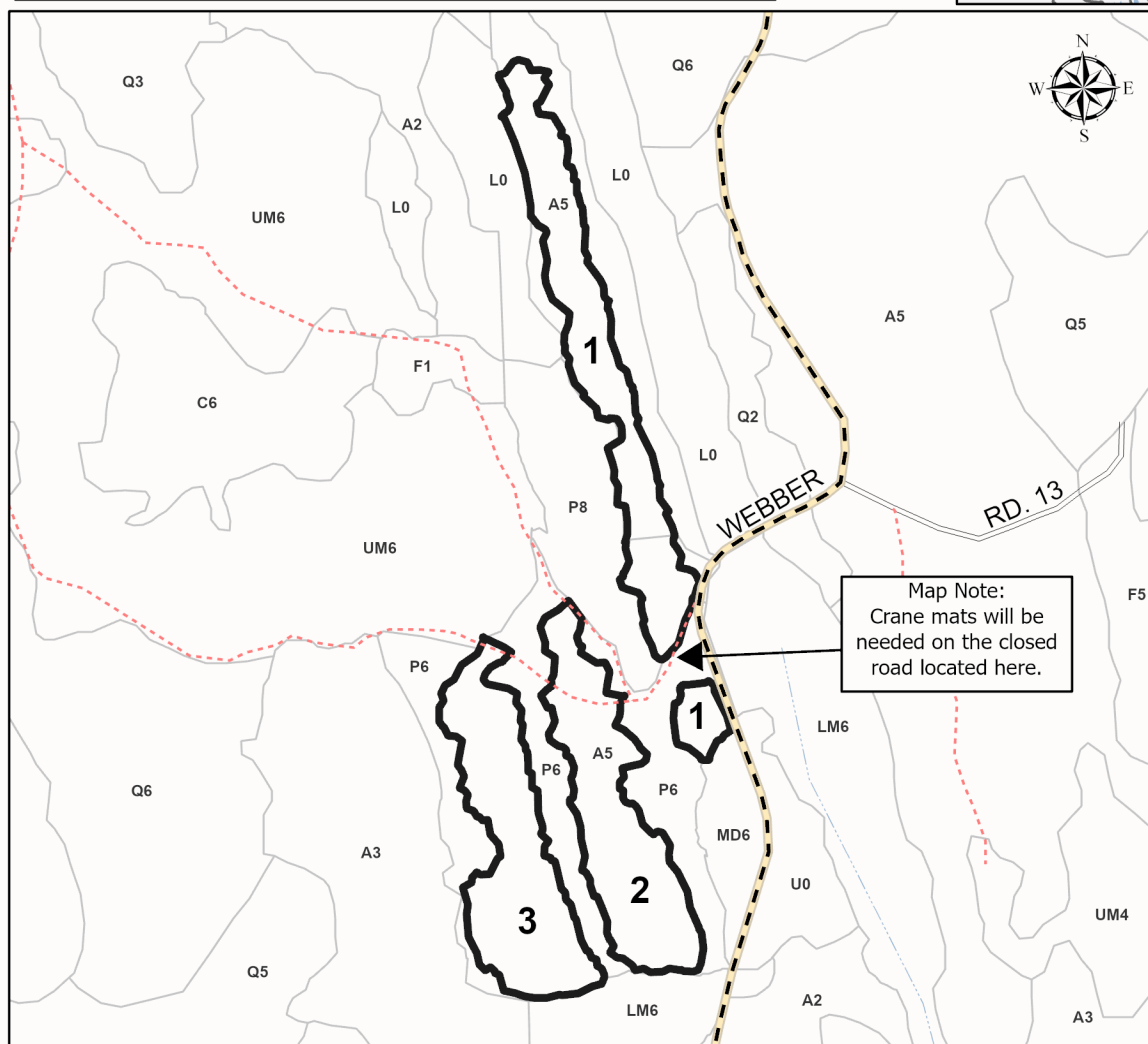
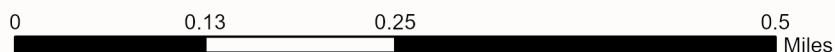


PU # Acres

1	8.3
2	6.9
3	7.3

Paint It Black Mix

22.5 Acres



Legend

- Against State (Red)
- Stand Boundary
- Gravel Road
- Secondary Forest Road
- Administrative Access Only
- Non-DNR Road
- Intermittent Stream

Map Note:
Crane mats will be needed on the closed road located here.

Use QR Code to open Map in App



Fisherman Aspen 2 (53-013-24)

T33N, R01W, SEC. 17; T33N, R01W, SEC. 19; T33N, R01W, SEC. 29; T33N,

In response to the notice of sale to be held 9:00 a.m. (local time) on November 21, 2024, I am hereby submitting my sealed bid (firm offer) for the following forest products to be cut. Bids for individual species must be at or above the advertised price. All non-responsive bid forms may be rejected.

<u>PRODUCTS & SPECIES</u>	<u>ESTIMATED VOLUME*</u>	<u>ADVERTISED PRICE</u>	<u>BID PRICE/UNIT</u>
Sawtimber			
B. T. Aspen	123.0 MBF	\$ 38.00/MBF	\$ _____
Basswood	19.6 MBF	\$ 55.00/MBF	\$ _____
Red Maple	6.7 MBF	\$ 42.00/MBF	\$ _____
Sugar Maple	11.4 MBF	\$ 179.00/MBF	\$ _____
Pulpwood			
Balsam Fir	206 Cords	\$ 22.55/Cord	\$ _____
Mixed Aspen	1,880 Cords	\$ 18.50/Cord	\$ _____
Mixed Hardwood	598 Cords	\$ 12.45/Cord	\$ _____
Red Pine	22 Cords	\$ 51.90/Cord	\$ _____
White Pine	340 Cords	\$ 19.95/Cord	\$ _____
White Spruce	34 Cords	\$ 16.90/Cord	\$ _____

*The volumes are statistically estimated within plus (+) or minus (-) 16.41 percent at 95% confidence level. These estimated volumes are final and not subject to adjustment. Prospective bidders are urged to examine this timber and to make their own estimates of quantity and quality.

I understand that any or all bids may be rejected. All bids must be signed and all bid items must be bid or the bid form may be rejected. I also understand that consideration and awarding a contract will be based upon my past performance and ability to complete the contract based upon equipment and staffing subject to my control.

FEDERAL ID: _____ - _____ or SOCIAL SECURITY NUMBER: _____ - _____ - _____

Company or individual bidding: _____

Company representative's name: _____

Address: _____

City: _____ State: _____ Zip: _____

IF AVAILABLE, PLEASE PLACE THE PERSONALIZED LABEL FROM YOUR PROSPECTUS IN THE ABOVE BOX.

Individual or company representative's signature: _____ Date: _____

Phone number : _____ Email (optional): _____

THE WINNING BIDDER MUST COMPLETE THE VERIFICATION OF WORKER'S DISABILITY COMPENSATION ACT COMPLIANCE (ON REVERSE SIDE IF DOUBLE SIDED) WITHIN 21 DAYS OF SALE AWARD DATE

Puddingstone Pine (53-018-24)
T33N, R01E, SEC. 21; Cheboygan COUNTY

In response to the notice of sale to be held 9:00 a.m. (local time) on November 21, 2024, I am hereby submitting my sealed bid (firm offer) for the following forest products to be cut. Bids for individual species must be at or above the advertised price. All non-responsive bid forms may be rejected.

<u>PRODUCTS & SPECIES</u>	<u>ESTIMATED VOLUME*</u>	<u>ADVERTISED PRICE</u>	<u>BID PRICE/UNIT</u>
Sawtimber			
Red Pine	64.9 MBF	\$ 137.00/MBF	\$ _____
Pulpwood			
Red Pine	133 Cords	\$ 51.90/Cord	\$ _____

*The volumes are statistically estimated within plus (+) or minus (-) 43.59 percent at 95% confidence level. These estimated volumes are final and not subject to adjustment. Prospective bidders are urged to examine this timber and to make their own estimates of quantity and quality.

I understand that any or all bids may be rejected. All bids must be signed and all bid items must be bid or the bid form may be rejected. I also understand that consideration and awarding a contract will be based upon my past performance and ability to complete the contract based upon equipment and staffing subject to my control.

FEDERAL ID: ____ - ____ - ____ or SOCIAL SECURITY NUMBER: ____ - ____ - ____

Company or individual bidding: _____

Company representative's name: _____

Address: _____

City: _____ State: _____ Zip: _____

IF AVAILABLE, PLEASE PLACE THE PERSONALIZED LABEL FROM YOUR PROSPECTUS IN THE ABOVE BOX.

Individual or company representative's signature: _____ Date: _____

Phone number : _____ Email (optional): _____

THE WINNING BIDDER MUST COMPLETE THE VERIFICATION OF WORKER'S DISABILITY COMPENSATION ACT COMPLIANCE (ON REVERSE SIDE IF DOUBLE SIDED) WITHIN 21 DAYS OF SALE AWARD DATE



FOR DEPARTMENT USE ONLY	
Sale Number (XX - XXX - XX - XX)	
Forest Management Unit:	

TIMBER SALE VERIFICATION OF WORKER'S DISABILITY COMPENSATION ACT COMPLIANCE

As required by Act 317, P.A. 1969 (Worker's Compensation) and
Part 5 of Act 451 of 1994, as amended.

VERIFICATION OF WORKER'S DISABILITY COMPENSATION ACT COMPLIANCE

- This verification must be completed and submitted within 21 days of contract award and prior to the issuance of the timber sale contract.
- In addition, if boxes 2B or 2C are checked, then Notice of Exclusion or Certificate of Insurance must be submitted within twenty-one (21) days of the contract award and prior to the issuance of the timber sale contract.
- All information must be typed or printed except for written signatures.

Please Check Appropriate Categories:

1. My business is organized as (you **must** check one of the boxes below):
 - A. Sole Proprietorship (individual)
 - B. Partnership
 - C. Corporation
2. You **must** check one of the boxes below:
 - A. I certify my business is a sole proprietorship and it has no employees but the sole proprietor. I am not subject to the Worker's Compensation Laws.
 - B. I certify my business has satisfied its obligation to the Worker's Compensation Act through the use of an approved Notice of Exclusion (BWC-337, Rev. 5/96). I will provide a copy of the Notice of Exclusion within 21 days of the contract award. (For questions or a copy of the BWC-337, please call the Worker's Compensation Bureau at 517-322-1195).
 - C. I certify my business has a Worker's Compensation Policy. I will provide an original Certificate of Insurance within twenty-one (21) days of the contract award.
3. If you have checked item 2(A) or 2(B), you **must** indicate the number of **both** full-time and part-time employees, other than yourself, including family members and active partners (if none, you must enter "0").

_____ Full-time Employees

_____ Part-time Employees

Name of Business		Federal ID (or) Social Security No.	
Address		Telephone ()	
City	State	ZIP	

I hereby certify that the above information is true and correct. I agree to notify the Michigan DNR of any changes that occur in factors affecting my coverage during any of my present and future operations.

Signature of Owner or Authorized Representative

Title

Date

Please complete the "SEALED BID" information on the next page

Elite Hardwoods (53-001-25)
T32N, R02W, SEC. 13; Otsego COUNTY

In response to the notice of sale to be held 9:00 a.m. (local time) on November 21, 2024, I am hereby submitting my sealed bid (firm offer) for the following forest products to be cut. Bids for individual species must be at or above the advertised price. All non-responsive bid forms may be rejected.

<u>PRODUCTS & SPECIES</u>	<u>ESTIMATED VOLUME*</u>	<u>ADVERTISED PRICE</u>	<u>BID PRICE/UNIT</u>
Sawtimber			
Basswood	83.3 MBF	\$ 66.00/MBF	\$ _____
Sugar Maple	114.4 MBF	\$ 215.00/MBF	\$ _____
Pulpwood			
Basswood	92 Cords	\$ 12.10/Cord	\$ _____
Jack Pine	9 Cords	\$ 14.60/Cord	\$ _____
Mixed Aspen	57 Cords	\$ 22.20/Cord	\$ _____
Mixed Hardwood	241 Cords	\$ 14.90/Cord	\$ _____
White Pine	1 Cords	\$ 23.95/Cord	\$ _____

*The volumes are statistically estimated within plus (+) or minus (-) 17.09 percent at 95% confidence level. These estimated volumes are final and not subject to adjustment. Prospective bidders are urged to examine this timber and to make their own estimates of quantity and quality.

I understand that any or all bids may be rejected. All bids must be signed and all bid items must be bid or the bid form may be rejected. I also understand that consideration and awarding a contract will be based upon my past performance and ability to complete the contract based upon equipment and staffing subject to my control.

FEDERAL ID: _____ or SOCIAL SECURITY NUMBER: _____
 Company or individual bidding: _____
 Company representative's name: _____
 Address: _____
 City: _____ State: _____ Zip: _____

IF AVAILABLE, PLEASE PLACE THE PERSONALIZED LABEL FROM YOUR PROSPECTUS IN THE ABOVE BOX.

Individual or company representative's signature: _____ Date: _____
Phone number : _____ Email (optional): _____

THE WINNING BIDDER MUST COMPLETE THE VERIFICATION OF WORKER'S DISABILITY COMPENSATION ACT COMPLIANCE (ON REVERSE SIDE IF DOUBLE SIDED) WITHIN 21 DAYS OF SALE AWARD DATE

Paint It Black Mix (53-029-24)
T34N, R01W, SEC. 29; T34N, R01W, SEC. 30; Cheboygan COUNTY

In response to the notice of sale to be held 9:00 a.m. (local time) on November 21, 2024, I am hereby submitting my sealed bid (firm offer) for the following forest products to be cut. Bids for individual species must be at or above the advertised price. All non-responsive bid forms may be rejected.

<u>PRODUCTS & SPECIES</u>	<u>ESTIMATED VOLUME*</u>	<u>ADVERTISED PRICE</u>	<u>BID PRICE/UNIT</u>
Pulpwood			
Balsam Fir	293 Cords	\$ 22.55/Cord	\$ _____
Mixed Aspen	264 Cords	\$ 18.50/Cord	\$ _____
Mixed Hardwood	121 Cords	\$ 12.45/Cord	\$ _____
White Spruce	30 Cords	\$ 16.90/Cord	\$ _____

*The volumes are statistically estimated within plus (+) or minus (-) 30.11 percent at 95% confidence level. These estimated volumes are final and not subject to adjustment. Prospective bidders are urged to examine this timber and to make their own estimates of quantity and quality.

I understand that any or all bids may be rejected. All bids must be signed and all bid items must be bid or the bid form may be rejected. I also understand that consideration and awarding a contract will be based upon my past performance and ability to complete the contract based upon equipment and staffing subject to my control.

FEDERAL ID: ____ - ____ - ____ or SOCIAL SECURITY NUMBER: ____ - ____ - ____

Company or individual bidding: _____

Company representative's name: _____

Address: _____

City: _____ State: _____ Zip: _____

IF AVAILABLE, PLEASE PLACE THE PERSONALIZED LABEL FROM YOUR PROSPECTUS IN THE ABOVE BOX.

Individual or company representative's signature: _____ Date: _____

Phone number : _____ Email (optional): _____

THE WINNING BIDDER MUST COMPLETE THE VERIFICATION OF WORKER'S DISABILITY COMPENSATION ACT COMPLIANCE (ON REVERSE SIDE IF DOUBLE SIDED) WITHIN 21 DAYS OF SALE AWARD DATE



FOR DEPARTMENT USE ONLY	
Sale Number (XX - XXX - XX - XX)	
Forest Management Unit:	

TIMBER SALE VERIFICATION OF WORKER'S DISABILITY COMPENSATION ACT COMPLIANCE

As required by Act 317, P.A. 1969 (Worker's Compensation) and
Part 5 of Act 451 of 1994, as amended.

VERIFICATION OF WORKER'S DISABILITY COMPENSATION ACT COMPLIANCE

- This verification must be completed and submitted within 21 days of contract award and prior to the issuance of the timber sale contract.
- In addition, if boxes 2B or 2C are checked, then Notice of Exclusion or Certificate of Insurance must be submitted within twenty-one (21) days of the contract award and prior to the issuance of the timber sale contract.
- All information must be typed or printed except for written signatures.

Please Check Appropriate Categories:

1. My business is organized as (you **must** check one of the boxes below):
 - A. Sole Proprietorship (individual)
 - B. Partnership
 - C. Corporation
2. You **must** check one of the boxes below:
 - A. I certify my business is a sole proprietorship and it has no employees but the sole proprietor. I am not subject to the Worker's Compensation Laws.
 - B. I certify my business has satisfied its obligation to the Worker's Compensation Act through the use of an approved Notice of Exclusion (BWC-337, Rev. 5/96). I will provide a copy of the Notice of Exclusion within 21 days of the contract award. (For questions or a copy of the BWC-337, please call the Worker's Compensation Bureau at 517-322-1195).
 - C. I certify my business has a Worker's Compensation Policy. I will provide an original Certificate of Insurance within twenty-one (21) days of the contract award.
3. If you have checked item 2(A) or 2(B), you **must** indicate the number of **both** full-time and part-time employees, other than yourself, including family members and active partners (if none, you must enter "0").

_____ Full-time Employees

_____ Part-time Employees

Name of Business		Federal ID (or) Social Security No.	
Address		Telephone ()	
City	State	ZIP	

I hereby certify that the above information is true and correct. I agree to notify the Michigan DNR of any changes that occur in factors affecting my coverage during any of my present and future operations.

Signature of Owner or Authorized Representative

Title

Date

Please complete the "SEALED BID" information on the next page