



**DEPARTMENT OF NATURAL RESOURCES  
STATE OF MICHIGAN  
TIMBER SALE PROSPECTUS #7682**

**SCHEDULED SALE DATE AND TIME:** 9:00 a.m. (local time) on July 2, 2025.

**LOCATION:** PIGEON RIVER COUNTRY MGMT UNIT, PO BOX 456, 9966 TWIN LAKES ROAD, VANDERBILT, MI 49795.

**PROSPECTUS NOTE:** The bidder is advised to inspect the sale area and review the location, estimated volumes, operating costs and contract terms of proposed sales. Please be aware that some landowners may request 60 days or more notice for access across their land.

Notice is hereby given that bids will be received by the Unit Manager, PIGEON RIVER COUNTRY MANAGEMENT UNIT, for certain timber on the following described lands:

Ice Mo Money Mo Popples (53-002-25) / T32N, R02W, SEC. 1 , SESE.  
T32N, R02W, SEC. 12, E1/2SW,NWSE.  
T32N, R02W, SEC. 12, NENW,S1/2NW,N1/2NE,SWNE.  
Otsego County, Advertised Price \$36,690.60, 97.3 Acres, Aspen, Hardwood.

SALE NOTE: Aspen in Payment Unit #'s 5-7 sustained moderate levels of damage from the ice storm. Most damage is in the form of broken tops and limbs. Payment Unit #'s 1-4 only sustained minor amounts of damage.

Ice-y Hot Pine (53-018-25) / T32N, R02W, SEC. 6 , W1/2NW.  
T32N, R02W, SEC. 7 , S1/2NW,NESW,S1/2SW,SESE.  
T32N, R03W, SEC. 12, N1/2NE,SWNE.  
Otsego County, Advertised Price \$3,460.00, 99.2 Acres, Red Pine.

SALE NOTE: This sale has been reduced, as it was a "no bid" on previous advertisement.

The following are red pine damage estimates for partial harvest Payment Units: Payment Unit 2 - 30% red pine damage; Payment Unit 4 - 20% red pine damage; Payment Unit 5 - 30% red pine damage.

Ice-d Out Aspen (53-019-25) / T32N, R01W, SEC. 6 , SESW,SWSE.  
T32N, R01W, SEC. 7 , N1/2NW,SENE,W1/2NE,N1/2SE.  
Otsego County, Advertised Price \$37,386.10, 98.3 Acres, Aspen, Hardwood.

SALE NOTE: The sale area received damage from the ice storm and should be harvested as soon as possible. The salvage extension in spec 7.2.3 will only be awarded if the entire sale area is harvested prior to March 31, 2026.

## BID INSTRUCTIONS (VER. 10/10/2022):

### 1. Scheduled Bid Location, Date, and Time (2/11)

Bids must be received by the Unit Manager, PIGEON RIVER COUNTRY OFFICE, PO Box 456 9966 Twin Lakes Road, Vanderbilt, MI 49795, no later than 9:00 a.m. (local time) on July 2, 2025. For further information concerning this sale, contact Mark Monroe at 989-983-4101 extension .

### 2. Bidder's Qualifications (10/22)

If all or part of a timber sale was prepared by a private contractor, the contractor and that contractor's company are not permitted to bid on the timber sale. A person must be 18 years of age or older to purchase timber. Permanent employees of the Department of Natural Resources or members of their immediate household may not bid. Former employees, in the permanent or seasonal class, may not bid until 3 months after the last day of active duty. Bids will not be accepted from individuals or companies appearing on the DNR/FRD No-Bid List. This list contains the names of purchasers who previously failed to execute a contract within 21-days or who have a history of poor performance.

### 3. Preparation of Sealed Bids (5/16)

Bid Forms may be completed online thru Michigan DNR Timber Sale Online Bidding (OLB) at [www.michigan.gov/timberbidding](http://www.michigan.gov/timberbidding) or by completing the hardcopy Bid Form found in the Timber Sale Prospectus . Hardcopy Bid Forms shall be manually signed in ink. Registration in OLB is considered your 'signature' for all bids submitted thru that system. Bid prices must be entered for each species and product in the Bid Price column for all material subject to bidding and all fill-in blanks must be completed. If erasures or other changes appear on the hardcopy Bid Form, each erasure or change must be initialed by the person signing the bid.

### 4. Submission of Sealed Bids (5/16)

Bid forms may be obtained from the Unit Manager or thru OLB. Bids may be submitted hardcopy or thru OLB. All hardcopy bids must be submitted on the bid form and in an envelope clearly identified as described in this section. NOTE: Only one bid form per bid envelope. Sealed bids must be submitted to the Unit office designated in the prospectus and must be submitted at or prior to the time established in the prospectus. The envelope should show on the outside (a) the sale name or number and (b) the date and time of bid opening, as shown in the prospectus. Bids received after the time specified in the sale prospectus are late bids and will be rejected.

It is possible for a bidder to submit multiple bids on a single sale. For example, a bid may be submitted hardcopy and a bid may be submitted thru OLB. Or, two bidders from the same company could both submit bids on the same sale. If this were to happen, the State would accept all bids received and award the contract accordingly. All bidding and contractual requirements would apply to all bids received.

### 5. Public Opening of Sealed Bids (7/16)

If conditions permit, the sealed bids will be publicly opened and posted at the time and place set in the prospectus.

If a bidder, present at a bid opening, has submitted bids on more than one sale, that bidder may withdraw their unopened bid envelopes or announce the withdrawal of their online bid after being declared the successful bidder on one sale.

### 6. Award of Contract (1/11)

Award of the contract will be made to the Bidder whose bid, conforming to the prospectus, is most advantageous to the State of Michigan on the basis of total value at rates bid for the estimated quantities. The State reserves the right to reject any bid or waive any minor irregularity in bids received. A written award mailed (or otherwise furnished) to the successful Bidder shall be deemed to result in a binding contract without further action by either party.

### 7. Down Payment (1/11)

The Bidder to whom award is made must make a down payment within 21 days of the sale award. The amount of the down payment will be calculated as shown in the Bond and Payment Schedule of this prospectus. Only cash may be used to meet this requirement.

### 8. Performance Security (1/11)

As guarantee of faithful performance, a cash bond, certificate of deposit, surety bond or irrevocable letter of credit (LOC) is required within 21 days of the sale award. The amount of the performance security is shown in the Bond and

Payment Schedule of this prospectus. If an LOC or surety is used, the coverage must extend for at least 6 months beyond the contract expiration.

#### 9. Worker's Compensation (10/22)

Purchaser shall obtain worker's compensation insurance to cover claims under Michigan's Worker's Disability Compensation Act of 1969 or similar employee benefit act of any other state applicable to an employee. Verification of Worker's Disability Compensation Act Compliance must be completed and submitted within 21 days of contract award and prior to the issuance of the timber sale contract. In addition, if applicable, Notice of Exclusion or Certificate of Insurance must also be submitted.

#### 10. Timber Sale Contract (10/22)

Additional conditions and requirements common to all timber sales are listed on the timber sale contract (R4031) and are available on line at [www.michigan.gov/timber](http://www.michigan.gov/timber). Contact the Unit Manager for additional information or a sample contract. Within 21 days of the date of the award letter, the bidder must sign the contract and provide the required down payment, performance security, and verification of worker's disability compensation. The down payment and performance security shall be in accordance with the provisions of the timber sale contract, in the sums stated in this prospectus. If these actions are not taken, then the Bidder, the Bidder's corporation, and the corporation's principals may not be permitted to bid on State timber sales for a period of 3 months after the first offense, 6 months after the second offense, and 1 year after the third offense. An offense will only be counted against the Bidder for 5 years. In addition, the Bidder certifies that if awarded this contract, the Bidder will complete the timber sale contract in accordance with its terms and any modifications thereof including requirements to purchase, cut, and remove the included timber by the expiration date.

Payment Unit values in the State Forest Timber Sale Contract are calculated based on the advertised value of the Payment Unit as a percentage of the total advertised value of the contract. The advertised value of each Payment Unit is given in the Description of Timber by Payment Unit table on the Timber Sale Information page. For example, if the value of Payment Unit 1 is advertised as \$1,500 and the total Timber Sale value is advertised as \$10,000, the contract price for Payment Unit 1 will be 15% of the total bid price ( $\$1,500/\$10,000 * 100$ ).

#### 11. Disclaimer of Estimates and Bidder's Warranty of Inspection (10/22)

Before submitting this bid, the Bidder is advised and cautioned to inspect the sale area, review the requirements of the sale contract, and take other steps as may be reasonably necessary to ascertain the location, estimated volumes, construction estimates, and operating costs of the proposed sale. Failure to do so will not relieve the Bidder from responsibility for completing the contract.

The Bidder warrants that this bid is submitted solely on the basis of the Bidder's examination and inspection of the quality and quantity of the timber offered for sale and the Bidder's opinion of the value thereof and the costs of recovery. No reliance should be placed on the State of Michigan's estimates of timber quality, quantity or costs of recovery. Bidder further acknowledges that the State of Michigan: (i) expressly disclaims any warranty of fitness of timber for any purpose; (ii) offers this timber as is without any warranty of quality (merchantability) or quantity and (iii) expressly disclaims any warranty as to the quantity or quality of timber sold.

#### 12. Certification and Chain-of-Custody (10/22)

Unless otherwise indicated in the contract under section 7 – Other Conditions of the Sale Specific Conditions & Requirements, the area encompassed by this timber sale is certified to the standards of the Forest Stewardship Council (FSC) - Certificate #SCS-FM/COC-00090N and the Sustainable Forestry Initiative (SFI) - Certificate #NSF-SFIS-5Y031-SF5. Forest products from this sale may be delivered to the mill as "FSC 100% and / or SFI certified" as long as the contractor hauling the forest products is chain-of-custody (COC) certified or covered under a COC certificate from the destination mill. The purchaser is responsible for maintaining COC after leaving the sale area.

#### 13. Good Neighbor Authority (GNA) Requirements (10/22)

If the name of this timber sales contains the acronym GNA, it is authorized by the Good Neighbor Authority (GNA) and covered by various agreements between the U.S. Forest Service and the State. The timber sale occurs on federal land and the following conditions apply:

GNA contracts on US Forest Service land will not be awarded to purchasers on the Federal list of excluded parties. The System for Award Management (SAM) will be checked for active excluded parties prior to award of contract. In

addition, the Bidder to whom award is made must complete an Assurance Regarding Felony Conviction or Tax Delinquent Status for Corporate Applicants (AD-3031).

14. Good Neighbor Authority (GNA) Requirements, con't (10/22)

Bidder certifies, by signing this bid form, that to the best of Bidder's knowledge that the following representations are accurate and complete.

- a. That the Bidder and its principals are not presently debarred, suspended, proposed for debarment, declared ineligible, or voluntary excluded from timber sales (covered transactions) by any Federal department or agency.
- b. That the Bidder and its principals have not within a 3-year period preceding this bid been convicted of or had a civil judgment rendered against them for commission of fraud or a criminal offense in connection with obtaining , attempting to obtain, or performing a public (Federal, State, or local) transaction or contract under a public transaction; violation of Federal or State antitrust statutes or commission of embezzlement, theft, forgery, bribery, falsification or destruction of records, making false statements, or receiving stolen property.
- c. That the Bidder and its principals are not presently indicted for or otherwise criminally or civilly charged by a governmental entity (Federal, State, or local) with commission of any of the offenses enumerated in paragraph b of this certification.
- d. That the Bidder and its principals have not within a 3-year period preceding this bid had one or more public transactions (Federal, State, or local) terminated for breach or default of a timber or forest product contract.

Bidders that cannot certify this requirement, in whole or in part, shall submit an explanation with their bid.

Scott Bowen  
Director

## TIMBER SALE INFORMATION

Ice Mo Money Mo Popples (53-002-25)  
T32N, R02W, SEC. 1; T32N, R02W, SEC. 12.  
Otsego County (Advertised Price \$36,690.60)

**SALE NOTE:** Aspen in Payment Unit #'s 5-7 sustained moderate levels of damage from the ice storm. Most damage is in the form of broken tops and limbs. Payment Unit #'s 1-4 only sustained minor amounts of damage.

A timber sale contract for this lump sum, sealed bid timber sale will be awarded to the responsible bidder offering the highest sealed bid price. All units of volume listed below were estimated using the Inventory Manager computer program and the new Michigan taper model. Bids must be at or above the following advertised price for each product and species:

<u>PRODUCTS &amp; SPECIES</u>	<u>ESTIMATED UNITS*</u>		<u>ADVERTISED PRICE</u>	
Sawtimber				
Mixed Aspen	149.0	MBF	\$	27.00 / MBF
Red Maple	24.4	MBF	\$	44.00 / MBF
White Pine	10.8	MBF	\$	48.00 / MBF
Pulpwood				
Balsam Fir	394	Cords	\$	12.65 / Cord
Mixed Aspen	1,882	Cords	\$	11.15 / Cord
Mixed Hardwood	686	Cords	\$	7.05 / Cord
White Pine	16	Cords	\$	11.70 / Cord
White Spruce	9	Cords	\$	9.30 / Cord

\* The total volume is statistically estimated within plus (+) or minus (-) 17.63 percent. There are an estimated 3,418 cords on this timber sale, plus or minus 603 cords at the 95% confidence level. The estimated units are final and not subject to adjustment. Prospective bidders are urged to examine this timber and to make their own estimates of quantity and quality.

### **BOND AND PAYMENT SCHEDULE:**

- A bond in the amount of \$3,669.00 to insure faithful performance of the conditions of the contract will be deposited by the successful bidder within 21 days of the sale award.
- Cutting in any sale or unit without the required advance payment would be considered a trespass.
- Total payment must be paid in advance or according to the following schedule :
  - Ten percent (10%) of the sale value must be paid within 21 days of the sale award.
  - The 10% down payment will be credited towards the first unit cut.
  - Payment for each of the following units must be made before cutting begins in that unit:
 

PAYMENT UNIT NUMBER	PERCENT OF TOTAL SALE VALUE
01	15.2%
02	27.1%
03	23.0%
04	10.0%
05	7.7%
06	10.5%
07	6.5%
- If no cutting takes place, the 10% down payment will not be refunded.
- Operations on the contract issued will terminate on 06/30/2027.

### **SALE STATISTICS**

Volumes were calculated in cubic feet using the Michigan taper model. Cubic foot volume includes all wood inside bark for the product indicated. For display purposes, cubic feet were converted to cords and MBF using a simple conversion factor, e.g. 79 cubic feet per cord and 185 cubic feet per MBF. The cubic foot volumes are precise; the cords and MBF volumes are not. Cubic foot volume cannot be directly converted to cords or boards with precision.

### **SALE VOLUMES**

The total estimated sale volume may not equal the sum of the species/products due to the nature of statistical calculations associated with double sampling methodology.

VOLUME			STATISTICAL RANGE IN CORDS	
TOTAL CUBIC FEET	TOTAL CORDS	PERCENT ERROR	MINIMUM	MAXIMUM
270,001	3,418	17.63%	2,815	4,020

## VDU VOLUMES

A VDU is a Volume Determination Unit. Volumes and their associated statistics are calculated at the VDU level and summarized to the sale level. There is often a one to one relationship between a VDU and a Payment Unit, but not always, depending on the cruise design. Refer to the VDU TO PAYMENT UNIT table.

	VOLUME			RANGE IN CORDS	
VDU	TOTAL CUBIC FEET	TOTAL CORDS	PERCENT ERROR	MINIMUM	MAXIMUM
51	160,205	2,028	27.88%	1,463	2,593
54	15,547	197	53.35%	92	302
57	26,836	340	30.52%	236	443
68	61,296	776	23.30%	595	957
147	6,116	77	74.39%	20	135
<b>TOTAL:</b>	<b>270,001</b>	<b>3,418</b>		<b>2,405</b>	<b>4,430</b>

## VDU TO PAYMENT UNIT

When a VDU is associated with more than one Payment Unit (PU), the VDU volumes are assigned to the PU based on acres of the VDU within the PU.

VDU	VDU ACRES	PU	PU ACRES
51	49.6	1	7.9
		2	22.4
		3	19.1
		4	0.2
54	5.1	1	5.1
57	10.8	2	0.1
		4	10.7
68	27.1	5	9.2
		6	11.1
		7	6.8
147	4.7	6	2.7
		7	2.0
<b>TOTAL:</b>	<b>97.3</b>		<b>97.3</b>

**DESCRIPTION OF TIMBER BY PAYMENT UNIT (PU)**

PU	MARKET GROUP	PRODUCT	QUANTITY	UNIT	ACRES	ADVERTISE PRICE
1	Mixed Aspen	Sawtimber	10.8	MBF	13.0	\$5,559.75
	<i>B. T. Aspen</i>		9.8	<i>MBF</i>		
	<i>Quaking Aspen</i>		1.0	<i>MBF</i>		
	Red Maple	Pulpwood	0.4	MBF		
	White Pine		0.5	MBF		
	Balsam Fir		99	Cords		
	Mixed Aspen		293	Cords		
	<i>B. T. Aspen</i>		92	<i>Cords</i>		
	<i>Quaking Aspen</i>		201	<i>Cords</i>		
	Mixed Hardwood		99	Cords		
	<i>Red Maple</i>		94	<i>Cords</i>		
	<i>Sugar Maple</i>		5	<i>Cords</i>		
	White Spruce		1	Cords		
2	Mixed Aspen	Sawtimber	31.0	MBF	22.5	\$9,957.05
	<i>B. T. Aspen</i>		28.0	<i>MBF</i>		
	<i>Quaking Aspen</i>		3.0	<i>MBF</i>		
	Red Maple	Pulpwood	1.3	MBF		
	White Pine		1.4	MBF		
	Balsam Fir		156	Cords		
	Mixed Aspen		531	Cords		
	<i>B. T. Aspen</i>		262	<i>Cords</i>		
	<i>Quaking Aspen</i>		269	<i>Cords</i>		
	Mixed Hardwood		148	Cords		
	<i>Red Maple</i>		134	<i>Cords</i>		
	<i>Sugar Maple</i>		14	<i>Cords</i>		
	White Pine		1	Cords		
	White Spruce		5	Cords		
3	Mixed Aspen	Sawtimber	26.3	MBF	19.1	\$8,448.80
	<i>B. T. Aspen</i>		23.8	<i>MBF</i>		
	<i>Quaking Aspen</i>		2.5	<i>MBF</i>		
	Red Maple	Pulpwood	1.1	MBF		
	White Pine		1.1	MBF		
	Balsam Fir		132	Cords		
	Mixed Aspen		452	Cords		
	<i>B. T. Aspen</i>		222	<i>Cords</i>		
	<i>Quaking Aspen</i>		230	<i>Cords</i>		
	Mixed Hardwood		126	Cords		
	<i>Red Maple</i>		114	<i>Cords</i>		
	<i>Sugar Maple</i>		12	<i>Cords</i>		
	White Pine		1	Cords		
	White Spruce		3	Cords		
4	Mixed Aspen	Sawtimber	20.2	MBF	10.9	\$3,684.70
	<i>B. T. Aspen</i>		20.2	<i>MBF</i>		
	Red Maple		7.3	MBF		
	White Pine	Pulpwood	7.8	MBF		
	Balsam Fir		7	Cords		
	Mixed Aspen		132	Cords		
	<i>B. T. Aspen</i>		124	<i>Cords</i>		
	<i>Quaking Aspen</i>		8	<i>Cords</i>		
	Mixed Hardwood		117	Cords		
	<i>Beech</i>		6	<i>Cords</i>		
	<i>Red Maple</i>		108	<i>Cords</i>		
	<i>Sugar Maple</i>		3	<i>Cords</i>		
	White Pine		5	Cords		
5	Mixed Aspen	Sawtimber	20.6	MBF	9.2	\$2,813.15
	<i>B. T. Aspen</i>		20.6	<i>MBF</i>		

**DESCRIPTION OF TIMBER BY PAYMENT UNIT (PU), CON'T**

PU	MARKET GROUP	PRODUCT	QUANTITY	UNIT	ACRES	ADVERTISE PRICE	
5 con't	Red Maple	Sawtimber	3.9	MBF			
	Mixed Aspen	Pulpwood	151	Cords			
	B. T. Aspen		151	Cords			
	Mixed Hardwood		52	Cords			
	Paper Birch	Sawtimber	0.3	MBF			
	Sugar Maple		0.3	MBF			
	Beech	Pulpwood	11	Cords			
	Paper Birch		3	Cords			
	Red Maple		22	Cords			
	Sugar Maple		14	Cords			
	White Pine		3	Cords			
6	Mixed Aspen	Sawtimber	24.9	MBF	13.8	\$3,842.60	
	B. T. Aspen		24.9	MBF			
	Red Maple		6.3	MBF			
	Mixed Aspen	Pulpwood	199	Cords			
	B. T. Aspen		199	Cords			
	Mixed Hardwood		89	Cords			
	Paper Birch	Sawtimber	0.3	MBF			
	Sugar Maple		0.4	MBF			
	Beech	Pulpwood	24	Cords			
	Paper Birch		4	Cords			
	Red Maple		37	Cords			
	Sugar Maple		22	Cords			
		White Pine		4			Cords
	7	Mixed Aspen	Sawtimber	15.2			MBF
B. T. Aspen			15.2	MBF			
Red Maple			4.1	MBF			
Mixed Aspen		Pulpwood	124	Cords			
B. T. Aspen			124	Cords			
Mixed Hardwood			55	Cords			
Paper Birch		Sawtimber	0.2	MBF			
Sugar Maple			0.2	MBF			
Beech		Pulpwood	16	Cords			
Paper Birch			2	Cords			
Red Maple			24	Cords			
Sugar Maple			13	Cords			
		White Pine		2	Cords		
TOTAL:			184.2	MBF			
TOTAL:			2,987	Cords			



## Sale Specific Conditions & Requirements

**Sale Name: Ice Mo Money Mo Popples**

**Sale Number: 53-002-25 Seq#: 1**

### 1 - Sale Area

#### 1.2 - Boundaries

##### 1.2.1 - Painted Boundaries (9/19)

The sale boundary and Payment Unit boundaries are marked and identified by red and yellow paint, along with roads. Exterior sale boundary lines against state are marked with red paint. Interior Payment Unit boundaries are marked with yellow paint, with the exception of the boundaries between Payment Units 1 & 2 and 5 & 6, which are unpainted and identified by Road 68. Red painted boundary line trees are not Included Timber and are to be protected. The painted boundary line trees are not Included Timber and are to be protected, with the exception of yellow painted aspen or red maple trees designating an interior Payment Unit boundary, which are only to be cut when all surrounding Payment Units have been paid.

### 2 - Timber Specifications

#### 2.1 - Included Timber

##### 2.1.1 - Clearcut Unit(s) with Unmerchantable Trees (6/14)

Within Payment Unit(s) 1-7, cut all trees that are two (2) inches or more at DBH, with the following exceptions:

- Within Payment Units 1 & 4, do not cut oak, birch, hemlock, or trees marked with green paint. In addition, do not cut any red or white pine trees that are 18 inches or more at DBH. Also, do not cut any black cherry that are 5 inches or more at DBH.

- Within Payment Units 2-3, do not cut oak, birch, or trees marked with green paint. In addition, do not cut any red or white pine that are 12 inches or more at DBH. Also, do not cut any black cherry that are 5 inches or more at DBH.

- Within Payment Units 5-7, do not cut oak or trees marked with green paint. In addition, do not cut any red or white pine that are 12 inches or more at DBH. Also, do not cut any black cherry that are 5 inches or more at DBH.

#### 2.2 - Utilization

##### 2.2.6 - Roundwood Operation Required (3/21)

The skidding of whole trees or tree segments with limbs attached is prohibited within Payment Units 1-7. All products must be produced as roundwood and forwarded to existing roads or landing areas in final product length.

##### 2.2.9 - No Chipping Permitted (12/08)

Within Payment Unit(s) 1-7, all wood must be removed by whole tree, tree segment, or roundwood. No chipping is permitted.

### 3 - Payments

#### 3.4 - Damaged Timber

##### 3.4.1 - Damaged timber (7/16)

General Condition and Requirement 3.4 Damaged Timber, defines liquidated damages for undesignated live merchantable trees which are cut or injured. In addition, extreme care should be taken to avoid damage to oak saplings and poletimber, which are abundant in Payment Units 5-7. Many, but not all, of these sapling and poletimber stems have been marked with green paint to aid in identification. Within the Sale Area, if more than 25% of the oak saplings (1/4" to 4.5" DBH) within a specified portion of the Sale Area are damaged, liquidated damages will be assessed at \$500 per acre for all acreage within that specified portion of the Sale Area that was damaged.

#### 3.6 - Payment Unit Cutting Schedule

##### 3.6.8 - Operating Period (5/16)

Once cutting begins, operations must continue until all Payment Units are completed. This requirement is in order to reduce browse pressure throughout the Sale Area.

## **4 - Transportation**

### **4.1 - Construction**

#### **4.1.3 - Slash and Earthen Piles (8/04)**

Piles or windrows of earth along roads and landings that have been widened or constructed shall be leveled. Slash from road maintenance or construction, including stumps, shall be dispersed throughout the sale.

#### **4.1.4 - Timber Removed for Construction (3/23)**

Trees cut or damaged in the process of pre-approved road, landing, or skid trail construction will be decked in an area separate from other Designated Timber and not removed until measured by the Sale Administrator. Payment will be made at contract prices or average prices, if not on the contract. Specifically, Road 68 will have to be widened in several areas to permit access for hauling. Trees marked with orange paint along the roadside may be cut in order to allow for access. The volume of these trees have been tallied and will be added as an amendment to the timber sale.

#### **4.1.6 - Road Construction (4/24)**

Improvements of existing roads or construction of new roads shall be done in such a way as to minimize the environmental and visual impacts. Merchantable trees shall be cut and utilized unless otherwise directed. Non-merchantable trees shall be severed and laid flat on the ground. Slash shall be scattered, and not left in windrows and kept a minimum of 10 feet back from the road edge. Stumps shall be set upright, not left on edge, and be moved at least 10 feet away from the road edge. Disturbed soil shall be feathered into the woods and not left in berms or windrows.

#### **4.1.7 - Road Closure (10/11)**

Overgrown roads that are reopened and new roads must be blocked to vehicle traffic upon completion of the sale. In general, this will require constructing a four (4') foot high berm of stumps and logs covered with earth. These roads must be rendered impassable to cars and trucks. Contact the Sale Administrator for specific details of design and placement.

### **4.2 - Maintenance**

#### **4.2.4 - Grading (10/16)**

For completion of the sale, state forest roads must be graded. In general, this will require a road grader or bulldozer to shape up the roads after forest products have been hauled off site. The grading equipment to be used must be approved by the Unit Manager or his/her representative.

#### **4.2.5 - Two Wheel Drive Condition (2/04)**

All existing trail roads on and adjacent to the Sale Area must be passable by two-wheel drive traffic for the duration of the sale.

## **5 - Operations**

### **5.1 - Notification**

#### **5.1.3 - Well Heads and Natural Gas Pipelines (11/15)**

The Purchaser is responsible for contacting the Enbridge prior to operating equipment in the vicinity of well heads or natural gas pipelines.

### **5.2 - Conduct of Operations**

#### **5.2.1 - Slash**

##### **5.2.1.11 - Slash for Reforestation (3/21)**

To facilitate reforestation, the Sale Area shall be left with slash evenly distributed. Bunched tops within the cutting area shall be broken up and scattered. Stumps shall be cut low to the ground. Processing sites shall not be left with a compacted layer of slash; tops from these sites shall be hauled back into the cut area and scattered.

#### **5.2.2 - Hazard Trees/Snags**

##### **5.2.2.1 - Den Trees (10/16)**

Obvious hollow and/or den trees shall be protected and left standing unless they are a safety hazard.

#### **5.2.3 - Operating Restrictions**

#### 5.2.3.4 - Oak Wilt Restriction, No Exceptions (1/18)

Within Payment Units 1-7, cutting, skidding, hauling within the sale and brushing of access roads to the sale are not permitted during the period of April 15 to July 15. No exceptions will be granted. This is necessary to reduce the spread of oak wilt.

#### 5.2.4 - Dead and Down Creation

##### 5.2.4.3 - Dead and Down Creation, Dead Trees (6/07)

Except as provided for in General Condition and Requirement 5.2.2, no dead trees, standing or down, are to be cut, skidded, or processed.

##### 5.2.4.7 - Dead and Down Creation: Hare, Grouse, Deer and Other Species (5/15)

To improve horizontal cover habitat for snowshoe hare, grouse, deer, and other species, the Purchaser is to push over all trees marked with a pink or orange X. These trees should be tipped over with the root ball still attached so the base of the tree is suspended off the ground. The crown of the fallen tree should be at or near ground level after it is pushed over.

#### 5.2.32 - Decking/Landing Restoration (9/13)

All decking and landing areas must have the surface area restored to a condition equal to or better than before. This is to ensure the proper regeneration of the stand. Wood debris, chips and "cookies" from trimmings must be removed or scattered away from landing and loading areas and may not be windrowed on the edge.

#### 5.2.38 - No Decking Against Live Trees (2/04)

Cut products may not be decked against unmarked or designated leave trees.

#### 5.4 - Soil Protection

##### 5.4.1 - Rutting Restriction, General (7/16)

Operations are to cease immediately if equipment and weather conditions result in rutting of roads and/or skid trails which is 12 inches or greater in depth and 25 feet in length. The Unit Manager or his/her representative may restrict hauling and/or skidding if ruts exceed the specified depth. With the Unit Manager or his/her representative's approval, the Purchaser may return to the area when the risk of rutting has decreased.

#### 5.8 - Protection of Endangered Species

##### 5.8.3 - Red Shoulder Hawk or Goshawk (1) (2/16)

In the event that an active red shoulder hawk or goshawk nest is found, the contract may be amended to protect the nest site until the nest is determined to be inactive. The value of the trees in this excluded area will be refunded or credited to the Purchaser. The nest will be buffered with a five-chain radius (eight acre) protection area, centered on the nest tree, in which there will be no cutting or new roads constructed. Avoid human disturbance, including loading and skidding, in the protection area.

An additional zone of five chains (ten chains centered on the active nest tree) will be established in which there is no management activity from March 15 to July 15. Limit biomass harvesting and chipping operations within this ten-chain zone, retain the maximum one-third of residues per the Woody Biomass Harvesting Guidelines (Michigan DNR 2010). Nests determined to be inactive will be protected with a one-chain no-harvest buffer.

### 6 - Safety and Fire Prevention

#### 6.2 - Signing

##### 6.2.1 - Road Posting (10/20)

The Purchaser is responsible for posting and maintaining caution signs on Ford Lake Road prior to beginning operations. The road must be posted at appropriate distances from the Sale Area to warn of logging activity and truck traffic. Signs must be removed when harvest operations are suspended or completed. The Purchaser will provide these signs.

### 7 - Other Conditions

#### 7.2 - Extensions

##### 7.2.2 - No Extensions (3/09)

There will be no extensions granted on this contract due to the browse pressure in the area.

#### 7.2.8 - Salvage Extension with Restrictions (6/25)

This is a salvage sale that should be harvested promptly. One (1), twelve (12) month extension can be applied to one (1) other State Forest Timber Sale Contract owned by the purchaser or owned by one (1) designated sub-contractor of the Purchaser that works this contract. To qualify, operations on this contract must be completed by March 31, 2026. If this is the first extension on the other State Forest Timber Sale Contract, then the 5% extension fee will be waived. If this is an additional extension, the 10% fee will be reduced to 5%. This specification does not alleviate the purchaser from any contractual obligations of the extended State Forest Timber Sale Contract. Per General Condition & Requirement 7.2, extensions are at the sole discretion of the DNR.

### 7.5 - Loss

#### 7.5.1 - Deteriorating Timber (7/09)

The Sale Area has received damage from the ice storm of late March 2025. The Purchaser should harvest the wood as soon as possible. The Department of Natural Resources is held free of responsibility of any further damage or deterioration due to delay in harvesting.

## TIMBER SALE MAP

This information provided by authority of Part 525, 1994 PA 451, as amended.

Sale Number

**53-002-25**

Date \_\_\_\_\_

06/20/2025

Forest Management Unit

County

Mapped By: Rekowski

Pigeon River Country Mgt Unit

Otsego

Cruised By: Rekowski

Scale

1:15,840

Page

1

Of

1

Township  
32N

Range  
02W

Section(s) and

Subdivision(s) Sec. 1 SESE; Sec. 12 E1/2SW,NWSE; Sec. 12 NENW,S1/2NW,N1/2NE,SWNE;

### Cover Type

A = Aspen	J = Jack Pine	O = Oak	U = Upland Brush
B = Paper Birch	K = Rock	P = Lowland Poplar	UM = Upland Mix Forest
C = Cedar	L = Lowland Brush	Q = Mixed Swamp Conifer	V = Bog or Marsh
D = Treed Bog	LM = Lowland Mix Forest	R = Red Pine	W = White Pine
E = Swamp Hardwoods	M = Maple, Beech, Birch	S = Black Spruce	X = Non Stocked
F = Spruce/Fir	MC = Mixed Conifer	T = Tamarack	Y = Sand
G = Grass	MD = Mixed Deciduous		Z = Water
H = Hemlock	N = Marsh		

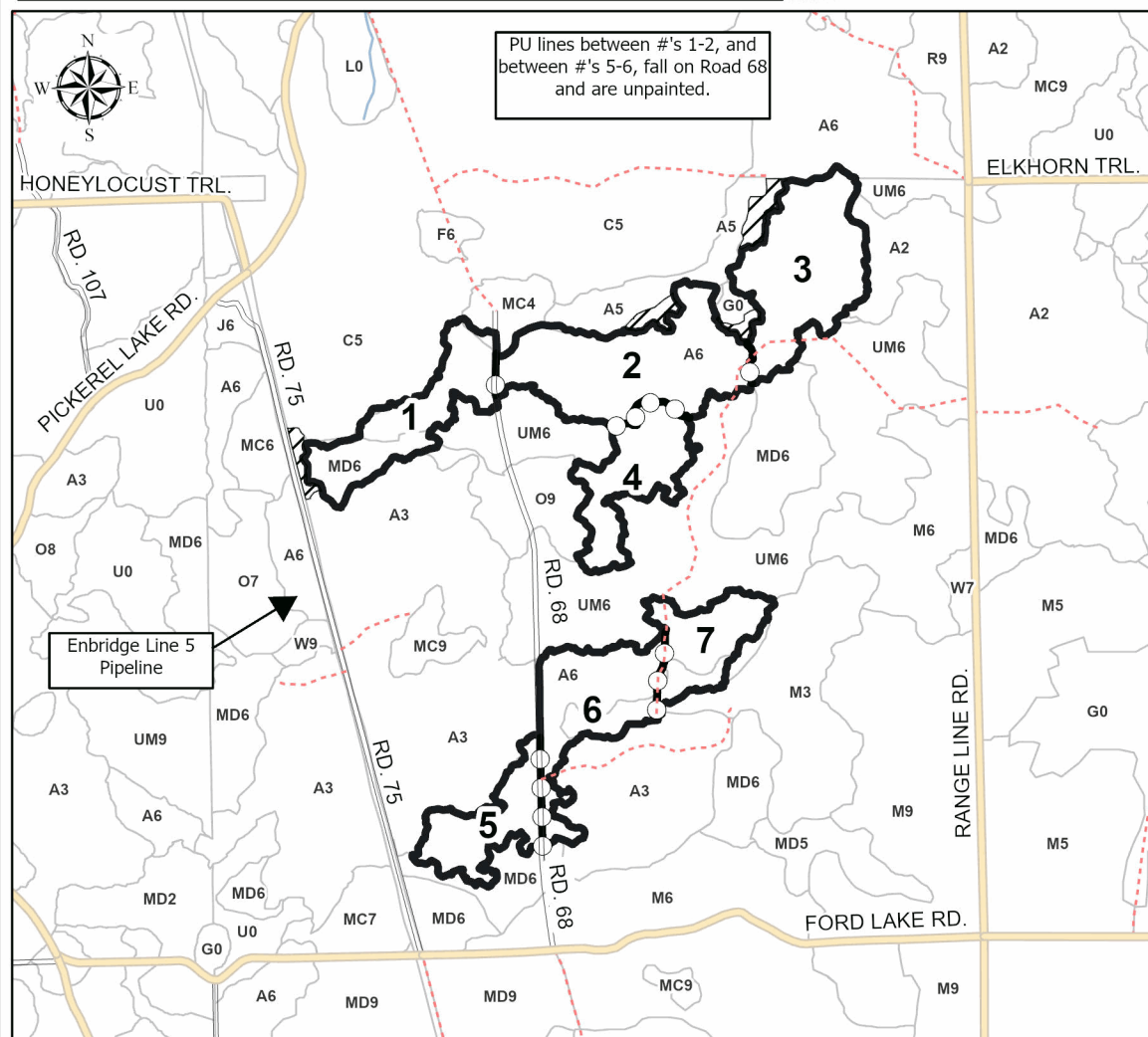
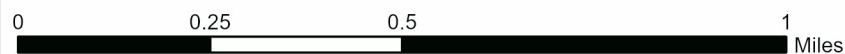
## Density

0 = Non Stocked	5 = Pole Timber Medium
1 = Seedling Sapling Poor	6 = Pole Timber Well
2 = Seedling Sapling Medium	7 = Saw Timber Poor
3 = Seedling Sapling Well	8 = Saw Timber Medium
4 = Pole Timber Poor	9 = Saw Timber Well

# Ice Mo Money Mo Popples

## 97.3 Acres

PU #	Acres	PU #	Acres
1	13	5	9.2
2	22.5	6	13.8
3	19.1	7	8.8
4	10.9		



### Legend

-  Against State (Red)
-  Payment Unit (Yellow)
-  Retention Areas
-  Stand Boundary
-  Secondary Forest Road
-  Administrative Access Only
-  Non-DNR Road

Use QR Code to open Map in App





## TIMBER SALE INFORMATION

Ice-y Hot Pine (53-018-25)

T32N, R02W, SEC. 6; T32N, R02W, SEC. 7; T32N, R03W, SEC. 12.  
Otsego County (Advertised Price \$3,460.00)

SALE NOTE: This sale has been reduced, as it was a "no bid" on previous advertisement.

The following are red pine damage estimates for partial harvest Payment Units: Payment Unit 2 - 30% red pine damage; Payment Unit 4 - 20% red pine damage; Payment Unit 5 - 30% red pine damage.

A timber sale contract for this scaled, sealed bid timber sale will be awarded to the responsible bidder offering the highest sealed bid price. All units of volume listed below were estimated using the Inventory Manager computer program and the new Michigan taper model. Bids must be at or above the following advertised price for each product and species:

<u>PRODUCTS &amp; SPECIES</u>	<u>ESTIMATED UNITS*</u>	<u>ADVERTISED PRICE</u>
Pulpwood		
Red Pine	692 Cords	\$ 5.00 / Cord

\* The estimated units are final and not subject to adjustment. Prospective bidders are urged to examine this timber and to make their own estimates of quantity and quality.

### **BOND AND PAYMENT SCHEDULE:**

1. A bond in the amount of \$346.00 to insure faithful performance of the conditions of the contract will be deposited by the successful bidder within 21 days of the sale award.
2. Cutting in any sale or unit without the required advance payment would be considered a trespass.
3. Total payment must be paid in advance or according to the following schedule :
  - (a) Ten percent (10%) of the sale value must be paid within 21 days of the sale award.
  - (b) The 10% down payment will be credited towards the first unit cut.
  - (c) Payment for each of the following units must be made before cutting begins in that unit:

<u>PAYMENT UNIT NUMBER</u>	<u>PERCENT OF TOTAL SALE VALUE</u>
01	10.1%
02	42.2%
03	26.3%
04	17.8%
05	3.6%

4. If no cutting takes place, the 10% down payment will not be refunded.
5. Operations on the contract issued will terminate on 06/30/2027.

### **SALE STATISTICS**

Volumes were calculated in cubic feet using the Michigan taper model. Cubic foot volume includes all wood inside bark for the product indicated. For display purposes, cubic feet were converted to cords and MBF using a simple conversion factor, e.g. 79 cubic feet per cord and 185 cubic feet per MBF. The cubic foot volumes are precise; the cords and MBF volumes are not. Cubic foot volume cannot be directly converted to cords or boards with precision.

### **SALE VOLUMES**

The total estimated sale volume may not equal the sum of the species/products due to the nature of statistical calculations associated with double sampling methodology.

<u>VOLUME</u>		<u>STATISTICAL RANGE IN CORDS</u>		
<u>TOTAL CUBIC FEET</u>	<u>TOTAL CORDS</u>	<u>PERCENT ERROR</u>	<u>MINIMUM</u>	<u>MAXIMUM</u>
54,673	692	0.00%	692	692

VDU VOLUMES

A VDU is a Volume Determination Unit. Volumes and their associated statistics are calculated at the VDU level and summarized to the sale level. There is often a one to one relationship between a VDU and a Payment Unit, but not always, depending on the cruise design. Refer to the VDU TO PAYMENT UNIT table.

	VOLUME			RANGE IN CORDS	
VDU	TOTAL CUBIC FEET	TOTAL CORDS	PERCENT ERROR	MINIMUM	MAXIMUM
24	1,936	25	0.00%	25	25
42	8,052	102	0.00%	102	102
61	13,502	171	0.00%	171	171
93	5,541	70	0.00%	70	70
162	9,592	121	0.00%	121	121
167	14,392	182	0.00%	182	182
171	1,659	21	0.00%	21	21
TOTAL:	54,673	692		692	692

VDU TO PAYMENT UNIT

When a VDU is associated with more than one Payment Unit (PU), the VDU volumes are assigned to the PU based on acres of the VDU within the PU.

VDU	VDU ACRES	PU	PU ACRES
TOTAL:			

DESCRIPTION OF TIMBER BY PAYMENT UNIT (PU)

PU	MARKET GROUP	PRODUCT	QUANTITY	UNIT	ACRES	ADVERTISE PRICE
1	Red Pine	Pulpwood	70	Cords	10.1	\$350.00
2	Red Pine	Pulpwood	292	Cords	41.9	\$1,460.00
3	Red Pine	Pulpwood	182	Cords	26.1	\$910.00
4	Red Pine	Pulpwood	123	Cords	17.6	\$615.00
5	Red Pine	Pulpwood	25	Cords	3.5	\$125.00
TOTAL:			692	Cords		



## Sale Specific Conditions & Requirements

**Sale Name: Ice-y Hot Pine**

**Sale Number: 53-018-25 Seq#: 3**

### 1 - Sale Area

#### 1.2 - Boundaries

##### 1.2.1 - Painted Boundaries (9/19)

The sale boundary is marked and identified by blue, red, and yellow paint. Exterior sale boundary lines against private property are marked with blue paint. Exterior sale boundary lines against state are marked with red paint, with the exception being the north boundary lines of Payment Units 1 and 5 which are marked with yellow paint. The painted boundary line trees are not Included Timber and are to be protected.

### 2 - Timber Specifications

#### 2.1 - Included Timber

##### 2.1.1 - Clearcut Unit(s) with Unmerchantable Trees (6/14)

Within Payment Unit(s) 3, cut all trees that are two (2) inches or more at DBH, except do not cut white pine or trees marked with green paint.

##### 2.1.2 - Clearcut Unit(s) w/o Unmerchantable Trees (8/11)

Within Payment Unit(s) 1, cut all red pine trees which meet minimum piece specifications in 2.2 Utilization, except do not cut any red pine marked with green paint. Do not cut any other species.

##### 2.1.4 - Designated Timber Unit(s) (6/17)

Within Payment Unit(s) 2, 4 and 5, red pine trees that have main boles which have broken or those that have fallen over and are on the ground are designated for cutting. Topwood that is on the ground from broken red pine may be utilized. Red pine trees that are bent more than 45 degrees from vertical may also be cut. Do not cut any other species.

##### 2.1.11 - Description of Timber Note (2/04)

Note that this is an ice storm salvage sale. All Payment Units will be scaled by the Sale Administrator. Prices for individual species if present within the Sale Area are as follows:

-Mixed Hardwood \$14.00/cord

-Mixed Aspen \$16.50/cord

Chipping of Payment Unit #3 will not be required but is encouraged. If the sale is chipped, the Purchaser must provide electronic confirmation of scale tickets at a minimum of twice per week. To convert red pine chip weight to cords, we will use a conversion of 1 cord = 1.9 tons or 1 cord = 3,800 pounds. This is from the USDA's Timber Management Field Book, 2008 Edition table 2.10 Weight Table for Various Woods.

#### 2.2 - Utilization

##### 2.2.3 - Stump Heights (12/24)

Stump heights within Payment Unit 3 shall not exceed six (6) inches for all trees.

### 3 - Payments

#### 3.2 - Scaled Sales

##### 3.2.1 - Scale Location (2/04)

Forest products will be placed for measurement at an area identified by the Sale Administrator. In addition, negotiate with the Sale Administrator to determine the frequency of scaling.

### 4 - Transportation

#### 4.1 - Construction

##### 4.1.3 - Slash and Earthen Piles (8/04)

Piles or windrows of earth along roads and landings that have been widened or constructed shall be leveled. Slash from road maintenance or construction, including stumps, shall be dispersed throughout the sale.

#### 4.1.12 - No New Roads (1/12)

No new roads will be permitted in any Payment Unit. All operations are limited to existing roads.

### 4.2 - Maintenance

#### 4.2.4 - Grading (10/16)

For completion of the sale, and if deemed necessary by the Timber Sale Administrator, State Forest roads must be graded. In general, this will require a road grader or bulldozer to shape up the roads after forest products have been hauled off site. The grading equipment to be used must be approved by the Unit Manager or his/her representative.

#### 4.2.5 - Two Wheel Drive Condition (2/04)

All existing trail roads on and adjacent to the Sale Area must be passable by two-wheel drive traffic for the duration of the sale.

### 4.4 - Access

#### 4.4.3 - Access gate (12/08)

The access gate must be locked at the completion of each day unless otherwise approved by the Unit Manager or his/her representative.

## 5 - Operations

### 5.1 - Notification

#### 5.1.1 - Pre-sale Conference (10/16)

A pre-sale conference between the Purchaser and Sale Administrator is required prior to beginning any operations to determine landing and road locations. The Unit Manager or his/her representative must be contacted at least three (3) days in advance to schedule the conference.

### 5.2 - Conduct of Operations

#### 5.2.2 - Hazard Trees/Snags

##### 5.2.2.1 - Den Trees (10/16)

Obvious hollow and/or den trees shall be protected and left standing unless they are a safety hazard.

#### 5.2.38 - No Decking Against Live Trees (2/04)

Cut products may not be decked against unmarked or designated leave trees.

### 5.4 - Soil Protection

#### 5.4.1 - Rutting Restriction, General (7/16)

Operations are to cease immediately if equipment and weather conditions result in rutting of roads and/or skid trails which are 12 inches or greater in depth and 25 feet in length. The Unit Manager or his/her representative may restrict hauling and/or skidding if ruts exceed the specified depth. With the Unit Manager or his/her representative's approval, the Purchaser may return to the area when the risk of rutting has decreased.

### 5.8 - Protection of Endangered Species

#### 5.8.5 - Protection of Raptor Nests (3/13)

All trees with raptor nests will be protected if found during harvesting operations. Notification will be made to the Unit Manager or his/her representative who will notify the Wildlife Biologist so an onsite evaluation and recommendation can be made, if necessary.

## 7 - Other Conditions

### 7.2 - Extensions

#### 7.2.2 - No Extensions (3/09)

There will be no extensions granted on this contract.

### 7.5 - Loss

#### 7.5.1 - Deteriorating Timber (7/09)

The Sale Area has received damage from an ice storm in late March 2025. The Purchaser should harvest the wood as soon as possible. The Department of Natural Resources is held free of responsibility of any further damage or deterioration due to delay in harvesting.



**TIMBER SALE MAP**

This information provided by authority of Part 525, 1994 PA 451, as amended.

Sale Number

**53-018-25**

Date

**05/29/2025**

Forest Management Unit

County

Mapped By: Rekowski

Scale

Page

Of

Pigeon River Country Mgt Unit

Otsego

Cruised By: Scaled sale

**1:23,914**

**1**

**1**

Township  
32N

Range  
02W /

Section(s) and

Subdivision(s)

Sec. 12 N1/2NE,SWNE; Sec. 6 W1/2NW; Sec. 7 S1/2NW,NESW,S1/2SW,SESE;

**Cover Type**

A = Aspen	J = Jack Pine	O = Oak	U = Upland Brush
B = Paper Birch	K = Rock	P = Lowland Poplar	UM = Upland Mix Forest
C = Cedar	L = Lowland Brush	Q = Mixed Swamp Conifer	V = Bog or Marsh
D = Treed Bog	LM = Lowland Mix Forest	R = Red Pine	W = White Pine
E = Swamp Hardwoods	M = Maple, Beech, Birch	S = Black Spruce	X = Non Stocked
F = Spruce/Fir	MC = Mixed Conifer	T = Tamarack	Y = Sand
G = Grass	MD = Mixed Deciduous		Z = Water
H = Hemlock	N = Marsh		

**Density**

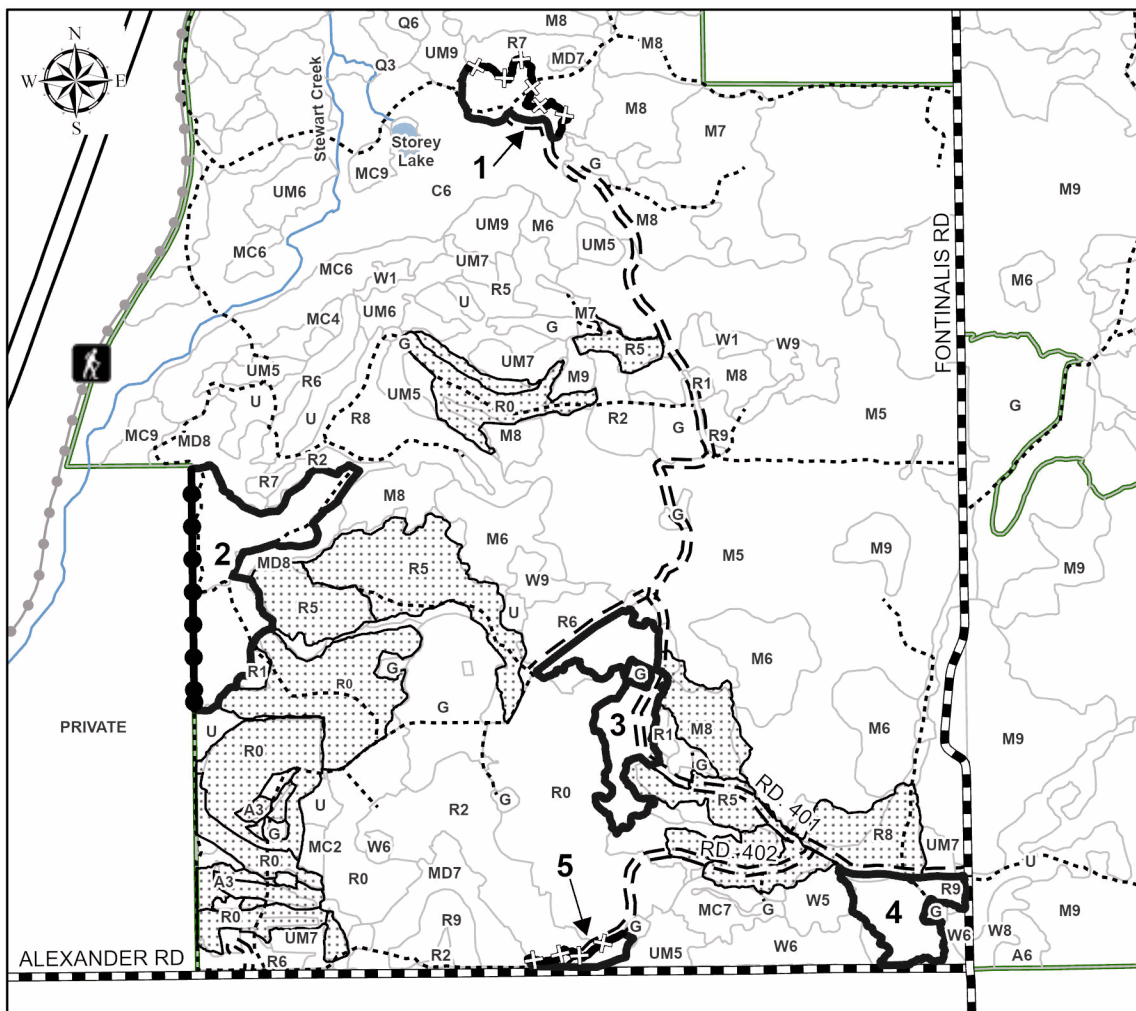
0 = Non Stocked	5 = Pole Timber Medium
1 = Seedling Sapling Poor	6 = Pole Timber Well
2 = Seedling Sapling Medium	7 = Saw Timber Poor
3 = Seedling Sapling Well	8 = Saw Timber Medium
4 = Pole Timber Poor	9 = Saw Timber Well

Payment Unit Number	Acres
1	10.1
2	41.9
3	26.1
4	17.6
5	3.5

**Ice-y Hot Pine**

**99.2 Acres**

0 0.38 0.75 1.5 Miles



**Legend**

- Against State (Red/Pink)
- Against State (Yellow)
- Private Line (Blue)
- Stand Boundary
- Nearby Timber Sale
- Forest Access Route
- Administrative Access Only
- Paved Road
- Government Gravel/Dirt
- Lakes
- Perennial River

**Map Note:**

The boundaries for PU #'s 3-4 are marked with pink paint.  
The northern boundaries of PU #'s 1 and 5 are marked with yellow paint.  
The remaining boundaries against State are marked in red.

Use QR Code to open Map in App



## TIMBER SALE INFORMATION

Ice-d Out Aspen (53-019-25)  
T32N, R01W, SEC. 6; T32N, R01W, SEC. 7.  
Otsego County (Advertised Price \$37,386.10)

**SALE NOTE:** The sale area received damage from the ice storm and should be harvested as soon as possible. The salvage extension in spec 7.2.3 will only be awarded if the entire sale area is harvested prior to March 31, 2026.

A timber sale contract for this lump sum, sealed bid timber sale will be awarded to the responsible bidder offering the highest sealed bid price. All units of volume listed below were estimated using the Inventory Manager computer program and the new Michigan taper model. Bids must be at or above the following advertised price for each product and species:

<u>PRODUCTS &amp; SPECIES</u>	<u>ESTIMATED UNITS*</u>	<u>ADVERTISED PRICE</u>
Pulpwood		
Mixed Aspen	3,161 Cords	\$ 11.15 / Cord
Red Maple	229 Cords	\$ 7.05 / Cord
White Pine	45 Cords	\$ 11.70 / Cord

\* The total volume is statistically estimated within plus (+) or minus (-) 18.54 percent. There are an estimated 3,434 cords on this timber sale, plus or minus 637 cords at the 95% confidence level. The estimated units are final and not subject to adjustment. Prospective bidders are urged to examine this timber and to make their own estimates of quantity and quality.

### **BOND AND PAYMENT SCHEDULE:**

- A bond in the amount of \$3,739.00 to insure faithful performance of the conditions of the contract will be deposited by the successful bidder within 21 days of the sale award.
- Cutting in any sale or unit without the required advance payment would be considered a trespass.
- Total payment must be paid in advance or according to the following schedule :
  - Ten percent (10%) of the sale value must be paid within 21 days of the sale award.
  - The 10% down payment will be credited towards the first unit cut.
  - Payment for each of the following units must be made before cutting begins in that unit:
 

<u>PAYMENT UNIT NUMBER</u>	<u>PERCENT OF TOTAL SALE VALUE</u>
01	15.0%
02	9.4%
03	25.9%
04	22.3%
05	27.4%
- If no cutting takes place, the 10% down payment will not be refunded.
- Operations on the contract issued will terminate on 06/30/2027.

### **SALE STATISTICS**

Volumes were calculated in cubic feet using the Michigan taper model. Cubic foot volume includes all wood inside bark for the product indicated. For display purposes, cubic feet were converted to cords and MBF using a simple conversion factor, e.g. 79 cubic feet per cord and 185 cubic feet per MBF. The cubic foot volumes are precise; the cords and MBF volumes are not. Cubic foot volume cannot be directly converted to cords or boards with precision.

### **SALE VOLUMES**

The total estimated sale volume may not equal the sum of the species/products due to the nature of statistical calculations associated with double sampling methodology.

<u>VOLUME</u>		<u>STATISTICAL RANGE IN CORDS</u>		
<u>TOTAL CUBIC FEET</u>	<u>TOTAL CORDS</u>	<u>PERCENT ERROR</u>	<u>MINIMUM</u>	<u>MAXIMUM</u>
271,260	3,434	18.54%	2,797	4,071

VDU VOLUMES

A VDU is a Volume Determination Unit. Volumes and their associated statistics are calculated at the VDU level and summarized to the sale level. There is often a one to one relationship between a VDU and a Payment Unit, but not always, depending on the cruise design. Refer to the VDU TO PAYMENT UNIT table.

	VOLUME			RANGE IN CORDS	
VDU	TOTAL CUBIC FEET	TOTAL CORDS	PERCENT ERROR	MINIMUM	MAXIMUM
7	66,541	842	36.64%	534	1,151
12	68,860	872	31.94%	593	1,150
14	62,137	787	51.03%	385	1,188
20	46,469	588	50.50%	291	885
28	27,252	345	59.53%	140	550
TOTAL:	271,260	3,434		1,943	4,924

VDU TO PAYMENT UNIT

When a VDU is associated with more than one Payment Unit (PU), the VDU volumes are assigned to the PU based on acres of the VDU within the PU.

VDU	VDU ACRES	PU	PU ACRES
TOTAL:			

DESCRIPTION OF TIMBER BY PAYMENT UNIT (PU)

PU	MARKET GROUP	PRODUCT	QUANTITY	UNIT	ACRES	ADVERTISE PRICE
1	Mixed Aspen	Pulpwood	469	Cords	16.5	\$5,598.05
	<i>B. T. Aspen</i>		469	<i>Cords</i>		
	Red Maple		44	Cords		
	White Pine		5	Cords		
2	Mixed Aspen	Pulpwood	293	Cords	10.3	\$3,499.45
	<i>B. T. Aspen</i>		293	<i>Cords</i>		
	Red Maple		28	Cords		
	White Pine		3	Cords		
3	Mixed Aspen	Pulpwood	857	Cords	23.0	\$9,679.60
	<i>B. T. Aspen</i>		856	<i>Cords</i>		
	<i>Quaking Aspen</i>		1	<i>Cords</i>		
	Red Maple		1	Cords		
	White Pine	10	Cords			
4	Mixed Aspen	Pulpwood	666	Cords	20.4	\$8,343.90
	<i>B. T. Aspen</i>		517	<i>Cords</i>		
	<i>Quaking Aspen</i>		149	<i>Cords</i>		
	Red Maple		102	Cords		
	White Pine	17	Cords			
5	Mixed Aspen	Pulpwood	876	Cords	28.1	\$10,265.10
	<i>B. T. Aspen</i>		875	<i>Cords</i>		
	<i>Quaking Aspen</i>		1	<i>Cords</i>		
	Red Maple		54	Cords		
	White Pine	10	Cords			
TOTAL:			3,435	Cords		

## **Sale Specific Conditions & Requirements**

**Sale Name: Ice-d Out Aspen**

**Sale Number: 53-019-25 Seq#: 1**

### **1 - Sale Area**

#### **1.2 - Boundaries**

##### **1.2.1 - Painted Boundaries (9/19)**

The sale boundary and Payment Unit boundaries are marked and identified by red and yellow paint. Exterior sale boundary lines against state are marked with red paint. Interior Payment Unit boundaries are marked with yellow paint. Interior retention patches are marked with red paint; no harvesting activities may occur within these areas. Red and yellow painted boundary line trees are not Included Timber and are to be protected.

### **2 - Timber Specifications**

#### **2.1 - Included Timber**

##### **2.1.1 - Clearcut Unit(s) with Unmerchantable Trees (6/14)**

Within Payment Unit(s) #'s 1-5, cut all trees that are two (2) inches or more at DBH, except do not cut red pine, oak, or trees marked with green paint. In addition, do not cut any white pine over 10 inches DBH.

#### **2.2 - Utilization**

##### **2.2.11 - Chipping Restriction (9/14)**

If chipping occurs on this sale, then no woody debris present on the ground at the start of the sale may be chipped. In addition, brush or chips may not be stored or stockpiled on site for more than 30 days.

### **3 - Payments**

#### **3.3 - Pre-measured Sales**

##### **3.3.4 - Dividing Payment Units (7/14)**

Payment Unit(s) #'s 3-5 may be divided at the request of the Purchaser and upon approval of the Unit Manager. Dividing Payment Units is a contract modification which requires a Timber Sale Contract Amendment. There will be only one division per Payment Unit.

#### **3.4 - Damaged Timber**

##### **3.4.1 - Damaged Timber (12/24)**

General Condition and Requirement 3.4 Damaged Timber, defines liquidated damages for undesigned live merchantable trees which are cut or injured. In addition, extreme care should be taken to avoid damage to red pine and oak saplings.

#### **3.6 - Payment Unit Cutting Schedule**

##### **3.6.8 - Operating Period (5/16)**

Once cutting begins, operations must continue until all Payment Units are completed.

### **4 - Transportation**

#### **4.1 - Construction**

##### **4.1.3 - Slash and Earthen Piles (8/04)**

Piles or windrows of earth along roads and landings that have been widened or constructed shall be leveled. Slash from road maintenance or construction, including stumps, shall be dispersed throughout the sale.

##### **4.1.7 - Road Closure (10/11)**

Overgrown roads that are reopened must be blocked to vehicle traffic upon completion of the sale. In general, this will require constructing a four (4') foot high berm of stumps and logs covered with earth. These roads must be rendered impassable to cars and trucks.

##### **4.1.12 - No New Roads (1/12)**

No new roads will be permitted in any Payment Unit. All operations are limited to existing roads.

## 4.2 - Maintenance

### 4.2.5 - Two Wheel Drive Condition (2/04)

All existing trail roads on and adjacent to the Sale Area must be passable by two-wheel drive traffic for the duration of the sale.

## 5 - Operations

### 5.1 - Notification

#### 5.1.1 - Pre-sale Conference (10/16)

A pre-sale conference between the Purchaser and Sale Administrator is required prior to beginning any operations to determine landing and road locations. The Unit Manager or his/her representative must be contacted at least 3 days in advance to schedule the conference.

### 5.2 - Conduct of Operations

#### 5.2.2 - Hazard Trees/Snags

##### 5.2.2.1 - Den Trees (10/16)

Obvious hollow and/or den trees shall be protected and left standing unless they are a safety hazard.

##### 5.2.2.3 - Snag Tree Creation (2) (1/25)

Special consideration is given to snags because they are an important part of the habitat requirement for many species of wildlife. The Purchaser is to leave or create at least five (5) wildlife snags per acre throughout the Sale Area. Snags consist of leaving a dead standing tree that is not deemed a safety hazard by the Purchaser, or trees with a minimum diameter of eight (8) inches measured at a point to 4.5 feet above ground level which can be girdled the full circumference of the tree.

#### 5.2.31 - Landing Locations (9/13)

Landing areas are marked on the Timber Sale Map with the letters "LD". Landings must be confined to these designated sites unless otherwise authorized by the Unit Manager or his/her representative.

#### 5.2.38 - No Decking Against Live Trees (2/04)

Cut products may not be decked against unmarked or designated leave trees.

### 5.4 - Soil Protection

#### 5.4.1 - Rutting Restriction, General (7/16)

Operations are to cease immediately if equipment and weather conditions result in rutting of roads and/or skid trails which are 12 inches or greater in depth and 25 feet in length. The Unit Manager or his/her representative may restrict hauling and/or skidding if ruts exceed the specified depth. With the Unit Manager or his/her representative's approval, the Purchaser may return to the area when the risk of rutting has decreased.

#### 5.4.2 - Skid Trails (2/04)

Skid trails up and down slopes should be avoided. If, however, this is unavoidable, these trails will be left in a non-erodible condition using water bars, logs, and slash. Placing of slash on these skid trails while logging is ongoing may alleviate need for any further action. At the direction of the Sale Administrator, seed, fertilizer, and mulch may also be required.

### 5.8 - Protection of Endangered Species

#### 5.8.3 - Red-shouldered Hawk or Goshawk (1) (1/25)

In the event that an active red shoulder hawk or goshawk nest is found, the contract may be amended to protect the nest site until the nest is determined to be inactive. The value of the trees in this excluded area will be refunded or credited to the Purchaser. The nest will be buffered with a five-chain radius (eight acre) protection area, centered on the nest tree, in which there will be no cutting or new roads constructed. Avoid human disturbance, including loading and skidding, in the protection area.

An additional zone of five chains (ten chains centered on the active nest tree) will be established in which there is no management activity from March 15 to July 15 (NLP). Limit biomass harvesting and chipping operations within this ten-chain zone, retain the maximum one-third of residues per the Woody Biomass Harvesting Guidelines (Michigan DNR 2010). Nests



determined to be inactive will be protected with a one-chain no-harvest buffer.

## **6 - Safety and Fire Prevention**

### **6.2 - Signing**

#### **6.2.1 - Road Posting (10/20)**

The Purchaser is responsible for posting and maintaining caution signs on Elkhorn Trail prior to beginning operations. The road must be posted at appropriate distances from the Sale Area to warn of logging activity and truck traffic. Signs must be removed when harvest operations are suspended or completed. The Purchaser will provide these signs.

## **7 - Other Conditions**

### **7.2 - Extensions**

#### **7.2.2 - No Extensions (3/09)**

There will be no extensions granted on this contract.

#### **7.2.3 - Salvage Extension (6/13)**

This is a salvage sale with a short contract length. The sale must be harvested promptly. One (1), twelve (12) month extension can be applied to one (1) other State Forest Timber Sale Contract owned by the purchaser or owned by one (1) designated sub-contractor of the Purchaser that works this contract. To qualify, the contract expiration date of the contract to be extended must be within twelve (12) months from the issue date of this contract. If this is the first extension on the other State Forest Timber Sale Contract, then the 5% extension fee will be waived. If this is an additional extension, the 10% fee will be reduced to 5%. The salvage extension must be used before this contract is closed-out. This specification does not alleviate the purchaser from any contractual obligations of the extended State Forest Timber Sale Contract. Per General Condition & Requirement 7.2, extensions are at the sole discretion of the DNR.

### **7.5 - Loss**

#### **7.5.1 - Deteriorating Timber (7/09)**

The Sale Area has received damage from the ice storm of late March 2025. The Purchaser should harvest the wood as soon as possible. The Department of Natural Resources is held free of responsibility of any further damage or deterioration due to delay in harvesting.

## **99 - Unique**

### **SKIP**

#### **99.1 - Unique Sale Condition (5/19)**

The salvage extension in spec 7.2.3 will only be awarded if the entire sale area is harvested prior to March 31, 2026.



**TIMBER SALE MAP**

This information provided by authority of Part 525, 1994 PA 451, as amended.

Sale Number

**53-019-25**

Date

**05/30/2025**

Forest Management Unit

County

Mapped By: Rekowski

Scale

Page

Of

Pigeon River Country Mgt Unit

Otsego

Cruised By: Rekowski

**1:13,000**

**1**

**1**

Township  
32N

Range  
01W

Section(s) and

Subdivision(s) Sec. 6 SESW,SWSE; Sec. 7 N1/2NW,SENW,W1/2NE,N1/2SE;

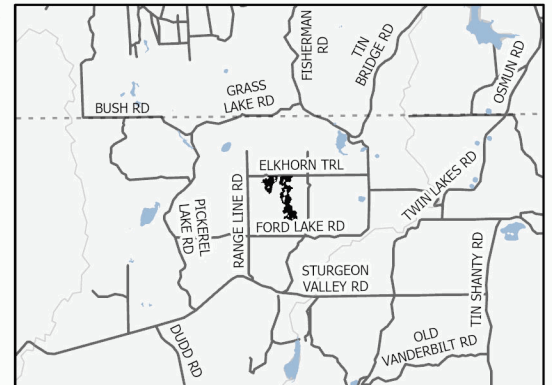
**Cover Type**

A = Aspen	J = Jack Pine	O = Oak	U = Upland Brush
B = Paper Birch	K = Rock	P = Lowland Poplar	UM = Upland Mix Forest
C = Cedar	L = Lowland Brush	Q = Mixed Swamp Conifer	V = Bog or Marsh
D = Treed Bog	LM = Lowland Mix Forest	R = Red Pine	W = White Pine
E = Swamp Hardwoods	M = Maple, Beech, Birch	S = Black Spruce	X = Non Stocked
F = Spruce/Fir	MC = Mixed Conifer	T = Tamarack	Y = Sand
G = Grass	MD = Mixed Deciduous	Z = Water	
H = Hemlock	N = Marsh		

**Density**

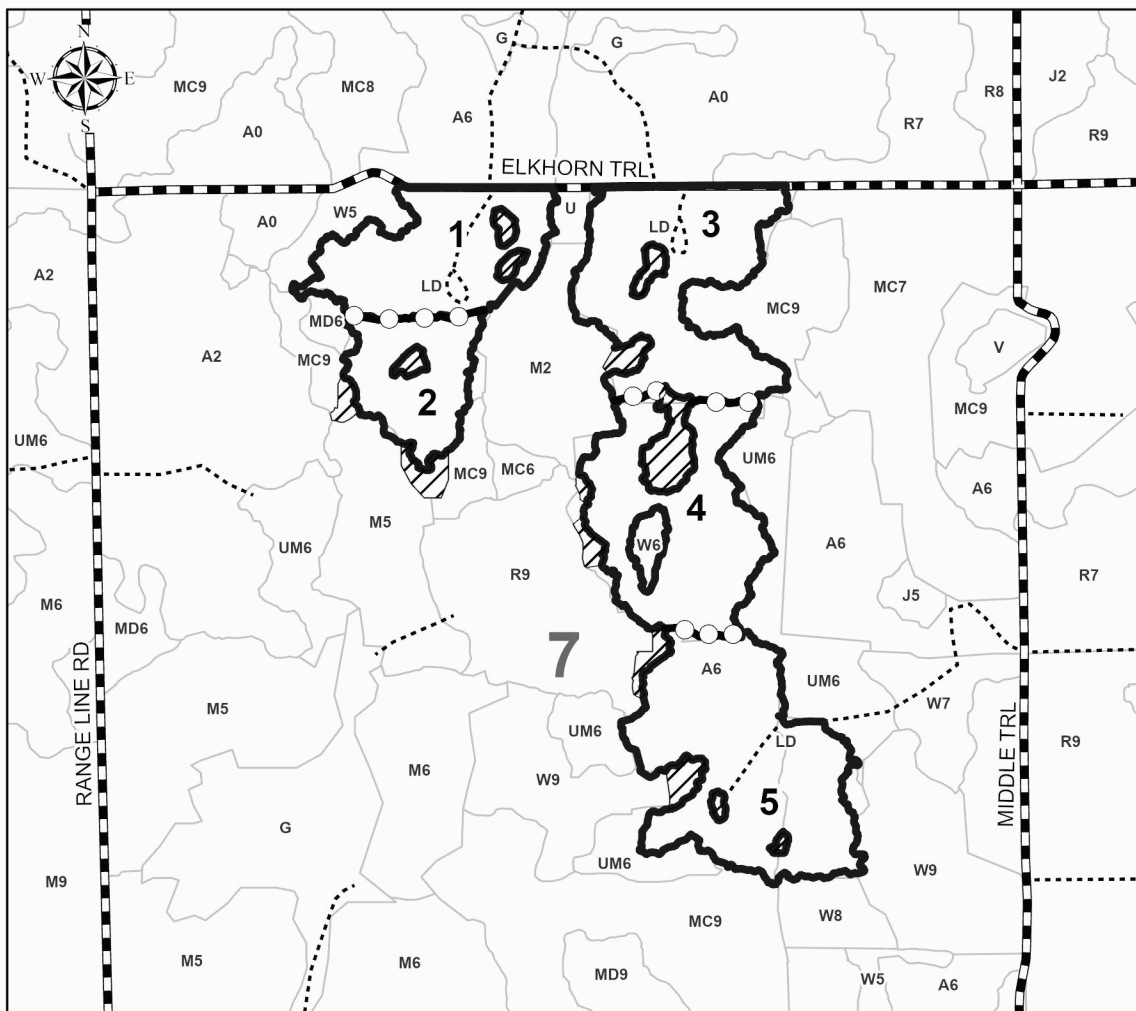
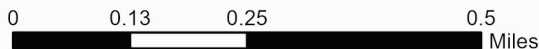
0 = Non Stocked	5 = Pole Timber Medium
1 = Seedling Sapling Poor	6 = Pole Timber Well
2 = Seedling Sapling Medium	7 = Saw Timber Poor
3 = Seedling Sapling Well	8 = Saw Timber Medium
4 = Pole Timber Poor	9 = Saw Timber Well

**Locator Map 1:200,000**



Payment Unit Number	Acres
1	16.6
2	10.3
3	22.9
4	20.4
5	28.2

**Ice-d Out  
Aspen  
98.3 Acres**



**Legend**

- Against State (Red)
- Payment Unit (Yellow)
- Retention Areas (Red)
- Stand Boundary
- Administrative Access Only
- Government Gravel/Dirt

Use QR Code to  
open Map in App



Ice Mo Money Mo Popples (53-002-25)  
T32N, R02W, SEC. 1; T32N, R02W, SEC. 12; Otsego COUNTY

In response to the notice of sale to be held 9:00 a.m. (local time) on July 2, 2025, I am hereby submitting my sealed bid ( firm offer) for the following forest products to be cut. Bids for individual species must be at or above the advertised price. All non-responsive bid forms may be rejected.

<u>PRODUCTS &amp; SPECIES</u>	<u>ESTIMATED VOLUME*</u>	<u>ADVERTISED PRICE</u>	<u>BID PRICE/UNIT</u>
<b>Sawtimber</b>			
Mixed Aspen	149.0 MBF	\$ 27.00/MBF	\$ _____
Red Maple	24.4 MBF	\$ 44.00/MBF	\$ _____
White Pine	10.8 MBF	\$ 48.00/MBF	\$ _____
<b>Pulpwood</b>			
Balsam Fir	394 Cords	\$ 12.65/Cord	\$ _____
Mixed Aspen	1,882 Cords	\$ 11.15/Cord	\$ _____
Mixed Hardwood	686 Cords	\$ 7.05/Cord	\$ _____
White Pine	16 Cords	\$ 11.70/Cord	\$ _____
White Spruce	9 Cords	\$ 9.30/Cord	\$ _____

\*The volumes are statistically estimated within plus (+) or minus (-) 17.63 percent at 95% confidence level. These estimated volumes are final and not subject to adjustment. Prospective bidders are urged to examine this timber and to make their own estimates of quantity and quality.

I understand that any or all bids may be rejected. All bids must be signed and all bid items must be bid or the bid form may be rejected. I also understand that consideration and awarding a contract will be based upon my past performance and ability to complete the contract based upon equipment and staffing subject to my control .

FEDERAL ID: \_\_\_\_ - \_\_\_\_ - \_\_\_\_ or SOCIAL SECURITY NUMBER: \_\_\_\_ - \_\_\_\_ - \_\_\_\_  
 Company or individual bidding: \_\_\_\_\_  
 Company representative's name: \_\_\_\_\_  
 Address: \_\_\_\_\_  
 City: \_\_\_\_\_ State: \_\_\_\_\_ Zip: \_\_\_\_\_

IF AVAILABLE, PLEASE PLACE THE PERSONALIZED LABEL FROM YOUR PROSPECTUS IN THE ABOVE BOX.

Individual or company representative's signature: \_\_\_\_\_ Date: \_\_\_\_\_

Phone number : \_\_\_\_\_ Email (optional): \_\_\_\_\_

**THE WINNING BIDDER MUST COMPLETE THE VERIFICATION OF WORKER'S DISABILITY COMPENSATION ACT  
COMPLIANCE (ON REVERSE SIDE IF DOUBLE SIDED) WITHIN 21 DAYS OF SALE AWARD DATE**



## TIMBER SALE VERIFICATION OF WORKER'S DISABILITY COMPENSATION ACT COMPLIANCE

As required by Act 317, P.A. 1969 (Worker's Compensation) and  
Part 5 of Act 451 of 1994, as amended.

### FOR DEPARTMENT USE ONLY

Sale Number (XX - XXX - XX - XX)

Forest Management Unit:

### VERIFICATION OF WORKER'S DISABILITY COMPENSATION ACT COMPLIANCE

- This verification must be completed and submitted within 21 days of contract award and prior to the issuance of the timber sale contract.
- In addition, if boxes 2B or 2C are checked, then Notice of Exclusion or Certificate of Insurance must be submitted within twenty-one (21) days of the contract award and prior to the issuance of the timber sale contract.
- All Information must be typed or printed except for written signatures.

Please Check Appropriate Categories:

1. My business is organized as (you **must** check one of the boxes below):
  - A. ☐ Sole Proprietorship (individual)
  - B. ☐ Partnership
  - C. ☐ Corporation
2. You **must** check one of the boxes below:
  - A. ☐ I certify my business is a sole proprietorship and it has no employees but the sole proprietor. I am not subject to the Worker's Compensation Laws.
  - B. ☐ I certify my business has satisfied its obligation to the Worker's Compensation Act through the use of an approved Notice of Exclusion (BWC-337, Rev. 5/96). I will provide a copy of the Notice of Exclusion within 21 days of the contract award. (For questions or a copy of the BWC-337, please call the Worker's Compensation Bureau at 517-322-1195).
  - C. ☐ I certify my business has a Worker's Compensation Policy. I will provide an original Certificate of Insurance within twenty-one (21) days of the contract award.
3. If you have checked item 2(A) or 2(B), you **must** indicate the number of **both** full-time and part-time employees, other than yourself, including family members and active partners (if none, you must enter "0").

\_\_\_\_\_ Full-time Employees

\_\_\_\_\_ Part-time Employees

Name of Business		Federal ID (or) Social Security No.
Address		Telephone (       )
City	State	ZIP

*I hereby certify that the above information is true and correct. I agree to notify the Michigan DNR of any changes that occur in factors affecting my coverage during any of my present and future operations.*

\_\_\_\_\_  
Signature of Owner or Authorized Representative

\_\_\_\_\_  
Title

\_\_\_\_\_  
Date

Please complete the "SEALED BID" information on the next page

Ice-d Out Aspen (53-019-25)

T32N, R01W, SEC. 6; T32N, R01W, SEC. 7; Otsego COUNTY

In response to the notice of sale to be held 9:00 a.m. (local time) on July 2, 2025, I am hereby submitting my sealed bid ( firm offer) for the following forest products to be cut. Bids for individual species must be at or above the advertised price. All non-responsive bid forms may be rejected.

<u>PRODUCTS &amp; SPECIES</u>	<u>ESTIMATED VOLUME*</u>	<u>ADVERTISED PRICE</u>	<u>BID PRICE/UNIT</u>
Pulpwood			
Mixed Aspen	3,161 Cords	\$ 11.15/Cord	\$ _____
Red Maple	229 Cords	\$ 7.05/Cord	\$ _____
White Pine	45 Cords	\$ 11.70/Cord	\$ _____

\*The volumes are statistically estimated within plus (+) or minus (-) 18.54 percent at 95% confidence level. These estimated volumes are final and not subject to adjustment. Prospective bidders are urged to examine this timber and to make their own estimates of quantity and quality.

I understand that any or all bids may be rejected. All bids must be signed and all bid items must be bid or the bid form may be rejected. I also understand that consideration and awarding a contract will be based upon my past performance and ability to complete the contract based upon equipment and staffing subject to my control .

FEDERAL ID: \_\_\_\_ - \_\_\_\_ - \_\_\_\_ or SOCIAL SECURITY NUMBER: \_\_\_\_ - \_\_\_\_ - \_\_\_\_

Company or individual bidding: \_\_\_\_\_

Company representative's name: \_\_\_\_\_

Address: \_\_\_\_\_

City: \_\_\_\_\_ State: \_\_\_\_\_ Zip: \_\_\_\_\_

IF AVAILABLE, PLEASE PLACE THE PERSONALIZED LABEL FROM YOUR PROSPECTUS IN THE ABOVE BOX.

Individual or company representative's signature: \_\_\_\_\_ Date: \_\_\_\_\_

Phone number : \_\_\_\_\_ Email (optional): \_\_\_\_\_

**THE WINNING BIDDER MUST COMPLETE THE VERIFICATION OF WORKER'S DISABILITY COMPENSATION ACT  
COMPLIANCE (ON REVERSE SIDE IF DOUBLE SIDED) WITHIN 21 DAYS OF SALE AWARD DATE**



## TIMBER SALE VERIFICATION OF WORKER'S DISABILITY COMPENSATION ACT COMPLIANCE

As required by Act 317, P.A. 1969 (Worker's Compensation) and  
Part 5 of Act 451 of 1994, as amended.

### FOR DEPARTMENT USE ONLY

Sale Number (XX - XXX - XX - XX)

Forest Management Unit:

### VERIFICATION OF WORKER'S DISABILITY COMPENSATION ACT COMPLIANCE

- This verification must be completed and submitted within 21 days of contract award and prior to the issuance of the timber sale contract.
- In addition, if boxes 2B or 2C are checked, then Notice of Exclusion or Certificate of Insurance must be submitted within twenty-one (21) days of the contract award and prior to the issuance of the timber sale contract.
- All information must be typed or printed except for written signatures.

Please Check Appropriate Categories:

1. My business is organized as (you **must** check one of the boxes below):
  - A. ☐ Sole Proprietorship (individual)
  - B. ☐ Partnership
  - C. ☐ Corporation
2. You **must** check one of the boxes below:
  - A. ☐ I certify my business is a sole proprietorship and it has no employees but the sole proprietor. I am not subject to the Worker's Compensation Laws.
  - B. ☐ I certify my business has satisfied its obligation to the Worker's Compensation Act through the use of an approved Notice of Exclusion (BWC-337, Rev. 5/96). I will provide a copy of the Notice of Exclusion within 21 days of the contract award. (For questions or a copy of the BWC-337, please call the Worker's Compensation Bureau at 517-322-1195).
  - C. ☐ I certify my business has a Worker's Compensation Policy. I will provide an original Certificate of Insurance within twenty-one (21) days of the contract award.
3. If you have checked item 2(A) or 2(B), you **must** indicate the number of **both** full-time and part-time employees, other than yourself, including family members and active partners (if none, you must enter "0").

\_\_\_\_\_ Full-time Employees

\_\_\_\_\_ Part-time Employees

Name of Business		Federal ID (or) Social Security No.
Address		Telephone (       )
City	State	ZIP

*I hereby certify that the above information is true and correct. I agree to notify the Michigan DNR of any changes that occur in factors affecting my coverage during any of my present and future operations.*

\_\_\_\_\_  
Signature of Owner or Authorized Representative

\_\_\_\_\_  
Title

\_\_\_\_\_  
Date

Please complete the "SEALED BID" information on the next page

Ice-y Hot Pine (53-018-25)

T32N, R02W, SEC. 6; T32N, R02W, SEC. 7; T32N, R03W, SEC. 12; Otsego

In response to the notice of sale to be held 9:00 a.m. (local time) on July 2, 2025, I am hereby submitting my sealed bid ( firm offer) for the following forest products to be cut. Bids for individual species must be at or above the advertised price. All non-responsive bid forms may be rejected.

<u>PRODUCTS &amp; SPECIES</u>	<u>ESTIMATED VOLUME*</u>	<u>ADVERTISED PRICE</u>	<u>BID PRICE/UNIT</u>
Pulpwood			
Red Pine	692 Cords	\$ 5.00/Cord	\$ _____

\*These estimated volumes are final and not subject to adjustment. Prospective bidders are urged to examine this timber and to make their own estimates of quantity and quality.

I understand that any or all bids may be rejected. All bids must be signed and all bid items must be bid or the bid form may be rejected. I also understand that consideration and awarding a contract will be based upon my past performance and ability to complete the contract based upon equipment and staffing subject to my control .

FEDERAL ID: \_\_\_\_-\_\_\_\_-\_\_\_\_ or SOCIAL SECURITY NUMBER: \_\_\_\_-\_\_\_\_-\_\_\_\_

Company or individual bidding: \_\_\_\_\_

Company representative's name: \_\_\_\_\_

Address: \_\_\_\_\_

City: \_\_\_\_\_ State: \_\_\_\_\_ Zip: \_\_\_\_\_

IF AVAILABLE, PLEASE PLACE THE PERSONALIZED LABEL FROM YOUR PROSPECTUS IN THE ABOVE BOX.

Individual or company representative's signature: \_\_\_\_\_ Date: \_\_\_\_\_

Phone number : \_\_\_\_\_ Email (optional): \_\_\_\_\_

**THE WINNING BIDDER MUST COMPLETE THE VERIFICATION OF WORKER'S DISABILITY COMPENSATION ACT  
COMPLIANCE (ON REVERSE SIDE IF DOUBLE SIDED) WITHIN 21 DAYS OF SALE AWARD DATE**



**TIMBER SALE**  
**VERIFICATION OF WORKER'S DISABILITY**  
**COMPENSATION ACT COMPLIANCE**

*As required by Act 317, P.A. 1969 (Worker's Compensation) and  
Part 5 of Act 451 of 1994, as amended.*

**FOR DEPARTMENT USE ONLY**

Sale Number (XX – XXX – XX – XX)

Forest Management Unit:

**VERIFICATION OF WORKER'S DISABILITY COMPENSATION ACT COMPLIANCE**

- This verification must be completed and submitted within 21 days of contract award and prior to the issuance of the timber sale contract.
- In addition, if boxes 2B or 2C are checked, then Notice of Exclusion or Certificate of Insurance must be submitted within twenty-one (21) days of the contract award and prior to the issuance of the timber sale contract.
- All Information must be typed or printed except for written signatures.

Please Check Appropriate Categories:

1. My business is organized as (you **must** check one of the boxes below):
  - A. ☐ Sole Proprietorship (individual)
  - B. ☐ Partnership
  - C. ☐ Corporation
2. You **must** check one of the boxes below:
  - A. ☐ I certify my business is a sole proprietorship and it has no employees but the sole proprietor. I am not subject to the Worker's Compensation Laws.
  - B. ☐ I certify my business has satisfied its obligation to the Worker's Compensation Act through the use of an approved Notice of Exclusion (BWC-337, Rev. 5/96). I will provide a copy of the Notice of Exclusion within 21 days of the contract award. (For questions or a copy of the BWC-337, please call the Worker's Compensation Bureau at 517-322-1195).
  - C. ☐ I certify my business has a Worker's Compensation Policy. I will provide an original Certificate of Insurance within twenty-one (21) days of the contract award.
3. If you have checked item 2(A) or 2(B), you **must** indicate the number of **both** full-time and part-time employees, other than yourself, including family members and active partners (if none, you must enter "0").

\_\_\_\_\_ Full-time Employees

\_\_\_\_\_ Part-time Employees

Name of Business		Federal ID (or) Social Security No.
Address		Telephone (       )
City	State	ZIP

*I hereby certify that the above information is true and correct. I agree to notify the Michigan DNR of any changes that occur in factors affecting my coverage during any of my present and future operations.*

\_\_\_\_\_  
Signature of Owner or Authorized Representative

\_\_\_\_\_  
Title

\_\_\_\_\_  
Date

**Please complete the "SEALED BID" information on the next page**