



**DEPARTMENT OF NATURAL RESOURCES
STATE OF MICHIGAN
TIMBER SALE PROSPECTUS #7574**

SCHEDULED SALE DATE AND TIME: 9:00 a.m. (local time) on September 4, 2025.

LOCATION: PIGEON RIVER COUNTRY MGMT UNIT, PO BOX 456, 9966 TWIN LAKES ROAD, VANDERBILT, MI 49795.

PROSPECTUS NOTE: The sales on this Prospectus have received damage from the Ice Storm in late March 2025. The Purchaser should harvest the wood as soon as possible.

The bidder is advised to inspect the sale area and review the location, estimated volumes, operating costs and contract terms of proposed sales. Please be aware that some landowners may request 60 days or more notice for access across their land.

Notice is hereby given that bids will be received by the Unit Manager, PIGEON RIVER COUNTRY MANAGEMENT UNIT, for certain timber on the following described lands:

Ice Jigsaw Aspen (53-023-25) / T33N, R01W, SEC. 24, SESW.
T33N, R01W, SEC. 25, E1/2NW,NWNE.
Cheboygan County, Advertised Price \$3,507.30, 13.6 Acres, Aspen.

SALE NOTE: At least 50% damage to aspen crowns from the ice storm. Most damage is in the form of broken tops or limbs.

Ice Bee Buzz Aspen (53-024-25) / T31N, R01W, SEC. 11, E1/2SW,SE.
T31N, R01W, SEC. 14, E1/2NW,N1/2NE,NESW.
Otsego County, Advertised Price \$31,118.85, 102.7 Acres, Aspen, Hardwood.

SALE NOTE: Aspen in Payment Unit s 1-4 and 7 were significantly damaged in the ice storm. Most damage is in the form of broken tops. Payment Unit 5-6 and 8 have only slight amounts of damage.

Note that Payment Unit 3 is a blowdown unit and the volumes listed in the prospectus for this unit are only rough approximations. This unit will be scaled to determine the actual volumes.

A recreation site such as a trail, pathway, or campground is within the sale area or the vicinity. Certain restrictions/specifications may be applicable including time restrictions.

Ice Existential Crisis Aspen (53-026-25) / T32N, R01W, SEC. 1 , S1/2SE.
T32N, R01W, SEC. 12, NE,E1/2SE.
Otsego County, Advertised Price \$19,546.30, 79.3 Acres, Aspen, Hardwood.

SALE NOTE: The Sale Area has received damage from the March 2025 ice storm The Purchaser should harvest the wood as soon as possible.

Payment Unit 1: The aspen in this area has an average of 40% damage to canopy; gets worse in the north and better in the south. Damage is to submerchantable wood and branches. Some whole tree blowdown exists.

Payment Unit 2: The trees marked for removal have over 70% of their canopy missing. Most of the damage is in smaller diameter and submerchantable wood.

Payment Unit 3: Canopy damage gets worse moving east to west; eastern sliver has 20% damage to canopies, western area has up to 60% damage, but most of the damage is just in the branches and submerchantable wood.

Ice Hurdle Aspen (53-027-25) / T32N, R01E, SEC. 6 , W1/2NE.

T33N, R01E, SEC. 30, E1/2SE.

T33N, R01E, SEC. 31, N1/2SW, SESW, SE.

Cheboygan County, Advertised Price \$35,391.70, 95.3 Acres, Aspen, Hardwood.

SALE NOTE: This is a salvage sale that should be harvested promptly.

Payment Unit 1, 40% damage to aspen crowns, branchwood.

Payment Unit 2 40% canopy damage to aspen, but it varies throughout; some tops broken off entirely, others lost 10% of branches, some tip ups.

Payment Unit 3, 70% damage to aspen crowns, mostly submerchantable and branches.

Payment Unit 4, 70% damage to aspen crowns, mostly submerchantable and branches.

Payment Unit 5 65% damage to aspen crowns, mostly submerchantable and branches.

Payment Unit 6, 40% damage to aspen crowns, mostly submerchantable and branches, but some tip ups, too.

Payment Unit 7 60% damage to aspen crowns, mostly submerchantable and branches.

BID INSTRUCTIONS (VER. 10/10/2022):

1. Scheduled Bid Location, Date, and Time (2/11)

Bids must be received by the Unit Manager, PIGEON RIVER COUNTRY OFFICE, PO Box 456 9966 Twin Lakes Road, Vanderbilt, MI 49795, no later than 9:00 a.m. (local time) on September 4, 2025. For further information concerning this sale, contact Mark Monroe at 989-983-4101 extension .

2. Bidder's Qualifications (10/22)

If all or part of a timber sale was prepared by a private contractor, the contractor and that contractor's company are not permitted to bid on the timber sale. A person must be 18 years of age or older to purchase timber. Permanent employees of the Department of Natural Resources or members of their immediate household may not bid. Former employees, in the permanent or seasonal class, may not bid until 3 months after the last day of active duty. Bids will not be accepted from individuals or companies appearing on the DNR/FRD No-Bid List. This list contains the names of purchasers who previously failed to execute a contract within 21-days or who have a history of poor performance.

3. Preparation of Sealed Bids (5/16)

Bid Forms may be completed online thru Michigan DNR Timber Sale Online Bidding (OLB) at www.michigan.gov/timberbidding or by completing the hardcopy Bid Form found in the Timber Sale Prospectus . Hardcopy Bid Forms shall be manually signed in ink. Registration in OLB is considered your 'signature' for all bids submitted thru that system. Bid prices must be entered for each species and product in the Bid Price column for all material subject to bidding and all fill-in blanks must be completed. If erasures or other changes appear on the hardcopy Bid Form, each erasure or change must be initialed by the person signing the bid.

4. Submission of Sealed Bids (5/16)

Bid forms may be obtained from the Unit Manager or thru OLB. Bids may be submitted hardcopy or thru OLB. All hardcopy bids must be submitted on the bid form and in an envelope clearly identified as described in this section. NOTE: Only one bid form per bid envelope. Sealed bids must be submitted to the Unit office designated in the prospectus and must be submitted at or prior to the time established in the prospectus. The envelope should show on the outside (a) the sale name or number and (b) the date and time of bid opening, as shown in the prospectus. Bids received after the time specified in the sale prospectus are late bids and will be rejected.

It is possible for a bidder to submit multiple bids on a single sale. For example, a bid may be submitted hardcopy and a bid may be submitted thru OLB. Or, two bidders from the same company could both submit bids on the same sale. If this were to happen, the State would accept all bids received and award the contract accordingly. All bidding and contractual requirements would apply to all bids received.

5. Public Opening of Sealed Bids (7/16)

If conditions permit, the sealed bids will be publicly opened and posted at the time and place set in the prospectus.

If a bidder, present at a bid opening, has submitted bids on more than one sale, that bidder may withdraw their unopened bid envelopes or announce the withdrawal of their online bid after being declared the successful bidder on one sale.

6. Award of Contract (1/11)

Award of the contract will be made to the Bidder whose bid, conforming to the prospectus, is most advantageous to the State of Michigan on the basis of total value at rates bid for the estimated quantities. The State reserves the right to reject any bid or waive any minor irregularity in bids received. A written award mailed (or otherwise furnished) to the successful Bidder shall be deemed to result in a binding contract without further action by either party.

7. Down Payment (1/11)

The Bidder to whom award is made must make a down payment within 21 days of the sale award. The amount of the down payment will be calculated as shown in the Bond and Payment Schedule of this prospectus. Only cash may be used to meet this requirement.

8. Performance Security (1/11)

As guarantee of faithful performance, a cash bond, certificate of deposit, surety bond or irrevocable letter of credit (LOC) is required within 21 days of the sale award. The amount of the performance security is shown in the Bond and

Payment Schedule of this prospectus. If an LOC or surety is used, the coverage must extend for at least 6 months beyond the contract expiration.

9. Worker's Compensation (10/22)

Purchaser shall obtain worker's compensation insurance to cover claims under Michigan's Worker's Disability Compensation Act of 1969 or similar employee benefit act of any other state applicable to an employee. Verification of Worker's Disability Compensation Act Compliance must be completed and submitted within 21 days of contract award and prior to the issuance of the timber sale contract. In addition, if applicable, Notice of Exclusion or Certificate of Insurance must also be submitted.

10. Timber Sale Contract (10/22)

Additional conditions and requirements common to all timber sales are listed on the timber sale contract (R4031) and are available on line at www.michigan.gov/timber. Contact the Unit Manager for additional information or a sample contract. Within 21 days of the date of the award letter, the bidder must sign the contract and provide the required down payment, performance security, and verification of worker's disability compensation. The down payment and performance security shall be in accordance with the provisions of the timber sale contract, in the sums stated in this prospectus. If these actions are not taken, then the Bidder, the Bidder's corporation, and the corporation's principals may not be permitted to bid on State timber sales for a period of 3 months after the first offense, 6 months after the second offense, and 1 year after the third offense. An offense will only be counted against the Bidder for 5 years. In addition, the Bidder certifies that if awarded this contract, the Bidder will complete the timber sale contract in accordance with its terms and any modifications thereof including requirements to purchase, cut, and remove the included timber by the expiration date.

Payment Unit values in the State Forest Timber Sale Contract are calculated based on the advertised value of the Payment Unit as a percentage of the total advertised value of the contract. The advertised value of each Payment Unit is given in the Description of Timber by Payment Unit table on the Timber Sale Information page. For example, if the value of Payment Unit 1 is advertised as \$1,500 and the total Timber Sale value is advertised as \$10,000, the contract price for Payment Unit 1 will be 15% of the total bid price ($\$1,500/\$10,000 * 100$).

11. Disclaimer of Estimates and Bidder's Warranty of Inspection (10/22)

Before submitting this bid, the Bidder is advised and cautioned to inspect the sale area, review the requirements of the sale contract, and take other steps as may be reasonably necessary to ascertain the location, estimated volumes, construction estimates, and operating costs of the proposed sale. Failure to do so will not relieve the Bidder from responsibility for completing the contract.

The Bidder warrants that this bid is submitted solely on the basis of the Bidder's examination and inspection of the quality and quantity of the timber offered for sale and the Bidder's opinion of the value thereof and the costs of recovery. No reliance should be placed on the State of Michigan's estimates of timber quality, quantity or costs of recovery. Bidder further acknowledges that the State of Michigan: (i) expressly disclaims any warranty of fitness of timber for any purpose; (ii) offers this timber as is without any warranty of quality (merchantability) or quantity and (iii) expressly disclaims any warranty as to the quantity or quality of timber sold.

12. Certification and Chain-of-Custody (10/22)

Unless otherwise indicated in the contract under section 7 – Other Conditions of the Sale Specific Conditions & Requirements, the area encompassed by this timber sale is certified to the standards of the Forest Stewardship Council (FSC) - Certificate #SCS-FM/COC-00090N and the Sustainable Forestry Initiative (SFI) - Certificate #NSF-SFIS-5Y031-SF5. Forest products from this sale may be delivered to the mill as "FSC 100% and / or SFI certified" as long as the contractor hauling the forest products is chain-of-custody (COC) certified or covered under a COC certificate from the destination mill. The purchaser is responsible for maintaining COC after leaving the sale area.

13. Good Neighbor Authority (GNA) Requirements (10/22)

If the name of this timber sales contains the acronym GNA, it is authorized by the Good Neighbor Authority (GNA) and covered by various agreements between the U.S. Forest Service and the State. The timber sale occurs on federal land and the following conditions apply:

GNA contracts on US Forest Service land will not be awarded to purchasers on the Federal list of excluded parties. The System for Award Management (SAM) will be checked for active excluded parties prior to award of contract. In

addition, the Bidder to whom award is made must complete an Assurance Regarding Felony Conviction or Tax Delinquent Status for Corporate Applicants (AD-3031).

14. Good Neighbor Authority (GNA) Requirements, con't (10/22)

Bidder certifies, by signing this bid form, that to the best of Bidder's knowledge that the following representations are accurate and complete.

- a. That the Bidder and its principals are not presently debarred, suspended, proposed for debarment, declared ineligible, or voluntary excluded from timber sales (covered transactions) by any Federal department or agency.
- b. That the Bidder and its principals have not within a 3-year period preceding this bid been convicted of or had a civil judgment rendered against them for commission of fraud or a criminal offense in connection with obtaining , attempting to obtain, or performing a public (Federal, State, or local) transaction or contract under a public transaction; violation of Federal or State antitrust statutes or commission of embezzlement, theft, forgery, bribery, falsification or destruction of records, making false statements, or receiving stolen property.
- c. That the Bidder and its principals are not presently indicted for or otherwise criminally or civilly charged by a governmental entity (Federal, State, or local) with commission of any of the offenses enumerated in paragraph b of this certification.
- d. That the Bidder and its principals have not within a 3-year period preceding this bid had one or more public transactions (Federal, State, or local) terminated for breach or default of a timber or forest product contract.

Bidders that cannot certify this requirement, in whole or in part, shall submit an explanation with their bid.

Scott Bowen
Director

TIMBER SALE INFORMATION

Ice Jigsaw Aspen (53-023-25)
T33N, R01W, SEC. 24; T33N, R01W, SEC. 25.
Cheboygan County (Advertised Price \$3,507.30)

SALE NOTE: At least 50% damage to aspen crowns from the ice storm. Most damage is in the form of broken tops or limbs.

A timber sale contract for this lump sum, sealed bid timber sale will be awarded to the responsible bidder offering the highest sealed bid price. All units of volume listed below were estimated using the Inventory Manager computer program and the new Michigan taper model. Bids must be at or above the following advertised price for each product and species:

PRODUCTS & SPECIES	ESTIMATED UNITS*	ADVERTISED PRICE
Sawtimber		
Quaking Aspen	11.1 MBF	\$ 21.00 / MBF
Pulpwood		
Mixed Aspen	321 Cords	\$ 10.20 / Cord

* The total volume is statistically estimated within plus (+) or minus (-) 56.06 percent. There are an estimated 348 cords on this timber sale, plus or minus 195 cords at the 95% confidence level. The estimated units are final and not subject to adjustment. Prospective bidders are urged to examine this timber and to make their own estimates of quantity and quality.

BOND AND PAYMENT SCHEDULE:

1. A bond in the amount of \$351.00 to insure faithful performance of the conditions of the contract will be deposited by the successful bidder within 21 days of the sale award.
2. Cutting in any sale or unit without the required advance payment would be considered a trespass.
3. Total payment must be paid in advance or according to the following schedule :
 - (a) Ten percent (10%) of the sale value must be paid within 21 days of the sale award.
 - (b) The remainder is due before cutting begins.
 - (c) Payment for each of the following units must be made before cutting begins in that unit:

PAYMENT UNIT NUMBER	PERCENT OF TOTAL SALE VALUE
01	100.0%
4. If no cutting takes place, the 10% down payment will not be refunded.
5. Operations on the contract issued will terminate on 06/30/2027.

SALE STATISTICS

Volumes were calculated in cubic feet using the Michigan taper model. Cubic foot volume includes all wood inside bark for the product indicated. For display purposes, cubic feet were converted to cords and MBF using a simple conversion factor, e.g. 79 cubic feet per cord and 185 cubic feet per MBF. The cubic foot volumes are precise; the cords and MBF volumes are not. Cubic foot volume cannot be directly converted to cords or boards with precision.

SALE VOLUMES

The total estimated sale volume may not equal the sum of the species/products due to the nature of statistical calculations associated with double sampling methodology.

VOLUME			STATISTICAL RANGE IN CORDS	
TOTAL CUBIC FEET	TOTAL CORDS	PERCENT ERROR	MINIMUM	MAXIMUM
27,481	348	56.06%	153	543

VDU VOLUMES

A VDU is a Volume Determination Unit. Volumes and their associated statistics are calculated at the VDU level and summarized to the sale level. There is often a one to one relationship between a VDU and a Payment Unit, but not always, depending on the cruise design. Refer to the VDU TO PAYMENT UNIT table.

	VOLUME			RANGE IN CORDS	
VDU	TOTAL CUBIC FEET	TOTAL CORDS	PERCENT ERROR	MINIMUM	MAXIMUM
45	27,481	348	56.06%	153	543
TOTAL:	27,481	348		153	543

VDU TO PAYMENT UNIT

When a VDU is associated with more than one Payment Unit (PU), the VDU volumes are assigned to the PU based on acres of the VDU within the PU.

VDU	VDU ACRES	PU	PU ACRES
TOTAL:			

DESCRIPTION OF TIMBER BY PAYMENT UNIT (PU)

PU	MARKET GROUP	PRODUCT	QUANTITY	UNIT	ACRES	ADVERTISE PRICE
1	Quaking Aspen	Sawtimber	11.1	MBF	13.6	\$3,507.30
	Mixed Aspen	Pulpwood	321	Cords		
	Balsam Poplar		90	Cords		
	Quaking Aspen		231	Cords		
TOTAL:			11.1	MBF		
TOTAL:			321	Cords		

Sale Specific Conditions & Requirements

Sale Name: Ice Jigsaw Aspen

Sale Number: 53-023-25 Seq#: 1

1 - Sale Area

1.2 - Boundaries

1.2.1 - Painted Boundaries (9/19)

The sale boundary is marked and identified by red and paint. Exterior sale boundary lines against state are marked with red paint. Retention patches are marked with red Xs; no harvesting activities may occur within these areas. Yellow painted trees provide guidance through narrow areas of the sale OR provide a path to connect sale areas. Do not harvest the yellow trees. The painted boundary line trees are not Included Timber and are to be protected.

2 - Timber Specifications

2.1 - Included Timber

2.1.1 - Clearcut Unit(s) with Unmerchantable Trees (6/14)

Within Payment Unit(s) 1, cut all aspen (including balsam poplar) trees that are two (2) inches or more at DBH. Do not cut any other species unless for maneuverability and operations.

4 - Transportation

4.1 - Construction

4.1.3 - Slash and Earthen Piles (8/04)

Piles or windrows of earth along roads and landings that have been widened or constructed shall be leveled. Slash from road maintenance or construction, including stumps, shall be dispersed throughout the sale.

4.1.7 - Road Closure (10/11)

Overgrown or bermed access roads that are reopened must be blocked to vehicle traffic upon completion of the sale. In general, this will require constructing a four (4') foot high berm of stumps and logs covered with earth. Stumps and brush must be placed along the remainder of the trail. These roads must be rendered impassable to cars and trucks. Contact the Sale Administrator for specific details of design and placement.

4.1.12 - No New Roads (1/12)

No new roads will be permitted. All operations are limited to existing roads. Only Skid trails will be allowed.

5 - Operations

5.1 - Notification

5.1.1 - Pre-sale Conference (10/16)

A pre-sale conference between the Purchaser and Sale Administrator is required prior to beginning any operations to determine landing and road locations. The Unit Manager or his/her representative must be contacted at least 3 days in advance to schedule the conference.

5.1.4 - Post-Sale Conference (10/16)

A post-sale conference on site between the Purchaser and sale administrator is required 1 day prior to the completion of active logging operations to determine clean-up and repair of landings, road edges, and the fulfillment of other contract specifications.

5.2 - Conduct of Operations

5.2.32 - Decking/Landing Restoration (9/13)

All decking and landing areas must have the surface area restored to a condition equal to or better than before. This is to ensure the proper regeneration of the stand. Wood debris, chips and "cookies" from trimmings must be removed or scattered away from landing and loading areas and may not be windrowed on the edge.

5.2.38 - No Decking Against Live Trees (2/04)

Cut products may not be decked against unmarked or designated leave trees.

5.4 - Soil Protection

5.4.1 - Rutting Restriction, General (7/16)

Operations are to cease immediately if equipment and weather conditions result in rutting of roads and/or skid trails which are 12 inches or greater in depth and 25 feet in length. The Unit Manager or his/her representative may restrict hauling and/or skidding if ruts exceed the specified depth. With the Unit Manager or his/her representative's approval, the Purchaser may return to the area when the risk of rutting has decreased.

5.8 - Protection of Endangered Species

5.8.5 - Protection of Raptor Nests (3/13)

All trees with raptor nests will be protected if found during harvesting operations. Notification will be made to the Unit Manager or his/her representative who will notify the Wildlife Biologist so an onsite evaluation and recommendation can be made, if necessary.

6 - Safety and Fire Prevention

6.2 - Signing

6.2.1 - Road Posting (10/20)

The Purchaser is responsible for posting and maintaining caution signs on Clark Bridge Rd prior to beginning operations. The road must be posted at appropriate distances from the Sale Area to warn of logging activity and truck traffic. Signs must be removed when harvest operations are suspended or completed. The Purchaser will provide these signs.

7 - Other Conditions

7.2 - Extensions

7.2.2 - No Extensions (3/09)

There will be no extensions granted on this contract.

7.2.8 - Salvage Extension with Restrictions (6/25)

This is a salvage sale that should be harvested promptly. One (1), twelve (12) month extension can be applied to one (1) other State Forest Timber Sale Contract owned by the purchaser or owned by one (1) designated sub-contractor of the Purchaser that works this contract. To qualify, operations on this contract must be completed by March 31, 2026. If this is the first extension on the other State Forest Timber Sale Contract, then the 5% extension fee will be waived. If this is an additional extension, the 10% fee will be reduced to 5%. This specification does not alleviate the purchaser from any contractual obligations of the extended State Forest Timber Sale Contract. Per General Condition & Requirement 7.2, extensions are at the sole discretion of the DNR.

7.5 - Loss

7.5.1 - Deteriorating Timber (7/09)

The Sale Area has received damage from the 2025 ice storm. The Purchaser should harvest the wood as soon as possible. The Department of Natural Resources is held free of responsibility of any further damage or deterioration due to delay in harvesting.



TIMBER SALE MAP

This information provided by authority of Part 525, 1994 PA 451, as amended.

Sale Number

53-023-25

Date

08/08/2025

Forest Management Unit

County

Mapped By: Mittig

Scale

Page

Of

Pigeon River Country Mgt Unit

Cheboygan

Cruised By: Mittig

1:6,000

1

2

Township
33N

Range
01W

Section(s) and

Subdivision(s) Sec. 24 SESW; Sec. 25 E1/2NW,NWNE;

Cover Type

A = Aspen	J = Jack Pine	O = Oak	U = Upland Brush
B = Paper Birch	K = Rock	P = Lowland Poplar	UM = Upland Mix Forest
C = Cedar	L = Lowland Brush	Q = Mixed Swamp Conifer	V = Bog or Marsh
D = Treed Bog	LM = Lowland Mix Forest	R = Red Pine	W = White Pine
E = Swamp Hardwoods	M = Maple, Beech, Birch	S = Black Spruce	X = Non Stocked
F = Spruce/Fir	MC = Mixed Conifer	T = Tamarack	Y = Sand
G = Grass	MD = Mixed Deciduous	Z = Water	
H = Hemlock	N = Marsh		

Density

0 = Non Stocked	5 = Pole Timber Medium
1 = Seedling Sapling Poor	6 = Pole Timber Well
2 = Seedling Sapling Medium	7 = Saw Timber Poor
3 = Seedling Sapling Well	8 = Saw Timber Medium
4 = Pole Timber Poor	9 = Saw Timber Well

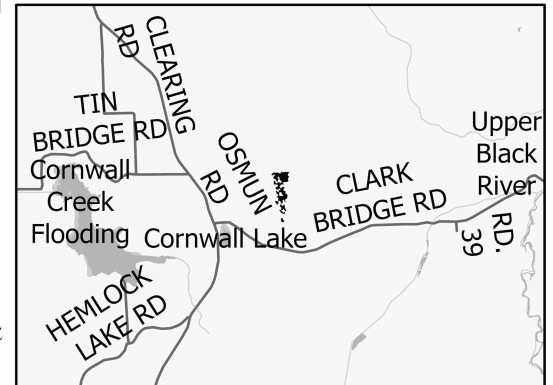
Payment Unit Acres
Number

1 13.6

**Ice Jigsaw
Aspen**

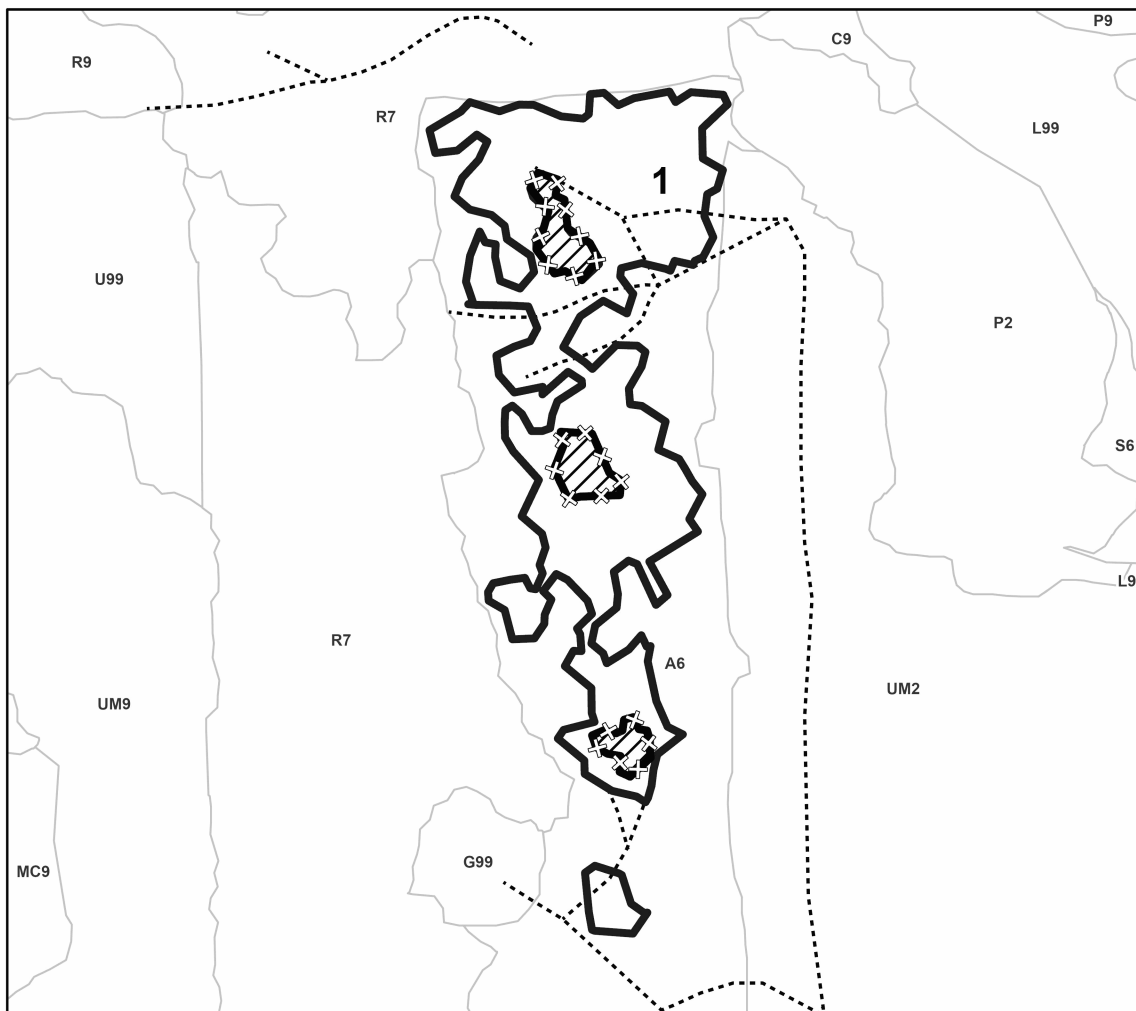
13.6 Acres

0 0.07 0.15 0.3 Miles



Legend

- Against State (Red)
- Rentention Areas (Red Xs)
- Administrative Access Only



Use QR Code to
open Map in App





TIMBER SALE MAP

This information provided by authority of Part 525, 1994 PA 451, as amended.

Sale Number

53-023-25

Date

08/08/2025

Forest Management Unit

County

Mapped By: Mittig

Scale

Page

Of

Pigeon River Country Mgt Unit

Cheboygan

Cruised By: Mittig

1:10,000

2

2

Township
33N

Range
01W

Section(s) and
Subdivision(s) Sec. 24 SESW; Sec. 25 E1/2NW,NWNE;

Cover Type

A = Aspen	J = Jack Pine	O = Oak	U = Upland Brush
B = Paper Birch	K = Rock	P = Lowland Poplar	UM = Upland Mix Forest
C = Cedar	L = Lowland Brush	Q = Mixed Swamp Conifer	V = Bog or Marsh
D = Treed Bog	LM = Lowland Mix Forest	R = Red Pine	W = White Pine
E = Swamp Hardwoods	M = Maple, Beech, Birch	S = Black Spruce	X = Non Stocked
F = Spruce/Fir	MC = Mixed Conifer	T = Tamarack	Y = Sand
G = Grass	MD = Mixed Deciduous	Z = Water	
H = Hemlock	N = Marsh		

Density

0 = Non Stocked	5 = Pole Timber Medium
1 = Seedling Sapling Poor	6 = Pole Timber Well
2 = Seedling Sapling Medium	7 = Saw Timber Poor
3 = Seedling Sapling Well	8 = Saw Timber Medium
4 = Pole Timber Poor	9 = Saw Timber Well

Payment Unit
Number

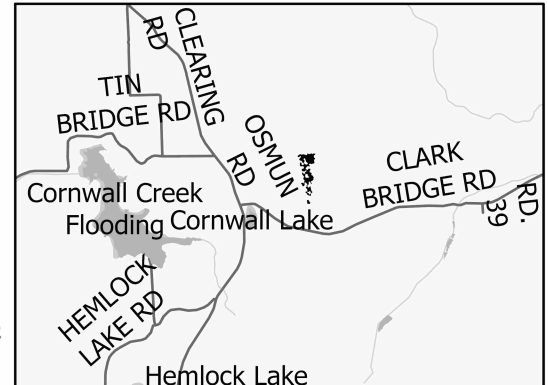
Acres

1 13.6

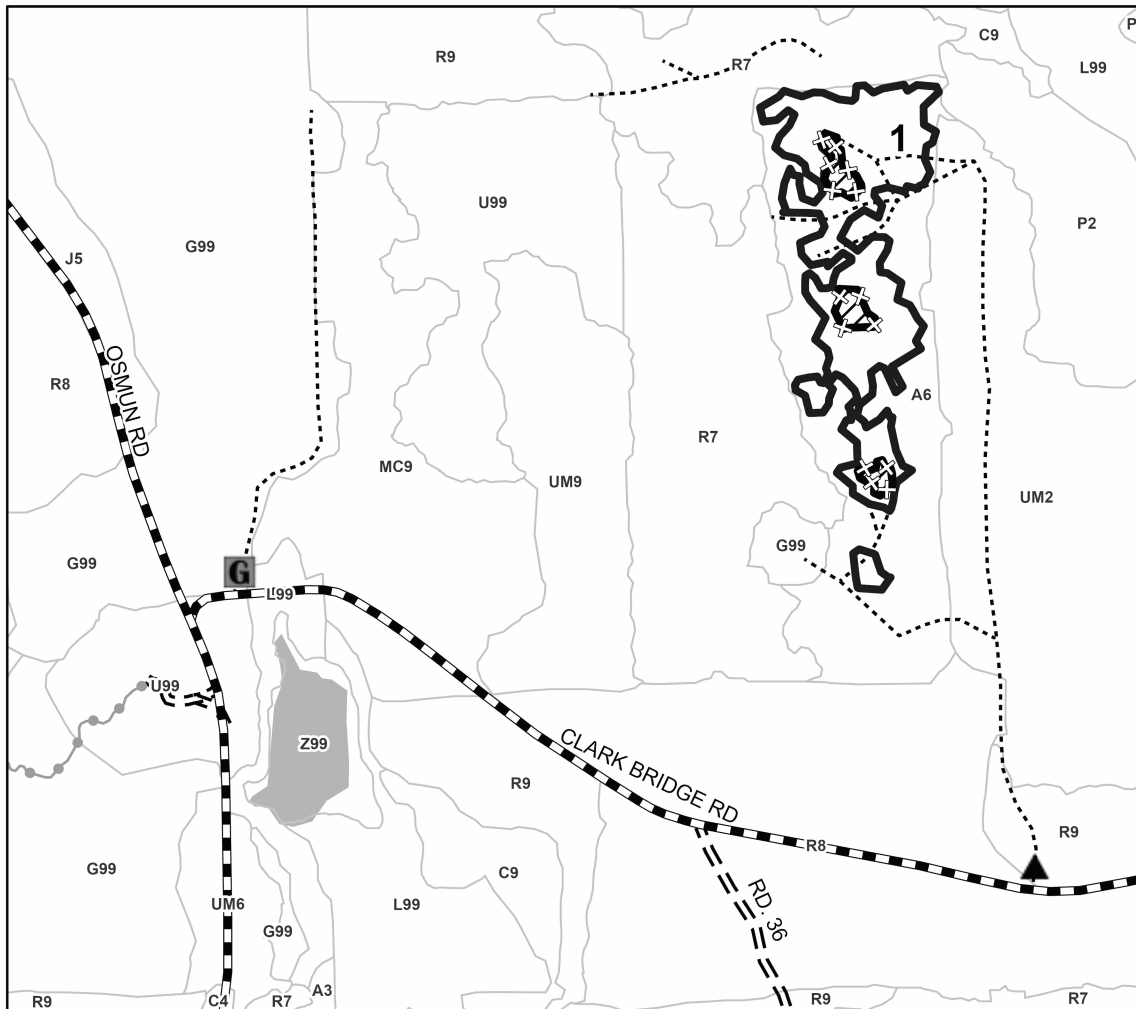
**Ice Jigsaw
Aspen**

13.6 Acres

Locator Map 1:100,000



0 0.15 0.3 0.6 Miles



Legend

- Against State (Red)
- Rentention Areas (Red Xs)
- Forest Access Route
- Administrative Access Only
- Government Gravel/Dirt
- Recreational Trails
- Berm
- Gate

Use QR Code to
open Map in App



TIMBER SALE INFORMATION

Ice Bee Buzz Aspen (53-024-25)
T31N, R01W, SEC. 11; T31N, R01W, SEC. 14.
Otsego County (Advertised Price \$31,118.85)

SALE NOTE: Aspen in Payment Unit s 1-4 and 7 were significantly damaged in the ice storm. Most damage is in the form of broken tops. Payment Unit 5-6 and 8 have only slight amounts of damage.

Note that Payment Unit 3 is a blowdown unit and the volumes listed in the prospectus for this unit are only rough approximations. This unit will be scaled to determine the actual volumes.

A recreation site such as a trail, pathway, or campground is within the sale area or the vicinity. Certain restrictions/specifications may be applicable including time restrictions.

A timber sale contract for this mixed, sealed bid timber sale will be awarded to the responsible bidder offering the highest sealed bid price. All units of volume listed below were estimated using the Inventory Manager computer program and the new Michigan taper model. Bids must be at or above the following advertised price for each product and species:

<u>PRODUCTS & SPECIES</u>	<u>ESTIMATED UNITS*</u>	<u>ADVERTISED PRICE</u>
Sawtimber		
Red Maple	7.3 MBF	\$ 45.00 / MBF
Pulpwood		
Balsam Fir	4 Cords	\$ 10.80 / Cord
Basswood	22 Cords	\$ 6.30 / Cord
Mixed Aspen	2,721 Cords	\$ 10.20 / Cord
Mixed Hardwood	390 Cords	\$ 6.45 / Cord
White Pine	27 Cords	\$ 12.55 / Cord

* The total volume is statistically estimated within plus (+) or minus (-) 19.05 percent. There are an estimated 3,185 cords on this timber sale, plus or minus 607 cords at the 95% confidence level. The estimated units are final and not subject to adjustment. Prospective bidders are urged to examine this timber and to make their own estimates of quantity and quality.

BOND AND PAYMENT SCHEDULE:

1. A bond in the amount of \$3,112.00 to insure faithful performance of the conditions of the contract will be deposited by the successful bidder within 21 days of the sale award.
2. Cutting in any sale or unit without the required advance payment would be considered a trespass.
3. Total payment must be paid in advance or according to the following schedule :
 - (a) Ten percent (10%) of the sale value must be paid within 21 days of the sale award.
 - (b) The 10% down payment will be credited towards the first unit cut.
 - (c) Payment for each of the following units must be made before cutting begins in that unit:

<u>PAYMENT UNIT NUMBER</u>	<u>PERCENT OF TOTAL SALE VALUE</u>
01	9.7%
02	34.3%
03	2.5%
04	1.5%
05	14.8%
06	12.2%
07	11.7%
08	13.3%

4. If no cutting takes place, the 10% down payment will not be refunded.
5. Operations on the contract issued will terminate on 06/30/2027.

SALE STATISTICS

Volumes were calculated in cubic feet using the Michigan taper model. Cubic foot volume includes all wood inside bark for the product indicated. For display purposes, cubic feet were converted to cords and MBF using a simple conversion factor, e.g. 79 cubic feet per cord and 185 cubic feet per MBF. The cubic foot volumes are precise; the cords and MBF volumes are not. Cubic foot volume cannot be directly converted to cords or boards with precision.

SALE VOLUMES

The total estimated sale volume may not equal the sum of the species/products due to the nature of statistical calculations associated with double sampling methodology.

VOLUME			STATISTICAL RANGE IN CORDS	
TOTAL CUBIC FEET	TOTAL CORDS	PERCENT ERROR	MINIMUM	MAXIMUM
251,596	3,185	19.05%	2,578	3,791

VDU VOLUMES

A VDU is a Volume Determination Unit. Volumes and their associated statistics are calculated at the VDU level and summarized to the sale level. There is often a one to one relationship between a VDU and a Payment Unit, but not always, depending on the cruise design. Refer to the VDU TO PAYMENT UNIT table.

	VOLUME			RANGE IN CORDS	
VDU	TOTAL CUBIC FEET	TOTAL CORDS	PERCENT ERROR	MINIMUM	MAXIMUM
18	33,233	421	57.73%	178	664
48	16,897	214	97.95%	4	423
53	106,604	1,349	29.18%	956	1,743
55	3,423	43	108.43%	0	90
59	33,272	421	41.85%	245	597
62	29,884	378	39.67%	228	528
66	28,283	358	95.82%	15	701
TOTAL:	251,596	3,185		1,626	4,747

VDU TO PAYMENT UNIT

When a VDU is associated with more than one Payment Unit (PU), the VDU volumes are assigned to the PU based on acres of the VDU within the PU.

VDU	VDU ACRES	PU	PU ACRES
TOTAL:			

DESCRIPTION OF TIMBER BY PAYMENT UNIT (PU)

PU	MARKET GROUP	PRODUCT	QUANTITY	UNIT	ACRES	ADVERTISE PRICE
1	Red Maple	Sawtimber	0.1	MBF	12.7	\$3,022.05
	Basswood	Pulpwood	1	Cords		
	Mixed Aspen		287	Cords		
	<i>B. T. Aspen</i>		150	<i>Cords</i>		
	<i>Quaking Aspen</i>		137	<i>Cords</i>		
	Mixed Hardwood		13	Cords		
	<i>Ironwood</i>		3	<i>Cords</i>		
	<i>Paper Birch</i>		1	<i>Cords</i>		
	<i>Red Maple</i>		5	<i>Cords</i>		
	<i>Sugar Maple</i>		3	<i>Cords</i>		
	<i>White Ash</i>		1	<i>Cords</i>		
2	Red Maple	Sawtimber	0.8	MBF	30.2	\$10,648.65
	Basswood	Pulpwood	19	Cords		
	Mixed Aspen		956	Cords		
	<i>B. T. Aspen</i>		659	<i>Cords</i>		
	<i>Quaking Aspen</i>		297	<i>Cords</i>		
	Mixed Hardwood		115	Cords		
	<i>Ironwood</i>		4	<i>Cords</i>		
	<i>Paper Birch</i>		7	<i>Cords</i>		
	<i>Red Maple</i>		61	<i>Cords</i>		
	<i>Sugar Maple</i>		37	<i>Cords</i>		
	<i>White Ash</i>		6	<i>Cords</i>		
3	Red Maple	Sawtimber	0.1	MBF	2.2	\$782.85
	Basswood	Pulpwood	1	Cords		
	Mixed Aspen		70	Cords		
	<i>B. T. Aspen</i>		48	<i>Cords</i>		
	<i>Quaking Aspen</i>		22	<i>Cords</i>		
	Mixed Hardwood		9	Cords		
	<i>Paper Birch</i>		1	<i>Cords</i>		
	<i>Red Maple</i>		4	<i>Cords</i>		
	<i>Sugar Maple</i>		3	<i>Cords</i>		
	<i>White Ash</i>		1	<i>Cords</i>		
4	Red Maple	Sawtimber	0.1	MBF	3.3	\$467.85
	Mixed Aspen	Pulpwood	41	Cords		
	<i>B. T. Aspen</i>		18	<i>Cords</i>		
	<i>Quaking Aspen</i>		23	<i>Cords</i>		
	Mixed Hardwood		7	Cords		
	<i>Ironwood</i>		2	<i>Cords</i>		
	<i>Red Maple</i>		4	<i>Cords</i>		
	<i>Sugar Maple</i>		1	<i>Cords</i>		
5	Red Maple	Sawtimber	6.2	MBF	18.8	\$4,590.60
	Basswood	Pulpwood	1	Cords		
	Mixed Aspen		307	Cords		
	<i>B. T. Aspen</i>		283	<i>Cords</i>		
	<i>Quaking Aspen</i>		24	<i>Cords</i>		
	Mixed Hardwood		182	Cords		
	<i>Sugar Maple</i>	<i>Sawtimber</i> <i>Pulpwood</i>	0.9	<i>MBF</i>		
	<i>Beech</i>		18	<i>Cords</i>		
	<i>Ironwood</i>		6	<i>Cords</i>		
	<i>Paper Birch</i>		7	<i>Cords</i>		
	<i>Red Maple</i>		98	<i>Cords</i>		
	<i>Sugar Maple</i>		50	<i>Cords</i>		
	<i>White Ash</i>		1	<i>Cords</i>		
6	Balsam Fir	Pulpwood	4	Cords	16.2	\$3,802.80
	Mixed Aspen		361	Cords		
	<i>B. T. Aspen</i>		267	<i>Cords</i>		

DESCRIPTION OF TIMBER BY PAYMENT UNIT (PU), CON'T

PU	MARKET GROUP	PRODUCT	QUANTITY	UNIT	ACRES	ADVERTISE PRICE
6 con't	<i>Quaking Aspen</i>	<i>Pulpwood</i>	94	<i>Cords</i>		
	Mixed Hardwood		12	Cords		
	<i>Red Maple</i>		12	<i>Cords</i>		
7	Mixed Aspen	Pulpwood	358	Cords	8.9	\$3,651.60
	<i>B. T. Aspen</i>		260	<i>Cords</i>		
	<i>Quaking Aspen</i>		98	<i>Cords</i>		
8	Mixed Aspen	Pulpwood	341	Cords	10.4	\$4,152.45
	<i>B. T. Aspen</i>	<i>Sawtimber</i>	3.8	<i>MBF</i>		
	<i>B. T. Aspen</i>	<i>Pulpwood</i>	315	<i>Cords</i>		
	<i>Quaking Aspen</i>		18	<i>Cords</i>		
	Mixed Hardwood		52	Cords		
	<i>Red Maple</i>		47	<i>Cords</i>		
	<i>Sugar Maple</i>		5	<i>Cords</i>		
	White Pine		27	Cords		
TOTAL:			7.3	MBF		
TOTAL:			3,164	Cords		

Sale Specific Conditions & Requirements

Sale Name: Ice Bee Buzz Aspen

Sale Number: 53-024-25 Seq#: 1

1 - Sale Area

1.2 - Boundaries

1.2.1 - Painted Boundaries (9/19)

The sale boundary and Payment Unit boundaries are marked and identified by red and yellow paint. Exterior sale boundary lines against state are marked with red paint. Interior Payment Unit boundaries are marked with yellow paint. Sawdust Pile Trail is the Payment Unit boundary between Payment Units 5 and 6, and is not marked with yellow paint. Retention patches are marked with red paint; no harvesting activities may occur within these areas. Red and yellow painted boundary line trees are not Included Timber and are to be protected.

2 - Timber Specifications

2.1 - Included Timber

2.1.1 - Clearcut Unit(s) with Unmerchantable Trees (6/14)

Within Payment Unit(s) #'s 1, 4, and 7, cut all trees that are two (2) inches or more at DBH, except do not cut oak, sugar maple, basswood, white pine, elm, or green marked trees. In addition, do not cut white ash over 5 inches DBH.

Within Payment Unit #2, cut all trees that are two (2) inches or more at DBH, except do not cut oak, elm, white pine, or green marked trees.

Within Payment Unit #3, cut all trees that are two inches or more at DBH, both standing and fallen over, except do not cut oak or green marked trees. This unit has substantial aspen blowdown and will be scaled.

Within Payment Unit #6, cut all trees that are two inches or more at DBH, except do not cut oak, basswood, white pine, or trees marked with green paint.

Within Payment Unit #8, cut all trees that are two inches or more at DBH, except do not cut oak, birch, or any trees marked with green paint.

Do not cut black cherry over 5 inches DBH in any Payment Unit.

2.1.7 - Leave Tree Marked Unit(s) (6/14)

Within Payment Unit(s) #5, cut all trees that are two (2) inches or more at DBH except red oak, basswood, and trees marked with green paint above and below stump height. In addition, cut all white pine under 10 inches DBH except for those marked with green paint.

2.1.11 - Description of Timber Note (2/04)

Note that the Purchaser has the option of harvesting aspen blowdown in Payment Units 1-2. These downed trees may not be harvested until all standing timber has been cut and skidded to the landing in each respective Payment Unit. All downed timber that is harvested must be piled separately and will be scaled by the timber Sale Administrator. Scaled timber from Payment Units 1 and 2 will be invoiced as additional timber. Blowdown is minimal in Payment Units 4-8 and may not be harvested from these units.

In addition, note that Payment Unit 3 is a scaled unit. All products from this Payment Unit must be piled separately from other units and will be scaled by the timber Sale Administrator.

3 - Payments

3.3 - Pre-measured Sales

3.3.4 - Dividing Payment Units (7/14)

Payment Unit(s) #2 may be divided at the request of the Purchaser and upon approval of the Unit Manager. Dividing Payment Units is a contract modification which requires a Timber Sale Contract Amendment.

3.4 - Damaged Timber

3.4.1 - Damaged Timber (12/24)

General Condition and Requirement 3.4 Damaged Timber, defines liquidated damages for undesignated live merchantable trees which are cut or injured. In addition, extreme care should be taken to avoid damage to sugar maple and oak saplings, most of which can be found in Payment Unit 7.

4 - Transportation

4.1 - Construction

4.1.3 - Slash and Earthen Piles (8/04)

Piles or windrows of earth along roads and landings that have been widened or constructed shall be leveled. Slash from road maintenance or construction, including stumps, shall be dispersed throughout the sale.

4.1.7 - Road Closure (10/11)

Overgrown roads that are reopened must be blocked to vehicle traffic upon completion of the sale. In general, this will require constructing a four (4') foot high berm of stumps and logs covered with earth. These roads must be rendered impassable to cars and trucks. Contact the Sale Administrator for specific details of design and placement.

4.1.12 - No New Roads (1/12)

No new roads will be permitted in any Payment Unit. All operations are limited to existing roads.

4.2 - Maintenance

4.2.5 - Two Wheel Drive Condition (2/04)

All existing trail roads on and adjacent to the Sale Area must be passable by two-wheel drive traffic for the duration of the sale.

5 - Operations

5.1 - Notification

5.1.1 - Pre-sale Conference (10/16)

A pre-sale conference between the Purchaser and Sale Administrator is required prior to beginning any operations to determine landing and road locations. The Unit Manager or his/her representative must be contacted at least three (3) days in advance to schedule the conference.

5.2 - Conduct of Operations

5.2.1 - Slash

5.2.1.10 - No Slash in Openings (5/10)

No brush or logging debris is to be left in the maintained wildlife openings which are indicated by G0 on the Timber Sale Map. Any damage to the opening shall be repaired according to specifications of the Unit Manager or his/her representative.

5.2.2 - Hazard Trees/Snags

5.2.2.1 - Den Trees (10/16)

Obvious hollow and/or den trees shall be protected and left standing unless they are a safety hazard.

5.2.4 - Dead and Down Creation

5.2.4.7 - Dead and Down Creation: Hare, Grouse, Deer and Other Species (5/15)

To improve horizontal cover habitat for snowshoe hare, grouse, deer, and other species, the Purchaser is to push over trees marked with pink paint in Payment Unit #'s 6 and 8. These trees should be tipped over with the root ball still attached so the base of the tree is suspended off the ground. The crown of the fallen tree should be at or near ground level after it is pushed over.

5.2.38 - No Decking Against Live Trees (2/04)

Cut products may not be decked against unmarked or designated leave trees.

5.2.40 - Pathway Protection (10/10)

The Shore to Shore equestrian trail falls on Sawdust Pile Trail and is shown on the Timber Sale Map. Do not cut trees or damage posts with blue pathway markers.

5.2.43 - Opening Protection (2/21)

Activities are only permitted along the northern edge of the opening on the southeast side of Payment Unit 2. This opening is marked on the Timber Sale Map with the letter "G". Any damage to the openings shall be repaired according to specifications of the Unit Manager or his/her representative.

5.4 - Soil Protection

5.4.1 - Rutting Restriction, General (7/16)

Operations are to cease immediately if equipment and weather conditions result in rutting of roads and/or skid trails which are 12 inches or greater in depth and 25 feet in length. The Unit Manager or his/her representative may restrict hauling and/or skidding if ruts exceed the specified depth. With the Unit Manager or his/her representative's approval, the Purchaser may return to the area when the risk of rutting has decreased.

5.8 - Protection of Endangered Species

5.8.5 - Protection of Raptor Nests (3/13)

All trees with raptor nests will be protected if found during harvesting operations. Notification will be made to the Unit Manager or his/her representative who will notify the Wildlife Biologist so an onsite evaluation and recommendation can be made, if necessary.

6 - Safety and Fire Prevention

6.2 - Signing

6.2.1 - Road Posting (10/20)

The Purchaser is responsible for posting and maintaining caution signs on Sawdust Pile Trail prior to beginning operations. The road must be posted at appropriate distances from the Sale Area to warn of logging activity and truck traffic. Signs must be removed when harvest operations are suspended or completed. The Purchaser will provide these signs.

7 - Other Conditions

7.2 - Extensions

7.2.2 - No Extensions (3/09)

There will be no extensions granted on this contract.

7.2.8 - Salvage Extension with Restrictions (6/25)

This is a salvage sale that should be harvested promptly. One (1), twelve (12) month extension can be applied to one (1) other State Forest Timber Sale Contract owned by the purchaser or owned by one (1) designated sub-contractor of the Purchaser that works this contract. To qualify, operations on this contract must be completed by March 31, 2026. If this is the first extension on the other State Forest Timber Sale Contract, then the 5% extension fee will be waived. If this is an additional extension, the 10% fee will be reduced to 5%. This specification does not alleviate the purchaser from any contractual obligations of the extended State Forest Timber Sale Contract. Per General Condition & Requirement 7.2, extensions are at the sole discretion of the DNR.

7.5 - Loss

7.5.1 - Deteriorating Timber (7/09)

The Sale Area has received damage from the ice storm of March 2025. The Purchaser should harvest the wood as soon as possible. The Department of Natural Resources is held free of responsibility of any further damage or deterioration due to delay in harvesting.



TIMBER SALE MAP

This information provided by authority of Part 525, 1994 PA 451, as amended.

Sale Number

53-024-25

Date

08/08/2025

Forest Management Unit

County

Mapped By: Rekowski

Scale

Page

Of

Pigeon River Country Mgt Unit

Otsego

Cruised By: Rekowski/Mittig

1:14,000

1

1

Township
31N

Range
01W

Section(s) and
Subdivision(s) Sec. 11 E1/2SW,SE; Sec. 14 E1/2NW,N1/2NE,NESW;

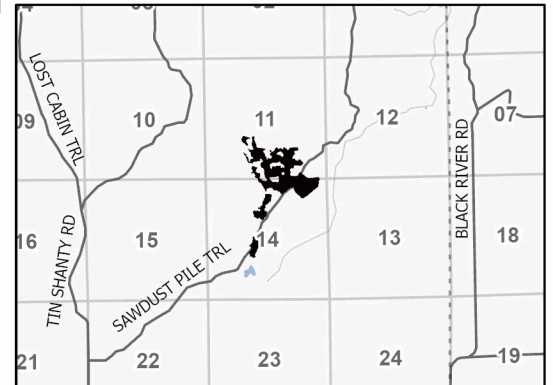
Cover Type

A = Aspen	J = Jack Pine	O = Oak	U = Upland Brush
B = Paper Birch	K = Rock	P = Lowland Poplar	UM = Upland Mix Forest
C = Cedar	L = Lowland Brush	Q = Mixed Swamp Conifer	V = Bog or Marsh
D = Treed Bog	LM = Lowland Mix Forest	R = Red Pine	W = White Pine
E = Swamp Hardwoods	M = Maple, Beech, Birch	S = Black Spruce	X = Non Stocked
F = Spruce/Fir	MC = Mixed Conifer	T = Tamarack	Y = Sand
G = Grass	MD = Mixed Deciduous	Z = Water	
H = Hemlock	N = Marsh		

Density

0 = Non Stocked	5 = Pole Timber Medium
1 = Seedling Sapling Poor	6 = Pole Timber Well
2 = Seedling Sapling Medium	7 = Saw Timber Poor
3 = Seedling Sapling Well	8 = Saw Timber Medium
4 = Pole Timber Poor	9 = Saw Timber Well

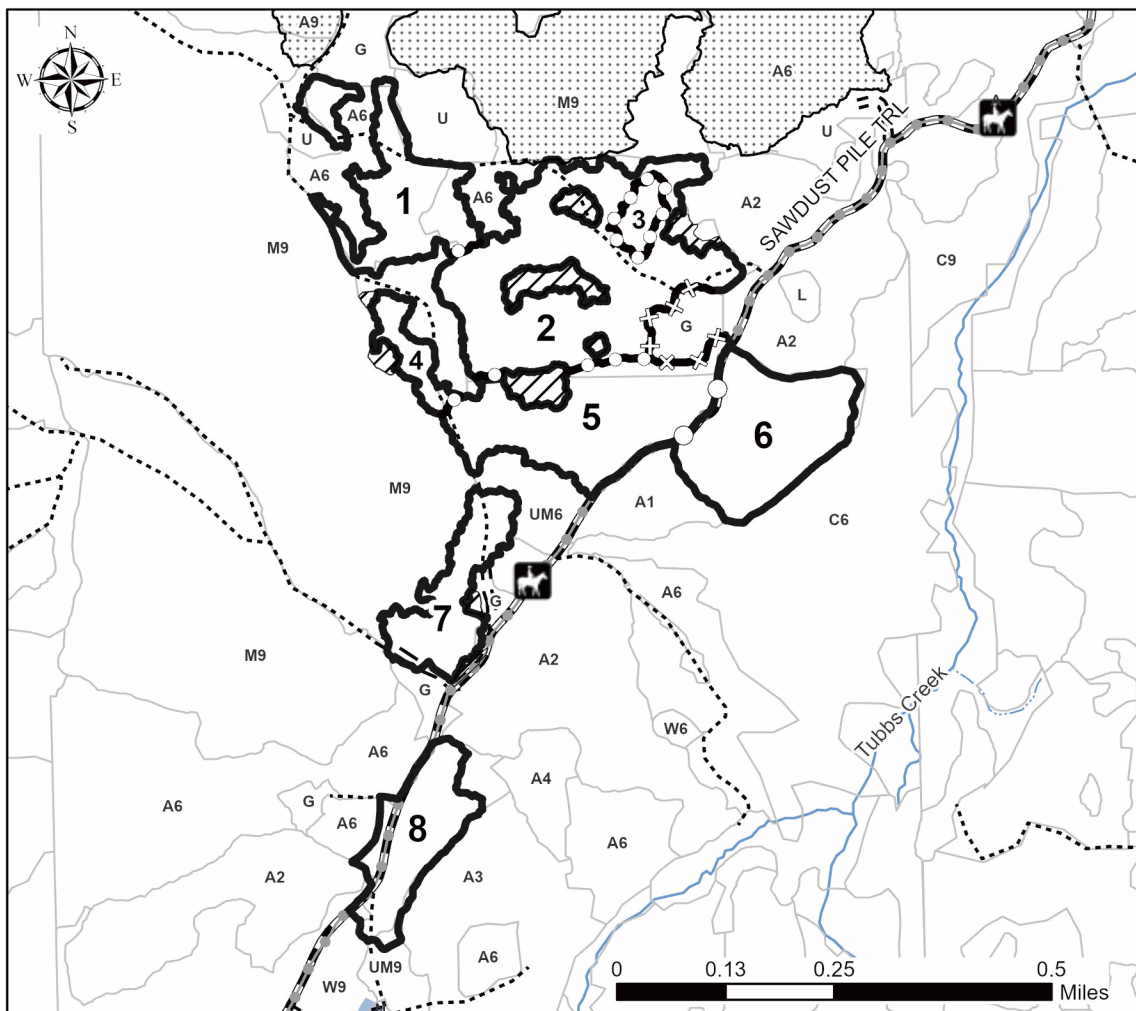
Locator Map 1:100,000



Payment Unit Number	Acres	Payment Unit Number	Acres
1	12.7	5	18.8
2	30.2	6	16.2
3	2.2	7	8.9
4	3.3	8	10.4

**Ice Bee Buzz
Aspen**

102.7 Acres



Legend

- Against State (Red)
- Against State (Unpainted)
- Payment Unit (Yellow)
- Payment Unit (Road)
- Retention Areas (Red)
- Nearby Timber Sales
- Recreational Trails
- Forest Access Route
- Administrative Access Only
- Government Gravel/Dirt
- Intermittent Stream
- Perennial River

Use QR Code to
open Map in App



TIMBER SALE INFORMATION

Ice Existential Crisis Aspen (53-026-25)
T32N, R01W, SEC. 1; T32N, R01W, SEC. 12.
Otsego County (Advertised Price \$19,546.30)

SALE NOTE: The Sale Area has received damage from the March 2025 ice storm The Purchaser should harvest the wood as soon as possible.

Payment Unit 1: The aspen in this area has an average of 40% damage to canopy; gets worse in the north and better in the south. Damage is to submerchantable wood and branches. Some whole tree blowdown exists.

Payment Unit 2: The trees marked for removal have over 70% of their canopy missing. Most of the damage is in smaller diameter and submerchantable wood.

Payment Unit 3: Canopy damage gets worse moving east to west; eastern sliver has 20% damage to canopies, western area has up to 60% damage, but most of the damage is just in the branches and submerchantable wood.

A timber sale contract for this lump sum, sealed bid timber sale will be awarded to the responsible bidder offering the highest sealed bid price. All units of volume listed below were estimated using the Inventory Manager computer program and the new Michigan taper model. Bids must be at or above the following advertised price for each product and species:

<u>PRODUCTS & SPECIES</u>	<u>ESTIMATED UNITS*</u>		<u>ADVERTISED PRICE</u>
Sawtimber			
Basswood	21.0	MBF	\$ 33.00 / MBF
Mixed Aspen	72.7	MBF	\$ 21.00 / MBF
Red Maple	16.1	MBF	\$ 45.00 / MBF
Sugar Maple	17.0	MBF	\$ 116.00 / MBF
Pulpwood			
Balsam Fir	330	Cords	\$ 10.80 / Cord
Basswood	42	Cords	\$ 6.30 / Cord
Mixed Aspen	803	Cords	\$ 10.20 / Cord
Mixed Hardwood	341	Cords	\$ 6.45 / Cord
Red Pine	9	Cords	\$ 11.35 / Cord
White Pine	21	Cords	\$ 12.55 / Cord
White Spruce	5	Cords	\$ 9.15 / Cord

* The total volume is statistically estimated within plus (+) or minus (-) 22.11 percent. There are an estimated 1,857 cords on this timber sale, plus or minus 411 cords at the 95% confidence level. The estimated units are final and not subject to adjustment. Prospective bidders are urged to examine this timber and to make their own estimates of quantity and quality.

BOND AND PAYMENT SCHEDULE:

1. A bond in the amount of \$1,955.00 to insure faithful performance of the conditions of the contract will be deposited by the successful bidder within 21 days of the sale award.
2. Cutting in any sale or unit without the required advance payment would be considered a trespass.
3. Total payment must be paid in advance or according to the following schedule:
 - (a) Ten percent (10%) of the sale value must be paid within 21 days of the sale award.
 - (b) The 10% down payment will be credited towards the first unit cut.

(c) Payment for each of the following units must be made before cutting begins in that unit:

<u>PAYMENT UNIT NUMBER</u>	<u>PERCENT OF TOTAL SALE VALUE</u>
01	8.8%
02	22.1%
03	69.1%

4. If no cutting takes place, the 10% down payment will not be refunded.
5. Operations on the contract issued will terminate on 06/30/2027.

SALE STATISTICS

Volumes were calculated in cubic feet using the Michigan taper model. Cubic foot volume includes all wood inside bark for the product indicated. For display purposes, cubic feet were converted to cords and MBF using a simple conversion factor, e.g. 79 cubic feet per cord and 185 cubic feet per MBF. The cubic foot volumes are precise; the cords and MBF volumes are not. Cubic foot volume cannot be directly converted to cords or boards with precision.

SALE VOLUMES

The total estimated sale volume may not equal the sum of the species/products due to the nature of statistical calculations associated with double sampling methodology.

VOLUME			STATISTICAL RANGE IN CORDS	
TOTAL CUBIC FEET	TOTAL CORDS	PERCENT ERROR	MINIMUM	MAXIMUM
146,711	1,857	22.11%	1,446	2,268

VDU VOLUMES

A VDU is a Volume Determination Unit. Volumes and their associated statistics are calculated at the VDU level and summarized to the sale level. There is often a one to one relationship between a VDU and a Payment Unit, but not always, depending on the cruise design. Refer to the VDU TO PAYMENT UNIT table.

	VOLUME			RANGE IN CORDS	
VDU	TOTAL CUBIC FEET	TOTAL CORDS	PERCENT ERROR	MINIMUM	MAXIMUM
77	22,001	278	66.26%	94	463
82	74,459	943	32.63%	635	1,250
92	36,349	460	40.40%	274	646
93	13,902	176	74.03%	46	306
TOTAL:	146,711	1,857		1,049	2,665

VDU TO PAYMENT UNIT

When a VDU is associated with more than one Payment Unit (PU), the VDU volumes are assigned to the PU based on acres of the VDU within the PU.

VDU	VDU ACRES	PU	PU ACRES
TOTAL:			

DESCRIPTION OF TIMBER BY PAYMENT UNIT (PU)

PU	MARKET GROUP	PRODUCT	QUANTITY	UNIT	ACRES	ADVERTISE PRICE
1	Mixed Aspen	Pulpwood	150	Cords	7.3	\$1,728.20
	<i>B. T. Aspen</i>		150	<i>Cords</i>		
	Mixed Hardwood		21	Cords		
	<i>Red Maple</i>		21	<i>Cords</i>		
	White Pine		5	Cords		
	<i>White Pine</i>		5	<i>Cords</i>		
2	Basswood	Sawtimber	17.0	MBF	21.7	\$4,322.20
	Mixed Aspen		17.1	MBF		
	<i>B. T. Aspen</i>		17.1	<i>MBF</i>		
	Red Maple		7.2	MBF		
	Sugar Maple		17.0	MBF		
	Basswood	Pulpwood	39	Cords		
	Mixed Aspen		54	Cords		
	<i>B. T. Aspen</i>		54	<i>Cords</i>		
	Mixed Hardwood		48	Cords		
	<i>Red Maple</i>		5	<i>Cords</i>		
	<i>Sugar Maple</i>		43	<i>Cords</i>		
3	Basswood	Sawtimber	4.0	MBF	50.3	\$13,495.90
	Mixed Aspen		55.6	MBF		
	<i>B. T. Aspen</i>		25.5	<i>MBF</i>		
	<i>Quaking Aspen</i>		30.1	<i>MBF</i>		
	Red Maple		8.9	MBF		
	Balsam Fir	Pulpwood	330	Cords		
	<i>Balsam Fir</i>		<i>Sawtimber</i>	13.4		
	<i>Balsam Fir</i>	<i>Pulpwood</i>	303	<i>Cords</i>		
	Basswood		3	Cords		
	Mixed Aspen		599	Cords		
	<i>B. T. Aspen</i>		76	<i>Cords</i>		
	<i>Quaking Aspen</i>		523	<i>Cords</i>		
	Mixed Hardwood		272	Cords		
	<i>Black Cherry</i>		7	<i>Cords</i>		
	<i>Ironwood</i>		4	<i>Cords</i>		
	<i>Paper Birch</i>		8	<i>Cords</i>		
	<i>Pin Cherry</i>		11	<i>Cords</i>		
	<i>Red Maple</i>		238	<i>Cords</i>		
	<i>White Ash</i>		4	<i>Cords</i>		
	Red Pine		9	Cords		
	<i>Red Pine</i>	<i>Sawtimber</i>	3.5	<i>MBF</i>		
	<i>Red Pine</i>	<i>Pulpwood</i>	2	<i>Cords</i>		
	White Pine		16	Cords		
	<i>White Pine</i>	<i>Sawtimber</i>	3.7	<i>MBF</i>		
	<i>White Pine</i>	<i>Pulpwood</i>	9	<i>Cords</i>		
	White Spruce		5	Cords		
TOTAL:			126.8	MBF		
TOTAL:			1,551	Cords		

Sale Specific Conditions & Requirements

Sale Name: Ice Existential Crisis Aspen

Sale Number: 53-026-25 Seq#: 1

1 - Sale Area

1.2 - Boundaries

1.2.1 - Painted Boundaries (9/19)

The sale boundary and Payment Unit boundaries are marked and identified by red and yellow paint, and the grassy openings. Exterior sale boundary lines against state are marked with red paint. The grassy openings are not painted. Interior Payment Unit boundaries are marked with yellow paint. The red painted boundary line trees are not Included Timber and are to be protected. Yellow painted trees designating an interior Payment Unit boundary are only to be cut if they are aspen or they are marked with orange paint, after all surrounding Payment Units have been paid.

2 - Timber Specifications

2.1 - Included Timber

2.1.1 - Clearcut Unit(s) with Unmerchantable Trees (6/14)

Within Payment Unit(s) 1 and 3, cut all trees that are two (2) inches or more at DBH, except:

In PU1, do not cut any red or white pine over 16" dbh, and do not cut any oak or hemlock.

In PU 3, do not cut any oak, white pine, hemlock, cedar, or sugar maple.

Note that the Purchaser has the option of harvesting aspen blowdown in Payment Unit #'s 1-2. These downed trees may not be harvested until all standing timber has been cut and skidded to the landing in each respective Payment Unit.

All downed timber that is harvested must be piled separately and will be scaled by the timber Sale Administrator. Scaled timber will be invoiced as additional timber.

2.1.3 - Cut Tree Marked Unit(s) (12/08)

Within Payment Unit(s) 2, all trees are designated for cutting when marked with orange paint above and below stump height, regardless of merchantability. In addition, all aspen is unmarked and designated for cutting.

4 - Transportation

4.1 - Construction

4.1.3 - Slash and Earthen Piles (8/04)

Piles or windrows of earth along roads and landings that have been widened or constructed shall be leveled. Slash from road maintenance or construction, including stumps, shall be dispersed throughout the sale.

4.1.7 - Road Closure (10/11)

Overgrown roads that are reopened must be blocked to vehicle traffic upon completion of the sale. In general, this will require constructing a four (4') foot high berm of stumps and logs covered with earth. Stumps and brush must be placed along the remainder of the trail.

4.1.12 - No New Roads (1/12)

No new roads will be permitted in any Payment Unit. All operations are limited to existing roads. Only Skid trails will be allowed.

4.2 - Maintenance

4.2.4 - Grading (10/16)

For completion of the sale, state forest roads must be graded. In general, this will require a road grader or bulldozer to shape up the roads after forest products have been hauled off site. This includes cleaning of drainage areas, grading, crowning and filling with gravel, if necessary. The grading equipment to be used must be approved by the Unit Manager or his/her representative.

4.2.5 - Two Wheel Drive Condition (2/04)

All existing trail roads on and adjacent to the Sale Area must be passable by two-wheel drive traffic for the duration of the sale.

5 - Operations

5.1 - Notification

5.1.1 - Pre-sale Conference (10/16)

A pre-sale conference on site between the Purchaser and Sale Administrator is required prior to beginning any operations. The Unit Manager or his/her representative must be contacted at least 3 days in advance to schedule the conference.

5.1.4 - Post-Sale Conference (10/16)

A post-sale conference on site between the Purchaser and sale administrator is required 2 days prior to the completion of active logging operations to determine clean-up and repair of landings, road edges, and the fulfillment of other contract specifications.

5.2 - Conduct of Operations

5.2.4 - Dead and Down Creation

5.2.4.2 - Dead and Down Creation, Hare and Grouse (1/25)

To improve habitat for snowshoe hare, grouse, and other species, the Purchaser is to leave one (1) existing downed tree on the ground for every two (2) acres. They should be scattered throughout the sale or positioned per the Sale Administrator's instructions.

5.2.32 - Decking/Landing Restoration (9/13)

All decking and landing areas must have the surface area restored to a condition equal to or better than before. This is to ensure the proper regeneration of the stand. Wood debris, chips and "cookies" from trimmings must be removed or scattered away from landing and loading areas and may not be windrowed on the edge.

5.2.38 - No Decking Against Live Trees (2/04)

Cut products may not be decked against unmarked or designated leave trees.

5.2.43 - Opening Protection (2/21)

Activities, like decking, are only permitted along the edges of the openings. These openings are marked on the Timber Sale Map with the letter "G". Any damage to the openings shall be repaired according to specifications of the Unit Manager or his/her representative.

5.4 - Soil Protection

5.4.1 - Rutting Restriction, General (7/16)

Operations are to cease immediately if equipment and weather conditions result in rutting of roads and/or skid trails which are 12 inches or greater in depth and 25 feet in length. The Unit Manager or his/her representative may restrict hauling and/or skidding if ruts exceed the specified depth. With the Unit Manager or his/her representative's approval, the Purchaser may return to the area when the risk of rutting has decreased.

5.8 - Protection of Endangered Species

5.8.5 - Protection of Raptor Nests (3/13)

All trees with raptor nests will be protected if found during harvesting operations. Notification will be made to the Unit Manager or his/her representative who will notify the Wildlife Biologist so an onsite evaluation and recommendation can be made, if necessary.

6 - Safety and Fire Prevention

6.2 - Signing

6.2.1 - Road Posting (10/20)

The Purchaser is responsible for posting and maintaining caution signs on Hardwood Lake Rd and Blue Lakes Rd prior to beginning operations. The road must be posted at appropriate distances from the Sale Area to warn of logging activity and

truck traffic. Signs must be removed when harvest operations are suspended or completed. The Purchaser will provide these signs.

7 - Other Conditions

7.2 - Extensions

7.2.2 - No Extensions (3/09)

There will be no extensions granted on this contract.

7.2.8 - Salvage Extension with Restrictions (6/25)

This is a salvage sale that should be harvested promptly. One (1), twelve (12) month extension can be applied to one (1) other State Forest Timber Sale Contract owned by the purchaser or owned by one (1) designated sub-contractor of the Purchaser that works this contract. To qualify, operations on this contract must be completed by March 31, 2026. If this is the first extension on the other State Forest Timber Sale Contract, then the 5% extension fee will be waived. If this is an additional extension, the 10% fee will be reduced to 5%. This specification does not alleviate the purchaser from any contractual obligations of the extended State Forest Timber Sale Contract. Per General Condition & Requirement 7.2, extensions are at the sole discretion of the DNR.

7.5 - Loss

7.5.1 - Deteriorating Timber (7/09)

The Sale Area has received damage from the March 2025 ice storm. The Purchaser should harvest the wood as soon as possible. The Department of Natural Resources is held free of responsibility of any further damage or deterioration due to delay in harvesting.

TIMBER SALE MAP

This information provided by authority of Part 525, 1994 PA 451, as amended.

Sale Number

53-026-25

Date _____

08/09/2025

Forest Management Unit		County	Mapped By: Mittig	Scale 1:15,840	Page 1	Of 1
Pigeon River Country Mgt Unit		Otsego	Cruised By: Sanborn			
Township 32N	Range 01W	Section(s) and Subdivision(s) Sec. 1 S1/2SE; Sec. 12 NE,E1/2SE;				

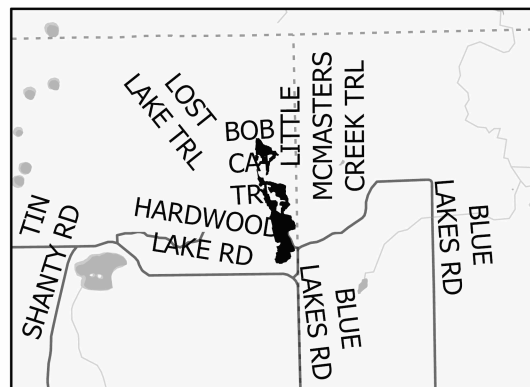
Cover Type

A = Aspen	J = Jack Pine	O = Oak	U = Upland Brush
B = Paper Birch	K = Rock	P = Lowland Poplar	UM = Upland Mix Forest
C = Cedar	L = Lowland Brush	Q = Mixed Swamp Conifer	V = Bog or Marsh
D = Treed Bog	LM = Lowland Mix Forest	R = Red Pine	W = White Pine
E = Swamp Hardwoods	M = Maple, Beech, Birch	S = Black Spruce	X = Non Stocked
F = Spruce/Fir	MC = Mixed Conifer	T = Tamarack	Y = Sand
G = Grass	MD = Mixed Deciduous		Z = Water
H = Hemlock	N = Marsh		

Density

0 = Non Stocked	5 = Pole Timber Medium
1 = Seedling Sapling Poor	6 = Pole Timber Well
2 = Seedling Sapling Medium	7 = Saw Timber Poor
3 = Seedling Sapling Well	8 = Saw Timber Medium
4 = Pole Timber Poor	9 = Saw Timber Well

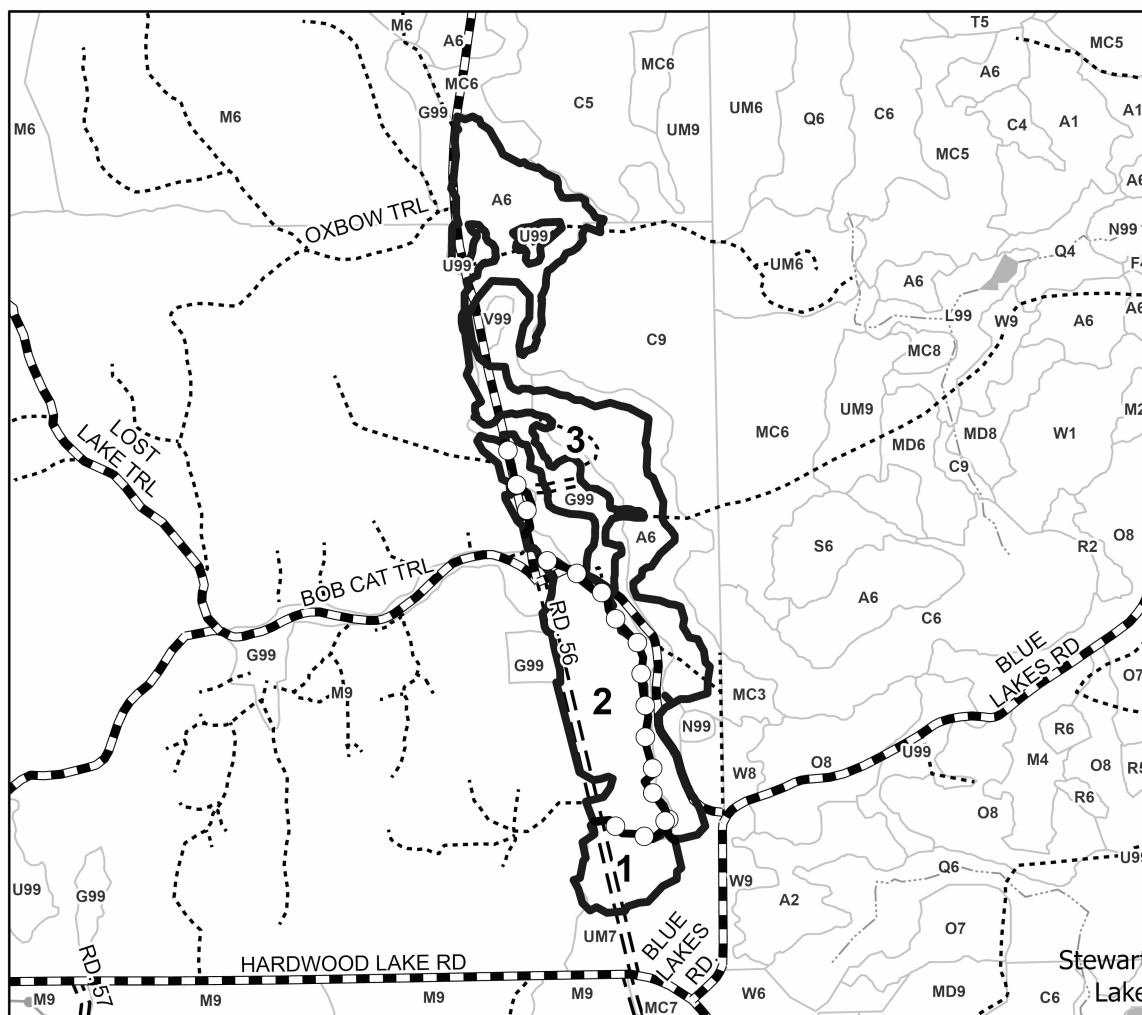
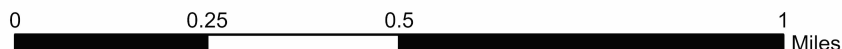
Locator Map 1:100,000



Payment Unit Number	Acres
1	7.3
2	21.7
3	50.2

Ice Existential Crisis Aspen

79.3 Acres



Legend

-  Against State (Red)
-  Payment Unit (Yellow)
-  Forest Access Route
-  Administrative Access Only
-  Government Gravel/Dirt
-  Recreational Trails

Use QR Code to
open Map in App



TIMBER SALE INFORMATION

Ice Hurdle Aspen (53-027-25)

T32N, R01E, SEC. 6; T33N, R01E, SEC. 30; T33N, R01E, SEC. 31.
Cheboygan County (Advertised Price \$35,391.70)

SALE NOTE: This is a salvage sale that should be harvested promptly.

Payment Unit 1, 40% damage to aspen crowns, branchwood.

Payment Unit 2 40% canopy damage to aspen, but it varies throughout; some tops broken off entirely, others lost 10% of branches, some tip ups.

Payment Unit 3, 70% damage to aspen crowns, mostly submerchantable and branches.

Payment Unit 4, 70% damage to aspen crowns, mostly submerchantable and branches.

Payment Unit 5 65% damage to aspen crowns, mostly submerchantable and branches.

Payment Unit 6, 40% damage to aspen crowns, mostly submerchantable and branches, but some tip ups, too.

Payment Unit 7 60% damage to aspen crowns, mostly submerchantable and branches.

A timber sale contract for this lump sum, sealed bid timber sale will be awarded to the responsible bidder offering the highest sealed bid price. All units of volume listed below were estimated using the Inventory Manager computer program and the new Michigan taper model. Bids must be at or above the following advertised price for each product and species:

<u>PRODUCTS & SPECIES</u>	<u>ESTIMATED UNITS*</u>	<u>ADVERTISED PRICE</u>
Pulpwood		
Balsam Fir	253 Cords	\$ 10.80 / Cord
Black Spruce	13 Cords	\$ 9.15 / Cord
Mixed Aspen	2,812 Cords	\$ 10.20 / Cord
Mixed Hardwood	340 Cords	\$ 6.45 / Cord
Red Pine	129 Cords	\$ 11.35 / Cord
White Pine	16 Cords	\$ 12.55 / Cord

* The total volume is statistically estimated within plus (+) or minus (-) 16.21 percent. There are an estimated 3,569 cords on this timber sale, plus or minus 579 cords at the 95% confidence level. The estimated units are final and not subject to adjustment. Prospective bidders are urged to examine this timber and to make their own estimates of quantity and quality.

BOND AND PAYMENT SCHEDULE:

1. A bond in the amount of \$3,539.00 to insure faithful performance of the conditions of the contract will be deposited by the successful bidder within 21 days of the sale award.
2. Cutting in any sale or unit without the required advance payment would be considered a trespass.
3. Total payment must be paid in advance or according to the following schedule:
 - (a) Ten percent (10%) of the sale value must be paid within 21 days of the sale award.
 - (b) The 10% down payment will be credited towards the first unit cut.
 - (c) Payment for each of the following units must be made before cutting begins in that unit:

PAYMENT UNIT NUMBER	PERCENT OF TOTAL SALE VALUE
01	15.9%
02	5.8%
03	12.8%
04	16.8%
05	13.4%
06	30.8%
07	4.5%
4. If no cutting takes place, the 10% down payment will not be refunded.
5. Operations on the contract issued will terminate on 06/30/2027.

SALE STATISTICS

Volumes were calculated in cubic feet using the Michigan taper model. Cubic foot volume includes all wood inside bark for the product indicated. For display purposes, cubic feet were converted to cords and MBF using a simple conversion factor, e.g. 79 cubic feet per cord and 185 cubic feet per MBF. The cubic foot volumes are precise; the cords and MBF volumes are not. Cubic foot volume cannot be directly converted to cords or boards with precision.

SALE VOLUMES

The total estimated sale volume may not equal the sum of the species/products due to the nature of statistical calculations associated with double sampling methodology.

VOLUME			STATISTICAL RANGE IN CORDS	
TOTAL CUBIC FEET	TOTAL CORDS	PERCENT ERROR	MINIMUM	MAXIMUM
281,916	3,569	16.21%	2,990	4,147

VDU VOLUMES

A VDU is a Volume Determination Unit. Volumes and their associated statistics are calculated at the VDU level and summarized to the sale level. There is often a one to one relationship between a VDU and a Payment Unit, but not always, depending on the cruise design. Refer to the VDU TO PAYMENT UNIT table.

	VOLUME			RANGE IN CORDS	
VDU	TOTAL CUBIC FEET	TOTAL CORDS	PERCENT ERROR	MINIMUM	MAXIMUM
7	84,057	1,064	26.11%	786	1,342
50	45,705	579	44.94%	319	839
53	37,243	471	48.96%	241	702
54	12,985	164	55.58%	73	256
58	48,261	611	31.82%	417	805
72	37,493	475	69.66%	144	805
85	16,173	205	41.77%	119	290
TOTAL:	281,916	3,569		2,098	5,039

VDU TO PAYMENT UNIT

When a VDU is associated with more than one Payment Unit (PU), the VDU volumes are assigned to the PU based on acres of the VDU within the PU.

VDU	VDU ACRES	PU	PU ACRES
TOTAL:			

DESCRIPTION OF TIMBER BY PAYMENT UNIT (PU)

PU	MARKET GROUP	PRODUCT	QUANTITY	UNIT	ACRES	ADVERTISE PRICE
1	Balsam Fir Mixed Aspen <i>B. T. Aspen</i> <i>Quaking Aspen</i> Mixed Hardwood <i>Red Maple</i> Red Pine White Pine	Pulpwood	9 441 212 229 87 87 25 16	Cords Cords Cords Cords Cords Cords Cords Cords	20.9	\$5,641.10
2	Balsam Fir Black Spruce Mixed Aspen <i>B. T. Aspen</i> Mixed Hardwood <i>Red Maple</i> <i>Basswood</i> <i>Red Maple</i>	Pulpwood <i>Sawtimber</i> <i>Pulpwood</i>	32 6 159 159 7 0.7 5 1	Cords Cords Cords Cords Cords MBF Cords Cords	4.1	\$2,067.45
3	Balsam Fir Black Spruce Mixed Aspen <i>B. T. Aspen</i> <i>Quaking Aspen</i> Mixed Hardwood <i>Basswood</i> <i>Red Maple</i> <i>White Ash</i> <i>Basswood</i> <i>Ironwood</i> <i>Red Maple</i> <i>White Ash</i> Red Pine	Pulpwood <i>Sawtimber</i> <i>Pulpwood</i>	29 7 225 26 199 104 2.2 1.1 1.7 55 22 5 13 104	Cords Cords Cords Cords Cords Cords MBF MBF MBF Cords Cords Cords Cords Cords	16.9	\$4,523.45
4	Balsam Fir Mixed Aspen <i>Quaking Aspen</i> Mixed Hardwood <i>White Ash</i> <i>Beech</i> <i>Ironwood</i> <i>Red Maple</i> <i>White Ash</i>	Pulpwood <i>Sawtimber</i> <i>Pulpwood</i>	15 524 524 70 2.4 12 5 19 29	Cords Cords Cords Cords MBF Cords Cords Cords Cords	13.2	\$5,958.30
5	Balsam Fir Mixed Aspen <i>B. T. Aspen</i> <i>Quaking Aspen</i> Mixed Hardwood <i>Black Ash</i> <i>White Ash</i>	Pulpwood	10 436 285 151 30 23 7	Cords Cords Cords Cords Cords Cords Cords	11.2	\$4,748.70
6	Balsam Fir Mixed Aspen <i>B. T. Aspen</i> <i>Quaking Aspen</i> Mixed Hardwood <i>Beech</i> <i>Red Maple</i>	Pulpwood	158 881 44 837 25 4 21	Cords Cords Cords Cords Cords Cords Cords	21.1	\$10,853.85
7	Mixed Aspen <i>B. T. Aspen</i>	Pulpwood	146 146	Cords Cords	7.9	\$1,598.85

DESCRIPTION OF TIMBER BY PAYMENT UNIT (PU), CON'T

PU	MARKET GROUP	PRODUCT	QUANTITY	UNIT	ACRES	ADVERTISE PRICE
7 con't	Mixed Hardwood	Pulpwood	17	Cords		
	<i>Basswood</i>	<i>Sawtimber</i>	2.8	<i>MBF</i>		
	<i>Basswood</i>	<i>Pulpwood</i>	7	<i>Cords</i>		
	<i>Ironwood</i>		4	<i>Cords</i>		
TOTAL:			3,563	Cords		

Sale Specific Conditions & Requirements

Sale Name: Ice Hurdle Aspen

Sale Number: 53-027-25 Seq#: 1

1 - Sale Area

1.2 - Boundaries

1.2.1 - Painted Boundaries (9/19)

The sale boundary and Payment Unit boundaries are marked and identified by blue, red and yellow paint, or grassy openings ('G' or 'U' stands). Exterior sale boundary lines against private property are marked with blue paint. Exterior sale boundary lines against state are marked with red paint. The grassy openings are not painted. Interior Payment Unit boundaries are marked with yellow paint. Retention patches are marked with red paint; no harvesting activities may occur within these areas. The painted boundary line trees are not Included Timber and are to be protected unless marked with orange paint. Yellow painted trees designating an interior Payment Unit boundary are only to be cut when all surrounding Payment Units have been paid.

2 - Timber Specifications

2.1 - Included Timber

2.1.1 - Clearcut Unit(s) with Unmerchantable Trees (6/14)

Within Payment Unit(s) 1-7, cut all trees that are two (2) inches or more at DBH, except as follows:

In PU1, do not cut any oak or the conifers growing within 15 feet of an oak.

In PU 2, do not cut sugar maple, white pine, or paper birch.

In PU 3, do not cut sugar maple.

In PU 4, Do not cut sugar maple, hemlock, or white pine.

In PU 5, do not cut sugar maple, hemlock, or cedar, if present.

In PU 6, do not cut sugar maple.

In PU 7, do not cut sugar maple, unless it has been ringed in pink for operability.

In accordance with General Condition 3.4, no damage is acceptable to merchantable trees. Clearcutting unit boundaries are not Included Timber and are to be protected, unless marked in orange paint.

Note that the Purchaser has the option of harvesting aspen blowdown in the sale area. These downed trees may not be harvested until all standing timber has been cut and skidded to the landing in each respective Payment Unit.

All downed timber that is harvested must be piled separately and will be scaled by the timber Sale Administrator. Scaled timber will be invoiced as additional timber.

3 - Payments

3.4 - Damaged Timber

3.4.2 - Special Protection Trees (1/25)

The Purchaser shall not cut live or dead special protection trees within cutting units or clearings. Special protection trees are marked with orange paint or designated species, size, etc. If Purchaser's operations have cut or damaged special protection trees through carelessness, the Purchaser shall pay \$\$ as fixed, agreed and liquidated damages for each special protection tree cut or damaged. Such payment does not constitute ownership of the undesignated timber.

4 - Transportation

4.1 - Construction

4.1.3 - Slash and Earthen Piles (8/04)

Piles or windrows of earth along roads and landings that have been widened or constructed shall be leveled. Slash from road maintenance or construction, including stumps, shall be dispersed throughout the sale.

4.1.12 - No New Roads (1/12)

No new roads will be permitted. All operations are limited to existing roads. Only Skid trails will be allowed.

4.2 - Maintenance

4.2.4 - Grading (10/16)

For completion of the sale, state forest roads must be graded. In general, this will require a road grader or bulldozer to shape up the roads after forest products have been hauled off site. This includes cleaning of drainage areas, grading, crowning and filling with gravel, if necessary. The grading equipment to be used must be approved by the Unit Manager or his/her representative.

4.2.5 - Two Wheel Drive Condition (2/04)

All existing trail roads on and adjacent to the Sale Area must be passable by two-wheel drive traffic for the duration of the sale.

4.4 - Access

4.4.3 - Access gate (12/08)

The access gate must be locked at the completion of each day unless otherwise approved by the Unit Manager or his/her representative.

5 - Operations

5.1 - Notification

5.1.1 - Pre-sale Conference (10/16)

A pre-sale conference on site between the Purchaser and Sale Administrator is required prior to beginning any operations. The Unit Manager or his/her representative must be contacted at least three (3) days in advance to schedule the conference.

5.1.4 - Post-Sale Conference (10/16)

A post-sale conference on site between the Purchaser and sale administrator is required two (2) days prior to the completion of active logging operations to determine clean-up and repair of landings, road edges, and the fulfillment of other contract specifications.

5.2 - Conduct of Operations

5.2.2 - Hazard Trees/Snags

5.2.2.1 - Den Trees (10/16)

Obvious hollow and/or den trees shall be protected and left standing unless they are a safety hazard.

5.2.32 - Decking/Landing Restoration (9/13)

All decking and landing areas must have the surface area restored to a condition equal to or better than before. This is to ensure the proper regeneration of the stand. Wood debris, chips and "cookies" from trimmings must be removed or scattered away from landing and loading areas and may not be windrowed on the edge. Landings may not be placed in managed wildlife openings, and their location is up to the discretion of the unit manager or his/her representative.

5.2.38 - No Decking Against Live Trees (2/04)

Cut products may not be decked against unmarked or designated leave trees.

5.2.43 - Opening Protection (2/21)

No activities are permitted in openings marked on the Timber Sale Map with the letter "G" or "U", except on the very edges of the openings. Any damage to the openings shall be repaired according to specifications of the Unit Manager or his/her representative.

5.4 - Soil Protection

5.4.1 - Rutting Restriction, General (7/16)

Operations are to cease immediately if equipment and weather conditions result in rutting of roads and/or skid trails which are 12 inches or greater in depth and 25 feet in length. The Unit Manager or his/her representative may restrict hauling and/or skidding if ruts exceed the specified depth. With the Unit Manager or his/her representative's approval, the Purchaser may return to the area when the risk of rutting has decreased.

5.8 - Protection of Endangered Species

5.8.5 - Protection of Raptor Nests (3/13)

All trees with raptor nests will be protected if found during harvesting operations. Notification will be made to the Unit Manager or his/her representative who will notify the Wildlife Biologist so an onsite evaluation and recommendation can be made, if necessary.

6 - Safety and Fire Prevention

6.2 - Signing

6.2.1 - Road Posting (10/20)

The Purchaser is responsible for posting and maintaining caution signs on Clark Bridge Road prior to beginning operations. The road must be posted at appropriate distances from the Sale Area to warn of logging activity and truck traffic. Signs must be removed when harvest operations are suspended or completed. The Purchaser will provide these signs.

7 - Other Conditions

7.2 - Extensions

7.2.2 - No Extensions (3/09)

There will be no extensions granted on this contract.

7.2.8 - Salvage Extension with Restrictions (6/25)

This is a salvage sale that should be harvested promptly. One (1), twelve (12) month extension can be applied to one (1) other State Forest Timber Sale Contract owned by the purchaser or owned by one (1) designated sub-contractor of the Purchaser that works this contract. To qualify, operations on this contract must be completed by March 31, 2026. If this is the first extension on the other State Forest Timber Sale Contract, then the 5% extension fee will be waived. If this is an additional extension, the 10% fee will be reduced to 5%. This specification does not alleviate the purchaser from any contractual obligations of the extended State Forest Timber Sale Contract. Per General Condition & Requirement 7.2, extensions are at the sole discretion of the DNR.

7.5 - Loss

7.5.1 - Deteriorating Timber (7/09)

The Sale Area has received damage from the March 2025 Ice Storm. The Purchaser should harvest the wood as soon as possible. The Department of Natural Resources is held free of responsibility of any further damage or deterioration due to delay in harvesting.



TIMBER SALE MAP

This information provided by authority of Part 525, 1994 PA 451, as amended.

Sale Number

53-027-25

Date

08/10/2025

Forest Management Unit

County

Mapped By: Mittig

Scale

Page

Of

Pigeon River Country Mgt Unit

Cheboygan

Cruised By: Shingleton Unit Staff

1:10,000

1

2

Township
32N / 33N

Range
01E

Section(s) and
Subdivision(s) Sec. 30 E1/2SE; Sec. 31 N1/2SW,SESW,SE; Sec. 6 W1/2NE;

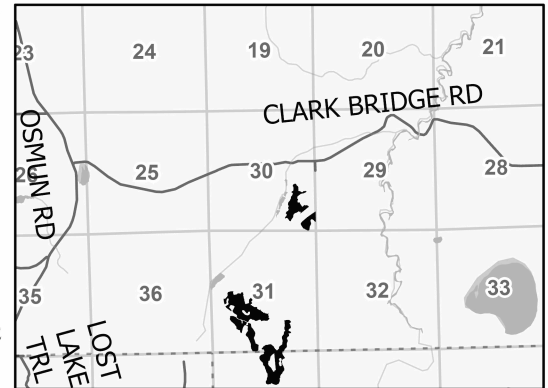
Cover Type

A = Aspen	J = Jack Pine	O = Oak	U = Upland Brush
B = Paper Birch	K = Rock	P = Lowland Poplar	UM = Upland Mix Forest
C = Cedar	L = Lowland Brush	Q = Mixed Swamp Conifer	V = Bog or Marsh
D = Treed Bog	LM = Lowland Mix Forest	R = Red Pine	W = White Pine
E = Swamp Hardwoods	M = Maple, Beech, Birch	S = Black Spruce	X = Non Stocked
F = Spruce/Fir	MC = Mixed Conifer	T = Tamarack	Y = Sand
G = Grass	MD = Mixed Deciduous		Z = Water
H = Hemlock	N = Marsh		

Density

0 = Non Stocked	5 = Pole Timber Medium
1 = Seedling Sapling Poor	6 = Pole Timber Well
2 = Seedling Sapling Medium	7 = Saw Timber Poor
3 = Seedling Sapling Well	8 = Saw Timber Medium
4 = Pole Timber Poor	9 = Saw Timber Well

Locator Map 1:100,000

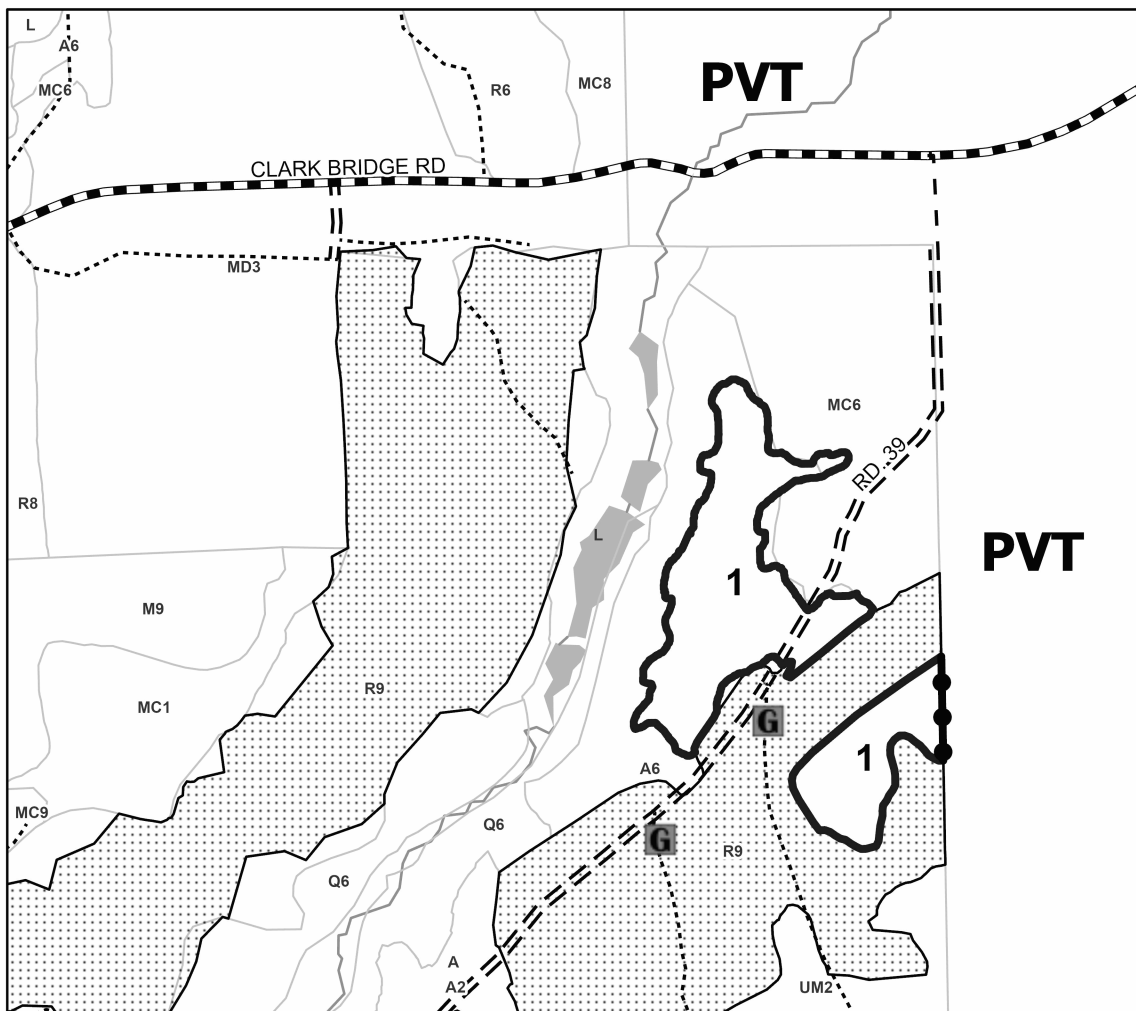


**Ice Hurdle
Aspen**

95.3 Acres

Payment Unit Number	Acres	Payment Unit Number	Acres
1	20.9	5	11.3
2	4.1	6	21
3	16.9	7	7.9
4	13.2		

0 0.15 0.3 0.6 Miles



Legend

- Against State (Red)
- Private Line (Blue)
- Stand
- Nearby Timber Sale
- Forest Access Route
- Administrative Access Only
- Government Gravel/Dirt
- Private Gravel/Dirt
- Gate

Use QR Code to
open Map in App





TIMBER SALE MAP

This information provided by authority of Part 525, 1994 PA 451, as amended.

Sale Number

53-027-25

Date

08/10/2025

Forest Management Unit

County

Mapped By: Mittig

Scale

Page

Of

Pigeon River Country Mgt Unit

Cheboygan

Cruised By: Shingleton Unit Staff

1:11,000

2

2

Township
32N / 33N

Range
01E

Section(s) and
Subdivision(s) Sec. 30 E1/2SE; Sec. 31 N1/2SW,SESW,SE; Sec. 6 W1/2NE;

Cover Type

A = Aspen	J = Jack Pine	O = Oak	U = Upland Brush
B = Paper Birch	K = Rock	P = Lowland Poplar	UM = Upland Mix Forest
C = Cedar	L = Lowland Brush	Q = Mixed Swamp Conifer	V = Bog or Marsh
D = Treed Bog	LM = Lowland Mix Forest	R = Red Pine	W = White Pine
E = Swamp Hardwoods	M = Maple, Beech, Birch	S = Black Spruce	X = Non Stocked
F = Spruce/Fir	MC = Mixed Conifer	T = Tamarack	Y = Sand
G = Grass	MD = Mixed Deciduous	Z = Water	
H = Hemlock	N = Marsh		

Density

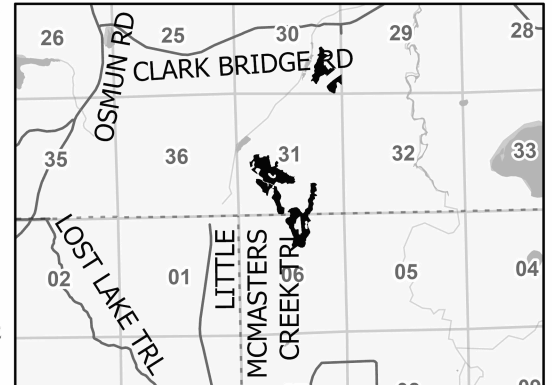
0 = Non Stocked	5 = Pole Timber Medium
1 = Seedling Sapling Poor	6 = Pole Timber Well
2 = Seedling Sapling Medium	7 = Saw Timber Poor
3 = Seedling Sapling Well	8 = Saw Timber Medium
4 = Pole Timber Poor	9 = Saw Timber Well

Payment Unit Number	Acres	Payment Unit Number	Acres
1	20.9	5	11.3
2	4.1	6	21
3	16.9	7	7.9
4	13.2		

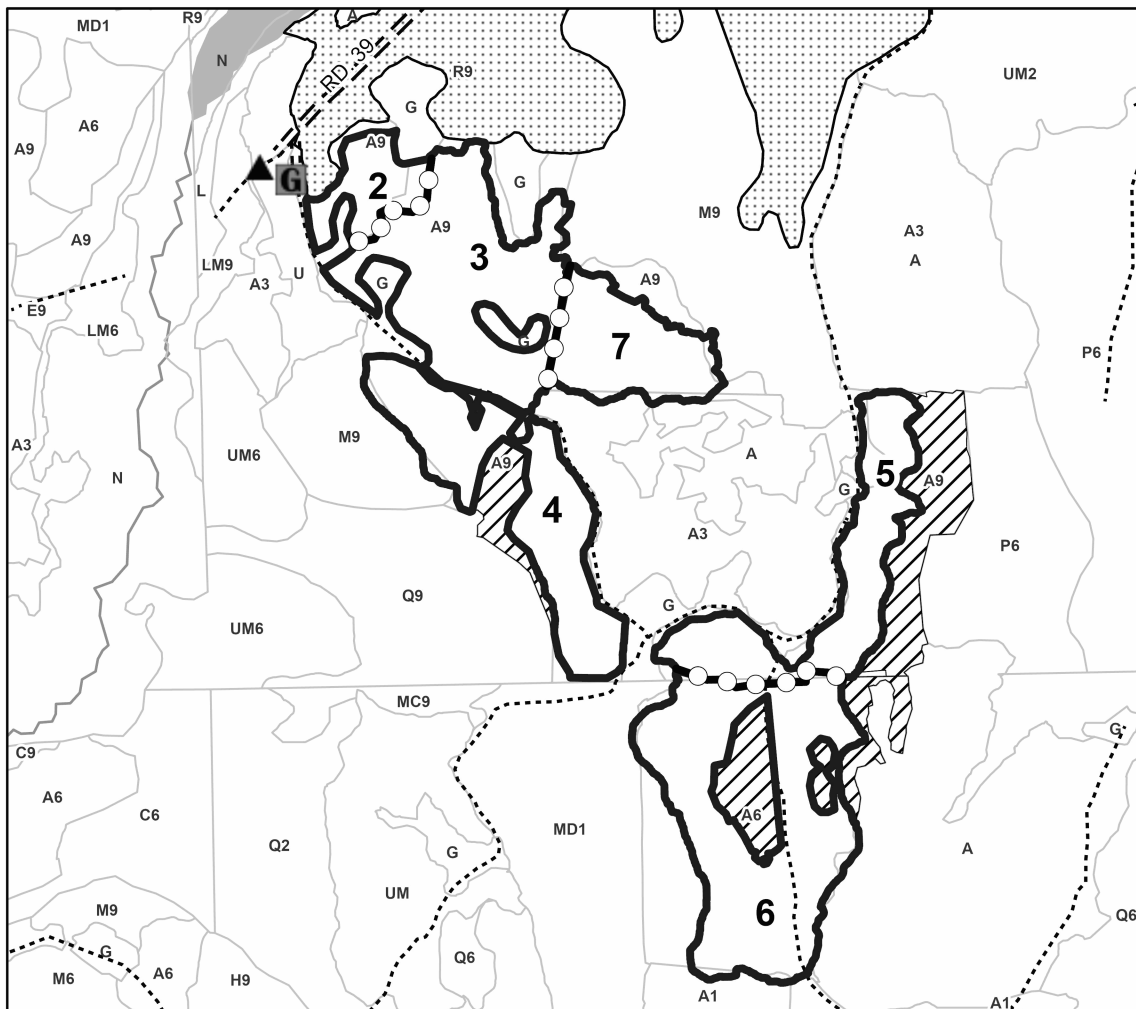
**Ice Hurdle
Aspen**

95.3 Acres

Locator Map 1:100,000



0 0.17 0.35 0.7 Miles



Legend

- Against State (Red)
- Payment Unit (Yellow)
- Stand
- Retention Areas
- Nearby Timber Sale
- Forest Access Route
- Administrative Access Only
- Berm
- Gate

Use QR Code to
open Map in App



Ice Jigsaw Aspen (53-023-25)

T33N, R01W, SEC. 24; T33N, R01W, SEC. 25; Cheboygan COUNTY

In response to the notice of sale to be held 9:00 a.m. (local time) on September 4, 2025, I am hereby submitting my sealed bid (firm offer) for the following forest products to be cut. Bids for individual species must be at or above the advertised price. All non-responsive bid forms may be rejected.

<u>PRODUCTS & SPECIES</u>	<u>ESTIMATED VOLUME*</u>	<u>ADVERTISED PRICE</u>	<u>BID PRICE/UNIT</u>
Sawtimber			
Quaking Aspen	11.1 MBF	\$ 21.00/MBF	\$ _____
Pulpwood			
Mixed Aspen	321 Cords	\$ 10.20/Cord	\$ _____

*The volumes are statistically estimated within plus (+) or minus (-) 56.06 percent at 95% confidence level. These estimated volumes are final and not subject to adjustment. Prospective bidders are urged to examine this timber and to make their own estimates of quantity and quality.

I understand that any or all bids may be rejected. All bids must be signed and all bid items must be bid or the bid form may be rejected. I also understand that consideration and awarding a contract will be based upon my past performance and ability to complete the contract based upon equipment and staffing subject to my control.

FEDERAL ID: ____ - ____ - ____ or SOCIAL SECURITY NUMBER: ____ - ____ - ____

Company or individual bidding: _____

Company representative's name: _____

Address: _____

City: _____ State: _____ Zip: _____

IF AVAILABLE, PLEASE PLACE THE PERSONALIZED LABEL FROM YOUR PROSPECTUS IN THE ABOVE BOX.

Individual or company representative's signature: _____ Date: _____

Phone number : _____ Email (optional): _____

**THE WINNING BIDDER MUST COMPLETE THE VERIFICATION OF WORKER'S DISABILITY COMPENSATION ACT
COMPLIANCE (ON REVERSE SIDE IF DOUBLE SIDED) WITHIN 21 DAYS OF SALE AWARD DATE**



TIMBER SALE VERIFICATION OF WORKER'S DISABILITY COMPENSATION ACT COMPLIANCE

As required by Act 317, P.A. 1969 (Worker's Compensation) and
Part 5 of Act 451 of 1994, as amended.

FOR DEPARTMENT USE ONLY

Sale Number (XX - XXX - XX - XX)

Forest Management Unit:

VERIFICATION OF WORKER'S DISABILITY COMPENSATION ACT COMPLIANCE

- This verification must be completed and submitted within 21 days of contract award and prior to the issuance of the timber sale contract.
- In addition, if boxes 2B or 2C are checked, then Notice of Exclusion or Certificate of Insurance must be submitted within twenty-one (21) days of the contract award and prior to the issuance of the timber sale contract.
- All Information must be typed or printed except for written signatures.

Please Check Appropriate Categories:

1. My business is organized as (you **must** check one of the boxes below):
 - A. ☐ Sole Proprietorship (individual)
 - B. ☐ Partnership
 - C. ☐ Corporation
2. You **must** check one of the boxes below:
 - A. ☐ I certify my business is a sole proprietorship and it has no employees but the sole proprietor. I am not subject to the Worker's Compensation Laws.
 - B. ☐ I certify my business has satisfied its obligation to the Worker's Compensation Act through the use of an approved Notice of Exclusion (BWC-337, Rev. 5/96). I will provide a copy of the Notice of Exclusion within 21 days of the contract award. (For questions or a copy of the BWC-337, please call the Worker's Compensation Bureau at 517-322-1195).
 - C. ☐ I certify my business has a Worker's Compensation Policy. I will provide an original Certificate of Insurance within twenty-one (21) days of the contract award.
3. If you have checked item 2(A) or 2(B), you **must** indicate the number of **both** full-time and part-time employees, other than yourself, including family members and active partners (if none, you must enter "0").

_____ Full-time Employees

_____ Part-time Employees

Name of Business		Federal ID (or) Social Security No.
Address		Telephone ()
City	State	ZIP

I hereby certify that the above information is true and correct. I agree to notify the Michigan DNR of any changes that occur in factors affecting my coverage during any of my present and future operations.

Signature of Owner or Authorized Representative

Title

Date

Please complete the "SEALED BID" information on the next page

Ice Bee Buzz Aspen (53-024-25)

T31N, R01W, SEC. 11; T31N, R01W, SEC. 14; Otsego COUNTY

In response to the notice of sale to be held 9:00 a.m. (local time) on September 4, 2025, I am hereby submitting my sealed bid (firm offer) for the following forest products to be cut. Bids for individual species must be at or above the advertised price. All non-responsive bid forms may be rejected.

<u>PRODUCTS & SPECIES</u>	<u>ESTIMATED VOLUME*</u>	<u>ADVERTISED PRICE</u>	<u>BID PRICE/UNIT</u>
Sawtimber			
Red Maple	7.3 MBF	\$ 45.00/MBF	\$ _____
Pulpwood			
Balsam Fir	4 Cords	\$ 10.80/Cord	\$ _____
Basswood	22 Cords	\$ 6.30/Cord	\$ _____
Mixed Aspen	2,721 Cords	\$ 10.20/Cord	\$ _____
Mixed Hardwood	390 Cords	\$ 6.45/Cord	\$ _____
White Pine	27 Cords	\$ 12.55/Cord	\$ _____

*The volumes are statistically estimated within plus (+) or minus (-) 19.05 percent at 95% confidence level. These estimated volumes are final and not subject to adjustment. Prospective bidders are urged to examine this timber and to make their own estimates of quantity and quality.

I understand that any or all bids may be rejected. All bids must be signed and all bid items must be bid or the bid form may be rejected. I also understand that consideration and awarding a contract will be based upon my past performance and ability to complete the contract based upon equipment and staffing subject to my control.

FEDERAL ID: ____ - ____ - ____ or SOCIAL SECURITY NUMBER: ____ - ____ - ____

Company or individual bidding: _____

Company representative's name: _____

Address: _____

City: _____ State: _____ Zip: _____

IF AVAILABLE, PLEASE PLACE THE PERSONALIZED LABEL FROM YOUR PROSPECTUS IN THE ABOVE BOX.

Individual or company representative's signature: _____ Date: _____

Phone number : _____ Email (optional): _____

**THE WINNING BIDDER MUST COMPLETE THE VERIFICATION OF WORKER'S DISABILITY COMPENSATION ACT
COMPLIANCE (ON REVERSE SIDE IF DOUBLE SIDED) WITHIN 21 DAYS OF SALE AWARD DATE**



TIMBER SALE
VERIFICATION OF WORKER'S DISABILITY
COMPENSATION ACT COMPLIANCE

*As required by Act 317, P.A. 1969 (Worker's Compensation) and
Part 5 of Act 451 of 1994, as amended.*

FOR DEPARTMENT USE ONLY

Sale Number (XX - XXX - XX - XX)

Forest Management Unit:

VERIFICATION OF WORKER'S DISABILITY COMPENSATION ACT COMPLIANCE

- This verification must be completed and submitted within 21 days of contract award and prior to the issuance of the timber sale contract.
- In addition, if boxes 2B or 2C are checked, then Notice of Exclusion or Certificate of Insurance must be submitted within twenty-one (21) days of the contract award and prior to the issuance of the timber sale contract.
- All information must be typed or printed except for written signatures.

Please Check Appropriate Categories:

1. My business is organized as (you **must** check one of the boxes below):
 - A. ☐ Sole Proprietorship (individual)
 - B. ☐ Partnership
 - C. ☐ Corporation
2. You **must** check one of the boxes below:
 - A. ☐ I certify my business is a sole proprietorship and it has no employees but the sole proprietor. I am not subject to the Worker's Compensation Laws.
 - B. ☐ I certify my business has satisfied its obligation to the Worker's Compensation Act through the use of an approved Notice of Exclusion (BWC-337, Rev. 5/96). I will provide a copy of the Notice of Exclusion within 21 days of the contract award. (For questions or a copy of the BWC-337, please call the Worker's Compensation Bureau at 517-322-1195).
 - C. ☐ I certify my business has a Worker's Compensation Policy. I will provide an original Certificate of Insurance within twenty-one (21) days of the contract award.
3. If you have checked item 2(A) or 2(B), you **must** indicate the number of **both** full-time and part-time employees, other than yourself, including family members and active partners (if none, you must enter "0").

_____ Full-time Employees

_____ Part-time Employees

Name of Business		Federal ID (or) Social Security No.
Address		Telephone ()
City	State	ZIP

I hereby certify that the above information is true and correct. I agree to notify the Michigan DNR of any changes that occur in factors affecting my coverage during any of my present and future operations.

Signature of Owner or Authorized Representative

Title

Date

Please complete the "SEALED BID" information on the next page

Ice Existential Crisis Aspen (53-026-25)
T32N, R01W, SEC. 1; T32N, R01W, SEC. 12; Otsego COUNTY

In response to the notice of sale to be held 9:00 a.m. (local time) on September 4, 2025, I am hereby submitting my sealed bid (firm offer) for the following forest products to be cut. Bids for individual species must be at or above the advertised price. All non-responsive bid forms may be rejected.

<u>PRODUCTS & SPECIES</u>	<u>ESTIMATED VOLUME*</u>	<u>ADVERTISED PRICE</u>	<u>BID PRICE/UNIT</u>
Sawtimber			
Basswood	21.0 MBF	\$ 33.00/MBF	\$ _____
Mixed Aspen	72.7 MBF	\$ 21.00/MBF	\$ _____
Red Maple	16.1 MBF	\$ 45.00/MBF	\$ _____
Sugar Maple	17.0 MBF	\$ 116.00/MBF	\$ _____
Pulpwood			
Balsam Fir	330 Cords	\$ 10.80/Cord	\$ _____
Basswood	42 Cords	\$ 6.30/Cord	\$ _____
Mixed Aspen	803 Cords	\$ 10.20/Cord	\$ _____
Mixed Hardwood	341 Cords	\$ 6.45/Cord	\$ _____
Red Pine	9 Cords	\$ 11.35/Cord	\$ _____
White Pine	21 Cords	\$ 12.55/Cord	\$ _____
White Spruce	5 Cords	\$ 9.15/Cord	\$ _____

*The volumes are statistically estimated within plus (+) or minus (-) 22.11 percent at 95% confidence level. These estimated volumes are final and not subject to adjustment. Prospective bidders are urged to examine this timber and to make their own estimates of quantity and quality.

I understand that any or all bids may be rejected. All bids must be signed and all bid items must be bid or the bid form may be rejected. I also understand that consideration and awarding a contract will be based upon my past performance and ability to complete the contract based upon equipment and staffing subject to my control.

FEDERAL ID: _____ or SOCIAL SECURITY NUMBER: _____
 Company or individual bidding: _____
 Company representative's name: _____
 Address: _____
 City: _____ State: _____ Zip: _____

IF AVAILABLE, PLEASE PLACE THE PERSONALIZED LABEL FROM YOUR PROSPECTUS IN THE ABOVE BOX.

Individual or company representative's signature: _____ Date: _____

Phone number : _____ Email (optional): _____

**THE WINNING BIDDER MUST COMPLETE THE VERIFICATION OF WORKER'S DISABILITY COMPENSATION ACT
COMPLIANCE (ON REVERSE SIDE IF DOUBLE SIDED) WITHIN 21 DAYS OF SALE AWARD DATE**



TIMBER SALE VERIFICATION OF WORKER'S DISABILITY COMPENSATION ACT COMPLIANCE

As required by Act 317, P.A. 1969 (Worker's Compensation) and
Part 5 of Act 451 of 1994, as amended.

FOR DEPARTMENT USE ONLY

Sale Number (XX - XXX - XX - XX)

Forest Management Unit:

VERIFICATION OF WORKER'S DISABILITY COMPENSATION ACT COMPLIANCE

- This verification must be completed and submitted within 21 days of contract award and prior to the issuance of the timber sale contract.
- In addition, if boxes 2B or 2C are checked, then Notice of Exclusion or Certificate of Insurance must be submitted within twenty-one (21) days of the contract award and prior to the issuance of the timber sale contract.
- All Information must be typed or printed except for written signatures.

Please Check Appropriate Categories:

1. My business is organized as (you **must** check one of the boxes below):
 - A. ☐ Sole Proprietorship (individual)
 - B. ☐ Partnership
 - C. ☐ Corporation
2. You **must** check one of the boxes below:
 - A. ☐ I certify my business is a sole proprietorship and it has no employees but the sole proprietor. I am not subject to the Worker's Compensation Laws.
 - B. ☐ I certify my business has satisfied its obligation to the Worker's Compensation Act through the use of an approved Notice of Exclusion (BWC-337, Rev. 5/96). I will provide a copy of the Notice of Exclusion within 21 days of the contract award. (For questions or a copy of the BWC-337, please call the Worker's Compensation Bureau at 517-322-1195).
 - C. ☐ I certify my business has a Worker's Compensation Policy. I will provide an original Certificate of Insurance within twenty-one (21) days of the contract award.
3. If you have checked item 2(A) or 2(B), you **must** indicate the number of **both** full-time and part-time employees, other than yourself, including family members and active partners (if none, you must enter "0").

_____ Full-time Employees

_____ Part-time Employees

Name of Business		Federal ID (or) Social Security No.
Address		Telephone ()
City	State	ZIP

I hereby certify that the above information is true and correct. I agree to notify the Michigan DNR of any changes that occur in factors affecting my coverage during any of my present and future operations.

Signature of Owner or Authorized Representative

Title

Date

Please complete the "SEALED BID" information on the next page

Ice Hurdle Aspen (53-027-25)

T32N, R01E, SEC. 6; T33N, R01E, SEC. 30; T33N, R01E, SEC. 31; Cheboygan

In response to the notice of sale to be held 9:00 a.m. (local time) on September 4, 2025, I am hereby submitting my sealed bid (firm offer) for the following forest products to be cut. Bids for individual species must be at or above the advertised price. All non-responsive bid forms may be rejected.

<u>PRODUCTS & SPECIES</u>	<u>ESTIMATED VOLUME*</u>	<u>ADVERTISED PRICE</u>	<u>BID PRICE/UNIT</u>
Pulpwood			
Balsam Fir	253 Cords	\$ 10.80/Cord	\$ _____
Black Spruce	13 Cords	\$ 9.15/Cord	\$ _____
Mixed Aspen	2,812 Cords	\$ 10.20/Cord	\$ _____
Mixed Hardwood	340 Cords	\$ 6.45/Cord	\$ _____
Red Pine	129 Cords	\$ 11.35/Cord	\$ _____
White Pine	16 Cords	\$ 12.55/Cord	\$ _____

*The volumes are statistically estimated within plus (+) or minus (-) 16.21 percent at 95% confidence level. These estimated volumes are final and not subject to adjustment. Prospective bidders are urged to examine this timber and to make their own estimates of quantity and quality.

I understand that any or all bids may be rejected. All bids must be signed and all bid items must be bid or the bid form may be rejected. I also understand that consideration and awarding a contract will be based upon my past performance and ability to complete the contract based upon equipment and staffing subject to my control.

FEDERAL ID: ____ - ____ - ____ or SOCIAL SECURITY NUMBER: ____ - ____ - ____

Company or individual bidding: _____

Company representative's name: _____

Address: _____

City: _____ State: _____ Zip: _____

IF AVAILABLE, PLEASE PLACE THE PERSONALIZED LABEL FROM YOUR PROSPECTUS IN THE ABOVE BOX.

Individual or company representative's signature: _____ Date: _____

Phone number : _____ Email (optional): _____

**THE WINNING BIDDER MUST COMPLETE THE VERIFICATION OF WORKER'S DISABILITY COMPENSATION ACT
COMPLIANCE (ON REVERSE SIDE IF DOUBLE SIDED) WITHIN 21 DAYS OF SALE AWARD DATE**



TIMBER SALE VERIFICATION OF WORKER'S DISABILITY COMPENSATION ACT COMPLIANCE

As required by Act 317, P.A. 1969 (Worker's Compensation) and
Part 5 of Act 451 of 1994, as amended.

FOR DEPARTMENT USE ONLY

Sale Number (XX - XXX - XX - XX)

Forest Management Unit:

VERIFICATION OF WORKER'S DISABILITY COMPENSATION ACT COMPLIANCE

- This verification must be completed and submitted within 21 days of contract award and prior to the issuance of the timber sale contract.
- In addition, if boxes 2B or 2C are checked, then Notice of Exclusion or Certificate of Insurance must be submitted within twenty-one (21) days of the contract award and prior to the issuance of the timber sale contract.
- All information must be typed or printed except for written signatures.

Please Check Appropriate Categories:

1. My business is organized as (you **must** check one of the boxes below):
 - A. ☐ Sole Proprietorship (individual)
 - B. ☐ Partnership
 - C. ☐ Corporation
2. You **must** check one of the boxes below:
 - A. ☐ I certify my business is a sole proprietorship and it has no employees but the sole proprietor. I am not subject to the Worker's Compensation Laws.
 - B. ☐ I certify my business has satisfied its obligation to the Worker's Compensation Act through the use of an approved Notice of Exclusion (BWC-337, Rev. 5/96). I will provide a copy of the Notice of Exclusion within 21 days of the contract award. (For questions or a copy of the BWC-337, please call the Worker's Compensation Bureau at 517-322-1195).
 - C. ☐ I certify my business has a Worker's Compensation Policy. I will provide an original Certificate of Insurance within twenty-one (21) days of the contract award.
3. If you have checked item 2(A) or 2(B), you **must** indicate the number of **both** full-time and part-time employees, other than yourself, including family members and active partners (if none, you must enter "0").

_____ Full-time Employees

_____ Part-time Employees

Name of Business		Federal ID (or) Social Security No.
Address		Telephone ()
City	State	ZIP

I hereby certify that the above information is true and correct. I agree to notify the Michigan DNR of any changes that occur in factors affecting my coverage during any of my present and future operations.

Signature of Owner or Authorized Representative

Title

Date

Please complete the "SEALED BID" information on the next page