



**DEPARTMENT OF NATURAL RESOURCES
STATE OF MICHIGAN
TIMBER SALE PROSPECTUS #7502**

SCHEDULED SALE DATE AND TIME: 10:00 a.m. (local time) on October 28, 2024.

LOCATION: SAULT DNR CUSTOMER SERVICE CENTER, 4131 S. M-129, SAULT STE MARIE, MI 49783.

PROSPECTUS NOTE: The bidder is advised to inspect the sale area and review the location, estimated volumes, operating costs and contract terms of proposed sales. Please be aware that some landowners may request 60 days or more notice for access across their land.

Notice is hereby given that bids will be received by the Unit Manager, SAULT STE MARIE MANAGEMENT UNIT, for certain timber on the following described lands:

Hard Times at Taylor Creek (45-007-24) / T43N, R01W, SEC. 19, SW,W1/2SE.

T43N, R01W, SEC. 20, E1/2SW,SE.

T43N, R01W, SEC. 21, NWSW.

T43N, R01W, SEC. 30, NENW.

Mackinac County, Advertised Price \$36,568.95, 199.8 Acres, Hardwood, Spruce/Fir/Tamarack, Sugar Maple.

SALE NOTE: Access may be through private land.

Clear the Way (45-008-24) / T43N, R01W, SEC. 19, NENE.

T43N, R01W, SEC. 20, NWNW,S1/2NW,S1/2NE.

T43N, R01W, SEC. 27, NWNW.

T43N, R01W, SEC. 28, E1/2NE.

Mackinac County, Advertised Price \$16,994.75, 83.8 Acres, Aspen, Spruce/Fir/Tamarack.

SALE NOTE: Private property access to Payment Units 3 & 4. Permission to operate through private property is required to bid on this sale.

Access may be through private land.

GNA2 Grouper (45-804-24) / T46N, R06W, SEC. 21, SE.

T46N, R06W, SEC. 22, W1/2SW.

T46N, R06W, SEC. 27, NWNW,SWSW.

T46N, R06W, SEC. 28, N1/2NE,SESE.

T46N, R06W, SEC. 33, NE,NESE.

T46N, R06W, SEC. 34, NW,W1/2NE,NWSW.

Chippewa County, Advertised Price \$34,350.75, 196.6 Acres, Aspen, Hardwood.

SALE NOTE: GNA Sale. Winter only. Sale is off of M-28 and has no hauling restrictions during breakup. Units 1-4 will be accessed by a wet, winter only road that will need to be frozen in.

Access may be through other public land.

BID INSTRUCTIONS (VER. 10/10/2022):

1. Scheduled Bid Location, Date, and Time (2/11)

Bids must be received by the Unit Manager, SAULT STE MARIE OFFICE, 4131 S. M-129, Sault Ste Marie, MI 49783, no later than 10:00 a.m. (local time) on October 28, 2024. For further information concerning this sale, contact Kenny Fanelli at 906-287-1380 extension .

2. Bidder's Qualifications (10/22)

If all or part of a timber sale was prepared by a private contractor, the contractor and that contractor's company are not permitted to bid on the timber sale. A person must be 18 years of age or older to purchase timber. Permanent employees of the Department of Natural Resources or members of their immediate household may not bid. Former employees, in the permanent or seasonal class, may not bid until 3 months after the last day of active duty. Bids will not be accepted from individuals or companies appearing on the DNR/FRD No-Bid List. This list contains the names of purchasers who previously failed to execute a contract within 21-days or who have a history of poor performance.

3. Preparation of Sealed Bids (5/16)

Bid Forms may be completed online thru Michigan DNR Timber Sale Online Bidding (OLB) at www.michigan.gov/timberbidding or by completing the hardcopy Bid Form found in the Timber Sale Prospectus . Hardcopy Bid Forms shall be manually signed in ink. Registration in OLB is considered your 'signature' for all bids submitted thru that system. Bid prices must be entered for each species and product in the Bid Price column for all material subject to bidding and all fill-in blanks must be completed. If erasures or other changes appear on the hardcopy Bid Form, each erasure or change must be initialed by the person signing the bid.

4. Submission of Sealed Bids (5/16)

Bid forms may be obtained from the Unit Manager or thru OLB. Bids may be submitted hardcopy or thru OLB. All hardcopy bids must be submitted on the bid form and in an envelope clearly identified as described in this section. NOTE: Only one bid form per bid envelope. Sealed bids must be submitted to the Unit office designated in the prospectus and must be submitted at or prior to the time established in the prospectus. The envelope should show on the outside (a) the sale name or number and (b) the date and time of bid opening, as shown in the prospectus. Bids received after the time specified in the sale prospectus are late bids and will be rejected.

It is possible for a bidder to submit multiple bids on a single sale. For example, a bid may be submitted hardcopy and a bid may be submitted thru OLB. Or, two bidders from the same company could both submit bids on the same sale. If this were to happen, the State would accept all bids received and award the contract accordingly. All bidding and contractual requirements would apply to all bids received.

5. Public Opening of Sealed Bids (7/16)

If conditions permit, the sealed bids will be publicly opened and posted at the time and place set in the prospectus.

If a bidder, present at a bid opening, has submitted bids on more than one sale, that bidder may withdraw their unopened bid envelopes or announce the withdrawal of their online bid after being declared the successful bidder on one sale.

6. Award of Contract (1/11)

Award of the contract will be made to the Bidder whose bid, conforming to the prospectus, is most advantageous to the State of Michigan on the basis of total value at rates bid for the estimated quantities. The State reserves the right to reject any bid or waive any minor irregularity in bids received. A written award mailed (or otherwise furnished) to the successful Bidder shall be deemed to result in a binding contract without further action by either party.

7. Down Payment (1/11)

The Bidder to whom award is made must make a down payment within 21 days of the sale award. The amount of the down payment will be calculated as shown in the Bond and Payment Schedule of this prospectus. Only cash may be used to meet this requirement.

8. Performance Security (1/11)

As guarantee of faithful performance, a cash bond, certificate of deposit, surety bond or irrevocable letter of credit (LOC) is required within 21 days of the sale award. The amount of the performance security is shown in the Bond and

Payment Schedule of this prospectus. If an LOC or surety is used, the coverage must extend for at least 6 months beyond the contract expiration.

9. Worker's Compensation (10/22)

Purchaser shall obtain worker's compensation insurance to cover claims under Michigan's Worker's Disability Compensation Act of 1969 or similar employee benefit act of any other state applicable to an employee. Verification of Worker's Disability Compensation Act Compliance must be completed and submitted within 21 days of contract award and prior to the issuance of the timber sale contract. In addition, if applicable, Notice of Exclusion or Certificate of Insurance must also be submitted.

10. Timber Sale Contract (10/22)

Additional conditions and requirements common to all timber sales are listed on the timber sale contract (R4031) and are available on line at www.michigan.gov/timber. Contact the Unit Manager for additional information or a sample contract. Within 21 days of the date of the award letter, the bidder must sign the contract and provide the required down payment, performance security, and verification of worker's disability compensation. The down payment and performance security shall be in accordance with the provisions of the timber sale contract, in the sums stated in this prospectus. If these actions are not taken, then the Bidder, the Bidder's corporation, and the corporation's principals may not be permitted to bid on State timber sales for a period of 3 months after the first offense, 6 months after the second offense, and 1 year after the third offense. An offense will only be counted against the Bidder for 5 years. In addition, the Bidder certifies that if awarded this contract, the Bidder will complete the timber sale contract in accordance with its terms and any modifications thereof including requirements to purchase, cut, and remove the included timber by the expiration date.

Payment Unit values in the State Forest Timber Sale Contract are calculated based on the advertised value of the Payment Unit as a percentage of the total advertised value of the contract. The advertised value of each Payment Unit is given in the Description of Timber by Payment Unit table on the Timber Sale Information page. For example, if the value of Payment Unit 1 is advertised as \$1,500 and the total Timber Sale value is advertised as \$10,000, the contract price for Payment Unit 1 will be 15% of the total bid price ($\$1,500/\$10,000 * 100$).

11. Disclaimer of Estimates and Bidder's Warranty of Inspection (10/22)

Before submitting this bid, the Bidder is advised and cautioned to inspect the sale area, review the requirements of the sale contract, and take other steps as may be reasonably necessary to ascertain the location, estimated volumes, construction estimates, and operating costs of the proposed sale. Failure to do so will not relieve the Bidder from responsibility for completing the contract.

The Bidder warrants that this bid is submitted solely on the basis of the Bidder's examination and inspection of the quality and quantity of the timber offered for sale and the Bidder's opinion of the value thereof and the costs of recovery. No reliance should be placed on the State of Michigan's estimates of timber quality, quantity or costs of recovery. Bidder further acknowledges that the State of Michigan: (i) expressly disclaims any warranty of fitness of timber for any purpose; (ii) offers this timber as is without any warranty of quality (merchantability) or quantity and (iii) expressly disclaims any warranty as to the quantity or quality of timber sold.

12. Certification and Chain-of-Custody (10/22)

Unless otherwise indicated in the contract under section 7 – Other Conditions of the Sale Specific Conditions & Requirements, the area encompassed by this timber sale is certified to the standards of the Forest Stewardship Council (FSC) - Certificate #SCS-FM/COC-00090N and the Sustainable Forestry Initiative (SFI) - Certificate #NSF-SFIS-5Y031-SF5. Forest products from this sale may be delivered to the mill as "FSC 100% and / or SFI certified" as long as the contractor hauling the forest products is chain-of-custody (COC) certified or covered under a COC certificate from the destination mill. The purchaser is responsible for maintaining COC after leaving the sale area.

13. Good Neighbor Authority (GNA) Requirements (10/22)

If the name of this timber sales contains the acronym GNA, it is authorized by the Good Neighbor Authority (GNA) and covered by various agreements between the U.S. Forest Service and the State. The timber sale occurs on federal land and the following conditions apply:

GNA contracts on US Forest Service land will not be awarded to purchasers on the Federal list of excluded parties. The System for Award Management (SAM) will be checked for active excluded parties prior to award of contract. In

addition, the Bidder to whom award is made must complete an Assurance Regarding Felony Conviction or Tax Delinquent Status for Corporate Applicants (AD-3031).

14. Good Neighbor Authority (GNA) Requirements, con't (10/22)

Bidder certifies, by signing this bid form, that to the best of Bidder's knowledge that the following representations are accurate and complete.

- a. That the Bidder and its principals are not presently debarred, suspended, proposed for debarment, declared ineligible, or voluntary excluded from timber sales (covered transactions) by any Federal department or agency.
- b. That the Bidder and its principals have not within a 3-year period preceding this bid been convicted of or had a civil judgment rendered against them for commission of fraud or a criminal offense in connection with obtaining , attempting to obtain, or performing a public (Federal, State, or local) transaction or contract under a public transaction; violation of Federal or State antitrust statutes or commission of embezzlement, theft, forgery, bribery, falsification or destruction of records, making false statements, or receiving stolen property.
- c. That the Bidder and its principals are not presently indicted for or otherwise criminally or civilly charged by a governmental entity (Federal, State, or local) with commission of any of the offenses enumerated in paragraph b of this certification.
- d. That the Bidder and its principals have not within a 3-year period preceding this bid had one or more public transactions (Federal, State, or local) terminated for breach or default of a timber or forest product contract.

Bidders that cannot certify this requirement, in whole or in part, shall submit an explanation with their bid.

Scott Bowen
Director

TIMBER SALE INFORMATION

Hard Times at Taylor Creek (45-007-24)

T43N, R01W, SEC. 19; T43N, R01W, SEC. 20; T43N, R01W, SEC. 21; T43N, R01W, SEC. 30.
Mackinac County (Advertised Price \$36,568.95)

SALE NOTE: Access may be through private land.

A timber sale contract for this lump sum, sealed bid timber sale will be awarded to the responsible bidder offering the highest sealed bid price. All units of volume listed below were estimated using the Inventory Manager computer program and the new Michigan taper model. Bids must be at or above the following advertised price for each product and species:

<u>PRODUCTS & SPECIES</u>	<u>ESTIMATED UNITS*</u>	<u>ADVERTISED PRICE</u>
Sawtimber		
Red Maple	5.8 MBF	\$ 110.00 / MBF
Sugar Maple	82.2 MBF	\$ 245.00 / MBF
Yellow Birch	1.3 MBF	\$ 56.00 / MBF
Pulpwood		
Balsam Fir	42 Cords	\$ 13.30 / Cord
Balsam Poplar	50 Cords	\$ 15.40 / Cord
Mixed Aspen	209 Cords	\$ 17.50 / Cord
Mixed Hardwood	509 Cords	\$ 15.00 / Cord
Mixed Spruce	116 Cords	\$ 15.10 / Cord
N. White Cedar	241 Cords	\$ 3.80 / Cord
Tamarack	162 Cords	\$ 1.95 / Cord
White Pine	5 Cords	\$ 22.95 / Cord

* The total volume is statistically estimated within plus (+) or minus (-) 14.54 percent. There are an estimated 1,541 cords on this timber sale, plus or minus 224 cords at the 95% confidence level. The estimated units are final and not subject to adjustment. Prospective bidders are urged to examine this timber and to make their own estimates of quantity and quality.

BOND AND PAYMENT SCHEDULE:

1. A bond in the amount of \$2,926.00 to insure faithful performance of the conditions of the contract will be deposited by the successful bidder within 21 days of the sale award.
2. Cutting in any sale or unit without the required advance payment would be considered a trespass.
3. Total payment must be paid in advance or according to the following schedule :
 - (a) Ten percent (10%) of the sale value must be paid within 21 days of the sale award.
 - (b) The 10% down payment will be credited towards the first unit cut.
 - (c) Payment for each of the following units must be made before cutting begins in that unit:

PAYMENT UNIT NUMBER	PERCENT OF TOTAL SALE VALUE
01	12.9%
02	9.0%
03	17.3%
04	15.6%
05	8.4%
06	11.6%
07	9.3%
08	10.9%
09	5.0%
4. If no cutting takes place, the 10% down payment will not be refunded.
5. Operations on the contract issued will terminate on 06/30/2028.

SALE STATISTICS

Volumes were calculated in cubic feet using the Michigan taper model. Cubic foot volume includes all wood inside bark for the product indicated. For display purposes, cubic feet were converted to cords and MBF using a simple conversion factor, e.g. 79 cubic feet per cord and 185 cubic feet per MBF. The cubic foot volumes are precise; the cords and MBF volumes are not. Cubic foot volume cannot be directly converted to cords or boards with precision.

SALE VOLUMES

The total estimated sale volume may not equal the sum of the species/products due to the nature of statistical calculations associated with double sampling methodology.

VOLUME			STATISTICAL RANGE IN CORDS	
TOTAL CUBIC FEET	TOTAL CORDS	PERCENT ERROR	MINIMUM	MAXIMUM
121,715	1,541	14.54%	1,317	1,765

VDU VOLUMES

A VDU is a Volume Determination Unit. Volumes and their associated statistics are calculated at the VDU level and summarized to the sale level. There is often a one to one relationship between a VDU and a Payment Unit, but not always, depending on the cruise design. Refer to the VDU TO PAYMENT UNIT table.

	VOLUME			RANGE IN CORDS	
VDU	TOTAL CUBIC FEET	TOTAL CORDS	PERCENT ERROR	MINIMUM	MAXIMUM
21	27,223	345	27.88%	249	441
29	17,515	222	30.95%	153	290
36	43,715	553	27.74%	400	707
37	33,262	421	27.95%	303	539
TOTAL:	121,715	1,541		1,105	1,977

VDU TO PAYMENT UNIT

When a VDU is associated with more than one Payment Unit (PU), the VDU volumes are assigned to the PU based on acres of the VDU within the PU.

VDU	VDU ACRES	PU	PU ACRES
21	78.1	6	28.4
		7	22.7
		8	27.0
29	9.7	9	9.7
		36	93.7
36	93.7	1	22.1
		2	15.4
		3	29.5
		4	26.7
37	18.3	5	18.3
TOTAL:	199.8		199.8

DESCRIPTION OF TIMBER BY PAYMENT UNIT (PU)

PU	MARKET GROUP	PRODUCT	QUANTITY	UNIT	ACRES	ADVERTISE PRICE
1	Red Maple	Sawtimber	1.1	MBF	22.1	\$4,710.00
	Sugar Maple		12.2	MBF		
	Mixed Aspen	Pulpwood	46	Cords		
	<i>B. T. Aspen</i>		21	<i>Cords</i>		
	<i>Quaking Aspen</i>		25	<i>Cords</i>		
	Mixed Hardwood		53	Cords		
	<i>Ironwood</i>		2	<i>Cords</i>		
	<i>Red Maple</i>		4	<i>Cords</i>		
	<i>Sugar Maple</i>		47	<i>Cords</i>		
	2	Red Maple	Sawtimber	0.8		
Sugar Maple			8.5	MBF		
Mixed Aspen		Pulpwood	31	Cords		
<i>B. T. Aspen</i>			14	<i>Cords</i>		
<i>Quaking Aspen</i>			17	<i>Cords</i>		
Mixed Hardwood			38	Cords		
<i>Ironwood</i>			2	<i>Cords</i>		
<i>Red Maple</i>			3	<i>Cords</i>		
<i>Sugar Maple</i>			33	<i>Cords</i>		
3		Red Maple	Sawtimber	1.5	MBF	29.5
	Sugar Maple		16.3	MBF		
	Balsam Fir	Pulpwood	1	Cords		
	Mixed Aspen		60	Cords		
	<i>B. T. Aspen</i>		27	<i>Cords</i>		
	<i>Quaking Aspen</i>		33	<i>Cords</i>		
	Mixed Hardwood		73	Cords		
	<i>Ironwood</i>		4	<i>Cords</i>		
	<i>Red Maple</i>		6	<i>Cords</i>		
	<i>Sugar Maple</i>		63	<i>Cords</i>		
4	Red Maple	Sawtimber	1.4	MBF	26.7	\$5,706.30
	Sugar Maple		14.7	MBF		
	Balsam Fir	Pulpwood	1	Cords		
	Mixed Aspen		55	Cords		
	<i>B. T. Aspen</i>		25	<i>Cords</i>		
	<i>Quaking Aspen</i>		30	<i>Cords</i>		
	Mixed Hardwood		65	Cords		
	<i>Ironwood</i>		3	<i>Cords</i>		
	<i>Red Maple</i>		5	<i>Cords</i>		
	<i>Sugar Maple</i>		57	<i>Cords</i>		
5	Red Maple	Sawtimber	1.0	MBF	18.3	\$3,078.50
	Balsam Fir	Pulpwood	2	Cords		
	Balsam Poplar		24	Cords		
	Mixed Hardwood		38	Cords		
	<i>Paper Birch</i>		34	<i>Cords</i>		
	<i>Red Maple</i>		4	<i>Cords</i>		
	Mixed Spruce		84	Cords		
	<i>Black Spruce</i>		77	<i>Cords</i>		
	<i>White Spruce</i>		7	<i>Cords</i>		
	N. White Cedar		110	Cords		
Tamarack		162	Cords			
6	Sugar Maple	Sawtimber	11.1	MBF	28.4	\$4,231.70
	Yellow Birch		0.5	MBF		
	Balsam Fir	Pulpwood	2	Cords		
	Balsam Poplar		3	Cords		
	Mixed Aspen		6	Cords		
	<i>B. T. Aspen</i>		3	<i>Cords</i>		
	<i>Quaking Aspen</i>		3	<i>Cords</i>		

DESCRIPTION OF TIMBER BY PAYMENT UNIT (PU), CON'T

PU	MARKET GROUP	PRODUCT	QUANTITY	UNIT	ACRES	ADVERTISE PRICE
6 con't	Mixed Hardwood	Pulpwood	79	Cords		
	<i>Ironwood</i>		1	<i>Cords</i>		
	<i>Paper Birch</i>		1	<i>Cords</i>		
	<i>Red Maple</i>		3	<i>Cords</i>		
	<i>Sugar Maple</i>		74	<i>Cords</i>		
	Mixed Spruce		5	Cords		
	<i>White Spruce</i>		5	<i>Cords</i>		
	White Pine		2	Cords		
	<i>White Pine</i>	<i>Sawtimber</i>	0.7	<i>MBF</i>		
	<i>White Pine</i>	<i>Pulpwood</i>	1	<i>Cords</i>		
7	Sugar Maple	Sawtimber	8.9	MBF	22.7	\$3,393.25
	Yellow Birch		0.4	MBF		
	Balsam Fir	Pulpwood	1	Cords		
	Balsam Poplar		3	Cords		
	Mixed Aspen		5	Cords		
	<i>B. T. Aspen</i>		2	<i>Cords</i>		
	<i>Quaking Aspen</i>		3	<i>Cords</i>		
	Mixed Hardwood		64	Cords		
	<i>Ironwood</i>		1	<i>Cords</i>		
	<i>Paper Birch</i>		1	<i>Cords</i>		
	<i>Red Maple</i>		2	<i>Cords</i>		
	<i>Sugar Maple</i>		60	<i>Cords</i>		
	Mixed Spruce		4	Cords		
	<i>White Spruce</i>		4	<i>Cords</i>		
	White Pine		1	Cords		
	<i>White Pine</i>	<i>Sawtimber</i>	0.5	<i>MBF</i>		
	8	Sugar Maple	Sawtimber	10.5		
Yellow Birch			0.4	MBF		
Balsam Fir		Pulpwood	2	Cords		
Balsam Poplar			3	Cords		
Mixed Aspen			6	Cords		
<i>B. T. Aspen</i>			3	<i>Cords</i>		
<i>Quaking Aspen</i>			3	<i>Cords</i>		
Mixed Hardwood			75	Cords		
<i>Ironwood</i>			1	<i>Cords</i>		
<i>Paper Birch</i>			1	<i>Cords</i>		
<i>Red Maple</i>			2	<i>Cords</i>		
<i>Sugar Maple</i>			71	<i>Cords</i>		
Mixed Spruce			5	Cords		
<i>White Spruce</i>			5	<i>Cords</i>		
White Pine			1	Cords		
<i>White Pine</i>		<i>Sawtimber</i>	0.6	<i>MBF</i>		
9		Balsam Fir	Pulpwood	33	Cords	9.7
	Balsam Poplar		17	Cords		
	Mixed Hardwood		24	Cords		
	<i>Paper Birch</i>		5	<i>Cords</i>		
	<i>Sugar Maple</i>		1	<i>Cords</i>		
	<i>Yellow Birch</i>		18	<i>Cords</i>		
	Mixed Spruce		18	Cords		
	<i>White Spruce</i>		18	<i>Cords</i>		
	N. White Cedar		131	Cords		
	TOTAL:			89.3	MBF	
TOTAL:			1,333	Cords		

Sale Specific Conditions & Requirements

Sale Name: Hard Times at Taylor Creek

Sale Number: 45-007-24 Seq#: 1

1 - Sale Area

1.2 - Boundaries

1.2.1 - Painted boundaries (9/19)

The sale boundary and Payment Unit boundaries are marked and identified by blue, red and yellow paint. Exterior sale boundary lines against private property are marked with blue paint. Exterior sale boundary lines against state are marked with red paint. Interior Payment Unit boundaries are marked with yellow paint. Retention patches are marked with red paint; no harvesting activities may occur within these areas. The painted boundary line trees are not Included Timber and are to be protected unless marked with orange paint. Yellow painted trees designating an interior Payment Unit boundary are only to be cut when all surrounding Payment Units have been paid.

2 - Timber Specifications

2.1 - Included Timber

2.1.1 - Clearcut unit(s) with unmerchantable trees (6/14)

Within Payment Unit(s) 5 and 9, cut all trees that are two (2) inches or more at DBH. Within Payment Unit 9, do not cut any pine or hemlock.

2.1.3 - Cut tree marked unit(s) (12/08)

Within Payment Unit(s) 1-4 and 6-8, all trees are designated for cutting when marked with orange paint above and below stump height, regardless of merchantability.

3 - Payments

3.3 - Pre-measured Sales

3.3.4 - Dividing payment units (7/14)

Payment Unit(s) may be divided at the request of the Purchaser and upon approval of the Unit Manager. Dividing Payment Units is a contract modification which requires a Timber Sale Contract Amendment. There will be only one division per Payment Unit.

4 - Transportation

4.1 - Construction

4.1.5 - Culverts (5/14)

Roads access to Payment Units 6-9 may require the installation of culvert(s) at the natural drainage-way indicated on the sale map. If any culverts are needed in these locations, their placement will be specified by the Sale Administrator, and they shall be installed prior to hauling. The culvert(s) shall be new, corrugated metal or plastic gauge. Culvert(s) will be a minimum of 12 inches in diameter and 24 feet in length. Culvert(s) will be provided by the Purchaser. Stream crossing permits, if needed, will be obtained by the DNR. A ninety (90) day notice will be given to the DNR before operations begin.

4.1.6 - Road construction (4/24)

Construction of new roads or improvements of existing roads shall be created only as is necessary and shall be done in such a way as to minimize the environmental and visual impacts. Merchantable trees shall be cut and utilized unless otherwise directed. Non-merchantable trees shall be severed and laid flat on the ground. Slash shall be scattered, and not left in windrows and kept a minimum of 10 feet back from the road edge. Stumps shall be set upright, not left on edge, and be moved at least 10 feet away from the road edge. Disturbed soil shall be feathered into the woods and not left in berms or windrows.

4.1.7 - Road closure (10/11)

All new roads built into the sale must be blocked to vehicle traffic upon completion of the sale. Overgrown roads that are reopened shall be considered new roads. In general, this will require constructing double earthen berms at strategic locations. These roads must be rendered impassable to cars and trucks. All stumps from road building and landing construction must be reserved to block any newly constructed roads upon completion of the sale. These stumps must be scattered along the road

system to prohibit vehicular movement. Contact the Sale Administrator for specific details of design and placement.

4.4 - Access

4.4.1 - Private property access (3/11)

Permission for access across private land will be required to access Payment Units 1-5. Securing permission for access is the responsibility of the Purchaser. A copy of the written permission from the private landowner must be given to the Unit Manager prior to the beginning of operations.

5 - Operations

5.2 - Conduct of Operations

5.2.1 - Slash

5.2.1.8 - Slash height (12/08)

No slash or tree tops may exceed 24 inches in height.

5.2.2 - Hazard Trees/Snags

5.2.2.1 - Den trees (10/16)

Obvious hollow and/or den trees shall be protected and left standing unless they are a safety hazard.

5.2.3 - Operating Restrictions

5.2.3.1 - Operating restrictions (9/11)

Within Payment Unit(s) 4 and 5, unless changed by written agreement, cutting, skidding, and hauling are limited to the period of December 1 to March 31. This restriction is because of the Deer Wintering Complex.

5.2.3.3 - Bark slippage restriction (3/09)

Within Payment Unit(s) 1-4 and 6-8, unless changed by written agreement, cutting and skidding are not permitted during the period of May 1 to July 15. This restriction is because of bark slippage.

5.2.4 - Dead and Down Creation

5.2.4.3 - Dead and down creation, dead trees (6/07)

Except as provided for in General Condition and Requirement 5.2.2, no dead trees, standing or down, are to be cut, skidded, or processed.

5.2.22 - Operating Caution

5.2.22.1 - Operating caution (6/11)

It is recommended, but not required, that within Payment Unit(s) 9, cutting, skidding, and hauling occur during dry summer or frozen winter conditions. The reason for the recommendation is due to wet conditions within these stands, causing the potential for excessive rutting and unwanted soil disturbance.

5.2.32 - Decking/landing restoration (9/13)

All decking and landing areas must have the surface area restored to a condition equal to or better than before. This is to ensure the proper regeneration of the stand. Wood debris, chips and "cookies" from trimmings must be removed or scattered away from landing and loading areas and may not be windrowed on the edge.

5.2.37 - No decking areas (12/08)

No decking is allowed within 50 feet of East Simmons Road, or on the non-DNR access roads leading to state property, without permission of the Unit Manager or his/her representative.

5.2.38 - No decking against live trees (2/04)

Cut products may not be decked against unmarked or designated leave trees.

5.4 - Soil Protection

5.4.6 - Wet area protection (5/10)

No harvesting operations, including skidding and felling, are to take place within drainages. Care must be taken by the Purchaser to identify and avoid operating in these areas of the timber sale.

5.8 - Protection of Endangered Species

5.8.5 - Protection of raptor nests (3/13)

All trees with raptor nests will be protected if found during harvesting operations. Notification will be made to the Unit Manager or his/her representative who will notify the Wildlife Biologist so an on-site evaluation and recommendation can be made, if necessary.



TIMBER SALE MAP

This information provided by authority of Part 525, 1994 PA 451, as amended.

Sale Number
45-007-24

Date
08/30/2024

Forest Management Unit	County	Mapped By: Louis Radecki
Sault Ste Marie Mgt Unit	Mackinac	Cruised By: Louis Radecki

Scale	Page	Of
1:24,000	1	1

Township	Range	Section(s) and Subdivision(s)
43N	01W	Sec. 19 SW,W1/2SE; Sec. 20 E1/2SW,SE; Sec. 21 NWSW; Sec. 30 NENW;

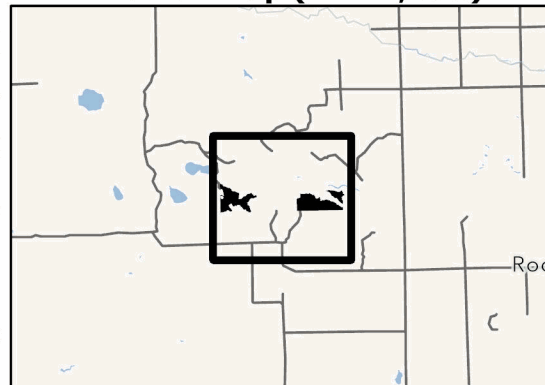
Cover Type

A = Aspen	J = Jack Pine	O = Oak	U = Upland Brush
B = Paper Birch	K = Rock	P = Lowland Poplar	UM = Upland Mix Forest
C = Cedar	L = Lowland Brush	Q = Mixed Swamp Conifer	V = Bog or Marsh
D = Treed Bog	LM = Lowland Mix Forest	R = Red Pine	W = White Pine
E = Swamp Hardwoods	M = Maple, Beech, Birch	S = Black Spruce	X = Non Stocked
F = Spruce/Fir	MC = Mixed Conifer	T = Tamarack	Y = Sand
G = Grass	MD = Mixed Deciduous	Z = Water	
H = Hemlock	N = Marsh		

Density

0 = Non Stocked	5 = Pole Timber Medium
1 = Seedling Sapling Poor	6 = Pole Timber Well
2 = Seedling Sapling Medium	7 = Saw Timber Poor
3 = Seedling Sapling Well	8 = Saw Timber Medium
4 = Pole Timber Poor	9 = Saw Timber Well

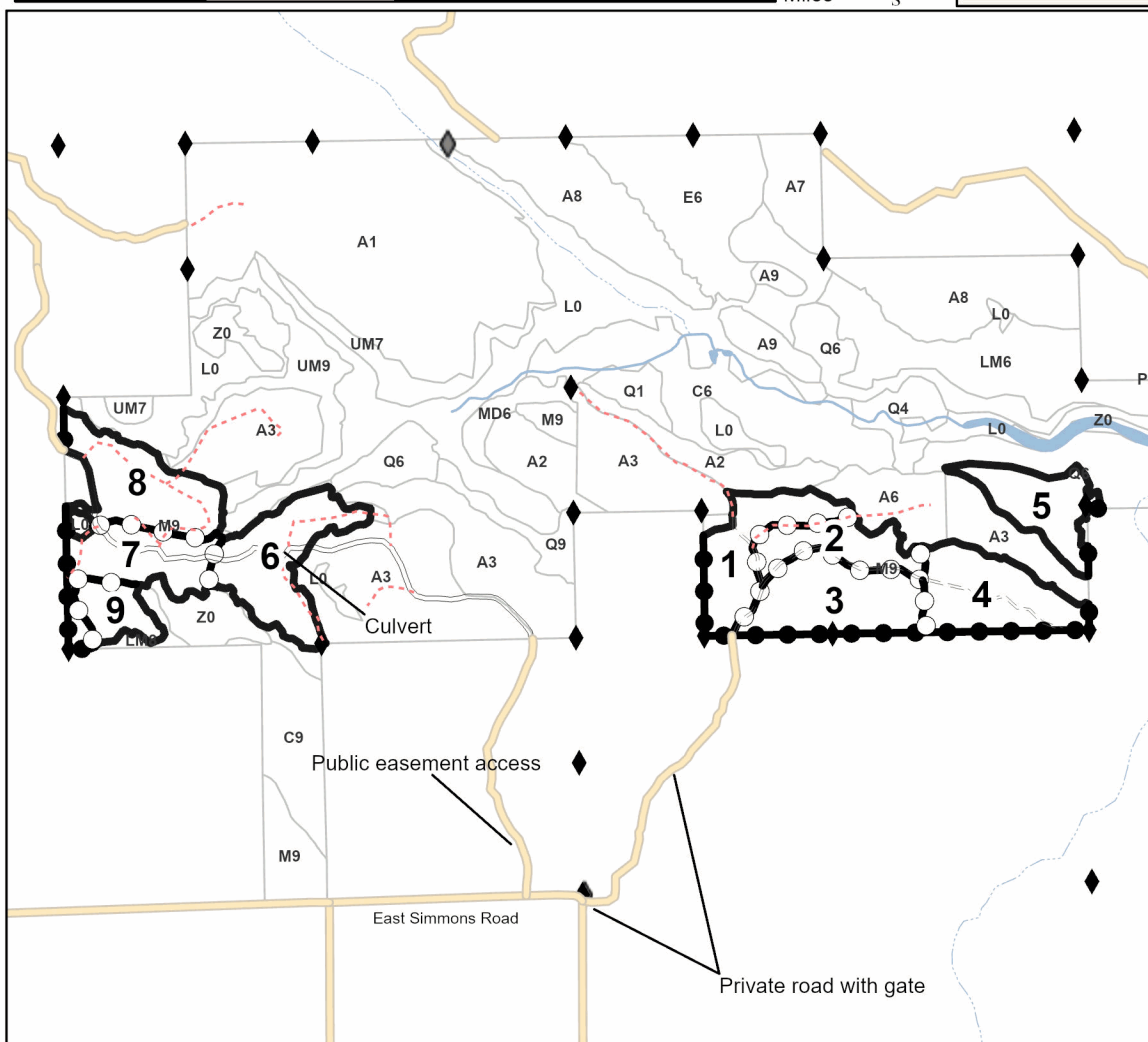
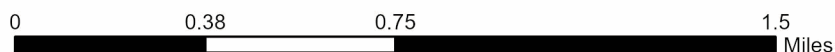
Locator Map (1:200,000)



Hard Times at Taylor Creek

199.8 Acres

PU #	Acres	PU #	Acres
1	22.1	6	28.4
2	15.4	7	22.7
3	29.5	8	27
4	26.7	9	9.7
5	18.3		



Legend

- Payment Unit (Red)
- Stand
- Payment Unit (Yellow)
- Private Line (Blue)
- Secondary Forest Road
- Forest Access Route
- Administrative Access Only
- Non-DNR Road
- Field Grade Corner
- Survey Grade Corner

Use QR Code to open Map in App



TIMBER SALE INFORMATION

Clear the Way (45-008-24)

T43N, R01W, SEC. 19; T43N, R01W, SEC. 20; T43N, R01W, SEC. 27; T43N, R01W, SEC. 28.
Mackinac County (Advertised Price \$16,994.75)

SALE NOTE: Private property access to Payment Units 3 & 4. Permission to operate through private property is required to bid on this sale.

Access may be through private land.

A timber sale contract for this lump sum, sealed bid timber sale will be awarded to the responsible bidder offering the highest sealed bid price. All units of volume listed below were estimated using the Inventory Manager computer program and the new Michigan taper model. Bids must be at or above the following advertised price for each product and species:

<u>PRODUCTS & SPECIES</u>	<u>ESTIMATED UNITS*</u>	<u>ADVERTISED PRICE</u>
Sawtimber		
Red Maple	12.3 MBF	\$ 70.00 / MBF
Pulpwood		
Balsam Fir	198 Cords	\$ 6.15 / Cord
Balsam Poplar	186 Cords	\$ 13.75 / Cord
Mixed Aspen	707 Cords	\$ 13.75 / Cord
Mixed Hardwood	129 Cords	\$ 10.40 / Cord
Mixed Spruce	85 Cords	\$ 3.50 / Cord
N. White Cedar	217 Cords	\$ 4.60 / Cord

* The total volume is statistically estimated within plus (+) or minus (-) 15.76 percent. There are an estimated 1,553 cords on this timber sale, plus or minus 245 cords at the 95% confidence level. The estimated units are final and not subject to adjustment. Prospective bidders are urged to examine this timber and to make their own estimates of quantity and quality.

BOND AND PAYMENT SCHEDULE:

1. A bond in the amount of \$1,360.00 to insure faithful performance of the conditions of the contract will be deposited by the successful bidder within 21 days of the sale award.
2. Cutting in any sale or unit without the required advance payment would be considered a trespass.
3. Total payment must be paid in advance or according to the following schedule :
 - (a) Ten percent (10%) of the sale value must be paid within 21 days of the sale award.
 - (b) The 10% down payment will be credited towards the first unit cut.
 - (c) Payment for each of the following units must be made before cutting begins in that unit:

PAYMENT UNIT NUMBER	PERCENT OF TOTAL SALE VALUE
01	29.9%
02	15.3%
03	19.2%
04	35.6%
4. If no cutting takes place, the 10% down payment will not be refunded.
5. Operations on the contract issued will terminate on 06/30/2028.

SALE STATISTICS

Volumes were calculated in cubic feet using the Michigan taper model. Cubic foot volume includes all wood inside bark for the product indicated. For display purposes, cubic feet were converted to cords and MBF using a simple conversion factor, e.g. 79 cubic feet per cord and 185 cubic feet per MBF. The cubic foot volumes are precise; the cords and MBF volumes are not. Cubic foot volume cannot be directly converted to cords or boards with precision.

SALE VOLUMES

The total estimated sale volume may not equal the sum of the species/products due to the nature of statistical calculations associated with double sampling methodology.

VOLUME		STATISTICAL RANGE IN CORDS		
TOTAL CUBIC FEET	TOTAL CORDS	PERCENT ERROR	MINIMUM	MAXIMUM
122,704	1,553	15.76%	1,308	1,798

VDU VOLUMES

A VDU is a Volume Determination Unit. Volumes and their associated statistics are calculated at the VDU level and summarized to the sale level. There is often a one to one relationship between a VDU and a Payment Unit, but not always, depending on the cruise design. Refer to the VDU TO PAYMENT UNIT table.

VDU	VOLUME		PERCENT ERROR	RANGE IN CORDS	
	TOTAL CUBIC FEET	TOTAL CORDS		MINIMUM	MAXIMUM
10	39,907	505	32.92%	339	671
23	23,233	294	29.52%	207	381
52	19,911	252	30.02%	176	328
53	39,652	502	28.66%	358	646
TOTAL:	122,704	1,553		1,081	2,026

VDU TO PAYMENT UNIT

When a VDU is associated with more than one Payment Unit (PU), the VDU volumes are assigned to the PU based on acres of the VDU within the PU.

VDU	VDU ACRES	PU	PU ACRES
10	27.0	4	27.0
23	21.8	3	21.8
52	16.5	2	16.5
53	18.5	1	18.5
TOTAL:	83.8		83.8

DESCRIPTION OF TIMBER BY PAYMENT UNIT (PU)

PU	MARKET GROUP	PRODUCT	QUANTITY	UNIT	ACRES	ADVERTISE PRICE			
1	Red Maple	Sawtimber	3.0	MBF	18.5	\$5,076.90			
	Balsam Fir	Pulpwood	58	Cords					
	Balsam Poplar		40	Cords					
	Mixed Aspen		212	Cords					
	<i>B. T. Aspen</i>		20	<i>Cords</i>					
	<i>Quaking Aspen</i>		192	<i>Cords</i>					
	Mixed Hardwood		35	Cords					
	<i>American Elm</i>		7	<i>Cords</i>					
	<i>Green Ash</i>		10	<i>Cords</i>					
	<i>Red Maple</i>		15	<i>Cords</i>					
	<i>æberry (Juneberry)</i>		1	<i>Cords</i>					
	<i>Sugar Maple</i>		2	<i>Cords</i>					
	Mixed Spruce		8	Cords					
	<i>Black Spruce</i>		4	<i>Cords</i>					
	<i>White Spruce</i>		4	<i>Cords</i>					
N. White Cedar		142	Cords						
2	Red Maple	Sawtimber	8.0	MBF	16.5	\$2,599.30			
	Balsam Fir	Pulpwood	17	Cords					
	Balsam Poplar		18	Cords					
	Mixed Aspen		59	Cords					
	<i>B. T. Aspen</i>		24	<i>Cords</i>					
	<i>Quaking Aspen</i>		35	<i>Cords</i>					
	Mixed Hardwood		45	Cords					
	<i>Paper Birch</i>		13	<i>Cords</i>					
	<i>Red Maple</i>		29	<i>Cords</i>					
	<i>White Ash</i>		3	<i>Cords</i>					
	Mixed Spruce		18	Cords					
	<i>White Spruce</i>		18	<i>Cords</i>					
	N. White Cedar		75	Cords					
	3	Red Maple	Sawtimber	0.7			MBF	21.8	\$3,265.75
		Balsam Fir	Pulpwood	75			Cords		
Balsam Poplar			35	Cords					
Mixed Aspen			153	Cords					
<i>Quaking Aspen</i>			153	<i>Cords</i>					
Mixed Hardwood			10	Cords					
<i>Green Ash</i>			5	<i>Cords</i>					
<i>Paper Birch</i>			2	<i>Cords</i>					
<i>Red Maple</i>			3	<i>Cords</i>					
Mixed Spruce			19	Cords					
<i>White Spruce</i>			19	<i>Cords</i>					
4		Red Maple	Sawtimber	0.6	MBF	27.0	\$6,052.80		
	Balsam Fir	Pulpwood	48	Cords					
	Balsam Poplar		93	Cords					
	Mixed Aspen		283	Cords					
	<i>Quaking Aspen</i>		283	<i>Cords</i>					
	Mixed Hardwood		39	Cords					
	<i>Green Ash</i>		8	<i>Cords</i>					
	<i>Paper Birch</i>		26	<i>Cords</i>					
	<i>Red Maple</i>		3	<i>Cords</i>					
	<i>White Ash</i>		2	<i>Cords</i>					
	Mixed Spruce		40	Cords					
	<i>White Spruce</i>		40	<i>Cords</i>					
	TOTAL:			12.3	MBF				
TOTAL:			1,522	Cords					

Sale Specific Conditions & Requirements

Sale Name: Clear the Way

Sale Number: 45-008-24 Seq#: 1

1 - Sale Area

1.2 - Boundaries

1.2.1 - Painted boundaries (9/19)

The sale boundary and Payment Unit boundaries are marked and identified by blue and red paint. Exterior sale boundary lines against private property are marked with blue paint. Exterior sale boundary lines against state are marked with red paint. Retention patches are marked with red paint; no harvesting activities may occur within these areas. The painted boundary line trees are not Included Timber and are to be protected.

2 - Timber Specifications

2.1 - Included Timber

2.1.1 - Clearcut unit(s) with unmerchantable trees (6/14)

Within Payment Unit(s) 1-4, cut all trees that are two (2) inches or more at DBH. Within Payment Unit 1, do not cut pine, sugar maple, hemlock, oak, or yellow birch. Within Payment Unit 2, do not cut pine. Within Payment Units 3 and 4, do not cut pine, cedar, hemlock, oak, or yellow birch.

4 - Transportation

4.1 - Construction

4.1.2 - Stream crossings, specific (3/11)

There is a creek that runs between portions of Payment Unit 2 as shown on the Timber Sale Map. Crossing this will require the installation of a culvert, portable bridge, or crane mat which may be borrowed from the DNR. A ninety (90) day notice will be given to the DNR before operations begin. This installation will be performed in accordance with the specifications on the appropriate permits which shall be provided by the DNR.

4.1.6 - Road construction (4/24)

Construction of new roads or improvements of existing roads shall be done in such a way as to minimize the environmental and visual impacts. Merchantable trees shall be cut and utilized unless otherwise directed. Non-merchantable trees shall be severed and laid flat on the ground. Slash shall be scattered, and not left in windrows and kept a minimum of 10 feet back from the road edge. Stumps shall be set upright, not left on edge, and be moved at least 10 feet away from the road edge. Disturbed soil shall be feathered into the woods and not left in berms or windrows.

4.1.7 - Road closure (10/11)

All new roads built into the sale must be blocked to vehicle traffic upon completion of the sale. Overgrown roads that are reopened shall be considered new roads. In general, this will require constructing double earthen berms at strategic locations. These roads must be rendered impassable to cars and trucks. All stumps from road building and landing construction must be reserved to block any newly constructed roads upon completion of the sale. These stumps must be scattered along the road system to prohibit vehicular movement. Contact the Sale Administrator for specific details of design and placement.

4.4 - Access

4.4.1 - Private property access (3/11)

Permission for access across private land is the responsibility of the Purchaser. Should the Purchaser desire to cross private land, a copy of the written permission from the private landowner may be required by the DNR. A copy of the written permission from the private landowner must be given to the Unit Manager prior to the beginning of operations.

5 - Operations

5.2 - Conduct of Operations

5.2.1 - Slash

5.2.1.8 - Slash height (12/08)

No slash or tree tops may exceed 24 inches in height.

5.2.2 - Hazard Trees/Snags

5.2.2.1 - Den trees (10/16)

Obvious hollow and/or den trees shall be protected and left standing unless they are a safety hazard.

5.2.3 - Operating Restrictions

5.2.3.1 - Operating restrictions (9/11)

Within Payment Unit(s) 1 and 2, unless changed by written agreement, cutting, skidding, and hauling are limited to the period of December 1 to March 31. This restriction is because of the Deer Wintering Complex.

5.2.4 - Dead and Down Creation

5.2.4.3 - Dead and down creation, dead trees (6/07)

Except as provided for in General Condition and Requirement 5.2.2, no dead trees, standing or down, are to be cut, skidded, or processed.

5.2.37 - No decking areas (12/08)

No decking is allowed within 50 feet of North 3 Mile Road, without permission of the Unit Manager or his/her representative.

5.4 - Soil Protection

5.4.1 - Rutting restriction, general (7/16)

Operations are to cease immediately if equipment and weather conditions result in rutting on skid trails or roads which is 12 inches or greater in depth and 50 feet in length. The Unit Manager or his/her representative may restrict hauling and/or skidding if ruts exceed the specified depth. With the Unit Manager or his/her representative's approval, the Purchaser may return to the area when the risk of rutting has decreased.

5.8 - Protection of Endangered Species

5.8.5 - Protection of raptor nests (3/13)

All trees with raptor nests will be protected if found during harvesting operations. Notification will be made to the Unit Manager or his/her representative who will notify the Wildlife Biologist so an on-site evaluation and recommendation can be made, if necessary.

6 - Safety and Fire Prevention

6.2 - Signing

6.2.1 - Road posting (10/20)

The Purchaser is responsible for posting and maintaining caution signs on North 3 Mile Road prior to beginning operations. The road must be posted at appropriate distances from the Sale Area to warn of logging activity and truck traffic. Signs must be removed when harvest operations are suspended or completed. The Purchaser will provide these signs.



TIMBER SALE MAP

This information provided by authority of Part 525, 1994 PA 451, as amended.

Sale Number

45-008-24

Date

08/28/2024

Forest Management Unit

Sault Ste Marie Mgt Unit

County

Mackinac

Mapped By: Louis Radecki

Cruised By: Louis Radecki

Scale

1:15,840

Page

1

Of

2

Township
43N

Range
01W

Section(s) and
Subdivision(s)

Sec. 19 NENE; Sec. 20 NWNW,S1/2NW,S1/2NE; Sec. 27 NWNW; Sec. 28 E1/2NE;

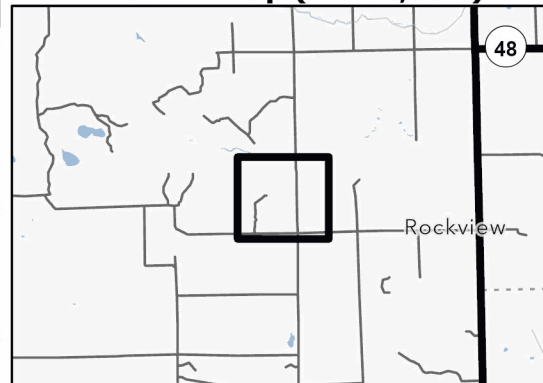
Cover Type

A = Aspen	J = Jack Pine	O = Oak	U = Upland Brush
B = Paper Birch	K = Rock	P = Lowland Poplar	UM = Upland Mix Forest
C = Cedar	L = Lowland Brush	Q = Mixed Swamp Conifer	V = Bog or Marsh
D = Treed Bog	LM = Lowland Mix Forest	R = Red Pine	W = White Pine
E = Swamp Hardwoods	M = Maple, Beech, Birch	S = Black Spruce	X = Non Stocked
F = Spruce/Fir	MC = Mixed Conifer	T = Tamarack	Y = Sand
G = Grass	MD = Mixed Deciduous	Z = Water	
H = Hemlock	N = Marsh		

Density

0 = Non Stocked	5 = Pole Timber Medium
1 = Seedling Sapling Poor	6 = Pole Timber Well
2 = Seedling Sapling Medium	7 = Saw Timber Poor
3 = Seedling Sapling Well	8 = Saw Timber Medium
4 = Pole Timber Poor	9 = Saw Timber Well

Locator Map (1:200,000)

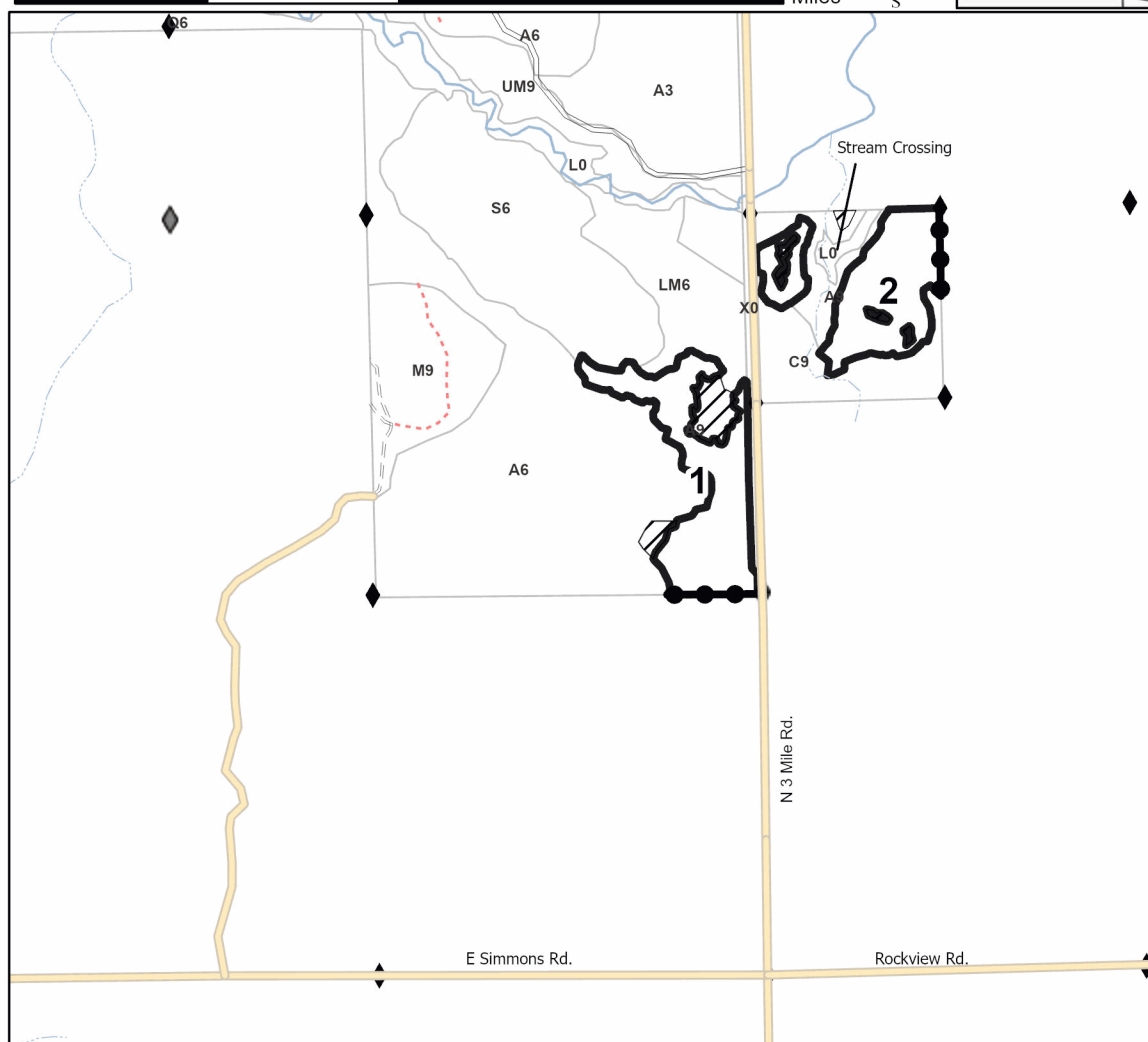
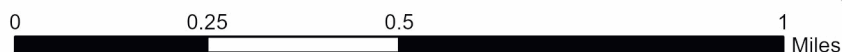


PU # Acres

1	18.5
2	16.5
3	21.8
4	27

Clear the Way

83.8 Acres



Legend

- Against State (Red)
- Private Line (Blue)
- Stand
- Retention Areas
- Secondary Forest Road
- Forest Access Route
- Administrative Access Only
- Non-DNR Road
- Field Grade Corner
- Survey Grade Corner

Use QR Code to open Map in App





Michigan Department of Natural Resources - Forest Resources Division

TIMBER SALE MAP

This information provided by authority of Part 525, 1994 PA 451, as amended.

Sale Number

45-008-24

Date

08/28/2024

Forest Management Unit

County

Mapped By: Louis Radecki

Scale

1:24,000

Page

2

Of

2

Sault Ste Marie Mgt Unit

Mackinac

Cruised By: Louis Radecki

Township
43N

Range
01W

Section(s) and

Subdivision(s) Sec. 19 NENE; Sec. 20 NWNW,S1/2NW,S1/2NE; Sec. 27 NWNW; Sec. 28 E1/2NE;

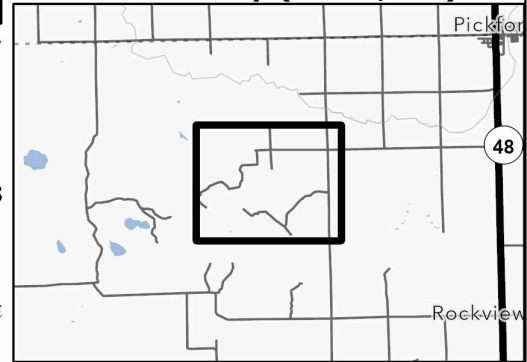
Cover Type

A = Aspen	J = Jack Pine	O = Oak	U = Upland Brush
B = Paper Birch	K = Rock	P = Lowland Poplar	UM = Upland Mix Forest
C = Cedar	L = Lowland Brush	Q = Mixed Swamp Conifer	V = Bog or Marsh
D = Treed Bog	LM = Lowland Mix Forest	R = Red Pine	W = White Pine
E = Swamp Hardwoods	M = Maple, Beech, Birch	S = Black Spruce	X = Non Stocked
F = Spruce/Fir	MC = Mixed Conifer	T = Tamarack	Y = Sand
G = Grass	MD = Mixed Deciduous	Z = Water	
H = Hemlock	N = Marsh		

Density

0 = Non Stocked	5 = Pole Timber Medium
1 = Seedling Sapling Poor	6 = Pole Timber Well
2 = Seedling Sapling Medium	7 = Saw Timber Poor
3 = Seedling Sapling Well	8 = Saw Timber Medium
4 = Pole Timber Poor	9 = Saw Timber Well

Locator Map (1:200,000)

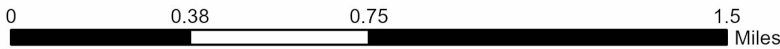


Clear the Way

83.8 Acres

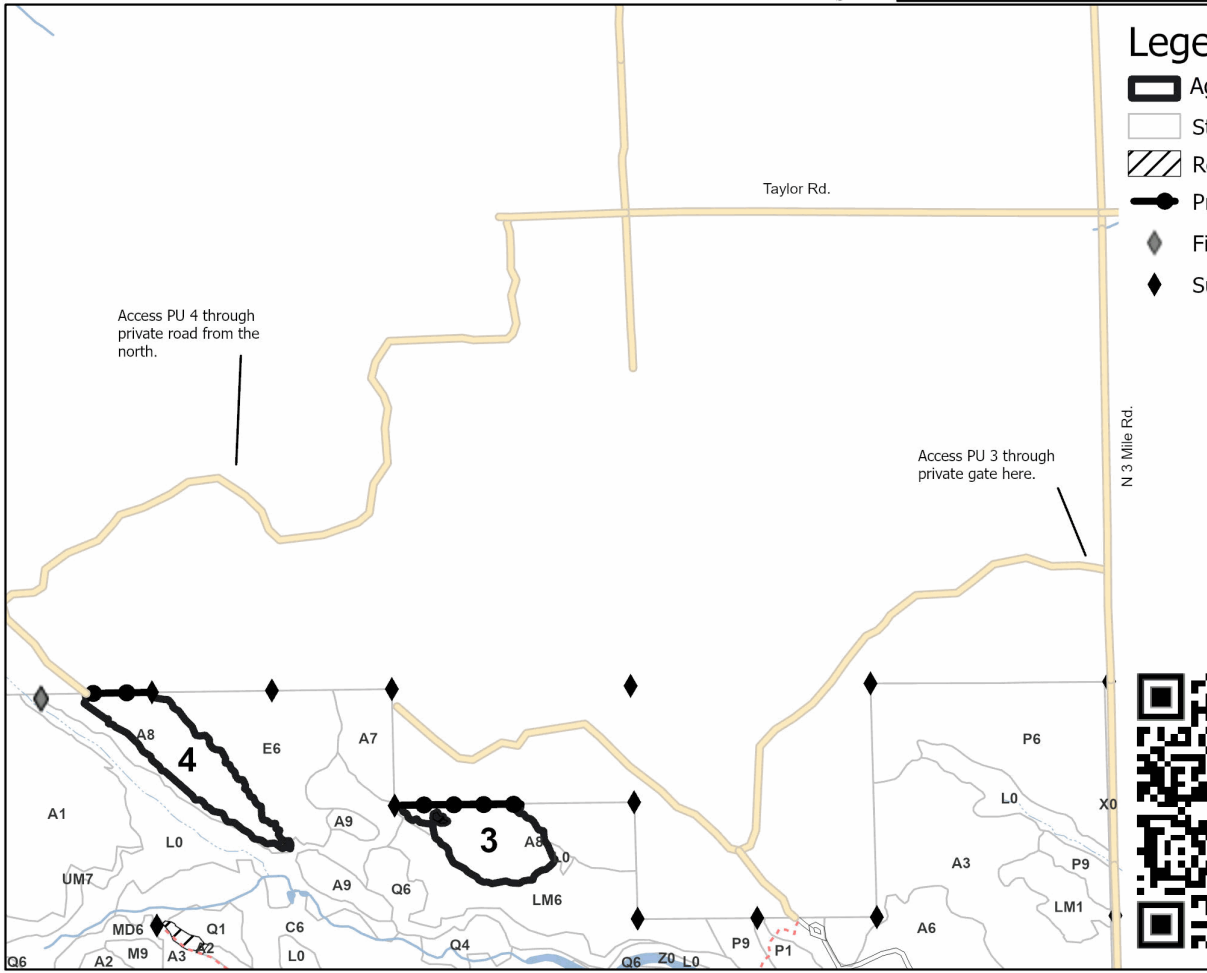
PU # Acres

1	18.5
2	16.5
3	21.8
4	27



Legend

- Against State (Red)
- Stand
- Retention Areas
- Private Line (Blue)
- Field Grade Corner
- Survey Grade Corner



Use QR Code to open Map in App

TIMBER SALE INFORMATION

GNA2 Grouper (45-804-24)

T46N, R06W, SEC. 21; T46N, R06W, SEC. 22; T46N, R06W, SEC. 27; T46N, R06W, SEC. 28; T46N, R06W, SEC. 33; T46N, R06W, SEC. 34.

SALE NOTE: GNA Sale. Winter only. Sale is off of M-28 and has no hauling restrictions during breakup. Units 1-4 will be accessed by a wet, winter only road that will need to be frozen in.

Access may be through other public land.

A timber sale contract for this lump sum, sealed bid timber sale will be awarded to the responsible bidder offering the highest sealed bid price. All units of volume listed below were estimated using the Inventory Manager computer program and the new Michigan taper model. Bids must be at or above the following advertised price for each product and species:

<u>PRODUCTS & SPECIES</u>	<u>ESTIMATED UNITS*</u>	<u>ADVERTISED PRICE</u>
Sawtimber		
Basswood	9.6 MBF	\$ 138.00 / MBF
Red Maple	16.6 MBF	\$ 104.00 / MBF
Sugar Maple	7.8 MBF	\$ 415.00 / MBF
Pulpwood		
Balsam Fir	71 Cords	\$ 9.15 / Cord
Mixed Aspen	797 Cords	\$ 20.50 / Cord
Mixed Hardwood	698 Cords	\$ 15.55 / Cord
Mixed Spruce	42 Cords	\$ 5.25 / Cord

* The total volume is statistically estimated within plus (+) or minus (-) 15.08 percent. There are an estimated 1,688 cords on this timber sale, plus or minus 255 cords at the 95% confidence level. The estimated units are final and not subject to adjustment. Prospective bidders are urged to examine this timber and to make their own estimates of quantity and quality.

BOND AND PAYMENT SCHEDULE:

1. A bond in the amount of \$1,718.00 to insure faithful performance of the conditions of the contract will be deposited by the successful bidder within 21 days of the sale award.
2. Cutting in any sale or unit without the required advance payment would be considered a trespass.
3. Total payment must be paid in advance or according to the following schedule :
 - (a) Ten percent (10%) of the sale value must be paid within 21 days of the sale award.
 - (b) The 10% down payment will be credited towards the first unit cut.
 - (c) Payment for each of the following units must be made before cutting begins in that unit:

PAYMENT UNIT NUMBER	PERCENT OF TOTAL SALE VALUE
01	15.2%
02	14.4%
03	10.1%
04	16.3%
05	7.0%
06	11.9%
07	6.8%
08	11.7%
09	6.6%
4. If no cutting takes place, the 10% down payment will not be refunded.
5. Operations on the contract issued will terminate on 06/30/2027.

SALE STATISTICS

Volumes were calculated in cubic feet using the Michigan taper model. Cubic foot volume includes all wood inside bark for the product indicated. For display purposes, cubic feet were converted to cords and MBF using a simple conversion factor, e.g. 79 cubic feet per cord and 185 cubic feet per MBF. The cubic foot volumes are precise; the cords and MBF volumes are not. Cubic foot volume cannot be directly converted to cords or boards with precision.

SALE VOLUMES

The total estimated sale volume may not equal the sum of the species/products due to the nature of statistical calculations associated with double sampling methodology.

VOLUME			STATISTICAL RANGE IN CORDS	
TOTAL CUBIC FEET	TOTAL CORDS	PERCENT ERROR	MINIMUM	MAXIMUM
133,355	1,688	15.08%	1,433	1,943

VDU VOLUMES

A VDU is a Volume Determination Unit. Volumes and their associated statistics are calculated at the VDU level and summarized to the sale level. There is often a one to one relationship between a VDU and a Payment Unit, but not always, depending on the cruise design. Refer to the VDU TO PAYMENT UNIT table.

	VOLUME			RANGE IN CORDS	
VDU	TOTAL CUBIC FEET	TOTAL CORDS	PERCENT ERROR	MINIMUM	MAXIMUM
4	58,082	735	26.42%	541	929
5	9,502	120	59.27%	49	192
21	21,231	269	35.93%	172	365
22	21,359	270	24.30%	205	336
49	23,181	293	35.51%	189	398
TOTAL:	133,355	1,688		1,156	2,220

VDU TO PAYMENT UNIT

When a VDU is associated with more than one Payment Unit (PU), the VDU volumes are assigned to the PU based on acres of the VDU within the PU.

VDU	VDU ACRES	PU	PU ACRES
4	78.9	5	14.9
		6	25.0
		7	14.3
		8	24.7
5	26.3	9	26.3
21	16.0	4	16.0
22	4.8	1	4.8
49	70.6	2	41.5
		3	29.1
TOTAL:	196.6		196.6

DESCRIPTION OF TIMBER BY PAYMENT UNIT (PU)

PU	MARKET GROUP	PRODUCT	QUANTITY	UNIT	ACRES	ADVERTISE PRICE
1	Balsam Fir	Pulpwood	1	Cords	4.8	\$5,236.55
	Mixed Aspen		211	Cords		
	<i>Quaking Aspen</i>		211	Cords		
	Mixed Hardwood		58	Cords		
	<i>Red Maple</i>		11	Cords		
	<i>Sugar Maple</i>		47	Cords		
2	Basswood	Sawtimber	5.6	MBF	41.5	\$4,942.15
	Red Maple	Pulpwood	0.9	MBF		
	Sugar Maple		4.1	MBF		
	Mixed Aspen		21	Cords		
	<i>Balsam Poplar</i>		2	Cords		
	<i>Quaking Aspen</i>		19	Cords		
	Mixed Hardwood		125	Cords		
	<i>Basswood</i>		40	Cords		
	<i>Beech</i>		3	Cords		
	<i>Black Ash</i>		18	Cords		
	<i>Red Maple</i>		10	Cords		
	<i>Sugar Maple</i>		49	Cords		
	<i>White Ash</i>		5	Cords		
	3		Basswood	Sawtimber		
Red Maple		Pulpwood	0.6	MBF		
Sugar Maple			2.8	MBF		
Mixed Aspen			15	Cords		
<i>Balsam Poplar</i>			2	Cords		
<i>Quaking Aspen</i>			13	Cords		
Mixed Hardwood			89	Cords		
<i>Basswood</i>			28	Cords		
<i>Beech</i>			2	Cords		
<i>Black Ash</i>			13	Cords		
<i>Red Maple</i>			7	Cords		
<i>Sugar Maple</i>			35	Cords		
<i>White Ash</i>			4	Cords		
4			Red Maple	Sawtimber	3.9	MBF
	Mixed Aspen	Pulpwood	226	Cords		
	<i>B. T. Aspen</i>		4	Cords		
	<i>Quaking Aspen</i>		222	Cords		
	Mixed Hardwood		36	Cords		
	<i>Beech</i>		8	Cords		
	<i>Red Maple</i>		19	Cords		
	<i>Sugar Maple</i>		2	Cords		
	<i>White Ash</i>		7	Cords		
	5		Red Maple	Sawtimber	2.1	MBF
Balsam Fir		Pulpwood	8	Cords		
Mixed Aspen			52	Cords		
<i>Quaking Aspen</i>			52	Cords		
Mixed Hardwood			65	Cords		
<i>Beech</i>			1	Cords		
<i>Black Cherry</i>			4	Cords		
<i>Red Maple</i>			58	Cords		
<i>Sugar Maple</i>			2	Cords		
Mixed Spruce			7	Cords		
<i>Black Spruce</i>			1	Cords		
<i>White Spruce</i>	6	Cords				
6	Red Maple	Sawtimber	3.6	MBF	25.0	\$4,080.00
	Balsam Fir	Pulpwood	14	Cords		
	Mixed Aspen		88	Cords		

DESCRIPTION OF TIMBER BY PAYMENT UNIT (PU), CON'T

PU	MARKET GROUP	PRODUCT	QUANTITY	UNIT	ACRES	ADVERTISE PRICE
6 con't	<i>Quaking Aspen</i>	<i>Pulpwood</i>	88	<i>Cords</i>		
	Mixed Hardwood		110	Cords		
	<i>Beech</i>		2	<i>Cords</i>		
	<i>Black Cherry</i>		6	<i>Cords</i>		
	<i>Ironwood</i>		1	<i>Cords</i>		
	<i>Red Maple</i>		98	<i>Cords</i>		
	<i>Sugar Maple</i>		3	<i>Cords</i>		
	Mixed Spruce		12	Cords		
	<i>Black Spruce</i>		1	<i>Cords</i>		
	<i>White Spruce</i>		11	<i>Cords</i>		
7	Red Maple	Sawtimber	2.0	MBF	14.3	\$2,322.60
	Balsam Fir	Pulpwood	8	Cords		
	Mixed Aspen		50	Cords		
	<i>Quaking Aspen</i>		50	<i>Cords</i>		
	Mixed Hardwood		63	Cords		
	<i>Beech</i>		1	<i>Cords</i>		
	<i>Black Cherry</i>		4	<i>Cords</i>		
	<i>Red Maple</i>		56	<i>Cords</i>		
	<i>Sugar Maple</i>		2	<i>Cords</i>		
	Mixed Spruce		7	Cords		
	<i>Black Spruce</i>		1	<i>Cords</i>		
	<i>White Spruce</i>		6	<i>Cords</i>		
8	Red Maple	Sawtimber	3.5	MBF	24.7	\$4,033.55
	Balsam Fir	Pulpwood	14	Cords		
	Mixed Aspen		87	Cords		
	<i>Quaking Aspen</i>		87	<i>Cords</i>		
	Mixed Hardwood		109	Cords		
	<i>Beech</i>		2	<i>Cords</i>		
	<i>Black Cherry</i>		6	<i>Cords</i>		
	<i>Ironwood</i>		1	<i>Cords</i>		
	<i>Red Maple</i>		97	<i>Cords</i>		
	<i>Sugar Maple</i>		3	<i>Cords</i>		
	Mixed Spruce		12	Cords		
	<i>Black Spruce</i>		2	<i>Cords</i>		
	<i>White Spruce</i>		10	<i>Cords</i>		
9	Sugar Maple	Sawtimber	0.9	MBF	26.3	\$2,264.55
	Balsam Fir	Pulpwood	26	Cords		
	Mixed Aspen		47	Cords		
	<i>Quaking Aspen</i>		47	<i>Cords</i>		
	Mixed Hardwood		43	Cords		
	<i>Black Cherry</i>		3	<i>Cords</i>		
	<i>Paper Birch</i>		10	<i>Cords</i>		
	<i>Red Maple</i>		26	<i>Cords</i>		
	<i>Sugar Maple</i>		4	<i>Cords</i>		
	Mixed Spruce		4	Cords		
	<i>White Spruce</i>		4	<i>Cords</i>		
TOTAL:			34.0	MBF		
TOTAL:			1,608	Cords		

Sale Specific Conditions & Requirements

Sale Name: GNA2 Grouper

Sale Number: 45-804-24 Seq#: 1

1 - Sale Area

1.2 - Boundaries

1.2.1 - Painted boundaries (9/19)

The sale boundary and Payment Unit boundaries are marked and identified by orange paint. Exterior sale boundaries against USFS are marked with orange paint. Interior Payment Unit boundaries are marked with orange painted dots. The painted boundary line trees are not Included Timber and are to be protected unless marked with blue paint. Interior Payment Unit boundaries are only to be cut when all surrounding Payment Units have been paid.

2 - Timber Specifications

2.1 - Included Timber

2.1.2 - Clearcut unit(s) w/o unmerchantable trees (8/11)

Within Payment Unit(s) 1, cut all trees which meet minimum piece specifications in 2.2 Utilization.

2.1.3 - Cut tree marked unit(s) (12/08)

Within Payment Unit(s) 2-9, all trees are designated for cutting when marked with blue paint above and below stump height, regardless of merchantability. In addition, within Payment Units 4-8, all aspen trees are designated for cutting, regardless of merchantability.

2.2 - Utilization

2.2.12 - GNA, cut and remove Included Timber (3/18)

Unless provided otherwise herein, the DNR agrees to sell and permit Purchaser to cut and remove Included Timber and Purchaser agrees to purchase, cut, and remove Included Timber.

3 - Payments

3.4 - Damaged Timber

3.4.3 - Special Protection Areas (8/11)

The Purchaser shall protect special protection areas from damage by the Purchaser's operations. Special protection areas are marked with an orange boundary line. The Purchaser shall not cut live or dead trees within special protection areas. If the Purchaser's operations have cut or damaged special protection areas through carelessness, the Purchaser shall pay double stumpage as fixed, agreed and liquidated damages for each acre or part thereof cut or damaged. Such payment does not constitute ownership of the undesignated timber.

4 - Transportation

4.1 - Construction

4.1.12 - No new roads (1/12)

No new roads will be permitted in any Payment Unit. All operations are limited to existing roads. Skid trails only will be allowed.

4.4 - Access

4.4.3 - Access gate (12/08)

The access gate must be closed at the completion of each day.

5 - Operations

5.1 - Notification

5.1.1 - Pre-sale conference (10/16)

A pre-sale conference on site between the Purchaser and sale administrator is required prior to beginning any operations to determine landing and road locations. The Unit Manager or his/her representative must be contacted at least 5 days in

advance to schedule the conference.

5.2 - Conduct of Operations

5.2.2 - Hazard Trees/Snags

5.2.2.1 - Den trees (10/16)

Obvious hollow and/or den trees shall be protected and left standing unless they are a safety hazard.

5.2.3 - Operating Restrictions

5.2.3.1 - Operating restrictions (9/11)

Within Payment Unit(s) 1-9, unless changed by written agreement, cutting, skidding, and hauling are limited to the period of December 15 to April 1. This restriction is because soft, wet soils subject to rutting from logging equipment.

5.2.32 - Decking/landing restoration (9/13)

All decking and landing areas must have the surface area restored to a condition equal to or better than before. This is to ensure the proper regeneration of the stand. Wood debris, chips and "cookies" from trimmings must be removed or scattered away from landing and loading areas and may not be windrowed on the edge.

5.2.38 - No decking against live trees (2/04)

Cut products may not be decked against unmarked or designated leave trees.

5.4 - Soil Protection

5.4.1 - Rutting restriction, general (7/16)

Operations are to cease immediately if equipment and weather conditions result in rutting of roads and/or skid trails which is 12 inches or greater in depth and 50 feet in length. The Unit Manager or his/her representative may restrict hauling and/or skidding if ruts exceed the specified depth. With the Unit Manager or his/her representative's approval, the Purchaser may return to the area when the risk of rutting has decreased.

5.6 - Debris and Waste Material

5.6.2 - GNA, equipment cleaning (4/24)

(a) Areas, known by the DNR prior to timber sale advertisement, that are infested with invasive species of concern are shown on the Timber Sale Map. A current list of invasive species of concern and a map showing the extent of known infestations is available from the DNR. For purposes of this provision, "Off-Road Equipment" includes all logging and construction machinery, except for log trucks, chip vans, service vehicles, water trucks, pickup trucks, cars, and similar vehicles.

(b) Purchaser shall adhere to the following requirements with regard to cleaning "Off-Road Equipment":

(i) Prior to moving Off-Road Equipment onto the Sale Area, Purchaser shall identify the location of the equipment's most recent operation. Purchaser shall not move any Off-Road Equipment that last operated in an area infested with one or more invasive species of concern onto Sale Area without having cleaned such equipment of seeds, soil, vegetative matter, and other debris that could contain or hold seeds, and having notified the DNR, as provided in (iii). If the location of prior operation cannot be identified, then Purchaser shall assume that the location is infested with invasive species of concern.

(ii) Prior to moving Off-Road Equipment from a cutting unit that is shown on the Timber Sale Map to be infested with invasive species of concern to, or through any other area that is shown as being free of invasive species of concern, or infested with a different invasive species, Purchaser shall clean such equipment of seeds, soil, vegetative matter, and other debris that could contain or hold seeds, and shall notify the DNR, as provided in (iii).

(iii) Prior to moving any Off-Road Equipment subject to the cleaning requirements set forth above, Purchaser shall advise DNR of its cleaning measures and make the equipment available for inspection. DNR shall have 2 days, excluding weekends and State holidays, to inspect equipment after it has been made available. After satisfactory inspection or after such 2 day period, Purchaser may move the equipment as planned. Equipment shall be considered clean when a visual inspection does not disclose seeds, soil, vegetative matter, and other debris that could contain or hold seeds. Purchaser shall not be required to disassemble equipment unless so directed by the DNR after inspection.

(iv) If Purchaser desires to clean Off-Road Equipment on National Forest land, such as at the end of a project or prior to moving to, or through an area that is free of invasive species of concern, Purchaser shall obtain prior approval from the Unit Manager or his/her representative as to the location for such cleaning and measures, if any, for controlling impacts.

(v) Unit Manager or his/her representative may order delay, interruption, or modification of this Contract pursuant to Condition & Requirement 7.3 or 7.3.4.

(c) Nothing contained in this Condition & Requirement shall be interpreted as creating any warranty on the part of the DNR that all locations of invasive species of concern have been described herein, elsewhere in this Contract, or designated on the ground. Following sale advertisement, additional locations may be described or designated, and other species may be added to the list of invasive species of concern. In such event, the Unit Manager or his/her representative may order delay, interruption, or modification of this Contract pursuant to Condition & Requirement 7.3 or 7.3.4.

(d) The parties shall promptly communicate with one another with respect to description or designation of additional locations; discovery of locations of new species or new infestation; and, addition of species to the list of invasive species of concern.

5.8 - Protection of Endangered Species

5.8.4 - Red shoulder hawk or goshawk (2) (5/24)

In the event that an active red shoulder hawk or goshawk nest is found, the contract may be amended to protect the nest site until the nest is determined to be inactive. The value of the trees in this excluded area will be refunded or credited to the Purchaser. The nest will be buffered with a ten-chain radius (31 acre) protection area, centered on the nest tree, in which there will be no cutting or new roads constructed. Avoid human disturbance, including loading and skidding, in the protection area.

Within a one half mile radius from the nest tree there shall be no harvest activities during the breeding period. For the northern goshawk, the restriction is from March 1 to July 31. For the red-shouldered hawk, the restriction is from April 1 to August 31.

For a nest to be considered inactive, it must be observed as inactive 2 years in a row by a wildlife biologist.

6 - Safety and Fire Prevention

6.2 - Signing

6.2.1 - Road posting (10/20)

The Purchaser is responsible for posting and maintaining caution signs on Forest Service Road 3661 prior to beginning operations. The road must be posted at appropriate distances from the Sale Area to warn of logging activity and truck traffic. Signs must be removed when harvest operations are suspended or completed. The Purchaser will provide these signs.

7 - Other Conditions

SKIP

7.1.1 - GNA, title (7/16)

General Condition & Requirement 7.1 is inapplicable. The following applies to this contract.

All right, title, and interest in and to any Included Timber shall remain in USDA Forest Service with the State of Michigan acting on behalf of the USDA Forest Service under this GNA contract, until it has been Measured, removed from Sale Area or other authorized cutting area, and paid for, at which time title shall vest in Purchaser. Title to any Included Timber that has been Measured and paid for, but not removed from Sale Area or other authorized cutting area by Purchaser on or prior to Termination Date, shall remain in USDA Forest Service.

7.3 - Contract Modifications

7.3.3 - Modification for reforestation (8/05)

When contractual work of Purchaser has been accepted for any Payment Unit identified on Sale Area Map, Payment Unit will be eliminated from the Sale Area on written notice so that reforestation operations can begin.

7.3.4 - GNA, contract suspension and modification (5/16)

(a) The Unit Manager may, by written order, delay or interrupt authorized operations under this contract or, notwithstanding Condition & Requirement 7.3, modify this contract, in whole or in part:

(i) To prevent environmental degradation or resource damage, including, but not limited to, harm to habitat, plants, animals, cultural resources, or cave resources;

(ii) To ensure consistency with land and resource management plans or other documents prepared pursuant to the National Environmental Policy Act of 1969, 42 USC 4321-4347;

(iii) To conduct environmental analysis, including, but not limited to, engaging in consultation pursuant to the Endangered Species Act of 1973, 16 USC 1531, et seq.; or

(iv) Upon agreement of the Forest Service, due to administrative appeal or litigation, regardless of whether the Unit Manager's order is required by a court order or this contract is named in such a proceeding.

(b) In the event of an order delaying or interrupting Purchaser's Operations under this Condition & Requirement, Purchaser's remedy shall be:

(i) a no cost contract extension,

(ii) reimbursement for Out-of-Pocket Expenses,

however, the foregoing remedies shall be available only to the extent that the Unit Manager's order was the sole and exclusive cause of the delay or interruption of Purchaser's operations.

(c) Remedies awarded to the Purchaser shall not be duplicative, and the Unit Manager shall have the right to structure remedies provided herein to avoid duplicative compensation.

(d) Purchaser agrees that this Condition & Requirement, and the remedies provided herein shall apply regardless of any finding by any court that the DNR failed to comply with any statute, regulation and/or policy in connection with awarding, advertising, or authorizing this sale, or a similar sale.

7.5 - Loss

7.5.2 - GNA, liability for loss (7/16)

If Included Timber is destroyed or damaged by an unexpected event that changes the nature of Included Timber, such as wind, flood, insects, disease, or similar cause, the Purchaser shall bear the timber value loss resulting from such destruction or damage.

Deterioration or loss of timber value due to delay or interruption under 7.3.4 - GNA, contract suspension and modification, shall be borne by the party holding title. In this event, Included Timber to which USDA Forest Service holds title, Purchaser of the State GNA contract will not be obligated to remove and pay for such timber. This Subsection shall not be construed to relieve either party of liability for negligence.

7.10 - Certified Timber

7.10.1 - Non-certified timber (2/16)

The area encompassed by this timber sale is not certified to the standards of the Forest Stewardship Council (FSC) or the Sustainable Forestry Initiative (SFI). Forest products from this sale may not be delivered to the mill as "FSC and / or SFI certified". The lands within this sale belong to the National Forest system and are being managed by the State as part of a Good Neighbor Authority (GNA) agreement.



TIMBER SALE MAP

This information provided by authority of Part 525, 1994 PA 451, as amended.

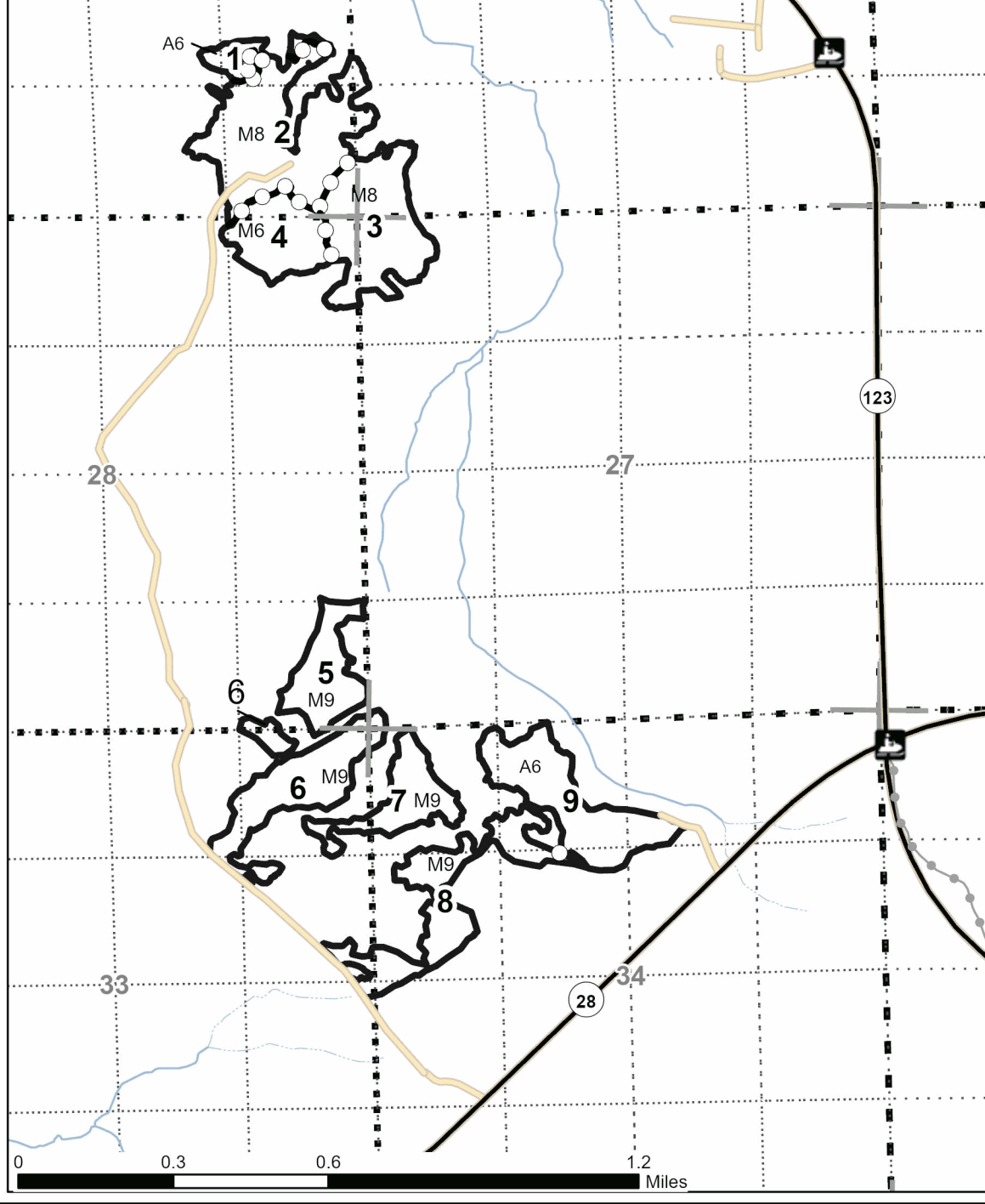
Sale Number	Date	
45-804-24	08/12/2024	
Scale	Page	Of
1:20,000	1	1

Forest Management Unit	County	Mapped By: A. Livermore
Sault Ste. Marie	Chippewa	Cruised By: Newberry Unit Staff

Township	Range	Section(s) and
T46N	06W	Sec. 21 SE; Sec. 22 W1/2SW; Sec. 27 NWNW, SWSW; Sec. 28 N1/2NE, SESE; Subdivision(s) Sec. 33 NE, NESE; Sec. 34 NW, W1/2NE, NWSW

Cover Type			
A = Aspen	J = Jack Pine	O = Oak	U = Upland Brush
B = Paper Birch	K = Rock	P = Lowland Poplar	UM = Upland Mix Forest
C = Cedar	L = Lowland Brush	Q = Mixed Swamp Conifer	V = Bog or Marsh
D = Treed Bog	LM = Lowland Mix Forest	R = Red Pine	W = White Pine
E = Swamp Hardwoods	M = Maple, Beech, Birch	S = Black Spruce	X = Non Stocked
F = Spruce/Fir	MC = Mixed Conifer	T = Tamarack	Y = Sand
G = Grass	MD = Mixed Deciduous	Z = Water	
H = Hemlock	N = Marsh		

Density	
0 = Non Stocked	5 = Pole Timber Medium
1 = Seedling Sapling Poor	6 = Pole Timber Well
2 = Seedling Sapling Medium	7 = Saw Timber Poor
3 = Seedling Sapling Well	8 = Saw Timber Medium
4 = Pole Timber Poor	9 = Saw Timber Well



PU #	Acres	PU #	Acres
1	4.8	6	25
2	41.5	7	14.3
3	29.1	8	24.7
4	16	9	26.3
5	14.9		

Legend

- Against USFS (Orange)
- Sections
- Payment Unit (Orange)
- Recreational Trail
- Non-DNR Road
- Highway
- MIRIS Section Corner



**GNA2
Grouper
196.6 Acres**



GNA2 Grouper (45-804-24)

T46N, R06W, SEC. 21; T46N, R06W, SEC. 22; T46N, R06W, SEC. 27; T46N,

In response to the notice of sale to be held 10:00 a.m. (local time) on October 28, 2024, I am hereby submitting my sealed bid (firm offer) for the following forest products to be cut. Bids for individual species must be at or above the advertised price. All non-responsive bid forms may be rejected.

<u>PRODUCTS & SPECIES</u>	<u>ESTIMATED VOLUME*</u>	<u>ADVERTISED PRICE</u>	<u>BID PRICE/UNIT</u>
Sawtimber			
Basswood	9.6 MBF	\$ 138.00/MBF	\$ _____
Red Maple	16.6 MBF	\$ 104.00/MBF	\$ _____
Sugar Maple	7.8 MBF	\$ 415.00/MBF	\$ _____
Pulpwood			
Balsam Fir	71 Cords	\$ 9.15/Cord	\$ _____
Mixed Aspen	797 Cords	\$ 20.50/Cord	\$ _____
Mixed Hardwood	698 Cords	\$ 15.55/Cord	\$ _____
Mixed Spruce	42 Cords	\$ 5.25/Cord	\$ _____

*The volumes are statistically estimated within plus (+) or minus (-) 15.08 percent at 95% confidence level. These estimated volumes are final and not subject to adjustment. Prospective bidders are urged to examine this timber and to make their own estimates of quantity and quality.

I understand that any or all bids may be rejected. All bids must be signed and all bid items must be bid or the bid form may be rejected. I also understand that consideration and awarding a contract will be based upon my past performance and ability to complete the contract based upon equipment and staffing subject to my control.

FEDERAL ID: _____ or SOCIAL SECURITY NUMBER: _____

Company or individual bidding: _____

Company representative's name: _____

Address: _____

City: _____ State: _____ Zip: _____

IF AVAILABLE, PLEASE PLACE THE PERSONALIZED LABEL FROM YOUR PROSPECTUS IN THE ABOVE BOX.

Individual or company representative's signature: _____ Date: _____

Phone number : _____ Email (optional): _____

THE WINNING BIDDER MUST COMPLETE THE VERIFICATION OF WORKER'S DISABILITY COMPENSATION ACT COMPLIANCE (ON REVERSE SIDE IF DOUBLE SIDED) WITHIN 21 DAYS OF SALE AWARD DATE



FOR DEPARTMENT USE ONLY
Sale Number (XX - XXX - XX - XX)
Forest Management Unit:

TIMBER SALE VERIFICATION OF WORKER'S DISABILITY COMPENSATION ACT COMPLIANCE

*As required by Act 317, P.A. 1969 (Worker's Compensation) and
Part 5 of Act 451 of 1994, as amended.*

VERIFICATION OF WORKER'S DISABILITY COMPENSATION ACT COMPLIANCE

- This verification must be completed and submitted within 21 days of contract award and prior to the issuance of the timber sale contract.
- In addition, if boxes 2B or 2C are checked, then Notice of Exclusion or Certificate of Insurance must be submitted within twenty-one (21) days of the contract award and prior to the issuance of the timber sale contract.
- All information must be typed or printed except for written signatures.

Please Check Appropriate Categories:

1. My business is organized as (you **must** check one of the boxes below):
 - A. Sole Proprietorship (individual)
 - B. Partnership
 - C. Corporation

2. You **must** check one of the boxes below:
 - A. I certify my business is a sole proprietorship and it has no employees but the sole proprietor. I am not subject to the Worker's Compensation Laws.
 - B. I certify my business has satisfied its obligation to the Worker's Compensation Act through the use of an approved Notice of Exclusion (BWC-337, Rev. 5/96). I will provide a copy of the Notice of Exclusion within 21 days of the contract award. (For questions or a copy of the BWC-337, please call the Worker's Compensation Bureau at 517-322-1195).
 - C. I certify my business has a Worker's Compensation Policy. I will provide an original Certificate of Insurance within twenty-one (21) days of the contract award.

3. If you have checked item 2(A) or 2(B), you **must** indicate the number of **both** full-time and part-time employees, other than yourself, including family members and active partners (if none, you must enter "0").

_____ Full-time Employees

_____ Part-time Employees

Name of Business		Federal ID (or) Social Security No.	
Address		Telephone ()	
City	State	ZIP	

I hereby certify that the above information is true and correct. I agree to notify the Michigan DNR of any changes that occur in factors affecting my coverage during any of my present and future operations.

Signature of Owner or Authorized Representative

Title

Date

Please complete the "SEALED BID" information on the next page

Hard Times at Taylor Creek (45-007-24)
T43N, R01W, SEC. 19; T43N, R01W, SEC. 20; T43N, R01W, SEC. 21; T43N,

In response to the notice of sale to be held 10:00 a.m. (local time) on October 28, 2024, I am hereby submitting my sealed bid (firm offer) for the following forest products to be cut. Bids for individual species must be at or above the advertised price. All non-responsive bid forms may be rejected.

<u>PRODUCTS & SPECIES</u>	<u>ESTIMATED VOLUME*</u>	<u>ADVERTISED PRICE</u>	<u>BID PRICE/UNIT</u>
Sawtimber			
Red Maple	5.8 MBF	\$ 110.00/MBF	\$ _____
Sugar Maple	82.2 MBF	\$ 245.00/MBF	\$ _____
Yellow Birch	1.3 MBF	\$ 56.00/MBF	\$ _____
Pulpwood			
Balsam Fir	42 Cords	\$ 13.30/Cord	\$ _____
Balsam Poplar	50 Cords	\$ 15.40/Cord	\$ _____
Mixed Aspen	209 Cords	\$ 17.50/Cord	\$ _____
Mixed Hardwood	509 Cords	\$ 15.00/Cord	\$ _____
Mixed Spruce	116 Cords	\$ 15.10/Cord	\$ _____
N. White Cedar	241 Cords	\$ 3.80/Cord	\$ _____
Tamarack	162 Cords	\$ 1.95/Cord	\$ _____
White Pine	5 Cords	\$ 22.95/Cord	\$ _____

*The volumes are statistically estimated within plus (+) or minus (-) 14.54 percent at 95% confidence level. These estimated volumes are final and not subject to adjustment. Prospective bidders are urged to examine this timber and to make their own estimates of quantity and quality.

I understand that any or all bids may be rejected. All bids must be signed and all bid items must be bid or the bid form may be rejected. I also understand that consideration and awarding a contract will be based upon my past performance and ability to complete the contract based upon equipment and staffing subject to my control.

FEDERAL ID: _____ or SOCIAL SECURITY NUMBER: _____

Company or individual bidding: _____

Company representative's name: _____

Address: _____

City: _____ State: _____ Zip: _____

IF AVAILABLE, PLEASE PLACE THE PERSONALIZED LABEL FROM YOUR PROSPECTUS IN THE ABOVE BOX.

Individual or company representative's signature: _____ Date: _____

Phone number : _____ Email (optional): _____

THE WINNING BIDDER MUST COMPLETE THE VERIFICATION OF WORKER'S DISABILITY COMPENSATION ACT COMPLIANCE (ON REVERSE SIDE IF DOUBLE SIDED) WITHIN 21 DAYS OF SALE AWARD DATE



FOR DEPARTMENT USE ONLY
Sale Number (XX – XXX – XX – XX)
Forest Management Unit:

TIMBER SALE VERIFICATION OF WORKER'S DISABILITY COMPENSATION ACT COMPLIANCE

*As required by Act 317, P.A. 1969 (Worker's Compensation) and
Part 5 of Act 451 of 1994, as amended.*

VERIFICATION OF WORKER'S DISABILITY COMPENSATION ACT COMPLIANCE

- This verification must be completed and submitted within 21 days of contract award and prior to the issuance of the timber sale contract.
- In addition, if boxes 2B or 2C are checked, then Notice of Exclusion or Certificate of Insurance must be submitted within twenty-one (21) days of the contract award and prior to the issuance of the timber sale contract.
- All information must be typed or printed except for written signatures.

Please Check Appropriate Categories:

1. My business is organized as (you **must** check one of the boxes below):
 - A. Sole Proprietorship (individual)
 - B. Partnership
 - C. Corporation
2. You **must** check one of the boxes below:
 - A. I certify my business is a sole proprietorship and it has no employees but the sole proprietor. I am not subject to the Worker's Compensation Laws.
 - B. I certify my business has satisfied its obligation to the Worker's Compensation Act through the use of an approved Notice of Exclusion (BWC-337, Rev. 5/96). I will provide a copy of the Notice of Exclusion within 21 days of the contract award. (For questions or a copy of the BWC-337, please call the Worker's Compensation Bureau at 517-322-1195).
 - C. I certify my business has a Worker's Compensation Policy. I will provide an original Certificate of Insurance within twenty-one (21) days of the contract award.
3. If you have checked item 2(A) or 2(B), you **must** indicate the number of **both** full-time and part-time employees, other than yourself, including family members and active partners (if none, you must enter "0").

_____ Full-time Employees

_____ Part-time Employees

Name of Business		Federal ID (or) Social Security No.	
Address		Telephone ()	
City	State	ZIP	

I hereby certify that the above information is true and correct. I agree to notify the Michigan DNR of any changes that occur in factors affecting my coverage during any of my present and future operations.

Signature of Owner or Authorized Representative

Title

Date

Please complete the "SEALED BID" information on the next page

Clear the Way (45-008-24)

T43N, R01W, SEC. 19; T43N, R01W, SEC. 20; T43N, R01W, SEC. 27; T43N,

In response to the notice of sale to be held 10:00 a.m. (local time) on October 28, 2024, I am hereby submitting my sealed bid (firm offer) for the following forest products to be cut. Bids for individual species must be at or above the advertised price. All non-responsive bid forms may be rejected.

<u>PRODUCTS & SPECIES</u>	<u>ESTIMATED VOLUME*</u>	<u>ADVERTISED PRICE</u>	<u>BID PRICE/UNIT</u>
Sawtimber			
Red Maple	12.3 MBF	\$ 70.00/MBF	\$ _____
Pulpwood			
Balsam Fir	198 Cords	\$ 6.15/Cord	\$ _____
Balsam Poplar	186 Cords	\$ 13.75/Cord	\$ _____
Mixed Aspen	707 Cords	\$ 13.75/Cord	\$ _____
Mixed Hardwood	129 Cords	\$ 10.40/Cord	\$ _____
Mixed Spruce	85 Cords	\$ 3.50/Cord	\$ _____
N. White Cedar	217 Cords	\$ 4.60/Cord	\$ _____

*The volumes are statistically estimated within plus (+) or minus (-) 15.76 percent at 95% confidence level. These estimated volumes are final and not subject to adjustment. Prospective bidders are urged to examine this timber and to make their own estimates of quantity and quality.

I understand that any or all bids may be rejected. All bids must be signed and all bid items must be bid or the bid form may be rejected. I also understand that consideration and awarding a contract will be based upon my past performance and ability to complete the contract based upon equipment and staffing subject to my control.

FEDERAL ID: _____ or SOCIAL SECURITY NUMBER: _____

Company or individual bidding: _____

Company representative's name: _____

Address: _____

City: _____ State: _____ Zip: _____

IF AVAILABLE, PLEASE PLACE THE PERSONALIZED LABEL FROM YOUR PROSPECTUS IN THE ABOVE BOX.

Individual or company representative's signature: _____ Date: _____

Phone number : _____ Email (optional): _____

THE WINNING BIDDER MUST COMPLETE THE VERIFICATION OF WORKER'S DISABILITY COMPENSATION ACT COMPLIANCE (ON REVERSE SIDE IF DOUBLE SIDED) WITHIN 21 DAYS OF SALE AWARD DATE



FOR DEPARTMENT USE ONLY	
Sale Number (XX - XXX - XX - XX)	
Forest Management Unit:	

TIMBER SALE VERIFICATION OF WORKER'S DISABILITY COMPENSATION ACT COMPLIANCE

As required by Act 317, P.A. 1969 (Worker's Compensation) and
Part 5 of Act 451 of 1994, as amended.

VERIFICATION OF WORKER'S DISABILITY COMPENSATION ACT COMPLIANCE

- This verification must be completed and submitted within 21 days of contract award and prior to the issuance of the timber sale contract.
- In addition, if boxes 2B or 2C are checked, then Notice of Exclusion or Certificate of Insurance must be submitted within twenty-one (21) days of the contract award and prior to the issuance of the timber sale contract.
- All information must be typed or printed except for written signatures.

Please Check Appropriate Categories:

1. My business is organized as (you **must** check one of the boxes below):
 - A. Sole Proprietorship (individual)
 - B. Partnership
 - C. Corporation
2. You **must** check one of the boxes below:
 - A. I certify my business is a sole proprietorship and it has no employees but the sole proprietor. I am not subject to the Worker's Compensation Laws.
 - B. I certify my business has satisfied its obligation to the Worker's Compensation Act through the use of an approved Notice of Exclusion (BWC-337, Rev. 5/96). I will provide a copy of the Notice of Exclusion within 21 days of the contract award. (For questions or a copy of the BWC-337, please call the Worker's Compensation Bureau at 517-322-1195).
 - C. I certify my business has a Worker's Compensation Policy. I will provide an original Certificate of Insurance within twenty-one (21) days of the contract award.
3. If you have checked item 2(A) or 2(B), you **must** indicate the number of **both** full-time and part-time employees, other than yourself, including family members and active partners (if none, you must enter "0").

_____ Full-time Employees

_____ Part-time Employees

Name of Business		Federal ID (or) Social Security No.	
Address		Telephone ()	
City	State	ZIP	

I hereby certify that the above information is true and correct. I agree to notify the Michigan DNR of any changes that occur in factors affecting my coverage during any of my present and future operations.

Signature of Owner or Authorized Representative

Title

Date

Please complete the "SEALED BID" information on the next page