



**DEPARTMENT OF NATURAL RESOURCES
STATE OF MICHIGAN
TIMBER SALE PROSPECTUS #7463**

SCHEDULED SALE DATE AND TIME: 4:00 p.m. (local time) on October 24, 2024.

LOCATION: TRAVERSE CITY MGMT UNIT, 2122 M 37 SOUTH, TRAVERSE CITY, MI 49685.

PROSPECTUS NOTE: The bidder is advised to inspect the sale area and review the location, estimated volumes, operating costs and contract terms of proposed sales. Please be aware that some landowners may request 60 days or more notice for access across their land.

Notice is hereby given that bids will be received by the Unit Manager, TRAVERSE CITY MANAGEMENT UNIT, for certain timber on the following described lands:

Seeps and Springs Mix (61-121-24) / T25N, R07W, SEC. 14, N1/2SE,SWSE.

T25N, R07W, SEC. 22, NESE,S1/2SE.

T25N, R07W, SEC. 23, NENW,S1/2NW,SW.

Kalkaska County, Advertised Price \$56,221.40, 124.9 Acres, Red Pine, Hardwood.

SALE NOTE: Payment Units 1 and 2 will need to be harvested in dry or frozen weather conditions.

Timber Wolf Hardwoods (61-126-24) / T28N, R06W, SEC. 18, NENE,S1/2NE.

T28N, R06W, SEC. 19, N1/2SE,SWSE.

Kalkaska County, Advertised Price \$45,035.50, 71.7 Acres, Hardwood, Sugar Maple.

SALE NOTE: Spec 5.2.3.3 Bark Slip Applies to Entire Sale

Educated Turkey Mix (61-127-24) / T28N, R06W, SEC. 18, SWNW.

T28N, R07W, SEC. 13, S1/2NE,NESW,S1/2SW,N1/2SE,SWSE.

Kalkaska County, Advertised Price \$60,020.65, 78.4 Acres, Hardwood, White Pine.

SALE NOTE: See Spec 5.1.6 Consumers ROW Permit for Access to Sale.

Sand Trap Jack Pine (61-620-24) / T25N, R06W, SEC. 1, SENW,S1/2NE,NESW,N1/2SE,SESE.

T25N, R06W, SEC. 2, SENE,NESE.

T26N, R05W, SEC. 31, SWSE.

Kalkaska County, Advertised Price \$23,876.80, 130.5 Acres, Jack Pine, Hardwood.

SALE NOTE: This sale is on DMVA land (Camp Grayling). There is potential for no harvesting operations from May 1st to Oct 31. Contact Sale Administrator for details.

A recreation site such as a trail, pathway, or campground is within the sale area or the vicinity. Certain restrictions/specifications may be applicable including time restrictions.

High Ground Oak (61-632-24) / T25N, R05W, SEC. 4, W1/2SW.

T25N, R05W, SEC. 5, NWNW,S1/2NW,SWNE,N1/2SW,NWSE.

T25N, R05W, SEC. 6, S1/2NE,E1/2SW,N1/2SE,SWSE.

T25N, R05W, SEC. 8, NWNW.

Kalkaska County, Advertised Price \$114,325.35, 161.9 Acres, Hardwood, Red Oak.

SALE NOTE: This sale is in a National Guard training area and has a timing restriction. Typically the restriction is no operations from May 1st to October 31st. Contact sale administrator for more details.

BID INSTRUCTIONS (VER. 10/10/2022):

1. Scheduled Bid Location, Date, and Time (2/11)

Bids must be received by the Unit Manager, TRAVERSE CITY OFFICE, 2122 M 37 South, Traverse City, MI 49685, no later than 4:00 p.m. (local time) on October 24, 2024. For further information concerning this sale, contact Matthew Edison at 906-291-0095.

2. Bidder's Qualifications (10/22)

If all or part of a timber sale was prepared by a private contractor, the contractor and that contractor's company are not permitted to bid on the timber sale. A person must be 18 years of age or older to purchase timber. Permanent employees of the Department of Natural Resources or members of their immediate household may not bid. Former employees, in the permanent or seasonal class, may not bid until 3 months after the last day of active duty. Bids will not be accepted from individuals or companies appearing on the DNR/FRD No-Bid List. This list contains the names of purchasers who previously failed to execute a contract within 21-days or who have a history of poor performance.

3. Preparation of Sealed Bids (5/16)

Bid Forms may be completed online thru Michigan DNR Timber Sale Online Bidding (OLB) at www.michigan.gov/timberbidding or by completing the hardcopy Bid Form found in the Timber Sale Prospectus. Hardcopy Bid Forms shall be manually signed in ink. Registration in OLB is considered your 'signature' for all bids submitted thru that system. Bid prices must be entered for each species and product in the Bid Price column for all material subject to bidding and all fill-in blanks must be completed. If erasures or other changes appear on the hardcopy Bid Form, each erasure or change must be initialed by the person signing the bid.

4. Submission of Sealed Bids (5/16)

Bid forms may be obtained from the Unit Manager or thru OLB. Bids may be submitted hardcopy or thru OLB. All hardcopy bids must be submitted on the bid form and in an envelope clearly identified as described in this section. NOTE: Only one bid form per bid envelope. Sealed bids must be submitted to the Unit office designated in the prospectus and must be submitted at or prior to the time established in the prospectus. The envelope should show on the outside (a) the sale name or number and (b) the date and time of bid opening, as shown in the prospectus. Bids received after the time specified in the sale prospectus are late bids and will be rejected.

It is possible for a bidder to submit multiple bids on a single sale. For example, a bid may be submitted hardcopy and a bid may be submitted thru OLB. Or, two bidders from the same company could both submit bids on the same sale. If this were to happen, the State would accept all bids received and award the contract accordingly. All bidding and contractual requirements would apply to all bids received.

5. Public Opening of Sealed Bids (7/16)

If conditions permit, the sealed bids will be publicly opened and posted at the time and place set in the prospectus.

If a bidder, present at a bid opening, has submitted bids on more than one sale, that bidder may withdraw their unopened bid envelopes or announce the withdrawal of their online bid after being declared the successful bidder on one sale.

6. Award of Contract (1/11)

Award of the contract will be made to the Bidder whose bid, conforming to the prospectus, is most advantageous to the State of Michigan on the basis of total value at rates bid for the estimated quantities. The State reserves the right to reject any bid or waive any minor irregularity in bids received. A written award mailed (or otherwise furnished) to the successful Bidder shall be deemed to result in a binding contract without further action by either party.

7. Down Payment (1/11)

The Bidder to whom award is made must make a down payment within 21 days of the sale award. The amount of the down payment will be calculated as shown in the Bond and Payment Schedule of this prospectus. Only cash may be used to meet this requirement.

8. Performance Security (1/11)

As guarantee of faithful performance, a cash bond, certificate of deposit, surety bond or irrevocable letter of credit (LOC) is required within 21 days of the sale award. The amount of the performance security is shown in the Bond and

Payment Schedule of this prospectus. If an LOC or surety is used, the coverage must extend for at least 6 months beyond the contract expiration.

9. Worker's Compensation (10/22)

Purchaser shall obtain worker's compensation insurance to cover claims under Michigan's Worker's Disability Compensation Act of 1969 or similar employee benefit act of any other state applicable to an employee. Verification of Worker's Disability Compensation Act Compliance must be completed and submitted within 21 days of contract award and prior to the issuance of the timber sale contract. In addition, if applicable, Notice of Exclusion or Certificate of Insurance must also be submitted.

10. Timber Sale Contract (10/22)

Additional conditions and requirements common to all timber sales are listed on the timber sale contract (R4031) and are available on line at www.michigan.gov/timber. Contact the Unit Manager for additional information or a sample contract. Within 21 days of the date of the award letter, the bidder must sign the contract and provide the required down payment, performance security, and verification of worker's disability compensation. The down payment and performance security shall be in accordance with the provisions of the timber sale contract, in the sums stated in this prospectus. If these actions are not taken, then the Bidder, the Bidder's corporation, and the corporation's principals may not be permitted to bid on State timber sales for a period of 3 months after the first offense, 6 months after the second offense, and 1 year after the third offense. An offense will only be counted against the Bidder for 5 years. In addition, the Bidder certifies that if awarded this contract, the Bidder will complete the timber sale contract in accordance with its terms and any modifications thereof including requirements to purchase, cut, and remove the included timber by the expiration date.

Payment Unit values in the State Forest Timber Sale Contract are calculated based on the advertised value of the Payment Unit as a percentage of the total advertised value of the contract. The advertised value of each Payment Unit is given in the Description of Timber by Payment Unit table on the Timber Sale Information page. For example, if the value of Payment Unit 1 is advertised as \$1,500 and the total Timber Sale value is advertised as \$10,000, the contract price for Payment Unit 1 will be 15% of the total bid price ($\$1,500/\$10,000 * 100$).

11. Disclaimer of Estimates and Bidder's Warranty of Inspection (10/22)

Before submitting this bid, the Bidder is advised and cautioned to inspect the sale area, review the requirements of the sale contract, and take other steps as may be reasonably necessary to ascertain the location, estimated volumes, construction estimates, and operating costs of the proposed sale. Failure to do so will not relieve the Bidder from responsibility for completing the contract.

The Bidder warrants that this bid is submitted solely on the basis of the Bidder's examination and inspection of the quality and quantity of the timber offered for sale and the Bidder's opinion of the value thereof and the costs of recovery. No reliance should be placed on the State of Michigan's estimates of timber quality, quantity or costs of recovery. Bidder further acknowledges that the State of Michigan: (i) expressly disclaims any warranty of fitness of timber for any purpose; (ii) offers this timber as is without any warranty of quality (merchantability) or quantity and (iii) expressly disclaims any warranty as to the quantity or quality of timber sold.

12. Certification and Chain-of-Custody (10/22)

Unless otherwise indicated in the contract under section 7 – Other Conditions of the Sale Specific Conditions & Requirements, the area encompassed by this timber sale is certified to the standards of the Forest Stewardship Council (FSC) - Certificate #SCS-FM/COC-00090N and the Sustainable Forestry Initiative (SFI) - Certificate #NSF-SFIS-5Y031-SF5. Forest products from this sale may be delivered to the mill as "FSC 100% and / or SFI certified" as long as the contractor hauling the forest products is chain-of-custody (COC) certified or covered under a COC certificate from the destination mill. The purchaser is responsible for maintaining COC after leaving the sale area.

13. Good Neighbor Authority (GNA) Requirements (10/22)

If the name of this timber sales contains the acronym GNA, it is authorized by the Good Neighbor Authority (GNA) and covered by various agreements between the U.S. Forest Service and the State. The timber sale occurs on federal land and the following conditions apply:

GNA contracts on US Forest Service land will not be awarded to purchasers on the Federal list of excluded parties. The System for Award Management (SAM) will be checked for active excluded parties prior to award of contract. In

addition, the Bidder to whom award is made must complete an Assurance Regarding Felony Conviction or Tax Delinquent Status for Corporate Applicants (AD-3031).

14. Good Neighbor Authority (GNA) Requirements, con't (10/22)

Bidder certifies, by signing this bid form, that to the best of Bidder's knowledge that the following representations are accurate and complete.

- a. That the Bidder and its principals are not presently debarred, suspended, proposed for debarment, declared ineligible, or voluntary excluded from timber sales (covered transactions) by any Federal department or agency.
- b. That the Bidder and its principals have not within a 3-year period preceding this bid been convicted of or had a civil judgment rendered against them for commission of fraud or a criminal offense in connection with obtaining , attempting to obtain, or performing a public (Federal, State, or local) transaction or contract under a public transaction; violation of Federal or State antitrust statutes or commission of embezzlement, theft, forgery, bribery, falsification or destruction of records, making false statements, or receiving stolen property.
- c. That the Bidder and its principals are not presently indicted for or otherwise criminally or civilly charged by a governmental entity (Federal, State, or local) with commission of any of the offenses enumerated in paragraph b of this certification.
- d. That the Bidder and its principals have not within a 3-year period preceding this bid had one or more public transactions (Federal, State, or local) terminated for breach or default of a timber or forest product contract.

Bidders that cannot certify this requirement, in whole or in part, shall submit an explanation with their bid.

Scott Bowen
Director

TIMBER SALE INFORMATION

Seeps and Springs Mix (61-121-24)

T25N, R07W, SEC. 14; T25N, R07W, SEC. 22; T25N, R07W, SEC. 23.
Kalkaska County (Advertised Price \$56,221.40)

SALE NOTE: Payment Units 1 and 2 will need to be harvested in dry or frozen weather conditions.

A timber sale contract for this lump sum, sealed bid timber sale will be awarded to the responsible bidder offering the highest sealed bid price. All units of volume listed below were estimated using the Inventory Manager computer program and the new Michigan taper model. Bids must be at or above the following advertised price for each product and species:

<u>PRODUCTS & SPECIES</u>	<u>ESTIMATED UNITS*</u>	<u>ADVERTISED PRICE</u>
Sawtimber		
Paper Birch	4.6 MBF	\$ 43.00 / MBF
Red Maple	74.4 MBF	\$ 118.00 / MBF
Red Pine	61.5 MBF	\$ 123.00 / MBF
White Pine	14.4 MBF	\$ 82.00 / MBF
Pulpwood		
Balsam Fir	166 Cords	\$ 22.70 / Cord
Black Spruce	18 Cords	\$ 10.35 / Cord
Jack Pine	19 Cords	\$ 16.40 / Cord
Mixed Aspen	442 Cords	\$ 19.05 / Cord
Mixed Hardwood	328 Cords	\$ 19.40 / Cord
Red Pine	391 Cords	\$ 47.80 / Cord
White Pine	34 Cords	\$ 22.35 / Cord

* The total volume is statistically estimated within plus (+) or minus (-) 15.28 percent. There are an estimated 1,760 cords on this timber sale, plus or minus 269 cords at the 95% confidence level. The estimated units are final and not subject to adjustment. Prospective bidders are urged to examine this timber and to make their own estimates of quantity and quality.

BOND AND PAYMENT SCHEDULE:

1. A bond in the amount of \$2,811.00 to insure faithful performance of the conditions of the contract will be deposited by the successful bidder within 21 days of the sale award.
2. Cutting in any sale or unit without the required advance payment would be considered a trespass.
3. Total payment must be paid in advance or according to the following schedule :
 - (a) Ten percent (10%) of the sale value must be paid within 21 days of the sale award.
 - (b) The 10% down payment will be credited towards the first unit cut.
 - (c) Payment for each of the following units must be made before cutting begins in that unit:

PAYMENT UNIT NUMBER	PERCENT OF TOTAL SALE VALUE
01	11.5%
02	10.7%
03	14.0%
04	27.9%
05	18.8%
06	15.8%
07	1.3%
4. If no cutting takes place, the 10% down payment will not be refunded.
5. Operations on the contract issued will terminate on 12/31/2027.

SALE STATISTICS

Volumes were calculated in cubic feet using the Michigan taper model. Cubic foot volume includes all wood inside bark for the product indicated. For display purposes, cubic feet were converted to cords and MBF using a simple conversion factor, e.g. 79 cubic feet per cord and 185 cubic feet per MBF. The cubic foot volumes are precise; the cords and MBF volumes are not. Cubic foot volume cannot be directly converted to cords or boards with precision.

SALE VOLUMES

The total estimated sale volume may not equal the sum of the species/products due to the nature of statistical calculations associated with double sampling methodology.

VOLUME			STATISTICAL RANGE IN CORDS	
TOTAL CUBIC FEET	TOTAL CORDS	PERCENT ERROR	MINIMUM	MAXIMUM
139,079	1,760	15.28%	1,491	2,030

VDU VOLUMES

A VDU is a Volume Determination Unit. Volumes and their associated statistics are calculated at the VDU level and summarized to the sale level. There is often a one to one relationship between a VDU and a Payment Unit, but not always, depending on the cruise design. Refer to the VDU TO PAYMENT UNIT table.

	VOLUME			RANGE IN CORDS	
VDU	TOTAL CUBIC FEET	TOTAL CORDS	PERCENT ERROR	MINIMUM	MAXIMUM
9	20,192	256	46.40%	137	374
30	17,262	219	35.66%	141	296
32	12,685	161	41.87%	93	228
39	51,273	649	30.21%	453	845
45	20,127	255	29.65%	179	330
48	15,596	197	43.70%	111	284
52	1,943	25	177.33%	0	68
TOTAL:	139,079	1,760		1,114	2,426

VDU TO PAYMENT UNIT

When a VDU is associated with more than one Payment Unit (PU), the VDU volumes are assigned to the PU based on acres of the VDU within the PU.

VDU	VDU ACRES	PU	PU ACRES
9	9.4	1	9.4
30	9.7	2	9.7
32	13.4	3	13.4
39	33.7	4	33.7
45	34.7	5	34.7
48	20.8	6	20.8
52	3.2	7	3.2
TOTAL:	124.9		124.9

DESCRIPTION OF TIMBER BY PAYMENT UNIT (PU)

PU	MARKET GROUP	PRODUCT	QUANTITY	UNIT	ACRES	ADVERTISE PRICE
1	Red Maple	Sawtimber	14.2	MBF	9.4	\$6,490.60
	Red Pine		1.8	MBF		
	White Pine		1.8	MBF		
	Balsam Fir	Pulpwood	31	Cords		
	Mixed Aspen		83	Cords		
	<i>Quaking Aspen</i>		83	<i>Cords</i>		
	Mixed Hardwood		93	Cords		
	<i>Black Cherry</i>		3	<i>Cords</i>		
	<i>Red Maple</i>		90	<i>Cords</i>		
	Red Pine		7	Cords		
White Pine		1	Cords			
2	Paper Birch	Sawtimber	4.6	MBF	9.7	\$6,025.95
	Red Maple		23.2	MBF		
	Balsam Fir	Pulpwood	41	Cords		
	Mixed Aspen		37	Cords		
	<i>Quaking Aspen</i>		37	<i>Cords</i>		
	Mixed Hardwood		75	Cords		
	<i>Paper Birch</i>		15	<i>Cords</i>		
	<i>Red Maple</i>		60	<i>Cords</i>		
	Red Pine	Sawtimber	17.0	MBF		
Red Pine	Pulpwood	121	Cords			
4	Red Maple	Sawtimber	37.0	MBF	33.7	\$15,604.00
	Balsam Fir	Pulpwood	91	Cords		
	Mixed Aspen		306	Cords		
	<i>Quaking Aspen</i>		306	<i>Cords</i>		
	Mixed Hardwood		160	Cords		
	<i>Black Cherry</i>		13	<i>Cords</i>		
	<i>Red Maple</i>		147	<i>Cords</i>		
	Red Pine		5	Cords		
5	Red Pine	Sawtimber	35.0	MBF	34.7	\$10,596.00
	White Pine		9.5	MBF		
	Balsam Fir	Pulpwood	3	Cords		
	Black Spruce		18	Cords		
	Jack Pine		3	Cords		
	Red Pine		94	Cords		
	White Pine		32	Cords		
	6	Red Pine	Sawtimber	7.7		
White Pine			3.1	MBF		
Jack Pine		Pulpwood	16	Cords		
Red Pine			155	Cords		
White Pine			1	Cords		
7		Mixed Aspen	Pulpwood	16	Cords	3.2
	<i>B. T. Aspen</i>		16	<i>Cords</i>		
	Red Pine		9	Cords		
	TOTAL:			154.9	MBF	
TOTAL:			1,398	Cords		

Sale Specific Conditions & Requirements

Sale Name: Seeps and Springs Mix

Sale Number: 61-121-24 Seq#: 1

1 - Sale Area

1.2 - Boundaries

1.2.1 - Painted boundaries (9/19)

The sale boundary and Payment Unit boundaries are marked and identified by blue, red, and yellow paint. Exterior sale boundary lines against private property are marked with blue paint. Exterior sale boundary lines against state are marked with red paint. Interior Payment Unit boundaries are marked with yellow paint. Retention patches are marked with red paint; no harvesting activities may occur within these areas. The painted boundary line trees are not Included Timber and are to be protected unless marked with orange paint.

2 - Timber Specifications

2.1 - Included Timber

2.1.3 - Cut tree marked unit(s) (12/08)

Within Payment Unit(s) 3 and 5-7, all trees are designated for cutting when marked with orange paint above and below stump height, regardless of merchantability. In addition, within Payment Unit 6, cut all jack pine, regardless of merchantability. Furthermore, within Payment Unit 7, cut all aspen, regardless of merchantability.

2.1.4 - Designated timber unit(s) (6/17)

Within Payment Unit(s) 1-2 and 4, all red maple, aspen, cherry, balsam fir, black spruce, and paper birch are designated for cutting, which meet minimum piece specifications in 2.2 Utilization. In addition, all trees marked with orange paint are designated for cutting, regardless of merchantability. Avoid damage to white pine regeneration.

3 - Payments

3.3 - Pre-measured Sales

3.3.4 - Dividing payment units (7/14)

Payment Unit(s) with a value greater than \$15,000, may be divided at the request of the Purchaser and upon approval of the Unit Manager. Dividing Payment Units is a contract modification which requires a Timber Sale Contract Amendment. There will be only one division per Payment Unit.

3.4 - Damaged Timber

3.4.1 - Damaged timber (7/16)

General Condition and Requirement 3.4 Damaged Timber, defines liquidated damages for undesignated live merchantable trees which are cut or injured. In addition, extreme care should be taken to avoid damage to tree seedlings and saplings.

No damage is acceptable to undesignated live merchantable trees. Within the Sale Area, if more than 10% of trees (> 4.5" DBH) within a specified area of the sale are damaged, liquidated damages will be assessed for all trees damaged. Rates will be in accordance with General Condition and Requirement 3.4 Damaged Timber.

4 - Transportation

4.1 - Construction

4.1.1 - Stream crossings, general (3/11)

All stream crossing structures will be temporary and therefore, shall be provided by the Purchaser, and must be removed upon completion of the sale. All permits for stream crossings will be provided by the DNR.

4.1.6 - Road construction (4/24)

Construction of new roads or improvements of existing roads shall be done in such a way as to minimize the environmental and visual impacts. Merchantable trees shall be cut and utilized unless otherwise directed. Non-merchantable trees shall be severed and laid flat on the ground. Slash shall be scattered, and not left in windrows and kept a minimum of 10 feet back from the road edge. Stumps shall be set upright, not left on edge, and be moved at least 10 feet away from the road edge.

Disturbed soil shall be feathered into the woods and not left in berms or windrows.

4.1.7 - Road closure (10/11)

All new roads built into the sale must be blocked to vehicle traffic within 30 days of completion of hauling. Overgrown roads that are reopened shall be considered new roads. In general, this will require constructing a four (4') foot high berm of stumps and logs covered with earth. Stumps and brush must be placed along the remainder of the trail. These roads must be rendered impassable to cars and trucks. Contact the Sale Administrator for specific details of design and placement.

5 - Operations

5.1 - Notification

5.1.1 - Pre-sale conference (10/16)

A pre-sale conference on site between the Purchaser and sale administrator is required prior to beginning any operations, to determine landing and road locations. The Unit Manager or his/her representative must be contacted at least 3 days in advance to schedule the conference.

5.2 - Conduct of Operations

5.2.1 - Slash

5.2.1.8 - Slash height (12/08)

No slash or tree tops may exceed 24 inches in height.

5.2.2 - Hazard Trees/Snags

5.2.2.1 - Den trees (10/16)

Obvious hollow and/or den trees shall be protected and left standing unless they are a safety hazard.

5.2.3 - Operating Restrictions

5.2.3.6 - Bark beetle restriction (12/08)

In the event drought creates a high risk of pine bark beetle infestation, pine is not to be cut during the period March 1 through July 1, unless all portions of trees greater than two inches in diameter are removed from the sale area, reduced to chips, or treated to the satisfaction of the Unit Manager or his/her representative, within fifteen days of being severed from the stump. Pine log decks, pulpwood piles and treetops that are piled for chipping in the fall or winter within a 1/4 mile of susceptible sites must be removed before March 15. Residual slash must not be placed in piles or rows and must be spread over the site for quick drying. The Department of Natural Resources will exercise this specification if the risk of damage warrants.

5.2.17 - Timber Mats and Interlocking Composite Mats (5/23)

Some skid trails may require extra protection such as that afforded by timber mats, or another approved system. If available, mats may be borrowed from the DNR. A Timber Sale Contract Amendment will be used to document the Purchaser's use of the DNR's mats. Contact the Sale Administrator regarding availability and pick-up. Timber mats are available from various field offices. Composite mats are only available from the Grayling field office and the Marquette ICC. The Purchaser is responsible for picking up and hauling the mats to and from the site. Contact the Sale Administrator to schedule at least 14 days before desired install/removal date. All mats must be cleaned prior to drop off. This may include, but is not limited to, power washing and brushing to remove mud and debris. A charge of \$700.00 per timber mat will be assessed for all damaged or non-returned mats. Damage for the crane/timber mats is defined as three or more broken cants. Damage for the composite mats is defined as cracked or broken mats.

5.2.20 - Equipment width (2/04)

Withing Payment Units 3, 6, and 7, equipment used to remove designated cut trees must be capable of moving through the plantation rows without damaging residual trees.

5.2.22 - Operating Caution

5.2.22.1 - Operating caution (6/11)

It is recommended, but not required, that within Payment Unit(s) 1 and 2, cutting, skidding, and hauling occur during dry summer or frozen winter conditions. The reason for the recommendation is because of some areas with wet ground.

5.2.29 - Shrub protection (1/20)

Do not cut or damage hawthorn, witch-hazel, dogwood or juneberry. These woody-shrub plants are highly beneficial to various wildlife species.

5.2.32 - Decking/landing restoration (9/13)

All decking and landing areas must have the surface area restored to a condition equal to or better than before. This is to ensure the proper regeneration of the stand. Wood debris, chips and "cookies" from trimmings must be removed or scattered away from landing and loading areas and may not be windrowed on the edge.

5.3 - Stream Protection

5.3.1 - Operating near stream (7/04)

No tracked or wheeled vehicles shall be operated within 50 feet of creek/stream/river/intermittent creek, except at an approved crossing.

5.3.2 - Parking equipment near water (10/23)

Within Payment Unit(s) 1-2 and 4, the parking of or storage of equipment is prohibited within 100 feet of water bodies or ground water supplies. All equipment, when not in use for harvest operations, must be parked a minimum of 100 feet away from water sources (streams, rivers, lakes, ponds, vernal pools, ground water sources) and 50 feet away from slopes leading to water sources and/or riparian areas. This restriction is for preventing unforeseen oil and/or fluid leaks from contaminating water bodies and/or ground water supplies.

5.4 - Soil Protection

5.4.1 - Rutting restriction, general (7/16)

Operations are to cease immediately if equipment and weather conditions result in rutting of roads and/or skid trails which is 12 inches or greater in depth and 50 feet in length. The Unit Manager or his/her representative may restrict hauling and/or skidding if ruts exceed the specified depth. With the Unit Manager or his/her representative's approval, the Purchaser may return to the area when the risk of rutting has decreased.

5.8 - Protection of Endangered Species

5.8.5 - Protection of raptor nests (3/13)

All trees with raptor nests will be protected if found during harvesting operations. Notification will be made to the Unit Manager or his/her representative who will notify the Wildlife Biologist so an on-site evaluation and recommendation can be made, if necessary.

5.8.9 - Bat habitat and roost trees (5/24)

If bats are observed emerging from a tree prior to being felled, or if injured or dead bats are found after a tree is felled, notify the Unit Manager for coordination with Forest Service biologists. If the tree is determined to be a roost, the contract may be amended to include a no activity buffer (typically 150 feet radius around the roost tree or trees).

6 - Safety and Fire Prevention

6.2 - Signing

6.2.1 - Road posting (10/20)

The Purchaser is responsible for posting and maintaining caution signs on Dutch John Road prior to beginning operations. The road must be posted at appropriate distances from the Sale Area to warn of logging activity and truck traffic. Signs must be removed when harvest operations are suspended or completed. The Purchaser will provide these signs.



TIMBER SALE MAP

This information provided by authority of Part 525, 1994 PA 451, as amended.

Sale Number
61-121-24

Date
08/30/2024

Forest Management Unit	County	Mapped By: Crigier
Traverse City Mgt Unit	Kalkaska	Cruised By: Crigier

Scale	Page	Of
1:15,840	1	1

Township	Range	Section(s) and Subdivision(s)
25N	07W	Sec. 14 N1/2SE,SWSE; Sec. 22 NESE,S1/2SE; Sec. 23 NENW,S1/2NW,SW;

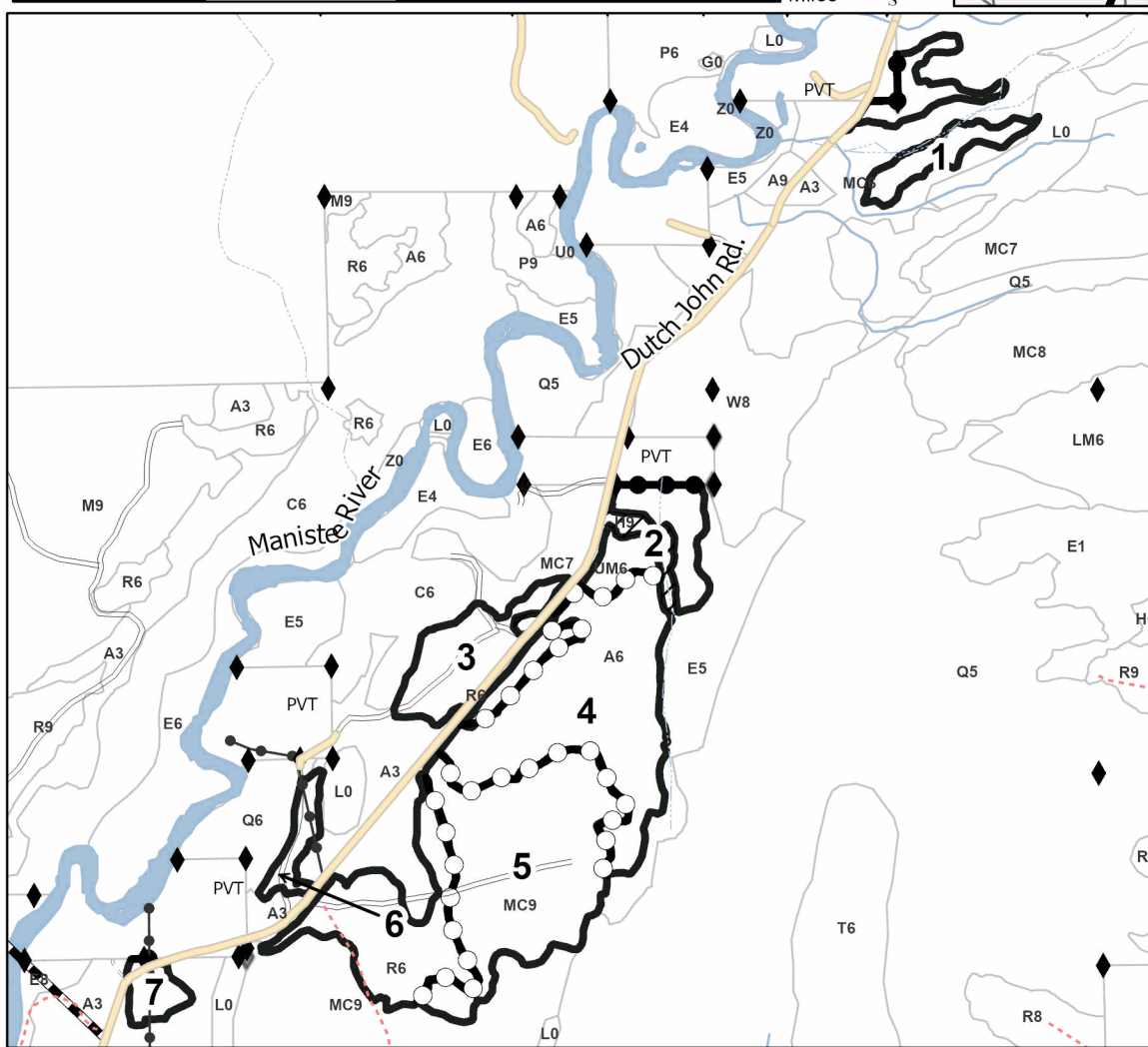
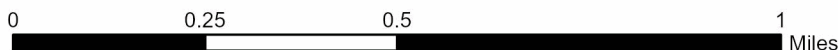
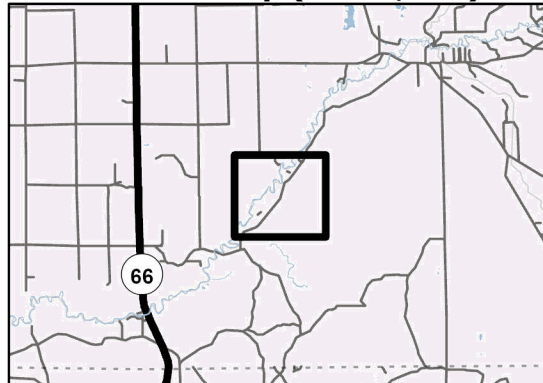
Cover Type			
A = Aspen	J = Jack Pine	O = Oak	U = Upland Brush
B = Paper Birch	K = Rock	P = Lowland Poplar	UM = Upland Mix Forest
C = Cedar	L = Lowland Brush	Q = Mixed Swamp Conifer	V = Bog or Marsh
D = Treed Bog	LM = Lowland Mix Forest	R = Red Pine	W = White Pine
E = Swamp Hardwoods	M = Maple, Beech, Birch	S = Black Spruce	X = Non Stocked
F = Spruce/Fir	MC = Mixed Conifer	T = Tamarack	Y = Sand
G = Grass	MD = Mixed Deciduous	Z = Water	
H = Hemlock	N = Marsh		

Density	
0 = Non Stocked	5 = Pole Timber Medium
1 = Seedling Sapling Poor	6 = Pole Timber Well
2 = Seedling Sapling Medium	7 = Saw Timber Poor
3 = Seedling Sapling Well	8 = Saw Timber Medium
4 = Pole Timber Poor	9 = Saw Timber Well

PU #	Acres	PU #	Acres
1	9.4	5	34.7
2	9.7	6	20.8
3	13.4	7	3.2
4	33.7		

Seeps and Springs Mix 124.9 Acres

Locator Map (1:200,000)



Legend

- Against State (Red)
- Stand
- Retention Areas
- Payment Unit (Yellow)
- Private Line (Blue)
- Secondary Forest Road
- Forest Access Route
- Administrative Access Only
- Non-DNR Road
- Pipeline
- Powerline
- Field Grade Corner
- Survey Grade Corner

Use QR Code to open Map in App



TIMBER SALE INFORMATION

Timber Wolf Hardwoods (61-126-24)
T28N, R06W, SEC. 18; T28N, R06W, SEC. 19.
Kalkaska County (Advertised Price \$45,035.50)

SALE NOTE: Spec 5.2.3.3 Bark Slip Applies to Entire Sale

A timber sale contract for this lump sum, sealed bid timber sale will be awarded to the responsible bidder offering the highest sealed bid price. All units of volume listed below were estimated using the Inventory Manager computer program and the new Michigan taper model. Bids must be at or above the following advertised price for each product and species:

<u>PRODUCTS & SPECIES</u>	<u>ESTIMATED UNITS*</u>	<u>ADVERTISED PRICE</u>
Sawtimber		
Basswood	4.5 MBF	\$ 117.00 / MBF
Beech	9.3 MBF	\$ 155.00 / MBF
Red Maple	99.1 MBF	\$ 127.00 / MBF
Sugar Maple	53.9 MBF	\$ 314.00 / MBF
Pulpwood		
B. T. Aspen	11 Cords	\$ 20.40 / Cord
Mixed Hardwood	641 Cords	\$ 20.80 / Cord

* The total volume is statistically estimated within plus (+) or minus (-) 17.45 percent. There are an estimated 1,044 cords on this timber sale, plus or minus 182 cords at the 95% confidence level. The estimated units are final and not subject to adjustment. Prospective bidders are urged to examine this timber and to make their own estimates of quantity and quality.

BOND AND PAYMENT SCHEDULE:

1. A bond in the amount of \$4,504.00 to insure faithful performance of the conditions of the contract will be deposited by the successful bidder within 21 days of the sale award.
2. Cutting in any sale or unit without the required advance payment would be considered a trespass.
3. Total payment must be paid in advance or according to the following schedule :
 - (a) Ten percent (10%) of the sale value must be paid within 21 days of the sale award.
 - (b) The 10% down payment will be credited towards the first unit cut.
 - (c) Payment for each of the following units must be made before cutting begins in that unit:

PAYMENT UNIT NUMBER	PERCENT OF TOTAL SALE VALUE
01	19.8%
02	45.1%
03	35.1%

4. If no cutting takes place, the 10% down payment will not be refunded.
5. Operations on the contract issued will terminate on 12/31/2027.

SALE STATISTICS

Volumes were calculated in cubic feet using the Michigan taper model. Cubic foot volume includes all wood inside bark for the product indicated. For display purposes, cubic feet were converted to cords and MBF using a simple conversion factor, e.g. 79 cubic feet per cord and 185 cubic feet per MBF. The cubic foot volumes are precise; the cords and MBF volumes are not. Cubic foot volume cannot be directly converted to cords or boards with precision.

SALE VOLUMES

The total estimated sale volume may not equal the sum of the species/products due to the nature of statistical calculations associated with double sampling methodology.

VOLUME		STATISTICAL RANGE IN CORDS		
TOTAL CUBIC FEET	TOTAL CORDS	PERCENT ERROR	MINIMUM	MAXIMUM
82,445	1,044	17.45%	861	1,226

VDU VOLUMES

A VDU is a Volume Determination Unit. Volumes and their associated statistics are calculated at the VDU level and summarized to the sale level. There is often a one to one relationship between a VDU and a Payment Unit, but not always, depending on the cruise design. Refer to the VDU TO PAYMENT UNIT table.

VDU	VOLUME		PERCENT ERROR	RANGE IN CORDS	
	TOTAL CUBIC FEET	TOTAL CORDS		MINIMUM	MAXIMUM
127	19,919	252	30.62%	175	329
136	62,526	791	21.03%	625	958
TOTAL:	82,445	1,044		800	1,287

VDU TO PAYMENT UNIT

When a VDU is associated with more than one Payment Unit (PU), the VDU volumes are assigned to the PU based on acres of the VDU within the PU.

VDU	VDU ACRES	PU	PU ACRES
127	21.1	3	21.1
136	50.6	1	15.4
		2	35.2
TOTAL:	71.7		71.7

DESCRIPTION OF TIMBER BY PAYMENT UNIT (PU)

PU	MARKET GROUP	PRODUCT	QUANTITY	UNIT	ACRES	ADVERTISE PRICE				
1	Beech	Sawtimber	1.3	MBF	15.4	\$8,914.10				
	Red Maple		30.2	MBF						
	Sugar Maple		5.2	MBF						
	B. T. Aspen	Pulpwood	1	Cords						
	Mixed Hardwood		155	Cords						
	<i>Beech</i>		11	<i>Cords</i>						
	<i>Ironwood</i>		1	<i>Cords</i>						
	<i>Red Maple</i>		120	<i>Cords</i>						
	<i>Sugar Maple</i>		23	<i>Cords</i>						
2	Beech	Sawtimber	3.0	MBF	35.2	\$20,293.90				
	Red Maple		68.9	MBF						
	Sugar Maple		11.9	MBF						
	B. T. Aspen	Pulpwood	1	Cords						
	Mixed Hardwood		352	Cords						
	<i>Beech</i>		25	<i>Cords</i>						
	<i>Ironwood</i>		1	<i>Cords</i>						
	<i>Red Maple</i>		275	<i>Cords</i>						
	<i>Sugar Maple</i>		51	<i>Cords</i>						
3	Basswood	Sawtimber	4.5	MBF	21.1	\$15,827.50				
	Beech		5.0	MBF						
	Sugar Maple		36.8	MBF						
	B. T. Aspen	Pulpwood	9	Cords						
	Mixed Hardwood		134	Cords						
	<i>Basswood</i>		3	<i>Cords</i>						
	<i>Beech</i>		13	<i>Cords</i>						
	<i>Ironwood</i>		7	<i>Cords</i>						
	<i>Sugar Maple</i>		111	<i>Cords</i>						
	TOTAL:			166.8			MBF			
	TOTAL:			652			Cords			

Sale Specific Conditions & Requirements

Sale Name: Timber Wolf Hardwoods

Sale Number: 61-126-24 Seq#: 1

1 - Sale Area

1.2 - Boundaries

1.2.1 - Painted boundaries (9/19)

The sale boundary and Payment Unit boundaries are marked and identified by blue and red paint. Exterior sale boundary lines against private property are marked with blue paint. Exterior sale boundary lines against state are marked with red paint. The painted boundary line trees are not Included Timber and are to be protected unless marked with orange paint.

2 - Timber Specifications

2.1 - Included Timber

2.1.3 - Cut tree marked unit(s) (12/08)

Within Payment Unit(s) 1, 2 and 3, all trees are designated for cutting when marked with orange paint above and below stump height, regardless of merchantability. In addition, cut all merchantable beech, ironwood and aspen unless marked with an orange "X". Also, within the green painted regen gaps in Payment Units 1 and 2, cut all trees that are two (2) inches or more at DBH, except do not cut maple less than 4 inches at DBH or any tree marked with green paint.

2.2 - Utilization

2.2.3 - Stump heights (4/07)

Stump heights within the Sale Area shall not exceed 12 inches for trees greater than 10 inches at DBH and 4 inches for trees smaller than 10 inches at DBH.

2.2.6 - Roundwood operation required (3/21)

The skidding of whole trees or tree segments with limbs attached is prohibited within Payment Unit(s) 1, 2 and 3. All products must be produced as roundwood and forwarded to existing roads or landing areas in final product length.

3 - Payments

3.4 - Damaged Timber

3.4.1 - Damaged timber (7/16)

General Condition and Requirement 3.4 Damaged Timber, defines liquidated damages for undesignated live merchantable trees which are cut or injured. In addition, extreme care should be taken to avoid damage to maple seedlings and saplings (1/4" to 4.5" DBH) within the regen gaps in Payment Units 1 and 2.

4 - Transportation

4.1 - Construction

4.1.3 - Slash and earthen piles (8/04)

Piles or windrows of earth along roads and landings that have been widened or constructed shall be leveled. Slash from road maintenance or construction, including stumps, shall be dispersed throughout the sale.

4.1.11 - Permits (2/12)

The Purchaser will secure any necessary highway and county road permits that may be required.

4.1.12 - No new roads (1/12)

No new roads will be permitted in any Payment Unit. All operations are limited to existing roads. Skid trails will only be allowed.

4.2 - Maintenance

4.2.5 - Two wheel drive condition (2/04)

All existing trail roads on and adjacent to the sale area must be passable by two-wheel drive traffic for the duration of the sale.

5 - Operations

5.1 - Notification

5.1.1 - Pre-sale conference (10/16)

A pre-sale conference on site between the Purchaser and sale administrator is required prior to beginning any operations, to determine landing and road locations. The Unit Manager or his/her representative must be contacted at least 5 days in advance to schedule the conference.

5.1.6 - Utility R.O.W. (4/19)

It is the responsibility of the Purchaser to obtain permission from the utility company to utilize the power line R.O.W. for operations. The Powerline runs between Payment Units 1 and 2 and will be needed as possible landing and will be used for hauling wood out.

5.2 - Conduct of Operations

5.2.1 - Slash

5.2.1.11 - Slash for reforestation (3/21)

To facilitate reforestation within Payment Unit(s) 1, 2 and 3, it is encouraged to bunch top wood into a pile directly on all maple stumps that were harvested as part of the timber sale. This will protect any stump sprouts from deer browse. Stumps shall be cut low to the ground and treetops should be placed directly on the stump. Piles should be 3 to 4 feet tall to help discourage deer browse. In addition, all tops and brush from within the regen gaps in Payment Units 1 and 2 shall be removed and scattered throughout the rest of the Payment Unit. This is necessary for any follow-up treatments.

5.2.3 - Operating Restrictions

5.2.3.3 - Bark slippage restriction (3/09)

Within Payment Unit(s) 1, 2 and 3, unless changed by written agreement, cutting and skidding are not permitted during the period of April 15 to July 15. This restriction is because of bark slippage.

5.2.32 - Decking/landing restoration (9/13)

All decking and landing areas must have the surface area restored to a condition equal to or better than before. This is to ensure the proper regeneration of the stand. Wood debris, chips and "cookies" from trimmings must be removed or scattered away from landing and loading areas and may not be windrowed on the edge.

5.4 - Soil Protection

5.4.1 - Rutting restriction, general (7/16)

Operations are to cease immediately if equipment and weather conditions result in rutting of roads and/or skid trails which are 12 inches or greater in depth and 50 feet in length. The Unit Manager or his/her representative may restrict hauling and/or skidding if ruts exceed the specified depth. With the Unit Manager or his/her representative's approval, the Purchaser may return to the area when the risk of rutting has decreased.

6 - Safety and Fire Prevention

6.2 - Signing

6.2.1 - Road posting (10/20)

The Purchaser is responsible for posting and maintaining caution signs on all county and state roads affected by timber sale prior to beginning operations. The road must be posted at appropriate distances from the Sale Area to warn of logging activity and truck traffic. Signs must be removed when harvest operations are suspended or completed. The Purchaser will provide these signs.



TIMBER SALE MAP

This information provided by authority of Part 525, 1994 PA 451, as amended.

Sale Number
61-126-24

Date
08/23/2024

Forest Management Unit	County	Mapped By: Tom Peterson
Traverse City Mgt Unit	Kalkaska	Cruised By: Tom Peterson

Scale	Page	Of
1:24,000	1	1

Township	Range	Section(s) and Subdivision(s)
28N	06W	Sec. 18 NENE,S1/2NE; Sec. 19 N1/2SE,SWSE;

Cover Type			
A = Aspen	J = Jack Pine	O = Oak	U = Upland Brush
B = Paper Birch	K = Rock	P = Lowland Poplar	UM = Upland Mix Forest
C = Cedar	L = Lowland Brush	Q = Mixed Swamp Conifer	V = Bog or Marsh
D = Treed Bog	LM = Lowland Mix Forest	R = Red Pine	W = White Pine
E = Swamp Hardwoods	M = Maple, Beech, Birch	S = Black Spruce	X = Non Stocked
F = Spruce/Fir	MC = Mixed Conifer	T = Tamarack	Y = Sand
G = Grass	MD = Mixed Deciduous	Z = Water	
H = Hemlock	N = Marsh		

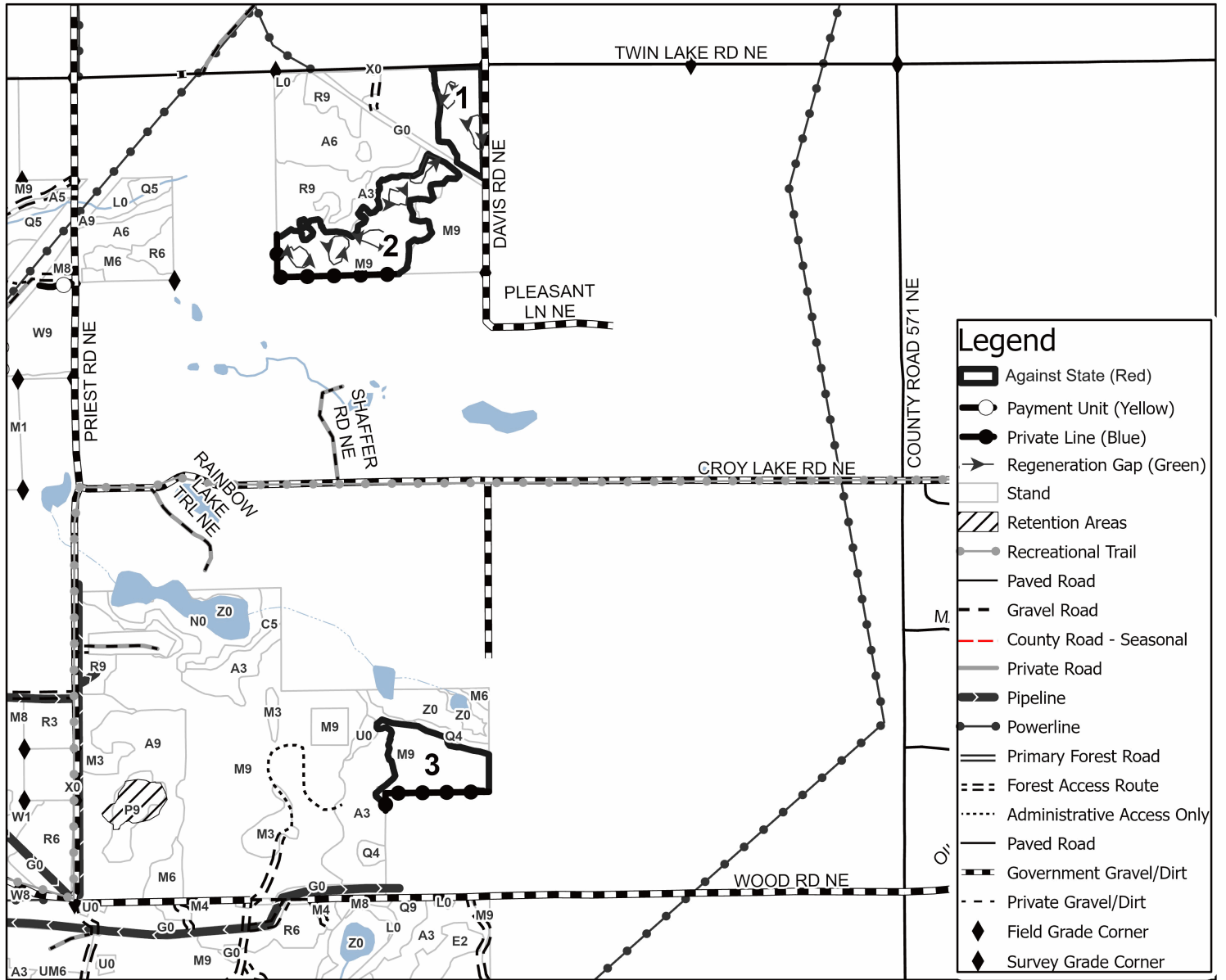
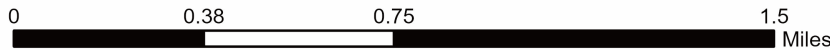
Density	
0 = Non Stocked	5 = Pole Timber Medium
1 = Seedling Sapling Poor	6 = Pole Timber Well
2 = Seedling Sapling Medium	7 = Saw Timber Poor
3 = Seedling Sapling Well	8 = Saw Timber Medium
4 = Pole Timber Poor	9 = Saw Timber Well

PU #	Acres
1	15.4
2	35.2
3	21.1

Timber Wolf Hardwoods
71.7 Acres



Use QR Code to open Map in App



Legend	
	Against State (Red)
	Payment Unit (Yellow)
	Private Line (Blue)
	Regeneration Gap (Green)
	Stand
	Retention Areas
	Recreational Trail
	Paved Road
	Gravel Road
	County Road - Seasonal
	Private Road
	Pipeline
	Powerline
	Primary Forest Road
	Forest Access Route
	Administrative Access Only
	Paved Road
	Government Gravel/Dirt
	Private Gravel/Dirt
	Field Grade Corner
	Survey Grade Corner

TIMBER SALE INFORMATION

Educated Turkey Mix (61-127-24)
T28N, R06W, SEC. 18; T28N, R07W, SEC. 13.
Kalkaska County (Advertised Price \$60,020.65)

SALE NOTE: See Spec 5.1.6 Consumers ROW Permit for Access to Sale.

A timber sale contract for this lump sum, sealed bid timber sale will be awarded to the responsible bidder offering the highest sealed bid price. All units of volume listed below were estimated using the Inventory Manager computer program and the new Michigan taper model. Bids must be at or above the following advertised price for each product and species:

<u>PRODUCTS & SPECIES</u>	<u>ESTIMATED UNITS*</u>	<u>ADVERTISED PRICE</u>
Sawtimber		
Basswood	1.5 MBF	\$ 117.00 / MBF
Beech	4.6 MBF	\$ 155.00 / MBF
Black Cherry	4.4 MBF	\$ 153.00 / MBF
Red Maple	29.1 MBF	\$ 127.00 / MBF
Sugar Maple	80.9 MBF	\$ 314.00 / MBF
Pulpwood		
B. T. Aspen	15 Cords	\$ 20.40 / Cord
Mixed Hardwood	503 Cords	\$ 20.80 / Cord
Red Pine	111 Cords	\$ 51.20 / Cord
White Pine	539 Cords	\$ 23.95 / Cord

* The total volume is statistically estimated within plus (+) or minus (-) 14.44 percent. There are an estimated 1,448 cords on this timber sale, plus or minus 209 cords at the 95% confidence level. The estimated units are final and not subject to adjustment. Prospective bidders are urged to examine this timber and to make their own estimates of quantity and quality.

BOND AND PAYMENT SCHEDULE:

1. A bond in the amount of \$6,002.00 to insure faithful performance of the conditions of the contract will be deposited by the successful bidder within 21 days of the sale award.
2. Cutting in any sale or unit without the required advance payment would be considered a trespass.
3. Total payment must be paid in advance or according to the following schedule :
 - (a) Ten percent (10%) of the sale value must be paid within 21 days of the sale award.
 - (b) The 10% down payment will be credited towards the first unit cut.
 - (c) Payment for each of the following units must be made before cutting begins in that unit:

PAYMENT UNIT NUMBER	PERCENT OF TOTAL SALE VALUE
01	22.9%
02	21.0%
03	4.4%
04	51.7%
4. If no cutting takes place, the 10% down payment will not be refunded.
5. Operations on the contract issued will terminate on 12/31/2027.

SALE STATISTICS

Volumes were calculated in cubic feet using the Michigan taper model. Cubic foot volume includes all wood inside bark for the product indicated. For display purposes, cubic feet were converted to cords and MBF using a simple conversion factor, e.g. 79 cubic feet per cord and 185 cubic feet per MBF. The cubic foot volumes are precise; the cords and MBF volumes are not. Cubic foot volume cannot be directly converted to cords or boards with precision.

SALE VOLUMES

The total estimated sale volume may not equal the sum of the species/products due to the nature of statistical calculations associated with double sampling methodology.

VOLUME		STATISTICAL RANGE IN CORDS		
TOTAL CUBIC FEET	TOTAL CORDS	PERCENT ERROR	MINIMUM	MAXIMUM
114,364	1,448	14.44%	1,238	1,657

VDU VOLUMES

A VDU is a Volume Determination Unit. Volumes and their associated statistics are calculated at the VDU level and summarized to the sale level. There is often a one to one relationship between a VDU and a Payment Unit, but not always, depending on the cruise design. Refer to the VDU TO PAYMENT UNIT table.

VDU	VOLUME		PERCENT ERROR	RANGE IN CORDS	
	TOTAL CUBIC FEET	TOTAL CORDS		MINIMUM	MAXIMUM
5	5,810	74	54.24%	34	113
29	45,272	573	25.99%	424	722
30	17,618	223	38.52%	137	309
32	4,102	52	72.45%	14	90
34	41,563	526	22.23%	409	643
TOTAL:	114,364	1,448		1,018	1,877

VDU TO PAYMENT UNIT

When a VDU is associated with more than one Payment Unit (PU), the VDU volumes are assigned to the PU based on acres of the VDU within the PU.

VDU	VDU ACRES	PU	PU ACRES
5	2.0	1	2.0
29	43.3	4	43.3
30	9.5	1	9.5
32	2.9	3	2.9
34	20.7	2	20.7
TOTAL:	78.4		78.4

DESCRIPTION OF TIMBER BY PAYMENT UNIT (PU)

PU	MARKET GROUP	PRODUCT	QUANTITY	UNIT	ACRES	ADVERTISE PRICE	
1	Beech	Sawtimber	0.7	MBF	11.5	\$13,742.95	
	Black Cherry		4.4	MBF			
	Red Maple		10.9	MBF			
	Sugar Maple		16.3	MBF			
	B. T. Aspen		Pulpwood	15			Cords
	Mixed Hardwood			131			Cords
	<i>Balsam Fir</i>			1			Cords
	<i>Beech</i>			11			Cords
	<i>Black Cherry</i>			16			Cords
	<i>Red Maple</i>			49			Cords
	<i>Sugar Maple</i>			54			Cords
	Red Pine			59			Cords
	White Pine			17			Cords
	2			Mixed Hardwood			Pulpwood
<i>Black Cherry</i>		4	Cords				
White Pine		522	Cords				
3	Red Pine	Pulpwood	52	Cords	2.9	\$2,662.40	
4	Basswood	Sawtimber	1.5	MBF	43.3	\$31,030.20	
	Beech		3.9	MBF			
	Red Maple		18.2	MBF			
	Sugar Maple		64.6	MBF			
	Mixed Hardwood		Pulpwood	368			Cords
	<i>Basswood</i>			2			Cords
	<i>Beech</i>			23			Cords
	<i>Ironwood</i>			6			Cords
	<i>Red Maple</i>			71			Cords
	<i>Sugar Maple</i>			266			Cords
TOTAL:			120.5	MBF			
TOTAL:			1,168	Cords			

Sale Specific Conditions & Requirements

Sale Name: Educated Turkey Mix

Sale Number: 61-127-24 Seq#: 1

1 - Sale Area

1.2 - Boundaries

1.2.1 - Painted boundaries (9/19)

The sale boundary and Payment Unit boundaries are marked and identified by blue, red and yellow paint. Exterior sale boundary lines against private property are marked with blue paint. Exterior sale boundary lines against state are marked with red paint. Interior Payment Unit boundaries are marked with yellow paint. The painted boundary line trees are not Included Timber and are to be protected unless marked with orange paint. Yellow painted trees designating an interior Payment Unit boundary are only to be cut when all surrounding Payment Units have been paid.

2 - Timber Specifications

2.1 - Included Timber

2.1.3 - Cut tree marked unit(s) (12/08)

Within Payment Unit(s) 3 and 4, all trees are designated for cutting when marked with orange paint above and below stump height, regardless of merchantability. In addition, cut all merchantable beech, ironwood and aspen unless marked with an orange "X". Also, within the green painted regen gaps in Payment Unit 4, cut all trees that are two (2) inches or more at DBH, except do not cut any maple less than 4 inches at DBH or any tree marked with green paint.

2.1.5 - Overstory removal unit(s) (8/11)

Within Payment Unit(s) 1, all trees which meet minimum piece specifications in 2.2 Utilization, are designated for cutting, except do not cut any tree marked with green paint.

2.1.8 - Designated plantation row unit(s) (12/08)

Within Payment Unit(s) 2, all trees which meet minimum piece specifications in 2.2 Utilization, within designated plantation rows are designated for cutting. Do not cut any maple or oak. Designated plantation rows begin with the second row in from the outside of the plantation, then continue every other row, following a take one, leave one pattern. Because of the variability of row direction, it shall be the responsibility of the producer to maintain the every-other row sequence.

2.2 - Utilization

2.2.3 - Stump heights (4/07)

Stump heights within the Sale Area shall not exceed 12 inches for trees greater than 10 inches at DBH and 4 inches for trees smaller than 10 inches at DBH.

3 - Payments

3.3 - Pre-measured Sales

3.3.4 - Dividing payment units (7/14)

Payment Unit(s) that have a value of over \$25,000, may be divided at the request of the Purchaser and upon approval of the Unit Manager. Dividing Payment Units is a contract modification which requires a Timber Sale Contract Amendment. There will be only one division per Payment Unit.

3.4 - Damaged Timber

3.4.1 - Damaged timber (7/16)

General Condition and Requirement 3.4 Damaged Timber, defines liquidated damages for undesignated live merchantable trees which are cut or injured. In addition, extreme care should be taken to avoid damage to tree seedlings and saplings (1/4" to 4.5" DBH) within Payment Unit 1, and maple seedlings and saplings (1/4" to 4.5" DBH) within the regen gaps in Payment Unit 4.

4 - Transportation

4.1 - Construction

4.1.3 - Slash and earthen piles (8/04)

Piles or windrows of earth along roads and landings that have been widened or constructed shall be leveled. Slash from road maintenance or construction, including stumps, shall be dispersed throughout the sale.

4.1.11 - Permits (2/12)

The Purchaser will secure any necessary county road permits and any utility permits that may be required. Consumers Energy must be Contacted by the Purchaser and a permit to use Consumers ROW will be purchased by the Purchaser. Consumers ROW will need to be used to access Payment Units 1 and 4. It is highly recommended to start permit process at least 30 days prior to moving into sale.

4.1.12 - No new roads (1/12)

No new roads will be permitted in any Payment Unit. All operations are limited to existing roads. Skid trails and landings will be allowed.

4.2 - Maintenance

4.2.5 - Two wheel drive condition (2/04)

All existing trail roads on and adjacent to the sale area must be passable by two-wheel drive traffic for the duration of the sale.

5 - Operations

5.1 - Notification

5.1.1 - Pre-sale conference (10/16)

A pre-sale conference on site between the Purchaser and sale administrator is required prior to beginning any operations, to determine landing and road locations. The Unit Manager or his/her representative must be contacted at least 5 days in advance to schedule the conference.

5.1.6 - Utility R.O.W. (4/19)

It is the responsibility of the Purchaser to obtain permission from the utility company to utilize the Consumers Powerline R.O.W. for operations. The Purchaser needs to reach out to 866-679-4054 or landcontracts@cmsenergy.com in order to use any portion of the Consumers R.O.W. This process takes about 30 days to complete from start to finish. It is the Purchaser's responsibility to pay the required fee to use the R.O.W.

5.2 - Conduct of Operations

5.2.1 - Slash

5.2.1.8 - Slash height (12/08)

No slash or tree tops may exceed 24 inches in height. Within Payment Units 2 or 3.

5.2.1.11 - Slash for reforestation (3/21)

To facilitate reforestation within Payment Units 1 and 4, it is encouraged to bunch top wood into a pile on all maple stumps that were harvested as part of timber sale. This will protect any stump sprouts from deer browse. Stumps shall be cut low to the ground and treetops should be placed directly on stump. Piles should be 3 to 4 feet tall to help discourage deer browse. In addition, all tops and brush from within the regen gaps in Payment Unit 4 shall be removed and scattered throughout the rest of the Payment Unit. This is necessary for any follow-up treatments.

5.2.3 - Operating Restrictions

5.2.3.3 - Bark slippage restriction (3/09)

Within Payment Unit(s) 2-4, unless changed by written agreement, cutting and skidding are not permitted during the period of April 15 to July 15. This restriction is because of bark slippage.

5.2.32 - Decking/landing restoration (9/13)

All decking and landing areas must have the surface area restored to a condition equal to or better than before. This is to ensure the proper regeneration of the stand. Wood debris, chips and "cookies" from trimmings must be removed or scattered away from landing and loading areas and may not be windrowed on the edge.

5.4 - Soil Protection

5.4.1 - Rutting restriction, general (7/16)

Operations are to cease immediately if equipment and weather conditions result in rutting of roads and/or skid trails which are 12 inches or greater in depth and 50 feet in length. The Unit Manager or his/her representative may restrict hauling and/or skidding if ruts exceed the specified depth. With the Unit Manager or his/her representative's approval, the Purchaser may return to the area when the risk of rutting has decreased.

6 - Safety and Fire Prevention

6.2 - Signing

6.2.1 - Road posting (10/20)

The Purchaser is responsible for posting and maintaining caution signs on all county and state road that are affected by the timber sale prior to beginning operations. The road must be posted at appropriate distances from the Sale Area to warn of logging activity and truck traffic. Signs must be removed when harvest operations are suspended or completed. The Purchaser will provide these signs.



TIMBER SALE MAP

This information provided by authority of Part 525, 1994 PA 451, as amended.

Sale Number 61-127-24	Date 07/26/2024
Scale 1:15,840	Page 1
	Of 1

Forest Management Unit Traverse City Mgt Unit	County Kalkaska	Mapped By: Tom Peterson
		Cruised By: Tom Peterson

Township 28N	Range 06W /	Section(s) and Subdivision(s) Sec. 13 S1/2NE,NESW,S1/2SW,N1/2SE,SWSE; Sec. 18 SWNW;
-----------------	----------------	---

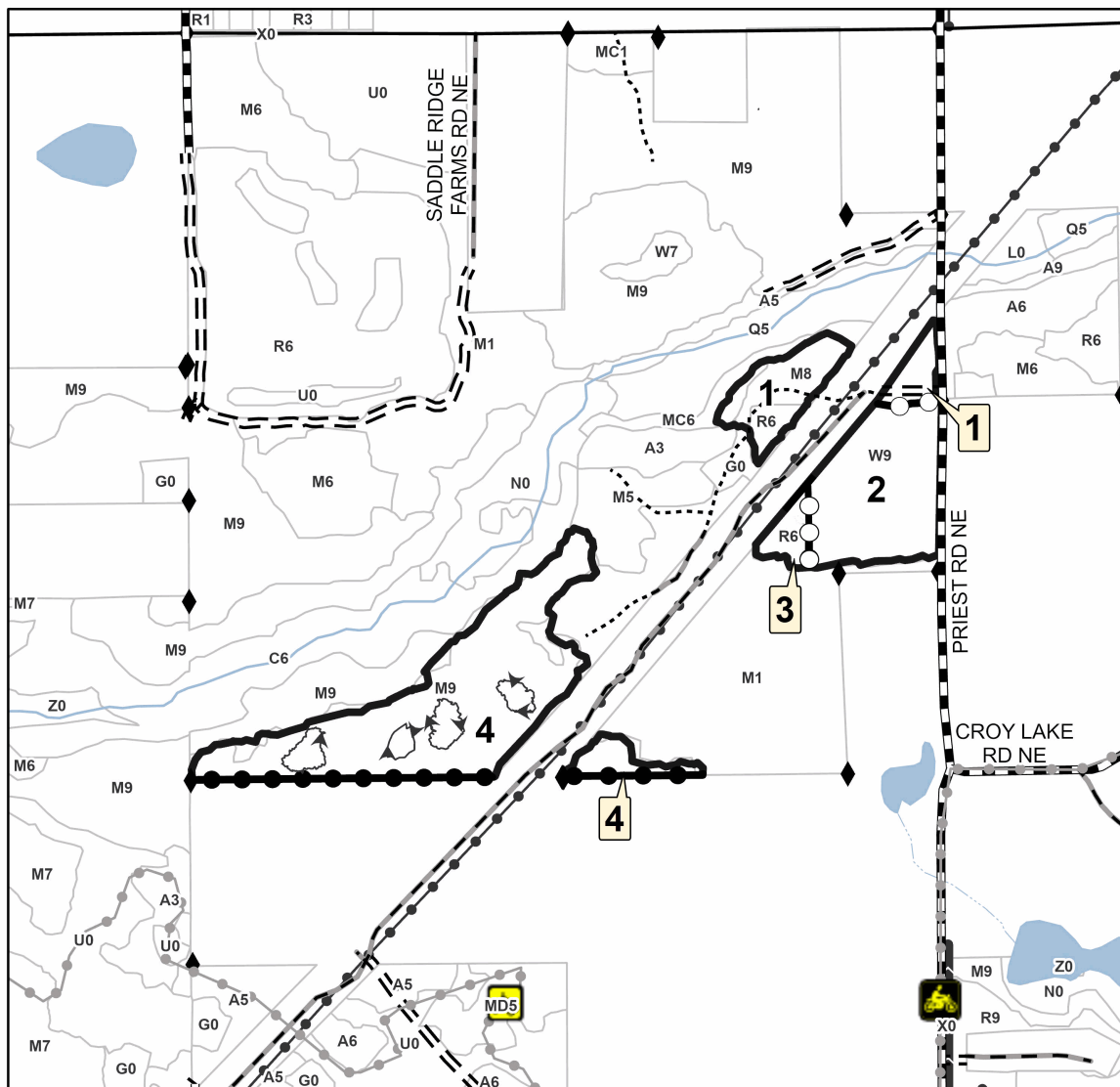
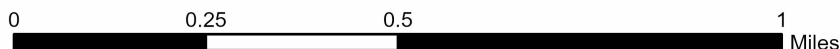
Cover Type			
A = Aspen	J = Jack Pine	O = Oak	U = Upland Brush
B = Paper Birch	K = Rock	P = Lowland Poplar	UM = Upland Mix Forest
C = Cedar	L = Lowland Brush	Q = Mixed Swamp Conifer	V = Bog or Marsh
D = Treed Bog	LM = Lowland Mix Forest	R = Red Pine	W = White Pine
E = Swamp Hardwoods	M = Maple, Beech, Birch	S = Black Spruce	X = Non Stocked
F = Spruce/Fir	MC = Mixed Conifer	T = Tamarack	Y = Sand
G = Grass	MD = Mixed Deciduous	Z = Water	
H = Hemlock	N = Marsh		

Density	
0 = Non Stocked	5 = Pole Timber Medium
1 = Seedling Sapling Poor	6 = Pole Timber Well
2 = Seedling Sapling Medium	7 = Saw Timber Poor
3 = Seedling Sapling Well	8 = Saw Timber Medium
4 = Pole Timber Poor	9 = Saw Timber Well

PU #	Acres
1	11.5
2	20.7
3	2.9
4	43.3

Educated Turkey Mix

78.4 Acres



Legend

- Against State (Red)
- Payment Unit (Yellow)
- Private Line (Blue)
- Regeneration Gaps (Green)
- Recreational Trail
- Stand
- Paved Road
- Gravel Road
- County Road - Seasonal
- Private Road
- Pipeline
- Powerline
- Primary Forest Road
- Forest Access Route
- Administrative Access Only
- Paved Road
- Government Gravel/Dirt
- Private Gravel/Dirt
- Field Grade Corner
- Survey Grade Corner

Use QR Code to open Map in App



TIMBER SALE INFORMATION

Sand Trap Jack Pine (61-620-24)

T25N, R06W, SEC. 1; T25N, R06W, SEC. 2; T26N, R05W, SEC. 31.
Kalkaska County (Advertised Price \$23,876.80)

SALE NOTE: This sale is on DMVA land (Camp Grayling). There is potential for no harvesting operations from May 1st to Oct 31. Contact Sale Administrator for details.

A recreation site such as a trail, pathway, or campground is within the sale area or the vicinity. Certain restrictions/specifications may be applicable including time restrictions.

A timber sale contract for this lump sum, sealed bid timber sale will be awarded to the responsible bidder offering the highest sealed bid price. All units of volume listed below were estimated using the Inventory Manager computer program and the new Michigan taper model. Bids must be at or above the following advertised price for each product and species:

<u>PRODUCTS & SPECIES</u>	<u>ESTIMATED UNITS*</u>	<u>ADVERTISED PRICE</u>
Sawtimber		
Black/Red (Hybrid) Oak	13.2 MBF	\$ 101.00 / MBF
Red Pine	5.4 MBF	\$ 114.00 / MBF
Pulpwood		
Black/Red (Hybrid) Oak	46 Cords	\$ 24.60 / Cord
Jack Pine	1,346 Cords	\$ 15.20 / Cord
Quaking Aspen	4 Cords	\$ 17.70 / Cord
Red Pine	6 Cords	\$ 44.40 / Cord

* The total volume is statistically estimated within plus (+) or minus (-) 14.55 percent. There are an estimated 1,447 cords on this timber sale, plus or minus 211 cords at the 95% confidence level. The estimated units are final and not subject to adjustment. Prospective bidders are urged to examine this timber and to make their own estimates of quantity and quality.

BOND AND PAYMENT SCHEDULE:

1. A bond in the amount of \$1,194.00 to insure faithful performance of the conditions of the contract will be deposited by the successful bidder within 21 days of the sale award.
2. Cutting in any sale or unit without the required advance payment would be considered a trespass.
3. Total payment must be paid in advance or according to the following schedule :
 - (a) Ten percent (10%) of the sale value must be paid within 21 days of the sale award.
 - (b) The 10% down payment will be credited towards the first unit cut.
 - (c) Payment for each of the following units must be made before cutting begins in that unit:

PAYMENT UNIT NUMBER	PERCENT OF TOTAL SALE VALUE
01	45.0%
02	27.1%
03	27.9%
4. If no cutting takes place, the 10% down payment will not be refunded.
5. Operations on the contract issued will terminate on 12/31/2027.

SALE STATISTICS

Volumes were calculated in cubic feet using the Michigan taper model. Cubic foot volume includes all wood inside bark for the product indicated. For display purposes, cubic feet were converted to cords and MBF using a simple conversion factor, e.g. 79 cubic feet per cord and 185 cubic feet per MBF. The cubic foot volumes are precise; the cords and MBF volumes are not. Cubic foot volume cannot be directly converted to cords or boards with precision.

SALE VOLUMES

The total estimated sale volume may not equal the sum of the species/products due to the nature of statistical calculations associated with double sampling methodology.

VOLUME		STATISTICAL RANGE IN CORDS		
TOTAL CUBIC FEET	TOTAL CORDS	PERCENT ERROR	MINIMUM	MAXIMUM
114,276	1,447	14.55%	1,236	1,657

VDU VOLUMES

A VDU is a Volume Determination Unit. Volumes and their associated statistics are calculated at the VDU level and summarized to the sale level. There is often a one to one relationship between a VDU and a Payment Unit, but not always, depending on the cruise design. Refer to the VDU TO PAYMENT UNIT table.

VDU	VOLUME		PERCENT ERROR	RANGE IN CORDS	
	TOTAL CUBIC FEET	TOTAL CORDS		MINIMUM	MAXIMUM
19	28,513	361	25.74%	268	454
30	33,003	418	29.43%	295	541
102	52,759	668	22.15%	520	816
TOTAL:	114,276	1,447		1,083	1,810

VDU TO PAYMENT UNIT

When a VDU is associated with more than one Payment Unit (PU), the VDU volumes are assigned to the PU based on acres of the VDU within the PU.

VDU	VDU ACRES	PU	PU ACRES
19	41.0	2	41.0
30	38.5	3	38.5
102	51.0	1	51.0
TOTAL:	130.5		130.5

DESCRIPTION OF TIMBER BY PAYMENT UNIT (PU)

PU	MARKET GROUP	PRODUCT	QUANTITY	UNIT	ACRES	ADVERTISE PRICE
1	Black/Red (Hybrid)	Sawtimber	5.6	MBF	51.0	\$10,753.80
	Black/Red (Hybrid)	Pulpwood	17	Cords		
	Jack Pine		634	Cords		
	Red Pine		3	Cords		
2	Black/Red (Hybrid)	Sawtimber	4.3	MBF	41.0	\$6,463.70
	Red Pine		5.4	MBF		
	Black/Red (Hybrid)	Pulpwood	19	Cords		
	Jack Pine		312	Cords		
	Quaking Aspen		4	Cords		
Red Pine		3	Cords			
3	Black/Red (Hybrid)	Sawtimber	3.3	MBF	38.5	\$6,659.30
	Black/Red (Hybrid)	Pulpwood	10	Cords		
	Jack Pine		400	Cords		
TOTAL:			18.6	MBF		
TOTAL:			1,402	Cords		

Sale Specific Conditions & Requirements

Sale Name: Sand Trap Jack Pine

Sale Number: 61-620-24 Seq#: 1

1 - Sale Area

1.2 - Boundaries

1.2.1 - Painted boundaries (9/19)

The sale boundary and Payment Unit boundaries are marked and identified by red paint. Exterior sale boundary lines against state are marked with red paint. Retention patches are marked with red paint; no harvesting activities may occur within these areas. The painted boundary line trees are not Included Timber and are to be protected unless they are along Military Road.

2 - Timber Specifications

2.1 - Included Timber

2.1.1 - Clearcut unit(s) with unmerchantable trees (6/14)

Within Payment Unit(s) 1-3, cut all trees that are two (2) inches or more at DBH, except do not cut any white pine, white oak, or trees marked with green paint. In addition, do not cut red pine or red oak that are 8 inches or less at DBH.

2.2 - Utilization

2.2.2 - Chipping required (2/18)

Payment Units 1-3 must be chip harvested to meet National Guard requirements. The Purchaser has the option to produce sawlogs or pulpwood bolts, but the remaining portion of the trees must be chipped and hauled. Products may be produced as roundwood and forwarded to decking areas in final product length, but the tops must be left intact and skidded to the landing for chipping in order to minimize the amount of residual slash. The requirement to retain approximately 1/6 to 1/3 of tree tops and limbs less than four inches in diameter does not apply (G. C. & R. 2.2). This is because of National Guard training area and uncertified lands.

2.2.3 - Stump heights (4/07)

Stump heights within the Sale Area shall not exceed 6 inches for all trees. This is in order to facilitate military requirements.

3 - Payments

3.4 - Damaged Timber

3.4.1 - Damaged timber (7/16)

General Condition and Requirement 3.4 Damaged Timber, defines liquidated damages for undesignated live merchantable trees which are cut or injured. In addition, extreme care should be taken to avoid damage to tree seedlings and saplings.

Within the Sale Area, if more than 20% of the tree seedlings or saplings (1/4" to 4.5" DBH) within a specified portion of the Sale Area are damaged, liquidated damages will be assessed at \$200 per acre for all acreage within that specified portion of the Sale Area that was damaged.

4 - Transportation

4.1 - Construction

4.1.6 - Road construction (4/24)

Construction of new roads or improvements of existing roads shall be done in such a way as to minimize the environmental and visual impacts. Merchantable trees shall be cut and utilized unless otherwise directed. Non-merchantable trees shall be severed and laid flat on the ground. Slash shall be scattered, and not left in windrows and kept a minimum of 10 feet back from the road edge. Stumps shall be set upright, not left on edge, and be moved at least 10 feet away from the road edge. Disturbed soil shall be feathered into the woods and not left in berms or windrows.

4.1.7 - Road closure (10/11)

All new roads built into the sale must be blocked to vehicle traffic within 30 days of completion of hauling. Overgrown roads that are reopened shall be considered new roads. In general, this will require constructing a four (4') foot high berm of stumps and logs covered with earth. Stumps and brush must be placed along the remainder of the trail. Berms must also be placed at

intervals of not over 50 feet and at all junctions. These roads must be rendered impassable to cars and trucks. All stumps from road building and landing construction must be reserved to block any newly constructed roads upon completion of the sale. These stumps must be scattered along the road system to prohibit vehicular movement. Contact the Sale Administrator for specific details of design and placement.

5 - Operations

5.1 - Notification

5.1.1 - Pre-sale conference (10/16)

A pre-sale conference on site between the Purchaser and sale administrator is required prior to beginning any operations, to determine landing and road locations. The Unit Manager or his/her representative must be contacted at least 3 days in advance to schedule the conference.

5.1.5 - National Guard notification (2/15)

This sale is upon lands utilized for training by the Michigan National Guard - Camp Grayling. A minimum of five (5) business days prior to opening this sale, the producer must request that the sale administrator contact the military for information regarding training plans that may impact sale operations.

5.2 - Conduct of Operations

5.2.3 - Operating Restrictions

5.2.3.4 - Oak wilt restriction, no exceptions (1/18)

Within Payment Unit 1-3, cutting and skidding, within the Sale Area and brushing of access roads to the units, are not permitted during the period of April 15 to July 15. No exceptions will be granted. This is necessary to reduce the spread of oak wilt.

5.2.3.7 - National Guard training restriction (1/09)

Operations on this contract may not be allowed during National Guard training operations. Typically, the restricted period is from May 1 to October 31. The Contractor must check with the Unit Manager who will coordinate the cutting schedule with the Military. All harvest equipment and timber products must be removed from the Sale Area during the period of May 1 to October 31.

5.2.29 - Shrub protection (1/20)

Do not cut or damage hawthorn, witch-hazel, dogwood or junberry. These woody-shrub plants are highly beneficial to various wildlife species.

5.2.32 - Decking/landing restoration (9/13)

All decking and landing areas must have the surface area restored to a condition equal to or better than before. This is to ensure the proper regeneration of the stand. Wood debris, chips and "cookies" from trimmings must be removed or scattered away from landing and loading areas and may not be windrowed on the edge.

5.2.41 - Snowmobile trail protection (9/11)

There is a snowmobile trail and is shown on the Timber Sale Map. Do not cut or damage posts with orange trail markers or traffic control signs. If the trail is used, it must be maintained and restored to a condition equal to or better than before the sale. If the trail road is to be used for hauling during the snowmobile season, then a snow covered base must be left on the trail. Maintain a 20-foot-wide slash, debris, and rut free zone daily using the snowmobile trail as the centerline. No decking of forest products will be permitted along the snowmobile trail. All stumps within 20 feet of the snowmobile trail must be cut at ground level.

5.4 - Soil Protection

5.4.1 - Rutting restriction, general (7/16)

Operations are to cease immediately if equipment and weather conditions result in rutting of roads and/or skid trails which is 12 inches or greater in depth and 50 feet in length. The Unit Manager or his/her representative may restrict hauling and/or skidding if ruts exceed the specified depth. With the Unit Manager or his/her representative's approval, the Purchaser may return to the area when the risk of rutting has decreased.

6 - Safety and Fire Prevention

6.2 - Signing

6.2.1 - Road posting (10/20)

The Purchaser is responsible for posting and maintaining caution signs on Military Road prior to beginning operations. The road must be posted at appropriate distances from the Sale Area to warn of logging activity and truck traffic. Signs must be removed when harvest operations are suspended or completed. The Purchaser will provide these signs.

6.2.2 - Snowmobile trail posting (10/20)

The Purchaser is responsible for posting and maintaining caution signs on the snowmobile trail prior to beginning operations during the snowmobile season (approximately December 1 to March 31). The trail must be posted at appropriate distances from the Sale Area to warn of logging activity and truck traffic. Signs must be removed when harvest operations are suspended or completed. The Purchaser will provide these signs.

7 - Other Conditions

7.10 - Certified Timber

7.10.1 - Non-certified timber (2/16)

The area encompassed by this timber sale is not certified to the standards of the Forest Stewardship Council (FSC) or the Sustainable Forestry Initiative (SFI). Forest products from this sale may not be delivered to the mill as "FSC and / or SFI certified". The lands within this sale are managed for military training.



TIMBER SALE MAP

This information provided by authority of Part 525, 1994 PA 451, as amended.

Sale Number
61-620-24

Date
05/24/2024

Forest Management Unit	County	Mapped By: Crigier
Traverse City Mgt Unit	Kalkaska	Cruised By: Crigier

Scale	Page	Of
1:15,840	1	1

Township	Range	Section(s) and Subdivision(s)
25N / 26N	05W/06W	Sec. 1 SENW,S1/2NE,NESW,N1/2SE,SESE; Sec. 2 SENE,NESE; Sec. 31 SWSE;

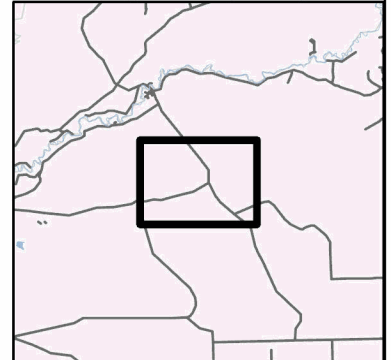
Cover Type

A = Aspen	J = Jack Pine	O = Oak	U = Upland Brush
B = Paper Birch	K = Rock	P = Lowland Poplar	UM = Upland Mix Forest
C = Cedar	L = Lowland Brush	Q = Mixed Swamp Conifer	V = Bog or Marsh
D = Treed Bog	LM = Lowland Mix Forest	R = Red Pine	W = White Pine
E = Swamp Hardwoods	M = Maple, Beech, Birch	S = Black Spruce	X = Non Stocked
F = Spruce/Fir	MC = Mixed Conifer	T = Tamarack	Y = Sand
G = Grass	MD = Mixed Deciduous	Z = Water	
H = Hemlock	N = Marsh		

Density

0 = Non Stocked	5 = Pole Timber Medium
1 = Seedling Sapling Poor	6 = Pole Timber Well
2 = Seedling Sapling Medium	7 = Saw Timber Poor
3 = Seedling Sapling Well	8 = Saw Timber Medium
4 = Pole Timber Poor	9 = Saw Timber Well

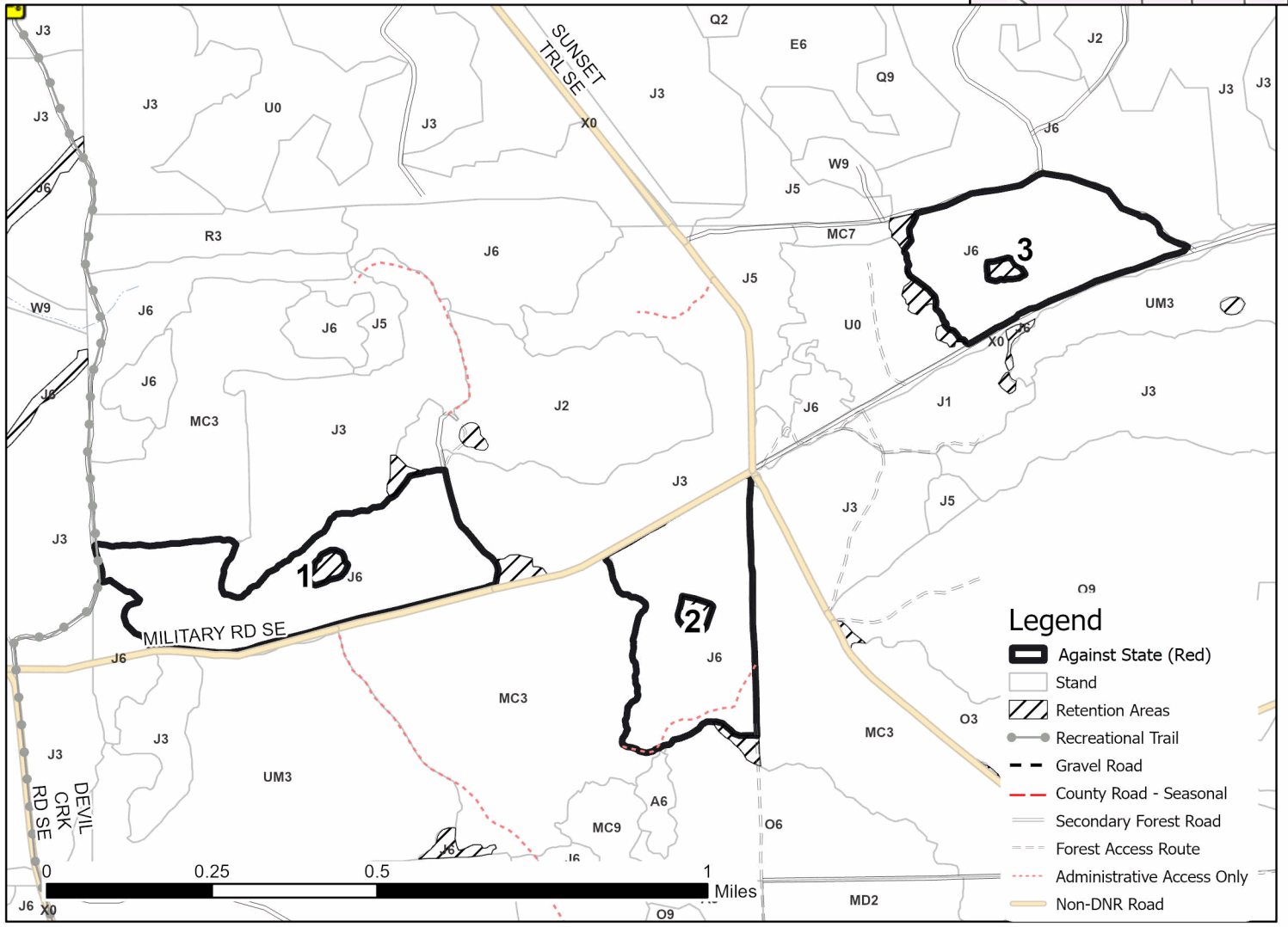
Locator Map (1:200,000)



PU #	Acres
1	51
2	41
3	38.5

**Sand Trap
Jack Pine
130.5 Acres**

Use QR Code to open Map in App



TIMBER SALE INFORMATION

High Ground Oak (61-632-24)

T25N, R05W, SEC. 4; T25N, R05W, SEC. 5; T25N, R05W, SEC. 6; T25N, R05W, SEC. 8.
Kalkaska County (Advertised Price \$114,325.35)

SALE NOTE: This sale is in a National Guard training area and has a timing restriction. Typically the restriction is no operations from May 1st to October 31st. Contact sale administrator for more details.

A timber sale contract for this lump sum, sealed bid timber sale will be awarded to the responsible bidder offering the highest sealed bid price. All units of volume listed below were estimated using the Inventory Manager computer program and the new Michigan taper model. Bids must be at or above the following advertised price for each product and species:

<u>PRODUCTS & SPECIES</u>	<u>ESTIMATED UNITS*</u>		<u>ADVERTISED PRICE</u>
Sawtimber			
Black/Red (Hybrid) Oak	181.8	MBF	\$ 109.00 / MBF
Red Maple	3.3	MBF	\$ 118.00 / MBF
Red Oak	260.4	MBF	\$ 148.00 / MBF
White Oak	70.9	MBF	\$ 75.00 / MBF
Pulpwood			
Jack Pine	35	Cords	\$ 16.40 / Cord
Misc. Species 2	121	Cords	\$ 7.00 / Cord
Mixed Aspen	89	Cords	\$ 19.05 / Cord
Mixed Oak	1,692	Cords	\$ 26.50 / Cord
Red Maple	119	Cords	\$ 19.40 / Cord

* The total volume is statistically estimated within plus (+) or minus (-) 10.38 percent. There are an estimated 3,263 cords on this timber sale, plus or minus 339 cords at the 95% confidence level. The estimated units are final and not subject to adjustment. Prospective bidders are urged to examine this timber and to make their own estimates of quantity and quality.

BOND AND PAYMENT SCHEDULE:

1. A bond in the amount of \$5,716.00 to insure faithful performance of the conditions of the contract will be deposited by the successful bidder within 21 days of the sale award.
2. Cutting in any sale or unit without the required advance payment would be considered a trespass.
3. Total payment must be paid in advance or according to the following schedule :
 - (a) Ten percent (10%) of the sale value must be paid within 21 days of the sale award.
 - (b) The 10% down payment will be credited towards the first unit cut.
 - (c) Payment for each of the following units must be made before cutting begins in that unit:

PAYMENT UNIT NUMBER	PERCENT OF TOTAL SALE VALUE
01	29.1%
02	21.7%
03	15.4%
04	27.6%
05	6.2%
4. If no cutting takes place, the 10% down payment will not be refunded.
5. Operations on the contract issued will terminate on 12/31/2027.

SALE STATISTICS

Volumes were calculated in cubic feet using the Michigan taper model. Cubic foot volume includes all wood inside bark for the product indicated. For display purposes, cubic feet were converted to cords and MBF using a simple conversion factor, e.g. 79 cubic feet per cord and 185 cubic feet per MBF. The cubic foot volumes are precise; the cords and MBF volumes are not. Cubic foot volume cannot be directly converted to cords or boards with precision.

SALE VOLUMES

The total estimated sale volume may not equal the sum of the species/products due to the nature of statistical calculations associated with double sampling methodology.

VOLUME		STATISTICAL RANGE IN CORDS		
TOTAL CUBIC FEET	TOTAL CORDS	PERCENT ERROR	MINIMUM	MAXIMUM
257,783	3,263	10.38%	2,924	3,602

VDU VOLUMES

A VDU is a Volume Determination Unit. Volumes and their associated statistics are calculated at the VDU level and summarized to the sale level. There is often a one to one relationship between a VDU and a Payment Unit, but not always, depending on the cruise design. Refer to the VDU TO PAYMENT UNIT table.

VDU	VOLUME		PERCENT ERROR	RANGE IN CORDS	
	TOTAL CUBIC FEET	TOTAL CORDS		MINIMUM	MAXIMUM
36	82,626	1,046	19.15%	846	1,246
44	68,270	864	18.80%	702	1,027
54	34,712	439	30.03%	307	571
69	10,746	136	41.62%	79	193
362	61,428	778	22.78%	600	955
TOTAL:	257,783	3,263		2,535	3,992

VDU TO PAYMENT UNIT

When a VDU is associated with more than one Payment Unit (PU), the VDU volumes are assigned to the PU based on acres of the VDU within the PU.

VDU	VDU ACRES	PU	PU ACRES
36	50.7	1	50.7
44	26.9	4	26.9
54	22.2	3	22.2
69	14.6	5	14.6
362	47.5	2	47.5
TOTAL:	161.9		161.9

DESCRIPTION OF TIMBER BY PAYMENT UNIT (PU)

PU	MARKET GROUP	PRODUCT	QUANTITY	UNIT	ACRES	ADVERTISE PRICE
1	Black/Red (Hybrid	Sawtimber	104.4	MBF	50.7	\$33,251.10
	Red Oak		25.5	MBF		
	White Oak		14.6	MBF		
	Jack Pine	Pulpwood	10	Cords		
	Misc. Species 2		71	Cords		
	Mixed Aspen		12	Cords		
	<i>B. T. Aspen</i>		12	Cords		
	Mixed Oak		589	Cords		
	<i>/Red (Hybrid) Oak</i>		347	Cords		
	<i>Red Oak</i>		16	Cords		
	<i>White Oak</i>		226	Cords		
	Red Maple		26	Cords		
	2	Black/Red (Hybrid	Sawtimber	63.3		
Red Oak			31.6	MBF		
White Oak			16.0	MBF		
Jack Pine		Pulpwood	20	Cords		
Misc. Species 2			50	Cords		
Mixed Aspen			54	Cords		
<i>B. T. Aspen</i>			54	Cords		
Mixed Oak			383	Cords		
<i>/Red (Hybrid) Oak</i>			201	Cords		
<i>Red Oak</i>			104	Cords		
<i>White Oak</i>			78	Cords		
Red Maple			11	Cords		
3		Black/Red (Hybrid	Sawtimber	14.1	MBF	22.2
	Red Oak		58.8	MBF		
	White Oak		17.8	MBF		
	Mixed Aspen	Pulpwood	4	Cords		
	<i>Quaking Aspen</i>		4	Cords		
	Mixed Oak		224	Cords		
	<i>/Red (Hybrid) Oak</i>		55	Cords		
	<i>Red Oak</i>		102	Cords		
	<i>White Oak</i>		67	Cords		
	4	Red Maple	Sawtimber	3.3	MBF	
Red Oak			104.3	MBF		
White Oak			22.5	MBF		
Jack Pine		Pulpwood	5	Cords		
Mixed Aspen			19	Cords		
<i>Quaking Aspen</i>			19	Cords		
Mixed Oak			456	Cords		
<i>Red Oak</i>			273	Cords		
<i>White Oak</i>			183	Cords		
Red Maple			80	Cords		
5	Red Oak	Sawtimber	40.2	MBF	14.6	\$7,048.40
	Mixed Oak	Pulpwood	40	Cords		
	<i>Red Oak</i>		40	Cords		
	Red Maple		2	Cords		
TOTAL:			516.4	MBF		
TOTAL:			2,056	Cords		

Sale Specific Conditions & Requirements

Sale Name: High Ground Oak

Sale Number: 61-632-24 Seq#: 1

1 - Sale Area

1.2 - Boundaries

1.2.1 - Painted boundaries (9/19)

The sale boundary and Payment Unit boundaries are marked and identified by red paint. Exterior sale boundary lines against state are marked with red paint. Retention patches are marked with red paint; no harvesting activities may occur within these areas. The painted boundary line trees are not Included Timber and are to be protected.

2 - Timber Specifications

2.1 - Included Timber

2.1.2 - Clearcut unit(s) w/o unmerchantable trees (8/11)

Within Payment Unit(s) 1-5, cut all trees which meet minimum piece specifications in 2.2 Utilization, except do not cut white pine, red pine and trees marked with green paint.

2.1.11 - Description of timber note (2/04)

Note that Misc. Species 2 = dead oak, which is designated for cutting, as long as it isn't a wildlife den tree (see spec 5.2.2.1).

2.2 - Utilization

2.2.2 - Chipping required (2/18)

Payment Units 1-5 must be chip harvested to meet National Guard requirements. Products may be produced as roundwood and forwarded to decking areas in final product length, but the tops must be left intact and skidded to the landing for chipping in order to minimize the amount of residual slash. The requirement to retain approximately 1/6 to 1/3 of tree tops and limbs less than four inches in diameter does not apply (G. C. & R. 2.2). This is because of the National Guard requirements.

2.2.3 - Stump heights (4/07)

Stump heights within the Sale Area shall not exceed 6 inches for all trees. This is in order to facilitate military requirements.

3 - Payments

3.3 - Pre-measured Sales

3.3.4 - Dividing payment units (7/14)

Payment Unit(s) with a value greater than \$15,000, may be divided at the request of the Purchaser and upon approval of the Unit Manager. Dividing Payment Units is a contract modification which requires a Timber Sale Contract Amendment. There will be only one division per Payment Unit.

3.4 - Damaged Timber

3.4.1 - Damaged timber (7/16)

General Condition and Requirement 3.4 Damaged Timber, defines liquidated damages for undesignated live merchantable trees which are cut or injured.

No damage is acceptable to undesignated live merchantable trees. Within the Sale Area, if more than 10% of trees (> 4.5" DBH) within a specified area of the sale are damaged, liquidated damages will be assessed for all trees damaged. Rates will be in accordance with General Condition and Requirement 3.4 Damaged Timber.

4 - Transportation

4.1 - Construction

4.1.6 - Road construction (4/24)

Construction of new roads or improvements of existing roads shall be done in such a way as to minimize the environmental and visual impacts. Merchantable trees shall be cut and utilized unless otherwise directed. Non-merchantable trees shall be severed and laid flat on the ground. Slash shall be scattered, and not left in windrows and kept a minimum of 10 feet back

from the road edge. Stumps shall be set upright, not left on edge, and be moved at least 10 feet away from the road edge. Disturbed soil shall be feathered into the woods and not left in berms or windrows.

4.1.7 - Road closure (10/11)

All new roads built into the sale must be blocked to vehicle traffic within 30 days of completion of hauling. Overgrown roads that are reopened shall be considered new roads. In general, this will require constructing a four (4') foot high berm of stumps and logs covered with earth. Stumps and brush must be placed along the remainder of the trail. These roads must be rendered impassable to cars and trucks. Temporary berms may be required if no sale activity occurs for 30 or more consecutive days. Contact the Sale Administrator for specific details of design and placement.

5 - Operations

5.1 - Notification

5.1.1 - Pre-sale conference (10/16)

A pre-sale conference on site between the Purchaser and sale administrator is required prior to beginning any operations, to determine landing and road locations. The Unit Manager or his/her representative must be contacted at least 3 days in advance to schedule the conference.

5.1.5 - National Guard notification (2/15)

This sale is upon lands utilized for training by the Michigan National Guard - Camp Grayling. A minimum of five (5) business days prior to opening this sale, the producer must request that the sale administrator contact the military for information regarding training plans that may impact sale operations.

5.2 - Conduct of Operations

5.2.2 - Hazard Trees/Snags

5.2.2.1 - Den trees (10/16)

Obvious hollow and/or den trees shall be protected and left standing unless they are a safety hazard.

5.2.3 - Operating Restrictions

5.2.3.4 - Oak wilt restriction, no exceptions (1/18)

Within Payment Units 1-5, cutting, skidding, hauling within the sale and brushing of access roads to the sale are not permitted during the period of April 15 to July 15. No exceptions will be granted. This is necessary to reduce the spread of oak wilt.

5.2.3.7 - National Guard training restriction (1/09)

Operations on this contract will not be allowed during National Guard training operations. Typically, the restricted period is from May 1 to October 31. The Purchaser must check with the Unit Manager who will coordinate the cutting schedule with the military. All harvest equipment and timber must be removed from the Sale Area during the period of May 1 to October 31.

5.2.29 - Shrub protection (1/20)

Do not cut or damage hawthorn, witch-hazel, dogwood or juneberry. These woody-shrub plants are highly beneficial to various wildlife species.

5.2.32 - Decking/landing restoration (9/13)

All decking and landing areas must have the surface area restored to a condition equal to or better than before. This is to ensure the proper regeneration of the stand. Wood debris, chips and "cookies" from trimmings must be removed or scattered away from landing and loading areas and may not be windrowed on the edge.

5.4 - Soil Protection

5.4.1 - Rutting restriction, general (7/16)

Operations are to cease immediately if equipment and weather conditions result in rutting of roads and/or skid trails which are 12 inches or greater in depth and 50 feet in length. The Unit Manager or his/her representative may restrict hauling and/or skidding if ruts exceed the specified depth. With the Unit Manager or his/her representative's approval, the Purchaser may return to the area when the risk of rutting has decreased.

5.4.3 - Erosion control (12/08)

Skid trails or haul roads may require erosion control structures or berms per direction of the Unit Manager or his/her representative.

5.8 - Protection of Endangered Species

5.8.5 - Protection of raptor nests (3/13)

All trees with raptor nests will be protected if found during harvesting operations. Notification will be made to the Unit Manager or his/her representative who will notify the Wildlife Biologist so an on-site evaluation and recommendation can be made, if necessary.

6 - Safety and Fire Prevention

6.2 - Signing

6.2.1 - Road posting (10/20)

The Purchaser is responsible for posting and maintaining caution signs on haul roads prior to beginning operations. The road must be posted at appropriate distances from the Sale Area to warn of logging activity and truck traffic. Signs must be removed when harvest operations are suspended or completed. The Purchaser will provide these signs.

SKIP

6.4 - Unexploded ordinance (7/15)

Be aware that the sale area could contain UXO (unexploded ordinances). Do not touch, or drive over any metal objects. If any objects are found, please flag the area and notify the Unit Manager or his/her representative, so that they can make arrangements with the Military.

7 - Other Conditions

7.10 - Certified Timber

7.10.1 - Non-certified timber (2/16)

The area encompassed by this timber sale is not certified to the standards of the Forest Stewardship Council (FSC) or the Sustainable Forestry Initiative (SFI). Forest products from this sale may not be delivered to the mill as "FSC and / or SFI certified". The lands within this sale are managed for military training.

8 - Performance and Settlement

8.3 - Uncompleted or Terminated Contracts

8.3.1 - Completion of contract, chipping (1/16)

In addition to cutting, all chipping must be completed by the contract expiration date. If chipping has not been completed, an extension fee or damages may be charged per General Condition & Requirement 7.2 and 8.3.



TIMBER SALE MAP

This information provided by authority of Part 525, 1994 PA 451, as amended.

Sale Number

61-632-24

Date

08/23/2024

Forest Management Unit

County

Mapped By: Crigier

Traverse City Mgt Unit

Kalkaska

Cruised By: Crigier

Scale

1:20,000

Page

1

Of

1

Township
25N

Range
05W

Section(s) and
Subdivision(s) S1/2NE,E1/2SW,N1/2SE,SWSE; Sec. 8 NWNW;
Sec. 4 W1/2SW; Sec. 5 NWNW,S1/2NW,SWNE,N1/2SW,NWSE; Sec. 6

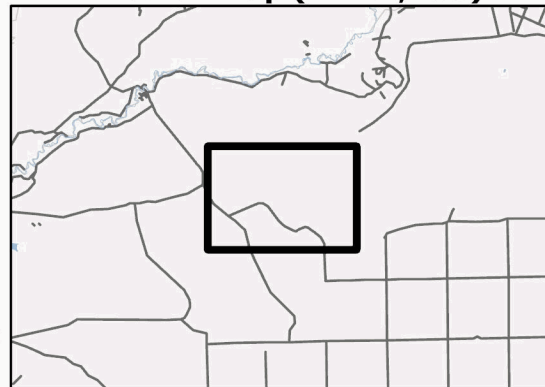
Cover Type

A = Aspen	J = Jack Pine	O = Oak	U = Upland Brush
B = Paper Birch	K = Rock	P = Lowland Poplar	UM = Upland Mix Forest
C = Cedar	L = Lowland Brush	Q = Mixed Swamp Conifer	V = Bog or Marsh
D = Treed Bog	LM = Lowland Mix Forest	R = Red Pine	W = White Pine
E = Swamp Hardwoods	M = Maple, Beech, Birch	S = Black Spruce	X = Non Stocked
F = Spruce/Fir	MC = Mixed Conifer	T = Tamarack	Y = Sand
G = Grass	MD = Mixed Deciduous	Z = Water	
H = Hemlock	N = Marsh		

Density

0 = Non Stocked	5 = Pole Timber Medium
1 = Seedling Sapling Poor	6 = Pole Timber Well
2 = Seedling Sapling Medium	7 = Saw Timber Poor
3 = Seedling Sapling Well	8 = Saw Timber Medium
4 = Pole Timber Poor	9 = Saw Timber Well

Locator Map (1:200,000)



PU # Acres

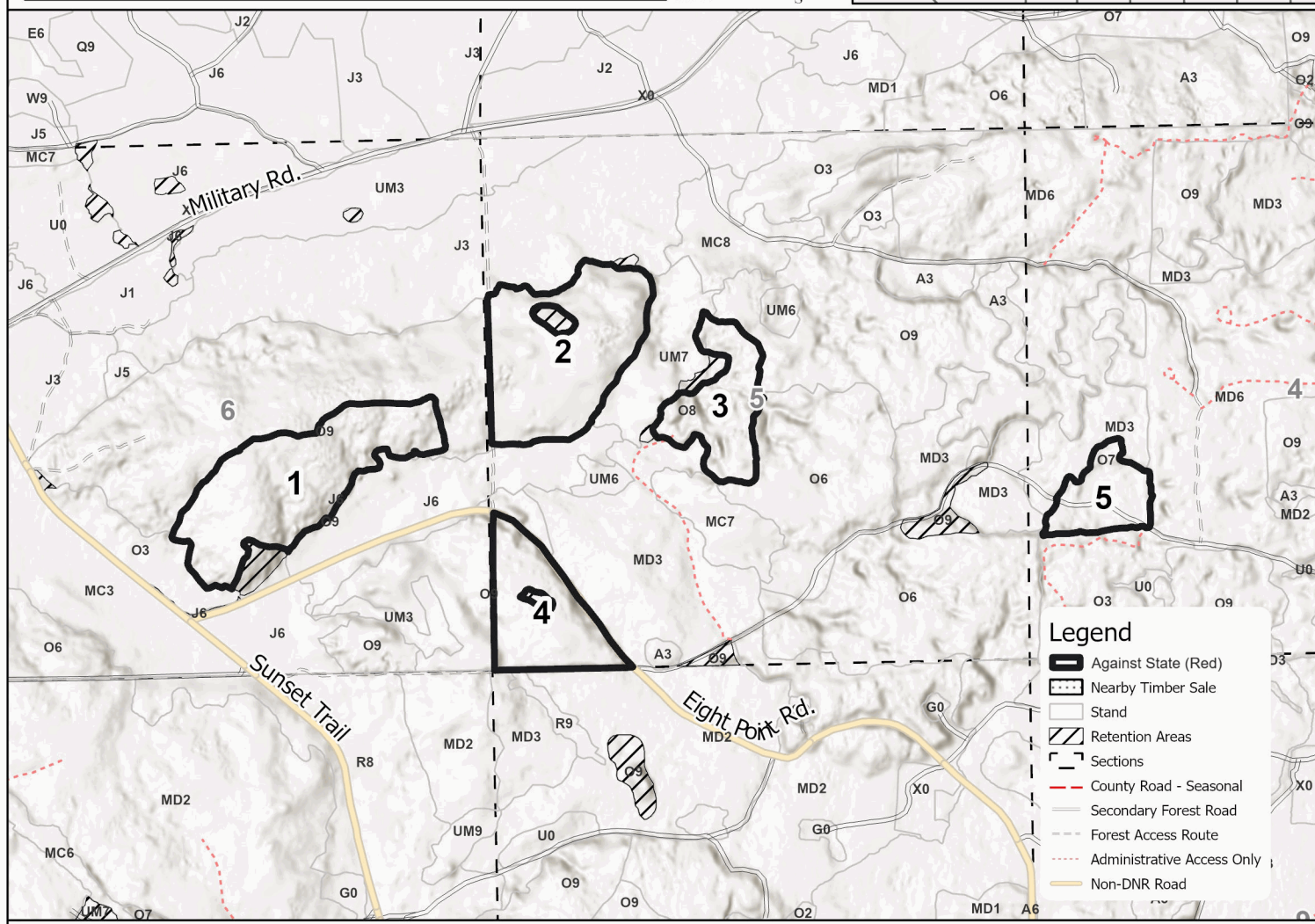
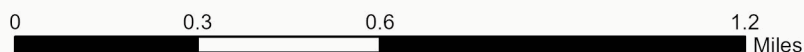
1	50.7
2	47.5
3	22.2
4	26.9
5	14.6

Use QR Code to open Map in App



High Ground Oak

161.9 Acres



Legend

- Against State (Red)
- Nearby Timber Sale
- Stand
- Retention Areas
- Sections
- County Road - Seasonal
- Secondary Forest Road
- Forest Access Route
- Administrative Access Only
- Non-DNR Road

Sand Trap Jack Pine (61-620-24)
T25N, R06W, SEC. 1; T25N, R06W, SEC. 2; T26N, R05W, SEC. 31; Kalkaska

In response to the notice of sale to be held 4:00 p.m. (local time) on October 24, 2024, I am hereby submitting my sealed bid (firm offer) for the following forest products to be cut. Bids for individual species must be at or above the advertised price. All non-responsive bid forms may be rejected.

<u>PRODUCTS & SPECIES</u>	<u>ESTIMATED VOLUME*</u>	<u>ADVERTISED PRICE</u>	<u>BID PRICE/UNIT</u>
Sawtimber			
Black/Red (Hybrid) Oak	13.2 MBF	\$ 101.00/MBF	\$ _____
Red Pine	5.4 MBF	\$ 114.00/MBF	\$ _____
Pulpwood			
Black/Red (Hybrid) Oak	46 Cords	\$ 24.60/Cord	\$ _____
Jack Pine	1,346 Cords	\$ 15.20/Cord	\$ _____
Quaking Aspen	4 Cords	\$ 17.70/Cord	\$ _____
Red Pine	6 Cords	\$ 44.40/Cord	\$ _____

*The volumes are statistically estimated within plus (+) or minus (-) 14.55 percent at 95% confidence level. These estimated volumes are final and not subject to adjustment. Prospective bidders are urged to examine this timber and to make their own estimates of quantity and quality.

I understand that any or all bids may be rejected. All bids must be signed and all bid items must be bid or the bid form may be rejected. I also understand that consideration and awarding a contract will be based upon my past performance and ability to complete the contract based upon equipment and staffing subject to my control.

FEDERAL ID: _____ - _____ or SOCIAL SECURITY NUMBER: _____ - _____ - _____

Company or individual bidding: _____

Company representative's name: _____

Address: _____

City: _____ State: _____ Zip: _____

IF AVAILABLE, PLEASE PLACE THE PERSONALIZED LABEL FROM YOUR PROSPECTUS IN THE ABOVE BOX.

Individual or company representative's signature: _____ Date: _____

Phone number : _____ Email (optional): _____

THE WINNING BIDDER MUST COMPLETE THE VERIFICATION OF WORKER'S DISABILITY COMPENSATION ACT COMPLIANCE (ON REVERSE SIDE IF DOUBLE SIDED) WITHIN 21 DAYS OF SALE AWARD DATE



TIMBER SALE VERIFICATION OF WORKER'S DISABILITY COMPENSATION ACT COMPLIANCE

As required by Act 317, P.A. 1969 (Worker's Compensation) and
Part 5 of Act 451 of 1994, as amended.

FOR DEPARTMENT USE ONLY	
Sale Number (XX - XXX - XX - XX)	
Forest Management Unit:	

VERIFICATION OF WORKER'S DISABILITY COMPENSATION ACT COMPLIANCE

- This verification must be completed and submitted within 21 days of contract award and prior to the issuance of the timber sale contract.
- In addition, if boxes 2B or 2C are checked, then Notice of Exclusion or Certificate of Insurance must be submitted within twenty-one (21) days of the contract award and prior to the issuance of the timber sale contract.
- All information must be typed or printed except for written signatures.

Please Check Appropriate Categories:

1. My business is organized as (you **must** check one of the boxes below):
 - A. Sole Proprietorship (individual)
 - B. Partnership
 - C. Corporation
2. You **must** check one of the boxes below:
 - A. I certify my business is a sole proprietorship and it has no employees but the sole proprietor. I am not subject to the Worker's Compensation Laws.
 - B. I certify my business has satisfied its obligation to the Worker's Compensation Act through the use of an approved Notice of Exclusion (BWC-337, Rev. 5/96). I will provide a copy of the Notice of Exclusion within 21 days of the contract award. (For questions or a copy of the BWC-337, please call the Worker's Compensation Bureau at 517-322-1195).
 - C. I certify my business has a Worker's Compensation Policy. I will provide an original Certificate of Insurance within twenty-one (21) days of the contract award.
3. If you have checked item 2(A) or 2(B), you **must** indicate the number of **both** full-time and part-time employees, other than yourself, including family members and active partners (if none, you must enter "0").

_____ Full-time Employees

_____ Part-time Employees

Name of Business		Federal ID (or) Social Security No.	
Address		Telephone ()	
City	State	ZIP	

I hereby certify that the above information is true and correct. I agree to notify the Michigan DNR of any changes that occur in factors affecting my coverage during any of my present and future operations.

Signature of Owner or Authorized Representative

Title

Date

Please complete the "SEALED BID" information on the next page

Seeps and Springs Mix (61-121-24)

T25N, R07W, SEC. 14; T25N, R07W, SEC. 22; T25N, R07W, SEC. 23; Kalkaska

In response to the notice of sale to be held 4:00 p.m. (local time) on October 24, 2024, I am hereby submitting my sealed bid (firm offer) for the following forest products to be cut. Bids for individual species must be at or above the advertised price. All non-responsive bid forms may be rejected.

<u>PRODUCTS & SPECIES</u>	<u>ESTIMATED VOLUME*</u>	<u>ADVERTISED PRICE</u>	<u>BID PRICE/UNIT</u>
Sawtimber			
Paper Birch	4.6 MBF	\$ 43.00/MBF	\$ _____
Red Maple	74.4 MBF	\$ 118.00/MBF	\$ _____
Red Pine	61.5 MBF	\$ 123.00/MBF	\$ _____
White Pine	14.4 MBF	\$ 82.00/MBF	\$ _____
Pulpwood			
Balsam Fir	166 Cords	\$ 22.70/Cord	\$ _____
Black Spruce	18 Cords	\$ 10.35/Cord	\$ _____
Jack Pine	19 Cords	\$ 16.40/Cord	\$ _____
Mixed Aspen	442 Cords	\$ 19.05/Cord	\$ _____
Mixed Hardwood	328 Cords	\$ 19.40/Cord	\$ _____
Red Pine	391 Cords	\$ 47.80/Cord	\$ _____
White Pine	34 Cords	\$ 22.35/Cord	\$ _____

*The volumes are statistically estimated within plus (+) or minus (-) 15.28 percent at 95% confidence level. These estimated volumes are final and not subject to adjustment. Prospective bidders are urged to examine this timber and to make their own estimates of quantity and quality.

I understand that any or all bids may be rejected. All bids must be signed and all bid items must be bid or the bid form may be rejected. I also understand that consideration and awarding a contract will be based upon my past performance and ability to complete the contract based upon equipment and staffing subject to my control.

FEDERAL ID: _____ or SOCIAL SECURITY NUMBER: _____

Company or individual bidding: _____

Company representative's name: _____

Address: _____

City: _____ State: _____ Zip: _____

IF AVAILABLE, PLEASE PLACE THE PERSONALIZED LABEL FROM YOUR PROSPECTUS IN THE ABOVE BOX.

Individual or company representative's signature: _____ Date: _____

Phone number : _____ Email (optional): _____

THE WINNING BIDDER MUST COMPLETE THE VERIFICATION OF WORKER'S DISABILITY COMPENSATION ACT COMPLIANCE (ON REVERSE SIDE IF DOUBLE SIDED) WITHIN 21 DAYS OF SALE AWARD DATE



TIMBER SALE VERIFICATION OF WORKER'S DISABILITY COMPENSATION ACT COMPLIANCE

As required by Act 317, P.A. 1969 (Worker's Compensation) and
Part 5 of Act 451 of 1994, as amended.

FOR DEPARTMENT USE ONLY	
Sale Number (XX - XXX - XX - XX)	
Forest Management Unit:	

VERIFICATION OF WORKER'S DISABILITY COMPENSATION ACT COMPLIANCE

- This verification must be completed and submitted within 21 days of contract award and prior to the issuance of the timber sale contract.
- In addition, if boxes 2B or 2C are checked, then Notice of Exclusion or Certificate of Insurance must be submitted within twenty-one (21) days of the contract award and prior to the issuance of the timber sale contract.
- All information must be typed or printed except for written signatures.

Please Check Appropriate Categories:

1. My business is organized as (you **must** check one of the boxes below):
 - A. Sole Proprietorship (individual)
 - B. Partnership
 - C. Corporation
2. You **must** check one of the boxes below:
 - A. I certify my business is a sole proprietorship and it has no employees but the sole proprietor. I am not subject to the Worker's Compensation Laws.
 - B. I certify my business has satisfied its obligation to the Worker's Compensation Act through the use of an approved Notice of Exclusion (BWC-337, Rev. 5/96). I will provide a copy of the Notice of Exclusion within 21 days of the contract award. (For questions or a copy of the BWC-337, please call the Worker's Compensation Bureau at 517-322-1195).
 - C. I certify my business has a Worker's Compensation Policy. I will provide an original Certificate of Insurance within twenty-one (21) days of the contract award.
3. If you have checked item 2(A) or 2(B), you **must** indicate the number of **both** full-time and part-time employees, other than yourself, including family members and active partners (if none, you must enter "0").

_____ Full-time Employees

_____ Part-time Employees

Name of Business		Federal ID (or) Social Security No.	
Address		Telephone ()	
City	State	ZIP	

I hereby certify that the above information is true and correct. I agree to notify the Michigan DNR of any changes that occur in factors affecting my coverage during any of my present and future operations.

Signature of Owner or Authorized Representative

Title

Date

Please complete the "SEALED BID" information on the next page

Timber Wolf Hardwoods (61-126-24)
T28N, R06W, SEC. 18; T28N, R06W, SEC. 19; Kalkaska COUNTY

In response to the notice of sale to be held 4:00 p.m. (local time) on October 24, 2024, I am hereby submitting my sealed bid (firm offer) for the following forest products to be cut. Bids for individual species must be at or above the advertised price. All non-responsive bid forms may be rejected.

<u>PRODUCTS & SPECIES</u>	<u>ESTIMATED VOLUME*</u>	<u>ADVERTISED PRICE</u>	<u>BID PRICE/UNIT</u>
Sawtimber			
Basswood	4.5 MBF	\$ 117.00/MBF	\$ _____
Beech	9.3 MBF	\$ 155.00/MBF	\$ _____
Red Maple	99.1 MBF	\$ 127.00/MBF	\$ _____
Sugar Maple	53.9 MBF	\$ 314.00/MBF	\$ _____
Pulpwood			
B. T. Aspen	11 Cords	\$ 20.40/Cord	\$ _____
Mixed Hardwood	641 Cords	\$ 20.80/Cord	\$ _____

*The volumes are statistically estimated within plus (+) or minus (-) 17.45 percent at 95% confidence level. These estimated volumes are final and not subject to adjustment. Prospective bidders are urged to examine this timber and to make their own estimates of quantity and quality.

I understand that any or all bids may be rejected. All bids must be signed and all bid items must be bid or the bid form may be rejected. I also understand that consideration and awarding a contract will be based upon my past performance and ability to complete the contract based upon equipment and staffing subject to my control.

FEDERAL ID: _____ - _____ or SOCIAL SECURITY NUMBER: _____ - _____ - _____

Company or individual bidding: _____

Company representative's name: _____

Address: _____

City: _____ State: _____ Zip: _____

IF AVAILABLE, PLEASE PLACE THE PERSONALIZED LABEL FROM YOUR PROSPECTUS IN THE ABOVE BOX.

Individual or company representative's signature: _____ Date: _____

Phone number : _____ Email (optional): _____

THE WINNING BIDDER MUST COMPLETE THE VERIFICATION OF WORKER'S DISABILITY COMPENSATION ACT COMPLIANCE (ON REVERSE SIDE IF DOUBLE SIDED) WITHIN 21 DAYS OF SALE AWARD DATE



FOR DEPARTMENT USE ONLY	
Sale Number (XX - XXX - XX - XX)	
Forest Management Unit:	

TIMBER SALE VERIFICATION OF WORKER'S DISABILITY COMPENSATION ACT COMPLIANCE

As required by Act 317, P.A. 1969 (Worker's Compensation) and
Part 5 of Act 451 of 1994, as amended.

VERIFICATION OF WORKER'S DISABILITY COMPENSATION ACT COMPLIANCE

- This verification must be completed and submitted within 21 days of contract award and prior to the issuance of the timber sale contract.
- In addition, if boxes 2B or 2C are checked, then Notice of Exclusion or Certificate of Insurance must be submitted within twenty-one (21) days of the contract award and prior to the issuance of the timber sale contract.
- All information must be typed or printed except for written signatures.

Please Check Appropriate Categories:

1. My business is organized as (you **must** check one of the boxes below):
 - A. Sole Proprietorship (individual)
 - B. Partnership
 - C. Corporation
2. You **must** check one of the boxes below:
 - A. I certify my business is a sole proprietorship and it has no employees but the sole proprietor. I am not subject to the Worker's Compensation Laws.
 - B. I certify my business has satisfied its obligation to the Worker's Compensation Act through the use of an approved Notice of Exclusion (BWC-337, Rev. 5/96). I will provide a copy of the Notice of Exclusion within 21 days of the contract award. (For questions or a copy of the BWC-337, please call the Worker's Compensation Bureau at 517-322-1195).
 - C. I certify my business has a Worker's Compensation Policy. I will provide an original Certificate of Insurance within twenty-one (21) days of the contract award.
3. If you have checked item 2(A) or 2(B), you **must** indicate the number of **both** full-time and part-time employees, other than yourself, including family members and active partners (if none, you must enter "0").

_____ Full-time Employees

_____ Part-time Employees

Name of Business		Federal ID (or) Social Security No.	
Address		Telephone ()	
City	State	ZIP	

I hereby certify that the above information is true and correct. I agree to notify the Michigan DNR of any changes that occur in factors affecting my coverage during any of my present and future operations.

Signature of Owner or Authorized Representative

Title

Date

Please complete the "SEALED BID" information on the next page

Educated Turkey Mix (61-127-24)
T28N, R06W, SEC. 18; T28N, R07W, SEC. 13; Kalkaska COUNTY

In response to the notice of sale to be held 4:00 p.m. (local time) on October 24, 2024, I am hereby submitting my sealed bid (firm offer) for the following forest products to be cut. Bids for individual species must be at or above the advertised price. All non-responsive bid forms may be rejected.

<u>PRODUCTS & SPECIES</u>	<u>ESTIMATED VOLUME*</u>	<u>ADVERTISED PRICE</u>	<u>BID PRICE/UNIT</u>
Sawtimber			
Basswood	1.5 MBF	\$ 117.00/MBF	\$ _____
Beech	4.6 MBF	\$ 155.00/MBF	\$ _____
Black Cherry	4.4 MBF	\$ 153.00/MBF	\$ _____
Red Maple	29.1 MBF	\$ 127.00/MBF	\$ _____
Sugar Maple	80.9 MBF	\$ 314.00/MBF	\$ _____
Pulpwood			
B. T. Aspen	15 Cords	\$ 20.40/Cord	\$ _____
Mixed Hardwood	503 Cords	\$ 20.80/Cord	\$ _____
Red Pine	111 Cords	\$ 51.20/Cord	\$ _____
White Pine	539 Cords	\$ 23.95/Cord	\$ _____

*The volumes are statistically estimated within plus (+) or minus (-) 14.44 percent at 95% confidence level. These estimated volumes are final and not subject to adjustment. Prospective bidders are urged to examine this timber and to make their own estimates of quantity and quality.

I understand that any or all bids may be rejected. All bids must be signed and all bid items must be bid or the bid form may be rejected. I also understand that consideration and awarding a contract will be based upon my past performance and ability to complete the contract based upon equipment and staffing subject to my control.

FEDERAL ID: ____ - ____ - ____ or SOCIAL SECURITY NUMBER: ____ - ____ - ____

Company or individual bidding: _____

Company representative's name: _____

Address: _____

City: _____ State: _____ Zip: _____

IF AVAILABLE, PLEASE PLACE THE PERSONALIZED LABEL FROM YOUR PROSPECTUS IN THE ABOVE BOX.

Individual or company representative's signature: _____ Date: _____

Phone number : _____ Email (optional): _____

THE WINNING BIDDER MUST COMPLETE THE VERIFICATION OF WORKER'S DISABILITY COMPENSATION ACT COMPLIANCE (ON REVERSE SIDE IF DOUBLE SIDED) WITHIN 21 DAYS OF SALE AWARD DATE



FOR DEPARTMENT USE ONLY	
Sale Number (XX - XXX - XX - XX)	
Forest Management Unit:	

TIMBER SALE VERIFICATION OF WORKER'S DISABILITY COMPENSATION ACT COMPLIANCE

As required by Act 317, P.A. 1969 (Worker's Compensation) and
Part 5 of Act 451 of 1994, as amended.

VERIFICATION OF WORKER'S DISABILITY COMPENSATION ACT COMPLIANCE

- This verification must be completed and submitted within 21 days of contract award and prior to the issuance of the timber sale contract.
- In addition, if boxes 2B or 2C are checked, then Notice of Exclusion or Certificate of Insurance must be submitted within twenty-one (21) days of the contract award and prior to the issuance of the timber sale contract.
- All information must be typed or printed except for written signatures.

Please Check Appropriate Categories:

1. My business is organized as (you **must** check one of the boxes below):
 - A. Sole Proprietorship (individual)
 - B. Partnership
 - C. Corporation
2. You **must** check one of the boxes below:
 - A. I certify my business is a sole proprietorship and it has no employees but the sole proprietor. I am not subject to the Worker's Compensation Laws.
 - B. I certify my business has satisfied its obligation to the Worker's Compensation Act through the use of an approved Notice of Exclusion (BWC-337, Rev. 5/96). I will provide a copy of the Notice of Exclusion within 21 days of the contract award. (For questions or a copy of the BWC-337, please call the Worker's Compensation Bureau at 517-322-1195).
 - C. I certify my business has a Worker's Compensation Policy. I will provide an original Certificate of Insurance within twenty-one (21) days of the contract award.
3. If you have checked item 2(A) or 2(B), you **must** indicate the number of **both** full-time and part-time employees, other than yourself, including family members and active partners (if none, you must enter "0").

_____ Full-time Employees

_____ Part-time Employees

Name of Business		Federal ID (or) Social Security No.	
Address		Telephone ()	
City	State	ZIP	

I hereby certify that the above information is true and correct. I agree to notify the Michigan DNR of any changes that occur in factors affecting my coverage during any of my present and future operations.

Signature of Owner or Authorized Representative

Title

Date

Please complete the "SEALED BID" information on the next page

High Ground Oak (61-632-24)
T25N, R05W, SEC. 4; T25N, R05W, SEC. 5; T25N, R05W, SEC. 6; T25N, R05W,

In response to the notice of sale to be held 4:00 p.m. (local time) on October 24, 2024, I am hereby submitting my sealed bid (firm offer) for the following forest products to be cut. Bids for individual species must be at or above the advertised price. All non-responsive bid forms may be rejected.

<u>PRODUCTS & SPECIES</u>	<u>ESTIMATED VOLUME*</u>	<u>ADVERTISED PRICE</u>	<u>BID PRICE/UNIT</u>
Sawtimber			
Black/Red (Hybrid) Oak	181.8 MBF	\$ 109.00/MBF	\$ _____
Red Maple	3.3 MBF	\$ 118.00/MBF	\$ _____
Red Oak	260.4 MBF	\$ 148.00/MBF	\$ _____
White Oak	70.9 MBF	\$ 75.00/MBF	\$ _____
Pulpwood			
Jack Pine	35 Cords	\$ 16.40/Cord	\$ _____
Misc. Species 2	121 Cords	\$ 7.00/Cord	\$ _____
Mixed Aspen	89 Cords	\$ 19.05/Cord	\$ _____
Mixed Oak	1,692 Cords	\$ 26.50/Cord	\$ _____
Red Maple	119 Cords	\$ 19.40/Cord	\$ _____

*The volumes are statistically estimated within plus (+) or minus (-) 10.38 percent at 95% confidence level. These estimated volumes are final and not subject to adjustment. Prospective bidders are urged to examine this timber and to make their own estimates of quantity and quality.

I understand that any or all bids may be rejected. All bids must be signed and all bid items must be bid or the bid form may be rejected. I also understand that consideration and awarding a contract will be based upon my past performance and ability to complete the contract based upon equipment and staffing subject to my control.

FEDERAL ID: ____ - ____ - ____ or SOCIAL SECURITY NUMBER: ____ - ____ - ____

Company or individual bidding: _____

Company representative's name: _____

Address: _____

City: _____ State: _____ Zip: _____

IF AVAILABLE, PLEASE PLACE THE PERSONALIZED LABEL FROM YOUR PROSPECTUS IN THE ABOVE BOX.

Individual or company representative's signature: _____ Date: _____

Phone number : _____ Email (optional): _____

THE WINNING BIDDER MUST COMPLETE THE VERIFICATION OF WORKER'S DISABILITY COMPENSATION ACT COMPLIANCE (ON REVERSE SIDE IF DOUBLE SIDED) WITHIN 21 DAYS OF SALE AWARD DATE



FOR DEPARTMENT USE ONLY
Sale Number (XX - XXX - XX - XX)
Forest Management Unit:

TIMBER SALE VERIFICATION OF WORKER'S DISABILITY COMPENSATION ACT COMPLIANCE

*As required by Act 317, P.A. 1969 (Worker's Compensation) and
Part 5 of Act 451 of 1994, as amended.*

VERIFICATION OF WORKER'S DISABILITY COMPENSATION ACT COMPLIANCE

- This verification must be completed and submitted within 21 days of contract award and prior to the issuance of the timber sale contract.
- In addition, if boxes 2B or 2C are checked, then Notice of Exclusion or Certificate of Insurance must be submitted within twenty-one (21) days of the contract award and prior to the issuance of the timber sale contract.
- All information must be typed or printed except for written signatures.

Please Check Appropriate Categories:

1. My business is organized as (you **must** check one of the boxes below):
 - A. Sole Proprietorship (individual)
 - B. Partnership
 - C. Corporation
2. You **must** check one of the boxes below:
 - A. I certify my business is a sole proprietorship and it has no employees but the sole proprietor. I am not subject to the Worker's Compensation Laws.
 - B. I certify my business has satisfied its obligation to the Worker's Compensation Act through the use of an approved Notice of Exclusion (BWC-337, Rev. 5/96). I will provide a copy of the Notice of Exclusion within 21 days of the contract award. (For questions or a copy of the BWC-337, please call the Worker's Compensation Bureau at 517-322-1195).
 - C. I certify my business has a Worker's Compensation Policy. I will provide an original Certificate of Insurance within twenty-one (21) days of the contract award.
3. If you have checked item 2(A) or 2(B), you **must** indicate the number of **both** full-time and part-time employees, other than yourself, including family members and active partners (if none, you must enter "0").

_____ Full-time Employees

_____ Part-time Employees

Name of Business		Federal ID (or) Social Security No.	
Address		Telephone ()	
City	State	ZIP	

I hereby certify that the above information is true and correct. I agree to notify the Michigan DNR of any changes that occur in factors affecting my coverage during any of my present and future operations.

Signature of Owner or Authorized Representative

Title

Date

Please complete the "SEALED BID" information on the next page