



**DEPARTMENT OF NATURAL RESOURCES
STATE OF MICHIGAN
TIMBER SALE PROSPECTUS #7495**

SCHEDULED SALE DATE AND TIME: 4:00 p.m. (local time) on December 12, 2024.

LOCATION: TRAVERSE CITY MGMT UNIT, 2122 M 37 SOUTH, TRAVERSE CITY, MI 49685.

PROSPECTUS NOTE: The bidder is advised to inspect the sale area and review the location, estimated volumes, operating costs and contract terms of proposed sales. Please be aware that some landowners may request 60 days or more notice for access across their land.

Notice is hereby given that bids will be received by the Unit Manager, TRAVERSE CITY MANAGEMENT UNIT, for certain timber on the following described lands:

Aylsworth Mix (61-033-24) / T26N, R14W, SEC. 32, E1/2SW.

T26N, R14W, SEC. 33, W1/2SW.

T26N, R14W, SEC. 35, W1/2SW.

Benzie County, Advertised Price \$62,854.80, 99.4 Acres, Spruce/Fir/Tamarack, Aspen.

SALE NOTE: A recreation site such as a trail, pathway, or campground is within the sale area or the vicinity. Certain restrictions/specifications may be applicable including time restrictions.

Grand Traverse County Special (61-034-24) / T25N, R11W, SEC. 26, W1/2SW.

T25N, R11W, SEC. 27, E1/2SE.

T25N, R11W, SEC. 34, NENE,NWSE.

T25N, R11W, SEC. 35, NENE,S1/2NE.

T25N, R11W, SEC. 36, NWNW.

Grand Traverse County, Advertised Price \$53,808.75, 87.4 Acres, Aspen, Hardwood.

Pettengil Pine (61-036-24) / T27N, R14W, SEC. 1, N1/2NW,SWNW,NE.

Benzie County, Advertised Price \$214,512.60, 127.5 Acres, Red Pine, Jack Pine.

SALE NOTE: A recreation site such as a trail, pathway, or campground is within the sale area or the vicinity. Certain restrictions/specifications may be applicable including time restrictions.

Up There Mix (61-039-24) / T27N, R14W, SEC. 1, S1/2SW.

T27N, R14W, SEC. 12, NW,W1/2NE,N1/2SW.

Benzie County, Advertised Price \$64,908.80, 61.3 Acres, Hardwood, Aspen.

SALE NOTE: A recreation site such as a trail, pathway, or campground is within the sale area or the vicinity. Certain restrictions/specifications may be applicable including time restrictions.

Little Lost Lake Aspen (61-040-24) / T25N, R13W, SEC. 4, E1/2NW,N1/2NE.

T26N, R13W, SEC. 33, SWSE.

Benzie County, Advertised Price \$78,477.00, 48.0 Acres, Aspen, Hardwood.

SALE NOTE: A recreation site such as a trail, pathway, or campground is within the sale area or the vicinity. Certain restrictions/specifications may be applicable including time restrictions.

TC Crew Cut (61-049-24) / T25N, R13W, SEC. 16, SWSW.

T25N, R13W, SEC. 17, SESE.

T25N, R13W, SEC. 6 , SWNW,N1/2SW.

Benzie County, Advertised Price \$51,833.90, 51.0 Acres, Red Pine, Hardwood.

SALE NOTE: A recreation site such as a trail, pathway, or campground is within the sale area or the vicinity.
Certain restrictions/specifications may be applicable including time restrictions.

BID INSTRUCTIONS (VER. 10/10/2022):

1. Scheduled Bid Location, Date, and Time (2/11)

Bids must be received by the Unit Manager, TRAVERSE CITY OFFICE, 2122 M 37 South, Traverse City, MI 49685, no later than 4:00 p.m. (local time) on December 12, 2024. For further information concerning this sale, contact Matthew Edison at 906-291-0095.

2. Bidder's Qualifications (10/22)

If all or part of a timber sale was prepared by a private contractor, the contractor and that contractor's company are not permitted to bid on the timber sale. A person must be 18 years of age or older to purchase timber. Permanent employees of the Department of Natural Resources or members of their immediate household may not bid. Former employees, in the permanent or seasonal class, may not bid until 3 months after the last day of active duty. Bids will not be accepted from individuals or companies appearing on the DNR/FRD No-Bid List. This list contains the names of purchasers who previously failed to execute a contract within 21-days or who have a history of poor performance.

3. Preparation of Sealed Bids (5/16)

Bid Forms may be completed online thru Michigan DNR Timber Sale Online Bidding (OLB) at www.michigan.gov/timberbidding or by completing the hardcopy Bid Form found in the Timber Sale Prospectus. Hardcopy Bid Forms shall be manually signed in ink. Registration in OLB is considered your 'signature' for all bids submitted thru that system. Bid prices must be entered for each species and product in the Bid Price column for all material subject to bidding and all fill-in blanks must be completed. If erasures or other changes appear on the hardcopy Bid Form, each erasure or change must be initialed by the person signing the bid.

4. Submission of Sealed Bids (5/16)

Bid forms may be obtained from the Unit Manager or thru OLB. Bids may be submitted hardcopy or thru OLB. All hardcopy bids must be submitted on the bid form and in an envelope clearly identified as described in this section. NOTE: Only one bid form per bid envelope. Sealed bids must be submitted to the Unit office designated in the prospectus and must be submitted at or prior to the time established in the prospectus. The envelope should show on the outside (a) the sale name or number and (b) the date and time of bid opening, as shown in the prospectus. Bids received after the time specified in the sale prospectus are late bids and will be rejected.

It is possible for a bidder to submit multiple bids on a single sale. For example, a bid may be submitted hardcopy and a bid may be submitted thru OLB. Or, two bidders from the same company could both submit bids on the same sale. If this were to happen, the State would accept all bids received and award the contract accordingly. All bidding and contractual requirements would apply to all bids received.

5. Public Opening of Sealed Bids (7/16)

If conditions permit, the sealed bids will be publicly opened and posted at the time and place set in the prospectus.

If a bidder, present at a bid opening, has submitted bids on more than one sale, that bidder may withdraw their unopened bid envelopes or announce the withdrawal of their online bid after being declared the successful bidder on one sale.

6. Award of Contract (1/11)

Award of the contract will be made to the Bidder whose bid, conforming to the prospectus, is most advantageous to the State of Michigan on the basis of total value at rates bid for the estimated quantities. The State reserves the right to reject any bid or waive any minor irregularity in bids received. A written award mailed (or otherwise furnished) to the successful Bidder shall be deemed to result in a binding contract without further action by either party.

7. Down Payment (1/11)

The Bidder to whom award is made must make a down payment within 21 days of the sale award. The amount of the down payment will be calculated as shown in the Bond and Payment Schedule of this prospectus. Only cash may be used to meet this requirement.

8. Performance Security (1/11)

As guarantee of faithful performance, a cash bond, certificate of deposit, surety bond or irrevocable letter of credit (LOC) is required within 21 days of the sale award. The amount of the performance security is shown in the Bond and

Payment Schedule of this prospectus. If an LOC or surety is used, the coverage must extend for at least 6 months beyond the contract expiration.

9. Worker's Compensation (10/22)

Purchaser shall obtain worker's compensation insurance to cover claims under Michigan's Worker's Disability Compensation Act of 1969 or similar employee benefit act of any other state applicable to an employee. Verification of Worker's Disability Compensation Act Compliance must be completed and submitted within 21 days of contract award and prior to the issuance of the timber sale contract. In addition, if applicable, Notice of Exclusion or Certificate of Insurance must also be submitted.

10. Timber Sale Contract (10/22)

Additional conditions and requirements common to all timber sales are listed on the timber sale contract (R4031) and are available on line at www.michigan.gov/timber. Contact the Unit Manager for additional information or a sample contract. Within 21 days of the date of the award letter, the bidder must sign the contract and provide the required down payment, performance security, and verification of worker's disability compensation. The down payment and performance security shall be in accordance with the provisions of the timber sale contract, in the sums stated in this prospectus. If these actions are not taken, then the Bidder, the Bidder's corporation, and the corporation's principals may not be permitted to bid on State timber sales for a period of 3 months after the first offense, 6 months after the second offense, and 1 year after the third offense. An offense will only be counted against the Bidder for 5 years. In addition, the Bidder certifies that if awarded this contract, the Bidder will complete the timber sale contract in accordance with its terms and any modifications thereof including requirements to purchase, cut, and remove the included timber by the expiration date.

Payment Unit values in the State Forest Timber Sale Contract are calculated based on the advertised value of the Payment Unit as a percentage of the total advertised value of the contract. The advertised value of each Payment Unit is given in the Description of Timber by Payment Unit table on the Timber Sale Information page. For example, if the value of Payment Unit 1 is advertised as \$1,500 and the total Timber Sale value is advertised as \$10,000, the contract price for Payment Unit 1 will be 15% of the total bid price ($\$1,500/\$10,000 * 100$).

11. Disclaimer of Estimates and Bidder's Warranty of Inspection (10/22)

Before submitting this bid, the Bidder is advised and cautioned to inspect the sale area, review the requirements of the sale contract, and take other steps as may be reasonably necessary to ascertain the location, estimated volumes, construction estimates, and operating costs of the proposed sale. Failure to do so will not relieve the Bidder from responsibility for completing the contract.

The Bidder warrants that this bid is submitted solely on the basis of the Bidder's examination and inspection of the quality and quantity of the timber offered for sale and the Bidder's opinion of the value thereof and the costs of recovery. No reliance should be placed on the State of Michigan's estimates of timber quality, quantity or costs of recovery. Bidder further acknowledges that the State of Michigan: (i) expressly disclaims any warranty of fitness of timber for any purpose; (ii) offers this timber as is without any warranty of quality (merchantability) or quantity and (iii) expressly disclaims any warranty as to the quantity or quality of timber sold.

12. Certification and Chain-of-Custody (10/22)

Unless otherwise indicated in the contract under section 7 – Other Conditions of the Sale Specific Conditions & Requirements, the area encompassed by this timber sale is certified to the standards of the Forest Stewardship Council (FSC) - Certificate #SCS-FM/COC-00090N and the Sustainable Forestry Initiative (SFI) - Certificate #NSF-SFIS-5Y031-SF5. Forest products from this sale may be delivered to the mill as "FSC 100% and / or SFI certified" as long as the contractor hauling the forest products is chain-of-custody (COC) certified or covered under a COC certificate from the destination mill. The purchaser is responsible for maintaining COC after leaving the sale area.

13. Good Neighbor Authority (GNA) Requirements (10/22)

If the name of this timber sales contains the acronym GNA, it is authorized by the Good Neighbor Authority (GNA) and covered by various agreements between the U.S. Forest Service and the State. The timber sale occurs on federal land and the following conditions apply:

GNA contracts on US Forest Service land will not be awarded to purchasers on the Federal list of excluded parties. The System for Award Management (SAM) will be checked for active excluded parties prior to award of contract. In

addition, the Bidder to whom award is made must complete an Assurance Regarding Felony Conviction or Tax Delinquent Status for Corporate Applicants (AD-3031).

14. Good Neighbor Authority (GNA) Requirements, con't (10/22)

Bidder certifies, by signing this bid form, that to the best of Bidder's knowledge that the following representations are accurate and complete.

- a. That the Bidder and its principals are not presently debarred, suspended, proposed for debarment, declared ineligible, or voluntary excluded from timber sales (covered transactions) by any Federal department or agency.
- b. That the Bidder and its principals have not within a 3-year period preceding this bid been convicted of or had a civil judgment rendered against them for commission of fraud or a criminal offense in connection with obtaining , attempting to obtain, or performing a public (Federal, State, or local) transaction or contract under a public transaction; violation of Federal or State antitrust statutes or commission of embezzlement, theft, forgery, bribery, falsification or destruction of records, making false statements, or receiving stolen property.
- c. That the Bidder and its principals are not presently indicted for or otherwise criminally or civilly charged by a governmental entity (Federal, State, or local) with commission of any of the offenses enumerated in paragraph b of this certification.
- d. That the Bidder and its principals have not within a 3-year period preceding this bid had one or more public transactions (Federal, State, or local) terminated for breach or default of a timber or forest product contract.

Bidders that cannot certify this requirement, in whole or in part, shall submit an explanation with their bid.

Scott Bowen
Director

TIMBER SALE INFORMATION

Aylsworth Mix (61-033-24)

T26N, R14W, SEC. 32; T26N, R14W, SEC. 33; T26N, R14W, SEC. 35.

Benzie County (Advertised Price \$62,854.80)

SALE NOTE: A recreation site such as a trail, pathway, or campground is within the sale area or the vicinity. Certain restrictions/specifications may be applicable including time restrictions.

A timber sale contract for this lump sum, sealed bid timber sale will be awarded to the responsible bidder offering the highest sealed bid price. All units of volume listed below were estimated using the Inventory Manager computer program and the new Michigan taper model. Bids must be at or above the following advertised price for each product and species:

<u>PRODUCTS & SPECIES</u>	<u>ESTIMATED UNITS*</u>	<u>ADVERTISED PRICE</u>
Sawtimber		
Basswood	30.1 MBF	\$ 120.00 / MBF
Beech	9.8 MBF	\$ 167.00 / MBF
Black Cherry	4.7 MBF	\$ 155.00 / MBF
Mixed Aspen	125.8 MBF	\$ 131.00 / MBF
Red Maple	11.0 MBF	\$ 124.00 / MBF
Sugar Maple	3.3 MBF	\$ 322.00 / MBF
White Pine	13.7 MBF	\$ 81.00 / MBF
White Spruce	121.3 MBF	\$ 59.00 / MBF
Pulpwood		
Basswood	105 Cords	\$ 11.45 / Cord
Mixed Aspen	368 Cords	\$ 21.15 / Cord
Mixed Hardwood	240 Cords	\$ 20.65 / Cord
White Pine	59 Cords	\$ 24.65 / Cord
White Spruce	1,223 Cords	\$ 11.70 / Cord

* The total volume is statistically estimated within plus (+) or minus (-) 12.58 percent. There are an estimated 2,744 cords on this timber sale, plus or minus 345 cords at the 95% confidence level. The estimated units are final and not subject to adjustment. Prospective bidders are urged to examine this timber and to make their own estimates of quantity and quality.

BOND AND PAYMENT SCHEDULE:

1. A bond in the amount of \$3,143.00 to insure faithful performance of the conditions of the contract will be deposited by the successful bidder within 21 days of the sale award.
2. Cutting in any sale or unit without the required advance payment would be considered a trespass.
3. Total payment must be paid in advance or according to the following schedule :
 - (a) Ten percent (10%) of the sale value must be paid within 21 days of the sale award.
 - (b) The 10% down payment will be credited towards the first unit cut.
 - (c) Payment for each of the following units must be made before cutting begins in that unit:

PAYMENT UNIT NUMBER	PERCENT OF TOTAL SALE VALUE
01	14.5%
02	10.9%
03	33.4%
04	24.9%
05	16.3%
4. If no cutting takes place, the 10% down payment will not be refunded.
5. Operations on the contract issued will terminate on 06/30/2027.

SALE STATISTICS

Volumes were calculated in cubic feet using the Michigan taper model. Cubic foot volume includes all wood inside bark for the product indicated. For display purposes, cubic feet were converted to cords and MBF using a simple conversion factor, e.g. 79 cubic feet per cord and 185 cubic feet per MBF. The cubic foot volumes are precise; the cords and MBF volumes are not. Cubic foot volume cannot be directly converted to cords or boards with precision.

SALE VOLUMES

The total estimated sale volume may not equal the sum of the species/products due to the nature of statistical calculations associated with double sampling methodology.

VOLUME			STATISTICAL RANGE IN CORDS	
TOTAL CUBIC FEET	TOTAL CORDS	PERCENT ERROR	MINIMUM	MAXIMUM
216,795	2,744	12.58%	2,399	3,090

VDU VOLUMES

A VDU is a Volume Determination Unit. Volumes and their associated statistics are calculated at the VDU level and summarized to the sale level. There is often a one to one relationship between a VDU and a Payment Unit, but not always, depending on the cruise design. Refer to the VDU TO PAYMENT UNIT table.

	VOLUME			RANGE IN CORDS	
VDU	TOTAL CUBIC FEET	TOTAL CORDS	PERCENT ERROR	MINIMUM	MAXIMUM
11	22,755	288	31.12%	198	378
18	115,567	1,463	18.80%	1,188	1,738
22	22,173	281	34.57%	184	378
46	36,219	458	25.94%	340	577
61	20,082	254	53.08%	119	389
TOTAL:	216,795	2,744		2,029	3,460

VDU TO PAYMENT UNIT

When a VDU is associated with more than one Payment Unit (PU), the VDU volumes are assigned to the PU based on acres of the VDU within the PU.

VDU	VDU ACRES	PU	PU ACRES
11	25.6	1	25.6
18	34.5	3	34.5
22	17.9	2	17.9
46	15.5	4	15.5
61	5.9	5	5.9
TOTAL:	99.4		99.4

DESCRIPTION OF TIMBER BY PAYMENT UNIT (PU)

PU	MARKET GROUP	PRODUCT	QUANTITY	UNIT	ACRES	ADVERTISE PRICE	
1	Basswood	Sawtimber	18.2	MBF	25.6	\$9,098.65	
	Beech		9.8	MBF			
	Black Cherry		2.1	MBF			
	Sugar Maple		3.3	MBF			
	Basswood		Pulpwood	51			Cords
	Mixed Aspen			4			Cords
	<i>Quaking Aspen</i>			4			<i>Cords</i>
	Mixed Hardwood			156			Cords
	<i>Beech</i>			17			<i>Cords</i>
	<i>Black Cherry</i>			26			<i>Cords</i>
	<i>Ironwood</i>			28			<i>Cords</i>
	<i>Red Maple</i>			3			<i>Cords</i>
	<i>Sugar Maple</i>			82			<i>Cords</i>
2	Basswood	Sawtimber	11.9	MBF	17.9	\$6,855.65	
	Black Cherry		2.6	MBF			
	Mixed Aspen		2.7	MBF			
	<i>B. T. Aspen</i>		2.3	<i>MBF</i>			
	<i>Quaking Aspen</i>		0.4	<i>MBF</i>			
	Red Maple		6.8	MBF			
	White Pine		2.2	MBF			
	White Spruce		1.8	MBF			
	Basswood		Pulpwood	54			Cords
	Mixed Aspen			44			Cords
	<i>B. T. Aspen</i>			21			<i>Cords</i>
	<i>Quaking Aspen</i>			23			<i>Cords</i>
	Mixed Hardwood			67			Cords
	<i>American Elm</i>			3			<i>Cords</i>
	<i>Black Cherry</i>			12			<i>Cords</i>
	<i>Ironwood</i>			4			<i>Cords</i>
	<i>Red Maple</i>			48			<i>Cords</i>
	White Pine			2			Cords
White Spruce	48	Cords					
3	White Pine	Sawtimber	2.8	MBF	34.5	\$21,049.45	
	White Spruce		119.5	MBF			
	White Pine		Pulpwood	1			Cords
	White Spruce			1,175			Cords
4	Mixed Aspen	Sawtimber	67.4	MBF	15.5	\$15,629.45	
	<i>B. T. Aspen</i>		60.2	<i>MBF</i>			
	<i>Quaking Aspen</i>		7.2	<i>MBF</i>			
	White Pine		8.7	MBF			
	Mixed Aspen		Pulpwood	220			Cords
	<i>B. T. Aspen</i>			194			<i>Cords</i>
	<i>Quaking Aspen</i>			26			<i>Cords</i>
	Mixed Hardwood			3			Cords
	<i>Ironwood</i>			3			<i>Cords</i>
White Pine	56	Cords					
5	Mixed Aspen	Sawtimber	55.7	MBF	5.9	\$10,221.60	
	<i>B. T. Aspen</i>		48.0	<i>MBF</i>			
	<i>Quaking Aspen</i>		7.7	<i>MBF</i>			
	Red Maple		4.2	MBF			
	Mixed Aspen		Pulpwood	100			Cords
	<i>B. T. Aspen</i>			65			<i>Cords</i>
	<i>Quaking Aspen</i>			35			<i>Cords</i>
	Mixed Hardwood			14			Cords
	<i>Ironwood</i>			6			<i>Cords</i>
	<i>Red Maple</i>			8			<i>Cords</i>

TOTAL:	319.7	MBF
--------	-------	-----

TOTAL:	1,995	Cords
--------	-------	-------

Sale Specific Conditions & Requirements

Sale Name: Aylsworth Mix

Sale Number: 61-033-24 Seq#: 1

1 - Sale Area

1.2 - Boundaries

1.2.1 - Painted boundaries (9/19)

The sale boundary and Payment Unit boundaries are marked and identified by blue and red paint, as well as roads. Exterior sale boundary lines against private property are marked with blue paint, with the exception of the western portion of Payment Unit 2 which is unpainted and designated by Zimmerman Road and the western portions of Payment Units 4 and 5 which are unpainted and designated by Weldon Road. Exterior sale boundary lines against state are marked with red paint. The painted boundary line trees are not Included Timber and are to be protected unless marked with orange paint.

2 - Timber Specifications

2.1 - Included Timber

2.1.1 - Clearcut unit(s) with unmerchantable trees (6/14)

Within Payment Unit(s) 3 and 5, cut all trees that are one (1) inch or more at DBH, regardless of merchantability. In addition, within Payment Unit 5, do not cut any sugar maple and do not cut any white pine that are 10.6 inches or more at DBH.

2.1.3 - Cut tree marked unit(s) (12/08)

Within Payment Unit(s) 1, all trees are designated for cutting when marked with orange paint above and below stump height, regardless of merchantability. In addition, all ironwood and aspen is designated for cutting, regardless of merchantability.

2.1.5 - Overstory removal unit(s) (8/11)

Within Payment Unit(s) 4, all aspen and ironwood that are two (2) inches or more at DBH, which meet minimum piece specifications in 2.2 Utilization, are designated for cutting. In addition, white pine trees that are marked with orange paint are designated for cutting, regardless of merchantability. Protect advanced regeneration as much as possible during cutting operations.

2.1.7 - Leave tree marked unit(s) (6/14)

Within Payment Unit(s) 2, all trees, which meet minimum piece specifications in 2.2 Utilization, are designated for cutting, except do not cut trees marked with green paint above and below stump height. Protect advanced regeneration as much as possible during cutting operations.

2.2 - Utilization

2.2.2 - Chipping required (2/18)

Payment Unit 3 must be chip harvested to facilitate subsequent planting operations. The Purchaser has the option to produce sawlogs or pulpwood bolts, but the remaining portion of the trees must be chipped and hauled.

2.2.3 - Stump heights (4/07)

Stump heights within Payment Unit 3 shall not exceed 6 inches for all trees. This is in order to facilitate planting operations.

4 - Transportation

4.1 - Construction

4.1.7 - Road closure (10/11)

Any driveways built into the sale must be blocked to vehicle traffic upon completion of the sale. In general, this will require constructing a four (4') foot high berm of stumps and logs covered with earth. These roads must be rendered impassable to cars and trucks. All stumps from road building and landing construction must be reserved to block any newly constructed roads upon completion of the sale. These stumps must be scattered along the road system to prohibit vehicular movement. Contact the Sale Administrator for specific details of design and placement.

4.1.12 - No new roads (1/12)

No new roads will be permitted in any Payment Unit. All operations are limited to existing roads. Skid trails or small driveways off of road only will be allowed.

4.2 - Maintenance

4.2.5 - Two wheel drive condition (2/04)

All existing trail roads on and adjacent to the sale area must be passable by two-wheel drive traffic for the duration of the sale.

5 - Operations

5.1 - Notification

5.1.1 - Pre-sale conference (10/16)

A pre-sale conference on site between the Purchaser and sale administrator is required prior to beginning any operations to determine landing and road locations. The Unit Manager or his/her representative must be contacted at least 3 days in advance to schedule the conference.

5.1.4 - Post-sale conference (10/16)

A post-sale conference on site between the Purchaser and sale administrator is required 5 days prior to the completion of active logging operations to determine clean-up and repair of landings, road edges, and the fulfillment of other contract specifications.

5.2 - Conduct of Operations

5.2.1 - Slash

5.2.1.1 - Slash within sale area (9/16)

No trees are to be felled outside the sale area and all slash is to be kept at least 10 feet back from the red and blue paint line. If sale boundary lines are along a public road or highway, then slash must be removed 50' from these lines per General Condition & Requirement 5.2.1.

5.2.3 - Operating Restrictions

5.2.3.3 - Bark slippage restriction (3/09)

Within Payment Unit(s) 1 and 2, unless changed by written agreement, cutting and skidding are not permitted during the period of April 15 to July 15. This restriction is because of bark slippage.

5.2.38 - No decking against live trees (2/04)

Cut products may not be decked against unmarked or designated leave trees.

5.2.41 - Snowmobile trail protection (9/11)

The Betsie Valley Trail is a snowmobile trail and is shown on the Timber Sale Map. Do not cut or damage posts with orange trail markers or traffic control signs. The snowmobile trail may not be used for any timber sale operations, including skidding across the trail.

6 - Safety and Fire Prevention

6.2 - Signing

6.2.1 - Road posting (10/20)

The Purchaser is responsible for posting and maintaining caution signs on access roads prior to beginning operations. The road must be posted at appropriate distances from the Sale Area to warn of logging activity and truck traffic. Signs must be removed when harvest operations are suspended or completed. The Purchaser will provide these signs.

6.2.2 - Snowmobile trail posting (10/20)

The Purchaser is responsible for posting and maintaining caution signs on Betsie Valley Trail prior to beginning operations during the snowmobile season (approximately December 1 to March 31). The trail must be posted at appropriate distances from the Sale Area to warn of logging activity and truck traffic. Signs must be removed when harvest operations are suspended or completed. The Purchaser will provide these signs.



TIMBER SALE MAP

This information provided by authority of Part 525, 1994 PA 451, as amended.

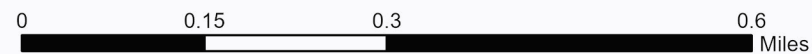
Sale Number 61-033-24	Date 07/23/2024	
Scale 1:10,000	Page 1	Of 2

Forest Management Unit Traverse City Mgt Unit	County Benzie	Mapped By: Melina Hurin
		Cruised By: Melina Hurin

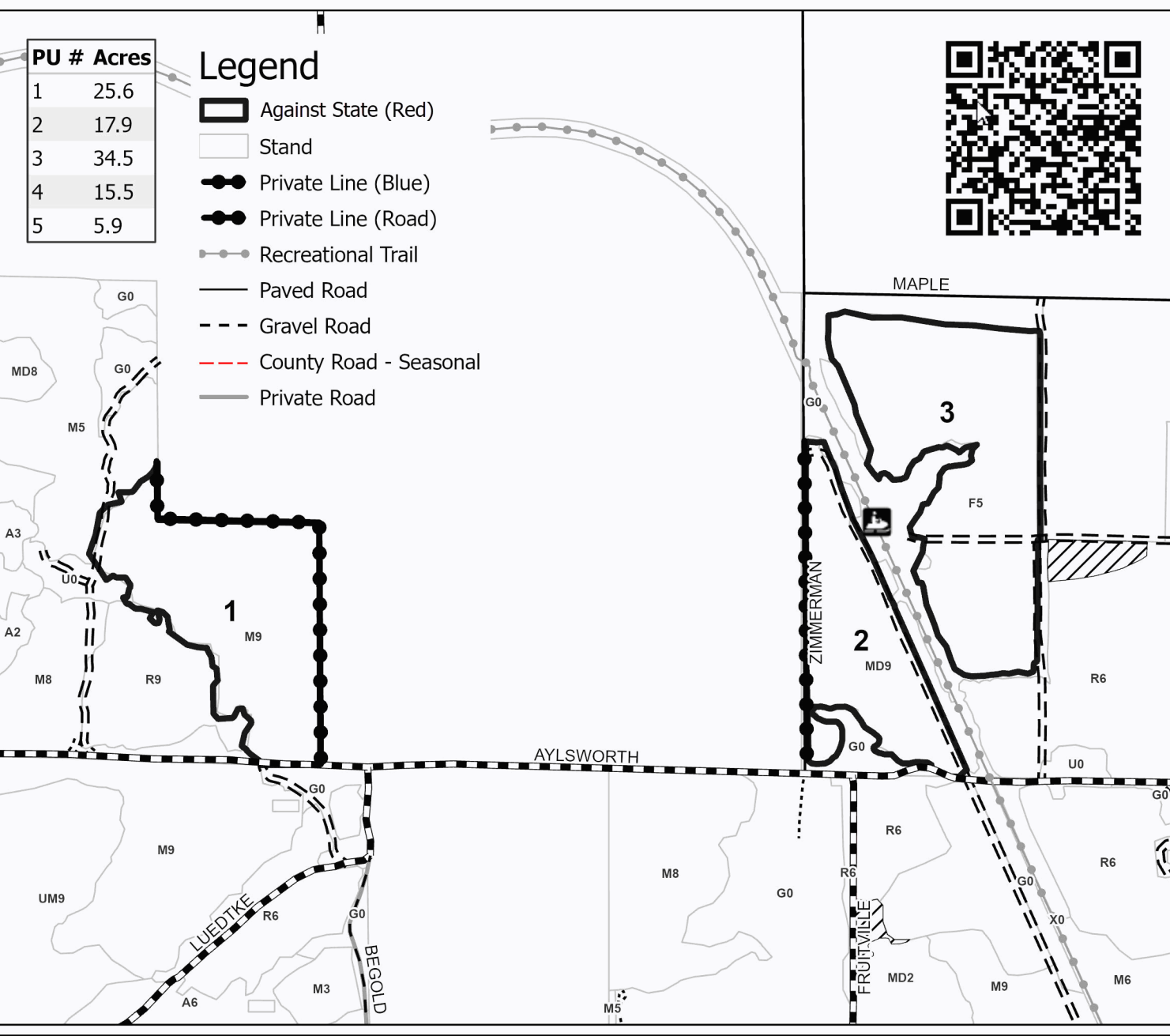
Township 26N	Range 14W	Section(s) and Subdivision(s) Sec. 32 E1/2SW; Sec. 33 W1/2SW; Sec. 35 W1/2SW;
-----------------	--------------	---

Cover Type			
A = Aspen	J = Jack Pine	O = Oak	U = Upland Brush
B = Paper Birch	K = Rock	P = Lowland Poplar	UM = Upland Mix Forest
C = Cedar	L = Lowland Brush	Q = Mixed Swamp Conifer	V = Bog or Marsh
D = Treed Bog	LM = Lowland Mix Forest	R = Red Pine	W = White Pine
E = Swamp Hardwoods	M = Maple, Beech, Birch	S = Black Spruce	X = Non Stocked
F = Spruce/Fir	MC = Mixed Conifer	T = Tamarack	Y = Sand
G = Grass	MD = Mixed Deciduous	Z = Water	
H = Hemlock	N = Marsh		

Density	
0 = Non Stocked	5 = Pole Timber Medium
1 = Seedling Sapling Poor	6 = Pole Timber Well
2 = Seedling Sapling Medium	7 = Saw Timber Poor
3 = Seedling Sapling Well	8 = Saw Timber Medium
4 = Pole Timber Poor	9 = Saw Timber Well



Aylsworth Mix
99.4 Acres





TIMBER SALE MAP

This information provided by authority of Part 525, 1994 PA 451, as amended.

Sale Number
61-033-24

Date
07/23/2024

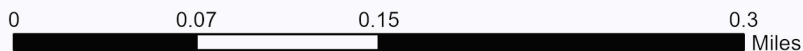
Forest Management Unit	County	Mapped By: Melina Hurin
Traverse City Mgt Unit	Benzie	Cruised By: Melina Hurin

Scale	Page	Of
1:5,000	2	2

Township	Range	Section(s) and Subdivision(s)
26N	14W	Sec. 32 E1/2SW; Sec. 33 W1/2SW; Sec. 35 W1/2SW;

Cover Type			
A = Aspen	J = Jack Pine	O = Oak	U = Upland Brush
B = Paper Birch	K = Rock	P = Lowland Poplar	UM = Upland Mix Forest
C = Cedar	L = Lowland Brush	Q = Mixed Swamp Conifer	V = Bog or Marsh
D = Treed Bog	LM = Lowland Mix Forest	R = Red Pine	W = White Pine
E = Swamp Hardwoods	M = Maple, Beech, Birch	S = Black Spruce	X = Non Stocked
F = Spruce/Fir	MC = Mixed Conifer	T = Tamarack	Y = Sand
G = Grass	MD = Mixed Deciduous	Z = Water	
H = Hemlock	N = Marsh		

Density	
0 = Non Stocked	5 = Pole Timber Medium
1 = Seedling Sapling Poor	6 = Pole Timber Well
2 = Seedling Sapling Medium	7 = Saw Timber Poor
3 = Seedling Sapling Well	8 = Saw Timber Medium
4 = Pole Timber Poor	9 = Saw Timber Well



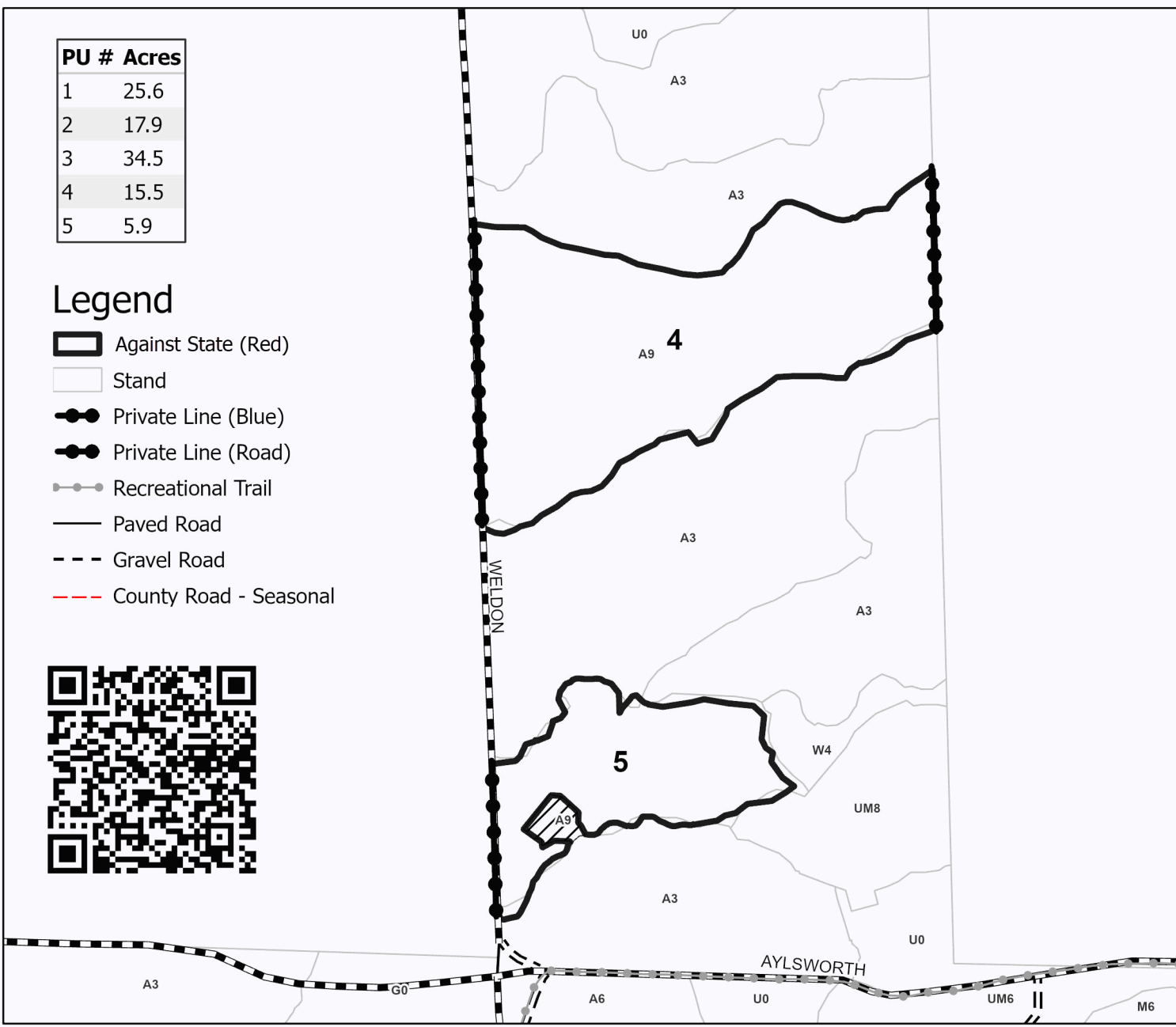
Aylsworth Mix

99.4 Acres

PU #	Acres
1	25.6
2	17.9
3	34.5
4	15.5
5	5.9

Legend

- Against State (Red)
- Stand
- Private Line (Blue)
- Private Line (Road)
- Recreational Trail
- Paved Road
- Gravel Road
- County Road - Seasonal



TIMBER SALE INFORMATION

Grand Traverse County Special (61-034-24)

T25N, R11W, SEC. 26; T25N, R11W, SEC. 27; T25N, R11W, SEC. 34; T25N, R11W, SEC. 35; T25N, R11W, SEC. 36.
Grand Traverse County (Advertised Price \$53,808.75)

A timber sale contract for this lump sum, sealed bid timber sale will be awarded to the responsible bidder offering the highest sealed bid price. All units of volume listed below were estimated using the Inventory Manager computer program and the new Michigan taper model. Bids must be at or above the following advertised price for each product and species:

<u>PRODUCTS & SPECIES</u>	<u>ESTIMATED UNITS*</u>	<u>ADVERTISED PRICE</u>
Sawtimber		
Beech	10.5 MBF	\$ 145.00 / MBF
Black Cherry	10.6 MBF	\$ 134.00 / MBF
Mixed Aspen	122.7 MBF	\$ 113.00 / MBF
Red Maple	17.8 MBF	\$ 107.00 / MBF
Sugar Maple	13.5 MBF	\$ 279.00 / MBF
Pulpwood		
Balsam Fir	8 Cords	\$ 24.05 / Cord
Mixed Aspen	1,244 Cords	\$ 18.35 / Cord
Mixed Hardwood	440 Cords	\$ 17.90 / Cord
Red Pine	3 Cords	\$ 44.75 / Cord
White Pine	14 Cords	\$ 21.40 / Cord

* The total volume is statistically estimated within plus (+) or minus (-) 13.62 percent. There are an estimated 2,120 cords on this timber sale, plus or minus 289 cords at the 95% confidence level. The estimated units are final and not subject to adjustment. Prospective bidders are urged to examine this timber and to make their own estimates of quantity and quality.

BOND AND PAYMENT SCHEDULE:

1. A bond in the amount of \$2,690.00 to insure faithful performance of the conditions of the contract will be deposited by the successful bidder within 21 days of the sale award.
2. Cutting in any sale or unit without the required advance payment would be considered a trespass.
3. Total payment must be paid in advance or according to the following schedule :
 - (a) Ten percent (10%) of the sale value must be paid within 21 days of the sale award.
 - (b) The 10% down payment will be credited towards the first unit cut.
 - (c) Payment for each of the following units must be made before cutting begins in that unit:

PAYMENT UNIT NUMBER	PERCENT OF TOTAL SALE VALUE
01	50.3%
02	20.1%
03	7.0%
04	16.1%
05	6.5%
4. If no cutting takes place, the 10% down payment will not be refunded.
5. Operations on the contract issued will terminate on 06/30/2027.

SALE STATISTICS

Volumes were calculated in cubic feet using the Michigan taper model. Cubic foot volume includes all wood inside bark for the product indicated. For display purposes, cubic feet were converted to cords and MBF using a simple conversion factor, e.g. 79 cubic feet per cord and 185 cubic feet per MBF. The cubic foot volumes are precise; the cords and MBF volumes are not. Cubic foot volume cannot be directly converted to cords or boards with precision.

SALE VOLUMES

The total estimated sale volume may not equal the sum of the species/products due to the nature of statistical calculations associated with double sampling methodology.

VOLUME		PERCENT ERROR	STATISTICAL RANGE IN CORDS	
TOTAL CUBIC FEET	TOTAL CORDS		MINIMUM	MAXIMUM
167,511	2,120	13.62%	1,832	2,409

VDU VOLUMES

A VDU is a Volume Determination Unit. Volumes and their associated statistics are calculated at the VDU level and summarized to the sale level. There is often a one to one relationship between a VDU and a Payment Unit, but not always, depending on the cruise design. Refer to the VDU TO PAYMENT UNIT table.

VDU	VOLUME		PERCENT ERROR	RANGE IN CORDS	
	TOTAL CUBIC FEET	TOTAL CORDS		MINIMUM	MAXIMUM
24	8,452	107	60.09%	43	171
76	97,190	1,230	19.32%	993	1,468
82	27,519	348	26.72%	255	441
140	34,350	435	30.14%	304	566
TOTAL:	167,511	2,120		1,594	2,647

VDU TO PAYMENT UNIT

When a VDU is associated with more than one Payment Unit (PU), the VDU volumes are assigned to the PU based on acres of the VDU within the PU.

VDU	VDU ACRES	PU	PU ACRES
24	5.8	5	5.8
76	39.2	1	39.2
82	13.2	2	13.2
140	29.2	3	8.9
		4	20.3
TOTAL:	87.4		87.4

DESCRIPTION OF TIMBER BY PAYMENT UNIT (PU)

PU	MARKET GROUP	PRODUCT	QUANTITY	UNIT	ACRES	ADVERTISE PRICE
1	Beech	Sawtimber	1.9	MBF	39.2	\$27,113.25
	Black Cherry		1.2	MBF		
	Mixed Aspen		61.1	MBF		
	<i>B. T. Aspen</i>		61.1	<i>MBF</i>		
	Mixed Aspen	Pulpwood	1,019	Cords		
	<i>B. T. Aspen</i>		1,019	<i>Cords</i>		
	Mixed Hardwood		60	Cords		
	<i>Beech</i>		2	<i>Cords</i>		
	<i>Black Cherry</i>		15	<i>Cords</i>		
<i>Red Maple</i>	43		<i>Cords</i>			
2	Black Cherry	Sawtimber	3.6	MBF	13.2	\$10,789.65
	Mixed Aspen		55.9	MBF		
	<i>Quaking Aspen</i>		55.9	<i>MBF</i>		
	Red Maple		1.8	MBF		
	Balsam Fir	Pulpwood	8	Cords		
	Mixed Aspen		177	Cords		
	<i>Quaking Aspen</i>		177	<i>Cords</i>		
	Mixed Hardwood		14	Cords		
	<i>Black Cherry</i>		12	<i>Cords</i>		
	<i>Red Maple</i>		2	<i>Cords</i>		
	White Pine		5	Cords		
	<i>White Pine</i>			1.7		
<i>White Pine</i>		2	<i>Cords</i>			
3	Beech	Sawtimber	2.6	MBF	8.9	\$3,769.25
	Black Cherry		1.8	MBF		
	Red Maple		4.9	MBF		
	Sugar Maple	2.7	MBF			
	Mixed Aspen	Pulpwood	3	Cords		
	<i>Quaking Aspen</i>		3	<i>Cords</i>		
	Mixed Hardwood		98	Cords		
	<i>Beech</i>		7	<i>Cords</i>		
	<i>Black Cherry</i>		5	<i>Cords</i>		
	<i>Ironwood</i>		1	<i>Cords</i>		
	<i>Red Maple</i>		20	<i>Cords</i>		
	<i>Sugar Maple</i>		65	<i>Cords</i>		
	White Pine		3	Cords		
	<i>White Pine</i>		3	<i>Cords</i>		
4	Beech	Sawtimber	6.0	MBF	20.3	\$8,653.65
	Black Cherry		4.0	MBF		
	Red Maple		11.1	MBF		
	Sugar Maple	6.3	MBF			
	Mixed Aspen	Pulpwood	7	Cords		
	<i>Quaking Aspen</i>		7	<i>Cords</i>		
	Mixed Hardwood		226	Cords		
	<i>Beech</i>		16	<i>Cords</i>		
	<i>Black Cherry</i>		13	<i>Cords</i>		
	<i>Ironwood</i>		3	<i>Cords</i>		
	<i>Red Maple</i>		46	<i>Cords</i>		
	<i>Sugar Maple</i>		148	<i>Cords</i>		
	White Pine		6	Cords		
	<i>White Pine</i>		6	<i>Cords</i>		
	5	Mixed Aspen	Sawtimber	5.7		
<i>B. T. Aspen</i>		5.7		<i>MBF</i>		
Sugar Maple		4.5	MBF			
Mixed Aspen		Pulpwood	38	Cords		
<i>B. T. Aspen</i>			38	<i>Cords</i>		

DESCRIPTION OF TIMBER BY PAYMENT UNIT (PU), CON'T

PU	MARKET GROUP	PRODUCT	QUANTITY	UNIT	ACRES	ADVERTISE PRICE
5 con't	Mixed Hardwood	Pulpwood	42	Cords		
	<i>Black Cherry</i>		4	<i>Cords</i>		
	<i>Red Maple</i>		26	<i>Cords</i>		
	<i>Sugar Maple</i>		12	<i>Cords</i>		
	Red Pine		3	Cords		
TOTAL:			175.1	MBF		
TOTAL:			1,709	Cords		

Sale Specific Conditions & Requirements

Sale Name: Grand Traverse County Special

Sale Number: 61-034-24 Seq#: 1

1 - Sale Area

1.2 - Boundaries

1.2.1 - Painted boundaries (9/19)

The sale boundary and Payment Unit boundaries are marked and identified by blue and red paint. Exterior sale boundary lines against private property are marked with blue paint. Exterior sale boundary lines against state are marked with red paint. Retention patches are marked with red paint; no harvesting activities may occur within these areas. The painted boundary line trees are not Included Timber and are to be protected unless marked with orange paint.

2 - Timber Specifications

2.1 - Included Timber

2.1.1 - Clearcut unit(s) with unmerchantable trees (6/14)

Within Payment Unit(s) 1, 2 and 5, cut all trees that are two (2) inches or more at DBH, except do not cut hemlock, cedar, or any trees marked with green paint. In addition, within Payment Unit 1, do not cut any conifers.

2.1.3 - Cut tree marked unit(s) (12/08)

Within Payment Unit(s) 3 and 4, all trees are designated for cutting when marked with orange paint above and below stump height, regardless of merchantability. In addition, all ironwood, beech, and aspen are designated for cutting regardless of merchantability. Furthermore, do not cut any green marked trees.

2.2 - Utilization

2.2.6 - Roundwood operation required (3/21)

The skidding of whole trees or tree segments with limbs attached is prohibited within Payment Units 3-4. All products must be produced as roundwood and forwarded to existing roads or landing areas in final product length.

4 - Transportation

4.1 - Construction

4.1.12 - No new roads (1/12)

No new roads will be permitted in any Payment Unit. All operations are limited to existing roads. Skid trails only will be allowed.

4.2 - Maintenance

4.2.5 - Two wheel drive condition (2/04)

All existing trail roads on and adjacent to the sale area must be passable by two-wheel drive traffic for the duration of the sale.

5 - Operations

5.2 - Conduct of Operations

5.2.3 - Operating Restrictions

5.2.3.3 - Bark slippage restriction (3/09)

Within Payment Unit(s) 3 & 4, unless changed by written agreement, cutting and skidding are not permitted during the period of April 15 to July 15. This restriction is because of bark slippage.

6 - Safety and Fire Prevention

6.2 - Signing

6.2.1 - Road posting (10/20)

The Purchaser is responsible for posting and maintaining caution signs on timber access roads prior to beginning operations.

The road must be posted at appropriate distances from the Sale Area to warn of logging activity and truck traffic. Signs must be removed when harvest operations are suspended or completed. The Purchaser will provide these signs.



TIMBER SALE MAP

This information provided by authority of Part 525, 1994 PA 451, as amended.

Sale Number
61-034-24

Date
08/16/2024

Forest Management Unit	County	Mapped By: Ventimiglia
Traverse City Mgt Unit	Grand Traverse	Cruised By: Ventimiglia/ Hurin

Scale	Page	Of
1:20,000	1	1

Township	Range	Section(s) and Subdivision(s)
25N	11W	Sec. 26 W1/2SW; Sec. 27 E1/2SE; Sec. 34 NENE,NWSE; Sec. 35 NENE,S1/2NE; Sec. 36 NWNW;

Cover Type

A = Aspen	J = Jack Pine	O = Oak	U = Upland Brush
B = Paper Birch	K = Rock	P = Lowland Poplar	UM = Upland Mix Forest
C = Cedar	L = Lowland Brush	Q = Mixed Swamp Conifer	V = Bog or Marsh
D = Treed Bog	LM = Lowland Mix Forest	R = Red Pine	W = White Pine
E = Swamp Hardwoods	M = Maple, Beech, Birch	S = Black Spruce	X = Non Stocked
F = Spruce/Fir	MC = Mixed Conifer	T = Tamarack	Y = Sand
G = Grass	MD = Mixed Deciduous	Z = Water	
H = Hemlock	N = Marsh		

Density

0 = Non Stocked	5 = Pole Timber Medium
1 = Seedling Sapling Poor	6 = Pole Timber Well
2 = Seedling Sapling Medium	7 = Saw Timber Poor
3 = Seedling Sapling Well	8 = Saw Timber Medium
4 = Pole Timber Poor	9 = Saw Timber Well

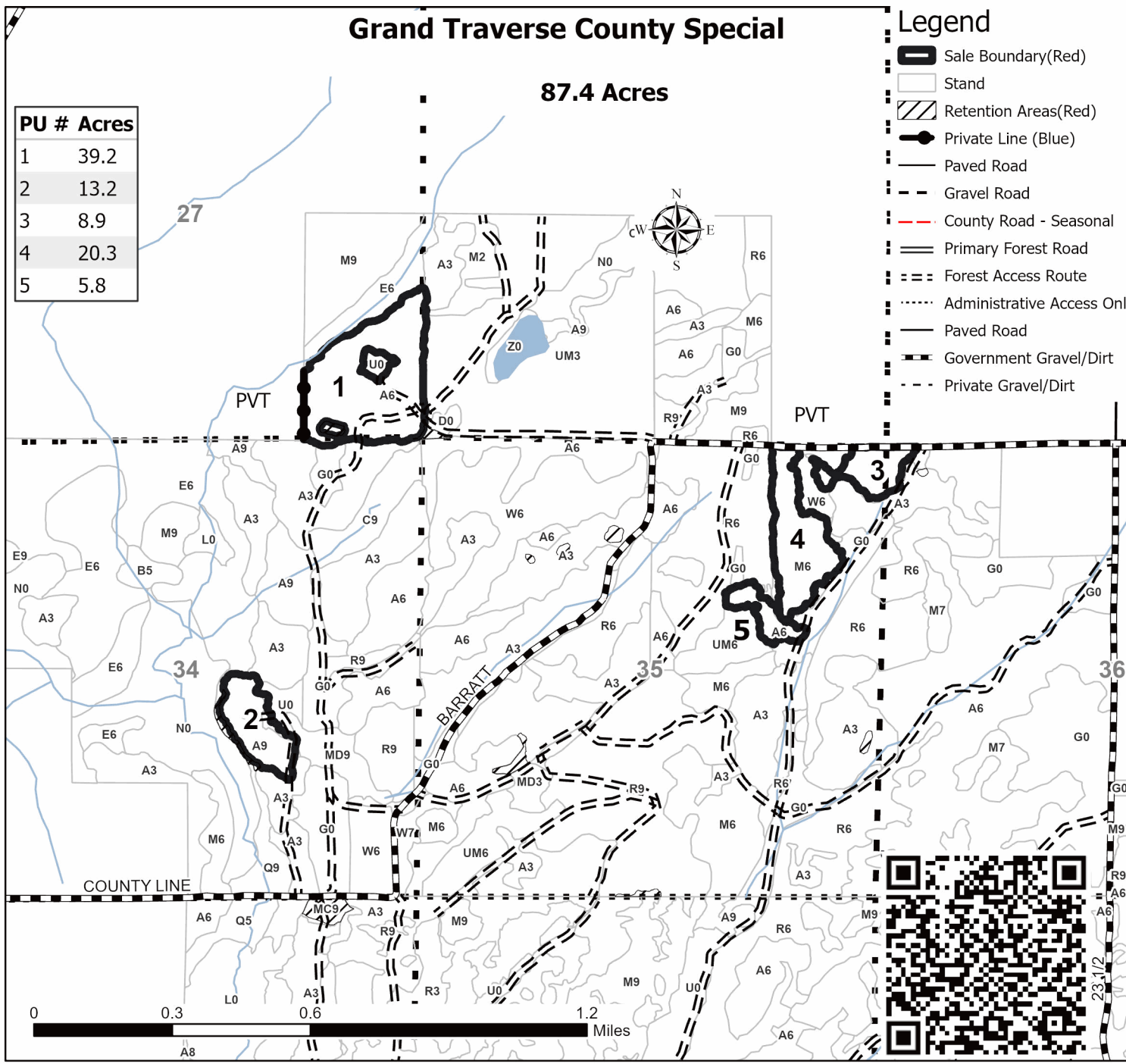
Grand Traverse County Special

87.4 Acres

PU #	Acres
1	39.2
2	13.2
3	8.9
4	20.3
5	5.8

Legend

- Sale Boundary (Red)
- Stand
- Retention Areas (Red)
- Private Line (Blue)
- Paved Road
- Gravel Road
- County Road - Seasonal
- Primary Forest Road
- Forest Access Route
- Administrative Access Only
- Paved Road
- Government Gravel/Dirt
- Private Gravel/Dirt



TIMBER SALE INFORMATION

Pettengil Pine (61-036-24)

T27N, R14W, SEC. 1.

Benzie County (Advertised Price \$214,512.60)

SALE NOTE: A recreation site such as a trail, pathway, or campground is within the sale area or the vicinity. Certain restrictions/specifications may be applicable including time restrictions.

A timber sale contract for this lump sum, sealed bid timber sale will be awarded to the responsible bidder offering the highest sealed bid price. All units of volume listed below were estimated using the Inventory Manager computer program and the new Michigan taper model. Bids must be at or above the following advertised price for each product and species:

<u>PRODUCTS & SPECIES</u>	<u>ESTIMATED UNITS*</u>	<u>ADVERTISED PRICE</u>
Sawtimber		
Jack Pine	11.2 MBF	\$ 51.00 / MBF
Red Pine	669.5 MBF	\$ 130.00 / MBF
Pulpwood		
Jack Pine	84 Cords	\$ 18.60 / Cord
Mixed Hardwood	22 Cords	\$ 20.65 / Cord
Red Pine	2,418 Cords	\$ 51.65 / Cord

* The total volume is statistically estimated within plus (+) or minus (-) 13.76 percent. There are an estimated 4, 117 cords on this timber sale, plus or minus 567 cords at the 95% confidence level. The estimated units are final and not subject to adjustment. Prospective bidders are urged to examine this timber and to make their own estimates of quantity and quality.

BOND AND PAYMENT SCHEDULE:

1. A bond in the amount of \$10,726.00 to insure faithful performance of the conditions of the contract will be deposited by the successful bidder within 21 days of the sale award.
 2. Cutting in any sale or unit without the required advance payment would be considered a trespass.
 3. Total payment must be paid in advance or according to the following schedule :
 - (a) Ten percent (10%) of the sale value must be paid within 21 days of the sale award.
 - (b) The 10% down payment will be credited towards the first unit cut.
 - (c) Payment for each of the following units must be made before cutting begins in that unit:
- | PAYMENT UNIT NUMBER | PERCENT OF TOTAL SALE VALUE |
|---------------------|-----------------------------|
| 01 | 22.2% |
| 02 | 16.1% |
| 03 | 33.7% |
| 04 | 9.6% |
| 05 | 8.6% |
| 06 | 4.2% |
| 07 | 3.2% |
| 08 | 2.4% |
4. If no cutting takes place, the 10% down payment will not be refunded.
 5. Operations on the contract issued will terminate on 12/31/2027.

SALE STATISTICS

Volumes were calculated in cubic feet using the Michigan taper model. Cubic foot volume includes all wood inside bark for the product indicated. For display purposes, cubic feet were converted to cords and MBF using a simple conversion factor, e.g. 79 cubic feet per cord and 185 cubic feet per MBF. The cubic foot volumes are precise; the cords and MBF volumes are not. Cubic foot volume cannot be directly converted to cords or boards with precision.

SALE VOLUMES

The total estimated sale volume may not equal the sum of the species/products due to the nature of statistical calculations associated with double sampling methodology.

VOLUME		PERCENT ERROR	STATISTICAL RANGE IN CORDS	
TOTAL CUBIC FEET	TOTAL CORDS		MINIMUM	MAXIMUM
325,224	4,117	13.76%	3,550	4,683

VDU VOLUMES

A VDU is a Volume Determination Unit. Volumes and their associated statistics are calculated at the VDU level and summarized to the sale level. There is often a one to one relationship between a VDU and a Payment Unit, but not always, depending on the cruise design. Refer to the VDU TO PAYMENT UNIT table.

VDU	VOLUME		PERCENT ERROR	RANGE IN CORDS	
	TOTAL CUBIC FEET	TOTAL CORDS		MINIMUM	MAXIMUM
2	225,400	2,853	19.06%	2,309	3,397
5	7,901	100	109.61%	0	210
8	83,974	1,063	13.71%	917	1,209
162	7,948	101	35.25%	65	136
TOTAL:	325,224	4,117		3,292	4,951

VDU TO PAYMENT UNIT

When a VDU is associated with more than one Payment Unit (PU), the VDU volumes are assigned to the PU based on acres of the VDU within the PU.

VDU	VDU ACRES	PU	PU ACRES
2	64.6	1	20.2
		2	13.6
		3	30.8
5	5.0	2	5.0
8	53.3	4	20.1
		5	17.9
		6	8.7
		7	6.6
		8	4.6
162	4.6	8	4.6
TOTAL:	127.5		127.5

DESCRIPTION OF TIMBER BY PAYMENT UNIT (PU)

PU	MARKET GROUP	PRODUCT	QUANTITY	UNIT	ACRES	ADVERTISE PRICE
1	Jack Pine	Sawtimber	0.9	MBF	20.2	\$47,517.70
	Red Pine		203.4	MBF		
	Jack Pine	Pulpwood	6	Cords		
	Mixed Hardwood		5	Cords		
	<i>Basswood</i>		1	<i>Cords</i>		
	<i>Beech</i>		1	<i>Cords</i>		
	<i>Sugar Maple</i>		3	<i>Cords</i>		
	Red Pine		403	Cords		
2	Jack Pine	Sawtimber	9.0	MBF	18.6	\$34,482.00
	Red Pine		140.9	MBF		
	Jack Pine	Pulpwood	63	Cords		
	Mixed Hardwood		11	Cords		
	<i>Basswood</i>		5	<i>Cords</i>		
	<i>Beech</i>		4	<i>Cords</i>		
	<i>Sugar Maple</i>		2	<i>Cords</i>		
	Red Pine		277	Cords		
3	Jack Pine	Sawtimber	1.3	MBF	30.8	\$72,448.35
	Red Pine		310.2	MBF		
	Jack Pine	Pulpwood	9	Cords		
	Mixed Hardwood		6	Cords		
	<i>Basswood</i>		1	<i>Cords</i>		
	<i>Beech</i>		1	<i>Cords</i>		
	<i>Sugar Maple</i>		4	<i>Cords</i>		
	Red Pine		615	Cords		
4	Red Pine	Sawtimber	4.9	MBF	20.1	\$20,662.75
	Jack Pine	Pulpwood	2	Cords		
	Red Pine		387	Cords		
5	Red Pine	Sawtimber	4.4	MBF	17.9	\$18,428.45
	Jack Pine	Pulpwood	2	Cords		
	Red Pine		345	Cords		
6	Red Pine	Sawtimber	2.1	MBF	8.7	\$8,968.80
	Jack Pine	Pulpwood	1	Cords		
	Red Pine		168	Cords		
7	Red Pine	Sawtimber	1.6	MBF	6.6	\$6,786.15
	Jack Pine	Pulpwood	1	Cords		
	Red Pine		127	Cords		
8	Red Pine	Sawtimber	2.0	MBF	4.6	\$5,218.40
	Red Pine	Pulpwood	96	Cords		
TOTAL:			680.7	MBF		
TOTAL:			2,524	Cords		

Sale Specific Conditions & Requirements

Sale Name: Pettengil Pine

Sale Number: 61-036-24 Seq#: 1

1 - Sale Area

1.2 - Boundaries

1.2.1 - Painted boundaries (9/19)

The sale boundary and Payment Unit boundaries are marked and identified by red and yellow paint. Exterior sale boundary lines against state are marked with red paint. Interior Payment Unit boundaries are marked with yellow paint. The painted boundary line trees are not Included Timber and are to be protected. Yellow painted trees designating an interior Payment Unit boundary in Payment Units 1, 2, and 3 are only to be cut when all surrounding Payment Units have been paid.

2 - Timber Specifications

2.1 - Included Timber

2.1.3 - Cut tree marked unit(s) (12/08)

Within Payment Unit(s) 8, all trees are designated for cutting when marked with orange paint above and below stump height, regardless of merchantability.

2.1.4 - Designated timber unit(s) (6/17)

Within Payment Unit(s) 1, 2, and 3, all trees are designated for cutting, regardless of merchantability.

2.1.8 - Designated plantation row unit(s) (12/08)

Within Payment Unit(s) 4, 5, 6, and 7, all red pine trees which meet minimum piece specifications in 2.2 Utilization, within designated plantation rows are designated for cutting. Designated plantation rows follow a take two, leave four pattern. Begin with cutting the fifth and sixth row in from the outside of the plantation, then continue by leaving 4 rows, then taking two, etc. Because of the variability of row direction, it shall be the responsibility of the Producer to maintain the "take 2 leave 4" sequence.

2.2 - Utilization

2.2.2 - Chipping required (2/18)

Payment Unit 1, 2, and 3 must be chip harvested to facilitate subsequent planting operations. The Purchaser has the option to produce sawlogs or pulpwood bolts, but the remaining portion of the trees must be chipped and hauled. Products may be produced as roundwood and forwarded to decking areas in final product length, but the tops must be left intact and skidded to the landing for chipping in order to minimize the amount of residual slash. A chipping exemption can be obtained if proposed operations are determined to be suitable for planting by reforestation staff. This exemption must be granted in writing. The requirement to retain approximately 1/6 to 1/3 of tree-tops and limbs less than four inches in diameter does not apply (G. C. & R. 2.2). This is because the area will be trenched and re-planted.

2.2.3 - Stump heights (4/07)

Stump heights within Payment Units 1, 2, and 3 shall not exceed 6 inches for all trees. This is in order to facilitate planting operations.

4 - Transportation

4.1 - Construction

4.1.3 - Slash and earthen piles (8/04)

Piles or windrows of earth along roads and landings that have been widened or constructed shall be leveled. Slash from road maintenance or construction, including stumps, shall be dispersed throughout the sale, chipped, utilized or otherwise removed from the sale as agreed by the Sale Administrator.

5 - Operations

5.2 - Conduct of Operations

5.2.1 - Slash

5.2.1.8 - Slash height (12/08)

No slash or tree tops may exceed 24 inches in height. This specification applies to Payment Units 4-8.

5.2.3 - Operating Restrictions

5.2.3.2 - Operating restrictions (9/11)

Within Payment Unit(s) 2 and 4-7, unless changed by written agreement, cutting, skidding, and hauling are not permitted during the period of April 1 to October 31 of each year. This restriction is to avoid conflict with recreational trail (horse trail and adjacent trail camp) users.

5.2.3.6 - Bark beetle restriction (12/08)

In the event drought creates a high risk of pine bark beetle infestation, pine is not to be cut during the period March 1 through July 1, unless all portions of trees greater than two inches in diameter are removed from the sale area, reduced to chips, or treated to the satisfaction of the Unit Manager or his/her representative, within fifteen days of being severed from the stump. Pine log decks, pulpwood piles and treetops that are piled for chipping in the fall or winter within a 1/4 mile of susceptible sites must be removed before March 15. Residual slash must not be placed in piles or rows and must be spread over the site for quick drying. The Department of Natural Resources will exercise this specification if the risk of damage warrants.

5.2.40 - Pathway protection (10/10)

The Shore-to-shore horse trail pathway is shown on the Timber Sale Map. Do not cut trees or damage posts with blue pathway markers. Maintain a 20-foot-wide slash, debris, and rut free zone daily, using the pathway as the centerline. Do not run equipment down the pathway. Skidding across the trail may only occur in locations approved by the Sale Administrator.

5.2.41 - Snowmobile trail protection (9/11)

The Platte River snowmobile trail is shown on the Timber Sale Map. Do not cut or damage posts with orange trail markers or traffic control signs. If the trail is used, it must be maintained and restored to a condition equal to or better than before the sale. The road maintenance/restoration must be done prior to December 1. If the trail is used for hauling, it must be graded to the satisfaction of the Unit Manager or his/her representative prior to December 1. If the trail road is to be used for hauling during the snowmobile season, then a snow covered base must be left on the trail. Maintain a 20-foot-wide slash, debris, and rut free zone daily using the snowmobile trail as the centerline.

5.4 - Soil Protection

5.4.3 - Erosion control (12/08)

Skid trails or haul roads may require erosion control structures or berms per direction of the Unit Manager or his/her representative.

5.4.4 - Slope protection (9/19)

Skid trails and roads on slopes shall be water barred with slash, stumps, as soon as use is complete to prevent erosion. This should be closely monitored in Payment Units 3-5 in particular.

6 - Safety and Fire Prevention

6.2 - Signing

6.2.2 - Snowmobile trail posting (10/20)

The Purchaser is responsible for posting and maintaining caution signs on the Platte River snowmobile trail prior to beginning operations during the snowmobile season (approximately December 1 to March 31). The trail must be posted at appropriate distances from the Sale Area to warn of logging activity and truck traffic. Signs must be removed when harvest operations are suspended or completed. The Purchaser will provide these signs.

6.2.3 - Recreational trail posting (10/20)

The Purchaser is responsible for posting and maintaining caution signs on Shore-to-Shore horse trail prior to beginning operations. The trail must be posted at appropriate distances from the Sale Area to warn of logging activity and truck traffic at both ends of the trail. Signs must be removed when harvest operations are suspended or completed. The Purchaser will provide these signs.

8 - Performance and Settlement

8.3 - Uncompleted or Terminated Contracts

8.3.1 - Completion of contract, chipping (1/16)

In addition to cutting, all chipping must be completed by the contract expiration date. If chipping has not been completed, an extension fee or damages may be charged per General Condition & Requirement 7.2 and 8.3.



TIMBER SALE MAP

This information provided by authority of Part 525, 1994 PA 451, as amended.

Sale Number

61-036-24

Date

09/30/2024

Forest Management Unit

County

Mapped By: Craig Allen

Traverse City Mgt Unit

Benzie

Cruised By: Craig Allen

Scale

1:10,000

Page

1

Of

1

Township
27N

Range
14W

Section(s) and
Subdivision(s) Sec. 1 N1/2NW,SWNW,NE;

Cover Type

A = Aspen	J = Jack Pine	O = Oak	U = Upland Brush
B = Paper Birch	K = Rock	P = Lowland Poplar	UM = Upland Mix Forest
C = Cedar	L = Lowland Brush	Q = Mixed Swamp Conifer	V = Bog or Marsh
D = Treed Bog	LM = Lowland Mix Forest	R = Red Pine	W = White Pine
E = Swamp Hardwoods	M = Maple, Beech, Birch	S = Black Spruce	X = Non Stocked
F = Spruce/Fir	MC = Mixed Conifer	T = Tamarack	Y = Sand
G = Grass	MD = Mixed Deciduous	Z = Water	
H = Hemlock	N = Marsh		

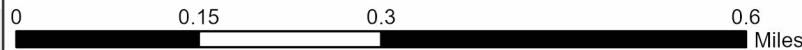
Density

0 = Non Stocked	5 = Pole Timber Medium
1 = Seedling Sapling Poor	6 = Pole Timber Well
2 = Seedling Sapling Medium	7 = Saw Timber Poor
3 = Seedling Sapling Well	8 = Saw Timber Medium
4 = Pole Timber Poor	9 = Saw Timber Well

PU #	Acres	PU #	Acres
1	20.2	5	17.9
2	18.6	6	8.7
3	30.8	7	6.6
4	20.1	8	4.6

Pettengill Pine

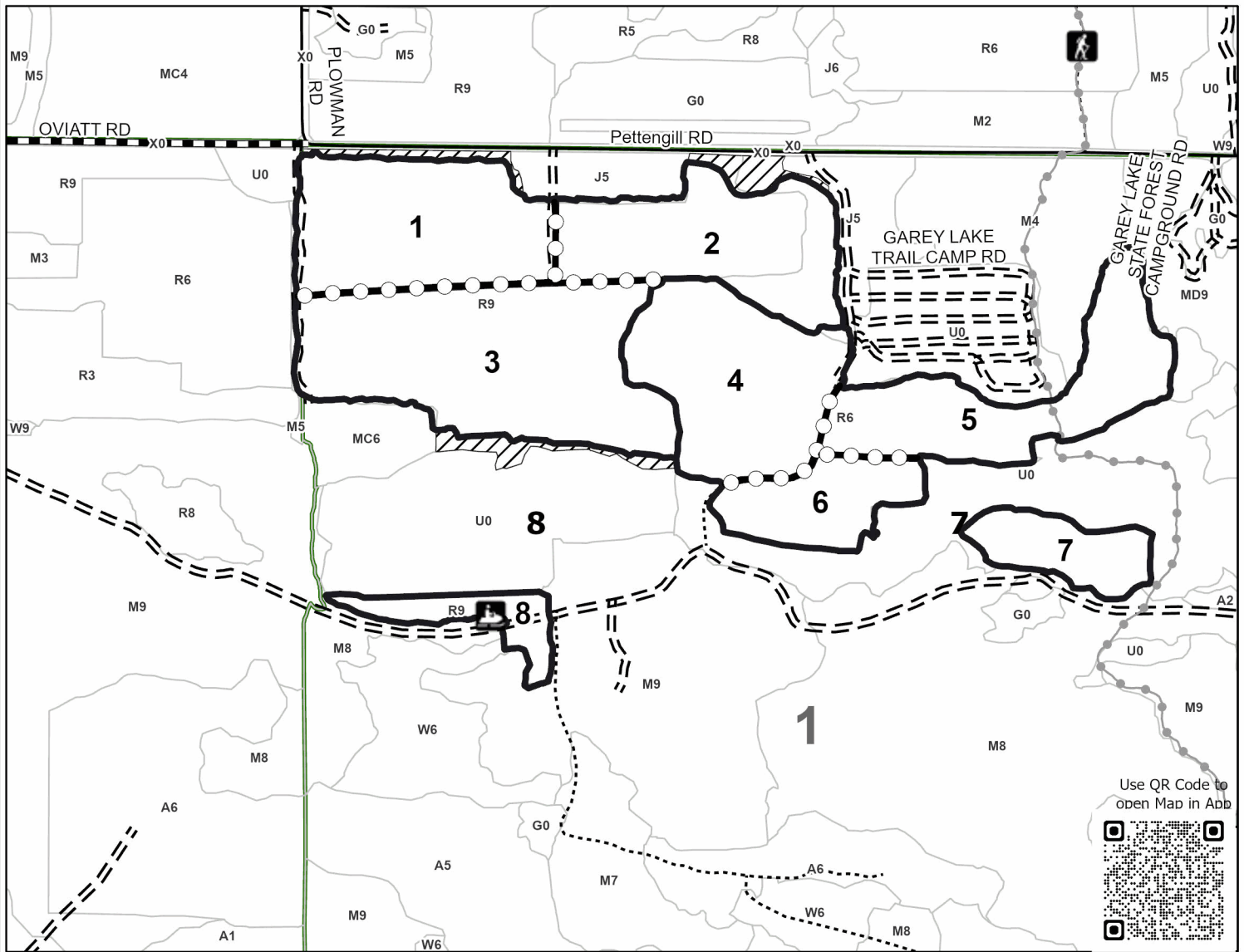
127.5 Acres



Locator Map

Legend

- Against State (Red)
- Payment Unit (Yellow)
- Retention Areas
- Forest Access Route
- Administrative Access Only
- Paved Road
- Government Gravel/Dirt
- Recreational Trails



Use QR Code to open Map in App



TIMBER SALE INFORMATION

Up There Mix (61-039-24)

T27N, R14W, SEC. 1; T27N, R14W, SEC. 12.
Benzie County (Advertised Price \$64,908.80)

SALE NOTE: A recreation site such as a trail, pathway, or campground is within the sale area or the vicinity. Certain restrictions/specifications may be applicable including time restrictions.

A timber sale contract for this lump sum, sealed bid timber sale will be awarded to the responsible bidder offering the highest sealed bid price. All units of volume listed below were estimated using the Inventory Manager computer program and the new Michigan taper model. Bids must be at or above the following advertised price for each product and species:

<u>PRODUCTS & SPECIES</u>	<u>ESTIMATED UNITS*</u>	<u>ADVERTISED PRICE</u>
Sawtimber		
Beech	12.4 MBF	\$ 167.00 / MBF
Black Cherry	73.0 MBF	\$ 155.00 / MBF
Mixed Aspen	82.1 MBF	\$ 131.00 / MBF
Red Maple	45.3 MBF	\$ 124.00 / MBF
Sugar Maple	22.5 MBF	\$ 322.00 / MBF
Pulpwood		
Mixed Aspen	552 Cords	\$ 21.15 / Cord
Mixed Hardwood	786 Cords	\$ 20.65 / Cord

* The total volume is statistically estimated within plus (+) or minus (-) 20.24 percent. There are an estimated 1,889 cords on this timber sale, plus or minus 382 cords at the 95% confidence level. The estimated units are final and not subject to adjustment. Prospective bidders are urged to examine this timber and to make their own estimates of quantity and quality.

BOND AND PAYMENT SCHEDULE:

1. A bond in the amount of \$3,245.00 to insure faithful performance of the conditions of the contract will be deposited by the successful bidder within 21 days of the sale award.
2. Cutting in any sale or unit without the required advance payment would be considered a trespass.
3. Total payment must be paid in advance or according to the following schedule :
 - (a) Ten percent (10%) of the sale value must be paid within 21 days of the sale award.
 - (b) The 10% down payment will be credited towards the first unit cut.
 - (c) Payment for each of the following units must be made before cutting begins in that unit:

PAYMENT UNIT NUMBER	PERCENT OF TOTAL SALE VALUE
01	17.8%
02	25.6%
03	9.4%
04	14.8%
05	32.4%
4. If no cutting takes place, the 10% down payment will not be refunded.
5. Operations on the contract issued will terminate on 12/31/2026.

SALE STATISTICS

Volumes were calculated in cubic feet using the Michigan taper model. Cubic foot volume includes all wood inside bark for the product indicated. For display purposes, cubic feet were converted to cords and MBF using a simple conversion factor, e.g. 79 cubic feet per cord and 185 cubic feet per MBF. The cubic foot volumes are precise; the cords and MBF volumes are not. Cubic foot volume cannot be directly converted to cords or boards with precision.

SALE VOLUMES

The total estimated sale volume may not equal the sum of the species/products due to the nature of statistical calculations associated with double sampling methodology.

VOLUME		STATISTICAL RANGE IN CORDS		
TOTAL CUBIC FEET	TOTAL CORDS	PERCENT ERROR	MINIMUM	MAXIMUM
149,206	1,889	20.24%	1,506	2,271

VDU VOLUMES

A VDU is a Volume Determination Unit. Volumes and their associated statistics are calculated at the VDU level and summarized to the sale level. There is often a one to one relationship between a VDU and a Payment Unit, but not always, depending on the cruise design. Refer to the VDU TO PAYMENT UNIT table.

VDU	VOLUME		PERCENT ERROR	RANGE IN CORDS	
	TOTAL CUBIC FEET	TOTAL CORDS		MINIMUM	MAXIMUM
35	77,935	987	29.29%	698	1,275
39	10,301	130	74.46%	33	227
46	48,901	619	37.45%	387	851
51	12,069	153	56.76%	66	239
TOTAL:	149,206	1,889		1,184	2,593

VDU TO PAYMENT UNIT

When a VDU is associated with more than one Payment Unit (PU), the VDU volumes are assigned to the PU based on acres of the VDU within the PU.

VDU	VDU ACRES	PU	PU ACRES
35	26.6	1	10.9
		2	15.7
39	3.9	3	3.9
46	19.3	5	19.3
51	11.5	4	11.5
TOTAL:	61.3		61.3

DESCRIPTION OF TIMBER BY PAYMENT UNIT (PU)

PU	MARKET GROUP	PRODUCT	QUANTITY	UNIT	ACRES	ADVERTISE PRICE	
1	Black Cherry	Sawtimber	13.8	MBF	10.9	\$11,550.60	
	Mixed Aspen		12.6	MBF			
	<i>B. T. Aspen</i>		10.7	<i>MBF</i>			
	<i>Quaking Aspen</i>		1.9	<i>MBF</i>			
	Red Maple		5.6	MBF			
	Sugar Maple		0.7	MBF			
	Mixed Aspen		Pulpwood	136			Cords
	<i>B. T. Aspen</i>			91			<i>Cords</i>
	<i>Quaking Aspen</i>			45			<i>Cords</i>
	Mixed Hardwood			192			Cords
	<i>Black Cherry</i>			114			<i>Cords</i>
	<i>Red Maple</i>			40			<i>Cords</i>
	<i>Sugar Maple</i>			38			<i>Cords</i>
	2			Black Cherry			Sawtimber
Mixed Aspen		18.1	MBF				
<i>B. T. Aspen</i>		15.3	<i>MBF</i>				
<i>Quaking Aspen</i>		2.8	<i>MBF</i>				
Red Maple		8.0	MBF				
Sugar Maple		1.1	MBF				
Mixed Aspen		Pulpwood	196	Cords			
<i>B. T. Aspen</i>			132	<i>Cords</i>			
<i>Quaking Aspen</i>			64	<i>Cords</i>			
Mixed Hardwood			276	Cords			
<i>Black Cherry</i>			164	<i>Cords</i>			
<i>Red Maple</i>			57	<i>Cords</i>			
<i>Sugar Maple</i>			55	<i>Cords</i>			
3			Black Cherry	Sawtimber	7.2	MBF	
	Red Maple	1.9	MBF				
	Sugar Maple	9.1	MBF				
	Mixed Aspen	Pulpwood	33		Cords		
	<i>B. T. Aspen</i>		33		<i>Cords</i>		
	Mixed Hardwood		55		Cords		
	<i>Black Cherry</i>		22		<i>Cords</i>		
	<i>Red Maple</i>		2		<i>Cords</i>		
	<i>Sugar Maple</i>		31		<i>Cords</i>		
	4		Beech		Sawtimber	12.4	MBF
Mixed Aspen			6.9	MBF			
<i>Quaking Aspen</i>		6.9	<i>MBF</i>				
Red Maple		16.4	MBF				
Sugar Maple		11.6	MBF				
Mixed Aspen		Pulpwood	1	Cords			
<i>Quaking Aspen</i>			1	<i>Cords</i>			
Mixed Hardwood			41	Cords			
<i>Beech</i>			12	<i>Cords</i>			
<i>Red Maple</i>			6	<i>Cords</i>			
<i>Sugar Maple</i>			23	<i>Cords</i>			
5			Black Cherry	Sawtimber		32.1	MBF
	Mixed Aspen		44.5		MBF		
	<i>B. T. Aspen</i>	37.9	<i>MBF</i>				
	<i>Quaking Aspen</i>	6.6	<i>MBF</i>				
	Red Maple	13.4	MBF				
	Mixed Aspen	Pulpwood	186		Cords		
	<i>B. T. Aspen</i>		179		<i>Cords</i>		
	<i>Quaking Aspen</i>		7		<i>Cords</i>		
	Mixed Hardwood		222		Cords		
	<i>Black Cherry</i>		108		<i>Cords</i>		

DESCRIPTION OF TIMBER BY PAYMENT UNIT (PU), CON'T

PU	MARKET GROUP	PRODUCT	QUANTITY	UNIT	ACRES	ADVERTISE PRICE
5 con't	<i>Red Maple</i>	<i>Pulpwood</i>	96	<i>Cords</i>		
	<i>Sugar Maple</i>		18	<i>Cords</i>		
TOTAL:			235.3	MBF		
TOTAL:			1,338	Cords		

Sale Specific Conditions & Requirements

Sale Name: Up There Mix

Sale Number: 61-039-24 Seq#: 1

1 - Sale Area

1.2 - Boundaries

1.2.1 - Painted boundaries (9/19)

The sale boundary and Payment Unit boundaries are marked and identified by blue, red and yellow paint, as well as forest roads. Exterior sale boundary lines against private property are marked with blue paint. Exterior sale boundary lines against state are marked with red paint, with the exception of the southern boundary of Payment Unit 1 and the northern boundary of Payment Unit 3 which are unpainted and designated by the forest road. In Payment Unit 5, a retention island is marked with red paint; no harvesting activities may occur within this area. The painted boundary line trees are not Included Timber and are to be protected.

2 - Timber Specifications

2.1 - Included Timber

2.1.1 - Clearcut unit(s) with unmerchantable trees (6/14)

Within Payment Unit(s) 1, 2, 3, and 5, cut all aspen, maple, cherry, ironwood, and beech trees that are two (2) inches or more at DBH, except do not cut trees marked with green paint above and below stump height.

2.1.3 - Cut tree marked unit(s) (12/08)

Within Payment Unit(s) 4, all trees are designated for cutting when marked with orange paint above and below stump height, regardless of merchantability. In addition, any sub merchantable ironwood and beech may be cut for operations of logging equipment/harvest of designated timber but must be severed at ground level and laid flat on the ground; not just broken, bent, or pushed over.

2.2 - Utilization

2.2.3 - Stump heights (4/07)

Stump heights within the Sale Area shall not exceed 12 inches for trees greater than 10 inches DBH and 4 inches for trees smaller than 10 inches DBH.

2.2.6 - Roundwood operation required (3/21)

The skidding of whole trees or tree segments with limbs attached is prohibited within all Payment Units. All products must be produced as roundwood and forwarded to existing roads or landing areas in final product length. This is done to retain unmerchantable tops and slash on site within the units to be utilized by various wildlife species.

2.2.9 - No chipping permitted (12/08)

Within Payment Unit(s) 1-5, all wood must be removed by whole tree, tree segment, or roundwood. No chipping is permitted.

4 - Transportation

4.1 - Construction

4.1.3 - Slash and earthen piles (8/04)

Piles or windrows of earth along roads and landings that have been widened or constructed shall be leveled. Slash from road maintenance or construction, including stumps, shall be dispersed throughout the sale as determined by the Sale Administrator.

4.1.12 - No new roads (1/12)

No new roads will be permitted in any Payment Unit. All operations are limited to existing roads. Skid trails only will be allowed. Some skid trails may need to be closed with slash and or stumps as determined by the Sale Administrator.

5 - Operations

5.2 - Conduct of Operations

5.2.1 - Slash

5.2.1.8 - Slash height (12/08)

No slash or tree tops may exceed 24 inches in height.

5.2.3 - Operating Restrictions

5.2.3.3 - Bark slippage restriction (3/09)

Within Payment Unit(s) 4, unless changed by written agreement, cutting and skidding are not permitted during the period of April 15 to July 15. This restriction is because of bark slippage.

5.2.4 - Dead and Down Creation

5.2.4.2 - Dead and down creation, hare and grouse (1/14)

To improve habitat for snowshoe hare, grouse, and other species, the Purchaser is to leave two whole trees, ten (10) inches or larger in diameter on the ground for every one acre within Payment Units 1, 2, 3, and 5. These trees should be maple trees and should be scattered throughout the sale preferably 50 feet or greater from any road or trail open to vehicles.

5.2.40 - Pathway protection (10/10)

The Shore-to-Shore horse trail is shown on the Timber Sale Map within Payment Unit 4 and on the access road to Payment Unit 5. Do not cut trees or damage posts with blue pathway markers. Maintain a 10-foot-wide slash, debris, and rut free zone daily, using the pathway as the centerline.

6 - Safety and Fire Prevention

6.2 - Signing

6.2.3 - Recreational trail posting (10/20)

The Purchaser is responsible for posting and maintaining caution signs on the Shore-to-Shore horse trail along Payment Units 4 and 5 prior to beginning operations. The trail must be posted at appropriate distances from the Sale Area to warn of logging activity and truck traffic at both ends of the trail. Signs must be removed when harvest operations are suspended or completed. The Purchaser will provide these signs.



TIMBER SALE MAP

This information provided by authority of Part 525, 1994 PA 451, as amended.

Sale Number

61-039-24

Date

09/27/2024

Forest Management Unit

County

Mapped By: Craig Allen

Traverse City Mgt Unit

Benzie

Cruised By: Craig Allen

Scale

1:10,000

Page

1

Of

1

Township
27N

Range
14W

Section(s) and
Subdivision(s) Sec. 1 S1/2SW; Sec. 12 NW,W1/2NE,N1/2SW;

Cover Type

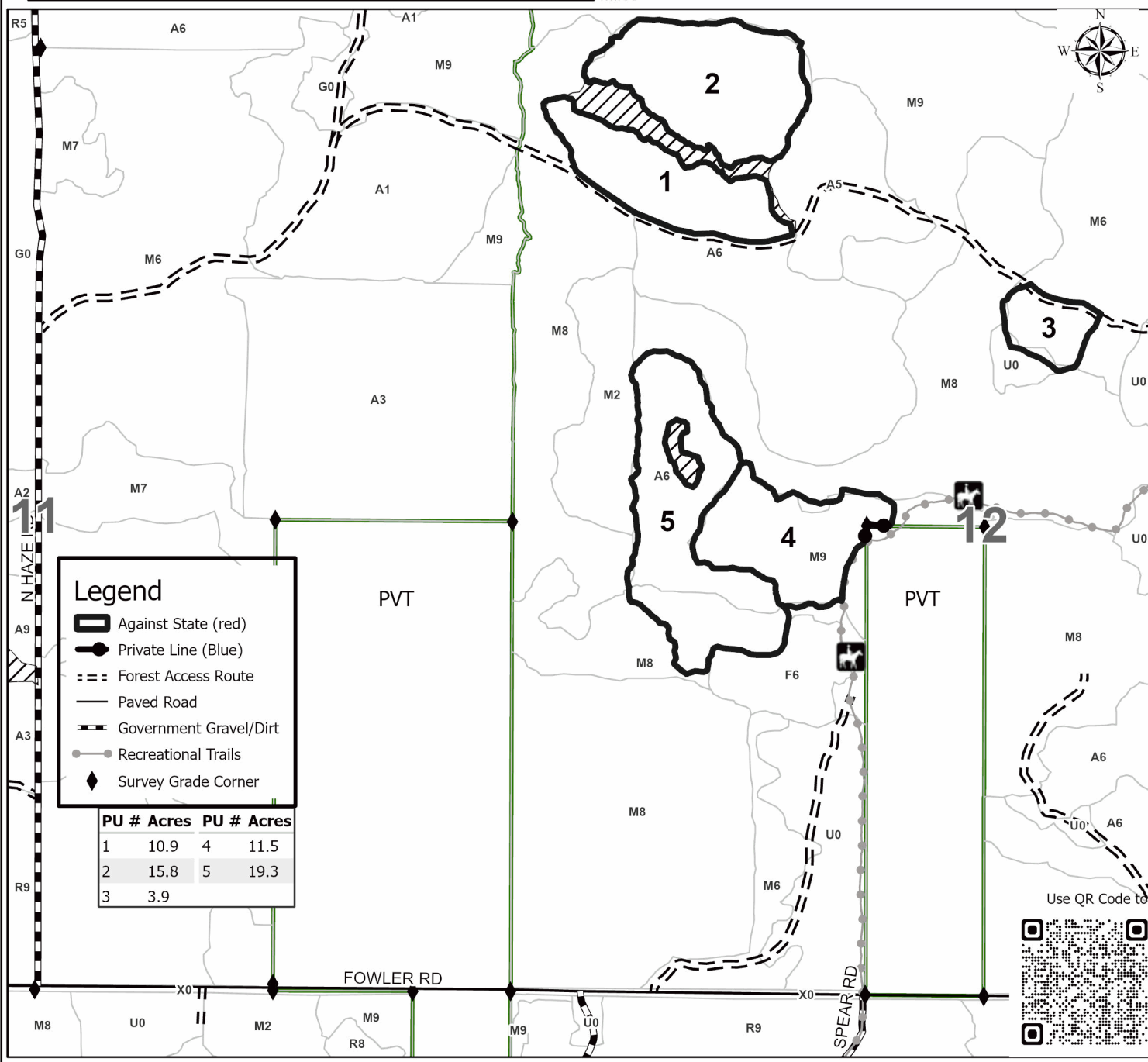
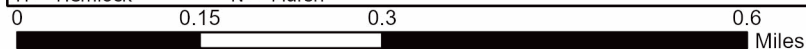
A = Aspen	J = Jack Pine	O = Oak	U = Upland Brush
B = Paper Birch	K = Rock	P = Lowland Poplar	UM = Upland Mix Forest
C = Cedar	L = Lowland Brush	Q = Mixed Swamp Conifer	V = Bog or Marsh
D = Treed Bog	LM = Lowland Mix Forest	R = Red Pine	W = White Pine
E = Swamp Hardwoods	M = Maple, Beech, Birch	S = Black Spruce	X = Non Stocked
F = Spruce/Fir	MC = Mixed Conifer	T = Tamarack	Y = Sand
G = Grass	MD = Mixed Deciduous	Z = Water	
H = Hemlock	N = Marsh		

Density

0 = Non Stocked	5 = Pole Timber Medium
1 = Seedling Sapling Poor	6 = Pole Timber Well
2 = Seedling Sapling Medium	7 = Saw Timber Poor
3 = Seedling Sapling Well	8 = Saw Timber Medium
4 = Pole Timber Poor	9 = Saw Timber Well

Up There Mix

61.3 Acres



TIMBER SALE INFORMATION

Little Lost Lake Aspen (61-040-24)
T25N, R13W, SEC. 4; T26N, R13W, SEC. 33.
Benzie County (Advertised Price \$78,477.00)

SALE NOTE: A recreation site such as a trail, pathway, or campground is within the sale area or the vicinity. Certain restrictions/specifications may be applicable including time restrictions.

A timber sale contract for this lump sum, sealed bid timber sale will be awarded to the responsible bidder offering the highest sealed bid price. All units of volume listed below were estimated using the Inventory Manager computer program and the new Michigan taper model. Bids must be at or above the following advertised price for each product and species:

<u>PRODUCTS & SPECIES</u>	<u>ESTIMATED UNITS*</u>	<u>ADVERTISED PRICE</u>
Sawtimber		
Black Cherry	9.0 MBF	\$ 155.00 / MBF
Mixed Aspen	266.9 MBF	\$ 131.00 / MBF
Red Maple	50.1 MBF	\$ 124.00 / MBF
Sugar Maple	21.0 MBF	\$ 322.00 / MBF
Pulpwood		
Mixed Aspen	963 Cords	\$ 21.15 / Cord
Mixed Hardwood	425 Cords	\$ 20.65 / Cord

* The total volume is statistically estimated within plus (+) or minus (-) 21.37 percent. There are an estimated 2,201 cords on this timber sale, plus or minus 471 cords at the 95% confidence level. The estimated units are final and not subject to adjustment. Prospective bidders are urged to examine this timber and to make their own estimates of quantity and quality.

BOND AND PAYMENT SCHEDULE:

1. A bond in the amount of \$3,924.00 to insure faithful performance of the conditions of the contract will be deposited by the successful bidder within 21 days of the sale award.
2. Cutting in any sale or unit without the required advance payment would be considered a trespass.
3. Total payment must be paid in advance or according to the following schedule :
 - (a) Ten percent (10%) of the sale value must be paid within 21 days of the sale award.
 - (b) The 10% down payment will be credited towards the first unit cut.
 - (c) Payment for each of the following units must be made before cutting begins in that unit:

PAYMENT UNIT NUMBER	PERCENT OF TOTAL SALE VALUE
01	27.4%
02	26.9%
03	6.0%
04	24.3%
05	15.4%
4. If no cutting takes place, the 10% down payment will not be refunded.
5. Operations on the contract issued will terminate on 12/31/2026.

SALE STATISTICS

Volumes were calculated in cubic feet using the Michigan taper model. Cubic foot volume includes all wood inside bark for the product indicated. For display purposes, cubic feet were converted to cords and MBF using a simple conversion factor, e.g. 79 cubic feet per cord and 185 cubic feet per MBF. The cubic foot volumes are precise; the cords and MBF volumes are not. Cubic foot volume cannot be directly converted to cords or boards with precision.

SALE VOLUMES

The total estimated sale volume may not equal the sum of the species/products due to the nature of statistical calculations associated with double sampling methodology.

VOLUME		STATISTICAL RANGE IN CORDS		
TOTAL CUBIC FEET	TOTAL CORDS	PERCENT ERROR	MINIMUM	MAXIMUM
173,903	2,201	21.37%	1,731	2,672

VDU VOLUMES

A VDU is a Volume Determination Unit. Volumes and their associated statistics are calculated at the VDU level and summarized to the sale level. There is often a one to one relationship between a VDU and a Payment Unit, but not always, depending on the cruise design. Refer to the VDU TO PAYMENT UNIT table.

VDU	VOLUME		PERCENT ERROR	RANGE IN CORDS	
	TOTAL CUBIC FEET	TOTAL CORDS		MINIMUM	MAXIMUM
45	83,168	1,053	31.29%	723	1,382
48	12,957	164	56.32%	72	256
51	46,449	588	50.38%	292	884
57	31,329	397	45.59%	216	577
TOTAL:	173,903	2,201		1,302	3,100

VDU TO PAYMENT UNIT

When a VDU is associated with more than one Payment Unit (PU), the VDU volumes are assigned to the PU based on acres of the VDU within the PU.

VDU	VDU ACRES	PU	PU ACRES
45	23.0	1	11.6
		2	11.4
48	5.0	3	5.0
51	10.5	4	10.5
57	9.5	5	9.5
TOTAL:	48.0		48.0

DESCRIPTION OF TIMBER BY PAYMENT UNIT (PU)

PU	MARKET GROUP	PRODUCT	QUANTITY	UNIT	ACRES	ADVERTISE PRICE				
1	Black Cherry	Sawtimber	2.2	MBF	11.6	\$21,557.05				
	Mixed Aspen		71.9	MBF						
	<i>B. T. Aspen</i>		71.1	<i>MBF</i>						
	<i>Quaking Aspen</i>		0.8	<i>MBF</i>						
	Red Maple		18.9	MBF						
	Sugar Maple		10.6	MBF						
	Mixed Aspen		Pulpwood	145			Cords			
	<i>B. T. Aspen</i>			142			<i>Cords</i>			
	<i>Quaking Aspen</i>			3			<i>Cords</i>			
	Mixed Hardwood			144			Cords			
	<i>Beech</i>			5			<i>Cords</i>			
	<i>Black Cherry</i>			6			<i>Cords</i>			
	<i>Red Maple</i>			115			<i>Cords</i>			
	<i>Sugar Maple</i>			18			<i>Cords</i>			
2	Black Cherry	Sawtimber	2.1	MBF	11.4	\$21,145.45				
	Mixed Aspen		70.7	MBF						
	<i>B. T. Aspen</i>		69.9	<i>MBF</i>						
	<i>Quaking Aspen</i>		0.8	<i>MBF</i>						
	Red Maple		18.5	MBF						
	Sugar Maple		10.4	MBF						
	Mixed Aspen		Pulpwood	143			Cords			
	<i>B. T. Aspen</i>			140			<i>Cords</i>			
	<i>Quaking Aspen</i>			3			<i>Cords</i>			
	Mixed Hardwood			140			Cords			
	<i>Beech</i>			4			<i>Cords</i>			
	<i>Black Cherry</i>			6			<i>Cords</i>			
	<i>Red Maple</i>			113			<i>Cords</i>			
	<i>Sugar Maple</i>			17			<i>Cords</i>			
3	Mixed Aspen	Sawtimber	14.4	MBF	5.0	\$4,688.30				
	<i>B. T. Aspen</i>		13.2	<i>MBF</i>						
	<i>Quaking Aspen</i>		1.2	<i>MBF</i>						
	Red Maple		0.8	MBF						
	Mixed Aspen		Pulpwood	119			Cords			
	<i>B. T. Aspen</i>			100			<i>Cords</i>			
	<i>Quaking Aspen</i>			19			<i>Cords</i>			
	Mixed Hardwood			9			Cords			
<i>Red Maple</i>	9	<i>Cords</i>								
4	Black Cherry	Sawtimber	4.7	MBF	10.5	\$19,037.00				
	Mixed Aspen		75.5	MBF						
	<i>B. T. Aspen</i>		65.6	<i>MBF</i>						
	<i>Quaking Aspen</i>		9.9	<i>MBF</i>						
	Mixed Aspen		Pulpwood	316			Cords			
	<i>B. T. Aspen</i>			185			<i>Cords</i>			
	<i>Quaking Aspen</i>			131			<i>Cords</i>			
	Mixed Hardwood			84			Cords			
	<i>Black Cherry</i>			12			<i>Cords</i>			
	<i>Ironwood</i>			2			<i>Cords</i>			
	<i>Red Maple</i>			60			<i>Cords</i>			
	<i>Sugar Maple</i>			10			<i>Cords</i>			
	5		Mixed Aspen	Sawtimber			34.4	MBF	9.5	\$12,049.20
			<i>B. T. Aspen</i>				34.4	<i>MBF</i>		
Red Maple		11.9	MBF							
Mixed Aspen		Pulpwood	240		Cords					
<i>B. T. Aspen</i>			240		<i>Cords</i>					
Mixed Hardwood			48		Cords					
<i>Black Cherry</i>	10	<i>Cords</i>								

DESCRIPTION OF TIMBER BY PAYMENT UNIT (PU), CON'T

PU	MARKET GROUP	PRODUCT	QUANTITY	UNIT	ACRES	ADVERTISE PRICE
5 con't	<i>Red Maple</i>	<i>Pulpwood</i>	34	<i>Cords</i>		
	<i>Sugar Maple</i>		4	<i>Cords</i>		
TOTAL:			347.0	MBF		
TOTAL:			1,388	Cords		

Sale Specific Conditions & Requirements

Sale Name: Little Lost Lake Aspen

Sale Number: 61-040-24 Seq#: 1

1 - Sale Area

1.2 - Boundaries

1.2.1 - Painted boundaries (9/19)

The sale boundary and Payment Unit boundaries are marked and identified by blue, red and yellow paint. Exterior sale boundary lines against private property are marked with blue paint. Exterior sale boundary lines against state are marked with red paint. Interior Payment Unit boundaries are marked with yellow paint. The painted boundary line trees are not Included Timber and are to be protected. Yellow painted trees designating an interior Payment Unit boundary are only to be cut when all surrounding Payment Units have been paid.

2 - Timber Specifications

2.1 - Included Timber

2.1.7 - Leave tree marked unit(s) (6/14)

Within Payment Unit(s) 1-5, all red maple, aspen, beech, ironwood, and cherry trees are designated for cutting, regardless of merchantability. In addition, within Payment Units 4 and 5, all sugar maple trees are designated for cutting, regardless of merchantability. Furthermore, within Payment Units 1-5, do not cut any trees marked with green paint above and below stump height.

2.2 - Utilization

2.2.3 - Stump heights (4/07)

Stump heights within Payment Units 1-5 shall not exceed 12 inches for trees greater than 10 inches DBH and 4 inches for trees smaller than 10 inches DBH.

4 - Transportation

4.1 - Construction

4.1.3 - Slash and earthen piles (8/04)

Piles or windrows of earth along roads and landings that have been widened or constructed shall be leveled. Slash from road maintenance or construction, including stumps, shall be dispersed throughout the sale as determined by the Sale Administrator.

4.1.9 - Road work (2) (12/08)

On the Timber Sale Map, the unnamed "administrative access" road going from Lost Lake Road to Payment Unit 4 needs extensive road work due to mud holes. On this road, the Purchaser must ditch and crown a roughly 0.15 mile portion of this road as designated by the Sale Administrator. A final grading on this portion of the road must be done when hauling is complete. The Purchaser is required to contact the Sale Administrator when this grading is about to occur. The Purchaser is required to purchase and spread any gravel that may be needed to stabilize the road surface. Gravel placement will be as designated by the Sale Administrator.

4.1.12 - No new roads (1/12)

No new roads will be permitted in any Payment Unit. All operations are limited to existing roads and to administrative access roads (see Timber Sale Map). Skid trails only will be allowed and may need closing with slash and/or stumps as determined by the Sale Administrator.

4.2 - Maintenance

4.2.2 - Fill material (4/07)

To maintain roads, fill material may be needed in areas where "holes" exist or may be expected to develop. This fill material should be placed before trucking begins. This may involve several locations on the state-owned access roads going to the sale units. Contact the Sale Administrator for more information.

4.2.5 - Two wheel drive condition (2/04)

All existing trail roads on and adjacent to the sale area must be passable by two-wheel drive traffic for the duration of the

sale.

5 - Operations

5.2 - Conduct of Operations

5.2.1 - Slash

5.2.1.8 - Slash height (12/08)

No slash or tree tops may exceed 24 inches in height.

5.2.4 - Dead and Down Creation

5.2.4.4 - Dead and down creation, grouse (6/18)

To encourage grouse and other wildlife, in Payment Unit(s) 1-5 leave one 12-inch or larger diameter (or largest diameter trees within stand) whole tree on the ground for every 2 acres, preferably a hardwood species such as maple. These trees will be evenly scattered throughout the unit, preferably at 50 feet from any roads, two-tracks, or trails open to vehicles. This can be an unmerchantable piece or a full tree.

5.2.41 - Snowmobile trail protection (9/11)

The Platte River snowmobile trail is located on a few roads north of the Payment Units. These roads may be used for hauling. Do not cut or damage posts with orange trail markers or traffic control signs. If the trail is used, it must be maintained and restored to a condition equal to or better than before the sale. The road maintenance/restoration must be done prior to December 1. If the trail is used for hauling, it must be graded to the satisfaction of the Unit Manager or his/her representative prior to December 1. If the trail road is to be used for hauling during the snowmobile season, then a snow-covered base must be left on the trail. No decking of forest products will be permitted along the snowmobile trail. All stumps within 20 feet of the snowmobile trail must be cut at ground level. In addition, any trees cut within 5 feet of the trail must have the stumps removed and be disposed of according to the direction of the Unit Manager or his/her representative.

6 - Safety and Fire Prevention

6.2 - Signing

6.2.2 - Snowmobile trail posting (10/20)

The Purchaser is responsible for posting and maintaining caution signs on the Platte River snowmobile trail prior to beginning operations during the snowmobile season (approximately December 1 to March 31). The trail must be posted at appropriate distances from the Sale Area to warn of logging activity and truck traffic. Signs must be removed when harvest operations are suspended or completed. The Purchaser will provide these signs.



TIMBER SALE MAP

This information provided by authority of Part 525, 1994 PA 451, as amended.

Sale Number

61-040-24

Date

09/30/2024

Forest Management Unit

County

Mapped By: Craig Allen

Scale

Page

Of

Traverse City Mgt Unit

Benzie

Cruised By: Allen & Hurin

1:10,000

1

1

Township
25N / 26N

Range
13W

Section(s) and
Subdivision(s) Sec. 33 SWSE; Sec. 4 E1/2NW,N1/2NE;

Cover Type

A = Aspen	J = Jack Pine	O = Oak	U = Upland Brush
B = Paper Birch	K = Rock	P = Lowland Poplar	UM = Upland Mix Forest
C = Cedar	L = Lowland Brush	Q = Mixed Swamp Conifer	V = Bog or Marsh
D = Treed Bog	LM = Lowland Mix Forest	R = Red Pine	W = White Pine
E = Swamp Hardwoods	M = Maple, Beech, Birch	S = Black Spruce	X = Non Stocked
F = Spruce/Fir	MC = Mixed Conifer	T = Tamarack	Y = Sand
G = Grass	MD = Mixed Deciduous	Z = Water	
H = Hemlock	N = Marsh		

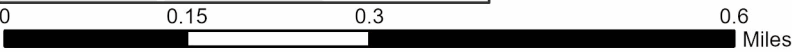
Density

0 = Non Stocked	5 = Pole Timber Medium
1 = Seedling Sapling Poor	6 = Pole Timber Well
2 = Seedling Sapling Medium	7 = Saw Timber Poor
3 = Seedling Sapling Well	8 = Saw Timber Medium
4 = Pole Timber Poor	9 = Saw Timber Well

PU #	Acres	PU #	Acres	PU #	Acres
1	11.6	3	5	5	9.5
2	11.4	4	10.5		

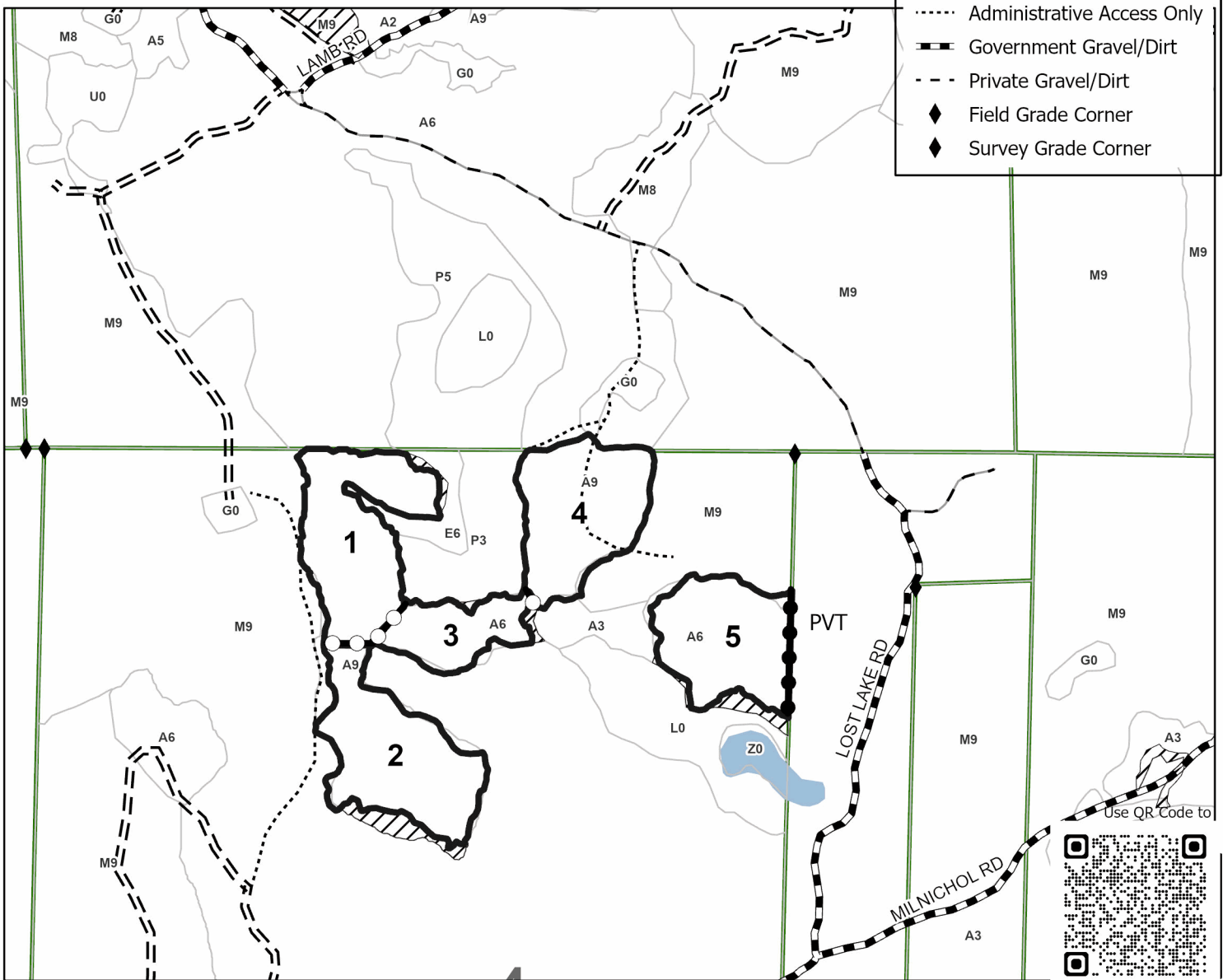
Little Lost Lake Aspen

48.0 Acres



Legend

- Against State (red)
- Private Line (Blue)
- Payment Unit (Yellow)
- Retention Areas
- Forest Access Route
- Administrative Access Only
- Government Gravel/Dirt
- Private Gravel/Dirt
- Field Grade Corner
- Survey Grade Corner



TIMBER SALE INFORMATION

TC Crew Cut (61-049-24)

T25N, R13W, SEC. 16; T25N, R13W, SEC. 17; T25N, R13W, SEC. 6.
Benzie County (Advertised Price \$51,833.90)

SALE NOTE: A recreation site such as a trail, pathway, or campground is within the sale area or the vicinity. Certain restrictions/specifications may be applicable including time restrictions.

A timber sale contract for this lump sum, sealed bid timber sale will be awarded to the responsible bidder offering the highest sealed bid price. All units of volume listed below were estimated using the Inventory Manager computer program and the new Michigan taper model. Bids must be at or above the following advertised price for each product and species:

<u>PRODUCTS & SPECIES</u>	<u>ESTIMATED UNITS*</u>	<u>ADVERTISED PRICE</u>
Sawtimber		
Red Pine	118.7 MBF	\$ 130.00 / MBF
Pulpwood		
Beech	2 Cords	\$ 20.65 / Cord
Red Pine	704 Cords	\$ 51.65 / Cord

* The total volume is statistically estimated within plus (+) or minus (-) 13.35 percent. There are an estimated 984 cords on this timber sale, plus or minus 131 cords at the 95% confidence level. The estimated units are final and not subject to adjustment. Prospective bidders are urged to examine this timber and to make their own estimates of quantity and quality.

BOND AND PAYMENT SCHEDULE:

1. A bond in the amount of \$2,592.00 to insure faithful performance of the conditions of the contract will be deposited by the successful bidder within 21 days of the sale award.
2. Cutting in any sale or unit without the required advance payment would be considered a trespass.
3. Total payment must be paid in advance or according to the following schedule :
 - (a) Ten percent (10%) of the sale value must be paid within 21 days of the sale award.
 - (b) The 10% down payment will be credited towards the first unit cut.
 - (c) Payment for each of the following units must be made before cutting begins in that unit:

PAYMENT UNIT NUMBER	PERCENT OF TOTAL SALE VALUE
01	18.9%
02	29.0%
03	25.3%
04	26.8%
4. If no cutting takes place, the 10% down payment will not be refunded.
5. Operations on the contract issued will terminate on 12/31/2026.

SALE STATISTICS

Volumes were calculated in cubic feet using the Michigan taper model. Cubic foot volume includes all wood inside bark for the product indicated. For display purposes, cubic feet were converted to cords and MBF using a simple conversion factor, e.g. 79 cubic feet per cord and 185 cubic feet per MBF. The cubic foot volumes are precise; the cords and MBF volumes are not. Cubic foot volume cannot be directly converted to cords or boards with precision.

SALE VOLUMES

The total estimated sale volume may not equal the sum of the species/products due to the nature of statistical calculations associated with double sampling methodology.

VOLUME		STATISTICAL RANGE IN CORDS		
TOTAL CUBIC FEET	TOTAL CORDS	PERCENT ERROR	MINIMUM	MAXIMUM
77,697	984	13.35%	852	1,115

VDU VOLUMES

A VDU is a Volume Determination Unit. Volumes and their associated statistics are calculated at the VDU level and summarized to the sale level. There is often a one to one relationship between a VDU and a Payment Unit, but not always, depending on the cruise design. Refer to the VDU TO PAYMENT UNIT table.

VDU	VOLUME		PERCENT ERROR	RANGE IN CORDS	
	TOTAL CUBIC FEET	TOTAL CORDS		MINIMUM	MAXIMUM
8	14,778	187	25.28%	140	234
10	42,402	537	17.54%	443	631
84	20,516	260	32.79%	175	345
TOTAL:	77,697	984		757	1,210

VDU TO PAYMENT UNIT

When a VDU is associated with more than one Payment Unit (PU), the VDU volumes are assigned to the PU based on acres of the VDU within the PU.

VDU	VDU ACRES	PU	PU ACRES
8	13.8	1	13.8
10	25.6	2	13.7
		3	11.9
84	11.6	4	11.6
TOTAL:	51.0		51.0

DESCRIPTION OF TIMBER BY PAYMENT UNIT (PU)

PU	MARKET GROUP	PRODUCT	QUANTITY	UNIT	ACRES	ADVERTISE PRICE
1	Red Pine	Sawtimber	13.4	MBF	13.8	\$9,799.40
	Red Pine	Pulpwood	156	Cords		
2	Red Pine	Sawtimber	29.0	MBF	13.7	\$15,050.35
	Beech	Pulpwood	1	Cords		
	Red Pine		218	Cords		
3	Red Pine	Sawtimber	25.2	MBF	11.9	\$13,110.15
	Beech	Pulpwood	1	Cords		
	Red Pine		190	Cords		
4	Red Pine	Sawtimber	51.1	MBF	11.6	\$13,874.00
	Red Pine	Pulpwood	140	Cords		
TOTAL:			118.7	MBF		
TOTAL:			706	Cords		

Sale Specific Conditions & Requirements

Sale Name: TC Crew Cut

Sale Number: 61-049-24 Seq#: 1

1 - Sale Area

1.2 - Boundaries

1.2.1 - Painted boundaries (9/19)

The sale boundary and Payment Unit boundaries are marked and identified by blue, red and yellow paint. Exterior sale boundary lines against private property are marked with blue paint. Exterior sale boundary lines against state are marked with red paint. Interior Payment Unit boundaries are marked with yellow paint. The painted boundary line trees are not Included Timber and are to be protected.

2 - Timber Specifications

2.1 - Included Timber

2.1.3 - Cut tree marked unit(s) (12/08)

Within Payment Unit(s) 1-4, all trees are designated for cutting when marked with orange paint above and below stump height, regardless of merchantability.

2.2 - Utilization

2.2.3 - Stump heights (4/07)

Stump heights within the Sale Area shall not exceed 6 inches for all trees.

2.2.5 - Limbed tree skidding (1/09)

The skidding of whole trees or tree segments with limbs attached is prohibited unless approved by the Unit Manager or his/her representative.

4 - Transportation

4.1 - Construction

4.1.3 - Slash and earthen piles (8/04)

Piles or windrows of earth along roads and landings that have been widened or constructed shall be leveled. Slash from road maintenance or construction, including stumps, shall be dispersed throughout the sale as agreed with the Sale Administrator.

4.2 - Maintenance

4.2.4 - Grading (10/16)

For completion of the sale, the state forest road in Payment Unit 1, 2, and 3 may need to be graded. In general, this will require a road grader or bulldozer to shape up the roads after forest products have been hauled off site. This includes cleaning of drainage areas, grading, crowning and filling with gravel, if necessary to return the roads to pre-sale conditions. The grading equipment to be used must be approved by the Unit Manager or his/her representative.

5 - Operations

5.2 - Conduct of Operations

5.2.1 - Slash

5.2.1.8 - Slash height (12/08)

No slash or tree tops may exceed 24 inches in height.

5.2.3 - Operating Restrictions

5.2.3.6 - Bark beetle restriction (12/08)

In the event drought creates a high risk of pine bark beetle infestation, pine is not to be cut during the period March 1 through July 1, unless all portions of trees greater than two inches in diameter are removed from the sale area, reduced to chips, or treated to the satisfaction of the Unit Manager or his/her representative, within fifteen days of being severed from the stump. Pine log decks, pulpwood piles and treetops that are piled for chipping in the fall or winter within a 1/4

mile of susceptible sites must be removed before March 15. Residual slash must not be placed in piles or rows and must be spread over the site for quick drying. The Department of Natural Resources will exercise this specification if the risk of damage warrants.

5.2.41 - Snowmobile trail protection (9/11)

The Betsie River snowmobile trail is shown on the Timber Sale Map. Do not cut or damage posts with orange trail markers or traffic control signs. If the trail is used, it must be maintained and restored to a condition equal to or better than before the sale. The road maintenance/restoration must be done prior to December 1. If the trail is used for hauling, it must be graded to the satisfaction of the Unit Manager or his/her representative prior to December 1. If the trail road is to be used for hauling during the snowmobile season, then a snow-covered base must be left on the trail. Maintain a 20-foot-wide slash, debris, and rut free zone daily using the snowmobile trail as the centerline. No decking of forest products will be permitted along the snowmobile trail. All stumps within 20 feet of the snowmobile trail must be cut at ground level. In addition, any trees cut within 5 feet of the trail must have the stumps removed and be disposed of according to the direction of the Unit Manager or his/her representative.

5.7 - Protection of Historical Sites

5.7.1 - Historical sites (7/12)

The Purchaser shall not cut live or dead trees or operate equipment within historical sites. Historical sites are located within the grassy area between Payment Units 1, 2 and 3. This is an old homestead site. No machinery will be allowed in this area and must only use the designated forwarding trails. All operations near this area must be closely coordinated with the Sale Administrator. The Purchaser shall protect historical sites from damage by the Purchaser's operations. If Purchaser's operations have cut or damaged historical sites through carelessness, the Purchaser shall pay \$500 as fixed, agreed and liquidated damages for each acre or part thereof cut or damaged.

6 - Safety and Fire Prevention

6.2 - Signing

6.2.2 - Snowmobile trail posting (10/20)

The Purchaser is responsible for posting and maintaining caution signs on the Betsie River snowmobile trail prior to beginning operations during the snowmobile season (approximately December 1 to March 31). The trail must be posted at appropriate distances from the Sale Area to warn of logging activity and truck traffic. Signs must be removed when harvest operations are suspended or completed. The Purchaser will provide these signs.



TIMBER SALE MAP

This information provided by authority of Part 525, 1994 PA 451, as amended.

Sale Number 61-049-24	Date 09/27/2024
Scale 1:7,920	Page 1
	Of 2

Forest Management Unit Traverse City Mgt Unit	County Benzie	Mapped By: Craig Allen Cruised By: Allen / Hurin
--	------------------	---

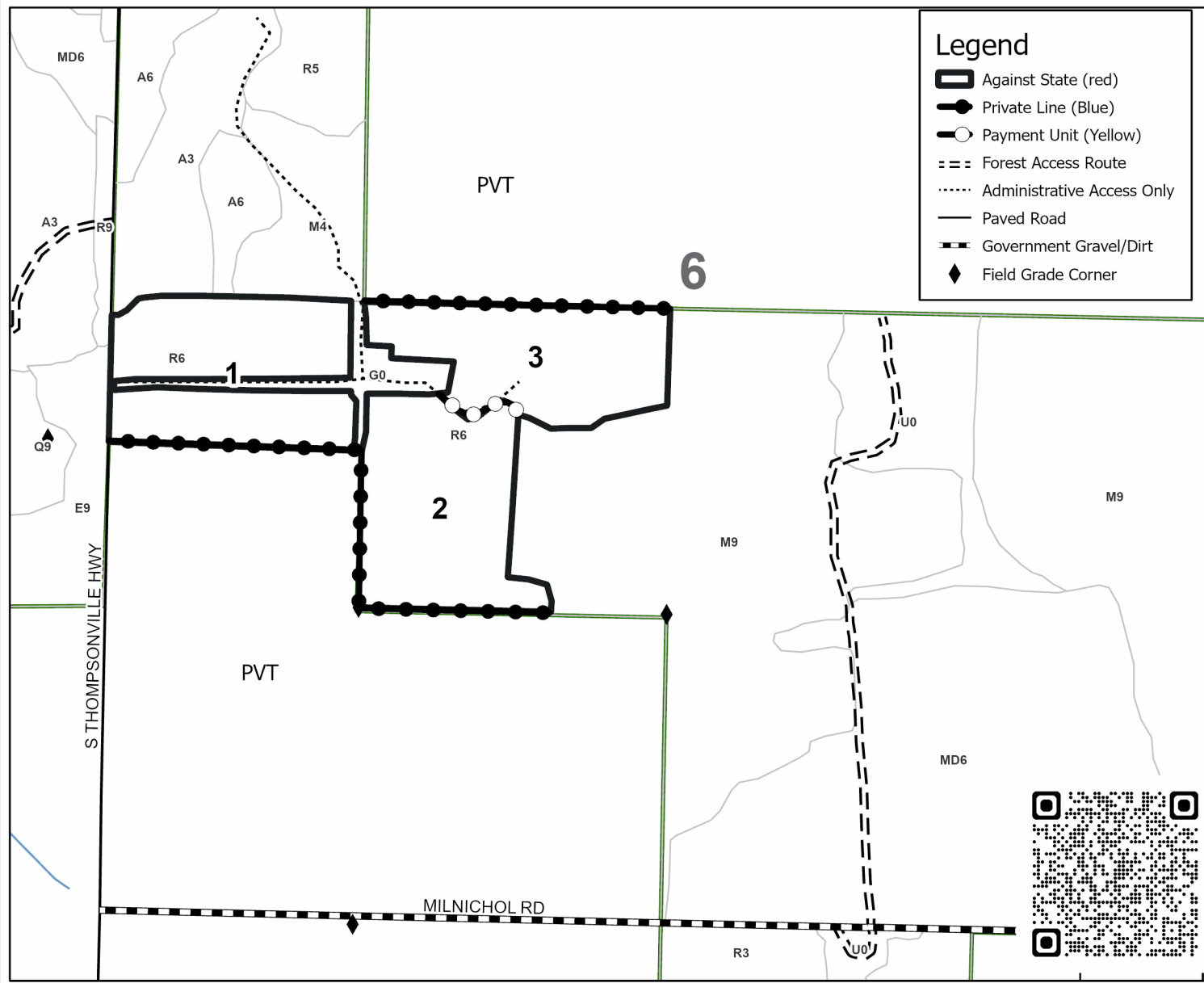
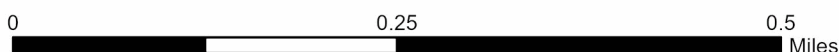
Township 25N	Range 13W	Section(s) and Subdivision(s) Sec. 16 SWSW; Sec. 17 SESE; Sec. 6 SWNW,N1/2SW;
-----------------	--------------	---

Cover Type			
A = Aspen	J = Jack Pine	O = Oak	U = Upland Brush
B = Paper Birch	K = Rock	P = Lowland Poplar	UM = Upland Mix Forest
C = Cedar	L = Lowland Brush	Q = Mixed Swamp Conifer	V = Bog or Marsh
D = Treed Bog	LM = Lowland Mix Forest	R = Red Pine	W = White Pine
E = Swamp Hardwoods	M = Maple, Beech, Birch	S = Black Spruce	X = Non Stocked
F = Spruce/Fir	MC = Mixed Conifer	T = Tamarack	Y = Sand
G = Grass	MD = Mixed Deciduous		Z = Water
H = Hemlock	N = Marsh		

Density	
0 = Non Stocked	5 = Pole Timber Medium
1 = Seedling Sapling Poor	6 = Pole Timber Well
2 = Seedling Sapling Medium	7 = Saw Timber Poor
3 = Seedling Sapling Well	8 = Saw Timber Medium
4 = Pole Timber Poor	9 = Saw Timber Well

PU #	Acres	PU #	Acres
1	13.8	3	11.9
2	13.7	4	11.6

TC Crew Cut 51.0 Acres





TIMBER SALE MAP

This information provided by authority of Part 525, 1994 PA 451, as amended.

Sale Number
61-049-24

Date
09/27/2024

Forest Management Unit	County	Mapped By: Craig Allen	Scale	Page	Of
Traverse City Mgt Unit	Benzie	Cruised By: Allen / Hurin	1:10,000	2	2

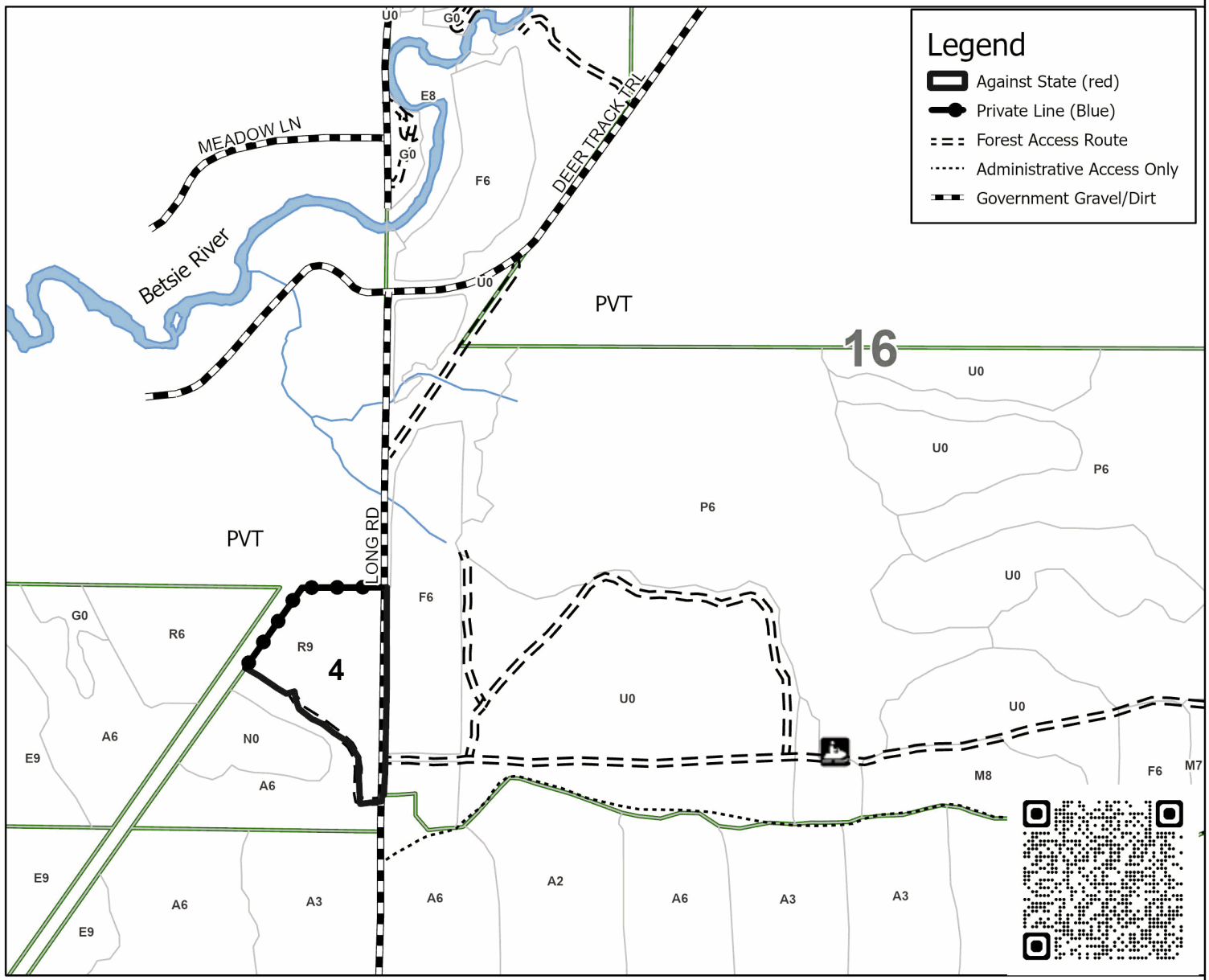
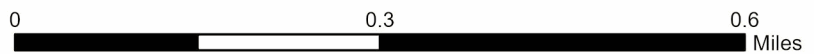
Township	Range	Section(s) and Subdivision(s)
25N	13W	Sec. 16 SWSW; Sec. 17 SESE; Sec. 6 SWNW,N1/2SW;

Cover Type			
A = Aspen	J = Jack Pine	O = Oak	U = Upland Brush
B = Paper Birch	K = Rock	P = Lowland Poplar	UM = Upland Mix Forest
C = Cedar	L = Lowland Brush	Q = Mixed Swamp Conifer	V = Bog or Marsh
D = Treed Bog	LM = Lowland Mix Forest	R = Red Pine	W = White Pine
E = Swamp Hardwoods	M = Maple, Beech, Birch	S = Black Spruce	X = Non Stocked
F = Spruce/Fir	MC = Mixed Conifer	T = Tamarack	Y = Sand
G = Grass	MD = Mixed Deciduous	Z = Water	
H = Hemlock	N = Marsh		

Density	
0 = Non Stocked	5 = Pole Timber Medium
1 = Seedling Sapling Poor	6 = Pole Timber Well
2 = Seedling Sapling Medium	7 = Saw Timber Poor
3 = Seedling Sapling Well	8 = Saw Timber Medium
4 = Pole Timber Poor	9 = Saw Timber Well

PU #	Acres	PU #	Acres
1	13.8	3	11.9
2	13.7	4	11.6

TC Crew Cut 51.0 Acres



Aylsworth Mix (61-033-24)

T26N, R14W, SEC. 32; T26N, R14W, SEC. 33; T26N, R14W, SEC. 35; Benzie

In response to the notice of sale to be held 4:00 p.m. (local time) on December 12, 2024, I am hereby submitting my sealed bid (firm offer) for the following forest products to be cut. Bids for individual species must be at or above the advertised price. All non-responsive bid forms may be rejected.

<u>PRODUCTS & SPECIES</u>	<u>ESTIMATED VOLUME*</u>	<u>ADVERTISED PRICE</u>	<u>BID PRICE/UNIT</u>
Sawtimber			
Basswood	30.1 MBF	\$ 120.00/MBF	\$ _____
Beech	9.8 MBF	\$ 167.00/MBF	\$ _____
Black Cherry	4.7 MBF	\$ 155.00/MBF	\$ _____
Mixed Aspen	125.8 MBF	\$ 131.00/MBF	\$ _____
Red Maple	11.0 MBF	\$ 124.00/MBF	\$ _____
Sugar Maple	3.3 MBF	\$ 322.00/MBF	\$ _____
White Pine	13.7 MBF	\$ 81.00/MBF	\$ _____
White Spruce	121.3 MBF	\$ 59.00/MBF	\$ _____
Pulpwood			
Basswood	105 Cords	\$ 11.45/Cord	\$ _____
Mixed Aspen	368 Cords	\$ 21.15/Cord	\$ _____
Mixed Hardwood	240 Cords	\$ 20.65/Cord	\$ _____
White Pine	59 Cords	\$ 24.65/Cord	\$ _____
White Spruce	1,223 Cords	\$ 11.70/Cord	\$ _____

*The volumes are statistically estimated within plus (+) or minus (-) 12.58 percent at 95% confidence level. These estimated volumes are final and not subject to adjustment. Prospective bidders are urged to examine this timber and to make their own estimates of quantity and quality.

I understand that any or all bids may be rejected. All bids must be signed and all bid items must be bid or the bid form may be rejected. I also understand that consideration and awarding a contract will be based upon my past performance and ability to complete the contract based upon equipment and staffing subject to my control.

FEDERAL ID: _____ or SOCIAL SECURITY NUMBER: _____

Company or individual bidding: _____

Company representative's name: _____

Address: _____

City: _____ State: _____ Zip: _____

IF AVAILABLE, PLEASE PLACE THE PERSONALIZED LABEL FROM YOUR PROSPECTUS IN THE ABOVE BOX.

Individual or company representative's signature: _____ Date: _____

Phone number : _____ Email (optional): _____

THE WINNING BIDDER MUST COMPLETE THE VERIFICATION OF WORKER'S DISABILITY COMPENSATION ACT COMPLIANCE (ON REVERSE SIDE IF DOUBLE SIDED) WITHIN 21 DAYS OF SALE AWARD DATE



FOR DEPARTMENT USE ONLY	
Sale Number (XX - XXX - XX - XX)	
Forest Management Unit:	

TIMBER SALE VERIFICATION OF WORKER'S DISABILITY COMPENSATION ACT COMPLIANCE

As required by Act 317, P.A. 1969 (Worker's Compensation) and Part 5 of Act 451 of 1994, as amended.

VERIFICATION OF WORKER'S DISABILITY COMPENSATION ACT COMPLIANCE

- This verification must be completed and submitted within 21 days of contract award and prior to the issuance of the timber sale contract.
- In addition, if boxes 2B or 2C are checked, then Notice of Exclusion or Certificate of Insurance must be submitted within twenty-one (21) days of the contract award and prior to the issuance of the timber sale contract.
- All information must be typed or printed except for written signatures.

Please Check Appropriate Categories:

1. My business is organized as (you **must** check one of the boxes below):
 - A. Sole Proprietorship (individual)
 - B. Partnership
 - C. Corporation
2. You **must** check one of the boxes below:
 - A. I certify my business is a sole proprietorship and it has no employees but the sole proprietor. I am not subject to the Worker's Compensation Laws.
 - B. I certify my business has satisfied its obligation to the Worker's Compensation Act through the use of an approved Notice of Exclusion (BWC-337, Rev. 5/96). I will provide a copy of the Notice of Exclusion within 21 days of the contract award. (For questions or a copy of the BWC-337, please call the Worker's Compensation Bureau at 517-322-1195).
 - C. I certify my business has a Worker's Compensation Policy. I will provide an original Certificate of Insurance within twenty-one (21) days of the contract award.
3. If you have checked item 2(A) or 2(B), you **must** indicate the number of **both** full-time and part-time employees, other than yourself, including family members and active partners (if none, you must enter "0").

_____ Full-time Employees

_____ Part-time Employees

Name of Business		Federal ID (or) Social Security No.	
Address		Telephone ()	
City	State	ZIP	

I hereby certify that the above information is true and correct. I agree to notify the Michigan DNR of any changes that occur in factors affecting my coverage during any of my present and future operations.

Signature of Owner or Authorized Representative

Title

Date

Please complete the "SEALED BID" information on the next page

Grand Traverse County Special (61-034-24)
T25N, R11W, SEC. 26; T25N, R11W, SEC. 27; T25N, R11W, SEC. 34; T25N,

In response to the notice of sale to be held 4:00 p.m. (local time) on December 12, 2024, I am hereby submitting my sealed bid (firm offer) for the following forest products to be cut. Bids for individual species must be at or above the advertised price. All non-responsive bid forms may be rejected.

<u>PRODUCTS & SPECIES</u>	<u>ESTIMATED VOLUME*</u>	<u>ADVERTISED PRICE</u>	<u>BID PRICE/UNIT</u>
Sawtimber			
Beech	10.5 MBF	\$ 145.00/MBF	\$ _____
Black Cherry	10.6 MBF	\$ 134.00/MBF	\$ _____
Mixed Aspen	122.7 MBF	\$ 113.00/MBF	\$ _____
Red Maple	17.8 MBF	\$ 107.00/MBF	\$ _____
Sugar Maple	13.5 MBF	\$ 279.00/MBF	\$ _____
Pulpwood			
Balsam Fir	8 Cords	\$ 24.05/Cord	\$ _____
Mixed Aspen	1,244 Cords	\$ 18.35/Cord	\$ _____
Mixed Hardwood	440 Cords	\$ 17.90/Cord	\$ _____
Red Pine	3 Cords	\$ 44.75/Cord	\$ _____
White Pine	14 Cords	\$ 21.40/Cord	\$ _____

*The volumes are statistically estimated within plus (+) or minus (-) 13.62 percent at 95% confidence level. These estimated volumes are final and not subject to adjustment. Prospective bidders are urged to examine this timber and to make their own estimates of quantity and quality.

I understand that any or all bids may be rejected. All bids must be signed and all bid items must be bid or the bid form may be rejected. I also understand that consideration and awarding a contract will be based upon my past performance and ability to complete the contract based upon equipment and staffing subject to my control.

FEDERAL ID: _____ - _____ or SOCIAL SECURITY NUMBER: _____ - _____ - _____

Company or individual bidding: _____

Company representative's name: _____

Address: _____

City: _____ State: _____ Zip: _____

IF AVAILABLE, PLEASE PLACE THE PERSONALIZED LABEL FROM YOUR PROSPECTUS IN THE ABOVE BOX.

Individual or company representative's signature: _____ Date: _____

Phone number : _____ Email (optional): _____

THE WINNING BIDDER MUST COMPLETE THE VERIFICATION OF WORKER'S DISABILITY COMPENSATION ACT COMPLIANCE (ON REVERSE SIDE IF DOUBLE SIDED) WITHIN 21 DAYS OF SALE AWARD DATE



FOR DEPARTMENT USE ONLY	
Sale Number (XX - XXX - XX - XX)	
Forest Management Unit:	

TIMBER SALE VERIFICATION OF WORKER'S DISABILITY COMPENSATION ACT COMPLIANCE

As required by Act 317, P.A. 1969 (Worker's Compensation) and
Part 5 of Act 451 of 1994, as amended.

VERIFICATION OF WORKER'S DISABILITY COMPENSATION ACT COMPLIANCE

- This verification must be completed and submitted within 21 days of contract award and prior to the issuance of the timber sale contract.
- In addition, if boxes 2B or 2C are checked, then Notice of Exclusion or Certificate of Insurance must be submitted within twenty-one (21) days of the contract award and prior to the issuance of the timber sale contract.
- All information must be typed or printed except for written signatures.

Please Check Appropriate Categories:

1. My business is organized as (you **must** check one of the boxes below):
 - A. Sole Proprietorship (individual)
 - B. Partnership
 - C. Corporation
2. You **must** check one of the boxes below:
 - A. I certify my business is a sole proprietorship and it has no employees but the sole proprietor. I am not subject to the Worker's Compensation Laws.
 - B. I certify my business has satisfied its obligation to the Worker's Compensation Act through the use of an approved Notice of Exclusion (BWC-337, Rev. 5/96). I will provide a copy of the Notice of Exclusion within 21 days of the contract award. (For questions or a copy of the BWC-337, please call the Worker's Compensation Bureau at 517-322-1195).
 - C. I certify my business has a Worker's Compensation Policy. I will provide an original Certificate of Insurance within twenty-one (21) days of the contract award.
3. If you have checked item 2(A) or 2(B), you **must** indicate the number of **both** full-time and part-time employees, other than yourself, including family members and active partners (if none, you must enter "0").

_____ Full-time Employees

_____ Part-time Employees

Name of Business		Federal ID (or) Social Security No.	
Address		Telephone ()	
City	State	ZIP	

I hereby certify that the above information is true and correct. I agree to notify the Michigan DNR of any changes that occur in factors affecting my coverage during any of my present and future operations.

Signature of Owner or Authorized Representative

Title

Date

Please complete the "SEALED BID" information on the next page

Pettengil Pine (61-036-24)
T27N, R14W, SEC. 1; Benzie COUNTY

In response to the notice of sale to be held 4:00 p.m. (local time) on December 12, 2024, I am hereby submitting my sealed bid (firm offer) for the following forest products to be cut. Bids for individual species must be at or above the advertised price. All non-responsive bid forms may be rejected.

<u>PRODUCTS & SPECIES</u>	<u>ESTIMATED VOLUME*</u>	<u>ADVERTISED PRICE</u>	<u>BID PRICE/UNIT</u>
Sawtimber			
Jack Pine	11.2 MBF	\$ 51.00/MBF	\$ _____
Red Pine	669.5 MBF	\$ 130.00/MBF	\$ _____
Pulpwood			
Jack Pine	84 Cords	\$ 18.60/Cord	\$ _____
Mixed Hardwood	22 Cords	\$ 20.65/Cord	\$ _____
Red Pine	2,418 Cords	\$ 51.65/Cord	\$ _____

*The volumes are statistically estimated within plus (+) or minus (-) 13.76 percent at 95% confidence level. These estimated volumes are final and not subject to adjustment. Prospective bidders are urged to examine this timber and to make their own estimates of quantity and quality.

I understand that any or all bids may be rejected. All bids must be signed and all bid items must be bid or the bid form may be rejected. I also understand that consideration and awarding a contract will be based upon my past performance and ability to complete the contract based upon equipment and staffing subject to my control.

FEDERAL ID: _____ - _____ or SOCIAL SECURITY NUMBER: _____ - _____ - _____

Company or individual bidding: _____

Company representative's name: _____

Address: _____

City: _____ State: _____ Zip: _____

IF AVAILABLE, PLEASE PLACE THE PERSONALIZED LABEL FROM YOUR PROSPECTUS IN THE ABOVE BOX.

Individual or company representative's signature: _____ Date: _____

Phone number : _____ Email (optional): _____

THE WINNING BIDDER MUST COMPLETE THE VERIFICATION OF WORKER'S DISABILITY COMPENSATION ACT COMPLIANCE (ON REVERSE SIDE IF DOUBLE SIDED) WITHIN 21 DAYS OF SALE AWARD DATE



FOR DEPARTMENT USE ONLY	
Sale Number (XX - XXX - XX - XX)	
Forest Management Unit:	

TIMBER SALE VERIFICATION OF WORKER'S DISABILITY COMPENSATION ACT COMPLIANCE

As required by Act 317, P.A. 1969 (Worker's Compensation) and
Part 5 of Act 451 of 1994, as amended.

VERIFICATION OF WORKER'S DISABILITY COMPENSATION ACT COMPLIANCE

- This verification must be completed and submitted within 21 days of contract award and prior to the issuance of the timber sale contract.
- In addition, if boxes 2B or 2C are checked, then Notice of Exclusion or Certificate of Insurance must be submitted within twenty-one (21) days of the contract award and prior to the issuance of the timber sale contract.
- All information must be typed or printed except for written signatures.

Please Check Appropriate Categories:

1. My business is organized as (you **must** check one of the boxes below):
 - A. Sole Proprietorship (individual)
 - B. Partnership
 - C. Corporation
2. You **must** check one of the boxes below:
 - A. I certify my business is a sole proprietorship and it has no employees but the sole proprietor. I am not subject to the Worker's Compensation Laws.
 - B. I certify my business has satisfied its obligation to the Worker's Compensation Act through the use of an approved Notice of Exclusion (BWC-337, Rev. 5/96). I will provide a copy of the Notice of Exclusion within 21 days of the contract award. (For questions or a copy of the BWC-337, please call the Worker's Compensation Bureau at 517-322-1195).
 - C. I certify my business has a Worker's Compensation Policy. I will provide an original Certificate of Insurance within twenty-one (21) days of the contract award.
3. If you have checked item 2(A) or 2(B), you **must** indicate the number of **both** full-time and part-time employees, other than yourself, including family members and active partners (if none, you must enter "0").

_____ Full-time Employees

_____ Part-time Employees

Name of Business		Federal ID (or) Social Security No.	
Address		Telephone ()	
City	State	ZIP	

I hereby certify that the above information is true and correct. I agree to notify the Michigan DNR of any changes that occur in factors affecting my coverage during any of my present and future operations.

Signature of Owner or Authorized Representative

Title

Date

Please complete the "SEALED BID" information on the next page

Up There Mix (61-039-24)
T27N, R14W, SEC. 1; T27N, R14W, SEC. 12; Benzie COUNTY

In response to the notice of sale to be held 4:00 p.m. (local time) on December 12, 2024, I am hereby submitting my sealed bid (firm offer) for the following forest products to be cut. Bids for individual species must be at or above the advertised price. All non-responsive bid forms may be rejected.

<u>PRODUCTS & SPECIES</u>	<u>ESTIMATED VOLUME*</u>	<u>ADVERTISED PRICE</u>	<u>BID PRICE/UNIT</u>
Sawtimber			
Beech	12.4 MBF	\$ 167.00/MBF	\$ _____
Black Cherry	73.0 MBF	\$ 155.00/MBF	\$ _____
Mixed Aspen	82.1 MBF	\$ 131.00/MBF	\$ _____
Red Maple	45.3 MBF	\$ 124.00/MBF	\$ _____
Sugar Maple	22.5 MBF	\$ 322.00/MBF	\$ _____
Pulpwood			
Mixed Aspen	552 Cords	\$ 21.15/Cord	\$ _____
Mixed Hardwood	786 Cords	\$ 20.65/Cord	\$ _____

*The volumes are statistically estimated within plus (+) or minus (-) 20.24 percent at 95% confidence level. These estimated volumes are final and not subject to adjustment. Prospective bidders are urged to examine this timber and to make their own estimates of quantity and quality.

I understand that any or all bids may be rejected. All bids must be signed and all bid items must be bid or the bid form may be rejected. I also understand that consideration and awarding a contract will be based upon my past performance and ability to complete the contract based upon equipment and staffing subject to my control.

FEDERAL ID: _____ or SOCIAL SECURITY NUMBER: _____

Company or individual bidding: _____

Company representative's name: _____

Address: _____

City: _____ State: _____ Zip: _____

IF AVAILABLE, PLEASE PLACE THE PERSONALIZED LABEL FROM YOUR PROSPECTUS IN THE ABOVE BOX.

Individual or company representative's signature: _____ Date: _____

Phone number : _____ Email (optional): _____

THE WINNING BIDDER MUST COMPLETE THE VERIFICATION OF WORKER'S DISABILITY COMPENSATION ACT COMPLIANCE (ON REVERSE SIDE IF DOUBLE SIDED) WITHIN 21 DAYS OF SALE AWARD DATE



FOR DEPARTMENT USE ONLY
Sale Number (XX - XXX - XX - XX)
Forest Management Unit:

TIMBER SALE VERIFICATION OF WORKER'S DISABILITY COMPENSATION ACT COMPLIANCE

*As required by Act 317, P.A. 1969 (Worker's Compensation) and
Part 5 of Act 451 of 1994, as amended.*

VERIFICATION OF WORKER'S DISABILITY COMPENSATION ACT COMPLIANCE

- This verification must be completed and submitted within 21 days of contract award and prior to the issuance of the timber sale contract.
- In addition, if boxes 2B or 2C are checked, then Notice of Exclusion or Certificate of Insurance must be submitted within twenty-one (21) days of the contract award and prior to the issuance of the timber sale contract.
- All information must be typed or printed except for written signatures.

Please Check Appropriate Categories:

1. My business is organized as (you **must** check one of the boxes below):
 - A. Sole Proprietorship (individual)
 - B. Partnership
 - C. Corporation

2. You **must** check one of the boxes below:
 - A. I certify my business is a sole proprietorship and it has no employees but the sole proprietor. I am not subject to the Worker's Compensation Laws.
 - B. I certify my business has satisfied its obligation to the Worker's Compensation Act through the use of an approved Notice of Exclusion (BWC-337, Rev. 5/96). I will provide a copy of the Notice of Exclusion within 21 days of the contract award. (For questions or a copy of the BWC-337, please call the Worker's Compensation Bureau at 517-322-1195).
 - C. I certify my business has a Worker's Compensation Policy. I will provide an original Certificate of Insurance within twenty-one (21) days of the contract award.

3. If you have checked item 2(A) or 2(B), you **must** indicate the number of **both** full-time and part-time employees, other than yourself, including family members and active partners (if none, you must enter "0").

_____ Full-time Employees

_____ Part-time Employees

Name of Business		Federal ID (or) Social Security No.	
Address		Telephone ()	
City	State	ZIP	

I hereby certify that the above information is true and correct. I agree to notify the Michigan DNR of any changes that occur in factors affecting my coverage during any of my present and future operations.

Signature of Owner or Authorized Representative

Title

Date

Please complete the "SEALED BID" information on the next page

Little Lost Lake Aspen (61-040-24)
T25N, R13W, SEC. 4; T26N, R13W, SEC. 33; Benzie COUNTY

In response to the notice of sale to be held 4:00 p.m. (local time) on December 12, 2024, I am hereby submitting my sealed bid (firm offer) for the following forest products to be cut. Bids for individual species must be at or above the advertised price. All non-responsive bid forms may be rejected.

<u>PRODUCTS & SPECIES</u>	<u>ESTIMATED VOLUME*</u>	<u>ADVERTISED PRICE</u>	<u>BID PRICE/UNIT</u>
Sawtimber			
Black Cherry	9.0 MBF	\$ 155.00/MBF	\$ _____
Mixed Aspen	266.9 MBF	\$ 131.00/MBF	\$ _____
Red Maple	50.1 MBF	\$ 124.00/MBF	\$ _____
Sugar Maple	21.0 MBF	\$ 322.00/MBF	\$ _____
Pulpwood			
Mixed Aspen	963 Cords	\$ 21.15/Cord	\$ _____
Mixed Hardwood	425 Cords	\$ 20.65/Cord	\$ _____

*The volumes are statistically estimated within plus (+) or minus (-) 21.37 percent at 95% confidence level. These estimated volumes are final and not subject to adjustment. Prospective bidders are urged to examine this timber and to make their own estimates of quantity and quality.

I understand that any or all bids may be rejected. All bids must be signed and all bid items must be bid or the bid form may be rejected. I also understand that consideration and awarding a contract will be based upon my past performance and ability to complete the contract based upon equipment and staffing subject to my control.

FEDERAL ID: _____ - _____ or SOCIAL SECURITY NUMBER: _____ - _____ - _____

Company or individual bidding: _____

Company representative's name: _____

Address: _____

City: _____ State: _____ Zip: _____

IF AVAILABLE, PLEASE PLACE THE PERSONALIZED LABEL FROM YOUR PROSPECTUS IN THE ABOVE BOX.

Individual or company representative's signature: _____ Date: _____

Phone number : _____ Email (optional): _____

THE WINNING BIDDER MUST COMPLETE THE VERIFICATION OF WORKER'S DISABILITY COMPENSATION ACT COMPLIANCE (ON REVERSE SIDE IF DOUBLE SIDED) WITHIN 21 DAYS OF SALE AWARD DATE



FOR DEPARTMENT USE ONLY	
Sale Number (XX - XXX - XX - XX)	
Forest Management Unit:	

TIMBER SALE VERIFICATION OF WORKER'S DISABILITY COMPENSATION ACT COMPLIANCE

As required by Act 317, P.A. 1969 (Worker's Compensation) and
Part 5 of Act 451 of 1994, as amended.

VERIFICATION OF WORKER'S DISABILITY COMPENSATION ACT COMPLIANCE

- This verification must be completed and submitted within 21 days of contract award and prior to the issuance of the timber sale contract.
- In addition, if boxes 2B or 2C are checked, then Notice of Exclusion or Certificate of Insurance must be submitted within twenty-one (21) days of the contract award and prior to the issuance of the timber sale contract.
- All information must be typed or printed except for written signatures.

Please Check Appropriate Categories:

1. My business is organized as (you **must** check one of the boxes below):
 - A. Sole Proprietorship (individual)
 - B. Partnership
 - C. Corporation
2. You **must** check one of the boxes below:
 - A. I certify my business is a sole proprietorship and it has no employees but the sole proprietor. I am not subject to the Worker's Compensation Laws.
 - B. I certify my business has satisfied its obligation to the Worker's Compensation Act through the use of an approved Notice of Exclusion (BWC-337, Rev. 5/96). I will provide a copy of the Notice of Exclusion within 21 days of the contract award. (For questions or a copy of the BWC-337, please call the Worker's Compensation Bureau at 517-322-1195).
 - C. I certify my business has a Worker's Compensation Policy. I will provide an original Certificate of Insurance within twenty-one (21) days of the contract award.
3. If you have checked item 2(A) or 2(B), you **must** indicate the number of **both** full-time and part-time employees, other than yourself, including family members and active partners (if none, you must enter "0").

_____ Full-time Employees

_____ Part-time Employees

Name of Business		Federal ID (or) Social Security No.	
Address		Telephone ()	
City	State	ZIP	

I hereby certify that the above information is true and correct. I agree to notify the Michigan DNR of any changes that occur in factors affecting my coverage during any of my present and future operations.

Signature of Owner or Authorized Representative

Title

Date

Please complete the "SEALED BID" information on the next page

TC Crew Cut (61-049-24)

T25N, R13W, SEC. 16; T25N, R13W, SEC. 17; T25N, R13W, SEC. 6; Benzie

In response to the notice of sale to be held 4:00 p.m. (local time) on December 12, 2024, I am hereby submitting my sealed bid (firm offer) for the following forest products to be cut. Bids for individual species must be at or above the advertised price. All non-responsive bid forms may be rejected.

<u>PRODUCTS & SPECIES</u>	<u>ESTIMATED VOLUME*</u>	<u>ADVERTISED PRICE</u>	<u>BID PRICE/UNIT</u>
Sawtimber			
Red Pine	118.7 MBF	\$ 130.00/MBF	\$ _____
Pulpwood			
Beech	2 Cords	\$ 20.65/Cord	\$ _____
Red Pine	704 Cords	\$ 51.65/Cord	\$ _____

*The volumes are statistically estimated within plus (+) or minus (-) 13.35 percent at 95% confidence level. These estimated volumes are final and not subject to adjustment. Prospective bidders are urged to examine this timber and to make their own estimates of quantity and quality.

I understand that any or all bids may be rejected. All bids must be signed and all bid items must be bid or the bid form may be rejected. I also understand that consideration and awarding a contract will be based upon my past performance and ability to complete the contract based upon equipment and staffing subject to my control.

FEDERAL ID: _____ - _____ or SOCIAL SECURITY NUMBER: _____ - _____ - _____

Company or individual bidding: _____

Company representative's name: _____

Address: _____

City: _____ State: _____ Zip: _____

IF AVAILABLE, PLEASE PLACE THE PERSONALIZED LABEL FROM YOUR PROSPECTUS IN THE ABOVE BOX.

Individual or company representative's signature: _____ Date: _____

Phone number : _____ Email (optional): _____

THE WINNING BIDDER MUST COMPLETE THE VERIFICATION OF WORKER'S DISABILITY COMPENSATION ACT COMPLIANCE (ON REVERSE SIDE IF DOUBLE SIDED) WITHIN 21 DAYS OF SALE AWARD DATE



FOR DEPARTMENT USE ONLY
Sale Number (XX – XXX – XX – XX)
Forest Management Unit:

TIMBER SALE VERIFICATION OF WORKER'S DISABILITY COMPENSATION ACT COMPLIANCE

*As required by Act 317, P.A. 1969 (Worker's Compensation) and
Part 5 of Act 451 of 1994, as amended.*

- VERIFICATION OF WORKER'S DISABILITY COMPENSATION ACT COMPLIANCE**
- This verification must be completed and submitted within 21 days of contract award and prior to the issuance of the timber sale contract.
 - In addition, if boxes 2B or 2C are checked, then Notice of Exclusion or Certificate of Insurance must be submitted within twenty-one (21) days of the contract award and prior to the issuance of the timber sale contract.
 - All information must be typed or printed except for written signatures.

Please Check Appropriate Categories:

1. My business is organized as (you **must** check one of the boxes below):
 - A. Sole Proprietorship (individual)
 - B. Partnership
 - C. Corporation
2. You **must** check one of the boxes below:
 - A. I certify my business is a sole proprietorship and it has no employees but the sole proprietor. I am not subject to the Worker's Compensation Laws.
 - B. I certify my business has satisfied its obligation to the Worker's Compensation Act through the use of an approved Notice of Exclusion (BWC-337, Rev. 5/96). I will provide a copy of the Notice of Exclusion within 21 days of the contract award. (For questions or a copy of the BWC-337, please call the Worker's Compensation Bureau at 517-322-1195).
 - C. I certify my business has a Worker's Compensation Policy. I will provide an original Certificate of Insurance within twenty-one (21) days of the contract award.
3. If you have checked item 2(A) or 2(B), you **must** indicate the number of **both** full-time and part-time employees, other than yourself, including family members and active partners (if none, you must enter "0").

_____ Full-time Employees

_____ Part-time Employees

Name of Business		Federal ID (or) Social Security No.	
Address		Telephone ()	
City	State	ZIP	

I hereby certify that the above information is true and correct. I agree to notify the Michigan DNR of any changes that occur in factors affecting my coverage during any of my present and future operations.

Signature of Owner or Authorized Representative

Title

Date

Please complete the "SEALED BID" information on the next page