



**DEPARTMENT OF NATURAL RESOURCES  
STATE OF MICHIGAN  
TIMBER SALE PROSPECTUS #7643**

**SCHEDULED SALE DATE AND TIME:** 4:00 p.m. (local time) on July 17, 2025.

**LOCATION:** TRAVERSE CITY MGMT UNIT, 2122 M 37 SOUTH, TRAVERSE CITY, MI 49685.

**PROSPECTUS NOTE:** The bidder is advised to inspect the sale area and review the location, estimated volumes, operating costs and contract terms of proposed sales. Please be aware that some landowners may request 60 days or more notice for access across their land.

Notice is hereby given that bids will be received by the Unit Manager, TRAVERSE CITY MANAGEMENT UNIT, for certain timber on the following described lands:

**1915 Planted Pine** (61-011-25) / T25N, R09W, SEC. 14, SWNW,NWSW,S1/2SW.  
T25N, R09W, SEC. 23, S1/2SW.  
T25N, R09W, SEC. 26, N1/2NW,SWNW,NWSW.  
T25N, R09W, SEC. 27, E1/2NE,NESE.

Grand Traverse County, Advertised Price \$186,278.25, 109.8 Acres, Red Pine, Hardwood.

SALE NOTE: A recreation site such as a trail, pathway, or campground is within the sale area or the vicinity. Certain restrictions/specifications may be applicable including time restrictions.

**Sheet Flow Aspen** (61-012-25) / T24N, R13W, SEC. 6 , SWNE,E1/2SW,W1/2SE.

Manistee County, Advertised Price \$66,935.15, 67.8 Acres, Aspen, Hardwood.

SALE NOTE: Please note sale specific specs 4.1.5 & 4.1.8 which identify road work needed to access sale. In addition, spec 5.2.3.1 details restricted periods for operating within sale.

A recreation site such as a trail, pathway, or campground is within the sale area or the vicinity. Certain restrictions/specifications may be applicable including time restrictions.

**Dutchman Aspen** (61-013-25) / T24N, R13W, SEC. 18, W1/2NW.

T24N, R13W, SEC. 7 , NWSW.

Manistee County, Advertised Price \$51,698.90, 38.4 Acres, Aspen, White Pine.

**Muddy Paws Pine** (61-014-25) / T24N, R13W, SEC. 6 , S1/2NW,SWNE,SW.

Manistee County, Advertised Price \$128,603.45, 91.4 Acres, Red Pine, White Pine.

SALE NOTE: A recreation site such as a trail, pathway, or campground is within the sale area or the vicinity. Certain restrictions/specifications may be applicable including time restrictions.

**Aspen On The Edge** (61-015-25) / T24N, R13W, SEC. 1 , E1/2SE.

Manistee County, Advertised Price \$39,997.90, 31.3 Acres, Hardwood, Aspen.

What a Gem (61-041-24) / T25N, R13W, SEC. 21, E1/2NE.

T25N, R13W, SEC. 22, N1/2NW,SWNW.

T25N, R13W, SEC. 24, NENE.

Benzie County, Advertised Price \$12,397.50, 34.1 Acres, Aspen, Hardwood.

SALE NOTE: This sale has a 3-year contract due to many restrictions in the sale that limit harvest operations and some extra coordination will be necessary due to Betsie GEM hunting trail area.

A recreation site such as a trail, pathway, or campground is within the sale area or the vicinity. Certain restrictions/specifications may be applicable including time restrictions.

## BID INSTRUCTIONS (VER. 10/10/2022):

### 1. Scheduled Bid Location, Date, and Time (2/11)

Bids must be received by the Unit Manager, TRAVERSE CITY OFFICE, 2122 M 37 South, Traverse City, MI 49685, no later than 4:00 p.m. (local time) on July 17, 2025. For further information concerning this sale, contact Matthew Edison at 906-291-0095.

### 2. Bidder's Qualifications (10/22)

If all or part of a timber sale was prepared by a private contractor, the contractor and that contractor's company are not permitted to bid on the timber sale. A person must be 18 years of age or older to purchase timber. Permanent employees of the Department of Natural Resources or members of their immediate household may not bid. Former employees, in the permanent or seasonal class, may not bid until 3 months after the last day of active duty. Bids will not be accepted from individuals or companies appearing on the DNR/FRD No-Bid List. This list contains the names of purchasers who previously failed to execute a contract within 21-days or who have a history of poor performance.

### 3. Preparation of Sealed Bids (5/16)

Bid Forms may be completed online thru Michigan DNR Timber Sale Online Bidding (OLB) at [www.michigan.gov/timberbidding](http://www.michigan.gov/timberbidding) or by completing the hardcopy Bid Form found in the Timber Sale Prospectus. Hardcopy Bid Forms shall be manually signed in ink. Registration in OLB is considered your 'signature' for all bids submitted thru that system. Bid prices must be entered for each species and product in the Bid Price column for all material subject to bidding and all fill-in blanks must be completed. If erasures or other changes appear on the hardcopy Bid Form, each erasure or change must be initialed by the person signing the bid.

### 4. Submission of Sealed Bids (5/16)

Bid forms may be obtained from the Unit Manager or thru OLB. Bids may be submitted hardcopy or thru OLB. All hardcopy bids must be submitted on the bid form and in an envelope clearly identified as described in this section. NOTE: Only one bid form per bid envelope. Sealed bids must be submitted to the Unit office designated in the prospectus and must be submitted at or prior to the time established in the prospectus. The envelope should show on the outside (a) the sale name or number and (b) the date and time of bid opening, as shown in the prospectus. Bids received after the time specified in the sale prospectus are late bids and will be rejected.

It is possible for a bidder to submit multiple bids on a single sale. For example, a bid may be submitted hardcopy and a bid may be submitted thru OLB. Or, two bidders from the same company could both submit bids on the same sale. If this were to happen, the State would accept all bids received and award the contract accordingly. All bidding and contractual requirements would apply to all bids received.

### 5. Public Opening of Sealed Bids (7/16)

If conditions permit, the sealed bids will be publicly opened and posted at the time and place set in the prospectus.

If a bidder, present at a bid opening, has submitted bids on more than one sale, that bidder may withdraw their unopened bid envelopes or announce the withdrawal of their online bid after being declared the successful bidder on one sale.

### 6. Award of Contract (1/11)

Award of the contract will be made to the Bidder whose bid, conforming to the prospectus, is most advantageous to the State of Michigan on the basis of total value at rates bid for the estimated quantities. The State reserves the right to reject any bid or waive any minor irregularity in bids received. A written award mailed (or otherwise furnished) to the successful Bidder shall be deemed to result in a binding contract without further action by either party.

### 7. Down Payment (1/11)

The Bidder to whom award is made must make a down payment within 21 days of the sale award. The amount of the down payment will be calculated as shown in the Bond and Payment Schedule of this prospectus. Only cash may be used to meet this requirement.

### 8. Performance Security (1/11)

As guarantee of faithful performance, a cash bond, certificate of deposit, surety bond or irrevocable letter of credit (LOC) is required within 21 days of the sale award. The amount of the performance security is shown in the Bond and

Payment Schedule of this prospectus. If an LOC or surety is used, the coverage must extend for at least 6 months beyond the contract expiration.

#### 9. Worker's Compensation (10/22)

Purchaser shall obtain worker's compensation insurance to cover claims under Michigan's Worker's Disability Compensation Act of 1969 or similar employee benefit act of any other state applicable to an employee. Verification of Worker's Disability Compensation Act Compliance must be completed and submitted within 21 days of contract award and prior to the issuance of the timber sale contract. In addition, if applicable, Notice of Exclusion or Certificate of Insurance must also be submitted.

#### 10. Timber Sale Contract (10/22)

Additional conditions and requirements common to all timber sales are listed on the timber sale contract (R4031) and are available on line at [www.michigan.gov/timber](http://www.michigan.gov/timber). Contact the Unit Manager for additional information or a sample contract. Within 21 days of the date of the award letter, the bidder must sign the contract and provide the required down payment, performance security, and verification of worker's disability compensation. The down payment and performance security shall be in accordance with the provisions of the timber sale contract, in the sums stated in this prospectus. If these actions are not taken, then the Bidder, the Bidder's corporation, and the corporation's principals may not be permitted to bid on State timber sales for a period of 3 months after the first offense, 6 months after the second offense, and 1 year after the third offense. An offense will only be counted against the Bidder for 5 years. In addition, the Bidder certifies that if awarded this contract, the Bidder will complete the timber sale contract in accordance with its terms and any modifications thereof including requirements to purchase, cut, and remove the included timber by the expiration date.

Payment Unit values in the State Forest Timber Sale Contract are calculated based on the advertised value of the Payment Unit as a percentage of the total advertised value of the contract. The advertised value of each Payment Unit is given in the Description of Timber by Payment Unit table on the Timber Sale Information page. For example, if the value of Payment Unit 1 is advertised as \$1,500 and the total Timber Sale value is advertised as \$10,000, the contract price for Payment Unit 1 will be 15% of the total bid price ( $\$1,500/\$10,000 * 100$ ).

#### 11. Disclaimer of Estimates and Bidder's Warranty of Inspection (10/22)

Before submitting this bid, the Bidder is advised and cautioned to inspect the sale area, review the requirements of the sale contract, and take other steps as may be reasonably necessary to ascertain the location, estimated volumes, construction estimates, and operating costs of the proposed sale. Failure to do so will not relieve the Bidder from responsibility for completing the contract.

The Bidder warrants that this bid is submitted solely on the basis of the Bidder's examination and inspection of the quality and quantity of the timber offered for sale and the Bidder's opinion of the value thereof and the costs of recovery. No reliance should be placed on the State of Michigan's estimates of timber quality, quantity or costs of recovery. Bidder further acknowledges that the State of Michigan: (i) expressly disclaims any warranty of fitness of timber for any purpose; (ii) offers this timber as is without any warranty of quality (merchantability) or quantity and (iii) expressly disclaims any warranty as to the quantity or quality of timber sold.

#### 12. Certification and Chain-of-Custody (10/22)

Unless otherwise indicated in the contract under section 7 – Other Conditions of the Sale Specific Conditions & Requirements, the area encompassed by this timber sale is certified to the standards of the Forest Stewardship Council (FSC) - Certificate #SCS-FM/COC-00090N and the Sustainable Forestry Initiative (SFI) - Certificate #NSF-SFIS-5Y031-SF5. Forest products from this sale may be delivered to the mill as "FSC 100% and / or SFI certified" as long as the contractor hauling the forest products is chain-of-custody (COC) certified or covered under a COC certificate from the destination mill. The purchaser is responsible for maintaining COC after leaving the sale area.

#### 13. Good Neighbor Authority (GNA) Requirements (10/22)

If the name of this timber sales contains the acronym GNA, it is authorized by the Good Neighbor Authority (GNA) and covered by various agreements between the U.S. Forest Service and the State. The timber sale occurs on federal land and the following conditions apply:

GNA contracts on US Forest Service land will not be awarded to purchasers on the Federal list of excluded parties. The System for Award Management (SAM) will be checked for active excluded parties prior to award of contract. In

addition, the Bidder to whom award is made must complete an Assurance Regarding Felony Conviction or Tax Delinquent Status for Corporate Applicants (AD-3031).

14. Good Neighbor Authority (GNA) Requirements, con't (10/22)

Bidder certifies, by signing this bid form, that to the best of Bidder's knowledge that the following representations are accurate and complete.

- a. That the Bidder and its principals are not presently debarred, suspended, proposed for debarment, declared ineligible, or voluntary excluded from timber sales (covered transactions) by any Federal department or agency.
- b. That the Bidder and its principals have not within a 3-year period preceding this bid been convicted of or had a civil judgment rendered against them for commission of fraud or a criminal offense in connection with obtaining , attempting to obtain, or performing a public (Federal, State, or local) transaction or contract under a public transaction; violation of Federal or State antitrust statutes or commission of embezzlement, theft, forgery, bribery, falsification or destruction of records, making false statements, or receiving stolen property.
- c. That the Bidder and its principals are not presently indicted for or otherwise criminally or civilly charged by a governmental entity (Federal, State, or local) with commission of any of the offenses enumerated in paragraph b of this certification.
- d. That the Bidder and its principals have not within a 3-year period preceding this bid had one or more public transactions (Federal, State, or local) terminated for breach or default of a timber or forest product contract.

Bidders that cannot certify this requirement, in whole or in part, shall submit an explanation with their bid.

Scott Bowen  
Director



# TIMBER SALE INFORMATION

1915 Planted Pine (61-011-25)

T25N, R09W, SEC. 14; T25N, R09W, SEC. 23; T25N, R09W, SEC. 26; T25N, R09W, SEC. 27.

Grand Traverse County (Advertised Price \$186,278.25)

SALE NOTE: A recreation site such as a trail, pathway, or campground is within the sale area or the vicinity. Certain restrictions/specifications may be applicable including time restrictions.

A timber sale contract for this lump sum, sealed bid timber sale will be awarded to the responsible bidder offering the highest sealed bid price. All units of volume listed below were estimated using the Inventory Manager computer program and the new Michigan taper model. Bids must be at or above the following advertised price for each product and species:

<u>PRODUCTS &amp; SPECIES</u>	<u>ESTIMATED UNITS*</u>	<u>ADVERTISED PRICE</u>
Sawtimber		
Black/Red (Hybrid) Oak	45.5 MBF	\$ 106.00 / MBF
Red Pine	1,012.9 MBF	\$ 134.00 / MBF
Scotch Pine	12.9 MBF	\$ 38.00 / MBF
White Oak	26.9 MBF	\$ 62.00 / MBF
White Pine	41.9 MBF	\$ 75.00 / MBF
Pulpwood		
Jack Pine	20 Cords	\$ 16.30 / Cord
Mixed Oak	135 Cords	\$ 26.90 / Cord
Red Maple	11 Cords	\$ 20.50 / Cord
Red Pine	616 Cords	\$ 55.25 / Cord
Scotch Pine	7 Cords	\$ 16.20 / Cord
White Pine	83 Cords	\$ 25.25 / Cord

\* The total volume is statistically estimated within plus (+) or minus (-) 10.70 percent. There are an estimated 3,541 cords on this timber sale, plus or minus 379 cords at the 95% confidence level. The estimated units are final and not subject to adjustment. Prospective bidders are urged to examine this timber and to make their own estimates of quantity and quality.

## BOND AND PAYMENT SCHEDULE:

1. A bond in the amount of \$9,314.00 to insure faithful performance of the conditions of the contract will be deposited by the successful bidder within 21 days of the sale award.
2. Cutting in any sale or unit without the required advance payment would be considered a trespass.
3. Total payment must be paid in advance or according to the following schedule :
  - (a) Ten percent (10%) of the sale value must be paid within 21 days of the sale award.
  - (b) The 10% down payment will be credited towards the first unit cut.
  - (c) Payment for each of the following units must be made before cutting begins in that unit:

PAYMENT UNIT NUMBER	PERCENT OF TOTAL SALE VALUE
01	18.3%
02	15.7%
03	28.4%
04	18.3%
05	19.3%

4. If no cutting takes place, the 10% down payment will not be refunded.
5. Operations on the contract issued will terminate on 09/30/2027.

## SALE STATISTICS

Volumes were calculated in cubic feet using the Michigan taper model. Cubic foot volume includes all wood inside bark for the product indicated. For display purposes, cubic feet were converted to cords and MBF using a simple conversion factor, e.g. 79 cubic feet per cord and 185 cubic feet per MBF. The cubic foot volumes are precise; the cords and MBF volumes are not. Cubic foot volume cannot be directly converted to cords or boards with precision.

## SALE VOLUMES

The total estimated sale volume may not equal the sum of the species/products due to the nature of statistical calculations associated with double sampling methodology.

VOLUME		STATISTICAL RANGE IN CORDS		
TOTAL CUBIC FEET	TOTAL CORDS	PERCENT ERROR	MINIMUM	MAXIMUM
279,721	3,541	10.70%	3,162	3,920

**VDU VOLUMES**

A VDU is a Volume Determination Unit. Volumes and their associated statistics are calculated at the VDU level and summarized to the sale level. There is often a one to one relationship between a VDU and a Payment Unit, but not always, depending on the cruise design. Refer to the VDU TO PAYMENT UNIT table.

	VOLUME			RANGE IN CORDS	
VDU	TOTAL CUBIC FEET	TOTAL CORDS	PERCENT ERROR	MINIMUM	MAXIMUM
15	96,783	1,225	16.10%	1,028	1,422
72	131,491	1,664	16.64%	1,388	1,941
94	51,446	651	27.83%	470	832
TOTAL:	279,721	3,541		2,885	4,196

**VDU TO PAYMENT UNIT**

When a VDU is associated with more than one Payment Unit (PU), the VDU volumes are assigned to the PU based on acres of the VDU within the PU.

VDU	VDU ACRES	PU	PU ACRES
15	32.9	1	17.7
		2	15.2
72	51.3	3	31.2
		4	20.1
94	25.6	5	25.6
TOTAL:	109.8		109.8



**DESCRIPTION OF TIMBER BY PAYMENT UNIT (PU)**

PU	MARKET GROUP	PRODUCT	QUANTITY	UNIT	ACRES	ADVERTISE PRICE
1	Black/Red (Hybrid	Sawtimber	7.5	MBF	17.7	\$34,077.70
	/Red (Hybrid) Oak		7.5	MBF		
	Red Pine		171.6	MBF		
	White Oak	Pulpwood	10.0	MBF		
	White Pine		17.8	MBF		
	Mixed Oak		27	Cords		
	/Red (Hybrid) Oak		8	Cords		
	White Oak		19	Cords		
	Red Pine		129	Cords		
	White Pine		19	Cords		
2	Black/Red (Hybrid	Sawtimber	6.4	MBF	15.2	\$29,229.95
	/Red (Hybrid) Oak		6.4	MBF		
	Red Pine		147.4	MBF		
	White Oak	Pulpwood	8.5	MBF		
	White Pine		15.3	MBF		
	Mixed Oak		23	Cords		
	/Red (Hybrid) Oak		7	Cords		
	White Oak		16	Cords		
	Red Pine		110	Cords		
	White Pine		17	Cords		
3	Black/Red (Hybrid	Sawtimber	19.3	MBF	31.2	\$52,942.60
	/Red (Hybrid) Oak		16.1	MBF		
	Red Oak		3.2	MBF		
	Red Pine	Pulpwood	283.0	MBF		
	Scotch Pine		7.8	MBF		
	White Oak		5.1	MBF		
	White Pine		5.4	MBF		
	Mixed Oak		46	Cords		
	/Red (Hybrid) Oak		24	Cords		
	Red Oak		4	Cords		
	White Oak		18	Cords		
	Red Maple	Sawtimber Pulpwood	7	Cords		
	Red Maple		1.8	MBF		
	Red Maple		3	Cords		
	Red Pine		177	Cords		
	Scotch Pine		4	Cords		
	White Pine		29	Cords		
4	Black/Red (Hybrid	Sawtimber	12.3	MBF	20.1	\$34,035.60
	/Red (Hybrid) Oak		10.3	MBF		
	Red Oak		2.0	MBF		
	Red Pine	Pulpwood	182.4	MBF		
	Scotch Pine		5.1	MBF		
	White Oak		3.3	MBF		
	White Pine		3.4	MBF		
	Mixed Oak		28	Cords		
	/Red (Hybrid) Oak		15	Cords		
	Red Oak		2	Cords		
	White Oak		11	Cords		
	Red Maple	Sawtimber Pulpwood	4	Cords		
	Red Maple		1.1	MBF		
	Red Maple		2	Cords		
	Red Pine		114	Cords		
	Scotch Pine		3	Cords		
	White Pine		18	Cords		
5	Red Pine	Sawtimber	228.5	MBF	25.6	\$35,992.40
	Jack Pine	Pulpwood	20	Cords		

DESCRIPTION OF TIMBER BY PAYMENT UNIT (PU), CON'T

PU	MARKET GROUP	PRODUCT	QUANTITY	UNIT	ACRES	ADVERTISE PRICE
5 con't	Mixed Oak	Pulpwood	11	Cords		
	/Red (Hybrid) Oak		8	Cords		
	White Oak		3	Cords		
	Red Pine		86	Cords		
TOTAL:			1,140.1	MBF		
TOTAL:			872	Cords		

## **Sale Specific Conditions & Requirements**

**Sale Name: 1915 Planted Pine**

**Sale Number: 61-011-25 Seq#: 1**

### **1 - Sale Area**

#### **1.2 - Boundaries**

##### **1.2.1 - Painted Boundaries (9/19)**

The sale boundary and Payment Unit boundaries are marked and identified by red paint and roads (see Timber Sale Map). Exterior sale boundary lines against state are marked in red paint. Interior Payment Unit boundaries, between Payment Units 1 and 2 and Payment Units 3 and 4, are unpainted and designated by the roads. The painted boundary line trees are not Included Timber and are to be protected.

### **2 - Timber Specifications**

#### **2.1 - Included Timber**

##### **2.1.1 - Clearcut Unit(s) with Unmerchantable Trees (6/14)**

Within Payment Unit(s) 1-5, cut all trees that are one (1) inch or more at DBH, except do not cut trees marked in green paint (there are only a few green marked trees in Payment Unit 4).

#### **2.2 - Utilization**

##### **2.2.2 - Chipping Required (12/24)**

This area must be chip harvested to facilitate subsequent planting operations. The Purchaser has the option to produce sawlogs or pulpwood bolts, but the remaining portion of the trees must be chipped and hauled. No exception will be granted. The requirement to retain approximately 1/6 to 1/3 of treetops and limbs less than four (4) inches in diameter does not apply (G. C. & R. 2.2). This is because of subsequent silviculture operations post-harvest.

##### **2.2.3 - Stump Heights (12/24)**

Stump heights within the Sale Area shall not exceed six (6) inches for all trees. This is in order to facilitate planting operations.

### **4 - Transportation**

#### **4.1 - Construction**

##### **4.1.12 - No New Roads (1/12)**

No new roads will be permitted in any Payment Unit. All operations are limited to existing roads. Only Skid trails will be allowed.

#### **4.2 - Maintenance**

##### **4.2.2 - Fill Material (4/07)**

To maintain roads, fill material may be needed in areas where "holes" exist or may be expected to develop. This fill material should be placed before trucking begins. The access roads to Payment Units 1 and 2 are particularly sandy and may need some material and or maintenance.

### **5 - Operations**

#### **5.1 - Notification**

##### **5.1.1 - Pre-sale Conference (10/16)**

A pre-sale conference on site between the Purchaser and Sale Administrator is required prior to beginning operations to determine landing and road locations. The Unit Manager or his/her representative must be contacted at least 3 days in advance to schedule the conference.

#### **5.2 - Conduct of Operations**

##### **5.2.40 - Pathway Protection (10/10)**

The North Country Trail is a hiking and horse trail that crosses through Payment Units 3 and 4 and is shown on the Timber

Sale Map. Do not cut trees or damage posts with blue pathway markers or horse trail markers. Maintain a 20-foot-wide slash, debris, and rut free zone daily, using the pathway as the centerline. Do not run equipment down the pathway. Skidding across the trail may only occur in locations approved by the Sale Administrator.

## **6 - Safety and Fire Prevention**

### **6.2 - Signing**

#### **6.2.3 - Recreational Trail Posting (10/20)**

The Purchaser is responsible for posting and maintaining caution signs on the North Country Trail (Hiking and Horse Trail) when working within Payment Units 3 and 4 prior to beginning operations. The trail must be posted at appropriate distances from the Sale Area to warn of logging activity and truck traffic at both ends of the trail. Signs must be removed when harvest operations are suspended or completed. The Purchaser will provide these signs.



**TIMBER SALE MAP**

This information provided by authority of Part 525, 1994 PA 451, as amended.

Sale Number  
**61-011-25**

Date  
**03/31/2025**

Forest Management Unit	County	Mapped By: Ventimiglia	Scale	Page	Of
Traverse City Mgt Unit	Grand Traverse	Cruised By: Ventimiglia	1:10,000	2	2

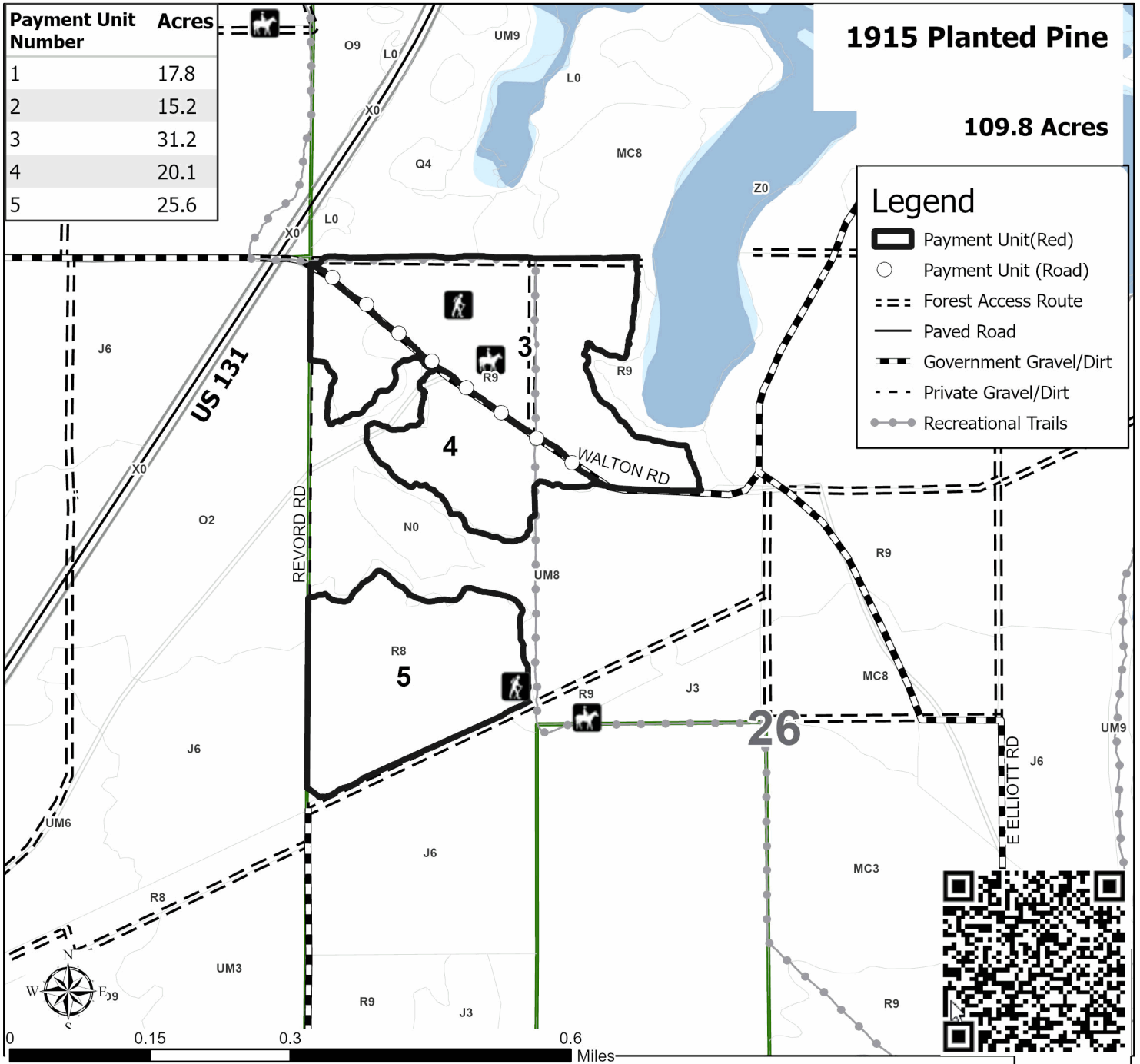
Township	Range	Section(s) and Subdivision(s)
25N	09W	E1/2NE,NESE; Sec. 14 SWNW,NWSW,S1/2SW; Sec. 23 S1/2SW; Sec. 26 N1/2NW,SWNW,NWSW; Sec. 27

**Cover Type**

A = Aspen	J = Jack Pine	O = Oak	U = Upland Brush
B = Paper Birch	K = Rock	P = Lowland Poplar	UM = Upland Mix Forest
C = Cedar	L = Lowland Brush	Q = Mixed Swamp Conifer	V = Bog or Marsh
D = Treed Bog	LM = Lowland Mix Forest	R = Red Pine	W = White Pine
E = Swamp Hardwoods	M = Maple, Beech, Birch	S = Black Spruce	X = Non Stocked
F = Spruce/Fir	MC = Mixed Conifer	T = Tamarack	Y = Sand
G = Grass	MD = Mixed Deciduous	Z = Water	
H = Hemlock	N = Marsh		

**Density**

0 = Non Stocked	5 = Pole Timber Medium
1 = Seedling Sapling Poor	6 = Pole Timber Well
2 = Seedling Sapling Medium	7 = Saw Timber Poor
3 = Seedling Sapling Well	8 = Saw Timber Medium
4 = Pole Timber Poor	9 = Saw Timber Well





**TIMBER SALE MAP**

This information provided by authority of Part 525, 1994 PA 451, as amended.

Sale Number

**61-011-25**

Date

**03/31/2025**

Forest Management Unit

County

Mapped By: Ventimiglia

Scale

Page

Of

Traverse City Mgt Unit

Grand Traverse

Cruised By: Ventimiglia

**1:10,000**

**1**

**2**

Township  
25N

Range  
09W

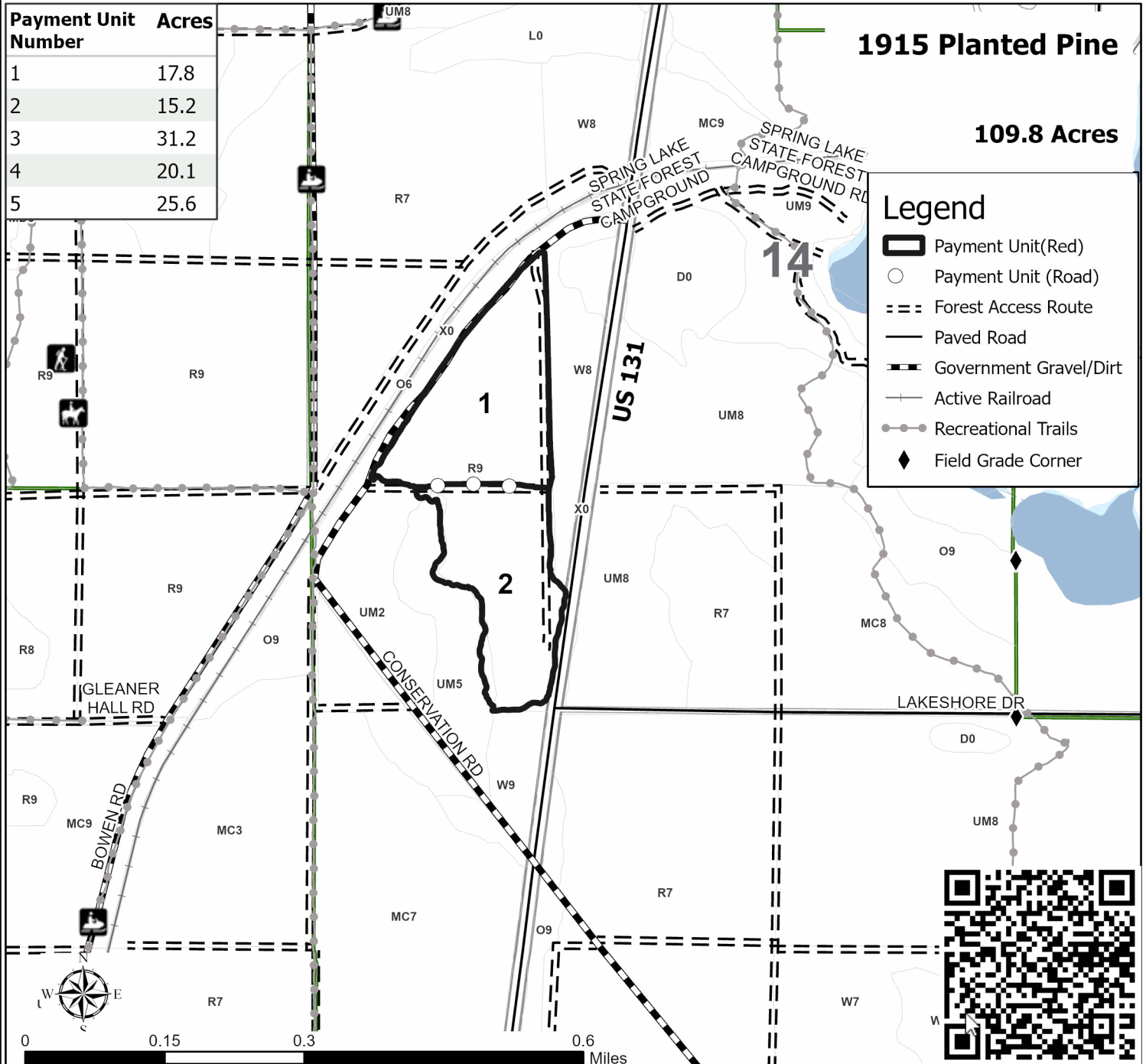
Section(s) and Subdivision(s) E1/2NE,NESE;  
Sec. 14 SWNW,NWSW,S1/2SW; Sec. 23 S1/2SW; Sec. 26 N1/2NW,SWNW,NWSW; Sec. 27

**Cover Type**

A = Aspen	J = Jack Pine	O = Oak	U = Upland Brush
B = Paper Birch	K = Rock	P = Lowland Poplar	UM = Upland Mix Forest
C = Cedar	L = Lowland Brush	Q = Mixed Swamp Conifer	V = Bog or Marsh
D = Treed Bog	LM = Lowland Mix Forest	R = Red Pine	W = White Pine
E = Swamp Hardwoods	M = Maple, Beech, Birch	S = Black Spruce	X = Non Stocked
F = Spruce/Fir	MC = Mixed Conifer	T = Tamarack	Y = Sand
G = Grass	MD = Mixed Deciduous	Z = Water	
H = Hemlock	N = Marsh		

**Density**

0 = Non Stocked	5 = Pole Timber Medium
1 = Seedling Sapling Poor	6 = Pole Timber Well
2 = Seedling Sapling Medium	7 = Saw Timber Poor
3 = Seedling Sapling Well	8 = Saw Timber Medium
4 = Pole Timber Poor	9 = Saw Timber Well



# TIMBER SALE INFORMATION

Sheet Flow Aspen (61-012-25)

T24N, R13W, SEC. 6.

Manistee County (Advertised Price \$66,935.15)

**SALE NOTE:** Please note sale specific specs 4.1.5 & 4.1.8 which identify road work needed to access sale. In addition, spec 5.2.3.1 details restricted periods for operating within sale.

A recreation site such as a trail, pathway, or campground is within the sale area or the vicinity. Certain restrictions/specifications may be applicable including time restrictions.

A timber sale contract for this lump sum, sealed bid timber sale will be awarded to the responsible bidder offering the highest sealed bid price. All units of volume listed below were estimated using the Inventory Manager computer program and the new Michigan taper model. Bids must be at or above the following advertised price for each product and species:

<u>PRODUCTS &amp; SPECIES</u>	<u>ESTIMATED UNITS*</u>		<u>ADVERTISED PRICE</u>
Sawtimber			
Quaking Aspen	197.3	MBF	\$ 108.00 / MBF
Red Maple	116.6	MBF	\$ 99.00 / MBF
Pulpwood			
Mixed Hardwood	167	Cords	\$ 17.75 / Cord
Quaking Aspen	959	Cords	\$ 20.90 / Cord
Red Maple	624	Cords	\$ 17.75 / Cord

\* The total volume is statistically estimated within plus (+) or minus (-) 18.78 percent. There are an estimated 2,489 cords on this timber sale, plus or minus 468 cords at the 95% confidence level. The estimated units are final and not subject to adjustment. Prospective bidders are urged to examine this timber and to make their own estimates of quantity and quality.

## **BOND AND PAYMENT SCHEDULE:**

- A bond in the amount of \$3,347.00 to insure faithful performance of the conditions of the contract will be deposited by the successful bidder within 21 days of the sale award.
- Cutting in any sale or unit without the required advance payment would be considered a trespass.
- Total payment must be paid in advance or according to the following schedule :
  - Ten percent (10%) of the sale value must be paid within 21 days of the sale award.
  - The 10% down payment will be credited towards the first unit cut.
  - Payment for each of the following units must be made before cutting begins in that unit:

PAYMENT UNIT NUMBER	PERCENT OF TOTAL SALE VALUE
01	51.8%
02	48.2%
- If no cutting takes place, the 10% down payment will not be refunded.
- Operations on the contract issued will terminate on 09/30/2028.

## **SALE STATISTICS**

Volumes were calculated in cubic feet using the Michigan taper model. Cubic foot volume includes all wood inside bark for the product indicated. For display purposes, cubic feet were converted to cords and MBF using a simple conversion factor, e.g. 79 cubic feet per cord and 185 cubic feet per MBF. The cubic foot volumes are precise; the cords and MBF volumes are not. Cubic foot volume cannot be directly converted to cords or boards with precision.

## **SALE VOLUMES**

The total estimated sale volume may not equal the sum of the species/products due to the nature of statistical calculations associated with double sampling methodology.

VOLUME		STATISTICAL RANGE IN CORDS		
TOTAL CUBIC FEET	TOTAL CORDS	PERCENT ERROR	MINIMUM	MAXIMUM
196,664	2,489	18.78%	2,022	2,957

VDU VOLUMES

A VDU is a Volume Determination Unit. Volumes and their associated statistics are calculated at the VDU level and summarized to the sale level. There is often a one to one relationship between a VDU and a Payment Unit, but not always, depending on the cruise design. Refer to the VDU TO PAYMENT UNIT table.

	VOLUME			RANGE IN CORDS	
VDU	TOTAL CUBIC FEET	TOTAL CORDS	PERCENT ERROR	MINIMUM	MAXIMUM
20	196,664	2,489	18.79%	2,022	2,957
TOTAL:	196,664	2,489		2,022	2,957

VDU TO PAYMENT UNIT

When a VDU is associated with more than one Payment Unit (PU), the VDU volumes are assigned to the PU based on acres of the VDU within the PU.

VDU	VDU ACRES	PU	PU ACRES
20	67.8	1	35.1
		2	32.7
TOTAL:	67.8		67.8

DESCRIPTION OF TIMBER BY PAYMENT UNIT (PU)

PU	MARKET GROUP	PRODUCT	QUANTITY	UNIT	ACRES	ADVERTISE PRICE
1	Quaking Aspen	Sawtimber	102.1	MBF	35.1	\$34,650.30
	Red Maple		60.4	MBF		
	Mixed Hardwood	Pulpwood	87	Cords		
	Basswood	Sawtimber	2.6	MBF		
	Black Cherry		2.4	MBF		
	Basswood	Pulpwood	30	Cords		
	Black Cherry		47	Cords		
	Quaking Aspen		496	Cords		
	Red Maple		323	Cords		
2	Quaking Aspen	Sawtimber	95.2	MBF	32.7	\$32,284.85
	Red Maple		56.2	MBF		
	Mixed Hardwood	Pulpwood	80	Cords		
	Basswood	Sawtimber	2.4	MBF		
	Black Cherry		2.2	MBF		
	Basswood	Pulpwood	27	Cords		
	Black Cherry		44	Cords		
	Quaking Aspen		463	Cords		
	Red Maple		301	Cords		
TOTAL:			313.9	MBF		
TOTAL:			1,750	Cords		



## **Sale Specific Conditions & Requirements**

**Sale Name: Sheet Flow Aspen**

**Sale Number: 61-012-25 Seq#: 1**

### **1 - Sale Area**

#### **1.2 - Boundaries**

##### **1.2.1 - Painted Boundaries (9/19)**

The sale boundary and Payment Unit boundaries are marked and identified by red and yellow paint. Exterior sale boundary lines against state are marked with red paint. Interior Payment Unit boundaries are marked with yellow paint. Retention patches are marked with green paint; no harvesting activities may occur within these areas. The painted boundary line trees are not Included Timber and are to be protected unless marked with a red "X". Boundary line trees marked with a red "X" shall be cut and felled so that they fall outside of the sale boundary, perpendicular to the boundary line. Yellow painted trees designating an interior Payment Unit boundary are only to be cut when all surrounding Payment Units have been paid.

### **2 - Timber Specifications**

#### **2.1 - Included Timber**

##### **2.1.1 - Clearcut Unit(s) with Unmerchantable Trees (6/14)**

Within Payment Unit(s) 1 and 2, cut all trees that are two (2) inches or more at DBH, except do not cut any conifers within Sale Area.

Special protection areas identified in accordance with condition 3.4.3, within clearcutting unit boundaries, are not Included Timber and are to be protected.

#### **2.2 - Utilization**

##### **2.2.3 - Stump Heights (12/24)**

Stump heights within the Sale Area shall not exceed 12 inches for trees greater than 10 inches at DBH and four (4) inches for trees smaller than 10 inches at DBH.

### **3 - Payments**

#### **3.4 - Damaged Timber**

##### **3.4.3 - Special Protection Areas (8/11)**

The Purchaser shall protect special protection areas from damage by the Purchaser's operations. Special protection areas are marked with a green boundary line. The Purchaser shall not cut live or dead trees within special protection areas. If the Purchaser's operations have cut or damaged special protection areas through carelessness, the Purchaser shall pay \$500.00 as fixed, agreed and liquidated damages for each acre or part thereof cut or damaged. Such payment does not constitute ownership of the undesignated timber.

### **4 - Transportation**

#### **4.1 - Construction**

##### **4.1.5 - Culverts (5/14)**

Access route may require the installation of culverts for cross drainage or at natural drainage-ways. If culverts are needed in these locations, their placement will be specified by the Sale Administrator, and they shall be installed prior to hauling. The culverts shall be new, corrugated metal or plastic gauge. Culverts will be a minimum of 12 inches in diameter and 24 feet in length. If culverts are removed, fill shall be removed from wetland soils as specified. Soils shall be maintained and left in a non-erodible condition, with water bars, seed, fertilizer, mulch, and slash installed as directed by the Sale Administrator and as specified in the BMP manual. Consultation has taken place with EGLE and it was determined no permits are required for this access.

##### **4.1.8 - Road Work (1) (8/07)**

The following road work is required: a properly sized culvert as specified in sale spec 4.1.5 will need to be placed to allow for equalization flow along access route to sale. In addition, fill will need to be added to surround culvert. On top of this culvert, crane mats will likely be needed in order to utilize this route, for skidding only. No truck access will be allowed into Sale Area.

#### 4.1.11 - Permits (2/12)

The Purchaser will secure any necessary permits that may be required.

### 5 - Operations

#### 5.2 - Conduct of Operations

##### 5.2.1 - Slash

###### 5.2.1.8 - Slash Height (12/08)

No slash or tree tops may exceed 24 inches in height.

##### 5.2.2 - Hazard Trees/Snags

###### 5.2.2.1 - Den Trees (10/16)

Obvious hollow and/or den trees shall be protected and left standing unless they are a safety hazard.

##### 5.2.3 - Operating Restrictions

###### 5.2.3.1 - Operating Restrictions (9/11)

Within Payment Unit(s) 1 and 2, unless changed by written agreement, cutting, skidding, and hauling are limited to DRY spring/summer/fall conditions, or if this area experiences entirely frozen conditions during winter months. This restriction is due to the fact that the access route crosses an area that experiences sheet flow during winter thaws and during spring runoff making the access route unusable.

##### 5.2.17 - Timber Mats and Interlocking Composite Mats (5/23)

Access route/skid trail may require extra protection such as that afforded by timber mats, interlocking composite mats, or another approved system. Approximately 180 feet of road or trail will need extra protection at locations shown on the Timber Sale Map. If available, mats may be borrowed from the DNR. A Timber Sale Contract Amendment will be used to document the Purchaser's use of the DNR's mats. Contact the Sale Administrator regarding availability and pick-up. Timber mats are available from various field offices. Composite mats are only available from the Grayling field office and the Marquette ICC. The Purchaser is responsible for picking up and hauling the mats to and from the site. The composite mats will require DNR staff onsite for installation and removal. Contact the Sale Administrator to schedule at least 30 days before desired install/removal date. All mats must be cleaned prior to drop off. This may include, but is not limited to, power washing and brushing to remove mud and debris. A charge of \$700.00 per timber mat and \$2,000.00 per composite mat will be assessed for all damaged or non-returned mats. Damage for the crane/timber mats is defined as three or more broken cants. Damage for the composite mats is defined as cracked or broken mats.

##### 5.2.29 - Shrub Protection (1/20)

Do not cut or damage hawthorn, witch-hazel or junberry. These woody-shrub plants are highly beneficial to various wildlife species.

##### 5.2.41 - Snowmobile Trail Protection (9/11)

The snowmobile trail is shown on the Timber Sale Map. Do not cut or damage posts with orange trail markers or traffic control signs. If the trail is used, it must be maintained and restored to a condition equal to or better than before the sale. The road maintenance/restoration must be done prior to December 1. If the trail is used for hauling, it must be graded to the satisfaction of the Unit Manager or his/her representative prior to December 1. If the trail road is to be used for hauling during the snowmobile season, then a snow-covered base must be left on the trail. No decking of forest products will be permitted along the snowmobile trail.

#### 5.4 - Soil Protection

##### 5.4.1 - Rutting Restriction, General (7/16)

Operations are to cease immediately if equipment and weather conditions result in rutting of roads and/or skid trails which are 12 inches or greater in depth and 50 feet in length. The Unit Manager or his/her representative may restrict hauling and/or skidding if ruts exceed the specified depth. With the Unit Manager or his/her representative's approval, the Purchaser may return to the area when the risk of rutting has decreased.

### 6 - Safety and Fire Prevention

#### 6.2 - Signing

#### 6.2.2 - Snowmobile Trail Posting (10/20)

The Purchaser is responsible for posting and maintaining caution signs on the snowmobile trail prior to beginning operations during the snowmobile season (approximately December 1 to March 31). The trail must be posted at appropriate distances from the state forest road used for accessing the Sale Area to warn of logging activity and truck traffic. Signs must be removed when harvest operations are suspended or completed. The Purchaser will provide these signs.



**TIMBER SALE MAP**

This information provided by authority of Part 525, 1994 PA 451, as amended.

Sale Number  
**61-012-25**

Date  
**03/27/2025**

Forest Management Unit  
Traverse City Mgt Unit

County  
Manistee

Mapped By: Patrick Cotant  
Cruised By: Cotant, Ventimiglia

Scale  
**1:15,840**

Page  
**1**

Of  
**1**

Township  
24N

Range  
13W

Section(s) and  
Subdivision(s) Sec. 6 SWNE,E1/2SW,W1/2SE;

**Cover Type**

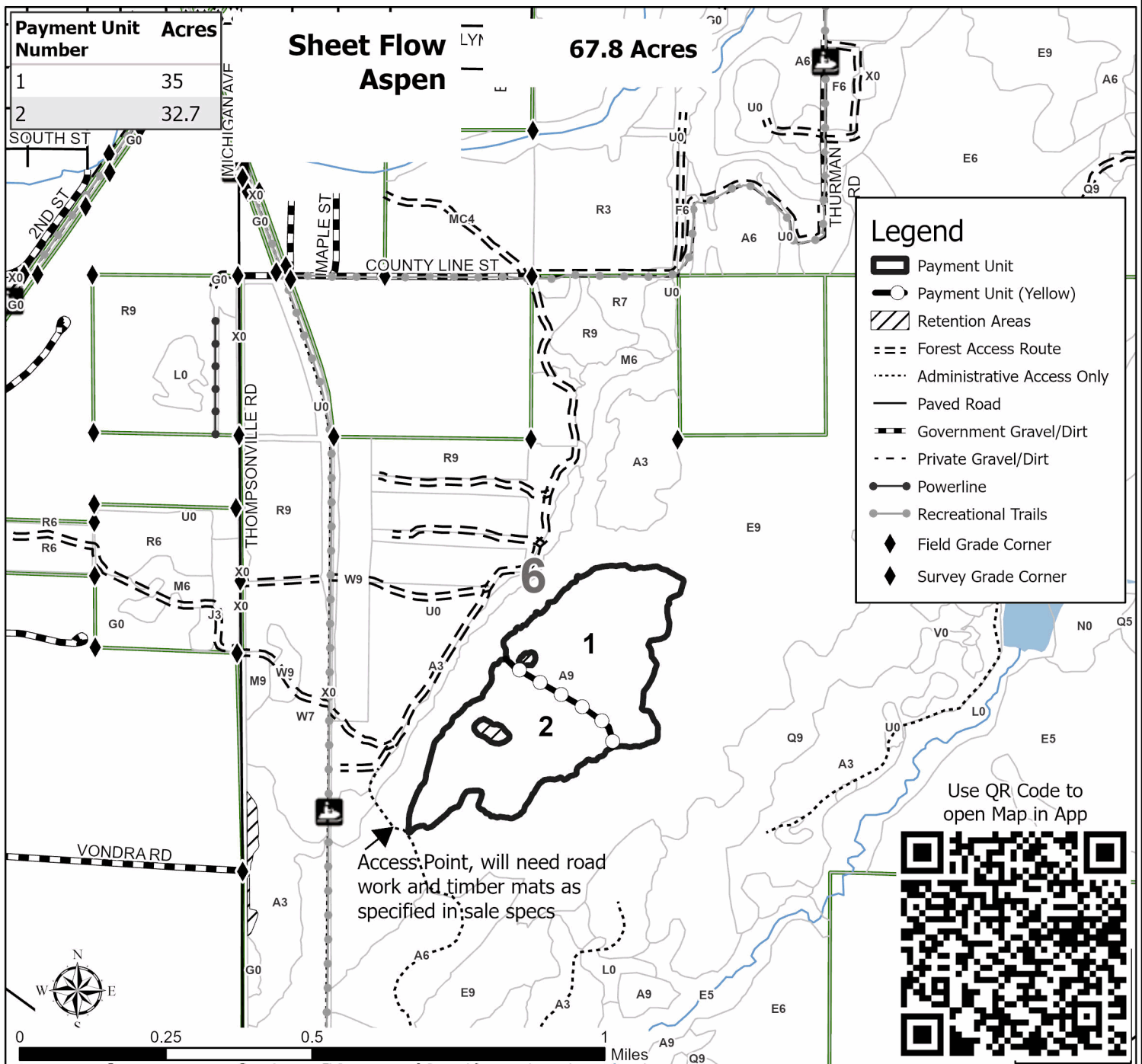
A = Aspen	J = Jack Pine	O = Oak	U = Upland Brush
B = Paper Birch	K = Rock	P = Lowland Poplar	UM = Upland Mix Forest
C = Cedar	L = Lowland Brush	Q = Mixed Swamp Conifer	V = Bog or Marsh
D = Treed Bog	LM = Lowland Mix Forest	R = Red Pine	W = White Pine
E = Swamp Hardwoods	M = Maple, Beech, Birch	S = Black Spruce	X = Non Stocked
F = Spruce/Fir	MC = Mixed Conifer	T = Tamarack	Y = Sand
G = Grass	MD = Mixed Deciduous	Z = Water	
H = Hemlock	N = Marsh		

**Density**

0 = Non Stocked	5 = Pole Timber Medium
1 = Seedling Sapling Poor	6 = Pole Timber Well
2 = Seedling Sapling Medium	7 = Saw Timber Poor
3 = Seedling Sapling Well	8 = Saw Timber Medium
4 = Pole Timber Poor	9 = Saw Timber Well

Payment Unit Number	Acres
1	35
2	32.7

**Sheet Flow Aspen 67.8 Acres**



Use QR Code to  
open Map in App



## TIMBER SALE INFORMATION

Dutchman Aspen (61-013-25)  
T24N, R13W, SEC. 18; T24N, R13W, SEC. 7.  
Manistee County (Advertised Price \$51,698.90)

A timber sale contract for this lump sum, sealed bid timber sale will be awarded to the responsible bidder offering the highest sealed bid price. All units of volume listed below were estimated using the Inventory Manager computer program and the new Michigan taper model. Bids must be at or above the following advertised price for each product and species:

<u>PRODUCTS &amp; SPECIES</u>	<u>ESTIMATED UNITS*</u>		<u>ADVERTISED PRICE</u>
Sawtimber			
Mixed Aspen	105.0	MBF	\$ 125.00 / MBF
White Pine	124.8	MBF	\$ 75.00 / MBF
Pulpwood			
Mixed Aspen	639	Cords	\$ 24.10 / Cord
Mixed Hardwood	260	Cords	\$ 20.50 / Cord
White Pine	336	Cords	\$ 25.25 / Cord

\* The total volume is statistically estimated within plus (+) or minus (-) 18.76 percent. There are an estimated 1,785 cords on this timber sale, plus or minus 335 cords at the 95% confidence level. The estimated units are final and not subject to adjustment. Prospective bidders are urged to examine this timber and to make their own estimates of quantity and quality.

### **BOND AND PAYMENT SCHEDULE:**

- A bond in the amount of \$2,585.00 to insure faithful performance of the conditions of the contract will be deposited by the successful bidder within 21 days of the sale award.
- Cutting in any sale or unit without the required advance payment would be considered a trespass.
- Total payment must be paid in advance or according to the following schedule :
  - Ten percent (10%) of the sale value must be paid within 21 days of the sale award.
  - The 10% down payment will be credited towards the first unit cut.
  - Payment for each of the following units must be made before cutting begins in that unit:
 

PAYMENT UNIT NUMBER	PERCENT OF TOTAL SALE VALUE
01	15.0%
02	50.9%
03	34.1%
- If no cutting takes place, the 10% down payment will not be refunded.
- Operations on the contract issued will terminate on 12/31/2027.

### **SALE STATISTICS**

Volumes were calculated in cubic feet using the Michigan taper model. Cubic foot volume includes all wood inside bark for the product indicated. For display purposes, cubic feet were converted to cords and MBF using a simple conversion factor, e.g. 79 cubic feet per cord and 185 cubic feet per MBF. The cubic foot volumes are precise; the cords and MBF volumes are not. Cubic foot volume cannot be directly converted to cords or boards with precision.

### **SALE VOLUMES**

The total estimated sale volume may not equal the sum of the species/products due to the nature of statistical calculations associated with double sampling methodology.

VOLUME			STATISTICAL RANGE IN CORDS	
TOTAL CUBIC FEET	TOTAL CORDS	PERCENT ERROR	MINIMUM	MAXIMUM
140,999	1,785	18.76%	1,450	2,120

## VDU VOLUMES

A VDU is a Volume Determination Unit. Volumes and their associated statistics are calculated at the VDU level and summarized to the sale level. There is often a one to one relationship between a VDU and a Payment Unit, but not always, depending on the cruise design. Refer to the VDU TO PAYMENT UNIT table.

	VOLUME			RANGE IN CORDS	
VDU	TOTAL CUBIC FEET	TOTAL CORDS	PERCENT ERROR	MINIMUM	MAXIMUM
67	20,378	258	54.57%	117	399
105	45,090	571	26.25%	421	721
199	75,530	956	28.55%	683	1,229
<b>TOTAL:</b>	<b>140,999</b>	<b>1,785</b>		<b>1,221</b>	<b>2,348</b>

## VDU TO PAYMENT UNIT

When a VDU is associated with more than one Payment Unit (PU), the VDU volumes are assigned to the PU based on acres of the VDU within the PU.

VDU	VDU ACRES	PU	PU ACRES
67	5.2	1	5.2
105	11.6	3	11.6
199	21.6	2	21.6
<b>TOTAL:</b>	<b>38.4</b>		<b>38.4</b>

**DESCRIPTION OF TIMBER BY PAYMENT UNIT (PU)**

PU	MARKET GROUP	PRODUCT	QUANTITY	UNIT	ACRES	ADVERTISE PRICE
1	Mixed Aspen	Sawtimber	32.1	MBF	5.2	\$7,740.10
	B. T. Aspen		32.1	MBF		
	Mixed Aspen	Pulpwood	56	Cords		
	B. T. Aspen		56	Cords		
	Mixed Hardwood		116	Cords		
	Red Maple	Sawtimber	23.9	MBF		
	Sugar Maple		6.0	MBF		
	Red Maple	Pulpwood	46	Cords		
Sugar Maple		10	Cords			
2	Mixed Aspen	Sawtimber	13.5	MBF	21.6	\$26,323.40
	B. T. Aspen		13.5	MBF		
	White Pine		124.8	MBF		
	Mixed Aspen	Pulpwood	209	Cords		
	B. T. Aspen		209	Cords		
	Mixed Hardwood		93	Cords		
	Black Cherry	Sawtimber	1.3	MBF		
	Red Maple		2.4	MBF		
	Black Cherry	Pulpwood	31	Cords		
	Red Maple		54	Cords		
	White Pine		330	Cords		
3	Mixed Aspen	Sawtimber	59.4	MBF	11.6	\$17,635.40
	Quaking Aspen		59.4	MBF		
	Mixed Aspen	Pulpwood	374	Cords		
	Quaking Aspen		374	Cords		
	Mixed Hardwood		51	Cords		
	Black Cherry	Sawtimber	1.1	MBF		
	Black Cherry	Pulpwood	10	Cords		
	Red Maple		39	Cords		
White Pine		6	Cords			
TOTAL:			229.8	MBF		
TOTAL:			1,235	Cords		

## **Sale Specific Conditions & Requirements**

**Sale Name: Dutchman Aspen**

**Sale Number: 61-013-25 Seq#: 1**

### **1 - Sale Area**

#### **1.2 - Boundaries**

##### **1.2.1 - Painted Boundaries (9/19)**

The sale boundary and Payment Unit boundaries are marked and identified by blue and red paint. Exterior sale boundary lines against private property are marked with blue paint. Exterior sale boundary lines against state are marked with red paint. The painted boundary line trees are not Included Timber and are to be protected.

### **2 - Timber Specifications**

#### **2.1 - Included Timber**

##### **2.1.1 - Clearcut Unit(s) with Unmerchantable Trees (6/14)**

Within Payment Unit(s) 1, 2 and 3, cut all trees that are two (2) inches or more at DBH.

Within Payment Unit 1, do not cut conifers or trees marked with blue paint.

Within Payment Unit 2, do not cut green marked trees.

Within Payment Unit 3, do not cut any white pine that are 10 inches or more at DBH. In addition, do not cut any sugar maple.

Special protection trees identified in accordance with condition 3.4.2, within clearcutting unit boundaries, are not Included Timber and are to be protected.

#### **2.2 - Utilization**

##### **2.2.3 - Stump Heights (12/24)**

Stump heights within the Sale Area shall not exceed 12 inches for trees greater than 10 inches at DBH and four (4) inches for trees smaller than 10 inches at DBH.

### **3 - Payments**

#### **3.4 - Damaged Timber**

##### **3.4.2 - Special Protection Trees (1/25)**

The Purchaser shall not cut live or dead special protection trees within cutting units or clearings. Special protection trees are marked with blue paint in Payment Unit 1, green paint in Payment Unit 2, and all white pine that are 10 inches or more at DBH and all sugar maple in Payment Unit 3 (these trees are not identified with paint, it is the Purchaser's responsibility to identify these trees to be retained). If Purchaser's operations have cut or damaged special protection trees through carelessness, the Purchaser shall pay \$100.00 as fixed, agreed and liquidated damages for each special protection tree cut or damaged. Such payment does not constitute ownership of the undesignated timber.

### **4 - Transportation**

#### **4.1 - Construction**

##### **4.1.11 - Permits (2/12)**

The Purchaser will secure any necessary permits that may be required.

##### **4.1.12 - No New Roads (1/12)**

No new roads will be permitted in any Payment Unit. All operations are limited to existing roads. Only skid trails will be allowed along with access points and landing area off Thompsonville Road for each Payment Unit. Each of these access points along with associated landing areas will need to be rehabbed and closed to the satisfaction of the Sale Administrator prior to sale completion.

### **5 - Operations**

#### **5.2 - Conduct of Operations**

##### **5.2.1 - Slash**



#### 5.2.1.8 - Slash Height (12/08)

No slash or tree tops may exceed 24 inches in height.

### 5.2.2 - Hazard Trees/Snags

#### 5.2.2.1 - Den Trees (10/16)

Obvious hollow and/or den trees shall be protected and left standing unless they are a safety hazard.

### 5.2.3 - Operating Restrictions

#### 5.2.3.1 - Operating Restrictions (9/11)

Within Payment Unit(s) 1, 2 and 3, unless changed by written agreement, cutting, skidding, and hauling are limited to dry and/or frozen conditions. This restriction is due to the fact that portions of each unit are seasonally wet and sensitive soils are located adjacent to these areas.

### 5.2.4 - Dead and Down Creation

#### 5.2.4.2 - Dead and Down Creation, Hare and Grouse (1/25)

To improve habitat for snowshoe hare, grouse, and other species, the Purchaser is to leave two 12-inch diameter or larger log size pieces on the ground for every two (2) acres. They should be scattered throughout the sale or positioned per the Sale Administrator's instructions. If possible, the logs or trees should be felled so they overlap. Note these pieces should have a minimum length of five (8) feet. They can be of any tree species and can be an un-merchantable piece of wood or a full tree.

#### 5.2.29 - Shrub Protection (1/20)

Do not cut or damage hawthorn, witch-hazel or juneberry. These woody-shrub plants are highly beneficial to various wildlife species.

### 5.3 - Stream Protection

#### 5.3.1 - Operating Near Stream (1/25)

No tracked or wheeled vehicles shall be operated within 50 feet of Dutchman Creek. No crossings will be approved.

### 5.4 - Soil Protection

#### 5.4.1 - Rutting Restriction, General (7/16)

Operations are to cease immediately if equipment and weather conditions result in rutting of roads and/or skid trails which are 12 inches or greater in depth and 50 feet in length. The Unit Manager or his/her representative may restrict hauling and/or skidding if ruts exceed the specified depth. With the Unit Manager or his/her representative's approval, the Purchaser may return to the area when the risk of rutting has decreased.



**TIMBER SALE MAP**

This information provided by authority of Part 525, 1994 PA 451, as amended.

Sale Number  
**61-013-25**

Date  
**03/28/2025**

Forest Management Unit	County	Mapped By: Patrick Cotant	Scale	Page	Of
Traverse City Mgt Unit	Manistee	Cruised By: Patrick Cotant	1:15,840	1	1

Township	Range	Section(s) and Subdivision(s)
24N	13W	Sec. 18 W1/2NW; Sec. 7 NWSW;

**Cover Type**

A = Aspen	J = Jack Pine	O = Oak	U = Upland Brush
B = Paper Birch	K = Rock	P = Lowland Poplar	UM = Upland Mix Forest
C = Cedar	L = Lowland Brush	Q = Mixed Swamp Conifer	V = Bog or Marsh
D = Treed Bog	LM = Lowland Mix Forest	R = Red Pine	W = White Pine
E = Swamp Hardwoods	M = Maple, Beech, Birch	S = Black Spruce	X = Non Stocked
F = Spruce/Fir	MC = Mixed Conifer	T = Tamarack	Y = Sand
G = Grass	MD = Mixed Deciduous		Z = Water
H = Hemlock	N = Marsh		

**Density**

0 = Non Stocked	5 = Pole Timber Medium
1 = Seedling Sapling Poor	6 = Pole Timber Well
2 = Seedling Sapling Medium	7 = Saw Timber Poor
3 = Seedling Sapling Well	8 = Saw Timber Medium
4 = Pole Timber Poor	9 = Saw Timber Well

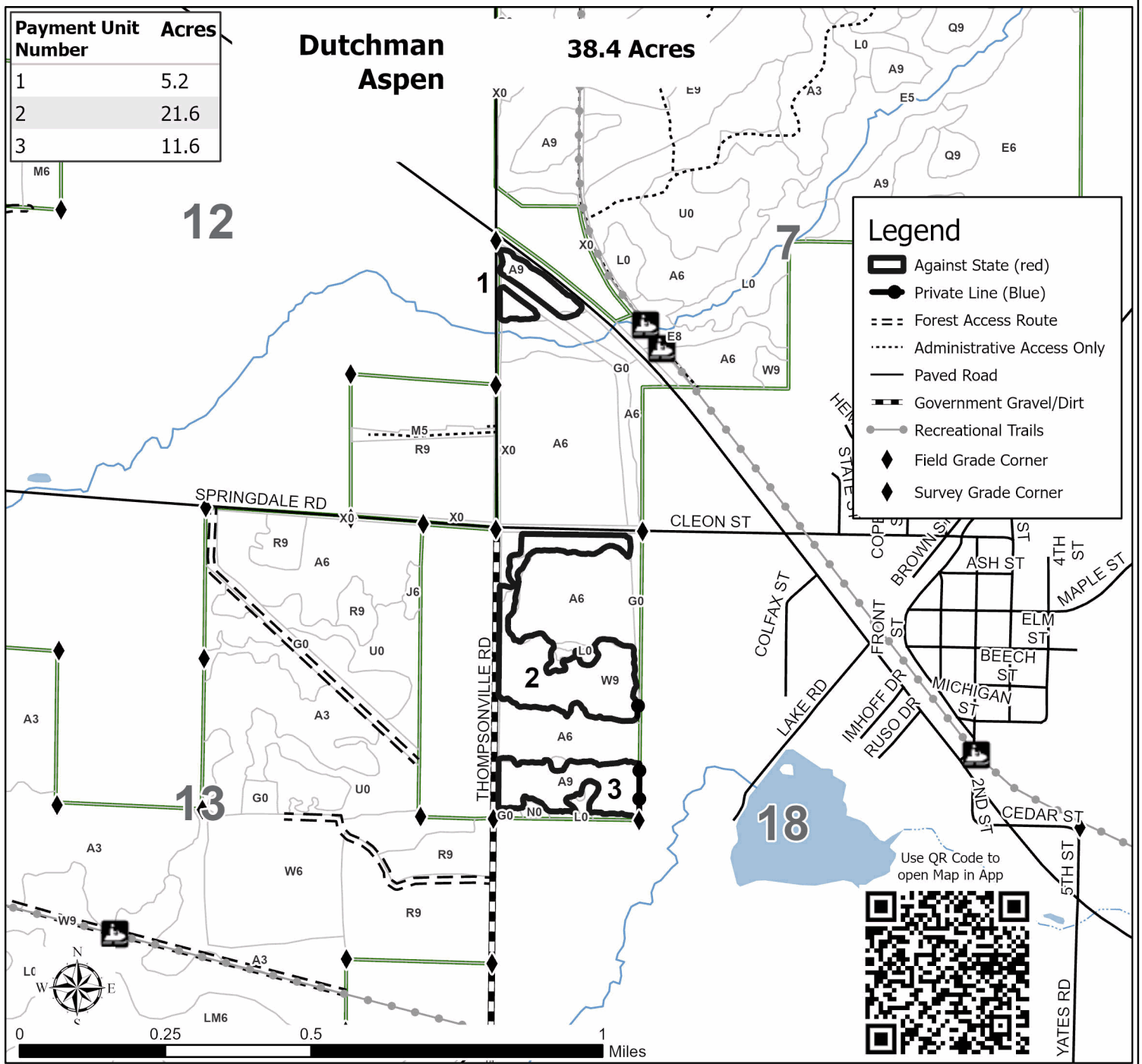
Payment Unit Number	Acres
1	5.2
2	21.6
3	11.6

**Dutchman Aspen**

**38.4 Acres**

**Legend**

- Against State (red)
- Private Line (Blue)
- Forest Access Route
- Administrative Access Only
- Paved Road
- Government Gravel/Dirt
- Recreational Trails
- Field Grade Corner
- Survey Grade Corner



## TIMBER SALE INFORMATION

Muddy Paws Pine (61-014-25)  
T24N, R13W, SEC. 6.  
Manistee County (Advertised Price \$128,603.45)

**SALE NOTE:** A recreation site such as a trail, pathway, or campground is within the sale area or the vicinity. Certain restrictions/specifications may be applicable including time restrictions.

A timber sale contract for this lump sum, sealed bid timber sale will be awarded to the responsible bidder offering the highest sealed bid price. All units of volume listed below were estimated using the Inventory Manager computer program and the new Michigan taper model. Bids must be at or above the following advertised price for each product and species:

<u>PRODUCTS &amp; SPECIES</u>	<u>ESTIMATED UNITS*</u>		<u>ADVERTISED PRICE</u>
Sawtimber			
Red Pine	354.8	MBF	\$ 134.00 / MBF
Pulpwood			
Mixed Hardwood	232	Cords	\$ 20.50 / Cord
Red Pine	930	Cords	\$ 55.25 / Cord
White Pine	987	Cords	\$ 25.25 / Cord

\* The total volume is statistically estimated within plus (+) or minus (-) 10.30 percent. There are an estimated 2,981 cords on this timber sale, plus or minus 307 cords at the 95% confidence level. The estimated units are final and not subject to adjustment. Prospective bidders are urged to examine this timber and to make their own estimates of quantity and quality.

### **BOND AND PAYMENT SCHEDULE:**

1. A bond in the amount of \$6,430.00 to insure faithful performance of the conditions of the contract will be deposited by the successful bidder within 21 days of the sale award.
  2. Cutting in any sale or unit without the required advance payment would be considered a trespass.
  3. Total payment must be paid in advance or according to the following schedule :
    - (a) Ten percent (10%) of the sale value must be paid within 21 days of the sale award.
    - (b) The 10% down payment will be credited towards the first unit cut.
    - (c) Payment for each of the following units must be made before cutting begins in that unit:
- | PAYMENT UNIT NUMBER | PERCENT OF TOTAL SALE VALUE |
|---------------------|-----------------------------|
| 01                  | 18.4%                       |
| 02                  | 74.9%                       |
| 03                  | 6.7%                        |

4. If no cutting takes place, the 10% down payment will not be refunded.
5. Operations on the contract issued will terminate on 12/31/2027.

### **SALE STATISTICS**

Volumes were calculated in cubic feet using the Michigan taper model. Cubic foot volume includes all wood inside bark for the product indicated. For display purposes, cubic feet were converted to cords and MBF using a simple conversion factor, e.g. 79 cubic feet per cord and 185 cubic feet per MBF. The cubic foot volumes are precise; the cords and MBF volumes are not. Cubic foot volume cannot be directly converted to cords or boards with precision.

### **SALE VOLUMES**

The total estimated sale volume may not equal the sum of the species/products due to the nature of statistical calculations associated with double sampling methodology.

VOLUME		PERCENT ERROR	STATISTICAL RANGE IN CORDS	
TOTAL CUBIC FEET	TOTAL CORDS		MINIMUM	MAXIMUM
235,483	2,981	10.30%	2,674	3,288

## VDU VOLUMES

A VDU is a Volume Determination Unit. Volumes and their associated statistics are calculated at the VDU level and summarized to the sale level. There is often a one to one relationship between a VDU and a Payment Unit, but not always, depending on the cruise design. Refer to the VDU TO PAYMENT UNIT table.

	VOLUME			RANGE IN CORDS	
VDU	TOTAL CUBIC FEET	TOTAL CORDS	PERCENT ERROR	MINIMUM	MAXIMUM
5	135,636	1,717	11.48%	1,520	1,914
9	74,700	946	24.48%	714	1,177
17	25,147	318	24.15%	241	395
<b>TOTAL:</b>	<b>235,483</b>	<b>2,981</b>		<b>2,475</b>	<b>3,486</b>

## VDU TO PAYMENT UNIT

When a VDU is associated with more than one Payment Unit (PU), the VDU volumes are assigned to the PU based on acres of the VDU within the PU.

VDU	VDU ACRES	PU	PU ACRES
5	32.7	2	32.7
9	17.5	1	17.5
17	41.2	3	41.2
<b>TOTAL:</b>	<b>91.4</b>		<b>91.4</b>

## DESCRIPTION OF TIMBER BY PAYMENT UNIT (PU)

PU	MARKET GROUP	PRODUCT	QUANTITY	UNIT	ACRES	ADVERTISE PRICE
1	Mixed Hardwood	Pulpwood	42	Cords	17.5	\$23,661.75
	Black Cherry		42	Cords		
	White Pine		903	Cords		
	White Pine		903	Cords		
2	Red Pine	Sawtimber	354.8	MBF	32.7	\$96,320.95
	Mixed Hardwood	Pulpwood	5	Cords		
	Black Cherry		5	Cords		
	Red Pine		881	Cords		
3	Mixed Hardwood	Pulpwood	185	Cords	41.2	\$8,620.75
	Sugar Maple	Sawtimber	1.8	MBF		
	Beech	Pulpwood	1	Cords		
	Black Cherry		132	Cords		
	Red Maple		25	Cords		
	Sugar Maple		23	Cords		
	Red Pine		49	Cords		
	White Pine		84	Cords		
	White Pine	Sawtimber	2.5	MBF		
	White Pine	Pulpwood	79	Cords		
	TOTAL:			354.8		
TOTAL:			2,149	Cords		

## **Sale Specific Conditions & Requirements**

**Sale Name: Muddy Paws Pine**

**Sale Number: 61-014-25 Seq#: 1**

### **1 - Sale Area**

#### **1.2 - Boundaries**

##### **1.2.1 - Painted Boundaries (9/19)**

The sale boundary and Payment Unit boundaries are marked and identified by blue and red paint and a change in cover type (see Timber Sale Map). Exterior sale boundary lines against private property are marked with blue paint. Exterior sale boundary lines against state are marked with red paint. Interior Payment Unit boundaries are unpainted and delineated by timber type only (see Timber Sale Map).

### **2 - Timber Specifications**

#### **2.1 - Included Timber**

##### **2.1.1 - Clearcut Unit(s) with Unmerchantable Trees (6/14)**

Within Payment Unit(s) 1, 2 and 3, cut all trees that are two (2) inches or more at DBH, except do not cut any trees marked in green paint.

Special protection trees identified in accordance with condition 3.4.2, within clearcutting unit boundaries, are not Included Timber and are to be protected.

#### **2.2 - Utilization**

##### **2.2.2 - Chipping Required (12/24)**

The entire Sale Area must be chip harvested to facilitate subsequent planting operations. The Purchaser has the option to produce sawlogs or pulpwood bolts, but the remaining portion of the trees must be chipped and hauled. No exceptions will be granted for this sale. Products may be produced as roundwood and forwarded to decking areas in final product length, but the tops must be left intact and skidded to the landing for chipping in order to minimize the amount of residual slash. The requirement to retain approximately 1/6 to 1/3 of treetops and limbs less than four (4) inches in diameter does not apply (G. C. & R. 2.2). This is in order to get the sale area prepared for reforestation and to ensure the best possible outcome for cultivation work needed on this site.

##### **2.2.3 - Stump Heights (12/24)**

Stump heights within the Sale Area shall not exceed six (6) inches for all trees. This is in order to facilitate planting operations.

### **3 - Payments**

#### **3.4 - Damaged Timber**

##### **3.4.2 - Special Protection Trees (1/25)**

The Purchaser shall not cut live or dead special protection trees within cutting units or clearings. Special protection trees are marked with green paint, approximately 7-8 large maple trees are marked throughout Sale Area. If Purchaser's operations have cut or damaged special protection trees through carelessness, the Purchaser shall pay \$100.00 as fixed, agreed and liquidated damages for each special protection tree cut or damaged. Such payment does not constitute ownership of the undesignated timber.

### **4 - Transportation**

#### **4.1 - Construction**

##### **4.1.11 - Permits (2/12)**

The Purchaser will secure any necessary permits that may be required.

##### **4.1.12 - No New Roads (1/12)**

No new roads will be permitted in any Payment Unit. All operations are limited to existing roads. Only Skid trails will be allowed.

## **5 - Operations**

### **5.2 - Conduct of Operations**

#### **5.2.41 - Snowmobile Trail Protection (9/11)**

The Betsie River snowmobile trail is shown on the Timber Sale Map. The portion of the trail that would be impacted during sale operations lies on County Line Road which is a maintained year-round county road. Do not cut or damage posts with orange trail markers or traffic control signs. If the trail road is to be used for hauling during the snowmobile season, then a snow-covered base must be left on the trail. No decking of forest products will be permitted along the snowmobile trail.

### **5.4 - Soil Protection**

#### **5.4.1 - Rutting Restriction, General (7/16)**

Operations are to cease immediately if equipment and weather conditions result in rutting of roads and/or skid trails which are 12 inches or greater in depth and 50 feet in length. The Unit Manager or his/her representative may restrict hauling and/or skidding if ruts exceed the specified depth. With the Unit Manager or his/her representative's approval, the Purchaser may return to the area when the risk of rutting has decreased.

## **6 - Safety and Fire Prevention**

### **6.2 - Signing**

#### **6.2.2 - Snowmobile Trail Posting (10/20)**

The Purchaser is responsible for posting and maintaining caution signs on Betsie River Snowmobile Trail prior to beginning operations during the snowmobile season (approximately December 1 to March 31). The trail must be posted at appropriate distances from the Sale Area to warn of logging activity and truck traffic. Signs must be removed when harvest operations are suspended or completed. The Purchaser will provide these signs.



**TIMBER SALE MAP**

This information provided by authority of Part 525, 1994 PA 451, as amended.

Sale Number  
**61-014-25**

Date  
**05/02/2025**

Forest Management Unit	County	Mapped By: Patrick Cotant	Scale	Page	Of
Traverse City Mgt Unit	Manistee	Cruised By: Patrick Cotant	1:15,840	1	1

Township	Range	Section(s) and Subdivision(s)
24N	13W	Sec. 6 S1/2NW,SWNE,SW;

**Cover Type**

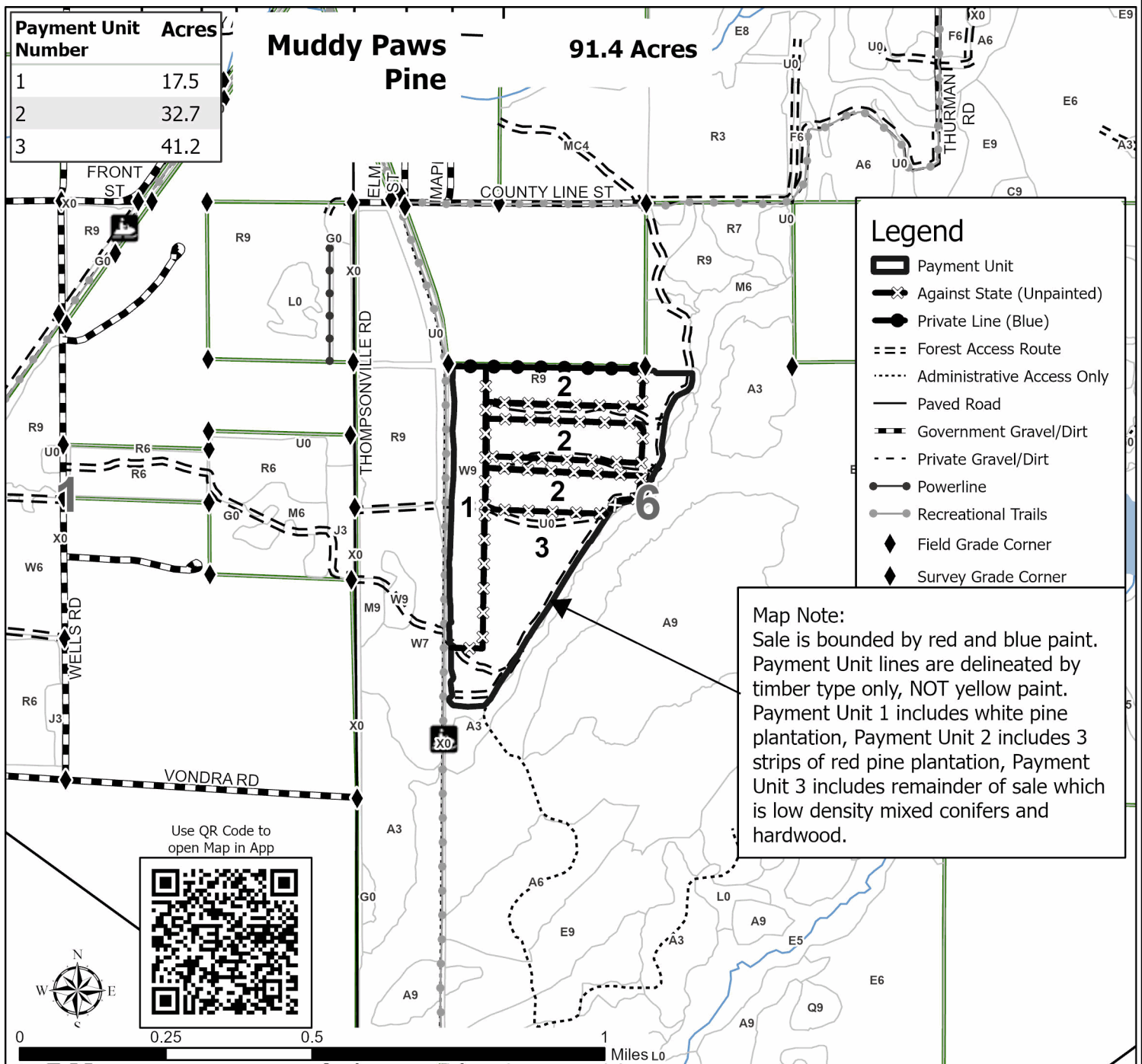
A = Aspen	J = Jack Pine	O = Oak	U = Upland Brush
B = Paper Birch	K = Rock	P = Lowland Poplar	UM = Upland Mix Forest
C = Cedar	L = Lowland Brush	Q = Mixed Swamp Conifer	V = Bog or Marsh
D = Treed Bog	LM = Lowland Mix Forest	R = Red Pine	W = White Pine
E = Swamp Hardwoods	M = Maple, Beech, Birch	S = Black Spruce	X = Non Stocked
F = Spruce/Fir	MC = Mixed Conifer	T = Tamarack	Y = Sand
G = Grass	MD = Mixed Deciduous		Z = Water
H = Hemlock	N = Marsh		

**Density**

0 = Non Stocked	5 = Pole Timber Medium
1 = Seedling Sapling Poor	6 = Pole Timber Well
2 = Seedling Sapling Medium	7 = Saw Timber Poor
3 = Seedling Sapling Well	8 = Saw Timber Medium
4 = Pole Timber Poor	9 = Saw Timber Well

Payment Unit Number	Acres
1	17.5
2	32.7
3	41.2

**Muddy Paws Pine**  
**91.4 Acres**







## TIMBER SALE INFORMATION

Aspen On The Edge (61-015-25)  
T24N, R13W, SEC. 1.  
Manistee County (Advertised Price \$39,997.90)

A timber sale contract for this lump sum, sealed bid timber sale will be awarded to the responsible bidder offering the highest sealed bid price. All units of volume listed below were estimated using the Inventory Manager computer program and the new Michigan taper model. Bids must be at or above the following advertised price for each product and species:

<u>PRODUCTS &amp; SPECIES</u>	<u>ESTIMATED UNITS*</u>	<u>ADVERTISED PRICE</u>
Sawtimber		
B. T. Aspen	92.9 MBF	\$ 125.00 / MBF
Black Cherry	31.1 MBF	\$ 178.00 / MBF
Red Maple	18.7 MBF	\$ 114.00 / MBF
Pulpwood		
B. T. Aspen	368 Cords	\$ 24.10 / Cord
Mixed Hardwood	578 Cords	\$ 20.50 / Cord

\* The total volume is statistically estimated within plus (+) or minus (-) 23.10 percent. There are an estimated 1,279 cords on this timber sale, plus or minus 296 cords at the 95% confidence level. The estimated units are final and not subject to adjustment. Prospective bidders are urged to examine this timber and to make their own estimates of quantity and quality.

### **BOND AND PAYMENT SCHEDULE:**

- A bond in the amount of \$2,000.00 to insure faithful performance of the conditions of the contract will be deposited by the successful bidder within 21 days of the sale award.
- Cutting in any sale or unit without the required advance payment would be considered a trespass.
- Total payment must be paid in advance or according to the following schedule :
  - Ten percent (10%) of the sale value must be paid within 21 days of the sale award.
  - The remainder is due before cutting begins.
  - Payment for each of the following units must be made before cutting begins in that unit:
 

PAYMENT UNIT NUMBER	PERCENT OF TOTAL SALE VALUE
01	100.0%
- If no cutting takes place, the 10% down payment will not be refunded.
- Operations on the contract issued will terminate on 09/30/2027.

### **SALE STATISTICS**

Volumes were calculated in cubic feet using the Michigan taper model. Cubic foot volume includes all wood inside bark for the product indicated. For display purposes, cubic feet were converted to cords and MBF using a simple conversion factor, e.g. 79 cubic feet per cord and 185 cubic feet per MBF. The cubic foot volumes are precise; the cords and MBF volumes are not. Cubic foot volume cannot be directly converted to cords or boards with precision.

### **SALE VOLUMES**

The total estimated sale volume may not equal the sum of the species/products due to the nature of statistical calculations associated with double sampling methodology.

VOLUME			STATISTICAL RANGE IN CORDS	
TOTAL CUBIC FEET	TOTAL CORDS	PERCENT ERROR	MINIMUM	MAXIMUM
101,067	1,279	23.10%	984	1,575

VDU VOLUMES

A VDU is a Volume Determination Unit. Volumes and their associated statistics are calculated at the VDU level and summarized to the sale level. There is often a one to one relationship between a VDU and a Payment Unit, but not always, depending on the cruise design. Refer to the VDU TO PAYMENT UNIT table.

	VOLUME			RANGE IN CORDS	
VDU	TOTAL CUBIC FEET	TOTAL CORDS	PERCENT ERROR	MINIMUM	MAXIMUM
112	101,067	1,279	23.11%	984	1,575
TOTAL:	101,067	1,279		984	1,575

VDU TO PAYMENT UNIT

When a VDU is associated with more than one Payment Unit (PU), the VDU volumes are assigned to the PU based on acres of the VDU within the PU.

VDU	VDU ACRES	PU	PU ACRES
112	31.3	1	31.3
TOTAL:	31.3		31.3

DESCRIPTION OF TIMBER BY PAYMENT UNIT (PU)

PU	MARKET GROUP	PRODUCT	QUANTITY	UNIT	ACRES	ADVERTISE PRICE
1	B. T. Aspen	Sawtimber	92.9	MBF	31.3	\$39,997.90
	Black Cherry		31.1	MBF		
	Red Maple		18.7	MBF		
	B. T. Aspen	Pulpwood	368	Cords		
	Mixed Hardwood		578	Cords		
	Black Cherry		310	Cords		
	Red Maple		251	Cords		
	Sugar Maple		17	Cords		
TOTAL:			142.7	MBF		
TOTAL:			946	Cords		

## **Sale Specific Conditions & Requirements**

**Sale Name: Aspen On The Edge**

**Sale Number: 61-015-25 Seq#: 1**

### **1 - Sale Area**

#### **1.2 - Boundaries**

##### **1.2.1 - Painted Boundaries (9/19)**

The sale boundary and Payment Unit boundaries are marked and identified by blue and red paint. Exterior sale boundary lines against private property are marked with blue paint. Exterior sale boundary lines against state are marked with red paint. The painted boundary line trees are not Included Timber and are to be protected.

### **2 - Timber Specifications**

#### **2.1 - Included Timber**

##### **2.1.1 - Clearcut Unit(s) with Unmerchantable Trees (6/14)**

Within Payment Unit(s) 1, cut all trees that are two (2) inches or more at DBH, except do not cut green marked trees or any conifer species.

Special protection trees identified in accordance with condition 3.4.2, within clearcutting unit boundaries, are not Included Timber and are to be protected.

### **3 - Payments**

#### **3.4 - Damaged Timber**

##### **3.4.2 - Special Protection Trees (1/25)**

The Purchaser shall not cut live or dead special protection trees within cutting units or clearings. Special protection trees are marked with green paint or any conifer species. If Purchaser's operations have cut or damaged special protection trees through carelessness, the Purchaser shall pay \$100.00 as fixed, agreed and liquidated damages for each special protection tree cut or damaged. Such payment does not constitute ownership of the undesignated timber.

### **4 - Transportation**

#### **4.1 - Construction**

##### **4.1.11 - Permits (2/12)**

The Purchaser will secure any necessary permits that may be required.

##### **4.1.12 - No New Roads (1/12)**

No new roads will be permitted in any Payment Unit. All operations are limited to existing roads. Only skid trails will be allowed.

### **5 - Operations**

#### **5.2 - Conduct of Operations**

##### **5.2.1 - Slash**

###### **5.2.1.8 - Slash Height (12/08)**

No slash or tree tops may exceed 24 inches in height.

##### **5.2.2 - Hazard Trees/Snags**

###### **5.2.2.1 - Den Trees (10/16)**

Obvious hollow and/or den trees shall be protected and left standing unless they are a safety hazard.

##### **5.2.4 - Dead and Down Creation**

###### **5.2.4.2 - Dead and Down Creation, Hare and Grouse (1/25)**

To improve habitat for snowshoe hare, grouse, and other species, the Purchaser is to leave two 12-inch diameter or larger

log size pieces on the ground for every two (2) acres. They should be scattered throughout the sale or positioned per the Sale Administrator's instructions. If possible, the logs or trees should be felled so they overlap. Note these pieces should have a minimum length of eight (8) feet. They can be of any tree species and can be an un-merchantable piece of wood or a full tree.

#### 5.2.29 - Shrub Protection (1/20)

Do not cut or damage hawthorn, witch-hazel or juneberry. These woody-shrub plants are highly beneficial to various wildlife species.

### 5.4 - Soil Protection

#### 5.4.1 - Rutting Restriction, General (7/16)

Operations are to cease immediately if equipment and weather conditions result in rutting of roads and/or skid trails which are 12 inches or greater in depth and 50 feet in length. The Unit Manager or his/her representative may restrict hauling and/or skidding if ruts exceed the specified depth. With the Unit Manager or his/her representative's approval, the Purchaser may return to the area when the risk of rutting has decreased.

#### 5.4.6 - Wet Area Protection (5/10)

No harvesting operations, including skidding and felling, are to take place within lowland areas adjacent to sale boundary. These areas are excluded from the sale area and lie outside of the red line. Care must be taken by the Purchaser to identify and avoid operating in these areas of the timber sale.



**TIMBER SALE MAP**

This information provided by authority of Part 525, 1994 PA 451, as amended.

Sale Number  
**61-015-25**

Date  
**04/02/2025**

Forest Management Unit  
Traverse City Mgt Unit

County  
Manistee

Mapped By: Patrick Cotant  
Cruised By: Cotant, Ventimiglia

Scale  
**1:15,840**

Page  
**1**

Of  
**1**

Township  
24N

Range  
13W

Section(s) and  
Subdivision(s) Sec. 1 E1/2SE;

**Cover Type**

A = Aspen	J = Jack Pine	O = Oak	U = Upland Brush
B = Paper Birch	K = Rock	P = Lowland Poplar	UM = Upland Mix Forest
C = Cedar	L = Lowland Brush	Q = Mixed Swamp Conifer	V = Bog or Marsh
D = Treed Bog	LM = Lowland Mix Forest	R = Red Pine	W = White Pine
E = Swamp Hardwoods	M = Maple, Beech, Birch	S = Black Spruce	X = Non Stocked
F = Spruce/Fir	MC = Mixed Conifer	T = Tamarack	Y = Sand
G = Grass	MD = Mixed Deciduous	Z = Water	
H = Hemlock	N = Marsh		

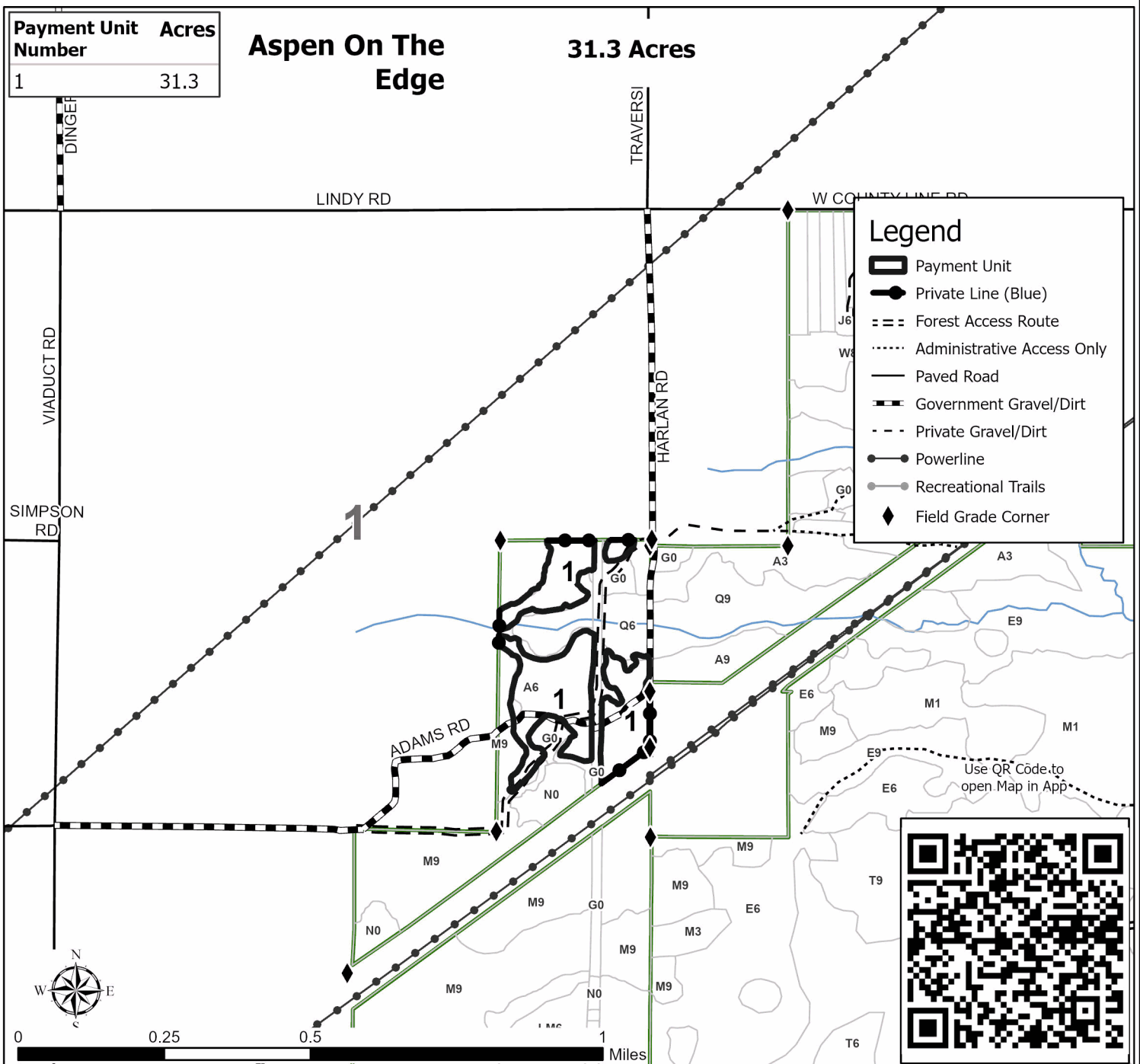
**Density**

0 = Non Stocked	5 = Pole Timber Medium
1 = Seedling Sapling Poor	6 = Pole Timber Well
2 = Seedling Sapling Medium	7 = Saw Timber Poor
3 = Seedling Sapling Well	8 = Saw Timber Medium
4 = Pole Timber Poor	9 = Saw Timber Well

Payment Unit Number	Acres
1	31.3

**Aspen On The Edge**

**31.3 Acres**





## TIMBER SALE INFORMATION

### What a Gem (61-041-24)

T25N, R13W, SEC. 21; T25N, R13W, SEC. 22; T25N, R13W, SEC. 24.  
Benzie County (Advertised Price \$12,397.50)

**SALE NOTE:** This sale has a 3-year contract due to many restrictions in the sale that limit harvest operations and some extra coordination will be necessary due to Betsie GEM hunting trail area.

A recreation site such as a trail, pathway, or campground is within the sale area or the vicinity. Certain restrictions/specifications may be applicable including time restrictions.

A timber sale contract for this lump sum, sealed bid timber sale will be awarded to the responsible bidder offering the highest sealed bid price. All units of volume listed below were estimated using the Inventory Manager computer program and the new Michigan taper model. Bids must be at or above the following advertised price for each product and species:

<u>PRODUCTS &amp; SPECIES</u>	<u>ESTIMATED UNITS*</u>	<u>ADVERTISED PRICE</u>
Sawtimber		
Black Cherry	1.9 MBF	\$ 178.00 / MBF
Mixed Aspen	40.0 MBF	\$ 125.00 / MBF
Red Maple	16.0 MBF	\$ 114.00 / MBF
Pulpwood		
Mixed Aspen	173 Cords	\$ 24.10 / Cord
Mixed Hardwood	52 Cords	\$ 20.50 / Cord

\* The total volume is statistically estimated within plus (+) or minus (-) 34.75 percent. There are an estimated 360 cords on this timber sale, plus or minus 125 cords at the 95% confidence level. The estimated units are final and not subject to adjustment. Prospective bidders are urged to examine this timber and to make their own estimates of quantity and quality.

### **BOND AND PAYMENT SCHEDULE:**

- A bond in the amount of \$620.00 to insure faithful performance of the conditions of the contract will be deposited by the successful bidder within 21 days of the sale award.
- Cutting in any sale or unit without the required advance payment would be considered a trespass.
- Total payment must be paid in advance or according to the following schedule :
  - Ten percent (10%) of the sale value must be paid within 21 days of the sale award.
  - The 10% down payment will be credited towards the first unit cut.
  - Payment for each of the following units must be made before cutting begins in that unit:
 

PAYMENT UNIT NUMBER	PERCENT OF TOTAL SALE VALUE
01	55.2%
02	44.8%
- If no cutting takes place, the 10% down payment will not be refunded.
- Operations on the contract issued will terminate on 12/31/2028.

### **SALE STATISTICS**

Volumes were calculated in cubic feet using the Michigan taper model. Cubic foot volume includes all wood inside bark for the product indicated. For display purposes, cubic feet were converted to cords and MBF using a simple conversion factor, e.g. 79 cubic feet per cord and 185 cubic feet per MBF. The cubic foot volumes are precise; the cords and MBF volumes are not. Cubic foot volume cannot be directly converted to cords or boards with precision.

### **SALE VOLUMES**

The total estimated sale volume may not equal the sum of the species/products due to the nature of statistical calculations associated with double sampling methodology.

VOLUME		STATISTICAL RANGE IN CORDS		
TOTAL CUBIC FEET	TOTAL CORDS	PERCENT ERROR	MINIMUM	MAXIMUM
28,469	360	34.75%	235	486

## VDU VOLUMES

A VDU is a Volume Determination Unit. Volumes and their associated statistics are calculated at the VDU level and summarized to the sale level. There is often a one to one relationship between a VDU and a Payment Unit, but not always, depending on the cruise design. Refer to the VDU TO PAYMENT UNIT table.

VDU	VOLUME		PERCENT ERROR	RANGE IN CORDS	
	TOTAL CUBIC FEET	TOTAL CORDS		MINIMUM	MAXIMUM
2	12,091	153	42.03%	89	217
16	5,938	75	48.67%	39	112
45	10,440	132	84.69%	20	244
<b>TOTAL:</b>	<b>28,469</b>	<b>360</b>		<b>148</b>	<b>573</b>

## VDU TO PAYMENT UNIT

When a VDU is associated with more than one Payment Unit (PU), the VDU volumes are assigned to the PU based on acres of the VDU within the PU.

VDU	VDU ACRES	PU	PU ACRES
2	18.8	1	18.8
16	8.2	1	8.2
45	7.1	2	7.1
<b>TOTAL:</b>	<b>34.1</b>		<b>34.1</b>

## DESCRIPTION OF TIMBER BY PAYMENT UNIT (PU)

PU	MARKET GROUP	PRODUCT	QUANTITY	UNIT	ACRES	ADVERTISE PRICE
1	Black Cherry	Sawtimber	1.9	MBF	27.0	\$6,843.40
	Mixed Aspen		15.8	MBF		
	<i>Quaking Aspen</i>		15.8	<i>MBF</i>		
	Red Maple		1.8	MBF		
	Mixed Aspen	Pulpwood	165	Cords		
	<i>Quaking Aspen</i>		165	<i>Cords</i>		
	Mixed Hardwood		17	Cords		
	<i>Black Cherry</i>		15	<i>Cords</i>		
	<i>Red Maple</i>		2	<i>Cords</i>		
2	Mixed Aspen	Sawtimber	24.2	MBF	7.1	\$5,554.10
	<i>B. T. Aspen</i>		24.2	<i>MBF</i>		
	Red Maple	Pulpwood	14.2	MBF		
	Mixed Aspen		8	Cords		
	<i>B. T. Aspen</i>		8	<i>Cords</i>		
	Mixed Hardwood		35	Cords		
	<i>Red Maple</i>		35	<i>Cords</i>		
TOTAL:			57.9	MBF		
TOTAL:			225	Cords		



## **Sale Specific Conditions & Requirements**

**Sale Name: What a Gem**

**Sale Number: 61-041-24 Seq#: 1**

### **1 - Sale Area**

#### **1.2 - Boundaries**

##### **1.2.1 - Painted Boundaries (9/19)**

The sale boundary and Payment Unit boundaries are marked and identified by blue and red paint. Exterior sale boundary lines against private property are marked with blue paint. Exterior sale boundary lines against state are marked with red paint. The painted boundary line trees are not Included Timber and are to be protected.

### **2 - Timber Specifications**

#### **2.1 - Included Timber**

##### **2.1.4 - Designated Timber Unit(s) (6/17)**

Within Payment Unit(s) 1 and 2, all aspen, maple, and cherry trees are designated for cutting, regardless of merchantability, except do not cut any trees marked with green paint above and below stump height.

#### **2.2 - Utilization**

##### **2.2.3 - Stump heights (4/07)**

Stump heights within the Sale Area shall not exceed 12 inches for trees greater than 10 inches DBH and 4 inches for trees smaller than 10 inches DBH.

### **4 - Transportation**

#### **4.1 - Construction**

##### **4.1.3 - Slash and Earthen Piles (8/04)**

Piles or windrows of earth along roads and landings that have been widened or constructed shall be leveled. Slash from road maintenance or construction, including stumps, shall be dispersed throughout the sale as determined by the Sale Administrator.

#### **4.2 - Maintenance**

##### **4.2.2 - Fill Material (4/07)**

To maintain roads, fill material may be needed in areas where "holes" exist or may be expected to develop. This fill material should be placed before trucking begins.

#### **4.4 - Access**

##### **4.4.3 - Access gate (12/08)**

The access gate to the Betsie GEM hunter trail is used to access Payment Unit 1 and must be locked at the completion of each day unless otherwise approved by the Unit Manager or his/her representative.

### **5 - Operations**

#### **5.2 - Conduct of Operations**

##### **5.2.1 - Slash**

###### **5.2.1.8 - Slash Height (12/08)**

No slash or tree tops may exceed 24 inches in height.

##### **5.2.3 - Operating Restrictions**

###### **5.2.3.1 - Operating Restrictions (9/11)**

Within Payment Unit(s) 1, unless changed by written agreement, cutting, skidding, and hauling are not permitted during the period of September 1 through January 1 of each year. This restriction is for the safety purposes due to the use of the GEM walking/hunting trails during this period.

#### 5.2.3.5 - Oak Wilt Restriction (1/18)

Within Payment Unit 2, unless changed by written agreement, cutting, skidding, hauling within the sale and brushing of access roads to the sale are not permitted during the period of April 15 to July 15. Operations may be allowed if specific steps are taken to prevent damaging uncut oak during the high-risk period. Those steps may include completing all road brushing before April 15 and clearing a tree-length buffer along uncut oak cover before April 15. This is necessary to reduce the spread of oak wilt. For more information, contact the Unit Manager or his/her representative.

#### 5.2.4 - Dead and Down Creation

##### 5.2.4.3 - Dead and Down Creation, Dead Trees (6/07)

Except as provided for in General Condition and Requirement 5.2.2, no dead trees, standing or down, are to be cut, skidded, or processed.

##### 5.2.4.4 - Dead and Down Creation, Grouse (6/18)

To encourage grouse and other wildlife, in Payment Unit(s) 1 and 2 leave one 12-inch or larger diameter (or largest diameter trees within stand) whole tree on the ground for every 2 acres, preferably a hardwood species such as maple. Leave this piece directly adjacent to a tree stump at least 3 feet tall or taller. These trees will be evenly scattered throughout the unit, preferably at 50 feet from any roads, two-tracks, or trails open to vehicles.

#### 5.2.17 - Timber Mats and Interlocking Composite Mats (5/23)

The administrative road that leads into Payment Unit 1 from the GEM walking trail may require extra protection such as that afforded by timber mats, interlocking composite mats, or another approved system due to seasonal soil moisture conditions. The exact location of this can be coordinated and agreed upon with the Sale Administrator. If available, mats may be borrowed from the DNR. A Timber Sale Contract Amendment will be used to document the Purchaser's use of the DNR's mats. Contact the Sale Administrator regarding availability and pick-up. Timber mats are available from various field offices. Composite mats are only available from the Grayling field office. The Purchaser is responsible for picking up and hauling the mats to and from the site. The composite mats will require DNR staff onsite for installation and removal. Contact the Sale Administrator to schedule at least 30 days before desired install/removal date. All mats must be cleaned prior to drop off. This may include, but is not limited to, power washing and brushing to remove mud and debris. A charge of \$700.00 per timber mat and \$2,000.00 per composite mat will be assessed for all damaged or non-returned mats. Damage for the crane/timber mats is defined as three or more broken cants. Damage for the composite mats is defined as cracked or broken mats.

#### 5.2.40 - Pathway Protection (10/10)

The Betsie GEM hunting pathway is shown on the Timber Sale Map. Do not cut trees or damage posts with blue pathway markers. The use of equipment down the pathway must be closely coordinated with the Sale Administrator to gain access to Payment Unit 1. Leveling and grading of the pathway after all sale operations are completed may be necessary.

#### 5.2.41 - Snowmobile Trail Protection (9/11)

The Betsie River snowmobile trail is shown on the Timber Sale Map. Do not cut or damage posts with orange trail markers or traffic control signs. If the trail is used, it must be maintained and restored to a condition equal to or better than before the sale. The road maintenance/restoration must be done prior to December 1. If the trail is used for hauling, it must be graded to the satisfaction of the Unit Manager or his/her representative prior to December 1. If the trail road is to be used for hauling during the snowmobile season, then a snow covered base must be left on the trail. No decking of forest products will be permitted along the snowmobile trail. All stumps within 20 feet of the snowmobile trail must be cut at ground level. In addition, any trees cut within 5 feet of the trail must have the stumps removed and be disposed of according to the direction of the Unit Manager or his/her representative.

#### 5.4 - Soil Protection

##### 5.4.1 - Rutting Restriction, General (7/16)

Operations are to cease immediately if equipment and weather conditions result in rutting of roads and/or skid trails which is 12 inches or greater in depth and 50 feet in length. The Unit Manager or his/her representative may restrict hauling and/or skidding if ruts exceed the specified depth. With the Unit Manager or his/her representative's approval, the Purchaser may return to the area when the risk of rutting has decreased.

## 6 - Safety and Fire Prevention

### 6.2 - Signing

#### 6.2.2 - Snowmobile Trail Posting (10/20)

The Purchaser is responsible for posting and maintaining caution signs on the Betsie River snowmobile trail prior to beginning operations during the snowmobile season (approximately December 1 to March 31). The trail must be posted at appropriate distances from the Sale Area to warn of logging activity and truck traffic. Signs must be removed when harvest operations are suspended or completed. The Purchaser will provide these signs.

#### 6.2.3 - Recreational Trail Posting (10/20)

The Purchaser is responsible for posting and maintaining caution signs on on the Betsie GEM hunting pathway prior to beginning operations. The trail must be posted at appropriate distances from the Sale Area to warn of logging activity and truck traffic at both ends of the trail. Signs must be removed when harvest operations are suspended or completed. The Purchaser will provide these signs.



**TIMBER SALE MAP**

This information provided by authority of Part 525, 1994 PA 451, as amended.

Sale Number

**61-041-24**

Date

**09/27/2024**

Forest Management Unit

County

Mapped By: Craig Allen

Scale

Page

Of

Traverse City Mgt Unit

Benzie

Cruised By: Allen / Hurin

**1:7,920**

**2**

**2**

Township  
25N

Range  
13W

Section(s) and  
Subdivision(s) Sec. 21 E1/2NE; Sec. 22 N1/2NW,SWNW; Sec. 24 NENE;

**Cover Type**

A = Aspen	J = Jack Pine	O = Oak	U = Upland Brush
B = Paper Birch	K = Rock	P = Lowland Poplar	UM = Upland Mix Forest
C = Cedar	L = Lowland Brush	Q = Mixed Swamp Conifer	V = Bog or Marsh
D = Treed Bog	LM = Lowland Mix Forest	R = Red Pine	W = White Pine
E = Swamp Hardwoods	M = Maple, Beech, Birch	S = Black Spruce	X = Non Stocked
F = Spruce/Fir	MC = Mixed Conifer	T = Tamarack	Y = Sand
G = Grass	MD = Mixed Deciduous		Z = Water
H = Hemlock	N = Marsh		

**Density**

0 = Non Stocked	5 = Pole Timber Medium
1 = Seedling Sapling Poor	6 = Pole Timber Well
2 = Seedling Sapling Medium	7 = Saw Timber Poor
3 = Seedling Sapling Well	8 = Saw Timber Medium
4 = Pole Timber Poor	9 = Saw Timber Well

**PU # Acres**

1 27.1

2 7.1

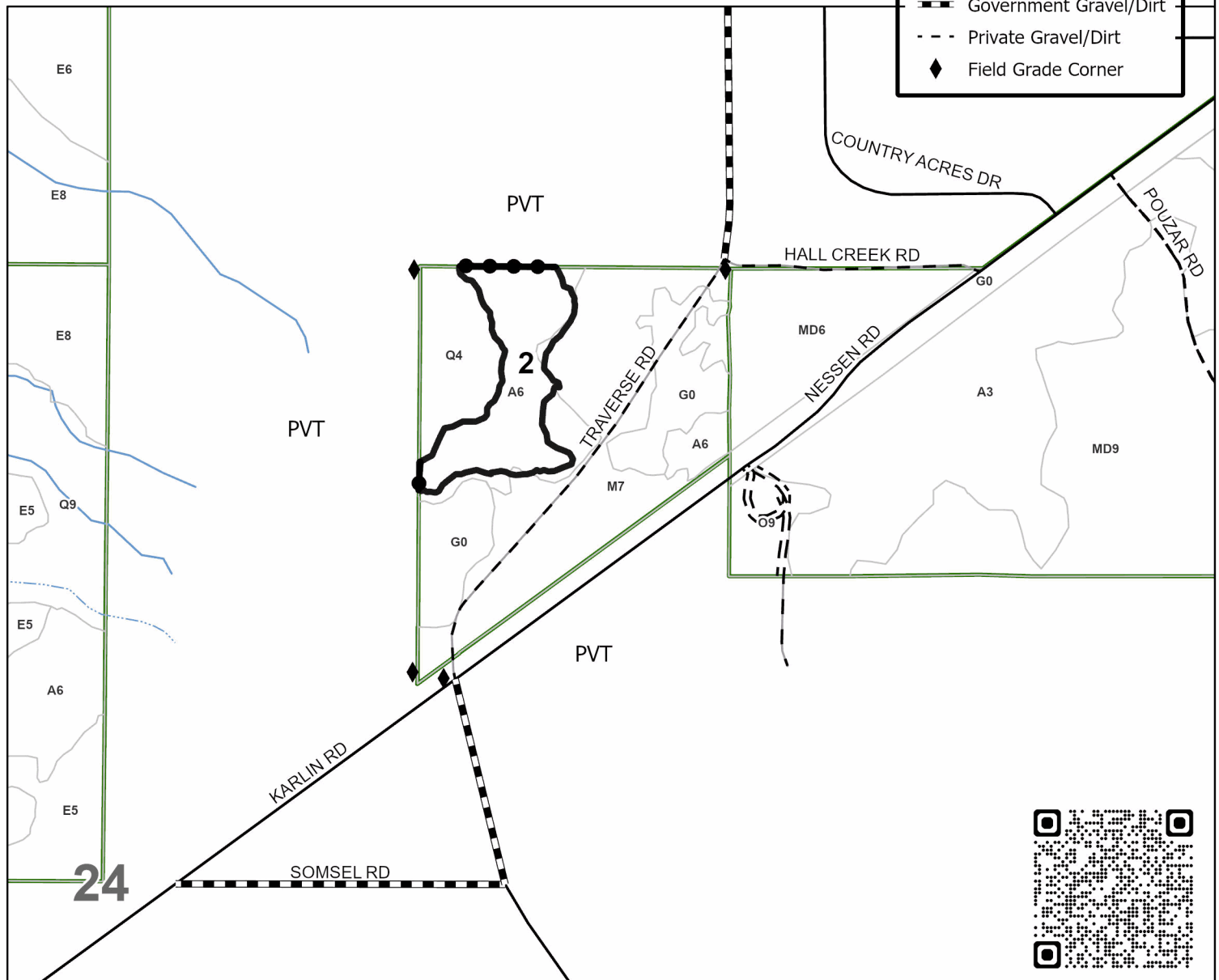
**What a Gem**  
**34.1 Acres**



0 0.13 0.25 0.5 Miles

**Legend**

- Against State (red)
- Private Line (Blue)
- Forest Access Route
- Paved Road
- Government Gravel/Dirt
- Private Gravel/Dirt
- Field Grade Corner



**TIMBER SALE MAP**

This information provided by authority of Part 525, 1994 PA 451, as amended.

Sale Number

**61-041-24**

Date

09/26/2024

Forest Management Unit

County

Mapped By: Craig Allen

Scale

Page

Of

Traverse City Mgt Unit

Benzie

Cruised By: Allen / Hurin

1:15,840

1

2

Township  
25NRange  
13WSection(s) and  
Subdivision(s)

Sec. 21 E1/2NE; Sec. 22 N1/2NW,SWNW; Sec. 24 NENE;

**Cover Type**

A = Aspen	J = Jack Pine	O = Oak	U = Upland Brush
B = Paper Birch	K = Rock	P = Lowland Poplar	UM = Upland Mix Forest
C = Cedar	L = Lowland Brush	Q = Mixed Swamp Conifer	V = Bog or Marsh
D = Treed Bog	LM = Lowland Mix Forest	R = Red Pine	W = White Pine
E = Swamp Hardwoods	M = Maple, Beech, Birch	S = Black Spruce	X = Non Stocked
F = Spruce/Fir	MC = Mixed Conifer	T = Tamarack	Y = Sand
G = Grass	MD = Mixed Deciduous	Z = Water	
H = Hemlock	N = Marsh		

**Density**

0 = Non Stocked	5 = Pole Timber Medium
1 = Seedling Sapling Poor	6 = Pole Timber Well
2 = Seedling Sapling Medium	7 = Saw Timber Poor
3 = Seedling Sapling Well	8 = Saw Timber Medium
4 = Pole Timber Poor	9 = Saw Timber Well

**PU # Acres**

1 27.1

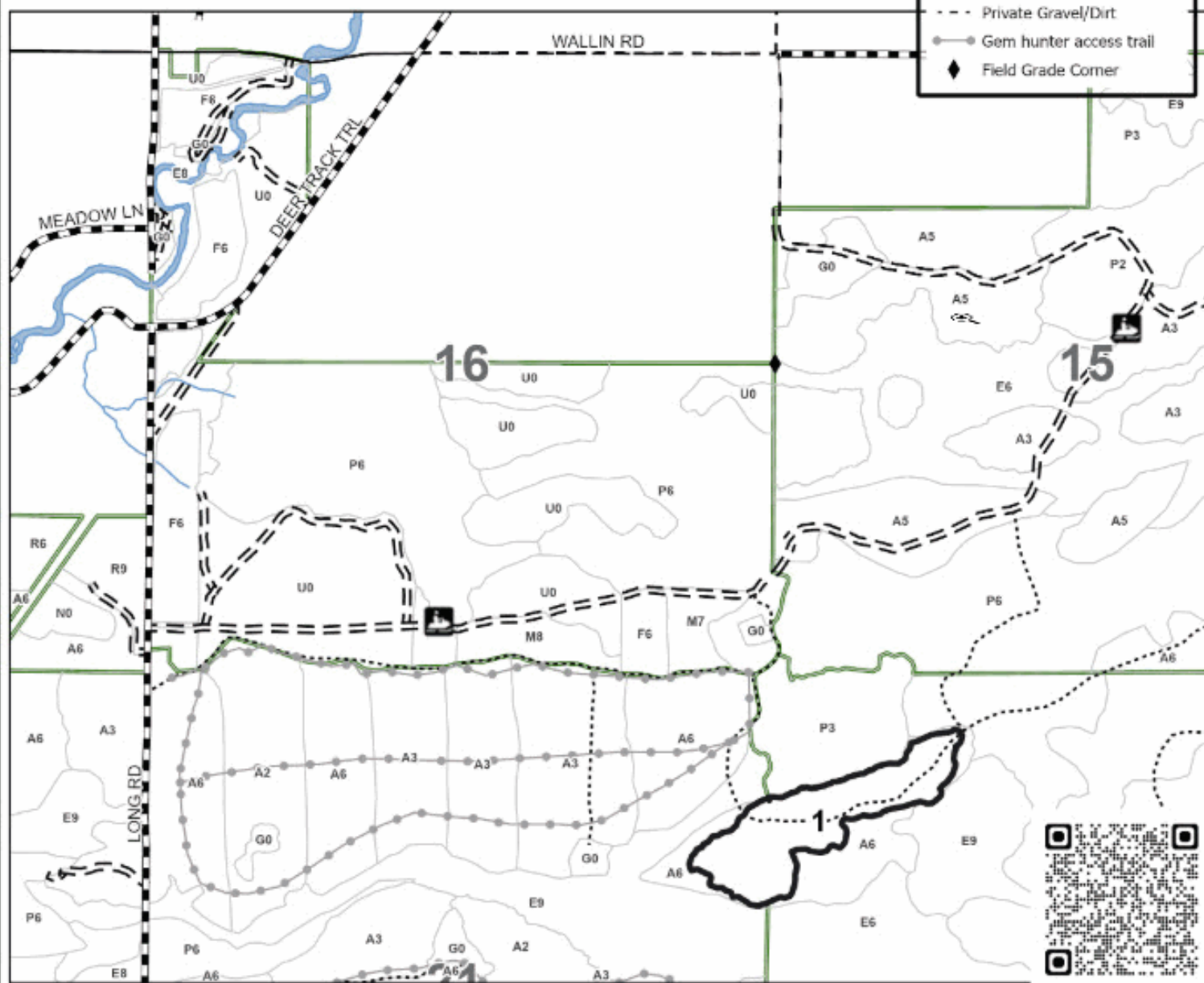
2 7.1

**What a Gem****34.1 Acres**

0 0.25 0.5 1 Miles

**Legend**

- Against State (red)
- Forest Access Route
- Administrative Access Only
- Paved Road
- Government Gravel/Dirt
- Private Gravel/Dirt
- Gem hunter access trail
- Field Grade Corner





What a Gem (61-041-24)

T25N, R13W, SEC. 21; T25N, R13W, SEC. 22; T25N, R13W, SEC. 24; Benzie

In response to the notice of sale to be held 4:00 p.m. (local time) on July 17, 2025, I am hereby submitting my sealed bid ( firm offer) for the following forest products to be cut. Bids for individual species must be at or above the advertised price. All non-responsive bid forms may be rejected.

<u>PRODUCTS &amp; SPECIES</u>	<u>ESTIMATED VOLUME*</u>	<u>ADVERTISED PRICE</u>	<u>BID PRICE/UNIT</u>
Sawtimber			
Black Cherry	1.9 MBF	\$ 178.00/MBF	\$ _____
Mixed Aspen	40.0 MBF	\$ 125.00/MBF	\$ _____
Red Maple	16.0 MBF	\$ 114.00/MBF	\$ _____
Pulpwood			
Mixed Aspen	173 Cords	\$ 24.10/Cord	\$ _____
Mixed Hardwood	52 Cords	\$ 20.50/Cord	\$ _____

\*The volumes are statistically estimated within plus (+) or minus (-) 34.75 percent at 95% confidence level. These estimated volumes are final and not subject to adjustment. Prospective bidders are urged to examine this timber and to make their own estimates of quantity and quality.

I understand that any or all bids may be rejected. All bids must be signed and all bid items must be bid or the bid form may be rejected. I also understand that consideration and awarding a contract will be based upon my past performance and ability to complete the contract based upon equipment and staffing subject to my control .

FEDERAL ID: \_\_\_\_ - \_\_\_\_ - \_\_\_\_ or SOCIAL SECURITY NUMBER: \_\_\_\_ - \_\_\_\_ - \_\_\_\_

Company or individual bidding: \_\_\_\_\_

Company representative's name: \_\_\_\_\_

Address: \_\_\_\_\_

City: \_\_\_\_\_ State: \_\_\_\_\_ Zip: \_\_\_\_\_

IF AVAILABLE, PLEASE PLACE THE PERSONALIZED LABEL FROM YOUR PROSPECTUS IN THE ABOVE BOX.

Individual or company representative's signature: \_\_\_\_\_ Date: \_\_\_\_\_

Phone number : \_\_\_\_\_ Email (optional): \_\_\_\_\_

**THE WINNING BIDDER MUST COMPLETE THE VERIFICATION OF WORKER'S DISABILITY COMPENSATION ACT  
COMPLIANCE (ON REVERSE SIDE IF DOUBLE SIDED) WITHIN 21 DAYS OF SALE AWARD DATE**



## TIMBER SALE VERIFICATION OF WORKER'S DISABILITY COMPENSATION ACT COMPLIANCE

As required by Act 317, P.A. 1969 (Worker's Compensation) and  
Part 5 of Act 451 of 1994, as amended.

### FOR DEPARTMENT USE ONLY

Sale Number (XX - XXX - XX - XX)

Forest Management Unit:

### VERIFICATION OF WORKER'S DISABILITY COMPENSATION ACT COMPLIANCE

- This verification must be completed and submitted within 21 days of contract award and prior to the issuance of the timber sale contract.
- In addition, if boxes 2B or 2C are checked, then Notice of Exclusion or Certificate of Insurance must be submitted within twenty-one (21) days of the contract award and prior to the issuance of the timber sale contract.
- All Information must be typed or printed except for written signatures.

Please Check Appropriate Categories:

1. My business is organized as (you **must** check one of the boxes below):
  - A. ☐ Sole Proprietorship (individual)
  - B. ☐ Partnership
  - C. ☐ Corporation
2. You **must** check one of the boxes below:
  - A. ☐ I certify my business is a sole proprietorship and it has no employees but the sole proprietor. I am not subject to the Worker's Compensation Laws.
  - B. ☐ I certify my business has satisfied its obligation to the Worker's Compensation Act through the use of an approved Notice of Exclusion (BWC-337, Rev. 5/96). I will provide a copy of the Notice of Exclusion within 21 days of the contract award. (For questions or a copy of the BWC-337, please call the Worker's Compensation Bureau at 517-322-1195).
  - C. ☐ I certify my business has a Worker's Compensation Policy. I will provide an original Certificate of Insurance within twenty-one (21) days of the contract award.
3. If you have checked item 2(A) or 2(B), you **must** indicate the number of **both** full-time and part-time employees, other than yourself, including family members and active partners (if none, you must enter "0").

\_\_\_\_\_ Full-time Employees

\_\_\_\_\_ Part-time Employees

Name of Business		Federal ID (or) Social Security No.
Address		Telephone (       )
City	State	ZIP

*I hereby certify that the above information is true and correct. I agree to notify the Michigan DNR of any changes that occur in factors affecting my coverage during any of my present and future operations.*

\_\_\_\_\_  
Signature of Owner or Authorized Representative

\_\_\_\_\_  
Title

\_\_\_\_\_  
Date

Please complete the "SEALED BID" information on the next page



1915 Planted Pine (61-011-25)

T25N, R09W, SEC. 14; T25N, R09W, SEC. 23; T25N, R09W, SEC. 26; T25N,

In response to the notice of sale to be held 4:00 p.m. (local time) on July 17, 2025, I am hereby submitting my sealed bid ( firm offer) for the following forest products to be cut. Bids for individual species must be at or above the advertised price. All non-responsive bid forms may be rejected.

<u>PRODUCTS &amp; SPECIES</u>	<u>ESTIMATED VOLUME*</u>	<u>ADVERTISED PRICE</u>	<u>BID PRICE/UNIT</u>
<b>Sawtimber</b>			
Black/Red (Hybrid) Oak	45.5 MBF	\$ 106.00/MBF	\$ _____
Red Pine	1,012.9 MBF	\$ 134.00/MBF	\$ _____
Scotch Pine	12.9 MBF	\$ 38.00/MBF	\$ _____
White Oak	26.9 MBF	\$ 62.00/MBF	\$ _____
White Pine	41.9 MBF	\$ 75.00/MBF	\$ _____
<b>Pulpwood</b>			
Jack Pine	20 Cords	\$ 16.30/Cord	\$ _____
Mixed Oak	135 Cords	\$ 26.90/Cord	\$ _____
Red Maple	11 Cords	\$ 20.50/Cord	\$ _____
Red Pine	616 Cords	\$ 55.25/Cord	\$ _____
Scotch Pine	7 Cords	\$ 16.20/Cord	\$ _____
White Pine	83 Cords	\$ 25.25/Cord	\$ _____

\*The volumes are statistically estimated within plus (+) or minus (-) 10.70 percent at 95% confidence level. These estimated volumes are final and not subject to adjustment. Prospective bidders are urged to examine this timber and to make their own estimates of quantity and quality.

I understand that any or all bids may be rejected. All bids must be signed and all bid items must be bid or the bid form may be rejected. I also understand that consideration and awarding a contract will be based upon my past performance and ability to complete the contract based upon equipment and staffing subject to my control .

FEDERAL ID: \_\_\_\_\_ - \_\_\_\_\_ or SOCIAL SECURITY NUMBER: \_\_\_\_\_ - \_\_\_\_\_ - \_\_\_\_\_

Company or individual bidding: \_\_\_\_\_

Company representative's name: \_\_\_\_\_

Address: \_\_\_\_\_

City: \_\_\_\_\_ State: \_\_\_\_\_ Zip: \_\_\_\_\_

IF AVAILABLE, PLEASE PLACE THE PERSONALIZED LABEL FROM YOUR PROSPECTUS IN THE ABOVE BOX.

Individual or company representative's signature: \_\_\_\_\_ Date: \_\_\_\_\_

Phone number : \_\_\_\_\_ Email (optional): \_\_\_\_\_

**THE WINNING BIDDER MUST COMPLETE THE VERIFICATION OF WORKER'S DISABILITY COMPENSATION ACT  
COMPLIANCE (ON REVERSE SIDE IF DOUBLE SIDED) WITHIN 21 DAYS OF SALE AWARD DATE**



## TIMBER SALE VERIFICATION OF WORKER'S DISABILITY COMPENSATION ACT COMPLIANCE

As required by Act 317, P.A. 1969 (Worker's Compensation) and  
Part 5 of Act 451 of 1994, as amended.

### FOR DEPARTMENT USE ONLY

Sale Number (XX - XXX - XX - XX)

Forest Management Unit:

### VERIFICATION OF WORKER'S DISABILITY COMPENSATION ACT COMPLIANCE

- This verification must be completed and submitted within 21 days of contract award and prior to the issuance of the timber sale contract.
- In addition, if boxes 2B or 2C are checked, then Notice of Exclusion or Certificate of Insurance must be submitted within twenty-one (21) days of the contract award and prior to the issuance of the timber sale contract.
- All information must be typed or printed except for written signatures.

Please Check Appropriate Categories:

1. My business is organized as (you **must** check one of the boxes below):
  - A. ☐ Sole Proprietorship (individual)
  - B. ☐ Partnership
  - C. ☐ Corporation
2. You **must** check one of the boxes below:
  - A. ☐ I certify my business is a sole proprietorship and it has no employees but the sole proprietor. I am not subject to the Worker's Compensation Laws.
  - B. ☐ I certify my business has satisfied its obligation to the Worker's Compensation Act through the use of an approved Notice of Exclusion (BWC-337, Rev. 5/96). I will provide a copy of the Notice of Exclusion within 21 days of the contract award. (For questions or a copy of the BWC-337, please call the Worker's Compensation Bureau at 517-322-1195).
  - C. ☐ I certify my business has a Worker's Compensation Policy. I will provide an original Certificate of Insurance within twenty-one (21) days of the contract award.
3. If you have checked item 2(A) or 2(B), you **must** indicate the number of **both** full-time and part-time employees, other than yourself, including family members and active partners (if none, you must enter "0").

\_\_\_\_\_ Full-time Employees

\_\_\_\_\_ Part-time Employees

Name of Business		Federal ID (or) Social Security No.
Address		Telephone (       )
City	State	ZIP

*I hereby certify that the above information is true and correct. I agree to notify the Michigan DNR of any changes that occur in factors affecting my coverage during any of my present and future operations.*

\_\_\_\_\_  
Signature of Owner or Authorized Representative

\_\_\_\_\_  
Title

\_\_\_\_\_  
Date

Please complete the "SEALED BID" information on the next page

Sheet Flow Aspen (61-012-25)  
T24N, R13W, SEC. 6; Manistee COUNTY

In response to the notice of sale to be held 4:00 p.m. (local time) on July 17, 2025, I am hereby submitting my sealed bid ( firm offer) for the following forest products to be cut. Bids for individual species must be at or above the advertised price. All non-responsive bid forms may be rejected.

<u>PRODUCTS &amp; SPECIES</u>	<u>ESTIMATED VOLUME*</u>	<u>ADVERTISED PRICE</u>	<u>BID PRICE/UNIT</u>
Sawtimber			
Quaking Aspen	197.3 MBF	\$ 108.00/MBF	\$ _____
Red Maple	116.6 MBF	\$ 99.00/MBF	\$ _____
Pulpwood			
Mixed Hardwood	167 Cords	\$ 17.75/Cord	\$ _____
Quaking Aspen	959 Cords	\$ 20.90/Cord	\$ _____
Red Maple	624 Cords	\$ 17.75/Cord	\$ _____

\*The volumes are statistically estimated within plus (+) or minus (-) 18.78 percent at 95% confidence level. These estimated volumes are final and not subject to adjustment. Prospective bidders are urged to examine this timber and to make their own estimates of quantity and quality.

I understand that any or all bids may be rejected. All bids must be signed and all bid items must be bid or the bid form may be rejected. I also understand that consideration and awarding a contract will be based upon my past performance and ability to complete the contract based upon equipment and staffing subject to my control .

FEDERAL ID: \_\_\_\_ - \_\_\_\_ - \_\_\_\_ or SOCIAL SECURITY NUMBER: \_\_\_\_ - \_\_\_\_ - \_\_\_\_  
Company or individual bidding: \_\_\_\_\_  
Company representative's name: \_\_\_\_\_  
Address: \_\_\_\_\_  
City: \_\_\_\_\_ State: \_\_\_\_\_ Zip: \_\_\_\_\_

IF AVAILABLE, PLEASE PLACE THE PERSONALIZED LABEL FROM YOUR PROSPECTUS IN THE ABOVE BOX.

Individual or company representative's signature: \_\_\_\_\_ Date: \_\_\_\_\_

Phone number : \_\_\_\_\_ Email (optional): \_\_\_\_\_

**THE WINNING BIDDER MUST COMPLETE THE VERIFICATION OF WORKER'S DISABILITY COMPENSATION ACT  
COMPLIANCE (ON REVERSE SIDE IF DOUBLE SIDED) WITHIN 21 DAYS OF SALE AWARD DATE**



## TIMBER SALE VERIFICATION OF WORKER'S DISABILITY COMPENSATION ACT COMPLIANCE

As required by Act 317, P.A. 1969 (Worker's Compensation) and  
Part 5 of Act 451 of 1994, as amended.

### FOR DEPARTMENT USE ONLY

Sale Number (XX - XXX - XX - XX)

Forest Management Unit:

### VERIFICATION OF WORKER'S DISABILITY COMPENSATION ACT COMPLIANCE

- This verification must be completed and submitted within 21 days of contract award and prior to the issuance of the timber sale contract.
- In addition, if boxes 2B or 2C are checked, then Notice of Exclusion or Certificate of Insurance must be submitted within twenty-one (21) days of the contract award and prior to the issuance of the timber sale contract.
- All Information must be typed or printed except for written signatures.

Please Check Appropriate Categories:

1. My business is organized as (you **must** check one of the boxes below):
  - A. ☐ Sole Proprietorship (individual)
  - B. ☐ Partnership
  - C. ☐ Corporation
2. You **must** check one of the boxes below:
  - A. ☐ I certify my business is a sole proprietorship and it has no employees but the sole proprietor. I am not subject to the Worker's Compensation Laws.
  - B. ☐ I certify my business has satisfied its obligation to the Worker's Compensation Act through the use of an approved Notice of Exclusion (BWC-337, Rev. 5/96). I will provide a copy of the Notice of Exclusion within 21 days of the contract award. (For questions or a copy of the BWC-337, please call the Worker's Compensation Bureau at 517-322-1195).
  - C. ☐ I certify my business has a Worker's Compensation Policy. I will provide an original Certificate of Insurance within twenty-one (21) days of the contract award.
3. If you have checked item 2(A) or 2(B), you **must** indicate the number of **both** full-time and part-time employees, other than yourself, including family members and active partners (if none, you must enter "0").

\_\_\_\_\_ Full-time Employees

\_\_\_\_\_ Part-time Employees

Name of Business		Federal ID (or) Social Security No.
Address		Telephone (       )
City	State	ZIP

*I hereby certify that the above information is true and correct. I agree to notify the Michigan DNR of any changes that occur in factors affecting my coverage during any of my present and future operations.*

\_\_\_\_\_  
Signature of Owner or Authorized Representative

\_\_\_\_\_  
Title

\_\_\_\_\_  
Date

Please complete the "SEALED BID" information on the next page

Dutchman Aspen (61-013-25)

T24N, R13W, SEC. 18; T24N, R13W, SEC. 7; Manistee COUNTY

In response to the notice of sale to be held 4:00 p.m. (local time) on July 17, 2025, I am hereby submitting my sealed bid ( firm offer) for the following forest products to be cut. Bids for individual species must be at or above the advertised price. All non-responsive bid forms may be rejected.

<u>PRODUCTS &amp; SPECIES</u>	<u>ESTIMATED VOLUME*</u>	<u>ADVERTISED PRICE</u>	<u>BID PRICE/UNIT</u>
Sawtimber			
Mixed Aspen	105.0 MBF	\$ 125.00/MBF	\$ _____
White Pine	124.8 MBF	\$ 75.00/MBF	\$ _____
Pulpwood			
Mixed Aspen	639 Cords	\$ 24.10/Cord	\$ _____
Mixed Hardwood	260 Cords	\$ 20.50/Cord	\$ _____
White Pine	336 Cords	\$ 25.25/Cord	\$ _____

\*The volumes are statistically estimated within plus (+) or minus (-) 18.76 percent at 95% confidence level. These estimated volumes are final and not subject to adjustment. Prospective bidders are urged to examine this timber and to make their own estimates of quantity and quality.

I understand that any or all bids may be rejected. All bids must be signed and all bid items must be bid or the bid form may be rejected. I also understand that consideration and awarding a contract will be based upon my past performance and ability to complete the contract based upon equipment and staffing subject to my control .

FEDERAL ID: \_\_\_\_ - \_\_\_\_ - \_\_\_\_ or SOCIAL SECURITY NUMBER: \_\_\_\_ - \_\_\_\_ - \_\_\_\_  
Company or individual bidding: \_\_\_\_\_  
Company representative's name: \_\_\_\_\_  
Address: \_\_\_\_\_  
City: \_\_\_\_\_ State: \_\_\_\_\_ Zip: \_\_\_\_\_

IF AVAILABLE, PLEASE PLACE THE PERSONALIZED LABEL FROM YOUR PROSPECTUS IN THE ABOVE BOX.

Individual or company representative's signature: \_\_\_\_\_ Date: \_\_\_\_\_

Phone number : \_\_\_\_\_ Email (optional): \_\_\_\_\_

**THE WINNING BIDDER MUST COMPLETE THE VERIFICATION OF WORKER'S DISABILITY COMPENSATION ACT  
COMPLIANCE (ON REVERSE SIDE IF DOUBLE SIDED) WITHIN 21 DAYS OF SALE AWARD DATE**



## TIMBER SALE VERIFICATION OF WORKER'S DISABILITY COMPENSATION ACT COMPLIANCE

As required by Act 317, P.A. 1969 (Worker's Compensation) and  
Part 5 of Act 451 of 1994, as amended.

### FOR DEPARTMENT USE ONLY

Sale Number (XX - XXX - XX - XX)

Forest Management Unit:

### VERIFICATION OF WORKER'S DISABILITY COMPENSATION ACT COMPLIANCE

- This verification must be completed and submitted within 21 days of contract award and prior to the issuance of the timber sale contract.
- In addition, if boxes 2B or 2C are checked, then Notice of Exclusion or Certificate of Insurance must be submitted within twenty-one (21) days of the contract award and prior to the issuance of the timber sale contract.
- All Information must be typed or printed except for written signatures.

Please Check Appropriate Categories:

1. My business is organized as (you **must** check one of the boxes below):
  - A. ☐ Sole Proprietorship (individual)
  - B. ☐ Partnership
  - C. ☐ Corporation
2. You **must** check one of the boxes below:
  - A. ☐ I certify my business is a sole proprietorship and it has no employees but the sole proprietor. I am not subject to the Worker's Compensation Laws.
  - B. ☐ I certify my business has satisfied its obligation to the Worker's Compensation Act through the use of an approved Notice of Exclusion (BWC-337, Rev. 5/96). I will provide a copy of the Notice of Exclusion within 21 days of the contract award. (For questions or a copy of the BWC-337, please call the Worker's Compensation Bureau at 517-322-1195).
  - C. ☐ I certify my business has a Worker's Compensation Policy. I will provide an original Certificate of Insurance within twenty-one (21) days of the contract award.
3. If you have checked item 2(A) or 2(B), you **must** indicate the number of **both** full-time and part-time employees, other than yourself, including family members and active partners (if none, you must enter "0").

\_\_\_\_\_ Full-time Employees

\_\_\_\_\_ Part-time Employees

Name of Business		Federal ID (or) Social Security No.
Address		Telephone (       )
City	State	ZIP

*I hereby certify that the above information is true and correct. I agree to notify the Michigan DNR of any changes that occur in factors affecting my coverage during any of my present and future operations.*

\_\_\_\_\_  
Signature of Owner or Authorized Representative

\_\_\_\_\_  
Title

\_\_\_\_\_  
Date

Please complete the "SEALED BID" information on the next page

Muddy Paws Pine (61-014-25)  
T24N, R13W, SEC. 6; Manistee COUNTY

In response to the notice of sale to be held 4:00 p.m. (local time) on July 17, 2025, I am hereby submitting my sealed bid ( firm offer) for the following forest products to be cut. Bids for individual species must be at or above the advertised price. All non-responsive bid forms may be rejected.

<u>PRODUCTS &amp; SPECIES</u>	<u>ESTIMATED VOLUME*</u>	<u>ADVERTISED PRICE</u>	<u>BID PRICE/UNIT</u>
Sawtimber			
Red Pine	354.8 MBF	\$ 134.00/MBF	\$ _____
Pulpwood			
Mixed Hardwood	232 Cords	\$ 20.50/Cord	\$ _____
Red Pine	930 Cords	\$ 55.25/Cord	\$ _____
White Pine	987 Cords	\$ 25.25/Cord	\$ _____

\*The volumes are statistically estimated within plus (+) or minus (-) 10.30 percent at 95% confidence level. These estimated volumes are final and not subject to adjustment. Prospective bidders are urged to examine this timber and to make their own estimates of quantity and quality.

I understand that any or all bids may be rejected. All bids must be signed and all bid items must be bid or the bid form may be rejected. I also understand that consideration and awarding a contract will be based upon my past performance and ability to complete the contract based upon equipment and staffing subject to my control .

FEDERAL ID: \_\_\_\_ - \_\_\_\_ - \_\_\_\_ or SOCIAL SECURITY NUMBER: \_\_\_\_ - \_\_\_\_ - \_\_\_\_

Company or individual bidding: \_\_\_\_\_

Company representative's name: \_\_\_\_\_

Address: \_\_\_\_\_

City: \_\_\_\_\_ State: \_\_\_\_\_ Zip: \_\_\_\_\_

IF AVAILABLE, PLEASE PLACE THE PERSONALIZED LABEL FROM YOUR PROSPECTUS IN THE ABOVE BOX.

Individual or company representative's signature: \_\_\_\_\_ Date: \_\_\_\_\_

Phone number : \_\_\_\_\_ Email (optional): \_\_\_\_\_

**THE WINNING BIDDER MUST COMPLETE THE VERIFICATION OF WORKER'S DISABILITY COMPENSATION ACT  
COMPLIANCE (ON REVERSE SIDE IF DOUBLE SIDED) WITHIN 21 DAYS OF SALE AWARD DATE**



## TIMBER SALE VERIFICATION OF WORKER'S DISABILITY COMPENSATION ACT COMPLIANCE

As required by Act 317, P.A. 1969 (Worker's Compensation) and  
Part 5 of Act 451 of 1994, as amended.

### FOR DEPARTMENT USE ONLY

Sale Number (XX - XXX - XX - XX)

Forest Management Unit:

### VERIFICATION OF WORKER'S DISABILITY COMPENSATION ACT COMPLIANCE

- This verification must be completed and submitted within 21 days of contract award and prior to the issuance of the timber sale contract.
- In addition, if boxes 2B or 2C are checked, then Notice of Exclusion or Certificate of Insurance must be submitted within twenty-one (21) days of the contract award and prior to the issuance of the timber sale contract.
- All information must be typed or printed except for written signatures.

Please Check Appropriate Categories:

1. My business is organized as (you **must** check one of the boxes below):
  - A. ☐ Sole Proprietorship (individual)
  - B. ☐ Partnership
  - C. ☐ Corporation
2. You **must** check one of the boxes below:
  - A. ☐ I certify my business is a sole proprietorship and it has no employees but the sole proprietor. I am not subject to the Worker's Compensation Laws.
  - B. ☐ I certify my business has satisfied its obligation to the Worker's Compensation Act through the use of an approved Notice of Exclusion (BWC-337, Rev. 5/96). I will provide a copy of the Notice of Exclusion within 21 days of the contract award. (For questions or a copy of the BWC-337, please call the Worker's Compensation Bureau at 517-322-1195).
  - C. ☐ I certify my business has a Worker's Compensation Policy. I will provide an original Certificate of Insurance within twenty-one (21) days of the contract award.
3. If you have checked item 2(A) or 2(B), you **must** indicate the number of **both** full-time and part-time employees, other than yourself, including family members and active partners (if none, you must enter "0").

\_\_\_\_\_ Full-time Employees

\_\_\_\_\_ Part-time Employees

Name of Business		Federal ID (or) Social Security No.
Address		Telephone (       )
City	State	ZIP

*I hereby certify that the above information is true and correct. I agree to notify the Michigan DNR of any changes that occur in factors affecting my coverage during any of my present and future operations.*

\_\_\_\_\_  
Signature of Owner or Authorized Representative

\_\_\_\_\_  
Title

\_\_\_\_\_  
Date

Please complete the "SEALED BID" information on the next page



Aspen On The Edge (61-015-25)  
T24N, R13W, SEC. 1; Manistee COUNTY

In response to the notice of sale to be held 4:00 p.m. (local time) on July 17, 2025, I am hereby submitting my sealed bid ( firm offer) for the following forest products to be cut. Bids for individual species must be at or above the advertised price. All non-responsive bid forms may be rejected.

<u>PRODUCTS &amp; SPECIES</u>	<u>ESTIMATED VOLUME*</u>	<u>ADVERTISED PRICE</u>	<u>BID PRICE/UNIT</u>
Sawtimber			
B. T. Aspen	92.9 MBF	\$ 125.00/MBF	\$ _____
Black Cherry	31.1 MBF	\$ 178.00/MBF	\$ _____
Red Maple	18.7 MBF	\$ 114.00/MBF	\$ _____
Pulpwood			
B. T. Aspen	368 Cords	\$ 24.10/Cord	\$ _____
Mixed Hardwood	578 Cords	\$ 20.50/Cord	\$ _____

\*The volumes are statistically estimated within plus (+) or minus (-) 23.10 percent at 95% confidence level. These estimated volumes are final and not subject to adjustment. Prospective bidders are urged to examine this timber and to make their own estimates of quantity and quality.

I understand that any or all bids may be rejected. All bids must be signed and all bid items must be bid or the bid form may be rejected. I also understand that consideration and awarding a contract will be based upon my past performance and ability to complete the contract based upon equipment and staffing subject to my control .

FEDERAL ID: \_\_\_\_ - \_\_\_\_ - \_\_\_\_ or SOCIAL SECURITY NUMBER: \_\_\_\_ - \_\_\_\_ - \_\_\_\_  
Company or individual bidding: \_\_\_\_\_  
Company representative's name: \_\_\_\_\_  
Address: \_\_\_\_\_  
City: \_\_\_\_\_ State: \_\_\_\_\_ Zip: \_\_\_\_\_

IF AVAILABLE, PLEASE PLACE THE PERSONALIZED LABEL FROM YOUR PROSPECTUS IN THE ABOVE BOX.

Individual or company representative's signature: \_\_\_\_\_ Date: \_\_\_\_\_

Phone number : \_\_\_\_\_ Email (optional): \_\_\_\_\_

**THE WINNING BIDDER MUST COMPLETE THE VERIFICATION OF WORKER'S DISABILITY COMPENSATION ACT  
COMPLIANCE (ON REVERSE SIDE IF DOUBLE SIDED) WITHIN 21 DAYS OF SALE AWARD DATE**



## TIMBER SALE VERIFICATION OF WORKER'S DISABILITY COMPENSATION ACT COMPLIANCE

As required by Act 317, P.A. 1969 (Worker's Compensation) and  
Part 5 of Act 451 of 1994, as amended.

### FOR DEPARTMENT USE ONLY

Sale Number (XX - XXX - XX - XX)

Forest Management Unit:

### VERIFICATION OF WORKER'S DISABILITY COMPENSATION ACT COMPLIANCE

- This verification must be completed and submitted within 21 days of contract award and prior to the issuance of the timber sale contract.
- In addition, if boxes 2B or 2C are checked, then Notice of Exclusion or Certificate of Insurance must be submitted within twenty-one (21) days of the contract award and prior to the issuance of the timber sale contract.
- All information must be typed or printed except for written signatures.

Please Check Appropriate Categories:

1. My business is organized as (you **must** check one of the boxes below):
  - A. ☐ Sole Proprietorship (individual)
  - B. ☐ Partnership
  - C. ☐ Corporation
2. You **must** check one of the boxes below:
  - A. ☐ I certify my business is a sole proprietorship and it has no employees but the sole proprietor. I am not subject to the Worker's Compensation Laws.
  - B. ☐ I certify my business has satisfied its obligation to the Worker's Compensation Act through the use of an approved Notice of Exclusion (BWC-337, Rev. 5/96). I will provide a copy of the Notice of Exclusion within 21 days of the contract award. (For questions or a copy of the BWC-337, please call the Worker's Compensation Bureau at 517-322-1195).
  - C. ☐ I certify my business has a Worker's Compensation Policy. I will provide an original Certificate of Insurance within twenty-one (21) days of the contract award.
3. If you have checked item 2(A) or 2(B), you **must** indicate the number of **both** full-time and part-time employees, other than yourself, including family members and active partners (if none, you must enter "0").

\_\_\_\_\_ Full-time Employees

\_\_\_\_\_ Part-time Employees

Name of Business		Federal ID (or) Social Security No.
Address		Telephone (       )
City	State	ZIP

*I hereby certify that the above information is true and correct. I agree to notify the Michigan DNR of any changes that occur in factors affecting my coverage during any of my present and future operations.*

\_\_\_\_\_  
Signature of Owner or Authorized Representative

\_\_\_\_\_  
Title

\_\_\_\_\_  
Date

Please complete the "SEALED BID" information on the next page