



**DEPARTMENT OF NATURAL RESOURCES
STATE OF MICHIGAN
TIMBER SALE PROSPECTUS #7767**

SCHEDULED SALE DATE AND TIME: 3:00 p.m. (local time) on January 28, 2026.

LOCATION: BALDWIN OFFICE, 2468 W 24TH STREET, BALDWIN, MI 49304.

PROSPECTUS NOTE: The bidder is advised to inspect the sale area and review the location, estimated volumes, operating costs and contract terms of proposed sales. Please be aware that some landowners may request 60 days or more notice for access across their land.

Notice is hereby given that bids will be received by the Unit Manager, CADILLAC MANAGEMENT UNIT, for certain timber on the following described lands:

Medison Mix (63-010-25) / T24N, R09W, SEC. 16, SW.

T24N, R09W, SEC. 21, NWNW, S1/2NW.

Wexford County, Advertised Price \$111,475.70, 92.5 Acres, Red Pine, Aspen.

SALE NOTE: A recreation site such as a trail, pathway, or campground is within the sale area or the vicinity.
Certain restrictions/specifications may be applicable including time restrictions.

Flying Raptor Aspen (63-015-25) / T24N, R09W, SEC. 16, NENW.

T24N, R09W, SEC. 8, E1/2NW, SWNE, NESW, NWSE, SESE.

T24N, R09W, SEC. 9, S1/2NW, NWSW, S1/2SW.

Wexford County, Advertised Price \$128,089.60, 91.3 Acres, Aspen, White Pine, Red Pine.

SALE NOTE: A recreation site such as a trail, pathway, or campground is within the sale area or the vicinity.
Certain restrictions/specifications may be applicable including time restrictions.

Ask MI Turkey (63-017-25) / T22N, R07W, SEC. 2, S1/2SW, NWSE.

Missaukee County, Advertised Price \$53,995.30, 79.9 Acres, Red Pine, Aspen.

Bark Eater Mix (63-019-25) / T23N, R07W, SEC. 3, S1/2SW.

Missaukee County, Advertised Price \$58,918.90, 64.3 Acres, Sugar Maple, Hardwood.

BID INSTRUCTIONS (VER. 10/10/2022):

1. Scheduled Bid Location, Date, and Time (2/11)

Bids must be received by the Unit Manager, BALDWIN OFFICE, 2468 W 24th Street, Baldwin, MI 49304, no later than 3:00 p.m. (local time) on January 28, 2026. For further information concerning this sale, contact David Fisher at 231-745-4651 extension 9064.

2. Bidder's Qualifications (10/22)

If all or part of a timber sale was prepared by a private contractor, the contractor and that contractor's company are not permitted to bid on the timber sale. A person must be 18 years of age or older to purchase timber. Permanent employees of the Department of Natural Resources or members of their immediate household may not bid. Former employees, in the permanent or seasonal class, may not bid until 3 months after the last day of active duty. Bids will not be accepted from individuals or companies appearing on the DNR/FRD No-Bid List. This list contains the names of purchasers who previously failed to execute a contract within 21-days or who have a history of poor performance.

3. Preparation of Sealed Bids (5/16)

Bid Forms may be completed online thru Michigan DNR Timber Sale Online Bidding (OLB) at www.michigan.gov/timberbidding or by completing the hardcopy Bid Form found in the Timber Sale Prospectus. Hardcopy Bid Forms shall be manually signed in ink. Registration in OLB is considered your 'signature' for all bids submitted thru that system. Bid prices must be entered for each species and product in the Bid Price column for all material subject to bidding and all fill-in blanks must be completed. If erasures or other changes appear on the hardcopy Bid Form, each erasure or change must be initialed by the person signing the bid.

4. Submission of Sealed Bids (5/16)

Bid forms may be obtained from the Unit Manager or thru OLB. Bids may be submitted hardcopy or thru OLB. All hardcopy bids must be submitted on the bid form and in an envelope clearly identified as described in this section. NOTE: Only one bid form per bid envelope. Sealed bids must be submitted to the Unit office designated in the prospectus and must be submitted at or prior to the time established in the prospectus. The envelope should show on the outside (a) the sale name or number and (b) the date and time of bid opening, as shown in the prospectus. Bids received after the time specified in the sale prospectus are late bids and will be rejected.

It is possible for a bidder to submit multiple bids on a single sale. For example, a bid may be submitted hardcopy and a bid may be submitted thru OLB. Or, two bidders from the same company could both submit bids on the same sale. If this were to happen, the State would accept all bids received and award the contract accordingly. All bidding and contractual requirements would apply to all bids received.

5. Public Opening of Sealed Bids (7/16)

If conditions permit, the sealed bids will be publicly opened and posted at the time and place set in the prospectus.

If a bidder, present at a bid opening, has submitted bids on more than one sale, that bidder may withdraw their unopened bid envelopes or announce the withdrawal of their online bid after being declared the successful bidder on one sale.

6. Award of Contract (1/11)

Award of the contract will be made to the Bidder whose bid, conforming to the prospectus, is most advantageous to the State of Michigan on the basis of total value at rates bid for the estimated quantities. The State reserves the right to reject any bid or waive any minor irregularity in bids received. A written award mailed (or otherwise furnished) to the successful Bidder shall be deemed to result in a binding contract without further action by either party.

7. Down Payment (1/11)

The Bidder to whom award is made must make a down payment within 21 days of the sale award. The amount of the down payment will be calculated as shown in the Bond and Payment Schedule of this prospectus. Only cash may be used to meet this requirement.

8. Performance Security (1/11)

As guarantee of faithful performance, a cash bond, certificate of deposit, surety bond or irrevocable letter of credit (LOC) is required within 21 days of the sale award. The amount of the performance security is shown in the Bond and

Payment Schedule of this prospectus. If an LOC or surety is used, the coverage must extend for at least 6 months beyond the contract expiration.

9. Worker's Compensation (10/22)

Purchaser shall obtain worker's compensation insurance to cover claims under Michigan's Worker's Disability Compensation Act of 1969 or similar employee benefit act of any other state applicable to an employee. Verification of Worker's Disability Compensation Act Compliance must be completed and submitted within 21 days of contract award and prior to the issuance of the timber sale contract. In addition, if applicable, Notice of Exclusion or Certificate of Insurance must also be submitted.

10. Timber Sale Contract (10/22)

Additional conditions and requirements common to all timber sales are listed on the timber sale contract (R4031) and are available on line at www.michigan.gov/timber. Contact the Unit Manager for additional information or a sample contract. Within 21 days of the date of the award letter, the bidder must sign the contract and provide the required down payment, performance security, and verification of worker's disability compensation. The down payment and performance security shall be in accordance with the provisions of the timber sale contract, in the sums stated in this prospectus. If these actions are not taken, then the Bidder, the Bidder's corporation, and the corporation's principals may not be permitted to bid on State timber sales for a period of 3 months after the first offense, 6 months after the second offense, and 1 year after the third offense. An offense will only be counted against the Bidder for 5 years. In addition, the Bidder certifies that if awarded this contract, the Bidder will complete the timber sale contract in accordance with its terms and any modifications thereof including requirements to purchase, cut, and remove the included timber by the expiration date.

Payment Unit values in the State Forest Timber Sale Contract are calculated based on the advertised value of the Payment Unit as a percentage of the total advertised value of the contract. The advertised value of each Payment Unit is given in the Description of Timber by Payment Unit table on the Timber Sale Information page. For example, if the value of Payment Unit 1 is advertised as \$1,500 and the total Timber Sale value is advertised as \$10,000, the contract price for Payment Unit 1 will be 15% of the total bid price ($\$1,500/\$10,000 * 100$).

11. Disclaimer of Estimates and Bidder's Warranty of Inspection (10/22)

Before submitting this bid, the Bidder is advised and cautioned to inspect the sale area, review the requirements of the sale contract, and take other steps as may be reasonably necessary to ascertain the location, estimated volumes, construction estimates, and operating costs of the proposed sale. Failure to do so will not relieve the Bidder from responsibility for completing the contract.

The Bidder warrants that this bid is submitted solely on the basis of the Bidder's examination and inspection of the quality and quantity of the timber offered for sale and the Bidder's opinion of the value thereof and the costs of recovery. No reliance should be placed on the State of Michigan's estimates of timber quality, quantity or costs of recovery. Bidder further acknowledges that the State of Michigan: (i) expressly disclaims any warranty of fitness of timber for any purpose; (ii) offers this timber as is without any warranty of quality (merchantability) or quantity and (iii) expressly disclaims any warranty as to the quantity or quality of timber sold.

12. Certification and Chain-of-Custody (10/22)

Unless otherwise indicated in the contract under section 7 – Other Conditions of the Sale Specific Conditions & Requirements, the area encompassed by this timber sale is certified to the standards of the Forest Stewardship Council (FSC) - Certificate #SCS-FM/COC-00090N and the Sustainable Forestry Initiative (SFI) - Certificate #NSF-SFIS-5Y031-SF5. Forest products from this sale may be delivered to the mill as "FSC 100% and / or SFI certified" as long as the contractor hauling the forest products is chain-of-custody (COC) certified or covered under a COC certificate from the destination mill. The purchaser is responsible for maintaining COC after leaving the sale area.

13. Good Neighbor Authority (GNA) Requirements (10/22)

If the name of this timber sales contains the acronym GNA, it is authorized by the Good Neighbor Authority (GNA) and covered by various agreements between the U.S. Forest Service and the State. The timber sale occurs on federal land and the following conditions apply:

GNA contracts on US Forest Service land will not be awarded to purchasers on the Federal list of excluded parties. The System for Award Management (SAM) will be checked for active excluded parties prior to award of contract. In

addition, the Bidder to whom award is made must complete an Assurance Regarding Felony Conviction or Tax Delinquent Status for Corporate Applicants (AD-3031).

14. Good Neighbor Authority (GNA) Requirements, con't (10/22)

Bidder certifies, by signing this bid form, that to the best of Bidder's knowledge that the following representations are accurate and complete.

- a. That the Bidder and its principals are not presently debarred, suspended, proposed for debarment, declared ineligible, or voluntary excluded from timber sales (covered transactions) by any Federal department or agency.
- b. That the Bidder and its principals have not within a 3-year period preceding this bid been convicted of or had a civil judgment rendered against them for commission of fraud or a criminal offense in connection with obtaining , attempting to obtain, or performing a public (Federal, State, or local) transaction or contract under a public transaction; violation of Federal or State antitrust statutes or commission of embezzlement, theft, forgery, bribery, falsification or destruction of records, making false statements, or receiving stolen property.
- c. That the Bidder and its principals are not presently indicted for or otherwise criminally or civilly charged by a governmental entity (Federal, State, or local) with commission of any of the offenses enumerated in paragraph b of this certification.
- d. That the Bidder and its principals have not within a 3-year period preceding this bid had one or more public transactions (Federal, State, or local) terminated for breach or default of a timber or forest product contract.

Bidders that cannot certify this requirement, in whole or in part, shall submit an explanation with their bid.

Scott Bowen
Director

TIMBER SALE INFORMATION

Medison Mix (63-010-25)

T24N, R09W, SEC. 16; T24N, R09W, SEC. 21.

Wexford County (Advertised Price \$111,475.70)

SALE NOTE: A recreation site such as a trail, pathway, or campground is within the sale area or the vicinity. Certain restrictions/specifications may be applicable including time restrictions.

A timber sale contract for this lump sum, sealed bid timber sale will be awarded to the responsible bidder offering the highest sealed bid price. All units of volume listed below were estimated using the Inventory Manager computer program and the new Michigan taper model. Bids must be at or above the following advertised price for each product and species:

<u>PRODUCTS & SPECIES</u>	<u>ESTIMATED UNITS*</u>	<u>ADVERTISED PRICE</u>
Sawtimber		
B. T. Aspen	68.4 MBF	\$ 116.00 / MBF
Red Maple	15.5 MBF	\$ 135.00 / MBF
Red Oak	57.5 MBF	\$ 188.00 / MBF
Red Pine	549.7 MBF	\$ 99.00 / MBF
White Pine	36.2 MBF	\$ 48.00 / MBF
Pulpwood		
B. T. Aspen	637 Cords	\$ 20.45 / Cord
Black Cherry	11 Cords	\$ 16.30 / Cord
Jack Pine	74 Cords	\$ 14.30 / Cord
Red Maple	180 Cords	\$ 16.30 / Cord
Red Oak	79 Cords	\$ 32.95 / Cord
Red Pine	272 Cords	\$ 45.60 / Cord
White Oak	24 Cords	\$ 32.95 / Cord
White Pine	83 Cords	\$ 17.90 / Cord

* The total volume is statistically estimated within plus (+) or minus (-) 13.52 percent. There are an estimated 3,063 cords on this timber sale, plus or minus 414 cords at the 95% confidence level. The estimated units are final and not subject to adjustment. Prospective bidders are urged to examine this timber and to make their own estimates of quantity and quality.

BOND AND PAYMENT SCHEDULE:

1. A bond in the amount of \$5,574.00 to insure faithful performance of the conditions of the contract will be deposited by the successful bidder within 21 days of the sale award.
2. Cutting in any sale or unit without the required advance payment would be considered a trespass.
3. Total payment must be paid in advance or according to the following schedule :
 - (a) Ten percent (10%) of the sale value must be paid within 21 days of the sale award.
 - (b) The 10% down payment will be credited towards the first unit cut.
 - (c) Payment for each of the following units must be made before cutting begins in that unit:

PAYMENT UNIT NUMBER	PERCENT OF TOTAL SALE VALUE
01	40.0%
02	18.7%
03	41.3%
4. If no cutting takes place, the 10% down payment will not be refunded.
5. Operations on the contract issued will terminate on 03/31/2029.

SALE STATISTICS

Volumes were calculated in cubic feet using the Michigan taper model. Cubic foot volume includes all wood inside bark for the product indicated. For display purposes, cubic feet were converted to cords and MBF using a simple conversion factor, e.g. 79 cubic feet per cord and 185 cubic feet per MBF. The cubic foot volumes are precise; the cords and MBF volumes are not. Cubic foot volume cannot be directly converted to cords or boards with precision.

SALE VOLUMES

The total estimated sale volume may not equal the sum of the species/products due to the nature of statistical calculations associated with double sampling methodology.

VOLUME			STATISTICAL RANGE IN CORDS	
TOTAL CUBIC FEET	TOTAL CORDS	PERCENT ERROR	MINIMUM	MAXIMUM
241,939	3,063	13.52%	2,648	3,477

VDU VOLUMES

A VDU is a Volume Determination Unit. Volumes and their associated statistics are calculated at the VDU level and summarized to the sale level. There is often a one to one relationship between a VDU and a Payment Unit, but not always, depending on the cruise design. Refer to the VDU TO PAYMENT UNIT table.

	VOLUME			RANGE IN CORDS	
VDU	TOTAL CUBIC FEET	TOTAL CORDS	PERCENT ERROR	MINIMUM	MAXIMUM
54	99,974	1,265	25.52%	943	1,588
55	58,842	745	27.58%	539	950
62	83,122	1,052	16.21%	882	1,223
TOTAL:	241,939	3,063		2,364	3,761

VDU TO PAYMENT UNIT

When a VDU is associated with more than one Payment Unit (PU), the VDU volumes are assigned to the PU based on acres of the VDU within the PU.

VDU	VDU ACRES	PU	PU ACRES
TOTAL:			

DESCRIPTION OF TIMBER BY PAYMENT UNIT (PU)

PU	MARKET GROUP	PRODUCT	QUANTITY	UNIT	ACRES	ADVERTISE PRICE			
1	B. T. Aspen	Sawtimber	37.0	MBF	43.7	\$44,589.20			
	Red Maple		10.8	MBF					
	Red Oak		28.5	MBF					
	Red Pine		184.1	MBF					
	B. T. Aspen	Pulpwood	412	Cords					
	Jack Pine		60	Cords					
	Jack Pine		60	Cords					
	Red Maple		67	Cords					
	Red Oak		36	Cords					
	Red Pine		81	Cords					
2	B. T. Aspen	Sawtimber	31.4	MBF	19.0	\$20,799.90			
	Red Maple		4.7	MBF					
	Red Oak		2.8	MBF					
	Red Pine		49.5	MBF					
	White Pine		33.4	MBF					
	B. T. Aspen	Pulpwood	225	Cords					
	Black Cherry		11	Cords					
	Black Cherry	Sawtimber	0.9	MBF					
	Black Cherry	Pulpwood	9	Cords					
	Jack Pine		14	Cords					
	Jack Pine	Sawtimber	2.9	MBF					
	Jack Pine	Pulpwood	8	Cords					
	Red Maple		89	Cords					
	Red Oak		11	Cords					
	Red Pine		27	Cords					
	White Pine		82	Cords					
	3	Red Oak	Sawtimber	26.2			MBF	29.8	\$46,086.60
		Red Pine		316.1			MBF		
White Pine			2.8	MBF					
Red Maple		Pulpwood	24	Cords					
Red Oak			32	Cords					
Red Pine			164	Cords					
White Oak			24	Cords					
White Pine			1	Cords					
TOTAL:			727.3	MBF					
TOTAL:			1,360	Cords					

Sale Specific Conditions & Requirements

Sale Name: Medison Mix

Sale Number: 63-010-25 Seq#: 1

1 - Sale Area

1.2 - Boundaries

1.2.1 - Painted Boundaries (9/19)

The sale boundary and Payment Unit boundaries are marked and identified by red paint. Exterior sale boundary lines against state are marked with red paint. Retention patches are marked with red paint; no harvesting activities may occur within these areas. The painted boundary line trees are not Included Timber and are to be protected.

2 - Timber Specifications

2.1 - Included Timber

2.1.1 - Clearcut Unit(s) with Unmerchantable Trees (6/14)

Within Payment Unit(s) 1 and 3, cut all species trees that are two (2) inches or more at DBH, except within Payment Unit 1, do not cut white pine, white oak, red oak 24 inches or greater at DBH, or green marked trees.

2.1.2 - Clearcut Unit(s) w/o Unmerchantable Trees (8/11)

Within Payment Unit(s) 2, cut all species trees which meet minimum piece specifications in 2.2 Utilization except white oak and red/white pine six (6) inches or less at DBH and 18 inches or greater at DBH.

2.2 - Utilization

2.2.2 - Chipping Required (12/24)

Payment Unit 3 must be chip harvested to facilitate subsequent planting operations. If market conditions limit the practicality of chipping, tops and slash must be arranged in a way that will not inhibit future planting operations, as directed by the Sale Administrator.

2.2.3 - Stump Heights (12/24)

Stump heights within Payment Unit(s) 3 shall not exceed six (6) inches for all trees. This is in order to facilitate planting operations.

3 - Payments

3.4 - Damaged Timber

3.4.1 - Damaged Timber (12/24)

General Condition and Requirement 3.4 Damaged Timber, defines liquidated damages for undesignated live merchantable trees which are cut or injured. In addition, extreme care should be taken to avoid damage to tree seedlings and saplings.

Within the Payment Unit 2, if more than 15% of the tree seedlings or saplings (1/4" to 4.5" DBH) are damaged, liquidated damages will be assessed at \$500 per acre for all acreage within that specified portion of the Sale Area that was damaged.

4 - Transportation

4.1 - Construction

4.1.3 - Slash and Earthen Piles (8/04)

Piles or windrows of earth along roads and landings that have been widened or constructed shall be leveled. Slash from road maintenance or construction, including stumps, shall be dispersed throughout the sale.

4.1.12 - No New Roads (1/12)

No new roads will be permitted in any Payment Unit. All operations are limited to existing roads. Only skid trails will be allowed.

4.2 - Maintenance

4.2.1 - Hauling Restriction (12/08)

Hauling may be restricted on forest roads by the Unit Manager or his/her representative. The restriction may occur during

spring breakup or during wet weather conditions.

4.2.4 - Grading (10/16)

For completion of the sale, state forest roads must be graded. In general, this will require a road grader or bulldozer to shape up the roads after forest products have been hauled off site. This includes cleaning of drainage areas, grading, crowning and filling with gravel, if necessary. The grading equipment to be used must be approved by the Unit Manager or his/her representative.

4.2.5 - Two Wheel Drive Condition (2/04)

All existing trail roads on and adjacent to the Sale Area must be passable by two-wheel drive traffic for the duration of the sale.

5 - Operations

5.1 - Notification

5.1.1 - Pre-sale Conference (10/16)

A pre-sale conference on site between the Purchaser and Sale Administrator is required prior to beginning any operations to determine landing and road locations. The Unit Manager or his/her representative must be contacted at least 5 days in advance to schedule the conference.

5.1.4 - Post-Sale Conference (10/16)

A post-sale conference on site between the Purchaser and sale administrator is required five (5) days prior to the completion of active logging operations to determine clean-up and repair of landings, road edges, and the fulfillment of other contract specifications.

5.2 - Conduct of Operations

5.2.1 - Slash

5.2.1.8 - Slash Height (12/08)

No slash or tree tops may exceed 24 inches in height.

5.2.2 - Hazard Trees/Snags

5.2.2.1 - Den Trees (10/16)

Obvious hollow and/or den trees shall be protected and left standing unless they are a safety hazard.

5.2.3 - Operating Restrictions

5.2.3.4 - Oak Wilt Restriction, No Exceptions (1/18)

Within Payment Unit(s) 1, cutting, skidding, hauling within the sale and brushing of access roads to the sale are not permitted during the period of April 15 to July 15. No exceptions will be granted. This is necessary to reduce the spread of oak wilt.

5.2.3.5 - Oak Wilt Restriction (1/18)

Within Payment Unit(s) 2 and 3, unless changed by written agreement, cutting, skidding, hauling within the sale and brushing of access roads to the sale are not permitted during the period of April 15 to July 15. Operations may be allowed if specific steps are taken to prevent damaging uncut oak during the high-risk period. Those steps may include completing all road brushing before April 15 and clearing a tree-length buffer along uncut oak cover before April 15. This is necessary to reduce the spread of oak wilt. For more information, contact the Unit Manager or his/her representative.

5.2.3.6 - Bark Beetle Restriction (1/25)

In the event drought creates a high risk of pine bark beetle infestation, pine is not to be cut during the period March 1 through July 1, unless all portions of trees greater than two (2) inches in diameter are removed from the Sale Area, reduced to chips, or treated to the satisfaction of the Unit Manager or his/her representative, within 15 days of being severed from the stump. Pine log decks, pulpwood piles and treetops that are piled for chipping in the fall or winter within a 1/4 mile of susceptible sites must be removed before March 15. Residual slash must not be placed in piles or rows and must be spread over the site for quick drying. The Department of Natural Resources will exercise this specification if the risk of damage warrants.

5.2.3.13 - Heterobasidion Root Disease (HRD) (7/19)

This plantation is at risk of infection by the root rot fungus, *Heterobasidion irregulare*. To prevent the spread of this disease, cutting operations within Payment Unit(s) 3 are restricted to the period of January 1 to March 31. Cutting may only occur outside this period with written permission of the Unit Manager or with the application of a preventative pesticide. Consultation with a forest health specialist will determine if cutting can occur prior to January 1 without pesticide application, dependent upon current and forecasted snow cover. Cellu-Treat and RotStop C are currently the only EPA registered products available in the United States for the control of *Heterobasidion*. Both products are a water-soluble powder that must be applied to the stump, in accordance with the product label. Dye must be added to these products to provide visible evidence of adequate coverage. Application of these pesticides requires licensing by the Michigan Department of Agriculture and Rural Development. All applicators are required to: provide to the Sale Administrator notification of application per requirements in 40 CFR 170.120; and document and provide to the Sale Administrator annually, by December 31 and prior to closure of sale, the volume of product used and acres treated.

5.2.4 - Dead and Down Creation

5.2.4.4 - Dead and Down Creation, Grouse (6/18)

To encourage grouse and other wildlife, in Payment Unit(s) 1 and 2, leave one, 12" diameter or larger log-length (8 foot minimum) piece on the ground for every two (2) acres and at least four (4) large brush piles per acre. These logs and brush piles will be evenly scattered throughout the Payment Units, preferably at least two chains from any roads, two-tracks, or trails open to vehicles.

5.2.29 - Shrub Protection (1/20)

Do not cut or damage hawthorn, witch-hazel, dogwood or junberry. These woody-shrub plants are highly beneficial to various wildlife species.

5.2.32 - Decking/Landing Restoration (9/13)

All decking and landing areas must have the surface area restored to a condition equal to or better than before. This is to ensure the proper regeneration of the stand. Wood debris, chips and "cookies" from trimmings must be removed or scattered away from landing and loading areas and may not be windrowed on the edge.

5.2.38 - No Decking Against Live Trees (2/04)

Cut products may not be decked against unmarked or designated leave trees.

5.2.39 - ORV Trail/Route Protection (4/18)

The North Missaukee is an ORV route and is shown on the Timber Sale Map. Do not cut trees or damage posts with ORV markers. All stumps within five (5) feet of the trail must be cut flush with the ground. Maintain a 20-foot-wide slash, debris, and rut free zone daily using the ORV trail or route as the centerline. Do not run equipment down the ORV trail or route. Skidding across the trail or route may only occur in locations approved by the Sale Administrator.

5.4 - Soil Protection

5.4.1 - Rutting Restriction, General (7/16)

Operations are to cease immediately if equipment and weather conditions result in rutting of roads and/or skid trails which are 12 inches or greater in depth and 50 feet in length. The Unit Manager or his/her representative may restrict hauling and/or skidding if ruts exceed the specified depth. With the Unit Manager or his/her representative's approval, the Purchaser may return to the area when the risk of rutting has decreased.

6 - Safety and Fire Prevention

6.2 - Signing

6.2.1 - Road Posting (10/20)

The Purchaser is responsible for posting and maintaining caution signs on N 41 Rd and E 8 1/2 Rd prior to beginning operations. The road must be posted at appropriate distances from the Sale Area to warn of logging activity and truck traffic. Signs must be removed when harvest operations are suspended or completed. The Purchaser will provide these signs.

6.2.3 - Recreational Trail Posting (10/20)

The Purchaser is responsible for posting and maintaining caution signs on North Missaukee ORV route prior to beginning operations. The trail must be posted at appropriate distances from the Sale Area to warn of logging activity and truck traffic at both ends of the trail. Signs must be removed when harvest operations are suspended or completed. The Purchaser will provide these signs.

TIMBER SALE MAP

This information provided by authority of Part 525, 1994 PA 451, as amended.

Sale Number 63-010-25	Date 08/13/2025	
Scale 1:15,840	Page 1	Of 1

Forest Management Unit		County	Mapped By: Adamczyk	Scale 1:15,840	Page 1	Of 1
Cadillac Mgt Unit		Wexford	Cruised By: Adamczyk, Lachman			
Township 24N	Range 09W	Section(s) and Subdivision(s) Sec. 16 SW; Sec. 21 NWNW,S1/2NW;				

Cover Type

A = Aspen	J = Jack Pine	O = Oak	U = Upland Brush
B = Paper Birch	K = Rock	P = Lowland Poplar	UM = Upland Mix Forest
C = Cedar	L = Lowland Brush	Q = Mixed Swamp Conifer	V = Bog or Marsh
D = Treed Bog	LM = Lowland Mix Forest	R = Red Pine	W = White Pine
E = Swamp Hardwoods	M = Maple, Beech, Birch	S = Black Spruce	X = Non Stocked
F = Spruce/Fir	MC = Mixed Conifer	T = Tamarack	Y = Sand
G = Grass	MD = Mixed Deciduous		Z = Water
H = Hemlock	N = Marsh		

Density

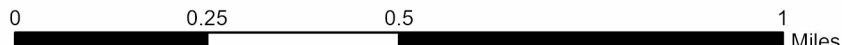
0 = Non Stocked	5 = Pole Timber Medium
1 = Seedling Sapling Poor	6 = Pole Timber Well
2 = Seedling Sapling Medium	7 = Saw Timber Poor
3 = Seedling Sapling Well	8 = Saw Timber Medium
4 = Pole Timber Poor	9 = Saw Timber Well

Payment Unit Number	Acres
------------------------	-------

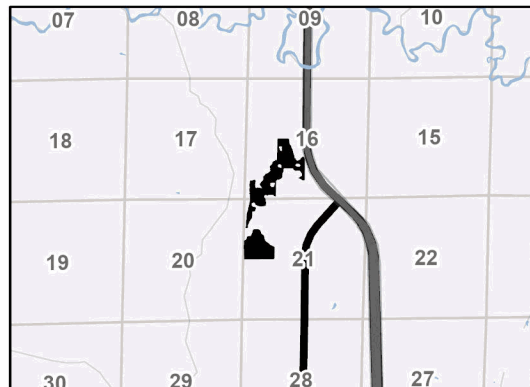
1	43.7
2	19
3	29.8

Medison Mix




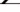




92.5 Acres

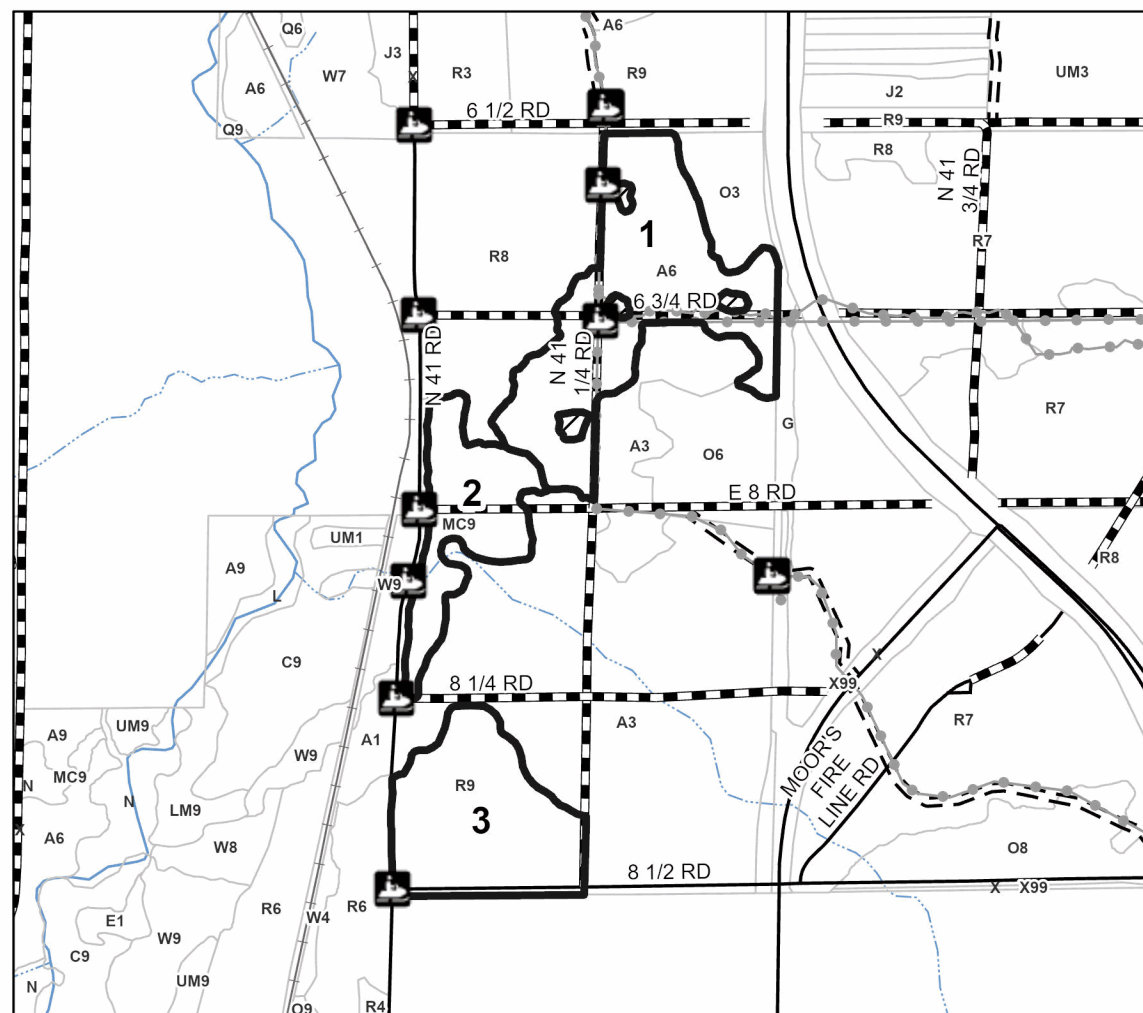


Locator Map 1:100,000



Legend

-  Sale Boundary - Red Paint
-  Retention Areas
-  Active Railroad
-  Recreational Trails
-  Forest Access Route
-  Paved Road
-  Government Gravel/Dirt
-  Field Grade Corner



Use QR Code to
open Map in App



TIMBER SALE INFORMATION

Flying Raptor Aspen (63-015-25)

T24N, R09W, SEC. 16; T24N, R09W, SEC. 8; T24N, R09W, SEC. 9.

Wexford County (Advertised Price \$128,089.60)

SALE NOTE: A recreation site such as a trail, pathway, or campground is within the sale area or the vicinity. Certain restrictions/specifications may be applicable including time restrictions.

A timber sale contract for this lump sum, sealed bid timber sale will be awarded to the responsible bidder offering the highest sealed bid price. All units of volume listed below were estimated using the Inventory Manager computer program and the new Michigan taper model. Bids must be at or above the following advertised price for each product and species:

<u>PRODUCTS & SPECIES</u>	<u>ESTIMATED UNITS*</u>		<u>ADVERTISED PRICE</u>
Sawtimber			
Black/Red (Hybrid) Oak	6.2	MBF	\$ 101.00 / MBF
Mixed Aspen	374.7	MBF	\$ 116.00 / MBF
Red Maple	86.3	MBF	\$ 135.00 / MBF
Red Oak	39.4	MBF	\$ 188.00 / MBF
Red Pine	70.2	MBF	\$ 107.00 / MBF
White Oak	10.6	MBF	\$ 114.00 / MBF
White Pine	122.6	MBF	\$ 48.00 / MBF
Pulpwood			
B. T. Aspen	956	Cords	\$ 20.45 / Cord
Balsam Fir	12	Cords	\$ 37.50 / Cord
Black/Red (Hybrid) Oak	7	Cords	\$ 32.95 / Cord
Quaking Aspen	176	Cords	\$ 20.45 / Cord
Red Maple	260	Cords	\$ 16.30 / Cord
Red Oak	86	Cords	\$ 32.95 / Cord
Red Pine	294	Cords	\$ 45.60 / Cord
White Oak	33	Cords	\$ 32.95 / Cord
White Pine	276	Cords	\$ 17.90 / Cord

* The total volume is statistically estimated within plus (+) or minus (-) 12.90 percent. There are an estimated 3,762 cords on this timber sale, plus or minus 486 cords at the 95% confidence level. The estimated units are final and not subject to adjustment. Prospective bidders are urged to examine this timber and to make their own estimates of quantity and quality.

BOND AND PAYMENT SCHEDULE:

1. A bond in the amount of \$6,404.00 to insure faithful performance of the conditions of the contract will be deposited by the successful bidder within 21 days of the sale award.
2. Cutting in any sale or unit without the required advance payment would be considered a trespass.
3. Total payment must be paid in advance or according to the following schedule:
 - (a) Ten percent (10%) of the sale value must be paid within 21 days of the sale award.
 - (b) The 10% down payment will be credited towards the first unit cut.
 - (c) Payment for each of the following units must be made before cutting begins in that unit:

PAYMENT UNIT NUMBER	PERCENT OF TOTAL SALE VALUE
01	46.6%
02	12.7%
03	22.4%
04	18.3%
4. If no cutting takes place, the 10% down payment will not be refunded.
5. Operations on the contract issued will terminate on 12/31/2029.

SALE STATISTICS

Volumes were calculated in cubic feet using the Michigan taper model. Cubic foot volume includes all wood inside bark for the product indicated. For display purposes, cubic feet were converted to cords and MBF using a simple conversion factor, e.g. 79 cubic feet per cord and 185 cubic feet per MBF. The cubic foot volumes are precise; the cords and MBF volumes are not. Cubic foot volume cannot be directly converted to cords or boards with precision.

SALE VOLUMES

The total estimated sale volume may not equal the sum of the species/products due to the nature of statistical calculations associated with double sampling methodology.

VOLUME			STATISTICAL RANGE IN CORDS	
TOTAL CUBIC FEET	TOTAL CORDS	PERCENT ERROR	MINIMUM	MAXIMUM
297,176	3,762	12.90%	3,276	4,247

VDU VOLUMES

A VDU is a Volume Determination Unit. Volumes and their associated statistics are calculated at the VDU level and summarized to the sale level. There is often a one to one relationship between a VDU and a Payment Unit, but not always, depending on the cruise design. Refer to the VDU TO PAYMENT UNIT table.

	VOLUME			RANGE IN CORDS	
VDU	TOTAL CUBIC FEET	TOTAL CORDS	PERCENT ERROR	MINIMUM	MAXIMUM
32	142,201	1,800	19.81%	1,443	2,157
41	53,072	672	29.87%	471	872
47	68,219	864	29.84%	606	1,121
61	28,218	357	22.00%	279	436
321	5,466	69	50.78%	34	104
TOTAL:	297,176	3,762		2,833	4,690

VDU TO PAYMENT UNIT

When a VDU is associated with more than one Payment Unit (PU), the VDU volumes are assigned to the PU based on acres of the VDU within the PU.

VDU	VDU ACRES	PU	PU ACRES
TOTAL:			

DESCRIPTION OF TIMBER BY PAYMENT UNIT (PU)

PU	MARKET GROUP	PRODUCT	QUANTITY	UNIT	ACRES	ADVERTISE PRICE
1	Black/Red (Hybrid	Sawtimber	2.1	MBF	40.5	\$59,606.65
	Mixed Aspen		193.4	MBF		
	<i>B. T. Aspen</i>		131.4	<i>MBF</i>		
	<i>Quaking Aspen</i>		62.0	<i>MBF</i>		
	Red Maple		43.1	MBF		
	Red Oak		18.9	MBF		
	Red Pine		9.8	MBF		
	White Oak		4.7	MBF		
	White Pine		122.6	MBF		
	B. T. Aspen		398	Cords		
	Balsam Fir		10	Cords		
	Black/Red (Hybrid		3	Cords		
	Quaking Aspen		120	Cords		
	Red Maple		132	Cords		
	Red Oak		46	Cords		
	Red Pine		33	Cords		
	White Oak		14	Cords		
	White Pine		191	Cords		
2	Red Pine	Sawtimber	60.4	MBF	8.7	\$16,312.40
	Red Pine	Pulpwood	216	Cords		
3	Black/Red (Hybrid	Sawtimber	4.1	MBF	20.7	\$28,737.95
	Mixed Aspen		107.4	MBF		
	<i>B. T. Aspen</i>		95.0	<i>MBF</i>		
	<i>Quaking Aspen</i>		12.4	<i>MBF</i>		
	Red Maple		9.0	MBF		
	Red Oak		10.1	MBF		
	White Oak		5.9	MBF		
	B. T. Aspen		358	Cords		
	Black/Red (Hybrid		4	Cords		
	Quaking Aspen		56	Cords		
	Red Maple		57	Cords		
	Red Oak		28	Cords		
	Red Pine		22	Cords		
	White Oak		19	Cords		
4	Mixed Aspen	Sawtimber	73.9	MBF	21.4	\$23,432.60
	<i>B. T. Aspen</i>		73.9	<i>MBF</i>		
	Red Maple		34.2	MBF		
	Red Oak		10.4	MBF		
	B. T. Aspen		200	Cords		
	Balsam Fir		2	Cords		
	Red Maple		71	Cords		
	Red Oak		12	Cords		
	Red Pine		23	Cords		
	White Pine		85	Cords		
TOTAL:			710.0	MBF		
TOTAL:			2,100	Cords		

Sale Specific Conditions & Requirements

Sale Name: Flying Raptor Aspen

Sale Number: 63-015-25 Seq#: 1

1 - Sale Area

1.2 - Boundaries

1.2.1 - Painted Boundaries (9/19)

The sale boundary and Payment Unit boundaries are marked and identified by blue and red paint or are unmarked and identified by a utility corridor. Exterior sale boundary lines against private property are marked with blue paint. Exterior sale boundary lines against state are marked with red paint. Payment Unit boundaries against the utility right-of-way are unmarked and delineate the south boundary line of Payment Unit 3 and the north boundary line of Payment Unit 4. No harvesting activities may occur within this area. Retention patches are marked with red paint; no harvesting activities may occur within these areas. The painted boundary line trees are not Included Timber and are to be protected.

2 - Timber Specifications

2.1 - Included Timber

2.1.1 - Clearcut Unit(s) with Unmerchantable Trees (6/14)

Within Payment Unit(s) 1, 3 and 4, cut all trees that are two (2) inches or more at DBH, except:

- Within Payment Unit 1, do not cut any red pine, cedar, or hemlock. In addition, do not cut white pine 22 inches or more at DBH or oak 22 inches or more at DBH.

- Within Payment Unit 3, do not cut white pine, cedar, or hemlock.

- Within Payment Unit 4, do not cut white pine 10 inches or more at DBH.

Special protection trees identified in accordance with condition 3.4.2, within clearcutting unit boundaries, are not Included Timber and are to be protected.

2.1.7 - Leave Tree Marked Unit(s) (6/14)

Within Payment Unit(s) 2, cut all red pine that are two (2) inches or more at DBH, except do not cut trees marked with green paint above and below stump height. Special protection trees identified in accordance with condition 3.4.2, within clearcutting unit boundaries, are not Included Timber and are to be protected.

3 - Payments

3.4 - Damaged Timber

3.4.2 - Special Protection Trees (1/25)

The Purchaser shall not cut live or dead special protection trees within cutting units or clearings. Special protection trees are marked with green paint within Payment Unit 2, as well as designated leave trees within Payment Units 1, 3 and 4. If Purchaser's operations have cut or damaged special protection trees through carelessness, the Purchaser shall pay \$50 as fixed, agreed and liquidated damages for each special protection tree cut or damaged. Such payment does not constitute ownership of the undesignated timber.

3.6 - Payment Unit Cutting Schedule

3.6.1 - Order of Cutting (1/09)

Payment Unit 3 shall be cut before Payment Unit 2, unless approved by the Unit Manager or his/her representative.

4 - Transportation

4.1 - Construction

4.1.4 - Timber Removed for Construction (3/23)

Trees cut or damaged in the process of pre-approved road, landing, or skid trail construction will be decked in an area separate from other Designated Timber and not removed until measured by the Sale Administrator. Payment will be made at

contract prices or average prices, if not on the contract.

4.1.12 - No New Roads (1/12)

No new roads will be permitted in any Payment Unit. All operations are limited to existing roads. Unless approved by the Unit Manager or his/her representative, only skid trails will be allowed.

4.2 - Maintenance

4.2.1 - Hauling Restriction (12/08)

Hauling may be restricted on forest roads by the Unit Manager or his/her representative. The restriction may occur during spring breakup or during wet weather conditions.

4.2.4 - Grading (10/16)

For completion of the sale, state forest roads must be graded. In general, this will require a road grader or bulldozer to shape up the roads after forest products have been hauled off site. This includes cleaning of drainage areas, grading, crowning and filling with gravel, if necessary. The grading equipment to be used must be approved by the Unit Manager or his/her representative.

4.2.5 - Two Wheel Drive Condition (2/04)

All existing trail roads on and adjacent to the Sale Area must be passable by two-wheel drive traffic for the duration of the sale.

5 - Operations

5.1 - Notification

5.1.1 - Pre-sale Conference (10/16)

A pre-sale conference on site between the Purchaser and Sale Administrator is required prior to beginning any operations to determine landing and road locations. The Unit Manager or his/her representative must be contacted at least 5 days in advance to schedule the conference.

5.1.4 - Post-Sale Conference (10/16)

A post-sale conference on site between the Purchaser and sale administrator is required 5 days prior to the completion of active logging operations to determine clean-up and repair of landings, road edges, and the fulfillment of other contract specifications.

5.2 - Conduct of Operations

5.2.1 - Slash

5.2.1.8 - Slash Height (12/08)

No slash or tree tops may exceed 24 inches in height.

5.2.2 - Hazard Trees/Snags

5.2.2.1 - Den Trees (10/16)

Obvious hollow and/or den trees shall be protected and left standing unless they are a safety hazard.

5.2.3 - Operating Restrictions

5.2.3.1 - Operating Restrictions (9/11)

Within Payment Unit(s) 2, unless changed by written agreement, cutting, skidding, and hauling are limited to frozen winter conditions only. This restriction is due to sensitive soils.

5.2.3.4 - Oak Wilt Restriction, No Exceptions (1/18)

Within Payment Unit 1, cutting, skidding, and hauling within the sale and brushing of access roads to the sale are not permitted during the period of April 15 to July 15. No exceptions will be granted. This is necessary to reduce the spread of oak wilt.

5.2.4 - Dead and Down Creation

5.2.4.2 - Dead and Down Creation, Hare and Grouse (1/25)

To improve habitat for snowshoe hare, grouse, and other species, the Purchaser is to leave two trees, nine (9) inches or

larger in diameter on the ground for every two (2) acres. They should be scattered throughout the sale evenly. If possible, the logs or trees should be felled so they overlap. Note these pieces should have a minimum length of ten (10) feet. They can be of any tree species and can be an un-merchantable piece of wood or a full tree.

5.2.32 - Decking/Landing Restoration (9/13)

All decking and landing areas must have the surface area restored to a condition equal to or better than before. This is to ensure the proper regeneration of the stand. Wood debris, chips and "cookies" from trimmings must be removed or scattered away from landing and loading areas and may not be windrowed on the edge.

5.2.38 - No Decking Against Live Trees (2/04)

Cut products may not be decked against unmarked or designated leave trees.

5.2.39 - ORV Trail/Route Protection (4/18)

The North Missaukee ORV trail is shown on the Timber Sale Map. Do not cut trees or damage posts with yellow ORV markers. All stumps within five (5) feet of the trail must be cut flush with the ground. Maintain a 20-foot-wide slash, debris, and rut free zone daily using the ORV trail or route as the centerline. Skidding across the trail or route may only occur in locations approved by the Sale Administrator.

5.2.41 - Snowmobile Trail Protection (9/11)

The North Missaukee snowmobile trail is shown on the Timber Sale Map. Do not cut or damage posts with orange trail markers or traffic control signs. If the trail is used, it must be maintained and restored to a condition equal to or better than before the sale. The road maintenance/restoration must be done prior to December 1. If the trail is used for hauling, it must be graded to the satisfaction of the Unit Manager or his/her representative prior to December 1. If the trail road is to be used for hauling during the snowmobile season, then a snow-covered base must be left on the trail. Maintain a 20-foot-wide slash, debris, and rut free zone daily using the snowmobile trail as the centerline.

5.4 - Soil Protection

5.4.1 - Rutting Restriction, General (7/16)

Operations are to cease immediately if equipment and weather conditions result in rutting of roads and/or skid trails which are 12 inches or greater in depth and 50 feet in length. The Unit Manager or his/her representative may restrict hauling and/or skidding if ruts exceed the specified depth. With the Unit Manager or his/her representative's approval, the Purchaser may return to the area when the risk of rutting has decreased.

5.4.4 - Slope Protection (9/19)

Skid trails and roads on slopes shall be water barred with slash, and/or stumps, to the area as soon as use is complete to prevent erosion.

5.4.7 - Rutting Restriction, Riparian Management Zone (RMZ) (1/25)

Within the Riparian Management Zone (RMZ) - 175 feet from the edge of the Manistee River in Payment Unit 2 - operations are to cease immediately if equipment and weather conditions result in rutting of roads and skid trails which are six (6) inches or greater in depth and 25 feet in length. The Unit Manager or his/her representative may restrict hauling and/or skidding if ruts exceed the specified depth. With the Unit Manager or his/her representative's approval, the Purchaser may return to the area when the risk of rutting has decreased.

5.8 - Protection of Endangered Species

5.8.5 - Protection of Raptor Nests (3/13)

All trees with raptor nests will be protected if found during harvesting operations. Notification will be made to the Unit Manager or his/her representative who will notify the Wildlife Biologist so an onsite evaluation and recommendation can be made, if necessary.

5.8.10 - Wood Turtle (12/24)

The sale area contains a known occurrence of wood turtles and/or areas of high-quality habitat.

-Within 100 foot buffer, operations are only allowed from October 1 to March 14.

-Within 660 foot buffer, operations are allowed from October 1 to March 14. Operations may be allowed from March 15 to May 1, with an amendment.

Payment Unit 1 falls within a known 660 foot buffer of the Manistee River.

6 - Safety and Fire Prevention

6.2 - Signing

6.2.1 - Road Posting (10/20)

The Purchaser is responsible for posting and maintaining caution signs on roads prior to beginning operations. The road must be posted at appropriate distances from the Sale Area to warn of logging activity and truck traffic. Signs must be removed when harvest operations are suspended or completed. The Purchaser will provide these signs.

6.2.3 - Recreational Trail Posting (10/20)

The Purchaser is responsible for posting and maintaining caution signs on the North Missaukee ORV/Snowmobile trail prior to beginning operations. The trail must be posted approximately 350 feet from the Sale Area to warn of logging activity and truck traffic at both ends of the trail. Signs must be removed when harvest operations are suspended or completed. The Purchaser will provide these signs.



TIMBER SALE MAP

This information provided by authority of Part 525, 1994 PA 451, as amended.

Sale Number
63-015-25

Date
09/16/2025

Forest Management Unit	County	Mapped By: Adamczyk	Scale	Page	Of
Cadillac Mgt Unit	Wexford	Cruised By: Manton FO	1:12,000	1	1

Township	Range	Section(s) and
24N	09W	Subdivision(s) Sec. 16 NENW; Sec. 8 E1/2NW,SWNE,NESW,NWSE,SESE; Sec. 9 S1/2NW,NWSW,S1/2SW;

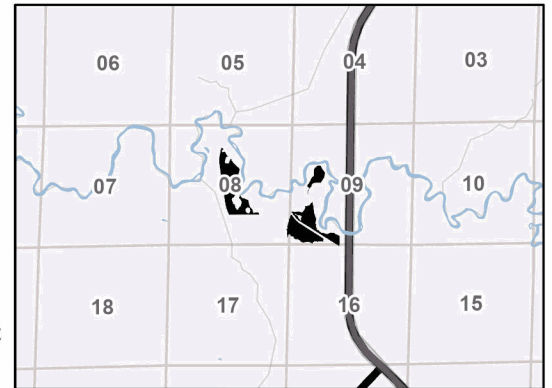
Cover Type

A = Aspen	J = Jack Pine	O = Oak	U = Upland Brush
B = Paper Birch	K = Rock	P = Lowland Poplar	UM = Upland Mix Forest
C = Cedar	L = Lowland Brush	Q = Mixed Swamp Conifer	V = Bog or Marsh
D = Treed Bog	LM = Lowland Mix Forest	R = Red Pine	W = White Pine
E = Swamp Hardwoods	M = Maple, Beech, Birch	S = Black Spruce	X = Non Stocked
F = Spruce/Fir	MC = Mixed Conifer	T = Tamarack	Y = Sand
G = Grass	MD = Mixed Deciduous	Z = Water	
H = Hemlock	N = Marsh		

Density

0 = Non Stocked	5 = Pole Timber Medium
1 = Seedling Sapling Poor	6 = Pole Timber Well
2 = Seedling Sapling Medium	7 = Saw Timber Poor
3 = Seedling Sapling Well	8 = Saw Timber Medium
4 = Pole Timber Poor	9 = Saw Timber Well

Locator Map 1:100,000

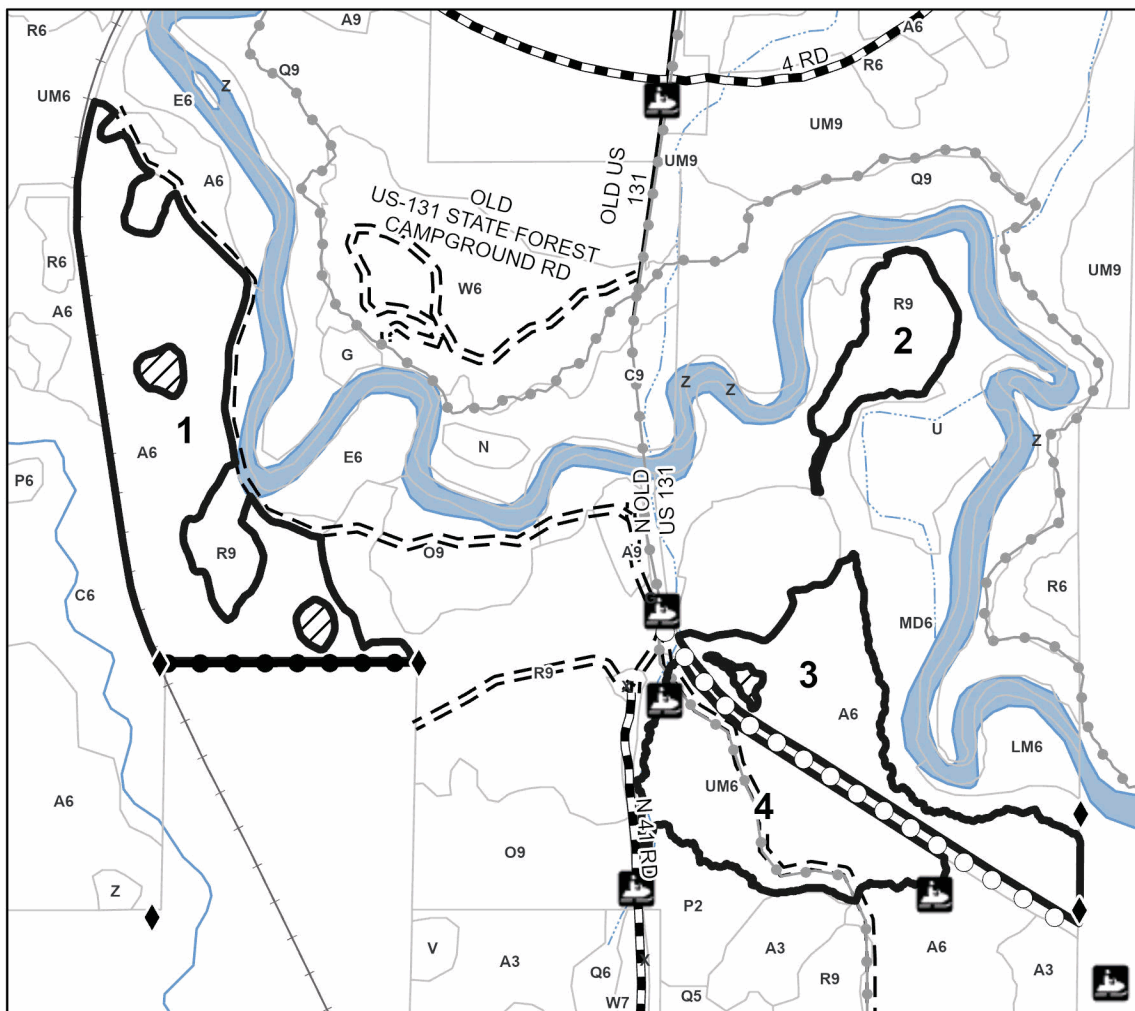


**Flying Raptor
Aspen**

91.3 Acres

Payment Unit Number	Acres
1	40.5
2	8.7
3	20.7
4	21.4

0 0.17 0.35 0.7 Miles



Legend

- Against State (Red)
- Private Line (Blue)
- Payment Unit (Unpainted)
- Active Railroad
- Recreational Trails
- Forest Access Route
- Paved Road
- Government Gravel/Dirt
- Field Grade Corner
- Retention Area

Use QR Code to
open Map in App



TIMBER SALE INFORMATION

Ask MI Turkey (63-017-25)

T22N, R07W, SEC. 2.

Missaukee County (Advertised Price \$53,995.30)

A timber sale contract for this lump sum, sealed bid timber sale will be awarded to the responsible bidder offering the highest sealed bid price. All units of volume listed below were estimated using the Inventory Manager computer program and the new Michigan taper model. Bids must be at or above the following advertised price for each product and species:

<u>PRODUCTS & SPECIES</u>	<u>ESTIMATED UNITS*</u>		<u>ADVERTISED PRICE</u>
Sawtimber			
Red Pine	151.3	MBF	\$ 107.00 / MBF
White Pine	12.5	MBF	\$ 48.00 / MBF
Pulpwood			
Black Cherry	43	Cords	\$ 16.30 / Cord
Jack Pine	243	Cords	\$ 14.30 / Cord
Mixed Aspen	291	Cords	\$ 20.45 / Cord
Red Maple	60	Cords	\$ 16.30 / Cord
Red Oak	21	Cords	\$ 32.95 / Cord
Red Pine	527	Cords	\$ 45.60 / Cord
White Pine	77	Cords	\$ 17.90 / Cord

* The total volume is statistically estimated within plus (+) or minus (-) 16.77 percent. There are an estimated 2,467 cords on this timber sale, plus or minus 414 cords at the 95% confidence level. The estimated units are final and not subject to adjustment. Prospective bidders are urged to examine this timber and to make their own estimates of quantity and quality.

BOND AND PAYMENT SCHEDULE:

1. A bond in the amount of \$2,700.00 to insure faithful performance of the conditions of the contract will be deposited by the successful bidder within 21 days of the sale award.
2. Cutting in any sale or unit without the required advance payment would be considered a trespass.
3. Total payment must be paid in advance or according to the following schedule :
 - (a) Ten percent (10%) of the sale value must be paid within 21 days of the sale award.
 - (b) The 10% down payment will be credited towards the first unit cut.
 - (c) Payment for each of the following units must be made before cutting begins in that unit:

<u>PAYMENT UNIT NUMBER</u>	<u>PERCENT OF TOTAL SALE VALUE</u>
01	31.2%
02	30.6%
03	29.8%
04	8.4%

4. If no cutting takes place, the 10% down payment will not be refunded.
5. Operations on the contract issued will terminate on 12/31/2029.

SALE STATISTICS

Volumes were calculated in cubic feet using the Michigan taper model. Cubic foot volume includes all wood inside bark for the product indicated. For display purposes, cubic feet were converted to cords and MBF using a simple conversion factor, e.g. 79 cubic feet per cord and 185 cubic feet per MBF. The cubic foot volumes are precise; the cords and MBF volumes are not. Cubic foot volume cannot be directly converted to cords or boards with precision.

SALE VOLUMES

The total estimated sale volume may not equal the sum of the species/products due to the nature of statistical calculations associated with double sampling methodology.

<u>VOLUME</u>			<u>STATISTICAL RANGE IN CORDS</u>	
<u>TOTAL CUBIC FEET</u>	<u>TOTAL CORDS</u>	<u>PERCENT ERROR</u>	<u>MINIMUM</u>	<u>MAXIMUM</u>
194,886	2,467	16.77%	2,053	2,881

VDU VOLUMES

A VDU is a Volume Determination Unit. Volumes and their associated statistics are calculated at the VDU level and summarized to the sale level. There is often a one to one relationship between a VDU and a Payment Unit, but not always, depending on the cruise design. Refer to the VDU TO PAYMENT UNIT table.

	VOLUME			RANGE IN CORDS	
VDU	TOTAL CUBIC FEET	TOTAL CORDS	PERCENT ERROR	MINIMUM	MAXIMUM
3	14,096	178	52.47%	85	272
4	32,062	406	42.38%	234	578
5	94,219	1,193	26.35%	878	1,507
6	12,730	161	40.87%	95	227
8	41,780	529	37.11%	333	725
TOTAL:	194,886	2,467		1,625	3,309

VDU TO PAYMENT UNIT

When a VDU is associated with more than one Payment Unit (PU), the VDU volumes are assigned to the PU based on acres of the VDU within the PU.

VDU	VDU ACRES	PU	PU ACRES
TOTAL:			

DESCRIPTION OF TIMBER BY PAYMENT UNIT (PU)

PU	MARKET GROUP	PRODUCT	QUANTITY	UNIT	ACRES	ADVERTISE PRICE
1	Red Pine	Sawtimber	25.7	MBF	18.7	\$16,803.45
	Black Cherry	Pulpwood	12	Cords		
	Black Cherry	Sawtimber	2.5	MBF		
	Black Cherry	Pulpwood	7	Cords		
	Mixed Aspen		31	Cords		
	B. T. Aspen		31	Cords		
	Red Pine		290	Cords		
2	Red Pine	Sawtimber	74.4	MBF	11.4	\$16,543.40
	White Pine		12.5	MBF		
	Red Pine	Pulpwood	157	Cords		
	White Pine		46	Cords		
3	Red Pine	Sawtimber	42.4	MBF	34.1	\$16,112.45
	Black Cherry	Pulpwood	13	Cords		
	Black Cherry	Sawtimber	0.5	MBF		
	Black Cherry	Pulpwood	12	Cords		
	Jack Pine		101	Cords		
	Jack Pine	Sawtimber	4.8	MBF		
	Jack Pine	Pulpwood	91	Cords		
	Mixed Aspen		258	Cords		
	B. T. Aspen	Sawtimber	9.1	MBF		
	Quaking Aspen		29.6	MBF		
	B. T. Aspen	Pulpwood	30	Cords		
	Quaking Aspen		151	Cords		
	Red Maple		60	Cords		
	Red Maple	Sawtimber	11.3	MBF		
	Red Maple	Pulpwood	37	Cords		
	Red Oak		21	Cords		
	Red Oak	Sawtimber	3.7	MBF		
	Red Oak	Pulpwood	14	Cords		
	Red Pine		55	Cords		
	White Pine		26	Cords		
4	Red Pine	Sawtimber	8.8	MBF	15.7	\$4,536.00
	Black Cherry	Pulpwood	18	Cords		
	Black Cherry		18	Cords		
	Jack Pine		142	Cords		
	Jack Pine	Sawtimber	5.2	MBF		
	Jack Pine	Pulpwood	132	Cords		
	Mixed Aspen		2	Cords		
	B. T. Aspen		2	Cords		
	Red Pine		25	Cords		
	White Pine		5	Cords		
TOTAL:			163.8	MBF		
TOTAL:			1,262	Cords		

Sale Specific Conditions & Requirements

Sale Name: Ask MI Turkey

Sale Number: 63-017-25 Seq#: 1

1 - Sale Area

1.2 - Boundaries

1.2.1 - Painted Boundaries (9/19)

The sale boundary and Payment Unit boundaries are marked and identified by blue, red and yellow paint. Exterior sale boundary lines against private property are marked with blue paint. Exterior sale boundary lines against state are marked with red paint. Interior Payment Unit boundaries are marked with yellow paint. The painted boundary line trees are not Included Timber and are to be protected. Yellow painted trees designating an interior Payment Unit boundary are only to be cut when all surrounding Payment Units have been paid.

2 - Timber Specifications

2.1 - Included Timber

2.1.1 - Clearcut Unit(s) with Unmerchantable Trees (6/14)

Within Payment Unit(s) 3 and 4, cut all trees that are two (2) inches or more at DBH, except do not cut red or white pine 20 inches or greater at DBH, fir, spruce, or any green marked trees.

2.1.7 - Leave Tree Marked Unit(s) (6/14)

Within Payment Unit(s) 2, all trees, which meet minimum piece specifications in 2.2 Utilization, are designated for cutting, except do not cut trees marked with green paint above and below stump height, white pine 20 inches and greater at DBH or black cherry.

2.1.8 - Designated Plantation Row Unit(s) (12/24)

Within Payment Unit(s) 1, all trees which meet minimum piece specifications in 2.2 Utilization, within designated plantation rows, are designated for cutting. Designated plantation rows are every third row. Begin with the third row in from the outside of the plantation, then continue every third row. Because of the variability of row direction, it shall be the responsibility of the Purchaser to maintain the third-row sequence. Also, cut all aspen and black cherry trees 2 inches and greater at DBH.

3 - Payments

3.4 - Damaged Timber

3.4.1 - Damaged Timber (12/24)

General Condition and Requirement 3.4 Damaged Timber, defines liquidated damages for undesignated live merchantable trees which are cut or injured. Within the Sale Area, if more than 10% of trees (> 4.5" DBH) within a specified area of the sale are damaged, liquidated damages will be assessed for all trees damaged. Rates will be in accordance with General Condition and Requirement 3.4 Damaged Timber.

3.6 - Payment Unit Cutting Schedule

3.6.1 - Order of Cutting (1/09)

Payment Units 3 and 4 shall be cut first, unless the sale is paid in full.

4 - Transportation

4.1 - Construction

4.1.3 - Slash and Earthen Piles (8/04)

Piles or windrows of earth along roads and landings that have been widened or constructed shall be leveled. Slash from road maintenance or construction, including stumps, shall be dispersed throughout the sale.

4.1.6 - Road Construction (4/24)

Construction of new roads or improvements of existing roads shall be done in such a way as to minimize the environmental and visual impacts. Merchantable trees shall be cut and utilized unless otherwise directed. Non-merchantable trees shall be severed and laid flat on the ground. Slash shall be scattered, not left in windrows, and kept a minimum of 10 feet back from the road edge. Stumps shall be set upright, not left on edge, and be moved at least 10 feet away from the road edge.

Disturbed soil shall be feathered into the woods and not left in berms or windrows.

4.1.7 - Road Closure (10/11)

All new roads built into the sale must be blocked to vehicle traffic within 30 days of completion of hauling. Overgrown roads that are reopened shall be considered new roads. In general, this will require constructing a four (4') foot high berm of stumps and logs covered with earth. These roads must be rendered impassable to cars and trucks. All stumps from road building and landing construction must be reserved to block any newly constructed roads upon completion of the sale. These stumps must be scattered along the road system to prohibit vehicular movement. Temporary berms may be required if no sale activity occurs for 30 or more consecutive days. Contact the Sale Administrator for specific details of design and placement.

4.2 - Maintenance

4.2.4 - Grading (10/16)

For completion of the sale, state forest roads must be graded. In general, this will require a road grader or bulldozer to shape up the roads after forest products have been hauled off site. This includes cleaning of drainage areas, grading, crowning and filling with gravel, if necessary. The grading equipment to be used must be approved by the Unit Manager or his/her representative.

4.2.5 - Two Wheel Drive Condition (2/04)

All existing trail roads on and adjacent to the Sale Area must be passable by two-wheel drive traffic for the duration of the sale.

5 - Operations

5.1 - Notification

5.1.1 - Pre-sale Conference (10/16)

A pre-sale conference on site between the Purchaser and Sale Administrator is required prior to beginning any operations to determine landing and road locations. The Unit Manager or his/her representative must be contacted at least 5 days in advance to schedule the conference.

5.1.4 - Post-Sale Conference (10/16)

A post-sale conference on site between the Purchaser and sale administrator is required 5 days prior to the completion of active logging operations to determine clean-up and repair of landings, road edges, and the fulfillment of other contract specifications.

5.2 - Conduct of Operations

5.2.1 - Slash

5.2.1.8 - Slash Height (12/08)

No slash or tree tops may exceed 24 inches in height.

5.2.2 - Hazard Trees/Snags

5.2.2.1 - Den Trees (10/16)

Obvious hollow and/or den trees shall be protected and left standing unless they are a safety hazard.

5.2.3 - Operating Restrictions

5.2.3.5 - Oak Wilt Restriction (1/18)

Within Payment Unit(s) 1-4, unless changed by written agreement, cutting, skidding, hauling within the sale and brushing of access roads to the sale are not permitted during the period of April 15 to July 15. Operations may be allowed if specific steps are taken to prevent damaging uncut oak during the high-risk period. Those steps may include completing all road brushing before April 15 and clearing a tree-length buffer along uncut oak cover before April 15. This is necessary to reduce the spread of oak wilt. For more information, contact the Unit Manager or his/her representative.

5.2.3.13 - Heterobasidion Root Disease (HRD) (7/19)

This plantation is at risk of infection by the root rot fungus, Heterobasidion irregulare. To prevent the spread of this disease, cutting operations within Payment Unit(s) 1-4 are restricted to the period of January 1 to March 31. Cutting may only occur outside this period with written permission of the Unit Manager or with the application of a preventative pesticide. Consultation with a forest health specialist will determine if cutting can occur prior to January 1 without

pesticide application, dependent upon current and forecasted snow cover. Cellu-Treat and RotStop C are currently the only EPA registered products available in the United States for the control of Heterobasidion. Both products are a water-soluble powder that must be applied to the stump, in accordance with the product label. Dye must be added to these products to provide visible evidence of adequate coverage. Application of these pesticides requires licensing by the Michigan Department of Agriculture and Rural Development. All applicators are required to: provide to the Sale Administrator notification of application per requirements in 40 CFR 170.120; and document and provide to the Sale Administrator annually, by December 31 and prior to closure of sale, the volume of product used and acres treated.

5.2.29 - Shrub Protection (1/20)

Do not cut or damage hawthorn, witch-hazel, dogwood or junberry. These woody-shrub plants are highly beneficial to various wildlife species.

5.2.32 - Decking/Landing Restoration (9/13)

All decking and landing areas must have the surface area restored to a condition equal to or better than before. This is to ensure the proper regeneration of the stand. Wood debris, chips and "cookies" from trimmings must be removed or scattered away from landing and loading areas and may not be windrowed on the edge.

5.2.38 - No Decking Against Live Trees (2/04)

Cut products may not be decked against unmarked or designated leave trees.

5.4 - Soil Protection

5.4.1 - Rutting Restriction, General (7/16)

Operations are to cease immediately if equipment and weather conditions result in rutting of roads and/or skid trails which are 12 inches or greater in depth and 50 feet in length. The Unit Manager or his/her representative may restrict hauling and/or skidding if ruts exceed the specified depth. With the Unit Manager or his/her representative's approval, the Purchaser may return to the area when the risk of rutting has decreased.

5.8 - Protection of Endangered Species

5.8.5 - Protection of Raptor Nests (3/13)

All trees with raptor nests will be protected if found during harvesting operations. Notification will be made to the Unit Manager or his/her representative who will notify the Wildlife Biologist so an onsite evaluation and recommendation can be made, if necessary.

6 - Safety and Fire Prevention

6.2 - Signing

6.2.1 - Road Posting (10/20)

The Purchaser is responsible for posting and maintaining caution signs on South Vandermeulen Rd prior to beginning operations. The road must be posted at appropriate distances from the Sale Area to warn of logging activity and truck traffic. Signs must be removed when harvest operations are suspended or completed. The Purchaser will provide these signs.



TIMBER SALE MAP

This information provided by authority of Part 525, 1994 PA 451, as amended.

Sale Number
63-017-25

Date
08/25/2025

Forest Management Unit		County	Mapped By: Adamczyk	Scale	Page	Of
Cadillac Mgt Unit		Missaukee	Cruised By: Adamczyk	1:10,000	1	1
Township	Range	Section(s) and Subdivision(s)				
22N	07W	Sec. 2 S1/2SW,NWSE;				

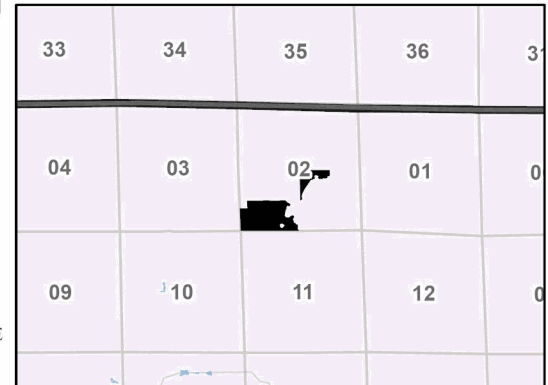
Cover Type

A = Aspen	J = Jack Pine	O = Oak	U = Upland Brush
B = Paper Birch	K = Rock	P = Lowland Poplar	UM = Upland Mix Forest
C = Cedar	L = Lowland Brush	Q = Mixed Swamp Conifer	V = Bog or Marsh
D = Treed Bog	LM = Lowland Mix Forest	R = Red Pine	W = White Pine
E = Swamp Hardwoods	M = Maple, Beech, Birch	S = Black Spruce	X = Non Stocked
F = Spruce/Fir	MC = Mixed Conifer	T = Tamarack	Y = Sand
G = Grass	MD = Mixed Deciduous		Z = Water
H = Hemlock	N = Marsh		

Density

0 = Non Stocked	5 = Pole Timber Medium
1 = Seedling Sapling Poor	6 = Pole Timber Well
2 = Seedling Sapling Medium	7 = Saw Timber Poor
3 = Seedling Sapling Well	8 = Saw Timber Medium
4 = Pole Timber Poor	9 = Saw Timber Well

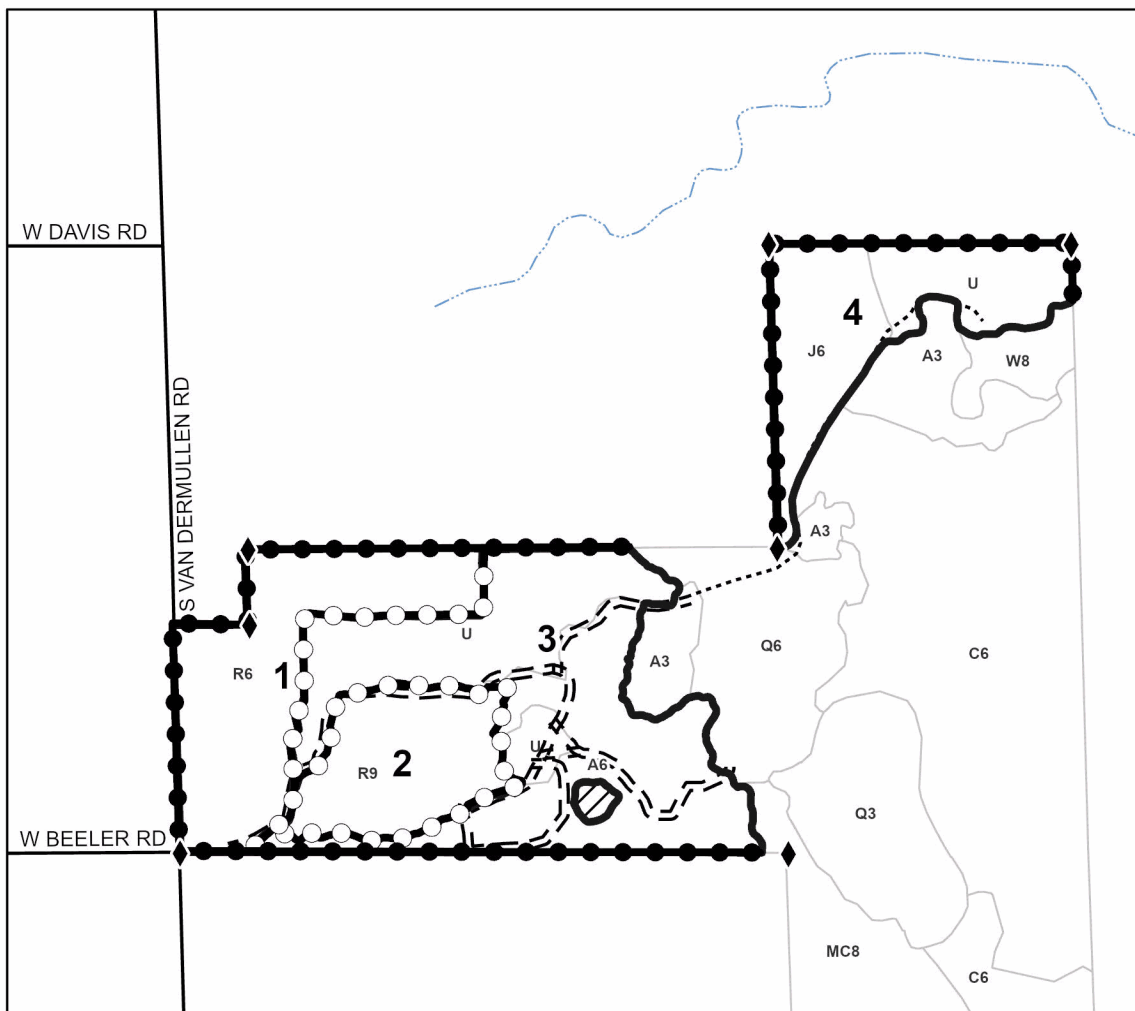
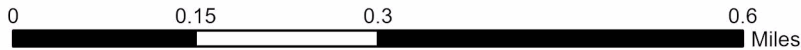
Locator Map 1:100,000



Payment Unit Number	Acres
1	18.7
2	11.4
3	34.1
4	15.7

Ask MI Turkey

79.9 Acres



Legend

- Against State (Red)
- Private Line (Blue)
- Payment Unit (Yellow)
- Retention Areas
- Forest Access Route
- Administrative Access Only
- Paved Road
- Field Grade Corner

Use QR Code to open Map in App



TIMBER SALE INFORMATION

Bark Eater Mix (63-019-25)
T23N, R07W, SEC. 3.
Missaukee County (Advertised Price \$58,918.90)

A timber sale contract for this lump sum, sealed bid timber sale will be awarded to the responsible bidder offering the highest sealed bid price. All units of volume listed below were estimated using the Inventory Manager computer program and the new Michigan taper model. Bids must be at or above the following advertised price for each product and species:

<u>PRODUCTS & SPECIES</u>	<u>ESTIMATED UNITS*</u>		<u>ADVERTISED PRICE</u>
Sawtimber			
Red Maple	68.0	MBF	\$ 135.00 / MBF
Sugar Maple	131.3	MBF	\$ 218.00 / MBF
White Pine	12.8	MBF	\$ 48.00 / MBF
Pulpwood			
Basswood	18	Cords	\$ 10.10 / Cord
Beech	225	Cords	\$ 16.30 / Cord
Black Cherry	28	Cords	\$ 16.30 / Cord
Mixed Aspen	55	Cords	\$ 20.45 / Cord
Red Maple	195	Cords	\$ 16.30 / Cord
Red Oak	9	Cords	\$ 32.95 / Cord
Sugar Maple	584	Cords	\$ 16.30 / Cord
White Pine	116	Cords	\$ 17.90 / Cord

* The total volume is statistically estimated within plus (+) or minus (-) 18.28 percent. There are an estimated 1,736 cords on this timber sale, plus or minus 317 cords at the 95% confidence level. The estimated units are final and not subject to adjustment. Prospective bidders are urged to examine this timber and to make their own estimates of quantity and quality.

BOND AND PAYMENT SCHEDULE:

- A bond in the amount of \$5,892.00 to insure faithful performance of the conditions of the contract will be deposited by the successful bidder within 21 days of the sale award.
- Cutting in any sale or unit without the required advance payment would be considered a trespass.
- Total payment must be paid in advance or according to the following schedule :
 - Ten percent (10%) of the sale value must be paid within 21 days of the sale award.
 - The 10% down payment will be credited towards the first unit cut.
 - Payment for each of the following units must be made before cutting begins in that unit:

PAYMENT UNIT NUMBER	PERCENT OF TOTAL SALE VALUE
01	53.0%
02	7.3%
03	39.7%
- If no cutting takes place, the 10% down payment will not be refunded.
- Operations on the contract issued will terminate on 06/30/2029.

SALE STATISTICS

Volumes were calculated in cubic feet using the Michigan taper model. Cubic foot volume includes all wood inside bark for the product indicated. For display purposes, cubic feet were converted to cords and MBF using a simple conversion factor, e.g. 79 cubic feet per cord and 185 cubic feet per MBF. The cubic foot volumes are precise; the cords and MBF volumes are not. Cubic foot volume cannot be directly converted to cords or boards with precision.

SALE VOLUMES

The total estimated sale volume may not equal the sum of the species/products due to the nature of statistical calculations associated with double sampling methodology.

VOLUME			STATISTICAL RANGE IN CORDS	
TOTAL CUBIC FEET	TOTAL CORDS	PERCENT ERROR	MINIMUM	MAXIMUM
137,164	1,736	18.28%	1,419	2,054

VDU VOLUMES

A VDU is a Volume Determination Unit. Volumes and their associated statistics are calculated at the VDU level and summarized to the sale level. There is often a one to one relationship between a VDU and a Payment Unit, but not always, depending on the cruise design. Refer to the VDU TO PAYMENT UNIT table.

	VOLUME			RANGE IN CORDS	
VDU	TOTAL CUBIC FEET	TOTAL CORDS	PERCENT ERROR	MINIMUM	MAXIMUM
1	72,999	924	27.36%	671	1,177
2	48,416	613	30.22%	428	798
5	15,749	199	39.07%	121	277
TOTAL:	137,164	1,736		1,220	2,252

VDU TO PAYMENT UNIT

When a VDU is associated with more than one Payment Unit (PU), the VDU volumes are assigned to the PU based on acres of the VDU within the PU.

VDU	VDU ACRES	PU	PU ACRES
TOTAL:			

DESCRIPTION OF TIMBER BY PAYMENT UNIT (PU)

PU	MARKET GROUP	PRODUCT	QUANTITY	UNIT	ACRES	ADVERTISE PRICE			
1	Red Maple	Sawtimber	38.2	MBF	29.6	\$31,260.10			
	Sugar Maple		68.5	MBF					
	White Pine		3.7	MBF					
	Basswood	Pulpwood	8	Cords					
	Basswood	Sawtimber	3.5	MBF					
	Basswood	Pulpwood	1	Cords					
	Beech		131	Cords					
	Mixed Aspen		7	Cords					
	Quaking Aspen	Sawtimber	2.5	MBF					
	Quaking Aspen	Pulpwood	2	Cords					
	Red Maple		143	Cords					
	Red Oak		9	Cords					
	Red Oak	Sawtimber	1.1	MBF					
	Red Oak	Pulpwood	7	Cords					
	Sugar Maple		341	Cords					
	White Pine		25	Cords					
2	Red Maple	Sawtimber	3.3	MBF	14.1	\$4,277.10			
	Sugar Maple		1.9	MBF					
	White Pine		9.1	MBF					
	Mixed Aspen	Pulpwood	48	Cords					
	Quaking Aspen		48	Cords					
	Red Maple		18	Cords					
	Sugar Maple		8	Cords					
	White Pine		88	Cords					
3	Red Maple	Sawtimber	26.5	MBF	20.6	\$23,381.70			
	Sugar Maple		60.9	MBF					
	Basswood	Pulpwood	10	Cords					
	Basswood	Sawtimber	4.4	MBF					
	Basswood	Pulpwood	1	Cords					
	Beech		94	Cords					
	Black Cherry		28	Cords					
	Black Cherry	Sawtimber	3.6	MBF					
	Black Cherry	Pulpwood	21	Cords					
	Red Maple		34	Cords					
	Sugar Maple		235	Cords					
	White Pine		3	Cords					
	TOTAL:			212.1			MBF		
	TOTAL:			1,230			Cords		

Sale Specific Conditions & Requirements

Sale Name: Bark Eater Mix

Sale Number: 63-019-25 Seq#: 1

1 - Sale Area

1.2 - Boundaries

1.2.1 - Painted Boundaries (9/19)

The sale boundary and Payment Unit boundaries are marked and identified by blue, red and yellow paint. Exterior sale boundary lines against private property are marked with blue paint. Exterior sale boundary lines against state are marked with red paint. Interior Payment Unit boundaries are marked with yellow paint. Retention patches are marked with red paint; no harvesting activities may occur within these areas. The painted boundary line trees are not Included Timber and are to be protected unless marked with orange paint. Yellow painted trees designating an interior Payment Unit boundary are only to be cut when all surrounding Payment Units have been paid.

2 - Timber Specifications

2.1 - Included Timber

2.1.3 - Cut Tree Marked Unit(s) (12/08)

Within Payment Unit(s) 2, all trees are designated for cutting when marked with orange paint above and below stump height, regardless of merchantability.

2.1.7 - Leave Tree Marked Unit(s) (6/14)

Within Payment Unit(s) 1 and 3, all trees, which meet minimum piece specifications in 2.2 Utilization, are designated for cutting, except do not cut birch, cedar, hemlock or trees marked with green paint above and below stump height. Special protection trees identified in accordance with condition 3.4.2, within clearcutting unit boundaries, are not Included Timber and are to be protected.

3 - Payments

3.3 - Pre-measured Sales

3.3.4 - Dividing Payment Units (7/14)

Payment Unit(s) may be divided at the request of the Purchaser and upon approval of the Unit Manager. Dividing Payment Units is a contract modification which requires a Timber Sale Contract Amendment.

3.4 - Damaged Timber

3.4.2 - Special Protection Trees (1/25)

The Purchaser shall not cut live or dead special protection trees within cutting units or clearings. Special protection trees are marked with green paint or designated leave species within Payment Units. If Purchaser's operations have cut or damaged special protection trees through carelessness, the Purchaser shall pay \$500 as fixed, agreed and liquidated damages for each special protection tree cut or damaged. Such payment does not constitute ownership of the undesignated timber.

4 - Transportation

4.1 - Construction

4.1.6 - Road Construction (4/24)

Construction of new roads or improvements of existing roads shall be done in such a way as to minimize the environmental and visual impacts. Merchantable trees shall be cut and utilized unless otherwise directed. Non-merchantable trees shall be severed and laid flat on the ground. Slash shall be scattered, not left in windrows, and kept a minimum of 10 feet back from the road edge. Stumps shall be set upright, not left on edge, and be moved at least 10 feet away from the road edge. Disturbed soil shall be feathered into the woods and not left in berms or windrows.

4.1.7 - Road Closure (10/11)

All new roads built into the sale must be blocked to vehicle traffic within 30 days of completion of hauling. Overgrown roads that are reopened shall be considered new roads. In general, this will require constructing a four (4') foot high berm of stumps and logs covered with earth. Stumps and brush must be placed along the remainder of the trail. These roads must be

rendered impassable to cars and trucks. All stumps from road building and landing construction must be reserved to block any newly constructed roads upon completion of the sale. These stumps must be scattered along the road system to prohibit vehicular movement. Temporary berms may be required if no sale activity occurs for 30 or more consecutive days. Contact the Sale Administrator for specific details of design and placement.

4.2 - Maintenance

4.2.5 - Two Wheel Drive Condition (2/04)

All existing trail roads on and adjacent to the Sale Area must be passable by two-wheel drive traffic for the duration of the sale.

5 - Operations

5.2 - Conduct of Operations

5.2.1 - Slash

5.2.1.8 - Slash Height (12/08)

No slash or tree tops may exceed 24 inches in height.

5.2.2 - Hazard Trees/Snags

5.2.2.1 - Den Trees (10/16)

Obvious hollow and/or den trees shall be protected and left standing unless they are a safety hazard.

5.2.3 - Operating Restrictions

5.2.3.3 - Bark Slippage Restriction (3/09)

Within Payment Unit(s) 1-3, unless changed by written agreement, cutting and skidding are not permitted during the period of April 15 to July 15. This restriction is because of bark slippage.

5.2.3.4 - Oak Wilt Restriction, No Exceptions (1/18)

Within Payment Unit(s) 1-3, cutting, skidding, hauling within the sale and brushing of access roads to the sale are not permitted during the period of April 15 to July 15. No exceptions will be granted. This is necessary to reduce the spread of oak wilt.

5.2.29 - Shrub Protection (1/20)

Do not cut or damage hawthorn, witch-hazel, dogwood or junberry. These woody-shrub plants are highly beneficial to various wildlife species.

5.2.32 - Decking/Landing Restoration (9/13)

All decking and landing areas must have the surface area restored to a condition equal to or better than before. This is to ensure the proper regeneration of the stand. Wood debris, chips and "cookies" from trimmings must be removed or scattered away from landing and loading areas and may not be windrowed on the edge.

5.2.38 - No Decking Against Live Trees (2/04)

Cut products may not be decked against unmarked or designated leave trees.

5.3 - Stream Protection

5.3.2 - Parking Equipment Near Water (10/23)

Within Payment Unit(s) 1 the parking of or storage of equipment is prohibited within 100 feet of water bodies or ground water supplies. All equipment, when not in use for harvest operations, must be parked a minimum of 100 feet away from water sources (streams, rivers, lakes, ponds, vernal pools, ground water sources) and 50 feet away from slopes leading to water sources and/or riparian areas. This restriction is for preventing unforeseen oil and/or fluid leaks from contaminating water bodies and/or ground water supplies.

5.4 - Soil Protection

5.4.1 - Rutting Restriction, General (7/16)

Operations are to cease immediately if equipment and weather conditions result in rutting of roads and/or skid trails which are 12 inches or greater in depth and 50 feet in length. The Unit Manager or his/her representative may restrict hauling and/or

skidding if ruts exceed the specified depth. With the Unit Manager or his/her representative's approval, the Purchaser may return to the area when the risk of rutting has decreased.

5.4.2 - Skid Trails (2/04)

Skid trails up and down slopes should be avoided. If, however, this is unavoidable, these trails will be left in a non-erodible condition using water bars, logs, and slash. Placing of slash on these skid trails while logging is ongoing may alleviate need for any further action. At the direction of the Sale Administrator, seed, fertilizer, and mulch may also be required.

5.4.6 - Wet Area Protection (5/10)

No harvesting operations, including skidding and felling, are to take place within the vernal pond areas or drainages. When harvesting occurs, there should be no disturbance to the vernal pond depression. All equipment, trees and tops should be kept out of this area. Within 100 feet of the pond, equipment should only be used when the soil is in a dry or frozen condition. Care must be taken by the Purchaser to identify and avoid operating in these areas of the timber sale.

5.8 - Protection of Endangered Species

5.8.5 - Protection of Raptor Nests (3/13)

All trees with raptor nests will be protected if found during harvesting operations. Notification will be made to the Unit Manager or his/her representative who will notify the Wildlife Biologist so an onsite evaluation and recommendation can be made, if necessary.

6 - Safety and Fire Prevention

6.2 - Signing

6.2.1 - Road Posting (10/20)

The Purchaser is responsible for posting and maintaining caution signs on Cutcheon Rd prior to beginning operations. The road must be posted at appropriate distances from the Sale Area to warn of logging activity and truck traffic. Signs must be removed when harvest operations are suspended or completed. The Purchaser will provide these signs.



TIMBER SALE MAP

This information provided by authority of Part 525, 1994 PA 451, as amended.

Sale Number
63-019-25

Date
09/05/2025

Forest Management Unit	County	Mapped By: Adamczyk	Scale	Page	Of
Cadillac Mgt Unit	Missaukee	Cruised By: River Valley Forestry	1:7,920	1	1

Township	Range	Section(s) and Subdivision(s)
23N	07W	Sec. 3 S1/2SW;

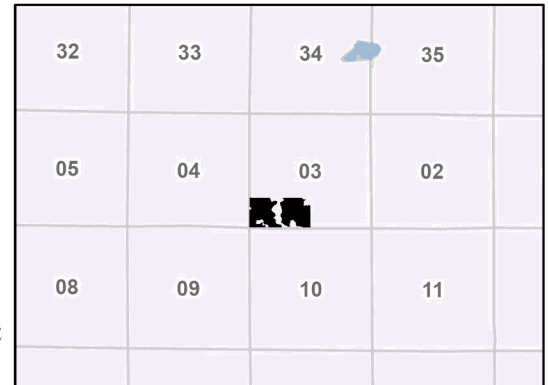
Cover Type

A = Aspen	J = Jack Pine	O = Oak	U = Upland Brush
B = Paper Birch	K = Rock	P = Lowland Poplar	UM = Upland Mix Forest
C = Cedar	L = Lowland Brush	Q = Mixed Swamp Conifer	V = Bog or Marsh
D = Treed Bog	LM = Lowland Mix Forest	R = Red Pine	W = White Pine
E = Swamp Hardwoods	M = Maple, Beech, Birch	S = Black Spruce	X = Non Stocked
F = Spruce/Fir	MC = Mixed Conifer	T = Tamarack	Y = Sand
G = Grass	MD = Mixed Deciduous		Z = Water
H = Hemlock	N = Marsh		

Density

0 = Non Stocked	5 = Pole Timber Medium
1 = Seedling Sapling Poor	6 = Pole Timber Well
2 = Seedling Sapling Medium	7 = Saw Timber Poor
3 = Seedling Sapling Well	8 = Saw Timber Medium
4 = Pole Timber Poor	9 = Saw Timber Well

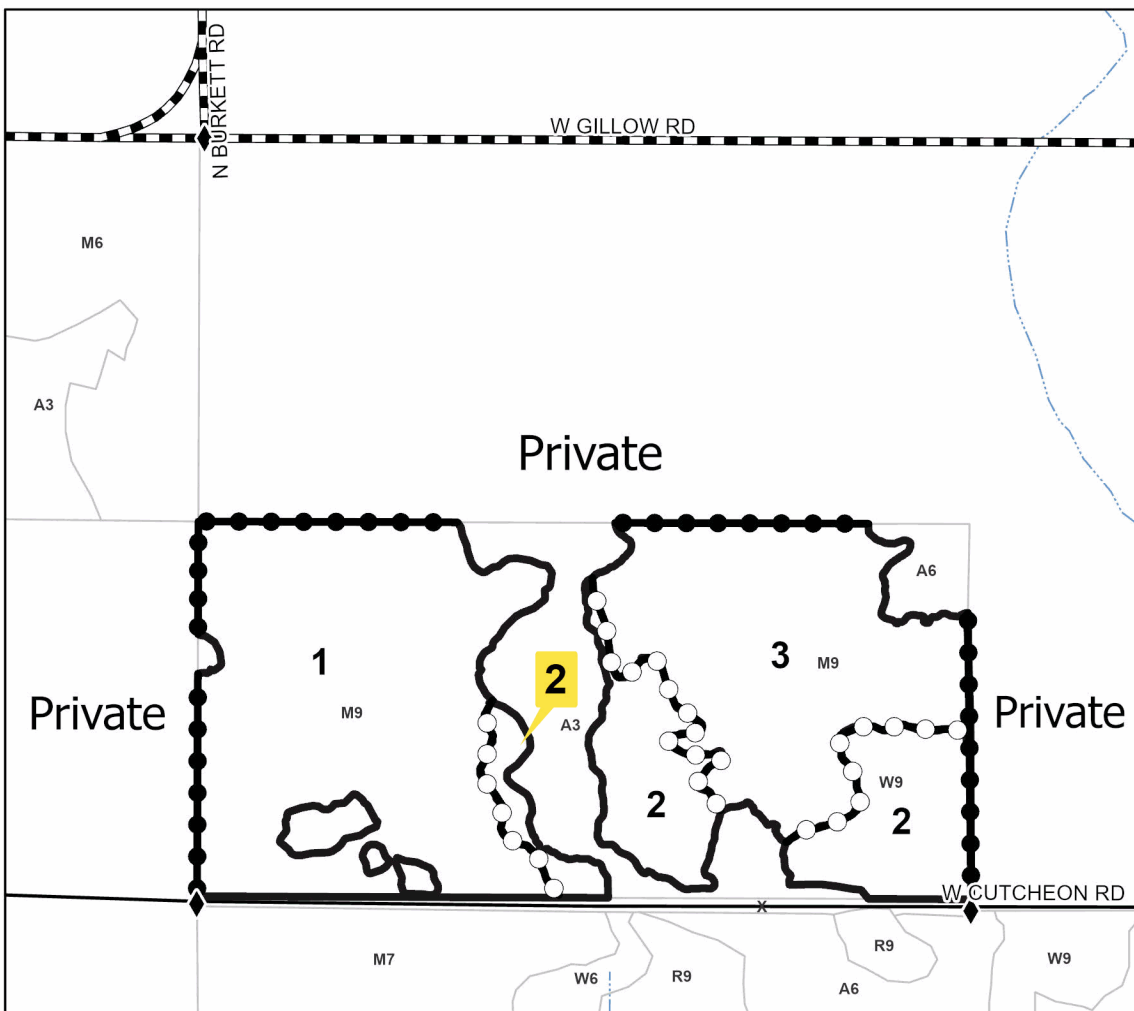
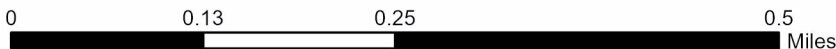
Locator Map 1:100,000



Payment Unit Number	Acres
1	29.6
2	14.1
3	20.6

Bark Eater Mix

64.3 Acres



Legend

- Against State (Red)
- Private Line (Blue)
- Payment Unit (Yellow)
- Paved Road
- Government Gravel/Dirt

Use QR Code to open Map in App



Medison Mix (63-010-25)

T24N, R09W, SEC. 16; T24N, R09W, SEC. 21; Wexford COUNTY

In response to the notice of sale to be held 3:00 p.m. (local time) on January 28, 2026, I am hereby submitting my sealed bid (firm offer) for the following forest products to be cut. Bids for individual species must be at or above the advertised price. All non-responsive bid forms may be rejected.

<u>PRODUCTS & SPECIES</u>	<u>ESTIMATED VOLUME*</u>	<u>ADVERTISED PRICE</u>	<u>BID PRICE/UNIT</u>
Sawtimber			
B. T. Aspen	68.4 MBF	\$ 116.00/MBF	\$ _____
Red Maple	15.5 MBF	\$ 135.00/MBF	\$ _____
Red Oak	57.5 MBF	\$ 188.00/MBF	\$ _____
Red Pine	549.7 MBF	\$ 99.00/MBF	\$ _____
White Pine	36.2 MBF	\$ 48.00/MBF	\$ _____
Pulpwood			
B. T. Aspen	637 Cords	\$ 20.45/Cord	\$ _____
Black Cherry	11 Cords	\$ 16.30/Cord	\$ _____
Jack Pine	74 Cords	\$ 14.30/Cord	\$ _____
Red Maple	180 Cords	\$ 16.30/Cord	\$ _____
Red Oak	79 Cords	\$ 32.95/Cord	\$ _____
Red Pine	272 Cords	\$ 45.60/Cord	\$ _____
White Oak	24 Cords	\$ 32.95/Cord	\$ _____
White Pine	83 Cords	\$ 17.90/Cord	\$ _____

*The volumes are statistically estimated within plus (+) or minus (-) 13.52 percent at 95% confidence level. These estimated volumes are final and not subject to adjustment. Prospective bidders are urged to examine this timber and to make their own estimates of quantity and quality.

I understand that any or all bids may be rejected. All bids must be signed and all bid items must be bid or the bid form may be rejected. I also understand that consideration and awarding a contract will be based upon my past performance and ability to complete the contract based upon equipment and staffing subject to my control.

FEDERAL ID: ____ - ____ - ____ or SOCIAL SECURITY NUMBER: ____ - ____ - ____

Company or individual bidding: _____

Company representative's name: _____

Address: _____

City: _____ State: _____ Zip: _____

IF AVAILABLE, PLEASE PLACE THE PERSONALIZED LABEL FROM YOUR PROSPECTUS IN THE ABOVE BOX.

Individual or company representative's signature: _____ Date: _____

Phone number : _____ Email (optional): _____

**THE WINNING BIDDER MUST COMPLETE THE VERIFICATION OF WORKER'S DISABILITY COMPENSATION ACT
COMPLIANCE (ON REVERSE SIDE IF DOUBLE SIDED) WITHIN 21 DAYS OF SALE AWARD DATE**



TIMBER SALE VERIFICATION OF WORKER'S DISABILITY COMPENSATION ACT COMPLIANCE

As required by Act 317, P.A. 1969 (Worker's Compensation) and
Part 5 of Act 451 of 1994, as amended.

FOR DEPARTMENT USE ONLY

Sale Number (XX - XXX - XX - XX)

Forest Management Unit:

VERIFICATION OF WORKER'S DISABILITY COMPENSATION ACT COMPLIANCE

- This verification must be completed and submitted within 21 days of contract award and prior to the issuance of the timber sale contract.
- In addition, if boxes 2B or 2C are checked, then Notice of Exclusion or Certificate of Insurance must be submitted within twenty-one (21) days of the contract award and prior to the issuance of the timber sale contract.
- All information must be typed or printed except for written signatures.

Please Check Appropriate Categories:

1. My business is organized as (you **must** check one of the boxes below):
 - A. ☐ Sole Proprietorship (individual)
 - B. ☐ Partnership
 - C. ☐ Corporation
2. You **must** check one of the boxes below:
 - A. ☐ I certify my business is a sole proprietorship and it has no employees but the sole proprietor. I am not subject to the Worker's Compensation Laws.
 - B. ☐ I certify my business has satisfied its obligation to the Worker's Compensation Act through the use of an approved Notice of Exclusion (BWC-337, Rev. 5/96). I will provide a copy of the Notice of Exclusion within 21 days of the contract award. (For questions or a copy of the BWC-337, please call the Worker's Compensation Bureau at 517-322-1195).
 - C. ☐ I certify my business has a Worker's Compensation Policy. I will provide an original Certificate of Insurance within twenty-one (21) days of the contract award.
3. If you have checked item 2(A) or 2(B), you **must** indicate the number of **both** full-time and part-time employees, other than yourself, including family members and active partners (if none, you must enter "0").

_____ Full-time Employees

_____ Part-time Employees

Name of Business		Federal ID (or) Social Security No.
Address		Telephone ()
City	State	ZIP

I hereby certify that the above information is true and correct. I agree to notify the Michigan DNR of any changes that occur in factors affecting my coverage during any of my present and future operations.

Signature of Owner or Authorized Representative

Title

Date

Please complete the "SEALED BID" information on the next page

Flying Raptor Aspen (63-015-25)

T24N, R09W, SEC. 16; T24N, R09W, SEC. 8; T24N, R09W, SEC. 9; Wexford

In response to the notice of sale to be held 3:00 p.m. (local time) on January 28, 2026, I am hereby submitting my sealed bid (firm offer) for the following forest products to be cut. Bids for individual species must be at or above the advertised price. All non-responsive bid forms may be rejected.

<u>PRODUCTS & SPECIES</u>	<u>ESTIMATED VOLUME*</u>	<u>ADVERTISED PRICE</u>	<u>BID PRICE/UNIT</u>
Sawtimber			
Black/Red (Hybrid) Oak	6.2 MBF	\$ 101.00/MBF	\$ _____
Mixed Aspen	374.7 MBF	\$ 116.00/MBF	\$ _____
Red Maple	86.3 MBF	\$ 135.00/MBF	\$ _____
Red Oak	39.4 MBF	\$ 188.00/MBF	\$ _____
Red Pine	70.2 MBF	\$ 107.00/MBF	\$ _____
White Oak	10.6 MBF	\$ 114.00/MBF	\$ _____
White Pine	122.6 MBF	\$ 48.00/MBF	\$ _____
Pulpwood			
B. T. Aspen	956 Cords	\$ 20.45/Cord	\$ _____
Balsam Fir	12 Cords	\$ 37.50/Cord	\$ _____
Black/Red (Hybrid) Oak	7 Cords	\$ 32.95/Cord	\$ _____
Quaking Aspen	176 Cords	\$ 20.45/Cord	\$ _____
Red Maple	260 Cords	\$ 16.30/Cord	\$ _____
Red Oak	86 Cords	\$ 32.95/Cord	\$ _____
Red Pine	294 Cords	\$ 45.60/Cord	\$ _____
White Oak	33 Cords	\$ 32.95/Cord	\$ _____
White Pine	276 Cords	\$ 17.90/Cord	\$ _____

*The volumes are statistically estimated within plus (+) or minus (-) 12.90 percent at 95% confidence level. These estimated volumes are final and not subject to adjustment. Prospective bidders are urged to examine this timber and to make their own estimates of quantity and quality.

I understand that any or all bids may be rejected. All bids must be signed and all bid items must be bid or the bid form may be rejected. I also understand that consideration and awarding a contract will be based upon my past performance and ability to complete the contract based upon equipment and staffing subject to my control.

FEDERAL ID: ____ - ____ - ____ or SOCIAL SECURITY NUMBER: ____ - ____ - ____

Company or individual bidding: _____

Company representative's name: _____

Address: _____

City: _____ State: _____ Zip: _____

IF AVAILABLE, PLEASE PLACE THE PERSONALIZED LABEL FROM YOUR PROSPECTUS IN THE ABOVE BOX.

Individual or company representative's signature: _____ Date: _____

Phone number : _____ Email (optional): _____

THE WINNING BIDDER MUST COMPLETE THE VERIFICATION OF WORKER'S DISABILITY COMPENSATION ACT COMPLIANCE (ON REVERSE SIDE IF DOUBLE SIDED) WITHIN 21 DAYS OF SALE AWARD DATE



TIMBER SALE
VERIFICATION OF WORKER'S DISABILITY
COMPENSATION ACT COMPLIANCE

*As required by Act 317, P.A. 1969 (Worker's Compensation) and
Part 5 of Act 451 of 1994, as amended.*

FOR DEPARTMENT USE ONLY

Sale Number (XX – XXX – XX – XX)

Forest Management Unit:

VERIFICATION OF WORKER'S DISABILITY COMPENSATION ACT COMPLIANCE

- This verification must be completed and submitted within 21 days of contract award and prior to the issuance of the timber sale contract.
- In addition, if boxes 2B or 2C are checked, then Notice of Exclusion or Certificate of Insurance must be submitted within twenty-one (21) days of the contract award and prior to the issuance of the timber sale contract.
- All Information must be typed or printed except for written signatures.

Please Check Appropriate Categories:

1. My business is organized as (you **must** check one of the boxes below):
 - A. ☐ Sole Proprietorship (individual)
 - B. ☐ Partnership
 - C. ☐ Corporation
2. You **must** check one of the boxes below:
 - A. ☐ I certify my business is a sole proprietorship and it has no employees but the sole proprietor. I am not subject to the Worker's Compensation Laws.
 - B. ☐ I certify my business has satisfied its obligation to the Worker's Compensation Act through the use of an approved Notice of Exclusion (BWC-337, Rev. 5/96). I will provide a copy of the Notice of Exclusion within 21 days of the contract award. (For questions or a copy of the BWC-337, please call the Worker's Compensation Bureau at 517-322-1195).
 - C. ☐ I certify my business has a Worker's Compensation Policy. I will provide an original Certificate of Insurance within twenty-one (21) days of the contract award.
3. If you have checked item 2(A) or 2(B), you **must** indicate the number of **both** full-time and part-time employees, other than yourself, including family members and active partners (if none, you must enter "0").

_____ Full-time Employees

_____ Part-time Employees

Name of Business		Federal ID (or) Social Security No.
Address		Telephone ()
City	State	ZIP

I hereby certify that the above information is true and correct. I agree to notify the Michigan DNR of any changes that occur in factors affecting my coverage during any of my present and future operations.

Signature of Owner or Authorized Representative

Title

Date

Please complete the "SEALED BID" information on the next page

Ask MI Turkey (63-017-25)
T22N, R07W, SEC. 2; Missaukee COUNTY

In response to the notice of sale to be held 3:00 p.m. (local time) on January 28, 2026, I am hereby submitting my sealed bid (firm offer) for the following forest products to be cut. Bids for individual species must be at or above the advertised price. All non-responsive bid forms may be rejected.

<u>PRODUCTS & SPECIES</u>	<u>ESTIMATED VOLUME*</u>	<u>ADVERTISED PRICE</u>	<u>BID PRICE/UNIT</u>
Sawtimber			
Red Pine	151.3 MBF	\$ 107.00/MBF	\$ _____
White Pine	12.5 MBF	\$ 48.00/MBF	\$ _____
Pulpwood			
Black Cherry	43 Cords	\$ 16.30/Cord	\$ _____
Jack Pine	243 Cords	\$ 14.30/Cord	\$ _____
Mixed Aspen	291 Cords	\$ 20.45/Cord	\$ _____
Red Maple	60 Cords	\$ 16.30/Cord	\$ _____
Red Oak	21 Cords	\$ 32.95/Cord	\$ _____
Red Pine	527 Cords	\$ 45.60/Cord	\$ _____
White Pine	77 Cords	\$ 17.90/Cord	\$ _____

*The volumes are statistically estimated within plus (+) or minus (-) 16.77 percent at 95% confidence level. These estimated volumes are final and not subject to adjustment. Prospective bidders are urged to examine this timber and to make their own estimates of quantity and quality.

I understand that any or all bids may be rejected. All bids must be signed and all bid items must be bid or the bid form may be rejected. I also understand that consideration and awarding a contract will be based upon my past performance and ability to complete the contract based upon equipment and staffing subject to my control.

FEDERAL ID: ____ - ____ - ____ or SOCIAL SECURITY NUMBER: ____ - ____ - ____

Company or individual bidding: _____

Company representative's name: _____

Address: _____

City: _____ State: _____ Zip: _____

IF AVAILABLE, PLEASE PLACE THE PERSONALIZED LABEL FROM YOUR PROSPECTUS IN THE ABOVE BOX.

Individual or company representative's signature: _____ Date: _____

Phone number : _____ Email (optional): _____

**THE WINNING BIDDER MUST COMPLETE THE VERIFICATION OF WORKER'S DISABILITY COMPENSATION ACT
COMPLIANCE (ON REVERSE SIDE IF DOUBLE SIDED) WITHIN 21 DAYS OF SALE AWARD DATE**



TIMBER SALE VERIFICATION OF WORKER'S DISABILITY COMPENSATION ACT COMPLIANCE

As required by Act 317, P.A. 1969 (Worker's Compensation) and
Part 5 of Act 451 of 1994, as amended.

FOR DEPARTMENT USE ONLY

Sale Number (XX - XXX - XX - XX)

Forest Management Unit:

VERIFICATION OF WORKER'S DISABILITY COMPENSATION ACT COMPLIANCE

- This verification must be completed and submitted within 21 days of contract award and prior to the issuance of the timber sale contract.
- In addition, if boxes 2B or 2C are checked, then Notice of Exclusion or Certificate of Insurance must be submitted within twenty-one (21) days of the contract award and prior to the issuance of the timber sale contract.
- All Information must be typed or printed except for written signatures.

Please Check Appropriate Categories:

1. My business is organized as (you **must** check one of the boxes below):
 - A. ☐ Sole Proprietorship (individual)
 - B. ☐ Partnership
 - C. ☐ Corporation
2. You **must** check one of the boxes below:
 - A. ☐ I certify my business is a sole proprietorship and it has no employees but the sole proprietor. I am not subject to the Worker's Compensation Laws.
 - B. ☐ I certify my business has satisfied its obligation to the Worker's Compensation Act through the use of an approved Notice of Exclusion (BWC-337, Rev. 5/96). I will provide a copy of the Notice of Exclusion within 21 days of the contract award. (For questions or a copy of the BWC-337, please call the Worker's Compensation Bureau at 517-322-1195).
 - C. ☐ I certify my business has a Worker's Compensation Policy. I will provide an original Certificate of Insurance within twenty-one (21) days of the contract award.
3. If you have checked item 2(A) or 2(B), you **must** indicate the number of **both** full-time and part-time employees, other than yourself, including family members and active partners (if none, you must enter "0").

_____ Full-time Employees

_____ Part-time Employees

Name of Business		Federal ID (or) Social Security No.
Address		Telephone ()
City	State	ZIP

I hereby certify that the above information is true and correct. I agree to notify the Michigan DNR of any changes that occur in factors affecting my coverage during any of my present and future operations.

Signature of Owner or Authorized Representative

Title

Date

Please complete the "SEALED BID" information on the next page

Bark Eater Mix (63-019-25)
T23N, R07W, SEC. 3; Missaukee COUNTY

In response to the notice of sale to be held 3:00 p.m. (local time) on January 28, 2026, I am hereby submitting my sealed bid (firm offer) for the following forest products to be cut. Bids for individual species must be at or above the advertised price. All non-responsive bid forms may be rejected.

<u>PRODUCTS & SPECIES</u>	<u>ESTIMATED VOLUME*</u>	<u>ADVERTISED PRICE</u>	<u>BID PRICE/UNIT</u>
Sawtimber			
Red Maple	68.0 MBF	\$ 135.00/MBF	\$ _____
Sugar Maple	131.3 MBF	\$ 218.00/MBF	\$ _____
White Pine	12.8 MBF	\$ 48.00/MBF	\$ _____
Pulpwood			
Basswood	18 Cords	\$ 10.10/Cord	\$ _____
Beech	225 Cords	\$ 16.30/Cord	\$ _____
Black Cherry	28 Cords	\$ 16.30/Cord	\$ _____
Mixed Aspen	55 Cords	\$ 20.45/Cord	\$ _____
Red Maple	195 Cords	\$ 16.30/Cord	\$ _____
Red Oak	9 Cords	\$ 32.95/Cord	\$ _____
Sugar Maple	584 Cords	\$ 16.30/Cord	\$ _____
White Pine	116 Cords	\$ 17.90/Cord	\$ _____

*The volumes are statistically estimated within plus (+) or minus (-) 18.28 percent at 95% confidence level. These estimated volumes are final and not subject to adjustment. Prospective bidders are urged to examine this timber and to make their own estimates of quantity and quality.

I understand that any or all bids may be rejected. All bids must be signed and all bid items must be bid or the bid form may be rejected. I also understand that consideration and awarding a contract will be based upon my past performance and ability to complete the contract based upon equipment and staffing subject to my control.

FEDERAL ID: _____ or SOCIAL SECURITY NUMBER: _____
Company or individual bidding: _____
Company representative's name: _____
Address: _____
City: _____ State: _____ Zip: _____

IF AVAILABLE, PLEASE PLACE THE PERSONALIZED LABEL FROM YOUR PROSPECTUS IN THE ABOVE BOX.

Individual or company representative's signature: _____ Date: _____

Phone number : _____ Email (optional): _____

**THE WINNING BIDDER MUST COMPLETE THE VERIFICATION OF WORKER'S DISABILITY COMPENSATION ACT
COMPLIANCE (ON REVERSE SIDE IF DOUBLE SIDED) WITHIN 21 DAYS OF SALE AWARD DATE**



TIMBER SALE
VERIFICATION OF WORKER'S DISABILITY
COMPENSATION ACT COMPLIANCE

*As required by Act 317, P.A. 1969 (Worker's Compensation) and
Part 5 of Act 451 of 1994, as amended.*

FOR DEPARTMENT USE ONLY

Sale Number (XX – XXX – XX – XX)

Forest Management Unit:

VERIFICATION OF WORKER'S DISABILITY COMPENSATION ACT COMPLIANCE

- This verification must be completed and submitted within 21 days of contract award and prior to the issuance of the timber sale contract.
- In addition, if boxes 2B or 2C are checked, then Notice of Exclusion or Certificate of Insurance must be submitted within twenty-one (21) days of the contract award and prior to the issuance of the timber sale contract.
- All Information must be typed or printed except for written signatures.

Please Check Appropriate Categories:

1. My business is organized as (you **must** check one of the boxes below):
 - A. ☐ Sole Proprietorship (individual)
 - B. ☐ Partnership
 - C. ☐ Corporation
2. You **must** check one of the boxes below:
 - A. ☐ I certify my business is a sole proprietorship and it has no employees but the sole proprietor. I am not subject to the Worker's Compensation Laws.
 - B. ☐ I certify my business has satisfied its obligation to the Worker's Compensation Act through the use of an approved Notice of Exclusion (BWC-337, Rev. 5/96). I will provide a copy of the Notice of Exclusion within 21 days of the contract award. (For questions or a copy of the BWC-337, please call the Worker's Compensation Bureau at 517-322-1195).
 - C. ☐ I certify my business has a Worker's Compensation Policy. I will provide an original Certificate of Insurance within twenty-one (21) days of the contract award.
3. If you have checked item 2(A) or 2(B), you **must** indicate the number of **both** full-time and part-time employees, other than yourself, including family members and active partners (if none, you must enter "0").

_____ Full-time Employees

_____ Part-time Employees

Name of Business		Federal ID (or) Social Security No.
Address		Telephone ()
City	State	ZIP

I hereby certify that the above information is true and correct. I agree to notify the Michigan DNR of any changes that occur in factors affecting my coverage during any of my present and future operations.

Signature of Owner or Authorized Representative

Title

Date

Please complete the "SEALED BID" information on the next page