



**DEPARTMENT OF NATURAL RESOURCES
STATE OF MICHIGAN
TIMBER SALE PROSPECTUS #7854**

SCHEDULED SALE DATE AND TIME: 9:00 a.m. (local time) on July 9, 2026.

LOCATION: **BARAGA MGMT UNIT, 427 US 41 NORTH, BARAGA, MI 49908.**

PROSPECTUS NOTE: The bidder is advised to inspect the sale area and review the location, estimated volumes, operating costs and contract terms of proposed sales. Please be aware that some landowners may request 60 days or more notice for access across their land.

Notice is hereby given that bids will be received by the Unit Manager, BARAGA MANAGEMENT UNIT, for certain timber on the following described lands:

Indiana Mine Mix (11-014-26) / T51N, R37W, SEC. 15, SESW.

T51N, R37W, SEC. 21, NENE.

T51N, R37W, SEC. 22, NW,SW,SE.

T51N, R37W, SEC. 27, NENW,NWNE.

Ontonagon County, Advertised Price \$48,919.65, 291.0 Acres, Hardwood, Spruce/Fir/Tamarack.

SALE NOTE: Extensive road work is required on this sale. The advertised price has been reduced by the estimate cost of this road work to off-set the additional expense.

A recreation site such as a trail, pathway, or campground is within the sale area or the vicinity. Certain restrictions/specifications may be applicable including time restrictions. Access may be through private land.

GNA2 West Swinger (12-800-26) / T44N, R36W, SEC. 10, SENW,NE,SW,SE.

T44N, R36W, SEC. 11, W1/2NW,NWSW.

T44N, R36W, SEC. 15, NW,NE,N1/2SW,NWSE.

T44N, R36W, SEC. 16, N1/2NE,SENE.

T44N, R36W, SEC. 9, S1/2SE.

Iron County, Advertised Price \$222,149.95, 607.9 Acres, Hardwood, Sugar Maple.

SALE NOTE: Access may be through other public land.

BID INSTRUCTIONS (VER. 10/10/2022):

1. Scheduled Bid Location, Date, and Time (2/11)

Bids must be received by the Unit Manager, BARAGA OFFICE, 427 US 41 North, Baraga, MI 49908, no later than 9:00 a.m. (local time) on July 9, 2026. For further information concerning this sale, contact Brad Carlson at 906-353-6651.

2. Bidder's Qualifications (10/22)

If all or part of a timber sale was prepared by a private contractor, the contractor and that contractor's company are not permitted to bid on the timber sale. A person must be 18 years of age or older to purchase timber. Permanent employees of the Department of Natural Resources or members of their immediate household may not bid. Former employees, in the permanent or seasonal class, may not bid until 3 months after the last day of active duty. Bids will not be accepted from individuals or companies appearing on the DNR/FRD No-Bid List. This list contains the names of purchasers who previously failed to execute a contract within 21-days or who have a history of poor performance.

3. Preparation of Sealed Bids (5/16)

Bid Forms may be completed online thru Michigan DNR Timber Sale Online Bidding (OLB) at www.michigan.gov/timberbidding or by completing the hardcopy Bid Form found in the Timber Sale Prospectus. Hardcopy Bid Forms shall be manually signed in ink. Registration in OLB is considered your 'signature' for all bids submitted thru that system. Bid prices must be entered for each species and product in the Bid Price column for all material subject to bidding and all fill-in blanks must be completed. If erasures or other changes appear on the hardcopy Bid Form, each erasure or change must be initialed by the person signing the bid.

4. Submission of Sealed Bids (5/16)

Bid forms may be obtained from the Unit Manager or thru OLB. Bids may be submitted hardcopy or thru OLB. All hardcopy bids must be submitted on the bid form and in an envelope clearly identified as described in this section. NOTE: Only one bid form per bid envelope. Sealed bids must be submitted to the Unit office designated in the prospectus and must be submitted at or prior to the time established in the prospectus. The envelope should show on the outside (a) the sale name or number and (b) the date and time of bid opening, as shown in the prospectus. Bids received after the time specified in the sale prospectus are late bids and will be rejected.

It is possible for a bidder to submit multiple bids on a single sale. For example, a bid may be submitted hardcopy and a bid may be submitted thru OLB. Or, two bidders from the same company could both submit bids on the same sale. If this were to happen, the State would accept all bids received and award the contract accordingly. All bidding and contractual requirements would apply to all bids received.

5. Public Opening of Sealed Bids (7/16)

If conditions permit, the sealed bids will be publicly opened and posted at the time and place set in the prospectus.

If a bidder, present at a bid opening, has submitted bids on more than one sale, that bidder may withdraw their unopened bid envelopes or announce the withdrawal of their online bid after being declared the successful bidder on one sale.

6. Award of Contract (1/11)

Award of the contract will be made to the Bidder whose bid, conforming to the prospectus, is most advantageous to the State of Michigan on the basis of total value at rates bid for the estimated quantities. The State reserves the right to reject any bid or waive any minor irregularity in bids received. A written award mailed (or otherwise furnished) to the successful Bidder shall be deemed to result in a binding contract without further action by either party.

7. Down Payment (1/11)

The Bidder to whom award is made must make a down payment within 21 days of the sale award. The amount of the down payment will be calculated as shown in the Bond and Payment Schedule of this prospectus. Only cash may be used to meet this requirement.

8. Performance Security (1/11)

As guarantee of faithful performance, a cash bond, certificate of deposit, surety bond or irrevocable letter of credit (LOC) is required within 21 days of the sale award. The amount of the performance security is shown in the Bond and Payment Schedule of this prospectus. If an LOC or surety is used, the coverage must extend for at least 6 months

beyond the contract expiration.

9. Worker's Compensation (10/22)

Purchaser shall obtain worker's compensation insurance to cover claims under Michigan's Worker's Disability Compensation Act of 1969 or similar employee benefit act of any other state applicable to an employee. Verification of Worker's Disability Compensation Act Compliance must be completed and submitted within 21 days of contract award and prior to the issuance of the timber sale contract. In addition, if applicable, Notice of Exclusion or Certificate of Insurance must also be submitted.

10. Timber Sale Contract (10/22)

Additional conditions and requirements common to all timber sales are listed on the timber sale contract (R4031) and are available on line at www.michigan.gov/timber. Contact the Unit Manager for additional information or a sample contract. Within 21 days of the date of the award letter, the bidder must sign the contract and provide the required down payment, performance security, and verification of worker's disability compensation. The down payment and performance security shall be in accordance with the provisions of the timber sale contract, in the sums stated in this prospectus. If these actions are not taken, then the Bidder, the Bidder's corporation, and the corporation's principals may not be permitted to bid on State timber sales for a period of 3 months after the first offense, 6 months after the second offense, and 1 year after the third offense. An offense will only be counted against the Bidder for 5 years. In addition, the Bidder certifies that if awarded this contract, the Bidder will complete the timber sale contract in accordance with its terms and any modifications thereof including requirements to purchase, cut, and remove the included timber by the expiration date.

Payment Unit values in the State Forest Timber Sale Contract are calculated based on the advertised value of the Payment Unit as a percentage of the total advertised value of the contract. The advertised value of each Payment Unit is given in the Description of Timber by Payment Unit table on the Timber Sale Information page. For example, if the value of Payment Unit 1 is advertised as \$1,500 and the total Timber Sale value is advertised as \$10,000, the contract price for Payment Unit 1 will be 15% of the total bid price ($\$1,500/\$10,000 * 100$).

11. Disclaimer of Estimates and Bidder's Warranty of Inspection (10/22)

Before submitting this bid, the Bidder is advised and cautioned to inspect the sale area, review the requirements of the sale contract, and take other steps as may be reasonably necessary to ascertain the location, estimated volumes, construction estimates, and operating costs of the proposed sale. Failure to do so will not relieve the Bidder from responsibility for completing the contract.

The Bidder warrants that this bid is submitted solely on the basis of the Bidder's examination and inspection of the quality and quantity of the timber offered for sale and the Bidder's opinion of the value thereof and the costs of recovery. No reliance should be placed on the State of Michigan's estimates of timber quality, quantity or costs of recovery. Bidder further acknowledges that the State of Michigan: (i) expressly disclaims any warranty of fitness of timber for any purpose; (ii) offers this timber as is without any warranty of quality (merchantability) or quantity and (iii) expressly disclaims any warranty as to the quantity or quality of timber sold.

12. Certification and Chain-of-Custody (10/22)

Unless otherwise indicated in the contract under section 7 – Other Conditions of the Sale Specific Conditions & Requirements, the area encompassed by this timber sale is certified to the standards of the Forest Stewardship Council (FSC) - Certificate #SCS-FM/COC-00090N and the Sustainable Forestry Initiative (SFI) - Certificate #NSF-SFIS-5Y031-SF5. Forest products from this sale may be delivered to the mill as "FSC 100% and / or SFI certified" as long as the contractor hauling the forest products is chain-of-custody (COC) certified or covered under a COC certificate from the destination mill. The purchaser is responsible for maintaining COC after leaving the sale area.

13. Good Neighbor Authority (GNA) Requirements (10/22)

If the name of this timber sales contains the acronym GNA, it is authorized by the Good Neighbor Authority (GNA) and covered by various agreements between the U.S. Forest Service and the State. The timber sale occurs on federal land and the following conditions apply:

GNA contracts on US Forest Service land will not be awarded to purchasers on the Federal list of excluded parties. The System for Award Management (SAM) will be checked for active excluded parties prior to award of contract. In addition, the Bidder to whom award is made must complete an Assurance Regarding Felony Conviction or Tax

14. Good Neighbor Authority (GNA) Requirements, con't (10/22)

Bidder certifies, by signing this bid form, that to the best of Bidder's knowledge that the following representations are accurate and complete.

- a. That the Bidder and its principals are not presently debarred, suspended, proposed for debarment, declared ineligible, or voluntary excluded from timber sales (covered transactions) by any Federal department or agency.
- b. That the Bidder and its principals have not within a 3-year period preceding this bid been convicted of or had a civil judgment rendered against them for commission of fraud or a criminal offense in connection with obtaining , attempting to obtain, or performing a public (Federal, State, or local) transaction or contract under a public transaction; violation of Federal or State antitrust statutes or commission of embezzlement, theft, forgery, bribery, falsification or destruction of records, making false statements, or receiving stolen property.
- c. That the Bidder and its principals are not presently indicted for or otherwise criminally or civilly charged by a governmental entity (Federal, State, or local) with commission of any of the offenses enumerated in paragraph b of this certification.
- d. That the Bidder and its principals have not within a 3-year period preceding this bid had one or more public transactions (Federal, State, or local) terminated for breach or default of a timber or forest product contract.

Bidders that cannot certify this requirement, in whole or in part, shall submit an explanation with their bid.

Scott Bowen
Director

TIMBER SALE INFORMATION

Indiana Mine Mix (11-014-26)

T51N, R37W, SEC. 15; T51N, R37W, SEC. 21; T51N, R37W, SEC. 22; T51N, R37W, SEC. 27.
Ontonagon County (Advertised Price \$48,919.65)

SALE NOTE: Extensive road work is required on this sale. The advertised price has been reduced by the estimate cost of this road work to off-set the additional expense.

A recreation site such as a trail, pathway, or campground is within the sale area or the vicinity. Certain restrictions/specifications may be applicable including time restrictions. Access may be through private land.

A timber sale contract for this lump sum, sealed bid timber sale will be awarded to the responsible bidder offering the highest sealed bid price. All units of volume listed below were estimated using the Inventory Manager computer program and the new Michigan taper model. Bids must be at or above the following advertised price for each product and species:

<u>PRODUCTS & SPECIES</u>	<u>ESTIMATED UNITS*</u>	<u>ADVERTISED PRICE</u>
Sawtimber		
Basswood	145.5 MBF	\$ 30.00 / MBF
Black Cherry	3.5 MBF	\$ 17.00 / MBF
Red Maple	18.8 MBF	\$ 96.00 / MBF
Red Oak	8.1 MBF	\$ 82.00 / MBF
Sugar Maple	96.7 MBF	\$ 181.00 / MBF
Yellow Birch	1.6 MBF	\$ 67.00 / MBF
Pulpwood		
Balsam Fir	225 Cords	\$ 3.85 / Cord
Basswood	1,061 Cords	\$ 3.30 / Cord
Mixed Aspen	159 Cords	\$ 13.30 / Cord
Mixed Hardwood	2,371 Cords	\$ 7.30 / Cord
Mixed Spruce	56 Cords	\$ 4.70 / Cord
White Ash	50 Cords	\$ 7.25 / Cord

* The total volume is statistically estimated within plus (+) or minus (-) 9.26 percent. There are an estimated 4,564 cords on this timber sale, plus or minus 423 cords at the 95% confidence level. The estimated units are final and not subject to adjustment. Prospective bidders are urged to examine this timber and to make their own estimates of quantity and quality.

BOND AND PAYMENT SCHEDULE:

1. A bond in the amount of \$8,000.00 to insure faithful performance of the conditions of the contract will be deposited by the successful bidder within 21 days of the sale award.
2. Cutting in any sale or unit without the required advance payment would be considered a trespass.
3. Total payment must be paid in advance or according to the following schedule :
 - (a) Ten percent (10%) of the sale value must be paid within 21 days of the sale award.
 - (b) The 10% down payment will be credited towards the first unit cut.
 - (c) Payment for each of the following units must be made before cutting begins in that unit:

PAYMENT UNIT NUMBER	PERCENT OF TOTAL SALE VALUE
01	27.3%
02	20.5%
03	2.8%
04	15.0%
05	11.3%
06	23.1%
4. If no cutting takes place, the 10% down payment will not be refunded.
5. Operations on the contract issued will terminate on 06/30/2030.

SALE STATISTICS

Volumes were calculated in cubic feet using the Michigan taper model. Cubic foot volume includes all wood inside bark for the product indicated. For display purposes, cubic feet were converted to cords and MBF using a simple conversion factor, e.g. 79 cubic feet per cord and 185 cubic feet per MBF. The cubic foot volumes are precise; the cords and MBF volumes are not. Cubic foot volume cannot be directly converted to cords or boards with precision.

SALE VOLUMES

The total estimated sale volume may not equal the sum of the species/products due to the nature of statistical calculations associated with double sampling methodology.

VOLUME			STATISTICAL RANGE IN CORDS	
TOTAL CUBIC FEET	TOTAL CORDS	PERCENT ERROR	MINIMUM	MAXIMUM
360,595	4,564	9.26%	4,141	4,988

VDU VOLUMES

A VDU is a Volume Determination Unit. Volumes and their associated statistics are calculated at the VDU level and summarized to the sale level. There is often a one to one relationship between a VDU and a Payment Unit, but not always, depending on the cruise design. Refer to the VDU TO PAYMENT UNIT table.

	VOLUME			RANGE IN CORDS	
VDU	TOTAL CUBIC FEET	TOTAL CORDS	PERCENT ERROR	MINIMUM	MAXIMUM
35	9,081	115	68.55%	36	194
42	91,918	1,164	17.50%	960	1,367
54	48,756	617	18.89%	501	734
65	96,875	1,226	19.26%	990	1,462
69	113,965	1,443	17.78%	1,186	1,699
TOTAL:	360,595	4,564		3,673	5,456

VDU TO PAYMENT UNIT

When a VDU is associated with more than one Payment Unit (PU), the VDU volumes are assigned to the PU based on acres of the VDU within the PU.

VDU	VDU ACRES	PU	PU ACRES
TOTAL:			

DESCRIPTION OF TIMBER BY PAYMENT UNIT (PU)

PU	MARKET GROUP	PRODUCT	QUANTITY	UNIT	ACRES	ADVERTISE PRICE	
1	Basswood	Sawtimber	28.9	MBF	62.2	\$13,342.20	
	Red Maple		3.0	MBF			
	Sugar Maple		30.7	MBF			
	Yellow Birch		1.1	MBF			
	Balsam Fir		Pulpwood	84			Cords
	Basswood			276			Cords
	Mixed Aspen			31			Cords
	<i>Quaking Aspen</i>			31			<i>Cords</i>
	Mixed Hardwood			623			Cords
	<i>Ironwood</i>			11			<i>Cords</i>
	<i>Red Maple</i>			198			<i>Cords</i>
	<i>Sugar Maple</i>			380			<i>Cords</i>
	<i>Yellow Birch</i>			34			<i>Cords</i>
	Mixed Spruce			37			Cords
	<i>White Spruce</i>		37	<i>Cords</i>			
White Ash	26	Cords					
2	Basswood	Sawtimber	30.3	MBF	57.5	\$10,031.60	
	Red Maple		1.5	MBF			
	Red Oak		4.7	MBF			
	Sugar Maple		30.0	MBF			
	Balsam Fir		Pulpwood	2			Cords
	Basswood			151			Cords
	Mixed Hardwood			364			Cords
	<i>Red Maple</i>			39			<i>Cords</i>
	<i>Red Oak</i>			4			<i>Cords</i>
	<i>Sugar Maple</i>			318			<i>Cords</i>
	<i>Yellow Birch</i>			3			<i>Cords</i>
3	Mixed Aspen	Pulpwood		86	Cords	4.5	\$1,355.50
	<i>Quaking Aspen</i>			86	<i>Cords</i>		
	Mixed Hardwood			29	Cords		
	<i>Red Maple</i>		24	<i>Cords</i>			
	<i>Sugar Maple</i>		5	<i>Cords</i>			
4	Basswood	Sawtimber	22.2	MBF	42.1	\$7,341.05	
	Red Maple		1.1	MBF			
	Red Oak		3.4	MBF			
	Sugar Maple		22.0	MBF			
	Balsam Fir		Pulpwood	1			Cords
	Basswood			110			Cords
	Mixed Hardwood			266			Cords
	<i>Red Maple</i>			29			<i>Cords</i>
	<i>Red Oak</i>			3			<i>Cords</i>
	<i>Sugar Maple</i>			232			<i>Cords</i>
	<i>Yellow Birch</i>			2			<i>Cords</i>
5	Basswood	Sawtimber		33.7	MBF	60.8	\$5,549.45
	Red Maple			1.3	MBF		
	Sugar Maple			7.5	MBF		
	Yellow Birch		0.5	MBF			
	Balsam Fir		Pulpwood	9	Cords		
	Basswood			182	Cords		
	Mixed Aspen			3	Cords		
	<i>Quaking Aspen</i>			3	<i>Cords</i>		
	Mixed Hardwood			319	Cords		
	<i>Red Maple</i>			95	<i>Cords</i>		
	<i>Sugar Maple</i>			222	<i>Cords</i>		
	<i>Yellow Birch</i>			2	<i>Cords</i>		
	Mixed Spruce			4	Cords		

DESCRIPTION OF TIMBER BY PAYMENT UNIT (PU), CON'T

PU	MARKET GROUP	PRODUCT	QUANTITY	UNIT	ACRES	ADVERTISE PRICE
5 con't	<i>White Spruce</i>	<i>Pulpwood</i>	4	<i>Cords</i>		
6	Basswood	Sawtimber	30.4	MBF	63.9	\$11,299.85
	Black Cherry		3.5	MBF		
	Red Maple		11.9	MBF		
	Sugar Maple		6.5	MBF		
	Balsam Fir	Pulpwood	129	Cords		
	Basswood		342	Cords		
	Mixed Aspen		39	Cords		
	<i>Quaking Aspen</i>		39	<i>Cords</i>		
	Mixed Hardwood		770	Cords		
	<i>Black Cherry</i>		11	<i>Cords</i>		
	<i>Paper Birch</i>		4	<i>Cords</i>		
	<i>Red Maple</i>		426	<i>Cords</i>		
	<i>Sugar Maple</i>		314	<i>Cords</i>		
	<i>Yellow Birch</i>		15	<i>Cords</i>		
	Mixed Spruce		15	Cords		
	<i>White Spruce</i>		15	<i>Cords</i>		
	White Ash		24	Cords		
TOTAL:			274.2	MBF		
TOTAL:			3,922	Cords		

Sale Specific Conditions & Requirements

Sale Name: Indiana Mine Mix

Sale Number: 11-014-26 Seq#: 1

1 - Sale Area

1.2 - Boundaries

1.2.1 - Painted Boundaries (9/19)

The sale boundary and Payment Unit boundaries are marked and identified by blue and red paint. Exterior sale boundary lines against private property are marked with blue paint. Exterior sale boundary lines against state are marked with red paint. Interior Payment Unit boundaries are marked with red paint. The painted boundary line trees are not Included Timber and are to be protected unless marked with orange paint.

2 - Timber Specifications

2.1 - Included Timber

2.1.1 - Clearcut Unit(s) with Unmerchantable Trees (6/14)

Within Payment Unit(s) 3, cut all trees that are two (2) inches or more at DBH, except do not cut red oak, hemlock, white pine and cedar, if present.

2.1.2 - Clearcut Unit(s) w/o Unmerchantable Trees (8/11)

Within Payment Unit(s) 1 and 6, cut all trees which meet minimum piece specifications in 2.2 Utilization, except do not cut hemlock, red pine, white pine, cedar, red oak or any tree over 22 inches at DBH, these are not Included Timber and are to be protected if present.

2.1.3 - Cut Tree Marked Unit(s) (12/08)

Within Payment Unit(s) 2, 4, and 5, all trees are designated for cutting when marked with orange paint above and below stump height, regardless of merchantability.

2.2 - Utilization

2.2.3 - Stump Heights (12/24)

Stump heights within the Sale Area shall not exceed 12 inches for trees greater than 10 inches at DBH and four (4) inches for trees smaller than 10 inches at DBH. A written waiver of this requirement may be obtained if wet summer weather makes winter logging necessary.

2.2.4 - Skidding Length (12/24)

Skidding of lengths over 17 feet is permissible as long as the Sale Administrator approves the method and machinery used. If at any point damage exceeds specification 3.4.1, all of the remaining wood must be skid in lengths less than 17 feet.

2.2.5 - Limbed Tree Skidding (12/24)

The skidding of whole trees or tree segments with limbs attached is prohibited, unless approved by the Unit Manager or his/her representative.

2.2.7 - Uncut Designated Trees (2/04)

Liquidated damages of \$10.00 per tree will be assessed for every marked tree not cut.

2.2.8 - Utilization and Removal (12/24)

All products meeting standards set forth in General Condition and Requirement 2.2 Utilization must be removed from the Sale Area. This is because excess woody debris inhibits regeneration.

2.2.11 - Chipping Restriction (9/14)

If chipping occurs on this sale, then no woody debris present on the ground at the start of the sale may be chipped. In addition, brush or chips may not be stored or stockpiled on-site for more than 30 days.

3 - Payments

3.4 - Damaged Timber

3.4.1 - Damaged Timber (12/24)

General Condition and Requirement 3.4 Damaged Timber, defines liquidated damages for undesignated live merchantable trees which are cut or injured. In addition, extreme care should be taken to avoid damage to tree seedlings and saplings.

No damage is acceptable to undesignated live merchantable trees. Within the Sale Area, if more than 5% of trees (> 4.5" DBH) within a specified area of the sale are damaged, liquidated damages will be assessed for all trees damaged. Rates will be in accordance with General Condition and Requirement 3.4 Damaged Timber. Note: trees within 10 feet of ruts exceeding 6" will be considered damaged due to severing of the tree's roots, thus harming future tree quality and inhibiting tree growth.

4 - Transportation

4.1 - Construction

4.1.1 - Stream Crossings, General (1/25)

All stream crossing structures will be temporary and, therefore, shall be provided by the Purchaser and must be removed upon completion of the sale. All permits for stream crossings will be provided by the DNR for crossings on state owned land, please notify the DNR 90 days prior to working on any crossing that requires a permit.

4.1.2 - Stream Crossings, Specific (3/11)

There are two culverts that need to be installed, one permanent installation and one temporary installation. The locations on the culvert installations are indicated on the Timber Sale Map. These culverts are located within 1/4 mile of an active bat hibernaculum, the removal of any vegetation (larger than 2 inches at DBH) within 1/4 mile of the hibernaculum will require prior approval from the bat specialist.

The permanent culvert installation is on the unnamed stream that feeds the East Branch of the Firesteel River. The crossing will require the installation of a culvert with a minimum size of (60" x 50") (see Timber Sale Map for location). The work required as part of the installation will be to remove the fill from over the top of the existing culvert, (Note: the top of the current culvert is 11 feet below the roadbed) remove the existing culvert and replace with a new culvert and replace fill. The fill currently on top of culvert appears to be large chunks of mine rock, approximately 2 foot in diameter, additional fill will be needed as the large rocks may be used as riprap around the ends of the culvert, but not as the primary fill over the culvert.

The temporary culvert is located in a drainage that has previously been crossed without a culvert installed, a culvert will need to be installed with a minimum size of (30"x 30") (see Timber Sale Map for location). Both culverts will be provided by the Purchaser. This installation will be performed in accordance with the specifications on the appropriate permits which shall be provided by the DNR. The Purchaser needs to notify the DNR 90 days before working the culvert installations.

4.1.3 - Slash and Earthen Piles (8/04)

Piles or windrows of earth along roads and landings that have been widened or constructed shall be leveled. Slash from road maintenance or construction, including stumps, shall be dispersed throughout the sale.

4.1.4 - Timber Removed for Construction (3/23)

Trees cut or damaged in the process of pre-approved road, landing, or skid trail construction will be decked in an area separate from other Designated Timber and not removed until measured by the Sale Administrator. Payment will be made at contract prices or average prices, if not on the contract.

4.1.5 - Culverts (5/14)

Roads may require the installation of culverts for cross drainage or at natural drainage-ways. If culverts are needed in these locations, their placement will be specified by the Sale Administrator, and they shall be installed prior to hauling. The culverts shall be new, corrugated metal or plastic gauge. Culverts will be a minimum of 12 inches in diameter and 24 feet in length. If culverts are removed, fill shall be removed from wetland soils as specified. Soils shall be maintained and left in a non-erodible condition, with water bars, seed, fertilizer, mulch, and slash installed as directed by the Sale Administrator and as specified in the BMP manual.

4.1.6 - Road Construction (4/24)

Construction of new roads or improvements of existing roads shall be done in such a way as to minimize the environmental and visual impacts. Merchantable trees shall be cut and utilized unless otherwise directed. Non-merchantable trees shall be severed and laid flat on the ground. Slash shall be scattered, and not left in windrows and kept a minimum of 10 feet back from the road edge. Note; no trees over 2" DBH are to be removed within the 1/4-mile radius of the Bat Hibernaculum without prior approval from the bat specialist. Stumps shall be set upright, not left on edge, and be moved at least 10 feet away from the road edge. Disturbed soil shall be feathered into the woods and not left in berms or windrows.

4.1.7 - Road Closure (10/11)

All new roads built into the sale must be blocked to vehicle traffic upon completion of the sale. Overgrown roads that are reopened shall be considered new roads. In general, this will require constructing a four (4') foot high berm of stumps and logs covered with earth. Contact the Sale Administrator for specific details of design and placement.

4.1.8 - Road Work (1) (8/07)

The following road work is required:

The insulation of two culverts that require permits (see 4.1.2 Stream Crossing, Specific for additional information). There are 7 locations identified on the Timber Sale Map that are going to need cross culverts installed (see Timber Sale Map for locations) the Purchaser is responsible for providing these culverts (see 4.1.5 - Culverts). There may be additional locations where cross culverts are needed that haven't been identified. There is one culvert that has been identified as having insufficient fill over the culvert (see Timber Sale Map for location). The Purchaser will be responsible for adding additional fill prior to trucking or running equipment over the culvert.

There is an old beaver dam located on the road where the water has subsided to a level below the existing roadbed. The dam remnants will need to be removed (see Timber Sale Map for location).

There is a segment of road approximately 600' long that need to be shaped, ditched, and capped with crushed gravel (size 6-) 4 inches deep and 12 feet wide (app 100 yards) prior to any harvesting occurring on the sale (see Timber Sale Map for location). The road segment currently consists of native material, which is heavy to clay and rutted. The gravel is not available from state lands will need to be purchased; additional gravel may be needed at other locations (see 4.2.2 - Fill Material).

In addition, if sale is logged with snow on the ground. The Purchaser will plow the access road into the sale, such that there are pull-offs and/or turn outs along the road at a distance of no greater than a quarter of a mile. These pull-offs shall be large enough to fit two passenger vehicles and allow passage of other vehicles.

4.1.11 - Permits (2/12)

The Purchaser will secure any necessary highway permits that may be required.

4.2 - Maintenance

4.2.1 - Hauling Restriction (12/08)

Hauling may be restricted on forest roads by the Unit Manager or his/her representative. The restriction may occur during spring breakup and/or during wet weather conditions.

4.2.2 - Fill Material (4/07)

To maintain roads, fill material may be needed in areas where "holes" exist or may be expected to develop. This fill material should be placed before trucking begins.

4.2.4 - Grading (10/16)

For completion of the sale, state forest roads must be graded. In general, this will require a road grader or bulldozer to shape up the roads after forest products have been hauled off site. This includes cleaning of drainage areas, grading, crowning and filling with gravel, if necessary. The grading equipment to be used must be approved by the Unit Manager or his/her representative.

4.2.5 - Two Wheel Drive Condition (2/04)

All existing trail roads on and adjacent to the Sale Area must be passable by two-wheel drive traffic for the duration of the sale.

4.4 - Access

4.4.1 - Private property access (3/11)

Permission for access across private land is the responsibility of the Purchaser. A copy of the written permission from the private landowner must be given to the Unit Manager prior to the beginning of operations, if using an access route that crosses private property.

5 - Operations

5.1 - Notification

5.1.1 - Pre-sale Conference (10/25)

A pre-sale conference on site between the Purchaser and Sale Administrator is required prior to beginning any operations to determine landing and road locations. Also required to attend are equipment operators that will be working on the sale. A presale is to be conducted anytime a new operator moves to the sale. The Unit Manager or his/her representative must be contacted at least 10 days in advance to schedule the conference.

5.1.4 - Post-Sale Conference (10/16)

A post-sale conference on site between the Purchaser and sale administrator is required 5 days prior to the completion of active logging operations to determine clean-up and repair of landings, road edges, and the fulfillment of other contract specifications.

5.2 - Conduct of Operations

5.2.1 - Slash

5.2.1.1 - Slash Within Sale Area (9/16)

No trees are to be felled outside the Sale Area, and all slash is to be kept at least 10 feet back from the red paint line. If sale boundary lines are along a public road or highway, then slash must be removed 50' from these lines per General Condition & Requirement 5.2.1.

5.2.1.11 - Slash for Reforestation (3/21)

To facilitate reforestation, the Sale Area shall be left with slash evenly distributed. Processing sites shall not be left with a compacted layer of slash; tops from these sites shall be hauled back into the cut area and scattered.

5.2.1.14 - Chipping of Slash (10/08)

If tops are chipped, they must be skidded to the landing separately from the bole section of the tree. Skidding of tops must be done in such a way as to minimize damage to the residual trees. See related specs 2.2.4 - Skidding Length and 3.4.1 - Damaged Timber.

5.2.2 - Hazard Trees/Snags

5.2.2.1 - Den Trees (10/16)

Obvious hollow and/or den trees shall be protected and left standing unless they are a safety hazard.

5.2.3 - Operating Restrictions

5.2.3.1 - Operating Restrictions (9/11)

Within Payment Unit(s) 1, 3, and 6 unless changed by written agreement, cutting, skidding, and hauling are not permitted during the period of 4/15 to 5/14 and 8/16 to 10/15. This restriction is due to northern long-eared bat restrictions. Note: there is a 1/4 mile bat Hibernaculum buffer indicated on the Timber Sale Map, the removal of any vegetation larger than 2 inches DBH is prohibited within this buffer without prior approval of the Northern Long-eared Bat Specialist.

5.2.3.2 - Operating Restrictions (9/11)

Within Payment Unit(s) 1, 2, 3, 4, 5, and 6 unless changed by written agreement, all clean-up activities must be completed by June 30 for all areas that were harvested during the previous harvest season. This restriction is to allow the clean-up areas to revegetate before the dry season.

5.2.3.3 - Bark Slippage Restriction (3/09)

Within Payment Unit(s) 2, 4, and 5, unless changed by written agreement, cutting and skidding are not permitted during the period of 4/15 to 7/15 and 8/16 to 10/15. This restriction is because of bark slippage and northern long-eared bat restrictions.

5.2.17 - Timber Mats and Interlocking Composite Mats (5/23)

Some roads or skid trails may require extra protection such as that afforded by timber mats, interlocking composite mats, or another approved system. If available, mats may be borrowed from the DNR. A Timber Sale Contract Amendment will be used to document the Purchaser's use of the DNR's mats. Contact the Sale Administrator regarding availability and pick-up. Timber mats are available from various field offices. Composite mats are only available from the Grayling field office and the Marquette ICC. The Purchaser is responsible for picking up and hauling the mats to and from the site. The composite mats will require DNR staff onsite for installation and removal. Contact the Sale Administrator to schedule at least 30 days before

desired install/removal date. All mats must be cleaned prior to drop off. This may include, but is not limited to, power washing and brushing to remove mud and debris. A charge of \$700.00 per timber mat and \$2,000.00 per composite mat will be assessed for all damaged or non-returned mats. Damage for the crane/timber mats is defined as three or more broken cants. Damage for the composite mats is defined as cracked or broken mats.

5.2.30 - Landing/Road Topsoil Protection (1/25)

Topsoil on landings and new roads must be removed, stockpiled, and saved. Upon completion of the timber sale, soil must be evenly distributed back over the area for revegetation. In addition, the area must be seeded and mulched per Sale Administrator's instructions.

5.2.32 - Decking/Landing Restoration (9/13)

All decking and landing areas must have the surface area restored to a condition equal to or better than before. This is to ensure the proper regeneration of the stand. Wood debris, chips and "cookies" from trimmings must be removed or scattered away from landing and loading areas and may not be windrowed on the edge.

5.2.38 - No Decking Against Live Trees (2/04)

Cut products may not be decked against unmarked or designated leave trees.

5.2.39 - ORV Trail/Route Protection (4/18)

The Railroad Grade is an ORV trail and is shown on the Timber Sale Map. The trail is also known as the Bill Nicholls Trail. Due to the condition of the Railroad Grade, it may not be used for trucking of forest products. Do not cut trees or damage posts with yellow ORV markers. All stumps within five (5) feet of the trail must be cut flush with the ground. Maintain a 20-foot-wide slash, debris, and rut free zone daily using the ORV trail or route as the centerline. Do not run equipment down the ORV trail or route. Skidding across the trail or route may only occur in locations approved by the Sale Administrator.

5.2.41 - Snowmobile Trail Protection (9/11)

Trail 3 (Railroad Grade) is a snowmobile trail and is shown on the Timber Sale Map. Do not cut or damage posts with orange trail markers or traffic control signs. The snowmobile trail may not be used for any timber sale operations from December 1 to March 31. The snowmobile trail may only be crossed at right angles. Maintain a 20-foot-wide slash, debris, and rut free zone daily using the snowmobile trail as the centerline. No decking of forest products will be permitted along the snowmobile trail. All stumps within 20 feet of the snowmobile trail must be cut at ground level.

5.4 - Soil Protection

5.4.1 - Rutting Restriction, General (7/16)

Within Sale Area operations are to cease immediately if equipment and weather conditions result in rutting of roads and/or skid trails which is 12 inches or greater in depth and 50 feet in length. The Unit Manager or his/her representative may restrict hauling and/or skidding if ruts exceed the specified depth. With the Unit Manager or his/her representative's approval, the Purchaser may return to the area when the risk of rutting has decreased. Note: Trees within 10 feet of ruts exceeding 6" will be considered damaged due to the severing of the tree's roots and will be billed in accordance with 3.4 Damaged Timber.

5.4.2 - Skid Trails (2/04)

Skid trails up and down slopes should be avoided. If, however, this is unavoidable, these trails will be left in a non-erodible condition using water bars, logs, and slash. Placing of slash on these skid trails while logging is ongoing may alleviate need for any further action. At the direction of the Sale Administrator, seed, fertilizer, and mulch may also be required.

5.4.3 - Erosion Control (12/08)

Skid trails or haul roads may require erosion control structures or berms per direction of the Unit Manager or his/her representative.

5.4.7 - Rutting Restriction, Riparian Management Zone (RMZ) (1/25)

Within the Riparian Management Zone (RMZ), and wetland areas, operations are to cease immediately if equipment and weather conditions result in rutting of roads and skid trails which are six (6) inches or greater in depth and 25 feet in length. The Unit Manager or his/her representative may restrict hauling and/or skidding if ruts exceed the specified depth. With the Unit Manager or his/her representative's approval, the Purchaser may return to the area when the risk of rutting has decreased.

5.8 - Protection of Endangered Species

5.8.3 - Red-shouldered Hawk or Goshawk (1) (1/25)

In the event that an active red shoulder hawk or goshawk nest is found, the contract may be amended to protect the nest site until the nest is determined to be inactive. The value of the trees in this excluded area will be refunded or credited to the Purchaser. The nest will be buffered with a five-chain radius (eight acre) protection area, centered on the nest tree, in which there will be no cutting or new roads constructed. Avoid human disturbance, including loading and skidding, in the protection area.

An additional zone of five chains (ten chains centered on the active nest tree) will be established in which there is no management activity from April 1 to July 30. Limit biomass harvesting and chipping operations within this ten-chain zone, retain the maximum one-third of residues per the Woody Biomass Harvesting Guidelines (Michigan DNR 2010). Nests determined to be inactive will be protected with a one-chain no-harvest buffer.

5.8.5 - Protection of Raptor Nests (3/13)

All trees with raptor nests will be protected if found during harvesting operations. Notification will be made to the Unit Manager or his/her representative who will notify the Wildlife Biologist so an onsite evaluation and recommendation can be made, if necessary.

6 - Safety and Fire Prevention

6.2 - Signing

6.2.1 - Road Posting (10/20)

The Purchaser is responsible for posting and maintaining caution signs on M-26 prior to beginning operations. The road must be posted at appropriate distances from the trucking activity to warn of logging activity and truck traffic. Signs must be removed when harvest operations are suspended or completed. The Purchaser will provide these signs.

6.2.2 - Snowmobile Trail Posting (10/20)

The Purchaser is responsible for posting and maintaining caution signs on Trail 3 (Railroad Grade) prior to beginning operations during the snowmobile season (approximately December 1 to March 31). The trail must be posted at appropriate distances from the Sale Area to warn of logging activity and truck traffic. Signs must be removed when harvest operations are suspended or completed. The Purchaser will provide these signs.

6.2.3 - Recreational Trail Posting (10/20)

The Purchaser is responsible for posting and maintaining caution signs on Bill Nicholls Trail prior to beginning operations. The trail must be posted at appropriate distances from the Sale Area to warn of logging activity and truck traffic at both ends of the trail. Signs must be removed when harvest operations are suspended or completed. The Purchaser will provide these signs.



TIMBER SALE MAP

This information provided by authority of Part 525, 1994 PA 451, as amended.

Sale Number

11-014-26

Date

05/18/2026

Forest Management Unit

County

Mapped By: Ryan Mattila

Scale

Page

Of

Baraga Mgt Unit

Ontonagon

Cruised By: Ryan Mattila

1:15,840

1

1

Township
51N

Range
37W

Section(s) and
Subdivision(s) Sec. 15 SESW; Sec. 21 NENE; Sec. 22 NW,SW,SE; Sec. 27 NENW,NWNE;

Cover Type

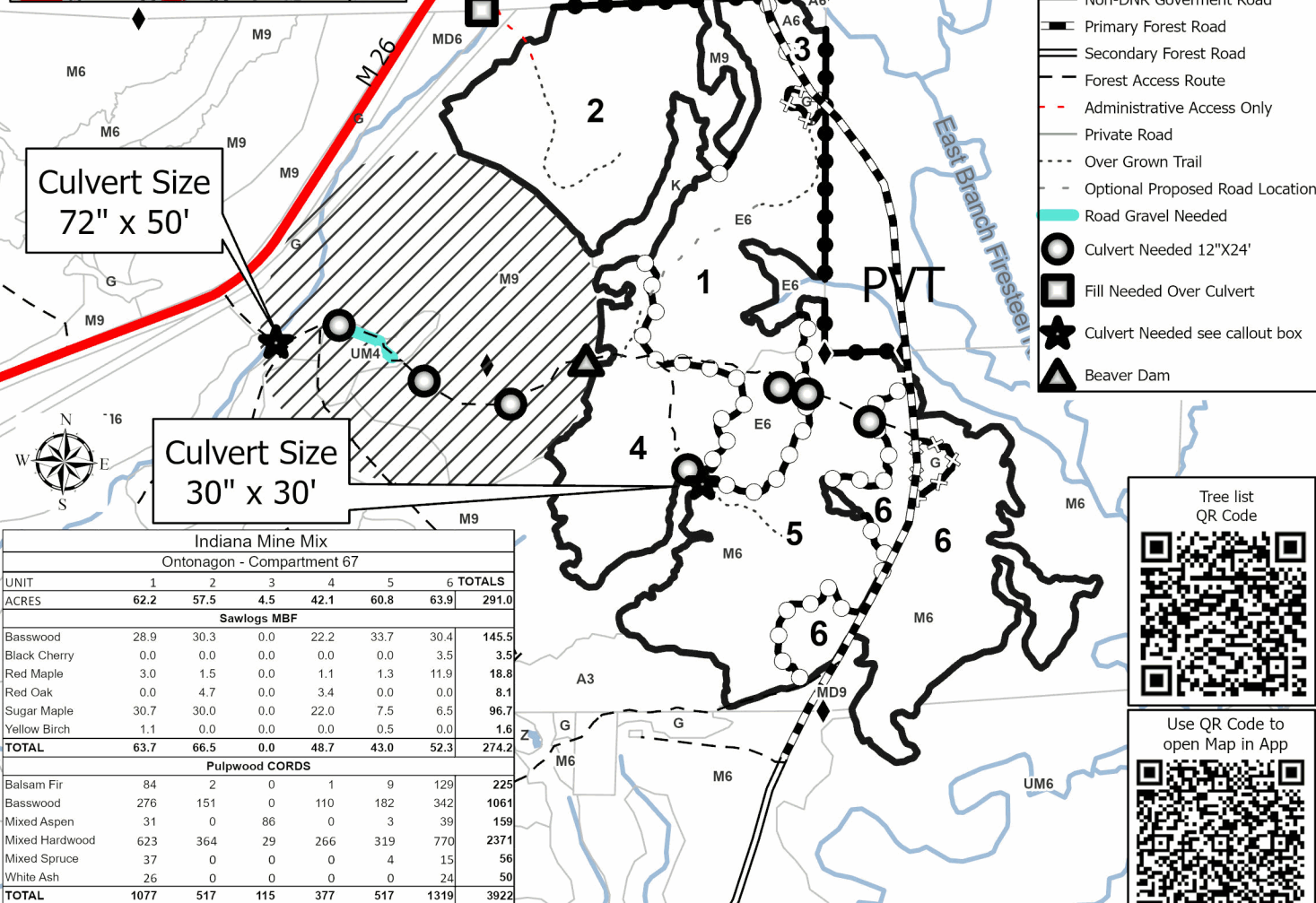
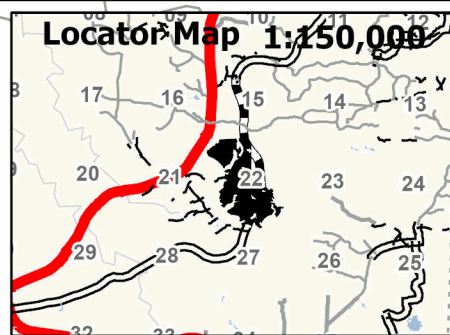
- A = Aspen
- B = Paper Birch
- C = Cedar
- D = Treed Bog
- E = Swamp Hardwoods
- F = Spruce/Fir
- G = Grass
- H = Hemlock
- J = Jack Pine
- K = Rock
- L = Lowland Brush
- LM = Lowland Mix Forest
- M = Maple, Beech, Birch
- MC = Mixed Conifer
- MD = Mixed Deciduous
- N = Marsh
- O = Oak
- P = Lowland Poplar
- Q = Mixed Swamp Conifer
- R = Red Pine
- S = Black Spruce
- T = Tamarack
- U = Upland Brush
- UM = Upland Mix Forest
- V = Bog or Marsh
- W = White Pine
- X = Non Stocked
- Y = Sand
- Z = Water

Density

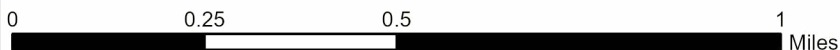
- 0 = Non Stocked
- 1 = Seedling Sapling Poor
- 2 = Seedling Sapling Medium
- 3 = Seedling Sapling Well
- 4 = Pole Timber Poor
- 5 = Pole Timber Medium
- 6 = Pole Timber Well
- 7 = Saw Timber Poor
- 8 = Saw Timber Medium
- 9 = Saw Timber Well

Legend

- Against State (Red)
- Against State (Unpainted)
- Private Line (Blue)
- Payment Unit (Red)
- Payment Unit (Road)
- 1/4 Mile No tree removal Buffer
- Lakes and Rivers
- Streams
- Survey Grade Corner
- Highway
- Non-DNR Government Road
- Primary Forest Road
- Secondary Forest Road
- Forest Access Route
- Administrative Access Only
- Private Road
- Over Grown Trail
- Optional Proposed Road Location
- Road Gravel Needed
- Culvert Needed 12"x24"
- Fill Needed Over Culvert
- Culvert Needed see callout box
- Beaver Dam



Indiana Mine Mix							
Ontonagon - Compartment 67							
UNIT	1	2	3	4	5	6	TOTALS
ACRES	62.2	57.5	4.5	42.1	60.8	63.9	291.0
Sawlogs MBF							
Basswood	28.9	30.3	0.0	22.2	33.7	30.4	145.5
Black Cherry	0.0	0.0	0.0	0.0	0.0	3.5	3.5
Red Maple	3.0	1.5	0.0	1.1	1.3	11.9	18.8
Red Oak	0.0	4.7	0.0	3.4	0.0	0.0	8.1
Sugar Maple	30.7	30.0	0.0	22.0	7.5	6.5	96.7
Yellow Birch	1.1	0.0	0.0	0.0	0.5	0.0	1.6
TOTAL	63.7	66.5	0.0	48.7	43.0	52.3	274.2
Pulpwood CORDS							
Balsam Fir	84	2	0	1	9	129	225
Basswood	276	151	0	110	182	342	1061
Mixed Aspen	31	0	86	0	3	39	159
Mixed Hardwood	623	364	29	266	319	770	2371
Mixed Spruce	37	0	0	0	4	15	56
White Ash	26	0	0	0	0	24	50
TOTAL	1077	517	115	377	517	1319	3922



BID INSTRUCTIONS (VER. 10/10/2022):

1. Scheduled Bid Location, Date, and Time (2/11)

Bids must be received by the Unit Manager, BARAGA OFFICE, 427 US 41 North, Baraga, MI 49908, no later than 9:00 a.m. (local time) on July 9, 2026. For further information concerning this sale, contact Brad Carlson at 906-353-6651.

2. Bidder's Qualifications (10/22)

If all or part of a timber sale was prepared by a private contractor, the contractor and that contractor's company are not permitted to bid on the timber sale. A person must be 18 years of age or older to purchase timber. Permanent employees of the Department of Natural Resources or members of their immediate household may not bid. Former employees, in the permanent or seasonal class, may not bid until 3 months after the last day of active duty. Bids will not be accepted from individuals or companies appearing on the DNR/FRD No-Bid List. This list contains the names of purchasers who previously failed to execute a contract within 21-days or who have a history of poor performance.

3. Preparation of Sealed Bids (5/16)

Bid Forms may be completed online thru Michigan DNR Timber Sale Online Bidding (OLB) at www.michigan.gov/timberbidding or by completing the hardcopy Bid Form found in the Timber Sale Prospectus. Hardcopy Bid Forms shall be manually signed in ink. Registration in OLB is considered your 'signature' for all bids submitted thru that system. Bid prices must be entered for each species and product in the Bid Price column for all material subject to bidding and all fill-in blanks must be completed. If erasures or other changes appear on the hardcopy Bid Form, each erasure or change must be initialed by the person signing the bid.

4. Submission of Sealed Bids (5/16)

Bid forms may be obtained from the Unit Manager or thru OLB. Bids may be submitted hardcopy or thru OLB. All hardcopy bids must be submitted on the bid form and in an envelope clearly identified as described in this section. NOTE: Only one bid form per bid envelope. Sealed bids must be submitted to the Unit office designated in the prospectus and must be submitted at or prior to the time established in the prospectus. The envelope should show on the outside (a) the sale name or number and (b) the date and time of bid opening, as shown in the prospectus. Bids received after the time specified in the sale prospectus are late bids and will be rejected.

It is possible for a bidder to submit multiple bids on a single sale. For example, a bid may be submitted hardcopy and a bid may be submitted thru OLB. Or, two bidders from the same company could both submit bids on the same sale. If this were to happen, the State would accept all bids received and award the contract accordingly. All bidding and contractual requirements would apply to all bids received.

5. Public Opening of Sealed Bids (7/16)

If conditions permit, the sealed bids will be publicly opened and posted at the time and place set in the prospectus.

If a bidder, present at a bid opening, has submitted bids on more than one sale, that bidder may withdraw their unopened bid envelopes or announce the withdrawal of their online bid after being declared the successful bidder on one sale.

6. Award of Contract (1/11)

Award of the contract will be made to the Bidder whose bid, conforming to the prospectus, is most advantageous to the State of Michigan on the basis of total value at rates bid for the estimated quantities. The State reserves the right to reject any bid or waive any minor irregularity in bids received. A written award mailed (or otherwise furnished) to the successful Bidder shall be deemed to result in a binding contract without further action by either party.

7. Down Payment (1/11)

The Bidder to whom award is made must make a down payment within 21 days of the sale award. The amount of the down payment will be calculated as shown in the Bond and Payment Schedule of this prospectus. Only cash may be used to meet this requirement.

8. Performance Security (1/11)

As guarantee of faithful performance, a cash bond, certificate of deposit, surety bond or irrevocable letter of credit (LOC) is required within 21 days of the sale award. The amount of the performance security is shown in the Bond and Payment Schedule of this prospectus. If an LOC or surety is used, the coverage must extend for at least 6 months

beyond the contract expiration.

9. Worker's Compensation (10/22)

Purchaser shall obtain worker's compensation insurance to cover claims under Michigan's Worker's Disability Compensation Act of 1969 or similar employee benefit act of any other state applicable to an employee. Verification of Worker's Disability Compensation Act Compliance must be completed and submitted within 21 days of contract award and prior to the issuance of the timber sale contract. In addition, if applicable, Notice of Exclusion or Certificate of Insurance must also be submitted.

10. Timber Sale Contract (10/22)

Additional conditions and requirements common to all timber sales are listed on the timber sale contract (R4031) and are available on line at www.michigan.gov/timber. Contact the Unit Manager for additional information or a sample contract. Within 21 days of the date of the award letter, the bidder must sign the contract and provide the required down payment, performance security, and verification of worker's disability compensation. The down payment and performance security shall be in accordance with the provisions of the timber sale contract, in the sums stated in this prospectus. If these actions are not taken, then the Bidder, the Bidder's corporation, and the corporation's principals may not be permitted to bid on State timber sales for a period of 3 months after the first offense, 6 months after the second offense, and 1 year after the third offense. An offense will only be counted against the Bidder for 5 years. In addition, the Bidder certifies that if awarded this contract, the Bidder will complete the timber sale contract in accordance with its terms and any modifications thereof including requirements to purchase, cut, and remove the included timber by the expiration date.

Payment Unit values in the State Forest Timber Sale Contract are calculated based on the advertised value of the Payment Unit as a percentage of the total advertised value of the contract. The advertised value of each Payment Unit is given in the Description of Timber by Payment Unit table on the Timber Sale Information page. For example, if the value of Payment Unit 1 is advertised as \$1,500 and the total Timber Sale value is advertised as \$10,000, the contract price for Payment Unit 1 will be 15% of the total bid price ($\$1,500/\$10,000 * 100$).

11. Disclaimer of Estimates and Bidder's Warranty of Inspection (10/22)

Before submitting this bid, the Bidder is advised and cautioned to inspect the sale area, review the requirements of the sale contract, and take other steps as may be reasonably necessary to ascertain the location, estimated volumes, construction estimates, and operating costs of the proposed sale. Failure to do so will not relieve the Bidder from responsibility for completing the contract.

The Bidder warrants that this bid is submitted solely on the basis of the Bidder's examination and inspection of the quality and quantity of the timber offered for sale and the Bidder's opinion of the value thereof and the costs of recovery. No reliance should be placed on the State of Michigan's estimates of timber quality, quantity or costs of recovery. Bidder further acknowledges that the State of Michigan: (i) expressly disclaims any warranty of fitness of timber for any purpose; (ii) offers this timber as is without any warranty of quality (merchantability) or quantity and (iii) expressly disclaims any warranty as to the quantity or quality of timber sold.

12. Certification and Chain-of-Custody (10/22)

Unless otherwise indicated in the contract under section 7 – Other Conditions of the Sale Specific Conditions & Requirements, the area encompassed by this timber sale is certified to the standards of the Forest Stewardship Council (FSC) - Certificate #SCS-FM/COC-00090N and the Sustainable Forestry Initiative (SFI) - Certificate #NSF-SFIS-5Y031-SF5. Forest products from this sale may be delivered to the mill as "FSC 100% and / or SFI certified" as long as the contractor hauling the forest products is chain-of-custody (COC) certified or covered under a COC certificate from the destination mill. The purchaser is responsible for maintaining COC after leaving the sale area.

13. Good Neighbor Authority (GNA) Requirements (10/22)

If the name of this timber sales contains the acronym GNA, it is authorized by the Good Neighbor Authority (GNA) and covered by various agreements between the U.S. Forest Service and the State. The timber sale occurs on federal land and the following conditions apply:

GNA contracts on US Forest Service land will not be awarded to purchasers on the Federal list of excluded parties. The System for Award Management (SAM) will be checked for active excluded parties prior to award of contract. In addition, the Bidder to whom award is made must complete an Assurance Regarding Felony Conviction or Tax

14. Good Neighbor Authority (GNA) Requirements, con't (10/22)

Bidder certifies, by signing this bid form, that to the best of Bidder's knowledge that the following representations are accurate and complete.

- a. That the Bidder and its principals are not presently debarred, suspended, proposed for debarment, declared ineligible, or voluntary excluded from timber sales (covered transactions) by any Federal department or agency.
- b. That the Bidder and its principals have not within a 3-year period preceding this bid been convicted of or had a civil judgment rendered against them for commission of fraud or a criminal offense in connection with obtaining , attempting to obtain, or performing a public (Federal, State, or local) transaction or contract under a public transaction; violation of Federal or State antitrust statutes or commission of embezzlement, theft, forgery, bribery, falsification or destruction of records, making false statements, or receiving stolen property.
- c. That the Bidder and its principals are not presently indicted for or otherwise criminally or civilly charged by a governmental entity (Federal, State, or local) with commission of any of the offenses enumerated in paragraph b of this certification.
- d. That the Bidder and its principals have not within a 3-year period preceding this bid had one or more public transactions (Federal, State, or local) terminated for breach or default of a timber or forest product contract.

Bidders that cannot certify this requirement, in whole or in part, shall submit an explanation with their bid.

Scott Bowen
Director

TIMBER SALE INFORMATION

GNA2 West Swinger (12-800-26)

T44N, R36W, SEC. 10; T44N, R36W, SEC. 11; T44N, R36W, SEC. 15; T44N, R36W, SEC. 16; T44N, R36W, SEC. 9.
Iron County (Advertised Price \$222,149.95)

SALE NOTE: Access may be through other public land.

A timber sale contract for this lump sum, sealed bid timber sale will be awarded to the responsible bidder offering the highest sealed bid price. All units of volume listed below were estimated using the Inventory Manager computer program and the new Michigan taper model. Bids must be at or above the following advertised price for each product and species:

<u>PRODUCTS & SPECIES</u>	<u>ESTIMATED UNITS*</u>	<u>ADVERTISED PRICE</u>
Sawtimber		
Basswood	121.8 MBF	\$ 46.00 / MBF
Black Cherry	22.9 MBF	\$ 26.00 / MBF
Red Maple	41.6 MBF	\$ 146.00 / MBF
Sugar Maple	440.4 MBF	\$ 276.00 / MBF
Yellow Birch	27.5 MBF	\$ 102.00 / MBF
Pulpwood		
Mixed Aspen	25 Cords	\$ 20.15 / Cord
Mixed Hardwood	7,729 Cords	\$ 11.00 / Cord

* The total volume is statistically estimated within plus (+) or minus (-) 7.43 percent. There are an estimated 9,287 cords on this timber sale, plus or minus 690 cords at the 95% confidence level. The estimated units are final and not subject to adjustment. Prospective bidders are urged to examine this timber and to make their own estimates of quantity and quality.

BOND AND PAYMENT SCHEDULE:

1. A bond in the amount of \$22,215.00 to insure faithful performance of the conditions of the contract will be deposited by the successful bidder within 21 days of the sale award.
2. Cutting in any sale or unit without the required advance payment would be considered a trespass.
3. Total payment must be paid in advance or according to the following schedule :
 - (a) Ten percent (10%) of the sale value must be paid within 21 days of the sale award.
 - (b) The 10% down payment will be credited towards the first unit cut.
 - (c) Payment for each of the following units must be made before cutting begins in that unit:

PAYMENT UNIT NUMBER	PERCENT OF TOTAL SALE VALUE
01	3.3%
02	9.2%
03	9.8%
04	6.9%
05	9.2%
06	6.3%
07	7.6%
08	8.6%
09	7.8%
10	13.3%
11	8.1%
12	9.9%

4. If no cutting takes place, the 10% down payment will not be refunded.
5. Operations on the contract issued will terminate on 06/30/2030.

SALE STATISTICS

Volumes were calculated in cubic feet using the Michigan taper model. Cubic foot volume includes all wood inside bark for the product indicated. For display purposes, cubic feet were converted to cords and MBF using a simple conversion factor, e.g. 79 cubic feet per cord and 185 cubic feet per MBF. The cubic foot volumes are precise; the cords and MBF volumes are not. Cubic foot volume cannot be directly converted to cords or boards with precision.

SALE VOLUMES

The total estimated sale volume may not equal the sum of the species/products due to the nature of statistical calculations associated with double sampling methodology.

VOLUME			STATISTICAL RANGE IN CORDS	
TOTAL CUBIC FEET	TOTAL CORDS	PERCENT ERROR	MINIMUM	MAXIMUM
733,643	9,287	7.43%	8,596	9,977

VDU VOLUMES

A VDU is a Volume Determination Unit. Volumes and their associated statistics are calculated at the VDU level and summarized to the sale level. There is often a one to one relationship between a VDU and a Payment Unit, but not always, depending on the cruise design. Refer to the VDU TO PAYMENT UNIT table.

	VOLUME			RANGE IN CORDS	
VDU	TOTAL CUBIC FEET	TOTAL CORDS	PERCENT ERROR	MINIMUM	MAXIMUM
1	674,316	8,536	7.97%	7,855	9,216
14	59,327	751	15.92%	631	871
TOTAL:	733,643	9,287		8,487	10,087

VDU TO PAYMENT UNIT

When a VDU is associated with more than one Payment Unit (PU), the VDU volumes are assigned to the PU based on acres of the VDU within the PU.

VDU	VDU ACRES	PU	PU ACRES
TOTAL:			

DESCRIPTION OF TIMBER BY PAYMENT UNIT (PU)

PU	MARKET GROUP	PRODUCT	QUANTITY	UNIT	ACRES	ADVERTISE PRICE
1	Basswood	Sawtimber	4.3	MBF	20.3	\$7,320.95
	Black Cherry		0.8	MBF		
	Red Maple		1.3	MBF		
	Sugar Maple		14.4	MBF		
	Yellow Birch		1.0	MBF		
	Mixed Aspen	Pulpwood	1	Cords		
	<i>Quaking Aspen</i>		1	Cords		
	Mixed Hardwood		256	Cords		
	<i>Basswood</i>		10	Cords		
	<i>Black Ash</i>		1	Cords		
	<i>Black Cherry</i>		8	Cords		
	<i>Ironwood</i>		1	Cords		
	<i>Red Maple</i>		29	Cords		
	<i>Sugar Maple</i>		194	Cords		
	<i>White Ash</i>		3	Cords		
<i>Yellow Birch</i>	10	Cords				
2	Basswood	Sawtimber	12.0	MBF	56.9	\$20,482.25
	Black Cherry		2.3	MBF		
	Red Maple		3.6	MBF		
	Sugar Maple		40.3	MBF		
	Yellow Birch		2.8	MBF		
	Mixed Aspen	Pulpwood	3	Cords		
	<i>Quaking Aspen</i>		3	Cords		
	Mixed Hardwood		716	Cords		
	<i>Basswood</i>		27	Cords		
	<i>Black Ash</i>		2	Cords		
	<i>Black Cherry</i>		23	Cords		
	<i>Ironwood</i>		2	Cords		
	<i>Red Maple</i>		80	Cords		
	<i>Sugar Maple</i>		545	Cords		
	<i>White Ash</i>		8	Cords		
<i>Yellow Birch</i>	29	Cords				
3	Basswood	Sawtimber	12.8	MBF	60.7	\$21,861.65
	Black Cherry		2.5	MBF		
	Red Maple		3.9	MBF		
	Sugar Maple		43.0	MBF		
	Yellow Birch		3.0	MBF		
	Mixed Aspen	Pulpwood	3	Cords		
	<i>Quaking Aspen</i>		3	Cords		
	Mixed Hardwood		764	Cords		
	<i>Basswood</i>		29	Cords		
	<i>Black Ash</i>		2	Cords		
	<i>Black Cherry</i>		25	Cords		
	<i>Ironwood</i>		2	Cords		
	<i>Red Maple</i>		85	Cords		
	<i>Sugar Maple</i>		581	Cords		
	<i>White Ash</i>		9	Cords		
<i>Yellow Birch</i>	31	Cords				
4	Basswood	Sawtimber	9.0	MBF	42.6	\$15,327.10
	Black Cherry		1.7	MBF		
	Red Maple		2.7	MBF		
	Sugar Maple		30.2	MBF		
	Yellow Birch		2.1	MBF		
	Mixed Aspen	Pulpwood	2	Cords		
	<i>Quaking Aspen</i>		2	Cords		
	Mixed Hardwood		535	Cords		

DESCRIPTION OF TIMBER BY PAYMENT UNIT (PU), CON'T

PU	MARKET GROUP	PRODUCT	QUANTITY	UNIT	ACRES	ADVERTISE PRICE
4 con't	<i>Basswood</i>	<i>Pulpwood</i>	20	<i>Cords</i>		
	<i>Black Ash</i>		1	<i>Cords</i>		
	<i>Black Cherry</i>		17	<i>Cords</i>		
	<i>Ironwood</i>		1	<i>Cords</i>		
	<i>Red Maple</i>		60	<i>Cords</i>		
	<i>Sugar Maple</i>		408	<i>Cords</i>		
	<i>White Ash</i>		6	<i>Cords</i>		
	<i>Yellow Birch</i>		22	<i>Cords</i>		
5	Basswood	Sawtimber	11.9	MBF	56.5	\$20,339.85
	Black Cherry		2.3	MBF		
	Red Maple		3.6	MBF		
	Sugar Maple		40.0	MBF		
	Yellow Birch		2.8	MBF		
	Mixed Aspen	Pulpwood	3	Cords		
	<i>Quaking Aspen</i>		3	<i>Cords</i>		
	Mixed Hardwood		711	Cords		
	<i>Basswood</i>		27	<i>Cords</i>		
	<i>Black Ash</i>		2	<i>Cords</i>		
	<i>Black Cherry</i>		23	<i>Cords</i>		
	<i>Ironwood</i>		2	<i>Cords</i>		
	<i>Red Maple</i>		79	<i>Cords</i>		
	<i>Sugar Maple</i>		541	<i>Cords</i>		
	<i>White Ash</i>		8	<i>Cords</i>		
	<i>Yellow Birch</i>		29	<i>Cords</i>		
6	Basswood	Sawtimber	8.2	MBF	39.0	\$14,025.50
	Black Cherry		1.6	MBF		
	Red Maple		2.5	MBF		
	Sugar Maple		27.6	MBF		
	Yellow Birch		1.9	MBF		
	Mixed Aspen	Pulpwood	2	Cords		
	<i>Quaking Aspen</i>		2	<i>Cords</i>		
	Mixed Hardwood		490	Cords		
	<i>Basswood</i>		18	<i>Cords</i>		
	<i>Black Ash</i>		1	<i>Cords</i>		
	<i>Black Cherry</i>		16	<i>Cords</i>		
	<i>Ironwood</i>		1	<i>Cords</i>		
	<i>Red Maple</i>		55	<i>Cords</i>		
	<i>Sugar Maple</i>		373	<i>Cords</i>		
	<i>White Ash</i>		6	<i>Cords</i>		
	<i>Yellow Birch</i>		20	<i>Cords</i>		
7	Basswood	Sawtimber	9.9	MBF	47.0	\$16,909.50
	Black Cherry		1.9	MBF		
	Red Maple		3.0	MBF		
	Sugar Maple		33.3	MBF		
	Yellow Birch		2.3	MBF		
	Mixed Aspen	Pulpwood	2	Cords		
	<i>Quaking Aspen</i>		2	<i>Cords</i>		
	Mixed Hardwood		591	Cords		
	<i>Basswood</i>		22	<i>Cords</i>		
	<i>Black Ash</i>		1	<i>Cords</i>		
	<i>Black Cherry</i>		19	<i>Cords</i>		
	<i>Ironwood</i>		2	<i>Cords</i>		
	<i>Red Maple</i>		66	<i>Cords</i>		
	<i>Sugar Maple</i>		450	<i>Cords</i>		
	<i>White Ash</i>		7	<i>Cords</i>		
	<i>Yellow Birch</i>		24	<i>Cords</i>		

DESCRIPTION OF TIMBER BY PAYMENT UNIT (PU), CON'T

PU	MARKET GROUP	PRODUCT	QUANTITY	UNIT	ACRES	ADVERTISE PRICE
8	Basswood	Sawtimber	11.2	MBF	52.9	\$19,047.70
	Black Cherry		2.1	MBF		
	Red Maple		3.4	MBF		
	Sugar Maple		37.5	MBF		
	Yellow Birch		2.6	MBF		
	Mixed Aspen	Pulpwood	2	Cords		
	<i>Quaking Aspen</i>		2	<i>Cords</i>		
	Mixed Hardwood		666	Cords		
	<i>Basswood</i>		25	<i>Cords</i>		
	<i>Black Ash</i>		2	<i>Cords</i>		
	<i>Black Cherry</i>		22	<i>Cords</i>		
	<i>Ironwood</i>		2	<i>Cords</i>		
	<i>Red Maple</i>		74	<i>Cords</i>		
	<i>Sugar Maple</i>		506	<i>Cords</i>		
	<i>White Ash</i>		8	<i>Cords</i>		
<i>Yellow Birch</i>	27	<i>Cords</i>				
9	Basswood	Sawtimber	9.9	MBF	48.0	\$17,418.30
	Black Cherry		1.9	MBF		
	Red Maple		3.2	MBF		
	Sugar Maple		34.4	MBF		
	Yellow Birch		2.3	MBF		
	Mixed Aspen	Pulpwood	2	Cords		
	<i>Quaking Aspen</i>		2	<i>Cords</i>		
	Mixed Hardwood		607	Cords		
	<i>Basswood</i>		22	<i>Cords</i>		
	<i>Black Ash</i>		1	<i>Cords</i>		
	<i>Black Cherry</i>		20	<i>Cords</i>		
	<i>Ironwood</i>		2	<i>Cords</i>		
	<i>Red Maple</i>		70	<i>Cords</i>		
	<i>Sugar Maple</i>		461	<i>Cords</i>		
	<i>White Ash</i>		7	<i>Cords</i>		
<i>Yellow Birch</i>	24	<i>Cords</i>				
10	Basswood	Sawtimber	9.2	MBF	72.7	\$29,430.15
	Black Cherry		1.2	MBF		
	Red Maple		7.3	MBF		
	Sugar Maple		60.8	MBF		
	Yellow Birch		1.5	MBF		
	Mixed Aspen	Pulpwood	1	Cords		
	<i>Quaking Aspen</i>		1	<i>Cords</i>		
	Mixed Hardwood		996	Cords		
	<i>Basswood</i>		22	<i>Cords</i>		
	<i>Black Ash</i>		1	<i>Cords</i>		
	<i>Black Cherry</i>		51	<i>Cords</i>		
	<i>Ironwood</i>		1	<i>Cords</i>		
	<i>Red Maple</i>		165	<i>Cords</i>		
	<i>Sugar Maple</i>		721	<i>Cords</i>		
	<i>White Ash</i>		4	<i>Cords</i>		
<i>Yellow Birch</i>	31	<i>Cords</i>				
11	Basswood	Sawtimber	10.5	MBF	49.9	\$17,965.70
	Black Cherry		2.0	MBF		
	Red Maple		3.2	MBF		
	Sugar Maple		35.4	MBF		
	Yellow Birch		2.4	MBF		
	Mixed Aspen	Pulpwood	2	Cords		
	<i>Quaking Aspen</i>		2	<i>Cords</i>		
	Mixed Hardwood		628	Cords		

DESCRIPTION OF TIMBER BY PAYMENT UNIT (PU), CON'T

PU	MARKET GROUP	PRODUCT	QUANTITY	UNIT	ACRES	ADVERTISE PRICE			
11 con't	<i>Basswood</i>	<i>Pulpwood</i>	24	<i>Cords</i>					
	<i>Black Ash</i>		2	<i>Cords</i>					
	<i>Black Cherry</i>		20	<i>Cords</i>					
	<i>Ironwood</i>		2	<i>Cords</i>					
	<i>Red Maple</i>		70	<i>Cords</i>					
	<i>Sugar Maple</i>		478	<i>Cords</i>					
	<i>White Ash</i>		7	<i>Cords</i>					
	<i>Yellow Birch</i>		25	<i>Cords</i>					
12	Basswood	Sawtimber	12.9	MBF	61.4	\$22,021.30			
	Black Cherry		2.6	MBF					
	Red Maple		3.9	MBF					
	Sugar Maple		43.5	MBF					
	Yellow Birch		2.8	MBF					
	Mixed Aspen		Pulpwood	2			Cords		
	<i>Quaking Aspen</i>	2		<i>Cords</i>					
	Mixed Hardwood	769		Cords					
	<i>Basswood</i>	29		<i>Cords</i>					
	<i>Black Ash</i>	1		<i>Cords</i>					
	<i>Black Cherry</i>	25		<i>Cords</i>					
	<i>Ironwood</i>	1		<i>Cords</i>					
	<i>Red Maple</i>	86		<i>Cords</i>					
	<i>Sugar Maple</i>	588		<i>Cords</i>					
	<i>White Ash</i>	8		<i>Cords</i>					
	<i>Yellow Birch</i>	31		<i>Cords</i>					
	TOTAL:			654.2			MBF		
	TOTAL:			7,754			Cords		

Sale Specific Conditions & Requirements

Sale Name: GNA2 West Swinger

Sale Number: 12-800-26 Seq#: 1

1 - Sale Area

1.2 - Boundaries

1.2.1 - Painted Boundaries (9/19)

The sale boundary and Payment Unit boundaries are marked and identified by triple orange paint slash and double orange paint slash or are unpainted and designated by US Forest Service roads. Exterior sale boundary lines against private property are marked with triple orange paint slash and red blaze paint. Exterior sale boundary lines against US Forest Service are marked with triple orange paint slash with the exception of the boundary along FDR 3475, which are unpainted and designated by FDR 3475 (see Timber Sale Map). Interior Payment Unit boundaries are marked with double orange paint slash. The painted boundary line trees are not Included Timber and are to be protected unless marked with blue paint. Blue painted trees designating an interior Payment Unit boundary are only to be cut when all surrounding Payment Units have been paid.

2 - Timber Specifications

2.1 - Included Timber

2.1.3 - Cut Tree Marked Unit(s) (12/08)

Within Payment Unit(s) 1-12, all trees are designated for cutting when marked with blue paint above and below stump height, regardless of merchantability.

2.2 - Utilization

2.2.3 - Stump Heights (12/24)

Stump heights within the Sale Area shall not exceed 12 inches for trees greater than 10 inches at DBH and four (4) inches for trees smaller than 10 inches at DBH. A written waiver of this requirement may be obtained if wet summer weather makes winter logging necessary.

2.2.4 - Skidding Length (12/24)

Skidding of lengths over 17 feet is permissible as long as the Sale Administrator approves the method and machinery used. If at any point damage exceeds specification 3.4.1, all of the remaining wood must be skid in lengths less than 17 feet.

2.2.5 - Limbed Tree Skidding (12/24)

The skidding of whole trees or tree segments with limbs attached is prohibited, unless approved by the Unit Manager or his/her representative.

2.2.7 - Uncut Designated Trees (2/04)

Liquidated damages of \$10.00 per tree will be assessed for every marked tree not cut.

2.2.8 - Utilization and Removal (12/24)

All products meeting standards set forth in General Condition and Requirement 2.2 - Utilization must be removed from the Sale Area. This is because excess woody debris inhibits regeneration.

2.2.9 - No Chipping Permitted (12/08)

Within Payment Unit(s) 1-12, tops may not be chipped.

2.2.12 - GNA, Cut and Remove Included Timber (3/18)

Unless provided otherwise herein, the DNR agrees to sell and permit Purchaser to cut and remove Included Timber, and Purchaser agrees to purchase, cut, and remove Included Timber.

3 - Payments

3.4 - Damaged Timber

3.4.1 - Damaged Timber (12/24)

General Condition and Requirement 3.4 Damaged Timber, defines liquidated damages for undesignated live merchantable trees which are cut or injured. In addition, extreme care should be taken to avoid damage to tree seedlings and saplings. No damage is acceptable to undesignated live merchantable trees. Within the Sale Area, if more than 5% of trees (> 4.5" DBH)

within a specified area of the sale are damaged, liquidated damages will be assessed for all trees damaged. Rates will be in accordance with General Condition and Requirement 3.4 Damaged Timber.

4 - Transportation

4.1 - Construction

4.1.1 - Stream Crossings, General (1/25)

All stream crossing structures will be temporary and, therefore, shall be provided by the Purchaser and must be removed upon completion of the sale. All permits for stream crossings will be provided by the DNR for crossings on US Forest Service land. See Spec 4.1.8 for additional stream crossing requirements.

4.1.3 - Slash and Earthen Piles (8/04)

Piles or windrows of earth along roads and landings that have been widened or constructed shall be leveled. Slash from road maintenance or construction, including stumps, shall be dispersed throughout the sale.

4.1.4 - Timber Removed for Construction (3/23)

Trees cut or damaged in the process of pre-approved road, landing, or skid trail construction will be decked in an area separate from other Designated Timber and not removed until measured by the Sale Administrator. Payment will be made at contract prices or average prices, if not on the contract.

4.1.5 - Culverts (5/14)

Roads may require the installation of culverts for cross drainage or at natural drainage-ways. If culverts are needed in these locations, their placement will be specified by the Sale Administrator, and they shall be installed prior to hauling. The culverts shall be new, corrugated metal or plastic gauge. Culverts will be a minimum of 18 inches in diameter and 24 feet in length. If culverts are removed, fill shall be removed from wetland soils as specified. Soils shall be maintained and left in a non-erodible condition, with water bars, seed, fertilizer, mulch, and slash installed as directed by the Sale Administrator and as specified in the BMP manual. Stream crossing permits, if needed, will be obtained by the DNR on US Forest Service land.

4.1.6 - Road Construction (4/24)

Construction of new roads or improvements of existing roads shall be done in such a way as to minimize the environmental and visual impacts. Merchantable trees shall be cut and utilized unless otherwise directed. Non-merchantable trees shall be severed and laid flat on the ground. Slash shall be scattered, not left in windrows, and kept a minimum of 10 feet back from the road edge. Stumps shall be set upright, not left on edge, and be moved at least 10 feet away from the road edge. Disturbed soil shall be feathered into the woods and not left in berms or windrows. Additionally, a back-in is required for decking off access road if desired on east side of Unit 10. Decking directly on haul road is prohibited due to adjacent timber sale activities. This back-in if used will be closed out and bermed.

4.1.7 - Road Closure (10/11)

All new roads built into the sale must be blocked to vehicle traffic upon completion of the sale. Overgrown roads that are reopened shall be considered new roads. Temporary access roads will need to be closed at the time of sale completion; see the Timber Sale Map for locations. In general, this will require constructing a four (4') foot high berm of earth and the use of stumps and logs if available. These roads must be rendered impassable to cars and trucks. All stumps from road building and landing construction must be reserved to block any newly constructed roads upon completion of the sale. Contact the Sale Administrator for specific details of design and placement.

4.1.8 - Road Work (1) (8/07)

The following road work is required: The Purchaser will gravel all transitions onto FDR 3475 used during the timber sale. This work needs to be completed prior to any hauling. Gravel must be from a weed free source. In general, this will require between five (5) and ten (10) yards of gravel per transition and completed to the satisfaction of the sale administrator. Two temporary culverts will need to be installed for completion of the sale. The culverts will be 18 inches in diameter and 24 feet in length. One will be installed on FDR 3475-C2 before the sale area, and the second is off FDR 3475-C2C on an un-numbered temp road (see Timber Sale Map for locations). The installation of these two culverts has been factored into the advertised price of this timber sale. If the sale is logged with snow on the ground, the Purchaser will plow the access road into the sale, such that there are pull-offs and/or turn outs sufficient for a passenger vehicle to pull off the road to allow the passage of other vehicles. These pull-offs shall be along the road at a distance of no greater than a quarter of a mile.

4.2 - Maintenance

4.2.1 - Hauling Restriction (12/08)

Hauling may be restricted on forest roads by the Unit Manager or his/her representative. The restriction may occur during wet weather conditions.

4.2.2 - Fill Material (4/07)

To maintain roads, fill material may be needed in areas where "holes" exist or may be expected to develop. This fill material should be placed before trucking begins. The number of loads used and type of material used (i.e. pit run gravel or crushed gravel) will need to be tracked if taken from a US Forest Service source. Contact the Sale Administrator regarding the availability of onsite sand or gravel from adjacent US Forest Service-owned lands

4.2.4 - Grading (10/16)

For completion of the sale, US Forest Service forest roads must be graded. In general, this will require a road grader or bulldozer to shape up the roads after forest products have been hauled off site. This includes cleaning of drainage areas, grading, crowning and filling with gravel, if necessary. The grading equipment to be used must be approved by the Unit Manager or his/her representative. Additionally, the designated haul route for the sale shall be graded once each season of harvest outside of winter months if the timber sale is active and once when hauling is completed for the season. The designated haul route for the timber sale is FDR 3475 to FDR 3470 to Basswood Road. The grading of this designated haul route has been factored into the minimum bid sale price.

4.2.5 - Two Wheel Drive Condition (2/04)

All existing trail roads on and adjacent to the Sale Area must be passable by two-wheel drive traffic for the duration of the sale.

5 - Operations

5.1 - Notification

5.1.1 - Pre-sale Conference (10/25)

A pre-sale conference on site between the Purchaser and Sale Administrator is required prior to beginning any operations to determine landing and road locations and to discuss contract-specific items. The Unit Manager or his/her representative must be contacted at least 10 days in advance to schedule the conference.

5.1.4 - Post-Sale Conference (10/16)

A post-sale conference on site between the Purchaser and sale administrator is required 5 days prior to the completion of active logging operations to determine clean-up and repair of landings, road edges, and the fulfillment of other contract specifications.

5.2 - Conduct of Operations

5.2.1 - Slash

5.2.1.11 - Slash for Reforestation (3/21)

To facilitate reforestation, the Sale Area shall be left with slash evenly distributed. Bunched tops within the cutting area shall be broken up and scattered. Stumps shall be cut low to the ground. Processing sites shall not be left with a compacted layer of slash; tops from these sites shall be hauled back into the cut area and scattered.

5.2.2 - Hazard Trees/Snags

5.2.2.1 - Den Trees (10/16)

Obvious hollow and/or den trees shall be protected and left standing unless they are a safety hazard.

5.2.3 - Operating Restrictions

5.2.3.1 - Operating Restrictions (9/11)

Within Payment Unit(s) 1-3, 9 and 10, unless changed by written agreement, cutting, skidding, and hauling are limited to the period of August 1 to September 30 and December 15 to March 15 or frozen winter conditions.

Within Payment Unit(s) 4-8, 11 and 12, unless changed by written agreement, cutting, skidding, and hauling are limited to December 15 to March 15 or frozen winter conditions.

The determination of frozen winter ground conditions will be at the discretion of the sale administrator. This restriction is due to US Forest Service seasonal operating restrictions.

5.2.30 - Landing/Road Topsoil Protection (1/25)

Topsoil on new landings and new roads must be removed, stockpiled, and saved. Upon completion of the timber sale, soil must be evenly distributed back over the area for revegetation. In addition, the area must be seeded and mulched per Sale Administrator's instructions.

5.2.32 - Decking/Landing Restoration (9/13)

All decking and landing areas must have the surface area restored to a condition equal to or better than before. This is to ensure the proper regeneration of the stand. Wood debris, chips and "cookies" from trimmings must be removed or scattered away from landing and loading areas and may not be windrowed on the edge.

5.2.38 - No Decking Against Live Trees (2/04)

Cut products may not be decked against unmarked or designated leave trees.

5.4 - Soil Protection

5.4.1 - Rutting Restriction, General (7/16)

Operations are to cease immediately if equipment and weather conditions result in rutting of roads and/or skid trails which are 6 inches or greater in depth and 25 feet in length. Note: Trees within 10 feet of ruts exceeding 6 inches will be considered damaged due to the roots being severed and will be billed in accordance with specification 3.4 Damaged Timber. The Unit Manager or his/her representative may restrict hauling and/or skidding if ruts exceed the specified depth. With the Unit Manager or his/her representative's approval, the Purchaser may return to the area when the risk of rutting has decreased.

5.4.2 - Skid Trails (2/04)

Skid trails up and down slopes should be avoided. If, however, this is unavoidable, these trails will be left in a non-erodible condition using water bars, logs, and slash. Placing of slash on these skid trails while logging is ongoing may alleviate need for any further action. At the direction of the Sale Administrator, seed, fertilizer, and mulch may also be required.

5.4.6 - Wet Area Protection (5/10)

No harvesting operations, including skidding and felling, are to take place within the vernal pond areas or drainages. When harvesting occurs, there should be no disturbance to the vernal pond depression. All equipment, trees and tops should be kept out of this area. Within 100 feet of the pond, equipment should only be used when the soil is in a dry or frozen condition. Care must be taken by the Purchaser to identify and avoid operating in these areas of the timber sale.

5.6 - Debris and Waste Material

5.6.2 - GNA, Equipment Cleaning (4/24)

(a) Areas, known by the DNR prior to timber sale advertisement, that are infested with invasive species of concern are shown on the Timber Sale Map. A current list of invasive species of concern and a map showing the extent of known infestations is available from the DNR. For purposes of this provision, "Off-Road Equipment" includes all logging and construction machinery, except for log trucks, chip vans, service vehicles, water trucks, pickup trucks, cars, and similar vehicles.

(b) Purchaser shall adhere to the following requirements with regard to cleaning "Off-Road Equipment":

(i) Prior to moving Off-Road Equipment onto the Sale Area, Purchaser shall identify the location of the equipment's most recent operation. Purchaser shall not move any Off-Road Equipment that last operated in an area infested with one or more invasive species of concern onto Sale Area without having cleaned such equipment of seeds, soil, vegetative matter, and other debris that could contain or hold seeds, and having notified the DNR, as provided in (iii). If the location of prior operation cannot be identified, then Purchaser shall assume that the location is infested with invasive species of concern.

(ii) Prior to moving Off-Road Equipment from a cutting unit that is shown on the Timber Sale Map to be infested with invasive species of concern to, or through any other area that is shown as being free of invasive species of concern, or infested with a different invasive species, Purchaser shall clean such equipment of seeds, soil, vegetative matter, and other debris that could contain or hold seeds, and shall notify the DNR, as provided in (iii).

(iii) Prior to moving any Off-Road Equipment subject to the cleaning requirements set forth above, Purchaser shall advise DNR of its cleaning measures and make the equipment available for inspection. DNR shall have two (2) days, excluding weekends and State holidays, to inspect equipment after it has been made available. After satisfactory inspection or after

such 2-day period, Purchaser may move the equipment as planned. Equipment shall be considered clean when a visual inspection does not disclose seeds, soil, vegetative matter, and other debris that could contain or hold seeds. Purchaser shall not be required to disassemble equipment unless so directed by the DNR after inspection.

(iv) If Purchaser desires to clean Off-Road Equipment on National Forest land, such as at the end of a project or prior to moving to, or through an area that is free of invasive species of concern, Purchaser shall obtain prior approval from the Unit Manager or his/her representative as to the location for such cleaning and measures, if any, for controlling impacts.

(v) Unit Manager or his/her representative may order delay, interruption, or modification of this Contract pursuant to Condition & Requirement 7.3 or 7.3.4.

(c) Nothing contained in this Condition & Requirement shall be interpreted as creating any warranty on the part of the DNR that all locations of invasive species of concern have been described herein, elsewhere in this Contract, or designated on the ground. Following sale advertisement, additional locations may be described or designated, and other species may be added to the list of invasive species of concern. In such event, the Unit Manager or his/her representative may order delay, interruption, or modification of this Contract pursuant to Condition & Requirement 7.3 or 7.3.4.

(d) The parties shall promptly communicate with one another with respect to description or designation of additional locations; discovery of locations of new species or new infestation; and, addition of species to the list of invasive species of concern.

5.8 - Protection of Endangered Species

5.8.5 - Protection of Raptor Nests (3/13)

All trees with raptor nests will be protected if found during harvesting operations. Notification will be made to the Unit Manager or his/her representative who will notify the Wildlife Biologist so an onsite evaluation and recommendation can be made, if necessary.

5.8.9 - GNA, Bat Habitat and Roost Trees (7/25)

If bats are observed emerging from a tree prior to being felled, or if injured or dead bats are found after a tree is felled, notify the Unit Manager for coordination with Forest Service biologists. If the tree is determined to be a roost, the contract may be amended to include a no activity buffer (typically 150 feet radius around the roost tree or trees).

During operations if any sick, injured, and/or dead bats (regardless of species) are found in the Sale Area the Purchaser shall report its location to the Sale Administrator as soon as possible, but no more than 12 hours upon discovery.

6 - Safety and Fire Prevention

6.2 - Signing

6.2.1 - Road Posting (10/20)

The Purchaser is responsible for posting and maintaining caution signs on Federal Forest Service Road 3475 prior to beginning operations. The road must be posted at appropriate distances from the sale area to warn of logging activity and truck traffic. Signs must be removed when harvest operations are suspended or completed. The Purchaser will provide these signs.

7 - Other Conditions

SKIP

7.1.1 - GNA, Title (7/16)

General Condition & Requirement 7.1 is inapplicable. The following applies to this contract.

All right, title, and interest in and to any Included Timber shall remain in USDA Forest Service with the State of Michigan acting on behalf of the USDA Forest Service under this GNA contract, until it has been Measured, removed from Sale Area or other authorized cutting area, and paid for, at which time title shall vest in Purchaser. Title to any Included Timber that has been Measured and paid for, but not removed from Sale Area or other authorized cutting area by Purchaser on or prior to Termination Date, shall remain in USDA Forest Service.

7.3 - Contract Modifications

7.3.4 - GNA, Contract Suspension and Modification (5/16)

(a) The Unit Manager may, by written order, delay or interrupt authorized operations under this contract or, notwithstanding Condition & Requirement 7.3, modify this contract, in whole or in part:

(i) To prevent environmental degradation or resource damage, including, but not limited to, harm to habitat, plants, animals, cultural resources, or cave resources;

(ii) To ensure consistency with land and resource management plans or other documents prepared pursuant to the National Environmental Policy Act of 1969, 42 USC 4321-4347;

(iii) To conduct environmental analysis, including, but not limited to, engaging in consultation pursuant to the Endangered Species Act of 1973, 16 USC 1531, et seq.; or

(iv) Upon agreement of the Forest Service, due to administrative appeal or litigation, regardless of whether the Unit Manager's order is required by a court order or this contract is named in such a proceeding.

(b) In the event of an order delaying or interrupting Purchaser's Operations under this Condition & Requirement, Purchaser's remedy shall be:

(i) a no cost contract extension,

(ii) reimbursement for Out-of-Pocket Expenses,

however, the foregoing remedies shall be available only to the extent that the Unit Manager's order was the sole and exclusive cause of the delay or interruption of Purchaser's operations.

(c) Remedies awarded to the Purchaser shall not be duplicative, and the Unit Manager shall have the right to structure remedies provided herein to avoid duplicative compensation.

(d) Purchaser agrees that this Condition & Requirement, and the remedies provided herein shall apply regardless of any finding by any court that the DNR failed to comply with any statute, regulation and/or policy in connection with awarding, advertising, or authorizing this sale, or a similar sale.

7.5 - Loss

7.5.2 - GNA, Liability for Loss (7/16)

If Included Timber is destroyed or damaged by an unexpected event that changes the nature of Included Timber, such as wind, flood, insects, disease, or similar cause, the Purchaser shall bear the timber value loss resulting from such destruction or damage.

Deterioration or loss of timber value due to delay or interruption under 7.3.4 - GNA, contract suspension and modification, shall be borne by the party holding title. In this event, Included Timber to which USDA Forest Service holds title, Purchaser of the State GNA contract will not be obligated to remove and pay for such timber. This Subsection shall not be construed to relieve either party of liability for negligence.

7.10 - Certified Timber

7.10.1 - Non-Certified Timber (2/16)

The area encompassed by this timber sale is not certified to the standards of the Forest Stewardship Council (FSC) or the Sustainable Forestry Initiative (SFI). Forest products from this sale may not be delivered to the mill as "FSC and / or SFI certified". The lands within this sale belong to the National Forest system and are being managed by the State as part of a Good Neighbor Authority (GNA) agreement.



TIMBER SALE MAP

This information provided by authority of Part 525, 1994 PA 451, as amended.

Sale Number

12-800-26

Date

05/28/2026

Forest Management Unit

County

Mapped By: Sullivan

Scale

Page

Of

Crystal Falls Mgt Unit

Iron

Cruised By: Sullivan, Collins, Yeo

1:20,000

1

1

Township
44N

Range
36W

Section(s) and N1/2NE,SENE; Sec. 9 S1/2SE;
Subdivision(s) Sec. 10 SENW,NE,SW,SE; Sec. 11 W1/2NW,NWSW; Sec. 15 NW,NE,N1/2SW,NWSE; Sec. 16

Cover Type

A = Aspen	J = Jack Pine	O = Oak	U = Upland Brush
B = Paper Birch	K = Rock	P = Lowland Poplar	UM = Upland Mix Forest
C = Cedar	L = Lowland Brush	Q = Mixed Swamp Conifer	V = Bog or Marsh
D = Treed Bog	LM = Lowland Mix Forest	R = Red Pine	W = White Pine
E = Swamp Hardwoods	M = Maple, Beech, Birch	S = Black Spruce	X = Non Stocked
F = Spruce/Fir	MC = Mixed Conifer	T = Tamarack	Y = Sand
G = Grass	MD = Mixed Deciduous	Z = Water	
H = Hemlock	N = Marsh		

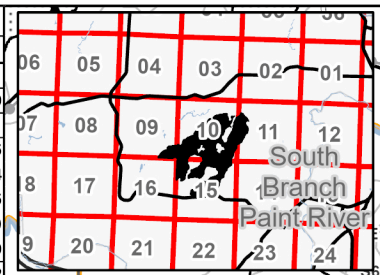
Density

0 = Non Stocked	5 = Pole Timber Medium
1 = Seedling Sapling Poor	6 = Pole Timber Well
2 = Seedling Sapling Medium	7 = Saw Timber Poor
3 = Seedling Sapling Well	8 = Saw Timber Medium
4 = Pole Timber Poor	9 = Saw Timber Well

GNA2 West Swinger

Iron - Compartment 7903073.7903074

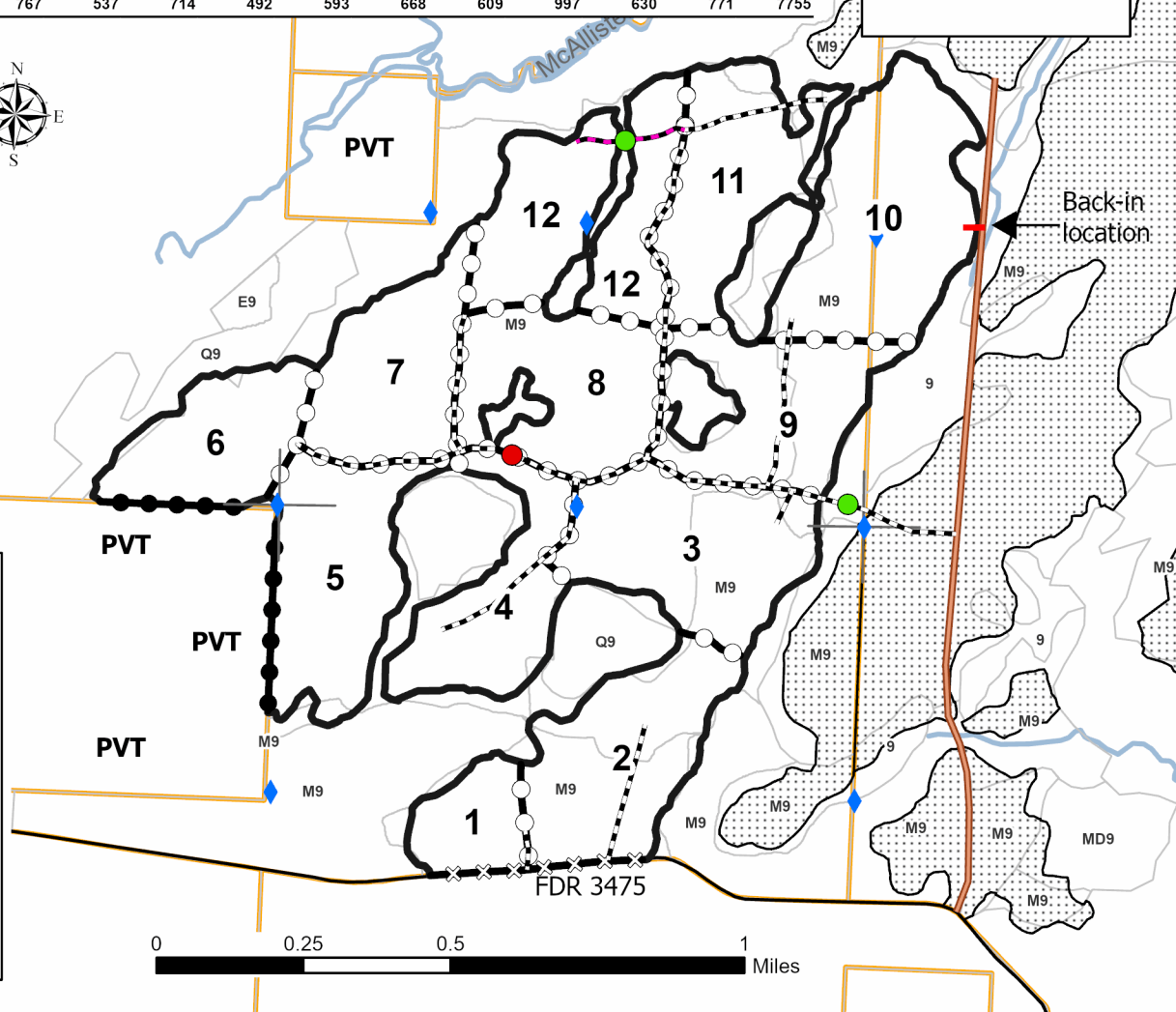
UNIT	1	2	3	4	5	6	7	8	9	10	11	12	TOTALS
ACRES	20.3	56.9	60.7	42.6	56.5	39	47	52.9	48	72.7	49.9	61.4	607.9
Sawlogs MBF													
Red Maple	1.2	3.6	3.9	2.7	3.6	2.5	3.0	3.4	3.2	7.3	3.2	3.9	41.5
Sugar Maç	14.4	40.3	43.0	30.2	40.0	27.6	33.3	37.5	34.4	60.8	35.4	43.5	440.4
Yellow Birc	1.0	2.8	3.0	2.1	2.8	1.9	2.3	2.6	2.3	1.5	2.4	2.8	27.5
Black Chei	0.8	2.3	2.5	1.7	2.3	1.6	1.9	2.1	1.9	1.2	2.0	2.6	22.9
Basswood	4.4	12.0	12.8	9.0	11.9	8.2	9.9	11.2	9.9	9.2	10.5	12.9	121.9
TOTAL	21.8	61.0	65.2	45.7	60.6	41.8	50.4	56.8	51.7	80.0	53.5	65.7	654.2
Pulpwood CORDS													
Mixed Asp	1	3	3	2	3	2	2	2	2	1	2	2	25
Mixed Har	257	716	764	535	711	490	591	666	607	996	628	769	7730
TOTAL	258	719	767	537	714	492	593	668	609	997	630	771	7755



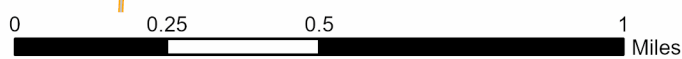
Locator Map
1:200,000



Use QR Code to open Map in App



Legend	
	Payment Unit
	Against USFS (Unpainted)
	Private Line (Orange)
	Payment Unit (Orange)
	Nearby Timber Sale
	Reconstruction Roads
	Temp Access Route
	Access Route
	Back In
	Survey Corners
	Culverts (Installed)
	Culvert (Required)
	Streams



GNA2 West Swinger (12-800-26)
T44N, R36W, SEC. 10; T44N, R36W, SEC. 11; T44N, R36W, SEC. 15; T44N,

In response to the notice of sale to be held 9:00 a.m. (local time) on July 9, 2026, I am hereby submitting my sealed bid (firm offer) for the following forest products to be cut. Bids for individual species must be at or above the advertised price. All non-responsive bid forms may be rejected.

<u>PRODUCTS & SPECIES</u>	<u>ESTIMATED VOLUME*</u>	<u>ADVERTISED PRICE</u>	<u>BID PRICE/UNIT</u>
Sawtimber			
Basswood	121.8 MBF	\$ 46.00/MBF	\$ _____
Black Cherry	22.9 MBF	\$ 26.00/MBF	\$ _____
Red Maple	41.6 MBF	\$ 146.00/MBF	\$ _____
Sugar Maple	440.4 MBF	\$ 276.00/MBF	\$ _____
Yellow Birch	27.5 MBF	\$ 102.00/MBF	\$ _____
Pulpwood			
Mixed Aspen	25 Cords	\$ 20.15/Cord	\$ _____
Mixed Hardwood	7,729 Cords	\$ 11.00/Cord	\$ _____

*The volumes are statistically estimated within plus (+) or minus (-) 7.43 percent at 95% confidence level. These estimated volumes are final and not subject to adjustment. Prospective bidders are urged to examine this timber and to make their own estimates of quantity and quality.

I understand that any or all bids may be rejected. All bids must be signed and all bid items must be bid or the bid form may be rejected. I also understand that consideration and awarding a contract will be based upon my past performance and ability to complete the contract based upon equipment and staffing subject to my control .

FEDERAL ID: _____ or SOCIAL SECURITY NUMBER: _____

Company or individual bidding: _____

Company representative's name: _____

Address: _____

City: _____ State: _____ Zip: _____

IF AVAILABLE, PLEASE PLACE THE PERSONALIZED LABEL FROM YOUR PROSPECTUS IN THE ABOVE BOX.

Individual or company representative's signature: _____ Date: _____
Phone number : _____ Email (optional): _____

THE WINNING BIDDER MUST COMPLETE THE VERIFICATION OF WORKER'S DISABILITY COMPENSATION ACT COMPLIANCE (ON REVERSE SIDE IF DOUBLE SIDED) WITHIN 21 DAYS OF SALE AWARD DATE



TIMBER SALE VERIFICATION OF WORKER'S DISABILITY COMPENSATION ACT COMPLIANCE

As required by Act 317, P.A. 1969 (Worker's Compensation) and
Part 5 of Act 451 of 1994, as amended.

FOR DEPARTMENT USE ONLY	
Sale Number (XX - XXX - XX - XX)	
Forest Management Unit:	

VERIFICATION OF WORKER'S DISABILITY COMPENSATION ACT COMPLIANCE

- This verification must be completed and submitted within 21 days of contract award and prior to the issuance of the timber sale contract.
- In addition, if boxes 2B or 2C are checked, then Notice of Exclusion or Certificate of Insurance must be submitted within twenty-one (21) days of the contract award and prior to the issuance of the timber sale contract.
- All information must be typed or printed except for written signatures.

Please Check Appropriate Categories:

1. My business is organized as (you **must** check one of the boxes below):
 - A. Sole Proprietorship (individual)
 - B. Partnership
 - C. Corporation
2. You **must** check one of the boxes below:
 - A. I certify my business is a sole proprietorship and it has no employees but the sole proprietor. I am not subject to the Worker's Compensation Laws.
 - B. I certify my business has satisfied its obligation to the Worker's Compensation Act through the use of an approved Notice of Exclusion (BWC-337, Rev. 5/96). I will provide a copy of the Notice of Exclusion within 21 days of the contract award. (For questions or a copy of the BWC-337, please call the Worker's Compensation Bureau at 517 -322-1195).
 - C. I certify my business has a Worker's Compensation Policy. I will provide an original Certificate of Insurance within twenty-one (21) days of the contract award.
3. If you have checked item 2(A) or 2(B), you **must** indicate the number of **both** full-time and part-time employees, other than yourself, including family members and active partners (if none, you must enter "0").

_____ Full-time Employees

_____ Part-time Employees

Name of Business		Federal ID (or) Social Security No.	
Address		Telephone ()	
City	State	ZIP	

I hereby certify that the above information is true and correct. I agree to notify the Michigan DNR of any changes that occur in factors affecting my coverage during any of my present and future operations.

Signature of Owner or Authorized Representative

Title

Date

Please complete the "SEALED BID" information on the next page

Indiana Mine Mix (11-014-26)
T51N, R37W, SEC. 15; T51N, R37W, SEC. 21; T51N, R37W, SEC. 22; T51N,

In response to the notice of sale to be held 9:00 a.m. (local time) on July 9, 2026, I am hereby submitting my sealed bid (firm offer) for the following forest products to be cut. Bids for individual species must be at or above the advertised price. All non-responsive bid forms may be rejected.

<u>PRODUCTS & SPECIES</u>	<u>ESTIMATED VOLUME*</u>	<u>ADVERTISED PRICE</u>	<u>BID PRICE/UNIT</u>
Sawtimber			
Basswood	145.5 MBF	\$ 30.00/MBF	\$ _____
Black Cherry	3.5 MBF	\$ 17.00/MBF	\$ _____
Red Maple	18.8 MBF	\$ 96.00/MBF	\$ _____
Red Oak	8.1 MBF	\$ 82.00/MBF	\$ _____
Sugar Maple	96.7 MBF	\$ 181.00/MBF	\$ _____
Yellow Birch	1.6 MBF	\$ 67.00/MBF	\$ _____
Pulpwood			
Balsam Fir	225 Cords	\$ 3.85/Cord	\$ _____
Basswood	1,061 Cords	\$ 3.30/Cord	\$ _____
Mixed Aspen	159 Cords	\$ 13.30/Cord	\$ _____
Mixed Hardwood	2,371 Cords	\$ 7.30/Cord	\$ _____
Mixed Spruce	56 Cords	\$ 4.70/Cord	\$ _____
White Ash	50 Cords	\$ 7.25/Cord	\$ _____

*The volumes are statistically estimated within plus (+) or minus (-) 9.26 percent at 95% confidence level. These estimated volumes are final and not subject to adjustment. Prospective bidders are urged to examine this timber and to make their own estimates of quantity and quality.

I understand that any or all bids may be rejected. All bids must be signed and all bid items must be bid or the bid form may be rejected. I also understand that consideration and awarding a contract will be based upon my past performance and ability to complete the contract based upon equipment and staffing subject to my control.

FEDERAL ID: ____ - ____ - ____ or SOCIAL SECURITY NUMBER: ____ - ____ - ____

Company or individual bidding: _____

Company representative's name: _____

Address: _____

City: _____ State: _____ Zip: _____

IF AVAILABLE, PLEASE PLACE THE PERSONALIZED LABEL FROM YOUR PROSPECTUS IN THE ABOVE BOX.

Individual or company representative's signature: _____ Date: _____

Phone number : _____ Email (optional): _____

THE WINNING BIDDER MUST COMPLETE THE VERIFICATION OF WORKER'S DISABILITY COMPENSATION ACT COMPLIANCE (ON REVERSE SIDE IF DOUBLE SIDED) WITHIN 21 DAYS OF SALE AWARD DATE



FOR DEPARTMENT USE ONLY	
Sale Number (XX - XXX - XX - XX)	
Forest Management Unit:	

TIMBER SALE VERIFICATION OF WORKER'S DISABILITY COMPENSATION ACT COMPLIANCE

As required by Act 317, P.A. 1969 (Worker's Compensation) and
Part 5 of Act 451 of 1994, as amended.

VERIFICATION OF WORKER'S DISABILITY COMPENSATION ACT COMPLIANCE

- This verification must be completed and submitted within 21 days of contract award and prior to the issuance of the timber sale contract.
- In addition, if boxes 2B or 2C are checked, then Notice of Exclusion or Certificate of Insurance must be submitted within twenty-one (21) days of the contract award and prior to the issuance of the timber sale contract.
- All information must be typed or printed except for written signatures.

Please Check Appropriate Categories:

1. My business is organized as (you **must** check one of the boxes below):
 - A. Sole Proprietorship (individual)
 - B. Partnership
 - C. Corporation
2. You **must** check one of the boxes below:
 - A. I certify my business is a sole proprietorship and it has no employees but the sole proprietor. I am not subject to the Worker's Compensation Laws.
 - B. I certify my business has satisfied its obligation to the Worker's Compensation Act through the use of an approved Notice of Exclusion (BWC-337, Rev. 5/96). I will provide a copy of the Notice of Exclusion within 21 days of the contract award. (For questions or a copy of the BWC-337, please call the Worker's Compensation Bureau at 517 -322-1195).
 - C. I certify my business has a Worker's Compensation Policy. I will provide an original Certificate of Insurance within twenty-one (21) days of the contract award.
3. If you have checked item 2(A) or 2(B), you **must** indicate the number of **both** full-time and part-time employees, other than yourself, including family members and active partners (if none, you must enter "0").

_____ Full-time Employees

_____ Part-time Employees

Name of Business		Federal ID (or) Social Security No.	
Address		Telephone ()	
City	State	ZIP	

I hereby certify that the above information is true and correct. I agree to notify the Michigan DNR of any changes that occur in factors affecting my coverage during any of my present and future operations.

Signature of Owner or Authorized Representative

Title

Date

Please complete the "SEALED BID" information on the next page