



**DEPARTMENT OF NATURAL RESOURCES
STATE OF MICHIGAN
TIMBER SALE PROSPECTUS #7713**

SCHEDULED SALE DATE AND TIME: 3:00 p.m. (local time) on October 22, 2025.

LOCATION: ESCANABA MGMT UNIT, 6833 US-2, 41 & M-35, GLADSTONE, MI 49837.

PROSPECTUS NOTE: The bidder is advised to inspect the sale area and review the location, estimated volumes, operating costs and contract terms of proposed sales. Please be aware that some landowners may request 60 days or more notice for access across their land.

Notice is hereby given that bids will be received by the Unit Manager, ESCANABA MANAGEMENT UNIT, for certain timber on the following described lands:

Limpert Road West (33-003-25) / T37N, R24W, SEC. 19, S1/2SE.

T37N, R24W, SEC. 20, S1/2SE.

T37N, R24W, SEC. 28, SWNW,W1/2SW.

T37N, R24W, SEC. 29, NENW,N1/2NE,SENE,NESW,SE.

T37N, R24W, SEC. 30, NE,N1/2SE.

T37N, R24W, SEC. 32, NWNE.

Delta County, Advertised Price \$117,900.75, 202.7 Acres, Hardwood, White Pine.

SALE NOTE: Payment Units 1,2,4,5, and 10 are restricted to December 1st through March 31st. See cutting specification 5.2.3.1 Operating Restriction.

A recreation site such as a trail, pathway, or campground is within the sale area or the vicinity. Certain restrictions/specifications may be applicable including time restrictions.

Limpert Road East (33-004-25) / T37N, R24W, SEC. 27, W1/2NW,NWSW.

T37N, R24W, SEC. 28, E1/2NE,SE.

Delta County, Advertised Price \$26,048.25, 86.8 Acres, Hardwood, Aspen.

SALE NOTE: Miscellaneous Species is dead/dying ash.

Z-1 Aspen (33-027-25) / T35N, R29W, SEC. 25, N1/2SW,SWSW.

Menominee County, Advertised Price \$20,630.30, 45.9 Acres, Aspen, Hardwood.

SALE NOTE: Payment Unit 1 is restricted to cutting between July 15th and April 15th, due to Bark Restrictions. No oak wilt was identified in Payment Units 2 and 3, but if it is identified during the contract the sale specifications could be modified.

Houte's Spur Red Eye (33-028-25) / T37N, R28W, SEC. 14, W1/2SE.

T37N, R28W, SEC. 15, SENW,E1/2SW,W1/2SE.

Menominee County, Advertised Price \$33,136.30, 108.0 Acres, White Pine, Hardwood.

SALE NOTE: Payment Units 1, 2, 3, and 6 are restricted during the period of April 15 to July 15 for bark slippage and oak wilt restrictions. Road work is required on this sale by the Purchaser.

BID INSTRUCTIONS (VER. 10/10/2022):

1. Scheduled Bid Location, Date, and Time (2/11)

Bids must be received by the Unit Manager, ESCANABA OFFICE, 6833 US-2, 41 & M-35, Gladstone, MI 49837, no later than 3:00 p.m. (local time) on October 22, 2025. For further information concerning this sale, contact Dan Racine at 906-789-8231.

2. Bidder's Qualifications (10/22)

If all or part of a timber sale was prepared by a private contractor, the contractor and that contractor's company are not permitted to bid on the timber sale. A person must be 18 years of age or older to purchase timber. Permanent employees of the Department of Natural Resources or members of their immediate household may not bid. Former employees, in the permanent or seasonal class, may not bid until 3 months after the last day of active duty. Bids will not be accepted from individuals or companies appearing on the DNR/FRD No-Bid List. This list contains the names of purchasers who previously failed to execute a contract within 21-days or who have a history of poor performance.

3. Preparation of Sealed Bids (5/16)

Bid Forms may be completed online thru Michigan DNR Timber Sale Online Bidding (OLB) at www.michigan.gov/timberbidding or by completing the hardcopy Bid Form found in the Timber Sale Prospectus. Hardcopy Bid Forms shall be manually signed in ink. Registration in OLB is considered your 'signature' for all bids submitted thru that system. Bid prices must be entered for each species and product in the Bid Price column for all material subject to bidding and all fill-in blanks must be completed. If erasures or other changes appear on the hardcopy Bid Form, each erasure or change must be initialed by the person signing the bid.

4. Submission of Sealed Bids (5/16)

Bid forms may be obtained from the Unit Manager or thru OLB. Bids may be submitted hardcopy or thru OLB. All hardcopy bids must be submitted on the bid form and in an envelope clearly identified as described in this section. NOTE: Only one bid form per bid envelope. Sealed bids must be submitted to the Unit office designated in the prospectus and must be submitted at or prior to the time established in the prospectus. The envelope should show on the outside (a) the sale name or number and (b) the date and time of bid opening, as shown in the prospectus. Bids received after the time specified in the sale prospectus are late bids and will be rejected.

It is possible for a bidder to submit multiple bids on a single sale. For example, a bid may be submitted hardcopy and a bid may be submitted thru OLB. Or, two bidders from the same company could both submit bids on the same sale. If this were to happen, the State would accept all bids received and award the contract accordingly. All bidding and contractual requirements would apply to all bids received.

5. Public Opening of Sealed Bids (7/16)

If conditions permit, the sealed bids will be publicly opened and posted at the time and place set in the prospectus.

If a bidder, present at a bid opening, has submitted bids on more than one sale, that bidder may withdraw their unopened bid envelopes or announce the withdrawal of their online bid after being declared the successful bidder on one sale.

6. Award of Contract (1/11)

Award of the contract will be made to the Bidder whose bid, conforming to the prospectus, is most advantageous to the State of Michigan on the basis of total value at rates bid for the estimated quantities. The State reserves the right to reject any bid or waive any minor irregularity in bids received. A written award mailed (or otherwise furnished) to the successful Bidder shall be deemed to result in a binding contract without further action by either party.

7. Down Payment (1/11)

The Bidder to whom award is made must make a down payment within 21 days of the sale award. The amount of the down payment will be calculated as shown in the Bond and Payment Schedule of this prospectus. Only cash may be used to meet this requirement.

8. Performance Security (1/11)

As guarantee of faithful performance, a cash bond, certificate of deposit, surety bond or irrevocable letter of credit (LOC) is required within 21 days of the sale award. The amount of the performance security is shown in the Bond and

Payment Schedule of this prospectus. If an LOC or surety is used, the coverage must extend for at least 6 months beyond the contract expiration.

9. Worker's Compensation (10/22)

Purchaser shall obtain worker's compensation insurance to cover claims under Michigan's Worker's Disability Compensation Act of 1969 or similar employee benefit act of any other state applicable to an employee. Verification of Worker's Disability Compensation Act Compliance must be completed and submitted within 21 days of contract award and prior to the issuance of the timber sale contract. In addition, if applicable, Notice of Exclusion or Certificate of Insurance must also be submitted.

10. Timber Sale Contract (10/22)

Additional conditions and requirements common to all timber sales are listed on the timber sale contract (R4031) and are available on line at www.michigan.gov/timber. Contact the Unit Manager for additional information or a sample contract. Within 21 days of the date of the award letter, the bidder must sign the contract and provide the required down payment, performance security, and verification of worker's disability compensation. The down payment and performance security shall be in accordance with the provisions of the timber sale contract, in the sums stated in this prospectus. If these actions are not taken, then the Bidder, the Bidder's corporation, and the corporation's principals may not be permitted to bid on State timber sales for a period of 3 months after the first offense, 6 months after the second offense, and 1 year after the third offense. An offense will only be counted against the Bidder for 5 years. In addition, the Bidder certifies that if awarded this contract, the Bidder will complete the timber sale contract in accordance with its terms and any modifications thereof including requirements to purchase, cut, and remove the included timber by the expiration date.

Payment Unit values in the State Forest Timber Sale Contract are calculated based on the advertised value of the Payment Unit as a percentage of the total advertised value of the contract. The advertised value of each Payment Unit is given in the Description of Timber by Payment Unit table on the Timber Sale Information page. For example, if the value of Payment Unit 1 is advertised as \$1,500 and the total Timber Sale value is advertised as \$10,000, the contract price for Payment Unit 1 will be 15% of the total bid price ($\$1,500/\$10,000 * 100$).

11. Disclaimer of Estimates and Bidder's Warranty of Inspection (10/22)

Before submitting this bid, the Bidder is advised and cautioned to inspect the sale area, review the requirements of the sale contract, and take other steps as may be reasonably necessary to ascertain the location, estimated volumes, construction estimates, and operating costs of the proposed sale. Failure to do so will not relieve the Bidder from responsibility for completing the contract.

The Bidder warrants that this bid is submitted solely on the basis of the Bidder's examination and inspection of the quality and quantity of the timber offered for sale and the Bidder's opinion of the value thereof and the costs of recovery. No reliance should be placed on the State of Michigan's estimates of timber quality, quantity or costs of recovery. Bidder further acknowledges that the State of Michigan: (i) expressly disclaims any warranty of fitness of timber for any purpose; (ii) offers this timber as is without any warranty of quality (merchantability) or quantity and (iii) expressly disclaims any warranty as to the quantity or quality of timber sold.

12. Certification and Chain-of-Custody (10/22)

Unless otherwise indicated in the contract under section 7 – Other Conditions of the Sale Specific Conditions & Requirements, the area encompassed by this timber sale is certified to the standards of the Forest Stewardship Council (FSC) - Certificate #SCS-FM/COC-00090N and the Sustainable Forestry Initiative (SFI) - Certificate #NSF-SFIS-5Y031-SF5. Forest products from this sale may be delivered to the mill as "FSC 100% and / or SFI certified" as long as the contractor hauling the forest products is chain-of-custody (COC) certified or covered under a COC certificate from the destination mill. The purchaser is responsible for maintaining COC after leaving the sale area.

13. Good Neighbor Authority (GNA) Requirements (10/22)

If the name of this timber sales contains the acronym GNA, it is authorized by the Good Neighbor Authority (GNA) and covered by various agreements between the U.S. Forest Service and the State. The timber sale occurs on federal land and the following conditions apply:

GNA contracts on US Forest Service land will not be awarded to purchasers on the Federal list of excluded parties. The System for Award Management (SAM) will be checked for active excluded parties prior to award of contract. In

addition, the Bidder to whom award is made must complete an Assurance Regarding Felony Conviction or Tax Delinquent Status for Corporate Applicants (AD-3031).

14. Good Neighbor Authority (GNA) Requirements, con't (10/22)

Bidder certifies, by signing this bid form, that to the best of Bidder's knowledge that the following representations are accurate and complete.

- a. That the Bidder and its principals are not presently debarred, suspended, proposed for debarment, declared ineligible, or voluntary excluded from timber sales (covered transactions) by any Federal department or agency.
- b. That the Bidder and its principals have not within a 3-year period preceding this bid been convicted of or had a civil judgment rendered against them for commission of fraud or a criminal offense in connection with obtaining , attempting to obtain, or performing a public (Federal, State, or local) transaction or contract under a public transaction; violation of Federal or State antitrust statutes or commission of embezzlement, theft, forgery, bribery, falsification or destruction of records, making false statements, or receiving stolen property.
- c. That the Bidder and its principals are not presently indicted for or otherwise criminally or civilly charged by a governmental entity (Federal, State, or local) with commission of any of the offenses enumerated in paragraph b of this certification.
- d. That the Bidder and its principals have not within a 3-year period preceding this bid had one or more public transactions (Federal, State, or local) terminated for breach or default of a timber or forest product contract.

Bidders that cannot certify this requirement, in whole or in part, shall submit an explanation with their bid.

Scott Bowen
Director

TIMBER SALE INFORMATION

Limpert Road West (33-003-25)

T37N, R24W, SEC. 19; T37N, R24W, SEC. 20; T37N, R24W, SEC. 28; T37N, R24W, SEC. 29; T37N, R24W, SEC. 30; T37N, R24W, SEC. 32.

SALE NOTE: Payment Units 1,2,4,5, and 10 are restricted to December 1st through March 31st. See cutting specification 5.2.3.1 Operating Restriction.

A recreation site such as a trail, pathway, or campground is within the sale area or the vicinity. Certain restrictions/specifications may be applicable including time restrictions.

A timber sale contract for this lump sum, sealed bid timber sale will be awarded to the responsible bidder offering the highest sealed bid price. All units of volume listed below were estimated using the Inventory Manager computer program and the new Michigan taper model. Bids must be at or above the following advertised price for each product and species:

<u>PRODUCTS & SPECIES</u>	<u>ESTIMATED UNITS*</u>		<u>ADVERTISED PRICE</u>
Sawtimber			
Paper Birch	32.2	MBF	\$ 80.00 / MBF
Red Maple	123.3	MBF	\$ 100.00 / MBF
Sugar Maple	1.0	MBF	\$ 212.00 / MBF
Yellow Birch	2.9	MBF	\$ 37.00 / MBF
Pulpwood			
Balsam Fir	167	Cords	\$ 8.40 / Cord
Hemlock	16	Cords	\$ 6.15 / Cord
Misc. Species 2	257	Cords	\$ 7.50 / Cord
Mixed Aspen	675	Cords	\$ 24.50 / Cord
Mixed Hardwood	3,131	Cords	\$ 15.35 / Cord
Mixed Spruce	395	Cords	\$ 12.25 / Cord
N. White Cedar	327	Cords	\$ 6.55 / Cord
Red Pine	202	Cords	\$ 61.00 / Cord
Tamarack	74	Cords	\$ 9.60 / Cord
White Pine	866	Cords	\$ 16.90 / Cord

* The total volume is statistically estimated within plus (+) or minus (-) 10.15 percent. There are an estimated 6,486 cords on this timber sale, plus or minus 659 cords at the 95% confidence level. The estimated units are final and not subject to adjustment. Prospective bidders are urged to examine this timber and to make their own estimates of quantity and quality.

BOND AND PAYMENT SCHEDULE:

1. A bond in the amount of \$5,895.00 to insure faithful performance of the conditions of the contract will be deposited by the successful bidder within 21 days of the sale award.
2. Cutting in any sale or unit without the required advance payment would be considered a trespass.
3. Total payment must be paid in advance or according to the following schedule:
 - (a) Ten percent (10%) of the sale value must be paid within 21 days of the sale award.
 - (b) The 10% down payment will be credited towards the first unit cut.
 - (c) Payment for each of the following units must be made before cutting begins in that unit:

<u>PAYMENT UNIT NUMBER</u>	<u>PERCENT OF TOTAL SALE VALUE</u>
01	11.7%
02	8.8%
03	12.9%
04	6.1%
05	22.0%
06	4.2%
07	4.6%
08	21.6%
09	3.9%
10	1.1%
11	3.1%

4. If no cutting takes place, the 10% down payment will not be refunded.
5. Operations on the contract issued will terminate on 09/30/2029.

SALE STATISTICS

Volumes were calculated in cubic feet using the Michigan taper model. Cubic foot volume includes all wood inside bark for the product indicated. For display purposes, cubic feet were converted to cords and MBF using a simple conversion factor, e.g. 79 cubic feet per cord and 185 cubic feet per MBF. The cubic foot volumes are precise; the cords and MBF volumes are not. Cubic foot volume cannot be directly converted to cords or boards with precision.

SALE VOLUMES

The total estimated sale volume may not equal the sum of the species/products due to the nature of statistical calculations associated with double sampling methodology.

VOLUME			STATISTICAL RANGE IN CORDS	
TOTAL CUBIC FEET	TOTAL CORDS	PERCENT ERROR	MINIMUM	MAXIMUM
512,386	6,486	10.15%	5,827	7,145

VDU VOLUMES

A VDU is a Volume Determination Unit. Volumes and their associated statistics are calculated at the VDU level and summarized to the sale level. There is often a one to one relationship between a VDU and a Payment Unit, but not always, depending on the cruise design. Refer to the VDU TO PAYMENT UNIT table.

	VOLUME			RANGE IN CORDS	
VDU	TOTAL CUBIC FEET	TOTAL CORDS	PERCENT ERROR	MINIMUM	MAXIMUM
10	62,994	797	28.16%	573	1,022
18	42,735	541	32.05%	368	714
29	46,357	587	31.56%	402	772
34	27,091	343	43.16%	195	491
36	29,780	377	40.18%	225	528
38	5,988	76	121.05%	0	168
42	23,843	302	56.98%	130	474
48	15,481	196	69.74%	59	333
52	20,060	254	55.81%	112	396
53	105,256	1,332	29.22%	943	1,722
56	132,801	1,681	16.07%	1,411	1,951
TOTAL:	512,386	6,486		4,418	8,570

VDU TO PAYMENT UNIT

When a VDU is associated with more than one Payment Unit (PU), the VDU volumes are assigned to the PU based on acres of the VDU within the PU.

VDU	VDU ACRES	PU	PU ACRES
TOTAL:			

DESCRIPTION OF TIMBER BY PAYMENT UNIT (PU)

PU	MARKET GROUP	PRODUCT	QUANTITY	UNIT	ACRES	ADVERTISE PRICE
1	Paper Birch	Sawtimber	28.3	MBF	28.5	\$13,833.15
	Red Maple		24.9	MBF		
	Balsam Fir	Pulpwood	20	Cords		
	Misc. Species 2		171	Cords		
	Mixed Aspen		17	Cords		
	<i>Quaking Aspen</i>		17	<i>Cords</i>		
	Mixed Hardwood		351	Cords		
	<i>Black Ash</i>		7	<i>Cords</i>		
	<i>Green Ash</i>		16	<i>Cords</i>		
	<i>Paper Birch</i>		154	<i>Cords</i>		
	<i>Red Maple</i>		164	<i>Cords</i>		
	<i>Sugar Maple</i>		5	<i>Cords</i>		
	<i>Yellow Birch</i>		5	<i>Cords</i>		
	Mixed Spruce		22	Cords		
	<i>White Spruce</i>		22	<i>Cords</i>		
	White Pine		92	Cords		
2	Paper Birch	Sawtimber	2.9	MBF	16.1	\$10,332.75
	Red Maple		15.8	MBF		
	Yellow Birch		0.9	MBF		
	Mixed Hardwood	Pulpwood	267	Cords		
	<i>Paper Birch</i>		64	<i>Cords</i>		
	<i>Red Maple</i>		199	<i>Cords</i>		
	<i>Yellow Birch</i>		4	<i>Cords</i>		
	Mixed Spruce		46	Cords		
	<i>Black Spruce</i>		46	<i>Cords</i>		
	Red Pine		17	Cords		
	White Pine		165	Cords		
3	Mixed Hardwood	Pulpwood	42	Cords	22.0	\$15,227.90
	<i>Red Maple</i>		42	<i>Cords</i>		
	Mixed Spruce		68	Cords		
	<i>Black Spruce</i>		68	<i>Cords</i>		
	Red Pine		129	Cords		
	White Pine		348	Cords		
4	Red Maple	Sawtimber	5.9	MBF	13.6	\$7,205.30
	Yellow Birch		1.0	MBF		
	Misc. Species 2	Pulpwood	23	Cords		
	Mixed Hardwood		167	Cords		
	<i>Black Ash</i>		35	<i>Cords</i>		
	<i>Paper Birch</i>		4	<i>Cords</i>		
	<i>Red Maple</i>		105	<i>Cords</i>		
	<i>Yellow Birch</i>		23	<i>Cords</i>		
	Mixed Spruce		7	Cords		
	<i>White Spruce</i>		7	<i>Cords</i>		
	Red Pine		40	Cords		
	Tamarack		28	Cords		
	White Pine		62	Cords		
5	Red Maple	Sawtimber	49.8	MBF	41.9	\$25,955.85
	Yellow Birch		1.0	MBF		
	Balsam Fir	Pulpwood	26	Cords		
	Mixed Hardwood		1,203	Cords		
	<i>Black Ash</i>		426	<i>Cords</i>		
	<i>Green Ash</i>		129	<i>Cords</i>		
	<i>Paper Birch</i>		28	<i>Cords</i>		
	<i>Red Maple</i>		572	<i>Cords</i>		
	<i>Yellow Birch</i>		48	<i>Cords</i>		
	Mixed Spruce		14	Cords		

DESCRIPTION OF TIMBER BY PAYMENT UNIT (PU), CON'T

PU	MARKET GROUP	PRODUCT	QUANTITY	UNIT	ACRES	ADVERTISE PRICE
5 con't	<i>White Spruce</i> N. White Cedar	<i>Pulpwood</i>	14 318	<i>Cords</i> Cords		
6	Paper Birch Red Maple Balsam Fir Mixed Hardwood <i>Black Ash</i> <i>Black Cherry</i> <i>Paper Birch</i> <i>Red Maple</i> <i>White Ash</i> Mixed Spruce <i>White Spruce</i>	Sawtimber Pulpwood	1.0 15.7 6 205 17 3 5 148 32 4 4	MBF MBF Cords Cords <i>Cords</i> <i>Cords</i> <i>Cords</i> <i>Cords</i> <i>Cords</i> Cords <i>Cords</i>	6.6	\$4,896.15
7	Balsam Fir Misc. Species 2 Mixed Hardwood <i>Paper Birch</i> <i>Red Maple</i> Mixed Spruce <i>Black Spruce</i> <i>White Spruce</i> Red Pine Tamarack White Pine	Pulpwood	3 19 214 13 201 39 34 5 3 40 58	Cords Cords Cords <i>Cords</i> <i>Cords</i> Cords <i>Cords</i> <i>Cords</i> Cords Cords Cords	14.5	\$5,477.55
8	Red Maple Balsam Fir Misc. Species 2 Mixed Aspen <i>B. T. Aspen</i> <i>Quaking Aspen</i> Mixed Hardwood <i>Balsam Poplar</i> <i>Beech</i> <i>Black Ash</i> <i>Black Cherry</i> <i>Green Ash</i> <i>Paper Birch</i> <i>Red Maple</i> <i>White Ash</i> Mixed Spruce <i>White Spruce</i> N. White Cedar	Sawtimber Pulpwood	2.1 106 44 658 279 379 504 186 2 59 5 13 11 216 12 12 12 4	MBF Cords Cords Cords <i>Cords</i> <i>Cords</i> Cords <i>Cords</i> <i>Cords</i> <i>Cords</i> <i>Cords</i> <i>Cords</i> <i>Cords</i> <i>Cords</i> <i>Cords</i> <i>Cords</i> <i>Cords</i> Cords	34.8	\$25,461.00
9	Hemlock Mixed Hardwood <i>Paper Birch</i> <i>Red Maple</i> Mixed Spruce <i>Black Spruce</i> N. White Cedar Red Pine White Pine	Pulpwood	16 31 7 24 125 125 5 7 117	Cords Cords <i>Cords</i> <i>Cords</i> Cords <i>Cords</i> Cords Cords Cords	14.1	\$4,542.55
10	Mixed Spruce <i>Black Spruce</i> Red Pine White Pine	Pulpwood	53 53 6 16	Cords <i>Cords</i> Cords Cords	4.3	\$1,285.65

DESCRIPTION OF TIMBER BY PAYMENT UNIT (PU), CON'T

PU	MARKET GROUP	PRODUCT	QUANTITY	UNIT	ACRES	ADVERTISE PRICE
11	Red Maple	Sawtimber	9.1	MBF	6.3	\$3,682.90
	Sugar Maple		1.0	MBF		
	Balsam Fir	Pulpwood	6	Cords		
	Mixed Hardwood		147	Cords		
	Beech		8	Cords		
	Red Maple		134	Cords		
	Sugar Maple		5	Cords		
	Mixed Spruce		5	Cords		
	Black Spruce		5	Cords		
	Tamarack		6	Cords		
	White Pine		8	Cords		
TOTAL:			159.4	MBF		
TOTAL:			6,110	Cords		

Sale Specific Conditions & Requirements

Sale Name: Limpert Road West

Sale Number: 33-003-25 Seq#: 1

1 - Sale Area

1.2 - Boundaries

1.2.1 - Painted Boundaries (9/19)

The sale boundary and Payment Unit boundaries are marked and identified by red and yellow paint. Exterior sale boundary lines against state are marked with red paint. Interior Payment Unit boundaries are marked with yellow paint. Retention patches are marked with red paint; no harvesting activities may occur within these areas. The painted boundary line trees are not Included Timber and are to be protected unless marked with orange paint. Yellow painted trees designating an interior Payment Unit boundary are only to be cut when all surrounding Payment Units have been paid; except the Payment Unit line between Payment Units 3 and 4 is to be protected.

2 - Timber Specifications

2.1 - Included Timber

2.1.1 - Clearcut Unit(s) with Unmerchantable Trees (6/14)

Within Payment Unit(s) 1, 2, 4-6 and 8-11, cut all trees that are three (3) inches and or more at DBH. In addition, the following exceptions apply:

- Within Payment Unit(s) 1, 2 and 6, do not cut cedar, hemlock, or trees marked with green paint (see spec 2.1.9 for Payment Units 1 and 2).

- Within Payment Unit(s) 4, do not cut cedar or hemlock.

- Within Payment Unit(s) 9 and 10, do not cut trees marked with green paint.

- Within Payment Unit(s) 11, do not cut hemlock or trees marked with green paint.

2.1.7 - Leave Tree Marked Unit(s) (6/14)

Within Payment Unit(s) 3 and 7, all trees, which meet minimum piece specifications in 2.2 Utilization, are designated for cutting, except do not cut hemlock, cedar, or trees marked with green paint above and below stump height (see spec 2.1.9).

2.1.9 - Harvest Exception (12/24)

Do not cut any cedar or hemlock trees in Payment Units 1, 2 and 7 and do not cut any hemlock trees in Payment Unit 3 other than those that are necessary to remove in order to operate within the Sale Area. Every effort must be made to preserve the existing cedar and hemlock in Payment Units 1, 2 and 7 and hemlock in Payment Unit 3 and to leave an intact stand upon sale completion. All cut cedar and hemlock in Payment Units 1, 2 and 7 and hemlock in Payment Unit 3 shall be piled separately by product and scaled in the woods, unless other scaling arrangements are agreed to by the Unit Manager or his/her representative. Stumpage price for cedar shall be \$35.00 per cord for pulpwood. Stumpage price for hemlock shall be \$35.00 per cord for pulpwood.

2.1.11 - Description of Timber Note (2/04)

Note that Misc. Species 2 is dead/dying ash.

2.2 - Utilization

2.2.4 - Skidding Length (12/24)

Skidding of unlimbed tops or lengths over 17 feet is not permissible. Unless approved by the Unit Manager or his/her representative.

3 - Payments

3.3 - Pre-measured Sales

3.3.4 - Dividing Payment Units (7/14)

Payment Unit(s) with a bid value of \$18,000 or greater may be divided at the request of the Purchaser and upon approval of

the Unit Manager. Dividing Payment Units is a contract modification which requires a Timber Sale Contract Amendment. There will be only one division per Payment Unit.

3.4 - Damaged Timber

3.4.1 - Damaged Timber (12/24)

General Condition and Requirement 3.4 Damaged Timber, defines liquidated damages for undesignated live merchantable trees which are cut or injured. In addition, extreme care should be taken to avoid damage to tree seedlings and saplings within Payment Units 3, 6 and 11.

Within Payment Units 3, 6 and 11, if more than 25% of the tree seedlings or saplings (1/4" to 4.5" DBH) within a specified portion of the Sale Area are damaged, liquidated damages will be assessed at \$100 per acre for all acreage within that specified portion of the Sale Area that was damaged.

4 - Transportation

4.1 - Construction

4.1.3 - Slash and Earthen Piles (8/04)

Piles or windrows of earth along roads and landings that have been widened or constructed shall be leveled. Slash from road maintenance or construction, including stumps, shall be dispersed throughout the sale.

4.1.7 - Road Closure (10/11)

All new roads built into the sale must be blocked to vehicle traffic upon completion of the sale. Overgrown roads that are reopened shall be considered new roads. In general, this will require constructing a four (4') foot high berm of stumps and logs covered with earth. These roads must be rendered impassable to cars and trucks. Temporary berms may be required if no sale activity occurs for 30 or more consecutive days. Contact the Sale Administrator for specific details of design and placement.

4.2 - Maintenance

4.2.1 - Hauling Restriction (12/08)

Hauling may be restricted on forest roads by the Unit Manager or his/her representative. The restriction may occur during wet weather conditions.

4.2.4 - Grading (10/16)

For completion of the sale, state forest roads must be graded. In general, this will require a road grader or bulldozer to shape up the roads after forest products have been hauled off site. This includes cleaning of drainage areas, grading, crowning and filling with gravel, if necessary. The grading equipment to be used must be approved by the Unit Manager or his/her representative.

5 - Operations

5.2 - Conduct of Operations

5.2.2 - Hazard Trees/Snags

5.2.2.1 - Den Trees (10/16)

Obvious hollow and/or den trees shall be protected and left standing unless they are a safety hazard.

5.2.3 - Operating Restrictions

5.2.3.1 - Operating Restrictions (9/11)

Within Payment Unit(s) 1, 2, 4, 5, 9 and 10, cutting and skidding are limited to the period of December 1 to March 31, unless there is an extended dry or frozen period and the Sale Administrator allows harvesting during that period of time. This restriction is because of low wet ground within the Payment Units.

5.2.3.3 - Bark Slippage Restriction (3/09)

Within Payment Unit(s) 3, unless changed by written agreement, cutting and skidding are not permitted during the period of April 15 to July 15. This restriction is because of bark slippage.

5.2.22 - Operating Caution

5.2.22.1 - Operating Caution (6/11)

It is recommended, but not required, that within Payment Unit(s) 7, cutting, skidding, and hauling occur during dry summer or frozen winter conditions. The reason for the recommendation is because unit 7 has low and wet areas.

5.2.32 - Decking/Landing Restoration (9/13)

All decking and landing areas must have the surface area restored to a condition equal to or better than before. This is to ensure the proper regeneration of the stand. Wood debris, chips and "cookies" from trimmings must be removed or scattered away from landing and loading areas and may not be windrowed on the edge.

5.2.38 - No Decking Against Live Trees (2/04)

Cut products may not be decked against unmarked or designated leave trees.

5.2.39 - ORV Trail/Route Protection (4/18)

The Deer Pond Road is an ORV trail or route and is shown on the Timber Sale Map. Do not cut trees or damage posts with yellow ORV markers. All stumps within five (5) feet of the trail must be cut flush with the ground. Maintain a 20-foot-wide slash, debris, and rut free zone daily using the ORV trail or route as the centerline. Do not run equipment down the ORV trail or route. Skidding across the trail or route may only occur in locations approved by the Sale Administrator.

5.4 - Soil Protection

5.4.1 - Rutting Restriction, General (7/16)

Operations are to cease immediately if equipment and weather conditions result in rutting of roads and/or skid trails which are 12 inches or greater in depth and 50 feet in length. The Unit Manager or his/her representative may restrict hauling and/or skidding if ruts exceed the specified depth. With the Unit Manager or his/her representative's approval, the Purchaser may return to the area when the risk of rutting has decreased.

6 - Safety and Fire Prevention

6.2 - Signing

6.2.1 - Road Posting (10/20)

The Purchaser is responsible for posting and maintaining caution signs on Limpert Road and Deer Pond Road prior to beginning operations. The road must be posted at appropriate distances from the Sale Area to warn of logging activity and truck traffic. Signs must be removed when harvest operations are suspended or completed. The Purchaser will provide these signs.

7 - Other Conditions

7.5 - Loss

7.5.1 - Deteriorating Timber (7/09)

The Sale Area has received damage from emerald ash borer and spruce budworm. The Purchaser should harvest the wood as soon as possible. The Department of Natural Resources is held free of responsibility of any further damage or deterioration due to delay in harvesting.



TIMBER SALE MAP

This information provided by authority of Part 525, 1994 PA 451, as amended.

Sale Number

33-003-25

Date

08/19/2025

Forest Management Unit

Escanaba Mgt Unit

County

Delta

Mapped By: George Wilson

Cruised By: George Wilson

Scale

1:15,840

Page

1

Of

1

Township
37N

Range
24W

Section(s) and Subdivision(s) Sec. 30 NE,N1/2SE; Sec. 32 NWNE;
Sec. 19 S1/2SE; Sec. 20 S1/2SE; Sec. 28 SWNW,W1/2SW; Sec. 29 NENW,N1/2NE,SENE,NESW,SE;

Cover Type

A = Aspen	J = Jack Pine	O = Oak	U = Upland Brush
B = Paper Birch	K = Rock	P = Lowland Poplar	UM = Upland Mix Forest
C = Cedar	L = Lowland Brush	Q = Mixed Swamp Conifer	V = Bog or Marsh
D = Treed Bog	LM = Lowland Mix Forest	R = Red Pine	W = White Pine
E = Swamp Hardwoods	M = Maple, Beech, Birch	S = Black Spruce	X = Non Stocked
F = Spruce/Fir	MC = Mixed Conifer	T = Tamarack	Y = Sand
G = Grass	MD = Mixed Deciduous		Z = Water
H = Hemlock	N = Marsh		

Density

0 = Non Stocked	5 = Pole Timber Medium
1 = Seedling Sapling Poor	6 = Pole Timber Well
2 = Seedling Sapling Medium	7 = Saw Timber Poor
3 = Seedling Sapling Well	8 = Saw Timber Medium
4 = Pole Timber Poor	9 = Saw Timber Well

Legend

- Against State (Red)
- Payment Unit (Yellow)
- Retention
- Recreational Trails
- Primary Forest Road
- Forest Access Route
- Administrative Access Only
- ORV Route
- Survey Grade Corner

Limpert Road West

202.7 Acres

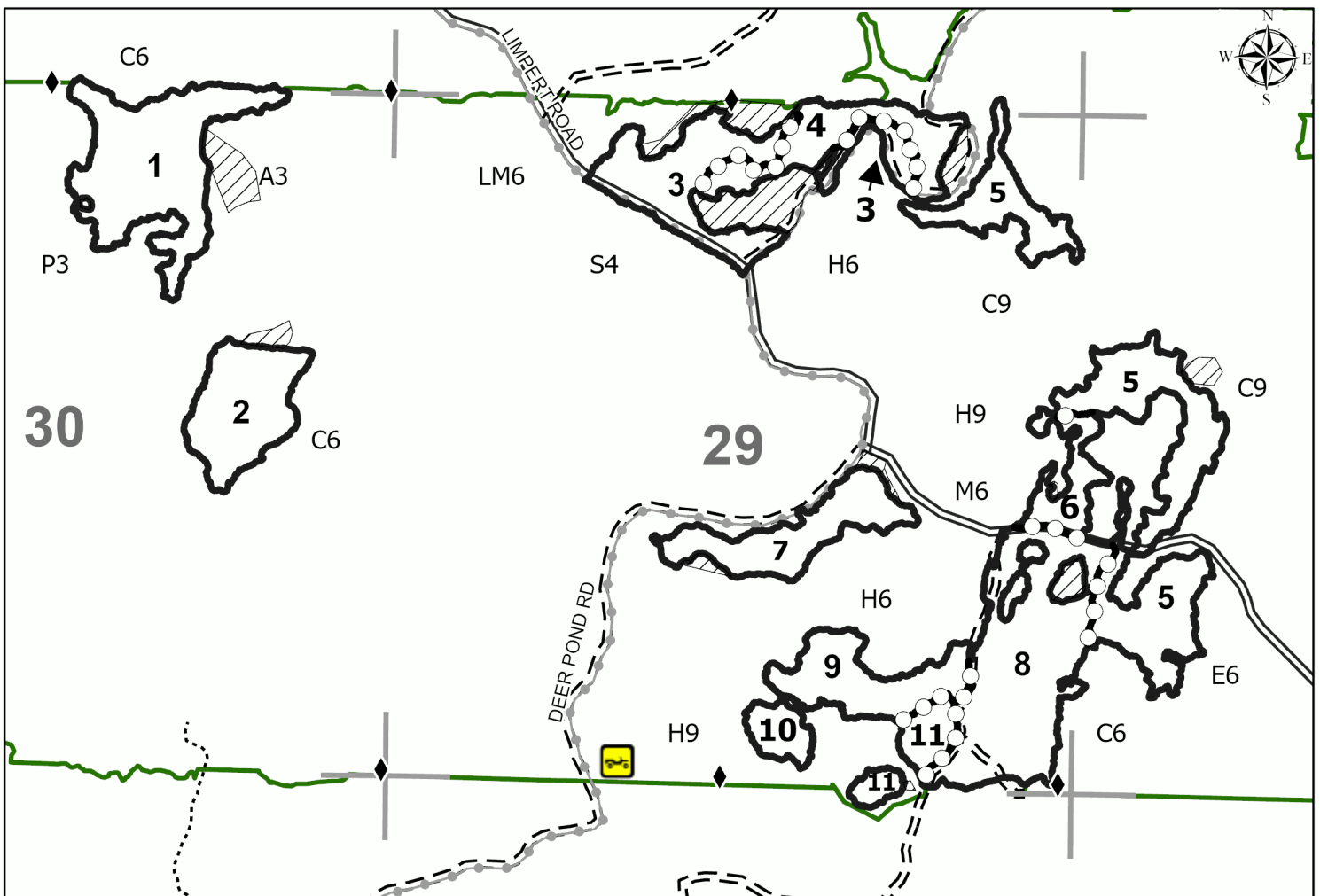
Compartment 75

Use QR Code to
open Map in App



Payment Unit Number	Acres	Payment Unit Number	Acres
1	28.5	7	14.5
2	16.1	8	34.8
3	22	9	14.1
4	13.6	10	4.3
5	41.9	11	6.3
6	6.6		

0 0.25 0.5 1 Miles



TIMBER SALE INFORMATION

Limpert Road East (33-004-25)
T37N, R24W, SEC. 27; T37N, R24W, SEC. 28.
Delta County (Advertised Price \$26,048.25)

SALE NOTE: Miscellaneous Species is dead/dying ash.

A timber sale contract for this lump sum, sealed bid timber sale will be awarded to the responsible bidder offering the highest sealed bid price. All units of volume listed below were estimated using the Inventory Manager computer program and the new Michigan taper model. Bids must be at or above the following advertised price for each product and species:

<u>PRODUCTS & SPECIES</u>	<u>ESTIMATED UNITS*</u>	<u>ADVERTISED PRICE</u>
Sawtimber		
Paper Birch	3.2 MBF	\$ 80.00 / MBF
Red Maple	1.4 MBF	\$ 100.00 / MBF
Sugar Maple	16.9 MBF	\$ 212.00 / MBF
Pulpwood		
Balsam Fir	81 Cords	\$ 8.40 / Cord
Basswood	2 Cords	\$ 8.75 / Cord
Misc. Species 2	266 Cords	\$ 7.50 / Cord
Mixed Hardwood	931 Cords	\$ 15.35 / Cord
N. White Cedar	19 Cords	\$ 6.55 / Cord
Quaking Aspen	194 Cords	\$ 24.50 / Cord
White Spruce	17 Cords	\$ 12.25 / Cord

* The total volume is statistically estimated within plus (+) or minus (-) 17.57 percent. There are an estimated 1,562 cords on this timber sale, plus or minus 275 cords at the 95% confidence level. The estimated units are final and not subject to adjustment. Prospective bidders are urged to examine this timber and to make their own estimates of quantity and quality.

BOND AND PAYMENT SCHEDULE:

- A bond in the amount of \$1,302.00 to insure faithful performance of the conditions of the contract will be deposited by the successful bidder within 21 days of the sale award.
- Cutting in any sale or unit without the required advance payment would be considered a trespass.
- Total payment must be paid in advance or according to the following schedule :
 - Ten percent (10%) of the sale value must be paid within 21 days of the sale award.
 - The 10% down payment will be credited towards the first unit cut.
 - Payment for each of the following units must be made before cutting begins in that unit:

PAYMENT UNIT NUMBER	PERCENT OF TOTAL SALE VALUE
01	25.0%
02	8.7%
03	25.2%
04	26.4%
05	14.7%
- If no cutting takes place, the 10% down payment will not be refunded.
- Operations on the contract issued will terminate on 09/30/2029.

SALE STATISTICS

Volumes were calculated in cubic feet using the Michigan taper model. Cubic foot volume includes all wood inside bark for the product indicated. For display purposes, cubic feet were converted to cords and MBF using a simple conversion factor, e.g. 79 cubic feet per cord and 185 cubic feet per MBF. The cubic foot volumes are precise; the cords and MBF volumes are not. Cubic foot volume cannot be directly converted to cords or boards with precision.

SALE VOLUMES

The total estimated sale volume may not equal the sum of the species/products due to the nature of statistical calculations associated with double sampling methodology.

VOLUME			STATISTICAL RANGE IN CORDS	
TOTAL CUBIC FEET	TOTAL CORDS	PERCENT ERROR	MINIMUM	MAXIMUM
123,397	1,562	17.57%	1,287	1,837

VDU VOLUMES

A VDU is a Volume Determination Unit. Volumes and their associated statistics are calculated at the VDU level and summarized to the sale level. There is often a one to one relationship between a VDU and a Payment Unit, but not always, depending on the cruise design. Refer to the VDU TO PAYMENT UNIT table.

	VOLUME			RANGE IN CORDS	
VDU	TOTAL CUBIC FEET	TOTAL CORDS	PERCENT ERROR	MINIMUM	MAXIMUM
36	58,008	734	29.34%	519	950
73	33,767	427	31.45%	293	562
77	31,622	400	29.07%	284	517
TOTAL:	123,397	1,562		1,096	2,028

VDU TO PAYMENT UNIT

When a VDU is associated with more than one Payment Unit (PU), the VDU volumes are assigned to the PU based on acres of the VDU within the PU.

VDU	VDU ACRES	PU	PU ACRES
TOTAL:			

DESCRIPTION OF TIMBER BY PAYMENT UNIT (PU)

PU	MARKET GROUP	PRODUCT	QUANTITY	UNIT	ACRES	ADVERTISE PRICE
1	Paper Birch	Sawtimber	3.2	MBF	22.2	\$6,516.95
	Red Maple		1.4	MBF		
	Sugar Maple		0.8	MBF		
	Balsam Fir	Pulpwood	12	Cords		
	Misc. Species 2		38	Cords		
	Mixed Hardwood		353	Cords		
	<i>Balsam Poplar</i>		125	Cords		
	<i>Black Ash</i>		89	Cords		
	<i>Green Ash</i>		8	Cords		
	<i>Ironwood</i>		9	Cords		
	<i>Paper Birch</i>		22	Cords		
	<i>Red Maple</i>		9	Cords		
	<i>Sugar Maple</i>		47	Cords		
	<i>White Ash</i>		34	Cords		
	<i>Yellow Birch</i>		10	Cords		
	White Spruce		12	Cords		
2	Sugar Maple	Sawtimber	4.1	MBF	8.4	\$2,270.50
	Basswood	Pulpwood	1	Cords		
	Misc. Species 2		6	Cords		
	Mixed Hardwood		83	Cords		
	<i>Black Ash</i>		6	Cords		
	<i>Ironwood</i>		2	Cords		
	<i>Red Maple</i>		1	Cords		
	<i>Sugar Maple</i>		38	Cords		
	<i>White Ash</i>		36	Cords		
	Quaking Aspen		3	Cords		
3	Sugar Maple	Sawtimber	12.0	MBF	24.6	\$6,575.25
	Basswood	Pulpwood	1	Cords		
	Misc. Species 2		19	Cords		
	Mixed Hardwood		240	Cords		
	<i>Black Ash</i>		16	Cords		
	<i>Ironwood</i>		4	Cords		
	<i>Red Maple</i>		1	Cords		
	<i>Sugar Maple</i>		112	Cords		
	<i>White Ash</i>		107	Cords		
	Quaking Aspen		8	Cords		
4	Balsam Fir	Pulpwood	44	Cords	20.3	\$6,868.35
	Misc. Species 2		130	Cords		
	Mixed Hardwood		164	Cords		
	<i>Balsam Poplar</i>		98	Cords		
	<i>Black Ash</i>		3	Cords		
	<i>Paper Birch</i>		33	Cords		
	<i>Red Maple</i>		16	Cords		
	<i>Sugar Maple</i>		10	Cords		
	<i>Yellow Birch</i>		4	Cords		
	N. White Cedar		12	Cords		
	Quaking Aspen		118	Cords		
	White Spruce		3	Cords		
5	Balsam Fir	Pulpwood	25	Cords	11.3	\$3,817.20
	Misc. Species 2		73	Cords		
	Mixed Hardwood		91	Cords		
	<i>Balsam Poplar</i>		54	Cords		
	<i>Black Ash</i>		1	Cords		
	<i>Paper Birch</i>		19	Cords		
	<i>Red Maple</i>		9	Cords		
	<i>Sugar Maple</i>		6	Cords		

DESCRIPTION OF TIMBER BY PAYMENT UNIT (PU), CON'T

PU	MARKET GROUP	PRODUCT	QUANTITY	UNIT	ACRES	ADVERTISE PRICE
5 con't	<i>Yellow Birch</i>	<i>Pulpwood</i>	2	<i>Cords</i>		
	N. White Cedar		7	Cords		
	Quaking Aspen		65	Cords		
	White Spruce		2	Cords		
TOTAL:			21.5	MBF		
TOTAL:			1,510	Cords		

Sale Specific Conditions & Requirements

Sale Name: Limpert Road East

Sale Number: 33-004-25 Seq#: 1

1 - Sale Area

1.2 - Boundaries

1.2.1 - Painted Boundaries (9/19)

The sale boundary and Payment Unit boundaries are marked and identified by red and yellow paint. Exterior sale boundary lines against state are marked with red paint. Interior Payment Unit boundaries are marked with yellow paint and are not to be cut; except the unit line between Payment Units 4 and 5 is designated for cutting. Retention patches are marked with red paint; no harvesting activities may occur within these areas. The painted boundary line trees are not Included Timber and are to be protected unless marked with orange paint.

2 - Timber Specifications

2.1 - Included Timber

2.1.1 - Clearcut Unit(s) with Unmerchantable Trees (6/14)

Within Payment Unit(s) 1, 4 and 5, cut all trees that are three (3) inches or more at DBH, except within Payment Unit 1 do not cut cedar.

2.1.3 - Cut Tree Marked Unit(s) (12/08)

Within Payment Unit(s) 2 and 3, all trees are designated for cutting when marked with orange paint above and below stump height, regardless of merchantability.

2.1.11 - Description of Timber Note (2/04)

Note that Misc. Species 2 is dead/dying mixed ash.

2.2 - Utilization

2.2.4 - Skidding Length (12/24)

Skidding of unlimbed tops or lengths over 17 feet is not permissible. Unless approved by the Unit Manager or his/her representative.

3 - Payments

3.3 - Pre-measured Sales

3.3.4 - Dividing Payment Units (7/14)

Payment Unit(s) with a bid value of \$18,000 or greater may be divided at the request of the Purchaser and upon approval of the Unit Manager. Dividing Payment Units is a contract modification which requires a Timber Sale Contract Amendment. There will be only one division per Payment Unit.

4 - Transportation

4.1 - Construction

4.1.3 - Slash and Earthen Piles (8/04)

Piles or windrows of earth along roads and landings that have been widened or constructed shall be leveled. Slash from road maintenance or construction, including stumps, shall be dispersed throughout the sale.

4.1.7 - Road Closure (10/11)

All new roads built into the sale must be blocked to vehicle traffic upon completion of the sale. Overgrown roads that are reopened shall be considered new roads. In general, this will require constructing a four (4') foot high berm of stumps and logs covered with earth. These roads must be rendered impassable to cars and trucks. Temporary berms may be required if no sale activity occurs for 30 or more consecutive days. Contact the Sale Administrator for specific details of design and placement.

4.2 - Maintenance

4.2.1 - Hauling Restriction (12/08)

Hauling may be restricted on forest roads by the Unit Manager or his/her representative. The restriction may occur during wet weather conditions.

4.2.3 - Road maintenance (8/13)

The following road maintenance is required: Within 60 days of completion of hauling, or if no hauling occurs for 60 days, the road must be maintained and graded. This includes cleaning of drainage areas, grading, crowning and filling with gravel, if necessary. Damages will be assessed if grading/repair does not occur.

4.2.4 - Grading (10/16)

For completion of the sale, state forest roads must be graded. In general, this will require a road grader or bulldozer to shape up the roads after forest products have been hauled off site. This includes cleaning of drainage areas, grading, crowning and filling with gravel, if necessary. The grading equipment to be used must be approved by the Unit Manager or his/her representative.

4.2.5 - Two Wheel Drive Condition (2/04)

All existing trail roads on and adjacent to the Sale Area must be passable by two-wheel drive traffic for the duration of the sale.

5 - Operations

5.2 - Conduct of Operations

5.2.2 - Hazard Trees/Snags

5.2.2.1 - Den Trees (10/16)

Obvious hollow and/or den trees shall be protected and left standing unless they are a safety hazard.

5.2.3 - Operating Restrictions

5.2.3.3 - Bark Slippage Restriction (3/09)

Within Payment Unit(s) 2 and 3, unless changed by written agreement, cutting and skidding are not permitted during the period of April 15 to July 15. This restriction is because of bark slippage.

5.2.22 - Operating Caution

5.2.22.1 - Operating Caution (6/11)

It is recommended, but not required, that within Payment Unit(s) 1, cutting, skidding, and hauling occur during dry summer or frozen winter conditions. The reason for the recommendation is due to this unit having higher risk of rutting.

5.2.32 - Decking/Landing Restoration (9/13)

All decking and landing areas must have the surface area restored to a condition equal to or better than before. This is to ensure the proper regeneration of the stand. Wood debris, chips and "cookies" from trimmings must be removed or scattered away from landing and loading areas and may not be windrowed on the edge.

5.2.38 - No Decking Against Live Trees (2/04)

Cut products may not be decked against unmarked or designated leave trees.

5.4 - Soil Protection

5.4.1 - Rutting Restriction, General (7/16)

Operations are to cease immediately if equipment and weather conditions result in rutting of roads and/or skid trails which are 12 inches or greater in depth and 50 feet in length. The Unit Manager or his/her representative may restrict hauling and/or skidding if ruts exceed the specified depth. With the Unit Manager or his/her representative's approval, the Purchaser may return to the area when the risk of rutting has decreased.

6 - Safety and Fire Prevention

6.2 - Signing

6.2.1 - Road Posting (10/20)

The Purchaser is responsible for posting and maintaining caution signs on Limpert Road prior to beginning operations. The

road must be posted at appropriate distances from the Sale Area to warn of logging activity and truck traffic. Signs must be removed when harvest operations are suspended or completed. The Purchaser will provide these signs.

7 - Other Conditions

7.5 - Loss

7.5.1 - Deteriorating Timber (7/09)

The Sale Area has received damage from emerald ash borer and spruce budworm. The Purchaser should harvest the wood as soon as possible. The Department of Natural Resources is held free of responsibility of any further damage or deterioration due to delay in harvesting.



TIMBER SALE MAP

This information provided by authority of Part 525, 1994 PA 451, as amended.

Sale Number

33-004-25

Date

07/24/2025

Forest Management Unit

Escanaba Mgt Unit

County

Delta

Mapped By: George Wilson

Cruised By: George Wilson

Scale

1:15,840

Page

1

Of

1

Township
37N

Range
24W

Section(s) and
Subdivision(s) Sec. 27 W1/2NW,NWSW; Sec. 28 E1/2NE,SE;

Cover Type

A = Aspen	J = Jack Pine	O = Oak	U = Upland Brush
B = Paper Birch	K = Rock	P = Lowland Poplar	UM = Upland Mix Forest
C = Cedar	L = Lowland Brush	Q = Mixed Swamp Conifer	V = Bog or Marsh
D = Treed Bog	LM = Lowland Mix Forest	R = Red Pine	W = White Pine
E = Swamp Hardwoods	M = Maple, Beech, Birch	S = Black Spruce	X = Non Stocked
F = Spruce/Fir	MC = Mixed Conifer	T = Tamarack	Y = Sand
G = Grass	MD = Mixed Deciduous	Z = Water	
H = Hemlock	N = Marsh		

Density

0 = Non Stocked	5 = Pole Timber Medium
1 = Seedling Sapling Poor	6 = Pole Timber Well
2 = Seedling Sapling Medium	7 = Saw Timber Poor
3 = Seedling Sapling Well	8 = Saw Timber Medium
4 = Pole Timber Poor	9 = Saw Timber Well

Payment Unit Number	Acres
1	22.2
2	8.4
3	24.6
4	20.3
5	11.3

Use QR Code to
open Map in App



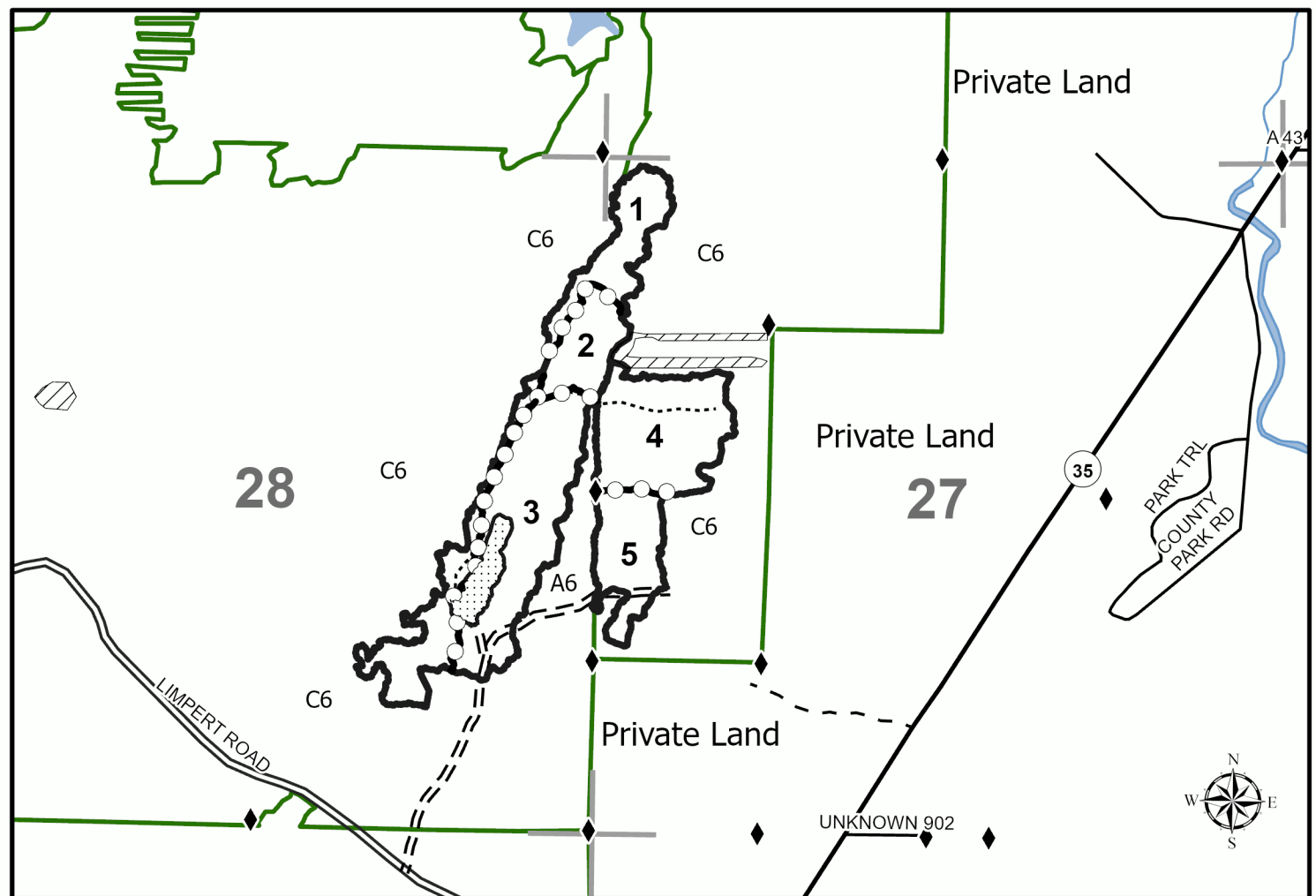
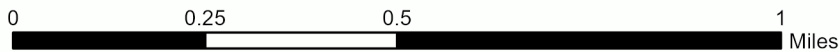
**Limpert Road
East**

86.8 Acres

Compartments 75 and 80

Legend

- Against State (Red)
- Payment Unit (Yellow)
- Retention
- Grassy Opening
- Recreational Trails
- Primary Forest Road
- Forest Access Route
- Administrative Access Only
- Paved Road
- Private Gravel/Dirt
- Survey Grade Corner



TIMBER SALE INFORMATION

Z-1 Aspen (33-027-25)

T35N, R29W, SEC. 25.

Menominee County (Advertised Price \$20,630.30)

SALE NOTE: Payment Unit 1 is restricted to cutting between July 15th and April 15th, due to Bark Restrictions. No oak wilt was identified in Payment Units 2 and 3, but if it is identified during the contract the sale specifications could be modified.

A timber sale contract for this lump sum, sealed bid timber sale will be awarded to the responsible bidder offering the highest sealed bid price. All units of volume listed below were estimated using the Inventory Manager computer program and the new Michigan taper model. Bids must be at or above the following advertised price for each product and species:

<u>PRODUCTS & SPECIES</u>	<u>ESTIMATED UNITS*</u>	<u>ADVERTISED PRICE</u>
Sawtimber		
Northern Pin Oak	5.1 MBF	\$ 111.00 / MBF
Red Maple	15.7 MBF	\$ 100.00 / MBF
Pulpwood		
Mixed Aspen	389 Cords	\$ 24.50 / Cord
Mixed Hardwood	288 Cords	\$ 15.35 / Cord
Northern Pin Oak	65 Cords	\$ 15.20 / Cord
Red Pine	58 Cords	\$ 61.00 / Cord
White Pine	1 Cords	\$ 16.90 / Cord

* The total volume is statistically estimated within plus (+) or minus (-) 22.47 percent. There are an estimated 851 cords on this timber sale, plus or minus 191 cords at the 95% confidence level. The estimated units are final and not subject to adjustment. Prospective bidders are urged to examine this timber and to make their own estimates of quantity and quality.

BOND AND PAYMENT SCHEDULE:

- A bond in the amount of \$1,032.00 to insure faithful performance of the conditions of the contract will be deposited by the successful bidder within 21 days of the sale award.
- Cutting in any sale or unit without the required advance payment would be considered a trespass.
- Total payment must be paid in advance or according to the following schedule :
 - Ten percent (10%) of the sale value must be paid within 21 days of the sale award.
 - The 10% down payment will be credited towards the first unit cut.
 - Payment for each of the following units must be made before cutting begins in that unit:

PAYMENT UNIT NUMBER	PERCENT OF TOTAL SALE VALUE
01	17.9%
02	42.8%
03	39.3%
- If no cutting takes place, the 10% down payment will not be refunded.
- Operations on the contract issued will terminate on 09/30/2028.

SALE STATISTICS

Volumes were calculated in cubic feet using the Michigan taper model. Cubic foot volume includes all wood inside bark for the product indicated. For display purposes, cubic feet were converted to cords and MBF using a simple conversion factor, e.g. 79 cubic feet per cord and 185 cubic feet per MBF. The cubic foot volumes are precise; the cords and MBF volumes are not. Cubic foot volume cannot be directly converted to cords or boards with precision.

SALE VOLUMES

The total estimated sale volume may not equal the sum of the species/products due to the nature of statistical calculations associated with double sampling methodology.

VOLUME			STATISTICAL RANGE IN CORDS	
TOTAL CUBIC FEET	TOTAL CORDS	PERCENT ERROR	MINIMUM	MAXIMUM
67,198	851	22.47%	659	1,042

VDU VOLUMES

A VDU is a Volume Determination Unit. Volumes and their associated statistics are calculated at the VDU level and summarized to the sale level. There is often a one to one relationship between a VDU and a Payment Unit, but not always, depending on the cruise design. Refer to the VDU TO PAYMENT UNIT table.

VDU	VOLUME		PERCENT ERROR	RANGE IN CORDS	
	TOTAL CUBIC FEET	TOTAL CORDS		MINIMUM	MAXIMUM
1	3,084	39	52.80%	18	60
2	61,777	782	24.38%	591	973
5	2,337	30	57.46%	13	47
TOTAL:	67,198	851		622	1,079

VDU TO PAYMENT UNIT

When a VDU is associated with more than one Payment Unit (PU), the VDU volumes are assigned to the PU based on acres of the VDU within the PU.

VDU	VDU ACRES	PU	PU ACRES
TOTAL:			

DESCRIPTION OF TIMBER BY PAYMENT UNIT (PU)

PU	MARKET GROUP	PRODUCT	QUANTITY	UNIT	ACRES	ADVERTISE PRICE
1	Mixed Aspen	Pulpwood	1	Cords	11.5	\$3,686.55
	<i>Quaking Aspen</i>		1	<i>Cords</i>		
	Mixed Hardwood		5	Cords		
	<i>Black Cherry</i>		1	<i>Cords</i>		
	<i>Red Maple</i>		4	<i>Cords</i>		
	Northern Pin Oak		2	Cords		
	Red Pine		58	Cords		
	White Pine		1	Cords		
2	Northern Pin Oak	Sawtimber	2.7	MBF	17.9	\$8,842.10
	Red Maple		8.2	MBF		
	Mixed Aspen	Pulpwood	202	Cords		
	<i>B. T. Aspen</i>		97	<i>Cords</i>		
	<i>Quaking Aspen</i>		105	<i>Cords</i>		
	Mixed Hardwood		148	Cords		
	<i>Red Maple</i>		146	<i>Cords</i>		
	<i>Yellow Birch</i>		2	<i>Cords</i>		
	Northern Pin Oak		33	Cords		
3	Northern Pin Oak	Sawtimber	2.4	MBF	16.5	\$8,101.65
	Red Maple		7.5	MBF		
	Mixed Aspen	Pulpwood	186	Cords		
	<i>B. T. Aspen</i>		90	<i>Cords</i>		
	<i>Quaking Aspen</i>		96	<i>Cords</i>		
	Mixed Hardwood		135	Cords		
	<i>Red Maple</i>		134	<i>Cords</i>		
	<i>Yellow Birch</i>		1	<i>Cords</i>		
	Northern Pin Oak		30	Cords		
TOTAL:			20.8	MBF		
TOTAL:			801	Cords		

Sale Specific Conditions & Requirements

Sale Name: Z-1 Aspen

Sale Number: 33-027-25 Seq#: 1

1 - Sale Area

1.2 - Boundaries

1.2.1 - Painted Boundaries (9/19)

The sale boundary and Payment Unit boundaries are marked and identified by blue, red and yellow paint or are unmarked and identified by a road and ROW. Exterior sale boundary lines against private property are marked with blue paint. Exterior sale boundary lines against state are marked with red paint, with the exception of the western boundary of Payment Units 2 and 3, which is unpainted and designated by Z-1 Road and its ROW. Interior Payment Unit boundaries are marked with yellow paint. Retention patches are marked with red paint; no harvesting activities may occur within these areas. The painted boundary line trees are not Included Timber and are to be protected unless marked with orange paint. Yellow painted trees designating an interior Payment Unit boundary are only to be cut when all surrounding Payment Units have been paid for.

2 - Timber Specifications

2.1 - Included Timber

2.1.1 - Clearcut Unit(s) with Unmerchantable Trees (6/14)

Within Payment Unit(s) 2 and 3, cut all trees that are three (3) inches or more at DBH, except do not cut red or white pine.

2.1.3 - Cut Tree Marked Unit(s) (12/08)

Within Payment Unit(s) 1, all trees are designated for cutting when marked with orange paint above and below stump height, regardless of merchantability.

2.1.15 - Hazard Trees Near Roads (12/24)

Cut and remove all standing dead trees within 100 feet of the cleared portion of Z-1 Road. These trees may be utilized or must be scattered back into the Sale Area.

2.2 - Utilization

2.2.4 - Skidding Length (12/24)

Skidding of unlimbed tops or lengths over 17 feet is not permissible within Payment Unit 1.

3 - Payments

3.3 - Pre-measured Sales

3.3.4 - Dividing Payment Units (7/14)

Payment Unit(s) \$18,000 in value or greater may be divided at the request of the Purchaser and upon approval of the Unit Manager. Dividing Payment Units is a contract modification which requires a Timber Sale Contract Amendment. There will be only one division per Payment Unit.

4 - Transportation

4.2 - Maintenance

4.2.1 - Hauling Restriction (12/08)

Hauling may be restricted on forest roads by the Unit Manager or his/her representative. The restriction may occur during spring breakup or during other wet weather conditions.

4.2.4 - Grading (10/16)

For completion of the sale, state forest roads must be graded. In general, this will require a road grader or bulldozer to shape up the roads after forest products have been hauled off site. This includes cleaning of drainage areas, grading, crowning and filling with gravel, if necessary. The grading equipment to be used must be approved by the Unit Manager or his/her representative.

5 - Operations

5.2 - Conduct of Operations

5.2.3 - Operating Restrictions

5.2.3.3 - Bark Slippage Restriction (3/09)

Within Payment Unit(s) 1, cutting and skidding are not permitted during the period of April 15 to July 15. This restriction is because of bark slippage.

7 - Other Conditions

7.3 - Contract Modifications

7.3.2 - Modification for Oak Wilt (2/05)

Within the Sale Area, there may be patches of oak wilt. If oak wilt is identified within the Sale Area, this contract may be modified. The following modifications could occur: time of cutting, species to cut, volume to harvest, or various others dealing with the treatment of oak wilt. If a species is not specified in this contract, it shall be paid for at the average price received for that species and product.

**TIMBER SALE MAP**

This information provided by authority of Part 525, 1994 PA 451, as amended.

Sale Number

33-027-25

Date

07/23/2025

Forest Management Unit

Escanaba Mgt Unit

County

Menominee

Mapped By: Beaudou

Cruised By: Salter, Beaudou

Scale

1:10,000

Page

1

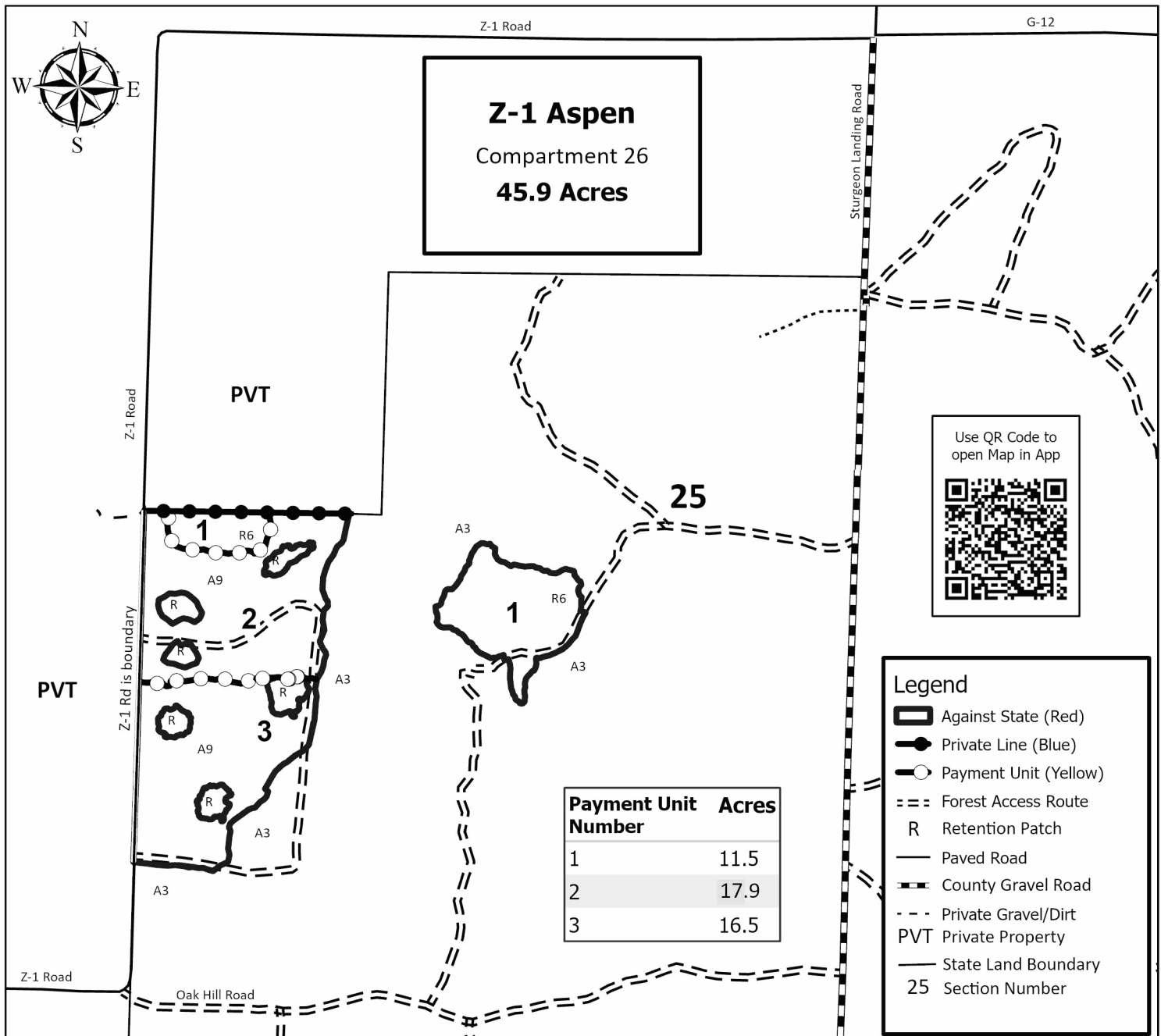
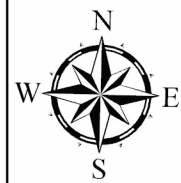
Of

1Township
35NRange
29WSection(s) and
Subdivision(s) Sec. 25 N1/2SW,SWSW;**Cover Type**

A = Aspen	J = Jack Pine	O = Oak	U = Upland Brush
B = Paper Birch	K = Rock	P = Lowland Poplar	UM = Upland Mix Forest
C = Cedar	L = Lowland Brush	Q = Mixed Swamp Conifer	V = Bog or Marsh
D = Treed Bog	LM = Lowland Mix Forest	R = Red Pine	W = White Pine
E = Swamp Hardwoods	M = Maple, Beech, Birch	S = Black Spruce	X = Non Stocked
F = Spruce/Fir	MC = Mixed Conifer	T = Tamarack	Y = Sand
G = Grass	MD = Mixed Deciduous	Z = Water	
H = Hemlock	N = Marsh		

Density

0 = Non Stocked	5 = Pole Timber Medium
1 = Seedling Sapling Poor	6 = Pole Timber Well
2 = Seedling Sapling Medium	7 = Saw Timber Poor
3 = Seedling Sapling Well	8 = Saw Timber Medium
4 = Pole Timber Poor	9 = Saw Timber Well



Payment Unit Number	Acres
1	11.5
2	17.9
3	16.5

TIMBER SALE INFORMATION

Houte's Spur Red Eye (33-028-25)
T37N, R28W, SEC. 14; T37N, R28W, SEC. 15.
Menominee County (Advertised Price \$33,136.30)

SALE NOTE: Payment Units 1, 2, 3, and 6 are restricted during the period of April 15 to July 15 for bark slippage and oak wilt restrictions. Road work is required on this sale by the Purchaser.

A timber sale contract for this lump sum, sealed bid timber sale will be awarded to the responsible bidder offering the highest sealed bid price. All units of volume listed below were estimated using the Inventory Manager computer program and the new Michigan taper model. Bids must be at or above the following advertised price for each product and species:

<u>PRODUCTS & SPECIES</u>	<u>ESTIMATED UNITS*</u>	<u>ADVERTISED PRICE</u>
Sawtimber		
Red Maple	5.2 MBF	\$ 100.00 / MBF
Red Oak	24.5 MBF	\$ 151.00 / MBF
Sugar Maple	0.4 MBF	\$ 212.00 / MBF
Pulpwood		
Balsam Fir	23 Cords	\$ 8.40 / Cord
Mixed Aspen	132 Cords	\$ 24.50 / Cord
Mixed Hardwood	314 Cords	\$ 15.35 / Cord
Mixed Spruce	22 Cords	\$ 12.25 / Cord
Red Oak	118 Cords	\$ 15.20 / Cord
Red Pine	123 Cords	\$ 61.00 / Cord
White Pine	652 Cords	\$ 16.90 / Cord

* The total volume is statistically estimated within plus (+) or minus (-) 13.26 percent. There are an estimated 1,455 cords on this timber sale, plus or minus 193 cords at the 95% confidence level. The estimated units are final and not subject to adjustment. Prospective bidders are urged to examine this timber and to make their own estimates of quantity and quality.

BOND AND PAYMENT SCHEDULE:

1. A bond in the amount of \$1,657.00 to insure faithful performance of the conditions of the contract will be deposited by the successful bidder within 21 days of the sale award.
2. Cutting in any sale or unit without the required advance payment would be considered a trespass.
3. Total payment must be paid in advance or according to the following schedule :
 - (a) Ten percent (10%) of the sale value must be paid within 21 days of the sale award.
 - (b) The 10% down payment will be credited towards the first unit cut.
 - (c) Payment for each of the following units must be made before cutting begins in that unit:

PAYMENT UNIT NUMBER	PERCENT OF TOTAL SALE VALUE
01	11.2%
02	8.2%
03	33.6%
04	15.7%
05	25.4%
06	5.9%
4. If no cutting takes place, the 10% down payment will not be refunded.
5. Operations on the contract issued will terminate on 09/30/2028.

SALE STATISTICS

Volumes were calculated in cubic feet using the Michigan taper model. Cubic foot volume includes all wood inside bark for the product indicated. For display purposes, cubic feet were converted to cords and MBF using a simple conversion factor, e.g. 79 cubic feet per cord and 185 cubic feet per MBF. The cubic foot volumes are precise; the cords and MBF volumes are not. Cubic foot volume cannot be directly converted to cords or boards with precision.

SALE VOLUMES

The total estimated sale volume may not equal the sum of the species/products due to the nature of statistical calculations associated with double sampling methodology.

VOLUME			STATISTICAL RANGE IN CORDS	
TOTAL CUBIC FEET	TOTAL CORDS	PERCENT ERROR	MINIMUM	MAXIMUM
114,906	1,455	13.26%	1,262	1,647

VDU VOLUMES

A VDU is a Volume Determination Unit. Volumes and their associated statistics are calculated at the VDU level and summarized to the sale level. There is often a one to one relationship between a VDU and a Payment Unit, but not always, depending on the cruise design. Refer to the VDU TO PAYMENT UNIT table.

	VOLUME			RANGE IN CORDS	
VDU	TOTAL CUBIC FEET	TOTAL CORDS	PERCENT ERROR	MINIMUM	MAXIMUM
16	24,199	306	22.27%	238	375
17	33,365	422	24.06%	321	524
18	15,685	199	40.32%	118	279
37	32,452	411	30.09%	287	534
38	9,205	117	40.52%	69	164
TOTAL:	114,906	1,455		1,034	1,875

VDU TO PAYMENT UNIT

When a VDU is associated with more than one Payment Unit (PU), the VDU volumes are assigned to the PU based on acres of the VDU within the PU.

VDU	VDU ACRES	PU	PU ACRES
TOTAL:			

DESCRIPTION OF TIMBER BY PAYMENT UNIT (PU)

PU	MARKET GROUP	PRODUCT	QUANTITY	UNIT	ACRES	ADVERTISE PRICE
1	Red Maple	Sawtimber	2.1	MBF	18.8	\$3,696.05
	Red Oak		1.5	MBF		
	Sugar Maple		0.2	MBF		
	Balsam Fir	Pulpwood	2	Cords		
	Mixed Aspen		9	Cords		
	<i>B. T. Aspen</i>		7	<i>Cords</i>		
	<i>Quaking Aspen</i>		2	<i>Cords</i>		
	Mixed Hardwood		105	Cords		
	<i>Red Maple</i>		101	<i>Cords</i>		
	<i>Sugar Maple</i>		3	<i>Cords</i>		
	<i>White Ash</i>		1	<i>Cords</i>		
	Mixed Spruce		2	Cords		
	<i>White Spruce</i>		2	<i>Cords</i>		
	Red Oak		18	Cords		
	Red Pine		12	Cords		
	White Pine		20	Cords		
2	Red Maple	Sawtimber	1.6	MBF	13.8	\$2,731.85
	Red Oak		1.1	MBF		
	Sugar Maple		0.2	MBF		
	Balsam Fir	Pulpwood	1	Cords		
	Mixed Aspen		6	Cords		
	<i>B. T. Aspen</i>		5	<i>Cords</i>		
	<i>Quaking Aspen</i>		1	<i>Cords</i>		
	Mixed Hardwood		78	Cords		
	<i>Red Maple</i>		75	<i>Cords</i>		
	<i>Sugar Maple</i>		2	<i>Cords</i>		
	<i>White Ash</i>		1	<i>Cords</i>		
	Mixed Spruce		1	Cords		
	<i>White Spruce</i>		1	<i>Cords</i>		
	Red Oak		14	Cords		
	Red Pine		9	Cords		
	White Pine		14	Cords		
3	Red Maple	Sawtimber	1.5	MBF	24.5	\$11,141.40
	Red Oak		17.8	MBF		
	Mixed Aspen	Pulpwood	31	Cords		
	<i>B. T. Aspen</i>		7	<i>Cords</i>		
	<i>Quaking Aspen</i>		24	<i>Cords</i>		
	Mixed Hardwood		68	Cords		
	<i>Balsam Poplar</i>		2	<i>Cords</i>		
	<i>Paper Birch</i>		2	<i>Cords</i>		
	<i>Red Maple</i>		64	<i>Cords</i>		
	Mixed Spruce		10	Cords		
	<i>White Spruce</i>		10	<i>Cords</i>		
	Red Oak		54	Cords		
	Red Pine		44	Cords		
	White Pine		170	Cords		
4	Mixed Aspen	Pulpwood	26	Cords	16.3	\$5,196.25
	<i>Quaking Aspen</i>		26	<i>Cords</i>		
	Mixed Hardwood		3	Cords		
	<i>Red Maple</i>		3	<i>Cords</i>		
	Red Oak		11	Cords		
	Red Pine		38	Cords		
	White Pine		120	Cords		
5	Red Oak	Sawtimber	4.1	MBF	25.0	\$8,413.40
	Balsam Fir	Pulpwood	17	Cords		
	Mixed Aspen		45	Cords		

DESCRIPTION OF TIMBER BY PAYMENT UNIT (PU), CON'T

PU	MARKET GROUP	PRODUCT	QUANTITY	UNIT	ACRES	ADVERTISE PRICE
5 con't	<i>B. T. Aspen</i>	<i>Pulpwood</i>	32	<i>Cords</i>		
	<i>Quaking Aspen</i>		13	<i>Cords</i>		
	Mixed Hardwood		13	Cords		
	<i>Basswood</i>		1	<i>Cords</i>		
	<i>Black Cherry</i>		1	<i>Cords</i>		
	<i>Red Maple</i>		9	<i>Cords</i>		
	<i>White Ash</i>		2	<i>Cords</i>		
	Mixed Spruce		5	Cords		
	<i>Black Spruce</i>		1	<i>Cords</i>		
	<i>White Spruce</i>		4	<i>Cords</i>		
	Red Oak		11	Cords		
	Red Pine		20	Cords		
	White Pine		290	Cords		
6	Balsam Fir	Pulpwood	3	Cords	9.6	\$1,957.35
	Mixed Aspen		15	Cords		
	<i>B. T. Aspen</i>		15	<i>Cords</i>		
	Mixed Hardwood		47	Cords		
	<i>Balsam Poplar</i>		2	<i>Cords</i>		
	<i>Basswood</i>		9	<i>Cords</i>		
	<i>Ironwood</i>		1	<i>Cords</i>		
	<i>Paper Birch</i>		14	<i>Cords</i>		
	<i>Sugar Maple</i>		4	<i>Cords</i>		
	<i>White Ash</i>		17	<i>Cords</i>		
	Mixed Spruce		4	Cords		
	<i>White Spruce</i>		4	<i>Cords</i>		
	Red Oak		10	Cords		
	White Pine		38	Cords		
	TOTAL:			30.1		
TOTAL:			1,384	Cords		

Sale Specific Conditions & Requirements

Sale Name: Houte's Spur Red Eye

Sale Number: 33-028-25 Seq#: 1

1 - Sale Area

1.2 - Boundaries

1.2.1 - Painted Boundaries (9/19)

The sale boundary and Payment Unit boundaries are marked and identified by blue, red and yellow paint. Exterior sale boundary lines against private property are marked with blue paint. Exterior sale boundary lines against state are marked with red paint. Interior Payment Unit boundaries are marked with yellow paint. The painted boundary line trees are not Included Timber and are to be protected unless marked with orange paint. Yellow painted trees designating an interior Payment Unit boundary are only to be cut when all surrounding Payment Units have been paid for.

2 - Timber Specifications

2.1 - Included Timber

2.1.2 - Clearcut Unit(s) w/o Unmerchantable Trees (8/11)

Within Payment Unit(s) 3, 4, and 5, cut all trees which meet minimum piece specifications in 2.2 Utilization, except do not cut trees marked with green paint.

2.1.3 - Cut Tree Marked Unit(s) (12/08)

Within Payment Unit(s) 1, 2, and 6, all trees are designated for cutting when marked with orange paint above and below stump height, regardless of merchantability.

2.2 - Utilization

2.2.4 - Skidding Length (12/24)

Skidding of unlimbed tops or lengths over 17 feet is not permissible within the sale.

3 - Payments

3.3 - Pre-measured Sales

3.3.4 - Dividing Payment Units (7/14)

Payment Unit(s) \$18,000 in value or greater may be divided at the request of the Purchaser and upon approval of the Unit Manager. Dividing Payment Units is a contract modification which requires a Timber Sale Contract Amendment. There will be only one division per Payment Unit.

4 - Transportation

4.1 - Construction

4.1.8 - Road Work (1) (8/07)

The following road work is required: The Purchaser must haul and spread a minimum of 100 cubic yards of gravel on the Houte's Spur Road. There are a number of washouts on the road that will need to be filled. These locations will be identified during the pre-sale meeting. All road work must be completed prior to any hauling from Payment Units 1-4. Gravel is available from state land, just south of Payment Unit 4.

4.2 - Maintenance

4.2.4 - Grading (10/16)

For completion of the sale, state forest roads must be graded. In general, this will require a road grader or bulldozer to shape up the roads after forest products have been hauled off site. This includes cleaning of drainage areas, grading, crowning and filling with gravel, if necessary. The grading equipment to be used must be approved by the Unit Manager or his/her representative.

4.4 - Access

4.4.1 - Private property access (3/11)

Permission for access across private land has been obtained by the DNR. DeHass Lane is a county road off of County Road 577 through private land back to Payment Units 5 and 6. This road may be used by the Purchaser.

5 - Operations

5.2 - Conduct of Operations

5.2.3 - Operating Restrictions

5.2.3.3 - Bark Slippage Restriction (3/09)

Within Payment Unit(s) 1, 2, 3, and 6, cutting and skidding are not permitted during the period of April 15 to July 15. This restriction is because of bark slippage.

5.2.3.4 - Oak Wilt Restriction, No Exceptions (1/18)

Within Payment Unit(s) 1, 2 and 6, cutting and skidding within the sale and brushing of access roads to the sale are not permitted during the period of April 15 to July 15. No exceptions will be granted. This is necessary to reduce the spread of oak wilt.

6 - Safety and Fire Prevention

6.2 - Signing

6.2.1 - Road Posting (10/20)

The Purchaser is responsible for posting and maintaining caution signs on the Houte's Spur Road prior to beginning operations. The road must be posted at appropriate distances from the Sale Area to warn of logging activity and truck traffic. Signs must be removed when harvest operations are suspended or completed. The Purchaser will provide these signs.

7 - Other Conditions

7.3 - Contract Modifications

7.3.2 - Modification for Oak Wilt (2/05)

Within the Sale Area, there may be patches of oak wilt. If oak wilt is identified within the Sale Area, this contract may be modified. The following modifications could occur: time of cutting, species to cut, volume to harvest, or various others dealing with the treatment of oak wilt. If a species is not specified in this contract, it shall be paid for at the average price received for that species and product.



TIMBER SALE MAP

This information provided by authority of Part 525, 1994 PA 451, as amended.

Sale Number

33-028-25

Date

08/11/2025

Forest Management Unit

Escanaba Mgt Unit

County

Menominee

Mapped By: Beaudou

Cruised By: Salter, Beaudou

Scale

1:16,000

Page

1

Of

1

Township
37N

Range
28W

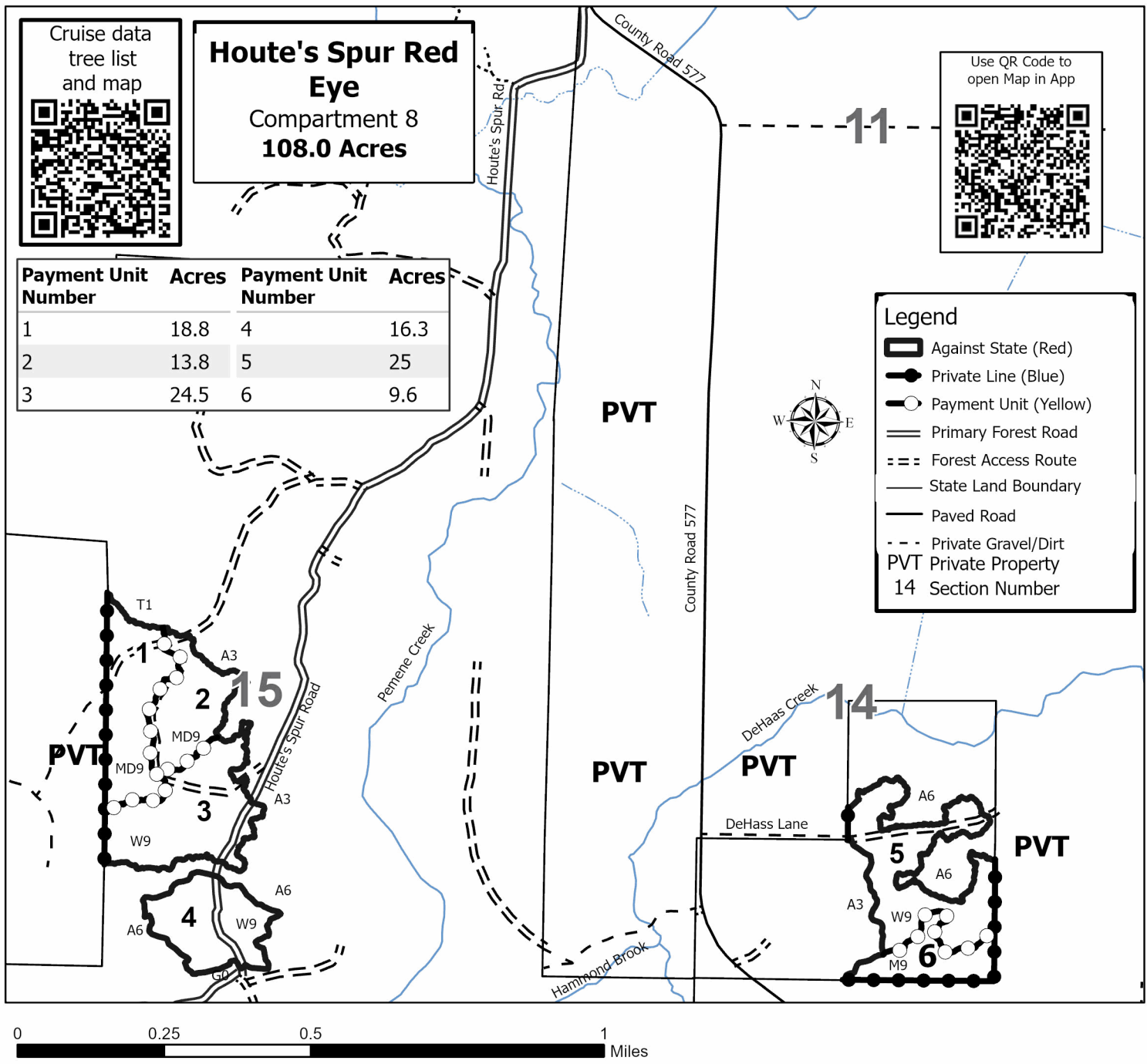
Section(s) and
Subdivision(s) Sec. 14 W1/2SE; Sec. 15 SENW,E1/2SW,W1/2SE;

Cover Type

A = Aspen	J = Jack Pine	O = Oak	U = Upland Brush
B = Paper Birch	K = Rock	P = Lowland Poplar	UM = Upland Mix Forest
C = Cedar	L = Lowland Brush	Q = Mixed Swamp Conifer	V = Bog or Marsh
D = Treed Bog	LM = Lowland Mix Forest	R = Red Pine	W = White Pine
E = Swamp Hardwoods	M = Maple, Beech, Birch	S = Black Spruce	X = Non Stocked
F = Spruce/Fir	MC = Mixed Conifer	T = Tamarack	Y = Sand
G = Grass	MD = Mixed Deciduous	Z = Water	
H = Hemlock	N = Marsh		

Density

0 = Non Stocked	5 = Pole Timber Medium
1 = Seedling Sapling Poor	6 = Pole Timber Well
2 = Seedling Sapling Medium	7 = Saw Timber Poor
3 = Seedling Sapling Well	8 = Saw Timber Medium
4 = Pole Timber Poor	9 = Saw Timber Well



Z-1 Aspen (33-027-25)
T35N, R29W, SEC. 25; Menominee COUNTY

In response to the notice of sale to be held 3:00 p.m. (local time) on October 22, 2025, I am hereby submitting my sealed bid (firm offer) for the following forest products to be cut. Bids for individual species must be at or above the advertised price. All non-responsive bid forms may be rejected.

<u>PRODUCTS & SPECIES</u>	<u>ESTIMATED VOLUME*</u>	<u>ADVERTISED PRICE</u>	<u>BID PRICE/UNIT</u>
Sawtimber			
Northern Pin Oak	5.1 MBF	\$ 111.00/MBF	\$ _____
Red Maple	15.7 MBF	\$ 100.00/MBF	\$ _____
Pulpwood			
Mixed Aspen	389 Cords	\$ 24.50/Cord	\$ _____
Mixed Hardwood	288 Cords	\$ 15.35/Cord	\$ _____
Northern Pin Oak	65 Cords	\$ 15.20/Cord	\$ _____
Red Pine	58 Cords	\$ 61.00/Cord	\$ _____
White Pine	1 Cords	\$ 16.90/Cord	\$ _____

*The volumes are statistically estimated within plus (+) or minus (-) 22.47 percent at 95% confidence level. These estimated volumes are final and not subject to adjustment. Prospective bidders are urged to examine this timber and to make their own estimates of quantity and quality.

I understand that any or all bids may be rejected. All bids must be signed and all bid items must be bid or the bid form may be rejected. I also understand that consideration and awarding a contract will be based upon my past performance and ability to complete the contract based upon equipment and staffing subject to my control.

FEDERAL ID: ____-____-____ or SOCIAL SECURITY NUMBER: ____-____-____
Company or individual bidding: _____
Company representative's name: _____
Address: _____
City: _____ State: _____ Zip: _____

IF AVAILABLE, PLEASE PLACE THE PERSONALIZED LABEL FROM YOUR PROSPECTUS IN THE ABOVE BOX.

Individual or company representative's signature: _____ Date: _____

Phone number : _____ Email (optional): _____

**THE WINNING BIDDER MUST COMPLETE THE VERIFICATION OF WORKER'S DISABILITY COMPENSATION ACT
COMPLIANCE (ON REVERSE SIDE IF DOUBLE SIDED) WITHIN 21 DAYS OF SALE AWARD DATE**



TIMBER SALE VERIFICATION OF WORKER'S DISABILITY COMPENSATION ACT COMPLIANCE

As required by Act 317, P.A. 1969 (Worker's Compensation) and
Part 5 of Act 451 of 1994, as amended.

FOR DEPARTMENT USE ONLY

Sale Number (XX - XXX - XX - XX)

Forest Management Unit:

VERIFICATION OF WORKER'S DISABILITY COMPENSATION ACT COMPLIANCE

- This verification must be completed and submitted within 21 days of contract award and prior to the issuance of the timber sale contract.
- In addition, if boxes 2B or 2C are checked, then Notice of Exclusion or Certificate of Insurance must be submitted within twenty-one (21) days of the contract award and prior to the issuance of the timber sale contract.
- All information must be typed or printed except for written signatures.

Please Check Appropriate Categories:

1. My business is organized as (you **must** check one of the boxes below):
 - A. ☐ Sole Proprietorship (individual)
 - B. ☐ Partnership
 - C. ☐ Corporation
2. You **must** check one of the boxes below:
 - A. ☐ I certify my business is a sole proprietorship and it has no employees but the sole proprietor. I am not subject to the Worker's Compensation Laws.
 - B. ☐ I certify my business has satisfied its obligation to the Worker's Compensation Act through the use of an approved Notice of Exclusion (BWC-337, Rev. 5/96). I will provide a copy of the Notice of Exclusion within 21 days of the contract award. (For questions or a copy of the BWC-337, please call the Worker's Compensation Bureau at 517-322-1195).
 - C. ☐ I certify my business has a Worker's Compensation Policy. I will provide an original Certificate of Insurance within twenty-one (21) days of the contract award.
3. If you have checked item 2(A) or 2(B), you **must** indicate the number of **both** full-time and part-time employees, other than yourself, including family members and active partners (if none, you must enter "0").

_____ Full-time Employees

_____ Part-time Employees

Name of Business		Federal ID (or) Social Security No.
Address		Telephone ()
City	State	ZIP

I hereby certify that the above information is true and correct. I agree to notify the Michigan DNR of any changes that occur in factors affecting my coverage during any of my present and future operations.

Signature of Owner or Authorized Representative

Title

Date

Please complete the "SEALED BID" information on the next page

Limpert Road West (33-003-25)

T37N, R24W, SEC. 19; T37N, R24W, SEC. 20; T37N, R24W, SEC. 28; T37N,

In response to the notice of sale to be held 3:00 p.m. (local time) on October 22, 2025, I am hereby submitting my sealed bid (firm offer) for the following forest products to be cut. Bids for individual species must be at or above the advertised price. All non-responsive bid forms may be rejected.

<u>PRODUCTS & SPECIES</u>	<u>ESTIMATED VOLUME*</u>	<u>ADVERTISED PRICE</u>	<u>BID PRICE/UNIT</u>
Sawtimber			
Paper Birch	32.2 MBF	\$ 80.00/MBF	\$ _____
Red Maple	123.3 MBF	\$ 100.00/MBF	\$ _____
Sugar Maple	1.0 MBF	\$ 212.00/MBF	\$ _____
Yellow Birch	2.9 MBF	\$ 37.00/MBF	\$ _____
Pulpwood			
Balsam Fir	167 Cords	\$ 8.40/Cord	\$ _____
Hemlock	16 Cords	\$ 6.15/Cord	\$ _____
Misc. Species 2	257 Cords	\$ 7.50/Cord	\$ _____
Mixed Aspen	675 Cords	\$ 24.50/Cord	\$ _____
Mixed Hardwood	3,131 Cords	\$ 15.35/Cord	\$ _____
Mixed Spruce	395 Cords	\$ 12.25/Cord	\$ _____
N. White Cedar	327 Cords	\$ 6.55/Cord	\$ _____
Red Pine	202 Cords	\$ 61.00/Cord	\$ _____
Tamarack	74 Cords	\$ 9.60/Cord	\$ _____
White Pine	866 Cords	\$ 16.90/Cord	\$ _____

*The volumes are statistically estimated within plus (+) or minus (-) 10.15 percent at 95% confidence level. These estimated volumes are final and not subject to adjustment. Prospective bidders are urged to examine this timber and to make their own estimates of quantity and quality.

I understand that any or all bids may be rejected. All bids must be signed and all bid items must be bid or the bid form may be rejected. I also understand that consideration and awarding a contract will be based upon my past performance and ability to complete the contract based upon equipment and staffing subject to my control.

FEDERAL ID: ____ - ____ - ____ or SOCIAL SECURITY NUMBER: ____ - ____ - ____

Company or individual bidding: _____

Company representative's name: _____

Address: _____

City: _____ State: _____ Zip: _____

IF AVAILABLE, PLEASE PLACE THE PERSONALIZED LABEL FROM YOUR PROSPECTUS IN THE ABOVE BOX.

Individual or company representative's signature: _____ Date: _____

Phone number : _____ Email (optional): _____

**THE WINNING BIDDER MUST COMPLETE THE VERIFICATION OF WORKER'S DISABILITY COMPENSATION ACT
COMPLIANCE (ON REVERSE SIDE IF DOUBLE SIDED) WITHIN 21 DAYS OF SALE AWARD DATE**



TIMBER SALE
VERIFICATION OF WORKER'S DISABILITY
COMPENSATION ACT COMPLIANCE

*As required by Act 317, P.A. 1969 (Worker's Compensation) and
Part 5 of Act 451 of 1994, as amended.*

FOR DEPARTMENT USE ONLY

Sale Number (XX - XXX - XX - XX)

Forest Management Unit:

VERIFICATION OF WORKER'S DISABILITY COMPENSATION ACT COMPLIANCE

- This verification must be completed and submitted within 21 days of contract award and prior to the issuance of the timber sale contract.
- In addition, if boxes 2B or 2C are checked, then Notice of Exclusion or Certificate of Insurance must be submitted within twenty-one (21) days of the contract award and prior to the issuance of the timber sale contract.
- All information must be typed or printed except for written signatures.

Please Check Appropriate Categories:

1. My business is organized as (you **must** check one of the boxes below):
 - A. ☐ Sole Proprietorship (individual)
 - B. ☐ Partnership
 - C. ☐ Corporation
2. You **must** check one of the boxes below:
 - A. ☐ I certify my business is a sole proprietorship and it has no employees but the sole proprietor. I am not subject to the Worker's Compensation Laws.
 - B. ☐ I certify my business has satisfied its obligation to the Worker's Compensation Act through the use of an approved Notice of Exclusion (BWC-337, Rev. 5/96). I will provide a copy of the Notice of Exclusion within 21 days of the contract award. (For questions or a copy of the BWC-337, please call the Worker's Compensation Bureau at 517-322-1195).
 - C. ☐ I certify my business has a Worker's Compensation Policy. I will provide an original Certificate of Insurance within twenty-one (21) days of the contract award.
3. If you have checked item 2(A) or 2(B), you **must** indicate the number of **both** full-time and part-time employees, other than yourself, including family members and active partners (if none, you must enter "0").

_____ Full-time Employees

_____ Part-time Employees

Name of Business		Federal ID (or) Social Security No.
Address		Telephone ()
City	State	ZIP

I hereby certify that the above information is true and correct. I agree to notify the Michigan DNR of any changes that occur in factors affecting my coverage during any of my present and future operations.

Signature of Owner or Authorized Representative

Title

Date

Please complete the "SEALED BID" information on the next page

Limpert Road East (33-004-25)

T37N, R24W, SEC. 27; T37N, R24W, SEC. 28; Delta COUNTY

In response to the notice of sale to be held 3:00 p.m. (local time) on October 22, 2025, I am hereby submitting my sealed bid (firm offer) for the following forest products to be cut. Bids for individual species must be at or above the advertised price. All non-responsive bid forms may be rejected.

<u>PRODUCTS & SPECIES</u>	<u>ESTIMATED VOLUME*</u>	<u>ADVERTISED PRICE</u>	<u>BID PRICE/UNIT</u>
Sawtimber			
Paper Birch	3.2 MBF	\$ 80.00/MBF	\$ _____
Red Maple	1.4 MBF	\$ 100.00/MBF	\$ _____
Sugar Maple	16.9 MBF	\$ 212.00/MBF	\$ _____
Pulpwood			
Balsam Fir	81 Cords	\$ 8.40/Cord	\$ _____
Basswood	2 Cords	\$ 8.75/Cord	\$ _____
Misc. Species 2	266 Cords	\$ 7.50/Cord	\$ _____
Mixed Hardwood	931 Cords	\$ 15.35/Cord	\$ _____
N. White Cedar	19 Cords	\$ 6.55/Cord	\$ _____
Quaking Aspen	194 Cords	\$ 24.50/Cord	\$ _____
White Spruce	17 Cords	\$ 12.25/Cord	\$ _____

*The volumes are statistically estimated within plus (+) or minus (-) 17.57 percent at 95% confidence level. These estimated volumes are final and not subject to adjustment. Prospective bidders are urged to examine this timber and to make their own estimates of quantity and quality.

I understand that any or all bids may be rejected. All bids must be signed and all bid items must be bid or the bid form may be rejected. I also understand that consideration and awarding a contract will be based upon my past performance and ability to complete the contract based upon equipment and staffing subject to my control.

FEDERAL ID: ____ - ____ - ____ or SOCIAL SECURITY NUMBER: ____ - ____ - ____

Company or individual bidding: _____

Company representative's name: _____

Address: _____

City: _____ State: _____ Zip: _____

IF AVAILABLE, PLEASE PLACE THE PERSONALIZED LABEL FROM YOUR PROSPECTUS IN THE ABOVE BOX.

Individual or company representative's signature: _____ Date: _____

Phone number : _____ Email (optional): _____

THE WINNING BIDDER MUST COMPLETE THE VERIFICATION OF WORKER'S DISABILITY COMPENSATION ACT COMPLIANCE (ON REVERSE SIDE IF DOUBLE SIDED) WITHIN 21 DAYS OF SALE AWARD DATE



TIMBER SALE VERIFICATION OF WORKER'S DISABILITY COMPENSATION ACT COMPLIANCE

As required by Act 317, P.A. 1969 (Worker's Compensation) and
Part 5 of Act 451 of 1994, as amended.

FOR DEPARTMENT USE ONLY

Sale Number (XX - XXX - XX - XX)

Forest Management Unit:

VERIFICATION OF WORKER'S DISABILITY COMPENSATION ACT COMPLIANCE

- This verification must be completed and submitted within 21 days of contract award and prior to the issuance of the timber sale contract.
- In addition, if boxes 2B or 2C are checked, then Notice of Exclusion or Certificate of Insurance must be submitted within twenty-one (21) days of the contract award and prior to the issuance of the timber sale contract.
- All Information must be typed or printed except for written signatures.

Please Check Appropriate Categories:

1. My business is organized as (you **must** check one of the boxes below):
 - A. ☐ Sole Proprietorship (individual)
 - B. ☐ Partnership
 - C. ☐ Corporation
2. You **must** check one of the boxes below:
 - A. ☐ I certify my business is a sole proprietorship and it has no employees but the sole proprietor. I am not subject to the Worker's Compensation Laws.
 - B. ☐ I certify my business has satisfied its obligation to the Worker's Compensation Act through the use of an approved Notice of Exclusion (BWC-337, Rev. 5/96). I will provide a copy of the Notice of Exclusion within 21 days of the contract award. (For questions or a copy of the BWC-337, please call the Worker's Compensation Bureau at 517-322-1195).
 - C. ☐ I certify my business has a Worker's Compensation Policy. I will provide an original Certificate of Insurance within twenty-one (21) days of the contract award.
3. If you have checked item 2(A) or 2(B), you **must** indicate the number of **both** full-time and part-time employees, other than yourself, including family members and active partners (if none, you must enter "0").

_____ Full-time Employees

_____ Part-time Employees

Name of Business		Federal ID (or) Social Security No.
Address		Telephone ()
City	State	ZIP

I hereby certify that the above information is true and correct. I agree to notify the Michigan DNR of any changes that occur in factors affecting my coverage during any of my present and future operations.

Signature of Owner or Authorized Representative

Title

Date

Please complete the "SEALED BID" information on the next page

Houte's Spur Red Eye (33-028-25)
T37N, R28W, SEC. 14; T37N, R28W, SEC. 15; Menominee COUNTY

In response to the notice of sale to be held 3:00 p.m. (local time) on October 22, 2025, I am hereby submitting my sealed bid (firm offer) for the following forest products to be cut. Bids for individual species must be at or above the advertised price. All non-responsive bid forms may be rejected.

<u>PRODUCTS & SPECIES</u>	<u>ESTIMATED VOLUME*</u>	<u>ADVERTISED PRICE</u>	<u>BID PRICE/UNIT</u>
Sawtimber			
Red Maple	5.2 MBF	\$ 100.00/MBF	\$ _____
Red Oak	24.5 MBF	\$ 151.00/MBF	\$ _____
Sugar Maple	0.4 MBF	\$ 212.00/MBF	\$ _____
Pulpwood			
Balsam Fir	23 Cords	\$ 8.40/Cord	\$ _____
Mixed Aspen	132 Cords	\$ 24.50/Cord	\$ _____
Mixed Hardwood	314 Cords	\$ 15.35/Cord	\$ _____
Mixed Spruce	22 Cords	\$ 12.25/Cord	\$ _____
Red Oak	118 Cords	\$ 15.20/Cord	\$ _____
Red Pine	123 Cords	\$ 61.00/Cord	\$ _____
White Pine	652 Cords	\$ 16.90/Cord	\$ _____

*The volumes are statistically estimated within plus (+) or minus (-) 13.26 percent at 95% confidence level. These estimated volumes are final and not subject to adjustment. Prospective bidders are urged to examine this timber and to make their own estimates of quantity and quality.

I understand that any or all bids may be rejected. All bids must be signed and all bid items must be bid or the bid form may be rejected. I also understand that consideration and awarding a contract will be based upon my past performance and ability to complete the contract based upon equipment and staffing subject to my control.

FEDERAL ID: ____ - ____ - ____ or SOCIAL SECURITY NUMBER: ____ - ____ - ____

Company or individual bidding: _____

Company representative's name: _____

Address: _____

City: _____ State: _____ Zip: _____

IF AVAILABLE, PLEASE PLACE THE PERSONALIZED LABEL FROM YOUR PROSPECTUS IN THE ABOVE BOX.

Individual or company representative's signature: _____ Date: _____

Phone number : _____ Email (optional): _____

**THE WINNING BIDDER MUST COMPLETE THE VERIFICATION OF WORKER'S DISABILITY COMPENSATION ACT
COMPLIANCE (ON REVERSE SIDE IF DOUBLE SIDED) WITHIN 21 DAYS OF SALE AWARD DATE**



TIMBER SALE VERIFICATION OF WORKER'S DISABILITY COMPENSATION ACT COMPLIANCE

As required by Act 317, P.A. 1969 (Worker's Compensation) and
Part 5 of Act 451 of 1994, as amended.

FOR DEPARTMENT USE ONLY

Sale Number (XX - XXX - XX - XX)

Forest Management Unit:

VERIFICATION OF WORKER'S DISABILITY COMPENSATION ACT COMPLIANCE

- This verification must be completed and submitted within 21 days of contract award and prior to the issuance of the timber sale contract.
- In addition, if boxes 2B or 2C are checked, then Notice of Exclusion or Certificate of Insurance must be submitted within twenty-one (21) days of the contract award and prior to the issuance of the timber sale contract.
- All information must be typed or printed except for written signatures.

Please Check Appropriate Categories:

1. My business is organized as (you **must** check one of the boxes below):
 - A. ☐ Sole Proprietorship (individual)
 - B. ☐ Partnership
 - C. ☐ Corporation
2. You **must** check one of the boxes below:
 - A. ☐ I certify my business is a sole proprietorship and it has no employees but the sole proprietor. I am not subject to the Worker's Compensation Laws.
 - B. ☐ I certify my business has satisfied its obligation to the Worker's Compensation Act through the use of an approved Notice of Exclusion (BWC-337, Rev. 5/96). I will provide a copy of the Notice of Exclusion within 21 days of the contract award. (For questions or a copy of the BWC-337, please call the Worker's Compensation Bureau at 517-322-1195).
 - C. ☐ I certify my business has a Worker's Compensation Policy. I will provide an original Certificate of Insurance within twenty-one (21) days of the contract award.
3. If you have checked item 2(A) or 2(B), you **must** indicate the number of **both** full-time and part-time employees, other than yourself, including family members and active partners (if none, you must enter "0").

_____ Full-time Employees

_____ Part-time Employees

Name of Business		Federal ID (or) Social Security No.
Address		Telephone ()
City	State	ZIP

I hereby certify that the above information is true and correct. I agree to notify the Michigan DNR of any changes that occur in factors affecting my coverage during any of my present and future operations.

Signature of Owner or Authorized Representative

Title

Date

Please complete the "SEALED BID" information on the next page